

UPS Accessories BROCHURE

JUNHO 2013

Tel: (+351) 21 843 64 00
Fax: (+351) 21 843 64 09
geral@bhb.pt www.bhb.pt

Ease of use

Load Switch

Intelligent load management with CompuWatch or network management software

In combination with the SNMP (PRO) Adapter, the Load Switch enables intelligent load management using a UPS monitor, web browser or UNMS. The four output circuits can be operated individually, allowing delayed on/off switching as well as event-driven switching (if a power outage occurs, for example). The front panel has four LEDs indicating the current switch status.



Key features:

- Four separately controlled load circuits, each with an IEC320 C13 connector
- Individually programmable for automated remote circuit/load management
- Robust metal enclosure designed for tower and 19" rack installation
- Plug-and-go design for easy installation and expansion
- On/off switching via 10/100 Mbit Ethernet TCP/IP connection
- Secured using password-protected levels

Load Switch: Technical data

TECHNICAL DATA	
Compatibility	all Protect series UPS units with SNMP-PRO-Adapter
Nominal input voltage/frequency	230 Vac, 50/60 Hz
Input connector	IEC320 - C20 (16 A)
No. of output circuits (load connection)	4 x IEC320 - C13 (10 A)
	max. switching capacity per circuit (8A)
Dimensions (H x W x D)	Tower mode 19" rack mode
	66 mm x 262 mm x 162 mm 66 mm (1,5 U) x 483 mm (19") x 162 mm
Weight	0,8 kg
AEG part number	600 000 6684

AEG is a registered trademark used under license from AB Electrolux • Changes are subject to change without notice • 07/2009

AEG

Ease of use

External manual bypass switches

External manual bypass switches for Protect B., C., C.R, 1. and 1.M series UPS units

The external manual bypass switch, an optional add-on for the Protect B., C., C.R, 1. and 1.M series of UPS systems, is used to bypass a UPS – for example, to carry out maintenance – without interrupting the supply of power to connected loads. Besides simple bypass operation, it features an additional setting to enable UPS testing. The switch is equipped with individually protected power connectors to supply power to loads directly.

The external manual bypass switch has three settings:

1. UPS mode:
Loads are supplied with power via the UPS.
2. Service mode:
Connected loads are powered directly from the mains supply. This setting also enables the UPS to be tested.
3. Bypass mode:
In this mode, loads are powered directly from the mains supply. The attached UPS is fully disconnected from the circuit and can be removed for maintenance or replacement.

Key features:

- Enclosures with a coordinated visual and technical design to match different UPS services
- Practical lasered and abrasion-resistant panel labeling
- High-quality can switch with leading and overlapping contacts
- Visual indication (green/yellow/red) of operating states (MBS 6000 only)
- Integrated power distribution unit; MBS 6000 additionally includes a terminal for supplying an external UPS
- Plug-and-go design for easy installation (MBS 2000/3000)
- Supplied complete with connection and installation kit
- Detailed user guide in several languages



Fig.: MBS 2000/3000, MBS 6000, MBS 24000



External manual bypass switches: Technical data

	MBS 2000	MBS 3000	MBS 6000	MBS 24000
Compatibility	B.750-B.2000 C.1000 (R) / C.2000 (R)	B.3000 / C.3000 (R)	C.6000 (R)	C.10000 / 1. / 1.M
Nominal input voltage frequency	230 Vac, 50/60 Hz	230 Vac, 50/60 Hz	230 Vac, 50/60 Hz	230 Vac, 50/60 Hz
Nominal current	10 A	16 A	32 A	32 A bis 125 A
No. of output connections	4 x IEC 320 (C 13)	4 x IEC 320 (C 13) 1 x IEC 320 (C 19)	8 x IEC 320 (C 13), protected in pairs by 5 x 20mm micro fuse (T 10 A), plus unprotected terminal output	16 x terminals
Enclosure color	Blackline	Blackline	Blackline	Blackline
Dimensions (H x W x D)				
Tower mode	88 mm x 215 mm x 200 mm		88 mm (2 U) x 483 mm (19") x 350 mm	600 mm x 380 mm x 350 mm
19" Rack mode	88 mm (2 U) x 483 mm (19") x 200 mm			
AEG part number	600 000 3039	600 000 3040	600 000 5205	100 000 2021

Ease of use

PDB for Protect C. and 1. series UPS units

Parallel switch panel, manual bypass unit and distribution panel for Protect C.6000/C.10000 and Protect 1.100/1.150/1.200 UPS units

With the compact parallel switch panel, users can set up a parallel system comprising up to three Protect C.6000 / C.10000 or up to three Protect 1.100 / 1.150 or 1.200 units without needing to restructure an existing low-voltage main distribution system. Combining up to 24 separately protected, ready-made circuits in an output distribution unit built into a parallel switch panel, the PDB box eliminates the need to set up or reorganize a sub-distribution system.

Offering active redundancy and designed for use with the Protect C. range of single-phase UPS units (up to 30 kVA or 20 kVA) and the Protect 1. range of three-phase-input UPS units (up to 60 kVA or 40 kVA), the switch panel allows users to connect devices in parallel for enhanced performance and single or multiple redundancy. Each UPS unit can be disconnected – from the mains supply on the input side and from the protected busbar – without interrupting the supply of power to connected loads. In addition, the manual bypass can disconnect the entire parallel UPS system – for maintenance, for example – without cutting power to attached devices. A remote signaling contact indicates the current operating status.



Fig.: PDB-Box for Protect C.

Key features:

- Robust metal enclosure with swing door, wall mount ready
- Generous wiring space, large wiring terminals
- High-quality all-pole cam switch with overlapping contacts, plus floating auxiliary changeover contact for additional position indication
- Prepared for integration of connection-ready sub-distribution system (up to 24 circuits protected individually to 63 A max. by power-protection switches, additional output terminals for directly supplying an external sub-distribution system)
- Practical labeling, including space for user-specific additions
- Detailed documentation, including installation diagram and wiring diagram



PDB box for Protect C. and 1. series UPS units: Technical data

For Protect C. series	PDB_C
Compatible UPS types	Protect C. 6000 / C.10000
Nominal input voltage/frequency	230Vac, 50/60 Hz
Nominal current	130 A
Enclosure color	Blackline
Dimensions (H x W x D)	600 mm x 600 mm x 350 mm
Weight	45 kg
AEG part number	100 000 1852

For Protect 1. series	PDB_1
Compatible UPS types	Protect 1.100 / 1.150 / 1.200
Nominal input voltage/frequency	400/230Vac, 50/60 Hz
Nominal current	250 A
Enclosure color	Blackline
Dimensions (H x W x D)	760 mm x 760 mm x 300 mm
Weight	70 kg
AEG part number	100 000 1853

Ease of use

Remote Panel

The remote panel displays remote UPS status in real time. An additional bar graph shows the current UPS load and remaining capacity in emergency power mode. Besides the visual indicators, the panel has an acoustic alarm (which can be disabled), plus a shutdown contact to enable a remote UPS shutdown in the event of an emergency. The remote panel can be installed at a distance of up to 500 meters. Data and power are supplied to the remote panel over a conventional patch cable. The remote panel is available for Protect C. Tower (6 kVA and higher), Protect 1. and Protect 1.M UPS units.

Key features:

- Robust enclosure with rear wall mounts
- Power supply and data communication over standard Ethernet patch cable (RJ45)
- Can be installed at distances up to 500m
- Acoustic alarm can be enabled to signal critical operating states
- Emergency shutdown contact
- Hot-swappable
- Controlled via slot card (included)
- Clearly structured display indicates current operating state
- No network required



Remote Panel: Technical data

TECHNICAL DATA	
Compatibility	Protect C. (Tower from 6 kVA), Protect 1, Protect 1.M
Includes	Remote Panel, control slot card, user guide
Dimensions	150 mm x 110 mm x 40 mm (W x H x D)
Weight	720 g
AEG part number	600 000 5881

AEG is a registered trademark used under license from AB Electrolux • Specifications are subject to change without notice • 03/2009

AEG

Ease of use

PDU Rack

Power distribution units for rack systems

These power distribution units are designed to distribute power from UPS outlets to multiple connected loads. Various models are available with a choice of grounded IEC320 C13 and C19 sockets for connecting equipment. The sockets are protected against overloading, either individually or in pairs, depending on the connector type. The connection options provide an effective means of defining selection criteria to meet required power-down conditions. LEDs indicate the current operating state.

Thanks to slot-in rack flanges, the PDUs are easy to install in a standard rack chassis. For flexibility, the flanges can be removed for desktop use. The PDUs have robust aluminum enclosures offering exceptional rigidity and durability.



Key features:

- Modular construction
- Choice of outlet socket types
- Micro fuse on supply circuit for additional protection
- High-quality aluminum enclosure
- Flexible installation options
- 1m connecting cord

PDU Rack: Technical data

	PDU 10-1	PDU 10-2	PDU 16-1	PDU 16-2
Compatibility	PROTECT A. / B. / C. / C.R and MBS 2000/3000/6000		PROTECT B.3000 / C.3000 / C.3000R and MBS 3000	
Input voltage	230 Vac, 50/60 Hz			
Input connector	IEC320 - C14 (10A)		IEC320 - C20 (16A)	
Output connectors	6 x IEC320 C13 (10A) protected in pairs	6 x grounded outlets protected centrally	4 x IEC320 C13 (10A) protected in pairs	3 x grounded outlets -
			3 x IEC320 C19 (16A)	3 x IEC320 C19 (16 A)
Dimensions ca. (W x H x D)	483mm (429mm w/o flanges) x 44 mm (1 U) x 44 mm			
Weight ca.	0,7 kg			
AEG part number	600 000 6829	600 000 6831	600 000 6830	600 000 6832

AEG is a registered trademark used under license from AB Electrolux • Specifications are subject to change without notice • 02/2009

Ease of use

Environment Manager

Management device for multiple environmental sensors

The Environment Manager is a universal sensor management device designed as a system add-on for the SNMP PRO Adapter. It can manage up to eight analog sensors, four digital contacts and four digital switches simultaneously. The device can also work with other kinds of sensor units – for humidity, pressure, tank fill levels and chemical concentrations, for example – provided the signal voltages from the attached sensors are within defined values (0-10V for analog inputs, 48V/500mA for digital inputs/outputs).

The digital outputs can be configured for a default state of open or closed. Sensors are simply connected to a free RJ11 port. If more than four sensor devices need to be attached, sensors are available that are equipped with an expansion connector, allowing multiple sensors to be connected to one another. If all the RJ11 ports are occupied, splitters can be used to provide additional ports.



Key features:

- Capable of managing up to eight analog sensor units, four digital contacts and four digital switches
- Robust metal enclosure
- Plug-and-go design for easy installation and expansion
- Secured using password-protected levels

Environment Manager: Technical data

TECHINCAL DATA		
Compatibility	all AEG PROTECT series UPS units with SNMPpro adapter	
Nominal input voltage/frequency	230 Vac, 50/60 Hz	
Input connector	IEC320 – C20 (16 A)	
No. of output circuits (load connection)	4 x IEC320 – C13 (10 A)	
	max. switching capacity per circuit 8A	
Dimensions (H x W x D)	Tower mode	66 mm x 262 mm x 162 mm
	19" rack mode	66 mm (1,5 HE) x 483 mm (19") x 162 mm
Weight	0,8 kg	
AEG part number	800 002 2488	

AEG is a registered trademark used under license from AB Electrolux • Changes are subject to change without notice • 07/2009

AEG

Ease of use

SNMP(pro) Adapter

Communications add-on for UPS systems from AEG Power Solutions

Available in two versions, the SNMP adapter enables users to monitor the status of UPS units via the Web or WAP. It can also initiate a staggered shutdown of key servers if the need arises, and can restart the servers via wake-on-LAN, providing automatic system shutdown and reboot capabilities. In addition to these features, the adapter has an integrated RFC1628-compliant SNMP agent, allowing the UPS to be configured and monitored in HP OpenView, SunNet Manager or other network management software.

The PRO version of the SNMP adapter can additionally incorporate room access control, air-conditioning, and smoke and fire detector systems. In combination with the EnvironmentManager, the SNMP PRO Adapter is even capable of processing temperature and humidity sensor data.



Key features:

- Event notification by e-mail, SMS text or network messages
- Status information can be viewed in web browser
- Automatic initiation of shutdown and reboot procedures over LAN
- Definition of time- and interrupt-driven events

SNMP(pro) Adapter: Technical data

TECHNICAL DATA	SNMP-ADAPTER	SNMP-PRO-ADAPTER	SNMP-PRO-ADAPTER (EXTERNAL)
Compatibility	Protect B. (from B.1500) / C. / 1. / 1.M		all PROTECT series UPS units
Power supply	internal via UPS		power adapter
Adapter ports	1 x RJ45	1 x RJ45, 1 x Com 2, 1 x 10/100 Mbit Ethernet	1 x RJ45, 1 x Com 2, 1 x 10/100 Mbit Ethernet
Format	Slot card (internal)		
Includes	Adapter, short user guide		Com cable, 12V power adapter
Dimensions (H x W x D)	60 mm x 44 mm x 120 mm		69 mm x 28 mm x 126mm
Weight	66 g		210 g
AEG part number	600 000 4036	600 0001271	800 000 9965

AEG is a registered trademark used under license from AB Electrolux • Specifications are subject to change without notice • 02/2009

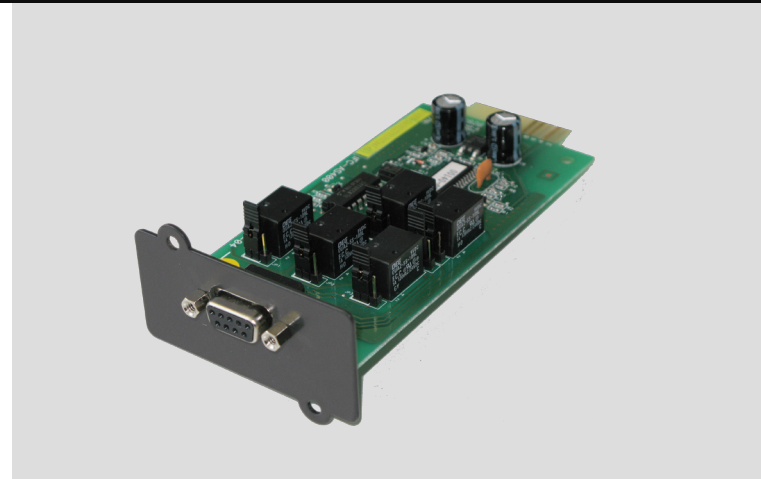
Ease of use

Relay card

This relay card is an option for UPS series Protect B. / C. / C.R / 1. and 1.M and enables the communication via potential free contacts. The contacts can be configured as opener or shutter. The status notifications will be transmitted by a 9 pin Sub-D socket. The relay cards are optimized for the IBM AS400 but can also be used for other applications.

Configuration:

1. UPS failure (battery \leq unload voltage)
2. Sammelstörmeldung (Meldungen der Pins 1, 7, 9)
3. Undefined
4. Undefined
5. Shared contact (ground) for pin 1, 2, 6, 7, 8 and 9
6. Active bypass, mains powered
7. Undervoltage of battery
8. UPS normal mode
9. Mains failure, battery mode



Key features:

- Communication card for expansion slot
- Potential free contacts, configurable as opener or shutter (not at Relaycard_B)
- Maximum contact rating: AC/DC \approx 24V / 0,5 A

Relay card: Technical data

	RELAYCARD_B	RELAYCARD
Compatibility	Protect B.	Protect C. / C.R / 1. / 1.M
Contacts configurable	as shutter	as opener or shutter
Outlets	9 pin Sub-D socket	
Scope of delivery	relay card, operating instruction (printed)	
Dimensions (W x H x D)	60 mm x 44 mm x 120 mm	
Weight	60 g	
AEG part number	600 000 5196	600 000 3932

AEG is a registered trademark used under license from AB Electrolux • Specifications are subject to change without notice • 07/2010

AEG

Ease of use

Sensor products

Sensors for use with the SNMPpro adapter and the Environment Manager

Sensors play an important role in process automation. They detect external events and conditions, and signal these to the UPS. The software CompuWatch includes modules that can execute scripts in response to defined events. The sensors are connected via an SNMP Pro Adapter. This can operate a single sensor directly or multiple sensors in combination with the Environment Manager. The latter supports up to eight analog sensors, four digital contacts and four digital switches.

Temperature and humidity sensors

The sensor is supplied with a ready-made cable for easy installation. The enclosure base has two holes to enable wall mounting.

Motion detector

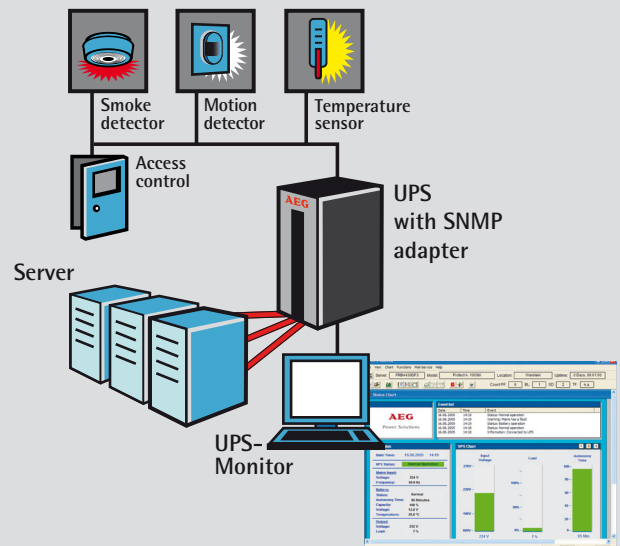
The motion detector is supplied with a ready-made cable for easy installation. The enclosure base has two holes to enable wall or ceiling mounting.

Smoke detector

The smoke detector has a hole in its base to enable direct mounting on ceilings. It can quickly detect smoldering fires caused by sparkover and allows fire control measures to be initiated automatically.

External relay board

The external relay board enables up to four devices to communicate with the UPS system via the RJ11 interface. It has four LEDs to indicate the current positions of the active floating relay outputs and inputs. The board requires its own power supply.



At failure:
alarm via
e-mail or pop-up.

Key features:

- Complete data center monitoring
- Automatic initiation of countermeasures
- Notification of administrators when thresholds are exceeded
- 6m connecting cord
- Holes for wall or ceiling mounting
- Detailed documentation



Sensori products: Technical data

Temperature sensor	SM_T	SM_T_Plus	SM_T_Com
Compatibility	EnvironmentManager, SiteManager		SNMP-Pro-Adapter
Measuring range	0°C - +100°C (+/- 1%)	-30°C - +70°C (+/- 1%)	-25°C - +100°C (+/- 0,5%)
Output signal	0 - 19V DC		Serial protocol (2400 Baud)
Additional inputs	1 x digital (EnvironmentManager only)		-
Dimensions	27mm (H) x 70mm (W) x 70mm (D)		
Includes	Temperature sensor, RJ12 cable (3m)		Temp.sensor, DB9 cable (1,8m)
AEG part number	800 002 2489	800 002 2490	800 002 0878

Combi sensor for temperature and humidity	SM_T_H	SM_T_H_Com
Compatibility	EnvironmentManager, SiteManager	
Measuring range	0°C - +100°C (+/- 1%), 0-100% rel. F (+/- 5%)	-25°C - +100°C (+/-0,5%)
Output signal	2 x 0 - 10V DC	serial protocol (2400 Baud)
Additional inputs	1 x digital (EnvironmentManager only)	
Dimensions	27mm (H) x 70mm (W) x 70mm (D)	
Includes	Sensor, RJ12 cable (3m)	Sensor, DB9 cable (1,8m)
AEG part number	800 002 2492	800 002 2493

Smoke and motion detection sensor	SM_Smoke	SM_Motion
Compatibility	EnvironmentManager, SiteManager	
Dimensions	85mm (D) x 75mm (H)	45mm (H) x 115mm (W) x 60mm (D)
Includes	Sensor, RJ12 cable (3m)	
AEG part number	800 002 2495	800 002 2494

Actuators	SM_Buzzer	SM_Flash
Compatibility	EnvironmentManager, SiteManager	
Power consumption	ca. 30mA	ca. 170mA
Other	ca. 80 dB (sound pressure)	
Dimensions	27mm (H) x 70mm (W) x 70mm (D)	70mm (D) x 40mm (H)
Includes	Sensor, RJ12 cable (3m)	
AEG part number	600 000 7361	600 000 7362

External relay board	CON_R_AUX
Compatibility	SNMP-Pro-Adapter
Power consumption	ca. 200mA
Relay outputs/inputs	4
Dimensions	45mm (H) x 68mm (W) x 78mm (D)
Includes	Relay board, RJ11 cable (1m), 12V power adapter
AEG part number	600 000 5994

AEG is a registered trademark used under license from AB Electrolux • Specifications are subject to change without notice • 07/2009

Contactos/Contacts:

Comercial/Commercial:

Francisco Lopes

e-mail: flopes@bhb.pt

Tel: (+351) 21 843 64 00

Fax: (+351) 21 843 64 09

Assistência/Service:

Joaquim Picante

e-mail: jpicante@bhb.pt

Tel: (+351) 21 843 64 00

24 Horas: (+351) 96 523 73 93

