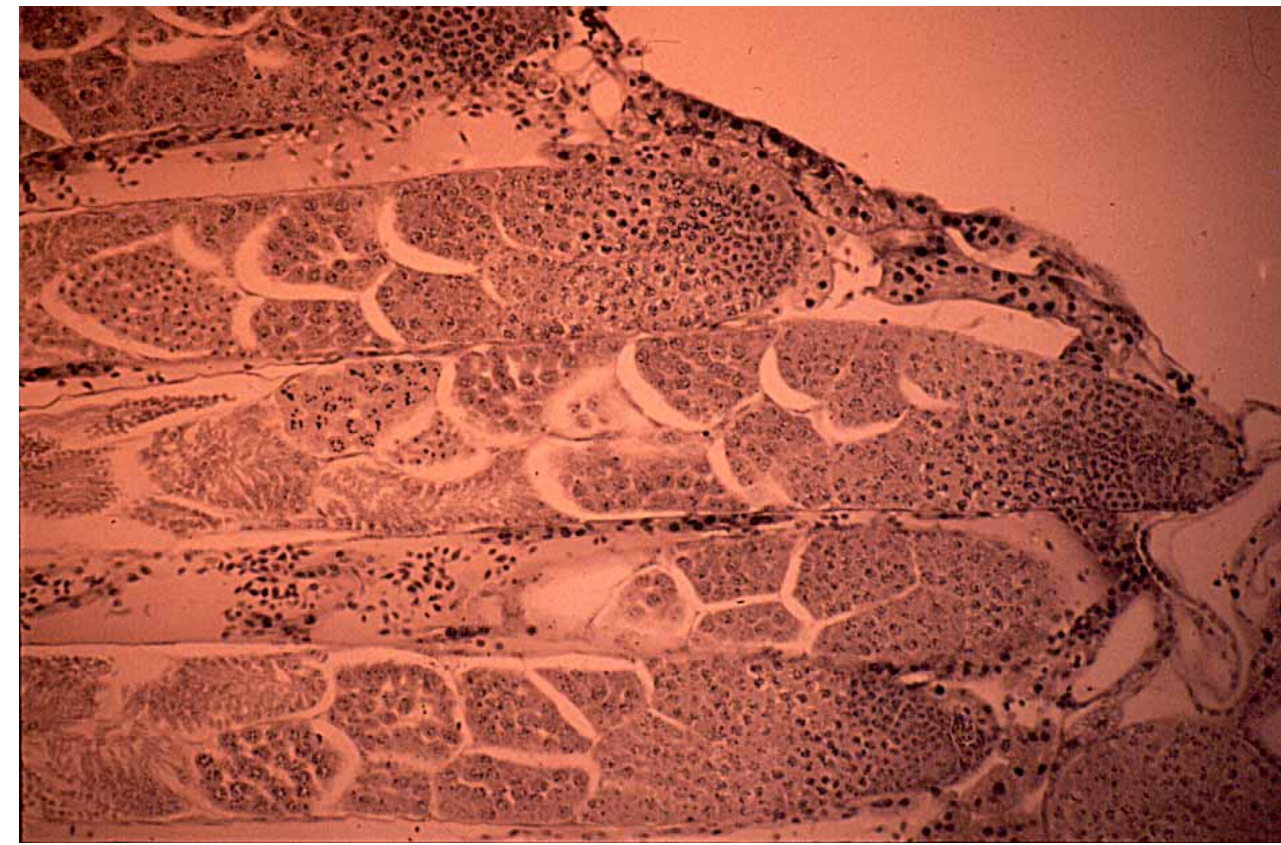
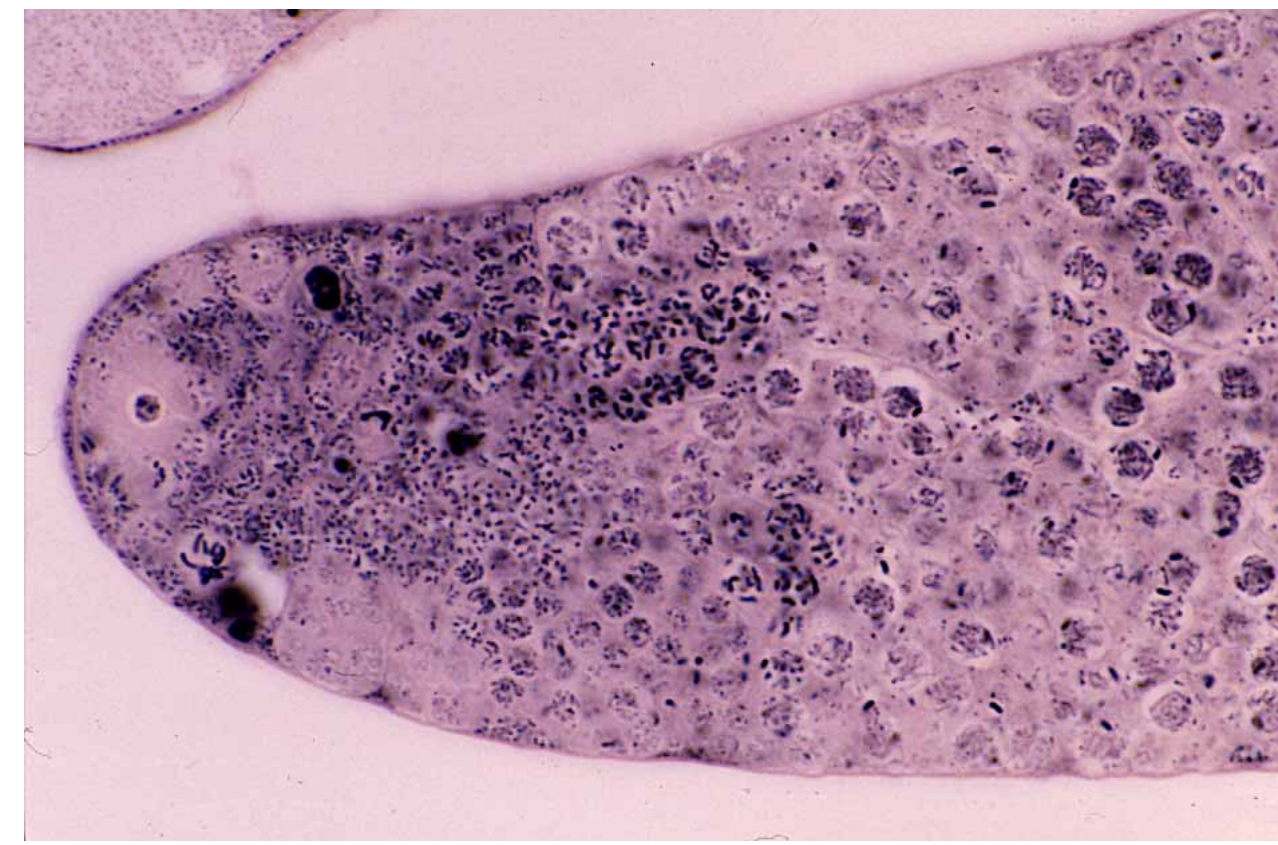


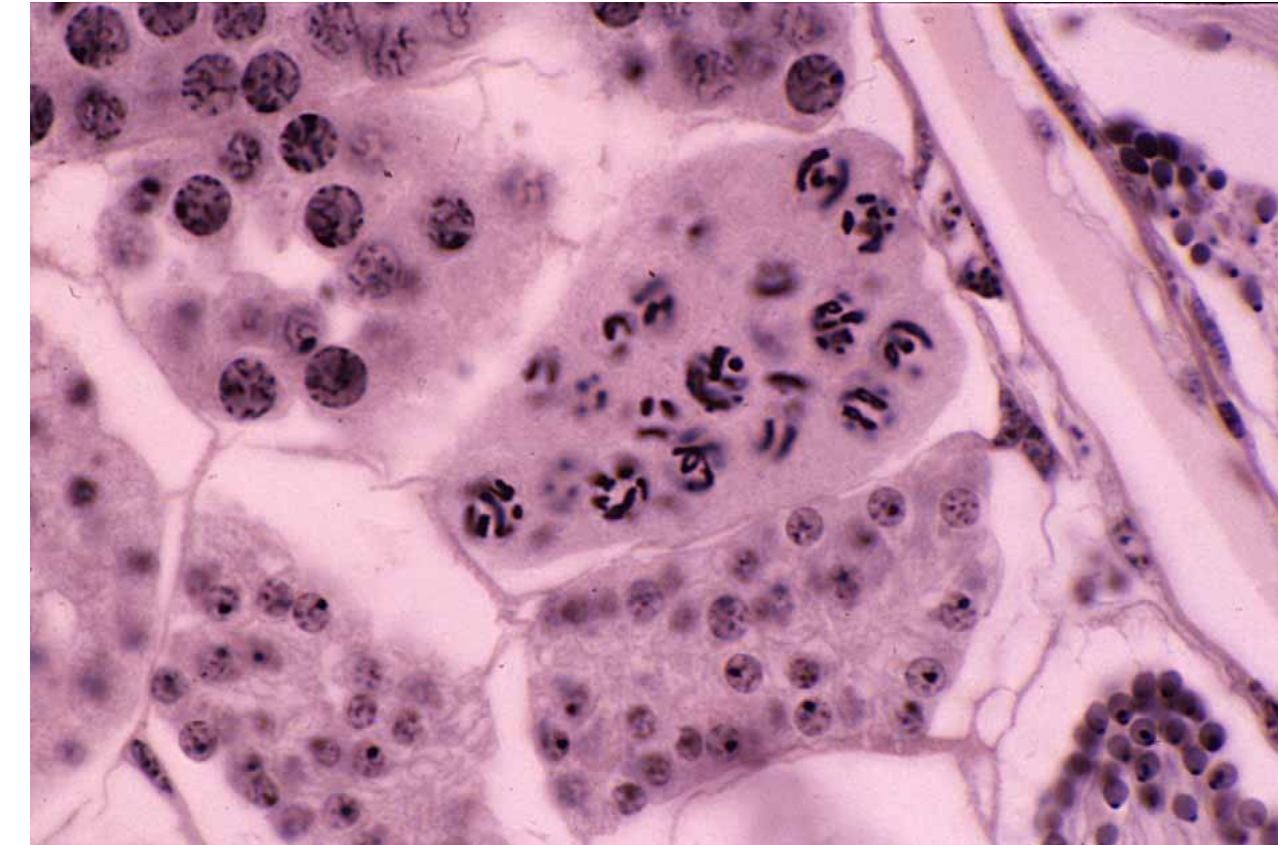
S P E R M A T O G E N E S I S



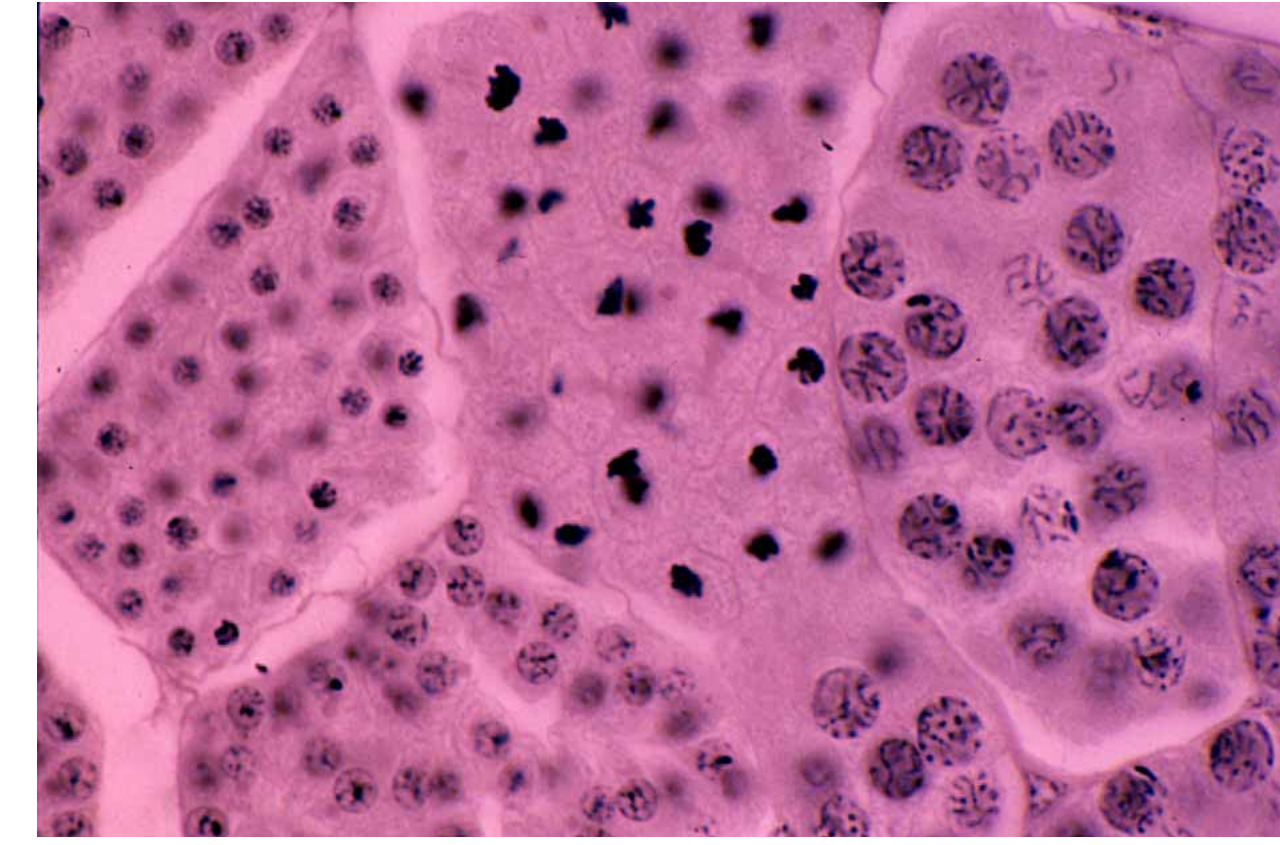
L.S. of grasshopper (Orthoptera: Acrididae) sperm tubes



Apex of grasshopper sperm tube



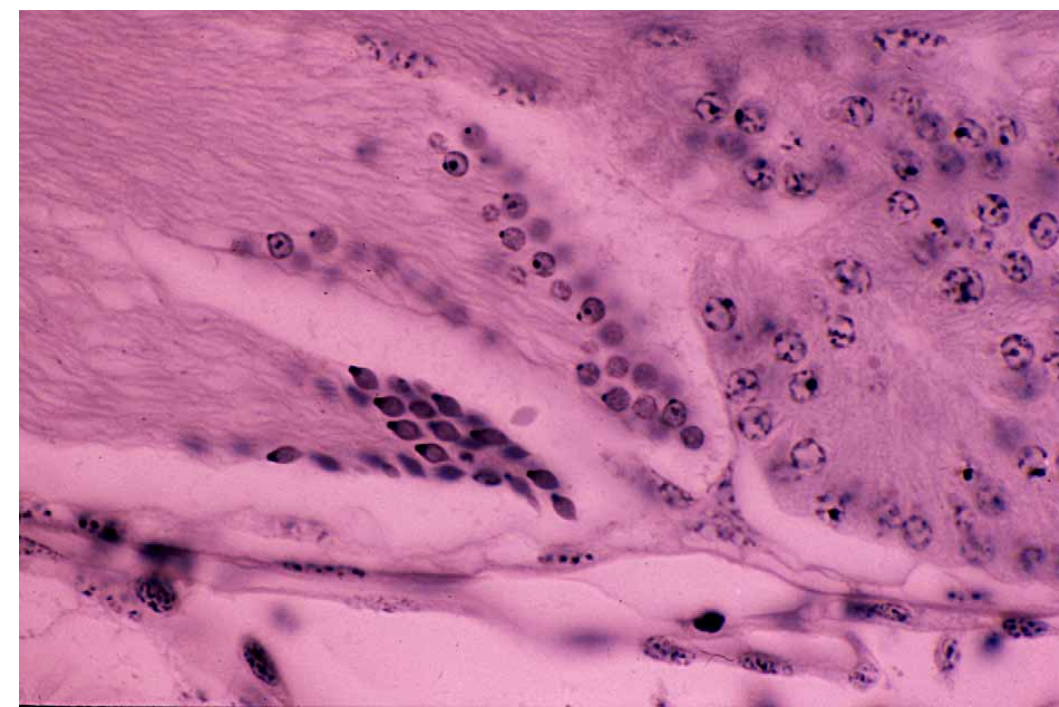
Cysts in grasshopper sperm tube



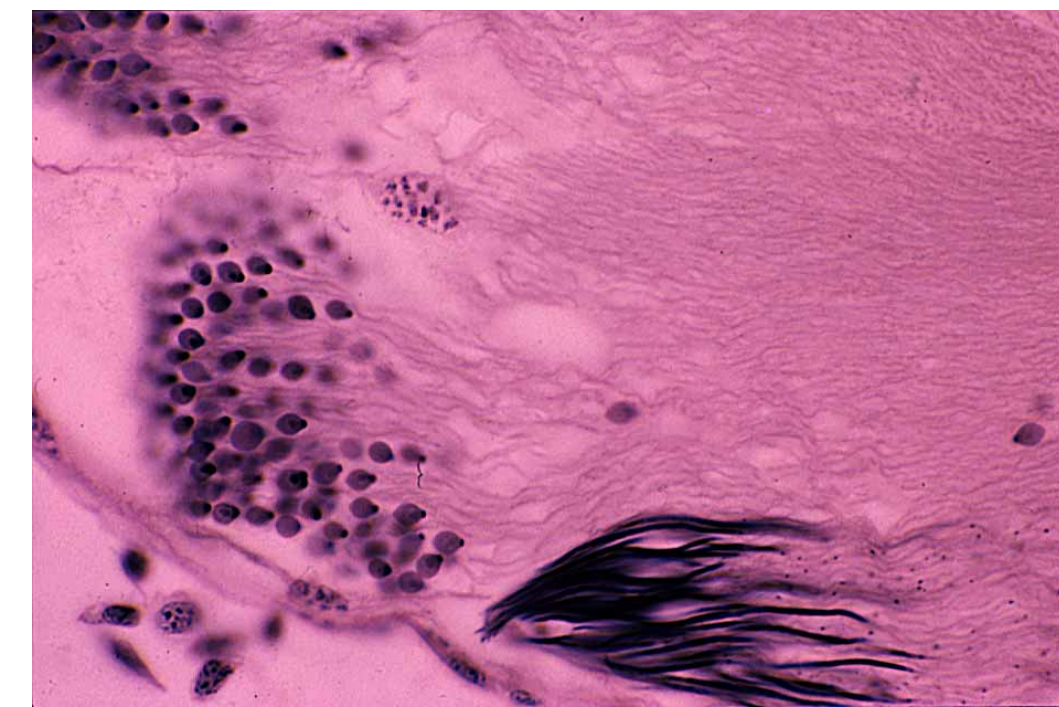
Cysts in grasshopper sperm tube



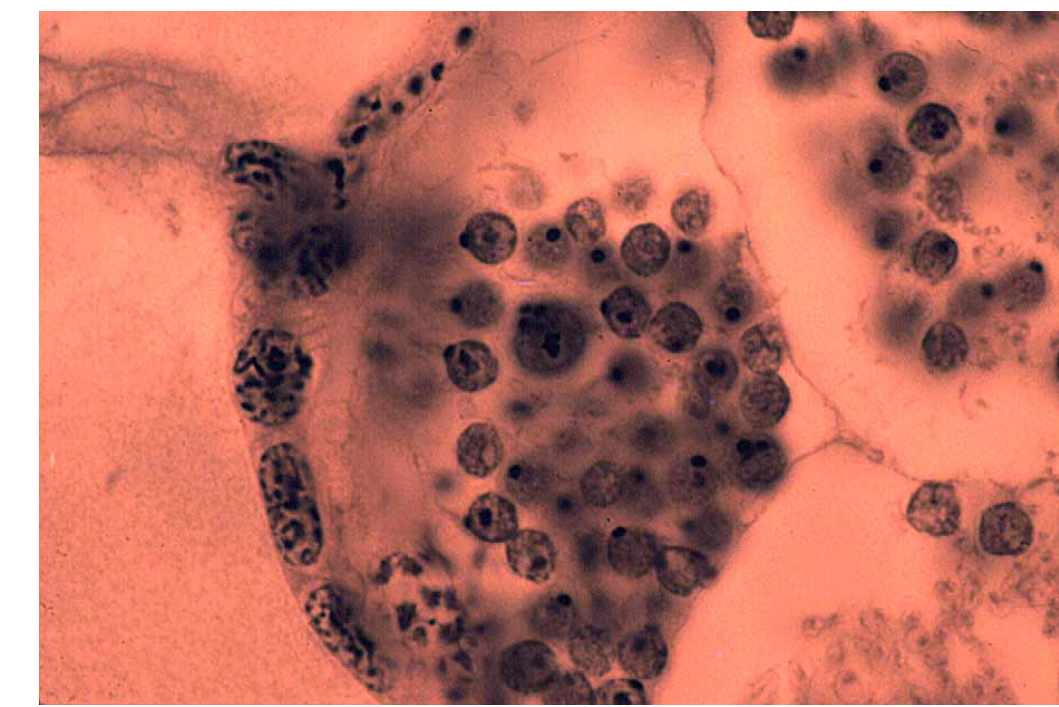
Grasshopper spermatogonial cysts



Grasshopper spermatid bundles



Grasshopper spermatid bundles



Grasshopper spermatids with 1, 2 and 4 axonemes



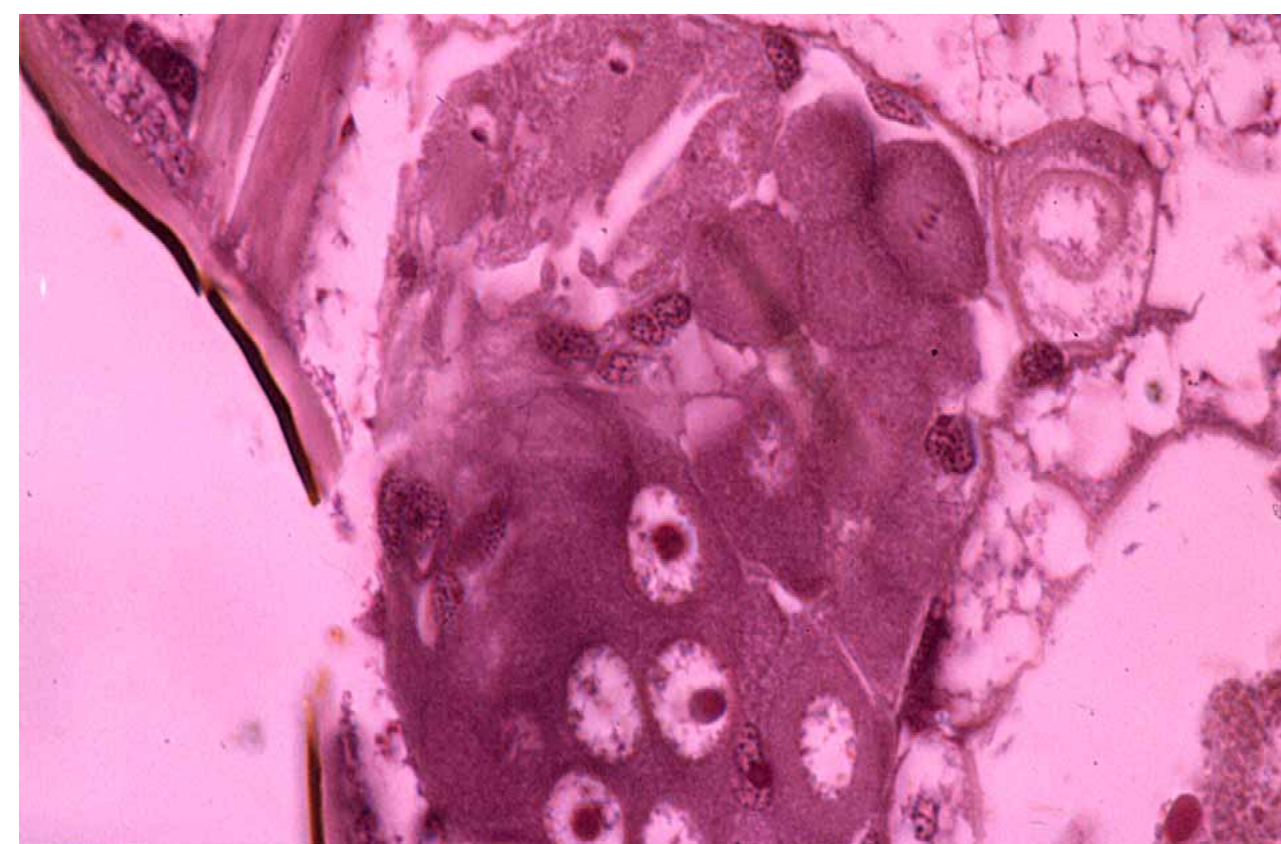
Squash preparation of grasshopper primary spermatocytes in diakinesis



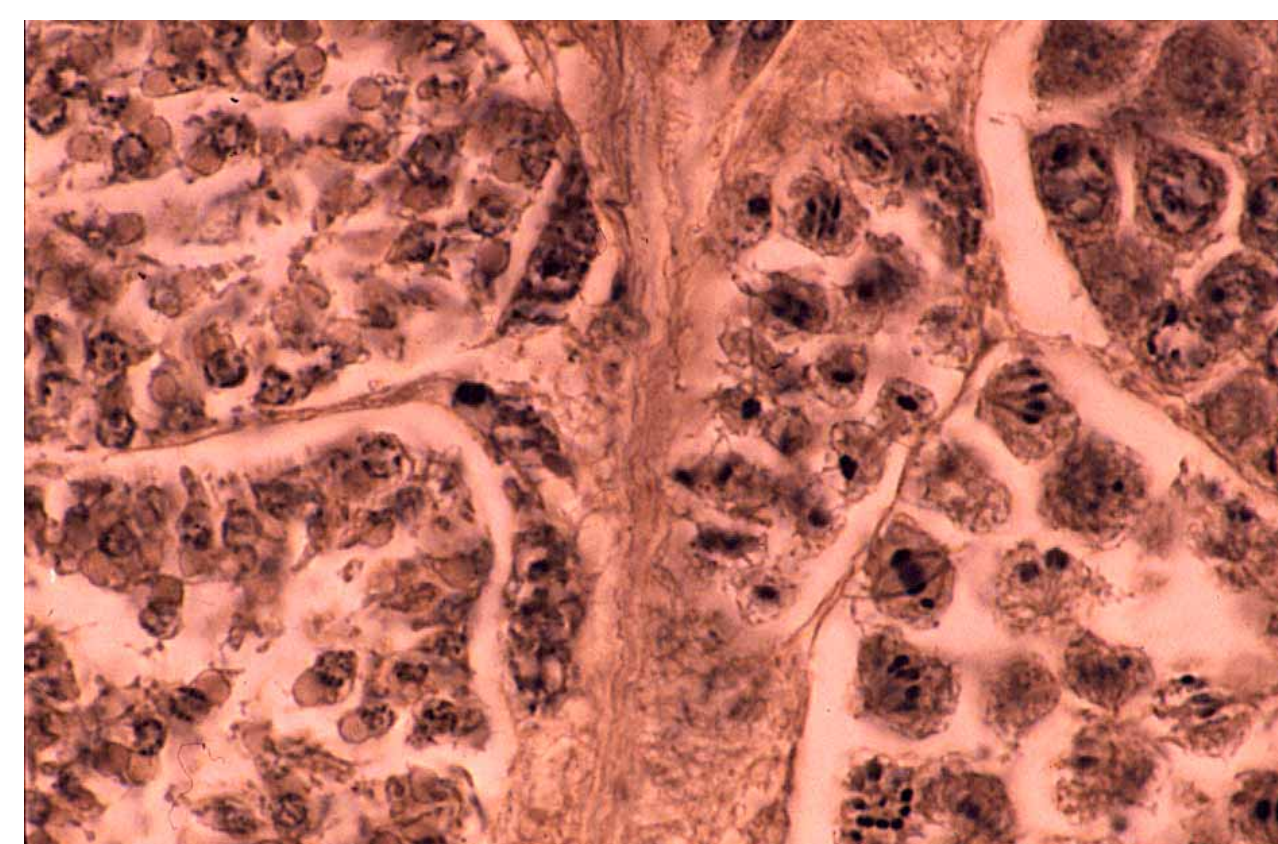
Squash preparation of grasshopper primary spermatocytes in metaphase I



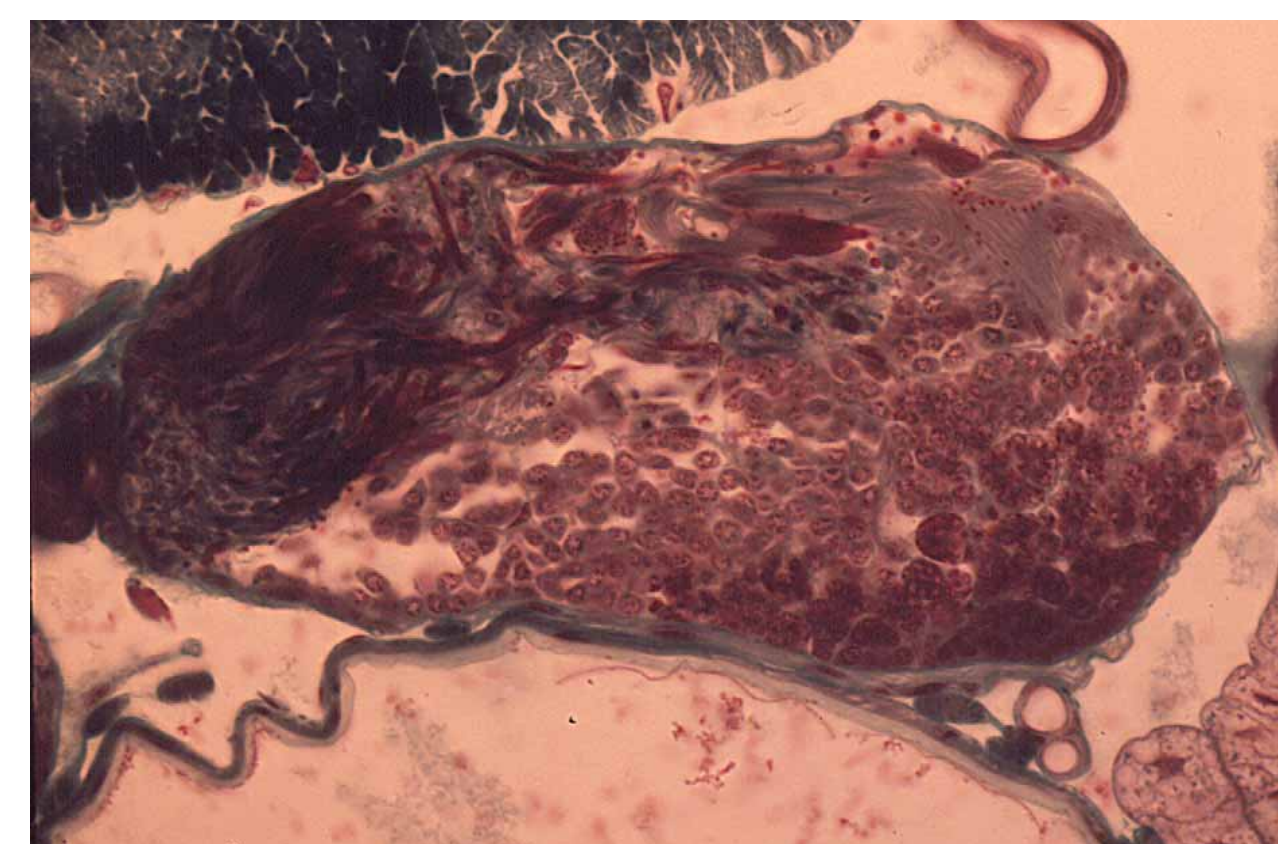
Squash preparation of grasshopper sperm bundle



Hebrus pusillus (Hemiptera: Hebridae) spermatogenesis



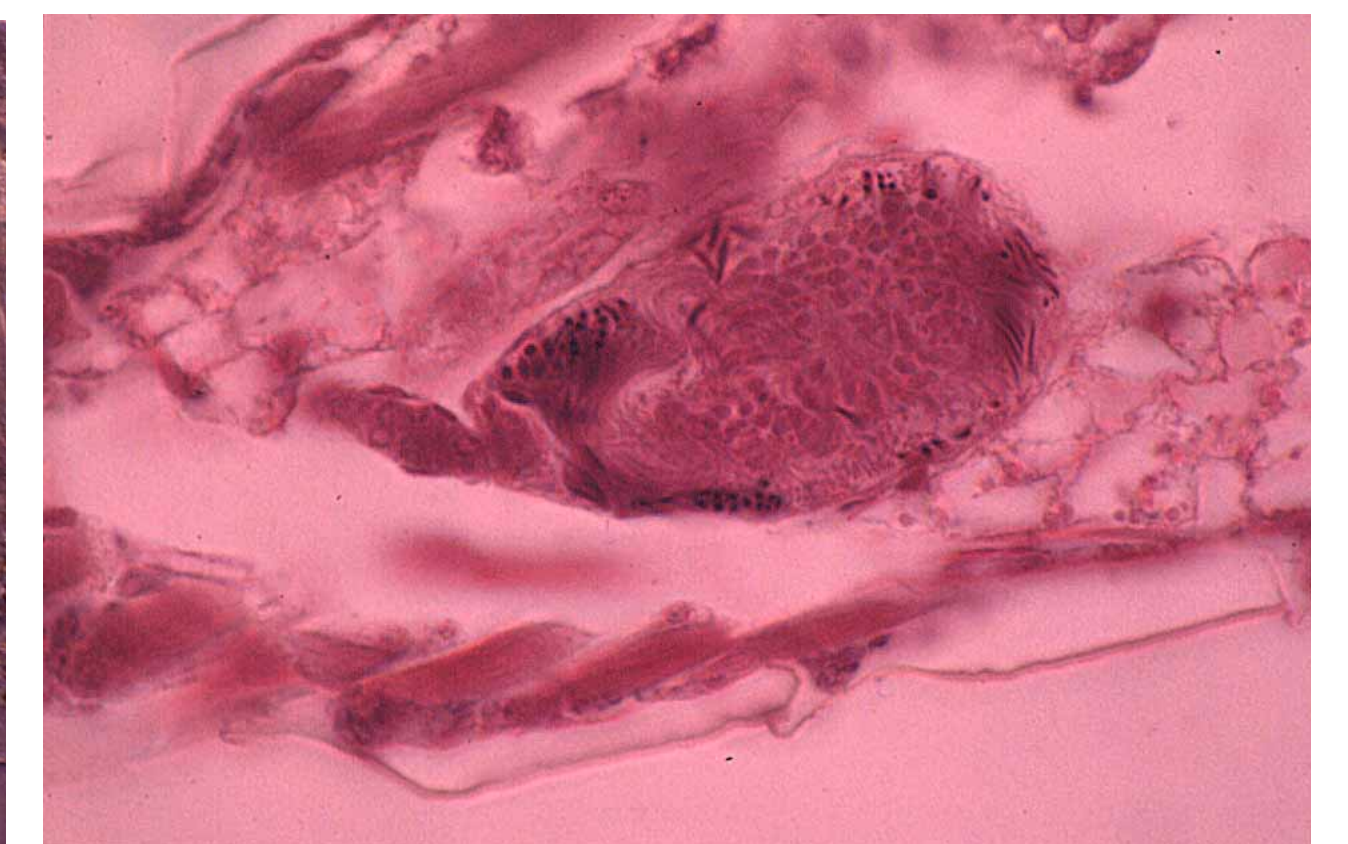
Anasa tristis (Hemiptera: Coreidae) testis



Caddisfly (Trichoptera) testis



Parthenothrips dracaenae (Thysanoptera: Thripidae) early pupa, showing two testes



Frankliniella fusca (Thysanoptera: Thripidae) late pupa; L.S. through testis

O O G E N E S I S



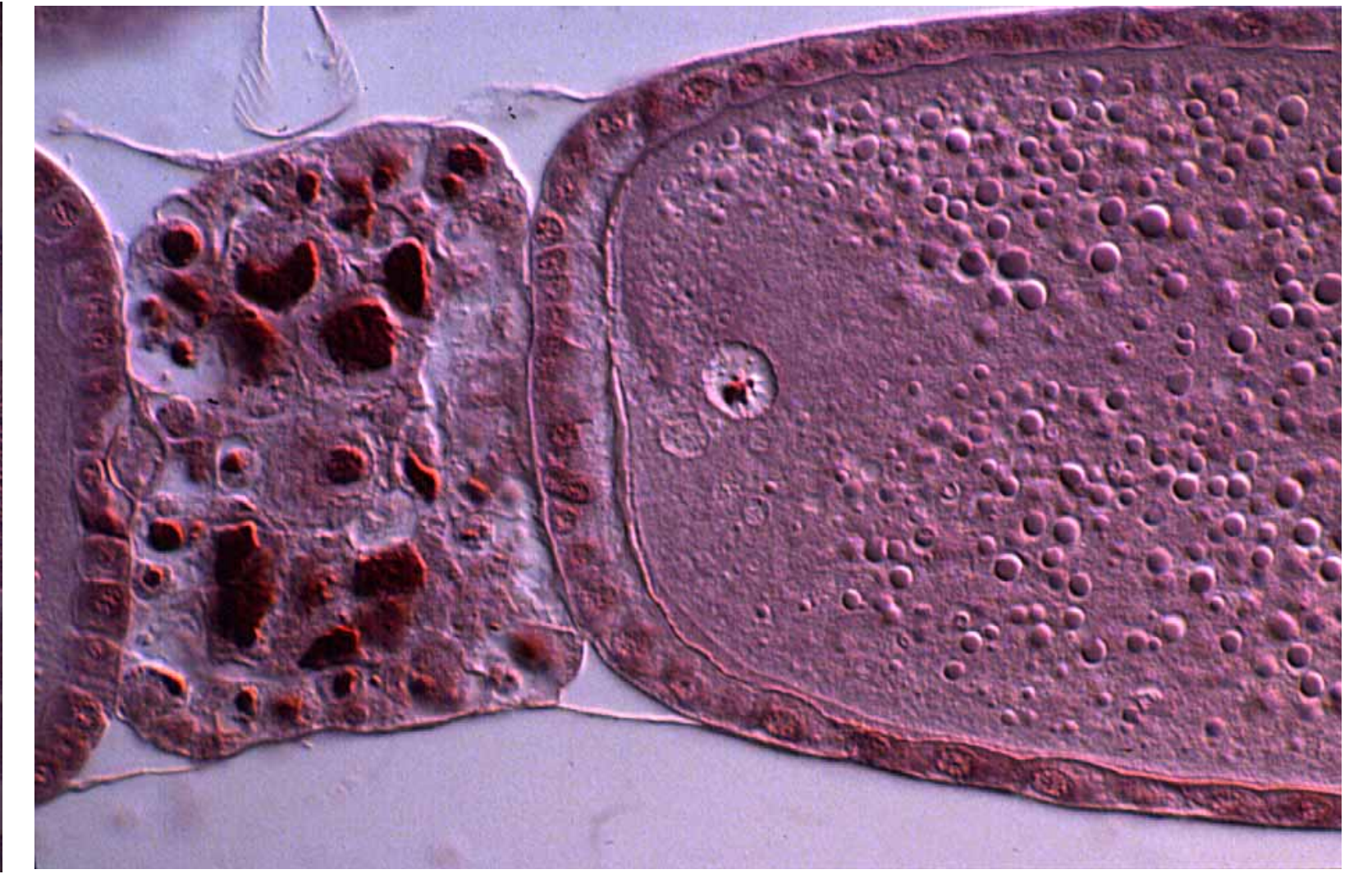
L.S. of honeybee (*Apis mellifera*) (Hymenoptera: Apidae) ovarioles



L.S. of honeybee ovariole



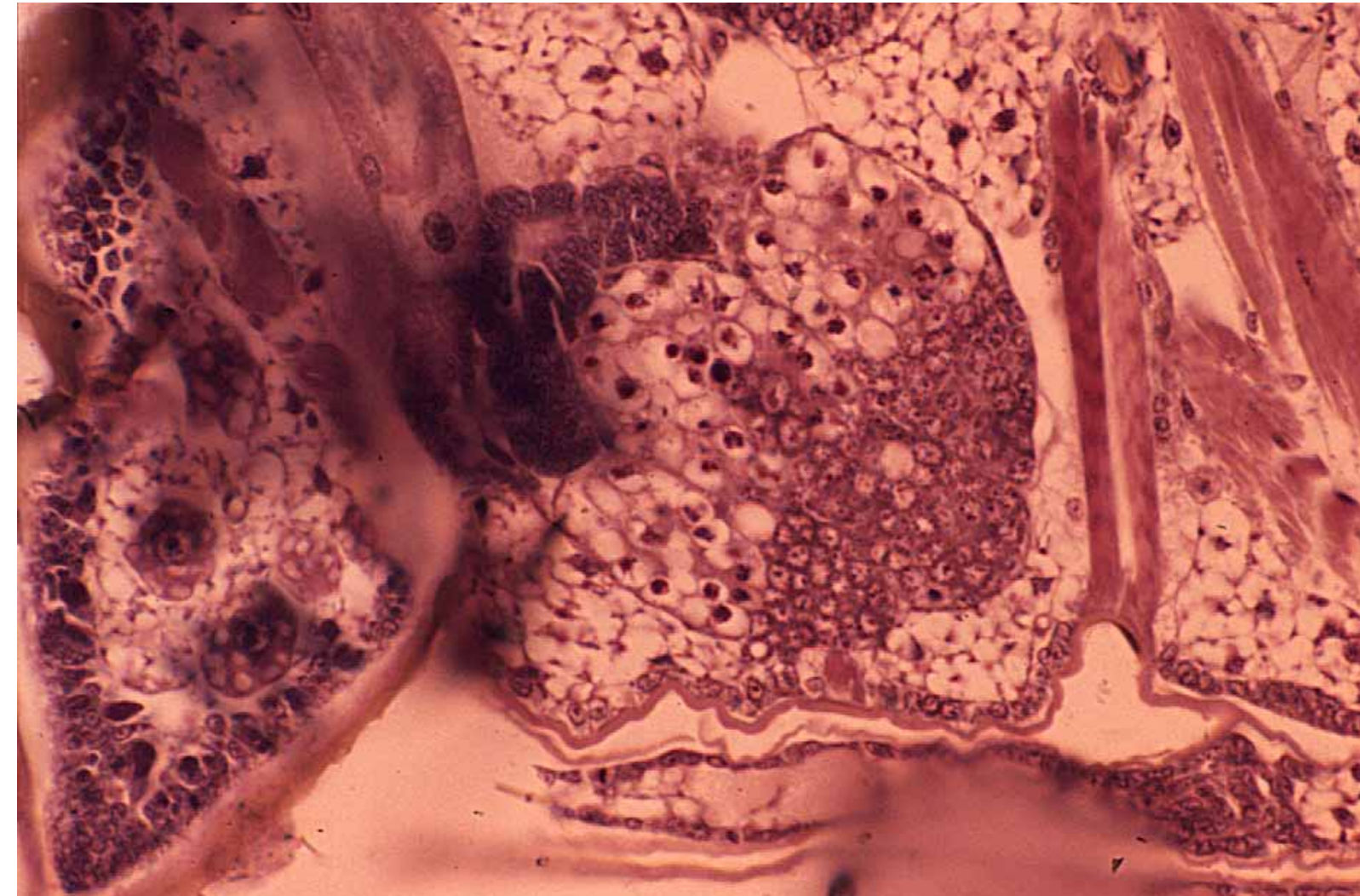
L.S. of honeybee ovariole



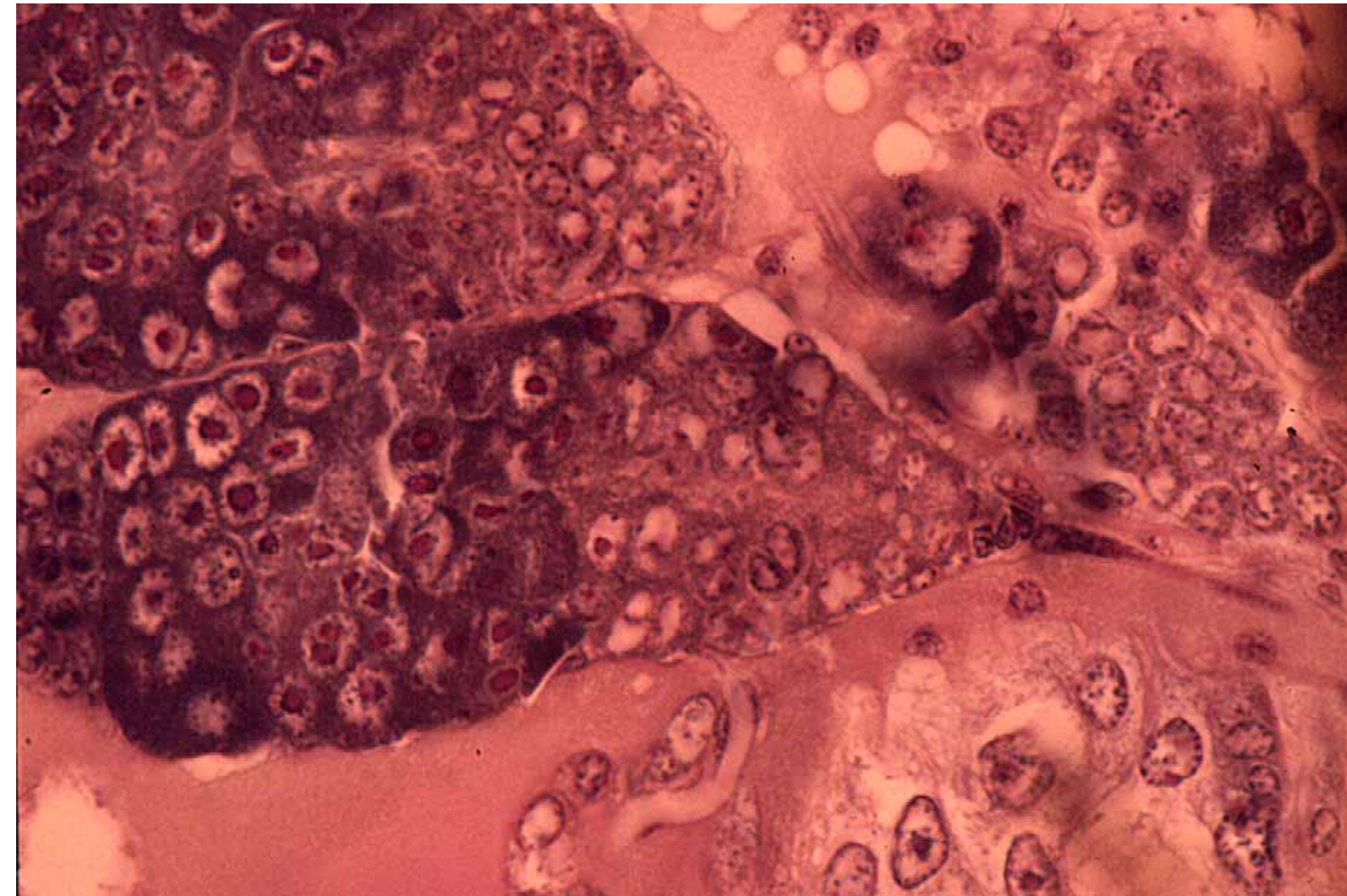
L.S. of honeybee ovariole



L.S. of honeybee ovariole



F.S. of *Hebrus pusillus* (Hemiptera: Hebridae) larva V ovary rudiment



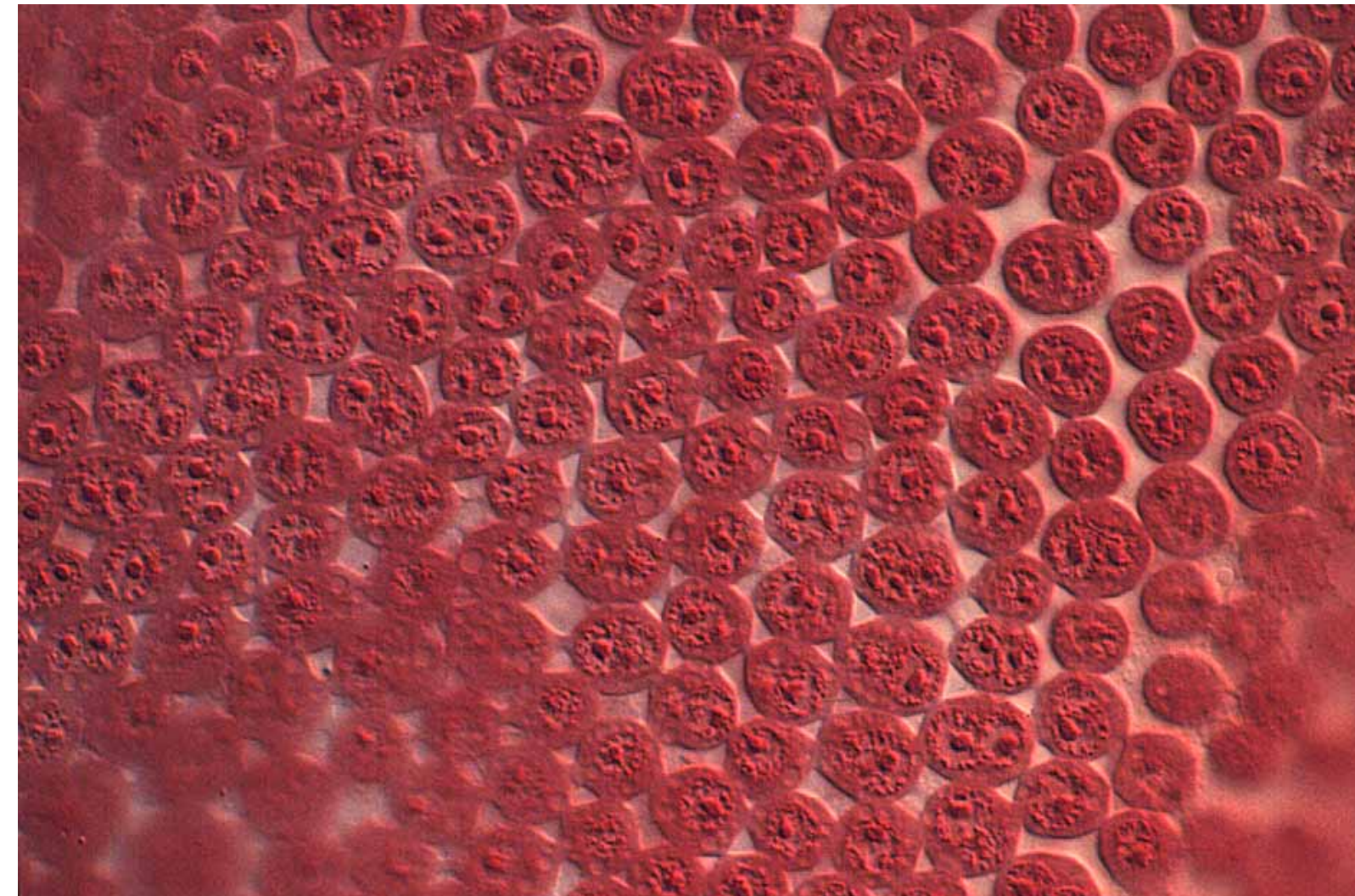
L.S. of *Hebrus pharate* adult ovary



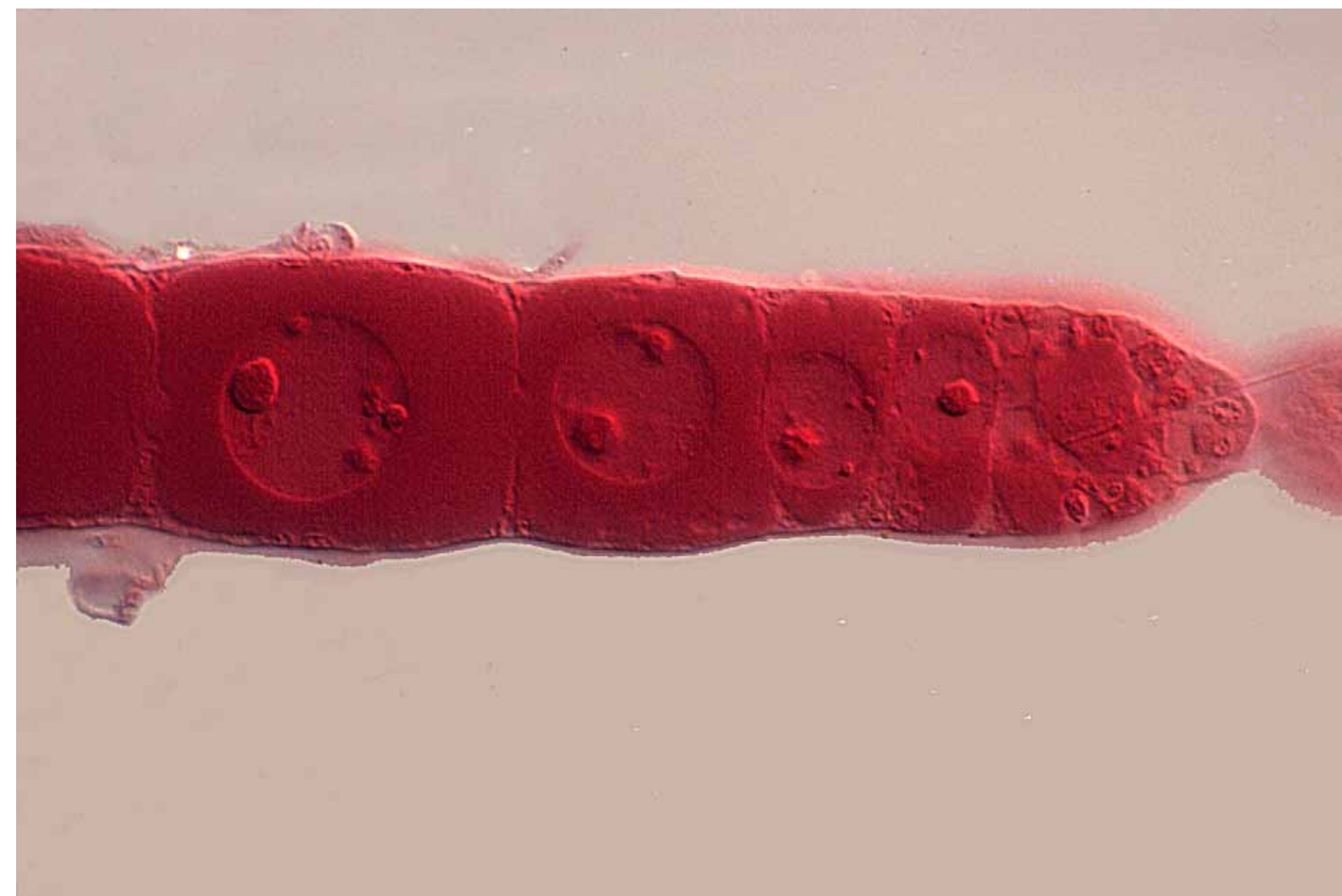
L.S. of *Hebrus pharate* adult ovary



L.S. of *Haplothrips verbasci* (Thysanoptera: Phlaeothripidae) larva II ovary rudiment



Whole mount of cricket (Orthoptera: Gryllidae) follicle cells

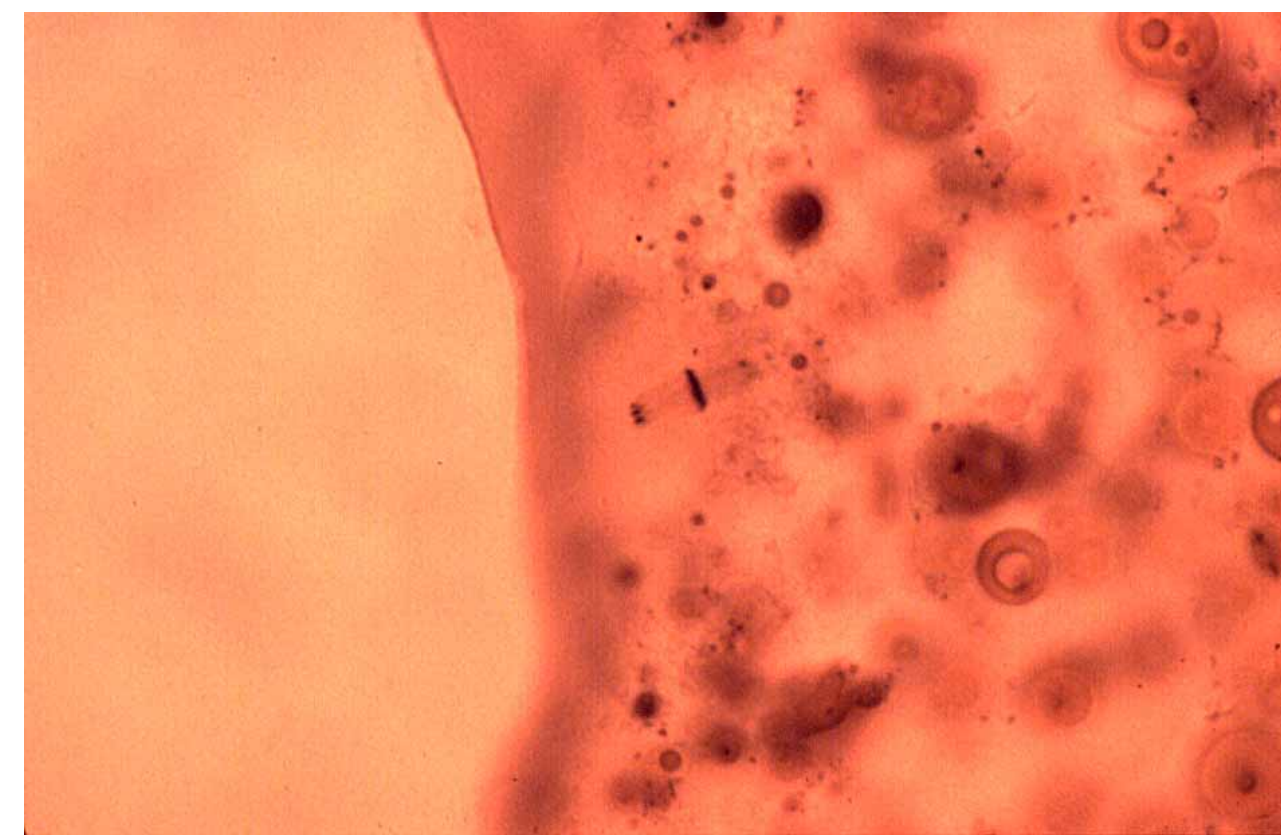


Whole mount of cricket ovariole

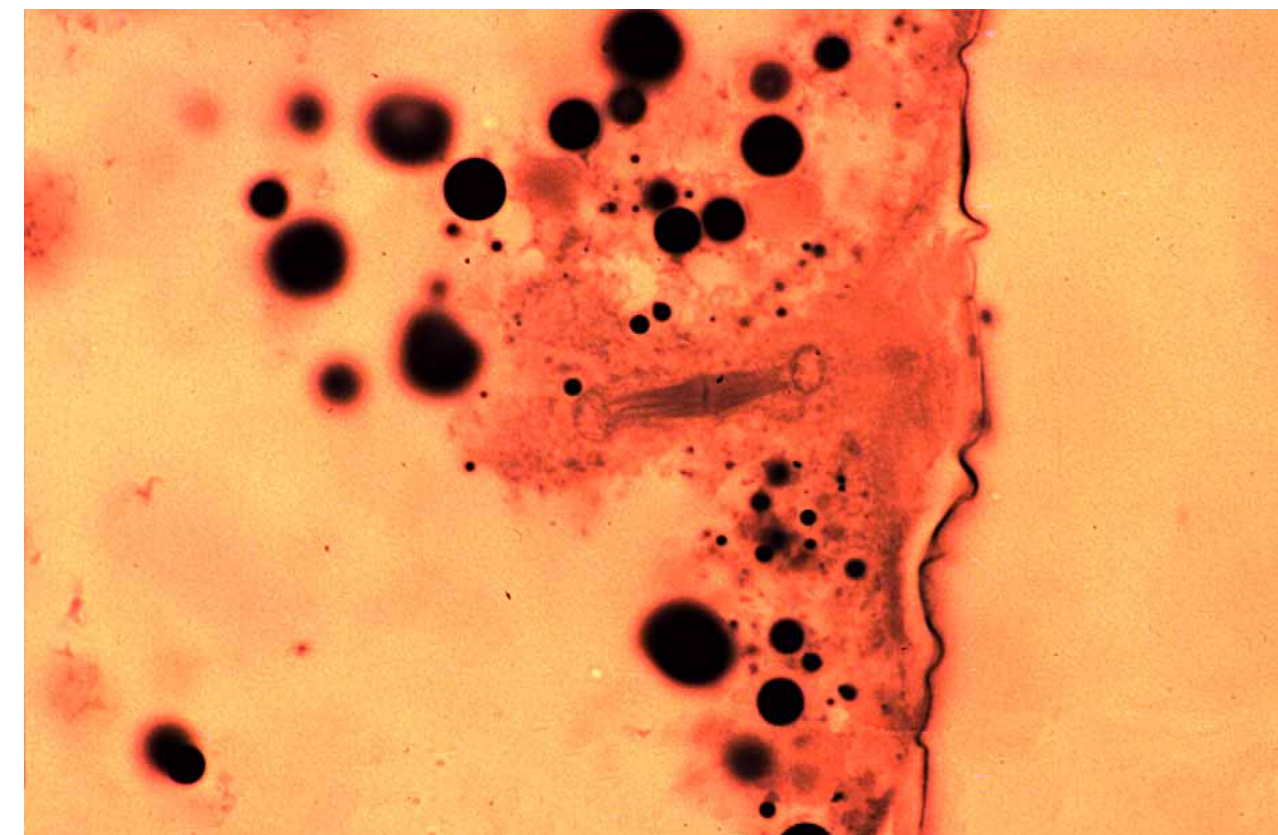


Whole mount of cricket ovariole

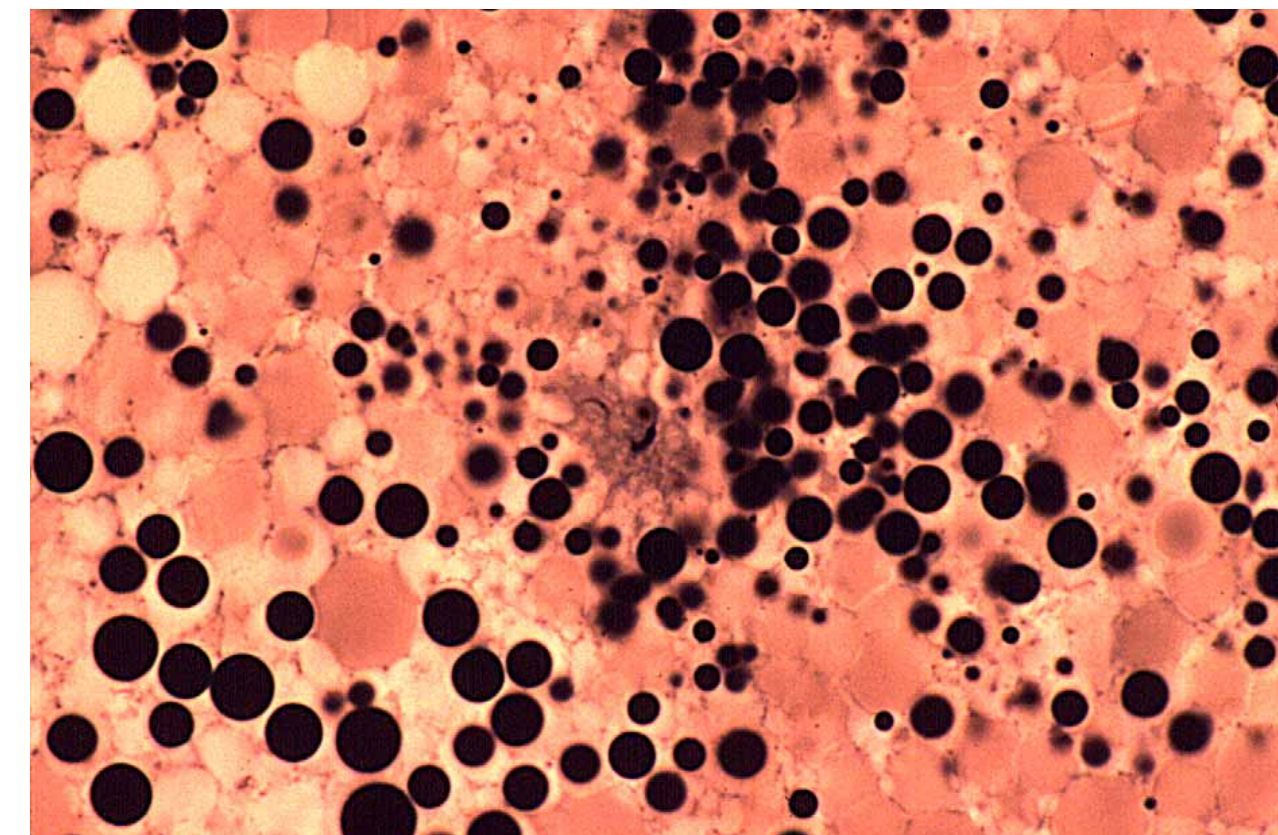
EARLY EMBRYOGENESIS



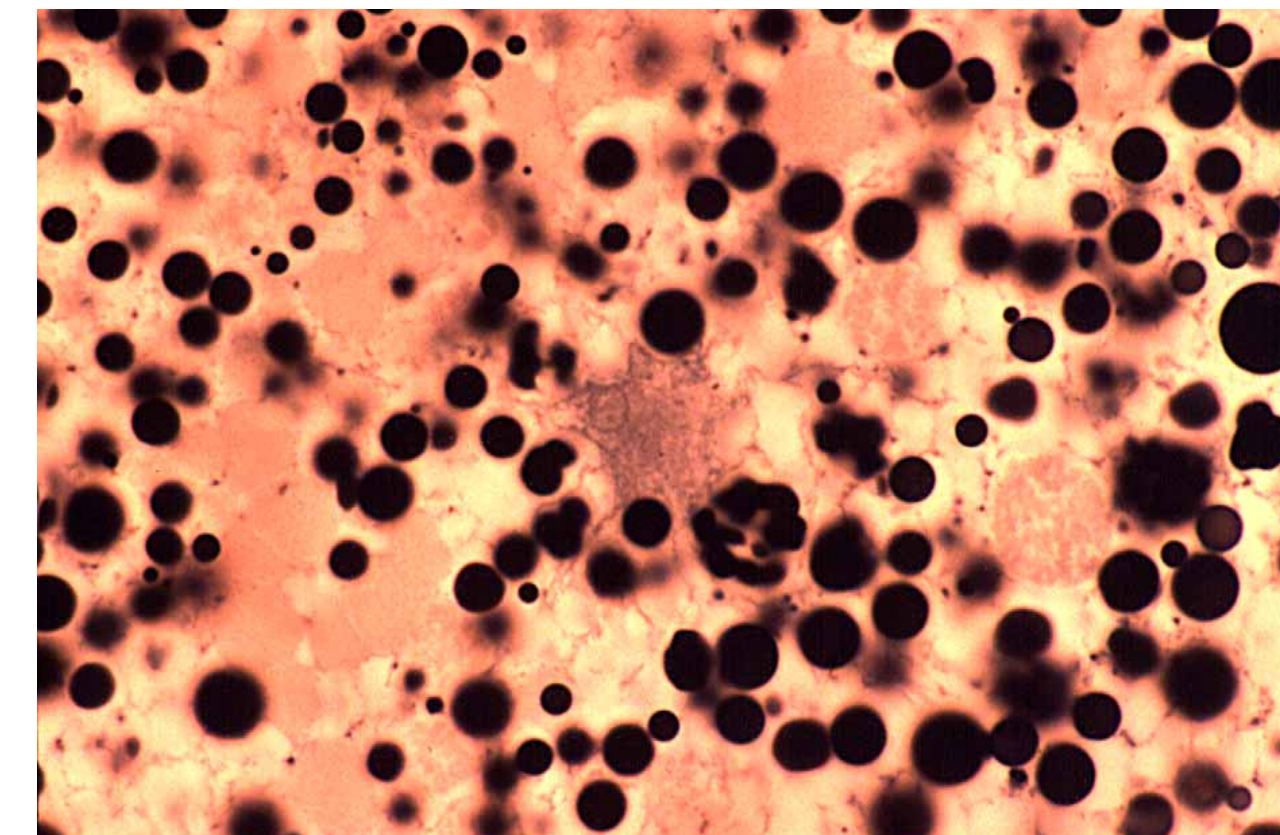
Lytta viridana (Coleoptera: Meloidae) female anaphase I



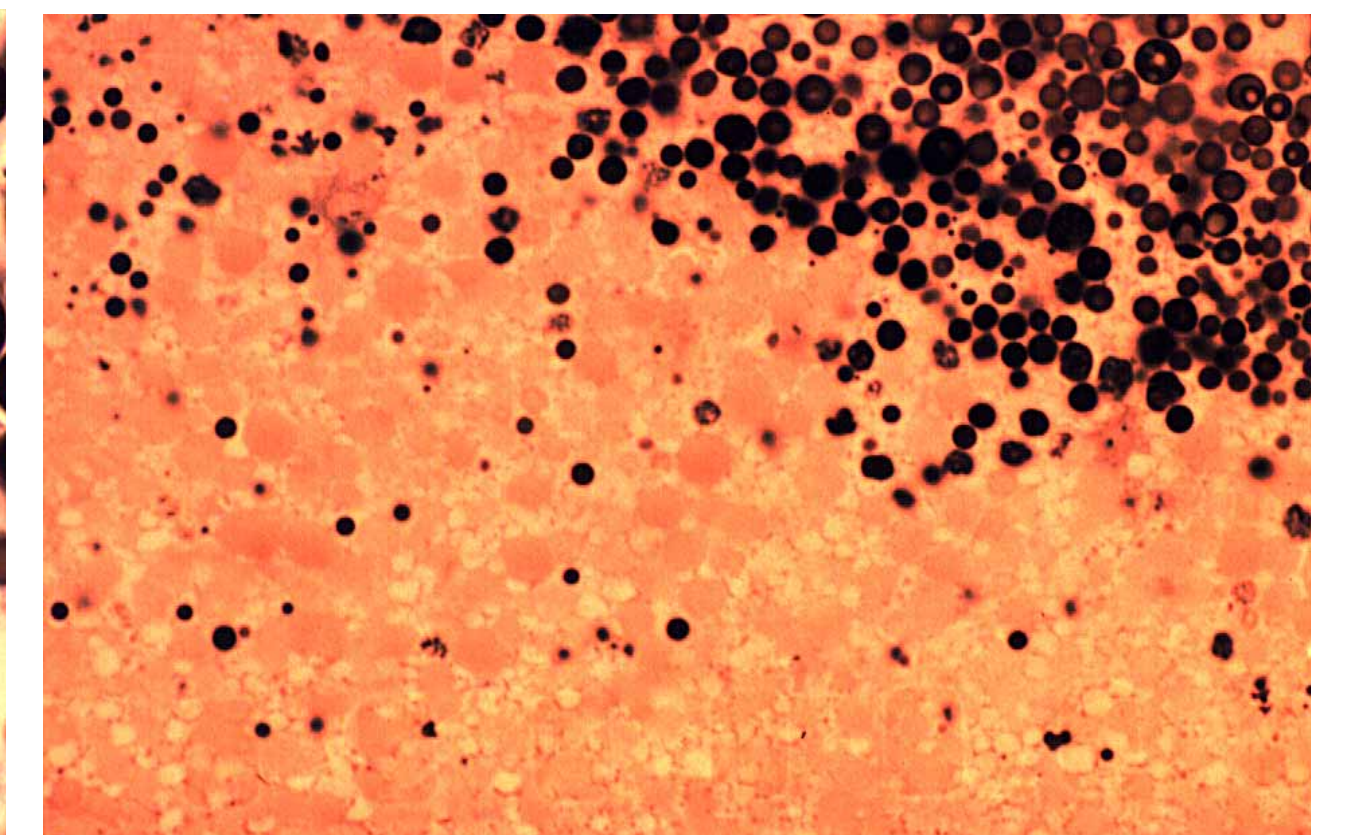
Lytta viridana female interphase II



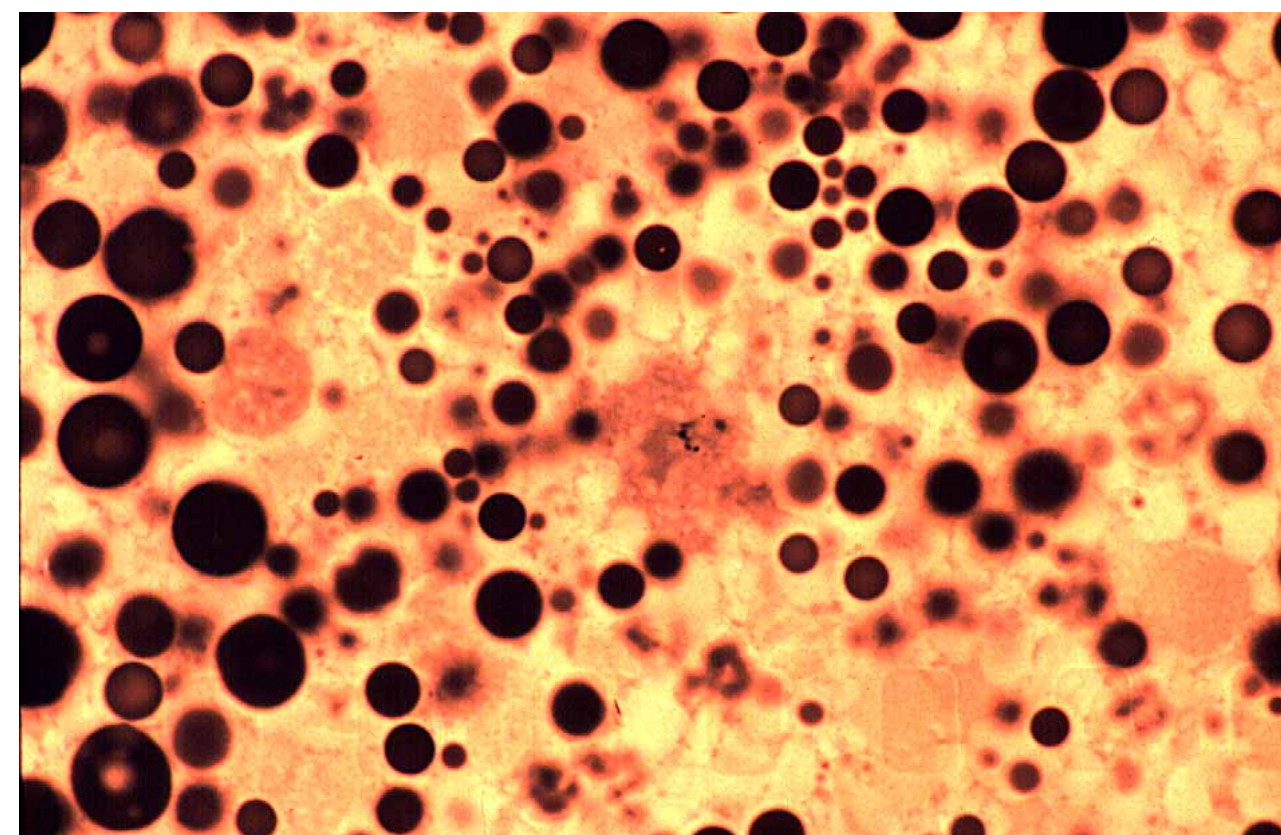
Lytta viridana sperm in yolk system



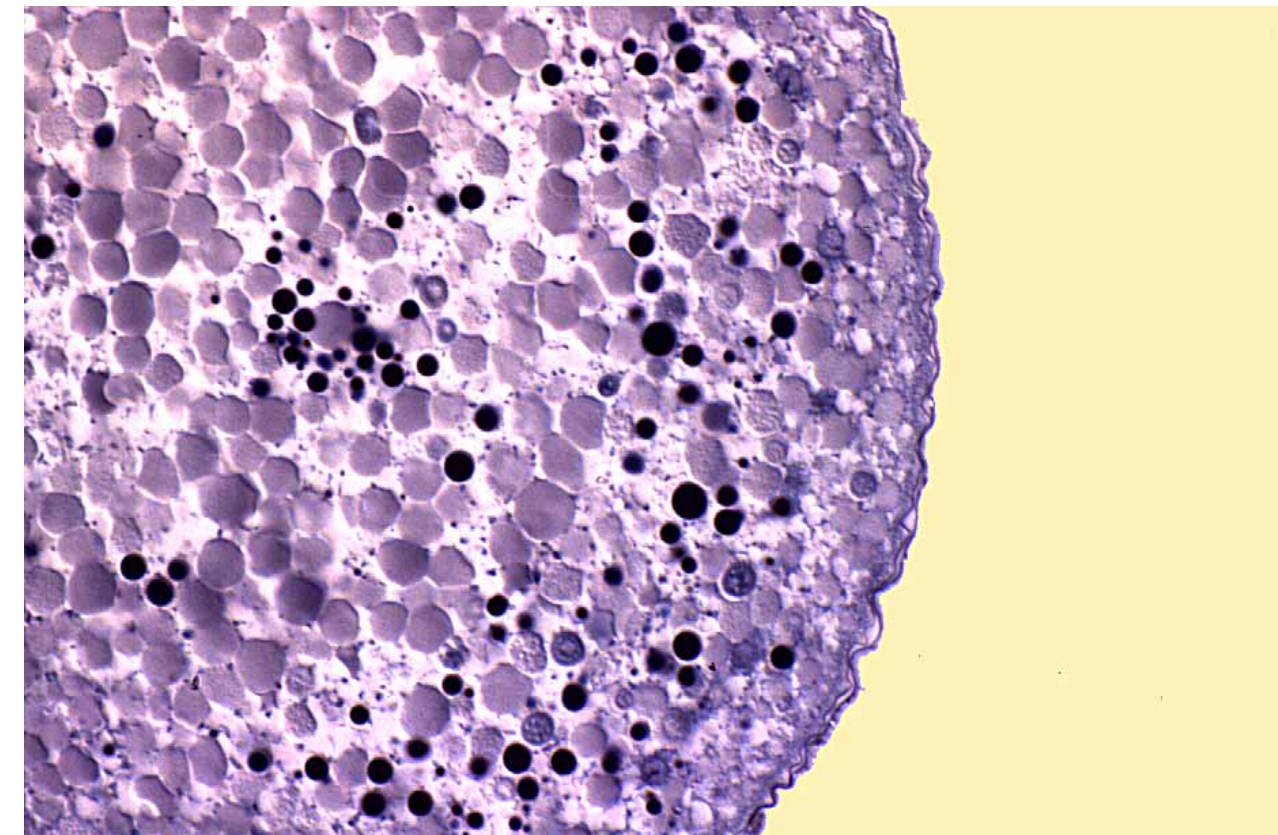
Lytta viridana male pronucleus and axoneme in yolk system



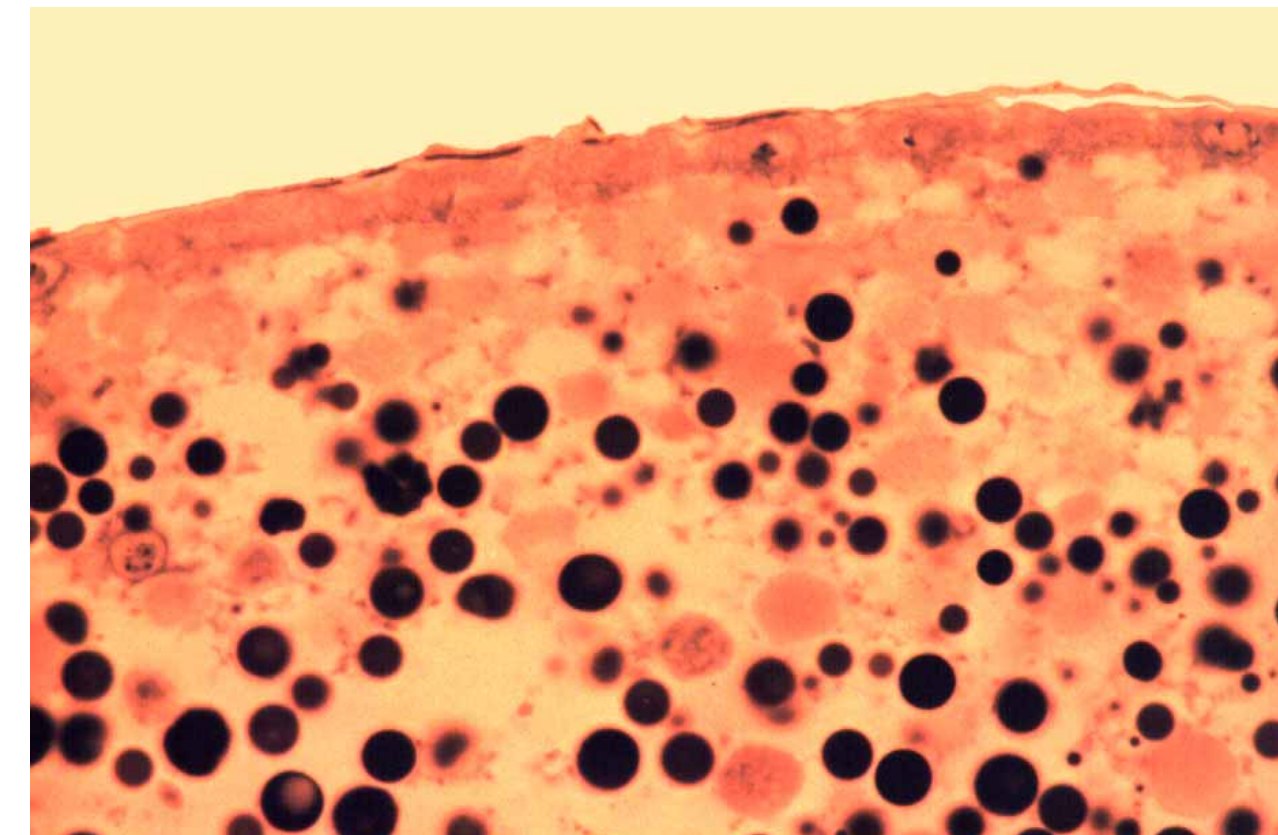
Lytta viridana two cleavage energids in yolk system



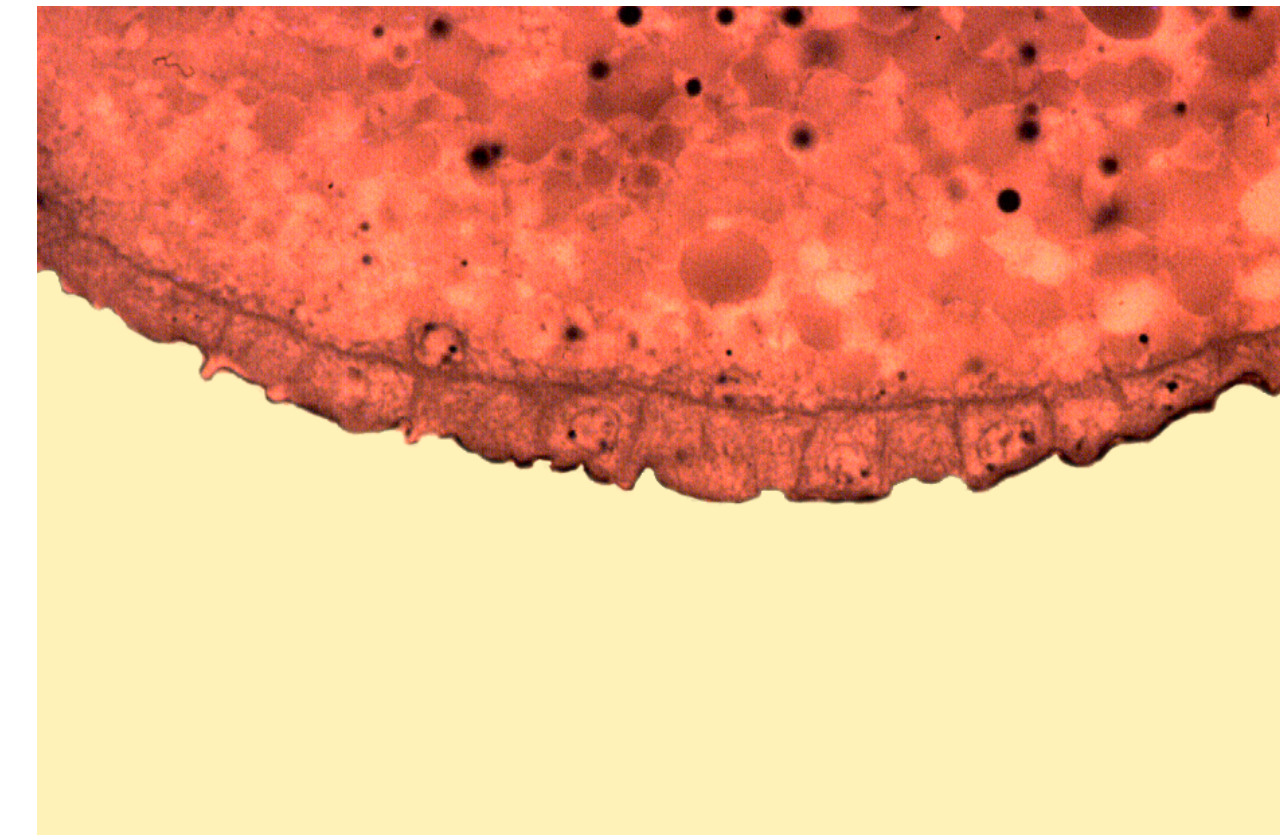
Lytta viridana cleavage energid in metaphase



Lytta viridana cleavage energids approaching periplasm



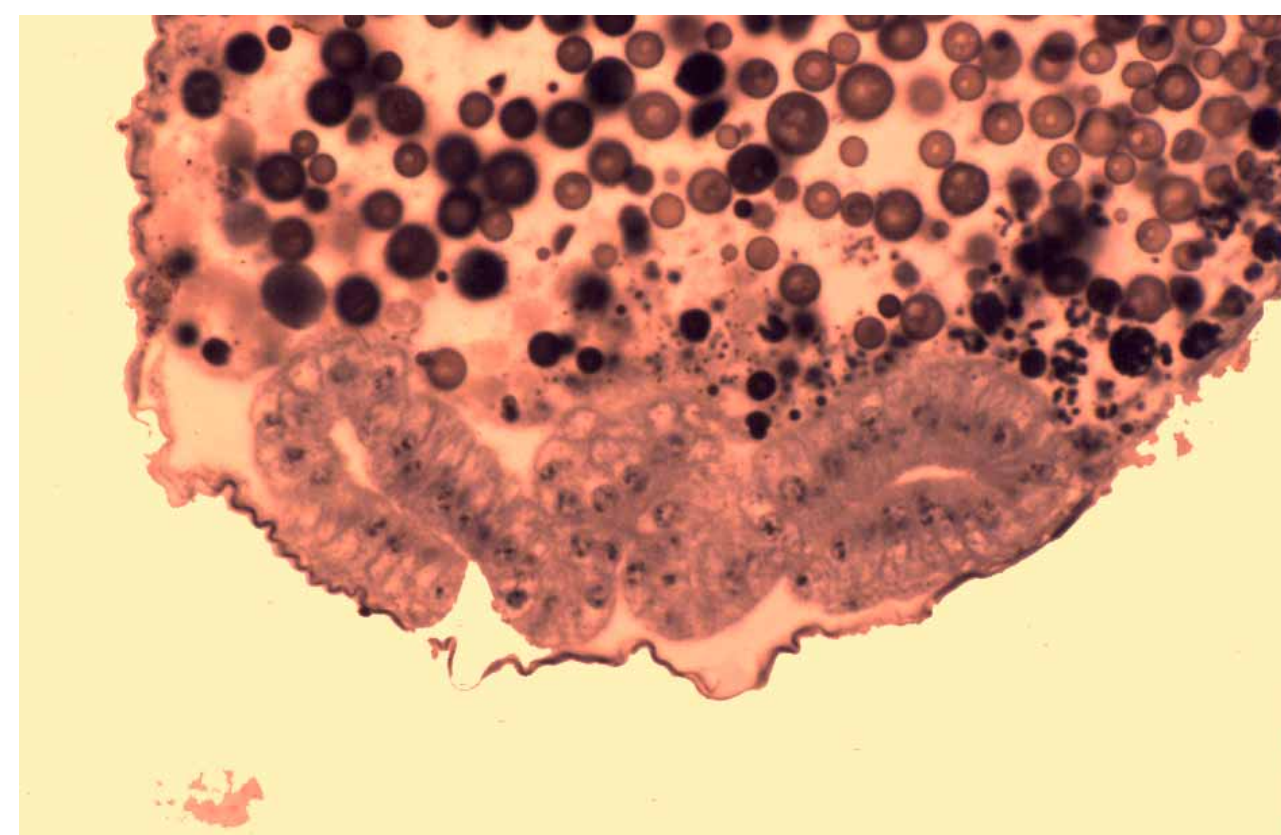
Lytta viridana preblastoderm with cleavage furrows



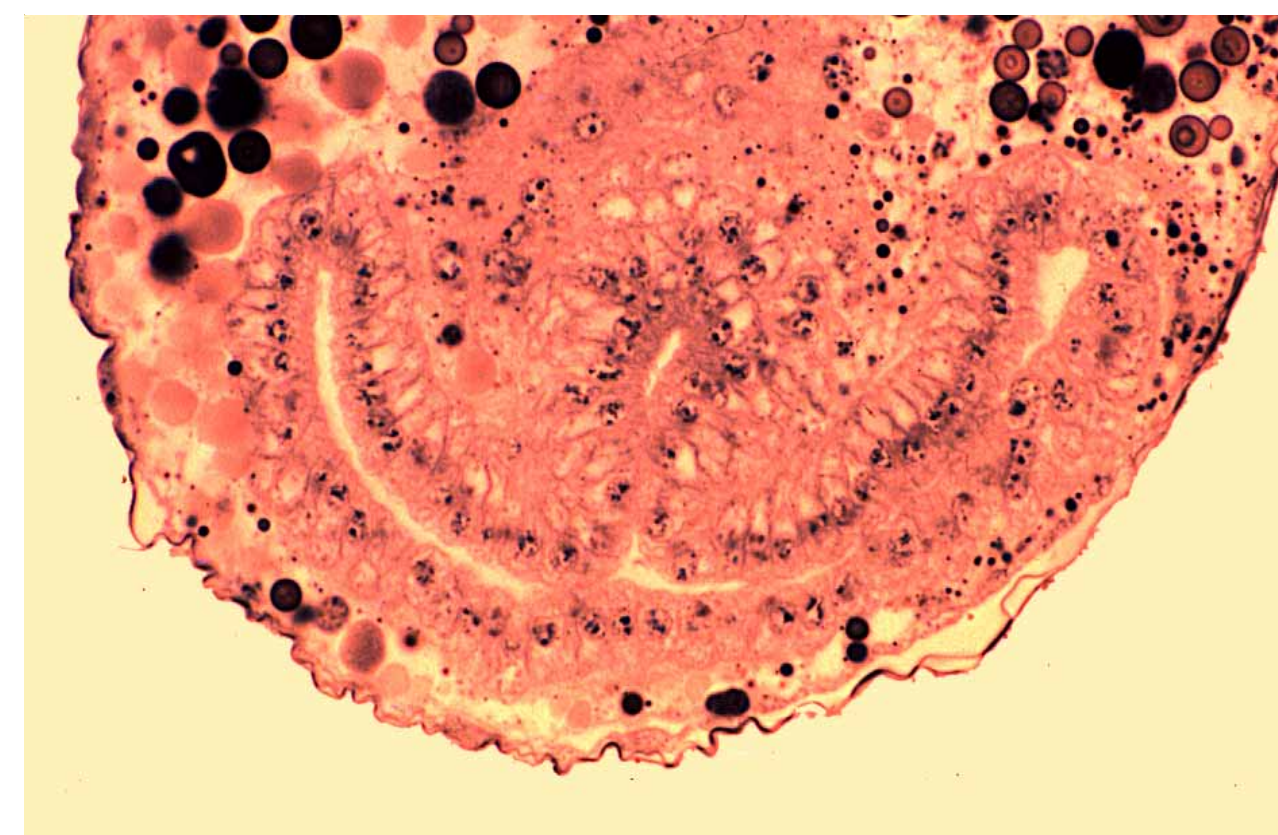
Lytta viridana blastoderm



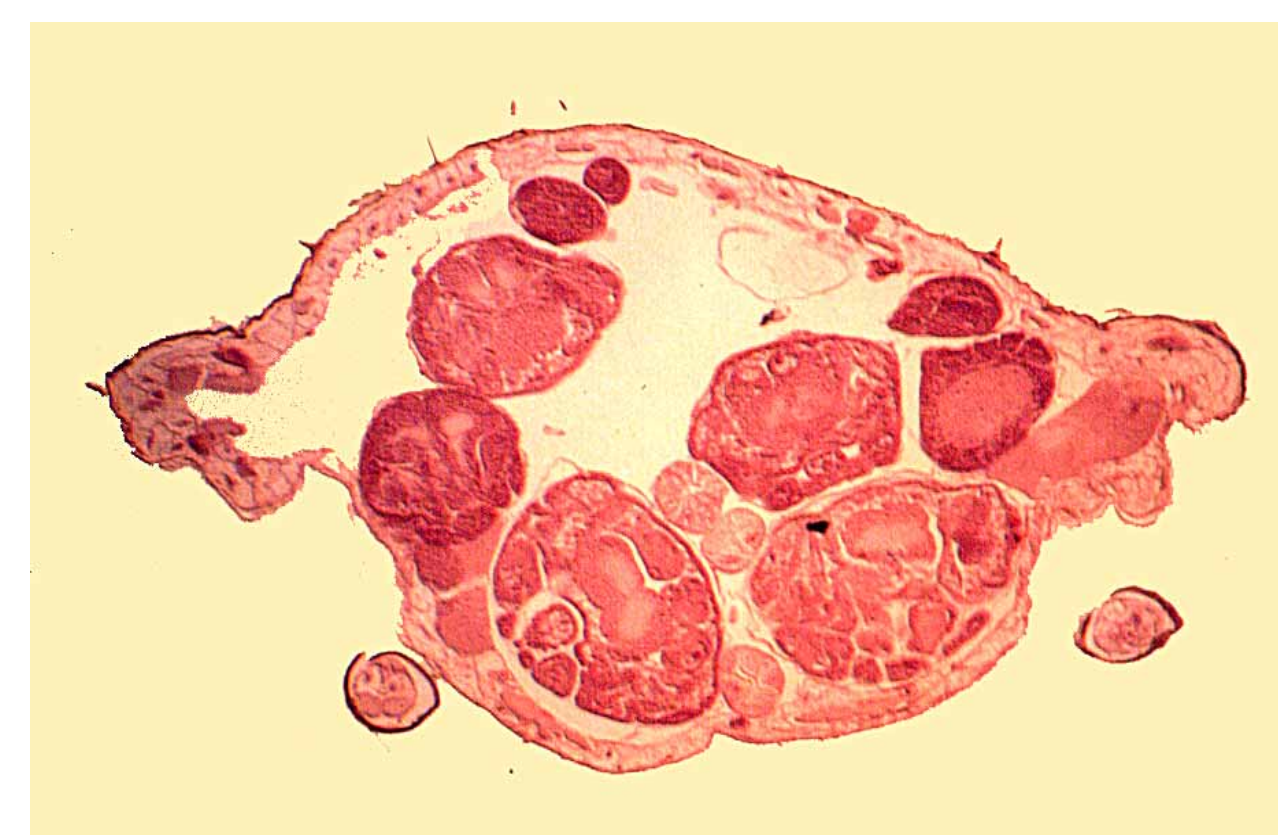
Lytta viridana L.S. of germ band



Lytta viridana X.S. through germ band at gastrulation



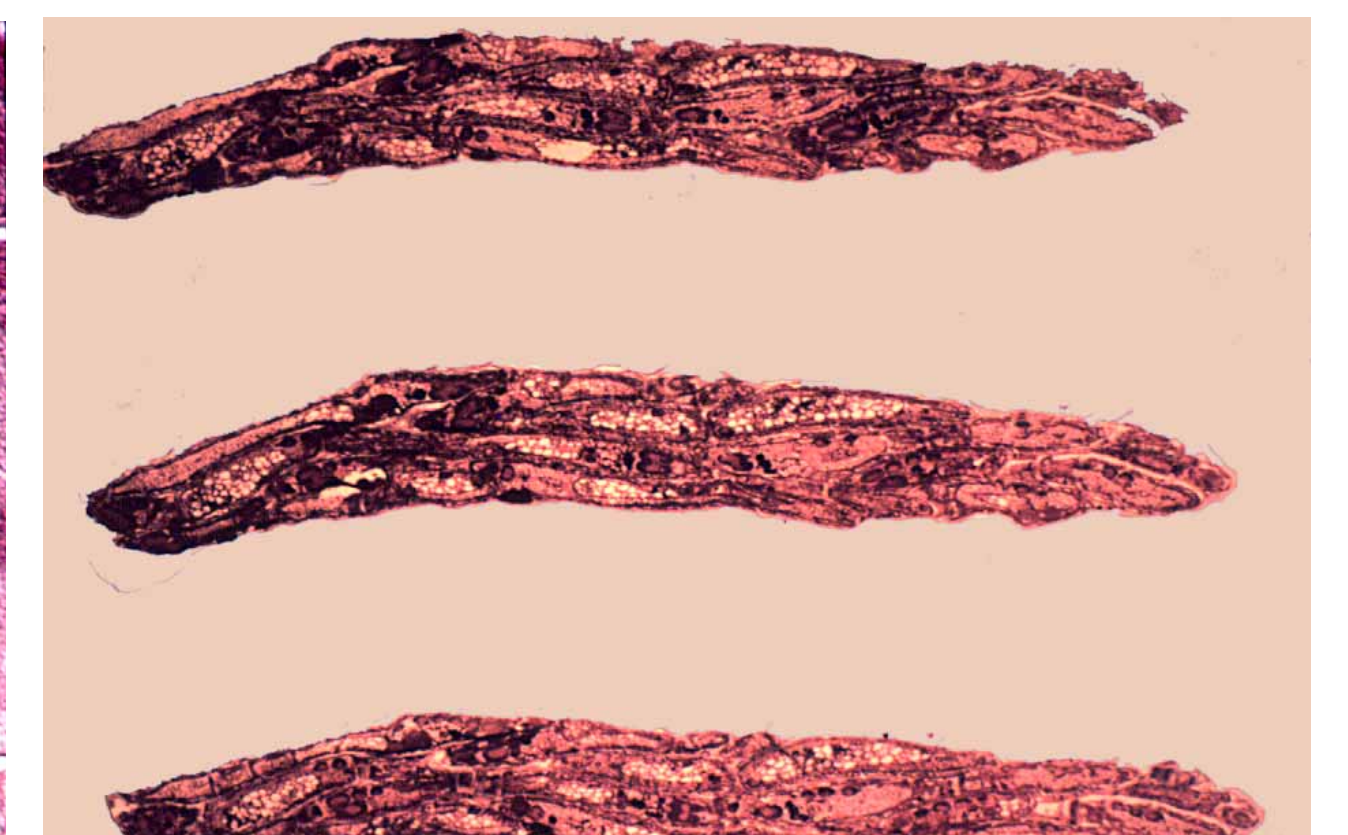
Lytta viridana X.S. through posterior end of germ band at gastrulation



X.S. through abdomen of viviparous aphid female (Hemiptera: Aphididae), showing 9 early embryos



X.S. through abdomen of viviparous aphid female, showing parts of 3 late embryos



L.S. through female larva of *Miastor* sp. (Diptera: Cecidomyiidae), showing paedogenetically developing larvae

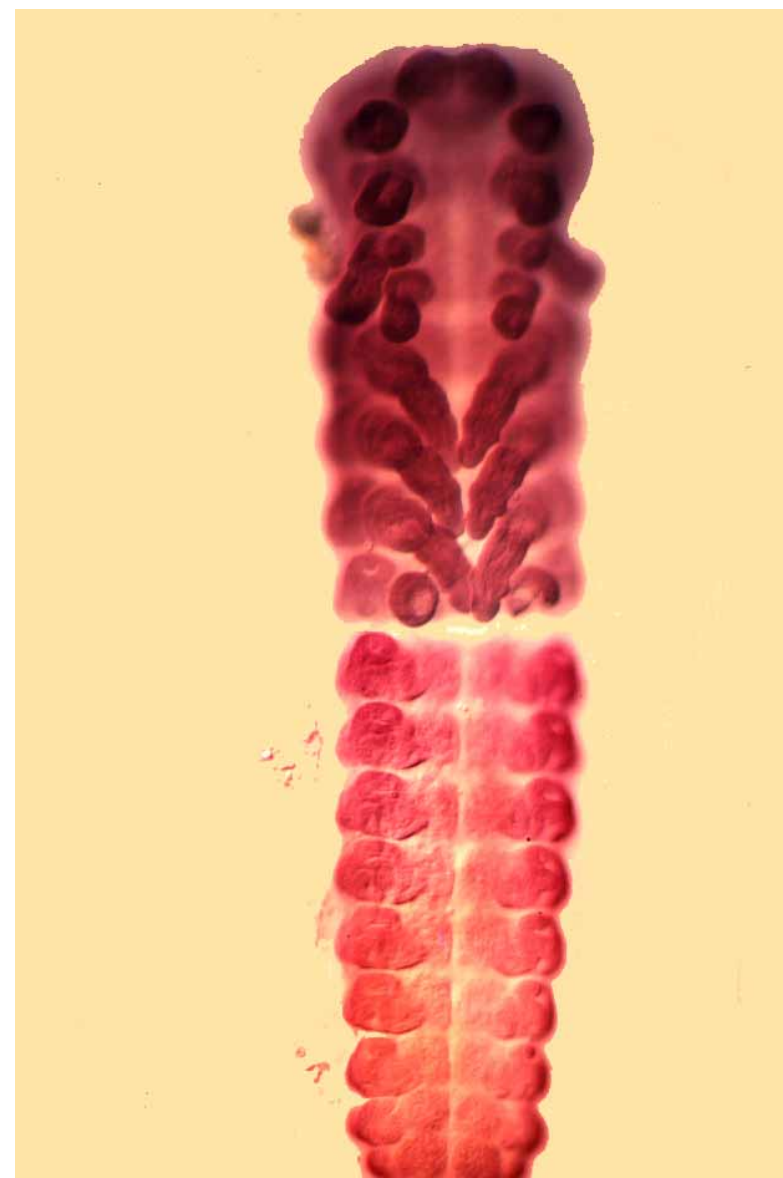
O R G A N O G E N E S I S



Wholemount of 52h embryo of *Lytta viridana* (Coleoptera: Meloidae)



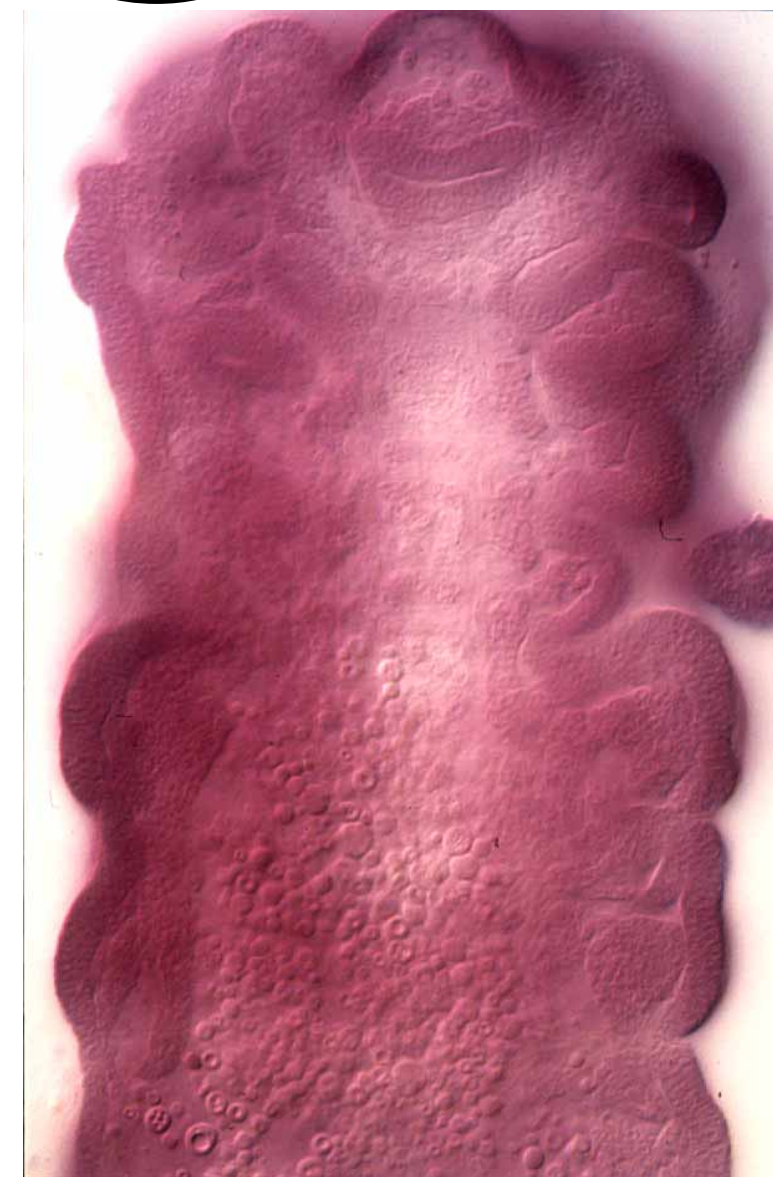
Wholemount of 72h embryo *Lytta viridana*



Wholemount of 88h embryo of *Lytta viridana*



Wholemount of 88h embryo of *Lytta viridana*, showing neuroblasts of developing CNS



Wholemount of 88h embryo of *Lytta viridana*, showing stomodaeum and developing neuropile of CNS



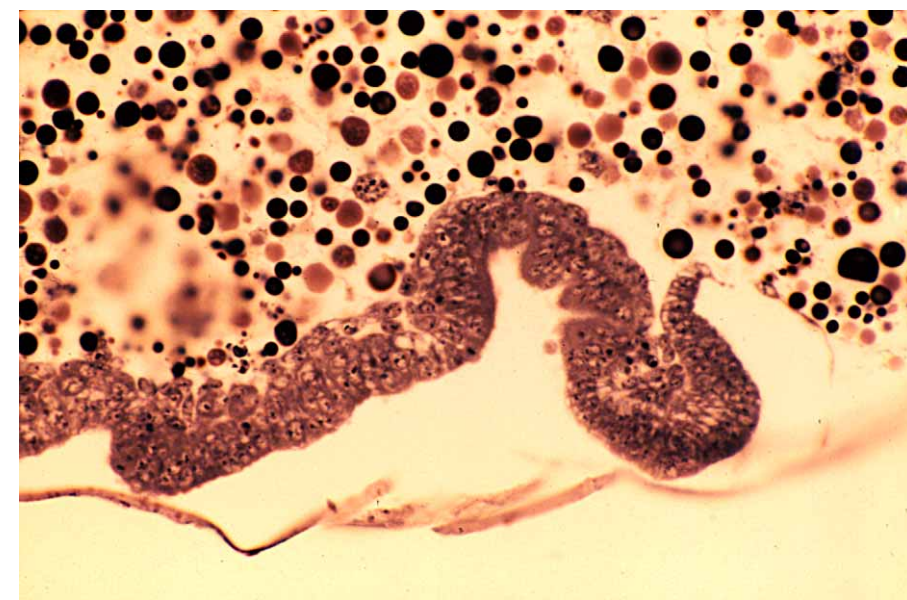
Wholemount of 88h embryo of *Lytta viridana*, showing abdominal neuroblasts



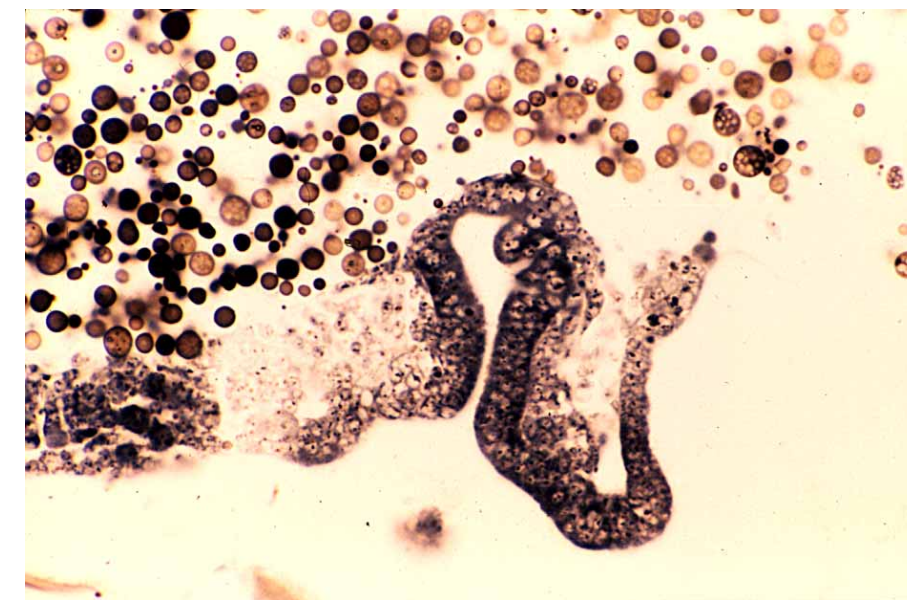
Wholemount of 88h embryo of *Lytta viridana*, showing proctodaeum and MTs



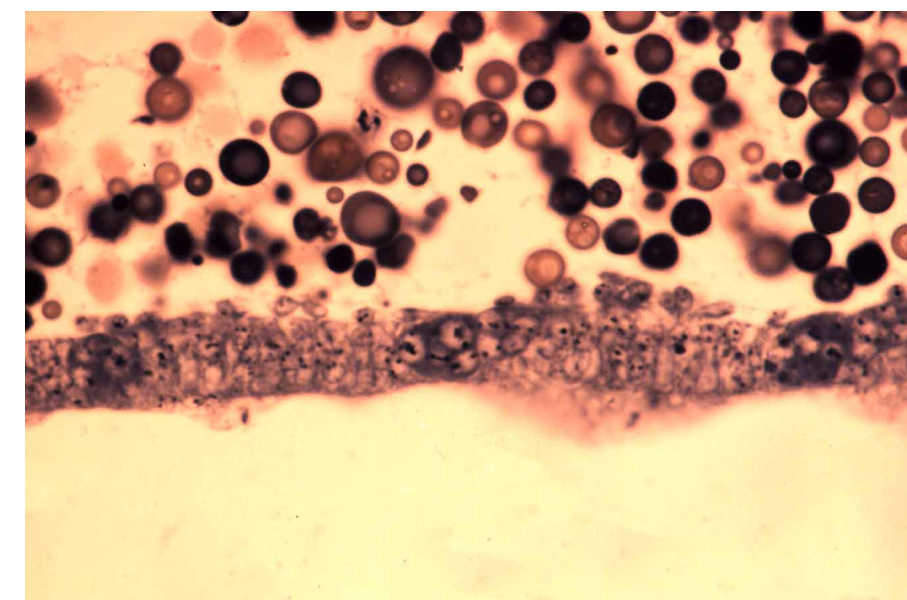
Wholemount of 96h embryo of *Lytta viridana*



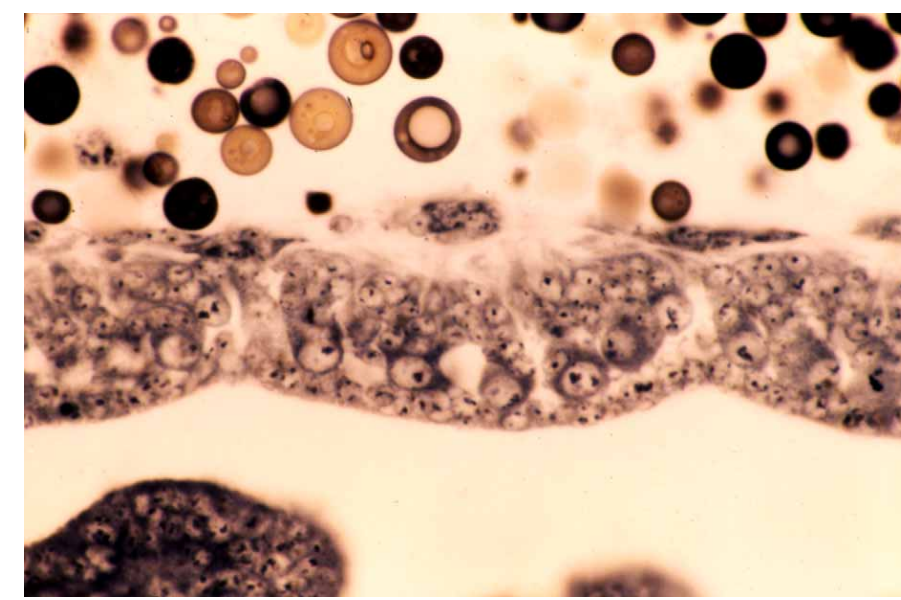
L.S. through stomodaeum of 56h embryo of *Lytta viridana*



L.S. through stomodaeum of 72h embryo of *Lytta viridana*



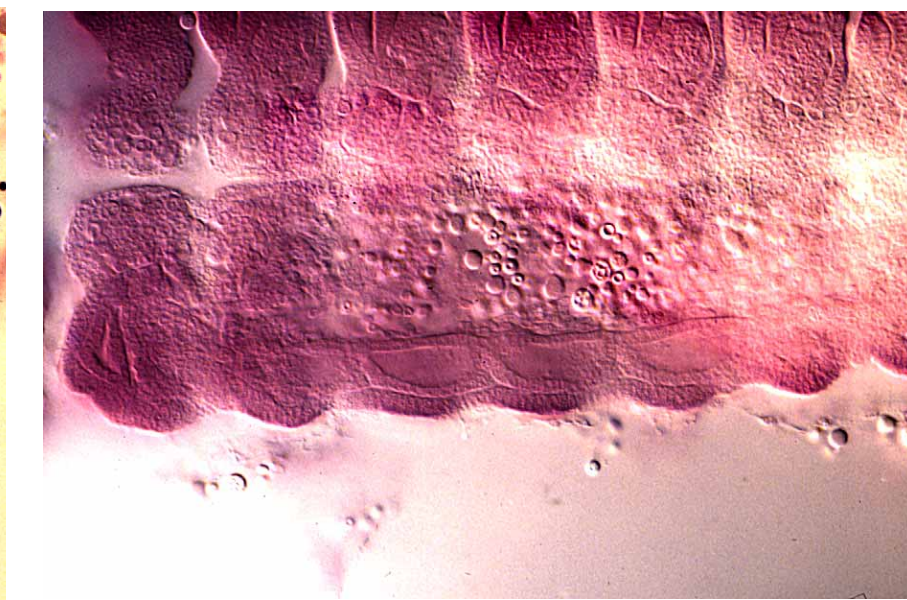
L.S. through midline of 72h embryo of *Lytta viridana*, showing midline precursor neuroblasts



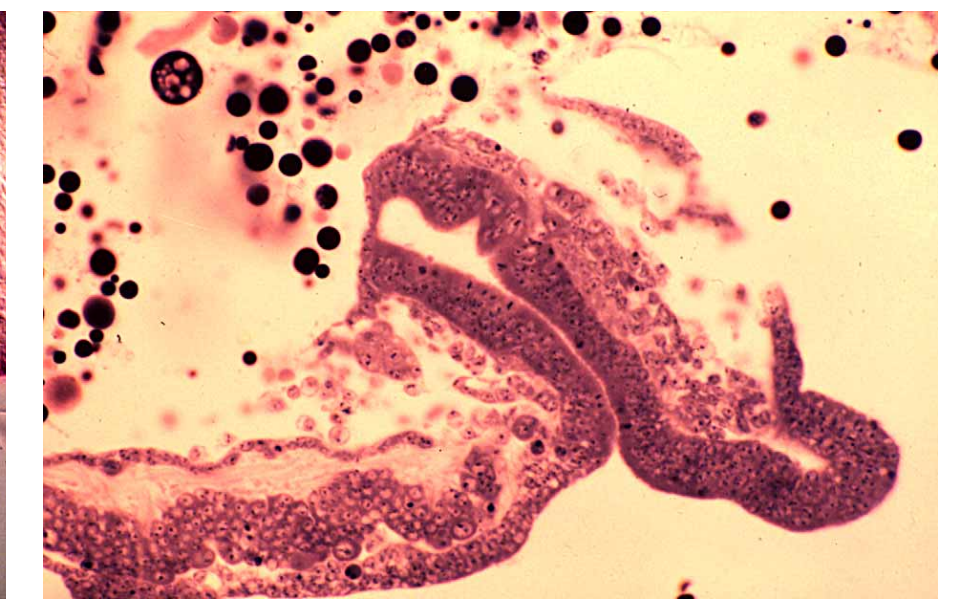
Parasagittal section through 72h embryo of *Lytta viridana*, showing neuroblasts and ganglion mother cells



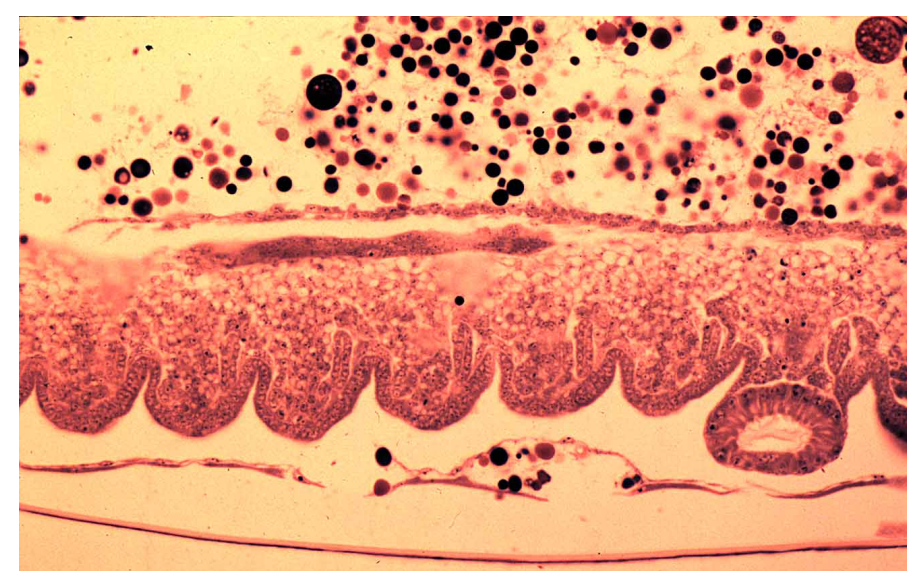
X.S. through prothorax of 72h embryo of *Lytta viridana*



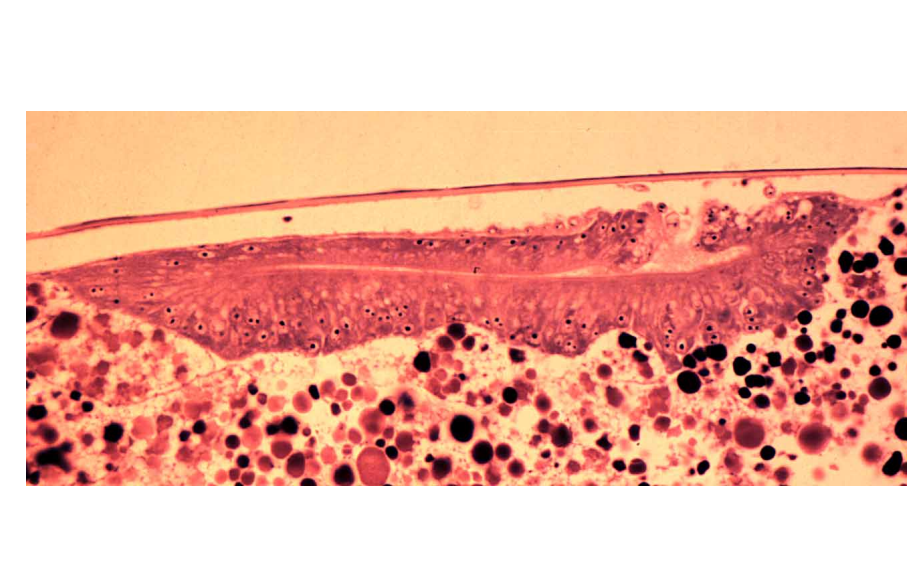
Wholemount of 88h embryo of *Lytta viridana*, showing abdominal coelomic sacs



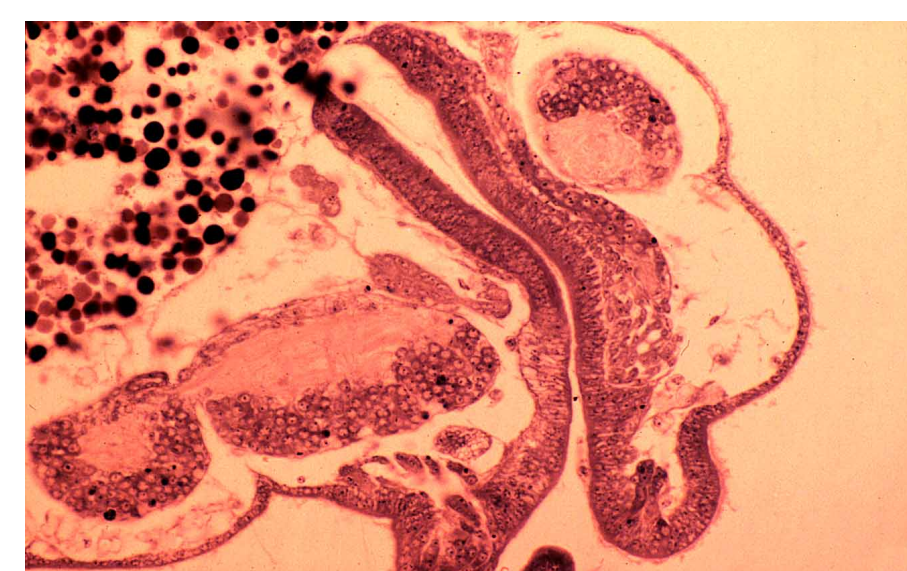
L.S. through stomodaeum of 88h embryo of *Lytta viridana*



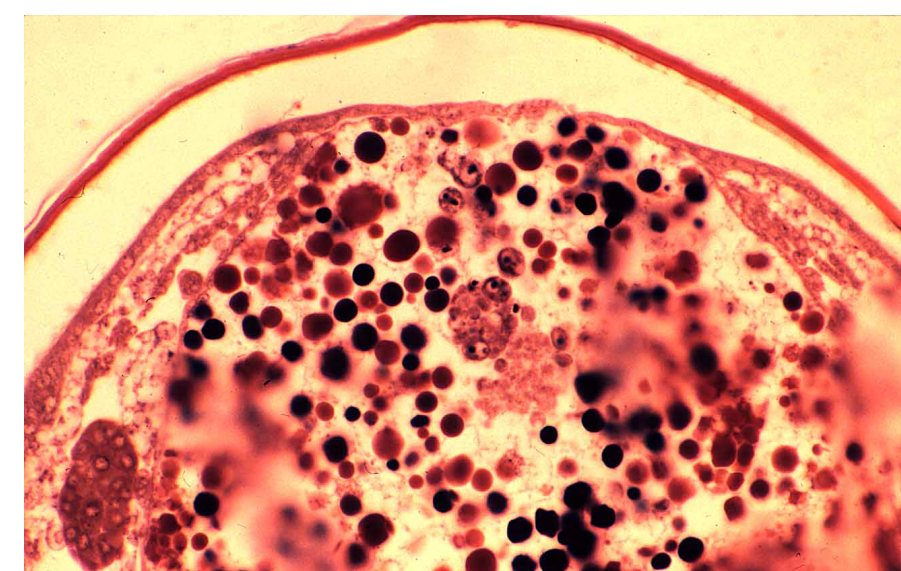
Parasagittal section of 96h embryo of *Lytta viridana*, showing genital ridge



L.S. through secondary dorsal organ of 120h embryo of *Lytta viridana*



L.S. through stomodaeum of 120h embryo of *Lytta viridana*



X.S. through 132h embryo of *Lytta viridana* just before dorsal closure



X.S. through abdominal segment 1 of a 132h embryo of *Lytta viridana*, showing pleuropodia

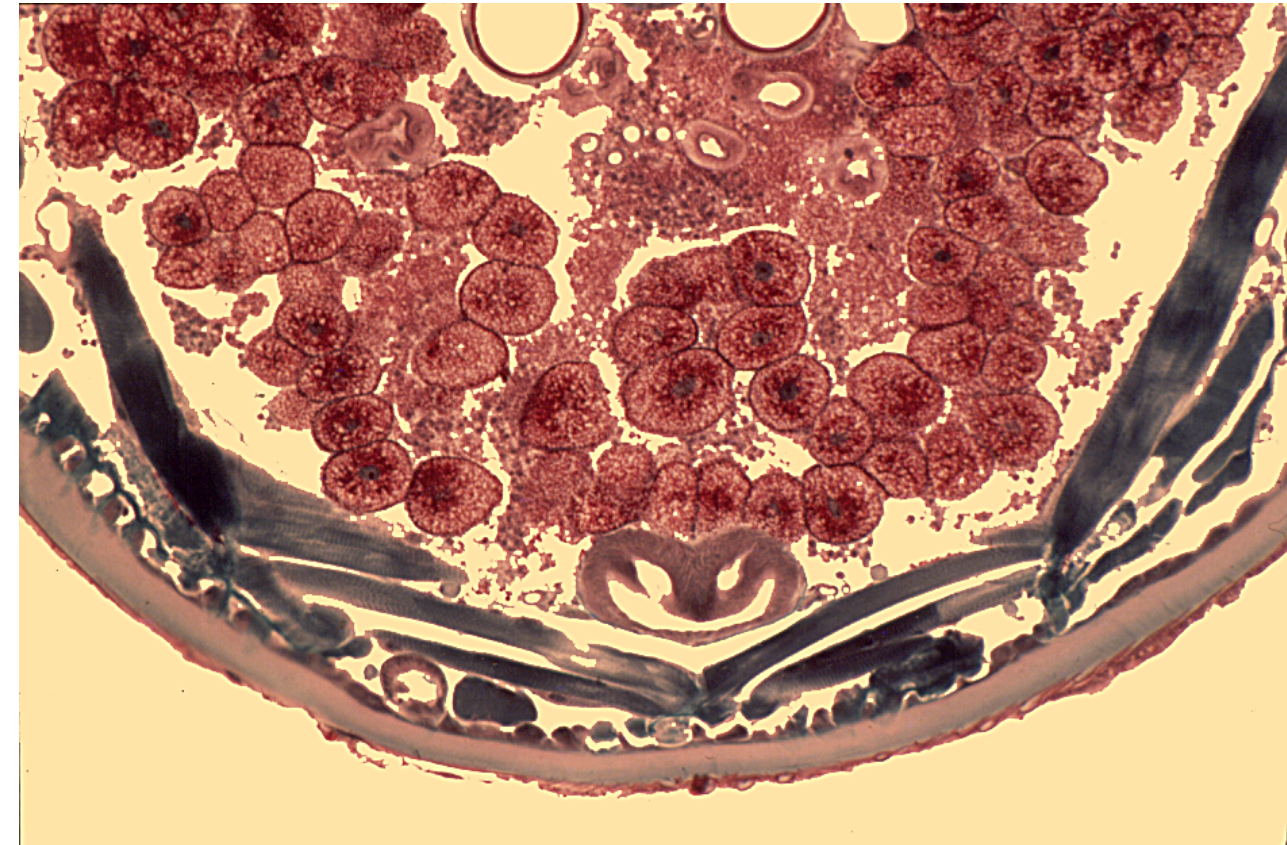


F.S. of embryo of *Gymnospais* sp. (Diptera: Simuliidae), showing cardioblasts zipping up at dorsal closure



X.S. through abdomen of *Rhodnius prolixus* embryo (Hemiptera: Reduviidae), showing germ cells, mesoderm and neural groove

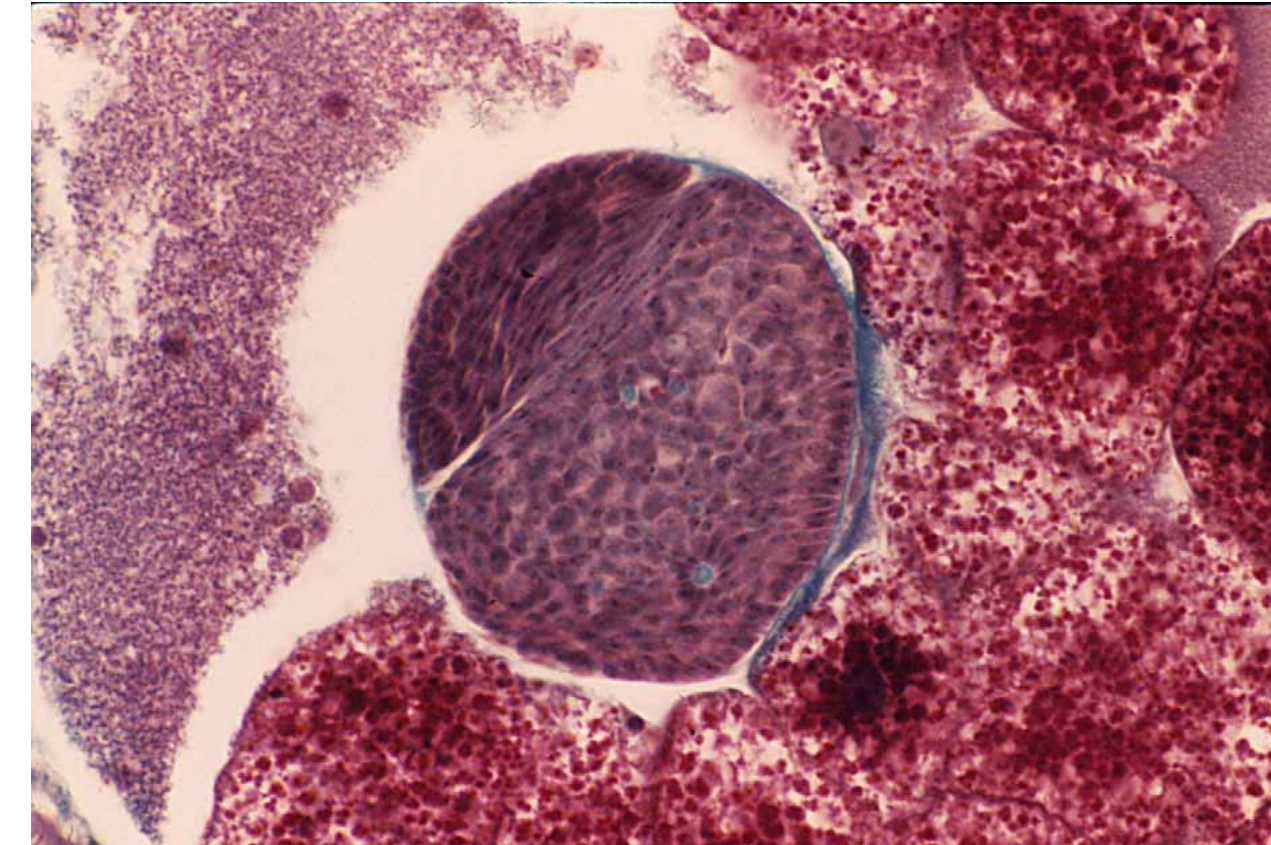
I M A G I N A L D I S C S



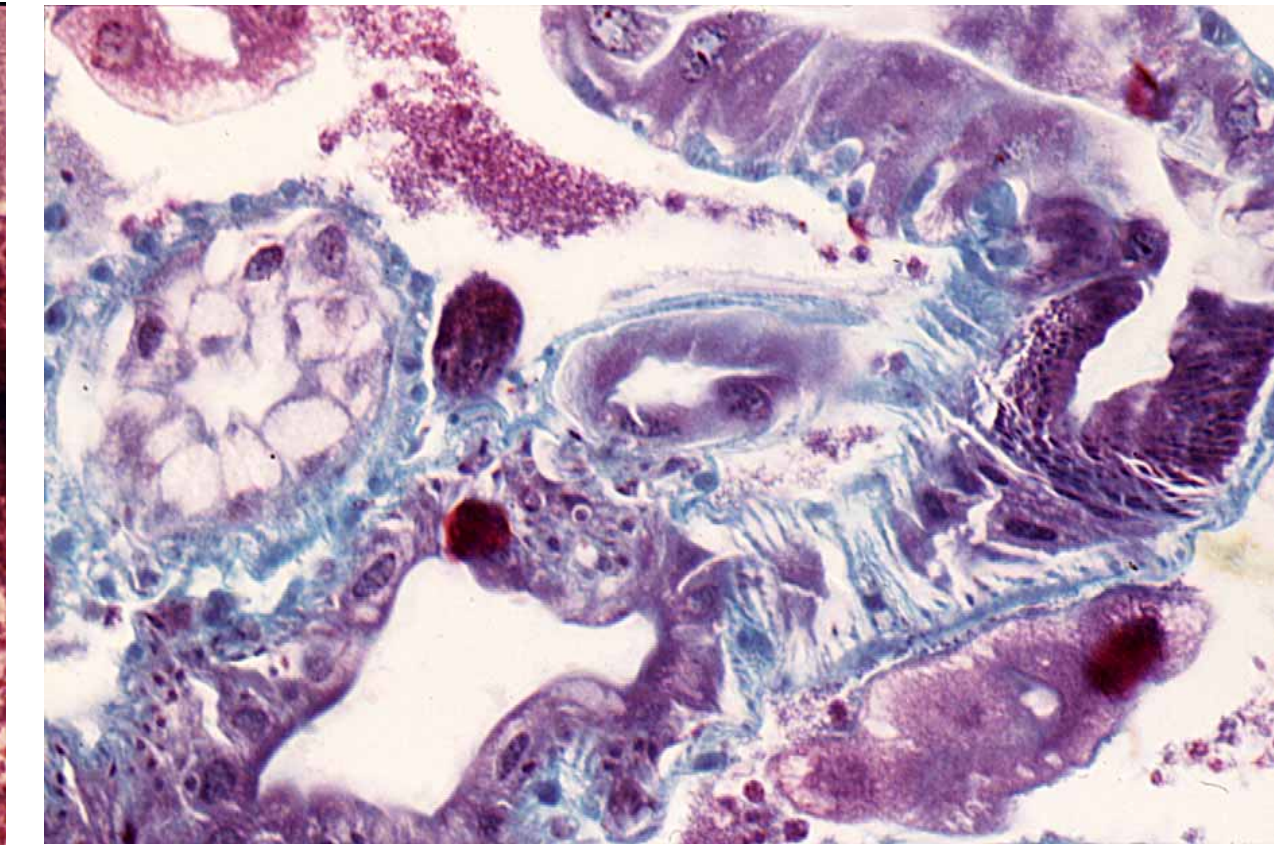
X.S. through genital disc of larva III of *Musca domestica* (Diptera: Muscidae)



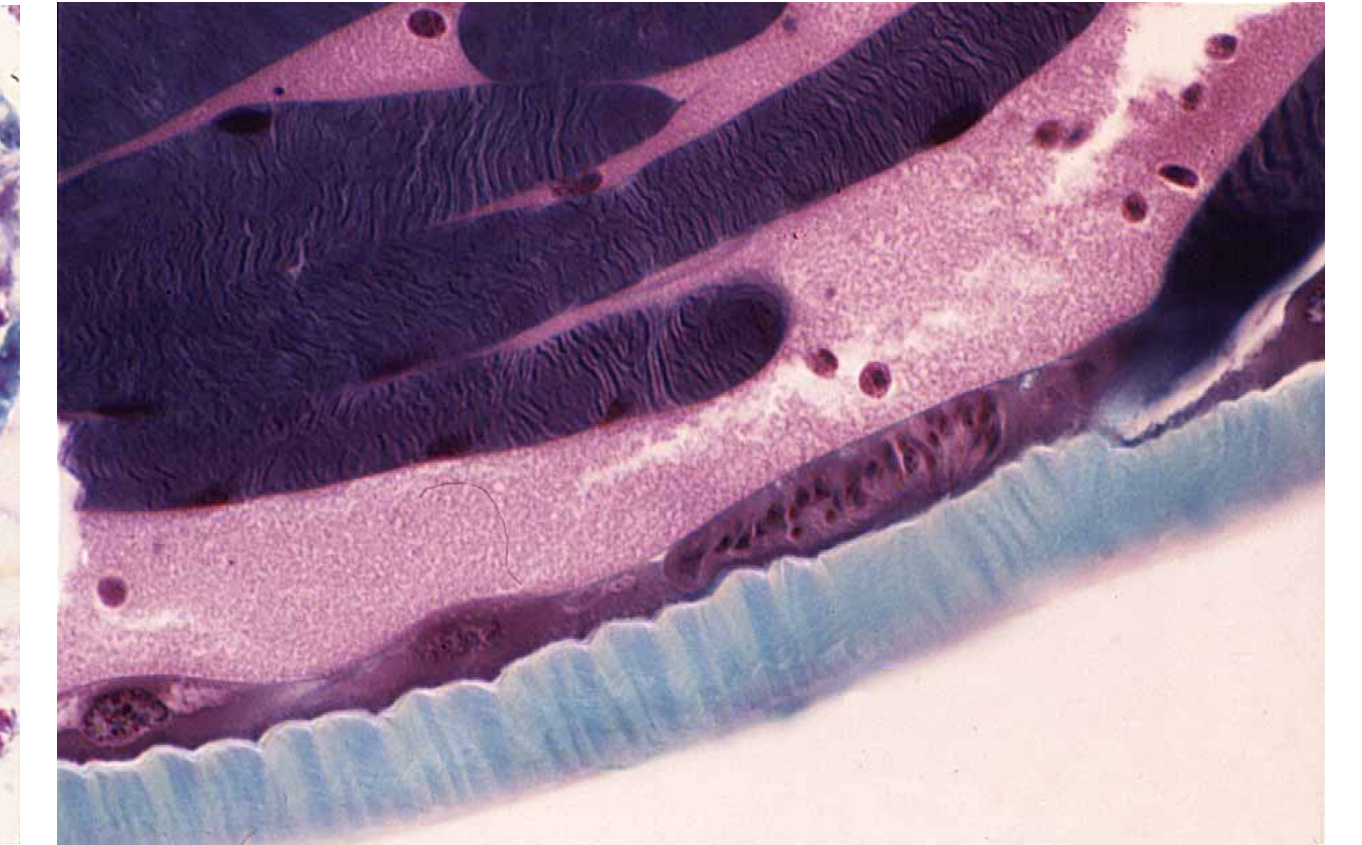
L.S. through testis rudiment of larva III



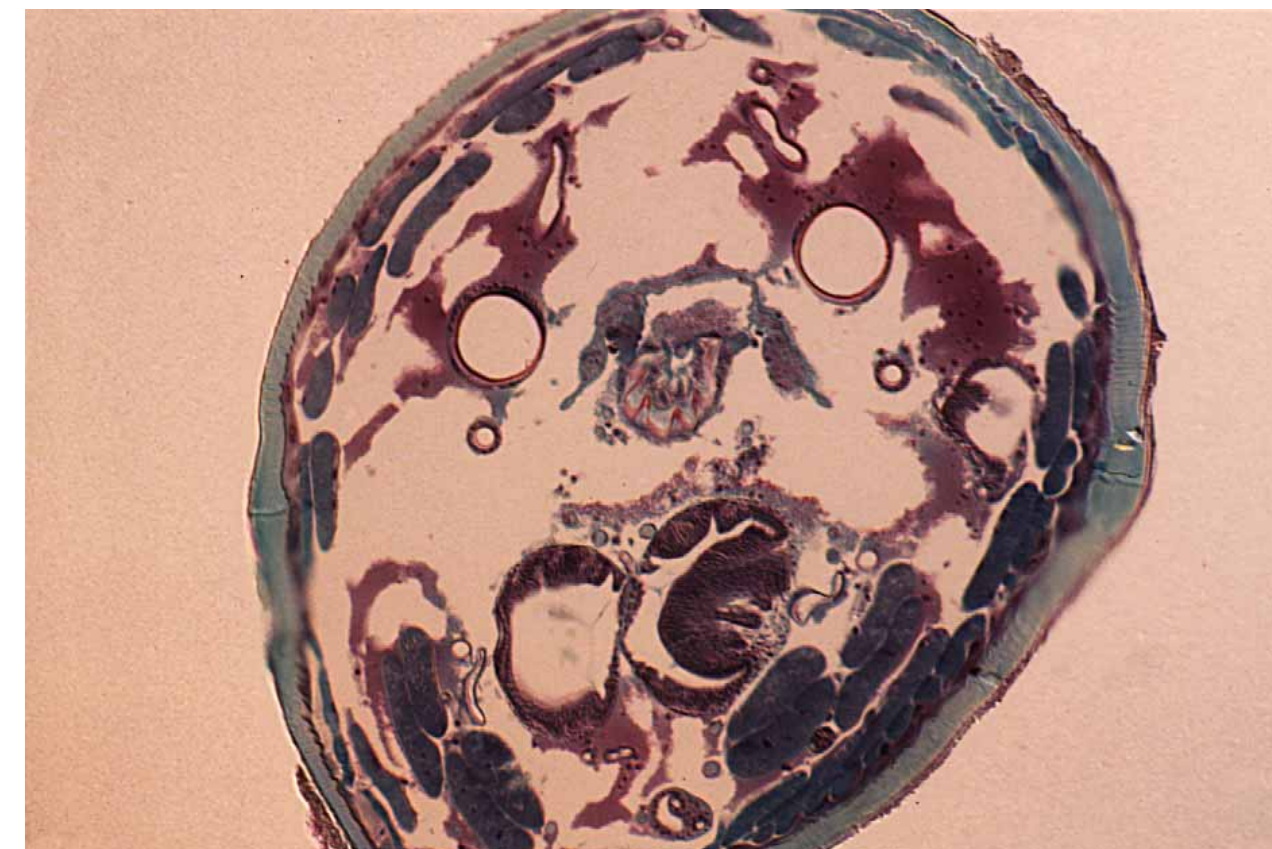
X.S. through ovary rudiment of larva III



L.S. through mid- and hindguts of larva III, showing imaginal midgut islands



X.S. through imaginal abdominal histoblast of larva III



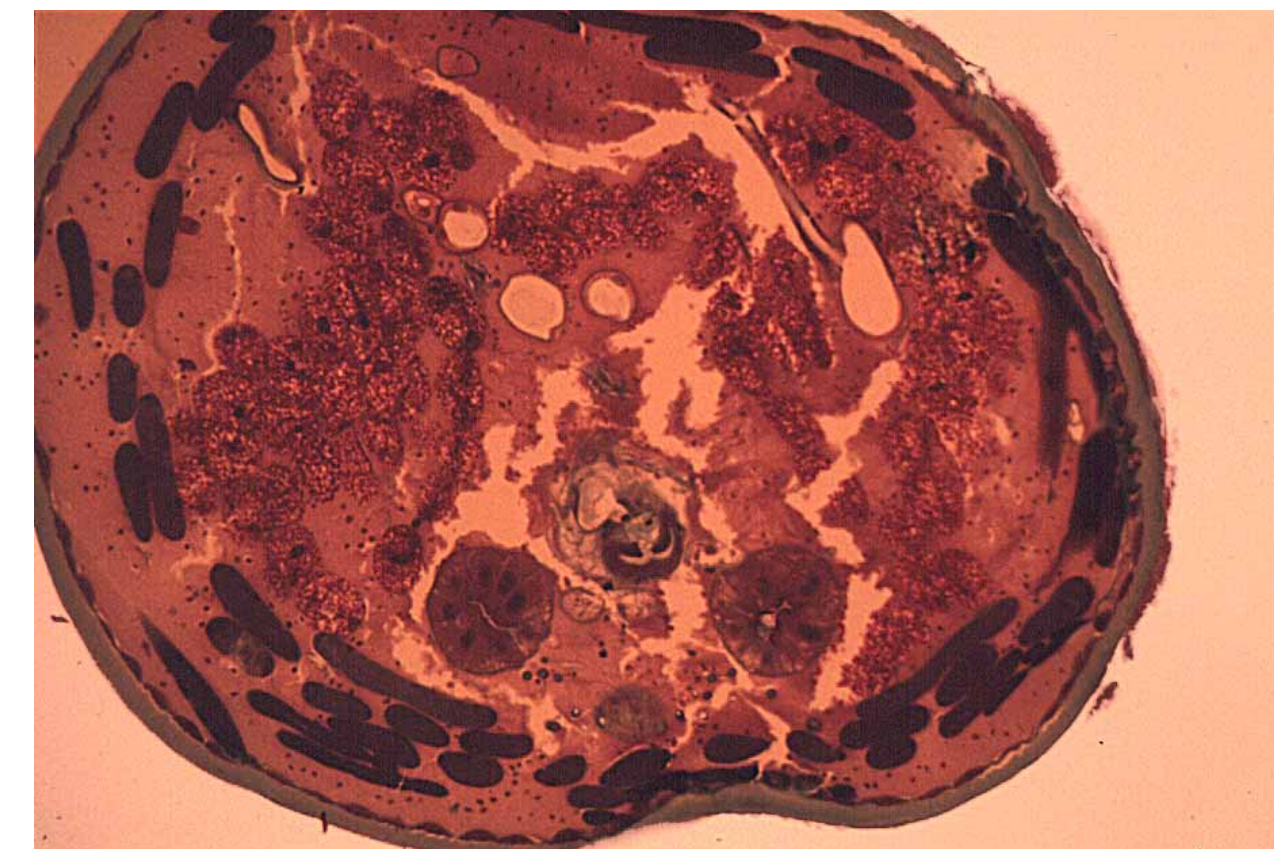
X.S. through larva III and prothoracic imaginal discs



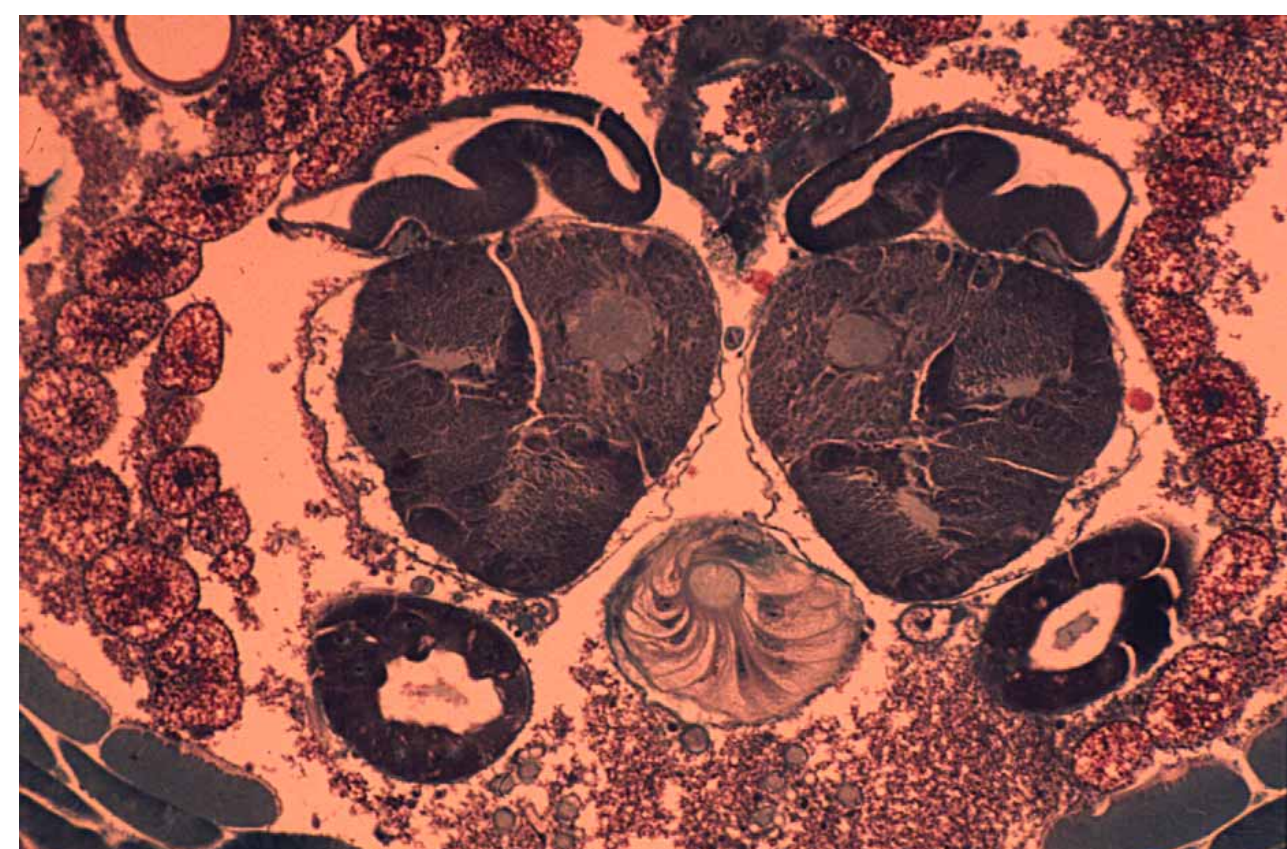
X.S. through larva III and most thoracic imaginal discs



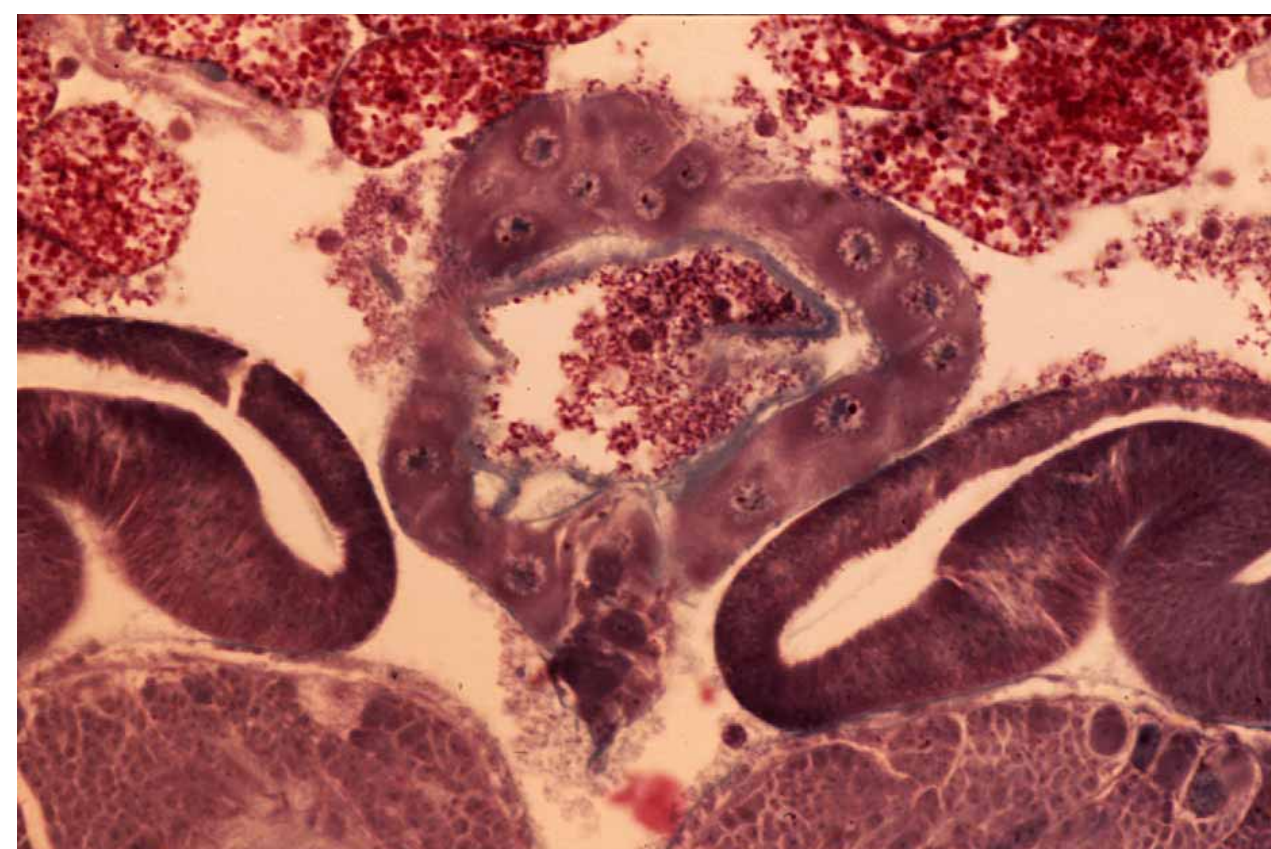
X.S. through mouthhooks and dorsal prothoracic discs of larva III



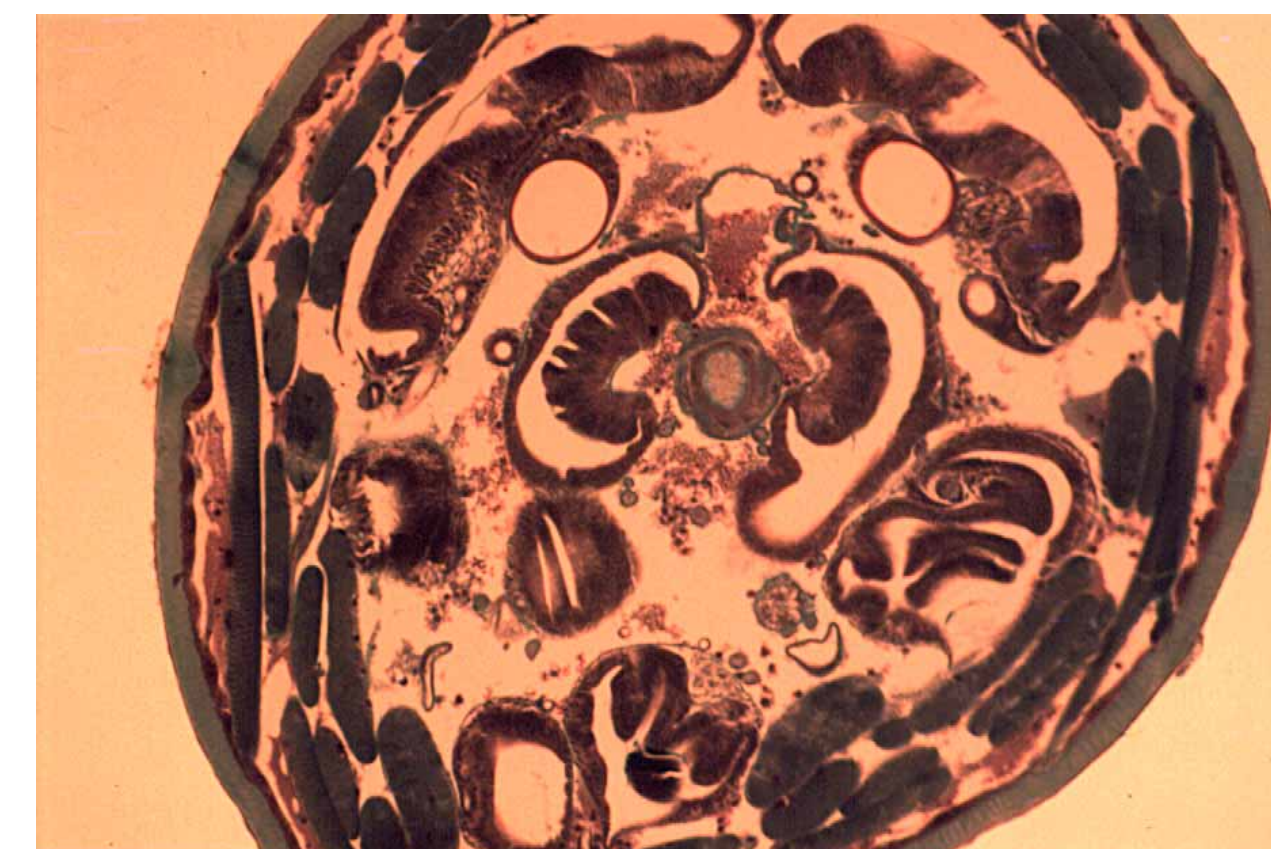
X.S. through imaginal ring of foregut and larval salivary glands of larva III



X.S. through protocerebral lobes, ring gland and eye/antennal discs of larva III



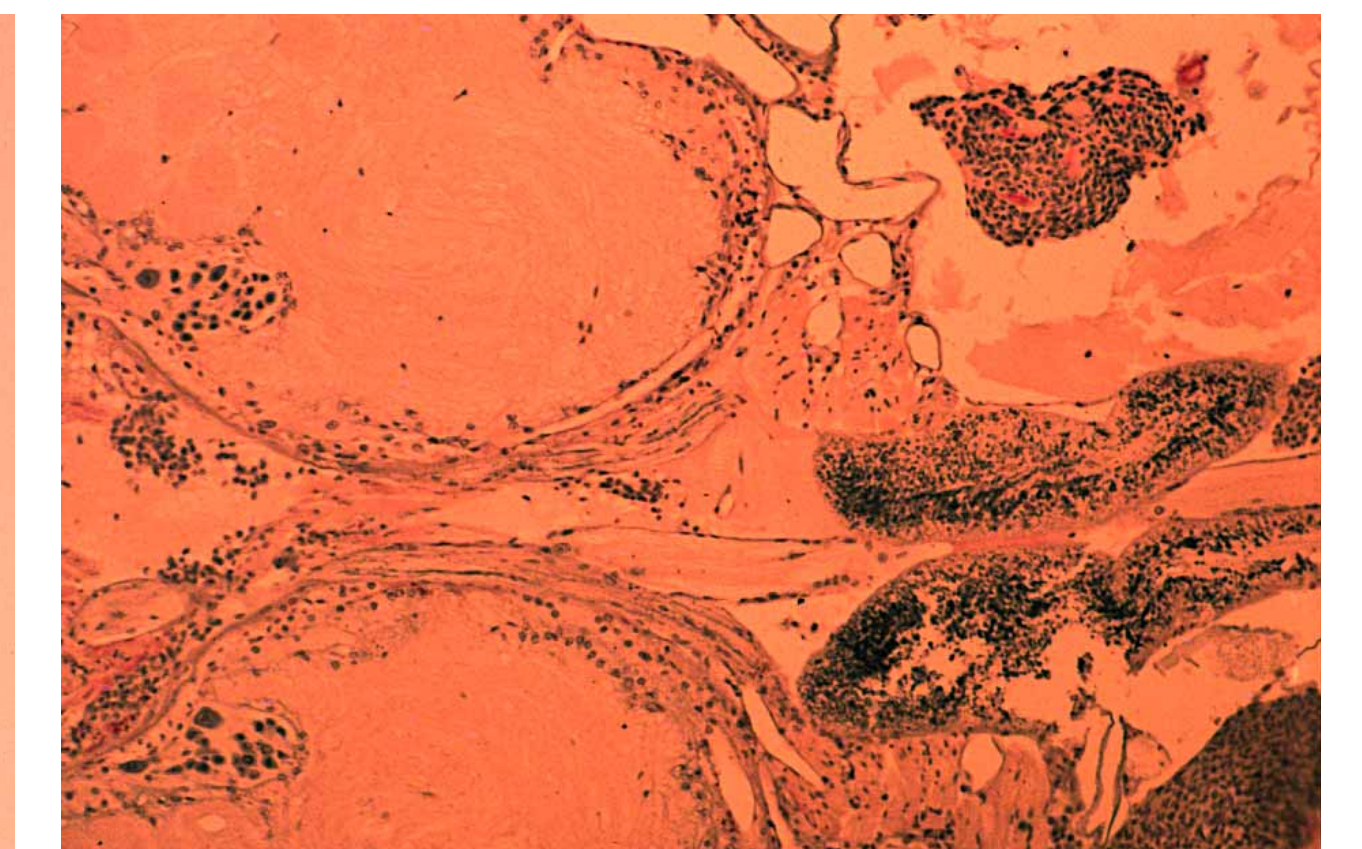
X.S. through ring gland and eye/antennal discs of larva III



X.S. through eye/antennal discs of larva III



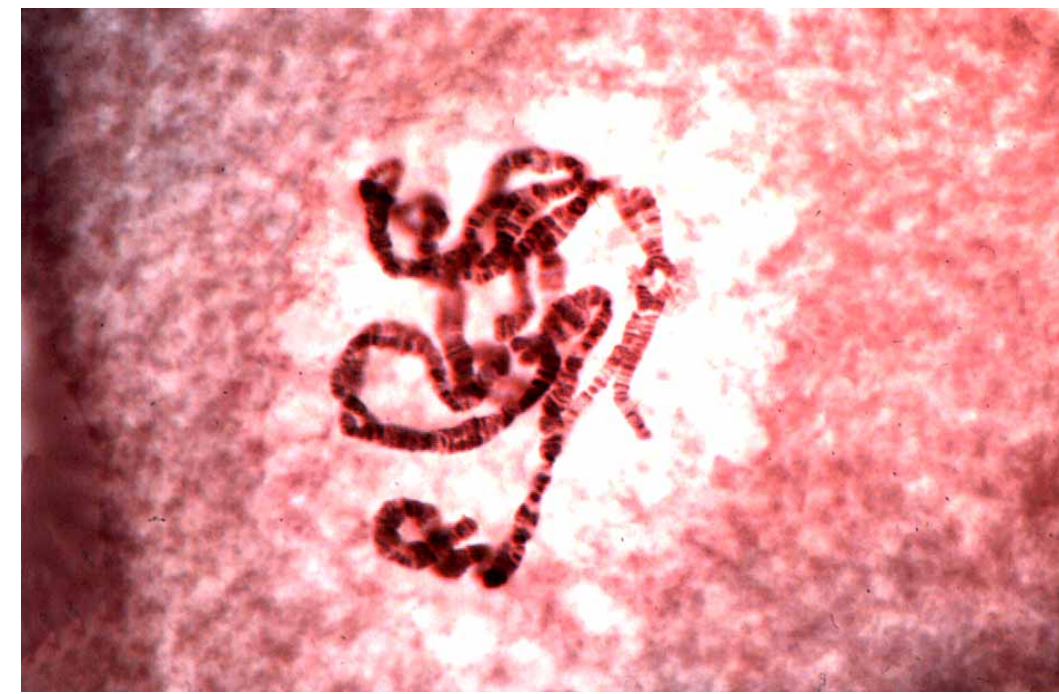
X.S. through cephalopharyngeal skeleton and labial discs



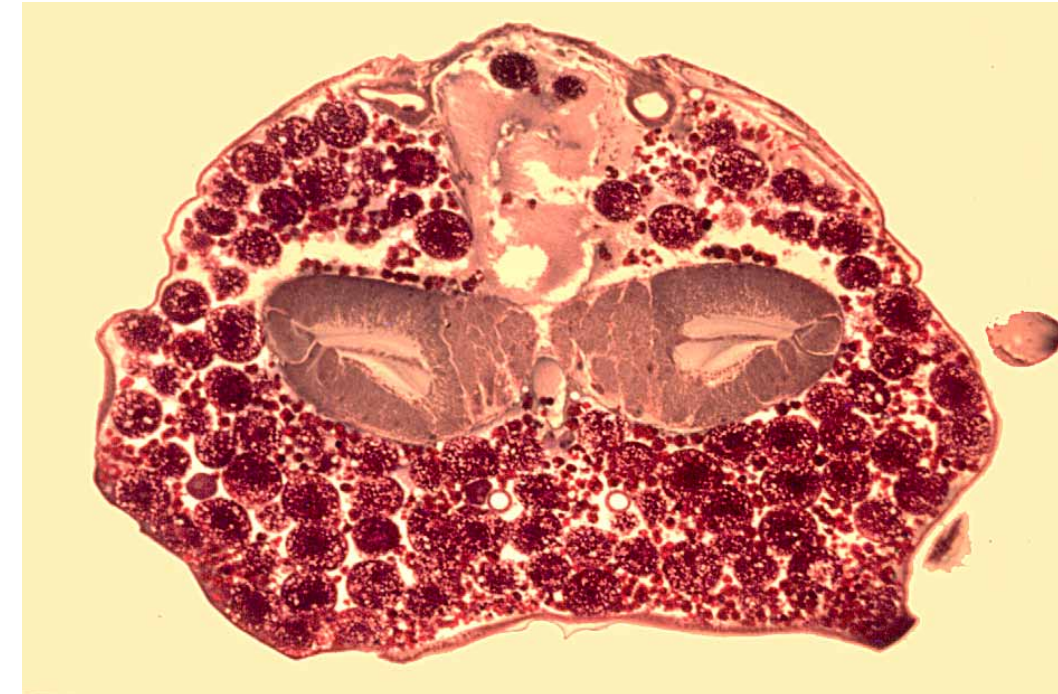
F.S. through protocerebral lobes, recurrent nerve, neurosecretory cells and corpora cardiaca of *Periplaneta americana* (Blattodea: Blattidae) nymph

M E T A M O R P H O S I S

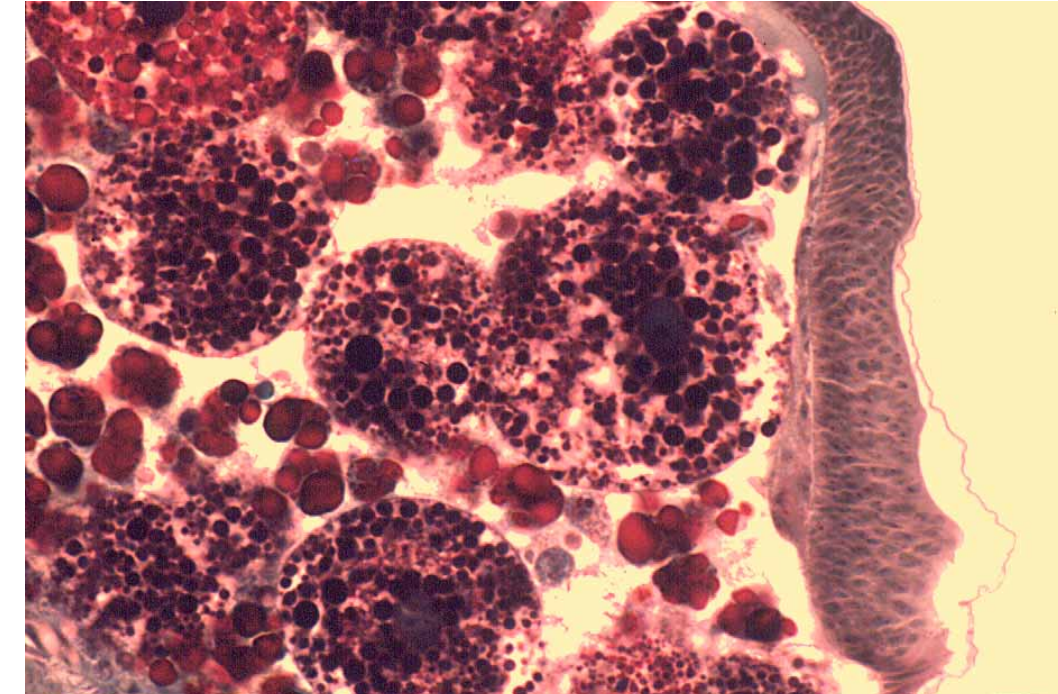
In *Musca domestica* (Diptera: Muscidae)



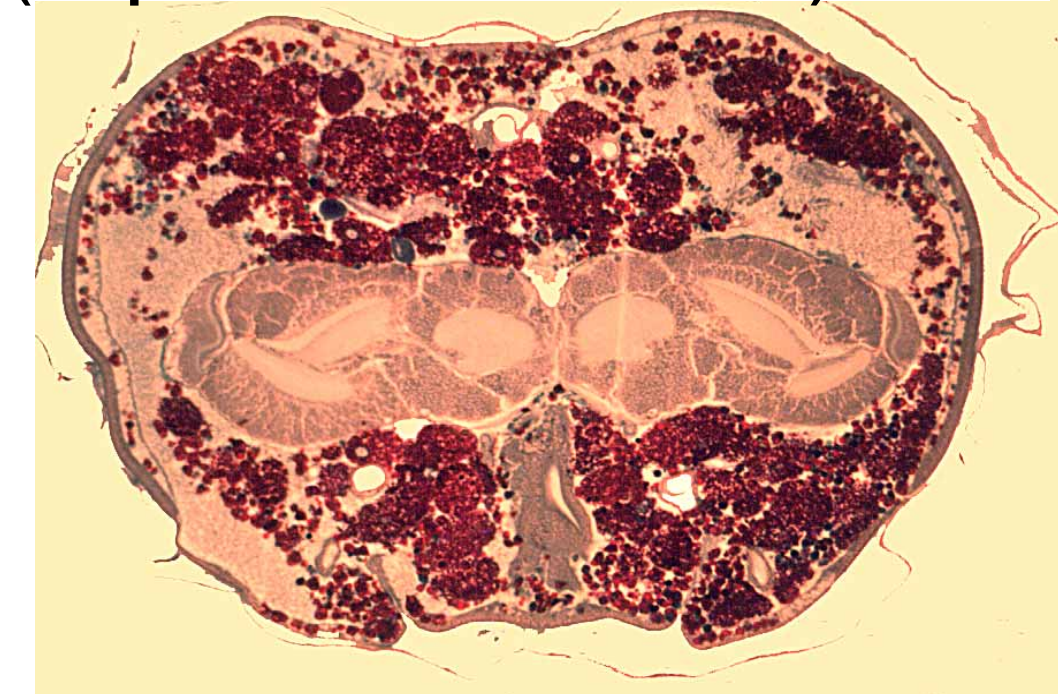
Squash preparation of polytene larval salivary gland chromosomes of *Simulium* sp. (Diptera: Simuliidae)



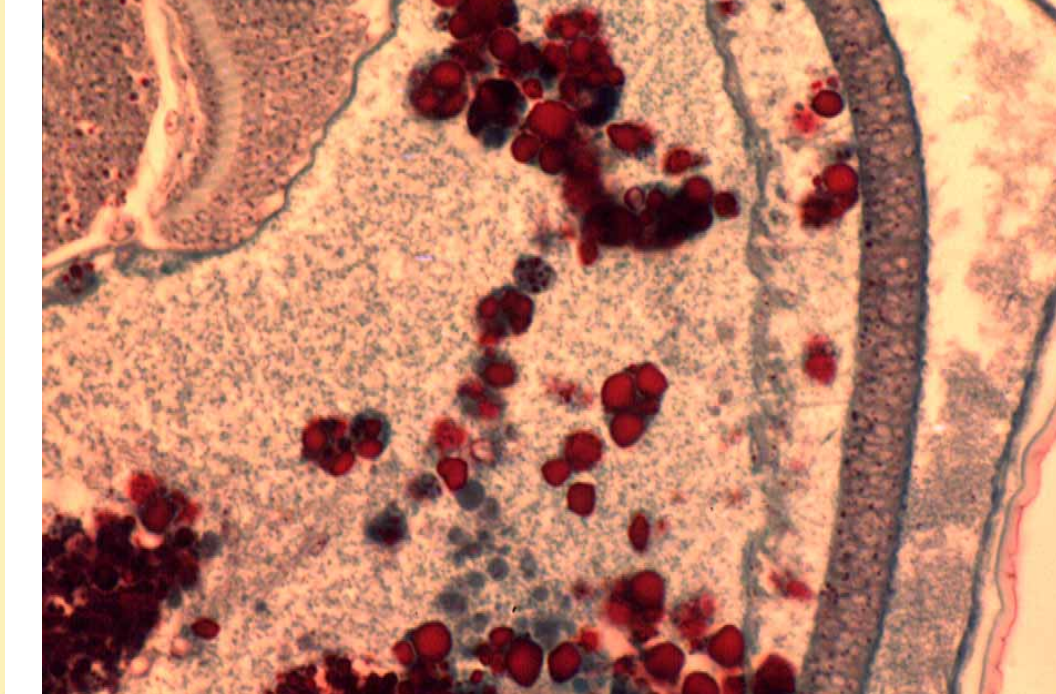
F.S. of head and brain 24h after pupariation (24h AP)



F.S. of compound eye 24h AP



F.S. of head and brain 48h AP



F.S. of compound eye 48h AP



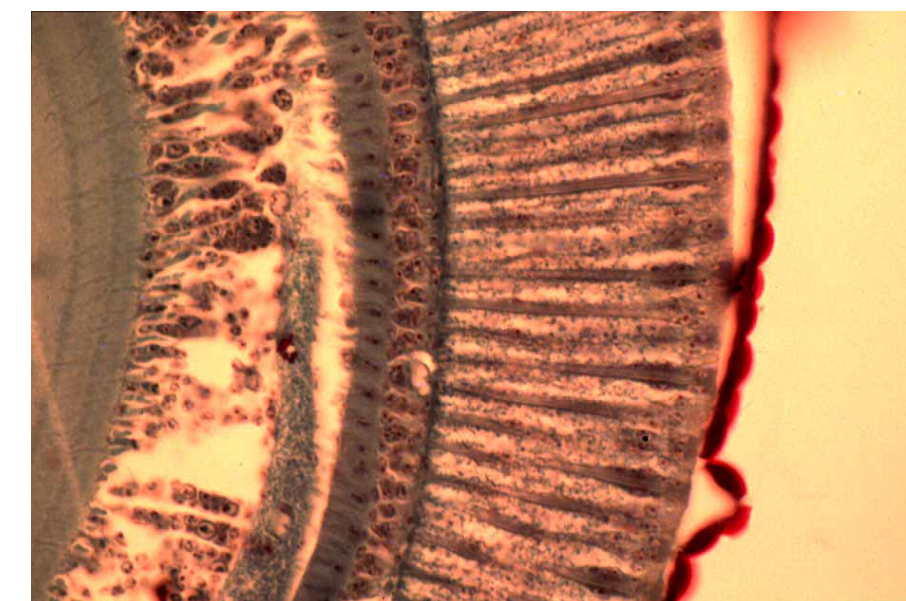
F.S. of head and brain 4 days AP



F.S. of compound eyes 4 days AP



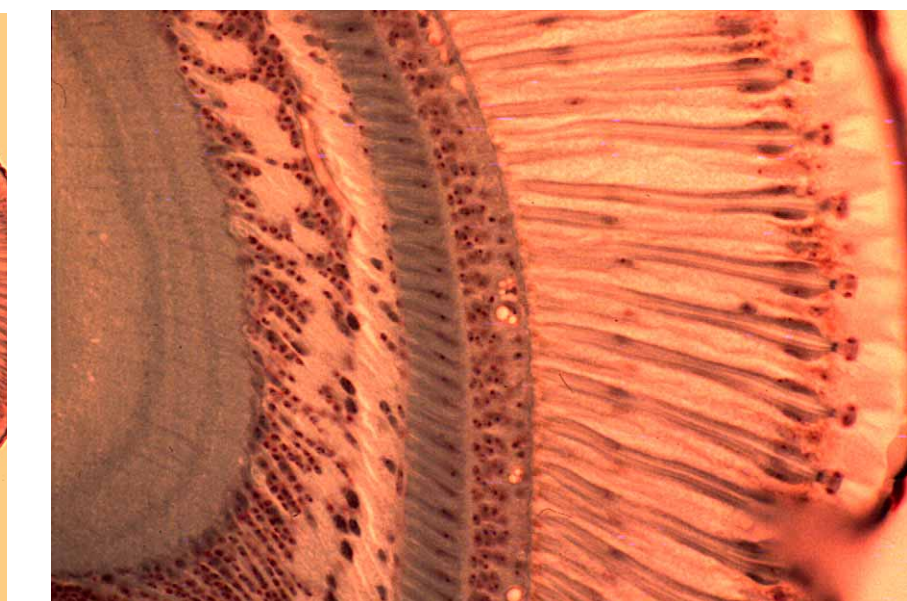
F.S. of head and brain 6 days AP



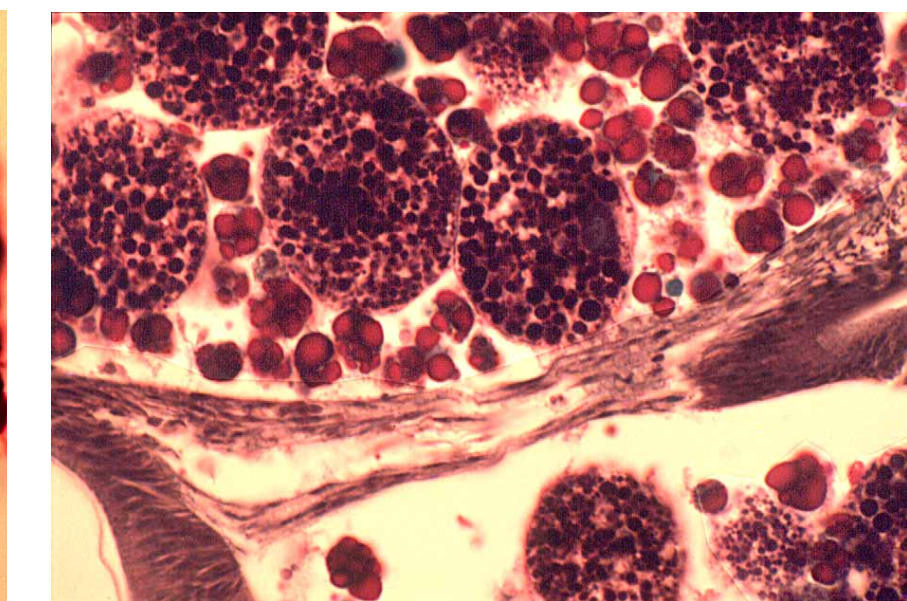
F.S. of compound eyes 6 days AP



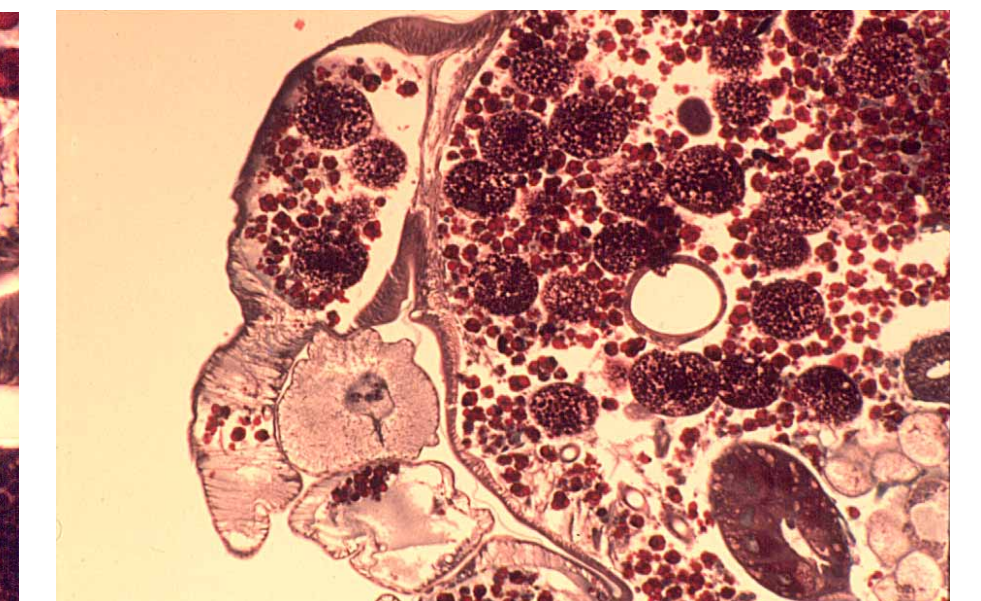
F.S. of head and brain - late pharate adult



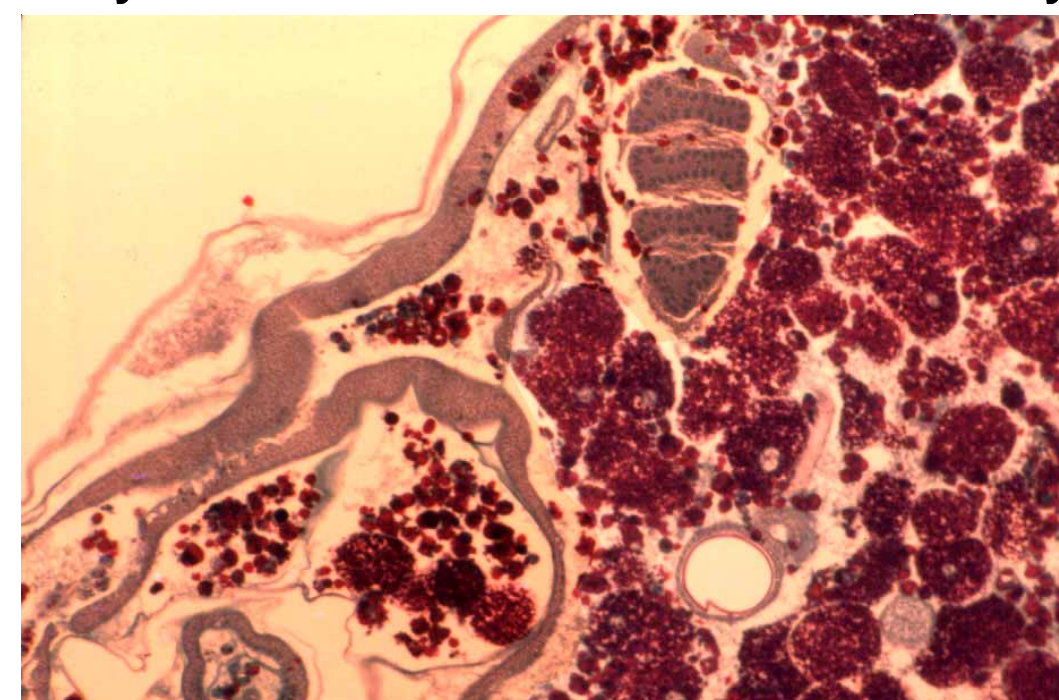
F.S. of compound eye - late pharate adult



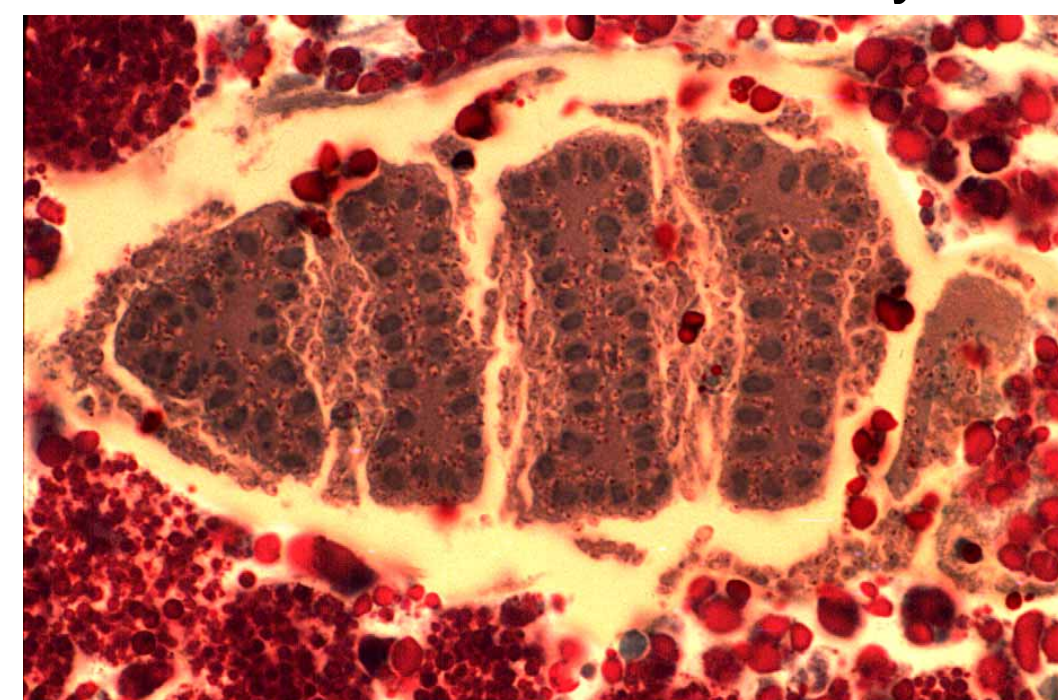
X.S. of wing base 24h AP



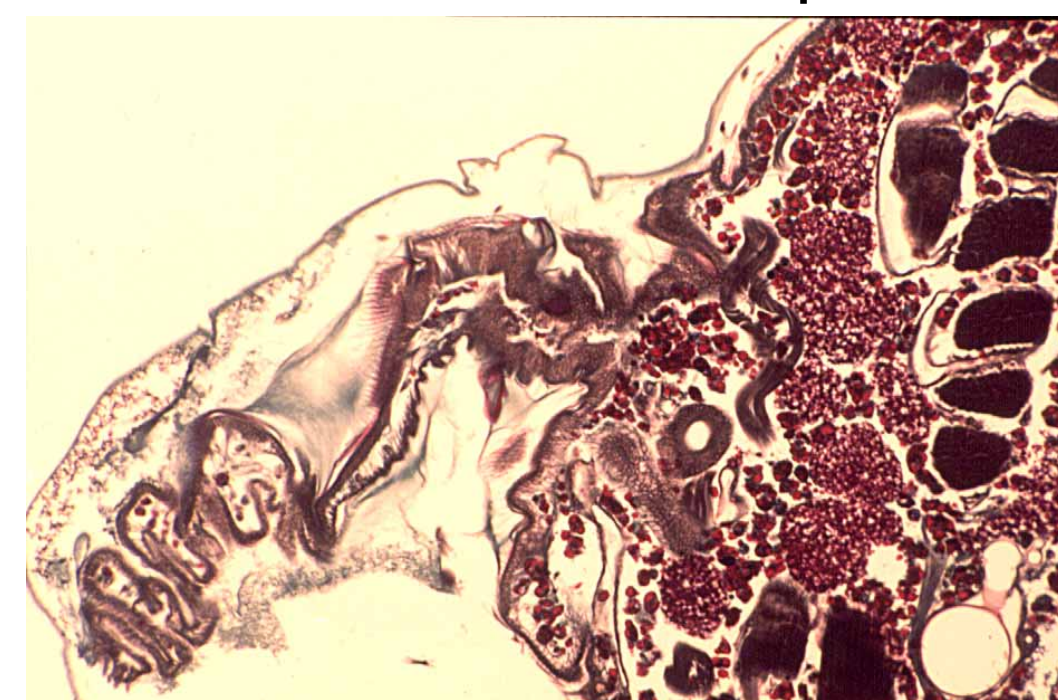
X.S. of wing base 24h AP



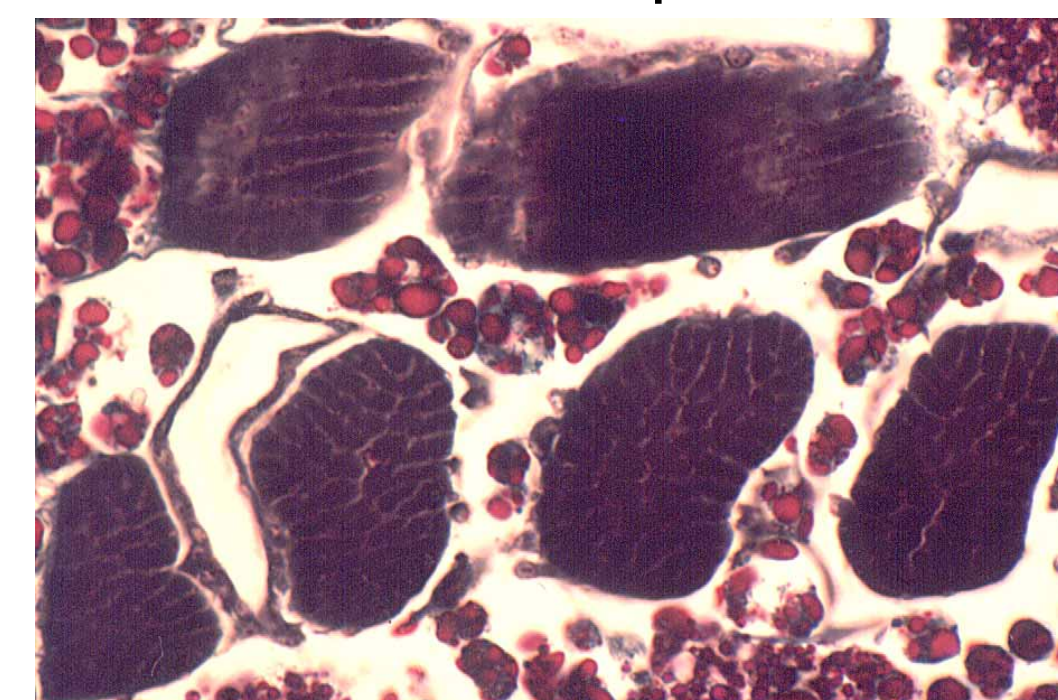
X.S. of wing base 48h AP



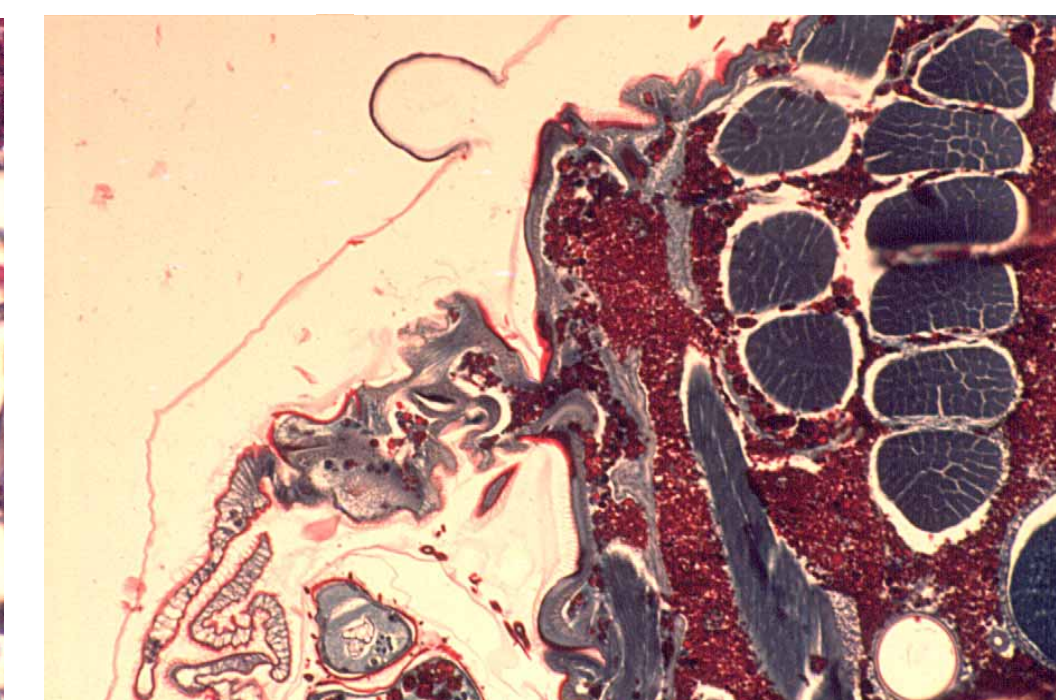
X.S. of wing base 48h AP



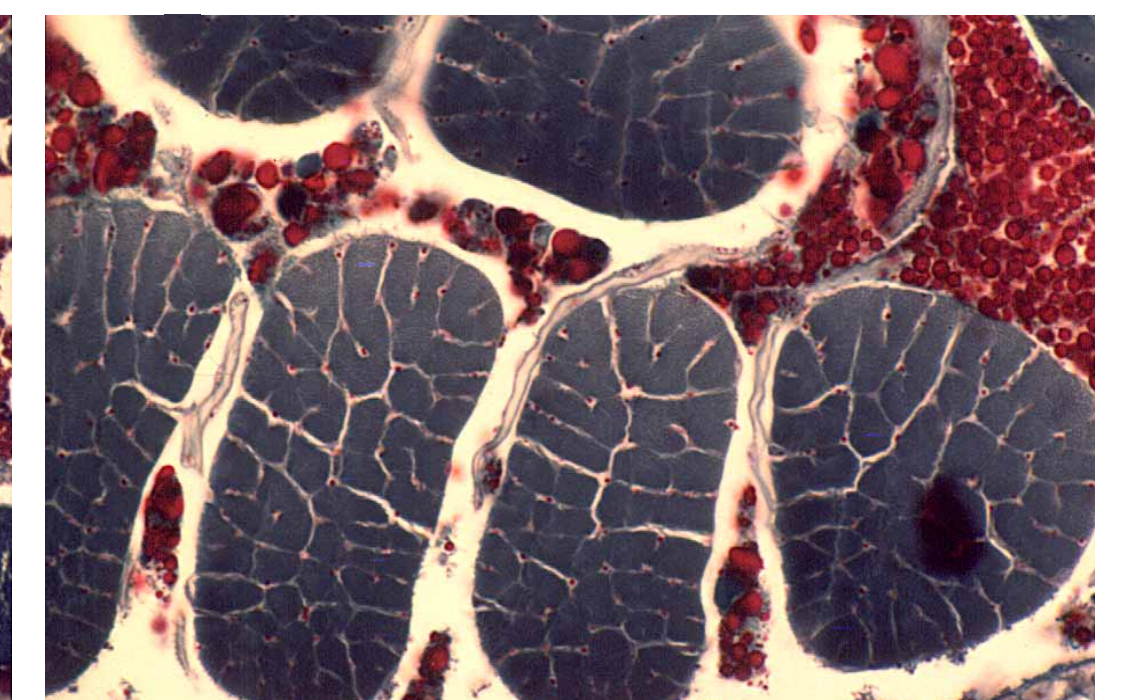
X.S. of wing base 4 days AP



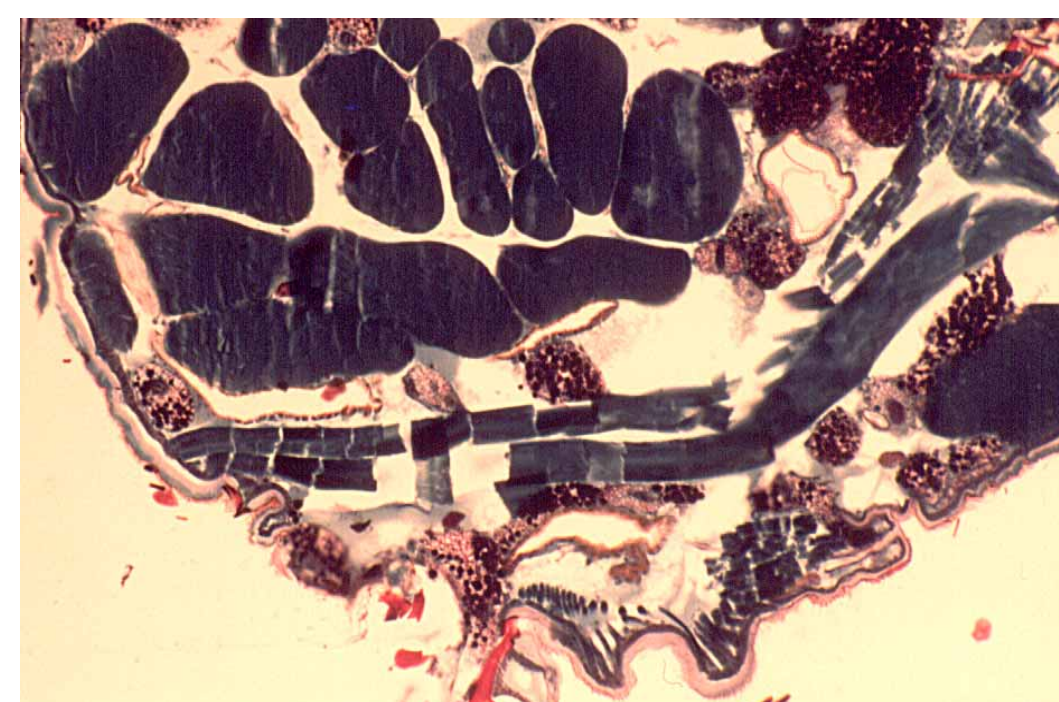
X.S. of longitudinal indirect flight muscles 4 days AP



X.S. of wing base 6 days AP



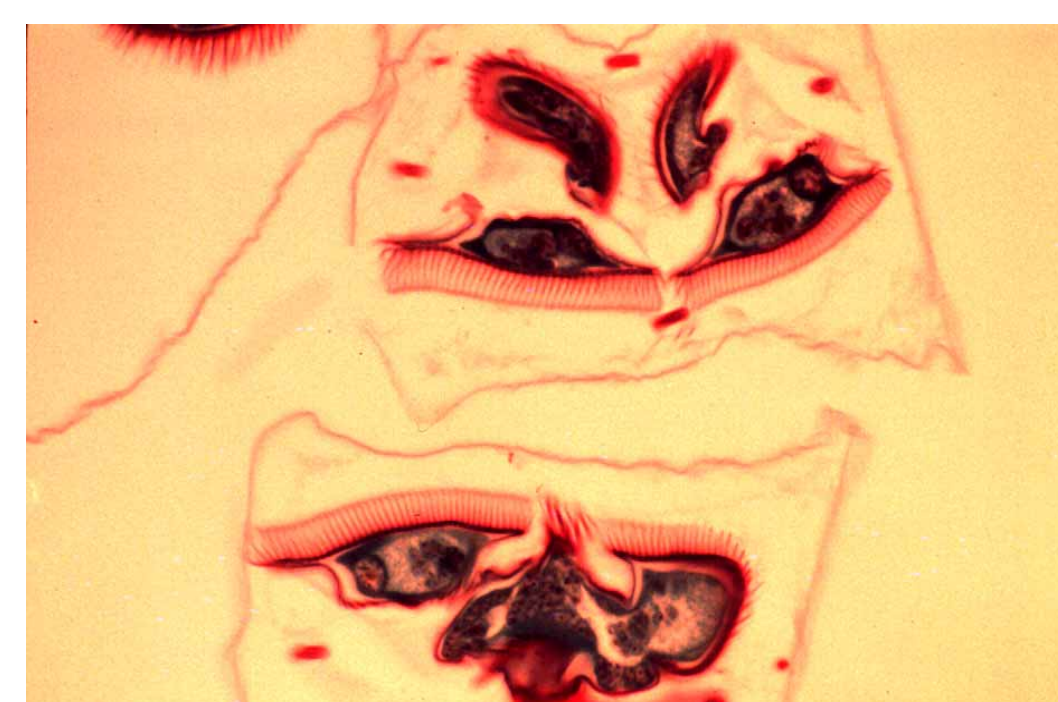
X.S. of longitudinal indirect flight muscles 6 days AP



X.S. of wing base - late pharate adult



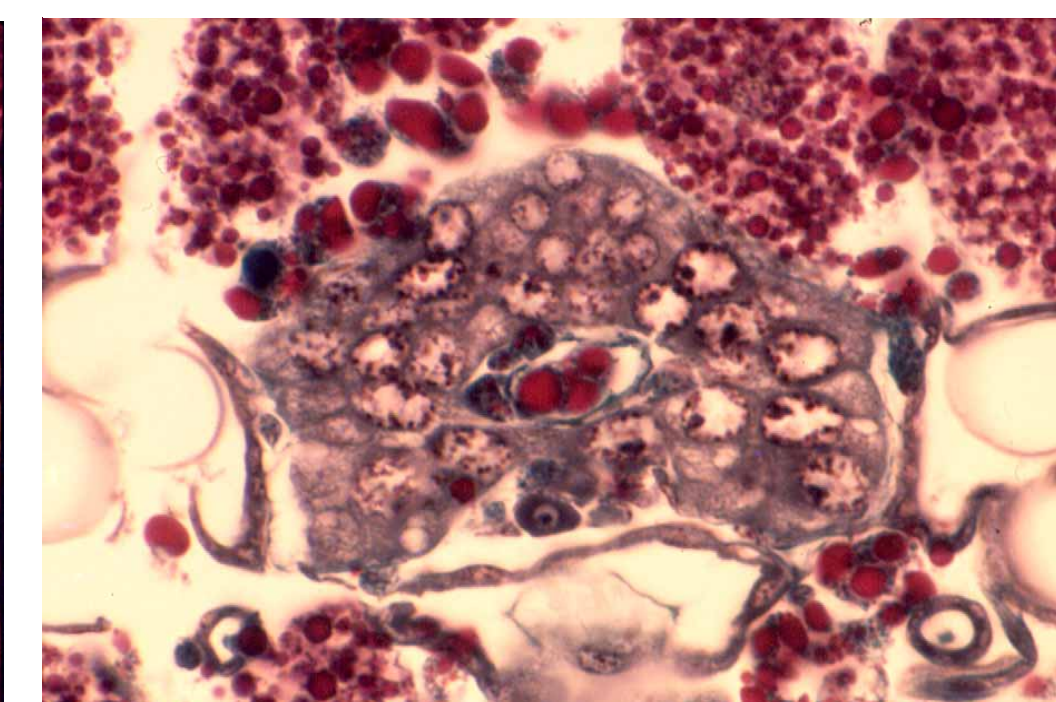
X.S. of longitudinal indirect flight muscles - late pharate



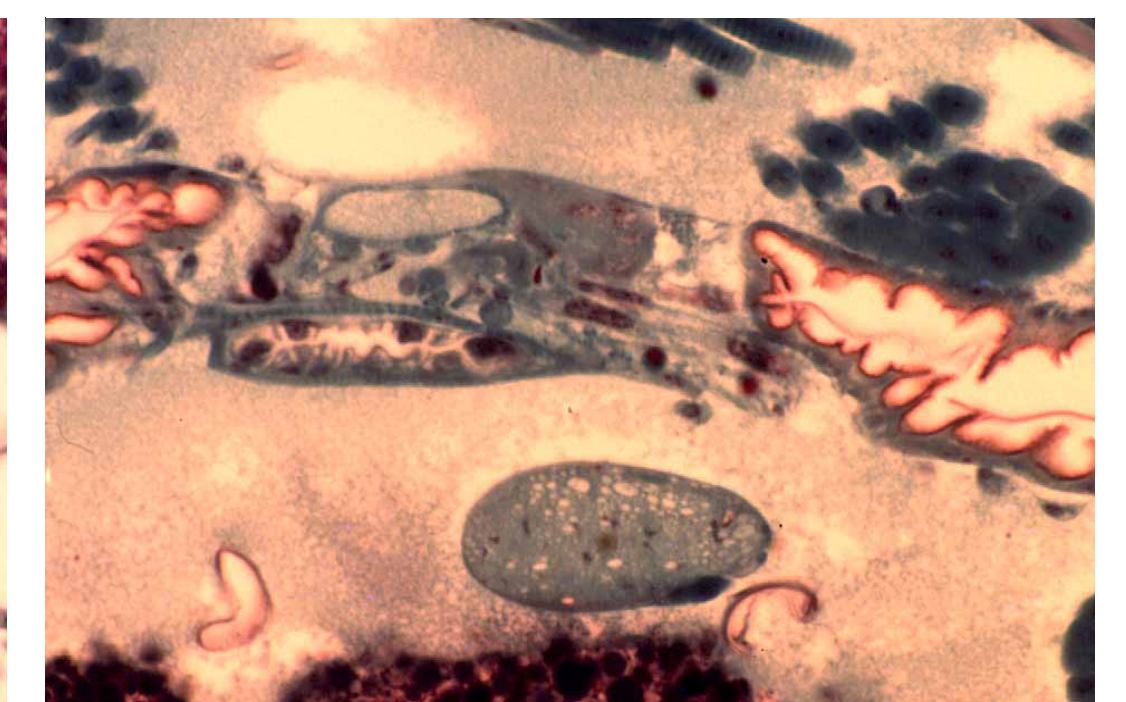
X.S. through pretarsi of late pharate adult



X.S. through ring gland 4 days AP



X.S. through ring gland 4 days AP



X.S. through ring gland - newly emerged adult