

1 Article

2 Isothermal Amplification of Nucleic Acids with Ladder-shape 3 Melting Curve

4 Deguo Wang^{1*}, Yongzhen Wang¹, Meng Zhang¹, Yongqing Zhang¹, Juntao Sun¹, Chumei Song¹, Fugang Xiao¹, Yuan
5 Ping¹, Chen Pan¹, Yushan Hu¹, Chaoqun Wang² and Yanhong Liu³

6 ¹ Key Laboratory of Biomarker Based Rapid-detection Technology for Food Safety of Henan Province,
7 Xuchang University, Xuchang 461000, China; wangdg666@126.com (D.W.); wangdg666@aliyun.com (Y.W.);
8 peterrabbit@yeah.net (M.Z.); lzyq336@163.com (Y.Z.); jtsfly@163.com (J.S.); pyuan.lhn@xcu.edu.cn (Y.P.);
9 panchen@xcu.edu.cn (P.C.); a17839979390@163.com (Y.H.)

10 ² Xuchang Customs, Xuchang 461000, China.

11 ³ Molecular Characterization of Foodborne Pathogens Research Unit, Eastern Regional Research Center, Ag-
12 ricultural Research Service, United States Department of Agriculture, Wyndmoor, PA 19038, USA.;
13 yanhong.liu@usda.gov

14 * Correspondence: wangdg666@126.com (D.W.); Tel.: +86-0374-2968907 (D.W.)

15 **Abstract:** A novel method termed isothermal amplification of nucleic acids with ladder-shape
16 melting curve (LMCP) was developed in the study. In this method, one pair of primers or two pairs
17 of nested primers and a thermostable DNA polymerase (large fragment) were employed to amplify
18 the internal transcribed spacer (ITS) of *Oryza sativa* with ladder-shape melting curve. Our results
19 demonstrated that the LMCP assay with nested primers was 50-fold more sensitive and one-hour
20 faster than the LAMP assay with the same level of specificity. The LMCP method has the potential
21 to be used for the prevention and control of the emerging epidemics.

22 **Keywords:** nucleic acids detection; isothermal amplification; melting curve; primer design

24 1. Introduction

25 Pathogenic microorganisms are threats to the health of human and animals. For
26 example, African Swine Fever Virus (ASFV) has brought great economical damage in
27 swine industry, and 2019-nCoV has been leading to a global disaster with the death of
28 millions people. The threat of ASFV, 2019-nCoV and newly emerging pathogenic mi-
croorganisms is emphatically still on, and a rapid, sensitive and simple nucleic acids test
method is urgently needed.

31 Polymerase Chain Reaction (PCR) is the most commonly used method [1,2], e.g. for
32 the nucleic acid detection of 2019-nCoV, but the application of this technology is limited
33 due to the need of a thermal cyler. Isothermal amplification of nucleic acids does not
34 need a thermal cyler, and some isothermal amplification methods have been elaborate-
35 ly designed, including nucleic acid sequence-based amplification (NASBA) [3],
36 self-sustained sequence replication (3SR) [4], helicase-dependent amplification (HDA)
37 [5], exponential amplification reaction (EXPAR) [6], Strand displacement amplification
38 (SDA) [7], recombinase polymerase amplification (RPA) [8], rolling circle amplification
39 (RCA) [9], and loop-mediated isothermal amplification (LAMP) [10], however, these
40 methods have their own limitations including lengthy time and non-specific amplifica-
41 tion [11,12]. Therefore, the nucleic acid test methods based on PCR are still dominant in
42 the detection of 2019-nCoV epidemic, and great efforts have been made to modify the
43 existing methods, e.g. enhanced recombinase polymerase amplification (eRPA) [13] and
44 CRISPR-Cas9-triggered triggered SDA reactions [14].

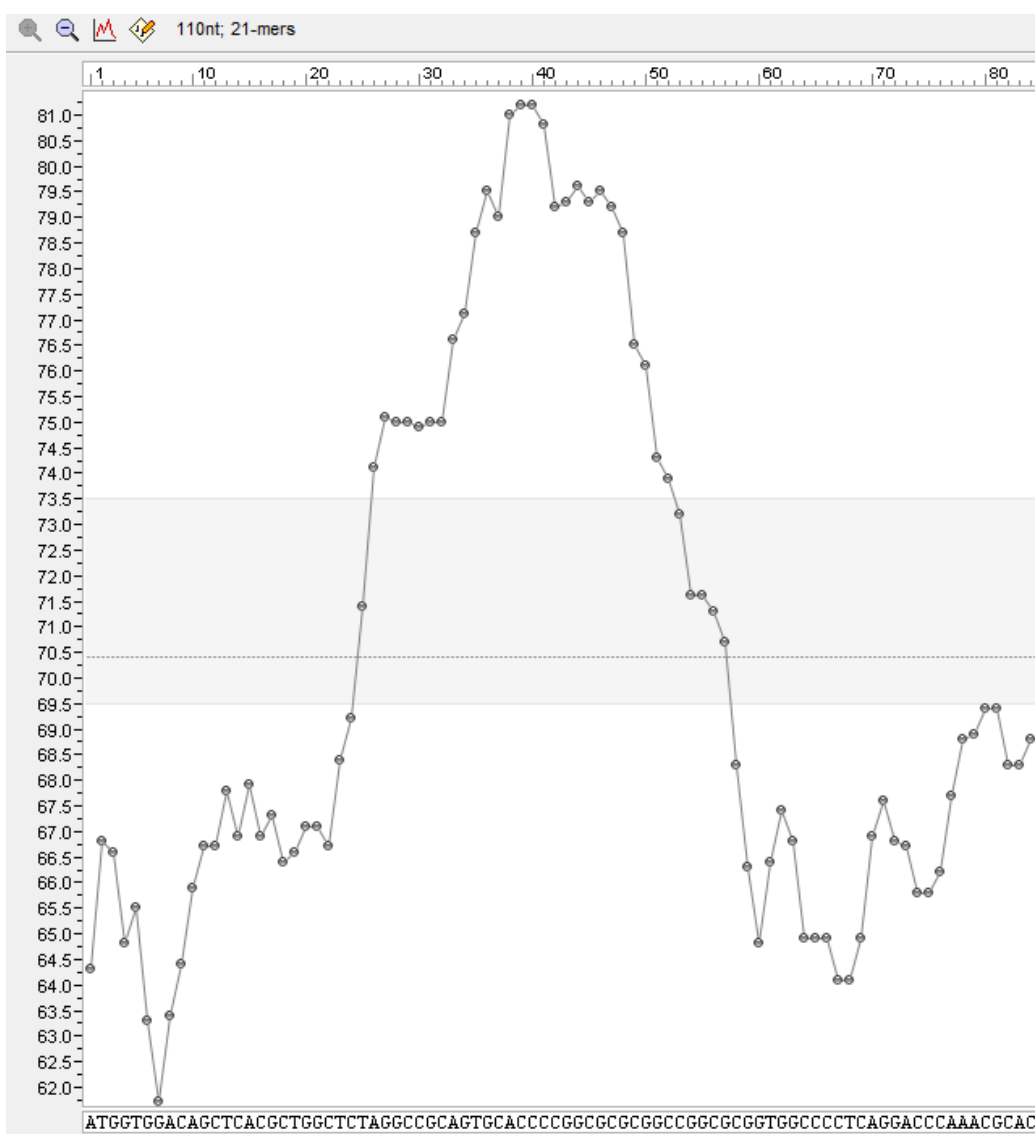
45 In this paper, a novel method, termed isothermal amplification of nucleic acids with
46 ladder-shape melting curve (LMCP), was developed. The reaction mechanism, target

47 sequence selection, primer design, sensitivity and specificity of the amplification method
48 are discussed. This new method can robustly amplify nucleic acids with high specificity
49 and sensitivity in a very short time. Since this method does not need a thermocycler, it
50 may have wide application for the detection of pandemic diseases including corona-
51 virus.

52 2. Materials and Methods

53 2.1. Selection of the target sequences for nucleic acid detection

54 The nucleic acid sequences of *Oryza sativa* internal transcribed spacer (ITS)
55 (GenBank ID: MF029734.1) were analyzed using Oligo 7 software (Molecular Biology In-
56 sights, Inc. Colorado Springs, CO, USA), and the target sequences with ladder-type
57 melting curve were selected, as shown in Figure 1.



58
59 **Figure 9.** Melting Curve of Target Sequence (ITS) for Detection of *Oryza sativa* with LMCP Method.

60 2.2. Primer design for LMCP Assays

51 With the selected target sequences, a set of primers (forward primer and re-
52 verse primer, for short, F and R), No.1, was designed using the online software Pri-
53 mer3Plus (<http://www.primer3plus.com/cgi-bin/dev/primer3plus.cgi>); two pairs of
54 nested primers (outer pair of primer P1 and D1, inner pair of primers P2 and D2) were
55 designed using the same software, among which primer P1 and primer D2 were com-
56plementary to the minus strand while primer P2 and primer D1 were complementary to
57 plus strand, the primer P (primer P2 and primer P1 linked with TTTT) and the primer D
58 (primer D2 and primer D1 linked with -tttt-) were the No.2 set of primers, as shown in
59 Table 1.

70 **Table1.** LMCP Primers for the ITS of *Oryza sativa*.

No	Primer	Sequence (5'-3')
No.1	F	ATGGTGGACAGCTCACGC
	R	GGTGC GTTGGGTCCTGA
No.2	P (P2-tttt-P1)	CGCCGGGGTGC ACTGttttCTCACGCTGGCTCTAGGC
	D (D2-tttt-D1)	GCGCGGTGGCCCCttttGGTGC GTTGGGTCCTGA

71 **2.3. Genomic DNA isolation**

72 Genomic DNA was isolated from *Oryza sativa*, *Zea mays*, *Vigna radiate*, *Glycine max*,
73 *Ipomoea batatas*, *Solanum tuberosum* and *Manihot esculenta* using NucleoSpin® Food kit
74 (MACHEREY-NAGEL GmbH & Co. KG) according to the manufacturer's instruction.

75 **2.4. Sensitivity comparison of the LMCP and LAMP assays**

76 The LMCP assays with different sets of primers were performed in a 10- μ L reaction
77 mixture containing 0.8 mM of each primers (No.1 set of Primer F and Primer R, or No.2
78 set of Primer P and Primer D), 1.0 mM dNTPs, 1 \times reaction buffer (20 mM Tris-HCl (pH
79 8.8), 10 mM KCl, 10 mM (NH₄)₂SO₄, 6 mM MgSO₄, 0.1% Triton X-100) and 3.2 U Bst
80 DNA polymerase (Merit Biotech (Shandong) Co., Ltd, China), and 1 \times SYBR Green I. The
81 detection limits of LMCP assays with No.1 or No.2 sets of primers were determined with
82 10-fold dilution of genomic DNA from *Oryza sativa*, the reaction mixtures with No.1 set
83 of primers were heated at the optimized temperature 56.5°C for 100 min (2 min per cycle)
84 in StepOne™ System Real-Time PCR System (Applied Biosystems, Foster City, CA,
85 USA), while the reaction mixtures with No.2 set of primers were heated at 55°C for 60
86 min (30 s per cycle), respectively. A melting curve was obtained for each reaction.

87 The LAMP primers targeting the *Oryza sativa* internal transcribed spacer (ITS)
88 (GenBank ID: MF029734.1) were designed using PrimerExplorer V5
89 (<http://primerexplorer.jp/e/>) (Please see Table 2 for primer sequences). The LAMP assay
90 with different set of LAMP primers was performed in a 10- μ L reaction mixture contain-
91 ing 0.8 mM each of forward inner primer (FIP) and backward inner primer (BIP), 0.2
92 mM each of forward outer primer (F3) and backward outer primer (B3), 1.0 mM dNTPs,
93 1 \times reaction buffer (20 mM Tris-HCl (pH 8.8), 10 mM KCl, 10 mM (NH₄)₂SO₄, 6 mM
94 MgSO₄, 0.1% Triton X-100) and 3.2 U Bst DNA polymerase (Merit Biotech (Shandong)
95 Co., Ltd, China), and 1 \times SYBR Green I. The detection limit of LAMP assay was deter-
96 mined with 10-fold dilution of genomic DNA from *Oryza sativa*, and the reaction mix-
97 ture was heated at the optimized temperature 59°C for 2 h (90 s per cycle).A melting
98 curve was obtained using a StepOne™ System (Applied Biosystems, Foster City, CA,
99 USA).

100 **Table.2** LAMP Primers for the ITS of *Oryza sativa*.

Primer	Sequence (5'-3')
--------	------------------

F3	CCGGGCCGCAACAGAA
B3	CTCGATGGTTCACGGGATTC
FIP	ACTCGTGGTATCGCGCCGctttTCAAGGAACACAGCGATACG
BIP	AATCCACACGACTCTCGGCAACtttTCGCATTCGCTACGTTCTT

01

02

2.5. Specificity Comparison of the LMCP and LAMP Assays

03

Genomic DNA from *Oryza sativa*, *Zea mays*, *Vigna radiate*, *Glycine max*, *Ipomoea batatas*, *Solanum tuberosum* and *Manihot esculenta* were randomly selected for the specificity determination of the LMCP assay with No.1 set of primers, No.2 set of primers and the LAMP assay, and the amount of genomic DNA used was 1 ng per reaction.

04

05

06

07

3. Results

08

3.1. Principle of the LMCP method

09

The major mechanism, also the greatest progress compared with the previously developed nucleic acid amplification methods, was the non-thermal and non-enzymatic single-strand template supply. The nucleic acid sequences with ladder-type melting curve were selected as target, as shown in Figure 2, the Tms of P1 and/or D1 were/was higher than the amplification temperature, whereas the Tms of corresponding fragments/fragment of P1 and/or D1 on the target were/was lower than the amplification temperature, and the single-strand template was supplied via the Tm difference.

10

11

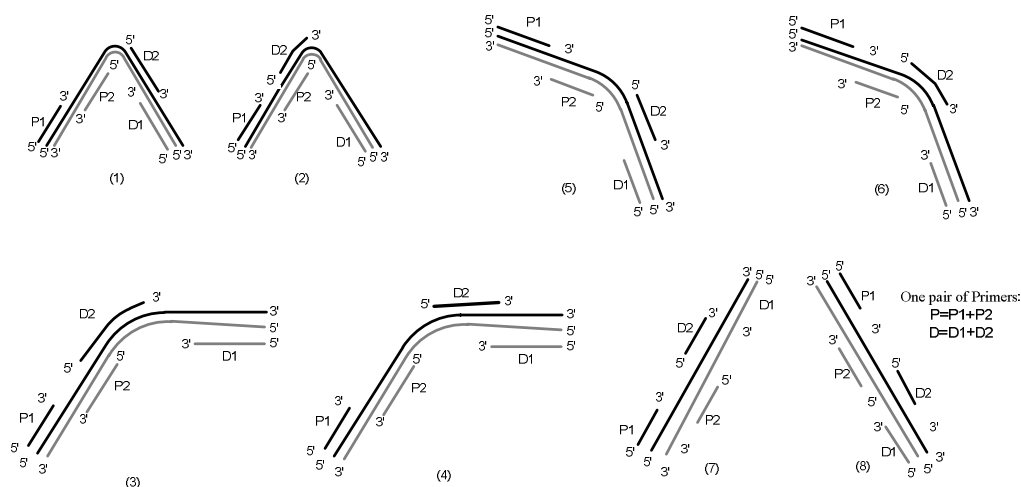
12

13

14

15

16



17

Figure 2. The Ladder-type Melting Curves of LMCP and their Primers.

18

19

20

When the Tm of both P1 and D1 were higher than the amplification temperature and the Tm of both corresponding fragments were lower than the amplification temperature, the two primers can amplify the target like PCR without temperature cycles of denaturation, annealing and extension.

21

22

23

24

For all of the ladder-type nucleic acid targets in Figure 2, the target sequences can be amplified by the pair of primer P (primer P2 and primer P1 linked with TTTT) and primer D (primer D2 and primer D1 linked with -ttt-). The whole amplification process can be divided into initial and exponential amplification stages. In the initial stage, when only the Tm of P1 was higher than the amplification temperature while the Tm of corresponding fragment of P1 on the target was lower than the amplification temperature, as shown in Figure 3, the P1 on the primer P annealed with the complementary fragment via the Tm difference initiated synthesis reaction and strand displacement reaction with

25

26

27

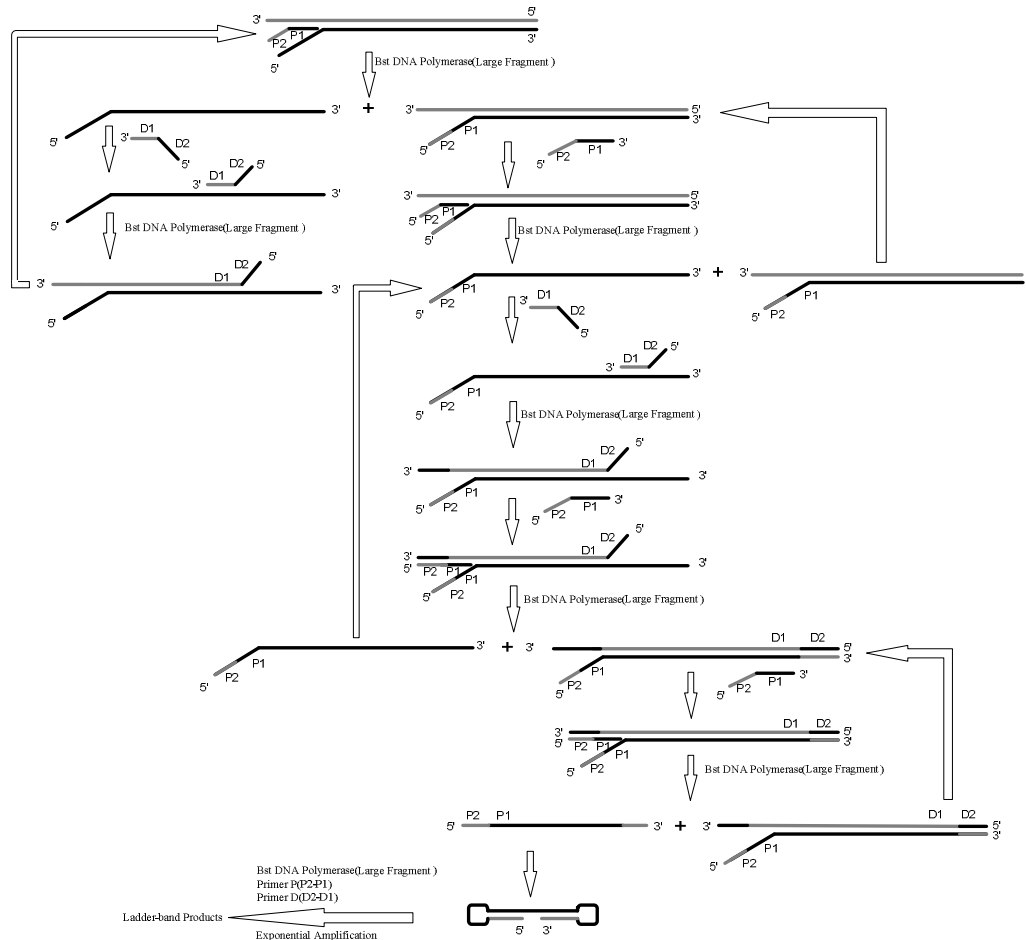
28

29

30

31

32 the action of thermostable DNA polymerase (large fragment), then the P1 on the primer
 33 P annealed with the complementary fragment of newly synthesized double strand DNA
 34 and initiated new cycle of synthesis reaction and strand displacement reaction, while the
 35 D1 of primer D annealed with the displaced single strand DNA and synthesized a double-
 36 strand DNA, after a series of annealing, synthesis and strand displacement, the initial
 37 structure for the exponential amplification stage was formed, which was a dumb-bell
 38 form of DNA. When the Tms of both P1 of primer P and D1 of primer D were higher
 39 than amplification temperature while the Tms of their corresponding fragments were
 40 lower than the amplification temperature, the initial stage produced the dumb-bell form
 41 DNA for the exponential amplification stage as above, as shown in Figure 4.



42
 43 **Figure 3.** Schematic representation (1) for Initial Stage of LMCP. Note: The Tm of P1 was higher than the amplification
 44 temperature and the Tm of corresponding fragment of P1 was lower than the amplification temperature at the same
 45 time.

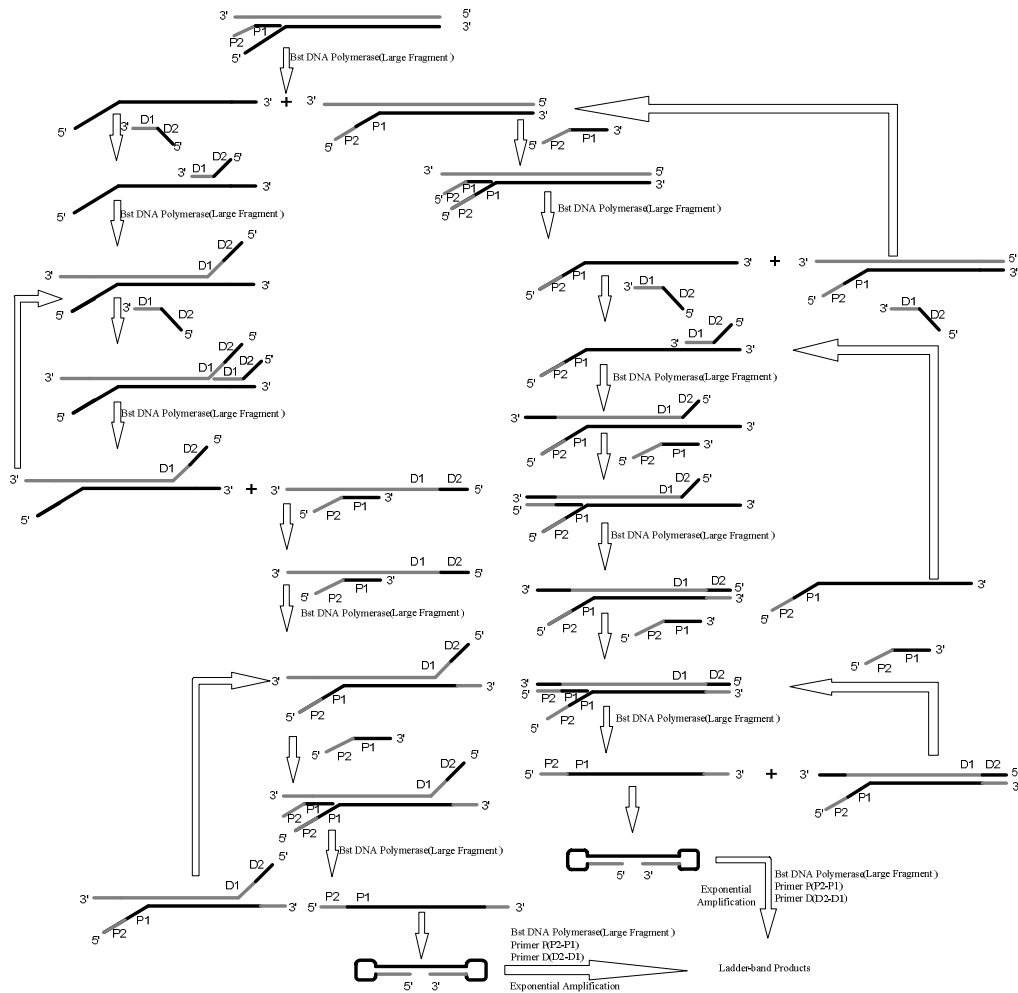


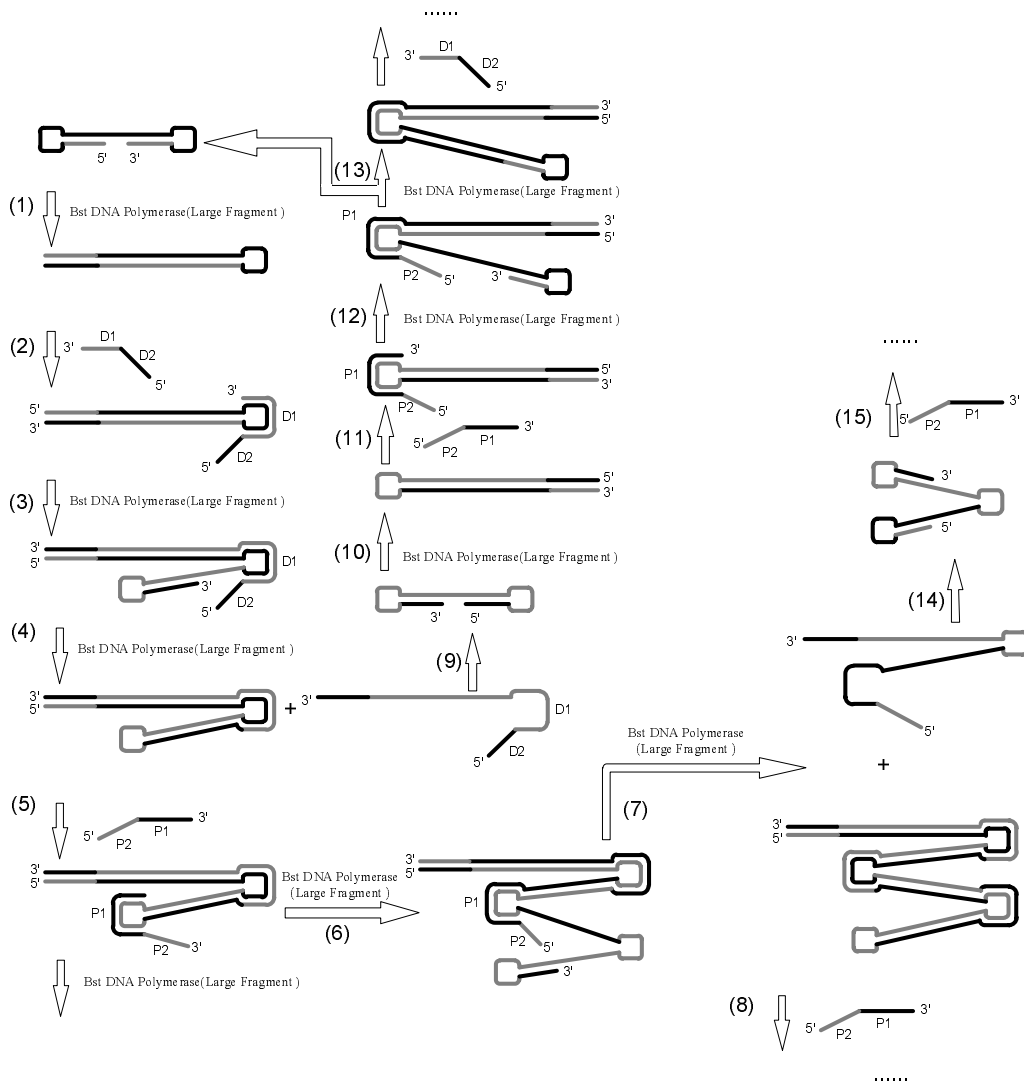
Figure 4. Schematic representation (2) for Initial Stage of LMCP. Note: The Tms of P1 and D1 were higher than the amplification temperature whereas the Tms of corresponding fragments of P1 and D1 were lower than the amplification temperature.

In the exponential amplification stage (Figure 5), the 3' end of dumb-bell form of DNA initiated self-primed synthesis and strand displacement reaction with the action of thermostable DNA polymerase (large fragment), and produced the double strand DNA with a blunt end and a single-strand stem-loop end (Step 1); the D1 of primer D annealing with the stem loop of the newly formed double-strand DNA via complementary base pairing initiated synthesis reaction and strand displacement reaction with the action of thermostable DNA polymerase (large fragment) (Step 2), and produced the semi-single-strand and semi-double-strand DNA with a blunt end, middle double-strand stem loop and a single-strand stem-loop end (Step 3); the 3' end of newly formed structure initiated self-primed synthesis and strand displacement reaction with action of thermostable DNA polymerase (large fragment) (Step 4), and produced a double-strand DNA with a blunt end, middle double-strand stem loop and a single-strand stem-loop end and a single-strand DNA, P1 of primer P annealing with the single-strand stem loop of newly produced double-strand DNA initiated a cycle of synthesis reaction and strand displacement reaction (Step 5, Step 6, Step 7...), and the newly formed single strand DNA quickly converted to dumb-bell form DNA via two-end complementary base pairing and initiated a new cycle of self-primed synthesis and strand displacement reaction with action of thermostable DNA polymerase (large fragment) (Step 9, Step

46
47
48
49
50
51
52
53
54
55
56
57
58

69
70
71

10...); and the numerous DNA with length as different-time as that of target sequence produced after a series of self-primed synthesis, annealing, synthesis and strand displacement reactions.



72
73
74

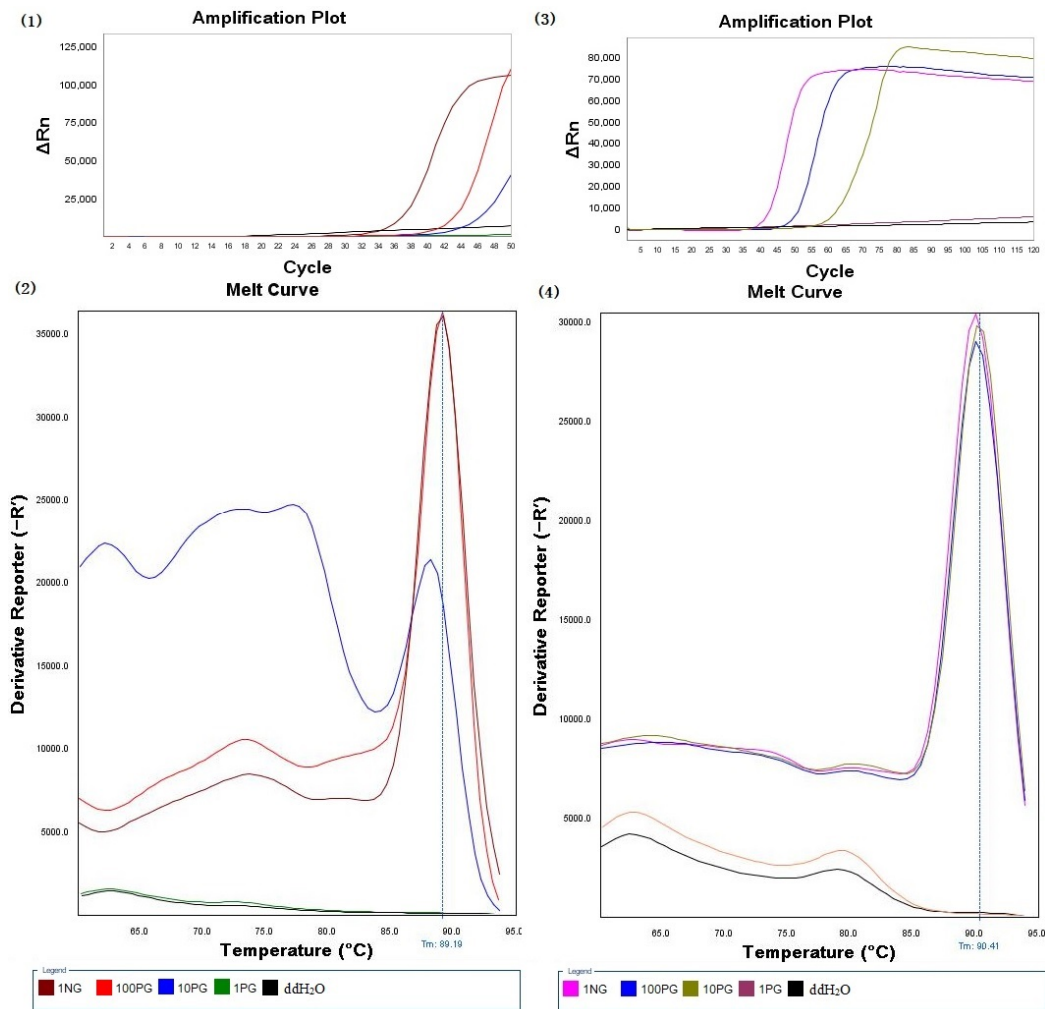
Figure 5. The Diagrammatic Sketch (2) for Exponential Amplification Stage of LMCP.

75

3.2. Sensitivity of the LMCP and the LAMP assays

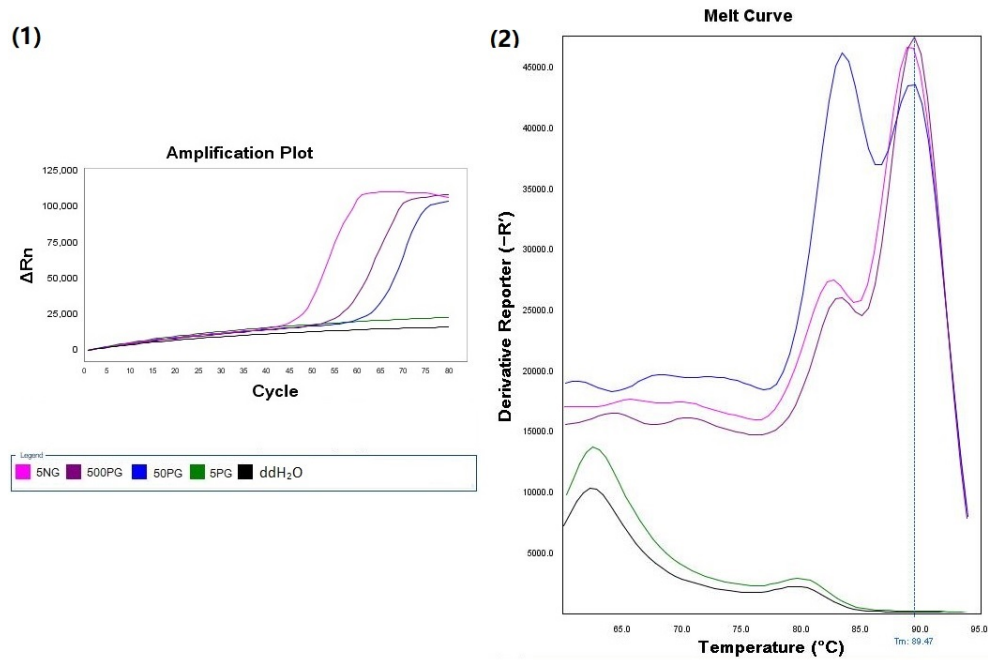
76
77
78
79
80
81
82
83

The detection limits of the LMCP assays with No.1 set of primers and No.2 set of primers as well as the LAMP assay were determined using 10-fold dilution of genomic DNA of *Oryza sativa*. In the case of non-specific amplification judged via the melting curves, the real detection limits of the LMCP with No.1 set of primers and No.2 set of primers as well as the LAMP assay were 100 pg, 10 pg and 500 pg genomic DNA of *Oryza sativa* (Figure 6 and Figure 7), the LMCP assay with No.2 set of primers was 50-fold more sensitive than the LAMP assay, and one-hour more rapid than the LAMP assay.



84

85 **Figure 5.** Sensitivity determination of LMCP assays for detection of *Oryza sativa* ITS using StepOne™ System
86 Real-Time PCR System. (1). Amplification plot of LMCP assay with No.1 set of primers; (2). Melting curve of LMCP
87 assay with No.1 set of primers; (3). Amplification plot of LMCP assay with No.2 set of primers; (4). Melting curve of
88 LMCP assay with No.2 set of primers.



89

90 **Figure 7.** Sensitivity determination of LAMP assay for detection of *Oryza sativa* ITS using StepOne™ System
91 Real-Time PCR System. (1). Amplification plot of LAMP assay; (2). Melting curve of LAMP assay with No.1 set of
92 primers.

93

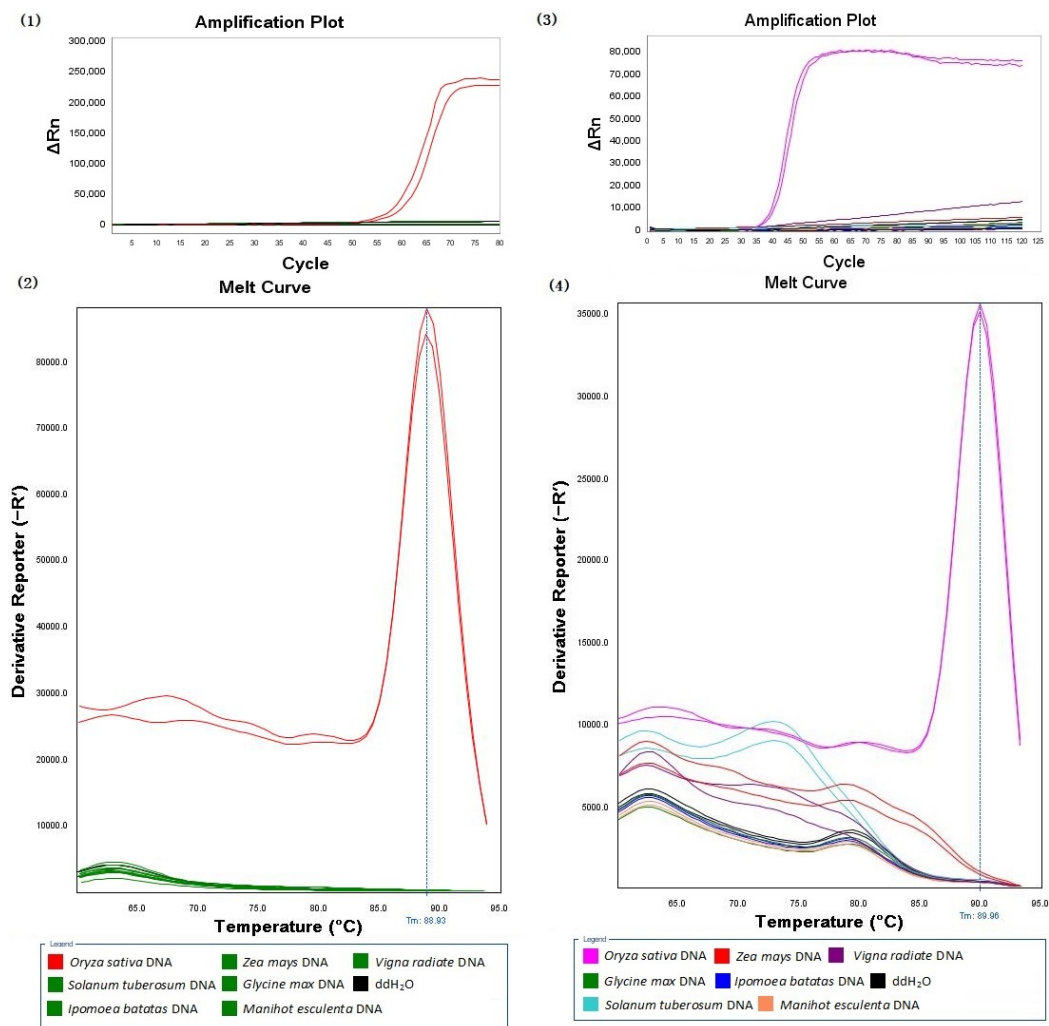
3.3. Specificity of the LMCP and LAMP assays

94

As shown in Figure 8 and in Figure 9, both the LMCP assays, as similar as the
95 LAMP assay, were of high specificity, which only amplified the genomic DNA from
96 *Oryza sativa*.

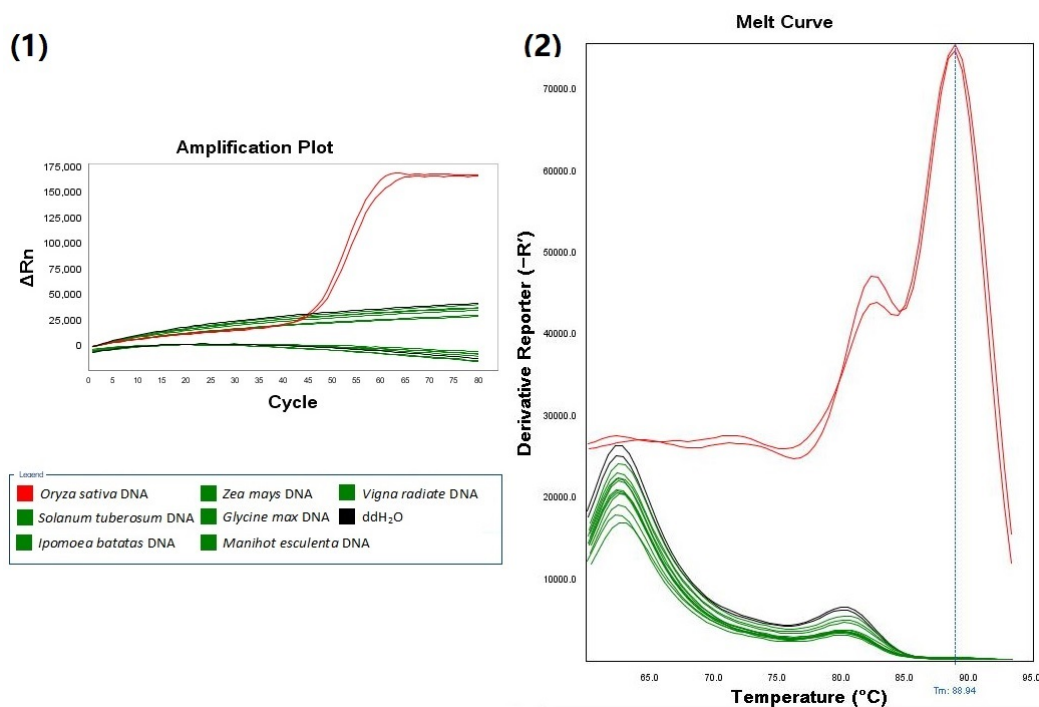
95

96



97
98
99
00
01

Figure 8. Specificity determination of LMCP assays for detection of *Oryza sativa* ITS using StepOne™ System Real-Time PCR System. (1). Amplification plot of LMCP assay with No.1 set of primers; (2). Melting curve of LMCP assay with No.1 set of primers; (3). Amplification plot of LMCP assay with No.2 set of primers; (4). Melting curve of LMCP assay with No.2 set of primers.



02
03
04 **Figure 9.** Specificity determination of LAMP assay for detection of *Oryza sativa* ITS using StepOne™ System Real-Time PCR System. (1). Amplification plot of LAMP assay; (2). Melting curve of LAMP assay.

05 4. Discussion

06 Compared with previously established detection methods, the LMCP developed in
07 this study offers following advantages: (i) **Simple Mechanism**, this method neither
08 needs the thermal denaturation in PCR [1,2] nor the enzymes other than thermostable
09 DNA polymerase (large fragment), e.g. reverse transcriptase in Nuclear Acid Se-
10 quence-based Amplification [3,6], NEase in exponential strand displacement amplifica-
11 tion (E-SDA), primer generation-rolling circle amplification (PG-RCA) and EXPAR [6,15,
12 16], ligase in ligation-mediated hyperbranched rolling circle amplification (HRCA) [17],
13 helicase in HAD [5] and recombinase in RPA [8]. (ii) **Easy Primer Design**, the primers of
14 LMCP can be easily designed with the commonly used PCR primer designing software.
15 (iii) **Quick turn-around time**, the reaction time of LMCP with nested primers is less than
16 half an hour; while the reaction time of most previous developed methods is more than
17 0.5 h [11], the reaction time of LAMP in the study was approximate 1.5 h. (iv) **High**
18 **Specificity**, the specific primer sequences, special requirement for T_m of primer and its
19 corresponding fragment and particular requirement for the melting curve shape of target
20 sequence lead to the high specificity of the LMCP. (v) **High Sensitivity**, the detection
21 limit of LMCP assays either with one pair of primers or with two pairs of nested primers
22 is 3-5 copies per reaction. (vi) **Low Requirement for Target Sequence Length**, the target
23 sequence length of LMCP is generally ≥60nt, e.g. the target sequence of No.2 set of pri-
24 mers in this study is 76 nt, while most LAMP methods generally require the target se-
25 quence to be more than 200 nt [10]. (vii) **Wide Application Range**, the LMCP can take
26 single-strand DNA, double-strand DNA or RNA as targets. It is easy to understand that
27 the LMCP can take single-strand DNA or double-strand DNA as target, which has been
28 clearly explained and experimentally confirmed in this study. The reason that the LMCP
29 can amplify RNA is that the Bst DNA polymerase also possesses the activity of reverse
30 transcriptase [18], which needs further study. The ITS of *Oryza sativa* was used to de-
31 veloped LMCP assay as a proof of concept in this study. Due to the low requirement of
32 target sequence length and no requirement for a thermocycler, the LMCP assays can be
33 extended to other emerging pandemics possibly 2019-nCoV.

34 **5. Conclusions**

35 The novel method, isothermal amplification of nucleic acids with ladder-shape
36 melting curve (LMCP), was developed in this study, which was 50-fold more sensitive
37 and one-hour faster than the LAMP assay with the same level of specificity.
38

39 **Author Contributions:** D.-G.W. and Y.-Z.W. conceived the experiments. M.Z., Y.-Q.Z. and J.-T.S.,
40 established the setup and performed the experiment. Y.-S.H., Y.P. and P.C. analyzed the data and
41 discussed the results. D.-G.W., Y.-Z.W., and Y.-H.L. wrote the manuscript. All authors read the
42 manuscript. D.-G.W. and Y.-H.L. supervised the project..

43 **Funding:** The research was funded by the National Key Research and Development Program of
44 China, grant number 2016YFD0500704, and by Henan Science and Technology Plan Project, grant
45 number 182102110285.

46 **Informed Consent Statement:** “Not applicable” for studies not involving humans.

47 **Data Availability Statement:** The authors declare that all data generated or analyzed during this
48 study are included in this published article and its Supplementary Information files. A Source Data
49 file is available. Any other relevant data is available upon reasonable request.

50 **Acknowledgments:** We thank all members from Key Laboratory of Biomarker Based Rap-
51 id-detection Technology for Food Safety of Henan Province, and would like to thank Prof. Zihe Rao
52 insightful discussion..

53 **Conflicts of Interest:** The authors declare that they have no competing interests.

54 **References**

- 55 1. Saiki, R.K.; Scharf, S.; Faloona, F.; Mullis, K.B.; Horn, G.T.; Erlich, H.A.; Arnheim, N. Enzymatic Amplification of Beta-Globin
56 Genomic Sequences and Restriction Site Analysis for Diagnosis of Sickle Cell Anemia. *Science* **1985**, *230*, 1350–1354.
- 57 2. Saiki, R.K.; Gelfand, D.H.; Stoffel, S.; Scharf, S.J.; Higuchi, R.; Horn, G.T.; Mullis, K.B.; Erlich, H.A. Primer-directed enzymatic
58 amplification of DNA with a thermostable DNA polymerase. *Science* **1988**, *239*, 487–491.
- 59 3. Compton, J. Nucleic acid sequence-based amplification. *Nature* **1991**, *350*, 91–92.
- 60 4. Fahy, E.; Kwoh, D.Y.; Gingeras, T.R. Self-sustained sequence replication (3SR): An isothermal transcription-based amplification
61 system alternative to PCR. *Genome Res* **1991**, *1*, 25–33.
- 62 5. Vincent, M.; Xu, Y.; Kong, H. Helicase-dependent isothermal DNA amplification. *Embo Rep* **2004**, *5*, 795–800.
- 63 6. Reid, M.S.; Le, X.C.; Zhang, H. Exponential isothermal amplification of nucleic acids and assays for proteins, cells, small mol-
64 ecules, and enzyme activities. *Angew Chem Int Ed* **2018**, *57*, 11856–11866.
- 65 7. Walker, G.T.; Fraiser, M.S.; Schram, J.L.; Little, M.C.; Nadeau, J.G.; Malinowski, D.P. Strand displacement amplification-an
66 isothermal, in vitro DNA amplification technique. *Nucleic Acids Res* **1992**, *20*, 1691–1696.
- 67 8. Lutz, S.; Weber, P.; Focke, M.; Faltin, B.; Hoffmann, J.; Müller, C.; Mark, D.; Roth, G.; Munday, P.; Armes, N. Microfluidic
68 lab-on-a-foil for nucleic acid analysis based on isothermal recombinase polymerase amplification (RPA). *Lab on A Chip* **2010**, *10*,
69 887–893.
- 70 9. Fire, A.; Xu, S.Q. Rolling replication of short DNA circles. *PNAS* **1995**, *92*, 4641–4645.
- 71 10. Notomi, T.; Okayama, H.; Masubuchi, H.; Yonekawa, T.; Watanabe, K.; Amino, N.; Tetsu, H. Loop-mediated isothermal am-
72 plification of DNA. *Nucleic Acids Res* **2000**, *28*, e63.
- 73 11. Zhao, Y.; Chen, F.; Li, Q.; Wang, L.; Fan, C. Isothermal Amplification of Nucleic Acids. *Chem Rev* **2015**, *115*, 12491–12545.
- 74 12. Bodulev, O.L.; Sakharov, I.Y. Isothermal nucleic acid amplification techniques and their use in bioanalysis. *Biochem* **2020**, *85*,
75 147–166.
- 76 13. Qian, J.; Boswell, S.A.; Chidley, C.; Lu, Z.X.; Springer, M. An enhanced isothermal amplification assay for viral detection. *Nat*
77 *Commun*, **2020**, *11*, 5920.
- 78 14. Zhou, W.; Hu, L.; Ying, L.; Zhao, Z.; Chu, P.K.; Yu, X.F. A CRISPR–Cas9-triggered strand displacement amplification method
79 for ultrasensitive DNA detection. *Nat Commun* **2018**, *9*, 5012.
- 80 15. Shi, C.; Liu, Q.; Ma, C.; Zhong, W. Exponential strand-displacement amplification for detection of microRNAs. *Anal Chem* **2014**,
81 *86*, 336–339.
- 82 16. Murakami, T.; Sumaoka, J.; Komiyama, M. Sensitive isothermal detection of nucleic-acid sequence by primer genera-
83 tion-rolling circle amplification. *Nucleic Acids Res* **2009**, *37*, e19.
- 84 17. Cao, A.; Zhang, C.Y. Sensitive and Label-Free DNA Methylation Detection by Ligation-Mediated Hyperbranched Rolling
85 Circle Amplification. *Anal Chem* **2012**, *84*, 6199–6205.
- 86 18. Ma, C.; Jing, H.; Zhang, P.; Han, L.; Zhang, M.; Wang, F.; Niu, S.; Shi, C. Ultrafast and one-step assay for visual detection of
87 RNA virus. *Chemi Commun* **2018**, *54*, 3118–3121.

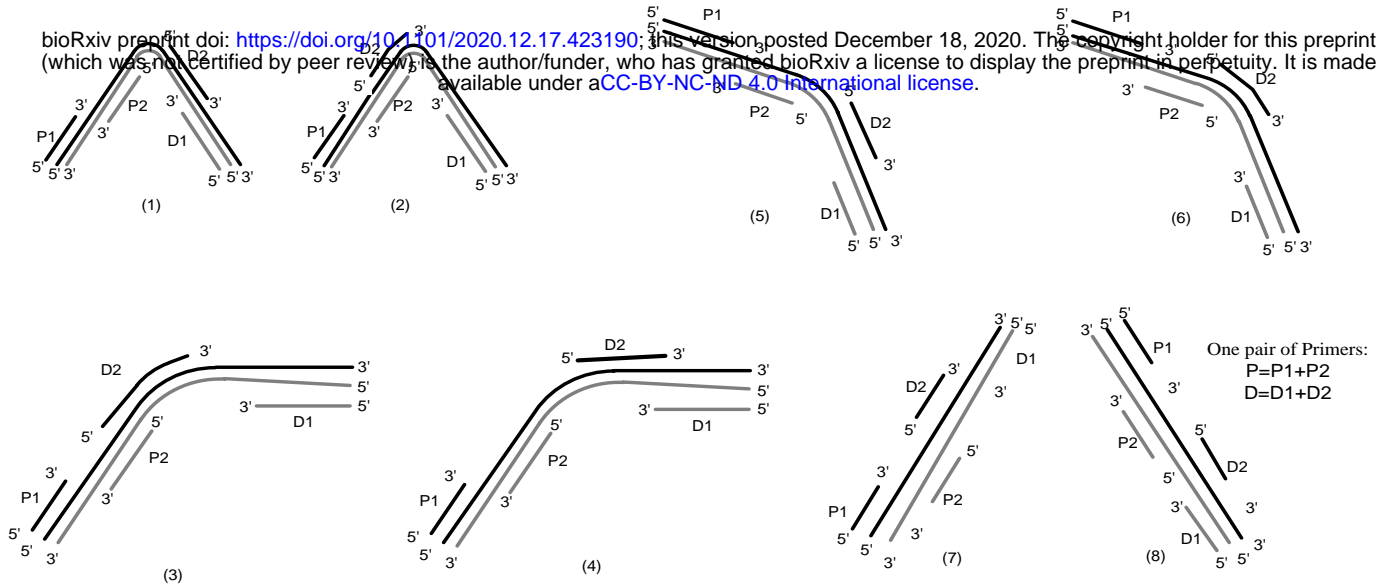


Figure 2

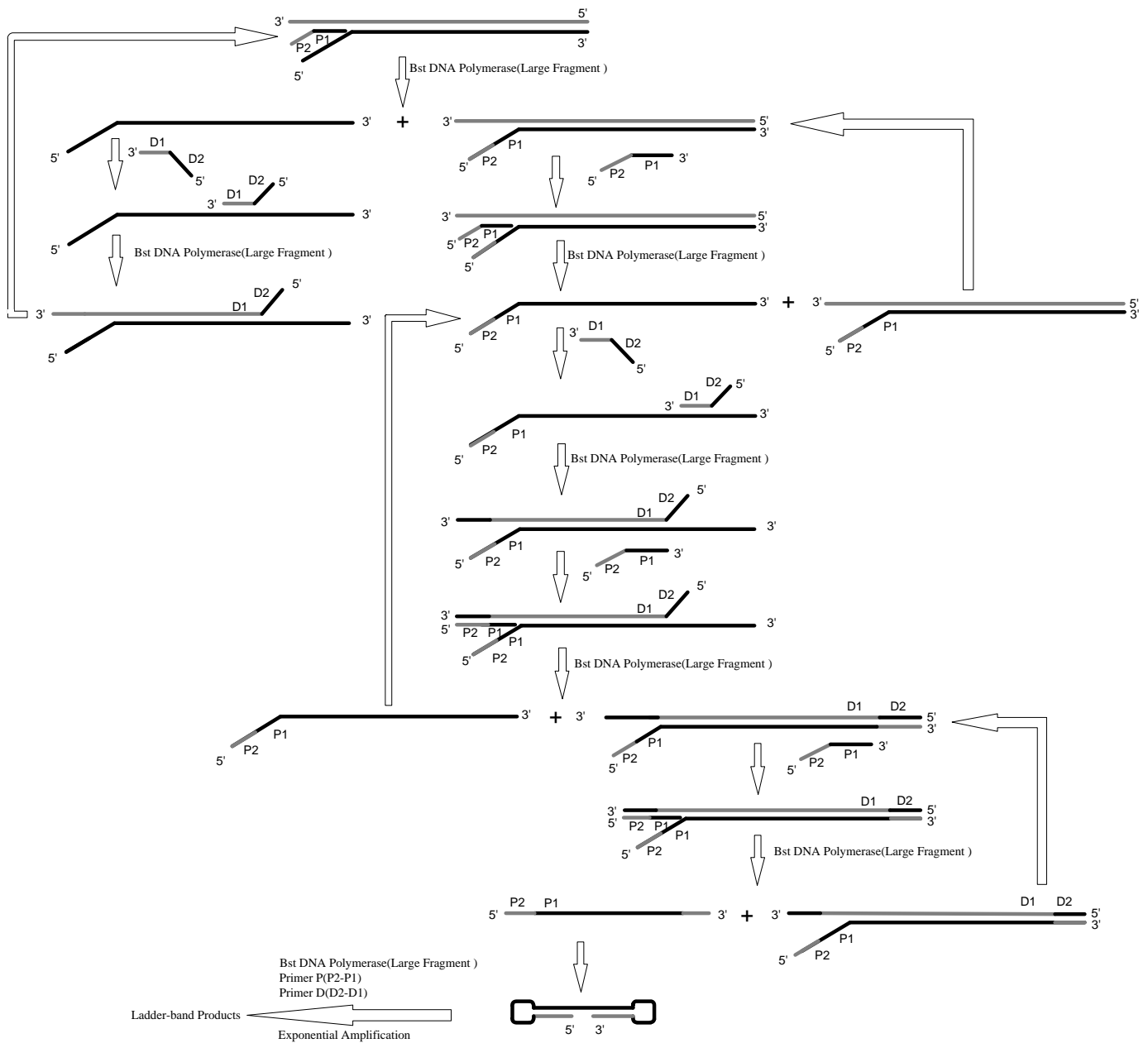


Figure 3

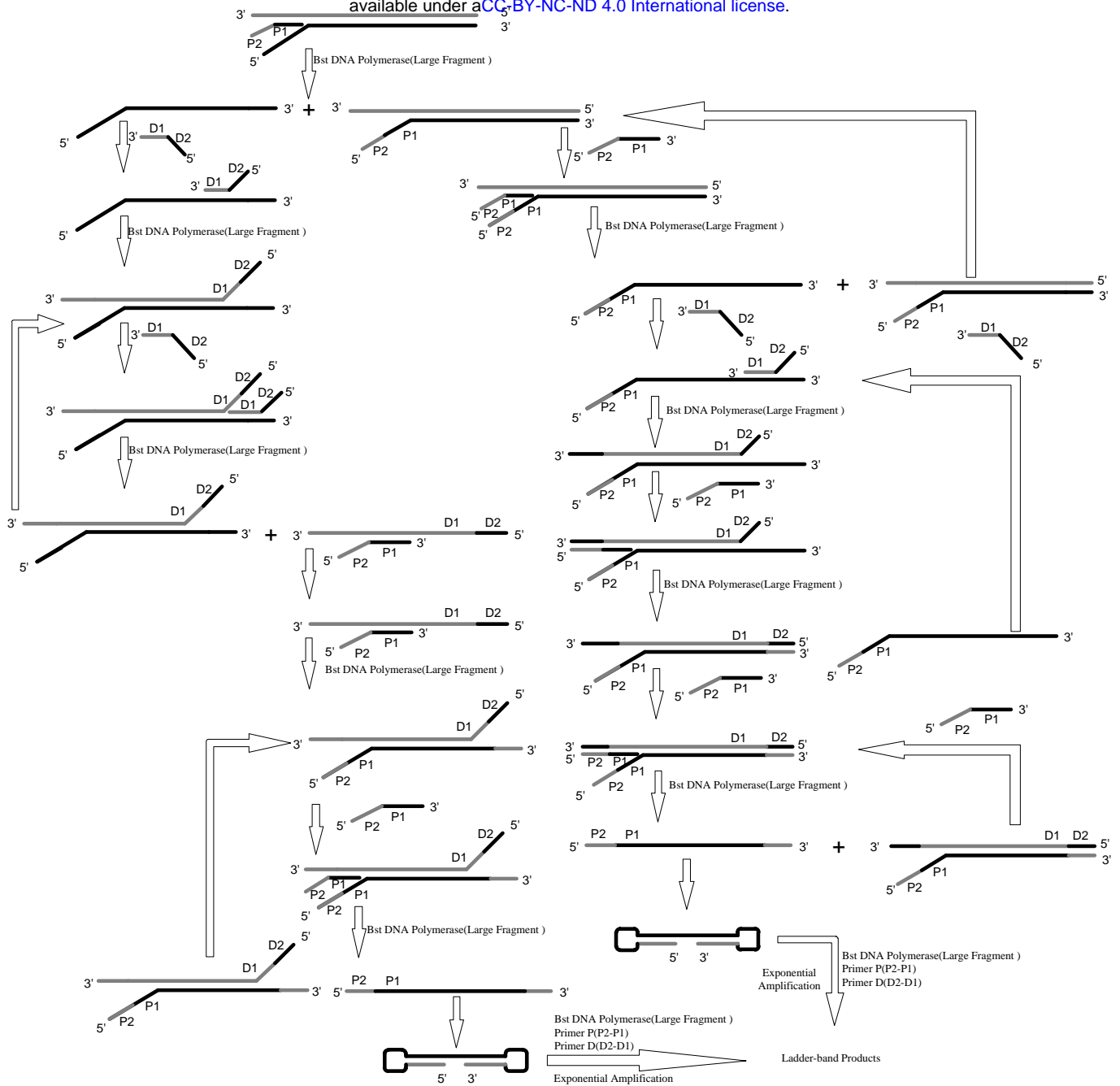


Figure 4

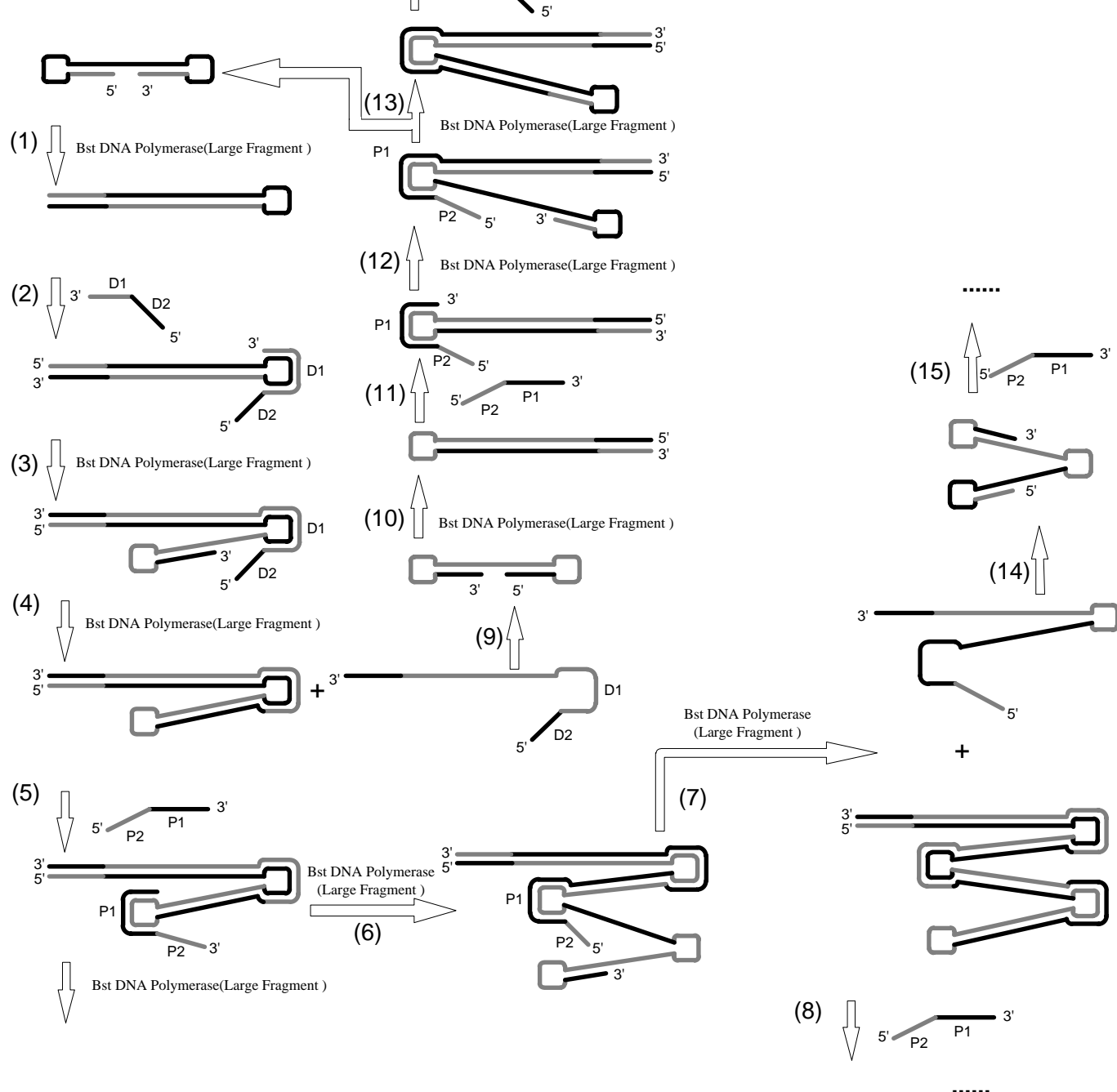


Figure 5