

Original Article

Molecular Characterization of *Tephromela atra* and *Tephromela grumosa* from Bozdag Mountain Based on ITS1 rDNA Sequences Analysis

Awad ALZEBAIR^{1*}, Meral YILMAZ CANKILIÇ¹, Mehmet CANDAN¹, İlker AVAN²

¹Biology Department, Faculty of Science, Eskisehir Technical University, Eskisehir, Turkey

²Chemistry Department, Faculty of Science, Eskisehir Technical University, Eskisehir, Turkey

* Correspondence Author address: Awad ALZEBAIR¹ e-mail: awad800@anadolu.edu.tr

ABSTRACT

The lichens *Tephromela atra* and *Tephromela grumosa* were studied in detail using various techniques, including morphological identification, biochemical taxonomy (chemotaxonomy), anatomical, and molecular characterization. The molecular characterization of *Tephromela atra* and *Tephromela grumosa* (Pers.) Hafelner & Cl. Roux was analyzed using internal transcribed spacer rDNA (ITS1) genes and the sequences obtained were compared with the ITS sequences of the other *Tephromela* species in GenBank (NCBI). The sequences were analyzed against reference sequences from the GenBank databases using the programs; BLAST, ClustalW, and MEGA11. The phylogenetic relationship was evaluated. The results show that some samples of *Tephromela atra* obtained in this study are closer to the same species isolated from Greece, while other samples are closer to other samples isolated from Italy and Austria. Moreover, the *Tephromela grumosa* isolated from Eskisehir Bozdag Mountain form a separate branch closer to the *Tephromela grumosa* samples isolated from Italy. Our study shows that lichens are an important source of biodiversity in Türkiye, which has a high species richness in Anatolia.

Keywords: *Tephromela*, Lichens, Sequence Analysis, ITS.

INTRODUCTION

Lichens are a symbiotic partnership between green algae or cyanobacteria and fungi, which join together to form a single thallus, called lichen[1]. The fungal partner of the lichen is called the mycobiont, and the photosynthetic partner (cyanobacteria or algae) is called the photobiont. The mycobiont is responsible for providing water, carbon dioxide, minerals, and protection for the lichen thallus[2]. The photobiont supplies organic compounds and oxygen produced by chlorophyll to the structure of the lichen thallus[3]. Since the fungal partner plays the main role in the life of a lichen symbiosis, lichens are sometimes referred to as “lichenized fungi”. According to some researchers, lichens are therefore an example of the controlled parasitism that fungi establish on algae [4, 5].

Most lichen species were defined in the 1800s and the first half of the last century by the concept of phenotypic species based on monomorphism [6]. The differences in morphological characters and, to a certain extent, anatomical features were used to differentiate between species. These differences are environmental rather than genetic. These taxonomic studies have led to an accumulation of many synonymous species. As a result, biographic origin is of great importance and most allopathic populations are named as separate species. Conventional diagnostic keys for lichen diagnostics work according to the morphological, anatomical, and more rarely, chemical characteristics of the organisms. Originally, the differences in morphological and anatomical

characteristics between different species may not have been sufficient for accurate identification of the organisms. In addition, organisms living in different environments may differ greatly from each other, so that organisms of the same species show different morphological and anatomical characteristics. Therefore, the genotype is more stable than the phenotype. Morphologically emerged diversity constitutes only a small percentage of genetic diversity and a large ratio of genetic diversity [7-10]. Some of the morphological characteristics are not reflected. Although the information obtained from morphological characteristics is used to identify genetic differences. The interaction between genotype and environment is not always sufficient because a character is identified by more than one locus and a gene affects more than one character[11]. In lichens, the concept of chemical species is also used to identify numerous taxa that cannot be distinguished morphologically[12]. However, this situation was first criticized by authors who thought that it was necessary to define the morphological characters[13, 14]. Systematic studies of lichens, as with other groups, are classically based on characterization by morphological characters. In addition to morphological characters, chemotaxonomic methods are still in use [6]. However, the fact that these identification studies do not fully define the lichen or plant is a problem. For this reason, systematic categories in recent years have led taxonomic studies to focus more on molecular methods, and molecular techniques and gene markers are the answer. Molecular markers have come to the fore in these molecular studies[7-9, 12].

Phylogenetic species concepts based on molecular characters are used to identify species within species complexes and to show how phenotypic characters in later generations develop slowly in lichenized fungi[15]. When studying genetically isolated species over a sufficiently long period, even a single locus can distinguish species in terms of fixed phenotypic characters. However, molecular characters such as phenotypic characters may be polymorphic within phylogenetic species and between sister species of species complexes. When a single locus cannot resolve species associated with phenotypic characters or biography, multiple loci should be used to accurately identify species. Most recent studies are based on nuclear ribosomal DNA (nrDNA) sequence information[16]. Several lichen species have been investigated in molecular phylogenetic studies[17-24]. However, there are only a few studies on *Tephromela atra*, and most of these studies were carried out at the University of Trieste in Italy by Lucia Muggia, for example, an early study by Muggia et al., 2008[25], reported extremotolerant fungi from alpine rock lichens, which include *Tephromela atra*, and their phylogenetic relationships[25-31].

As the literature search revealed, there is no previous study showing the diversity and molecular characterization of *Tephromela M. Choisy* species in Eskisehir Bozdag Mountain. Thereby, this study aimed to molecularly identify two different species of the lichen genus *Tephromela M. Choisy* isolated from Bozdag Mountain in Eskisehir and to determine their phylogenetic relationship to other *Tephromela* lichens. The results of the present study indicate that some of the *Tephromela atra* samples are more similar to species that were previously isolated from Greece and others show similarity to the ones that were isolated from Italy and Austria. In addition, *Tephromela grumosa* isolated from Eskisehir Bozdag Mountain forms a separate branch that is closer to the Italian *Tephromela grumosa* samples.

***Tephromela M. Choisy* (1929)**

Tephromela M. Choisy the name comes from the Greek word “tephra”, meaning ash, and “mela”, meaning black, and thus refers to the black color of the lichen thallus. The *Tephromela* species share diagnostic anatomical

characters with the type species, *Tephromela atra* (Huds.) Hafellner & Kalb[32]. *Tephromela atra* and *Tephromela grumosa* examined in this study are shown in Figure 1.

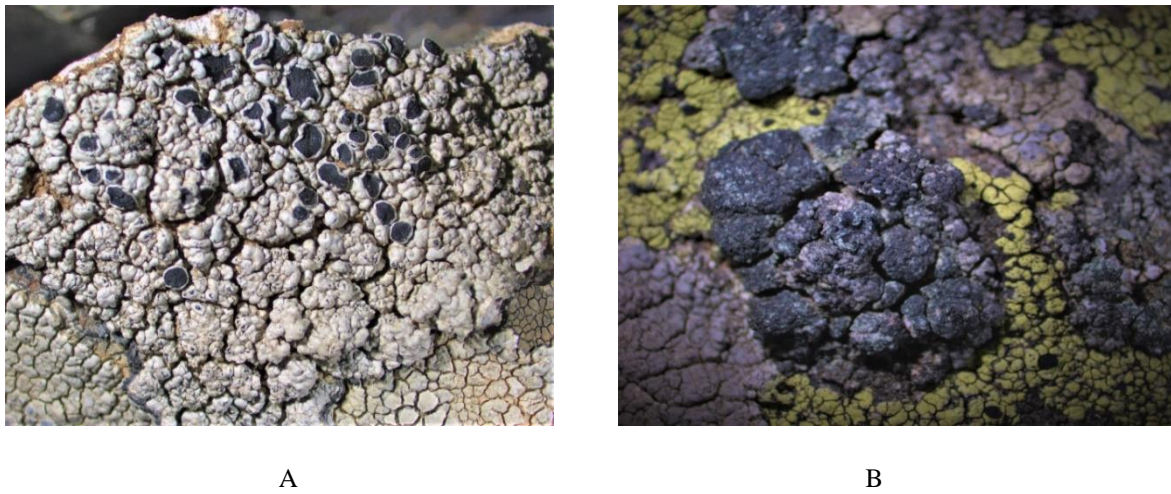


Figure 1 Microscopic images of *Tephromela* lichens collected from Eskisehir Bozdag Mountain (A: *Tephromela atra*; B: *Tephromela grumosa*).

Distribution of *Tephromela* and study area

The genus *Tephromela* comprises around 25-30 species. One of the most common species is *Tephromela atra*. Various identification keys, flora books, and monographs were used to identify the species[1, 33-38]. *Tephromela atra* has a worldwide distribution and has been reported from Chile, Antarctica, Argentina, New Zealand, and Australia. It is unknown on the other side of the world. However, numerous other species have been reported, especially from Antarctica and Australia. In southern South America, the only other species reported besides *T. atra* is *T. australitoralis* (Zahlbr.), reported by Elix and Kalb, (2008)[39]. It resembles *T. atra* but has an interspersed hymenium. *Tephromela atra* has been recorded in most provinces of Türkiye in the last thirty years. It is reported for examples from Bursa, Sivas, Adana, and Ankara. The first studies that recorded *Tephromela atra* lichen from Bozdag Mountains in Eskisehir province belong to Özdemir, (1991)[40], Özdemir Türk, (2002)[41], John V, (2007)[42], Singer, et al, (2014)[43] and John and Türk, (2017)[44]. Bozdag Mountain is located north of the center of Eskisehir and forms the western end of the Sundiken Mountains. The southern slopes of the mountain start with an altitude of about 850 meters in the grasslands of Eskisehir, the highest point is 1534 meters, and the northern slopes descend steeply into the Sakarya Valley, about 200-250 meters.

MATERIALS AND METHODS

Collection of lichen samples

The lichens *Tephromela atra* and *Tephromela grumosa* (Figure 1) were collected from an open area on the siliceous rock in the Bozdag Mountain in Eskisehir province. Verification and morphological characteristics of *Tephromela atra* and *Tephromela grumosa* lichens were carried out using standard methods[35]. In order to facilitate the identification, lichen samples were collected from each locality together with the substrate on which they live. In this way, the type of *Tephromela* spp. on which the lichens developed could be determined in a laboratory study. To facilitate the identification of the lichen species, thallus pieces with structures responsible for the reproduction and dispersal of the lichens were preferably taken. The samples collected in the field study were wrapped with paper napkins and placed in paper bags. The location, date of collection, information about the substrate type, height, and coordinates measured with the GPS device were noted. Moist ones from the samples

collected in the study field were dried in the laboratory at room temperature. To protect the identified samples from the negative effects of pests, they were kept in good condition. The samples were then placed in special herbarium envelopes of 12 × 17 cm size. Information about the lichen sample was noted on the label of the envelope. Finally, the samples are stored in the herbarium of Eskisehir Technical University, Department of Biology, Eskisehir, Türkiye.

DNA Extraction and Amplification

DNA extraction was performed using a combination protocol between the NucleoSpin® Plant II kit from Macherey-Nagel and the DNeasy plant mini kit from QIAGEN. Approximately 2 g of each lichen sample was grinding and crushed with a mortar and pestle for distribution of the sample and convert the lichen samples into powder. Liquid nitrogen was then added to the tube and freeze the lichen samples for approximately 45 seconds and the samples were kept submerged in liquid nitrogen and disrupted for approximately 30 seconds at full speed and allowed the liquid nitrogen to evaporate. Then 20 mg of glass beads were added to each sample. The sample was mixed for 20 minutes using the vortex accessory from “Thomas Scientific”. All steps of DNA extraction are the same as in the kit manufacturer’s instructions with some differences: For cell lysis, 400 µL of AP1 lysis buffer from the DNeasy plant mini kit plus 400 µL of PL1 buffer from the NucleoSpin® Plant II kit was used, the uses of these two buffers in the protocol is based on the established CTAB procedure. The general chemicals utilized in the lysis buffer are 2% CTAB, 0.04 M Tris, 0.04 M EDTA pH: 8, MgCl₂, SDS, Triton X100, KCl, 0.8 M LiCl, NaCl, and other detergents. For DNA elution, 50 µL of the PE elution buffer from the NucleoSpin® Plant II kit was added and the tube was incubated at 65 °C for 5 minutes before centrifugation, repeating this step twice. The presence of DNA was determined by loading the DNA samples onto the gel using gel electrophoresis techniques. The gels were prepared from 1.5% agarose with 1x TAE buffer (Tris-acetate-EDTA). With RedSafe™ Nucleic Acid Staining Solution (20,000x) dye was added at a final concentration of 0.5 mg/ml for visualizing the DNA fragments, Finally, the 1kb DNA ladder was loaded as a positive control, and samples were loaded on a gel for 70 minutes at 100 volts then agarose gel images transferred to the UV imaging system, whether banding and DNA sizes have been identified.

The phylogenetic study was analyzed with sequence data of the ITS1 gene region (Figure 2) and the ITS1 was amplified using PCR technique with the primers ITS1 (CTTGGTCATTTAGAGGAAGTA), and ITS4 (TCCTCCGCTTATTGATATGC).

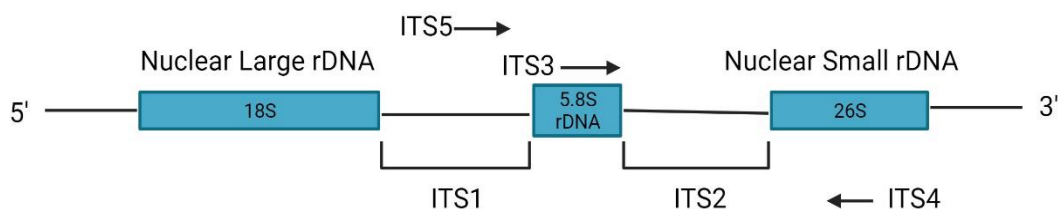


Figure 2 Diagrammatic representation of the Internal Transcribed Spacer (ITS) regions of 18S-26S nuclear ribosomal DNA (nrDNA). The positions of the ITS genes group used in this study for amplification and sequencing are indicated by an arrow.

Table 1 PCR ITS primers sequences.

Primers	Sequences 5' to 3'	Organism	Reference	Comment
ITS1	CTTGGTCATTTAGAGGAAGTA	Fungi	White et al., (1990)[7]	5' PCR
ITS4	TCCTCCGCTTATTGATATGC	Fungi	Gardes and Bruns, (1993)[45]	3' PCR

Amplification of the ITS region in the genomic DNA of the lichen was performed with the primer containing the corresponding region under appropriate PCR conditions. The PCR reaction mixture used; Within 25 μ L volume: 0.5 μ L ~ 200 ng DNA, 2.5 μ L 10X reaction buffer, 1 μ L 0.1 mM dNTPs, 0.75 μ L 10 μ M ITS1 primer, 0.75 μ L 10 μ M ITS4 primer, 0.5 μ L Taq DNA polymerase and will complete the total volume to 25 μ L PCR reaction was performed by adding 17 μ L sterile distilled water. PCR reactions are initiated on the Progene-Techne PCR instrument under the following conditions: 94 °C 5 min. pre-denaturation, 94 °C 45 sec., 56 °C 30 sec., 72 °C 2 min. was performed as the final elongation phase. The DNAs amplified under these PCR conditions were run on agarose gel (1.5 % agarose gel, 100 volts, 30 minutes) and visualized by gel electrophoresis. Banding and negatives were checked after UV imaging. Since it was observed that the PCR products in the gel images could not be obtained in the desired purity in the gel images obtained by PCR, the reactions were repeated several times under different PCR optimization conditions. The MgCl₂ concentrations were changed and the DNA that showed the correct bands was stored at 4°C for purification.

Sequencing, Alignment, and Phylogenetic Analyses

The target DNA region amplified by PCR was extracted from the gel and included in the sequence analysis. The sequences analyzed from a double chain were checked with the BLAST (Basic Local Alignment Search Tool) program using data from GenBank (National Center for Biotechnology Information) (www.ncbi.nlm.nih.gov). The percentage match of the sequences was determined, and the matching sequences were selected. The integrity of the data was confirmed by checking the compatibility of the bidirectional arrays within themselves and solving the possible read errors with the Cluster X program. After the sequences were sorted, the unstable regions were removed and evaluated as lost data when performing the analyses. Six samples for the ITS1 gene region were used for the molecular analyses. During this process, each base was carefully checked. The analyses were performed with the MEGA11 program. It was calculated by analyzing the ITS sequences. After obtaining the DNA sequences, the sequences were analyzed using reference sequences from the GenBank (NCBI) databases, using the BLAST, ClustalW, and MEGA11 programs. Multiple alignments of the downloaded sequences and the sequences obtained in our study belonging to the species were performed and determined by comparing them with the data in GenBank with the BLAST program. Based on the aligned sequences, a phylogenetic tree showing the grouping of species was generated using the MEGA11 program to understand the relationships between species and populations. For the phylogenetic tree of the ITS region, *Lecanora cenisia* (EU558540.1) and *Lecanora rupicola* (AY398707.1) were selected as the outer group.

RESULTS

DNA Extraction

Samples of *Tephromela* species were collected at various locations and identified using classical systematic methods. A total of six samples of *Tephromela atra* (Contig 2, 3, 5, 7) and *Tephromela grumosa* (Contig

4, 6) DNA were isolated. The names and codes of the species with DNA isolation are listed in Table 3. The isolation products were carried out in gel electrophoresis and the presence of DNA was determined from the band's photo taken as a result of gel electrophoresis.

Sequences and Molecular Analysis

As a result of the PCR, the samples of the target region were amplified, and the desired bands were purified by standard purification methods. The products obtained from the purification were sequenced by BM Labosis Company. The sequences of the species were aligned using the programs BioEdit, ClustalX 2.0, and MEGA6, and an analysis of the sequences was performed. Phylogenetic trees were generated using the maximum likelihood algorithm and the Nearest Neighbor Interchange (NNI) method in MEGA 11 (Figure 3). The distance matrix was calculated using the Jukes-Cantor correction and the validity of the tree topology was checked using the bootstrap method (1000 replicates). The accession numbers of the DNA sequences of *Tephromela atra* and *Tephromela grumosa* used in the creation of phylogenetic trees are given in Table 3. To compare the sequences of *Tephromela* species obtained in this study with other *Tephromela* species from other parts of the world that were sequenced and included in the database, the sequences were extracted and merged with other sequences downloaded from the GenBank database (www.ncbi.nlm.nih.gov) as shown in Table 2. The alignment of the sequences was performed visually, as only a few gaps were present and easy to interpret. Insertion/deletion gaps were treated as missing data. According to the phylogenetic tree formed after the minimum evolution (ME) analysis (Figure 3), the species belonging to the *Tephromela* species were found to be divided into three main branches. *Lecanora cenisia* (EU558540.1) and *Lecanora rupicola* (AY398707.1) are the outgroup species in Minimum-Evolution (ME) analysis and has created a separate branch from all studied species. When comparing the differentiation of the studied *Tephromela atra* and *Tephromela grumosa* with the related genus, the species belonging to the same genus generally formed a branch against the main branch. According to the results of the molecular phylogenetic analysis in Figure 3, *Tephromela atra* (PP003331 and PP003332) was found to be closer to the same species isolated from Greece than the other samples obtained in this study, which are closer to other samples isolated from Italy and Austria. Furthermore, the phylogenetic tree shows that the sequences of *Tephromela grumosa* from Eskisehir (PP003333 and PP003335) form a separate branch closer to *Tephromela grumosa* samples isolated from Italy. In this study, the phylogenetic analysis of *Tephromela atra* and *Tephromela grumosa* isolated from Bozdag Mountain Eskisehir was evaluated for the first time in the literature, and it is expected that the results will be a source for future identification of lichen species by molecular phylogenetic methods.

Table 2 Origins, voucher code, and accession numbers of sequences that were downloaded from GenBank.

Species	Voucher code	Accession No.	Origin
<i>Tephromela atra</i>	TSB 37121	EU558649.1	Greece
<i>Tephromela atra</i>	TSB 37456	EU558659.1	Greece
<i>Tephromela atra</i>	TSB 37930	EU558690.1	Greece
<i>Tephromela atra</i>	TSB 37922	EU558686.1	Greece
<i>Tephromela atra</i>	TSB 37919	EU558685.1	Greece
<i>Tephromela atra</i>	TSB 37942	EU558614.1	Greece
<i>Tephromela atra</i>	TSB 37940	EU558609.1	Greece
<i>Tephromela atra</i>	TSB 37924	EU558688.1	Greece
<i>Tephromela atra</i>	TSB 37914	EU558682.1	Greece
<i>Tephromela atra</i>	TSB 37910	EU558680.1	Greece
<i>Tephromela atra</i>	TSB 38695	EU558616.1	Italy
<i>Tephromela atra</i>	TSB 38698	EU558619.1	Italy
<i>Tephromela atra</i>	TSB 37936	EU558605.1	Italy
<i>Tephromela atra</i>	TSB 38697	EU558618.1	Italy
<i>Tephromela atra</i>	TSB 38699	EU558620.1	Italy
<i>Tephromela atra</i>	TSB 37928	EU558689.1	Italy
<i>Tephromela atra</i>	TSB 37137	EU558655.1	Austria
<i>Tephromela atra</i>	TSB 37903	EU558676.1	Austria
<i>Tephromela atra</i>	TSB 37917	EU558684.1	Greece
<i>Tephromela atra</i>	TSB 37923	EU558687.1	Greece
<i>Tephromela atra</i>	L1316	KF730620.1	Türkiye
<i>Tephromela atra</i>	L1320	KF730621.1	Türkiye
<i>Tephromela atra</i>	MB 0.004	KX550110.1	Türkiye
<i>Tephromela grumosa</i>	TSB 37070	EU558628.1	Italy
<i>Tephromela grumosa</i>	TSB 38686	EU558625.1	Italy
<i>Tephromela grumosa</i>	TSB 37082	EU558641.1	Italy
<i>Tephromela grumosa</i>	TSB 37881	EU558673.1	Italy
<i>Tephromela grumosa</i>	TSB 37079	EU558635.1	Italy
<i>Tephromela grumosa</i>	TSB 38687	EU558626.1	Italy
<i>Tephromela grumosa</i>	TSB 37080	EU558636.1	Italy
<i>Lecanora cenisia</i>	TSB 37464	EU558540.1	Italy
<i>Lecanora rupicola</i>		AY398707.1	Austria

Table 3 Names of the sample's species, codes, origin, and accession numbers of DNA sequences used in the creation of phylogenetic tree

Species	Sequence ID	Accession No.	Location (Origin)
<i>Tephromela atra</i>	Contig-2	PP003331	Bozdag Mountain
<i>Tephromela atra</i>	Contig-3	PP003332	Bozdag Mountain
<i>Tephromela grumosa</i>	Contig-4	PP003333	Bozdag Mountain
<i>Tephromela atra</i>	Contig-5	PP003334	Bozdag Mountain
<i>Tephromela grumosa</i>	Contig-6	PP003335	Bozdag Mountain
<i>Tephromela atra</i>	Contig-7	PP003336	Bozdag Mountain

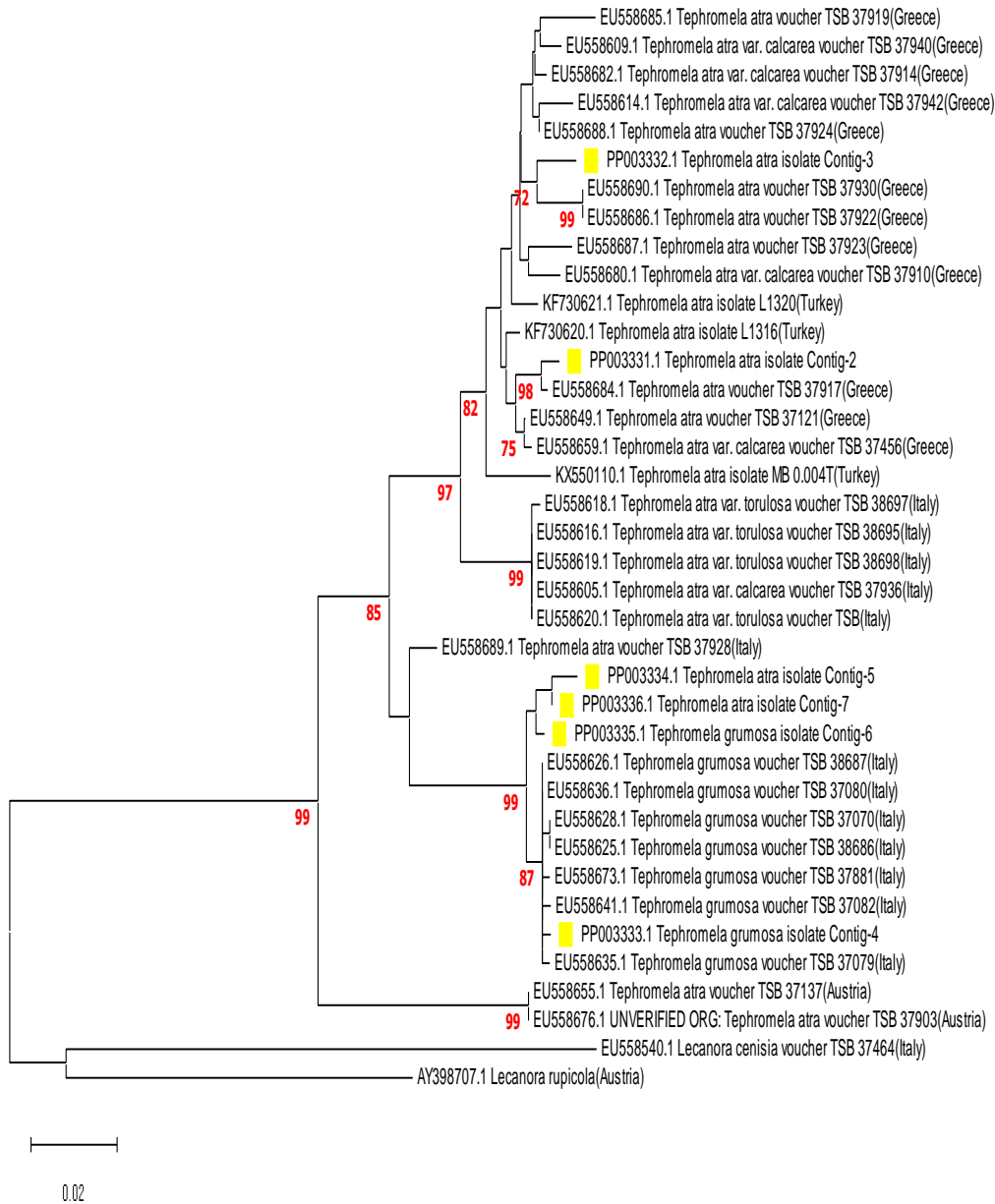


Figure 3 Molecular Phylogeny evolution analysis of *Tephromela atra* and *Tephromela grumosa* inferred from ITS region sequences data. The sample selected from GenBank is reported with their accession numbers. Newly obtained sequences in this study are in yellow. Scale bar represents the probable number of substitutions per site.

CONCLUSION

To the best of our knowledge, the diversity and prevalence of *Tephromela* lichens in Türkiye have not been previously studied. This is the first report using elaborate techniques such as morphological taxonomy, morphological identification, biochemical taxonomy (chemotaxonomy), anatomical characterization, molecular identification, and phylogenetic techniques to study *Tephromela* species in Eskisehir. In Türkiye, many ITS sequence analysis information of different lichen species have been included in GenBank, but no phylogenetic studies on *Tephromela atra* and *Tephromela grumosa* species from Bozdag Mountain have been performed in the literature. In this study, the DNA sequence analysis and phylogenetic analysis methods were applied to determine the evolutionary relationships. In previous studies, various methods such as RAPD and AFLP were used for genotyping, but these techniques cause problems due to the symbiotic life of lichens. In this study, ITS sequences were collected from six samples of two different *Tephromela* species, *Tephromela atra* and *Tephromela grumosa*. The sequences were analyzed and compared with the data in GenBank. Methods based on PCR technology were used for genotyping because of its advantages. A highly informative phylogenetic tree was formed from the data obtained in this study. The ITS1 sequence analysis data showed the genetic similarities and differences in the lichens very well. The genetic distances observed in the phylogenetic tree indicate that the differentiation between the *Tephromela* species is quite high. The use of ITS1 sequence analysis, using only fungal-specific primers, has overcome these obstacles, and this method demonstrated in the study, is sufficient to reveal genetic differences in samples of the genus *Tephromela*. The results show that the genus *Tephromela* has a very informative phylogenetic tree consisting of many branches including *Tephromela atra* and *Tephromela grumosa* Species. Finally, this study shows that lichens constitute an important part of biodiversity in Türkiye which proves the richness of species in Anatolia. Furthermore, ITS diversity among species can help shed light on evolutionary variation among lichen species, especially *Tephromela* species.

ABBREVIATIONS:

T. atra: *Tephromela atra*; rDNA: Ribosomal DNA; ITS: Internal transcribed spacer region; ML: Maximum likelihood; ME: Minimum-Evolution; NNI: Nearest Neighbor Interchange; MSA: Multiple sequence alignment; CTAB: Cetyl trimethyl ammonium bromide; EDTA: Ethylenediaminetetraacetic acid; NCBI: National center for biotechnology information; PCR: Polymerase chain reaction; PE: Paired end; SD: Standard deviation.

ACKNOWLEDGEMENT:

The authors thank Eskisehir Technical University, Scientific Research Projects Commission for funding the isolation of lichen acids and molecular studies (Project No. 19ADP089).

Availability of Data and Materials:

Assembled sequences are deposited in NCBI's Sequence GenBank (accession numbers PP003331-PP003332-PP003333- PP003334- PP003335-PP003336).

Authors' Contributions: Conceptualization, A. A., and M. Y.; Methodology, A. A., and M. Y.; Validation, M. Y., I. A., and M. C.; Investigation, A. A., and M. Y.; Writing – Original Draft Preparation, A. A.; Writing – Review & Editing, A. A., M. Y., I. A. and M. C.; Supervision, M. Y.; Funding Acquisition, M. Y. All authors read and approved the final manuscript.

Ethics Declarations

Conflict of interest: The authors declare that they have no conflict of interest.

Consent for publication: All authors confirmed the publication of the manuscript.

Ethical approval: Our research does not need ethical approval.

Human and animal rights: This article does not contain any studies on humans or animals subjects.

REFERENCES

1. Nash, T.H., *Lichen flora of the greater Sonoran desert region*. 2002: Lichens Unlimited, Arizona State University.
2. Bates, S.T., et al., *A preliminary survey of lichen associated eukaryotes using pyrosequencing*. *The Lichenologist*, 2012. **44**(1): p. 137-146.
3. Selbmann, L., et al., *Culturable bacteria associated with Antarctic lichens: affiliation and psychrotolerance*. *Polar biology*, 2010. **33**: p. 71-83.
4. Ahmadjian, V., *The lichen symbiosis*. 1993: John Wiley & Sons.
5. Romagni, J.G. and F.E. Dayan, *Structural diversity of lichen metabolites and their potential use*, in *Advances in microbial toxin research and its biotechnological exploitation*. 2002, Springer. p. 151-169.
6. Grube, M. and S. Kroken, *Molecular approaches and the concept of species and species complexes in lichenized fungi*. *Mycological Research*, 2000. **104**(11): p. 1284-1294.
7. White, T.J., et al., *Amplification and direct sequencing of fungal ribosomal RNA genes for phylogenetics*. *PCR protocols: a guide to methods and applications*, 1990. **18**(1): p. 315-322.
8. Goffinet, B. and R.J. Bayer, *Characterization of mycobionts of photomorph pairs in the Peltigerineae (lichenized ascomycetes) based on internal transcribed spacer sequences of the nuclear ribosomal DNA*. *Fungal Genetics and Biology*, 1997. **21**(2): p. 228-237.
9. Crespo, A., P.D. Bridge, and D.L. Hawksworth, *Amplification of fungal rDNA-ITS regions from non-fertile specimens of the lichen-forming genus Parmelia*. *The Lichenologist*, 1997. **29**(3): p. 275-282.
10. Crespo, A. and H.T. Lumbsch, *Cryptic species in lichen-forming fungi*. *IMA fungus*, 2010. **1**: p. 167-170.
11. Via, S. and R. Lande, *Genotype-environment interaction and the evolution of phenotypic plasticity*. *Evolution*, 1985. **39**(3): p. 505-522.
12. Crespo, A., et al., *Phylogenetic generic classification of parmelioid lichens (Parmeliaceae, Ascomycota) based on molecular, morphological and chemical evidence*. *Taxon*, 2010. **59**(6): p. 1735-1753.
13. Hawksworth, D.L. and F. Rose, *Lichens as pollution monitors*. 1979.
14. Lumbsch, H.T., *The use of metabolic data in lichenology at the species and subspecific levels*. *The Lichenologist*, 1998. **30**(4-5): p. 357-367.

15. Naranjo-Ortiz, M.A. and T. Gabaldón, *Fungal evolution: major ecological adaptations and evolutionary transitions*. Biological Reviews, 2019. **94**(4): p. 1443-1476.
16. Baldwin, B.G., et al., *The ITS region of nuclear ribosomal DNA: a valuable source of evidence on angiosperm phylogeny*. Annals of the Missouri botanical garden, 1995: p. 247-277.
17. Arnold, A.E., et al., *A phylogenetic estimation of trophic transition networks for ascomycetous fungi: are lichens cradles of symbiotrophic fungal diversification?* Systematic biology, 2009. **58**(3): p. 283-297.
18. Carlsson, R. and K. Nilsson. *Status of the red-listed lichen Lobaria pulmonaria on the Åland Islands, SW Finland*. in *Annales Botanici Fennici*. 2009. BioOne.
19. Melo, M.G.D., et al., *Redox properties and cytoprotective actions of atranorin, a lichen secondary metabolite*. Toxicology in vitro, 2011. **25**(2): p. 462-468.
20. Bellemain, E., et al., *Fungal palaeodiversity revealed using high-throughput metabarcoding of ancient DNA from arctic permafrost*. Environmental microbiology, 2013. **15**(4): p. 1176-1189.
21. Bazzicalupo, A.L., M. Bálint, and I. Schmitt, *Comparison of ITS1 and ITS2 rDNA in 454 sequencing of hyperdiverse fungal communities*. Fungal Ecology, 2013. **6**(1): p. 102-109.
22. Monard, C., S. Gantner, and J. Stenlid, *Utilizing ITS1 and ITS2 to study environmental fungal diversity using pyrosequencing*. FEMS microbiology ecology, 2013. **84**(1): p. 165-175.
23. Abdelfattah, I., et al., *Biosorption of heavy metals ions in real industrial wastewater using peanut husk as efficient and cost effective adsorbent*. Environmental Nanotechnology, Monitoring & Management, 2016. **6**: p. 176-183.
24. Miller, J.E., H.T. Root, and H.D. Safford, *Altered fire regimes cause long-term lichen diversity losses*. Global Change Biology, 2018. **24**(10): p. 4909-4918.
25. Muggia, L., M. Grube, and M. Tretiach, *A combined molecular and morphological approach to species delimitation in black-fruited, endolithic Caloplaca: high genetic and low morphological diversity*. Mycological Research, 2008. **112**(1): p. 36-49.
26. Muggia, L., M. Grube, and M. Tretiach, *Genetic diversity and photobiont associations in selected taxa of the Tephromela atra group (Lecanorales, lichenised Ascomycota)*. Mycological progress, 2008. **7**(3): p. 147-160.
27. Muggia, L., et al., *Morphological and phylogenetic study of algal partners associated with the lichen-forming fungus Tephromela atra from the Mediterranean region*. Symbiosis, 2010. **51**: p. 149-160.
28. Muggia, L., et al., *Global assessment of genetic variation and phenotypic plasticity in the lichen-forming species Tephromela atra*. Fungal Diversity, 2014. **64**: p. 233-251.
29. Cestaro, L., T. Tønsberg, and L. Muggia, *Phylogenetic data and chemical traits characterize a new species in the lichen genus Tephromela*. Herzogia, 2016. **29**(2): p. 383-402.
30. Muggia, L. and M. Grube, *Fungal diversity in lichens: from extremotolerance to interactions with algae*. Life, 2018. **8**(2): p. 15.

31. Pino-Bodas, R., M. Zhurbenko, and S. Stenroos, *Phylogenetic placement within Lecanoromycetes of lichenicolous fungi associated with Cladonia and some other genera*. *Personia-Molecular Phylogeny and Evolution of Fungi*, 2017. **39**(1): p. 91-117.
32. Hafellner, J., *Studien in Richtung einer natürlicheren Gliederung der Sammelfamilien Lecanoraceae und Lecideaceae*. Beihefte zur Nova Hedwigia, 1984(79): p. 241-371.
33. Clauzade, G. and C. Roux, *Likenoj de Okcidenta Europa./lustri/a determinlibro*. 1985, Bui.
34. Timdal, E., *A monograph of the genus Toninia (Lecideaceae, Ascomycetes)*. (No Title), 1991.
35. Coppins, B. and C. Smith, *The lichens of great Britain and Ireland*. 2009: London: British Lichen Society.
36. Brodo, I.M., S.D. Sharnoff, and S. Sharnoff, *Lichens of north America*. 2001: Yale University Press.
37. Kranner, I., et al., *Desiccation-tolerance in lichens: a review*. *The Bryologist*, 2008. **111**(4): p. 576-593.
38. Halici, M. and S. Guevenc, *Lichens from the Mediterranean phytogeographical region of Turkey*. *Cryptogamie Mycologie*, 2008. **29**(1).
39. Elix, J. and K. Kalb, *Additional new lichen taxa (lichenized Ascomycota) from Australia*. 2008.
40. Özdemir, A., *Eskişehir ili likenleri*. *Doğa, Tr. J. of Bot*, 1991. **15**: p. 189-196.
41. TÜRK, Ö.A., *Eskişehir ili liken florasına katkılar*. *Ot Sistematiik Botanik Dergisi*, 2002. **9**(2): p. 149-165.
42. John, V., *Lichenological studies in Turkey and their relevance to environmental interpretation*. *Bocconea*, 2007. **21**: p. 85-93.
43. Singer, T.E., T.A. Özdemir, and M. Candan, *Additional records to the lichenized and lichenicolous fungi diversity of Bozdağ (Eskişehir/Turkey)*. 2014.
44. John, V. and A. Türk, *Türkiye likenleri listesi*. 2017: Nezahat Gökyiğit Botanik Bahçesi Yayını.
45. Gardes, M. and T.D. Bruns, *ITS primers with enhanced specificity for basidiomycetes-application to the identification of mycorrhizae and rusts*. *Molecular ecology*, 1993. **2**(2): p. 113-118.