

1 Crustaceans as hosts of parasites throughout the Phanerozoic

2

3 Adiël A. Klompmaker, Cristina M. Robins, Roger W. Portell, Antonio De Angeli

4

5 A.A. Klompmaker (corresponding author)

6 Department of Integrative Biology and Museum of Paleontology, University of California,

7 Berkeley, 1005 Valley Life Sciences Building #3140, Berkeley, CA 94720, USA

8 e-mail: adielklompmaker@gmail.com

9

10 C.M. Robins

11 Museum of Paleontology, University of California, Berkeley, 1101 Valley Life Science

12 Building, Berkeley, CA 94720, USA

13 e-mail: cristina.robins@gmail.com

14

15 R.W. Portell

16 Florida Museum of Natural History, University of Florida, 1659 Museum Road, Gainesville,

17 Florida 32611, USA

18 e-mail: portell@flmnh.ufl.edu

19

20 A. De Angeli

21 Museo Civico “G. Zannato”, Piazza Marconi 15, 36075 Montecchio Maggiore (VI), Italy

22 e-mail: antonio.deangeli@alice.it

23

24

25 Abstract

26

27 The fossil record of crustaceans as hosts of parasites has yielded three confirmed associations: epicaridean
28 isopod-induced swellings on Jurassic–Recent decapod crustaceans, feminization of Cretaceous and
29 Miocene male crabs possibly caused by rhizocephalan barnacles, and presumed pentastomids on/in
30 Silurian ostracods. Cestode plathyhelminth hooks and swellings by entoniscid isopods may be recognized
31 in the future. Relative to 2014, we report an increase of 41% to 124 fossil decapod species with
32 epicaridean-induced swellings in the branchial chamber (ichnotaxon *Kanthylooma crusta*). Furthermore,
33 using a Late Jurassic (Tithonian) decapod assemblage from Austria, we find (1) no correlation between
34 genus abundance and prevalence of *K. crusta*, (2) host preference for some galatheid taxa (as for a mid-
35 Cretaceous assemblage from Spain), and (3) a larger median size of parasitized versus non-parasitized
36 specimens for two selected species. The latter result may be caused by infestation throughout ontogeny
37 rather than exclusively in juveniles and/or possible selection for the larger sex.

38

39 Keywords: barnacle, biotic interaction, Bopyridae, Cirripedia, coevolution, Crustacea, Decapoda,
40 Isopoda, Ostracoda, parasitism

41

42

43 1. Introduction

44

45 Extant crustaceans (or pancrustaceans) act as both parasites and hosts of parasites (e.g., Yamaguti 1963;
46 Cressey 1983; Boxshall et al. 2005; Boyko and Williams 2011; Trilles and Hipeau-Jacquotte 2012; Smit
47 et al. 2014; Klompmaker and Boxshall 2015; Boxshall and Hayes in press). For this paper, we define
48 parasitism as a symbiotic relationship in which the parasite is nutritionally dependent on the host for at
49 least part of its life cycle and has a negative impact on the fitness of the host (cf. Combes 2001; Tapanila

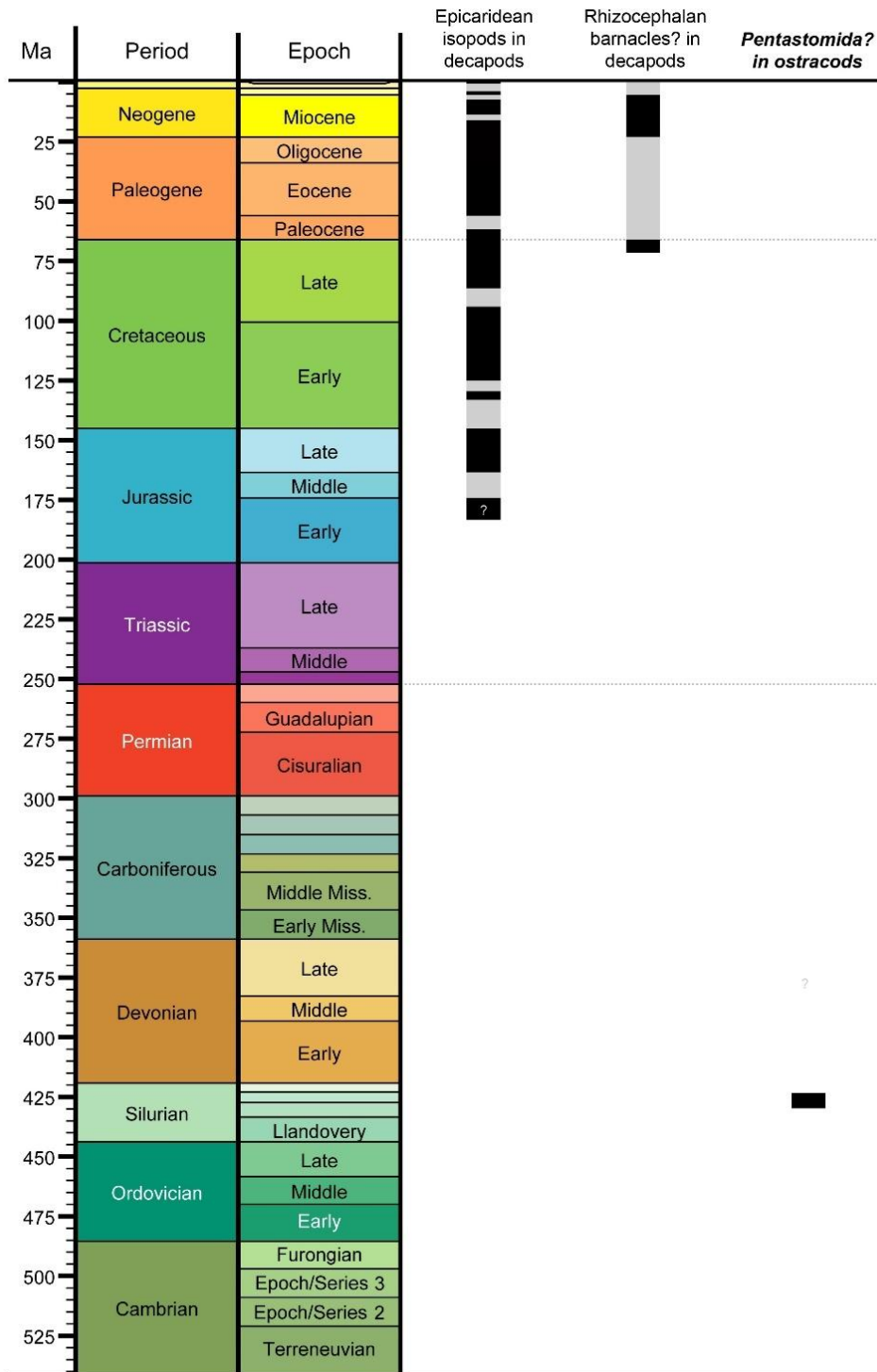
50 2008). Over 7000 extant crustaceans are intermediate and final hosts to parasites from diverse clades such
51 as acanthocephalans, cestodes, crustaceans (e.g., copepods, cirripedes, isopods, Tantulocarida), digenean
52 trematodes, monogeneans, nematodes, and protists (e.g., Boxshall et al. 2005; Klompmaker and Boxshall
53 2015; Boxshall and Hayes in press). Representatives of nearly all to all major clades of crustaceans serve
54 as hosts today, including amphipods, branchiopods, cirripeds, copepods, decapods, euphausiaceans,
55 mysidaceans, ostracods, peracarids, and stomatopods (e.g., Boxshall et al. 2005; Klompmaker and
56 Boxshall 2015; Boxshall and Hayes in press). The impact of parasitism on crustaceans is likely to be
57 enormous, but understudied in the context of whole ecosystems.

58 The fossil record of parasitism involving crustaceans has been reviewed recently (Klompmaker
59 and Boxshall 2015, for crustaceans as parasites and hosts; Haug et al. this volume, for crustaceans as
60 parasites). Three instances of parasites in crustacean hosts have been reported thus far (Fig. 1). This low
61 number and the fact that the stratigraphic coverage of two of these records is spotty can be ascribed to a
62 combination of the small size of parasites, the low preservation potential of parasites due to their general
63 lack of a hard skeleton, not all parasites leave recognizable traces, and the lack of targeted research. One
64 notable exception is epicaridean isopods, which cause characteristic swellings on decapod crustacean
65 carapaces. This association represents a nearly continuous record since the Jurassic (Klompmaker et al.
66 2014; Klompmaker and Boxshall 2015), presenting an ideal model system to study various aspects of
67 parasitism through time.

68 The goal of this paper is to re-review the fossil record of crustaceans as hosts of parasites because
69 ample new evidence has been found in recent years. We focus primarily on evidence of epicaridean
70 isopod parasites in decapod crustaceans by (1) presenting a substantially expanded list of infested
71 decapod species and (2) using a vast Late Jurassic assemblage to test the relationship between taxon
72 abundance and infestation percentage, assess host preference, and evaluate the size of parasitized versus
73 non-parasitized specimens for two species. Subsequently, we briefly review the claimed evidence for
74 parasitism of (1) rhizocephalan barnacles in fossil decapod crustaceans, (2) ciliates on ostracods, and (3)
75 pentastomids on ostracods. Finally, modern parasitism on crustaceans with preservation potential are
76 discussed.

77
78 Institutional abbreviations: MAB = Oertijdmuseum, Boxtel, The Netherlands; MCV = Museo Civico D.
79 Dal Lago, Valdagno, Vicenza, Italy; NHMW = Naturhistorisches Museum Wien, Vienna, Austria; UF =
80 Florida Museum of Natural History at the University of Florida, Gainesville, Florida, USA.

81



82
 83 Figure 1. Stratigraphic ranges of crustaceans as hosts of parasites. Black parts represent known
 84 occurrences, while grey parts are inferred occurrences. Black occurrences have been plotted at the stage-
 85 level where possible. The category in bold italic font is based on body fossils of the parasite; others are
 86 based on morphologies inferred to have been caused by parasites in the host taxon. Timescale on left
 87 produced with TSCreator 6.3 (<http://www.tscreator.org>). Modified and updated from Klompmaker and
 88 Boxshall (2015: fig. 12).

89
90
91
92
93
94
95
96
97
98
99
100
101
102
103
104
105
106
107
108

2. Isopod swellings in decapod crustaceans

2.1. General information

Epicaridean isopods (Bopyroidea and Cryptoniscoidea) parasitize calanoid copepods as intermediate hosts and other crustaceans as final hosts, following two larval stages (e.g., Williams and Boyko 2012). Approximately 800 species are known and they are found today in all oceans (e.g., Williams and Boyko 2012). The phylogenetic relationship of epicaridean families has recently been clarified using 18S rDNA, resulting in five accepted families to date (Boyko et al. 2013). Unlike the endoparasitic Cryptoniscoidea (Dajidae and Entophilidae), Bopyroidea (Ionidae, Bopyridae, and Entoniscidae) are ectoparasitic and their female individuals often create swellings in the cuticle of one or rarely both branchial chambers of decapod crustaceans (e.g., Markham 1986; Boyko and Williams 2009; Williams and Boyko 2012). Epicaridean females feed on hemolymph and ovarian fluids after piercing the inner cuticle of the host (e.g., Bursey 1978; Lester 2005), while the much smaller, less deformed, less modified males attach themselves to females subsequently for reproduction and do not form swellings in the cuticle. Effects on the host are manifold and can be dramatic (Table 1).

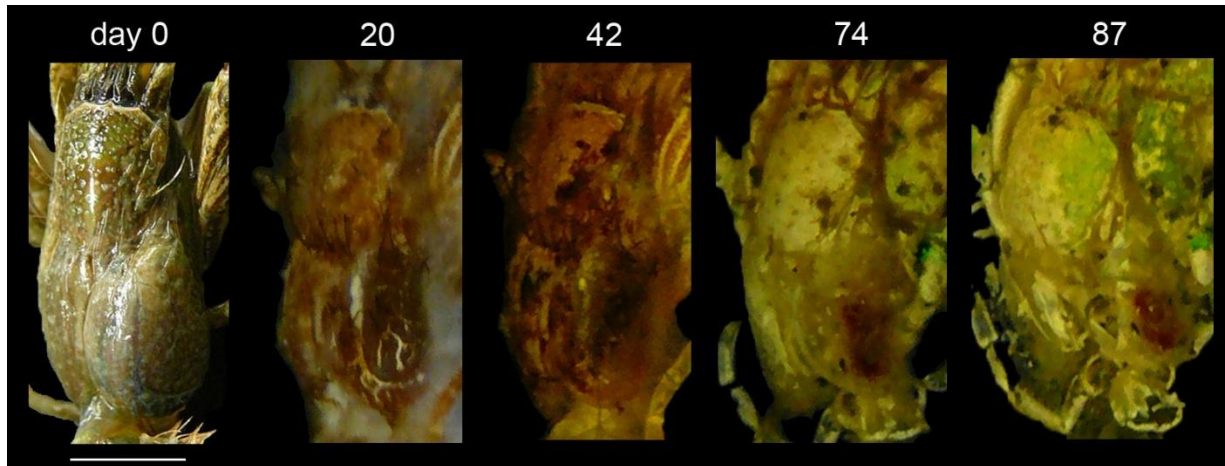
Table 1. Parasitic epicarideans cause a variety of negative effects on their decapod hosts. Sources are not comprehensive.

Effect of bopyroid isopods on decapod host	Source(s)
lower fecundity	Van Wyk 1982; Calado et al. 2006; Hernáez et al. 2010
castration	McDermott 1991; González and Acuña 2004; Markham and Dworschak 2005; Sherman and Curran 2013 O'Brien and Van Wyk 1985; Markham and Dworschak 2005; Petrić et al. 2010; Romero-Rodríguez and Román-Contreras 2011; Yasuoka and Yusa 2017
feminization of males	
altered sexual characters of females	Lee et al. 2016; Yasuoka and Yusa 2017
gill damage and scar tissue development	Bursey 1978; McDermott 1991; Corrêa et al. 2018
reduced molt frequency	Van Wyk 1982; O'Brien and Van Wyk 1985
(unintended) mortality	Anderson 1990
increased predation risk	Brinton and Curran 2015
lower activity levels	Bass and Weis 1999; McGrew and Hultgren 2011
lower oxygen consumption	Anderson 1975; Neves et al. 2000
different host sex ratios	Somers and Kirkwood 1991; McDermott 2002; Cericola and Williams 2015

109
110
111
112
113
114
115
116
117
118
119
120
121

The body fossil record of epicarideans is nearly non-existent. No adults have been found in decapod body chambers thus far due to their low preservation potential, as also shown experimentally (Klomp maker et al. 2017; Fig. 2). Only some epicaridean larvae have been found in Miocene and Late Cretaceous amber (Serrano-Sánchez et al. 2016; Néraudeau et al. 2017; Schädel et al. 2018). However, the swellings in the oft-calcified cuticle of decapod hosts can be preserved and detected relatively easily in the fossil record (e.g., Wienberg Rasmussen et al. 2008; Ceccon and De Angeli 2013; Robins et al. 2013; Klomp maker et al. 2014; Klomp maker and Boxshall 2015; Hyžný et al. 2015). These swellings are referred to the ichnotaxon *Kanthyloma crusta* Klomp maker et al., 2014 (see also Klomp maker and Boxshall 2015). The earliest known swelling is in a lobster from the Early Jurassic (Toarcian) of Indonesia, but this record is somewhat doubtful (Wienberg Rasmussen et al. 2008; Klomp maker et al. 2014). The Late Jurassic (Oxfordian) yields the first definite examples, suggesting coevolution between epicarideans and their decapod host for at least 160 million years. Most infested fossil species are brachyurans and galatheoids,

122 taxa that today are parasitized primarily by Ionidae and Bopyridae, respectively (Markham 1986; Boyko
123 and Williams 2009).
124



125
126 Figure 2. Decay of the carapace of the modern hermit crab *Clibanarius vittatus* (Bosc, 1802) and its
127 parasitic bopyrid [most likely *Bopyrissa wolffi* Markham, 1978, see Markham (1978) and McDermott et
128 al. (2010)] in the swollen right branchial chamber. The carapace is tilted to the left to better observe the
129 decay of the parasite. The bopyrid body outline is still visible on day 20, but much less so subsequently
130 when a smaller red spot is observed. For experimental setup and conditions see Klompmaker et al. (2017).
131 1st, 2nd, and 4th image modified from same reference. Scale bar: 5.0 mm wide.
132

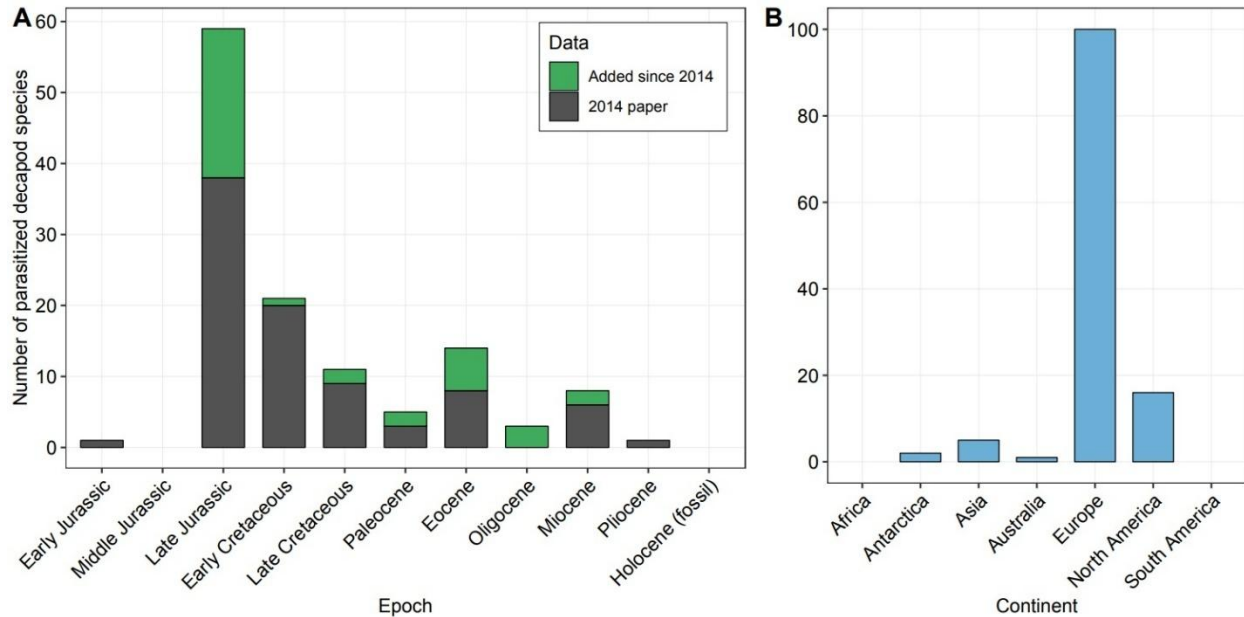
133 2.2. Global Meso- and Cenozoic data

134
135 Fossil decapod crustacean species with at least one specimen containing a swelling in the branchial region
136 attributed to an epicaridean parasite have been listed previously (Van Straelen 1928: p. 51; Van Straelen
137 1931: p. 56; Houša 1963: p. 110; Förster 1969: p. 53–54; Markham 1986: table 2; Wienberg Rasmussen
138 et al. 2008: table 2; Klompmaker et al. 2014: table 3). The most recent report identified 88 parasitized
139 species. Targeted research on Meso-Cenozoic decapod assemblages for evidence of *Kanthylooma crusta*
140 since the summer of 2017, published research since 2014, and new discoveries of infested species in older
141 literature has led to an increase of 41% of known infested fossil species, totaling of 124 infested species
142 (Fig. 3, for examples of new and some known occurrences). This remarkable rise and the total number of
143 infested decapod species today exceeding 550 (Boyko and Williams 2009: fig. 6, and subsequent papers)
144 suggest that more infested fossil taxa are to be expected.

145 Most infested fossil species represent Brachyura and Galatheoidea, and are primarily found in
146 Europe (100/123 or 81%, Fig. 4B). The highest number of infested species on the epoch-level is known
147 from the Late Jurassic (Fig. 4A). A Late Jurassic peak was also shown for the percentage of infested
148 decapod species per epoch in the Mesozoic (Klompmaker et al. 2014: fig. 6). Although they argued that
149 elevated collecting and reporting of *Kanthylooma* in the Late Jurassic may explain part of the peak, they
150 found a biological explanation more likely. Variable reporting may indeed be a factor because there are
151 multiple papers specifically dedicated to this type of parasitism in the Late Jurassic (Remeš 1921;
152 Bachmayer 1948; Houša 1963; Radwański 1972), while only two papers have focused on *Kanthylooma*
153 from younger, pre-Holocene epochs (Ceccon and De Angeli 2013: Eocene; Klompmaker et al. 2014: mid-
154 Cretaceous). Whether this type of parasitism is truly reaching its peak in the Late Jurassic can only be
155 assessed by studying the infestation prevalence on the finest possible scale using specimens from many
156 assemblages across time and space. This study is currently ongoing.
157



158
159 Figure 3. Fossil decapod crustacean carapaces with isopod-induced swellings (ichnotaxon *Kanthyloma*
160 *crusta*) in one of the branchial chambers. A. *Galathea valmaranensis* De Angeli and Garassino, 2002,
161 from the Oligocene (Rupelian) of Sant'Urbano, Italy (left side), MCV.17/0049. B. *Pithonoton*
162 *marginatum* von Meyer, 1842 [sensu Wehner (1988: pl. 6.1)] (right side), NHMW 1990/0041/1373. C.
163 *Pithonoton* cf. *P. rusticum* Patruilius, 1966 (right side), NHMW 2017/0089/0028. D. *Longodromites*
164 *angustus* (Reuss, 1858) (right side), NHMW 1990/0041/2600. E. *Cyclothyreus cardiacus* Schweitzer and
165 Feldmann, 2009a (left side), NHMW 2017/0089/0026. F. *Distefania oxythyreiformis* (Gemmellaro, 1869)
166 (right side), NHMW 2017/0089/0002. G. *Cycloprosopon* cf. *C. octonarium* Schweitzer and Feldmann,
167 2010 (left side), NHMW 1990/0041/1455. H. *Coelopus hoheneggeri* (Moericke, 1889) (left side),
168 NHMW 1990/0041/1519. I. *Abyssopthalmus spinosus* (von Meyer, 1842) from the Late Jurassic
169 (Kimmeridgian) of the Plettenberg, Germany (right side), MAB k3612. J. *Galatheites* cf. *G. diasema*
170 Robins et al., 2016 (right side), NHMW 1990/0041/0163. K, L. *Panopeus nanus* Portell and Collins,
171 2004, from the early Miocene of Jamaica (right side), UF 288470. C–H, J from the Late Jurassic
172 (Tithonian) near Ernstbrunn, eastern Austria. All dorsal views, except for L (frontal view). Scale bars: 5.0
173 mm wide.
174



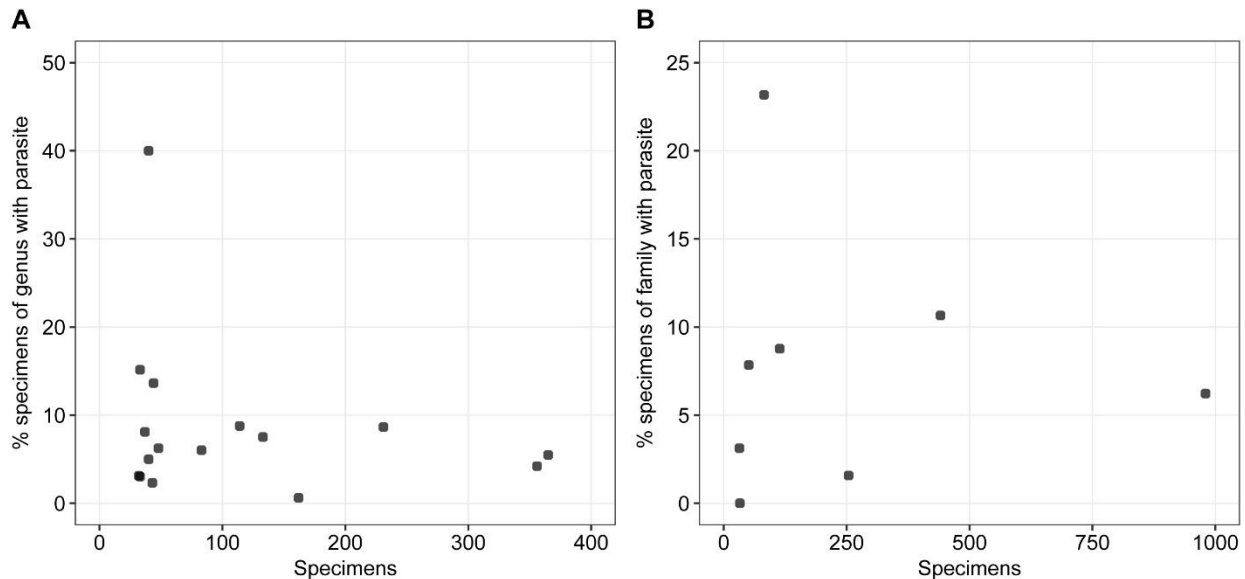
175
 176 Figure 4. The number of decapod crustacean species parasitized by epicaridean isopods. A. Raw epoch-
 177 level data split before and after Klompaker et al. (2014: table 3), total n = 124. Targeted research has
 178 led to 41% more decapod species that were infested. B. Data split by continent.
 179

180 2.3. Abundance vs infestation percentage per taxon

181
 182 Multiple studies have shown that host density positively affects the transmission rate of parasites. For
 183 example, there is a positive correlation between mammal host density across many species and strongylid
 184 nematode parasite abundance in modern ecosystems (Arneberg et al. 1998). For decapods, host
 185 abundance was the best predictor of bopyrid infestation prevalence in modern carid shrimp from Florida
 186 (Briggs et al. 2017). An Early Cretaceous decapod assemblage from Koskobilo in northern Spain yielded
 187 a significant correlation between taxon abundance and epicaridean infestation percentage on the species-
 188 and genus-levels (Klompaker et al. 2014: fig. 4A, 4B). These fossil specimens were collected
 189 predominantly from the southern wall of the Koskobilo quarry, minimizing the influence of possible
 190 spatial and temporal variation. However, they called for more research because of the limited sample size
 191 of specimens of many taxa and the fact that the correlation appears driven by one taxon.

192 To address these issues, the latest Jurassic – earliest Cretaceous Ernstbrunn coral-associated
 193 assemblage (also called the Bachmayer Collection) from eastern Austria (e.g., Schneider et al. 2013) was
 194 used. This decapod collection consists of ~6900 specimens according to the latest counts (pers. comm. A.
 195 Kroh to AAK, November 2018). Bachmayer (1945) listed four localities in the Ernstbrunn Limestone in
 196 which decapods were found (Dörfles I, Dörfles Werk II, Klafterbrunn I, and Klement I), but decapods
 197 were only abundant in Dörfles I and rare in the other three localities. The Dörfles exposures are
 198 considered to be middle to late Tithonian in age based on ammonite stratigraphy (Zeiss 2001; Schweitzer
 199 and Feldmann 2009b). All specimens of this collection were identified to the genus- and family-levels,
 200 where possible. Species-level assignments were not consistently possible for all taxa because not all
 201 brachyurans species have been studied in detail. As in Klompaker et al. (2014), both branchial sides
 202 needed to be preserved to confirm that specimens were not infested, whereas this was not a requirement
 203 for specimens with *Kanthyloma*. Our results show that there is no significant relationship between taxon
 204 abundance and infestation percentage on both the genus- and family-levels (Fig. 5). Similar results apply
 205 when genus-level data is split into Anomura (n = 6; r = -0.28, two-tailed t-test p = 0.59) and Brachyura (n
 206 = 10; r = -0.09, two-tailed t-test p = 0.80). Sample size is not adequate for such analyses on the family-
 207 level. Decapods from the Ernstbrunn Limestone assemblage were, however, not all collected at the same

208 location or stratigraphic level (Bachmayer 1945). The precise locality and stratigraphic position are not
209 known for all Ernstbrunn specimens. In situ collected assemblages from a single bed and small spatial
210 scale with a relatively high proportion of parasitized specimens would be needed to further test the
211 relationship between abundance and prevalence. Brachyurans and galatheoids from the Tithonian
212 Štramberský Limestone in the active Kotouč Quarry (Czech Republic, Fraaije et al. 2013) may be
213 most suitable because decapods from this limestone are occasionally infested (Houša 1963; pers. obs.
214 AAK, CMR). Due to the generally low prevalence of epicarideans within large, diverse decapod
215 assemblages today (Williams and Boyko 2012, and references therein), modern assemblages may not be
216 suitable for this purpose.
217



218
219 Figure 5. The percentage of parasitized specimens per taxon versus taxon abundance for decapods from
220 the Ernstbrunn Limestone assemblage (Late Jurassic, Tithonian, Austria). A. Genera, $n = 16$; $r = -0.23$,
221 two-tailed t-test $p = 0.39$. B. Families, $n = 8$; $r = -0.04$, two-tailed t-test $p = 0.93$. Minimum number of
222 specimens per taxon = 30.

223 224 2.4. Host preference

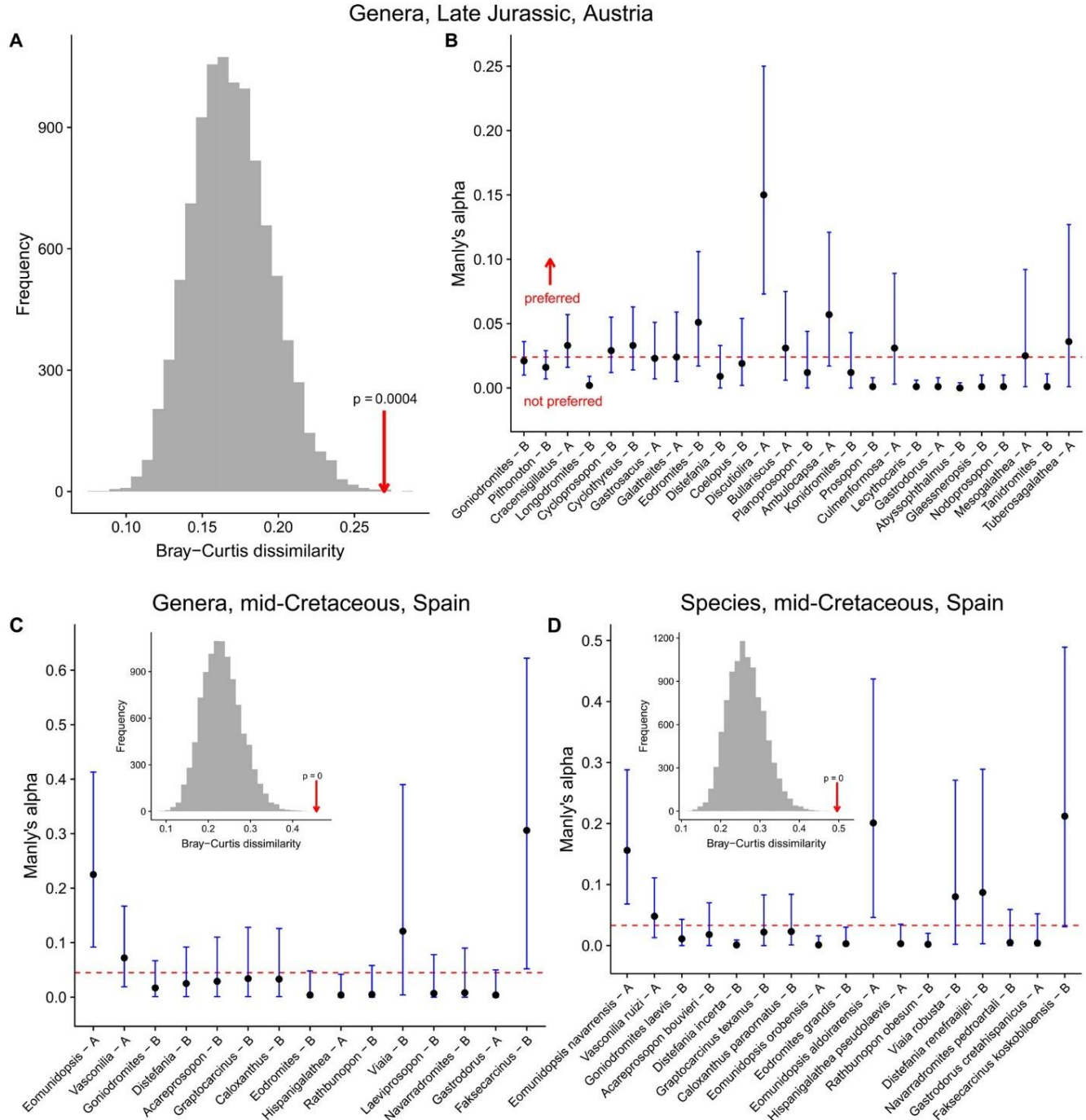
225
226 Host preference is likely to result in non-random patterns of parasite prevalence. Some generalizations
227 have been made concerning epicaridean parasites: Markham (1986) mentioned that host-species
228 specificity appears to be rare among Bopyriodea; McDermott (1991) remarked that most branchial
229 bopyroids infest particular crab families; and Boyko and Williams (2009) noted that some bopyroids
230 infested multiple paguroid hosts, whereas others have been found only on one species thus far. Data in
231 systematic studies on epicarideans echo variability in host specificity: An et al. (2009: table 1) showed
232 that most *Progebiophilus* spp. were restricted to one thalassinidean host species and both An et al. (2015)
233 and Boyko et al. (2017) noted epicaridean species infecting only a single host species, whereas other
234 epicaridean species were found on multiple, often related host species. For carid shrimp from Florida,
235 each bopyrid species was found only on one host genus (Briggs et al. 2017). The fact that multiple species
236 from the same genus or family can be infested by the same parasite species does not imply a lack of
237 preference because parasitized hosts can have very different infestation percentages (e.g., Owens and
238 Glazebrook 1985; González and Acuña 2004; Brockerhoff 2004).

239
240 Host specificity of individual parasite species is impossible to address because epicarideans tend
241 not to preserve as fossils due to their low preservation potential (Klompaker et al. 2017; Fig. 2), but it is
possible to assess host preferences for all epicaridean-induced swellings combined. Very little is known

242 thus far. From the Late Cretaceous (Campanian-Maastrichtian) of Greenland, species-level infestation
243 percentages have been reported from a lobster-brachyuran assemblage preserved in siliciclastic rocks,
244 primarily in shales (Collins and Wienberg Rasmussen 1992; Wienberg Rasmussen et al. 2008). The
245 raninoid crab species *Macroacaena rosenkrantzi* (Collins and Wienberg Rasmussen, 1992) was infested
246 more frequently than the congeneric *M. succedana* (Collins and Wienberg Rasmussen, 1992) (73/1295 =
247 5.6% vs a few out of 193 = < 2%). Species-level data is also known from the mid-Cretaceous reefal
248 limestones (late Albian) from Spain (Klomp maker et al. 2014). The galatheoid *Eomunidopsis navarrensis*
249 (Van Straelen, 1940) was heavily infested (21/174 = 12.1%) relative to other common species (< 5%).

250 To evaluate host preference for the Jurassic for the first time, the Tithonian Ernstbrunn Limestone
251 decapod assemblage was used again and the same specimen selection criteria as above were used with
252 specimens determined to the genus-level. We studied host preference in a more quantitative framework
253 than was done previously, testing host preference against a null model as described in Smith et al. (2018).
254 To test for host preference in the entire assemblage, the observed number of infested specimens per taxon
255 was compared to the expected number in the null model (i.e., random distribution) using the Bray-Curtis
256 index of dissimilarity based on 10,000 iterations. Subsequently, preference for individual host genera are
257 assessed using Manly's alpha to identify which genera are more and less frequently infested than would
258 be expected by chance. The results indicate that evidence for *Kanthyloma crusta* is distributed non-
259 randomly across the genera because only 0.05% of the simulated Bray-Curtis dissimilarity values is
260 greater than the observed Bray-Curtis dissimilarity value (Fig. 6A). The only taxon that is preferentially
261 infested is the moderately common genus *Discutiolira* Robins et al., 2016, whereas *Longodromites*
262 Patru lius, 1959, *Prosopon* von Meyer, 1835, *Lecythocaris* von Meyer, 1858, *Gastrodorus* von Meyer,
263 1864, *Abyssopthalmus* Schweitzer and Feldmann, 2009b, *Glaessneropsis* Patru lius, 1959, and
264 *Nodoprosopon* Beurlen, 1928, are less frequently infested than expected by chance (Fig. 6B). To compare
265 the results to the mid-Cretaceous Koskobilo assemblage (Klomp maker et al. 2014: table 1), the same tests
266 were run on the genus- and species-levels from that assemblage. Bray-Curtis dissimilarity analyses
267 indicate that *Kanthyloma crusta* is distributed non-randomly (insets Fig. 6C, D). The very abundant
268 *Eomunidopsis* Vía Boada, 1981, and the less common *Faksecarcinus* Schweitzer et al., 2012, are
269 preferential host taxa, while *Eodromites* Patru lius, 1959, appears avoided by epicarideans (Fig. 6C). On
270 the species-level, *Eomunidopsis navarrensis* and *E. aldoirarensis* Klomp maker et al., 2012, are targeted,
271 but *E. orobensis* (Ruiz de Gaona 1943), *Eodromites grandis* (von Meyer, 1857), *Distefania incerta* (Bell,
272 1863), and *Rathbunopon obesum* (Van Straelen, 1944) are less frequently infested than would be expected
273 by chance (Fig. 6D).

274 Host specificities can be compared across assemblages by different methods. Basic host
275 specificity considers the number of taxa infested (Poulin et al. 2011), which is higher for Ernstbrunn (22
276 genera) than for Koskobilo (9 genera). However, the Ernstbrunn Limestone assemblage contains more
277 genera (42 vs 22). To remedy this issue, the percentage of genera that is parasitized can be compared.
278 This method yields a higher percentage for Ernstbrunn (52%) than for vs Koskobilo (41%). A caveat here
279 is that many of the non-infested genera are represented by a low number of specimens. Other indices
280 compare the prevalence per host taxon or structural specificity (Poulin et al. 2011). Rohde's modified
281 index takes into account the percentage of parasitized specimens per taxon and corrects for a different
282 number of host genera (Rohde 1980; Rohde and Rohde 2005). This index ranges from 0 to 1 with a
283 higher value implying a higher level of host specificity among the infested hosts. Using genus-level data,
284 the mid-Cretaceous Koskobilo assemblage yield a higher host specificity value than the Late Jurassic
285 Ernstbrunn Limestone assemblage (0.49 vs 0.39). Another specificity measure combines prevalence and
286 phylogenetic distance to compare host specificity (Poulin and Mouillot 2005), but the phylogenetic
287 structures of the Ernstbrunn and Koskobilo assemblages differ substantially, rendering any comparisons
288 using this method uninformative.



289

290

291 Figure 6. Parasite host preference analyses for decapods from the Ernstbrunn (Late Jurassic, Tithonian,

292 Austria) and Koskobilo (mid-Cretaceous, late Albian, Spain) assemblages. A–B. Genera from Ernstbrunn,

293 n = 42. C. Genera Koskobilo, n = 22. D. Species Koskobilo, n = 30. Histogram panels: grey histograms

294 show randomized Bray-Curtis dissimilarity values assuming no host preference; red arrows indicate

295 actual value for the assemblage. P-value is the chance of getting a higher value than the actual value.

296 Panels with dots and error bars: Manly's alpha values with 95% confidence intervals for brachyuran (B)

297 and anomuran (A) taxa, ordered by decreasing abundance. Dashed line is the expected alpha value for

298 each taxon ($1/n$), assuming no host preference. Only taxa with at least ten specimens are shown.

299 2.5. Size of parasitized versus non-parasitized specimens

300

301 Parasitism by epicaridean isopods poses a metabolic drain on the decapod host because female parasite
302 individuals feed on host hemolymph and ovarian fluids after piercing the host's cuticle (Burse 1978;
303 Lester 2005). For example, a bopyrid parasite can consume up to 25% (Walker 1977) or up to 10%
304 (Anderson 1977) of hemolymph volume per day, for a species of carid shrimp. Consequently, a lower
305 growth rate leading to smaller average and maximum sizes within parasitized specimens may be
306 expected. Multiple studies have indeed shown that modern parasitized decapods are smaller on average
307 than uninfested specimens of the same taxon (e.g., Roccatagliata and Lovrich 1999, for a lithodid
308 anomuran; González and Acuña 2004, for a galatheoid; Petrić et al. 2010, for a galatheoid), but other
309 studies found that infested individuals are of similar size (e.g., Mantelatto and Miranda 2010, for
310 porcellanid anomuran) or even larger (e.g., McDermott 1991, for a brachyuran; Lee et al. 2016, for a carid
311 shrimp). For maximum size, many examples exist in which the non-parasitized individuals were larger
312 (O'Brien and Van Wyk 1985, and references; Roccatagliata and Lovrich 1999), but one study showed no
313 difference (O'Brien and Van Wyk 1985).

314 No study has compared body sizes of parasitized versus non-parasitized fossil decapods of the
315 same taxon thus far. To that end, we examined two species of the Ernstbrunn Limestone assemblage
316 introduced above. Both the galatheoid *Cracensigillatus acutirostris* (Moericke, 1889) and the brachyuran
317 *Goniodromites bidentatus* Reuss, 1858, are abundant species in this assemblage, specimens of these taxa
318 are fairly well-preserved, and multiple specimens are infested, making them suitable target species. Using
319 digital calipers, the maximum width (without spines and without the additional width due to the parasitic
320 swelling) and maximum length (without the long, often incomplete rostrum for *C. acutirostris*) was
321 measured for all infested specimens where possible. For non-parasitized specimens, the same
322 measurements were taken for 43 and 36 randomly chosen individuals of *C. acutirostris* and *G. bidentatus*,
323 respectively. Length (L), width (W), and the geometric mean of length and width ($\sqrt{L \times W}$) are used to
324 compare the sizes of parasitized and non-parasitized specimens for both species using a Mann-Whitney
325 test and a significance level of 5%.

326 For the geometric mean (Fig. 7), the median size is significantly larger for parasitized specimens
327 of *C. acutirostris* ($p = 0.008$), while the median appears also larger for *G. bidentatus*, but not significantly
328 so ($p = 0.057$). Results are similar for the length ($p = 0.030$ and $p = 0.060$, resp.), but the median widths
329 are statistically larger for parasitized specimens of both species ($p = 0.002$ and $p = 0.018$, resp.). Larger
330 size classes contain a higher proportion of infested specimens, although sample size is limited for some
331 size classes (Fig. 7).

332 For maximum size, the samples of non-infested specimens contain the largest specimen for both
333 species (see Fig. 7), but non-infested specimens are more numerous than infested specimens in both cases.
334 To test the effect of unequal sample size on the maximum size, bootstrap analyses without replacement
335 were carried out. The maximum size was determined 10,000 times from random sampling without
336 replacement from the pool of non-infested specimens with the total number of infested specimens for that
337 species as the number of specimens to be sampled from the pool of non-infested specimens. The
338 distribution of maximum sizes was then compared to the maximum size of the infested sample for both
339 species, with a p-value representing the chance of getting a larger non-parasitized specimen than the
340 largest parasitized specimen here. For both species, the maximum sizes of the infested specimens fall well
341 within the distribution of bootstrapped maximum sizes for non-infested specimens ($p > 0.05$, Fig. 8),
342 indicating that the maximum sizes of parasitized and non-parasitized taxa do not differ statistically.

343

344 How can the larger median size of infested specimens be explained for both species? We will
345 discuss the following hypotheses: (1) swellings in small specimens were not recognized, (2) parasitized
346 specimens represent a different assemblage consisting of larger specimens on average, (3) small
347 specimens with a swelling have a relatively low preservation potential compared to similar-sized
348 specimens that are not infested and/or small specimens have a lower preservation potential than large
349 infested carapaces, (4) the larger swollen specimens represented specimens of which the parasite was lost

350 at an earlier stage but the swelling remained present, (5) parasites have an equal probability of infesting
351 their host at any point during the life of the host, (6) parasites are more likely to infest larger hosts, (7)
352 complete or partial castration of the host leads to increased growth and/or longevity of parasitized hosts,
353 (8) juvenile hosts have a higher probability of dying than adult infested specimens, (9) parasites selected
354 for the larger sex within species, and (10) a combination of several factors.

355 It is unlikely that swellings in small specimens were not noted or were too small to be
356 distinguished from possible post-mortem deformations. We (AAK, CMR) studied specimens for
357 swellings with 10x magnification hand lenses and from different angles in case of doubt.

358 Not all specimens from the Ernstbrunn Limestone assemblage were collected in the same locality
359 and possibly the same stratigraphic level (see above), which may affect host size and parasite prevalence
360 (e.g., McDermott 1991). Bachmayer (1948) reported on parasitic swellings in nine individuals across
361 three species, six from Dörfles I and three from Dörfles Werk II, and Bachmayer (1964) showed another
362 specimen from Dörfles Werk II with *Kanthylooma*. Analyzing the specimens per locality is not possible
363 because the exact locality is unknown for most specimens. Given that Dörfles I and Dörfles Werk II are
364 only ~100 m apart (Bachmayer 1945; Schneider et al. 2013), the hypothesis that the parasitized specimens
365 represent a very different assemblage consisting of larger individuals appears unlikely.

366 No experiments have explored whether small corpses and/or molts containing a swelling have a
367 lower preservation potential than equally-sized specimens without a swelling. However, a galatheoid host
368 cuticle was much thicker on the swelling due to a thicker epidermis/connective tissue layer relative to a
369 non-infested conspecific, but the calcified layers were of equal thickness (Burse 1978). For non-infested
370 specimens, the decay rate of small specimens is not markedly different than in large specimens for most
371 marine arthropods, including brachyurans (Klompaker et al. 2017). Thus, a relatively low preservation
372 potential for small specimens exhibiting *Kanthylooma* is unlikely to explain the larger size of infested
373 specimens.

374 Not all decapods exhibiting a swollen branchial region harbor an isopod parasite permanently,
375 with the isopod leaving the branchial region prior to the death of the host. Such occurrences, however,
376 cannot be identified in fossil specimens because the preservation potential for epicaridean isopods is low
377 (Klompaker et al. 2017; Fig. 2). Decapods can lose the parasite during the molting phase either after the
378 death of the parasite or when the living parasite gets dislodged (e.g., Van Wyk 1982; Anderson 1990;
379 Somers and Kirkwood 1991; Cash and Bauer 1993; Roccatagliata and Lovrich 1999), but the swelling in
380 the carapace can remain present even after a new molting phase for at least one molting cycle for a
381 porcellanid or even four to five cycles for a carid shrimp (Van Wyk 1982). Such empty swellings can
382 dominate large size classes of infested specimens (Van Wyk 1982; Roccatagliata and Lovrich 1999), but
383 they make up only a small portion of all specimens in those size classes (Van Wyk 1982; Cash and Bauer
384 1993; Roccatagliata and Lovrich 1999). Conversely, no marked increase of empty swellings with
385 carapace size were found for a galatheoid (Wenner and Windsor 1979) and a porcellanid (Oliveira and
386 Masunari 1998). Thus, carapaces with these “ghost parasites” are unlikely to result in a substantial
387 increase in the median sizes of fossil specimens with swellings.

388 Regarding the timing of infestation, infestation of many modern decapods by bopyroids is
389 suggested to occur almost exclusively in juvenile hosts based on (1) a positive and often significant
390 relationship between parasite size and host size (e.g., Allen 1966; Beck 1980; Abu-Hakima 1984; Cash
391 and Bauer 1993; Oliveira and Masunari 1998; Roccatagliata and Lovrich 1999; González and Acuña
392 2004; Mantelatto and Miranda 2010; Román-Contreras and Romero-Rodríguez 2013; Baeza et al. 2018),
393 (2) the observation that immature parasites are found in small hosts only (Van Wyk 1982; Oliveira and
394 Masunari 1998, both for a porcellanids), and (3) small specimens are shown to be more readily infested
395 than large specimens (Anderson 1990, for a carid shrimp). Consequently, swellings should be visible
396 early on in the life of infested decapod hosts and, all else being equal, the proportion of specimens that is
397 infested would remain about the same or decrease due to the adverse effects of parasitism on the host (see
398 above) as host size increases. Such patterns are indeed shown in papers that also report on parasite
399 prevalence per size class (e.g., Oliveira and Masunari 1998; Roccatagliata and Lovrich 1999; González
400 and Acuña 2004; Mantelatto and Miranda 2010; but see Román-Contreras and Romero-Rodríguez 2013).

401 On the other hand, epicarideans can also infest their host throughout host ontogeny as shown by a
402 relatively weak or lack of correlation between parasite size (including immature specimens) and host size
403 (Brockerhoff 2004; Smith et al. 2008; Griffen 2009; Rasch and Bauer 2015). Research using only mature
404 female parasites to test for an expected correlation between parasite size and host size (e.g., McDermott
405 1991; Roccatagliata and Lovrich 1999; Jordá and Roccatagliata 2002) should not be taken into account in
406 this case because all epicarideans should be used to assess the timing of infestation. All else being equal,
407 an increase in prevalence with host size is expected when infestation takes place throughout host
408 ontogeny or primarily in larger size classes. As this pattern matches the size-prevalence results herein
409 (Fig. 7), infestation throughout ontogeny or preferential infection of larger specimens rather than solely in
410 juveniles can explain the larger median size of infested individuals. This hypothesis is consistent with the
411 lack of epicarideans in small host size classes in some studies (Mantelatto and Miranda 2010; Lee et al.
412 2016).

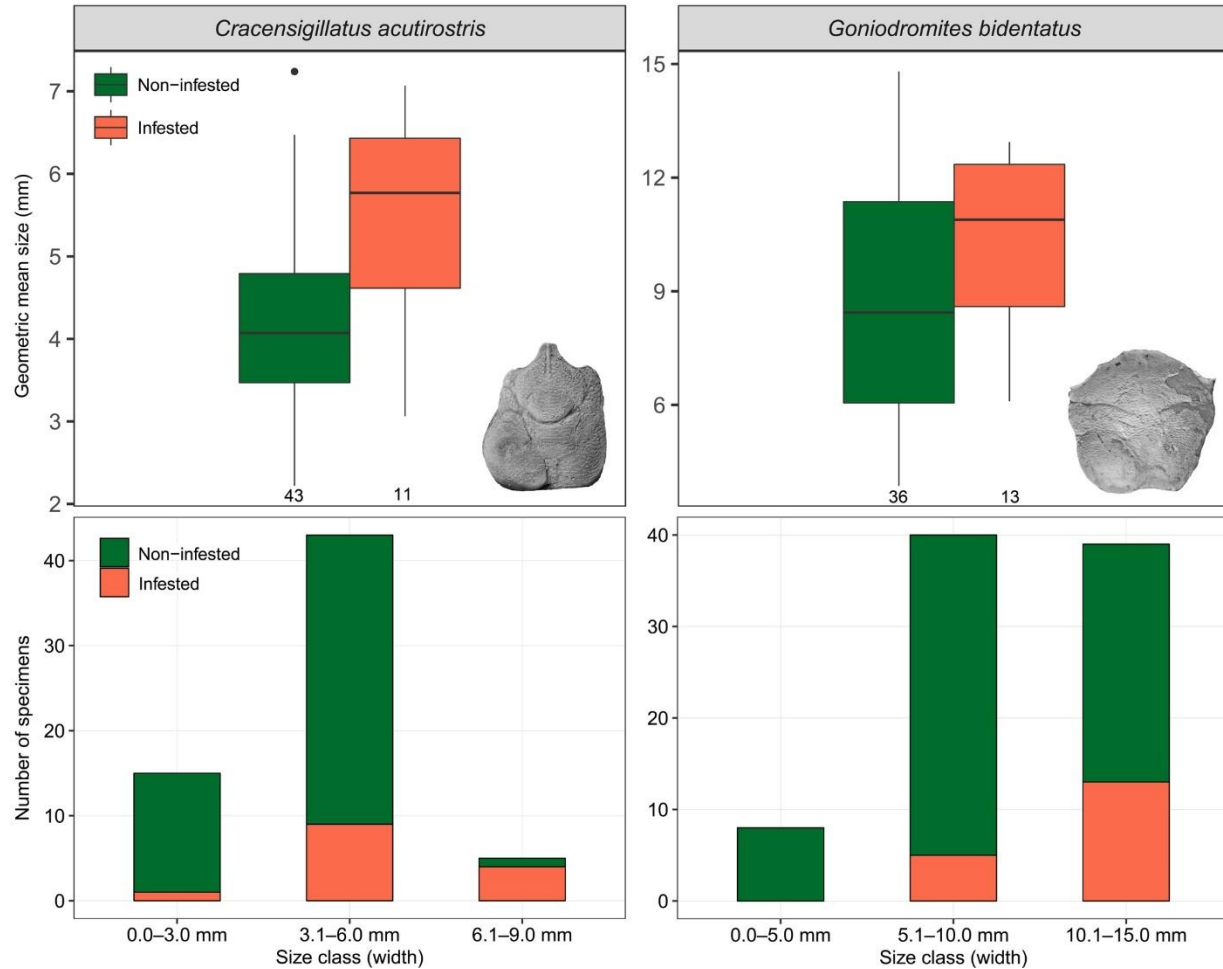
413 Castration may provide another explanation for the larger median size of infested specimens, if
414 the energy that would have been spent on host reproduction is directed toward growth of the host
415 specimen (cf. Poulin 2011: fig. 5.7) instead of to the growth of the parasite and the parasite's reproductive
416 efforts. Host gigantism may be (1) a strategy of the parasite because parasite fecundity is positively linked
417 to host size and host survival may perhaps be improved or (2) an adaptation of the host to counterbalance
418 the negative impact of parasitism (Poulin 2011). Parasite fecundity is often positively correlated with
419 some measure of bopyroid parasite size (e.g., Jay 1989; McDermott 2002; Romero-Rodríguez and
420 Román-Contreras 2008; Román-Contreras and Romero-Rodríguez 2013; Cericola and Williams 2015;
421 Baeza et al. 2018) or host size (Beck 1980); thus, a larger host would be beneficial to the parasite
422 population. However, not all epicarideans castrate their host and host growth rates are inhibited relative to
423 non-infested specimens for many decapods when the epicaridean becomes mature, perhaps because more
424 energy is diverted to the parasite at that point (O'Brien and Van Wyk 1985, and references; Romero-
425 Rodríguez et al. 2016). Castrated hosts that outlive non-parasitized conspecifics would also result in
426 relatively large parasitized specimens. However, at least some species live shorter lives (Romero-
427 Rodríguez et al. 2016, for a carid shrimp) and the multiple negative effects of parasitism (see above)
428 render the castration hypothesis unlikely.

429 A larger median size of infested individuals may be explained by young hosts having a higher
430 probability of dying than older infested specimens, particularly when a branchial swelling has yet to form
431 in small specimens. For those that do survive, a swelling may appear only in larger size classes. High
432 mortality of primarily young hosts infested by a bopyrid is known for a carid shrimp during the one-to-
433 two-week endoparasitic stage before becoming ectoparasitic in the gill chamber (Anderson 1990).
434 Mortality of infested vs non-infested individuals was equal after five weeks (Anderson 1990), but
435 specimen sizes were not provided. Others also hinted at a high mortality of young, infested individuals
436 (Roccatagliata and Lovrich 1999; Lee et al. 2016). As little is known about how much time it takes for an
437 epicaridean to cause a swelling in small and large hosts, it is difficult to further evaluate this hypothesis.

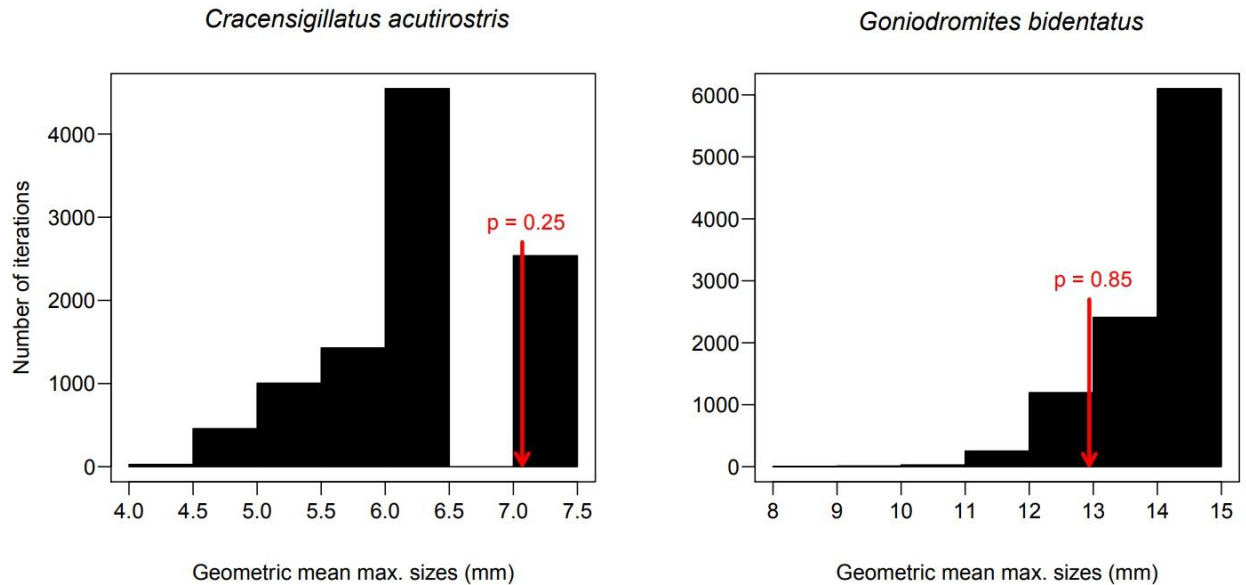
438 Selection of the larger sex of a species, which would have a positive effect on parasite fecundity
439 (see above), could result in a larger median size for infested specimens. For a galatheoid, Petrić et al.
440 (2010) found that the larger male specimens were infected more frequently despite being less common.
441 Our analysis of Petrić et al's data indicates that males are significantly more infested than females ($\chi^2 =$
442 4.7, $p = 0.03$). Beck (1979) mentioned several more examples of bopyroids infecting the larger sex,
443 although results were not always consistent and sexes do not always differ in size (e.g., McDermott
444 1991). If both fossil *Cracensigillatus acutirostris* and *Goniodromites bidentatus* had differently-sized
445 sexes, it is possible that the larger sex was selected by epicarideans. Unfortunately, sex determination is
446 not possible for the fossil specimens because only dorsal carapaces were available.

447 In sum, despite a possible slower growth rate for infested specimens, infestation throughout
448 ontogeny rather than exclusively in young individuals and, possibly, selection for the larger sex appear
449 the most likely explanations for the larger median sizes of infested specimens of *C. acutirostris* and *G.*
450 *bidentatus*. This study adds to the rare examples from the fossil record testing the relative sizes of infested
451 and non-infested specimens. Other examples include Paleozoic crinoids parasitized by platyceracid

452 gastropods that were either larger (Baumiller and Gahn 2018) or smaller (Rollins and Brezinski 1988;
 453 Gahn and Baumiller 2003) than non-parasitized crinoids, and Holocene and possibly Pleistocene bivalves
 454 infested by trematodes that were larger than non-infested specimens (Ruiz and Lindberg 1989; Huntley
 455 and Scarponi 2012).
 456



457
 458 Figure 7. Upper panel: boxplots of geometric mean sizes of non-infested vs infested specimens of two
 459 decapod species from the Ernstbrunn Limestone assemblage (Late Jurassic, Tithonian, Austria).
 460 Geometric mean size = $\sqrt{[\text{maximum carapace length (excluding rostrum for } C. \text{ acutirostris)} \times \text{maximum}$
 461 $\text{carapace width excluding spines}]}$. Infested galatheoid *Cracensigillatus acutirostris* (photo = NHMW
 462 2007z0149/0315, modified from Robins et al. 2013: fig. 16.12): Mann-Whitney $p = 0.008$. Infested
 463 brachyuran *Goniodromites bidentatus* (photo = NHMW 2017/0089/0012): Mann-Whitney $p = 0.057$.
 464 Lower panel: per size class stacked bar diagrams of non-infested and infested specimens for the two
 465 decapod species. Maximum width is used to maximize sample size.
 466



467
468 Figure 8. Comparison of the maximum size of a parasitized specimen versus bootstrapped maximum sizes
469 of non-parasitized specimens for two decapod species from the Ernstbrunn Limestone assemblage (Late
470 Jurassic, Tithonian, Austria). Bootstrapping without replacement (number of iterations = 10,000)
471 was performed because the sample size of non-parasitized specimens was larger than that of parasitized
472 specimens in both cases (sample sizes as in previous figure). Red arrow represents the maximum size of
473 parasitized specimens within the sample. P-value is the chance of getting a larger non-parasitized
474 specimen than the largest parasitized specimen.

475 476 3. Rhizocephalan barnacles in decapod crustaceans

477
478 Rhizocephalan barnacles infest modern decapods and castrate their host, cause feminization of male
479 individuals, and reduce host growth rates (e.g., Reinhard 1956; O'Brien and Van Wyk 1985; Takahashi
480 and Matsuura 1994; Høeg et al. 2005; Nagler et al. 2017b). Feminization of male individuals is seen in
481 true crabs (e.g., Reinhard 1956), but not in squat lobsters (Boyko and Williams 2011). The fossil record
482 of evidence for rhizocephalans parasitizing decapods has been discussed in detail recently (Klompaker
483 and Boxshall 2015). In short, feminization of male crab specimens from the Late Cretaceous of South
484 Dakota, USA (Bishop 1974; Bishop 1983b; Jones 2013) and the Miocene of New Zealand (Feldmann
485 1998) is known, with the latter specifically attributed to Rhizocephala. However, epicarideans may also
486 cause feminization of male specimens (e.g., Reinhard 1956; Rasmussen 1973; O'Brien and Van Wyk
487 1985). No new records of feminized fossil decapods have been reported since 2015, but a 5 mm large
488 nauplius larva, perhaps close to Rhizocephala, was found in the Late Jurassic of Germany (Nagler et al.
489 2017a). Collections of decapods with ventral sides and appendages preserved would be suitable for
490 additional studies on this type parasitism. Anomura have been suggested as the ancestral hosts of
491 Rhizocephala because four basal rhizocephalans all infested anomurans and an ancestral host
492 reconstruction also pointed toward anomurans (Glenner and Hebsgaard 2006; Scholtz et al. 2009).

493 494 4. Ciliates on ostracods

495
496 Phosphatized stalked peritrichid ciliates (Ciliophora) have been found attached to ostracods within an
497 Early Triassic ammonoid from Svalbard (Spitsbergen) (Weitschat and Guhl 1994). The specimens were
498 up to 0.2 mm long and attached to the inner part of the shell and on the epipodal appendages. These
499 specimens were not considered parasitism in the strict sense because the specimens were filter feeding

500 rather than feeding directly on the host (Klompaker and Boxshall 2015). More specimens may only be
501 found in Konservat-Lagerstätten.

502

503 **5. “Pentastomids” on ostracods**

504

505 Four 1–4 mm long specimens identified as Pentastomida associated with a Silurian ostracod were
506 reported from the Herefordshire Lagerstätte in England (Siveter et al. 2015). Whether these specimens
507 represent true pentastomids was called into question (De Baets et al. 2015; De Baets and Littlewood
508 2015; Klompaker and Boxshall 2015). A re-evaluation rejects a pentastomid affinity because the snout
509 and trunk are in different planes, unlike for true pentastomids in which they are in the same plane; the
510 paired limbs are proportionally longer than in extant pentastomids; and no apical hooks were found, a
511 feature characteristic of true pentastomids (Boxshall and Hayes in press). Regardless of the taxonomic
512 identity, two specimens occurred jointly on the carapace, suggesting that these specimens may not have
513 been nutritionally dependent on the ostracod (not parasitism in the strict sense), but two others were found
514 within the ostracod at the position of the gills near eggs, and may have fed on eggs (parasitism).
515 Specimens were identified as adults, suggesting that the ostracods may have served as the final host
516 (Siveter et al. 2015).

517

518 **6. Modern evidence with preservation potential**

519

520 Many modern crustaceans serve as hosts of parasites sometime during the life cycle of parasites, but most
521 are unlikely to be found in the fossil record (e.g., Klompaker and Boxshall 2015). The reasons are: (1)
522 the parasite does not leave a (recognizable) trace (e.g., Vannier and Abe 1993, for ostracod hosts); (2) the
523 parasite is unlikely to be found as body fossils associated with the crustacean host because the parasite
524 has a low preservation potential and/or is extremely small (e.g., Boxshall and Lincoln 1983, for
525 tantulocarid parasites on other crustaceans); and/or (3) the body fossils of the host are unlikely to fossilize
526 (e.g., Poinar et al. 2010, for amphipod hosts).

527 Some associations only found in modern ecosystems thus far have the potential to be found in the
528 fossil record. First, the endoparasitic entoniscid isopods can cause swellings/asymmetries in the carapaces
529 of decapod crustaceans including anomuran, brachyuran, and shrimp hosts (Miyashita 1941: p. 251;
530 Shiino 1942: p. 62, 68; Shields and Kuris 1985: fig. 1; Mushtaq et al. 2016: p. 1608). These swellings
531 may be less prominent than those caused by the primarily ectoparasitic Bopyridae and Ionidae and not
532 always at the same spot in the branchial chamber because entoniscids are found in the visceral cavity of
533 their host and may even cause a swelling of the cardiac region (Adkison 1990; Williams and Boyko 2012:
534 fig. 1F; Mushtaq et al. 2016: fig. 1). Although not all entoniscid cause malformations (McDermott 2009,
535 for pinnotherid crabs), gentle bopyrid/ionid-induced swellings may be confused with swellings caused by
536 entoniscid in fossil material. Thus, it is possible that some examples of *Kanthylooma crusta* ascribed to
537 bopyrids/ionids are caused by entoniscids.

538 Second, Hosie (2008: fig. 12A) showed a barnacle *Smilium zancleanum* (Seguenza, 1876), with
539 swelling up to 1 cm made by a cryptoniscoid isopod. The swellings are located in the muscular peduncle
540 or at the base of the capitulum, where they can cause a disruption in the alignment of plates. Exceptional
541 preservational circumstances are necessary for such swellings to preserve in the fossil record.

542 In addition to small (0.02–0.40 mm) hooks of likely platyhelminth (?Monogenea) origin found in
543 fish, platyhelminth hooks have also been found in association with two crustacean specimens from the
544 Late Devonian (Frasnian) of Latvia (Upeniec 2001; Upeniece 2011; De Baets et al. 2015). Two hooks
545 were found near a specimen of Mysidacea (a member of Peracarida), whereas another hook was found
546 near a clam shrimp (Conchostraca). Recent work has suggested that parasitism by platyhelminthes of
547 these crustacean specimens is unlikely because of the large size of the hooks relative to the crustacean
548 specimens (De Baets et al. 2015) and the rarity of hooks among the thousands of mysidacean specimens
549 (Klompaker and Boxshall 2015). Monogeneans parasitize nearly exclusively fish today, but another
550 group of platyhelminthes, Cestoda, also uses hooks for attachment to crustacean host, including their

551 larvae (e.g., Xylander 2005). Cestodes have been recorded from modern decapods such as true crabs
552 (Dollfus 1976; Torchin et al. 2001), hermit crabs (McDermott et al. 2010), and shrimps (Dollfus 1976;
553 Georgiev et al. 2007). Cestode hooks are mineralized (e.g., Collin 1968; Ambrosio et al. 2003). Thus,
554 minute platyhelminth hooks may be found associated with fossil crustaceans in the right preservational
555 settings in the future.

556

557 **Acknowledgements:** AAK and CMR thank Thomas Nichterl and Andrea Krapf (both Naturhistorisches
558 Museum Wien, Austria) for help with handling loans, and Andreas Kroh (Naturhistorisches Museum
559 Wien) for facilitating a wonderful research stay in Vienna in 2017. René Fraaije (Oertijdmuseum, The
560 Netherlands) made his fossil decapod collection available for study. This research was supported by a
561 Paleontological Society Arthur J. Boucot research grant to AAK and, in part, by a Palaeontological
562 Association research grant (PA-RG201401) to AAK.

563

564 **References**

- 565 Abu-Hakima R (1984) Preliminary observations on the effects of *Epipenaeon elegans* Chopra
566 (Isopoda; Bopyridae) on reproduction of *Penaeus semisulcatus* de Haan (Decapoda;
567 Penaeidae). International Journal of Invertebrate Reproduction and Development 7:51–
568 62. doi: 10.1080/01688170.1984.10510071
- 569 Adkison DL (1990) A review of the Entoniscinae (Isopoda: Epicaridea: Entoniscidae).
570 Dissertation, Tulane University
- 571 Allen JA (1966) Notes on the relationship of the bopyrid parasite *Hemiarthrus abdominalis*
572 (Krøyer) with its hosts. Crustaceana 10:1–6. doi: 10.1163/156854066X00018
- 573 Ambrosio J, Reynoso-Ducoing O, Hernández-Sánchez H, Correa-Piña D, González-Malerva L,
574 Cruz-Rivera M, Flisser A (2003) Actin expression in *Taenia solium* cysticerci (cestoda):
575 tisular distribution and detection of isoforms. Cell Biology International 27:727–733. doi:
576 10.1016/S1065-6995(03)00142-2
- 577 An J, Boyko CB, Li X (2015) A review of bopyrids (Crustacea: Isopoda: Bopyridae) parasitic on
578 caridean shrimps (Crustacea: Decapoda: Caridea) from China. Bulletin of the American
579 Museum of Natural History 399:1–85. doi: 10.1206/amnb-921-00-01.1
- 580 An J, Williams JD, Yu H (2009) The Bopyridae (Crustacea: Isopoda) parasitic on thalassinideans
581 (Crustacea: Decapoda) from China. Proceedings of the Biological Society of Washington
582 122:225–246. doi: 10.2988/08-26.1
- 583 Anderson G (1977) The effects of parasitism on energy flow through laboratory shrimp
584 populations. Marine Biology 42:239–251. doi: 10.1007/BF00397748
- 585 Anderson G (1990) Postinfection mortality of *Palaemonetes* ssp. (Decapoda: Palaemonidae)
586 following experimental exposure to the bopyrid isopod *Probopyrus pandalicola*
587 (Packard)(Isopoda: Epicaridea). Journal of Crustacean Biology 10:284–292
- 588 Anderson G (1975) Metabolic response of the caridean shrimp *Palaemonetes pugio* to infection
589 by the adult epibranchial isopod parasite *Probopyrus pandalicola*. Comparative
590 Biochemistry and Physiology Part A: Physiology 52:201–207. doi: 10.1016/S0300-
591 9629(75)80153-8
- 592 Arneberg P, Skorping A, Grenfell B, Read AF (1998) Host densities as determinants of
593 abundance in parasite communities. Proceedings of the Royal Society B: Biological
594 Sciences 265:1283–1289. doi: 10.1098/rspb.1998.0431
- 595 Bachmayer F (1948) Pathogene Wucherungen bei jurassischen Dekapoden. Sitzungsberichte der
596 Österreichischen Akademie der Wissenschaften, Mathematisch-naturwissenschaftliche
597 Klasse, Abteilung I 157(6–10):263–266

- 598 Bachmayer F (1945) Die Crustaceen aus dem Ernstbrunner Kalk der Jura-Klippenzone zwischen
599 Donau und Thaya. Jahrbuch der Geologischen Bundesanstalt 1945:35–43
- 600 Baeza JA, Steedman S, Prakash S, Liu X, Bortolini JL, Dickson M, Behringer DC (2018) Mating
601 system and reproductive performance in the isopod *Parabopyrella lata*, a parasitic
602 castrator of the ‘peppermint’ shrimp *Lysmata boggessi*. Marine Biology 165:41. doi:
603 10.1007/s00227-018-3297-z
- 604 Bass CS, Weis JS (1999) Behavioral changes in the grass shrimp, *Palaemonetes pugio*
605 (Holthuis), induced by the parasitic isopod, *Probopyrus pandalicola* (Packard). Journal of
606 Experimental Marine Biology and Ecology 241:223–233
- 607 Baumiller TK, Gahn FJ (2018) The nature of the platyceratid–crinoid association as revealed by
608 cross-sectional data from the Carboniferous of Alabama (USA). Swiss Journal of
609 Palaeontology 137:177–187. doi: 10.1007/s13358-018-0167-8
- 610 Beck JT (1979) Population interactions between a parasitic castrator, *Probopyrus pandalicola*
611 (Isopoda: Bopyridae), and one of its freshwater shrimp hosts, *Palaemonetes paludosus*
612 (Decapoda: Caridea). Parasitology 79:431–449. doi: 10.1017/S003118200005383X
- 613 Beck JT (1980) Life history relationships between the bopyrid isopod *Probopyrus pandalicola*
614 and of its freshwater shrimp hosts *Palaemonetes paludosus*. American Midland Naturalist
615 104:135–154. doi: 10.2307/2424966
- 616 Beurlen K (1928) Die Decapoden des schwäbischen Jura mit Ausnahme der aus den
617 oberjurassischen Plattenkalken stammenden. Palaeontographica 70:115–278, pls. 6–8
- 618 Bishop GA (1974) A sexually aberrant crab (*Dakoticancer overanus* Rathbun, 1917) from the
619 upper cretaceous Pierre shale of South Dakota. Crustaceana 26:212–218. doi:
620 10.1163/156854074X00578
- 621 Bishop GA (1983) A second sexually aberrant specimen of *Dakoticancer overanus* Rathbun,
622 1917, from the Upper Cretaceous *Dakoticancer* assemblage, Pierre Shale, South Dakota
623 (Decapoda, Brachyura). Crustaceana 44:23–26. doi: 10.1163/156854083X00028
- 624 Bosc LAG (1802) Histoire naturelle des vers, contenant leur description et leurs moeurs, avec
625 figures dessinees d’après nature, volumes 1–3. Deterville, Paris
- 626 Boxshall G, Lester R, Grygier M, Høeg J, Glenner H, Shields J, Lützen J (2005) Crustacean
627 parasites. In: Rohde K (ed) Marine Parasitology. CSIRO Publishing, Collingwood, pp
628 123–169
- 629 Boxshall GA, Hayes P (In press) Biodiversity and taxonomy of the parasitic Crustacea. In: Smit
630 N, Bruce N (eds) Parasitic Crustacea. Springer
- 631 Boxshall GA, Lincoln RJ (1983) Tantulocarida, a new class of Crustacea ectoparasitic on other
632 crustaceans. Journal of Crustacean Biology 3:1–16. doi: 10.2307/1547849
- 633 Boyko CB, Moss J, Williams JD, Shields JD (2013) A molecular phylogeny of Bopyroidea and
634 Cryptoniscoidea (Crustacea: Isopoda). Systematics and Biodiversity 11:495–506. doi:
635 10.1080/14772000.2013.865679
- 636 Boyko CB, Williams JD (2009) Crustacean parasites as phylogenetic indicators in decapod
637 evolution. In: Martin JW, Crandall KA, Felder DL (eds) Decapod Crustacean
638 Phylogenetics. CRC Press, Boca Raton, pp 197–220
- 639 Boyko CB, Williams JD (2011) Parasites and other symbionts of squat lobsters. In: Poore GCB,
640 Ahyong ST, Taylor J (eds) The Biology of Squat Lobsters. CRC Press, Boca Raton, pp
641 271–295
- 642 Boyko CB, Williams JD, Shields JD (2017) Parasites (Isopoda: Epicaridea and Nematoda) from
643 ghost and mud shrimp (Decapoda: Axiidea and Gebiidea) with descriptions of a new

- 644 genus and a new species of bopyrid isopod and clarification of *Pseudione* Kossmann,
645 1881. Zootaxa 4365:251–301. doi: 10.11646/zootaxa.4365.3.1
- 646 Briggs SA, Blonar CA, Robblee MB, Boyko CB, Hirons AC (2017) Host abundance, sea-grass
647 cover, and temperature predict infection rates of parasitic isopods (Bopyridae) on
648 caridean shrimp. Journal of Parasitology 103:653–662. doi: 10.1645/16-126
- 649 Brinton BA, Curran MC (2015) The effects of the parasite *Probopyrus pandalicola* (Packard,
650 1879) (Isopoda, Bopyridae) on the behavior, transparent camouflage, and predators of
651 *Palaemonetes pugio* Holthuis, 1949 (Decapoda, Palaemonidae). Crustaceana 88:1265–
652 1281. doi: 10.1163/15685403-00003501
- 653 Brockerhoff AM (2004) Occurrence of the internal parasite *Portunion* sp. (Isopoda:
654 Entoniscidae) and its effect on reproduction in intertidal crabs (Decapoda: Grapsidae)
655 from New Zealand. Journal of Parasitology 90:1338–1344. doi: 10.1645/GE-295R
- 656 Bursey CR (1978) Histopathology of the parasitization of *Munida iris* (Decapoda: Galatheidae)
657 by *Munidion irritans* (Isopoda: Bopyridae). Bulletin of Marine Science 28:566–570
- 658 Calado R, Vitorino A, Dinis MT (2006) Bopyrid isopods do not castrate the simultaneously
659 hermaphroditic shrimp *Lysmata amboinensis* (Decapoda: Hippolytidae). Diseases of
660 Aquatic Organisms 73:73–76. doi: 10.3354/dao073073
- 661 Cash CE, Bauer RT (1993) Adaptations of the branchial ectoparasite *Probopyrus pandalicola*
662 (Isopoda: Bopyridae) for survival and reproduction related to ecdysis of the host,
663 *Palaemonetes pugio* (Caridea: Palaemonidae). Journal of Crustacean Biology 13:111–
664 124. doi: 10.1163/193724093X00480
- 665 Ceccon L, De Angeli A (2013) Segnalazione di decapodi eocenici infestati da parassiti isopodi
666 (Epicaridea) (Vicenza, Italia settentrionale). Lavori Società veneziana di Scienze naturali
667 38:83–92
- 668 Cericola MJ, Williams JD (2015) Prevalence, reproduction and morphology of the parasitic
669 isopod *Athelges takanoshimensis* Ishii, 1914 (Isopoda: Bopyridae) from Hong Kong
670 hermit crabs. Marine Biology Research 11:236–252
- 671 Collin WK (1968) Electron microscope studies of the muscle and hook systems of hatched
672 oncospheres of *Hymenolepis citelli* McLeod, 1933 (Cestoda: Cyclophyllidea). The
673 Journal of Parasitology 54:74–88. doi: 10.2307/3276878
- 674 Collins JSH, Wienberg Rasmussen H (1992) Upper Cretaceous-Lower Tertiary decapod
675 crustaceans from West Greenland. Bulletin fra Grønlands geologiske Undersøgelse
676 162:1–46
- 677 Combes C (2001) Parasitism. The ecology and evolution of intimate interactions. University of
678 Chicago Press, Chicago
- 679 Corrêa LL, Oliveira Sousa EM, Flores Silva LV, Adriano EA, Brito Oliveira MS, Tavares-Dias
680 M (2018) Histopathological alterations in gills of Amazonian shrimp *Macrobrachium*
681 *amazonicum* parasitized by isopod *Probopyrus bithynis* (Bopyridae). Diseases of Aquatic
682 Organisms 129:117–122. doi: 10.3354/dao03236
- 683 Cressey RF (1983) Crustaceans as parasites of other organisms. In: Bliss DE (ed) The biology of
684 Crustacea, Vol. 6. Pathobiology. Academic Press, New York, pp 251–273
- 685 De Angeli A, Garassino A (2002) Galatheid, chirostylid and porcellanid decapods (Crustacea,
686 Decapoda, Anomura) from the Eocene and Oligocene of Vicenza (N Italy). Memorie
687 della Società Italiana di Scienze Naturali e del Museo Civico di Storia Naturale di Milano
688 30:1–40

- 689 De Baets K, Dentzien-Dias P, Upeniece I, Verneau O, Donoghue PCJ (2015) Constraining the
690 deep origin of parasitic flatworms and host-interactions with fossil evidence. *Advances in*
691 *Parasitology* 90:93–135. doi: 10.1016/bs.apar.2015.06.002
- 692 De Baets K, Littlewood DTJ (2015) The importance of fossils in understanding the evolution of
693 parasites and their vectors. *Advances in Parasitology* 90:1–51. doi:
694 10.1016/bs.apar.2015.07.001
- 695 Dollfus R-P (1976) Énumération des Cestodes du plancton et des Invertébrés marins. 9e
696 Contribution. *Annales de Parasitologie* 51:207–220
- 697 Feldmann RM (1998) Parasitic castration of the crab, *Tumidocarcinus giganteus* Glaessner, from
698 the Miocene of New Zealand: Coevolution within the Crustacea. *Journal of Paleontology*
699 72:493–498. doi: 10.1017/S0022336000024264
- 700 Förster R (1969) Epökie, Entökie, Parasitismus und Regeneration bei fossilen Dekapoden.
701 Mitteilungen aus der Bayerischen Staatssammlung für Paläontologie und historische
702 Geologie 9:45–59
- 703 Fraaije RHB, Van Bakel BWM, Jagt JWM, Skupien P (2013) First record of paguroid
704 anomurans (Crustacea) from the Tithonian-lower Berriasian of Štramberk, Moravia
705 (Czech Republic). *Neues Jahrbuch für Geologie und Paläontologie - Abhandlungen*
706 269:251–259. doi: 10.1127/0077-7749/2013/0348
- 707 Gahn FJ, Baumiller TK (2003) Infestation of Middle Devonian (Givetian) camerate crinoids by
708 platyceratid gastropods and its implications for the nature of their biotic interaction.
709 *Lethaia* 36:71–82. doi: 10.1080/00241160310003072
- 710 Gemmellaro GG (1869) Studi paleontologici sulla fauna del calcare à Terebratula janitor del
711 Nord di Sicilia. Part 1:11–18, pls. 2–3
- 712 Georgiev BB, Sánchez MI, Vasileva GP, Nikolov PN, Green AJ (2007) Cestode parasitism in
713 invasive and native brine shrimps (*Artemia* spp.) as a possible factor promoting the rapid
714 invasion of *A. franciscana* in the Mediterranean region. *Parasitology Research* 101:1647–
715 1655. doi: 10.1007/s00436-007-0708-3
- 716 Glenner H, Hebsgaard MB (2006) Phylogeny and evolution of life history strategies of the
717 parasitic barnacles (Crustacea, Cirripedia, Rhizocephala). *Molecular Phylogenetics and*
718 *Evolution* 41:528–538. doi: 10.1016/j.ympev.2006.06.004
- 719 González MT, Acuña E (2004) Infestation by *Pseudione humboldtensis* (Bopyridae) in the squat
720 lobsters *Cervimunida johni* and *Pleuroncodes monodon* (Galatheidæ) off northern Chile.
721 *Journal of Crustacean Biology* 24:618–624
- 722 Griffen BD (2009) Effects of a newly invasive parasite on the burrowing mud shrimp, a
723 widespread ecosystem engineer. *Marine Ecology Progress Series* 391:73–83. doi:
724 10.3354/meps08228
- 725 Haug JT, Haug C, Nagler C (In press) Evolutionary history of crustaceans as parasites. In: De
726 Baets K, Huntley JW (eds) *The Evolution and Fossil Record of Parasitism*. Springer,
727 Dordrecht
- 728 Hernáez P, Martínez-Guerrero B, Anker A, Wehrtmann IS (2010) Fecundity and effects of
729 bopyrid infestation on egg production in the Caribbean sponge-dwelling snapping shrimp
730 *Synalpheus yano* (Decapoda: Alpheidae). *Journal of the Marine Biological Association of*
731 *the United Kingdom* 90:691–698
- 732 Høeg JT, Glenner H, Shields JD (2005) Cirripedia Thoracica and Rhizocephala (barnacles). In:
733 Rohde K (ed) *Marine Parasitology*. CSIRO Publishing, Wallingford, pp 154–165

- 734 Hosie AM (2008) Four new species and a new record of Cryptoniscoidea (Crustacea: Isopoda:
735 Hemioniscidae and Crinoniscidae) parasitizing stalked barnacles from New Zealand.
736 Zootaxa 1795:1–28
- 737 Houša V (1963) Parasites of Tithonian decapod crustaceans (Štramberk, Moravia). Sborník
738 Ústředního ústavu geologického 28:101–114
- 739 Huntley JW, Scarponi D (2012) Evolutionary and ecological implications of trematode
740 parasitism of modern and fossil northern Adriatic bivalves. Paleobiology 38:40–51. doi:
741 10.1666/10051.1
- 742 Hyžný M, Starzyk N, Robins CM, Kočová Veselská M (2015) Taxonomy and palaeoecology of
743 a decapod crustacean assemblage from the Oxfordian of Stránská skála (Southern
744 Moravia, Czech Republic). Bulletin of Geosciences 90:633–650. doi:
745 10.3140/bull.geosci.1559
- 746 Jay CV (1989) Prevalence, size and fecundity of the parasitic isopod *Argeia pugettensis* on its
747 host shrimp *Crangon francisorum*. American Midland Naturalist 121:68–77
- 748 Jones A (2013) Population dynamics of *Dakoticancer overanus* from the Pierre Shale, South
749 Dakota. MS Thesis, Kent State University
- 750 Jordá MT, Roccatagliata D (2002) Population dynamics of *Leidyia distorta* (Isopoda: Bopyridae)
751 infesting the fiddler crab *Uca uruguayensis* at the Río de la Plata Estuary, Argentina.
752 Journal of Crustacean Biology 22:719–727. doi: 10.1163/20021975-99990286
- 753 Klompmaker AA, Feldmann RM, Robins CM, Schweitzer CE (2012) Peak diversity of
754 Cretaceous galatheoids (Crustacea, Decapoda) from northern Spain. Cretaceous Research
755 36:125–145. doi: 10.1016/j.cretres.2012.03.003
- 756 Klompmaker AA, Artal P, Van Bakel BWM, Fraaije RHB, Jagt JWM (2014) Parasites in the
757 fossil record: a Cretaceous fauna with isopod-infested decapod crustaceans, infestation
758 patterns through time, and a new ichnotaxon. PLoS One 9:e92551. doi:
759 10.1371/journal.pone.0092551
- 760 Klompmaker AA, Boxshall GA (2015) Fossil crustaceans as parasites and hosts. Advances in
761 Parasitology 90:233–289. doi: 10.1016/bs.apar.2015.06.001
- 762 Klompmaker AA, Portell RW, Frick MG (2017) Comparative experimental taphonomy of eight
763 marine arthropods indicates distinct differences in preservation potential. Palaeontology
764 60:773–794. doi: 10.1111/pala.12314
- 765 Lee IO, Bae HJ, Kim H-G, Oh C-W (2016) Effects of infestation by *Argeia pugettensis* Dana,
766 1853 (Isopoda, Bopyridae) on the growth and reproduction of the sand shrimp *Crangon*
767 *hakodatei* Rathbun, 1902 (Decapoda, Crangonidae) in South Korea. Crustaceana 89:685–
768 699. doi: 10.1163/15685403-00003556
- 769 Lester RJG (2005) Isopoda (isopods). In: Rohde K (ed) Marine Parasitology. CSIRO Publishing,
770 Victoria, pp 138–144
- 771 Mantelatto F, Miranda I (2010) Temporal dynamic of the relationship between the parasitic
772 isopod *Aporobopyrus curtatus* (Crustacea: Isopoda: Bopyridae) and the anomuran crab
773 *Petrolisthes armatus* (Crustacea: Decapoda: Porcellanidae) in southern Brazil. Latin
774 American Journal of Aquatic Research 38:210–217. doi: 10.3856/vol38-issue2-fulltext-5
- 775 Markham JC (1986) Evolution and zoogeography of the Isopoda Bopyridae, parasites of
776 Crustacea Decapoda. In: Gore RH, Heck KL (eds) Crustacean Issues 4. Crustacean
777 Biogeography. A.A. Balkema, Rotterdam, pp 143–164
- 778 Markham JC (1978) Bopyrid isopods parasitizing hermit crabs in the northwestern Atlantic
779 Ocean. Bulletin of Marine Science 28:102–117

- 780 Markham JC, Dworschak PC (2005) A new species of *Entophilus* Richardson, 1903 (Isopoda:
781 Bopyridae: Entophilinae) from the Gulf of Aqaba, Jordan. *Journal of Crustacean Biology*
782 25:413–419. doi: 10.1651/C-2566
- 783 McDermott JJ (1991) Incidence and host-parasite relationship of *Leidyia bimini* (Crustacea,
784 Isopoda, Bopyridae) in the brachyuran crab *Pachygrapsus transversus* from Bermuda.
785 *Ophelia* 33:71–95
- 786 McDermott JJ (2002) Relationships between the parasitic isopods *Stegias clibanarii* Richardson,
787 1904 and *Bopyrissa wolffi* Markham, 1978 (Bopyridae) and the intertidal hermit crab
788 *Clibanarius tricolor* (Gibbes, 1850) (Anomura) in Bermuda. *Ophelia* 56:33–42. doi:
789 10.1080/00785236.2002.10409487
- 790 McDermott JJ (2009) Hypersymbioses in the pinnotherid crabs (Decapoda: Brachyura:
791 Pinnotheridae): a review. *Journal of Natural History* 43:785–805. doi:
792 10.1080/00222930802702480
- 793 McDermott JJ, Williams JD, Boyko CB (2010) The unwanted guests of hermits: a global review
794 of the diversity and natural history of hermit crab parasites. *Journal of Experimental*
795 *Marine Biology and Ecology* 394:2–44
- 796 McGrew M, Hultgren KM (2011) Bopyrid parasite infestation affects activity levels and
797 morphology of the eusocial snapping shrimp *Synalpheus elizabethae*. *Marine Ecology*
798 *Progress Series* 431:195–204. doi: 10.3354/meps09123
- 799 Miyashita Y (1941) Observations on an entoniscid parasite of *Eriocheir japonicus* de Haan,
800 *Entionella fluviatilis* n. g., n. sp. *Japanese Journal of Zoology* 9:251–267
- 801 Moericke W (1889) Die Crustaceen der Stramberger Schichten. *Palaeontographica, Supplement*
802 2 6:43–72, pl. 6
- 803 Mushtaq S, Shafique S, Khatoon Z (2016) *Micippion asymmetricus*: an entoniscid parasite of the
804 coral crab, *Charybdis feriatus* (Linnaeus, 1758). *Pakistan Journal of Zoology* 48:1607–
805 1611
- 806 Nagler C, Høeg JT, Haug C, Haug JT (2017a) A possible 150 million years old cirripede
807 crustacean nauplius and the phenomenon of giant larvae. *Contributions to Zoology*
808 86:213–227
- 809 Nagler C, Hörnig MK, Haug JT, Noever C, Høeg JT, Glenner H (2017b) The bigger, the better?
810 Volume measurements of parasites and hosts: Parasitic barnacles (Cirripedia,
811 Rhizocephala) and their decapod hosts. *PLOS ONE* 12:e0179958. doi:
812 10.1371/journal.pone.0179958
- 813 Néraudeau D, Perrichot V, Batten DJ, Boura A, Girard V, Jeanneau L, Nohra YA, Polette F,
814 Martin SS, Saint Martin J-P, Thomas R (2017) Upper Cretaceous amber from Vendée,
815 north-western France: Age dating and geological, chemical, and palaeontological
816 characteristics. *Cretaceous Research* 70:77–95. doi: 10.1016/j.cretres.2016.10.001
- 817 Neves CA, Santos EA, Bainy ACD (2000) Reduced superoxide dismutase activity in
818 *Palaemonetes argentinus* (Decapoda, Palaemonidae) infected by *Probopyrus ringueleti*
819 (Isopoda, Bopyridae). *Diseases of Aquatic Organisms* 39:155–158. doi:
820 10.3354/dao039155
- 821 O'Brien J, Van Wyk P (1985) Effects of crustacean parasitic castrators (epicaridean isopods and
822 rhizocephalan barnacles) on growth of crustacean hosts. In: Wenner AM (ed) *Factors in*
823 *adult growth, Crustacean Issues 3*. A.A. Balkema, Rotterdam, pp 191–218
- 824 Oliveira E, Masunari S (1998) Population relationships between the parasite *Aporobopyrus*
825 *curtatus* (Richardson, 1904) (Isopoda: Bopyridae) and one of its porcelain crab hosts

- 826 *Petrolisthes armatus* (Gibbes, 1850) (Decapoda: Porcellanidae) from Farol Island,
827 southern Brazil. *Journal of Natural History* 32:1707–1717. doi:
828 10.1080/00222939800771221
- 829 Owens L, Glazebrook JS (1985) The biology of bopyrid isopods parasitic on commercial penaeid
830 prawns in northern Australia. In: Rothlisberg PC, Hill BJ, Staples DJ (eds) Second
831 Australian National Prawn Seminar. NPS2, Cleveland, Queensland, pp 105–113
- 832 Patrulius D (1966) Les Décapodes du Tithonique Inférieur de Woźniki (Carpates Polonaises
833 Occidentales). *Annales de la Société Géologique de Pologne* 36:495–517, pls. 30–31
- 834 Petrić M, Ferri J, Mladineo I (2010) Growth and reproduction of *Munida rutilanti* (Decapoda:
835 Anomura: Galatheidae) and impact of parasitism by *Pleurocrypta* sp. (Isopoda:
836 Bopyridae) in the Adriatic Sea. *Journal of the Marine Biological Association of the*
837 *United Kingdom* 90:1395–1404. doi: 10.1017/S0025315409991615
- 838 Poinar G, Duarte D, Santos MJ (2010) *Halomonhystera parasitica* n. sp. (Nematoda:
839 Monhysteridae), a parasite of *Talorchestia brito* (Crustacea: Talitridae) in Portugal.
840 *Systematic Parasitology* 75:53–58. doi: 10.1007/s11230-009-9210-x
- 841 Portell RW, Collins JSH (2004) Decapod crustaceans of the Lower Miocene Montpelier
842 Formation, White Limestone Group of Jamaica. *Cainozoic Research* 3:109–126
- 843 Poulin R (2011) *Evolutionary Ecology of Parasites*, 2nd edition. Princeton University Press,
844 Princeton
- 845 Poulin R, Krasnov BR, Mouillot D (2011) Host specificity in phylogenetic and geographic space.
846 *Trends in Parasitology* 27:355–361. doi: 10.1016/j.pt.2011.05.003
- 847 Poulin R, Mouillot D (2005) Combining phylogenetic and ecological information into a new
848 index of host specificity. *Journal of Parasitology* 91:511–514. doi: 10.1645/GE-398R
- 849 Radwański A (1972) Isopod-infected prosoponids from the Upper Jurassic of Poland. *Acta*
850 *Geologica Polonica* 22:499–506
- 851 Rasch JA, Bauer RT (2015) Temporal variation in population structure of the isopod *Urobopyrus*
852 *processae* Richardson, 1904 (Isopoda: Bopyridae) infesting the branchial chamber of the
853 night shrimp *Ambidexter symmetricus* Manning and Chace, 1971 (Decapoda:
854 Processidae). *Nauplius* 23:89–103. doi: 10.1590/S0104-64972015002317
- 855 Rasmussen E (1973) Systematics and ecology of the Isefjord marine fauna (Denmark) with a
856 survey of the eelgrass (*Zostera*) vegetation and its communities. *Ophelia* 11:1–507. doi:
857 10.1080/00785326.1973.10430115
- 858 Reinhard EG (1956) Parasitic castration of Crustacea. *Experimental Parasitology* 5:79–107. doi:
859 10.1016/0014-4894(56)90007-8
- 860 Remeš M (1921) Excroissance des crustacés du Tithonique de Štramperk. *Bulletin international*
861 *de l'Académie des Sciences de Bohême* 23:36–37, pl. 1
- 862 Reuss AE (1858) Über kurzschwänzige Krebse im Jurakalke Mährens. *Sitzungsberichte der*
863 *Kaiserlichen Akademie der Wissenschaften, (Mathematischnaturwissenschaftliche*
864 *Classe)* 31:5–13
- 865 Robins CM, Feldmann RM, Schweitzer CE (2013) Nine new genera and 24 new species of the
866 Munidopsidae (Decapoda: Anomura: Galatheoidea) from the Jurassic Ernstbrunn
867 Limestone of Austria, and notes on fossil munidopsid classification. *Annalen des*
868 *Naturhistorischen Museums in Wien, Serie A* 115:167–251
- 869 Roccatagliata D, Lovrich GA (1999) Infestation of the false king crab *Paralomis granulosa*
870 (Decapoda: Lithodidae) by *Pseudione tuberculata* (Isopoda: Bopyridae) in the Beagle
871 Channel, Argentina. *Journal of Crustacean Biology* 19:720–729

- 872 Rohde K (1980) Host specificity indices of parasites and their application. *Experientia* 36:1369–
873 1371. doi: 10.1007/BF01960103
- 874 Rohde K, Rohde PP (2005) The ecological niches of parasites. In: Rohde K (ed) *Marine*
875 *Parasitology*. CSIRO Publishing, Collingwood, pp 286–293
- 876 Rollins HB, Brezinski DK (1988) Reinterpretation of crinoid-platycteratid interaction. *Lethaia*
877 21:207–217. doi: 10.1111/j.1502-3931.1988.tb02072.x
- 878 Román-Contreras R, Romero-Rodríguez J (2013) Prevalence and reproduction of *Bopyrina*
879 *abbreviata* (Isopoda, Bopyridae) in Laguna de Términos, SW Gulf of Mexico. *Journal of*
880 *Crustacean Biology* 33:641–650. doi: 10.1163/1937240X-00002182
- 881 Romero-Rodríguez J, Román-Contreras R (2011) Changes in secondary sexual characters of
882 males of *Thor floridanus* (Decapoda, Hippolytidae), infested by *Bopyrinella thorii*
883 (Isopoda, Bopyridae). *Crustaceana* 84:1041–1050. doi: 10.1163/001121611X586693
- 884 Romero-Rodríguez J, Román-Contreras R (2008) Aspects of the reproduction of *Bopyrinella*
885 *thorii* (Richardson, 1904) (Isopoda, Bopyridae), a branchial parasite of *Thor floridanus*
886 Kingsley, 1878 (Decapoda, Hippolytidae) in Bahía de la Ascensión, Mexican Caribbean.
887 *Crustaceana* 81:1201–1210. doi: 10.1163/156854008X374522
- 888 Romero-Rodríguez J, Román-Contreras R, Cházaro-Olvera S, Martínez-Muñoz MA (2016)
889 Growth of individuals within the parasite-host association *Bopyrina abbreviata* (Isopoda,
890 Bopyridae) and *Hippolyte zostericola* (Decapoda, Caridea), and variations in parasite
891 morphology. *Invertebrate Reproduction & Development* 60:39–48. doi:
892 10.1080/07924259.2015.1126536
- 893 Ruiz de Gaona M (1943) Nota sobre Crustáceos Decápodos de la cantera del Monte Orobe
894 (Alsasua). *Boletín Real Sociedad Española de Historia Natural* 40:425–433, pl. 28
- 895 Ruiz GM, Lindberg DR (1989) A fossil record for trematodes: extent and potential uses. *Lethaia*
896 22:431–438. doi: 10.1111/j.1502-3931.1989.tb01447.x
- 897 Schädel M, Nagler C, Haug JT (2018) Taking a deeper look – a fossil isopod revisited by ‘virtual
898 paleontology.’ In: 9th International Crustacean Congress, Abstract Book. Washington, D.
899 C., p 60
- 900 Schneider S, Harzhauser M, Kroh A, Lukeneder A, Zuschin M (2013) Ernstbrunn Limestone and
901 Klentnice beds (Kimmeridgian Berriasian; Waschberg-dánice Unit; NE Austria and SE
902 Czech Republic): state of the art and bibliography. *Bulletin of Geosciences* 88:105–130
- 903 Scholtz G, Ponomarenko E, Wolff C (2009) Cirripede cleavage patterns and the origin of the
904 Rhizocephala (Crustacea: Thecostraca). *Arthropod Systematics & Phylogeny* 67:219–228
- 905 Schweitzer CE, Feldmann RM (2009a) Revision of the genus *Cyclothyreus* Remeš, 1895
906 (Decapoda: Brachyura: Dromioidea). *Neues Jahrbuch für Geologie und Paläontologie -*
907 *Abhandlungen* 253:357–372
- 908 Schweitzer CE, Feldmann RM (2009b) Revision of the Prosopinae sensu Glaessner, 1969
909 (Crustacea: Decapoda: Brachyura) including four new families, four new genera, and five
910 new species. *Annalen des Naturhistorischen Museums in Wien, Serie A* 110:55–121
- 911 Schweitzer CE, Feldmann RM (2010) Revision of Cycloprosopon and additional notes on
912 Eodromites (Brachyura: Homolodromioidea: Gonioprosopidae). *Annalen des*
913 *Naturhistorischen Museums in Wien Serie A* 112:169–194
- 914 Schweitzer CE, Feldmann RM, Franțescu OD, Klompaker A (2012) Revision of Etyidae
915 Guinot and Tavares, 2001 (Crustacea: Brachyura). *Journal of Paleontology* 86:129–155.
916 doi: 10.1666/11-060.1

- 917 Seguenza G (1876) Ricerche Paleontologiche intorno ai Cirripedi Terziarii della Provincia di
918 Messina. Atti Dell'Accademia Pontaniana 3:268–481
- 919 Serrano-Sánchez M de L, Nagler C, Haug C, Haug JT, Centeno-García E, Vega FJ (2016) The
920 first fossil record of larval stages of parasitic isopods: cryptoniscus larvae preserved in
921 Miocene amber. Neues Jahrbuch für Geologie und Paläontologie - Abhandlungen
922 279:97–106. doi: 10.1127/njgpa/2016/0543
- 923 Sherman MB, Curran MC (2013) The effect of the bopyrid isopod *Probopyrus pandalicola*
924 (Packard, 1879) (Isopoda, Bopyridae) on the survival time of the daggerblade grass
925 shrimp *Palaemonetes pugio* Holthuis, 1949 (Decapoda, Palaemonidae) during starvation
926 at two different temperatures. Crustaceana 86:1328–1342. doi: 10.1163/15685403-
927 00003245
- 928 Shields JD, Kuris AM (1985) Ectopic infections of *Portunion conformis* (Isopoda: Entoniscidae)
929 in *Hemigrapsus* spp. Journal of Invertebrate Pathology 45:122–124
- 930 Shiino SM (1942) On the parasitic isopods of the family Entoniscidae, especially those found in
931 the vicinity of Seto. Memoirs of the College of Science, Kyoto Imperial University,
932 Series B 17:37–76
- 933 Siveter DJ, Briggs DEG, Siveter DJ, Sutton MD (2015) A 425-million-year-old Silurian
934 pentastomid parasitic on ostracods. Current Biology 25:1632–1637. doi:
935 10.1016/j.cub.2015.04.035
- 936 Smit NJ, Bruce NL, Hadfield KA (2014) Global diversity of fish parasitic isopod crustaceans of
937 the family Cymothoidae. International Journal for Parasitology: Parasites and Wildlife
938 3:188–197. doi: 10.1016/j.ijppaw.2014.03.004
- 939 Smith AE, Chapman JW, Dumbauld BR (2008) Population structure and energetics of the
940 bopyrid isopod parasite *Orthione griffenis* in mud shrimp *Upogebia pugettensis*. Journal
941 of Crustacean Biology 28:228–233. doi: 10.1651/0278-
942 0372(2008)028[0228:PSAEOT]2.0.CO;2
- 943 Smith JA, Handley JC, Dietl GP (2018) On drilling frequency and Manly's alpha: towards a null
944 model for predator preference in paleoecology. PALAIOS 33:61–68. doi:
945 10.2110/palo.2017.098
- 946 Somers IF, Kirkwood GP (1991) Population ecology of the grooved tiger prawn, *Penaeus*
947 *semisulcatus*, in the north-western Gulf of Carpentaria, Australia: growth, movement, age
948 structure and infestation by the bopyrid parasite *Epipenaeon ingens*. Marine and
949 Freshwater Research 42:349–367. doi: 10.1071/MF9910349
- 950 Takahashi T, Matsuura S (1994) Laboratory studies on molting and growth of the shore crab,
951 *Hemigrapsus sanguineus* de Haan, parasitized by a rhizocephalan barnacle. The
952 Biological Bulletin 186:300–308. doi: 10.2307/1542276
- 953 Tapanila L (2008) Direct evidence of ancient symbiosis using trace fossils. The Paleontological
954 Society Papers 14:271–287. doi: 10.1017/S1089332600001728
- 955 Torchin ME, Lafferty KD, Kuris AM (2001) Release from parasites as natural enemies:
956 increased performance of a globally introduced marine crab. Biological Invasions 3:333–
957 345
- 958 Trilles J-P, Hipeau-Jacquotte R (2012) Symbiosis and parasitism in the Crustacea. In:
959 Charmantier-Daures Forest (†) M, Vaupel Klein Schram C, Charmantier-Daures Forest
960 (†) M, Vaupel Klein Schram C (eds) Treatise on Zoology - Anatomy, Taxonomy,
961 Biology. The Crustacea, Volume 3. Brill, Leiden, pp 239–317

- 962 Upeniece I (2001) The unique fossil assemblage from the Lode Quarry (Upper Devonian,
963 Latvia). *Mitteilungen aus dem Museum für Naturkunde in Berlin – Geowissenschaftliche*
964 *Reihe* 4:101–119. doi: 10.1002/mmng.20010040108
- 965 Upeniece I (2011) Palaeoecology and juvenile individuals of the Devonian placoderm and
966 acanthodian fishes from Lode site, Latvia. Dissertation, University of Latvia
- 967 Van Straelen V (1940) Crustacés Décapodes nouveaux du Crétacique de la Navarre. *Bulletin du*
968 *Musée Royal d’Histoire Naturelle de Belgique* 16:1–5, pl. 1
- 969 Van Straelen V (1931) Crustacea Eumalacostraca (Crustaceis decapodis exclusis). In: Quenstedt
970 W (ed) *Fossilium Catalogus, I Animalia*. Part 48. W. Junk, Berlin, pp 1–98
- 971 Van Straelen V (1928) Contribution à l’étude des Isopodes Méso- et Cénozoïques. *Mémoires*
972 *Academie Royale des Belgique, Classe de Sciences Collection, Second Series* 9:1–68
- 973 Van Wyk PM (1982) Inhibition of the growth and reproduction of the porcellanid crab
974 *Pachycheles rudis* by the bopyrid isopod, *Aporobopyrus muguensis*. *Parasitology*
975 85:459–473. doi: 10.1017/S0031182000056249
- 976 Vannier J, Abe K (1993) Functional morphology and behavior of *Vargula hilgendorffii*
977 (Ostracoda: Myodocopida) from Japan, and discussion of its crustacean ectoparasites:
978 preliminary results from video recordings. *Journal of Crustacean Biology* 13:51–76. doi:
979 10.1163/193724093X00444
- 980 Vía Boada L (1981) Les Crustacés Décapodes du Cénomaniien de Navarre (Espagne): premiers
981 resultats de l’étude des Galatheidae. *Géobios* 14:247–251
- 982 von Meyer H (1835) Briefliche Mittheilungen. *Neues Jahrbuch für Mineralogie, Geologie,*
983 *Geognosie und Petrefaktenkunde* 1835:329
- 984 von Meyer H (1842) Über die in dem dichten Jurakalk von Aalen in Württemberg
985 vorkommenden Spezies des Crustaceengenus Prosopon. *Beiträge zur Petrefaktenkunde*
986 5:70–75, pl. 15
- 987 von Meyer H (1857) Briefliche Mittheilungen. *Neues Jahrbuch für Mineralogie, Geognosie,*
988 *Geologie und Petrefaktenkunde* 1857:556
- 989 von Meyer H (1858) Briefliche Mittheilungen. *Neues Jahrbuch für Mineralogie, Geognosie,*
990 *Geologie und Petrefaktenkunde* 1858:59–62
- 991 von Meyer H (1864) Briefliche Mittheilungen. *Neues Jahrbuch für Mineralogie, Geognosie,*
992 *Geologie und Petrefaktenkunde* 1864:20
- 993 Walker SP (1977) *Probopyrus pandalicola*: Discontinuous ingestion of shrimp hemolymph.
994 *Experimental Parasitology* 41:198–205. doi: 10.1016/0014-4894(77)90145-X
- 995 Wehner G (1988) Über die Prosoponiden (Crustacea, Decapoda) des Jura. Dissertation, Ludwig-
996 Maximilians-Universität München
- 997 Weitschat W, Guhl W (1994) Erster Nachweis fossiler Ciliaten: first fossil Ciliates.
998 *Paläontologische Zeitschrift* 68:17–31. doi: 10.1007/BF02989430
- 999 Wenner EL, Windsor NT (1979) Parasitism of galatheid crustaceans from the Norfolk Canyon
1000 and Middle Atlantic Bight by bopyrid isopods. *Crustaceana* 37:293–303. doi:
1001 10.1163/156854079X01176
- 1002 Wienberg Rasmussen H, Jakobsen SL, Collins JSH (2008) Raninidae infested by parasitic
1003 Isopoda (Epicaridea). *Bulletin of the Mizunami Fossil Museum* 34:31–49
- 1004 Williams JD, Boyko CB (2012) The global diversity of parasitic isopods associated with
1005 crustacean hosts (Isopoda: Bopyroidea and Cryptoniscoidea). *PLoS One* 7:e35350. doi:
1006 10.1371/journal.pone.0035350

- 1007 Xylander W (2005) Gyrocotylidea (unsegmented tapeworms). In: Xylander W (ed) Marine
1008 Parasitology. CABI Publishing, Oxon
- 1009 Yamaguti S (1963) Parasitic Copepoda and Branchiura of fishes. Interscience Publishers, New
1010 York
- 1011 Yasuoka N, Yusa Y (2017) Effects of a crustacean parasite and hyperparasite on the Japanese
1012 spiny oyster *Saccostrea kegaki*. Marine Biology 164:217. doi: 10.1007/s00227-017-3250-
1013 6
- 1014 Zeiss A (2001) Die Ammonitenfauna der Tithonklippen von Ernstbrunn, Niederösterreich. Neue
1015 Denkschriften des Naturhistorischen Museums in Wien, Neue Serie 6:1–117
1016