

Buru Pitta in a shady ginger grove (Craig Robson)

REMOTE EASTERN INDONESIA

7 – 29 NOVEMBER 2014

LEADER: CRAIG ROBSON

Our latest tour to Buru, Ambon, Haruku, Yamdena (Tanimbar Is), Kai and Seram was another action-packed adventure! There were a couple of special highlights this time. On Buru we were lucky enough to re-discover Blue-fronted Lorikeet. It seems that there have been no confirmed sightings of this tiny endemic parrot since the 1920s or 1930s. Our few record shots are the first pictures ever taken of the species. Another stand-out observation was the Chinese Crested Tern that we found again off the north coast of Seram, following on from our discovery in 2010. The bird was still present in late December, and it is now clear that this is a wintering area – the only one currently documented for this critically endangered species. This tour is packed with a seemingly ever-increasing number of endemics, and there was a constant stream of other highlights: Forsten's, Tanimbar and Moluccan Megapodes, Pygmy Eagle, Rufous-necked Sparrowhawk, Great Cuckoo-Dove, Wallace's Fruit Dove, Moluccan (or Lesser) Masked Owl, Salmon-crested (or Seram) Cockatoo, Blue-eared Lory, Moluccan King Parrot, Buru Dwarf Kingfisher, Buru, Seram and Tanimbar Boobooks, Buru and Papuan Pittas, Kai Leaf Warbler, Buru and Seram Bush Warblers, Rufescent Darkeye, Grey-hooded White-eyes, Long-crested Myna, Buru, Fawn-breasted and Slaty-backed Thrushes, and many more. Logistics were pretty seamless and this was a smooth-running and comfortable tour as usual.

We all landed in Ambon, the capital of South Maluku Province, at lunch-time. After checking-in to our accommodation, we spent the remainder of the afternoon in an area of remnant forest patches and cultivated gardens. On arrival, a pair of Ambon White-eyes flew over the car, and we had multiple views of this near-endemic. A small selection of regional specialities got us in the mood for what was to come. After dinner in town, we boarded the relatively comfortable overnight ferry to the remote island of Buru. It was a typically smooth crossing, and most of us were able to get some sleep in our cabins. On arrival, we headed straight off for some introductory birding in the patchy lowland forest remnants known as Waslabi. As soon as the sun began to rise, the familiar whistled tones of Black-tipped Monarch emanated from the lush understorey, and we soon had our first proper endemic under the belt. A stroll along a rough track brought a typically good selection of local birds, including Moluccan Cuckoo, Black-faced Friarbird, Pale Cicadabird, Drab Whistler, Buru Drongo (split from Spangled), White-naped Monarch, Moluccan Flycatcher, Buru Golden Bulbul, Buru White-eye, and Flame-breasted (or Buru) Flowerpecker. After lunch in Namlea, we drove to our very comfortable accommodation at the newly completed Buru Island Resort at Waspait, mid-way along the north coast.

The next few days were spent exploring the nearby Wamlana Logging Road. With 4WD vehicles at our disposal, we enjoyed maximum comfort and flexibility, as well as regular coffee & cookie breaks! A newly constructed side road (now dubbed the 'Danau Road'), leading to the large inland lake of Danau Rana, enabled us to access some less disturbed and better quality forest up to an elevation of 1420m. Our adventurous band of keen birders, armed with a machete, also explored forested hills above the road, up to 1660m. Away from the montane forests, we made several visits to Bara on the north-west coast of the island, which is easily accessed now after the completion of a number of bridges and a new road. Our final total of 21 out of 23 currently recognized endemics was perhaps the highest recorded by any birding trip to the island to date. The highlight this year was our rediscovery of the mega-rare and critically endangered Blue-fronted Lorikeet. Well done to Sue Williamson for finding it, when the first one popped up in the top of a huge flowering dipterocarp, while we were watching Buru Honeyeaters and Wakolo Myzomelas. We were all able to get satisfying scope views on two separate days. The only previous confirmed records of this tiny parrot are the seven specimens collected in 1921 & 1922. Our sightings, at 1300m, also confirm a montane distribution for the species, and support previously obtained information from local communities that they feed in flowering trees.



Blue-fronted Lorikeet, Buru (Dave Williamson)

Our other main highlights in the hills were the great views that we had of Buru Dwarf Kingfisher (a split from Variable) and several Buru Thrushes. Buru Boobook, with its amazingly distinctive duetted vocalizations was seen really well at two separate locations. We connected with the recently split Buru Pitta at somewhat lower levels, with a very confiding individual watched for some time by us all. Buru Racquet-tail and the amazing

Moluccan King Parrot were pleasantly frequent as usual, and more thinly distributed species like Buru Cuckooshrike and Streak-breasted Jungle Flycatcher showed up on multiple occasions, but it took a bit of effort to track-down our only Cinnamon-chested Flycatcher. Buru Honeyeaters were easily seen in good numbers this year, reflecting the presence of flowering trees.



Buru Boobook (Craig Robson)

There were several highlights in the remnant forest near Bara. Best of all was the fantastic Moluccan (or Lesser) Masked Owl that was so easy to see, calling incessantly and staring down at us. Just before finding the owl, we were lucky enough to see a Forsten's Megapode going to roost. Our third visit to any area of fruiting fig trees finally turned-up the much wanted Buru Green Pigeon.



Streak-breasted Jungle Flycatcher (Craig Robson)

Our accommodation on Buru proved to be a nice spot from which to scan the ocean. Brown Boobies, Lesser Frigatebirds and Greater Crested Terns were always on view, and we also managed to see Red-footed Booby and a pod of Short-finned Pilot Whales.

As we returned to Namlea, to catch the overnight ferry back to Ambon, we stopped at a freshwater lake called Danau Sawah, where we were able to scope-up some Australasian Darters as they roosted in the trees by the shore.



A tame Little Curlew on Ambon (Craig Robson)

Back on Ambon we paid a morning visit to Ewang Tulahu, walking much further towards the hills than we had previously. Our first Lazuli Kingfisher was very welcome and we enjoyed good looks at Seram Imperial Pigeon, Seram Drongo, the local form of Northern Fantail, and more Ambon White-eyes. In the afternoon we visited what is perhaps the only freshwater lake on the island at Ewang Suli. There is always something unusual here and this time we found Little Curlew, Several Greater Painted Snipes, and a Common Snipe; the latter two perhaps the first to be recorded on Ambon.



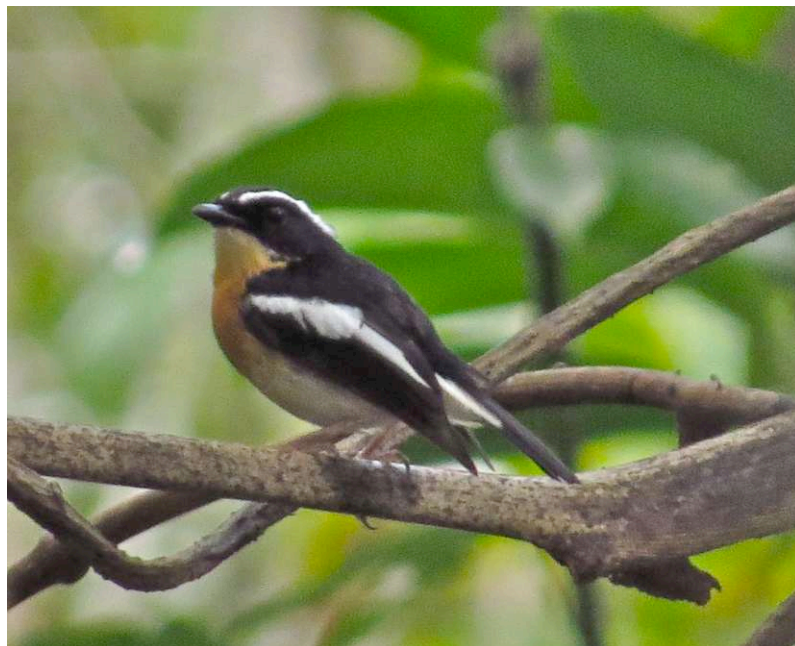
Pied Bronze Cuckoo (Craig Robson)

At lunch time on the following day we flew to Yamdena in the Tanimbar Islands - politically in Maluku but zoogeographically in the eastern Lesser Sundas. This year we landed on a brand new airstrip, only 15 minutes away from the birding sites, and in no time at all we were fully immersed in the rich and varied Tanimbar bird fauna. By the end of a very birdy afternoon, we had already seen many of the endemics. At the airport itself, we were greeted by a circling pair of Rensch's Eagles (a potential split from Bonelli's) and, as we casually worked our way along a trail to the forest edge further north, we enjoyed our first Bar-necked



Tanimbar Corellas are surprisingly common on Yamdena (Craig Robson)

Cuckoo-Doves, Wallace's and Rose-crowned Fruit-Doves (the latter lacking a rose crown here!), Elegant and Pink-headed Imperial Pigeons, Pied Bronze Cuckoos, Tanimbar Corellas, Blue-streaked Lories, numerous Scaly-breasted Honeyeaters, Golden-bellied Flyrobins, Tanimbar Oriole, Tanimbar Friarbird,



Tanimbar Flycatcher (Craig Robson)

Rufous-sided Gerygone, White-browed (or Tanimbar) Triller, Cinnamon-tailed Fantail, Loetoe Monarch, Tanimbar Starling, our first looks at Fawn-breasted Thrushes, Mistletoebird, and Five-coloured Munia. Even

before it was fully dark, a Tanimbar Boobook performed admirably! The next three days were spent making twice-daily forays to several different areas of forest alongside the main road to the north of Saumlaki. A large part of Yamdena is still carpeted in dense primary forest, and we were basically picking around the southern edge of this forest mass, following a series of old logging roads and trails. One or two species kept us on tenterhooks. Although many Fawn-breasted Thrushes were encountered, it was a while before we had all got really good views. As usual, Slaty-backed Thrush proved to be less of a challenge. A very obliging pair of Tanimbar Crows (one of the tougher endemics to track-down) came close enough to show their pale eyes, and after much effort, we eventually found a good number of Tanimbar Megapodes. Presumably due to the timing of its breeding cycle, Tanimbar Flycatcher was really tough to find this year, and it was only right at the end of our visit that many of us finally got a view of the species. Tanimbar Bush Warbler, Black-bibbed Monarch, Wallacean Whistler, the distinctly unusual Long-tailed Fantail, and Banda (or Black-breasted) Myzomela all showed well, and we even had multiple sightings of the local form of Greater Wallacean Drongo - a potential split. Yamdena certainly was the birdiest of all the islands that we visited. Lunchtime breaks back at the hotel also gave us a few chances to see what was around in Saumlaki Bay. The usual Australian Pelicans were present, as well as Common, White-winged and Whiskered Terns.



Wallace's Fruit Dove occurs on both the Tanimbar and the Kai Islands (Dave Williamson)

From Yamdena we flew to Tual on Kai Kecil, in the Kai Islands. On arrival at Langgur Dumatubun Airport, we hooked-up with our latest vehicle convoy and headed off for some introductory birding in the coastal forest at Ohoililur, in the north-west of the island. Working what forest clings on at the foot of the limestone escarpment we managed a good spread of specialities, with the highly localised Island Whistler most welcome of all. Varied Trillers were typically conspicuous, as was the local form of Greater Wallacean Drongo (a nailed-on future split), the rather shy White-tailed Monarch made its first of many appearances on Kai, as did the aberrant Golden-bellied (or Little Kai) White-eye and Mistletoebird. Our first Kai Coucal performed brilliantly, posing in the treetops. Offshore, 180 Little Pied Cormorants going to roost were impressive, and there were two male Great Frigatebirds. The next day was spent at a variety of locations on Kai Kecil, where we caught up with Yellow-capped Pygmy Parrot, Papuan Pitta (another of the recent splits

in the Red-bellied group), Grey-headed Whistler, and Australasian Figbird, as well as Pacific Baza, and some fly-by Channel-billed Cuckoos. At Danau Ngadi on neighbouring Kai Dullah, we enjoyed a nice pair of Spotted Whistling Ducks, Australasian Grebes and a Nankeen (or Rufous) Night Heron, as well as a family of White-tailed monarchs with an orange-breasted juvenile.

Before dawn on the following morning we were off by boat for a half-day trip to Kai Besar. This long, narrow island is the largest in the group and is still mostly clothed in untouched forest. At the jetty, we were met by our little mini-buses and, after cramming ourselves inside, we made the short journey along the islands tiny main road to Bukit Indah Mission, with its backdrop of beautifully forested hills. Walking along the access track, we soon encountered the islands' most well-known endemic, Pearl-bellied (or Great Kai) White-eye, which is common and easily seen. Once at the mission, we quickly headed up a narrow forest trail in order to reach the correct elevation for the islands' other endemic, Kai Leaf Warbler (split from Island). This year we had to get well above the 400m threshold before we heard our first warbler, but ended up with lengthy views of several individuals. The same area also brought us further views of White-tailed Monarch, and the interesting local form of Northern Fantail. Some tree-top feeding Red-flanked Lorikeets were a bonus. Carefully heading back down to the mission, we lingered for coffee and tea and then walked back to the main road. After lunch back at the jetty we returned to Kai Kecil, and then headed off in the afternoon to explore forest patches in the Ohoilur area. Good birding but little extra of note



Kai Coucal (Craig Robson)

We had one last morning of birding on Kai Kecil, before heading back to Ambon. Working some roadside forest edge at first light, it wasn't too long before the familiar hiccupping call of a Kai Cicadabird was picked-up, and we were able to get satisfying scope views of a male. Entering the forest we found a single Stephan's Dove, which was the only one of the tour.

From Kai it was another short flight back to Ambon. The afternoon was spent getting some much earned rest but, after dark, we drove a short distance along the coast and then took a speedboat to the neighbouring island of Haruku. We were visiting the village of Kailolo, which has one of the best known Moluccan Scrubfowl breeding grounds. It was another night of confusion and disappointment so we decided to have another go on the last day of the trip.

We spent the last few days of the tour on Seram, based at a well-situated coastal guest-house at Sawai, on the north coast. Built on stilts like a pier, it was surrounded by some impressive coral growth with its attendant rich variety of colourful fish and other sea creatures. The small village of Sawai is tucked into a sort of cove, and has traditionally suffered from poor access. So it was pleasing to see that some funds were finally being invested in improving the road to the village and nearby settlements, massively reducing our



Long-crested Mynas are usually paired (Craig Robson)

travel time and increasing comfort! Most of our birding was divided between the upper reaches of the Trans-Seram Highway - where it runs through the wonderful forests of the huge Manusela National Park - and lowland forest remnants to the east of Sawai. Clouds often build during the mornings here and then gather over the higher ground and produce rain showers and mist in the afternoons. With vehicles constantly at our disposal, we had maximum flexibility and were able to dodge the rain as best as possible. One of the primary species that the park was set up to protect is the endangered Salmon-crested Cockatoo, and we saw several of these beautiful and highly vocal birds, particularly along the higher points of the road. The striking Long-crested Myna made but two appearances, both in pairs. Several early mornings were begun at the highest point of the road (c.1270m). This is where we managed to get our views of several different pairs of Blue-eared Lorikeets, which are more frequently encountered at this particular point than the generally much commoner Red Lory and Coconut Lorikeet. Bird-waves were quite frequent, so we didn't have too much difficulty finding the highly distinctive endemic Grey-hooded White-eye, along with the commoner Seram Leaf Warblers, Seram and Mountain White-eyes (the latter form looking highly unlike that species), and Streak-breasted Fantails. Slightly lower in elevation, we had fantastic prolonged views of two Rufescent Darkeyes in another busy bird flock. Nearby, Cinnamon-chested Flycatcher was a leader-only. There were no obvious flowering trees around the summit, so Seram Honeyeater required a little more effort than expected, while Drab Myzomela could often be seen around the many ant-plants (Myrmecophytes). Inside the lovely mossy forest we had some pretty good views of Seram Bush Warbler, but unfortunately the recently split Seram Pitta was a distant and relatively brief heard-only. Seram Mountain Pigeon was seen well perched on a number of occasions, and regular scanning brought us multiple flight views of both Pygmy Eagle and the sneaky and diminutive Rufous-necked Sparrowhawk.

In the lowlands to the north of the mountains, we visited a couple of different areas. Tall dead trees provided valuable perching and nesting places for a variety of species. Highlights for us were several Eclectus Parrots



One of our boats for exploring the north Sera coast (Craig Robson)

and Lazuli Kingfishers, Blyth's Hornbill, Australian Hobby, Violet (or Seram) Crow, and Seram Oriole. As usual, our site for Seram (or Hantu) Boobook came up with the goods.....in the end!

On one morning we took boats down the Salawi River to the east of the guest-house at Sawai. Cruising slowly upstream, we passed several Australian White Ibises. As the river narrowed we finally found our main target, a group of 11 Spotted Whistling Ducks. Seram Imperial Pigeons were around as usual, and there was



Our Chinese Crested Tern near Pulau Lusaolate (Dave Williamson)

a nice selection of other species. A few of us were lucky enough to spot a Little Kingfisher as it darted from its perch and down a side-creek. We turned around and headed across a short stretch of ocean to the north-

east, to the remarkably tiny islet of Pulau Lusaolate. Approaching a nearby sandbank it was clear that a good number of Greater Crested Terns were roosting and, lo-and-behold, there was a single Chinese Crested Tern, standing out like a sore thumb! How exciting it was to see this critically endangered species again here, after our initial discovery four years earlier. After soaking it up, and making sure that there were no other birds present (just singles of Black-naped and Little Tern), we continued to Lusaolate itself. Even before we got out of the boat we had heard the bird that we had come here to see - the small-island-loving Olive Honeyeater - and we were to see at least eight in all. Quite how this small population survives on this isolated atoll is unclear, but evidently populations can survive at much lower levels than some authorities suggest, as these birds have been here since at least 1912. An excellent Beach Stone-curlew flew in and landed on the beach, and further scanning produced a rather large number of Brown Boobies and a couple of nice Pomarine Jaegers. Though with less epic birds on offer Pulau Sawai, which lies directly offshore from the village, also had much to offer, with a good selection of waterbirds that included Great-billed Heron, Far Eastern Curlew and Grey Plover.

Leaving Seram behind, and returning to Ambon, we once more made our way to jetty for a second assault on the megapodes of Haruku. We arrived well before nightfall, expecting to wait for darkness before the birds began to fly in. What we did not know, and what no-one had ever bothered to tell us, was that Moluccan Megapodes are present on the island all day long! Arriving at the site, we were amazed to find several birds scuttling and flapping about and, without too much effort, we coaxed a bird into full view for the entire group. What a result, and what a great finale to a superb tour.



Ewang Suli, Ambon (Craig Robson)

SYSTEMATIC LIST OF SPECIES RECORDED DURING THE TOUR

Species which were heard but not seen are indicated by the symbol (H).

Species which were not personally recorded by the leader are indicated by the symbol (NL).

Species marked with the diamond symbol (◊) are either endemic to the country or local region or considered 'special' birds for some other reason (e.g. it is only seen on one or two Birdquest tours; it is difficult to see across all or most of its range; the local form is endemic or restricted-range and may in future be treated as a full species).

Spotted Whistling Duck *Dendrocygna guttata* 2 at Danau Ngadi, Kai Dullah; 11 along the Salawi R, north Seram.



Spotted Whistling Ducks in the Kai Islands (Craig Robson)

- Moluccan Megapode (M Scrubfowl)** *Eulipoa wallacei* Brilliant views in the daytime at Kailolo, Haruku; 5+.
- Tanimbar Megapode (T Scrubfowl)** *Megapodius tenimberensis* Seen by all of us on Yamdena; c.4 birds in all.
- Forsten's Megapode (O-f Megapode)** *M. forstenii* Three different birds were seen on Buru (*buruensis*).
- Orange-footed Scrubfowl** *Megapodius reinwardt* (H) Several heard on Kai Besar.
- Streaked Shearwater** *Calonectris leucomelas* (NL) One was spotted from the Ambon to Seram ferry.
- Bulwer's Petrel** *Bulweria bulwerii* One distant bird off the north coast of Buru.
- Tricolored Grebe** *Tachybaptus tricolor* Scattered sightings. Split from Little Grebe *T. ruficollis*.
- Australasian Grebe (Black-throated Little G)** *T. novaehollandiae* 2 at Danau Ngadi, Kai Dullah.
- Australian White Ibis** *Threskiornis moluccus* About 9 in the Sawai area.
- Cinnamon Bittern** *Ixobrychus cinnamomeus* (NL) One was seen near the hotel on Buru.
- Nankeen Night Heron (Rufous N H)** *Nycticorax caledonicus* Just one at Danau Ngadi, Kai Dullah.
- Striated Heron (Little H)** *Butorides striatus* Three in coastal Seram.
- Eastern Cattle Egret** *Bubulcus coromandus*
- Great-billed Heron** *Ardea sumatrana* A single bird on mud- and sandflats at Pulau Sawai, Seram.
- Purple Heron** *Ardea purpurea* Three on Buru.
- Eastern Great Egret** *Ardea alba*
- Intermediate Egret** *Egretta intermedia* Small numbers in Saumlaki Bay.
- Little Egret** *Egretta garzetta* Mostly nigripes, but a migrant garzetta at Ewang Suli, Ambon.
- Pacific Reef Heron (P R Egret)** *Egretta sacra*
- Australian Pelican** *Pelecanus conspicillatus* 4-5 in Saumlaki Bay, and 2 at Ohoililur Beach, Kai Kecil.
- Great Frigatebird** *Fregata minor* Two males on Kai Kecil.
- Lesser Frigatebird** *Fregata ariel* Widely recorded, with a day high of 71 off the north coast of Buru.
- Little Black Cormorant** *Phalacrocorax sulcirostris* Widespread sightings, including 180 at Ohoililur, Kai Kecil.

Little Pied Cormorant *Phalacrocorax melanoleucos* Less common than the previous species.

Australasian Darter *Phalacrocorax novaehollandiae* Five at Danau Sawah, Buru.

Red-footed Booby *Sula sula* (NL) Mike saw one off the north coast of Buru.

Brown Booby *Sula leucogaster* Widespread, with a high of 40 off Pulau Lusaolate.

Eastern Osprey *Pandion cristatus* Two at Bara, singles in Saumlaki Bay and en route to Kai Besar..

Pacific Baza *Aviceda subcristata* One on Ambon (*reinwardtii*), and three on Kai Kecil (*pallida*).

Black Eagle *Ictinaetus malayensis* Common in the highlands of Buru and Seram.

Pygmy Eagle *Hieraeetus weiskei* Two seen separately along the higher levels of the Trans-Seram Highway.

Rensch's Eagle *Aquila [fasciata] renschi* Two on Yamdena.

Variable Goshawk *Accipiter hiogaster* Frequent on Yamdena (*polionotus*), and in the Kai Islands (*albiventris*).

Rufous-necked Sparrowhawk *Accipiter erythrauchen* Two sightings on Seram (*ceramensis*).

Brahminy Kite *Haliastur indus*

White-bellied Sea Eagle *Haliaeetus leucogaster* One in Saumlaki Bay.

Pale-vented Bush-hen (Rufous-tailed B-h) *Amaurornis moluccana* (H) Throughout, but no luck when we tried for it.

White-breasted Waterhen *Amaurornis phoenicurus* Two along Salawi River, N Seram. Distinctive *leucomelanus*.

White-browed Crake *Porzana cinerea* Four on a small pool north of Lorulun, Yamdena.

Common Moorhen *Gallinula chloropus* One on a small pool north of Lorulun, Yamdena.



Chinese Crested Tern, with Greater Crested and Black-naped Terns, off north Seram (Craig Robson)

Beach Stone-curlew (B Thick-knee) *Esacus neglectus* One at Pulau Lusaolate.

Pacific Golden Plover *Pluvialis fulva* Seven at Ewang Suli, Ambon.

Grey Plover (Black-bellied P) *Pluvialis squatarola* Four on Pulau Sawai, Seram.

Greater Sand Plover *Charadrius leschenaultii* 1 at Wai Lala, Buru, 5 identified in Saumlaki Bay & 2 on Pulau Sawai.

Greater Painted-snipe *Rostratula benghalensis* Two males and a female at Ewang Suli.

Common Snipe *Gallinago gallinago* One at Ewang Suli.

Little Curlew *Numenius minutus* One tame individual at Ewang Suli.

Eurasian Whimbrel *Numenius phaeopus*

Far Eastern Curlew *Numenius madagascariensis* 6 at Pulau Sawai, north Seram, which is evidently a wintering site.

Marsh Sandpiper *Tringa stagnatilis* Two with the next species at Ewang Suli.

Common Greenshank *Tringa nebularia*

Wood Sandpiper *Tringa glareola*

Common Sandpiper *Actitis hypoleucos*

Grey-tailed Tattler *Heteroscelus brevipes* Small numbers at scattered sites.

Red-necked Phalarope *Phalaropus lobatus* Much smaller numbers this year, than in 2012.

Beach Stone-curlew (B Thick-knee) *Esacus neglectus* One at Pulau Lusaolate was a surprise.

Oriental Pratincole *Glareola maldivarum* Just two at Saumlaki Airport, Yamdena.

Greater Crested Tern *Sterna bergii* Common, with a high count of 200 at Pulau Lusaolate, north Seram.

Lesser Crested Tern *Sterna bengalensis* One off Ohoilur Beach, Kai Kecil.

Chinese Crested Tern *Sterna bernsteini* A single wintering individual at Pulau Lusaolate, N Seram.

Little Tern *Sterna albifrons* One off the north coast of Seram.

Black-naped Tern *Sterna sumatrana* A single bird off the north coast of Seram.

Common Tern *Sterna hirundo* A single bird off the north coast of Buru, and at least 8 in Saumlaki Bay.

Whiskered Tern *Chlidonias hybridus* At least 7 in Saumlaki Bay.

White-winged Black Tern (W-w Tern) *Chlidonias leucopterus* 25 off Bara, Buru, and at least 6 in Saumlaki Bay.

Pomarine Jaeger (P Skua) *Stercorarius pomarinus* Two around Pulau Lusaolate, chasing Greater Crested Terns.



An amazingly confiding Great Cuckoo-Dove on Seram (Dave Williamson)

Rock Pigeon (R Dove, Feral P) *Columba livia* Noted on Ambon, Kai and Seram.

White-throated Pigeon *Columba vitiensis* Singles on Buru and Seram (*halmaheira*).

Spotted Dove *Streptopelia chinensis* 3 on Buru & 2 on Kai Kecil. Thought to have been introduced on these islands.

Slender-billed Cuckoo-Dove (Brown C-D) *Macropygia amboinensis* Nominate race throughout but *keyensis* on Kai.

Bar-necked Cuckoo-Dove (Barred-n C-D) *M. magna* Quite common on Yamdena (*timorlaensis*).

Great Cuckoo-Dove *Reinwardtoena reinwardti* Four seen on Seram (nominate).

Common Emerald Dove (Emerald D) *Chalcophaps indica* Ambon and Buru.

Pacific Emerald Dove (Green-winged Pigeon) *C. longirostris* Yamdena and Kai Kecil.

Stephan's Emerald Dove (S Dove) *Chalcophaps stephani* A couple of singing birds on Kai Kecil.

Barred Dove *Geopelia maugei* A few of these Wallacean endemics on Yamdena and Kai Kecil.

Buru Green Pigeon *Treron aromatica* Six of these scarce Buru endemics in fig trees at Bara.

Wallace's Fruit Dove *Ptilinopus wallacii* Good numbers of this attractive dove on Yamdena and Kai Kecil.

Superb Fruit Dove *Ptilinopus superbis* Just one identified on Seram.

Rose-crowned Fruit Dove *P. regina* Grey-hooded *xanthogaster* on Yamdena - surely a future split.

White-bibbed Fruit Dove (White-breasted F D) *Ptilinopus rivoli* A few on Buru, Kai and Seram (*prassinorrhous*).

Claret-breasted Fruit Dove *Ptilinopus viridis* Frequent on Buru, Ambon and Seram (*viridis*).
Spectacled Imperial Pigeon (Buru I P) *Ducula perspicillata* Some good views on Buru.
Seram Imperial Pigeon *Ducula neglecta* Easily seen on Ambon and Seram. Split from the previous species.
Elegant Imperial Pigeon (Yellow-eyed I P) *Ducula concinna* Common on Yamdena and also the Kai Is.
Pink-headed Imperial Pigeon *Ducula rosacea* Fairly good numbers on Yamdena, and one or two on Kai Kecil.
Pied Imperial Pigeon *Ducula bicolor* Widely recorded throughout. All '*bicolor*'.
Buru Mountain Pigeon *Gymnophaps mada* Common this year with around 40 logged.
Seram Mountain Pigeon *Gymnophaps stalkerii* Also common, with around 55 logged.



Spectacled Imperial Pigeon (Craig Robson)

Lesser Coucal *Centropus bengalensis*
Kai Coucal *Centropus spilopterus* Some very nice observations of this vocal endemic.
Asian Koel (Common K) *Eudynamis scolopacea* (H) Seram lowlands (Sawai), where said to be resident *orientalis*.
Pacific Koel (Australian K) *Eudynamis orientalis* Small numbers on Buru, Yamdena, and the Kai Is.
Channel-billed Cuckoo *Scythrops novaehollandiae* Two shot by at Letfuan, Kai Kecil.
Pied Bronze Cuckoo *Chrysococcyx crassirostris* Up to six on Yamdena.
Brush Cuckoo *Cacomantis variolosus* Frequently recorded on Yamdena (? subspecies), and the Kai Is (*infaustus*).
Moluccan Cuckoo *Cacomantis heinrichi* Quite common on Buru, Ambon and Seram.
Oriental Cuckoo *Cuculus optatus* (NL) One sighting on Seram.
Moluccan Masked Owl (Lesser M O) *Tyto sororcula* Great looks at one near Bara, north-west Buru (*cayelii*).
Moluccan Scops Owl *Otus magicus* Often heard on Buru and Seram; one glided over on Haruku (*magicus*).
Buru Boobook *Ninox hantu* Excellent views of five. Very confiding this time. Totally different calls to the next two sp.
Seram Boobook *Ninox squamipila* After much work & frustration, good looks at a couple near Sawai.
Tanimbar Boobook *Ninox forbesi* Commonly heard on Yamdena, with four seen incredibly well.
Large-tailed Nightjar *Caprimulgus macrurus* Many on Buru; several flushed on Seram! Wallacea-wide *schlegelii*.
Moustached Treeswift *Hemiprocne mystacea*
Glossy Swiftlet *Collocalia esculenta*
Seram Swiftlet *Aerodramus ceramensis* On Ambon, Buru & Seram. Split from Moluccan *C. infuscatus*.
Uniform Swiftlet *Aerodramus vanikorensis* Seen on Ambon and the Kai Is (*moluccarum*).
White-throated Needletail *Hirundapus caudacutus* 5 in upland Buru; 3 near Lorulun, Yamdena, 1 on Kai Kecil.
Oriental Dollarbird (Common D) *Eurystomus orientalis* A few resident *pacificus* on Yamdena and Kai Kecil.

Common Paradise Kingfisher *Tanysiptera galatea* (H) Two called above Ewang Tulahu, Ambon.
Lazuli Kingfisher *Halcyon lazuli* One seen and one heard on Ambon, five seen on Seram.
Collared Kingfisher *Halcyon chloris* Frequently recorded throughout (nominate).
Common Kingfisher *Alcedo atthis* (NL) One was noted at the Baguala Bay Resort, Ambon.
Buru Dwarf Kingfisher *Ceyx cajeli* What a stunner. A pair in the Buru highlands. See notes at end.
Little Kingfisher *Ceyx pusillus* 1 fleetingly at Bukit Indah Mission, Kai Besar & 1 along Salawi R, N Seram (*pusillus*).
Blyth's Hornbill *Rhyticeros plicatus* Throughout Seram (nominate race).
Spotted Kestrel *Falco moluccensis* Many sightings on Buru, Yamdena & Seram (*moluccensis*).
Australian Hobby *Falco longipennis* One at Wae Sapalewa, north Seram.
Peregrine Falcon *Falco peregrinus* 2 Buru (resident form, *ernesti*?); 1 Ohoililur, Kai Kecil; 1 Pulau Lusaolate.
Tanimbar Corella *Cacatua goffini* Easy on Yamdena (c.40 logged). Two introduced individuals on Kai Kecil.
Salmon-crested Cockatoo (Seram C) *Cacatua moluccensis* 6 seen and others heard on Seram. Superb.
Yellow-capped Pygmy Parrot *Micropsitta keiensis* Great views at multiple sites on Kai Kecil; at least 14 seen.



Yellow-capped Pygmy Parrots (Craig Robson)

Red Lory (Moluccan R L) *Eos bornea* Common Buru (*cyanothous*). Common Seram & 4 Kai Kecil (nominate).
Blue-streaked Lory *Eos reticulata* Still common on Yamdena.
Blue-eared Lory *Eos semilarvata* 12 of these rare lorries noted in pairs near the top of the Trans-Seram Highway.
Coconut Lorikeet (Rainbow L) *Trichoglossus haematodus* 50 logged on Buru, 65 on Seram (nominate).
Purple-naped Lory *Lorius domicella* Much invested effort with a calling pair only resulted in a leader-only glimpse!
Blue-fronted Lorikeet *Charmosyna toxopei* At least two initially, and a single 2 days later, in the same tree on Buru.
Red-flanked Lorikeet *Charmosyna placentis* Perched and flight views of 10 on the Kai Is & 4 on Seram (*placentis*).
Red-cheeked Parrot *Geoffroyus geoffroyi* Buru, Ambon, Seram (*rhodops*); Yamdena (*timorlaoensis*); Kai (*keyensis*).
Buru Racquet-tail (B Racket-t) *Prioniturus mada* Frequent on Buru, with around 40 birds logged.
Great-billed Parrot *T. megalorhynchus* 7 on Buru (*affinis*) and 4 on Yamdena (*subaffinis*).
Eclectus Parrot *Eclectus roratus* 2 on Buru & 7 on Seram (*roratus*); 1 on Yamdena (*riedeli*); 6 on Kai (*polychloros*).
Moluccan King Parrot *Alisterus amboinensis* 20+ on Buru (*buruensis*), and 2 on Seram (*amboinensis*).
Buru Pitta *Erythropitta rubrinucha* 1 seen well twice, and many heard. Split with the next 2 species from Red-bellied.
Seram Pitta *E. piroensis* (H) Calling very distantly on one morning, above the Trans-Seram Highway (1300m).

Papuan Pitta *E. macklotii* Easily seen well, and also heard on Kai Kecil.

Elegant Pitta *Pitta elegans* (H) Tough this year. 1 at Bara, NW Buru (*elegans*), 2 Yamdena & 3 Kai Kecil (*vigorsii*).



Papuan Pitta on Kai Kecil (Craig Robson)

Drab Myzomela (D Honeyeater) *Lichmera blasii* Occasional on Seram.

Banda Myzomela (Black-breasted M) *M. boiei* Regular on Yamdena. Endemic to Tanimbar, Babar & the Banda Is.

Wakolo Myzomela *Myzomela wakoloensis* Seen at high levels on Buru (*wakoloensis*) and Seram (*elisabethae*).

Olive Honeyeater *Lichmera argenteauris* Around 8 of these range-restricted honeyeaters on P. Lusaolate, Seram.

Scaly-breasted Honeyeater *L. squamata* Common on Yamdena. Endemic to SE Moluccas & E Lesser Sundas.

Buru Honeyeater *Lichmera deningeri* Easy this year in the Buru, with 50-60 logged. Plenty of tasty flowers!

Seram Honeyeater *Lichmera monticola* At high-elevation along the Trans-Seram Highway; only 2 this year.

Seram Friarbird *Philemon subcorniculatus*

Black-faced Friarbird (Buru F) *Philemon moluccensis* One of the commonest Buru endemics.

Tanimbar Friarbird *Philemon plumigenis* A common endemic of the Tanimbar and Kai Is.

Rufous-sided Gerygone (R-s Fairy Warbler) *Gerygone dorsalis* Small numbers on Yamdena (nominate).

White-breasted Woodswallow *Artamus leucorhynchus* *A. l. musschenbroeki* on Yamdena, nominate elsewhere.

Wallacean Cuckooshrike *Coracina personata* *5 unimodus* on Yamdena & *3 pollens* on Kai. Distinct dark forms.

Buru Cuckooshrike *Coracina fortis* Six at the higher levels on Buru. A rather uncommon endemic.

Moluccan Cuckooshrike *Coracina atriceps* (NL) A few in the Seram lowlands (*atriceps*).

Kai Cicadabird *Coracina dispar* Three fleetingly on Yamdena, then a nice male on Kai Kecil.

Common Cicadabird *Coracina tenuirostris* A female on Buru – where previously unrecorded?

Pale Cicadabird *Coracina ceramensis* Seen on Buru & Seram (*ceramensis*). Endemic to here, plus Boano & Obi.

White-browed Triller (Tanimbar T) *Lalage moesta* Frequent on Yamdena.

Varied Triller *Lalage leucomela* Common and conspicuous on the Kai Is.

Island Whistler *Pachycephala phaionotus* Scarce, with just three seen in forest near Ohoililur Beach, Kai Kecil.

Grey-headed Whistler *Pachycephala griseiceps* Seven in bird flocks on Kai Kecil (*rufipennis*).

Yellow-throated Whistler *P. macrorhyncha* 25 Buru (*buruensis*); 2 Yamdena (*fuscoflava*); 3 Seram (nominate).

Wallacean Whistler *Pachycephala arctitorquis* Fairly common on Yamdena (*arctitorquis*), with some nice males.

Drab Whistler *Pachycephala griseonota* Very common on Buru (*examinata*), but less so on Seram (nominate).

Australasian Figbird (Green F) *Sphecotheres vieilloti* 10 on Kai Kecil. Great views.

Tanimbar Oriole *Oriolus decipiens* Several on Yamdena. The other part of the two-way Black-eared Oriole split.

Grey-collared Oriole (Seram O) *Oriolus forsteni* Just two seen well, along the Trans-Seram Highway.

Black-eared Oriole (Buru O) *Oriolus bouroensis* Frequent on Buru.

Greater Wallacean Drongo *Dicrurus densus* 3 on Yamdena (*kuehni*); common on Kai (*megalornis*). Potential splits.

Seram Drongo *Dicrurus amboinensis* 3 on Ambon and 4 on Seram. Split from Spangled Drongo *D. bracteatus*.
Buru Drongo *Dicrurus buruensis* Occasional sightings. Also split from Spangled.
Willie Wagtail *Rhipidura leucophrys* Quite common in coastal lowlands of Buru, Ambon and Seram (*melaleuca*).
Cinnamon-tailed Fantail *Rhipidura fusciorufa* Common on Yamdena. Endemic to the Tanimbar Is & Babar.
Northern Fantail *Rhipidura rufiventris* 3 distinct races: Buru (*bouruensis*), Ambon-Seram (*cinerea*), Kai Is (*assimilis*).
Streak-breasted Fantail (Streaky-b F) *Rhipidura dedemi* This neat Seram endemic was fairly common.
Tawny-backed Fantail *Rhipidura dedemi* Endemic to the Buru highlands. Frequent and seen well.
Long-tailed Fantail *Rhipidura opistherythra* An unusual Tanimbar endemic; seen well inside the forest.
Arafura Fantail *Rhipidura dryas* Common on Yamdena (*hamadryas*).



Cinnamon-tailed Fantail is one of the commoner Tanimbar endemics (Craig Robson)

Black-bibbed Monarch *Monarcha mundus* Secretive; 10 on Yamdena. Endemic to Tanimbar, Damar, Babar.
Spectacled Monarch *Monarcha trivirgatus* 1 on Buru (*nigrimentum?*); 2 on Ambon and 2 on Seram (*nigrimentum*).
White-tailed Monarch *Monarcha leucurus* This beautiful Kai endemic was tolerably common, with 15 noted. 1 Juv.
Black-tipped Monarch *Monarcha loricatus* Frequent in the Buru lowlands; up to 1270m elevation.
Island Monarch *Monarcha cinerascens* Widespread sightings of this small island monarch (nominate).
White-naped Monarch *Carterornis pileatus* Some good views on Buru (*buruensis*).
Loetoe Monarch *Carterornis castus* Fairly common on Yamdena. A split from White-naped *M. pileatus*.
Moluccan Flycatcher (Slaty F) *Myiagra galeata* Seen on Buru (*buruensis*), and Ambon (*goramensis*).
Broad-billed Flycatcher (B-b Monarch) *Myiagra ruficollis* Two on Yamdena (*fulviventris*).
Violet Crow (Seram C) *Corvus violaceus* Seen well on Seram. Totally distinct from Slender-billed *C. enca*.
Tanimbar Crow *Corvus latirostris* This split from Torresian Crow *C. orru* was only seen once on Yamdena (pair).
Golden-bellied Flyrobin (G-b Flycatcher) *Microeca hemixantha* Common on Yamdena.
Sooty-headed Bulbul *Pycnonotus aurigaster* (Introduced) Two on Ambon. The nominate race of Java & Bali?
Seram Golden Bulbul *Ixos affinis* Frequently seen on Seram (*affinis*).
Buru Golden Bulbul *Ixos mysticalis* Common on Buru.
Barn Swallow *Hirundo rustica* A few on Buru, Ambon, Yamdena and Kai.
Pacific Swallow *Hirundo tahitica*
Mountain Tailorbird *Phyllergates cuculatus* Buru & Seram (*dumasi*). A warbler, not a tailorbird.

Tanimbar Bush Warbler *Cettia carolinae* Several seen well on Yamdena; others heard. Only discovered in 1985.

Arctic Warbler *Phylloscopus borealis* Small numbers wintering on Buru and Ambon.

Buru Leaf Warbler *Phylloscopus everetti* Common at the highest levels along the Wamlana Logging Road, Buru.

Seram Leaf Warbler *Phylloscopus ceramensis* Common along the higher levels of the Trans-Seram Highway.

Kai Leaf Warbler *Phylloscopus avicola* 4 on Kai Besar (c.460m). Very distinctive & not remotely like next 2 species.

Buru Bush Warbler *Locustella disturbans* 3 seen & others heard. Split from Chestnut-backed *L. castaneus*.

Seram Bush Warbler *Locustella ceramensis* One pretty good sighting. Split from Chestnut-backed *L. castaneus*.

Gray's Grasshopper Warbler (G's Warbler) *Locustella fasciolata* 3 Buru; 1 Kai Besar; 1 Pulau Sawai, N Seram.

Tawny Grassbird *Megalurus timoriensis* Several on Yamdena. Apparently an undescribed form with some potential.

Golden-headed Cisticola *Cisticola exilis* Buru & Ambon (*rustica*). Vocally distinct compared with mainland Asia.

Rufescent Darkeye *Tephrozosterops stalker* Great prolonged views of 2 in a bird-wave on Seram. So distinct.

Grey-hooded White-eye (G-h Dark-e) *Lophozosterops pinaiae* 5 of these unusual endemics, high up on Seram.

Mountain White-eye *Zosterops montanus* Higher up on Buru (*montanus*), and Seram (*obstinatus*).

Ashy-bellied White-eye *Zosterops citrinellus* Relatively small numbers on Yamdena (*albiventris*).

Pearl-bellied White-eye (Great Kai W-e) *Zosterops grayi* 10 on Kai Besar, to which it is endemic.

Golden-bellied White-eye (Little Kai W-e) *Zosterops uropygialis* Common on Kai Kecil, with 40 logged.

Seram White-eye *Zosterops stalker* Uncommon on Seram. Formerly lumped in Black-fronted *Z. atrifrons*.

Buru White-eye *Zosterops buruensis* This Buru endemic was pretty common.

Ambon White-eye *Zosterops kuehni* 10 at two sites on Ambon.

Metallic Starling *Aplonis metallica* Seen on Ambon, Buru, the Kai Is, and Seram (*metallica*).

Tanimbar Starling *Aplonis crassa* This unremarkable Tanimbar endemic was quite common.

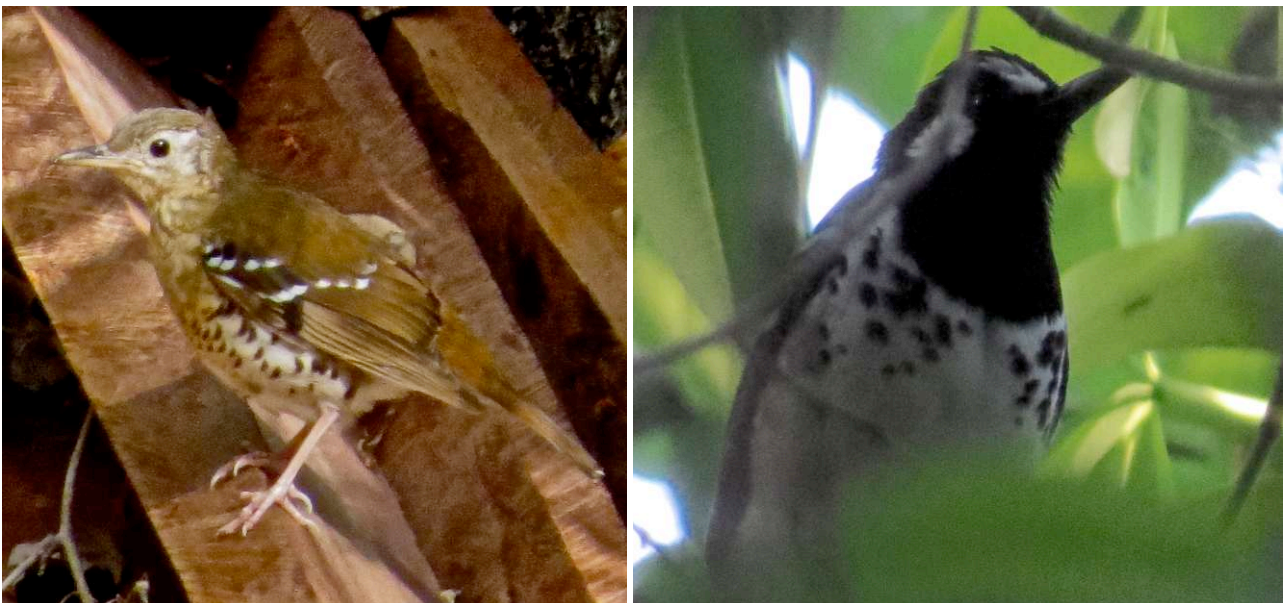
Moluccan Starling *Aplonis mysolensis* Only small numbers on Buru and Seram (*mysolensis*).

Long-crested Myna *Basilornis corythaix* This amazing endemic was seen well on two occasions on Seram.

Slaty-backed Thrush *Geokichla schistacea* This endemic was seen well and commonly heard on Yamdena.

Buru Thrush *Geokichla dumasi* Three seen and many heard in the Buru uplands. Much more confiding this time.

Fawn-breasted Thrush *Zoothera machiki* Another good year for this Tanimbar endemic. 10-15 seen, some well.



Fawn-breasted and Slaty-backed Thrushes on a Yamdena (Craig Robson)

Grey-streaked Flycatcher *Muscicapa griseisticta* Visitor from east Asia, seen on Buru, Ambon, Yamdena & Seram.

Turquoise Flycatcher (Island Verditer F) *Eumyias panayensis* Just a few endemic *harterti* higher up on Seram.

Streak-breasted Jungle Flycatcher (Streaky-b J-F) *Eumyias additus* A Buru endemic, seen really well.

Tanimbar Flycatcher *Ficedula riedeli* Three in forest understory on Yamdena. Hard work this year.

Snowy-browed Flycatcher *Ficedula hyperythra* Quite common higher up on Buru (*negroides*).

Cinnamon-chested Flycatcher *Ficedula buruensis* 1 Buru (n nominate); 1 Seram (*ceramensis*). S Moluccan endemic.

Little Pied Flycatcher *Ficedula westermanni* Seven logged on Buru. Not listed for the island by Coates & Bishop.

Flame-breasted Flowerpecker (Buru F) *Dicaeum erythrorhax* Common on Buru.

Ashy Flowerpecker *D. vulneratum* Regular on Ambon & Seram. 1 dependant fledged juvenile, Seram 25 November.

Mistletoebird *Dicaeum hirundinaceum* Fairly common on Yamdena (*fulgidum*) and the Kai Is (*keiense*).

Black Sunbird *Leptocoma aspasia* *L. a. proserpina* on Buru, *aspasioides* on Ambon & Seram, & *chlorolaema* on Kai.

Black-breasted Sunbird *Cynniris clementiae* Buru (*buruensis*); Ambon & Seram (*clementiae*); Kai Is. (*keiensis*).

Eurasian Tree Sparrow (Tree S) *Passer montanus*

Tricoloured Parrotfinch *Erythrura tricolor* Three on Yamdena were a nice surprise.

Black-faced Munia *Lonchura molucca* Reasonable numbers on Buru, Ambon and the Kai Is. (*vagans*).

Scaly-breasted Munia *Lonchura punctulata* Occasional on Yamdena (*nisoria*).

Five-coloured Munia *Lonchura quinticolor* Eight on Yamdena.

Chestnut Munia *Lonchura atricapilla* On Buru, and Ambon (300 at Ewang Suli). *L. a. brunniceps* or *jagori*?

Manchurian Wagtail (Alaska W) *Motacilla [t.] tshutschensis* Positively identified on Ambon.

Green-headed Wagtail (Yellow-browed W) *Motacilla [t.] taivana* Two singles on Ambon.

Grey Wagtail *Motacilla cinerea* Surprisingly common on Buru, Ambon and Seram.

MAMMALS

Brown Rat *Rattus norvegicus* (Introduced) Occasional on Buru, Ambon, and Yamdena.

Asian Palm Civet (Common P C) *Paradoxurus hermaphroditus* (Introduced) Three sightings on Buru.

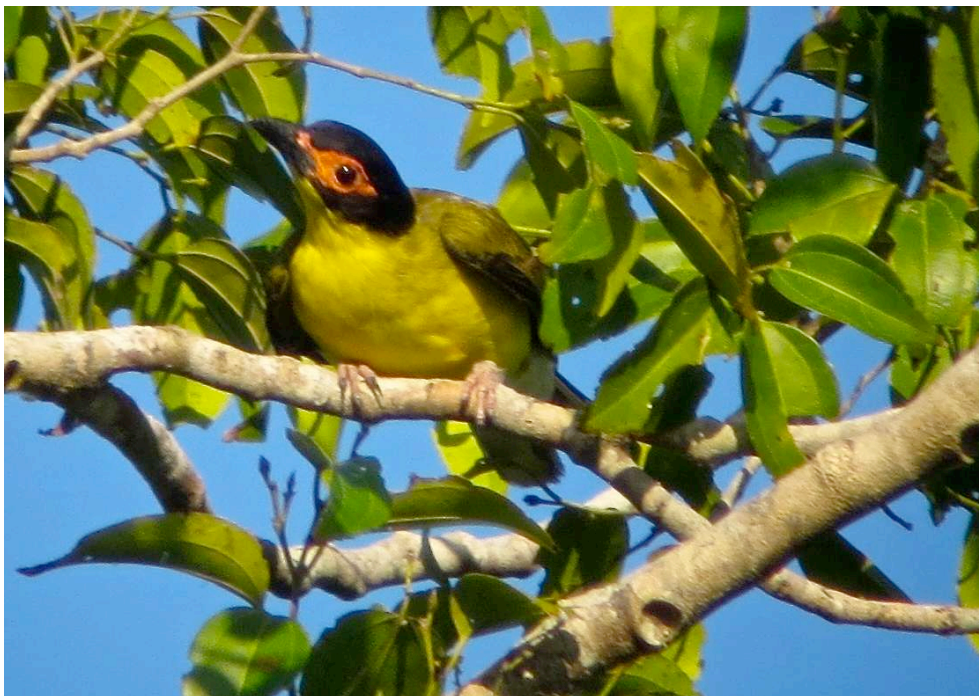
Black-bearded Flying Fox *Pteropus melanopogon* Frequently seen throughout.

Eurasian Wild Boar (Wild B, Indian W B) *Sus scrofa* (Introduced) Two sightings on Buru.

Indo-Pacific Bottle-nosed Dolphin *Tursiops aduncus* 20 noted during the Ambon-Seram ferry journey.

Spinner Dolphin *Stenella longirostris* 40 noted during the Ambon-Seram ferry journey.

Short-finned Pilot Whale *Globicephala macrorhynchus* Over 30 off the north coast of Buru.



Australasian Figbird on Kai Kecil (Craig Robson)

NOTES TO THE SYSTEMATIC LIST

Tricolored Grebe *Tachybaptus tricolor*

Coates & Bishop lump this distinctive regional form in Little (or Red-throated Little) Grebe *T. ruficollis*.

Rensch's Eagle *Aquila [fasciata] renschi*

Coates & Bishop lump this distinctive regional form in Bonelli's Eagle *Hieraetus fasciatus*. *Aquila fasciata* is the accepted scientific name now for Bonelli's.

White-throated Pigeon *Columba vitiensis*

Some authorities lump this form in Metallic Pigeon *C. metallica*, retaining the same specific name for the enlarged species.

Buru Dwarf Kingfisher *Ceyx cajeli*

The HBW/BirdLife International World Checklist splits this distinctive endemic form, following the splitting-up of the former Variable Dwarf Kingfisher *C. lepidus*.

Spectacled Monarch *Monarcha trivirgatus*

Not listed for Buru by Coates & Bishop.

APPENDIX 1

TOP 5 BIRDS OF THE TOUR

1st	Blue-fronted Lorikeet	17 points
2nd	Salmon-crested Cockatoo	16 points
3rd	Moluccan Scrubfowl	15 points
4th	Moluccan Masked Owl	13 points
5th	Rufescent Darkeye	08 points

APPENDIX 2 - Other fauna & flora recorded

REPTILES

'Yamdena' Water Dragon *Lophognathus maculilabris* An agamid lizard seen by some of us on Yamdena.

Tockay Gecko *Gekko gekko* (H) Heard on Yamdena.

Flat-tailed Gecko *Cosymburus platyrurus*

Asian House Gecko *Hemidactylus frenatus* This and the last species are the two common house geckos.

Saltwater Crocodile *Crocodylus porosus* One in the middle of Danau Sawah, Buru!



'Yamdena' Water Dragon *Lophognathus maculilabris* (Craig Robson)

BUTTERFLIES

- Blue Triangle (Common Bluebottle) *Graphium sarpedon*** Buru, Ambon & Seram (arhedon), & Kai Is (choredon).
Ulysses Swallowtail *Papilio ulysses* Brilliant huge black and electric blue butterfly on Ambon & Seram (nominate).
Oblong-spotted Birdwing *Troides oblongomaculatus* Big black & yellow birdwing on Seram (nominate).
Buru Opalescent Birdwing *Troides prattorum* Spectacular black & yellow birdwing on Buru - to which it is endemic.
Common Green Birdwing *Ornithoptera priamus* Seram at least. Females are mainly black and white.
'Buru' Jezebel *Delia buruana* Feeding on flowering trees, Buru.
Jezebel sp. *Delia caeneus* Feeding on flowering trees, Buru.
Psyche *Leptosia nina* Yamdena.
Orange Bush-brown *Mycalesis terminus* Common on Seram (remulia).
'Urania' Owl *Taenaris urania* Buru (hollandi).
Red Lacewing *Cethosia cydippe* Buru (iphigenia).
Eight-spot Diadem *Hypolimnas pandarus* Black, white & orange beauty; Wamlana Logging Road, Buru (pandora).
Moluccan Constable *Dichorragia ninus* Seram.
Lurcher *Yoma sabina* Buru (sabina).
Chocolate Argus (C Soldier, Brown S) *Junonia hedonia* Kai Kecil (zelima).
Striped Tiger (Orange Tiger) *Danaus genutia* Yamdena (laratensis) at least.
Climena Crow *Euploea climena* Widespread.
Rice Paper Butterfly ('Moluccan' Tree Nymph) *Idea idea* This beauty was seen on Ambon and Seram (nominate).
Jewel sp. *Hypochrysops polycletus* On the Trans-Seram Highway.



Jewel sp. Hypochrysops polycletus (Craig Robson)

MOTHS

- Uraniid moth sp. *Alcides orontes*** An amazing blue day-flying moth on Buru. Like a huge swallowtail butterfly.
'Moluccan' Swallowtail Moth *Lyssa patroclus* Photographed on Buru.
Convolvulus Hawk Moth *Agrius convolvuli* One on Yamdena. Dave photographed it.

DRAGONFLIES

Ramburi Red Parasol (Red Pondhawk) *Neurothemis ramburii* Widespread.

Common Redbolt *Rhodothemis rufa* Ambon.



Common Redbolt on Ambon (Dave Williamson)

BEETLES

Schoenherr's Blue Weevil *Eupholus schoenherrii* This amazing turquoise weevil was seen on the Kai Islands.



tiger beetle on Seram (Dave Williamson)

PLANTS

Pitcher-plant *Nepenthes cf. mirabilis* Frequent at higher levels of the Wamlana Logging Road, Buru.



Nepenthes cf. mirabilis, Buru (Craig Robson)