

New products and fair highlights 2024.

Innovations for the lighting industry.



technology for light



SMD PCB terminals



SMD Pico Terminal Block - 46.110

Pico - our most compact and flattest terminal block in the range, continues to offer a wide range of connection options. Ideal for the direct connection of solid and fine-stranded, tinned wires. Thanks to its contact opening function, finely stranded wires can also be connected without any problems.

Just like our other product families in the field of SMD PCB terminal blocks, the Pico is characterized by easy handling and guarantees a permanently secure connection for the electrical contacting of PCBs.

The benefits are

- Wide range of connection options in the smallest possible installation space for different conductor types (0.2 - 0.75 mm², AWG 24 - 18)
- Direct insertion of rigid and fine-tinned conductors, with contact opening function for fine-stranded conductors
- Easy handling thanks to integrated insertion channel

- Extremely flat design (only 2.7 mm high) minimizes shadowing despite positioning close to the LED
- Optimized tape-and-reel packaging for twice the number of clamps per reel compared to the competition, reducing waste and enabling more efficient transport and set-up.
- Ensures a permanently secure connection for the electrical contacting of printed circuit boards

For standard applications, we recommend our all-rounder, the SMD terminal block Mini Flex (46.131 / 46.132). This is available in 1- and 2-pole versions and offers an insulating housing with additional benefits, such as larger conductor entries for automatic wiring, with the same scope of performance.

OptiSquare optics



OptiSquare 2x2 Optics for Highbay, Street- and Area Lighting - 35.104

Discover our product family of 2x2 optics for street, area and Highbay lighting. These are characterized by their outstanding efficiency, uniform light distribution and minimal glare. With a compact form factor of 50 x 50 mm, they are ideal for use with LED boards in accordance with Zhaga Book 15. Our optics offer various light distribution options according to IESNA standards as well as classic options for area lighting.

The benefits are

- Specially developed for LED modules Philips Fortimo Fast Flex DA HE and DA G5
- Compatible with 5050 LEDs and HP LEDs, suitable for all Zhaga Book 15 boards
- High optical efficiency with minimal glare
- Fast and efficient installation thanks to screw fixing
- Designed for solutions with a focus on high performance
- Large and constantly growing portfolio

Receptacle - the basis for outdoor light sensors



Zhaga Book 18 Receptacle - 47.121 / 47.921

This electromechanical interface in accordance to Zhaga Book 18 is a practical solution for connecting an outdoor LED light to a sensor or communication module. The connectivity-system consists of different components from the connection socket to the sensor base plate and the matching cover in various heights and represents the ideal basis for the use of smart city solutions. The design is optimized for outdoor applications, very compact and equipped with IP66 seals. It can be used to position sensors at the top, bottom or side of the luminaire.

The benefits are

- Fast mounting
- Compact design for flexible mounting position in luminaire housing
- Available with cover cap or various cover hoods to IP66 standard
- Approved and certified according to VDE DIN EN 61984
- Zhaga-compliant

GH36d - creates interchangeability for COBs

NEW



GH36d Lamp holders and components for spot & downlight applications - 32.920 / 28.720

The GH36d system introduces the concept of interchangeability to the world of spotlight and downlight applications. This IEC-standardized system consists of two main components: the lampholder and the lamp. The lampholders are approved by VDE in accordance with DIN EN 60838.

In this case, interchangeability means maintaining serviceability and upgradeability, the possibility of „late stage finishing“ and extending the service life of the luminaire.

The benefits are

- Use of the latest COBs possible
- Final configuration possible shortly prior to delivery
- Simple installation of the light source and luminaire installation of the socket
- Push-wire connection for rigid conductors
- Automation options for luminaire production
- Easy maintenance
- Reliability and long service life
- Optimal thermal management
- Base with integrated TIM (Thermal Interface Material)

OptiSpot reflectors

NEW



OptiSpot Reflectors ø 81.5 mm - 35.850

The family of OptiSpot reflectors is growing with the addition of the ø 81.5 mm versions. These reflectors ideally complement the COB connection elements of the 47.319 and 47.360 series. Together with the available lenses and diffusor cover plates, they enable the perfect combination for targeted light control with point light sources thanks to the modular principle.

The entire product family now includes reflectors with diameters of ø 50 / 74 / 81.5 / 92 / 110 mm. There are five reflector groups, each with four different beam characteristics (spot, medium, flood and wide flood), as well as optional mixing lenses or diffusor cover plates for a wide range of possible combinations.

The benefits are

- Quick and easy installation thanks to twist-and-lock function on BJB COB connection elements
- Modular luminaire design and easy replacement of reflectors thanks to standardized interface
- No additional components required: lenses and plates are simply snapped into the reflectors
- Covering any visually disturbing openings in the COB connection element

OptiSpot lenses

NEW



OptiSpot Lenses - 35.235 / 35.245 / 35.250

The OptiSpot lenses are the ideal complement to our product range for spot-light and downlight applications. The optics are specially optimized for our COB connection elements (47.360) with a diameter of 35 mm and offer a uniform light distribution from narrow to wide beam angles with diameters of 35, 45 and 50 mm. The optics are supplied with a holder that offers an integrated bayonet interface for attachment to the connection elements.

The benefits are

- Quick and easy installation thanks to twist-and-lock function on BJB COB connection elements
- Modular luminaire design and easy lens replacement thanks to standardized interface
- Optimally coordinated design of lens and holder for optimum performance
- Holder has a perfect fit to BJB COB connector 47.360 with ø 35 mm
- Product family with three different diameters (ø 35 / 45 / 50 mm) and 4 beam characteristics (spot, medium, flood and wide flood)
- Optimized for COBs with different LES (Light Emitting Surface)

Connecting system for trunking solutions

NEW



Connector system 7 pole or 14 pole - 47.514

The BJB Connector System sets a new standard for linear lighting solutions with up to 14 poles. It combines through-wiring with the option of simple electrical tapping of various luminaire or control modules in the lighting system. The plug/socket system can be easily integrated into your luminaire system

This innovative standard connector system is based on BJB's many years of expertise in connection technology, combined with simplicity and user-friendliness. As a customer, you benefit from a flexible system that is 100% easy to integrate into your individual continuous-row lighting project and offers you complete freedom in the [design] technical configuration.

The benefits are

- Reduced number of components compared to conventional systems
- Few standard assemblies enable simple installation
- More freedom in luminaire design
- Less effort in final assembly leads to lower installation costs
- Plug-and-play solution for maximum user-friendliness
- Ideal for automated production including wiring



Linear Intrack Adapter for busbar systems with Zhaga Book 14 interface



Linear Intrack Adapter - the plug & play system for busbar systems - 32.901

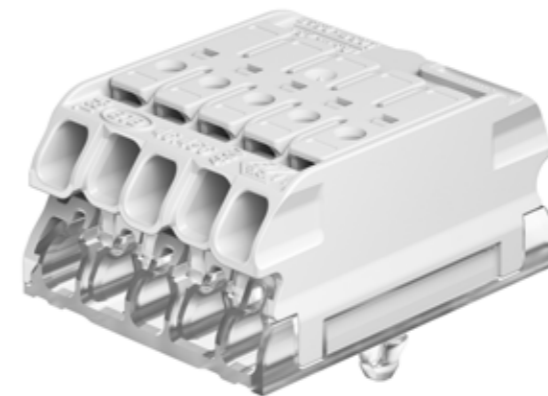
The linear Intrack adapter system from BJB is a true universal genius. It combines an inline adapter, socket and holder for use in all common 3-phase track systems. The simple installation and tool-free replacement of the module are impressive. Zhaga Book 14 LLEs can be attached to the Intrack adapter without tools using the socket base system.

The benefits are

- LED driver with seamless integration into 3-phase tracks from various manufacturers
- Tool-free connection of Zhaga Book 14 LLEs (Linear Light Engines) thanks to integrated GR6d lamp holder
- Variants with different current levels (700 mA, 1050 mA, open system 350 - 1050 mA) and DALI 2 light control available
- Available in black or white
- Mechanical counterholder for mounting linear LED modules (28.701.U305)

Terminals and connection elements

NEW



Compact Lock 5 Terminal Block - 46.456

The new generation of lock 5 connection clamps from BJB sets new standards with a height of just 16 mm and offers a perfect fit for all standard ECGs. With 16 different variants, it covers a wide range of applications. The well-thought-out design and simple handling will inspire in use.

The benefits are

- Compact dimensions (16 mm height, 30 mm width) ideal for compact luminaires and miniaturization
- Various earth options: Screw earth, REC and earth marking
- Different mechanical fixation methods: snap-in pins, pin for aluminum profiles and screw mounting
- With release pushers on both sides for easy handling
- Plug-in contacts enable efficient installation
- Large selection of labeling options
- Wire range: 0,5 - 2,5 mm²
- ENEC Rating (pending): 24 A / 450 V

OptiLine Louvre optics system



OptiLine Louvre - das low-glare LED dark light louvre optics system - 35.303 / 35.306 / 35.312

With its innovative combination of louvre and lens optics, the OptiLine Louvre system offers the optimum solution for uniform, low-glare lighting. A variety of beam characteristics and different lengths (½, 1 and 2 ft) form the basis for this individual module concept, which is specially optimized for the Philips Fortimo Strip R LED modules.

Thanks to the low UGR value, these optics are particularly suitable for applications where optimum light, minimal glare and homogeneous color mixing are required.

The 1-click latching elements enable tool-free installation and offer flexibility when latching into the luminaire sheet or aluminum profile. The established 1-click fixing system enables the LED module and optics to be fixed in a single step. The tongue and groove system on the end faces ensures gap-free installation.

The benefits are

OptiLine Louvre 3x3 - 35.109

- Easy mounting and cabling
- Louvre for surface and downlight illumination with a 3x3 louvre
- Suitable for non SELV applications
- Uniform color mixing

OptiLine Louvre ½ ft. Lenses and frames - 35.303

- Lens series compatible for linear applications and 3x3 applications
- Frame Compatible with 1 ft. and 2 ft. grids
- No gap between two frames due to overlapping geometries at the ends
- Reinforced integrated wire routing on the lens rows

NEW

NEW

OptiLine Performance optics

NEW



OptiLine Performance Duallens - 35.320

The pitch-dependent 1-click OptiLine Performance optics impress with their particularly low glare. Now you get „amplification“ in the truest sense of the word. The OptiLine Performance Duallens allows the positioning of two to four LEDs per lens, resulting in even more light output and maximum efficiency.

The benefits are

- 1-Click-Snap in fixing of LED module and optics in one step
- For applications within luminaire metal sheets or aluminum profiles
- Centering pins for optimal alignment of optics and LED module and anti-twist protection
- Uniform contact pressure of the LED module by integrated spacer pins
- Key and slot system for a gapless assembly of the optics

Terminals and connection elements



Universal wire connectors - 46.811

The 46.811 connection terminal block product family comprises three different versions with 2, 3 or 5 terminal points. These terminal blocks impress with their versatility in a wide range of lighting and building installation applications

The benefits are

- Combination of different wire cross-section in one terminal possible
- Direct insertion of rigid wires
- Easy and tool-free connection and disconnection of wires
- Release lever for flexible wires
- Rigid wires can be opened without operating the lever. This is real time-saving and ergonomic handling.
- The transparent housing allows you to check the correct cable positioning at all times
- Wire cross section: 0.2 - 4 mm²

Your design and innovation partner for lighting since 1867. Worldwide.



Fixing - Connecting - Light Control

BJB stands for excellent performance in the design, development, production and supply of high-quality components for demanding and pioneering projects. Our diverse 'Technology for Light' product portfolio includes electromechanical connection technology, innovative fastenings and light-directing optics. We are pioneers in innovative light control, offering components for progressive digitalization, automated processing, interchangeability and diverse connectivity.

Innovative thanks to in-house research and development

BJB continuously invests in research and development facilities and state-of-the-art production plants. In line with our high sustainability goals, this enables the resource-saving production of custom-fit, high-quality and durable components. Our investments help you to successfully bring new, innovative solutions to the market. With our components, you can design future-oriented lighting solutions that are in line with the top themes and trends of our time. This is what BJB stands for!



technology for light



You can find more information about our new products here:

BJB GmbH & Co. KG
Werler Straße 1
59755 Arnsberg
Tel. +49 2932 982-0
info@bjb.com
www.bjb.com