



ATTO Technology, Inc.

ATTO ExpressSAS Host and RAID Adapter Installation and Operation Manual

ExpressSAS H644 Adapter

ExpressSAS H608 Adapter

ExpressSAS H680 Adapter

ExpressSAS H60F Adapter

ExpressSAS H6F0 Adapter

ExpressSAS H308 Adapter

ExpressSAS H380 Adapter

ExpressSAS H30F Adapter

ExpressSAS R348 RAID Adapter

ExpressSAS R380 RAID Adapter

ExpressSAS R30F RAID Adapter

ATTO Technology, Inc.

155 CrossPoint Parkway
Amherst, New York 14068 USA
www.attotech.com

Tel (716) 691-1999
Fax (716) 691-9353

Sales support: sls@attotech.com
Technical support: Monday -- Friday, 8am-6pm EST
techsupp@attotech.com
(716) 691-1999 ext. 242

© 2009 ATTO Technology, Inc. All rights reserved. All brand or product names are trademarks of their respective holders. No part of this manual may be reproduced in any form or by any means without the express written permission of ATTO Technology, Inc.

Contents

1 ATTO Provides Storage Solutions	1
Installation procedure	
ExpressSAS features	
ExpressSAS Host Adapters	
H644 technical specifications	
H680 technical specifications	
H608 technical specifications	
H6F0 technical specifications	
H60F technical specifications	
H308 technical specifications	
H380 technical specifications	
H30F technical specifications	
ExpressSAS RAID Adapters	
R348 technical specifications	
R380 technical specifications	
R30F technical specifications	
2 Install Drivers	7
Downloading drivers from the ATTO website	
Windows	
Installing from the ExpressSAS Installation CD	
Installing from the ATTO Technology website	
Installing from a directory containing the ExpressSAS driver	
OS X	
Linux	
VMware	
Creating and using the Driver CD.	
Driver CD as a Boot CD Only	
Driver CD as an Update CD Only	
New Windows OS Installation	
Creating ExpressSAS installation media from the Installation CD	
Creating ExpressSAS installation media from a file	
Install the driver into a new version of Windows 2000, XP, Server 2003	
Install the driver into a new version of Windows Vista, Server 2008	
New OS X Installation	
Adjusting adapter settings with the EFI	
Installing OS X Snow Leopard onto a disk attached to an ExpressSAS adapter	
Installing OS X Leopard or Tiger onto a disk attached to an ExpressSAS adapter	
3 Install Hardware	15
System requirements	
SAS address	
Installing the adapter	
ExpressSAS R348 only	
Bracket details	
Adapter board details	
Install storage	

4 Troubleshooting	25
General suggestions	
If the RAID adapter is not accessible	
Appendix A Standards and Compliances	i
Appendix B Safety and Warranty	ii

1 ATTO Provides Storage Solutions

ATTO Technology ExpressSAS low-profile host adapters provide 3-Gb and 6-Gb SAS/SATA II connectivity for IT and digital video environments.

The ATTO ExpressSAS host adapter family provides enhanced reliability and performance thanks to more than 15 years of ATTO experience with SCSI hardware and storage connectivity solutions. Using the latest in PCI Express bus technology, the ATTO ExpressSAS host adapters deliver blazing-fast performance with transfer rates.

ATTO provides industry standard PCIe to SAS control using Serial SCSI Protocol (SSP), Serial ATA Tunneling Protocol (STP), and Serial Management Protocol (SMP).

An easy-to-use utility, the ATTO Configuration Tool, configures, manages and monitors the ExpressSAS adapters. The tool is included in your installation CD.

Installation procedure

The ExpressSAS RAID adapter has a Getting Started Guide. If you have not used this guide or you are installing an ExpressSAS host adapter, follow the instructions in this manual.

In general you must:

- 1 Ensure you have the equipment and software you need for the installation:
 - ExpressSAS adapter
 - ATTO ExpressSAS CD including drivers, user manuals and utilities (Installation CD)
 - The optional low-profile bracket and its installation procedure
 - A computer with an available x8 or x16 PCI Express expansion slot. The ExpressSAS adapter has been optimized for x8 electrical slots. Check your computer's documentation
 - SAS/SATA storage, cables and connectors
- 2 Install drivers from the Installation CD for your operating system. Refer to [Install Drivers](#) on page 7.
- 3 Install the configuration software, the ATTO Configuration Tool, found on the Installation CD. Refer to the ATTO Utilities Installation and Operation Manual for details.

- 4 Install the adapter. Refer to [Install Hardware](#) on page 15.
- 5 Attach SAS/SATA storage. Refer to [Install storage](#) on page 23.
- 6 Configure your storage and adapter, including RAID, using the ATTO Configuration Tool.



Note

Default settings are appropriate for most systems but you may change settings using the ATTO Configuration Tool.

ExpressSAS features

- Improved performance over traditional ULTRA320 SCSI with SAS, SATA and SATA II attachment
- Increased bandwidth through x8 PCI Express host interface
- Point-to-point technology delivers full throughput to each connected storage device
- One-click installation
- User-friendly ATTO Configuration Tool provides a simple host-based utility for effortless configuration; a BIOS setup utility provides flexibility for custom applications
- For RAID adapters, a user-friendly GUI allows quick and easy RAID setup
- ADS™ technology alleviates data transfer bottlenecks and moves data more efficiently while managing latency
- DriveAssure™ is an ATTO exclusive combination of features that performs predictive and corrective actions to allow the continued operation of marginal drives, while ensuring continued, uninterrupted access to data.
- Driver support for Windows®, Linux® and Mac® OS X 10.4x, 10.5x, VMWare ESX server 3.5
- RoHS compliant
- 3-year standard warranty

ExpressSAS Host Adapters

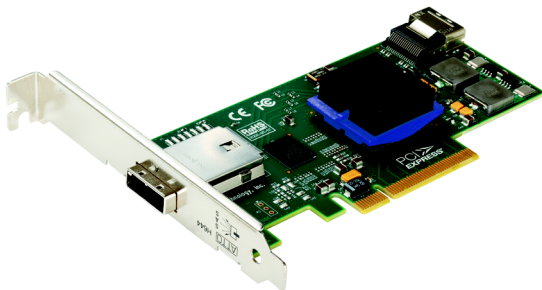
ATTO ExpressSAS Host Adapters are engineered for the most stringent IT server and digital media workgroup environments and are compatible with multiple operating systems, applications, and drives. Providing SAS/SATA II connectivity to up to 256 end devices, the ATTO SAS Host Adapter is ideal for both IT and digital video environments that require a high level of performance.

- Operating humidity: 5 - 95% non-condensing
- Storage temperature: -40-70 °C (-40 °F-157 °F)
- Storage humidity: 5 - 95% non-condensing
- Power: 8W
- Airflow: 100 lf/m minimum



H644 technical specifications

- Four internal, four external ports
- Up to 6-Gb/sec per port performance
- Form factor conforms to PCI low-profile specification
- Length: 6.600"
- Height: 2.713"
- Operating temperature: 0-40 °C (32 °F-104 °F)
- Operating humidity: 5 - 95% non-condensing
- Storage temperature: -40-70 °C (-40 °F-157 °F)
- Storage humidity: 5 - 95% non-condensing
- Power: 8W
- Airflow: 100 lf/m minimum

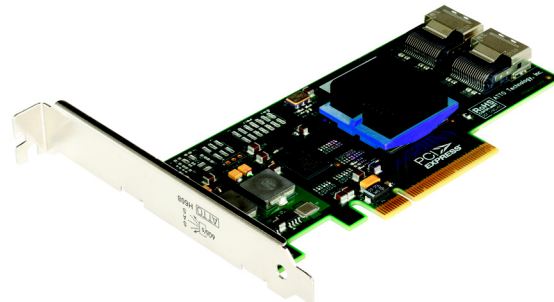


H680 technical specifications

- Eight external ports
- Up to 6-Gb/sec per port performance
- Length: 6.600"
- Height: 2.846"
- Operating temperature: 0-40 °C (32 °F-104 °F)

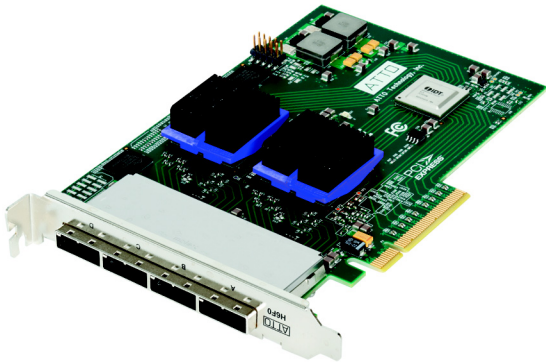
H608 technical specifications

- Eight internal ports
- Up to 6-Gb/sec per port performance
- Form factor conforms to PCI low-profile specification
- Length: 5.600"
- Height: 2.713"
- Operating temperature: 0-40 °C (32 °F-104 °F)
- Operating humidity: 5 - 95% non-condensing
- Storage temperature: -40-70 °C (-40 °F-157 °F)
- Storage humidity: 5 - 95% non-condensing
- Power: 8W
- Airflow: 150 lf/m minimum

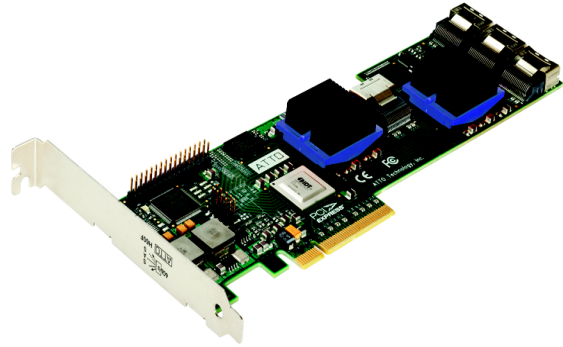


H6F0 technical specifications

- 16 external ports
- Up to 6-Gb/sec per port performance
- Length: 5.600"
- Height: 4.376"
- Operating temperature: 0-40 °C (32 °F-104 °F)
- Operating humidity: 5 - 95% non-condensing
- Storage temperature: -40-70 °C (-40 °F-157 °F)
- Storage humidity: 5 - 95% non-condensing
- Power: 22W
- Airflow: 150 lf/m minimum



- Power: 22W
- Airflow: 150 lf/m minimum



H308 technical specifications

- Eight internal ports
- Up to 3-Gb/sec per port performance
- Form factor conforms to PCI low-profile specification
- Length: 6.600"
- Height: 2.713"
- Operating temperature: 0-40 °C (32 °F-104 °F)
- Operating humidity: 5 - 95% non-condensing
- Storage temperature: -40-70 °C (-40 °F-157 °F)
- Storage humidity: 5 - 95% non-condensing
- Power: 12V @ 0.6A max; 3.3V@0.9A max, 10W
- Airflow: 150 lf/m minimum

H60F technical specifications

- 16 internal ports
- Up to 6-Gb/sec per port performance
- Form factor conforms to PCI low-profile specification
- Length: 8.638"
- Height: 2.918"
- Operating temperature: 0-40 °C (32 °F-104 °F)
- Operating humidity: 5 - 95% non-condensing
- Storage temperature: -40-70 °C (-40 °F-157 °F)
- Storage humidity: 5 - 95% non-condensing



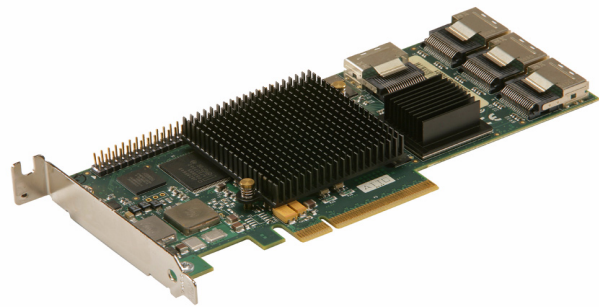
H380 technical specifications

- Eight external ports
- Up to 3-Gb/sec per port performance
- Form factor conforms to PCI low-profile specification
- Length: 6.600"
- Height: 2.713"
- Operating temperature: 0-40 °C (32 °F-104 °F)
- Operating humidity: 5 - 95% non-condensing
- Storage temperature: -40-70 °C (-40 °F-157 °F)
- Storage humidity: 5 - 95% non-condensing
- Power: 12V @ 0.6A max; 3.3V@0.9A max, 10W
- Airflow: 150 lf/m minimum



H30F technical specifications

- 16 internal ports
- Up to 3-Gb/sec per port performance
- 1/2 height form factor
- Length: 6.600"
- Height: 2.800"
- Operating temperature: 0-40 °C (32 °F-140 °F)
- Operating humidity: 5 - 95% non-condensing
- Storage temperature: -40-70 °C (-40 °F-157 °F)
- Storage humidity: 5 - 95% non-condensing
- Power: 12V @ 1.4A max; 3.3V@0.5A max, 19W
- Airflow: 150 lf/m minimum



ExpressSAS RAID Adapters

ATTO ExpressSAS RAID adapters are ideal for both IT and digital video environments that require a high level of protection and performance, supporting up to 64 end devices.

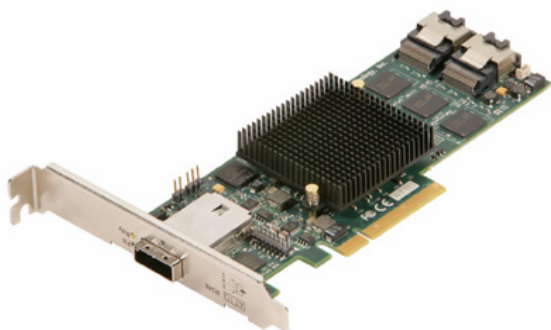
RAID improves data accessibility and reliability during normal operations. A RAID group is a virtual, independent single drive with data written to physical drives according to a RAID algorithm.

DriveAssure™ lets you run longer, faster and smoother without interrupting data flow while avoiding the unnecessary cost of replacing functional drives.

The ATTO ExpressSAS RAID adapters support JBOD, DVRAID™, RAID Level 0, 1, 4, 10, 5 and 6 and advanced features such as read caching, Hot Spares, automatic RAID group rebuilding, hot swap and Simple Network Management Protocol (SNMP).

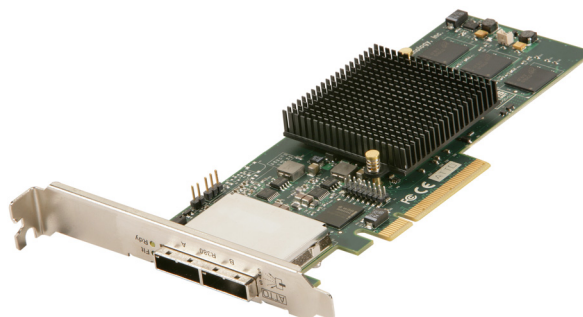
R348 technical specifications

- User-configurable as four external and four internal ports or as eight internal ports
- Up to 3-Gb/sec per port performance
- Form factor conforms to PCI low-profile specification
- Length: 6.600"
- Height: 2.713"
- Operating temperature: 0-40 °C (32 °F-104 °F)
- Operating humidity: 5 - 95% non-condensing
- Storage temperature: -40-70 °C (-40 °F-157 °F)
- Storage humidity: 5 - 95% non-condensing
- Power: 12V @ 1.25A max; 3.3V@ 0.5A max
- Airflow: 150 lf/m minimum



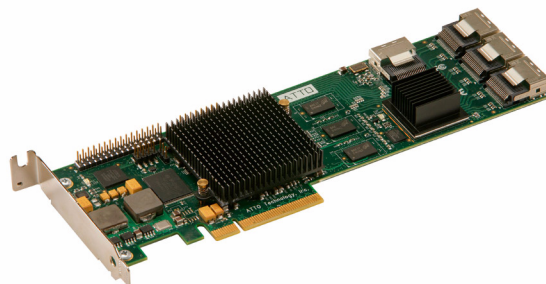
R380 technical specifications

- Eight external ports
- Up to 3-Gb/sec per port performance
- Form factor conforms to PCI low-profile specification
- Length: 6.600"
- Height: 2.713"
- Operating temperature: 0-40 °C (32 °F-104 °F)
- Operating humidity: 5 - 95% non-condensing
- Storage temperature: -40-70 °C (-40 °F-157 °F)
- Storage humidity: 5 - 95% non-condensing
- Power: 12V @ 1.25A max; 3.3V@ 0.5A max
- Airflow: 150 lf/m minimum



R30F technical specifications

- 1/2 height form factor
- Up to 3-Gb/sec per port performance
- Length: 8.640"
- Height: 2.900"
- Operating temperature: 0-60 °C (32 °F-140 °F)
- Operating humidity: 5 - 95% non-condensing
- Storage temperature: -40-70 °C (-40 °F-157 °F)
- Storage humidity: 5 - 95% non-condensing
- Power: 12V @ 1.7A max; 3.3V@0.9A max
- Airflow: 150 lf/m minimum



2 Install Drivers

ATTO ExpressSAS host adapters require a current device driver and hardware flash for proper operation.

Your adapter was properly flashed before shipment. However, you must add ExpressSAS drivers to your computer before continuing with installation.

If you already have one or more ExpressSAS adapters installed and you have the latest drivers found on the

ATTO web site, or you followed the instructions in the Getting Started Guide, you do not need to perform any of these procedures.

Drivers for Windows, OS X and Linux are supplied on the Installation CD and on the ATTO web site.

Exhibit 2-1 The Installation CD splash screen. for the ExpressSAS RAID host adapter.



Downloading drivers from the ATTO website

Use this procedure if you need to update drivers. The Installation CD that came with your adapter has the latest driver for your adapter.

- 1 Go to www.attotech.com.
- 2 On the splash screen menu, put your cursor over **Downloads** then click on **Drivers**.
- 3 Register or log in if previously registered.
- 4 Select **SAS/SATA Host & RAID Adapters** from the product list.
- 5 Select your model.
- 6 From the table, find your Operating System.

- 7 Click on the entry for the latest driver.
- 8 A download window appears. Follow the instructions for downloading the driver.
Internet Explorer users may select **Run** to automatically run the downloaded self-extracting executable file.
All other browser users select a download destination and run the self-extracting executable file.
- 9 Continue with the driver installation as described on the following pages for your Operating System.

Windows

Installing from the ExpressSAS Installation CD

- 1 Power on your system.
- 2 Log on to Windows as the system administrator.
- 3 Insert the Installation CD into a CD or DVD drive. The CD begins automatically and displays the **Installation Guide**. If the CD fails to begin automatically, navigate to the root of the CD, and run **Autorun.bat**.
- 4 Select **Windows Drivers** from the items on the left side of the screen.
- 5 Select the appropriate CPU-based operating system from the operating system choices. If you do not know which version to select, contact your system administrator or refer to your operating system manual.
- 6 Select **Install Windows Driver**.
For Windows Vista and Server 2008: If you have **User Account Control** enabled, you are asked for permission for the installer to continue. If you do not have administrator privileges, you are also asked for an administrator user name and password. Fulfill the required fields and click **Continue**.
- 7 Click **Install**.
- 8 Follow the on-screen instructions to complete the driver installation.
- 9 Continue on to [Install Hardware](#) on page 15.

Installing from the ATTO Technology website

- 1 Power on your system.
- 2 Log on to Windows as the system administrator.
- 3 Follow the instructions in [Downloading drivers from the ATTO website](#) on page 7.

For Windows Vista and Server 2008: If you have **User Account Control** enabled, you are asked for permission for the installer to continue. If you do not have administrator privileges, you are also asked for an administrator user name and password. Fulfill the required fields and click **Continue**.

- 4 Click **unzip**. The driver files are extracted and the driver installer is launched.
- 5 Click **Install**.
- 6 Follow the on-screen instructions to complete the driver installation.
- 7 Continue on to [Install Hardware](#) on page 15.

Installing from a directory containing the ExpressSAS driver

- 1 Power on your system.
- 2 Log on as the system administrator.
- 3 Navigate to the directory containing the ExpressSAS driver.
- 4 Run **Setup.exe**.

For Windows Vista and Server 2008: If you have **User Account Control** enabled, you are asked for permission for the installer to continue. If you do not have administrator privileges, you are also asked for an administrator user name and password. Fulfill the required fields and click **Continue**.

- 5 Click **Install**.

For Windows Vista and Server 2008: If you have **User Account Control** enabled, you are asked for permission for the installer to continue. If you do not have administrator privileges, you are also asked for an administrator user name and password. Fulfill the required fields and click **Continue**.

- 6 Follow the on-screen instructions to complete the installation.
- 7 Continue on to [Install Hardware](#) on page 15.

OS X



Note

ExpressSAS adapters support Mac OS X 10.4x, 10.5x.

- 1 Power on your system.
- 2 Insert the Installation CD.

- 3 After it mounts, open the ExpressSAS volume.
- 4 Select the **Drivers** folder.
- 5 Launch the installer.
- 6 Follow the on-screen instructions.
- 7 Continue on to [Install Hardware](#) on page 15.

Linux



Note

ExpressSAS adapters are not supported under Linux kernel 2.4.

- 1 Power on your system.
- 2 Log in as **root**.
- 3 Verify that the kernel header files, usually included with the Linux kernel development package, are installed.
- 4 Insert the Installation CD.
- 5 Mount the CD to your chosen mount point such as `/mnt/cdrom`.
- 6 Open your File Browser and browse to `/mnt/cdrom/Linux/Drivers`.
- 7 Click on the driver:
 - for the ExpressSAS adapters, the driver filename appears as **lnx_drv_esashba_XXX.tgz** where XXX is the driver's current version number.
 - for ExpressSAS RAID adapters, the driver filename appears as **lnx_drv_esasraid_XXX.tgz** where XXX is the driver's current version number.
- 8 Copy the driver file to a directory such as `/usr/src`.
- 9 Open a Terminal session.
- 10 Change to the directory where you stored the driver.
- 11 Extract the driver source:
 - for ExpressSAS adapters: **tar xzf lnx_drv_esashba_XXX.tgz**.
 - for ExpressSAS RAID adapters: **tar xzf lnx_drv_esasraid_XXX.tgz**.
- 12 The driver files are extracted to a directory called `lnx_drv_esashba_XXX` or `lnx_drv_esasraid_XXX`.
Navigate to that directory.
- 13 Compile and install the driver using `./install.sh`. The driver is now installed and ready to use.
- 14 Add the following line to `/etc/modprobe.conf` after installing the driver:
 - for ExpressSAS adapters: **alias scsi_hostadapterX esashba** where X is the next available adapter number.
 - for ExpressSAS RAID adapters: **alias scsi_hostadapterX esasraid** where X is the next available adapter number.
- 15 Continue on to [Install Hardware](#) on page 15.

VMware



Note

ATTO ESAS VMware drivers are supported with ATTO ESAS Host Bus Adapters and do not apply to ATTO ESAS RAID adapters.

Creating and using the Driver CD.

- 1 Download the correct driver .iso file from the VMware Drivers & Tools Download site.
- 2 Write the .iso image to a CD-ROM..
- 3 Use the CD-ROM as a Boot CD or an Update CD.

Driver CD as a Boot CD Only



Note

The following procedure describes how to use the driver CD as a boot CD. Use this CD as a boot CD only if the new driver must enable the target device on which ESX Server 3.5 will be installed.

- 1 Place the driver CD in the CD-ROM drive of the host machine.
- 2 Start the host machine.
- 3 When prompted for an upgrade or installation, press Enter for graphical mode.
- 4 Choose the language you prefer.
- 5 Select a keyboard type.
- 6 After you are prompted to swap the driver CD with the ESX Server installation CD, insert the ESX Server 3.5 installation CD and continue with ESX Server installation.
- 7 After ESX Server is installed and the system reboots, log in to ESX Server.
- 8 Verify that the driver is installed successfully:
 - a. Run the **esxupdate query** command. A message containing the information about the driver appears.
 - b. View the PCI ID XML file in the `/etc/vmware/pciid/` directory. The driver information is available in the file.

- c. Check for the latest version of the driver module in the following directory:
/usr/lib/vmware/vmkmod/
 - d. To verify that the driver is loaded and functioning, enter ***vmkload_mod -l*** command. The driver is listed in the displayed list.
- 9 After driver installation, please reboot host. Once the host is back online, go to **Storage** and create **VMFS datastore**. If storage does not appear, perform a rescan using the **VMware Storage** option. If your storage does not present itself, thereafter, please contact your SAN administrator.

Driver CD as an Update CD Only



Note

The following procedure describes how to use the driver CD to update or add the driver on an existing ESX Server 3.5.

- 1 Start the ESX Server machine and log in to service console as root.
- 2 Place the driver CD in the CD-ROM drive of the server.
- 3 Mount the driver CD.
- 4 Change the directory to the ***VMupdates/VPMS/*** on the driver CD.
- 5 Run the ***esxupdate update*** command.



Note

*If the hardware is not already installed on the system, run the ***esxupdate*** command with the ***--noreboot*** option, shut down the host machine manually, install the hardware, and then boot the host machine. This allows you to install in a single boot.*

The server reboots after the driver update.

- 6 Remove the driver CD from the CD-ROM drive before the system reboots.
- 7 After the system reboots, log in to ESX Server.

- 8 Verify that the driver is installed successfully:
 - a. Run the ***esxupdate query*** command and verify that the information about the driver is mentioned in the resulting message.
 - b. View the PCI ID XML file in the ***/etc/vmware/pciid/*** directory. The driver information is available in the file.
 - c. Check for the latest version of the driver module in ***/usr/lib/vmware/vmkmod/***

To verify that the driver is loaded and functioning, run the ***vmkload_mod -l*** command. The driver is listed in the displayed list.

- 9 After driver installation, please reboot host. Once the host is back online, go to **Storage** and create **VMFS datastore**. If storage does not appear, perform a rescan using the **VMware Storage** option. If your storage does not present itself, thereafter, please contact your SAN administrator.

2.1 New Windows OS Installation

When you install a new or different copy of the Windows operating system on a disk attached to an ATTO ExpressSAS host adapters, you must reinstall the ATTO ExpressSAS drivers.

If you are changing the version of Windows you are using or installing a fresh copy of your current version onto your system, you must ensure Windows recognizes your ATTO ExpressSAS and uses its drivers.

You may either create an installation media (disk, CD or USB flash drive) from the Installation CD or create an installation media (disk, CD or USB flash drive) from a file from the ATTO website, then use that media to install the adapter and its driver to the new version of Windows.

Follow these procedures after you have completed installation of the ExpressSAS adapter and you have connected storage devices (refer to [Install Hardware](#) on page 15).

If you have an ExpressSAS RAID adapter, you must configure a RAID group to install the operating system using the BIOS Utility from the ATTO Utilities program found on your Installation CD or downloaded from the ATTO website.

Creating ExpressSAS installation media from the Installation CD

- 1 Insert the Installation CD into a CD or DVD drive. The installation starts automatically. If it does not, navigate to the root of the CD and run **autorun.bat**.
- 2 Select **Windows Drivers** from the items on the left side of the screen.
- 3 Select the appropriate CPU-based operating system from operating system choices.
- 4 Select **Create Scsiport Driver Diskette** or **Create Storport Driver Diskette** or **Create Driver Installation Media**.
- 5 Follow the instructions to complete the installation.
- 6 Continue with [Install the driver into a new version of Windows 2000, XP, Server 2003](#) or [Install the driver into a new version of Windows Vista, Server 2008](#) on page 12.

Creating ExpressSAS installation media from a file

- 1 Go to www.attotech.com.
- 2 Put your cursor over **Downloads** then click on **Driver downloads** from the splash screen menu.
- 3 Register or log in if previously registered.
- 4 Select **SAS/SATA Host & RAID Adapters** from the product list.
- 5 Select your model.
- 6 From the table, find your Operating System.
- 7 Click on the entry for the latest driver.
- 8 A download window appears. Follow the instructions for downloading the driver.
Internet Explorer users may select **Run** to automatically run the downloaded self-extracting executable file.
All other browser users select a download destination and run the self-extracting executable file.
- 9 Uncheck **When done unzipping open \Setup.exe**.
- 10 Select a destination folder and click **Unzip** to extract the driver files.
- 11 The expanded software package contains a Scsiport driver in the base directory and a Storport driver in the Storport directory.
Navigate to the folder with the desired ExpressSAS driver.
Select **Scsiport** for Windows 2000 and XP.
Select **Storport** for all other versions of Windows.
- 12 Run **makedisk.exe**.
- 13 Follow the instructions to complete the installation.
- 14 Continue with [Install the driver into a new version of Windows 2000, XP, Server 2003](#) or [Install the driver into a new version of Windows Vista, Server 2008](#) on page 12.

Install the driver into a new version of Windows 2000, XP, Server 2003



Note

You must have a floppy disk with the ExpressSAS driver available. Refer to [Creating ExpressSAS installation media from the Installation CD](#) or [Creating ExpressSAS installation media from a file](#) on page 11

- 1 Start Windows text mode setup as described by your Windows documentation.
- 2 Press **F6** when the first blue window, called **Windows Setup**, appears.
- 3 Setup continues to load files. A new window asks you to specify additional mass storage devices. Press **S**.
- 4 Insert the ExpressSAS installation floppy disk into Drive A:.
- 5 Press **Enter**.
- 6 A screen which would normally ask you to select a driver appears which lists ExpressSAS adapters instead. Select your adapter.

- 7 Press **Enter**.

- 8 Windows Setup loads the files from the installation media and displays the window described in [Step 3](#). The ATTO ExpressSAS device is listed as detected.

Repeat steps [Step 3](#) through [Step 7](#) for any other vendor-supplied driver installation media.

- 9 After all other drives have been processed, press **Enter**.
- 10 Continue with the remainder of the Windows installation procedure.



Note

You may be asked to insert the ExpressSAS installation floppy disk again. This is normal: the first time Windows loaded the drivers into memory; the second time Windows copies the driver to your hard drive.

- 11 Update to Windows Server 2003 SP1 or later when installation is complete.

Install the driver into a new version of Windows Vista, Server 2008



Note

You must have the ExpressSAS installation CD or a USB flash drive with the ExpressSAS driver software available. Refer to [Creating ExpressSAS installation media from the Installation CD](#) or [Creating ExpressSAS installation media from a file](#) on page 11.

- 1 Start Windows text mode setup as described by your Windows documentation.
- 2 Select **Custom installation**.
- 3 The **Where do you want to install Windows** message appears. Click **Load Driver**.
- 4 Insert the ExpressSAS installation media into the appropriate slot.
- 5 Click **OK**.

- 6 Windows Setup searches for drivers matching devices in your system. If the ExpressSAS adapter is not in the **Select the driver to be installed**, click **Browse** and locate the driver.

- 7 Select the ExpressSAS adapter from the list.

- 8 Click **Next**.

- 9 The **Where to you want to install Windows** window appears. Your devices should be listed. Remove the ExpressSAS installation media.

- 10 Configure and select a partition for installing Windows.

- 11 Click **Next**.

- 12 Continue with the remainder of the Windows installation procedure.

2.2 New OS X Installation

Boot support is available on Intel-based systems only.

Adjusting adapter settings with the EFI

Depending on your configuration, it may be necessary to adjust adapter NVRAM settings prior to performing the OS X installation. For example, you may need to modify the device wait time. The EFI configuration utility can be launched from an EFI shell. Unfortunately, an EFI shell is not included with Intel Macs. ATTO recommends rEFIt, which is available for free from <http://refit.sourceforge.net>. Once you have downloaded the DMG for rEFIt, do the following to open the EFI Configuration Utility:

- 1 Burn the **rEFIt DMG** file to a CD. Do not remove the CD.
- 2 Shut down the system and install the ExpressSAS adapter.
- 3 With the rEFIt CD inserted, boot the system while pressing and holding the **C** key. This will boot the rEFIt CD.
- 4 The rEFIt boot menu will appear which contains a series of icons. Release the **C** key and use the arrows to highlight the **Start EFI Shell** icon. Press **Return** to enter the EFI Shell.
- 5 At the prompt, enter the **drivers -b** command. Scroll through the list of installed EFI drivers and find the **ATTO ExpressSAS driver**. There may be more than one entry based on the number and type of adapter(s). Note the two or three digit hexadecimal driver handle on the far left of the screen.
- 6 At the prompt, enter **'rvcfg -s {handle}'** where {handle} is the hexadecimal number from the previous step. This will launch the EFI Configuration Utility for the associated adapter.
- 7 Use the on-screen menus to configure your adapter. Help is available at the bottom of the screen.
- 8 When exiting the configuration utility, if you changed any settings, the system will restart the adapter so the new settings take effect.
- 9 At the prompt, enter **exit** to return to the **rEFIt boot menu** or reset to restart the system.

Installing OS X Snow Leopard onto a disk attached to an ExpressSAS adapter

- 1 Install your ExpressSAS adapter and connect your storage.
- 2 If you are launching the OS X installation by booting the installation DVD:
 - a. Launch the installation and proceed to the **Select the disk where you want to install Mac OS X** screen.
 - b. If you need to partition your disk, open **Disk Utility** from the **Utilities menu**. Once you partition your disk and exit, the newly created volume will appear in the installer window.
- 3 If you are launching the OS X installation from an existing OS X installation:
 - a. If you need to partition your disk, open **Disk Utility** from **/Applications/Utilities**. Partition your disk and exit.
 - b. Launch the installation DVD and proceed to the **Select the disk where you want to install Mac OS X** screen.
- 4 Select the volume on the disk where you want to install OS X.
- 5 Click **Install** and proceed with the rest of OS X installation.
- 6 When OS X installation completes, install the latest ExpressSAS driver from the [ATTO Technology website](#).

Installing OS X Leopard or Tiger onto a disk attached to an ExpressSAS adapter



Note

Due to limitations of the Mac OS X Installer, two systems are required to complete this procedure. These will be referred to as the 'target' and 'host' systems. The target system will contain your ExpressSAS adapter and storage. The host system will only be used during the installation and must be an Intel-based system capable of booting the OS X installation CD. However, it does not have to be the same type of system as the target system. For example, you may use a MacBook Pro to install OS X on a Mac Pro containing your ExpressSAS adapter. Both systems must have an available FireWire port.

- 1 On the target system, install the ExpressSAS adapter and connect your storage.
- 2 Connect the target and host systems with a FireWire cable.
- 3 Power on the target system while pressing and holding **T**. This will boot the target system in target disk mode. You may release the key when the FireWire symbol appears.
- 4 On the host system, insert the OS X installation disc and begin installation. Proceed through the installation wizard until you reach the destination volume selection window.
- 5 Select a volume on the storage attached to the ExpressSAS adapter. If a volume is not present, open the Disk Utility from the OS X Installer menu to create a volume. The storage will appear in Disk Utility as **AAPL FireWire Media**. Exit the Disk Utility when finished and select the newly created volume.
- 6 Finish the OS X installation, restart the host system when prompted, and complete the OS X setup wizard. You may now remove the OS X installation disc.
- 7 On the host system, obtain and install the latest version of the ExpressSAS OS X driver from the software CD that came with your adapter or the [ATTO Technology website](#).
- 8 On the host system, open System Preferences and restore the Startup Disk to the disk that the host system booted from before performing this procedure. After restarting, you may disconnect the FireWire cable from the target system. The host system is no longer needed.
- 9 Power off the target system and power it back on again normally. If you previously had an OS X installation present, it will boot that version of OS X. Otherwise, the new OS X installation will be booted.
- 10 On the target system, open System Preferences and set the Startup Disk to the new OS X installation and restart.

3 Install Hardware

Use this chapter as a guide to install the ATTO ExpressSAS adapter into a PCI Express expansion slot on your computer. If you have followed the Getting Started Guide successfully, you do not need to read this chapter.



CAUTION

Back up your system data before changing or installing any hardware.

System requirements

The ATTO ExpressSAS host adapter package contains

- ExpressSAS adapter
- ATTO ExpressSAS CD including drivers, user manuals and utilities (Installation CD)
- A low-profile or standard bracket and the installation procedure
- A warranty and registration card

If any of these items are missing, contact your ATTO authorized sales representative.

In addition you must have:

- A computer with an available x8 or x16 PCI

Express 2.0/1.2 expansion slot. The ExpressSAS adapter has been optimized for x8 electrical 2.0 slots. Check your computer's documentation.

- SAS/SATA storage, cables and connectors.

See [Bracket details](#) on page 17 and [Adapter board details](#) on page 19 for details of the adapters and brackets.

SAS address

Each ATTO ExpressSAS adapter has a unique SAS address designated by the Institute of Electrical and Electronic Engineers which allows the system to recognize the ATTO ExpressSAS host adapter as a unique part of your configuration.

The address is marked on the back of the board for easy identification. Please keep a reference copy of the number in a safe place.

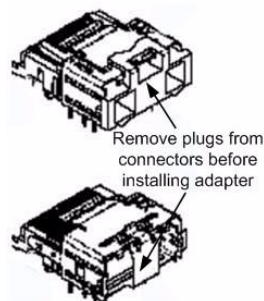
Installing the adapter



WARNING

ATTO ExpressSAS host adapters contain components that are sensitive to electrostatic discharge (ESD). ESD can cause damage to the ATTO ExpressSAS host adapter. Please follow standard methods to avoid ESD.

- 1 Install system drivers before you begin hardware installation. Refer to [Install Drivers](#) on page 7.
- 2 Power down the computer and unplug the computer from all power sources.
- 3 Open the case.
- 4 If using internal ports, remove the plastic or metal plugs on the adapter internal connectors.
- 5 If applicable, attach the low profile or standard bracket to the adapter.



- a. Remove the original bracket from the adapter, being careful not to damage the board. Use an ESD-safe #1 Phillips screwdriver to remove the Phillips screws at the top and bottom edges of the board.



CAUTION

Make sure the screwdriver is centered in the top of the screw to prevent damage to the screw. Damaging the screw can void the warranty.

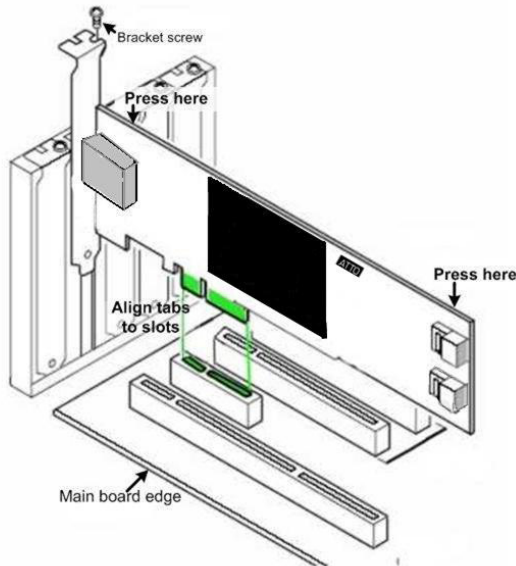
- b. Set the bracket and screws aside.
- c. Place the adapter on top of the replacement bracket, positioning the bracket so that the holes in the bracket are aligned with the openings in the board.
- d. Dip the screws into Loctite® 242.
- e. Use an ESD-safe #1 torque screwdriver set to a maximum torque of 3.98 in/lbs (0.45N m) to screws removed previously.



CAUTION

Do not exceed the torque specification to avoid damaging the board, connectors or screws.

- 6 Insert the ATTO ExpressSAS host adapter into any open 2.0/1.2 PCI Express expansion slot. If you have questions about how to install an expansion card in your system, consult your computer's documentation.



- 7 Close the case on the computer and power it up.
- 8 Installed drivers are loaded.
For Windows 2000, XP and Server 2003
 - Windows detects your ExpressSAS Adapter and the **Found New Hardware** wizard appears. Proceed through the wizard with the default settings for each adapter

channel. Insert the ExpressSAS installation disk when prompted.

- After adapter installation is complete, the **Found New Hardware** wizard shows an **ATTO Phantom Device** for each channel. Proceed through the wizard with default settings to complete the installation.

For Windows Vista and Server 2008

- Windows detects your adapter and automatically installs the required drivers.

If drivers do not load, refer to [Install Drivers](#) on page 7 and [Troubleshooting](#) on page 25.

- 9 Turn off power to the computer.
- 10 Continue to [Install storage](#) on page 23.

ExpressSAS R348 only

At shipping, the ExpressSAS R348 has an 8x internal port configuration. You may change the adapter to use a 4x internal port and 4x external port configuration.

- 1 Power on your computer.
- 2 Launch the ATTO Configuration Tool from the Installation CD. For Configuration Tool instructions, refer to the ATTO Utilities Installation and Operation Manual, also on the Installation CD.
- 3 From the left hand panel **Device Listing**, expand all the elements in the **hosts** tree.
- 4 Find the ExpressSAS adapter and click on the **Channel 1** entry in the tree.
- 5 Change the **Port Configuration** from **8 Internal** to **4 Intrn, 4 Extrn**.
- 6 Click on **Commit**.
- 7 Exit the Configuration Tool application.
- 8 Power down the computer and unplug the computer from all power sources.
- 9 Continue to [Install storage](#) on page 23.

Bracket details

Exhibit 3-1 ExpressSAS H644 Adapter brackets.

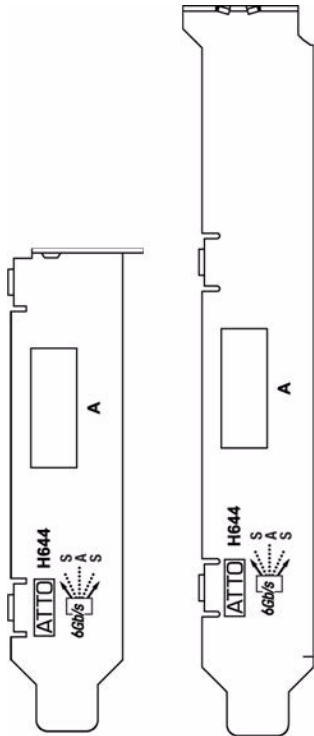


Exhibit 3-3 ExpressSAS H680 Adapter brackets.

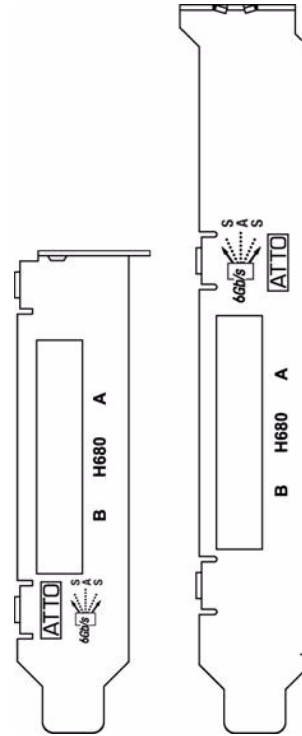


Exhibit 3-2 ExpressSAS H608 Adapter brackets.

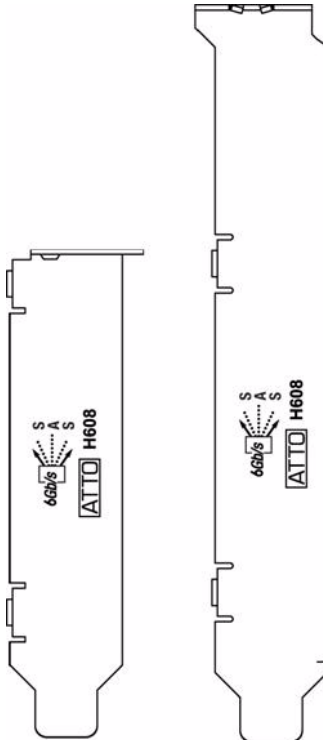


Exhibit 3-4 ExpressSAS 60F Adapter brackets.

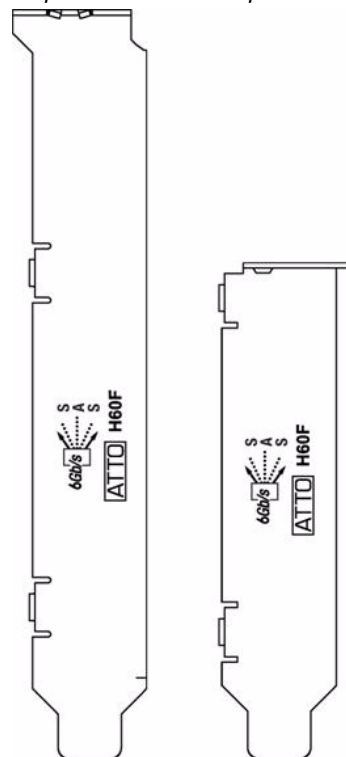


Exhibit 3-5 ExpressSAS H6F0 Adapter bracket.

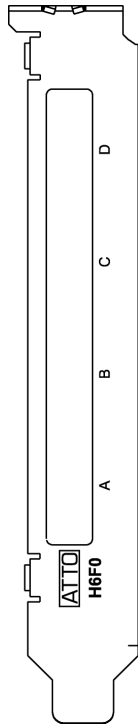


Exhibit 3-7 ExpressSAS H380 Adapter brackets

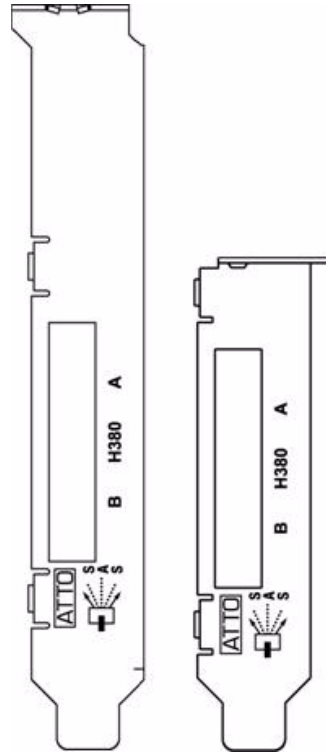


Exhibit 3-6 The ExpressSAS H308 Adapter brackets

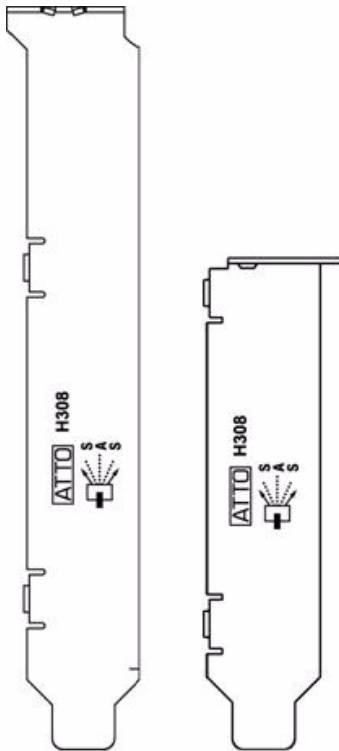


Exhibit 3-8 The ExpressSAS R348 Adapter brackets

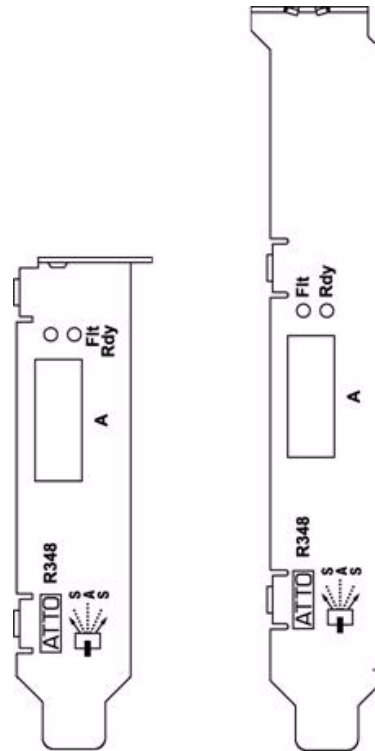


Exhibit 3-9 The ExpressSAS R380 Adapter brackets

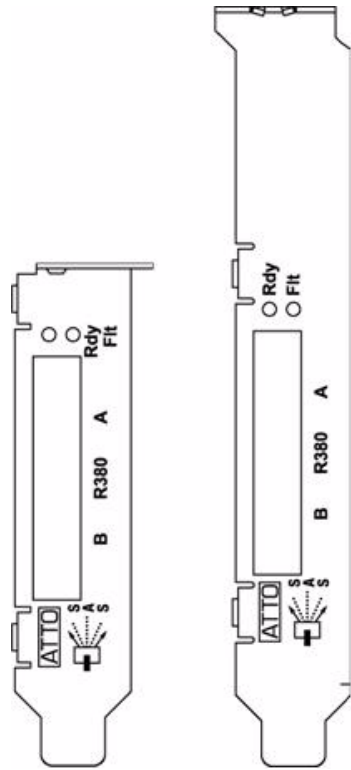
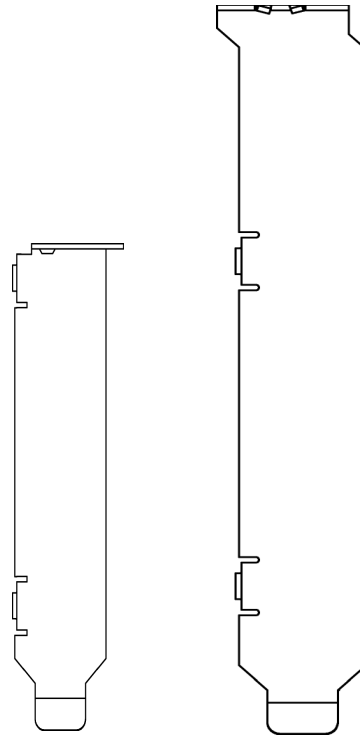


Exhibit 3-10 The ExpressSAS H30F and R30F Adapter brackets.



Adapter board details

Exhibit 3-11 ExpressSAS H644 Adapter board.

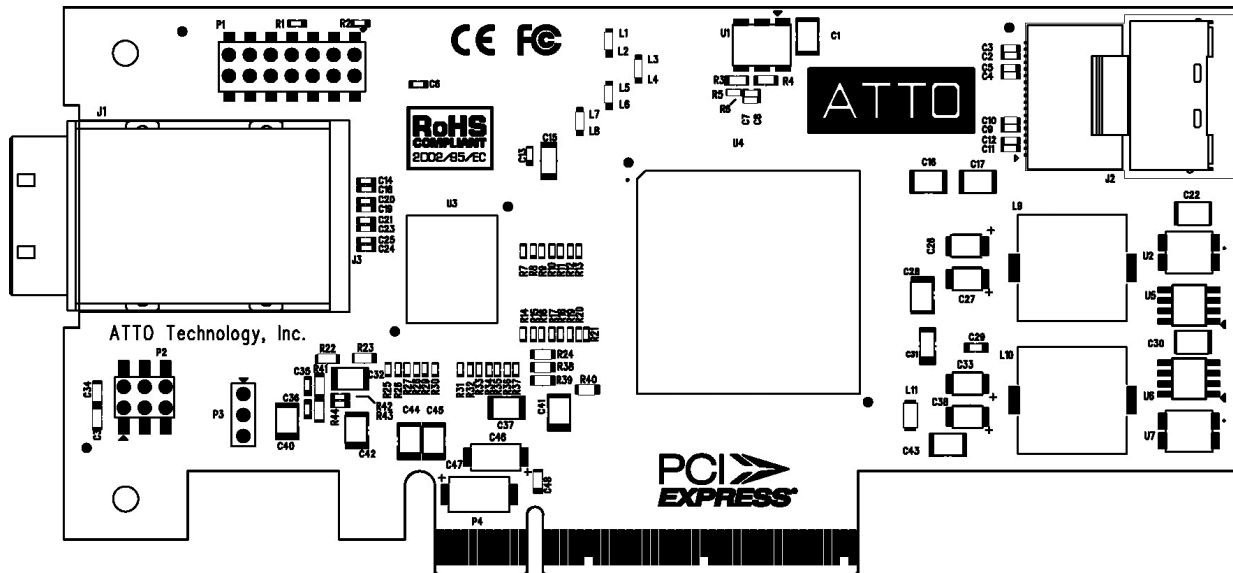


Exhibit 3-12 ExpressSAS H608 Adapter board.

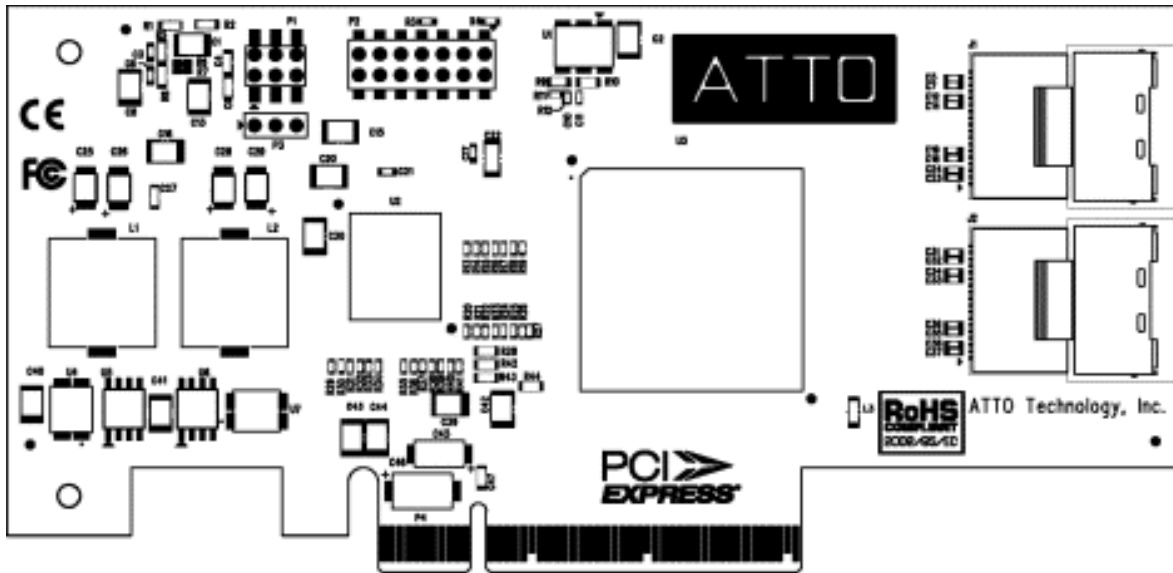


Exhibit 3-13 ExpressSAS H680 Adapter board.

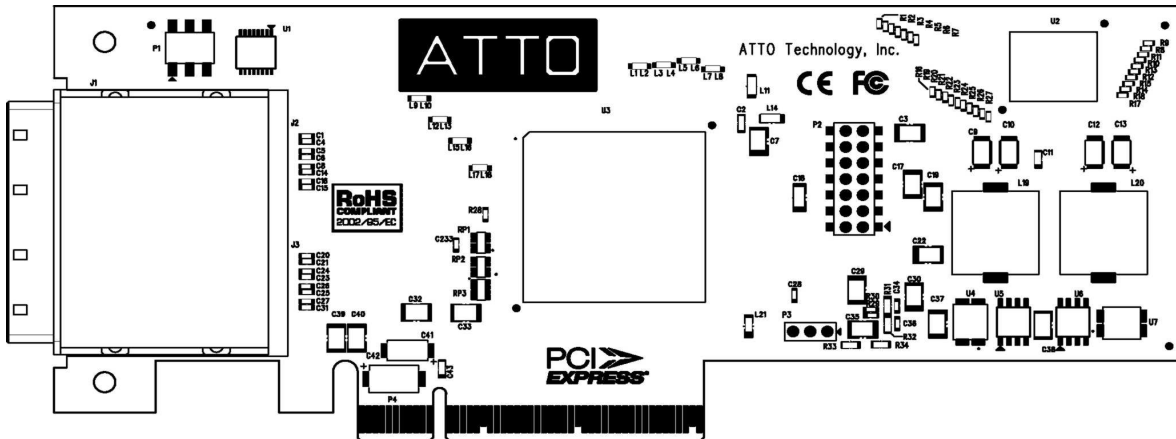


Exhibit 3-14 ExpressSAS H60F Adapter board.

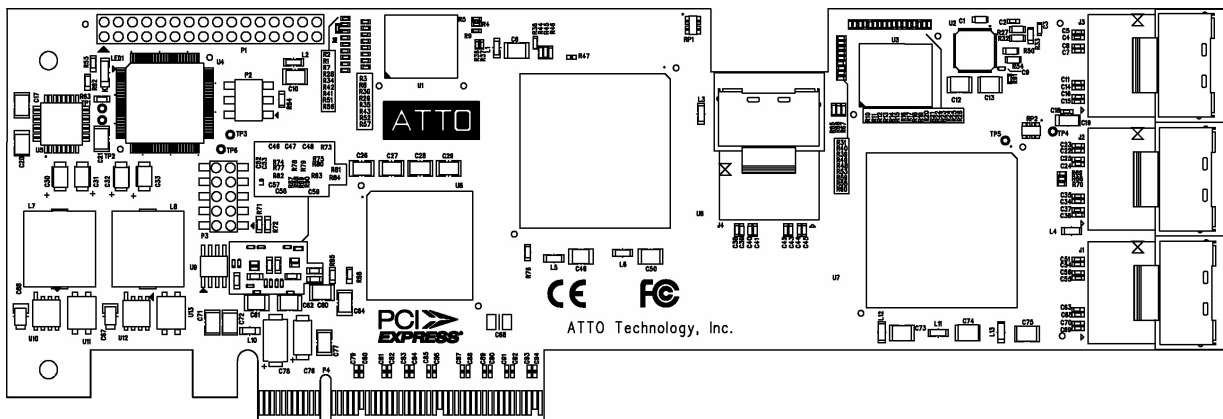


Exhibit 3-15 ExpressSAS H6F0 Adapter board.

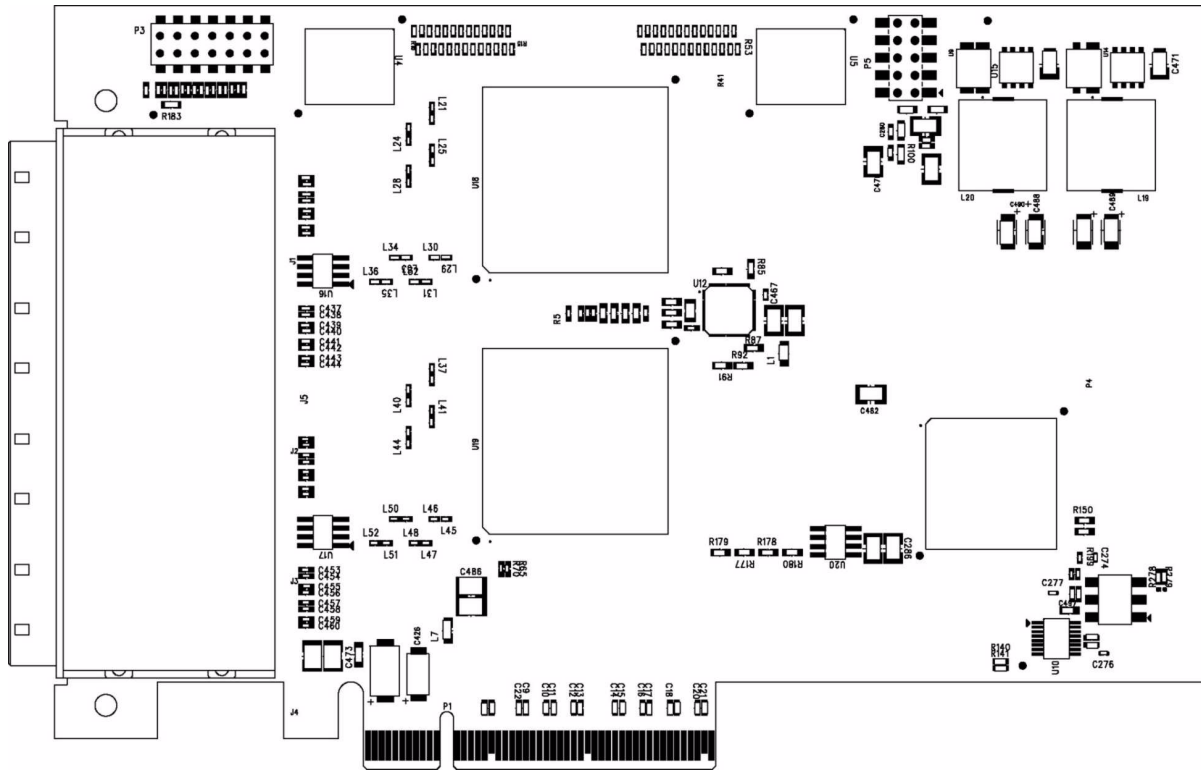


Exhibit 3-16 ExpressSAS H308 Adapter board.

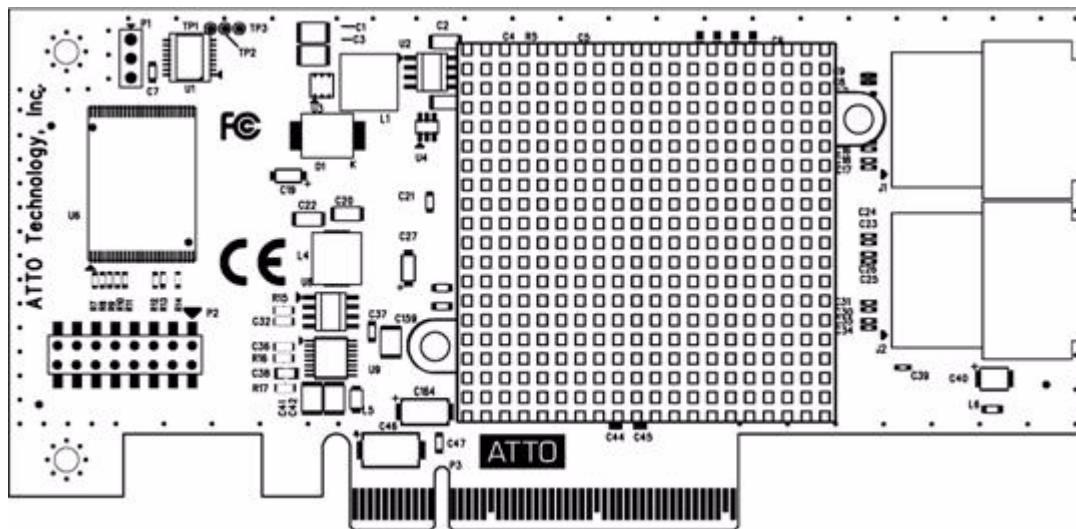


Exhibit 3-17 ExpressSAS H380 Adapter board.

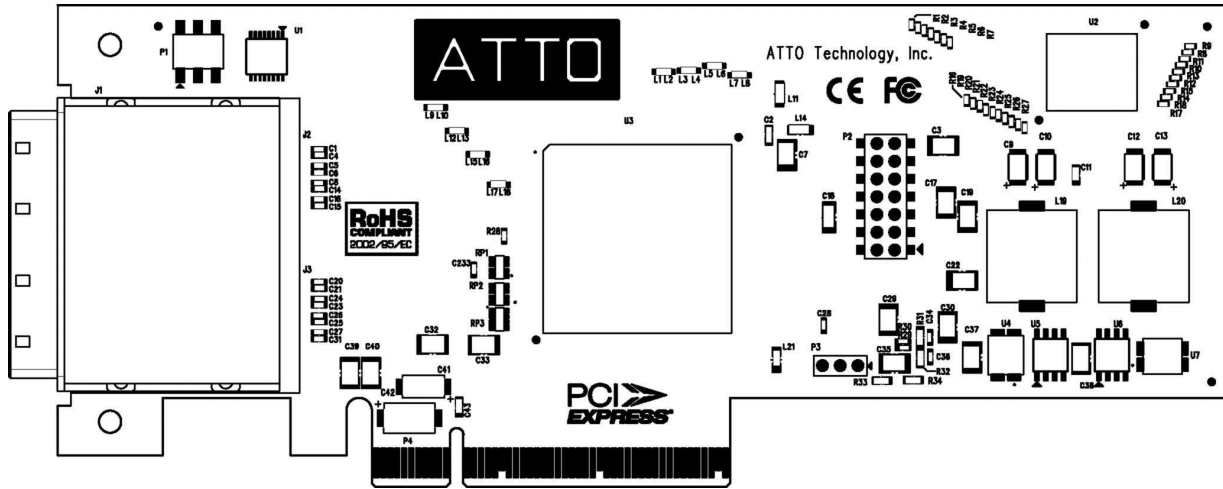


Exhibit 3-18 The ExpressSAS R348 Adapter board.

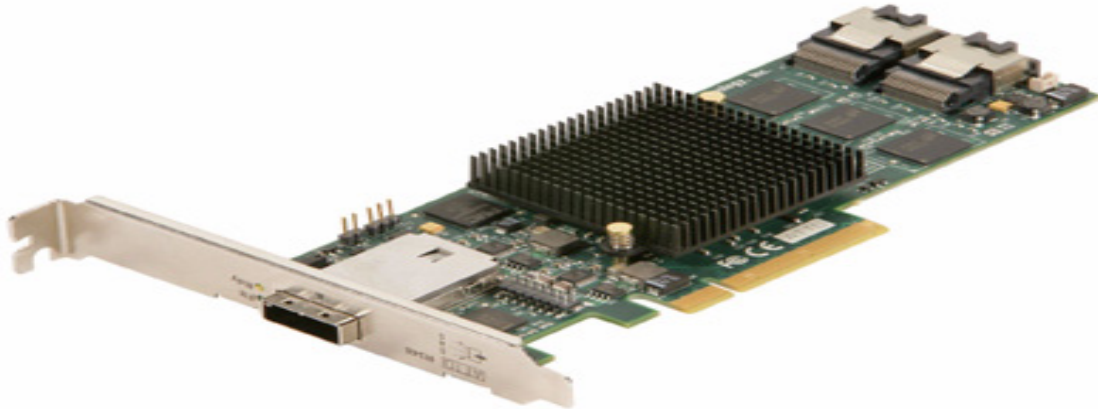


Exhibit 3-19 The ExpressSAS R380 Adapter board.

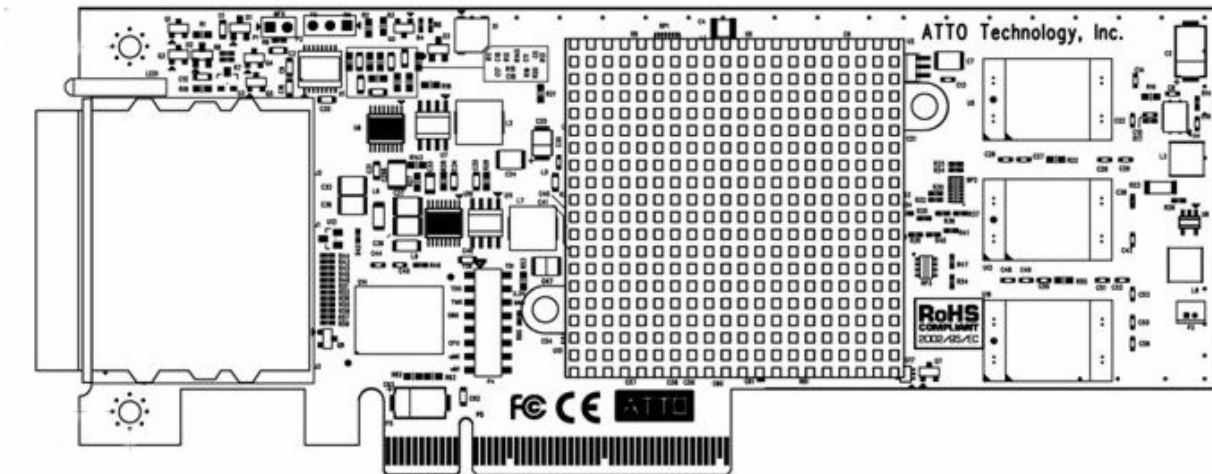


Exhibit 3-20 The ExpressSAS H30F Adapter board.

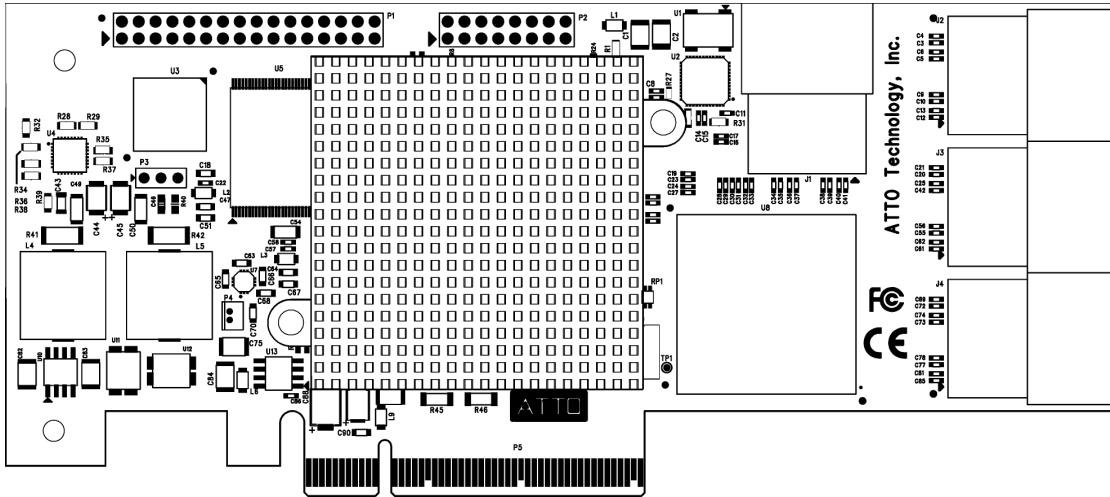
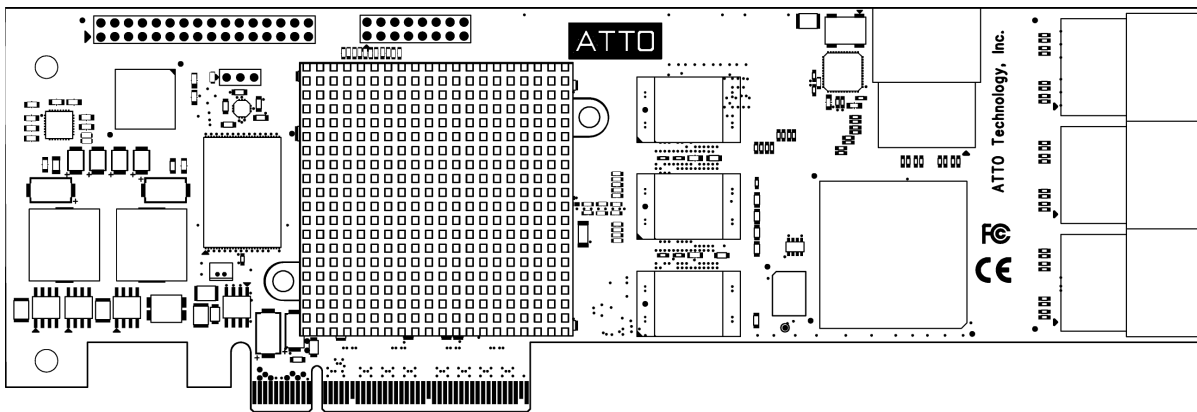


Exhibit 3-21 The ExpressSAS R30F Adapter board.



Install storage

- 1 Connect your SAS/SATA storage to the ATTO ExpressSAS adapter.



Note

Consult with your storage vendor for the proper connectors and cables to interface with your storage

- External connectors: use SFF-8088 connectors.



- Internal connectors: use SFF-8087 internal connectors.
- For SATA, use cables which are no longer than 1 meter.
- For SAS, use cables which are no longer than 7 meters.



- 2 Plug in your computer and storage and power them on.
- 3 If required, configure your storage and adapter, including RAID, using the ATTO Configuration Tool found in ATTO Utilities on the Installation CD or the ATTO web site. Default settings are appropriate for most systems but you may change settings using the ATTO Configuration Tool.

4 Troubleshooting

This chapter contains solutions for the most common problems you might encounter. If you need additional assistance, please refer to the ATTO Technology web site (www.attotech.com) or contact an ATTO Technology authorized representative.

General suggestions

- Check each cable connection on every device.
- Verify all cables are in proper working condition. Loose or broken cables are often the cause of errors or problems.
- Check that devices are plugged into an AC outlet and are turned on before you add power to your computer.
- Ensure you have the latest driver for your operating system and that the driver is installed (refer to [Install Drivers](#) on page 7).
- Ensure the ExpressSAS adapter is installed properly in the computer (refer to [Install Hardware](#) on page 15).

If the RAID adapter is not accessible

- 1 Open the ATTO **Configuration Tool** from the ATTO Utilities found on the Installation CD or download from the ATTO web site. Refer to the *ATTO Utilities Installation and Operation Manual* for additional information.
- 2 If the adapter does not appear in the **Device Listing**, make sure it is properly seated in the PCI slot.
 - a. Remove power from the PC.
 - b. Remove the case.

- c. Check the PCI slot.
- d. Replace the case.
- e. Apply power.



Note

If it is properly seated and devices are still not accessible, contact an ATTO Technology authorized representative.

- 3 Verify the driver is loaded.
 - a. Click on the adapter name in the **Device Listing** to view the **Basic Info** screen.
 - b. If the **Driver Information** section indicates **Unknown: driver not loaded**, reinstall the driver. Refer to [Install Drivers](#) on page 7.
 - c. If reinstalling the driver does not fix the problem, contact an ATTO authorized representative.
- 4 Reset the NVRAM for all channels to defaults and reboot. If the problem persists, contact an ATTO authorized representative.



Note

For OS X systems, when calling ATTO Technical Support, please have a printout of the IOreg listing and output from the Apple System Profiler available.

Appendix A Standards and Compliances

The equipment described in this manual generates and uses radio frequency energy. The Technical Specification sheet for the ATTO ExpressSAS Host Adapter shows certifications for each model.



FCC standards: radio and television interference

This equipment has been tested and found to comply with the limits for a Class B digital device, pursuant to Part 15 of the FCC Rules. These limits are designed to provide reasonable protection against harmful interference in a residential installation. This equipment generates, uses, and can radiate radio frequency energy and, if not installed and used in accordance with the instruction manual, may cause interference to radio communications. However, there is no guarantee that interference will not occur in a particular installation. If this equipment does cause interference to radio or television reception, which can be determined by turning the equipment off and on, the user is encouraged to try to correct the interference by one or more of the following measures:

- Reorient or relocate the receiving antenna
- Increase the separation between the equipment and receiver
- Connect the equipment into an outlet on a circuit different from that to which the receiver is connected
- Consult the dealer or an experienced radio/TV technician for help



Canadian standards

This Class B digital apparatus complies with Canadian ICES-003.
Cet appareil numérique de la classe A est conforme à la norme NMB-003 du Canada.



European standards

Declaration of Conformity

This following statement applies to the ATTO ExpressSAS Host Adapter.

This device has been tested in the basic operating configuration and found to be compliant with the following European Union standards: Application of Council Directive: 89/336/EEC

Standard(s) to which conformity is declared:

EN55024:2002; EN55022:2002 CLASS B

This Declaration will only be valid when this product is used in conjunction with other CE approved devices and when the entire system is tested to the applicable CE standards and found to be compliant.



The ATTO ExpressSAS Host Adapter cards comply with Directive 2002/95/EC on the Restriction of the Use of Hazardous Substances in Electrical and Electronic Equipment (RoHS). Contact your ATTO representative regarding RoHS compliant products.

Appendix B Safety and Warranty

All ATTO host adapter products have been tested to meet applicable safety standards when operated in proper electrical and thermal environments.

Safety

Please review the specifications for your specific host adapter before installing and operating it in any computer system to ensure compatibility.

Installation

Before installing an ATTO host adapter product into your computer system, unplug the computer from its electrical power source and allow adequate time for electrical discharge and the internal components to cool down before removing the computer system cover. This will decrease the risk of personal injury from electrical shock or touching the hot surface of an electrical component.

Once an ATTO host adapter is installed in a computer system, the computer cover must be reinstalled properly before turning the computer system back on.

Operation

ATTO host adapters require adequate cooling to function properly. If you have any questions as to the airflow provided by your computer system, please refer to your computer system manual or contact your computer system manufacturer.

To facilitate proper air circulation, ATTO host adapters should never be operated in a computer system without the cover installed or with an inoperable fan as this may cause safety or thermal problems which could damage the ATTO host adapter and void the warranty.

ATTO Technology, Inc. limited warranty

ATTO Technology, Inc. warrants to the original purchaser of this product that it is free from defects in material and workmanship as described in the ATTO Technology website, www.attotech.com, for three years.

ATTO Technology, Inc. liability shall be limited to replacing or repairing, at its option, any defective product. There is no charge for parts or labor should ATTO Technology, Inc. determine that this product is defective.

Products which have been subject to abuse, misuse, alteration, neglected, or have been serviced, repaired or installed by unauthorized personnel shall not be covered under this warranty provision. Damage resulting from incorrect connection or an inappropriate application of this product shall not be the responsibility of ATTO Technology, Inc. Liability is limited to ATTO Technology, Inc. product(s); damage to other equipment connected to ATTO Technology, Inc. product(s) is the customer's responsibility.

This warranty is made in lieu of any other warranty, express or implied. ATTO Technology, Inc. disclaims any implied warranties of merchantability or fitness for a particular purpose.

ATTO Technology, Inc. responsibility to repair or replace a defective product is the sole and exclusive remedy provided to the customer for breach of this warranty. ATTO Technology, Inc. is not liable for any indirect, special, incidental, or consequential damages irrespective of whether ATTO Technology, Inc. has advance notice of the possibility of such damages.

No ATTO Technology, Inc. dealer, agent or employee is authorized to make any modification, extension or addition to this warranty.