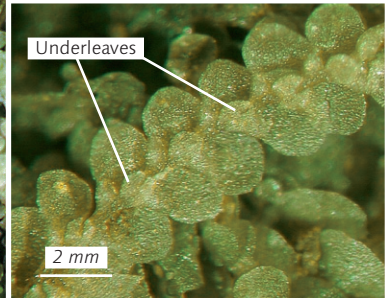
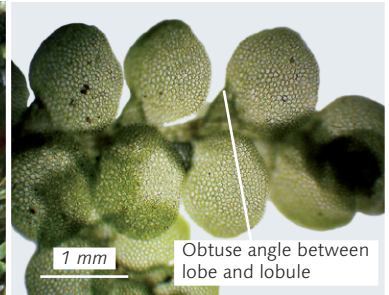
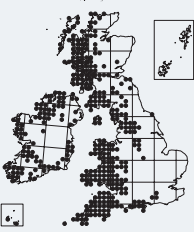


Lejeunea lamacerina

Western Pouncewort

Key 42



Identification The often extensive mats formed by *L. lamacerina* are composed of small (shoots up to 2 cm long and 0.5–1.5 mm wide), delicate, pale green shoots. The lobules are smaller than the broadly rounded main leaf lobes. The underleaves are rather small and distant. Often fertile, with small, 5-keeled perianths.

Similar species *L. cavifolia* (p. 221) has relatively larger, more overlapping underleaves and relatively smaller lobules. *L. patens* (p. 223) has a large, inflated lobule, which makes an acute angle with the leaf lobe. *L. holtii* (*L. eckloniana*) (Paton, p. 497) is a rare plant of south-west Ireland, and has distinctly elliptical leaves, with rather small underleaves and even smaller lobules. *L. mandonii* (Paton, p. 500) is also very rare in oceanic districts; it is as tiny as *Harpalejeunea mollerii* (p. 219), but has slightly elongated, rounded leaf lobes and a very distinctive, smoothly rounded perianth that differs from the 5-angled perianths of most related species. *Aphanolejeunea* (p. 227), *Microlejeunea* (p. 220), *Drepanolejeunea* (p. 218), etc. – are usually much smaller, with differently shaped leaves, often longer and thinner or pointed.

Habitat Especially characteristic of rock faces by streams in humid valleys, and often covering extensive areas. It is far less frequent on crags or on trees in the uplands.