



**GOOD
MORNING**

Perineum

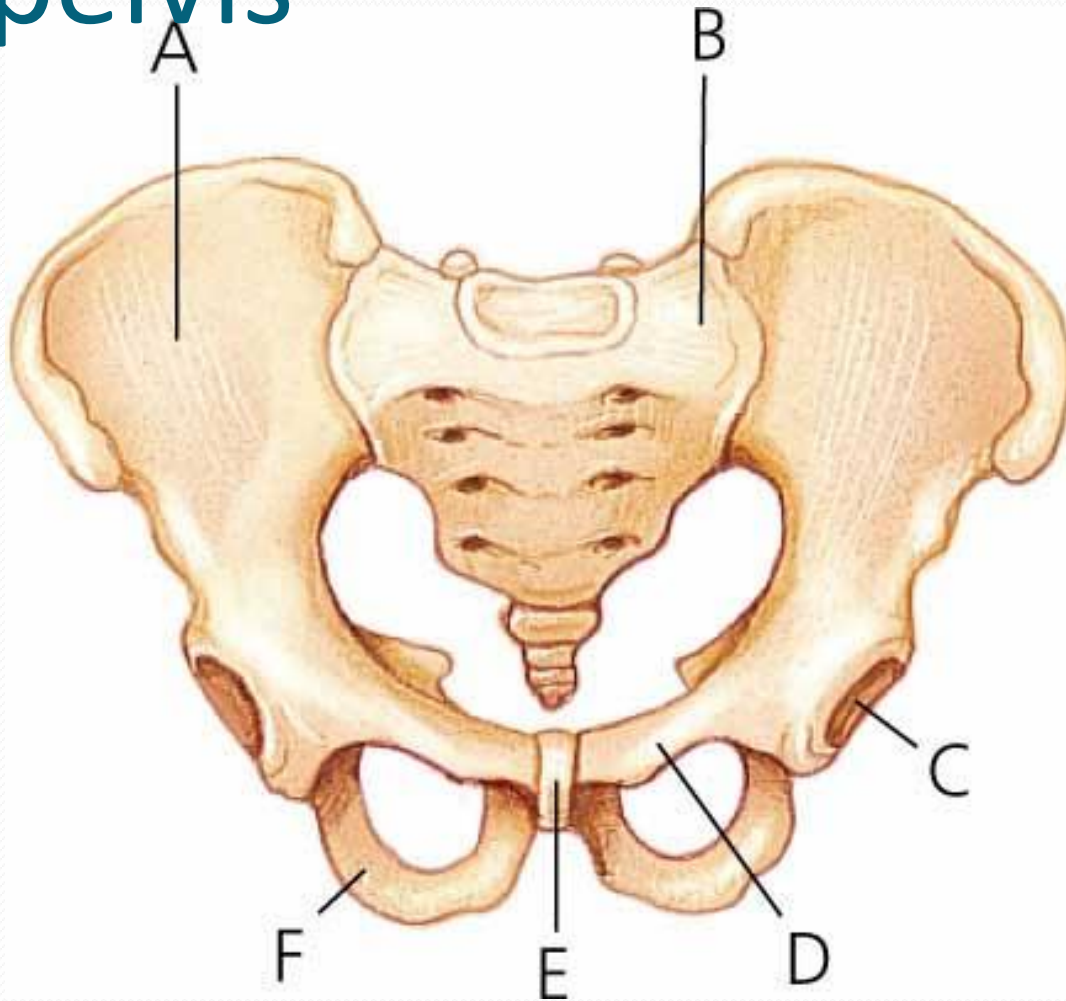
Dr. Radhika P .M

Assistant Professor

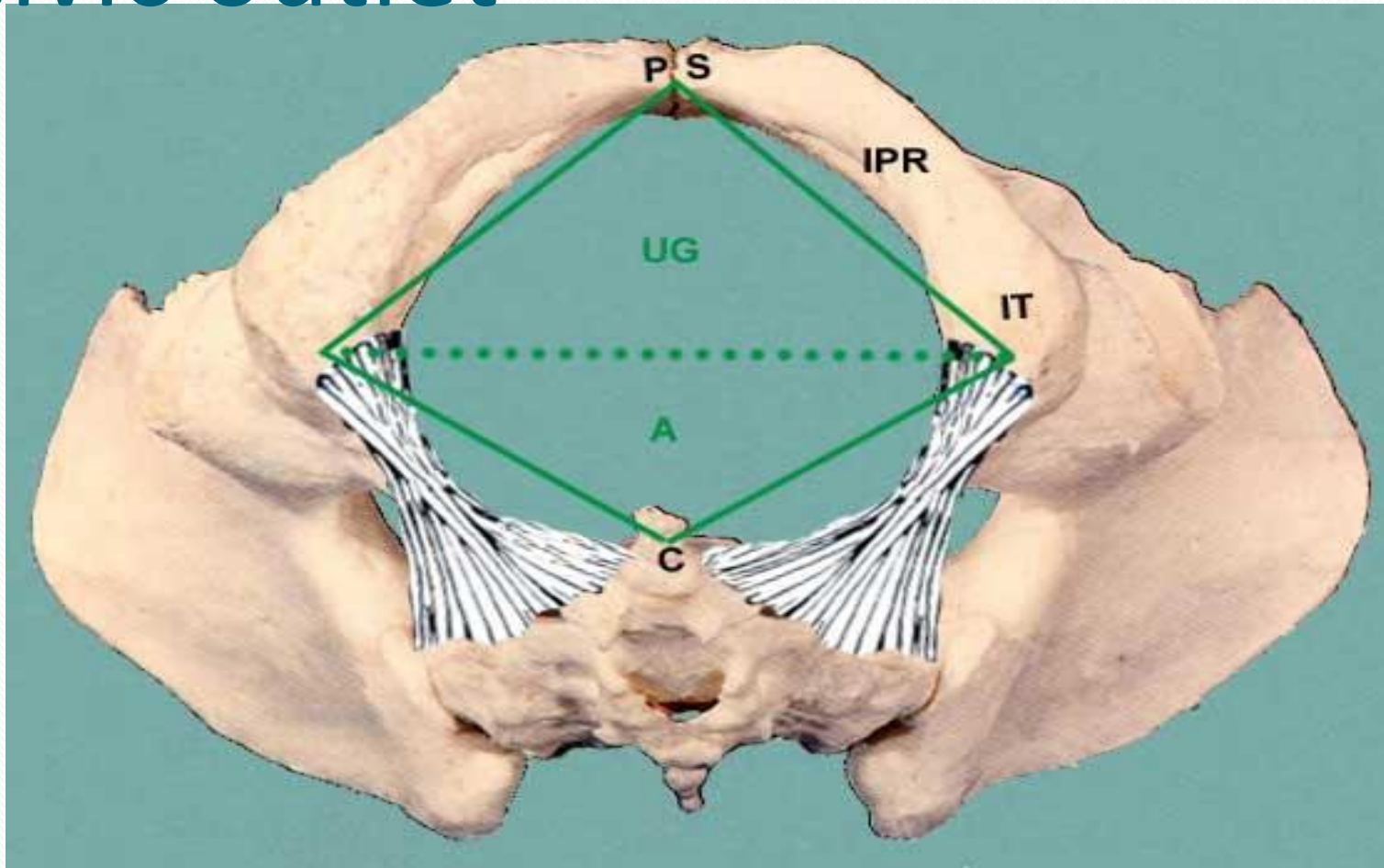
Department of Anatomy

Ramaiah Medical College

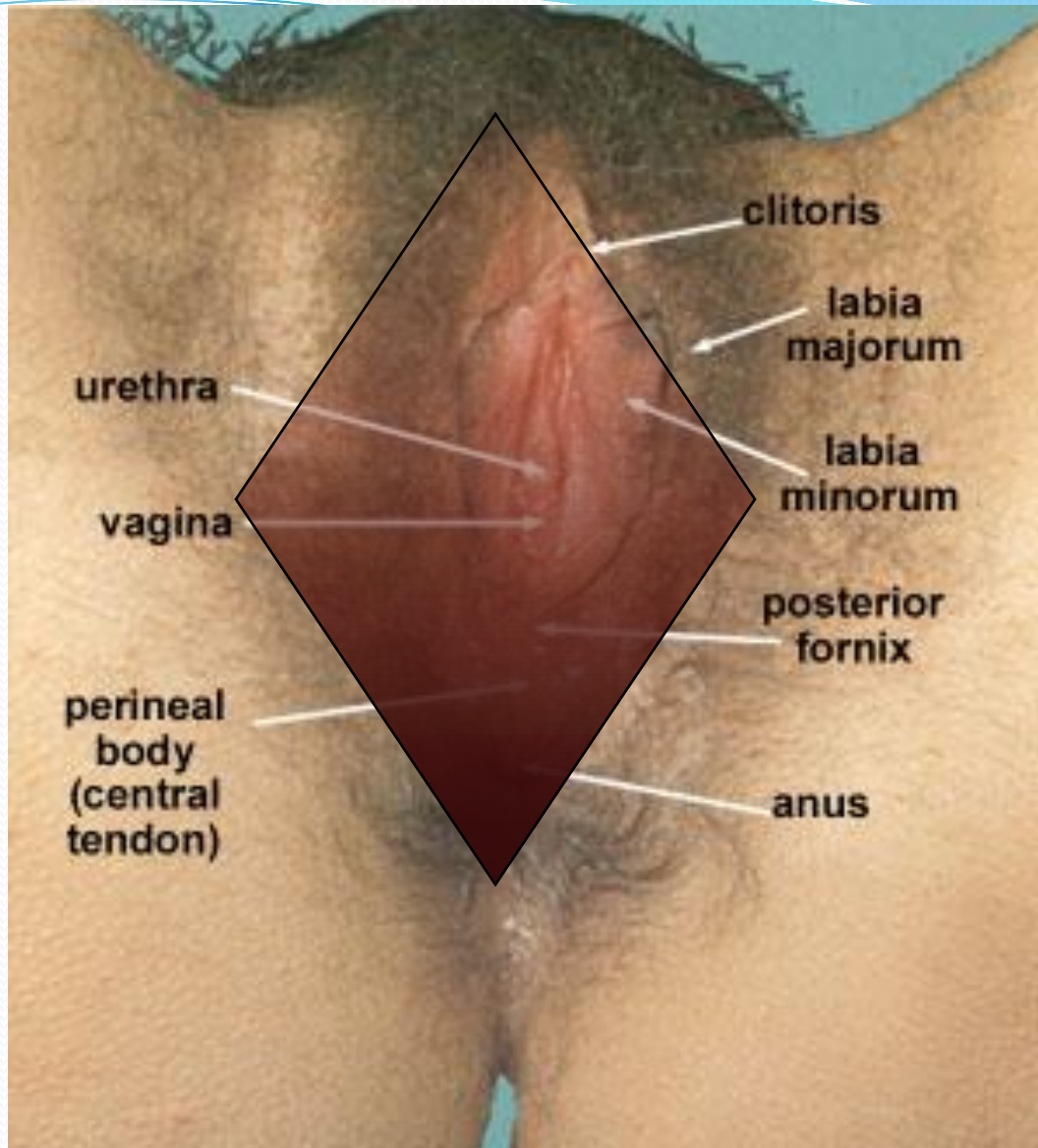
Bony pelvis



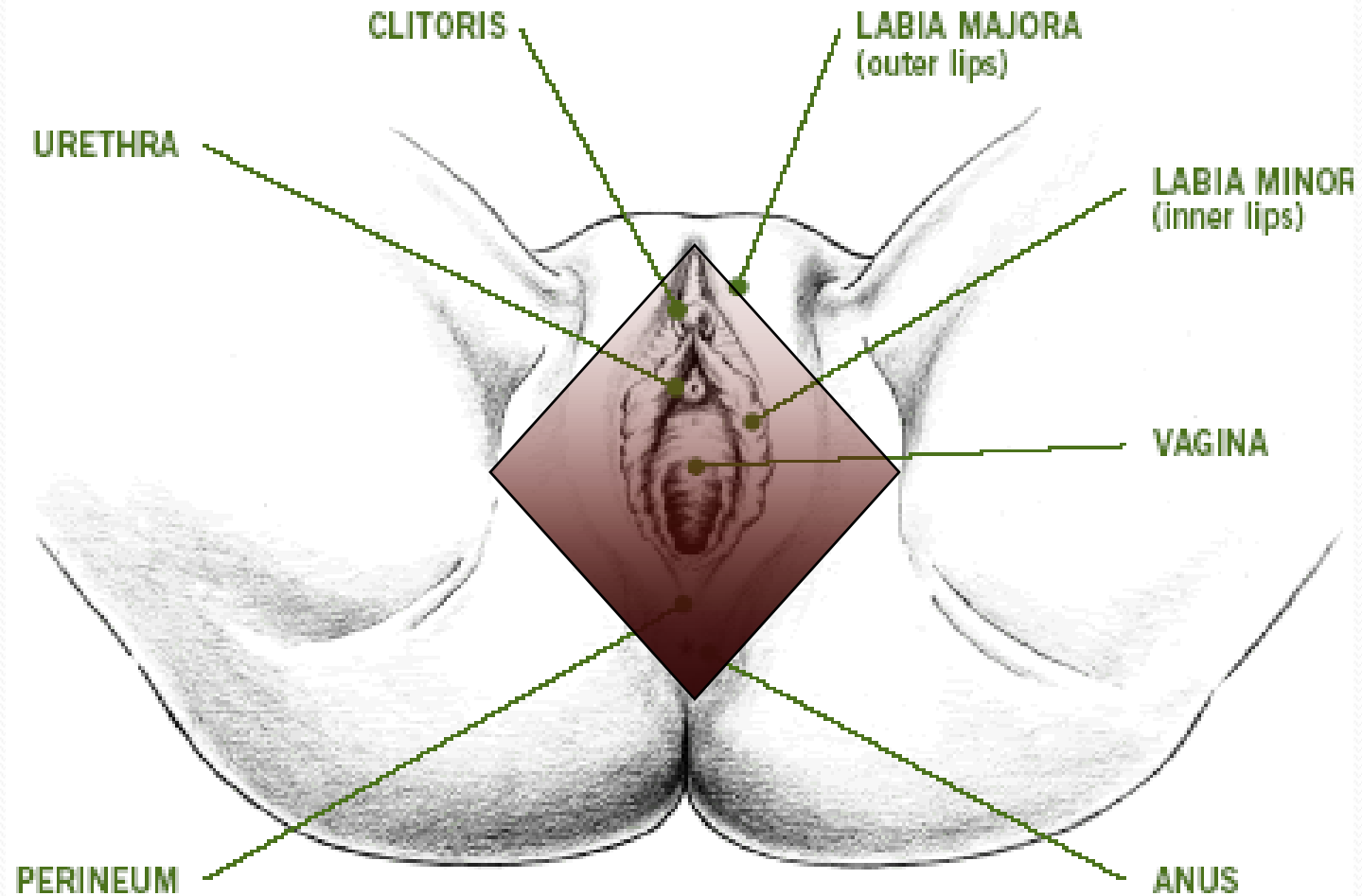
Pelvic outlet



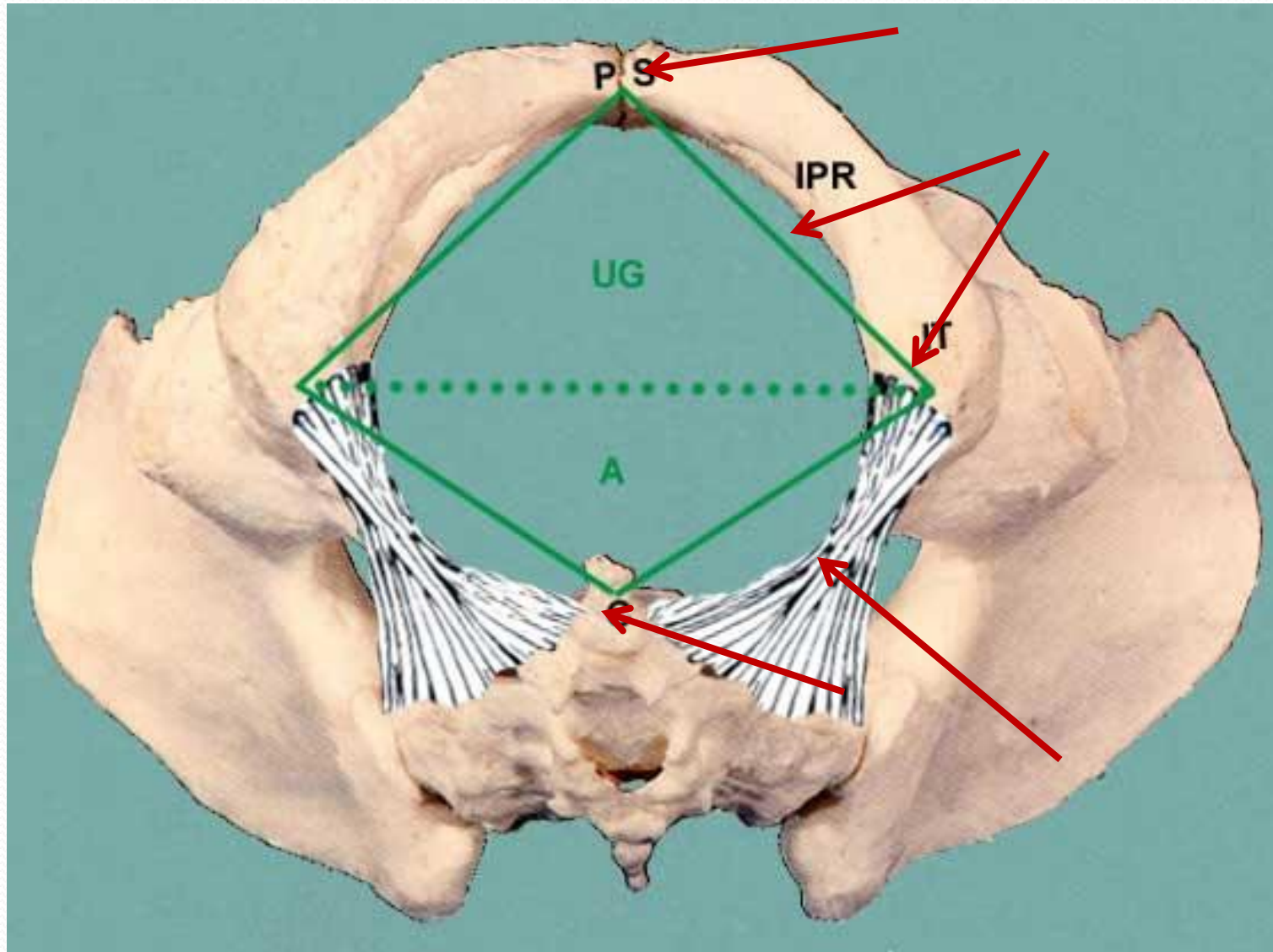
SUPERFICIAL BOUNDARIES IN FEMALE



Superficial boundaries of perineum in female

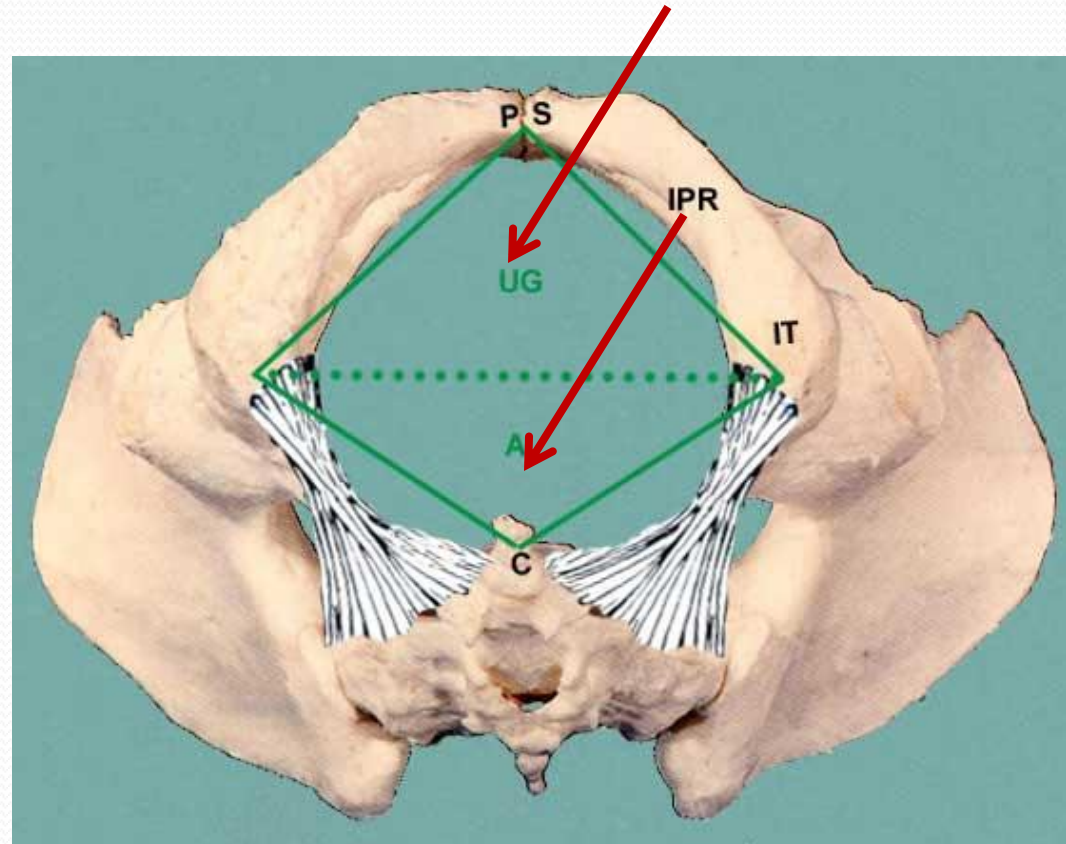


Deep boundaries of perineum

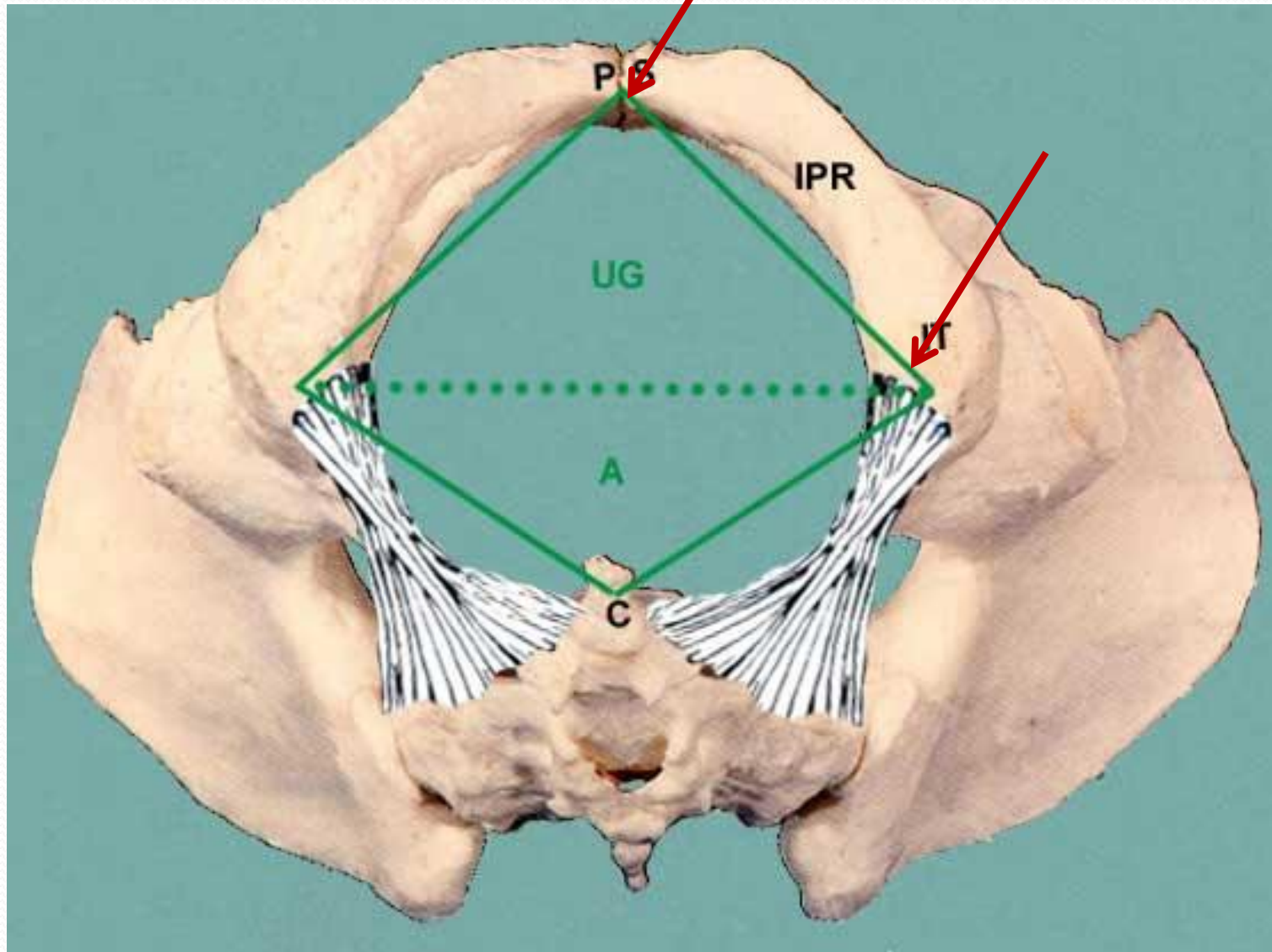


DIVISION OF PERINEUM

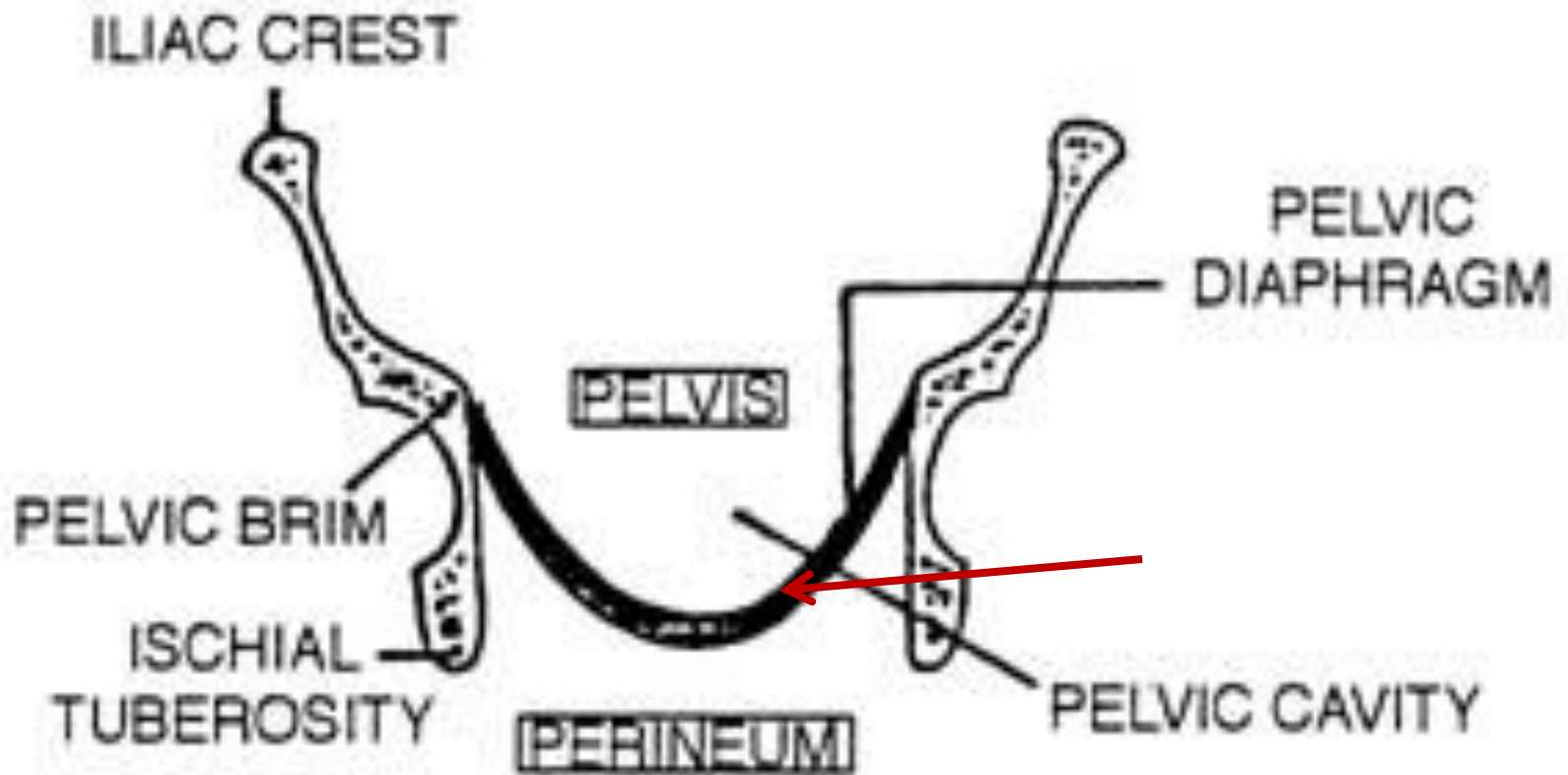
- Urogenital triangle
- Anal triangle

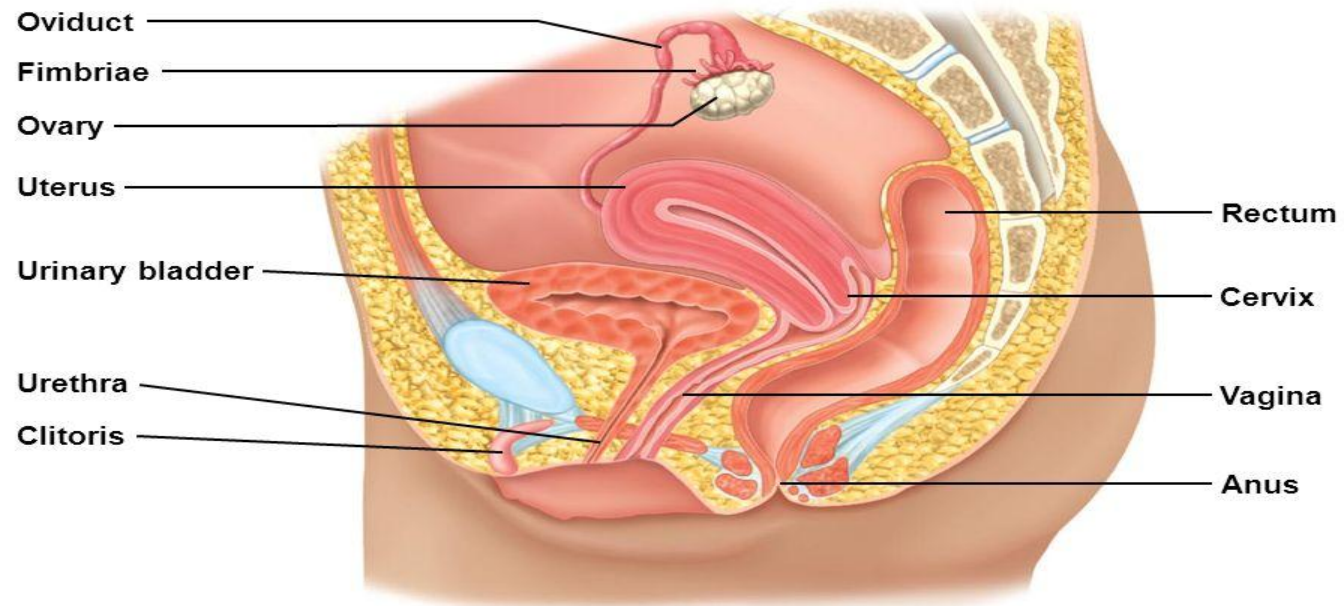


DIVISIONS OF PERINEUM



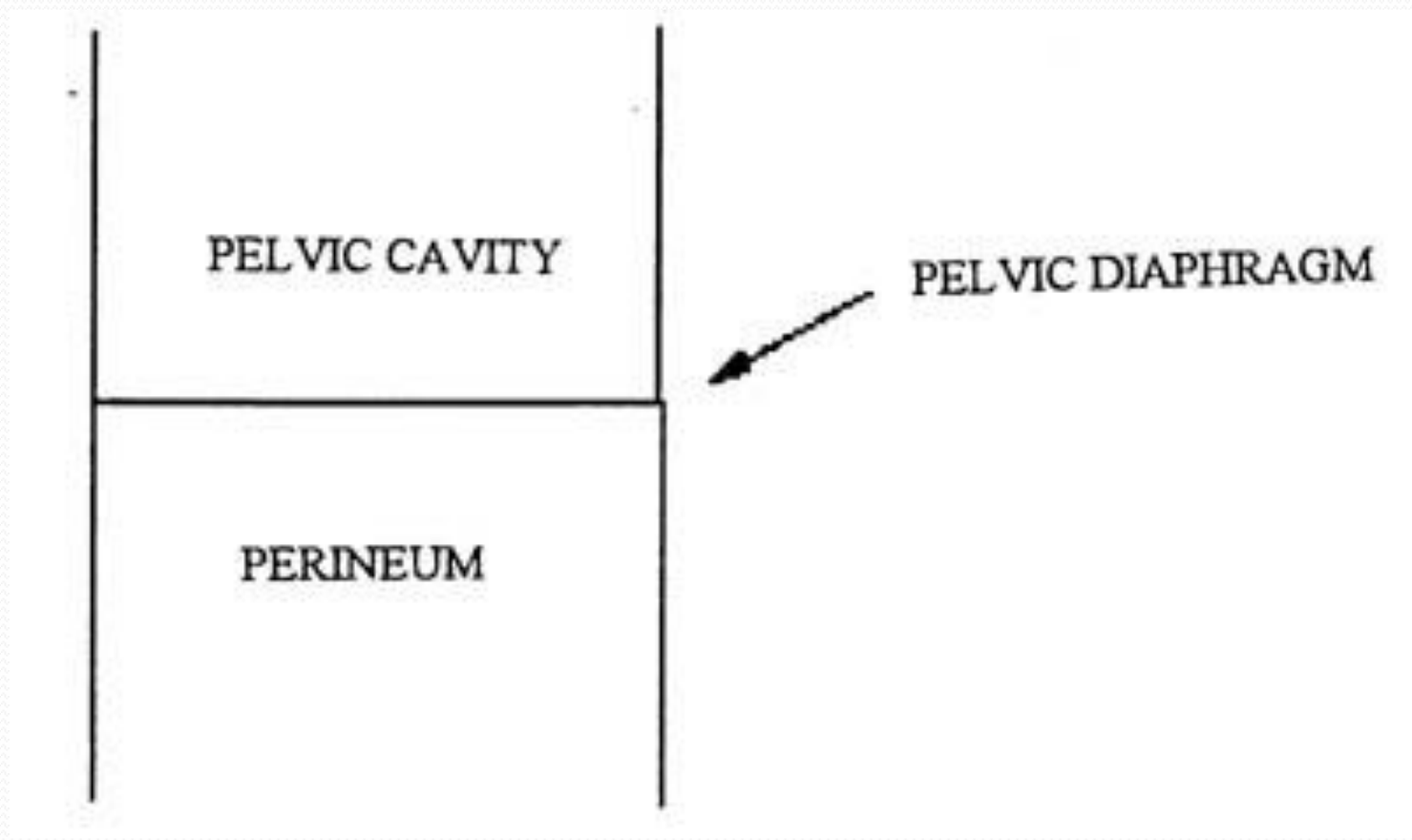
Perineum schematic (coronal section)





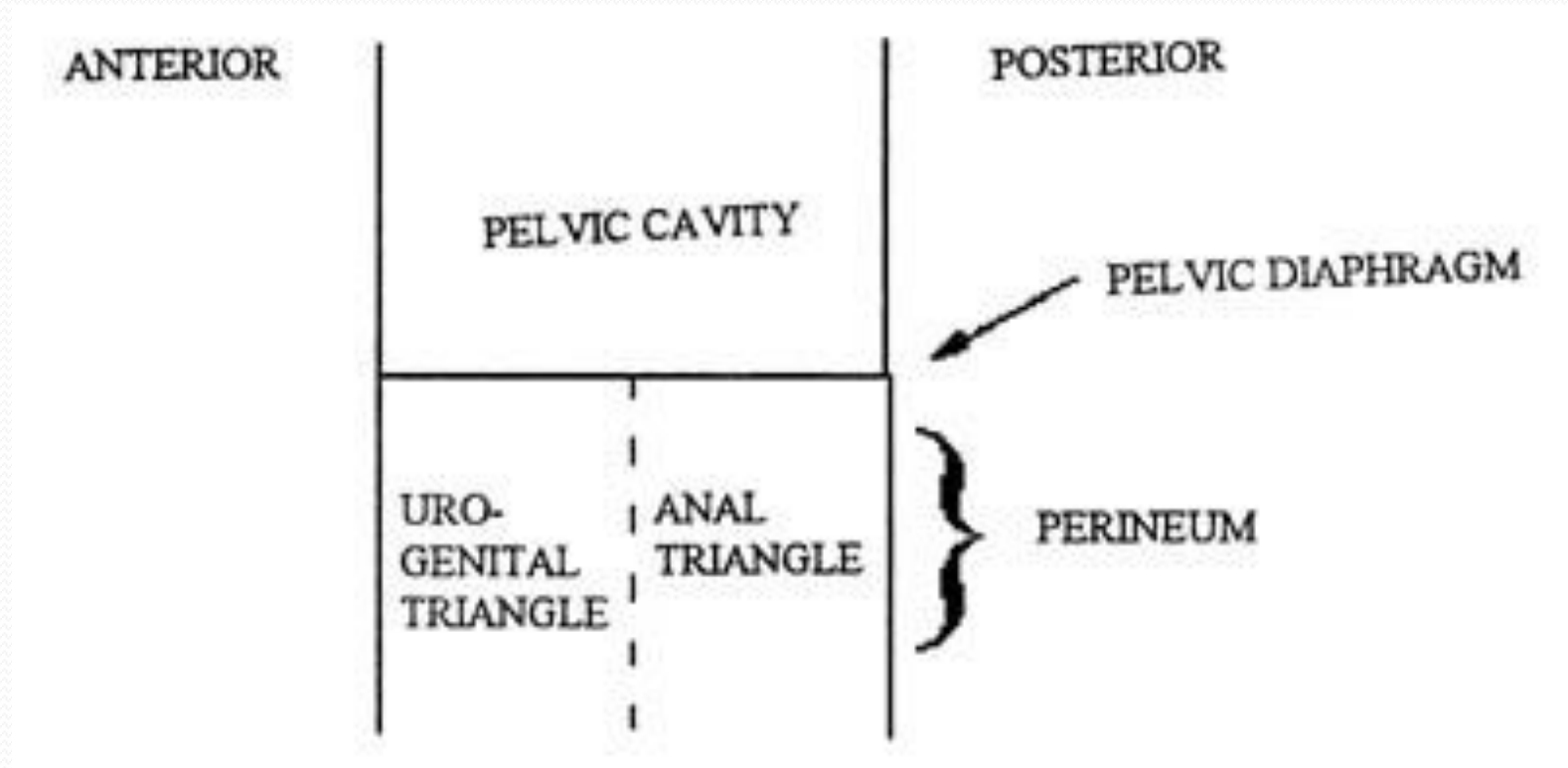
a) Sagittal section showing the components of the system in relation to other structures.

Figure 16.4a



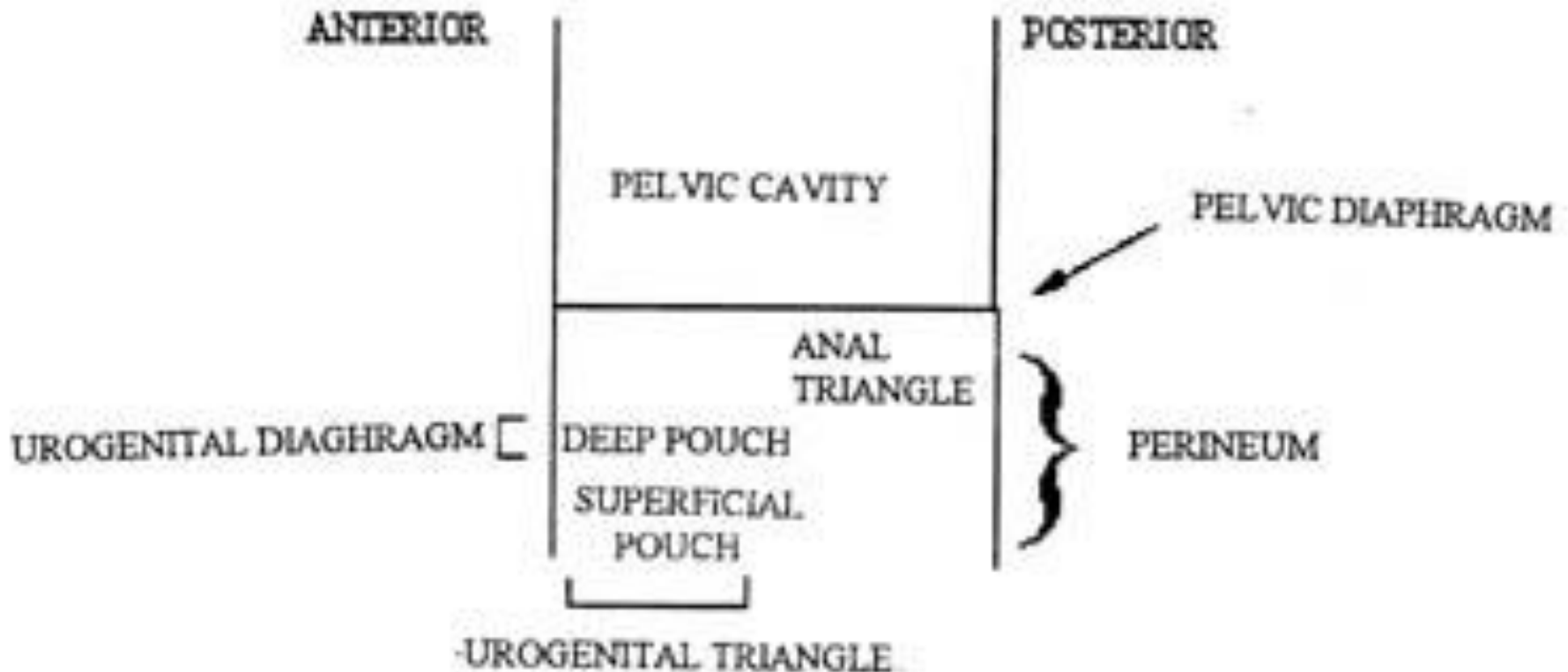
Division of perineum into two triangle (schematic)

Sagittal section



FURTHER DIVISION OF UROGENITAL TRIANGLE

Sagittal section



Superior fascia of urogenital diaphragm

Deep perineal space

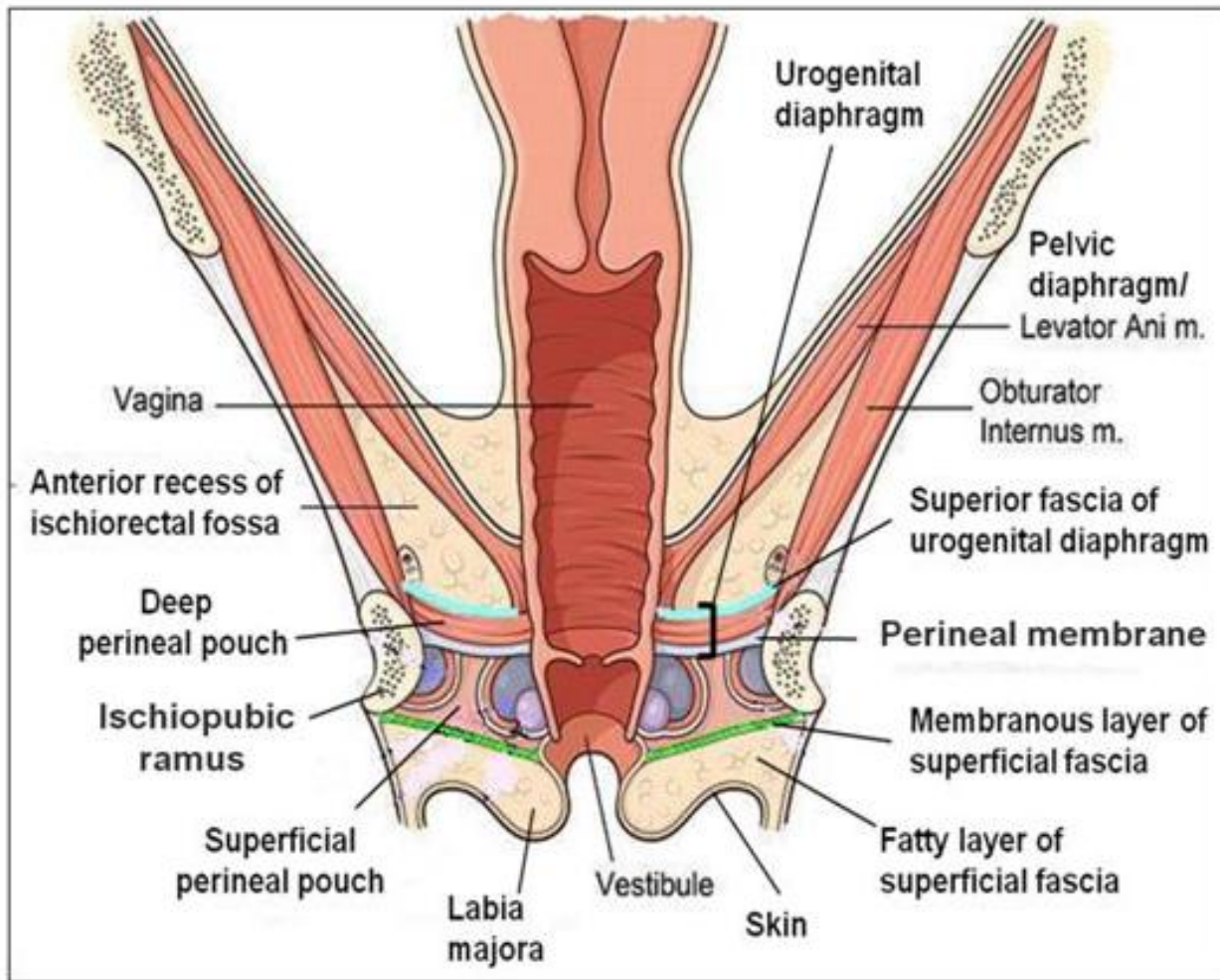
Inferior fascia of urogenital diaphragm

Superficial perineal space

superficial fascia of perineum

F

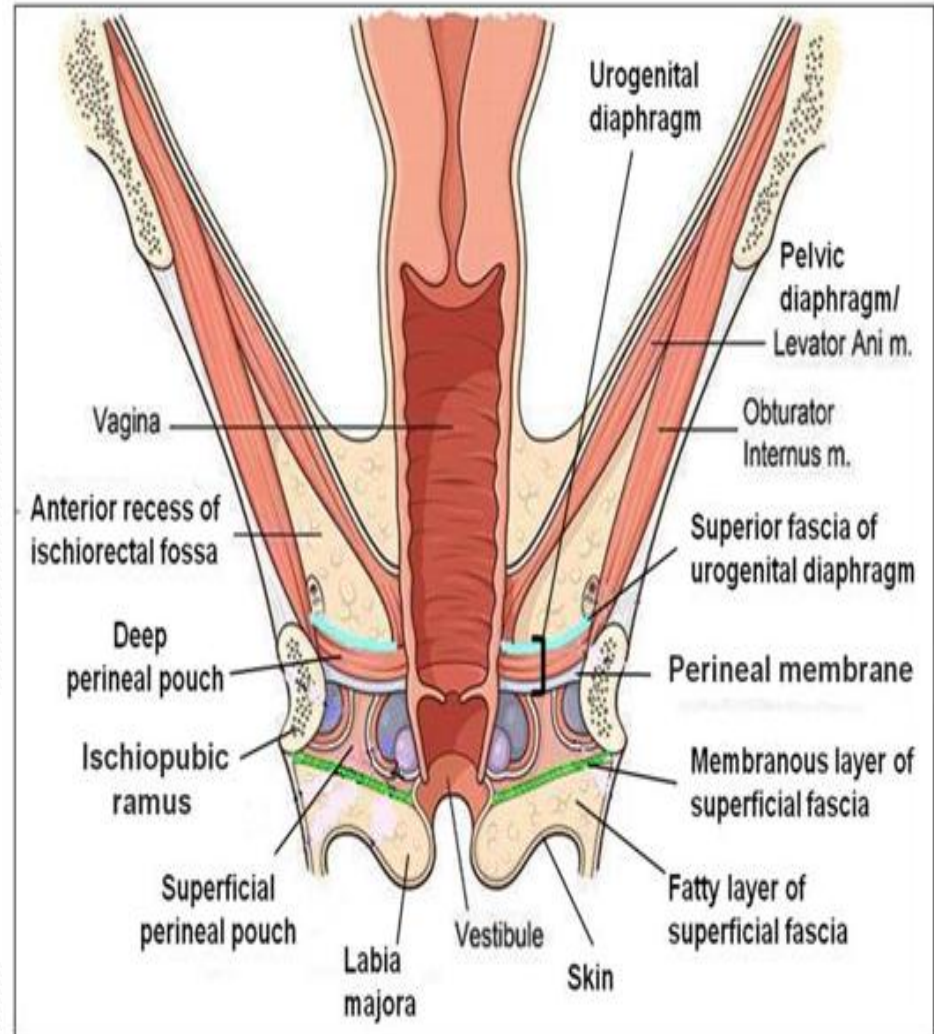
I



Three fasciae of urogenital triangle

- Colles fascia
- Perineal membrane
- Superior fascia of urogenital diaphragm

A

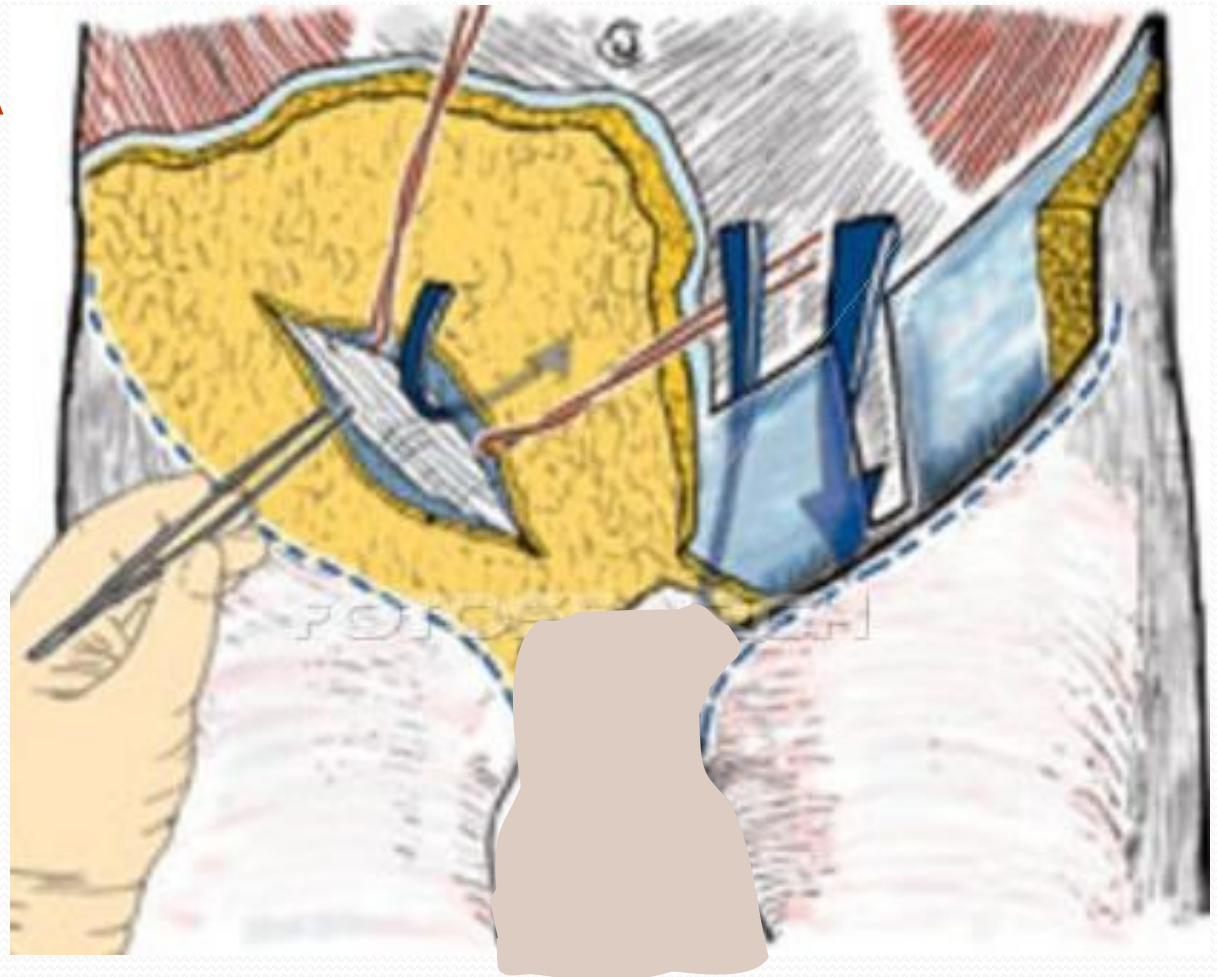


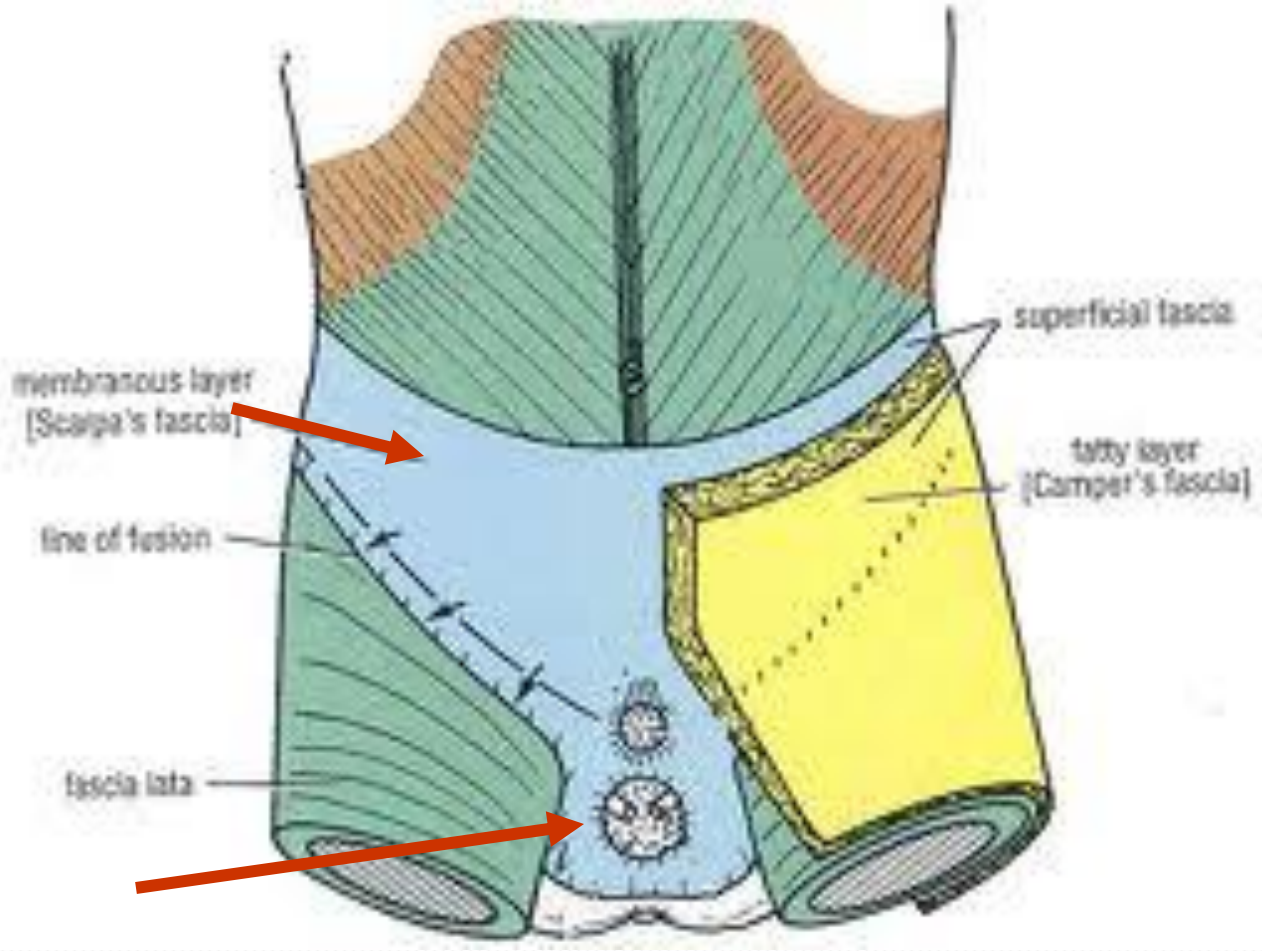
Tracing of Colles' fascia

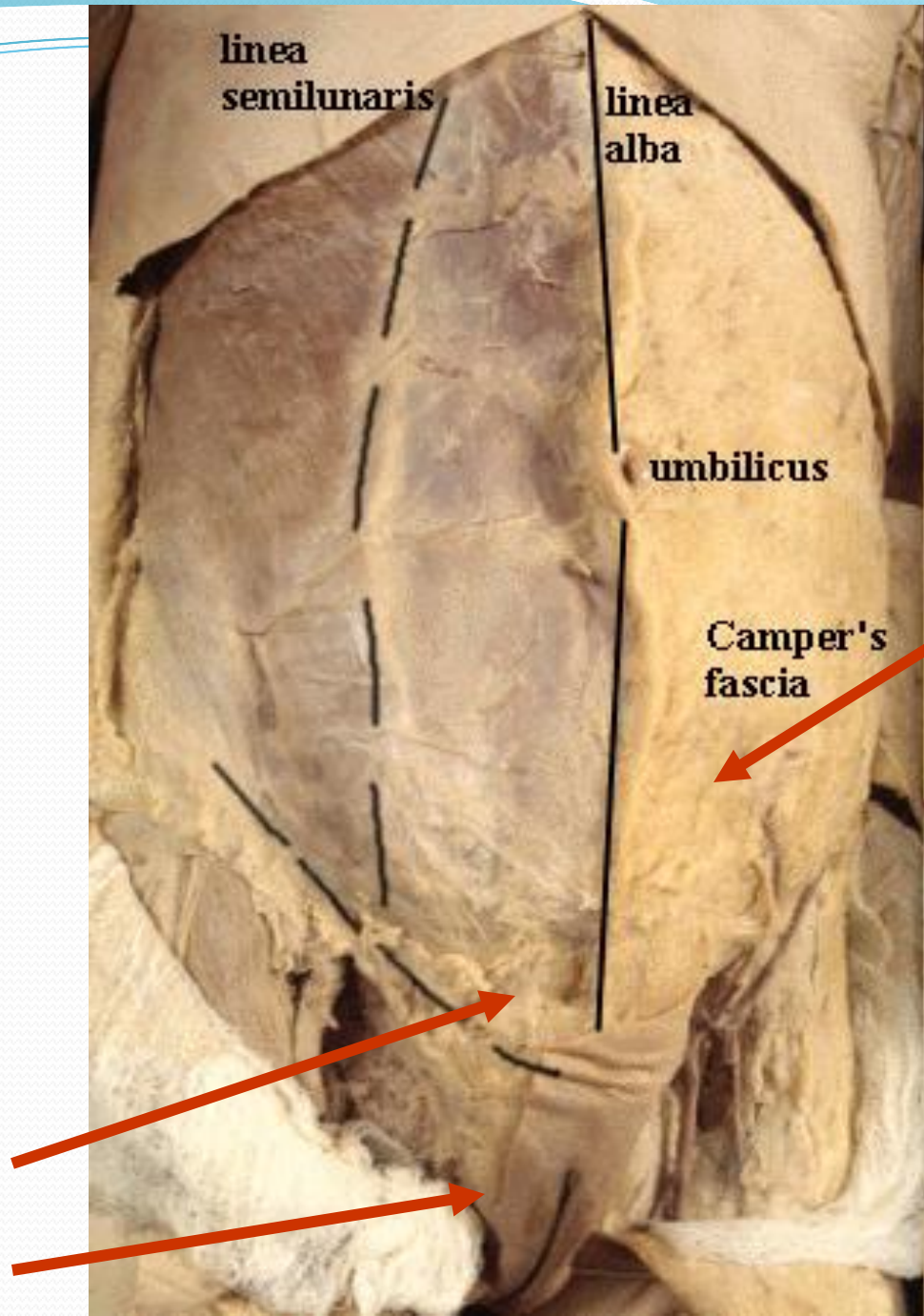
lower part of anterior abdominal wall

SUPERFISCIAL FASCIA

FATTY LAYER
(Fascia Camper)
MEMBRANOUS
LAYER (Fascia
Scarpa)

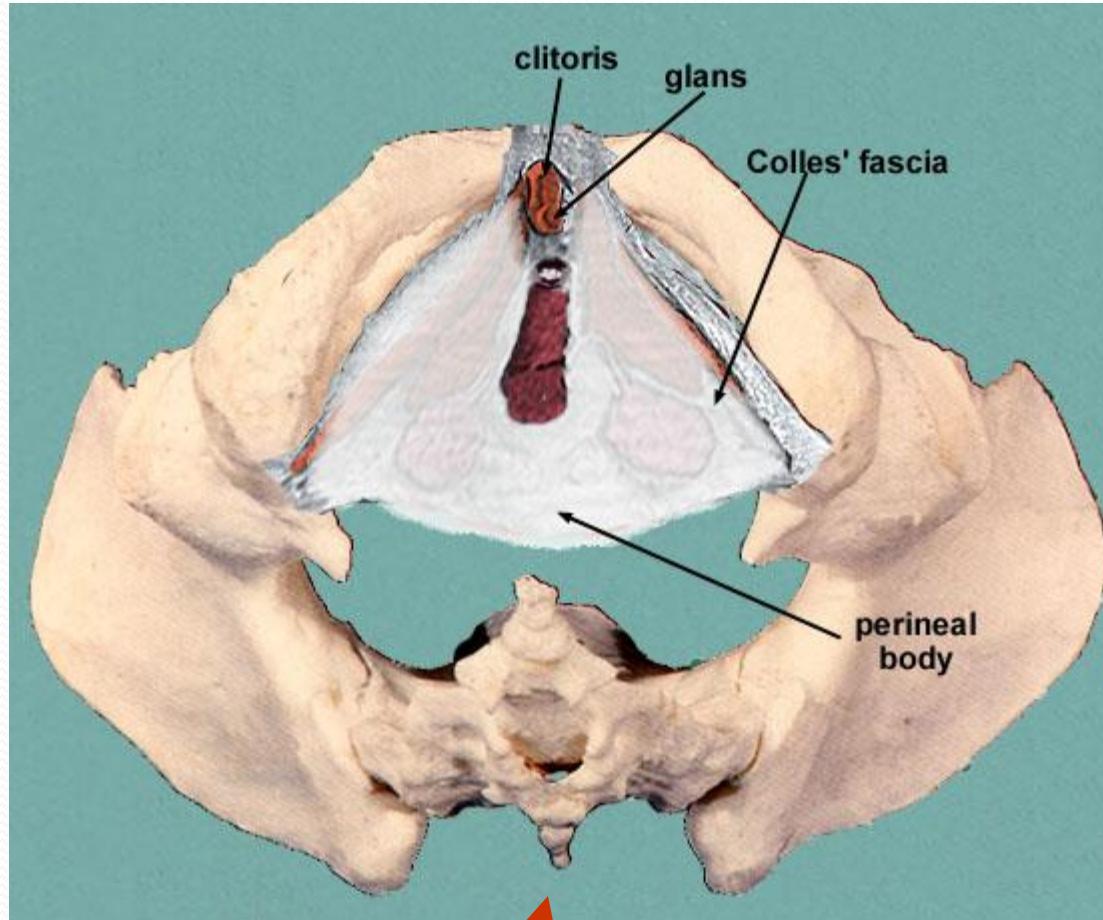






Attachment of Colles fascia

A

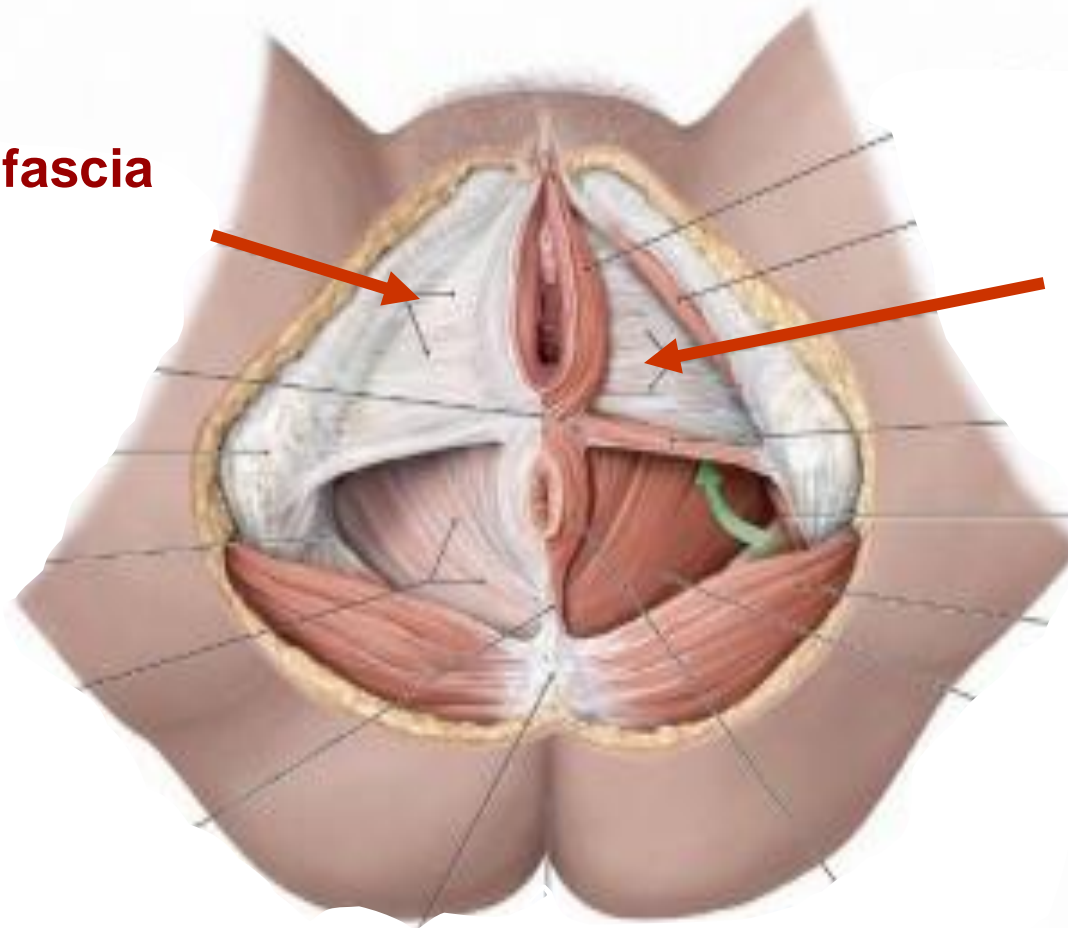


P

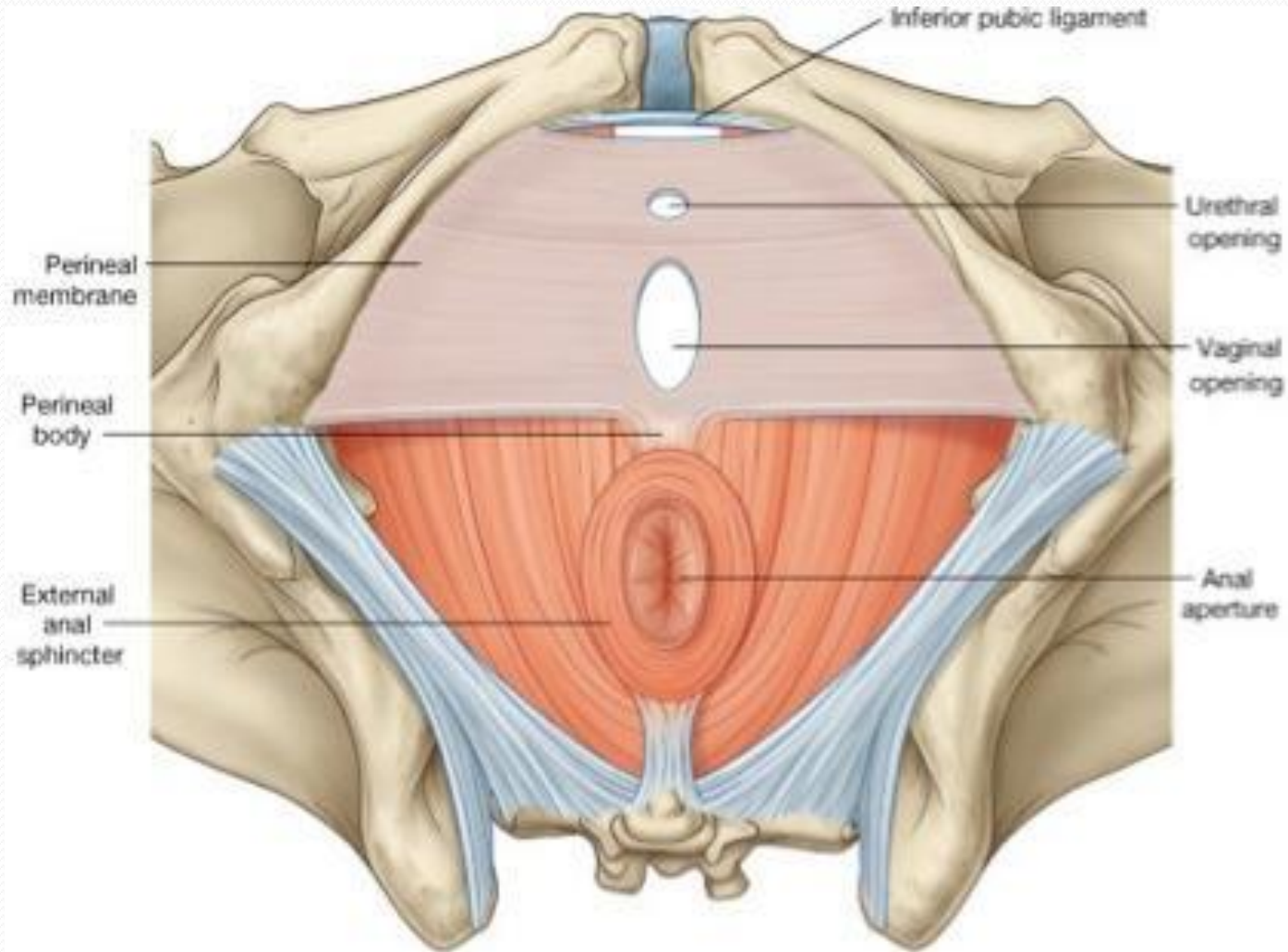
Perineal membrane

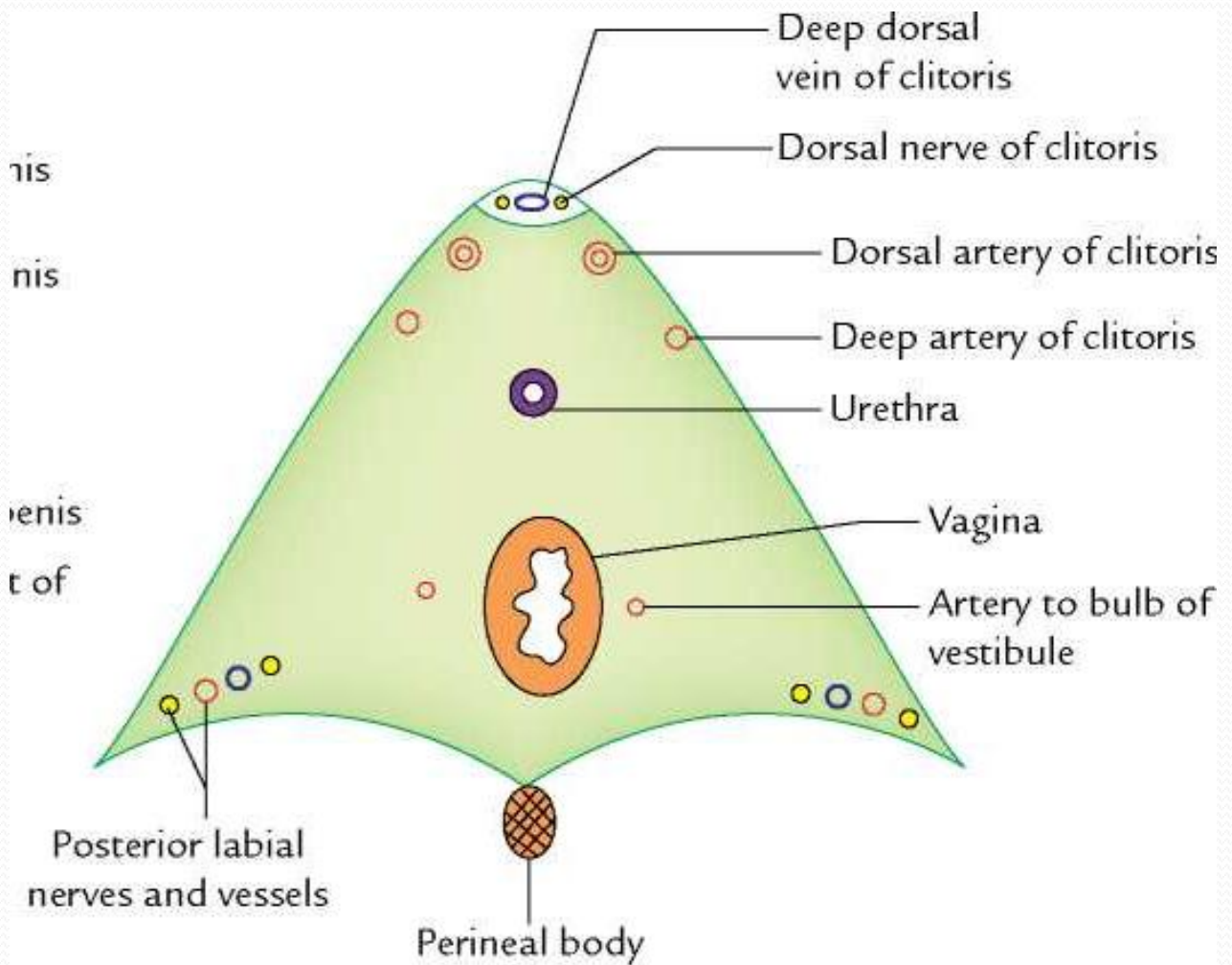
Colles fascia

Perineal membrane



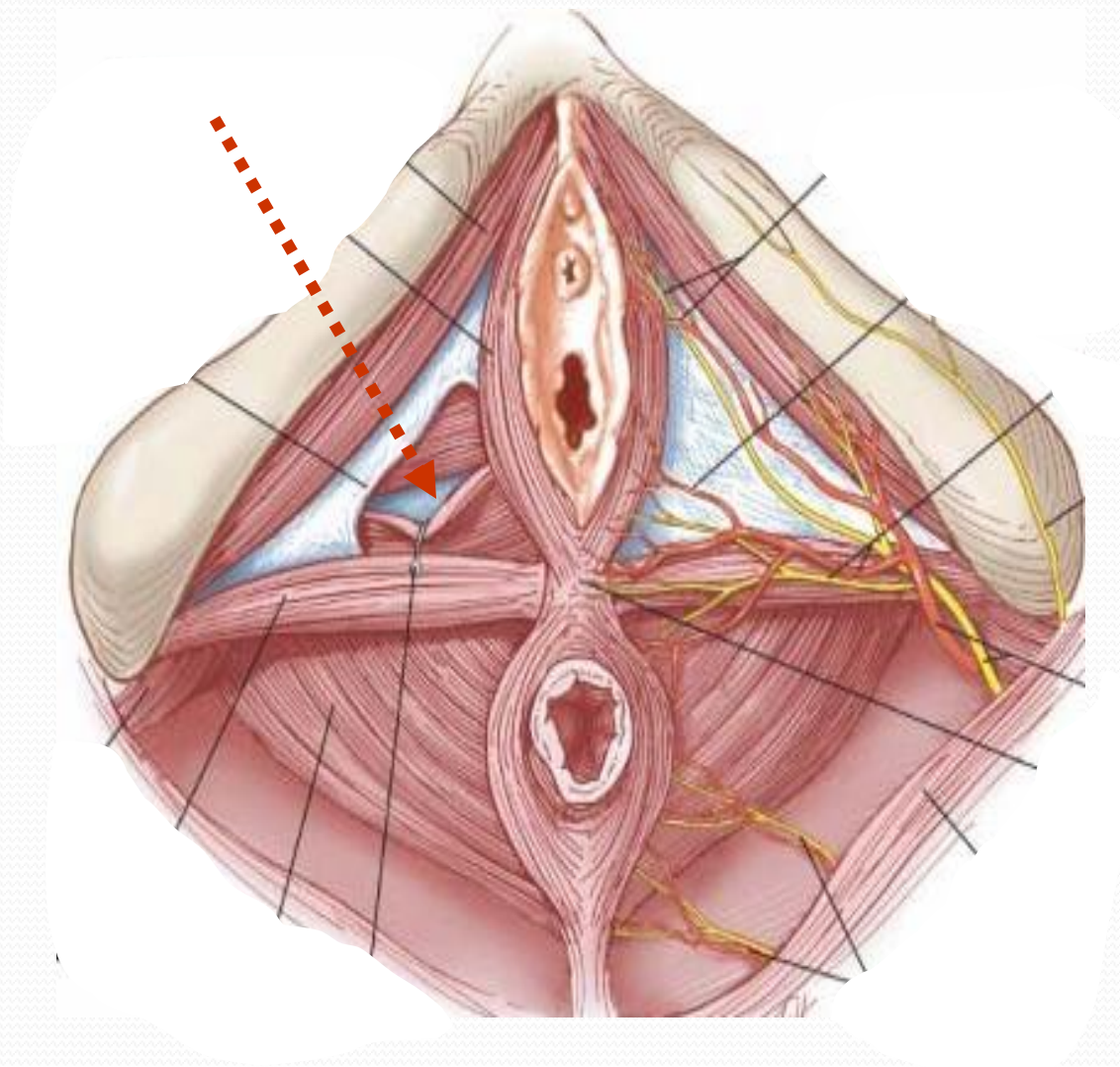
Perineal membrane , attachments, features



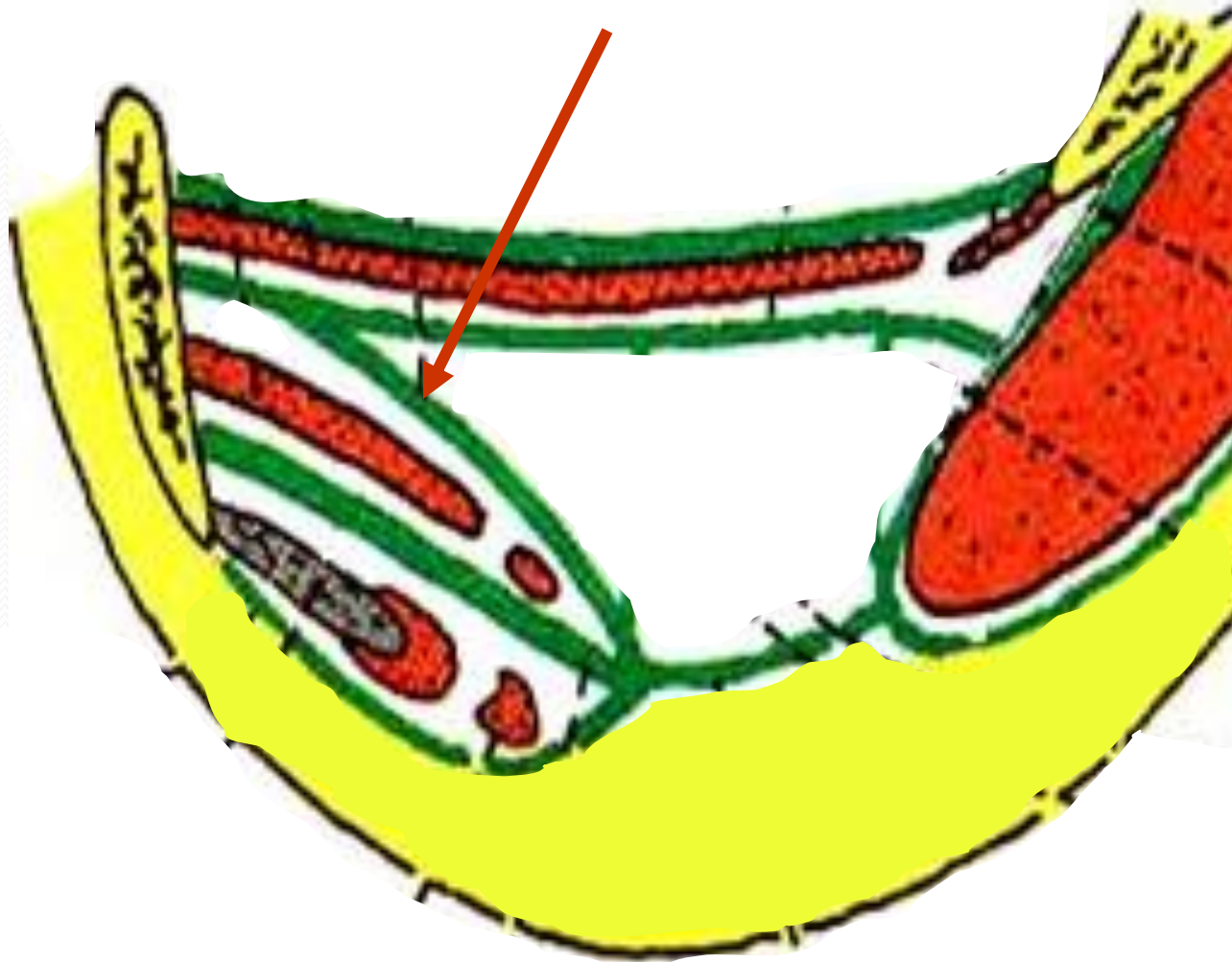


B

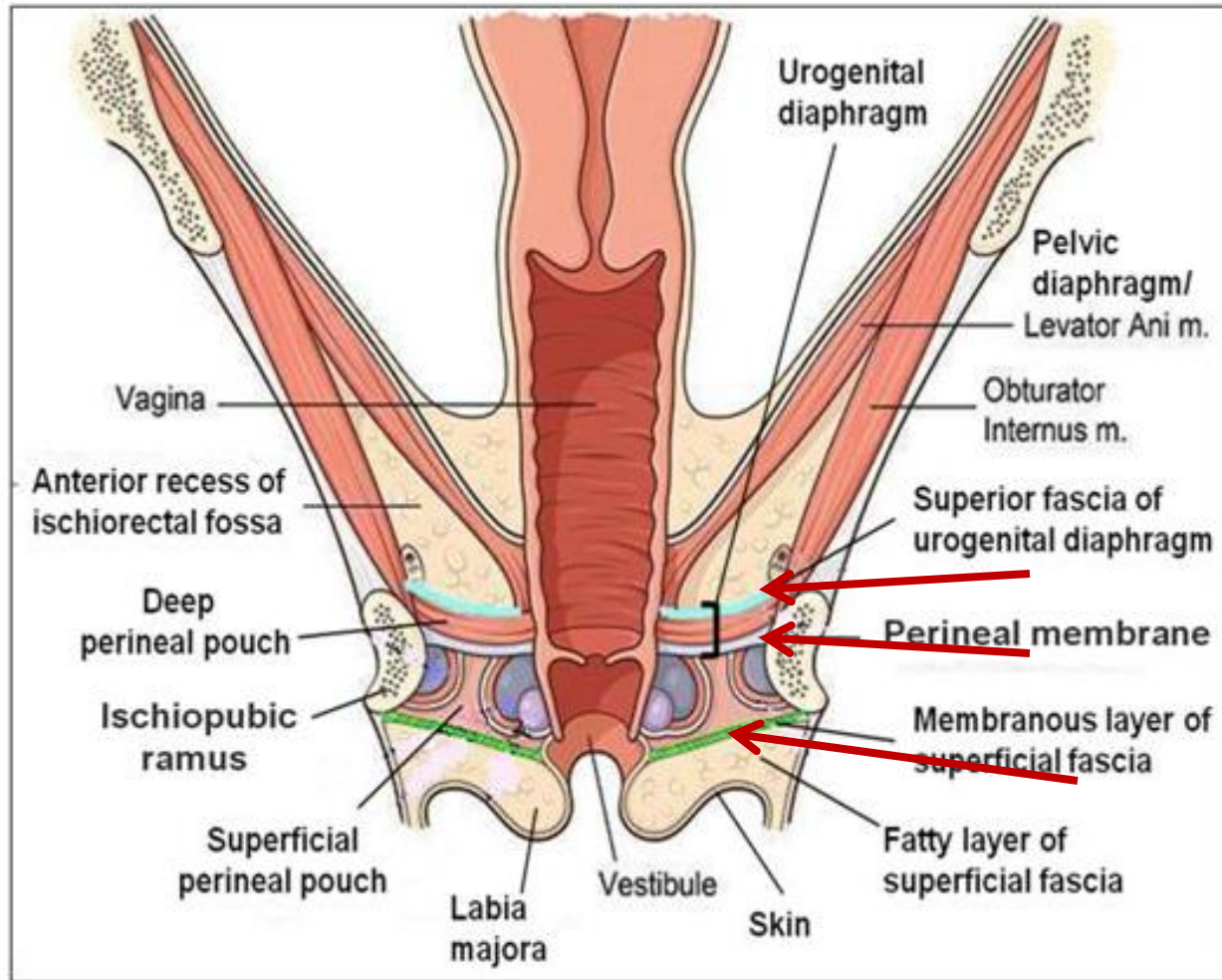
Superior fascia of urogenital diaphragm



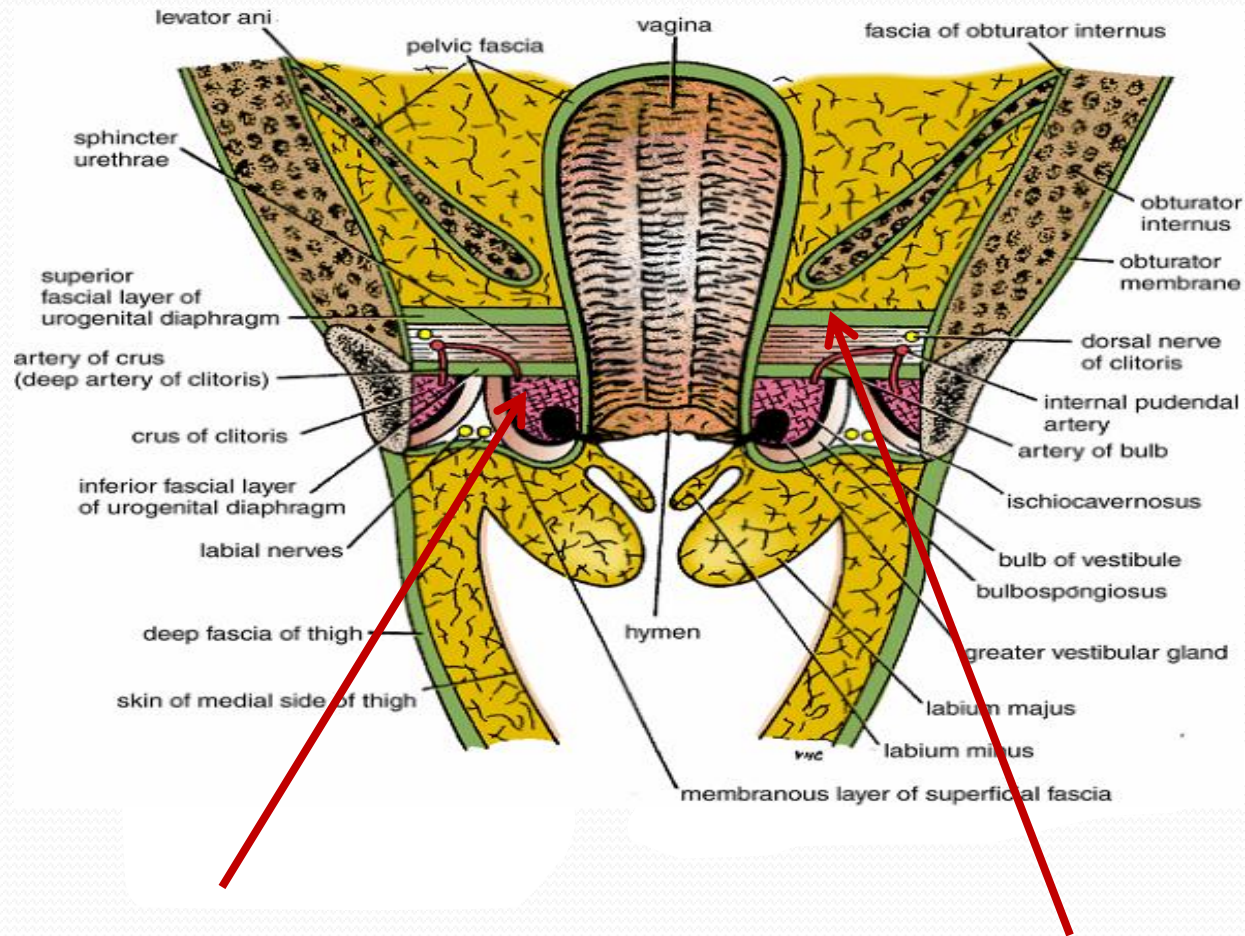
Superior fascia of urogenital diaphragm



Three fasciae in coronal section



Superficial perineal pouch and deep perineal pouch

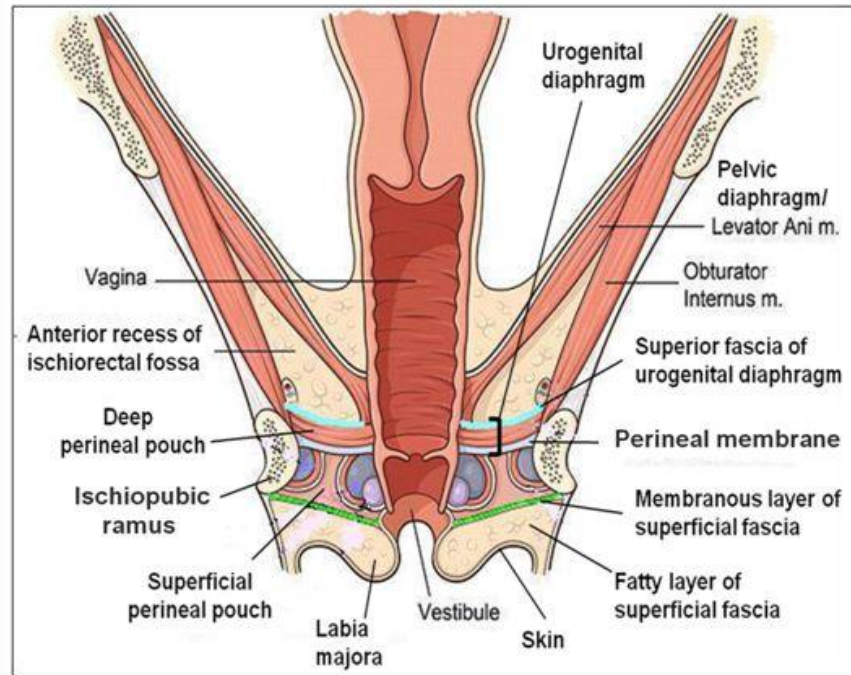


Superficial pouch

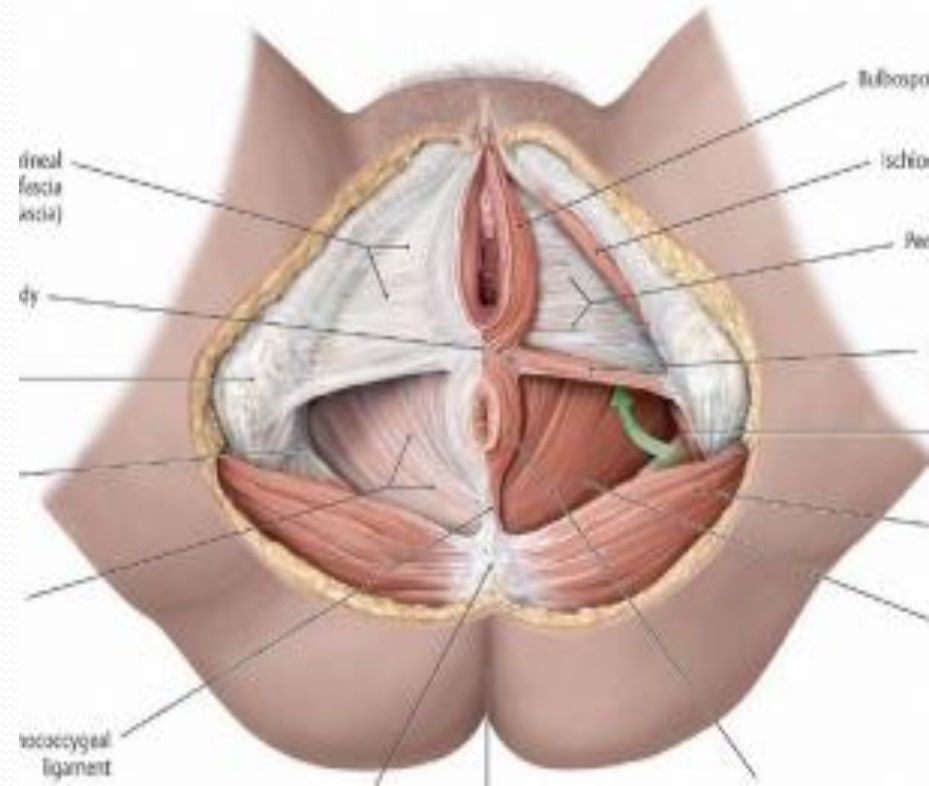
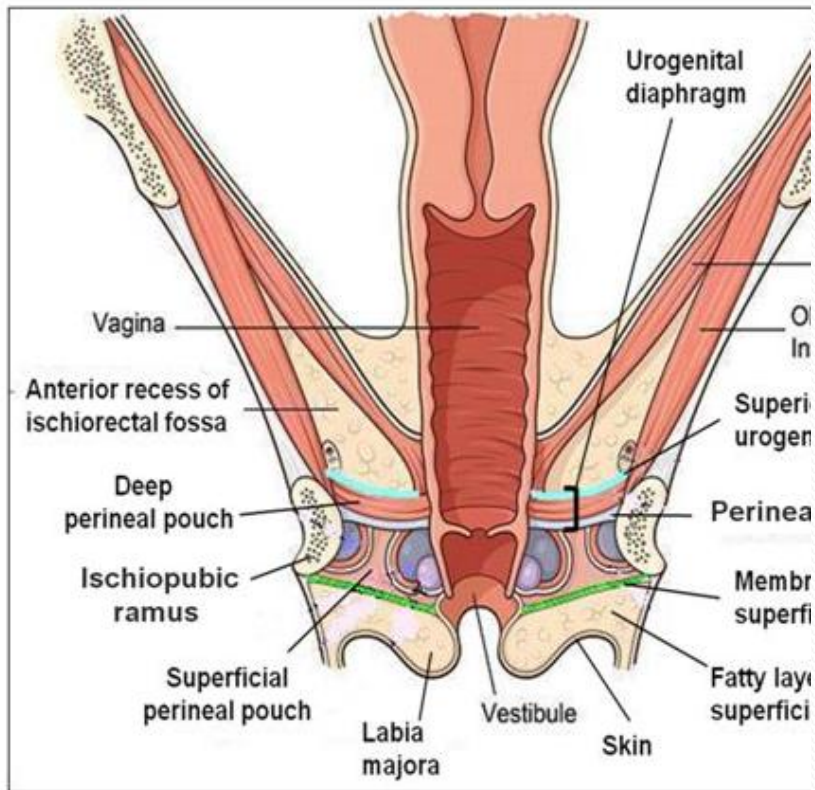
Deep perineal pouch

Superficial Perineal Pouch

- It is the space between the deep membranous layer of superficial fascia and the perineal membrane.
- **BOUNDARIES:**
 - **Inferiorly:** membranous layer of superficial fascia.
 - **Superiorly:** perineal membrane.
 - **Laterally:** ischiopubic rami

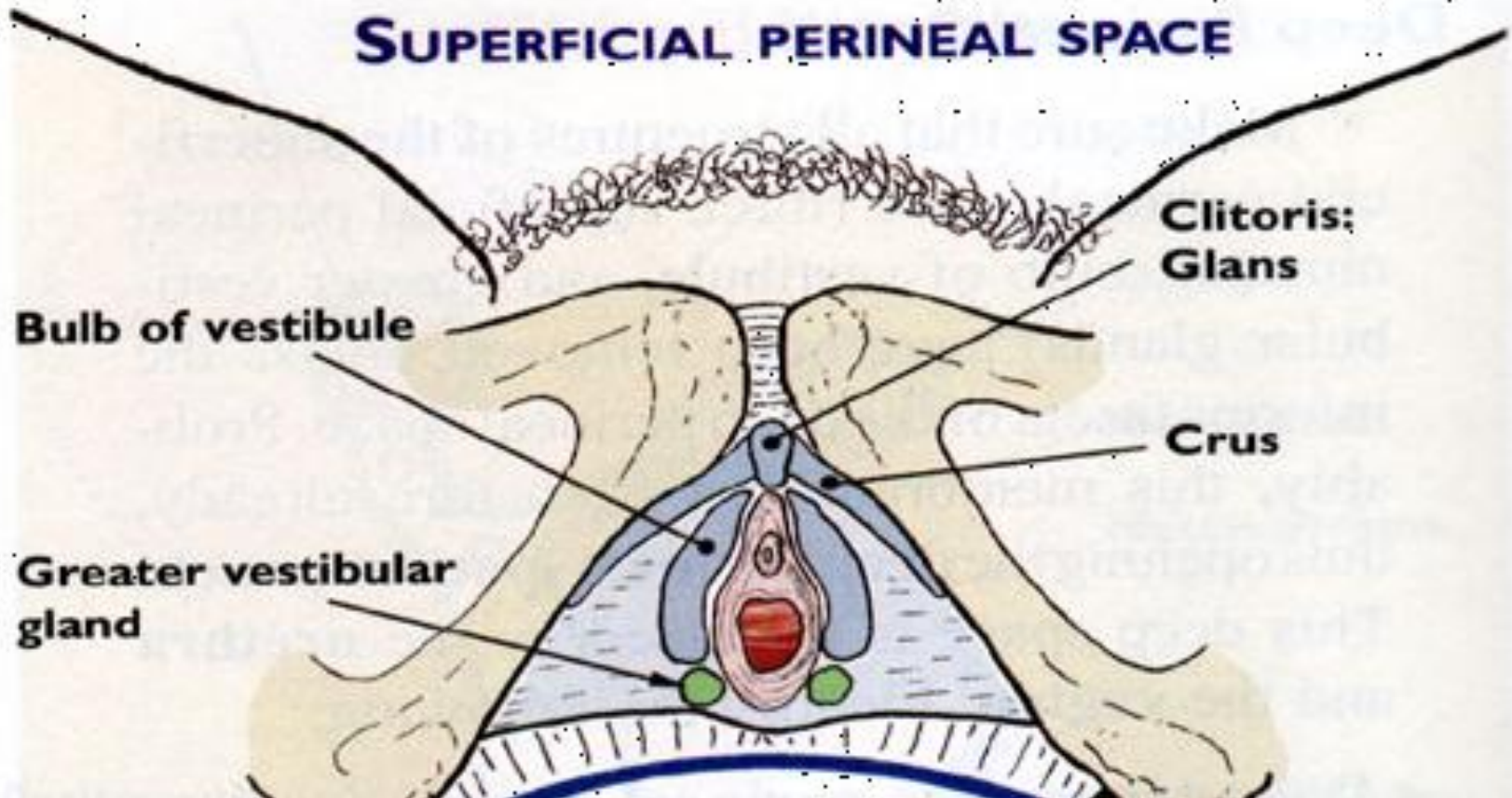


Boundaries

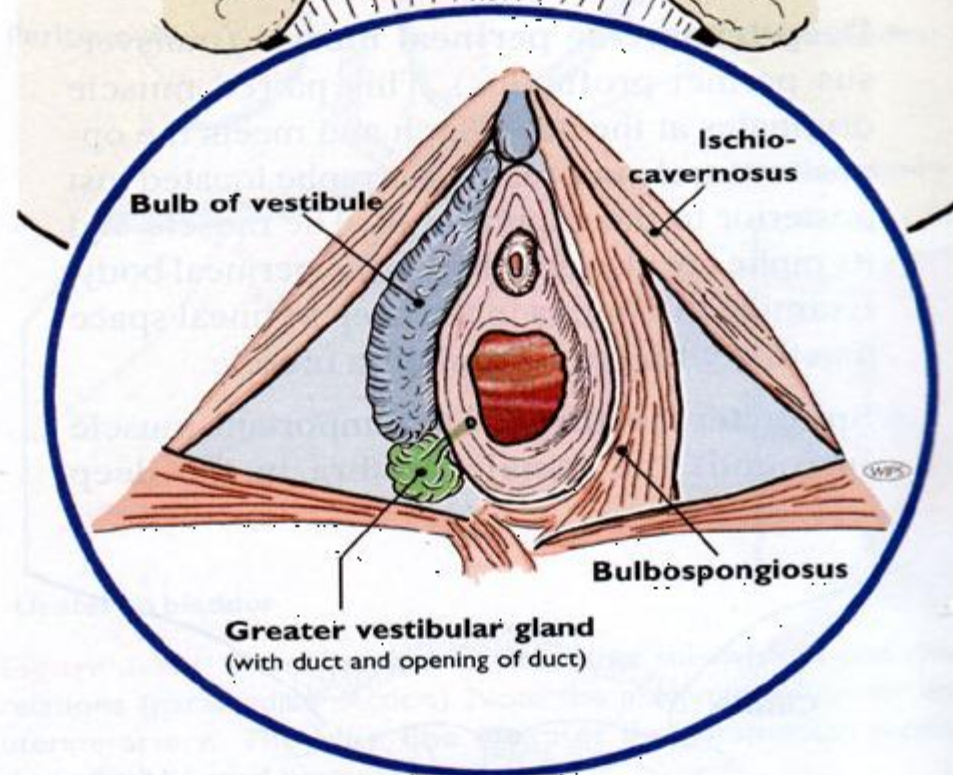
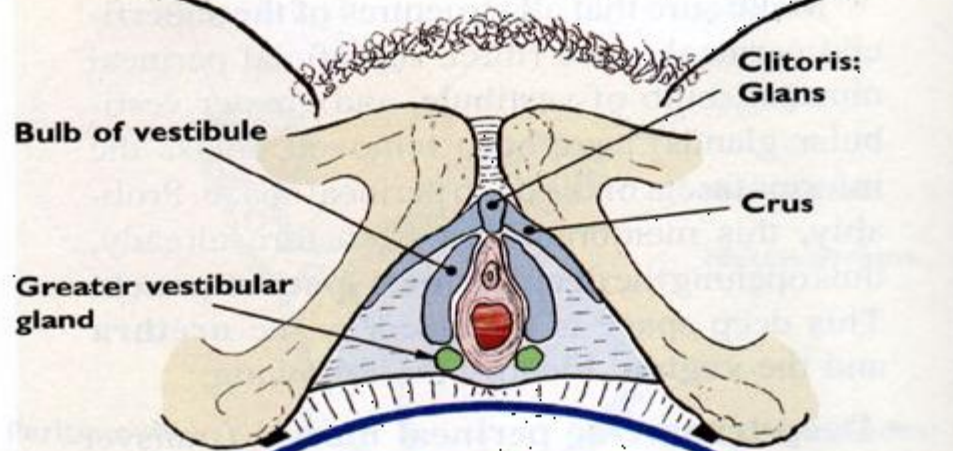


CONTENTS OF SUPERFICIAL POUCH IN THE FEMALE

SUPERFICIAL PERINEAL SPACE

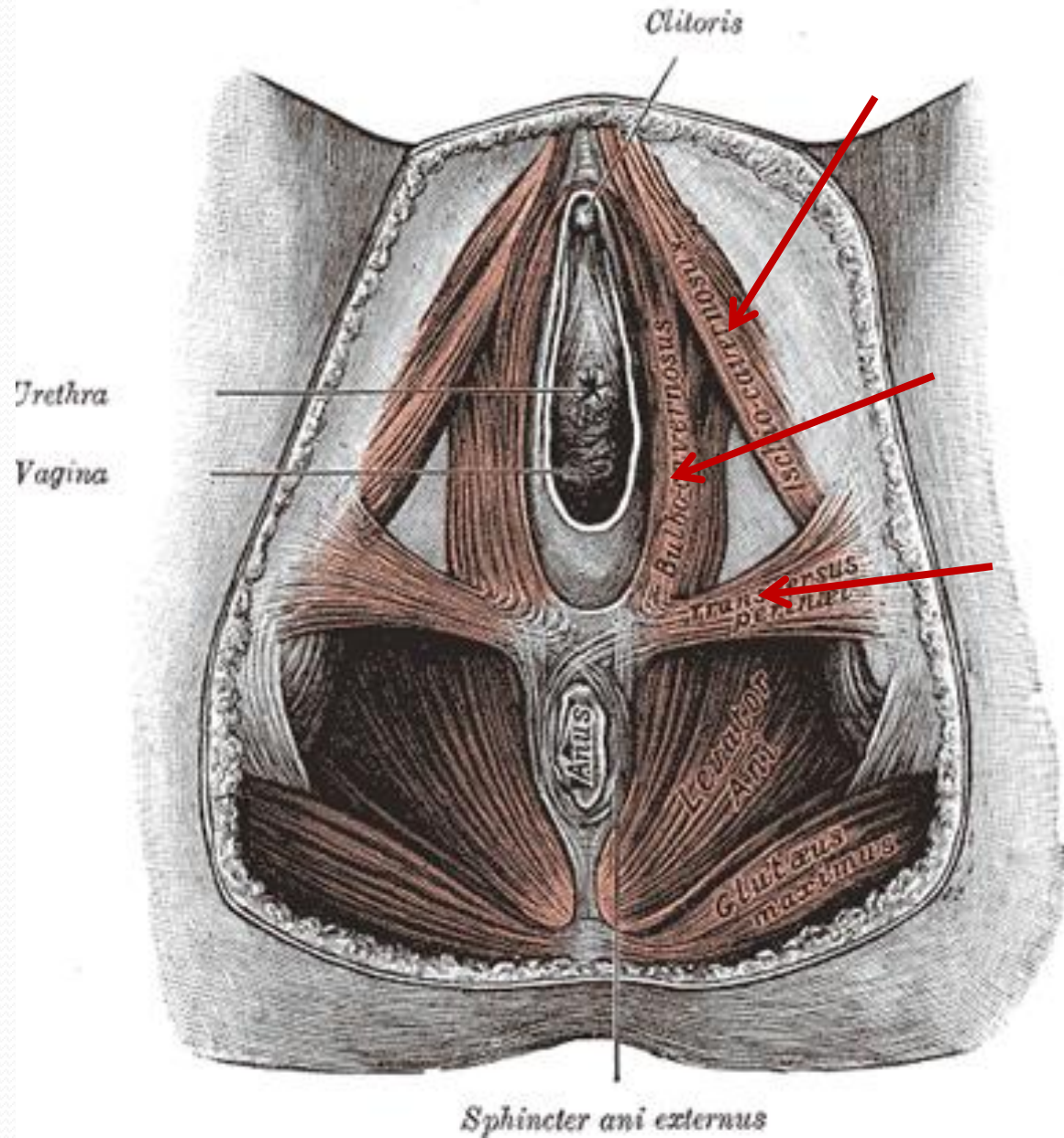


SUPERFICIAL PERINEAL SPACE

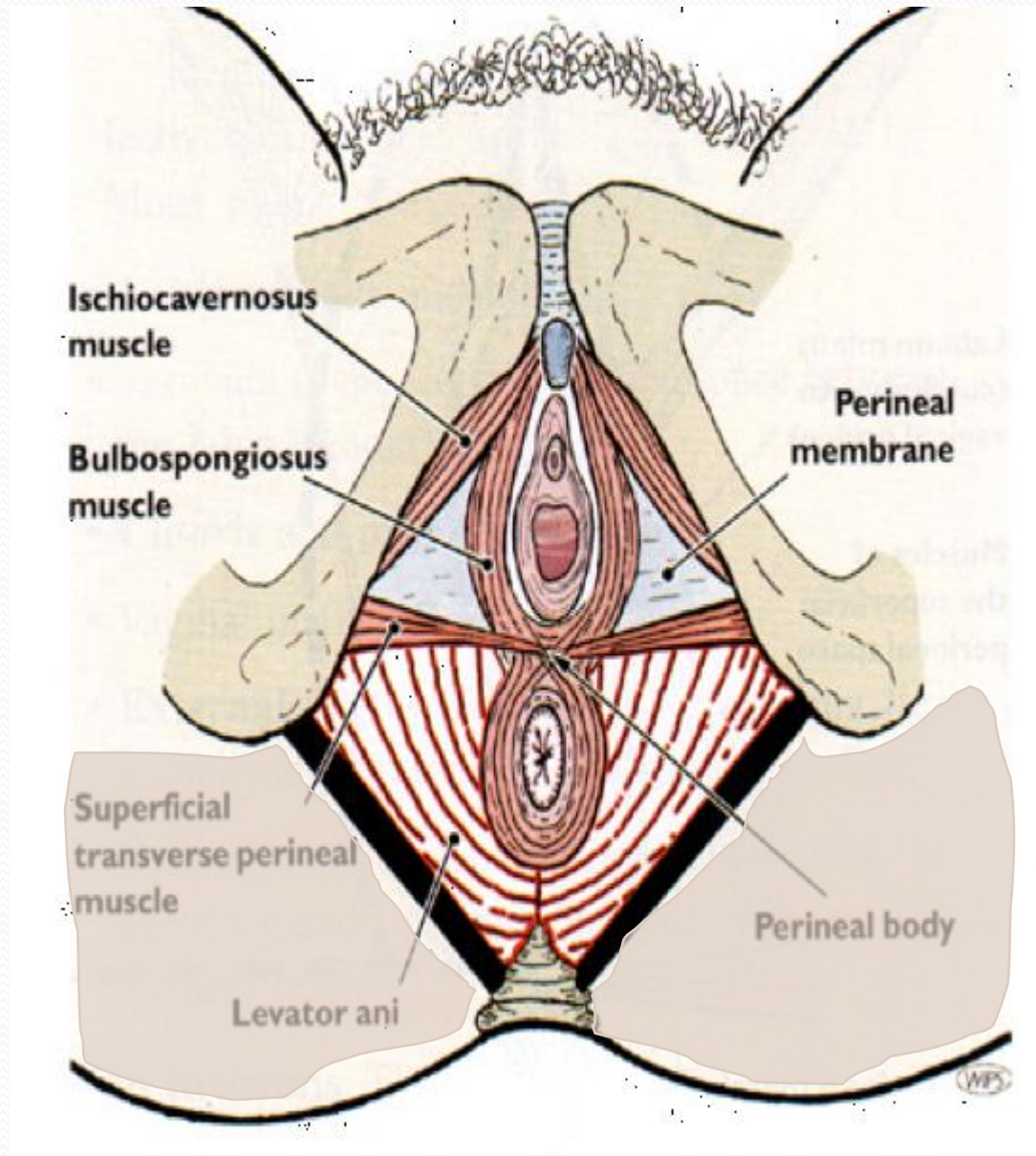


Muscles in the superficial pouch in the female

- 3 muscles
- Ischio-cavernosus
- Bulbo-spongiosus
- Transverse perinei superficialis

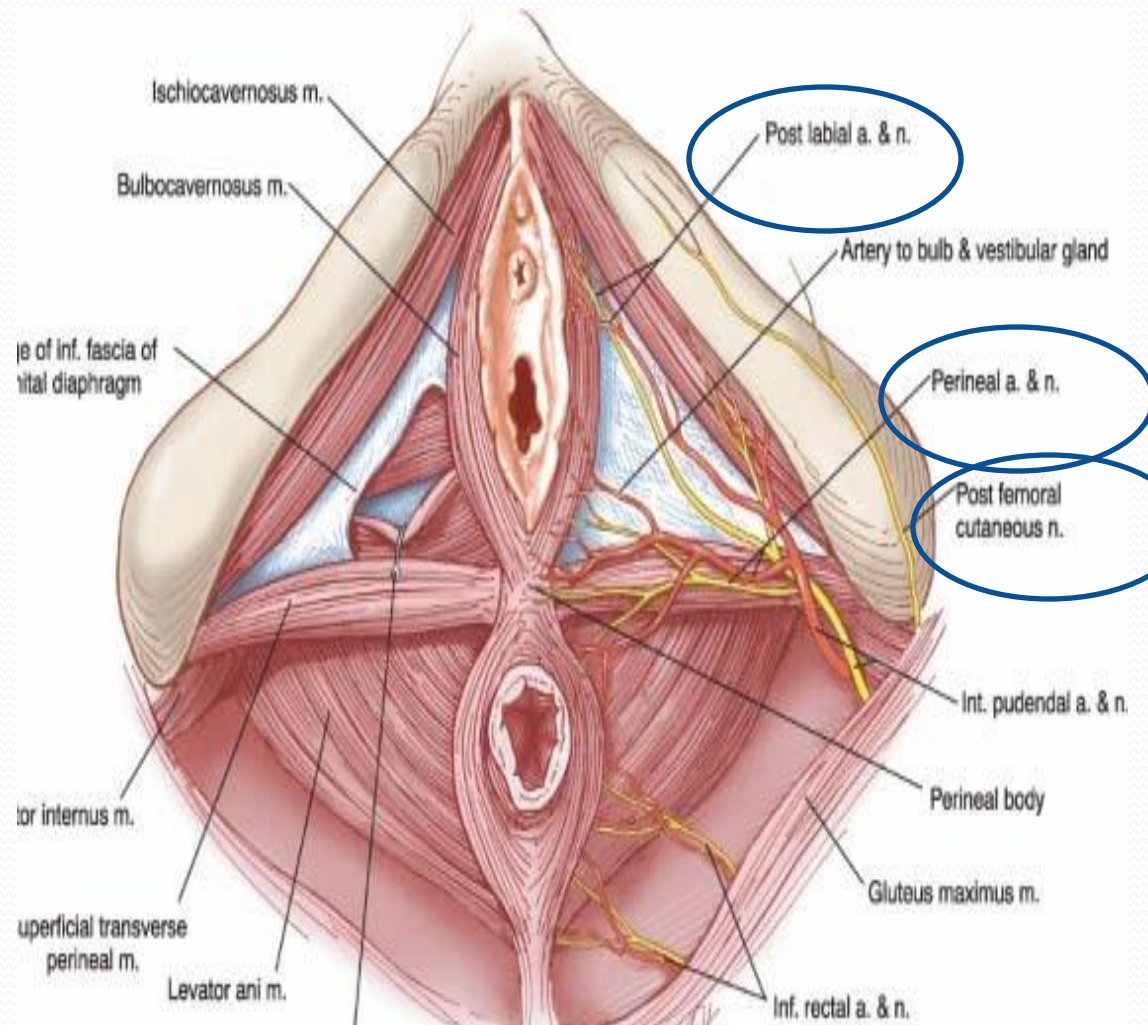


Muscles and perineal body

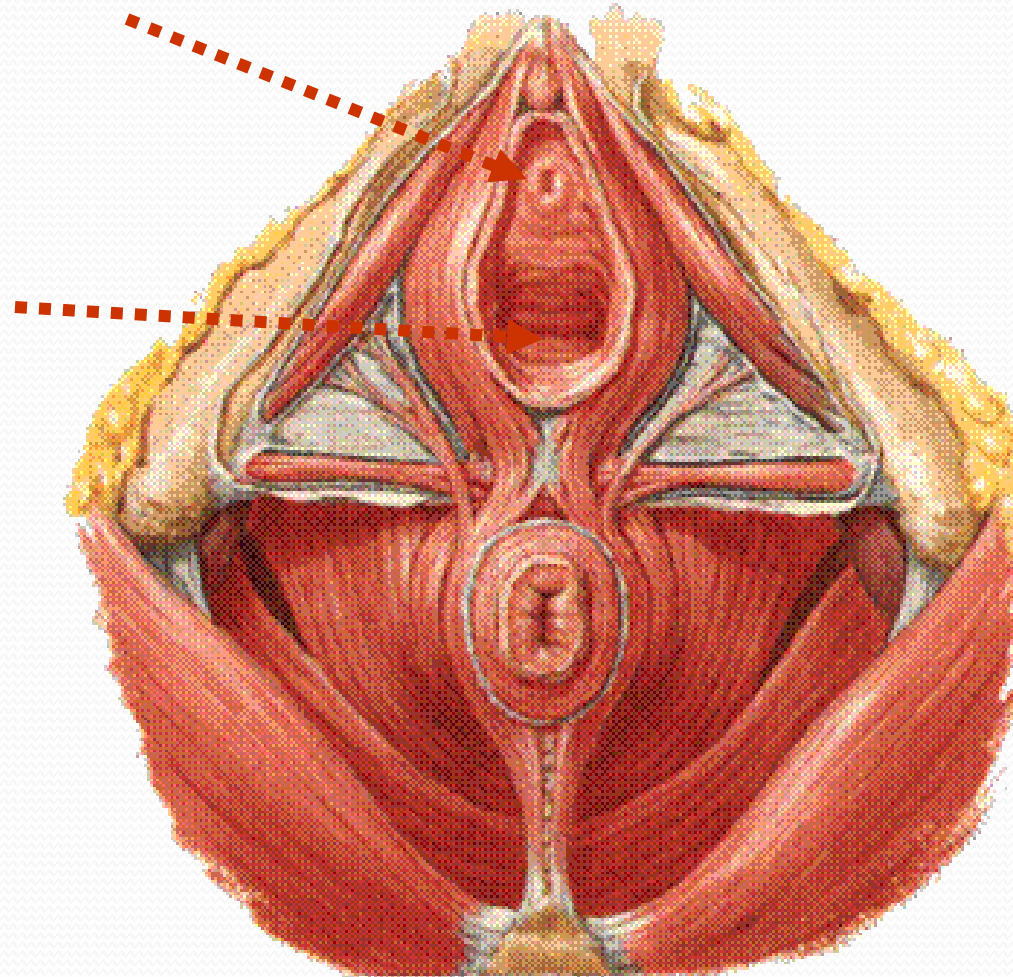


Vessels and nerves in the superficial pouch

- Two posterior labial vessels and nerve
- Transverse perineal vessels
- Perineal branch of posterior femoral cutaneous nerve

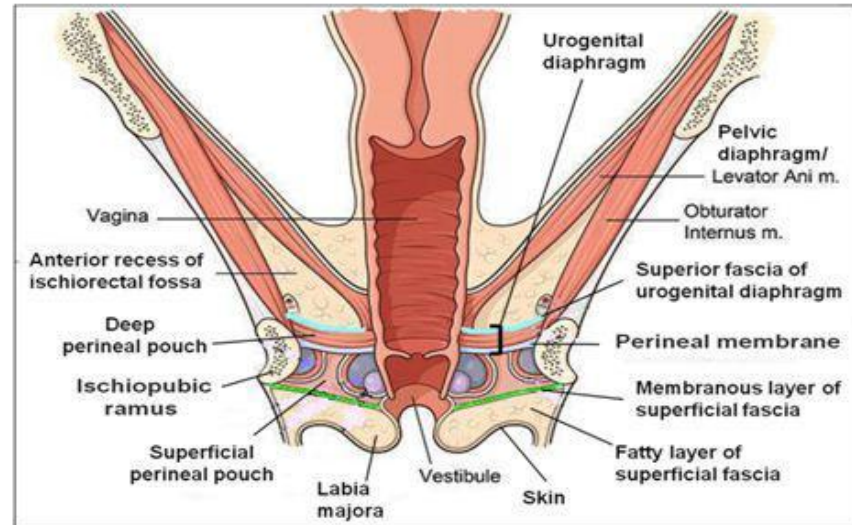


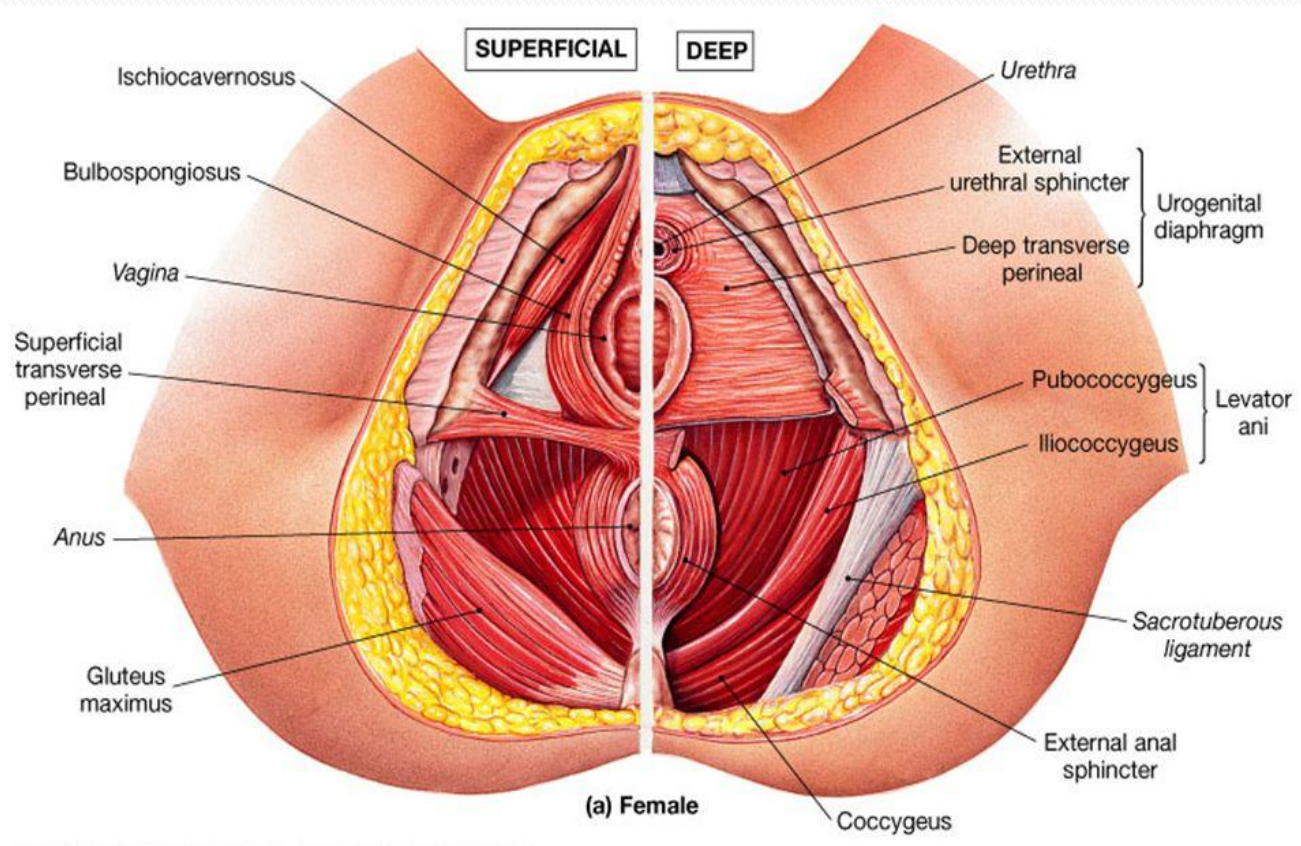
Other structures passing through superficial perineal pouch



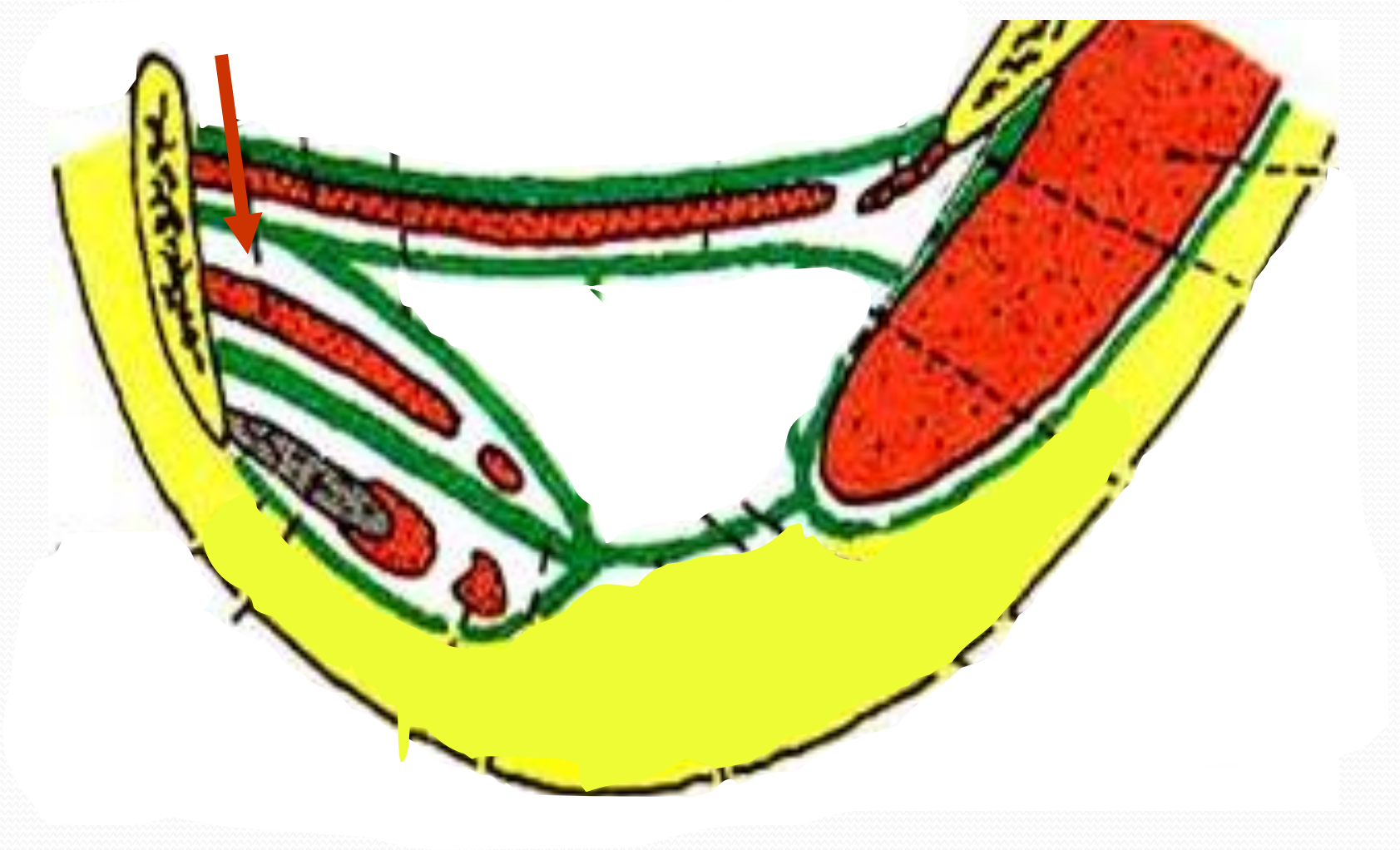
Deep Perineal Pouch

- It is a completely closed space deep to the perineal membrane
- **BOUNDARIES:**
 - **Inferiorly:** Inferior fascia of the urogenital diaphragm (Perineal membrane)
 - **Superiorly:** Superior fascia of the urogenital diaphragm
 - **Laterally:** Inferior portion of obturator internus fascia

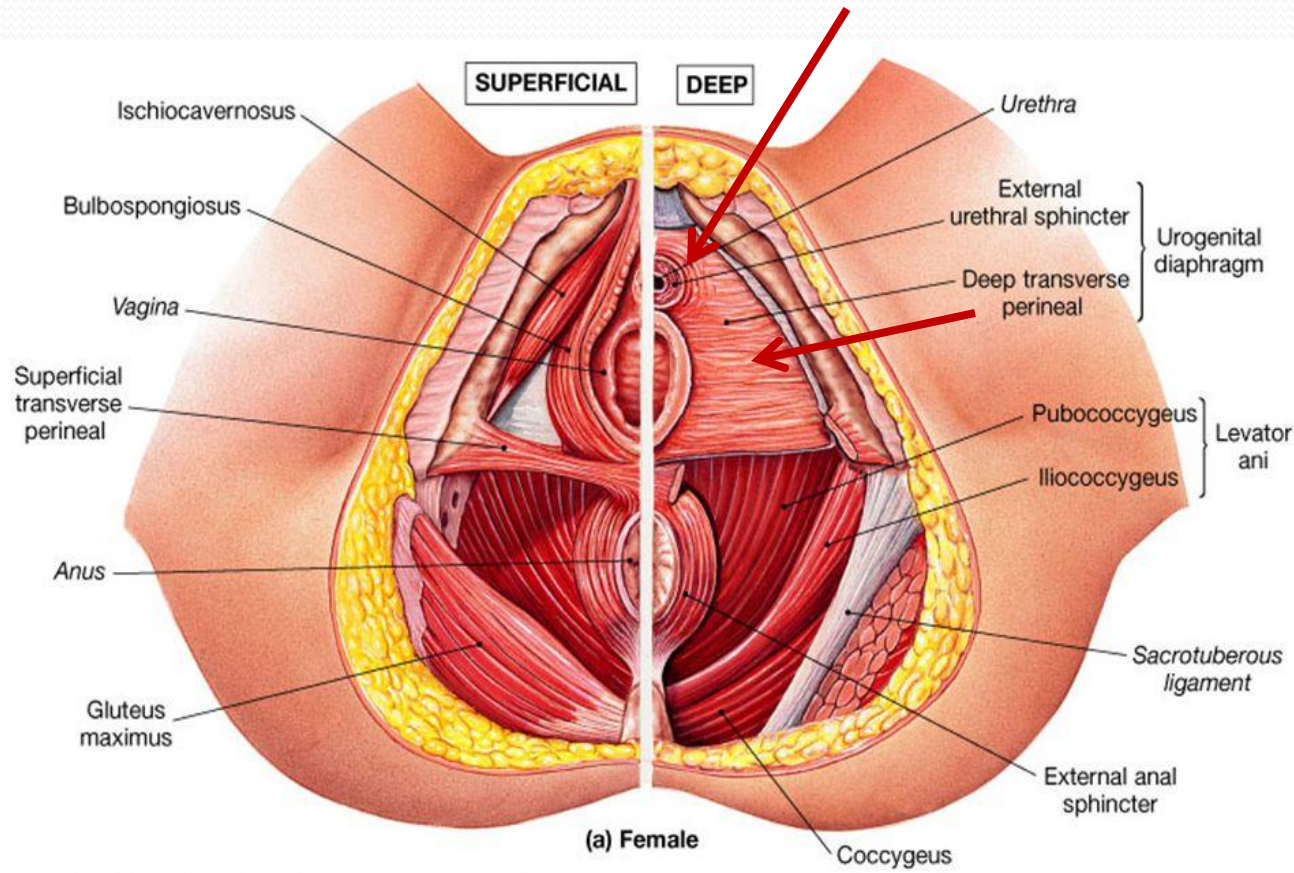




Boundaries of deep perineal pouch



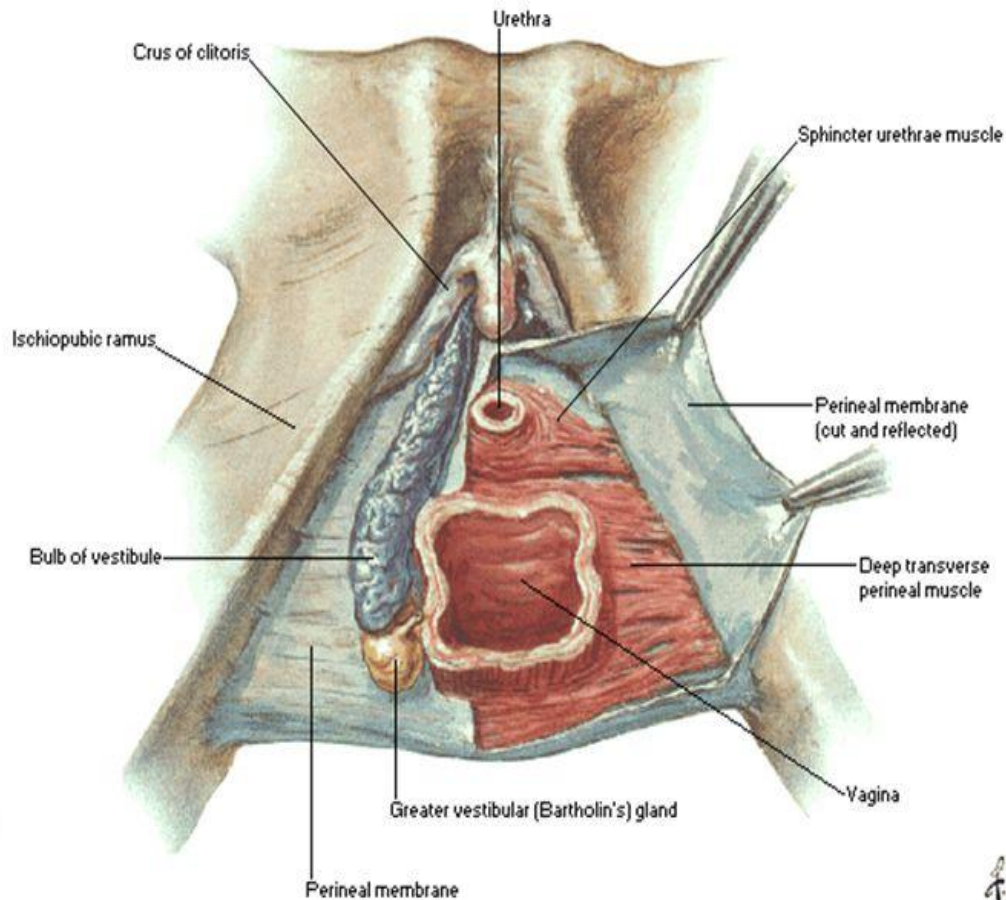
Contents

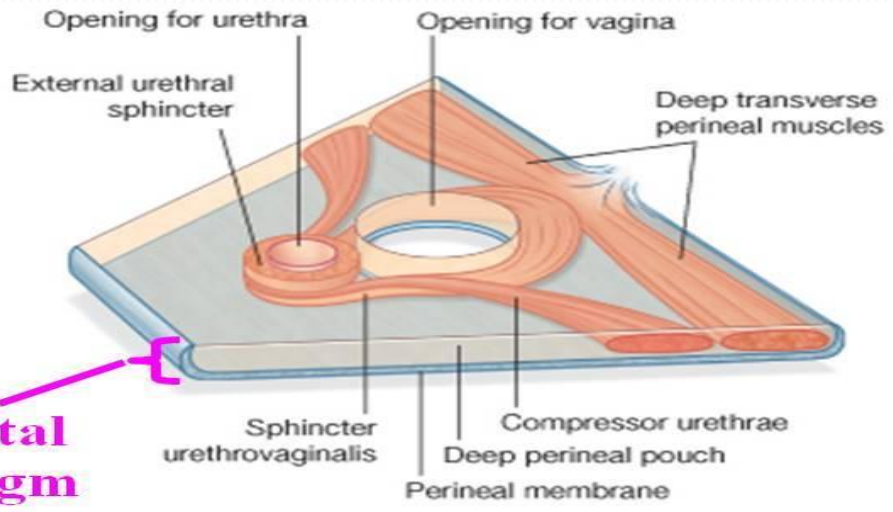


Deep Transverse Perineal -M

Perineum and Urogenital Diaphragm of Female

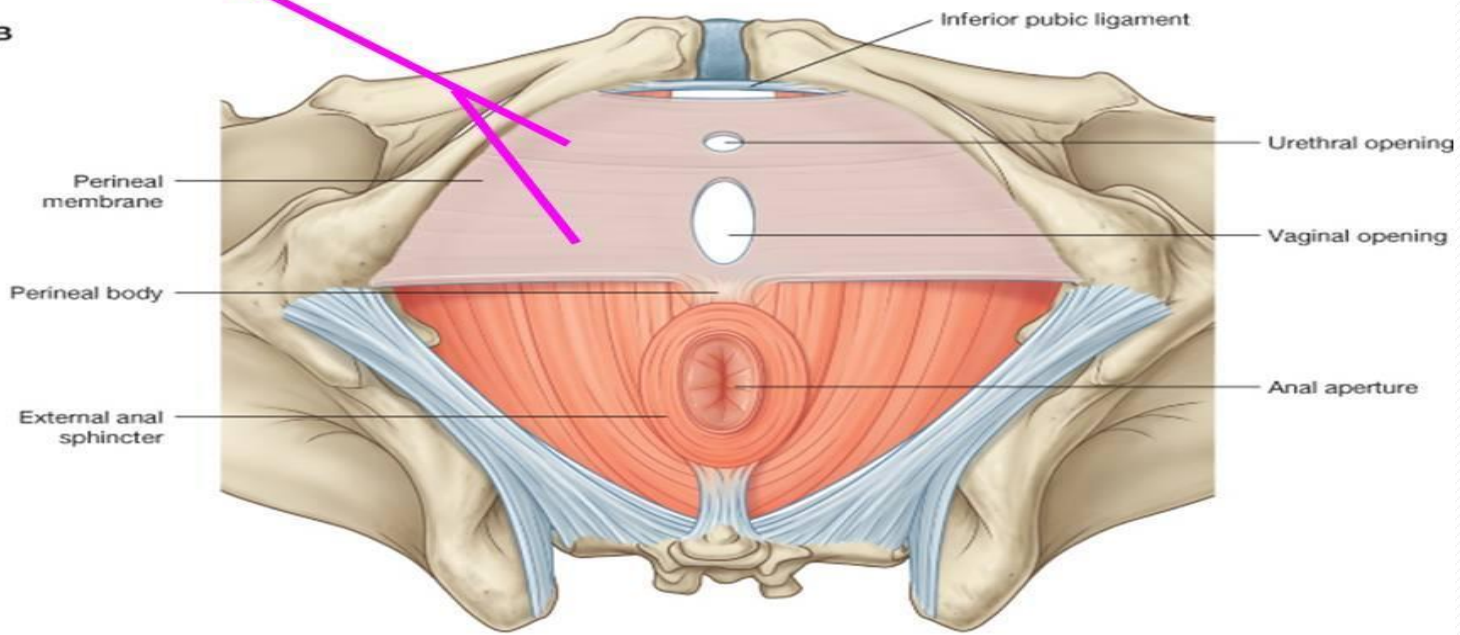
Deep Dissection





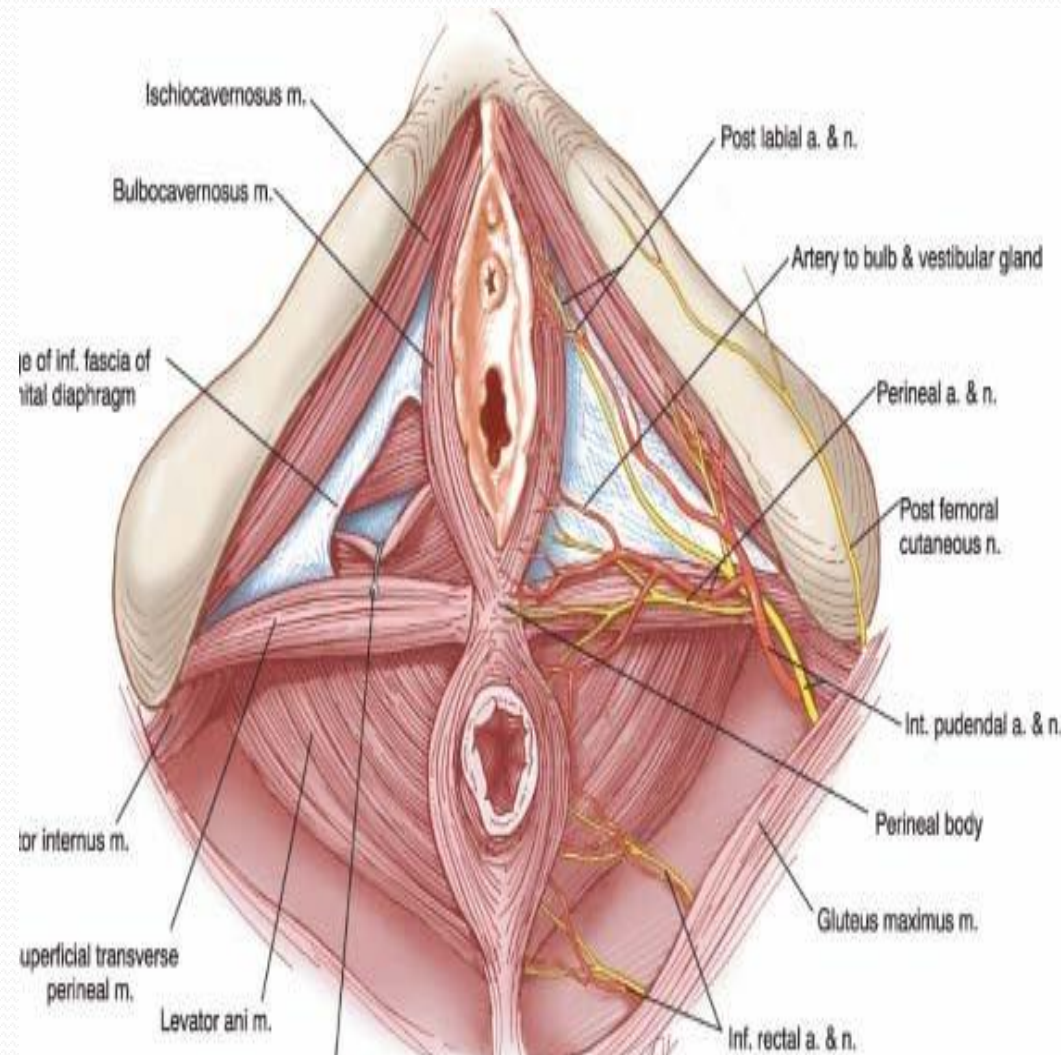
Urogenital diaphragm

B



Vessels in the deep pouch

- Dorsal a and v of clitoris
- Deep a and vein of clitoris
- Artery to the bulb of vestibule



Nerve in the deep pouch

- Dorsal nerve of clitoris

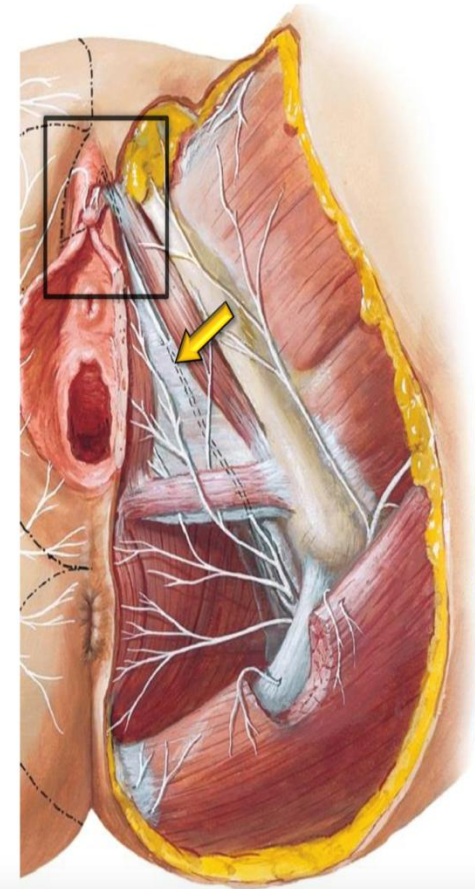
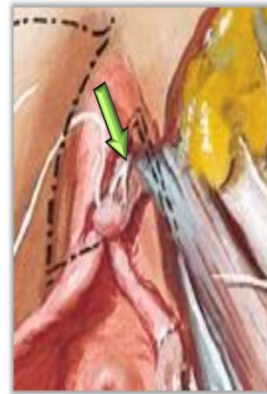
DEEP PERINEAL SPACE—female

Deep perineal nerve

From pudendal nerve (S2–S4)

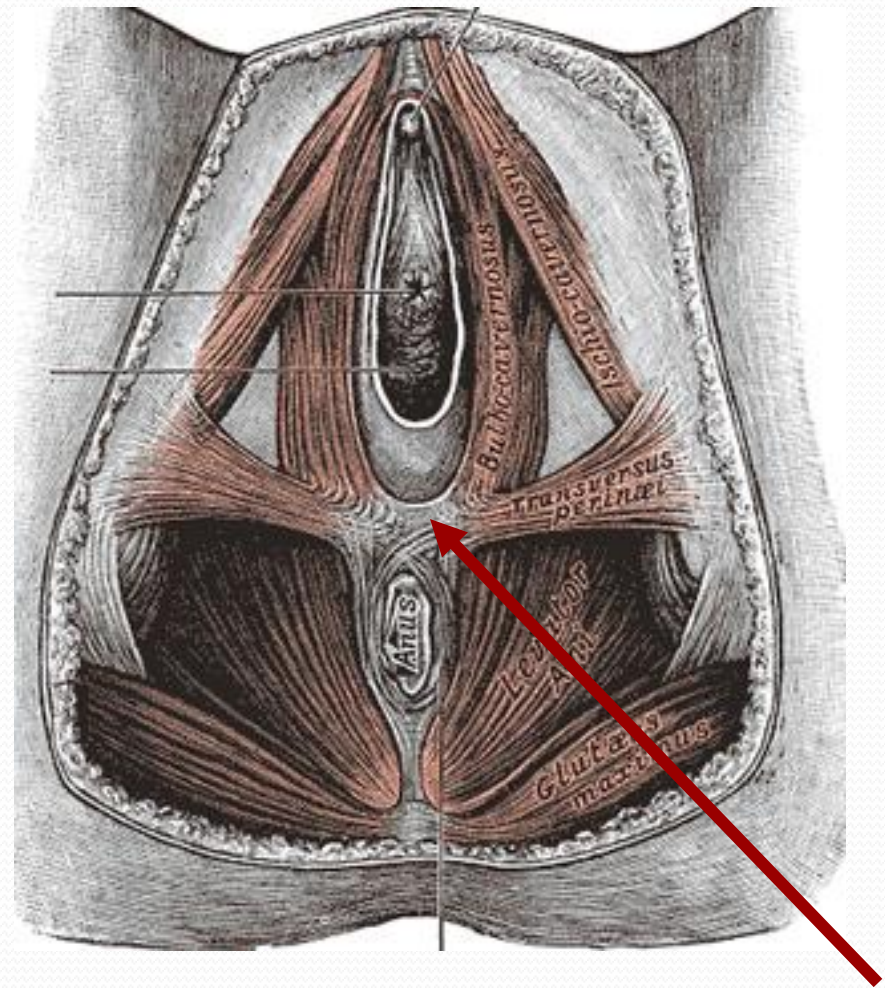
Dorsal nerve of clitoris

From pudendal nerve (S2–S4)



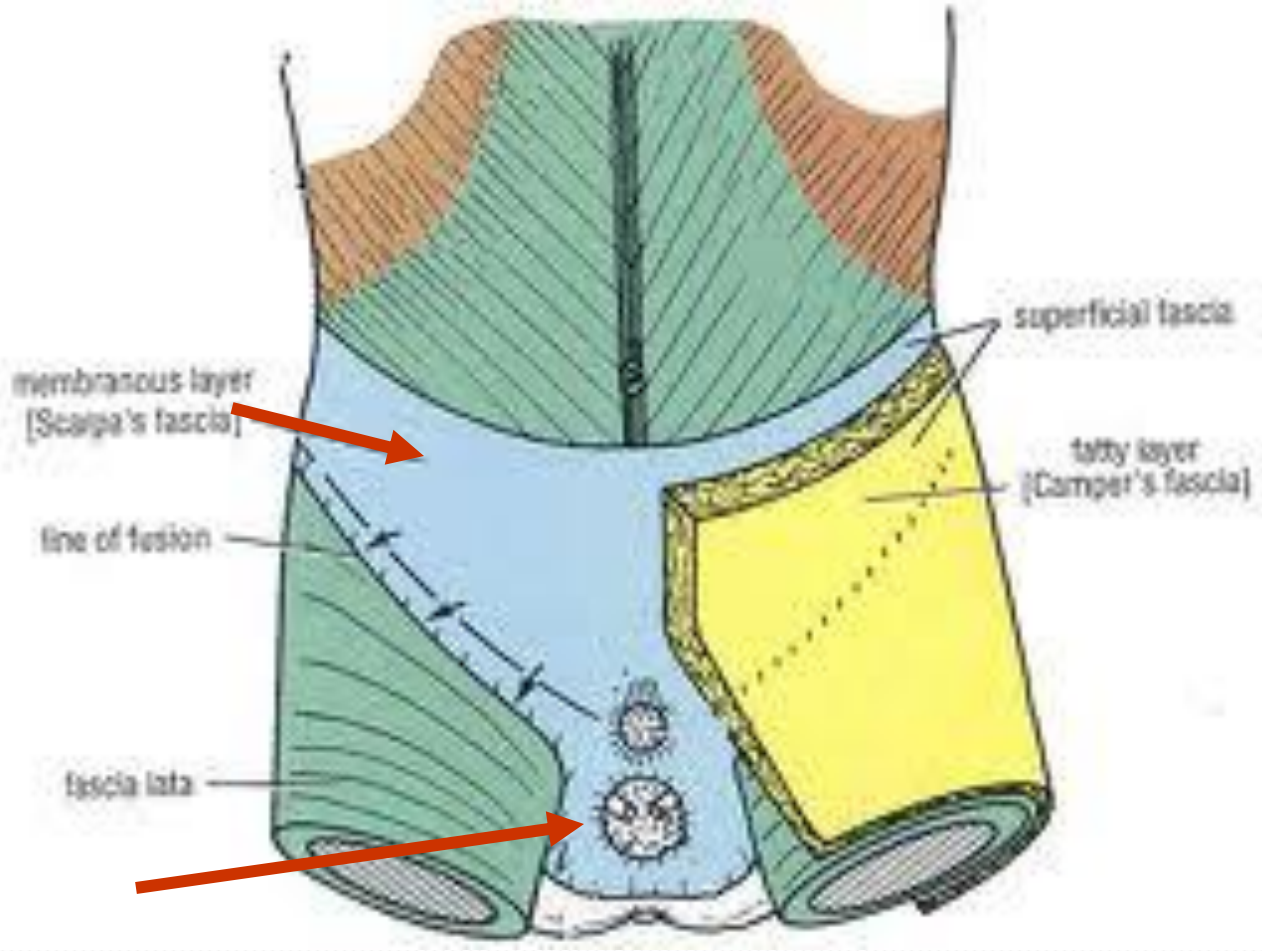
PERINEAL BODY

- Bulbospongiosus
- Levator ani
- External anal sphincter
- Superficial transverse perinei
- Sphincter urethra
- Deep transverse perinei



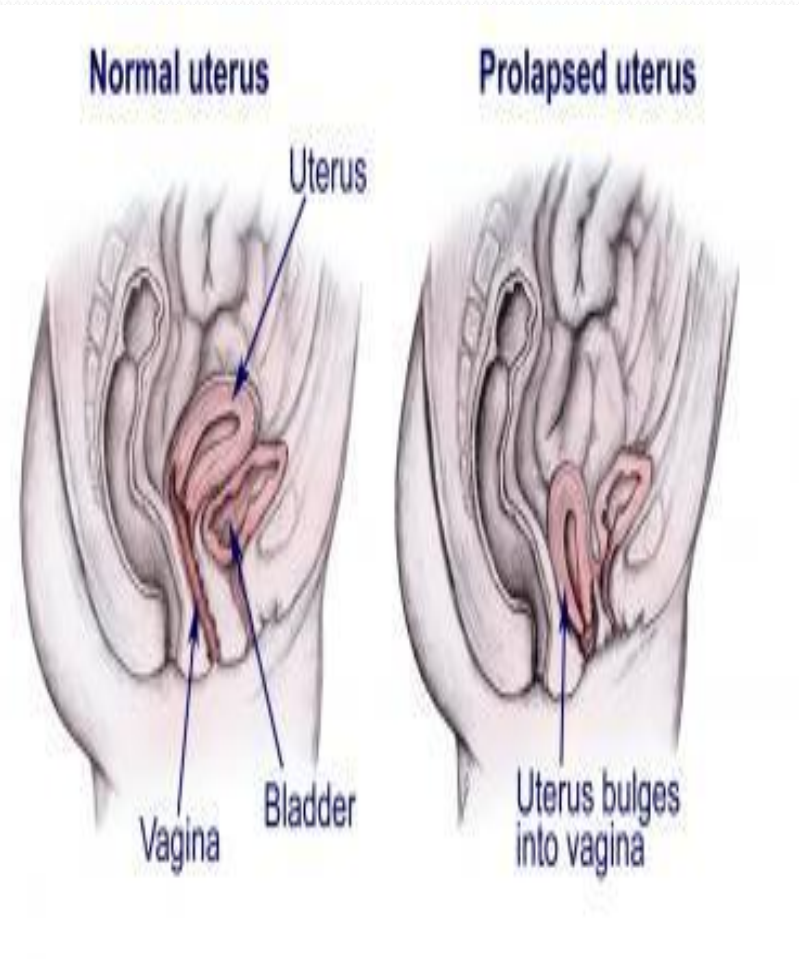
Applied

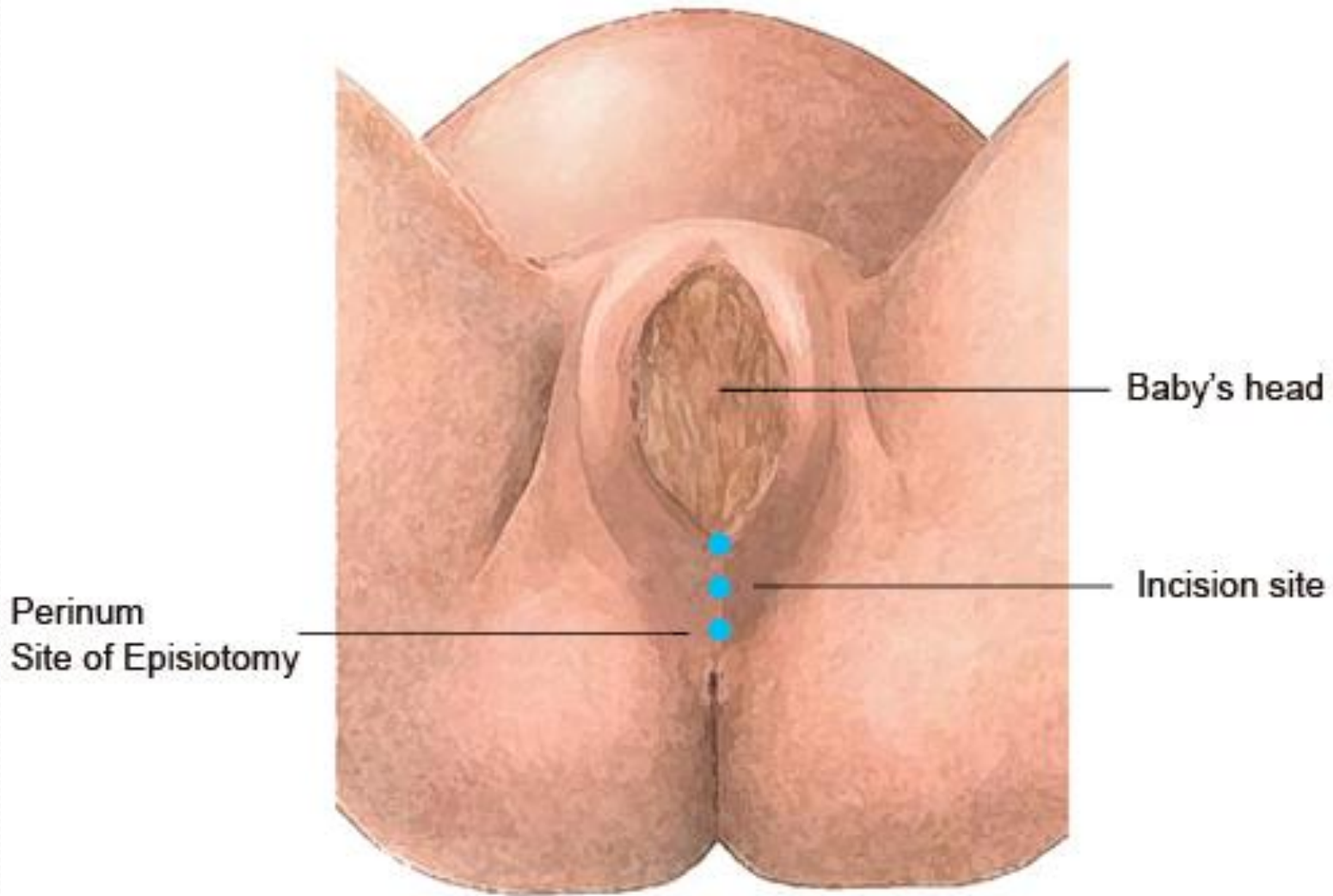
- Extravasations of urine in the superficial pouch will extend into the lower part of anterior abdominal wall



Applied , perineal body ..

- Damage to perineal body leads to prolapse of uterus in the female





Baby's head

Incision site

Perineum
Site of Episiotomy



Midline incision

Mediolateral incision

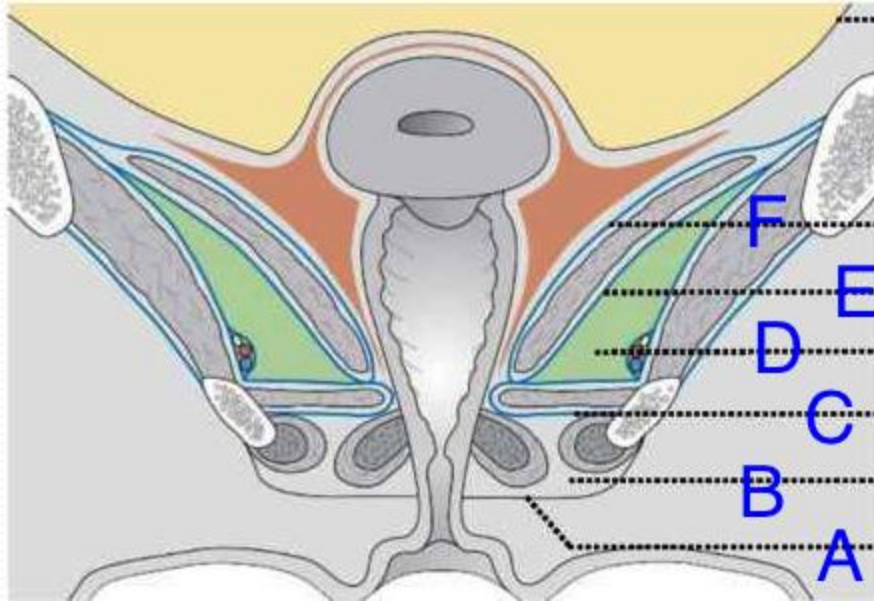




END OF PRESENTATION

A white, hand-drawn style thought bubble sticker is pinned to a corkboard. The bubble has a small tail pointing downwards. Inside the bubble, the words "Thank you!!" are written in a black, casual, handwritten font. The corkboard background is a warm, textured brown color. The entire image is framed by a light blue border with white decorative lines at the top and right edges.

Thank
you!!



Perineal Body

- Perineal body is an irregular mass of variable size and consistency, located at midpoint of the line between the ischial tuberosities
- Lies in the **subcutaneous tissue**, **posterior to vestibule** and **anterior to the anal canal & anus**
- Forms the **central point of the perineum** & blends anteriorly with the **perineal membrane**

Function:

- Gives attachment to perineal muscles
- Plays an important role in visceral support especially in female

