



Calflora

information on wild California plants

Calflora.org



Ed Dorrington
Developer



John Malpas
Lead Developer



Michelle Tollett
Outreach &
Communication
Director



Roy West
Board Director



Cynthia Powell
Executive Director



Darrell
Anderson
Developer



Foresta Sieck-Hill
Bookkeeper



Calflora

information on wild California plants

Calflora basics

Observation Hotline

What Grows Here

Create an Illustrated Plant List

Planting Guide

Collecting data using a smart phone



Calflora

information on wild California plants

What is Calflora?

Calflora is a 501(c)3 non-profit plant database. We provide information on wild CA plants for conservation, education, and appreciation.



What is Calflora **NOT**?

We are **NOT** part of the UC system.

We are **NOT** part of CalPhotos (UC).

We are **NOT** part of Cal-IPC (non-profit).

We are **NOT** part of CNPS (non-profit).

Calflora has been a 501(c)3 non-profit since 2000.



Calflora

information on wild California plants

Calflora database contains

- > 10,000 native and introduced species
- > 2 million plant location observations (points, lines, and polygons)
- > 30,000 relationships between old and new plant names
- > 300,000 plant photos
- > 70,000 unique Calflora e-visitors each month (~2,500/day)
- > 3,000 active data contributors (you?)

Popular “taxon report” pages



Vaccinium ovatum Pursh

California huckleberry, Evergreen huckleberry

Vaccinium ovatum, a dicot, is a **shrub** that is **native** to California, is also found outside of California, but is confined to western North America.

Pests and Pathogens from Calinvasives

Distribution by Watershed

Observation Hotline
(observation details)

Plant Characteristics



Bloom Period

Photos from CalPhotos / Calflora

Family: ERICACEAE

Genus: *Vaccinium*



© 2017 James Gonsman



© 2005 Brian L. Anacker



photo size:

One taxon report page for each wild plant species in CA

Note scientific name, author(s), and common name(s)



Brickellia californica (Torr. & A. Gray) A. Gray
Brickell bush, California brickellbush, California brickellia

Brickellia californica, a dicot, is a **perennial herb** that is **native** to California, is also found outside of California, but is confined to western North America.

Plant Distribution

Observation Hotline
(observation details)

Plant Characteristics



Bloom Period

Photos from CalPhotos / Calflora

Family: **ASTERACEAE**

Genus: **Brickellia**

Subspecies and Varieties:

... var. *jepsonii*



© 2017 Stephen



© 2018 Dian

Change photo size on taxon report pages



Vaccinium ovatum Pursh

California huckleberry, Evergreen huckleberry

Vaccinium ovatum, a dicot, is a **shrub** that is **native** to California, is also found outside of California, but is confined to western North America.

Pests and Pathogens from Calinvasives

Distribution by Watershed

Observation Hotline
(observation details)

Plant Characteristics



Bloom Period

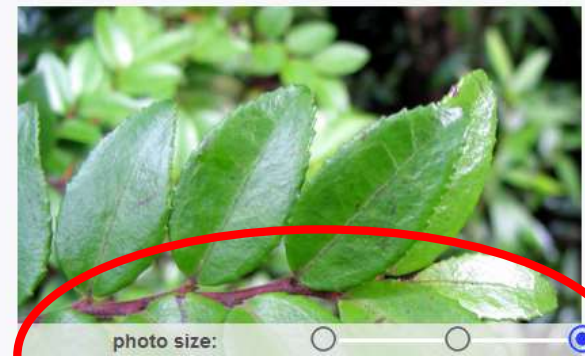
Photos from CalPhotos / Calflora

Family: ERICACEAE

Genus: *Vaccinium*



© 2017 James Gonsman

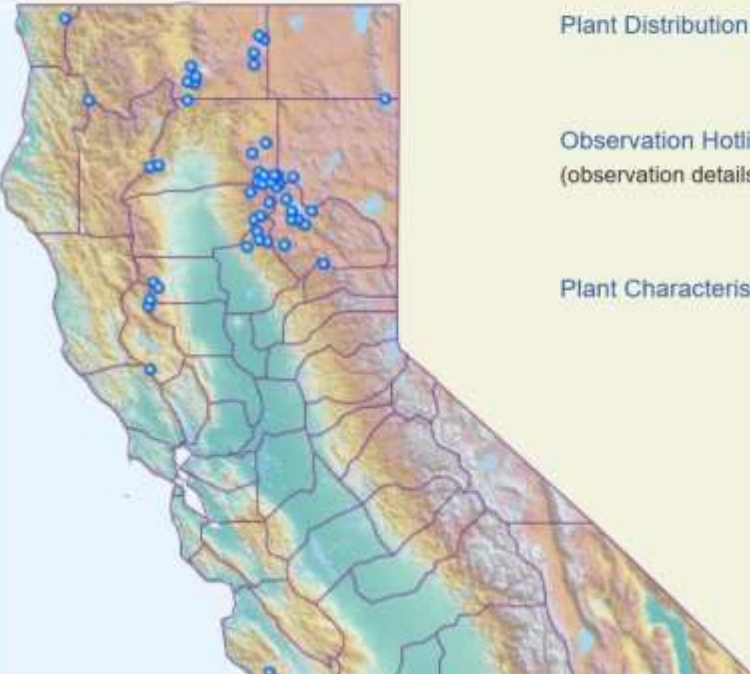


Note reference photographers



Cycladenia humilis Benth. var. *humilis*
Cycladenia, Sacramento waxycdogbane

Cycladenia humilis var. *humilis*, a dicot, is a **perennial herb** that is **native** to California, and is endemic (limited) to California.



Plant Distribution

Observation Hotline
(observation details)

Plant Characteristics



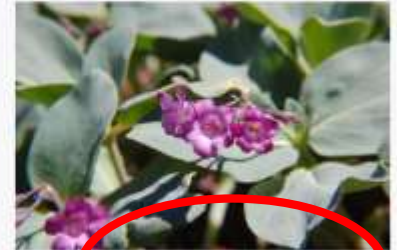
Bloom Period

Photos from CalPhotos / Calflora

Family: APOCYNACEAE

Genus: *Cycladenia*

Parent: *Cycladenia humilis*



© 2010 Paul Heiple



© 2000 John Game




Note native status

Calflora Taxon Report 8594 Cynthia Powell EDIT - SIGN OUT

Geranium purpureum Vill.
Herb robert

Geranium purpureum, a dicot, is an **annual or biennial herb** that is **not native** to California. Cal-IPC rating: Limited




Plant Distribution

Observation Hotline
(observation details)

Plant Characteristics


■ one or more occurrences within a 7.5-minute quadrangle




Bloom Period

Photos from CalPhotos / Calflora

Family: GERANIACEAE
Genus: Geranium



© 2016 Torii Corelli



Note family, genus, ssp. and var.

Calflora Taxon Report 9825 Cynthia Powell


Corethrogyne filaginifolia (Hook. & Arn.) Nutt.
Common sandaster

Corethrogyne filaginifolia, a dicot, is a **perennial herb** that is **native** to California, Baja California.

Plant Distribution

Observation Hotline
(observation details)


Plant Characteristics



Bloom Period

Photos from CalPhotos / Calflora

Family: **ASTERACEAE**
Genus: *Corethrogyne*
Subspecies and Varieties:
... var. *californica*
... var. *filaginifolia*
... var. *incana*
... var. *linifolia*



© 2019 stephen rosenthal



information on wild California plants

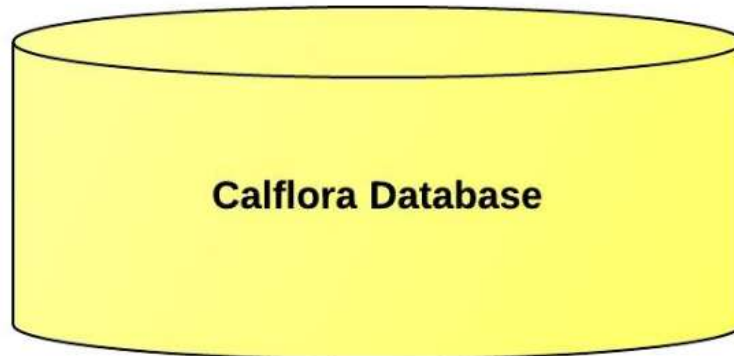
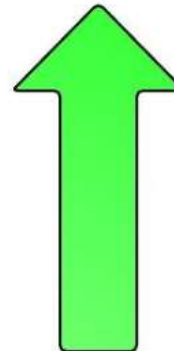
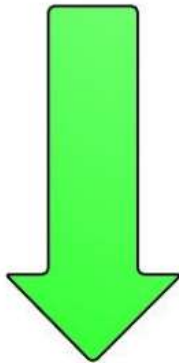
Calflora

Data In

- > 500 Professional Botanists
- > 1000 Amateur Botanists
- > 1800 Other Observers
- > 100 Institutions

Data Out

- Researchers
- Students
- Botanists
- Ecologists
- Land Managers
- Conservationists



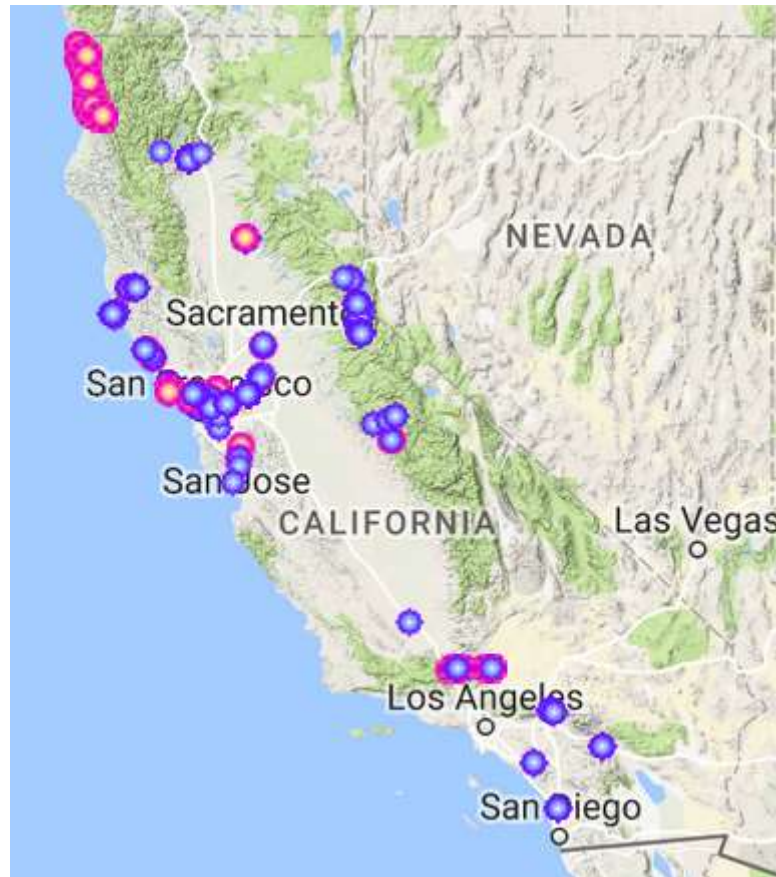
Calflora Database



information on wild California plants

Calflora

My “travel journal” showing where I’ve botanized in CA since I started using Calflora 8 years ago





Calflora

information on wild California plants



Nolina cismontana
Peninsular beargrass
by Diane Etchison

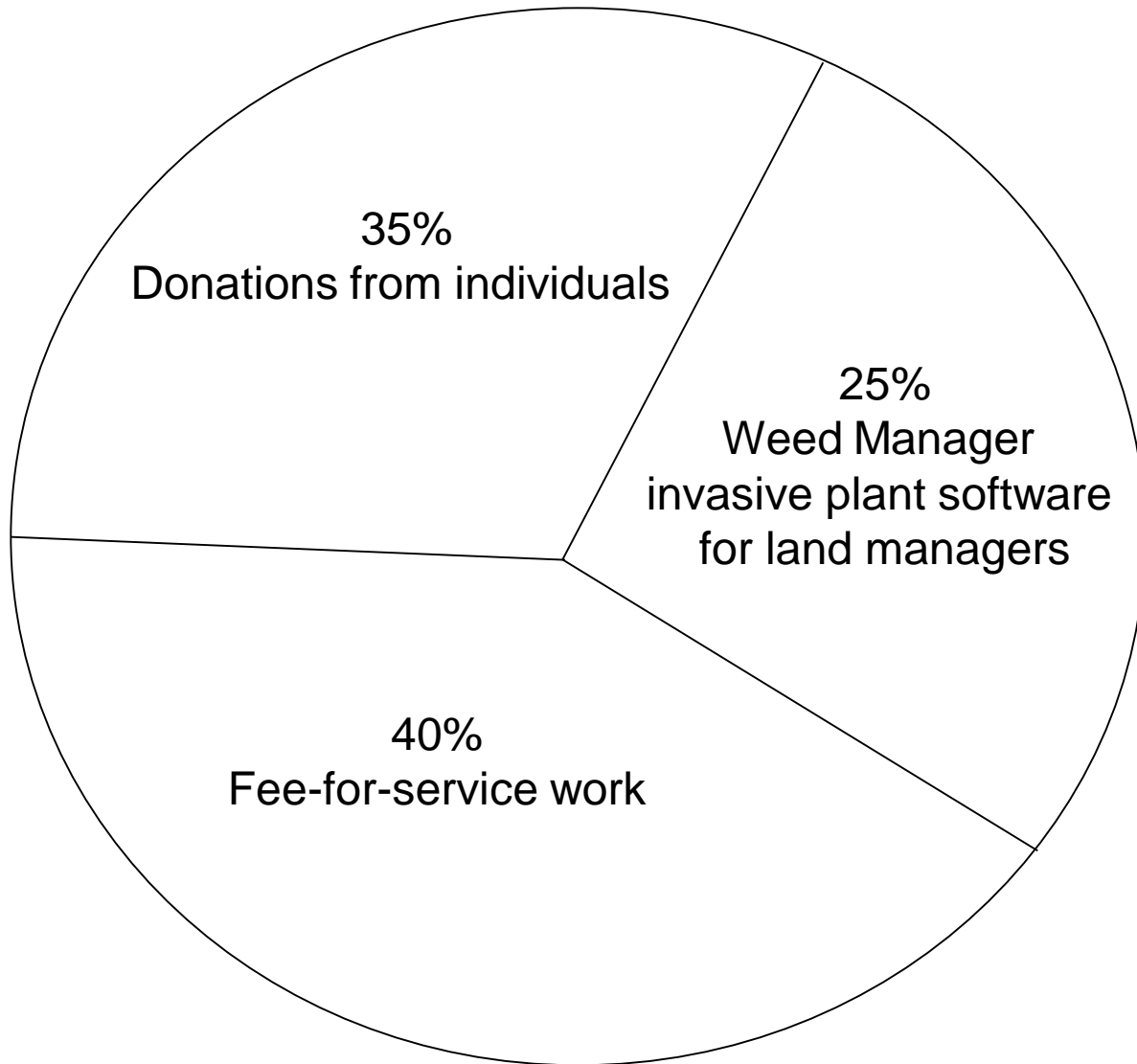
"I spend a lot (A LOT!) of time looking up species on Calflora every single day. What an incredibly useful resource it is!"

Bonnie Nickel, Calflora data and photo contributor



Calflora

information on wild California plants





Calflora

information on wild California plants

Q: With the millions of plant observations in Calflora, how can I find what I'm looking for?



Calflora

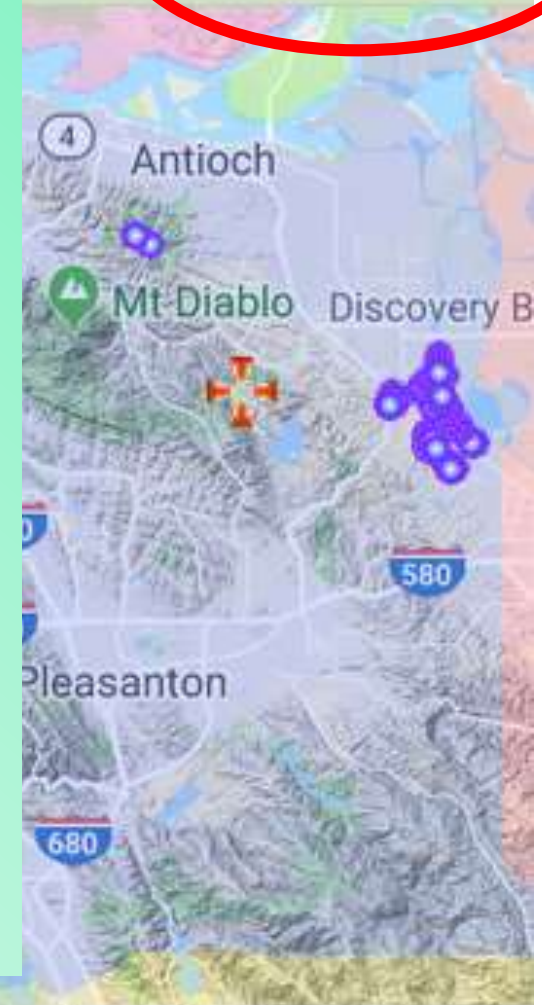
information on wild California plants

A: There are many ways! We will go over several today.

Sign in for personalized Calflora experience:

- My observations
- My preferences
- My profile
- My plant lists
- My email alerts
- My searches

Cynthia Powell



Google

EPA Ecoregion

Climate

Soil

©2019 Google 10 km Terms c

ription

County

Sign in to “like” photos



Caulanthus lasiophyllus
California mustard

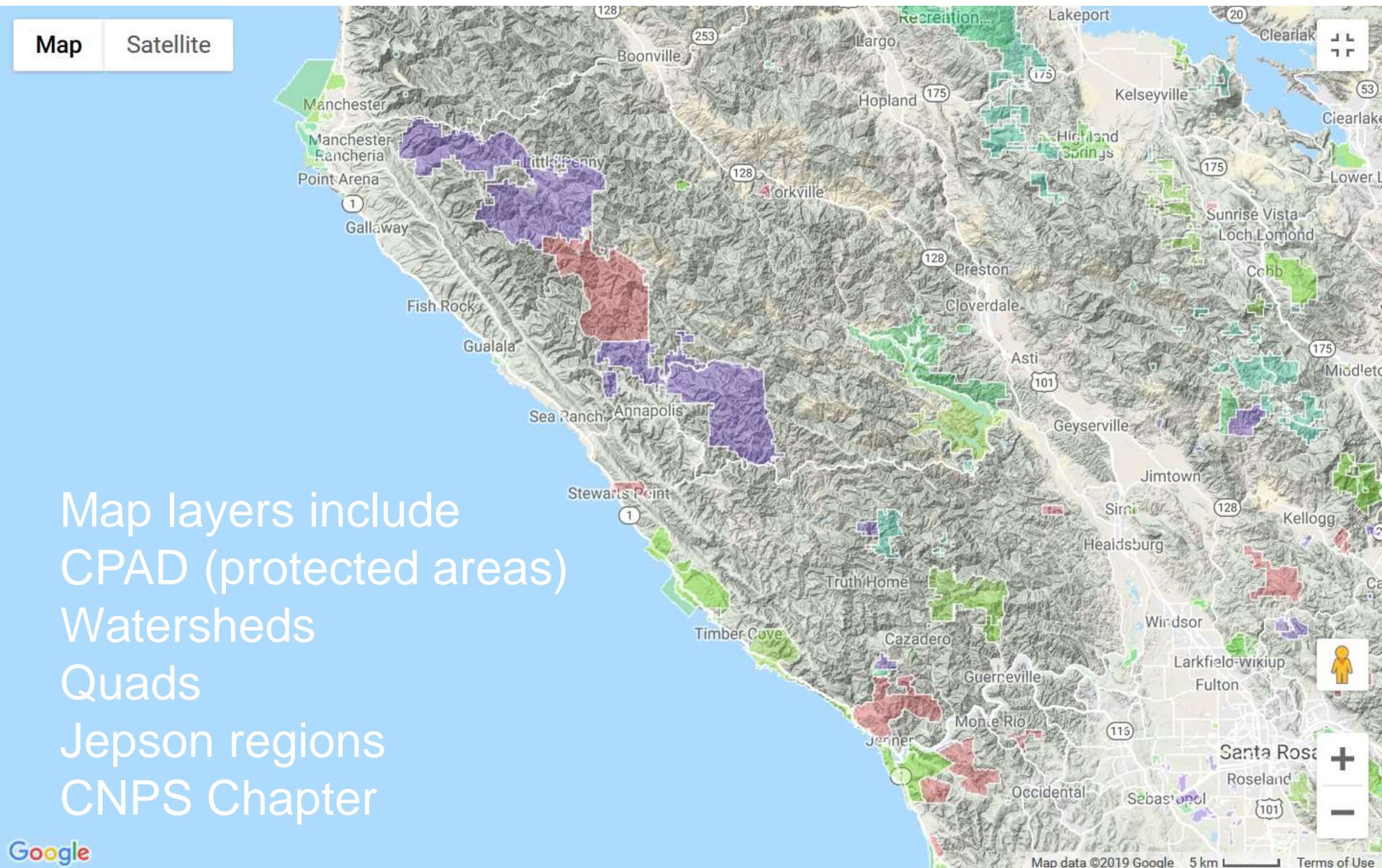
Stephen Rosenthal

Like

4

© 2017 stephen rosenthal CC BY-NC 4.0

Conduct queries in your area(s) of interest



Map

MAP LAYERS

Cynthia Powell

Point Reyes

Map

County Lines

Streams

Region

Watershed

Protected Area (CPAD)

Jepson Flora Project
geographic subdivision

✓ CNPS Chapter

Zip Code

MLRA

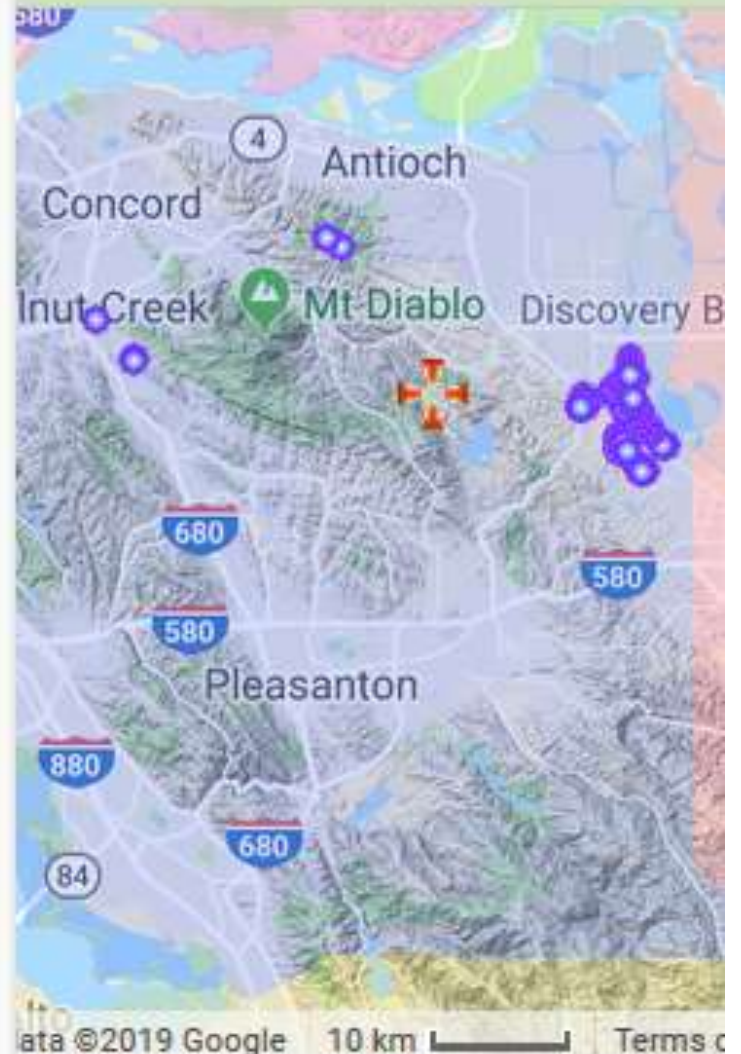
4ETa Zone

USGS Quadrangle

EPA Ecoregion

Climate

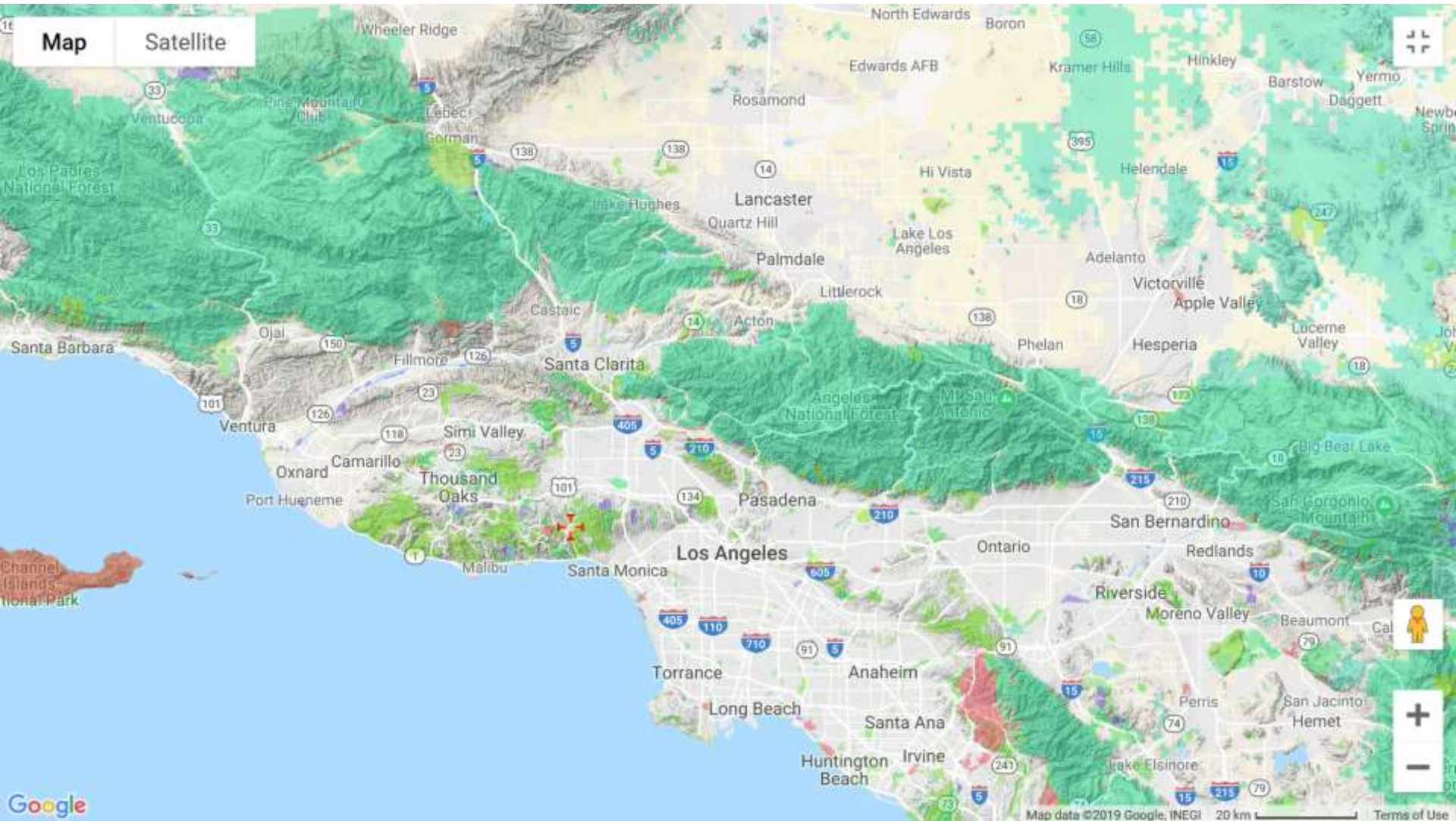
Soil



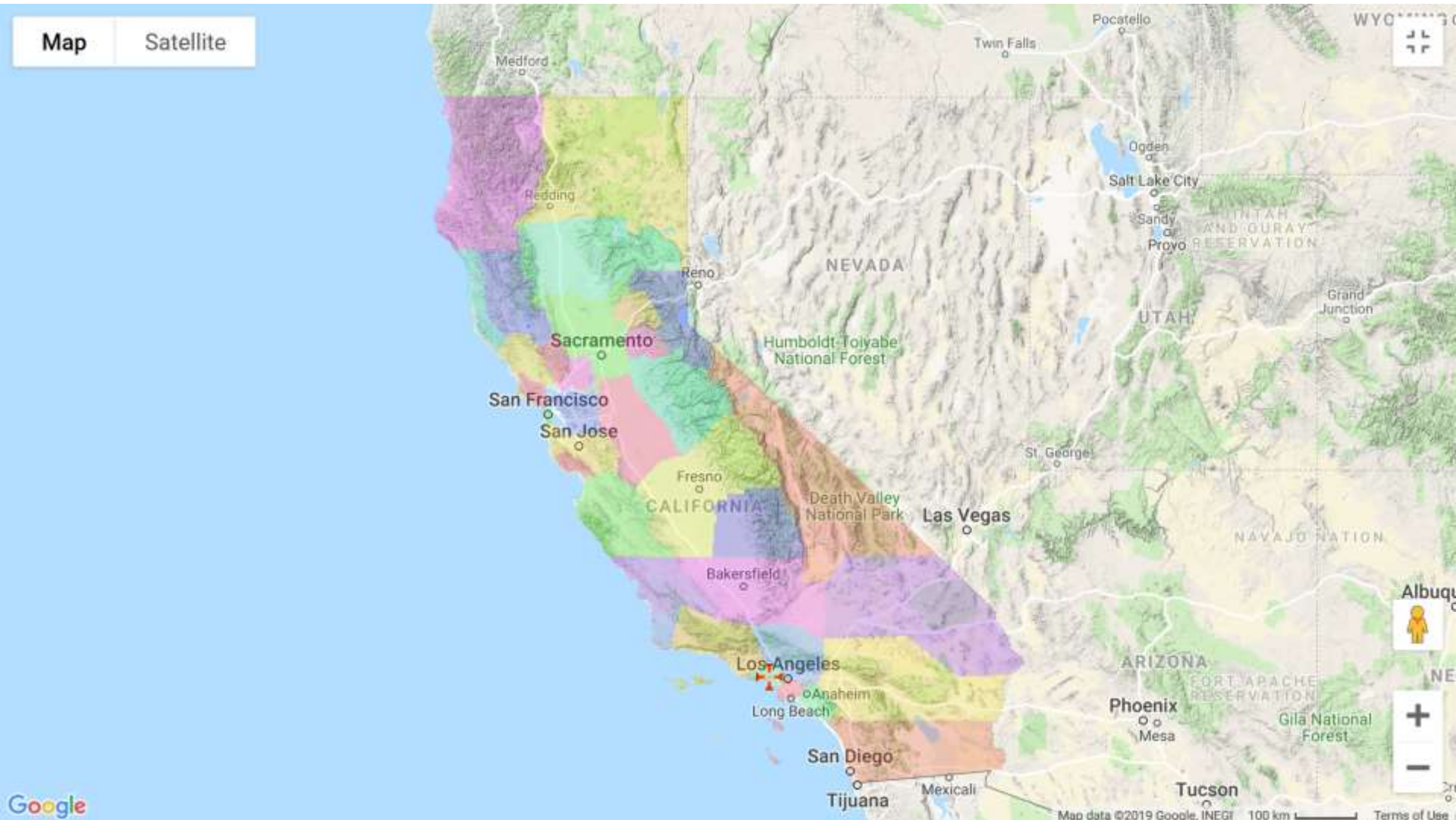
Description

County

Search Calflora observations by a specific Protected Area



Search Calflora observations by a specific CNPS Chapter



Calflora home page “name wizard” type ahead for sci names



information on wild California plants

Search for Plants

SEARCH

CLEAR

HELP

Common A B C D E F G H I J K L M N O P Q R S T U V W X Y Z
Scientific A B C D E F G H I J K L M N O P Q R S T U V W X Y Z
Family A B C D E F G H I J K L M N O P Q R S T U V W X Y Z

plant name

NAME WIZARD

county

any

Enter part of a name: Common Scientific or Family
poppy Papaver POACEAE

duration Annual
 Perennial
 Biennial

lifeform Grasslike Tree
 Herb Fern
 Shrub Vine

status Native to California CNPS rare plants
 Not native to California Affinity to serpentine soil
 Cal-IPC invasive plants

community any
Alkali Sink
Alpine Fell-fields
Bristle-cone Pine Forest
Chaparral
Closed-cone Pine Forest

category Monocot Bryophyte
 Dicot Lichen
 Gymnosperm Algae
 Pteridophyte Whisk-fern

result format Photos

less ...

Order by scientific name

elevation below meters above meters

blooms during any month

- My Calflora
- My Observations
- Add Observations
- Phone Applications
- Donate
- About Calflora
- NEWS
- Observation Hotline
- What Grows Here?
- Great Places
- Planting Guide
- NRCS eVegGuide
- Weed Manager
- Privacy

- any
- Alameda
- Alpine
- Amador
- Butte
- Calaveras
- Colusa
- Contra Costa
- Del Norte
- El Dorado
- Fresno
- Glenn
- Humboldt
- Imperial
- Inyo
- Kern
- Kings
- Lake
- Lassen
- Los Angeles
- Madera
- Marin
- Mariposa
- Mendocino
- Merced
- Modoc



Calflora

information on wild California plants

Calflora basics

Observation Hotline

What Grows Here

Create an Illustrated Plant List

Planting Guide

Collecting data using a smart phone



- Common A B C D E F G H I
- Scientific A B C D E F G H I
- Family A B C D E F G H I

Search for Plants

[HELP](#)

plant name [NAME WIZARD](#)

Enter part of a name: Common Scientific or Family
poppy Papaver POACEAE

duration Annual Perennial Biennial

lifeform Grasslike Herb Shrub

status Native to California Not native to California Cal-IPC invasive plants

CNPS rare plants Affinity to serpentine soil

community

- Alkali Sink
- Alpine Fell-fields
- Bristle-cone Pine Forest
- Chaparral
- Closed-cone Pine Forest

category Monocot Dicot Gymnosperm Pteridophyte

result format [less ...](#) Order by

elevation below meters above meters

- My Calflora
- My Observations
- Add Observations
- Phone Applications
- [Donate](#)
- About Calflora
- NEWS
- [Observation Hotline](#)
- What Grows Here?
- Great Places
- Planting Guide
- NRCS eVegGuide
- Weed Manager
- Privacy



Scientific Name

Status (native or not)

Common Name

Start Date

End Date

Observer

▶ OTHER SOURCES

include surveys/checklists

Location Description

in selected area 

in map area

▶ POLYGON

Photos

Columns

▶ customize

SEARCH

Click on ID to select a record. Click on column title to sort.

Showing the first 3000 records.



Scientific Name

anywhere

in map area

Native Status

Common Name

Start Date

End Date

Observer

[▶ POLYGON](#)

[▶ OTHER SOURCES](#)

include surveys/checklists

Photos

Location Description




Columns

[▶ customize](#)

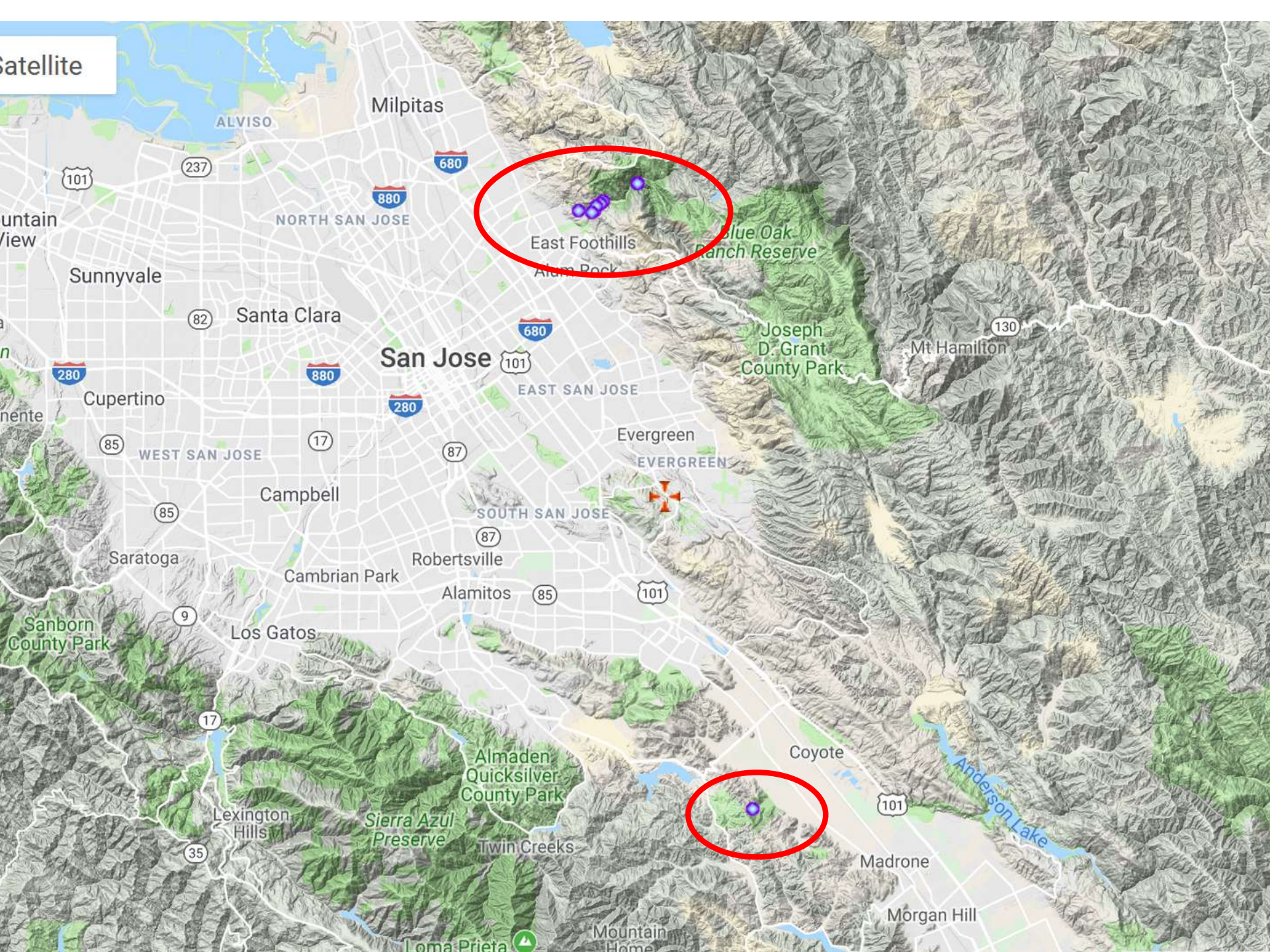
SEARCH

Click on ID to select a record. Click on column title to sort. 9 records:

Penny has 9 observations in Calflora; here are the first 3 in table view

Plant	Photo	Observer	Source	Date	County	Location Description
<i>Symphoricarpos albus</i> Common snowberry		Penny Pollock		2017-08-12	Santa Clara	Upper end of Creek Trail, beginning of South Rim Switchback trail
<i>Clinopodium douglasii</i> Yerba buena		Penny Pollock		2017-06-16	Santa Clara	Along Maintenance road about 1/3 of way from Alum Rock Ave to Inspiration Point.
<i>Achyrochaena mollis</i> Blow wives		Penny Pollock	California Native Plant Society	2017-05-10	Santa Clara	Coyote Valley Open Space Preserve

Satellite



Milpitas

ALVISO

NORTH SAN JOSE

East Foothills

Blue Oak Ranch Reserve

Sunnyvale

Santa Clara

San Jose

EAST SAN JOSE

Joseph D. Grant County Park

Mt Hamilton

Cupertino

WEST SAN JOSE

Campbell

Evergreen

EVERGREEN

SOUTH SAN JOSE

Saratoga

Cambrian Park

Robertsville

Alamitos

Sanborn County Park

Los Gatos

Almaden Quicksilver County Park

Coyote

Anderson Lake

Lexington Hills

Sierra Azul Preserve

Twin Creeks

Madrone

35

Loma Prieta

Mountain Home

Morgan Hill



Scientific Name

in selected area

in map area

Native Status

Common Name

Start Date

End Date

Observer

POLYGON

OTHER SOURCES

include surveys/checklists

Photos

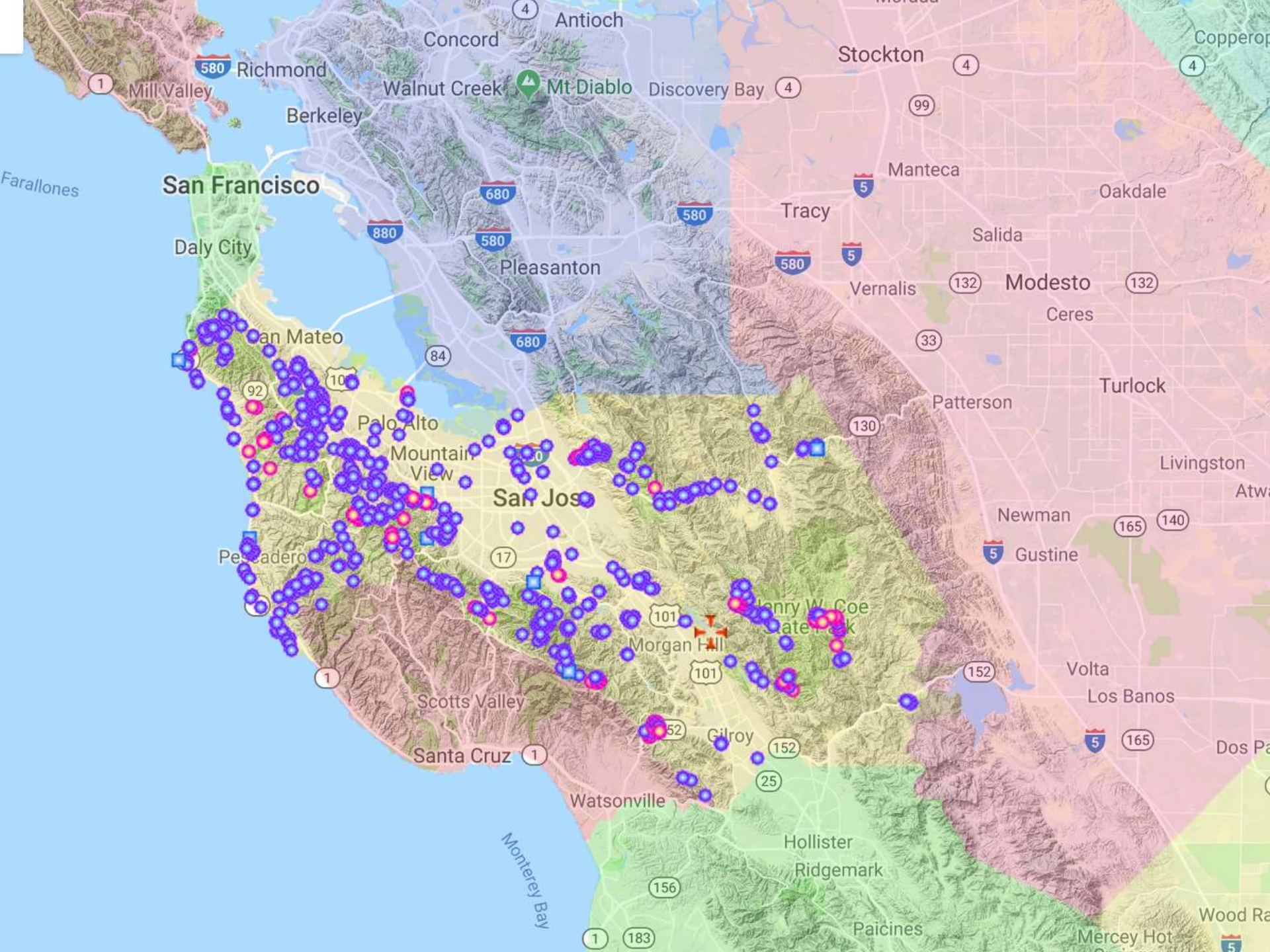
Location Description

Columns

customize

SEARCH

Click on ID to select a record. Click on column title to sort. 1644 records:





Observation Hotline

Map

Map Layers

Cynthia Powell

EDIT - LOGOUT

December Low 28 ° F



- County Lines
- Streams
- Region ▶
- Climate ▼
- Annual Precipitation
- Wet Season
- Temp Range
- December Low
- July High
- July Low
- Warm Season
- USDA Hardiness Zone
- Soil ▶
- [ABOUT LAYERS](#)



Map Satellite

Stanislaus National Forest

108

108



- My Calflora
- My Observations
- Add Observations
- Phone Applications

Donate

- About Calflora
- NEWS
- Observation Hotline
- What Grows Here?
- Great Places
- Planting Guide
- NRCS eVegGuide
- Weed Manager
- Privacy

Search for Plants

SEARCH

CLEAR

HELP

- Common A B C D E F G H I
- Scientific A B C D E F G H I
- Family A B C D E F G H I

plant name

NAME WIZARD

Enter part of a name: Common Scientific or Family
poppy Papaver POACEAE

- duration**
- Annual
 - Perennial
 - Biennial

- lifeform**
- Grasslike
 - Herb
 - Shrub
 - Tree
 - Vine

- status**
- Native to California
 - Not native to California
 - Cal-IPC invasive plants
 - CNPS rare plants
 - Affinity to serpentine soil

- community**
- any
 - Alkali Sink
 - Alpine Fell-fields
 - Bristle-cone Pine Forest
 - Chaparral
 - Closed-cone Pine Forest

- category**
- Monocot
 - Dicot
 - Gymnosperm
 - Pteridophyte

result format

Photos

less ...

Order by scientific name

elevation below meters above meters



▼ Criteria

- Low water tolerant
- Riparian
- Shade tolerant
- Commercially available

▼ PLANT FILTER

Status (native or not)

any ▼

Duration

any ▼

Lifeform

any ▼

Bloom month

any ▼

Two or more photos

any ▼

SEARCH

▼ RESULTS

Format

photo ▼

Order by

Scientific Name ▼

Group by LIFEFORM

Location Quality

any ▼

Minimum records / plant

1 record ▼

▼ PLANT NAMES

Scientific Name

Family

Plant List

-- none -- ▼

▼ AREA

in map area

in selected background

[▶ DRAW A POLYGON](#)

[▶ SAVED SEARCH POLYGONS](#)

▼ POINTS

0 points

CLEAR POINTS

ICON PALETTE

NATIVE ▼

Native



[display](#)

Non-native



[display](#)

[▶ Plants with Icons](#)

APPLY

[▶ My Palettes](#)

What Grows Here

MAP

TOOLS

SEARCH

Water tolerant
 Tolerant
 Commercially available

FILTER

RESULTS

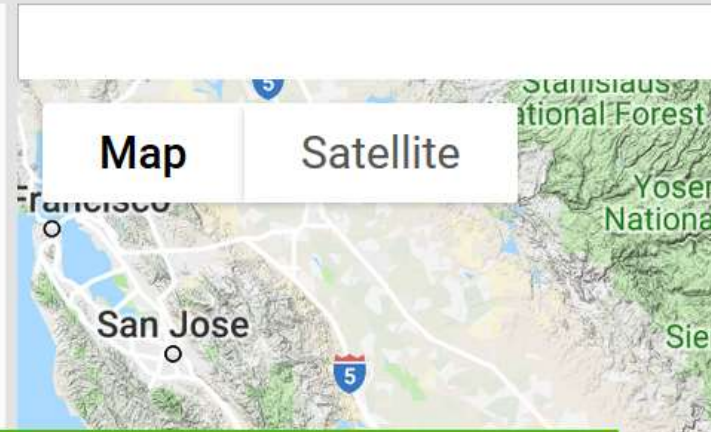
AREA

PLANT NAMES

POINTS

LOCATION

Edgewood



- Edgewood Creek / uns1527 (Stream) El Dorado County
- uns1542 / Edgewood Creek (Stream) El Dorado County
- Edgewood Park Marin County
- Edgewood (Town) Siskiyou County
- Edgewood Creek (Stream) Siskiyou County
- Edgewood County Park San Mateo County
- Edgewood Park 1 San Mateo County
- Edgewood Park 2 San Mateo County
- Edgewood Park and Natural Preserve San Mateo County
- Edgewood Trail San Mateo County
- Gordon Valley Creek / Ledgewood Creek (Stream) Solano County
- Ledgewood Creek / uns554 (Stream) Solano County



▼ Criteria

SEARCH

- Low water tolerant
- Riparian
- Shade tolerant
- Commercially available

▼ PLANT FILTER

Status (native or not)

native ▼

Duration

any ▼

Lifeform

any ▼

Bloom month

September ▼

Two or more photos

any ▼

▶ RESULTS

▶ AREA

▶ PLANT NAMES

▶ POINTS

▼ LOCATION

Edgewood Park and Natural Pr

Corethrogyne filaginifolia *Common sandaster*

4 records (2 CCH)

native

Perennial herb

ASTERACEAE



2019 Bonnie Nickel



2018 Ron Vanderhoff



2018 Ron Vanderhoff



Corethrogyne leucophylla *Branching beach aster*

1 record

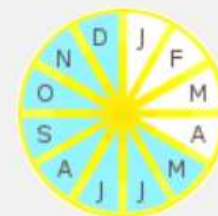
native

Perennial herb

ASTERACEAE



© 2016 Dean Wm. Taylor



Cyperus eragrostis *Tall cyperus*

4 records (1 CCH)

native

Perennial grasslike herb

CYPERACEAE



2017 Gary McDonald



2017 Gary McDonald



2012 Neal Kramer





Calflora

information on wild California plants

Calflora basics

Observation Hotline

What Grows Here

Create an Illustrated Plant List

Planting Guide

Collecting data using a smart phone

Achyrachaena mollis *Blow wives*

8 records (7 CCH)

native

Annual herb

ASTERACEAE



2004 Keir Morse



2004 Carol W. Witham



2018 Gary McDonald

**Acmispon americanus** *American bird's foot trefoil*

4 records (2 CCH)

native

Annual herb

FABACEAE



2016 Jim Moore



2013 Arcangelo Wessells



2018 H Bolling

**Acmispon americanus var. americanus** *Spanish lotus*

3 records (3 CCH)

native

Annual herb

FABACEAE



2009 Neal Kramer



2017 David Wolfson



2009 Keir Morse





Plants found near 37.46606, -122.28243

San Mateo County

Criteria: native

Location 'Edgewood Park and Natural Preserve'



37.46606, -122.28243

What Grows Here?



▼ OPTIONS

X

Show bloom period

Order by bloom start month

Group by family

No photos

Show photo links

DISPLAY

506 PLANTS

<i>Abutilon palmeri</i>	<i>Palmer's abutilon</i>	native	Perennial herb	MALVACEAE
<i>Acacia baileyana</i>	<i>Cootamundra wattle</i>	• invasive non-native	Tree, Shrub	FABACEAE
<i>Acacia cultriformis</i>	<i>Knife acacia</i>	non-native	Tree	FABACEAE
<i>Acer macrophyllum</i>	<i>Bigleaf maple</i>	native	Tree	SAPINDACEAE
<i>Acer negundo</i>	<i>Boxelder</i>	native	Tree	SAPINDACEAE
<i>Achillea millefolium</i>	<i>Yarrow</i>	native	Perennial herb	ASTERACEAE
<i>Achyrachaena mollis</i>	<i>Blow wives</i>	native	Annual herb	ASTERACEAE
<i>Acmispon glaber</i>	<i>Deerweed</i>	native	Perennial herb	FABACEAE
<i>Acmispon glaber</i> var. <i>glaber</i>	<i>Deerweed</i>	native	Perennial herb	FABACEAE
<i>Acmispon maritimus</i>	<i>Coastal lotus</i>	native	Annual herb	FABACEAE
<i>Acmispon maritimus</i> var. <i>maritimus</i>	<i>Coastal lotus</i>	native	Annual herb	FABACEAE
<i>Acmispon strigosus</i>	<i>Strigose lotus</i>	native	Annual herb	FABACEAE
<i>Acourtia microcephala</i>	<i>Sacapellote</i>	native	Perennial herb	ASTERACEAE
<i>Adenostoma fasciculatum</i>	<i>Chamise</i>	native	Tree, Shrub	ROSACEAE



97 PLANTS

Alnus rhombifolia *White alder*

native
Tree

BETULACEAE



2014 Garth Wadsworth



2014 Zoya Akulova



2008 Zoya Akulova



Ambrosia psilostachya *Ragweed, Western ragweed*

native
Perennial herb

ASTERACEAE



2014 Richard Spellenberg



2011 Aaron Arthur



2011 Aaron Arthur



...and all 97 species on the list



Calflora

information on wild California plants

Calflora basics

Observation Hotline

What Grows Here

Create an Illustrated Plant List

Planting Guide

Collecting data using a smart phone



- My Calflora
- My Observations
- Add Observations
- Phone Applications

[Donate](#)

- About Calflora
- NEWS
- Observation Hotline
- What Grows Here?
- Great Places
- Planting Guide**
- NRCS eVegGuide
- Weed Manager
- Privacy

Search for Plants

[HELP](#)

- Common [A](#) [B](#) [C](#) [D](#) [E](#) [F](#) [G](#) [H](#)
- Scientific [A](#) [B](#) [C](#) [D](#) [E](#) [F](#) [G](#) [H](#) [I](#)
- Family [A](#) [B](#) [C](#) [D](#) [E](#) [F](#) [G](#) [H](#) [I](#)

plant name [NAME WIZARD](#)

Enter part of a name: Common Scientific or Family
poppy **Papaver** **POACEAE**

- duration**
- Annual
 - Perennial
 - Biennial

- lifeform**
- Grasslike
 - Herb
 - Shrub

- status**
- Native to California
 - Not native to California
 - Cal-IPC invasive plants
 - CNPS rare plants
 - Affinity to serpentine soil

community

- Alkali Sink
- Alpine Fell-fields
- Bristle-cone Pine Forest
- Chaparral
- Closed-cone Pine Forest

- category**
- Monocot
 - Dicot
 - Gymnosperm
 - Pteridophyte

result format [less ...](#) Order by

elevation below meters above meters



▼ More Criteria

low water

riparian

shade

Check for wild plants:

in the same county

within 10 miles

use soil factors to choose plants

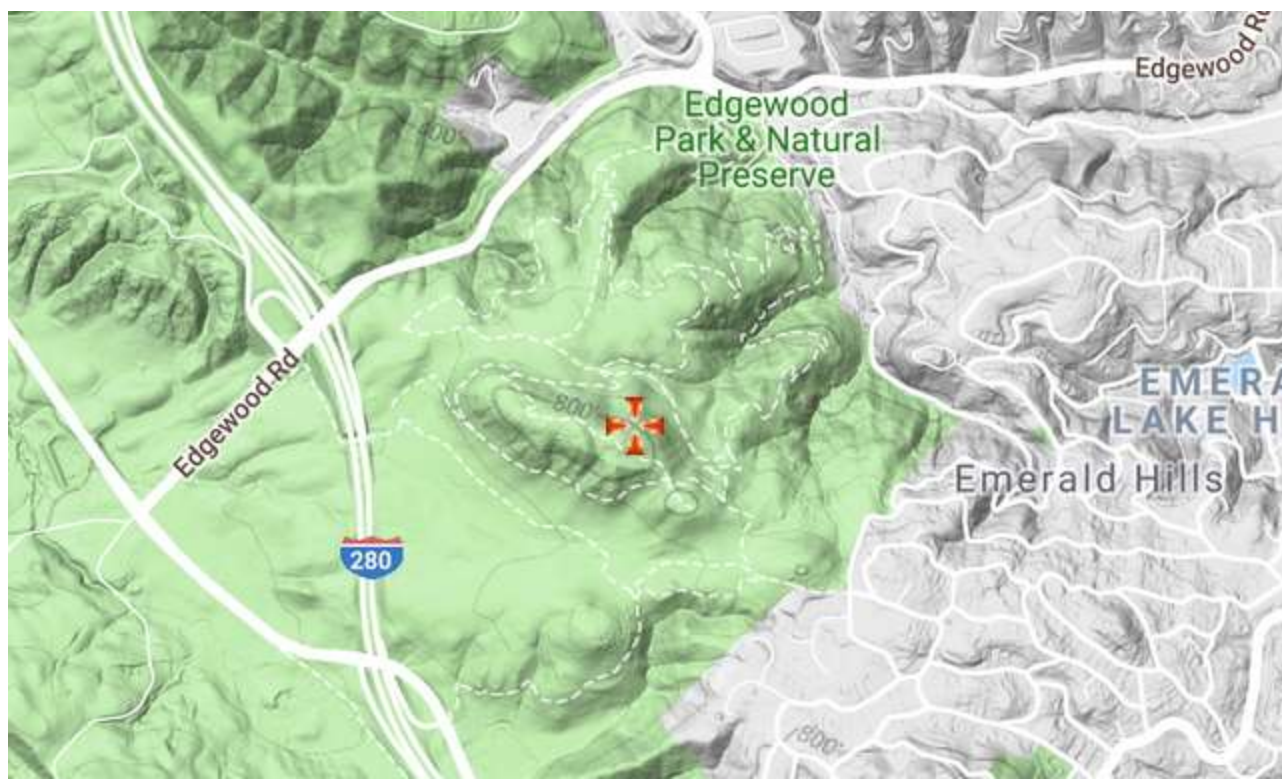
omit plants at the edge of their tolerances

easy to establish

Plants that grow with:

Scientific Name

Common Name



The Planting Guide algorithm includes

1. soil
2. climate
3. plant observations for that area

County	San Mateo	
Elevation	600 ft	183 m
<u>Precipitation</u>	25 inches	64 cm
<u>Wet Season</u>	6 months	
<u>Temp Range</u>	44 ° F	24 ° C
<u>December Low</u>	42 ° F	6 ° C
<u>July High</u>	84 ° F	29 ° C
<u>Accumulated Temperature</u>	184 ° F	84 ° C
<u>Growing Season</u>	8 months	
<u>Hardiness Zone</u>	10a	
<u>SOIL pH</u>	6.3	
<u>Salinity</u>	0 (non-saline)	
<u>Min Depth</u>	26 inches	66 cm
<u>Texture</u>	Slightly decomposed plant material	
<u>CaCO3</u>	0 % (none)	
<u>Soil Map Unit 2747733</u> (CA Soil Resource Lab)		

Emmenanthe penduliflora

Whispering bells

Annual herb



2005 James M. Andre



2018 Ron Vanderhoff



2019 Aaron Echols



Lupinus concinnus

Bajada lupine

Annual herb



2016 Ron Vanderhoff



2017 Aaron Echols



2017 B.J. Dion



Mentzelia albicaulis

White stemmed blazing star

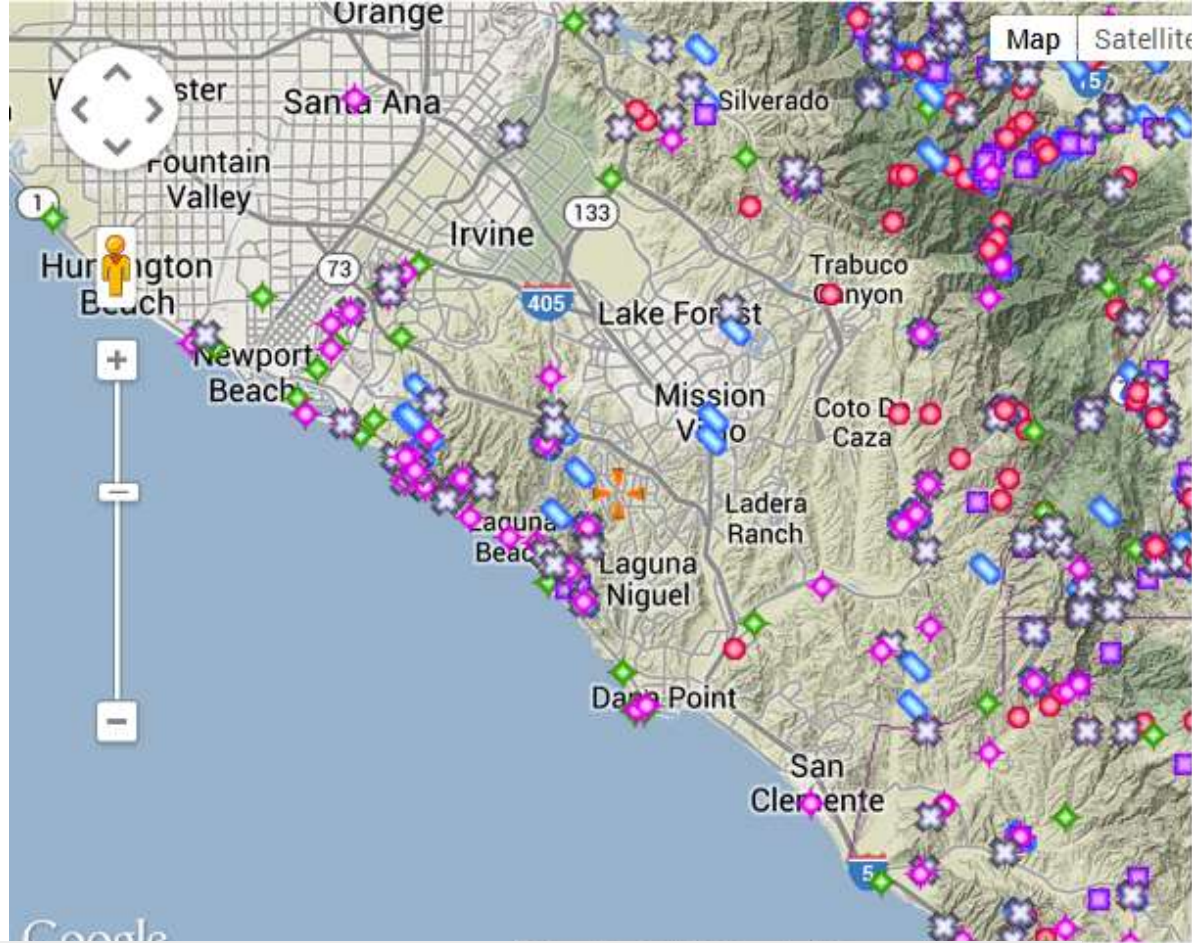
Annual herb




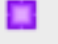



2016 Richard Spjut



Map-making in Calflora



<i>Quercus berberidifolia</i>	<i>Inland scrub oak</i>	145 records	
<i>Salvia mellifera</i>	<i>Black sage</i>	139 records	
<i>Artemisia californica</i>	<i>Coastal sage brush</i>	129 records (63 CCH)	
<i>Adenostoma fasciculatum</i>	<i>Chamise</i>	129 records	
<i>Keckiella cordifolia</i>	<i>Heart leaved keckiella</i>	100 records (65 CCH)	



Calflora

information on wild California plants

Calflora basics

Observation Hotline

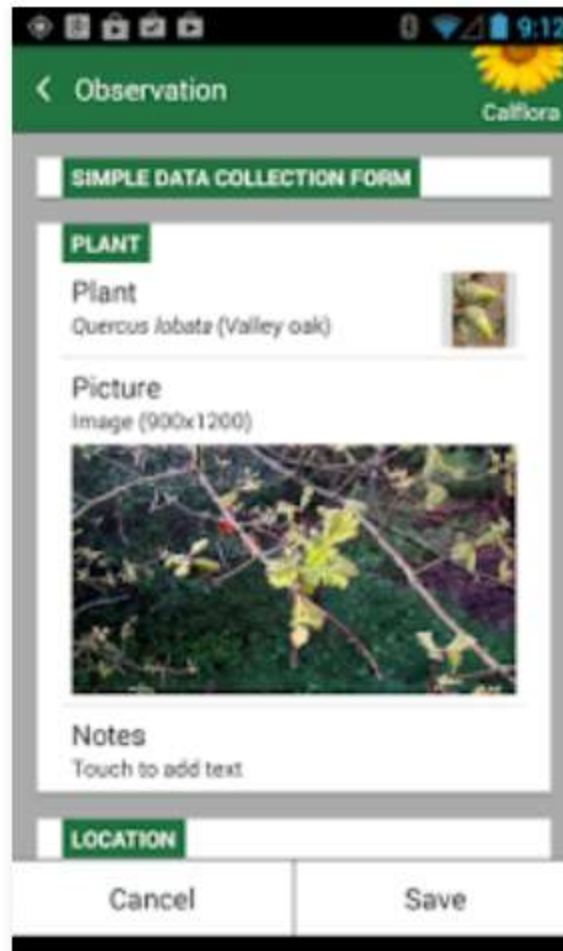
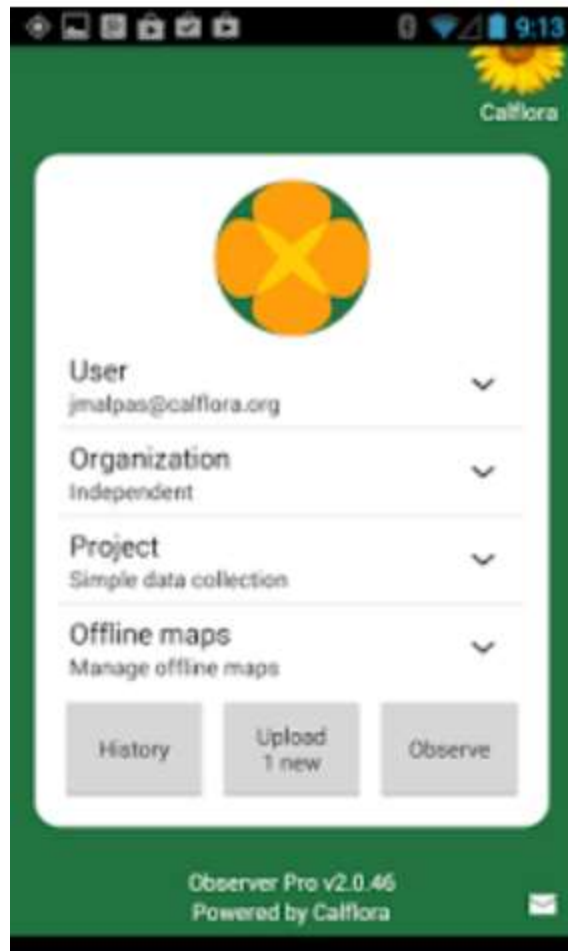
What Grows Here

Create an Illustrated Plant List

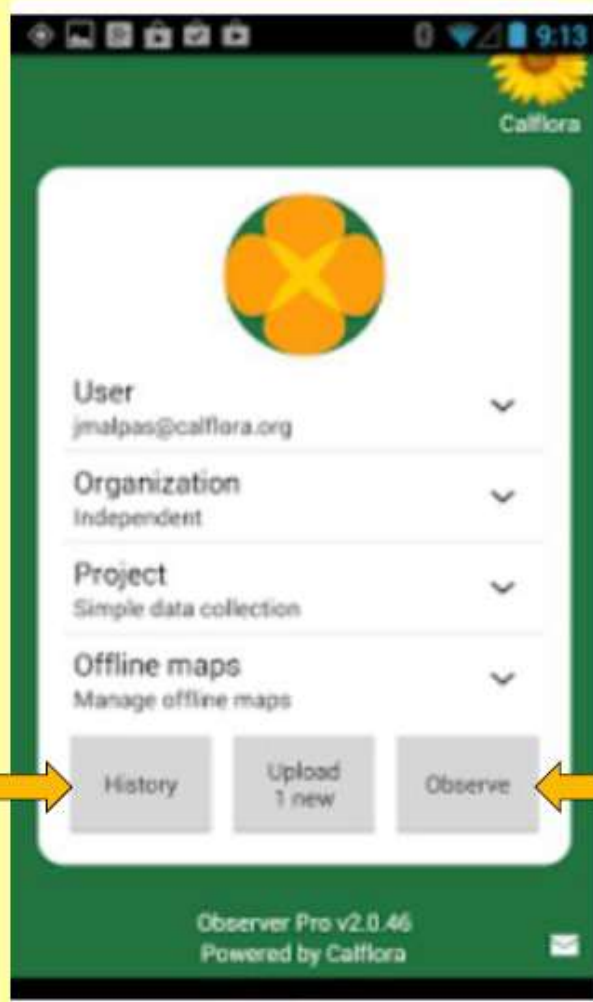
Planting Guide

Collecting data using a smart phone

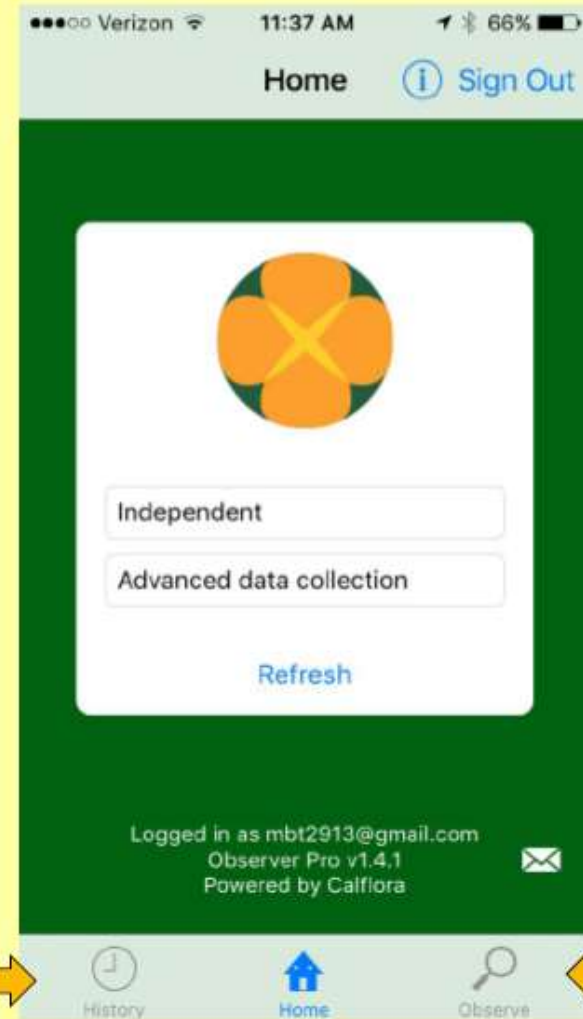
Observer Pro is free available on android and iOS



Android



iPhone





History Tab

Verizon 12:31 PM 55%

History [Sign Out](#)

Session | Map | Project

Olea europaea
Olive (49 minutes ago)

Upload All Clear All

History Home Observe

Verizon LTE 11:45 AM 62%

History [Sign Out](#)

Session | **Map** | Project

Legal Oceanside

History Home Observe

Verizon LTE 11:45 AM 62%

History [Sign Out](#)

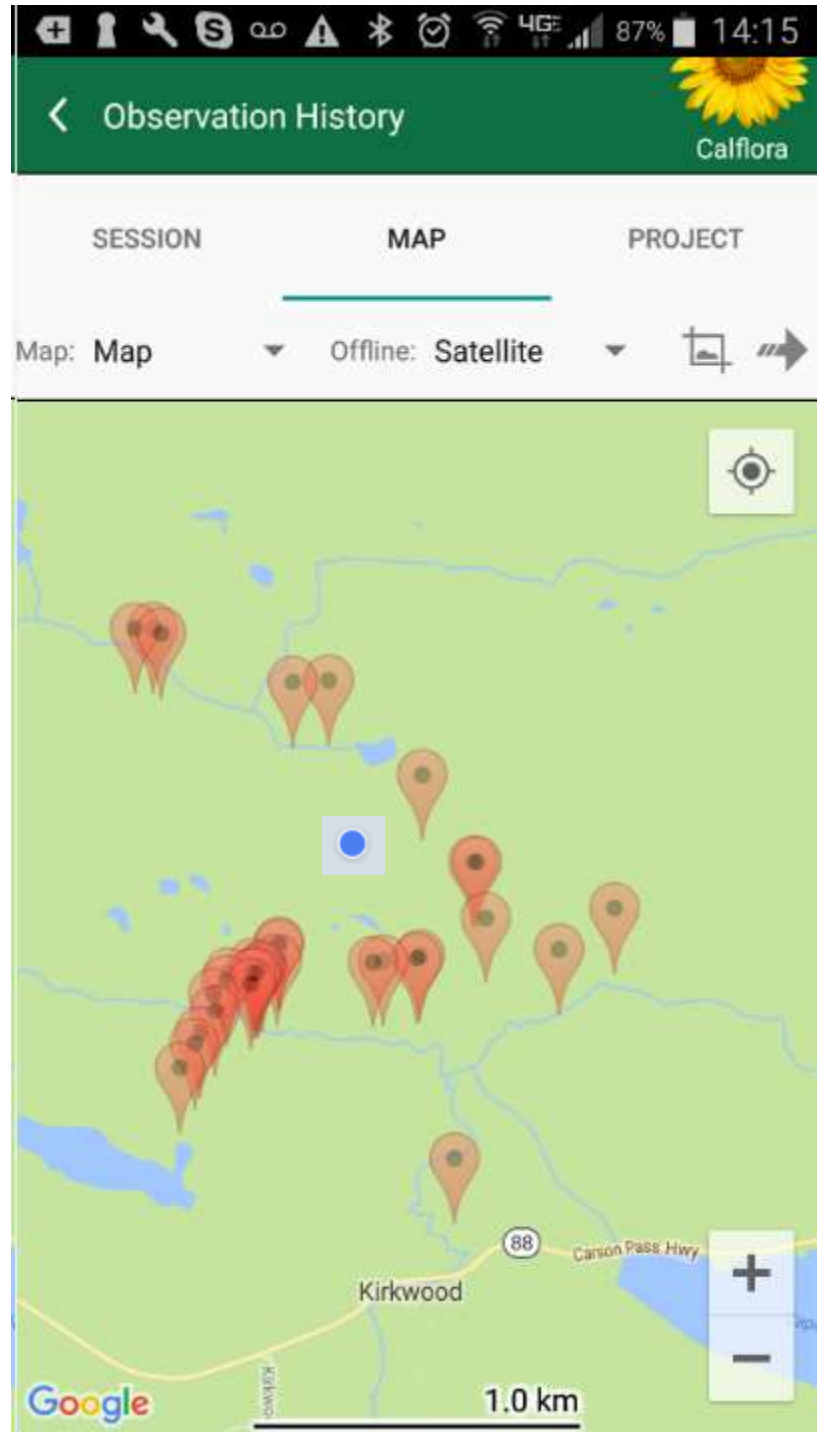
Session | Map | **Project**

- Malacothamnus aboriginum**
none/po106051, 2 months ago
- Malacothamnus aboriginum**
none/po105604, 2 months ago
- Malacothamnus aboriginum**
none/po105605, 2 months ago
- Malacothamnus fremontii**
none/mg75901, 2 months ago
- Malacothamnus fremontii**
none/mg75900, 2 months ago
- Malacothamnus aboriginum**
none/po104897, 2 months ago
- Malacothamnus aboriginum**
none/po104898, 2 months ago
- Malacothamnus aboriginum**
none/po104899, 2 months ago
- Malacothamnus aboriginum**
none/po104900, 2 months ago

History Home Observe



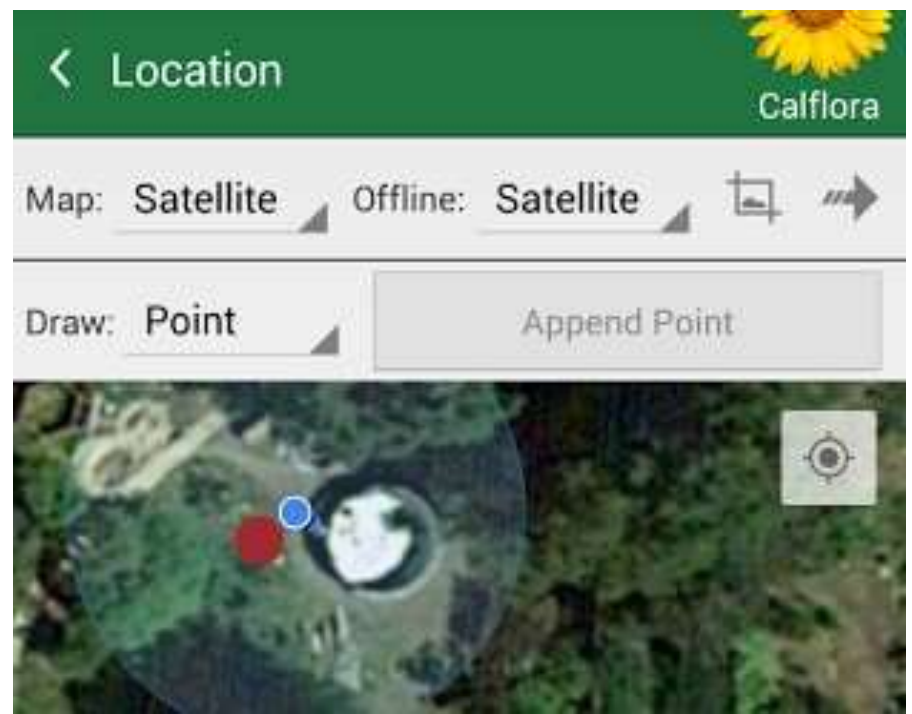
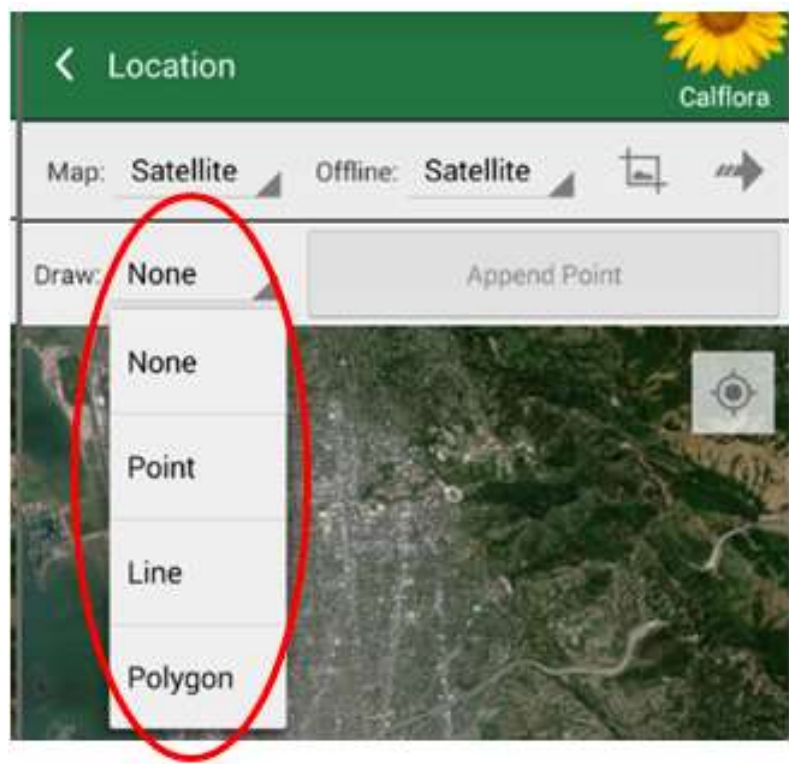
Travel to your project observations based on your blue GPS point



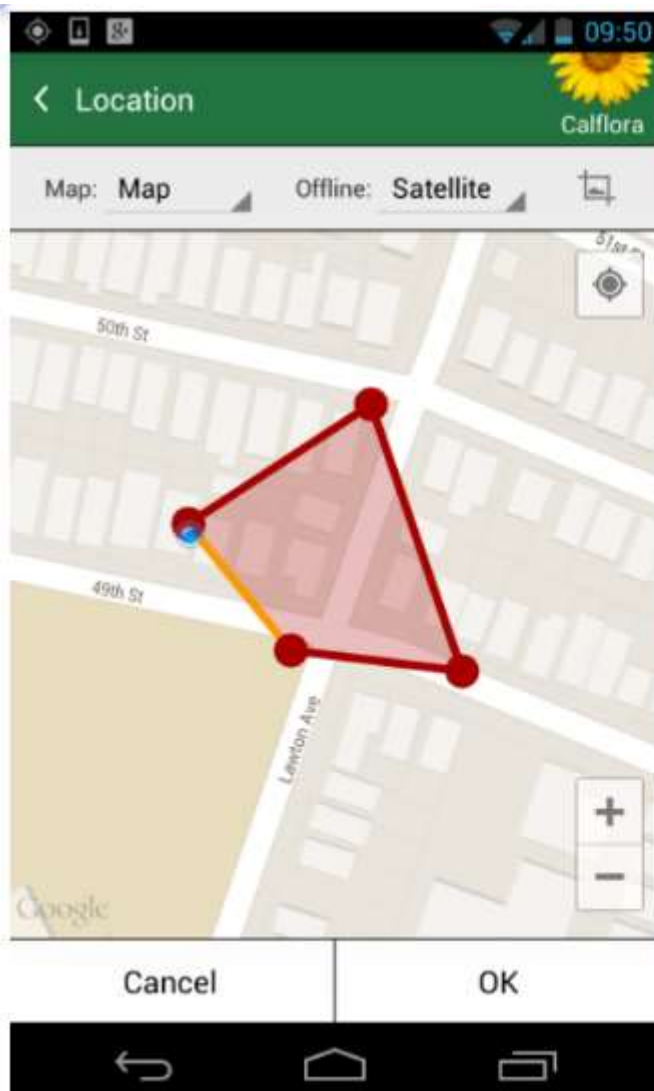


Calflora

information on wild California plants for conservation, education, and appreciation

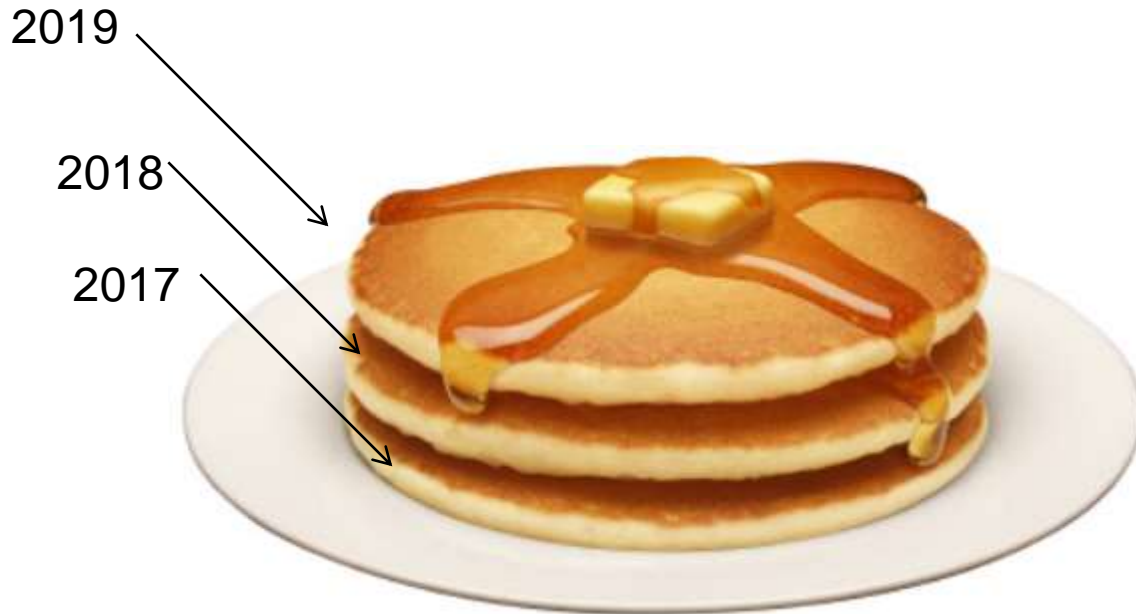


Drawing polygons: android vs. iOS





History stack capability



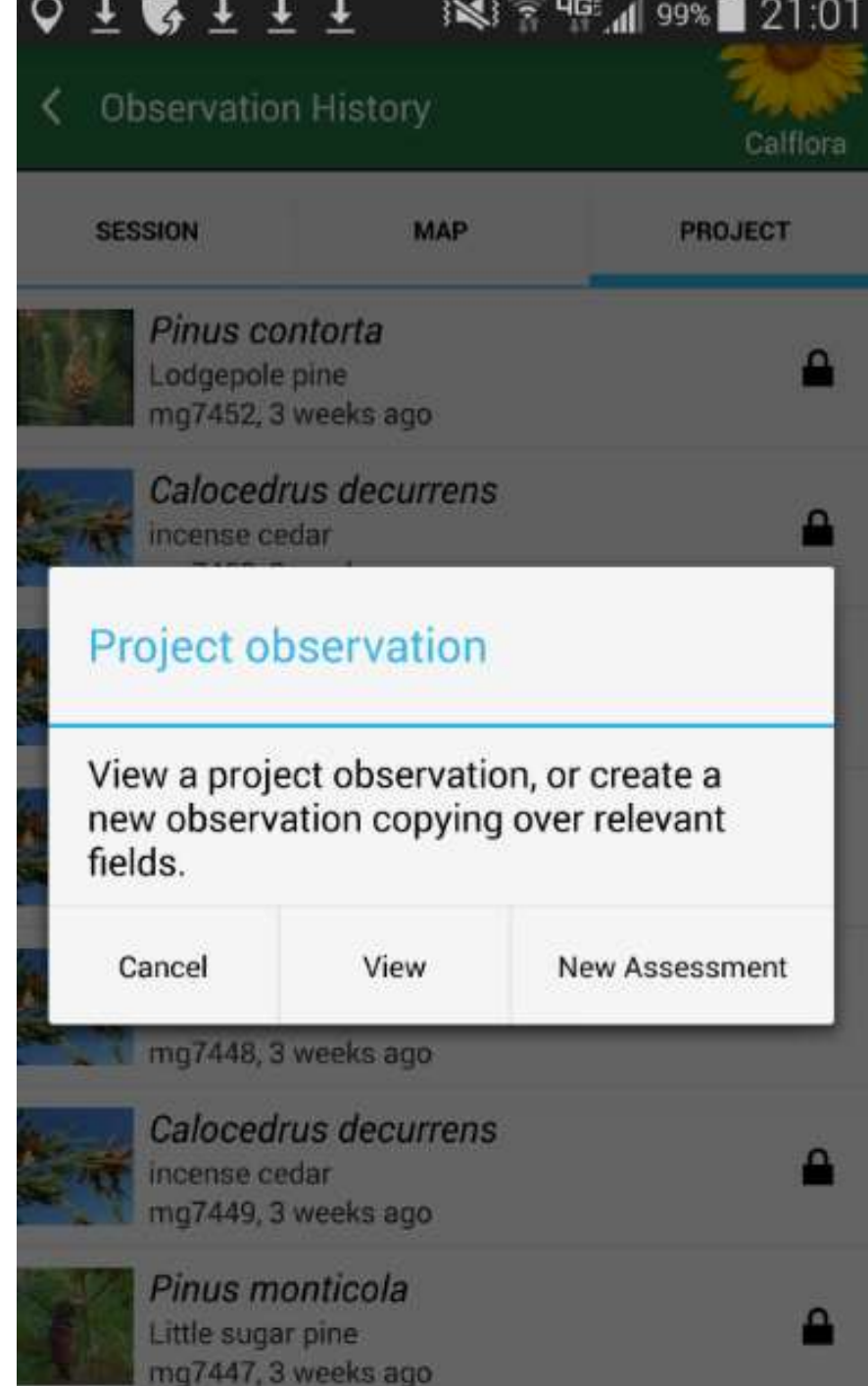
On phone app and website



Observer Pro phone app:

- Don't need data plan at all
- Don't need wifi in the field
- Do need wifi before you go in the field and after to login and (later) upload observations

Coming back the following year for a new assessment of the same patch



Satellites and Accuracy



Dual XGPS150A

Universal Bluetooth® GPS receiver for portable devices.



Bad Elf



Garmin GLO Bluetooth GPS for iOS and Android



GNS 2000 GPS MFI GLONASS RECEIVER





Thank you!





If you're planning on collecting data in the field using Observer Pro, you need to have the app already downloaded and be logged in with your Calflora email and password BEFORE you get there.