

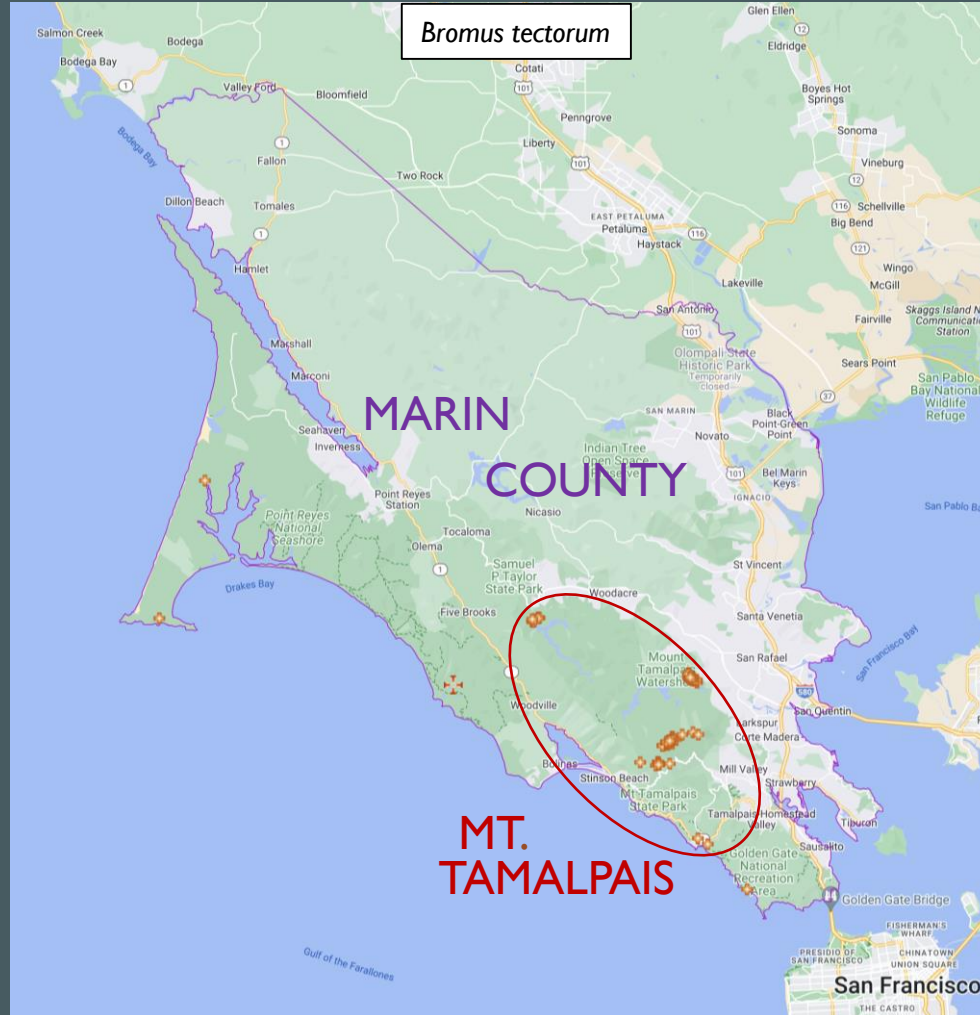


EFFECTIVE CHEATGRASS CONTROL ON MOUNT TAMALPAIS

DAVID GREENBERGER
GOLDEN GATE NATIONAL PARKS CONSERVANCY



GOLDEN GATE
NATIONAL
PARKS
CONSERVANCY



Map

Satellite



SPRING 2016

Number of Plants * >10000	Percent Cover 1 - 5
Phenology Fruiting	Distribution Scattered Plants



Google

Keyboard shortcuts

Map data ©2023 Imagery ©2023 , Airbus, Maxar Technologies, U.S. Geological Survey

10 m

Terms of Use

Report a map error

Field Guide for Managing Cheatgrass in the Southwest



Repeated mowing every 2 to 3 weeks during spring and summer may be as effective as an application of glyphosate.

However, mowing just a single time has not been found to be effective in preventing seed production since plants often rapidly regrow and still produce seed.





Map

Satellite



SPRING 2019

Number of Plants *

1400

Percent Cover

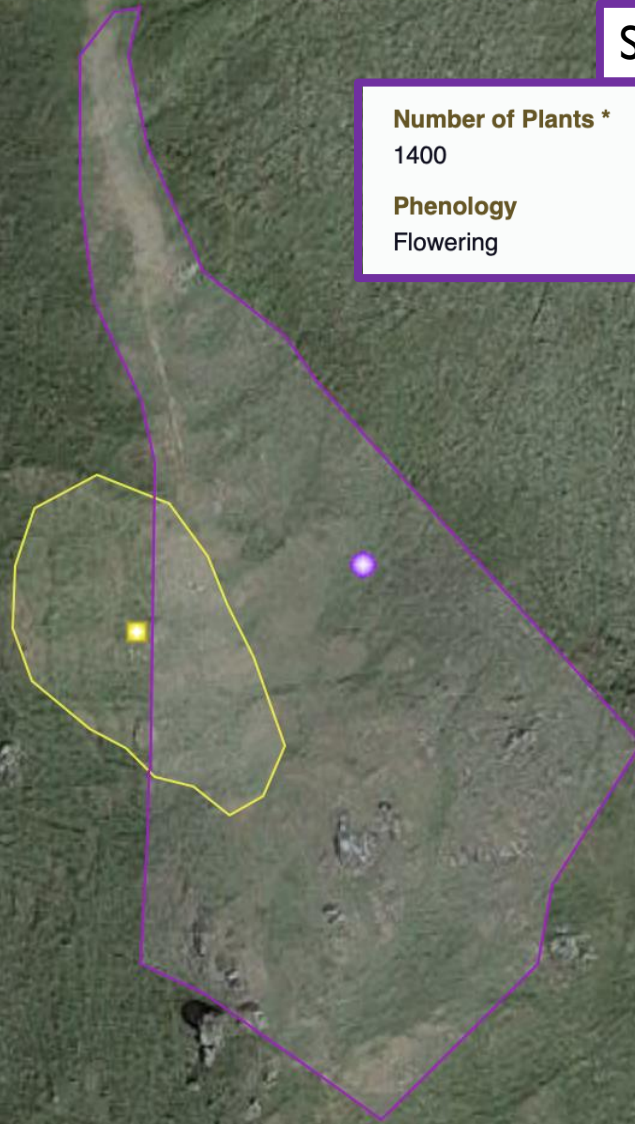
0 - 1

Phenology

Flowering

Distribution

Scattered Plants



GROUP 1 HERBICIDE

PULL HERE TO OPEN ►



syngenta®

Herbicide

For the control of grass weeds in landscape areas, roadsides, nurseries, greenhouses, flower beds, groundcovers, interiorscapes, parks, sports fields, golf courses, commercial and residential areas.

Active Ingredient:

Fluazifop-P-butyl

Butyl (R)-2-[4-[[5-(trifluoromethyl)-2-pyridinyl]oxy]phenoxy]propanoate* 24.5%

Other Ingredients 75.5%

Total: 100.0%

*Fusilade II Turf and Ornamental Herbicide is an emulsifiable concentrate containing 2 pounds (+) isomer (fluazifop-P-butyl) per gallon.

Contains petroleum distillate.

KEEP OUT OF REACH OF CHILDREN

CAUTION

See additional precautionary statements and directions for use inside booklet.

EPA Reg. No. 100-1084

EPA Est. No. 11773-IA-01^{VWC}

EPA Est. No. 46073-TN-003^{NTM}



TARGET PESTS: Invasive annual grasses – Barbed Goatgrass – *Aegilops* and Cheatgrass – *Bromus tectorum*

Material (Add to tank in order)	Rate per 100 gal	Rate per gal (handhelds)	Volume/Acre
(1) Fusilade II Herbicide – 100-1084	0.5 gallon	0.67 oz.	Variable – Low Volume Spot Spray Treatments
(2a) Renegade-EA Surfactant – 2935-50201	1 gallon	1.3 oz.	
Or (2b) Competitor ESO Surfactant– 2935-50173	1 gallon	1.3 oz.	
(3) Hi-Light Blue Dye (if necessary)	1 quart	0.3 oz.	

Map

Satellite



SPRING 2020

Number of Plants *

1400

??????

Percent Cover

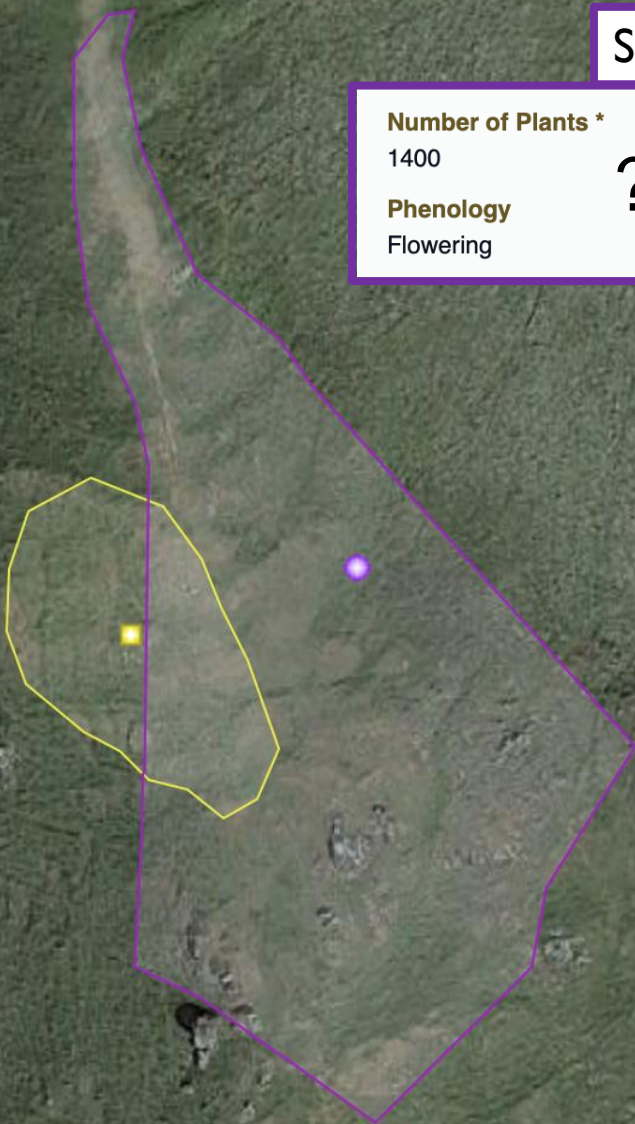
0 - 1

Phenology

Flowering

Distribution

Scattered Plants





SPRING 2021

Number of Plants *

200

Phenology

Flowering

Percent Cover

0 - 1

Distribution

Scattered Plants

SPRING 2022

Number of Plants *

15

Phenology

Flowering

Percent Cover

0 - 1

Distribution

Scattered Plants

CHEATGRASS
ABUNDANCE

