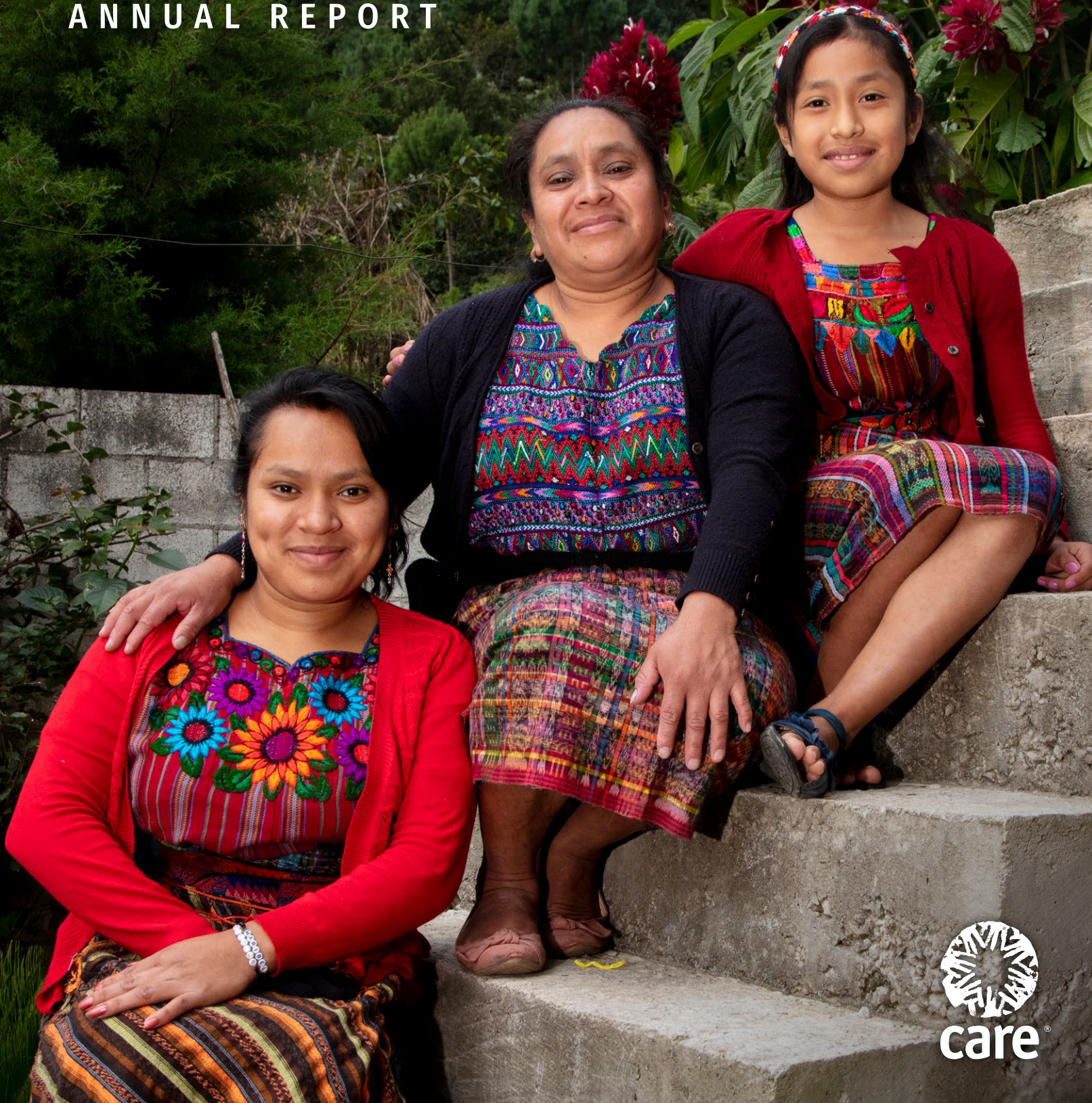

CARE 2023
ANNUAL REPORT



Letter from the president and CEO



CARE's work over the past year has felt both harder and more critical than ever before.

In the opening months of 2023, we watched CARE's country director in Türkiye give interviews in her car after an earthquake that killed 59,259 people, including two of our own staff. In the ensuing months, we have watched cascading crises confront people around the world. From Afghanistan to Morocco to Somalia, CARE has been there.

In Sudan, CARE teams have been using all available means to resupply health centers and hospitals, including horse-drawn carts and motorized rickshaws. In Nepal, our teams have delivered blankets, shelter kits, and kitchen supplies to communities affected by earthquakes. In Gaza, they managed to deliver 12 boxes of water to a shelter that had none.

Since the October 7 attack on Israel, it has felt especially difficult to hold together and share solidarity for the enormous human suffering on all sides. We all have read and heard millions of words of polarization in the ensuing days, but the words I most remember came from Hiba Tibi, country director of CARE Palestine: West Bank/Gaza, who said simply: "Our hearts are breaking for all people impacted by this, and we wish for peace and resolution. We pray for peace in the world and for all the human souls."

This sense of shared humanity is what binds us together and it is what animates thousands of CARE team members, who I have seen firsthand delivering hope around the world.

In Nepal, I met Asta, one of thousands of CARE community health volunteers. She has helped deliver 150 babies in remote villages. In Zambia, I watched Henry teach an accelerated learning program for girls that allows them to graduate to secondary school.

And in Côte d'Ivoire, I reconnected with Salimatou, once a CARE participant, now a CARE volunteer leader who has personally started 729 savings groups in her country, engaging 15,000 members. She tells me she is just getting started.

As we enter 2024, we are mindful that while we cannot predict the next crisis, we can remain true to the vision of a more just and equitable world, where poverty is shrinking and gender equality is a growing reality. Your support enables us to pursue this vision every day in thousands of acts of solidarity.

Michelle Nunn
President and CEO

Women Lead in Emergencies

Supporting women on the front lines of conflict and disaster to take the lead in humanitarian decision-making

Women and girls often are the hardest hit when conflict and disaster strike, but the last to have their voices heard in humanitarian decision-making.

To counter this, CARE’s Women Lead in Emergencies approach shifts power and resources directly to women in communities affected by crisis. Women Lead provides a five-step model for working with marginalized women so they can lead in responding to the disasters and emergencies that affect their communities.

When Women Lead activities started in Uganda’s Omugo refugee settlement, 33 group members decided they wanted to stand for election on the influential – and traditionally male-dominated – Refugee Welfare Council. Now, the successful candidates are helping to ensure the voices of women and girls are heard in Omugo’s decision-making structures.

The Refugee Welfare Council plays a lead role in identifying the camp’s critical needs relating to health, sanitation, education, and security. The council also represents the refugee community in decision-making

with the Ugandan government and other humanitarian actors. As such, it is an influential voice for the community, and seats on the council are highly contested.

Women Lead participants step forward

The Women Lead approach asks women how they want to participate in humanitarian action, what the barriers are, and what support CARE and partners can provide to overcome them. One of the biggest barriers they identified was a lack of confidence in public speaking, which became a major focus for Women Lead mentorship sessions.

Omugo’s women leaders are now tasked with bringing to the table issues impacting women, girls, and the community as a whole and challenging deep-rooted ideas around the role of women as leaders and problem-solvers. And whether candidates were successful or not, the confidence, skills, and visibility of women as role models will have a ripple effect in communities for years to come.

WOMEN LEAD: FIVE-STEP MODEL

1. **Reflect:** Women Lead participants – CARE, partners, local women – reflect on their own values, norms, and beliefs about women’s participation and leadership.
2. **Analyze:** Women are supported to analyze their own situations and the local realities that affect their ability to participate in and lead humanitarian responses.
3. **Co-create:** Women are supported to identify for themselves the problems they want to address, and devise strategies to bring about change.
4. **Learn:** Women are supported to discuss and reflect on what they have achieved, and to adapt their strategies and activities as necessary.
5. **Act:** Women take action to overcome barriers to their leadership in humanitarian responses, and to improve their lives and communities. Women have the resources (including budgets) that they need to act.



Reaching 167 million of the world’s poorest people across 109 countries is testament to CARE’s global reach and effectiveness. Our programs support building a solid foundation for almost one quarter of the population living in poverty, so that repeated shocks from climate, crises, disease, and disasters don’t negate the gains we’ve made in defeating poverty and achieving social justice.

Our integrated programming supported 135M people in accessing better health outcomes, 34M with essential food, water and nutrition resources, and 4M with economic opportunities. And to ensure these programs take hold, we have worked to address critical barriers by responding to 20M people affected by crisis, support 20M people on a path to gender equality, and 3M people to adapt and mitigate the growing climate crisis.

3M

people supported in strengthening their resilience and adaptiveness to climate change.

4M

people assisted in advancing women’s economic justice.

20M

people served through humanitarian response.

34M

people provided with access to food, water, and nutrition.

20M

people empowered to advance gender equality.

135M

people equipped with information and access to health services, including sexual and reproductive health resources.

stories of impact



CLIMATE

United States: Hurricane Idalia

In 2020, CARE established its Partner Relief network to respond to crises in the U.S. By establishing strong local partnerships, CARE is able to mobilize resources to respond quickly to emergencies and reach people often overlooked by larger operations. By 2022, the network had distributed \$238,500 in emergency funds to families in need after Florida's Hurricane Ian.

When Idalia, a Category 3 hurricane with 125 mph winds and destructive storm surges, made landfall on Florida's Gulf Coast in late August, CARE was there to help. Recognizing the unique needs of these hard-hit communities still recovering from Ian, CARE collaborated with Feeding Tampa Bay (FTB) and other local groups to help.

CARE focused on direct cash assistance, allowing families to purchase essential items for survival and recovery and providing relief in the midst of chaos. This method proved particularly vital for women-led households and BIPOC communities, who often are left behind in times of crisis.

"Our team and those we serve are so thankful for our partnership with CARE," said Matt Spence of FTB. "This funding will go directly into the hands of our neighbors."



FOOD & WATER

Lebanon

"Clean and tasty food. It's my work. When I work, I feel like I own the world," said Youmin Nasser Al Khoder, a small-scale farmer in the Akkar region of Lebanon.

Her work is just what CARE hopes for when it advocates for legislation like the 2023 Farm Bill, which is essential for farmers around the world who face urgent challenges, from climate change to resource limitations. CARE's advocacy efforts, focusing on aid programs like Food for Peace and McGovern-Dole Food for Education, help boost Youmin's ability to focus on sustainable, clean farming and community resilience.

As CARE lobbies for the Farm Bill's reauthorization, its emphasis on gender equality reflects Youmin's aspirations for women's empowerment in Lebanon. "My dream for women is for them to become liberated, that they become the masters of themselves – independent," said Youmin.

CARE's work around the world has supported farming courses, the development of disease management techniques, and sustainable pesticide use, echoing the Farm Bill's goal of building sustainable, resilient food systems in some of the world's most at-risk regions.



CRISIS

Morocco, Syria, and others

In the face of a series of devastating earthquakes around the world in 2023, CARE's rapid response network has been a lifeline for tens of thousands of people across multiple regions.

In Syria, Afghanistan, Nepal, and Morocco, CARE emergency teams reacted within hours with mobile health units, cash assistance, and essential supplies for women, girls, and the most at-risk populations. After triaging the immediate needs, CARE transitioned to long-term support, including reconstruction, WASH facilities, and mental health services.

"The recovery process from such a disaster is long and arduous," Deepmala Mahla, CARE Vice President of Humanitarian Affairs, said days after the Morocco earthquake. "It's crucial that we extend our support beyond the immediate crisis."

CARE's rapid response work in different countries underscores our commitment to immediate relief and long-term recovery, even in the most difficult circumstances, including for staff.

"We are finally safe," Ayham Taha, a technical adviser to CARE in Syria, said only hours after the February earthquake hit. "And I feel like I can start working again."

stories of impact



EQUALITY

Mali

In Mali, 12-year-old Bintou faced an unimaginable challenge: a forced marriage to a man three times her age. Prevailing social norms nearly dictated her fate, but Bintou rewrote her story. Refusing to accept this future, she spoke up, advocating for her right to an education and making her own choice about when to marry.

Bintou inspired a movement within her community. Through CARE's Tipping Point project, she and other young women learned about leadership and their rights. They met with local leaders, including the Imam and village chief, advocating for change. Their efforts were successful, and the community agreed to prohibit marriages under the age of 18.

This wasn't just a personal victory for Bintou; it was a paradigm shift for her entire village. Her father, initially opposed, became a supporter, vowing to prioritize her education. This story proves the transformative power of giving girls a voice, not only altering their lives but also reshaping the fabric of their community.



HEALTH

Worldwide

In late 2020, CARE launched an innovative journey with Meta exploring social media as a tool for social and behavioral change communications (SBCC). After three years of experimentation, CARE published a comprehensive playbook, "Using Social Media to Drive Public Health Outcomes," outlining lessons learned and winning strategies for driving changes in knowledge, attitude, and behavior. The playbook shares CARE's extensive experience and insights from more than 60 SBCC campaigns.

"While CARE learned a lot, there are questions that still challenge us," said Jessica Kirkwood, CARE Associate Vice President of Supporter Engagement. "We're excited to keep exploring and testing to better understand what levers best drive shifts in knowledge, attitude, and behavior across a variety of topics."

Designed for practical application, the playbook serves as a step-by-step guide, enriched with video lessons and case studies, to empower other practitioners in leveraging social media for social good.



EDUCATION & WORK

Afghanistan

In Afghanistan, where girls' access to education has been severely restricted due to conflict, displacement, and gender-based prohibitions, CARE's work has made all the difference for girls like Amina. Previously prevented from going to school because of the distance and concerns for her safety, 14-year-old Amina's story changed when she joined CARE's Accelerated Learning Program (ALP), part of the Leave No Girls Behind initiative.

Through ALP, Amina, along with 1,450 other girls, got the opportunity to complete her primary education up to grade six. This program has been pivotal, especially since the de facto authority suspended formal education for Afghan girls over the age of 12, leaving 2.5 million girls and young women out of school.

Amina's progress has been remarkable. From learning how to read and write and gaining math skills, she has also started teaching her siblings.

And her aspirations have grown; she dreams of continuing her education, ultimately graduating from university.

Amina's story is a testament to the profound socio-economic impact of CARE's community-based education and accelerated learning programs in a country where girls' education faces unprecedented challenges. Her journey from exclusion to empowerment and hope symbolizes the transformative power of accessible education.

"I am very happy to be here. I want to continue my school up to grade 12. I do not want to stop there. I wish to study at the university and become a graduate." —Amina, 14

2023 Global Reach

IN FISCAL YEAR

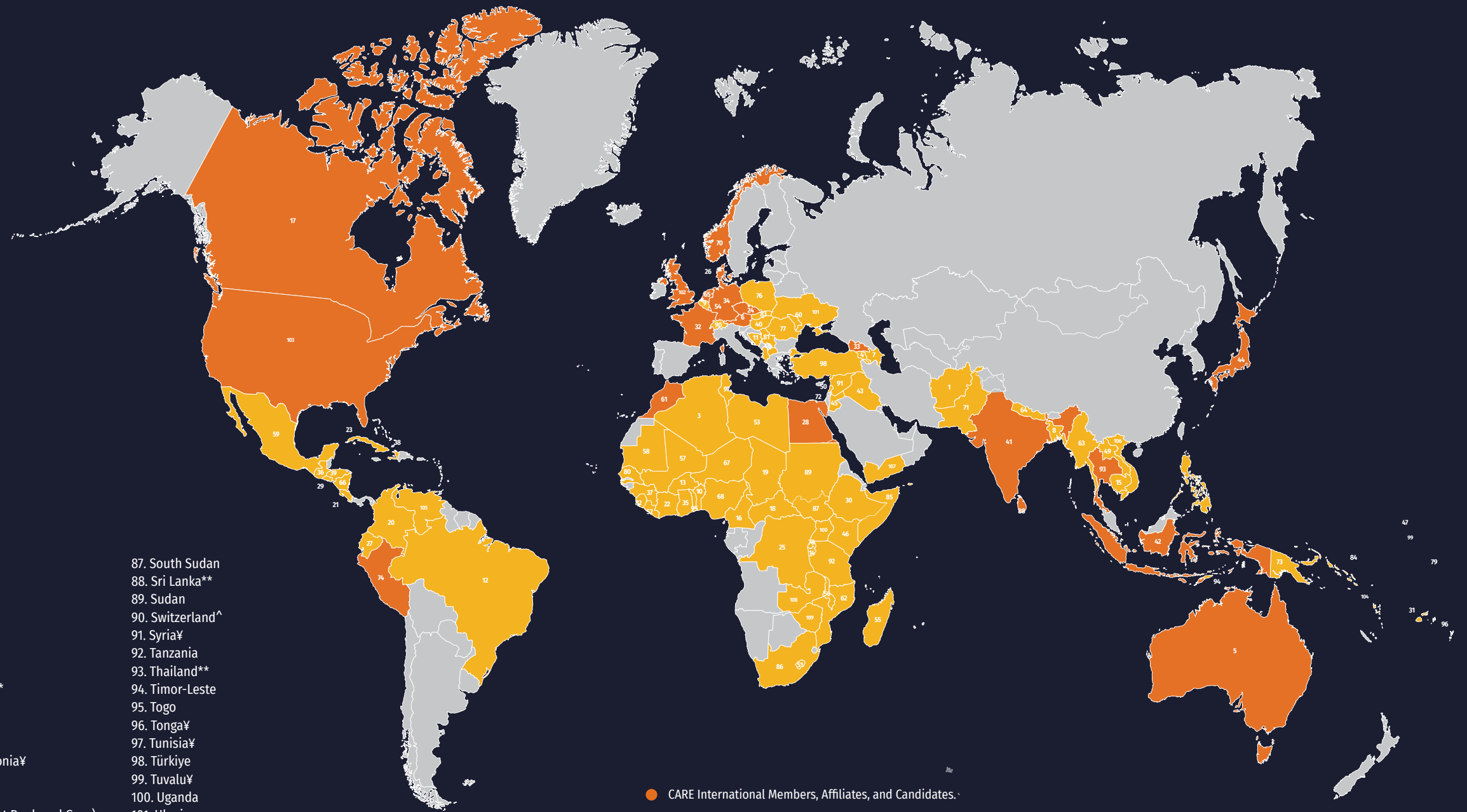
2023, CARE WORKED

IN 109 COUNTRIES

AROUND THE WORLD

CARE International Country Presence for FY23:

- | | | | |
|---|------------------------------|------------------------------------|---|
| 1. Afghanistan | 29. El Salvador [¥] | 58. Mauritania [¥] | 87. South Sudan |
| 2. Albania [¥] | 30. Ethiopia | 59. Mexico [¥] | 88. Sri Lanka ^{**} |
| 3. Algeria [¥] | 31. Fiji [¥] | 60. Moldova [¥] | 89. Sudan |
| 4. Armenia [¥] | 32. France ^{**} | 61. Morocco ^{**} | 90. Switzerland [^] |
| 5. Australia ^{**} | 33. Georgia ^{**} | 62. Mozambique | 91. Syria [¥] |
| 6. Austria ^{**} | 34. Germany ^{**} | 63. Myanmar | 92. Tanzania |
| 7. Azerbaijan [¥] | 35. Ghana | 64. Nepal | 93. Thailand ^{**} |
| 8. Bangladesh | 36. Guatemala | 65. Netherlands ^{**} | 94. Timor-Leste |
| 9. Belgium ^{^∅} | 37. Guinea | 66. Nicaragua [¥] | 95. Togo |
| 10. Benin | 38. Haiti | 67. Niger | 96. Tonga [¥] |
| 11. Bosnia and Herzegovina | 39. Honduras | 68. Nigeria | 97. Tunisia [¥] |
| 12. Brazil [¥] | 40. Hungary [¥] | 69. North Macedonia [¥] | 98. Türkiye |
| 13. Burkina Faso | 41. India ^{**} | 70. Norway ^{**} | 99. Tuvalu [¥] |
| 14. Burundi | 42. Indonesia ^{**} | 71. Pakistan | 100. Uganda |
| 15. Cambodia | 43. Iraq | 72. Palestine (West Bank and Gaza) | 101. Ukraine |
| 16. Cameroon | 44. Japan ^{**} | 73. Papua New Guinea | 102. United Kingdom ^{**^} |
| 17. Canada ^{**} | 45. Jordan | 74. Peru ^{**} | 103. United States of America ^{**} |
| 18. Central African Republic [¥] | 46. Kenya | 75. Philippines | 104. Vanuatu |
| 19. Chad | 47. Kiribati [¥] | 76. Poland | 105. Venezuela [¥] |
| 20. Colombia | 48. Kosovo | 77. Romania [¥] | 106. Vietnam |
| 21. Costa Rica [¥] | 49. Laos | 78. Rwanda | 107. Yemen |
| 22. Côte d'Ivoire | 50. Lebanon | 79. Samoa [¥] | 108. Zambia |
| 23. Cuba | 51. Lesotho [¥] | 80. Senegal [¥] | 109. Zimbabwe |
| 24. Czech Republic [*] | 52. Liberia | 81. Serbia | |
| 25. Democratic Republic of the Congo | 53. Libya [¥] | 82. Sierra Leone | |
| 26. Denmark ^{**} | 54. Luxembourg ^{**} | 83. Slovakia [¥] | |
| 27. Ecuador | 55. Madagascar | 84. Solomon Islands [¥] | |
| 28. Egypt ^{**} | 56. Malawi | 85. Somalia | |
| | 57. Mali | 86. South Africa [¥] | |



- CARE International Members, Affiliates, and Candidates.
- CARE presence via Country Offices, work with/through partners, or other types of offices.
- ** CARE International Members, Affiliates, and Candidates.
- ¥ Limited CARE presence, mostly working with/through strategic partnerships.
- ^ The Secretariat has offices in Belgium, Switzerland, and the UK, and staff based in 15 countries.
- ∅ Other registered offices.

¹ CARE International Members, Candidates, and Affiliates may implement projects and initiatives in their own countries.

CARE International acknowledges the existence of divergent views to certain territories. CARE International aligns with United Nations-sourced maps for consistency purposes; this use does not imply a political statement on any given country or territory.

Thanks to our partners

The global crises we faced in 2023 left us with little time to catch our breath. Earthquakes, floods, cyclones, and droughts dominated the year, accentuated by the ongoing effects of climate change and the humanitarian toll of conflict. This year saw a record-high number of refugees – more than 100 million – as ongoing conflict in Ukraine continues to devastate food systems worldwide.

Through it all, CARE has been there, as we have been for 78 years: working hand-in-hand with communities to bring relief and hope, supporting women and girls because they are disproportionately poor and have the greatest leverage to defeat poverty.

Vital support from individuals, foundations, corporations, and other partners has allowed us to remain steadfast, delivering hope amid unprecedented challenges. You have responded to our appeals and have answered the call every time, enabling every aspect of our work around the world.



featured foundations



Building on more than two decades of partnership, the **Bill & Melinda Gates Foundation** and CARE continued their collective impact through efforts spanning gender equality, advocacy, food security, health, family planning, emergency response, and livelihood programming. New investments supported CARE's advocacy work to help ensure that community health care workers are prioritized in U.S. government and multilateral investments, as well as ongoing efforts to reduce maternal and neonatal mortality in the Indian state of Bihar through strengthening the government health system. The Foundation also contributed to CARE's emergency responses to flooding and the refugee crisis in Chad, along with CARE's collaboration with the Government of Uganda to strengthen the economic resilience of women through gender-transformative women's economic empowerment policy, enterprise growth, and accessible markets.

Deepening our commitment to communities at home and in the U.S., CARE is testing domestic programming through its Global Innovation Hub with support from the **Robert Wood Johnson Foundation**. The Hub pilots and scales some of the best of CARE's global emergency response and resilience programming in the U.S.

To address equity gaps in access to essential health services, the **Rockefeller Foundation** supported CARE and local community organizations in Guatemala and Honduras to address some of the greatest challenges to access vaccinations and other health services, especially among marginalized populations and indigenous groups.

The initiative aims to support hyper-local community-level behavior change, building demand and uptake, vaccine trust, and confidence in access to health services. CARE and the Rockefeller Foundation continue to partner closely on a gender equality-focused artist fellowship as well as with the **Global Energy Alliance for People and Planet** to support women in Sierra Leone's mini-grid-connected communities to launch sustainable energy-enabled businesses.

Support from the **David and Lucile Packard Foundation** enabled CARE to respond to unprecedented levels of rising global hunger and malnutrition in 17 countries, including the Horn of Africa. CARE's multi-faceted response has been saving lives through immediate food distributions while supporting small farmers to grow crops more effectively and advocating for better government safety nets. Since women and girls face far higher rates of malnutrition, our partnership has emphasized reaching women-headed households, including providing training and tools to women farmers that increased their crop yields. In addition, the Packard Foundation generously contributed to CARE's response to the devastating earthquakes in Türkiye and Syria that overturned the lives of more than 17 million. These efforts have included maternal health care for pregnant women and case management for survivors of gender-based violence. CARE has already reached 750,000 in Syria and Türkiye and continues to provide longer-term support for recovery, given the magnitude of this disaster.



airbnb.org

Airbnb.org

In times of crisis, shelter is a priority. Together, CARE and Airbnb.org have partnered to offer temporary housing for individuals amid both natural disasters and conflicts. This past year, Airbnb.org and CARE have provided accommodations for more than 1,900 migrant women, girls, and their families traveling through Ecuador; 120 Ukrainian

refugees in Detroit, Southern California, and New York; and over 100 individuals – including CARE’s own staff – in Türkiye in the wake of the devastating earthquakes in February 2023. Thanks to Airbnb.org’s support, CARE helps ensure people have a comfortable place to recover and rebuild their lives.



center for inclusive growth

Mastercard

Since 2019, CARE and the Mastercard Center for Inclusive Growth have been working together to support micro and small enterprises, especially those led by women, to grow their businesses. With a \$9 million investment from the Mastercard Impact Fund, the partnership was renewed and relaunched as Strive Women in November 2023, with a goal of directly supporting more than 300,000 small businesses in Pakistan, Peru, and Vietnam to strengthen their financial health and resilience. The program aims to reach 6 million entrepreneurs through campaigns.

Strive Women builds on the success of the Ignite program, a partnership between the Mastercard Center for Inclusive Growth and CARE that ran from 2020 to 2023. Through

the Ignite program, more than 150,000 entrepreneurs were supported with loans, critical support services, and training. The program unlocked \$154.9 million in loans from the initial grant of \$5.26 million. Notably, 79% of female program participants increased their sales, and 89% reported an increased confidence in running their business.

The partnership also extends to Strive Czechia, a program that unleashes the power of micro and small enterprises in the Czech Republic to succeed in the digital economy and runs from 2022 to 2025. Strive Women and Strive Czechia are part of Mastercard Strive, a global portfolio of philanthropic programs aimed at helping small businesses around the world thrive in the digital economy.

donors and partners

Global Leadership Society

Cumulative Lifetime Giving:
\$1,000,000+

#StartSmall

A. Morris Williams Jr.

AB InBev

Abbott

David T. and Jean K. Akers

Amway

Nancy K. Anderson

The Andrew W. Mellon Foundation

Anita M. McCullough Trust

The Annenberg Foundation

Anonymous (43)

Armacost Trust

The Arthur M. Blank Family Foundation

Estate of Barbara L. Bacich

Marietta and Jim Bala

Mr. E. T. Baldrige

Margaret D. and Matthew T. Balitsaris

Paul and Mary Jan Bancroft

Bank of America

Baxter International Foundation

Benevity

Sheryl Sandberg and Tom Bernthal

The Bezos Family Foundation

Bill & Melinda Gates Foundation

Thomas C. Bishop

Blackstone

Bloomberg Philanthropies

Boeing

Bok Family Foundation

Estate of Daniel L. Brenner

Helen and Harold Buirkle

C.E. and S. Foundation Inc.

California Community Foundation

Cargill

Eduardo Castro-Wright and Fabiola De Castro

Center for Disaster Philanthropy

Charles Schwab Corporation Foundation

Charles Stewart Mott Foundation

Chubb

Cisco Systems, Inc. & the Cisco Foundation

Citi

The Coca-Cola Company

Colgate-Palmolive

Estate of Priscilla B. Collins

The Community Foundation for Greater Atlanta

Community Foundation for Southern Arizona

Community Foundation of Greater Memphis

Conrad N. Hilton Foundation

Alison A. Cornell

Covance Inc.

Credit Suisse

Eleanor Crook

Susan M. Crown

Estate of J.W. Culler

Cummins Foundation

DAF

Rosalie A. Danbury

Daniel Oliver Trust

The David and Lucile Packard Foundation

The David R. and Patricia D. Atkinson Foundation

Delphi Asset Management

Delta Air Lines

The Dietrich W. Botstiber Foundation

Estate of Elaine Dooman Trust

Dubai Cares

The David Tepper Charitable Foundation Inc.

Educate A Child

Joseph H. and Barbara I. Ellis

ELMA Philanthropies

Estate of Lucia P. Ewing

Fidelity Charitable Gift Fund

Estate of Saralee Fine

Finn Brooks Family Foundation

Estate of Janet A. Fisher

The Flatley Foundation

The Ford Foundation

The Frees Foundation



Estate of Esther Freier

Gap Foundation

General Electric

General Mills Foundation

Genie and Scott Randell

Global Energy Alliance for People & Planet

Global Environment Technology Foundation

Global Impact

Goldman Sachs

Gordon and Betty Moore Foundation

The Greater Cincinnati Foundation

Guilford Fund

Estate of John M. Harding

Harold Simmons Foundation

Wayne R. and Camellia A. Helsel

The Hershey Company

Estate of David James Hofheinz

Justin S. and Hilarie V. Huscher

Glenn H. and Deborah Dow Hutchins

Hutchins Family Foundation, Inc.

Estate of William E. Boeing III

Jahn's Private Charitable Foundation

Jeffries

The John D. and Catherine T. MacArthur Foundation

John and Virginia Sall

Sheila C. Johnson

Johnson & Johnson

The Jordan Family

Steve Joyce

JPMorgan Chase

Estate of Bradley Currey, Jr.

Peter H. and Joan M. Kaskell

Dean C. and Elizabeth H. Kehler

Rosalind and Michael Keiser

The Kendeda Fund

Estate of Mary B. Ketcham

Julie Konigsberg

Latter-Day Saint Charities

The LeBrun Foundation

Levi Strauss Foundation

Lloyd A. Fry Foundation

lululemon USA Inc.

Elizabeth M. Lutas

Mark Eisner, Jr. Trust

Mars

Mastercard

The MathWorks Inc.

Merck & Co., Inc.

Meta

H. Conrad III and Sarah S. Meyer

Michael and Susan Dell Foundation

Microsoft Corporation

Millennium Water Alliance

Mondelez International Foundation

Morgan Stanley

William S. and Jane R. Mosakowski

Multiple District 19 Lions

Estate of Julia Van Munster

Estate of Mary E. Murdock

Murphy Family Fund

Nancy L. Evans Trust

Nancy O. Kaehr Trust

National Philanthropic Trust

Ken Birman and Anne Neiryneck

Network for Good

New Venture Fund

The New York Community Trust

NIKE Foundation

Oak Foundation

Olayan Group & the Suliman S. Olayan Foundation

Oracle

Orange County Community Foundation

The Osprey Foundation

Estate of Leonard R. Overton

P&G

The Panaphil Foundation

Chang K. Park

The Peierls Foundation

Jim Pentecost

PepsiCo Foundation

Estate of Juan M. Perdomo

Pew Charitable Trusts

Pfizer Foundation

The Picower Foundation

PlowShare Group

Power and Telephone Supply Company

PricewaterhouseCoopers

Priscilla Bullitt Trust

Public Consulting Group

Reach Out to Asia

The Robert Wood Johnson Foundation

The Robert W. Woodruff Foundation

The Rockefeller Foundation

Estate of Hazel Gibbons Ross

Ben and Luanne Russell

Sall Family Foundation

Saperlipopette

SAS Institute

Estate of Kendrick Schlatter

Estate of Ronald and Elisabeth Schodt

Schultz Family Foundation

Schwab Charitable Fund

MacKenzie Scott

Silicon Valley Community Foundation

David A. Smith and Nancy H. Smith

Snap Inc.

Sony Music

Brian J. Smith and Laurel Spellman

Theodore R. and Vada S. Stanley

Starbucks Coffee Company/The Starbucks Foundation

The Sunbridge Foundation

Estate of Leonard Surratt

The T. Rowe Price Program For Charitable Giving

Estate of Samuel H. Talley

Target

Daniel M. Tellep

The Howard G. Buffett Foundation

Thomas L. Williams Trust

The Tides Foundation

Tiffany & Co.

Tijori Foundation

TOSA Foundation

Trehan Foundation

Estate of Angelina P. Perdomo Trust

Everett O'Connor Charitable Trust

William D. Unger

United Nations Foundation

The UPS Foundation

Vanguard Charitable

Vanguard Charitable Endowment Program

Visa Inc.

W.K. Kellogg Foundation

Deidra J. Wager

Diana Walsh and Kent Walker

The Walmart Foundation

Weyerhaeuser Company Foundation

Michael and Geraldine Wiles

The William and Flora Hewlett Foundation

The Willow Springs Foundation

Estate of Joyce Karyl Winn

Wisconsin Evangelical Lutheran Synod

World Bank Group

World Wings International

Global Leadership Society

FY23: \$1,000,000+

AB InBev

Anonymous (2)

The Arthur M. Blank Family Foundation

Benevity

Sheryl Sandberg and Tom Bernthal

The Bezos Family Foundation

Bill & Melinda Gates Foundation

Bloomberg Philanthropies

Cargill

The Coca-Cola Company

Conrad N. Hilton Foundation

The David R. and Patricia D. Atkinson Foundation

Educate A Child

Global Energy Alliance for People & Planet

The Hershey Company

Estate of David James Hofheinz

The Kendeda Fund

Latter-Day Saint Charities

Mars

Mastercard

The MathWorks Inc.

Meta

William S. and Jane R. Mosakowski

Olayan Group & The Suliman S. Olayan Foundation

P&G

PepsiCo Foundation

Estate of Angelina P. Perdomo Trust

Pfizer Foundation

The Rockefeller Foundation

Sall Family Foundation

Thomas L. Williams Trust

Tijori Foundation

The UPS Foundation

World Bank Group

Founder's Council Violeta Chunchu Society

FY23: \$500,000-\$999,999

Abbott

Anonymous (2)

Paul and Mary Jan Bancroft

Alison A. Cornell

Cummins Foundation

Estate of Bradley Currey Jr.

DAF

Dorothy M. McClraith Trust

The Flatley Foundation
 The Ford Foundation
 Estate of Juliet F. Harding
 Kenneth J. McIlraith Trust
 Chang K. Park
 Public Consulting Group
 PVH Corporation
 Ralph Lauren
 The Robert Wood Johnson Foundation
 Target
 TOSA Foundation

Founder's Council Lydia Marshall Society

FY23: \$250,000-\$499,999

Estate of Eileen May Adams
 Airbnb.org
 Anonymous (4)
 Bank of America
 Thomas C. Bishop
 Boston Consulting Group Inc.
 Estate of Marshall Bridge
 Buddhist Global Relief
 Carnegie Corporation of New York
 John S. and Sherry H. Chen
 Circle of Service Foundation
 Estate of Catherine Cockburn
 Eleanor Crook
 Crown Family Philanthropies
 Deloitte
 Delta Air Lines
 Stephen Esser and Dana Dortone
 Dr. Roy W. Carlson Trust
 eBay Foundation
 Richard and Susan Galbraith
 General Mills Foundation
 Gerald A. & Karen A. Kolschowsky Foundation Inc.
 Global Impact
 Harold Simmons Foundation
 Estate of Marjorie G. Hickey
 Justin S. and Hilarie V. Huscher
 Hutchins Family Foundation Inc.
 The Jordan Family
 The Koum Family Foundation
 Latham & Watkins LLP
 New Balance
 New Venture Fund
 The Peierls Foundation
 Jim Pentecost

PricewaterhouseCoopers
 Norberto Priu
 Quaker Company
 Salesforce
 Snap Inc.
 The Sunbridge Foundation
 The David and Lucile Packard Foundation
 Estate of Joyce Karyl Winn

Founder's Council Murray Lincoln Society

FY23: \$100,000-\$249,999

Adam R. Scripps Foundation
 Anonymous (11)
 Aptar
 Ares Management
 Arlene E. Stearns Trust
 Arlette L. Mann Trust
 Marietta and Jim Bala
 Estate of Renate Belville
 Daniel Berger
 Boeing
 Bok Family Foundation
 Booz Allen Hamilton Inc
 Mary A. Brauer
 Peggy Hamburg and Peter Brown
 Brown Family Endowment
 Bruges Realty Corp Trust
 Eduardo Castro-Wright and Fabiola De Castro
 Center for Disaster Philanthropy
 Cisco Systems Inc. & The Cisco Foundation
 Condé Nast
 Cotopaxi
 Cranberry Lake Associates LLC
 Rosalie A. Danbury
 Barbara Davis
 Bart D. Ehrman
 Estate of Charlotte M. Erb
 FabFitFun
 Finn Brooks Family Foundation
 Fiserv
 Douglas Dunn and Donna Gaab
 General Electric
 The Giving Block
 Global Environment Technology Foundation
 Estate of William E. Goggin
 Geoffrey A. Goodman

Guilford Fund
 Jay and Vanessa Hallik
 Helen M. Embree Trust
 Wayne R. and Camellia A. Helsel
 Honorable Charles J. Hely
 Dale and Louise Henderson
 Estate of Carl C. Hug Jr.
 International Monetary Fund
 Eugene P. Jacoby
 Jenner & Block LLP
 Jennifer and Jonathan Allan Soros Foundation
 Rosalind and Michael Keiser
 Kilpatrick Townsend
 Julie Konigsberg
 Levi Strauss Foundation
 Lucien Thomson Trust
 lululemon USA Inc.
 Manners M. Foundation
 McCormick & Company Inc.
 M. Craig McKibben and Sarah E. Merner
 Nelda L. Rankin Trust
 NIKE Foundation
 Susan O'Connor
 Oracle
 Organon
 Michelle Griffin and Thomas Parker
 Allen Perrel
 Estate of Rosemary V. Petta
 PlowShare Group
 Estate of Adelaide I. Richter
 Ripple
 Rockefeller Philanthropy Advisors
 Ronald Lewer Trust
 Samuel E. & Mary W. Thatcher Foundation Inc.
 Santander
 Estate of Laura D. Sidlek
 Timothy J. and Lisa Sloan
 Brian J. Smith and Laurel Spellman
 Starbucks Coffee Company/The Starbucks Foundation
 State Street Foundation
 Tessa Lyons and Sam Steyer
 William D. Unger
 United Nations Foundation
 William L. Lunsford Trust
 The Willow Springs Foundation
 Zukowski Giving Fund

Founder's Council Lincoln Clark Society

FY23: \$25,000-\$99,999

Kenneth L. Adams
 Sohail Akbar
 Sohail and Shazia Akbar
 David T. and Jean K. Akers
 Jared Levy and Alba Alamillo
 Amazon Web Services
 American Endowment Foundation
 Amida Technology Solutions
 Estate of Louise B. Amyes
 Anonymous (21)
 AQUENT
 Arrow Electronics Inc.
 Baker Hughes
 Cecile Falk Balsler
 Bank of America Charitable Gift Fund
 Dr. Cori Bargmann
 Robin Barker and Family
 Estate of Suzanne Bausch
 Joseph and Rachel Beda
 Lee James Best Jr. Trust
 Estate of Sylvia Bezek
 Estate of Catharina L. Billingham
 Blackbaud
 John W. Bloom
 The Branson Family Foundation
 James and Adean A. Bridges
 Helen and Harold Buirkle
 Mary Catherine Bunting
 Molly Burke
 Susan Okie Bush
 The Cable Company
 Charles C. Cahn Jr.
 Carlo and Micol Schejola Foundation
 Ted and Catherine Carlson
 Lee Carpenter-Long
 Cecile H. Murphy Charitable Foundation
 Estate of Kamal C. Chanda
 Charities Aid Foundation America
 John and Julie Chesnutt
 The Chicago Community Foundation
 The Chicago Community Trust
 Citi
 The Clifford Family Foundation Charitable Trust
 Cogan Family Foundation
 H. Rodgin and Barbara Cohen

Jennifer Cole
 Colgate-Palmolive
 The Colleen & Sam Nunn Family Foundation
 Cooper Companies
 Rhonwyn Counihan
 Creative Artists Agency
 Critical Role Foundation
 Susan M. Crown
 Glen A. and Lynne Cunningham
 Kiana Danial
 Daz 3D
 DC Capital Partners
 Debicki Foundation
 Richard and Janice Deitering
 Estate of William G. Denhard
 Dentons
 Bob and Terri DiMeo
 Discover
 Dr. Scholl Foundation
 John D. Dreisbach
 Deirdre M. Giblin and David B. DuBard
 Estate of Margaret E. Dunlop
 Earl W. Miller Trust
 Maureen O'Hara and David Easley
 Eaton Corporation
 Edmund H. Blakeman Trust
 The Ellis Foundation
 Frank Evans
 Scott C. and Elizabeth P. Evans
 Faulstich Family Trust
 Tiffany Feland and Will Feland
 David Felts
 Steve and Cathy Fisher
 Michele Flournoy
 Bert E. and Candace M. Forbes
 Fossil Group
 Russell Foszcz and Sara Foszcz
 Gap Foundation
 Global Water Challenge
 Craig Goldman
 Jill R. Gordon
 Robert D. and Linda Graham
 The Gray Jacklin Charitable Trust
 GSN Games
 RoseAnn and Dale Gunther
 Douglas W. and Tsognie Hamilton
 Hannelore D'Elia Trust
 Everett Harper
 Susan Hassan

Nicholas S. and Susan D. Hellmann
 John T. and Felicia K. Hendrix
 Henry and Elfriede Winkler Trusts
 Hermann International Inc.
 Paula Hodgkiss
 Robert Horowitz
 Estate of Eleanor J. Hovey
 Estate of Winnifred C. Howard Unitrust
 Baker Hughes
 Estate of Berniece M. Huhnerkoch
 Julia Huiskamp
 David L. and Sara E. Hunt
 Impact Assets
 International Game Technology (IGT)
 Dennis Walo and Kathleen Irvin
 Jamestown Charitable Foundation
 Jamf Nation Global Foundation
 Richard J. and Involut V. Jessup
 John R. & M. Margrite Davis Foundation
 Johnson Foundation of the Rockies
 Joie
 Radhika Jones
 Roy R. Joseph
 Joyce M. Gibbons Trust
 Julius Juracsik Family Trust
 Bill and Stephanie Kennedy
 Kenneth Douglass Foundation
 Michael and Eunice Kim
 Joshua Klayman
 Kurt W. Lewin Trust
 Ronni S. Lacroute
 Ladybug Foundation
 Pauline P. Lee
 Johanna E. Levin
 The Lichtenberger Foundation
 Lloyd A. Fry Foundation
 Michelle and John Magdsick
 The Manhoff Trust
 Barbara Marcin
 Marilyn Cummins Trust
 Frank and Susan Mars
 Michelle Nunn and Ron Martin
 June Mathis
 Kathleen McCarthy
 McClelland Foundation
 Kristi and Mark McCombe
 The MCJ Amelior Foundation
 Estate of Crystal Y. McLaughlin
 Melitta Howard Trust



H. Conrad III and Sarah S. Meyer
 Raymond N. and Kathryn M. Miller
 MITRE
 Moglia Family Foundation
 Estate of Mary Rosalind Morris Trust
 Jane Mosbacher Morris
 Estate of Winfred L. Morris Jr. Trust
 Duane and Margaret Morse
 Multiple District 19 Lions
 Ken Birman and Anne Neiryck
 Jonathan Nelson
 Neustar
 Kevin Ng
 Tim Kelley and Chung-Wei Ng
 NVIDIA
 NYDJ
 Marc K. Whitehead and Sheila M. O'Brien
 Niall O'Rourke
 Elinor K. Ogden
 Olivela Inc.
 Estate of David B. Osborne Trust
 Paradise on Earth Fund
 Pamela Peters
 Mr. David Peyton
 The Philip and Irene Toll Gage Foundation
 The Ping Y. Tai Foundation Inc.
 Erna and Bob Place
 PMI Educational Foundation
 PriceSmart
 QGiv
 Connie and John Rakoske
 Genie and Scott Randell
 The Realan Foundation
 Red Butterfly Foundation
 Martha L. Rees
 Theodora Retsina
 Kathleen Peto and Daniel Rice
 The Robert L. and Jane B. Wallace Foundation
 Robert A. Buzzelli Foundation
 Robert L. Fischer Trust
 Rosalie J. Coe Weir Foundation
 *David Rose
 Horacio Rozanski
 Sharon D. Lund Foundation
 Henry and Christina Shea
 Jon and Kim Shirley
 Shutterstock

Sikand Foundation Inc.
 Estate of Jeffrey Skeer
 Diana L. Strassmann and Jeffrey Smisek
 David A. Smith and Nancy H. Smith
 Sonecha Family Foundation
 The Spurlino Foundation
 Lois and Arthur Stainman
 Standard Industries
 Morgan Stanley
 Elizabeth Steele
 Stella & Charles Guttman Foundation
 Stephen K. Meyer Trust
 Mark Kantor and Lawranne Stewart
 Mr. Hayes Stover and Mrs. Patricia Stover
 Estate of Elizabeth H. Summer
 Taylor Family Trust
 TEGNA
 Teneo
 Tory Burch LLC
 Trehan Foundation
 The Trio Foundation of St. Louis
 Trott Family Philanthropies
 Tsadik Foundation
 Turn.io
 Estate of Micki Turner
 Twilio.org Impact Fund
 Victoria's Secret
 The Virginia Wellington Cabot Foundation
 Barbara and John Vogelstein
 Deidra J. Wager
 The Walter and Ursula Eberspacher Foundation
 Estate of Joan E. Warren
 Joyce Wechsler
 Licoln Weed
 West Foundation Inc.
 Westly Foundation
 Wick Family Foundation
 A. Morris Williams Jr.
 Johanna Voolich Wright
 Yarbrough Family Foundation
 Tom Zimmerman

Founder's Council Arthur Ringland Society
FY23: \$10,000-\$24,999
 & Other Stories
 Joseph Abraham



Runa Alam
 Aloha Bay
 Alpha and Omega Semiconductors
 David and Sharman Althshuler
 George and Herawati Alvarez-Correa
 American Electric Power Foundation
 American Medical Women's Association
 Craig G. Anderson
 Scott Anderson
 Eugenius Ang and Agnes Ang
 The Ann Hyatt and James Donald Kenney Family Foundation
 Anonymous (23)
 Antares Capital
 Brian Armstrong
 AT&T
 Aviv Foundation
 Aaron Bach
 Richard Bae
 James N. Bailey
 Margaret D. and Matthew T. Balitsaris
 Susan M. Barnum
 Dennis M. Barry
 Robert and Margarita Bartels
 Edward Bayliss
 Michael G. and Diane Beemer
 Belmont Village
 Marc and Lynne Benioff
 Linda and Rodney Benjamin
 Gregory and Paula Benkovic
 Larry and Kathy Berkbigler
 Gerald W. Bernstein
 Lyle G. and Susan A. Best
 Noelani Bevill
 William Biggs
 Donald and Sheila M. Billings
 Jan and Larry Birenbaum
 Oliver and Jenny Blackman
 Blaker Family Foundation
 Lawrence Blaskopf
 Marcia W. Blenko and Don B. Blenko Jr.
 Karl and MaryAnn Boehmke
 Mr. Jeffrey Boer
 Estate of Walter R. Boone, Sr.
 Jeanine and Alistair Borthwick
 Anosheh Bostani
 The Boston Foundation
 Ross Boucher
 Bright Funds

Johanna Brookner
 Elaine Burke
 C.E. and S. Foundation Inc.
 John Stephen Cafilisch and Elizabeth Cafilisch
 Charles and Marjorie Calvert
 Mary Warren Case and Stanley E. Case
 Gerhard and Regina Casper
 Mike and Julie Chang
 Charles Lamar Family Foundation
 Charlotte Keuscher-Barkman Trust
 Sylvia Chin
 David and Cheryl Clark
 Heinke K. Clark
 John R. Cleveland
 Frank P. Cofone
 Titilope and Wale Cole
 Virginia F. Coleman
 Ruth M. Collins
 Shawn Concannon
 John and Stephanie Connaughton
 Christopher Connor
 Cooleaf Inc
 Cornerstone Research
 The Cosman Family Foundation
 Canute Dalmasse
 Richard T. and Sally S. Dawson
 Margaret Dean
 Dean Coughenour Trust
 Matthew and Kacey DeBeer
 The deLaski Family Foundation
 Depeche Mode
 James and Carol Dew
 DiAnne Davis Trust
 John E. Dixon
 Steven Djerf
 Shirley A. and Terry Dobson
 Dolan Family Foundation
 Donna S. Richards Trust
 William G. and Nancy C. Doolittle
 Michael and Regina Dowd
 John R. Herr and Kathleen M. Doyle
 DTE Energy & The DTE Foundation
 Andrew and Lea Dudum
 Ellen Duttweiler
 Estate of William H. Eades
 Eaglemere Foundation
 Eaton Charitable Fund
 Nina Beattie and Michael Eberstadt
 Doug and Florida S. Ellis

Joseph H. and Barbara I. Ellis
 Jay and Karen Eubanks
 Todd and Dorothy Evans
 Ms. Shannon Everly
 Herbert and Jeanette Evert
 Patricia Weiss Fagen
 Mohammed Farooq
 Gary Feldman
 James W. and Tammy G. Felt
 Fenwick & West LLP
 David L. Ferrera and Vinita Chopra Ferrera
 Fields Galley Private Foundation
 Jonathan Solovy and Stacey Fisher
 Jody F. Fleischer
 John M. and Marie Foley
 Sandra Pike Foundas
 Lewis Fountain
 James and Sharon France
 Frank Family Foundation
 David M. and Priscilla L. Friedman
 Friends of Inman Park Inc.
 Brian Fry
 Gaijani Family
 John Gally
 Garda Capital Partners
 Stefan Gavell
 Gerszewski Family Trust
 Nancy Ellen Gibbs
 Mary Ginn
 Global Giving
 Goldman Sachs
 Cecilia and Douglas Gordon
 The Greater Cincinnati Foundation
 William C. Griffith
 Robert I. and Susan S. Guenther
 Gail and Yogesh Gupta
 Amy S. and Timothy F. Guth
 Albert J. Gutke
 Frederick and Linda Haddad
 Jane Haegele
 Eugene Hagewood
 Gordon Hagewood
 George and Paige Hagle
 Paul R. and Lisa Haller
 Douglas and Mary Hallward-Driemeier
 Harold Haluptzok and Linda Haluptzok
 Jane and Van Harissis
 Jessica and Matthew Harris
 Harry and Jane Alburger Trust

Scott Hawks
 Andrew Haydel
 LeRoy Robert Hayden
 Daniel Heaney
 The Helen and Aaron Schlaffer Foundation Trust
 Hellman Foundation Fund
 Hello In There Foundation
 Wes Heppler
 Michael and Rebecca Herman
 Willis and Cindy Hesselroth
 Paul A. Higgins
 Susan M. Schaffer and Joan Hinckley
 Hirsch Philanthropy Partners
 Mr. John Holmes
 Frank and Lora Holsenbeck
 Lesley B. and Joseph C. Hoopes Jr.
 John Horejsi
 Patricia and Robert Hosken
 Houlihan Lokey Inc.
 Lincoln Howell
 Walter C. D. Carlson and Debora De Hoyos
 Robert C. Pasnau and Kimberly M. Hult
 Stephen L. Huntoon and Barbara D. Huntoon
 Alan and Glen G. Husak
 Sarah and Jordan Hymowitz
 Hyojin Kim Nirav Patel Foundation
 iHeart Media
 Illinois Tool Works Foundation
 The Ina Kay Foundation
 E. Neville and Pamela A. Isdell
 Raymond Jablonowski
 Jack Weisberg Charitable Foundation
 James Starr Moore Memorial Foundation
 Janet M. Harper Trust
 Paul J. and Deborah K. Jansen
 Ms. Janet Jeanes
 David and Constance Jenkins
 Mary Jenkins
 Estate of Kay D. Jennings
 Kay D. Jennings
 Jim Rochelle
 John and Margaret Brennan Charitable Trust
 Johnson & Johnson
 Mary Gwen Wheeler and David Jones
 Steve Joseph and Debbie Joseph
 Joseph and Sophia Abeles Foundation Inc.

Steve Joyce
 Michael G. Kaehr
 Yashodhan Kanoria
 Estate of Elizabeth Karpati
 Gary and Linda Katz
 Avinash Kaushik
 Keith and Mary Kay McCaw Family Foundation
 Sam Kellie-Smith
 Kevin J. and Pamela M. Kelly
 Kelly Relief Fund
 Michael A. and Dona M. Kemp
 Kindergarten Unit Foundation
 Terrie Ray and Kenneth Kipp
 Derek and Lisa Kirkland
 Stephen and Mary Kitchen
 Robert Kline
 Klungness Family Foundation Inc.
 Kramer Partners
 Cynthia Kriebel
 Kishor M. and Josefina Kulkarni
 Daniel Lang
 Maria Lasagabaster
 Nancy Latner
 Bonnie Ledford
 Philip J. Lee
 Daniel Leiter
 Leslie H. Cox Trust
 Janet Lewis
 Lightening the Load
 Lincoln Electric Company

The Litterman Family Foundation
 Eva B. Lohrer
 Edward and Claire London
 Lorber Family Foundation
 Peter Loring
 J. Michael Losh
 Lubert Family Foundation
 Matthew Maas
 Sharon MacKenzie
 Dr. Alex Malaspina and Mrs. Doris Malaspina
 Raja Malkani
 Paul Malone
 Joseph R. and Linda K. Manthey
 The Marc Haas Foundation
 Marilea Larm Trust
 Marin Community Foundation
 Ann Markowitz
 Frank Markowitz
 Peter and Robin Matt
 Nancy L. Mauro
 Brian K. and Anne S. Mazar
 David Isaman and Janet McAfee
 Robert James McCarter Jr.
 Katherine Pringle and John McCormick
 Kari McDonald
 Adam McGuire
 Brian and Mary McHugh
 McMaster-Carr Supply Co.
 Gregory S. and Lori A. McMillan
 Mary McNellis

Daisy and James McTighe
 Richard Meehan
 Carol Mejia
 Merle and Ellen Morgan Gift Fund
 Peter Merrigan
 Jared Mesznik
 Harmon Michelson
 Diane Millen
 Gail and Gerrish Milliken
 Glen S. and Alison Milliman
 Mohammed Minhaj
 Edward and Ginger Mitchell
 Michael Moheimani
 John B. and Kristi B. Mooney
 Estate of Lois Moran
 Vincenzo Morelli
 Tyler and Cindy Morrey
 Kristina and Patrick Morton
 Sandra Moss
 Jon and Shelley Motley
 Mouat Charitable Trust
 Mt. Calvary Baptist Church of Palm Coast
 Adm. Mike Mullen
 Mark Stevens and Mary E. Murphy
 Muslim Aid USA
 Thomas J. Cutillo and Priscilla A. Myrick
 NBA Properties Inc
 NetApp
 Network for Good

Estate of Robert Nevoraski
 New England Biolabs
 New Horizon Foundation
 The New York Community Trust
 Ruthann Nichols
 Barry and Elaine Nocks
 Norvell Family Foundation
 Novelis
 William Novelli
 Paul and Barbara Nowak
 Laurel B. and Edward W. O'Connor
 Matthew P. and Ellen O'Loughlin
 Paul Oakland
 William Okerlund
 Douglas and Marcia Olson
 Gilman Ordway
 Omozuwa Osayimwese
 Amy and Paul Osenar
 Joe and Frances Pao
 Party City
 Monika Patel
 Patricia H. Carcich Trust
 Jill and David Patterson
 Paul & Pearl Caslow Foundation
 Paul and Joan Rubschlager Foundation
 Paycom
 PayPal
 Garrett M. Moran and Mary J. Penniman
 Henry Perkins
 Louis Perwien
 Kathryn and Mark Petralia
 Thomas G. and Pamela Petrosino
 Richard Stengel and Mary Pfaff
 Carl Hess and Tracy Pirnack
 John Glenn Pitcairn
 Gary Poliner
 Carrie, Gary and Leigh Pomerantz
 David McCormick and Dina Powell
 Power and Telephone Supply Company
 Power Corporation of Canada
 Mr. Amol Prasad
 Estate of Howard F. Prass
 R.K. Squire Company
 Katherine Rayner
 Wendell S. and Mary L. Reilly
 Barbara and Jack Reis
 Joanne and Richard
 Dr. Marsha Slater Rider

Sarah F. Roach
 Robert A. Hicks Trust
 Robert W. Alvord Trust
 Shannon Robertson
 Lauren and Edward Robinson
 Douglas L. Rogers
 Estate of Frederick Roos
 Kim Ross
 Tamara Mitchel and Dan Ross
 Ray and Meredith Rothrock
 Dorothy Russell
 Ruth E. Muntis Trust
 Ruth O'Dell Trust
 Gene and Barbara Sackett
 Jesse S. and Carrie Sanders
 The Sandra Atlas Bass and Edythe & Sol G. Atlas Fund Inc.
 Nott Sankar
 Dan M. and Pam Sargent
 Robert G. Scharper
 John W. Ryan and Jenny P. Scheu
 Dianne Schisler
 Gregg S. Sciabica
 Second Presbyterian Church
 Michael Sachse and Erin Segal
 Mrs. Ruth Greenstein and Mr. David Seidman
 Karen D. Seitz
 Sellars Family LLC
 Richard and Carol Seltzer
 Dr. Samuel Sessions
 Sheldon Wolfe Trust
 Shirley Weissman Trust
 John Eckfeldt and Nancy Shultz
 Douglas and Fabienne Silverman
 Mark Heising and Elizabeth Simons
 Jennifer Sims
 Skoll Foundation
 Skyscraper Foundation
 Brian Friedman and Vanessa Slinger-Friedman
 David and Kathy Smachlo
 Sherrill Smith
 Elizabeth Solomon
 Southern Company
 Southern Glazer's Wine & Spirits
 Malcolm K. and Penelope J. Sparrow
 Karen Spielman
 Thomas Stair
 Mark Dickinson and Letizia Stanghellini

Stuart L. and Kirsten J. Stein
 Randall Stephenson
 Campbell Steward
 Martin Sticht
 Yvette Stokes
 John and Mary Louise Stover
 Stripe
 Martha and William Stueck
 Hope Taitz
 Mr. David Tanner
 Brian Taylor
 Thalia and Michael C. Carlos Foundation
 Joyce and William Thibodeaux
 Thomas R. Bump Trust
 Michael Thompson
 Robert E. Tobert
 George VanWyngarden
 Vince.
 W.P. Carey Foundation
 Harvey R Waite II
 Douglas F. and Ann Ward
 Warner Bros. Discovery
 Doug and Tara Weckstein
 Weill Cornell Medicine Department of Radiology
 Lynne and David Weinberg
 David J. Whippo
 James D. Whitehead
 Daniel Yates and Tobie Whitman
 Michael and Geraldine Wiles
 The William and May D. Norris Foundation
 James A. Attwood and Leslie K. Williams
 Barbara and Edward Wilson
 Kimberli Winter
 Fred L. and Sue Wintermantel
 Stefan H. Schmieta and Dorte Wohmann-Schmieta
 David Wolfe
 Tamara G. and Frank J. Woods III
 Peter Wortman
 John B. Wright
 Robert and Margueretta Yaeger
 Steven H. Yahr
 The Zankel Fund
 Elif and Paolo Zapparoli
 Zegar Family Foundation
 The Zephyr Fund
 Michael and Diane Ziering



BANGLADESH



SYRIA

CARE leadership

GLOBAL LEADERSHIP TEAM

Stacy Aldinger

Chief of Staff, Strategy,
and Transformation

Claudine Mensah Awute

Vice President for International
Programs and Operations

Madhu Deshmukh

Vice President of Program Strategy
and Impact

Ranil DeSilva

Chief Finance and Operating Officer

Melissa Heggie

Chief People, Equity, and
Inclusion Officer

Eric D. Johnson

General Counsel

Deepmala Mahla

Vice President of
Humanitarian Affairs

Kate Maina-Vorley

Regional Director for East and
Central Africa

Dr. Muhammad Musa

Regional Director for Asia

Michelle Nunn

President and CEO, CARE

Sarah Taylor Peace

Chief Revenue Officer

Matthew Pickard

Regional Director for
Southern Africa

Monica Rowe

Chief Marketing Officer

Ritu Sharma

Vice President of U.S. Programs and
Policy Advocacy

Balla Sidibe

Regional Director for West Africa

Jerry Tuan

Chief Information Officer

BOARD OF DIRECTORS

CO-CHAIRS

Susan Hassan

Founder
Sea Dune Partners

Richard Stengel

Former Under Secretary of State
for Public Diplomacy and Public
Affairs
Former Editor, TIME

VICE CHAIR

Radhika Jones

Editor-in-Chief
Vanity Fair

TREASURER

H. Conrad Meyer III

Private Investor

SECRETARY*

Eric Johnson

General Counsel
CARE

MEMBERS

Runa Alam

Co-Founder and CEO
Development Partners International

Dolika Banda

Former Director
International Finance Corporation,
World Bank Group and CDC Group
Plc, UK

Martha Brooks

Former President and Chief
Operating Officer
Novelis, Inc.

Scott Budnick

Founder, Anti-Recidivism
Coalition (ARC)
CEO, One Community, LLC

Titi Cole

CEO, Legacy Franchises
Citi

Charlie Dent

Former U.S. Congressman and
Policy Advisor

Michèle Flournoy

Co-Founder and Managing Partner
WestExec Advisors

Jay Hallik

Global Co-Head of Fixed Income
Morgan Stanley

Everett Harper

CEO
Truss

Glenn Hutchins

Chairman, North Island
Co-Founder, Silver Lake

Seema Jayachandran

Professor of Economics and
Public Affairs
Princeton University

Stephen P. Joyce

Chief Executive Officer and Director
RE/MAX Holdings

Mohamed Kande

Vice Chairman and U.S. Advisory
Leader/Global Advisory Leader
PwC

Tessa Lyons-Laing

Director of Product
Instagram

David MacLennan

Executive Chairman
Cargill

Valerie Montgomery Rice, MD, FACOG

President and Dean
Morehouse School of Medicine

Jane Mosbacher Morris

CEO and Founder
To The Market

Michelle Nunn

President and CEO
CARE

Una Osili

Associate Dean, Research and
International Programs
IUPI

Kathryn Petralia

President and Co-Founder
Kabbage Inc.

Horacio Rozanski

President and CEO
Booz Allen Hamilton, Inc.

English Sall

Board Member
Sall Family Foundation

Board Emeritus

Virginia Sall

Co-Founder
Sall Family Foundation



*Non-member

2023 financial overview

Letter from the CFO

2023 was another extraordinary year for CARE. We continued our growth trajectory, surpassing the 2022 performance in both revenue and program implementation areas. We saw a high number of humanitarian crises across many countries in Africa, Asia, Europe, Latin America, and the Middle East. Geopolitical conflicts across Ukraine, Sudan, Ethiopia, and countries in the Sahel in Africa continued to impact the livelihoods of many women and girls, while natural disasters like earthquakes and flooding affected many vulnerable communities in Türkiye, Syria, Bangladesh, and Pakistan. During this period CARE reached record program implementation costs of approximately **\$858 million**, 15% higher than 2022. We managed to reach more vulnerable communities and were able to serve **167 million** people in **109 countries** through **1,671 active projects**.

CARE's total revenue for the fiscal year 2023 was **\$894 million**. CARE also benefited from the continued strong support of our U.S. private donors, governments, and multilateral institutions around the world. Our diversified funding base continues to be a strength. Total Institutional revenue increased 15% from FY22 to **\$683 million**. Although Private revenue was down from FY22, which benefited from the generous response to fund our work related to Ukraine, it remained strong at **\$206 million**, with positive performance across all channels, particularly in Major Gifts and Corporate fundraising.

CARE's commitment to stewardship and efficiency enables us to maximize the value of every dollar we receive.

We endeavor to be responsible with the resources entrusted to us, evidenced by the fact that **92 cents** of every dollar spent goes toward program expenses. Total program expenses, sponsored primarily by restricted funds, were **\$95 million** above the original budgets due to implementation of many new humanitarian programs globally.

Our success in 2023 resulted in CARE supporting **20 million** people to advance gender equality; 72% of our projects integrated gender into their work. We assisted **20 million** people who were affected by humanitarian crisis in meeting their basic needs and provided access to basic food, water, and nutrition for **34 million** people around the world.

We are tremendously grateful for the generous support from our private donors, U.S. government, and other global institutions that helped CARE to advance our mission.

We count on your continued support and contribution in 2024 as we deliver quality services to save lives, defeat poverty, and achieve social justice.

Thank you!

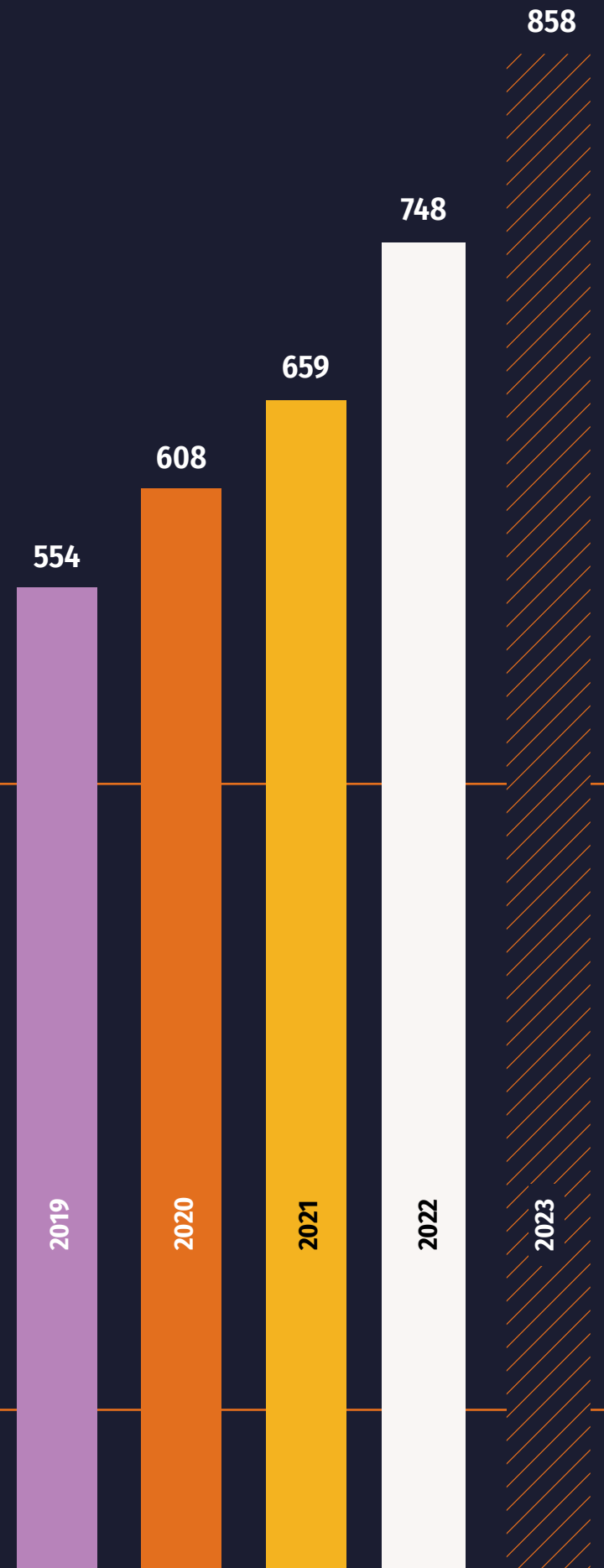


Ranil De Silva
Chief Financial and Operating Officer

Program Expense Growth

(in \$ millions)

WE ARE PROUD THAT
WE WERE ABLE TO
GROW PROGRAM
EXPENSE OVER TIME,
BY **55%** FROM 2019
TO 2023.



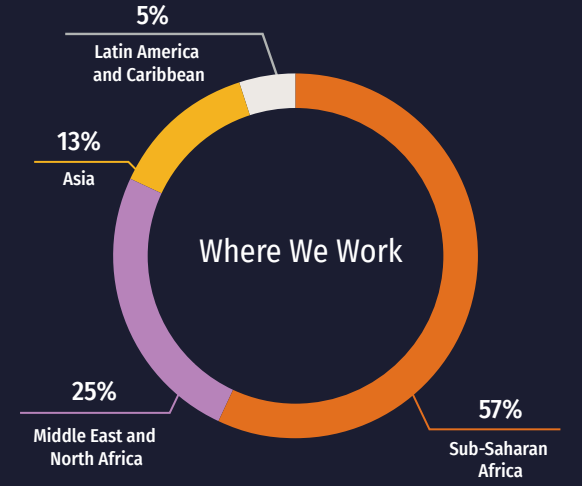
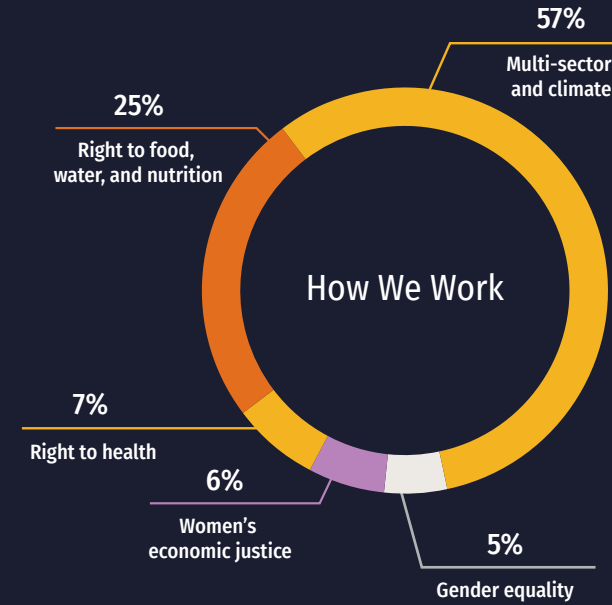
CARE Consolidated Statement of Activities

For the Years Ended June 30, 2023 and June 30, 2022

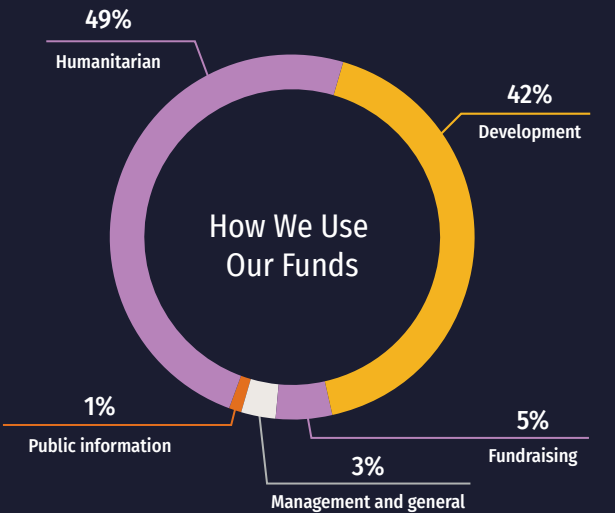
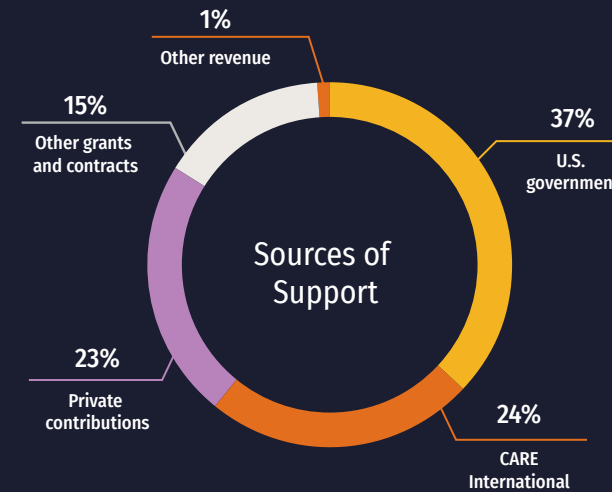
| | Without Donor Restrictions | With Donor Restrictions | Total 2023 | Total 2022 |
|---|----------------------------|-------------------------|-------------------|-------------------|
| Support | | | | |
| Contributions of financial assets | | | | |
| United States government | \$ 265,828 | \$ - | \$ 265,828 | \$ 240,781 |
| CARE International | 216,036 | - | 216,036 | 199,785 |
| Private contributions | 127,386 | 75,879 | 203,265 | 283,266 |
| Other institutional donors | 124,152 | - | 124,152 | 124,535 |
| Contributions of nonfinancial assets | | | | |
| United States government | 64,872 | - | 64,872 | 25,276 |
| CARE International | 1,566 | - | 1,566 | - |
| Private contributions | - | 2,239 | 2,239 | 8,221 |
| Other institutional donors | 10,801 | - | 10,801 | 2,603 |
| Other revenue | 5,467 | 84 | 5,551 | 3,461 |
| Satisfaction of restrictions | 110,406 | (110,406) | - | - |
| Total support | 926,514 | (32,204) | 894,310 | 887,928 |
| Expenses | | | | |
| Program activities | 857,533 | - | 857,533 | 747,914 |
| Supporting activities | 78,717 | - | 78,717 | 70,515 |
| Total expenses | 936,250 | - | 936,250 | 818,429 |
| Investment income and other gains and losses | 11,684 | 733 | 12,417 | (24,823) |
| Total changes in net assets | 1,948 | (31,471) | (29,523) | 44,676 |
| Net assets, beginning of year | 108,241 | 320,843 | 429,084 | 384,408 |
| Net assets, end of year | \$ 110,189 | \$ 289,372 | \$ 399,561 | \$ 429,084 |

Financials at a Glance

Program Work Overview



Selected Financial Information



Vision

We seek a world of hope, inclusion, and social justice, where poverty has been overcome and all people live with dignity and security.

Focus

We put women and girls in the center because we know that we cannot overcome poverty until all people have equal rights and opportunities.

Mission

CARE works around the globe to save lives, defeat poverty, and achieve social justice.

Values

INTEGRITY EXCELLENCE
DIVERSITY EQUALITY
TRANSFORMATION

CARE's Commitment to Workplace Diversity, Equity, Belonging, and Inclusion

Three years ago, CARE made a commitment to launch a Diversity, Equity, Belonging, and Inclusion (DEBI) strategy that could be integrated throughout our organization. We knew that our dedication to the dignity of all people required us to center humility and promote respect for difference. Since that time, we have taken concrete steps to make progress on some key areas and plan to deepen our work in the years to come.

- We have engaged the entire CARE community, from the Board of Directors to Country Office colleagues, in DEBI learning, development, and dialogue opportunities.
- We have increased the racial, ethnic, and gender diversity of our Board, Executive Leadership Team, and Global Leadership Team.
- We have implemented best practices to promote diversity within our candidate slates and vendor selection process.

These actions are building a strong foundation for continued growth and new ways of advancing inclusion for our community and partners in the future.

THIS YEAR, JOIN US
AS WE STAND STRONG
WITH COMMUNITIES
AROUND THE WORLD
TO MEET WHATEVER
CHALLENGES ARISE.



DONATE

Your gift today can help change the world of tomorrow.

Visit: care.org
Call: 1-800-521-CARE (2273)
Mail: CARE Gift Center
P.O. Box 1870
Merrifield, VA
22116

Contact Us: care.org/contact

Future Gifts

Help CARE fight poverty through a bequest. Contact Planned Giving at **1-800-752-6004** for information about including CARE in your estate planning.

ACTIVATE

Join the conversation. Mobilize your networks to create a community of CARE.

 [@careorg](https://www.instagram.com/careorg)  [@care](https://twitter.com/care)

 [@carefans](https://www.facebook.com/carefans)  [CARE](https://www.linkedin.com/company/care)

ADVOCATE

Speak up! Join CARE Action and raise your voice in the fight against extreme poverty. Call, meet, inform your elected leaders. careaction.org



JOIN US!

care.org/careers

care.org/get-involved



HEADQUARTERS & SOUTHEAST FIELD OFFICE

CARE

151 Ellis Street NE
Atlanta, GA 30303
T: 404-681-2552

CONSTITUENT SERVICES

1-800-422-7385
care.org/contact

FIELD OFFICES

Chicago, IL

PO Box 57569
Chicago, IL 60657

New York, NY

370 Lexington Avenue
Suite 1103
New York, NY 10017

San Francisco, CA

465 California Street
Suite 475
San Francisco, CA 94104

Washington, D.C.

1100 17th Street NW
Suite 900
Washington, DC 20036

**Please send donations to
CARE's gift processing center
rather than field offices:**

CARE Gift Center
P.O. Box 1870
Merrifield, VA 22116



PHOTO CREDITS — Cover: LauraNoel/CARE; Inside Front Cover:CARE; Page 5: Nadir Houboub/CARE Page 6/7: Eliasaph/CARE; Page 11: Jannatul Mawa/CARE; Page 12: CARE; Page 14: Laura Noel/CARE; Page 16: Yen Duong/CARE; Page 19/20: Laura Noel/CARE; Page 22: Mohammad Hasan Zobayer/CARE; Page 23: Mohammed Alboush/CARE; Page 25: Laura Noel/CARE; Page 30/31: Laura Noel/CARE; Page 32/33: Laura Noel/CARE

CARE is an Equal Opportunity Employer and Affirmative Action Employer (AA/M/F/D/V) dedicated to workplace diversity. CARE® and CARE Package® are registered marks of CARE. Copyright ©2024 by Cooperative for Assistance and Relief Everywhere, Inc. (CARE). All rights reserved. Unless otherwise indicated, all photos ©CARE.