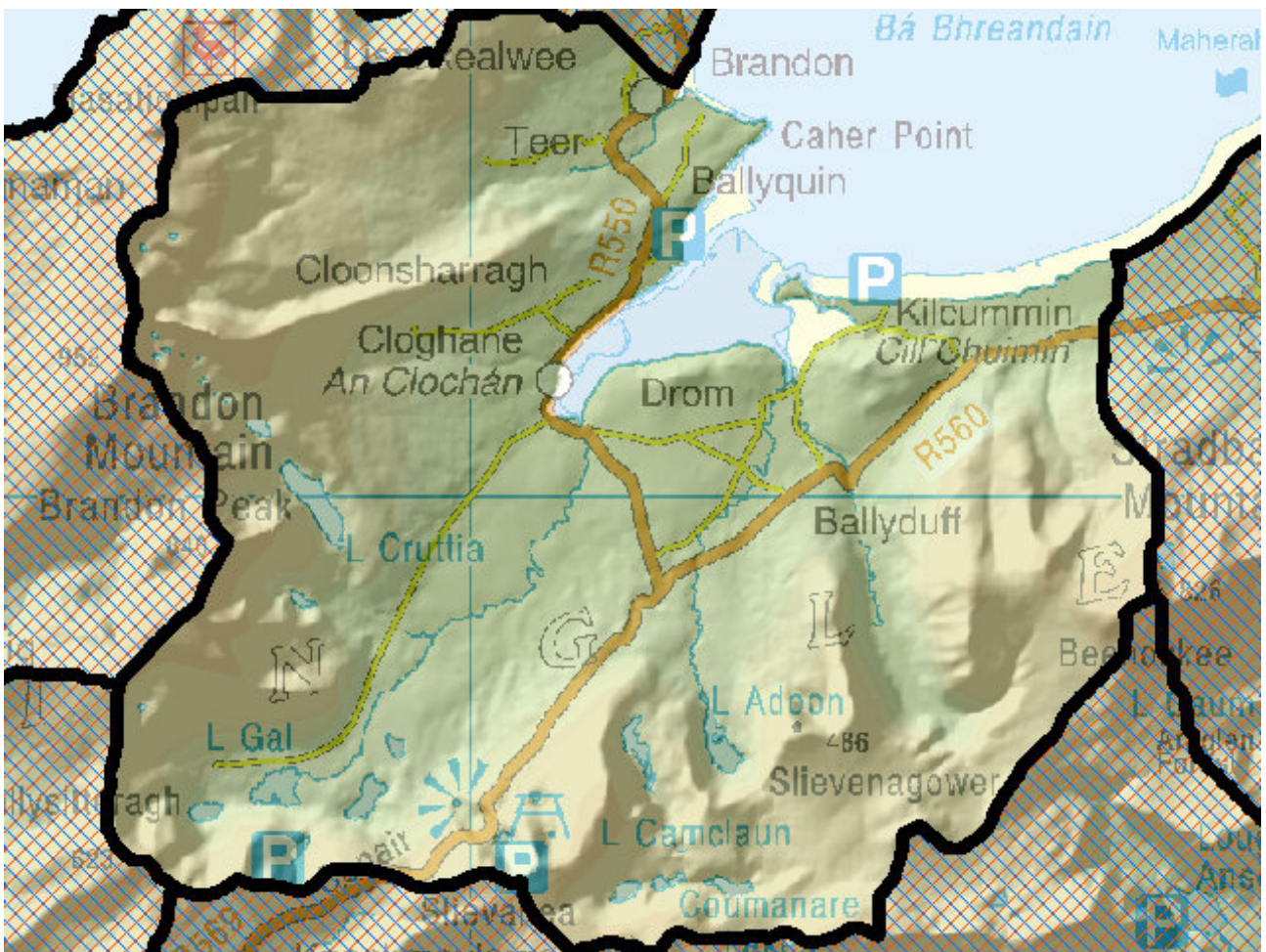


WFD Cycle 2

Catchment Tralee Bay-Feale

Subcatchment Owenmore[Kerry]_SC_010

Code 23_10



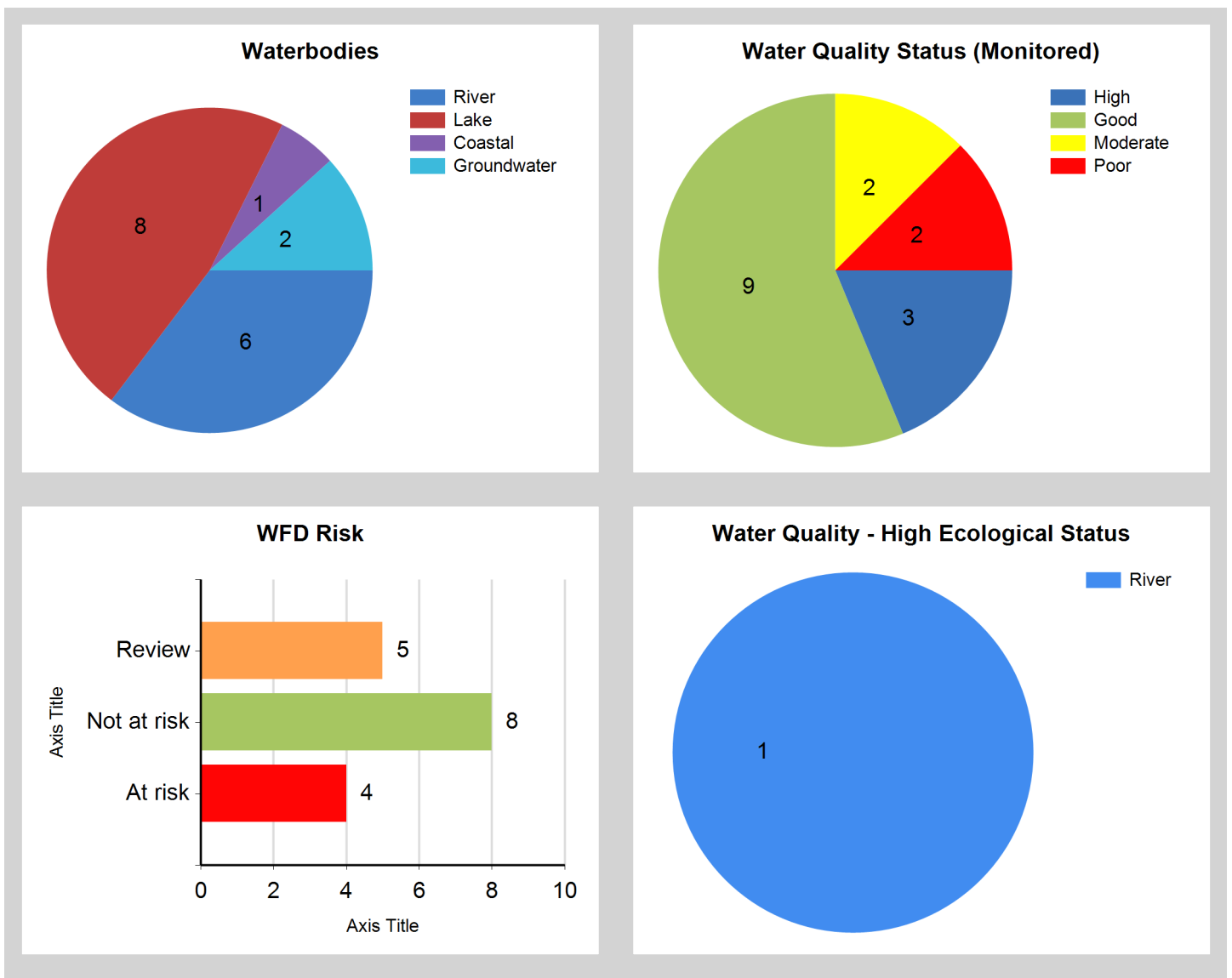
© Ordnance Survey Ireland. All rights reserved. Licence Number EN 0059208

Generated on: 09 Jan 2019

Assessment Purpose

This assessment has been produced as part of the national characterisation programme undertaken for the second cycle of Water Framework Directive river basin management planning. It has been led by the EPA, with input from Local Authorities and other public bodies, and with support from RPS consultants.

The characterisation assessments are automatically generated from the information stored in the WFD Application. They are based on information available to the end of 2015 but may be subject to change until the final 2018-21 river basin management plan is published. Users should ensure that they have the most up to date information by downloading the latest assessment before use.

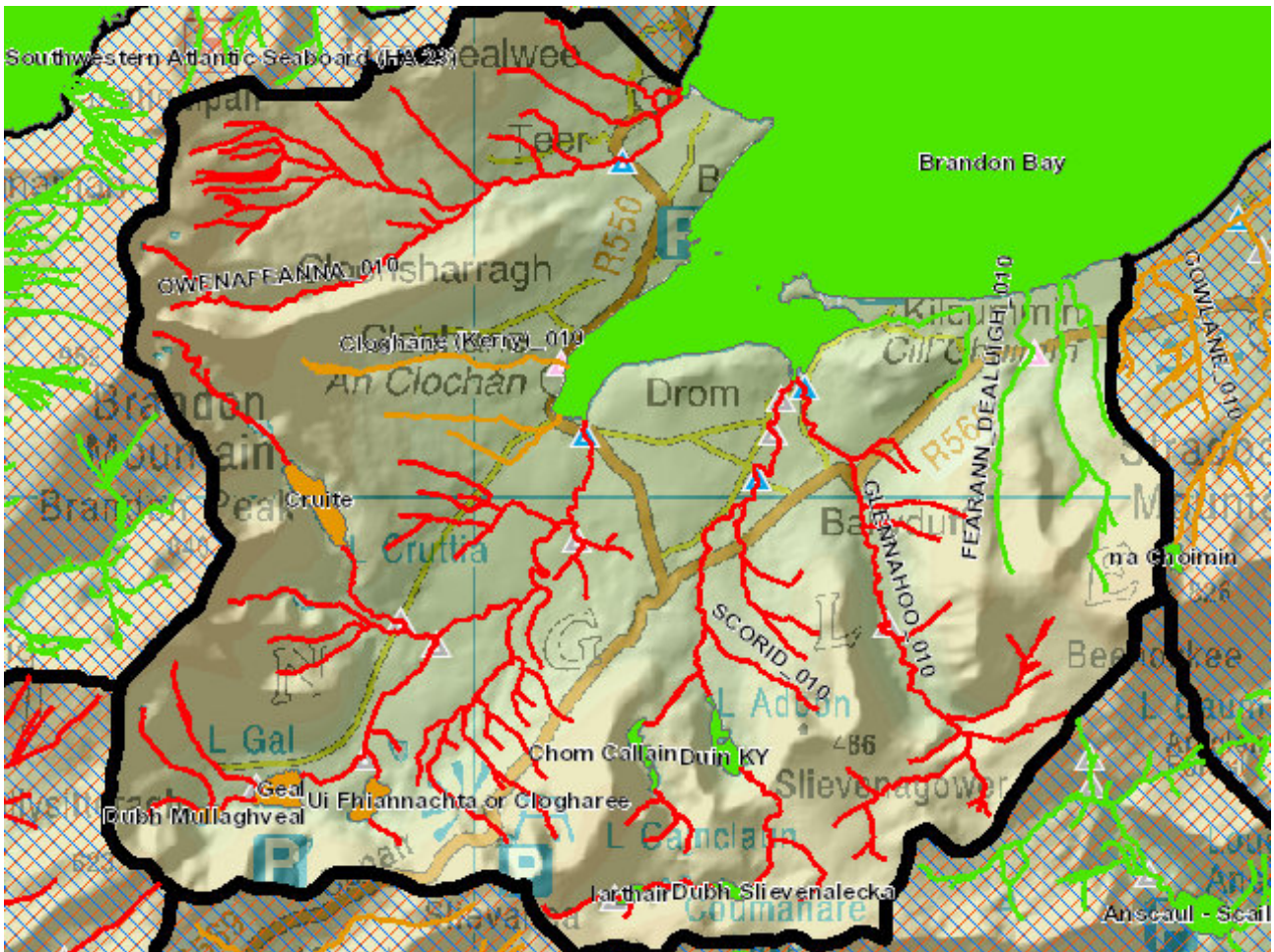


Evaluation of Priority Subcatchment Issues

Four out of six river water bodies are AT RISK: Glennahoo_010 and Owenafeanna_010 due to Poor biological status; Owenmore (Kerry)_010 due to Moderate biological status and; Scorid_010 due to failing to meet its High Ecological Status (HES) objective due to Good hydromorphological status. One river water body, Cloghane (Kerry)_010 is under REVIEW due to its unassigned status. Four out of eight lake water bodies are also under REVIEW due to their unassigned status. All remaining water bodies are NOT AT RISK.

Agriculture, forestry, peat extraction and localised hydromorphological issues may be driving Moderate status within Owenmore (Kerry)_010. Localised hydromorphological pressures (barriers, bank protection, riparian habitat maintenance) are impacting Scorid_010. Significant pressures were not identified for Glennahoo_010 and Owenafeanna_010 and further investigation is required. Further investigations are also required for REVIEW water bodies so as to determine whether any issues exist.

Map Subcatchment Risk Map

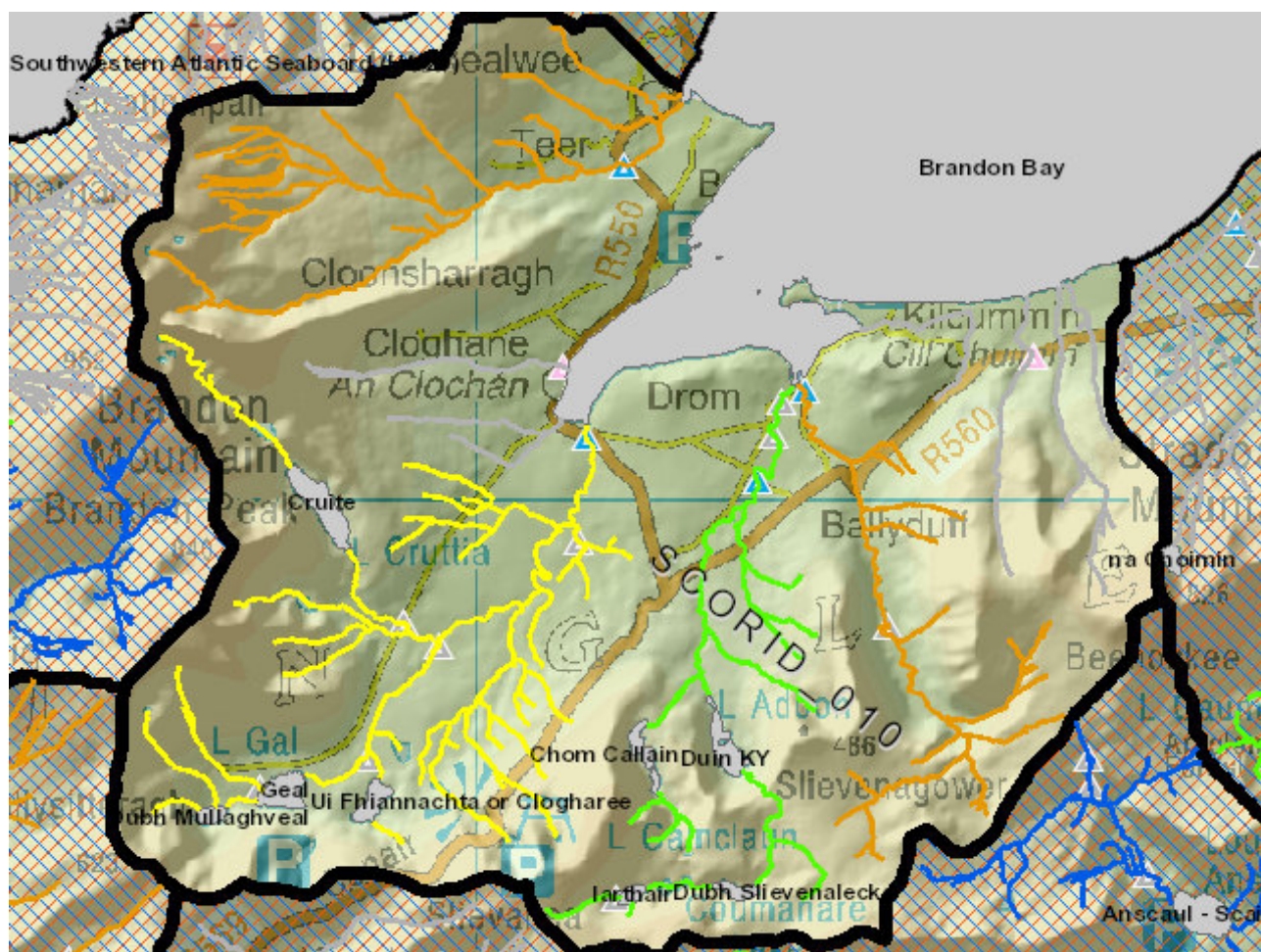


River And Lake Waterbodies: WFD Risk

The following river and lake waterbodies are in the subcatchment.

Code	Name	Type	WFD Risk	Significant Pressure
IE_SH_23G050200	GLENNAHOO_010	River	At risk	Yes
IE_SH_23O030300	OWENMORE (KERRY)_010	River	At risk	Yes
IE_SH_23O040100	OWENAFEANNA_010	River	At risk	Yes
IE_SH_23S010200	SCORID_010	River	At risk	Yes
IE_SH_23_60	Dubh Mullaghveal	Lake	Review	Yes
IE_SH_23_61	Ui Fhiannachta or Clogharee	Lake	Review	Yes
IE_SH_23_69	Cruite	Lake	Review	Yes
IE_SH_23_71	Geal	Lake	Review	Yes
IE_SH_23C300980	Cloghane (Kerry)_010	River	Review	Yes
IE_SH_23_65	Iarthair	Lake	Not at risk	No
IE_SH_23_67	Duin KY	Lake	Not at risk	No
IE_SH_23_73	Chom Callain	Lake	Not at risk	No
IE_SH_23_75	Dubh Slievenalecka	Lake	Not at risk	No
IE_SH_23F080770	FEARANN_DEALÚIGH_010	River	Not at risk	No

Map Subcatchment Water Quality Status Map



River And Lake Waterbodies: Water Quality Status

The water quality status of river and lake waterbodies in the subcatchment is as follows.

Code	Name	Type	2007-09	2010-12	2010-15
IE_SH_23_73	Chom Callain	Lake	Unassigned	Unassigned	Unassigned
IE_SH_23C300980	Cloghane (Kerry)_010	River	Unassigned	Unassigned	Unassigned
IE_SH_23_69	Cruite	Lake	Unassigned	Unassigned	Unassigned
IE_SH_23_60	Dubh Mullaghveal	Lake	Unassigned	Unassigned	Unassigned
IE_SH_23_75	Dubh Slievenalecka	Lake	Unassigned	Unassigned	Unassigned
IE_SH_23_67	Duin KY	Lake	Unassigned	Unassigned	Unassigned
IE_SH_23F080770	FEARANN_DEALÚIGH_010	River	Unassigned	Unassigned	Unassigned
IE_SH_23_71	Geal	Lake	Unassigned	Unassigned	Unassigned
IE_SH_23G050200	GLENNAHOO_010	River	Good	Moderate	Poor
IE_SH_23_65	Iarthair	Lake	Unassigned	Unassigned	Unassigned
IE_SH_23O040100	OWENAFEANNA_010	River	Good	Good	Poor
IE_SH_23O030300	OWENMORE (KERRY)_010	River	Good	High	Moderate
IE_SH_23S010200	SCORID_010	River	High	High	Good
IE_SH_23_61	Ui Fhiannachta or Clogharee	Lake	Unassigned	Unassigned	Unassigned

Potentially Dependent Transitional and Coastal Waterbodies

The Transitional and Coastal waterbodies listed below intersect spatially with river and lake waterbodies in the subcatchment ...

Code	Name	Type	Local Authority	WFD Risk
IE_SH_030_0000	Brandon Bay	Coastal	Kerry County Council	Not at risk

Potentially Dependent Groundwater Waterbodies

The groundwaters listed below intersect spatially with river and lake waterbodies in the subcatchment ...

Code	Name	Type	Local Authority	WFD Risk
IE_SH_G_044	Brandon Head	Groundwater	Kerry County Council	Not at risk
IE_SW_G_033	Dingle	Groundwater	Kerry County Council	Not at risk

Protected Areas intersecting River and Lake Waterbodies

The Protected Areas listed below intersect spatially with river and lake waterbodies in the subcatchment ...

Code	Name	Type	Waterbody Name	Association Type
IE0002070	Tralee Bay And Magharees Peninsula, West To Cloghane SAC	SAC	Cloghane (Kerry)_010	Overlapping / partly within Protected Area
IE0002070	Tralee Bay And Magharees Peninsula, West To Cloghane SAC	SAC	FEARANN_DEALÚIGH_010	Overlapping / partly within Protected Area
IE0002070	Tralee Bay And Magharees Peninsula, West To Cloghane SAC	SAC	GLENNAHOO_010	Overlapping / partly within Protected Area
IE0002070	Tralee Bay And Magharees Peninsula, West To Cloghane SAC	SAC	OWENMORE (KERRY)_010	Overlapping / partly within Protected Area
IE0002070	Tralee Bay And Magharees Peninsula, West To Cloghane SAC	SAC	SCORID_010	Overlapping / partly within Protected Area

Pressures

Below is a list of all significant pressures identified in the subcatchment.

Code	Name	WFD Risk	Pressure Category	Pressure Sub Category
IE_SH_23G050200	GLENNAHOO_010	At risk	Anthropogenic Pressures	Unknown
IE_SH_23O030300	OWENMORE (KERRY)_010	At risk	Forestry	Forestry
IE_SH_23O030300	OWENMORE (KERRY)_010	At risk	Hydromorphology	Channelisation
IE_SH_23O030300	OWENMORE (KERRY)_010	At risk	Extractive Industry	Peat - Harvesting
IE_SH_23O030300	OWENMORE (KERRY)_010	At risk	Agriculture	Agriculture
IE_SH_23O040100	OWENAFEANNA_010	At risk	Anthropogenic Pressures	Unknown
IE_SH_23S010200	SCORID_010	At risk	Hydromorphology	Dams, barriers, locks, weirs
IE_SH_23S010200	SCORID_010	At risk	Hydromorphology	Channelisation
IE_SH_23_60	Dubh Mullaghveal	Review	Anthropogenic Pressures	Unknown
IE_SH_23_61	Ui Fhiannachta or Clogharee	Review	Anthropogenic Pressures	Unknown
IE_SH_23_69	Cruite	Review	Anthropogenic Pressures	Unknown
IE_SH_23_71	Geal	Review	Anthropogenic Pressures	Unknown
IE_SH_23C300980	Cloghane (Kerry)_010	Review	Forestry	Forestry
IE_SH_23C300980	Cloghane (Kerry)_010	Review	Domestic Waste Water	Waste Water discharge

Further Characterisation Actions

The following further characterisation actions have been identified. These are necessary to help understand more fully issues in the subcatchment and their likely cause.

Code	Name	Action	Responsible Organisation
IE_SH_23O030300	OWENMORE (KERRY)_010	IA7 Multiple Sources in Multiple Areas	Kerry County Council
IE_SH_23G050200	GLENNAHOO_010	IA7 Multiple Sources in Multiple Areas	Kerry County Council
IE_SH_23S010200	SCORID_010	IA8 High status RWB pressures	Kerry County Council
IE_SH_23_60	Dubh Mullaghveal	IA3 Determination of Water Quality (unassigned waterbody)	Kerry County Council
IE_SH_23G050200	GLENNAHOO_010	IA1 Provision of Information	Environmental Protection Agency
IE_SH_23C300980	Cloghane (Kerry)_010	IA3 Determination of Water Quality (unassigned waterbody)	Kerry County Council
IE_SH_23_61	Ui Fhiannachta or Clogharee	IA3 Determination of Water Quality (unassigned waterbody)	Kerry County Council
IE_SH_23O040100	OWENAFEANNA_010	IA3 Determination of Water Quality (unassigned waterbody)	Kerry County Council
IE_SH_23S010200	SCORID_010	IA1 Provision of Information	Environmental Protection Agency
IE_SH_23_71	Geal	IA3 Determination of Water Quality (unassigned waterbody)	Kerry County Council
IE_SH_23_69	Cruite	IA3 Determination of Water Quality (unassigned waterbody)	Kerry County Council