

The Journal of the Catfish Study Group



Convention 2010

Corydoras sp. CW037

Brachyrhamdia

Spring auction

Aspidoras albater

Catfish Study Group Committee

Full contact details are available on our website: catfishstudygroup.org

President – Ian Fuller	Editor - Mark Walters
Vice-President – Dr. Peter Burgess	BAP Secretary – Adrian Taylor
Chairman – Bill Hirst	Show Secretary – Brian Walsh
Treasurer – Danny Blundell	Assistant Show Secretary – Ann Blundell
Membership Secretary – Bob Barnes	Website Manager – Alan James
Secretary – Adrian Taylor	Floor Members – Tony Pickett, John Toon
Deputy Secretary – Mike O'Sullivan	

Diary Dates - 2010

Jun 20th	Topic - Catfish health	Meeting cancelled
July 18th	Topic - The dietary needs of catfish	
Aug 15th	Summer Lecture – 'The Genetics of Ornamental Fish' – Dr. David Price & Mini Auction	Auction limited to 5 lots. Pre booking David Barton 01942 248130
Sep 19th	Open Show & Auction	35 Catfish classes Auction pre booking David Barton 01942 248130
Oct 17th	Topic - Favourite catfish	
Nov 21st	Autumn Auction	Pre booking David Barton 01942 248130
Dec 12th	Christmas meeting	Details to be announced

All meetings are normally held at the Highfields Working Men's Club, 1 Ratcliffe Street, Darwen, Lancashire, BB3 2BZ on the third Sunday of each Month from 1pm

Contents

Editorial and Notices.....	3
Brachyrhamdia – Steven Grant.....	4
Convention 2010.....	17
Aspidoras albater – Adrian Taylor.....	22
2010 Open Show – Schedule.....	24
Corydoras sp ‘CW037’ – Erik Schiller.....	26
Spring Auction.....	28
What’s New – Mark Walters.....	29
Show Rules	33

**Publication of the Catfish Study Group is
proudly sponsored by Tetra**



Editorial

Mark Walters

Welcome to the latest issue of the Catfish Study Group journal and my first as Editor. I was pleased to be accepted by the committee to take on the role in March and I hope you enjoy the articles and some of the changes I have incorporated.

In the future, the cover will feature images relevant to the issue. The quality of paper for the cover and the rest of the journal has been improved. We have also taken receipt of a new laser colour printer which should reduce some of the delays we have had which affected quality and release. The last printer did not do auto duplex or collation – resulting in significant effort to pull each journal together. Finally, there are more images of more catfish for you to enjoy! If you have any comments on the new look, please feed them through the forum on our website.

I am lucky coming into the job for the April issue considering the abundance of copy. The March convention was a great success (as always) and we have plenty of images to remind you of the event. Our Spring auction was one of the best ever with record receipts and numbers of lots. I have also been asking for specific articles from individuals resulting in some informative pieces. I have put on hold articles from Michael Hardman and David Marshall for future journals.

German aquarist Erik Schiller has provided a great article on some new *Corydoras* species and UK amateur ichthyologist Steve Grant has pulled together what must be the most comprehensive overview of the mimic catfish *Brachyrhamdia*. The fantastic photos in Steve's article are credited to a number of CSG members.

Considering the requirements for my new role, there have been a few organisational changes. I have handed the baton for Breeders Award Programme management to Adrian Taylor. To support Adrian's other duties, Mike O'Sullivan has taken on the role of Deputy Secretary. I hope members will continue to support the BAP programme with reports and articles. This month Adrian has provided a great account of his success with another *Aspidoras* species.

For me, breeding success has been limited in recent months. I have moved a few species around which has resulted in my *Scleromystax barbatus* and *S. kronei* spawning again. I've been trying in vain to get *Pecolitia* sp 'L134' – leopard frog plecs, to spawn and have recently been attempting my 'flash panaques' (L204). I did get some eggs from another *panaquolous* species (L169) but the male kicked them out. It's starting to warm up in the fish house, the space heater was switched off early April and now the door is open on an evening!

Mark

In Memory

It was with deep regret that in February 2010 we heard of the death of Mrs Morris, the mother of our former Chairman and President Trevor Morris.

Mrs Morris, for many years, could be found in the group's canteen serving teas, coffee and pastry's. Upon the group's relocation to Darwen from Aspul a few years ago, Mrs Morris decided to retire from the canteen due to health reasons; although she continued attending meetings in Darwen with her family for some time after and remained a loyal supporter of the Catfish Study Group.

Our sympathies go out to Mr. Morris, Trevor and all of the family.

Brachyrhamdia Myers, 1927
(Siluriformes: Heptapteridae)
Steven Grant



B. marthae dominant male – Steven Grant

Brachyrhamdia catfish have been appearing in the hobby intermittently for some years. The introduction of a few undescribed species recently prompted me to write this article as an introduction to this genus of beautiful dwarf heptapterids.

Familial Placement

Firstly, why is this genus referred to as being in Heptapteridae rather than Pimelodidae, the family it has traditionally been included in?

Since Lundberg & McDade (1986) there has been a generally accepted view that Pimelodidae as it stood did not accurately represent the relationships of the genera that were included.

See Shibatta (2003) for a historical overview of the phylogenetic¹ works covering the issue.

Recently Sullivan et al (2006) also provided phylogenetic evidence for the basis for Heptapteridae being a valid family.

¹ The study of evolutionary relatedness through the use of molecular data and/or very detailed morphological comparisons. A cladogram or 'family tree' is usually created from the results to show the evolutionary relationships.

Thus this genus and many others formerly classed as pimelodids are currently deemed as heptapterids.

The basis for *Brachyrhamdia* as a genus

Myers described *Brachyrhamdia* for his new species *B. imitator* Myers, 1927. He appears to have mainly based the new genus on the "compact, somewhat compressed and deep" body.

Sands & Black (1985) also mention the apparent deeper body, and although Lundberg & McDade (1986) agree that *Brachyrhamdia* appears to have a deeper body they were not satisfied that this in itself warranted a different genus.

In fact *Brachyrhamdia* means 'short Rhamdia' from the Greek word for 'short': *brakhús*.

The other characters mentioned by Myers, and Sands & Black were shown not to be unique to *Brachyrhamdia*. Lundberg & McDade did find

some differences in bony processes of the fourth and fifth vertebrae and they kept *Brachyrhamdia* as a separate genus.

After that *Brachyrhamdia* has been synonymised by some authors with *Pimelodella* Eigenmann & Eigenmann, 1888, and also with *Rhamdia* Bleeker, 1858 (Zarske, 2003).

Bockmann & Miquelarena (2008) provided a phylogenetic analysis of Heptapteridae using detailed morphology and this supported *Brachyrhamdia* as a valid genus.

It also showed that *Brachyrhamdia* and *Pimelodella* are closely related, and that *Brachyrhamdia* was near the base of the family tree in terms of its evolutionary development.

The phylogenetic differences relied on for separating *Brachyrhamdia* and *Pimelodella* from *Rhamdia* and *Rhamdella* was that in the first two mentioned genera the supraoccipital process meets the nuchal plate, and the eye is proportionately larger in the head length.

These two characters were seen as being an early evolutionary development in the family. In two *Rhamdella* species the eyes were larger but this was viewed as a 'reversal'.

I understand that this means a change back towards a physical characteristic of an earlier relative in the evolution.

So for example the earlier evolved *Brachyrhamdia* has larger eyes than genera that evolved later such as *Rhamdella*, but then some *Rhamdella* species evolved the other way and developed a larger eye than their closer relatives.

I understand that a full phylogenetic analysis of *Brachyrhamdia* is underway, so we will know more soon about the relationships of the species within the genus. For aquarists the easiest ways to distinguish the genera are:

1. In *Pimelodella* the posterior fontanel is long and wide (fig. 1)

2. in *Brachyrhamdia* it is a small foramen (fig. which is not always visible on live specimens).

Fig. 1. Elongated posterior fontanel (pf) of *Pimelodella* (from Bockmann & Miquelarena, 2008)

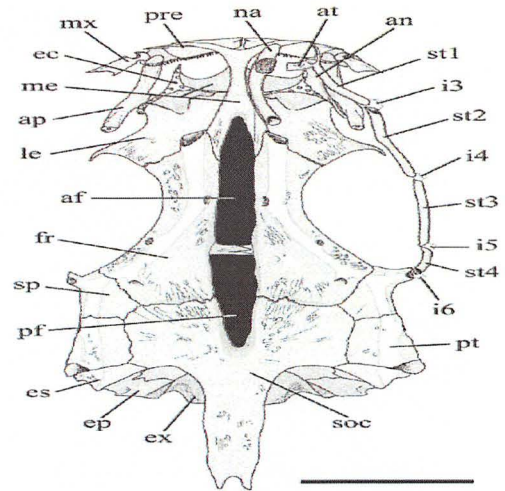
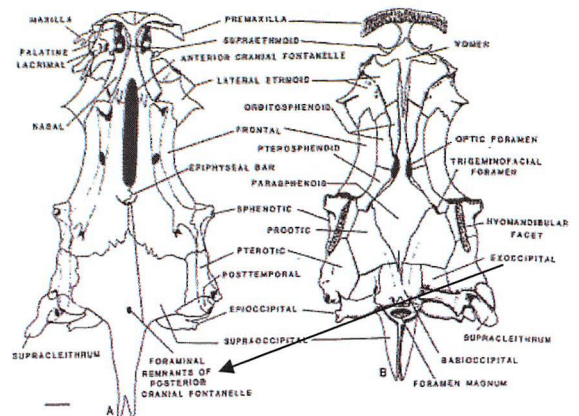


Fig. 2. Posterior fontanel is a foramen in *Brachyrhamdia* (from Lundberg & McDade, 1986). Figure on left is the dorsal view of the neurocranium.



In *Rhamdia* and *Rhamdella* the supraoccipital process does not meet the nuchal plate (see fig. 3) – in *Brachyrhamdia* it does² (see fig. 2).

² In the specimens of *B. marthae* that Zarske (2003) examined he said the supraoccipital process did not meet the nuchal plate. In all species that I have (including *B. marthae*) the supraoccipital process does meet the nuchal plate, so I am unsure why it does not in Zarske's specimens.

Fig. 3. Supraoccipital process not meeting nuchal plate in *Rhamdia* and *Rhamdella* - figure shows *Rhamdia* (from Zarske, 2003)

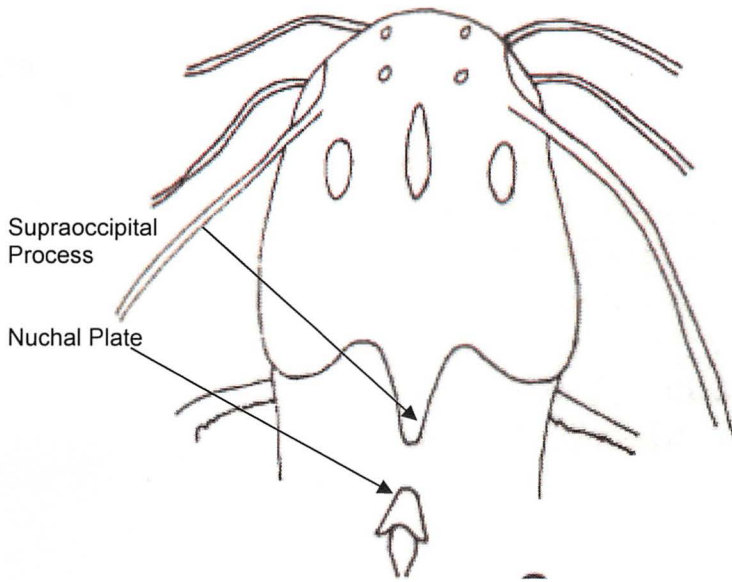
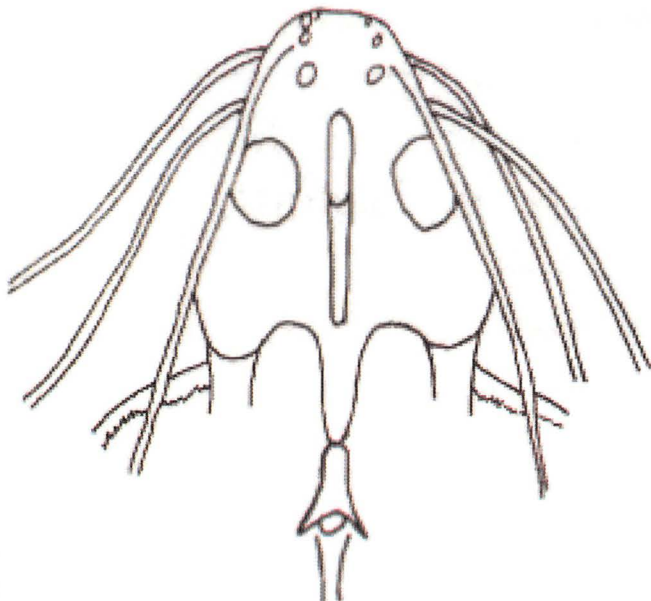


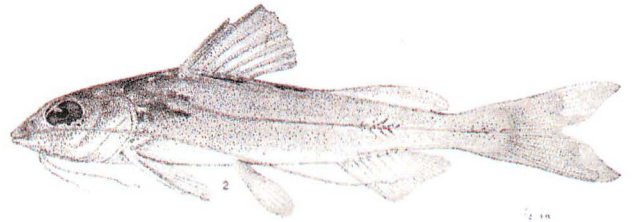
Fig. 4. Supraoccipital process meeting nuchal plate in *Brachyrhamdia* and *Pimelodella* - figure shows *Pimelodella* (from Zarske, 2003)



The Species

Brachyrhamdia heteropleura (Eigenmann, 1912)

Etymology: Greek for 'different' *héteros* and Latin for 'ribs' *pleuro*.



This species is distributed in the Coratijn, Essequibo and Negro River basins; in Guyana, Suriname and northern Brazil (Bockmann & Guazzelli in Reis et al. 2003). It has also been caught by aquarists in the Rio Branco and Rio Jatapu in Brazil. It has appeared in the hobby, but very rarely.

I haven't seen photographs of any live or preserved specimens other than the one on Planet Catfish which does appear to match most of the drawing in the original description, apart from the lack of pigment around the post cleithral process³.

Brachyrhamdia imitator Myers, 1927

Etymology: Latin for mimic '*imitator*'.



B. imitator semiadult – Steven Grant

This species is distributed in the Caura River basin in Orinoco River drainage, Venezuela

³ Sometimes called the humeral process. In this genus it is a small thin bony process on the body, pointing backwards, situated just above the pectoral fin spine when it is clamped to the body.

(Bockmann & Guazzelli in Reis et al. 2003). It does appear in the hobby but infrequently



B. imitator juvenile – Steven Grant

Brachyrhamdia marthae Sands & Black, 1985

Etymology: named after Martha Sands.

This species is distributed in Juruá and Mamoré/Madeira River basins in Brazil, Bolivia and Peru (Bockmann & Guazzelli in Reis et al. 2003).

This is the second most common species in the hobby. I noticed that when two males were kept together, the dominant fish had a much more violet tinge to the body colour and blacker markings (see images on title page and below).



B. marthae subordinate male – Steven Grant

Brachyrhamdia meesi Sands & Black, 1985

Etymology: named after Gerlof Fokko Mees. This species is distributed in the Amazon River basin, Brazil (Bockmann & Guazzelli in Reis et al. 2003).



***B. meesi* – Alan James**

This is the most common species in the hobby. It can appear a silvery colour with a dark midlateral body band, and a dark vertical eye band.

However some specimens can also get a purplish base colour and black pigmentation to the upper portion of the dorsal fin rays and/or the area around the post cleithral process (see images). *B. meesi* can be separated from *B. marthae* by the lack of an eye band in *B. marthae*.

Brachyrhamdia rambaranni (Axelrod & Burgess, 1987)

Etymology: named after Harry Rambarran.

This species is distributed in the Unini River basin in upper Negro River drainage, Brazil (Bockmann & Guazzelli in Reis et al. 2003).



B. rambaranni – Julian Dignall

I have only seen this species in the hobby on one occasion since its description.

Brachyrhamdia sp. 1

This species is currently being described. I first noticed it on a now defunct Peruvian fish website at the beginning of 2009. In October 2009 specimens were imported into the UK from Colombia and after Mike Kirkham's photographs were published on Planet Catfish it was given the name sp. 1.



B. 'sp.1' male – Steven Grant

I am aware of the true locality of this fish but as it is being described I will not divulge the information.

Brachyrhamdia sp. 2

This undescribed species appeared in the hobby a couple of years ago. Its origin is unknown to me but based on its colour/pattern and the probable model(s) it mimics I would guess that it also comes from the Rio Negro, Brazil.



B. 'sp.2' – Steven Grant

Following my submission to Planet Catfish it was given the name sp. 2. It is sometimes incorrectly identified as *B. rambarrani* but that species has the black lines across all the ridge of the back instead of just being confined to underneath the dorsal fin area.

This is actually a better mimic of *C. burgessii* than *B. rambarrani*.

Brachyrhamdia sp. 3

This species has recently been designated the name sp. 3. The adult specimens were exported from Colombia but their true origins are unknown.



B. 'sp.3' – Hans-Georg Evers

They appear similar to *B. heteropleura* but appear to have black pigment in different areas

on the fins, and none around the post cleithral process area. They may well turn out to be adult *B. heteropleura*.

Mimicry

Since the description of *Brachyrhamdia* and the species name of '*imitator*' given to its type species there has been an association with mimicry. The type specimens of *B. imitator* were collected with *Corydoras melanistius* Regan, 1912, a catfish it shares a very similar pattern and size with.



B. imitator



C. melanistius – Ian Fuller

In 1980 and 1984, Sands discussed the possibility of *Brachyrhamdia* mimicking *Corydoras* by shoaling with them, in effort to benefit by predators avoiding them, due to the armoured bodies of *Corydoras* and their ability to lock their dorsal and pectoral fin spines in place as a defence mechanism against predation.

With the description of the two new species in 1985, which didn't appear to just mimic *Corydoras* but also a small loricatoriid and another heptapterid, Sands also suggested that it could be a "cryptic or zoomimesis" attempt to blend in with other fishes for greater shoaling protection.

He later (1990) hypothesised that some species may mimic *Corydoras* to steal eggs or food.

One basis for these views was the hypothesis that in the wild the *Brachyrhamdia* would be outnumbered by the catfish they were mimicking, as they usually came in as small volume by-catches with shoals of other catfish.

Some of the specimens used by Lundberg & McDade were also collected syntopically with *C. melanisti*, as well as another 3 species. Lundberg & McDade noted a large school of *Brachyrhamdia* in Venezuela, and their occasional proximity to individuals of *Corydoras*. Note that that individuals or the school were not schooling mixed in with the *Corydoras*.

As mentioned above, *B. imitator* is said to mimic *C. melanisti* but also *C. brevirostris* Fraser-Brunner, 1947 and *C. delphax* Nijssen & Isbrücker, 1983.



C. brevirostris (male) – Steven Grant



C. delphax – Ian Fuller

B. rambarrani was collected from the same river as *C. burgessi* Axelrod, 1987 and has a similar appearance, although it is probably closer to *C. adolfoi* Burgess, 1982, *C. duplicareus* Sands, 1995, *C. imitator* Nijssen & Isbrücker, 1983, and *C. serratus* Sands, 1995 in terms of pattern.



C. burgessi – Ian Fuller



C. adolfoi – Ian Fuller



C. duplicareus – Ian Fuller



C. imitator – Ian Fuller



C. serratus – Ian Fuller

Sands (1990) states that *B. rambarrani* has also been imported with the similar *C. davidsandsi* Black, 1987. *C. nijsseni* Sands, 1989 is another similar species.



C. davidsandsi – Ian Fuller



C. nijsseni – Ian Fuller



B. rambarrani

All those 7 species of *Corydoras* come from the same river system (Upper Rio Negro, Brazil) as

B. rambarrani so it could mimic any or all of them.

Another *Corydoras* mimic appears to be *B. sp. 1*. This has a resemblance to *C. urucu* Britto, Wosiacki & Montag, 2009, *C. arcuatus* Elwin, 1938, and *C. narcissus* Nijssen & Isbrucker, 1980 (as well as several apparently undescribed species – see Fuller & Evers, 2005).



B. sp. 1



C. arcuatus – Mark Smith



C. narcissus – Mark Smith

Mike Kirkham's *B. sp. 1* are housed with about 30 *C. cf. arcuatus* and do shoal with them, albeit Mike has noticed that as the *Corydoras* move, the *Brachyramphid* seem to get left behind and then catch up.

When viewed from above they look very similar, and you can only really tell them apart

by the faint ridges of the scutes in the *Corydoras*.



Dorsal view of *B. 'sp.1'* and *C. cf. arcuatus* – Mike Kirkham

Mike's fish do not appear to be fully grown. My *B. sp 1* are housed with *C. gosseii* Nijssen, 1972 and they do not shoal or associate with them.

B. sp. 2 also appears to mimic similar *Corydoras* species to *B. rambarrani*, but is probably closer to *C. burgessi* and some of the pattern variants of *C. nijsseni*.

So, what do *B. marthae*, *B. meesi*, *B. heteropleura*, and *B. sp. 3* mimic?



B. marthae



C. pygmaeus - Ian Fuller

Sands (1985) stated that *B. marthae* was being imported for many years amongst *Corydoras pygmaeus* Knaack, 1966 but also with a hypoptopomatine loricarid: *Otocinclus* Cope, 1871, which appears to be *O. vestitus* Cope, 1872.

B. marthae does have a similar appearance to both these catfish, and to back this up, my two specimens came in as by-catches with a large group of *Otocinclus* cf. *vestitus*.



Otocinclus vestitus – Mike Noren

The two specimens were small, about the same length as the almost fully grown *Otocinclus*.

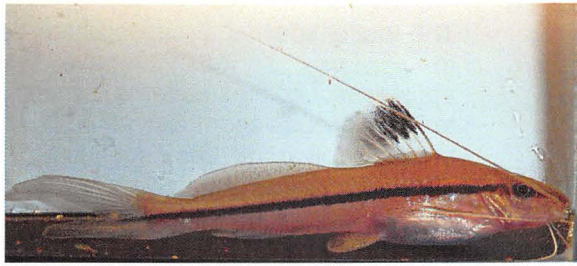
As the *B. marthae* have grown in length and body depth, they would stand out easily from the smaller *Otocinclus*, albeit they still share a similar pattern, but with slightly different colours.

My *B. marthae* are in with *B. sp 1* and *C. gosseii*. They do not shoal or associate with the *C. gosseii* (in fact they can be aggressive towards them).

Mimicry between a *Corydoras* and *Otocinclus* species has already been documented (Axenrot & Kullander, 2003); could *B. marthae* be mimicking two different genera, which may also be mimicking each other at some stage in their life cycle?

Sands (1985) stated that *B. meesi* had been imported with what he identified as *Pimelodella lateristriga* (Lichtenstein, 1823), but this identity is not certain.

I know that recently *B. meesi* has been imported in numbers in its own right, rather than as by-catches. These specimens were not small but about half grown.



Pimelodella cf. metae – Mike Kirkham

B. heteropleura and *B. sp. 3* are similar looking to *B. marthae* and *B. meesi*. It is not known what *B. heteropleura* and *B. sp. 3* mimic but it is my hypothesis that they also mimic small *Corydoras* and/or young *Pimelodella*.

Based on its distribution there are various species *B. heteropleura* could mimic. Ingo Seidel has informed me that it comes in as a by-catch with *Corydoras kanei* Grant, 1997, from the Rio Branco Brazil.



C. kanei – Ian Fuller

Although it does not appear too similar to that species so may not be actually mimicking it. Ingo caught *B. heteropleura* in the Rio Jatapu in Brazil along with two *Corydoras* species: CW30 and CW46. Out of those two *B. heteropleura* is similar to CW030 so may mimic that species.



C. CW030 – Ian Fuller

It could also mimic *C. griseus* Holly, 1940 as that species is known to be present in the Essequibo.



B. sp 3 cf heteropleura



C. griseus – Ian Fuller

Based on what I have gleaned from the information and observations above, it is my opinion that in the wild *Brachyramdia* species shoal with other similar patterned genera when they are young and small and thus the slight differences in pattern, colour and shape are not as noticeable in the immature fish.

As they mature and grow and thus the differences in adult size, shape, pattern and colour become more obvious and thus more so to predators, my hypothesis is that they will leave the shoal of other genera and group together with their own species, although they may still occur syntopically with the model.

The only information I can find to potentially disprove this is that Morris (1984) observed *B. imitator* shoal with *C. melanistius* and *C. brevirostris* and spawn shortly after the *C. brevirostris* did, although it may well be that in the wild mature *Brachyramdia* shoal with or near their model and spawn at similar times, the observations in Lundberg & McDade seem to back this up.

If my hypothesis is the case, is this actual mimicry, and if so which and what is its actual purpose? I follow Randall's (2005) definition of the difference between mimicry and crypsis / zoomimesis, or protective resemblance as he called it. His study was based on fishes, albeit marine ones. His definition, slightly adapted by me for freshwater fishes, is:

'Protective resemblance is used for fishes that closely resemble a part of a substratum, a plant, or a sedentary animal. Mimicry applies only to fishes that resemble active animals. In addition to resemblance in colour and morphology, the mimic may adopt a pattern of behaviour to enhance the deception.'

Therefore *Brachyrhamdia* are mimics in my opinion.

There are different forms of mimicry, depending on the reason for it. It appears to be a form of defensive mimicry. Although some *Brachyrhamdia* can be aggressive to *Corydoras*, I do not think they are biting fins for nutrition, or stealing eggs. I think that they are shoaling with them when young for defensive purposes, and as they get older and do not need the mimicry they become aggressive towards them. This is partly backed up by an observation by Morris (1984) who noticed *B. imitator* to be shy and hide on their own, but when *C. melanisti* were introduced they would shoal with them, but nip the fins of *C. aeneus* (Gill, 1858) and drive them out of the shoal.

The two forms of mimicry relevant here are Batesian and Müllerian.

In Batesian mimicry the mimic (*Brachyrhamdia*) shares the shares signals similar to the model (*Corydoras*, *Otocinclus*, *Pimelodella*), but does not have the attribute that makes it unprofitable to predators (e.g. unpalatability, which would be the armoured body of *Corydoras*). Batesian mimics are less likely to be found out when in low proportion to their model. In Müllerian mimicry two or more species have very similar warning signals and both share genuine anti-predation attributes (e.g. being unpalatable).

So, in *Brachyrhamdia* is the 'warning signal' the similar colour/pattern to that of the model species, which we assume the predator associates with some form of unpalatability in the model species?

The model species discussed here don't seem to us to have overtly aposematic⁴ colours/patterns, when compared to poisonous/venomous animals such as poison arrow frogs, coral snakes etc. However, the pattern/colour may give a warning signal to the predator, if not to us humans, as it is not probably a warning of venom, but of the model being difficult to eat due to armour, fin spines etc (unpalatability), although we know that many catfish have some form of mild venom.

But if this is the case, why would *Brachyrhamdia* apparently mimic another heptapterid, *Pimelodella*, which assumedly only has similar unpalatable characteristics – lockable sharp dorsal and pectoral fin spines⁵? It may well be that *Pimelodella* are more noxious to eat, or that the species that mimic *Corydoras* and *Otocinclus* are Batesian mimics, and the ones that mimic *Pimelodella* Müllerian mimics. Field studies could hopefully clear this up although this would be difficult, and perhaps as difficult as trying to reproduce the life cycle of these fishes as well as their models in an aquarium setting. This leads me onto the breeding of *Brachyrhamdia*.

Breeding

There has only been one written account of spawning that I am aware of. Morris (1984) reported spawning of *B. imitator* following the spawning of *C. brevirostris*, although the eggs were infertile. The text of the behaviour is quoted here (via www.scotcat.com):

"The water in the aquarium was around the 6.6 pH mark, hardness unknown, but local tapwater is quite soft. The first species to actually spawn was the C. brevirostris they chose to use the glass sides of the tank to site their eggs.

⁴ Aposematism (from *apo-* away, and *sematic* sign/meaning), perhaps most commonly known in the context of warning colouration, describes a family of antipredator adaptations where a warning signal is associated with the unprofitability of a prey item to potential predators. It is one form of "advertising" signal, with many others existing, such as the bright colours of flowers which lure pollinators. The warning signal may take the form of conspicuous colours, sounds, noxious taste, odours or other perceivable characteristics. Aposematic signals are beneficial for both the predator and prey, who both avoid potential harm.

⁵ When *Brachyrhamdia* are caught in a net they are able to move the pectoral fin to produce stridulation noises and vibrations – personal observations.

During the spawning act the *Brachyrhamdia* became highly active with the three smaller male specimens chasing the larger plumper females round into the clump of densely planted *Vallisneria* which, in this 15in. deep tank reached to the surface. Two pairs went through the motions of spawning amongst the *Vallisneria*. Observations of the actual act were made difficult by the speed of the actual spawning runs, but a side by side method was employed.

Many small transparent eggs were produced which adhered to the plant leaves. However, these proved to be infertile. Size was smaller than the average *Corydoras* egg but this was made up for in the larger numbers produced. The trigger factor seemed to be the spawning of the *Corydoras* (the sexual emissions from them, milt, etc.) but further study will see if this is true."

Based on examination of dissected specimens Lundberg & McDade hypothesised that breeding was seasonal, and not at the time the specimens were caught (January and early February).

They suggested that they may breed near or at peak high water season. If this is the case one may be able to induce spawning by raising the water level and cooling the water. *B. imitator*, *B. rambaranni*, and *B. sp. 2*. may need to have the water conditions similar to their blackwater habitat, so soft, acidic water, and wood and leaves may help

In terms of sexing *Brachyrhamdia* I would agree that females will probably be noticeably plumper and deeper bodied than males, but this can be misleading as they can be greedy eaters and become very fat. There should be some differences in the vent, which is the case in some other catfish. The only information I can find on heptapterid external sexual dimorphism is that of *Pimelodella boschmai* Van der Stigchel, 1964.

According to Van der Stigchel both male and female of that species have a genital papilla, but in the male it was well developed, conical, long, and further from the vent, and in the female it was short, thicker, and closer to the vent. I have looked at specimens of *B. imitator* (1), *B. marthae* (2), *B. meesi* (1), *B. sp. 1* (4) and *B. sp. 2* (1). All these, apart from the *B. imitator* appear to have a genital papilla. In the more mature / larger *B. marthae* and *B. sp. 2*

the urogenital area is swollen and there appears to be a papilla.



B. marthae genital papilla

In the *B. marthae* it is pointed, in the larger *B. sp. 2* it is thin and tube-like.



B. sp. 2 genital papilla

In the less mature and smaller *B. sp. 1*, and *B. meesi* the urogenital area does not appear swollen, but a small thin pointed papilla can be seen. In one of the images of *B. sp. 3* one specimen appears to have a swollen urogenital area, but no papilla. Therefore it is my opinion that *Brachyrhamdia* have external sexual dimorphism – the males have a small papilla, the females do not.

Anyone lucky enough to have a sexed group of one or more of the species should try a spawning project with these fish. It will be interesting to see if they will spawn without their model, and how they behave without it during their life cycle. A comparison of with and without the model would be even better.

Aquarium care

From my limited experience with these catfish they appear to be generally quite hardy. They

will eat tablet, frozen, and live foods often voraciously. They will accept temperatures in the range of 75-79°F, ph 6.2-7.5 (although the lower ph may lead to fin erosion, so I would suggest 6.5 as the lowest).

One should provide plenty of cover such as plants, pipes, bogwood, caves etc but if you are keeping them with their model, which would be ideal, I would also provide some shoaling space. I advise sand as the substrate rather than gravel, as it appears that this is the natural substrate in the wild. Lundberg & McDade noted that when trying to evade capture by the collectors they dived into the sand. They will eat fish small enough to fit in their mouths, and some species can be aggressive towards *Corydoras*, although this may mainly be to those that they don't mimic.

I have noticed in my *B. marthae* that the dominant specimen of the two males has much more distinct and deeper colouration than the subordinate male.

Acknowledgements

Thanks to Julian Dignall, Hans-Georg Evers, Ian Fuller, Ingo Seidel, Mike Kirkham, Allan James, Mark Smith, and Mike Noren for the use of their images, and any information provided.

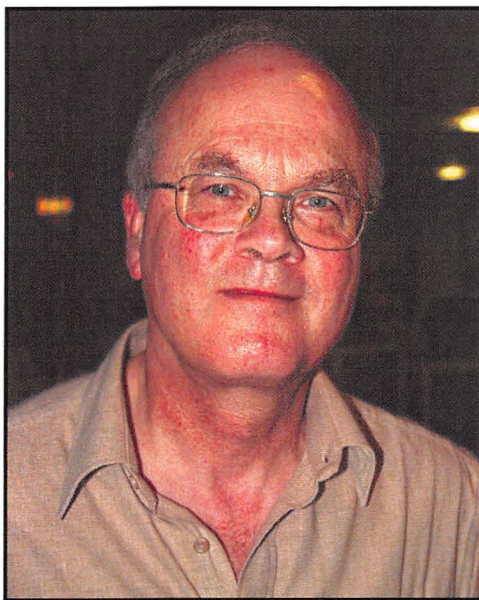
References

- Axelrod, H. R., 1987.
Two new species of catfishes (Siluriformes, Callichthyidae and Pimelodidae) from the Rio Unini, Amazonas, Brazil. *Tropical Fish Hobbyist* v. 35 (no. 12): 22-25.
- Axenrot, T. E. and S. O. Kullander, 2003.
Corydoras diphys (Siluriformes: Callichthyidae) and *Otocinclus mimulus* (Siluriformes: Loricariidae), two new species of catfishes from Paraguay, a case of mimetic association. *Ichthyological Exploration of Freshwaters* v. 14 (no. 3): 249-272.
- Bockmann, F. A. and A. M. Miquelarena, 2008.
Anatomy and phylogenetic relationships of a new catfish species from northeastern Argentina with comments on the phylogenetic relationships of the genus *Rhamdella* Eigenmann and Eigenmann 1888 (Siluriformes, Heptapteridae). *Zootaxa* No. 1780: 1-54.
Corydoras World
www.corydorasworld.com
Eigenmann, C. H., 1912.
The freshwater fishes of British Guiana, including a study of the ecological grouping of species, and the relation of the fauna of the plateau to that of the lowlands.
- Memoirs of the Carnegie Museum* v. 5 (no. 1): i-xxii + 1-578, Pls. 1-103.
- Fuller, I. A. M. and H. G. Evers, 2005.
Identifying Corydoradinae Catfish.
Ian Fuller Enterprises, Kidderminster. 1-384.
- Grant, S., 2010.
Brachyrhamdia marthae Sands & Black, 1985.
Scotcat March 2010 Factsheet, www.scotcat.com
- Lundberg, J. G. and L. A. McDade, 1986.
On the South American catfish *Brachyrhamdia imitator* Myers (Siluriformes, Pimelodidae), with phylogenetic evidence for a large intrafamilial lineage.
Notulae Naturae (Philadelphia) No. 463: 1-24.
- Morris, J. T., 1984.
An observation on a spawning of *Brachyrhamdia imitator* Myers, 1927.
Catfish Association of Great Britain Magazine, No. 41. Jan. 1984, p. 12-13.
- Myers, G. S., 1927.
Descriptions of new South American fresh-water fishes collected by Dr. Carl Ternetz.
Bulletin of the Museum of Comparative Zoology v. 68 (no. 3): 107-135.
- Planet Catfish
www.planetcatfish.com
- Randall, J. E., 2005.
A Review of Mimicry in Marine Fishes.
Zoological Studies 44(3): 299-328 (2005).
- Reis, R. E., S. O. Kullander, and C. J. Ferraris, Jr., 2003.
Check list of the freshwater fishes of South and Central America. CLOFFSCA. 2003: i-xi + 1-729.
- Sands, D. D. and B. K. Black, 1985.
Two new species of *Brachyrhamdia*, Myers, 1927, from Brazil and Peru, together with a redefinition of the genus. In: D. Sands, *Catfishes of the World*. v. 3, *Suppl (first set)*: 58(1)-58(8).
- Sands, D. D., 1985.
Brachyrhamdia, cryptic or mimetic catfishes from South America – Zoomimesis, Camouflage or Mimicry?
Catfishes of the World. v. 3, *Suppl (first set)*: 58(9)-58(11).
- Sands, D. D., 1990.
"Brachyrhamdia rambarrani" – and also "Brachyrhamdia – A valid genus".
Catfishes of the World 1990 Supplements, P1990/13, and P1990/14 1-3.
- Scot Cat
www.scotcat.com
- Shibatta, O. A., 2003.
Phylogeny and Classification of 'Pimelodidae'. P. 385-400
In: Arratia, G. et al (Eds.), 2003.
Catfishes, Vol. 1, p i-xvi, 1-487. Science Publishers Inc.
- Sullivan, J. P., J. G. Lundberg and M. Hardman, 2006.
A phylogenetic analysis of the major groups of catfishes (Teleostei: Siluriformes) using rag1 and rag2 nuclear gene sequences".
Mol Phylogenet Evol. 41 (3): 636-662.
- Van der Stigchel, J. W. R., 1964.
A new species of pimelodid catfish from eastern Brazil, *Pimelodella boschmai* nov. spec.
Zoologische Mededelingen (Leiden) v. 39: 327-330.
- Zarske, A., 2003.
Wiederbeschreibung von *Rhamdia marthae* (Sands & Black, 1985) (Teleostei, Siluriformes, Pimelodidae).
Zoologische Abhandlungen; Staatliches Museum für Tierkunde in Dresden v. 53: 47-55.

CATFISH STUDY GROUP SUMMER LECTURE

SUNDAY 15th AUGUST 2010

GENETICS OF ORNAMENTAL FISHES



by **Dr David Price**
Senior Lecturer in Genetics
School of Biomedical & Biological Sciences
University of Plymouth.

Venue:
Highfields Working Men's Club,
Ratcliff Street,
Darwen, Lanc's.
BB3 2DF.
Doors open 12.00 noon
(To be followed by a limited lot 'short' auction).

Convention 2010

Mark Walters

This year our Convention was held on the 5th, 6th and 7th March in the seaside town of Southport, UK, in the prestigious Prince of Wales Hotel.

Delegates started arriving on the Friday evening to find much of the arrangements for the convention in place, thanks to the hard working convention committee.

Exhibitors were busy setting up their stands including the Anabantoid Association of Great Britain (pictured below),



The British Livebearer Association, British Cichlid association (fantastic live exhibit, *Vieja argentea*, pictured below), Killifish association, Cichlid Press also set up specialist stands.



Tetra (pictured below), Aquarian and Mark Breeze (live food guru) provided trade displays.



The CSG had its own displays with merchandise and of course the Breeders Award Programme display.

This year we made arrangements for bespoke display tanks to be available for BAP participants to exhibit their successes. The equipment (pictured below) was funded by the CSG and CorydorasWorld.com



The BAP display generated a fantastic amount of interest over the weekend with 11 groups of tank bred catfish from at least 7 genera on display.

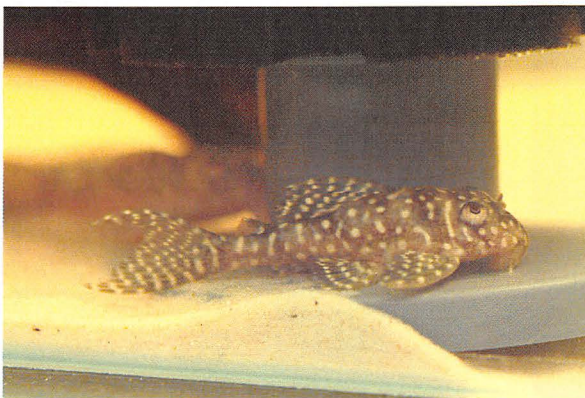
The exhibit included some species of unknown identity providing a challenge for some of the expert delegates to crack. Thankfully Ingo Seidel and Ian Fuller provided the answers.

What had been widely regarded in the hobby as *Ancistrus* sp. 'L144' (pictured below, exhibited by the Editor) are not now regarded to be this species, but another unknown species (not a xanthic form of the common *A. cf. cirrhosus*).



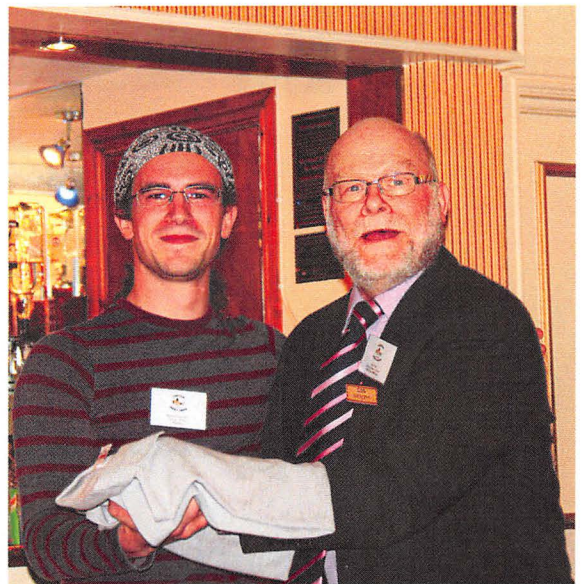
Similarly a group of *Hypancistrus* displayed by Danny Blundell, thought to be *H. sp. 'L04'* ('angelicus ancistrus') was identified as *H. sp. 'L136b'* (shown below).

Keepers of this species will be pleased to have pinned down the identification of this fish!



Speakers

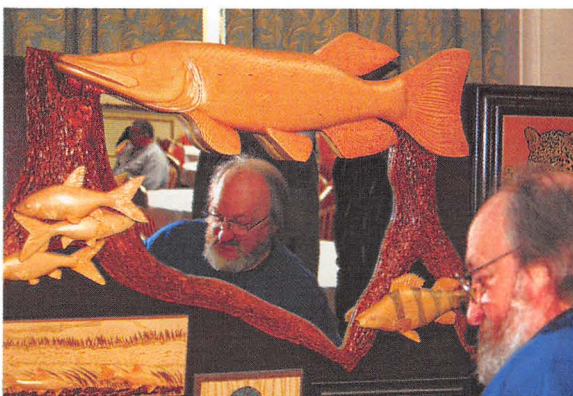
As has been the norm over the last few years we had speakers from far and wide. Worldwide expert on *Loricariidae* and good friend of the CSG, Ingo Seidel; Dr. Michael Hardman, known for many catfish articles and his latest scientific work on the Bullheads of North America; Markos Alexandrou from Bangor University in Wales; and plant expert Claus Christensen from Denmark. Michael, Markos and Claus are pictured below.



We had our very own Secretary, Adrian Taylor on the Friday night with a presentation on his favourite moth cats. Adrian (pictured below) was also hard at work manning the merchandise stand.



The Saturday night after dinner speaker was our vice President, Dr. Peter Burgess (pictured below) with a hilarious look back to his beginnings in the hobby.



Trophy keepsakes, carved impeccably by our Show Secretary Brian Walsh were presented to each speaker in turn. Brian is pictured hard at work on his display stand.

I have captured some of the detail from one of Ingo's fantastic lectures – It would be a particularly difficult task to document all the nuggets of information given. At the end of the day the convention is best experienced live – we could never do it justice through this journal.

Ingo Seidel – Catfishes of Suriname

For much of Ingo's Suriname presentation (Ingo pictured with Ian Fuller), the audience was stunned into silence by images of unseen catfish. The country is not regularly visited by commercial collectors yet has an enviable list of endemic species.



Many of the rarer species are shipped off to Japan, where they command a premium. Corydoras are a particular favourite for collectors and slides of species such as *C. baderi*, *C. filamentosa*, *C. nanus*, *C. bicolor* were shown. All of these species are extremely rare in the hobby – or unknown in some cases.

Suriname close to the equator and is still heavily forested (80%), meaning that there is plenty of pristine habitat. Ingo took us on a journey along the Rio Tapanahony (26.5C,

pH6, < 1kH) where *Corydoras* were caught along the sandbanks including *C. sp. 'Palumeu'* (cf. *heteromorphus* with a rounded snout – since assigned code CW047). Also caught were *Microglanis poecilus* and the ubiquitous *Callichthys*. In the rapids of the Suriname River were found *Hartia guianensis* – very specialised algae grazers needing high oxygen concentrations, *Hypostomus gymnorhynchus*, *Pimelodus ornatus*.

In the lower Suriname River (Gran Rio) at Awarradam were found *Corydoras boesmani*, again on the sandbanks, at 28C and a pH of 6.6. Also caught were the lipbrooding *Metaloricaria paucidens* and *Hypoptopomatidae* species. In the rapids there were plenty of grazing *loricarids* including *Hypostomus micromaculatus*, *H. surinamensis*, *Guyanancistrus cf. brevispinosis*, *Pseudancistrus depressus* with fine 1cm bristles around the mouth and *Hartia surinamensis* upto 30cm in length. The heavily armoured *Creniloricaria maculata* (different to *Hartia* which have no ventral plates) was also found. In feeder streams were discovered true *Corydoras punctatus* and more *C. boesmani*.

Even warmer (32C, pH 6.5) was the Coppename River where in Spari Creek were discovered *Corydoras brevirostris* and another new *Corydoras* the colour of *C. aeneus* but in the *elegans* group – *C. sp. 'spari creek'* (now coded as CW048).

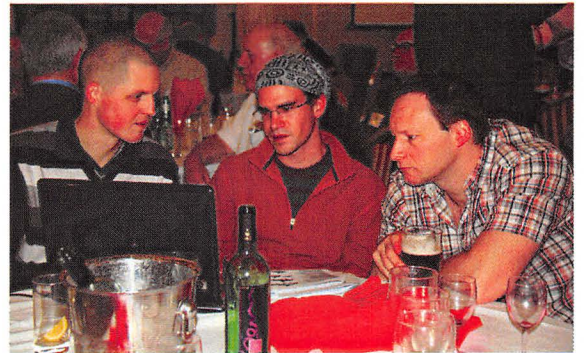
Other species captured included the real *Hypostomus plecostomus*, *Ancistrus temmincki* and *Trachelyopterus galeatus*. The talk concluded with accounts of brackish water catfish species encountered at the mouth of the Suriname River

Extra Curricular Activities



No CSG convention would be complete without the after hours debates discussions and diatribes and this year was no exception. Well lubricated with fine wine and good beer, new friendships were made and issues (catfish related) resolved!

A few images are shown below.



Following presentations to all speakers the weekend was drawn to a conclusion at about 5.30 on the Sunday night by our President, Ian Fuller, whose hard work alongside the committee and helpers has not gone unnoticed and again they rose to the occasion to make it another successful Convention.

Plans have already been made for the next convention – see the advert in this issue. See you all in March 2011!

Thanks must also be given to our sponsors who you can view at:
http://catfishstudygroup.org/core/convention_sponsors.htm

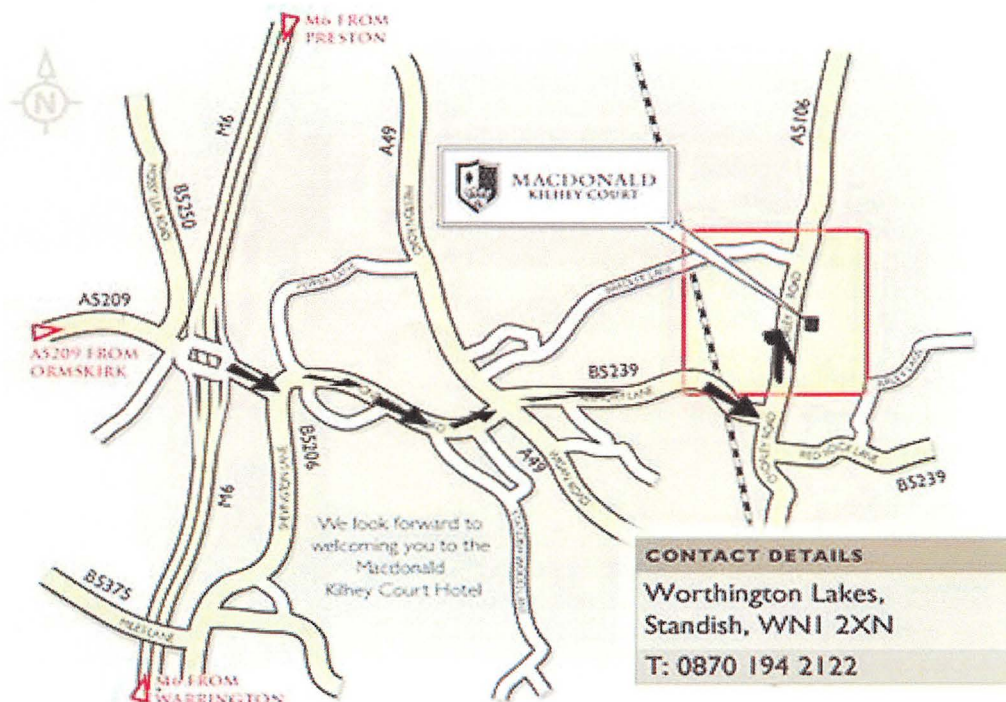
All photos by Mark Walters and Danny Blundell.

CSG Convention 2011

The date for the CSG's 2011 Convention has now been set for : - 18th - 19th - 20th March

The venue is totally new and should meet with everyone's approval, it is **The Kilhey Court Hotel, Chorley Road, Standish, Wigan, Lanc's. WN1 2XN**. This is a superb four star hotel with enough room to cater for our every need. The conference room holds up to 300 people.

See map below and directions, or goto: http://www.catfishstudygroup.org/core/find_us.htm



Because this is a relatively small hotel with a total of 62 rooms, bookings will be on a first come first served basis and those that book their tickets early will get discount. Booking forms will be available as soon as everything has been settled and checked. Please check back to the CSG website for upcoming information. Or contact the Convention Manager – Ian Fuller.

Catfish Study Group 32nd Annual Convention

The Venue

The Kilhey Court Hotel
Chorley Road,
Standish, Wigan,
Lanc's WN1 2XN,
United Kingdom



The Speakers

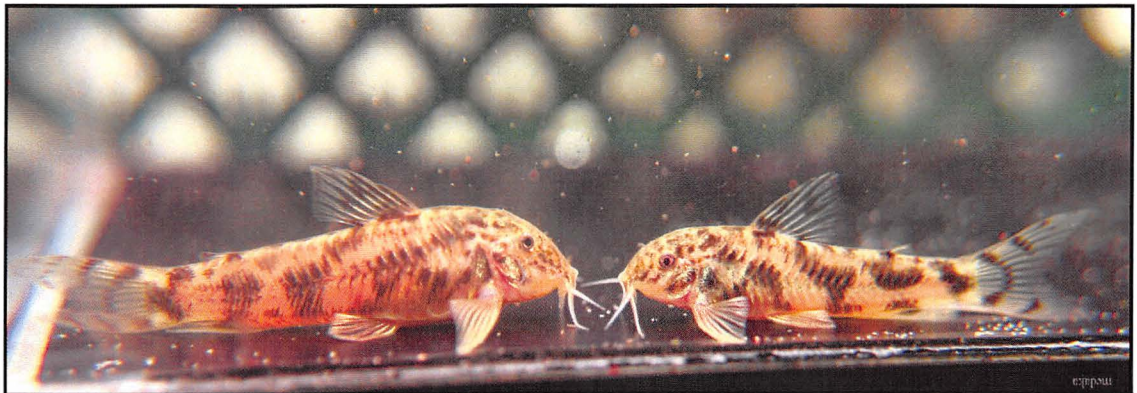
Dr Michael Goulding
Dr Ralph Britz
Dr Devon Graham
Rupert Bridges
Hans-Georg Evers
Bob Barnes

18th-19th-20th March 2011

For full details contact ian@catycats.com or visit the CSG website www.catfishstudygroup.org

Spawning *Aspidoras albater*

Adrian W Taylor. F.N.A.S. Dip; MB.



Aspidoras albater. Female left, male right

Having acquired quite a nice pair of these small Corydoradinae species unexpectedly, I hurried around my fish room trying to find a tank that I could utilise. I decided that some *Akysis prashadi* that I had in a small tank on their own, could be moved into another larger tank that contained a mixture of fish; and thus giving me room into which I could house the *Aspidoras*.

The tank itself was 400mm x 160mm x 160mm and filtered via a 'hamburg matten filter', and had a sand substrate. I removed 75% of the water in the tank and refilled with a mixture of RO water and rainwater, which was at the ambient temperature of the fish room, which is space heated.

I gradually introduced the pair of *Aspidoras albater*. This involved placing the catfish into a container and gradually adding water taken out of the prepared tank over a few hours, and into which I added a clump of java moss, and released the pair.

Over the next few weeks I lightly fed these on a mixture of grindal worm and commercially prepared tablet feed. After a couple of weeks I noticed that the female was looking slightly more plump and the male seemed to be a bit more bright in its colouration and was also showing more interest in the female.

I then added a nylon spawning mop to one corner of the tank, positioned at the water line and was opposite from the filter. Water changes were increased from 20% every 6th day to 30% every 3rd day; and I added into their diet live Cyclops which were to be found in one of my water butts. Like most

of the other members of this genera spawning took place during the hours of darkness a few days later.

Ten eggs which were clear with a hint of brown in colour; were found in-amongst the nylon spawning mop and these were removed into a small plastic container, aerated, and left to hatch.

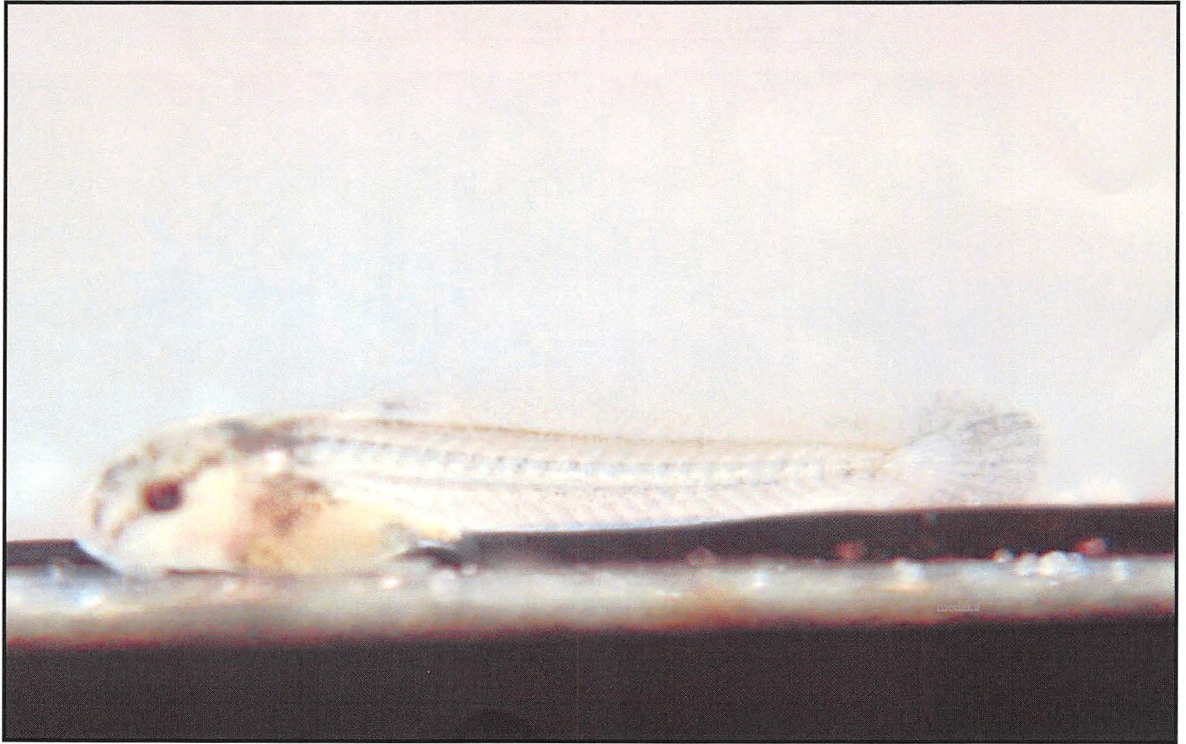
The water parameters at the time of finding the eggs were as follows: Temperature 23°C, pH 6, dGH 5 and with a water conductivity of 130µS cm. The eggs hatched some 24hrs later with the fry taking a further 24hrs to absorb their yolk sac and become free swimming.

The fry was then fed upon a mixture of infusoria and marine invert food; twice daily, with 50% water changes to the fry container carried out each evening.

After 7 days the fry were photographed and moved on to a small growing on tank that had a sand substrate, and which contained a small sponge filter and a small clump of



java fern.



A. albater fry at 7 days

The fry were fed upon a diet of newly hatched brine shrimp, powdered flake and milliworms. Water changes were carried out on the fry tank at a rate of 30% every third day for the first month and then subsequently I reduced the water changes to 30% every 6th day.



A. albater fry at 2 months

CATFISH STUDY GROUP

19 SEPTEMBER 2010

Highfields Working Men's Club
Ratcliffe Street, DARWEN Lancs BB3 2BZ

OPEN SHOW

Catfish Classes Only

Benching from 10.30 - Judging 13.00
Show Secretary: Brian 01254 776567

AUCTION

Normal Entry Rules Apply
Any fish other than painted accepted;
Name & Tel No on electrical goods;
Suitable containers for livestock, etc.
[If unsure of the rules ask when booking in]

CSG Commission 15%

Booking in:
Auction Manager: Dave 01942 248130
Or from 10.30 on the day

CANTEEN

Hot & Cold Food & Drinks & Bar

Catfish Study Group Show Schedule - Classes

1. **Aspidoras**
2. **Brochis**
3. **Corydoras group A** - up to 55 mm SL. (females)
4. **Corydoras group B** - over 55 mm SL. (females)
5. **Corydoras Types** - C-numbers and unidentified*
6. **Scleromystax**
7. **AOV Callichthyidae** - Calichthys; Dianema; Hoplosternum; Megalechis; Leptoplosternum.
8. **Aspredinidae**
9. **Auchenipteridae**
10. **Bagridae**.
11. **Doradidae**
12. **Loricariidae** - Up to 130 mm SL
13. **Loricariidae** - Over 130 mm SL
14. **Loricariidae** - L & LDA numbers up to 130 mm SL[i]
15. **Loricariidae** - L & LDA numbers over 130 MM SL[i]
16. **Mochokidae** - Up to 130 mm SL
17. **Mochokidae** - Over 130 mm SL
18. **Pimelodidae** - Up to 100 mm SL
19. **Pimelodidae** - Over 100 mm SL
20. **AOV Cold water Catfish** [ii]
21. **AOV Catfish** - South American
22. **AOV Catfish** - African
23. **AOV Catfish** - Asian
24. **Pairs** - Corydoradinae
25. **Pairs** - Loricariidae. Including L & LDA numbers
26. **Pairs** - AOV South American
27. **Pairs** - AOV African
28. **Pairs** - AOV Asian
29. **Breeders** - Corydoradinae
30. **Breeders** - Loricariidae, including L & LDA numbers
31. **Breeders** - AOV South American
32. **Breeders** - AOV African
33. **Breeders** - AOV Asian
34. **Family Class** - Pair & Breeders - Adults should be placed in their respective Pairs class and juveniles in their respective Breeders class, the points are added together and then divided by 2.
35. **Breeders Master Class** - 1 entry = 3 separate species of juvenile fish.
 - i. Corydoradinae and Loricariidae species with a L or LDA number that have been described or positively identified should be entered in the named species class.
 - ii. Because of current legislation we can only accept entries for the AOV Cold Water Catfish on production of a current valid licence

Corydoras sp. "Uruara" - CW37**Erik Schiller**

CW37 – Pic courtesy of Marcus Hufgard

Corydoras sp. CW37 is a *Corydoras* species that resembles *Corydoras punctatus* from Surinam. This mailed catfish is depicted as *Corydoras punctatus* "Xingu" on one Japanese website. With its striking pattern of fine dots, covering the entire body and combining to form a fine longitudinal streak on the ventral surface, this is a very pretty mailed catfish. A striking black spot in the dorsal fin constitutes another distinguishing character.



Corydoras sp. CW037

Corydoras sp. "Uruara" – its name before it received a CW number – was first imported to Germany by Jens Gottwald of Garbsen. According to Herr Gottwald these catfishes were caught by his collectors in the Rio Uruara in the federal state of Para in Brazil. The Rio

Uruara is a tributary of the Rio Curua Una, which in turn flows south into the Amazonas near Santarem. Marcus Hufgard acquired a group of these lovely mailed catfishes. After just one month these *Corydoras* spawned for Marcus, who has reported the following water parameters: 24 °C, 5 °dGH, 3 °dKH, and a pH of 6.5. He also reports that his adult fishes are confirmed egg-cannibals, and he usually manages to save only 15-20 eggs. I received ten of the first juveniles in summer 2008. These youngsters grew slowly but evenly.

Then, in December 2009, I found the first eggs on the aquarium glass. There were always 10-30 eggs collected per clutch, even with later spawnings. Only rarely were they found on plants; up to 90% were attached to the end glasses of the aquarium. The female invariably laid just two eggs per spawning pass. The size of the eggs was between that for *Corydoras aeneus* and that for *Corydoras panda*.

Hatching took place after four days at 23 °C, but the hatch rate was only around 50%. From an average of 20 eggs I was only ever able to rear 5-8 *Corydoras* sp. CW37. Not exactly the best of results and not at all the same as the data reported by Marcus Hufgard for wild-caught specimens.

Moreover an aquarist friend who also obtained tank-bred stocks from Marcus Hufgard had no better success, although his clutch sizes were

larger. In my opinion the poor fertilization rate and the losses during the development of the eggs are a function of the combination of water parameters.



CW037 juvenile at 6 weeks

During the first weeks the young fishes are very light in colour, with no markings, then slowly but surely more and more dots develop on the bodies of these catfishes. At 1 cm juveniles of *Corydoras* sp. CW37 exhibit the following body markings: lots of tiny dots all over the body, a small black spot on the upper third of the dorsal fin, and a faintly marked eye-stripe completes the appearance of the roughly 1 cm long youngsters.

A very rare *Corydoras* species from Surinam is very similar. *Corydoras punctatus* was described from the Brokopondo district. The dotting in this species is appreciably coarser than in *Corydoras* sp. CW37, plus *C. punctatus* has a broad band marking on the caudal fin. In *Corydoras* sp. CW37, by contrast, the numerous small dots produce a faint banding on the caudal fin.



C. punctatus Picture courtesy of Ian Fuller

In the aquarium trade several *Corydoras* species are often incorrectly offered for sale under the name *Corydoras punctatus*. These are usually members of the *Corydoras agassizi* and *Corydoras schwartzi* assemblage.

A further very similar species was brought back for me from Austria by an aquarist friend. This *Corydoras* was collected in French Guiana.

The collecting locality was the Rio Comte, south of the town of Cacao. The Rio Comte flows south from Cayenne into the Atlantic.

The local people term these catfishes *Corydoras* "bondi bondi". According to the local fishermen this species is caught only in the Rio Comte. Like *Corydoras bondi*, this species, which I will here christen *Corydoras* sp. "Comte", has a continuous mid-lateral stripe composed of dots and bordered by a light band.

Beneath this light line there are a very small number of small dots. The upper half of the body is covered in lots of dark dots. The caudal fin exhibits 6-7 longitudinal bands. The dorsal fin also has hints of 2-3 stripes, but no dark spot! The body shape of *Corydoras* sp. "Comte" is more thick-set than in *Corydoras bondi* (which comes from Venezuela) or *Corydoras copenamensis* (a species from Surinam).



Corydoras sp. "comte" (editor note: now assigned CW050)

I have now been keeping this species for three years, but unfortunately despite spawning tubes being clearly visible, I have yet to persuade these *Corydoras* to actually spawn. All three species have one characteristic in common – they are all extremely shy. Only rarely are these *Corydoras* to be seen by day.

They spend most of their time beneath large roots, plants, and similar hiding-places. Only at twilight do they come out of their hiding-places and go looking for food, and even then at the least vibration they disappear again for a while. I keep all three species in aquaria with light sand and roots as hiding-places (these catfishes don't lose their shyness even with a dark substrate). The temperature fluctuates between 23 and 25 °C and the pH is on average 7.0.

Unless assigned, all pictures courtesy of the author.

This article was first published on Corydorasworld.com

CSG Spring Auction – 21st March 2010**Mark Walters**

I have listed all catfish which went through the auction this March. It's an impressive offering. Personally, I grabbed 6 *Brochis splendens* at £2 each, a *Rhineloricaria lanceolata* male and 4 green lazer Cory's:

Corydoras nattereri, *C. reticulatus*, *C. leucomelus*, CW gold lazer, *C. aeneus* 'black', *C. duplicareous*, *C. weitzmani*, *C. melanotaenia*, *C. metae*, *C. habrosus*, *C. pygmaeus*, *C. loretoensis*, *C. sterbai*, *C. semiaquilis*, *C. robineae*, *C. simulatus*, *C. bondi*, CW green lazer, CW orange lazer, C140, *C. similis*, C139, *C. elegans* (pictured below), *C. panda*, *C. venezualanus*

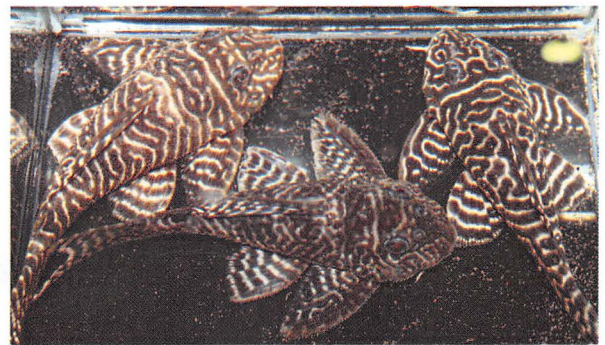


Aspidoras taurus, A. sp C118, A. sp. CW035, A. sp. C125 'gold', *Scleromystax barbatus*, *S. prionotus*, *S. kronei* (male pictured below),



Brochis splendens, *Megalechis thoracatum*, *Leptoplosternum pectorale*,

Rhineloricaria sp., *R. lanceolata*, *Hypancistrus* sp. L136b, *H. sp.* L400, *H. sp.* L201, *H. sp.* L199, *H. sp.* LDA19, *H. sp.* L333, *H. zebra*, *H. sp.* L066 (pictured below) ,



Ancistrus cf. *cirrhosus*, A. sp. L144, A. sp. L182, *Sturisomatichthys* sp. 'columbianus', *Otocinclus cocama*, *O. vittata*, *Baryancistrus* sp, *Dekeyseria* sp. L052, *Sturisoma nigrirostrum*, *Pseudancanthicus adonis*,

Hara jerdoni, *Amblydoras* cf. *hancocki*, *Neotropius atherinoides*, *Bunocephalus caracooides* (pictured below), *Pimelodella blochi*, *Synodontis polli*, *S. petricola*, *S. angelicus*, *S. nigrita*, *Rhamdia quelen*.



All pics by Mark Walters.

What's New - April 2010

Mark Walters

This article presents information for five recently published scientific papers for which further details are available.

The following uncommon species, have been sighted: *Amaralia hypsiura*, *Scleromystax cf. lacerdai*, *S. prionotus*, *S. kronei*, *Brochis britskii*, *B. multiradiatus*, *Corydoras sp. 'CW049'*, *C. sp. 'CW006'* *C. cf. orphonopterus*, *C. sp. 'CW007'*, *C. cf. orcesi*, *Trachyloperus sp. 'Ottarongo'*, *Trachelyichthys exilis*, *Centromochlus reticulatus*, *Caematoglanis zonatus*



Brochis multiradiatus – pic courtesy of Mark Walters



Corydoras sp. 'CW006' – pic courtesy of Mark Walters



Scleromystax cf. lacerdai – pic courtesy Mark Walters

Taphorn, DC, JW Armbruster & D Rodríguez-Zolarte, 2010. A new species, of *Ancistrus*, *A. falconensis*, is described from the Hueque and Ricoa Rivers, small, isolated Caribbean drainages of the northwest Falcón state of Venezuela.

The species is compared with *A. gymnorhynchus*, a similar species from adjacent drainages which has a distinct pattern and morphological arrangement.

Unfortunately, in the immediate vicinity of the type locality, there is human pressure on water resources.

In addition, human engineering affects most coastal streams, causing accelerating habitat loss and degradation. Thus, this new species must be considered vulnerable to extinction.

Rocha, MS & FRV Ribeiro, 2010. A new species of *Pimelodus*, *P. luciae* is described from Rio Itacaiunas, a clear water tributary of the Rio Tocantins, Brazil.

A review of *Pimelodus* species from the Amazon Basin revealed the existence of the undescribed species.

The Tocantins basin contains a rich freshwater fish fauna including many endemic species and a variety of habitats. The new species exhibits a unique spotted pigmentation pattern for *Pimelodidae*. *P. luciae* is known only from the type-locality.

N. Anganthoibi & W. Vishwanath, 2009. A new *Erethistid* catfish species, *Hara koladyensis* is described from Koladyne River, Mizoram, India, following a collection in the area.

It is distinguished from its congeners in having rough (vs. smooth or serrated) anterior margin of dorsal spine.

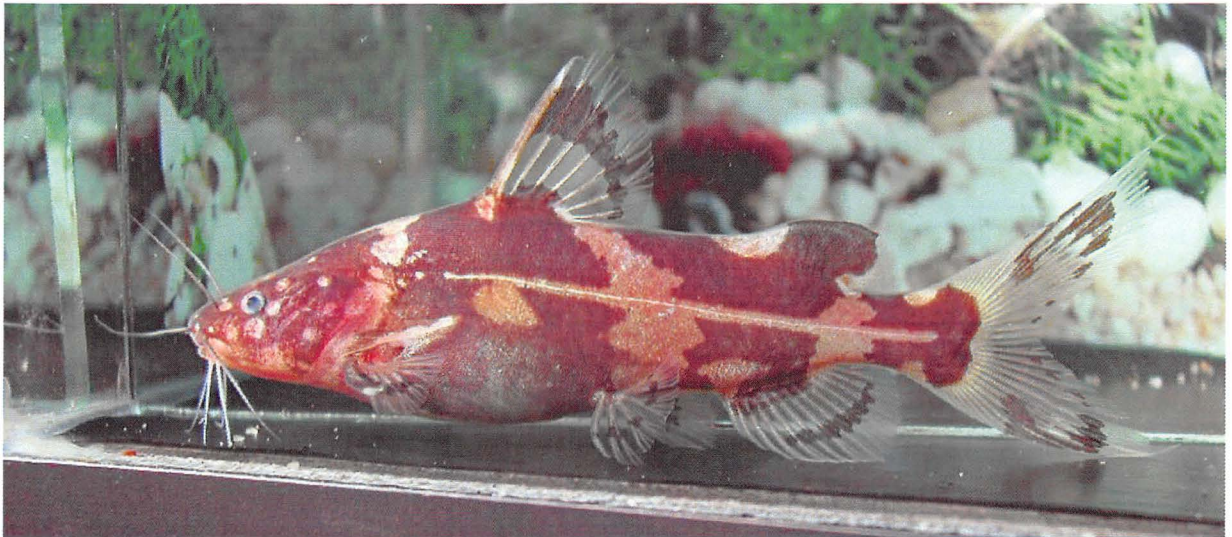
At the point of collection, the river bottom is rocky and water current very fast. The isolated habitat (separated from other main river drainages by the unique geography of the area) is expected to yield many endemic species.

The paper provides a valuable reference resource for study of other *Erithistidae*.

Jiang, W-S, X-Y Chen & J-X Yang, 2010. A new species of sisorid catfish from the genus *Glyptothorax* has been described. *G. obliquimaculatus* originating from the Salween drainage of Yunnan, China

Ng, HH, 2010. a new species of Bagrid catfish has been described originating from Borneo.

Pseudomystus funebris is a blackwater bumble catfish from the Rungan Drainage of southern Borneo. The species is found in floodplain peat swamps of a very low pH (<5).



Pseudomystus funebris – picture courtesy of Steve Grant



Caelatoglanis zonatus – female picture courtesy of Steve Grant

If you have any sightings you would like to share or want to track down a paper, contact the Editor.

Acknowledgement is made to Planet Catfish and Practical Fishkeeping magazine for the original source of information on papers.

CSG Journal Sponsors



Tetra Products



AQUALIFE

Wyevale Garden Centre, 338 Southport Road, Ulnes Walton, Leyland PR26 8LQ
Tel/Fax: 01772 601777

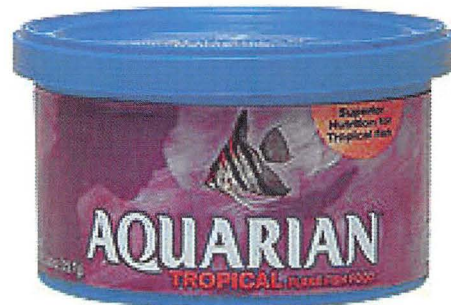
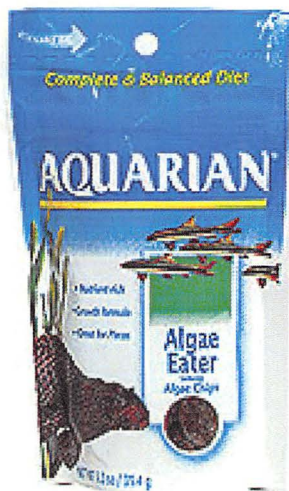


OVER 100 TANKS - WIDE RANGE OF CORYDORAS AND CATFISH



Visit us online at www.northtrop.co.uk

Mars / Aquarian Products



CATFISH STUDY GROUP

SHOW RULES

Fish will be judged to Catfish Study Group Show Size Guide. Submittance of an entry implies acceptance of all of the rules.

1. Fish will be exhibited in clear, flat-sided containers, the smallest of which will be 100mm x 100mm x 100mm. Jars will not be accepted. Exhibitors are requested to label their show tank with the Latin and/or Common name of the fish.
2. Gravel/Sand is allowed. Aeration may be used.
3. Show tanks must be of sufficient size to allow fish to swim and turn. Exhibitors may be **DISQUALIFIED** if the fish is poorly presented, in poor or cramped conditions. Fish will not be fed on the show bench.
4. Breeders teams will consist of **4** fish, minimum age **3** months, maximum **15** months. Date of birth/hatching and name of species must be shown on tanks.
5. Entries may not be moved, or interfered with once judging has commenced, except by order of the Judges or the Show Secretary.
6. **DEBENCHING** is not allowed until the Show Secretary makes the announcement, except by prior arrangement with him.
7. The show organisers reserve the right to **RE-BENCH** any fish into their appropriate class.
8. **PHOTOGRAPHY** of entries will be permitted after judging is completed.
9. Time will be allocated to allow viewing of the judges' decisions.
10. The Judges decisions are final. Judging sheets will be displayed in the hall.
11. Any complaints, comments, etc., should be directed to the Show Secretary.

Whilst every care will be taken, the Catfish Study Group will not be held responsible for the loss of or damage to fish, equipment, or persons.

CSG 2010

**MIDLAND
WATERLIFE**

**AQUARIUM AND POND CENTRE
20 THE STRAND
BROMSGROVE**

WORCS B61 8AB

TEL :- (01527) 879207

*FRIENDLY EXPERT ADVICE
ALWAYS AVAILABLE
HOME CALLS NO PROBLEM*

GREAT SELECTION OF **AQUARIUMS**



**AQUARIUMS INSTALLED
AND MAINTAINED
HOME/OFFICE/SURGERY
AQUA RENTALS AVAILABLE**

**TOP QUALITY
HEALTHY
TROPICAL
COLD WATER FISH
AND PLANTS GUARANTEED**

LARGE SELECTION OF
PRE-FORMED **PONDS** AND
WATERFALLS

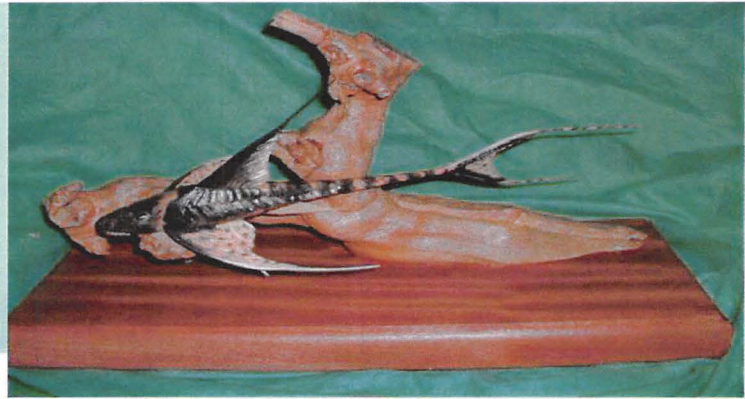
**NOT SURE WHAT SIZE
LINER/PUMP/FILTRATION ?
WE WILL MEASURE FOR YOU**



**POND CONSTRUCTION
AND CLEANING**

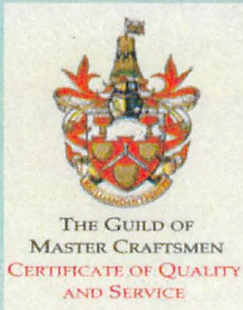


**WATER GARDENING
DISPLAY AREA
NOW OPEN**



G.B.W

Products & Services



**High Class Joinery
Furniture
Wood Carvings
Commissions Undertaken**

Contact
Brian Walsh
Tel: (01254) 776567
Mob: 07977 428 788
Email: g.b.w@live.co.uk

