

centrum

INVITES YOU TO THE



2019 GALA & AUCTION
THIS ENCHANTED FOREST

SATURDAY | OCTOBER 19, 2019 | 5PM

"EACH FOREST HAS ITS OWN SOUND,
ITS OWN RUSTLING WHISPERS AND SMELLS.
A VOICE SPEAKS UP WHEN YOU ENTER ITS
ACRES THAT CAN'T BE MISTAKEN
FOR ONE YOU'D HEAR ANYPLACE ELSE."

— CHARLES DE LINT

"PASSAGE"

BY SCULPTOR CORNELIA KONRADS

PHOTOGRAPH BY ERIC SANDER



THANK YOU

TO ALL OF OUR SPONSORS



Invested in Family since 1908



Holland America Line®
SAVOR THE JOURNEY





WELCOME TO OUR

2019 GALA & AUCTION THIS ENCHANTED FOREST

centrum
creativity in community

WELCOME TO "THIS ENCHANTED FOREST," OUR FESTIVE GALA AND AUCTION IN SUPPORT OF CENTRUM!

A Chinese proverb says, "If you keep a green bough in your heart, the singing bird will come." At the Gala, ladies and gentlemen, you are our choir of birds. We are grateful for your generous support of the evening's festivities. Every dollar bid this evening supports a great cause – bringing life-changing experiences to artists of all ages.

Nearly 2,000 participants travel from 17 foreign countries, 46 of the 50 states, and 77% of the counties in Washington to participate in Centrum workshops and artist residencies. In addition, over 10,000 audience members share the power of artistic creativity in our many performances, literary readings and free events that we produce each year.

The Gala is a chance for you to show your support of Centrum and its mission. We encourage you to bid generously, knowing your support helps the thousands of workshop students, from age 4 to 98, whom we serve.

This Gala is particularly important to emerging artists, young and old, who cannot otherwise afford to experience what we offer without financial assistance. Your special participation in tonight's auction and "Fund-a-Dream" segment supports our annual programs and scholarships for these artists.

Please don't forget to purchase tickets for your opportunity to win a seven-day cruise on Holland America! One lucky winner will walk away tonight with this trip of a lifetime.

This evening is the result of the incredible vision, dedication and commitment of nearly 100 volunteers, led by Gala Committee Co-Chairs Heather Sehulster and Jason Pageau and their intrepid committee. Please join us in thanking them, and our most generous presenting sponsors – Kitsap Bank, Adventure Artisans, and the Tulalip Tribes – as we celebrate our triumphs together!

Thank you all for your continued support, and here's to everlasting years of life-changing programs at Centrum!



Robert Alexander
President, Board of Directors



Robert A. Birman
Executive Director

PROGRAM

5:00 PM

Arrival photos and check-in
Refreshments
Explore The Glade to 'Buy It Now'
Bid on experiences and treasures in the silent auction.
Enter the raffle for a Seven-Day Holland America Cruise for two

6:00 PM

Silent Auction One Closing

6:55 PM

Silent Auction Two Closing

7:00 PM

Savor a delicious meal featuring locally-sourced ingredients and select wines.
Music by Les Zonards

7:20 PM

Raise your paddle in the live auction and Fund-a-Dream with
Auctioneer Laura Michalek.



TABLE OF CONTENTS

Presenting Sponsor Kitsap Bank..... 5
Auctioneer & Reader 8
Photographer & Musicians 9
Centrum Programs 10

THE AUCTION

Auction Rules 12
The Glade 14
Silent Auction One 22
Silent Auction Two 44
Wine Grab..... 66
Premier Desserts 68
Live Auction..... 70
Menu..... 95
Board of Directors 96
Staff..... 97

KITSAP BANK IS YOUR LOCAL INDEPENDENT FINANCIAL PARTNER.

Founded in the small community of Port Orchard in 1908, we have expanded our presence throughout the Pacific Northwest and continue to grow by remaining connected to our deep local roots.

- **Northwest Growth.** We are invested in the success of the communities we serve. This means we help local small businesses and commercial companies contribute to local economic growth.
- **Family-Owned.** As a multi-generational, women-owned family company, we understand the unique needs of independent family-owned business.
- **Local Decisions.** Not only are Kitsap Bank's decisions made right here at home, our policies are set right here in the Pacific Northwest.



Steve Politakis
Kitsap Bank
Chief Executive Officer

Invested in Jefferson County. We are committed to our communities, contributing to crucial causes and investing in the sustainability of our region. In 2018, Kitsap Bank opened its newly remodeled Port Townsend Branch – a facility built utilizing green building practices, and featuring a number of energy efficient and sustainable solutions, including a solar array. The Port Townsend Branch also became the first Kitsap Bank branch to utilize Interactive Teller Service (ITS) technology – units that accommodate ATM transactions while enabling customers to immediately connect to a Teller for transactions that could normally only be completed by going inside a branch.

A Local Partner. "Whether you have a business lending need now, or will in the future, I encourage you to contact your local Commercial Loan Officer, Susan Whitmire," comments Steve Politakis, Kitsap Bank Chief Executive Officer. "Susan is a longtime resident of Port Townsend, and is actively involved in the community. When you work with Susan, you can count on having someone who understands the unique needs of businesses in this area, and who will forge a long-lasting relationship with you."



Jefferson County Locations:

2365 East Sims Way
Port Townsend, WA 98368
Tel: 360.385.0123

69 Oak Bay Road
Port Hadlock, WA 98339
Tel: 360.344.3424

74 Breaker Lane
Port Ludlow, WA 98365
Tel: 360.437.7863

GALA COMMITTEE



The success of Centrum's annual Gala and Auction begins with an all-volunteer Gala Committee. Together, they create a theme; acquire donations; recruit table hosts and develop the audience; design décor, displays, menus, and print collateral; and are hands-on for event implementation and follow-up.

The Centrum Board of Directors and staff offer heartfelt thanks to this year's Gala Committee – a creative, organized, and practical group of volunteers who are united in their passion for Centrum. We are honored by their contributions.

Gala Committee

Heather Schulster, *Co-Chair*

Jason Pageau, *Co-Chair*

Acquisitions

Sarah DuBose, *Chair*

JoAnn Bussa

Jessica Pavish

Auction Display

Cindy Madsen, *Chair*

Audience Development

Jessica Pavish, *Chair*

Catalog Sponsorships

Sarah DuBose, *Chair*

Catering

Carla Vander Ven, *Chair*

General Décor

Heather Schulster, *Chair*

Sarah DuBose, *Co-Chair*

Premier Desserts

JoAnn Bussa, *Chair*

Volunteer Coordination

Debbi Steele, *Co-Chair*

Jeanie Glaspell, *Co-Chair*

GALA TABLE HOSTS



Head Table

Homer Smith III

Gold Table

Robert and Ali Alexander
Jeanie Cardon and Richard Clayton
Leah Mitchell and Nancy McLachlan
Sally Warren and Jeff Jackson

Silver Table

Terry Bergeson
Karen Best and Laury Hunt
Gigi Callaizakis and Steve Moore
Karen and Mark Clemens
Jim and Jeanne Costello
Sarah and Don DuBose
Kris Easterday and Mike Heckinger
Mark and Deborah Hamby
Karen and Malcolm Harris
Jan Kennedy and Charles Beauchamp
Kitsap Bank
Carla Main and Brad West
Stephanie Nickasio
Bobbi and Roland Nikles
Jessica Pavish and Jim Arrabito
The Renegades
David and Laura Rinn
Catharine Robinson
Dave Robison and Sheila Westerman
Ralph and Susan Sabin
Heather Sehulster
Carla Vander Ven
Scott and Jennifer Wilson

AND TO ALL THE VOLUNTEERS WHO ARE
WORKING THE GALA THIS EVENING,

LAURA MICHALEK



Fundraising Auctioneer

Laura Michalek still relies on the endurance and discipline she possessed when at the age of 15, she became the first female winner of the Chicago Marathon. While Ms. Michalek has hardly missed a day of running since then, it's this intention

to excel at what she loves that is most evident. "To me auctioneering is about giving a lot of yourself, before and during the event, in a way that most folks wouldn't expect." Her style, fundraising insight, and commitment to her clients and their mission not only sets her apart but has created a career beyond Ms. Michalek's wildest dreams. "I've always been deeply interested in how non-profits I care about are going to sustain themselves, so it is nothing less than a thrill to know I can personally and professionally be part of that." As the youngest winner in the history of the Chicago Marathon, it has not been lost on Ms. Michalek that this experience informed her whole life. "When I start auctioneering, it's like being in the starting block all over again, and I still set out to win; however this time it's for the organization I'm representing."

BARRY MITZMAN



As professor of strategic communications at Seattle University, **Barry Mitzman** launched a popular undergraduate program that prepares students for careers in public relations, advertising and related fields. As director of the Seattle University Center for Strategic Communications, Mitzman leads the Project on Family Homelessness, supported by a series of grants from the

Bill & Melinda Gates Foundation. Recent activities include service on the Fort Worden PDA Foundation Board of Directors, collaborations with StoryCorps, Moth Radio Hour, and American Refugees film project, which premiered at the 2014 Seattle International Film Festival. Mitzman is a Peabody Award-winning television producer and reporter with many documentaries and public-affairs series to his credit, including the hour-long PBS special, Buffett & Gates on Success, featuring life lessons from two of the world's richest men.

DEJA VIEW



Deja Webster arrived in Port Townsend 28 years ago, fell in love with the town, and decided to make this her home. Deja View specializes in portrait and event photography including weddings, anniversary, birthday party coverage, and bar or bat mitzvah and quinceanera celebrations. Her Port Townsend studio lighting is set up to create flattering images the professional may need for website or print collateral head shots. She

photographs local Chimacum and Port Townsend High School Seniors wanting unique images for their yearbooks. She has photographed weddings at the Northwest Maritime Center, American Legion, Elks Club, St Mary's Star of the Sea Catholic Church, First Presbyterian Church, Manresa Castle, the Farm Kitchen in Poulsbo, and Fort Worden. You can reach Deja View Photography at: 360-385-2662 or deja@dejasphotos.com.

LES ZONARDS



We are pleased to welcome **Les Zonards** back to the 2019 Centrum Gala. Tony Petrillo and his friends will bring an eclectic blend of musical flavors to the gala reaching for the theme of *This Enchanted Forest*. They will play tunes exhibiting interesting melodic intervals, different rhythms and time signatures, a few gypsy strains, several early jazz tunes, some musettes, and a palette of Latin rhythms. Les Zonards features Tony on guitar and vocals, versatile pianist and accordion man George Radebaugh, "Professor" Kurt Festinger on tenor sax and clarinet, and Neil Conaty on upright bass. They will play as guests peruse the silent auctions and also perform a short set prior to the start of the live auction.



ARTIST RESIDENCIES

- Artist Residency Program
- Emerging Artist Residency
- NW Heritage Residency (National Endowment for the Arts/Our Town)
- Funded Artist Residency Model (long-term)

WORKSHOPS

- Acoustic Blues Festival
- Brazilian Choro
- Creative Aging Conference
- Festival of American Fiddle Tunes
- Jazz Port Townsend
- Port Townsend Chamber Music Festival
- Red Hot Strings
- Storytelling
- Ukulele Festival
- Voice Works
- Writers' Conference
- YAWP (Your Alternative Writing Program)

YOUNG ARTISTS PROJECT

- Dance This
- Explorations
- High School Writers Conference
- Homeless/Foster Kids Academy (2021)
- Native Voices Arts Academy
- Tales, Texts & Theatre
- Voices from the Field Arts Academy
- Water World





Deja View
p h o t o g r a p h y
www.dejasphotos.com
360-385-2662

GENERAL RULES

- 1.** When you purchase auction items, your balance will be subject to the 8% Auction Service Fee. For example, if you purchase \$100 worth of auction items, your bill will be increased by \$8. On your auction statement, this fee will be called an "administrative and data processing fee" because it allows Centrum to:
 - Do its own data entry, using Auction Tracker software
 - Pay for the services of Auctioneer Laura Michalek
 - Cover the expense of printing silent and live auction bid forms, invoices, bid cards, and the catalog

The Services Fee applies to all items charged to your account. However, it is not applied to donations made to the Fund-a-Dream portion of the auction.
- 2.** Unless otherwise noted, all goods and services must be claimed and used within one year of the auction date.
- 3.** Upon entry, each guest receives a bid card. To bid in the silent auction, write your bid number clearly on the silent auction bid form. To bid in the live auction, hold your bid card up high, with the number toward the auctioneer. By bidding in the live or silent auction each bidder agrees to these auction rules.
- 4.** A bid acknowledged in the live auction by the auctioneer is a legal contract to purchase the item. In the silent auction, designation by the silent auction official of the bid you have written is a legal contract to purchase that item.
- 5.** Winning bidders may pay for their items at the conclusion of the live auction. Please provide your credit card at check-in so that purchases may be charged to your account. Payment in full is mandatory at the auction.
- 6.** Except for "per person" bidding, auction items are awarded to one purchaser only. A purchaser wishing to split the payment for an auction item must collect individual payments from the other bidders sharing in the cost and present them to the cashiers at the time of payment for the item.
- 7.** All purchases are final and there will be no exchanges or refunds on items unless otherwise noted.
- 8.** We will gladly accept your payment by currency, check, Visa or MasterCard.
- 9.** Centrum reserves the right to add or withdraw, without notice, items to or from the auction.

GENERAL RULES

- 10.** Purchaser may pick up items by showing the "Paid" receipt.
- 11.** Reservations for trips, dinners, and vacation accommodations must be mutually arranged between bidder and doner unless otherwise noted.
- 12.** Centrum has attempted to describe and catalog all items correctly, "as is, where is." Centrum neither warrants nor represents, and in no event shall be responsible for the correctness of descriptions, authorship, or condition of items. Should winning bidders transfer an item to another "as is" Centrum is not responsible for changes desired by the new owner.
- 13.** Each person issued a bid number (bidder) assumes all risks and hazards related to the auction and items obtained at the auction and agrees to hold harmless all parties connected with the auction from any liability arising therefrom.

SILENT AUCTION

- 1.** Bid by writing your bid number on the form opposite the amount you want to bid. We ask you to press firmly, as you will be making two copies. The next bidder must bid a higher amount to be successful.
- 2.** You do not have to take the next available bid amount, but may skip ahead to find the amount you really want to bid.
- 3.** To ensure your purchase of an item, write your bid number opposite the amount labeled "GUARANTEED PURCHASE" and you own the item. Bidding on that item is concluded.
- 4.** You may bid on any silent auction item until the section is closed. Bidding will close at the time announced or posted.

LIVE AUCTION

You may bid in the Live Auction by holding your bid card up high, with the number toward the auctioneer. Either the auctioneer or bid spotter can accept your bid. Please note that some items, for large groups, will be bid PER PERSON. Each couple has two bid cards, and you must raise a card for each person bidding to attend one of these events.



2019 GALA & AUCTION THIS ENCHANTED FOREST

THE GLADE

EACH ITEM SELLS FOR THE VALUE STATED.
WRITE YOUR BID NUMBER ON THE PLACARD AND IT'S YOURS.

DINING

1000-1001 FARM'S REACH, CHIMACUM - BREAKFAST OR LUNCH

Fresh, local, organic ingredients. Dine in, dine al fresco, or use the drive-through.

Donor: Farm's Reach Café

Value: \$25

1002 FINNRIVER FARM & CIDERY, CHIMACUM

Finnriver Farm & Cidery is on the forefront of the Pacific Northwest hard cider revival, crafting ciders and brandies that honor historic traditions and offer fresh perspectives on the possibilities of fermented fruit. So much to explore - traditional, contemporary, and botanical ciders; brandy dessert wines; and port-style wines.

Donor: Finnriver Farm & Cidery

Value: \$100

1003 ANTHONY'S AT PIER 66, SEATTLE - DINNER FOR 2

Dine on the finest and freshest Northwest seafood; enjoy outstanding views and service.

Donor: Anthony's Restaurants

Value: \$100

1004-1005 THE CUP, PORT TOWNSEND

Enjoy breakfast or lunch, prepared from scratch every day.

Donor: The Cup

Value: \$20

1006-1008 FERINO'S PIZZERIA, PORT HADLOCK

Use your gift certificate for a 12" pizza with two toppings.

Donor: Ferino's Pizzeria

Value: \$61

1009, 1010 OWL SPRIT, PORT TOWNSEND

A downtown institution, they believe in local and organic food, which they use in their sandwiches, burgers, sliders, salads, wraps, Buddha bowls, and soups.

Donor: Owl Sprit Café

Value: Value: \$15

1011-1014 METRO BAGELS, PORT TOWNSEND OR PORT HADLOCK

Nine great bagel varieties, baked fresh daily: plain, poppy, sesame, everything, whole wheat, oat, salt, cinnamon raisin, and parmesan.

Certificate works at either location.

Donor: Metro Bagels

Value: \$15

1017 HIGHWAY 20 ROADHOUSE, PORT TOWNSEND

Classic diner offering breakfast, lunch, and dinner.

Donor: Highway Twenty Roadhouse

Value: \$100

1018, 1019 O'YUMMY FROZEN YOGURT, PORT TOWNSEND

Self-serve frozen yogurt with over 70 toppings, right here in downtown Port Townsend!

Donor: O'Yummy Frozen Yogurt

Value: \$25

1020 MEAN BEAN COFFEE COMPANY, PORT TOWNSEND

Sweet people. GREAT coffee!

Donor: Mean Bean Coffee Company

Value: \$20

1021 C'EST SI BON RESTAURANT, PORT ANGELES

The only 4+-Star French restaurant in this region outside of Seattle.

Donor: C'est Si Bon

Value: \$50

1022 PORT TOWNSEND FOOD CO-OP

The Port Townsend Food Co-op is a full-service organic foods market providing affordable organic foods, to everyone, every day! A member-owned consumer cooperative serving the community since 1972.

Donor: Port Townsend Food Co-Op

Value: \$100

1023 FINNRIVER FARM & CIDERY, CHIMACUM

This 50-acre organic farm, south of Chimacum at the corner of Center Road and Beaver Valley Road, is a gathering place for people of all ages.

Donor: Finnriver Farm & Cidery

Value: \$100

1024 SALTY'S AT REDONDO BEACH - BRUNCH FOR 2

Salty's Waterfront Seafood Grills offers you fabulous views of the Sound, Maury Island and the Olympic Mountains and an award-winning brunch, served on Saturday and Sunday from 9:15 am to 1 pm. It features Eggs Benedict, Belgium Waffles, Bacon, Potatoes O'Brien, fresh Dungeness and Snow Crab, Oysters on the Half Shell, Blackened Salmon and so much more!

Excludes Holiday Brunch.

Donor: Salty's at Redondo Beach

Value: \$90



SERVICES

1100, 1101 IN BALANCE, PORT TOWNSEND 60-MINUTE RELAXATION MASSAGE

Relax while Ellen works to relieve pain and tension, improve the tone and elasticity of your skin, and calm your nerves and provide lymphatic drainage.

Donor: In Balance

Value: \$80

1102 ROUND OF GOLF FOR 4 AT PORT TOWNSEND GOLF CLUB

Located in the heart of Port Townsend, the course features a nine-hole layout of classic design that appeals to players of all skill levels.

Donor: Port Townsend Golf Club

Value: \$100

1103 MYSTIC MONKEY YOGA, PORT TOWNSEND 1-MONTH'S FREE LESSONS

Mystic Monkey Yoga offers hot yoga classes morning and evening, seven days a week, to suit your busy schedule and build a consistent, meaningful, and safe practice.

Donor: Mystic Monkey Yoga

Value: \$130

1104 THE PARLOUR SALON, PORT TOWNSEND

Owner Dawn Gately donates her skill as a make-up artist to the Fund for Women and Girls' annual Wearable Arts Show... that's how good she is!

Donor: The Parlour Salon

Value: \$55

1105 GILMAN TAI CHI STUDIO, PORT TOWNSEND A MONTH OF TAI CHI

Learn the Yuan style of Tai Chi, taught by Michael Gilman, winner of Grand Champion Tai Chi competitions.

Donor: Gilman Studio

Value: \$75

1106, 1107 TWISTED HISTORY TOUR FOR 2, PORT TOWNSEND

Locals and visitors alike can discover the haunted, underside aspects of either Downtown or Uptown Port Townsend - your choice - through Grymm's Twisted History Tours.

Donor: Twisted History Tours

Value: \$50

1108 THE SALON IN PORT HADLOCK

Natalie was voted "Best Hairstylist in Jefferson County" in *The Leader's* survey. Use for a hair-cut and styling, manicure, pedicure, or tanning.

Donor: Natalie Hamilton

Value: \$100

1109, 1110 PARK PLACE DOG GROOMING, PORT TOWNSEND

A bath and haircut; no giant breeds. Please make appointment in advance. Park Place Grooming.

Donor: Park Place Dog Grooming

Value: \$65

1111, 1112 SOAK ON THE SOUND, PORT TOWNSEND

Enjoy a therapeutic salt water soak in a serene Port Townsend spa; let the restorative, anti-inflammatory, muscle-penetrating magic of a saltwater soak dissolve you into a state of ahhhhhs...

Donor: Soak on the Sound

Value: \$30

1113 CROSSROADS MUSIC, PORT TOWNSEND

An independently-owned, full-service musical instrument store that also offers on-site music lessons, expert repairs, quality rental instruments, CD duplication, PA systems and more.

Donor: Crossroads Music

Value: \$50

1114 HADLOCK COMPUTER SERVICES, PORT HADLOCK

They diagnose/repair most computer problems, set up custom installations for WiFi, offer 1 on 1 training classes in networking, Windows, and OSX. Reasonable rates, great discounts, and A+ and Microsoft Certified Professionals to help with all your computer service needs.

Donor: Hadlock Computer Services

Value: \$50



Family Owned & Operated
360.385.2642

- ◆ *Personalized Funeral & Memorial Services*
- ◆ *Advanced Arrangements*
- ◆ *Cemetery Markers & Memorials*
- ◆ *On-Site Crematory*

kosecfh@olypen.com
1615 Parkside Drive, Port Townsend, WA 98368

SHOPPING

1200 NORTHWEST MAN, PORT TOWNSEND

Fashionable, understated, and refined clothing for men: Pendleton, Gramicci, Cotton Reel, Cutter and Buck, plus shoes, socks, and accessories.

Donor: Northwest Man

Value: \$100

1201 THE CLOTHES HORSE, PORT TOWNSEND

Features a selection of carefully curated brands including Eileen Fisher, Tiano, Trival, Adventura, Samuel Dong, and Cutloose, alongside an array of items to complement your choices.

Donor: Clothes Horse

Value: \$100

1202, 1203 GREEN EYESHAD/WHAT'S COOKIN', PORT TOWNSEND

Two destination kitchen and gift shops. Use your gift certificate at either one.

Donor: Gail Boulter Burgler

Value: \$50

1204 PENINSULA FLOORS & FURNISHINGS, PORT TOWNSEND

Visit their beautiful showroom where friendly, helpful staff will guide you through the process of choosing from an extensive array of flooring: carpet, tile, hardwood, bamboo, cork, and more. They also feature luxury furniture and high-end mattresses.

Donor: Peninsula Floors & Furnishings

Value: \$100

1205-1208 APPLE MEDIA SERVICES, APPSTORE & ITUNES

From Apple Media Services, for apps, games, music, movies, TV shows, books, and iCloud.

Donor: Anonymous

Value: \$100

1209 PT CYCLERY, PORT TOWNSEND

20% off a helmet in stock.

Donor: PT Cyclery

Value: \$15

1210 PET TOWN, PORT TOWNSEND

They carry a wide range of high-quality dog, cat, fish, reptile, pocket pet, and bird supplies.

Donor: Pet Town

Value: \$100

1211 LISA'S JEWELRY, PORT HADLOCK

Celebrating 30 years of business in Port Hadlock, Lisa's Jewelry offers jewelry repair, pearl/bead restringing, same-day sizing, watch batteries/repair, and jewelry featuring 14-karat gold, sterling silver, and gems.

Donor: Lisa's Jewelry

Value: \$75

1212, 1213 CONSERVATORY COASTAL HOME BAINBRIDGE ISLAND AND PORT TOWNSEND

Design, embellish, and inspire your environment. They feature an eclectic mix of clean-lined, modern design with rustic vintage and nautical finds. This gift certificate works at both the new Bainbridge Island store, in the heart of downtown on the corner of Winslow and Madison, and the location in Port Townsend.

Donor: Conservatory Coastal Home

Value: \$50

1214, 1215 SHOLD LANDSCAPE, PORT TOWNSEND

Featuring a healthy selection of annuals, perennials, shrubs, and trees, plus an excellent line of seeds, bulbs, fertilizers, and soil amendments, plus bulk landscape supplies, furniture for outdoor living, and specialty gifts.

Donor: Shold Excavating, Inc.

Value: \$50

1216 HABITAT FOR HUMANITY, PORT TOWNSEND

For acquiring new and gently-used furniture, home accessories, building materials and appliances at a fraction of the retail price.

Donor: Habitat for Humanity

Value: \$50

1217, 1218 QUIMPER MERCANTILE, PORT TOWNSEND

25% discount certificate; value based on \$100 purchase, but discount can be applied to any purchase at this unique community-owned store, featuring a huge inventory of the right stuff for the right price: dress/work clothes, shoes/boots, camping/sporting goods, sewing notions, cards, toys, art supplies, kitchenware and more.

Donor: Quimper Mercantile Company

Value: \$25



1219-1224 CONSERVATORY COASTAL HOME, PORT TOWNSEND

The seaside-inspired lifestyle store in the heart of Port Townsend, just steps from the bay, features an eclectic mix of clean-lined, modern design with rustic vintage and nautical finds.

Donor: Conservatory Coastal Home

Value: \$25

1225 OLYMPIC RENTALS, PORT HADLOCK

For all your equipment rental, outdoor needs and more.

Donor: Olympic Equipment Rentals

Value: \$50

1226 JEFF DERR JEWELRY, PORT TOWNSEND

Stop in and peruse their collection of gold, diamonds, estate jewelry and newly expanded silver division. If you don't see what you're looking for, let Jeff create a piece for you. He can also alter your jewelry for you and offer consignment services.

Donor: Jeff Derr Jewelry

Value: \$100

1227 COSTCO, SEQUIM

A membership warehouse club offering the best possible prices on quality, brand-name merchandise; the convenience of specialty departments; and exclusive member services.

Donor: Costco

Value: \$50



Matt Johnson
Store Manager
matt.johnson66248@gmail.com

PROUD MEMBER OF
Team O'Reilly
www.oreillyauto.com

2223 East Sims Way
Port Townsend, WA 98368
Work Phone: (360)385-2027

“We Appreciate Your Business”

2019 GALA & AUCTION THIS ENCHANTED FOREST

) SILENT AUCTION ONE (

HOME

2000 KING-SIZED HANDMADE QUILT IN FLORAL FABRICS

Huge floral quilt: patchwork on one side and poppies on the other.

Donor: Anonymous

Value: \$650

2001 RIGGER'S BAG OF CURATED TOOLS, NEW AND VINTAGE

A collection of essential tools: adopt a new craft hobby or enhance your kit for an existing one! Includes Cummins 7-piece Brad Point Drill Bit Set; assorted drill bits; 2 sets of X-acto knives; KregJig set; 9-piece Metric Hex Key Wrench set; drill bits; wood-handles; tiny wrenches; pliers; and other items, presented in a 15" riggers bag.

Donor: Jim Arrabito

Value: \$350

2002 HARDBOUND COPY OF CONSTITUTION, INSCRIBED

A hard-bound copy of the United States Constitution, inscribed with your name and signed by The Honorable Bob Ferguson, Attorney General, State of Washington.

Donor: Bob Ferguson

Value: \$50

2003 SALT HOUSE MERCANTILE GIFT BASKET

Salt House Mercantile has stores in Winslow and Madison Park, and offers a unique selection of fine gifts, high quality, small batch pantry goods and beautifully made homewares. The gift basket includes some of their favorite things.

Donor: Salt House Mercantile

Value: \$175

2004 LAZY SUSAN WITH PACIFIC NORTHWEST SCENE AND WOOD CONDITIONER

A finely-crafted piece to promote sharing at your dining room table. Maintain its luster with the accompanying container of Pablo's Fine Wood Conditioner.

Donor: Julie Dorsch

Value: \$165

2005 WILDERBEE FARM BOX OF BOUNTY

A family-run, organic business featuring you-pick-it fruits and flowers and specially-crafted mead. Crate contains two cheese boards, a set of four napkin rings, lotion, spa oil, floral water, lip balm, essential oil, Refresh/Repel, and Soother.

Donor: Wilderbee Farm

Value: \$180

JohnLScott®

**PORT TOWNSEND
2219 W. SIMS WAY
PORT TOWNSEND, WA
360-385-4115
800-869-7834**



**CHECK OUT OUR MOBILE APP!
SEARCH "JOHNLSMOTT" AT YOUR
SMART PHONE APP STORE
TO DOWNLOAD IT FOR FREE.
SEE EVERY LISTED, PENDING
& RECENTLY SOLD PROPERTY
IN THE ENTIRE NWMLS!**

www.JohnLScott.com

2006 BEER BOTTLE CAP BISTRO SET

Whimsical seating for your deck or patio.

Donor: Henery Do-It-Best Hardware

Value: \$220

Every thing for your Home or Garden



Henery Do it Best Hardware

Henery Hardware: 218 Sims Way, Port Townsend • 360-385-5900

Kingston Henery Hardware: 10960 Highway 104, Suite 107, Kingston WA • 360-297-3366

Bremerton Henery Hardware: 3449 Wheaton Way, Bremerton WA • 360-824-5047

Sebo's Henery Hardware: 1102 Commercial Ave, Anacortes WA • 360-293-4575

2007 RED METAL BISTRO SET

Cheerful al fresco seating, from rise and shine to wine and dine!

Donor: Henery Do-It-Best Hardware

Value: \$140

2008 PROFESSIONAL ORGANIZING BY SMOOTH TRANSITIONS

Three hours of professional services: downsize, de-clutter, and/or re-organize with Robin Abb, our community's household downsizing and estate dispersal professional. Says one satisfied client: "Think of Robin as the competent adult daughter that you wished lived close by."

Donor: Smooth Transitions

Value: \$150

2009 O'REILLY'S 73-PIECE SOCKET SET WITH BUCKETS

O'Reilly is an American auto parts retailer that provides tools and accessories for servicing both professional providers and do-it-yourselfers. The 73-piece Power Torque Socket Set is SAE/Metric Input, with a lifetime guarantee. The buckets might inspire you to wash your car, old-school style!

Donor: O'Reilly Auto Parts

Value: \$105



**2010 WOODEN BOAT CHANDLERY GIFT CERTIFICATE
WITH STUFFED ANIMAL**

Sales generated at the Wooden Boat Chandlery support the Northwest Maritime Center in Port Townsend.

Donor: Wooden Boat Chandlery

Value: \$75

2011 THE BUTLER HOME ORGANIZER

The Butler keeps your keys, wallet, iPhone, Android, HTC and glasses in one sleekly designed spot that measures 9" H x 10" W x 1.75" D.

Donor: Anonymous

Value: \$95

**2012 CONSERVATORY COASTAL HOME
ENCHANTED FOREST GIFT BASKET**

Conservatory's curated gift basket includes a wood bowl, a hand-made moss candle, a gold flask and a gold beetle, plus a \$100 gift certificate.

Donor: Conservatory Coastal Home

Value: \$206

2013 40% DISCOUNT ON \$500+ FRAME JOB AT FRAMEWORKS

With a long history as a locally-owned, family run business, Frameworks brings design, knowledge, and training to your framing project. You'll value their creativity and ingenuity.

Donor: Frameworks Northwest

Value: \$200

2014 VINTAGE GALVANIZED WINDMILL BLADES

51" in diameter; ready for energy-saving use or as garden decor.

Donor: Cherry Blossom

Value: \$130

PENINSULA
FLOORS & FURNISHINGS
ABBAY CARPET

Furniture ~ Floor Coverings ~ Window Treatments ~ La-Z-Boy
Tempur-Pedic ~ Sealy ~ Simmons ~ King Koil ~ Craftmaster

2405 W. SIMS WAY
PORT TOWNSEND, WA 98368

(360) 385-0945
penfloors.com
info@penfloors.com

2015 BRONZE DOOR KNOCKER BY PORT TOWNSEND FOUNDRY

Ornate Victorian door knocker measures 11" H x 7" W. Created for Centrum at Port Townsend Foundry, established in 1883 and revived by Pete Langley with the same levels of craftsmanship, dedication, and integrity. The use of heritage techniques alongside modern technology allows Port Townsend Foundry's craftspeople to produce pieces that will someday themselves be a part of history.

Donor: Port Townsend Foundry

Value: \$500



2016 NAUTICAL PORTHOLE MIRROR

A round mirror framed in a weathered-metal porthole. 22" D.

Donor: World's End

Value: \$90

2017 WALL-MOUNTED ENCLUME POT RACK

Wrought-iron, wall-mounted pot rack fabricated by Enclume.

Donor: Lou Salsbury

Value: \$250

2018 YARD ORNAMENT FROM PETALS

Charmingly weathered metal ornament on a tall metal stake.

Donor: Petals Flower Boutique

Value: \$65

2020 CELTIC COASTERS IN BLUE CERAMIC, SET OF 6

Set of six square coasters embellished with a Celtic design.

Donor: Jessica Pavish

Value: \$30

**2021 HOLLY'S FINE FLOWERS
ARRANGEMENT WITH GIFT CERTIFICATE**

A floral bouquet accompanied by a \$25 gift certificate.

Donor: Holly's Fine Flowers

Value: \$100

2022 INFINITY TRAVEL CLOCK IN BLACK LEATHER CASE

Clock measures 2" in diameter; case is 3" H x 3.5" W x 2" D with black satin lining and a silver fastening.

Donor: Anonymous

Value: \$85

2023 ENCLUME 5-TIERED BLACK INDOOR/OUTDOOR RACK

Multi-purpose, indoor/outdoor, 5-tiered racks, hand-crafted hammered steel created by Enclume. Made in USA, locally in Port Hadlock.

Donor: Enclume Design Products, Inc.

Value: \$322

2024 ENCLUME 5-TIERED SILVER INDOOR/OUTDOOR RACK

Multi-purpose, indoor/outdoor, 5-tiered racks, hand-crafted hammered steel created by Enclume. Made in USA, locally in Port Hadlock.

Donor: Enclume Design Products, Inc.

Value: \$322

2025 ENCLUME 5-TIERED BRONZE INDOOR/OUTDOOR RACK

Multi-purpose, indoor/outdoor, 5-tiered racks, hand-crafted hammered steel created by Enclume. Made in USA, locally in Port Hadlock.

Donor: Enclume Design Products, Inc.

Value: \$322

2026 MOBO TRI-TON RECUMBENT BIKE

Original to the Mobo line, the Mobo Triton is the classic, ultimate three-wheeled cruiser. With the new innovative rear-wheel steering system and a sleek design, it is unparalleled in the world of three-wheeled cycling for youths or the young at heart. Incorporating a single-speed gear, recumbent style seating, and stress-free steering, this cruiser makes it the perfect companion for a brisk workout. Concerned about outgrowing this cruiser? No need to worry - the Mobo Triton has an adjustable frame to fit heights up to 5'2". Delivering quality you can trust, the caliper handbrakes, front free-wheel mechanism, and a stylish finish are just among many of its features. Best for someone who weighs less than 180 pounds.

Donor: Nan Toby Tyrrell

Value: \$400

20 Years of Building Homes, Communities, and Hope.



Volunteer. Shop. Give.



Schedule a free pick-up of gently used furniture, appliances, or household items by calling 360.385.9653.

100% of proceeds raised in our stores helps people in need of affordable housing.

habitatejc.org

SERVICES

3000 COLLECTION OF BOOKS ABOUT JAZZ & THE BLUES

A trove of books that explore the lives of Jazz and Blues masters: *The World of Earl Hines* by Stanley Dance (signed); *Bass Line: The Stories and Photographs of Milt Hinton* by Milt Hinton and David Berger; *Really the Blues* by Milton "Mezz" Mezzrow and Bernard Wolfe; *The Horn* by John Clellan Holmes; *Mister Jelly Roll* by Alan Lomax; *Miles* by Miles Davis; and *Milestones I and II* by Jack Chambers.

Donor: Robere LeHuquet

Value: \$180

3001 1-YEAR SUBSCRIPTION TO THE PENINSULA DAILY NEWS

The *Peninsula Daily News* began publishing out of Port Angeles in 1916; today it comes out Sunday through Friday morning, the only daily newspaper serving the North Olympic Peninsula. Delivered to either home or office; may be used to extend current subscription.

Donor: Peninsula Daily News

Value: \$135

3002 TIPPY TOP TREE SERVICE - 4 HOURS OF TREE WORK

Accredited, highly professional tree surgeons/specialists. See Tippy Top Tree Service, Port Townsend on GLOBUYA and other search engines for videos of their work. You'll be impressed!

Donor: Tippy Top Tree Service

Value: \$1,100



COLDWELL BANKER
BEST HOMES

(360) 531-1301 DIRECT LINE
(360) 385-0836 BUS
(360) 385-0846 FAX
I Sell Dirt & Dreams!
carolwise@gmail.com
234 Taylor Street
Port Townsend, WA 98368

CRS

PortTownsendRealEstate.Net
Each Office Is Independently Owned And Operated. 

CAROL A. WISE, CRS
Certified Residential Specialist



Maestrale

Authentic Asian Art
Artifacts, Furniture
Textiles & Jewelry

821 Water Street, Port Townsend
www.maestraleimports.com
360. 385. 5565



Tippy Top Tree
SERVICES LLC

541-429-0646
tippytoptreespc@gmail.com

**EXPERT
TREE
SERVICES**

**VETERAN'S
DISCOUNT
10% OFF**
with valid military ID

**Hazardous Tree Removal /
Trimming
Community Safety
Commercial / Residential**

**General Contractor
Remodel Services**

**Fully Insured
Licenced & Bonded**

3003 130 WEEKS OF THE LEADER

Celebrate 130 weeks of *The Leader*, our home-based news source, with 130 months of weekly delivery to your Jefferson County business or home.

Donor: The Leader

Value: \$565

3004 COLLECTION OF BOOKS/CDs PURCHASED AT FIDDLE TUNES

A collection of books and CDs, acquired over the years from the Festival of American Fiddle Tunes store. Among the 17 book titles include: *The Complete Fiddle Tunes I Either Did or Did Not Learn at the Tractor Tavern* by Gene Silberberg; *The Portland Collection: Contra Dance Music in the Pacific Northwest* by Susan Songer with Clyde Curley, Volumes 1 and 2; and *White Mountain Reel Book & Music CD of Eleven Dances With Calls and Without* by Caller Dudley Laufman. The 22-CD collection includes Kinnon and Betty Beaton, Alastair Fraser and Natalie Haas, and Natalie and Buddy MacMaster. This collection would cost \$824 to assemble brand new; this collection is a lightly used bargain, and a perfect starter-library for fans of the fiddle.

Donor: Margaret King

Value: \$300

Did you know?

Both of our CPAs are studio arts majors!



We're proud to support Centrum and the arts.




THE
Business
GUIDES
CPAs & Advisors

YOUR HOME IS YOUR GALLERY... TREAT YOURSELF!



Frame something you love!

MONDAY -
SATURDAY 10-5,
SUNDAY 12-5
CLOSED
TUESDAYS



211 TAYLOR
STREET B-5,
PORT
TOWNSEND
360-385-3809

DOWN THE STAIRS
frameworksnw.com

**3005 EQUINE ENERGY EXCHANGE
THE LANGUAGE OF THE HORSE
HANDS-ON 2-HOUR SESSION, CUSTOMIZED**

For anyone who seeks to understand and experience horse/human communication and connection in a safe and supportive environment; if you are a horse owner, session can be used to expand on true partnership and centered riding for all disciplines, including dressage. For all ages and experience levels. Session for 1-2 people; may accommodate up to 8 people unmounted with an added \$50 per person. Good through June 30, 2020; certificate holder will be required to sign a liability waiver form.

Donor: Teren MacLeod

Value: \$600



Turbo Tacksi, Clark's Legend and Windfield's Blue Heaven

3006 QUARTER-PAGE AD IN THE PENINSULA DAILY NEWS

A great opportunity to showcase your service or retail shop, or express your gratitude to someone special.

Donor: Peninsula Daily News

Value: \$450

3007 PORT TOWNSEND ATHLETIC CLUB-3-MONTH MEMBERSHIP

This full-service fitness center holds 70 classes a week: group fitness, yoga, pilates, dance aerobics, weights, and cardio. Feel free to use the Jacuzzi, sauna, and racquetball court.

Donor: Port Townsend Athletic Club

Value: \$232

3008 1-YEAR SUBSCRIPTION TO THE LEADER

Founded in 1889, *The Leader* is headquartered in the Enoch Fowler Building (1874), the oldest two-story sandstone structure in Washington State. In the 1980s, it became the first community newspaper in the state with a newsroom computer network; in the early 1990s, the first community newspaper in the state with a website. It's still making history today as our independent news source for Port Townsend and Jefferson County.

Donor: The Leader

Value: \$52

<p>Mail Plus 1240 W. Sims Way Port Townsend, WA 98368 "Expert custom packing at your Unfranchised shipping store"</p>	
<p>Visit: www.mailpluspt.com Tel: 360-379-1156 Fax: 360-385-6832 Email: mpluspt@outlook.com</p>	<p>Carrier Pick-up Times: FedEx Exp: 2:30 UPS NextDay: 3:45 FedEx Ground: 3:30 UPS Ground: 4:00 USPS: 3:00</p>

ARROW
 LUMBER & HARDWARE
 A Disabled Veteran Owned Business, Est. 1997

CADIAN HENDRICKS
 V.P. / MANAGER

✉
📞
☎
📠

c.hendricks@arrowlumber.com
 (360) 301.0739
 (360) 385.9474
 (360) 379.2872

f
📷
🐦
📌
📺

www.arrowlumber.com

EATONVILLE
 - 360.832.3424 -
 388 Center St. E. - Eatonville, WA 98328

ORTING
 - 360.893.2200 -
 201 Calistoga St. W. - Orting, WA 98360

BUCKLEY
 - 360.829.9049 -
 28280 SR 410 E. - Buckley, WA 98321

PORT TOWNSEND
 - 360.385.9474 -
 8457 SR 20 - Port Townsend, WA 98368

PORT ORCHARD
 - 360.876.2903 -
 6100 Bethel Rd. S.E. - Port Orchard, WA 98366

OCEAN SHORES
 - 360.289.3222 -
 724 Point Brown Ave N.E. - Ocean Shores, WA 98569

RANDLE
 - 360.497.3511 -
 105 Peters Creek Rd. - Randle, WA 98377

3009 EVERGREEN FITNESS: 3-MONTH PACKAGE

Evergreen's mission is to generate a fitter planet. You may work individually or with classes such as Bodystep, Yoga, SAIL (Stay Active and Independent for Life) for adults 65+, and Zumba; after class, enjoy a bar stocked with freshly made low-calorie fruit and vegetable drinks.

Donor: Evergreen Fitness

Value: \$235

3010 3 HOURS ON-BOARD MECHANIC TIME

West Coast Marine Electronics offers the winning bidder/boat owner three hours of a Marine Electronics Technician's time. Use it for testing, interfacing, adjusting your Autopilot, Chart Plotter, VHF Radio or other marine electronics equipment; OR, use it for operator training on Autopilot or other boat electronics. West Coast Marine Electronics is a Certified Simrad/Navico Electronics Dealer.

Donor: West Coast Marine Electronics

Value: \$315

3011, 3012 CAR WASH AUTO DETAIL - UNLIMITED FOR 1 YEAR

Unlimited car washes for one year! Preserve and protect your vehicle with a professional detail that includes a hand wash, engine clean, and interior/exterior detail, finished with a Gyeon Can Coat that enriches color and lasts up to six months.

Donor: The Car Wash

Value: \$330

<p style="text-align: center; font-weight: bold; color: white;">JOIN THE UNLIMITED <u>MONTHLY WASH</u> CLUB TODAY!</p> <p style="text-align: center; font-size: small;">Wash your car as many times as you like for only \$38.00/mo. Add a second vehicle for \$19.00/mo.</p> <p style="text-align: center;">-----</p> <p style="text-align: center; font-size: x-small;">Its fast, easy and environmentally responsible, recycling over 70% of water to treat your car and our planet right!</p>	<p style="text-align: center; font-weight: bold;">FULL SERVICE DETAIL SHOP OFFERING MANY OPTIONS FOR YOUR VEHICLE'S NEEDS!</p> <ul style="list-style-type: none"> ▶2-Stage Paint Polishing ▶Boat/RV/Motorcycle Detailing ▶Interior/Exterior Detailing <p style="text-align: center; font-size: x-small;">Can't go w/out your car? We've got you covered! We'll take you where you need to go & pick you up when your car is done!</p>
<div style="display: flex; justify-content: space-around; align-items: center;"> <div style="text-align: center;">  <p style="font-size: x-small;">ENVIROSTARS CERTIFIED</p> </div> <div style="text-align: center;">  <p style="font-size: x-small;">the car wash</p> </div> </div> <p style="text-align: center; font-weight: bold; margin-top: 10px;">Call or come by to sign-up today!</p> <p style="text-align: center; font-size: small;">Carwash Hours: Monday - Saturday 8 - 6◊Sunday 9 -5</p> <p style="text-align: center; font-size: small;">Detail Shop Hours: 515 Rainier Street◊Port Townsend Washington 98368 (360) 379-5717◊info@thecarwashinc.com</p>	

3013 ROOF INSPECTION FROM HOPE ROOFING

Hope Roofing's trained technicians will provide information needed to make critical life-span decisions about the roof on our home of rental property as well as install a traditional weather vane. Early inspection could save you money.

Donor: Hope Roofing & Construction

Value: \$275

4008 LONG STRAND OF BLACK JET BEADS

35" strand of faceted black jet (a type of lignite coal, also known as carbonized driftwood) beads.

Donor: Anonymous

Value: \$125

4009 BLUE VENETIAN GLASS BEAD NECKLACE

9" strand of irregular oblong and round blue glass beads with gold links and fastening.

Donor: Anonymous

Value: \$60

4010 SPUN GLASS PENDANT ON JET BEAD STRAND

18.5" strand of tiny jet beads, ending in a sphere of spun glass.

Donor: Anonymous

Value: \$95

4011 AMBER PENDANT ON STRAND OF GLASS BEADS

1.5" high amber pendant hangs from a 22" knotted strand of alternating black, brown, and gold cut glass beads.

Donor: Anonymous

Value: \$125

4012 WANDERING WARDROBE SHOPPING PARTY FOR 8

Beverly will host you and your party of 8 for after-hours shopping. Enjoy champagne and snacks while you browse the Wander-land of vintage, period, and just plain FUN attire: from hats to shoes and everything in-between! Shoppers will receive a 20% discount on all purchases.

Donor: Wandering Wardrobe

Value: \$150

4013 CASHMERE SCARF

Six feet long, in muted winter colors.

Donor: Phoenix Rising

Value: \$80

4014 SILK SCARF BY COACH

White on gray with a black border; 21" square.

Donor: Anonymous

Value: \$25

4015 COACH FOUNDERS' SILK SCARF

The Coach C is printed in brown on a beige background with a red/cream/brown border; 27" square.

Donor: Anonymous

Value: \$55

4016 SILK SCARF BY OSCAR DE LA RENTA

20" silk square in black, blue, and yellow.

Donor: Anonymous

Value: \$65

4017 SILK SCARF BY VALENTINO

35" silk square in yellow, blue, and white daisy print.

Donor: Anonymous

Value: \$125

4018 VINTAGE SILK SCARF BY VERA

27" silk square in floral print of beige, blue, and brown.

Donor: Anonymous

Value: \$95

4019 SILK SCARF BY GINNY JOHNSON

36" silk square in butterfly and black herringbone print.

Donor: Anonymous

Value: \$100

4020 SILK SCARF BY GINNY JOHANSEN

34" silk square in floral print of brown, blue, green, and deepest purple.

Donor: Anonymous

Value: \$95

4021 TURKISH DUNYA SILK SCARF BY CLAIRE MURRAY

Floral print with checked border on a black background; 34" square.

Donor: Anonymous

Value: \$55

4022 DOONEY & BOURKE SEAHAWKS HANDBAG

11" H x 13"W x 4" D, in a Seahawk pattern on a navy background with signature Dooney & Burke brown leather trim and leather strap with 8" drop. Lined in red with two open interior pockets, and one zippered interior pocket with an open pocket below. Show your 12th person pride!

Donor: JoAnn Bussa

Value: \$225

4023 BEADED EVENING BAG WITH GOLF SCENE

Whimsical evening bag measures 6.5" H x 5.5" W; blue beaded handle drops 24".

Donor: Anonymous

Value: \$150

4024 TOUS ITALIAN LEATHER HANDBAG

Dark brown bucket bag with yellow trim, two interior pockets, and a lime green lining measures 15" H x 11" W x 5" D.

Donor: Anonymous

Value: \$150

4025 PERLINA LEATHER HANDBAG

Taupe bag with 12" drop strap has one exterior and two interior pockets, leopard spot lining, and measures 12" H x 12" W x 3" D.

Donor: Anonymous

Value: \$150

4026 SUEDE PATCHWORK CARRY-ALL TOTE BY CHRISTIAN LIVINGSTON

In gray and burgundy; measures 13.5" H x 13" W x 3" D.

Donor: Anonymous

Value: \$95

4027 BLACK LEATHER ITALIAN PURSE BY PULICATI

Measures 9" H x 10" W x 5.5" D with one zippered interior pocket and two open interior pockets.

Donor: Anonymous

Value: \$225

4028 HAIKU POUCH AND POCKET

A duet of Japanese fabric pouches featuring hares dancing in the moonlight. Large rectangular pouch is 8.5" W x 6" H x 2.5" deep; triangular "haiku pocket" is 4.5" tall. These beautiful gifts were thoughtfully crafted and hand-stitched with sashiko-style Japanese embroidery by Port Townsend bag maker, Nancy Pascoe, who shows at the Port Townsend Gallery.

Donor: Nancy Pascoe

Value: \$110



4029 TIGER'S EYE BEAD BRACELET

Tiger's Eye is a crystal with bands of yellow-golden color. It helps release anxiety, aids harmony and balance, and promotes discernment and understanding, unclouded by emotion.

So many reasons to bid on this 7" strand!

Donor: Anonymous

Value: \$30

4030 BROACH BY SWEET ROMANCE

A 3" high baroque fantasy in bronze and silver with rhinestone curves.

Donor: Anonymous

Value: \$125

4031 SILVERTONE RING WITH RHINESTONE

Simply ornamental, for everyday wear.

Donor: Anonymous

Value: \$30

4032 PIN WITH TWO METALS AND FAUX PEARL

A nice-sized broach with modern lines.

Donor: Anonymous

Value: \$30

4033 BUTTERSCOTCH BALTIC PRESSED AMBER BROACH

19 grams of hard translucent fossilized resin produced by extinct coniferous trees of the Tertiary period, offered in the form of a handsome amber broach.

Donor: Anonymous

Value: \$175

4034 POLAR BEAR WITH SALMON PIN BY ZEALANDIA DESIGNS

Zealandia's unique fossilized ivory jewelry is recognized for its creative use of ancient fossilized ivory, spiritual and mythological designs, and handcrafted artisan quality. Whether mammoth or ancient walrus ivory, artisans carve each piece to bring out its unique character and exquisite beauty.

Donor: Anonymous

Value: \$265

4035 COILED SILVER RING AND BRACELET SET

Addy Thornton's work reflects her unique design style; each piece is one-of-a-kind in sterling silver.

Donor: Moonsnail Creations

Value: \$305

4036 LEAF EARRINGS, CITRINE/STERLING SILVER

Addy Thornton's work reflects her unique design style; each piece is a one-of-a-kind creation in sterling silver. Peridot stones, "the gem of the sun," sit atop the circles above the leaf-shaped earrings.

Donor: Moonsnail Creations

Value: \$85

4037 STERLING SILVER DANGLE EARRINGS CAST BY LOIS

"Charmed Heart" in green glass and cast sterling silver.

Donor: Wynwoods Gallery and Bead Studio

Value: \$35

4038 STERLING SILVER DANGLE EARRINGS CAST BY LOIS

"Sun Warrior" cast sterling silver earrings.

Donor: Wynwoods Gallery and Bead Studio

Value: \$55

4039 STERLING SILVER DANGLE EARRINGS CAST BY LOIS

"Native American Mother" cast sterling silver earrings.

Donor: Wynwoods Gallery and Bead Studio

Value: \$50

4040 VINTAGE ART NOVEAU BAR PIN WITH 5 DIAMONDS

Five diamonds set in a silver filigree bar pin of Art Nouveau design; 2 1/4" W x 3/8" H.

Donor: Rita Kepner

Value: \$600

4041 90'S RETRO BROWN COACH RIVETS HANDBAG

Crafted for the first time in the 90's, this iconic piece is a longtime Coach favorite. Measuring 8.5" H x 11" W x 3" D and created in natural pebble leather in brown, it features a flap closure with signature turnlock, main internal compartment, internal slip pocket, and internal snap pocket. The detachable and adjustable shoulder strap has a 17" drop when fully extended.

Donor: Janet Kennedy

Value: \$495



4042 CUMULONIMBUS-A BAROQUE PEARL NECKLACE

Six baroque pearls, free-form, set in sterling silver.

Donor: Jason Pageau

Value: \$495



Got wood?

Tippy Top Tree
SERVICES SPC

Karlton Booth
Tree Surgeon
360.774.0635
tippytopreespc@gmail.com

PROUDLY SERVING WA & OR

Got wood?

Tippy Top Tree
SERVICES SPC

Brandon Matney
Tree Surgeon
541.429.0646
tippytopreespc@gmail.com

PROUDLY SERVING WA & OR

CREATOR OF THE

Community Free Wood Pile

P.O. Box 1731 | Port Townsend, WA | 98368

PROUDLY SERVING WA & OR
Licensed • Bonded • Insured

General Contractor License# TIPPYTT822BU
CCB# 223653

PLEASED TO BE A CENTRUM SUPPORTER



Serving Port Townsend for Three Generations.

Ryan Smith

Homer Smith



Homer Smith Insurance

804 Water Street • Port Townsend, WA 98368 • 360-385-3711
www.homersmith.com



2019 GALA & AUCTION
THIS ENCHANTED FOREST

) SILENT AUCTION TWO (

ART 

5000 JULIE READ: COSMIC EVENT.

Oils, 40"H x 40"W, framed. Inspired by a visit to her grandfather's childhood home-occupied and decorated by folk artist Richard Chalmers-Read signed on to take an acrylic painting class with local artist Max Grover, and was hooked from the start. In 2014 she had a solo exhibition at the Max Grover Gallery and has gone on to exhibit in local and national galleries. Read teaches painting classes at the Port Townsend School of the Arts.

Donor: Julie Read

Value: \$950



5001 MAXINE NOEL: NOT FORGOTTEN.

Print. The artist's Native American name is Ioyan Mani. She has dedicated this work to the Native American women in Canada and North America who have been murdered and/or gone missing at an alarming rate from 2010 to the present.

Donor: Pacific Traditions Gallery

Value: \$160

5002 ARNOU VAN GILST: MIDNIGHT.

Oils, 32.5" H x 27.5" W, framed. Dutchman Arnout Van Gilst (1898-1982) began his art studies as a sculptor, but was inspired to paint by the colors and moods of the canals, cities, countryside and skies of the Netherlands. He is mentioned in the Netherlands 'Register of Overlijden' in P.A.Scheen's Dictionary of Contemporary Artists; was a student of the Akademie for Beeldende Arts in The Hague under Jan Springer; and was also a student of Johan Coenraad Altorf.

Donor: Cheryl Cashman

Value: \$575

5003 MARIE AMERSON: LOUISIANA RED.

Acrylics, 21" H 21" H x 25" W, framed. Louisiana Red was an African-American blues guitarist, harmonica player, and singer who recorded more than 50 albums and served as artist faculty at Centrum's Acoustic Blues Festival; he was best known for his song "Sweet Blood Call." Amerson is a local artist who moved to the area in 1976; working primarily in oil on canvas, she focuses on rendering local people and scenes. She says of her art: "I like to push color in painting to a point right before it explodes to see what happens."

Donor: Carla Main

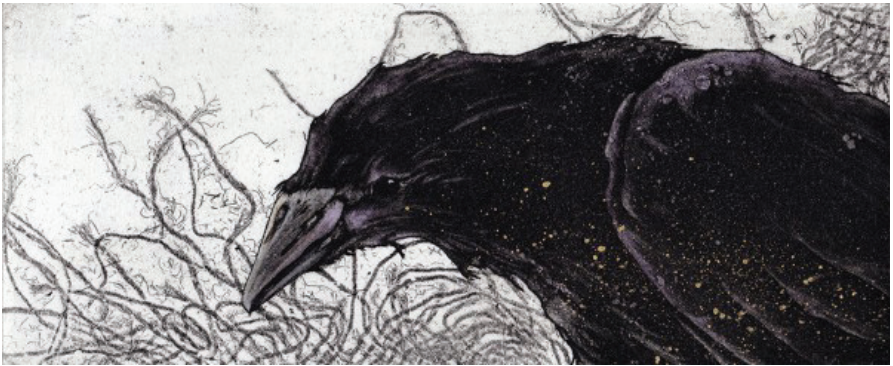
Value: \$250

5004 BEKI KILLORIN: RAGTIME.

Print, 11/200, signed. Killoran is a watercolor artist working for over twenty-five years in the Pacific Northwest. Her artwork includes loons, ducks, koi, and other marine life. Matted and framed by Frameworks.

Donor: FrameWorks Northwest

Value: \$450



5005 ANNE SCHNEIDER: FIDDLE DEE DEE.

Mixed Media, 2016, 17" H x 17" W, framed. A Port Townsend resident for over 20 years, Schneider has emerged in her retirement as a mixed media collage artist. She has studied with teachers from Port Townsend, Vermont, Portland, and New Mexico. Her process involves creating collage papers using an array of materials and techniques; layering the papers with acrylic paints on substrates of canvas, wood boards, or paper; and excavations through and additions to the layers, when a balance and dimensionality emerges in the work.

Donor: Anne Schneider

Value: \$250

5006 BOTANICAL PRINT: 19TH CENTURY, FRANCE.

24" H x 17" W, framed. From the collection of Max Grover.

Donor: Max Grover

Value: \$300

5007 TAMARA HALLIGAN: WASHINGTON STREET.

Watercolor, 21" H x 21" W, framed. From the collection of Max Grover.

Donor: Max Grover

Value: \$300

5008 JOHN HILLMER: BLUES LAMP SHADE.

A hand-painted original by Centrum artist-in-residence, John Hillmer, inspired by Centrum's Acoustic Blues Workshop. Hillmer's posters and designs have been used to promote more than 50 music, literary, and community events across North America; you may also have seen his work on Centrum Blues and Jazz t-shirts. His artwork reflects his experiences living, traveling, and teaching in Mexico, and colorful observations about life's vast interconnections.

Donor: John Hillmer

Value: \$300

5009 PAIR OF HANDBLOWN GLASS CANDELABRA

14.5" H x 4" diameter; clear glass with white cane.

Donor: Jessica Pavish

Value: \$125

5010 PAMUJI: HAND-FORGED BRONZE FISH, 1 OF A PAIR.

10" H x 5" W 24" L. This lost wax sculpture was imported from the artist's homeland in East Java, Indonesia. May be purchased alone, or with 5011 also to make a pair.

Donor: Joglo

Value: \$225

5011 PAMUJI: HAND-FORGED BRONZE FISH. 1 OF A PAIR.

10" H x 5" W 24" L. This lost wax sculpture was imported from the artist's homeland in East Java, Indonesia. May be purchased alone, or with 5010 also to make a pair.

Donor: Joglo

Value: \$225

5012 KENIEN: GLASS BOWL.

Heavy glass bowl with a gold and translucent body banded in vivid yellow, measuring 5 1/2" H x 8"W. Kenien began working in the mid-1980s at the beginning of the American Glass Movement. He studied at Corning, Pilchuck, and in Murano, Italy.

Donor: Earthenworks Gallery

Value: \$300

5013 BARBARA EWING: CERAMIC BOTTLE WITH CORK.

10.5" H x 2.5" in diameter. Multi-colored, patterned, and dishwasher/food-safe vessel for everything from salad dressings to wine.

Donor: Barbara Ewing

Value: \$65

5014 PAIR OF WAYAN GOLEK PUPPETS

Traditional Javanese puppets, carved and painted by hand and dressed in traditional costumes. These articulated puppets are at least 80 years old and used in Wayan Golek puppet plays based on the epic Ramayana story of the struggle between good and evil.

Donor: Maestrale

Value: \$300

5015 GUNTER REIMNITZ: CROW WITH RED BERRY.

11.5 H x 9" W x 18" L sculpture in black steel. From Kodiak Island, Alaska, Gunter has a BFA (earned on scholarship) from the San Francisco Art Institute and now resides in Port Townsend, where he works full-time as sculptor and shows throughout the Northwest.

Donor: Gunter Reimnitz

Value: \$175

5016 TOM WHITE: LOTUS POND.

Photograph taken at the Botanical Gardens of New Orleans in 2019; double-matted and framed, measuring 18" H x 22" W.

Donor: Tom White

Value: \$150

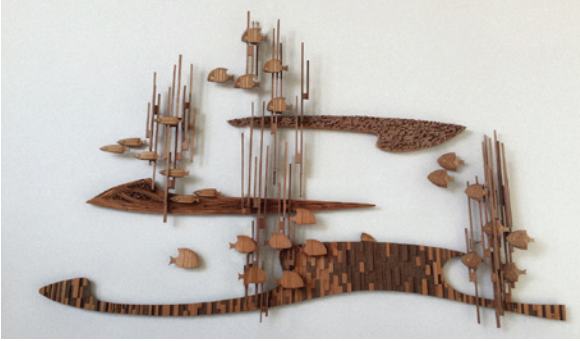


5017 HANS NORHAUSEN: WOOD BAS RELIEF SCULPTURE.

Measures 48" H x 96" W; currently on transition board; designed for an interior wall. This piece was commissioned of the artist in 1967 for a Laguna Beach home and is in excellent condition.

Donor: Suzanne Pitts

Value: \$4,000



5018-5022 RON HUDSON: JAZZ PHOTOGRAPHS.

Hudson was an extraordinary jazz photographer, who spent thirty-plus years photographing some of jazz's brightest dignitaries, capturing moments and committing them to history. Each photograph is framed and measures 22" H x 18" W.

Donor: Laura Welland

Value: \$304 each

- 5018 Count Basie
- 5019 Milt Hinton
- 5020 Ray Brown
- 5021 Oscar Peterson
- 5022 John Clayton

5023 PAUL BOYER: GREEN DOOR & RED DOOR, PUERTO VALLARTA.

Photograph. 1983. Framed and matted on canvas.

Donor: Don and Sarah DuBose

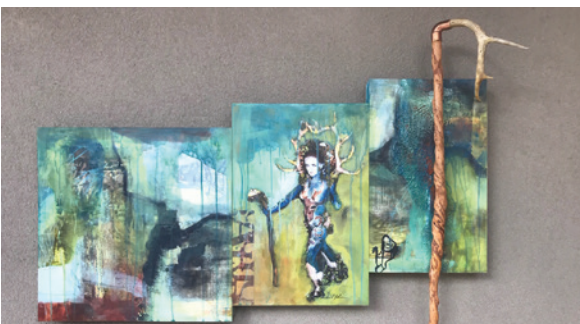
Value: \$250

5024 SANDEE JOHNSON: THE QUEST.

3D Mixed Media Assemblage, 22.5" H X 42" W, plus addition of handmade cane. A recent transplant to Port Townsend, artist, writer and photographer Sandee Johnson has lived, worked and traveled all around the globe. Her artwork has shown in countless galleries, public spaces and museums in Asia, Europe, the Caribbean, Middle East, and Central and North America. Sandee's artwork can be found in collections worldwide.

Donor: Sandee Johnson

Value: \$4,000



EVENTS & EXCURSIONS

6000 DINING, SHOPPING, AND THEATER IN POULSBO FOR 2

Have a slice of Poulsbo! Dine at Elmer's, a family restaurant with a broad menu punctuated by seasonal delights; shop for treasures at Second Seasons; and use your Season Flex Passes to enjoy the Jewel Box Theater's upcoming season, which includes *Murder on West Moon Street*, *Tick, Tick...Boom!*, *Skin Deep*, and *Leaving Iowa*.

Donors: Elmer's Restaurant, Second Season, and Jewel Box Theatre

Value: \$320

6001 A CONTEMPORARY THEATRE, SEATTLE: DRACULA FOR 2 ON NOVEMBER 6TH, 2019

Steven Dietz brings his new adaptation of Bram Stoker's classic, terrifying, and seductive tale of good versus evil to ACT. In this psychological thriller with a surprising twist, Mina, the object of Dracula's desire, sets out to uncover the mysterious haunting of her fiancé and why her closest companion, Lucy, feels her body summoned by howls and whispers in the dark. Mina knows she must boldly challenge the ruler of the night before it's too late. Seductive, empowering, and punctuated by wit, this foray to the dark side is soon to become a cult classic at ACT. Content Advisory: Please be advised this production contains: smoke, fog, strobe lights, sexually suggestive language, references to sexual situations, violence, epic amounts of stage blood and gore, creepy crawlies, things that go bump, and the curse of the undead.

Donor: Robert and Ali Alexander

Value: \$105

6002 BEER TASTING FOR 10 ON NOVEMBER 30TH, 2019 AT THE POURHOUSE, PORT TOWNSEND

Located on the beach at the mouth of Port Townsend Bay, The Pourhouse offers a relaxed environment to enjoy craft beer and spectacular views. For this beer tasting for 10 on Saturday, November 30 at 3 pm, each participant will receive eight 5-ounce pours of craft beer selected by Ned and Virginia.

Value: \$10 per person; 10 places.

Donor: Pourhouse

Value: \$200



6003 CENTRUM ACOUSTIC BLUES FESTIVAL WORKSHOP

For one week, July 26-August 2, 2020, Centrum's campus will become an acoustic blues village. Immerse yourself in a creative community of artists from across the globe who share a passion for early blues traditions. Port Townsend Acoustic Blues week goes deep into the music and traditions of African American folk blues: its roots, forerunners, and their stories. Participants learn, "knee to knee," in intimate sessions with diverse instruments and an artist faculty that is unrivaled anywhere in the world. Each evening, participants enjoy private faculty concerts, master classes, jam sessions, and house parties.

Donor: Centrum

Value: \$595

6004 BOX OF FRAN'S CHOCOLATES AND FACTORY TOUR FOR 2

For Fran Bigelow, founder of Fran's Chocolates, a visit to Paris inspired a European-like passion for pure flavors and simple yet exquisite ingredients. In 1982, she opened her first patisserie and chocolate shop and many confections later, has been credited with sparking the artisan chocolate renaissance in the United States; she is considered one of the best chocolatiers in the nation. Enjoy a tour of Fran's Chocolates Retail, Production, and Viewing area in charming and quirky Georgetown, along with a box of her extraordinary chocolates.

Donor: Kelli Conrads

Value: \$100

6005 CONCIERGE PASS TO 2020 PORT TOWNSEND FILM FESTIVAL

From September 19-21 in 2020 the Port Townsend Film Festival (PTFF) screens more than 90 films in seven downtown venues, all within walking distance of each other. With its big outdoor dinner for passholders, Q&A and panel discussions with filmmakers, and great parties, the PTFF draws film historians, critics, screenwriters, producers, directors and industry specialists, special guests, and film fans like you! The Concierge Pass gains one individual entry to the 2020 PTFF with full Festival benefits: no waiting in line; concierge assistance with film selection and seat reservations; the Friday Night Opening Dinner on Taylor Street; and a one-year membership to PTFF.

Donor: Port Townsend Film Festival

Value: \$650



6006 EVENING WITH THE LEGEND OF JULIA CHILD FOR 6

"Find something you are passionate about and keep tremendously interested in it."

- Julia Child

Enjoy an evening of cooking and dining with Chef Kate (who has lived and worked in France and knew Julia Child) at her in-home teaching kitchen, "Kitchen Conversations." Learn to prepare a few of Child's favorite dishes: Boeuf Bourguignon with freshly made noodles, roasted root vegetables, and simple vinaigrettes for the salad course. Savor each portion of the meal while Kate entertains you with selected passages from her collection of cookbooks. Conclude your evening with a Gateau Aux Noix (Walnut Cake) and the making of Truffles. This culinary experience is designed to familiarize you with classic cooking techniques that can be used in any kitchen, encourage you to make parts of your meal homemade, and highlight the importance of using fresh, quality ingredients. Allow 4-5 hours: it will be worth your while! Scheduled for Sunday, May 2, 2020.

Donor: Kate Keenan

Value: \$100 per person; limit of 6 places

6007 CENTRUM FESTIVAL OF AMERICAN FIDDLE TUNES WORKSHOP

Spend a week living, learning, and playing music with masters of a wide variety of fiddling styles. Fiddle Tunes provides an opportunity to be in community with the bearers of fiddle traditions. More than just improving your skills as a musician, you'll discover a wide range of American traditions and culture through music and build lifelong relationships in the fiddle music community. From June 28-July 5, 2020, it's a week-long, immersive experience with workshops, classes, band labs, tutorials, dances, concerts, singing, open jams, and hat parties. If you've never come to Fiddle Tunes before, now is the time.

Donor: Centrum

Value: \$560

6008 KEY CITY PUBLIC THEATRE SEASON TICKETS FOR 2 WITH T-SHIRTS

For drama and excitement, you'll want to bid on this package two season tickets for all six of Key City Public Theatre's 2019-2020 season shows, plus two of their branded t-shirts. At the time this catalog was assembled, Artistic Director Denise Winter had not yet announced its 2020 offerings; however, coming up in December are both *Mercy Falls* and *Spirit of the Yule*, two productions you will NOT want to miss.

Donor: Key City Public Theatre

Value: \$175



6009 FINDING PAX: 2 BOOKS AND A SAIL FOR 2 WITH KACI CRONKHITE

In 1936, on the island in Denmark where the oldest oak tree in Europe grows, a lone boat builder crafted a boat with his hands. Seventy years later in Port Townsend, just minutes after a near catastrophe was averted in the marina outside her office window, Kaci Cronkhite opened an email to learn a Danish spidsgatter named Pax was for sale. Smitten by the buxom curves of Pax and inspired by a life in the wind, she bought it. The journey that brought the two together connected families in three countries with her lost history - where and how far Pax had journeyed, what she had survived those seven decades, and what those who loved her would always remember. Read Cronkhite's book and enjoy a sail on Pax, skippered by the author.

Donor: Kaci Cronkhite

Value: \$300

6010 CENTRUM JAZZ PORT TOWNSEND WORKSHOP

This week-long immersion into the world of jazz - July 19-26, 2020 - is open to instrumentalists and singers of high school age and older. More than 200 participants focus on improvisational skills in coached combos and vocal classes, with a performance at the end of the week. Participants attend master classes and faculty performances each day, given by 24 internationally-known musicians, each hand-picked by Artistic Director John Clayton. New to the faculty since 2019 are Monk Competition winner Marquis Hill, Michael Mayo, Vicente Archer, and Gillian Margot.

Donor: Centrum

Value: \$835

6011 2 DOUBLE KAYAKS FOR 1 HOUR

A Port Townsend summer experience package. Valid everyday except Tuesday during July and August 2020.

Donor: Port Townsend Paddlesports

Value: \$70

6012 LOGGERS LANDING AND MT. WALKER INN FOR 2, QUILCENE

Two Quilcene gems on Highway 101 in one cozy package for two! Enjoy home-cooked food at Loggers Landing (their slogan: "Sit Your Axe Down and Eat!"). Sleep your meal off at the Mt. Walker Inn, featuring clean and simple rooms on attractive grounds, and proximity to Logger's Landing.

Donor: Loggers Landing, Mt. Walker Inn

Value: \$175

6013 MULES & MOJITOS AT THE IN BETWEEN FOR 18

Discover the treasure of Kris Nelson's The In Between cocktail lounge when you attend this private tasting event! Expert Bartenders will demonstrate creating the perfect Moscow Mule and its variations, the Mojito and Gin-Gin Mule, while providing the history behind the "mule" and the copper cup. Signature Bites will complement this night of fun, tasting and history. Scheduled for Thursday, January 16, 2020.

Donor: The In Between

Value: \$100 per person; limit 20 people

6014 JEFFERSON COUNTY HISTORICAL SOCIETY SUPPORTER MEMBERSHIP AND LUNCH WITH TOUR FOR 2

Executive Director Shelley Leavens will take the lucky winning bidder and guest to lunch, and then conduct a Behind the Scenes tour of the Museum Collection! Enjoy the many benefits of a Supporter-level membership in the Jefferson County Historical Society for a full year: Free admission to the Jefferson Museum, Research Center, Rothschild House, and Commanding Officer's Quarters; free admission to both uptown and downtown; JCHS Walking Tours by reservation; monthly Member e-newsletter subscription; a 10% discount in the Museum Shop and on reprints from our collection of 20,000 historic photos; VIP invitations to exhibit openings and other special events; and exclusive member discount rate for space rentals.

Donor: Jefferson County Historical Society

Value: \$300

6015 FINNRIVER FARM & CIDERY TASTING AND TOUR FOR 10

Enjoy an orchard tour and tasting, with light hors d'oeuvres, for your party of 10. This 50-acre organic farm, south of Chimacum at the corner of Center Road and Beaver Valley Road, is a gathering place for people of all ages. It has been host to family reunions, weddings, and all manner of get-togethers. The winning bidder will also receive a gift basket of farm-crafted ciders, stemware, and other goodies. Tour must be scheduled at least two months prior to desired date. Weekends cannot be guaranteed.

Donor: Finnriver Farm & Cidery

Value: \$405

6016 CENTRUM PORT TOWNSEND WRITERS' CONFERENCE

The Port Townsend Writers' Conference has been at the wild heart of the thriving Pacific Northwest literary scene since 1974. With a focus on community and rigorous attention to craft, the Conference - July 12-19, 2020 - offers morning and afternoon workshops, residencies, guided freewrites, and a vibrant readings and lectures series presented by vital, contemporary writers. Whether you're new to writing and seeking an inspirational environment to create new work; looking for advanced post-MFA revision workshops; or simply desire to renew and recharge yourself in a writing retreat, the Port Townsend Writers' Conference gives you the craft and connections to make breakthroughs in your work.

Donor: Centrum

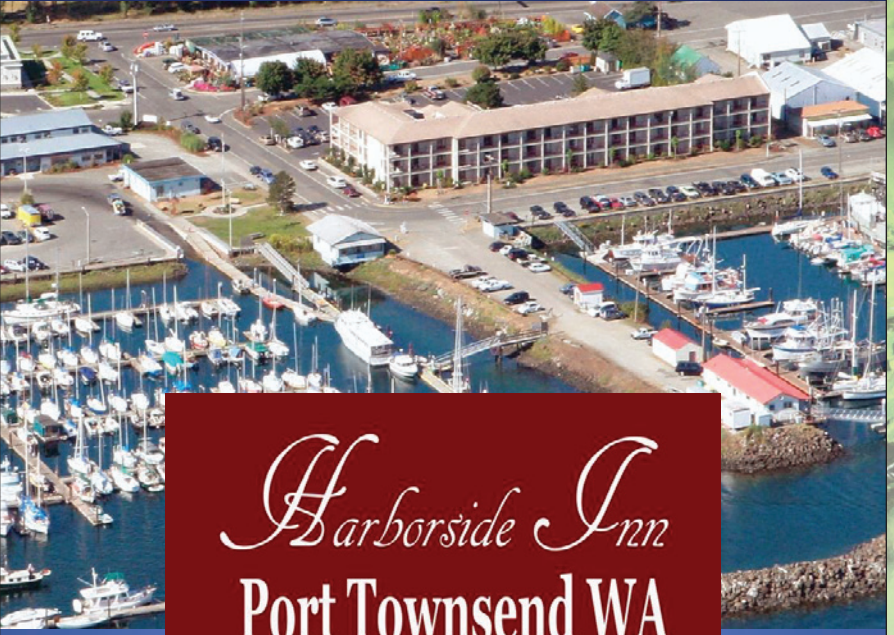
Value: \$750

6017 HARBORSIDE INN, PORT TOWNSEND - ONE NIGHT FOR 2

Located right next to the Port Townsend Boat Haven, every room enjoys a view of the marina and Admiralty Inlet. Let the Harborside Inn be your base camp for the Olympic Peninsula.

Donor: Harborside Inn

Value: \$159



Harborside Inn
Port Townsend WA

Newly Remodeled!

*Every room enjoys a view of the
marina and Admiralty Inlet!*

- Free Wi-Fi
- Complimentary Continental Breakfast
- All rooms with walk-out patio or balcony
 - 100% Non-Smoking
 - Wheelchair Accommodation
 - Outdoor Pool / Spa

Thank you Centrum for sponsoring the Events that give so much to our community. We appreciate you!

330 Benedict St. • Port Townsend
1-800-942-5960 or 306-385-7909
www.harborside-inn.com
harbordsideinn@gmail.com

**6018 SEATTLE REPERTORY THEATER,
THE IMPORTANCE OF BEING EARNEST FOR 2**

Two tickets to the April 24, 2020 show. Jack Worthing is in a bit of a pickle. As a baby, he was abandoned in a train station, and now, in order to marry his beloved Gwendolen, he must prove his lineage to her eagle-eyed mother, Lady Bracknell. To make matters worse, Jack has been known to the entire town and Gwendolen as "Ernest" in his desire to lead an exciting double-life, and Gwendolen is about to get the shock of her life. A beautifully-crafted comedy by the inimitable Oscar Wilde.

Donor: Robert and Ali Alexander

Value: \$156

6019 SAN JUAN TACQUERIA - TEQUILA TASTING FOR 2

It is said that high quality tequila boosts bone health and assists with weight loss; what we know for sure is that San Juan Taqueria is a well-loved local favorite and knows its way around a tequila tasting! Please contact 3-4 weeks in advance of intended date.

Donor: San Juan Tacqueria

Value: \$140

6020 CENTRUM VOICE WORKS: A WORKSHOP FOR SINGERS

Join us for Centrum's next gathering of singers! Led by Artistic Director Pharis Romero, expect six days and five nights of intense fun, singing instruction, repertoire building, and merry music-making. You'll soak up styles, songs, and stories in a wide range of vocal traditions with some of the finest vocalists in the hemisphere. The week-long workshop runs from June 22-27, 2020; the 2019 workshop featured Clinton Fearon, Eva Salina, Peter Rowan, Drew Simon, Bill and the Belles, Emily Millard, Robert Sarazin Blake, Jefferson Hamer, Mara Kaye, Ernie Vega, Dawn Pemberton, Kathy Kallick, and Brian Ó hAirt.

Donor: Centrum

Value: \$480

**6021 PORT TOWNSEND MARINE SCIENCE CENTER,
FORT WORDEN - 4 TICKETS**

The Center is an educational and scientific organization devoted to understanding and conserving our marine and shoreline environment, operating out of Fort Worden State Park. Use your tickets to discover the nearshore habitats of the Salish Sea in the Aquarium (on the pier at the Fort Worden beach) and engage with the Museum's interactive displays and videos that explore the human impact on the Salish Sea ecosystem.

Donor: Port Townsend Marine Science Center

Value: \$20



6022 MYSTERY BAY FARM TOUR AND CHEESE TASTING FOR 4

Mystery Bay Farm is a small scale, family farm operating on five acres on Marrowstone Island. They milk 100% American Alpine dairy goats raised on their farm, and breed the adults in the fall, producing spring kids five months later. They milk between 20 and 25 goats each season. Your group of four will learn the basic natural history of goats, the farm's management styles/ techniques, and see examples of their rotational mixed forage grazing. You will also tour the milking parlor and cheese making facility. The tour is approximately 1 hour long, culminating with a cheese tasting.

Donor: Mystery Bay Farm

Value: \$160

**6023 SEATTLE OPERA'S CINDERELLA FOR 2
ON OCTOBER 30, 2019**

Rossini's flowery adaptation of the ultimate rags-to-riches story mixes tenderness and frivolity with fabulous results. From its first-class overture to its high-flying, happily-ever-after finale, the comedic love story delivers delights by the dozen. Toe-tapping tunes, bright ensembles, colorful characters, and ridiculous situations make this valentine to kindness sparkle with an enchantment all its own. Inspired by Charles Dickens and the cheeky panto shows enjoyed in English music halls, director Lindy Hume sets the fairy tale in and around a Victorian emporium. With costumes and dances reminiscent of Mary Poppins, multi-level sets, and a dash of stage magic, Hume shines a light on the gleaming potential for goodness in a dark world.

Donor: Robert and Ali Alexander

Value: \$284

6024 SUQUAMISH CLEARWATER CASINO RESORT FOR 2

This destination casino resort pampers guests with rustic elegance, luxurious amenities, full-service spa, a golf course and the excitement of casino nightlife. Enjoy a one night Tower Hotel stay and a \$50 dining certificate.

Donor: Suquamish Clearwater Casino Resort

Value: \$209

**6025 PORT TOWNSEND SCHOOL OF THE ARTS
CLASS AND GIFT BASKET**

Bringing top quality arts instruction to the Olympic Peninsula, Port Townsend School of the Arts offers one-time classes, multi-day workshops, and teaching series for youth and adults in a wide variety of artistic mediums.

Donor: Port Townsend School of The Arts

Value: \$200

6026 TASTING FOR 6 AT SUNRISE COFFEE

Your party of six will learn where the coffee is grown and how it is roasted with Sunrise Coffee's new, high-end coffee roaster. Each guest will journey home with a Sunrise Coffee cup and one pound of coffee of their choice. Date to be arranged by Susie and the winning bidder.

Donor: Sunrise Coffee

Value: \$325

6027 PUGET SOUND EXPRESS - WHALE WATCHING TOUR FOR 2

A day-long whale watching tour for 2. See whales in the wild and tour the San Juan Islands on their family-run boats departing from Port Townsend.

Donor: Puget Sound Express

Value: \$226.40

6028 THE POINT CASINO, KINGSTON: ONE NIGHT FOR 2

Stay and play in a King or Double Queen room at The Point Hotel and dine - breakfast, lunch, or dinner - at any of their food outlets, including the Pizza Pit Stop, Point Julia Cafe, Market Fresh Buffet, Little Boston Bistro, and The Center Bar.

Donor: The Point Casino

Value: \$250

6029 SEATTLE REPERTORY THEATER, LYDIA AND THE TROLL FOR 2

Two tickets to the May 15, 2020 show. Singer-songwriter Lydia feels held back. Maybe it's writer's block, maybe it's her not-so-perfect boyfriend. But when a mysterious stranger offers her the chance to change her life, she may end up sacrificing more than she ever imagined. Inspired by fantasy and folklore, yet grounded in Seattle's noted landscape and landmarks, revered actor and playwright Justin Huertas (Lizard Boy) conjures up Pacific Northwest magic in this intimate new world premiere musical. Presented in the Leo K. Theatre.

Donor: Robert and Ali Alexander

Value: \$82

6030 SEATTLE ART MUSEUM FAMILY MEMBERSHIP

Your SAM Family Membership includes all-membership benefits for two adults and children 18 and under in the same household; invitations to, and discounts on, family programming, including Parent's Night Out and SAM Camp; subscription to SAM Kids Brochure; and two one-time-use discount passes good for \$5 off special exhibition tickets or free entry into SAM collection galleries (restrictions apply).

Donor: Seattle Art Museum

Value: \$109



6031 THE SWAN PENTHOUSE WITH BRUNCH AT QUENCH FOR 4

Your party of four will enjoy the amenities and appointments of The Penthouse on the third floor of The Swan Hotel's main building. It features a full kitchen, large dining area, and two sitting areas. The master bedroom has a king bed and a master bath with a two-person soaking bathtub. The Penthouse Suite also features a second bedroom with queen bed, a second full bath, and a loft with two queen beds. Two private decks offer dramatic views of the Strait of Juan de Fuca, Admiralty Inlet, Port Townsend Bay, Historic Downtown Port Townsend and the Olympic Mountains. Other amenities: free Wi-Fi, high-definition TV with basic cable HD channels, full kitchen with refrigerator, and in-room coffee or tea service.

And then onto brunch! With a hint of Hawaii and a taste of aloha, Quench's Sunday brunch includes 'Endless Champagne', Bacon Marys, Creme Brulee French Toast, Benedicts with luscious lemony Hollandaise, Loco Mocos, burgers, brews and even more, with incredible views!

Donors: Swan Hotel, Quench Waterfront Kitchen & Bar

Value: \$565

*Located in the Historic
Maritime District of
Port Townsend, Washington*

- *Eight Studio Rooms*
- *Four Private Cottages*
- *Penthouse Suite*



The Swan Hotel

222 Monroe St. • theswanhotel.com • 360.385.1718



The Bishop
VICTORIAN HOTEL

*Victorian grace in the heart
of historic downtown
Port Townsend, Washington*

714 Washington Street / bishopvictorian.com / 360.385.6122

6032 TOUR OF LOCAL WATERS AND SHORELINE ON "SALTY"

Skim the shore of Mystery Bay, stop to visit the historic Nordland Store, set the crab pots, and keep your fingers crossed! Light refreshments and beverages served by Skipper Jim Maupin.

Donor: Jim Maupin

Value: \$300

6033 PALACE HOTEL, PORT TOWNSEND, 2 NIGHTS FOR 2

A Victorian treasure on Port Townsend's Water Street, close to the ferry and downtown shops and cultural life. It's been a private home and a house of ill repute; "there may be ghosts." Off-season, based on availability, weekends and holidays excluded. Expires 6 months from October 19, 2019.

Donor: Palace Hotel

Value: \$250

6034 PUGET SOUND EXPRESS - WHALE WATCHING TOUR FOR 2

Day-long whale watching tour for 2. See whales in the wild and tour the San Juan Islands on their family-run boats departing from Port Townsend.

Donor: Puget Sound Express

Value: \$227

6035 PORT TOWNSEND BREWING COMPANY TOUR AND TASTING FOR 8

Your group of eight will enjoy a tour and tasting at this popular local brewing company, featuring a lively array of beers worth trying for their names alone: Hop Diggity, Chet's Golden Ale, Peeping Peter Scotch Ale, and Yoda's Green Tea Gold. The list goes on. Includes all the peanuts you can eat and a pint glass to take home. Please call two weeks in advance to make an appointment.

Donor: Port Townsend Brewing Company

Value: \$300

6036 RING-MAKING CLASS WITH JIM COSTELLO

Work with Jim Costello to design a ring in gold or silver. Jim has more than 20 years' experience in teaching lost wax casting; he will provide the 14K gold (enough for one ring), give you a choice of several stones for setting (no faceted stones), and guide you to the creation of a unique piece.

Donor: Jim Costello

Value: \$400



6037 SEATTLE REPERTORY THEATER, SHOUT SISTER SHOUT! FOR 2 ON NOVEMBER 15, 2019

Long before "women in rock" became a media catchphrase, Rosetta Tharpe proved in spectacular fashion that women rocked. Inspired by Gayle F. Wald's book *Shout, Sister, Shout!*, this new theatrical work tells "The Godmother of Rock-n-Roll's" incredible story. Ambitious, courageous, and uncompromisingly public, Sister Rosetta Tharpe became a legend who redefined the national and international music scene in the 1930s and 40s. Experience her incredible life through this rousing musical portrait.

Donors: Robert and Ali Alexander

Value: \$156

6038 SEATTLE MUSEUM OF FLIGHT GIFT BASKET

They've provided gifts for the whole family! When you visit, don't forget to see the Aviation Pavilion where the Museum's unrivaled collection of large commercial aircraft can be seen in one place, including Air Force One, Concorde, and the world's first 747! Includes: 10 admission passes; Museum of Flight Commemorative "Apollo" bottle of wine; stuffed pilot bear; book, For Future Generations; parafoil micro kite; Toob toys; kid's water bottle; astronaut ice cream; laundry bag; and Glow-in-the-Dark Stars.

Donor: Museum of Flight

Value: \$481

6039 TRIP TO VICTORIA FOR 2!

Walk on (round-trip) the Black Ball Ferry from Port Angeles to Victoria and spend the night in a one-bedroom suite at the Royal Scot Hotel, a good central location close to public transport for great sightseeing, dining out, and shopping.

Donor: Black Ball Ferry Line, Royal Scot Suite Hotel

Value: \$265

**6040 COMMANDER'S BEACH HOUSE, PORT TOWNSEND
2-NIGHTS FOR 2**

Two nights at Port Townsend's award-winning bed and breakfast. Choose between the Schooner Room or Island View Room. It's an easy walk to all the shops and restaurants in Port Townsend; or a nice day in, storm watching, and sitting by the fireplace with a good book. Valid Sunday through Thursday, November 1, 2019 through March 31, 2020, excluding holiday weeks.

Donor: Commander's Beach House

Value: \$315

6041 KEY CITY PUBLIC THEATRE AND BANANA LEAF FOR 4

Key City Public Theatre (KCPT) plays an important role in the fabric of Jefferson County by consistently producing thought-provoking and visually stunning productions, performed to rapidly growing regional audiences. Under the leadership of Artistic Director, Denise Winter, KCPT has experienced tremendous programmatic success. Enjoy four tickets to an evening performance, with concessions for four and a Banana Leaf Thai Bistro gift certificate for \$40.

Donor: Key City Public Theatre and Banana Leaf

Value: \$188



CONSUMABLES

7000 ALDRICH'S GIFT BASKET, LARGE

A basket from Ghana, filled with delectable goodies from Aldrich's Uptown Market. Aldrich's first opened in 1895 and continues to run today as Port Townsend's place for groceries, salads, soups, wine, craft beer, and - with Sushi Ichiba in The Loft - the best sushi on this side of the water. Scott and Robin Rogers run the store - as caretakers of history and active members of the community, empowering their employees and providing the very best in products and service.

Donor: Aldrich's Market

Value: \$176

7001 LYNNE STANKO'S HOME-BAKED COOKIES, PROVIDED OVER 6 MONTHS

Indulge your inner cookie monster with four dozen cookies over a six-month period, baked and delivered to your local doorstep by Master Baker Lynne Stanko. Holiday-themed treats are her specialty.

Donor: Lynne Stanko

Value: \$125

7002 ALPENFIRE CIDER TASTING FOR 4 WITH GIFT BASKET

The Northwest's first organic cidery, based right here in Port Townsend, is providing all the makings for a tasting of Alpenfire products for four: Cinders Methode Champenoise; Glame Methode Champagne; Orleans Style Barrel-Aged Apple Cider Vinegar; two signature glasses; and an Alpenfire kitchen towel.

Donor: Alpenfire Cider

Value: \$350

7003 QFC SIMPLE TRUTH ORGANICS GIFT BASKET

Includes items from the Simple Truth product line and other QFC products.

Donor: QFC Port Townsend

Value: \$35

7004 PIZZA FOR A YEAR FROM THE PIZZA FACTORY

One large pizza a month for one whole year. They serve calzones and pasta as well..."You Toss 'em, They're Awesome!"

Donor: Pizza Factory

Value: \$264



**7005 THE KEG & I, CHIMACUM
A GROWLER, SOME GLASSES, AND BEER**

Chimacum's newest taproom offers craft beer, cider, kombucha, and non-alcoholic ginger beer on tap; wine by the glass and bottle; bubble water, Dry Soda, Root Beer, Ginger Beer; and multifarious snackeries from land and sea (and bicycle too)! Enjoy a signature growler and two glasses from The Keg and I, plus a \$20 gift certificate to use for beer!

Donor: The Keg and I

Value: \$40

7006 ALDRICH'S GIFT BASKET, SMALL

Filled with delectable goodies from Aldrich's Uptown Market. Aldrich's first opened in 1895 and continues to run today as Port Townsend's place for groceries, salads, soups, wine, craft beer, and - with Sushi Ichiba in The Loft - the best sushi on this side of the water. Scott and Robin Rogers run the store as caretakers of history and active members of the community, empowering their employees and providing the very best in products and service.

Donor: Aldrich's Market

Value: \$65.52

7007 PROPOLIS: BEER FLIGHT WITH CHEESE PAIRINGS FOR 8

Producing high-quality, handcrafted herbal ales inspired by old world tradition, local resources, and the rhythms of nature in Port Townsend.

Donor: Propolis Brewery

Value: \$150

7008 6 KINDS OF WHISKEY WITH CRYSTAL GLASSES AND A BOOK

A curated collection of whiskeys, selected with an eye to flavor and variety: Woodford Reserve (Kentucky), Basil Hayden's (Kentucky), Hibiki Suntory (Japan), Green Spot (Irish), Oban (Scotland), Delwhinnie (Scotland). Sip them from your pair of Glencairn Crystal Whiskey Glasses while perusing your whiskey coffee table book.

Donor: Larry Crockett

Value: \$520

7009-7014 BOX OF ULTIMATE CHOCOLATES FROM ELEVATED

One pound of Elevated's delectable chocolates.

Donor: Elevated Ice Cream Co. & Candy Shop

Value: \$35

7015 SAFEWAY ORGANICS GIFT BASKET

Includes organic delights and other items from departments throughout the Port Townsend store.

Donor: Safeway

Value: \$55

7016 GET-A-BLES GIFT BASKET

Basket of eclectic delights. Under new ownership, Get-a-bles has expanded its variety of epicurian offerings, beverages, and gift items.

Donor: Get-a-bles

Value: \$80

7017 SUGAR HILL FARMS GIFT BASKET

Sugar Hill began as a small time sweet stand at local farmer's markets. In a time where candy is at every front counter for a dime a dozen, Sugar Hill's mission is to create confections that taste like someone cares. Each piece is handcrafted by a family with a dream and a love for life.

Donor: Sugar Hill Farms

Value: \$50

7018 TUROPHILE'S TROPHY FROM MT. TOWNSEND CREAMERY

One cheese per week for one year! Mt. Townsend Creamery offers hand-crafted award-winning cheeses created in centuries-old tradition. They have repeatedly won national competitions with Trufflestack, their original creation. However, all their delectable cheeses are renowned throughout the Northwest as exceptional! Mt. Townsend Creamery operates sustainably out of consideration for the Olympic Peninsula we share. Winners should present their Turophile Trophy card weekly to receive their prize (not to exceed \$10 per week).

Donor: Mt. Townsend Creamery

Value: \$520

7019 PANE D'AMORE-1 LOAF OF BREAD PER WEEK FOR 1 YEAR

Imagine - a year of the staff of life, from Port Townsend's legendary bakery! 52 loaves of Pane d'Amore bread - one loaf per visit. Among the choices are Organic Oat Bread, Ciabatta, Cinnamon Raisin Loaves and Rolls, Nash's Miche, Cranberry Walnut, Fig Anise, 100% Rye, Challah, and Kalamatta Olive.

Donor: Pane d'Amore

Value: \$335

7020 FINISTÈRE, PORT TOWNSEND

The name Finistère derives from the Latin Finis Terræ, meaning end of the earth. For Port Townsend, it means a destination and neighborhood restaurant owned and operated by Chef Deborah Taylor and Front-of-House Manager Scott Ross in Uptown. They offer haute cuisine - meticulously prepared and beautifully presented - over happy hour and dinner Wednesday through Sunday and brunch on the weekend. Does not include tax and gratuity.

Donor: Finistere

Value: \$160

KEY CITY FISH COMPANY

PURVEYORS OF QUALITY
MEAT, SEAFOOD, POULTRY



TACO'S TO-GO

MARKET OPEN EVERY DAY 10AM-6PM.

TACO'S OPEN MON-SAT 11AM-4PM



In the Port Townsend Boat Haven
307 10th Street, Port Townsend
360-379-5516 | info@keycityfish.com

WINE GRAB

CENTRUM'S BOARD OF DIRECTORS PRESENTS THE WINE GRAB FOR THIS ENCHANTED FOREST! EACH BOTTLE OF WINE IS DISGUISED (YOU WON'T BE ABLE TO TELL ONE FROM THE OTHER) AND VALUED AT \$25 OR MORE.

WRITE YOUR BID NUMBER ON THE TAG AND IT'S YOURS FOR \$25.

WINE NOTES FOR SOME OF THE OFFERINGS, COURTESY OF TOM ARMITAGE, CENTRUM BOARD OF DIRECTORS:

OREGON

Oregon Territory Pinot Noir 2016. Very fresh red cherries and poached strawberries with a succulent, fresh and juicy core of very bright, red-cherry flavor that holds impressive length. This is a concentrated and really fresh young Oregon pinot. Drink now. 91 points, James Suckling.

ARGENTINA

Tikal Patriota 2008. This full-bodied, rich and powerful red wine from Mendoza, Argentina is 60% Bonarda and 40% Malbec. It has gobs of flavor (black cherry, plum, cigar box, Asian spices, lavender) and great length. Robert Parker's Wine Advocate gave it 92 points.

Bodega Norton Reserva Malbec 2016. Bodega Norton was founded in 1895 in the Mendoza River Valley, Argentina. The estate winery is located at the foothills of the Andes. The Reserva is made from carefully selected grapes from vineyards more than 30 years old. This reliably good Malbec is an expressive wine with ripe black fruits, violets, spices and tobacco.



FRANCE

Arnoux et Fils Vacqueyras Cuvee Jean-Marie Arnoux 2007. A blend of 70% Grenache, 25% Syrah, and 5% Mourvedre, all from 50-year or older vines on the plateau Garrigues in Vacqueyras, Rhone, France. 93 points, Robert Parker's Wine Advocate.

ITALY

Fattoria Cabanon Bonarda Boisee Oltrepo Pavese 2006. A full-bodied red wine from the relatively rare grape Bonarda grown in the northwestern region of Piedmont, Italy. Bonarda is produced only in excellent vintages and is well structured for aging.

Cannonau di Sardegna Reserva 2011. This is a grenache from Sardegna, Italy. It has a lovely violet-like scent and warm, plummy flavors with an aristocratic oak overtone.

SPAIN

Campo Viejo Rioja Reserva 2013. From the Campo Viejo vineyard in the La Rioja region, this classic Rioja is made with 85 percent Tempranillo, 10 percent Graciano, and 5 percent Mazuelo grapes and is aged for 18 months in casks of American and French oak. It has a delicate balance of cherry, plum, tea, cocoa, licorice and spice flavors mingling over firm tannins and juicy acidity. Savory, in the traditional Rioja style.


getables



COFFEE BAR



BEER, WINE, CIDER



GIFTS & CARDS



GOURMET SNACKS

810 water street, port townsend wa · 360-385-5560 · getablespt.com



PREMIER DESSERTS

8000 LEMON MERINGUE PIE BY PANE D'AMORE

From Port Townsend's favorite bakery, and as only Linda Yakush can make it.

Donor: Pane d'Amore

Value: \$75

8001 JOANN SAUL'S DEEP-DISH BANANA CREAM PIE

Her reputation precedes her! Joann Saul created Dream City Catering and Finn's Coastal Cuisine; she's back in Port Townsend with a delicious deep-dish banana cream pie with caramel sauce AND chocolate sauce.

Donor: Joann Saul

Value: \$75

8002 PETIT CAFÉ AU CHOCOLAT BY ISABEL GATES

The 12" chocolate cake is layered with a collection of raspberry and chocolate mousses, a chocolate/hazelnut crumble and topped with a chocolate mirror glaze. Elegant chocolate trees and red currants surround a small clearing (the cake top) where mini-French patisserie are being served to forest guests around a chocolate cauldron of raspberry coulis.

Isabel's blog: belovedrecipebox.com.

Donor: Isabel Gates

Value: \$75

8003 HAZELNUT CHOCOLATE COFFEE DACQUOISE FROM VAL ANNE WELCH

A Hazelnut Dacquoise layered with coffee buttercream, chocolate crunch, and ganache, decorated "woodland" style with chocolate bark, meringue mushrooms, and chocolate woodland creatures.

Donor: Val Anne Welch

Value: \$75

8004 L'OPERA GATEAU BY KATE KEENAN

This classic dessert is a work in six acts: three thin layers of almond cake (jaconde), each soaked in a potent coffee syrup; a layer of espresso-flavored buttercream; one layer of bittersweet chocolate ganache; and a topping of chocolate glaze. Traditionally, the cake is decorated with its name written in glaze across the top and finished with a piece of shimmering gold leaf.

Donor: Kate Keenan

Value: \$75



8005 LEHANI'S BELOVED GRANDMA'S CHOCOLATE CAKE

You'll be thanking her grandmother as you savor the love in this decadent double-layer chocolate cake with cream cheese frosting, drizzled with Belgian chocolate.

Donor: Lehani's Deli and Coffee

Value: \$75

8006 SILVERWATER CAFE'S CHOCOLATE KAHLUA MOUSSE

The scent of Chef David Hero's toffee-filled chocolate Kahlua mousse cake is intoxicating. Be their hero! Buy it for your table!

Donor: Silverwater Café

Value: \$75

8007 AARON STARK'S MYSTERIES OF THE FOREST DESSERT

Jefferson Healthcare's Chef Stark has promised a dessert that references the forest and its mystery, and is as delicious as it looks.

Donor: Arran Stark

Value: \$75

8008 LIME CHEESECAKE BY SHANNON AFRICA

The proprietor of Seashell Cakes has created a masterpiece:

This Lime Cheesecake is unbelievably delicious - perfectly tart, perfectly sweet, perfectly tangy, perfectly creamy, perfectly luscious - it's perfectly Shannon Africa!

Donor: Shannon Africa

Value: \$75

8009 LARRY CROCKETT'S TIRAMISU IN A CRYSTAL BOWL

A traditional Italian tiramisu features ladyfingers dipped in coffee, layered with a whipped mixture of eggs, sugar, and mascarpone cheese, and flavored with cocoa; and then there's Larry's tiramisu, which will be cradled in a crystal bowl.

Donor: Larry Crockett

Value: \$75



2019 GALA & AUCTION THIS ENCHANTED FOREST

🍷 LIVE AUCTION 🍷

LIVE AUCTION

1 A QUARTET OF EXTRAORDINARY AND RARE WINES

These very special wines are from the cellar of Centrum Board Member Tom Armitage. They have been carefully aged in temperature and humidity controlled storage. The wines are accompanied by a brochure prepared by Tom that gives detailed descriptions of the winemakers, the vineyards, the grapes, and the vintages. Some are sold out and no longer available.

Donor: Tom Armitage

Value: \$525

CHAMPAGNE BOLLINGER LA GRANDE ANNÉE BRUT 2007



The vintage-dated La Grande Année is only produced in exceptional years and is rightly known as one of the world's greatest Champagnes. The 2007 vintage has a slightly higher amount of Pinot Noir (70%) than usual, with Chardonnay rounding out the rest of the blend (30%). Over 90% of this cuvée was sourced from Grand

Cru sites, with the balance from Premier Cru villages. Wine Spectator, Wine Advocate, and Jeb Dunnock all scored this wine 94 or 94+. This is an elegant example of La Grande Année, fermented in older barrels and aged under natural cork for more than eight years. It offers a tapestry of finely woven flavors: graphite and ground spice, crushed blackberry and dried apricot, toast and honeycomb. Firm and focused, with a lasting, chalky finish. This classy, impressive Champagne will keep for 10-15 years. Valued at \$210 (All costs include excise and sales tax.)

CASANOVA DI NERI BRUNELLO DI MONTALCINO TENUTA NUOVA 2013



Brunello di Montalcino is one of Italy's most famous and prestigious wines. Casanova di Neri's 2013 Brunello di Montalcino Tenuta Nuova is celebrating its 20th anniversary (1993-2013), and a special gold-label edition of the wine was made to commemorate this important milestone. Tenuta Nuova is a pioneering and visionary vineyard

project embodying the belief and passion of Casanova di Neri. This extraordinary example of a great Brunello received scores of 98 from James Suckling, 97 from Robert Parker's Wine Advocate, and 96 from Wine Spectator. This is a bold and expressive Brunello that displays tightly knit aromas of Morello cherry, spice, leather and balsam herb that are the building blocks of the very best and most beautiful Brunellos. Best from 2021 through 2037. Valued at \$140.

BRANCAIA ILATRAIA 2012

This amazing wine from Tuscany, Italy received a score of 94 from Wine Spectator, 93 from James Suckling, and 93 from Robert Parker's Wine Advocate. It was #52 on Wine Spectator's list of the top 100 wines of 2015. The blend is 40% Cabernet Sauvignon, 40% Petit Verdot, and 20% Cabernet Franc. Valued at \$80.



MERRY EDWARDS "COOPERSMITH" RUSSIAN RIVER VALLEY PINOT NOIR 2007

Merry Edwards, "The Queen of Pinot," is an iconic California winemaker known for her impeccable single-vineyard Pinot Noirs. Her wines are bold, rich, and structured. Wine Spectator gave the 2007 Coopersmith Vineyard 93 points stating that it "strikes a wonderful balance between delicacy, finesse and subtle rich earthy flavors, serving up loamy cherry and berry, mineral and forest floor. Picks up body and tannic structure on the long finish." Valued at \$95.



2 CAPE GEORGE CRAB CAPTURE ON MINOTS LIGHT FOR 6

Join Kris Easterday and Mike Heckinger for a day's crabbing adventure out of Cape George on the Minots Light, a 37' Lord Nelson Victory tug. They'll provide the crab-pots and training; when the pots are set, you'll be free to enjoy the gourmet lunch provided by your hosts. And if the crab gods smile on you, you'll take some home. Plus Captain Mike will clean and cook them for you! A grand adventure for a family or group of friends, yours to enjoy during the winter or summer crabbing season!

Donor: Kristine Easterday and Mike Heckinger

Value: \$1,000



3 APRIL IN PARIS AT QUIMPER INN - GOURMET DINNER FOR 8

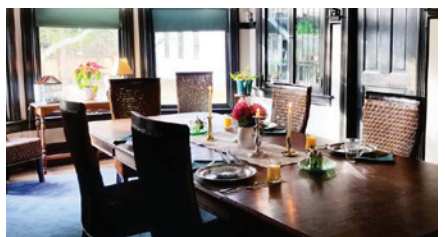
Innkeeper and consummate Chef, Sue Ramage, offers a five-course meal to conjure the joy of visiting Paris. Wine will be served throughout and a reading from Janice MacLeod's *A Year In Paris* will follow. The menu includes:

- **Hors d'oeuvres:** Blue Cheese Gougeres with Charcuterie Platter
- **Soup:** Cream of Artichoke
- **Choice of Entrée:** Coq Au Vin or Dijon Crusted Salmon
- **Salad:** Asparagus, Grated Beets with Goat Cheese and Walnuts on a Bed of Arugula with Wine Vinaigrette
- **Dessert:** Hazelnut-Chocolate Ganache with Carmelized Figs, served with Port Wine

BON APPÉTIT! To be held on Sunday, April 19, 2020. Hold up your card to be included; if you are bidding for two, hold up two cards!

Donor: Sue Ramage

Value: \$140 per person: 8 places



TAHITI | FRENCH POLYNESIA | FIJI | SOUTH PACIFIC

Paradise is Calling

The time to visit French Polynesia and the South Pacific is now. Experience luxury small-ship cruising on the award-winning m/s *Paul Gauguin*.

For more information contact
Adventure Artisans
844.554.6161 or AdventureArtisans.com



50% OFF Standard Cruise Fares
plus INCLUDED AIRFARE
from Los Angeles or San Francisco

Paul Gauguin
CRUISES

4 7-NIGHT SOCIETY ISLAND CRUISE ON THE MS PAUL GAUGUIN

The perfect introduction - or reintroduction - to the picture-perfect charms of the South Pacific, this seven-night sojourn whisks you away to destinations that played muse for author James A. Michener, painter Paul Gauguin, and many more. Where will you find your inspiration? Vanilla-scented Taha'a? Rugged Moorea? Or perhaps even just watching the Technicolor sunset from your balcony onboard the MS Paul Gauguin, launched in 1998 and built specifically to sail the waters of Tahiti, French Polynesia, and the South Pacific. For two lucky people. Cruise is to be scheduled for mutually agreeable dates, but must be taken prior to October 20, 2020, and must be scheduled no more than 60 days in advance. If winner fails to sail within the given timeframe, the cruise will be forfeited and no extensions will be granted. Final confirmation of sailing will be provided sixty-(60)-days prior to sailing. Travel documents will be issued once space is confirmed and port charges are received. Includes 7-night cruise, based on double occupancy, gratuities for ship's staff, all meals, use of all sports related equipment and facilities, and complimentary select beverages/wines (excluding all premium brands). Does not include port, security and handling charges (additional \$149 - 159 per person), purchases of a personal nature, air and ground transportation to and from the vessel, or travel insurance.

Donor: Adventure Artisans

Value: \$9,390



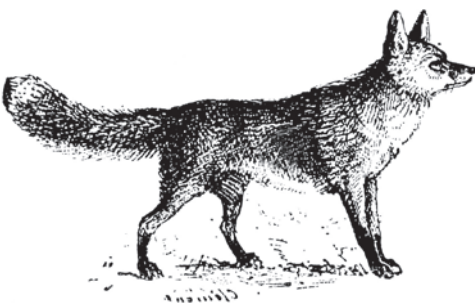
**5 HUSKIES VS. UTAH ON SATURDAY, NOVEMBER 2
WITH A NIGHT AT HOTEL ANDRA FOR 2**

Enjoy outstanding seats on the 48-yard line of Husky Stadium's south side while you watch this game against highly-ranked Utah - likely to determine the outcome of the PAC-12 North Championship. The seats are located just under the roof, so the rain won't reach you unless the wind is high. You cannot buy tickets this good - only at the Centrum Gala! \$140 for the tickets, \$400 for the license needed to buy the tickets, and a 50-year wait for the tickets to become available!

After the game, repair for the night to Hotel Andra, a boutique hotel in Seattle's midtown. Your Andra Superia mini-suite is perfectly appointed in calming textures and subtle Scandinavian designs; white linens and warm patterned drapery are complemented by modern minimalist furniture to provide a relaxing space in the center of Seattle. Valet parking included.

Donors: Robert and Ali Alexander and Hotel Andra

Value: \$537



6 PORT TOWNSEND VINEYARDS TOUR AND TASTING FOR 8

Treat yourself and eight guests to a private guided tasting and Barrel Room tour. You'll learn how the grapes were grown, harvested, and crafted into wine while sipping their current wine offerings, paired with just the right cheeses. The winning bidder will also receive two bottles of special Port Townsend Vineyards Chardonnay.

Donor: Port Townsend Vineyards

Value: \$315



7 ENCHANTED GARDEN PARTY AT THE VAN ALLEN'S FOR 40

Hosts Nancy and Doug Van Allen invite you to their enchanted gardens in Uptown Port Townsend for party featuring theme delicacies such as Toadstool Cups (Crab-stuffed Mushrooms); Sasquatch's Selection (Sliced Beef on Rustic Bread); Sylph's Surprise (Salmon Tartare on Cucumber Slice); and Moon-glow Bites (Strawberry and Blueberry Goat's Cheese Pastries), accompanied by alcoholic and non-alcoholic beverages including Watermelon Lemonade, Strawberry Kiss, and Sarsaparilla Root Tea, as well as wines. Moss Troll bartenders, Wood Nymphs and Forest Fairies will be your enchanting servers. Scheduled for Friday, July 10, 2020.

Hold up your card to be included.
If you are bidding for two, hold up two cards!

Donors: Doug and Nancy Van Allen

Value: \$125 per person; 40 spaces.



8 LUXURY HIGHLIGHTS OF VIETNAM OVER 12 DAYS FOR 2

Vietnam is an exotic land of breathtaking natural landscapes, vivid colors, and lifestyle. It is home to eight recognized UNESCO World Heritage Sites; its cuisine never ceases to amaze avid foodies. It has royal relics, enduring French colonial legacies, and 54 separate ethnic groups, all with their own languages, ways of life, and traditional customs. The winning bidders will travel in a luxury, private, air-conditioned vehicle throughout their tour, which begins in Ha Noi and continues onto Ha Long, Hoi An, Da Nang, and Hue, ending at Ho Chi Minh. Trip is to be scheduled for mutually agreeable dates and must be scheduled at least 60 days in advance. May-September, low season; March, April, and October, high season.

Includes:

- 12 days, 11 nights’ accommodations in a twin or double room with daily breakfast
- One-night cruise on Ha Long Bay – sharing boat
- 5 Lunches and 1 dinner as specified in the itinerary – visit the sites where Anthony Bourdain broke bread with Barack Obama
- Domestic ticket from Hanoi to Da Nang and Hue to Ho Chi Minh by Vietnam Airline
- Personal assistant to meet and greet in immigration for VIP Visa fast track & Visa stamping fee in Vietnam (US \$25 p/p)
- Private cooking class
- 4 optional tours in Ho Chi Minh
- Services of a driver and guide with luxury private air-conditioned vehicle during all tours and transfers
- Experienced English-speaking guide during all tours and transfers
- Entrance fees for all visits as mentioned in program’s longer description

Does not include: International airfare, meals (if not specified in the itinerary), gratuities for guides and drivers, or travel insurance.

Donors: Adventure Artisans

Value: \$11,736



Vietnam / Thailand / Cambodia / Laos / Myanmar

*Be immersed in culture
and sightseeing*



For more information contact

Adventure Artisans

at 844.554.6161 or AdventureArtisans.com



9 2019 NEW TREK VERVE AND ELECTRIC HYBRID BICYCLE

The ultimate Port Townsend electric hybrid bike! It features a lightweight aluminum frame, 250-watt Bosch Active Line mid-drive motor capable of sustaining speeds up to 20 mph, a PowerPack Performance 400Wh battery, and a handlebar-mounted Bosch Purion controller. The TREK Verve+ is equipped with commute-ready features like an integral Lync Light system, wide 45c Bontager H5 Hard-Case Ultimate tires for extra stability, Shimano hydraulic disc brakes for all-weather stopping power, fenders, and a kickstand. The Bosch PowerPack 400 can be 50% charged in 1.5 hours and fully charged in 3.5 hours from a 110-volt household electrical system. In normal usage, the battery charge will last from 25-50 miles.

Donors: Robert and Ali Alexander & The Broken Spoke

Value: \$2,400



10 VICTORIAN ICE CREAM SOCIAL AT THE OLD CONSULATE INN FOR 35

Join hosts Cindy and Nathan at the acclaimed Old Consulate Inn (named one of the New York Times Top-10 Favorite Hotels in 2018). This unusual, adults-only Victorian Ice Cream Social features all authentic 1900s turn-of-the-century recipes. You'll enjoy delicacies created especially for this event: ice creams from Elevated Ice Cream, and pastries by Pane d' Amore. You'll also savor hors d'oeuvres and alcoholic beverages inspired by the era. Your trip back in time will be enhanced by the magnificent view of Admiralty Inlet, the lovely gardens, and a performance of music from the era offered by concert violinist Kristen Smith and accompanied by Otto Smith on concertina. Nathan will provide a brief history of the ice cream social - the first was held in 1744. Scheduled for Tuesday, September 22, 2020.

Hold up your card to be included.
If you are bidding for two, hold up two cards!

Donor: Old Consulate Inn

Value: \$125 per person (over 21 please); 35 places



11 KAUAI IN A PRINCEVILLE AT HANAIEI CONDO - 7 NIGHTS FOR 2

This beautiful, newly remodeled suite is located on Kauai's romantic North shore. Its living room, bedroom and lanai dining 'alfresco' areas are well-designed and generously appointed. The winning bidders will enjoy a private entrance to this studio suite, which includes a king-size bed with private lanai, kitchenette, high-end bathroom, living area with queen pull out sofa, flat screen tv, reliable wifi, and a free parking space. Beach chairs and beach bags are stored on the lanai. The kitchenette can handle breakfast and lunch, plus side dishes if guests wish to grill at the common barbecue area. The full bath is completely remodeled, with a large closet to hold the luxurious linens and ample plush towels that come with the condo.

Kauai is an island apart - the greenest of all the Hawaiian islands, with 97 percent covered by forests or mountain ranges. It has the most dramatic landscape in its 4,000-foot-high Na Pali cliffs, and the biggest gorge in the Pacific, the ten-mile-long and 3,000-foot-deep Waimea Canyon. Cradled by tall green cliffs, Hanalei Bay is a perfect beach; sunsets from the center of the bay are absolutely serene.

Donors: Dave and Lynne Stanko

Value: \$1,253



**12 KRONOS QUARTET AT CENTRUM FOR 2
ON WEDNESDAY, NOVEMBER 6, 2019!**

Centrum is particularly pleased to present the renowned Kronos Quartet. For more than 40 years, Kronos has pursued a singular artistic vision, combining a spirit of fearless exploration with a commitment to continually reimagine the string quartet experience. In the process, Kronos has become one of the most celebrated and influential groups of our time, performing thousands of concerts worldwide, releasing more than 60 recordings of extraordinary breadth and creativity, collaborating with many of the world's most intriguing and accomplished composers and performers, and commissioning more than 950 works and arrangements for string quartet. If you don't yet have tickets to their concert in the Wheeler Theater, now's your chance! Seats B7 and B8 in the Wheeler Theater; concert starts at 7:30 pm and is followed by a reception in the Chapel to celebrate Chamber Music Artistic Director Lucinda Carver's 10th anniversary with Centrum.

Donor: Centrum

Value: \$120

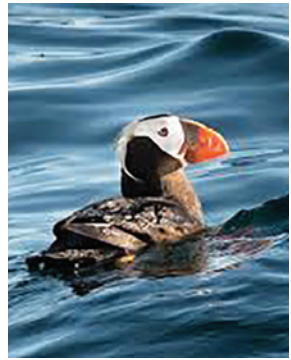


13 DREAM TRIP TO PROTECTION ISLAND FOR 6

Come aboard Minots Light, a 37' Lord Nelson Victory tug, for a trip from Cape George to Protection Island hosted by Kris Easterday and Mike Heckinger. A gourmet lunch with beverages will be served. Members of the general public are not allowed onto Protection Island, which makes this the trip of a lifetime! The Island's only resident, Marty Bluewater, will be your guide to this very unique wildlife sanctuary.

Donors: Kristine Easterday and Mike Heckinger

Value: \$1,000



14 CENTRUM GALA HEAD TABLE

Your upgrade to a 2020 Gala Head Table not only supports Centrum's scholarship fund, it offers you and your guests an enhanced experience of Centrum's signature fundraiser: the best view of the stage; a commanding position from which to bid during the live auction; boutique wines; delicacies to enjoy before and after dinner; and appealing take-home gifts as befit a Head Table.

Donor: Centrum

Value: \$2,500



Your guest room comes with
breakfast & a water view

Old Consulate Inn



Top-10 New York Times' Favorite Hotels

**Proud supporter of
the Arts**

360-385-6753 www.OldConsulate.com

**15 INSIDE THE SUPREME COURT WITH TOM ARMITAGE,
LAW CLERK TO JUSTICE WILLIAM O. DOUGLAS - AN EVENT FOR 15**

You provide the site and gather your friends; retired attorney, chef, oenophile, and raconteur Tom Armitage will provide the hors d'oeuvres, good wine, and perspective on the U.S. Supreme Court with a special focus on the professional and personal life of the legendary William O. Douglas, for whom he clerked in 1969-70.

Tom, a Centrum board member, graduated at the top of his UCLA Law School class and was Editor-in-Chief of the UCLA Law Review. He had the honor of serving as law clerk to Justice Douglas in the 1969 Term of the U.S. Supreme Court - in fact, he was the last of the "solo" law clerks, working one-on-one and side-by-side with him. The discussion will be informal, with ample opportunity for questions. The value of the wine and hors d'oeuvres is \$800; the value of special access to non-public and inside information about the U.S. Supreme Court and William O. Douglas...priceless!

Donor: Tom Armitage

Value: \$800



Justice Douglas (far left) and a young 30-year-old Tom Armitage (far right) on Justice Douglas's annual hike on the C&O Canal



Adventure Artisans

ACTIVE & SPECIALTY TRAVEL



If luxury travel
were a masterpiece,
*we'd be
your
curator.*

ADVENTURE ARTISANS

We make a world of difference in the way you experience travel.

A Virtuoso travel advisor provides the value, expertise and connections you expect from all of your trusted professionals. Put us to the test. We'll make your next travel experience worth toasting.



CONTACT

Cheryl Cashman - 360-379-2719
Susan Valentino - 847-322-2954



AdventureArtisans.com
info@adventureartisans.com

My Luxury is meeting the locals.



16 EXCURSION FOR 8 WITH JOE EURO ABOARD THE ST. BRENDAN

Joe Euro, owner of The Wine Seller in downtown Port Townsend, will be your skipper for this fun, educational, and delectable three-hour wine tasting cruise aboard Joe's classic 40' 1947 Matthews power yacht. Joe will share an array of fine wines, and provide commentary on their origins and characteristics. You will also enjoy hors d'oeuvres and chocolates, paired with the wine for maximum appreciation. Joe, an accomplished neo-classical guitarist, will perform for your entertainment. Scheduled for August 16, 2020, weather permitting; optional dates to be mutually agreed upon.

Hold up your card to be included.
If you are bidding for two, hold up two cards!

Donor: Joe Euro
Value: \$130 per person, 8 places





*The Small
Town Wine
Shop, with
the **BIG** City
Selection*

Est. 1982



1010 Water St., Port Townsend WA (360) 385-7673

17 BONEFISH GRILL IN BOTHELL FOR YOUR PARTY OF 8

Treat your closest family and friends to this culinary destination in Canyon Park, Bothell. Owner Richard Rush's menu includes award-winning martinis, appetizers, oak-grilled fish specialties, and desserts. Anticipate an innovative menu of seasonal specials, featuring the highest quality and freshest ingredients. The standard of service is excellent. Gratuity not included.

Donor: Bonefish Grill

Value: \$800



18 HOLIDAY PARTY AT THE HOFFMAN'S FOR 30

Make a grand beginning to the holiday season with a cocktail and light dinner party at the historic McCurdy House, the Uptown Port Townsend home of Lisa and Lee Hoffman. Your hosts will deck their halls with boughs and Victorian decor; music will fill the rooms. Treat yourself to some holiday spirit! To be held on Thursday, December 5, 2019 at 5:30pm.

Hold up your card to be included.
If you are bidding for two, hold up two cards!

Donors: Lisa and Lee Hoffman
Value: \$75 per person; 30 places



19 VIDANTA RESORT, MEXICO - 7 NIGHTS FOR 4

Enjoy a week at a Vidanta resort! Choose your location: Acapulco, Nuevo Vallarta, Cancun Riviera Maya, Los Cabos (highest demand, subject to availability), or Puerto Peñasco.

Details:

- 7 night stay in a Grand Mayan Master Room
- Room accommodates 2 adults and 2 children (12 yrs and under)
- 12 months to book, 18 months to travel
- No blackout dates (subject to availability)
- 4 Diamond Luxury (Riviera Maya, Nuevo Vallarta, Cabo San Lucas)
- Ocean Front Properties
- Resorts are NOT all inclusive but have activities, entertainment, shopping and many restaurants and bars, making it easy to never leave the property
- Vidanta is a Members ONLY resort, not available to the general public. Winning Bidders may be invited to tour the property for membership but may decline the offer as it's not a contingency of this package
- Nuevo Vallarta and Cancun-Riviera Maya locations include one way airport to hotel shuttle transportation
- Airfare is not included in this package

Donor: Charity Booster

Value: \$4,550



20 CENTRUM PREMIER PACKAGE

This package brings the successful bidder two front-row Center seat tickets to every 2020 McCurdy Pavilion Centrum performance and a VIP reserved parking space in the McCurdy parking lot for every Centrum McCurdy performance - yours for the entire day, even when there are two shows! Enjoy a complimentary glass of wine or beer (must be 21+) in the Centrum Beer and Wine Garden; two t-shirts for each festival; and be welcomed as a guest at the donor receptions held at intermission during Saturday matinee performances. Check centrum.org for performances; includes Voice Works, Fiddle Tunes, Jazz, and Blues.

Donor: Centrum

Value: \$1,000



Championing
the cause to
SUPPORT

Centrum
creativity in
community



Stephen M Sklar
Financial Advisor
2500 W Sims Way Ste 202
Port Townsend, WA 98368
360-385-2243

www.edwardjones.com
Member SIPC

Edward Jones
MAKING SENSE OF INVESTING

21 RAFFLE FOR LUXURIOUS 7-DAY HOLLAND AMERICA CRUISE FOR 2

Raffle tickets may be purchased for \$25 apiece at the Gala, prior to being seated for dinner. With just 200 tickets available, the odds are good! Buy early, buy often! To purchase, find a raffle ticket seller or head to the Raffle Ticket Sales table in the lobby.

The winner may choose any cruise on one of the Holland America Line 5-star ships to Alaska, the Caribbean, Mexico, or Canada/New England. For up to seven days, you and your companion will experience world-class dining, spacious staterooms, elegant surroundings, and extraordinary discoveries. Enjoy the pampering of an award-winning crew as you partake in as many, or as few, activities as suit your mood, including the Greenhouse Spa and Salon, cooking demonstrations and wine tastings in the Culinary Arts Center, or simply taking in the scenery on the wrap-around teak deck.

No expiration date! Call World Cruise Reservations to secure a mutually agreeable date. Airfare to and from departure/arrival ports not included. Does not include taxes, onboard charges, shore excursions, or hotel service charges.

Donor: Holland America Line

Value: \$1,900



MENU



RECEPTION

Hosted Beer and Wine
Dungeness Crab-Stuffed Cremini Mushrooms
Eggplant Caviar on Toasted Brioche
Potato Truffle Croquette with Chive Aioli

SOUP

Split Pea Bisque with Red Pepper Crème Fraiche

ENTRÉE CHOICES

Rockfish Wellington - Rockfish with mushroom duxelle encased in puff pastry served with seasonal vegetables, roasted red potatoes and pesto beurre blanc

Chicken Coq au Vin with Pearl Onion Bacon Cremini Hash and Beecher's Mashed Potatoes

Mushroom Baked Ravioli with a Warm Fall Vegetable Salad and Cashew Alfredo

DESSERT

Black Forest Cake



BOARD OF DIRECTORS

The Centrum Board of Directors and staff thank the volunteers, donors, advertisers, sponsors, and guests who make this evening possible; our 2019 Production Crew – Ashante, Austin, Brendan, Bud, Kendall, Paul, and Tavin for their responsive ways and ready smiles; the staff of Fort Worden for meeting a gold standard for catering and event support; Printery Communications for outstanding design and printing services; and Tippy Top Tree Services for sponsoring the photography backdrop and providing décor elements.

BOARD OF DIRECTORS

Robert Alexander, *President*

Leah Mitchell, *Vice President*

John Kennedy, *Secretary*

Mark Hamby, *Treasurer*

Tom Armitage

Terry Bergeson

Jeanie Cardon

James Costello

Kris Easterday

Malcolm Harris

Edmund W. Littlefield, Jr.

Carla Main

David Rinn

Catharine Robinson

Ralph Sabin

Sam Shoen

Sally Warren

Scott Wilson



CENTRUM STAFF

Robert A. Birman, *Executive Director*

Claire Africa, *Volunteer Coordinator*

Ashante Ashley, *Operations/Youth Programs Administrative Assistant*

Becky Berryhill, *Operations*

Gigi Callaizakis, *Director of Human Resources*

Robert Caprye, *Finance Director*

Chris Clark, *Director of Philanthropy*

Karen Gose Clemens, *Senior Director of Development*

Kelly Doran, *Technical Director*

Tavin Dotson, *Development Associate*

Michelle Hagedwood, *Artist Residency Program Manager*

Savannah Hensel, *Program Assistant/Fiddle, Voice, Uke*

Mary Hilts, *Development and Program Manager/Blues*

Katya Kirsch, *Development Officer*

George Marie, *Program Manager/Writers*

Peter McCracken, *Program Manager/Fiddle, Voice, Uke*

Gregg Miller, *Program Manager/Jazz, Chamber Music, Choro*

Sue Randolph, *Finance Associate*

Hali Ransom Miller, *Operations Registrar and Bookings*

Caitlin Romtvedt, *Program Manager/Blues*

Bonnie Showers, *Program Manager, Creative Youth Development*

Joan Wenske, *Program Assistant/Jazz, Chamber Music, Choro*

Lisa Waipio Werner, *Director of Operations*



CENTRUM

PO Box 1158, 223 Battery Way, Port Townsend, WA 98368

360-385-3102 | www.centrum.org

CENTRUM IS A NONPROFIT ORGANIZATION UNDER SECTIONS 501(C)(3) AND 509(A)(1) OF THE INTERNAL REVENUE CODE. TAX IDENTIFICATION NUMBER: 23-7348302



Community Giving Begins at Home

We believe that growth starts right here at home, which is why we invest in our neighbors and the communities we love. Kitsap Bank is proud to once again sponsor Centrum!



69 Oak Bay Road
Port Hadlock, WA 98339
360.344.3424

74 Breaker Lane
Port Ludlow, WA 98365
360.437.7863

2313 East Sims Way
Port Townsend, WA 98368
360.385.0123

kitsapbank.com

