

**SCREENING REPORT FOR AN ENVIRONMENTAL AUTHORIZATION AS
REQUIRED BY THE 2014 EIA REGULATIONS – PROPOSED DEVELOPMENT
FOOTPRINT ENVIRONMENTAL SENSITIVITY**

EIA Reference number: TBA

Project name: PROPOSED ALBANY OVERHEAD LINE AND ASSOCIATED GRID INFRASTRUCTURE
NEAR MAKHANDA, EASTERN CAPE PROVINCE.

Project title: PROPOSED ALBANY OVERHEAD LINE AND ASSOCIATED GRID INFRASTRUCTURE
NEAR MAKHANDA, EASTERN CAPE PROVINCE.

Date screening report generated: 24/08/2021 12:24:58

Applicant: ALBANY WIND POWER (PTY) LTD

Compiler: COASTAL AND ENVIRONMENTAL SERVICES (PTY) LTD

Compiler signature: 
.....

Application Category: Utilities Infrastructure | Electricity | Distribution and Transmission | Powerline



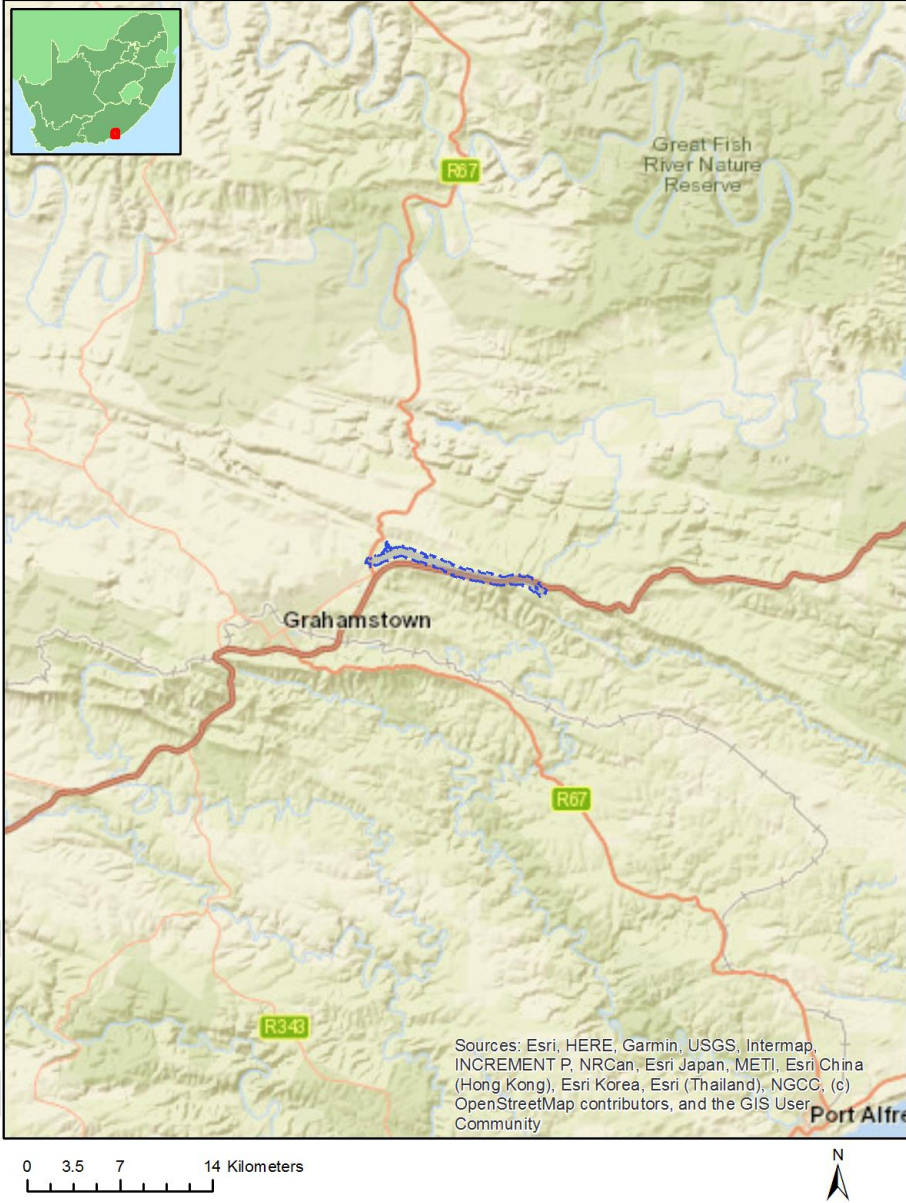
Table of Contents

Proposed Project Location	3
Orientation map 1: General location	3
Map of proposed site and relevant area(s)	4
Cadastral details of the proposed site	4
Wind and Solar developments with an approved Environmental Authorisation or applications under consideration within 30 km of the proposed area	8
Environmental Management Frameworks relevant to the application	8
Environmental screening results and assessment outcomes	8
Relevant development incentives, restrictions, exclusions or prohibitions	8
Map indicating proposed development footprint within applicable development incentive, restriction, exclusion or prohibition zones	9
Proposed Development Area Environmental Sensitivity	10
Specialist assessments identified	10
Results of the environmental sensitivity of the proposed area	12
MAP OF RELATIVE AGRICULTURE THEME SENSITIVITY	12
MAP OF RELATIVE ANIMAL SPECIES THEME SENSITIVITY	13
MAP OF RELATIVE AQUATIC BIODIVERSITY THEME SENSITIVITY	14
MAP OF RELATIVE ARCHAEOLOGICAL AND CULTURAL HERITAGE THEME SENSITIVITY	15
MAP OF RELATIVE CIVIL AVIATION THEME SENSITIVITY	16
MAP OF RELATIVE DEFENCE THEME SENSITIVITY	17
MAP OF RELATIVE PALEONTOLOGY THEME SENSITIVITY	18
MAP OF RELATIVE PLANT SPECIES THEME SENSITIVITY	19
MAP OF RELATIVE TERRESTRIAL BIODIVERSITY THEME SENSITIVITY	20

Proposed Project Location

Orientation map 1: General location

General Orientation: PROPOSED ALBANY OVERHEAD LINE AND ASSOCIATED GRID INFRASTRUCTURE NEAR MAKHANDA, EASTERN CAPE PROVINCE.



Map of proposed site and relevant area(s)



Cadastral details of the proposed site

Property details:

No	Farm Name	Farm/ Erf No	Portion	Latitude	Longitude	Property Type
1	GRAHAMSTOWN	5989	0	33°16'27.73S	26°35'23.79E	Erven
2	GRAHAMSTOWN	4807	0	33°16'23.06S	26°36'0.83E	Erven
3	GRAHAMSTOWN	9604	0	33°16'27.59S	26°35'22.05E	Erven
4	GRAHAMSTOWN	4807	0	33°17'22.51S	26°34'54.35E	Erven
5	GRAHAMSTOWN	4807	0	33°17'22.27S	26°34'54.35E	Erven
6	GRAHAMSTOWN	9603	0	33°16'28.14S	26°35'27.72E	Erven
7	GRAHAMSTOWN	9701	0	33°16'46.18S	26°35'39.7E	Erven
8	GRAHAMSTOWN	8093	0	33°16'27.85S	26°35'19.24E	Erven
9	GRAHAMSTOWN	9700	0	33°16'22.23S	26°35'20.17E	Erven
10	THE ORCHARDS	233	0	33°15'32.88S	26°37'50.5E	Farm
11	QUACHA	352	0	33°17'10.89S	26°41'20.99E	Farm
12	HOOLETON	599	0	33°16'19.87S	26°39'14.4E	Farm
13		234	0	33°17'5.44S	26°40'14.15E	Farm
14		615	0	33°16'43.04S	26°43'40.83E	Farm
15		223	0	33°16'45.43S	26°41'27.37E	Farm
16	GROBBELERS KLOOF	334	0	33°16'55.84S	26°37'54.94E	Farm
17	COLLINGHAM TOWERS	235	0	33°16'42.05S	26°40'24.2E	Farm
18	TEMPE	240	0	33°14'48.41S	26°34'48.53E	Farm
19	STATE LAND	353	0	33°17'26.67S	26°41'23.54E	Farm
20		601	0	33°17'15.78S	26°40'7.76E	Farm
21	ALLANDALE	581	0	33°16'28.21S	26°39'47.19E	Farm
22	NUTWOOD	583	0	33°16'41.31S	26°39'56.37E	Farm
23	GREEN HILLS	358	0	33°17'11.3S	26°42'24.01E	Farm
24	MINIPLAAS	582	0	33°16'38.78S	26°39'28.91E	Farm
25		663	0	33°18'23.67S	26°43'22.79E	Farm
26		223	4	33°16'54.86S	26°41'33.54E	Farm Portion
27	TEMPE	240	8	33°15'53.96S	26°34'44.26E	Farm Portion
28	GROBBELERS KLOOF	334	5	33°16'42.47S	26°38'47.62E	Farm Portion

29	STATE LAND	353	1	33°17'2.76S	26°40'36.79E	Farm Portion
30	MINIPLAAS	582	0	33°16'38.57S	26°39'28.9E	Farm Portion
31		615	0	33°16'42.82S	26°43'40.83E	Farm Portion
32	COLLINGHAM TOWERS	235	2	33°16'59.39S	26°40'21.08E	Farm Portion
33	QUACHA	352	1	33°17'2.35S	26°40'50.37E	Farm Portion
34	NUTWOOD	583	0	33°16'41.13S	26°39'56.37E	Farm Portion
35		601	2	33°16'50.71S	26°39'28.6E	Farm Portion
36		601	3	33°17'3.13S	26°40'35.12E	Farm Portion
37		223	1	33°16'39.19S	26°41'22.09E	Farm Portion
38	GROBBELERS KLOOF	334	3	33°16'16.15S	26°36'55.22E	Farm Portion
39	HOOLETON	599	0	33°16'48.34S	26°39'11.4E	Farm Portion
40		601	0	33°17'15.6S	26°40'7.76E	Farm Portion
41		663	1	33°18'18.81S	26°42'16.82E	Farm Portion
42		223	1	33°16'57.73S	26°41'55.53E	Farm Portion
43		234	3	33°16'59.31S	26°40'13.87E	Farm Portion
44	QUACHA	352	0	33°17'10.67S	26°41'20.95E	Farm Portion
45	NUTWOOD	583	1	33°16'53.71S	26°39'48.78E	Farm Portion
46	HOOLETON	599	2	33°16'46.68S	26°39'7.28E	Farm Portion
47		223	5	33°16'55.6S	26°41'48.82E	Farm Portion
48		223	7	33°17'3.14S	26°42'13.05E	Farm Portion
49		223	8	33°16'58.79S	26°41'13.43E	Farm Portion
50	THE ORCHARDS	233	3	33°15'55.84S	26°37'47.97E	Farm Portion
51	COLLINGHAM TOWERS	235	1	33°16'58.47S	26°40'13.75E	Farm Portion
52	GROBBELERS KLOOF	334	2	33°16'58.89S	26°38'37.1E	Farm Portion
53	GREEN HILLS	358	3	33°17'9.12S	26°42'18.04E	Farm Portion
54	HOOLETON	599	0	33°16'19.65S	26°39'14.36E	Farm Portion
55		601	1	33°17'2.63S	26°40'35.06E	Farm Portion
56		615	2	33°17'6.8S	26°42'26.28E	Farm Portion
57		223	6	33°16'56.17S	26°41'48.87E	Farm Portion
58		223	3	33°16'58.71S	26°41'10E	Farm Portion
59		234	1	33°17'5.52S	26°40'13.78E	Farm Portion
60	COLLINGHAM TOWERS	235	0	33°16'41.87S	26°40'24.22E	Farm Portion
61	TEMPE	240	12	33°15'48.38S	26°36'23.99E	Farm Portion
62	GROBBELERS KLOOF	334	2	33°16'58.65S	26°38'37.46E	Farm Portion
63	GREEN HILLS	358	1	33°17'13.96S	26°42'29.3E	Farm Portion
64	ALLANDALE	581	0	33°16'28.21S	26°39'47.19E	Farm Portion
65	NUTWOOD	583	0	33°16'58.83S	26°39'48.46E	Farm Portion
66	HOOLETON	599	3	33°16'46.51S	26°39'12.85E	Farm Portion
67		223	10	33°16'54.34S	26°41'33.11E	Farm Portion
68		223	9	33°16'58.31S	26°42'1.78E	Farm Portion
69	GROBBELERS KLOOF	334	11	33°16'38.7S	26°38'21.35E	Farm Portion
70	QUACHA	352	0	33°16'58.78S	26°40'44.14E	Farm Portion
71	STATE LAND	353	0	33°17'26.46S	26°41'23.54E	Farm Portion
72	MINIPLAAS	582	2	33°16'49.55S	26°39'26.17E	Farm Portion
73	MINIPLAAS	582	3	33°16'49.48S	26°39'28.65E	Farm Portion
74	NUTWOOD	583	3	33°16'52.99S	26°39'47.49E	Farm Portion
75	NUTWOOD	583	2	33°16'54.77S	26°39'49.58E	Farm Portion
76		223	2	33°17'6.36S	26°41'43.32E	Farm Portion
77		234	1	33°17'5.26S	26°40'14.13E	Farm Portion
78	TEMPE	240	10	33°16'3.47S	26°35'49.21E	Farm Portion
79	GROBBELERS KLOOF	334	6	33°16'34.48S	26°37'59.29E	Farm Portion
80	GROBBELERS KLOOF	334	4	33°16'24.4S	26°37'36.61E	Farm Portion
81	HOOLETON	599	1	33°16'45.66S	26°39'6.01E	Farm Portion
82		615	1	33°17'13.91S	26°42'47.53E	Farm Portion
83	RINI	4106	0	33°16'25.38S	26°35'14.39E	Public Place

Development footprint¹ vertices:

Footprint	Latitude	Longitude
1	33°16'24.81S	26°35'20.18E
1	33°16'17.3S	26°35'23.62E
1	33°15'52.05S	26°36'38.72E
1	33°15'51.7S	26°36'40.01E
1	33°15'51.51S	26°36'41.33E
1	33°15'51.47S	26°36'42.68E
1	33°15'51.59S	26°36'44.02E
1	33°15'51.84S	26°36'45.21E
1	33°16'17.69S	26°38'23.16E
1	33°16'18.1S	26°38'24.41E
1	33°16'18.28S	26°38'24.81E
1	33°16'33.6S	26°38'59.09E
1	33°16'39.89S	26°39'30.93E
1	33°16'53.01S	26°40'51.39E
1	33°16'50.29S	26°41'14.58E
1	33°16'50.21S	26°41'15.93E
1	33°16'50.25S	26°41'16.92E
1	33°16'52.75S	26°41'45.66E
1	33°16'52.91S	26°41'46.84E
1	33°16'55.12S	26°41'58.25E
1	33°16'55.47S	26°41'59.54E
1	33°16'55.95S	26°42'0.76E
1	33°16'56.4S	26°42'1.63E
1	33°17'6.52S	26°42'18.8E
1	33°17'7.24S	26°42'19.85E
1	33°17'7.24S	26°42'19.85E
1	33°17'6.52S	26°42'18.8E
1	33°17'5.85S	26°42'17.65E
1	33°17'5.93S	26°42'17.88E
1	33°17'6.55S	26°42'19.01E
1	33°17'6.91S	26°42'19.54E
1	33°17'15.91S	26°42'31.93E
1	33°17'16.3S	26°42'32.43E
1	33°17'17.15S	26°42'33.31E
1	33°17'18.1S	26°42'34.05E
1	33°17'19.13S	26°42'34.62E
1	33°17'20.21S	26°42'35.02E
1	33°17'21.34S	26°42'35.23E
1	33°17'22.47S	26°42'35.26E
1	33°17'23.58S	26°42'35.1E
1	33°17'24.68S	26°42'34.75E
1	33°17'25.72S	26°42'34.23E
1	33°17'26.69S	26°42'33.54E
1	33°17'27.57S	26°42'32.69E
1	33°17'28.34S	26°42'31.71E
1	33°17'29S	26°42'30.61E
1	33°17'29.51S	26°42'29.4E
1	33°17'29.89S	26°42'28.13E
1	33°17'30.1S	26°42'26.8E
1	33°17'30.17S	26°42'25.46E
1	33°17'30.07S	26°42'24.12E

¹ “development footprint”, means the area within the site on which the development will take place and includes all ancillary developments for example roads, power lines, boundary walls, paving etc. which require vegetation clearance or which will be disturbed and for which the application has been submitted.

1	33°17'29.83S	26°42'22.8E
1	33°17'29.41S	26°42'21.54E
1	33°17'28.86S	26°42'20.36E
1	33°17'28.19S	26°42'19.28E
1	33°17'19.94S	26°42'7.93E
1	33°17'19.8S	26°42'7.69E
1	33°17'10.59S	26°41'52.07E
1	33°17'8.84S	26°41'43.07E
1	33°17'6.49S	26°41'16.11E
1	33°17'9.28S	26°40'52.47E
1	33°17'9.35S	26°40'51.3E
1	33°17'9.3S	26°40'49.96E
1	33°17'9.2S	26°40'49.29E
1	33°16'55.78S	26°39'27.05E
1	33°16'55.73S	26°39'26.69E
1	33°16'49.16S	26°38'53.45E
1	33°16'49.07S	26°38'52.99E
1	33°16'48.67S	26°38'51.72E
1	33°16'48.42S	26°38'51.11E
1	33°16'32.94S	26°38'16.51E
1	33°16'8.2S	26°36'42.7E
1	33°16'32.37S	26°35'30.8E
1	33°16'26.09S	26°35'29.16E
1	33°16'24.81S	26°35'20.18E
2	33°16'4.39S	26°36'2.01E
2	33°15'54.74S	26°36'9.48E
2	33°15'50.5S	26°36'8.65E
2	33°15'48.26S	26°36'7.34E
2	33°15'47.89S	26°36'7.17E
2	33°15'47.52S	26°36'7.07E
2	33°15'47.13S	26°36'7.02E
2	33°15'46.75S	26°36'7.03E
2	33°15'46.38S	26°36'7.12E
2	33°15'46.01S	26°36'7.26E
2	33°15'45.66S	26°36'7.47E
2	33°15'45.35S	26°36'7.71E
2	33°15'45.06S	26°36'8.02E
2	33°15'44.96S	26°36'8.16E
2	33°15'47.08S	26°36'8.14E
2	33°15'47.08S	26°36'12.02E
2	33°15'44.7S	26°36'12.02E
2	33°15'44.81S	26°36'12.23E
2	33°15'45.07S	26°36'12.59E
2	33°15'45.35S	26°36'12.9E
2	33°15'45.68S	26°36'13.15E
2	33°15'45.84S	26°36'13.25E
2	33°15'48.45S	26°36'14.76E
2	33°15'48.64S	26°36'14.86E
2	33°15'49.01S	26°36'15E
2	33°15'49.19S	26°36'15.05E
2	33°15'53.01S	26°36'15.79E
2	33°15'57.09S	26°36'23.78E
2	33°15'59.34S	26°36'17.04E
2	33°15'59.34S	26°36'17.04E
2	33°16'1.44S	26°36'10.8E
2	33°16'1.43S	26°36'10.8E
2	33°16'4.39S	26°36'2.01E
3	33°17'13.22S	26°42'13.32E
3	33°17'13.8S	26°42'17.13E
3	33°17'17S	26°42'16.45E

3	33°17'16.42S	26°42'12.65E
3	33°17'13.22S	26°42'13.32E
4	33°15'43.82S	26°36'8.16E
4	33°15'43.84S	26°36'12.02E
4	33°15'47.08S	26°36'12.02E
4	33°15'47.08S	26°36'8.14E
4	33°15'43.82S	26°36'8.16E
5	33°16'12.44S	26°37'43.74E
5	33°16'7.83S	26°37'45.55E
5	33°16'9.34S	26°37'51.05E
5	33°16'13.97S	26°37'49.25E
5	33°16'12.44S	26°37'43.74E
6	33°16'25.8S	26°35'28.84E
6	33°16'24.95S	26°35'20.78E
6	33°16'22.27S	26°35'21.25E
6	33°16'23.02S	26°35'29.3E
6	33°16'25.8S	26°35'28.84E

Wind and Solar developments with an approved Environmental Authorisation or applications under consideration within 30 km of the proposed area

No nearby wind or solar developments found.

Environmental Management Frameworks relevant to the application

No intersections with EMF areas found.

Environmental screening results and assessment outcomes

The following sections contain a summary of any development incentives, restrictions, exclusions or prohibitions that apply to the proposed development footprint as well as the most environmental sensitive features on the footprint based on the footprint sensitivity screening results for the application classification that was selected. The application classification selected for this report is:

Utilities Infrastructure | Electricity | Distribution and Transmission | Powerline.

Relevant development incentives, restrictions, exclusions or prohibitions

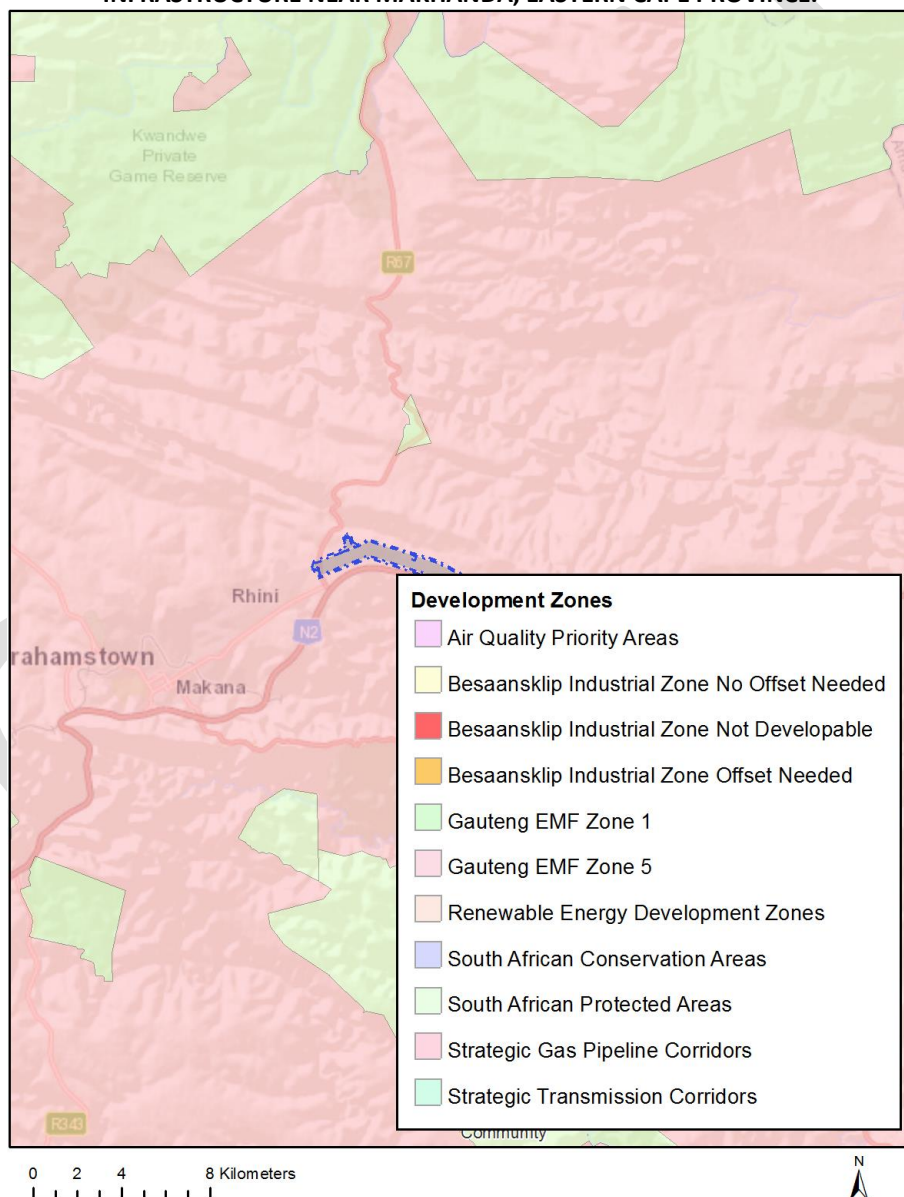
The following development incentives, restrictions, exclusions or prohibitions and their implications that apply to this footprint are indicated below.

Incentive, restriction or prohibition	Implication
Renewable energy developme	https://screening.environment.gov.za/ScreeningDownloads/DevelopmentZones/Combined_REDZ.pdf

nt zones 3- Cookhouse	
Strategic Gas Pipeline Corridors- Phase 7: Coega to Richards Bay	https://screening.environment.gov.za/ScreeningDownloads/DevelopmentZones/Combined_GAS.pdf

Map indicating proposed development footprint within applicable development incentive, restriction, exclusion or prohibition zones

Project Location: PROPOSED ALBANY OVERHEAD LINE AND ASSOCIATED GRID INFRASTRUCTURE NEAR MAKHANDA, EASTERN CAPE PROVINCE.



Proposed Development Area Environmental Sensitivity

The following summary of the development footprint environmental sensitivities is identified. Only the highest environmental sensitivity is indicated. The footprint environmental sensitivities for the proposed development footprint as identified, are indicative only and must be verified on site by a suitably qualified person before the specialist assessments identified below can be confirmed.

Theme	Very High sensitivity	High sensitivity	Medium sensitivity	Low sensitivity
Agriculture Theme		X		
Animal Species Theme		X		
Aquatic Biodiversity Theme	X			
Archaeological and Cultural Heritage Theme	X			
Civil Aviation Theme		X		
Defence Theme				X
Paleontology Theme	X			
Plant Species Theme			X	
Terrestrial Biodiversity Theme	X			

Specialist assessments identified

Based on the selected classification, and the environmental sensitivities of the proposed development footprint, the following list of specialist assessments have been identified for inclusion in the assessment report. It is the responsibility of the EAP to confirm this list and to motivate in the assessment report, the reason for not including any of the identified specialist study including the provision of photographic evidence of the footprint situation.

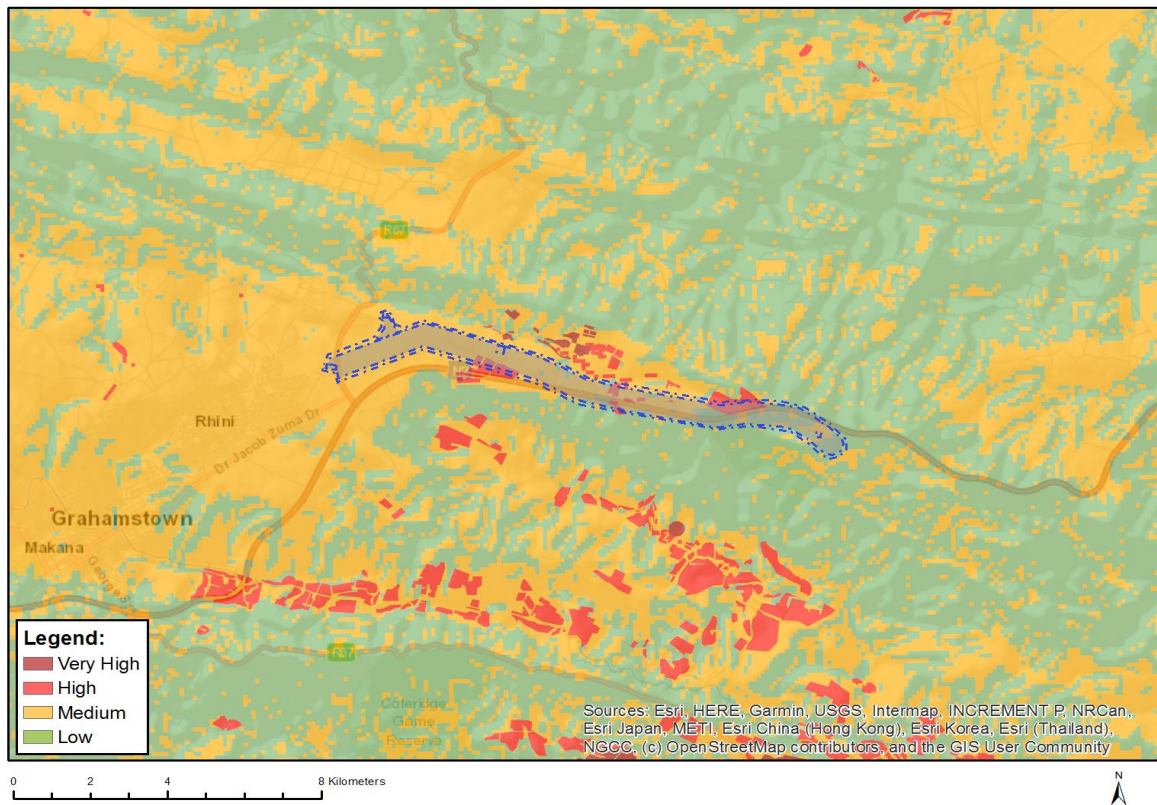
N o	Specialist assessment	Assessment Protocol
1	Agricultural Impact Assessment	https://screening.environment.gov.za/ScreeningDownloads/AssessmentProtocols/Gazetted_General_Agriculture_Assessment_Protocols.pdf
2	Landscape/Visual Impact Assessment	https://screening.environment.gov.za/ScreeningDownloads/AssessmentProtocols/Gazetted_General_Requirement_Assessment_Protocols.pdf
3	Archaeological and Cultural Heritage Impact Assessment	https://screening.environment.gov.za/ScreeningDownloads/AssessmentProtocols/Gazetted_General_Requirement_Assessment_Protocols.pdf
4	Palaeontology Impact Assessment	https://screening.environment.gov.za/ScreeningDownloads/AssessmentProtocols/Gazetted_General_Requirement_Assessment_Protocols.pdf

5	Terrestrial Biodiversity Impact Assessment	https://screening.environment.gov.za/ScreeningDownloads/AssessmentProtocols/Gazetted Terrestrial Biodiversity Assessment Protocols.pdf
6	Aquatic Biodiversity Impact Assessment	https://screening.environment.gov.za/ScreeningDownloads/AssessmentProtocols/Gazetted Aquatic Biodiversity Assessment Protocols.pdf
7	Avian Impact Assessment	https://screening.environment.gov.za/ScreeningDownloads/AssessmentProtocols/Gazetted Avifauna Assessment Protocols.pdf
8	Civil Aviation Assessment	https://screening.environment.gov.za/ScreeningDownloads/AssessmentProtocols/Gazetted Civil Aviation Installations Assessment Protocols.pdf
9	RFI Assessment	https://screening.environment.gov.za/ScreeningDownloads/AssessmentProtocols/Gazetted General Requirement Assessment Protocols.pdf
10	Geotechnical Assessment	https://screening.environment.gov.za/ScreeningDownloads/AssessmentProtocols/Gazetted General Requirement Assessment Protocols.pdf
11	Plant Species Assessment	https://screening.environment.gov.za/ScreeningDownloads/AssessmentProtocols/Gazetted Plant Species Assessment Protocols.pdf
12	Animal Species Assessment	https://screening.environment.gov.za/ScreeningDownloads/AssessmentProtocols/Gazetted Animal Species Assessment Protocols.pdf

Results of the environmental sensitivity of the proposed area.

The following section represents the results of the screening for environmental sensitivity of the proposed footprint for relevant environmental themes associated with the project classification. It is the duty of the EAP to ensure that the environmental themes provided by the screening tool are comprehensive and complete for the project. Refer to the disclaimer.

MAP OF RELATIVE AGRICULTURE THEME SENSITIVITY

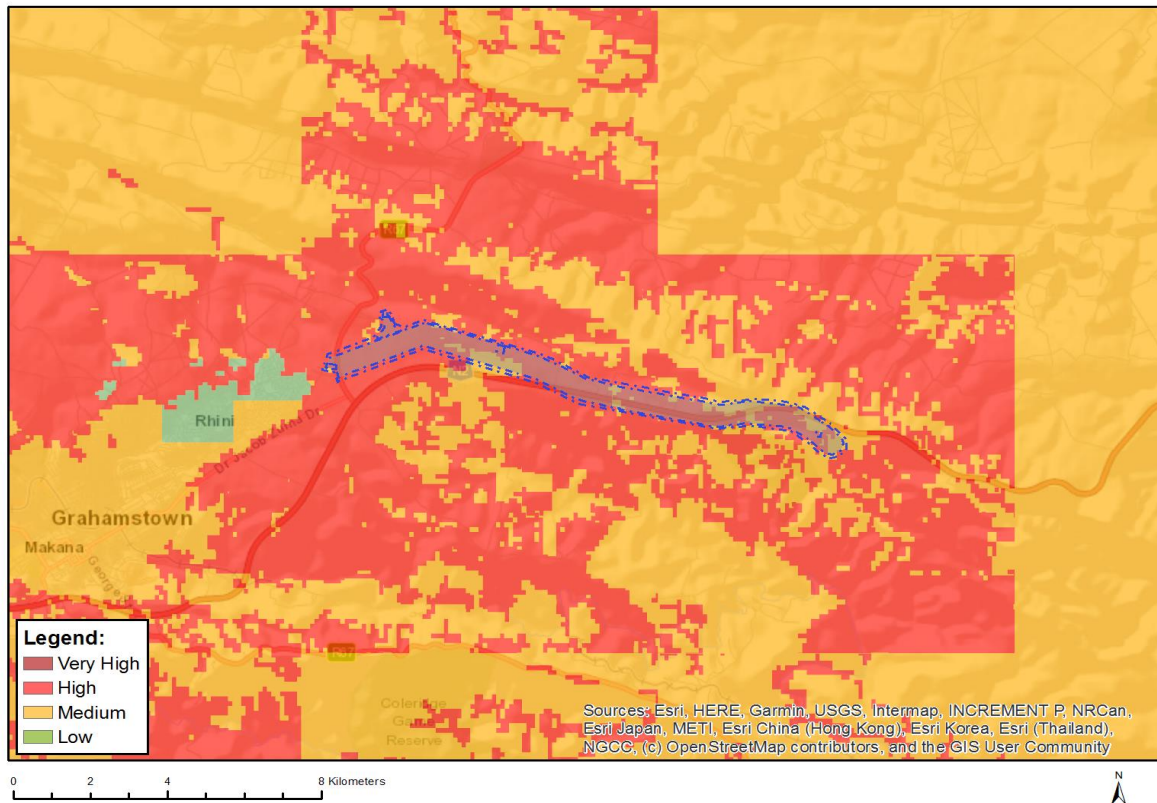


Very High sensitivity	High sensitivity	Medium sensitivity	Low sensitivity
	X		

Sensitivity Features:

Sensitivity	Feature(s)
High	Land capability;09. Moderate-High/10. Moderate-High
High	Annual Crop Cultivation / Planted Pastures Rotation;Land capability;06. Low-Moderate/07. Low-Moderate/08. Moderate
High	Annual Crop Cultivation / Planted Pastures Rotation;Land capability;01. Very low/02. Very low/03. Low-Very low/04. Low-Very low/05. Low
Low	Land capability;01. Very low/02. Very low/03. Low-Very low/04. Low-Very low/05. Low
Medium	Land capability;06. Low-Moderate/07. Low-Moderate/08. Moderate

MAP OF RELATIVE ANIMAL SPECIES THEME SENSITIVITY



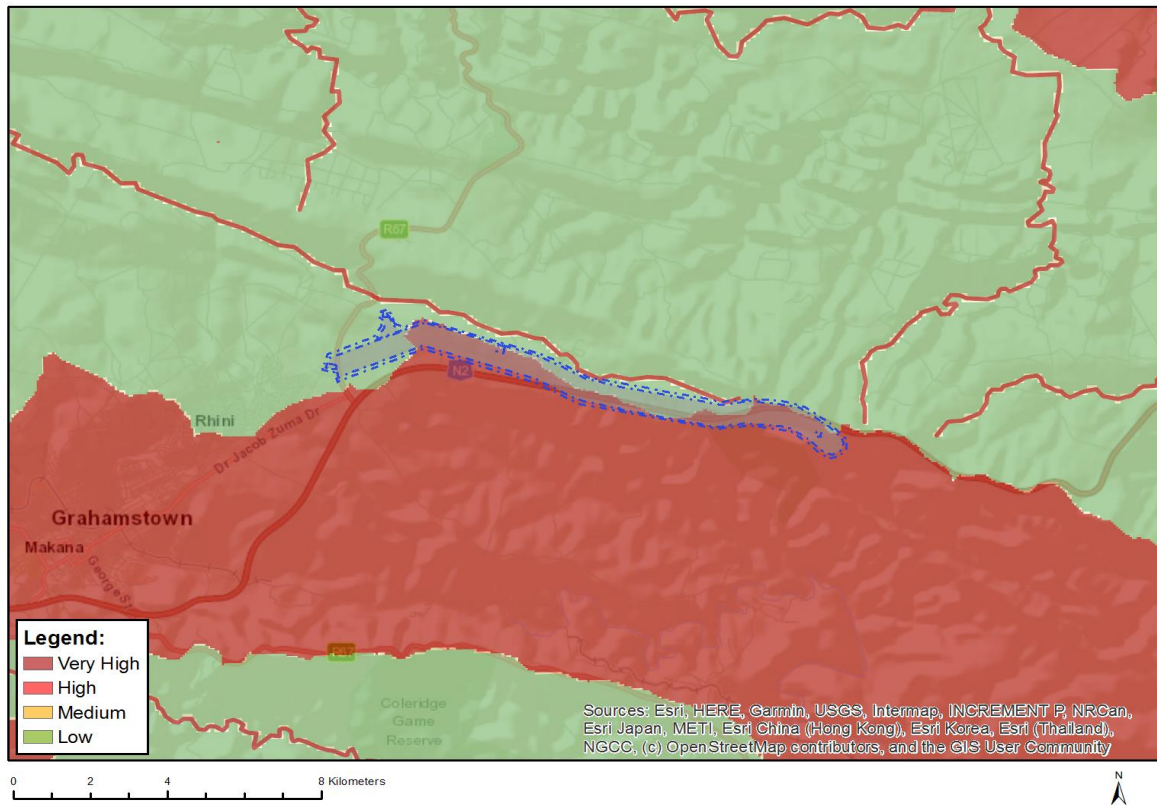
Where only a sensitive plant unique number or sensitive animal unique number is provided in the screening report and an assessment is required, the environmental assessment practitioner (EAP) or specialist is required to email SANBI at aiadatarequests@sanbi.org.za listing all sensitive species with their unique identifiers for which information is required. The name has been withheld as the species may be prone to illegal harvesting and must be protected. SANBI will release the actual species name after the details of the EAP or specialist have been documented.

Very High sensitivity	High sensitivity	Medium sensitivity	Low sensitivity
	X		

Sensitivity Features:

Sensitivity	Feature(s)
High	Aves-Circus maurus
High	Aves-Neotis denhami
High	Aves-Sarothrura affinis
Medium	Invertebrate-Forest invertebrate
Medium	Aves-Circus ranivorus
Medium	Aves-Neotis denhami
Medium	Aves-Sarothrura affinis
Medium	Mammalia-Acinonyx jubatus
Medium	Mammalia-Dendrohyrax arboreus
Medium	Mammalia-Ourebia ourebi ourebi
Medium	Sensitive species 7

MAP OF RELATIVE AQUATIC BIODIVERSITY THEME SENSITIVITY

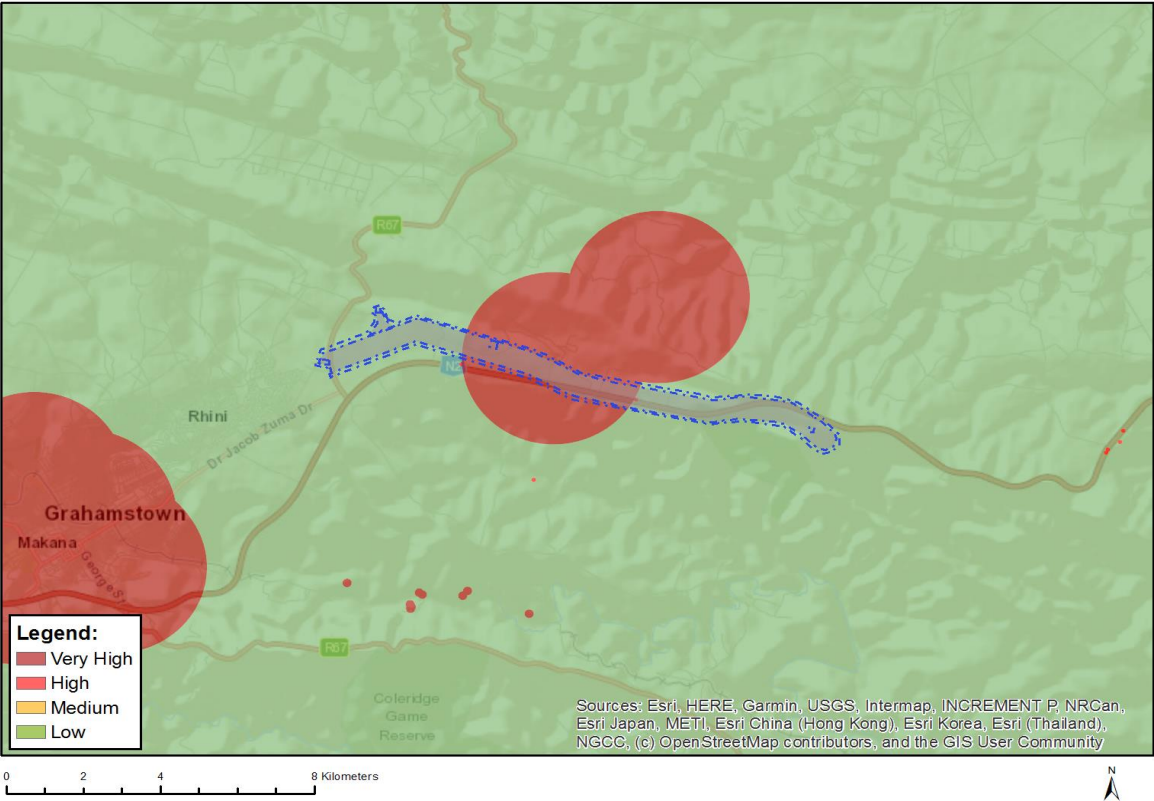


Very High sensitivity	High sensitivity	Medium sensitivity	Low sensitivity
X			

Sensitivity Features:

Sensitivity	Feature(s)
Low	Low sensitivity
Very High	Rivers
Very High	Wetlands and Estuaries
Very High	Freshwater ecosystem priority area quinary catchments

MAP OF RELATIVE ARCHAEOLOGICAL AND CULTURAL HERITAGE THEME SENSITIVITY

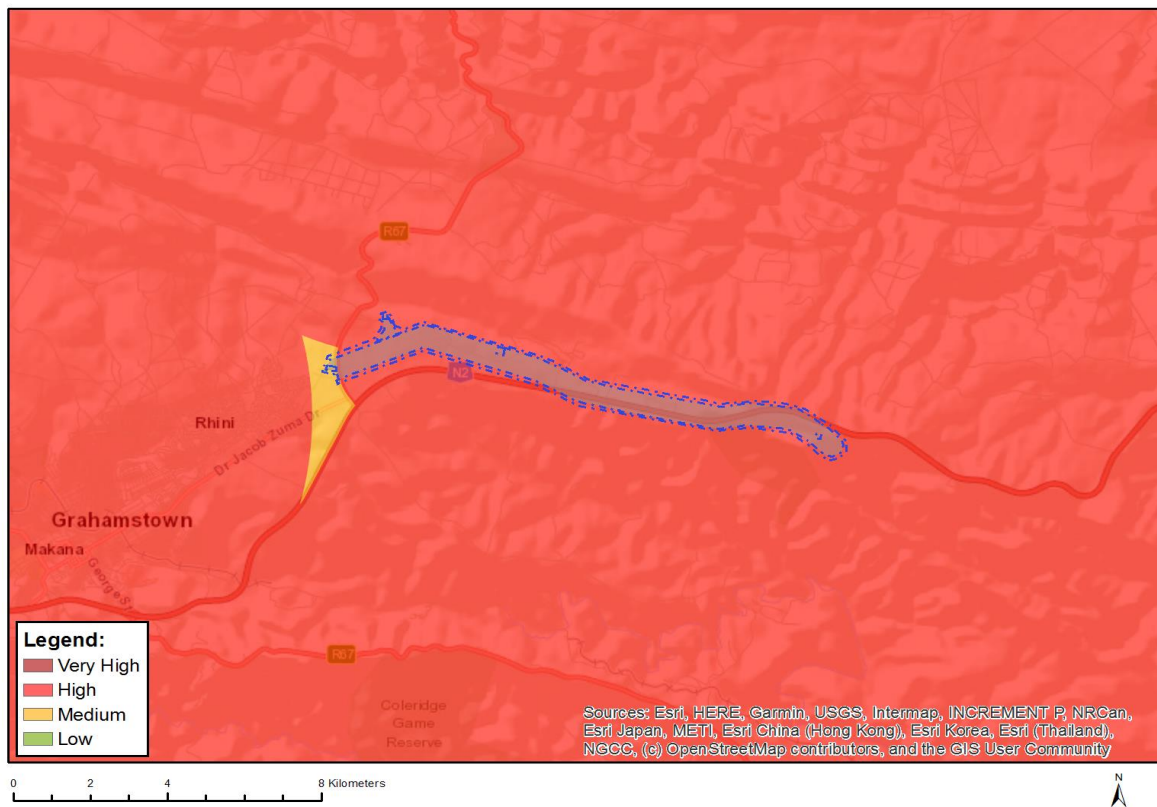


Very High sensitivity	High sensitivity	Medium sensitivity	Low sensitivity
X			

Sensitivity Features:

Sensitivity	Feature(s)
High	Within 50m of a Grade IIIc Heritage site
Low	Low sensitivity
Very High	Within 2km of a Grade II Heritage site

MAP OF RELATIVE CIVIL AVIATION THEME SENSITIVITY

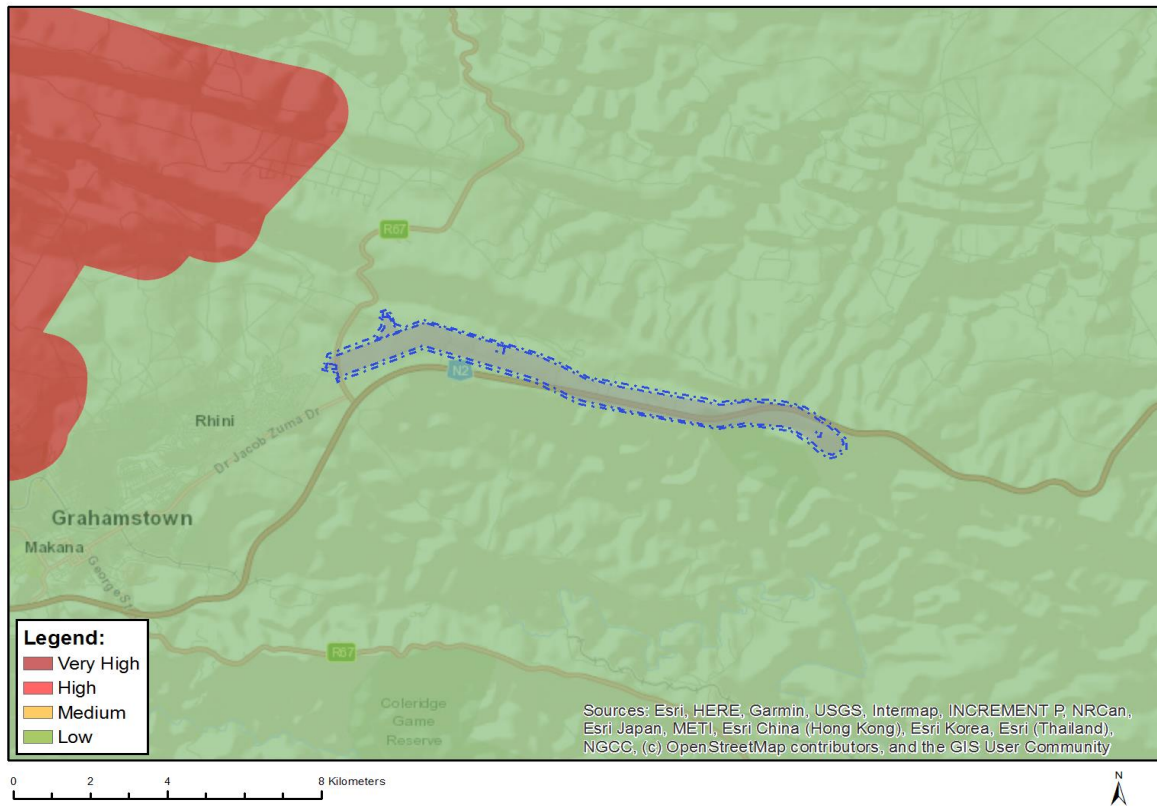


Very High sensitivity	High sensitivity	Medium sensitivity	Low sensitivity
	X		

Sensitivity Features:

Sensitivity	Feature(s)
High	Within 8 km of other civil aviation aerodrome
High	Dangerous and restricted airspace as demarcated
Medium	Between 8 and 15 km of other civil aviation aerodrome

MAP OF RELATIVE DEFENCE THEME SENSITIVITY

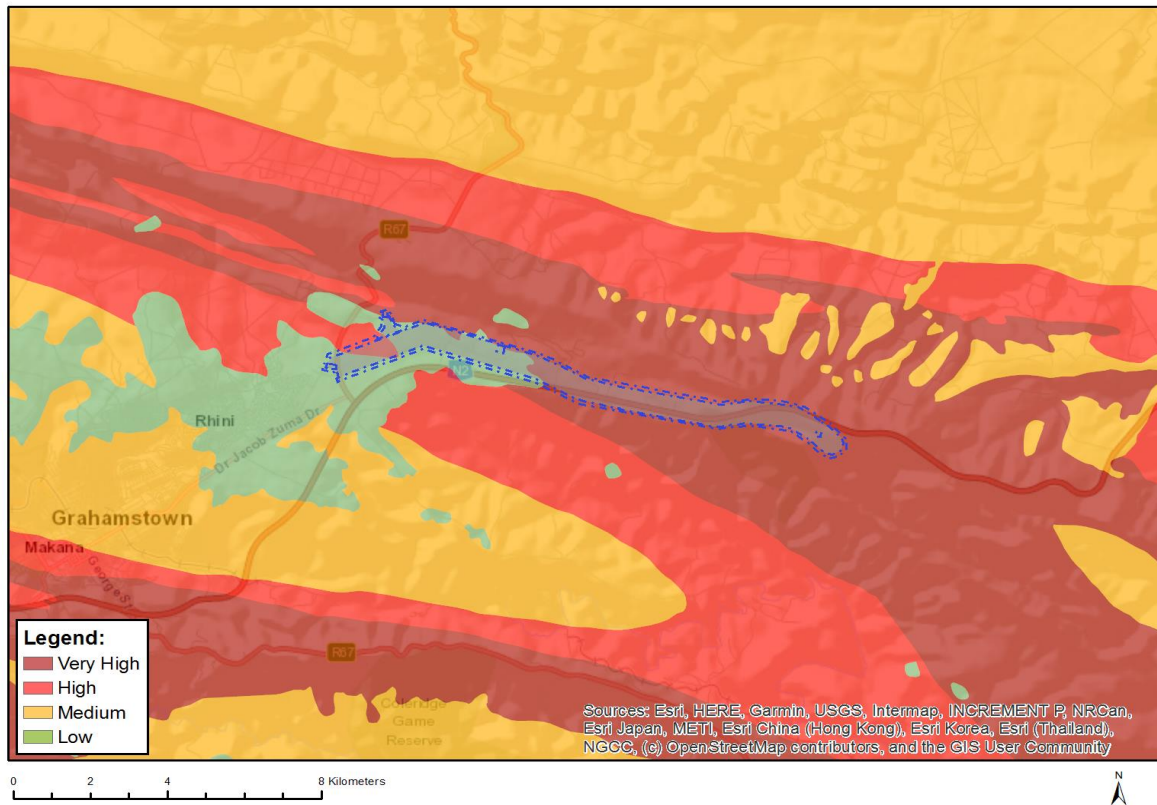


Very High sensitivity	High sensitivity	Medium sensitivity	Low sensitivity
			X

Sensitivity Features:

Sensitivity	Feature(s)
Low	Low Sensitivity

MAP OF RELATIVE PALEONTOLOGY THEME SENSITIVITY

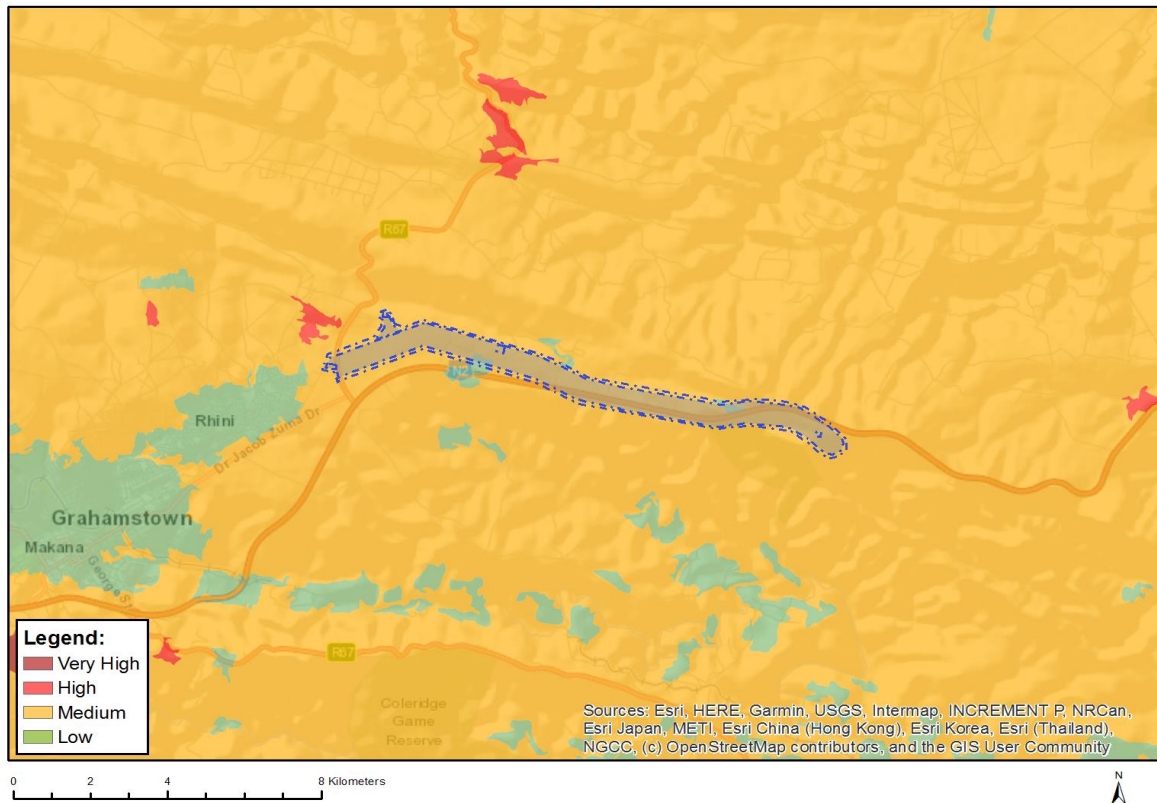


Very High sensitivity	High sensitivity	Medium sensitivity	Low sensitivity
X			

Sensitivity Features:

Sensitivity	Feature(s)
High	Features with a High paleontological sensitivity
Low	Features with a Low paleontological sensitivity
Very High	Features with a Very High paleontological sensitivity

MAP OF RELATIVE PLANT SPECIES THEME SENSITIVITY



Where only a sensitive plant unique number or sensitive animal unique number is provided in the screening report and an assessment is required, the environmental assessment practitioner (EAP) or specialist is required to email SANBI at aiadatarequests@sanbi.org.za listing all sensitive species with their unique identifiers for which information is required. The name has been withheld as the species may be prone to illegal harvesting and must be protected. SANBI will release the actual species name after the details of the EAP or specialist have been documented.

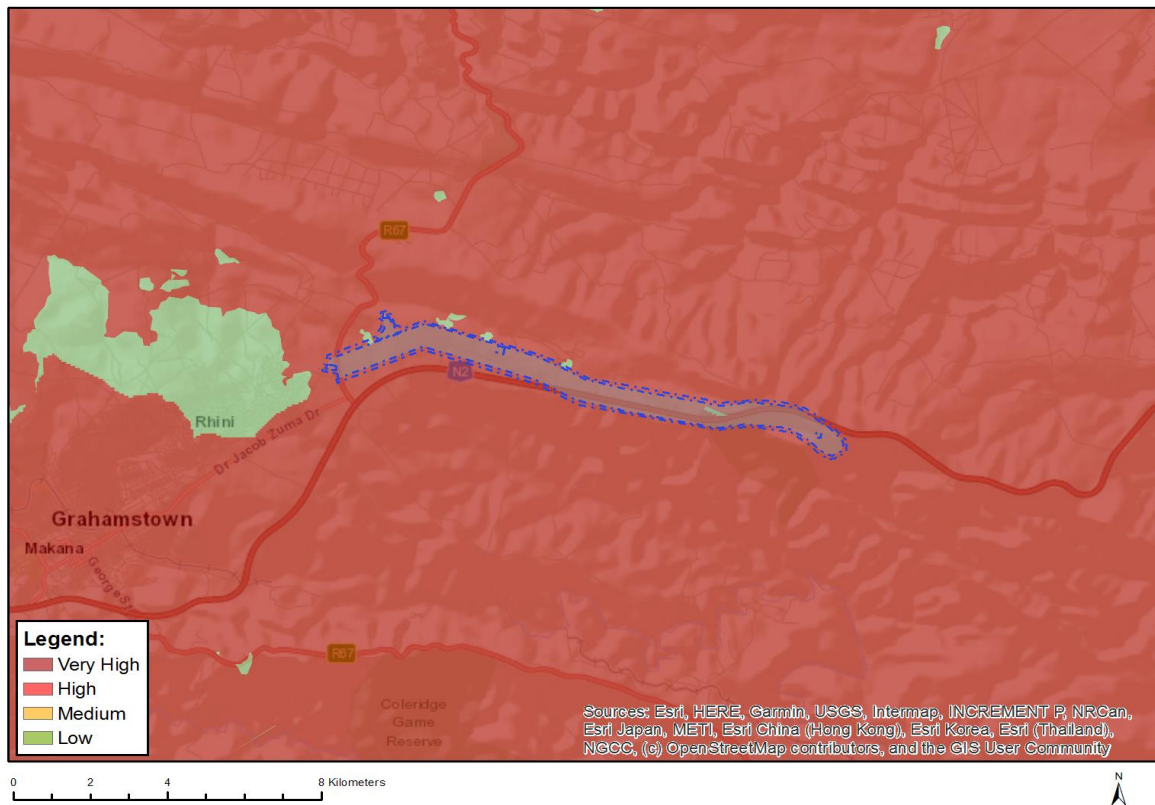
Very High sensitivity	High sensitivity	Medium sensitivity	Low sensitivity
		X	

Sensitivity Features:

Sensitivity	Feature(s)
Low	Low Sensitivity
Medium	Ocotea bullata
Medium	Sensitive species 1252
Medium	Faucaria tigrina
Medium	Aspalathus argyrophanes
Medium	Sensitive species 969
Medium	Sensitive species 72
Medium	Sensitive species 377
Medium	Apodolirion macowanii
Medium	Isoetes wormaldii
Medium	Sensitive species 1162
Medium	Sensitive species 1247
Medium	Sensitive species 708
Medium	Sensitive species 488
Medium	Sensitive species 97

Medium	Agathosma bicornuta
Medium	Sensitive species 828
Medium	Syringodea flanagani
Medium	Sensitive species 448
Medium	Bobartia macrocarpa
Medium	Erica glumiflora
Medium	Sensitive species 609
Medium	Sensitive species 579
Medium	Asclepias compressidens
Medium	Sensitive species 654
Medium	Sensitive species 1248
Medium	Prunus africana

MAP OF RELATIVE TERRESTRIAL BIODIVERSITY THEME SENSITIVITY



Very High sensitivity	High sensitivity	Medium sensitivity	Low sensitivity
X			

Sensitivity Features:

Sensitivity	Feature(s)
Low	Low Sensitivity
Very High	Critical biodiversity area 1
Very High	Critical biodiversity area 2
Very High	Ecological support area 1
Very High	Ecological support area 2
Very High	FEPA Subcatchments
Very High	National Forestry Inventory

OFFICIAL