

**SCREENING REPORT FOR AN ENVIRONMENTAL AUTHORIZATION AS  
REQUIRED BY THE 2014 EIA REGULATIONS – PROPOSED DEVELOPMENT  
FOOTPRINT ENVIRONMENTAL SENSITIVITY**

**EIA Reference number:** TBA

**Project name:** ALBANY CONNECTION AND ASSOCIATED GRID INFRASTRUCTURE NEAR  
MAKHANDA, EASTERN CAPE PROVINCE.

**Project title:** PROPOSED ALBANY CONNECTION AND ASSOCIATED GRID INFRASTRUCTURE NEAR  
MAKHANDA, EASTERN CAPE PROVINCE.

**Date screening report generated:** 07/09/2021 14:00:45

**Applicant:** ALBANY WIND POWER (PTY) LTD

**Compiler:** COASTAL AND ENVIRONMENTAL SERVICES (PTY) LTD

**Compiler signature:**

*R Greeff*

**Application Category:** Utilities Infrastructure | Electricity | Distribution and  
Transmission | Substation



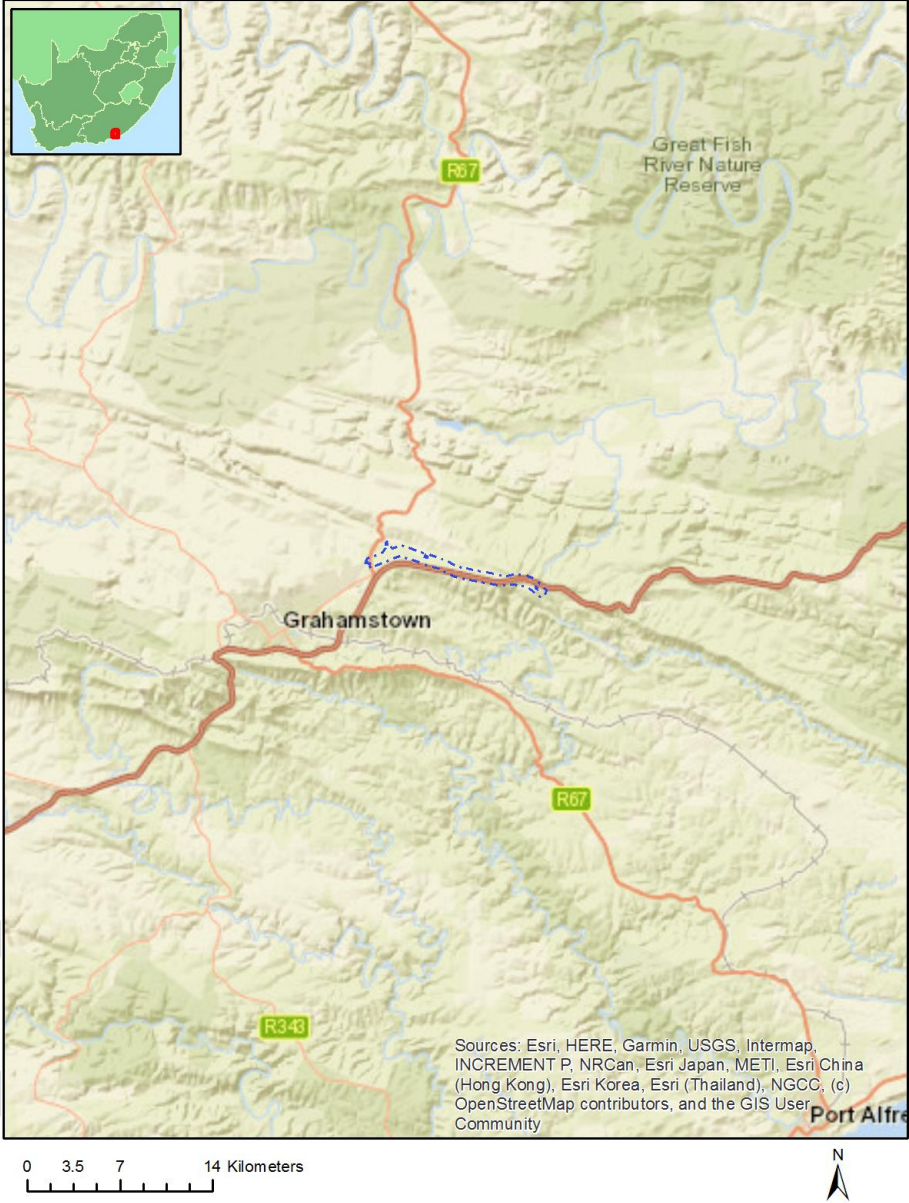
## Table of Contents

Proposed Project Location .....	3
Orientation map 1: General location .....	3
Map of proposed site and relevant area(s) .....	4
Cadastral details of the proposed site .....	4
Wind and Solar developments with an approved Environmental Authorisation or applications under consideration within 30 km of the proposed area .....	6
Environmental Management Frameworks relevant to the application .....	6
Environmental screening results and assessment outcomes .....	6
Relevant development incentives, restrictions, exclusions or prohibitions .....	6
Map indicating proposed development footprint within applicable development incentive, restriction, exclusion or prohibition zones .....	8
Proposed Development Area Environmental Sensitivity .....	8
Specialist assessments identified .....	9
Results of the environmental sensitivity of the proposed area .....	11
MAP OF RELATIVE AGRICULTURE THEME SENSITIVITY .....	11
MAP OF RELATIVE ANIMAL SPECIES THEME SENSITIVITY .....	12
MAP OF RELATIVE AQUATIC BIODIVERSITY THEME SENSITIVITY .....	13
MAP OF RELATIVE ARCHAEOLOGICAL AND CULTURAL HERITAGE THEME SENSITIVITY .....	14
MAP OF RELATIVE CIVIL AVIATION THEME SENSITIVITY .....	15
MAP OF RELATIVE DEFENCE THEME SENSITIVITY .....	16
MAP OF RELATIVE PALEONTOLOGY THEME SENSITIVITY .....	17
MAP OF RELATIVE PLANT SPECIES THEME SENSITIVITY .....	18
MAP OF RELATIVE TERRESTRIAL BIODIVERSITY THEME SENSITIVITY .....	19

# Proposed Project Location

Orientation map 1: General location

**General Orientation: ALBANY CONNECTION AND ASSOCIATED GRID INFRASTRUCTURE NEAR MAKHANDA, EASTERN CAPE PROVINCE.**



## Map of proposed site and relevant area(s)



## Cadastral details of the proposed site

Property details:

No	Farm Name	Farm/ Erf No	Portion	Latitude	Longitude	Property Type
1	GRAHAMSTOWN	4807	0	33°16'23.06S	26°36'0.83E	Erven
2	GRAHAMSTOWN	5989	0	33°16'27.73S	26°35'23.79E	Erven
3	GRAHAMSTOWN	9604	0	33°16'27.59S	26°35'22.05E	Erven
4	GRAHAMSTOWN	4807	0	33°17'22.27S	26°34'54.35E	Erven
5	GRAHAMSTOWN	9603	0	33°16'28.14S	26°35'27.72E	Erven
6	GRAHAMSTOWN	9701	0	33°16'46.18S	26°35'39.7E	Erven
7	GRAHAMSTOWN	4807	0	33°17'22.51S	26°34'54.35E	Erven
8	GRAHAMSTOWN	8093	0	33°16'27.85S	26°35'19.24E	Erven
9	GRAHAMSTOWN	9700	0	33°16'22.23S	26°35'20.17E	Erven
10		234	0	33°17'5.44S	26°40'14.15E	Farm
11		223	0	33°16'45.43S	26°41'27.37E	Farm
12	GROBBELERS KLOOF	334	0	33°16'55.84S	26°37'54.94E	Farm
13	COLLINGHAM TOWERS	235	0	33°16'42.05S	26°40'24.2E	Farm
14	TEMPE	240	0	33°14'48.41S	26°34'48.53E	Farm
15	STATE LAND	353	0	33°17'26.67S	26°41'23.54E	Farm
16		601	0	33°17'15.78S	26°40'7.76E	Farm
17	THE ORCHARDS	233	0	33°15'32.88S	26°37'50.5E	Farm
18	QUACHA	352	0	33°17'10.89S	26°41'20.99E	Farm
19	HOOLETON	599	0	33°16'19.87S	26°39'14.4E	Farm
20	GREEN HILLS	358	0	33°17'11.3S	26°42'24.01E	Farm
21	MINIPLAAS	582	0	33°16'38.78S	26°39'28.91E	Farm
22		663	0	33°18'23.67S	26°43'22.79E	Farm
23		615	0	33°16'43.04S	26°43'40.83E	Farm
24	ALLANDALE	581	0	33°16'28.21S	26°39'47.19E	Farm
25	NUTWOOD	583	0	33°16'41.31S	26°39'56.37E	Farm
26	COLLINGHAM TOWERS	235	2	33°16'59.39S	26°40'21.08E	Farm Portion
27	QUACHA	352	1	33°17'2.35S	26°40'50.37E	Farm Portion

28	NUTWOOD	583	0	33°16'41.13S	26°39'56.37E	Farm Portion
29		601	2	33°16'50.71S	26°39'28.6E	Farm Portion
30		601	3	33°17'3.13S	26°40'35.12E	Farm Portion
31		223	4	33°16'54.86S	26°41'33.54E	Farm Portion
32	TEMPE	240	8	33°15'53.96S	26°34'44.26E	Farm Portion
33	GROBBELERS KLOOF	334	5	33°16'42.47S	26°38'47.62E	Farm Portion
34	STATE LAND	353	1	33°17'2.76S	26°40'36.79E	Farm Portion
35	MINIPLAAS	582	0	33°16'38.57S	26°39'28.9E	Farm Portion
36		615	0	33°16'42.82S	26°43'40.83E	Farm Portion
37		223	6	33°16'56.17S	26°41'48.87E	Farm Portion
38		223	3	33°16'58.71S	26°41'10E	Farm Portion
39		234	1	33°17'5.52S	26°40'13.78E	Farm Portion
40	COLLINGHAM TOWERS	235	0	33°16'41.87S	26°40'24.22E	Farm Portion
41	TEMPE	240	12	33°15'48.38S	26°36'23.99E	Farm Portion
42	GROBBELERS KLOOF	334	2	33°16'58.65S	26°38'37.46E	Farm Portion
43	GREEN HILLS	358	1	33°17'13.96S	26°42'29.3E	Farm Portion
44	ALLANDALE	581	0	33°16'28.21S	26°39'47.19E	Farm Portion
45	NUTWOOD	583	0	33°16'58.83S	26°39'48.46E	Farm Portion
46	HOOLETON	599	3	33°16'46.51S	26°39'12.85E	Farm Portion
47		223	1	33°16'39.19S	26°41'22.09E	Farm Portion
48	GROBBELERS KLOOF	334	3	33°16'16.15S	26°36'55.22E	Farm Portion
49	HOOLETON	599	0	33°16'48.34S	26°39'11.4E	Farm Portion
50		601	0	33°17'15.6S	26°40'7.76E	Farm Portion
51		663	1	33°18'18.81S	26°42'16.82E	Farm Portion
52		223	2	33°17'6.36S	26°41'43.32E	Farm Portion
53		234	1	33°17'5.26S	26°40'14.13E	Farm Portion
54	TEMPE	240	10	33°16'3.47S	26°35'49.21E	Farm Portion
55	GROBBELERS KLOOF	334	6	33°16'34.48S	26°37'59.29E	Farm Portion
56	GROBBELERS KLOOF	334	4	33°16'24.4S	26°37'36.61E	Farm Portion
57	HOOLETON	599	1	33°16'45.66S	26°39'6.01E	Farm Portion
58		615	1	33°17'13.91S	26°42'47.53E	Farm Portion
59		223	1	33°16'57.73S	26°41'55.53E	Farm Portion
60		234	3	33°16'59.31S	26°40'13.87E	Farm Portion
61	QUACHA	352	0	33°17'10.67S	26°41'20.95E	Farm Portion
62	NUTWOOD	583	1	33°16'53.71S	26°39'48.78E	Farm Portion
63	HOOLETON	599	2	33°16'46.68S	26°39'7.28E	Farm Portion
64		223	10	33°16'54.34S	26°41'33.11E	Farm Portion
65		223	9	33°16'58.31S	26°42'1.78E	Farm Portion
66	GROBBELERS KLOOF	334	11	33°16'38.7S	26°38'21.35E	Farm Portion
67	QUACHA	352	0	33°16'58.78S	26°40'44.14E	Farm Portion
68	STATE LAND	353	0	33°17'26.46S	26°41'23.54E	Farm Portion
69	MINIPLAAS	582	2	33°16'49.55S	26°39'26.17E	Farm Portion
70	MINIPLAAS	582	3	33°16'49.48S	26°39'28.65E	Farm Portion
71	NUTWOOD	583	3	33°16'52.99S	26°39'47.49E	Farm Portion
72	NUTWOOD	583	2	33°16'54.77S	26°39'49.58E	Farm Portion
73		223	5	33°16'55.6S	26°41'48.82E	Farm Portion
74		223	7	33°17'3.14S	26°42'13.05E	Farm Portion
75		223	8	33°16'58.79S	26°41'13.43E	Farm Portion
76	THE ORCHARDS	233	3	33°15'55.84S	26°37'47.97E	Farm Portion
77	COLLINGHAM TOWERS	235	1	33°16'58.47S	26°40'13.75E	Farm Portion
78	GROBBELERS KLOOF	334	2	33°16'58.89S	26°38'37.1E	Farm Portion
79	GREEN HILLS	358	3	33°17'9.12S	26°42'18.04E	Farm Portion
80	HOOLETON	599	0	33°16'19.65S	26°39'14.36E	Farm Portion
81		601	1	33°17'2.63S	26°40'35.06E	Farm Portion
82		615	2	33°17'6.8S	26°42'26.28E	Farm Portion
83	RINI	4106	0	33°16'25.38S	26°35'14.39E	Public Place

Development footprint<sup>1</sup> vertices:

Footprint	Latitude	Longitude
1	33°17'13.22S	26°42'13.32E
1	33°17'13.8S	26°42'17.13E
1	33°17'17S	26°42'16.45E
1	33°17'16.42S	26°42'12.65E
1	33°17'13.22S	26°42'13.32E
2	33°15'43.82S	26°36'8.16E
2	33°15'43.84S	26°36'12.02E
2	33°15'47.08S	26°36'12.02E
2	33°15'47.08S	26°36'8.14E
2	33°15'43.82S	26°36'8.16E
3	33°16'12.44S	26°37'43.74E
3	33°16'7.83S	26°37'45.55E
3	33°16'9.34S	26°37'51.05E
3	33°16'13.97S	26°37'49.25E
3	33°16'12.44S	26°37'43.74E
4	33°16'25.8S	26°35'28.84E
4	33°16'24.95S	26°35'20.78E
4	33°16'22.27S	26°35'21.25E
4	33°16'23.02S	26°35'29.3E
4	33°16'25.8S	26°35'28.84E

## Wind and Solar developments with an approved Environmental Authorisation or applications under consideration within 30 km of the proposed area

No nearby wind or solar developments found.

## Environmental Management Frameworks relevant to the application

No intersections with EMF areas found.

## Environmental screening results and assessment outcomes

The following sections contain a summary of any development incentives, restrictions, exclusions or prohibitions that apply to the proposed development footprint as well as the most environmental sensitive features on the footprint based on the footprint sensitivity screening results for the application classification that was selected. The application classification selected for this report is:

**Utilities Infrastructure | Electricity | Distribution and Transmission | Substation.**

## Relevant development incentives, restrictions, exclusions or prohibitions

The following development incentives, restrictions, exclusions or prohibitions and their implications that apply to this footprint are indicated below.

---

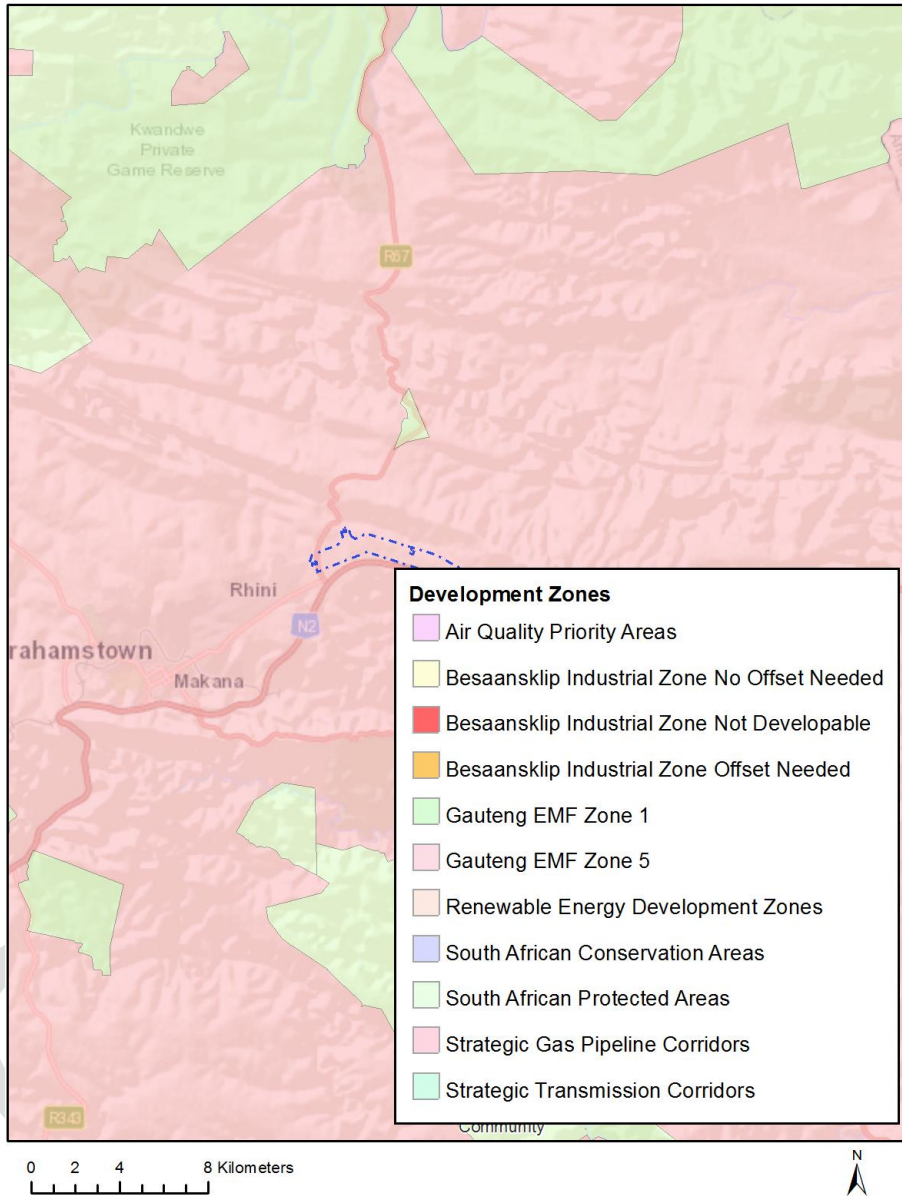
<sup>1</sup> “development footprint”, means the area within the site on which the development will take place and includes all ancillary developments for example roads, power lines, boundary walls, paving etc. which require vegetation clearance or which will be disturbed and for which the application has been submitted.

Incentive, restriction or prohibition	Implication
Renewable energy development zones 3-Cookhouse	<a href="https://screening.environment.gov.za/ScreeningDownloads/DevelopmentZones/Combined_REDZ.pdf">https://screening.environment.gov.za/ScreeningDownloads/DevelopmentZones/Combined_REDZ.pdf</a>
Strategic Gas Pipeline Corridors-Phase 7: Coega to Richards Bay	<a href="https://screening.environment.gov.za/ScreeningDownloads/DevelopmentZones/Combined_GAS.pdf">https://screening.environment.gov.za/ScreeningDownloads/DevelopmentZones/Combined_GAS.pdf</a>

OFFICIAL

Map indicating proposed development footprint within applicable development incentive, restriction, exclusion or prohibition zones

**Project Location: ALBANY CONNECTION AND ASSOCIATED GRID INFRASTRUCTURE NEAR MAKHANDA, EASTERN CAPE PROVINCE.**



**Proposed Development Area Environmental Sensitivity**

The following summary of the development footprint environmental sensitivities is identified. Only the highest environmental sensitivity is indicated. The footprint environmental sensitivities for the proposed development footprint as identified, are indicative only and must be verified on site by a suitably qualified person before the specialist assessments identified below can be confirmed.

Theme	Very High sensitivity	High sensitivity	Medium sensitivity	Low sensitivity
-------	-----------------------	------------------	--------------------	-----------------



Agriculture Theme			X	
Animal Species Theme		X		
Aquatic Biodiversity Theme	X			
Archaeological and Cultural Heritage Theme	X			
Civil Aviation Theme		X		
Defence Theme				X
Paleontology Theme	X			
Plant Species Theme			X	
Terrestrial Biodiversity Theme	X			

### Specialist assessments identified

Based on the selected classification, and the environmental sensitivities of the proposed development footprint, the following list of specialist assessments have been identified for inclusion in the assessment report. It is the responsibility of the EAP to confirm this list and to motivate in the assessment report, the reason for not including any of the identified specialist study including the provision of photographic evidence of the footprint situation.

No	Specialist assessment	Assessment Protocol
1	Agricultural Impact Assessment	<a href="https://screening.environment.gov.za/ScreeningDownloads/AssessmentProtocols/Gazetted_General_Agriculture_Assessment_Protocols.pdf">https://screening.environment.gov.za/ScreeningDownloads/AssessmentProtocols/Gazetted_General_Agriculture_Assessment_Protocols.pdf</a>
2	Archaeological and Cultural Heritage Impact Assessment	<a href="https://screening.environment.gov.za/ScreeningDownloads/AssessmentProtocols/Gazetted_General_Requirement_Assessment_Protocols.pdf">https://screening.environment.gov.za/ScreeningDownloads/AssessmentProtocols/Gazetted_General_Requirement_Assessment_Protocols.pdf</a>
3	Palaeontology Impact Assessment	<a href="https://screening.environment.gov.za/ScreeningDownloads/AssessmentProtocols/Gazetted_General_Requirement_Assessment_Protocols.pdf">https://screening.environment.gov.za/ScreeningDownloads/AssessmentProtocols/Gazetted_General_Requirement_Assessment_Protocols.pdf</a>
4	Terrestrial Biodiversity Impact Assessment	<a href="https://screening.environment.gov.za/ScreeningDownloads/AssessmentProtocols/Gazetted_Terrestrial_Biodiversity_Assessment_Protocols.pdf">https://screening.environment.gov.za/ScreeningDownloads/AssessmentProtocols/Gazetted_Terrestrial_Biodiversity_Assessment_Protocols.pdf</a>
5	Aquatic Biodiversity Impact Assessment	<a href="https://screening.environment.gov.za/ScreeningDownloads/AssessmentProtocols/Gazetted_Aquatic_Biodiversity_Assessment_Protocols.pdf">https://screening.environment.gov.za/ScreeningDownloads/AssessmentProtocols/Gazetted_Aquatic_Biodiversity_Assessment_Protocols.pdf</a>

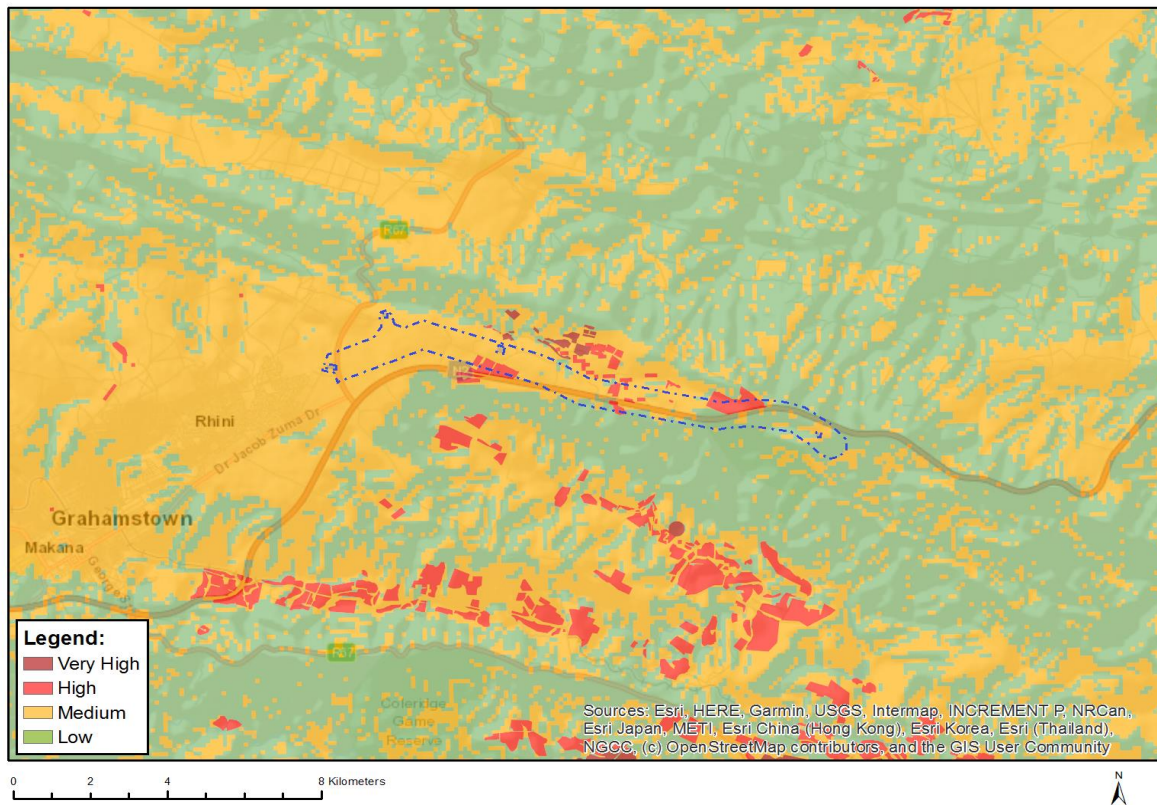
6	Geotechnical Assessment	<a href="https://screening.environment.gov.za/ScreeningDownloads/AssessmentProtocols/Gazetted_General_Requirement_Assessment_Protocols.pdf">https://screening.environment.gov.za/ScreeningDownloads/AssessmentProtocols/Gazetted_General_Requirement_Assessment_Protocols.pdf</a>
7	Plant Species Assessment	<a href="https://screening.environment.gov.za/ScreeningDownloads/AssessmentProtocols/Gazetted_Plant_Species_Assessment_Protocols.pdf">https://screening.environment.gov.za/ScreeningDownloads/AssessmentProtocols/Gazetted_Plant_Species_Assessment_Protocols.pdf</a>
8	Animal Species Assessment	<a href="https://screening.environment.gov.za/ScreeningDownloads/AssessmentProtocols/Gazetted_Animal_Species_Assessment_Protocols.pdf">https://screening.environment.gov.za/ScreeningDownloads/AssessmentProtocols/Gazetted_Animal_Species_Assessment_Protocols.pdf</a>

OFFICIAL

## Results of the environmental sensitivity of the proposed area.

The following section represents the results of the screening for environmental sensitivity of the proposed footprint for relevant environmental themes associated with the project classification. It is the duty of the EAP to ensure that the environmental themes provided by the screening tool are comprehensive and complete for the project. Refer to the disclaimer.

### MAP OF RELATIVE AGRICULTURE THEME SENSITIVITY

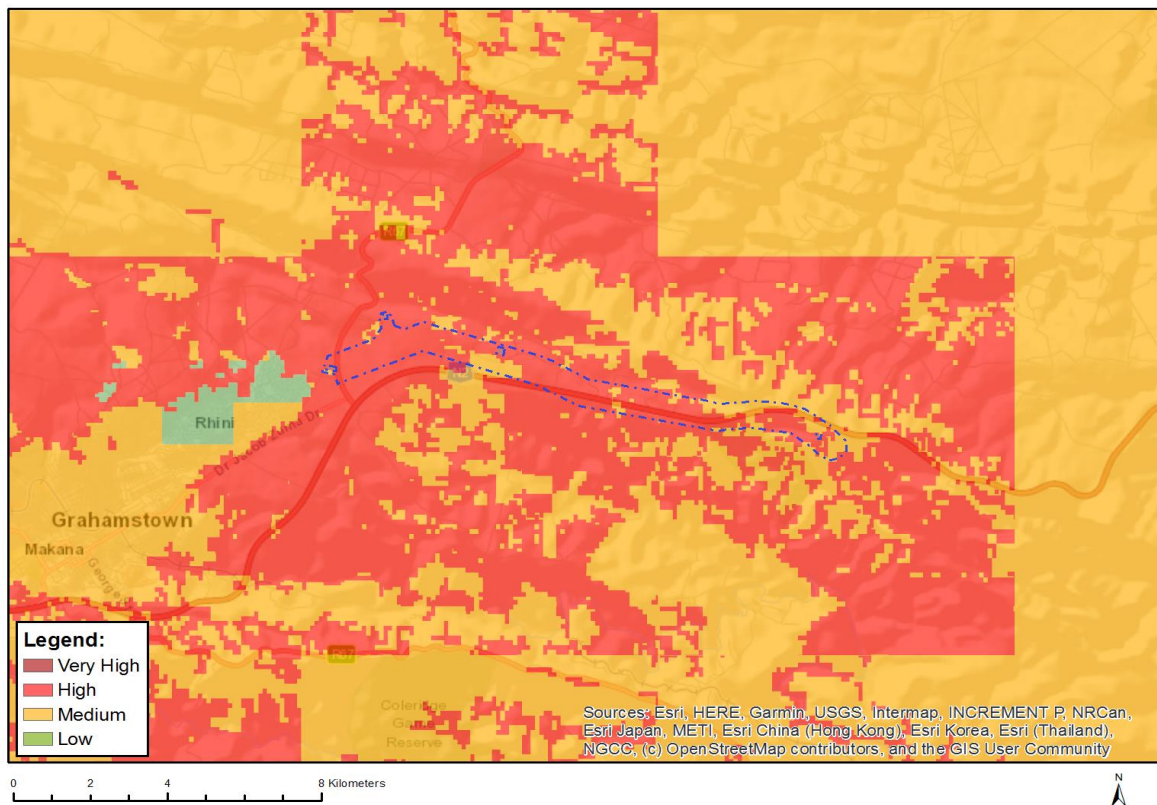


Very High sensitivity	High sensitivity	Medium sensitivity	Low sensitivity
		X	

#### Sensitivity Features:

Sensitivity	Feature(s)
Low	Land capability;01. Very low/02. Very low/03. Low-Very low/04. Low-Very low/05. Low
Medium	Land capability;06. Low-Moderate/07. Low-Moderate/08. Moderate

## MAP OF RELATIVE ANIMAL SPECIES THEME SENSITIVITY



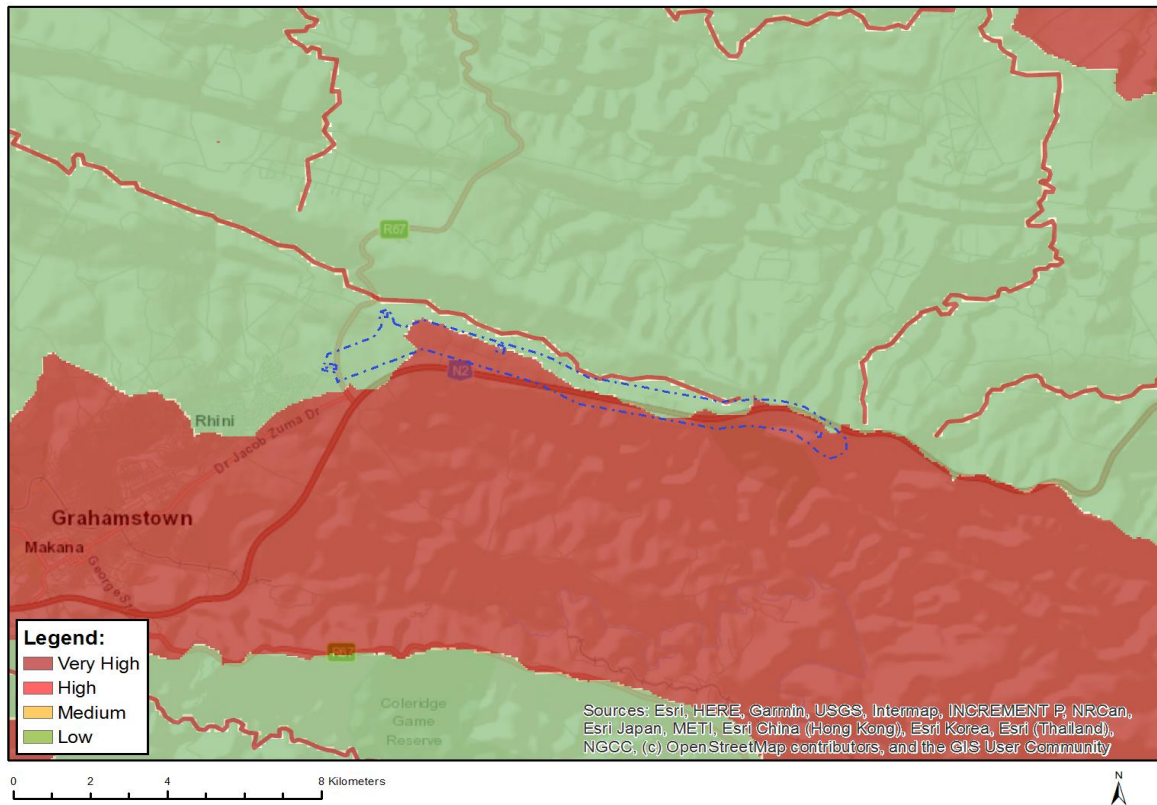
Where only a sensitive plant unique number or sensitive animal unique number is provided in the screening report and an assessment is required, the environmental assessment practitioner (EAP) or specialist is required to email SANBI at [eiadatarequests@sanbi.org.za](mailto:eiadatarequests@sanbi.org.za) listing all sensitive species with their unique identifiers for which information is required. The name has been withheld as the species may be prone to illegal harvesting and must be protected. SANBI will release the actual species name after the details of the EAP or specialist have been documented.

Very High sensitivity	High sensitivity	Medium sensitivity	Low sensitivity
	X		

### Sensitivity Features:

Sensitivity	Feature(s)
High	Aves-Circus maurus
High	Aves-Sarothrura affinis
High	Aves-Neotis denhami
Medium	Aves-Circus ranivorus
Medium	Mammalia-Acinonyx jubatus
Medium	Sensitive species 7

## MAP OF RELATIVE AQUATIC BIODIVERSITY THEME SENSITIVITY

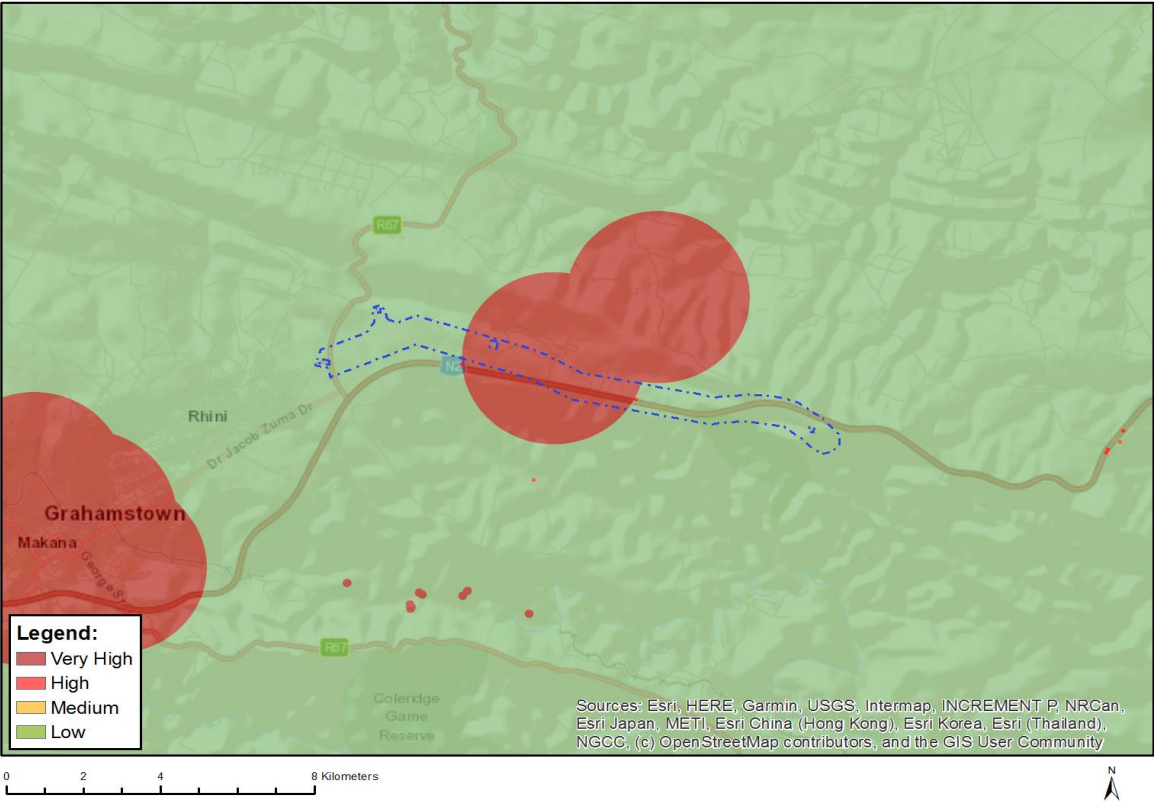


Very High sensitivity	High sensitivity	Medium sensitivity	Low sensitivity
X			

### Sensitivity Features:

Sensitivity	Feature(s)
Low	Low sensitivity
Very High	Freshwater ecosystem priority area quinary catchments

# MAP OF RELATIVE ARCHAEOLOGICAL AND CULTURAL HERITAGE THEME SENSITIVITY

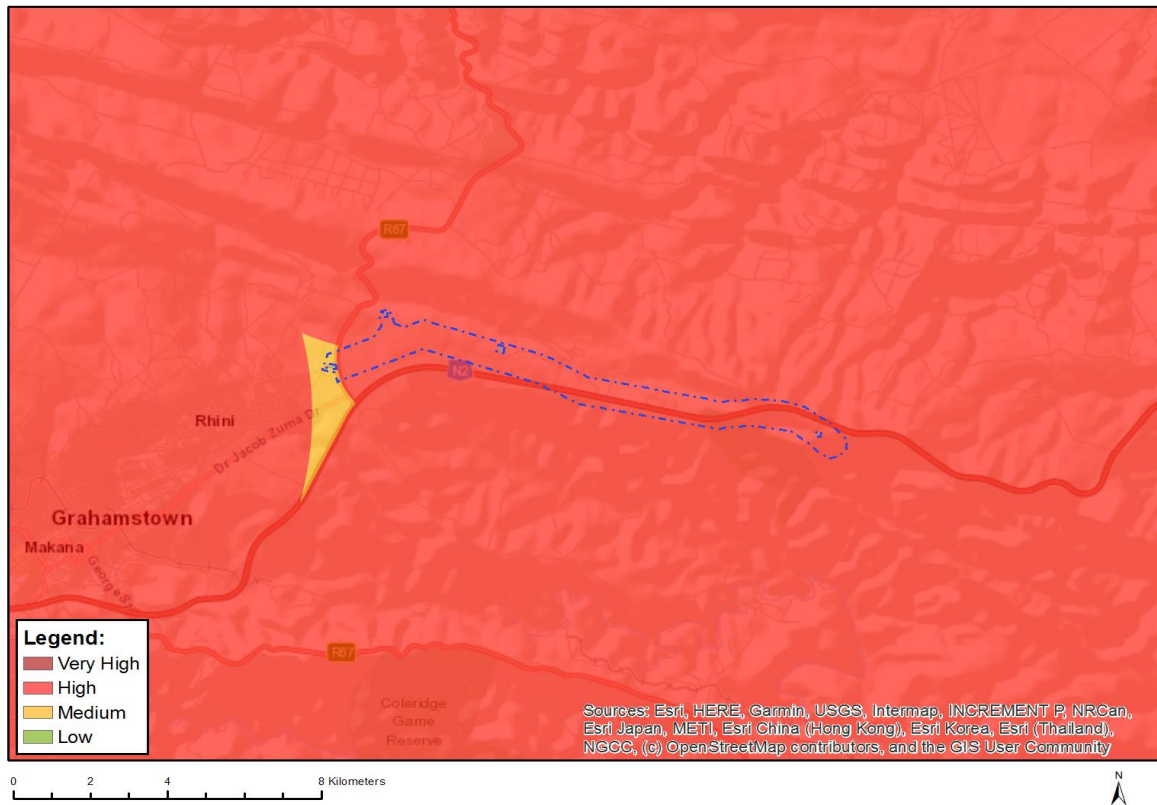


Very High sensitivity	High sensitivity	Medium sensitivity	Low sensitivity
X			

**Sensitivity Features:**

Sensitivity	Feature(s)
Low	Low sensitivity
Very High	Within 2km of a Grade II Heritage site

## MAP OF RELATIVE CIVIL AVIATION THEME SENSITIVITY

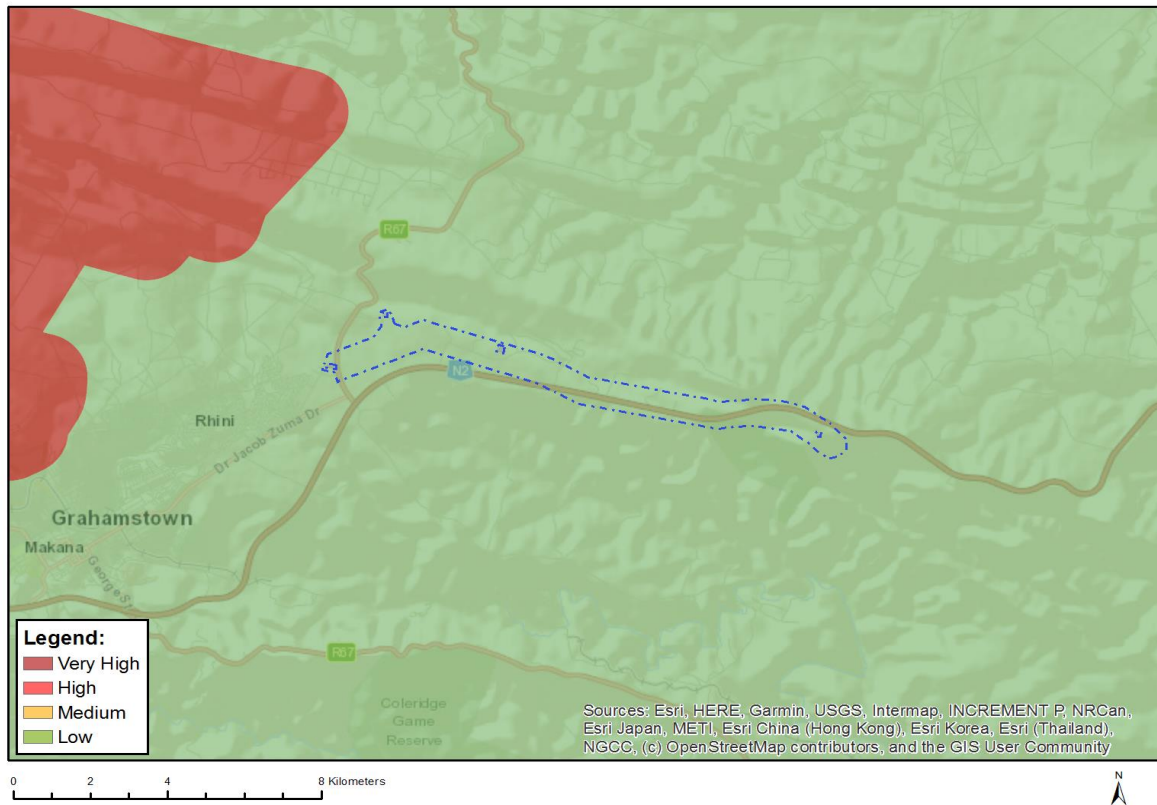


Very High sensitivity	High sensitivity	Medium sensitivity	Low sensitivity
	X		

### Sensitivity Features:

Sensitivity	Feature(s)
High	Within 8 km of other civil aviation aerodrome
High	Dangerous and restricted airspace as demarcated
Medium	Between 8 and 15 km of other civil aviation aerodrome

## MAP OF RELATIVE DEFENCE THEME SENSITIVITY



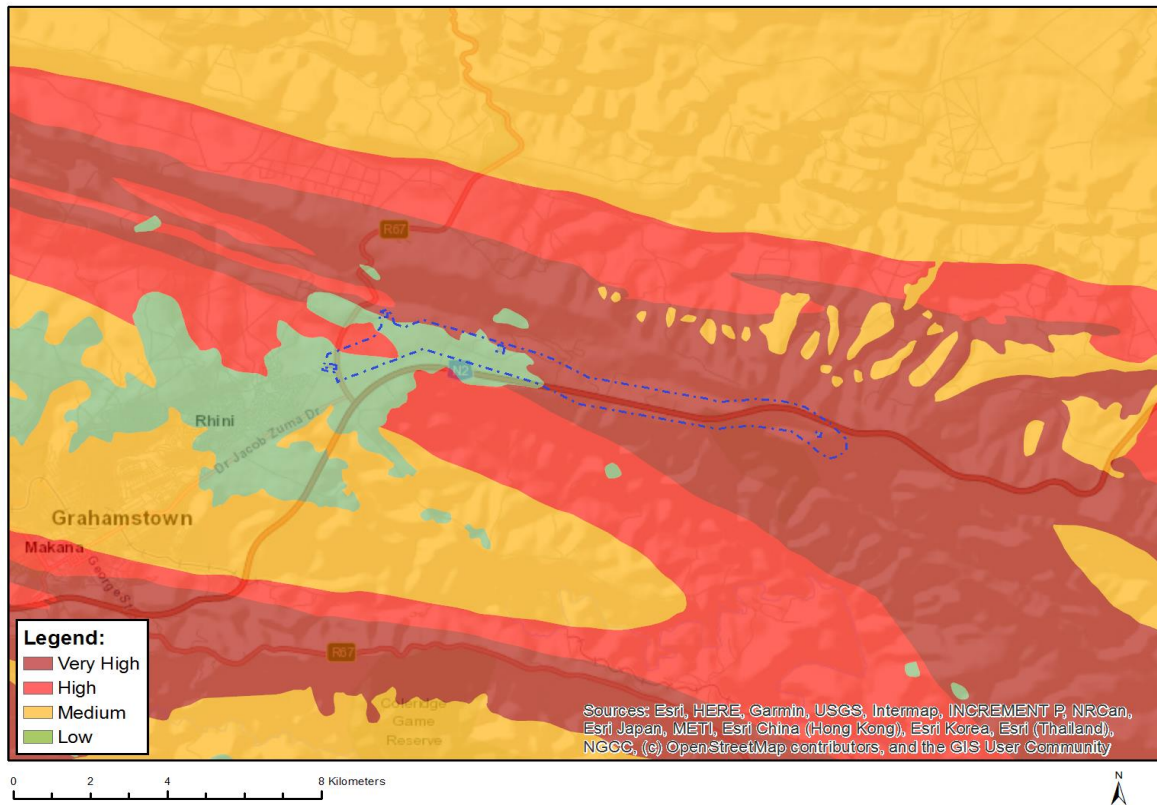
Very High sensitivity	High sensitivity	Medium sensitivity	Low sensitivity
			X

### Sensitivity Features:

Sensitivity	Feature(s)
Low	Low Sensitivity



## MAP OF RELATIVE PALEONTOLOGY THEME SENSITIVITY

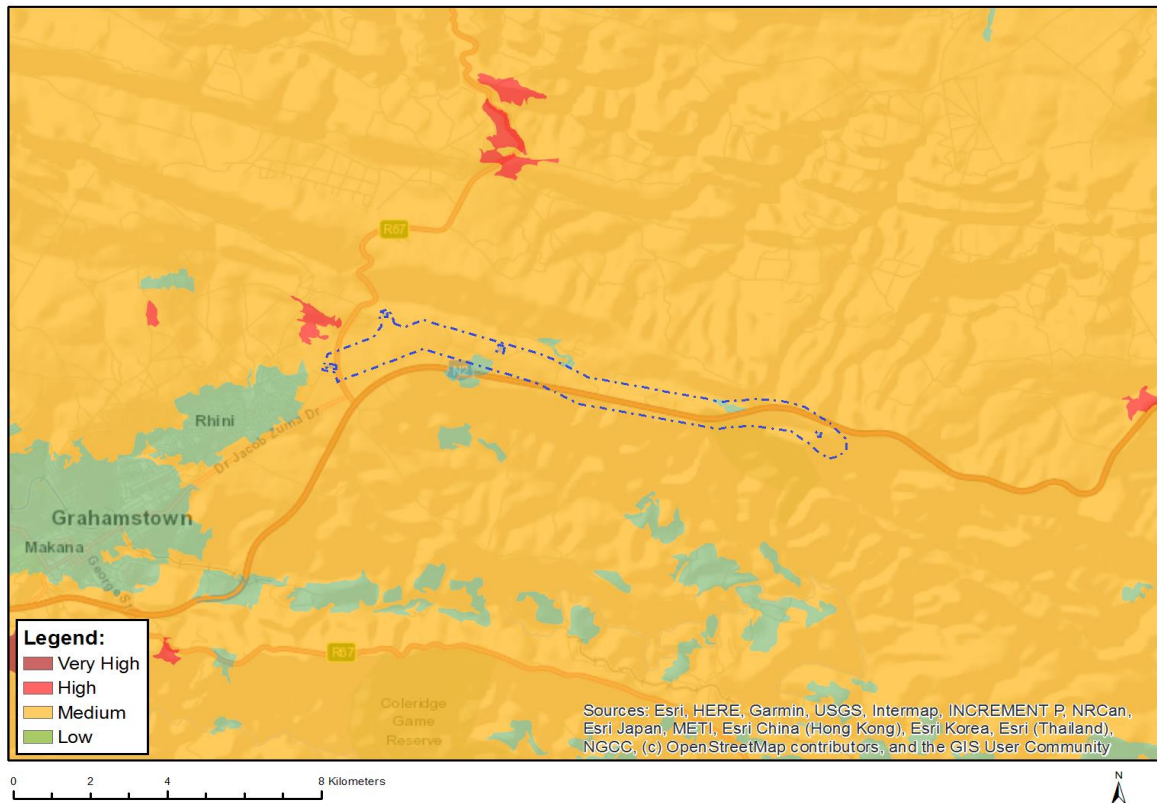


Very High sensitivity	High sensitivity	Medium sensitivity	Low sensitivity
X			

### Sensitivity Features:

Sensitivity	Feature(s)
Low	Features with a Low paleontological sensitivity
Very High	Features with a Very High paleontological sensitivity

## MAP OF RELATIVE PLANT SPECIES THEME SENSITIVITY



Where only a sensitive plant unique number or sensitive animal unique number is provided in the screening report and an assessment is required, the environmental assessment practitioner (EAP) or specialist is required to email SANBI at [aiadatarequests@sanbi.org.za](mailto:aiadatarequests@sanbi.org.za) listing all sensitive species with their unique identifiers for which information is required. The name has been withheld as the species may be prone to illegal harvesting and must be protected. SANBI will release the actual species name after the details of the EAP or specialist have been documented.

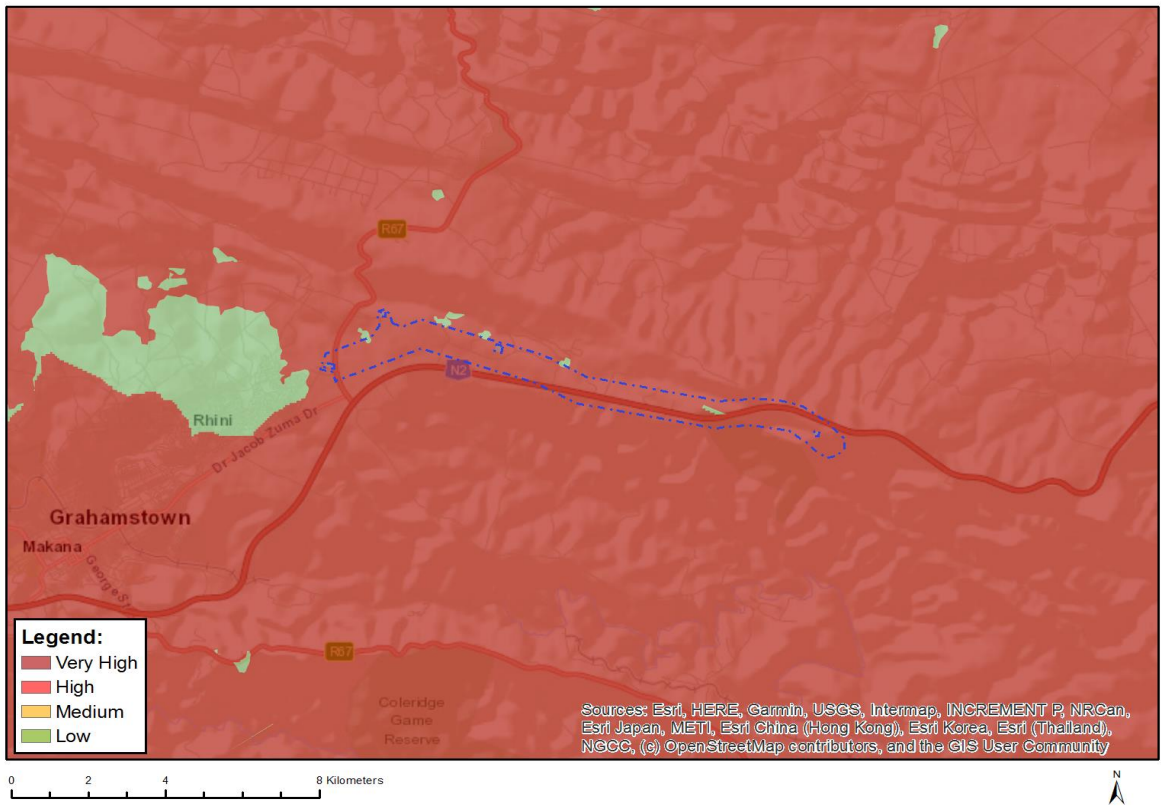
Very High sensitivity	High sensitivity	Medium sensitivity	Low sensitivity
		X	

### Sensitivity Features:

Sensitivity	Feature(s)
Low	Low Sensitivity
Medium	Faucaria tigrina
Medium	Aspalathus argyrophanes
Medium	Sensitive species 969
Medium	Sensitive species 72
Medium	Sensitive species 377
Medium	Apodolirion macowanii
Medium	Isoetes wormaldii
Medium	Sensitive species 1162
Medium	Sensitive species 1247
Medium	Sensitive species 708
Medium	Sensitive species 488
Medium	Sensitive species 97
Medium	Agathosma bicornuta
Medium	Syringodea flanaganii

Medium	Asclepias compressidens
--------	-------------------------

### MAP OF RELATIVE TERRESTRIAL BIODIVERSITY THEME SENSITIVITY



Very High sensitivity	High sensitivity	Medium sensitivity	Low sensitivity
X			

#### Sensitivity Features:

Sensitivity	Feature(s)
Very High	Critical biodiversity area 2
Very High	Ecological support area 1
Very High	FEPA Subcatchments