



72

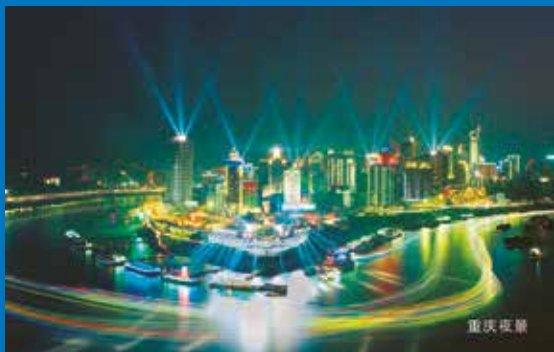
CHONGQING
SERVICE GUIDE ON
**72-HOUR VISA-FREE
TRANSIT TOURISTS**

Chongqing Tourism Administration

CHONGQING
SERVICE GUIDE ON
72-HOUR VISA-FREE
TRANSIT TOURISTS

CONTENTS

Welcome to Chongqing	01
Basic Information about Chongqing Airport	02
Recommended Routes for Tourists from 51 COUNTRIES	02
Sister Cities	03
Consulates in Chongqing	03
Financial Services for Tourists from 51 COUNTRIES by Bank of China	05
List of Most Popular Five-star Hotels in Chongqing among Foreign Tourists	10
List of Inbound Travel Agencies	14
Most Popular Traveling Routes among Foreign Tourists	16
Distinctive Trips	18



重庆夜景

Welcome to Chongqing

A city of water and mountains, the fashion city Chongqing is the only municipality directly under the Central Government in the central and western areas of China. Numerous mountains and the surging Yangtze River passing through make the beautiful city of Chongqing in the upper reaches of the Yangtze River. With 3,000 years of history, Chongqing, whose civilization is prosperous and unique, is a renowned city of history and culture in China. With the gift of nature and history, Chongqing, a city of 82,400 square kilometers, has not only distinct landscapes, but also profound culture created by 33 million industrious and hospitable Chongqing people. With the names of Mountain City, River City and Sleepless City, Chongqing has beautiful landscape, appetizing food and fantastic springs that are indeed appealing. It is also listed among the “World Top 10 Destinations 2012” on the website of Frommer’s, a famous American travel guidebook.

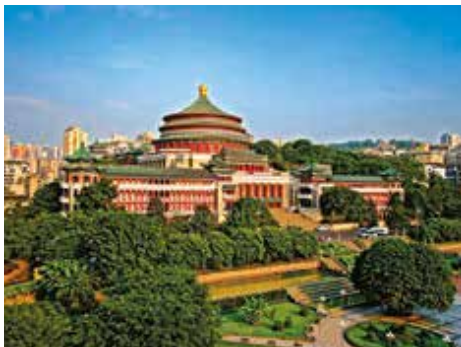
As one of the cities with the richest tourism resources in China, Chongqing now has 136 tourist attractions that reach level A, among which there are 6 5A tourist attractions, 48 4A tourist attractions and 46 3A tourist attractions; Chongqing also has 1 World Natural Heritage site and 1 World Cultural Heritage site. Among the well-known tourist attractions, there are Three Gorges —— the only grand gorge in the world which can be viewed in a luxury cruiser on Yangtze River; Dazu Rock Carvings —— World Cultural Heritage; Wulong Tiansheng Three Bridges —— World Natural Heritage; Tiangkeng and Geofracture Scenic Area in Fengjie —— the deepest and longest Tiangkeng and geofracture in the world; Hechuan Fishing Town —— relic of ancient battlefield that changed the history of Europe; Fuling Baiheliang —— the only ancient hydrological station that has been preserved completely in the world, to mention only a few. Benefiting from the mountains and water, Chongqing has a diversity of world-class geothermal energy resources of springs, as well as 1,600 years of spring history. In 2012, Chongqing was granted the “World’s Hot Spring Capital” in The 65th General Assembly and International Scientific Congress of The World Federation of Hydrotherapy and Climatotherapy.

What’s more, Chongqing also has excellent tourism reception facilities and superior services. There are 266 tourist hotels with star ratings in Chongqing, among which there are 22 five-star hotels, 55 four-star hotels and 136 three-star hotels; Among the 510 travel agencies, 48 are outbound travel agencies; Besides, there are 31 five-star Yangtze River cruisers to meet various needs of tourists from different countries and regions.

Chongqing is such a wonderful historic city with 3,000 years of culture!

In the economic center of the upper reaches of Yangtze River, a new Chongqing is developing and going global!

Chongqing, a place you must to go!



Great Hall of the People

Chongqing Service Guide on 72-hour Visa-free Transit Tourists

Basic Information about Chongqing Airport

Chongqing Jiangbei International Airport is one of the compound hub airports in China and is the only authentic double-runway international airport in the inland area of China. With the third runway being built, a fourth runway will also be constructed in the future. The planned annual throughput of passengers is 75 million and of the cargo is 2.5 million tons. With 14 million inbound and outbound tourists as well as 1 million tons of inbound and outbound cargo, Chongqing Jiangbei International Airport will become the largest single airport in China.

In 2012, the number of tourists at Chongqing Jiangbei International Airport exceeded 22 million and is among the top 10 of China and among the top 80 of the world. The number of inbound and outbound people has reached 936 thousand and ranks the second among airports in the inland area of China. In 2013, the number of tourists at Chongqing Jiangbei International Airport will reach 25 million with the number of inbound and outbound people reaching 1.3 million. Currently, 24 international passenger air routes have been open between Chongqing and cities such as Doha, Helsinki, Sydney, San Francisco, Los Angeles, Bangkok, Seoul, Singapore, etc.



Recommended Routes for Tourists from 51 Countries

I. Tourists from Finland, Qatar, America, Singapore, Japan, and Republic of Korea who can enjoy the visa-free policy can choose to take the non-stop flight to Chongqing for the outbound travel then go to the third country.

II. Tourists from Sweden, France, Germany, Italy, Switzerland, and

Russia who can enjoy the visa-free policy can choose to take the non-stop flight from Helsinki to Chongqing and stay in Chongqing for three or four days, then go to the third country.

III. Tourists from United Arab Emirates, Brazil, Argentina, and Australia who can enjoy the visa-free policy can choose to take the non-stop flight from Doha to Chongqing and stay in Chongqing for three or four days, then go to the third country.

Sister Cities

Up to now, Chongqing has been the sister city of 31 foreign cities. Among which 21 are sister cities of the municipal level, they are Toulouse of France, Seattle of America, Toronto of Canada, Hiroshima of Japan, Leicester of UK, Voronezh of Russia, Zaporizhia Oblast of Ukraine, Mpumalanga of South Africa, Düsseldorf of Germany, Shiraz of Iran, the

Province of Aswan, Brisbane of Australia, Incheon of the Republic of Korea, Sor-Trondelag of Norway, Chiang Mai Province of Thailand, the Province of Cordoba of Argentina, Pest County of Hungary, Bangkok of Thailand, the Province of Antwerp of Belgium, Bahia of Brazil and Canton of Zurich of Switzerland. There are 9 sister cities of the district level, they are Gers of France, Miyakonojo of Japan, Cherkassy of Ukraine, Vladimir of Russia, First District of Vienna of Austria, the City of Waynesboro of America, Linden of Guyana, Central District of Busan of Republic of Korea, Pleven of Bulgaria, Phnom Penh of Cambodia.



Consulates in Chongqing

Consulate General of the UK of Great Britain and Northern Ireland in Chongqing

CHANCERY: Metropolitan Tower, 28F, 68 Zourong Rd,
Yuzhong District, Chongqing
TEL: 023-63691500
FAX: 023-63691525
DISTRICT: Chongqing, Sichuan, Guizhou, Yunnan

Royal Cambodia Consulate General in Chongqing

CHANCERY: China Life Tower, 10F, 2 Kuaizi St, Yuzhong District,
Chongqing
TEL: 023-63113666
FAX: 023-63113666
DISTRICT: Chongqing, Hubei, Hunan, Shaanxi

Consulate General of Japan in Chongqing

CHANCERY: Metropolitan Tower, 37F, 68 Zourong Rd,
Yuzhong District, Chongqing
TEL: 023-63733585
FAX: 023-63733589
DISTRICT: Chongqing, Sichuan, Guizhou, Yunnan, Shaanxi

Consulate General of the Republic of Philippines in Chongqing

CHANCERY: Metropolitan Tower, 29F, 68 Zourong Rd, Yuzhong
District, Chongqing
TEL: 023-63810832
FAX: 023-63729809
DISTRICT: Chongqing, Guizhou, Yunnan

Consulate General of Hungary in Chongqing

CHANCERY: JW Marriott Hotel Business Building, 6F, Yuzhong
District, Chongqing
TEL: 023-61609606
FAX: 023-61609605
DISTRICT: Chongqing, Sichuan, Guizhou, Yunnan, Shaanxi,
Gansu

Consulate General of the Federal Democratic Republic of Ethiopia in Chongqing

CHANCERY: Xinhua International Tower, Unit 2204, No. 27
Minquan Rd., Yuzhong District, Chongqing
TEL: 023-63734732, 63734733
FAX: 023-63734735, 63734736
DISTRICT: Chongqing, Sichuan, Guizhou

Consulate General of Canada in Chongqing

CHANCERY: Metropolitan Tower, 17F, 68 Zourong Rd, Yuzhong
District, Chongqing
TEL: 023-63738007
FAX: 023-63738026
DISTRICT: Chongqing, Sichuan, Guizhou, Yunnan

Royal Danish Consulate General in Chongqing

CHANCERY: Metropolitan Tower, 31F, 68 Zourong Rd, Yuzhong
District, Chongqing
TEL: 023-63836008/63726200
FAX: 023-63725284
DISTRICT: Chongqing, Sichuan, Guizhou, Yunnan

Financial Services for Tourists from 51 Countries by Bank of China

I. Foreign Currency Exchange

The specialist institution which is exclusively cooperating with Bank of China has set two foreign currency exchange sites in the airport terminal to provide multi-currency exchange service for foreign tourists.



Foreign Currency Exchange Site 1:

Name: Shanghai Geoswift Co., Ltd, First Branch

Address: Arrival Lounge of International Terminal of Chongqing Jiangbei International Airport

Foreign Currency Exchange Site 2:

Name: Shanghai Geoswift Co., Ltd, Second Branch

Address: Arrival Lounge of T2A Domestic Terminal, Gate 4, Chongqing Jiangbei International Airport

Currencies can be exchanged on site:

Available Currencies are those whose list price is Cash Buying Rate on that day, including US dollar, UK Pound, euro, yen, Hong Kong dollar, Singapore dollar, Canadian dollar, Australian dollar, New Zealand dollar, Swiss Franc, Danish Krone, Norwegian Krone, KRW(to be opened in Cash Buying Rate) basically covering the currencies of 45 countries.

When necessary, tourists can also purchase the foreign currency traveler's check of American Express or Travelex.

Foreign Currency Exchange Limit:

Tourists can exchange foreign currencies totaling less than 5,000 US dollars on one day

Besides the exchange sites in the airport, tourists can also exchange foreign currencies in the counters of the banking departments of Bank of China all over Chongqing during their stay in Chongqing. The names and addresses of the institutions are as follows:

Banking Department of Chongqing Branch:

No. 218 First Zhongshan Road, Yuzhong District

Banking Department of Yuzhong Sub-branch:

No. 104 Minzu Road, Yuzhong District

Banking Department of Shapingba Sub-branch:

No. 39 Yubei Road, Shapingba District

Banking Department of Jiulongpo Sub-branch:

No. 1 Tuanjie Road, Yangjiaping, Jiulongpo District

Banking Department of Jiangbei Sub-branch:

No. 18 Jianxin Road North, Jiangbei District

Banking Department of Nan' an Sub-branch:

No. 29 Nanping Road West, Nan' an District

Banking Department of Yubei Sub-branch:

No. 10 Shuangfeng Road, Yubei District

Banking Department of Liangjiang Sub-branch:

-1F, Jinshan Mansion, Economic Development Park, Chongqing

Economic Development Zone

Banking Department of Ba' nan Sub-branch:

Room 1-3, Building 1, Longhai Avenue, Ba' nan District

Banking Department of Dadukou Sub-branch:

No. 624 Ganghua Road, Dadukou District

Banking Department of Beibei Sub-branch:

No. 1 Shengli Road, Beibei District

Banking Department of Western New City Sub-branch:

No. 12-1234, University Town Road Middle, Shapingba District

Banking Department of Changshou Sub-branch:

No.2, Tiyu Village, Fengcheng Sub-district Office, Changshou District

Banking Department of Yongchuan Sub-branch:

No. 1285, Middle Section, Yuxi Avenue, Yongchuan District

Banking Department of Fuling Sub-branch:

No. 2 Guangchang Ring Road, Fuling District

Banking Department of Wanzhou Sub-branch:

No. 121 Baiyan Road, Wanzhou District

Banking Department of Hechuan Sub-branch:

No. 10 Sujia Street, Hechuan District

Banking Department of Jiangjin Sub-branch:

No. 1 Wucheng Road, Jijiang Sub-district Office, Jiangjin District

Banking Department of Dazu Sub-branch:

No. 98 Longgang Road Middle, Longgang Sub-district Office, Dazu County

Banking Department of Qijiang Sub-branch:

No. 99 Shuanglong Road, Gunan Town, Qijiang District

Banking Department of Rongchang Sub-branch:

No. 75 Guangchang Road, Changyuan Town, Rongchang County

Banking Department of Tongliang Sub-branch:

No. 2 Jianshe Road, Bachuan Town, Tongliang County

Banking Department of Bishan Sub-branch:

No.77-7-11, North Section, Yanhe Road West, Bichen Street,
Bishan County

Banking Department of Dianjiang Sub-branch:

No. 57 Renmin Road, Guixi Town, Dianjiang County

Banking Department of Nanchuan Sub-branch:

No. 15 Xida Street, Xichen Sub-district Office, Nanchuan District

Banking Department of Fengdu Sub-branch:

No. 1, West Section, Pingdu Avenue, Sanhe Town, Fengdu
County

Banking Department of Liangping Sub-branch:

No. 317 Liangshan Road, Liangshan Town, Liangping County

Banking Department of Zhongxian Sub-branch:

No. 7 Daqiao Road, Zhongzhou Town, Zhongxian County

Banking Department of Wushan Sub-branch:

No. 263 Guangdong Road Middle, Wuxia Town, Wushan County

Banking Department of Qianjiang Sub-branch:

Building 1, No. 118 Fourth Chengxi Road, Chengxi Office,
Qianjiang District

Banking Department of Kaizhou Sub-branch:

No. 183 Kaizhou Avenue Middle, Kaixian County



II. Consumption with Foreign Card

The banking business of consumption with foreign card is widely applicable in hotels, airline companies, jewelry stores, large department stores, etc.

With the card with logo such as “Visa”, “Master”, “JCB”, “ExpressPay”, and “Diners”, foreign tourists can use the foreign card POS of Bank of China to enjoy the fast and convenient shopping. Besides, in some hotels, Bank of China has also opened the foreign currency card value-added service -- DCC, which is one of its preponderant services. The foreign tourists can choose to use the currency of their own country for payment, and can know the actual amount of money of the currency of their own country for the overseas transaction in a real-time manner before receiving the bills, and this is convenient for the calculation of business trips or non-business trips of the tourists.

Names of premises where the banking business of consumption with foreign card of Bank of China is available:

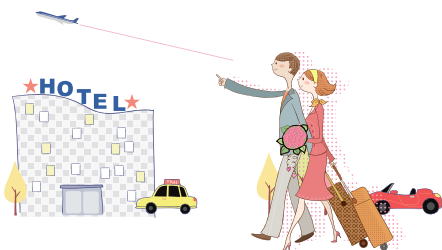
Hotels: Harbour Plaza Hotel, Sofitel Forebase Chongqing, Chongqing Wanda Aimei Hotel, Jinke Grand Hotel, Tianlai Hotel, Days Hotel & Suites Sun Kingdom Chongqing, Empark Hotel & Resorts, Kingworld Hotel Chongqing, Chongqing Jinjiang Oriental Hotel, JW Marriott Hotel Chongqing, Chongqing Jiangbei DoubleTree by Hilton, Kempinski Hotel Chongqing, Crowne Plaza Chongqing Riverside, Chongqing Yangtze Island Hotel, Tianci Hot-spring Hotel, Gloria-chongching Hotel, Ourland Hotel, Xiejiawan GreeTree Inn, Jinfengshan Hotel, Xiangjiang Fortune Hotel, Jundun Liangjiang Hotel, Hefu Hotel, Xuehao Hotel, Xinxiya Hotel, Chongqing Keyuan Hotel, Chongqing Ruika Hotel, Chongqing Juncao Hotel, Holiday Inn North Chongqing, Lafee Plaze, Jiayu Emperor Hotel, Chongqing Minshan Hotel, Hillsun Hotel, Chongqing DLT Hotel, Shiji Tonghui Hotel, WANYOU CONIFER Chongqing, Haide Hotel, Yutong Hotel, Milky Way Hotel Chongqing of Tianyou Group, Chongqing Grand Hotel, Chongqing South Garden Hotel, Fuli Hotel, Chuangshiji Hotel, Yudu Hotel, Biduiyuan Phoenix Hotel

Large Department Stores: Chongqing Xinmian Duty-free Goods Co., Ltd., Chongqing Airport Shop, Starlight 68 Department Store, Pacific Mall, Far Eastern Department Store, Maoye Department Store, GRAND OCEAN Department Store, Louis Vuitton, West Outlets, Lingmei Commerce & Trade Chongqing Branch, Shanghai Dongquan Commerce & Trade Chongqing Branch, Longhao Chongqing Second Branch, Ishijah Commerce & Trade, Heji Company(metropolis).

Jewelry Stores: Emperor Watch and Jewellery

Airline Companies: Dragonair Chongqing, Bida Ticket, Mandarin Airlines.

Others: Starbucks, Airport Fast Food Restaurant of Chongqing, Hexin Club, Poly Golf Sales, Sakura Bar, Hengda Tourism, Damei Three Gorges Cruise, New Century Cruise, Victoria (Beidou), Qianye Glasses, Lihua Restaurant, Huazhuo Restaurant.



List of Most Popular Five–star Hotels in Chongqing Among Foreign Tourists

S/N	Name	Address
1.	Marriott Hotel	77 Qiannian Road, Yuzhong District, Chongqing
	TEL: 023–63888888	FAX: 023–63999999 P.C: 400010
	http://www.marriott.com.cn	
2.	Harbour Plaza Hotel	Wuyi Road, Yuzhong District, Chongqing
	TEL: 023–63700888	FAX: 023–63700778 P.C: 400010
	http://www.harbour-plaza.com	
3.	Empark Hotel & Resorts	No. 1, Second Branch Road, Jieyin North Road, Jiebei District, Chongqing
	TEL: 023–67958888	FAX: 023–67958616 P.C: 400020
	http://www.empark.com.cn	
4.	Carlton Hotel Chongqing	259 Keyuan Fourth Road, High-tech Zone, Chongqing
	TEL: 023–68066806	FAX: 023–68066666 P.C: 400041
	http://www.carltonhotel.com	
5.	King World Hotel	368 Binjiang Road, Jiangbei District, Chongqing
	TEL: 023–86338888	FAX: 023–86339999 P.C: 400020
	http://www.empark.com.cn	
6.	InterContinental Hotel	101 Minzun Road, Yuzhong District, Chongqing
	TEL: 023–89066888	FAX: 023–89066999 P.C: 400010
	http://www.cn.ihg.com	
7.	Jinke Grand Hotel	Huangshan Road, New North Zone, Chongqing
	TEL: 023–89136666	FAX: 023–89136800 P.C: 401121
	http://www.jkhotel.com	
8.	Tianlai Hotel(the original Days Hotel)	7 Jinkai Road, New North Zone, Chongqing
	TEL: 023–67888888	FAX: 023–67397900 P.C: 401121
	http://www.tianlaihotel.com	
9.	Sofitel Forebase Chongqing	137 Keyuan Second Road, Jiulongpo
	TEL: 023–68639999	FAX: 023–68637555 P.C: 400039
	http://www.sofitel.com	
10.	Glenview ITC Plaza Chongqing	66 Qingnian Road, Yuzhong District, Chongqing
	TEL: 023–63666666	FAX: 023–63666888 P.C: 400010
	http://www.glenviewhotels.com	



S/N	Name	Address
11.	Jianghong International Hotel	New Economic Development Zone, Yongchuan District, Chongqing TEL: 023-49666666 FAX: 023-49802000 P.C: 402160 http://www.jhgjhotel.com
12.	Chongqing Jinjiang Oriental Hotel	6 West Lake Road, Yubei District, Chongqing TEL: 023-67306666 FAX: 023-67306070 P.C: 401120 http://www.cqouruiji.com
13.	BEITY Hot Spring Tourism Resort	Nongke Road, Baishiyi Town, Jiulongpo District, Chongqing TEL: 023-65718888 FAX: 023-65718188 P.C: 401329 http://www.cqbeity.com
14.	Grand Metropark Hotel Chongqing	1598 Jinkai Road, Jinkai District, Chongqing TEL: 023-63118888 FAX: 023-67888388 P.C: 401160 http://www.metroparkhotels.com
15.	Hilton Chongqing	139 Zhongshan Third Road, Yuzhong District, Chongqing TEL: 023-89039999 FAX: 023-89038600 P.C: 400015 http://www.hilton.com.cn
16.	Minghao International Hotel	108 Xuanhua Road, Yongchuan District, Chongqing TEL: 023-49848888 FAX: 023-49868000 P.C: 402160 http://www.minghaointernationalhotel.chinahotel.com.cn
17.	Haiyu Hot Spring Hotel	198 Shuangyuan Road, Beibei District, Chongqing TEL: 023-63179999 FAX: 023-63179666 P.C: 400711 http://www.cqhyspringhotel.com





S/N	Name	Address
18.	Days Hotel & Suites Sun Kingdom Chongqing	3 Shangbang Road, Jinfeng Town, Jiulongpo District, Chongqing TEL:023-86638888 FAX:023-86638999 P.C:401329 http://www.daysinn.cn/hotel/shangbang_a.htm
19.	Chongqing Wanda Aimei Hotel	10 Jiangnan Road, Nan'an District, Chongqing TEL:023-86388888 FAX:023-86386666 P.C:40060 http://cq.wandahotels.com
20.	Wildlife World River & Holiday Hotel	Fenglong Field, Satellite Lake Street, Yongchuan District, Chongqing TEL:023-85380888 FAX:023-85380999 P.C:402168 http://www.cqljir.com
21.	Rose Plaza Hotel	99号99 Xinhua Street West Section, Qianjiang District, Chongqing TEL:023-79228888 FAX:023-79228889 P.C:409000 http://www.rose-plaza.com
22.	RAMADA PLAZA CHONGQING WEST	386 Wuxing Road, Tangxiang Street, Dazu District, Chongqing TEL:023-85226666 FAX:023-85227777 P.C:402360 http://www.ramadaplazacq.com
23.	Sheraton Chongqing Hotel	78 Nanbin Road, Nan'an District, Chongqing TEL:023-62777777 FAX:023-62877777 P.C:400060 http://www.sheraton.com/chongqing
24.	AUWI Hotel	2 Qilong Road, Longshan Street, Yubei District, Chongqing TEL:023-88288888 FAX:023-88519666 P.C:401147 http://www.auwihotel.com
25.	RAMADA PLAZA Chongqing North	678 Zhongnan Road, Hechuan District, Chongqing TEL:023-85136666 FAX:023-85131099 P.C:401520 http://www.ramadaplazacqn.com



S/N	Name	Address
26.	Chongqingtianci Hot-spring 1	Hot Spring Road, Bishan County, Chongqing TEL: 023-41566288 FAX:023-41443666 P.C:402760 http://www.cqtchtwq.com
27.	Ruier Hotel	39 Changlong Road, New North Zone, Rongchang County, Chongqing TEL: 023-46277777 FAX:023-46277555 P.C:402460 http://www.17u.cn/HotelInfo-49020.html
28.	JINKE Grand Hotel	6 Binjiang Road Second Section, Fuling District, Chongqing TEL:023- 85677777 FAX:023-85669999 P.C:408000 http://www.jinkehotel.com
29.	Radisson Blu Hotel Chongqing Shapingba	8 Huiquan Road, Shapingba District, Chongqing TEL: 023-88669999 FAX:023-88662999 P.C:400030 http://www.radissonblu.com/chongqing-shapingba
30.	Hyatt Regency Chongqing Hotel	11 Beichengtianjie Street, Jiangbei District, Chongqing TEL: 023-67751234 FAX:023-67871235 P.C:400020 http://www.hyatt.com
31.	Radisson Blu Plaza Chongqing	22 Nanbin Road, Nan'an District, Chongqing TEL: 023-88668888 FAX:023-88605555 P.C:400060 http://www.radissonblu.com/hotel-chongqing
32.	Kempinski Hotel Chongqing	2 Jiangnan Road, Nan'an District, Chongqing TEL:023-86888888 FAX:023-86885666 P.C:400060 http://www.kempinski.com/chongqing

List of Inbound Travel Agencies

S/N	Name	Contact Number	Contact Person
1.	Chongqing New Century Cruises Co., Ltd. http://www.centurytrip.com	023-62948994	Xie Yu
2.	Chongqing Holiday International Travel Service Co., Ltd. http://www.lvyoucq.net/index.asp	023-67001500	Yang Shunhua
3.	Chongqing Yangtz INTERNATIONAL Tourism Company http://www.023ccotc.com	023-63775907	Tan Xingwei
4.	CHONGQING SUNSHINE INTERNATIONAL TRAVEL SERVICE CO., LTD. http://www.96960.com.cn	023-88639381	Bao Haibing
5.	Chongqing China International Travel Service Co., Ltd. http://www.citscq.com	023-63876537	Xing Xiaoli
6.	CHONGQING GRAND CHINA EXPRESS INTL TRAVEL SERVICE CO., LTD. http://www.itripgce.com	023-61212755	He Xiaoke
7.	Chongqing Golden Holiday International Travel Service Co., Ltd. http://www.cqghit.com	023-67872133	Jiang Can
8.	Chongqing Shenzhen International Travel Service Co., Ltd. http://lxs.cncn.com/75107	023-63032005	Chen Ye
9.	Chongqing Yangtz Yingxiang International Travel Service Co., Ltd. http://www.cjtc.com	023-63762386	Zhou Shizhi
10.	康辉旅游集团重庆旅行社有限责任公司 http://www.slowlook.net	023-86626555	Deng Tao
11.	Chongqing China Travel Service (Group) Co., Ltd. http://www.ctsho.com	023-63516515	Liu Xiaoying

S/N	Name	Contact Number	Contact Person
12.	Chongqing China Travel Service (Group) Co., Ltd. http://www.63728888.com	023-63809999	Wang Ke
13.	Chongqing Weisidun International Travel Service Co., Ltd. http://www.wsdgl.com	023-67101717	Luo Xiaoying
14.	Chongqing China Youth Travel Service Co., Ltd. http://www.cytscq.com	023-63803807	Chen Guotai
15.	Chongqing Everbright International Travel Service Co., Ltd. http://www.cqeits.com	023-67743065	Hao Xiaojun
16.	Chongqing Wanyou International Travel Service Co., Ltd. http://baike.baidu.com/view/8072510.htm	023-63825827	He Qian
17.	Chongqing Xinya International Travel Service http://www.cqxygl.com	023-86559629	Zhang Yan
18.	Chongqing Huifeng International Travel Service Co., Ltd. http://baike.baidu.com/view/7940620.htm	023-63719291	Xiao Xin
19.	Chongqing Yangzi River International Travel Service http://baike.baidu.com/view/331268.htm	023-63728300	Cao Yangjun
20.	Fengjie International Travel Service Co., Ltd. http://www.cqfjgl.com	023-56557260	Xu Gang



Most Popular Traveling Routes among Foreign Tourists

1. One-day sightseeing trip in Chongqing

(Chongqing International Expo Center–Central Park–Garden Expo Park–Chaotianmen–People’s Square–Grand Hall of the People–Three Gorges Museum–Paradise Walk–Ronghui Hot Spring–Ciqikou Ancient Town)

2. One-day fashionable trip in Chongqing

(Chongqing Zoo–Eling Park–Jiefangbei–Nanshan Golf–Chongqing Tiandi–Cruise on Yangtze River and Jialing River)

3. One-day memory trip in Chongqing

(Huguang Guild Hall–Grand Hall of the People–Ciqikou Ancient Town–Zhazi Cave–Bai’s Mansion –Sichuan Opera Museum–Sichuan Opera Jinzi)

4. One-day charming trip in Chongqing

(Hongya Cave–Chaotianmen– Cableway–taking above Yangtze River –Yangren Street–Nanbin Park–Nanshan Quanshuiji Dining Street–Night scene viewing from Yikeshu, Nanshan Mountain)

5. Two-day trip to Beibei-Hechuan Fishing Town

(Huguang Guild Hall–Chongqing Grand Theatre–Sightseeing tour in Chongqing Science and Technology Museum + Hechuan Fishing Town–Beibei North Hot Spring <Brilliant SPA and Banyan Tree>– Pinyan Ancient Town–Jindao Gorge)

6. Three-day romantic cruise trip to the Three Gorges

(People’s Square–Three Gorges Museum–Huguang Guild Hall–Sightseeing tour in Zhoujunji Hot Pot Food Industrial Park + Fengdu Mingshan Mountain–Yunyang Zhang Fei Temple–Fengjie Baidi Town–Qutang Gorge–Wushan Mountain Small Three Gorges–Mini Three Gorges)

7. Three-day trip to the world heritages

(Eling Park–Three Gorges Museum–Wulong Tiansheng Three Bridges and Dazu Rock Carvings)

8. Three-day trip to Baiheliang Underwater Museum-Fengdu Mingshan Mountain

(Eling Park–Chongqing Grand Hall of the People–Sightseeing tour in Three Gorges Museum + Changshou Ancient Town + Changshou Lake–Fuling Baiheliang–Fengdu Mingshan Mountain)

9. Four-day sightseeing trip in Chongqing

(Chongqing Zoo–Sightseeing tour in Chongqing Sichuan Opera Museum + Wansheng Heishan Valley–Dazu Rock Carvings Cultural Heritage–Jiangjin Simian Mountain)

10. Four-day ecological folk-custom trip to the southeast of Chongqing

(People's Square–Sightseeing tour in Grand Hall of the People + Nanchuan Jinfo Mountain–Wulong Tiansheng Three Bridges–Youyang Taohuayuan–Hong'an Ancient Town, Xiushan County)



Distinctive Trips

Trip to Three Gorges

Fuling Baiheliang Baiheliang (literally, White Crane Ridge), a national 4A level scenic area, is located on the Yangtze River, in the north of Fuling County in Chongqing. The total length of this natural ridge is 1,600 meters and the average width is 15 meters. This tourist spot, Baiheliang, is named for large flocks of white cranes gathered here.



Fengdu Ghost Town It is a national 4A level scenic area, situated along Yangtze River in Fengdu County. There are as many as 27 ancient temples in Fengdu Ghost Town. The vivid constructions and sculptures of the netherworld show



how Chinese people understand god & ghost, paradise & inferno. As a key cultural tourism spot along Three Gorges of Yangtze River, it is honored as Chinese Divine Comedy Town.

Shibao Village in Zhongxian County

Shibao Village is a national 4A level scenic area, located along the Yangtze River in Zhongxian County. The whole wooden structure building on Yuyin Mountain was first constructed during the reign of Wanli Emperor in Ming Dynasty. It has 12 floors and is composed of village gate, main structure and attic. It is known as Pearl on Yangtze River and is one of the eight strange structures of the world.



Wanzhou Waterfall As a national 4A level scenic area, Qinglong Waterfall has a width of 115 meters and a height of 64.5 meters. The total area of the waterfall reaches 7,417.5 square meters, which earns it the reputation as the first waterfall



in Asia. Water curtain cave covering an area of 1,600 square meters enriches your imagination. The 7,000 square meters' Qinglong Cave has stunning carvings on the wall.



Zhang Fei Temple in Yunyang County This is another national 4A level scenic area, located along the Yangtze River on the opposite side of Yunyang County. It is the only cultural tourism spot that was relocated and rebuilt after the reservoir area was

flooded. The whole building is composed of ancient style complex. In the Temple, the statue of Zhang Fei, a figure from during the Three Kingdoms, is worshiped. Besides, this Temple also houses inscriptions, calligraphy and paintings on marble from Han and Tang Dynasties as well as hundreds of cultural relics.



Baidi Town in Fengjie County It is a national 4A level scenic area, situated at the opening of Qutang Gorge, one of the Three Gorges. It was initially built in 25 AD. At the end of Western Han Dynasty, Gongsun Shu occupied Sichuan and called himself the King of Shu. At that time,

he often saw white smoke rising out of a well. The white smoke looked like a white dragon. So, he called himself Baidi, literally, white emperor. Many ancient poetry inscriptions can be found in Baidi Town. There are poems composed by Li Bai and Du Fu, poet immortal and poet sage of Tang Dynasty. As a result, this town is also known as poetry town.

Qutang Gorge It is a representative landmark of the Three Gorges.



Qutang Gorge starts from Baidi Town in Fengjie County and extends to Daixi in Wushan County. The total length reaches 8 kilometers. It is the shortest, narrowest and the most spectacular gorge with profound culture and history among all the Three Gorges. It has long enjoyed the

reputation that Kuimen holds the most magnificent view.

Small Three Gorges in Wushan County It is a national 5A level scenic area, situated on the lower reaches of Daring River in Wushan County. This scenic area is the general term for Longmen Gorge, Bawu Gorge and Dicui Gorge. It is the



best preserved tourism spot with the best ecological environment along the traveling route of Three Gorges along Yangtze River. The tourism spot boasts fantastic natural landscape, crystal clear water and beautifully-shaped stones and rocks. So, it is renowned as a wonder of China.

Wuxia Gorge It starts from the estuary of Daning River in Chongqing in the west and expands to Guandukou Town in Badong County, Hubei Province in the east. The total length is 40 kilometers. It is the most beautiful gorge among the Three Gorges and earns the reputation that it has the most



breathtaking scenery. Shennv Peak, one of the 12 peaks of Wuxia Gorge, is part of the amazing view. There is a line describing it as: The mountain goddess, if she is still there, will marvel at a world so changed.

Xiling Gorge It stretches from estuary of Xiangxi River, Zigui County, Hubei Province in the west and ends in Nanjinguan, Yichang City in the east. The total length is 76 kilometers. This is the longest gorge among all the Three Gorges. Xiling Gorge is famous for strangely-shaped stones and rocks as well as dangerous cliffs. They together make Xiling Gorge more spectacular and the stunning views along the River are enjoyed by throngs of tourists.



Three Gorges Dam It is a national 5A level scenic area and the largest hydropower project in the world. The project includes a concrete gravity dam, a hydropower station at dam-toe, a permanent navigation lock and vertical ship lifts. The Dam includes five parks: Three Gorges Exhibition Hall, Tanziling Park, 185 Park, Jinba Park and Interception Memorial Park. The total



land area is 15.28 square kilometers. Based on Three Gorges project, this scenic area fully shows the engineering and hydropower culture of this project. It was completed in 2009; at present, it is the world's highest dam.

Trip to World Heritage Sites



Dazu Rock Carvings Dazu Rock Carvings is listed as a World Cultural Heritage, national 5A level scenic area and a key national cultural relics protection site. A total of 100,000 stone statues can be found in more than 70 places in the scenic area. Among all carvings, the most

famous carvings and inscriptions can be found on the cliffs of Baoding Mountain and Beishan Mountain. Statues on the mountain are mainly Buddhist statues, but Confucian and Taoist ones are also established. These works represent late Chinese art of rock carving statues which hold a critical position in the art history of rock carving statues in ancient China. It is also renowned as a miraculous “Pearl of the Oriental Art”.



Wulong Tiansheng Three Bridges Wulong Tiansheng Three Bridges is also included in the list of World Natural Heritage and the list of national 5A level scenic areas. It is the largest natural stone arch bridge in the world. This scenic area features

typical karst landform, boasting magnificent and matchless scenery. It is a rarely seen ecological tourism spot of geological wonder and has been acclaimed by exploration and geological experts as a heritage of the Earth and a wonder of the world.

Nanchuan Jinfo Mountain (efforts underway to apply for world heritage site)

Jinfo Mountain is a national 5A level scenic area, China’s national scenic spot, national-level nature reserve area, national forest park and national natural heritage. It covers an area of 1,300 square meters, with the highest altitude reaching 2,238 meters and a forest coverage rate of over



95%. This scenic area has maintained age-old and a diverse varieties of primitive ecosystems in geologic ages. It is home to a great variety of rare and precious animal and plant species, and is known as the Kingdom of Plants and Chinese Pharmacy.

Trip to Hot Springs

North Hot Spring-Brilliant

SPA It is the top hot spring brand in Asia, located in the time-honored Chongqing North Hot Spring. It neighbors Jinyun Mountain in the south and Jialing River in the north and has a 1,600-year-old hot spring temple at its side. Here, you will be immersed in an atmosphere of religious life everyday. It offers river view SPA room, bamboo SPA, river view tea bar, geothermal SPA. With exotic atmosphere, it is a paradise for hot spring vacation and a fantastic place for your body and your mind.



Address: North Hot Spring Park, Beibei District, Chongqing

Banyan Tree Hot Spring Banyan Tree enjoys great geographical location, nestling in a natural reserve area at the foot of Jinyun Mountain in Beibei, Chongqing. This resort has 107 suites and villas, offering guests amazing experience. Each kind of room is equipped with private hot spring pool. The hot spring pouring into the pool is inducted from the prestigious North Hot Spring in Chongqing, so guests can have access to comfortable and private hot spring experience.

Address: Shili Hot Spring Town, Yunhe Area, Chengjiang Town, Beibei District, Chongqing

Ronghui Hot Spring

Ronghui Hot Spring occupies an area of about 20,000 square meters. It is a large-scale ecological hot spring meeting advanced international standards in the city center. The daily water flow is 4,800 tons and the temperature is 53°C. The hot spring contains calcium magnesium sulphate, which is able to facilitate fitness, improve health conditions and is good for the skin. At the same time, the resort offers nearly 3,000 square meters of German-style SPA house and 53 hot spring pools decorated in different styles. These facilities provide various kinds of hot spring experience to guests.



Address: Lishuwan, Shapingba District, Chongqing



Beity Hot Spring It is honored as a national 4A level scenic area, located in Baishiyi Town, Jiulongpo District. Beity Hot Spring has been recognized as a key tourism and resort area of Chongqing. This resort offers high-end ecological hot spring and traveling service, including vacation tour, tourism, sightseeing and business meeting, by

depending on its ecologically-friendly garden art.

Address: Beity Hot Spring, Nongke Avenue, Baishiyi Town, Jiulongpo District, Chongqing



Tongjing Hot Spring Tongjing Hot Spring is a brand new largest hot spring resort in China, covering a land area of over 300 mu. It is named as China Tongjing Hot Spring Resort. With beautiful natural scenery and unique hot spring resource, this resort focuses on health while highlighting the concepts of being ecologically-friendly, people-oriented and culturally aware. The hot

spring in this resort is famous for its high temperature, large water flow. There are 25 natural hot springs, with a temperature as high as 62°C and a daily water flow of 30,000 tons. Tongjing Hot Spring Resort was awarded as the Best Hot Spring Resort in China in 2005 and was applauded as a national 4A level scenic area in 2006.

Address: No. 66, Jingquan Road, Tongjing Town, Yubei District, Chongqing



South Hot Spring (Nanquanhui Resort and South Hot Spring Park)

This time-honored and refined hot spring is one of the four natural hot springs in Chongqing. The daily available hot spring water can reach as much as 20,000 cubic meters and

the temperature is 35–42°C all the year round. The hot spring water is great for rehabilitation and skin. The resort has rich natural landscape, for instance, mountains, river, forest, springs and waterfalls. It is place with amazing landscape including 12 tourism spots, such as South Hot Spring Pool and Cliffside Spring. At present, more than one billion RMB has been invested to build hot spring tourism hotel like Nanquanhui Resort, South Hot Spring Club, Orient Retreat, Hotspring 99 Hotel and Sunshine Hot-Spring Resort Hotel, as well as farm stay tourism.

Address: South Hot Spring, Ba'nan District, Chongqing

Xiuquanyingyue Holiday Inn of Hot Spring This hotel is located in the Town of Hot Spring, at the foot of Mu'er Mountain, Dongwenquan Town, Ba'nan District. The temperature is 52°C and there are 17 hot spring pools with a water surface area of 3,000m². The style of this hotel takes on the features of landscape garden, which offers a getaway from the bustling city while enjoying the natural hot spring.

Address: No. 102, Central Street, Dongquan Town, Ba'nan District, Chongqing

Sanfeng Spring (Oriental Folklore Hot Spring) This hot spring is situated in Chongqing East Hot Spring Scenic Area, covering a land area of more than 300 mu. It is a special scenic area, which enables tourists to see the views of Dongwenquan Mountain, spring, forest, caves, peaks, gorges, waterfalls and islands and experience local customs, folklore and Buddhism culture. This is a tourism resort offering services like sightseeing, vacation tour, group meeting, catering, accommodation and hot spring rehabilitation and fitness.

Address: No. 86, Central Street, Dongquan Town, Ba'nan District, Chongqing

Tianci Hot Spring Tianci Hot Spring is a national 3A level scenic area, themed around hot spring and leisure activity. It is a resort combining garden landscape, hot spring bath, health care, catering, accommodation, business meeting and entertainment based on its ecologically-friendly garden art.

Address: No. 1, Tianci Hot Spring Road, Hangu Town, Chongqing



Hailan Yuntian Hot Spring It is located beside the beautiful Hailan Lake, reputed as the garden of Jiulongpo District. With a land area of 1,000 mu and 30,000 square meters' floor area, it is able to accommodate thousands of tourists. Hailan Lake occupies an area of 600 mu in front of Baitaping Forest Park. It has lush vegetation, clear air, fantastic landscape, unique geographical position and pleasant environment, which makes it a paradise in the urban center.

Address: Hailan Village, Jinfeng Town, Jiulongpo District, Chongqing

Shangbang Golf Hot Spring It stands between Hailan Lake and the original ecological forest of Jinyun Mountain. Here, you can find springs and streams running here and there and broad coverage of plants. Hot springs come from 2,900 meters underneath Jinyun Mountain. The temperature is as high as 56°C. The hot spring water is rich in zinc, strontium, fluorine, lithium, manganese, barium, magnesium, selenium, metaboric acid, metasilicic acid, bromide and many other microelements. If one always takes hot spring bath, then the health status and immunity will be improved.

Address: No. 3, Shangbang Road, Jinfeng Town, Jiulongpo District, Chongqing

Nanhai Fengqing Hot Spring The Hot Spring takes up a land area of 350 mu, constituted by villa resort, hot spring resort and reception center. Natural hot spring pools are available in 28 stand-alone villas in the villa resort. The hot



spring resort includes 26 natural hot spring pools and six natural cold spring pools.

Address: Hongsheng Village, Taodeng Town, Dadukou District, Chongqing

Haitang Xiaoyue Health Care Hot Spring It is located in the central part of Nanbin Road in the city center. There are over 50 outdoor hot spring pools with various kinds of functions, special designed VIP indoor hot spring room, hot spring villa, hot spring SPA room and ultra-low temperature SPA room. At the same time, it is also equipped with buffet restaurant, lounge, fitness center, chess



& card room etc. Therefore, it is a high quality place to have hot spring bath, which offers hot spring health care, SPA, entertainment service, catering and hot spring room.

Address: Haitang Xiaoyue, Nan'an District, Chongqing

Rongqiao • Central Peninsula Hot Spring Central Peninsula Hot Spring occupies a land area of 43 mu with a floor area of 10,000m². It is composed of indoor hot spring SPA, healthcare recreational area and an outdoor garden landscape hot spring park covering an area of 23 mu. It shows a stunning view and a garden-like hot spring experience surrounded by mountains, rivers and bridges. Such an atmosphere will make you set all troubles aside and just enjoy the pleasure of the moment.

Address: No. 2, Fenglin Road, Rongqiao Peninsula, Nanbin Road, Nan'an District, Chongqing



Jinyun Dazhong Hot Spring Jinyun Dazhong Hot Spring is located in Shili Hot Spring, Beibei, Chongqing. It is able to accommodate 2,000 people simultaneously and has a daily accommodation capacity of over 5,000 tourists. Standard hot spring swimming pools, hot spring pools of various sizes and children pools are available. Besides, Chinese dishes, wheaten food and many other special snacks are served.

Address: Shili Hot Spring Town, Beibei District, Chongqing

White-collars East Hotspring Hotel The Hotel stands in front of green Zhongshan Mountain. It is surrounded by bluish water and has Kuan Yin Pavilion in the east and Baisha Temple in the west. It enjoys fresh air and pleasant environment. In this ecologically-friendly environment, there are 51 original lava hot spring pools of different sizes and functions. These hot springs can be found in many places on the mountains. If walking in the mountain, hot springs can be encountered unexpectedly. Such an interesting experience will make you feel relaxed.

Address: No. 3, Foling Street, Dongquan Town, Ba'nan District, Chongqing

New Orient Hot Spring Hotel New Orient Hot Spring Hotel is a three-star hotel offering hot spring and business meeting services. It has 138 guest rooms, including two luxury villas and eight meeting rooms. Original hot spring water coming from 1,918 meters underground is available in each room. Besides, 13 pools with different functions and sizes are equipped, such as massage pool and surfing pool. The water temperature is 60°C.

Address: No. 109, Yunan Avenue, Ba'nan District, Chongqing



Cruise Trip



Changjiang Cruise Overseas Travel Co., Ltd.

The company has nine luxury cruise liners such as M. S. Yangtze 1 and M.S. Yangtze 2. Among all cruise liners, M.S. Yangtze 2 is built according to five-star cruise ship at sea and

it is a world-class inland river luxury cruise liner. Yangtze Cruise Series has the longest history of serving tourists to the Three Gorges. It has hosted state leaders and many important leaders from other nations. Therefore, it has been acclaimed as state guests' cruiser.

Now the following cruisers are available: M.S. Victoria 2, M.S. Victoria 3, M.S. Victoria 5, M.S. Victoria 7, M.S. Sunshine China, M.S. Yangtze Angel, M.S. Blue Whale, M.S. Yangtze 1 and M.S. Yangtze 2.



Dongjiang Industrial Cruise Co., Ltd.

At present, the company has seven five-star cruisers such as Katarina and Jenna. It has excellent service by offering selected and novel traveling routes as well as

superb facilities. It has the only international five-star cruiser along Yangtze River, which adopts the management concepts from the US.

Now the following cruisers are available: Jenna, Anna, Katarina, Lianna, Selina, Grace and Sophia.



Century Cruises Co., Ltd.

The company now has seven five-star luxury cruises, for instance, Century Diamond and Century Jewel. The Century Series plays a pioneering role in upgrading luxury cruisers along

Yangtze River because of its excellent facility and first-class international service team.

Now the following cruisers are available: Century Star, Century Resplendence, Century Diamond, Century Legend, Century Myth and Century Jewel.

Gold Cruises Co., Ltd.

This company has seven 10,000-ton five-star luxury cruisers. As the a five-star cruiser of the fifth generation, the company has borrowed the experience of previous Yangtze River cruisers and



makes each and every cruise as beautiful as possible. So, each cruise looks like a water palace and an amazing city on the move.

Now the following cruisers are available: Yangtze Gold 1, Yangtze Gold 2, Yangtze Gold 3, Yangtze Gold 5, Yangtze Gold 6, Yangtze Gold 7 and Yangtze Gold 8.

Damei Three Gorges Cruises Co. Ltd. Chinese Goddess Series

is designed according to the styles of ocean cruisers. It looks fashionable, magnificent and elegant. It takes on the cultural essence of Chinese civilization, Three Gorges culture and the culture of Goddesses. This series boasts the most beautiful night view among all five-star luxury cruisers along Yangtze River.



Now the following cruisers are available: Chinese Goddess 1.



Trip to Wujiang River Gallery

World Natural Heritage— “Wulong Karst Geological Wonder”

It is located in Wulong County, Chongqing, including Tiangkeng–geofracture, Tiansheng Three Bridges, Furong Cave and Furong River.

Tiankeng and geofracture: Tiankeng and geofracture are formed by the movement of mountains tens of thousands years ago. It belongs to a kind of typical karst landform of deep-cutting gorge. The total length of Tiankeng and geofracture is five kilometers and the depth of 200 to 500 meters. The beautiful scenery is composed of deep gorge, cliff, primitive vegetation, waterfalls, rapids and deep pool.

Tiansheng Three Bridges: They are of typical karst landform. This scenic area has natural stone arch bridges and maze-like caves. The most famous bridges include Tianlong Bridge, Qinglong Brige and Heilong Bridge. It is the largest natural stone arch bridge in the world. This is also the only shooting location of *Curse of the Golden Flower* directed by Zhang Yimou.

Furong Cave: The main cave covers an area of 37,000 square meters with a length of 2,700 meters. It is a rarely seen cave in China with such a large number of stalactites. Besides, these stalactites are not only beautifully shaped but also boast crystal-clear texture and are widely distributed in the cave. At the same time, nearly 30 sedimentary characteristics in the world can be found in this cave. Furong Cave is widely known thanks to coral-like projections, stone waterfall, vertical shafts, dog-tooth like crystalline calcite flowers as well as crystalline gypsum flowers.

Furong River: It is famous for karst original water forest, U-shaped gorge and river landscape. The river stretches 35 kilometers, covering a land area of 122.5 square kilometers. It combines natural and cultural landscape together, which presents rich sightseeing resources. It is a rarely seen ecologically-friendly gorge tourism area with large capacity.

Xiannvshan National Forest Park: It is national 5A level scenic area, located 28 kilometers away from Wulong County. The altitude of this Mountain is 1,650–2,033 meters. It has 330,000

mu of forest land and over 100,000 mu of natural lawns. Even though it is located in southern China, it also presents beautiful scenery like northern China. This mountain is renowned as Pasture in Southern China, Oriental Switzerland and the Garden of Eden on the Earth.



Small South Sea It was formed in 1856 due to an earthquake. This is the only earthquake-made lake in China and also a rarely seen lake in the world. It is 32 kilometers away from Qianjiang. The surface area of the Lake is 2.87 square kilometers and is the largest lake in Chongqing. This lake is surrounded by green mountains. It is endowed with green water and fantastic landscape, which earns the reputation of Pearl in Deep Mountain.



Zhuoshui Ancient Town Zhuoshui was initially named Baiheba. It enjoys prominent position for doing business. Since ancient times, Zhuoshui has become a key courier station and commercial port. Since late Qing Dynasty, Zhuoshui has become the only route for post, business and sending salt in southeastern Sichuan. The ancient town has a length of about 700 meters. The stone streets have a width of three meters. Houses standing along the streets are all wooden structures.



Buildings of special styles can be found, such as structures with assembly hall, arcade and arbour. Now, Zhuoshui Ancient Town is known as one of the three famous towns in Youyang, together with Longtan and Gongtan Ancient Towns.

A' peng River This is rarely seen river in China, which flows westward. It expands 249 kilometers within Wuling Mountains. It runs across Qianjiang and pours into Wujiang River in Gongtan, Youyang. The difference of level reaches as high as 1,159 meters. It has five scenic areas, namely,



Shengui Gorge, Guandu Gorge, Xisha River Hot Spring, karst cave and Puhua River geyser. Among which, Shengui Gorge is the most prestigious tourism spot because of its steep cliff, lush vegetation, various animal species and pendent stalactites.

A' yi River A' yi River originates from Pengshui and stretches 21 kilometers. On both sides of the River, there are deep gorges and amazing views. This river has a narrow riverbed and a large number of rocks hide under the deep and clear water. It is a pearl along the golden traveling route of Wujiang River Gallery.





Mowei Mountain Mowei Mountain is situated in Maoyun Mountain National Forest Park in Pengshui County. It belongs to the middle and lower reaches of Wujang River Gallery in the south of Pengshui County. The total area is 1,910.2 hectares and the altitude is 1,394 meters. On this mountain,

tourists can appreciate ranges upon ranges of peaks and deep gorges. Apart from geological landscape such as stone forest, steep cliff, Tiangkeng, geofracture and karst cave, meteorological and forest scenery can also be seen, for instance, spectacular mountain mist, sun rising and sun setting, towering age-old tree and endless forest. Besides, this mountain also has profound history and religious culture.



Taohuayuan Taohuayuan (Mysterious Peach Land) is a national 5A level scenic area. According to Youyang County Annals, everything depicted by Tao Yuanming is in line with the reality on the ground. Experts and scholars from home and abroad have conducted investigations on its

geographical position, visiting routes, scenery, history, distance and environment and proved that this is the prototype of Taohuayuan as depicted by Tao Yuanming in his Notes on Taohuayuan.



Gongtan Ancient Town Located in Youyang Tujia and Miao Autonomous County in Chongqing, Gongtan Ancient Town sits on the eastern bank of Wujang River, after converging with A' peng River. It is an ancient town of more than 1,700 years.

Today, the Ancient Town still has about 3-kilometer-long flagstone road, more than 15 unique fire-proof walls, over 200 age-old and quiet courtyard dwellings and 50-plus stilted buildings of diverse styles. All of these show the local features and are well preserved. They constitute a large-scale architectural complex of Ming and Qing Dynasties and can be referred to as the essence of Wujang River Gallery.



Longtan Ancient Town Longtan Ancient Town is in the southeast of Youyang County, Chongqing. There are two water pools in this town and they look like the eyes of a dragon (or Longyan in Chinese), so this town is named Longtan.

This town covers an area of 7.2 square kilometers. Till today, over 200 years' old flagstone road, quadrangular dwellings and fire-proof walls and other unique style buildings are well-preserved.



Hong' an Ancient Town, Xiushan County It is a famous historical and cultural town in Chongqing, located 46 kilometers away from Xiushan County. It is the prototype of Border Town, a novel written by the prestigious writer Shen Congwen. The story told in this novel took place in Hongcha Ferry, the meeting place of Hong' an Town and Chadong Town in Hunan. It is a renowned place that sits across three provinces and is the first gateway to Yudong.



Trip to Ancient Towns



Gongtian Ancient Town Located in Youyang Tujia and Miao Autonomous County in Chongqing, Gongtan Ancient Town sits on the eastern bank of Wujiang River, after converging with A' peng River. It is an ancient town of more than 1,700

years. Today, the Ancient Town still has about 3-kilometer-long flagstone road, more than 15 unique fire-proof walls, over 200 age-old and quiet courtyard dwellings and 50-plus stilted buildings of diverse styles. All of these show the local features and are well preserved. They constitute a large-scale architectural complex of Ming and Qing Dynasties and can be referred to as the essence of Wujiang River Gallery.



Laitan Ancient Town Laitan Ancient Town is located in Hechuan District. The town, with a history of 200 years, covers an area of 0.25 square kilometers. The four gates of the town form a cruciform symmetry, and the bulwarks are all made of block stones and are very firm. There remain

200-meter blue flagstone roads and more than 400 dwellings of Qing dynasty.



Longtan Ancient Town Longtan Ancient Town is in the southeast of Youyang County, Chongqing. There are two water pools in this town and they look like the eyes of a dragon (or Longyan in Chinese), so this town is named Longtan. This town covers an area of 7.2 square kilometers. Till today, over

200 years' old flagstone road, quadrangular dwellings and fire-proof walls and other unique style buildings are well-preserved.

Lukong Ancient Town Lukong Ancient Town is located in the east of Rongchang County, Chongqing. It is 13 kilometers away from the county and covers an area of 24 square kilometers. The name of the Ancient Town is related to a folktale. According to the folktale, a monk named Zeng Ao roamed there and decided to build a temple. He found that there were 6 stone holes on the hill that seemed to be connected to the river. He poured brans into the holes and then they floated on the river. So the place was named Liukong (meaning six holes) River, and Lukong Town was named after that.



Shuangjiang Ancient Town

Located in the northwest of Tongnan County and in front of Fujang River and canal, Shuangjiang Ancient Town is dotted with yards and gardens of Qing-dynasty style. The ancient courtyard dwellings, with exquisitely carved gates and pillars, upwarping overhanging eaves in each corner, large yards, well-designed patio and gardens, lush trees and flowers in each season, preserves the presence of typical bashu ancient town. It is the hometown of former President Yang Shangkun.



Piányan Ancient Town

Piányan Ancient Town is located on the hills between two branches of Huaying Mountains. It is higher in the northeast and lower in the southwest with an average altitude of 520 meters and maximum altitude of 942.9 meters. In Qing Dynasty, it was under the jurisdiction of Liliujia, Jiangbei County, and was built as a town in the 24th year of Emperor Qianlong's reign). Piányan (meaning leaning rock) Town is named after a leaning high cliff in the north of the town.



Zhongshan Ancient Town

Located in the mountainous area in the south of Jiangjin City, Zhongshan Ancient Town is commonly known as Sanhe Town or Longdong Town, and links national scenic spot Simian Mountain. The Ancient Town lies in front of mountains and rivers and the buildings are built by rivers and are linked by 3 small streets of Longdong, Huangzhongba, and Gaoshengqiao.



Ciqikou Ancient Town

Ciqikou Ancient Town is located in Shapingba District. It connects Jianging River in the east, Shapingba in the south Tongjiaqiao in the west and Shijingpo in the north. Ciqikou covers a total area of about 1.18 square kilometers and is Chongqing's key-protected traditional street of one thousand years. The town boasts a unique landform of "one river, two streams, three mountains, and four streets". As an important wharf on the bank of Jialing River, it was a prosperous place "with one thousand people gathering in the day and ten thousand lanterns shining at night". It is known as "little Chongqing".





Dachang Ancient Town Dachang Ancient Town is located 10 kilometers in the north of Dicui Gorge in the Small Three Gorges scenic area (national 5A level scenic area). The town was built in Jin Dynasty and has a history of more than 1700 years, and is the only completely preserved ancient town in

the Small Three Gorges area. It covers an area of about 10 hectares and the main east–west street has the length of around 350 meters and south–north street has the length of about 200 meters. It is a “mini ancient city” where “a conversation can be heard in 4 gates of the town and a lamp can light the whole city” .

Linshi Ancient Town Linshi Ancient Town is 20 kilometers in the west of Fuling downtown. It is enclosed by mountains on all sides and is surrounded by rivers on 3 sides. It boasts Confucian Temple, Wangye Temple and religious sites such as Nanhua Palace, Wanshou Palace and Yuwang Palace, as well as over 10 historical sites including Lu Ban Hall, Taiping Pond, Longmen Bridge, watchtowers, etc. The Confucian Temple and Longmen Bridge belong to municipal historic relic preservation sites. Ancient streets built in Ming and Qing Dynasties, together with modern bridge buildings form a unique picture that never fails to attract people.



Longxing Ancient Town Located in the southeast of Yubei District, Longxing Ancient Town is a famous historical and cultural town and top–100 economic town in Chongqing. There are more than 70 cultural relics of 8 clusters, and its typical buildings include ancient temples, ancient stockaded villages, ancestral halls, old streets and dwellings. Those buildings have different styles and unique shapes, and their simpleness, elegance, dignity,

mystery and quietness show the profound cultural connotation of the town. This has been a prosperous place since ancient times and, a place where people are simple, honest, and hometown of many talents. It has given birth to more than 200 cultural celebrities and many culture heritages.



Fengsheng Ancient Town Fengsheng Ancient Town is located in northeast of Ba’ nan District, 62 kilometers away from Jiefangbei in the center of Chongqing. As what is described in the vivid and objective proverb that the town “steps on 3 counties” , it is the junction among Banan District, Fuling District,

and Nanchuan City. It was established as a town in late Ming and early Qing dynasties and was an important stopover on the way from Chongqing Prefecture to Nanchuan and Fuling.

Tanghe Ancient Town

Tanghe Ancient Town is located in the southwest of Jiangjin city, Chongqing at the border of Chongqing and Sichuan. The Ancient Town, in Heishi Mountain — Gunziping Scenic Area, retains an ancient architectural complex from Ming and Qing Dynasties of about 40,000 square meters and is divided



into 3 parts, namely ancient Tanghe Street, Shilongmen Manor, and Tingzhong Memorial Temple. Ancient Tanghe Street covers an area of 2.8 hectares and preserves ancient buildings of more than 15,000 square meters with different styles since Ming and Qing Dynasties. As a traffic hub and material distribution center among Chongqing, Sichuan and Guizhou, the area has long been a prosperous place full of travelers and businessmen, a place with profound and splendid culture and history.

.....

Ningchang Ancient Town Ningchang Ancient Town is located in Wuxi County. It was built near the mountain and by the river. There, ancient buildings and dwellings such as narrow stone streets, stilted buildings, and arcades stretch for 3.5 km along the streams and it is commonly known as “7-li half-side street” . The Ancient town boasts a salt manufacturing history of over 4,000 years and was a paradise where people “got clothes without weaving, got grains without planting” . It was the territory and capital of Wuxian Kingdom in Tang Yao Period .



.....

Songji Ancient Town

Songji Ancient Town is located beside the Yangtze River, 40 kilometers away from Yongchuan downtown, Chongqing. It is named after its Songzi Mountain and Jishui. As the saying goes, Songji Town is a “first-class ancient town with ten-



li old streets, one-hundred-year changes, and one-thousand-year culture, and ten-thousand-li Yangtze River” . The rhythmic architectural remains, beautiful natural sceneries, rich cultural relics and unique wharf culture impress tourists a lot.



Golf Trip



Chongqing Riverview Golf & Country Club

Chongqing Riverview Golf & Country Club is located in Shimahe, Jiangbei District, Chongqing. It has convenient transportation, being 20 km away from Jiefangbei, the city center, and 20 minute' s ride from Jiangbei International Airport. The 18-hole golf

course lies beside Jialing River. There, beautiful sceneries, a vast area, a unique view of Jialing River, attractive landscape of fairways, green natural vegetation, high and low mountains fill the course with interests and challenges.

Chongqing International Golf Club



Chongqing International Golf Club is located at the exit of Longzhouwan of the 1st ring expressway in Huaxi Town, Banan District, about 17 km from the city center, and only 3 kilometers away from famous scenic spot South Hot Spring. The golf course has 18 holes and it is a place with green mountains, clear rivers, fresh air and unique natural environment.

Hilton International Sports Holiday Center (Chongqing Qinglong Golf Club)



Located in Chongqing Qinglong Nanshan International Golf Community, the center covers an area of 3300 mu. According to the plan, it will build a 1500-mu, par 72, 18-hole championship-level golf course, driving ranges and the golf club, Hilton Resort & Spa, International Convention Center, etc. At present, there are 9 holes in operation.

Chongqing Jinfeng International Sports & Leisure Center (Chongqing Shangbang Golf Club)

The center is located in the national scenic area Jinyun Mountain in Jinfeng Town, Jiulongpo District, Chongqing, only 20 km and 25 minute' s ride from downtown. The center possesses two 18-hole international standard golf courses and covers an area of 3600 mu in total. With the theme of nature, the courses are cleverly combined with hills, forests, and lakes of the original ecology and landforms.



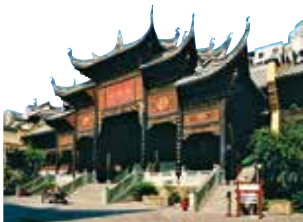
Poly Golf Course The course is located in the economic development park in Chongqing New North Zone, only 10 minutes' ride from Chongqing Jiangbei International Airport and 8 kilometers away from Yuzhong District, the central business district. It has convenient transportation and complete municipal supporting facilities. With Chongqing's unique mountainous characteristics, the course preserves the original landforms and it mainly consists of forests with dense woods and winding rivers. The precipitous and flat landforms fill the course with interests and challenges.



Wulong Xiannv Mountain Golf Club Located in Xiannvshan Town, Wulong County, it is an international standard 18-hole golf course. The course has beautiful environment and wide fairways. Summer is the season for golf when you can feel the cool weather when playing it.



Trip in the City



Huguang Guild Hall Huguang Guild Hall is located at No.4, Dongshuimen Central Street, Yuzhong District. It is a national 4A tourist spot and complex of ancient buildings and guilds halls with the largest scale in urban areas of cities in the south of Yangtze River. Built during Emperor Qianlong's reign in Qing Dynasty, it shows Chongqing, as it was from 200 years ago: a busy, prosperous and open city and commercial hub in

the southwestern China.

Chongqing Museum of Provisional Government of the Republic of Korea

Located at No. 38, Lianhuachi, Qixinggang, Yuzhong District, it is a theme museum to study and exhibit Korean history of independence movement. Provisional Government of the Republic of Korea was a government-in-exile in China that persisted anti-Japanese independence movement. It was established in Shanghai in April 1919 and then moved to Chongqing. It was the only foreign government-in-exile in China during World War II.



Former Residence of Soong Ching-ling

Located at No. 5, Lianglukou New Village, Yuzhong District, Former Residence of Soong Ching-ling was an important site of culture relics in Anti-Japanese War in Chongqing. It is a municipal culture relic protection site, national 2A level scenic area (spot), as well as educational base of the tradition of the national unified front. The Former Residence was apartment of Soong Ching-ling in Anti-Japanese War (1942-1945) and former site of the Central Committee of "the Great League for Defense of China" .



Eling Park Located at First Changjiang Road, Yuzhong District, the park is a national 3A level scenic area and earliest private garden in Chongqing. It lies in the highest point of Chongqing Peninsula. Overlook sceneries from high Kansheng Tower (Liangjiang Pavilion) , and you can enjoy a panoramic view of the two rivers. It is also the best place to appreciate the ocean of lights at night.



Sanxia Square Located in the central area of Shapingba District, Sanxia Square is the landmark of Chongqing and is a famous business district in China. It covers an area of nearly 80,000 square meters and links Art Square, Celebrity Square, and Commercial Square. It uses an artificial river with a length of 100 meters and width of 8 meters to symbolize Yangtze River and along the river there are famous mini scenic spots of the Three Gorges such as Fengdu Ghost Town, Shibaozhai in Zhongxian County, Bai Di Castle in Fengjie County, Kuimen Gate, Qutang Gorge, Shennv Peak in Wushashn County, etc., and legends of Chongqing people.



Ronghui Hot Springs

Located in Lishuawan, Shapingba District, Ronghui Hot Springs is a national 3A level scenic area with a total area of over 30,000 m² and daily water yield of about 5000 tons at temperature of 54 ° C. The spring is full of various kinds of minerals and it is an urban leisure spring project with the integration of outdoor hot spring indoor hydrotherapies, hot spring parks and SPA.



Ciqikou Ancient Town

Located on the bank of Jialing River in Shapingba District, Ciqikou Ancient Town is a national 4A level scenic area consists of 12 streets. On both sides of the streets are mainly buildings with Ming and Qing style. It is a commercial wharf built in Xianping Period during Emperor Song Zhenzong' s reign (998–1003 AD) and became prosperous in Ming Dynasty with the unique landform of “one river, two streams, three mountains, and four streets” .



Geleshan Anti-Japanese War Sites

Geleshan Town in Shapingba preserves a lot of sites of Anti-Japanese War including “Bai’ s Mansion” and “Zhazi Cave” (now belong to Geleshan Revolutionary Martyrs Cemetery, national 4A level scenic area), as well as scenic Geleshan Forest Park (national 4 A level scenic area).



Jiefangbei Central Shopping Plaza

Jiefangbei Central Shopping Plaza is located at the intersection of Minquan Road, Minzu Road and Zourong Road in Jiefangbei, Yuzhong District. It is a landmark of Chongqing, the largest pedestrian street in western China and the first large-sized



commercial pedestrian street in China. It is a famous one-stop international shopping plaza with famous shopping malls and international luxury brands.

Hongyadong Folk Custom Scene Area

Located at No. 88 Jabin Road, Yuzhong District, Hongyadong Folk Custom Scene Area is a national 4A level scenic area with the architectural complex of ancient Chongqing style and with old Chongqing's unique



stilted buildings, ancient memorial archways, wooden festoons, overhanging beams, old Blue Flagstone roads, etc, reproducing "stilted buildings on the cliff, old Chongqing from memory" .

Zhou' s Mansion

Located at Fourth Zhongshan Road, Yuzhong District, Zhou' s Mansion is among the first batch of national key cultural relics protection sites, and is now part of Hongyan Revolutionary Memorial Hall. In the winter of 1938 after the CPC delegation moved from Wuhan



to Chongqing, for the convenience of work, Zhou Enlai rented the house personally as the major office of the CPC Southern Bureau in Chongqing.

Chongqing Great Hall of the People

Located in Xuetianwan, Renmin Road, Shangqingsi, the Great Hall is a national 4A level scenic area.

It was built in 1951 and adopted the architectural style of traditional Chinese palace and western architectural structure. The main part was the imitation of Tiananmen and Temple of Heaven in Beijing. It is magnificent and is one of the top 10 Asian classic



buildings of the 20th century.

China Three Gorges Museum

Located beside People's Square in Xuetianwan, Renmin Road, Shangqingsi, it is a national 4A level scenic area and the biggest themed museum in China and a landmark of Chongqing.



Former Residence of General Stilwell

Former Residence of General Stilwell is located at No. 63 New Jialing Road, Liziba, Yuzhong District. It is an important relic of the provisional capital of Chongqing, as well as China's only museum named after foreign soldier. In the museum more than 100 articles of General Stilwell are exhibited, including his daily-use articles, manuscripts, and military uniform.



Chongqing Hongyan Revolutionary Memorial Hall

Located at No. 52 Hongyan Village, Yuzhong District, Chongqing Hongyan Revolutionary Memorial Hall is a national 4A level scenic area and one of the first batches of national key protected cultural sites. It was South Bureau of the CPC Central Committee and office of the Eighth Route Army in Chongqing during Anti-Japanese War.



Chongqing Zoo

Chongqing Zoo is a national 4A level scenic area located beside Taohuaxi, Yangjaping. The zoo is full of hills, dense bamboos and trees, green grasses and beautiful flowers. It possesses more than 20 animal pavilions and over 4000 animals of more than 230 species.



Baguo City

Baguo City is located at No.6 Hongshi Avenue in Julong Park of Chongqing High-tech Zone. It is a national 4A level scenic area with an area of 350 mu. It is the only for-profit large ecological tourist ancient town with palace style buildings. It is an educational base, research base and communication base of Chongqing culture.



Jiangbei Guanyinqiao Pedestrian Street

Jiangbei Guanyinqiao Pedestrian Street is located in the central area of Jiangbei District, Chongqing. It is a national 4A level scenic area, a famous shopping street in China, as well as the largest and widest



Pedestrian Street in southwestern China. It possesses urban landscape public space area of 200,000 square meters, and is a fashionable life and shopping center integrating shopping, leisure, food and entertainment.

Chongqing Crocodile Breeding Center

Chongqing Crocodile Breeding Center is located at No.106 Baoshi Road, Yubei District. It is a national 4A level scenic area with an area of 33, 000 square meters. It consists of more than 20 enclosures including Crocodile Lake, amphibious reptile venue, venue of the Asian giant crocodiles, Nile crocodile venue, venue of animal performances, etc. It is an animal park integrating food, living, transportation, traveling, shopping and entertainment.



Baolin Museum

Baolin Museum is located on Longzhan Road, Jinkai Avenue in Chongqing New North Zone. It is a private comprehensive large-sized museum. It covers an area of 8,000 square meters in total and collects about 6,880 exhibits with the theme of Bayu culture, among which Hand-written Sutras of Tang Dynasty, Emperor Qianlong's color-enamels porcelain pillow, Bawang Spear are three most precious treasures of Baolin Museum.

Garden Expo Park

Located in Longjinghu Park in Chongqing New North Zone, the 3300-mu Garden Expo Park is a super-large urban ecological park with the combination of natural



landscapes and cultural landscapes. In the park, there are 51,000-square-meter landscape architectures and 26 scenic spots, gathering gardens from 30 cites of 21 foreign countries and regions and more than 80 Chinese cites.

Chongqing Ba-yu Folk Culture Village

Located at No. 31 Shuanglong Avenue, Yubei District, Chongqing Bayu Folk Culture Village is a national 3A level scenic area with an area of 85 mu. With a village in the park and a museum in the village, the scenic area forms the unique structure of "one park, one village, and one museum". It is a tourist attraction to show the folk-custom and folk culture of Ba-yu area.



Chongqing Flower Garden

Located in the prime location of Yubei District and near the development area of Chongqing New North Town, Chongqing Flower Garden is One-hundred-li flower corridor project in Yubei District, Chongqing with a total area of 50,000 mu. The park is divided into flower production zone, sightseeing and leisure zone, flower wholesale market, and management service zone.

Chongqing Hong' ensi Forest Park

Located in Jiangbei District, Chongqing, it is one of the major parks in the central area of Chongqing. The park has highest altitude of 418 m, lowest altitude of 270 meters, with a relative height difference of 148 meters. There are 12 major spots in the garden including "Hong' enfang" "Gunxue Tingui", "Hantianbao" and so on, and ecological ring roads, walking trails and climbing trails go through the park.



Zhaomushan Botanical Garden

Located in the north of High-tech Park in Chongqing New North Zone, Zhaomushan Botanical Garden is the third largest botanical garden in the main urban area of Chongqing. Ancient relics including ancient trees, bodies of mountains and water are completely preserved in the 5055-mu garden and a folk culture village is constructed in the garden with a large quantity of local folk cultural tools, showing people's life before the development of the area.



International Expo Center

Located at No.66, Yuelai Avenue, Yubei District, International Expo Center covers a total area of 600,000 square meters. It is a modern and smart venue with the multifunction of exhibitions, conventions, dining, five-star hotels, sporting activities, etc. It has become a landmark of Liangjiang New Area and western China's largest, China's second, the world's top ten international convention center.



Shopping trip

Jiefangbei Business District

Located in the center of the main urban area of Chongqing, Jiefangbei, with a total area of 36,000 square meters, is the first large-sized commercial pedestrian street China and gathers shopping malls including New Century Department Store, Chongbai Department Store, Pacific Department Store, Wangfujing Department Store, Chongqing Xinhua Bookstore, Maison Mode, and so on. As the saying goes, “One who fails to reach Jiefangbei fails to reach Chongqing”, Jiefangbei is a must for Chinese and foreign tourists to pay a visit and do shopping. It is the well-deserved “No.1 street in Western China” .



Shapingba Business District

Located in the western urban area of Chongqing, Shapingba Business District is one of the oldest business districts except Jiefangbei. It covers a commercial area of 80,000 square meters on the ground and an area of 100,000 square meters underground. Focusing on modern business, it gathers shopping malls, large supermarkets, international cinemas, market of electronic and communication products, business apartments, residence, hotels, and is a comprehensive modern central community with the integration of



shopping, leisure, entertainment, food, and culture. It was awarded the title “characteristic commercial street in China” in 2005.

Guanyinqiao Business District

Located in the northern urban area of Chongqing, Guanyinqiao is a national 4A level scenic area. It possesses an urban landscape public space area of 200,000 square meters, and a pedestrian street consisting of a 30,000-square-meter commercial building and a 400-meter pedestrian street. It is a fashionable life and shopping center with the integration of shopping, leisure, food and entertainment and is titled “Chinese key demonstration business district” .





Yangjiaping Business District

Located in the western urban area of Chongqing, Yangjiaping is a time-honored business district in Chongqing. With department stores, electric appliance stores, supermarkets, cinemas, boutiques and a pedestrian street, it is a comprehensive business district with the integration of entertainment, shopping, dining, and leisure. The district covers an area of 2.5 square kilometers and gathers large department stores including Longhu Xicheng Tianjie, Dayang Department Store, Fu' an Department Store, Ruicheng Commercial City, Jiamao underground shopping mall, etc, forming a three-dimensional commercial pattern that the business district is prosperous both on and under the ground.



Nanping Business District

Located in the core area of Nan' an District and one of the three core business district in the main urban area of Chongqing, Nanping Business District is a comprehensive urban service district with the integration of convention, exhibition, tourism, business headquarters commercial complex, fashion & shopping , entertainment and other functions. It possesses large commercial complexes including Chongqing Wanda Plaza, Sincere Starlight Times Square, Shanghai Bailian Mall, etc.

Dadukou Business District Located in the southern urban area of Chongqing, Dadukou is an emerging business district in Chongqing. After being completed in 2008, it covers an area of 200,000 square meters, with a population of 0.3 to 1 million. With squares, parks, pedestrian street as its axis, it is divided into characteristic pedestrian street, sports and leisure street, characteristic food street, trade and services street, forming a unique modern shopping park.

Shiqiaopu IT & Digital Business District

Located in Jiulongpo District, it is a digital commercial complex with business area of about 100,000 square meters and the integration of functions including IT warehousing, logistics, trade, display, after-sales service, trade of second-hand IT commodities, upgrade of old products and so on. Baiteng Digital, CyberMart, Buynow digital, Taixing Computer City, Pacific Security, the five professional one-stop large IT digital malls play an important role in the district.





Hongyadong Folk Custom Street Located at No. 88 Jabin Road, Yuzhong District, Hongyadong Folk Custom Street is a national 4A level scenic area and gathers hundreds of tourist commodity shops and some of them sell various kinds of Chongqing local specialties and artifacts. There, tourists can enjoy the ancient residences of the beautiful city and buy tourist commodities in the one-stop shopping street, which is very convenient.

West Outlets Shopping Plaza Chongqing West Outlets Shopping Plaza is located at Jinyu Flyover, Airport Expressway in Chongqing Economic and Technological Development Zone. The plaza collects nearly 300 famous International and domestic brands including PRADA, GUCCI, FENDI, Gieves & Hawkes, Adolfo Dominguez, etc. It is a “shopping paradise” in Chongqing New North Zone.



Food Trip



Chongqing Hotpot Chongqing hotpot, mainly pungent and spicy, is known for its elaborately stewed soup and spicy flavor. The hotpot features various raw materials, both meaty and vegetarian, as well as the wide application, unique flavor, and the vehement

eating scene. A hotpot, surrounded by many people, in which the pungent, spicy, fresh, delicious or crisp materials are being boiled, creates a cultural atmosphere of “The same wish, the same get-together, the same enjoyment and same happiness”. It’s said that “Not eating hotpots in Chongqing equals to never having been there.” Up to this day, the hotpot has already won a reputation across the county, and is making its way across the world.



Boiled Fish with Pickled Cabbage and Chili Boiled fish with pickled cabbage and chili acquired its popularity in the early 1990s. The well-cooked fish tastes fine and tender, and the soup, a little spicy but not greasy, tastes sour and delicious. The tender,

yellow fillet tastes smooth. Boiled fish with pickled cabbage and chili has won a position in restaurants of all sizes, and then it was popularized by Chongqing chefs to all parts of China as a forerunner of Chongqing food.

Chongqing Peppery Chicken Chongqing peppery chicken nuggets are fried so that the outside looks a little scorched while the inside is crisp, and then the nuggets are stir fried with Sichuan pepper, dry pepper and conical redpepper fruit. The well-cooked Chongqing peppery chicken looks ruddy in



color and luster and tastes pungent, spicy, delicious, and crisp. In order to authentically exhibit the feature of this dish, it is best to entirely cover the chicken nuggets with pepper. Chongqing peppery chicken shows the spicy feature of Chongqing cuisine and is one of the earliest Chongqing Jianghu

dishes, which has given Chongqing Jianghu dishes unprecedented reach.

Postal Kiosk Crucian Postal kiosk crucian inherited the feature of Chongqing hotpot, the fine and tender fish tastes delicious. But the way of eating this dish is



innovative in that the fresh oil saucers or grease saucers are replaced with other auxiliary ingredients. When cooking the crucian is done in the hotpot, the eater takes it out and puts it on a plate, then he arbitrarily adds all kinds of auxiliary ingredients to it, he then adds another small

gourd ladle of hotpot soup to mix the condiments well. Then he eats them all.

The crucian tastes spicy and crisp, and the auxiliary ingredients such as crispy peanuts, preserved pickles and shallots are chewed together, bringing mouth-filling aromas.

Duck Blood Cake Duck blood cake tastes pungent, spicy, fresh and appetizing. The fresh duck blood cake is the main material which is eaten once it's scalded. The main cooking method is to boil it. That way, a ruddy, thick soup, with a strong pungent and spicy flavor is made. The flavor is spicy. Duck blood cake is a famous Sichuan and Chongqing dish worth tasting.



Double Cooked Pork Slices "Double Cooked" means that the boiled meat is cooked again. Double cooked pork slices has appetizing color and luster, and strong aroma. It tastes a little spicy and sweet, fatty but not greasy, and it has a reputation of having "the Street Aroma". Double cooked pork slices is always deemed as the top famous Sichuan and Chongqing dishes.



Spicy Crab Spicy crab is a delicious dish cooked with fresh crabs, plus some ingredients such as shallots, ginger, Sichuan pepper and dry pepper, etc. The dish tastes pungent, spicy, fresh and crisp, and has rich nutrients. It is one of the authentic Chongqing Jianghu dishes.



Hot-spicy Stewed Chicken

According to their own taste, Chongqing people added copious amounts of pepper, spices, and hotpot ingredients when they cooked chicken, as a result, the famous dish, hot-spicy stewed chicken, was created. It then acquired a high popularity in Sichuan and Chongqing.



Qianjiang Chicken GIBLETS The dish Qianjiang chicken giblets is a representative of simpler pot series. In a Tujia cooking method, the raw materials—the chicken giblets such as intestines, livers and hearts, together with thin chicken slices plus potatoes, cusp pickled pepper, fresh shallots, etc. are cooked together. Qianjiang chicken giblets taste pungent, spicy and delicious and have an appetizing look. The flavor is pure and tasty.





Chongqing Spicy Noodles In Chongqing, there is one dish more famous than the hotpots—the Chongqing spicy noodles. Chongqing people love the spicy noodles not second to hotpot. Chongqing spicy noodles can be seen on every street in Chongqing. While the

materials are not of the top grade, the ingredients are elaborately chosen, which mainly has a pungent and spicy flavor. The highly springy noodles, supplemented with scalded green vegetables; taste is unparalleled. Moreover, the price of spicy noodles is quite low, making it one of the common tasty foods of Chongqing people.



Hot and Sour Rice Noodles The main raw materials of hot and sour rice noodles are natural sweet potato flour and pea flour. The two kinds of flour are mixed at an appropriate ratio and then traditionally leaked to make the noodles. The hot and sour rice noodles features

“pungent, spicy, fresh, tasty, sour, fatty but not greasy” ! It’ s known as “the world’ s best noodles” . The hot and sour rice noodles sells very well in major cities nationwide due to its low price and unique flavor.



Fried Flour The fried flour, made of crisp fried dough twist, thick rice soup, and minced preserved pickles plus all kinds of ingredients, bears the Chongqing characteristics and it is one of the most popular breakfast snacks of Chongqing people.



Glutinous Rice Cakes Glutinous rice cake, as a folk snack in Chongqing, has sticky rice as its main raw material. The cake features a brown–yellow color. The outside is crisp and the inside is soft. It tastes crisp, delicious, salty, and a little spicy. The main cooking methods are steaming and frying.

Fuling Oily Fermented Glutinous Rice

The famous, eutrophic traditional snack, Puling oily fermented glutinous rice, was created in the Jiaqing Period of the Qing Dynasty. Sticky rice is made into fermented glutinous rice adobes, and then fried in the oil together with sesames,



orange pies, semen juglandis, crisp peanut kernels, candied jujubes, and white sugar, etc. Then water is added to these materials and boiled, that way, the oily fermented glutinous rice is done. The color is black and glossy, with a sour stirring aroma as well as a sweet, refreshing taste.

Jiuyuan Steamed Stuffed Bun

Make salty stuffing with streaky pork, winter bamboo shoots, dried scallops, small shrimps, ham, etc. or make sweet stuffing with semen juglandis, candied jujubes, lemon slices, orange pies, rose candies, and leaf fats, etc. Jiuyuan steamed stuffed buns feature thin skins



and full stuffing. The bun tastes soft and delicious, fresh and sweet.

Bean Curd with Rice Bean curd with rice comprises a bowl of bean curd, a bowl of rice, a small saucer of dipping sauce. Dipping sauce is made of the mixture of minced pork, water fermented soy beans, oil pepper, soy, salts, aginomoto, mince ginger, shallots and caraway. Bean curd tastes tender and dipping sauce tastes delicious. As one of the most popular street snacks of Chongqing people, the dish is vegetarian but not tasteless.



Chongqing Little Soup Balls

The flour for making soup balls is kneaded well, stuffed with sweet filling, and then boiled in water. The little glue pudding features a white, jade-bead-like look, a thin transparent skin through which the filling could vaguely been seen, and a soft, sweet taste.



Trip to Forest Parks

Jinfoshan National Forest Park

Located in Nanchuan City, South Chongqing, Jinfoshan National Forest Park consists of 108 peaks of Jinfo Mountain, Qingba Mountain and Bozhi Mountain.

The main peak, Fengchui Ridge, is 2,251 meters above sea level, the highest peak of Dalou Mountains. Jinfo Mountain is of typical karst landform. The cathaya argyrophylla trees, ginkgo trees, big-leaf tree trees, Chimonobambusa quadrangularis, and cuckoo king trees on the mountain are national first-class protected plants, known as “the five most fabulous plants of Jinfo Mountain” .



Xiannvshan National Forest Park

Located in Wuling County, Xiannvshan National Forest Park is a national geological park, as well as a national 5A level scenic area. The park covers a total

area of 100 square kilometers, with an average elevation of 1,900 meters. The highest peak is 2,033 meters high and the area of the forest covers 330,000 mu. The natural meadow covers an area of over 100,000 mu. The forest park is the largest highland meadow in the suburb of Chongqing. It has the reputation of “the oriental Switzerland” for its unique charming highland meadow in regions south of the Yangtze River, rare snowy forest in South China, and beautiful scenery of green jungles.



Shizhu Huangshui National Forest Park

Located in Shizhu County, Chongqing, Huangshui National Forest Park has the best preserved old-growth forests in the reservoir area of the Three Gorges.

The highest elevation is 1,934 meters and the lowest is 800 meters. The average elevation is 1,600 meters. With a total area of 50,400 hectares and the combination of rest, relaxing, avoiding

summer heat, going on holiday, appreciation of Tujia folk customs, the park is a perfect resort for holiday, relaxation, scientific investigations, and adventure. There are great elevation disparities in the park, with a distinct difference in vertical climates. The annual average temperature is 12¹° C, most suitable for avoiding summer heat and recuperating.



Wuxi Hongchiba National Forest Park

Located in the northeast of Wuxi County, Chongqing, Hongchiba National Forest Park is 84 kilometers from Wuxi County. It covers 156,000 mu of forest and 201,000 mu of meadow, bringing it the reputation of the largest highland meadow in South China. The lofty distance and pure blue of the north and the plenty of rainfall and flourishing plants of the south are amazingly combined here. The natural landscape of Hongchiba is beautiful and splendid, and the human landscape could be traced far into the remote past. Hongchiba is a resplendent ecological pearl on the golden traveling route of the Three Gorges and the Fengjie–Wuxi–Wushan “Golden Triangle” .

Chengkou Huang’ anba Meadow

Located in the east of Chengkou County, juncture of Chongqing and Shaanxi province, Huang’ anba Meadow is over 50 kilometers long from east to west, and over 10 kilometers wide from south to north. It is distributed on the main peak of Daba Mountains. With a total area of



306,000 mu, it’ s a resplendent ecological pearl inlaid on the Daba Mountain Nature Reserve and National Demonstration Developing Zone for South China Grass Mountain and Grass Slope. Far into the mountains where the waters turn back, there are always strange farmhouses; Deep into the willows where the flowers blossom, there are always preserved meat waiting for the guests. The high mountains, the lakes, genuine quadrangular courtyard or three–section compounds make one feel the fun of heaven, and natural oxygen bars.

Xuebaoshan National Forest Park

Located in the north of Kaixian County, Xuebaoshan National Forest Park is 330 kilometers from Chongqing City. It belongs to the same mountain chain as that of Hongchiba National Forest Park. The landscape of Xuebaoshan National Forest Park is unique, and has high preservation value, scientific research value and ecotourism value. According to the investigations by the experts, there are over 4,300 kinds of plants in the park, 170 kinds of which are rare plants. There are over 480 kinds of wild vertebrates, among which 40 species are key state protected animals. It is the only well–preserved virgin land for the tourism industry in Chongqing, and is known as “the pearl of Bashan, the paradise of Eden” . It was listed among the national nature reserves in 2011.



Geleshan National Forest Park

Located in Guihuawan, Geleshan County, Shaping District, Geleshan National Forest Park is China’ s first forest sports park. It is situated on the extension line of Jinyun Mountain, with the main peak of 693 meters high, leading the mountains in the suburb of Chongqing for height. The giant mountain induces thick fogs and turbid clouds. Low white clouds and choppy cloud waves are often seen. So



there is a saying that goes “Half a mountain of clouds and half a mountain of pine trees” . Spots with beautiful sceneries and fresh air naturally fascinate high officials and noble lords. The “Lin Sen’ s Mansion” of Chiang Kai-shek, Bai’ s Mansion, and Plum Garden are built here.

Nanshan National Forest Park

Located in Nan’ an District, Nanshan National Forest Park has a total area of 3080 hectares, with a forest coverage rate of 92%. It is a forest park within the city. The park is located in the mid-subtropical humid monsoon climate area, with a warm climate, plenty of rainfall and four distinct seasons. It’ s a green barrier for the main districts of Chongqing City, as well as a natural oxygen bar, the corolla of Chongqing, a summer resort and a pearl of metropolitan ecotourism.



Jinyunshan National Forest park

Jinyunshan National Forest Park is located near the Small Three Gorges of Jialing River in Beibei District. There are auspicious clouds floating over the mountains all year round, which will reflect the color of sunlight so that in the morning or evening, the clouds will turn roseate. As the old saying goes “More red and less white is called Jin” , the mountain was named “Jinyun” . The elevation of Jinyun Mountain is over 900 meters. There are altogether nine mountains from south to north, among which, Yujian Peak is the highest with an elevation of 1050 meters. It is a perfect place for seeing the sunrise, appreciating the sea of clouds, avoiding summer heat, enjoying the winter fogs as well as appreciating the natural scenery of evergreen broad-leaf forests.



Gujianshan National Forest Park

Located 10 kilometers from the south of Qijiang County, Gujianshan National Forest Park is a mountainous natural scenery tourist destination. The highest elevation is over 1,100 meters. The mountain is in the shape of a crowing rooster with its neck reaching into the sky, so it has another name – “beak of the rooster” . The climate in the mountain is pleasant, with fresh air. Jingyin Temple is located on the top of the mountain, with its cornices and cliffs outside the world of mortals. One could watch the sunrise and sea of clouds in the morning, and listen to the sougning of the wind in the pines at night.



Shengdengshan National Forest Park

Shengdengshan National Forest Park is located in Taoshi Town, Ba’ nan District, Chongqing City, with an elevation of 1,064 meters. Tradition has it that, in the Ming Dynasty, Emperor Jianwen built a cottage and lived here in Sichuan when



taking refuge. There are flourishing and thick forests in the mountains. There are especially many rare trees and animals that are of rich natural splendor. The park is well known for its unique, beautiful, ancient, and venturous natural scenery. The park features ancient trees and rare animals, bizarre peaks and stones, beautiful lakes, unique climate, ancient humanities, etc.

Yunzhuanshan National Forest Park

Located in Ba' nan District on the bank of Yangtze River, Yunzhuanshan National Forest Park is about 36 kilometers from Jiefangbei. Yunzhuanshan Mountain has long been known as "The surging Yangtze River, the towering Yunzhuanshan Mountain". The elevation of Yunzhuanshan Mountain is 650 meters. The annual average temperature is at 16.8° C. The temperature in summer is 3–5° C lower than that in the city. The mountain is in the shape of a pagoda, looking rather magnificent. The park comprises nine forts and thirteen bays, and looks like a sleeping Buddha watching the moon in the distance, while up-close, it looks like a giant skyscraper. The topography of the mountain is strategically located and difficult to access, which is of great fun.

Wulingshan National Forest Park

Built in 2001, Wulingshan National Forest Park is located in the state-owned giant forest farm, Fuling District, Chongqing, with a total area of 1633.33 hectares. The elevation is 980–1620 meters. The park is the first choice for weekend trips and avoiding summer heat. The beautiful forest park is divided into six major districts, 30 small scenic spots, 3 reception centers and 5 playgrounds.



Qianfengshan National Forest Park

Located in the north of Wanzhou District, Chongqing, Qianfengshan Forest Park has a total area of 9,100 hectares, with a forest coverage rate of 95%. There are rich animal resources in the thick forests. The forest park has 869 species of plants and over 500 species of animals, making it a treasury of flora and fauna.

Chashan Zhuhai National Forest Park

Located 2 kilometers from the north of Yongchuan City, the park has 20,000 mu of consecutive tea garden, the largest in Asia, as well as 50,000 mu of bamboo, the largest in Sichuan and Chongqing. The houses here are made of bamboo sea. The house is decorated with paintings on the wall, while tables and chairs are also made of bamboo. The bamboo sea is just behind the house while the tea mountain is just in front. When Zhuge Liang passed this place, he wrote those famous lines: "The behavior of a gentleman should be like this: to be calm to cultivate his moral character, to be thrifty to cultivate his virtue. It's only indifference to fame that helps to build one's ambition, and only silence that could let man hear far. This is a god-given resting place." These words became the motto of generations of Chinese scholars. This is the only exterior spot of House of Flying Daggers, a martial arts blockbuster directed by the famous director, Zhang Yimou.



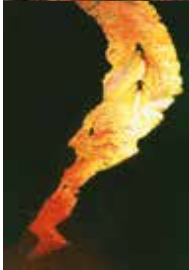
Trip to Gorges

Three Gorges

Qutang Gorge: The first of the Three Gorges, the gorge starts from Baidi Town, Fengjie County in the west, and ends in Dai Brook, Wuhan County in the east, with a total length of about 8 kilometers. The gorge is also the shortest, the narrowest and the most spectacular one. “The waters converge at Fuwan to pass the Qutang Gorge.” This gorge is known for its magnificence and danger for thousands of years.

Wuxia Gorge: The second of the Three Gorges. Wuxia Gorge starts from the estuary of Daning River, Wushan County, Chongqing in the west, and ends at the official ferry of Dadong County in the east, with a total length of 40 kilometers. “Wuxia Gorge is the longest gorge in the east of Badong County, along which the monkeys cry make my tears wet cloths.” Wuxia Gorge is famous in the world for its depth and beauty, where the twelve peaks each has its own characteristics.

Xiling Gorge: The third of the Three Gorges. Xiling Gorge starts from the estuary of Xiangxi River, Zigui County, Hubei in the west, and ends at Nanjingguan, Yichang County in the east, with a total length of 76 kilometers. Xiling Gorge is the longest and most dangerous gorge of the Three Gorges.



Small Three Gorges Small Three Gorges is the name for Longmen Gorge, Bawu Gorge and Dicu Gorge that are all located in Wushan County, through which the Daning River flows. Cliffs stand against each other in Longmen Gorge, and they form the shape of a door, that has long been known as “Though not a Kuimen Gate, better than the Kuimen Gate” . Mountains in the Bawu Gorge are high and the gorges are rather deep. There are lots of strange stones that form groups of natural sculptures, which are too many for one to see. Dicu Gorge is the longest of the Small Three Gorges, and also the most serene and beautiful one. There is not a single place that is not covered by green plants in Dicu Gorge, and monkeys climbing the trees can always be seen.



Heishan Valley Located in Heishan Town, Wansheng District, Heishan Valley is an ecotourism park with the best preserved original ecology in Chongqing and a forest coverage rate of 97%. The extant 1800 species of plants as well as Francois's leaf monkeys, pangolins and other first-class/second-class state protection animals are touted by the experts as “the gene bank of creatures in Chongqing and Guizhou” . Heshan Valley is of 13 kilometers long in total, and the narrowest place on the valley bottom is less than 2 meters wide. Looking up to the sky from the valley bottom, the sun



can be only seen at noon. The valley can be only passed through the 6-km-long plank road and floating bridge, which requires strong will, abundant physical strength and long-lasting endurance.

Jindao Gorge A serpentine flagstone path leads far into the Huaying Mountain. The desolated mountains look farther in the nightfall, when the ancient town and gorges are painted with a layer of gold by the setting sun. Jindao Gorge is located at the northwest foothills of Huaying Mountain in the northeast of Beibei District, Chongqing, with a total length of 6.2 kilometers. The elevation is 825 meters. The gorge is divided into the upper and lower part, with distinct karst landform. The most famous scenic spot of Jindao Gorge is Cangdao Cave, from where comes the name Jindao Gorge.



Geofracture at Longshui Gorge Located on Xiannv Mountain, Wulong County, the geofracture, which is of typical karst landform, was formed thousands of years ago by the movements of the mountains. Like its name, the geofracture formed thousands of years ago, is just like a deep crack in the earth, where the narrowest place is only one meter wide, and even the widest is no more than ten meters. The height from the entrance to the bottom of the geofracture reaches 350 meters, and the water at the bottom is so clear that one could see the bottom through it.



Shenlong Gorge Shenlong Gorge is located in Nanping Town, Nanchuan District, Chongqing. There is rich primeval vegetation in the scenic area that extends green color to the limit of eyesight. Shenlong Gorge is one of the best-preserved and the closest ecological gorges to Chongqing. The main scenic area of Shenlong Gorge is a typical V-shaped deep-cutting gorge. At the both sides stand high mountains that rise thousands of feet into the sky, looking quite great and momentous. Clear and serpentine brooks flow through the gorge. It's so carefree and leisurely when seeing the fish swimming in the shallow water and the birds flying in the vast sky.

Shennv Brook Shennv Brook is a small brook that lies between Qingshi Town, Wushan County and Feifeng Peak. The brook is 15 kilometers long with beautiful scenery on both sides. 10 kilometers along the brook are untraversed virgin valleys, in which lies the scenic spots such as Qin Pool. After the second impoundment of the reservoir area, a small town with only dozens of families sheepishly came into the vision of the world. The mysterious brook that only few photographers knew about before has now become the most charming scenic area of the Three Gorges.





A' yi River A' yi River originates from Pengshui and stretches 21 kilometers. On both sides of the River, there are deep gorges and amazing views. This river has a narrow riverbed and a large number of rocks hide under the deep and clear water. It is a pearl along the golden traveling route of Wujang River Gallery.



A' peng River This is rarely seen river in China, which flows westward. It expands 249 kilometers within Wuling Mountains. It runs across Qianjiang and pours into Wujang River in Gongtan, Youyang. The difference of level reaches as high as 1,159 meters. It has five scenic areas, namely, Shengui Gorge, Guandu Gorge, Xisha River Hot Spring, karst cave and Puhua River geyser. Among which, Shengui Gorge is the most prestigious tourism spot because of its steep cliff, lush vegetation, various animal species and pendent stalactites.



Trip to Museums

Chongqing Stillwell Museum

Located at No. 63, New Jialing Road, Liziba, Yuzhong District, the museum was established in 1991, with an original floor space of less than 500 square meters. During 1942 and 1944, it was the former residence of General Stilwell. As a symbol of the friendly exchanges between Chinese and American people and a major channel of China's foreign non-governmental exchanges, the museum has significant influence both in China and abroad.



Chongqing Huguang Guild Hall

As a national 4A level scenic area, the large-scale, classical and elegant antique architectural complex of Chongqing Huguang Guild Hall lies at No. 4, Dongshuimen Central Street, Yuzhong District. Sichuan Giant Immigration Museum is situated in the guild hall. Chongqing Huguang Guild Hall is the largest-scale classical guild hall architectural complex within the main urban areas in the city south of the Yangtze River in China. The construction began during the reign of Emperor Qianlong in the Qing Dynasty, which evidently shows that over 200 years ago, Chongqing, the commercial hub in the southwest, attracted tens of thousands of merchants who contributed to the prosperity of the thoroughfares of eight provinces.



Located at No. 38, Lianhuachi, Qixinggang, Yuzhong District, the museum is about 0.8 kilometer from the downtown, and is a themed museum for researching and exhibiting the history of Korea's independence movement. The provisional government of the Republic of Korea was a refugee government that long persisted in conducting independence movement against Japan in China. It was founded in April, 1919 in Shanghai, and then later moved to Chongqing. It was the only foreign refugee government in China during World War II.



Chongqing Museum of Nature

History Chongqing Museum of Nature History is a comprehensive museum of natural history in China that is located at No. 42, Wenxingwan, Beibei District, Chongqing. The predecessor of the museum was West China Academy of Sciences. In 1944, West China Museum was founded. Since 1949, it was successively reconstructed into Southwest People's Museum of Sciences, Southwest Museum of Natural History, Nature Department of Chongqing Municipal Museum. In 1981, it was renamed the Museum of Natural History.



The Art Museum of Dazu Rock Carvings, Chongqing

Located at No. 7 Beishan Road Middle, Longgang Town, Dazu County, Chongqing, the museum covers an area of 2,267 square meters, with a floorage of 1,800 square meters. The Art Museum of Dazu Rock Carvings is a general designation of the art of bas-reliefs on precipices in Dazu County, Chongqing. The number of bas-reliefs on precipices announced as culture relic protection sites reaches 75, with over 50,000 statues and over 100,000 words of inscriptions. Among the 75 sites, there are six national key cultural relics protection units.



Chongqing China Three Gorges Museum

Located beside of People's Square, Chongqing China Three Gorges Museum is a landmark of Chongqing City, and also a national 4A level scenic area. The total floorage is 425,000 square meters, and the area of the exhibition hall is 23,000 square meters, making it the largest theme museum in China. Large areas of arc blue glass curtain walls and simple and unsophisticated square sandstone decoration outer walls, are full of the lingering charm of the city of mountains and water as well as the most symbolic metaphor. The museum collects and exhibits the cultural relics and historical site relics of Chongqing and the Three Gorges reservoir areas.



Chongqing Baiheliang Underwater Museum for Ancient Hydrological Inscription

The museum is located 40 meters under the water of Yangtze River. After taking an 88-meter-long elevator, tourists have to pass a 150-meter-long corridor, walk through a steel hatch door, and then enter an annular exhibition corridor.



Hongyan Revolutionary Memorial Hall

Hongyan Revolutionary Memorial is located by the Jialing River, Chongqing, and comprises No. 13, Hongyuan Village, No. 50, Zengjiayan, the Osmanthus Garden, the former site of Xinhua Daily, etc. They were all activity



bases of the South Bureau of the CPC Central Committee during the Anti-Japanese War, and the centers where our party consolidated and developed the anti-Japanese national united front and led the people to carry on revolutionary struggles within the area under the reign of the Nationalist Party. It was the former site of the offices in Chongqing of the South Bureau of the CPC Central Committee and the Eighth Route Army. The memorial hall was built here in 1955, and opened to public on May 1, 1958. In 1959, Dong Biwu inscribed the name of the hall. In 1961, the State Council announced that it was among the first batch of national key cultural relics protection units .

The Democratic Parties History Museum of China

Teyuan Garden is located at the south bridge head of Jialing River Bridge, Shangqing Temple, Yuzhong District. The construction of Teyuan Garden, the residence of a good friend of the Chinese Communist Party and also a patriotic democratic personage, Xian Ying, began in the late 1920s and early 1930s. Teyuan Garden was one of the most important activity sites of the Chinese Communist Party and the democratic parties before and after the victory in the Anti-Japanese War. It is also a historical testimony that South Bureau implemented CCP' s anti-Japanese national united front. It is a part of the predecessor of China Democratic League and National Revolution—the birthplace of the Comrade League of the Three People' s Principles.



Trip to Caves



Wulong Tiansheng Three Bridges

Located in Wulong County, they are of typical karst landform. This scenic area has natural stone arch bridges and maze-like caves. The most famous bridges include Tianlong Bridge, Qinglong Brige and Heilong Bridge. It is the largest natural stone

arch bridge in the world. This is also the only shooting location of *Curse of the Golden Flower* directed by Zhang Yimou.



Furong Cave in Wulong

Furong cave, located in Wulong County, covers an area of 37,000 square meters with a length of 2,700 meters. It is a rarely seen cave in China with such a large number of stalactites. Besides, these stalactites are not only beautifully shaped but also boast

crystal-clear texture and are widely distributed in the cave. At the same time, nearly 30 sedimentary characteristics in the world can be found in this cave. Furong Cave is widely known thanks to coral-like projections, stone waterfall, vertical shafts, dog-tooth like crystalline calcite flowers as well as crystalline gypsum flowers.

Gufo Cave – Jinfo Cave Alpine Karst Caves on Jinfo Mountain in Nanchuan District

In the underground of the woody Jinfo Mountain in Nanchuan lies a huge caves system. It started over 300 million years ago. Its underground rivers are so many that they look like a cobweb. The discovered caves, including Gufo Cave, Jinfo Cave, Xiannv Cave, Lingguan Cave, Yanzi Cave, Yang'er Cave, Heifeng Cave, etc., form the highest group of karst caves in China.



Tiankeng and Geofracture in Fengjie County

Tiankeng, located in Xiaozhai Village, Xinglong Town, Fengjie County, has a diameter of 626 m, a depth of 662 m, and a volume of 119 million m³ that equals that of 5 mid-sized reservoirs. In terms of depth and volume, it ranks first among the karst funnels of the same kind in the world; so it deserves the title "No. 1 Funnel in the World". Geofracture origins

from alpine meadow and consists of several valleys, with a total length of 37 km and in the shape of “V” . It is the longest geofracture in the world and is called “No. 1 Geofracture in the World” .

Fuxi Cave in Taohuayuan, Youyang

It is located under the bold cliff of the attraction “Xiucui Kanbang” that lies at the foot of Jinyin Mountain in Youyang Taohuayuan 5A National Scenic Area. The cave is 3,000 m long, 10 to 50 m wide, and 20 to 80 m high. It is named after a natural huge stone at the entrance of the cave. The stone looks exactly like “Fuxi Dragon Picture” in “The Book of Changes” and stands at the most inside part of Taohuayuan.



Zhangguan Karst Cave in Yubei District

It is located in Zhangguan Village, Yubei District, Chongqing. A long geological movement formed the four-layer karst caves, 4.6 km long. It is the longest underground river in Asia, including four sightseeing zones – Yulin Cave, Xuanlian River, Zhangjia Cave, and Yunxia Mountain. In the caves, stalactites, stalagmites and sheets stand in different poses. Falling and purring water together with mist in the mountains make people wonder whether they are in heaven or on earth.



Yunyang Longgang Geopark

The main landscapes of the attraction consist of karst landforms represented by Longgang karst funnel and fluvial landforms represented by stalagmite gorges, southern three gorges, the Huangling Gorge, as well as meadow biological landscapes and Tuja-style cultural landscapes. The main landscape in the scenic area is Longgang karst funnel with almost vertical wall. Its plan is an irregular ellipse, with a long axis of 304 to 326 m and a short axis of 178 to 183 m. Its depth hits 335 m, ranking 3rd in China and 5th in the world.



Xueyu Cave in Fengdu

It is located in the dangerously steep palisades of the Longhe Valley, only 17 km away from the new county town of Fengdu for migrants from Three Gorges area. Xueyu Cave is the youngest one among developed caves in China. It is over 1,600 m long and the developed area is 1,166 m long and has six sightseeing zones at three levels: Qunyinghuicui, Tianshangrenjian, Bubudenggao, Beiguofengguang, Qionglouyuyu, Qianchengsijin. Most of the high-quality attractions in the cave are 3,000 to 10,000 years old, still in puberty and sprouting new myths.



Trip to Lakes



Changshou Lake Scenic Area

The scenic area is located in Changshou District, 100 km away from Chongqing proper and 26 km away from downtown Changshou. It is the largest scenic area for vacation with artificial freshwater lake and islands in southwestern China. The Changshou Lake is in the shape of “Y”, with two

lake systems. It is a wide expanse of mist-covered waters, surrounded by mountains. The village on the mountains makes it as unaffected as pastoral and an ideal destination for urban residents to recover one's original simplicity and enjoy ruralness.



Nantian Lake in Fengdu The lake is located 45 km away from southeastern Fengdu and lies to the Xiannv Mountain in Wulong. It has a beautiful environment and a variety of vegetations. Most of scenic area is covered by primeval forest and bamboo forest. According to investigation, there are over 1,300 kinds of herbaceous and woody plants in the area, including as many as 26 kinds of nationally-protected rare plants – metasequoia, davidia involucrata, etc.; the number of animal kinds here reaches more than 120, including as many as 27 kinds of nationally-protected animals – leopard, tragopan caboti, manis pentadactyla, etc. The lowest altitude here is 1,495 m while the highest is 1,950 m. The average temperature here is 9.2° C, and the highest temperature is 27° C and the lowest -7° C.



Hanfeng Lake in Kaixian

The lake, located in Kaixian County, northeast of Chongqing, is a unique artificial lake that was formed by the

construction of the remarkable Three Gorges Project on the Yangtze River. The new county town of Kaixian for immigrants from Three Gorges Area is located along the lake. The beautiful picturesque scene of “a city surrounded by a lake, the lake surrounded by mountains, a feeling in people's hearts” can be found here. There are many cultural and natural landscapes near the lake, including Nanshan Forest Park, Dajue Temple, Memorial Hall to Liu Bocheng, etc.



The lake is a relic left by the earthquake in 1856, “unique in China and rare in the world” . The largest lake in Chongqing, surrounded by mountains, is 32 km away from downtown Qianjiang and covers an area of 2.87 km², with green islands on clear water. The landscape of lakes and mountains is as beautiful as a painting and honored as “a bright pearl in remote mountains” .

Longshui Lake in Dazu

The Longshui Lake, located in Dazu County, is 100 km away from Chongqing proper. It was named after its location – Longshui Town, the production base of metal fittings” . The lake covers an area of over 5,000 mu and has a water storage of more than 12 million m³. Islands on the



lake look like stars in the sky, with 108 different natural islands and over 20 kinds of rare birds playing here. The color looks like that of Penglai fairyland.

Lixiang Lake in Nanchuan

The lake covers an area of 3,348 mu, with picturesque scenery. The water in it is clear and peaceful. There are many harbors along the lake and its revetment line is circuitous (65 km long). There are 38 peninsulas on it available for development and one mid-lake island (Muyu Island). Convenient infrastructure and pleasant scenery and climate make it an ideal destination for ecological traveling, vacation, and recuperation.

Nanhu Lake in Banan

The lake covers an area of 1,998 mu, with a pleasant climate. The temperature gap among four seasons is wide and the annual average temperature hits 17° C. In summer, it has a temperature 2 to 4 ° C lower than that in Chongqing proper. There are as many as over 70 islands on the lake that is surrounded



by green mountains. With green water and verdant trees, the whole of the lake region is an integration of mountains, water, forest, and islands. It is a hard-won natural scenic area in suburban Chongqing.

Performing Arts Trip

Guotai Art Center The center, located in the Jiefangbei CBD, Yuzhong District, Chongqing Municipality and surrounded by Linjiang Zhi Road, Jiangjia Alley, Qingnian Road, and Zourong Road, covers an area of 2.91 hectares, with the overall floorage of over 30,000 m². It consists of Guotai Theatre and Chongqing art Gallery. The center, into which 500 million RMB were invested, officially “opened” on January 25, 2013. For Chongqing, it is one of the top 10 public facilities and the first multifunctional art center for “exhibition, drama, entertainment, and commerce” .

Chongqing Poly Theatre The theatre, located at the Jiangbeizui and along the Yangtze River, is a large and multifunctional facility for social and cultural purposes --- opera, drama, and concerts and cultural and art exchanges. In terms of quality and size, it ranks among top 3 in the whole of the nation. It is also the highest-quality theatre with most functions in Chongqing. The structure has 7 floors on the ground and 2 floors under the ground, including three parts – grand theatre, middle theatre, and rehearse hall, with a capacity of over 3,000 people.

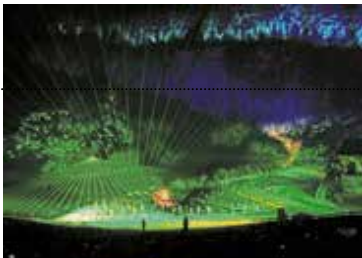


Chongqing Center for Sichuan Opera The center, neighboring Renhe Tianhumeizhen Park and Zhaomushan Ecological Botanic Garden, has a main building with an overall floorage of over 12,000 m² and a supportive building with an overall floorage of 4,206 m² (under construction). The main building is in the style of ancient temples and the shape of plum blossom. The group of architectures has many characteristics of residencies in eastern Sichuan. It is an “active” national museum for intangible cultural heritages. As a China center for Sichuan Opera, national base for productively protecting intangible cultural heritages, national base for producing excellent stage art projects, and national base for protecting cultural creation, it has become a symbol structure for the regional culture of Chongqing and the prosperity of Chinese dramas.



Image of Wulong

The on-location concert “Image of Wulong” employs the iron-triangle creators of “Image” series – Zhang Yimou, the art consultant, Wang Chaoge and Fanyue, the chief directors. Over 100 performers sincerely sing on site, with the main content of endangered “chantey” . Through seventy-minute shows, audiences can experience the magnificent and beautiful natural landscapes in natural heritages and the unique customs and conditions of Bashu. The site is Taoyuan Grand Valley in Wulong County, Chongqing Municipality, 9 km away from Xiannvshan Town and in the shape of “U” . The fall of the valley hits 180 m. The remote mountains are mysterious while the near ones are mighty and peculiar; the gullies are quiet and beautiful. Such a site selection can not only protect the ecology, but also offer excellent space for shows. There are about 2,700 seats installed here, with stage in stand and stand in stage. Performers can interact with audiences closely. The on-location concert “Image of Wulong” will sing long-lost “chantey” in the quiet and beautiful valley.



Tianshang Huangshui Theatre The theatre is located in Huangshui Town, Shizhu Tujia Autonomous County. The large Tujia song and dance drama “Tianshang Huangshui” is the first indoor show for tourists in Chongqing. The drama takes the mountain and water culture in Shizhu as the “point” , the Tujia people’ s pursuing for beautiful life as the “soul” , and romantic and aestheticism modern high-tech stage as the “scene” ; on the basis of fully learning from “The Romance of The Song Dynasty” , “Yunnan Image” and “Song of Regret” , creates a large national, artistic, and shocking Tujia song and dance drama.

Trip to Religious Sites



Huayan Temple (Buddhism)

The temple is also called Temple for the Founder Huayan and Huayan Cave. It is located in Huayansi Scenic Area, Jiulongpo District, southwest of Chongqing and 23 km away from the center of Chongqing downtown. The

magnificent temple is near mountains and water and consists of three parts – the Huayan Cave in the Dalao (Dailou) Mountains, Jieyin Hall, and Huayan Temple. The overall floorage hits nearly 10,000 m², with a site area of over 70 mu and more than 300 rooms. There are magnificent halls, nearby mountains and water, thick forest and tall bamboos, purring water, and green pine and twittering cranes in the temple that is surrounded by eight attractions – Tianchi Yeyue, Qushui Liuxia, Paling Songtao, Yuanfan Xiaozhong, Shulin Yeyu, Shuangfeng Songcui, Gudong Yusheng, Hanyan Penxue. Undulating hills and mountains in the shape of lotus make it an efficacious site in the Ba Mountain and the most famous temple in eastern original Sichuan. It is also a national protection site for culture relic.



Shuanggui Temple (Buddhism)

The temple, located on the Wanzhu Mountain, 13 km southwest of county town of Liangping, is a famous Buddhist temple in China and honored as “temple for the founder of the Chan sect in southwestern China”. It also enjoys a high status among Buddhists in China and

Southeast Asia. The over 350 years old temple is still magnificent and attracts many Buddhists, enjoying the reputation of “the king of forests in southwestern China”, “No. 1 Buddhist temple”, and “giant of the Chan sect”. Shuanggui Temple was built by the believers in the Chan sect and named after the two sweet osmanthus plants by Master Poshan in the temple.

Luohan Temple Luohan Temple is located in Xiaoshenzi, Yuzhong District and was built during the reign of the Emperor Yingzong Emperor of the Song Dynasty (1064 to 1066) whose reign title is Zhiping and was originally named Zhiping Temple. In 1885, the 11th year of the reign of the Emperor Guangxu of the Qing Dynasty, an Arhat’s Hall was built here as in Baoguang Temple in Xindu and the temple was named Luohan Temple. It is a temple for Rinzaï Zen. During the past several thousand years, the temple went through ups and downs and its name was changed several times.

On the over-20-meter-long ancient Buddhism rock in the temple, there are over 400 stone Buddhas that were carved in the Song Dynasty, including

Wofoniexiang (Vulgo: “Sleeping Buddha”), Avalokitesvara, statues of supporters, etc. They have a similar style to that of Dazu stone carving on the Baoding Mountain. There are Buddhist art treasures in the great Buddha’s hall and the Tripitaka, classic books in Sanskrit and Tibetan, and ancient books,



calligraphies, and paintings preserved in the depository of Buddhist text, most of which are treasures made in Tang and Ming dynasties.

Shengshou Buddhist Temple (Buddhism) It is located on Baoding Mountain northeast of the county town of Dazu. It was built during the reign of Emperor Gaozong of Southern Song Dynasty and is known for Buddhist stone carvings, and has always attracted a lot of believers.

Zhao Zhifeng, the founder of the temple, was born in Dazu. He became a monk to learn Doctrine of Yidam and publicized Esoteric Buddhism in Bayu region after achieving attainments and then returned to the Baoding Mountain for constructing Shengshou Temple and at the same built Baoding stone carving ashram that was so rare that the royald and civilians were both shocked and it was honored as “the Holy Land of Buddhism” in southwestern China. During the Ming and Qing dynasties, many eminent monks cultivated themselves here and high Buddhist attainments were frequently achieved here. During the Qing Dynasty, it was transformed into an ashram for the Chan sect and belonged to Qingshan Faction in Linji. That is why the temple is called “Shengshou Buddhist Temple” . The temple is thriving and enjoys reputation at home and abroad. Each year, the number of those who make pilgrimages to the temple to pay respect to the Buddha and tourists hits one million. Green mountains, clear water, ancient Buddhist temple, and carved stone statues make it perfect. People say that “pilgrimages should be made both to the E’ mei Mountain and the Baoding Mountain” .

Ciyun Temple (Buddhism) It is located in Nanan District and was built in the Tang Dynasty. In 1983, the State Council designated it as one of the nationally key temples of Han people. The temple covers an area of about over 4,000 m2. It is an integration of Chinese and Western styles, unique among Buddhist temples in China. The temple is built according to the geological characteristics of the mountains. The main structures in the temple include the Great Buddha’s Hall, Skanda Hall, Samantabhadra Hall, Three Buddhas’ Hall, Ksitigarbha’s Hall, Aido Hall, etc.



Jinyun Temple (Buddhism) It is located in Beibei, Chongqing and on the Jinyun Mountain, an over-1,500-year-old Holy Land of Buddhism. It was built in 423, later was named “Xiangsi Temple”, “Chongsheng Temple”, and “Chongjiao Temple” and awarded by emperors in different dynasties. It is the only temple for Kasyapa in China and during ancient times, it was also a school and called “Jinyun Academy” .



Tushan Temple (Daoism)

It is located on the Tushan Mountain in Nanan District, Chongqing and the oldest existing temple. There is the Founder Zunwu in the temple, which gives it another name Zunwu Temple. It is so old that its origin cannot be tracked. According to investigation, during the Western Han Dynasty, the temple was used as Memorial Hall for King Yu and Queen Tu and the home to their statues. During the Tang Dynasty, Bai Juyi, a famous poet and the governor of Zhongzhou wrote the poem “My own traveling in Tushan Temple” . It can be found that the temple had been called Tushan Temple at that time. The temple has 8 halls and 100 rooms, and covers an area of over 10,000 m².

Shaolong Taoist Temple (Taoism)

Shaolong Taoist Temple is located at the entry of a national scenic area – Jinyunshan Forest Park. It is also the largest ashram for Zhengyi School of Taoism in southwestern China, and was built in 1485 and transformed into Beiquan Nursery during Anti-Japanese War.

The temple started to be renovated in March 1998 and officially was opened to the public in February 1999, surrounded by mountains on three sides and water on one side. Clear spring water flows into Jianchi pool from the left side and the wide land lies to the east like wide-



opened gate to the temple. It seems that the temple is sitting on an armchair made by mountains and clear water. In the temple, there are towering ancient trees like old pines, ginkgo, cinnamomum hupehanum, sweet osmanthus, etc. and phyllostachys pubescens, sinocalamus affinis, and bambusa alboineta grow in large amounts. You even can find rare plants including acacia rachii, spinulose tree fern, etc.

The renovated temple covers an area of over 30 mu, and over 8 million RMB have been invested to construct the main structures of the temple – Linggong Hall, Yuhuang Hall, Caishen Hall, Yuanchen Hall, Cihang Hall, Sanqing Hall, memorial gateway, tea porch, incense rooms, etc. It fully displays Taoist culture – Taoist feast, Taoist tea, Taoist Kungfu and Taoist doctrine.

Gospel Hall (Christianity)

It was built by American missionaries in 1894, and has a history longer than a century up to now. During Anti-Japanese War, diversified patriotic and anti-Japanese publicities were carried out in this hall. Then many current national

senators, including Deng Yingchao, Shi Liang, etc., delivered speeches here. Ren Biage, the former mayor of Chongqing after liberation attended the “Patriotic Reading Club” in this hall. During the “Cultural Revolution”, all religious activities were prohibited. In 1983, it was reopened. In 2006, its relocation and reconstruction work began. On November 30th, 2006, the church was moved to the First Wanfeng Village in Jiangbei District for the time being. The newly-built church is located in the Jiangbeizui Central Park. It costs a total investment of 10 million RMB, and covers an area of over 1,400 m². The area of the hall is over 700 m², and the hall can hold 500 people at least. The newly-built Gospel Hall integrates the styles of classical and modern religious architectures. It not only inherits Chongqing’s historical architectural culture, but also provides a human landscape in the modern Jiangbei CBD Financial Center.



Holy Love Church (Christianity)

It was called “Social Hall” in the past. In around 1900, missionaries from The Methodist Church of America purchased a premise and established a church at the former site of No. 96, Ciqi Street, Yuzhong District. During Anti-Japanese War, there were many holy day activities and anti-Japanese activities jointly held by churches in Chongqing. In 1958, it became one of the churches for the joint religious services of Christianity in Chongqing. After 1966, all activities were prohibited during the Cultural Revolution. On December 24th, 1979, a Christmas Eve, the religious service was restarted in this church. That is to say, it was the first church of Christianity providing religious service in Chongqing after the reform and opening-up. It has received over 1,000 guests from over 30 countries and districts. Since its opening, over 4,000 believers have been baptized here. Over 1,500 people attend meetings here regularly, and worship is offered twice on each Sunday. In addition, there are also such activities as choirs, Bible classes, Bible reading classes, youth fellowship, etc.

Teresa Church (Catholicism)

Located in the Central Park in the Jiangbeizui CBD, it was transformed from a residence (former Boji Church) by Father Li Fangji in 1855. It was renovated in 1881. On October 24th, 1927, Shang Weishan (French, consecrated to be the bishop of the Chongqing Parish on September 21st, 1926), the bishop of Chongqing Parish released a circular, which called on believers to donate money to build the current Jiangbei Teresa Church. The construction was completed in 1928. In 2005, Chongqing Municipal Government decided to remove and develop the whole urban area of Jiangbei District, and build a Jiangbeizui CBD. Teresa Church in Jiangbei District was protectively relocated, constructed and enlarged in the same proportion in the Central Park of Jiangbeizui CBD. On May 10th, 2008, the Teresa Church was officially transferred to Jiangbei Patriotic



Catholic Association. On October 1st, 2008, the opening ceremony of Jiangbei Teresa Catholic Church Chongqing Parish and the Solemn Mass for the 111th anniversary of Saintess Teresa' s assumption was grandly held in Jiangbeizui CBD.

Joseph Church (Catholicism)

Located on Minsheng Road of Yuzhong District, this church was built in 1893, and covers an area of 1,700 m². The central scripture hall is about 500 m² in area, and can contain over 1,000 people. The furnishings in it are elegant and gorgeous, and the atmosphere is solemn and respectful. In 1917, a steepled cross bell tower was built that is 36 meters high and has three bell stoppers and one big clock in it. There are three masses in Joseph Church every Sunday. During significant worship activities, over 1,000 believers will come to attend the Mass.

Mosque (Islam)

Located on Zhongxing Road of Yuzhong District, it covers an area of 4,500 m². Its construction was hosted by Ma Wensheng, an Assistant Minister in the Wanli Period of the Ming Dynasty. In 1940, the south mosque was blown up by the Japanese air force, and was restored in 1942. Before long, the south and north mosques were integrated into the west mosque. In 1982, the mosque was totally renovated, and the architecture became more distinctive. The Arab-style green round castle stands on the roof with the symbols of star and moon on it. There are four huge pillars standing in the hall, and the walls in the hall are pinky and reflect silver light. The colors are in harmony and the atmosphere is solemn and respectful. The Hadith of Islam is preserved in the mosque. There are Akhoonds hosting religious activities there. When the Ramadan or holy day comes, believers will gather together, praying and chanting here. There are guesthouses and a Muslim restaurant in the mosque. Chongqing Islam Association is located here.





24-hour Consulting Hotline of Chongqing Tourism
Administration: 023-12301

Website of China Chongqing Tourism Government
Administration: <http://www.cqta.gov.cn:8080>



72

**NOTICE ON
72-HOUR VISA-FREE
TRANSIT TOURISTS
TO CHONGQING**





Notice on 72-hour Visa-free Transit Tourists to Chongqing

I. The 72-hour Visa-free Transit Policy is applicable to foreign tourists who: (1) come from 51 nations included in the 72-hour Visa-free Transit Policy; (2) are passport or travel documents holders from other nations and have air tickets of connecting flights heading to a third nation (or region) with identified date and seat within 72 hours; (3) transit in Chongqing Jiangbei International Airport and travel to a third nation (or region).

II. Foreign tourists enjoying the 72-hour Visa-free Transit Policy shall enter China from Chongqing Jiangbei International Airport. During the visa-free stay in Chongqing, only administrative regions governed by Chongqing can be visited. Foreign tourists shall depart from Chongqing Jiangbei International Airport within 72 hours (calculated by starting from 00:00 following the day of arrival).

III. After arriving in Chongqing, check-in registration shall be completed as required within 24 hours: 1. finish check-in registration at the reception desk of a hotel; 2. for those who do not stay in hotels, foreign tourists or the one who offers accommodation shall complete lodging registration in local public security office.

IV. Arriving foreign tourists shall carry passports or other ID documents for the purpose of inspection conducted by public security officers. For lost or stolen (robbed) passport or other international travel documents, please report the case to local public security office and handle exit formalities in Chongqing Public Security Bureau with the Case Receipt issued by the local public security office.

V. In case of emergency or in need of assistance, please call Chongqing Public Security at 110. For further information about visa, please call 24-hour service hotline of Exit-Entry Administration of Chongqing Public Security Bureau at 023-63961916.

VI. Please take good care of your passport or other international travel documents and make sure all documents are legal and valid. In the event of force majeure, for instance, acute diseases, disasters or accidents, taking place during visa-free stay, the time spent in Chongqing will be more than 72 hours or foreign tourists are in the need to go to other places out of the jurisdiction of Chongqing, then apply for required visa at Exit-Entry Administration of Chongqing Public Security Bureau as per legal procedure.

Address of Exit-Entry Administration of
Chongqing Public Security Bureau: No. 555,
Huanglong Road, Yubei District, Chongqing

Website: www.cqga.gov.cn

E-mail: crjqc@hotmail.com



Notice on Frontier Inspection for 72-hour Visa-free Transit Tourists

I. Visa-free requirement

According to the regulation of Ministry of Public Security, foreign tourists who meet ALL the following requirements could apply for the 72-hour Visa-free Transit Policy in Chongqing Jiangbei International Airport:

Citizens from the listed nations enjoying 72-hour Visa-free Transit Policy

Holding valid international travel documents that prove nationality

Qualified for the entry requirements of the destination country or region

Holding air tickets of connecting flight heading to a third nation (or region) with identified date and seat within 72 hours or other relevant proofs.

Airline company carrying in-bound foreign tourists shall report to frontier inspection.

Upon the approval of Chongqing Frontier Inspection, relevant formalities will be handled and completed as required.

II. Notes

(I) Air tickets to a third nation is required

According to the requirement of 72-hour Visa-free Transit Policy, foreign tourists from the listed nations are requested to have air tickets of connecting flight with identified date and seat or other relevant documents before applying for using the of 72-hour Visa-free Transit Policy. For foreign tourists from the listed nations who do not have air tickets of connecting flights departing within 72 hours, they are not eligible for the Policy. If the destination country is your own country, then you are not allowed to enjoy the Policy.

(II) Exit and entry at Jiangbei International Airport

Upon the implementation of 72-hour Visa-free Transit Policy, Chongqing Jiangbei International Airport is the ONLY port of entry and exit. Foreign tourists qualified for the Policy shall enter and exit from Chongqing Jiangbei International Airport.

(III) Do not leave Chongqing during visa-free stay

Foreign tourists from listed nations can stay in Chongqing within the approved visa-free stay and are not allowed to visit places out of the jurisdiction of Chongqing or stay longer than required time duration. In case of force majeure and more time is needed to stay in Chongqing or for going to places out of the jurisdiction of

Chongqing, then application shall be submitted to Exit-Entry Administration of Chongqing Public Security Bureau.





III. Procedures of frontier inspection conducted on foreign tourists qualified for 72-hour Visa-free Transit Policy:

Entry procedures:

Tourists shall apply for the completion of 72-hour Visa-free Transit formalities in advance through the airline company that operates flights to Jiangbei International Airport

Upon the arrival at Chongqing International Airport, tourists shall complete foreign tourist's entry registration card and apply for 72-hour Visa-free Transit treatment to the frontier inspection agency at the "72-hour Visa-free Transit Channel", by showing valid international travel documents, air tickets of connecting flights departing from Jiangbei International Airport within 72 hours to a third nation (or region) with identified date and seat or other documents.

If being approved, the frontier inspection agency will stamp temporary entry seal on passport held by tourists and handle 72-hour Visa-free Transit formalities.

Exit procedure:

Tourists exit from Chongqing Jiangbei International Airport within 72 hours by showing valid international travel documents and the temporary entry seal on passport. After being checked and confirmed by frontier inspection, tourists can exit from Chongqing.





Customs Supervision and Inspection Regulations for 72-hour Visa-free Transit Tourists

I. Whether leaving customs supervision zone or not, transit tourists are not allowed to carry with them prohibited items as per the regulations of People's Republic of China.

II. According to the No. 72 Notice issued by the General Administration of Customs of People's Republic of China, required items shall be reported to the customs.

(Link to the Notice: <http://www.customs.gov.cn/publish/porta10/tab3889/module1188/info92463.htm>)

III. Regulations on Inspection and releasing conducted by the customs regarding items carried by transit tourist

1. Transit tourists departing from China as per the required time duration shall report the carried items and complete the Luggage Item Declaration Form of Transit Tourists in People's Republic of China. The customs agency will handle the luggage items carried by transit non-resident short-term tourists.

2. Luggage items carried by transit tourists shall just serve the purposes of traveling, including one camera, one minicam, one hand-held video camera and one laptop, as well as other special personal items approved by the customs. Items meeting the requirements can be released free of taxation fees. When exiting China, transit tourists are required to carry with them the same items out of China.

3. For personal items valued over 2,000 RMB, to stay in China, import tax shall be paid to the customs. As to the 20 kinds of commodities, including cigarette and wine, other regulations are applicable. For items excluded in this scope, they are not allowed to be taken into China and shall be kept by the customs and when exiting China, such kind of items shall be transported out of China.

Notice on Health, Animal and Plants Quarantine for 72-hour Visa-free Transit

I. According to China's regulation on entry-exit inspection and quarantine and Frontier Health and Quarantine Law of the People's Republic of China, for yours and others' health, if you have any of the following symptoms, please report to the frontier inspection officers and accept inspection and quarantine:

1. Fever, constant cough, vomiting, diarrhea, rash, dyspnea and subcutaneous hemorrhage for unknown reasons;

2. Diagnosed with infectious diseases;

3. Carrying special items, such as, microbes, human tissue, biological products, blood or other products.

Anyone who conceals information or makes unfaithful report shall shoulder legal responsibilities and be fined as much as 5,000 RMB.

II. Animal, plants and their products are not allowed to be carried into China (For more details, please refer to the No. 1712 Notice issued by General Administration of Quality Supervision, Inspection and Quarantine of the People's Republic of China). For animals, plants and their products carried along with tourists, during the visa-free stay, they can be temporarily kept or taken care of by staff members from Chongqing Entry-Exit Inspection and Quarantine Bureau and be carried out of China while exiting.

III. For special prohibited items and biological products, (they can be carried by tourists if such items are used to treat diseases suffered by the tourist or are vaccines and have proof from doctors).

