

imagine

Children's Hospital
LOS ANGELES



FALL 2018



RYAN MURPHY AND DAVID MILLER

The couple has made an extraordinary \$10 million donation in honor of their son, who was treated for cancer at CHLA.

ABOUT US

The mission of Children's Hospital Los Angeles is to create hope and build healthier futures. Founded in 1901, CHLA is the top-ranked pediatric hospital in California and among the top 10 in the nation, according to the prestigious U.S. News & World Report Honor Roll of children's hospitals for 2018-19. The hospital is home to The Saban Research Institute and is one of the few freestanding pediatric hospitals where scientific inquiry is combined with clinical care devoted exclusively to children. Children's Hospital Los Angeles is a premier teaching hospital and has been affiliated with the Keck School of Medicine of USC since 1932.



TABLE OF CONTENTS

- 2 A Letter From the President and Chief Executive Officer**
- 3 A Message From the Chief Development Officer**
- 4 Grateful Parents**
Ryan Murphy and David Miller
Give \$10 Million to CHLA
- 8 The Armenian Ambassadors**
Working Together to Support Children's Health Care
- 10 Shaving the Way to a Cure**
St. Baldrick's Foundation
- 12 A Miracle in May**
Costco Wholesale
- 14 Sophia Scano Fitzmaurice**
Changing the Future for Children and Adults
With a Rare Blood Disease
- 15 Good News! Charitable Gift Annuity Rates
Have Increased**
- 16 Anonymous Donation Funds
Emergency Department Expansion**
- 16 Upcoming Events**
- 17 In Memoriam**
- 18 CHLA Happenings**
- 21 The Children's Hospital Los Angeles Gala:
From Paris With Love**
- 25 Walk and Play L.A.**
- 28 Make March Matter 2018**
- 30 Honor Roll of Donors**
- 53 Children's Miracle Network Hospitals
Honor Roll of Friends**
- 54 Board of Directors**
- 54 Foundation Board of Trustees**
- 55 Hospital Leadership**

On the Cover:

*Logan Miller Murphy (left),
Ryan Murphy, David Miller,
and Ford Miller Murphy.
See page 4 for more.*

A Letter From the President and Chief Executive Officer



If this issue of Imagine magazine strikes you as different, you're on to something. Allow me to introduce you to the new iteration of our flagship publication. We have reimagined it, so to speak, to highlight the valuable impact of our philanthropic partners.

One of the core values of Children's Hospital Los Angeles is that we do our best together. This is manifested in the efforts of physicians, nurses, care specialists, families, friends and philanthropists uniting to make our institution one of the very best pediatric academic medical centers in the nation. Our generous supporters help ensure that CHLA is able to deliver leading-edge clinical care, conduct life-changing research and educate the next generation of pediatric specialists, all with the aim of creating hope and building healthier futures for children and youth.

For this premiere issue of our relaunch, we are thrilled to feature Ryan Murphy and David Miller on our cover. Murphy, an Emmy-winning creator, producer and director of an impressive string of successful TV series, and Miller, a photographer, have a son who was treated for cancer at CHLA. The couple made an extraordinary \$10 million donation to the hospital to ensure that the outstanding care their son received will continue to be available to all the children who need it.

In addition, we have a story about Costco Wholesale that highlights the personal connections that are created and strengthened by our corporate partnerships. A feature on the Armenian Ambassadors, who support CHLA through individual giving and group fundraising, illustrates the good that can be accomplished when donors unite. Other content includes an article on childhood cancer research charity St. Baldrick's Foundation and an array of images that capture the spirit of philanthropic events that help rally the community in support of Children's Hospital Los Angeles all year long.

As you read through this revamped Imagine, I think you will see why we were compelled to celebrate the philanthropists who help propel our work and who are doing more than helping us imagine a future, but taking steps to help us create it.

Thank you,

A handwritten signature in black ink that reads "Paul S. Viviano". The signature is written in a cursive, flowing style.

Paul S. Viviano
President and Chief Executive Officer

A Message From the Chief Development Officer



I'm delighted to share this first edition of the new Imagine magazine with all of you. We are pleased to celebrate the efforts of our donors, whose contributions are often made anonymously or without fanfare. Their generosity and their essential role in moving our mission forward deserve to be highlighted, and the pages of Imagine will now provide us with the perfect avenue for doing so.

At Children's Hospital Los Angeles, we believe in building strong, lasting relationships with our philanthropic partners, which you will see illustrated throughout this publication. I am so grateful for the individuals, corporations and foundations whose support enables CHLA to remain at the forefront of research and clinical care that heals kids. Our daily effort to make a difference in the lives of children battling the most complex pediatric diseases, and who come to CHLA from around Los Angeles and every part of the world, is sustained and improved by the generosity of all our donors.

Even among the larger community of philanthropists, CHLA donors stand out for their selflessness and generosity. Their inspirational giving is motivated by a humanitarian desire to help our young patients get well and stay well, and to support our hospital's mission to create hope and build healthier futures.

One look at our logo—a butterfly—offers a model for the impact our donors have. As a pediatric academic medical center pursuing new discoveries, we are built for flight, but our donors are the ones who give us the lift we need to get visionary new approaches to medicine off the ground.

Most sincerely,

A handwritten signature in cursive script that reads "Alex Carter".

Alexandra Carter, MBA, CFRE
Senior Vice President and Chief Development Officer



GRATEFUL PARENTS

*Ryan Murphy and David Miller
Give \$10 Million to CHLA*

By Marla Lehner

Their generous gift will be recognized by the naming of the Ford Theodore Miller Murphy Floor in their son's honor.

Emmy Award-winning writer, director and producer Ryan Murphy is known for championing underrepresented groups in Hollywood, such as women, people of color and the LGBTQ community. In his personal life, too, Murphy channels his energy into causes that impact the lives of others. That's just one reason he and his husband, photographer David Miller, chose to make an extraordinary \$10 million donation to Children's Hospital Los Angeles.

"We both love that Children's Hospital Los Angeles is committed to helping kids and families regardless of their financial status," says Murphy, who has produced a series of hit television shows, including "Glee," "American Horror Story," and "The Assassination of Gianni Versace: American Crime Story." "The care CHLA provides is amazing, and they treat a huge number of families who are often overlooked and underserved in our society. David and I wanted to support that work."

To recognize the family's generosity, CHLA has named the fifth floor of the Marion and John E. Anderson Pavilion the Ford Theodore Miller Murphy Floor, in honor of Murphy

and Miller's son Ford, age 4, who was successfully treated for cancer at CHLA.

"David and I, as well as Logan [the couple's older child], are immensely grateful for the care that CHLA provided not only to Ford, but to us as well," Murphy says. "His cancer diagnosis was one of life's unexpected moments, and the team at the hospital provided a comforting atmosphere in the midst of a trying situation."

At just 18 months old, Ford was diagnosed with neuroblastoma—a cancer often found in the adrenal glands that most commonly affects children ages 5 or younger—during a routine checkup with his pediatrician.

"CHLA was the obvious choice for us when we learned of Ford's diagnosis," says Miller. "We needed a support system, and their experience with children and parents proved invaluable."

The motivating factor behind the couple's decision to make such a generous donation to CHLA, however, was not merely the care Ford received, but their belief in the hospital's goal to provide the highest-quality medical treatment to every child who needs it.

Core to CHLA's values is a dedication to serving vulnerable children and families in the community. A safety-net hospital, CHLA provides leading-edge health care to many underserved patients; more than 70 percent of the hospital's inpatients are insured by Medi-Cal. Moreover, CHLA serves one of the most ethnically diverse patient populations in the country, provides interpreting services in more than 34 languages and delivers culturally sensitive health care that is respectful to the needs of each family.

"We are thrilled to offer a significant donation to support CHLA so they can continue to provide care to those less



Ford Miller Murphy

Photo by David Miller



The family enjoying some quality time together at home

fortunate financially,” says Murphy. “Cancer affects us all.”

Alexandra Carter, CHLA’s senior vice president and chief development officer, says the gift reflects the family’s interest in helping others and will provide important support in the effort to reach more children in need of specialized health care.

“Ryan Murphy and David Miller have a long and admirable history of championing underserved members of our community,” says Carter. “Their values and commitment to help others along with their charitable support align with our hospital’s mission to create hope and build healthier futures.”

Supporting research and clinical care
Funds from Murphy and Miller’s landmark gift will support the hospital’s

continued leadership in surgical oncology, neuroblastoma treatment and research conducted by the Children’s Center for Cancer and Blood Diseases (CCCBD) at CHLA.

“The family’s generosity will help us continue to provide lifesaving care to the patients we treat,” says CHLA President and Chief Executive Officer Paul S. Viviano. “This gift reflects their dedication to improving the lives of children and families throughout the Los Angeles community.”

A portion of the funds will be used to name an endowed chair in Surgical Oncology. The inaugural holder of the chair will be Chief Medical Officer James Stein, MD, MSc, FACS, FAAP, a nationally renowned surgeon who has been at CHLA since 1996. Stein’s extensive experience in the surgical treatment of

“CHLA was the obvious choice for us when we learned of Ford’s diagnosis. We needed a support system, and their experience with children and parents proved invaluable.”

—David Miller

neuroblastoma and hepatoblastoma, as well as other childhood cancers, has been an integral component of CHLA's successful Solid Tumor and Neuroblastoma Programs.

"Dr. Stein and pediatric oncologist Dr. Araz Marachelian from the CCCBD saved our child's life," adds Murphy, "and we are forever thankful for that."

"I'm honored to be the inaugural chair in Surgical Oncology," says Stein. "Our hospital is one of the leading institutions in the nation for treating children with cancer. I deeply appreciate Ryan and David's generosity in supporting this important work for future generations of children."

The donation will also create the Ford Theodore Miller Murphy Neuroblastoma Endowment and support the greatest needs of the pediatric cancer program at CHLA, including clinical care, research and education. Led by Alan S. Wayne, MD, the nationally ranked CCCBD is the largest pediatric hematology, oncology and blood and marrow transplant program in the western United States. It also has one of the largest clinical trial programs in the nation for children with cancer and blood disorders.

Photo by David Miller



Ford (left) and Logan Miller Murphy



Left to right: Director of CHLA's Children's Center for Cancer and Blood Diseases Alan Wayne, MD; Director of CHLA's Neuroblastoma Program Araz Marachelian, MD; CHLA Chief Medical Officer James Stein, MD; Ryan Murphy; Logan Miller Murphy; Ford Miller Murphy; David Miller; CHLA President and CEO Paul S. Viviano; and CHLA Chief Development Officer Alexandra Carter

"I often say that our work is a team sport," says Wayne. "The CCCBD's strength comes from individual excellence and team collaboration. Working together, our researchers, clinicians, nurses, staff and philanthropic partners allow us to deliver the best possible care and make extraordinary progress. I am extremely grateful to the Miller Murphy family for their generous and impactful investment in our work. Their support will improve the outcomes for children with cancer in the future."

The Ford Theodore Miller Murphy Floor in the Anderson Pavilion is dedicated to caring for medically and surgically acute patients of all ages. It is a calm and welcoming environment where children can recover surrounded by family, receive one-on-one care from Child Life specialists, and participate in art, music or dance therapy. The floor also features a Child Life playroom and the Creative Oasis, a space for music and art exploration.

Looking to the future

While Murphy is famous for effortlessly juggling multiple projects at once, he and Miller have also learned to savor each moment with their happy, healthy family.

"Becoming a parent is life-changing," Murphy says. "Our experience with Ford has made us even more aware of how important it is to live in the moment and to appreciate each day together."

These days, Ford is doing well and loves playing with his older brother, Logan, 5. And the family is sharing their ordeal in the hope that others can find comfort in it.

"Ford is thriving in preschool, and he's been free and clear for over two years now," says Miller. "In sharing this story, I hope we can give other families hope and help them know they are not alone in the struggles they face." 🌈

THE ARMENIAN AMBASSADORS

Working Together to Support Children's Health Care

By Eunice Oh

Each and every donor makes an impact at Children's Hospital Los Angeles. And when donors band together, the effect can be exponential. The Ambassadors—a community of philanthropic partners who raise funds and awareness on behalf of the hospital throughout the year—underscore CHLA's collaborative spirit, and include more than 2,300 supporters committed to our mission of creating hope and building healthier futures.

The Ambassadors program is made up of seven distinct leadership groups that establish their own fundraising priorities and goals. While many groups have adopted a specific division at CHLA, the Armenian Ambassadors have supported multiple clinical areas, including the Heart Institute, The Vision Center, the Division of Neurology and the Children's Center for Cancer and Blood Diseases. Since the Armenian Ambassadors were formed in 2015, they have raised more than \$1.3 million.

"Our goal is to help ensure that Children's Hospital has the best

resources to care for our children," says Narine Galstian, a former patient who now serves on the Armenian Ambassadors Leadership Council. "Given the hospital's close proximity to the Little Armenia neighborhood in Los Angeles, we are grateful for the opportunity to share our philanthropic heritage with a place that has welcomed so many of our families."

Every year, more than 2,000 patients of Armenian descent are treated at CHLA's main campus. The hospital reaches even more Armenian children in the Greater Los Angeles area, as well as children 7,000 miles away in Armenia, through medical missions, telemedicine initiatives and partnerships with the Armenian Bone Marrow Donor Registry and the Armenian EyeCare Project.

The Armenian Ambassadors support CHLA through individual giving and group fundraising, and by introducing their families, friends and colleagues to the lifesaving work performed at the hospital. Many members

have joined because of a personal connection as patient families or former patients. Others—such as the Agape Circle of the Western Diocese of the Armenian Church, businesses, and honorary members Kim Kardashian West and the rock band System Of A Down—are inspired by the parallels between CHLA's family-centered care and the family-oriented culture of the Armenian community.

"CHLA has provided so many kids both here in Los Angeles and in Armenia with the most excellent care for so many years," says System Of A Down's Serj Tankian. "I'm proud to have a connection to such a hospital."

"We are forever grateful for the wonderful care our daughter received from the amazing team of specialists at Children's Hospital," adds Armenian Ambassadors Leadership Council member George Tonikian. "My wife and I are proud to give back in this way and to help future generations whose lives, like our child's, will be improved because of CHLA." 🦋

"Our goal is to help ensure that Children's Hospital has the best resources to care for our children."

*—Narine Galstian,
member of the Armenian
Ambassadors Leadership Council*



The Armenian Ambassadors hosted an Ambassadors Speaker Series event on Oct. 19, 2017: "Familial Mediterranean Fever: No Longer the Disease of Shame." Left to right: Leadership Council members Vahe Soghomonian, Alice Chakrian and Souzy Ohanian; event speaker and head of CHLA's Division of Rheumatology Andreas Reiff, MD; and Leadership Council members Narine Galstian, Ani Simonian and Tony Adam.



Left to right: Ara Balkian, MD, chief medical director, CHLA Inpatient Operations; Rita Terterian, vice president of Development, CHLA Foundation; Honorary Armenian Ambassadors Serj Tankian and Shavo Odadjian from the band System Of A Down; and George Tonikian, Armenian Ambassadors Leadership Council member



On Oct. 18, 2018, the Agape Circle of the Western Diocese of the Armenian Church of North America celebrated its fifth anniversary. Under the leadership of His Eminence Archbishop Hovnan Derderian (center) and Chairlady Alice Chakrian (eighth from right), the Agape Circle has raised over \$100,000 in support of CHLA.

To learn more about the Armenian Ambassadors, visit CHLA.org/Armenian-Ambassadors or contact Rita Terterian, vice president of Development, at rterterian@chla.usc.edu or 323-361-7428.

SHAVING THE WAY TO A CURE

St. Baldrick's Foundation

By Sara Nafie

Grants from the St. Baldrick's Foundation are among the most competitive in the field of pediatric cancer. Since 2005, Children's Hospital Los Angeles has received nearly \$7.4 million in philanthropic support from St. Baldrick's, the largest private funder of childhood cancer research in the U.S. and around the world. And it all started with a few shaved heads.

In 1999, three friends—all successful New York reinsurers—agreed they should share their good fortune. They took over a 2000 St. Patrick's Day celebration—the biggest annual party

in their industry—by challenging attendees to shave their heads in solidarity with kids battling cancer. St. Patrick's was reimagined as St. Baldrick's, monetary donations poured in, and the rest, as they say, is history.

Head-shaving events now take place in nearly 30 countries each year, organized and supported by wide cross-sections of supporters, from businesses and students of all ages to firefighters and soccer moms. Funds raised at these events are combined and distributed to CHLA and other institutions where innovative research

helps improve the quality of life for survivors—and holds the promise of one day curing childhood cancer. From 2000 to 2004, funds were distributed through the Children's Oncology Group (COG) and strictly supported clinical trials. In 2005, the St. Baldrick's Foundation was formed and began awarding other types of grants, including support for oncology fellows, young investigators and basic research. All applications go through a rigorous scientific review process, ensuring that every dollar St. Baldrick's awards—more than a quarter of a billion dollars worldwide since 2005—has the greatest impact for children with cancer.



Robert Seeger, MD, MS (left), and Yves DeClerck, MD, at CHLA's head-shaving event in April 2018

Through the COG and 34 direct grants, St. Baldrick's has supported CHLA every year since its humble beginnings in 2000.

"We haven't been able to do that for every institution, and it certainly speaks to the quality, depth and breadth of the research going on at CHLA," says Kathleen Ruddy, chief executive officer of the St. Baldrick's Foundation, located 20 miles northeast of CHLA in the city of Monrovia.

CHLA physician-scientist Robert Seeger, MD, MS, is in the midst of a multiyear consortium grant from St. Baldrick's to support the New

Approaches to Neuroblastoma Therapy (NANT) Consortium, which has its national headquarters at CHLA. The funded research seeks to enhance the immune system's ability to fight neuroblastoma, the second-most common solid tumor in children, by targeting both the cancer cells and surrounding cells that help the tumor grow and resist traditional treatments.

Michael Pulsipher, MD, section head of Blood and Marrow Transplantation at CHLA and head of the Pediatric Blood and Marrow Transplant Consortium (PBMT), also nationally headquartered at CHLA, currently receives support from St. Baldrick's for

evaluating cellular and immunological approaches to preventing relapse in children with acute lymphoblastic leukemia. In addition, St. Baldrick's recently awarded two grants to CHLA's Summer Oncology Research Fellowship (SORF) Program, led by Anat Erdreich-Epstein, MD, PhD. The fellowship provided two first-year medical students an opportunity to work in a pediatric oncology research lab for the summer in the hope that they will incorporate research into their future careers.

St. Baldrick's grant recipients are encouraged to organize signature head-shaving events, which CHLA has enthusiastically done every year since 2007, raising more than \$209,000.

"CHLA is an important partner, not only on the research, but in collaboration with other institutions," Ruddy says. "[CHLA] understands the need to make sure every institution in the country is able to provide the same high-quality care for patients and works hard to share their expertise. That is extraordinary, and we are profoundly grateful for CHLA's leadership." 🦋



Robert Seeger, MD, MS, gets his locks sheared during a 2017 head-shaving event.

"CHLA is an important partner, not only on the research, but in collaboration with other institutions."

*—Kathleen Ruddy,
chief executive officer
of the St. Baldrick's Foundation*



A MIRACLE IN MAY

Costco Wholesale

By Katie Sweeney

For five weeks in 1987, Joan Anderson found herself living at Children's Hospital Los Angeles—staying day and night with her infant daughter, who needed surgery and treatment for a stomach blockage and infection.

"It was scary," Anderson recalls. "But my doctor, Dr. Robert Adler, was amazing, and I got to know and love all the nurses. From that day forward, I was a fan of Children's Hospital."

Although her daughter fully recovered, Anderson has returned to CHLA many times—not as the mother of a patient, but through her job as Los Angeles regional marketing manager for Costco Wholesale Corp.

Costco is one of CHLA's most generous and longstanding corporate benefactors, donating more than \$26 million since 1995. The second floor of the Marion and John E. Anderson Pavilion is named The Costco Wholesale Floor, in recognition of a \$10 million gift from the company in 2014. That same year, CHLA honored Costco for its support at the hospital's biennial fundraising gala.

A major part of that support comes through the company's annual fundraising campaign for Children's Miracle Network Hospitals, which supports local children's hospitals around the country, including CHLA. Joan Anderson spearheads that campaign for the Los Angeles region

every year. And as you might expect, it's close to her heart.

"It means a lot to me," says Anderson, who has worked for Costco for 33 years. "I have always felt that my employer has taken care of my family, but I love that we're also taking care of the community's families by supporting Children's Miracle Network Hospitals and Children's Hospital Los Angeles."

The month-long fundraising campaign takes place every May in Costco stores. Members contribute by purchasing "Miracle Balloon" paper icons, which are proudly displayed in the stores. The company also raises money through an annual golf tournament and matches a percentage of the stores' fundraising.

But the biggest key to the campaign is the employees themselves.

"Some of our employees think all year long about how to raise more money for Children's Hospital," Anderson says. "I've had employees wear a hospital smock to work the entire month of May, just to draw attention to the cause, while others design amazing works of art out of the balloon icons."

"It's amazing how many employees I meet who have been helped by CHLA. For me, it motivates me to try to raise even more money next year. Children's Hospital touches everyone."

—Joan Anderson





Left to right: Costco's L.A. Regional Marketing Manager Joan Anderson; Senior Vice President and Regional Manager Caton Frates Jr.; Vice President and General Merchandise Manager, Los Angeles Region, Sarah Wehling; and Executive Vice President, Southwest Division and Mexico, Russ Miller

One store manager organized a “Boonies to the Beach” annual bike ride in Orange County to support the campaign. Another location rallied to boost its fundraising from \$14,000 to \$82,000 in just one year—and then raised over \$100,000 the next year. Employees around the region have also begun volunteering at CHLA, passing out coffee, tea and snacks to patients and staff.

Their dedication is driven by a desire to help their community, but like Anderson, many employees have also had firsthand experience at Children’s Hospital. Last year, she was taking a tour of CHLA with Caton Frates Jr., Costco’s senior vice president for the Los Angeles region, when they bumped into an assistant general manager from Costco whose child was undergoing surgery.

For Frates, the experience was more validation of the impact of Costco’s support. Every year, he buys and eats lunch with the store that raises the most in the campaign’s final week.

“Costco is extremely proud to support Children’s Hospital Los Angeles,” Frates says. “It’s part of our corporate mission to help improve the communities where we operate, and as one of the nation’s top pediatric hospitals, Children’s Hospital Los Angeles makes a lifesaving difference for families throughout our region, including those of our own employees and members.”

Anderson will certainly never forget the difference CHLA made in her life. Today, her daughter is a mom with two children of her own. Throughout Costco, Anderson has met countless other grateful families.

“It’s amazing how many employees I meet who have been helped by Children’s Hospital Los Angeles,” she says. “For me, it motivates me to try to raise even more money next year. Children’s Hospital touches everyone.” 🦋

“It’s part of our corporate mission to help improve the communities where we operate.”

—Caton Frates Jr.

A close-up portrait of an elderly woman with short, wavy, light-colored hair. She is smiling warmly at the camera, showing her teeth. She is wearing a dark blue or black top, a long pearl necklace, and pearl earrings. The background is softly blurred, showing what appears to be a wooden chair with a basket of blue flowers on it.

SOPHIA SCANO FITZMAURICE

Changing the Future for Children and Adults With a Rare Blood Disease

By Candace Pearson

At 97, Sophia Scano Fitzmaurice has been investing in research into thalassemia, an inherited form of anemia, for 64 years. In that time, she has seen treatment outcomes and life expectancies improve dramatically—in no small part because of investigations she supports at Children’s Hospital Los Angeles.

“I lost two beautiful children to a rare blood disorder,” says Fitzmaurice of daughter Kristine, born in 1953, and son Gary, born in 1958. “They were

among the original research subjects at CHLA in an effort to find a cure. I decided early on to carry on their work.”

In patients with thalassemia, the body cannot produce enough hemoglobin, an indispensable molecule in red blood cells that transports oxygen throughout the body. Patients with the disorder try to make lots of red blood cells, but the cells never fully develop and die in the marrow, causing severe anemia.

Fitzmaurice first began supporting CHLA’s Carol B. Hyman, MD, a pediatric hematologist, in the 1960s. For the past several decades, she has helped fund the research of Thomas D. Coates, MD, section head of Hematology at the Children’s Center for Cancer and Blood Diseases.

“She stands alone,” says Coates. “In my experience, Sophia’s level of involvement is unique. Her enthusiasm and insight are really amazing. I always enjoy talking with her—her positive attitude is infectious.”

Fitzmaurice, who also raised two healthy children, Lorraine and Michael, is thrilled at the progress Coates and others are making. Treatment for thalassemia involves multiple blood transfusions, which can cause an overload of iron in vital organs and heart failure. Work spearheaded at CHLA has led to advances in measuring iron overload with cardiac magnetic resonance imaging.

This year, in what Coates calls “a major breakthrough for thalassemia,” results from a phase III clinical trial of an experimental drug (luspatercept) showed promise in encouraging late-stage development of red blood cells, allowing the cells to develop completely. CHLA enrolled the highest number of study participants nationwide. One participant told Coates she hadn’t felt this well in decades.

“Now these children don’t have to die. It’s very exciting,” says Fitzmaurice.

Starting with one charitable annuity to CHLA, Fitzmaurice has now given 11 annuities to further the hospital’s thalassemia research. In addition, she established a bequest to CHLA and funded a patient room in honor of Kristine and Gary in CHLA’s Marion and John E. Anderson Pavilion. More recently, she has been supporting Coates by rolling over mandatory distributions from her individual retirement account (IRA) to CHLA.

Kristine, a talented fashion designer, and Gary, a popular floral designer who owned two shops, lived until ages 27 and 26, respectively, longer than most people with thalassemia at the time. Fitzmaurice credits her healthy cooking. Her own longevity may owe itself in part to her ongoing passion for her philanthropy.

Fitzmaurice, who has held leadership positions with the Cooley’s Anemia Foundation, feels the presence of Kristine and Gary as she reads up on the latest research. “They are here, on my shoulder,” she says. “Even though the answers didn’t come in time for them, we are helping children around the world.” 🦋

“In my experience, Sophia’s level of involvement is unique.”

—Thomas D. Coates, MD,
section head of Hematology at the
Children’s Center for Cancer and Blood Diseases

Good News! Charitable Gift Annuity Rates Have Increased

For many Children’s Hospital Los Angeles donors, a charitable gift annuity (CGA) is a wonderful way to create a dependable stream of lifetime income—while helping provide for the future of CHLA. With a charitable gift annuity, donors can make a gift of cash, marketable securities or other assets valued at \$10,000 or more, and CHLA will in turn pay a fixed amount to the donor for life. A CGA is a great way to boost retirement income and receive a guaranteed income for one or two individuals. And as of July 1, 2018, rates of return for new CGAs have increased, making them the highest they have been in years.

- For a 65-year-old, the rate of return is 5.1 percent. When factoring in the charitable deduction and taking into account that a portion of quarterly payments is tax-free for the donor’s life expectancy, the effective rate of return is 6.25 percent.
- For an 80-year-old, the rate is 7.3 percent, with a 9.6 percent effective rate of return.
- The rate for those ages 90 and above is 9.5 percent, with an effective rate of return of 13.7 percent.

CHLA also offers deferred charitable gift annuities for donors ages 45 and above—allowing them to make a gift now and take an immediate charitable deduction, but defer receiving their guaranteed lifetime income for a number of years, when their rate of return will be higher.

CGAs not only provide great benefits for donors over a lifetime, but the proceeds will one day be used in support of CHLA’s mission to create hope and build healthier futures. 🦋

If you would like a free illustration of the income and tax implications of a charitable gift annuity, please contact Robert Weiner, vice president of Development, at rweiner@chla.usc.edu or 323-361-1749, or visit CHLA.org/PlannedGiving.

Anonymous \$20 Million Donation Funds Emergency Department Expansion



Philanthropy plays a valuable role at Children's Hospital Los Angeles. Donations fuel lifesaving work, support groundbreaking research and help us meet the needs of our community.

In 2018, an anonymous donor made a transformational \$20 million gift to fund the expansion of CHLA's Emergency Department (ED) and Trauma Center—Los Angeles County's largest and busiest emergency department devoted to children. Constructed in 2011 to accommodate 65,000 patients per year, the ED now supports more than 94,000 patient visits annually.

The generous donation will allow CHLA to increase the ED capacity by 30 percent, providing for 11 additional examination bays, updated equipment and a larger waiting area. The gift also provides support for dedicated Child Life staff to soothe anxious patients and families in the ED.

"CHLA's Emergency Department is a beacon of hope for thousands of families in some of their most vulnerable moments," says Alan L. Nager, MD, MHA, director of Emergency and Transport Medicine at CHLA. "With the new space, the department will increase its capacity to deliver safe and innovative care, improve workflow and reduce wait times, while also training the next generation of pediatric emergency specialists. We are grateful for this extraordinary gift." 🦋

UPCOMING EVENTS

Make March Matter®

March 2019

During the month of March, businesses and the community work together to raise funds for Children's Hospital Los Angeles. To find out how you can get involved, visit MakeMarchMatter.org

Men's Guild Poker Tournament

March 9, 2019

Join the Men's Guild for its 14th annual Texas Hold 'Em tournament benefiting CHLA. For information, visit MGCHLA.com

Seahorse Classic Golf Tournament

April 29, 2019

Presented by the Peninsula Committee—Tee up in the South Bay for CHLA! For information, visit PCCH.net

The Great Chocolate Race 2.5K/5K

May 5, 2019

Presented by the Flintridge Guild—Join more than 500 participants at this sweet event to raise funds for CHLA. For information, visit FGCH.la

Walk and Play L.A.

June 2019

Join in the fun at CHLA's third annual 3K walk and family fun festival featuring sports events, performances and more. (Date to be determined.) For updates, visit WalkAndPlayLA.org

IN MEMORIAM

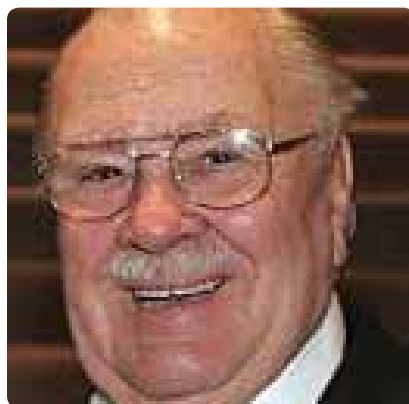


Richard D. Farman

The Children's Hospital Los Angeles community is grateful for the legacy left by Richard D. "Dick" Farman, who passed away on Aug. 3, 2018. A member of CHLA's Board of Directors and previously on the hospital's Board of Trustees since 2003, Dick steadfastly supported CHLA alongside his wife, Suzie, who has been a member of the Peninsula Committee since 1971. Dick served on numerous Board and Trustee committees during his tenure at CHLA, and he and Suzie were members of CHLA's First Families Program and Mary Duque Society.

Until his retirement in 2000, Dick was chairman and chief executive officer of Sempra Energy, a San Diego-based Fortune 500 energy services holding company. He also served on the boards of numerous organizations, including Marymount

California University and Executive Service Corps of Southern California, and was the former chairman of the board of KCET. A graduate of both Stanford University and Stanford Law School, Dick also served as an officer in the United States Navy. Dick and Suzie have two sons, and they made philanthropic gifts to name rooms in the hospital's Steven & Alexandra Cohen Foundation Newborn and Infant Critical Care Unit after each of their four grandchildren. 🦋



Thomas E. "Tom" Larkin, Jr.

Children's Hospital Los Angeles honors the contributions of Thomas E. "Tom" Larkin, Jr., who passed away on July 29, 2018. Tom served as a member of the hospital's Board of Trustees between 1999 and 2007. He also co-chaired the Heart Institute Campaign Committee during Living Proof: The Campaign for Children's Hospital Los Angeles, and was a

member of the Mary Duque Society. Prior to her passing in 2017, Tom's wife, Margaret, was a member of Las Madrinas and a past president of Children's Chain.

Tom attended the University of Notre Dame, where he earned a bachelor's degree in economics. He then served as a lieutenant in the United States Army and later completed postgraduate studies at the New York University Stern School of Business. After graduating in 1966, he entered the investment management industry, ultimately joining Trust Company of the West (TCW), a global asset management firm, and TCW Asset Management Company, which he is credited with transforming into a global giant.

In addition to providing support for CHLA, Tom served as a member of the boards for the University of Notre Dame; Loyola Marymount University; Mount Saint Mary's University; Harvard-Westlake School; the Los Angeles Orthopedic Hospital Foundation; and the Heart and Lung Surgery Foundation. 🦋

CHLA HAPPENINGS

The Walt Disney Company Visits CHLA

Senior executives from The Walt Disney Company were joined by some classic Disney characters on a visit to Children's Hospital Los Angeles in June 2018 to bring toys and smiles to patients and families in the hospital, and celebrate the 35th anniversary of the Disney VoluntEARS program.

1. Mickey Mouse and The Walt Disney Company Chairman and CEO Bob Iger with CHLA patient Jayden, age 4
2. Back row, from left: Vice President, Office of the Chairman and CEO at The Walt Disney Company Nancy Lee; CHLA Board of Foundation Trustees Co-Chair Arnie Kleiner; Chairman of Disney Parks, Experiences and Consumer Products Bob Chapek; CHLA President and CEO Paul S. Viviano; The Walt Disney Company Chairman and CEO Bob Iger; Disney Media Networks Co-Chair and ESPN President James Pitaro; and Senior Executive Vice President and CFO Christine McCarthy. Front row, from left: The Walt Disney Company Senior Executive Vice President,

General Counsel and Secretary Alan Braverman; CHLA Junior Ambassador Teddy Wirick; CHLA Senior Vice President and Chief Development Officer Alexandra Carter; Junior Ambassadors Aiden Zea, Quentin Zea, Lily Mata, Noah Jeter and Amelie Jeter; The Walt Disney Company Senior Vice President of Enterprise Social Responsibility Elissa Margolis; and Junior Ambassador Sasha Bogosian





3

Nautica Malibu Triathlon

On Sept. 16, 2018, more than 5,000 athletes participated in the Nautica Malibu Triathlon supporting pediatric cancer research at Children's Hospital Los Angeles. This year's event raised more than \$1.4 million for CHLA.

3. CHLA patient Ava Cardoso Smith sings the national anthem.
4. Master of Ceremonies Maria Menounos
5. Left to right: Director of CHLA's Children's Center for Cancer and Blood Diseases Alan Wayne, MD; CHLA patient Parker Brockway;

CHLA patient Ethan Moore; parent Aaron Moore; event emcee Maria Menounos; parent Aubrey Kelly; CHLA patient Pierce Kelly; parent Tyler Kelly; Michael Epstein of Malibu Triathlon Productions; and Alexandra Taylor, brand marketing director for ABG, parent company of Nautica

6. Swimmers heading into the ocean
7. Members of Team CHLA



4



6



5



7



8



11



9



12



10



Associate and Affiliate Events

Launched in 1914, the Associates and Affiliates are an all-volunteer force of more than 3,000 dynamic men and women who support Children’s Hospital Los Angeles. Today, 37 of these groups raise money and goodwill for CHLA through a variety of events and efforts year-round.

8. *The Peninsula Committee’s 61st annual Portuguese Bend National Horse Show was held Sept. 7-9, 2018. Members of the Peninsula Committee, left to right: Meredith Edwards, Lisa Gentry, Lisa Noski, Vall Light, Jacquie Leimbach and Anne Clark, with Norm the horse.*

9. *The Men’s Guild 13th Annual Texas Hold ‘Em Poker Tournament, held at the USC Tower in downtown Los Angeles on March 3, 2018*

10. *Participants at the third annual Flintridge Guild Great Chocolate Race, May 6, 2018*

11. *Fifteen young women were presented at the 57th Pasadena Guild of Children’s Hospital June Ball on June 16, 2018.*

12. *Left to right: Jim Cook, Dave McKinnie, Lew Latimer and Al Walsh, golfers at the Seahorse Classic Golf Tournament, presented by the Peninsula Committee on April 23, 2018*

The Children's Hospital Los Angeles Gala:

FROM PARIS WITH LOVE

On Saturday, Oct. 20, 2018, more than 1,400 supporters of Children's Hospital Los Angeles, including prominent philanthropists, local dignitaries and celebrities, came together for the Children's Hospital Los Angeles Gala. Guests were captivated by the biennial signature event's theme, "From Paris With Love," and brought to their feet by performances from Foo Fighters and Pharrell Williams. The gala raised \$5.5 million for CHLA and honored Vin Scully, Hasbro and Jimmy Kimmel with Courage to Care Awards.

"Children's Hospital Los Angeles is incredibly grateful to each of you for your support, which helps our hospital provide transformative compassionate care more than half a million times a year," Children's Hospital Los Angeles President and Chief Executive Officer Paul S. Viviano told the audience.

Broadcasting legend Vin Scully represents the voice of Los Angeles, and has lent that voice to campaigns supporting CHLA and children's health care funding. Late-night talk show host Jimmy Kimmel and his wife, Molly McNearney, elevated the national conversation about health care and encouraged all to support the hospital after their son, Billy, was diagnosed with a heart defect and

received lifesaving surgery at CHLA. And Hasbro has been a committed partner to the hospital, both through generous philanthropic giving and regular, sustaining donations to the hospital's toy program for patients.

1. Cheryl Saban, PhD, member of the CHLA Foundation Board of Trustees, who also designed and crafted the handblown Courage to Care Award vases
2. Actor Josh Gad with actor and 2018 CHLA Gala emcee Jesse Tyler Ferguson
3. Caitlin McHugh and John Stamos
4. Guests from Courage to Care honoree Hasbro, L-R: Jeff Davis; Karen Davis; Gary Lucchesi; Deborah Lucchesi; Steve Davis; Barbara Goldner; Hasbro Chief Executive Officer Brian Goldner; Will Davis; Peggy Davis; Carol Nicolau; and Kimo Worthington





5

5. The Gala's theme, "From Paris With Love," transported guests to the City of Lights.
6. Left to right: Nikki DeLoach, Jamie-Lynn Sigler and Malin Åkerman
7. Legendary Dodgers broadcaster Vin Scully takes the stage to accept the first Courage to Care Award of the evening.
8. Nine-year-old Eliana Georges danced on stage with Pharrell Williams, and shared a moment with him after his show-stopping performance.

9. Left to right: Blaine Fetter, Co-Chair of the CHLA Foundation Board of Trustees Lynda Boone Fetter, and Erika and Kyle Fetter.
10. Left to right: CHLA President and Chief Executive Officer Paul S. Viviano member of the CHLA Foundation Board of Trustees Mary Hart, and Courage to Care honoree Vin Scully
11. Tanya Chorn and Robin Chorn, MD, Trustee of the Sydney Smith Trust
12. Carol Kleiner and Arnie Kleiner, co-chair of the CHLA Foundation Board of Trustees
13. Twelve-time Grammy Award-winning Foo Fighters opened the gala to a standing ovation.



6



9



7



10



12



8



11



13



CHILDREN'S HOSPITAL LOS ANGELES GALA

FROM PARIS with Love

PROUDLY
PRESENTED BY



14. Left to right: CHLA President and CEO Paul S. Viviano; grateful patient parent and member of the CHLA Foundation Board of Trustees Jennifer Page; and Brian Goldner, chief executive officer of Courage to Care honoree Hasbro

15. Left to right: Jonathan Weiss, Jody Weiss, Gabriel Wisdom, Diana Weiss Wisdom, Robert Detlof, Debbie Weiss, Howard Keyes, Elaine Keyes and Bud Shapiro

16. Kris and Becky Lythgoe

17. Left to right: Courage to Care honoree Jimmy Kimmel, members of the CHLA Foundation Board of Trustees Jihee Huh and Mitch Mitchell, and Rebecca Mitchell

18. Chair of the CHLA Board of Directors Jeff Worthe (right) with daughters LouLou (left) and Genevieve, and his wife, Kristin

19. Molly McNearney and Courage to Care honoree Jimmy Kimmel with CHLA Heart Institute Co-Director and Head of the Division of Cardiothoracic Surgery Vaughn Starnes, MD. Starnes performed lifesaving surgery on their son, Billy, to treat his heart defect.

20. CHLA President and CEO Paul S. Viviano with Alex Meneses Simpson, member of the CHLA Foundation Board of Trustees

21. Left to right: Member of the CHLA Foundation Board of Trustees Jennifer Page, actor and CHLA heart patient Max Page, Buck Page and Els Page





22

22. Longtime CHLA supporter, supermodel and TV personality Heidi Klum enjoying the show



23

23. Courage to Care honoree Jimmy Kimmel donned glasses so no one would see him tear up. Kimmel also announced that he and his wife, Molly McNearney, would be donating \$1 million to Children's Hospital Los Angeles.

24. Kevin O'Connell and Mary Adams O'Connell, member of the CHLA Foundation Board of Trustees

25. Left to right: CHLA President and CEO Paul S. Viviano, grateful patient parent and Courage to Care honoree Jimmy Kimmel, and The Walt Disney Company Chairman and CEO Bob Iger



24

26. Left to right: Amy Adolph, counsel, ABC Network (left); Whitney Fair, associate principal counsel, Disney ABC Networks Group; member of CHLA's Board of Directors and KABC-TV President and General Manager Cheryl Kunin Fair; Don Fair, senior coordinating producer for Fox News; Marisa Fair, director of Artist Marketing for Pandora; and Emily Bines, senior creative director for Kobalt Music



25



26

EVENT SPONSORS

Presenting Sponsor

Hasbro

Benefactor

Costco

The Walt Disney Company

The Sydney Smith Trust

Premier

Goldhirsh-Yellin Foundation

Molly McNearney and Jimmy Kimmel

Kristin and Jeffrey Worthe

Patron

Keyes Automotive

Mary Adams O'Connell
and Kevin O'Connell

Joan Payden

Payden & Rygel

Stanley Wayne Ekstrom Foundation

Friend

AEG

Black and White Car Rental

Cerner Corporation

Delta Air Lines

Blaine and Lynda Fetter

The Gorelik and Dallavecchia Family

Mary Hart and Burt Sugarman

Hub International

William H. Hurt

Johnny Carson Foundation

Susan and Daniel Kane

Alex Meneses Simpson

n:Philanthropy

Pacific American Fish Company
and the Huh Family

Paramount Pictures

Kathleen and Larry Paul

Beth Price

Lori and Ted Samuels

The Simms Family

Simms/Mann Family Foundation

Sodexo

Trevesa and James Terrile

John and Sharon Tesoriero

Alia and Ron Tutor

VIVA XXXII Tequila

USC Department of Surgery

Wells Fargo





WALK AND PLAY L.A.

On June 2, 2018, the second annual Walk and Play L.A. event took place at the Los Angeles Memorial Coliseum, raising more than \$300,000 in support of Children's Hospital Los Angeles. More than 1,500 participants and 130 teams came out for the 3K walk around Exposition Park, followed by exclusive sports clinics for kids hosted by professional athletes—including mixed martial artist Anderson Silva; coaches from the L.A. Galaxy; Los Angeles Kings alumni Daryl Evans and Pete Demers; Los Angeles Chargers players Craig Mager and Geno Smith; and NFL alumni Terrell Thomas and Lawrence Jackson. The event also featured a family festival and live entertainment.

1. The music group JAGMAC perform for guests.
2. Mixed martial artist Anderson Silva works with kids during a sports clinic after the walk.
3. Former NFL player and CHLA patient Lawrence Jackson looks on as a child runs through a skills course at one of the event's sports clinics.
4. The Los Angeles Kings' Ice Girls
5. Volunteers from the Amerman Family Foundation Dog Therapy Program came out to meet participants—and even brought their humans. L-R: Lucy, Elisa Angeletti and Jackie Grant.
6. Participants head out at the start of the walk.
7. CHLA President and Chief Executive Officer Paul S. Viviano thanks the crowd for supporting CHLA.
8. Legendary bassist and Walk and Play L.A. participant Michael Anthony joins teen performers from "School of Rock" onstage for their rendition of Van Halen's "Jump."

The date for next year's event will be announced soon! For updates, visit WalkandPlayLA.org.



MAKE MARCH MATTER®

The annual Make March Matter® fundraising campaign brings local businesses and the community together to support Children's Hospital Los Angeles. Through a variety of programs and events each day of the month of March, thousands of participants raise money for the hospital's Helping Hands Fund, which ensures that all CHLA patients receive the highest-quality care. In 2018, Make March Matter raised \$2 million, double the campaign's fundraising goal.

1. *Left to right: KOST radio host Ellen K., Darlene Rodrigo of iHeartMedia, Yael Grobglas from "Jane the Virgin," Patrick Adams from "Suits," Troian Bellisario of "Pretty Little Liars," and Brooke Lyons and Elliot Knight from "Life Sentence" helped Make March Matter by passing out coffee, tea and snacks to parents of CHLA patients.*
2. *The L.A. Galaxy helped Make March Matter, welcoming CHLA patient Pierce Kelly and his mom, Aubrey, onto the field with team mascot Cozmo to inspire soccer fans.*
3. *An event in September honored corporate partners who supported the Make March Matter effort. J'Adore Les Fleurs presented a \$10,000 gift to CHLA.*

4. *Victoria Arlen, holding CHLA patient Pierce Kelly, helped kick off Make March Matter at CHLA.*
5. *CHLA patient and entrepreneur Grace Rose, 15, dedicated a portion of sales from her clothing line, Rosie G Style, to Make March Matter.*
6. *Make March Matter fundraising efforts were featured at CHLA's Los Angeles Kings Title Night hockey game.*

To get involved with Make March Matter in 2019, visit MakeMarchMatter.org, or find us on Twitter and Instagram @MakeMarchMatter.





**MAKE
MARCH
MATTER®**

HONOR ROLL OF DONORS

Children's Hospital Los Angeles

In 1901, Children's Hospital Los Angeles was founded by a small group of caring individuals at a time when few people believed a hospital for children was possible, let alone that it could evolve into one of the world's outstanding pediatric health care facilities. More than a century later, the compassion of those founding members continues to thrive as support for Children's Hospital is carried from one generation to the next. The hospital's international recognition is a testament to years of dedicated efforts from faculty, staff and volunteers—as well as the individuals, organizations, corporations and foundations whose philanthropic support plays a pivotal role in our mission to create hope and build healthier futures for children.

As a pediatric academic medical center, we provide more than just the finest clinical care; we also remain at the forefront of research and training. Given the fundamental differences in the health care of kids and adults, the best place to discover and develop the safest, most effective therapies and devices for children is a hospital dedicated exclusively to their care. As a global leader in improving treatment options, developing cures and elevating the next generation of pediatric professionals, we have seen our commitment to caring—and the impact of our donors' support—grow and extend far beyond Los Angeles.

On behalf of all the children and families whose lives you have impacted, and everyone at Children's Hospital Los Angeles, we offer our sincere thanks.

We strive to accurately recognize our donors. Please inform us of any errors or omissions by contacting Deborah Kim, director of Stewardship and Donor Relations, at dekim@chla.usc.edu or 323-361-1713.

LIFETIME GIVING

Children's Hospital Los Angeles is deeply grateful to the donors who support our institution. The legacy of Children's Hospital Los Angeles is a legacy of philanthropic partners committed to providing the highest-quality health care to the children and families in our community. Our lifetime giving lists recognize donors who have made contributions of \$1 million or more, as well as those who have included the hospital in their estate plans or have made planned gift commitments, as of June 1, 2018. Thank you for your dedication and generosity.

MARY DUQUE SOCIETY

The Mary Duque Society honors supporters with lifetime giving of \$1 million or more.

\$50,000,000

Marion and John E. Anderson
Cheryl and Haim Saban
The Saban Family Foundation
The McAlister Family
The Associates of the Associate and Affiliate Groups
Anchors Guild
Antelope Valley Guild
Bel Air Guild
Centennial Guild
Children's Chain
Della Robbia Guild
El Segundo Auxiliary
Flintridge Guild
FOCUS
Glendale Auxiliary
La Providencia Guild
Las Hermanas Guild
Las Primeras Guild
Mary Duque Guild
Mary Duque Juniors
Men's Guild
Monrovia Guild
Northridge Guild
Peninsula Committee
San Antonio Guild
Santa Monica Bay Auxiliary
Sierra Guild
South Bay Auxiliary
Toluca Guild
Westside Guild
Whittier Guild
Young Professionals Council
Children's Hospital Patient Art Cards
Children's Hospital Patient Art Calendar
Gabriel C. and Mary Duque Gift Shop
Las Madras
Pasadena Guild

\$25,000,000 – \$49,999,999

Costco Wholesale
T.J. Martell Foundation

\$5,000,000 – \$24,999,999

The Ahmanson Foundation
Mr. George Alva
Anna Bing Arnold
Alan and Ruth Berliner
Burtie Green Bettingen
Joyce and Stanley Black and Family
California Community Foundation
The California Wellness Foundation
Johnny Carson Foundation
Dr. Peggy Tsiang Cherng and Mr. Andrew Cherng
Children's Chain
Children's Hospital Los Angeles Thrift Shop
L.J. Christopher
Helen and Bill Close
Steven & Alexandra Cohen Foundation
Credit Unions for Kids



Mr. and Mrs. Michael D. Dalany
 Ernest Odin Ellison and Tim Duffy
 Roger and Patricia Featherston
 Tom and Holly Gores
 Mr. and Mrs. Ronald E. Gother
 Dolly Green
 Helinet Aviation Services
 Doris C. Helms
 William H. Hurt
 William H. Hurt Foundation
 W.M. Keck Foundation
 Mr. and Mrs. Russell Davis Keely
 Kohl's Department Stores, Inc.
 Mr. and Mrs. Franklyn Griffith Kostlan
 La Providencia Guild
 The Thomas and Dorothy Leavey Foundation
 Dr. Charles B. and Joyce O'Gar Lilly
 The Sharon D. Lund Foundation
 The Maurice Marciano Family Foundation
 Patricia and John Merrell
 The Moore Family
 Ford Theodore Miller Murphy Family
 Juliette and George C. Page
 Ms. Jane Vruwink Palmer
 Panda Restaurant Group, Inc.
 The Ralph M. Parsons Foundation
 Ms. Joanne Patton
 Peninsula Committee
 Margie and Robert E. Petersen Foundation
 Mr. and Mrs. Alan Purwin
 Rite Aid Corporation
 Victoria and Ronald Simms
 The Simms/Mann Family Foundation
 St. Baldrick's Foundation
 Mrs. Susan St. John
 John Stauffer Charitable Trust
 UniHealth Foundation
 United Way of Greater Los Angeles
 Mr. Lee Vandervelde
 Walmart and Sam's Club
 The Walt Disney Company Foundation
 Anita S. Watson
 Weingart Foundation
 Westside Guild
 The Billy and Audrey L. Wilder Foundation

\$1,000,000 – \$4,999,999

Chris Albrecht
 Alex's Lemonade Stand Foundation
 Commander Richard Allen
 Caren Elise Allmand
 American Cancer Society, Inc.
 Amerman Family Foundation
 The Annenberg Foundation
 Ms. Wallis Annenberg
 Antelope Valley Guild
 Rebecca and Andrew Apfelberg
 Armenian Ambassadors of
 Children's Hospital Los Angeles
 Autism Speaks

Mr. Hay Edward Baher
 Bank of America
 Mr. Marty Banks
 Mr. Gene Barger
 Bel Air Guild
 Mr. Aaron Belokamen in honor of
 Lilian and David Belokamen
 H.N. and Frances C. Berger Foundation
 Beverly Hills Properties
 The Bireley Foundation
 Mr. Elias Bishara
 Ms. Lillian Bishop
 Marion C. Blalock
 Anthem Blue Cross
 Blue Shield of California Foundation
 Bogart Pediatric Cancer Research Program
 The Otis Booth Foundation
 Debbe and Spike Booth
 Eitel Wilson Bowles and Robert Bowles Memorial Fund
 Mr. and Mrs. Clifton H. Brown
 Ronald W. Burkle
 Audrey Steele Burnand
 Fritz B. Burns Foundation
 California Institute of Regenerative Medicine
 The Capital Group Companies
 Tina and Rick Caruso
 Centennial Guild
 Ms. Jane Cha
 The Chase Foundation
 Chevron Corporation
 Children's Hospital Card and Stationery Office
 Entertainment Leadership Council
 Heart Ambassadors of Children's Hospital Los Angeles
 Clayton Foundation for Research
 Mr. Grover Collins
 Hugh and Audy Lou Colvin Foundation
 Concern Foundation
 Confidence Foundation
 Michael J. Connell Foundation
 Corday Foundation
 Kenneth and Sherry Corday
 Elizabeth Corlin
 Melania Coto and Family Foundation
 Julia E. Cramer
 Mr. and Mrs. C.J. Cramer
 The Crawford Family Foundation
 Ms. Edra Crocker
 Crohn's & Colitis Foundation of America
 Dan and Martha Cuñado Family
 Curing Kids Cancer
 Mary and Gary Damsker
 Mr. and Mrs. Kirk A. Day
 Mr. and Mrs. Dorn K. Dean
 Della Robbia Guild
 Delta Delta Delta Sleighbell Committee
 The Corwin D. Denney Foundation
 Nanci Denney Bergin
 Raymond Arnold Disney
 Doll Fair
 Kirk and Anne Douglas
 Joseph Drown Foundation
 Doris Duke Charitable Foundation
 The Gabriel C. and Mary Duque Gift Shop
 Mary and Gabriel C. Duque
 Ms. Helen Dyess
 Frances Crandall Dyke
 Orrin K. Earle
 The Margaret E. Early Medical Research Trust
 Howard F. and Gwynne T. Eckes
 El Segundo Auxiliary
 Mr. and Mrs. Leon Ellison
 Entravision Communications Corp.
 Epilepsy Foundation of Greater Los Angeles
 Mr. Michael Epstein
 In honor of Mildred Esterbrook Mudd
 Caroline Etchemendy
 Ms. Marylynn Evans
 Max Factor Family Foundation
 R. Douglas Fanning
 The Farman Family
 Lynda and Blaine Fetter
 Ms. Sophia Scano Fitzmaurice
 Flintridge Guild
 Fox Entertainment Group
 Mrs. Dorothy F. Fredericks
 Don and Lorraine Freeberg Foundation
 Mr. and Mrs. Daniel D. Freeberg
 Bob and Sami Freedman
 Gateway for Cancer Research
 Mrs. Elsie Gelber
 Herbert M. and Beverly J. Gelfand
 Mrs. Irene K. Gerdtz
 Kathy and Maureen Girouard
 Elizabeth Glaser Pediatric AIDS Foundation
 Mr. Cameron Glidwell
 Kate and David Golderer
 Good Hope Medical Foundation
 Mrs. Brindell Roberts Gottlieb
 Joseph B. Gould Foundation
 Mrs. Helen Graux
 Mary Lou and Terence Green
 The Green House
 Dr. and Mrs. Alan Gross
 Henry L. Guenther Foundation
 The Stanley E. Hanson Foundation
 Mr. Adrian Hardy
 Mary Hart and Burt Sugarman
 Hasbro, Inc.
 HBO
 Ms. Amber Heard
 Hearst Foundations
 HEDCO Foundation
 Kimberly and Ronald D. Hegardt
 Audrey Hepburn Children's Fund
 Mr. John C. Herklotz
 George W. Herman
 Higgins Family Charitable Foundation
 The Hoag Foundation
 The Michael Hoefflin Foundation
 H. Leslie and Elaine S. Hoffman Foundation
 Howe-Allen-Theis Trust
 Donald and Marjorie Howley
 Mr. George Huber
 Hurlbut-Johnson Charitable Trusts
 Hyundai Motor America
 Incentive Aid Foundation
 IHOP Restaurants
 The Fletcher Jones Foundation
 KABC-TV 7
 Louis and Annette Kaufman
 Drs. Faye and Jonathan Kellerman
 Carol and Arnold J. Kleiner
 Mr. Donald L. Kneer
 Mr. Douglas W. Knight
 The Kort Family Foundation
 Mr. Walter Lake
 Mr. Thomas E. Larkin Jr.
 Las Hermanas Guild
 Lazer Broadcasting Corporation
 Christina and George Legg in honor of Matthew Foster
 Leukemia & Lymphoma Society
 Mr. Morris Leviloff
 Mr. Lloyd Levine
 The Lincy Foundation
 Lopez Family Foundation
 Los Angeles Kings - Kings Care Foundation
 Beth and Bob Lowe
 The Gary Magness Family Foundation
 Anna Murdoch Mann
 Blind Childrens Center - Margaret Bundy Scott Trust
 Mr. Lee Marks
 Marriott International, Inc.
 Mary Duque Guild
 Mary Duque Juniors
 Ronald and Annette Massman
 The Harold McAlister Charitable Foundation
 Callie D. McGrath Foundation
 The Shirley McKernan Courage Foundation
 McLane Company, Inc.
 Ms. Alberta P. McNamara
 L.M. McOmie
 Harriett and Frederick Mellinger

Ms. Evelyn C. Melough
Men's Guild
The Johnny Mercer Foundation
Nautica Malibu Triathlon
Irene Combe Miller
Mrs. M. Kinzie Miller
The Larry & Celia Moh Foundation
Mr. and Mrs. Michael Moh
The Morf Foundation
Keleigh and Michael Morgan
Rupert Murdoch
A. Linn Murphree, MD
Names Family Foundation
Emma and Christopher Nolan
The Kenneth T. and Eileen L. Norris Foundation
Mrs. Harlyne Norris
Mr. José L. Oliva Jr.
Alex and Margaret Oser
Ms. Mary Joan Palevsky
Pediatric Cancer Research Foundation
Ms. Magdalene Peregrin
Jean Perkins Foundation
Anna K. Pfeiffer
Amy D. Phillips
The Pipkin Family
Teresa and Byron Pollitt
Kris Popovich
QueensCare
Mrs. Lucille Raskoff-Banks
Rauch Family Foundation
RE/MAX
Mr. Bennie C. Reagan
Mr. Alfred Redisch
The Philip and Audrey Gillan Reed Charitable Trust
Refinoblastoma International
Robin and Susan Richards
Mr. Andrew Riegel
Dayle and Ken Roath
Shirlee A. Roberts in honor of
Lewis and Gladys Roberts
The Harry W. and Virginia Robinson Trust
Ronald McDonald House Charities
Mrs. Kathy Rose
Mr. Walter B. Rose
The Rose Hills Foundation
Mr. Richard Rosenblatt
Philip and Monica Rosenthal
Ruth and Art Rosinsky
Hazel Gibbons Ross
Mr. Jim Roth
Mrs. Anne Rothenberg
Mr. and Mrs. Stuart Rubin
Mr. Barry Rudin
Ruby L. Rudine
Paula and Allan Rudnick
In honor of Claiborn A. Saint
Mr. and Mrs. Theodore R. Samuels
Toni and Oscar Sanchez
Mr. T. Denny Sanford
The Santa Anita Foundation and
Los Angeles Turf Club, Inc.
Santa Monica Bay Auxiliary
Mrs. June Sapiro
Jane W. Schimpff
Katherine B. Schoby
The Seaver Institute
Mr. and Mrs. Robert Tharp Shepherd
Silicon Valley Community Foundation
Sarah Silver
Mr. and Mrs. Thomas M. Simms
Mr. and Mrs. Herbert S. Simon
Jefery Levy and Pamela Skaist-Levy
Margaret Anne Slater
Mr. and Mrs. Lance Smigel
Mr. and Mrs. Scott Smigel
Mrs. Suzan K. Smigel
The H. Russell Smith Foundation
Mr. and Mrs. Charles W. Smith
Mr. Stewart R. Smith and Ms. Robin A. Ferracone
Sydney Smith
The Andre Sobel River of Life Foundation

Sodexo, Inc.
Paul N. Sommer
South Bay Auxiliary
G.N. Spencer
Spiritual Care Guild
John M. Stahl
Starz Media, LLC
Mr. and Mrs. Eugene Stein
Donald and Shelley Sterling
Mr. J. Stibbards
STOP CANCER
Mr. Jack Teeters
Flora L. Thornton Foundation
Ms. Loretta E. Timbrook
Toluca Guild
Ms. Juanita Travers
John C. and Alice C. Tyler
The V Foundation for Cancer Research
Mr. A. Ray Van Horn
I.N. and Susanna H. Van Nuys Foundation
Mr. Hassan Virani
Esther and Tom Wachtell
Walgreens
Marilyn and George Wallace
Wasserman Foundation
Dorothy Currie Waugh
The Webb Foundation
Mr. and Mrs. Lewis Webb Jr.
Mr. and Mrs. William P. Weidner
Wells Fargo
Gladys F. Wetherby
Mr. Leland K. Whittier
Whittier Guild
Maureen and David F. Williams
Mrs. Janet G. Williamson
Madeline Frances Wills
Mignon Winans
Marian R. Wingert
Mr. and Mrs. Robert L. Winston
The Robert Wood Johnson Foundation
Judge Arleigh Woods
Drs. Jane and Morton Woolley
Jeff and Kristin Worth

EMMA PHILLIPS SOCIETY

The Emma Phillips Society recognizes donors who have included Children's Hospital Los Angeles in their estate plans by making a bequest to the hospital in their will or living trust, or who have made other planned gift commitments.

Chris Albrecht
Mr. and Mrs. Douglas R. Allensworth
Mr. George Alva
Ms. Brooke Anderson
Mrs. Edith Anderson
Rebecca and Andrew Apfelberg
Mr. Warren Jefferson Arnett
Mr. and Mrs. Craig C. Baise
Mr. and Mrs. Charles George Bakaly, Jr.
Michael A. Barr
Tom and Sherry Barrat
Mr. Aaron Belokamen in honor of
Lilian and David Belokamen
Ms. Judy Bennis
Alan and Ruth Berliner
Mrs. Lanie Bernhard
Ms. Laurie Bernhard
Ms. Lillian Bishop
Joyce and Stanley Black and Family
Mr. and Mrs. Charles Anthony Bolster
Debbe and Spike Booth
Ms. Susan Brinkama
Ms. Kathleen L. Brown and Mr. Van Gordon Sauter
Ms. Delores Burkland
Ronald W. Burkle
Audrey Steele Burnand
Mr. and Mrs. Neil F. Campbell Jr.
Neil and Karen Carrey in honor of Christopher Carrey
Mr. and Mrs. Ralph H. Catalano

Ms. Marjorie Cates
Dennis Chaffey
Mrs. Alice Chan
Catherine C. Cheney
Helen and Bill Close
Mr. and Mrs. Lyman Bruce Coffey
Mr. and Mrs. Theodore Louis Cohen
Sam and Cynthia Coleman
Ms. Shelley L. Conger
Mr. and Mrs. John E. Cookman Jr.
Melania Coto and Family Foundation
Mr. Verne M. Cottom
Ms. Edra Crocker
Lucy and Don Crumrine
Mr. Charles Cummings
Dan and Maritha Cuñado Family
Mr. and Mrs. Michael D. Dalany
Gary Damsker and Roni-Lynn Millder
Mary and Gary Damsker
Dr. and Mrs. Leonard I. Dauer
Dr. and Mrs. Yves A. De Clerck
The Grace DeDieu Foundation
Mr. and Mrs. James Deeken
Mr. and Mrs. Rudy R. DeLeo
Paula and Tim Doherty
Ms. Judith Dolan
Norman H. Drechsel
Mr. and Mrs. William Driscoll
Mr. and Mrs. Trey Duval
Ms. Patricia Eckley
Mr. and Mrs. Allan Eisenman
Mr. and Mrs. James George Ellis
Ernest Odin Ellison and Tim Duffy
Ms. Tanya Engle
Andrea and Frank Epinger
Lynda and Al Fadel and Family
R. Douglas Fanning
Mr. and Mrs. William Farnam
Roger and Patricia Featherston
Lynda and Blaine Fetter
Mr. Francis D. Fetty
Ms. Sophia Scano Fitzmaurice
Mrs. Patricia Fletcher



Kristy J. Fletcher
Mrs. Dorothy F. Fredericks
Mrs. Loretta Frye
Ms. Ann Furnas
Mr. and Mrs. James Marshall Galbraith
Mrs. Millie Garretson
Martha and Steven Garske
Herbert M. and Beverly J. Gelfand
Kathy and Maureen Girouard
Kate and David Golderer
Mary Lou and Terence Green
Mary Dee Hacker, RN, and
Steven W. Nishibayashi, MD
Mrs. Caroline Halili and Mr. Andrew Bikichky

Dr. and Mrs. George Denman Hammond
 In honor of our daughter, Mary Abigail Hanson
 Ms. Carol Harmon
 Mr. Myron Arthur Hartwig
 The Family of Adam Jeffrey Hatwan
 Mrs. Milania Henley
 Mr. John C. Herklotz
 Mr. and Mrs. Jaime A. Hernandez
 Ms. Miriam Hetsler and Ms. Chris Kelley
 Mrs. David B. Hill in honor of
 Rosemary Rae Hill Hansen
 Ann and Steve Hinchliffe
 Ms. Linda Joyce Hodge
 Ms. Melissa Hogarth-Brown
 Amrita and William Holden
 Dr. and Mrs. Sung J. Hong
 Fatemeh Hosseini
 Mr. Alan Hymowitz
 Ms. Elizabeth Ince
 Robert A. Jacobs, MD, MPH
 Mr. John Jameson
 Mr. and Mrs. Richard C. Johnson
 Mr. and Mrs. Joe Kaczorowski
 Mrs. Beatrice Kahn-Boykoff
 Virginia and Michael Kazanjian
 Mrs. Jane Keeler
 Mr. and Mrs. Russell Davis Keely
 Mr. and Mrs. Peter Kelly
 Mr. Mike Kelly
 Ms. Phillis Kemp
 Ms. Punita Khanna and Mr. John R. Yates
 Paul and Daphne King
 Mrs. Michael D. King
 Anthony Kistler
 Mr. and Mrs. Stuart Klabin
 Ms. Aleta L. Knight
 Mr. Edward Knight Jr.
 Ms. Marilyn Kohls
 Ms. Martha Koplín
 Ms. Rosby Lamm
 Ms. Jane Langley
 Mr. and Mrs. Kevin J. Lanigan
 Mr. Thomas E. Larkin Jr.
 Sara and Erik Larson
 The Michael Learned Family
 Ms. Lisa Rowe Legg
 Christina and George Legg in honor of Matthew Foster
 Mr. Lloyd Levine
 Nancy and Ken Lewis
 Dr. Charles B. and Joyce O'Gar Lilly
 Mr. and Mrs. Richard Linn
 Mrs. Linda Lipscomb
 Mr. and Mrs. T. Michael Liquori
 Mr. Michael D. Lockwood
 Claudia and Jim Looney
 Ernesto A. Lopez
 Mr. José I. Lozano
 Mr. and Mrs. Richard J. Luciano
 Carolyn and Bruce Ludwig
 Kevin Peisheng Ma
 Eithne F. MacLaughlin, MD
 Mrs. Melba Macneil
 Ms. Ortense Madrid
 Mr. Chris Maes
 Mr. and Mrs. Peter D. Mallory
 Carol and Douglas Mancino
 The Maurice Marciano Family Foundation
 Lori C. Marshall, PhD
 Marshall R. and Marilyn Kading Martinez
 Mr. Robert Martone
 Ronald and Annette Massman
 Mrs. Arthur M. McClure
 Mr. and Mrs. Malcolm McDuffie
 Linda and Terry F. McLean
 Mr. and Mrs. Philip McMahan
 Ms. Karena Mediate
 Ms. Evelyn C. Melough
 Patricia and John Merrell
 Caryl and Jeffrey Merritt
 Raylene and Bruce Meyer
 Mr. and Mrs. Marc Mostman

Tom and Anne Muller
 A. Linn Murphree, MD
 Mr. and Mrs. Larry S. Murphy
 Dr. and Mrs. Robert W. Nafie
 Ken Nelson
 Carol Nisson
 Bill and Susan Noce
 Lynn B. Oberman
 Mary Adams O'Connell and Kevin O'Connell
 Mr. José L. Oliva Jr.



Mr. Chris Pahl
 Ms. Jane Vruwink Palmer
 Mr. Panhi Panhi
 Viridette L. Brumm, PhD, and Robertson Parkman, MD
 Gordon J. Pashgian
 Nancy and Sidney Petersen
 John D. and Victoria R. Pettker
 Mr. and Mrs. David Phung
 Mr. and Mrs. Boris Pillin
 The Pipkin Family
 D. Brent Polk, MD, and Mr. Terry Carr-Hall
 Ms. Karol Pozniak
 Mrs. Maria Preacher
 Margaret and Ron Preissman
 Mrs. Sandra Rapke
 Mrs. Lucille Raskoff-Banks
 Robin and Susan Richards
 Mr. Allen Ridderhoff
 In honor of Sophie Riem
 Kimberlee and Robert Rollo
 Mr. and Mrs. Marino P. Romano
 Mr. and Mrs. Charles B. Rooney
 Mrs. Kathy Rose
 Mr. Walter B. Rose
 Mr. and Mrs. Mitch Rosenberg
 Mr. Richard Rosenblatt
 Mr. Jim Roth
 Mr. and Mrs. Stuart Rubin
 Mr. Barry Rudin
 Paula and Allan Rudnick
 Carmie and Michael Saldana
 Toni and Oscar Sanchez
 Ms. Etelvina Sandoval
 Carolyn and Scott Sanford
 Mr. and Mrs. Keith G. Sawa
 Mr. Larry Sayen
 Zoe and Jonathan Schaeffer
 Paul and Judy Schaeffer
 Ms. Kathie Schiff
 Laura and Michael Schulte
 Hisako and Ramon Sharp
 Ms. Dorothy Shepard
 Dr. Stuart and Barbara Siegel
 Miss June Silen
 Mr. Joseph Simpson
 Bernhard H. Singsen, MD, MPH
 Mrs. Joyce Skinner
 Mr. and Mrs. Scott Smigel

Ms. Helen Smith
 Mr. and Mrs. Russell K. Snow Jr.
 Matt, Larissa and Luke Sonnen in honor of Layla Paige
 John and Kathy Sottile
 Ms. Earlyn Spector
 Mrs. Susan St. John
 Dr. Philip and Penny Stanley
 Mr. and Mrs. William M. Stewart
 Mr. and Mrs. Robert Stone
 Mr. and Mrs. Peter E. Strauss
 Ms. Patricia Streeter
 Samantha and Ryan Stromsberg
 Mary Hart and Burt Sugarman
 Ms. Dolores Swinn
 Mr. Steven P. Switzer
 Mr. Heman Taube
 Ms. Elizabeth M. Taylor
 Mr. and Mrs. Eszylfie Taylor
 Mrs. Nancy P. Taylor
 Mr. Eldon Teper
 Mrs. Lynn Titus
 Dr. and Mrs. Joshua Trabelus
 Ms. Lynne Tracy
 Mrs. Jane Tritt
 Mary Turk
 Mr. A. Ray Van Horn
 Ms. Judith Vidor
 Mr. Hassan Virani
 Tom and Celeste Von Der Ahe
 Mr. and Mrs. Eric Wald
 Marilyn and George Wallace
 Mr. Michael Walter
 David Warburton, OBE, DSc, MD, and Family
 Ms. Carole Warren
 Mr. and Mrs. David D. Watts
 Dorothy Currie Waugh
 Ms. Karen Maile Webster
 Mrs. Hildegard Weck
 Mr. and Mrs. Robert E. Weiner
 Ms. Irene Wertz
 Diane Wheeler
 Mr. and Mrs. John H. Wilkens Jr.
 Roberta G. Williams, MD
 Maureen and David F. Williams
 Karen and Wally Wirick
 Mr. and Mrs. Edward J. Wirtz
 Ms. Tana U. Wong in honor of Ann and Tom Ung
 Judge Arleigh Woods
 Drs. Jane and Morton Woolley
 Susan Lynn Wright In honor of Jason Pittman
 Dick and Judy Zeigler
 Ms. Diane V. Zeoli

FISCAL YEAR 2018 DONOR HONOR ROLL

For the time period of July 1, 2017,
through June 30, 2018

We are honored to acknowledge our extraordinary donors for their generosity during fiscal year 2018. This Honor Roll recognizes donors for contributions of \$1,000 or more in the form of outright gifts, new pledges or payments made on active commitments made in prior fiscal years. We are also proud to honor those who have contributed gifts of \$150 to \$999 on the Red Wagon Society Honor Roll of Donors, viewable at CHLA.org/HonorRoll. Additionally, we extend our gratitude to donors who directed their generosity through one of our Associate and Affiliate or allied groups.

\$10,000,000 – \$49,999,999

Ford Theodore Miller Murphy Family

\$5,000,000 – \$9,999,999

Roger and Patricia Featherston
Mr. Lee Vanderveelde

\$1,000,000 – \$4,999,999

The Ahmanson Foundation
Tom and Holly Gores
Higgins Family Charitable Foundation
Mr. Donald L. Kneer
DL Kneer Charitable Trust
Las Madrinas
Mr. Lloyd Levine
Ms. Evelyn C. Melough
Panda Restaurant Group, Inc.
Pasadena Guild
Sydney Smith
Maureen and David F. Williams

\$500,000 – \$999,999

Sarah Jane Benzino
Joyce and Stanley Black and Family
Ms. Donna Brady
California Community Foundation
Mr. Mel Cantor
Jamie Lee Curtis and Christopher Guest
Don and Lorraine Freeberg Foundation
The Donaghue Foundation
Mr. and Mrs. Daniel D. Freeberg
Hasbro, Inc.
Dr. and Mrs. Daniel S. Higgins
William H. Hurt
William H. Hurt Foundation
Hyundai Hope on Wheels
Hyundai Motor America
John Stauffer Charitable Trust
Kohl's Department Stores, Inc.
Los Compadres
The Sharon D. Lund Foundation
The Morf Foundation
Network for Good
Carol Nisson
Emma and Christopher Nolan
Peninsula Committee
Gustavus and Louise Pfeiffer Research Foundation
Prizeo US, LLC
Rauch Family Foundation
Victoria and Ronald Simms
The Simms/Mann Family Foundation
St. Baldrick's Foundation
The Stanley and Joyce Black Family Foundation
The V Foundation for Cancer Research
Mrs. Janet G. Williamson

\$100,000 – \$499,999

The Alden Girls
Alex's Lemonade Stand Foundation

Ms. Dorothy Allen
Byron Allen
American Heart Association, Inc.
Autism Speaks
June and Merle Banta
Barry's Ticket Service, Inc.
Jane and Philip Bellomy
Nanci Denney Bergin
Debbe and Spike Booth
Alfred E Mann Family Foundation
in honor of Alfred E Mann
Saul Brandman Foundation
Ted and Bea Braun
Beatrice B. Braun Trust
Mr. and Mrs. David R. Butterworth
Dr. and Mrs. Richard W. Call
Call-Fleming Foundation
Cambia Health Foundation
Bernard Carl
Dr. Peggy Tsiang Cherng and Mr. Andrew Cherng
Chevron Corporation
L.J. Christopher
Ms. Lida Clemente
Concern Foundation
Geneva and Tom Cosgrove



Curing Kids Cancer
Delta Air Lines
The Corwin D. Denney Foundation
The Janet Diller Irrevocable Trust
Sheri and Roy P. Disney
Mr. and Mrs. Roy Patrick Disney
April and Christian Driscoll
Doris Duke Charitable Foundation
Stanley Wayne Ekstrom Family Foundation, Inc.
Epilepsy Foundation of Greater Los Angeles
Estate of Charlotte M. Ferris
Estate of Louis J. Christopher
Caroline Etchemendy
Mr. and Mrs. Lawrence C. Felix
Fineberg Foundation
Kristy J. Fletcher
Arleen S. Gamza
Mr. John D. Gest
Goldhirsh-Yellin Foundation
Good Hope Medical Foundation
Ms. Shirley Goodman
Mr. and Mrs. Eric Guefen
H. Leslie and Elaine S. Hoffman Foundation
The Stanley E. Hanson Foundation
Mr. Brian Harvey
Ms. Amber Heard
Kimberly and Ronald D. Hegardt
Helene Tropp Trust
Mr. John C. Herklotz
Conrad N. Hilton Foundation
The Larry and Helen Hoag Foundation
Hollywood Independent Church UCC
The Hsieh Family Foundation

Hurlbut-Johnson Charitable Trusts
Iger Bay Foundation
IHOP Restaurants
Louis and Annette Kaufman Family Trust
Mr. and Mrs. Howard Keyes
KLM Foundation
KLS Martin, LP
Knights Templar Eye Foundation
Ms. Laura Knox
The Kort Family Foundation
Mr. and Mrs. Franklyn Griffith Kostlan
Mr. Robert A. Kotick
La Providencia Guild
The Michael Learned Family
Dr. Kerri and Mr. Frank Lee
Bernadette and Ray Charles Leonard
Monica Lester Charitable Trust
Leukemia & Lymphoma Society
Leukemia Research Foundation
Mr. Joel Levine
Los Angeles Clippers Foundation
Los Angeles Galaxy Foundation
Los Angeles Kings - Kings Care Foundation
The Gary Magness Family Foundation
T.J. Martell Foundation
Ronald and Annette Massman
Mr. and Mrs. James Patrick McAlister
Mr. Michael McAlister
Shonda McIntyre and Philip McIntyre
Eleanor and John Meyer
Ms. Dolores J. Miller
James Robert Miller and Barbara Darlene Miller
The Moore Family
Names Family Foundation
Nordstrom
The Otis Booth Foundation
Lucile Packard Foundation for Children's Health
Panda Charitable Foundation
Pediatric Cancer Research Foundation
Jean Perkins Foundation
PFI Advisor, LLC
QueensCare
Alfred and Rozelyn Redisch Trust
Rising Tide Foundation
Rite Aid Corporation
Dayle and Ken Roath
Ron W. Burkle Foundation
SHARE, Inc.
Ms. Dorothy Shepard
Mr. and Mrs. Robert Tharp Shepherd
Susan and Eric Smidt
Solving Kids' Cancer
Matt, Larissa and Luke Sonnen
in honor of Layla Paige
South Bay Auxiliary
The Sugar Ray Leonard Foundation
Mr. Jack Teeters
The Harold McAlister Charitable Foundation
The Larry & Celia Moh Foundation
The Max and Karel Guefen Foundation
The Walt Disney Company Foundation
The Tikun Olam Foundation
Alia and Ronald Tutor
Mr. Reynaldo Vellan
Mrs. Mindy H. Weiss and Mr. Robert David
West Coast University
Westside Guild
Diane Wheeler
Dr. Lucy White
Hilary Winston and David Parker
Jeff and Kristin Worthe

\$50,000 – \$99,999

Amerman Family Foundation
The Annenberg Foundation
The Atlas Family Foundation
Mr. Kris Bergen
Bergen Foundation
H.N. and Frances C. Berger Foundation
Martha and Barry Berkett
The Billy and Audrey L. Wilder Foundation

Dr. Lillian P. Blanchik
 Bloomfield Family Foundation
 Ms. Virginia Blywise
 Ethel Wilson Bowles and Robert Bowles
 Memorial Fund
 Charles and Kharlene Boxenbaum
 Ms. Caren Bramhall
 Cable Family Foundation
 Caruso Management Co., Ltd.
 CBS Television Studios
 Centennial Guild
 Children's Chain
 Children's National Medical Center
 Circle Trust
 Confetti Consortium Foundation
 Elizabeth Corlin Charitable Trust
 Costco Wholesale
 The Crawford Family Foundation
 The Crown Robinson Family
 Kimberly and Craig Darian and Albert Sweet
 The Derfner Foundation
 Disney Worldwide Services, Inc.
 Estate of Douglas W. Knight
 Ms. Marylynn Evans
 Ms. Vivian Feintech
 Ms. Sophia Scano Fitzmaurice
 Flintridge Guild
 From Maddi's Closet
 Gabrielle's Angel Foundation for Cancer Research
 Ed and Shari Glazer
 Gold In September (G9) Charitable Trust
 Mr. Chris Gwaltney and Mrs. Jill Gwaltney
 Mr. and Mrs. Homer M. Harvey
 HEDCO Foundation
 Donna and Neil Holmes
 Jihee Kim Huh and Peter Yun Huh
 Mr. James and Mrs. Joanne Hunter
 Italian Catholic Federation
 Susan and Daniel Kane
 Mr. and Mrs. David B. Kaplan
 The David and Meredith Kaplan Foundation
 The A&J Kay Family Foundation
 William M. Keck Jr. Foundation
 Kendra Scott, LLC
 Mr. and Mrs. Michael J. Klein
 Carol and Arnold J. Kleiner
 Blair and David Kohan
 Ms. Monica Lester
 Chuck Lorre Family Foundation
 Love Your Melon
 Lupus LA
 Danielle and Jonathan Maloof
 Ms. Julia Marquez
 Matchbox Twenty Foundation
 Callie D. McGrath Foundation
 The Shirley McKernan Courage Foundation
 Men's Guild
 The Johnny Mercer Foundation
 Mr. and Mrs. Andy P. Mooney
 The Kenneth T. and Eileen L. Norris Foundation

Occidental Entertainment Group Holdings
 The Pablove Foundation
 Packard Children's Health Alliance
 The Ralph M. Parsons Foundation
 Party City
 Joseph and Evelyn Pertusati
 Mr. Oscar T. Peters
 The Honorable and Mrs. Peter Polos
 Beth Price
 Pritzker Foster Care Initiative
 Anthony and Jeanne Pritzker Family Foundation
 RE/MAX
 The Rose Hills Foundation
 Carol and Stephen Rountree
 Mr. Rodger Saffold
 Ms. Zoe Saldana
 Mr. and Mrs. Theodore R. Samuels
 Harriet H. Samuelsson Foundation
 Save The Heartbeat Foundation
 Paul and Judy Schaeffer
 Cheryl and Michael Schwab
 The Selander Foundation
 Mr. Roland Siu
 Skylight Foundation
 The Smidt Family Foundation
 Hope Smith and Robert F. Smith
 Soccer for Hope
 The Harry and Estelle Soicher Foundation
 Spencer G.N. Foundation Charitable Trust
 Spirit of Children and Spirit Halloween Superstores
 Mr. Joel Sprague
 The Robert R. Sprague Foundation
 Donald and Shelley Sterling
 The Donald T. Sterling Charitable Foundation
 STOP CANCER
 Sunshine Sachs & Associates
 Taglyan Family
 Linda Tallen and David Paul Kane Educational and
 Research Foundation
 James and Trevecca Terrile
 Torch Relay
 Tower Cancer Research Foundation
 United Mitochondrial Disease Foundation
 United Way Worldwide
 USC - Disbursement Control
 Vallarta Supermarkets
 Mr. A. Ray Van Horn
 I.N. and Susanna H. Van Nuys Foundation
 Van Nuys Rotary Foundation
 Grover and Stephanie Wald
 The Webb Foundation
 Ms. Harriet Wolf
 Wei and Dickson Wong
 Sandy Wood Foundation
 Ms. Ruth Harvey Zomnick
 Zynga Game Network

\$10,000 – \$49,999

7-Eleven, Inc.
 Mr. Alon Abady
 Mrs. Barbara Abell
 David L. Abell and Barbara Abell Fund
 Achieving America Family Foundation
 Alberini Family Fund
 The Albertsons Companies Foundation
 Commander Richard Allen
 Mr. and Mrs. James Pendleton Allen
 Dorothy L. Allen Living Trust
 Alpha Phi Foundation
 Alpha Phi Zeta Beta Chapter LMU
 AltaMed Health Services Corporation
 American Association of Orthodontists
 Americana at Brand, LLC
 Ms. Brooke Anderson
 Antelope Valley Guild
 Stella and Jerry Anthony
 Michael and Sue Anthony
 Mrs. Susan Anthony
 The Apatow-Mann Family Foundation
 Mr. and Mrs. Timothy D. Armour
 Asian Americans Advancing Justice Los Angeles

Shane and Mariam Astani
 The Elias, Genevieve, Georgianna
 Atol Charitable Trust
 Mr. Luis Avalos
 The Emanuel Bachmann Foundation
 Bank of America
 Mr. Robert K. Barth
 Mr. and Mrs. John W. Bartman
 The Cecile and Fred Bartman Foundation
 Mr. Julien Bassan
 The Beal Foundation
 Sanford and Phyllis Beim Family Foundation
 Milo W. Bekins Foundation
 Lilly M. Berg
 Bergstein Family Foundation
 Mr. Tom H. Berry
 Ms. Marina Bertini and Mr. Stephen M. Prough
 The Bialis Family Foundation
 Jenna and Todd Binder
 Binder Foundation
 Jim Bisch
 Bloom Hergott Diemer Rosenthal LaViolette Feldman
 Schenkman and Goodman, LLP
 Eleanor Collins Boas Foundation
 Vahagen Azizian
 Mr. David Boorstein
 Ms. Maya Brenner
 BrightEyes Guild
 Mr. Jeremy Bronfman and Mrs. Stephanie Bronfman
 Eileen and Harold Brown Foundation
 Ms. Suzanne Bukinik
 Bumble Trading, Inc.
 James and Debbie Burrows
 Ms. Rachel Cahill
 The Capital Group Companies
 The Capital Group Companies Charitable Foundation
 Johnny Carson Foundation
 Tina and Rick Caruso
 Caruso Affiliated
 Mr. and Mrs. Michael Joseph Casey
 Cerner Corporation
 I Chadbourne Charitable Trust
 Chan Soon-Shiong Family Foundation
 Mac and Michelle Chandler
 Charities Aid Foundation America
 Charles Richardson Estate
 Mr. and Mrs. David H. Chase
 Nadine and Alex Chaves Sr.
 Barbara and Bernard Chester
 Chico's FAS, Inc.
 Children's Cancer Research Fund
 Children's Hospital Los Angeles Medical Group
 Armenian Ambassadors of
 Children's Hospital Los Angeles
 CHOC Children's Foundation
 Chubb Charitable Foundation
 Claims Management Resources
 CLK, Inc.
 Clubcorp Charities, Inc.
 Alex and Emily Cohen
 Mr. Gary Cohen and Dr. Qin Shao
 Mr. and Mrs. Bradley S. Cohen
 Mr. Reginald Cole
 Mr. and Mrs. Christopher Cole
 Combined Federal Campaign of Greater SoCal
 Community Fund of New Jersey, Kurtzman Fund
 Compulink Business Systems
 Mr. and Mrs. John Joseph Connolly III
 Martha and Tim Corbett
 Ms. Geneva Cosgrove
 Credit Unions for Kids
 CTBC Bank, Noor and Sadya Menai
 Dan and Martha Cuñado Family
 Mr. Richard Halkett and Mrs. Elizabeth Currid-Halkett
 Cushman Family Foundation
 Matt Cwiertny Memorial Foundation
 Mr. and Mrs. Gary M. Cypres
 Daaks International Inc
 Mr. Matt Damon and Ms. Luciana Damon
 Nancy D'Andrea in memory of Robert D'Andrea
 Mr. Robert A. Davidow



The Davidow Charitable Fund
 The de Toledo Family
 Mr. David Delgado
 Delray Lighting, Inc.
 Radiologists at CHLA
 Morgan and Luc Des Groseillers
 Destination Hotels
 Irving B. Deutschman Foundation
 Carlos Diaz-Errodas
 Dick Clark Productions
 Carrie Estelle Doheny Foundation
 Oscar M. Dominguez
 Mr. and Mrs. Robert R. Dryden
 The Helen Dyess Living Trust
 Easton Calzada Harlan Foundation
 Aaron and Valerie Edelheit
 The Edelstein Family Charitable Foundation
 Ms. Dixie Eger
 Martha and John M. Eggmeyer III
 Mr. and Mrs. Greg Ehlers
 Ben and Joyce Eisenberg Foundation
 El Segundo Auxiliary
 Mr. and Mrs. Edward R. Elko
 Ernest Odin Ellison and Tim Duff
 Emi Jay
 Encino Baseball, Inc.
 Mr. and Mrs. Michael V. Epstein
 Estate of Caroline Etchemendy
 Estate of Lilly Berg
 Estate of Paul Schambach
 Evil Shenanigans, Inc.
 F. Gaviña & Sons, Inc.
 Donald and Cheryl Fair
 Fair Grounds Racing Club, Inc.
 The FalCarthy Foundation
 Family Reach Foundation
 The Farman Family
 Mr. and Mrs. Marshall Farrer
 FASP Entertainment, Inc.
 Miriam M. Fetherolf Irrevocable Trust
 Lynda and Blaine Fetter
 Bill Fielder
 Mr. and Mrs. Gregory A. Foster
 The Louis and Gladycy Foster Family Foundation
 Mr. and Mrs. David Fredston
 Sheril and Robert Freedman
 Mr. and Mrs. Bryan Freedman
 Robert and Sheril Freedman Family Foundation
 The Douglas Michael Fuller Foundation
 Ms. Raquel Fuller-Green
 Mr. and Mrs. Jan R. Gable
 The Gallagher Family
 Ms. Kim Garcia and Mr. Greg Garcia
 Gardner Grout Foundation
 Mrs. Margaret Gates
 Herbert M. and Beverly J. Gelfand
 Ms. Ariadne N. Getty
 The Ginsburg Foundation
 G1ve A Buck Fund, Inc.
 Glass Box Technology
 Michael Glick
 Max H. Gluck Foundation
 Dave and Sheila Gold Foundation
 Golden Beach, LLC
 Steven C. Gordon Family Foundation
 Dr. and Mrs. Craig D. Gordon
 The Gores Foundation
 Mr. and Mrs. Ronald E. Gother
 Dr. Geoffrey and Mrs. Laura Graham
 Mrs. Ciera Granger and Mr. Dan Granger
 Barbara B. Grant Trust
 Grayson's Gift
 Great Plains Trust Company
 Mary Lou and Terence Green
 Ethan Greninger
 The Wayne Gretzky Foundation
 Ms. Kathy Griffin
 Mr. Michael Groff
 Mr. Adolph R. Gudino
 H & H Evergreen Foundation
 Mr. William T. Hammond

Mr. Perry Han
 William H. Hannon Foundation
 Mary Hart and Burt Sugarman
 Healey Family Foundation
 Healing Arts Reaching Kids (HARK)
 Ms. Margaret Healy
 Mr. and Mrs. Enrique Hernandez Jr.
 The Hexberg Family Foundation
 Ms. Paris Hilton
 Mr. and Mrs. Ronald Jeffrey Hilton
 Ms. Anita Hirsh
 Mr. David Hockney
 Ambassador and Mrs. Glen A. Holden
 The Hollywood Charity Horse Show
 Hollywood Foreign Press Association
 Mr. Edward A. Holroyde
 Mr. and Mrs. Michael Homayounian
 The Hoppus Family
 Mr. and Mrs. Richard Horn
 Hoteliers for Charity, Inc.
 Clark, Sherry, Josh and Samantha Hsu
 Hub International Limited
 Mary Ann Fletcher Hurley, MD, and John K. Hurley, MD
 Mr. Sal Iacono
 ICM Partners
 In-N-Out Burger Foundation
 Irvine Health Foundation
 Edward M. Israel
 ITV Studios America
 The Ann Jackson Family Foundation
 Jacquie Aiche, Inc.
 Todd James and Tatiana Blackington James
 The Jel Sert Company
 Ms. Kendall Jenner
 Ms. Kris Jenner
 Jerome Foundation
 Jersey Mike's Subs Franchise Systems, Inc.
 John B. Sanfilippo & Son, Inc.
 Carl W. Johnson Foundation
 Mr. Tylie Jones
 The Fletcher Jones Foundation
 JP Morgan Chase Foundation
 JP's Peace, Love and Happiness Foundation
 Jubilant DraxImage, Inc.
 The Brad Kaminsky Foundation
 Titania K9 Fund
 Mr. and Mrs. Carl Karcher
 Ms. Kimberly Kardashian West
 Ms. Khloe Kardashian
 Karl Storz Endoscopy-America, Inc.
 Mr. Clifford E. Katab
 W.M. Keck Foundation
 Steven and Kathryn Keefer
 Drs. Faye and Jonathan Kellerman
 Kathleen Kennedy and Frank Marshall
 Mr. Joseph E. Kenny and Mrs. Jennifer H. Siegel
 Ms. Cathy Kerzner
 The Khachaturian Foundation
 Mr. and Mrs. Karan Khanna
 Ms. Lara Khouri and Ms. Lisa Junghahn
 Kiewit International
 Kilter Films
 Corinne Kimura
 Pamela and Brad King
 Jennifer and Cary Kleinman
 Klondike Construction Services, Inc.
 Ms. Heidi Klum
 Mr. Enrique Koenig
 Mr. and Mrs. Miguel Koenig
 Erich and Della Koenig Foundation
 Larry and Stacey Kohl
 Sidney Kohl Family Foundation
 Mr. and Ms. Alexander Koretz, MD
 Kost 103.5 FM
 Mr. and Mrs. E. Stanley Kroenke
 Mrs. Maxine Kurtzman
 Mrs. Lesley M. Kyle-Wilson and Mr. Michael Wilson
 L.A. Arena Company, LLC
 Riot Society Clothing
 Mr. and Mrs. Peter J. LaBarbera and Family
 Susan F. Laffer



The Lampson Family Trust
 Ana and Mark H. Langer
 Ms. Karin L. Larson
 Giselle Loren Lazzarato
 Mr. and Mrs. Brian Po-Jen Lee
 Lee's Noodle
 Mr. Paul Lester
 Mr. Brian Lewis
 Dr. Danica B. Liberman and Mr. Brad T. Gottfred
 Liberty Hill Foundation
 Mr. and Mrs. Damon L. Lindelof
 Linkin Park
 Looking Beyond
 Gail Lopez
 L'Oreal
 Los Angeles Marketing Cooperative
 Melissa and David Love
 Mr. Randy K. Lovejoy
 Mrs. Charlotte R. Mabry and Mr. Milton Mabry
 Matt Macarthur
 Ms. Elissa Kao and Mr. Fergus Macdonald
 Mr. and Mrs. Will Mackenzie
 Susan and Peter D. Mallory
 Ms. Barbara Mandel
 Mrs. Sandra Manger and Mr. William L. Manger
 Mr. and Ms. Simon Mani
 Mr. Paul Marciano
 Marriott International (National)
 Marriott International, Inc.
 Marriott Vacations Worldwide
 Marvin and Sondra Smallley Family Foundation
 Mr. and Mrs. Andrew P. Matson
 Hilary Chen and Joe Matt
 Maya Brenner Designs
 MCC Junior Fund
 Victoria and Rider McDowell
 McDowell CRT
 Mr. Louis D. McGraw
 Ms. Vivien Chang and Mr. Travis McIntosh
 Mr. Ernest Meadows
 Nancy and Greg Meidel
 Dr. and Mrs. Rafael G. Mendez
 Mendiburu Magic Foundation
 Mericos Foundation
 Patricia and John Merrell
 Ramin and Mersedeh Mesriani
 Mez Children Foundation
 The Dorothy Phillips Michaud Charitable Trust
 Tally and Bill Mingst
 Dr. and Mrs. Jerrold H. Mink
 Miracle Babies
 Miranda Sings, Inc.
 Kirsten and Todd Molz
 Monrovia Guild
 Mrs. Karlene Garber and Mr. Richard Garber
 Mr. John Mulaney
 Ms. Molly Munger and Mr. Stephen English
 Mrs. Kaitlyn Murphy and Mr. Curtis Wagner
 n:Philanthropy
 Net-A-Porter

Mrs. Jeanne Martin Neville
 New York Life Insurance Company
 Jennifer Newbill and Clay C. Newbill
 Ms. Yvonne Niemi
 Lisa Joy and Jonathan Nolan
 Northern Trust
 Oaktree Capital Management, LP
 Obesity Medicine Association
 The Oder Family Foundation
 Hedy Orden in honor of Ted Orden
 Paramount Pictures
 Nicole Parker Foundation for Children
 Dr. Laurence E. Paul and Mrs. Kathleen Paul and
 the Louis and Sandra Berkman Foundation
 Ms. Mary Paullin
 Pearl Recovery Retreat and Wellness
 Pediatric Brain Tumor Foundation
 John D. and Victoria R. Pettker
 Anna K. Pfeiffer
 Phantom Halloween Superstores
 Placer Community Foundation
 Pledgeling Foundation
 The Plum Spring Foundation
 Porto's Bakery and Cafe
 Mr. Donald B. Prell
 Project Social T, LLC
 Berti Prough Family Foundation
 Robin and Jeffrey Raich
 The Ralphs Fund
 Ms. Elizabeth Raposo
 William and Louise Ray, Robert and Xiaole Ray
 Red Hot Chili Peppers
 Mr. Michael A. Reisner
 Rhynard Family Foundation
 Charles D. Richardson
 The Michael T. Riordan Family Foundation
 The Harry W. and Virginia Robinson Trust
 Ms. Christi Robinson
 Gino and Bingo Roncelli
 Roncelli Plastics, Inc.
 Mr. and Mrs. Robert E.G. Ronus
 Mitch and Madeleine Rose
 Mr. and Ms. David M. Rosenberg
 Meta and George Rosenberg Foundation
 The Ross and Wolf Families in honor of Stan Ross
 Ross Family 2011 Trust
 Cappy and Beth Rothman Family Foundation
 Mr. Michael A. Sachs
 SADA Systems, Inc.
 John and Jean Sahyoun
 Ms. Elizabeth Sands and Mr. Michael Sands
 Rusty and Jeffrey Sanfilippo
 SBL Charitable Trust
 Ms. Jacqueline Schaffer
 Paul Schambach
 Mr. and Mrs. Frederick Schaufeld
 Elisa and Michael Schenkman
 Schools First Federal Credit Union
 Schwab Charitable
 Ms. Nadya Scott
 Dr. Robert Seeger
 Ms. Susan Seifert
 Louise Fettig Seimer
 Mr. and Mrs. Adam Selkowitz
 Selkowitz Family Foundation
 ServiceTitan
 Mrs. Catherine Shaffer and Mr. Paul Shaffer
 Mr. and Mrs. David Shannon
 Mr. William Shatner
 Mr. Allen Edward Shay
 Mr. and Mrs. Adam Shier
 Ginger and William Sherak
 Ms. Chari A. Sherman
 The Al Sherman Foundation
 Ms. Leslie Shriver-Katab
 Sidley Austin, LLP
 Cathy Siegel Weiss and Ken Weiss
 Mr. Anderson Silva
 Cecile and Bernard Silver
 Mr. and Mrs. Mike Simms
 Kara and Brad Slater

Sondra and Marvin Smalley and Family
 Jack and Marilyn Smith
 Ms. Maxine M. Smith
 Society For Pediatric Pathology
 Vahe and Priscilla Soghomonian
 The Sondheimer Foundation
 Sony Pictures Entertainment
 Dr. and Mrs. Patrick Soon-Shiong
 Spendthrift Farm, LLC
 Spiritual Care Guild
 Norman F. Sprague Jr. Foundation
 Joan Spreckels Foundation
 Stahl Rolling Hills Trust
 The Fran & Ray Stark Foundation
 Dr. and Mrs. Vaughn A. Starnes
 Mr. and Mrs. William G. Steele III
 M and B Sugarman Family Trust
 Dr. and Mrs. Hai-Sou Chen,
 Linda Sun, and Emmy Chen
 Sunair Children's Foundation
 Ms. Sonia E. Supple
 The Swager Family Trust
 The Sweat, Dustin Blood Trust
 T2 Technology Group
 Tag Heuer
 Takeda Pharmaceuticals U.S.A., Inc.
 The Tappan Foundation
 Tawa Charitable Foundation
 Mr. Christian Teague
 Mr. and Mrs. Ian D. Teague
 The Ryan And Genevieve Tedder Foundation
 Dr. Amanda M. Termuhlen
 Terranea Resort
 Mr. and Mrs. John M. Tesoriero
 Tin Roof Bistro
 Titania K9 Fund Club
 Toluca Guild
 Mr. and Mrs. Charles Toppino
 Toyota Motor Credit Corporation



Training Mate
 Victor and Jaclyn Trang
 Ms. Juanita Travers
 The Treetops Foundation
 Triple Threat Productions, Inc.
 TRUIST
 Mr. Richard F. Tucci
 United Way of Greater Los Angeles
 Universal Television, LLC
 Unravel
 Van De Bunt - Fox Family Foundation
 Van Konynenburg Foundation
 Laura Fox and Ben VandeBunt
 Mr. Robert Vargas
 Ms. Teri Veltkamp
 VF Sportswear, Inc.
 The Vick Family
 The David Vickter Foundation
 Carole and Paul Viviano

Noel and William Wade
 Mr. and Mrs. John B. Wagner
 Walgreens
 Audrey J. Walton and Ann Walton
 Kroenke Charitable Foundation
 Dr. and Mrs. Kasper Wang
 Leo and Sydelle Ward Foundation
 Warner Music Group, Inc.
 Ms. Heather Watkins
 Weisman Discretionary Trust
 Mr. Jeffrey Weiss
 Wells Fargo
 Hila and Jeremy Wenokur
 Mr. Kanye West
 West Coast Dental Services, Inc.
 Western Diocese of the Armenian Church
 Western Financial Trend, Inc.
 Westmount Asset Management
 Ina Coleman, Alan Wilson and Family
 George A. and Marion M. Wilson Foundation
 Mr. and Mrs. Don Witzel
 Mr. William Wolf
 Wonderland Industries, Inc.
 Robert Wood
 Robert Wood Family Trust
 Ms. Laure Woods
 WWW Foundation
 Carl E. Wynn Foundation
 Jing Xu and Zhen Huang
 Yoga Silverlake
 Yogurtland
 Mr. Henry Yost
 The Henry A. and Cynthia G. Yost Family Foundation
 Whitney Young Children's Foundation
 The Zielinski-Anaya Family
 Zolla Family

\$5,000 – \$9,999

7-Eleven FOASC
 John Aaroo Group Community Foundation
 Mr. Greg W. Adler and Mrs. Stacy W. Adler
 Mr. and Mrs. Abraham Aguilar
 Mr. and Mrs. Richard Aguilar
 CARS 4 U
 Alfred Coffee
 Alhambra Rotary Charities Foundation
 W. Robert Kohorst and Shelley Allen
 Allianz Life Insurance Company of North America
 Danielle and David Allison
 Allyn Foundation
 Mr. George Alva
 America's Charities
 America's Christian Credit Union
 Amgen PAC, Matching Gift Program
 Mr. and Mrs. Scott C. Anderson
 Hilary and Jack Angelo
 AEG
 Rebecca and Andrew Apfelberg
 Mr. and Mrs. Armen Aroyan
 Mr. and Mrs. John C. Babcock
 Mr. and Mrs. Sean Bailey
 Mr. and Mrs. Ryan Baker
 Mr. and Mrs. Ryan G. Baker
 Tom and Sherry Barrat
 William J. and Carol A. Barrett
 Ms. Azniv Bayramyan
 Mr. Carter Bays
 Chase and Brad Beckerman
 Mr. and Mrs. Thomas L. Beckmen
 Mrs. George Harvey Benter Jr.
 Mr. Bruce Bernard
 Paul Stanford Bernhard Foundation
 Mr. and Mrs. I. Mark Bledstein
 Ms. Margarita Blikian
 Bluefield Associates, Inc.
 Dr. Emil Bogenmann
 Marilyn Booker
 Mr. Mark Borde
 Dr. and Mrs. Henry Botzbach
 The Boudjadjji Foundation
 Mr. and Mrs. Geoffrey M. Bremer

Mr. and Mrs. Kevin Herbert Brogan
 Mr. and Mrs. Jerry Bruckheimer
 Cable Entertainment Management
 Mr. and Mrs. Michael Cabrera
 James Cahill
 Claudia Calandrino
 Trisha J. Cardoso
 CARES Foundation, Inc.
 Carnitas El Rey
 Mr. and Mrs. Douglas Carrigan and Sadie's Angels
 Mr. and Mrs. Peter W. Casey
 Chris and Larissa Chapin
 Chegg, Inc.
 Children's Tumor Foundation
 Ms. Diana Chin
 Chipotle Mexican Grill, Inc.
 Mr. Daniel Chun
 The Herman Chung Foundation USA
 Mr. Patrick A. Clark
 Mr. and Mrs. David A. Clark
 Arnold and Kay Clejan Charitable Foundation
 CLK Desert Star, LP
 Francis H. Clougherty Charitable Trust
 The Peter A. and Elizabeth S. Cohn Foundation, Inc.
 Jill and Riley Cole
 Cole Family Trust
 Veriar Collins-Jenkins
 Ray and Vera Conniff Foundation
 Usama N. Cortas
 Mr. Tobey Cotsen
 Creative Artists Agency
 Lucy and Don Crumrine
 Billy and Janice Crystal
 Cure a Child, Inc.
 Ms. Angela Damante
 Mr. and Mrs. Howard Daniels
 Mr. Eric d'Arbeloff and Mr. Howard Cohen
 Mr. and Mrs. James Deeken
 Jim and Ruth DeFlavio
 Delta Delta Delta Sleighbell Committee
 Mr. Rashmi Desai
 Cheryl and Bart Dickens
 Mr. Brian Disser
 DLE Equipment, Inc.
 Ms. Margery L. Domhoff
 Dsm Canister, LLC
 Mr. and Mrs. Timothy Dugan
 Mr. and Mrs. Roger N. Duhl
 Patty, Lilli and Jack Elias
 Mr. and Mrs. Shahram Elie
 Gail and Jim Ellis
 Mr. and Mrs. Robert D. Emerick
 Mr. Nick English and Mrs. Hayley English
 Michael Epstein Revocable Trust
 Estate of Emily Storrow
 Estate of Lucie Agbajian Hubbard
 Mr. Ron Laffitte and Mrs. Erin Estrada-Laffitte
 Eureka Sausage, Inc.
 The FalCarthy Foundation
 Ms. Carol Faucett
 Christian Fedorcuk
 First American Title Insurance Company
 First Entertainment Credit Union, EEC
 Ms. Amy Foo
 Mrs. Floran Fowkes
 Fox Animation Los Angeles, Inc.
 Fox Entertainment Group
 Frontline Charities
 Mrs. Georgia Funsten
 FX Networks, LLC
 Mr. and Mrs. Sal Gabbay
 Mr. and Mrs. James Marshall Galbraith
 Mr. and Mrs. Ryan Gallagher
 Martha and Steven Garske
 Mary and George Garvey
 Gateway for Cancer Research
 Robert M and Lottie Q Gee Foundation
 Mrs. Sharon Gerstein and Mr. Michael Gerstein
 GGE Foundation
 Mr. and Mrs. Kenneth P. Gilson
 Ms. Cary Gimelstob

Mr. Justin Gimelstob
 George Gittelsohn
 Michele and Padraic J. Glaspy
 Mr. Jason Glazer
 Barbara and Bruce N. Goldreyer, MD
 Ms. Ellen Goldsmith-Vein and Mr. Jon F. Vein
 Mr. and Mrs. Gary Lee Gorchester
 Mr. Ranjan Goswami
 Carra Graziadio, Jonathan Lund and Cullen Lund
 Greek Partners - Zeta Beta Tau
 Nora and Bruce A. Greenwood
 Mr. and Mrs. Woody Gruninger
 Mr. Jorge Guzman
 Mr. and Mrs. Patrick C. Haden
 Mr. Gregory Hafif
 Mr. and Ms. Jonathan Haft
 The Hagerman Trust
 Thomas E. Hall Foundation
 Ms. Denise Hammett Bieker
 Dr. Sean E. Harper and
 Ms. Stella Tarbinian Harpootherian
 Mr. Buzz Harris
 The Bob and Gaye Harris Foundation
 Hart Girls Volleyball
 Mr. and Mrs. Stephen Heaney
 Mr. David B. Hill in honor of
 Rosemary Rae Hill Hansen
 Mr. and Mrs. Thomas Randolph Hoffman
 Meshell and Nelson Holdo
 Mr. Judd Holroyde
 Meleana T. Holroyde
 Holy Family Cantonese Opera, Inc.
 Hope Is Forever Charitable Foundation
 Mr. Jerry Hornstein
 Ms. Mary Jo Hurwitz
 Mr. Jack Huston
 Mr. Christopher O. Hyldahl
 Ms. Erin Irwin Callahan
 J and J Tires and Wheels, Inc.
 J. Yang and Family Foundation
 Johannessen Trading Company
 Johnson & Johnson Family Matching Gift Program
 Just One Eye, LLC
 Mr. and Mrs. Hiroshi Kageyama
 Ric and Suzanne Kayne
 Kayne Anderson Rudnick Investment Management, LLC
 Mr. and Mrs. Kellstrom
 Mr. and Mrs. Craig Knizek
 Kohorst Allen Family Foundation
 Mr. and Mrs. Scott M. Kolbrenner
 Mrs. Adrienne Kreindler and Mr. Charles Kreindler



Dr. and Mrs. Lyle D. Kurtz
 La Salle High School
 Mr. Richard Labowe
 Labowe Family Foundation, Inc.
 Susan F. Laffer Charitable Trust
 Ronald and Erin Laffitte Family Trust

Stacey and Curtis Lane
 Ms. Ruth Lavine
 Richard and Ruth Lavine Family Foundation
 Legacy Endowment Community Foundation
 Legalzoom.com, Inc.
 Leko Construction, Inc.
 Mr. and Mrs. Marc A. Lescher
 Mr. and Mrs. J. Derek Lewis
 Los Angeles Dodgers, Inc.
 The Lotus US Foundation
 The Luis Loya Revocable Trust
 The Luppe and Paula Luppen Family Foundation
 Mr. and Mrs. Robert Arthur Lyddon
 Ms. Camelia Kath and Mr. Jeffrey Lynne
 The Ava Mae Foundation, Inc.
 Majestic Realty Company
 Ms. Maria Martinez
 Michael Marzban
 Ms. Dominique A. Maskaluk and Mr. John Maskaluk
 Matthew G. Norton Co.
 Kevin and Lisa Mayer
 Mr. and Mrs. Edward Joseph Justin McCarthy Jr.
 Ms. Gretchen McDonald
 Mr. Chris P. McKenna
 Mr. and Mrs. Lawrence Meltzer
 Manijeh Messa
 Ms. Robin Metcalfe
 Ms. Chloe Metrose
 Mr. and Mrs. Lary Jo Mielke
 Mimi Et Cie, LLC
 Mod Hatters of Acton
 Ms. Carol Moran
 Mr. and Mrs. Neal Moritz
 In Honor of Mildred Esterbrook Mudd
 Mrs. Wendy Munger and Mr. Leonard Gumpert
 Mrs. Akshata Murty
 National Stores, Inc.
 The Natter Family Foundation
 Mr. Charles L. Neal
 Ms. Christian Neal
 Ms. Bonnie M. Nelson
 Ms. Freda Nessim
 Nestle, USA, Inc.
 NewMark Mountain States, LLC
 Mr. Thien Vien C. Nguyen
 Mary Dee Hacker, RN, and
 Steven W. Nishibayashi, MD
 Bill and Susan Noce
 The Nokin Family
 Jenji Kohan and Christopher Noxon
 Ms. Barbara O'Connor
 Raffi, Souzy, Aram and Shant Ohanian
 Bob and Eileen O'Leary
 Mr. Dan Olsen
 Omron Foundation, Inc.
 One Small Voice Foundation
 Mr. and Mrs. Lyn Parker
 Robin Paule
 Ms. Magdalene Peregrin
 Mr. and Mrs. Drew Pomerance
 Premier Healthcare Services
 Sondra Press Charitable Foundation
 Morris and Mary Press Foundation
 Ms. Victoria Principal
 The Victoria Principal Foundation
 for Thoughtful Existence
 Mr. Josh Pyatt
 R.W. Zant Company
 The Edward Raphael Foundation
 Mr. and Mrs. Jerry Rapport
 RAR Family Foundation
 RE/MAX All Pro
 Mr. Douglas Reidt
 Reiling Family Foundation
 Gina Rich
 The Richter Family Foundation
 Mr. and Mrs. Melvyn S. Rifkind
 The Andrea Rizzo Foundation
 Mr. and Mrs. Robert Rodriguez
 Mr. and Mrs. Richard Rosenberg
 Mr. and Mrs. Edward P. Roski Jr.



Ms. Sue D. Ross
 Mrs. Sarah Hunt Rothenberg and
 Mr. Daniel H. Rothenberg
 Mr. and Mrs. John L. Rouse
 Mr. Charles Roven
 Mr. and Mrs. Nicholas Roxborough
 Mr. Kenneth Ruby
 Ruby Family Foundation
 Paula and Allan Rudnick
 San Diego Gas and Electric
 Rae Sanchini and Bruce Tobey
 Mr. Alicia Sandoval
 Ms. Charlene F. Savage
 Jennifer and Fred Savage
 Mr. and Mrs. C. Joe Sayas Jr.
 Ms. Marcia Scanlon
 The George H. Scanlon Foundation
 Robert and Diana Schenkman
 Ms. Loretta Scherer
 The Schlum Charitable Trust
 Mr. and Mrs. John Schumacher Jr.
 John and Michele Sciarra
 Mr. and Mrs. John E. Seidel
 Mr. and Mrs. Arnold Seidel
 Mr. Gregory Sheran
 Mr. Kayoshi Shoda
 Shottenkirk Desert Lexus
 Patricia K. Shumway
 Sikand Foundation, Inc.
 Mr. Jonathan Silva
 The Simon-Strauss Foundation
 Mr. Scott F. Simpson
 Charles and Gloria Singleton
 Skechers USA, Inc.
 The James and Glenys Slavik Family Foundation
 Bonnie K. Sloane and Douglas I. Sloane
 Danielle and Eric Slutzky
 Smart & Final Charitable Foundation
 Ralph L. Smith Foundation
 The Snyder Family Foundation
 Ash Sobhe
 Dr. and Mrs. Norman F. Sprague III
 Stolaroff Foundation, Inc.
 Ms. Emily Storrow
 Mr. and Mrs. Peter E. Strauss
 Elizabeth and Jason Sugarman
 Tim and Lauren Sullivan
 Tapatio Foods, LLC
 Mr. and Mrs. Jay W. Taylor
 Team Silva Keller Williams
 Mr. Eldon Teper
 TGH Enterprises, LLC
 Mr. and Mrs. Robert C. Thorell
 The Three Sisters Foundation
 Sylvia and Mark Tieman
 Tokio Marine HCC
 Vernon and Charlene Tolo
 Tong Pharmacy, Inc.
 Mr. and Mrs. Steven Totten
 Ms. Chan-My Trinh

Mr. Len Unger and Mrs. Catherine L. Unger
 United Way California, Capital Region
 Valencia Vikings Football Club
 Gregory and Glenda Vanni
 Mr. Shane Vereen
 Mr. Brock Vereen
 Versant Holdings, LLC
 Virtus Investment Partners
 Voiceworks Productions, Inc.
 Tom and Celeste Von Der Ahe
 Whittier Trust Von Der Ahe Foundation
 Esther and Tom Wachtell
 WalMart Stores and Sam's Clubs
 Mr. Peter Wardle
 Warner Bros. Entertainment, Inc.
 Mr. Robert Warren
 Warren Soden Hopkins Family Foundation
 Dr. Sharon A. Weiner and Dr. John M. Weiner
 Myrna and George Weisenfeld
 Mrs. Michelle R. Wermers and Mr. Thomas Wermers
 West Coast Franchise Owners Association
 Mrs. Erika White and Mr. Paul A. White
 Paul and Erika White Family Foundation
 Whittier Guild
 Ms. Sarah E. Wick
 Ms. Laura S. Wiley and Michael E. Wiley
 William Morris Endeavor Entertainment, LLC
 Mr. Kevin R. Williams
 Gaia and Wade Winter
 Mr. and Mrs. Keenan L. Wolens
 Mr. Todd R. Wolff
 Ms. Cheryl Wright
 Wundabar Inc.
 The Yaspan-Unterberg Foundation, Inc.
 Mr. Joshua Zad
 Dr. and Mrs. Richard Zapanta
 Mr. Rick Zeff

\$1,000 – \$4,999

360 Prescription Services, Inc.
 Mr. Jeffrey Aaron
 Mr. Thomas Abbott and Ms. Jane Abbott
 Abbott Laboratories
 AbbVie, Inc.
 Kirsten and David Abdo
 Ms. Margaret S. Abdun-Nur
 Veronica J. Abernathy
 Above+Beyond Films
 Mr. and Mrs. Neil Accortt
 Ace Hardware Corporation
 Mr. Timoteo Aceves
 Mr. Richard Ackerman
 Mr. Robert Ackermann
 Active Network, LLC
 Mr. Joshua Adande
 Advances In Neuroblastoma Research
 AEG Presents, LLC
 Mrs. Lourdes Aesquivel and Mr. Virgil Aesquivel
 Aetna Foundation
 Mrs. Rozita Afar and Mr. Ebbie Afar
 Mr. Masoud Afkhami
 Mr. Patrick Aghabegian
 Mrs. Soraya T. Aguirre
 Aguirre Healthcare Foundation
 Mr. Jaideep Ahluwalia
 Ms. Hoorieh Ahmadi
 Ms. Diana Ajemian
 Ms. Kathy Akashi
 Mr. and Mrs. Jim Alderson
 The Alderson Family Foundation
 Mr. Saba Alemseged
 Carol and Brad Alesso
 ALEX AND ANI
 Mr. Nathan Alexander
 Alfred Melrose Place
 All Valley Dealer Auto Auction, Inc.
 Mr. Eric C Allaway
 Allcare Pharmacy, Inc.
 The Tim and Krystal Allen Charitable Trust
 Alliance Bernstein
 Mr. Eduardo A. Almonte and Ms. Karen D. Carranza

Nina and Dan Aloni
 Nicola Alpe
 Mr. and Mrs. Robert Alpers
 Alpha Rho of Zeta Beta Tau
 Alpha Tile and Stone Inc
 Lawrence and Joan Altman
 Ms. Deedee Altmayer
 AmazonSmile Foundation
 Mr. Gregory Amendola
 American Cabinet Works, Inc.
 American Realty Advisors
 American Society of Travel Agents Inc.
 Southern Cal Chapter
 Amgen, Inc. Political Action Committee
 Mrs. Mojgan Amin
 Mr. Bob B. Amirian
 Amirian Law Group, PC
 Anchor Loans, LP
 Candelario Andalon
 Mr. Vance R. Anderson
 James Anderson
 Ms. Adrienne M. Anderson
 Mr. Theodore Anderson
 Ms. Katie Anderson
 Ms. Martha Andreani
 Andrews International
 Mr. Mikel Androsky
 Mr. Gregory A. Andruk
 Ms. Cinde Angelastro
 Mr. Brian Angely
 Ms. Rachelle I. Angle
 Aniocha/Oshimli Daughters of Southern California
 Ann Pham, DDS, Miracle Dental
 Brian Annulis
 Ms. Mary C. Antoci
 Ms. Helen Apostle
 Mr. and Mrs. Tim Apple
 Ms. Marine Arakelians
 Ms. Aria Arancio
 Mr. and Mrs. Abolhassan Arefi
 Argonaut Charitable Foundation
 Mr. Fernando Arias Sr.
 Mr. and Mrs. Rushdi A. Ariss
 Mr. and Mrs. Henry Arklin
 Mr. Robert B. Armani
 Mr. Stephen Aronson
 Ms. Janice Arouh
 The Arthur J
 Arthur J. Gallagher and Company
 Ms. Alain D. Artieri
 Ms. Sarvenaz Bahar and Mr. Hossein Arzy
 Ms. Laura Ascencio
 Mr. Douglas Asermely
 Jordan Asheghian
 Ms. Nancy Asner
 Kerry Asomugha
 Mr. Vinod Assomull
 Shahab Attarchi
 Jamie Tarses and Paddy Aubrey
 Toby and William R. Austin
 Ms. Elisabeth J. Averick
 Michael and Kelley Avery
 Awesomenesstv
 Barbara G. Colbert and Jamshid Azari, MD
 The B. Attitudes Foundation
 Mr. Mike Babakhanyan
 Bach Charitable Trust
 Bad Attitude Productions, Inc.
 Miss Lily S. Bailey
 Mr. Matthew Bailey
 Mr. Joseph Baiocco
 B-Air
 Thanks to the ICU and Cardiac Team for
 their care of Mitchell Blakey - the Baker Family
 Mr. and Mrs. Danny J. Bakewell Sr.
 Ms. Bushra Bakir
 Alex and Carolyn Balian Family
 Mrs. Lorraine Ballentine and Mr. Terry Ballentine
 Mr. Amnon Band
 Mr. and Mrs. Dan Bane
 Ms. Darcelle Banks

Mr. Jonathan and Dr. Julie Banks
 Richard P. Banta
 Mr. Robert Bard
 The Barin Family
 Mr. Ronald Barker
 Mr. James L. Barker
 Barnes Family Foundation
 Mr. Sean M. Barnett
 Mr. Richard Barrett
 Drs. James D. Barrie and Leslie A. Momoda
 Barrister Executive Suites, Inc.
 Mr. and Mrs. Craig Somers Barron



Mrs. Katherine S. Bart
 Ms. Lorrie Bartlett
 Mr. Michael Bartman
 Mr. Jonathan H. Bassan
 Mr. Pascale Bassan
 Mr. Rostam Bastani
 Mr. and Mrs. Timothy P. Baum
 Ms. Gigi Birchfield and Mr. Mark Baute
 Mr. Camilo Bayona
 Mr. Alex Bealer
 John T. Bearss
 Mr. and Mrs. Dan Beckerman
 Mike and Jeanne Beckman
 Tinamarie Herrera and Mr. Michael Bedford
 Ms. Nadine Beffa
 Varun Behl
 Ms. Rosamaria Belli
 Mr. and Mrs. Laurence Bellows
 Mr. Adam Belsky
 Mr. and Mrs. Morris Benoun
 Ms. Carol Benson
 Mr. and Mrs. Randolph C. Bentler
 Ms. Marilyn S. Benton
 Mr. and Mrs. Peter Benudiz
 Michele and Morris Benun
 Mr. Robert Beran
 Mr. Aaron Berchild
 Berkes Crane Robinson & Seal, LLP
 Berkshire Fashions
 Alan and Ruth Berliner
 Mr. and Mrs. James Edgar Berliner
 Mr. and Mrs. Robert A. Berliner
 Alexandra and Michael Berman
 Mr. and Mrs. Daniel A. Berman
 Milton And Ruth Berman Family Foundation
 Mr. and Mrs. Greg G. Bernards
 Ms. Bunny M. Wasser and Mr. Howard M. Bernstein
 Ms. Amy Reichenbach and Mr. Dave J. Bernstein
 Mr. Keith Berson
 Mr. Bryan Bertino
 Ms. Meline Sirounian Berube
 Mr. Manuel Beshlikyan
 Mattia Biagi
 Mr. and Mrs. Julian M. Bieber
 Ms. Michelle Biggs
 Ms. Patricia Biggs

Mr. and Ms. Paul Bilgore
 The Sheri and Les Biller Family Foundation
 Billesdon Family
 Mr. and Mrs. Michael Birmingham
 BJ's Restaurants Foundation, Inc.
 Melissa Blake
 Dr. Marnie Baker Blakey and Mr. David Blakey
 in honor of Mitchell Blakey
 Virgilia A. Blanchard Trust
 Mr. Gary A. Blassingham
 Blastoff, LLC
 Mr. and Mrs. Eugene Bliley
 Mr. and Mrs. Ralph L. Block
 Mr. Peter Block
 Mr. and Mrs. Ronald G. Blom
 Ms. Maurine Bloom
 Mev and Jason O. G. Blount
 Mr. David Blumfield
 The BLVD Hotel and Spa
 Mr. Raymond Bocanegra
 Mr. Chris Boden
 Mr. Bob Boden
 The Sasha Project LA
 Ms. Frances Bojorquez
 Mr. George N. Boone
 Ms. Rosana Borgen
 Mr. and Mrs. Bruce Bornhurst
 Mr. Jeffrey Boster
 Mr. and Mrs. Benjamin Boston
 Dr. William D. Boswell
 Mr. William M. Boswell
 The Boulevard School
 Renee Bourland
 Ms. Lynn Bowker
 Mrs. Donna L. Boyle
 Joyce Brandman
 Ms. Emily Brandon and Mr. Jim Brandon
 Ms. Faith Branvold
 The Sascha Brastoff Foundation
 Steffan Braunlich
 Mr. Gerald Breslauer
 Mr. Greg Bresner
 Alison and Andrew Brettschneider
 Mr. and Mrs. Daniel E. Bridleman
 Brilliant Tax and Accounting Services, Inc.
 Mr. Lucas Brito
 Mr. and Mrs. David Brockelmeyer
 Mrs. Dora Brockway
 The Broder Foundation and Mr. Robert Broder
 Jeffrey and Deirdre Bronchick
 Mrs. Karen R. Bronow and Mr. Paul Bronow
 Mr. Lee Bronson
 Ms. Renee Brook
 Mr. Dennis J. Brooks
 Carolyn Brothers
 Mr. and Mrs. Edward Brown
 Ms. Mary M. Brown
 Ms. Kathleen J. Brown
 Mr. Gary Brown
 Mr. Darrell Brown
 Mr. Michael Brown
 Mr. and Mrs. Dean Carson Brown
 Brown Family Trust
 Ms. Bridget Brownell
 Gunilla Brownfield
 Mr. and Mrs. Brett A. Browning
 Mr. and Mrs. Barry Brucker
 Ms. Margaret Brumm
 Mrs. Mary Stout Brunner
 Mr. and Mrs. Jeff Brunner
 Bryan Hawkins Kenpo Karate
 Mr. and Mrs. Ian Bryce
 Mr. Christopher A. Bucci
 Ms. Carol Buck
 Jane and Vince Buck
 Jane Buckingham
 Kate E. Buhmaster
 Kiwanis Club of Burbank Sunrise
 Burberry Limited Retail
 Mr. and Mrs. James J. Burge
 Mr. Manuel L. Burgos

Mr. Sean Burke
 Mrs. Sheilah Burnham and Mr. Matthew Burnham
 Mr. and Mrs. Robert B. Burns
 Ms. Whitney Burrell
 Paul Burton
 Mr. Didier M. Burton
 Mr. Jacob Busch
 Ms. Jeanie Buss
 Mr. Michael Butler
 Mr. Steve Butler
 Mrs. Evelyn E. Buysse
 Ms. Elaine Byerley
 Mr. David M. Bynum
 The Bypass Trust
 CMRE Financial Services, Inc.
 California Pizza Kitchen, Inc.
 Calleen Cordero Retail, Inc.
 Mr. Robert Campbell
 Mr. and Mrs. Gary A. Campbell
 Mr. Arthur F. Canales
 Mr. and Mrs. Mark Cane
 Mrs. Sara Cannon
 Cannon Family Foundation
 Trinh Cao
 Capcommunity Foundation, Inc.
 Care Review Resources, Inc.
 Mr. Rory Carey
 Mr. King Cargo
 Mr. Kenneth A. Carlson and Mrs. Katrina M. Carlson
 Mr. Steve Carlston
 Ms. Vanessa Carlton
 Mr. and Mrs. Adam Carolla
 Mr. Agustin Carpio
 Mr. Larry Carranco
 Ms. Rosella Carreon
 Jay Carson and Sarah Treem
 Mr. and Mrs. Rhett Carter
 Mr. and Mrs. William Carter
 Mr. Roberto Casas
 Ms. Tammy Casey
 Mr. and Mrs. Daniel M. Cashdan Jr.
 Mr. Daniel Cashdan
 Dr. and Mr. Russ A. Cashdan
 Mr. David Caspe
 Mr. and Mrs. Hugh R. Cassar
 Patrick J. Cassels
 Mr. Antonio Castaneda
 Ms. Desiree Castillo
 Mr. Howard Castillo
 Ms. Amanda Castillo
 Mr. Arnold Castro
 Ms. Theresa Caughlin
 Mr. Jon Cavanaugh-Spain
 CBRB Community Foundation
 CDW Corporation
 Mark and Cynthia Cendrowski
 Mr. Steven M. Centracchio
 Certified Plumbing Professionals
 Ms. Jacqueline Chacon
 Ms. Irma Chadbourne
 Shant Chakerian
 Mr. Andrew Chan
 Ms. Juliana Chan
 Niithya V. Raman and Vali Chandrasekaran
 Ms. Rosita Chang
 Mr. John Chang
 Mr. and Mrs. Alan Chang
 Change4Children's
 Ms. Lezlie Chapman
 The Charitable Foundation/Agent Community
 Outreach of Berkshire Hathaway Home Services
 Charityworks
 Charles Schwab
 Mrs. Barbara Chase
 Mr. Jack Chatenever
 Mr. Sammy B. Chau
 Ms. Khanh N. Chau
 Mr. Francisco Chavez
 Ms. Lina Chen
 Mrs. Christina Chen and Mr. Chad Chen
 Mrs. Yulin Hung and Mr. Chih C. Chen

Ms. Erica Chen
 Ms. Ashley Chen
 Catherine C. Cheney
 Steven Chester
 Chevron Matching Gift Program
 Shih-Chung Chien and Shu Jung Chen
 Ms. In Young Choe
 Mr. Paul Choi
 Mr. Thomas Chou
 Jennifer and Carey Chrisman
 Boon Hui Chua
 Mr. Paul Chuberka
 David Chueh Su Hsiung Memorial Foundation
 Mr. Te-Ming Chung
 Mrs. Shirley Chung
 Tae K. Chung
 Ms. Alise R. Churchill-Powell
 Mr. Henry Chyung
 Cinemark USA, Inc.
 Mr. Leroy Cisneros
 City Cosmetics, Inc.
 Dr. Leslie Clark
 Eric Clarke
 Mrs. Ann H. Clements and Mr. Robert Clements
 Clifford Segil, DO
 ClinicalMind, LLC
 The CM Group
 Coastal Bridge Advisors
 Mr. Gary Cobrae
 Ms. Sharon Cochrane
 Ms. Brianna Codeus
 Ms. Veronica M. Coelho
 Mr. and Mrs. Lyman Bruce Coffey
 Mr. Michael Cohen
 Mr. Christopher Cohick
 Ms. Laurie Cohn
 Coldwell Banker Residential
 Brokerage Community Foundation
 Mr. William Cole
 Mr. Cory Colgan
 Mr. Brian Collier
 Lathan Collins
 Ms. Kathy Collins
 Mr. and Mrs. Barry Colman
 Mr. Nicholas Colucci
 Eduardo Comagon
 Ms. Elizabeth D. Comley and Mr. Shaoul J. Levy
 Victoria E.J. Condos
 Ms. Shelley L. Conger
 Mrs. Yolanda Conklin
 Christina Conlon
 Mr. and Mrs. Timothy Connolly
 Amy and Brad Conroy
 Consulate General of the UAE



Ms. Stephanie Contreras
 Mr. and Mrs. John E. Cookman Jr.
 Mr. and Mrs. Clyde Dan Cooksey
 Mr. Fred D. Cooper

Mr. and Mrs. Gary D. Cooper
 Mr. Richard L. Corbell
 Mr. Chris Cordone and
 Mrs. Elizabeth Belkind-Cordone
 Lindsay Cordoves and Nino Cordoves
 Corp It Group, Inc.
 Ms. C.M. Coulourides
 Cove Street Capital, LLC
 Mr. Sean Crahan
 Crail-Johnson Foundation
 Mr. Thomas L. Crandall
 Mr. Bryan L. Cranston
 Mr. and Mrs. Joel G. Crawley
 Crazy Dog Tshirts
 Creation Entertainment
 Ms. Ruth Crooker
 Mr. Jason Crooks
 Ms. Phyllis Crotty
 Cheryl L. and Terry M. Crow
 Joni K. Crummet and Mr. Johnny A. Crummett
 Mr. and Mrs. Rafael Cruz
 Mr. Edward J. Cummings
 Ms. Jacquelin Curtis
 Mrs. Malgorzata E. Cwiertnia and
 Mr. Matthew D. Cwiertnia
 Cycle House, LLC
 Ms. Maritza Cyrus
 Mr. and Mrs. Samuel Dabbin
 Mr. Saverio D'Agostino
 Matthew Dalany
 Ms. Ila Dalrymple
 Mr. Cliff Damavandi
 Mr. Ted Dane
 Mr. Dean R. Darr
 Ms. Marina Davidov
 Mrs. Jennifer N. Davis and Mr. Timothy W. P. Davis
 Ms. Kathleen Davis
 Mark Davis
 Ms. Amy Davis
 Mr. and Mrs. Hugo D. De Castro
 Mr. Abraham De Dios
 Francis De Leon
 Mr. and Mrs. Norman F. Deatherage
 Mr. R. Douglas Deaver and Mrs. Francesca Deaver
 Mr. and Mrs. Joe DeBriyn
 Mr. and Mrs. Scott Decker
 Mr. Dennis DeCoster
 Mr. Robert T. Deere
 Mrs. Margaret E. Dehler and Mr. Martin Dehler
 Mr. Vic J. Deirmendjian
 Mr. Grant Dekernion
 Mr. Rodney Delson
 Delson Family Trust
 Delta Delta Delta
 Mrs. Barbara Dembo
 Mr. Josh Dembo
 Den Meditation, LLC
 Mr. Henrik Der Mesropian
 Mr. Christopher Derick
 Warren Dern and Clare Ryu Dern
 Mr. Manish H. Desai
 Mr. and Mrs. Peter Wheaton Devereaux
 Mr. and Mrs. Mike K. Dexter
 Ms. Nan Diacovo
 Diamond Bar Outdoors, Inc.
 Ms. Adriana Dibernardo
 Ms. Nancy Dick
 Ms. Susan DiCristina
 Ms. Sandra Dieny
 Tim and Lisa Dietenhofer
 Mr. Roberto Difffoot
 Ms. Jacky Dilfer
 The Din Family
 Mr. and Mrs. Philip J. DiNapoli Jr.
 Mr. Charles Dinse
 Direct Service, Inc.
 Mr. Michael Dixon
 Mr. Jason Djang and Mrs. Holly Djang
 Ms. Donna Djujic
 Dr. Maria A. Roldan and Dr. Paul K. Dohi
 Ms. Susan Doi

Ms. Kandice Dolkart
 The Dolotta Family Charitable Foundation
 Mr. Juan Dominguez
 Mr. John J. Doran
 Raia Doshi
 Mrs. Catherine Dougan and Mr. Benjamin F. Dougan
 Kirk and Anne Douglas
 Melissa and Scott Do Vale
 Mr. Brad Downs
 Ms. Jane B. Downs
 Ms. Mary Doyle
 Mr. and Mrs. Paul Drain
 Drivewise Auto, Inc.
 Drybar Holdings, LLC
 Mr. and Mrs. Jack Dudum Jr.
 Mr. and Mrs. Russell Duke
 Mr. Christopher C. Dunn
 Ms. Adriana Duran
 Mr. and Mrs. Wally Durham
 Ms. Audrey Dyne
 Dr. Ayk W. Dzhragatspanyan
 E H Summit, Inc.
 Mr. Michael Easton
 Mrs. Kirsten Ebine and Mr. Masaki Ebine
 Julie and Robert Edelstein
 Mr. Hugh Edey
 Mr. Brad Edgren
 Ms. Kerry Ehrin
 Breck and Georgia Eisner
 The Eisner Foundation
 El Segundo Rotary Club
 Electromed, Inc.
 Ms. Michelle Elliott-Pham
 Ms. Jocelyn Elsberry
 Ms. Patricia Emmerson
 Employees Charity Organization (ECHO)
 Employees Community Fund of Boeing California, Inc.
 Mr. Jacob Emrani
 Mr. and Mrs. Michael Augustin Enright
 Jaime Enriquez
 Andrea and Frank Epinger
 Mr. and Mrs. Donald Epstein
 The Phyllis and Donald Epstein Foundation
 Mikkel Eriksen
 Mrs. Georgianna Erskine
 Mr. Cleto Escobedo Iii III
 Ms. Josephine Eshagian
 Serjik Eskandari
 Anahit Esmaeilian
 Ms. Marisa Esparza
 Mr. Joseph Esquivel
 Ms. Maritha Estrada-Luna
 Mr. Richard Evans
 Eventbrite, Inc.
 Everbank
 Mr. and Mrs. Peter G. Exline
 Fabulous Faith's Foundation
 Falconwood Foundation, Inc.
 Mrs. Shirley Familian
 Family Rescue Fund
 Ms. Yun-Po Fan
 Ms. Sandra Farag
 Mr. and Mrs. James R. Farris
 Azita and George Fatheree
 Mr. and Mrs. Jon Favreau
 Mr. and Mrs. Aaron Feit
 Mr. D. B. Felch
 Mr. and Mrs. Robert S. Feldman
 Mrs. Pam Fellman
 Mr. and Mrs. Jon H. Feltheimer
 Mrs. Yong Fenlon
 Leeza Gibbons and Steven Fenton
 Mr. and Mrs. Giorgio Ferrara
 Mr. Jeremy Ferrell
 Mr. Ryan Fetters
 Mr. and Mrs. Banning Fiber
 Fidelity Charitable Gregory Gelfan & Lucy Butler Fund
 Presidio Strategic Communications
 Film Musicians Secondary Markets Fund
 Raymond Fimbres
 Mr. Edward Finley

Mr. William Finnegan
 Mr. and Mrs. Stanley Fishfader
 Fishing With Dynamite
 Fishlover Management, LLC
 Mr. Ross Flagg
 Flame Enterprises, Inc.
 Mrs. Ruth Flinkman Marandy
 Ms. Vanessa Flores
 The Morrison and Foerster Foundation
 Mr. Rodney and Mrs. Vicki Folden
 Ms. Shirlee Fonda
 Ms. Cynthia Ford
 Ms. Shermeta Forte
 Mr. Robert Fortner
 Ms. Anne Foster
 Founders Logistics, LLC
 Fountain Day School
 Dr. John Fowler
 Fernando Francisco
 Mrs. Tena L. Frank and Mr. Blair Frank
 Ms. Margaret-Ellen Frankel
 Ms. Erica Franzel
 Mr. Douglas A. Frazer
 Mrs. Laura Freedman and Andrew Freedman
 Ms. Hillary Freeman
 Mr. and Mrs. Bradford Freer
 Mr. David Frei
 Mr. Stanley Friar
 Ms. Lisa Frias Kujolic
 Mr. and Mrs. Robert A. Frinier
 Mr. Gary N. Frischling and Ms. Cindy Bauman
 Ms. Elizabeth Frost
 Mr. Jason Fuchs
 Mr. Nicolai Fuglsig
 Mr. Dan Fung
 Mr. Klaus Funke
 Mr. John G. Gallagher
 Mr. Brian Gallivan
 The Galstian Family
 Ms. Melinda Garcia
 Ms. Zulema Garcia
 Mr. Alexander Garcia
 Ms. Consuelo Garcia
 Ms. Karla Garcia
 Mr. Robert Garcia
 Garibaldina Society
 Ms. Lori Garo
 Mr. William Garren
 Mr. Larry Gasco
 Kimberly and Ivan Gavin
 Gelson's Markets
 Genentech
 Genentech, Inc.
 General Mills
 Mr. Ronald Gerhardt
 Ms. Anna Gezalyan
 G-H Transportation Inc
 Babak Ghassemieh
 Mr. and Mrs. Tony Giannoulis
 Gibson International Real Estate

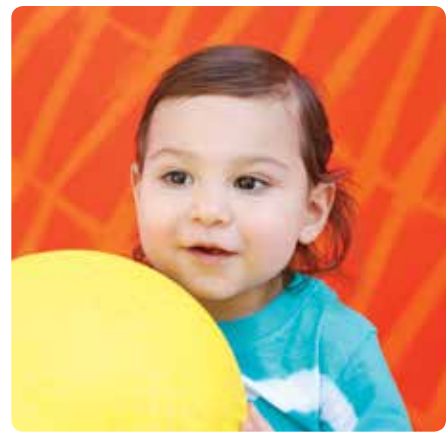
Mr. Kevin Gigax
 Ms. Gabby Gilady
 Gilead Sciences, Inc.
 Ms. Catherine Gill
 Mr. James Gillson
 Charalamos Giovani
 Girl Scout Troop 6445
 Mr. Paul Gitter
 Susan and Stephen Giusto
 Mr. Roland Glaser
 Mr. Andrew Glassman
 Mr. Jonathan Glatzer
 Mrs. Maureen Glick
 Rochelle and Jacob Glucksman
 Go4theGoal Foundation
 Mr. David Godinez
 Mr. Thomas Goff
 Ms. Jeanette Goldbaum
 Kira Goldberg and Aaron Zimmerman
 Myra Goldman and Mr. Jerome Goldman
 Mr. and Mrs. Todd Goldstein
 Mr. Mark Goldstein
 Mr. Mark R. Goldston and Mrs. Nancy Jane Goldston
 Dr. and Mrs. Charles J. Gomer
 Mr. Kevin Gomez
 Ms. Tina M. Gomez
 Mr. and Mrs. Luis A. Gomez
 Andrew Gomez Dream Foundation
 Mrs. Genevieve L. Gongwer and
 Mr. Robert C. Gongwer
 Isabel Gonzalez
 Mr. and Mrs. Brian Good
 Good Swings Happen, LLC
 Mrs. Eunice Goodan
 The Surviving Spouse's Trust of The
 Eunice Erb Goodan
 Mr. and Mrs. Parvin Goodarzi
 Mr. and Mrs. Michael Goodrich
 Mr. Paul Goodwin
 Dr. and Mrs. Martin Gordon
 Mr. Donald R. Gordon and Carol A. Johnston
 Mr. Randy Gorzeman
 Mr. and Mrs. David Gould
 Lynda Grace and Mr. David W. Grace
 Jaki Grainger
 Kayte and Kelsey Grammer
 Gregory and Louise Grasmehr
 Mr. John R. Gravance
 Ms. Dorothy Gray
 Greek Partners-Sigma Alpha Epsilon
 Mr. Michael Green
 Mr. and Mrs. Junius D. Green
 Mr. and Mrs. George Green
 Lahn Kim and Mr. Eric M. Greenfeld
 Mrs. Joanne Greenleaf
 Mr. and Mrs. Robert Greenspan
 Mrs. Jean Greenwood
 Mr. and Mrs. Joshua Greer
 Mrs. Sarah H. Griffin and Mr. James Griffin
 Mr. Fred Griggs
 Mrs. Anzhela Grigoryants
 Ms. Sonia Grijalva
 The Grinshteyn Family
 Ms. Barbara Gross
 Mr. and Mrs. David M. Gross
 Mathew and Erica Gross
 Mrs. Kristina C. Grotzinger and
 Mr. Jonathan Grotzinger
 Mr. and Mrs. Jason N. Gruenbaum
 Mr. Donald E. Gruenberg
 Dana R. Guerin
 Ms. Blanca Guerrero-Lopez
 Mr. Andrew Guest
 Mr. Nicholas Guia
 Ms. Gracie Guillen
 Dr. Yong Li Guo
 Ms. Liliana Gurganus
 Ms. April Gushue
 H&R Block
 Dr. Cornelia Haag-Molkenteller
 Mr. and Mrs. Randy J. Hage

Hage Family Trust
 Mr. and Mrs. Thomas J. Hageman
 Mr. Lawrence Hahn
 Hai Benefit Circle
 Ms. Sharon Hakimfar
 Mr. Andre Hall
 Mr. Marshall B. Hall
 Ms. Regina Hall
 Ms. Brooke Halsband
 Mrs. Dorothy Hamblin
 Rabeea Hameed
 Mr. and Mrs. Michael A. Hamilton
 Mia Hamm Foundation
 Oliver Hammett
 Mr. Dick Hampikian
 Matthew Hanna
 Hansen, Jacobson, Teller, Hoberman, Newman,
 Warren, Richman, Rush, Kaller & Gellman, LLP
 In Honor of our daughter, Mary Abigail Hanson
 Ms. Carol Hao
 Ms. Lia Buman and Mr. Mathew O. Harowitz
 Mr. and Mrs. Dorian Harwood
 Rose and Dennis Harley
 Ms. Kimberly Harmon
 Ms. Kristen Harrington and Mr. Luc Harrington
 Valeria and James Harris
 Dr. and Mrs. Irwin Harris
 Vivienett Harris and Mr. Mark A. Harris
 Dr. Richard Hart
 Mrs. Sylvia Hartman
 Harvard-Westlake School
 Ms. Kathleen Hauck
 Mr. and Mrs. Bryan Hausner
 Mr. Thomas J. Hawkins
 Haymarket Media, Inc.
 The Morris A. Hazan Family Foundation
 Hearts Of ABA
 Hecho En Mexico, LLC
 Mrs. Victoria Heggem
 Peter Heilbron and Jennifer Brandt Heilbron
 Dr. William R. Henderson Jr.
 Hensel Phelps Construction Co.
 Patrick Hensley
 Danuta and Bruce Herber
 George W. Herman
 Ms. Yamira Hernandez
 Ms. Yecenia Hernandez-Ramirez
 Mr. Armando Herrera
 Mr. Todd Hersperger and Mrs. Heather Hersperger
 Mr. Mark Herzer and Ms. Jennifer Herzer
 Mr. and Mrs. Bruce I. Heymont
 Mr. Ernest R. Hilger
 Mr. Kevin Hill
 Mr. Scott Hilton
 Mr. Barry Hinden
 Mr. and Mrs. William H. Hines Jr.
 Mrs. Cathy L. Hinson and Mr. Wayne E. Hinson
 Mrs. Chona Hirsch and Mr. Douglas Hirsch
 Mr. Richard S. Hirschfield
 Mr. and Mrs. Elan Hiutin
 James Ho
 Ms. Marcia Wilson Hobbs
 Mr. and Mrs. David Hoberman
 Mr. Abe Hoch
 Mr. Colin Hodgson
 Ms. Marie Hoffman
 Ms. Teresa Hoffman
 Mr. and Mrs. Lathrop G. Hoffman
 Ms. Christine Hoffman
 The Hoffman Murphy Team
 Ms. Heidi Hoffower
 Ms. Karen Hagan
 Ms. Diane Holguin
 Mr. Steve Holland
 Hollywood Bed
 Hollywood Roosevelt Hotel
 Mr. Tom Holt
 Mr. Don H. Holt
 Holy Trinity School
 Mr. and Mrs. Michael J. Hong
 The Horn Foundation



Mr. and Mrs. Rex Horney
 The Householter Family Charitable Fund
 Sona Hovakimyan
 Mr. Tyrone Howard
 Ms. Corinne Howard
 Howard Building Corporation
 Mr. Kenneth Howe
 Mr. Henry Hsieh
 Ms. Shelly Hsu
 Dr. and Mrs. Morgan Huang
 Ms. Lucy Huang and Mr. Tim Chang
 Mr. Wen H. Huang
 Ms. Karin Huang
 Mr. and Mrs. Peter Hubbell
 Hudson Tailor, Inc.
 Mr. Jacob J. Huebner and Mrs. Joann R. Huebner
 Mr. Daren Hughes
 Ms. Katherine Hulbert
 Mr. and Mrs. Chi H. Hung
 Mr. Lance Hunsicker
 Mr. and Mrs. David B. Hunt
 Ms. Angelica Hunt
 Mr. and Mrs. Shaikh L. Hussain
 Ms. Kim L. Huynh
 Mr. and Mrs. Ted Hwang
 Dr. and Mrs. Phillip M. Hwang
 Mr. and Mrs. George J. Hwang
 Mr. and Mrs. Steven Hyland
 Mr. Jim J. Hyman and Mrs. Leslie Weisberg
 I Am Gay, Inc.
 IAB Of SFV
 Mr. Franco Iadevaia
 IBM Computershare
 IBM Employee Services Center
 Manouchehr and Afsaneh Illouliau
 Mr. Barry Ilovitch
 Mr. John Im
 Imoff & Associates
 Mr. Gerardo Iniguez
 Insurance Auto Auctions, Inc.
 The Integra Foundation
 Integrity Property Management, Inc.
 Dairy Queen
 International Society for Children with Cancer
 Cris Ippolite
 Mr. Muhammad Iqbal
 Irell & Manella, LLP
 Mr. and Ms. Mark Ishida
 Nori N. Ishimori
 Mr. and Mrs. David Itzikman
 Ivan A. Marks, DDS, MD, Inc.
 Mr. Ivan Ivanov
 Ivy Springs Medical Care, Inc.
 J W Pacific, Inc.
 Ms. Marissa B. Nerenberg and Mr. Jay Jackson
 Mr. and Mrs. Luke R. Jacobellis
 Dr. Shahram Jacobs
 Lee Ann and Melvin H. Jacobs Foundation
 Keiko and Larry Jacobson
 Mr. David C. Jaffe
 Mr. John M. Jakubowski
 Mr. Kenneth W. Jamison
 Ms. Diana Jansen
 Ms. Karen Jansons
 Jennifer Meyer, Inc.
 Mr. James D. Jennings
 Ms. Lori Jennings
 Mr. Kendrick Jeong
 Ms. Charlotte Jess
 Mr. Fay Jew
 Mr. and Mrs. Joseph E. Giuliano
 JKB Corporation
 Joan Fritz Family Trust
 John White Plumbing and Rooter Connection, Inc.
 Nicole and Andrew Johnsen
 Mr. David Johnson
 Mr. Michael S. Johnson
 Meredith and Brett Johnson
 Mr. George Johnson
 Mr. Craig Johnson
 Mr. Henry Johnson

Mr. William Johnston
 Mr. Matthew Jones
 Mr. Cary W. Jones
 Ms. Ruth Jones
 The Jordan Family Living Trust
 Jose M. Sachez Family Foundation
 Mr. Michael Joseph
 Mrs. Gloria Joseph
 Shira's Story Corner and the Josephson Family
 Mr. Colin K. Jost
 Ms. Claudia Joyce
 JP Morgan Chase
 Mr. Martin Juarez
 Ms. Deborah Jury
 JustGive, Inc.
 Mr. Sam Kabbani
 Mr. Kristian Kachikis
 Mr. Neil Kadisha
 Mr. and Mrs. Jon Kagawa
 Ms. Diane M. Kageyama
 Mr. Akira Kageyama
 Ms. Mary B. Kaiser
 Mr. Larry Kaiser
 Kal Krishnan Consulting Services, Inc.
 Tanya D. Kalaydjian
 Mr. Matthew Kaleba
 Deborah and Ivan Kalklick
 Ms. Avalyn Kamachi-Lazaro
 Mr. Sepehr Kamjoo
 Dr. Raj Kanodia
 Mr. Patrick Karapetian
 Ms. Anita Karbelnig
 Shibani Kashyap
 Mr. Paul Katayama
 Mrs. Beth Kaufman and Mr. Brett A. Kaufman
 Dr. and Mrs. Mark D. Kaufman
 Ms. Leslie Kautz and Mr. Jack Weiss
 Dr. Matthew Kaw
 Mr. Donald Kawano
 Mr. Eric Kawase
 Dr. Robert and Mrs. Fori Kay
 Ms. Lauren Kaye
 KBL Home Design
 KCNS Law Group, LLP
 Mr. and Mrs. William J. Kearney
 Mr. Hovannes Kechian
 Matthew S. Keefer, MD
 Mr. Thomas Keefer
 Mr. and Mrs. Jesse O. Kellerman
 Ms. Diedre Kelly
 Mr. John Kendall
 Kennel Club of Beverly Hills
 Mr. and Mrs. Charles N. Kenworthy
 Ms. Heddy Kervandjian
 Marie Keshishian
 Ms. Roubina Keshish-Moses
 Mr. Norayr Keshishyan
 Ms. Sandra L.B. Kessinger
 Mr. and Mrs. Jeffrey A. Kessler
 Mr. and Mrs. William Kessler
 Ms. Patricia Ketchum
 Keyes Motors, Inc.
 Ms. Mary Khalilpour
 Ms. Carolin Khanlari
 Ms. Toba Khedoori
 Ms. Kathleen Choi and Mr. John Jong-Hyun Kim
 Mr. Charles Kim
 Ms. Chong Kim
 Kim Minh, Inc.
 Mr. and Mrs. Jim Kimmel
 Mr. and Mrs. William Craig Kinard
 Kinecta Federal Credit Union
 Ms. Kim King
 Mr. Patrick A. Kinney
 Mr. Gary Kinsella
 Mr. Joshua Kiper
 Mr. Andrew Kissil
 Mrs. Cathy Kissinger
 Kiwanis Charities of Santa Monica
 Kiwanis Club of Glendora Kiwanianes
 Kiwanis Club of Glendora Projects Fund, Inc.



Kiwanis Club of Hacienda Heights
 Mr. and Mrs. Stuart Klabin
 Mrs. Janet B. Klein and Mr. George Klein
 Avram D. Klein and Ms. Carol T. Klein
 Jessi Klein and Michael Engleman
 Mr. and Mrs. Stephen D. Klein
 Mr. and Mrs. Howard B. Klein
 Arthur Kleinman
 Ms. Judith Kline
 KMS Sales
 Mr. and Mrs. Rob Knox
 Dr. Rohit Kohli
 Ms. Martha Koplin
 Mr. and Mrs. Dennis R. Korn
 Mr. Alan Kornfeld
 Mital Kotecha
 Mr. Richard D. Koury
 Ms. Victoria Kowalski
 KPMG Community Giving Campaign
 Mr. Justin Kraft
 Dr. Michael Kramer
 Ms. Fyllis Kramer
 Mr. Stephen Kramer Glickman
 Brad D. Krasnoff and Ms. Danielle Krasnoff
 Deborah Krava
 Mr. and Ms. Hal N. Kravitz
 Mr. Johnny Kreitman
 Mrs. Catharine Krellenstein and Mr. Gary Krellenstein,
 in honor of Pam and Jeff Levy
 Ms. Rochelle Krieger
 Kroger Specialty Pharmacy
 Ms. Phyllis M. Kruckenberg
 Mr. and Mrs. Jeffrey Krul
 Mr. and Mrs. Stanley P. Kubota
 Mr. Robert G. Kuchinski
 Ms. Raghavendra Kulkarni
 Mr. and Ms. Sagar Kumar
 Caroline and Mark Kuperstock
 Mr. Ernest Kwong
 L.M.C. Family Trust
 LA American Center Insurance, LLC
 Mr. Scott B. La Riviere
 Mr. Syd La Van and Ms. Alexandra La Van
 Ms. Eva LaChica
 Ms. Judith Lacsza
 Mr. Bruce Lafferan
 The Lafferan Family Foundation
 Mr. Daniel Laframboise
 Mr. Bruce Lagnese
 Chienhong Lai
 Nehal Lakhani
 Dr. Ara Jil-Agopian and Ms. Lusine Lalabekyan
 Ms. Margaret Lam
 Mr. Dung M. Lam
 Mrs. Susanna Lam and Mr. Evans Lam
 Ms. Gina Lamanna
 Mr. O'Neil Lamb
 Mrs. Cynthia Lambaren and Salvador Lambaren
 Jason Land and the Guitar Ninjas
 Rodger and Jennifer Landau

Landmark Properties
 Ms. Cindy Landon
 Dr. and Mrs. Ronald P. Lang
 Mr. Alexander Lange
 Mr. and Mrs. Jack D. Lantz
 Larchmont Sanctuary Spa
 Ms. Amy Larkowski
 Mrs. Barbara Larson
 Ms. Tak-Lai Lau
 Mr. Daniel Laughlin
 Mr. Calvin Laughlin
 Laurie Singer Behavioral Services, Inc.
 Ruth Lautzenheiser
 Dr. Arash B. Lavian
 Mr. Jason Lavizani
 Law Offices of Humberto Guizar
 Mr. Ralph Lawler
 The Lawrence and Diedre Gordon Foundation
 The Laz Parking Charitable Foundation, Inc.
 Mr. Gilbert Laza
 Ms. Mary Lazar
 Mr. and Mrs. Paul Lazarus
 Lazer Broadcasting Corporation
 Mr. Robert Lea
 Ms. Martha Leal
 The Learning Castle, Inc.
 Ms. Celia Leaver
 Ms. Kathryn Leaverton
 Mr. and Mrs. Adam Lebovitz
 Rabbi and Mrs. Nolan Lebovitz
 Mr. Michael Lee
 Mr. Wung Lee
 Yi-Lung Lee
 Ms. Helen Lee
 Mr. Benton Lee
 Ms. Joanne C. Lee and Mr. Harry J. Lee
 Norman and Sadie Lee Foundation
 Legends Baseball Academy Inc
 Christina and George Legg in honor
 of Matthew Foster
 Mr. Juan Leon
 Mr. Max Lerman and Mr. Lawrence Lerman
 Mr. Avi Levi
 Levi Construction and Development, Inc.
 Mr. and Mrs. Richard Levin
 Dr. Melvyn B. Lewis
 Ms. Betty Ann Lewis
 Mr. Zach Lewis
 Lexmar
 Mr. Rodney Liber
 Ms. Evangelia Lieberman
 Mr. and Mrs. Christopher Liebes
 Ms. Susan Liljestrom
 Ruth Lilly Philanthropic Foundation
 Mr. Kenneth Lim
 Mr. Emmanuel Limtao
 Ms. Kelli Lin
 Kuang Hsiang Lin
 Mr. Oscar Lin
 Mr. Steven Lin
 Lincoln Property Company
 Walter B. Lindheimer Charitable Foundation
 Patrick Ling and Josephine Ling
 LinQuest Corporation
 Ms. Margaret Lipis
 Ms. Linda Lirones
 Ms. Marisa D. McGrath and Mr. Matthew T. Liston
 Mrs. Lori E. Litow and Dr. Jeffrey J. Litow
 Litow Family Foundation
 Dr. and Mrs. David Liu
 Shen Liu
 Michelle and Joshua Lobel
 Mr. Andrew Logan
 Mr. and Mrs. Holger Lohfeld
 Mr. Robert and Ms. Wendi Lohmar
 Mr. Michael Longacre
 Longden Enterprises, Inc.
 Mr. Eduardo Lopez
 Mr. and Mrs. Joel Lopez
 Mr. and Mrs. Ed Lopez
 Los Angeles Microtek

Los Angeles Rams
 Vinicius Losacco
 Beth and Bob Lowe
 Mr. Jack Lowell
 Mr. David Lowenthal
 Loyal Order Moose Club
 Mr. and Mrs. Richard J. Luciano
 Lucy and Douglas Lucterhand
 Mr. Francisco Lugardo
 Clement Chung and Macy M. Luk
 Mr. and Mrs. Robert W. Lyons
 Henry and Winifred Lyons Foundation
 Ms. Crystal MacDonell
 Ms. Marilyn Mack
 Mr. and Mrs. Stephen Mack
 The Honorable and Mrs. William A. MacLaughlin
 Mr. and Mrs. Robert V. Madden
 David Magruder
 Ms. Stephanie Mailen
 Mrs. Diana and Mr. Steve Maiman
 Mr. and Mrs. Edwin F. Major
 Mr. Robert Makhani and Mrs. Emi Makhani
 Saner Makphon
 Mr. Jeffrey J. Malcolm and Mrs. Lisa R. Malcolm
 Mr. Alen Malekian
 Carol and Douglas Mancino
 Mr. Joel Mandel
 Mr. and Mrs. Joseph Manisco
 Mr. and Mrs. Ralph Manker
 Mr. Gregory Mansur
 Ms. Melissa Maravilla
 Marc Michel Eyewear Studio, Inc.
 March of Dimes Foundation
 Mr. and Mrs. Joel S. Marcus
 The Marcy Family
 Marcy Family Trust
 Mr. Gary Margolis
 Mr. and Mrs. Thomas V. Marino
 Ms. Michelle Marks
 The Alvin Marley Foundation, Inc.
 Ms. Debbie Marquez
 Brett and Brenda Marsh
 The Whittier Trust Company Katie and
 Willy Marsh Fund
 Mr. Nathan Martin
 Curtis Martin
 Mashhoon Family Foundation
 Mr. Yashua H. Mashiach
 Gary and Amy Masino
 Mr. Goren Marcus Masino Marsh
 Ms. Cristina Mateescu and Mihail V. Mateescu
 Mr. Ben Matheny
 Mr. Cannon Mathews
 Clark Mathis
 Goran S. Matijasevic and Susan Matijasevic
 Mary I. Maxon and Dr. Harry Maxon
 Maxon Family Foundation
 Ms. Oana Maxwell
 Ms. Roberta Maxwell
 Ms. Susan May
 Mr. and Mrs. Steven F. Mayer
 Steven and Laura Mayer Family Foundation
 Ms. Laray Mayfield
 Ms. Valerie Mazor
 Mr. Michael McAlpine
 Ms. Mary E. McCulley
 Mr. Ronald McDaniel
 Mr. and Mrs. Stephen McDonald
 Mr. Timothy W. McHale and Mrs. Mirna McHale
 Mr. Peter McMillan
 Ms. Marjorie McNaught
 Mickey McNearney
 L.M. McOmie
 Mr. and Mrs. Tim L. McPherson
 Mdr Pharmaceutical Care
 Jodi and Bradley Meadow
 Ms. Adrienne Medawar
 Medtronic Foundation
 Mr. Robert Mehlman
 Mr. and Mrs. Thomas Meikle
 Mr. and Mrs. Peter J. Melideo

Niv Melili and Tally Melili
 Andriy Melnychenko
 Mr. Ira Meltzer
 Wendy and Judd Meltzer
 Mr. and Mrs. Michael R. Mend
 Kurt Menke
 Dr. JD Menteer and Family
 Rose and Gene Mergelmeyer
 Mesa West Foundation
 Mr. and Mrs. Larry Methvin
 Mr. Robert Metoyer
 Ms. Susan Metros
 Mr. Robert Meyer
 Mrs. Jamie Meyer
 MGA Entertainment
 Michael and Mary Living Trust
 Mr. Steve Michaels
 Mr. Elexander Michaelson
 Michele Marie Public Relations, LLC
 Ms. Celia Mignucci
 Mr. Joseph Mika
 Mr. and Mrs. Robert L. Miles
 Mr. and Mrs. Edward Milkovich
 Ms. Karen Millan
 Mr. and Mrs. Jacques Millaud
 Mrs. Suzanne C. Miller
 Corrine and Milton Miller
 Mr. and Mrs. Eric James Miller
 Mr. and Mrs. O'Malley Murray Miller
 Mr. and Mrs. Joseph F. Miller
 Mr. David C. Miller
 Mr. and Mrs. Jerome Miller
 M.M. and O. Miller Charitable Trust
 Milliondollarplus, LLC
 Mr. and Mrs. Adam Milstein
 Adam and Gila Milstein Family Foundation
 Mr. Ashkan Minaie
 Matthew Minich and Jennifer Minich
 R. Bruce Minto
 Mrs. Margaret Mintz and Mr. Daniel Mintz
 Mr. Robert M. Mirvis
 Mr. Scott Mischel
 Mr. and Mrs. Ross Misher
 Mr. Eugene Mitchell
 Mr. and Mrs. Donne P. Moen
 Mr. Jason Moffitt
 Mr. and Mrs. David Sai Ho Mok
 Pablo Molnar
 Mr. Scott Monroe
 Mr. Elias Montano
 Gloria Montes
 Moondance Jewelry Gallery
 Mr. Naresh Moonesinghe
 Mr. Robert Moore Jr.
 Mr. Patrick Moore
 Ms. Kathe Moore
 Robert London Moore Jr. Foundation
 Dr. and Mrs. Ferzaad Moosa
 Mr. Santiago Moran
 Keleigh and Michael Morgan



Ms. Ronetta Morgan
 Mr. Lowell Morgen
 Mrs. Levita Morris
 Ms. Carol Morrissey
 Mr. and Mrs. Hadi Morshed
 Suzy and Shu Shu Moser
 Walter W. Mosher Jr. Foundation
 Mr. Walter W. Mosher Jr.
 Mr. Tommy P. Moss



Amir and Ellie Mossanen
 Motive
 Mr. Ali Moussavi
 Mr. and Mrs. Thomas F. Moyer
 Mr. C's Towing of South Gate, Inc.
 MRG Management, Inc.
 Ms. Victoria Mudd
 Mr. and Mrs. William H. Mudd
 Seeley W. Mudd Foundation
 Ken and Carolyn Mueller
 Muller Family Foundation
 Ms. Janice Munoz
 Mr. Jack Murad
 Mr. and Mrs. James Murdock Jr.
 Ms. Susan Murphy
 Mr. John Murphy
 Mr. William Murray Jr.
 Ms. Deborah Murray
 Kathleen and Matthew Murray
 Mr. and Mrs. Robert Musgrove
 Erik Hyman and Max Mutchnick
 Ms. Nicole Mutchnik
 Mr. Eric Myers
 Mr. and Mrs. Jerry Myman
 Ms. Frances Myman
 Frances Myman Living Trust
 Dr. and Mrs. Robert W. Nafie
 Ms. Beth Nahama
 Dr. Ali Najafi
 Naked Zebra
 National Association of Theatre Owners
 Ms. Jessica Nava-Rivas
 Mr. Jonathan P. Nave
 Mr. Max Nawaz
 NBC Universal
 Ms. Annie Neal
 Nederlander-Anaheim, Inc.
 Candace and Charles Nelson
 Merrylou J. Nelson
 Ms. Jessica Nerren
 Mr. David Nevins
 Ms. Claudette Nevins and Mr. Benjamin L. Pick
 New Era Family Foundation
 Mr. and Mrs. Bruce Newberg
 Mei-Lee Ney
 Mr. Kenneth Ng
 Ms. Alice Ngao
 Mr. Tony Ngo
 Mr. Philip Wah and Kim-Lien Ngo-Wah

Ms. Leslie Nguyen
 Ms. Maggie N. B. Nguyen
 Rev. Hien M. Nguyen
 Mr. Anthony Nicholas
 Mr. Samuel Nickens
 Shane Nickerson
 Mr. and Mrs. Lief Nicolaisen
 Ms. Michelle Nieves
 Nigro Karlin Segal and Feldstein, LLP
 Mrs. Nancy L. Nikolai and Lawrence Nikolai
 Mr. Ronald G. Niner
 Dr. and Mrs. Gerald A. Niznick, DMD
 The Gerald and Reesa Niznick Family Foundation
 Mr. Michael Norris
 Northrop Grumman
 Mrs. Rose Norton
 Mr. and Mrs. Stephan Nourmand
 Nulo, Inc.
 Mr. Eduardo Nunez
 Mr. Mark J. Nureddine and Ms. Barbara Nureddine
 Michael and Liz Nyman
 Oaks Christian School
 Mr. and Mrs. Michael Gavin O'Brien
 Mr. Miguel Ochoa
 Charleen Oconnell
 Mr. Randal O'Connor
 Mr. James O'Connor
 Ms. Jodi Ogden
 Mr. Timothy O'Gorman
 Juliet and Jun Oh
 Oh Boy Sports, LLC
 Ms. Patricia M. Okada
 Ms. Silvia Olmedo
 Mrs. Kerry S. Olson
 On Time Building Maintenance, Inc.
 One Beacon Charitable Trust
 Option Care Enterprises, Inc.
 Opus Community Foundation
 Orange County United Way
 Orangetheory Fitness
 Mr. Joel Oropesa
 Jesse Orozco
 Mr. Antonio Ortiz
 Enrique Ortiz Jr.
 Mr. and Mrs. Steig A. Osberg
 Mr. and Mrs. Robert Osborn
 Mr. Neil Osina
 Osterkamp
 Roger Stoker and Michael Ostrow
 Mr. Alex Osuna
 Mr. and Mrs. Vince Otte
 Outdoor Voices
 Donna S. Tenore and Mr. James W. Owca
 Mr. Michael Owen
 Mr. and Mrs. Calvin H. Owens
 Ms. Teresa Owens
 Oxford Engineering Inc
 Mr. William Oxley
 Mr. Ruben Pacheco
 Pacific Commerce Bank
 Pacific Loanworks, Inc.
 Mr. and Mrs. Buck Page
 Mr. Stephen Page
 Mr. and Mrs. David Paller
 Peter and Patricia Palmer
 Mr. and Mrs. Jeff R. Palmer
 Ms. Veronica Panduro
 Mr. Prayuth Panichpakdee
 Mr. Carlos Papierski
 Ms. Julie Park
 Mr. Mel Parker
 Mr. William Parker
 Vipul Parmar
 The Albert Parvin Foundation
 Pasadena Showcase House for the Arts
 Kathe Pate and William C. Pate
 Mrs. Rachel Patino and Mr. Roberto Patino
 Ms. Lisa Patino
 Patriot Wealth Management
 Edwin W. Pauley Foundation
 Mrs. Karen L. Paulson and Mr. Clyde S. Paulson

Payden & Rygel
 William A. Peacher and Evon Peacher
 Peak Theory, Inc.
 Mr. Barry Pearlman
 Pearls Twirls, LLC
 Mr. Jason Pearson
 Peco Pallet
 Mr. Mark Peel and Ms. Daphne Brogdon
 Mr. Richard R. Pejsa
 Mr. Gregory Penske
 Ms. Brandy Peoples
 Mr. and Mrs. Murray Pepper
 Peralta and Associates
 Mr. Nicholas Perdomo
 Ms. Cynthia Perez
 Ms. Antoinette Perez
 Dr. and Mrs. Gilbert S. Perlman
 Mr. John Perry
 Mr. Scott Perry
 Mr. and Mrs. Michael A. Persky
 Pessin Family
 Nancy and Sidney Petersen
 Kathleen and Jack Peterson
 Mr. Bradley and Mrs. Christine Peterson
 Mr. Kurt Peterson
 Mr. and Mrs. Robert G. Petrie
 Michael Petrosian
 Mr. Le N. Phan
 Mr. and Mrs. Warren B. Phelps III
 Stephen Philibosian Foundation
 Daphne Phillips
 Mr. Aaron Philpott
 Philpott Meeks, LLP
 Ellen and Peter Picataggio
 Ms. Felicia Pickett
 Ms. Karen Piggee
 Mr. and Mrs. David Pillemer
 William and Sonia Pindler Family Foundation
 William and Valerie Pinero
 Mr. Barry L. Pinsky and Ms. Linda Rae Scharlin
 Wendy Platt
 Playa Vista Moms Group, Inc.
 Pleaser USA, Inc.
 Ms. Silvia Pleitez
 Mr. and Mrs. Edward Podrebarac
 Point Dume, Ltd.
 Mr. Terry D. Polesie
 Mr. Efrén I. Ponce
 Mr. Scott R. Poole
 Mrs. Gwen Potiker and Mr. Brian Potiker
 Rick and Debbie Powell
 Mr. Scott Power
 Mr. Joshua Prager
 PRE Holding, Inc.
 Preferred Testing Labs, Inc.
 Mr. and Mrs. Ernest T. Prentice
 Mr. Henry and Mrs. Felicia Present
 Present Family Foundation
 Ms. Jackie Price
 Mr. Lonnie Priestler
 Primex International Trading Corp.
 Mr. Domonek E. Prince
 The Alvin Marley Foundation, Inc.
 Mr. John Prins
 Ms. Becky Proctor
 Pro-Softnet Corporation
 Mr. Anthony Pugliese
 The Pump Group, LLC
 Mr. and Mrs. Steve Quackenbush
 Mr. and Mrs. Robert Queen
 Quest Diagnostics
 Mr. and Mrs. Mike Quevedo Jr.
 Mr. Louis Quiles
 Mr. and Mrs. Bret David Quinlan
 R.D. Glaser Rental Account
 Danielle Rabadi
 Mr. Saravanan Radhakrishnan
 Michael Raimondo
 Ralph J. Garrido and Associates, Inc.
 Ralph Lauren Corporation
 Mr. Arash Raminfar

Lisa Renee Ramirez
 Dr. Leigh M. Ramos-Platt
 Mr. William Ramsey
 Tracy Rannazzisi and Mr. Stephen Rannazzisi
 Ms. Lillian Raphael
 Ms. Amanda Goldberg and Mr. Philip Raskind
 Mr. Manish Raval
 Ms. Renata Ravina
 Mr. Steven Ray
 Dr. Amer and Mr. Cory Rayyes
 RE/MAX Dynasty, Inc.
 RE/MAX International, Inc.
 Mrs. Joy Rea in honor of Johnny
 Ms. Janet Read
 Redbird Flooring, Inc.
 Reed Smith, LLP
 Ms. Zoe C. Regan
 Regency Centers
 Mr. and Mrs. G. A. Reich
 Mr. Christopher Reilly
 Ms. Tami B. Reineking
 Ms. Mary A. Reinhard
 Mr. William Reisinger
 Robert Relski
 Mrs. Joan Remick
 Ms. Frieda Rentie
 Mrs. Carole Restovich
 Ms. Cristina Reyes
 Mr. Joel Reyes
 Mr. Jesus Reynoso
 Ms. Nessa Rezale
 Natalie Morales-Rhodes and Joseph Rhodes
 Dr. and Mrs. J. R. Rich
 Dr. Dixie Richards
 Dr. and Mrs. Warren Richards
 Mrs. Theresa M. Richards and
 Mr. Michael J. Richards
 Warren and Carolyn Richards Foundation
 Ms. Aimee Richardson



Mr. Daniel Ricker
 Mr. and Mrs. Don Rickles
 Riconsito Latino
 Mr. Robert Riley
 Mrs. Nancy Ringle
 Mr. Peter Ringold
 Mr. and Mrs. John D. Ripa
 Mr. Ulysses Rivas
 Ms. Hilda Rivera
 Riverview Dairy
 Mr. Dennis A. Roach and Ms. Jill J. Roach
 Ms. Joan Robbins
 Dr. Heather J. Roberts
 Ms. Mary Ann N. Roberts
 Mrs. Leslie Robinson and Mr. Douglas Robinson
 Mr. Jack Robinson
 Mr. Edward Robles
 Rodale
 Mr. and Mrs. W. Jack Rode

Mrs. Dorcas W. Rodi-Shryock
 Liz Rodriguez
 Ms. Gloria Rodriguez
 Ms. Maria Rodriguez
 Ms. Geraldine Rodriguez
 Ms. Laura Rodriguez
 Ms. Sacorra Rodriguez
 Mr. Victor Rodriguez
 Ms. Alejandra Rodriguez Garcia
 Mr. and Mrs. Roberto Roges
 Ms. Hilda Rolfe
 Rolling Hills Country Day School
 Rolling Hills Methodist Church
 Ms. Charlotte Rombaut
 Mr. Charles Romero
 Mario Romero
 Mr. Waldo Romero
 Dr. Wilhelmine Wiese-Rometsch and
 Mr. Martin P. Rometsch
 Mr. and Mrs. Art Ronci
 Ropolo Charitable Trust
 Ms. Isabel Rosales
 Fedelito Rosario
 Rose and Louis Klosk Fund
 Mr. David Rosen
 Mr. Steve Rosen
 Mr. Fredric Rosen
 Eli and Mae Rosen Foundation
 Mr. and Mrs. Mitch Rosenberg
 Ellen Rosenberg
 Mrs. Catherine Rosenberger and
 Mr. Paul W. Rosenberger
 Ms. Carole Rosenblum
 Mr. Jeffrey Rosenblum
 Mr. Mark Ross
 Ms. Donna Ross Jones
 Mrs. Barbara Rostand
 Helen Roth and Stanley K. Roth
 Dr. Martine A. Rothblatt and Ms. Bina A. Rothblatt
 Mr. Glenn Rothner
 Maria and Marc Rotter
 Ms. Candace Roy
 Royal Electronics, Inc.
 Royal Jewelers, Inc.
 Mr. Daniel Rubin
 Melanie R. Schiff and Sterling Ruby
 Ms. Doreen Ruth Braverman and
 Mr. Stuart William Rudnick
 Mr. Francisco Ruiz
 Beatrice Ruiz
 The Runaway Hamsters
 RUSH
 Rusnak Automotive Group
 Mr. and Ms. David Ryan
 S & M Development
 Mr. and Mrs. Stephen A. Sachs
 Ms. Sherrie B. Sachs
 Ms. Julie A. Sandler and Mr. Cary Sacks
 Sacred Heart Council Knights of Columbus
 Ms. Nunila Sagisi
 Dr. and Mrs. Paul E. Sago
 Ms. Olga Sahagun
 Mrs. Annette Sahakian
 Jan Saiget and John Clouse
 Saint Steven's Serbian Orthodox Cathedral
 Ms. Edith Salas
 Mr. Hossein Salehi
 Ms. Joan A. Saller
 Mr. Rami Salman
 Mr. Lloyd Saltman
 Mr. Michael Sampiano
 Mr. and Mrs. Mark A. Samuels
 Ms. Danielle Samulon
 Samy Metyas, MD, Inc.
 San Jose Charter Academy Associated Student Body
 Mr. and Mrs. Ed C. Sanborn
 Marcela Sanchez
 Toni and Oscar Sanchez
 Mr. John E. Sanders
 Mr. Michael E. Sandler
 Mr. David H. Sands

Santa Monica Bay Auxiliary
 Ms. Amy Santiago
 Ms. Michelle Santos
 Mr. Micheal J. Sapienza and
 Mrs. Iwona A. Sapienza
 Ms. Ashley Sardonía
 Mr. and Mrs. Charles M. Sarff
 Mr. and Mrs. James C. Sater
 Mr. Gary Satin
 Mr. and Mrs. James A. Satragni
 Mrs. Ramendra N. Satyarthi and
 Mr. Bharti N. Satyarthi
 Ms. Marina Saurin
 Nicole and Jonathon Savic
 Mr. and Mrs. Steve Savitsky
 SCA Enterprises, Inc.
 Ms. Erin Scanlon
 SCCUA
 Mr. and Mrs. Albert Schatz
 Ms. Carol A. Scheck and Mr. T. R. Scheck
 Ms. Gail Schenkman
 Mr. Steven Scher
 Ms. Sandra Schiro
 Mr. and Mrs. Larry Schmanski
 Mr. Kenneth Schmidt
 Mr. Harvey Schneider
 Mr. Michael Schoenfeld
 Mr. and Mrs. Leonard Schrage
 Mr. and Mrs. Alan R. Schultz
 Mr. and Mrs. John J. Schumacher III
 Mr. and Mrs. Thomas A. Schupp
 Mr. and Mrs. Jordan Schur
 Schwab Charitable Shugart Lead Account
 Mr. and Mrs. Charles Schwartz
 Mr. Andrew A. Schwartz
 Ms. Elizabeth Schwartz
 Ms. Carole Sclafani
 Mr. and Mrs. Howard R. Scott
 Tim Scully
 Mrs. Laura B. Scuticchio and Mr. Anthony Scuticchio
 Mr. Darren Segale
 Ms. Yvonne De Segerstrom
 Mrs. Terry Seidler
 Mr. and Mrs. Tom Seidman
 Seidman Family Foundation
 Karl and Liselotte Seitz
 Select Management Group
 Mr. John Sell
 Ms. Marjorie Seltmann
 Sempra Energy
 Serna Insurance Agency, Inc.
 Le'Naye Session
 Ms. Pamela Shafer
 Shake Shack
 Mr. Kieran Shamash
 Mr. Albert Shamsian
 Mr. Mitchell Shapiro
 Miles Koules and Risa Shapiro
 Mr. Bruce Shapiro
 Mr. Jesse Shapiro
 Mrs. Maha Said-Shariff and Mr. Ahmad Shariff
 Mr. Yossi Sharon
 Ms. Shirley A. Suda and Donald B. Shaul, MD,
 and The Shaul Family
 Rory Sheehan
 Mr. Eddie Sheldrake
 Mr. Richard Sherman
 Mrs. Barbara Shilling
 Mr. David Shinn
 Shinola/Detroit, LLC
 Mr. Mike Shinozaki
 Mr. and Mrs. Izek Shlomof
 Mr. John Shoemaker
 Mrs. Virginia L. Shoji and Dr. Kent T. Shoji
 Mr. Leonard Shonka and Ms. Roxane Shonka
 Ms. Brittany Shugart Shiba
 Ms. Suzy E. Shuster and Mr. Rich S. Eisen
 Mr. Alfred H. Siegel
 Ms. Rita S. Sieger
 Mr. Robert W. Sievers
 Mr. and Mrs. Sandy Sigal

Mr. Luis A. Silva
 Joyce and Bennett Silverman
 Mr. and Mrs. Michael G. Silverman
 Mr. and Mrs. Richard Silverman
 Ms. Rachel Silverman
 Dr. and Mrs. Randall A. Silverston
 Mr. and Mrs. Thomas M. Simms
 Ms. Barbara L. Simon
 Mr. Lionel F. Simon
 Simpson and Simpson Management Consulting, Inc.
 Ms. Kate Sinclair
 Jesse D. Sines
 The Family of Jacob Singer
 Mr. and Mrs. Michael L. Singer
 Ms. Amber Sinne
 Mr. Matt Sinnreich
 Mr. Michael G. Sipes and Mrs. Natty Rios-Sipes
 Mr. Dale M. Sipma
 Mrs. Woloiporn Sirichalermchai and
 Chalermchai Sirichalermchai
 Ms. Pauline Sjoenell
 SK Taekwondo Center
 Drs. Valerie Ulene and David Lee Skaggs
 Ms. Emma Slater and Mr. Sasha Farber
 Mrs. Arlene Slater
 Mrs. Alice T. Morin and Mr. Michael L. Sloan
 Slowdown Studio
 Mrs. Carolyn Small and Mr. Martin Barmatz
 Ms. Janine Smith
 Mr. and Mrs. Richard K. Smith Jr.
 Mr. Jon Snoddy
 Mr. Todd Snyder
 Ms. Parisa Sobhani
 Sociedad Progresista Mexicana
 Society of the Friendly Sons
 Soheil A. Soleimani, DDS
 Mary Solis and Mr. Anthony M. Solis
 Ms. Margaret Somers
 Something Yellow: The Kevin Cordasco Foundation
 Dr. Shannon Sommers
 Dr. Charles H. Song and Kay Song
 Catherine and Michael Sorensen
 Mr. Shahriar Soroush
 Southern California Gas Company
 Mr. Lawrence Souza
 Mr. Randy Sowell
 Ms. Helen Sowell
 Dr. John Spalding
 Ms. Earlyn Spector
 Mr. and Mrs. William W. Spencer
 Mr. Dirk Spoons
 Spring Towers, LLC
 Maureen and Richard Sprunger
 Michelle Stafford
 Mr. and Ms. Robert Stallings
 Mrs. Shirley Stamen Jaffe
 Sima and Robert Stanley
 Ms. Kathleen M. Stapp
 Mr. Steven M. Stark
 Starlight Nails and Beauty Salon, Inc.
 State Farm Companies Foundation
 California Institute of Regenerative Medicine
 Mr. Jeffrey Steele
 Ms. Joanne Steenson
 Sheri J. Steig and Joshua P. Steig
 Dr. and Mrs. James E. Stein
 Mr. and Mrs. Mark Steines
 Sue and Ralph Stern
 Mr. Eric H. Stern and Mrs. Rachel Kaganoff-Stern
 Steven Nguyen, DDS
 Mr. Raymond L. Stevens
 Ms. Charlotte Stone
 Ms. Georgina Stopfer
 Mr. David Storrs
 Mr. and Mrs. James E. Street
 Studio City Farmers Market
 Mr. Jason Subia
 Iping Sung
 Mr. and Mrs. Manuel T. Sunga Jr.
 Sunwest Electric, Inc.
 Mr. Steven C. Supowitz

Surfing 4A Cure
 Mr. and Mrs. Craig Susser
 Mr. and Mrs. Gregory J. Sviland
 Mrs. Roma Swan
 Mr. Theodore H. Swanson
 Swanson Family Trust
 Mr. Russell C. Swartz
 The Sweat Shoppe Group, LLC
 Mr. and Mrs. Stephen Ryan Sweeney



Ms. Debra A. Sweitzer
 Bobby and Karni Syed
 Ms. Elizabeth Szykiel
 Mr. Mohammad Tabrizzadeh
 Tabula Rasa Bar, LLC
 Mr. and Mrs. Jack Taglyan
 Mr. Sanio Tamashiro
 Mr. and Mrs. Ronald H. Tanaka
 Mr. Christopher Tanaka
 Ms. Laura Tanaka
 Ms. Chao-May Cheng Tang
 Tanuja, LLP
 Target MarkeTeam, Inc.
 Katie and Matthew Tarses
 TASC CFC
 Ms. Rosalyn B. Taub
 Tawny Lam Consulting, Inc.
 Mr. and Mrs. Steven Taylor
 Mr. Elliott Taylor
 Ms. Elizabeth Taylor
 Ms. Gela Taylor and Mr. John Taylor
 Ms. Teresa Taylor
 Teamsters Local Union #572
 Teksystems
 Mr. Andy Temple
 Ms. Dawn Terada
 Mrs. Joy Teske and Mr. John A. Teske
 Ms. Ashley Tesoriero
 Tina Thakar
 Thale Blanc, LLC
 Le L. Thanh
 Mr. Hari Krishnan Thazhathveetil
 Theory, LLC
 This Ability Orchestra Foundation
 Mr. Rahim Thobani and Sakinah Thobani
 Monin Thoeung
 Ms. Rebecca Milkman and Mr. Craig Thomas
 The Morgan H and Aimee K Thomas Foundation
 Thomas L. Crandall Insurance Agency
 Mrs. Cheryl Thompson
 Mr. and Mrs. David K. Thompson
 Mrs. Jacquelyn Thompson and
 Mr. Michael L. Thompson
 Thompson Family Trust
 Ms. Susan Thoreson
 Mr. Robert Thornburgh III
 Mr. Randy Thwing
 Ms. Victoria Till
 Mrs. Nadine Tilley

Mr. Herbet Tilsner
 Timely Prefinished Steel Door Frames
 Ms. Persis H. Tiner
 Mr. Craig Titley
 Ms. Teresa Todesco
 Mr. Carlos Tognana
 Mr. Andrew Tolman
 Russell C Tolman
 Mr. Trang Q. Tong
 Ms. Mary Alice Toomey
 Top Nails And Spa
 Francis P. Torino Foundation
 Jessica Tornek and Josh Haacker
 Mr. Jim Torres
 Huseyin Tosun
 Mr. Vicente Towan
 Ms. Marilyn Townsend
 Mr. and Mrs. Jason Tracey
 Drs. Vinh Tran and Joyce Show Tran
 Chris Tran
 Mr. David Tran
 Mr. Kim Tran
 Ms. Lena Tran
 The Transportation Corporation
 Mr. and Mrs. Mike P. Trapani
 Mrs. Donna S. Travers
 Mr. Rolando Tringale
 Mr. Jack Truax
 Mr. Nathan Truman
 Ms. Nancy L. Tsai
 Kelvin Tsoi
 Tu-Ashcraft Revocable Trust
 Mr. Joseph R. Tucker
 Ms. Adina D. Turchin
 Mr. Joe Turner Jr.
 Ms. Camyo Turner
 Ms. Seema Turner
 Ms. Kathleen Turner
 Turret Lathe Specialists, Inc.
 Mr. and Mrs. Michael Tutko
 Mr. Paul Tuvman
 Mr. Michael B. Kong and Ms. Stacy A. Twilley
 UBS Matching Gift Program
 Ugrouppmedia, Inc.
 Mr. Gary Umetsu
 Union Bank Employee Workplace Campaign
 United Talent Agency Foundation
 United Talent Agency, Inc.
 United Way of Central Ohio
 United Way of Greater Philadelphia
 and Southern New Jersey
 United Way of the Desert
 United Way of the Inland Valleys
 United Way of Ventura County
 Urbane Cafe
 Mr. Amedeo Ursini
 US Bank Foundation Employee Matching
 Gift Program
 US-Japan Consulting
 Mr. Dean Usman
 Mr. Gary Uyehara
 Mr. Dennis Vaccaro
 Dr. Suketu Vaishnav
 Ms. Courtenay Valenti and Mr. Patrick Roberts
 Valero Wilmington Refinery
 Mr. Michael Vallens
 The Valley Jesters
 Ms. Jenn Van de Vanter
 Mr. Jack Vandermark
 Mrs. Sadie Vannier
 Mr. and Mrs. Joseph D. Varatta
 Michelle Varela
 Mr. Efen Varela
 Ms. Ilona Varner
 Mr. Ronen Varsha
 Dr. Evalynn C. Vasquez
 Mr. Fernando Vasquez
 Tessa Vasseghe
 Ms. Yuliya Vdovichenko
 Mr. Gabriel Velasco
 Mr. and Mrs. Guillermo Veliz

Dr. Chad M. Venne
 Ventura County Coastal Association of Realtors, Inc.
 Ms. Marina Vergara
 Verrecchia Family Foundation, Inc.
 Vertex Pharmaceuticals, Inc.
 Mr. Donald Veto
 Vietnamese United Buddhist Churches
 Viewpoint Educational Foundation
 Mr. Jorge Villasenor
 Ms. Guadalupe Villegas
 Ms. Christy Villela
 Vince, LLC
 Vincent Family Trust
 Mrs. Katie Vinten
 Mr. and Mrs. Ronald Visconti
 Mr. Ian K. Voecks
 Mr. Greg A. Voigt
 Ms. Sheila Von Euer
 Mr. Martin von Kanel
 Vradenburg Foundation
 Ms. Molly Vrooman
 Ms. Renee Wager
 Mr. Frank Wainwright
 Ms. Kathleen Walker
 Mr. and Mrs. M.H. Wallace
 Martha R. Wallau and Mr. Alex L. Wallau
 Robert A. Waller Foundation in honor of
 Robert and Judy Waller
 David Walton
 Mr. Louis Wane
 Mr. Peter Y. Wang and Margaret Wang
 Mr. Kuo-Ping Wang
 Mrs. Emily C. Wang and Mr. Joseph Wang
 Mrs. Alice Wang
 Dr. Scott Tong and Mrs. Rachel YS Wang
 Mr. Peter Wang
 Mr. Tony S. Wang
 Mr. and Mrs. Charles Warner III
 Mr. Kirk Warner
 Ms. Carole Warren
 Mr. Michael Wasco Jr.
 Mr. Marlon Wasemiller
 Dr. Scott Wasserman
 Mr. Seymour Waterman
 Judith C. Watson, MD
 Mr. Larry Watson
 Mr. Scott Watson
 Ms. Nadine Watt
 Ms. June J. Watts
 Ms. Cherisse E. Watts
 Mr. and Mrs. David D. Watts
 Mr. and Mrs. Marc Wax
 Sol and Tina P. Waxman Family Foundation
 Wealth Management Services
 Mr. Gordon Webb
 Mr. Jeffrey Weddle
 Dara and Benjamin Weeden
 Ms. Lisa M. Wegener
 Mr. and Mrs. Colin Weightman
 Ms. Monica Weisman
 Ms. Billie Weisman
 Frederick R. Weisman Philanthropic Foundation
 The Philippa V. Weismann Family Foundation
 Mr. Aaron Weiss
 Mr. and Ms. Scott Weiss
 Mr. and Mrs. Robert E. Welch
 Ms. Frances Wells
 DoTopia, Inc.
 Timothy Welsh
 Ms. Hsin-I Grace Tsai and Mr. Thomas Wen
 Mr. Barbara Wenrick
 Mr. Tom Wertheimer
 The Wertheimer Foundation
 Wescom Credit Union
 Mr. and Mrs. Robert Lee West Jr.
 West Coast Fitness, LLC
 Mr. and Mrs. James M. Weston
 Westpark School PTA
 Mr. Stephen L. Wetstein
 Ms. Pamela Wheless
 Mr. and Mrs. Michael J. White

Ms. Kaleigh White
 Manette Whitfield and Mr. Barton Whitfield
 Mr. and Mrs. Richard Whiting
 Mr. Thomas Whittington
 Mr. Paul Whyte
 Eloise V. Wicker
 Mr. and Mrs. Bernard Wickman
 Mr. Zachary P. Wigal
 Mr. James Wilczek



Mr. Calvin Wilder Jr.
 Mr. and Mrs. Donald Williams
 Ms. Ruby Williams
 Mr. and Mrs. Kenneth L. Williams
 Ms. Toni Williams
 Mr. and Mrs. Royce Edrice Wilson
 The McKenzie Noelle Wilson Foundation
 Miss Kylie R. Wines
 Tonya Winfield
 Mr. Kyle Winn
 Christopher Winn
 Ms. Sara Winston
 Mr. and Mrs. Richard T. Winter
 Karen and Wally Wirick
 Mr. and Mrs. Wally S. Wirick
 Mr. and Mrs. Edward J. Wirtz
 Ms. Natalie Wizman
 Ms. Suzanne Wojcik
 Robert Wolders Trust
 Mr. and Mrs. Richard M. Wolfen
 Karen And Rick Wolfen Charitable Trust
 Mr. Don Wollman
 The Wonderful Company
 Mr. Mike Wong
 Mr. and Mrs. Jacky Chi-Kin Wong
 Ms. Lenore Wong
 Kenneth Wong
 Richard and Bobbie Woo
 Ms. Nancy Wood
 World Federation of Hemophilia
 Mr. and Mrs. James Worth
 Marianne, Matt and Emily Wright
 Mr. Timothy Wright
 Wundabar Pilates Los Feliz
 Mr. and Mrs. Paul Wunsch
 Mrs. Pamela J. Wyler and Mr. Leopold S. Wyler
 Mrs. Victoria Wynn
 Xpress Data, Inc.
 Mr. Bin Xu
 James Yamaki
 Ms. Coral Yang
 Hua Yang
 Suzanne and Al Yankovic
 Mr. Antonio Yaphockun
 Mr. Wei C. Yeh
 Ken Yeh
 Ms. Jeanne Yen
 The Yen Family Trust
 The Yes Bar

Chief Margaret A. York and Judge Lance A. Ito
 Ms. Joanne Yoshii
 Cater Lee and David Yost
 Mr. James Yost III
 Mr. Edvin Youhanna
 Mr. Jaemin Youk
 Ms. Melissa Young
 Mr. Raymond Young
 Yourcause, Llc Trustee For Medtronic Foundation
 Mr. and Mrs. Henry Yue
 Ms. Barbara Yuki
 Ik Yun
 Ms. Jessica Zach
 Ms. Natasha Zaharov
 Xivic Team
 Mr. Michael Zarrilli
 Eva and Paul Zee
 Mr. and Mrs. Milton Zerlin
 Mr. Kevin Zhang
 Mr. Joel Zide
 Mr. and Mrs. Robert Ziemann
 Mr. Douglas Zillmer
 Marisa and Jeremy Zimmer
 Zions Management Services Company
 Andrea and Michael A. Zislis
 Mr. Peter Zomber

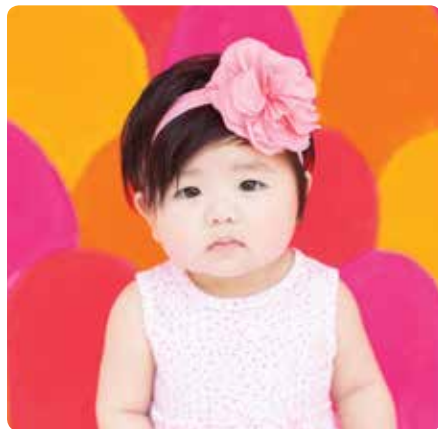
ENDOWMENT FUNDS

A cornerstone of philanthropy, an endowed fund is a permanent fund established by a donor or our Board of Trustees with the stipulation that the principal remain intact to ensure earning distributions in perpetuity. Annual interest earnings from an endowed fund provide a stable source of support for the hospital program specified by the donor. The following list acknowledges donors who have established permanent endowment funds to support exceptional patient care, scientific research and medical education.

New endowments in bold below

Advanced Research Chair Endowment
 Established by Margaret Fleming Call
 Allmand Endowment for Research
 The John E. Anderson Endowment for
 Scholarship in Nursing
 Anna Bing Arnold Autologous Bone Marrow
 Transplant Endowment
 Established by Peter Bing and the
 Bing Fund Corporation
 Anna Bing Arnold Endowment for Nursing Research
 Established by Henry C. Kent
 Associates Endowed Chair for the Chief
 of the Children's Orthopaedic Center
 Associates Endowed Chair in Motion
 Analysis Research
 Associates Endowed Chair in Pediatric
 Spine Disorders
 Associates Endowment for Adolescent Medicine
 Associates Endowment for Allergy
 Associates Endowment for Cancer Biology Research
 Associates Endowment for Cardiac Surgery
 Associates Endowment for Cardiology
 at the Heart Institute
 Associates Endowment for Clinical Imaging
 Research and Technology
 Associates Endowment for Gastroenterology
 Associates Endowment for Gene Therapy Research
 Associates Endowment for General Pediatrics
 Associates Endowment for the Heart Institute
 Associates Endowment for Hematology/Oncology
 Associates Endowment for Infectious Disease Research
 Associates Endowment for Liver and Intestinal Research
 Associates Endowment for Molecular Biology Research
 Associates Endowment for Molecular Genetics
 Associates Endowment for Neurology
 Associates Endowment for Neuroscience and
 Imaging Research
 Associates Endowment for Neurosurgery
 Associates Endowment for Nursing Excellence

Associates Endowment for Ophthalmology
 Associates Endowment for Otolaryngology
 Associates Endowment for Pediatric Cardiology
 Associates Endowment for Pediatric Surgery
 Associates Endowment for Plastic Surgery
 Associates Endowment for Radiology
 Associates Endowment for Research Immunology
 and Bone Marrow Transplant
 Associates Endowment for Residents' Education Fund
 Associates Endowment for Rheumatology
 Associates Endowment for Urology
 Associates Endowment to Advance
 Developmental Neurosciences
 Associates Fellowship in Respiratory Disorders
 Associates Orthopaedic Center Academic and
 Research Endowment
 Associates Sarcoma Program Chair
 Avery Memorial Fund
 In memory of Sarah Gorton Avery, Moses N. Avery
 and L. Gordon Avery
 Hay Edward Baher Endowed Chair in Rheumatology
 Pauline de Coppet Bara Memorial Fund
 Established by Lori de Coppet Bara
 Barnes Family Endowment in Neurology
 Established by Mrs. Barbara C. Barnes, Mr. and
 Mrs. Robert John Barnes and Carat USA, Inc.
 Belokamen Family Endowment in
 Developmental Therapeutics
 Established in honor of Lillian and David Belokamen
 Judy Bennis Patient Enrichment Fund
 Paul Stanford Bernhard Foundation Endowment
 in Dog Therapy
 Bing Endowment in Adolescent Medicine
 Established by Anna Bing Arnold
 Bing Endowment in Child Psychiatry
 Established by Anna Bing Arnold
 Neil Bogart Leukemia Research Program Endowment
 Established by Bogart Pediatric Cancer
 Research Program
 Boone Family Endowment
 Established by Dr. and Mrs. George N. Boone and
 Lynda Boone Fetter



Otis Booth Foundation Career Development and
 Innovative Research Fund
 Brady Bunch Room Fund
 Established by Mr. and Mrs. Sherwood Schwartz
 Brain Tumor Immunology Endowment
 Established by Concern II
The Larkin Brogan Endowment
 Carol Young Brooke Foundation Endowment Fund
 for Children's Needs
 Brophy-Wilson Surgical Follow-up Clinic
 Endowment Fund
 Established by Hazel E. Wilson
 Ron Burkle Chair in the Center for Endocrinology,
 Diabetes and Metabolism
 Ida V. Buxton Memorial Endowment Fund

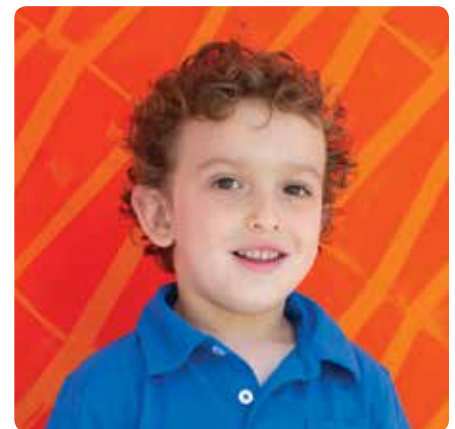
Richard Call Family Endowed Chair in Pediatric
 Research Innovation
 Christopher Leonard Campbell Endowment Fund
 for AIDS Research
 Established by Mr. and Mrs. William F. Campbell
 Martha and Larry Campos Endowment Fund
 Capital Maintenance Endowment Fund
 Established by Dolly Green and Peggy Slater
 Cardiovascular Research Endowment
 Christopher Carrey Cancer Research Endowment
 Established by Mr. and Mrs. Neil Carrey
 Children's Endowment Fund
 Established by an anonymous donor
 Children's Hospital Institute for Medical Education
 Established by an anonymous donor
 Children's Hospital Los Angeles Comfort and Pain
 Management Service Endowment
 Established by the physicians of the Children's
 Hospital Department of Anesthesiology and
 Critical Care Medicine
 Minnie S. Claffey Memorial Endowment Fund
 Established by Henry Amos Claffey
 Jewell Budd Cohan Endowment Fund
 Hugh and Audy Lou Colvin Chair in Cancer Research
 Established by the Colvin Foundation
 Community, Health Outcomes and Intervention
 Research (C.H.O.I.R.) Program Endowed Chair
 Established with gifts from Dr. Cheryl Saban and Mr.
 Haim Saban and The Saban Family Foundation
 Comprehensive Cystic Fibrosis Center Endowment
 Established by Chun-I Wang, MD, and
 Frances L. Chiang
 John E. Cookman Jr. Endowment
 Shannon Crandall Jr. Memorial Fund
 Established by Helen Fullerton Crandall
 Carson Russell Crouch Endowment
 Established by family and friends of
 Carson Russell Crouch
 Kate Crutcher Associate and Affiliate Endowment
 Mary Damsker Endowment for Spiritual Care
 Mary and Gary Damsker Special Needs Fund
 Bart and Cheryl Dickens Family Endowment for
 Heart Institute and Cardiac Care Research
 Dr. George N. Donnell Endowment in the
 Department of Pediatrics
 Established by Dr. and Mrs. Leonard Dauer and
 associates of Dr. Donnell
 Palmer Gross Ducommun Endowment Fund
 Established by Charles E. Ducommun and the
 Ducommun and Gross Foundation
 Eric Dudl, PhD, Graduate Fellowship
 Research Endowment
 Established by friends and associates of
 Eric Dudl, PhD
 Gabriel C. Duque Jr. Memorial Endowment
 Established by friends and family of
 Gabriel C. Duque Jr.
 Mary Duque Emeritus Endowment
 Established by friends and family of Mary Duque
 Mary Duque Endowment Fund
 Helen Dyess Canines for Kids Pet Therapy Endowment
 Helen Dyess Pediatric Cancer Research Endowment
 Frances Dyke Endowment for Plastic Surgery
 Joan Elko Fund for Cancer and Blood
 Disease Research
 Established by Mr. and Mrs. Edward R. Elko
 Ellison Family Research Career Development
 Fellowship Endowment
 Established by Carol and Leon Ellison
 Emergency Housing Endowment Fund
 Established by the Ropolo Charitable Trust and
 Ms. Constance E. Ropolo
 Emergency Medicine Endowment for
 Physicians Operations
 Emergency Services Nursing Education Endowment
 Established by Deborah P. Henderson, RN
 Enany Family Endowment in the Center for
 Endocrinology, Diabetes and Metabolism
 Established by Mr. and Mrs. Essam H. Enany
 Endowed Chair for Director of The Institute for the
 Developing Mind

The Endowed Chair for the Center for Fetal and
 Neonatal Medicine
 Endowed Chair for the Director of the
 Neuromuscular Program
 Endowment for the Developmental Biology Program
 Established by the Santa Anita Foundation
 Jack Epstein Endowment for Cancer Research,
 Education and Patient Care
 Marjorie Cranfield Evans Endowment
 Expressive Arts Therapies Endowment
 Sophia Fitzmaurice Endowment for
 Thalassemia Research
 Mildred Vivian Foutz Endowment Fund
 Established by Dr. Reynold L. Foutz
 Don and Lorraine Freeberg Foundation
 Endowment for Child Life
 Rosalie Friedman Children's Book Endowment Fund
 for Cystic Fibrosis
 Established by Shol Friedman
 General Research Endowment Fund
 Established by Nancy O'Fallon in memory of
 Harris T. O'Fallon
 Gores Family Allergy Center Endowment
 Graduate Medical Education Endowment Fund
 Aaron Michael Graham Endowed Lectureship Fund
 Burton E. Green Endowment for
 Pediatric Neuropathology
 Established by his children, Dorothy Green, Liliore
 Green Rains and Burton Green Bettingen
 The Green House Endowment for Surgical Research
 The Green House Research Endowment Fund
 John L. Gwinn Chair of Pediatric Radiology
 Established by the Board of Trustees in honor of
 Dr. John L. Gwinn
 Adrian and Dorothy Hardy Palliative Care Endowment
 Dr. Brian Hardy Endowment in Urology
 Established by an anonymous donor
 William Randolph Hearst Endowment Fund for
 the RN Residency in Pediatrics
 Established by The William Randolph
 Hearst Foundation
 Jack C. and Doris C. Helms Chair in Neural Tumors
 Audrey Hepburn CARES Team Endowment
 Established by the Audrey Hepburn Children's Fund
 Edwin W. Hively Memorial Fund
 Marian O. Hooker Endowment
 Donald and Marjorie Howley Cancer Center
 Endowment Fund
 Hurlbut-Johnson Charitable Trusts Endowment
 The Declan J. Hurley Lectureship: Ethical Issues
 in Pediatric Practice
 International Programs Endowment for the Division of
 Plastic and Maxillofacial Surgery
 Johnson Boys & Girls Clubs of the Conejo Health Fund
 Established by Marje and Cal Johnston
 Jonas Family Endowment
 Fletcher Jones Foundation Endowment for LA-HIP
 The Jonnie Fund for Leukemia Research
 Established in honor of Jonnie Lanners by his
 family and friends
 Mark R. Jouett Fund
 Established by Gladys K. Jouett
 Jack and Gioia Kalvin Patient Care Endowment
 Myron Karon Fellowship Endowment Fund
 Established by Mr. and Mrs. Maxwell Salter
 Myron Karon Memorial Lectureship in Pediatric
 Hematology Endowment Fund
 Francine R. Kaufman Endocrinology Endowment
 Established by friends of the Center for
 Endocrinology, Diabetes and Metabolism
 Takeji Kay and Anita Torimaru Cancer Center
 Endowment Fund
 M. Bailey Keates Endowment
 Established by the family of M. Bailey Keates
 W.M. Keck Foundation Dental Division Endowment
 W.M. Keck Foundation Pediatric Surgery
 Endowment Fund
 Keens Family Faculty Development Fund
 Sally and Stephen Keller and Fairchild Martindale
 Foundation Urology Endowment

Jonathan and Faye Kellerman HOPE Program Endowment
 Phillis Kemp Endowment
 Adam Hunter Knizek Memorial Endowment Fund
 Established by Summa Group Children's Foundation, and the family and friends of Adam Hunter Knizek
 The Kort Family Foundation Brain and Spinal Cord Tumor Research Program
 Gary F. Krieger, MD, Award for Patient Advocacy Endowment
 Established by the family and friends of Gary Krieger, MD
 LA-HIP Endowment Fund
 Las Madrinas Endowment for Autism Research, Interventions and Outcomes
 Las Madrinas Endowment for Experimental Therapeutics for Ophthalmology
 Las Madrinas Endowment for Gene, Immune and Stem Cell Therapy Research
 Las Madrinas Endowment for Hematopoietic Stem Cell Research
 Las Madrinas Endowment for Molecular Genetics
 Las Madrinas Endowment for Molecular Oncology
 Las Madrinas Endowment for Molecular Pathology
 Las Madrinas Endowment for the Chief of Neurology Chair and the Neurological Institute Epilepsy Program
 Las Madrinas Pediatric Simulation Research Laboratory Endowment
 Las Madrinas Research Endowment Fund
 Betty Learned Memorial Fund
 Established by friends and family of Betty Learned
 Kent Lee Memorial Fund for Leukemia Research
 Established by Dortha S. Lee
 Lisa Rowe Legg Endowment
 Established in honor of John and Onoria A. Rocca and Christina Rocca Rowe
 Leire Family Endowment Fund
 Established by Tom and Merydith Leire
 Colleen Lenihan and John Dylan Lenihan
 "Care to Cure" Juvenile Diabetes Fund
 Established by Variety – The Children's Charity of Southern California, Tent 25
 Octavia W. and Winifred O. Little Memorial Orthopaedic Endowment Fund
 Established by Dora Conkling and Winifred Little
 The Thomas and Dorothy Leavey Foundation Spiritual Care Program Endowment
 Lexie Looker Educational Endowment
 Established by The Looker Foundation
 Claudia A. Looney Development Endowment
 Established by Mary Lou and Terence Green
 Los Angeles Clippers Foundation Endowment
 Lozano Family Endowment in Pediatric Epilepsy
 Alfred and Maybell Machris Research Fund
 The Gary Magness Family Foundation
 Endowed Music Therapist
 The Dr. S. Michael Marcy Memorial Lectureship in Pediatrics
 J.W. Marriott Otolaryngology Communicative Disorders Fund
 The Harold McAlister Charitable Foundation
 Endowment in Fetal Therapy Research
 Harold and Fern McAlister Endowment
 Harold and Fern McAlister Research Endowment
 McClure Family Research Endowment
 Established by Bonnie and Mark McClure
 L.M. McOmie Medical Equipment Endowment Fund
 Medical Library Endowment Fund
 Established with gifts in memory of staff physicians, Dr. Dietrich, Dr. Berkley, Dr. Lyttle and Dr. Clement
 Memorial Services Endowment Fund
Mez Children's Foundation by Ramin and Mersedeh Mesriani Endowment
 Fannie B. Miller Memorial Fund
 Established by William M. Zang
Ford Theodore Miller Murphy Chair in Surgical Oncology
Ford Theodore Miller Murphy Neuroblastoma Endowment
 Irene C. and M. Kinzie Miller Surgical Equipment Endowment

Nick and Lillian Moss Fund
 Della M. Mudd Resident Endowment Fund
 A. Linn Murphree, MD, Retinoblastoma Program Chair
 Musculoskeletal Oncology Endowment
 Established with gifts from RE/MAX Beach Cities Realty and grateful families
 Robert and Leslie Nafie Endowment Fund
 Carl and Elizabeth Naumann Endowment for Kidney Dialysis and Transplant
 Moriah Nelson Endowment in Epidemiology Research
 Neonatology Endowment
 Established by Violette E. Lipshin
Neuroblastoma Research Endowment
 Harry B. Neustein Memorial Endowment
 Established by Dr. Joseph Neustein
 Hoa Kim Nguyen and Xuan Si Nguyen Endowment
 Established by the Zolla Family Foundation, the blaZrs Chinese New Year Dinner Society, and Joseph Nguyen and Family
 The Kenneth T. and Eileen L. Norris Foundation
 Endowment for Otolaryngology Research
 Notkin Family and Zachary Barnet Rosen Chair in Pediatric Diabetes
 Established by Mr. and Mrs. Shelby Notkin
 Nursing and Interprofessional Research Endowment
 Ophthalmology Endowment Fund
 Established by Sherwood and Mildred Schwartz
 Orthopaedic Center Endowment Chair Fund
 Killian Owen Curing Kids Cancer Research Endowment
 Richard Owens Endowment in Neuroscience Research
 Established by Brindell Roberts Gottlieb
 George and Juliette Page Endowment for Gene Therapy Program
 Jane Vruwink Palmer Cancer Research Endowment
 Ernest H. and Dora H. Parker Endowment Fund
 Parker and Friends Fund Benefiting Pediatric Brain Tumor Research
Pasadena Guild Chair, Pediatrician-in-Chief and Senior Vice President, Academic Affairs
 Pasadena Guild Endowed Chair in Developmental Biology and Regenerative Medicine
 Pasadena Guild Endowment for Adolescent Medicine
 Pasadena Guild Endowment for Bone and Soft Tissue Tumor Research
 Pasadena Guild Endowment for Developmental Biology Research
 Pasadena Guild Endowment for Pediatric Eye Cancer Research
 Pasadena Guild Endowment for Pediatric Surgery
 Pasadena Guild Endowment for Pediatric Surgical Research
 Pasadena Guild Endowment for Program Enhancement and Faculty Retention in Developmental Biology
 The Patient and Family Education Endowment
 Established by Lori C. Marshall, PhD, RN
 The Pediatric Epilepsy Fellowship Program at Children's Hospital Los Angeles
 Pediatric Spine Disorders Endowment
 Established by Dorothy Rosen and friends of Children's Hospital Los Angeles
 Jane Browne Petersen Endowment in honor of Margaret Gray Browne
 Sidney and Nancy Petersen Fund
 Plastic and Reconstructive Surgery Endowment
 Established by Mary Joan Palevsky
 Arnold C.G. Platzker, MD, Fellows' Research and Education Endowment for the Division of Pulmonology
 Established by former graduates who trained under Dr. Platzker
 Stanley and Jessica Prescott Memorial Visiting Professorship in Pediatric Pulmonology Endowment
 Morris and Mary Press "Humanism" Award Fund
 Established by the Press Foundation
 Jerry Price Seizure Clinic Endowment Fund
 Established by F.S. Markham
 Radiology Endowment Fund
 Established by Anna M. Sanborn in memory of the Sanborn family
 Bennie C. Reagan Endowment in the Children's Center for Cancer and Blood Diseases
 Rehabilitation Center Endowment Fund

Contributions by the Associate and Affiliate Groups
 John F. Reinisch, MD, Pediatric Plastic Surgery Endowment
 Established by contributions to the Division of Plastic Surgery
 Chase Richards Child Life Endowment
 Established by Robin and Susan Richards
 Warren and Carolyn Richards Allergy Grand Rounds Endowment
 Beatrice Richardson Endowment for Patient Beds
 Don Rickles Family Endowment Fund
 Lewis, Gladys and Shirlee Roberts Endowment for Retinal Development in the Vision Center
 Kelli Kason Rooney Endowment for the Children's Center for Cancer and Blood Diseases
 Established by Jennifer Cue
 Linda Rosen Pediatric Pulmonary Research Fund
 Established by Mrs. Dorothy Rosen
 Meta and George Rosenberg Vision Center Endowment
 Established by the Meta and George Rosenberg Foundation
 Stephanie Knox Ross Cancer Research Endowment
 Established by Mr. and Mrs. George Green
 Philip Rothman Chair in Medical Teaching
 Established by an anonymous donor
 The Saban Research Institute of Children's Hospital Los Angeles Endowed Chair in Neuroscience
 Established by a gift from Dr. Cheryl Saban and Mr. Haim Saban and The Saban Family Foundation
 The Saban Research Institute of Children's Hospital Los Angeles Endowment for Innovative and Interactive Research
 Established by a gift from Dr. Cheryl Saban and Mr. Haim Saban and The Saban Family Foundation
 The Saban Research Institute of Children's Hospital Los Angeles Endowment Fund
 Established by a gift from Dr. Cheryl Saban and Mr. Haim Saban and The Saban Family Foundation
 The Saban Research Institute of Children's Hospital Los Angeles Faculty "Bridge Funding" Endowment
 Established by a gift from Dr. Cheryl Saban and Mr. Haim Saban and The Saban Family Foundation



Claiborn A. Saint Endowment for Pediatric Neurological Disorders Research
 Established by an anonymous donor
 Saint Andrew's Society of Los Angeles Bairns Endowment Fund
 Samuels Family Latino and African American High School Internship Program Endowment
 Santa Anita Research Endowment
 Jennifer and Fred Savage Endowed Fund for Pediatric Cancer Research
 Larry Schmolle Memorial Endowment
 Established by Mr. and Mrs. John B. Schmolle
 Henry S. Shavelle Research Laboratory for Neonatal Blindness Fund
 The Sarah and Adam Sher Child Life Activities Fund

Stuart E. Siegel, MD, Chair in Pediatric Oncology Endowment
Established by an anonymous donor

Melanie Silverman Bone and Soft Tissue Tumor Endowment
Established by friends and family of Melanie Silverman

Simms/Mann Chair in Developmental Neurogenetics

The Herbert Simon Endowment for Stem Cell Research

The Herbert Simon Programmatic Endowment in Retinal Development in the Vision Center

Ruth and Jerome Simon Memorial Fund

Jacob Singer Endowment
Established by the family and friends of Jacob Singer

Bernhard H. Singsen, MD, MPH, Endowment in Pediatric Rheumatology

Leonard B. Skaist, MD, Endowed Chair in Pediatric Urology
Established by Jefery Levy and Pamela Skaist-Levy

Joyce and Ken Skinner Endowment
Established by Joyce Skinner and the Fritz B. Burns Foundation

The Jack H. Skirball Fellowship
Established by The Skirball Foundation

Smigel Chair for Stem Cell Research
Established by the family of Suzan K. Smigel

Sydney Smith Endocrinology Fund
Sydney Smith Endowment for Basic and Applied Research in Cancer

John Stauffer Children's Center for Cancer and Blood Diseases Blood and Marrow Transplantation Endowments

Cameron Stewart Smith Chair in Brain Tumor Biology Endowment
Established by the H. Russell Smith Foundation

Cameron Stewart Smith Chair in Radiation-Oncology Research
Established by Mr. and Mrs. H. Russell Smith

The H. Russell Smith Foundation Endowed Chair in Cardiothoracic Research
Established by the H. Russell Smith Foundation

H. Russell Smith Research Award Endowment
Established by the H. Russell Smith Foundation

Dr and Mrs. William Snyder Jr. and Dr. and Mrs. Lawrence Chaffin Endowed Visiting Professorship for the Division of Pediatric Surgery
Established by Dr. Morton Woolley and Dr. Lawrence Chaffin in memory of Dr. William Snyder

Spiritual Care Guild Endowment

Harry Tipton Steck and Florence Bartlett Steck Memorial Fund

Julie Elizabeth Steffey Memorial Fund
Established by Dr. J.M. Steffey

Stone Family Endowment
Established by Robert and Nancy Stone

Dr. Victor E. Stork Awards Fund
Established by Mr. and Mrs. Frazer

Peter and Susan Strauss Cancer Research Endowment Fund

Nancy and Mark Strouse Fund for Cancer and Blood Diseases Research

Evelyn Clark and Elbridge Hadley Stuart Plastic and Reconstructive Surgery Endowment Fund

Survivors Day Endowment
Established by Strategic Financial Group and Northwestern Mutual Foundation

Wanda and Charles Sweatt Research Endowment

Tianna Teegarden Memorial Endowment
Established by friends and family of Tianna Teegarden

Flora Thornton Kids N Fitness® Program Endowment

Mark Towner Orthopaedic Endowment Fund
Established by Mr. and Mrs. Harvey Towner

Mutsuko Tsunokawa and Richard Williams Cancer Research Endowment

Mutsuko Tsunokawa and Richard Williams Diabetes Research Endowment

The Alba Tull Endowment for Literally Healing

The A. Ray Van Horn Endowment for Fetal and Neonatal Medicine

The Vision Center Endowment
Established by gifts to The Vision Center

Geoffrey Von Der Ahe Jr. Endowment
Established with gifts from Geoff and Danielle Von Der Ahe, friends and family

James F. Ward and Agnes N. Ward Memorial Fund
Established by Marion Merrill Bateman

Robert Ward Memorial Endowment Fund

Ruth Evans Watkins Memorial Endowment for Cancer Research

Ariel Kaare Rosholt Weathers-Lowin Endowment Fund
Established by Leeam Weathers-Lowin



Karen Maile Webster Cancer Research Endowment

West Coast University Endowed Education Fund for the Institute for Nursing and Interprofessional Research

West Coast University Endowed Scholarship for the Institute for Nursing and Interprofessional Research

Roger E. Wheeler Endowment
Established by Janet G. Williamson

The Laura P. and Leland K. Whittier Virtual Pediatric Intensive Care Unit Endowment Fund
Established by the L.K. Whittier Foundation

Wild Rose Endowment Fund for Orthopedics

Billy and Audrey L. Wilder Chair in Neurosurgery

Billy and Audrey L. Wilder Chair in Pediatric Rheumatology

Billy and Audrey L. Wilder Endowed Chair in Neuro-Oncology

Billy and Audrey L. Wilder Programmatic Chair in Neurosurgery

The Kenneth J. Wildes Endowment for Nursing

Kenneth O. Williams, MD, Chair in Bone and Soft Tissue Tumor Research
Established by Mr. and Mrs. William Close and Family

Anne O'Melveny Wilson Chair in Pediatric Intensive Care

Anne Wilson Endowment for Nursing Excellence
Established by the Associate Groups

John C. Wilson Jr. Chair in Orthopaedic Surgery
Established by an anonymous donor

John C. Wilson Sr. Visiting Professor Endowment
Established by Dr. John C. Wilson Jr.

Ryan Winston Family Chair in Transplant Cardiology
Established by Mr. and Mrs. Robert L. Winston

Frances Nunnally Winzer Residency Endowment

Mrs. George A. Winzer Fund

Justice Arleigh Woods Endowment

Brooke Young Chaplaincy Chair

If you have any questions about setting up an endowment fund with a gift of \$50,000 or more, please contact Robert Weiner, vice president of Major and Planned Gifts, at rweiner@chla.usc.edu or 323-361-1749.



HONOR ROLL OF FRIENDS

Children's Miracle Network Hospitals® Partners Fiscal Year 2018

Since 1983, Children's Hospital Los Angeles has worked with Children's Miracle Network Hospitals (CMNH) to raise funds through the organization's various partners and programs. Donations to CHLA from our local CMNH partners totaled more than \$10.5 million in fiscal year 2018, an increase of more than \$500,000 from the prior year.

We express our sincere gratitude and appreciation to our dedicated corporate partners, and to everyone who works tirelessly to raise these funds. Thank you to the many employees, customers and leadership teams who continue to exceed our expectations. We celebrated their accomplishments during Mega Miracle Day, held annually to honor the many miracles our corporate and CMNH partners create each year.

Our CMNH partners' contributions support the wraparound care that makes our institution so unique—including family-centered patient care, surgical excellence, research and discovery, and education and training. Children's Hospital Los Angeles deeply appreciates the generous philanthropic partners that support our ability to offer comfort and hope to those who need it most. Their generosity helps make CHLA the best hospital for kids and families in California and on the West Coast, and we are deeply grateful.

We recognize these generous contributors in our Honor Roll of Friends.

Please visit CHLA.org/Corporate-Partnerships to find out more about Children's Miracle Network Hospitals.

Ace Hardware Corporation
Aflac
Alex and Ani
American Legion
Car Program
CDW Corporation
Claremont Colleges Dance Marathon
Chevron Corporation
Chico's FAS Inc.
Coca-Cola
CO-OP Financial Services
Costco Wholesale
Credit Unions for Kids
CSUN Matathon
Dairy Queen
Delta Air Lines
Direct Energy
Entravision Communications Corporation
Express Personnel Services
Extra Life 24-Hour Gaming Marathon
General Mills
Great Clips
IHOP Restaurants
Kiewit International
Kiwanis International
Lazer Broadcasting Corporation
Los Angeles Dance Marathon
LA Arena Company
Love's Travel Stops & Country Stores
Loyola Marymount University Dance Marathon
Marriott International, Inc.
Marriott Vacations, Inc.
McLane Company, Inc.
Miss America Organization
Panda Restaurant Group, Inc.
Phi Delta Epsilon International Medical Fraternity
Phi Mu Sorority Foundation



Precious Moments, Inc.
RE/MAX International
Red Bull
Rite Aid Corporation
Sigma Alpha Epsilon Fraternity
Superior Grocers
Torch Relay
Trojan Dance Marathon
United Networks of America
University of LaVerne Dance Marathon
Vallarta Supermarkets
Walgreens
Walmart and Sam's Club
Yogurtland
Zeta Beta Tau Fraternity



Board of Directors



Jeffrey Worthe
Chair

Paul S. Viviano
President and Chief Executive Officer

Directors

Kevin H. Brogan
Martha N. Corbett
Cheryl Kunin Fair
Lynda Boone Fetter
Arnold (Arnie) J. Kleiner
Mark D. Krieger, MD
Burt Levitch
Christopher (Chris) C. Martin
Todd E. Molz
Laurence (Larry) E. Paul, MD
Elisabeth (Beth) Hunt Price
Theodore (Ted) R. Samuels
Gary Scott, MD
Robert (Bob) E. Shaddy, MD
Kimberly (Kim) Shepherd
Alia Tutor
Paul S. Viviano
Jeffrey Worthe

Honorary Directors

Marion Anderson
(Co-Chair and Director Emeritus)
Mary Hart
William (Bill) H. Hurt
Kathleen McCarthy Kostlan
Cheryl Saban, PhD

Foundation Board of Trustees*



Lynda Boone Fetter
Co-Chair



Arnold (Arnie) J. Kleiner
Co-Chair

Foundation Trustees

Ashwin Adarkar
Robert (Bob) Adler, MD, MSEd
Brooke Anderson
June Banta
Kevin H. Brogan
Jay Carson
Alex Chaves, Sr.
Alex Martin Chaves
Martha N. Corbett
Michael Epstein
Cheryl Kunin Fair
Lynda Boone Fetter
Deborah (Debbie) A. Freund, PhD
Philippe Friedlich, MD, MSEpi, MBA
Margaret (Peggy) Rodi Galbraith
Ranjana Goswami
Carl Grushkin, MD
Mary Hart
Marcia Wilson Hobbs
Gloria Holden
Jihee Huh
William (Bill) H. Hurt
Karen Kay Imagawa, MD
Alexander (Alex) R. Judkins, MD, FCAP, FRCP (Edin)
Arnold (Arnie) J. Kleiner
Kathleen McCarthy Kostlan
Mark D. Krieger, MD
Nancy J. Lee, MSN, RN, NEA-BC
Thomas (Tom) C. Lee, MD
Burt Levitch
Pat Levitt, PhD
Susan H. Mallory
Carol Mancino
Barry Markovitz, MD, MPH

Christopher (Chris) C. Martin
Bonnie McClure
Nancy Caroline Meidel
Alexandra (Alex) Meneses Simpson
Caryll (Tally) Sprague Mingst
Eugene (Mitch) Mitchell
Todd E. Molz
Marvin (Marv) D. Nelson, MD, MBA, FACR
Mary Adams O'Connell
Jennifer Page
Laurence (Larry) E. Paul, MD
John (Jack) D. Pettker
Sandra (Sandy) Pham
Chester (Chet) J. Pipkin
Byron H. Pollitt, Jr.
Teresa (Teri) Pollitt
Ronald (Ron) S. Preissman
Elisabeth (Beth) Hunt Price
Kathryn Purwin
Elizabeth (Liz) Estrada Rahn
Dayle I. Roath
Stephen (Steve) D. Rountree
Allan M. Rudnick
Cheryl Saban, PhD
Michael A. Sachs
Theodore (Ted) R. Samuels
Jonathan Schaeffer
Paul M. Schaeffer
Elisa Schenkman
Michael Schenkman
Robert (Bob) E. Shaddy, MD
Kimberly (Kim) Shepherd
Victoria (Vicki) Simms, PhD
David (Dave) L. Skaggs, MD, MMM
Vaughn A. Starnes, MD
James (Jim) E. Stein, MD, MSc, FACS, FAAP
Lisa Stevens
James Terrile
Gary L. Toebben
Joyce Bogart Trubulus
Alia Tutor
Paul S. Viviano
Janis Black Warner
Eric C. Wasserman
Roberta G. Williams, MD
Jeffrey Worthe
Jill Black Zalben
Robert (Rob) A. Zielinski

Honorary Foundation Trustees

Peggy Tsiang Cherng, PhD
Ernest O. Ellison
James M. Galbraith
Walter B. Rose

**as of Nov. 5, 2018*

Hospital Leadership

Executive Leadership

Paul S. Viviano

President and Chief Executive Officer

Robert Adler, MD, MSED

Chief Medical Officer, CHLA Health System; Senior Advisor to the Chair of Pediatrics (CHLA); Professor of Pediatrics (USC)

Alexandra Carter, MBA, CFRE

Senior Vice President and Chief Development Officer

Steve R. Garske, PhD, MSc

Senior Vice President and Chief Information Officer

Larry J. Harrison, MPH, MBA

Chief Executive Officer, Children's Hospital Los Angeles Medical Group

Marilyn C. Ho, MBA

Administrative Chief of Staff

Karen Kay Imagawa, MD

Chief of Staff; Director, Audrey Hepburn CARES Center; Director, Developmental-Behavioral Pediatrics Program (CHLA); Clinical Assistant Professor of Pediatrics (Clinician Educator) (USC)

Alexander R. Judkins, MD, FCAP, FRCP (Edin)

Pathologist in Chief; Head, Department of Pathology and Laboratory Medicine (CHLA); Vice Chair and Associate Professor (Clinical Scholar), Department of Pathology (USC)

Lara M. Khouri, MBA, MPH

Senior Vice President and Chief Strategy Officer, CHLA and Children's Hospital Los Angeles Medical Group

Mark D. Krieger, MD

Billy and Audrey L. Wilder Endowed Chair in Neurosurgery, Interim Chair, Department of Surgery (CHLA); Professor of Clinical Surgery (USC)

Nancy J. Lee, MSN, RN, NEA-BC

Senior Vice President and Chief Clinical Officer

Pat Levitt, PhD

Vice President, Chief Scientific Officer, Director, The Saban Research Institute, Simms/Mann Chair in Developmental Neurogenetics (CHLA); W.M. Keck Provost Professor of Neurogenetics (USC)

M. Scott Lieberenz, MSA, CPA

Senior Vice President and Chief Financial Officer

Barry Markovitz, MD, MPH

Chair, Department of Anesthesiology Critical Care Medicine (CHLA); Professor of Clinical Pediatrics and Anesthesiology (USC)

Marvin D. Nelson, MD, MBA, FACR

Head, Department of Radiology (CHLA); Professor of Radiology (USC)

Grace E. Oh, JD, MBA

Senior Vice President and General Counsel

Gary Scott, MD

President, Children's Hospital Los Angeles Medical Group; Clinical Professor of Anesthesiology (USC)

Robert E. Shaddy, MD

Pasadena Guild Chair, Pediatrician in Chief and Senior Vice President, Academic Affairs (CHLA); Chair, Department of Pediatrics (USC)

James E. Stein, MD, MSc, FACS, FAAP

Senior Vice President and Chief Medical Officer, Ford Theodore Miller Murphy Chair in Surgical Oncology (CHLA); Associate Professor of Clinical Surgery (USC)

Mamoon Syed, MHA

Senior Vice President and Chief People Officer

Foundation Senior Leadership

Alexandra Carter, MBA, CFRE

Senior Vice President and Chief Development Officer

Candie Davidson-Goldbronn

Associate Senior Vice President, Development

Melissa DeVale

Associate Senior Vice President, Development

Terry Green

Associate Senior Vice President, Development

Francesca Overwater, MSc

Vice President, Foundation Strategy

Tina Pakfar, ML, DPPD

Associate Senior Vice President, Development

Anna Weiser, MA

Vice President, Foundation Relations

Dawn Wilcox

Vice President, Corporate Partnerships

Associate Groups

Anchors Guild
Antelope Valley Guild
Bel Air Guild
Centennial Guild
Children's Chain
Della Robbia Guild
El Segundo Auxiliary
Flintridge Guild
Glendale Auxiliary
La Providencia Guild
Las Hermanas Guild
Las Primeras Guild
Mary Duque Guild
Mary Duque Juniors
Men's Guild
Monrovia Guild
Northridge Guild
Peninsula Committee
San Antonio Guild
Santa Monica Bay Auxiliary
Sierra Guild
South Bay Auxiliary
Toluca Guild
Westside Guild
Whittier Guild
Young Professionals Council
Children's Hospital Patient Art Calendar
Gabriel C. and Mary Duque Gift Shop



Affiliate Groups

BrightEyes
Delta Delta Delta Sleighbell Committee
FOCUS
Friends of Children's Hospital
Healing Arts Reaching Kids (HARK)
Las Madrinas
Pasadena Guild
Project CHLA
Spiritual Care Guild
Teen Impact Affiliates
The Green House
This Little Light





OUR MISSION

We create hope and
build healthier futures.



Nonprofit Organization

US POSTAGE PAID

Los Angeles, CA

Permit No. 22460

Imagine Magazine

Post Office Box 27980

Los Angeles, CA 90027-0980

Change Service Requested



PRESIDENT AND CHIEF EXECUTIVE OFFICER

Paul S. Viviano

SENIOR VICE PRESIDENT AND
CHIEF DEVELOPMENT OFFICER

Alexandra Carter, MBA, CFRE

SENIOR VICE PRESIDENT
AND CHIEF STRATEGY OFFICER

Lara M. Khouri

VICE PRESIDENT AND CHIEF MARKETING
AND COMMUNICATIONS OFFICER

Deborah A. Braidic, MABC

ASSISTANT VICE PRESIDENT,
CONTENT DEVELOPMENT

Matthew Pearson

EDITORS **Sarah T. Brown** and **Marla Lehner**

PROJECT MANAGER

Jennifer Duerksen

EDITORIAL REVIEW

James E. Stein, MD, MSc, FACS, FAAP

DESIGN **Jessica Kucinkas** and **Christina Naguib**

CONTENT **Sarah T. Brown, Marla Lehner,**

Sara Nafie, Eunice Oh, Candace Pearson,

Katie Sweeney and **Jeff Weinstock**

PHOTOGRAPHY

Dana Attebery, Hannah Benet, Sarah T. Brown,
Rich Cruse Photography, Keats Elliott, Louis Felix,
Mimi Haddon, Claudia Linh, Glen Marzano, David
Miller, Vanessa Preziose, Alberto E. Rodriguez/
Getty Images for Children's Hospital Los Angeles,
Karine Simon and **Walter Urie**

DONATE TODAY



FEARLESS JORDAN

6 years old. 21 surgeries. 1 brave kid.

Your support can help save the life of a sick child like Jordan. If you make one donation this holiday, please make it to Children's Hospital Los Angeles.

To explore the digital version of Imagine, visit
CHLA.org/IMAGINE

GiveCHLA.org/Jordan
888-847-0883

