

07 MAIN UNITS

THE LINK BETWEEN YOU AND YOUR MUSIC

Music – we all move to different beats whether it's hip-hop, reggae, jazz or disco. Clarion has adopted an 'Any Source, Any Time' way of thinking. With provisions for USB memory devices, SD card slots, front panel auxiliary inputs and easy-to-use iPod® interfaces, there's no portable device you can't enjoy through your audio system.

MAIN UNITS

Front AUX input terminal for quick connection of portable music players



Plug it in and turn up! Connect any audio and video portable device. The front panel auxiliary input featured on several source units provides connectivity with clarity.

USB terminal to increase connectivity to a variety of peripheral devices



Drag and drop - that's all you have to do to copy your entire music collection onto a USB memory stick. Then simply plug it in to your Clarion USB-enabled head unit and listen to countless hours of your favourite music. For 2007, Clarion USB-enabled radios will allow you to access more than 65,000 songs from a single USB device, and view ID3 tag information so you know what you're listening to.



Control of iPods on the main unit

The EA1276 interface takes iPod integration to another level. It features the capability of navigation through playlists, similar to changing tracks on a CD. The EA1276



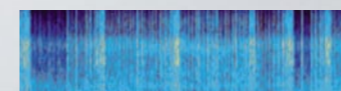
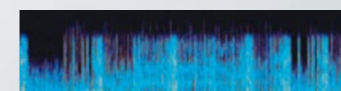
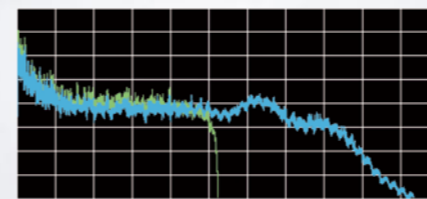
will charge the battery in your iPod as you listen, so you'll be ready to go when you arrive at your destination.

Support of wide variety of digital era media and compression formats

Now, playing that music is just as easy. Clarion has added Apple iTunes® AAC file support to our existing MP3 and WMA compressed digital audio compatibility.

Sound Restorer complements sound content lost during compression

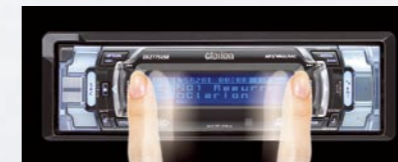
When audio files are compressed into MP3, WMA, or AAC format, every attempt is made to remove information which is not easily heard. This is called perceptual encoding. The drawback is that frequencies over 10 kHz are often lost or distorted. Clarion's exclusive "Sound Restorer" processing recreates those subtle nuances and harmonics back into the recording. Compressed music files simply won't sound like compressed music any longer.



Sound Restorer ON



SLIDETRAK sideways control



Clarion takes H.M.I. to the next level with SLIDETRAK for precise control of key features on the head unit. Simply swipe your fingertip to easily adjust the volume. Preset radio station and CD track controls are also incorporated into the multifunctional display, so you can navigate through preset stations or select your favourite music track by sliding your finger to either side of the display. SLIDETRAK also maximises available space on the head unit to create a large, easy-to-read display. This promotes safe driving, as you can now operate the stereo while keeping the eyes on the road.

SHOOTING STAR: Buttons put together could be associated with the image of shooting stars



Advances in H.M.I. design takes many forms. The new DB178RMP through to DXZ378RMP feature our new Shooting Star control panel design. Shooting Star puts all the controls as close as possible to the driver and allows for a larger, easier to read LC display that contains more information. A centrally located rotary volume knob underscores this advanced design.

FB278RBT – Cool design, totally different from units in the past

Clarion isn't afraid to be different. This is what was behind the design of FB278RBT.



A unique featured set combined with our 'Metal Shark Gill' design which makes this deck stand out in the crowd. Unconventional materials, indirect lighting and aggressive styling combine to make a source unit that will attract attention, even before you turn it on.

DUB278RMP – A modern living room for cars



Clarion designers thrive on creativity. The result – DUB278RMP. This unit incorporates a simple and stylish design, one that is smooth and clean. The H.M.I. interface is clear and effective, adding to the uncluttered look. Add unique features like front-panel auxiliary input and USB with variable colour illumination, and DUB278RMP stands out in the crowd.



The DXZ778RUSB has more source connections and format capabilities than any before. A 728-colour motorised detachable control panel with "SLIDETRAK" control serves as your interface to USB and Bluetooth® connectivity. If your music is digital, the DXZ778RUSB is ready with MP3/WMA and AAC playback capabilities from CD-R/W or a USB memory stick. It joins together a 3-way crossover network, 6-volt/6-channel audio pre-out, 24-bit D/A converter and digital time alignment control with dynamic sound to enable flexible sound customisation and awesome sound in your car.

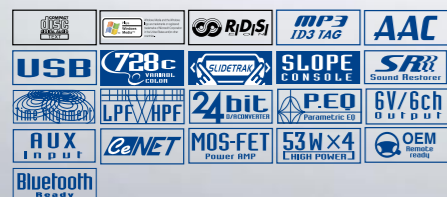
Fusion of best sound quality and safety control



SLIDETRAK control



DXZ778RUSB CD/USB/MP3/WMA/AAC RECEIVER with CeNET CONTROL



- CD-R/RW ready • MP3, WMA and iTunes® AAC compatible with ID3-TAG display • USB connector
- Maximum track capacity: 65,025 (255 tracks in 255 folders) • 18 FM, 6 MW/LW station presets
- RDS-EON tuner with variable bandwidth and Radio Text display
- iPod® control capability via optional EA1276 • Subwoofer level control • 24-bit



- D/A converter • Sound Restorer • Digital Z-Enhancer sound customisation • Digital time alignment control • 3-way active crossover
- 3-band parametric equaliser • Built-in High-pass filter & Low-pass filter • Built-in amplifier canceller • 4-channel x 53 watts of MOS-FET amplification • Motorised sloping console
- 728-variable colour display and illuminated keys • Full dot display with Screensavers
- "SLIDETRAK" for dynamic operation
- Cellular input and Phone mute • Auxilliary input with level control • 6-volt / 6-channel audio pre-out • CeNET control of: TV tuner, 6-disc CD changer and iPod® • AUX Bluetooth transceiver BLT373 ready
- OEM steering wheel remote wired interface capability • Detachable control panel

SLIDETRAK

Clarion takes H.M.I. to yet another level with the introduction of SLIDETRAK. With a simple swipe of the fingertip, it provides precise control of the key features on the head unit. In addition, SLIDETRAK



maximises the available space on the head unit's face to create a large easy-to-read display. SLIDETRAK allows an increase in button size for easy identification of buttons. This way, you can keep your eyes on the road while operating the source unit. This promotes safer driving.

USB Connector



Copy, Paste, Play - with Clarion's USB Connector, accessing your music collection is easy. With access to up to 65,025 songs, there's seemingly no limit to your musical boundaries.

728 variable colours



Colour-tuning the look of your audio system is easy. Clarion also lets you fine-tune the look of your source unit with 728-colour illumination. Choose from 13 different preset colours to let the DXZ778RUSB slowly morph through the entire spectrum or fine tune the Red, Green and Blue levels to match your dash perfectly.

MP3/WMA/iTunes® AAC compatible with ID3-TAG display

These days formats like MP3 & WMA are standard; AAC with its higher compression ratio are supported. This way you can listen to music data downloaded from music stores on the internet in your car. The ID3-Tag display feature simplifies ease of use for all three formats.

iPod interface EA1276 control

Connecting an iPod ensures you enjoy all tunes in your iPod library through your car audio system. As the unit recognises the connection automatically, it is possible to fully operate the iPod as if it is a part of your system.

Sound technology

Time Alignment

To achieve optimum sound positioning, ideally each speaker should be located equidistantly from the listener. However, it is almost impossible to realise this within the environment of a car. Digital Time Alignment works to virtually change speaker distances, thus creating a seemingly optimal sound field. Adjustment is possible from 0 to 501.4 cm in 2.3 cm steps.

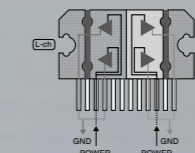
6-volt/6-channel output



Equipped with 6V/6ch outputs for reproduction of sources with high sound quality. Together with crossover settings, it can be used to output to various speaker systems like Front 2ch + Rear 2ch + Subwoofer 2ch.

212 watts MOS-FET power amplifier

There's only one way for Clarion's DXZ778RUSB to deliver 4-channel x 53 watts of unyielding power output and superior linearity: MOS-FET amplification, or, otherwise known as Metal Oxide Semiconductor Field Effect Transmitter amplification. Smaller and more efficient than conventional power supplies, this MOS-FET amplification circuitry delivers power with less distortion and zero On/Off switching noise. So turn it up, or down for easy listening. MOS-FET amplification — your music has never sounded better.



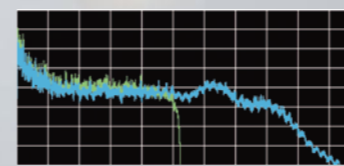
Digital Z-Enhancer

Clarion's Digital-Z Enhancer controls P-EQ, HPF, and LPF through the DSP, allowing you to select from three equalising patterns that emphasise the range of tones in the treble and bass regions respectively while maintaining perfect acoustic balance. Furthermore, by adding gain adjustment (HI, MID, LOW) to the 3 equalising patterns, it is now possible to choose from 9 different equalising patterns to customise the sound quality pattern so that it matches your speaker system or selected music source perfectly.

X-over

Separates the sound spectrum into different bands so you can minimise peaking and phase cancellation, which can result in muddy sound when using a 2-way or 3-way speaker system. X-over circuitry also optimises each output range, resulting in more natural and smoother transitions between ranges. And since it's built-in, it requires no additional equipment or expertise. The cut-off frequency, filter, slope and phase can be adjusted for each band, enabling precise sound tuning. You can also set a Time Alignment value for each speaker for optimal sound matched to the vehicle's acoustics.

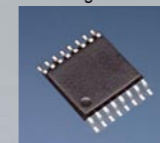
Sound Restorer



Hear your music the way it was meant to be heard. Clarion's Sound Restorer recreates the high frequency information that is lost during compression. The result is clear and detailed sound.

24-bit D/A converter

A key component in the transfer of digital data from a CD into analogue sound is Clarion's 24-bit D/A converter. Because the digital realm is made up of unnaturally square sound waves, as opposed to the smoothly undulating sound waves characteristic of the real-world environment, Clarion's embedded 24-bit D/A converter recreates the natural nuances and expressions lost during the sound reproduction process.



The DXZ578RUSB offers features and connectivity second to none. This unit integrates an incredibly convenient front-panel USB slot with our new "SLIDETRAK" control for an interface that's unrivalled in performance. Clarion's advanced development team has fitted this source unit with a 24-bit DAC for pure, detailed sonic reproduction and our Digital Z-Enhancer and Sound Restorer signal processing. The result is a source unit that offers all the features you want combined with stunning sonic performance.

Front panel USB puts your music close at hand



SLIDETRAK



Clarion takes H.M.I. to the next level with SLIDETRAK for precise control of key features on the head unit. Simply swipe your fingertip to easily operate key functions. Preset radio station and CD track controls are also incorporated into the multifunctional display. Navigate through station presets or select favourite music tracks by sliding your finger to either side of the display. SLIDETRAK also maximises available space on the head unit to create a large, easy-to-read display. This promotes safer driving.

USB slot on the front panel

USB (Universal Serial Bus) is an international interface standard for connection of peripheral devices. It is fully supported via the USB slot on the front. This enables simple plug-in connection of a wide range of devices and USB memory media carrying up to 65,025 songs.

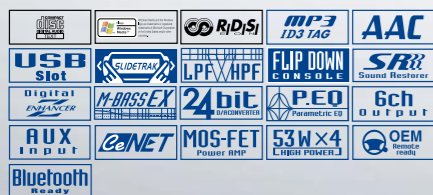


iPod® interface EA1276 control

By connecting your iPod to the main unit, you can listen to favourite tunes from your iPod library in your car using the Clarion system. iPod control is done on the main unit screen, and as the unit recognises the connection automatically, operation of your iPod is smoothly integrated as part of your Clarion system.



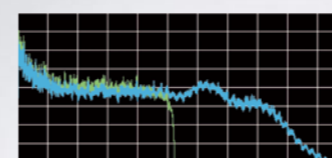
DXZ578RUSB CD/USB/MP3/WMA/AAC RECEIVER with CeNET CONTROL



- CD-R/RW ready • MP3, WMA and iTunes® AAC compatible with ID3-TAG display
- Front USB slot • Maximum track capacity: 65,025 (255 tracks in 255 folders) • 18 FM, 6 MW/LW station presets • RDS-EON tuner with variable bandwidth and Radio Text display • iPod® control capability via optional EA1276 • Subwoofer level control • 24-bit D/A converter • Sound Restorer • Digital Z-Enhancer sound customisation • 2-band parametric equaliser • MAGNA BASS EX dynamic bass enhancement • Built-in High-pass filter & Low-pass filter • Built-in amplifier canceller • 4-channel x 53 watts of MOS-

- FET amplification • Flip-down console • High visibility 2-line display with Screensavers
- "SLIDETRAK" for dynamic operation
- Cellular input and Phone mute • Auxilliary input with level control • 6-channel audio pre-out • CeNET control of: TV tuner, 6-disc CD changer and iPod® • AUX Bluetooth transceiver BLT373 ready • OEM steering wheel remote wired interface capability
- Detachable control panel

Sound Restorer



Compression formats like MP3, WMA and AAC achieve more efficient compression by sacrificing the high frequency range above 10 kHz. "Sound Restorer" complements this lost content by way of extracting harmonic overtone elements from the compressed data. Reproduction, quasi equal to the original sound, can be realised.

24-bit D/A converter

A key component in the transfer of digital data from a CD into analogue sound is Clarion's 24-bit D/A converter. Because the digital realm is made up of unnaturally square sound waves, as opposed to the smoothly undulating sound waves characteristic of the real-world environment, Clarion's embedded 24-bit D/A converter recreates the natural nuances and expressions lost during the sound reproduction process.



High-pass/Low-pass filter

You can set the frequency range of the audio signal that's output to each channel, to best match the acoustic characteristics of the front, rear and subwoofer. This is also possible even if you decide to connect your original speakers directly to your head unit without an external amplifier. The high-pass filter is also available to cut off frequencies below 50, 80 or 120 kHz.

Digital Z-Enhancer sound customisation

The Digital Z-Enhancer lets you choose from 3 equalisation patterns to restore tonal balance by freely accentuating each of the high and low frequency ranges. Thanks to 6-step gain adjustment of 3 separate preset patterns, tailoring the sound to your system speakers and the selected audio source is now possible.

Equipped with a USB port for extended musical style and expression



DB568RUSB

CD/USB/MP3/WMA RECEIVER



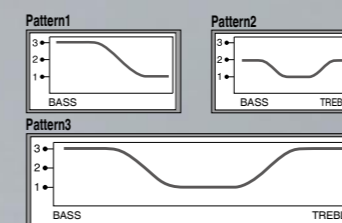
- USB slot on front • Z-Enhancer sound customisation • 18 FM, 6 MW/LW station presets • RDS-EON tuner • 4-channel x 50 watts of MOS-FET amplification • MP3 and WMA compatible with ID3-TAG display • CD-R/RW ready • High contrast white negative display (13 x 8 digits) with Screensavers
- 4-channel audio pre-out • 2-channel AUX input • OEM steering wheel remote wired interface capability • Cellular input and Phone mute

USB interface

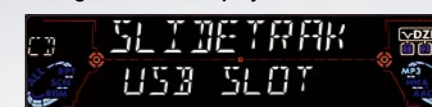
You can now connect all kinds of peripheral equipment using the common USB (Universal Serial Bus) standard interface. By connecting a mobile audio player directly to the USB connector, you can enjoy all of your MP3/WMA format music files through the car audio system. The system supports a maximum of 255 files, 255 folders, 28 character file names and 16-character folder names.

Z-Enhancer

Three types of sound quality patterns are pre-set for easy selection. Boost the bass only, the treble or both, with the level of boost adjustable by the user.

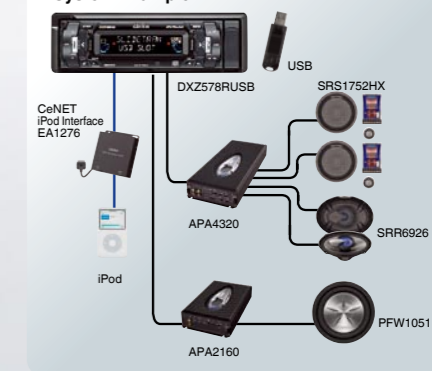


13-segment 2-line display



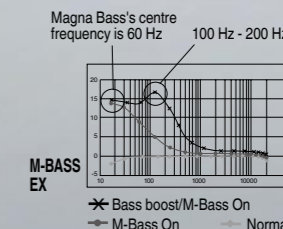
The 13-segment 2-line display enables display of a multitude of information. As a visual interface between you and the source unit, it offers clear display of what's playing with numerous setting and selection possibilities.

System Example



Magna Bass EX

Clarion's Magna Bass boosts bass in a band centred at 60 Hz—lower than that of ordinary loudness circuits at around 100 Hz—to provide extra low-frequency impact. Clarion's new Magna Bass EX boosts the bass by nearly 10 dB at



even lower frequencies around 60 Hz. It automatically compensates for the volume level to ensure well-balanced dynamic bass at any level.

The new DXZ378RMP and DB178RMP feature Clarion's new Shooting Star DCP design. We've gathered all the frequently used controls and put them as close as possible to the driver for ease of operation, thus allowing for a large easy to read display. This enables the driver to see station or track information with minimal distraction from the road. Additionally, a precision rotary volume control knob is centrally located for optimum control from either the driver's or passenger seat. Clarion combines form, functionality, and style with this "Shooting Star" design.

Your music never looked so good



DXZ378RMP

CD/MP3/WMA RECEIVER with CeNET CONTROL



- CD-R/RW ready • MP3 and WMA compatible with ID3-TAG display
- 18 FM, 6 MW/LW station presets • iPod control capability via optional EA1276 • Z-Enhancer sound customisation • MAGNA BASS EX



dynamic bass enhancement • Built-in amplifier canceller • 4-channel x 50 watts • Flip-down console • High visibility 2-line display with Screensavers • Rotary volume control • Phone mute • Cellular input through minijack • Front-panel auxilliary input with level control • 4-channel audio pre-out • CeNET control of: TV tuner, 6-disc CD changer and iPod® • OEM steering wheel remote wired interface capability • Detachable control panel



DB178RMP

CD/MP3/WMA RECEIVER



- CD-R/RW ready • MP3 and WMA compatible with ID3-TAG display • 18 FM, 6 MW/LW station presets • Z-Enhancer sound customisation • MAGNA BASS EX dynamic bass enhancement • 4-channel x 50 watts • High visibility single line display with



Screensavers • Rotary volume control • Phone mute • Cellular input through minijack • Front-panel auxilliary input with level control • 2-channel audio pre-out • OEM steering wheel remote interface capability • Detachable control panel



Front AUX input terminal for quick connection of portable music players

Plug it in and crank it up! Connect any audio and video portable device. The front panel auxiliary input featured on these source units provides connectivity with clarity.

Here is innovative design that goes beyond traditional concepts: a fusion of radical design and state-of-the-art technology culminating in a unit with a "shark gill" look and subtle lighting reminiscent of contemporary interior designs. The simplistic design with its hi-tech appearance will complement your car's interior and impress not only with its looks, but also with fantastic sound and innovative features.

The fusion of innovative form and technology heralding the coming of a new age



FB278RBT

Bluetooth SD/MP3 RECEIVER



- SD slot for music playback • MP3 compatible with ID3-TAG display • Built-in Bluetooth wireless technology for: headset and handsfree profile / audio-streaming and remote-control • 18 FM station presets • RDS-EON tuner • 4-channel x 50 watts of amplification • Flip-down control panel • 728-variable colour illuminated design • Auxilliary input • 2-channel audio pre-out • External microphone included

The next-generation source unit

- Built-in Bluetooth audio streaming (A2DP & AVRCP)
- Built-in Bluetooth Handsfree (HFP & HSP)
- MP3 playback via SD card slot



728-variable colour illuminated design

Advanced functions such as handsfree calling and enhanced media links are combined.

The built-in Bluetooth receiver allows you to enjoy handsfree calls with a mobile phone using the 3.5 mm connector for commercially available microphones. Furthermore, a built-in SD slot makes playing music from external sources easy, and the ID3-TAG Display offers simple manipulation of compressed musical formats such as MP3. In addition, the 728-variable colour illuminated keys provide brilliant illumination for your interface.



(option)

SD memory card playback with no mechanical parts



The next evolution in mobile audio - no moving parts. The FB278RBT features an SD card slot behind the folding control panel. Simply copy your favourite songs from your PC to an SD card, and you're ready to go with hours of music. You can also connect your Bluetooth enabled cellular phone, PDA or iPod (with the optional Bluetooth transmitter) for even more music choices. The revolution is here and its name is FB278RBT.

Floating interface created by display lighting



Indirect lighting on the FB278RBT makes each of the arched buttons appear to float, adding to the mystique of the Metal Shark design. A mirror finish surrounds the bottom half of the illuminated rotary volume control.

The perfect product to round out your car's interior awaits you. Clarion's WXZ468RMP features quality audio components. Its bold, brushed metal faceplate is divided into five sections for a control layout offering superior usability. It also sports a double-sized design as more cars offer large dashboard spaces for audio components. Add the graphics from the 23-band spectrum analyser for a finishing touch on this powerful in-dash 6-CD unit.

The essence of audio is alive in its design



WXZ468RMP

2-DIN 6-DISC CD/MP3/WMA RECEIVER with CeNET CON-



- 18 FM, 6 MW/LW station presets • RDS-EON tuner with variable bandwidth
- 4-channel x 50 watts of MOS-FET amplification • MP3 and WMA compatible with ID3-TAG display • CD-R/RW ready
- VF display with Spectrum analyser and Screensavers • 9-band graphic equaliser
- CATS: Theft prevention system with personal code • CeNET control of: TV tuner, 6-disc CD changer and iPod • 4-channel audio pre-out • 2-channel AUX input with level control • OEM steering wheel remote wired interface capability • Cellular input and Phone mute • CeNET iPod interface compatible (EA1251 is required)



Built-in 6-disc CD changer & MP3/WMA file playback



You can load up to 6 discs in the unit's internal CD changer. In addition to music CDs and MP3 files, the changer also supports WMA files, which offer superior compression while maintaining high quality, making it possible to fit the equivalent of a full CD library on a single CD-R at comparable quality. ID3/WMA tags are supported for display of a wide range of information on the tunes being played.

DCZ628

6-DISC CD CeNET CHANGER

- CD-R/RW ready • CD text
- CeNET
- -15° to 105° mounting angle
- Dimensions: 225 (W) x 167 (D) x 63 (H) mm



Digital Z-Enhancer

Clarion's Digital-Z Enhancer controls P-EQ, HPF, and LPF through the DSP. Select from three equalising patterns that emphasise the range of tones in the treble and bass regions while maintaining perfect acoustic balance. And adding gain adjustment (HI, MID, LOW) to the three equalising patterns lets you choose from nine equalising patterns to customise the sound quality pattern to match your speakers or music source.

LPO (Listening Position Optimiser)



The WXZ468RMP's Listening Position Optimiser uses digital processing to virtually adjust the speaker distance, enabling sound stage settings that accommodate a wide variety of different vehicles. No matter what type of car you drive, you can count on Clarion to drive your sound with high precision and realistic presence.

Setting		Right		Left	
		Distance	Sample	Distance	Sample
LPO 1 for compact car	R	10cm	13	40cm	52
	L	40cm	52	10cm	13
LPO 2 for sedan	R	10cm	13	80cm	104
	L	80cm	104	10cm	13
LPO 3 for estate car	R	10cm	13	160cm	208
	L	160cm	208	10cm	13

23-band spectrum analyser with 9-band Graphic Equaliser



The 9-band Graphic Equaliser offers detailed customisation of the frequency curve to adapt the sound character to the speakers used and the acoustic properties in the car. The spectrum analyser visually displays the subtle expressions and nuances of the music. It provides a detailed graphical portrayal of 23 different frequency bands with instantaneous display of current band levels of the music being played. Additionally, you can choose between nine types of graphic display patterns to match the music and your mood.

Clarion's product designers worked hard to minimise the number of buttons on the DUB278RMP while maximising its functionality. The result is a source unit that is simple and stylish in design, while offering leading edge technology, connectivity and performance. The DUB278RMP is a stylish 2-DIN AM/FM CD/USB source unit with a look like no other.

Clean, Simple and Elegant – a new concept for your car



DUB278RMP

2-DIN CD/USB/MP3/WMA RECEIVER



- CD-R/RW ready • MP3 and WMA compatible with ID3-TAG display • Front USB slot (supports max. 255 folders and max. 15,000 files in the folders) • 18 FM / 6 MW/LW station presets • RDS-EON tuner • Z-Enhancer sound customisation • MAGNA BASS EX dynamic bass enhancement • 4-channel x 50 watts of MOSFET amplification • High visibility single line display with Screensavers • 728-variable colour display and illuminated keys
- Front-panel audio input with level control
- 4-channel audio pre-out • OEM Steering wheel remote wired interface capability

USB input for compressed digital audio

This source unit can handle 15,000 digital audio files. File names can be up to 28 characters long, and folder names can be up to 16 characters long.



Front USB slot & AUX input



4 x 50 W MOS-FET power amplifier

MOS-FET amplification is the only way for Clarion's DUB278RMP to deliver 4-channel x 50 Watts of unyielding power output and superior linearity. Smaller and more efficient than conventional power supplies, this MOS-FET amplification circuit delivers power with less distortion and no switching noise. So crank it up, or turn it down for easy listening.

Multicolour buttons

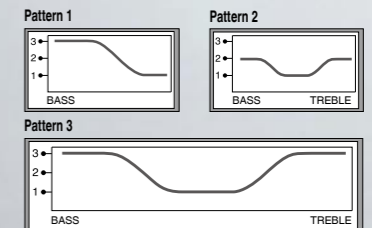
The DUB278RMP allows precise adjustment of the RGB levels to cosmetically harmonise the look of the set with the illumination colour of the vehicle's dashboard and instrument panel. Choose from 728 colour possibilities.



728 variable colours

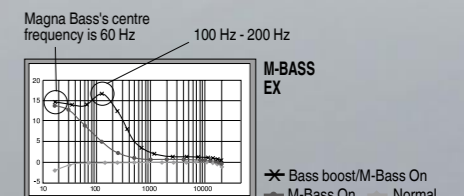
Z-Enhancer changes the tonal balance

Want more bass, more treble, or more of both? No problem. Z-Enhancer has three pre-set equalisation curves to choose from... and the amount of boost is adjustable.



Magna Bass EX for dynamic bass enhancement

Clarion's Magna Bass boosts bass in a band centred at 60 Hz - lower than that of ordinary loudness circuits at around 100 Hz - to provide extra low-frequency impact. Now, Clarion's new Magna Bass EX boosts the bass by nearly 10 dB at even lower frequencies around 60 Hz. It even automatically compensates the volume level to ensure well-balanced dynamic bass at any level.



For more detailed information concerning installation possibilities, please refer to the CIP (Clarion Installer Programme) on page 32-33.

For more detailed information concerning installation possibilities, please refer to the CIP (Clarion Installer Programme) on page 32-33.

iPod and Clarion: the perfect combination for mobility, safety, integration and ultimate quality.



Now iPod Video Ready

Direct iPod connection

MAX973HD	MAX678RVD	VRX878RVD	VRX578RUSB	VRX378RUSB
CCA692 iPod video Connecting cable	CCA673 iPod video Connecting cable	CCA673 iPod video Connecting cable	CCA691 iPod video Connecting cable	CCA691 iPod video Connecting cable
	CCA670 iPod Connecting cable (audio only)	CCA670 iPod Connecting cable (audio only)		

CeNET - iPod Interface

Interfaces to enjoy iPods full operation



EA1276

iPod connection unit for '07 CeNET models DXZ778RUSB, DXZ578RUSB, DXZ378RMP, DXZ379RMP, CMD5

Interfaces to enjoy iPods with simple operation as with CD changers



EA1251

iPod connection unit for WXZ468RMP, compatible with '06 or older CeNET Models



Bluetooth technology enhances your motoring life

BLT573

CeNET Bluetooth INTERFACE ADAPTER

- Compatible with MAX973HD • Headset and hands-free profile • Controls mobile phone book directly from touch screen: 500 persons, 5 numbers per person can be transferred to BLT573* • Displays name / number for incoming / outgoing calls / missed calls*
- Automatic receive function* • Redial function* • Voice recognition control* • On-screen information of battery level, tel. reception signal strength*

*depending on telephones



Connection available for the MAX973HD with touch-panel operation.



MAX973HD

AUX Bluetooth interface with Handsfree and Audio-Streaming capability.

BLT373

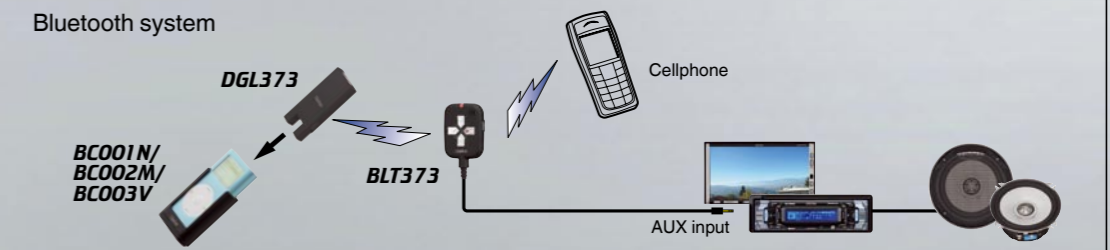
Bluetooth AUDIO/MOBILE-PHONE TRANSCEIVER FOR AUX INPUT

- Headset and hands-free profile
- Bluetooth Audio-Streaming and Remote-Control capability (A2DP and AVRCP) • Bluetooth audio transmitter DGL373 ready • Built-in microphone for hands-free use



*All units switch automatically to AUX when receiving a telephone mute signal.

Bluetooth system



iPod® & Bluetooth®

The line-up features iPod cradles to match a diverse range of iPods including iPod nano, iPod mini, and iPod with video. Just slide the iPod into the iPod cradle and set up the iPod dongle that emits a Bluetooth signal and you're ready to listen to music from your iPod through your car's stereo.



Transmitter
Transmits digital media player audio output through Bluetooth-Audio-Streaming (A2DP) to the receiver. Compatible with iPod cradle or minijack input for all kinds of portable players.

DGL373

Bluetooth AUDIO TRANSMITTER

Cradle
Docking cradle for Bluetooth audio transmitter DGL373. Available for iPod Nano "BC001N", Mini "BC002M" & Video "BC003V"

BC001N/BC002M/BC003V

CRADLE FOR iPod nano/mini/Video

*Please refer to page 48 for iPod connection.

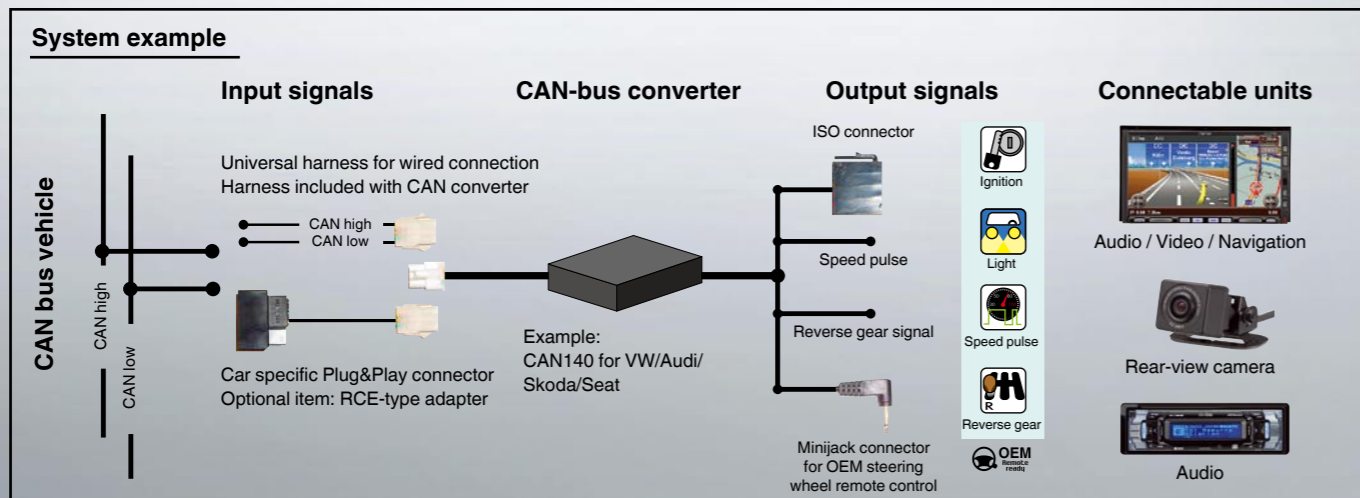


The new CIP — Clarion Installer Programme offers the most professional fitting accessories to connect your Clarion device simply and safely to more than 200 different car models.

Please visit www.clarion.com/cip to see the latest range of professional Clarion installation accessories online.

CAN-bus converter

New cars increasingly rely on proprietary data bus techniques that are not compatible with commercial audio products. Clarion's development division specialised in finding solutions to adapt such digital communications system with our line of products. Our CAN converter interfaces can customise CAN-bus equipped cars with a superior Clarion audio system.



Upgrade your CAN-equipped car with the latest Navigation technologies from Clarion by installing a compatible CAN-converter to handle all the required signals or simply to enable enhanced use of Clarion multimedia products with the convenient steering wheel controls in your car.

To see which cars are supported for converting digital CAN data into analogue signals, please refer to our website at www.clarion.com/cip.

www.clarion.com/cip

2-DIN installation bracket

More than 60% of all new vehicles sold in Europe offer a larger installation space for car entertainment products in the dashboard than the standard 1-DIN size. The use of 2-DIN units gives the customer the advantage of more advanced features and added functionality in a single source unit.

In order to offer professional fitting and seamless integration of Clarion components in a 2-DIN spaced slot, Clarion has developed a wide range of car-specific mounting brackets. To help the installer, all brackets are supplied with detailed mounting instructions and diagrams for each car. All fixing materials are included with each bracket.



To see which car models are ready for a 2-DIN Clarion main unit, please refer to our website at www.clarion.com/cip

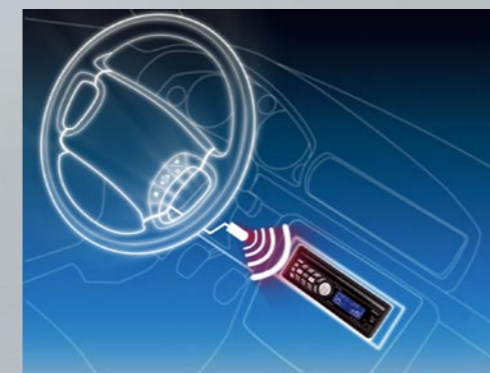
OEM steering wheel remote control

More and more cars are sold with original car radios that can be operated from convenient controls on the steering wheel. Clarion has introduced a series of interfaces that allow connection of Clarion products to the steering wheel controls in your car. This way, you get the best of both worlds: continued use of the handy steering wheel controls and a top-performing Clarion system in your car.



Adaptor with wire connection

Compatible with all Clarion models with minijack steering wheel remote control input.



Adaptor with infrared connection

Compatible with all previous Clarion models with infrared sensor.



To see which car models can control a Clarion main unit from the steering wheel, please refer to our website at www.clarion.com/cip