

The Corning Museum of Glass Annual Report 2016



Cover:

The Studio of The Corning Museum of Glass celebrated its 20th anniversary with a variety of festivities. Events from 1996 and 2016 are pictured.

Opposite:

Amy Schwartz and William Gudenrath, founders of The Studio, are joined by the artists Lino Tagliapietra and Paul Stankard, along with staff and friends, during its opening in 1996.

Photo Credits

All of the photographs in this *Annual Report* are by The Corning Museum of Glass (Andrew M. Fortune, Allison S. Lavine, Bryan H. Buchanan, Mieke Fay, Amy Schwartz, Amanda Sterling, and former Photographic Department Manager Nicholas L. Williams), with the following exceptions:

Cover (row 1, center, and row 5, left) and pages 2 (right), 6, and 43: Kyle Atkinson

Cover (row 3, left; row 5, right; and row 6, left) and pages 3 (top, left), 4 (top), 15, and 21: Gary Hodges Photography

Pages 2 (left) and 13: Heather Baigelman, courtesy of the Glass Art Society

Pages 17 and 53: Maxwell Harvey-Sampson

Officers of the Board

Jeffrey W. Evenson
Chairman

James B. Flaws
Vice Chairman

Linda E. Jolly
Secretary

Melissa J. Gambol
Assistant Secretary

Mark S. Rogus
Treasurer

Michael J. Burns III
Assistant Treasurer

Officers of the Corporation

Karol B. Wight
President and Executive Director

Alan T. Eusden
Chief Operating Officer

Trustees

- Roger G. Ackerman*
- Peter S. Aldridge
- Van C. Campbell*
- Dale Chihuly*
- Patricia T. Dann*
- Robert Duke*
- Alan T. Eusden
- Jeffrey W. Evenson
- James B. Flaws
- John P. Fox*
- Polly W. Guth* †
- Randi L. Hewit
- Amory Houghton Jr.*
- Arthur A. Houghton III*
- James D. Houghton
- James R. Houghton*
- Sir Mark Ellis Powell Jones
- E. Marie McKee*
- David L. Morse
- Carl H. Pforzheimer III
- Carlos A. Picón
- Helmut Ricke*

- Mark S. Rogus
- Antony E. Snow*
- Susan M. Taylor
- Peter F. Volanakis*
- Wendell P. Weeks
- Ian McKibbin White*
- Karol B. Wight

* Trustee Emeritus
† Deceased, June 22, 2016

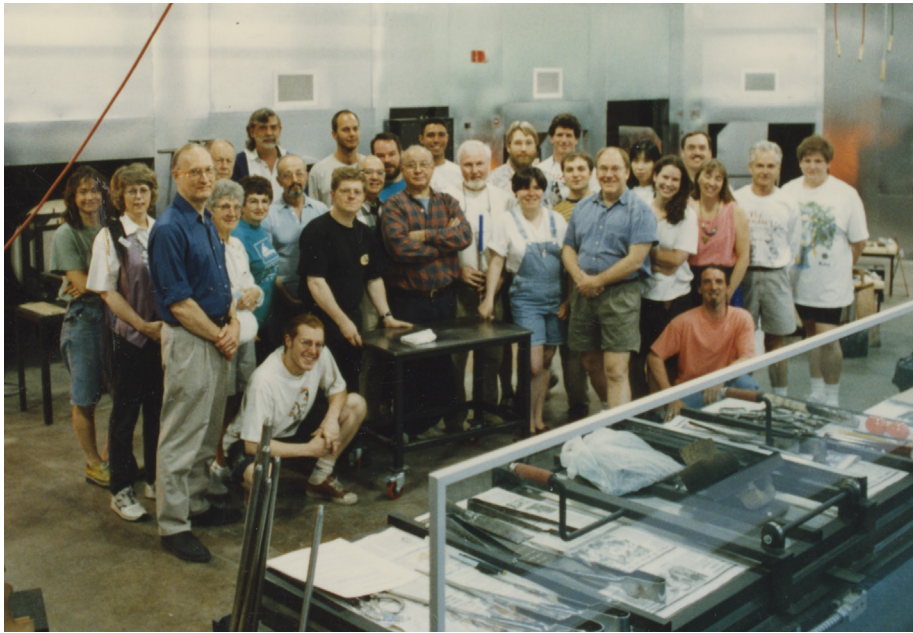
The Fellows of The Corning Museum of Glass

- Carole Allaire
- James K. Asselstine
- Sheldon Barr
- Mike Belkin
- William W. Boeschstein*
- Alan L. Cameros§
- James Carpenter
- Lt. Gen. Christian Clausen, retired§
- Simon Cottle
- Kenneth C. Depew
- Thomas P. Dimitroff
- Jay R. Doros
- Micki Doros
- Paul E. Doros
- David Dowler
- Roland “Max” Erlacher+
- Christopher T. G. Fish
- Alice Cooney Frelinghuysen
- David Fuchshuber
- William Gudenrath
- Douglas B. Heller
- Dorothy-Lee Jones+
- Olive Jones+
- Helena Koenigsmarková+
- Stephen P. Koob
- Michael Kovacek
- Anna Laméris
- Kitty Laméris
- Willem Laméris
- David Landau
- Dwight P. Lanmon+
- Howard J. Lockwood
- Louise Luther
- Kenneth W. Lyon§ †
- Malcolm N. MacNeil
- Douglas C. McCorkle
- Gregory A. Merkel
- Kirk J. Nelson+

- Tina Oldknow+
- Barbara H. Olsen§ ‡
- Elmerina L. Parkman
- Paul D. Parkman
- Lindsay R. Parrott
- Paul N. Perrot +
- John V. B. Perry
- Joan P. Randles
- Richard F. Randles
- Peter B. Rath
- Rachel Russell
- Josh Simpson
- John P. Smith
- Walter Spiegel+
- Jane Shadel Spillman+
- Paul J. Stankard
- Arlie Sulka
- Lino Tagliapietra
- Jennifer Thalheimer
- Catherine M. V. Thuro-Gripton+
- Kenneth R. Treis
- Harley N. Trice
- Deborah Truitt
- Durk Valkema
- William Warmus
- Mark J. West
- Karol B. Wight
- Rainer M. Zietz
- Maris Zuika

* Life Fellow
+ Honorary Fellow
§ Fellow Emeritus
† Deceased, April 15, 2016
‡ Deceased, April 27, 2016

The Fellows of The Corning Museum of Glass are among the world’s leading glass collectors, scholars, dealers, and glassmakers. The objectives of this organization are (1) to disseminate knowledge about the history and art of glassmaking and (2) to support the acquisitions program of the Museum’s Rakow Research Library. Admission to the fellowship is intended to recognize accomplishment, and is by invitation.



The Corning Museum of Glass Annual Report 2016

An educational institution
dedicated to the history,
art, and science of glass

Chartered by the Board
of Regents of the University
of the State of New York
April 27, 1951
(6026)



Accredited by the American
Alliance of Museums
1973, 1986, 1999, 2010

The Year in Review

The year 2016 was one of continued growth for the Museum. Following the opening of our Contemporary Art + Design Wing in March 2015, we built upon the success achieved by that landmark expansion and celebrated some special moments. Our Studio marked its 20th birthday, and in a perfect confluence of events, the Glass Art Society conference returned to Corning. Many of the conference attendees had taken classes in, or taught at, The Studio, and for many, it was also the first opportunity to see what the new contemporary galleries and Amphitheater Hot Shop had to offer. In all of its activities, the Museum reinforced its leadership position in the glass world.

The artist Laura Donefer participates in the Glass Fashion Show during the 45th annual Glass Art Society (GAS) conference.

Harry Seaman, facility manager at The Studio, leads a parade from The Studio to the Amphitheater Hot Shop while carrying a blowpipe with a hot gather of glass in celebration of The Studio's 20th anniversary.

It is no secret that opening a new gallery space results in increased visitation, and 2015's final attendance figure of 460,000 confirmed that. But what happens next can be anybody's guess. Often, attendance figures fall once the buzz about the new space has worn off. That was not the case, however, with attendance at the Museum in 2016. We matched our 2015 number, and in the breakdown of visitation between group tour visitors and individual and family visitors, we saw a continued increase in our individual and family attendance. That number rose by 12 percent in 2015, and we matched and exceeded that figure by another two percent in 2016. This demonstrated to us that what we began with the new wing

continues to attract visitors from around the world. The slate of guest artists who demonstrated in the Amphitheater Hot Shop attracted some of this audience, as did our demonstrations in the Innovation Center, many of which were linked to works on view in our major exhibitions. Many of our visitors participated in a Make Your Own Glass experience at The Studio, and that facility was at capacity once again over the summer months.

Our Guest Services staff and front-line staff in The Shops, in The Studio, in the Café, in Security, and all across the campus performed their work graciously and attentively, resulting in the highest satisfaction rating we have ever achieved in our visitor survey: 9.3 out of 10. In addition, the Museum was awarded the Visitor Services Tourism Excellence Award, presented to the Guest Services Team—led by Regina Wagner, guest and Member relations manager—by the New York State Tourism Industry Association. I congratulate the Guest Services Team and all of our staff members for their hard work and their attention to ensuring that our visitors had a world-class experience while at the Museum.

One of our major exhibitions, on view in the atrium of the Rakow Research Library, explored the relationship between the development of optical glass for microscopes and the study of the microscopic world. "Revealing





Lino Tagliapietra shapes an object during a demonstration in the Amphitheater Hot Shop.

Regina Wagner, guest and Member relations manager, holds the 2016 Visitor Services Tourism Excellence Award, presented to the Museum by the New York State Tourism Industry Association.

Display of an original microscope by Antoni van Leeuwenhoek on view in the exhibition "Revealing the Invisible: The History of Glass and the Microscope."

the Invisible: The History of Glass and the Microscope” contained an impressive array of historical microscopes on loan from the Museum Boerhaave in Leiden, the Netherlands. Among them was a small but important device with a glass lens used for magnification by Antoni van Leeuwenhoek—the first time one of these devices has been on view in an American institution.

The subject of our special exhibition was the flameworked marine invertebrate models made by the Dresden-based father-and-son team of Leopold and Rudolf Blaschka. “Fragile Legacy: The Marine Invertebrate Glass Models of Leopold and Rudolf Blaschka” was a collaborative endeavor with Dr. Drew Harvell, a marine biologist at Cornell University and curator of Cornell’s collection of Blaschka



Left to right: *David Owen Brown, filmmaker; Marvin Bolt, the Museum's curator of science and technology; Drew Harvell, marine biologist at Cornell University; and Alexandra Ruggiero, curatorial assistant, at the opening of "Fragile Legacy: The Marine Invertebrate Glass Models of Leopold and Rudolf Blaschka."*

models, and David Owen Brown, an independent undersea filmmaker. In the exhibition, we explored the parallel stories of the fragile nature of these precious glass models and the fragility of the oceans of the world, in which the living examples of the glass models are under threat from environmental pollution and climate change. The work of the Museum's conservators on these models was highlighted within the exhibition, and also by the series of blogs published by the Museum during the course of the show. The work of the Blaschkas was also the subject of the Museum's annual Seminar on Glass. The program brought together specialists in marine biology and professionals from natural history museums, among others, to talk about the purpose behind the making of the marine invertebrate models, and the institutions where Blaschka collections still reside today.

Joining the staff in 2016 were (left to right): Dr. John (Jack) Green, James Gerhardt, Dr. Christopher (Kit) Maxwell, and Susie J. Silbert.



The new Contemporary Art + Design Wing continued to generate an increase in membership in our donor groups, including the Museum's Members and the Ennion Society. Various programs were held throughout the year to benefit these groups at exhibition openings, before and after our "Behind the Glass" lectures, and in conjunction with the Glass Art Society conference. In September, members of the Ennion Society took a memorable trip to Sweden and Denmark, visiting artists' studios, museums, galleries, and historical sites. The generosity of our donors has led to contributions of funds and of glass and library materials that enrich our activities and our collections. As always, we thank them for their generosity and ongoing support of the Museum.

New staff members joined the Museum in 2016, including Dr. John (Jack) Green as deputy director, James Gerhardt as chief advancement officer, Dr. Christopher (Kit) Maxwell as curator of European glass, and Susie J. Silbert as curator of modern and contemporary glass. They have brought additional depth and professional experience to the Museum across a variety of fronts.

Silbert selected her first artist to receive the Museum's annual Rakow Commission. This commission, which supports the development of new works of art in glass, has richly expanded the collection with important works by emerging and established artists. For 2016, Silbert selected Thaddeus Wolfe, an American artist whose work crosses the border between art and design in glass. *Stacked Grid Structure* is the first work by this artist to enter our collection. It is now on view in the Contemporary Art + Design Wing.

Silbert also oversaw important additions to the modern and contemporary collection, including new works by Karen LaMonte and

Fred Wilson, significant donations by James R. and Maisie Houghton and Paul and Elmerina Parkman, and one of my personal favorites: an Art Deco chair, made of plate glass by the Pittsburgh Plate Glass Company, that was on view in the 1939 Golden Gate International Exposition in San Francisco.

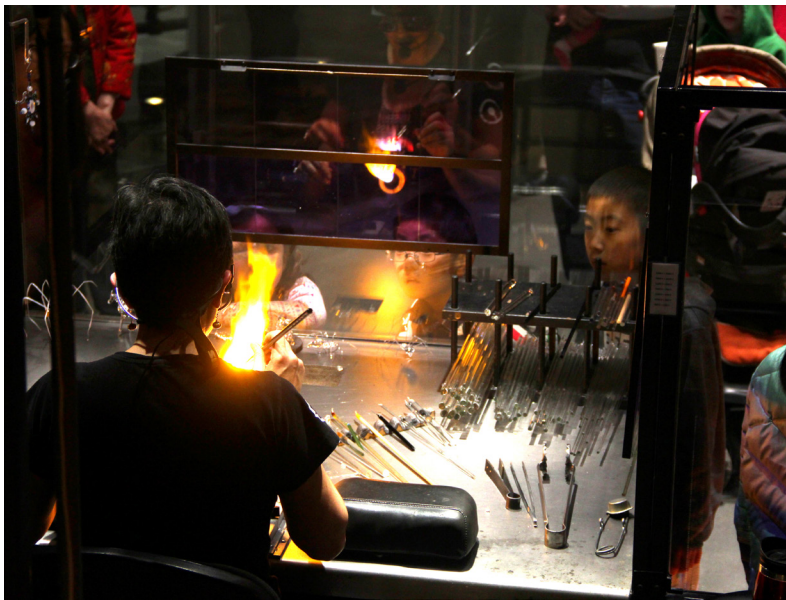
Maxwell brings a strong curatorial background to the team, having previously worked at the Victoria and Albert Museum in London and for the Royal Collection. Since his arrival in October, he has added a pair of English lustres from the early 19th century, and an important collection of English cameo-cut scent bottles that were selected as the Ennion Society acquisition for 2016.

Our other curators were also busy with important acquisitions. Among them were a pair of American vessels decorated in the “Tulip and Sawtooth” pattern, one cut and one pressed, and—in preparation for our upcoming exhibition, “Tiffany’s Glass Mosaics”—a pen tray in the “Swirl” pattern with inset mosaic glass elements. These works were acquired by Kelly Conway, curator of American glass. Dr. Marvin Bolt added more scientific instruments to the collection, including microscopes, telescopes, and a remarkable machine used for making light bulb envelopes (up to 1,600 per minute) that was decommissioned from a manufacturing plant in Wellsboro, Pennsylvania.



Stacked Grid Structure, mold-blown glass; bronze inclusions. U.S., Brooklyn, NY, Thaddeus Wolfe (American, b. 1979), 31st Rakow Commission, 2016. Overall: H. 56 cm, W. 30.3 cm (2016.4.9).

Front and reverse of cameo-carved scent bottle with swan and dragonfly, cased and blown glass, carved; silver, cork; assembled. U.K., Amblecote, England, Thomas Webb & Sons, carved by Harry A. Davies (British, 1862–1937), about 1880–1900. H. 8.3 cm, W. 4.9 cm (2016.2.15). Gift of the Ennion Society.



A young visitor is captivated by a glassblowing demonstration during “Family Night at the Museum.”

The Museum published its annual list of titles, including *New Glass Review*, the *Journal of Glass Studies*, *Notable Acquisitions 2015*, and our *Annual Report* for 2015. In addition, in a collaborative project between the Publications and Digital Media Departments, we released an electronic resource titled *The Techniques of Renaissance Venetian Glassworking*. Created by William Gudenrath, resident adviser at The Studio, this resource brings together his observations on the techniques of making Venetian glass, gathered from a lifetime of close study, as well as work in The Studio, to understand and replicate the glass-making methods of Venetian masters. This resource has already had an impact on the field of Renaissance Venetian glass studies. It is being used by experts, collectors, curators, and glassmakers around the world.

The Digital Media Department also continued to deliver impressive digital interpretive tools to accompany our special and other major exhibitions, and to share new content with the world. A new section has been added to this *Annual Report* to share its accomplishments (see pages 36–37).

With our high visitation, it is no surprise that our earned revenues set a new mark for the institution, increasing by \$1 million. They rose six percent over last year, driven by higher visitation and associated visitor revenues. Also notable in 2016 were increased revenues from the Steuben glass business, which outstripped its 2015 figures and set a new sales record of over \$1 million. More information will be found in the “Financial Report” on pages 65–66.

The Museum continued to be used by local and regional groups throughout the year. Our public programs attracted significant interest as well. We welcomed 13,000 school visitors for curriculum-related tours, and 35,000 guests attended education and public programs.

In other hot-glass activities, the staff continued to support our Hot Glass at Sea program aboard three Celebrity Cruises Solstice-class ships. The Hot Glass Roadshow returned to Domaine de Boisbucet in Lessac, France, to participate in a glass design workshop, visited Nantucket to support a fund-raising effort, and worked with guest artists and presented demonstrations at SOFA Chicago amid Cubs mania following the World Series.

It is impossible in this review to make note of every activity undertaken by the Museum and its amazing staff in 2016. I encourage you to review the entire contents of this *Annual Report* to appreciate all that was achieved across the institution. We’ve included a new feature, “By the Numbers,” which graphically captures some of our activities. As always, we thank our benefactors, large and small. Most notable among them is Corning Incorporated, which continues to support our work in significant ways. The corporation annually provides substantial operating funds to enable us to fulfill our mission to “tell the world about glass.” Its unwavering support of the Museum is gratefully acknowledged and deeply appreciated.

Karol Wight
President and Executive Director

European

Beaded snuff box, glass, tin, brass; assembled. Germany, Brunswick, workshop of Johann Michael van Selow (probably Dutch, dates unknown), 1756–1772. H. 3.8 cm, W. 11.5 cm (2016.3.5).

Imperial Russian goblets with monogram of Catherine II, blown, cut, engraved. Russia, probably St. Petersburg, St. Petersburg Glass Manufactory (after 1791, known as the Imperial Glass Works), 1762–1796. Taller: H. 22.5 cm, D. 9.8 cm (2016.3.3, .4). Gift of Bruce and Angela Meyer.

Pair of candelabra (lustres), blown glass, cut; gilded metal; assembled. U.K., London, England, possibly John Blades (British, d. 1829), 1822–1829. H. 38 cm, W. 42 cm (2016.2.20A, B). Gift of Mark and Peni Weinstein.

Cameo-carved scent bottles with floral and other decorations, cased, blown, carved, painted, enameled, gilded; silver, metal, cork; assembled. U.K., Amblecote, England, Thomas Webb & Sons, including works by Jules Barbe (French, 1847–?), Fridolin Kretschman (Bohemian, about 1850–1898), and Harry A. Davies (British, 1862–1937), about 1880–1900. Tallest: H. 16.9 cm, W. 3.6 cm (2016.2.4–.17). Gift of the Ennion Society.

Pair of photograph frames, cut glass, brass; assembled. U.K., Birmingham, England, F. & C. Osler, 1890–1900. Taller: H. 29.7 cm, W. 20.5 cm (2016.2.18, .19).

American

Engraved finger bowl in “Jackson” pattern with White House seal, blown, engraved, ground. U.S., New York, NY, probably Davis Collamore & Co. (retailer), probably 1850. H. 7.3 cm; D. (bowl) 11.4 cm, (foot) 6.8 cm (2016.4.10). Gift of Kurt A. Reed in memory of his wife, Carol J. Reed.

Compote in “Tulip and Sawtooth” pattern, blown, applied, cut. U.S., probably Cambridge, MA, New England Glass Company, about 1850–1854. H. 23.5 cm, D. 26 cm (2016.4.3). Purchased with the assistance of The Karl and Anna Koepke Endowment Fund.

Sugar bowl with cover, mold-blown, applied, machine-cut. U.S., Brooklyn, NY, Brooklyn Flint Glass Company (blank) and Joseph Stouvenel and Company (cutting), about 1851–1857. OH. 24.5 cm, D. 13.5 cm (2016.4.5). Purchased with the assistance of The Karl and Anna Koepke Endowment Fund.

Covered dish in “Tulip and Sawtooth” pattern, pressed, applied. U.S., Pittsburgh, PA, Bryce, Richards & Company, about 1854–1870. OH. 19.7 cm, D. 18.6 cm (2016.4.4). Purchased with the assistance of The Karl and Anna Koepke Endowment Fund.

Wineglass in “Parisian” pattern, cased, blown, cut, applied. U.S., White Mills, PA, C. Dorflinger & Sons, designed by John S. O’Connor (b. Ireland, 1831–1916), about 1886–1910. H. 12.5 cm, D. 7.6 cm (2016.4.11). Gift of James Asselstine and Bette Davis.

Selected Additions to the Glass Collection*

* For more information about many of these acquisitions, see *The Corning Museum of Glass: Notable Acquisitions 2016* (May 2017) or visit www.cmog.org.

Pair of candelabra (lustres), blown glass, cut; gilded metal; assembled. U.K., London, England, possibly John Blades (British, d. 1829), 1822–1829. H. 38 cm, W. 42 cm (2016.2.20A, B). Gift of Mark and Peni Weinstein.



Pen tray in “Swirl” pattern, cast bronze, glass mosaic. U.S., Corona, NY, Tiffany Glass and Decorating Company or Tiffany Studios, about 1900–1905. H. 1.6 cm, W. 20 cm (2016.4.6).

Modern and Contemporary

Sugar bowl with cover, mold-blown, applied, machine-cut. U.S., Brooklyn, NY, Brooklyn Flint Glass Company (blank) and Joseph Stouvenel and Company (cutting), about 1851–1857. OH. 24.5 cm, D. 13.5 cm (2016.4.5). Purchased with the assistance of The Karl and Anna Koepke Endowment Fund.

Nocturne 5, mold-melted glass, grit-blasted, acid-polished. Czech Republic, Železný Brod, Karen LaMonte (American, b. 1967), 2015. H. 150 cm, W. 63.5 cm (2016.3.2). Purchased with funds from the Ennion Society.

Vase, *Crabes et algues* (Crabs and algae), *pâte de verre*. France, Gabriel Argy-Rousseau (French, 1885–1953), designed in 1920. H. 14.1 cm, D. 12.5 cm (2016.3.9). Gift of James R. and Maisie Houghton.

Glass Chair, slumped plate glass, sandblasted; metal, textile; assembled. U.S., Pittsburgh, PA, Pittsburgh Plate Glass Company, designed by Henry H. Turchin (American, 1891–1967), probably under the direction of Louis Dierra (American, active about 1939), about 1939. H. 75 cm, D. 57 cm (2016.4.38).

Vase, blown. U.S., Joel Philip Myers (American, b. 1934), 1970. H. 15.6 cm, D. 13.9 cm (2016.4.33). Gift of Paul and Elmerina Parkman.

Sculpture, *Macbeth*, cast glass, copper-wheel engraved; granite, felt; assembled. U.S., Corning, NY, Steuben Glass Inc., Eric Hilton (British, b. Scotland, 1937) and Lubomir Richter (b. Czechoslovakia, 1936), 1990.

Overall: H. 28 cm, W. 40.5 cm (2016.4.43). Gift of Willson and Susan Craigie.

I Saw Othello's Visage In His Mind, cold-worked and engraved glass; painted wood; assembled. Italy, Murano, Fred Wilson (American, b. 1954), 2013. H. 163 cm, W. 131 cm (2016.3.6).

Nocturne 5, mold-melted glass, grit-blasted, acid-polished. Czech Republic, Železný Brod, Karen LaMonte (American, b. 1967), 2015. H. 150 cm, W. 63.5 cm (2016.3.2). Purchased with funds from the Ennion Society.

Water jug, decanter, and four wineglasses from the “Cross-fire” series, flameworked colorless borosilicate glass. U.K., Edinburgh, Scotland, Geoffrey Mann (British, b. Scotland, 1980), with the assistance of Jochen Holz (b. Germany, 1970), designed in 2010–2015 and made in 2015. Decanter and stopper: H. 42.2 cm, D. 22.4 cm (2016.2.1, .2, and .3A–D).





Necklace, *I Love Stripes*, Bullseye glass, fused; 0.925 sterling silver; assembled. U.S., Chevy Chase, MD, Helene Safire (American, b. England, 1936), 2016. H. 1.3 cm, D. (closed) 26 cm (2016.4.8). Gift of the artist.

Stacked Grid Structure, mold-blown glass; bronze inclusions. U.S., Brooklyn, NY, Thaddeus Wolfe (American, b. 1979), 31st Rakow Commission, 2016. Overall: H. 56 cm, W. 30.3 cm (2016.4.9).

Science and Technology

Ellis-type aquatic/botanical simple microscope, brass, glass, wood, sharkskin, velvet; assembled. Europe, possibly England, about 1770. H. 15.4 cm, W. 14.8 cm (2016.8.1).

Telescope, ground and polished glass, lacquered and gilded cardboard tube, turned horn and wood; brass collars. Japan, 1800–1825. L. (collapsed) 23 cm, (extended) 68 cm; D. (main tube) 5 cm, (smallest tube) 2.5 cm (2016.8.414).

Fresnel mirror with original case, glass, brass (mirror) and wood, leather, velvet (case); assembled. Possibly France, Paris, 1825–1850. Mirror: H. 16 cm, W. 20 cm; case: H. 6 cm, W. 21.7 cm (2016.8.22).

Silver magnifier with Stanhope lens, with original box, glass, tooled silver (magnifier) and leather, velvet, silk, metal (box). U.K., England, probably London, possibly Edward Palmer (British, 1803–1872) or Francis West (British, about 1789–1867), about 1825–1850. Magnifier: H. 4.8 cm, W. 1.5 cm; lidded box: H. 2.1 cm, W. 5.6 cm (2016.8.28).

Walking stick telescope, rosewood, ebony, plated brass, iron, optically ground glass, lathed woodwork; assembled. U.S., possibly Otsego or Chenango County, NY, William H. Baker (American, 1835–1889), 1865. H. 86.5 cm, D. 3.5 cm (2016.8.7).

Aquarium/tank microscope, rolled and cast brass, nickel plating, plate glass. U.K., London, England, Charles Baker (British, active 1851–1909), and Germany, Berlin, J. Klönne & G. Müller, about 1885. H. (without triple-jointed microscope) 34.7 cm, W. 18.1 cm (2016.8.27).

Air pump, blown and ground cylinder glass, turned wooden feet and handle, painted and enameled cast iron, lacquered brass. U.S., made by Ziegler Electric, Boston, MA, and retailed by James W. Queen & Company, Philadelphia, PA, 1889–1925. H. (with lever down) 74 cm, W. 71 cm (2016.8.23).

Chromatophotometer in original box, brass, quartz, glass (chromatophotometer) and wood, leather, velvet, satin (box); assembled. France, Paris, Lucien Giroux (French, dates unknown), about 1895. Chromatophotometer: H. 7.3 cm, W. 20.4 cm; box: H. 7.5 cm, W. 22.1 cm (2016.8.8).

Glass ribbon machine, metal. U.S., Buffalo, NY, Keller Technology Corporation, 1998. L. about 23 m, H. about 250 cm, W. about 250 cm (2016.8.411). Gift of Ledvance LLC.

Foldscope with accessories, polypropylene sheet, glass, printed circuit board, LED, paper. U.S., Stanford, CA, James Cybulski (American, b. 1979) and Manu Prakash (Indian, b. 1980), 2014. Assembled: H. 8.2 cm, W. 17.7 cm; unassembled: H. 22.4 cm, W. 29.4 cm (2016.8.2A, B).

Telescope, ground and polished glass, lacquered and gilded cardboard tube, turned horn and wood; brass collars. Japan, 1800–1825. L. (collapsed) 23 cm, (extended) 68 cm; D. (main tube) 5 cm, (smallest tube) 2.5 cm (2016.8.414).

Selected Additions to the Library Collection

John Peckham (English, about 1230–1292), *Perspectiva communis* (Common perspective), 2nd ed., ed. Luca Gaurico (Italian, 1476–1558), Venice: Per Io. Baptistam Sessam, 1504. 20 leaves (39 pp.), illustrations. H. 31 cm (CMGL 152058). Purchased with funds from The Fellows of The Corning Museum of Glass.

Antoni van Leeuwenhoek (Dutch, 1632–1723), *Send-brieven zoo aan . . . de Koninklyke societeit te Londen* (Letters sent to The Royal Society of London), Delft: A. Beman, 1718. 460 pp., [31] plates, illustrations; includes 46 letters, written between 1712 and 1717. H. 21 cm (CMGL 165071).



Dmitry Ivanovich Mendeleev (Russian, 1834–1907), *Osnovy khimii* (Principles of chemistry), 5th ed., St. Petersburg: Tip. V. Demakova, 1889.

780 pp., illustrations, portraits. H. 25 cm (CMGL 151545). Purchased with funds from The Fellows of The Corning Museum of Glass.

Broadside, *Wonderful Mechanism*. J. Tilley, *Fancy Glass Blower, from London*, New York: J. Robinson, [1820]. Ink on paper. H. 16 cm, W. 23 cm (CMGL 163866).

Frederick Wilson (British, b. Ireland, 1858–1932), design for stained glass window, *And the Smoke of the Incense of the Prayers of the Saints Ascended Up before God*, at St. Etheldreda's Church, Ely Place, London, England, U.K., 1888. Watercolor, ink, and pencil on paper and board. H. 78 cm, W. 49 cm (CMGL 164711).

Dmitry Ivanovich Mendeleev (Russian, 1834–1907), *Osnovy khimii* (Principles of chemistry), 5th ed., St. Petersburg: Tip. V. Demakova, 1889. 780 pp., illustrations, portraits. H. 25 cm (CMGL 151545). Purchased with funds from The Fellows of The Corning Museum of Glass.

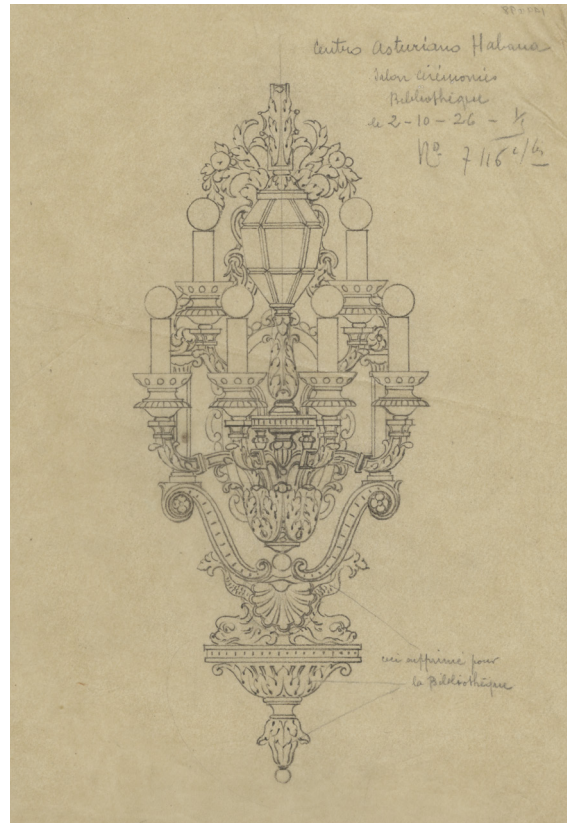
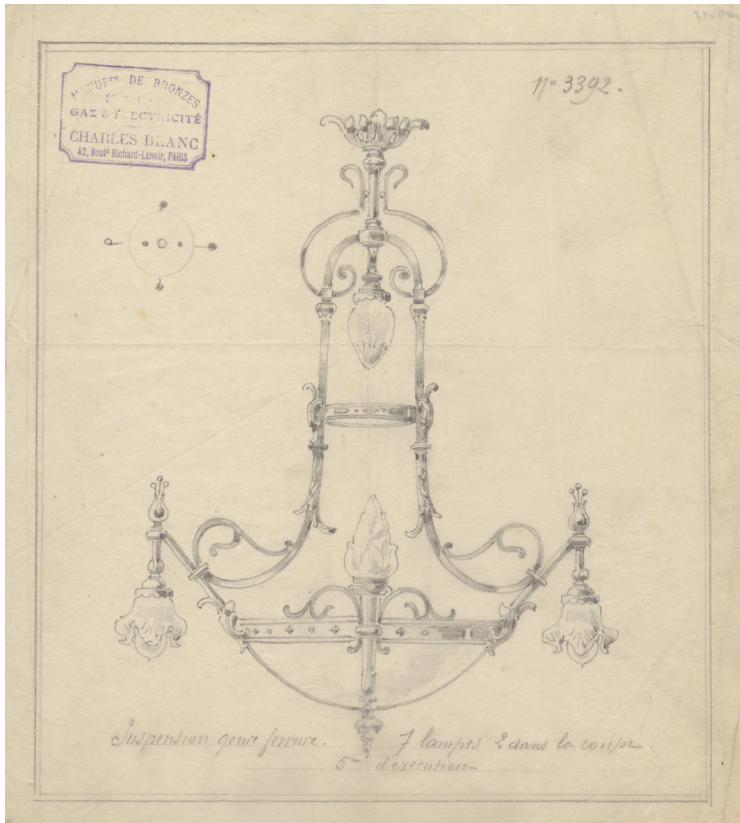
Sketches by the American stained glass designers Otto Heinigke (1850–1915) and Frederick L. Leuchs (1926–1999), 1890–1995. About 30 linear feet (CMGL 166544). Gift of the family of Frederick Ludwick Leuchs.

Design for conservatory fountain for the residence of Mrs. Josefina de Mesa in Havana, Cuba. U.S., New York, NY, Tiffany Studios, about 1916. Watercolor, gouache, and graphite on board. H. 48 cm, W. 68 cm (CMGL 164710).

Etchings Charles Blanc (Paris, France), portfolio containing 10 plates of 14 images and 87 design drawings for floor lamps, wall and ceiling lighting fixtures, and chandeliers for the Palacio del Centro Asturiano (Palace of the Asturian) in Havana, Cuba, [1924–1926]. Pencil, charcoal, and ink on paper. Greatest H. 64 cm, W. 42 cm (CMGL 149698).

Collection of research files on various glass-related subjects, including conference and lecture notes, slides, and transparencies, compiled by William Warmus (American, b. 1953), 1971–2012. 36 linear feet (CMGL 150144). Gift of William Warmus.

Collection of research materials compiled by Susanne K. Frantz (American, b. 1951), including lectures, notes, and correspondence, on contemporary glass artists, designers, and companies, as well as other topics relating to studio glass, 1980s–2011. 30 linear feet (CMGL 150259). Gift of Susanne K. Frantz.



Wonderful Mechanism.

J. TILLEY,

Fancy Glass Blower,

FROM LONDON,

RESPECTFULLY informs the Ladies and Gentlemen, and the Public in General, that he will exhibit the whole Art of Fancy Glass Blowing, Spinning and Reeling Hot Glass round a Wheel, with the astonishing velocity of a Mile in less than two minutes. Blowing Glass to different degrees of thinness, and forming it into various Articles, such as Writing Pens, Smelling Bottles, &c. &c. He will blow a small Globe, which will form nearly a Vacuum, and fall to the floor with apparent great weight. The Hydro Pneumatic Fountain will be exhibited, and a small Glass Man will ascend and descend in a bottle of Water, Glass will be divided into some Hundreds of parts, in a second of time. The properties of Air will be explained, so far as relates to the Work. The experiments in general, are an introduction to Pneumatics.

To be seen in a neat Sitting Room, at 141 Broadway.

Admission 25 Cents.---Children and Servants in the Evening at Half Price.

To be seen for a few Days only, from 10 till 1 o'Clock, and from 7 till 8 at Night.

J. Robinson, Printer, 121 Water-Street, New-York.

Two of 87 design drawings for floor lamps, wall and ceiling lighting fixtures, and chandeliers for the Palacio del Centro Asturiano (Palace of the Asturian) in Havana, Cuba, [1924-1926]. Etablissements Charles Blanc (Paris, France). Pencil, charcoal, and ink on paper. Taller: H. 31 cm, W. 23 cm (CMGL 149698).

Broadside, Wonderful Mechanism. J. Tilley, Fancy Glass Blower, from London, New York: J. Robinson, [1820]. Ink on paper. H. 16 cm, W. 23 cm (CMGL 163866).

Exhibitions and Loans

Special Exhibitions

Ennion and His Legacy: Mold-Blown Glass from Ancient Rome

Changing Exhibitions Gallery
Through January 4, 2016

Fragile Legacy: The Marine Invertebrate Glass Models of Leopold and Rudolf Blaschka

Changing Exhibitions Gallery
May 14, 2016–January 8, 2017

Other Exhibitions

America's Favorite Dish: Celebrating a Century of Pyrex

Rakow Research Library
Through March 17, 2016

Revealing the Invisible: The History of Glass and the Microscope

Rakow Research Library
April 23, 2016–March 19, 2017

The Studio at 20

The Studio of The Corning Museum of Glass
May 26, 2016–January 22, 2017

Glass on Loan

In 2016, the Museum had 20 glass objects on loan to five exhibitions in the United States and Europe. These loans are listed in chronological order.

Display of lampworked marine animals that were on view in the exhibition "Fragile Legacy: The Marine Invertebrate Glass Models of Leopold and Rudolf Blaschka."

"Fulvio Bianconi alla Venini" (managed loan of Steinberg Foundation objects via The Corning Museum of Glass), Le Stanze del Vetro, Venice, Italy, through January 10, 2016; one object.

"Moderno: Design for Living in Brazil, Mexico, and Venezuela, 1940–1970" (traveling exhibition organized by the Americas Society, New York, NY), Blanton Museum of Art, University of Texas, Austin, TX, through January 17, 2016; four objects.

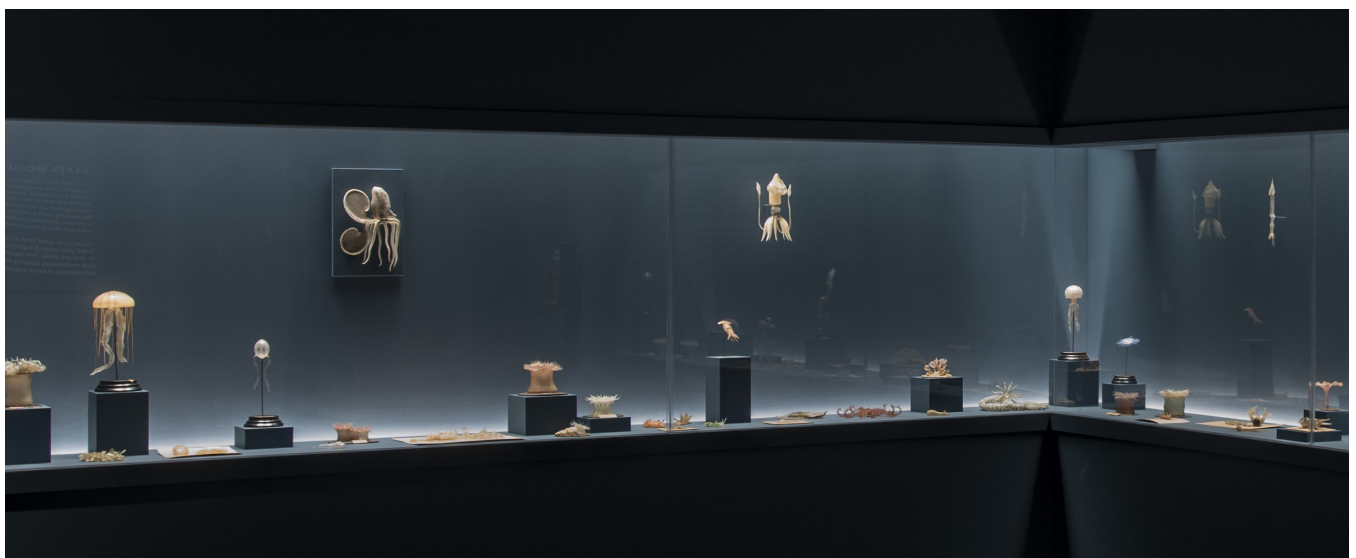
"Renaissance Remix," Memorial Art Gallery, Rochester, NY, through June 2016; seven objects (loans to the reinstatement of the permanent collection gallery).

"Pergamon and the Hellenistic Kingdoms of the Ancient World," The Metropolitan Museum of Art, New York, NY, April 11, 2016–July 17, 2016; five objects.

"Court and Cosmos: The Great Age of the Seljuqs," The Metropolitan Museum of Art, New York, NY, April 25, 2016–July 24, 2016; three objects.

Library Material on Loan

"The Arts and Crafts Movement: Making It Irish," McMullen Museum of Art, Boston College, Chestnut Hill, MA, February 1, 2016–June 5, 2016; one design drawing.



Special Programs

Glass Art Society's 45th annual conference, "Creating Context: Glass in a New Light" (hosted by the Museum, with events held in the Corning community), June 9–11

The Studio at 20: Celebratory Day, all-day festivities, including a block party, a giant birthday cupcake glassmaking demonstration by John Miller, and a special edition of 2300°, May 26

Adult Programs

Hot Glass Programs

Demonstrations at the Museum and in Corning

Glass Art Society conference

Amphitheater Hot Shop: Laura Donefer and Jeff Mack, Beth Lipman, Jocelyne Prince, Raven Skyriver, Boyd Sugiki and Lisa Zerkowitz, Lino Tagliapietra

Courtyard Hot Shop: Devin Burgess and Pablo Soto, Josie Gluck and Michael Schunke, Eric Hilton and George Kennard, Adam Holtzinger, Eric Meek, John Moran

Innovation Hot Shop: Eric Goldschmidt, Caitlyn Hyde, Akihisa Izumi, Junichi Kojima, Carmen Lozar, Salt

Studio Cold Shop: Niels Cosman, Jennifer Crescuillo, Pavel Novak and Martin Rosol

Studio Engraving Shop: Pavlína Čambalová, Katharine Coleman

Studio Hot Shops: Stine Bidstrup, Deborah Czeresko, Lisa Demagall, Tim Drier, Maria Bang Espersen, Mike Gnann, Patrick Martin, Michael Meilahn, Nick Mount, Roger Parramore, Kari Russell-Pool, Michael Souza

Lec-mos: Masahiro Asaka, Max Erlacher, Yoko Hirose and others, Dan Mirer, Jessi Moore, Etsuko Nishi, Andy Paiko, Kirstie Rea, Nathan Sandberg, Judith Schaechter, David Schnuckel, Bernd Weinmayer

Corning, NY, GlassFest (seventh annual), May 26–29 (glassmakers: Lewis Olson, G Brian Juk, Dane Jack, Heather Spiewak, Ryan Doolittle, Aric Sneek)

Properties of Glass Demonstrations: Inspired by Blaschka, Glass Aquarium, Flameworking, Glass Breaking, Glassblowing, Optical Fiber

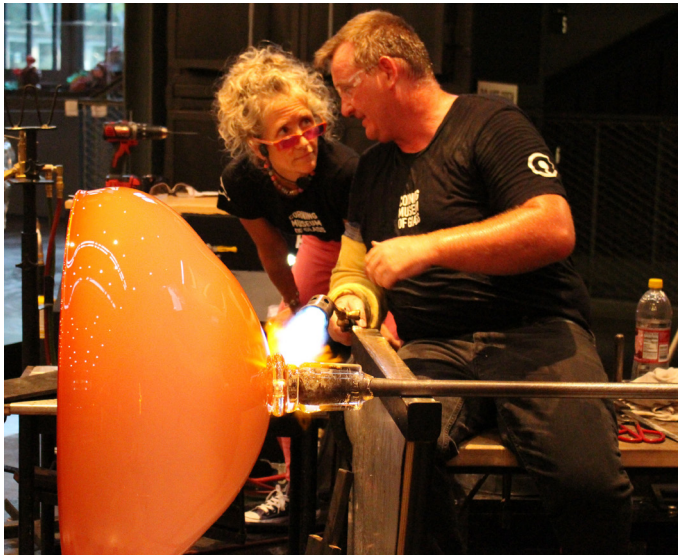
You Design It; We Make It!

Education and Public Programs



Katharine Coleman (left) engraves one of her blown glass objects in the Studio Engraving Shop, while Josie Gluck and Michael Schunke (below) work on a blown object at the Courtyard Hot Shop during the Glass Art Society's 45th annual conference. The conference featured a wide variety of flame-working, cold-working, and hot-glass demonstrations.





Kristina Logan (with the gaffer George Kennard) and Thaddeus Wolfe were two of the guest artists at the Hot Glass Show.

GlassLab

Glass Design Workshops, Domaine de Boisbuchet, Lessac, France: “Formed by You, Refined by Fire” (wood-fired kiln), July 10–20 (instructor: Tomoko Azumi; glassmaker: Lewis Olson); and “Glass Candy Shop,” July 24–30 (instructor: Jaime Hayon; glassmakers: Jeff Mack, Chris Rochelle, Damien François, Laurie Kain Bousquet)

Hot Glass Show

Guest Artist Demonstrations
Micah Evans, January 11 and 12
Stephanie Trenchard and Jeremy Popelka, January 17

Grant Garmezy, January 31
Mark Matthews, February 14
James Mongrain, February 15–19
Martin Janecky, April 4–10
Chris Rochelle, June 2
Lino Tagliapietra, June 5–8
Nick Mount, June 16
Karen Willenbrink-Johnsen, June 17
Jeff Ballard, June 23
George Kennard, June 30
G Brian Juk, July 7
Kristina Logan, July 14
Michael Schunke and Josie Gluck, July 21
Eric Meek, July 28
Pablo Soto, August 4
Jeff Mack, August 11
Nancy Callan, August 18
Emilio Santini, August 19
Mel Douglas, August 25
Davide Salvatore, September 1
Harry Allen, September 17 and 18
Anna Mlasowsky, September 21 and 23
Randy Walker and Ross Richmond, September 25 and 26
Iittala factory glassworkers, October 13 and 14
Thaddeus Wolfe, November 7–9
Clare Twomey, December 5–7
Pauline Deltour, December 13–15

Hot Glass Roadshow

Hot Glass Nantucket, Dane Gallery/Nantucket, Nantucket, MA, August 12–14 (glassmakers: Eric Meek, Catherine Ayers, Tom Ryder, Helen Tegeler; guest artists: Robert Dane, Claire Kelly, Raven Skyriver)

SOFA Chicago, Chicago, IL, November 3–6 (glassmakers: Steve Gibbs, George Kennard, Jeff Mack, Tom Ryder; guest artists: James Labold, Laura Donefer, John Miller, Tim Shaw, Richard Jolley, Steve Czescki, Harriet Schwarzrock, Grant Garmezy, Joe Ivacic, James Wobat, Ben Johnson)

Hot Glass at Sea

Presented live narrated demonstrations in “Blow Glass at Sea” program on *Celebrity Eclipse* (gaffers: Michael Beahm, Tom Ryder, Brianna Barron, Taryn Bertolino, Jeremy Shriver-Munsch, Kim Savoie, Kenton Pratt, Megan Mathie), *Celebrity Equinox* (gaffers: Kenton Pratt, Lizzie Perkins, G Brian Juk, Celia Garland, Rebecca Potash, Stephanie Perry, Logan Brooks; guest artist: Eric Meek), and *Celebrity Solstice* (gaffers:

Robert Swidergal, Jared Rosenacker, Logan Brooks, Julia Cordi, Helen Tegeler, Caitlyn Burns, Eli Appelbaum, Lauren Hunt)

“Behind the Glass” Lecture Series

- “Origins, Inspirations, and Unprecedented Extrapolations: Confessions of a Glass Sphere Maker,” Mark Matthews, artist, February 11
- “Activating the Physical,” Yasuaki Kakehi, artist, scientist, and technologist, March 10
- “Space: Real and Imagined,” Tom Patti, artist, April 14
- “Spineless: Portraits of Marine Invertebrates, the Backbone of Life,” Susan Middleton, photographer and research associate, Department of Photography, California Academy of Sciences, September 8
- “Meet the 2016 Rakow Commission Artist,” Thaddeus Wolfe, November 10
- “Ornaments,” panel discussion moderated by Kelly Conway, curator of American glass, The Corning Museum of Glass, with Regan Brumagen, senior librarian for reference services, The Corning Museum of Glass, and Marcie Davis, importer and tour leader in Lauscha, Germany; included demonstration of ornament-making process by Eric Goldschmidt; December 8

Ennion Society Events

- Dinner following “Behind the Glass” lecture by Mark Matthews, artist, February 11
- Tour and champagne toast for opening of “Fragile Legacy” exhibition, May 13
- Dinner with Lino Tagliapietra, June 8
- Patrons’ trip to Sweden (Stockholm, Kingdom of Crystal) and Denmark (Bornholm, Ebeltoft, Copenhagen), including visits to many artists, glass and design schools, and museums, September 15–23
- Annual dinner, celebrating “The Studio at 20” with Amy Schwartz, director of The Studio and featured speaker, October 13
- Dinner following “Behind the Glass” lecture by Thaddeus Wolfe, Rakow Commission artist, November 10

Members-Only Events

- Reception with Mark Matthews, artist, February 11
- Reception with Yasuaki Kakehi, artist, scientist, and technologist, March 10

- Preview of “Fragile Legacy: The Marine Invertebrate Glass Models of Leopold and Rudolf Blaschka,” May 13
- Tours of “Fragile Legacy,” May 14
- Members’ reception for “Revealing the Invisible: The History of Glass and the Microscope,” June 17
- Tours of “Revealing the Invisible,” June 18
- Reception with Thaddeus Wolfe, Rakow Commission artist, November 10
- Reception for “Ornaments,” December 8

Seminar on Glass (55th annual):

“The Blaschkas’ Glass Marine Invertebrates: Diving into Context,” October 14–16

Lectures

October 15

- “Blaschka Marine Invertebrate Conservation and Photography,” Stephen Koob, Astrid van Giffen, and Andrew Fortune
- “Clips and Conversation on the *Fragile Legacy* Film,” David Brown
- “Collecting Ocean Life,” Victoria Cain
- “Fragile Legacy: An Overview,” Marvin Bolt and Alexandra Ruggiero
- “Sublime Function,” Carrie Greif
- “Three-Dimensional Scientific Models: Materials, Uses, Representations,” Joshua Nall
- “Welcome and New Acquisitions,” Karol Wight

The artist Mark Matthews discusses his work at the Museum’s “Behind the Glass” lecture series.





Visitors of all ages enjoyed creating their own glass ornament during the Holiday Open House.

October 16

“The Blaschka Collections in Dublin,” Nigel Monaghan

“A Sea of Glass,” Drew Harvell

Other Events

Brunch and demonstration, Eric Goldschmidt and Wesley Fleming

Tours of “Fragile Legacy” and “Revealing the Invisible” exhibitions

Tours of the Museum’s Conservation Department and the Rakow Research Library

2300°

“Number 100,” glassmaking by George Kennard, music by the Tongue and Groove Band and by the Christian Li Jazz Quartet, January 21

“Fire and Ice,” glassmaking by James Mongrain, music by Wild Adriatic, February 18

“St. Patrick’s Day,” glassmaking by Toots Zynsky and Claire Kelly, music by the Red Hot Chili Pipers, March 17

“The Studio’s 20th-Birthday Celebration,” glassmaking by William Gudenrath, music by Break of Reality, May 26

Glassmaking by Fredrik Nielsen, music by Whiskey Shivers, November 17

Glassmaking by Pauline Deltour, music by the Jeff Love Band, December 15

Family Programs

Art Museum Day, May 18

Family Night at the Museum, March 4 (classic games with a glassy twist) and September 23

(Doc Possum, Blaschka-themed activities and demonstrations)

Fun with Glass

Glass Wonderland, November 17–January 3, 2017

Holiday Open House (with glassmaking activities), December 3 and 4

Make Your Own Glass

Marble Extravaganza Day (marble games, collection pieces shaped like marbles, how marbles are made), February 14

Spring Break activities, including Make Your Own Glass, glassmaking demonstrations, and Garden Gallery Hunt, March 19–April 2, and MakerSpace (do-it-yourself simple and compound microscopes), April 23–30

Winter Break activities, including Marble Extravaganza, February 13–15

Children’s Programs

Little Gather (storytelling, ages 3–10)

Doc Possum, July 13

Mounafanyi Pan-African Drum & Dance Ensemble, July 20

Stories with Jay Stetzer, July 27

Crabgrass Puppet Theatre – Jack and the Beanstalk, August 3

Hill Brothers – The Math & Science Show, August 10

The Wondermakers – Gardens of the Earth, August 17

Youth Programs

Addison Youth Center Museum Program, October 13 and 28, and November 3 and 18

Choices (careers program for girls), November 1

Expanding Horizons (for at-risk teens), The Studio, funded by The Robert M. Minkoff Foundation, July 24–30

Explainers (in-gallery program)

Fire Up Your Future! Denise Ackley, president, Corning Area Chamber of Commerce, and manager, Young Entrepreneurs Academy, on starting and running real businesses, January 8

Junior Curators, March 3–May 26 (included exhibition “Highlights of ‘The Studio at 20,’” May 19–December 31, 2016)

Junior Scientists, February 23–June 7 (included a symposium, June 6 and 7)

Teen Leadership Council, June 16–September 1

School Programs

Corning–Painted Post High School Learning Center: flameworking (March and April) and glassblowing (November and December)
Glass: It's Art, History, Science, and More! (attended by 12,501 children)
Immersion in Glass Studies
Hendrick Hudson High School, Montrose, NY, April 8–10
Student Art Show (48th annual), May 19–22

Teacher Programs

Evening for Educators, March 17 (preview of Museum exhibitions “Revealing the Invisible” and “Fragile Legacy” and overview of each exhibition’s curriculum connections) and November 17 (science behind beverage and pub tricks, trick glasses and how they work, making a trick glass)

Educational Tours

Adventures in Glass: Art, History, Science (all grades/interdisciplinary or subject-focused)
Ancient Civilizations (middle school and up)
Architecture (high school and college)
Chemistry of Glass (high school)
Exploring Shapes and Colors (pre-kindergarten and kindergarten)
Glass and Our Community (third grade)
Glass: It's All Shapes and Sizes (first and second grades)
Glass in the Ancient World (middle school)
Glass Matters! (fifth grade)
Geology (Scouts, middle school and up)
Introduction to the Rakow Library: Services and Collections (all grades/interdisciplinary or subject-focused)
Measurement (third grade)
Meet Me at the Museum (tour in partnership with the Alzheimer’s Association, Rochester & Finger Lakes Region)
Mixtures and Solutions (fifth grade)
Museum Careers (high school and college)
Pebbles, Sand, and Silt (first grade)
Science: Glass and Nature (middle school)
Uses of Glass (elementary school)
World Civilizations (high school)

Guided Tours and Gallery Activities

Tours of “Fragile Legacy” and “Revealing the Invisible” exhibitions

Family public guided tours
Glass Detectives (scavenger hunts)
Color Match (Contemporary Art + Design Wing)
Garden Gallery Hunt (Glass Collection Galleries)
Harvest Hunt (Glass Collection Galleries)
Searching for Animals (Glass Collection Galleries)
What Inspired Frederick Carder? (Carder Gallery)
Winter Wonders Hunt (Glass Collection Galleries)



The Studio and The Robert M. Minkoff Foundation continued their partnership with “Expanding Horizons,” a program that furthers glass education for at-risk and underserved youth across the country.

Students in grades 7–9 participated in the Junior Scientists program, where they joined museum educators, local scientists, and glassworking experts to discover glass properties and processes and to conduct scientific experiments with glass.



Meet the Museum (adult groups)
Museum Explainers' Gallery Carts
Ancient Glass
Caneworking and *Murrine*
Casting Techniques
Glass Recipes and Cameo Glass
Glassworking Tools
Optics
Pressed and Cut Glass
Stained Glass
Public guided tours
Science tours
Tours of Rakow Research Library

✦

The Studio

Intensive Courses

January 4–9

“Cheers” (glassblowing), Jordana Korsen
“Cold Construction” (cold working), Martin Rosol and Pavel Novak
“Design and Function” (flameworking), Micah Evans
“The Upper Crust: Magnificent Surfaces and Compelling Layers for Kiln-Formed Glass” (kiln working), Kari Minnick

January 11–16

“Flameworking for Everybody,” Emilio Santini
“An In-Depth Introduction to Venetian Techniques” (glassblowing), William Gudenrath
“Moldmaking Mash-Up” (kiln working), Matthew Day Perez
“Narrative Inclusions” (casting), Stephanie Trenchard and Jeremy Popelka

January 18–23

“Beginning Glassblowing,” Bruce Ferguson
“Engraving and Cold-Working Techniques,” Max Erlacher
“Flamework Glass Sculpting: Solid and Blown Forms,” Suellen Fowler
“An In-Depth Introduction to Kiln Casting,” Lisa Zerkowitz

January 25–30

“Fine-Tune Your Torch Fundamentals” (flameworking), Hugh Salkind
“An In-Depth Introduction to Venetian Techniques” (glassblowing), William Gudenrath
“Lost Wax Glass Casting” (kiln working), Mark Abildgaard
“Sparkling Life into Glass” (glassblowing), Grant Garmezy

February 1–6

“Combining Lamp-, Kiln-, and Furnace-Worked Glass” (flameworking), Jeremy Burdge and Gayla Lee
“Next Steps in Glassblowing: In Living Color,” Amanda Gundy
“The Sum of the Parts” (kiln working), Martin Kremer

February 8–13

“From the Kiln to the Hot Shop (and Back Again)” (kiln working and glassblowing), Mark Ditzler and Gayla Lee
“Graphic and Color Systems in Glass” (glassblowing), Mark Matthews
“Ocean Life” (flameworking), Elijah Schwartz

May 30–June 8

“Blowing and Sculpting inside the Bubble” (glassblowing), Martin Janecky
“Cold Construction” (cold working), Martin Rosol and Pavel Novak
“An In-Depth Introduction to Venetian Techniques” (glassblowing), William Gudenrath
“Low Relief of Glass” (flameworking and kiln casting), Lucio Bubacco, Omur and Fatih Duruerk

June 13–18

“Flameworking Using Ultimate Details,” Loren Stump
“Glass Engraving,” Katharine Coleman
“Light 3” (kiln forming), Jessica Loughlin
“Taking the Next Step” (glassblowing), Nick Mount
“Working It Out: Hot Glass Sculpting” (glassblowing and hot sculpting), Karen Willenbrink-Johnsen and Jasen Johnsen

June 20–25

“Exploration in Cold-Working Glass,” Jiyong Lee
“Gaffers Inc.” (glassblowing), Jeff Ballard
“If You Can Understand It, You Can Do It” (flameworking), Jason Howard
“Secret ‘Knitted Glass’ Techniques” (kiln casting), Carol Milne
“Venetian Techniques in Glass Painting,” Lucia Santini

June 27–July 8

“Developing Your Idea in Boro” (flameworking), Simone Crestani
“Experimental Glass Engraving” (cold working), Pavlína Čambalová

“Form + Color” (glassblowing), Boyd Sugiki and Lisa Zerkowitz
“Illuminating Space” (kiln working), Joanna Manousis

July 11–16

“Beadmaking: Expanding Your Skills” (flameworking), Kristina Logan
“Beginning Glassblowing,” Bruce Ferguson
“Glass Engraving,” Matteo Seguso
“An In-Depth Introduction to Venetian Techniques” (glassblowing), William Gudenrath
“*Pâte de verre*: Particle Expressions” (kiln working), Alicia Lomné

July 18–23

“Fine-Tune Your Torch Fundamentals” (flameworking), Hugh Salkind

July 18–29

“Cups and Color” (furnace working), Michael Schunke and Josie Gluck
“Diamant Wheels Intaglio Engraving,” Jaroslav Šára
“Kiln Casting: Demystifying the Digital,” Norwood Viviano

July 25–30

“Flamework Glass Sculpting: Solid and Blown Forms,” Suellen Fowler

August 1–6

“Design within Reach” (glassblowing), Pablo Soto
“Exploration of Cold-Working Techniques,” František Janák
“Out of the Box” (flameworking), Astrid Riedel
“Vitrigraph Cane & *Murrine*” (kiln working), Nathan Sandberg

August 15–26

“Flameworking for Everybody,” Emilio Santini
“Luminous Graphics” (kiln working), Denise Stillwaggon Leone
“Point.Line.Plane” (kiln working and cold working), Mel Douglas
“Roulette” (glassblowing), Nancy Callan

August 29–September 3

“Creating and Using *Murrine*” (furnace working), Davide Salvatore
“Imagining the Inside, Hanging-Hollow-Core Mold” (kiln casting), Erika Tada

“Texturing Glass” (*battuto*, cold working), Pietro and Riccardo Ferro
“Venetian-Style Glass Beads” (flameworking), Davide Penso

September 5–10

“Advanced Basic Boot Camp” (glassblowing), Darin Denison
“Introduction to Flameworking,” Tim Drier
“Working in Shallow Space: Bas-Relief in Kiln Glass” (kiln working), Richard Parrish

Ten-Week Courses (one session each week)

Spring

“Beginning Glassblowing,” Cat Burns
“Flameworking in Soft Glass,” Jen Kuhn
“Flameworking with Borosilicate Glass: Trinkets and Things,” Corinne Everhart
“Fusing with *Murrine*” (kiln working), Janet Dalecki
“Introduction to Caneworking” (glassblowing), Jeremy Unterman
“Vessels” (glassblowing), Ross Delano

Fall

“Beginning Glassblowing,” Chris Giordano
“Borosilicate Marbles: Tiny Worlds Within,” Miles Parker
“Color Techniques at the Furnace” (glassblowing), Jeremy Unterman
“Fusing with *Murrine*” (kiln working), Janet Dalecki
“Introduction to Casting with Glass” (kiln working), Jessi Moore

Special Week-Long Workshop

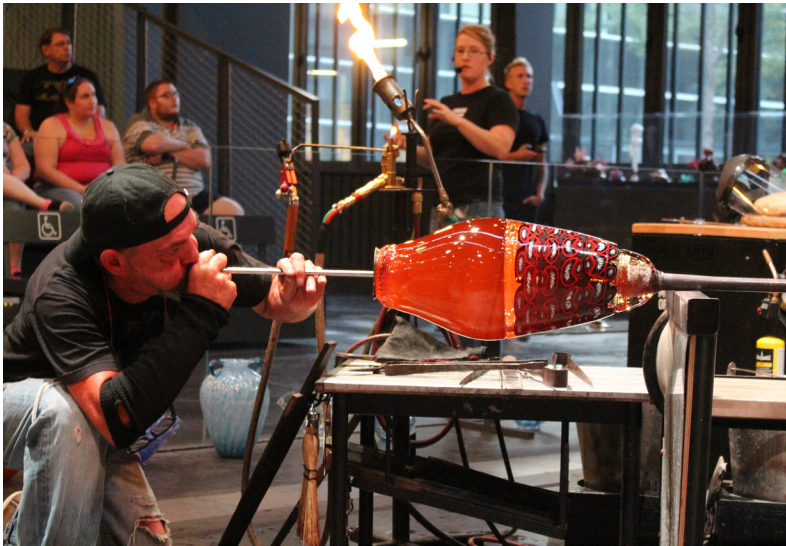
“The Portrait Matters: Making Extreme Realistic Portraits with Glass Powders” (kiln working), Miriam Di Fiore

Weekend Workshops

Spring

Flameworking

“Beginning Flameworking,” Jim Byrnes
“Borosilicate Marbles: Tiny Worlds Within,” Miles Parker
“Floral Implosion Techniques in Soft Glass,” Alberto Greslin
“Hollowware and Color Application,” Katie Volk
“Introduction to Mouth-Blown Beads,” Annukka Ritalahti
“Smoke Signals,” Noah Drew
“Turbulent Flow,” Aaron Verity



Davide Salvadore shapes a vessel during a guest artist demonstration.

Glassblowing

- “Beginning Glassblowing,” Chris Giordano, Chrissy Lapham, Kyle Lavery, Christa Westbrook
- “Next Steps in Glassblowing,” Ross Delano, Chris Giordano

Kiln Working

- “Graphic Possibilities Using Sandblasting and Enameling,” Denise Stillwaggon Leone
- “Introduction to *Pâte de verre*,” Jessi Moore

Other

- “Introduction to Stained Glass,” Joseph Barlett
- “Photosandblasting Glass,” Denise Stillwaggon Leone

Fall

Flameworking

- “Beginning Flameworking,” Jim Byrnes
- “Borosilicate Marbles: Tiny Worlds Within,” Miles Parker
- “Introduction to Borosilicate,” Stephen Brucker
- “Next Steps in Flameworking,” Jim Byrnes
- “Seasonal Beads and Sculptures in Soft Glass,” Elijah Schwartz
- “Smoke Signals,” Noah Drew
- “Turbulent Flow,” Aaron Verity

Glassblowing

- “Beginning Glassblowing,” Chris Giordano (2), Kyle Lavery, Christa Westbrook
- “Break Some Rules, See What Happens,” Ed Branson
- “Next Steps in Glassblowing,” Chris Giordano

Kiln Working

- “Beginning Fusing,” Janet Dalecki
- “Introduction to *Pâte de verre*,” Jessi Moore

Other

- “Graphic Possibilities Using Sandblasting and Enameling” (kiln working and cold working), Denise Stillwaggon Leone
- “Introduction to Stained Glass,” Joseph Barlett
- “Level II Stained Glass Window Building,” Joseph Barlett

One-Day Workshops

Spring

- “Advanced Beadmaking” (flameworking), Jen Kuhn
- “Beadmaking” (flameworking), Shiloh Parker
- “Introduction to Caneworking” (glassblowing), Jeremy Unterman
- “Paperweights at the Furnace” (glassblowing), Ross Delano, Chris Giordano

Fall

- “Beadmaking” (flameworking), Jen Kuhn, Shilo Parker
- “Introduction to Caneworking” (glassblowing), Jeremy Unterman
- “Paperweights at the Furnace” (glassblowing), Chris Giordano

GlassFest Workshops (May 27–29)

- “Fantastic Patterning in Beads” (flameworking), Elijah Schwartz
- “Fusing with Pattern Bars” (kiln working), Janet Dalecki
- “Tumblers: Simple Perfection” (glassblowing), Powell Scott

Other

- Beadmakers’ Marathon for Beads of Courage, February 20
- Collaborative Winter Guest Artists: Micah Evans, Grant Garmezy, Mark Matthews, Jeremy Popelka, Stephanie Trenchard
- Collaborative Summer Guest Artists: Jeff Ballard, Nancy Callan, Mel Douglas, Kristina Logan, Nick Mount, Davide Salvadore, Emilio Santini, Michael Schunke and Josie Gluck, Pablo Soto
- Road Scholars at The Studio, April 18–21, October 24–27, and November 14–17
- Studio Glass Sale, December 3 and 4
- Veterans Glassworking Experience, November 12

To the Museum

Visitor Services Tourism Excellence Award, presented to the Museum's Guest Services Team—led by Regina Wagner, guest and Member relations manager—by the New York State Tourism Industry Association Honorable Mention, Education and Outreach category, MUSE Awards, sponsored by the Media & Technology Professional Network, for *The Techniques of Renaissance Venetian Glassworking* by William Gudenrath, the Museum's first e-resource

From the Museum

Residencies

Artists in Residence

James Mongrain (U.S.), February
Martin Janecky (Czech Republic), March
Jeffrey Stenbom (U.S.), March
Claire Deleurme (France), April
Andrew Erdos (U.S.), April
Nisha Bansil (U.S.), October
Rui Sasaki (Japan), October

Namdoo Kim (Republic of Korea), November
Fredrik Nielsen (Sweden), November
Instructor Collaborative Residency
Simone Crestani (Italy) and Tim Rogers (U.S.), September
Ross Richmond (U.S.) and Randy Walker (U.S.), September
Specialty Glass Residency
(in collaboration with Corning Incorporated)
Toots Zynsky (U.S.), January–June 2016
Anna Mlasowsky (Germany), June 2016–February 2017

Other Awards

GlassLab Fellowship (in conjunction with the Rochester Institute of Technology): Mehrafza Mirzazad Barijugh
Rakow Commission: Thaddeus Wolfe
Rakow Grant for Glass Research: Charlotte Holzer and Melina Smirniou
Student Art Show scholarships: Tiffany Palmer (Corning–Painted Post High School) and Julianna Lindquist (Corning Christian Academy)

Awards

Artists in residence (clockwise from top, left) *Jeffrey Stenbom, Martin Janecky, Andrew Erdos, and Claire Deleurme.*



2016 BY THE NUMBERS

TELLING THE WORLD ABOUT GLASS

AT THE MUSEUM

2016 VISITORS

460,000

2014 VISITORS

440,000

2012 VISITORS

407,000



3,427
TOTAL MUSEUM
MEMBERS



728
GLASS COLLECTION
OBJECTS ACQUIRED



\$350,000
RAISED BY MEMBERS
OF THE ENNION SOCIETY



16,712
HOURS SERVED BY
DOCENTS, INTERNS,
AND VOLUNTEERS

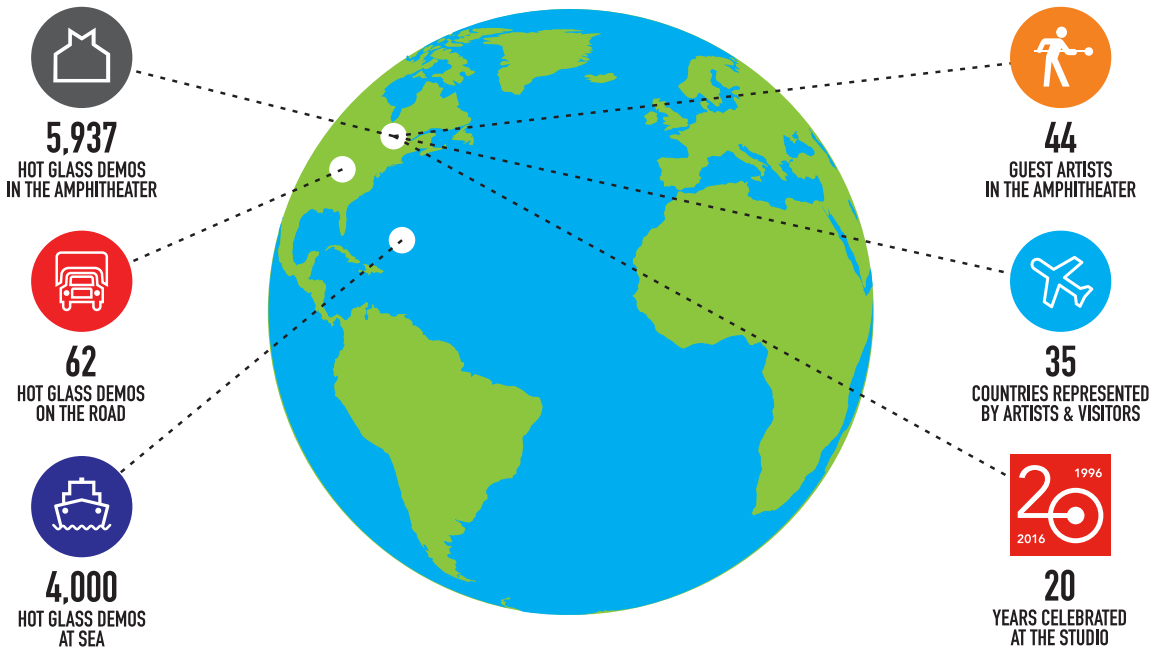


\$33
AVERAGE REVENUE
PER GUEST

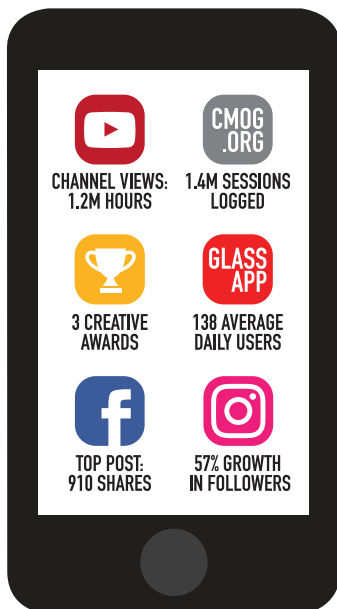


OVER 850,000,000
CIRCULATION OF NEWS ARTICLES
ABOUT THE MUSEUM

AROUND THE WORLD



DIGITAL REACH



VISITOR HIGHLIGHTS



Professional Activities

Publications

- Bardhan, Gail P. Editor, *Glass Club Bulletin* (National American Glass Club), nos. 229 and 230, 2016.
- . Contributor to *The Corning Museum of Glass: Notable Acquisitions 2015*, Corning: the museum, 2016 (hereafter, *Notable Acquisitions 2015*).
- . “The Fugitive Artist” (with Regan Brumagen), *GASnews* (Glass Art Society), v. 27, no. 1, Spring 2016, pp. 10–11.
- . “Tankards, Mugs, Jugs, and Stoneware: Researching Steins,” *Prosit*, v. 2, no. 100, December 2016, pp. 41–43.
- Berry, Sally K. “How NTA Members Stepped into the China Market” (with Greg Eckhart and Ron Kuhlman, compiled by Gabe Webb), *Courier* (NTA [National Tour Association] Services), v. 43, no. 6, July 2016, pp. 14–15+.
- Bolt, Marvin P. Contributor to *Notable Acquisitions 2015*.
- . Contributor to “Recent Acquisitions” section of *The Gather*, Fall 2016/Winter 2017, p. 16.
- . “Revealing the Invisible: The History of Glass and the Microscope,” *The Gather*, Spring/Summer 2016, pp. 7–8.
- . “Undersea Adventures,” *The Magazine Antiques*, v. 183, no. 3, May/June 2016, pp. 124–129, <http://themagazineantiques.com/article/undersea-adventures>.

Pen tray in “Swirl” pattern, cast bronze, glass mosaic. U.S., Corona, NY, Tiffany Glass and Decorating Company or Tiffany Studios, about 1900–1905. H. 1.6 cm, W. 20 cm (2016.4.6).



- Brumagen, Regan. Contributor to *Notable Acquisitions 2015*.
- . “Discovering the Collector,” *GASnews*, v. 26, no. 4, Winter 2015 (January 2016), pp. 18–19.
- See also Bardhan, Gail P.
- Communications Department. Contributor to “Recent Acquisitions” section of *The Gather*, Spring/Summer 2016, pp. 14–16, and Fall 2016/Winter 2017, p. 16.
- Conway, Kelly A. Contributor to *Notable Acquisitions 2015*.
- . Contributor to “Recent Acquisitions” section of *The Gather*, Spring/Summer 2016 and Fall 2016/Winter 2017, p. 14.
- Galbraith, James A. Contributor to *Notable Acquisitions 2015*.
- Green, John (Jack) D. M. Co-editor, *Journal of Glass Studies*, The Corning Museum of Glass.
- . “Celebrating 30 Years of the Rakow Grant for Glass Research,” *The Gather*, Fall 2016/Winter 2017, pp. 9–10.
- . “Egyptian Coffin Conservation Project” (with Simona Cristanetti and Alison Whyte), *Bulletin of the American Research Center in Egypt*, no. 208, Summer 2016, pp. 51–54.
- . “The Lost City: Recycling the Past, Regaining the Present,” essay published in conjunction with *Excavation II* by Daniel R. Small as part of the exhibition “Made in

L.A. 2016: a, the, though, only” at the Hammer Museum, UCLA, Los Angeles, CA, June 12–August 28, 2016.

—. Book review of Marian H. Feldman, *Communities of Style: Portable Luxury Arts, Identity, and Collective Memory in the Iron Age Levant*, in *Journal of Near Eastern Studies*, v. 75, no. 1, April 2016, pp. 178–181.

Gudenrath, William. *The Techniques of Renaissance Venetian Glassworking*, e-resource, The Corning Museum of Glass, <http://renvenetian.cmog.org>.

—. “Una sola visione, due persone = One Vision, Two People,” in *Giovanni Marani, architetto: 25 anni di vetro*, Padua: Bright Digital Print, [2016], pp. 10–11.

Hamblen, Mary Anne. Contributor to *Notable Acquisitions 2015*.

—. Contributor to “Recent Acquisitions” section of *The Gather*, Spring/Summer 2016, p. 16.

Hopman, Rebecca C. Contributor to *Notable Acquisitions 2015*.

—. Contributor to “Recent Acquisitions” section of *The Gather*, Fall 2016/Winter 2017, p. 15.

—. “Illuminating the Whitefriars Stained Glass Cartoon Collection,” *GASnews*, v. 27, no. 3, Fall 2016, pp. 6–7.

Hysten, Beth J. Contributor to *Notable Acquisitions 2015*.

—. “Finding Your Marbles in the Collection of the Rakow Research Library,” *The Flow*, v. 14, no. 2, Summer 2016, p. 18+.

Koob, Stephen P. See Van Giffen, N. Astrid R.

Larson, Katherine A. Contributor to “Recent Acquisitions” section of *The Gather*, Fall 2016/Winter 2017, p. 14.

Ruggiero, Alexandra M. Contributor to *Notable Acquisitions 2015*.

—. “The Blaschkas and Their Undersea Creatures,” *Glass Circle News*, v. 39, no. 2 (issue 141), July 2016, pp. 12–17.

—. “Fragile Legacy,” www.cmog.org/article/fragile-legacy.

—. “Fragile Legacy: The Marine Invertebrate Glass Models of Leopold and Rudolf



Blaschka,” *The Gather*, Spring/Summer 2016, pp. 5–6.

Savard, Tracy L. Contributor to *Notable Acquisitions 2015*.

—. Contributor to “Recent Acquisitions” section of *The Gather*, Fall 2016/Winter 2017, p. 15.

Schwartz, Amy J. “Celebrating 20 Years of The Studio,” *The Gather*, Spring/Summer 2016, pp. 9–10.

Seaman, Harry E. “My Favorite Thing” (Libbey Amberina sugar bowl and creamer), *The Gather*, Spring/Summer 2016, p. [19].

Silbert, Susie J. “John Zimmerman’s Big History,” *American Art Collector*, no. 123, January 2016, pp. 114–117.

—. “Mapping Meaning: On Ways of Way-finding,” *Metalsmith Magazine*, v. 36, no. 4, August 2016, pp. 14–17.

—. “Mysterious Nature: The Art of Jiyong Lee, Harue Shimomoto, and Rob Snyder,” *American Art Collector*, no. 124, February 2016, pp. 116–119.

Thompson, Kimberly A. “Women on the Waves: Checking In with an All-Female Glassblowing Team on Celebrity Cruises,”

I Saw Othello’s Visage In His Mind, cold-worked and engraved glass; painted wood; assembled. Italy, Murano, Fred Wilson (American, b. 1954), 2013. H. 163 cm, W. 131 cm (2016.3.6).



Air pump, blown and ground cylinder glass, turned wooden feet and handle, painted and enameled cast iron, lacquered brass. U.S., made by Ziegler Electric, Boston, MA, and retailed by James W. Queen & Company, Philadelphia, PA, 1889–1925. H. (with lever down) 74 cm, W. 71 cm (2016.8.23).

The Flow, v. 14, no. 4, Winter 2016, pp. 34–36.

Togni, David R. “My Favorite Thing” (*Piazza S. Pietro micromosaic*), *The Gather*, Fall 2016/Winter 2017, p. [19].

Van Giffen, N. Astrid R. “Caring for Your Glass Collection,” *Prosit*, v. 2, no. 100, December 2016, pp. 46–47.

—. “Cleaning and Repairing Blaschka Glass Models: Challenges in the Preservation of Exquisite Reproductions of Nature” (with Stephen P. Koob), in *Recent Advances in Glass and Ceramics Conservation 2016*, International Council of Museums – Committee for Conservation (hereafter, ICOM-CC), ed. Hannelore Roemich and Lauren Fair, [Poland]: Glass and Ceramics Working Group, [2016], pp. 205–214.

Wight, Karol B. Co-editor, *Journal of Glass Studies*, The Corning Museum of Glass.

—. Contributor to *Notable Acquisitions 2015*.

—. “Dear Members,” *The Gather*, Spring/Summer 2016 and Fall 2016/Winter 2017, p. 1.

—. “The Religious Iconography of Roman Cameo Glass,” in *Icon, Cult, and Context: Sacred Spaces and Objects in the Classical World*, ed. Maura K. Heyn and Ann Irvine Steinsapir, UCLA Cotsen Institute of Archaeology Press Monographs, v. 82, Los Angeles: the press, 2016, pp. 103–114.

Lectures

Bardhan, Gail P. “Images from the Cutting Room Floor,” Brilliant Weekend, American Cut Glass Association, The Corning Museum of Glass.

—. “Researching Steins in the Rakow Library,” convention, Stein Collectors International, Corning, NY.

Bolt, Marvin P.* “The Art of the First Scientific Instruments: Looking through—and at—the World’s Oldest Telescopes,” The McGowan Center for Ethics and Social Responsibility, King’s College, Wilkes-Barre, PA, and Mt. Wilson Institute and Carnegie Observatories, Pasadena, CA.

—. “A New Device for a New Era: An Early Telescopic View of Innovation,” keynote address, fifth Leadership Summit, American Ceramic Society, Cleveland, OH.

—. “The Physics and Chemistry of Glass in the Innovations Gallery” and “The Role of Failure in Success: Learning to Fail, and Learning from Failing,” Docent Lecture Series, The Corning Museum of Glass.

—. “Revealing the Invisible: The History of Glass and the Microscope,” Fellows meeting, The Corning Museum of Glass.

—. “Saving Your Life: When Scientific Reasoning and Moral Wisdom Turn Urgent,” The McGowan Center for Ethics and Social Responsibility, King’s College, Wilkes-Barre, PA.

—. “Scoping Out Telescopes: The Surprises of a Familiar Instrument,” Scientific Instrument Commission, International Union for the History and Philosophy of Science, Istanbul, Turkey.

—. “The Solar Microscope: A Historical Introduction,” Members’ opening, “Revealing the Invisible,” The Corning Museum of Glass.

—. “Through Looking Glasses: Almost to Infinity and Beyond,” Binghamton University, Binghamton, NY.

Cassetti, Robert K. "Canals as Cultural Catalyst" (with Daniel DeRusha), New York State Tourism Industry Association, Clayton, NY.

—. "Corning Museum of Glass GlassBarge" (with Steven Gibbs and Daniel DeRusha), New York State Canal Conference, Auburn, NY.

—. "150th Anniversary of Glassmaking Coming to Corning from Brooklyn" (with Daniel DeRusha), Harbor Soirée, New York State Council on the Arts, New York, NY.

Conway, Kelly A. "The Art Glass of Louis Comfort Tiffany," Study Days on Venetian Glass, Istituto Veneto di Scienze, Lettere ed Arti (hereafter, IVSLA), Venice, Italy.

—. "English Cameo Glass," Docent Lecture Series, The Corning Museum of Glass.

—. "Transparency at the Table: Contents and Customs of American Glass," The New Orleans Antiques Forum, The Historic New Orleans Collection, New Orleans, LA.

Cook, Glen B. "Girls in STEM," Expanding Your Horizons Parents Panel, Cornell University, Ithaca, NY.

—. "Glass: The Science of a Shape-Shifting Solid," UrbanGlass, Brooklyn, NY.

—. "Glass Chemistry through the Ages" and "Teaching the Science of Glass from

Two Perspectives" (both with Kathryn Wieczorek), Docent Lecture Series, The Corning Museum of Glass.

—. "Glass Science: Shedding Light on the Artist's Palette," Art History and Chemistry Departments, Lafayette College, Easton, PA.

—. "Glass Science for Glass Artists," Glass Department, Alfred University, Alfred, NY; Cleveland Institute of Art, Cleveland, OH; Pilchuck Glass School, Seattle, WA; and Glass Gathering, Sheridan College, Oakville, ON, Canada.

—. "Science at CMOG," Carnegie Observatories, Pasadena, CA.

—. "Science for Art's Sake," Glass Department, Rhode Island School of Design, Providence, RI.

—. "Teaching Glass Science & Technology with a History and Art Museum Collection," Art, Archaeometry, and Conservation Division, annual meeting, American Ceramic Society, Salt Lake City, UT.

DeRusha, Daniel G. *See* Cassetti, Robert K. and Gibbs, Steven T.

Fay, Mieke L. "Architecture Tours at CMOG," Docent Lecture Series, The Corning Museum of Glass.

—. "My Career Path," investor panel, Young Entrepreneurs Academy, Corning, NY.

Imperial Russian goblet with monogram of Catherine II, bloun, cut, engraved. Russia, probably St. Petersburg, St. Petersburg Glass Manufactory (after 1791, known as the Imperial Glass Works), 1762–1796. H. 20.6 cm, D. 9.6 cm (2016.3.4). Gift of Bruce and Angela Meyer.

Vase, Crabes et algues (Crabs and algae), pâte de verre. France, Gabriel Argy-Rousseau (French, 1885–1953), designed in 1920. H. 14.1 cm, D. 12.5 cm (2016.3.9). Gift of James R. and Maisie Houghton.





Compote in "Tulip and Sawtooth" pattern, blown, applied, cut. U.S., probably Cambridge, MA, New England Glass Company, about 1850–1854. H. 23.5 cm, D. 26 cm (2016.4.3). Purchased with the assistance of The Karl and Anna Koepke Endowment Fund.

Fortune, Andrew M.*

Galbraith, James A. "Getting to Know Special Libraries," annual conference, New York Library Association, Saratoga Springs, NY.

—. "Promoting a Culture of Innovation in a Museum Library," annual meeting, South Central Regional Library Council (hereafter, SCRLC), Ithaca, NY.

Gibbs, Steven T. "Corning Museum of Glass Hot Glass Outreach" (with Daniel DeRusha), American Museum Network Conference (MUSCON 2016), Miami Beach, FL.

Goldschmidt, Eric S.* "The Blaschkas: A Lampworker's Perspective," keynote address, docent and volunteer recognition dinner, The Corning Museum of Glass.

Green, John (Jack) D. M. "Archaeology and Heritage in Jericho: The Hisham's Palace Site and Museum Project," Cornell Institute of Archaeology and Material Studies lecture series, Cornell University, Ithaca, NY.

—. "Excavating the Ten Commandments" (with Daniel R. Small), Conversations series, Hammer Museum, UCLA, Los Angeles, CA.

—. "Welcome and Opening Remarks" (with Scott Hansen), annual symposium, Carder Steuben Club, Corning, NY (hereafter, Carder symposium).

Gudenrath, William. "A Close Look at Some Venetian Glassblowing Techniques from the Medieval Period through the Later 19th Century: Continuity and Change," Study Days on Venetian Glass, IVSLA.

—. "More Interesting than It Looks: Renaissance Venetian Glass in the Wadsworth Atheneum," Wadsworth Atheneum, Hartford, CT.

—. "The Skill of the Glassblower: Its Roman-World Ascent and Renaissance-Venice Zenith," The British School, Rome, Italy.

—. "The Techniques of Renaissance Venetian Glassworking," 45th annual conference of the Glass Art Society, held in Corning, NY (hereafter, GAS conference).

—. "Venetian Glass: A Close Look at the Big Picture," keynote lecture at the 50th annual conference of Stein Collectors International, Corning, NY.

Hamblen, Mary Anne. "The Frederick Carder Papers: An Artist's Life Revealed," Carder symposium.

Hewitt, Brian J. "Little Joe Tube Tower: Tin Pan Time Machine" (with Ryan Langille), Rochester Maker Faire, Rochester, NY.

Hopman, Rebecca C. "Gathering a Crowd: A Look at Glassmaking Demonstrations of the Past" (with Alexandra Ruggiero), GAS conference.

Kennard, George M. "The Making of Lino Tagliapietra's *Spirale*" (with Eric Meek and Jeff Mack), Docent Lecture Series, The Corning Museum of Glass.

Koob, Stephen P.* "Materials and Techniques for Filling Losses in Broken Glasses," Society of Glass Technology Centenary Conference and 13th European Society of Glass Conference, Sheffield, England, U.K.

See also Van Giffen, N. Astrid R.

Langille, Ryan R. *See* Hewitt, Brian J.

Larson, Katherine A. “‘But There Is No Hellenistic Glass’: A Multi-Scalar Analysis of the Late First Millennium BCE Glass Industry,” annual meeting, Archaeological Institute of America, San Francisco, CA.

Mack, Jeff W. “The Role of Failure in Success: Failure Feeds Creativity,” Docent Lecture Series, The Corning Museum of Glass. *See also* Kennard, George M.

Maxwell, Christopher L. “The Role of Failure in Success: French Porcelain of the 18th Century,” Docent Lecture Series, The Corning Museum of Glass.

Meek, Eric T. “Glass Olympics,” Cleveland Institute of Art, Cleveland, OH. *See also* Kennard, George M.

Nace, Aprille C. “Pyrex: America’s Favorite Dish,” American Institute of Chemical Engineers, Southern Tier Chapter, Corning, NY.

Cameo-carved scent bottles: (top) front and reverse of bottle with swan and Christmas rose, probably gilded by Jules Barbe (French, 1847–?), and engraved and painted by Fridolin Kretschman (Bohemian, about 1850–1898), about 1880–1890 (2016.2.8); (below, left) bottle with tapestry decoration, about 1880–1900, gold manufactured by Tiffany and Company (2016.2.17); and (below, right) bottle with ivy, in original presentation box, possibly Thomas Woodall or George Woodall, about 1888 (2016.2.11). Cased, blown, carved, painted, enameled, gilded; silver, metal, cork; assembled. U.K., Amblecote, England, Thomas Webb & Sons. Tallest: H. 16.9 cm, W. 3.6 cm. Gift of the Ennion Society.



Ruggiero, Alexandra M.* “Artistry and Innovation in American Glass,” Connecticut Historical Society, Hartford, CT.

———. “Fragile Legacy,” Trustees dinner, The Corning Museum of Glass.

———. “Fragile Legacy: The Marine Invertebrate Models of Leopold and Rudolf Blaschka,” Art Glass Forum, New York, NY.

See also Hopman, Rebecca C.

Sayre, Scott A. “Little Joe Tube Tower: Tin Pan Time Machine,” annual conference, New Media Consortium, Rochester, NY.

———. “Speed Networking,” annual conference, Museum Computer Network, New Orleans, LA.

Schwartz, Amy J. “International Women Artists at The Studio,” Zonta International, Elmira, NY.

———. “The Studio at 20,” Ennion Society dinner, The Corning Museum of Glass.

Smythe, Troy J. “Glass and the Roots of Early Modernism” and “Understanding the Art of Today,” Docent Lecture Series, The Corning Museum of Glass.

———. “Introduction to the Docent Program at The Corning Museum of Glass,” Kiwanis Club of Corning, Corning, NY.

Van Giffen, N. Astrid R.* “Cleaning and Repairing Blaschka Glass Models: Challenges in the Preservation of Exquisite Reproductions of Nature” (with Stephen P. Koob),

ICOM-CC, Glass and Ceramics Working Group, interim meeting, Wroclaw, Poland.

———. “Conservation of Glass with Enamels,” annual convention, Stein Collectors International, Corning, NY.

Wetterlund, Kris. “Changing Nature of Collaborations” and “Interpretive Writing Workshop,” annual conference, Museum Computer Network, New Orleans, LA.

———. “Community of Practice: Your Professional Learning Community” and “Nothing Ventured, Nothing Gained,” annual conference, American Alliance of Museums, Washington, DC.

Wieczorek, Kathryn E. “ASTC Creativity Garden Minigrants: How ASTC Institutions Got Creative!,” annual conference, Association of Science–Technology Centers, Tampa, FL.

———. “How Is Glass Made?,” Brains On!, Minnesota Public Radio, www.brainson.org/how-is-glass-made.

See also Cook, Glen B.

Wight, Karol B.*

*For lecture at Seminar on Glass, see pages 15–16.

Other Activities

Bardhan, Gail P. Board member, National American Glass Club.

Glass ribbon machine, metal. U.S., Buffalo, NY, Keller Technology Corporation, 1998. L. about 23 m, H. about 250 cm, W. about 250 cm (2016.8.411). Gift of Ledvance LLC.



Berry, Sally K. Named one of 10 most influential women in the group tour industry by *Groups Today* magazine. Member, board of directors, U.S. Travel's Experience Network, Washington, DC.

Bolt, Marvin P. Curator of "Revealing the Invisible: The History of Glass and the Microscope," and co-curator (with Alexandra Ruggiero) of "Fragile Legacy: The Marine Invertebrate Glass Models of Leopold and Rudolf Blaschka," The Corning Museum of Glass. Led tour of "Revealing the Invisible: The History of Glass and the Microscope," GAS conference. Member, nominating committee, Scientific Instrument Commission, International Union for the History and Philosophy of Science.

Brumagen, Regan. Elected delegate, Regional Councils of America, Online Computer Library Center (OCLC). Member, editorial board, *GASnews*.

Cassetti, Robert K. Board president, Museum Association of New York.

Conway, Kelly A. Member, board of directors and finance committee, Glass Art Society; member, marketing and communications committee, The Association of Art Museum Curators.

Cook, Glen B. Led tour, "3,500 Years of Glass Science and Technology," GAS conference.

Corradini, Ellen D. Co-chairman (with Steven Gibbs), GAS conference.

Doolittle, Ryan F. Board member, Steuben County Convention and Visitors Bureau, Corning, NY; member, marketing committee, Finger Lakes Tourism Alliance, Penn Yan, NY.

Duane, Elizabeth M. Board member, Gaffer District (second vice president) and Finger Lakes Wine Country (chairman), Corning, NY; and Schuyler County Community Development Corporation.

Fay, Mieke L. Member, advisory board, and co-chairman, membership workgroup, Expanded Learning Network of the Southern



Tier, a regional chapter of the New York State Network for Youth Success.

Galbraith, James A. Member, board of trustees, The Rockwell Museum, Corning, NY; the ARTS Council of the Southern Finger Lakes, Corning, NY; and the Chemung County Historical Society, Elmira, NY. President, Friends of the Chemung County Library District, Elmira, NY. Elected to the board of trustees of the SCRLC.

Engraved finger bowl in "Jackson" pattern with White House seal, blown, engraved, ground. U.S., New York, NY, probably Davis Collamore & Co. (retailer), probably 1850. H. 7.3 cm; D. (bowl) 11.4 cm, (foot) 6.8 cm (2016.4.10). Gift of Kurt A. Reed in memory of his wife, Carol J. Reed.

Gibbs, Steven T. *See* Corradini, Ellen D.

Goldschmidt, Eric S. Presented flameworking demonstration, "Holy Sheet: Sculpting Sheet Glass on the Torch," GAS conference. Presented flameworking and glass properties demonstrations during launch of Gorilla Glass 5 at the Palo Alto, CA, laboratories of Corning Incorporated, and flameworking demonstration at meeting of Northeast Section, American Scientific Glassblowers Society, at The Corning Museum of Glass. Visiting artist at the University of South Alabama, Mobile, AL.

Green, John (Jack) D. M. Member, Committee on Archaeological Policy, American Schools of Oriental Research. Visiting scholar, Department of Anthropology, Cornell University, Ithaca, NY.



Beaded snuff box, glass, tin, brass; assembled. Germany, Brunswick, workshop of Johann Michael van Selow (probably Dutch, dates unknown), 1756–1772. H. 3.8 cm, W. 11.5 cm (2016.3.5).

- Gudenrath, William. Member, The Fellows of The Corning Museum of Glass, and International Advisory Committee, UrbanGlass, Brooklyn, NY. Co-chairman (with Lino Tagliapietra), technical committee, IVSLA; taught six classes at The Studio of The Corning Museum of Glass, as well as a three-day workshop at Design with Fire Studio, Davis, CA, where he also demonstrated Renaissance Venetian glassblowing techniques. Guest artist at May 2300°, celebrating the 20th birthday of The Studio of The Corning Museum of Glass. Co-led (with Amy Schwartz) Ennion Society trip to Sweden and Denmark. Panel member, “Mastering the Craft NYC,” New York Yacht Club, New York, NY.
- Hill, Evan B. Became a Certified Interpretive Guide, as established by the National Association for Interpretation. Conducted “Glass and Nature” tour for the annual conference of the New York State Outdoor Education Association, held in Corning, NY.
- Hyde, Caitlin B. Presented flameworking demonstration, “The Mighty (Tiny) Tardigrade Cirque de Science,” GAS conference. Presented flameworking demonstration at meeting of Northeast Section, American Scientific Glassblowers Society, at The Corning Museum of Glass.
- Hylen, Beth J. Panel moderator/speaker, “Contemporary Glass: Seattle and Beyond,” annual conference, Art Libraries Society of North America (hereafter, ARLIS/NA), Seattle, WA. Presented “Round Table for Glass Educators” (with Shane Fero and William Warmus), GAS conference. Co-coordinator, Decorative Arts Special Interest Group, ARLIS/NA; co-chairman, history committee, Glass Art Society.
- Kennard, George M. Presented hot-working demonstration, “Metamorphosis: Cold to Hot and Back Again” (with Eric Hilton), GAS conference.
- Koob, Stephen P. Member, Fellows of The Corning Museum of Glass; chairman, Technical Committee 17 (TC 17), International Council of Museums (hereafter, ICOM); co-chairman, Conservation and Site Preservation Committee, Archaeological Institute of America; national peer, General Services Administration for the Design and Construction Excellence Programs and Art in Architecture Program; member, Public Art Committee, City of Corning, NY; council member, International Institute for Conservation of Historic and Artistic Works, London, England, U.K. Taught “Conservation and Restoration of Glass,” one-week course sponsored by The Corning Museum of Glass, at the Canadian Conservation Institute, Ottawa, ON. Taught and supervised (with N. Astrid R. Van Giffen) two interns at the Corning Museum, one from the Institute of Conservation at the University of Applied Arts, Vienna, Austria, and the other from The Israel Museum, Jerusalem, Israel. Taught and supervised one student conservator from the New York University Conservation Program for three weeks at the Samothrace Museum, Samothrace, Greece.
- Larson, Katherine A. Co-chairman, “Glass in the Ancient Near East,” member-organized session, annual meeting, American Schools of Oriental Research, San Antonio, TX. Glass specialist, Aphrodisias Excavations, Turkey. Led tour, “Glass from Antiquity to the Cold War: Response, Reception, and Reinvention,” GAS conference.
- Librarians, Rakow Research Library. Led tour, “Behind the Scenes at the Rakow Library,” GAS conference.

Meek, Eric T. Presented hot-working demonstration, “Part of the Tradition: A Corning Gaffer,” GAS conference.

Miller, Kerry. Board vice chairman, Steuben County Convention and Visitors Bureau, Corning, NY; member, marketing committee, Finger Lakes Tourism Alliance, Penn Yan, NY.

Nace, Aprille C. President, board of trustees, and chairman, executive committee, SCRLC, Ithaca, NY. Peer reviewer for *Art Documentation*, ARLIS/NA.

Public Services Team, Rakow Research Library. Offered several library-related behind-the-scenes tours to Museum Members (beyond books, contemporary artists, history of the book, local glass history, Pyrex, and stained glass). Hosted Docent Days at the Rakow Library and the Upstate New York spring meeting of ARLIS/NA. Welcomed 4,970 visitors (3,377 individuals and 1,593 in groups) and answered 4,432 reference questions. LibAnswers, the Museum’s online reference management system, received 40,958 hits. The library’s Web site was visited 245,224 times, and there were

13,138 viewings of its research guides. Processed 903 interlibrary loan requests. Collected two oral histories at GlassFest, Corning, NY.

Ruggiero, Alexandra M. Led tour of “Fragile Legacy: The Marine Invertebrate Glass Models of Leopold and Rudolf Blaschka,” GAS conference and Carder symposium. *See also* Bolt, Marvin P.

Sayre, Scott A. Board member, Museum Computer Network. Reviewer, *2016 Museum Horizon Report*, New Media Consortium. Member, museum advisory committee, Artstor.

Schwartz, Amy J. Co-curator (with Karol Wight) of “The Studio at 20” exhibition, The Corning Museum of Glass. Panelist, “What Next? Opportunities for At-Risk Youth after High School,” GAS conference. Member, international advisory committee, International Craft Biennale, Cheongju, Republic of Korea. Board member, Berlin Glas e.V. (Berlin Art Glas GmbH), Berlin, Germany. Board member and chairman of marketing committee, Alternative School for Math and Science, Corning, NY. Board



Water jug, decanter, and four wineglasses from the “Cross-fire” series, flameworked colorless borosilicate glass. U.K., Edinburgh, Scotland, Geoffrey Mann (British, b. Scotland, 1980), with the assistance of Jochen Holz (b. Germany, 1970), designed in 2010–2015 and made in 2015. Decanter and stopper: H. 42.2 cm, D. 22.4 cm (2016.2.1, .2, and .3A–D).

member and member of grants committee, Fund for Women of the Southern Tier Inc., Corning, NY. *See also* Gudenrath, William.

Silbert, Susie J. Co-curator, “#F*nked!,” Kansas City Art Institute, Kansas City, MO. Juror, fourth annual Irvin Borowsky International Prize in Glass Art, The University of the Arts, Philadelphia, PA, and “On the Edge of Your Seat: Chairs for the 21st Century,” The Center for Art in Wood, Philadelphia, PA. Nominee, American Craft Council Emerging Voices Award. Board member, The Furniture Society. Panelist, “Frank Talk: The Arts in the Twenty-First Century, or Do the Hierarchies Still Exist?,” SOFA Chicago, Chicago, IL. Led tour, “New Space, New Light, New Curator,” GAS conference.

Smythe, J. Troy. Board member, Museum-Ed, a nonprofit online organization dedicated to the professional development of museum educators. Invited participant at annual Teaching in Museum Education workshop

at the School of the Art Institute of Chicago, Chicago, IL, and participant, National Museum Publishing Seminar, Chicago, IL.

Thomas-Clark, Jill. Member, board of trustees, Stickley Museum at Craftsman Farms, Morris Plains, NJ.

Togni, David R. Member, finance committee, Corning Children’s Center, Corning, NY.

Tshudy, Sheila A. Member, certificate of achievement review board, and chairman, donations committee, New York State Library Assistants’ Association; secretary, ParaLibrarian Roundtable, New York Library Association.

Van Giffen, N. Astrid R. Assistant coordinator in charge of glass deterioration, ICOM-CC, Glass and Ceramics Working Group. *See also* Koob, Stephen P.

Wetterlund, Kris. Completed three-month residency as guest scholar in museum education at the Getty Research Institute, Los Angeles, CA. Editor, Museum-Ed (www.museum-ed.org).

Wieczorek, Kathryn E. Panelist, “Careers in the Arts and Humanities,” Ridge Road Elementary School, Horseheads, NY.

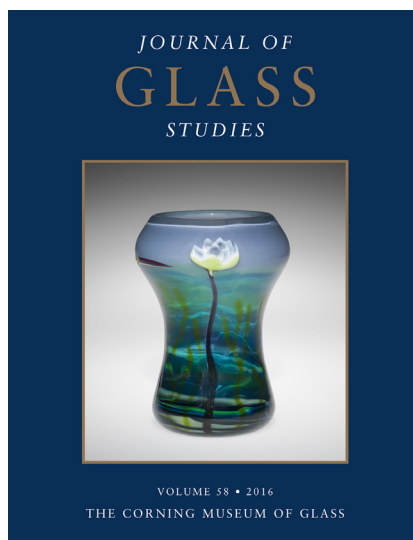
Wight, Karol B. Awarded the second Samuel H. Kress Foundation/Association of Art Museum Directors (AAMD) Affiliated Fellowship at the American Academy in Rome, Italy. Panelist, Mentoring Workshop Webinar, The Association of Art Museum Curators. Presented remarks on behalf of AAMD at a reception marking the renewal of the Memorandum of Understanding between the United States and the Italian Republic, held at the Embassy of the Italian Republic, Washington, DC. Led tour, “The Romans Invented Everything,” GAS conference. Member, AAMD. Member, board of trustees and Fellows of The Corning Museum of Glass. Board member, Association Internationale pour l’Histoire du Verre. Member, advisory committee, Intercollegiate Center for Classical Studies, Rome, Italy; and glass subcommittee, ICOM. *See also* Schwartz, Amy J.

John Peckham (English, about 1230–1292),
Perspectiva communis
(Common perspective),
2nd ed., ed. Luca Gaurico
(Italian, 1476–1558),
Venice: Per Io. Baptistam
Sessam, 1504. 20 leaves
(39 pp.), illustrations.
H. 31 cm (CMGL
152058). Purchased
with funds from The
Fellows of The Corning
Museum of Glass.





*The Corning Museum of Glass:
Notable Acquisitions 2015*
65 pp., 74 illustrations



Journal of Glass Studies
Volume 58
344 pp., illustrations



New Glass Review 37
128 pp., 235 color illustrations

Table of Contents

The Techniques of Renaissance Venetian Glassworking

by William Gudenrath

The Venetian glass industry, which was established during the Middle Ages, enjoyed a golden age during the Renaissance. Its rise to prominence in the manufacture of luxury glass was breathtaking in scope: by the early 1600s, the wonders of Venetian glass were well known throughout western Europe.

Not well known, however, was how these objects were made. That information was carefully kept secret by the Venetian government. This publication presents complete reconstructions of Venetian glassmaking techniques through detailed photography and high-definition video.

CORNING MUSEUM OF GLASS

Visual Guide to Objects and Techniques →

The Techniques of Renaissance Venetian Glassworking
William Gudenrath
e-resource, <http://renvenetian.cmog.org>

Digital Media

Founded in 2014 as an area of strategic focus for The Corning Museum of Glass, the Digital Media Team pursues excellence in providing agile, growing, and sustainable digital services and resources for the Museum's worldwide audiences. These services include cmog.org and all related Web sites, video production and livestreams, in-gallery interactives, and digital marketing and way-finding. All videos are available on the Museum's YouTube channel.

Be Microscopic, a gesture-controlled interactive experience in the "Revealing the Invisible" exhibition.

Blaschkas Around the World model location map.

Exhibition- and Gallery-Related Projects

"Revealing the Invisible: The History of Glass and the Microscope"

Be Microscopic: full-body, gesture-controlled interactive experience allowing users to place themselves in a slide under a virtual microscope. Guests are encouraged to share

photos on social media, using the hashtag #cellfie.

Micrographia: interactive touch-table giving access to a digitized copy of Robert Hooke's *Micrographia* (1665), the earliest detailed account of observations of the natural world through the microscope.

Understanding magnification: touch-screen interactive that invites visitors to explore magnification from a coffee bean to a mitochondrion, based on the University of Utah's Cell Size and Scale program.

Lens Making in the 1600s: video showing the making of a glass lens of the type used in Antoni van Leeuwenhoek's early microscope.

"Fragile Legacy: The Marine Invertebrate Glass Models of Leopold and Rudolf Blaschka"

Video labels: selected excerpts from David Owen Brown's film *Fragile Legacy*.

Blaschkas Around the World: touch-screen interactive map documenting locations of Blaschka marine invertebrate models around the world.

3-D scanning and printing of an arm of a Blaschka sea star as a potential conservation component.

Animated, interactive 3-D rotation of Blaschka models for www.cmog.org.

The Studio at 20

"The Studio 20th Birthday Scrapbook": online and in-gallery selection of community-contributed images, text, and videos documenting the celebration of The Studio's 20th anniversary.

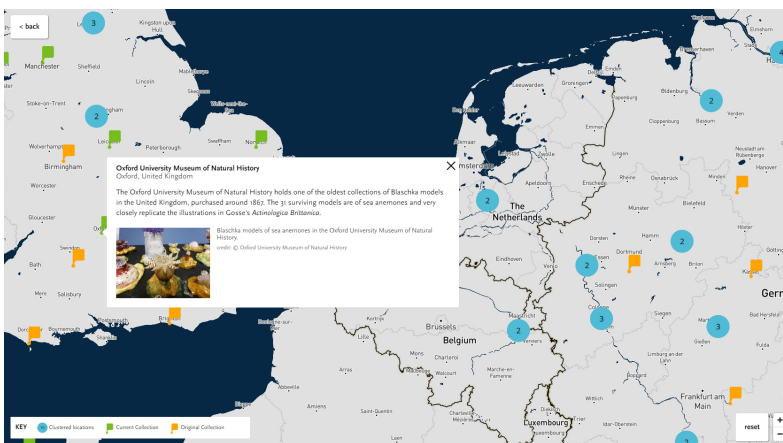
Contemporary Art + Design Galleries

Three GlassApp "tour stops" for new acquisitions.

Museum Programming Support Projects

Glass Art Society

Tin Pan Time Machine: temporary public art installation of video viewers surrounding the Little Joe Thermometer Tube Tower, and the production of a five-minute video telling the story of the tower.



The Studio

Visiting artist livestreams: 17 one- to two-hour live Webcasts of artists producing work in The Studio's hot shop.

The Techniques of Renaissance Venetian Glassworking online publication: scholarly Web-based resource using images, text, and videos to demonstrate the probable working practices of glassblowers in Renaissance Venice.

Artist-in-residence profile videos: short videos providing interviews with four of the 2016 Studio artists in residence and overviews of their work.

Hot Glass Programs

Guest artist livestreams: 50 one-hour live Webcasts of artists producing work in the Amphitheater Hot Shop. All videos are later archived on the Museum's YouTube channel.

Gathering Glass from the Furnace: animated cross section of the glory hole, illustrating how glass is gathered on the end of a blowpipe.

Hot-Shop trivia: glass trivia game that is played, during intervals between hot-glass demonstrations, on the digital displays in the Amphitheater Hot Shop.

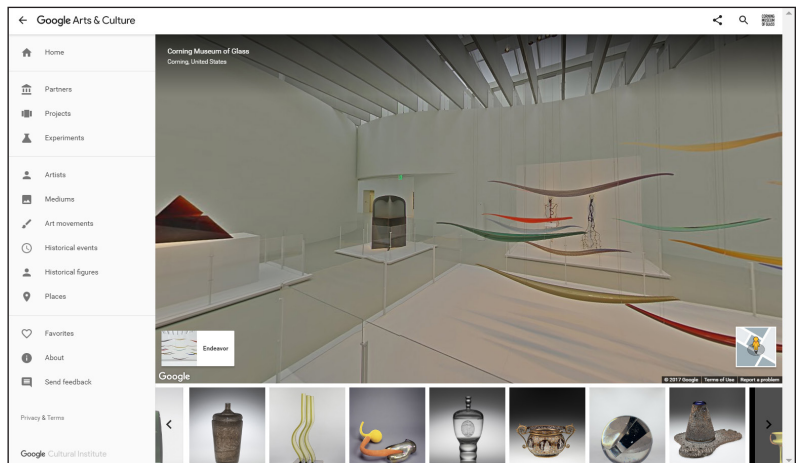
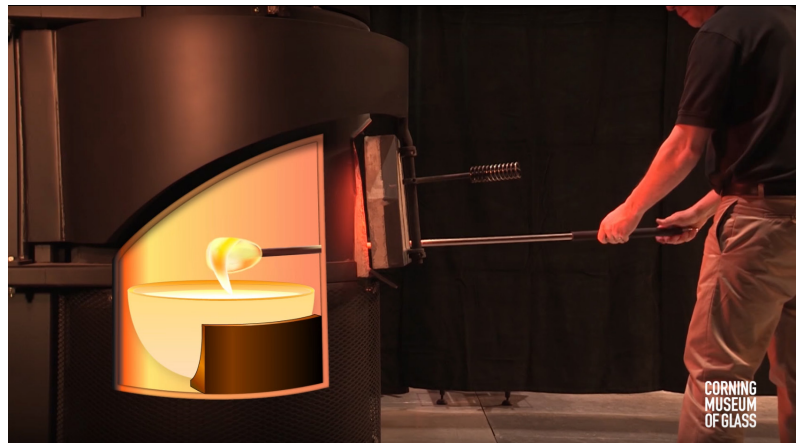
Marketing and Public Relations

Digital holiday card: Web-based video greeting card demonstrating the creation of a mold-blown glass ornament by Eric Goldschmidt, frameworking and properties of glass supervisor at the Museum.

Google Street View: the Museum can now be viewed in a 360-degree virtual walkthrough via Google Maps.

Expanded digital signage program, including additional displays and marketing of upcoming internal events.

Dynamic signage to inform visitors when and where to gather for group tours of the galleries.



Tin Pan Time Machine: Little Joe Thermometer Tube Tower video.

Gathering Glass from the Furnace animated video.

Google Street View presentation of the Museum.

Museum Staff

Staff as of
December 31, 2016

Executive Leadership Team

Karol B. Wight
President and Executive Director

Nancy J. Earley
Deputy Chief Operating Officer

Alan T. Eusden
Chief Operating Officer

John D. M. Green
*Deputy Director of Collections,
Research, and Exhibitions*

Leadership Team

Robert K. Cassetti
*Senior Director of Creative
Services and Marketing*

Ellen D. Corradini
*Director of Human Resources
and Safety*

Elizabeth M. Duane
*Director of Marketing
and Community Relations*

James S. Gerhardt
Chief Advancement Officer

Scott A. Sayre
Chief Digital Officer

Amy J. Schwartz
Director of The Studio

David R. Togni Jr.
Director of Finance

Kris A. Wetterlund
*Director of Education
and Interpretation*

❖ ❖ ❖

Russell W. Anthony
Retail E-commerce Specialist

Elijah H. Applebaum
*Hot Glass Cruise Ship
Demonstrator/Narrator*

Chelsea J. Arnold
*Guest Services Lead Group
Tours Associate*

Lyman C. Babbitt
*Make Your Own Glass Workshop
Coordinator, The Studio*

Peter Bambo-Kocze
Bibliographer

Gail P. Bardhan
Reference and Research Librarian

Darren L. Barnard
Storage Facility Associate

Brianna E. Barron
*Hot Glass Cruise Ship
Demonstrator/Narrator*

Jeannine M. Bates
Retail Coordinator

Michael A. Beahm
*Hot Glass Cruise Ship
Demonstrator/Narrator*

Steven C. Bender
*Steuben and Retail E-commerce
Business Development Manager*

Sally K. Berry
*Tourism Sales and Marketing
Manager*

Taryn J. Bertolino
*Hot Glass Cruise Ship
Demonstrator/Narrator*

Valerie M. Bigelow
Accounting Associate

Whitney B. Birkett
*Assistant Registrar, Records
Management*

Kelly L. Bliss
Lead Cataloguer

Marvin P. Bolt
Curator of Science and Technology

Jacqueline M. Brandow
*Make Your Own Glass Workshop
Assistant, The Studio*

William L. Brooks
*Hot Glass Cruise Ship
Demonstrator/Narrator*

Regan Brumagen
*Senior Librarian for Reference
Services*

Bryan H. Buchanan
Photographer

Ann M. Bullock
*Constituent Management
and Human Resource Supervisor*

Warren M. Bunn II
Collections and Exhibitions Manager

Meghan D. Bunnell
Buyer

Caitlyn M. Burns
*Hot Glass Cruise Ship
Demonstrator/Narrator*

Kenneth L. Burns
Coordinator of Access Services

Brandyn C. Callahan
*Hot Glass Cruise Ship
Demonstrator/Narrator*

Edward E. Callahan
Facilities Technician

Kimberly A. Carlisle-Locey
Executive Assistant

Kurt B. Carlson
*Make Your Own Glass Workshop
Team Leader, The Studio*

Rebecca A. Congdon
*Development and Special Projects
Coordinator*

Kelly A. Conway
Curator of American Glass

Christy L. Cook
Associate Registrar

Glen B. Cook
Chief Scientist

Julia M. Cordi
*Hot Glass Cruise Ship
Demonstrator/Narrator*

Chad D. Crans
Events Production Lead Technician

Lynn M. Creeley
Retail Operations/Inventory Associate

Emily S. Davis
*Cataloguing Specialist, Continuing
Resources and Digital Collections*

Laurie J. Derr
Acquisitions Assistant

Daniel G. DeRusha
*Hot Glass Logistics
and Ship Supervisor*

Ryan F. Doolittle
Tourism Sales Specialist

Allison M. Duncan
Special Projects Manager, The Studio

Hilarie A. Dyer
Administrative Assistant, Collections

Matthew K. Eaker
Maintenance Supervisor

Shirley K. Faucett
Retail Coordinator

Mieke L. Fay
Youth and Family Programs Educator

Terry E. Finnefrock
Senior Production Manager

Kathleen D. Force
Storage Facility Coordinator

Andrew M. Fortune
*Collections Photography
Department Manager*

Lori A. Fuller
*Associate Librarian, Collections
Management*

James A. Galbraith
Chief Librarian

JoAnne M. Gargano
*Retail and Customer Service
Supervisor*

Celia E. Garland
*Hot Glass Cruise Ship
Demonstrator/Narrator*

Kevin K. Geiser
Guest Services Associate

Steven T. Gibbs
Senior Manager, Hot Glass Programs

William J. Gilbert
Senior Manager, Safety and Security

Eric S. Goldschmidt
*Flameworking and Properties
of Glass Supervisor*

Charles T. Golonkiewicz
*Hot Glass Cruise Ship
Demonstrator/Narrator*

William Gudenrath
Resident Adviser, The Studio

Laghan N. Guiles
Guest Services Team Leader

Bonnie L. Hackett
Customer Service Specialist

Mary Anne Hamblen
*Special Collections
and Archives Librarian*

Brandy L. Harold
Registrar

Myrna L. Hawbaker
*Volunteer Program Coordinator/
Telephone Administrator*

Stephen Hazlett
Preparator/Mount Maker

Jonathan E. Heath
Retail Coordinator

Brian J. Hewitt
Designer/Front-End Developer

Evan B. Hill
Education Programs Coordinator

Rebecca C. Hopman
Outreach Librarian

Lauren S. Hunt
*Hot Glass Cruise Ship
Demonstrator/Narrator*

Caitlin B. Hyde
*Properties of Glass Demonstrations
Team Leader*

Beth J. Hylen
Reference Librarian

Scott R. Ignaszewski
*Event Planning and Production
Manager*

Aaron M. Jack
*Hot Glass Cruise Ship
Demonstrator/Narrator*

Abigail D. Jacobson
Retail Sales Associate

Mary E. Jacobson
Retail Sales Coordinator

Michael A. Jasikoff
Graphic Designer

G Brian Juk
*Hot Glass Cruise Ship
Demonstrator/Narrator*

Nedra J. Jumper
Administrative Project Planner

Julie M. Kabelac
Acquisitions and Serials Supervisor

George M. Kennard
*Hot Glass Show and Roadshow
Team Leader/Gaffer*

Stephen P. Koob
Chief Conservator

Amanda S. Kritzeck
*Digital Media Producer/
Project Manager*

David A. Kuentz
*Innovation Center Technician/
Preparator*

Ryan R. Langille
Lead Web/Interactive Developer

Katherine A. Larson
Curatorial Assistant

Kyle A. Lavery
Facility Coordinator, The Studio

Allison S. Lavine
Assistant Photographer

Suzette L. Lutcher
Retail Purchasing and Sales Associate

Amanda S. Machuga
Guest Services Associate

Jeffrey W. Mack
*Hot Glass Programs
and Projects Supervisor*

Megan C. Mathie
*Hot Glass Cruise Ship
Demonstrator/Narrator*

Christopher L. Maxwell
Curator of European Glass

Michael A. McCullough
Controller

Eric T. Meek
Hot Glass Show/GlassLab Manager

Michael J. Milano
Maintenance Technician

Ann M. Miller
Event Planner

Maureen L. Miller
*Constituent Management/
Benefits Specialist*

Nathan V. Miner
Events Production Lead Technician

Jessica A. Moore
*Special Projects Team Leader,
The Studio*

Timothy L. Morgan
Maintenance Technician

Timothy M. Morgan
*Inventory Control and Storage
Facility Team Leader*

Colleen E. Murphy
Guest Services Coordinator

David R. Murray
Operations Manager

Victor A. Nemard Jr.
Senior Merchandising Manager

Lindsay R. Nikisher
Preparator

Thomas P. Oberg
Preparator

Lewis R. Olson
Hot Glass Technical Team Leader

Michelle M. Padilla
Digital Content Specialist

Bradley C. Patocka
Lead Video Production Specialist

Nathan C. Peal
Financial Analyst

Jamie M. Perian
*Hot Glass Cruise Ship
Demonstrator/Narrator*

Elizabeth W. Perkins
*Hot Glass Cruise Ship
Demonstrator/Narrator*

Stephanie R. Perry
*Hot Glass Cruise Ship
Demonstrator/Narrator*

El L. Peterson
Maintenance Technician

Shelley M. Peterson
Merchandise Team Manager

Martin J. Pierce
Digital Imaging Specialist

Katherine E. Plunkard
*Hot Glass Cruise Ship
Demonstrator/Narrator*

Rebecca A. Potash
*Hot Glass Cruise Ship
Demonstrator/Narrator*

Kenton S. Pratt
*Hot Glass Cruise Ship
Demonstrator/Narrator*

Cynthia J. Price
*School and Docent Programs
Coordinator*

Richard W. Price
Head of Publications Department

Theresa F. Radigan
Marketing Communications Specialist

Charlyn M. Reynolds
*Hot Glass Cruise Ship
Demonstrator/Narrator*

Christopher A. Rochelle
Hot Glass Projects Team Leader

Melissa M. Rose
*Tour, Sales, and Reservations
Coordinator*

Jared F. Rosenacker
*Hot Glass Cruise Ship
Demonstrator/Narrator*

Alexandra M. Ruggiero
Curatorial Assistant

Stephanie M. Russell
Retail Team Leader

Thomas J. Ryder
*Hot Glass Cruise Ship
Demonstrator/Narrator*

Alexandra K. Salisbury
Accounting Associate

Jacolyn S. Saunders
Publications Designer

Tracy L. Savard
*Cataloguing Specialist, Artwork
and Documents*

Kimberly A. Savoie
*Hot Glass Cruise Ship
Demonstrator/Narrator*

Harry E. Seaman
Facility Manager, The Studio

Debra C. Sharretts
Human Resource Coordinator

Aaron P. Sheeley
Desktop Coordinator

Annette D. Shepherd
*Hot Glass Cruise Ship
Demonstrator/Narrator*

Hsiao-Ying Shih
Narrator/Interpreter

Jeremy J. Shriver-Munsch
*Hot Glass Cruise Ship
Demonstrator/Narrator*

Carl A. Siglin
*Hot Glass Maintenance, Supply
and Technical Team Leader*

Susie J. Silbert
*Curator of Modern
and Contemporary Glass*

Erica L. Simon
*Make Your Own Glass Workshop
Assistant, The Studio*

Damon V. Smith
*Senior Analyst, Security
and Network Systems*

Emily E. Smith
Assistant Registrar – Loans

Kara R. Smith
Event Planner

J. Troy Smythe
*Education and Interpretation
Supervisor*

Kalli A. Snodgrass
*Make Your Own Glass Workshop
Coordinator, The Studio*

Tina S. Snow
Marketing and Event Coordinator

Heather N. Spiewak
*Hot Glass Cruise Ship
Demonstrator/Narrator*

Sara L. Squires
Accounting Associate

Krystopher A. Sullivan
Maintenance Technician

Courtney R. Sutryk
Guest Services Associate

Robert V. Swidergal
*Hot Glass Cruise Ship
Demonstrator/Narrator*

Helen M. Tegeler
*Hot Glass Cruise Ship
Demonstrator/Narrator*

Jason M. Thayer
Lead Digital Media Technician

Kimberly A. Thompson
Media and Public Relations Manager

Timothy C. Thompson
*Information Technology Operations
Supervisor*

Jessica L. Trump
*Volunteer and Internship Program
Supervisor*

James M. Truxon
Lead Application Developer

Sheila A. Tshudy
*Cataloguing Specialist, Trade Catalogs
and Audiovisual Materials*

Jeremy I. Unterman
Facility Team Leader, The Studio

Richard J. Urban
Digital Asset Manager and Strategist

N. Astrid R. van Giffen
Associate Conservator

Jennifer VanEtten
Retail Coordinator

Randy T. Vargason
Information Technology Manager

Karen L. Vaughn
*Student and Instructor Services
Coordinator, The Studio*

Regina L. Wagner
*Guest and Member Relations
Manager*

Ling Wang
*Database Administrator/
Programmer Analyst*

Diane E. Webster
Guest Services Lead Studio Associate

Gladys M. West
*Make Your Own Glass Workshop
Manager, The Studio*

Christa R. Westbrook
Studio Assistant

Kathryn E. Wiczorek
Science Educator

Nicholas C. Wilson
*Retail and Guest Services Technical
Coordinator*

Violet J. Wilson
*Senior Administrative Assistant
to the Deputy Director*

Docents and Volunteers

The Museum's 78 docents led 2,472 tours in 2016 (a total of 3,836 hours).

Our docents, and their years of service to the Museum, are:

Laura Acuto, 4	Barbara Cooper, 11
Anita Adelsberg, 8	Martha Custer, 6
Jerry Altilio, 11	Kimberly Cutler, 8
Malinda Applebaum, 10	Lindy DiPietro, 4
Roger Bartholomew, 6	Richard Dreifuss, 4
Melissa Bauco, 11	Dee Eolin, 11
Elizabeth Berliner, 3	Nadine Farrell, 3
Karen Biesanz, 12	Pamela Fraboni, 3
Caroline Bismeyer, 3	Anne Galvin, 1
Andrea Bocko, 4	Nathalie Gollier, 11
Louise Bush, 8	Gretchen Halpert, 8
Catherine Caneau, 1	Thomas Hart, 15
Zung Sing Chang, 14	Kaori Heberle, 5
Sharon Colacino, 11	Brenda Hill, 1
Joseph Coletta, 6	Janis Hobbs-White, 10

Meg Horn, 4
William Horsfall, 14
Christine Hoyler, 6
David Kallenborn, 3
John Kohut, 12
Jean Krebs, 14
Eileen Kremer, 10
Jennifer Kuhn, 5
Barbara Kurcoba, 6
Pam Lally, 5
Richard LaVere, 1
Lenore Lewis, 18
Dennis Lockard, 11
Tricia Louiz, 9
Les Malcovitch, 3
Mary Margeson, 12
Edwin Marosek, 3
Sophie Mayolet, 8
Connie McCarrick, 11
James McCarthy, 4
William Mecum, 9
Sandra Mentuck, 3
Francine Murray, 9
Karen Navaie, 5
Nancy O'Loughlin, 3
Charles Paone, 1
Joanna Porreca, 1
Rebecca Potash, 3
William Powell, 12

Judith Prentice, 10
Thomas Reynolds, 8
Anna Rice, 18
Karen Rowe, 12
Betty Santandrea, 9
Gordon Shedd, 1
Gisela Smith, 13
Shao-Fung Sun, 11
Patricia Thiel, 24
Steve Tong, 13
Paul Topichak, 4
Edward Trexler, 14
Susan Weibel, 3
Elizabeth Whitehouse, 6
Penny Wilson, 1
Lynn Woodard, 4
Mary Young, 10
Yizhou Zhang, 6
Ravit Zinger, 1

Honorary Docents

Anne Darling
Charlie Ellis
Sherry Gehl
Mary Ellen Ivers
William Plummer
Lucille Richter
Florence Villa
Donald Walker

In 2016, our volunteers worked 8,711 hours as they served at special events and helped many Museum departments.

Volunteers in 2016 were:

Anita Adelsberg	Karen Biesanz	Betsy Carisetti	Martha Custer
Hilda Allington	Richard Biesanz	Devon Carnevale	Kimberly Cutler
Natalia Alonzo	Caroline Bismeyer	Florence Cecce	Bev Dates
Alternative School for Math and Science (ASMS, Corning, NY) Student Volunteers	Drew Blencowe	Karyn Cepek	Maran Davis
Michelle Anderson	Katelyn Blencowe	Yinghong Chen	Ethan Demuth
Leslie Antos	Mikaela Bock	Catlin Chissom	Marilyn Denson
Jordyn Masey Baker	Mary Ellen Brennan	Mirye Choi	Ashley Descartes
Rachel Francescon Barroso	Shirley Brzezinski	Mary Ellen Clarke	Elizabeth Dixon
Claudia Basabakwinshi	Nancy Burdick	Linda Clayman	Saranya Dorairajan
Griffin Bates	Louise Bush	Sharon Colacino	Kailee Drewno
Melissa Bauco	Margaret Butler	Darren Cole	Chandler Erway
Elizabeth Berliner	Tammie Cain	Marilyn Cristofaro	Charles Evans
	Chase Cameron	Lexus Cruz	Nancy Evans
	Claire Canale	Emily Curreri	Raymond Finger
	Catherine Caneau	Jeanette Currie	Barbara Fisher

Dale Fisher Sr.
Christine Forester
Milton French
Moirra French
Sherry Gehl
Regina George
Andrea Giganti
Rowan Ging
Susan Goodrich
Terri Grace
Mahala Hart
Virginia Hauff
Emily Hauryski
Sophia He
Carrie Heath
Marlene Heikkila
Emma Herbst
Brenda Hill
Jennifer Hill
Janis Hobbs-White
Barbara Hornick-Lockard
Jerry Hou
Dennis Jacob
Evan Jiang
Nicholas Jubilee
Ridhikasri Kannappan
Joanne Kim
Barbara Kish
Spencer Klubben
John Kohut
Darla Kosty
Marianne Kosty
Robert Kosty
Jean Krebs
Josie Kubrich
Staci Kuppe
June Laughlin
Allan Layman
KirraRikki Leary
Patrick LeBlanc
Sylvia Leonard
Erin Lindquist
Nina Listopadzki
Artyom Littrell
Robin Liu
Roger Liu
Tricia Louiz
Nayana Madhudi
Scott Magruder
Les Malcovitch
Olivia Marchionda
Mary Margeson

Ray Margeson
Nicholas Mattingly
Allora McEnroe
Valerie Mebert
Sandra Mentuck
Mildred Miles
Julie Miller
Elena Millett
Brigid Mountain
Nicholas Mucci
Petra Mullooly
Teresa Mullooly
Beene Ng'oma
Marge Nieber
Conrad Niedzielski
Michelle Nishimoto
Emily Niu
Sailor Ong
Devin Page
Matheu Palmer
Kavita Patil
Rich Peng
Janet Perdue
Connie Petro
Katherine Polakowski
Joanna Porreca
Rebecca Potash
Esha Prashar
Alexia Pratt
Lucas Pratt
Mitra Pratt
Judith Prentice
Erin Rafalowski
Suzanne Abrams Rebillard
Rachel Rebis
Meredith Rector
Sue Ellen Repine
Anna Rice
Victoria Riina
Luke Rondinaro
Betty Santandrea
Kacey Scheib
Sharon Scheyer
Grace Scouten
Steven Segal
Christine Sellers
Clayton Senkiw
Rose Senkiw
Barbara Serdula
Kim Seymour
Jing Shao
Indira Sharma

Benjamin Shaw
Jussi Sistonen-Lonnroth
Deborah Smith
Emily Smith
Gisela Smith
Jeffrey Smith
Keyden Snow
Stephanie Spry
Pat Starzec
Emily Stein
Ben Sterbenk
Sharron Stone
Laura Storms
Leah Storms
Brandon Sun
Shao-Fung Sun
Daniel Tarshus
Ben Terwilliger
Galla Theodosia
Nicholas Theurich
Stephen Thomas
Adesh Tiwari
Joseph Tobia
Monique Tovey
Sean Tovey
Erin Tucker
William Tucker
Shreya Upadhya
Prema Vaddi
Pooranhi Veluswamy
Lingyan Wang
Eileen Warren
Alexis Washburn

Dongqun Wei
Sue Weibel
Judy Whitbred
Marie Whittenhall
Dana Widmer-Quiel
Mishala Wilber
Amanda Williams
Sarah Woolaway
Ting-Hsuan Wu
Radha Wusirika
Jiaxiong Xu
Shuai Yuan
Yizhou Zhang
Ravit Zinger
Maclaine Zink

Docent and volunteer Les Malcovitch assists with a microscope activity at the Spring Break MakerSpace in the Museum's Education Lab.



Development and Membership

Development

Donor Support

The Corning Museum of Glass gratefully acknowledges the many donors, Members, foundations, and corporate contributors that supported its initiatives in 2016. Seventeen new individuals and couples joined the Museum's patron group, the Ennion Society, our leadership-level annual giving program. Society members donated \$350,000 to the 2016 campaign. Among the key benefits of joining the Ennion Society is that members' gifts bolster the Museum's collections of objects and glass-related resources. During 2016, a portion of the gifts given by members of the Society were directed to acquire a rare collection of 14 English cameo-carved scent bottles.

In June, Ennion Society members were invited to a dinner at the home of Dr. Jeffrey W. Evenson, chairman of the Museum's Board of Trustees, and his wife, Dr. Karyn L. Cepek, to honor a very special guest artist, Lino Tagliapietra. Lino provided pre-conference glassmaking demonstrations in the Amphitheater Hot Shop before the Glass Art Society's 45th annual conference, which was held in Corning.

William Gudenrath and Amy Schwartz led a group of Ennion Society members who traveled to Sweden and Denmark in September. The group met a number of well-known glassmakers and visited important museums and historical sites.

The annual dinner to recognize the financial support of Ennion Society members was held on October 13 in the Museum's Amphitheater.

Members of the Ennion Society traveled to Sweden and Denmark in 2016.



More than 200 members of the Society and guests attended this elegant event, which celebrated The Studio's 20th birthday. The featured speaker was Amy Schwartz, director of The Studio. The dinner was graciously hosted by Drs. Evenson and Cepek. The annual sale of glass objects at the dinner raised \$18,000 for The Studio's Scholarship and Residency Fund, and additional contributions of \$5,000 supported the transportation fund for Museum visits by area students.

In addition to the Ennion Society, the Museum has a very active group of Fellows, composed of recognized glass collectors, scholars, dealers, and glassmakers. Their membership dues support acquisitions for the Rakow Research Library. In 2016, the group contributed \$23,000 to the Fellows Fund and acquired two rare books for the library's collection.

Throughout the year, glass auctions on three Solstice-class ships raised \$297,000 in support of the Museum's Celebrity Cruises Glassmaking Scholarship Fund. In addition, a portion of Ennion Society members' donations and the Studio Holiday Open House weekend in December added to The Studio's Scholarship and Residency Fund. A total of \$414,000 was added to the Museum's glassmaking scholarship funds in 2016.

The Museum greatly appreciates the generosity of benefactors for glass and library acquisitions, exhibitions, education and Studio programs, and numerous special interests. We thank them all for their continued support.

Grants

Grants awarded in 2016 totaled \$556,000, thanks to continued financial support from many private foundations, trust funds, and federal and state granting agencies.

\$50,000 and Above

I Love NY, Market NY

New York State Waterways GlassBarge project: marketing plan

National Endowment for the Humanities
The Wider Scope: A Survey of Early Telescopes

New York State Canal Corporation

New York State Waterways GlassBarge project: GlassBarge equipment

New York State Council on the Arts (NYSCA)

New York State Waterways GlassBarge project: guest artist programs

\$10,000–\$49,999

William C. Anderson Study Group
Digitization of American brilliant-cut
glass materials
Allen Berk Foundation
Digitization of William Warmus Collection
The Dana Foundation
Studio Scholarship and Residency Fund,
Studio equipment and supplies
The Robert M. Minkoff Foundation Ltd.
Expanding Horizons Scholarship
New York State Council on the Arts
2017 general operating support
G & H Snyder Memorial Trust
Construction of a flexible prototyping space

Under \$10,000

Association of Science–Technology Centers,
Creativity Garden program
MakerSpace Spring Break Program
South Central Regional Library Council
Digitization of Chemung County Historical
Society’s Thatcher Glass archive
The Triangle Fund
The Studio’s glassblowing and framewor-
king program with the Corning–Painted Post
High School Learning Center
www.cga Inc.
Digitization of Carnival glass catalogs

During 2016, the Museum applied for grants to supplement the generous financial support of Corning Incorporated. The grants awarded, which are listed above, make unique programs and initiatives possible. The Museum is very grateful to the granting organizations for their continued endorsement and support.

Nancy J. Earley
Deputy Chief Operating Officer

❖ ❖ ❖

Membership

Members of The Corning Museum of Glass come from a great variety of locations around the globe. Our Members are a committed, enthusiastic group of individuals whose participation and generosity are essential to the Museum’s advancement and accomplishments.

In 2016, the Museum welcomed 1,174 new Members, bringing our total number of Members to 3,427. We renewed our membership in both the North American Reciprocal Museum

(NARM) Association and the Reciprocal Organization of Associated Museums (ROAM) for a second year. Word of our participation in these programs has spread, with 902 visitors taking advantage of complimentary admission, an increase of nearly 200 visitors over 2015.

The Museum presented a number of successful Member events in 2016. We celebrated the opening of two major exhibitions: “Fragile Legacy: The Marine Invertebrate Glass Models of Leopold and Rudolf Blaschka” and “Revealing the Invisible: The History of Glass and the Microscope.” Each of these exhibitions had a private Members-only preview as well as exclusive Members-only tours. We also hosted receptions for Members at the Donor level and above before lectures in the “Behind the Glass” series by the Rakow Commission artist Thaddeus Wolfe and the artists Mark Matthews and Yasuaki Kakehi. Another reception preceded a collaborative presentation by Marcie Davis, an importer and tour leader from Lauscha, Germany, and three members of the Corning Museum staff: Kelly Conway, curator of American glass; Regan Brumagen, senior librarian for reference services; and Eric Goldschmidt, frameworking and properties of glass supervisor. Members continued to take full advantage of the Members-only bar at each of our 2300° events while networking with fellow Members.

Throughout the year, Members enjoyed unlimited complimentary admission to the Museum. Other benefits included discounts in The Shops and Café, with an additional discount during May and December as part of our Members-only spring and holiday sales. Members also received a discount on tickets to see the Venetian glass maestro Lino Tagliapietra in a guest artist demonstration that preceded the annual Glass Art Society conference, which was held in Corning in June.

The Museum sincerely appreciates the support and commitment of all of our Members. We look forward to 2017, anticipating that the new year will be a time of prosperity and advancement as our Members assist us in fulfilling our mission to tell the world about glass through our world-class collections, exhibitions, and programming.

Regina L. Wagner
Guest and Member Relations Manager

Donors to the Museum

Donors to the Glass Collection

The generosity of 23 donors allowed the Museum to add 668 objects to the collection during the year.

James Asselstine and Bette Davis, Tyler Hill, PA

Wineglass in “Parisian” pattern. U.S., White Mills, PA, C. Dorflinger & Sons, designed by John S. O’Connor, about 1886–1910.

Willson and Susan Craigie, Richmond, VA

Sculpture, *Macbeth*. U.S., Corning, NY, Steuben Glass Inc., designed by Eric Hilton, engraved by Lubomir Richter, 1990.

Bette Davis, Tyler Hill, PA

See James Asselstine and Bette Davis.

The Thomas P. Dimitroff Family, Corning, NY

Mold for club “bon bon” dish #1526. U.S., probably New York City or Corning, NY, possibly Homer Brooke, about 1900–1920.

Automobile mascot. Possibly manufactured in the Czech Republic and retailed in the U.K., Manchester, England, by H. G. Ascher Ltd., about 1920–1929.

Wineglass in “Parisian” pattern, cased, blown, cut, applied. U.S., White Mills, PA, C. Dorflinger & Sons, designed by John S. O’Connor (b. Ireland, 1831–1916), about 1886–1910. H. 12.5 cm, D. 7.6 cm (2016.4.11). Gift of James Asselstine and Bette Davis.



Ennion Society of The Corning Museum of Glass, Corning, NY

Cameo scent bottle with fruit. U.K., Amblecote, England, Thomas Webb & Sons, probably gilded by Jules Barbe and engraved and painted by Fridolin Kretschman, about 1880–1890; silver possibly manufactured by John Goffe & Son, 1888.

Cameo scent bottle with swan and Christmas rose. U.K., Amblecote, England, Thomas Webb & Sons, probably gilded by Jules Barbe and engraved and painted by Fridolin Kretschman, about 1880–1890.

Pseudo-ivory scent bottle with floral decoration. U.K., Amblecote, England, Thomas Webb & Sons, possibly decorated by Fridolin Kretschman, about 1880–1890; silver manufactured in 1889.

Cameo scent bottle with flowers. U.K., Amblecote, England, Thomas Webb & Sons, about 1880–1900; silver manufactured by Arthur Willmore Pennington, 1886.

Cameo scent bottle with flowers. U.K., Amblecote, England, Thomas Webb & Sons, about 1880–1900; silver manufactured by Sampson Mordan & Co., 1879.

Cameo scent bottle with flowers, and cameo scent bottle with fuchsia flowers. U.K., Amblecote, England, Thomas Webb & Sons, about 1880–1900.

Cameo scent bottle with fruit. U.K., Amblecote, England, Thomas Webb & Sons, about 1880–1900; metal manufactured by Tiffany and Company.

Cameo scent bottle with globular flowers. U.K., Amblecote, England, Thomas Webb & Sons, about 1880–1900; silver manufactured by Jane Brownnett & Alexander Jones.

Cameo scent bottle with monkeys. U.K., Amblecote, England, Thomas Webb & Sons, possibly George Woodall, about 1880–1900.

Cameo scent bottle with plums. U.K., Amblecote, England, Thomas Webb & Sons, about 1880–1900; silver manufactured by C. C. May & Sons, 1904.

Cameo scent bottle with swan and dragonfly. U.K., Amblecote, England, Thomas Webb & Sons, carved by Harry A. Davies, about 1880–1900; silver manufactured in 1889.

Cameo scent bottle with tapestry decoration. U.K., Amblecote, England, Thomas Webb & Sons, about 1880–1900; gold manufactured by Tiffany and Company.

Cameo scent bottle with ivy, in original presentation box. U.K., Amblecote, England,

Thomas Webb & Sons, possibly Thomas Woodall or George Woodall, about 1888.

Ennion Society of The Corning Museum of Glass, Corning, NY (funds)

Sculpture, *Nocturne 5*. Czech Republic, Železný Brod, Karen LaMonte, 2015.

James R. and Maisie Houghton, Corning, NY

Desk set in “Etched Metal & Glass (E.M. & G.)” pattern. U.S., Corona, NY, probably Tiffany Glass and Decorating Company, possibly Tiffany Studios, probably 1899–1920.

Hatpin, *Feuille* (Leaf). France, possibly Wingen-sur-Moder, Clairefontaine, or Combs-la-Ville, Lalique et Cie, René Lalique, designed in 1912.

Bowl, *Anémones* (Anemones), and vase, *Crabes et algues* (Crabs and algae). France, Gabriel Argy-Rousseau, designed in 1920.

Bracelet, *Fleurettes* (Little flowers). France, Wingen-sur-Moder, Lalique et Cie, René Lalique, designed in 1922.

Three pendants, *Papillon* (Butterfly), *Conifère* (Conifer), and *Sorbier* (Service tree). France, Gabriel Argy-Rousseau, designed in 1924.

Bowl, *Coupe sur pied aux anses* (Bowl on foot with handles). France, Gabriel Argy-Rousseau, designed in 1927.

Sculpture from the “Cuneiform” series. U.S., Tulsa, OK, Kreg Kallenberger, 1983.

Sculpture, *Parcel Post*. U.S., Mount Vernon, OH, Doug Anderson, 1985.

Sculpture, *Standing Stone*. U.S., Stanwood, WA, William Morris, 1987.

Collar. Austria, Vienna, Jacqueline Irène Lillie, 1992.

Necklace. Austria, Vienna, Jacqueline Irène Lillie, about 1994.

Sculpture, *Madam De/Diana DePoitiers*. Czech Republic, Prague, Dana Zámečnicková, 2000.

Karl and Anna Koepke Endowment Fund, Kent, OH (funds)

Compote in “Tulip and Sawtooth” pattern. U.S., probably Cambridge, MA, New England Glass Company, 1850–1854.

Sugar bowl with cover. U.S., Brooklyn, NY, Brooklyn Flint Glass Works, cut by Joseph Stouvenel and Company, about 1851–1857.

Covered dish in “Tulip and Sawtooth” pattern. U.S., Pittsburgh, PA, Bryce, Richards & Company, about 1854–1870.



Ledvance LLC, Wellsboro, PA

Glass ribbon machine. U.S., Buffalo, NY, Keller Technology Corporation, 1998.

About 200 metal ribbon machine molds for light bulbs, ornaments, and tubes.

Bruce and Angela Meyer, Crofton, MD

Two imperial Russian goblets with monograms of Catherine II. Russia, probably St. Petersburg, St. Petersburg Glass Manufactory, 1762–1796.

Paul and Elmerina Parkman, Kensington, MD

Vase. U.S., Patricia Esch, 1968.

Vase. U.S., Burnsville, NC, William Bernstein, 1969.

Vase. U.S., Penland, NC, Mark Peiser, 1969.

Vase. U.S., Roland Jahn, 1970.

Vase. U.S., Joel Philip Myers, 1970.

Bottle (perfume or cologne) or decanter with stopper. U.S., Suellen Fowler, 1970–1974.

Untitled vase and vase, *Starfish*. U.S., Grand Rapids, OH, Dominick Labino, 1971.

Vase. U.S., George Thiewes, 1973.

Untitled vase and vase, *Multi Flora*. U.S., Charles Lotton, 1974.

Vase. U.S., Nancy Freeman, 1975.

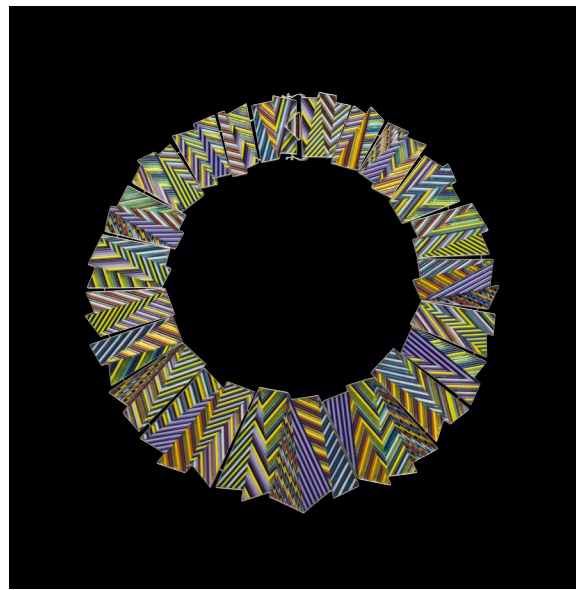
Vase. U.S., Nouveau Studios, Art Reed, 1975.

Bowl. U.S., Pauline Solven, 1976.

Perfume bottle with stopper. U.S., Maine, Robert Bartlett, 1976.

Two vases, *Spring Things* and *Conflagration*. U.S., Grand Rapids, OH, Dominick Labino, 1976.

Sculpture, Macbeth, cast glass, copper-wheel engraved; granite, felt; assembled. U.S., Corning, NY, Steuben Glass Inc., Eric Hilton (British, b. Scotland, 1937) and Lubomir Richter (b. Czechoslovakia, 1936), 1990. Overall: H. 28 cm, W. 40.5 cm (2016.4.43). Gift of Willson and Susan Craigie.



Vase, blown. U.S., Joel Philip Myers (American, b. 1934), 1970. H. 15.6 cm, D. 13.9 cm (2016.4.33). Gift of Paul and Elmerina Parkman.

Necklace, I Love Stripes, Bullseye glass, fused; 0.925 sterling silver; assembled. U.S., Chevy Chase, MD, Helene Safire (American, b. England, 1936), 2016. H. 1.3 cm, D. (closed) 26 cm (2016.4.8). Gift of the artist.

Vase. U.S., Kent F. Ipsen, 1976.
 Vase. U.S., Charles Lotton, 1976.
 Vase, *Blown Silver Schmaltz Ovoid*. U.S., Grand Rapids, OH, Dominick Labino, 1978.
 Vase, *Harlequin Vase*. U.S., Grand Rapids, OH, Dominick Labino, 1979.
 Plate. U.S., Illinois, Michael Higgins.
 Two plates, *Three Doves* and *K Motif*. U.S., West Nyack, NY, Maurice Heaton.

Richard A. Paselk, Bayside, CA

Duboscq colorimeter. U.S., Rochester, NY, Bausch & Lomb, 1870–1941.
 Gay-Lussac burette. U.S., New York State, Eimer & Amend, about 1900.
 Beckman pH meter. U.S., San Francisco, CA, Braun-Knecht-Heimann Co., about 1955.
 Hand refractometer. Germany, Carl Zeiss AG, about 1955.
 McCleod gauge. U.S., Scientific Glass Apparatus Co. Inc., about 1960.
 Iron spectral line standard for interpreting spectrograph data. Manufactured about 1960–1969.
 Beckmann differential thermometer in original packaging. Germany, made for the Brooklyn Thermometer Company Inc., about 1960–1970.
 Three-inch immersion thermometer in original packaging. U.S., Scientific Glass Apparatus Co. Inc., 1970–1999.
 Total-immersion thermometer in original packaging. U.S., Cenco, 1970–1999.

Total-immersion thermometer in original packaging. U.S., Chicago Surgical & Electrical Co., 1970–1999.

Two electrodes. U.S., Corning Glass Works, probably 1970–1989.

Two electrodes. Orion, probably 1970–1999.

Beckmann differential thermometer in original packaging. U.S., Scientific Glass Apparatus Co. Inc., about 1970–1979.

Precision refractometer. U.S., Bausch & Lomb, 1983.

Kurt A. Reed (in memory of his wife, Carol J. Reed), Lake Ariel, PA

Engraved finger bowl in “Jackson” pattern with White House seal. Probably retailed by Davis Collamore & Co., U.S., New York, NY, probably 1850.

Helene Safire, Chevy Chase, MD

Necklace, *I Love Stripes*. U.S., Chevy Chase, MD, Helene Safire, 2016.

The Science Museum, London, U.K.

Three hundred seventy-one pieces of chemical glassware. Primarily U.K. (England) and Germany, 1880–1980.

Shanghai Museum of Glass, Shanghai, People’s Republic of China

Calligraphy set and brush rest in original presentation boxes. People’s Republic of China, Shanghai, Wang Qin Studio, Wang Qin, probably 2015.

Marian L. Shatto, Lititz, PA

Listerine bottle in original packaging. U.S., Lititz, PA (mouthwash and packaging), Warner-Lambert Co., 1994.

Mark and Peni Weinstein, Ridgefield, CT

Gilded pair of metal and cut glass table candelabra. U.K., London, England, possibly John Blades, 1822–1829.

World Kitchen LLC, Charleroi, PA

Two-part mold for Pyrex custard cup. U.S., Charleroi, PA, World Kitchen LLC, 2001.

Mold for Pyrex measuring cup. U.S., Charleroi, PA, World Kitchen LLC, 2002.

Two molds for nine-inch by 13-inch Pyrex baking pans. U.S., Fort Wayne, IN, Industrial Engineering, 2007.

❖ ❖ ❖

Donors to the Rakow Research Library

Financial Donors

Anonymous

William C. Anderson Study Group, Northville, MI

Brea Barthel, Albany, NY

Allen Berk, Raleigh, NC

The Fellows of The Corning Museum of Glass, Corning, NY

Fidelity Charitable Gift Fund, Cincinnati, OH

Estate of Irene Hollister, Lebanon, NH

Dorothy Saxe, Menlo Park, CA (in memory of Marvin Lipofsky, for the Marvin Lipofsky Archive Fund)

South Central Regional Library Council, Ithaca, NY (The Regional Bibliographic Databases and Interlibrary Resource Sharing [RBDB] Program Project Grant)

www.cga Inc., Arlington, TX

Lenders of Materials

Chemung County Historical Society, Elmira, NY

Mr./Mrs. Jon P. Dorsey, Grand Rapids, MI

Mr./Mrs. Roderick E. Dorsey Jr., Colorado Springs, CO

Gertrude Marie Leuchs, St. Petersburg, FL

Toledo Museum of Art, Toledo, OH

Donors to the Library Collection

Accent Decor Inc., Norcross, GA

Ashok Agrawal, London, England, U.K.

American Craft Council, Minneapolis, MN

American Cut Glass Association, Elizabeth, CO

American Institute of the History of Pharmacy, University of Wisconsin, Madison, WI

The American Scientific Glassblowers Society, Machias, NY

David W. Anderson, Painted Post, NY

Arne Andersson, Sannan, Sweden

Antique Bottle Collectors of Colorado, Englewood, CO

Antique Glass Salt & Sugar Shaker Club, Ogunquit, ME

Anastassios Antonaras, Kalamaria, Greece

Art Museum of South Texas, Corpus Christi, TX

Artěl Glass, Prague, Czech Republic

Asahi Glass Company Ltd., Yokohama, Kanagawa, Japan

The Asahi Glass Foundation, Tokyo, Tokyo, Japan

Association des Amis du Musée de l’Ecole de Nancy (AAMEN), Nancy, France

Association for Glass Art Studies, Tokyo, Tokyo, Japan

Atelier Remy & Veenhuizen VOF, Utrecht, The Netherlands

Ateneo Veneto, Venice, Italy

Diane Atkerson, Paoli, PA

Elizabeth V. Barenthaler, Elmira, NY

S. A. Bendheim Ltd., Passaic, NJ

Adriano Berengo, Murano, Venice, Italy

Bibliothèque d’Art et d’Archéologie, Geneva, Switzerland

Frederick and Jean Birkhill, Pinckney, MI

Frederick and Jean Birkhill, Glass Art Society, Pinckney, MI

Pat Blair, American Cut Glass Association, Bernalillo, NM

H. Blairman and Sons Ltd., London, England, U.K.

Bobbecca Publishing Inc., Holmdel, NJ

Jean-François Boivin, address not provided

Marvin and Linda Bolt, Corning, NY

Lothar Böttcher, Pretoria, South Africa

Heike Brachlow, Harlow, England, U.K.

Robin Brailsford, Dulzura, CA

Colin Brain, Salisbury, England, U.K.

Ed Branson, Ashfield, MA

Bravo Integrated Media, Plymouth Meeting, PA

Steve Breuning, Oxford, MI

Brunk Auctions, Asheville, NC

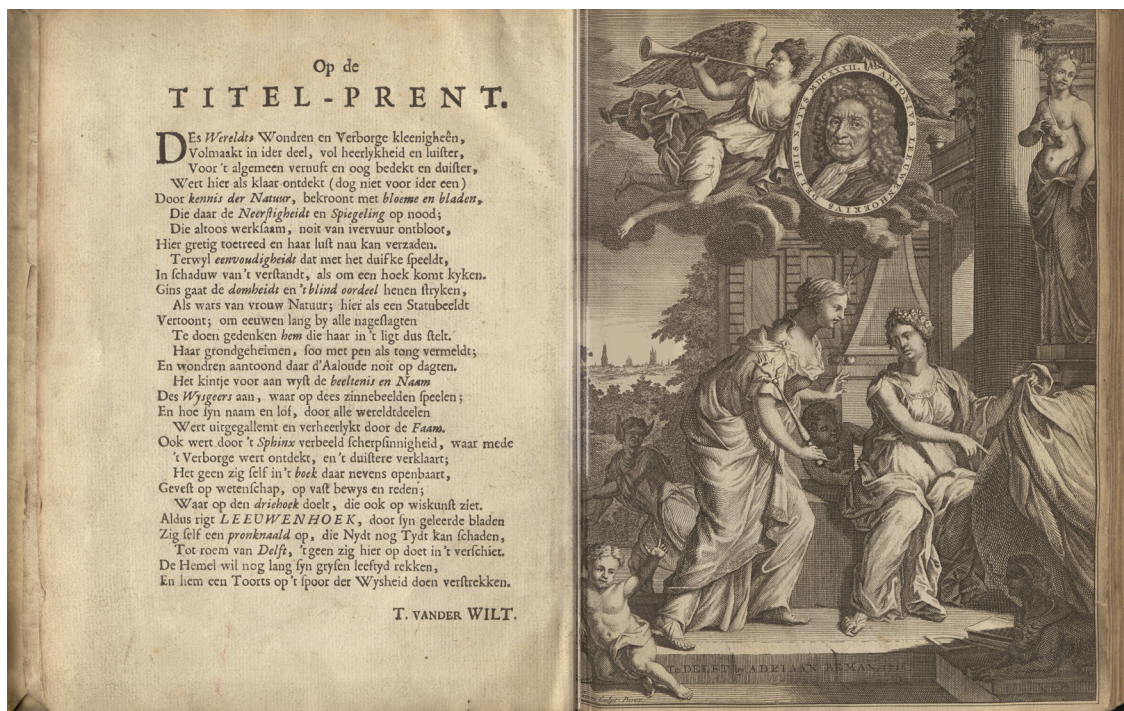
Dorothy Buenz, Newton, NJ

Bullseye Glass Company, Portland, OR

Louise Bush, Painted Post, NY

Jerry Catania, Benton Harbor, MI

CERFAV, Vannes-le-Châtel, France



Antoni van Leeuwenhoek (Dutch, 1632–1723), Send-brieven zoo aan . . . de Koninklyke societeit te Londen (Letters sent to The Royal Society of London), Delft: A. Beman, 1718. 460 pp., [31] plates, illustrations; includes 46 letters, written between 1712 and 1717. H. 21 cm (CMGL 165071).

Chihuly Workshop, Seattle, WA
 C.I.R.E.C.A., Domaine de Boisbuchet, Lessac, France
 Sharon Colacino, Painted Post, NY
 Katharine Coleman, London, England, U.K.
 Barrie Tait Collins, Bethany, CT
 Congregation Emanu-El of the City of New York, New York, NY
 Julie Conway, Seattle, WA
 Kelly A. Conway, Corning, NY
 J. W. Courter, Calvert City, KY
 Inês Coutinho, Caparica, Portugal
 Dar al-Athar al-Islamiyyah, Safat, Kuwait
 Robert Davis LLC, New York, NY
 Robert Deutsch, Old City of Jaffa, Israel
 Theodora Devereux, Durham, NC
 Thomas P. and Peetie Dimitroff, Corning, NY
 Mr./Mrs. Jon P. Dorsey, Grand Rapids, MI
 Mr./Mrs. Roderick E. Dorsey Jr., Colorado Springs, CO
 Bernard A. Drabeck, Shutesbury, MA
 Bandhu Scott Dunham, Prescott, AZ
 Ömür and Fatih Duruerk, Denizli, Turkey
 Edmund Optics Inc., Barrington, NJ
 Anna Eide, Elmira, NY
 Rachel Elliott, Glasgow, Scotland, U.K.
 Mr./Mrs. Max Erlacher, Campbell, NY
 Espace Verre, Montreal, QC, Canada
 Jeffrey S. Evans and Associates, Mount Crawford, VA

Fenton Art Glass Collectors of America Inc., Williamstown, WV
 Fire Mountain Gems and Beads, Grants Pass, OR
 Wesley Fleming, Ashfield, MA
 Florida State University Museum of Fine Arts, Tallahassee, FL
 Susanne K. Frantz, Paradise Valley, AZ
 Friends of Mount Hope Cemetery, Rochester, NY
 Gaffer Glass USA Ltd., Kent, WA
 Galerie bei der Albertina Zetter GmbH, Vienna, Austria
 Hannah Gason, Hackett, ACT, Australia
 Gemological Institute of America (GIA), Carlsbad, CA
 Georgia Southwestern State University, Department of Visual Arts, Americus, GA
 María Cristina Giménez Raurell, address not provided
 Justin Ginsberg, Arlington, TX
 The Glass Circle, Hythe, England, U.K.
 Lisa Goldberg, Corning, NY
 Nancy Gong, Rochester, NY
 Jeff Goodman, Glass Art Society, Burnsville, NC
 Zachary Gorell, Cleveland, OH
 Rick Grenda, Blackwood, NJ
 William Gudenrath, Corning, NY
 Habatat Galleries, Royal Oak, MI

Henry Halem, Kent, OH
 Scott Hansen, Stamford, CT
 Takao Hayasaka, Tokyo, Tokyo, Japan
 Haystack Mountain School of Crafts, Deer Isle, ME
 Norman C. Heckler & Co., Woodstock Valley, CT
 Heisey Club of California, Dana Point, CA
 Hershman Glass, Smithville, TN
 Brenda Hill, Lindley, NY
 Leslie Hindman Auctioneers, Chicago, IL
 Martin Hlubuček, Železný Brod, Czech Republic
 James R. and Maisie Houghton, Corning, NY
 Barbara Howe, Morgantown, WV
 Katrina Hude, Greenbank, WA
 Humler & Nolan, Cincinnati, OH
 Elizabeth Hylen, Painted Post, NY
 IndieMe Inc., Mooresville, NC
 The International Chinese Snuff Bottle Society, Baltimore, MD
 Dorothy-Lee Jones, Weston, MA
 James D. Julia Inc., Fairfield, ME
 Naoko Kato, Yokohama, Kanagawa, Japan
 Su-yeon Kim, Tempe, AZ
 Hannah Kirkpatrick, Norfolk, VA
 Kitazawa Museum of Art, Suwa, Nagano, Japan
 Kobe Shoin Women's University, Kobe, Hyogo, Japan
 Jan Kock, Højbjerg, Denmark
 Glenn Kohnke, Corning, NY
 John Kohut, Elkland, PA
 Stephen Koob, Corning, NY
 Korea Crafts & Design Foundation (KCDF), Seoul, Republic of Korea
 Barbara E. Krueger, Hartland, MI
 Greg Kucera Gallery Inc., Seattle, WA
 Lalique North America Inc., East Rutherford, NJ
 Dwight P. Lanmon, Phoenix, AZ
 Katherine Larson, Big Flats, NY
 Peter Layton, London, England, U.K.
 Georgette Lee, Rochester, NY
 Steven Leetch, Avon Lake, OH
 Louis Leloup, Neupré, Belgium
 Denise Stillwaggon Leone, Hamilton, NY
 Sid Lethbridge, Brights Cove, ON, Canada
 Family of Frederick Ludwick Leuchs, St. Petersburg, FL
 Christopher S. Lightfoot, New York, NY
 Lintex AB, Nybro, Sweden
 Marvin Lipofsky Studios, Berkeley, CA
 J. & L. Lobmeyr, Vienna, Austria
 Howard J. Lockwood, Fort Lee, NJ
 Alicia Lomné, Freeland, WA
 Tricia Louiz, Bradford, NY
 LWL-Industriemuseum, Westfälisches Landesmuseum für Industriekultur, Glashütte Gernheim, Petershagen, Germany
 Ray C. Margeson, Elmira, NY
 Maureen McCarthy, London, England, U.K.
 D. W. "Harv" McClelland, East Peoria, IL
 McMullen Museum of Art, Boston College, Brighton, MA
 James Measell, Marietta, OH
 J. William and Barbara Meek, Naples, FL
 Chris Mees, Burwash, England, U.K.
 Melrose International LLC, Quincy, IL
 Mary Cheek Mills, Burlington, NJ
 Carol Milne, Seattle, WA
 Ginat Wintermeyer Mirowski, Carmel, IN
 Moser, Karlovy Vary, Czech Republic
 Nick and Pauline Mount, Leabrook, SA, Australia
 Musée du Verre, Conches-en-Ouche, France
 Musée Lalique, Wingen-sur-Moder, France
 Museo Municipal de Arte en Vidrio de Alcorcón, Alcorcón, Spain
 Museu do Vidro da Marinha Grande, Marinha Grande, Portugal
 Museum of Antiquities, University of Saskatchewan, Saskatoon, SK, Canada
 Museum of Byzantine Culture, Thessaloniki, Greece
 Stefanie Nagel, Leipzig, Germany
 Yoshihiro Nakano, Fukuoka, Fukuoka, Japan
 National American Glass Club, Sandwich Chapter, Rockville, MD
 National Bottle Museum, Ballston Spa, NY
 National Duncan Glass Society, Washington, PA
 National Greentown Glass Association, Greentown, IN
 National Imperial Glass Collectors' Society Inc., Bellaire, OH
 National Toothpick Holder Collectors Society, Archer City, TX
 National Westmoreland Glass Collectors Club, Grapeville, PA
 Die Neue Sammlung, Munich, Germany
 Fredrik Nielsen, Stockholm, Sweden
 Orin Nisenson, Pelham, MA
 Charles G. and Mary Lammon Nitsche, Geneseo, NY
 Jonathan Oakleaf, Canton, CT
 Mike O'Brien, Corning, NY
 Anne Seymour Odden, Benton Harbor, MI
 Mica Okuno, Yokohama, Kanagawa, Japan
 Tina Oldknow, Silver City, NM

Yuka Otani, Hachioji, Tokyo, Japan
 Sharon Owens, Lafayette, IN
 Tanja Pak, Ljubljana, Slovenia
 Stéphane Palaude, Marchais, France
 Kathleen J. Palmer, Bernardsville, NJ
 Jonas Palmqvist, Karlskrona, Sweden
 Paperweight Collectors Association Inc.,
 Fairless Hills, PA
 Paul and Elmerina Parkman, Kensington, MD
 Lindsay R. Parrott, Long Island City, NY
 David Patchen, San Francisco, CA
 Tony Patti, address not provided
 Jacque Pavlosky, Askett, England, U.K.
 Natalie Z. Peters, Washington, DC
 Jens Pfeifer, Amsterdam, The Netherlands
 Philanthropy Roundtable, Washington, DC
 Phoenix Ancient Art S.A., Geneva, Switzerland
 Thomas J. Pick, Bethany, ON, Canada
 Pilchuck Glass School, Seattle, WA
 Dr./Mrs. António Pires de Matos, Lisbon,
 Portugal
 Robert and Lynn Ponton, The American Sci-
 entific Glassblowers Society, Machias, NY
 Sally Prasch, The American Scientific Glass-
 blowers Society, Montague, MA
 Richard Price, Big Flats, NY
 George Quinn, Gaithersburg, MD
 Rietumu Bankas labdarības fonds, Riga,
 Latvia
 The Rockwell Museum, Corning, NY
 Rona a.s., Lednické Rovne, Slovakia
 San Antonio Museum of Art, San Antonio, TX

*Notebooks from collec-
 tion of research files on
 various glass-related
 subjects, compiled
 by William Warmus
 (American, b. 1953),
 1971–2012 (CMGL
 150144). Gift of
 William Warmus.*



The Schein-Joseph International Museum of
 Ceramic Art, Alfred, NY
 Schott North America Inc., Elmsford, NY
 Dr. Bruno Schreiber, Aesch, Switzerland
 Alain and Lynn Schroeder, address not provided
 Gloria Schulman, Penland, NC
 Amy Schwartz, Corning, NY
 Arlene Palmer Schwind, Portland, ME
 Fred Scott, Odessa, NY
 Scottish Glass Society, Edinburgh, Scotland,
 U.K.
 Hedvika Sedláčková, Nymburk, Czech
 Republic
 Seeck Auctions, Mason City, IA
 Matteo Seguso, Murano, Venice, Italy
 Marc Selvaggio, Berkeley, CA
 Cathryn Shilling, London, England, U.K.
 Susie J. Silbert, Corning, NY
 Soprintendenza Archeologia, Belle Arti e
 Paesaggio per l'Area Metropolitana di
 Venezia e per le Province di Belluno,
 Padova e Treviso, Padua, Italy
 Spectrum Glass Company, Woodinville, WA
 Jane Shadel Spillman, State College, PA
 Stained Glass News, Newaygo, MI
 Paul J. Stankard, Mantua, NJ
 Le Stanze del Vetro, Venice, Italy
 Stein Collectors International, Oxford, MI
 Kimball M. Sterling Inc., Johnson City, TN
 Dr. Max Stewart, Wolverhampton, England,
 U.K.
 Stretch Glass Society, Sunbury, OH
 Studio 34 Creative Arts Center, Rochester, NY
 Lea Swantz Glass Design, Nuutajärvi,
 Finland
 Caroline Swash, London, England, U.K.
 T&K Glass, Theodore, AL
 Tesseract, Hastings-on-Hudson, NY
 The Louis Comfort Tiffany Foundation,
 New York, NY
 Toms River Branch of the Ocean County
 Library, Toms River, NJ
 Cristina Tonini, Milan, Italy
 Toyama City Institute of Glass Art, Toyama,
 Toyama, Japan
 Traver Gallery, Seattle, WA
 Treasures for Little Children, Kilbourne, IL
 Claudia Trimbur-Pagel, Lambersart, France
 Nick Troubetzkoy, Soufrière, Saint Lucia
 Judy Tuwaletstwiwa, Galisteo, NM
 Durk Valkema and Anna Carlgen, Amsterdam,
 The Netherlands
 Verabane, Paris, France
 Jen Violette, Wilmington, VT
 Walter Vogdes, Bainbridge Island, WA

Ann P. Wählström, Stockholm, Sweden
 Mary Lu Walker, Corning, NY
 Kasia Wantuch-Jarkiewicz and Prof. Henryk Stoksik, Wrocław, Poland
 William Warmus and Patricia Driscoll, Ithaca, NY
 Zachary Weinberg, address not provided
 Henry F. Weiss, Plano, TX
 Wet Dog Glass, Star, NC
 Kris Wetterlund, Corning, NY
 Judy Whitbred, Campbell, NY
 Mary Bayard White, Berkeley, CA
 Karol and Steven Wight, Corning, NY
 Windham Historical Society, Windham, ME
 Winterthur Library, Winterthur Museum, Garden & Library, Winterthur, DE
 Dr. Edward D. Wolf, Trumansburg, NY
 Woody Auction, Douglass, KS
 William Worcester and Sally Worcester, Kula, HI
 The Worshipful Company of Grocers, London, England, U.K.
 Jerry and Virginia Wright, Corning, NY
 Sha Wu, Shanghai, People's Republic of China
 Jay Okun Yedvab, Toronto, ON, Canada

❖ ❖ ❖

Donors to The Studio

We thank the foundations, individuals, and companies that made generous donations of funds and materials to The Studio's programs in 2016.

Anonymous
 ABR Imagery, Bloomington, IN
 Acorn Hill Foundation Inc., Marian Burke and Russell E. Burke III, New York, NY
 Pat Arnold and Dennis McCloud, Alexandria, VA
 James Asselstine, Tyler Hill, PA
 Association of Israel's Decorative Arts, Palm Beach, FL
 Rhonda Baker, Williamston, MI*
 F. Ross Birkhill and Laura Jean Birkhill, Bloomfield Hills, MI
 Julia G. Brown, La Mesa, CA
 Bullseye Glass Company, Portland, OR
 Jeremy and Angela Burdge, Hilliard, OH
 Debora Coombs, Readsboro, VT
 Corning Incorporated Foundation, Corning, NY
 Creative Ceramics Kft., Sopron, Hungary
 Sue and Rob Elgar, Plainfield, IL



The flameworker Simone Crestani shapes an octopus made from borosilicate glass.

Guest artist Jeff Ballard forms the neck of a blown vessel.

Alan Eusden, Big Flats, NY
 Sally Fairfax, Berkeley, CA
 James B. Flaws and Marcia D. Weber, Painted Post, NY
 Jane and Terry Francescon, Moline, IL
 Beth Gehr, New Holland, PA
 Scott Glaesemann, Corning, NY
 Golden Gate Glassworks LLC, Eugene, OR
 Mr./Mrs. Kirk Gregg, Corning, NY

Alberto Greselin, Les Cèdres, QC, Canada
 Jennifer Halvorson, Noblesville, IN
 J. G. Harrington, Alexandria, VA
 Rodney Hickman, Hillsboro, OR
 His Glassworks Inc., Asheville, NC
 James D. Houghton, Boston, MA
 Harry Hunnell, Cleveland, TN
 Drs. Allan Jaworski and Deborah Winn, Silver
 Spring, MD
 Robin Lehman, Rochester, NY
 Mary McEachern, Rockville, MD
 The Meshberg Foundation, Baltimore, MD
 Robert Minkoff, Potomac, MD
 Ginat Wintermeyer Mirowski, Carmel, IN
 Imran Mukhtar, Corning, NY
 Ann Nicholson, Painted Post, NY
 Charles G. and Mary Lammon Nitsche,
 Geneseo, NY
 Northstar Glassworks, Portland, OR
 Mike Pambianchi, Corning, NY
 Paperweight Collectors Association of Texas,
 Austin, TX
 Jim Pearce, Arkport, NY
 David Porter, East Lansing, MI*
 Jacob Price, Evanston, IL+
 Richard and Sheila Price, Big Flats, NY
 (in honor of William Gudenrath)
 Jim Rideout and Diane Murray, Hickory, NC
 Phillip Rogerson and Lisa Francesca-Rogerson,
 Rochester, NY
 Mark Rogus, Corning, NY
 Edward F. Rover, President, The Dana Founda-
 tion, New York, NY
 Dr. Susan W. Schwartz, State College, PA
 (for the Silver Trout Fund)
 Terri Sigler, Asheville, NC
 Josh Simpson, Shelburne Falls, MA
 Mr./Mrs. Richard Sphon, Painted Post, NY
 Tracy Lyn Stauffer, Richmond, VA +
 Arlie Sulka, Lillian Nassau LLC, New York,
 NY
 Michael Taylor, Rochester, NY
 David Harrison Tiller, Norman, OK
 Trautman Art Glass, Wilsonville, OR
 The Triangle Fund, Corning, NY
 Richard Vezza, Berkeley Heights, NJ
 Jeff Waterhouse, Whitehall, PA
 Jay Okun Yedvab, Toronto, ON, Canada
 Nobuyasu Yoshida, Kobe, Hyogo, Japan
 Paula Zellner, Fayetteville, NC
 Toots Zynsky, Providence, RI

* For the David Whitehouse Studio Scholarship Fund

+ For the Elio Quarisa Scholarship Fund

❖ ❖ ❖

Gifts in Kind

Special thanks to the businesses and individuals that provided goods, services, and gifts of time and talent to the Museum in 2016.

Christine Adams, Corning, NY
 All Saints Academy, Corning, NY
 Alternative School for Math and Science,
 Corning, NY
 Atwater Estate Vineyards, Hector, NY
 Birdland Brewing Company, Horseheads, NY
 Bluestone Brewing Company, South Waverly,
 PA
 Bottomless Brewing, Geneva, NY
 The Brewery of Broken Dreams, Hammonds-
 port, NY
 Brick House Brewery, Corning, NY
 Kathy Broderick, Corning, NY
 Wendy Brubaker, Corning, NY
 Frederick Carder Elementary School, Corning,
 NY
 Casa Larga Vineyards, Fairport, NY
 Castel Grisch, Watkins Glen, NY
 Chateau LaFayette Reneau, Hector, NY
 Chemung Valley Montessori School, Elmira,
 NY
 Climbing Bines Hop Farm & Craft Ale
 Company, Penn Yan, NY
 Corning Christian Academy, Corning, NY
 Corning Gaffer District, Corning, NY
 Corning–Painted Post High School, Corning,
 NY
 Corning–Painted Post Middle School, Painted
 Post, NY
 Dr. Frank’s Vinifera Wine Cellars, Hammonds-
 port, NY
 Erwin Valley Elementary School, Painted Post,
 NY
 Shawn Farwell, Corning, NY
 Finger Lakes Beer Company, Hammondsport,
 NY
 Fox Run Vineyards, Penn Yan, NY
 Fulkerson Winery, Dundee, NY
 Jesse Gardner, West End Gallery, Corning, NY
 Paula Gilboy, Corning, NY
 Glenora Wine Cellars Inc., Dundee, NY
 Maria Goldwyn, Painted Post, NY
 Grist Iron Brewing Company, Burdett, NY
 Hazlitt 1852 Vineyards, Hector, NY
 Hector Wine Company, Hector, NY
 Heron Hill Winery, Hammondsport, NY
 Hickory Hollow Wine Cellars, Dundee, NY

Sharron Holland, Watkins Glen, NY
 James Horton, Painted Post, NY
 Hosmer Winery, Ovid, NY
 Idol Ridge Winery, Lodi, NY
 Iron Flamingo Brewery, Corning, NY
 Joni Kehoe, Corning, NY
 King Ferry Winery, King Ferry, NY
 Knapp Winery and Vineyard, Romulus, NY
 Lakewood Vineyards, Watkins Glen, NY
 Julianna Lindquist, Corning Christian Academy, Corning, NY
 Jeff Mack, Corning, NY
 Emily Masteller, Corning, NY
 McGregor Vineyard, Dundee, NY
 Katherine Miller, Corning, NY
 Montezuma Winery, Seneca Falls, NY
 Tiffany Palmer, Corning–Painted Post High School, Corning, NY
 Brad Patocka, Corning, NY
 Rick Pirozollo, Arnot Art Museum, Elmira, NY
 PTA Reflections Program, Corning, NY
 Connie and Josh Randall, Painted Post, NY
 Ravines Wine Cellars, Geneva, NY
 Rooster Fish Brewing, Watkins Glen, NY
 Lisa Rossi-Sullivan, Corning, NY
 Seneca Lake Brewing Company, Rock Stream, NY
 Seneca Lodge, Watkins Glen, NY
 William E. Severn Elementary School, Corning, NY
 Chris Sharkey, Corning, NY
 Calvin U. Smith Elementary School, Painted Post, NY
 Standing Stone Vineyards, Hector, NY
 Steuben Brewing Company, Hammondsport, NY
 Teresa Telehany, Painted Post, NY
 Keenan Tolbert, Corning, NY
 David Tremaine, Corning, NY
 Bridget Bossart Van Otterloo, 171 Cedar Arts Center, Corning, NY
 Wagner Valley Brewing Company, Lodi, NY
 Wagner Vineyards, Lodi, NY
 War Horse Brewing Company, Geneva, NY
 Winfield Elementary School, Corning, NY
 Birgitt Wolf-King, Painted Post, NY
 Megan Wukovitz, Corning, NY
 Chelsea Xidis, Corning, NY

❖ ❖ ❖

Donors to Museum Funds

The Corning Museum of Glass gratefully acknowledges individuals and organizations

that made substantial financial gifts to enhance its collections, and to support programs and activities in 2016. Complete lists of donors to the glass collection, the Rakow Research Library, The Studio, and the Museum’s many programs and activities will be found on pages 46–55.

Ennion Society

Lifetime Members

The Ben W. Heineman Sr. Family
 Stanford and Elaine Steppa

Directors Circle (\$25,000 and above)

Marian Burke and Russell E. Burke III
 James B. Flaws and Marcia D. Weber
 Ron Meshberg

Curators Circle (\$10,000–\$24,999)

Louise M. Erskine
 Roy and Myra Gordon
 E. Marie McKee and Robert Cole Jr.*
 Robert Minkoff
 J. Douglas and Patricia Perry
 Helene Safire
 Wendell P. Weeks and Kim Frock Weeks

Sustainers Circle (\$5,000–\$9,999)

James K. Asselstine and Bette J. Davis
 David C. Burger
 Alan and Lynette Eusden
 Drs. Jeffrey W. Evenson and Karyn L. Cepek

Chromatophotometer in original box, brass, quartz, glass (chromatophotometer) and wood, leather, velvet, satin (box); assembled. France, Paris, Lucien Giroux (French, dates unknown), about 1895. Chromatophotometer: H. 7.3 cm, W. 20.4 cm; box: H. 7.5 cm, W. 22.1 cm (2016.8.8).



James D. Houghton and Connie B. Coburn
James R. and Maisie Houghton
Mr./Mrs. Carl H. Pforzheimer III
Richard and Judy Sphon
Peter and Cathy Volanakis
Toots Zynsky and Ernesto Aparicio

Collectors Circle (\$2,500–\$4,999)

Mr./Mrs. Roger G. Ackerman
Bob and Brenda Brown
Jeremy and Angela Burdge
Dr. Polly W. Chu and Dr. William Mattingly*
Jeremy and Marci Cohen
Pippa Cohen
Tony and Moira Cohen
Charles R. and Trudy Craig
Dr. Charles and the Rev. Virginia G. Deneka
Mr./Mrs. David Dowler
Mr./Mrs. Eric D. Elder*
Sue and Rob Elgar
Olivia and Harlan Fischer
Kirk and Penelope Gregg
Drs. Allan Jaworski and Deborah M. Winn
David A. Kaplan and Glenn A. Ostergaard
Xavier Lafosse and Thérèse Arliguie*
Robin Levin
Mr./Mrs. David A. Lubin
Margaret M. MacAvoy
Dr. Douglas C. McCorkle and Dr. Lynn Harris-McCorkle
David and Susan Morse
Mr./Mrs. Imran Mukhtar*
Ann H. S. and Barry Nicholson
Phil Rogerson and Lisa Francesca-Rogerson
Mark and Kay Rogus*
Welmoet and Daniel Van Kammen*
Karol and Steven Wight

Members (\$1,200–\$2,499)

John and Carole Allaire
Lisa and Dudley Anderson
Thomas and Ulrike Appelt*
Pat Arnold and Dennis McCloud
Kate and Ric Asbeck
Gail O. and Elijah Baity
Richard and Carolyn Barry
John and Gwynne Bayne
Mr./Mrs. Mike Belkin
Ronald and Gail Bellohusen
Thomas E. and Barbara Blumer
Michael B. Bono
Mr./Mrs. Thomas Buckles
Mr./Mrs. Michael J. Burns III*
Tom and Lisa Capek

Cheryl Capps and Brian Stoyer
Mr./Mrs. Gilbert C. Chorosz
Eleanor T. Cicerchi
James and Doreen Clappin
Mary and Jack Cleland
Sarah and Daniel Collins
Elisabeth Corveleyn and Thomas E. Reilly
Kimberly and Willard Cutler
C. Matthew and Elizabeth Dann
Patricia T. Dann
Kenneth C. Depew
Thomas P. and Peetie Dimitroff
Jay and Micki Doros
Dr. Kate Douglas and Paul Douglas*
Drs. Walter and Karen Douglas
Joe P. and Mary K. Dubendorfer
William Eggers and Deborah McLean
Dr./Mrs. Adam J. Ellison
Christopher T. G. Fish
John P. Fox
Jane and Terry Francescon
Melissa J. Gambol
Elinor † and Willard Geller
Jere Gibber and J. G. Harrington
Robert and Patricia Gilchrist
Virginia and Martin Gold
Carol and Joseph Green
Mr./Mrs. Steven J. Harrold
Vincent and Anne Hatton
Denise A. Hauselt
Douglas and Katya Heller
Mr./Mrs. Thomas Hinman
The Honorable Amory Houghton Jr.
Scott and Susie Jacobson
Sir Mark Jones and Dr. Camilla Toulmin
Kimberly and James Kaffenbarger
Sharon Karmazin and David Greene
Grace and Christopher Kelly
John L. Kirkman
Michael Kovacek
Dr. David Landau and Marie-Rose Kahane
Mark and Beth Landin
Jon and Judith Liebman
Mr./Mrs. Doron Livnat
Howard Lockwood and Margaret Best
Joan Lunney and William Idler
Nonnie and Kostas Lyketsos
Jean-Pierre and Laurette Mazeau
Mary E. McEachern
Peter L. Meltzer
Dr. Gregory A. Merkel*
Ginat Wintermeyer Mirowski
Mike and Frances Mohr
Victoria and Stephen Morris
Mr./Mrs. Eric S. Musser

Mr./Mrs. David Naylor*
 Tina Oldknow and Peter Herzberg
 Richard A. O’Leary
 Fran and Mary Helen Olmstead
 Christine and Michael Pambianchi
 Paul and Elmerina Parkman
 The Rev. James R. Pearce
 Prof. John V. B. Perry
 Richard and Joan Randles
 Douglas and Shirley Reed
 James A. Rideout and Diane Murray*
 Christina Rifkin
 Myrna Ross
 Fabio and Brittany Salgado
 Dorothy Saxe
 Jim Schantz and Kim Saul
 Pamela Schneider
 James and Susan Schuppert
 Dr. Susan W. Schwartz
 John and Christine Sharkey*
 Josh Simpson and Cady Coleman
 John C. and Bonnie A. Sirianni
 Tom Snow and Karen Meriwether
 Arlie Sulka and Andrew Freedman
 Kristin and Charles Swain
 Mary Ann and Anthony Terranova
 Mr./Mrs. G. Thomas Tranter Jr.
 Mary and Tony Tripeny
 Deborah Truitt
 Gary and Margaret Wendlandt
 Elizabeth Whitehouse
 The Honorable Robert Whiting
 and Mrs. Audrey J. Randall Whiting
 Tony and Ann Wimpfheimer
 Jay Okun Yedvab and Carol Chorich
 Carol Yorke and Gerard Conn
 Marianne W. and James D. Young
 Mr./Mrs. Rainer Zietz

Donors Supporting Special Projects

Financial gifts from private foundations, corporations, matching gift programs, and other friends of the Museum continue to contribute to the Museum’s ever-expanding educational programs and special projects.

Other Contributors (above \$100)

Anonymous
 Rhonda Baker
 Frederick and Jean Birkhill
 Michaela Boruta
 Carol Donofrio
 Mr./Mrs. Robert Duke
 Sally Fairfax
 Beth Gehr

G. Scott and Sharon Glaesemann
 Eileen Hartmann
 James and Alison Haskins
 David J. and Patricia McConnell
 Charles G. and Mary Lammon Nitsche
 Tom Oreck
 Marilyn Patti
 David Porter
 Jacob D. Price
 Richard and Sheila Price
 Richard E. Rahill
 Dr. Latcia Stauffer
 David Harrison Tiller
 Kenneth R. Treis
 Kris Wetterlund

**Foundations, Trusts, Corporations,
 and Other Organizations (\$100 and above)**

Acorn Hill Foundation Inc.
 William C. Anderson Study Group
 Association of Israel’s Decorative Arts
 Association of Science–Technology Centers
 Allen Berk Foundation
 F. Ross Birkhill and Laura Jean Birkhill
 Family Foundation
 Jeffrey J. and Mary E. Burdge Charitable
 Trust
 Cameros Family Lead Trust
 The Carbetz Foundation Inc.
 Celebrity Cruises Inc.
 Charities Aid Foundation
 The Cleveland Foundation
 Community Foundation of Elmira–Corning
 and the Finger Lakes Inc.
 Corning Incorporated
 The Grace K. Culbertson Charitable Lead
 Trust
 The Dana Foundation
 Dartmouth College
 Empire State Development
 Estate of Irene Hollister
 Fidelity Charitable Gift Fund
 Glass Alliance – New Mexico
 Anna and Karl Koepke Foundation
 Market Street Trust Company
 The Meshberg Foundation
 The Robert M. Minkoff Foundation Ltd.
 National Endowment for the Humanities
 New York State Canal Corporation
 New York State Council on the Arts
 Paperweight Collectors Association of
 Texas Inc.
 Resnicow Schroeder Associates
 Ruth & Jerome A. Siegel Foundation
 G & H Snyder Memorial Trust

South Central Regional Library Council
The Triangle Fund
The Twin Tiers Glass Collectors Group
UBS Donor Advised Fund
Vitreus Foundation
Wineglass Marathon
www.cga Inc.

Corporate Matching Gift Donors

Corning Incorporated Foundation
Duke Energy Foundation
IBM Corporation
Johnson & Johnson Family of Companies

Honorariums

The Museum is privileged to recognize gifts made in tribute to someone admired, respected, or remembered in a special way.

Gifts in Memoriam

Andrea Bronfman
Association of Israel's Decorative Arts
Jeremy and Marci Cohen
Pippa Cohen
Tony and Moira Cohen

David Dorsi
Carol Donofrio

Frances Fox
John Fox

Jiří Harcuba
Charles G. and Mary Lammon Nitsche

Clarinda Kirkman
John L. Kirkman

Marvin Lipofsky
Dorothy Saxe

Harry M. Lowell
Mary and Jack Cleland

Thomas C. MacAvoy
Margaret M. MacAvoy
Vitreus Foundation

Elio Quarisa
Dr. Laticia Stauffer
Jacob D. Price

David Whitehouse
Rhonda Baker
David Porter

Gifts in Tribute

Glen Cook
Glass Alliance – New Mexico

Corning Museum of Glass Staff
E. Marie McKee and Robert Cole Jr.

William Gudenrath
Richard and Sheila Price

The Honorable Amory Houghton Jr.
Mr./Mrs. Robert Duke

Amy Schwartz
Fidelity Charitable Gift Fund
Kirk and Penelope Gregg

Amy Schwartz and William Gudenrath
and The Studio's 20th Anniversary
Ronald and Gail Bellohusen
James B. Flaws and Marcia D. Weber

Karol Wight
Dorothy Saxe

* Gift matched by a corporate/other matching gift
† Deceased



The Corning Museum of Glass gratefully recognizes individuals and organizations that have joined at Contributing Membership levels (\$125 and above).

Corporate

Corning Incorporated

Association

Carder Steuben Club Inc.

Library

George F. Johnson Memorial Library,
Endicott, NY

Penfield Public Library, Penfield, NY

Southeast Steuben County Library,
Corning, NY

Spalding Memorial Library, Athens, PA
Spencer Library, Spencer, NY

Patron (\$500–\$1,199)

Barbara Abeles

Beth and Abbott S. Barclay

Leroy and Anne Marie Boatwright

Mary Laub Cowan

Mr./Mrs. W. Wallace Dyer Jr.

Sandra Harris and Monte Becker

Dr. Dawn R. Howell

Linda and Gerald Nordberg

Patricia L. Schucker

John Thoman and Lee Venolia

John M. Ulrich and Lynn A. Pifer

Tim and Paddy Welles

Supporting (\$250–\$499)

Robert Craig Attig and Mary Sinclair
Attig

Roberta Auerbach

Lee F. Baldwin

David Bliss

Cynthia and Frederick Bloom

Geraldine R. and Daniel E. Britton

Debbie Brodsky

Frank G. and Lynne A. Bunke

Sven Carlsson

Fred and Gail Coveler

Susan and Willson Craigie

Martha Custer and David Schissel

Lee DeBrish and Marline Riehle

Judith H. and Thomas Dwyer

Michael and Susan Eisner

Karen Epstein and Linda Cole

Jeff and Beverley Evans

Dr./Mrs. Richard Fastiggi

Leslie and John Ford

David Fuchshuber

Dr. Anthony E. Gerbasi

David Granish

Audrey Handler and John Martner

Sandra L. Helton and Norman M. Edelson

Gene Herber

Mark and Sarah Holford

Michael Horan and Jeremy Brumbaugh

Barbara A. Johnson and Carrie Johnson

Charles Kaliski and James Tsugawa

Mr./Mrs. Marcus E. Kantz

Jerry and Sally Kersting

Richard Lehman

Adele and Leonard Leight

Anne K. Lindenfeld

Kevin and Michele Mannella

Drs. William and Phyllis Martin

Bruce McKay

H. Barbara Nunan

Richard E. Rahill

Peggy Steffel

James Summar Sr. and Becky Summar

Teresa Tkacik and Edward Kern

Charles and Bonnie Tyo

Jim and Linda Varner

Ron and Erica Verkleeren*

Brent and Susan Wedding

Evalyn A. Wilkes

Darryl M. Wood and Helene T. Wollin

Mr./Mrs. Dennis Younge

Donor (\$125–\$249)

Robin Abaya and James Petras

Don and Kay Adams

Djusmin Adi and Albert Jones

Dr./Mrs. Richard Ahola

Kathleen D. and Dennis L. Albrecht

Keith and Lois Allen

Kirk and Denise Allen

Marc Alpert

Kathryn Anastasio and William Groome

Edward Andrewlavage and Madonna

Cornelissen

Drs. Alan Angell and Beth Dollinger

G Anisuzzaman and Salma Swaty

Thomas Antonovich-Treiman

Diane Araki and Leigh Howell

Tedd and Carol Arnold

Carl and Karen Atkinson

Barbara and Thomas Babonis

Anna and Martin Baker

Leslie Baker

Elzbieta Bakowska and Pawel Bakowski

Mr./Mrs. Sam Balash Jr.

Rachel Barbour and Tom McConnell

Museum Contributing Members

James S. and Beth M. Barnes
 Michael F. Barrett
 Allison and Brock Barry
 Karen Baumgartner
 Floyd Beatty
 Jan Bell and Melinda Clark
 Selina Bendoock and Kevin Flynn
 David M. Berg and Dawn Riedy
 Harvey and Janice Berger
 Linda Bergstrom and James Keenly
 Vicki and Michael Bernard
 Stanley and Sarah Bhasker
 Klaus Biemann †
 Joshua Bishop and Maia Ambegaokar
 Sarah E. Blagg and Glenn Bracegirdle
 Thomas and Andrea Blumenthal
 Andrew Boatman
 Paul and Sarah Bookbinder
 Megan Booth and Jeremy Bittel
 Sandra Borgardt
 Dirck and Lee Born
 Adrian and Debbi Brandau
 Dave Braun
 Edwin and Carol Braunstein
 Sue Braunstein and Nancy Miller
 Lynwood and Janyce Brawn
 Ross Bremer and Karen Perrin-Bremer
 Fay S. and Phelan A. Bright
 Alisa Brown
 Rachel H. Brumberg

Cynthia and Stephen Brylinsky
 Mr./Mrs. Sean I. Burns
 Sheila L. Butler and Anthony E. Jones
 Steven M. and Lisa A. Byers
 Steven R. Campbell and Noreen Mitchell
 Robert and Mary Carlson
 Marie and Tom Caroscio
 Dorothy Carpenter
 Karl Carter and Cooper Robb
 Roger and Pauline Cary
 Jolanda Chesonis and Roma Chesonis
 Joyce and Jim Chizick
 Bill and Paige Christian
 Miles Cigolle and Abe Chernela
 Joseph and Lauren Coffee
 Alan Cohen and Nancy Bloom
 Marianne Cohn
 Marie H. Cole
 Dr. Robert E. and Jo Ann Cole
 Timothy Coleman and Judith Smith-Coleman
 Ian Collier and Barbara Wetherington
 George and Barbara Connors
 Christine D. Conti-Collins and Daniel Collins
 Margaret Corbit and Wesley Blauvelt
 Christopher and Glenda Cornett
 John and Mary Jane Crane
 Radha Crawford
 Sarah and Tom Creath
 William A. and Elizabeth O. Crowley
 Carl and Susan Cuipyllo
 Nathalie Cunningham and Ann Saydlowski
 Martin J. and Susan Curran
 Leszek Czarnota and Maria J. Kucz-
 Czarnota
 Lisa Czejdo and Henry Zawistoski
 Michele D'Amico
 Robert and Jayne Dane
 Ian Danic and Chris Arnett
 Janet and Herbert Dann
 Joe and Judy Darweesh
 Laura and Laurence Davis
 Megan and Christian DeLamielleure
 DeAnna Deneen and Dan Kane
 Leonard DiGiovanna and Jana Wachslar
 Dustin Dixon and Jacob Reagan
 Dr./Mrs. Donald R. Dolan Jr.
 Debra Domack and Clare Greiner
 Robin Dowden and Michele Tobin
 Laney Doyle
 Bruce and Diane Drake
 Marie Droege and Cecelia Weeks
 Nirbhay and Samta Dugad
 Jean and Richard Dulude
 Lorraine and Paul Duncan
 Sharon M. and Edward Dunscombe

Design for conservatory fountain for the residence of Mrs. Josefina de Mesa in Havana, Cuba. U.S., New York, NY, Tiffany Studios, about 1916. Watercolor, gouache, and graphite on board. H. 48 cm, W. 68 cm (CMGL 164710).



Ernie Dusablon
 Carrie and Donald Dworek
 Mr./Mrs. Robert L. Ecklin
 Anna Eide and Karianna Eide-Lindsay
 Carl and Susan Eisdorfer
 Paul and Lori Engle
 Alicia Jo English and Cody Dylan Palmer
 Eugene D. Eppen and Joan Cole Eppen
 Stanley and Rhoda Epstein
 Matt and Jeanne Estep
 Alan Evans and Renee Jacobson
 Harold and Margaret Fabinsky
 Dr./Mrs. Thomas Fassett
 Francis P. Fehlner
 Lynne Feldman and Anthony Suchman
 Elizabeth and Mark Feulner
 Thomas Fies Jr.
 Gary and Janice Fitzpatrick
 Dalton and Myrna Flatt
 Elizabeth Fleming-Larratt and Glenn Larratt
 Michaeline and Winton Fletcher
 Dawn and Chris Forman
 John Forster and Laurie Steven
 Todd and Donna Frankford
 Ben T. Franklin and Sandra Bungerz
 Timothy J. Frawley
 Monica and James Fredell
 Ronald and Gloria Friedman
 Zachary and Stephanie Friess
 Kristine M. and Steven C. Garner
 James Gavin
 William and June Gilligan
 Judith Prentice Golby
 Deborah Goldman
 Eugene and Anita Goldstein
 Jorge Gomez Juarez and Diana Casais
 Almanza
 Mr./Mrs. Carl F. Gortzig
 Dina and David Graham
 Dr. Edward J. Grandt
 Clay Granoff
 James and Faith Gray
 Dianne Gregg
 Erin Shae and Richard Grinstead
 Kathy and Jon Groth
 Ryan and Samantha Guggenmos
 Ingrid Haaijer and John J. McMahon
 Carl Haberstroh and Margo Corsa
 Charles Hall
 Janet J. Hallahan
 Scott Haller
 Bill and Mary Hallinan
 Betsy Harding
 Kathleen and William Harmand
 Darlene and John Harris



Orville P. and Patricia T. Harris
 Neil and Rachael Hart
 Hedy Hartman and Andrew Chait
 Ed and Mofoko Haskell
 Holly M. Hatch and Meghan D. Bunnell
 Mary and Rex Hawbecker
 Ann Hayes and Neal Gummo
 Dawson and Audrey Heck
 Larry Helber
 Brian and Cynthia Heppard
 Dr./Mrs. Raul Herrera
 Geoffrey S. and M. Joan Heywood
 Douglas and Helen Hill
 Stephen and Anne Hoffman
 Peter and Mary Hofmann
 Pauline P. Holbrook
 Curt and Rosemary Hooey
 Katherine Hope and Ron Blackman
 Judith Hope-Klessig and Daniel F. Klessig
 Barbara Hornick-Lockard and Dennis L.
 Lockard
 Donald and Jennifer Houghtalen
 Robert Howard and Catherine Minder
 George L. Howell
 Dorothy and Larry Humm
 Alison Hurst and Russel Mikel
 William C. and Carole M. Hutchison
 John R. and Becky L. Igel
 Hope and Bruce Irvine

Covered dish in "Tulip and Sawtooth" pattern, pressed, applied. U.S., Pittsburgh, PA, Bryce, Richards & Company, about 1854-1870. OH. 19.7 cm, D. 18.6 cm (2016.4.4). Purchased with the assistance of The Karl and Anna Koepke Endowment Fund.



Glass Chair, slumped plate glass, sandblasted; metal, textile; assembled. U.S., Pittsburgh, PA, Pittsburgh Plate Glass Company, designed by Henry H. Turchin (American, 1891–1967), probably under the direction of Louis Dierra (American, active about 1939), about 1939. H. 75 cm, D. 57 cm (2016.4.38).

Patricia Jackson
 Kai and Judy Jarosch
 Carl Johengen and Brad Benson
 Mr./Mrs. Hank Jonas
 Janet and Walter Jones
 Tom Julius
 Linda and Ed Kabelac
 Ernestine and Franklin Kamp
 Akhilesh Kanneganti and Sindhu Kuchipudi
 Kim and Christopher Karam
 Carl Kass and Della Lee Sue
 Linda and Joanne Kaufman
 James Michael and Mary Katherine Kearns
 Zoya and Svetlana Khaletskaya
 J. Andrew Kirby and Tina Yanchis-Kirby
 Richard B. Klein
 Richard Kniffin
 Janice and Larry Knowles
 Glenn Kohnke and Jill VanDewoestine
 Mr./Mrs. Stuart Komer
 Karen and Jessica Kondrick
 David and Rosemary Kopczynski
 Lara Koritzke and William Navarre
 Lynda Kraar and Steven Rothman
 Jean K. Krebs
 Dietrich Kuhlmann and Annette Redican
 Mildred C. Kuner

Andrew and Wendy Kurtz
 Mary Clare Kurzanski
 Mr./Mrs. Andrew Kutschke
 Ernestine W. and Roy A. Kyles
 Mark and Margaret LaLomia
 Mr./Mrs. Brian Landis
 Lynne Landmesser and Connie Sharer
 Mary and William Lane
 Dr./Mrs. Milton C. Lapp
 Dorian and Koren LaTocha
 Shirley and Mary Lazoration
 Michael and Anne Ledbetter
 Scott Ledbetter
 Richard and Ruby Lewis
 Alan and Kay Liddell
 Linda and Rudolf Lienhard
 Edward and Carol Lincoln
 William and Kathryn Littleton
 Jennifer Long
 Alex Loughman
 Blanche Love
 Emily C. Lowery and Victor A. Russo
 Richard and Ellen Luce
 Mr./Mrs. Edward J. Lukomski
 Mr./Mrs. Merrill Lynn
 Deborah and Hiram Lyon
 Barbara J. Macedo and James R. Macedo Jr.
 Michael and Alicia MacFarland
 Martha and Tom Macinski
 John and Karen Madison
 Lauren and Russell Magaziner
 Virginia and Chad Maphis
 Bernard Margolis and Amanda Batey
 Teodoro and Erlinda Mariano
 Becky and Joe Marinelli
 Thomas E. Mark and Amyjane Rettew
 Bridget and Paul Marques
 Matthew and Mary Maslyn
 Mariquita Masterson
 James I. and Bonnie Matteson
 Mark Mauer
 Eileen and Randy Mayall
 Lisa and Timothy McClosky
 Mary Lou and Tom McCullough
 Brian McDonald and Benno Haenel
 Katie McKee-Cole
 Sara Mead and Douglas Beers
 Jennifer and Mrugendra Mehta
 Martha and Dady Mehta
 Vickie A. Mike
 David and Mary Milano
 Jeffrey Miller and Carol Perovich
 Paul and Susan Miller
 Mary Cheek Mills
 Maureen Mines and Mark W. Holman

Joan Mintz and Robinson Markel
 Dan Mirer and Chrissy Lapham
 Mr./Mrs. George Misnick
 Laura Mooney
 Dr. Franke T. Moore and Phyllis Mott
 Lucy M. Moran
 Stephanie Jo and Kevin Morgan
 Joe and Gail Morrison
 Rhonda Morton and J. McKnight
 Marianne and Greg Mukai
 Gary C. Myers and Cheri Atkinson
 Ruth Nash and Linda Lenzi
 Kirk Nelson
 Richard and Cynthia W. Nelson
 Paul and Marcia Newsom
 George and Josie Newsome
 Charles G. and Mary Lammon Nitsche
 Rod and Melissa Noel
 Roland D. and Kathy Nortman
 Mark Norton and Brigid Cassidy
 Eliana Nossa and Juan Isaza
 Jeffrey and Cynthia Nucciarone
 Jerry Nystrom and Ruth Davis
 Robert O'Connor
 David and Heather Odahowski
 Deborah and Kent Ogden
 Daniel J. and Connie M. O'Herron
 Linda Oliver
 Dr./Mrs. John F. Olmstead
 Alonzo K. Osgood
 Margaret M. Ostermann
 Mr./Mrs. Robert D. Oyler
 Ron Palmer
 Rakesh and Sujay Pandey
 Sheila and Zebulon Parks
 Nikshan and Smita Patel
 Fiona Patrick and Sam Castellino
 Robert and Louise Paul
 Robert and Janet Peper
 Kristine and James Perle
 Mark and Karolina Perry
 Sally A. Reisacher Petro
 Eugene Pflughaupt
 Patricia Pinkston and Martin Gutierrez
 Michael Pirozzolo and Charles Russell
 Sharon Pitt and Ken Sampson
 Michael Plummer and Linda Voss-Plummer
 Richard and Felicia Poes
 Roy and Barbara Pollock
 Dr. David Porter and Rhonda Baker
 C. Protto
 Richard G. and Karen Pudliner
 Dr./Mrs. L. David Pye
 Christopher and Elizabeth Quinlan
 Franz Rabauer and Brian Doggett

Mr./Mrs. Michael J. Radigan
 Terri and Warren Radke
 Sam Rajaratnam and Uma Yoganathan
 Janet Randall and Edward Racht
 John and Jon Rees
 Jon Michael Rees and Catherine Hellsten
 Catherine Gail Reichl and Vickie Dotson
 Helen Revelas
 Georgia A. Reynolds
 Rita Rhodes and Felix P. Kapron
 Mr./Mrs. Edward Richie
 Sandra Roehrs and Joanne Spangenberg
 Andrew and Chase Wilson Roper
 Michael and Bette Rogers
 Susan Tryon Rogers and James H. Rogers
 Timothy W. and Michelle L. Rogers
 Kristina and Sandra Roper
 Denise and Delevan Rose
 James B. and Sharon S. Rose
 Eric D. Rosenberg
 Susan Rosenstock
 John A. Roy
 James and Ginger Ruddock
 Monica and Maria Rudzinski
 Shannon and Charles E. Runyan
 Marian Ruty
 Linda Sadev and Steve Carollo
 Karim and Crystal Sadik
 Morton K. Sadinsky
 Dr. Naoyuki G. Saito and Richard P. Jasper
 Kirstin and Andrea Sandblom
 Amy Sarno
 Cindy Schaffhausen and John Kowalik

Pair of photograph frames, cut glass, brass; assembled. U.K., Birmingham, England, F. & C. Osler, 1890–1900. Taller: H. 29.7 cm, W. 20.5 cm (2016.2.18, .19).





Ellis-type aquatic/ botanical simple microscope, brass, glass, wood, sharkskin, velvet; assembled. Europe, possibly England, about 1770. H. 15.4 cm, W. 14.8 cm (2016.8.1).

John and Joan Schoonover
 Richard and Mary K. Seager
 Christine Seel-Gallagher
 Matteo Seguso
 The Rev. Constance L. Seifert and Joan Mistretta
 Carol and Sam Shama
 MaryRose and Gary Shaw
 Sonjia M. Shay and Eugene F. Sensel Jr.
 M. D. Sherman
 Nadine Shields and Gary Bigsby
 Jerry and Susan Sleve
 David Smering and Ewa Wdzlczak
 Peter and Gladys Smingler
 Brenda J. Smith
 Dana Smith
 Doug and Paula Smith
 Dr. J. D. Smith
 Gail and Louis Snitkoff
 Denise and David Snodgrass
 Jon Sonnenblick
 Andrew and Lisa Spittal
 Pat and John Starzec
 Aafke and Tammo Steenhuis

Tracy and Gary Stein
 Chris and Jennifer Stenzel
 Joseph and Lisa Stoddard
 Connie and Russell Striff
 Stephen and Leah Suffin
 John P. and Phyllis Swift
 Elaine Swiler
 Vincent Tancredi
 Jennifer and Michael Tansey
 Paula M. and Neil C. Tarallo
 Dr. Wayne C. Templer and Linda Templer-Alexander
 Patrick Tepesch and Kate Paterson
 Debra and Shawn Thomas
 Leo C. and Judith A. Thomas
 Patrick and Donna Thrush
 August and Marie Titi
 Gretta Tomb, D.D.S.
 Mr./Mrs. Stephen Toombs
 Susan Tracy and Dan Janal
 Alexander Tsang and Gloria Ho
 Togoontumur Tumurbat and Filagot Taye
 John G. and Bobbie Ullman
 Leonard Van Wyk
 Frank and Barbara Vassallo
 Wallace and Norma Jean Venable
 Darryl Verran and Karen Livingston
 Darlene and Randy Vesterfelt
 Nancy and Carl Wahlstrom
 Fritz F. and Linda C. Wasser
 George Weiss Jr. and Mary E. Wilcox
 Barbara and Jerry Wells
 Murray J. and Annie Werner
 Betty Westlake-Reist and L. Fitzgerald Reist
 Kathyne Wheat and Fred Schulte
 Elise and Carol Williams
 Duane Willis and Barbara Millier-Willis
 Lori Wilson
 Hans J. Witt and Richard Scott
 Bob and Barb Wood
 David Wood and Marylinda Stawasz
 Wen and Elizabeth Wu
 Mr./Mrs. Kogo Yamaguchi
 Randall Young
 Connie Zehr
 Mary Anne and Gerard A. Zeller
 Zhong Zhong and Xin Fan

* Gift matched by a corporate matching gift

† Deceased

Operating Results

Financial Report

The Museum experienced positive financial results in 2016, the first full year following the opening of the Contemporary Art + Design Wing. Increased family visitation and profitable operations were generated by campus-wide activities. Earned revenues grew six percent over those of last year to \$18.2 million, and Museum operations generated a \$600,000 cash surplus.

Visitation

Full-year visitation and program attendance repeated the 2015 attendance level of 460,000 guests. Two-percent growth in individual and family visitation nearly offset the six-percent decline in tour group visitation. Continued growth in individual and family visitation was exceptional after a 12-percent increase in the prior year. In addition, a total of 13,000 school-children, teachers, and other adult attendants visited the Museum for curriculum-related tours, and 35,000 people attended a rich series of education and public programs.

Revenue

Earned revenue of \$18.2 million was \$1.0 million higher than last year. The six-percent increase was impressive on top of the seven-percent growth in 2015. The Museum recorded growth in on-site and online sales, profitable Café operations, Studio programs, guest Make Your Own Glass experiences, admissions, and hot-glass demonstration events.

- On-site retail sales increased nine percent and contributed significantly to the overall growth of visitor revenues, which totaled \$14.1 million.
- Other earned revenues were up four percent over last year to \$4.1 million, with the continued strength of The Studio, the Celebrity Hot Glass at Sea program, and online and corporate retail sales of Steuben glass.

In addition to the Museum's earned revenues, cash and contributed services from Corning Incorporated amounted to \$41.3 million, investment income totaled \$2.2 million, and other cash and in-kind contributions for acquisitions, programs, and operating support came to \$1.3 million in 2016, marking another strong year of development activities and donor support.

Expenditures

Operating expenditures increased seven percent over 2015 to \$57.6 million, with growth in all areas of operation: personnel and employee benefits, capital equipment and facility operations, marketing and guest services, advances in technology and digital media initiatives, and annual support of an impressive list of exhibitions, publications, and programs.

Glass and library acquisition spending was \$1.2 million, and donations to the Museum's collections were valued at \$241,000.

Consolidated Net Assets and Activities (Dollars in Thousands)

The Museum concluded 2016 with consolidated financials reporting an 11-percent increase in net assets to \$51 million. The major component of the unrestricted net asset balance is the Museum Operating Reserve Fund (MORF), with a year-end balance of \$30.8 million, up from \$28.9 million at the end of last year because of investment gains of \$1.9 million.

The Museum's net assets at December 31 are categorized as follows:

	<u>2016</u>	<u>2015</u>
Unrestricted	\$48,258	\$42,374
Temporarily restricted	2,714	2,397
Permanently restricted	<u>960</u>	<u>960</u>
Total net assets	<u>\$51,932</u>	<u>\$45,731</u>

The following summary consolidates the Museum’s unrestricted, temporarily restricted, and permanently restricted activities (2016 unaudited).

	<u>2016</u>	<u>2015</u>
Revenue, gains, and other support	\$63,059	\$59,289
Operating expenses	57,646	54,094
Acquisition purchases	1,176	1,525
Other changes in net assets (post-retirement benefits)	(1,964)	996
Change in net assets	6,201	2,674
Net assets at beginning of year	45,731	43,057
Net assets at end of year	<u>\$51,932</u>	<u>\$45,731</u>

Looking Forward

The Museum’s operating budget has been established with a continuing focus on preserving core mission operations, managing expenditures below projected revenues, and ensuring the future stability of the institution by adding to the MORE.

The Museum’s three-year strategic plan and the 2016 operating forecast provided guidance for the 2017 budget process. The 2017 budget, which has been approved by the board of trustees, totals \$60.3 million. With 2016 actual results exceeding the 2016 forecast, the organization is positioned to exceed the visitation and revenue assumptions in the 2017 budget. The operating budget (within unrestricted fund totals) has been set with expectations for conservative growth in visitation and earned revenues, following two very successful years of growth in individual and family visitation to the expanded Museum. The operating budget is also supported by considerable cash and in-kind support from Corning Incorporated.

With the hiring of James Gerhardt, chief advancement officer, in late 2016, discussions with the board of trustees on development and fund-raising strategies will focus on broadening the diversity of revenue streams to support the institution’s aspirations.

Audited Financial Statements

The complete financial records of the Museum are audited on an annual basis. Upon completion of the audit, the 2016 audited financial statements and accompanying notes to the financial statements will be available upon request from the Director of Finance at (607) 937-5371 or online at www.cmog.org/publication/annual-report-2016.

Nancy J. Earley
Deputy Chief Operating Officer

**CORNING
MUSEUM
OF GLASS**