

Fact sheet of reference DNA sequences of *Fritillaria unibracteata* (暗紫貝母)

Summary	Information
<b>Scientific name</b>	<i>Fritillaria unibracteata</i> Hsiao et K. C. Hsia
<b>Type of reference material used for data generation</b>	<ul style="list-style-type: none"> <li>● Plant voucher specimen</li> <li>● Dried leaf</li> </ul>
<b>Dried leaf (number of specimens / locality)</b>	<ul style="list-style-type: none"> <li>● 5 / Mao County, Sichuan Province, China</li> <li>● 5 / Maqin County, Qinghai Province, China</li> <li>● 4 / Songpan County, Sichuan Province, China</li> </ul>
<b>Plant voucher specimen (number of specimens / locality)</b>	<ul style="list-style-type: none"> <li>● 2 / Mao County, Sichuan Province, China</li> <li>● 2 / Maqin County, Qinghai Province, China</li> <li>● 2 / Songpan County, Sichuan Province, China</li> </ul>
<b>Total number of specimen</b>	<ul style="list-style-type: none"> <li>● 20</li> </ul>

<b>Specimen source</b>	<ul style="list-style-type: none"> <li>● GCMTI collection</li> </ul>
<b>Method for data generation</b>	<ul style="list-style-type: none"> <li>● GCMTI RD-5:2020</li> </ul>
<b>Length of DNA barcode</b>	<ul style="list-style-type: none"> <li>● Nuclear internal transcribed spacer 2 (ITS2) is 238 bp</li> <li>● Chloroplast <i>psbA-trnH</i> intergenic spacer (<i>psbA-trnH</i>) is 330 bp</li> <li>● Chloroplast ribulose biphosphate carboxylase large chain (<i>rbcL</i>) is 553 bp</li> </ul>

# Reference DNA Sequence

## Dried Leaf

### DNA Information

#### Internal transcribed spacer 2 of nuclear ribosomal RNA (ITS2)

Batch ID. BI200818

```
>RD506-1B ITS2
CGCCTTGTTTCGCTCCGTGCCAATGACCCTTCGGGTG
CGGTCACGGATGCGGAGATTGGCCCCCGTGCTCGT
GTGCGGGGGCTTAAGCGGGGCTGTCGGCGTCGGG
ATGGGCACGACGAGTGGTGGACGGAGCACCAGCAGG
ATGTTGTGGCCCCCYGTCGCCTTAAGGGGCTCAAGAG
ACCCGGAMCGGGCGAKCCGTGCTCCGTACGAGGAGG
CGGTGYCGTCTCGCAATG
```

Remarks: observations at nucleotide position 162, 192, 200, 226

#### Chloroplast *psbA-trnH* intergenic spacer (*psbA-trnH*)

Batch ID. BI200818

```
>RD506-1B_psbA-trnH
ACAATTTCCCTCTAGACCTAGCTGCTATTGAAGTTCCA
TCTACAAATGGATAAGACTTAAATCTGTCTTAGTGT
ATACGAATCCTTGATGGAGCAATATCTTTGTATCTTGC
TAAAGATATTGCTCCATCAAGGATTTTTTTTATTGAA
CGTGTACAGGGGATTACTCCTTATTACATTACATTT
TAAAAATTGGCATTCTATGCCAATATATCGATCTAA
GTATGAAGGTAAGAATAAATAAATAATGATGAATG
GAAAAATAAAAAAGCTAAAAATCCTTTAGCTAGATAA
GGGCGGATGTAGCCAAGTGATCAAGGCAGT
```

#### Chloroplast ribulose biphosphate carboxylase large chain (*rbcL*)

Batch ID. BI200818

```
>RD506-1B_rbcL
AAGTGTGGATTCAAAGCTGGTGTAAAGATTACAAA
TTGACTTATTATACTCCTGACTATGAAACCAAAGATA
CTGATATTTGGCAGCATTCCGAGTAACCTCAACC
CGGAGTTCCACCGAAGAGGCAGGGGCAGCGGTAGC
CGCCGAATCTTCCACTGGTACATGGACAACCTGTGTG
ACTGATGGACTTACCAGTCTTGATCGTTACAAAGGGC
GATGCTACCACATCGAGAGCGTTGTTGGGAAGAAA
ATCAATATATTGCTTATGTAGCTTATCCTTTAGACCTT
TTTGAAGAAGGTTCTGTTACTAACATGTTCACTTCCAT
TGTGGGTAATGTATTTGGTTTCAAAGCCCTACGAGCT
CTACGCTGGAGGATCTGCGAATTCCTACTTCTTATT
CAAACTTTTCAAGGCCCGCCTCATGGTATCCAAGTT
GAAAGGATAAATTGAACAAGTATGGTCGTCCCTAT
TAGGATGTACCATTAAACCAAAATAGGATTATCTGC
AAAGAACTATGGTAGAGCAGTTTATGAATGTCTG
```

### Reference Detail

Description of reference material	Dried leaf
Scientific name	<i>Fritillaria unibracteata</i> Hsiao et K. C. Hsia
Laboratory number	RD506
Sample mark	RD506-1B
Locality	Mao County, Sichuan Province, China
Corresponding voucher specimen	RD532
Authenticated	Yes
Remarks	ITS2: 162Y, 192M, 200K, 226Y

### Image

Front view



Back view



# Reference DNA Sequence

## Dried Leaf

### DNA Information

#### Internal transcribed spacer 2 of nuclear ribosomal RNA (ITS2)

Batch ID. BI200818

```
>RD506-2B ITS2
CGCCTTGTTTCGCTCCGTGCCAATGACCCTTCGGGTG
CGGTCACGGATGCGGAGATTGGCCCCCGTGCTCGT
GTGCGGGGGCTTAAGCGGGGCTGTCGGCGTGGG
ATGGGCACGACGAGTGGTGGACGGAGCACCAGCAGG
ATGTTGTGGCCCCYGTGCCTTAAGGGGCTCAAGAG
ACCCGGAACGGGCGAKCCGTGCTCCGTACGAGGAGG
CGGTGYCGTCTCGCAATG
```

Remarks: observations at nucleotide position 162, 200, 226

#### Chloroplast *psbA-trnH* intergenic spacer (*psbA-trnH*)

Batch ID. BI200818

```
>RD506-2B psbA-trnH
ACAATTTCCCTCTAGACCTAGCTGCTATTGAAGTTCCA
TCTACAAATGGATAAGACTTAAATCTGTCTTAGTGT
ATACGAATCCTTGATGGAGCAATATCTTTGTATCTTGC
TAAAGATATTGCTCCATCAAGGATTTTTTTTTATTGAA
CGTGTACACAGGGGATTACTCCTTATTACATTACATTT
TAAAAATTGGCATTCTATGCCAATATATCGATCTAA
GTATGAAGGTAAGAATAAATAACAATAATGATGAATG
GAAAAATAAAAAAGCTAAAATCCTTTAGCTAGATAA
GGGGCGGATGTAGCCAAGTGATCAAGGCAGT
```

#### Chloroplast ribulose biphosphate carboxylase large chain (*rbcL*)

Batch ID. BI200818

```
>RD506-2B rbcL
AAGTGTTGGATTCAAAGCTGGTGTAAAGATTACAAA
TTGACTTATTATACTCCTGACTATGAAACCAAAGATA
CTGATATTTTGGCAGCATTCCGAGTAACTCCTCAACC
CGGAGTTCCACCCGAAGAGGCAGGGGCAGCGGTAGC
CGCCGAATCTTCCACTGGTACATGGACAACGTGTGG
ACTGATGGACTTACCAGTCTTGATCGTTACAAAGGGC
GATGCTACCACATCGAGAGCGTTGTTGGGGAAGAAA
ATCAATATATTGCTTATGTAGCTTATCCTTTAGACCTT
TTTGAAGAAGGTTCTGTTACTAACATGTTCACTTCCAT
TGTGGGTAATGTATTTGGTTTCAAAGCCCTACGAGCT
CTACGCTGGAGGATCTGCGAATTCCTACTTCTTATTC
CAAAACTTTTCAAGGCCCGCCTCATGGTATCCAAGTT
GAAAGGGATAAATTGAACAAGTATGGTCGTCCTTAT
TAGGATGTACCATTAACCAAAAATTAGGATTATCTGC
AAAGAACTATGGTAGAGCAGTTTATGAATGTCTG
```

### Reference Detail

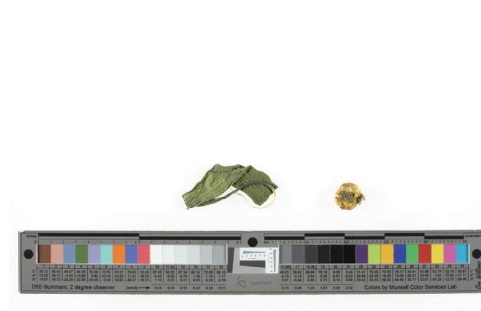
Description of reference material	Dried leaf
Scientific name	<i>Fritillaria unibracteata</i> Hsiao et K. C. Hsia
Laboratory number	RD506
Sample mark	RD506-2B
Locality	Mao County, Sichuan Province, China
Corresponding voucher specimen	RD532
Authenticated	Yes
Remarks	ITS2: 162Y, 200K, 226Y

### Image

Front view



Back view



# Reference DNA Sequence

## Dried Leaf

### DNA Information

#### Internal transcribed spacer 2 of nuclear ribosomal RNA (ITS2)

Batch ID. BIC210709-3

```
>RD506-3A ITS2
CGCCTTGTTTCGCTCCGTGCCAATGACCCTTCGGGTG
CGGTCACGGATGCGGAGATTGGCCCCCGTGCTCGT
GTGCGGGGGCTTAAGCGGGGCTGTCGGCGTGGG
ATGGGCACGACGAGTGGTGGACGGAGCACCAGCAGG
ATGTTGTGGCCCCYGTGCGCTTAAGGGGCTCAAGAG
ACCCGGAACGGGCGAKCCGTGCTCCGTACGAGGAGG
CGGTGYCGTCTCGCAATG
```

Remarks: observations at nucleotide position 164, 203, 229

#### Chloroplast *psbA-trnH* intergenic spacer (*psbA-trnH*)

Batch ID. BIC210709-3

```
>RD506-3A psbA-trnH
ACAATTTCCCTCTAGACCTAGCTGCTATTGAAGTTCCA
TCTACAAATGGATAAGACTTAAATCTGTCTTAGTGT
ATACGAATCCTTGATGGAGCAATATCTTTGTATCTTGC
TAAAGATATTGCTCCATCAAGGATTTTTTTTTATTGAA
CGTGTACACAGGGGATTACTCCTTATTACATTACATTT
TAAAAATTGGCATTCTATGCCCAATATATCGATCTAA
GTATGAAGGTAAGAATAAATAACAATAATGATGAATG
GAAAAATAAAAAAGCTAAAATCCTTTAGCTAGATAA
GGGGCGGATGTAGCCAAGTGGATCAAGGCAGT
```

#### Chloroplast ribulose biphosphate carboxylase large chain (*rbcL*)

Batch ID. BIC210709-3

```
>RD506-3A rbcL
AAGTGTTGGATTCAAAGCTGGTGTAAAGATTACAAA
TTGACTTATTATACTCCTGACTATGAAACCAAAGATA
CTGATATTTTGGCAGCATTCCGAGTAACTCCTCAACC
CGGAGTTCCACCCGAAGAGGCAGGGGCAGCGGTAGC
CGCCGAATCTTCCACTGGTACATGGACAACGTGTGG
ACTGATGGACTTACCAGTCTTGATCGTTACAAAGGGC
GATGCTACCACATCGAGAGCGTTGTTGGGGAAGAAA
ATCAATATATTGCTTATGTAGCTTATCCTTTAGACCTT
TTGAAGAAGGTTCTGTTACTAACATGTTCACTTCCAT
TGTGGGTAATGTATTTGGTTTCAAAGCCCTACGAGCT
CTACGCTGGAGGATCTGCGAATTCCTACTTCTTATTC
CAAAACTTTTCAAGGCCCGCCTCATGGTATCCAAGTT
GAAAGGGATAAATTGAACAAGTATGGTCGTCCTTAT
TAGGATGTACCATTAACCAAAAATTAGGATTATCTGC
AAAGAACTATGGTAGAGCAGTTTATGAATGTCTG
```

### Reference Detail

Description of reference material	Dried leaf
Scientific name	<i>Fritillaria unibracteata</i> Hsiao et K. C. Hsia
Laboratory number	RD506
Sample mark	RD506-3A
Locality	Mao County, Sichuan Province, China
Corresponding voucher specimen	RD532
Authenticated	Yes
Remarks	ITS2: 164Y, 203K, 229Y

### Image

Front view



Back view



# Reference DNA Sequence

## Dried Leaf

### DNA Information

#### Internal transcribed spacer 2 of nuclear ribosomal RNA (ITS2)

Batch ID. BIC210709-3

```
>RD506-4B ITS2
CGCCTTGTTTCGCTCCGTGCCAATGACCCTTCGGGTG
CGGTCACGGATGCGGAGATTGGCCCCCGTGCTCGT
GTGCGGGGGCTTAAGCGGGGCTGTCGGCGTGGG
ATGGGCACGACGAGTGGTGGACGGAGCACCAGCAGG
ATGTTGTGGCCCCYGTGCGCTTAAGGGGCTCAAGAG
ACCCGGAACGGGCGAKCCGTGCTCCGTACGAGGAGG
GCGTGCCGTCTCGCAATG
```

Remarks: observations at nucleotide position 164, 203

#### Chloroplast *psbA-trnH* intergenic spacer (*psbA-trnH*)

Batch ID. BIC210709-3

```
>RD506-4B psbA-trnH
ACAATTTCCCTCTAGACCTAGCTGCTATTGAAGTTCCA
TCTACAAATGGATAAGACTTAAATCTGTCTTAGTGT
ATACGAATCCTTGATGGAGCAATATCTTTGTATCTTGC
TAAAGATATTGCTCCATCAAGGATTTTTTTTATTGAA
CGTGTACACAGGGGATTACTCCTTATTACATTACATTT
TAAAAATTGGCATTCTATGCCCAATATATCGATCTAA
GTATGAAGGTAAGAATAAATAACAATAATGATGAATG
GAAAAATAAAAAAGCTAAAATCCTTTAGCTAGATAA
GGGGCGGATGTAGCCAAGTGGATCAAGGCAGT
```

#### Chloroplast ribulose biphosphate carboxylase large chain (*rbcL*)

Batch ID. BIC210709-3

```
>RD506-4B rbcL
AAGTGTTGGATTCAAAGCTGGTGTAAAGATTACAAA
TTGACTTATTATACTCCTGACTATGAAACCAAAGATA
CTGATATTTTGGCAGCATTCCGAGTAACTCCTCAACC
CGGAGTTCACCCGAAGAGGCAGGGGCAGCGGTAGC
CGCCGAATCTTCCACTGGTACATGGACAACGTGTGTTG
ACTGATGGACTTACCAGTCTTGATCGTTACAAAGGGC
GATGCTACCACATCGAGAGCGTTGTTGGGGAAGAAA
ATCAATATATTGCTTATGTAGCTTATCCTTTAGACCTT
TTTGAAGAAGGTTCTGTTACTAACATGTTCACTTCCAT
TGTGGGTAATGTATTTGGTTTCAAAGCCCTACGAGCT
CTACGCTGGAGGATCTGCGAATTCCTACTTCTTATTC
CAAACTTTTCAAGGCCCGCCTCATGGTATCCAAGTT
GAAAGGGATAAATTGAACAAGTATGGTCGTCCTTAT
TAGGATGTACCATTAAACCAAAATTAGGATTATCTGC
AAAGAACTATGGTAGAGCAGTTTATGAATGTCTG
```

### Reference Detail

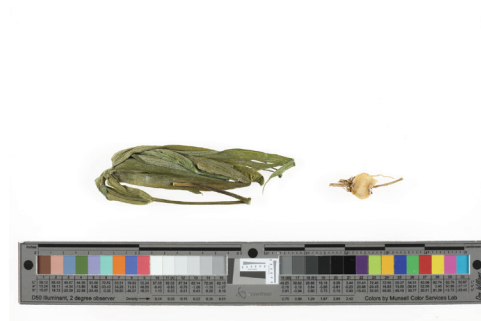
Description of reference material	Dried leaf
Scientific name	<i>Fritillaria unibracteata</i> Hsiao et K. C. Hsia
Laboratory number	RD506
Sample mark	RD506-4B
Locality	Mao County, Sichuan Province, China
Corresponding voucher specimen	RD532
Authenticated	Yes
Remarks	ITS2: 164Y, 203K

### Image

Front view



Back view



# Reference DNA Sequence

## Dried Leaf

### DNA Information

#### Internal transcribed spacer 2 of nuclear ribosomal RNA (ITS2)

Batch ID. BIC210709-3

```
>RD506-5A ITS2
CGCCTTGTTTCGCTCCGTGCCAATGACCCTTCGGGTG
CGGTCACGGATGCGGAGATTGGCCCCCGTGCTCGT
GTGCGGGGGCTTAAGCGGGGCTGTCGGCGTGGG
ATGGGCACGACGAGTGGTGGACGGAGCACCAGCAGG
ATGTTGTGGCCCCYGTGCGCTTAAGGGGCTCAAGAG
ACCCGGAACGGGCGAKCCGTGCTCCGTACGAGGAGG
GCGTGYCGTCTCGCAATG
```

Remarks: observations at nucleotide position 164, 203, 229

#### Chloroplast *psbA-trnH* intergenic spacer (*psbA-trnH*)

Batch ID. BIC210709-3

```
>RD506-5A psbA-trnH
ACAATTTCCCTCTAGACCTAGCTGCTATTGAAGTTCCA
TCTACAAATGGATAAGACTTAAATCTGTCTTAGTGT
ATACGAATCCTTGATGGAGCAATATCTTTGTATCTTGC
TAAAGATATTGCTCCATCAAGGATTTTTTTTATTGAA
CGTGTACAGGGGATTACTCCTTATTACATTACATTT
TTAAAATTGGCATTCTATGCCAATATATCGATCTAA
GTATGAAGGTAAGAATAAATAACAATAATGATGAATG
GAAAAATAAAAAAGCTAAAATCCTTTAGCTAGATAA
GGGGCGGATGTAGCCAAGTGATCAAGGCAGT
```

#### Chloroplast ribulose biphosphate carboxylase large chain (*rbcL*)

Batch ID. BIC210709-3

```
>RD506-5A rbcL
AAGTGTGGATTCAAAGCTGGTGTAAAGATTACAAA
TTGACTTATTATACTCCTGACTATGAAACCAAAGATA
CTGATATTTTGGCAGCATTCCGAGTAACTCCTCAACC
CGGAGTTCACCCGAAGAGGCAGGGGCAGCGGTAGC
CGCCGAATCTTCCACTGGTACATGGACAACGTGTGG
ACTGATGGACTTACCAGTCTTGATCGTTACAAAGGGC
GATGCTACCACATCGAGAGCGTTGTTGGGGAAGAAA
ATCAATATATTGCTTATGTAGCTTATCCTTTAGACCTT
TTGAAGAAGGTTCTGTTACTAACATGTTCACTTCCAT
TGTGGGTAATGTATTTGGTTTCAAAGCCCTACGAGCT
CTACGCTGGAGGATCTGCGAATTCCTACTTCTTATTC
CAAAACTTTTCAAGGCCCGCCTCATGGTATCCAAGTT
GAAAGGGATAAATTGAACAAGTATGGTCGTCCTTAT
TAGGATGTACCATTAAACCAAAATTAGGATTATCTGC
AAAGAACTATGGTAGAGCAGTTTATGAATGTCTG
```

### Reference Detail

Description of reference material	Dried leaf
Scientific name	<i>Fritillaria unibracteata</i> Hsiao et K. C. Hsia
Laboratory number	RD506
Sample mark	RD506-5A
Locality	Mao County, Sichuan Province, China
Corresponding voucher specimen	RD532
Authenticated	Yes
Remarks	ITS2: 164Y, 203K, 229Y

### Image

Front view



Back view



## Reference DNA Sequence

### Dried Leaf

#### DNA Information

#### Internal transcribed spacer 2 of nuclear ribosomal RNA (ITS2)

Batch ID. BIC210709-4

>RD507-10A ITS2

```
CSCCTTGTTCGCTCCGTGCCCAATGACCCTTCGGGTG
CGGTCACGGATGCGGAGATTGGCCCCCGTGCTCGT
GTGCGGGGGCTTAAGCGGGGCTGTCGGCGTGGG
ATGGGCACGACGAGTGGTGGACGGAGCACCAGCAGG
ATGTTGTGGCCCCYGTGCGCTTAAGGGGCTCAAGAG
ACCCGGAACGGGCGAKCCGTGCTCCGTACGAGGAGG
CGGTGYCGTCTCGCAATG
```

Remarks: observations at nucleotide position 2, 164, 203, 229

#### Chloroplast *psbA-trnH* intergenic spacer (*psbA-trnH*)

Batch ID. BIC210709-4

>RD507-10A\_psbA-trnH

```
ACAATTTCCCTCTAGACCTAGCTGCTATTGAAGTTCCA
TCTACAAATGGATAAGACTTAAATCTGTCTTAGTGT
ATACGAATCCTTGATGGAGCAATATCTTTGTATCTTGC
TAAAGATATTGCTCCATCAAGGATTTTTTTTTATTGAA
CGTGTACACAGGGGATTACTCCTTATTACATTACATTT
TAAAAATTGGCATTCTATGCCCAATATATCGATCTAA
GTATGAAGGTAAGAATAAATAACAATAATGATGAATG
GAAAAATAAAAAAGCTAAAATCCTTTAGCTAGATAA
GGGGCGGATGTAGCCAAGTGGATCAAGGCAGT
```

#### Chloroplast ribulose biphosphate carboxylase large chain (*rbcL*)

Batch ID. BIC210709-4

>RD507-10A\_rbcL

```
AAGTGTGGATTCAAAGCTGGTGTAAAGATTACAAA
TTGACTTATTATACTCCTGACTATGAAACCAAAGATA
CTGATATTTGGCAGCATTCCGAGTAACTCCTCAACC
CGGAGTTCCACCCGAAGAGGCAGGGGCAGCGGTAGC
CGCCGAATCTTCCACTGGTACATGGACAACGTGTGG
ACTGATGGACTTACCAGTCTTGATCGTTACAAAGGGC
GATGCTACCACATCGAGAGCGTTGTTGGGGAAGAAA
ATCAATATATTGCTTATGTAGCTTATCCTTTAGACCTT
TTGAAGAAGGTTCTGTTACTAACATGTTCACTTCCAT
TGTGGGTAATGTATTTGGTTTCAAAGCCCTACGAGCT
CTACGCTGGAGGATCTGCGAATTCCTACTTCTTATTC
CAAAACTTTTCAAGGCCCGCCTCATGGTATCCAAGTT
GAAAGGGATAAATTGAACAAGTATGGTCTGCCCTAT
TAGGATGTACCATAAACCAAAATTAGGATTATCTGC
AAAGAACTATGGTAGAGCAGTTTATGAATGTCTG
```

#### Reference Detail

Description of reference material	Dried leaf
Scientific name	<i>Fritillaria unibracteata</i> Hsiao et K. C. Hsia
Laboratory number	RD507
Sample mark	RD507-10A
Locality	Songpan County, Sichuan Province, China
Corresponding voucher specimen	RD533
Authenticated	Yes
Remarks	ITS2: 2S, 164Y, 203K, 229Y

#### Image

Front view



Back view





## Reference DNA Sequence

### Dried Leaf

#### DNA Information

#### Internal transcribed spacer 2 of nuclear ribosomal RNA (ITS2)

Batch ID. BI200818

>RD507-1B ITS2

```
CGCCTTGTTTCGCTCCGTGCCAATGACCCTTCGGGTG
CGGTCACGGATGCGGAGATTGGCCCCCGTGCTCGT
GTGCGGGGGCTTAAGCGGGGCTGTCGGCGTGGG
ATGGGCACGACGAGTGGTGGACGGAGCACCAGCAGG
ATGTTGTGGCCCCYGTGCGCTTAAGGGGCTCAAGAG
ACCCGGAACGGGCGAKCCGTGCTCCGTACGAGGAGG
CGGTGYCGTCTCGCAATG
```

Remarks: observations at nucleotide position 162, 200, 226

#### Chloroplast *psbA-trnH* intergenic spacer (*psbA-trnH*)

Batch ID. BI200818

>RD507-1B *psbA-trnH*

```
ACAATTTCCCTCTAGACCTAGCTGCTATTGAAGTTCCA
TCTACAAATGGATAAGACTTAAATCTGTCTTAGTGT
ATACGAATCCTTGATGGAGCAATATCTTTGTATCTTGC
TAAAGATATTGCTCCATCAAGGATTTTTTTTATTGAA
CGGTGCACAGGGGATTACTCCTTATTACATTACATTT
TAAAAATTGGCATTCTATGCCCAATATATCGATCTAA
GTATGAAGGTAAGAATAAATAACAATAATGATGAATG
GAAAAATAAAAAAGCTAAAATCCTTTAGCTAGATAA
GGGGCGGATGTAGCCAAGTGGATCAAGGCAGT
```

#### Chloroplast ribulose biphosphate carboxylase large chain (*rbcL*)

Batch ID. BI200818

>RD507-1B *rbcL*

```
AAGTGTTGGATTCAAAGCTGGTGTAAAGATTACAAA
TTGACTTATTATACTCCTGACTATGAAACCAAAGATA
CTGATATTTTGGCAGCATTCCGAGTAACTCCTCAACC
CGGAGTTCCACCCGAAGAGGCAGGGGCAGCGGTAGC
CGCCGAATCTTCCACTGGTACATGGACAACGTGTGTTGG
ACTGATGGACTTACCAGTCTTGATCGTTACAAAGGGC
GATGCTACCACATCGAGAGCGTTGTTGGGGAAGAAA
ATCAATATATTGCTTATGTAGCTTATCCTTTAGACCTT
TTTGAAGAAGGTTCTGTTACTAACATGTTCACTTCCAT
TGTGGGTAATGTATTTGGTTTCAAAGCCCTACGAGCT
CTACGCTGGAGGATCTGCGAATTCCTACTTCTTATTC
CAAAACTTTTTCAAGGCCCGCCTCATGGTATCCAAGTT
GAAAGGGATAAATTGAACAAGTATGGTTCGTCCTTAT
TAGGATGTACCATTAACCAAAAATTAGGATTATCTGC
AAAGAACTATGGTAGAGCAGTTTATGAATGTCTG
```

#### Reference Detail

Description of reference material	Dried leaf
Scientific name	<i>Fritillaria unibracteata</i> Hsiao et K. C. Hsia
Laboratory number	RD507
Sample mark	RD507-1B
Locality	Songpan County, Sichuan Province, China
Corresponding voucher specimen	RD533
Authenticated	Yes
Remarks	ITS2: 162Y, 200K, 226Y

#### Image

Front view



Back view



## Reference DNA Sequence

### Dried Leaf

#### DNA Information

#### Internal transcribed spacer 2 of nuclear ribosomal RNA (ITS2)

Batch ID. BI200818

>RD507-2A ITS2

```
CGCCTTGTTTCGCTCCGTCGCCAATGACCCTTCGGGTG
CGGTCACGGATGCGGAGATTGGCCCCCGTGCTCGT
GTGCGGGGGCTTAAGCGGGGCTGTCGGCGTGGG
ATGGGCACGACGAGTGGTGGACGGAGCACCAGCAGG
ATGTTGTGGCCCCYGTGCGCTTAAGGGGCTCAAGAG
ACCCGGAACGGGCGAKCCGTGCTCCGTACGAGGAGG
CGGTGYCGTCTCGCAATG
```

Remarks: observations at nucleotide position 162, 200, 226

#### Chloroplast *psbA-trnH* intergenic spacer (*psbA-trnH*)

Batch ID. BI200818

>RD507-2A *psbA-trnH*

```
ACAATTTCCCTCTAGACCTAGCTGCTATTGAAGTTCCA
TCTACAAATGGATAAGACTTACATTCTGTCTTAGTGT
ATACGAATCCTTGATGGAGCAATATCTTTGTATCTTGC
TAAAGATATTGCTCCATCAAGGATTTTTTTTATTGAA
CGGTGCACAGGGGATTACTCCTTATTACATTACATTT
TAAAAATTGGCATTCTATGCCCAATATATCGATCTAA
GTATGAAGGTAAGAATAAATAACAATAATGATGAATG
GAAAAATAAAAAAGCTAAAATCCTTTAGCTAGATAA
GGGGCGGATGTAGCCAAGTGGATCAAGGCAGT
```

#### Chloroplast ribulose biphosphate carboxylase large chain (*rbcL*)

Batch ID. BI200818

>RD507-2A *rbcL*

```
AAGTGTTGGATTCAAAGCTGGTGTAAAGATTACAAA
TTGACTTATTATACTCCTGACTATGAAACCAAAGATA
CTGATATTTTGGCAGCATTCCGAGTAACTCCTCAACC
CGGAGTTCACCCGAAGAGGCAGGGGCAGCGGTAGC
CGCCGAATCTTCCACTGGTACATGGACAACGTGTGTTG
ACTGATGGACTTACCAGTCTTGATCGTTACAAAGGGC
GATGCTACCACATCGAGAGCGTTGTTGGGGAAGAAA
ATCAATATATTGCTTATGTAGCTTATCCTTTAGACCTT
TTTGAAGAAGGTTCTGTTACTAACATGTTCACTTCCAT
TGTGGGTAATGTATTTGGTTTCAAAGCCCTACGAGCT
CTACGCTGGAGGATCTGCGAATTCCTACTGCTTATTC
CAAAACTTTTTCAAGGCCCGCCTCATGGTATCCAAGTT
GAAAGGGATAAATTGAACAAGTATGGTCTGCCCTAT
TAGGATGTACCATAAACCAAAATTAGGATTATCTGC
AAAGAACTATGGTAGAGCAGTTTATGAATGTCTG
```

#### Reference Detail

Description of reference material	Dried leaf
Scientific name	<i>Fritillaria unibracteata</i> Hsiao et K. C. Hsia
Laboratory number	RD507
Sample mark	RD507-2A
Locality	Songpan County, Sichuan Province, China
Corresponding voucher specimen	RD533
Authenticated	Yes
Remarks	ITS2: 162Y, 200K, 226Y

#### Image

Front view



Back view



# Reference DNA Sequence

## Dried Leaf

### DNA Information

#### Internal transcribed spacer 2 of nuclear ribosomal RNA (ITS2)

Batch ID. BIC210709-4

>RD507-8B ITS2

```
CGCCTTGTTTCGCTCCGTCGCCAATGACCCTTCGGGTG
CGGTCACGGATGCGGAGATTGGCCCCCGTGCTCGT
GTGCGGGGGCTTAAGCGGGGCTGTCGGCGTCGGG
ATGGGCACGACGAGTGGTGGACGGAGCACCAGCAGG
ATGTTGTGGCCCCYGTGCGCTTAAGGGGCTCAAGAG
ACCCGGAACGGGCGAGCCGTGCTCCGTACGAGGAGG
GCGTGCCGTCTCGCAATG
```

Remarks: observations at nucleotide position 164

#### Chloroplast *psbA-trnH* intergenic spacer (*psbA-trnH*)

Batch ID. BIC210709-4

>RD507-8B *psbA-trnH*

```
ACAATTTCCCTCTAGACCTAGCTGCTATTGAAGTTCCA
TCTACAAATGGATAAGACTTAAATCTGTCTTAGTGT
ATACGAATCCTTGATGGAGCAATATCTTTGTATCTTGC
TAAAGATATTGCTCCATCAAGGATTTTTTTTATTGAA
CGTGTACAGGGGATTACTCCTTATTACATTACATTT
TAAAAATTGGCATTCTATGCCCAATATATCGATCTAA
GTATGAAGGTAAGAATAAATAACAATAATGATGAATG
GAAAAATAAAAAAGCTAAAATCCTTTAGCTAGATAA
GGGGCGGATGTAGCCAAGTGGATCAAGGCAGT
```

#### Chloroplast ribulose biphosphate carboxylase large chain (*rbcL*)

Batch ID. BIC210709-4

>RD507-8B *rbcL*

```
AAGTGTTGGATTCAAAGCTGGTGTAAAGATTACAAA
TTGACTTATTATACTCCTGACTATGAAACCAAAGATA
CTGATATTTTGGCAGCATTCCGAGTAACTCCTCAACC
CGGAGTTCCACCCGAAGAGGCAGGGGCAGCGGTAGC
CGCCGAATCTTCCACTGGTACATGGACAACGTGTGTG
ACTGATGGACTTACCAGTCTTGATCGTTACAAAGGGC
GATGCTACCACATCGAGAGCGTTGTTGGGGAAGAAA
ATCAATATATTGCTTATGTAGCTTATCCTTTAGACCTT
TTTGAAGAAGGTTCTGTTACTAACATGTTCACTTCCAT
TGTGGGTAATGTATTTGGTTTCAAAGCCCTACGAGCT
CTACGCTGGAGGATCTGCGAATTCCTACTTCTTATTC
CAAAACTTTTCAAGGCCCGCCTCATGGTATCCAAGTT
GAAAGGGATAAATTGAACAAGTATGGTCGTCCTTAT
TAGGATGTACCATTAAACCAAAATTAGGATTATCTGC
AAAGAACTATGGTAGAGCAGTTTATGAATGTCTG
```

### Reference Detail

Description of reference material	Dried leaf
Scientific name	<i>Fritillaria unibracteata</i> Hsiao et K. C. Hsia
Laboratory number	RD507
Sample mark	RD507-8B
Locality	Songpan County, Sichuan Province, China
Corresponding voucher specimen	RD533
Authenticated	Yes
Remarks	ITS2: 164Y

### Image

Front view



Back view



## Reference DNA Sequence

### Dried Leaf

#### DNA Information

#### Internal transcribed spacer 2 of nuclear ribosomal RNA (ITS2)

Batch ID. BI200818

>RD508-1A ITS2

```
CGCCTTGTTTCGCTCCGTGCCAATGACCCTTCGGGTG
CGGTCACGGATGCGGAGATTGGCCCCCGTGCTCGT
GTGCGGGGGCTTAAGCGGGGCTGTCGGCGTGGG
ATGGGCACGACGAGTGGTGGACGGAGCACCAGCAGG
ATGTTGTGGCCCCYGTGCGCTTAAGGGGCTCAAGAG
ACCCGGAACGGGCGAKCCGTGCTCCGTACGAGGAGG
CGGTGCCGTCTCGCAATG
```

Remarks: observations at nucleotide position 162, 200

#### Chloroplast *psbA-trnH* intergenic spacer (*psbA-trnH*)

Batch ID. BI200818

>RD508-1A *psbA-trnH*

```
ACAATTTCCCTCTAGACCTAGCTGCTATTGAAGTTCCA
TCTACAAATGGATAAGACTTAAATCTGTCTTAGTGT
ATACGAATCCTTGATGGAGCAATATCTTTGTATCTTGC
TAAAGATATTGCTCCATCAAGGATTTTTTTTATTGAA
CGTGTACAGGGGATTACTCCTTATTACATTACATTT
TAAAAATTGGCATTCTATGCCCAATATATCGATCTAA
GTATGAAGGTAAGAATAAATAACAATAATGATGAATG
GAAAAATAAAAAAGCTAAAATCCTTTAGCTAGATAA
GGGGCGGATGTAGCCAAGTGGATCAAGGCAGT
```

#### Chloroplast ribulose biphosphate carboxylase large chain (*rbcL*)

Batch ID. BI200818

>RD508-1A *rbcL*

```
AAGTGTGGATTCAAAGCTGGTGTAAAGATTACAAA
TTGACTTATTATACTCCTGACTATGAAACCAAAGATA
CTGATATTTGGCAGCATTCCGAGTAACTCCTCAACC
CGGAGTTCCACCCGAAGAGGCAGGGGCAGCGGTAGC
CGCCGAATCTTCCACTGGTACATGGACAACGTGTGTG
ACTGATGGACTTACCAGTCTTGATCGTTACAAAGGGC
GATGCTACCACATCGAGAGCGTTGTTGGGGAAGAAA
ATCAATATATTGCTTATGTAGCTTATCCTTTAGACCTT
TTTGAAGAAGGTTCTGTTACTAACATGTTCACTTCCAT
TGTGGGTAATGTATTTGGTTTCAAAGCCCTACGAGCT
CTACGCTGGAGGATCTGCGAATTCCTACTTCTTATTC
CAAAACTTTTCAAGGCCCGCCTCATGGTATCCAAGTT
GAAAGGGATAAATTGAACAAGTATGGTCGTCCTTAT
TAGGATGTACCATTAAACCAAAATTAGGATTATCTGC
AAAGAACTATGGTAGAGCAGTTTATGAATGTCTG
```

#### Reference Detail

Description of reference material	Dried leaf
Scientific name	<i>Fritillaria unibracteata</i> Hsiao et K. C. Hsia
Laboratory number	RD508
Sample mark	RD508-1A
Locality	Maqin County, Qinghai Province, China
Corresponding voucher specimen	RD534
Authenticated	Yes
Remarks	ITS2: 162Y, 200K

#### Image

Front view



Back view



## Reference DNA Sequence

### Dried Leaf

#### DNA Information

#### Internal transcribed spacer 2 of nuclear ribosomal RNA (ITS2)

Batch ID. BI200818

>RD508-2B ITS2

```
CGCCTTGTTTCGCTCCGTGCCAATGACCCTTCGGGTG
CGGTCACGGATGCGGAGATTGGCCCCCGTGCTCGT
GTGCGGGGGCTTAAGCGGGGCTGTCGGCGTGGG
ATGGGCACGACGAGTGGTGGACGGAGCACCAGCAGG
ATGTTGTGGCCCCYGTGCGCTTAAGGGGCTCAAGAG
ACCCGGAACGGGCGAKCCGTGCTCCGTACGAGGAGG
CGGTGYCGTCTCGCAATG
```

Remarks: observations at nucleotide position 162, 200, 226

#### Chloroplast *psbA-trnH* intergenic spacer (*psbA-trnH*)

Batch ID. BI200818

>RD508-2B *psbA-trnH*

```
ACAATTTCCCTCTAGACCTAGCTGCTATTGAAGTTCCA
TCTACAAATGGATAAGACTTAAATCTGTCTTAGTGT
ATACGAATCCTTGATGGAGCAATATCTTTGTATCTTGC
TAAAGATATTGCTCCATCAAGGATTTTTTTTATTGAA
CGGTGCACAGGGGATTACTCCTTATTACATTACATTT
TAAAAATTGGCATTCTATGCCAATATATCGATCTAA
GTATGAAGGTAAGAATAAATAACAATAATGATGAATG
GAAAAATAAAAAAGCTAAAATCCTTTAGCTAGATAA
GGGGCGGATGTAGCCAAGTGGATCAAGGCAGT
```

#### Chloroplast ribulose biphosphate carboxylase large chain (*rbcL*)

Batch ID. BI200818

>RD508-2B *rbcL*

```
AAGTGTTGGATTCAAAGCTGGTGTAAAGATTACAAA
TTGACTTATTATACTCCTGACTATGAAACCAAAGATA
CTGATATTTTGGCAGCATTCCGAGTAACTCCTCAACC
CGGAGTTCACCCGAAGAGGCAGGGGCAGCGGTAGC
CGCCGAATCTTCCACTGGTACATGGACAACCTGTGTGG
ACTGATGGACTTACCAGTCTTGATCGTTACAAAGGGC
GATGCTACCACATCGAGAGCGTTGTTGGGGAAGAAA
ATCAATATATTGCTTATGTAGCTTATCCTTTAGACCTT
TTTGAAGAAGGTTCTGTTACTAACATGTTCACTTCCAT
TGTGGGTAATGTATTTGGTTTCAAAGCCCTACGAGCT
CTACGCTGGAGGATCTGCGAATTCCTACTTCTTATTC
CAAAACTTTTCAAGGCCCGCCTCATGGTATCCAAGTT
GAAAGGGATAAATTGAACAAGTATGGTCTGCCCTAT
TAGGATGTACCATTAACCAAAAATTAGGATTATCTGC
AAAGAACTATGGTAGAGCAGTTTATGAATGTCTG
```

#### Reference Detail

Description of reference material	Dried leaf
Scientific name	<i>Fritillaria unibracteata</i> Hsiao et K. C. Hsia
Laboratory number	RD508
Sample mark	RD508-2B
Locality	Maqin County, Qinghai Province, China
Corresponding voucher specimen	RD534
Authenticated	Yes
Remarks	ITS2: 162Y, 200K, 226Y

#### Image

Front view



Back view



## Reference DNA Sequence

### Dried Leaf

#### DNA Information

#### Internal transcribed spacer 2 of nuclear ribosomal RNA (ITS2)

Batch ID. BIC210709-3

>RD508-3B ITS2

```
CGCCTTGTTTCGCTCCGTGCCAATGACCCTTCGGGTG
CGGTCACGGATGCGGAGATTGGCCCCCGTGCTCGT
GTGCGGGGGCTTAAGCGGGGCTGTCGGCGTGGG
ATGGGCACGACGAGTGGTGGACGGAGCACCAGCAGG
ATGTTGTGGCCCCCYGTCGCCTTAAGGGGCTCAAGAG
ACCCGGAACGGGCGAKCCGTGCTCCGTACGAGGAGG
CGGTGCCGTCTCGCAATG
```

Remarks: observations at nucleotide position 164, 203

#### Chloroplast *psbA-trnH* intergenic spacer (*psbA-trnH*)

Batch ID. BIC210709-3

>RD508-3B *psbA-trnH*

```
ACAATTTCCCTCTAGACCTAGCTGCTATTGAAGTTCCA
TCTACAAATGGATAAGACTTAAATCTGTCTTAGTGT
ATACGAATCCTTGATGGAGCAATATCTTTGTATCTTGC
TAAAGATATTGCTCCATCAAGGATTTTTTTTATTGAA
CGTGTACACAGGGGATTACTCCTTATTACATTACATTT
TAAAAATTGGCATTCTATGCCCAATATATCGATCTAA
GTATGAAGGTAAGAATAAATAACAATAATGATGAATG
GAAAAATAAAAAAGCTAAAATCCTTTAGCTAGATAA
GGGGCGGATGTAGCCAAGTGGATCAAGGCAGT
```

#### Chloroplast ribulose biphosphate carboxylase large chain (*rbcL*)

Batch ID. BIC210709-3

>RD508-3B *rbcL*

```
AAGTGTTGGATTCAAAGCTGGTGTAAAGATTACAAA
TTGACTTATTATACTCCTGACTATGAAACCAAAGATA
CTGATATTTTGGCAGCATTCCGAGTAACTCCTCAACC
CGGAGTTCCACCCGAAGAGGCAGGGGCAGCGGTAGC
CGCCGAATCTTCCACTGGTACATGGACAACGTGTGTG
ACTGATGGACTTACCAGTCTTGATCGTTACAAAGGGC
GATGCTACCACATCGAGAGCGTTGTTGGGGAAGAAA
ATCAATATATTGCTTATGTAGCTTATCCTTTAGACCTT
TTTGAAGAAGGTTCTGTTACTAACATGTTCACTTCCAT
TGTGGGTAATGTATTTGGTTTCAAAGCCCTACGAGCT
CTACGCTGGAGGATCTGCGAATTCCTACTTCTTATTC
CAAAACTTTTCAAGGCCCGCCTCATGGTATCCAAGTT
GAAAGGGATAAATTGAACAAGTATGGTCGTCCTTAT
TAGGATGTACCATTAACCAAAAATTAGGATTATCTGC
AAAGAACTATGGTAGAGCAGTTTATGAATGTCTG
```

#### Reference Detail

Description of reference material	Dried leaf
Scientific name	<i>Fritillaria unibracteata</i> Hsiao et K. C. Hsia
Laboratory number	RD508
Sample mark	RD508-3B
Locality	Maqin County, Qinghai Province, China
Corresponding voucher specimen	RD534
Authenticated	Yes
Remarks	ITS2: 164Y, 203K

#### Image

Front view



Back view



## Reference DNA Sequence

### Dried Leaf

#### DNA Information

#### Internal transcribed spacer 2 of nuclear ribosomal RNA (ITS2)

Batch ID. BIC210709-3

>RD508-4B ITS2

```
CGCCTTGTTTCGCTCCGTGCCAATGACCCTTCGGGTG
CGGTCACGGATGCGGAGATTGGCCCCCGTGCTCGT
GTGCGGGGGCTTAAGCGGGGCTGTCGGCGTGGG
ATGGGCACGACGAGTGGTGGACGGAGCACCAGCAGG
ATGTTGTGGCCCCYGTGCGCTTAAGGGGCTCAAGAG
ACCCGGAACGGGCGAKCCGTGCTCCGTACGAGGAGG
CGGTGYCGTCTCGCAATG
```

Remarks: observations at nucleotide position 164, 203, 229

#### Chloroplast *psbA-trnH* intergenic spacer (*psbA-trnH*)

Batch ID. BIC210709-3

>RD508-4B *psbA-trnH*

```
ACAATTTCCCTCTAGACCTAGCTGCTATTGAAGTTCCA
TCTACAAATGGATAAGACTTAAATCTGTCTTAGTGT
ATACGAATCCTTGATGGAGCAATATCTTTGTATCTTGC
TAAAGATATTGCTCCATCAAGGATTTTTTTTTATTGAA
CGGTGCACAGGGGATTACTCCTTATTACATTACATTT
TAAAAATTGGCATTCTATGCCAATATATCGATCTAA
GTATGAAGGTAAGAATAAATAACAATAATGATGAATG
GAAAAATAAAAAAGCTAAAATCCTTTAGCTAGATAA
GGGGCGGATGTAGCCAAGTGGATCAAGGCAGT
```

#### Chloroplast ribulose biphosphate carboxylase large chain (*rbcL*)

Batch ID. BIC210709-3

>RD508-4B *rbcL*

```
AAGTGTTGGATTCAAAGCTGGTGTAAAGATTACAAA
TTGACTTATTATACTCCTGACTATGAAACCAAAGATA
CTGATATTTTGGCAGCATTCCGAGTAACTCCTCAACC
CGGAGTTCCACCCGAAGAGGCAGGGGCAGCGGTAGC
CGCCGAATCTTCCACTGGTACATGGACAACGTGTGG
ACTGATGGACTTACCAGTCTTGATCGTTACAAAGGGC
GATGCTACCACATCGAGAGCGTTGTTGGGGAAGAAA
ATCAATATATTGCTTATGTAGCTTATCCTTTAGACCTT
TTTGAAGAAGGTTCTGTTACTAACATGTTCACTTCCAT
TGTGGGTAATGTATTTGGTTTCAAAGCCCTACGAGCT
CTACGCTGGAGGATCTGCGAATTCCTACTTCTTATTC
CAAAACTTTTCAAGGCCCGCCTCATGGTATCCAAGTT
GAAAGGGATAAATTGAACAAGTATGGTCTGCCCTAT
TAGGATGTACCATTAACCAAAAATTAGGATTATCTGC
AAAGAACTATGGTAGAGCAGTTTATGAATGTCTG
```

#### Reference Detail

Description of reference material	Dried leaf
Scientific name	<i>Fritillaria unibracteata</i> Hsiao et K. C. Hsia
Laboratory number	RD508
Sample mark	RD508-4B
Locality	Maqin County, Qinghai Province, China
Corresponding voucher specimen	RD534
Authenticated	Yes
Remarks	ITS2: 164Y, 203K, 229Y

#### Image

Front view



Back view



## Reference DNA Sequence

### Dried Leaf

#### DNA Information

#### Internal transcribed spacer 2 of nuclear ribosomal RNA (ITS2)

Batch ID. BIC210709-3

>RD508-5A ITS2

```
CGCCTTGTTTCGCTCCGTGCCAATGACCCTTCGGGTG
CGGTCACGGATGCGGAGATTGGCCCCCGTGCTCGT
GTGCGGGGGCTTAAGCGGGGCTGTCGGCGTGGG
ATGGGCACGACGAGTGGTGGACGGAGCACCAGCAGG
ATGTTGTGGCCCCCGTCGCCTTAAGGGGCTCAAGAG
ACCCGGAACGGGCGAKCCGTGCTCCGTACGAGGAGG
GCGTGCCGTCTCGCAATG
```

Remarks: observations at nucleotide position 203

#### Chloroplast *psbA-trnH* intergenic spacer (*psbA-trnH*)

Batch ID. BIC210709-3

>RD508-5A *psbA-trnH*

```
ACAATTTCCCTCTAGACCTAGCTGCTATTGAAGTTCCA
TCTACAAATGGATAAGACTTAAATCTGTCTTAGTGT
ATACGAATCCTTGATGGAGCAATATCTTTGTATCTTGC
TAAAGATATTGCTCCATCAAGGATTTTTTTTTATTGAA
CGTGTACAGGGGATTACTCCTTATTACATTACATTT
TAAAAATTGGCATTCTATGCCCAATATATCGATCTAA
GTATGAAGGTAAGAATAAATAACAATAATGATGAATG
GAAAAATAAAAAAGCTAAAATCCTTTAGCTAGATAA
GGGGCGGATGTAGCCAAGTGGATCAAGGCAGT
```

#### Chloroplast ribulose biphosphate carboxylase large chain (*rbcL*)

Batch ID. BIC210709-3

>RD508-5A *rbcL*

```
AAGTGTTGGATTCAAAGCTGGTGTAAAGATTACAAA
TTGACTTATTATACTCCTGACTATGAAACCAAAGATA
CTGATATTTTGGCAGCATTCCGAGTAACTCCTCAACC
CGGAGTTCCACCCGAAGAGGCAGGGGCAGCGGTAGC
CGCCGAATCTTCCACTGGTACATGGACAACCTGTGTGG
ACTGATGGACTTACCAGTCTTGATCGTTACAAAGGGC
GATGCTACCACATCGAGAGCGTTGTTGGGGAAGAAA
ATCAATATATTGCTTATGTAGCTTATCCTTTAGACCTT
TTTGAAGAAGGTTCTGTTACTAACATGTTCACTTCCAT
TGTGGGTAATGTATTTGGTTTCAAAGCCCTACGAGCT
CTACGCTGGAGGATCTGCGAATTCCTACTTCTTATTC
CAAAACTTTTCAAGGCCCGCCTCATGGTATCCAAGTT
GAAAGGGATAAATTGAACAAGTATGGTCTGCCCTAT
TAGGATGTACCATTAAACCAAAATTAGGATTATCTGC
AAAGAACTATGGTAGAGCAGTTTATGAATGTCTG
```

#### Reference Detail

Description of reference material	Dried leaf
Scientific name	<i>Fritillaria unibracteata</i> Hsiao et K. C. Hsia
Laboratory number	RD508
Sample mark	RD508-5A
Locality	Maqin County, Qinghai Province, China
Corresponding voucher specimen	RD534
Authenticated	Yes
Remarks	ITS2: 203K

#### Image

Front view



Back view





# Reference DNA Sequence

## Plant Specimen

### DNA Information

#### Internal transcribed spacer 2 of nuclear ribosomal RNA (ITS2)

Batch ID. BI201008

```
>RD532-10D ITS2
CGCCTTGTTTCGCTCCGTGCCAATGACCCTTCGGGTG
CGGTCACGGATGCGGAGATTGGCCCCCGTGCTCGT
GTGCGGGGGCTTAAGCGGGGCTGTCGGCGTCGGG
ATGGGCACGACGAGTGGTGGACGGAGCACCAGCAGG
ATGTTGTGGCCCCYGTGCCTTAAGGGGCTCAAGAG
ACCCGGAACGGGCGAKCCGTGCTCCGTACGAGGAGG
CGGTGYCGTCTCGCAATG
```

Remarks: observations at nucleotide position 162, 200, 226

#### Chloroplast *psbA-trnH* intergenic spacer (*psbA-trnH*)

Batch ID. BI201008

```
>RD532-10D_psbA-trnH
ACAATTTCCCTCTAGACCTAGCTGCTATTGAAGTTCCA
TCTACAAATGGATAAGACTTAAATCTGTCTTAGTGT
ATACGAATCCTTGATGGAGCAATATCTTTGTATCTTGC
TAAAGATATTGCTCCATCAAGGATTTTTTTTATTGAA
CGTGTACACAGGGGATTACTCCTTATTACATTACATTT
TAAAAATTGGCATTCTATGCCCAATATATCGATCTAA
GTATGAAGGTAAGAATAAATAACAATAATGATGAATG
GAAAAATAAAAAAGCTAAAATCCTTTAGCTAGATAA
GGGGCGGATGTAGCCAAGTGGATCAAGGCAGT
```

#### Chloroplast ribulose biphosphate carboxylase large chain (*rbcL*)

Batch ID. BI201008

```
>RD532-10D_rbcL
AAGTGTGGATTCAAAGCTGGTGTAAAGATTACAAA
TTGACTTATTATACTCCTGACTATGAAACCAAAGATA
CTGATATTTTGGCAGCATTCCGAGTAACTCCTCAACC
CGGAGTTCACCCGAAGAGGCGAGGGGCGGTCAGC
CGCCGAATCTTCACTGGTACATGGACAACCTGTGTGG
ACTGATGGACTTACCAGTCTTGATCGTTACAAAAGGGC
GATGCTACCACATCGAGAGCGTTGTTGGGGAAGAAA
ATCAATATATTGCTTATGTAGCTTATCCTTTAGACCTT
TTGAAGAAGGTTCTGTTACTAACATGTTCACTTCCAT
TGTGGGTAATGTATTTGGTTTCAAAGCCCTACGAGCT
CTACGCTGGAGGATCTGCGAATTCCTACTTCTTATTC
CAAAACTTTTCAAGGCCCGCCTCATGGTATCCAAGTT
GAAAGGGATAAATTGAACAAGTATGGTCGTCCTTAT
TAGGATGTACCATTAACCAAAATTAGGATTATCTGC
AAAGAACTATGGTAGAGCAGTTTATGAATGTCTG
```

### Reference Detail

Description of reference material	Plant specimen
Scientific name	<i>Fritillaria unibracteata</i> Hsiao et K. C. Hsia
Laboratory number	RD532
Sample mark	RD532-10D
Locality	Mao County, Sichuan Province, China
Corresponding CMM	RD506
Authenticated	Yes
Remarks	ITS2: 162Y, 200K, 226Y

### Image



# Reference DNA Sequence

## Plant Specimen

### DNA Information

#### Internal transcribed spacer 2 of nuclear ribosomal RNA (ITS2)

Batch ID. BI201009

```
>RD532-5B ITS2
CGCCTTGTTTCGCTCCGTCGCCAATGACCCTTCGGGTG
CGGTCACGGATGCGGAGATTGGCCCCCGTGCCTCGT
GTGCGGGGGCTTAAGCGGGGCTGTCGGCGTCGGR
ATGGGCACGACGAGTGGTGGACGGAGCACCAGCAGG
ATGTTGTGGCCCCCGTGCCTTAAGGGGCTCAAGAG
ACCCGGAACGGGCGAKCCGTGCTCCGTACGAGGAGG
GCGTGYCGTCTCGCAATG
```

Remarks: observations at nucleotide position 111, 200, 226

#### Chloroplast *psbA-trnH* intergenic spacer (*psbA-trnH*)

Batch ID. BI201009

```
>RD532-5B psbA-trnH
ACAATTTCCCTCTAGACCTAGCTGCTATTGAAGTTCCA
TCTACAAATGGATAAGACTTAAATCTGTCTTAGTGT
ATACGAATCCTTGATGGAGCAATATCTTTGTATCTTGC
TAAAGATATTGCTCCATCAAGGATTTTTTTTATTGAA
CGTGTACAGGGGATTACTCCTTTATTACATTACATTT
TAAAAATTGGCATTCTATGCCAATATATCGATCTAA
GTATGAAGGTAAGAATAAATAACAATAATGATGAATG
GAAAAATAAAAAAGCTAAAATCCTTTAGCTAGATAA
GGGGCGGATGTAGCCAAGTGGATCAAGGCAGT
```

#### Chloroplast ribulose biphosphate carboxylase large chain (*rbcL*)

Batch ID. BI201009

```
>RD532-5B rbcL
AAGTGTGGATTCAAAGCTGGTGTAAAGATTACAAA
TTGACTTATTATACTCCTGACTATGAAACCAAAGATA
CTGATATTTTGGCAGCATTCCGAGTAACTCCTCAACC
CGGAGTTCACCCGAAGAGGCGAGGGGCAGCGGTAGC
CGCCGAATCTTCACTGGTACATGGACAACCTGTGTGG
ACTGATGGACTTACCAGTCTTGATCGTTACAAAAGGGC
GATGCTACCACATCGAGAGCGTTGTTGGGGAAGAAA
ATCAATATATTGCTTATGTAGCTTATCCTTTAGACCTT
TTTGAAGAAGGTTCTGTTACTAACATGTTCACTTCCAT
TGTGGGTAATGTATTTGGTTTCAAAGCCCTACGAGCT
CTACGCTGGAGGATCTGCGAATTCCTACTTCTTATTC
CAAAACTTTTCAAGGCCCGCCTCATGGTATCCAAGTT
GAAAGGGATAAATTGAACAAGTATGGTCGTCCTAT
TAGGATGTACCATTAACCAAAATTAGGATTATCTGC
AAAGAACTATGGTAGAGCAGTTTATGAATGTCTG
```

## Reference Detail

Description of reference material	Plant specimen
Scientific name	<i>Fritillaria unibracteata</i> Hsiao et K. C. Hsia
Laboratory number	RD532
Sample mark	RD532-5B
Locality	Mao County, Sichuan Province, China
Corresponding CMM	RD506
Authenticated	Yes
Remarks	ITS2: 111R, 200K, 226Y

## Image



# Reference DNA Sequence

## Plant Specimen

### DNA Information

#### Internal transcribed spacer 2 of nuclear ribosomal RNA (ITS2)

Batch ID. BI200818-2

>RD533-1A ITS2

CGCCTTGTTTCGCTCCGTGCCAATGACCCTTCGGGTG  
CGGTCACGGATGCGGAGATTGGCCCCCGTGCTCGT  
GTGCGGGGGCTTAAGCGGGGCTGTCGGCGTGGG  
ATGGGCACGACGAGTGGTGGACGGAGCACCAGCAGG  
ATGTTGTGGCCCCYGTGCGCTTAAGGGGCTCAAGAG  
ACCCGGAMCGGGCGAGCCGTGCTCCGTACGAGGAGG  
GCGTGCCGTCTCGCAATG

Remarks: observations at nucleotide position 162, 192

#### Chloroplast *psbA-trnH* intergenic spacer (*psbA-trnH*)

Batch ID. BI200818-2

>RD533-1A psbA-trnH

ACAATTTCCCTCTAGACCTAGCTGCTATTGAAGTTCCA  
TCTACAAATGGATAAGACTTAAATCTGTCTTAGTGT  
ATACGAATCCTTGATGGAGCAATATCTTTGTATCTTGC  
TAAAGATATTGCTCCATCAAGGATTTTTTTTATTGAA  
CGTGTACAGGGGATTACTCCTTTATTACATTACATTT  
TAAAAATTGGCATTCTATGCCAATATATCGATCTAA  
GTATGAAGGTAAGAATAAATAACAATAATGATGAATG  
GAAAAATAAAAAAGCTAAAATCCTTTAGCTAGATAA  
GGGGCGGATGTAGCCAAGTGGATCAAGGCAGT

#### Chloroplast ribulose biphosphate carboxylase large chain (*rbcL*)

Batch ID. BI200818-2

>RD533-1A rbcL

AAGTGTGGATTCAAAGCTGGTGTAAAGATTACAAA  
TTGACTTATTATACTCCTGACTATGAAACCAAAGATA  
CTGATATTTTGGCAGCATTCCGAGTAACTCCTCAACC  
CGGAGTTCACCCGAAGAGGCAGGGGCAGCGGTAGC  
CGCCGAATCTCCACTGGTACATGGACAACCTGTGTGG  
ACTGATGGACTTACCAGTCTTGATCGTTACAAAGGGC  
GATGCTACCACATCGAGAGCGTTGTTGGGGAAGAAA  
ATCAATATATTGCTTATGTAGCTTATCCTTTAGACCTT  
TTGAAGAAGGTTCTGTTACTAACATGTTCACTTCCAT  
TGTGGGTAATGTATTTGGTTTCAAAGCCCTACGAGCT  
CTACGCTGGAGGATCTGCGAATTCCTACTTCTTATTC  
CAAAACTTTTCAAGGCCCGCCTCATGGTATCCAAGTT  
GAAAGGGATAAATTGAACAAGTATGGTCGTCCTAT  
TAGGATGTACCATTAACCAAAAATTAGGATTATCTGC  
AAAGAACTATGGTAGAGCAGTTTATGAATGTCTG

## Reference Detail

Description of reference material	Plant specimen
Scientific name	<i>Fritillaria unibracteata</i> Hsiao et K. C. Hsia
Laboratory number	RD533
Sample mark	RD533-1A
Locality	Songpan County, Sichuan Province, China
Corresponding CMM	RD507
Authenticated	Yes
Remarks	ITS2: 162Y, 192M

## Image



# Reference DNA Sequence

## Plant Specimen

### DNA Information

#### Internal transcribed spacer 2 of nuclear ribosomal RNA (ITS2)

Batch ID. BI200818-2

>RD533-2A ITS2

CGCCTTGTTTCGCTCCGTGCCAATGACCCTTCGGGTG  
CGGTCACGGATGCGGAGATTGGCCCCCGTGCTCGT  
GTGCGGGGGCTTAAGCGGGGCTGTCGGCGTGGG  
ATGGGCACGACGAGTGGTGGACGGAGCACCAGCAGG  
ATGTTGTGGCCCCYGTGCGCTTAAGGGGCTCAAGAG  
ACCCGGAACGGGCGAKCCGTGCTCCGTACGAGGAGG  
GCGTGYCGTCTCGCAATG

Remarks: observations at nucleotide position 162, 200, 226

#### Chloroplast *psbA-trnH* intergenic spacer (*psbA-trnH*)

Batch ID. BI200818-2

>RD533-2A *psbA-trnH*

ACAATTTCCCTCTAGACCTAGCTGCTATTGAAGTTCCA  
TCTACAAATGGATAAGACTTAAATCTGTCTTAGTGT  
ATACGAATCCTTGATGGAGCAATATCTTTGTATCTTGC  
TAAAGATATTGCTCCATCAAGGATTTTTTTTATTGAA  
CGTGTACACAGGGGATTACTCCTTTATTACATTACATT  
TAAAAATTGGCATTCTATGCCAATATATCGATCTAA  
GTATGAAGGTAAGAATAAATAACAATAATGATGAATG  
GAAAAATAAAAAAGCTAAAATCCTTTAGCTAGATAA  
GGGGCGGATGTAGCCAAGTGGATCAAGGCAGT

#### Chloroplast ribulose biphosphate carboxylase large chain (*rbcl*)

Batch ID. BI200818-2

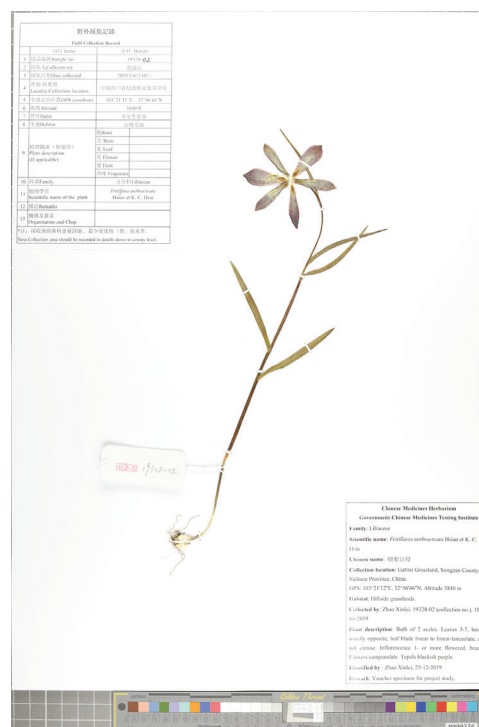
>RD533-2A *rbcl*

AAGTGTGGATTCAAAGCTGGTGTAAAGATTACAAA  
TTGACTTATTATACTCCTGACTATGAAACCAAAGATA  
CTGATATTTTGGCAGCATTCCGAGTAACCTCAACC  
CGGAGTTCACCCGAAGAGGCAGGGGCAGCGGTAGC  
CGCCGAATCTCCACTGGTACATGGACAACCTGTGTGG  
ACTGATGGACTTACCAGTCTTGATCGTTACAAAAGGGC  
GATGCTACCACATCGAGAGCGTTGTTGGGGAAGAAA  
ATCAATATATTGCTTATGTAGCTTATCCTTTAGACCTT  
TTTGAAGAAGGTTCTGTTACTAACATGTTCACTTCCAT  
TGTGGGTAATGTATTTGGTTTCAAAGCCCTACGAGCT  
CTACGCTGGAGGATCTGCGAATCCTACTTCTTATTC  
CAAAACTTTTCAAGGCCCGCCTCATGGTATCCAAGTT  
GAAAGGGATAAATTGAACAAGTATGGTCGTCCTTAT  
TAGGATGTACCATTAACCAAATAGGATTATCTGC  
AAAGAACTATGGTAGAGCAGTTTATGAATGTCTG

### Reference Detail

Description of reference material	Plant specimen
Scientific name	<i>Fritillaria unibracteata</i> Hsiao et K. C. Hsia
Laboratory number	RD533
Sample mark	RD533-2A
Locality	Songpan County, Sichuan Province, China
Corresponding CMM	RD507
Authenticated	Yes
Remarks	ITS2: 162Y, 200K, 226Y

### Image



# Reference DNA Sequence

## Plant Specimen

### DNA Information

#### Internal transcribed spacer 2 of nuclear ribosomal RNA (ITS2)

Batch ID. BI200818-2

>RD534-1A ITS2

CGCCTTGTTTCGCTCCGTGCCAATGACCCTTCGGGTG  
CGGTCACGGATGCGGAGATTGGCCCCCGTGCCCTCGT  
GTGCGGGGGCTTAAGCGGGGCTGTCGGCGTCGGR  
ATGGGCACGACGAGTGGTGGACGGAGCACCAGCAGG  
ATGTTGTGGCCCCCGTGCCTTAAGGGGCTCAAGAG  
ACCCGGAMCGGGCGAKCCGTGCTCCGTACGAGGAGG  
GCGTGCCGTCTCGCAATG

Remarks: observations at nucleotide position 111, 192, 200

#### Chloroplast *psbA-trnH* intergenic spacer (*psbA-trnH*)

Batch ID. BI200818-2

>RD534-1A\_psbA-trnH

ACAATTTCCCTCTAGACCTAGCTGCTATTGAAGTTCCA  
TCTACAAATGGATAAGACTTAAATCTGTCTTAGTGT  
ATACGAATCCTTGATGGAGCAATATCTTTGTATCTTGC  
TAAAGATATTGCTCCATCAAGGATTTTTTTTTATTGAA  
CGTGTACAGGGGATTACTCCTTATTACATTACATTT  
TAAAAATTGGCATTCTATGCCCAATATATCGATCTAA  
GTATGAAGGTAAGAATAAATAACAATAATGATGAATG  
GAAAAATAAAAAAGCTAAAATCCTTTAGCTAGATAA  
GGGGCGGATGTAGCCAAGTGGATCAAGGCAGT

#### Chloroplast ribulose biphosphate carboxylase large chain (*rbcL*)

Batch ID. BI200818-2

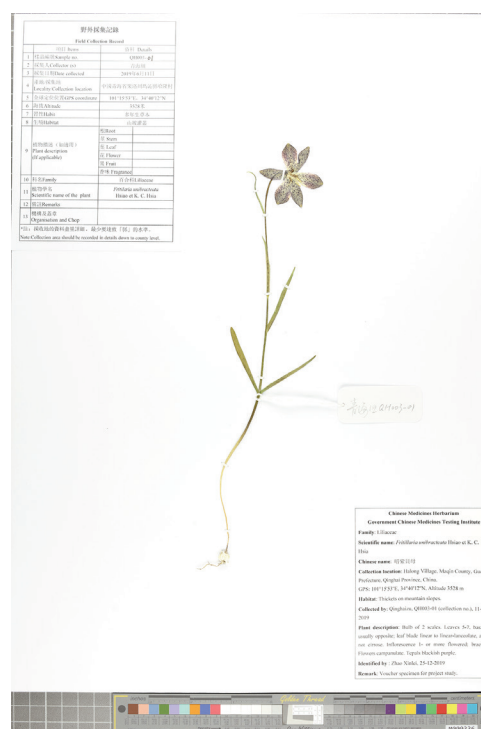
>RD534-1A\_rbcL

AAGTGTGGATTCAAAGCTGGTGTAAAGATTACAAA  
TTGACTTATTATACTCCTGACTATGAAACCAAAGATA  
CTGATATTTTGGCAGCATTCCGAGTAACTCCTCAACC  
CGGAGTTCACCCGAAGAGGCAGGGGCGAGCGGTAGC  
CGCCGAATCTCCACTGGTACATGGACAACCTGTGTGG  
ACTGATGGACTTACCAGTCTTGATCGTTACAAAAGGGC  
GATGCTACCACATCGAGAGCGTTGTTGGGGAAGAAA  
ATCAATATATTGCTTATGTAGCTTATCCTTTAGACCTT  
TTGAAGAAGGTTCTGTTACTAACATGTTCACTTCCAT  
TGTGGGTAATGTATTTGGTTTCAAAGCCCTACGAGCT  
CTACGCTGGAGGATCTGCGAATTCCTACTCTTATTTC  
CAAAACTTTTCAAGGCCCGCTCATGGTATCAAAAGTT  
GAAAGGGATAAATTGAACAAGTATGGTCGTCCTTAT  
TAGGATGTACCATTAACCAAAAATTAGGATTATCTGC  
AAAGAACTATGGTAGAGCAGTTTATGAATGTCTG

### Reference Detail

Description of reference material	Plant specimen
Scientific name	<i>Fritillaria unibracteata</i> Hsiao et K. C. Hsia
Laboratory number	RD534
Sample mark	RD534-1A
Locality	Maqin County, Qinghai Province, China
Corresponding CMM	RD508
Authenticated	Yes
Remarks	ITS2: 111R, 192M, 200K

### Image



# Reference DNA Sequence

## Plant Specimen

### DNA Information

#### Internal transcribed spacer 2 of nuclear ribosomal RNA (ITS2)

Batch ID. BI200818-2

```
>RD534-2B ITS2
CGCCTTGTTTCGCTCCGTGCCAATGACCCTTCGGGTG
CGGTCACGGATGCGGAGATTGGCCCCCGTGCTCGT
GTGCGGGGGCTTAAGCGGGGCTGTCGGCGTCGGG
ATGGGCACGACGAGTGGTGGACGGAGCACCAGCAGG
ATGTTGTGGCCCCCGTCGCCTTAAGGGGCTCAAGAG
ACCCGGAMCGGGCGAGCCGTGCTCCGTACGAGGAGG
GCGTGCCGTCTCGCAATG
```

Remarks: observations at nucleotide position 192

#### Chloroplast *psbA-trnH* intergenic spacer (*psbA-trnH*)

Batch ID. BI200818-2

```
>RD534-2B psbA-trnH
ACAATTTCCCTCTAGACCTAGCTGCTATTGAAGTTCCA
TCTACAAATGGATAAGACTTAAATCTGTCTTAGTGT
ATACGAATCCTTGATGGAGCAATATCTTTGTATCTTGC
TAAAGATATTGCTCCATCAAGGATTTTTTTTATTGAA
CGTGTACAGGGGATTACTCCTTTATTACATTACATTT
TAAAAATTGGCATTCTATGCCAATATATCGATCTAA
GTATGAAGGTAAGAATAAATAACAATAATGATGAATG
GAAAAATAAAAAAGCTAAAATCCTTTAGCTAGATAA
GGGGCGGATGTAGCCAAGTGGATCAAGGCAGT
```

#### Chloroplast ribulose biphosphate carboxylase large chain (*rbcL*)

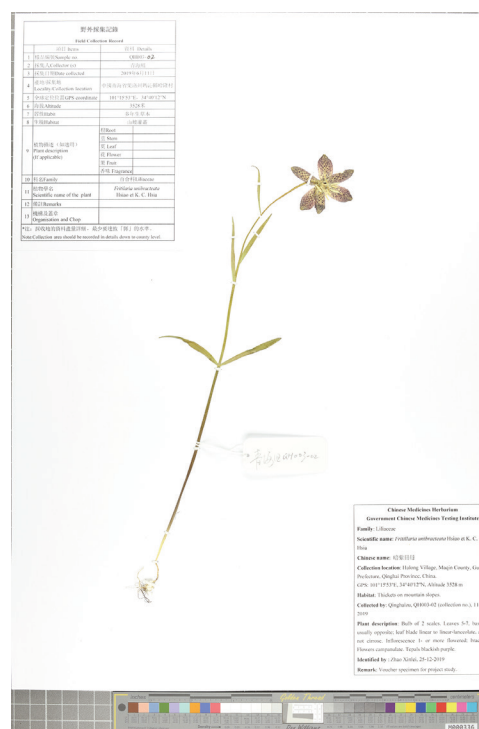
Batch ID. BI200818-2

```
>RD534-2B rbcL
AAGTGTGGATTCAAAGCTGGTGTAAAGATTACAAA
TTGACTTATTATACTCCTGACTATGAAACCAAAGATA
CTGATATTTTGGCAGCATTCCGAGTAACTCCTCAACC
CGGAGTTCACCCGAAGAGGCGAGGGGCGGAGTGC
CGCCGAATCTTCACTGGTACATGGACAACCTGTGTGG
ACTGATGGACTTACCAGTCTTGATCGTTACAAAGGGC
GATGCTACCACATCGAGAGCGTTGTTGGGGAAGAAA
ATCAATATATTGCTTATGTAGCTTATCCTTTAGACCTT
TTGAAGAAGGTTCTGTTACTAACATGTTCACTTCCAT
TGTGGGTAATGTATTTGGTTTCAAAGCCCTACGAGCT
CTACGCTGGAGGATCTGCGAATTCCTACTTCTTATTC
CAAAACTTTTCAAGGCCGCCCTCATGGTATCCAAGTT
GAAAGGGATAAATTGAACAAGTATGGTCGTCCTTAT
TAGGATGTACCATTAACCAAAAATTAGGATTATCTGC
AAAGAACTATGGTAGAGCAGTTTATGAATGTCTG
```

## Reference Detail

Description of reference material	Plant specimen
Scientific name	<i>Fritillaria unibracteata</i> Hsiao et K. C. Hsia
Laboratory number	RD534
Sample mark	RD534-2B
Locality	Maqin County, Qinghai Province, China
Corresponding CMM	RD508
Authenticated	Yes
Remarks	ITS2: 192M

## Image



## Reference DNA sequences in FASTA format

Internal transcribed spacer 2 of nuclear ribosomal RNA (ITS2) sequence of plant voucher specimen of *Fritillaria unibracteata* and dried leaf of *F. unibracteata*

```

>RD506-1B ITS2
CGCCTTGTTTCGCTCCGTGCCCAATGACCCCTTCGGGTGCGGTCACGGATGCGGAGATTGGCCCCCGTGCCTCGTG
TGCGGCGGGCTTAAGCGCGGGCTGTCGGCGTCGGGATGGGCACGACGAGTGGTGGACGGAGACCAGCAGGATG
TTGTGGCCCCYGTGCCTTAAGGGGCTCAAGAGACCCGGAMCGGGCGAKCCGTGCTCCGTACGAGGAGGGCGTG
YCGTCTCGCAATG
>RD506-2B ITS2
CGCCTTGTTTCGCTCCGTGCCCAATGACCCCTTCGGGTGCGGTCACGGATGCGGAGATTGGCCCCCGTGCCTCGTG
TGCGGCGGGCTTAAGCGCGGGCTGTCGGCGTCGGGATGGGCACGACGAGTGGTGGACGGAGACCAGCAGGATG
TTGTGGCCCCYGTGCCTTAAGGGGCTCAAGAGACCCGGAACGGGCGAKCCGTGCTCCGTACGAGGAGGGCGTG
YCGTCTCGCAATG
>RD506-3A ITS2
CGCCTTGTTTCGCTCCGTGCCCAATGACCCCTTCGGGTGCGGTCACGGATGCGGAGATTGGCCCCCGTGCCTCGTG
TGCGGCGGGCTTAAGCGCGGGCTGTCGGCGTCGGGATGGGCACGACGAGTGGTGGACGGAGACCAGCAGGATG
TTGTGGCCCCYGTGCCTTAAGGGGCTCAAGAGACCCGGAACGGGCGAKCCGTGCTCCGTACGAGGAGGGCGTG
YCGTCTCGCAATG
>RD506-4B ITS2
CGCCTTGTTTCGCTCCGTGCCCAATGACCCCTTCGGGTGCGGTCACGGATGCGGAGATTGGCCCCCGTGCCTCGTG
TGCGGCGGGCTTAAGCGCGGGCTGTCGGCGTCGGGATGGGCACGACGAGTGGTGGACGGAGACCAGCAGGATG
TTGTGGCCCCYGTGCCTTAAGGGGCTCAAGAGACCCGGAACGGGCGAKCCGTGCTCCGTACGAGGAGGGCGTG
CCGTCTCGCAATG
>RD506-5A ITS2
CGCCTTGTTTCGCTCCGTGCCCAATGACCCCTTCGGGTGCGGTCACGGATGCGGAGATTGGCCCCCGTGCCTCGTG
TGCGGCGGGCTTAAGCGCGGGCTGTCGGCGTCGGGATGGGCACGACGAGTGGTGGACGGAGACCAGCAGGATG
TTGTGGCCCCYGTGCCTTAAGGGGCTCAAGAGACCCGGAACGGGCGAKCCGTGCTCCGTACGAGGAGGGCGTG
YCGTCTCGCAATG
>RD507-10A ITS2
CSCCTTGTTTCGCTCCGTGCCCAATGACCCCTTCGGGTGCGGTCACGGATGCGGAGATTGGCCCCCGTGCCTCGTG
GCGGCGGGCTTAAGCGCGGGCTGTCGGCGTCGGGATGGGCACGACGAGTGGTGGACGGAGACCAGCAGGATG
TGTGGCCCCYGTGCCTTAAGGGGCTCAAGAGACCCGGAACGGGCGAKCCGTGCTCCGTACGAGGAGGGCGTG
CGTCTCGCAATG
>RD507-1B ITS2
CGCCTTGTTTCGCTCCGTGCCCAATGACCCCTTCGGGTGCGGTCACGGATGCGGAGATTGGCCCCCGTGCCTCGTG
TGCGGCGGGCTTAAGCGCGGGCTGTCGGCGTCGGGATGGGCACGACGAGTGGTGGACGGAGACCAGCAGGATG
TTGTGGCCCCYGTGCCTTAAGGGGCTCAAGAGACCCGGAACGGGCGAKCCGTGCTCCGTACGAGGAGGGCGTG
YCGTCTCGCAATG
>RD507-2A ITS2
CGCCTTGTTTCGCTCCGTGCCCAATGACCCCTTCGGGTGCGGTCACGGATGCGGAGATTGGCCCCCGTGCCTCGTG
TGCGGCGGGCTTAAGCGCGGGCTGTCGGCGTCGGGATGGGCACGACGAGTGGTGGACGGAGACCAGCAGGATG
TTGTGGCCCCYGTGCCTTAAGGGGCTCAAGAGACCCGGAACGGGCGAKCCGTGCTCCGTACGAGGAGGGCGTG
YCGTCTCGCAATG
>RD507-8B ITS2
CGCCTTGTTTCGCTCCGTGCCCAATGACCCCTTCGGGTGCGGTCACGGATGCGGAGATTGGCCCCCGTGCCTCGTG
TGCGGCGGGCTTAAGCGCGGGCTGTCGGCGTCGGGATGGGCACGACGAGTGGTGGACGGAGACCAGCAGGATG
TTGTGGCCCCYGTGCCTTAAGGGGCTCAAGAGACCCGGAACGGGCGAGCCGTGCTCCGTACGAGGAGGGCGTG
CCGTCTCGCAATG
>RD508-1A ITS2
CGCCTTGTTTCGCTCCGTGCCCAATGACCCCTTCGGGTGCGGTCACGGATGCGGAGATTGGCCCCCGTGCCTCGTG
TGCGGCGGGCTTAAGCGCGGGCTGTCGGCGTCGGGATGGGCACGACGAGTGGTGGACGGAGACCAGCAGGATG
TTGTGGCCCCYGTGCCTTAAGGGGCTCAAGAGACCCGGAACGGGCGAKCCGTGCTCCGTACGAGGAGGGCGTG
CCGTCTCGCAATG
>RD508-2B ITS2
CGCCTTGTTTCGCTCCGTGCCCAATGACCCCTTCGGGTGCGGTCACGGATGCGGAGATTGGCCCCCGTGCCTCGTG
TGCGGCGGGCTTAAGCGCGGGCTGTCGGCGTCGGGATGGGCACGACGAGTGGTGGACGGAGACCAGCAGGATG
TTGTGGCCCCYGTGCCTTAAGGGGCTCAAGAGACCCGGAACGGGCGAKCCGTGCTCCGTACGAGGAGGGCGTG
YCGTCTCGCAATG
>RD508-3B ITS2
CGCCTTGTTTCGCTCCGTGCCCAATGACCCCTTCGGGTGCGGTCACGGATGCGGAGATTGGCCCCCGTGCCTCGTG
TGCGGCGGGCTTAAGCGCGGGCTGTCGGCGTCGGGATGGGCACGACGAGTGGTGGACGGAGACCAGCAGGATG
TTGTGGCCCCYGTGCCTTAAGGGGCTCAAGAGACCCGGAACGGGCGAKCCGTGCTCCGTACGAGGAGGGCGTG
CCGTCTCGCAATG
>RD508-4B ITS2
CGCCTTGTTTCGCTCCGTGCCCAATGACCCCTTCGGGTGCGGTCACGGATGCGGAGATTGGCCCCCGTGCCTCGTG
TGCGGCGGGCTTAAGCGCGGGCTGTCGGCGTCGGGATGGGCACGACGAGTGGTGGACGGAGACCAGCAGGATG

```

TTGTGGCCCCYGTGCGCTTAAGGGGCTCAAGAGACCCGGAACGGGCGAKCCGTGCTCCGTACGAGGAGGGCGTG  
YCGTCTCGCAATG  
>RD508-5A\_ITS2  
CGCCTTGTTTCGCTCCGTGCCCAATGACCCTTCGGGTGCGGTCACGGATGCGGAGATTGGCCCCCGTGCCTCGTG  
TGCGGCGGGCTTAAGCGCGGGCTGTCGGCGTCGGGATGGGCACGACGAGTGGTGGACGGAGACCAGCAGGATG  
TTGTGGCCCCCGTGCCTTAAGGGGCTCAAGAGACCCGGAACGGGCGAKCCGTGCTCCGTACGAGGAGGGCGTG  
CCGTCTCGCAATG  
>RD532-10D\_ITS2  
CGCCTTGTTTCGCTCCGTGCCCAATGACCCTTCGGGTGCGGTCACGGATGCGGAGATTGGCCCCCGTGCCTCGTG  
TGCGGCGGGCTTAAGCGCGGGCTGTCGGCGTCGGGATGGGCACGACGAGTGGTGGACGGAGACCAGCAGGATG  
TTGTGGCCCCCYGTGCGCTTAAGGGGCTCAAGAGACCCGGAACGGGCGAKCCGTGCTCCGTACGAGGAGGGCGTG  
YCGTCTCGCAATG  
>RD532-5B\_ITS2  
CGCCTTGTTTCGCTCCGTGCCCAATGACCCTTCGGGTGCGGTCACGGATGCGGAGATTGGCCCCCGTGCCTCGTG  
TGCGGCGGGCTTAAGCGCGGGCTGTCGGCGTCGGGATGGGCACGACGAGTGGTGGACGGAGACCAGCAGGATG  
TTGTGGCCCCCGTGCCTTAAGGGGCTCAAGAGACCCGGAACGGGCGAKCCGTGCTCCGTACGAGGAGGGCGTG  
YCGTCTCGCAATG  
>RD533-1A\_ITS2  
CGCCTTGTTTCGCTCCGTGCCCAATGACCCTTCGGGTGCGGTCACGGATGCGGAGATTGGCCCCCGTGCCTCGTG  
TGCGGCGGGCTTAAGCGCGGGCTGTCGGCGTCGGGATGGGCACGACGAGTGGTGGACGGAGACCAGCAGGATG  
TTGTGGCCCCCYGTGCGCTTAAGGGGCTCAAGAGACCCGGAMCGGGCGAGCCGTGCTCCGTACGAGGAGGGCGTG  
CCGTCTCGCAATG  
>RD533-2A\_ITS2  
CGCCTTGTTTCGCTCCGTGCCCAATGACCCTTCGGGTGCGGTCACGGATGCGGAGATTGGCCCCCGTGCCTCGTG  
TGCGGCGGGCTTAAGCGCGGGCTGTCGGCGTCGGGATGGGCACGACGAGTGGTGGACGGAGACCAGCAGGATG  
TTGTGGCCCCCYGTGCGCTTAAGGGGCTCAAGAGACCCGGAACGGGCGAKCCGTGCTCCGTACGAGGAGGGCGTG  
YCGTCTCGCAATG  
>RD534-1A\_ITS2  
CGCCTTGTTTCGCTCCGTGCCCAATGACCCTTCGGGTGCGGTCACGGATGCGGAGATTGGCCCCCGTGCCTCGTG  
TGCGGCGGGCTTAAGCGCGGGCTGTCGGCGTCGGGATGGGCACGACGAGTGGTGGACGGAGACCAGCAGGATG  
TTGTGGCCCCCGTGCCTTAAGGGGCTCAAGAGACCCGGAMCGGGCGAKCCGTGCTCCGTACGAGGAGGGCGTG  
CCGTCTCGCAATG  
>RD534-2B\_ITS2  
CGCCTTGTTTCGCTCCGTGCCCAATGACCCTTCGGGTGCGGTCACGGATGCGGAGATTGGCCCCCGTGCCTCGTG  
TGCGGCGGGCTTAAGCGCGGGCTGTCGGCGTCGGGATGGGCACGACGAGTGGTGGACGGAGACCAGCAGGATG  
TTGTGGCCCCCGTGCCTTAAGGGGCTCAAGAGACCCGGAMCGGGCGAGCCGTGCTCCGTACGAGGAGGGCGTG  
CCGTCTCGCAATG



Chloroplast *psbA-trnH* intergenic spacer (*psbA-trnH*) sequence of plant voucher specimen of *Fritillaria unibracteata* and dried leaf of *F. unibracteata*

&gt;RD506-1B\_psbA-trnH

ACAATTCCCTCTAGACCTAGCTGCTATTGAAGTTCCATCTACAAATGGATAAGACTTAAATTCTGTCTTAGTGTAT  
 ACGAATCCTTGATGGAGCAATATCTTTGTATCTTGCTAAAAGATATTGCTCCATCAAGGATTTTTTTTTATTGAACGT  
 GTCACAGGGGATTACTCCTTTATTACATTACATTTTTAAAAATTGGCATTCTATGCCCAATATATCGATCTAAGTATG  
 AAGGTAAGAATAAATAACAATAATGATGAATGGAAAAATAAAAAAGCTAAAAATCCTTTAGCTAGATAAGGGGCGG  
 ATGTAGCCAAGTGGATCAAGGCAGT

&gt;RD506-2B\_psbA-trnH

ACAATTCCCTCTAGACCTAGCTGCTATTGAAGTTCCATCTACAAATGGATAAGACTTAAATTCTGTCTTAGTGTAT  
 ACGAATCCTTGATGGAGCAATATCTTTGTATCTTGCTAAAAGATATTGCTCCATCAAGGATTTTTTTTTATTGAACGT  
 GTCACAGGGGATTACTCCTTTATTACATTACATTTTTAAAAATTGGCATTCTATGCCCAATATATCGATCTAAGTATG  
 AAGGTAAGAATAAATAACAATAATGATGAATGGAAAAATAAAAAAGCTAAAAATCCTTTAGCTAGATAAGGGGCGG  
 ATGTAGCCAAGTGGATCAAGGCAGT

&gt;RD506-3A\_psbA-trnH

ACAATTCCCTCTAGACCTAGCTGCTATTGAAGTTCCATCTACAAATGGATAAGACTTAAATTCTGTCTTAGTGTAT  
 ACGAATCCTTGATGGAGCAATATCTTTGTATCTTGCTAAAAGATATTGCTCCATCAAGGATTTTTTTTTATTGAACGT  
 GTCACAGGGGATTACTCCTTTATTACATTACATTTTTAAAAATTGGCATTCTATGCCCAATATATCGATCTAAGTATG  
 AAGGTAAGAATAAATAACAATAATGATGAATGGAAAAATAAAAAAGCTAAAAATCCTTTAGCTAGATAAGGGGCGG  
 ATGTAGCCAAGTGGATCAAGGCAGT

&gt;RD506-4B\_psbA-trnH

ACAATTCCCTCTAGACCTAGCTGCTATTGAAGTTCCATCTACAAATGGATAAGACTTAAATTCTGTCTTAGTGTAT  
 ACGAATCCTTGATGGAGCAATATCTTTGTATCTTGCTAAAAGATATTGCTCCATCAAGGATTTTTTTTTATTGAACGT  
 GTCACAGGGGATTACTCCTTTATTACATTACATTTTTAAAAATTGGCATTCTATGCCCAATATATCGATCTAAGTATG  
 AAGGTAAGAATAAATAACAATAATGATGAATGGAAAAATAAAAAAGCTAAAAATCCTTTAGCTAGATAAGGGGCGG  
 ATGTAGCCAAGTGGATCAAGGCAGT

&gt;RD506-5A\_psbA-trnH

ACAATTCCCTCTAGACCTAGCTGCTATTGAAGTTCCATCTACAAATGGATAAGACTTAAATTCTGTCTTAGTGTAT  
 ACGAATCCTTGATGGAGCAATATCTTTGTATCTTGCTAAAAGATATTGCTCCATCAAGGATTTTTTTTTATTGAACGT  
 GTCACAGGGGATTACTCCTTTATTACATTACATTTTTAAAAATTGGCATTCTATGCCCAATATATCGATCTAAGTATG  
 AAGGTAAGAATAAATAACAATAATGATGAATGGAAAAATAAAAAAGCTAAAAATCCTTTAGCTAGATAAGGGGCGG  
 ATGTAGCCAAGTGGATCAAGGCAGT

&gt;RD507-10A\_psbA-trnH

ACAATTCCCTCTAGACCTAGCTGCTATTGAAGTTCCATCTACAAATGGATAAGACTTAAATTCTGTCTTAGTGTAT  
 ACGAATCCTTGATGGAGCAATATCTTTGTATCTTGCTAAAAGATATTGCTCCATCAAGGATTTTTTTTTATTGAACGT  
 GTCACAGGGGATTACTCCTTTATTACATTACATTTTTAAAAATTGGCATTCTATGCCCAATATATCGATCTAAGTATG  
 AAGGTAAGAATAAATAACAATAATGATGAATGGAAAAATAAAAAAGCTAAAAATCCTTTAGCTAGATAAGGGGCGG  
 ATGTAGCCAAGTGGATCAAGGCAGT

&gt;RD507-1B\_psbA-trnH

ACAATTCCCTCTAGACCTAGCTGCTATTGAAGTTCCATCTACAAATGGATAAGACTTAAATTCTGTCTTAGTGTAT  
 ACGAATCCTTGATGGAGCAATATCTTTGTATCTTGCTAAAAGATATTGCTCCATCAAGGATTTTTTTTTATTGAACGT  
 GTCACAGGGGATTACTCCTTTATTACATTACATTTTTAAAAATTGGCATTCTATGCCCAATATATCGATCTAAGTATG  
 AAGGTAAGAATAAATAACAATAATGATGAATGGAAAAATAAAAAAGCTAAAAATCCTTTAGCTAGATAAGGGGCGG  
 ATGTAGCCAAGTGGATCAAGGCAGT

&gt;RD507-2A\_psbA-trnH

ACAATTCCCTCTAGACCTAGCTGCTATTGAAGTTCCATCTACAAATGGATAAGACTTACATTCTGTCTTAGTGTAT  
 ACGAATCCTTGATGGAGCAATATCTTTGTATCTTGCTAAAAGATATTGCTCCATCAAGGATTTTTTTTTATTGAACGT  
 GTCACAGGGGATTACTCCTTTATTACATTACATTTTTAAAAATTGGCATTCTATGCCCAATATATCGATCTAAGTATG  
 AAGGTAAGAATAAATAACAATAATGATGAATGGAAAAATAAAAAAGCTAAAAATCCTTTAGCTAGATAAGGGGCGG  
 ATGTAGCCAAGTGGATCAAGGCAGT

&gt;RD507-8B\_psbA-trnH

ACAATTCCCTCTAGACCTAGCTGCTATTGAAGTTCCATCTACAAATGGATAAGACTTAAATTCTGTCTTAGTGTAT  
 ACGAATCCTTGATGGAGCAATATCTTTGTATCTTGCTAAAAGATATTGCTCCATCAAGGATTTTTTTTTATTGAACGT  
 GTCACAGGGGATTACTCCTTTATTACATTACATTTTTAAAAATTGGCATTCTATGCCCAATATATCGATCTAAGTATG  
 AAGGTAAGAATAAATAACAATAATGATGAATGGAAAAATAAAAAAGCTAAAAATCCTTTAGCTAGATAAGGGGCGG  
 ATGTAGCCAAGTGGATCAAGGCAGT

&gt;RD508-1A\_psbA-trnH

ACAATTCCCTCTAGACCTAGCTGCTATTGAAGTTCCATCTACAAATGGATAAGACTTAAATTCTGTCTTAGTGTAT  
 ACGAATCCTTGATGGAGCAATATCTTTGTATCTTGCTAAAAGATATTGCTCCATCAAGGATTTTTTTTTATTGAACGT  
 GTCACAGGGGATTACTCCTTTATTACATTACATTTTTAAAAATTGGCATTCTATGCCCAATATATCGATCTAAGTATG  
 AAGGTAAGAATAAATAACAATAATGATGAATGGAAAAATAAAAAAGCTAAAAATCCTTTAGCTAGATAAGGGGCGG  
 ATGTAGCCAAGTGGATCAAGGCAGT

&gt;RD508-2B\_psbA-trnH

ACAATTCCCTCTAGACCTAGCTGCTATTGAAGTTCCATCTACAAATGGATAAGACTTAAATTCTGTCTTAGTGTAT  
 ACGAATCCTTGATGGAGCAATATCTTTGTATCTTGCTAAAAGATATTGCTCCATCAAGGATTTTTTTTTATTGAACGT  
 GTCACAGGGGATTACTCCTTTATTACATTACATTTTTAAAAATTGGCATTCTATGCCCAATATATCGATCTAAGTATG  
 AAGGTAAGAATAAATAACAATAATGATGAATGGAAAAATAAAAAAGCTAAAAATCCTTTAGCTAGATAAGGGGCGG  
 ATGTAGCCAAGTGGATCAAGGCAGT



Partial chloroplast ribulose biphosphate carboxylase large chain (*rbcL*) sequence of plant voucher specimen of *Fritillaria unibracteata* and dried leaf of *F. unibracteata*

>RD506-1B\_ *rbcL*

AAAGTGTGGATTCAAAGCTGGTGTTAAAGATTACAAATTGACTTATTATACTCCTGACTATGAAACCAAAGATACT  
GATATTTTGGCAGCATTCCGAGTAACTCCTCAACCCGGAGTTCCACCCGAAGAGGCAGGGGCAGCGGTAGCCGCC  
GAATCTTCCACTGGTACATGGACAACCTGTGTGGACTGATGGACTTACCAGTCTTGATCGTTACAAAGGGCGATGCT  
ACCACATCGAGAGCGTTGTTGGGGAAGAAAATCAATATATTGCTTATGTAGCTTATCCTTTAGACCTTTTTGAAGA  
AGGTTCTGTACTAACATGTTCACTTCCATTGTGGGTAATGTATTTGGTTTCAAAGCCCTACGAGCTCTACGTCTGG  
AGGATCTGCGAATTCCTACTTCTTATCCAAAACCTTTCAAGGCCCGCCTCATGGTATCCAAGTTGAAAGGGATAA  
ATTGAACAAGTATGGTCGTCGCCCTATTAGGATGTACCATTAACCAAATAAGGATTATCTGCAAAGAAGTATGGT  
AGAGCAGTTTATGAATGTCTG

>RD506-2B\_ *rbcL*

AAAGTGTGGATTCAAAGCTGGTGTTAAAGATTACAAATTGACTTATTATACTCCTGACTATGAAACCAAAGATACT  
GATATTTTGGCAGCATTCCGAGTAACTCCTCAACCCGGAGTTCCACCCGAAGAGGCAGGGGCAGCGGTAGCCGCC  
GAATCTTCCACTGGTACATGGACAACCTGTGTGGACTGATGGACTTACCAGTCTTGATCGTTACAAAGGGCGATGCT  
ACCACATCGAGAGCGTTGTTGGGGAAGAAAATCAATATATTGCTTATGTAGCTTATCCTTTAGACCTTTTTGAAGA  
AGGTTCTGTACTAACATGTTCACTTCCATTGTGGGTAATGTATTTGGTTTCAAAGCCCTACGAGCTCTACGTCTGG  
AGGATCTGCGAATTCCTACTTCTTATCCAAAACCTTTCAAGGCCCGCCTCATGGTATCCAAGTTGAAAGGGATAA  
ATTGAACAAGTATGGTCGTCGCCCTATTAGGATGTACCATTAACCAAATAAGGATTATCTGCAAAGAAGTATGGT  
AGAGCAGTTTATGAATGTCTG

>RD506-3A\_ *rbcL*

AAAGTGTGGATTCAAAGCTGGTGTTAAAGATTACAAATTGACTTATTATACTCCTGACTATGAAACCAAAGATACT  
GATATTTTGGCAGCATTCCGAGTAACTCCTCAACCCGGAGTTCCACCCGAAGAGGCAGGGGCAGCGGTAGCCGCC  
GAATCTTCCACTGGTACATGGACAACCTGTGTGGACTGATGGACTTACCAGTCTTGATCGTTACAAAGGGCGATGCT  
ACCACATCGAGAGCGTTGTTGGGGAAGAAAATCAATATATTGCTTATGTAGCTTATCCTTTAGACCTTTTTGAAGA  
AGGTTCTGTACTAACATGTTCACTTCCATTGTGGGTAATGTATTTGGTTTCAAAGCCCTACGAGCTCTACGTCTGG  
AGGATCTGCGAATTCCTACTTCTTATCCAAAACCTTTCAAGGCCCGCCTCATGGTATCCAAGTTGAAAGGGATAA  
ATTGAACAAGTATGGTCGTCGCCCTATTAGGATGTACCATTAACCAAATAAGGATTATCTGCAAAGAAGTATGGT  
AGAGCAGTTTATGAATGTCTG

>RD506-4B\_ *rbcL*

AAAGTGTGGATTCAAAGCTGGTGTTAAAGATTACAAATTGACTTATTATACTCCTGACTATGAAACCAAAGATACT  
GATATTTTGGCAGCATTCCGAGTAACTCCTCAACCCGGAGTTCCACCCGAAGAGGCAGGGGCAGCGGTAGCCGCC  
GAATCTTCCACTGGTACATGGACAACCTGTGTGGACTGATGGACTTACCAGTCTTGATCGTTACAAAGGGCGATGCT  
ACCACATCGAGAGCGTTGTTGGGGAAGAAAATCAATATATTGCTTATGTAGCTTATCCTTTAGACCTTTTTGAAGA  
AGGTTCTGTACTAACATGTTCACTTCCATTGTGGGTAATGTATTTGGTTTCAAAGCCCTACGAGCTCTACGTCTGG  
AGGATCTGCGAATTCCTACTTCTTATCCAAAACCTTTCAAGGCCCGCCTCATGGTATCCAAGTTGAAAGGGATAA  
ATTGAACAAGTATGGTCGTCGCCCTATTAGGATGTACCATTAACCAAATAAGGATTATCTGCAAAGAAGTATGGT  
AGAGCAGTTTATGAATGTCTG

>RD506-5A\_ *rbcL*

AAAGTGTGGATTCAAAGCTGGTGTTAAAGATTACAAATTGACTTATTATACTCCTGACTATGAAACCAAAGATACT  
GATATTTTGGCAGCATTCCGAGTAACTCCTCAACCCGGAGTTCCACCCGAAGAGGCAGGGGCAGCGGTAGCCGCC  
GAATCTTCCACTGGTACATGGACAACCTGTGTGGACTGATGGACTTACCAGTCTTGATCGTTACAAAGGGCGATGCT  
ACCACATCGAGAGCGTTGTTGGGGAAGAAAATCAATATATTGCTTATGTAGCTTATCCTTTAGACCTTTTTGAAGA  
AGGTTCTGTACTAACATGTTCACTTCCATTGTGGGTAATGTATTTGGTTTCAAAGCCCTACGAGCTCTACGTCTGG  
AGGATCTGCGAATTCCTACTTCTTATCCAAAACCTTTCAAGGCCCGCCTCATGGTATCCAAGTTGAAAGGGATAA  
ATTGAACAAGTATGGTCGTCGCCCTATTAGGATGTACCATTAACCAAATAAGGATTATCTGCAAAGAAGTATGGT  
AGAGCAGTTTATGAATGTCTG

>RD507-10A\_ *rbcL*

AAAGTGTGGATTCAAAGCTGGTGTTAAAGATTACAAATTGACTTATTATACTCCTGACTATGAAACCAAAGATACT  
GATATTTTGGCAGCATTCCGAGTAACTCCTCAACCCGGAGTTCCACCCGAAGAGGCAGGGGCAGCGGTAGCCGCC  
GAATCTTCCACTGGTACATGGACAACCTGTGTGGACTGATGGACTTACCAGTCTTGATCGTTACAAAGGGCGATGCT  
ACCACATCGAGAGCGTTGTTGGGGAAGAAAATCAATATATTGCTTATGTAGCTTATCCTTTAGACCTTTTTGAAGA  
AGGTTCTGTACTAACATGTTCACTTCCATTGTGGGTAATGTATTTGGTTTCAAAGCCCTACGAGCTCTACGTCTGG  
AGGATCTGCGAATTCCTACTTCTTATCCAAAACCTTTCAAGGCCCGCCTCATGGTATCCAAGTTGAAAGGGATAA  
ATTGAACAAGTATGGTCGTCGCCCTATTAGGATGTACCATTAACCAAATAAGGATTATCTGCAAAGAAGTATGGT  
AGAGCAGTTTATGAATGTCTG

>RD507-1B\_ *rbcL*

AAAGTGTGGATTCAAAGCTGGTGTTAAAGATTACAAATTGACTTATTATACTCCTGACTATGAAACCAAAGATACT  
GATATTTTGGCAGCATTCCGAGTAACTCCTCAACCCGGAGTTCCACCCGAAGAGGCAGGGGCAGCGGTAGCCGCC  
GAATCTTCCACTGGTACATGGACAACCTGTGTGGACTGATGGACTTACCAGTCTTGATCGTTACAAAGGGCGATGCT  
ACCACATCGAGAGCGTTGTTGGGGAAGAAAATCAATATATTGCTTATGTAGCTTATCCTTTAGACCTTTTTGAAGA  
AGGTTCTGTACTAACATGTTCACTTCCATTGTGGGTAATGTATTTGGTTTCAAAGCCCTACGAGCTCTACGTCTGG  
AGGATCTGCGAATTCCTACTTCTTATCCAAAACCTTTCAAGGCCCGCCTCATGGTATCCAAGTTGAAAGGGATAA  
ATTGAACAAGTATGGTCGTCGCCCTATTAGGATGTACCATTAACCAAATAAGGATTATCTGCAAAGAAGTATGGT  
AGAGCAGTTTATGAATGTCTG

>RD507-2A\_ *rbcL*

AAAGTGTGGATTCAAAGCTGGTGTTAAAGATTACAAATTGACTTATTATACTCCTGACTATGAAACCAAAGATACT  
GATATTTTGGCAGCATTCCGAGTAACTCCTCAACCCGGAGTTCCACCCGAAGAGGCAGGGGCAGCGGTAGCCGCC



>RD532-5B\_rbcL

AAGTGTGGATTCAAAGCTGGTGTTAAAGATTACAAATTGACTTATTATACTCCTGACTATGAAACCAAAGATACT  
GATATTTGGCAGCATTCCGAGTAACTCCTCAACCCGGAGTTCCACCCGAAGAGGCAGGGGCAGCGGTAGCCGCC  
GAATCTTCCACTGGTACATGGACAACCTGTGTGGACTGATGGACTTACCAGTCTTGATCGTTACAAAGGGCGATGCT  
ACCACATCGAGAGCGTTGTTGGGGAAGAAAATCAATATATTGCTTATGTAGCTTATCCTTTAGACCTTTTTGAAGA  
AGGTTCTGTTACTAACATGTTCACTTCCATTGTGGGTAATGTATTTGGTTTCAAAGCCCTACGAGCTCTACGTCTGG  
AGGATCTGCGAATTCCTACTTCTTATCCAAAACCTTTCAAGGCCCGCCTCATGGTATCCAAGTTGAAAGGGATAA  
ATTGAACAAGTATGGTCGTCGCCCTATTAGGATGTACCATTAACCAAATAATTAGGATTATCTGCAAAGAAGTATGGT  
AGAGCAGTTTATGAATGTCTG

>RD533-1A\_rbcL

AAGTGTGGATTCAAAGCTGGTGTTAAAGATTACAAATTGACTTATTATACTCCTGACTATGAAACCAAAGATACT  
GATATTTGGCAGCATTCCGAGTAACTCCTCAACCCGGAGTTCCACCCGAAGAGGCAGGGGCAGCGGTAGCCGCC  
GAATCTTCCACTGGTACATGGACAACCTGTGTGGACTGATGGACTTACCAGTCTTGATCGTTACAAAGGGCGATGCT  
ACCACATCGAGAGCGTTGTTGGGGAAGAAAATCAATATATTGCTTATGTAGCTTATCCTTTAGACCTTTTTGAAGA  
AGGTTCTGTTACTAACATGTTCACTTCCATTGTGGGTAATGTATTTGGTTTCAAAGCCCTACGAGCTCTACGTCTGG  
AGGATCTGCGAATTCCTACTTCTTATCCAAAACCTTTCAAGGCCCGCCTCATGGTATCCAAGTTGAAAGGGATAA  
ATTGAACAAGTATGGTCGTCGCCCTATTAGGATGTACCATTAACCAAATAATTAGGATTATCTGCAAAGAAGTATGGT  
AGAGCAGTTTATGAATGTCTG

>RD533-2A\_rbcL

AAGTGTGGATTCAAAGCTGGTGTTAAAGATTACAAATTGACTTATTATACTCCTGACTATGAAACCAAAGATACT  
GATATTTGGCAGCATTCCGAGTAACTCCTCAACCCGGAGTTCCACCCGAAGAGGCAGGGGCAGCGGTAGCCGCC  
GAATCTTCCACTGGTACATGGACAACCTGTGTGGACTGATGGACTTACCAGTCTTGATCGTTACAAAGGGCGATGCT  
ACCACATCGAGAGCGTTGTTGGGGAAGAAAATCAATATATTGCTTATGTAGCTTATCCTTTAGACCTTTTTGAAGA  
AGGTTCTGTTACTAACATGTTCACTTCCATTGTGGGTAATGTATTTGGTTTCAAAGCCCTACGAGCTCTACGTCTGG  
AGGATCTGCGAATTCCTACTTCTTATCCAAAACCTTTCAAGGCCCGCCTCATGGTATCCAAGTTGAAAGGGATAA  
ATTGAACAAGTATGGTCGTCGCCCTATTAGGATGTACCATTAACCAAATAATTAGGATTATCTGCAAAGAAGTATGGT  
AGAGCAGTTTATGAATGTCTG

>RD534-1A\_rbcL

AAGTGTGGATTCAAAGCTGGTGTTAAAGATTACAAATTGACTTATTATACTCCTGACTATGAAACCAAAGATACT  
GATATTTGGCAGCATTCCGAGTAACTCCTCAACCCGGAGTTCCACCCGAAGAGGCAGGGGCAGCGGTAGCCGCC  
GAATCTTCCACTGGTACATGGACAACCTGTGTGGACTGATGGACTTACCAGTCTTGATCGTTACAAAGGGCGATGCT  
ACCACATCGAGAGCGTTGTTGGGGAAGAAAATCAATATATTGCTTATGTAGCTTATCCTTTAGACCTTTTTGAAGA  
AGGTTCTGTTACTAACATGTTCACTTCCATTGTGGGTAATGTATTTGGTTTCAAAGCCCTACGAGCTCTACGTCTGG  
AGGATCTGCGAATTCCTACTTCTTATCCAAAACCTTTCAAGGCCCGCCTCATGGTATCCAAGTTGAAAGGGATAA  
ATTGAACAAGTATGGTCGTCGCCCTATTAGGATGTACCATTAACCAAATAATTAGGATTATCTGCAAAGAAGTATGGT  
AGAGCAGTTTATGAATGTCTG

>RD534-2B\_rbcL

AAGTGTGGATTCAAAGCTGGTGTTAAAGATTACAAATTGACTTATTATACTCCTGACTATGAAACCAAAGATACT  
GATATTTGGCAGCATTCCGAGTAACTCCTCAACCCGGAGTTCCACCCGAAGAGGCAGGGGCAGCGGTAGCCGCC  
GAATCTTCCACTGGTACATGGACAACCTGTGTGGACTGATGGACTTACCAGTCTTGATCGTTACAAAGGGCGATGCT  
ACCACATCGAGAGCGTTGTTGGGGAAGAAAATCAATATATTGCTTATGTAGCTTATCCTTTAGACCTTTTTGAAGA  
AGGTTCTGTTACTAACATGTTCACTTCCATTGTGGGTAATGTATTTGGTTTCAAAGCCCTACGAGCTCTACGTCTGG  
AGGATCTGCGAATTCCTACTTCTTATCCAAAACCTTTCAAGGCCCGCCTCATGGTATCCAAGTTGAAAGGGATAA  
ATTGAACAAGTATGGTCGTCGCCCTATTAGGATGTACCATTAACCAAATAATTAGGATTATCTGCAAAGAAGTATGGT  
AGAGCAGTTTATGAATGTCTG