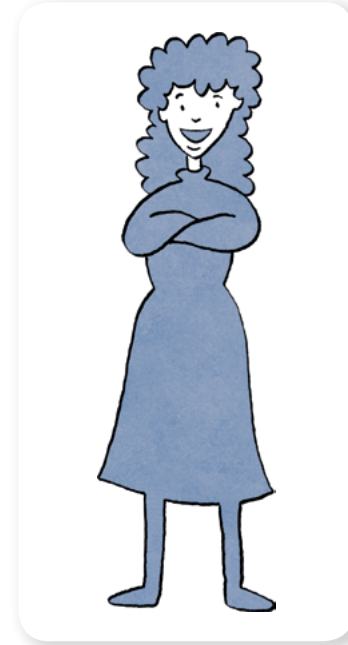


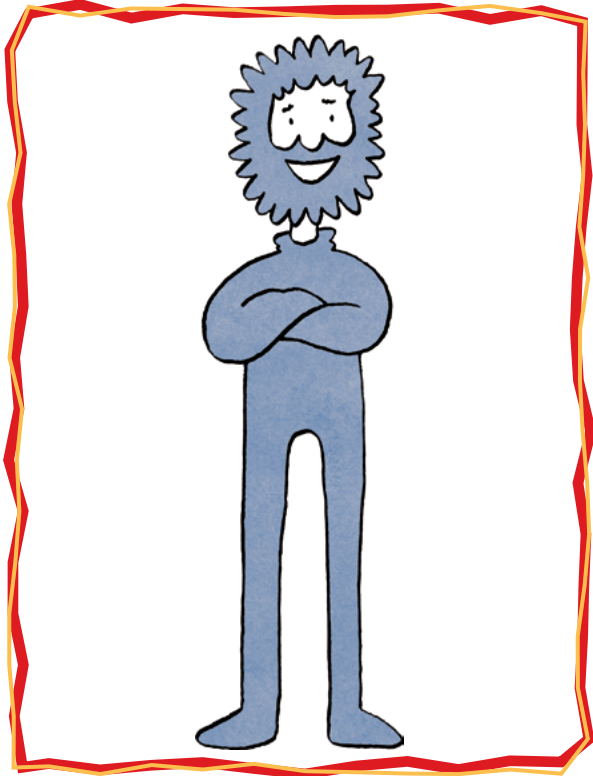


Inscne





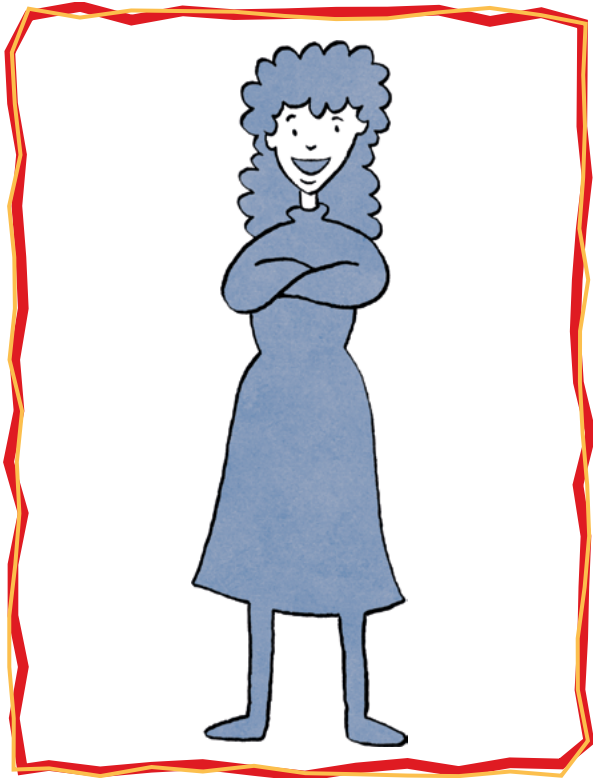
Firinscneach



- An bord
- An peann
- An cóipleabhar
- An doras
- An mála
- An bosca lóin



Baininscneach



- An **fh**uinneog
- An **fh**eadóg
- An **m**haidin
- An **p**haidir
- An **b**háisteach
- An **fh**oireann

- An **G**haeilge



An bhfeiceann tú patrún?

Ainmfhocail fhirinscneacha

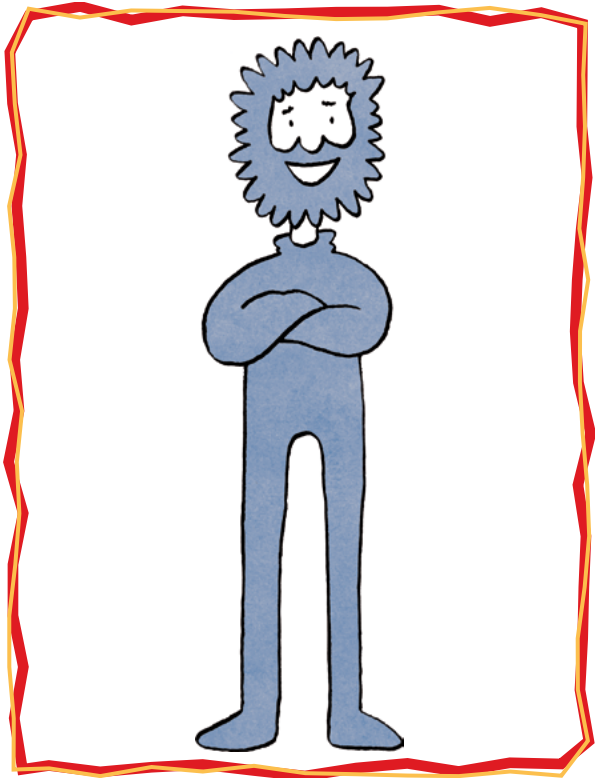
- An bord
- An peann
- An cóipleabhar
- An doras
- An mála
- An bosca lóin

Ainmfhocail bhaininscneacha

- An **fh**uinneog
- An **fh**eadóg
- An **m**haidin
- An **p**haidir
- An **b**háisteach
- An **fh**oireann



Firinscneach



- Má tá ainmfhocal firinscneach, ní bheidh séimhiú ar chonsan tar éis an ailt.
- An bord
- An peann
- An buachaill
- An fear



Baininscneach



- Má tá ainmfhocal baininscneach, beidh séimhiú ar chonsan tar éis an ailt.
- An **G**haeilge
Labhair **í**
Is teanga iontach **í**



Tá na hainmfhocail seo firinscneach.
An bhfeiceann tú patrún?



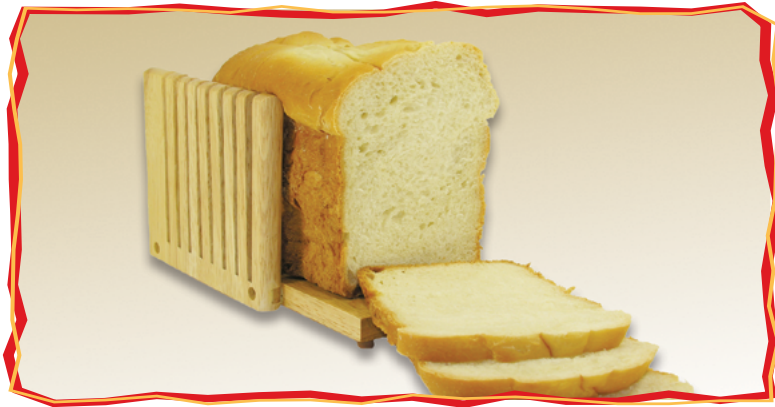
- An **t-airgead**



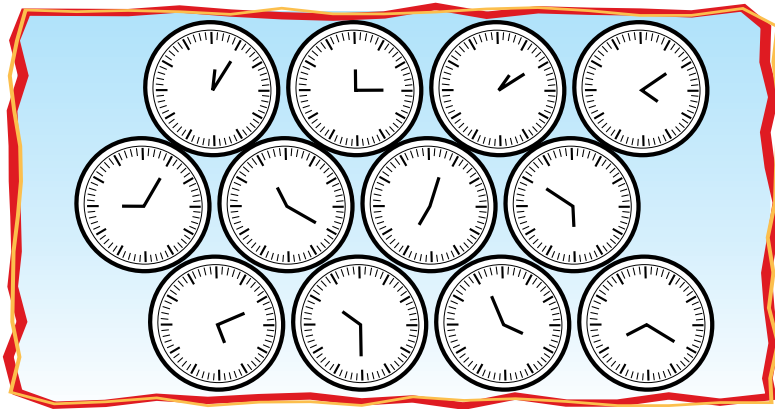
- An **t-uisce**



An féidir leat riail a chumadh?



- An **t**-arán



- An **t**-am



Baininscneach ag tosú ar ghuta



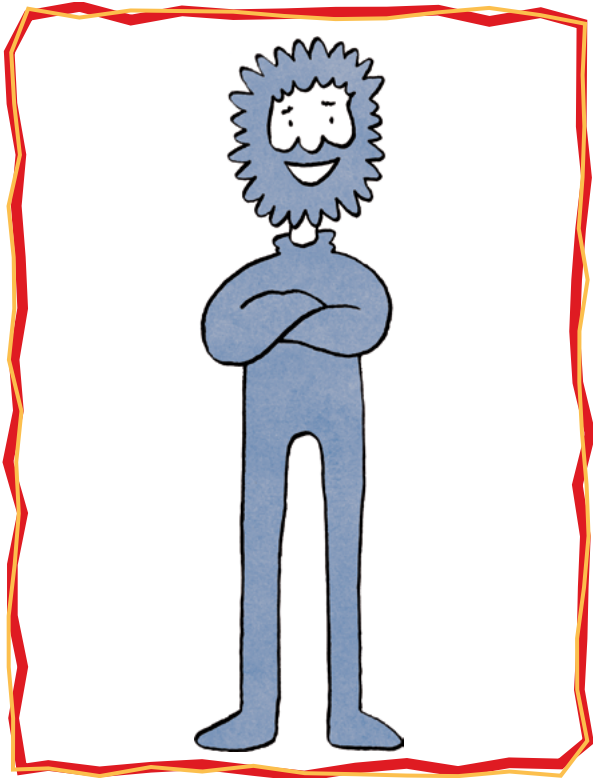
- An oíche



- An obair



Firinscneach



- Má tá an t-alt roimh thúsghuta ar fhocal firinscneach, cuir **t-** leis an ainmfhocal.
- An **t**-airgead
- An **t**-uisce
- An **t**-am
- An **t**-úll
- An **t**-amhrán

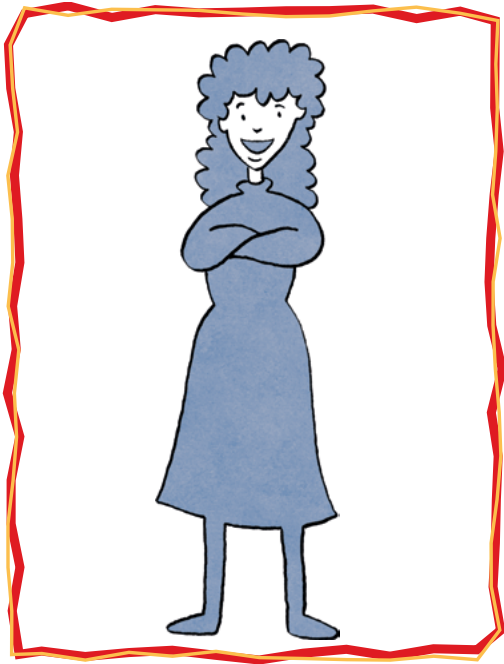


An t-alt

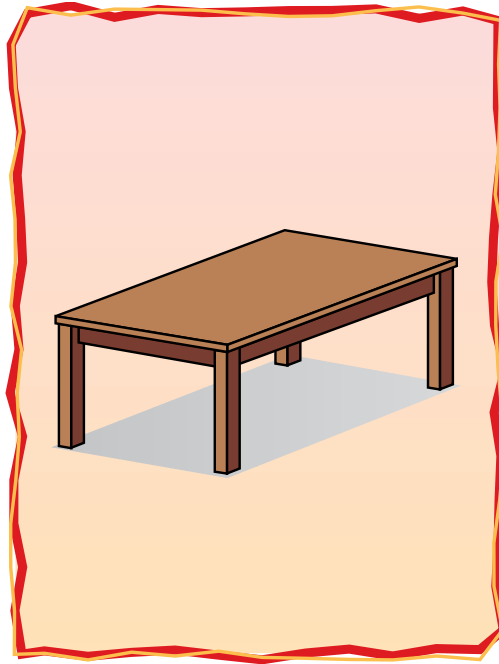
- **An = an t-alt**



Ainmfhocail



Duine



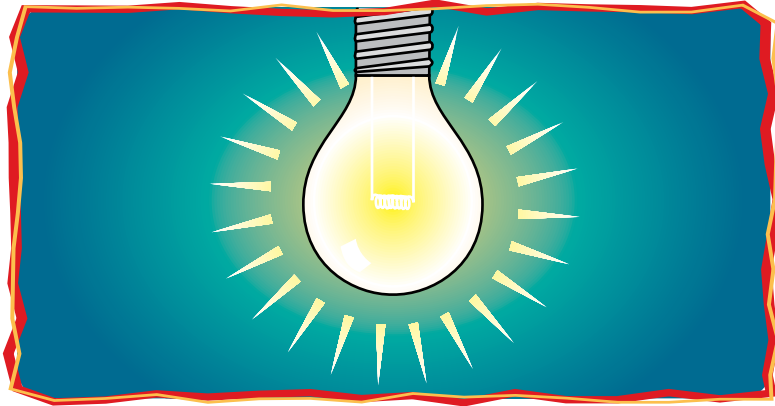
Rud



Áit



Ainmfhocail Fhirinscneacha ag tosú ar s



- An solas



- An samhradh



Ainmfhocail Bhaininscneacha ag tosú ar s



- An **tsráid**

- An **tseachtain**

An Luan/An Mháirt/An Chéadaoin

Déardaoin/An Aoine/An Satharn

An Domhnach



**Ainmfhocail a bhfuil s acu ag tús
an fhocail.**

An bhfeiceann tú patrún?

Firinscneach

- An sagart
- An solas
- An samhradh
- An siopa
- An seomra

Baininscneach

- An tsráid
- An tseacláid
- An tseachtain
- An tsúil
- An tsrón



An t-ainmfhocal agus an aidiacht

- An **b**hean
- An **f**huinneog
- An **G**haeilge
- An **p**háirc
- An **f**headóg
- An **f**oireann
- An scoil

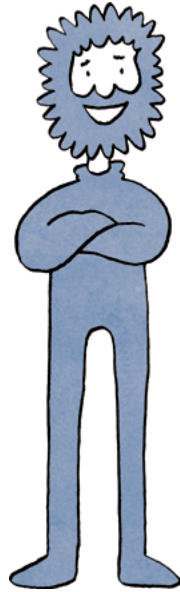


- Bean **d**heas
- Fuinneog **g**hlan
- Gaeilge **m**haith
- Páirc **d**heas
- Feadóg **m**hór
- Foireann **m**haith
- Scoil **b**heag
- Is scoil bheag í



An t-ainmfhocal agus an aidiacht

- An fear
- An t-eolas
- An t-uisce
- An seomra
- An múinteoir
- An t-airgead
- An t-am



- Fear deas
- Eolas maith
- Uisce glan
- Seomra mór
- Múinteoir crosta
- Airgead mór
- Am maith
- Is am maith é le Gaeilge a fhoghlaim



Laethanta na Seachtaine

- An Luan
- An Mháirt
- An Chéadaoin
- Déardaoin
- An Aoine
- An Satharn
- An Domhnach

- Cad iad na laethanta atá baininscneach?