

# Envisioning Como



Como Friends Annual Report 2012

# Envisioning Como: Our Community Photographers

**Most of the photos in this annual report were taken by Como visitors who posted their photos to the “Como Park Zoo & Conservatory” Flickr group—a great place to explore how our community “sees” Como.**

**JENNIFER SHIELDS** captured “Bonsai Dreams” and “Mother Love” featured on the front and back covers. (Flickr id: jjs08)

“I was amazed it was free,” St. Cloud photographer Jennifer Shields says about discovering Como after moving from Indiana. “But I find I actually end up paying more at a free zoo, because you want everyone to experience this. I’ve worked in inner city schools, and I think there’s something so special about being able to see animals that every child should have.”

**JEFF LEE** snapped “Jaya,” page 5 (Flickr id: jlee8399)

Two things changed when Jeff Lee and his wife had their first child. “I bought a camera, and we started coming to Como,” says Lee, an electrician who lives in East St. Paul. “The place has completely changed since I was a kid, with the amusement park and the new polar bear exhibit. It’s gotten a lot more family-friendly.” Though he enjoys the Zoo, he prefers the Conservatory, where he snaps pictures with his Nikon and his daughter “likes looking for fish” in the North Garden.

**JOHN OAKES** got up-close and personal with Schroeder the gorilla on page 9.

“There was a group of kids there and the gorilla was showing off for them and I just kept shooting him. After a while the kids left and he just sat there with a kind of a bored look and that’s when I took this shot,” says Oakes, a music store manager. Favorite corner at Como? “I love the Primate House. The Tamarins in particular.”

**MELISSA KOPKA** used macro and fish-eye lenses to capture the Conservatory photos here and on pages 14-15. (Flickr id: m01229)

Though she’d been to Como Zoo as a child, it wasn’t until her photography group came to the Marjorie McNeely Conservatory for an early “artists and photographers” morning that Melissa Kopka rediscovered Como. “I loved it. I couldn’t wait to go back,” says Kopka, a U.S. Bank project manager from New Hope. What’s her favorite place? “Definitely the Sunken Garden.”

**ANTHONY KWAN** got nose-to-nose with Judy the brown bear on page 11.

University of Minnesota aerospace engineering major Anthony Kwan was on assignment for The Minnesota Daily covering an exhibit called “The Hidden World of Bears” when he captured this image of Judy, one of the visiting bears from Minot, N.D. “I’d been taking pictures of polar bears and we were just about to leave, when this brown bear poked around the corner,” says Kwan, who came to Como regularly before he graduated last spring “not just for the animals, but I also liked laying on the grass to read.” Kwan graduated from the U last spring, and hopes to launch a career as a professional photographer. To see more of his work, visit [www.Anthonykwan.com](http://www.Anthonykwan.com). (Photo used with the permission of The Minnesota Daily.)

**STEFAN PRESSLEIN** focuses on visitors in the Sunken Garden on pages 6-7. (Flickr ID: SteffPress)

“My parents owned a flower shop, so I grew up around this,” says Presslein, who drives to St. Paul from his home in St. Michael two or three times a month just to relax and take photos in the Marjorie McNeely Conservatory. Even though he’s a regular, “it just blows me away how fast they turn the gardens around and make everything look beautiful and like it’s always been there.” A fan of Como’s “Music Under Glass” series, he’s also looking forward to the unveiling of *The Ordway Gardens*. “I can’t wait to see how it all looks now.”



## 2012 Contribution to Como Park Zoo and Conservatory

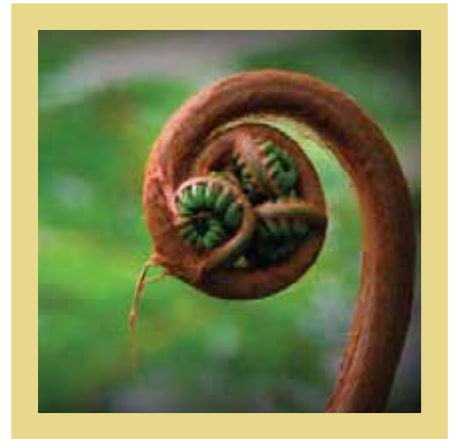
**Total 2012 Donation: \$2,664,399**

---

<b>Capital Campaign</b> .....	<b>\$1,696,500</b>
<b>Marjorie McNeely Conservatory</b> .....	<b>\$567,301</b>
Gardener Positions, Training, Operations .....	237,551
Contribution to MMC Endowment .....	244,750
Restoration of the Japanese Garden .....	85,000
<b>Como Zoo</b> .....	<b>\$183,150</b>
Zoo keeper Positions & Annual Operations .....	91,050
Donor Plaza Repairs .....	30,000
Design for Facelift in African Hoofstock Bldg .....	30,000
Graphics and Build Out of Cove in Primate Building .....	21,000
Orangutan Conservation .....	11,100
<b>Education</b> .....	<b>\$82,700</b>
Education Positions & Annual Operations .....	71,200
Edible Garden Programs .....	10,000
Cheney Family Scholarship .....	1,500
<b>Marketing</b> .....	<b>\$60,501</b>
In-Kind Services Promoting Como .....	35,501
Mobile App .....	15,000
Conservatory Brochure .....	10,000
<b>Volunteer Services</b> .....	<b>\$36,000</b>
Staff Positions & Annual Operations .....	31,000
Youth Scholarships .....	5,000
<b>Como Campus</b> .....	<b>\$20,147</b>
Smartboard for Auditorium .....	9,000
Projects .....	6,563
Conservation .....	4,584
<b>Advocacy</b> .....	<b>\$18,000</b>

“We inspire community generosity to advance Como Park Zoo and Conservatory as a destination where people from all walks of life can gather, learn and enjoy the natural world.”

– Como Friends’ new mission statement, adopted December 2012





## Dear Como Friends Supporters,

*What do you see when you come to Como? How do our two million visitors view our work? What do we envision for Como Zoo and the Marjorie McNeely Conservatory in the next five years—or the next fifty?*

These were some of the questions Como Friends explored in 2012, as we set out on a strategic planning process that allowed us to reflect on just how far we've come in the last decade, while imagining where we'd like to move in the next one. After the fast-paced, four-year **Campaign for Como** came to a successful conclusion in 2011, our board of directors agreed the time was right to catch our collective breath and reenergize around our shared love for all that Como has to offer. In a series of surveys, interviews and community discussions, we asked our supporters to help us consider both the challenges and opportunities we face as one of Minnesota's few free admission cultural destinations.

You can read more about the results of our strategic plan in the following pages, including our mission statement. When Como Friends first incorporated in 1999, our goal was to "preserve and enhance" the historic Zoo and Conservatory, a mission that inspired community investment of more than \$31 million in improvements, from the Visitor Center in 2005, to the *Ordway Gardens* wing opening this spring.

This transformation wouldn't have been possible without the generosity of thousands of individual supporters and advocates, and the commitment of those whose names and businesses are listed in this annual report. Though award-winning animal habitats and gorgeous gardens and plants bring us together, it's people from all walks of life whose support and encouragement have been at the heart of the critical improvements we've witnessed at Como over the last decade. We're pleased to have a mission statement that now reflects the power of the people who make Como what it is. **Thank you for all you do for Como!**

*Jackie Sticha*

Jackie Sticha  
President

*Anne Hazelroth Field*

Anne Hazelroth Field  
Board Chair

# The Fundamentals of Como Friends

After nearly a century of service, the historic Zoo and the beloved Conservatory were in need of major improvements by the late 1990s. The long wish list included a visitor center, classroom space, and facilities that would allow both organizations to keep pace with improvements in animal and horticultural care. Though the Zoo and Conservatory had always operated as separate entities, it was clear to civic leaders and community volunteers that the case for Como would be far stronger if the two sides forged a new future together. Though the transition was challenging at first, creating this new public-private partnership through Como Friends made it possible to unite

the historic Zoo and Conservatory with a shared entrance and a shared mission, and preserved Como's place as **one of the country's last completely free metro zoos and botanical gardens.**



When Como Friends' stakeholders came together in 2012 to imagine the nonprofit's second decade of service, free admission emerged as one of the fundamental goals of our community of two million visitors. Supporters also told us they're committed to continuing the transformation they've witnessed at Como over the last decade, creating exhibits and educational programs that enrich every visitor, while earning global recognition for Como's innovations in animal care, horticulture, and conservation.

To get there, Como Friends' board of directors have adopted a series of new strategic initiatives designed to strengthen Como Friends' "brand" identity as a leading nonprofit, build relationships with new donors and long-time supporters, increase the contributions Como Friends cultivates for the Zoo and Conservatory, and create a board and staff that can respond to change while reflecting the audience we serve.



**In the next five years, the work of Como Friends will be guided by these core values:**

**Engage** the community and donors of Como Friends.

**Steward** the resources entrusted to us, and **respect** the wishes of each donor.

**Embrace** Como Friends' growth to support **continuous improvements** of Como Park Zoo and Conservatory. Serve as a model for an exemplary public-private **partnership** with the City of Saint Paul.

Honor the **traditions** of Como Park Zoo and Conservatory in our community.

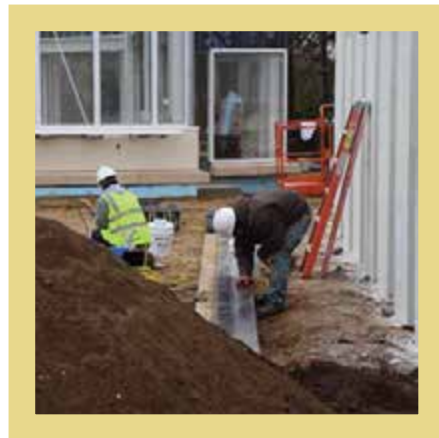
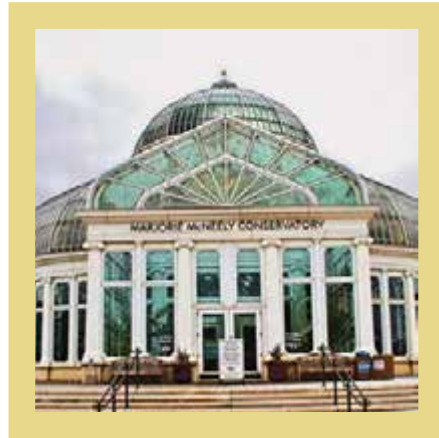
Support **education and enjoyment** for all, with special concern for those who may not otherwise have access.

# Under Construction

"Please Pardon Our Mess" was the motto at Como Park Zoo and Conservatory in 2012, as staff and visitors made way for two major construction projects that will be completed in 2013.

To create *The Ordway Gardens: A Japanese Collection* at the Marjorie McNeely Conservatory, construction crews turned Como's seasonal "Bonsai garage" into a new glass wing that will become the permanent home of Como's nationally-regarded collection, while landscape architects and horticulturists planted an inviting new pedestrian pathway leading into the beloved Charlotte Partridge Ordway Japanese Garden. This \$2.8 million improvement was funded entirely by private contributions to Como Friends, which also invested in landscaping and plantings within the Japanese Garden that will better reflect the original intentions of landscape designer Masami Matsuda.

At the Como Zoo, the northwest end of the primate building is about to become *Gorilla Forest*, an \$11 million, publicly funded expansion for Como's western lowland gorillas. Long a leader in gorilla husbandry, Como Zoo will soon have a habitat that reflects that progressive care, with enriching and naturalistic features, public training areas, and even gorilla-sized blood pressure cuffs that will enable Como to contribute to worldwide conservation efforts. Support from Como's two million visitors and from people like you helped to make a powerful case for public investment in this long-awaited improvement. Thank you!







*Remodeling can be stressful, but when Gorilla Forest is complete, Schroeder will have plenty of room to stretch out and explore his new habitat, which includes elevated terrain, natural substrate, running water, and other features that will dramatically improve the care keepers can provide Como Zoo's western lowland gorillas. Under construction throughout 2012, this \$11 million publicly funded improvement opens June 2013.*

# Unexpected Outcomes



On June 20, 2012, more than 10 inches of rain flooded Duluth's Lake Superior Zoo, sending harbor seal sisters Feisty and Vivian on a wild ride from their exhibit right into downtown Duluth. After their rescue, they were delivered safely to Como Zoo, where they recovered from the excitement along with polar bear Berlin, who became the latest guest in *Polar Bear Odyssey*. Como's twin bears Buzz and Neil were already sharing their new digs with Goldie, Sandy, and Judy, three bears from the flooded Roosevelt Park Zoo in Minot, N.D.

Coming to the rescue of zoo partners in crisis wouldn't have been possible without the support of people just like you. Community support for *Polar Bear Odyssey* in 2010 made the difference in creating a state-of-the-art facility capable of serving multiple needs for a variety of animals. Your contributions also helped to provide life-saving medical care to Berlin, who underwent surgery at the University of Minnesota to remove a growth that caused internal bleeding while she was in the care of Como zookeepers. Being a good neighbor to partner zoos and botanical gardens is important to Como Park Zoo and Conservatory, and your contributions in 2012 made it all possible.



*The aptly-named Feisty the seal quickly became an internet sensation, with her own Twitter feed ("Feisty@DuluthZooSeal") and fundraising bracelets inspiring her admirers to "Live Feisty."*

*Berlin the polar bear was a good house guest to Buzz and Neil, who helped her celebrate her 23rd birthday in December just before her move to be part of a breeding recommendation at the Kansas City Zoo.*



# Next Generation Conservation

*"More than 150 million people a year visit zoos and aquariums in the United States. Why do we flock to them? It's not just a pleasant outing with family or friends, or to introduce children (whose lives are a cavalcade of animal images) to real animals, though those are still big reasons. I think people are also drawn to a special stripe of innocence they hope to find there....Few of us will ever see wild penguins sledding downhill to sea on their bellies, giant pandas holding bamboo lollipops in China or tree porcupines in the Canadian Rockies, balled up like giant pine cones. Meeting them at the zoo widens a visitor's view of nature and personalizes it."*

—Naturalist Diane Ackerman  
The New York Times, February 4, 2012

## Como Fun Facts:

Total volunteers in 2012: **1,199**

Volunteer hours in 2012: **46,384**

Total number of "interpretive moments" shared by Como's talented and well-trained volunteers in 2012: **275,520**

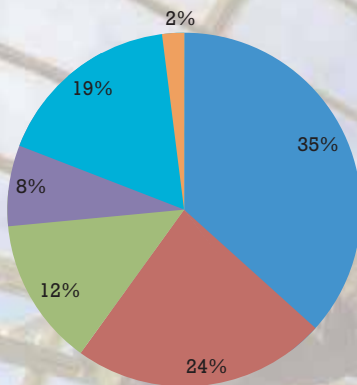
**Connecting visitors with the wonders of nature** is the mission of Como's conservation education programs, which reached more than 500,000 children and adults in 2012. Whether it was learning how to start a kitchen compost bin in "The Edible Garden," asking questions about polar bear conservation at a "Bear Banter" session, or cheering for Sparky the Sea Lion's stylish recycling efforts, visitors of every age left Como with a deeper understanding of what we can all do at home to help improve the environment.

With so many families and field trip groups that depend on Como's free admission, Como created two very popular free programs in 2012—"Lil Explorers," a weekly program that captures the curiosity Como's littlest learners have for animals and plants, and "Nature's Engineers," a more immersive curriculum for older students that explores science, technology, engineering and math through the lens of nature's design. Funded by seed grants from the Minnesota Legacy Amendment, private contributions through Como Friends made it possible to continue these popular programs through 2012 and beyond. **Thank you!**



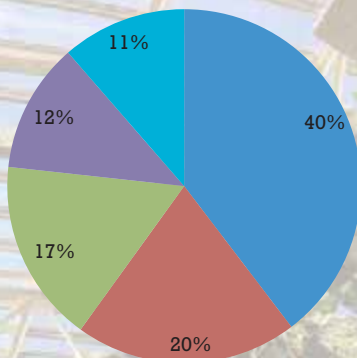
# Statements of Activities

## Sources of Revenue



- Gift Shop Revenue \$1,150,159
- Annual Donations \$763,067
- Event Revenue \$377,077
- Memberships \$273,624
- Investment and Other Income \$615,481
- Capital Campaign Donations \$72,513

## Contributions to Como and Expenses



- Contributions to Polar Bear Odyssey and Japanese Garden Experience \$1,696,500
- Salaries and Benefits \$869,431
- Contribution to Como Park Zoo and Conservatory \$718,162
- Gift Shop Cost of Goods Sold \$508,083
- Other \$487,732

\*excludes in-kind gifts/expense

# The Marjorie McNeely Conservatory



*The best time to plant a tree is twenty years ago.  
The second best time is now. ~Proverb*

Nearly a century ago, city leaders and civic planners had the foresight to set aside a great public green space where families could come to renew their connection to nature, and with each other. That early vision is still growing strong at the Marjorie McNeely Conservatory, one of the country's leading botanical gardens, with a horticultural collection that ranges from soaring tropical palms, to medicinal plants from the Amazon, to ten thousand tulip bulbs that arrive every autumn from Amsterdam.



In 2012, your contributions to Como Friends helped to provide professional training for our talented horticulturists, new acquisitions for the Conservatory's expansive orchid and Bonsai collections, and even an endowment fund that preserves and protects this 97-year-old glass treasure. Como Friends also invested in engaging interpretive programs in "The Edible Garden," five seasonal Flower Show brochures that inspire backyard gardeners across the region, and a restoration of the Japanese Garden that Como's two million visitors will see unveiled in April 2013.



# Statement of Financial Position

As of December 31,	2012	2011
<b>ASSETS</b>		
<b>Current</b>		
Cash and Cash Equivalents .....	\$893,043	\$1,170,394
Investments .....	810,309	2,170,341
Contributions Receivable .....	472,509	734,544
Inventory .....	215,884	186,953
Prepaid Expenses .....	26,713	22,281
Total Current Assets .....	2,418,458	4,284,513
<b>Other</b>		
Contributions Receivable, Net of Current Portion .....	2,350,977	2,971,641
Furniture, Fixtures and Equipment, Net .....	8,655	11,252
Beneficial Interests in Assets Held by Others .....	5,292,775	4,734,110
Total Other Assets .....	7,652,407	7,717,003
<b>Total Assets .....</b>	<b>\$10,070,865</b>	<b>\$12,001,516</b>
<b>LIABILITIES AND NET ASSETS</b>		
<b>Current</b>		
Accounts Payable .....	\$ 47,261	\$ 63,060
Grants Payable .....	—	900,164
Accrued Expenses and Other Liabilities .....	72,446	59,147
Total Current Liabilities .....	119,707	1,022,371
<b>Net Assets</b>		
Unrestricted		
Board Designated .....	786,795	745,422
Undesignated .....	689,949	474,985
Total Unrestricted .....	1,476,744	1,220,407
Temporarily Restricted .....	3,652,669	5,181,743
Permanently Restricted .....	4,821,745	4,576,995
Total Net Assets .....	9,951,158	10,979,145
<b>Total Liabilities and Net Assets .....</b>	<b>\$10,070,865</b>	<b>\$12,001,516</b>

# Como Zoo



***Look deep into nature, and then you will understand everything better.*** ~Albert Einstein

Moving our progressive animal care from behind-the-scenes to center stage has been a growing trend at Como Zoo, driven in part by your contributions to Como Friends.

In 2012, your support allowed Como zookeepers to share their knowledge at keeper talks and public training sessions with visitors from around the region, and to serve as active partners on conservation projects to save endangered orangutans and amphibians around the globe. In the new *Gorilla Forest* habitat set to open in June 2013, Como Friends' also invested in an engaging new interpretive cove on the second floor of the primate building that will teach visitors more about the world of the western lowland gorilla. The African Hoofstock building will be the next exhibit to be remodeled, thanks to a new facelift design plan paid for by Como Friends.



Helping Como Zoo to welcome and serve nearly two million children and adults every year was also a priority in 2012. Your contributions helped to pay for much needed repairs on the zoo's well trod Donor Plaza, and even provided a fun, new mobile app that takes visitors on a self-guided tour of Minnesota's most visited zoo.







# { Thank you, Donors! }

## \$200,000 +

Katherine B. Andersen Fund  
Donald McNeely Family  
The Saint Paul Foundation

## \$50,000 - \$199,999

Berger Transfer & Storage  
Chipotle Mexican Grill  
Russell Cowles and Josine Peters  
E. M. Pearson Foundation Endowment  
Fund of Como Friends  
Ecolab Foundation  
KSTP  
Mardag Foundation  
McCarthy Bjorklund Foundation  
Mr. and Mrs. John G. Ordway, Jr.  
Shirley K. Moore Estate  
Travelers Foundation  
Xcel Energy Foundation

## \$15,000 - \$49,999

Fred C. and Katherine B. Andersen  
Foundation  
API Group, Inc.  
Coca Cola Bottling Co Midwest Inc  
Bernice Decowski Estate  
Dellwood Foundation, Inc.  
Hubbard Broadcasting Foundation  
Huelsmann Foundation  
The M Group  
Radio Disney  
Lillian Wright & C. Emil Berglund  
Foundation

## \$10,000 - \$14,999

Jo and Gordie Bailey  
Best Buy Children's Foundation  
Bust Out Solutions, Inc.  
Don and Sharon Christensen  
Frog Crossing Foundation, Inc.  
H.B. Fuller Company Foundation  
Horton Holding, Inc.  
McGough Companies  
The Nicholson Brothers Fund  
John and Marla Ordway Charitable  
Lead Trust  
Pioneer Press  
Darwin and Geri Reedy  
TREND enterprises, inc.  
U.S. Bancorp Foundation

## \$5,000 - \$9,999

Andersen Corporate Foundation  
Andersen Corporation  
Athwin Foundation  
Cheryl Lynn Bailey and Dan Humes  
Gordon and Margaret Bailey Foundation  
Abigail and Nicholas Boetticher  
Boss Foundation  
Channel 45  
City of Saint Paul City Council Ward 5  
Country Choice Organic  
Ellis Family Fund of The Minneapolis  
Foundation  
Litton and Anne Field  
Tom Garden  
General Mills

The Pat and Tom Grossman Family Fund  
of MN Community Foundation  
Carla Heyl  
Deb and Mike Hogenson /  
Glamour Paws  
Karen and Stanley S. Hubbard  
John and Ruth Huss  
Jelly Belly Candy Co  
Jim and Peggy McIntyre  
Nancy and Russell Nelson  
Nelson, Tietz & Hoye, Inc.  
Timothy and Gayle Ober  
Old Home Foods Inc  
The Pentair Foundation  
Helen and Ruth Peterson Fund of  
Como Friends  
Dave and Lynne Plummer  
Edward Reed  
Kari and Daniel Rominski  
Securian Foundation  
Standard Water Control Systems, Inc  
Coralmae Stenstrom  
Taishoff Family Foundation  
Lisa Tienter  
Pat Tovo  
Twin Cities Public Television  
Weck Charitable Trust  
Wells Fargo Foundation Minnesota

## \$2,500 - \$4,999

3M Foundation  
Jack Allen  
Allied - THA  
Anonymous  
Shane and Leslee Boyd  
Martin and Esther Capp Family Fund of  
The Saint Paul Foundation  
Arta Cheney  
Cities 97  
CLR Design  
Karen Cohen  
Jay and Page Cowles  
Mary Daschner and Dan Chowen  
Jennifer and Carl Denys  
Terry Devitt and Michael Hoffman Family  
Fund of TSPF  
Scott and Lisa Dongoske  
Emerson Process Management-  
Rosemount Inc.  
Sherry Fonseth-Lais and Charles Lais  
Shannon and Corey Hoagland  
Jack and Linda Hoeschler  
Doug and Laura Jaeger  
John and Nancy Lindahl  
Old Dutch Foods, Inc.  
Jay and Korina Osborn  
William Paddock  
Lynette and Robert Palmgren  
Bob and Melanie Parise  
Pearson's Candy  
Post Foods  
Stephen and Kristen Rose  
Wendy and Steve Rubin  
Salon Ave  
Kathleen Schubert  
Snikiddy Snacks  
Space Center Inc  
The Thayer Family Foundation  
Weesner Foundation

## \$1,000 - \$2,499

Sarah Andersen  
Asset Marketing Services  
Ben and Phyllis Baltes  
Base Management LLC  
Carol Bierbrauer  
Alexandra Bjorklund  
BlackBlue  
Tom and Elizabeth Boyd  
Steve and Gail Brand  
Briggs & Morgan PA.  
Bruce Bruchman  
Steve and Elaine Bruchman  
Bob and Gerry Bullard  
Craig and Laurie Carlson  
Children's Theatre Company  
City Club Foundation  
David and Margaret Cochrane  
Bob and Diane Coderre Fund of  
The Saint Paul Foundation  
Thomas Colalzy  
Nicholas and Laura Coleman  
CPMI  
John and Eva Cross  
D'Amico Catering  
Mr. Miles E. Efron  
Peter and Kate Everett  
Federated Insurance  
Elizabeth Fesler  
Patricia Freeburg  
Michelle Furrer  
David and Kathleen Gabel  
Gannett Foundation  
James and Joan Gardner  
Peter and Julie Goodwin  
Grand Casino Mille Lacs & Hinckley  
John and Lisa Griffith  
Kelly Griffiths and Margaret Skelton  
Mike Hamm  
Jack and Joan Hansen  
HealthPartners and Regions Hospital  
Stephen and Stacey Hecht  
Sharon and David Heitzman  
Heraeus Medical Components  
Barbara Hove & Associates  
Dennis and Bettina Hoye  
Iconic Images I, LLC  
Java Train Cafe  
Johnson & Johnson Family of  
Companies  
Robert Wood Johnson, Jr. Fund of the  
Princeton Area Community  
Steve and Barb Judd  
William and Diane Kaphing  
Jerome Kelley  
Thomas Kigin and Donna Avery  
Steve and Margie Krause  
Michael Lasser and James R. Horst  
LeJeune Family Foundation  
Leonard Street and Deinard  
Juanita and Richard Luis  
Tim and Judy Lundquist  
LymanDoran  
Macy's  
Mansur & O'Leary, P.A.  
William and Carolyn McCarthy  
Edwin and Susan McCarthy  
Judy and Malcolm W. McDonald Family  
Charitable Account

Colleen McGough-Wood and  
Brad Wood  
Greg McNeely  
Medtronic Foundation  
Caroline and Scott Mehlhop  
Shirley Miles  
Larry Moody  
Justin and Krista Morneau  
Nicky and Tim Nagle  
Navarre  
Chuck and Barb Nelson  
David and Sheryll Norback  
Marla and John Ordway  
Bill and Anne Parker  
John and Debra Peterson  
Pool and Yacht Club, Inc.  
Q3 Contracting, Inc.  
Margaret Rivers Fund  
David and Darla Roeker  
Karen Rylander and Robert Schachter  
Jill Sadler  
Arlene and Joe Scheunemann  
Sue and Dan Schmitt  
Susan and Brian Smith  
St. Paul Ramsey County Environmental  
Health  
Jackie Sticha  
N. Stewart and Caroline Stone  
Rupert and Jeanne Strobel  
Martha Sweeney  
Joe Tashjian and Kay Savik  
Jerrold and Alleen Tostrud  
Traditions Furniture  
Helen Van Slyke  
Matthew and Linda Virnig  
David and Ann Wasson  
Wheelock Whitney  
Kenny and Jill Wicker  
Keith and Colleen Wietecki  
Leonard Wilkening  
Wilkinson Guthmann  
Wintergreen Dogsled Lodge, Inc.  
Winthrop & Weinstine  
Burton and Patricia Witthuhn  
Delores Zbikowski

## \$500 - \$999

Above the Falls Sports  
Diana Allen  
Allied Integrated Marketing  
Mary A. Anderson  
Anime Twin Cities, Inc.  
Amy Ault  
Au'some Candy, Inc  
Barbara Bachman  
Elam and Janis Baer  
Joe Bagnoli and Barbara Cox  
Bailey Nurseries  
Paul and Kathrynne Baumtrog  
William Beery  
Fazil and Cynthia Bhimani  
Carolyn Bingham  
Michael and Lisa Bjorkman  
Deb Bly  
Kaydee Brown  
Diana Burlison and Joyce Koshol  
Peter Butler  
Jack and June Chowen  
Cheryl Christenson

Classics By David  
Stephen Daas  
Florene Dougherty  
Jennifer Downham and Andrew Williams  
Joan Duddingston  
David Dudycha  
Mary Beth and Andrew Ellingboe  
Enterprise Holdings Foundation  
Peter and Tamara Erickson  
Nancy T. Field  
Carol and Michael Fix  
Eric Foster and Daniela Bell  
Pat Foster  
Derek Gjerde  
Christine and Chris Gohl  
Jewelie Grape  
Pegi and Thomas Harkness  
Kathy and Mike Harris  
Wesley Haut  
John and Marilyn Hay  
John and Dinah Heneman  
Molly and Keith Herrmann  
Justin and Natalie Heyl  
Verna Hoy  
Joan Humes  
ING  
Peter and Kay Jamieson  
Jennifer Jett  
Charles and Mary Jungmann  
Art and Martha Kaemmer  
Ben and Leah Kann  
Michael Kearn  
Stephan and Karen Kistler  
Kopp Family Foundation  
Peter Leach and Nan Skelton  
Linder's Garden Center  
Lutheran Community Foundation  
Harry G. McNeely, Jr.  
Jeremy and Janessa Meyer  
Minnesota Boat Club  
Carolyn Mohn  
Anna Morrison and William Morrison  
Dennis and Kellie Mueller  
Muffuletta Cafe  
James B. and Mellissa A. Murphy Family  
Fund  
John and Mignette Najarian  
Marin Nelson  
North Oaks Garden Club  
David and Mindy Odneal  
Keith and Mary Olson  
Erik Ordway and Andrea LaFontaine  
Rick Sirek and Joan Palm  
Elizabeth Parilla  
Park Midway Bank  
Park Tavern  
Peeps Retail, LP  
Alyson Perling  
Piper Classic Disc Golf Tourney  
Premium Waters  
Q.Cumbers  
Rainforest Cafe  
Richard and Marcia Reardon  
Richard and Elisabeth Revoir  
James and Suzanne Riesterer  
Cheryl Riley  
Todd and Anne Ringgenberg  
Valerie and Alan Rivers  
Robins, Kaplan, Miller & Ciresi LLP

Janel Russell  
James Sautter  
Vicki Scheunemann  
Schwab Fund for Charitable Giving  
Joe and Kristina Shaffer  
James A. Shober  
Barbara and Debora Shumsker  
John and Liz Sjaastad  
Southview Country Club  
Mary C. Sperl and Geoff Olson  
Stanley E. and Jennifer Hubbard Fund  
Susan and Stephen Stedman  
Erik and Pam Stegman  
Donald Steinkraus  
Stout's Pub  
Studio C Designs  
Cheryl Sykora and William Welbes  
Tankenoff Families Foundation  
The Head Foundation  
The Zephyr Charitable Foundation Inc.  
Peter and Mary Jo Thrane  
Thrivent Financial for Lutherans  
Paul and Janet Tolzmann  
Toro Foundation  
Robin Tost  
Michele Vaillancourt and Brent  
Wennberg  
Heather Walch  
Warners' Stellan Co Inc  
Gary Wendlendt  
Debra and Richard Wicka  
Wilderness Inquiry  
Woolley's Steakhouse  
Ron and Lynn Zamansky  
Emily Zempel  
Debra Zimmer

### **\$250 - \$499**

Jerry Adams  
Allina Health System  
Ameriprise Financial  
Paul and Patricia Amidon  
Kenneth and Ann Anderson  
Arden Shoreview Animal Hospital  
Jason and Amber Asmus  
William and Joan Baker  
Peggy and Mark Bakko  
Bame Foundation  
Kathryn and Thomas Barnett  
Paul and LaVonne Batalden  
John and Susan Bauer  
Kimberlee Bell  
Eric and Ingrid Beyer  
Blasted Art Inc.  
Walter and Jacqueline Blue  
Blue Cross/Blue Shield of Minnesota  
Barbara Bobrowitz  
Donna Boreen  
Roger and Diane Brack  
Alice and Charles Bresnahan  
Kathleen Briggs  
Bright Wines  
Carolyn Britton and Thomas Lux  
William J. Brody and Bronwen L. Cound  
Bill and Sheila Brown  
Richard and Dianne Brundage  
Barbara Buhl  
Burkhart Design Studio  
Barbara Burleigh

David Carpenter and Jenifer Doherty  
Laura Carpenter  
Paul and Tina Casey  
Mark Chowen and Adele Stock  
Judith Christensen  
Barbara Clothier  
Alfonse Cocchiarella and Shelly Burgess  
Biz and Ted Colburn  
Debra Connelly  
William and Maureen Cosgriff  
Barbara Courey  
Craguns Golf Resort & Conference  
Center  
David and Gretchen Cray  
Melissa and Hugh Cullen  
Robert and Sherry Cyza  
Robert and Laura Daly  
John Deters  
John and Sandra Dimond  
Danielle DiRe and Mark Baum  
DNA Sales  
Dodge Nature Center  
Arthur and Carol Doten  
Emily and John Douglass  
Dick and Joan Downham  
Robert and Mary Druke  
Ian and Susan Drummond  
Eric Dunn and Lori Ricke  
E J Houle Inc  
Mike Eckhardt and Mary Pat Blowers  
Larry Englund  
Robert and Mary Ann Evander  
Rebecca and Eric Everman  
Fairmount Avenue United Methodist  
Church  
Family Dentistrey  
Edward Faulkner  
Steve and Susan Flack  
Richard and Mary Fowler  
Laura Fries  
Anne Geisser  
Raymond Ghant  
Michael and Sarah Giga  
Kenneth Goebel  
Alan and Lynn Goldbloom  
Jerry and Joyce Golden  
Jim Grantman  
Karen Gruetzmacher and Lynn Markun  
Charles Hallman  
James Hamilton and Anna Burgett  
Marion Handt  
Kevin and Sharon Hannigan  
Marcus Hansen  
Grete Hanson  
Frank Hapke  
Sally and Robert Hart  
Karen Hawkinson  
Robert Hebbel and Charlotte Pancake  
Rosemary Heintz  
Mark and Michele Heintz  
Tom and Pat Henkels  
James and Nancy Hiebert  
Joan Higinbotham  
Ms. Hildrum  
HLB Tautges Redpath, Ltd.  
Ken and Corey Hobbins  
Tom and Nancy Hodnefield  
Heidi Hoganson  
Robert and Sylvia Hoke

William and Linda Holley  
Jean Hudson  
Worth Hudspeth  
Dale Hurni  
Jim Ingebretsen  
Elliott and Judy Jaffee  
Jawaahir Dance Studio  
Frances Jensen  
Russell and Helen Johnson  
Fredrik and Sharon Johnson  
Gail Jones  
Joy and Co. Interior Design  
Martin Juhn  
Juut Salon Spa  
Andrea Kanten  
Thomas and Marlene Kayser  
Brian and Carin Kelly  
Jay and Deborah Kerkvliet  
Kidcapers Portraits  
Betty Kirk  
Steve and Mimi Klane  
Steve and Dayna Klein  
John Koshuba  
Julie Kunin  
Jan Kurhajetz  
Mary Louise Laine  
Ruth Lais  
Carol Larson  
David and Elizabeth Lee  
Lehmann Family Fund of The Saint Paul  
Foundation  
William Leonard  
Bradley Levenhagen  
Dennis and Kathleen Libra  
Dick and Peggy Lidstad  
William Lohman and Ann Dillon  
Matt and Sara Lovat  
Dale and Linda Lutz  
Richard and Mary Fowler  
Michele Lynn  
Mall of America  
Manhattan Toy Co.  
Brian Marten  
Chad and Therese McCauley  
Tom and Jean McGough  
Vanessa McGuire  
Gerald and Marian McNabb  
Barbara Meier and Peter McSwiggen  
Peter and Christine Melchert  
Mendakota Country Club  
Barb Metz  
Microsoft Corporation  
Jonathan and Karilyn Miller  
Richaed Miller  
Jay Miller  
Minnesota Bonsai Society  
Mary Ann Monahan  
Lynn Montgomery  
Linda Moser  
Katie and Adam Nave  
Richard and Joan Newmark  
Nicholson Family Foundation  
Ryan Norman  
Dan and Sallie O'Brien  
Helen Officer  
Gary J. Olsen and Lael Pickett  
Mary and Joseph Olson  
Edward and Jean Olszewski  
James Otto  
ParAid

Peter and Jean Parilla  
Marian Paschket  
Eric Paulson  
Karin Peterson  
Jane and Ron Petrich  
Michael and Marie Porcaro  
prongily  
Terry Rauschendorfer  
Judith Riese  
Bridgette Robinet  
Roseville Abra Body & Glass  
Mona and Mike Rosow  
Richard and Louise Routhie  
Shelly and Steve Rucks  
Naquib Rupawalla  
Edwin and Jennifer Ryan  
Rick and Carol Rydeen  
Saint Paul Area Chamber of Commerce  
The Saint Paul Hotel  
Linda Sandell  
Kent and Shaneen Schmidt  
Bob and Connie Schmitz  
Alyssa Schulke  
Science Museum of Minnesota and  
OmniTheater  
Scripted Stones  
Sears Imported Autos, Inc.  
Kirstin Sersland and Matthew Estel  
Shakopee Jaycees  
Donna Sheeley  
Stan and Lucy Shepard  
Roger Shimada  
Steve and Corilee Skildum  
Gregory Smit  
Marschall and Debra Smith  
Clifford C. and Virginia G. Sorensen  
Charitable Trust of The Saint Paul  
Foundation  
Vic and Mary Spaulding  
Joan Speers  
Frances Spira  
Christopher Sprung and DeAnne Hilgers  
St. Paul Harley-Davidson/Buell  
St. Paul Saints  
Stein Insurance Agency  
Ron and Margaret Tabar Fund  
Terri Ann Tacheny and Tim Dickinson  
Dan Thyken  
Paul and Cathy Tweet  
Amy and Craig Twombly  
University of Minnesota Plant Disease  
Clinic  
Urban Village  
Paul and Carolyn Verret  
Isaac and Anna Vogel  
Jeffrey and Carey Walker  
Alice and Fred Wall Family Foundation  
Chris and Beth Wall  
Julie Wearn  
The Jeffrey and Mary Werbalowsky  
Philanthropic Fund  
Deborah Wexler and Michael Mann  
John and Sandra White  
Charles and Vicky Willcox  
Gloria Williams  
Sydney Williams  
Judy Wolf and Peter Wolf  
Mara Wurm  
Xcel Energy Center

Doug and Ann Yetzer  
Jack and Valerie Young  
Laura Young and Susan Purdie  
Paul Cassidy and Sarah Youngerman  
Robert and Monica Zarembski

### \$100 - \$249

Gerald Adams  
Aetna Foundation, Inc.  
Pamela Albrecht  
Bradley Althoff and Gregory Scanlan  
AMD Foundation  
American Girl  
Sarah Amendola  
Georgiana Anderson  
Esther Anderson  
Norah Anderson  
Chris and Kelle Anderson  
Jerome and Constance Anderson  
Jerry Anderson  
Jan Anderson  
Joel and Teresa Anderson  
Liz and Rich Anderson  
Cheryl Anderson  
Andrew Photography  
Michael and Teresa Angier  
Jeff and Beth Ansel  
Nick and Mary Apitz  
Thomas and Susan Arcand  
Ruth Arneson  
Pam Arnold  
Lynne Arnold-Walker  
Arthur Murray Dance Studio  
Minneapolis  
Ann Aurelius  
Aurora Spa  
Fran Babbitt  
Christopher and Amber Backhaus  
Kent Bahner  
Balance for Life  
Kathy Ball  
Terri and Greg Banaszewski  
Susan Bang  
Mary Barber-Schmitz and Tom Schmitz  
Bruce and Carol Barry  
Bryan Bearss  
Thomas and Mary Beaumont  
April Beck  
Jack and Carrie Ann Beckman  
Janelle Beitz  
Robert and Carmen Bell  
Vicki Belz  
Jeannette and Gerald Bensing  
Theodore Benson and Janet Pope  
Darwin and Mary Benz  
Henry and Diane Benz  
Machelle Berglund  
John Bergstrom  
Caren Berry  
Bill and Marilyn Bessler  
Best Western white Bear Country  
Inn/Rudy's Red Eye Grill  
Michael C. Betti and Stephanie  
Hammes-Betti  
Bonnie Beverly  
Sheila and Anthony Bianconi  
Bob and Joan Bierscheid  
Scott Biggar  
Susan Billings

Jancyn Bindman  
Bonnie and Cam Blodgett  
Joyce Boardson  
Muriel Bochnak  
Norrine Bohman  
Savvianna Boles  
Mary Bolkom  
Colleen and Patrick Bollom  
Michael Bondhus  
James and Donna Bosch  
Todd Boss and Amy Grove  
George and Linda Bounds  
Bourget Imports  
Debbie Boyles  
Andrea and John Brainard  
Paul and Susette Brandon  
Roline Bravo  
Kathleen Breeggemann and  
Patrick McDermeit  
Wanda Breyer  
Jane and Michael Brodie  
Brian Brommel  
Robert Brown  
Bill and Sheila Brown  
Sheila Brown  
Samantha Brown and Josh Bodie  
Katherine and Richard Buenger  
Rhonda and Michael Burke  
Todd and Patricia Burnes  
Patrick Burns  
Rose and Don Bush  
Hilary Caligiuri  
Cambria  
Robyn Campanaro  
Candyland  
Linda Capell and Lisa Ruth Alter Capell  
Nelson Capes and Christine Kraft  
Jodi Capistrant  
Gary Carlson  
Tom and Susan Cathey  
Chanhassen Dinner Theater  
Debra Chatelle  
Renee Chesley  
Chicago Lake Liquors  
Anita Cholewa  
Choo Choo Bob's  
Roxanne Choulock  
Mark Christensen and Joy Yoshikawa  
Jane Clappier  
Chris P. Claude  
Jane and Gary Clements  
Kathleen Coleman  
Christine Coletta  
Nicole Conner  
Thomas Connolly  
Tyler Conrad  
Cooks Of Crocus Hill  
Nina Cooper  
Core Power Yoga  
John and Shari Couch  
David Councilman  
Kevin Courtney  
The Covington Inn  
Linda Crooks  
Mary Beth Cutting  
Sue Dahl  
Monica Dahlen  
Linda and Lyle Dallman  
Sharon Dalmasso

Michael Davis  
Jim and Bonnie Davy  
Tamara Day  
John E Debee and Donald Michael  
Shields  
Kisha Delain and Charles Schmidt  
Stephen and Kimberly DeRoche  
Deb Dickey and Manny Esguerra  
Taisa Diedrich  
Thomas and Alison Diffley  
Kelley Dinsmore  
Erin Dirksen  
Marc and Stacy Doepner-Hove  
Dara Sanders Dokas  
Jeanne and Dan Dolan  
Tina Dombrowski and Thomas Ivancsics  
Debra and David Doubek  
Mary Downham  
David and Mary Drache  
Michael Dreher and Tammy Schexnaider  
Margaret Drevnick  
James Driscoll  
Bob Duerr  
Karen Duke and Desiree Kempcke  
Patricia Dunford  
Gloria Dunshee  
Patricia Dutke  
Thomas Dzik and Hannah McGraw Dzik  
Eagles on the River, Inc.  
Mary Edel-Joyce  
Cassidy Edstrom  
Cynthia Eicher and Blake Johnson  
Alexander and Julie Elder  
Natalie Enzmann  
John and Margaret Erbe  
Kristian Erdman  
Kay Erickson  
Marvin Erickson  
Bonnie Erickson  
Georgiann and Joseph Errigo  
Ruth Fagen  
David and Maryse Fan  
Daniel and Janey Farber  
Jon and Elyse Farnsworth  
John Farrell  
Joan Fearing  
Kay and Nile Fellows  
Margaret Ferguson  
Amy Fettes  
Brian and Diane Fiderlein  
Frederick Finch  
Alice Finley  
Maureen and Patrick Flahaven  
Soni and Dave Forsman  
Cindy Fossum  
Cynthia Foster  
William Foussard  
Mollie Fragnito  
Daniel and Emily Franks  
Eileen Frants  
Ronald Fredericksen  
Laurie Friese  
Front Avenue Pottery and Tile Co.  
Kimberly Fuhrman  
Jim and Mary Gage  
Linda Gagnon  
Karol Galatzer  
Marilyn Galazen  
Bev Galles

# { Thank you, Donors! }

Robert Garrett and John Novak  
Andrea Gates  
Bill and Ann Geery  
Patricia Gillis  
Aran Glancy  
Jan Godeke  
Amanda Golden  
GolfTec  
Marilyn Gomez  
Good Earth  
Leon Goodrich  
Joseph and Visala Goswitz  
Grand Pere  
Greater Twin Cities United Way  
Jon Greer and Nancy Roff  
William and Carol Gregory  
Douglas and Kristen Griep  
Yvonne Grierson and Sherwin James  
Annette Griffin  
Ralph and Nancy Gundersen  
Jackie and Steve Gunn  
Kathryn Gustafson  
Dan and Maura Hackenmueller  
Kathleen Hallinan and Vern Jackson  
Martin and Laurie Halvorson  
Jean Hammar  
Pamela Hansen  
Joyce Hanson  
Bonnie Hanson  
Pauline Harmon  
Merrie Harrison  
Catherine Hart  
Nancy Haugen  
Kathleen Havelin  
Karen Hawkinson  
Karan Heather  
Kara Hefner  
Shirley Hellem  
Siena Hennum  
Dennis and Phyllis Hepp  
Shirley Hill-Erbe  
Elizabeth Hobbs  
Ronald Hockin  
Bethany Hoffman and Ted Zukowski  
Don and Sandy Hoffman  
Peggy Hogan  
James and Carol Hollenbeck  
Karla Hollinshead  
Robert Holly  
Ronald and Marion Holly  
Home Consulting Company  
Cindy Howard  
Lincoln Hudson  
Joyce Huff  
Josephine Hughes  
David Hultgren  
Leslie Huseby  
Beth and Jeff Hvass  
Felicia Imlay  
Mary and Austin Indritz  
Kirsten Ingerson and Charles Pinto  
Rex and Monica Ingram  
Kathryn and James Irvine  
Sandra Isaaman  
Parker Iten  
Ann Iverson  
J. Novachis  
Glenn Jackola  
Kristin Janning

Diane Jensen  
Joan Jensen  
Judith Johnson  
Scott and Jennifer Johnson  
Bert and Anita Johnson  
Arnold Johnson  
Michael Johnson and Cynthia Fraser-  
Johnson  
Janice Johnson  
Patricia Johnson  
Dale and Jan Johnson  
Doug Johnson  
Richard and Corinne Johnson  
Joe and Michele Johnston  
James and Patricia Jorissen  
Judd Frost Clothiers  
Chris Junker  
Peter Kahn  
Mary Kalish-Johnson and Richard  
Johnson  
Justin and Stephanie Kappel  
Judy Karbo  
Catherine Karie  
KC Fortune Cookie Factory Keeper  
Cart Food Inc.  
Martin and Esther Kellogg  
Anna Kieselbach  
Joseph and Carole Killpatrick  
Kimberly Lane Elementary  
Corrine Kindschy  
Susan Kingsbury  
Shannon Kinney  
Janice Kispert  
Virginia and Corby Kistler  
Sharon Kjellberg  
Robert and Lisa Klenzman  
Bob Klepperich  
Kris Kline  
Kline Volvo  
John Knoedler and Maureen Kane  
Jerry and Nancy Knoth  
Shawn and Barbara Knoth  
Nancy and Todd Koch  
Stephen Kodluboy  
Philip and Patricia Kohls  
Diane Kolhoff  
Karen Komp  
Lisa Kotsonas  
Kozlaks Royal Oak  
Penny Kranz  
Bernie and Janet Krenner  
Robert Kriel and Linda Krach  
Frank and Constance Krmpotich  
Jerome Kroll and Kathleen Carey  
Rebecca Krus  
Linda Kucera  
Darlene Kunze  
Charles and Linda Lamprecht  
Landmark Corporation  
Anne and William Langford  
Joshua Lanzdorf  
Pete and Tara Larkin  
Dillon and Erica Larsen  
John and Karen Larsen  
Laura Larson  
Don and Carole Larson  
Evan LaToure  
Janice Laulainen  
The Laundry Doctor

John Lawlor  
Barbara and Rolfe Leary  
Rhys and Andrea Ledger  
Jeanne Lee  
Yu-Jung Lee  
Cynthia and Stephen Lehr  
Arthur Lemke  
William and Mary Lerman  
Kevin Leuthold and Nancy Garrett  
Deborah Lewis  
Gary and Judith Lewis  
Lori and Richard Licht  
Light House Bed & Breakfast  
Daniel and Mary Beth Liska  
Alan and Lori Lohman  
Jason Lonstein and Jessica K. Looman  
William and Anne Losby  
Lotus International  
Lee and Jo Lundblad  
Lutsen Mountains  
Renee Machacek  
Kathy MacKnight  
Jessica Madole  
Georgia Maguire  
Daniel and Chris Mahai  
Victoria Mahoney  
Jenna Maloy  
Paul and Patricia Mamula  
Marsha and Thomas Mann  
Mara-Mi  
Larry and Karin Margolis  
Michele and Tom Marrinan  
Tim and Monica Marx  
Timothy and Dana Masek  
James Mastroianna  
Daniel and Karen Maxey  
Mae Mazzara  
Pamela G. McAlister and Gary E. Stoos  
Paul and Margaret McCarrick  
Carla McClellan  
Claudette McCollar  
Amy McDonald  
Bob and Mary McDonald  
Deborah McGlynn and Amy Cennamo  
James McGuiggan  
Malcolm and Wendy McLean  
Margot McManus  
Mary Bigelow McMillan  
Thomas McMullen  
Robert McNamara  
Debra McPeck  
Meadowood Shores  
Cathy Meyer  
Jerome Kroll and Kathleen Carey  
Susan Meyers  
Joseph and Jane Micallef  
Steve and Lisa Mills  
Scott and Rosemary Milton  
Minnesota International Center  
Patricia Mitchell  
Dan Moak  
Melva Moline  
Luann and Thomas Monahan  
Bjorn and Margot Monson  
Alan and Janet Montgomery  
Debbie and Robert Montgomery  
Maxine Mootz  
Dee Moreland  
Dolores Morgantini

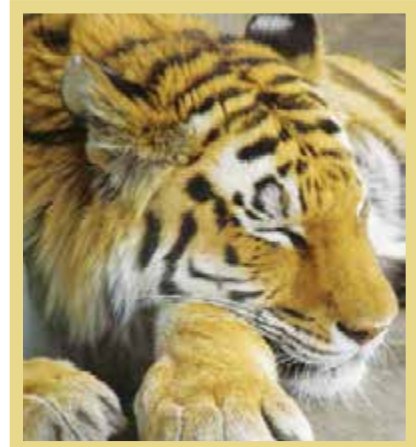
Jeff Moriarty  
Dan Moriarty  
Larry and Sharon Morrisette  
Lisa Motz and Bruce Bruemmer  
Avishek Mukherjee  
Nancy and James Mulvey  
Lawrence and Rachel Mundt  
George and Judy Murakami  
Amy and Shawn Murnan  
Bryan Murphy  
Michael and Marilyn Myers  
Kevin Myren  
Mystic Lake Casino Hotel  
Lawrence and Kristine Nagel  
Michael and Kristina Nagle  
Nature's Yardifacts  
Matt and Kelley Nelson  
Corinne Nelson  
Stuart and Ann Nelson  
Carol Nelson  
Darrell Nelson  
William and Jennifer Neujahr  
Elinor Nicklawks  
Gerard and Eileen Niewenhaus  
Michael Nilles  
Earl Nolting  
Rolf and Kathryn Nordstrom  
Patricia Norgren  
North Metro Pediatrics  
Northern Brewer  
Northern Lights Greyhound Adoption  
Leslie Norton  
Ed Nowak and Diane Marx  
Lisa Nowak  
Lois Nyman  
Lynne and Jim Nystrom  
Edward O'Brien  
Jaime O'Brien  
Cheri O'Brien  
Scott O'Connor  
Alan O'Donnell  
Louise Ogden  
Michael and Elizabeth O'Leary  
Judith and Thomas Olin  
The Olive Grove  
Christopher Olsen  
Jim Olsen and Carolyn Ganz  
Michael Olson  
Steven and Katherine Onken  
Katherine Opseth  
Richard Opseth  
Ordway Center for the Performing Arts  
D. Larry Oreschnick  
Irene Ott  
Claudia Oxley  
Kathleen Palmen  
Panera Bread  
Raline Paper  
Laura Parcels  
Jessica Parker  
James Parker  
Michelle Parks  
Don Paschke  
Gilbert and Betty Patsche  
Lucia Paul  
Robert Payne  
Jacob and Jessica Pearson  
Ed and Kris Pendergast  
Perseus Distribution

# { Thank you, Donors! }

Jane Peterson  
Mary Peterson  
Janet and Paul Pettit  
Stephen and Lynne Pettitt  
Randolph Pflueger  
Megan Piffer  
Rachel and Lauren Piga  
Doris and David Polson  
Jodene Pope and Tim Wong  
Poppy Togs and Clogs  
Dominic Postiglione  
Clare Poulouse  
Leonard Powell  
Janet Pribnow  
Joni Proffitt  
John Provo  
Chuck Putzer and Meghan Walsh  
Brad and Linda Quarderer  
Susan Rasmussen  
Anita and Paul Ratwik  
Jennifer Read  
Red Wing Shoes  
Timothy Reents  
Pierre and Judith Regnier  
Robertta Reilly  
Vicki Reynolds  
Norman and Cynthia Rhodes  
Ric Cox Pottery  
Mary Lou and Norman Rice  
Bruce and Joan Richard  
Barb Ricke  
Richard and Krispen Ridgway  
Diane Riedesel  
Riverwood Community Church  
Mary Rivett  
Andrew and Heather Rocheford  
Kristi Rogers  
Rob and Elizabeth Rominski  
Lorianne Rosa  
Deborah Rose  
Grace Rose  
Kenneth Rose  
Debra Rossbach  
Mark Rossow  
Victoria Rouse  
William and Peggy Roush  
David Rudolph and Susan Sochacki  
Dolores Rufenacht  
Nancy Rustad  
Mary Ryan and Robert Schmitz  
Marion Rys  
Dorothy Sadler  
Michael and Marcia Sager  
The Sample Room  
Todd and Marilyn Sandell  
Barbara Santine  
Dick Sarafolean  
Cindy Satre  
Mark Satt  
Kathleen Scarfone  
Richard and Betty Jo Scarrow  
Susan Schanning  
Joanne Schentzel  
Victoria Schifsky  
Sue Schilling  
Alan Schmidt  
Susan G. Schmidt and Virgil Wiebe  
Phyllis Schmitz  
Rich and Katie Schmitz

Edward and Eileen Schneider  
Elizabeth and John Schneider  
Gary Schoener  
David and Helene Schultz  
Harold and Judith Schultz  
Douglas and Hilory Seaton  
Patrick Sellner  
Barbara Semple  
Renee Seran  
Suzanne and Patrick Shearen  
Susan J. Sheets  
Tom and Nancy Sheldon  
Steven Sickmann  
Nathan Sider  
Margaret Skelton  
Craig Skone Family  
Thomas and Teresa Slatoski  
Robert Smith  
Laura Smith and Paul Christianson  
Matthew Smith and Janet Hughes  
Ella and Oscar Snyder  
Leif and Jeanne Solberg  
Christian and Jayne Soltermann  
Joan Sorenson  
Sheryl and Jon Sostarich  
Peter and Joan Spangrud  
Raymond and Sharon Sperrick  
Dorothy Sporney  
St. Croix Casino Danbury  
St. Jude Medical  
Clara Stahlmann-Roeder  
Marcia Stapleton Mehlhop  
Rick and Judie Steenberg  
Elyse Steiner  
Sharron Steinfeldt  
Peggy Steldt  
Barbara Stelmasik  
Marcia Stemwedel  
Sarah Stevenson  
William and Marilyn Sticha  
Brent Stickels and Jane B. Johnson  
Stillwater Balloons  
Harlan and Marlene Stoehr  
Thomas Stoffel  
Warren Stortroen  
Ronald and Patricia Stotzheim  
Donald Stover and Clare Summers  
Evelyn Struthers  
James and Leslie Studenski  
The Stull Family Foundation  
Karen Swan  
Carol Swanson  
Kristen and William Swanson  
Barb Swanson  
Beverly Swanson  
Theresa Swanson  
Leonard and Sandra Swanson  
Kimberly Swenson  
Janice Swenson  
Synergetic Endeavors, LLC  
Tanner's Brook Golf Club  
Anita Terry and Kevin Harding  
Chris and Steve Thiers  
Benjamin Thompson  
Steven and Geri Thompson  
Christopher Thompson  
Thomson Reuters  
Ralph and Loanne Thrane  
Michael and Elizabeth Tibbetts

Joseph and Pamela Tikalsky  
Fred Tio and Sara Leiste  
Robert and Kathleen Tipler  
John and Kim Tophen  
Amber and Jason Tritabaugh  
Edward and Karolee Trost  
James Turnure  
Twin City Bagel, Inc.  
Twin City Model Railroad Museum  
Dolores Ullstrom  
UnitedHealth Group  
Kirk Vadnais  
ValleyFair Family Amusement Park  
Elizabeth Vance  
Carroll and Michele Vance  
Brenda Vaughn  
Kirk and Laurie Velett  
Vertical Endeavors Indoor Rock  
Climbing Facility  
Zsolt and Maria Vincze  
Vinocopia  
Rolande Voerding  
Stephanie Volm  
Mary and Daglin VonRuden  
Sharon Voto  
Michael Vraa and Sonja Short  
Wagner Greenhouses, Inc.  
Jackie Walcome  
Susan and Robert Warde  
Bill Warner  
Berton Weberg  
Wells Fargo Bank Minnesota  
John Welsh  
Richard and Diane Weniger  
Barbara Wente  
Calleigh Wenzel  
Elizabeth Werner  
Charles and Barbara Werness  
Eric Werzel  
Western Bank  
Eric and Lucinda White  
Carl and Barbara White  
Thomas and Barbara Wiberg  
Catherine Anne Wick  
Brenda Wiener  
Jennifer Wightman  
Scott and Joan Wilcox  
Eva Ann Williams  
Patricia Williams  
Leonard and Adelia Wilson  
Stewart Wilson and Melissa Barker  
Wirtz Beverage of Minnesota  
Patricia Wood  
Jonathan Wood  
Robert Wray  
Garry Yazell and Michele Dunning  
Paul and Mary Zadach  
James Zangl  
Howard Zechmeister  
Peter Zeller  
Mona Zielke  
Richard and Kathleen Ziemann  
Genevieve Zimmerman  
Alice Zittel  
Jacie Zolna



## Como Friends BOARD OF DIRECTORS

**Diana Allen**  
Realtor, MN Home Ventures

**Jo Bailey**  
Community Volunteer

**Shane Boyd**  
Vice President, Communications  
and Branding, Travelers

**Arta Cheney**  
Community Volunteer

**Jennifer Denys**  
Investment Counsel, Advantus

**Peter Everett**  
Marketing Director  
General Mills

**Anne Hazelroth Field**  
Community Volunteer

**David Gabel**  
Finance, Ecolab

**Stephen Hecht**  
Management Consultant,  
United Health Care

**Tom Hodnefield**  
Partner, Tautges Redpath, Ltd.

**Robert Hoke**  
Vice President, Wells Fargo

**Bill Kaphing**  
Vice President, Xcel Energy

**Greg McNeely**  
Ear 4 Music

**Joe Nayquonabe**  
Director of Marketing, Grand Casino

**Nancy Nelson**  
Consultant, The Nelson Group

**Marla Ordway**  
Pratt Ordway Properties

**Bill Parker**  
EVP, Chief Credit Officer, US Bancorp  
US Bank

**Ed Pendergast**  
Retired SVP, Travelers

**Susan Roeder**  
Vice President, Andersen Corporate  
Foundation, Andersen Corporation

**Wendy Rubin**  
CEO, Wendy Rubin Ltd.

**Kathleen Schubert**  
Community Volunteer

**Peter Thrane**  
Attorney, Leonard Street & Deinard

**Keith Wietecki**  
Former President and CEO,  
Seren Innovations, Xcel Energy

**Officers**  
Chair, **Wendy Rubin**  
Vice Chair, **Anne Hazelroth Field**  
Treasurer, **Tom Hodnefield**  
Secretary, **Jackie Sticha**

### Ex Officio

**Mike Hahm**  
Director, Saint Paul Parks and Recreation

**Jackie Sticha**  
President, Como Friends  
**Michelle Furrer**

**Emeritus Directors**  
**Leonard Wilkening**  
Retired President, Wilder Foundation

## Como Friends Staff

**Kelly Billig**  
Development Associate

**Jennifer Downham**  
Director of Individual Giving

**Amanda Golden**  
Event Associate

**Mary Jenson**  
Director of Finance

**Jan Kurhajetz**  
Volunteer and Finance Associate

**Caroline Mehlhop**  
Director of Events and Sponsorships

**Kathy Satersmoen**  
Assistant Manager, Garden Safari Gifts

**Terri Scheunemann**  
Manager, Garden Safari Gifts

**Jackie Sticha**  
President

**Matt Wehner**  
Communications and  
Development Associate

## Garden Safari Gifts

Janell Bergman	Kristin Neff
Karina Bigit	Alison Olmstead
Flo Dougherty	Karli Olson
Barb Durfee	Jessie Percy
Julie Estrem	Tara Ruedy
Jim Etten	Ratih Sutrisno
Gaby Gretz	Xai Vang
Molli Gould	Kayla Vrudny
Emily Hanson	Bao Vue
Krista Hasse	Ray Weiland
Jen Holin	Sheila Wewers
Andrea Kjell	Mary Xiong
Kanna Loyd	Pachi Xiong
Mia Loyd	Khue Yang
Rose Masanz	Melissa Yang





*como friends*  
TOGETHER WE GROW

1225 Estabrook Drive • Saint Paul, MN 55103

651.487.8229

Follow @ComoFriends on Twitter and Facebook