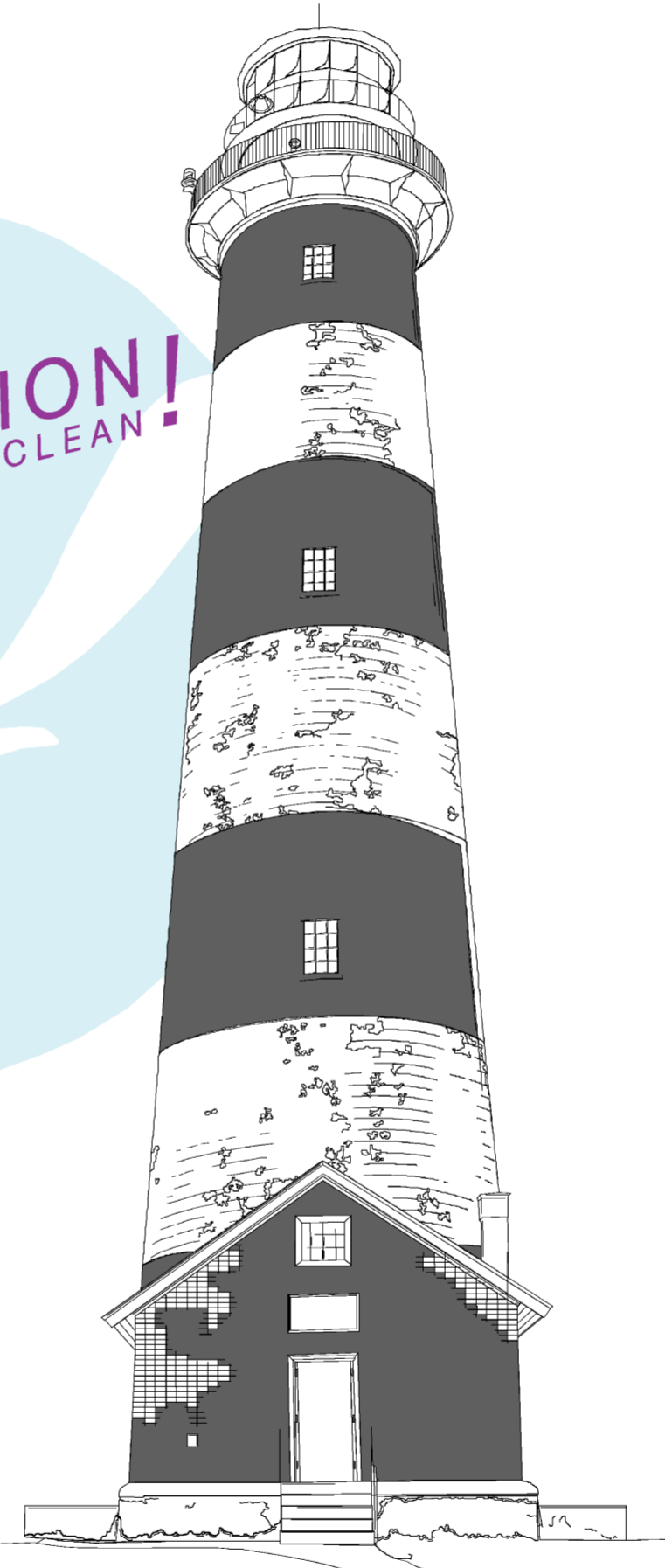


NEW HAVEN HARBOR ENTRANCE AND PORT JEFFERSON TO THROGS NECK LONG ISLAND SOUND CONNECTICUT - NEW YORK

FIGHT POLLUTION!
KEEP YOUR WATERWAYS CLEAN!



U.S. DEPARTMENT OF COMMERCE

NATIONAL OCEANIC AND ATMOSPHERIC ADMINISTRATION

NATIONAL OCEAN SERVICE

12364

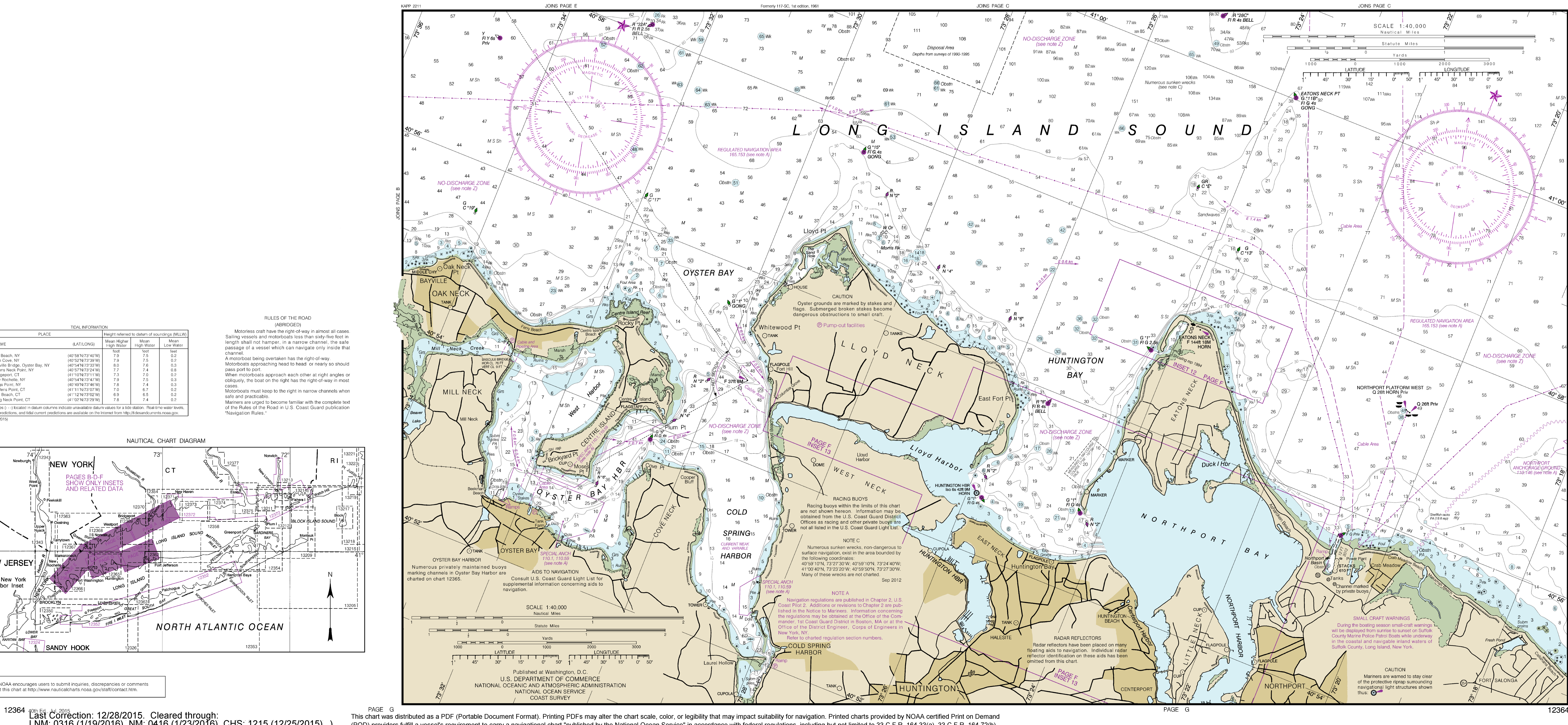
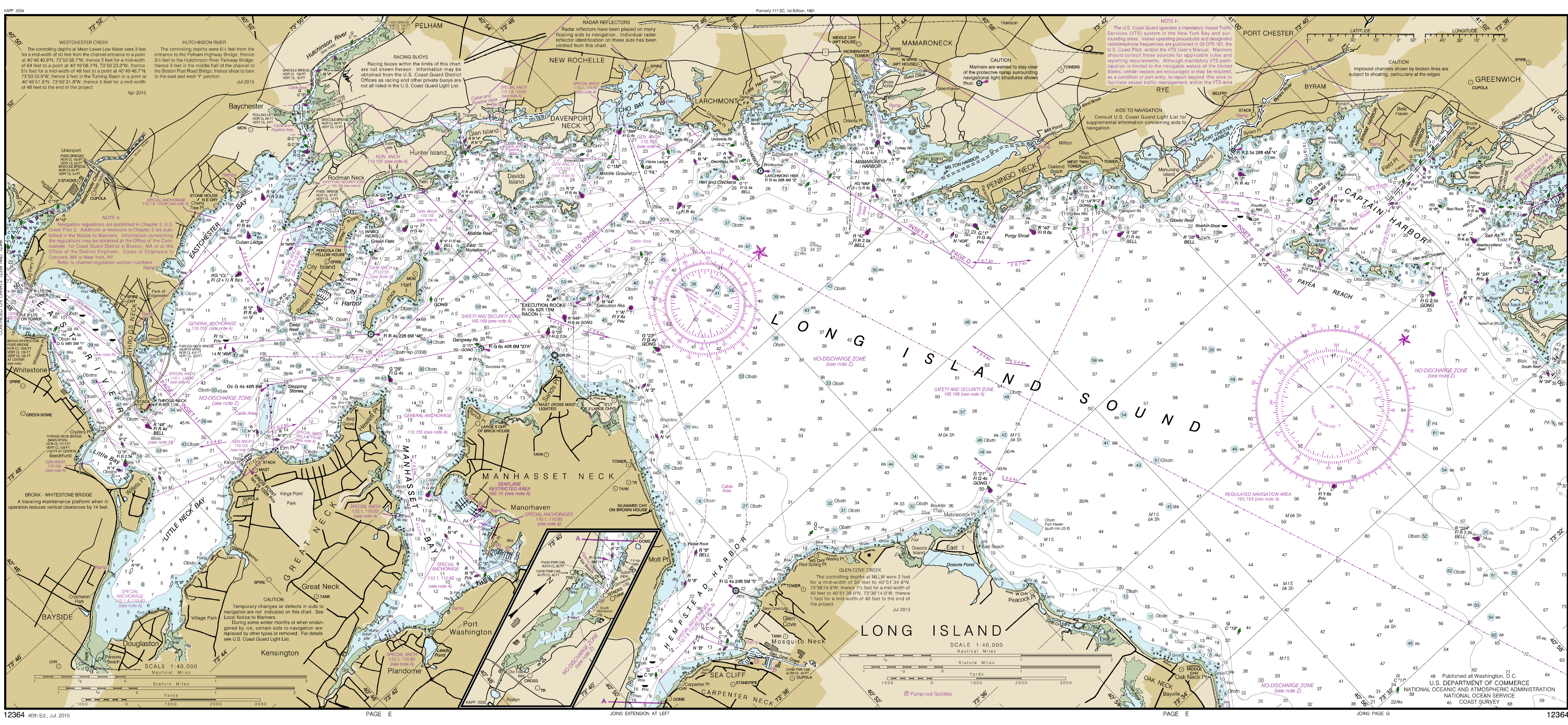
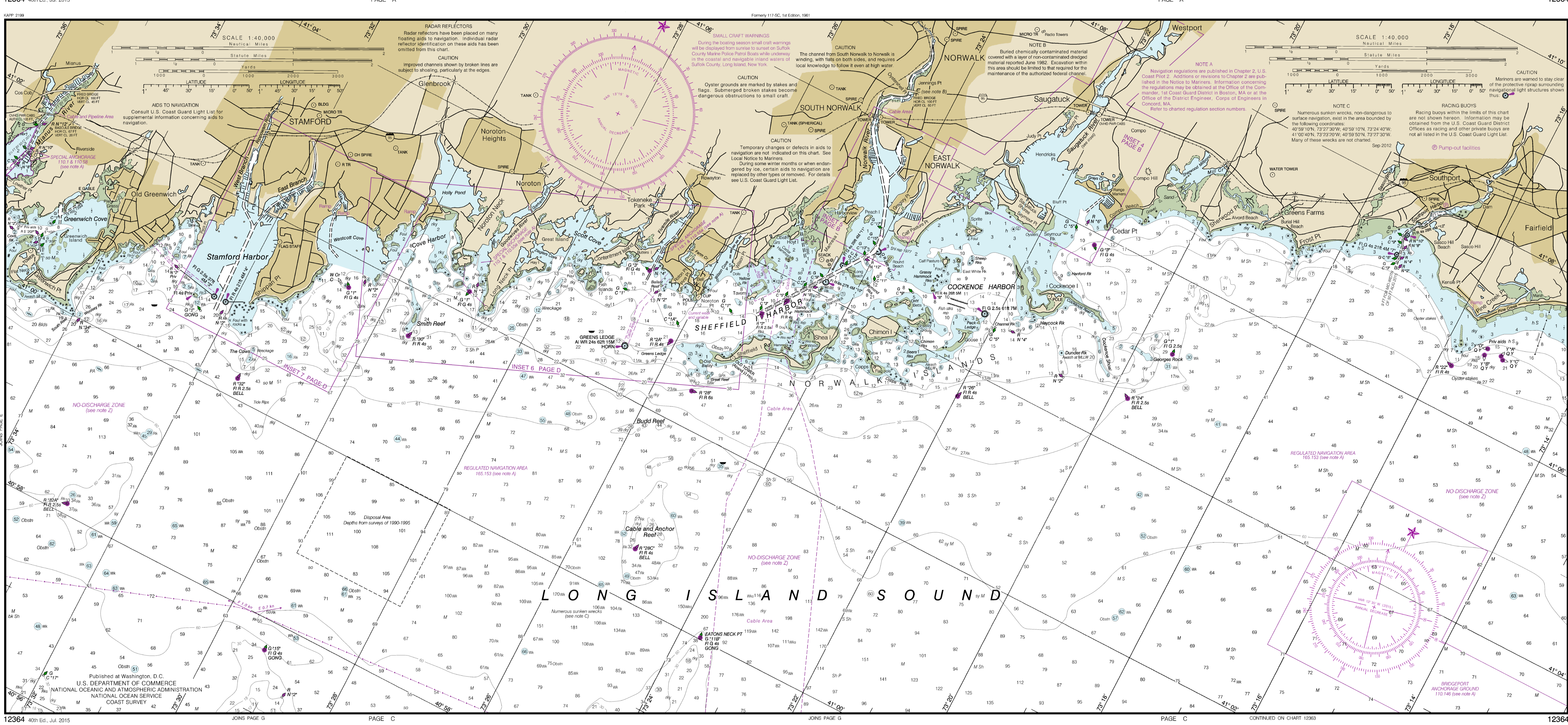
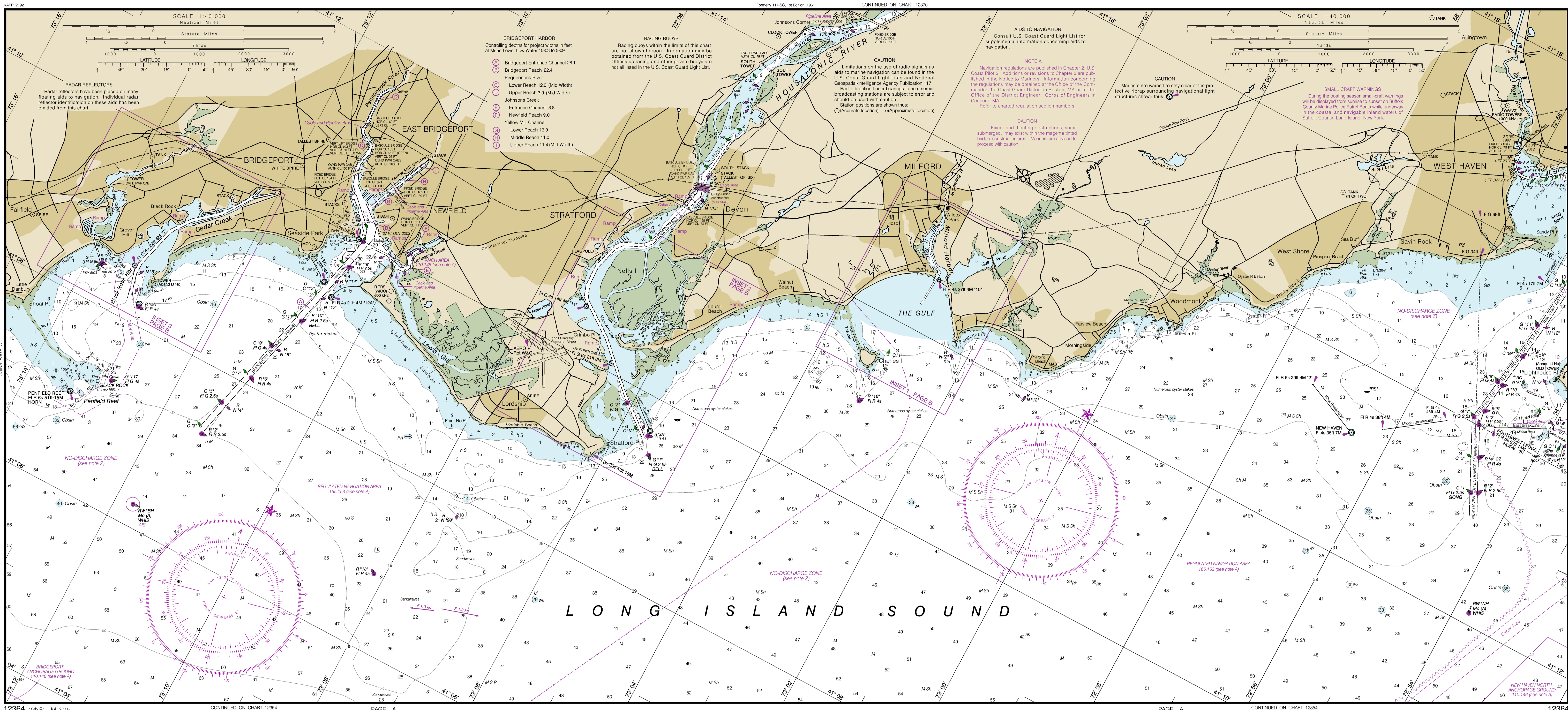
EDITION 40 JULY 2015

Last Correction: 7/21/2015. Cleared through:
LNM: 0316 (1/19/2016), NM: 0416 (1/23/2016), CHS: 1215 (12/25/2015))

This chart was distributed as a PDF (Portable Document Format). Printing PDFs may alter the chart scale, color, or legibility that may impact suitability for navigation. Printed charts provided by NOAA certified Print on Demand (POD) providers fulfill a vessel's requirement to carry a navigational chart "published by the National Ocean Service" in accordance with federal regulations, including but not limited to 33 C.F.R. 164.33(a), 33 C.F.R. 164.72(b), and 46 C.F.R. 28.225(a). POD charts meet stringent print standards and can be recognized by an official certification of authenticity printed on the chart. A list of POD providers can be found at: nauticalcharts.noaa.gov/pod

To ensure that this chart was printed at the proper scale, the line below should measure six inches (152 millimeters).
If the line does not measure six inches (152 millimeters), this copy is not certified safe for navigation.

SCALE 1:40,000
Nautical Miles



NAUTICAL CHART DIAGRAM

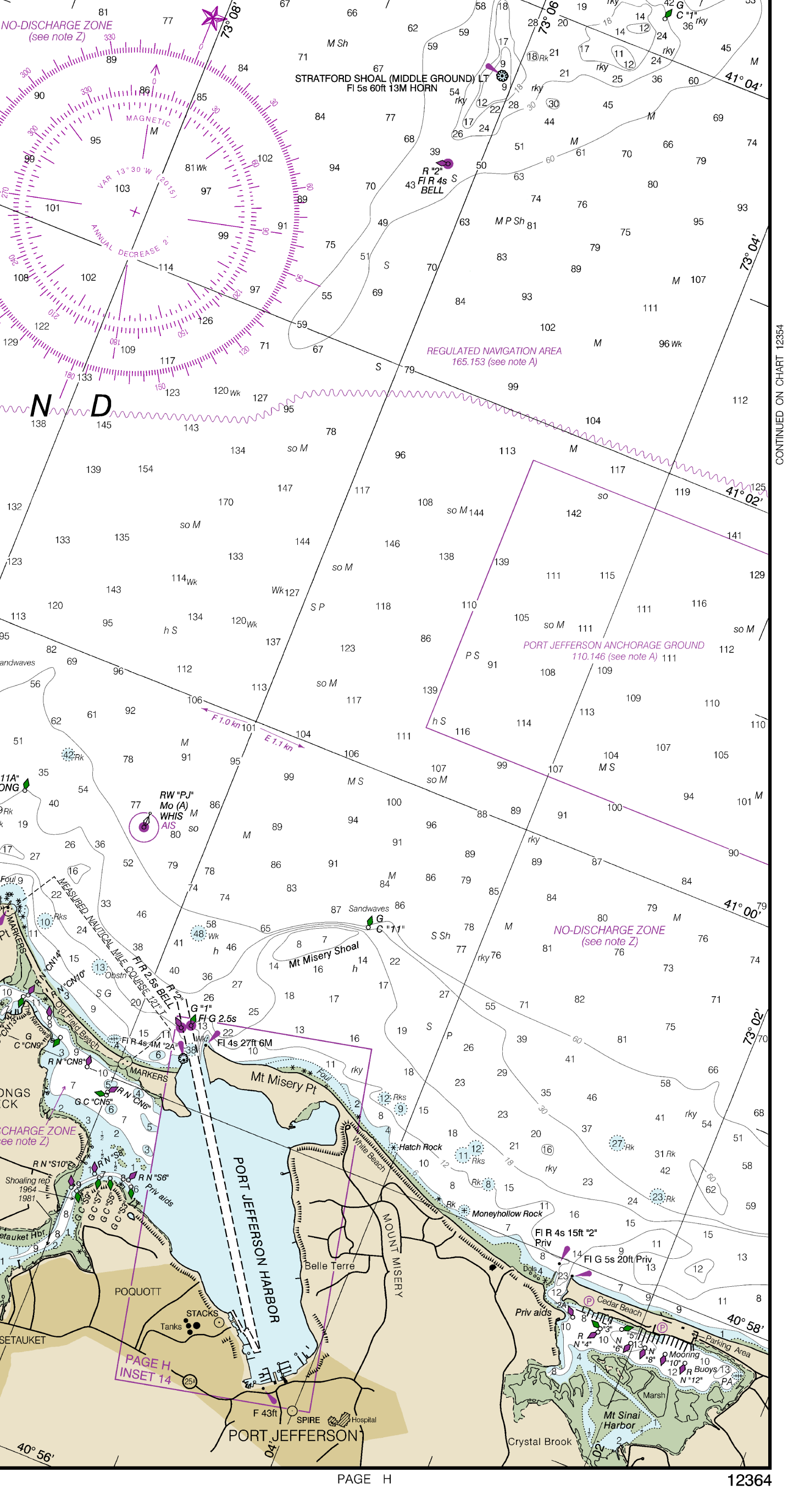
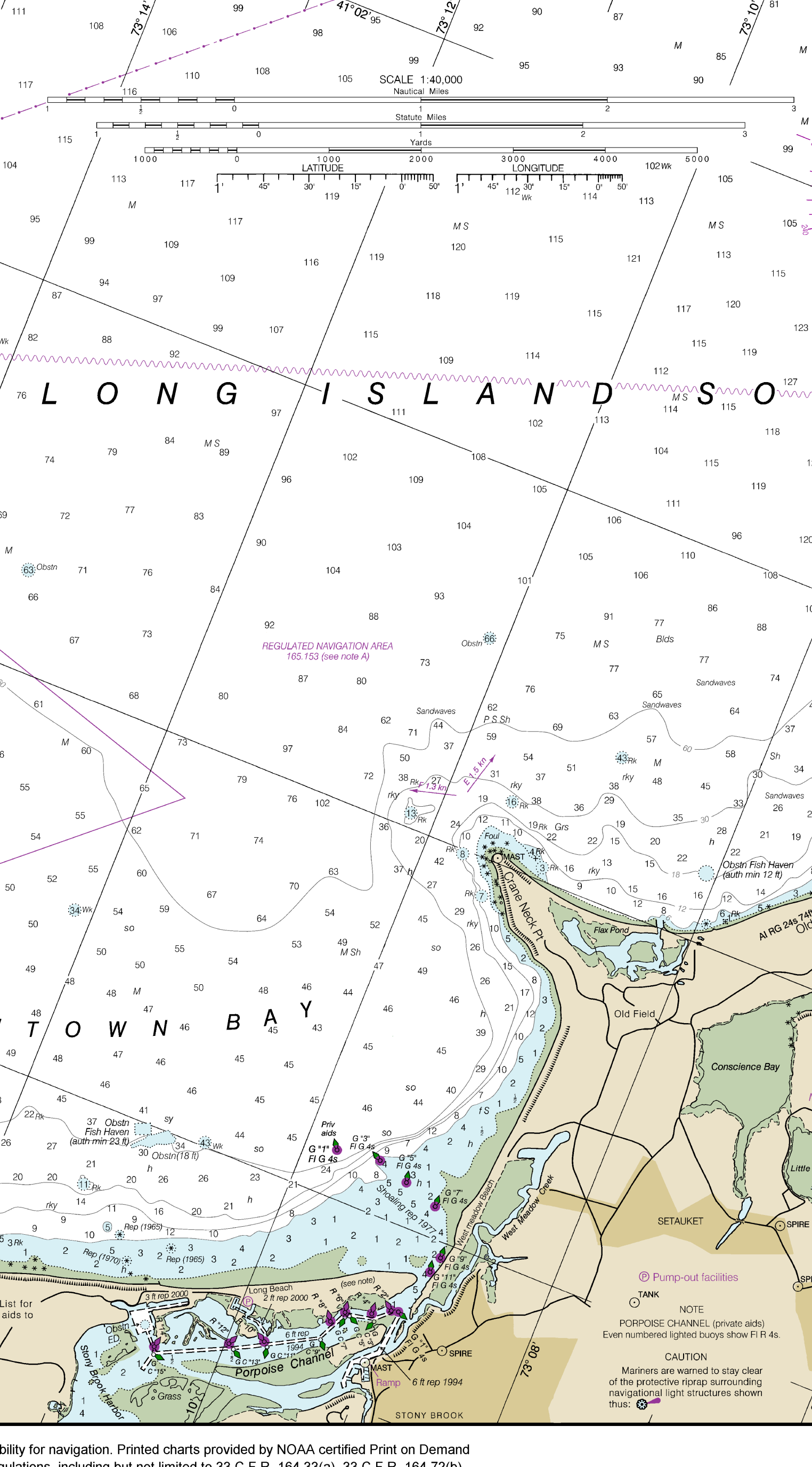
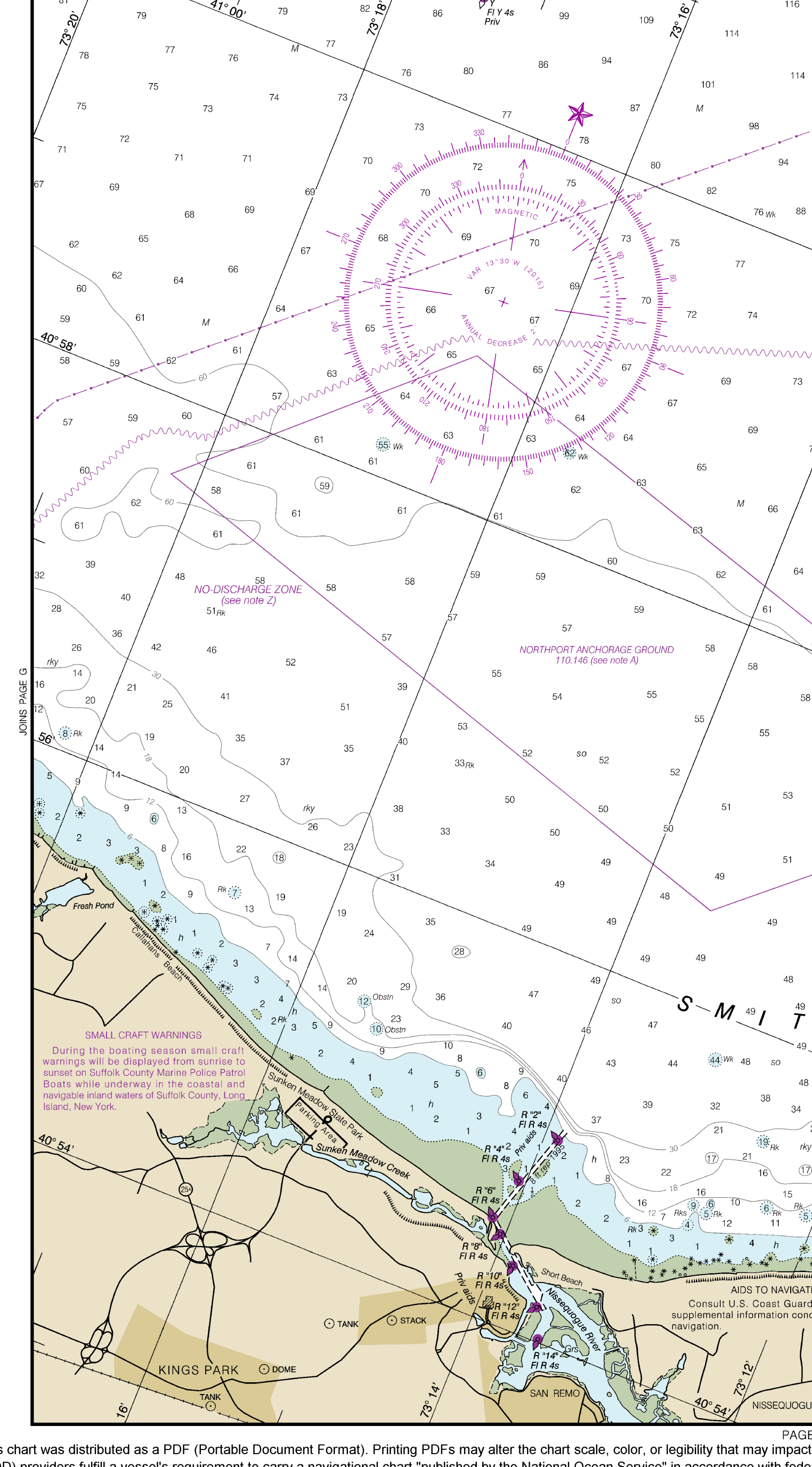
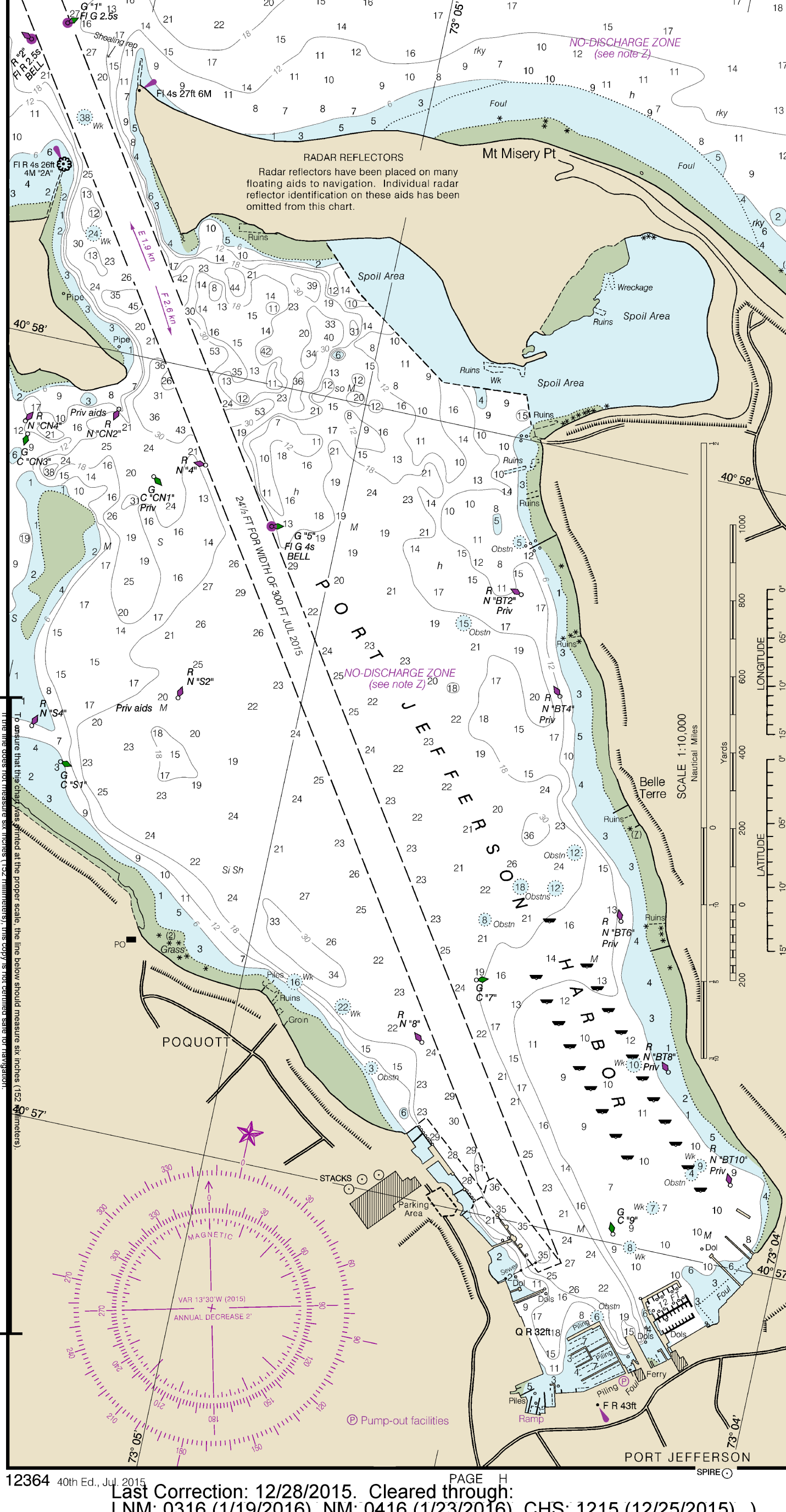
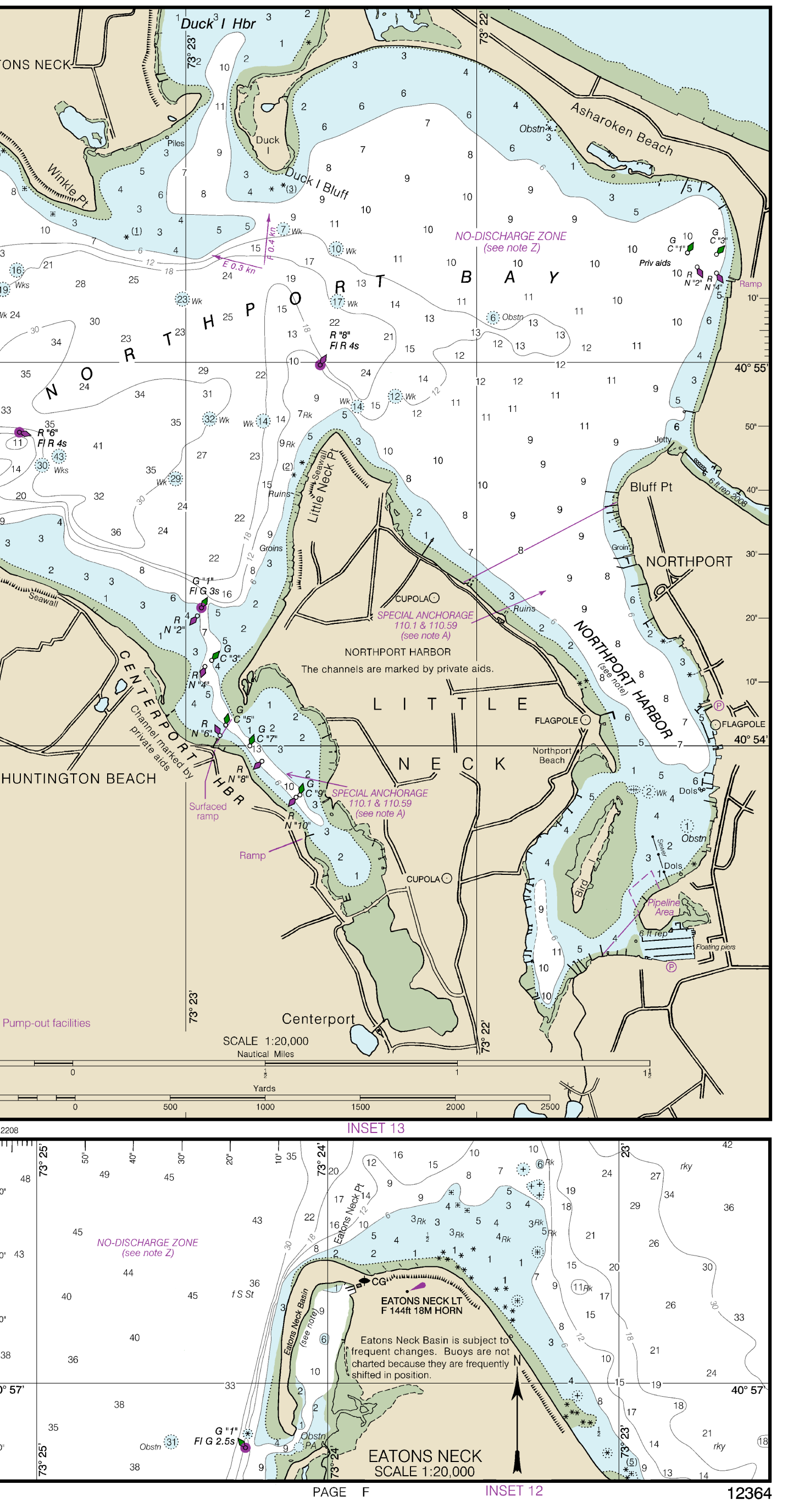
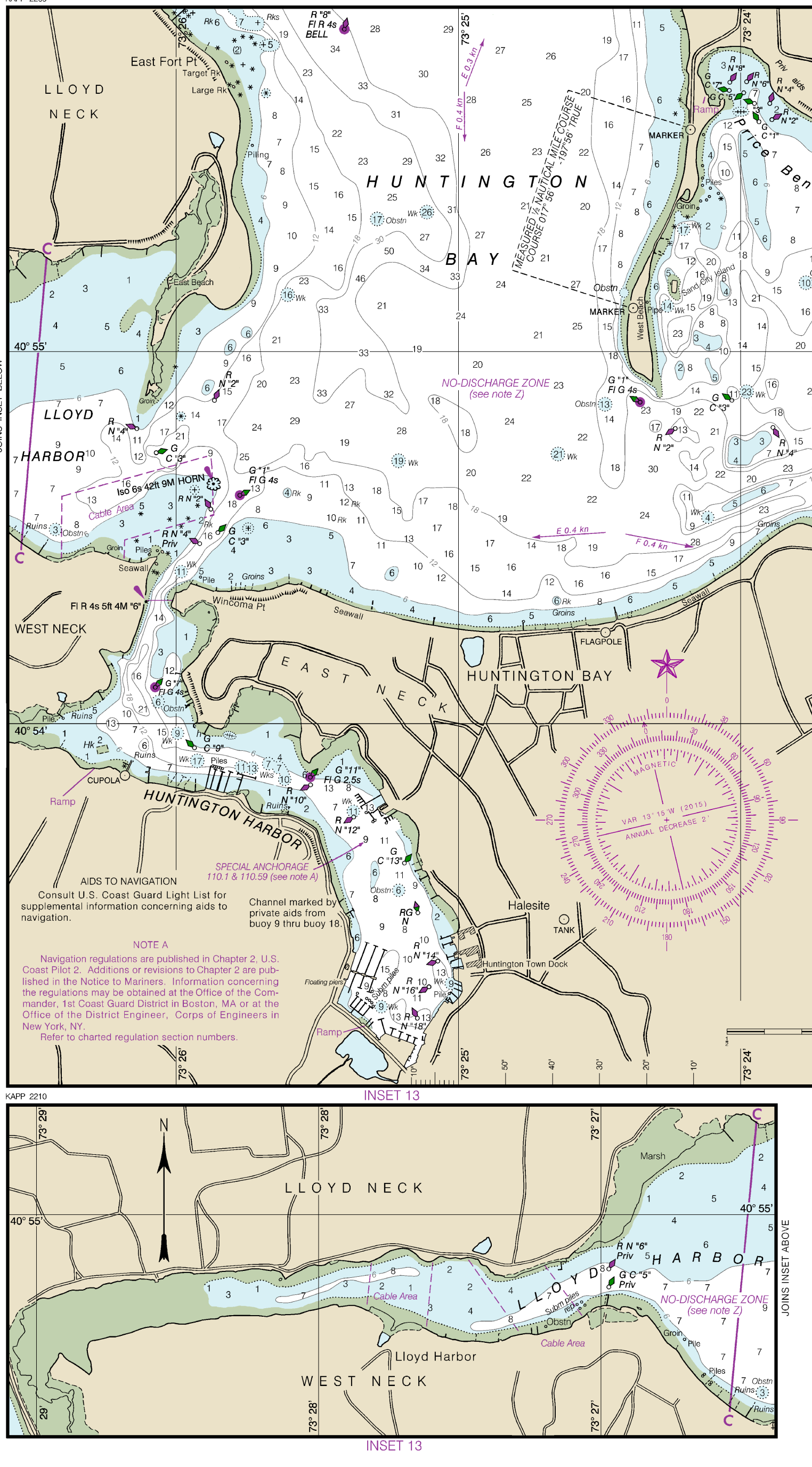
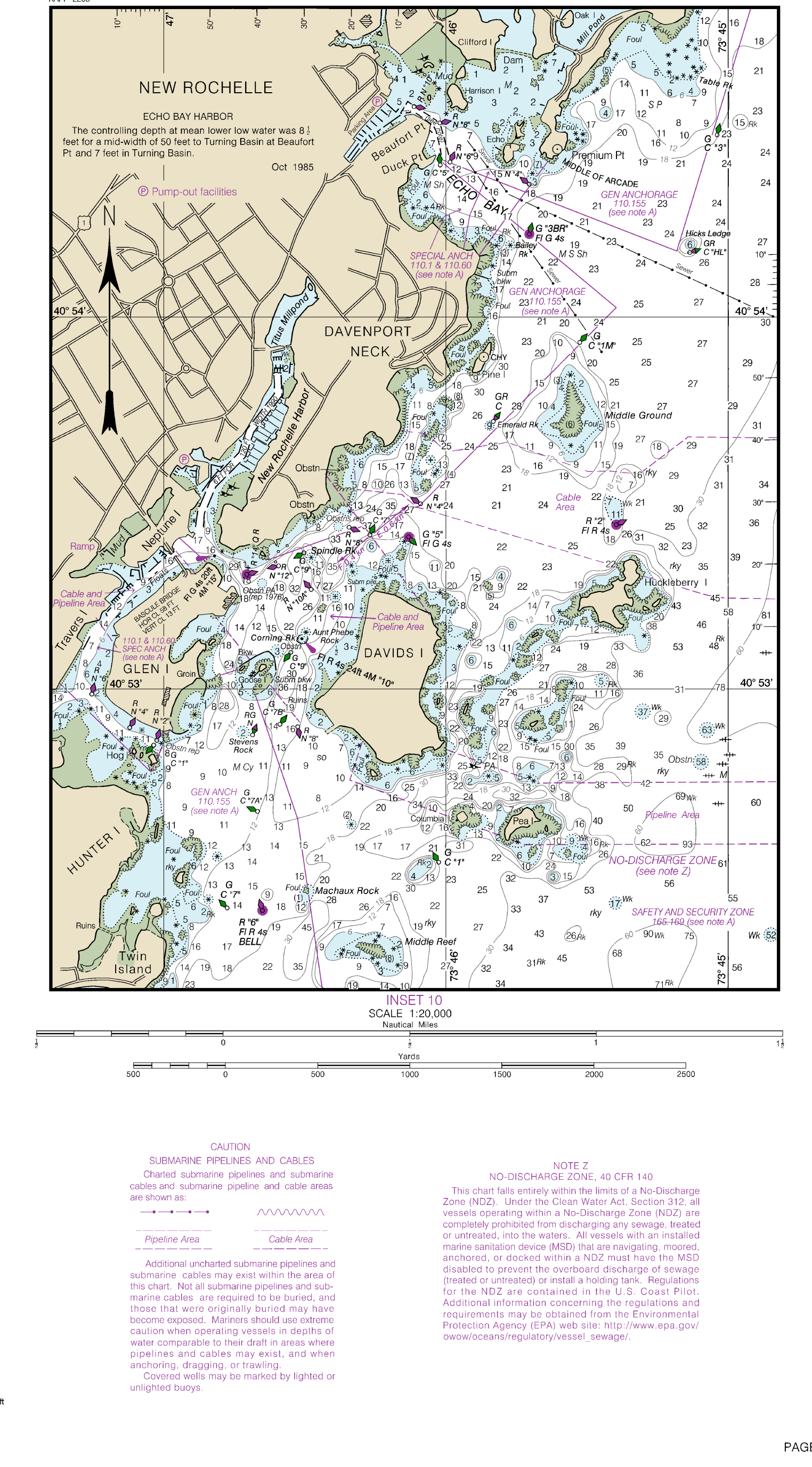
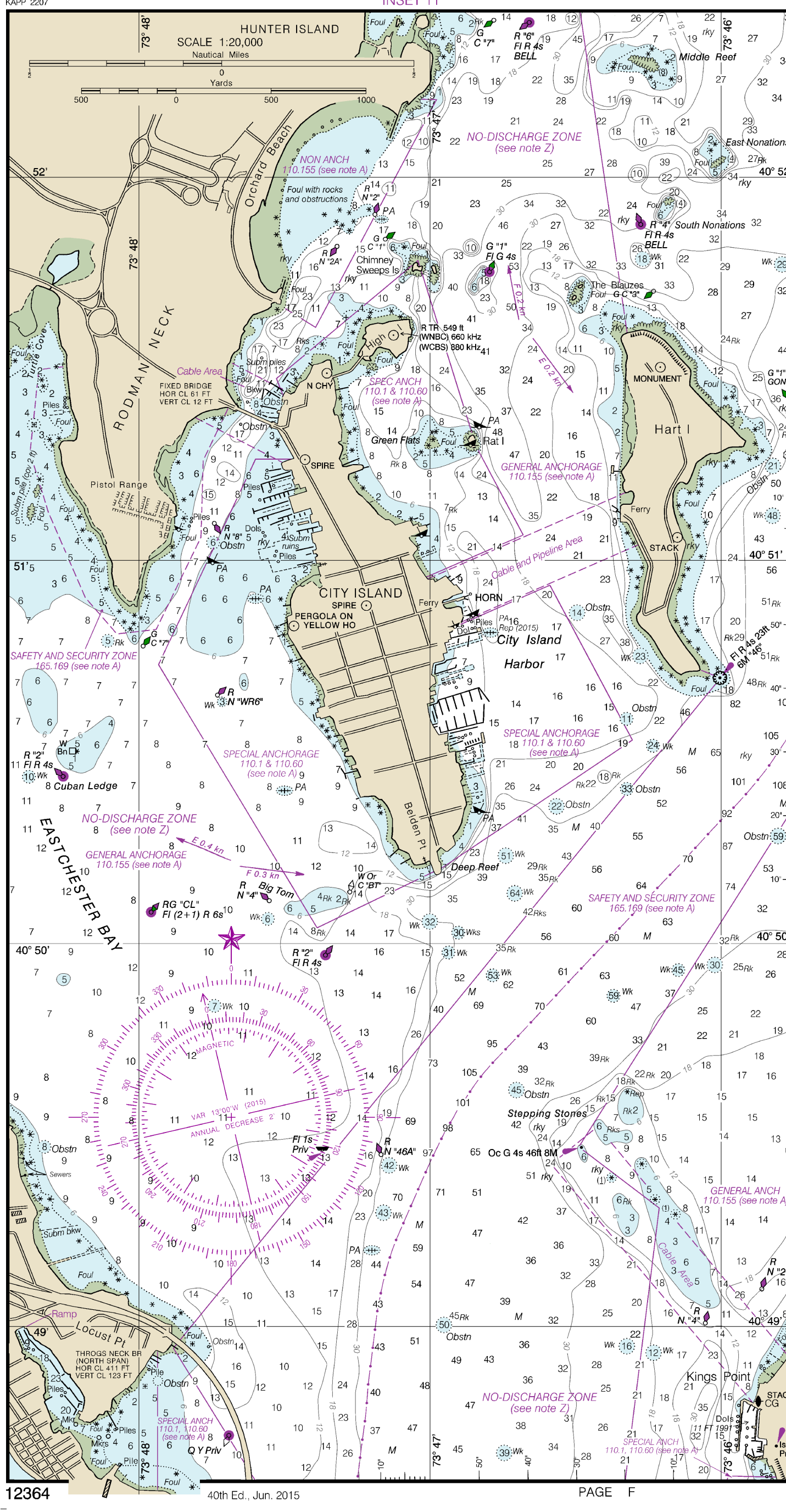
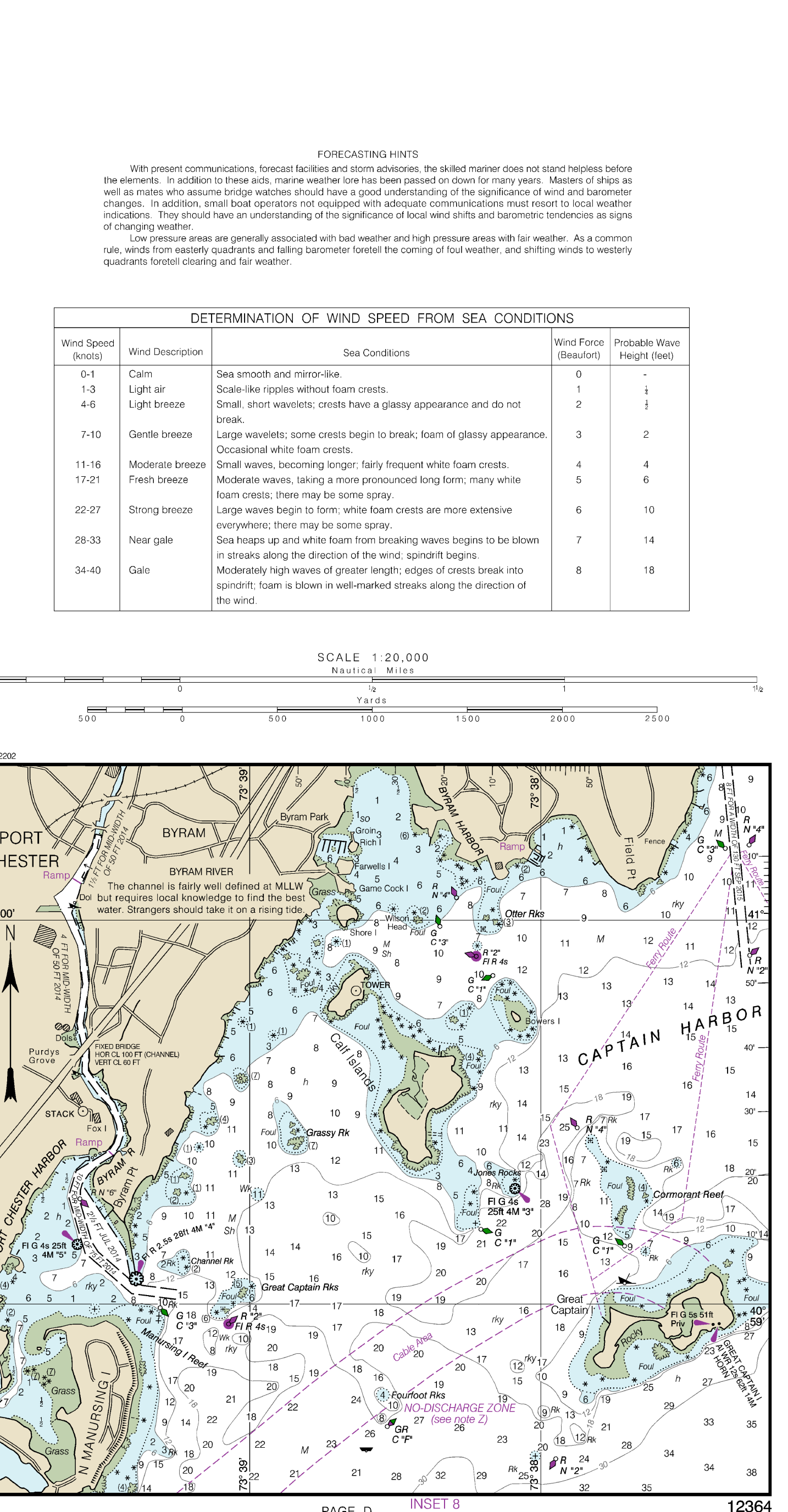
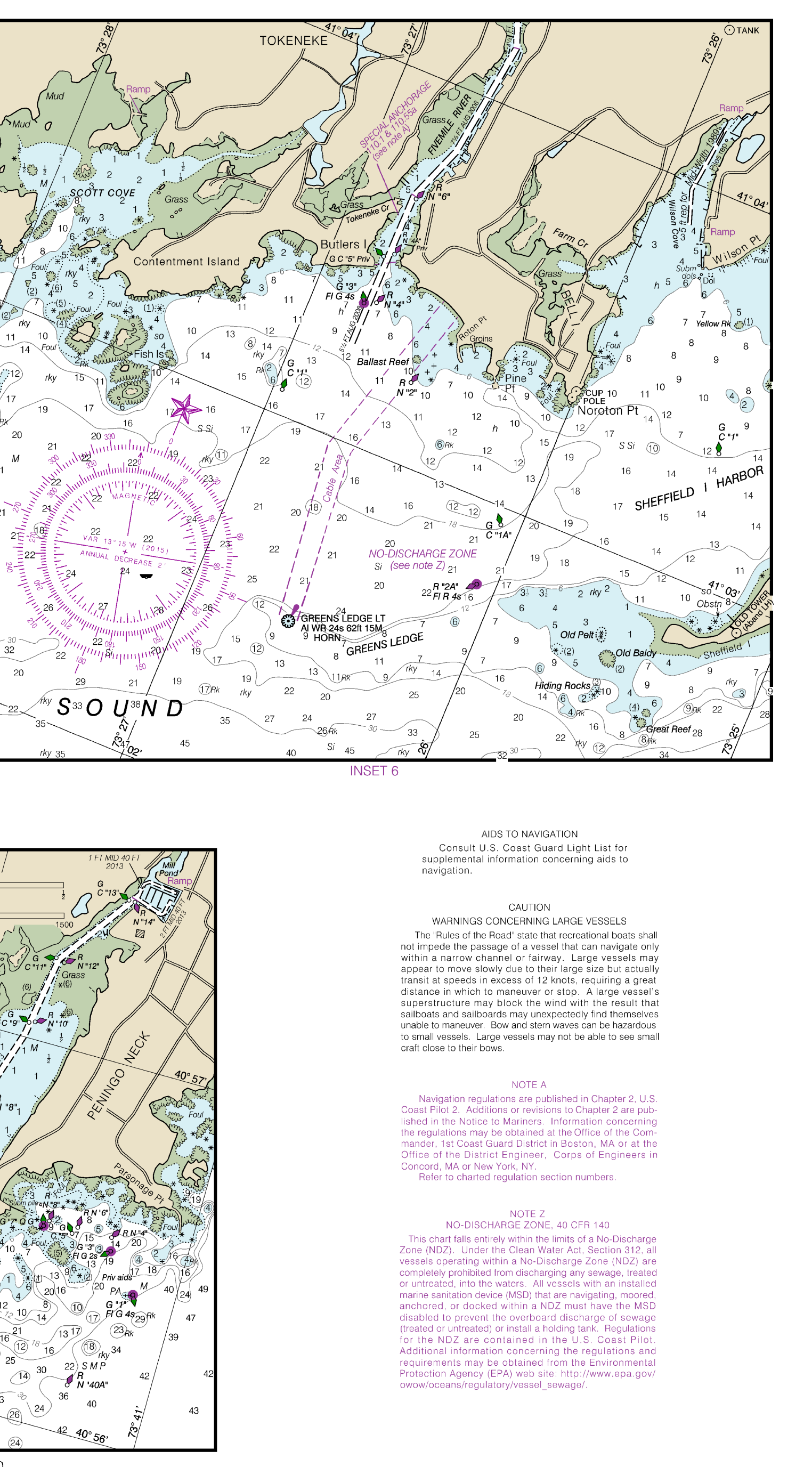
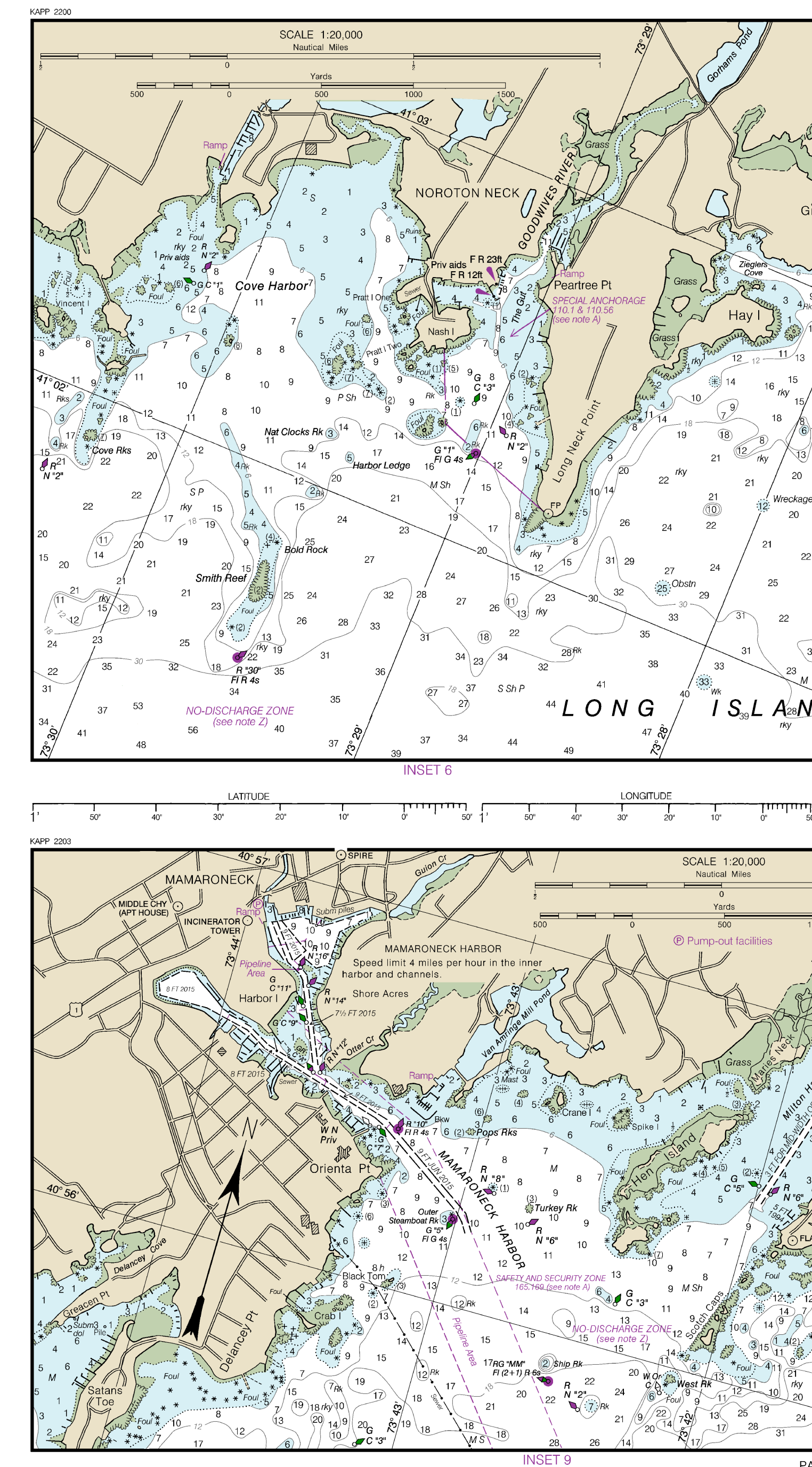
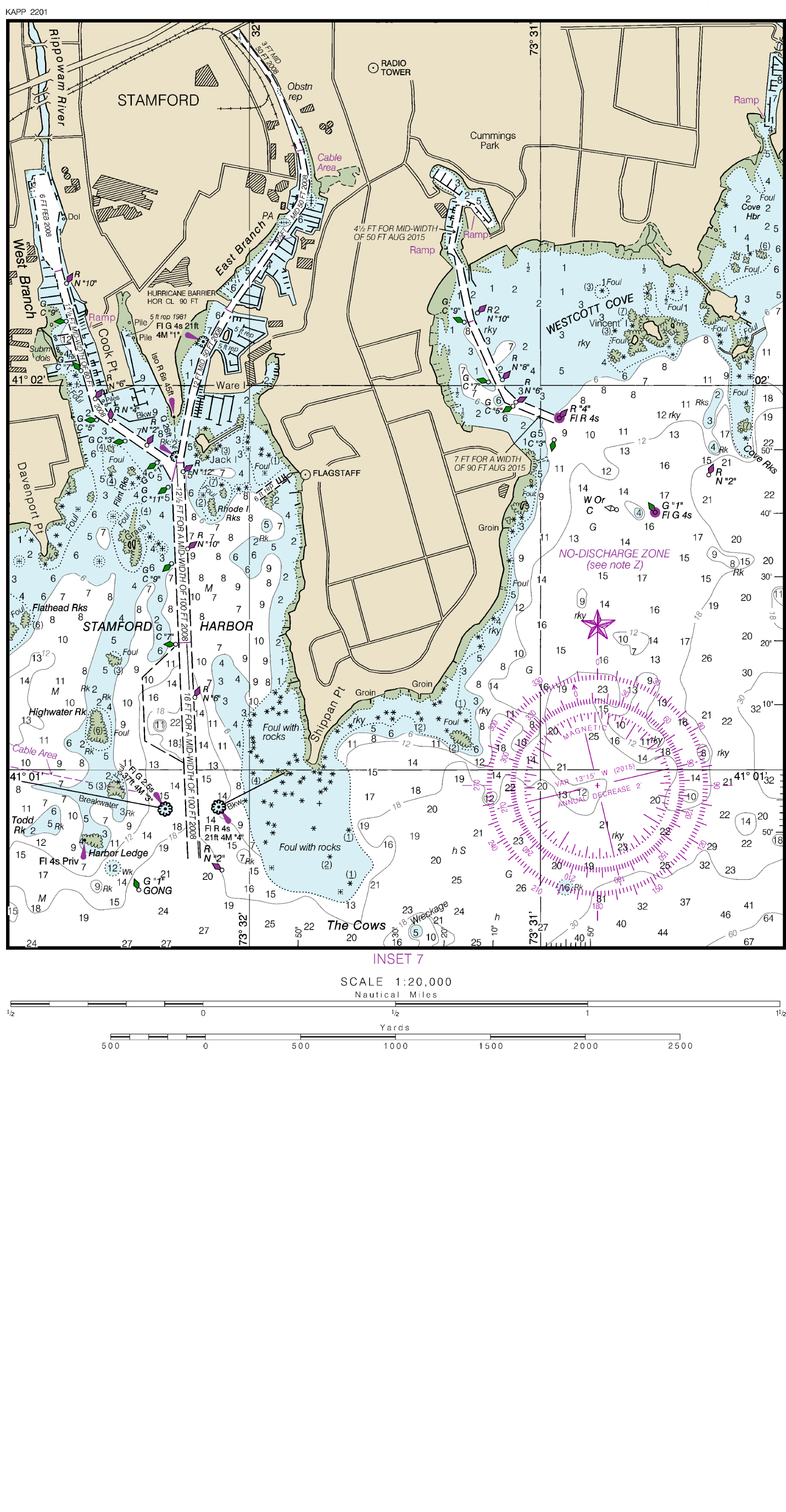
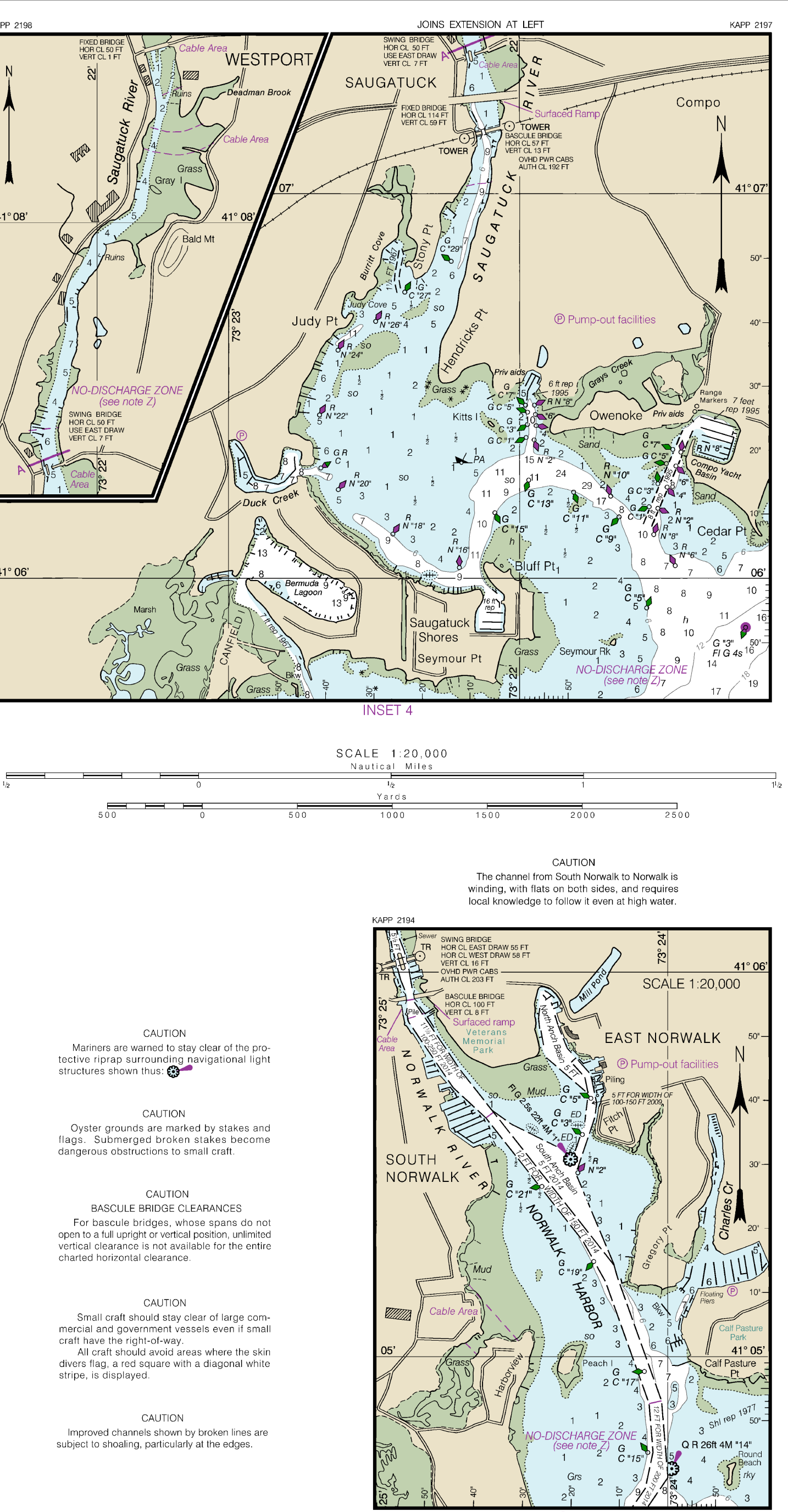
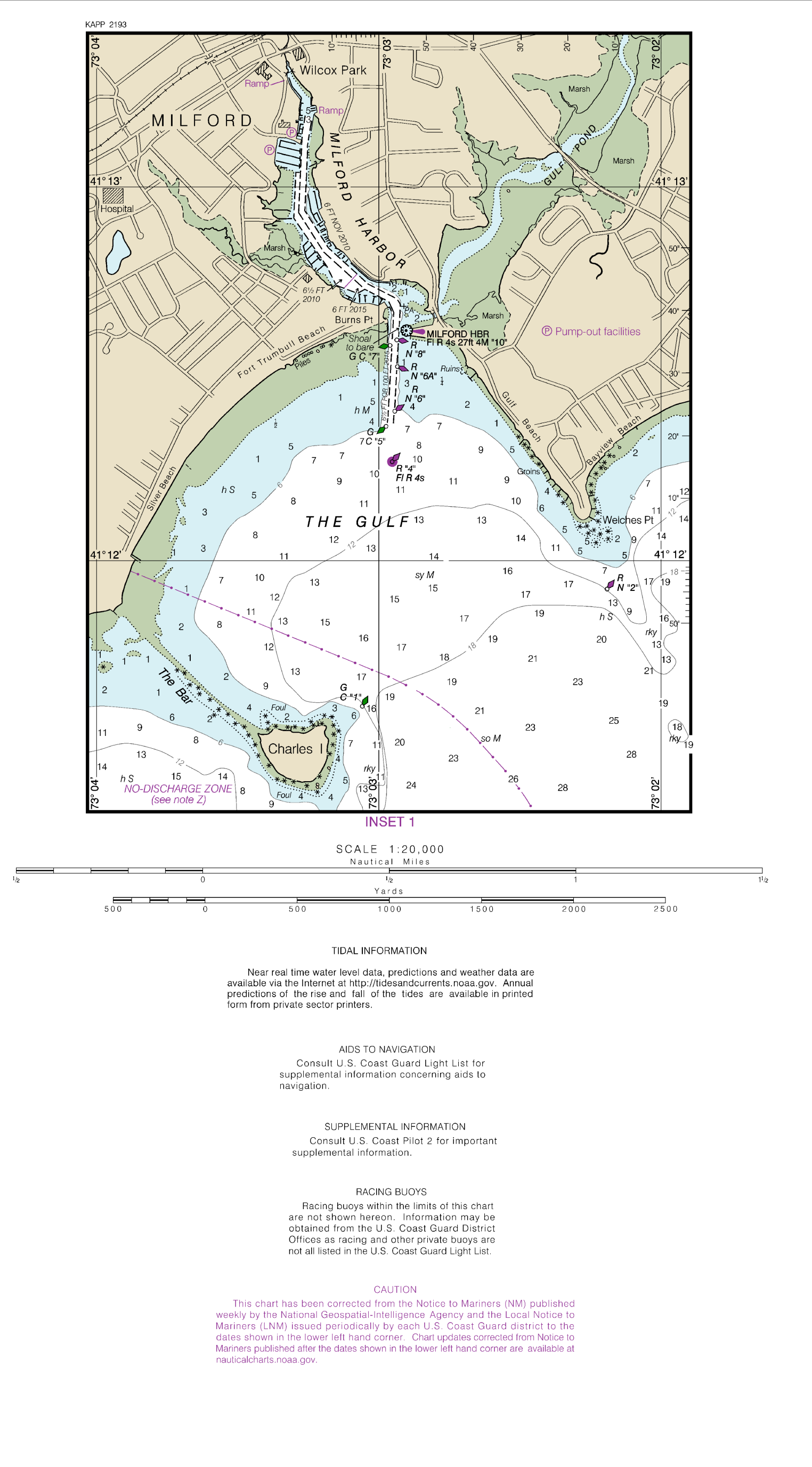
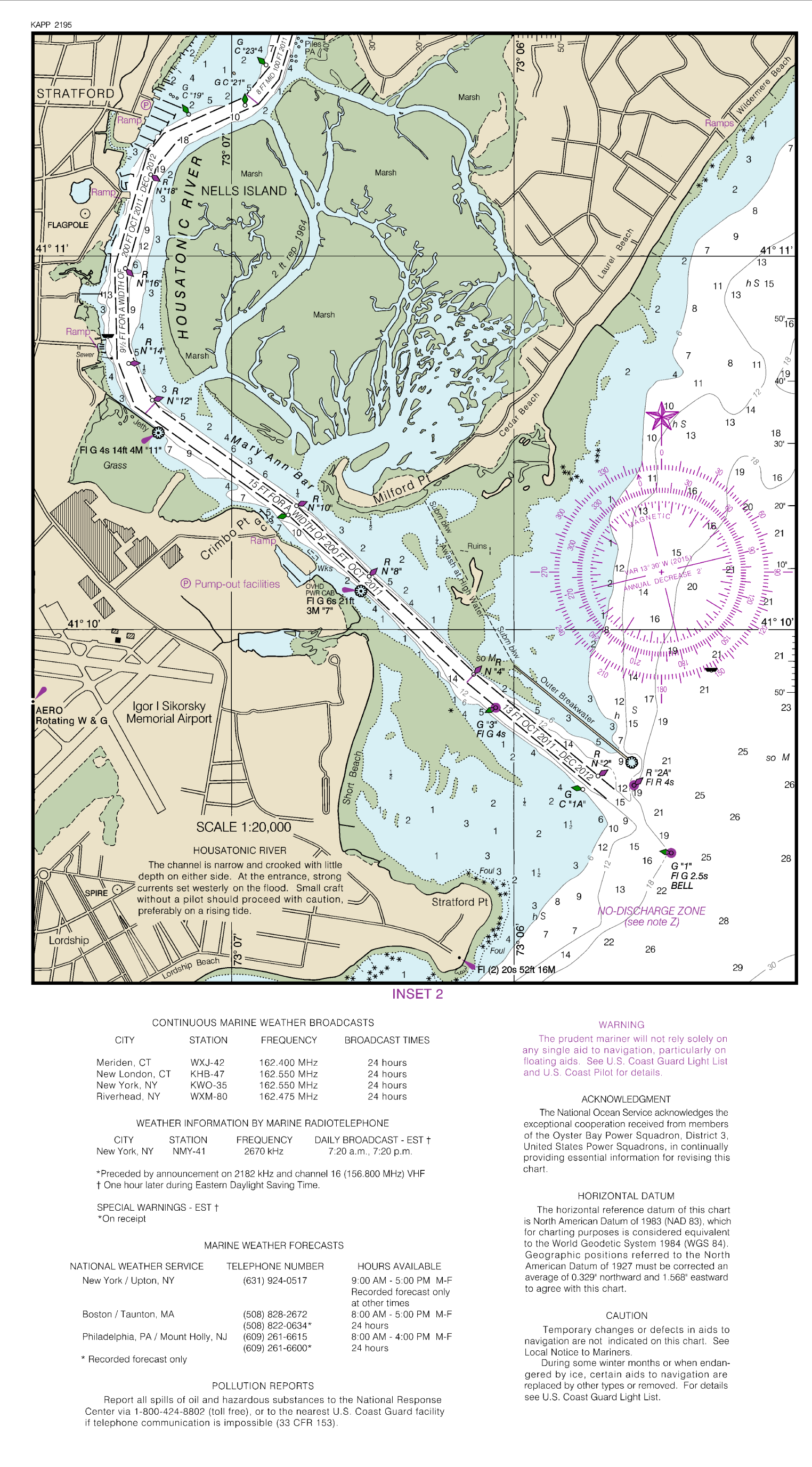
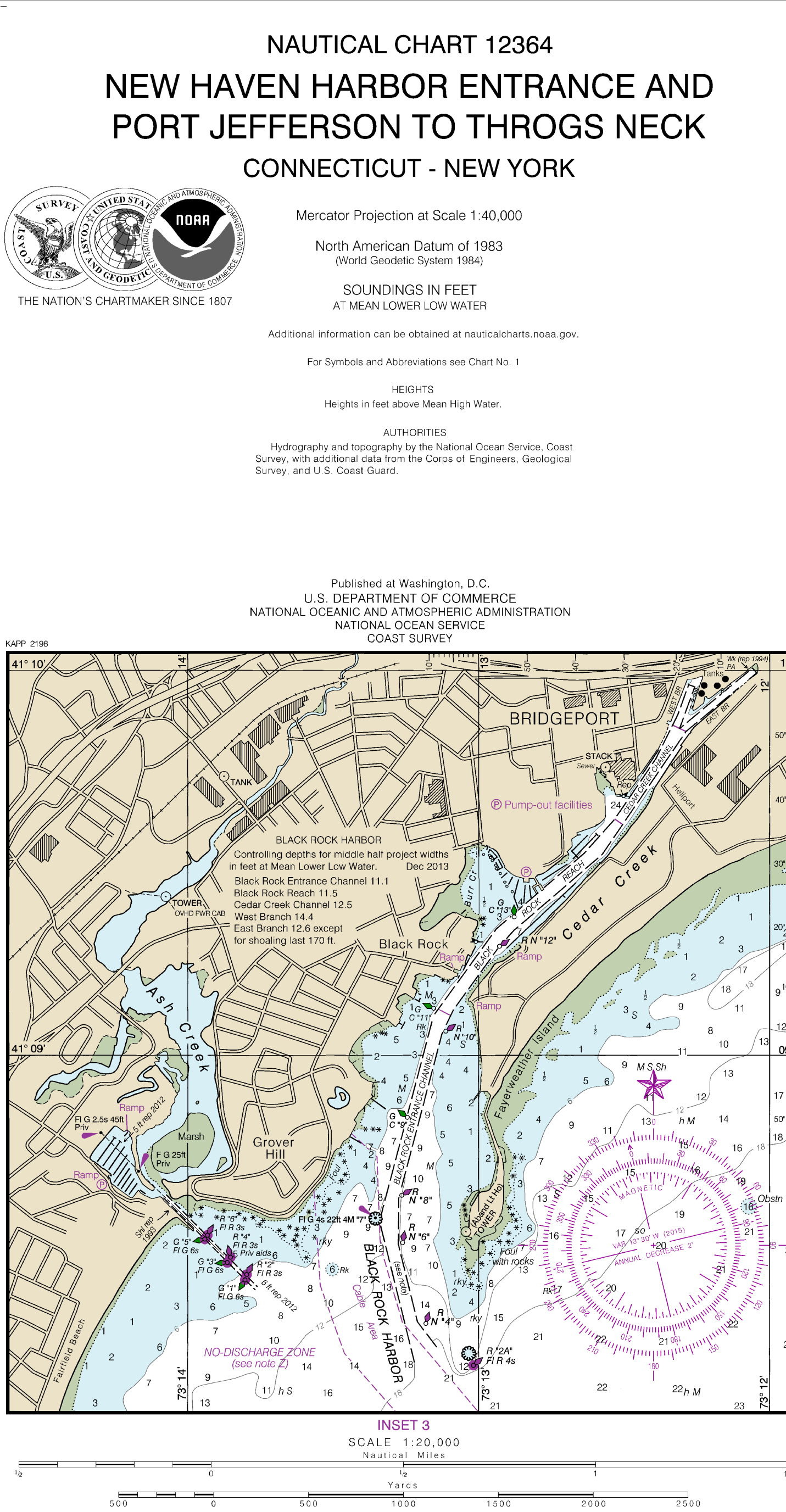
NEW YORK

NEW JERSEY

SANDY HOOK

NORTH ATLANTIC OCEAN

NAME	PLACES	COAST PROJECTIONS	CONVERSION TABLE OF EQUIVALENT MILES
1	1	1	1
2	2	2	2
3	3	3	3
4	4	4	4
5	5	5	5
6	6	6	6
7	7	7	7
8	8	8	8
9	9	9	9
10	10	10	10
11	11	11	11
12	12	12	12
13	13	13	13
14	14	14	14
15	15	15	15
16	16	16	16
17	17	17	17
18	18	18	18
19	19	19	19
20	20	20	20
21	21	21	21
22	22	22	22
23	23	23	23
24	24	24	24
25	25	25	25
26	26	26	26
27	27	27	27
28	28	28	28
29	29	29	29
30	30	30	30
31	31	31	31
32	32	32	32
33	33	33	33
34	34	34	34
35	35	35	35
36	36	36	36
37	37	37	37
38	38	38	38
39	39	39	39
40	40	40	40
41	41	41	41
42	42	42	42
43	43	43	43
44	44	44	44
45	45	45	45
46	46	46	46
47	47	47	47
48	48	48	48
49	49	49	49
50	50	50	50
51	51	51	51
52	52	52	52
53	53	53	53
54	54	54	54
55	55	55	55
56	56	56	56
57	57	57	57
58	58	58	58
59	59	59	59
60	60	60	60
61	61	61	61
62	62	62	62
63	63	63	63
64	64	64	64
65	65	65	65
66	66	66	66
67	67	67	67
68	68	68	68
69	69	69	69
70	70	70	70
71	71	71	71
72	72	72	72
73	73	73	73
74	74	74	74
75	75	75	75
76	76	76	76
77	77	77	77
78	78	78	78
79	79	79	79
80	80	80	80
81	81	81	81
82	82	82	82
83	83	83	83
84	84	84	84
85	85	85	85
86	86	86	86
87	87	87	87
88	88	88	88
89	89	89	89
90	90	90	90
91	91	91	91
92	92	92	92
93	93	93	93
94	94	94	94
95	95	95	95
96	96	96	96
97	97	97	97
98	98	98	98
99	99	99	99
100	100	100	100



CONTINUOUS MARINE WEATHER BROADCASTS

CITY	STATION	FREQUENCY	BROADCAST TIMES
Newport, CT	WVLA 47	162.550 MHz	24 Hours
New York, NY	WABC 54	162.550 MHz	24 Hours
New York, NY	WABC 54	162.550 MHz	24 Hours
New York, NY	WABC 54	162.550 MHz	24 Hours

WEATHER INFORMATION BY MARINE FACSIMILE/TELETYPE

CITY	STATION	FREQUENCY	DAY	BROADCAST EST
New York, NY	WABC 54	162.550 MHz	24 Hours	24 Hours

WEATHER BROADCASTS

NATIONAL WEATHER SERVICE	TELEPHONE NUMBER	HOURS AVAILABLE
New York, NY	212-424-5117	8:00 AM - 5:00 PM M-F 8:00 AM - 5:00 PM S-F
Boston, MA	617-252-2572	8:00 AM - 5:00 PM M-F 8:00 AM - 5:00 PM S-F
Philadelphia, PA	215-597-5117	8:00 AM - 5:00 PM M-F 8:00 AM - 5:00 PM S-F

ADDITIONAL INFORMATION

The chart is a reproduction of the original chart published by the U.S. Coast and Geodetic Survey in 1983. It is based on the original chart and includes all corrections and amendments published by the U.S. Coast and Geodetic Survey through the date of publication of this edition.

TEAL INFORMATION

Near real time water level data, predictions and weather data are available at the following website: www.nws.noaa.gov. An email prediction of the next and all of the tides are available printed from the website.

ADD TO NAVIGATION

Consult U.S. Coast Guard Light List for supplemental information concerning aids to navigation.

SUPPLEMENTAL INFORMATION

Consult U.S. Coast Pilot 3 for important supplemental information.

RACING BUOYS

Racing buoys are shown in the area of this chart. Buoyage is shown in accordance with the International Association of Marine Aids to Navigation and Lighthouse Authorities (IALA) Buoyage System. For more information concerning racing buoys, consult the U.S. Coast Guard Light List.

CAUTION

This chart has been compiled from the best available information and is not a substitute for a full set of charts. It is intended for use as a reference only. It is not intended for use as a substitute for a full set of charts. It is intended for use as a reference only. It is not intended for use as a substitute for a full set of charts.

CAUTION

The electronic chart (ENC) is a reproduction of the original chart published by the U.S. Coast and Geodetic Survey in 1983. It is based on the original chart and includes all corrections and amendments published by the U.S. Coast and Geodetic Survey through the date of publication of this edition.

CAUTION

Markers are marked by states and countries. Different markers are used by different countries. Different markers are used by different countries. Different markers are used by different countries.

CAUTION

Small craft should stay clear of large commercial and government vessels. Small craft should stay clear of large commercial and government vessels. Small craft should stay clear of large commercial and government vessels.