

<https://www.conchology.be/?t=76&search=VOLUTIDAE&shells=on&searchRadioFilter=sale&p=1>

 Conchology



VOLUTIDAE  
*Adelomelon ferussacii*



VOLUTIDAE  
*Amoria necopinata*



VOLUTIDAE  
*Cymbiola aulica*



VOLUTIDAE  
*Alcithoe pseudolutea*



VOLUTIDAE  
*Amoria praetexta*



VOLUTIDAE  
*Cymbiola malayensis*



VOLUTIDAE  
*Amoria damonii damonii*



VOLUTIDAE  
*Athleta gilchristi*



VOLUTIDAE  
*Cymbiola nobilis nobilis*



VOLUTIDAE  
*Amoria molleri molleri f. reducta*



VOLUTIDAE  
*Athleta lutosa*



VOLUTIDAE  
*Cymbiola nobilis nobilis f. parva*



VOLUTIDAE  
*Cymbiola pulchra pulchra*



VOLUTIDAE  
*Cymbiola vespertilio f. pellisserpentis*



VOLUTIDAE  
*Enaeta cumingii*



VOLUTIDAE  
*Cymbiola pulchra pulchra f. woolacottae*



VOLUTIDAE  
*Cymbium cymbium*



VOLUTIDAE  
*Enaeta cylleniformis*



VOLUTIDAE  
*Cymbiola rutila ruckeri*



VOLUTIDAE  
*Cymbium marmoratum*



VOLUTIDAE  
*Enaeta leonardhilli*



VOLUTIDAE  
*Cymbiola vespertilio*



VOLUTIDAE  
*Cymbium souliei*



VOLUTIDAE  
*Fulgoraria chinoi*



© 2015 - G. & Ph. Poppe  
VOLUTIDAE  
*Fulgoraria hamillei*



© 2019 - G. & Ph. Poppe  
VOLUTIDAE  
*Fulgoraria rupestris politohumerosa*



© 2015 - G. & Ph. Poppe  
VOLUTIDAE  
*Harpulina arausiaca*



© 2018 - G. & Ph. Poppe  
VOLUTIDAE  
*Fulgoraria hirasei*



© 2018 - G. & Ph. Poppe  
VOLUTIDAE  
*Fulgoraria rupestris thachi*



© 2018 - G. & Ph. Poppe  
VOLUTIDAE  
*Harpulina arausiaca f. vexillum*



© 2015 - G. & Ph. Poppe  
VOLUTIDAE  
*Fulgoraria kaneko*



© 2015 - G. & Ph. Poppe  
VOLUTIDAE  
*Fusivoluta barnardi*



© 2015 - G. & Ph. Poppe  
VOLUTIDAE  
*Harpulina lapponica*



© 2017 - G. & Ph. Poppe  
VOLUTIDAE  
*Fulgoraria megaspira magna f. salebrosa*



© 2015 - G. & Ph. Poppe  
VOLUTIDAE  
*Fusivoluta clarkei*



© 2018 - G. & Ph. Poppe  
VOLUTIDAE  
*Harpulina loroisi*



© 2018 - G. & Ph. Poppe  
VOLUTIDAE  
*Livonia limpusi*



© 2016 - G. & Ph. Poppe  
VOLUTIDAE  
*Lyria mallicki mallicki f. vicdani*



© 2016 - G. & Ph. Poppe  
VOLUTIDAE  
*Lyria planicostata planicostata*



© 2020 - G. & Ph. Poppe  
VOLUTIDAE  
*Livonia roadnightae*



© 2015 - G. & Ph. Poppe  
VOLUTIDAE  
*Lyria mitraeformis*



© 2015 - G. & Ph. Poppe  
VOLUTIDAE  
*Melo broderipii*



© 2015 - G. & Ph. Poppe  
VOLUTIDAE  
*Lyria boholensis*



© 2019 - G. & Ph. Poppe  
VOLUTIDAE  
*Lyria mitraeformis f. grangeri*



© 2019 - G. & Ph. Poppe  
VOLUTIDAE  
*Nannamoria inflata*



© 2015 - G. & Ph. Poppe  
VOLUTIDAE  
*Lyria deliciosa deliciosa*



© 2015 - G. & Ph. Poppe  
VOLUTIDAE  
*Lyria pauljohnsoni*



© 2019 - G. & Ph. Poppe  
VOLUTIDAE  
*Nannamoria parabola*



© 2018 - G. & Ph. Poppe  
VOLUTIDAE  
*Neptuneopsis gilchristi*



© 2018 - G. & Ph. Poppe  
VOLUTIDAE  
*Plicoliva zelindae*



© 2018 - G. & Ph. Poppe  
VOLUTIDAE  
*Scaphella dubia georgiana*



© 2016 - G. & Ph. Poppe  
VOLUTIDAE  
*Notovoluta verconis*



© 2018 - G. & Ph. Poppe  
VOLUTIDAE  
*Plicoliva zelindae f. oceanica*



© 2016 - G. & Ph. Poppe  
VOLUTIDAE  
*Voluta ebraea*



© 2020 - G. & Ph. Poppe  
VOLUTIDAE  
*Odontocymbiola americana*



© 2019 - G. & Ph. Poppe  
VOLUTIDAE  
*Saotomea minima*



© 2018 - G. & Ph. Poppe  
VOLUTIDAE  
*Volutoconus hargreavesi*



[http://www.idscaro.net/sci/01\\_coll/index.htm](http://www.idscaro.net/sci/01_coll/index.htm)

[http://www.idscaro.net/sci/01\\_coll/plates/gastro/pl\\_volutidae\\_1.htm#aa](http://www.idscaro.net/sci/01_coll/plates/gastro/pl_volutidae_1.htm#aa)



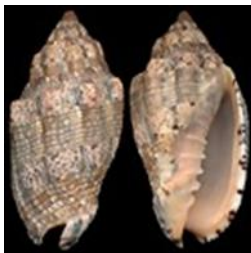
[Calliotectinae](#)  
[Fulgorariinae](#)

[Calliotectum](#)  
[Fulgoraria](#)  
[Neptuneopsis](#)



[Cymbiolinae](#)

[Aморia](#)  
[Cymbiola](#)  
[Melo](#)  
[Nannamoria](#)  
[Notovoluta](#)  
[Volutoconus](#)



[Volutinae](#)

[Enaeta](#)  
[Harpulina](#)  
[Lyria](#)  
[Voluta](#)



[Zidoninae](#)

[Adelomelon](#)  
[Cymbium](#)  
[Ericusa](#)  
[Zidona](#)



[Other](#)

[Ampulla](#)

Noble volute laying egg capsule  
(*Cymbiola nobilis*)



A female *Cymbiola oblita* nurturing a gelatinous egg mass she has laid on a stone on the sea bed—Cape Preston, Pilbara Bioregion

Une femelle *Cymbiola oblita* nourrissant une masse d'œufs gélatineux qu'elle a posée sur une pierre sur le fond marin - Cape Preston, Pilbara Bioregion



<http://www.gastropods.com/>

**Eddie Hardy**



[http://www.gastropods.com/Taxon\\_pages/Class\\_GASTROPODA.shtml](http://www.gastropods.com/Taxon_pages/Class_GASTROPODA.shtml)

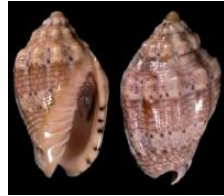
[http://www.gastropods.com/Taxon\\_pages/TN\\_Family\\_VOLUTIDAE.shtml](http://www.gastropods.com/Taxon_pages/TN_Family_VOLUTIDAE.shtml)

VOLUTIDAE

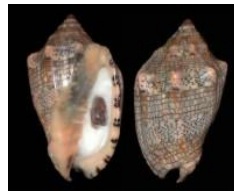
### Subfamily : VOLUTIDAE VOLUTINAE VOLUTINI



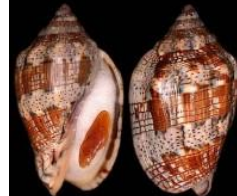
*Voluta musica*



*Voluta musica carneolata* (var.)



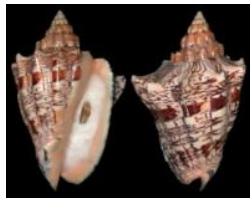
*Voluta musica guinaica* (var.)



*Voluta musica laevigata* (var.)



*Voluta musica thiarella* (var.)



*Voluta ebraea*



*Voluta garciai*



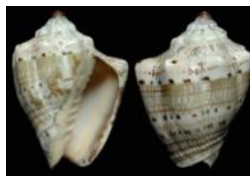
*Voluta harasewychi*



*Voluta hilli*



*Voluta kotorai*



*Voluta minuta*



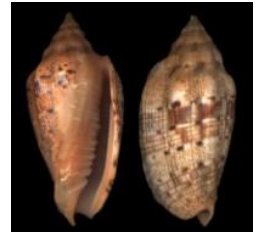
*Voluta morrisoni*



*Voluta polypleura hennequini*



*Voluta polypleura polypleura*



*Voluta polypleura brunneocincta* (var.)



*Voluta retemirabilis*



*Voluta sunderlandi*



*Voluta demarcoi*



*Voluta ernesti*



*Voluta virescens*



*Voluta virescens lacertina* (var.)



*Voluta virescens lindae* (var.)



*Lyreneta laseroni*



*Minicymbiola corderoi*



*Nanomelon viperinus*



Nanomelon vossi



Fusivoluta anomala



Fusivoluta aikeni



Fusivoluta barnardi



Fusivoluta blaizei



Fusivoluta clarkei



Fusivoluta decussata



Fusivoluta lemaitrei



Fusivoluta profundorum



Fusivoluta pyrrostoma



Fusivoluta sculpturata



Fusivoluta wesselsi



Neptuneopsis gilchristi



Tenebricola cukri



Provocator pulcher



Provocator corderoi



Provocator palliatus



Zidona dufresnei dufresnei



Zidona dufresnei dufresnei distincta (var.)



Zidona dufresnei dufresnei typica (var.)



Zidona dufresnei affinis



Volutifusus aguayoi



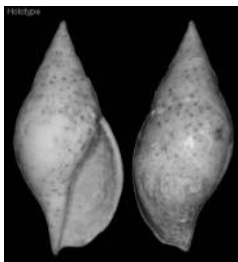
Volutifusus piraticus



Volutifusus torrei



Iredalina mirabilis



Iredalina mirabilis aurantia (var.)



# Subfamily : VOLUTIDAE VOLUTINAE LYRIINI



Lyria suduirauti



Lyria (Lyria) pattersonia



Lyria (Lyria) pattersonia nucleus (var.)



Lyria (Lyria) cassidula cassidula



Lyria (Lyria) cassidula pallidula



Lyria (Lyria) cordis



Lyria (Lyria) deliciosa deliciosa



Lyria (Lyria) deliciosa howensis



Lyria (Lyria) insignita



Lyria (Lyria) leonardi



Lyria (Lyria) mallicki



Lyria (Lyria) mallicki jessicae (var.)



Lyria (Lyria) mallicki viddani (var.)



Lyria (Lyria) ogasawarana



Lyria (Lyria) russjenseni



Lyria (Lyria) vegai



Lyria (Harpeola) anna



Lyria (Indolyria) lyraeformis lyraeformis



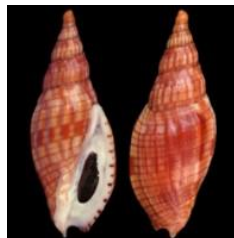
Lyria (Indolyria) lyraeformis somaliana



Lyria (Indolyria) bondarevi



Lyria (Indolyria) brianoi



Lyria (Indolyria) cloveriana



Lyria (Indolyria) cloveriana gabryae (var.)



Lyria (Indolyria) delessertiana



Lyria (Indolyria) doutei



Lyria (Indolyria) leslieboschae



Lyria (Indolyria) michardi



Lyria (Indolyria) patbaili patbaili



Lyria (Indolyria) patbaili minifusca



Lyria (Indolyria) pauljohnsoni



Lyria (Indolyria) solangeae



Lyria (Indolyria) surinamensis



Lyria (Indolyria) tulearensis



Lyria (Microlyria) mikoi



Lyria (Mitraelyria) mitraeformis mitraeformis



Lyria (Mitraelyria) mitraeformis mitraeformis grangeri (var.)



Lyria (Mitraelyria) mitraeformis grockeae



Lyria (Mitraelyria) beauii archeri



Lyria (Mitraelyria) beauii beauii



Lyria (Mitraelyria) beauii sabaensis



Lyria (Mitraelyria) cleaveri



Lyria (Mitraelyria) grangei



Lyria (Plicolyria) boholensis



Lyria (Plicolyria) boucheti



Lyria (Plicolyria) exorata



Lyria (Plicolyria) grandidieri



Lyria (Plicolyria) guionneti



Lyria (Plicolyria) kuniene



Lyria (Plicolyria) planicostata planicostata



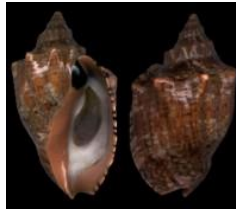
Lyria (Plicolyria) planicostata fijiensis



Lyria (Plicolyria) planicostata grohi



Lyria (Plicolyria) poppei



Callipara (Callipara) africana



Callipara (Callipara) africana pumila



Callipara (Callipara) bullatiana



Callipara (Canalilyria) aphrodite



Callipara (Canalilyria) kurodai



Callipara (Festilyria) duponti



Callipara (Festilyria) festiva



Callipara (Festilyria) festiva deceptrix (var.)



Callipara (Festilyria) ponsobyi



Callipara (Simililyria) aikeni aikeni



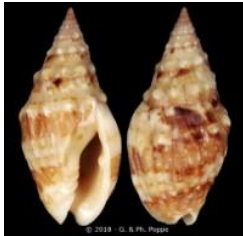
Callipara (Simililyria) aikeni inhacaensis



Callipara (Simililyria) queketti queketti



Enaeta barnesii



Enaeta cumingii



Enaeta cylleniformis



Enaeta guildingii



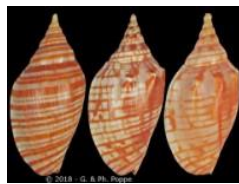
Enaeta leonardhilli



Enaeta reevei



Enaeta somalica



Harpulina arausiaca



Harpulina arausiaca vexilla (var.)



Harpulina lapponica lapponica

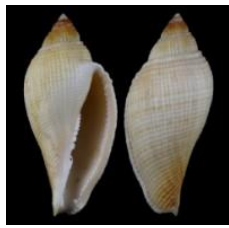


Harpulina lapponica laroisi



Leptoscapha crassilabrum

Subfamily : VOLUTIDAE ATHLETINAE



Athleta (Athleta) abyssicola abyssicola



Athleta (Athleta) abyssicola massieri



Athleta (Athleta) boswellae



Athleta (Athleta) boswellae disparilis (var.)



Athleta (Athleta) boswellae magister (var.)



Athleta (Athleta) easoni



Athleta (Athleta) epigona



Athleta (Athleta) gilchristi



Athleta (Athleta) glabrata



Athleta (Athleta) kilburni



Athleta (Athleta) lutosa



Athleta (Athleta) mozambicana



Athleta (Athleta) nana



Athleta (Athleta) rosavittoriae



Athleta (Athleta) semirugata



Athleta (Ternivoluta) pisorum



Athleta (Ternivoluta) studeri

Subfamily : VOLUTIDAE CYMBIINAE



Cymbium coenyei



Cymbium cucumis



Cymbium cymbium



Cymbium fragile



Cymbium glans



Cymbium gracile



Cymbium marmoratum



Cymbium olla



Cymbium pachyus



Cymbium patulum



*Cymbium patulum congoensis*



*Cymbium pepo*



*Cymbium senegalensis*



*Cymbium souliei*



*Cymbium tritonis*

### Subfamily : VOLUTIDAE CYMBIINAE ADELOMELONINI



*Adelomelon ancilla*



*Adelomelon ancilla barattinii (var.)*



*Adelomelon ancilla martensi (var.)*



*Adelomelon beckii beckii*



*Adelomelon beckii beckii indigestus (var.)*



*Adelomelon beckii connexa*



*Adelomelon beckii fusiformis*



*Adelomelon brasiliana*



*Adelomelon ferussacii*



*Adelomelon riosi*



*Adelomelon scoresbyana*

### Subfamily : VOLUTIDAE CYMBIINAE ALCITHOINI



*Alcithoe arabica*



*Alcithoe arabica depressa (var.)*



*Alcithoe arabica motutaraensis (var.)*



*Alcithoe arabica swainsoni (var.)*



*Alcithoe aillaudorum*



*Alcithoe albescens*



*Alcithoe benthicola*



*Alcithoe colesae*



*Alcithoe davegibbsi*



*Alcithoe fissurata fissurata*



*Alcithoe fissurata crassa*



*Alcithoe fissurata elegans*



*Alcithoe flemingi*



*Alcithoe fusus*



*Alcithoe fusus haurakiensis (var.)*



*Alcithoe fusus hedleyi (var.)*



*Alcithoe jaculoides*



*Alcithoe jaculoides calva (var.)*



*Alcithoe jaculoides johnstoni (var.)*



*Alcithoe larochei larochei*



*Alcithoe larochei ostenfeldi*



*Alcithoe larochei tigrina*



*Alcithoe lutea*



*Alcithoe pseudolutea*



*Alcithoe seelyeorum*



*Alcithoe triregensis*



*Alcithoe wilsonae wilsonae*



*Alcithoe wilsonae wilsonae chathamensis (var.)*



*Alcithoe wilsonae wilsonae grahami (var.)*



*Alcithoe wilsonae wilsonae smithi (var.)*



*Alcithoe wilsonae acuminata*

Subfamily : VOLUTIDAE CYMBIINAE LIVONIINI



*Livonia mervcooperi*



*Livonia (Livonia) nodiplicata*



*Livonia (Livonia) limpusi*



*Livonia (Livonia) mammilla*



*Livonia (Livonia) mammilla leucostoma (var.)*



*Livonia (Livonia) roadnightae*



*Cottonia joerinkensi*

Subfamily : VOLUTIDAE CYMBIINAE ODONTOCYMBIOLINI



*Odontocymbiola americana*



*Odontocymbiola canigiai*



*Odontocymbiola cleryana*



*Odontocymbiola macaensis*



*Odontocymbiola magellanica*



*Odontocymbiola pescalia*



*Odontocymbiola rucciana*



*Odontocymbiola saotomensis*



*Odontocymbiola simulatrix simulatrix*



*Odontocymbiola simulatrix nana*



*Odontocymbiola subnodosa*



*Tractolira delli*



*Tractolira germonae*



*Tractolira sparta*



*Tractolira tenebrosa*

### Subfamily : VOLUTIDAE CYMBIINAE ZIDONINI



*Arctomelon benthalis*



*Arctomelon borealis*



*Arctomelon ryosukei*



*Arctomelon stearnsii*



*Arctomelon tamikoae*



*Miomelon alarconi*



*Miomelon eltanini*



*Miomelon philippiana*



*Miomelon turnerae*



*Harpovoluta charcoti*



*Guivillea alabastrina*



*Notopeplum annulatum*



*Notopeplum cossignanii*



*Notopeplum translucidum*



*Ericusa fulgetrum*



*Ericusa fulgetrum bicincta*  
(var.)



*Ericusa fulgetrum connectens*  
(var.)



*Ericusa fulgetrum dictua*  
(var.)



*Ericusa fulgetrum lunisligata*  
(var.)



*Ericusa fulgetrum orca*  
(var.)



*Ericusa papillosa*



*Ericusa papillosa kenyoniana*  
(var.)



*Ericusa sericata*



*Ericusa sowerbyi sowerbyi*



*Ericusa sowerbyi sowerbyi*  
*perspecta* (var.)





*Ericusa sowerbyi sowerbyi porcellana (var.)*



*Ericusa sowerbyi stokesi*



*Zygomelon zodium*

### Subfamily : VOLUTIDAE AMORIINAE AMORINI



*Amoria canaliculata*



*Amoria canaliculata harfordi (var.)*



*Amoria damonii damonii*



*Amoria damonii damonii gatliffi (var.)*



*Amoria damonii damonii keatsiana (var.)*



*Amoria damonii damonii reevei (var.)*



*Amoria damonii damonii reticulata (var.)*



*Amoria damonii ludbrookae*



*Amoria dampieria*



*Amoria diamantina*



*Amoria ellioti*



*Amoria exoptanda*



*Amoria grayi*



*Amoria grayi whitworthi (var.)*



*Amoria guttata*



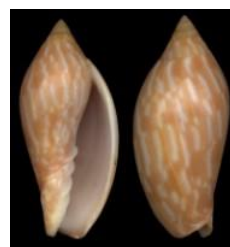
*Amoria jamrachi jamrachi*



*Amoria jamrachi condei*



*Amoria kawamurai*



*Amoria lineola*



*Amoria macandrewi*



*Amoria maculata*



*Amoria maculata caroli (var.)*



*Amoria molleri molleri*



*Amoria molleri isabelae*



*Amoria molleri reducta*



*Amoria molleri vandenburghae*



*Amoria benthalis*



*Amoria chaneyi*



*Amoria hansenae*



*Amoria maculata volva (var.)*



*Amoria necopinata*



*Amoria praetexta*



*Amoria rinkensi*



*Amoria ryosukei*



*Amoria spenceriana*



*Amoria turneri*



*Amoria turneri broderipi (var.)*



*Amoria turneri newmanae (var.)*



*Amoria undulata*



*Amoria undulata angasii (var.)*



*Amoria undulata kingi (var.)*



*Amoria undulata moslemica (var.)*



*Amoria undulata sclateri (var.)*



*Amoria weldensis*



*Amoria zebra*



*Amoria zebra lineata (var.)*



*Amoria zebra lineatina (var.)*



*Paramoria guntheri*



*Paramoria guntheri adcocki (var.)*



*Paramoria weaveri*

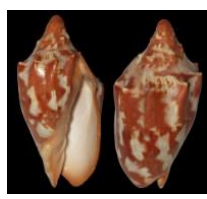


*Paramoria johnclarki*

# Subfamily : VOLUTIDAE AMORIINAE MELONINI



Cymbiola alexisallaryi



Cymbiola aulica aulica



Cymbiola aulica cathartiae



Cymbiola chrysostoma



Cymbiola cymbiola



Cymbiola deshayesi



Cymbiola flavicans



Cymbiola hughmorrisoni



Cymbiola imperialis



Cymbiola imperialis robinsona (var.)



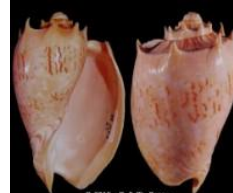
Cymbiola innexa



Cymbiola innexa marispuma (var.)



Cymbiola irvinae



Cymbiola kimbacki



Cymbiola laminusa



Cymbiola magnifica



Cymbiola magnifica altispira (var.)



Cymbiola malayensis



Cymbiola mariaemma



Cymbiola nivosa nivosa



Cymbiola nivosa oblita



Cymbiola nobilis nobilis



Cymbiola nobilis nobilis fasciata (var.)



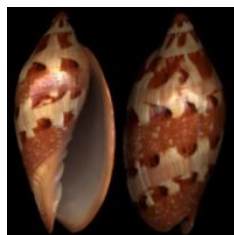
Cymbiola nobilis nobilis octogonalis



Cymbiola nobilis tamariskae



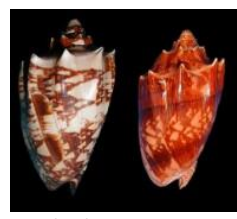
Cymbiola palawanica



Cymbiola palawanica cuyo (var.)



Cymbiola perplicata



Cymbiola rossiniana



Cymbiola rutila



*Cymbiola rutila* b (var.)



*Cymbiola rutila* *ceraunia* (var.)



*Cymbiola rutila* *macgillivrayi* (var.)



*Cymbiola rutila* *norriisii* (var.)



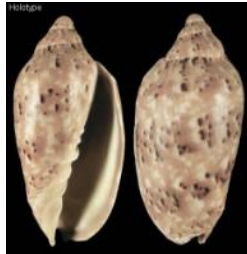
*Cymbiola rutila* *piperita* (var.)



*Cymbiola rutila* *ruckeri* (var.)



*Cymbiola thatcheri*



*Cymbiola* (*Cymbiola*) *scottjordani*



*Cymbiola* (*Cymbiola*) *vespertilio* *vespertilio*



*Cymbiola* (*Cymbiola*) *vespertilio* *vespertilio* *mirindugue* (var.)



*Cymbiola* (*Cymbiola*) *vespertilio* *agustinensis*



*Cymbiola* (*Cymbiola*) *vespertilio* *matiyensis*



*Cymbiola* (*Cymbiola*) *vespertilio* *mitis*



*Cymbiola* (*Cymbiolacca*) *complexa* *complexa*



*Cymbiola* (*Cymbiolacca*) *complexa* *fraserensis*



*Cymbiola* (*Cymbiolacca*) *complexa* *nielseni*



*Cymbiola* (*Cymbiolacca*) *cracenta*



*Cymbiola* (*Cymbiolacca*) *houarti*



*Cymbiola* (*Cymbiolacca*) *intruderi* *intruderi*



*Cymbiola* (*Cymbiolacca*) *intruderi* *rowseorum*



*Cymbiola* (*Cymbiolacca*) *moretonensis*



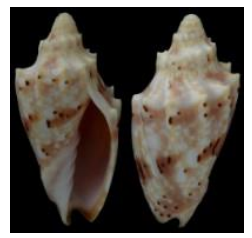
*Cymbiola* (*Cymbiolacca*) *provocationis*



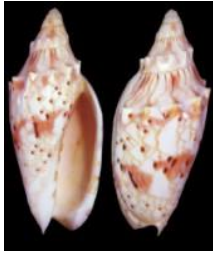
*Cymbiola* (*Cymbiolacca*) *pulchra* *pulchra*



*Cymbiola* (*Cymbiolacca*) *pulchra* *pulchra* *perryi* (var.)



*Cymbiola* (*Cymbiolacca*) *pulchra* *pulchra* *woolacottae* (var.)



Cymbiola (Cymbiolacca) pulchra coucomorum



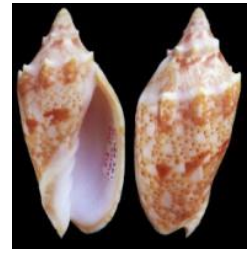
Cymbiola (Cymbiolacca) pulchra excelsior



Cymbiola (Cymbiolacca) pulchra flindersi



Cymbiola (Cymbiolacca) pulchra peristicta



Cymbiola (Cymbiolacca) pulchra wisemani



Cymbiola (Cymbiolacca) pulchra wisemani randalli (var.)



Cymbiola (Cymbiolacca) sophia



Cymbiola (Cymbiolacca) subelongata



Melo aethiopicus



Melo amphora



Melo ashmorensis



Melo broderipii



Melo georginae



Melo melo melo



Melo melo melo nautica (var.)



Melo melo tessellatus



Melo miltonis



Melo umbilicatus



Amoria (Cymbiolista) hunteri



Amoria (Cymbiolista) jansae jansae



Amoria (Cymbiolista) jansae pithensis



Amoria (Cymbiolista) subfossilis



Nannamoria amicula



Nannamoria breviforma



Nannamoria bulbosa



Nannamoria gotoi gotoi



Nannamoria gotoi curta



Nannamoria inflata



Nannamoria inopinata



Nannamoria parabola



Nannamoria ranya



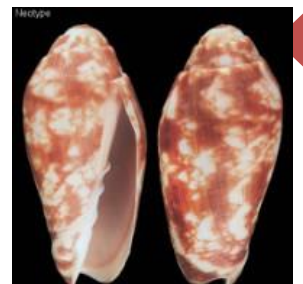
Volutoconus bednalli



Volutoconus browni



Volutoconus calcarelliformis



Volutoconus coniformis



Volutoconus daisyae



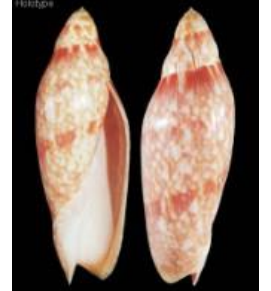
Volutoconus grossi grossi



Volutoconus grossi grossi mcmichaeli (var.)



Volutoconus hargreavesi



Volutoconus keppelensis



Volutoconus multiformis

### Subfamily : VOLUTIDAE AMORIINAE NOTOVOLUTINI



Notovoluta baconi



Notovoluta capricornea



Notovoluta gardneri



Notovoluta gerondiosi



Notovoluta hoskensis



Notovoluta kreuslerae



Notovoluta kreuslerae clarksonii (var.)



Notovoluta norwestralis



Notovoluta occidua



Notovoluta pseudolirata



Notovoluta verconis

Subfamily : VOLUTIDAE SCAPHELLINAE



Scaphella junonia junonia



Scaphella junonia butleri



Scaphella junonia curryi



Scaphella junonia elizabethae



Scaphella junonia johnstoneae



Scaphella atlantis



Scaphella bullisi



Scaphella contoyensis



Scaphella dohrni



Scaphella dohrni florida (var.)



Scaphella dubia dubia



Scaphella dubia dubia kieneri (var.)



Scaphella dubia georgiana



Scaphella dubia schmitti



Scaphella evelina



Scaphella garciai



Scaphella gaudiati



Scaphella gouldiana



Scaphella luizcoutoi



Scaphella macginnorum



Scaphella neptunia



Scaphella robusta robusta



Scaphella robusta marionae



Scaphella robusta marionae worki (var.)



Scaphella stimpsonorum



Ampulla priamus

### Subfamily : VOLUTIDAE FULGORARIINAE



Fulgoraria alforum alforum



Fulgoraria bailorum



Fulgoraria philippsi philippsi



Fulgoraria (Fulgoraria) ericarum



Fulgoraria (Fulgoraria) hamillei hamillei



Fulgoraria (Fulgoraria) hamillei nipponkaensis



Fulgoraria (Fulgoraria) hamillei tosaensis



Fulgoraria (Fulgoraria) kaoae



Fulgoraria (Fulgoraria) leviuscula



Fulgoraria (Fulgoraria) rupestris rupestris



Fulgoraria (Fulgoraria) rupestris rupestris aurantia (var.)



Fulgoraria (Fulgoraria) rupestris politohumerosa



Fulgoraria (Fulgoraria) rupestris thachi



Fulgoraria (Musashia) allaryi



Fulgoraria (Musashia) cancellata





Fulgoraria (Musashia) carnicolor



Fulgoraria (Musashia) chinoi



Fulgoraria (Musashia) clara clara



Fulgoraria (Musashia) clara noguchii



Fulgoraria (Musashia) formosana



Fulgoraria (Musashia) hirasei



Fulgoraria (Psephaea) concinna



Fulgoraria (Psephaea) concinna corrugata (var.)



Fulgoraria (Psephaea) concinna rosea (var.)



Fulgoraria (Psephaea) daviesi



Fulgoraria (Psephaea) kaneko



Fulgoraria (Psephaea) kaneko hayashii (var.)



Fulgoraria (Psephaea) kaneko itoi (var.)



Fulgoraria (Psephaea) kaneko yamamotoi (var.)



Fulgoraria (Psephaea) mentiens



Fulgoraria (Nipponomelon) elongata



Fulgoraria (Nipponomelon) kamakurensis



Fulgoraria (Nipponomelon) megaspira megaspira



Fulgoraria (Nipponomelon) megaspira megaspira angulosa (var.)



Fulgoraria (Nipponomelon) megaspira megaspira exoptanda (var.)



Fulgoraria (Nipponomelon) megaspira magna



Fulgoraria (Nipponomelon) megaspira magna salebrosa (var.)



Fulgoraria (Nipponomelon) prevostiana prevostiana



Fulgoraria (Nipponomelon) prevostiana sagamiensis



Fulgoraria (Kurodina) smithi



Fulgoraria (Volutipysma) humerosa



Saotomea (Saotomea) delicata



Saotomea (Saotomea) hinae



Saotomea (Saotomea) pratensis



Saotomea (Saotomea) solida



Saotomea (Bondarevia) minima

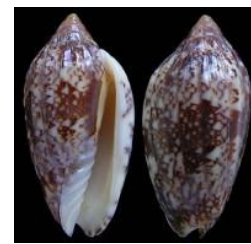
### Subfamily : VOLUTIDAE PLICOLIVINAE



Plicoliva ryalli



Plicoliva zelindae zelindae



Plicoliva zelindae oceanica

### Subfamily : VOLUTIDAE CALLIOTECTINAE



Calliotectum dalli dalli



Calliotectum dalli claydoni



Calliotectum egregium



Calliotectum piersonorum



Calliotectum smithi



Calliotectum tibiaeforme tibiaeforme



Calliotectum tibiaeforme barneli



Calliotectum tibiaeforme dupreyae



Calliotectum tibiaeforme johnsoni



Calliotectum tibiaeforme williamsorum



© 2004 - G. & Ph. Poppe  
Calliotectum vernicosum

Subfamily : VOLUTIDAE - NOMINA NON VALIDA

PERLE – PERLE



PERLE – PERLE

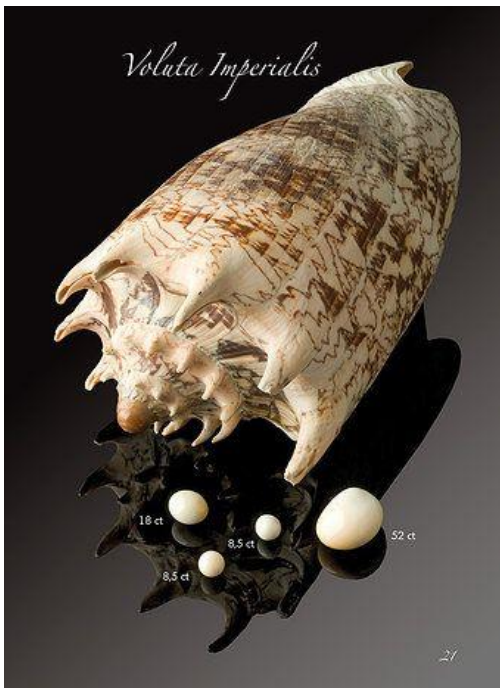
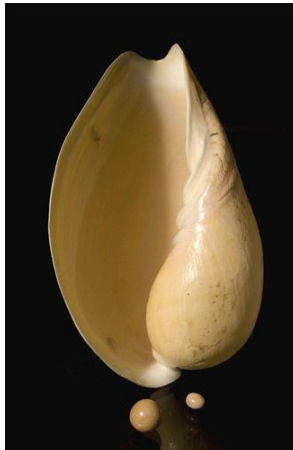
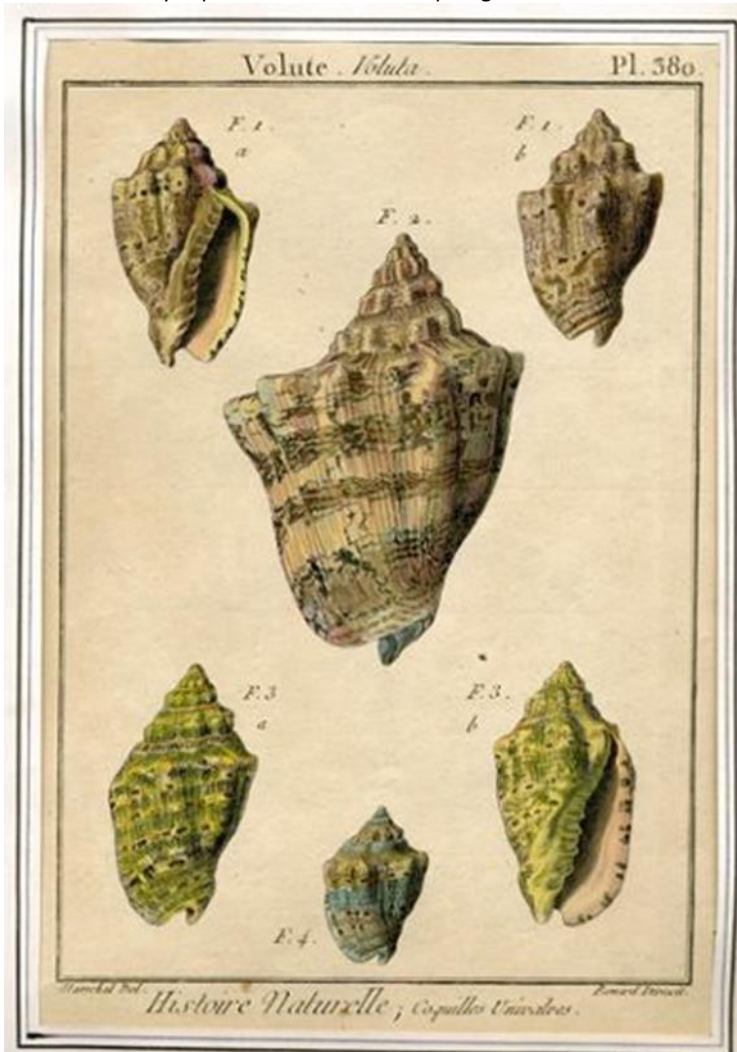


Planche de l'Encyclopédie Diderot XVIIIe Coquillage

**N° 153 - Janvier 2016****N° 151 - Juillet 2015****N° 140 - Octobre 2012****N° 139 - Juillet 2012****N° 134 - Avril 2011****N° 133 - Janvier 2011****N° 132 - Octobre 2010****N° 113 - Janvier 2006**

Référence aux VOLUTES dans la revue de l' A.F.C.

Les nouvelles Volutes récentes par P. Bail

Première occurrence de l'espèce du Rupélien (Oligocène inférieur) de Belgique *Athleta* (*Volutocorbis*) *suturalis* (Nyst, 1836) dans les sables bartoniens (Éocène moyen) du bassin de Paris par J-M. Pacaud & J. Laporte

Volutes fossiles de France par D. Ledon

Les Volutes fossiles de France par D. Ledon

Les Volutes fossiles de France par D. Ledon

Les Volutes fossiles de France par D. Ledon

Les Volutes fossiles de France par D. Ledon

Merveilleuses volutes par P. Bail.

Rien dans les dernières publications

<https://www.pinterest.fr/oli170711/volutes/>



Voluta ebraea - Molusco gastropode

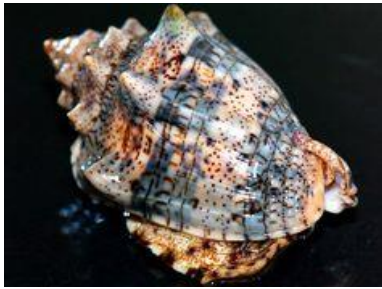


Noble volute (Cymbiola nobilis)



CALLIOTECTUM SMITHI



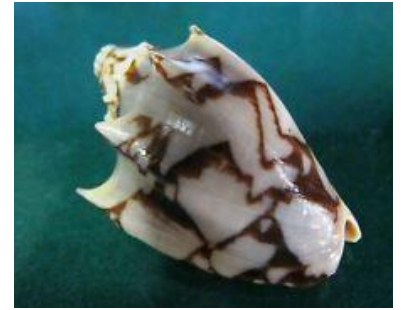


[Voluta musica](#)



[Molusco - Voluta ebraea](#)





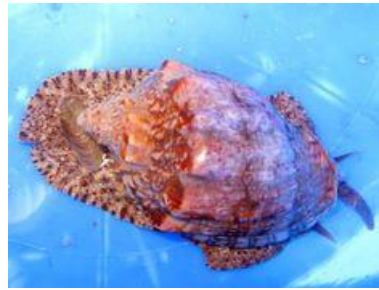
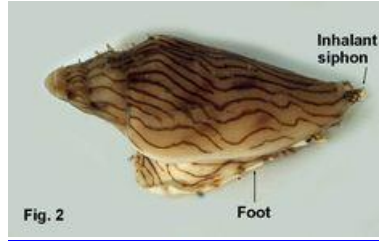
[cymbiola](#)



[Seashell Voluta musica carneolata](#)  
[Yellow FORM!](#)

[cymbiola](#)





[Noble volute \(\*Cymbiola nobilis\*\)](#)



