

**COREL**



# PaintShop Photo® Pro X3

**Ultimate**

Reviewer's Guide

# PaintShop Photo® Pro X3

Ultimate

Contents	
<b>1  </b>	<b>Introducing Corel PaintShop Photo Pro X3 Ultimate . . 1</b>
<b>2  </b>	<b>What's included? . . . . . 2</b>
<b>3  </b>	<b>Corel PaintShop Photo Pro X3.2 . . . . . 4</b>
<b>4  </b>	<b>Incomedia WebSite X5 Special Edition . . . . . 14</b>
<b>5  </b>	<b>Corel KPT Collection . . . . . 16</b>
<b>6  </b>	<b>Corel Painter Essentials 4 . . . . . 18</b>

## About Corel Corporation

Corel is one of the world's top software companies, with more than 100 million active users in over 75 countries. We develop software that helps people express their ideas and share their stories in more exciting, creative, and persuasive ways. Through the years, we've built a reputation for delivering innovative, trusted products that are easy to learn and use, helping people achieve new levels of productivity. The industry has responded with hundreds of awards for software innovation, design, and value.

Our award-winning product portfolio includes some of the world's most widely recognized and popular software brands, including CorelDRAW® Graphics Suite, Corel® Painter™, Corel DESIGNER® Technical Suite, Corel® PaintShop Photo® Pro, Corel® VideoStudio®, Corel® WinDVD®, Corel® WordPerfect® Office, WinZip®, and Corel® Digital Studio™ 2010. Our global headquarters are in Ottawa, Canada, and major offices are in the United States, the United Kingdom, Germany, China, Taiwan, and Japan.

Copyright 2010 Corel Corporation. All rights reserved.

### Corel® PaintShop Photo® Pro X3 Ultimate Reviewer's Guide

Protected by U.S. Patents 6121976; 5828380; 6542863; 6601032; 6940907; 6678648; 6850566; 6940903; 6944224; 6970506; 6999919; 7003033; 7110452; 7149592; 7164716; 7164717; 6993075; 7133451; 7197072; 7274864; 7269331; 7276656; 6119080; 6785335; 6963877; 6972801; 6876705; 6990151; 7042948; 6788318; 6785335; 6972801; 6876705; 6990151; 7042948; 6119080; 6826310; 6868179; 7057768; 6121976; 5828380; 6542863; 6601032; 6940907; 6678648; 6850566; 6940903; 6944224; 6970506; 6999919; 7003033; 7110452; 7149592; 7164716; 7164717; 6993075; 7133451; 7197072; 7274864; 7269331; 7276656; 6119080; 6785335; 6963877; 6972801; 6876705; 6990151; 7042948; 6788318; 5828380; 6542863; 6601032; 6940907; 6678648; 6850566; 6940903; 6944224; 6970506; 6999919; 7003033; 7110452; 7149592; 7164716; 7164717; 6993075; 7133451; 7197072; 7274864; 7269331; 7276656; 6119080; 6785335; 6963877; 6972801; 6876705; 6990151; 7042948; 6788318; 6785335; 6972801; 6876705; 6990151; 7042948; 6119080; 6826310; 6868179; 7057768

Product specifications, pricing, packaging, technical support and information ("specifications") refer to the retail English version only. The specifications for all other versions (including other language versions) may vary.

INFORMATION IS PROVIDED BY COREL ON AN "AS IS" BASIS, WITHOUT ANY OTHER WARRANTIES OR CONDITIONS, EXPRESS OR IMPLIED, INCLUDING, BUT NOT LIMITED TO, WARRANTIES OF MERCHANTABILITY, SATISFACTORY QUALITY, MERCHANTABILITY OR FITNESS FOR A PARTICULAR PURPOSE, OR THOSE ARISING BY LAW, STATUTE, USAGE OF TRADE, COURSE OF DEALING OR OTHERWISE. THE ENTIRE RISK AS TO THE RESULTS OF THE INFORMATION PROVIDED OR ITS USE IS ASSUMED BY YOU. COREL SHALL HAVE NO LIABILITY TO YOU OR ANY OTHER PERSON OR ENTITY FOR ANY INDIRECT, INCIDENTAL, SPECIAL, OR CONSEQUENTIAL DAMAGES WHATSOEVER, INCLUDING, BUT NOT LIMITED TO, LOSS OF REVENUE OR PROFIT, LOST OR DAMAGED DATA OR OTHER COMMERCIAL OR ECONOMIC LOSS, EVEN IF COREL HAS BEEN ADVISED OF THE POSSIBILITY OF SUCH DAMAGES, OR THEY ARE FORESEEABLE. COREL IS ALSO NOT LIABLE FOR ANY CLAIMS MADE BY ANY THIRD PARTY. COREL'S MAXIMUM AGGREGATE LIABILITY TO YOU SHALL NOT EXCEED THE COSTS PAID BY YOU TO PURCHASE THE MATERIALS. SOME STATES/COUNTRIES DO NOT ALLOW EXCLUSIONS OR LIMITATIONS OF LIABILITY FOR CONSEQUENTIAL OR INCIDENTAL DAMAGES, SO THE ABOVE LIMITATIONS MAY NOT APPLY TO YOU.

Corel, the Corel logo, CorelDRAW, Corel DESIGNER, Digital Studio, Instant Viewer, KPT, Painter, PaintShop Photo, and WinZip are trademarks or registered trademarks of Corel Corporation and/or its subsidiaries in Canada, the U.S. and/or other countries.

WebSite X5 is a registered trademark of Incomedia S.r.l in the European Union and other countries.

Microsoft, Windows, Windows Media, Windows Vista are either registered trademarks or trademarks of Microsoft Corporation in the United States and/or other countries. QuickTime is a registered trademark of Apple Inc., registered in the U.S. and other countries. Canon is a registered trademark of Canon Inc. Facebook is a registered trademark of Facebook, Inc. Flickr is a registered trademark of Yahoo! Inc. YouTube is a trademark of Google Inc. in the US and other countries.

# 1



## Introducing Corel® PaintShop Photo® Pro X3 Ultimate

The Corel® PaintShop Photo® Pro product line is long renowned for offering powerful, creative photo and graphics tools at an affordable price. The new Corel® PaintShop Photo® Pro X3 Ultimate extends this by combining intuitive photo-editing software with web design, photo painting, and a variety of creative plug-in photo filters that broaden the capabilities of any photographer or designer.

PaintShop Photo Pro X3 Ultimate is based on the recently updated PaintShop Photo Pro X3.2, which delivers enhanced stability and performance, and more than 50 enhancements to top customer workflows. The suite also includes a selection of powerful extras, including Incomedia™ WebSite X5® Special Edition, which includes everything needed to easily create a website and get it online. Now with the addition of Corel® Painter™ Essentials 4, it's easy for users to sketch and paint as well as transform photos into works of art. By offering the full Corel® KPT® Collection of creative plug-in filters, PaintShop Photo Pro X3 Ultimate gives users even more creative options, so anyone can get the most out of their photos.

### Customer profile

**Photo enthusiasts and consumer photographers:** Today's consumer photographer is very familiar with compact cameras, and they're increasingly adopting DSLRs for superior performance and broader creative possibilities. They're comfortable working with their photos and seek affordable tools that help them achieve great results quickly.

PaintShop Photo Pro X3 Ultimate is designed to meet the needs of today's photo enthusiast, delivering an outstanding combination of creative and intuitive features — for both experienced and entry-level photographers — in a value-laden package available nowhere else.

# 2



## What's included?

**Corel® PaintShop Photo® Pro X3:** Based on the recent enhancements in X3.2, the latest version of Corel PaintShop Photo Pro adds greater speed, stability, and performance in key editing workflows to its powerful photo-editing tools and features. PaintShop Photo Pro X3 gives users the power to easily organize, edit, and share professional-quality photos. Photo enthusiasts have the option to make enhancements quickly in the Express Lab and the new Organizer or go further with powerful advanced editing tools, such as the new Smart Carver™. Consumer photographers can create amazing photo books and projects, upload to Flickr®, Facebook®, or YouTube™, print or share by email. Combining single and multi-photo editing tools, online sharing and simple HD video integration, the entire digital workflow is now available in one high-performance package.

**Incomedia™ Website X5® Special Edition:** Incomedia WebSite X5 Special Edition is an all-in-one solution packed with tools to create and publish professional websites, blogs, and more in just five easy steps.

**Corel® KPT® Collection:** One of the most creative collections of plug-in filters available, the Corel KPT Collection fits right into any image-editing workflow. Combining a selection of 24 powerful Kai's Power Tools plug-in filters, Corel KPT Collection gives photo enthusiasts an unprecedented set of creative tools for producing impressive effects that would ordinarily be impossible or too time-consuming to create from scratch.

**Corel® Painter™ Essentials 4:** If users want to do more than just edit and print photos, Corel Painter Essentials 4 is the ideal way to get started with digital art. In addition to the extensive set of drawing and painting tools and brushes, users can turn photos into stunningly realistic works in just three easy steps with the unique Auto-Painting palette.

**Comprehensive manual:** Corel PaintShop Photo Pro X3 Ultimate includes a comprehensive manual. Together, the unique Learning Center and the manual gives users all the information they need to maximize the potential of their digital photos.

## Minimum system requirements

- Windows® 7, Windows Vista® or Windows® XP, with latest service packs installed (32-bit or 64-bit editions)
- 1.5 GHz processor (2 GHz or greater recommended)
- 1 GB RAM (2 GB RAM or greater recommended)
- 3 GB of free hard drive space
- 24-bit color display, 1024 x 768 resolution or greater
- Windows-compatible DVD-ROM drive for installation
- Internet connection required for online features
- Incomedia WebSite X5 Special Edition requires an Internet connection and email account for product activation

# 3



## Corel® PaintShop Photo® Pro X3

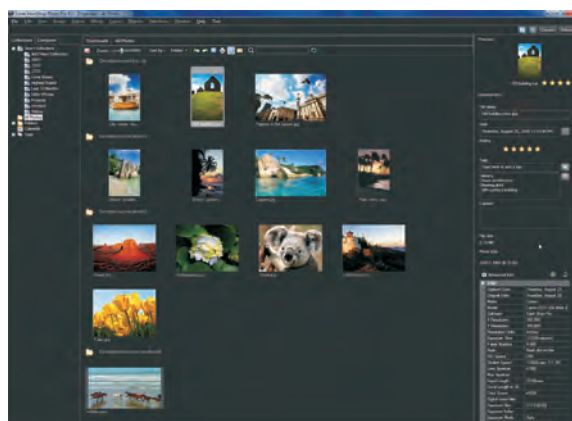
Corel has recently released Corel PaintShop Photo Pro X3.2 as a free update to Corel PaintShop Photo Pro X3. This latest release is the basis of the new PaintShop Photo Pro X3 Ultimate, delivering improved speed and performance, faster RAW decoding, more RAW format support, and other workflow improvements. This section outlines the new and enhanced features in Corel PaintShop Photo Pro X3 as compared to the features previously available in the standard X2 and X2 Ultimate versions. The “New” or “Enhanced” labels highlight features new in the suite’s core photo editor, PaintShop Photo Pro X3.

PaintShop Photo Pro X3 is a powerful photo-editing experience designed to match the workflow of today’s photo enthusiast. Combining easy-to-use tools with advanced features, PaintShop Photo Pro X3 helps photographers of all skill levels do more with their photos, creative projects, and even video.

### Express editing and workflow tools

**New! Organizer:** The new Organizer simplifies the digital-photography workflow with new tools for importing, managing, locating, and quickly touching up image files.

Images can be viewed in multiple ways, and photos can be tagged and rated, making them easier to find and group. The Organizer also displays advanced information, such as exchangeable image file format (EXIF) and International Press Telecommunications Council (IPTC) data.



*The Organizer simplifies photo management.*

Features in the Organizer include:

- **New! Multi-photo editing:** Users can save time by copying edits performed on one image to a batch of photos.

### Give it a try

#### To copy changes to multiple photos

- 1 In the Organizer, select a photo, and click the **Express Lab** button.
- 2 In the Express Lab, click **Smart Photo Fix**, and click **Suggest Settings**.
- 3 Click the **Exit Express Lab** button, and click **Yes** to save the photo and return to the Organizer.
- 4 In the Organizer, right-click the image you edited, and choose **Capture Editing**.
- 5 Click another photo, hold down the **Ctrl** key, and select multiple photos.
- 6 Right-click, and choose **Apply Editing**.

The Smart Photo Fix settings are copied to all the selected photos.

- **New! RAW image conversion:** From within the Organizer, RAW images can be converted to another format.

### Give it a try

#### To convert RAW images to another format

- 1 In the Organizer, select the thumbnails of the RAW images you want to convert to another file format.
- 2 Right-click, and choose **Convert RAW**.  
The Batch Process dialog box appears.
- 3 From the **Type** drop list, select a new file format for the RAW images.
- 4 In the **Folder** field, type the location of the folder where you want to save the new files, or click the **Browse** button and select a new folder.
- 5 To rename files during conversion, click the **Modify** button and choose a renaming option.  
The renaming option appears in the **New File Name** field after clicking **OK**.
- 6 Click **Start**.



**Enhanced! Express Lab:** Launched with a click within the Organizer, the Express Lab provides a faster way to perform common editing tasks, enabling users to scroll through their photos, make quick fixes, apply effects, and delete pictures that didn't turn out. An instant preview offers a quick look at any changes.



*The Express Lab has tools for the most common digital photography problems.*

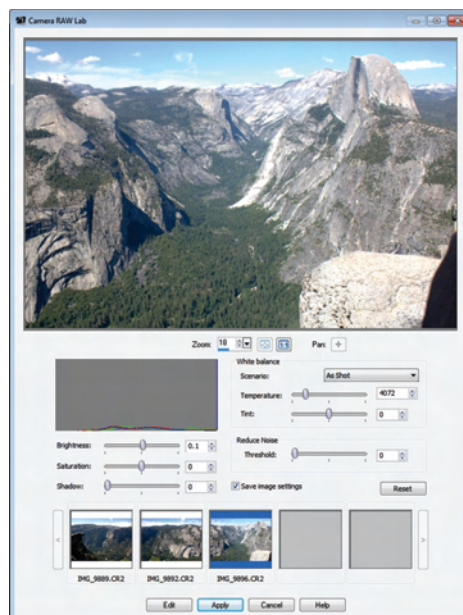
The Express Lab gives photo enthusiasts instant access to the most frequently used tools and quick fixes for the most common problems, including:

- **Straighten Tool:** Users can easily straighten crooked images by simply specifying a line along an image feature that should be horizontal or vertical, such as the horizon or a building.
- **Smart Photo Fix:** In a single click, Smart Photo Fix analyzes an image and suggests settings for auto-correcting brightness, shadows, highlights, and saturation.
- **New! Local Tone Mapping:** This new tool increases the dynamic range in a photo, drawing more detail out of image areas, such as clouds, sky, stone, and sand.
- **New! Color Balance:** Any number of factors — for example, the type of lighting used, the processing that occurs inside the camera, or whether an image was scanned — can cause incorrect coloring in photos. Using the Color Balance Tool to cool or warm colors, photo enthusiasts can improve a photo dramatically.
- **New! Adjust Contrast/Brightness:** Incorrect exposure levels can ruin an otherwise great shot. The Adjust Contrast/Brightness tool lets users salvage those photos by quickly brightening underexposed images and darkening overexposed images.
- **Makeover Tool:** The Makeover Tool has five modes for improving how subjects in a photo look. The Toothbrush mode quickly whitens discolored teeth, the Suntan Brush mode adds color to pale, washed-out skintones, and the Blemish Fixer mode can remove over blemishes. In addition, the Thinify™

mode helps people lose those pounds the camera sometimes adds, and the Eye Drop mode takes the red out of bloodshot eyes.

- **Clone Tool:** Imperfections can be easily corrected using the Clone Tool to copy detail from one part of a photo to another, replacing the flawed image area with detail from the source location.
- **Red Eye Tool:** One of the most common problems in photos is red-eye, but the Express Lab offers an easy solution. Users can remove red-eye from their photos with a click.
- **New! Sharpen Tool:** With a simple click-and-drag, photo enthusiasts can sharpen pixels.
- **New! One Step Noise Removal:** “Noise” artifacts — small specks of color that interfere with the clarity of the image — are one of the most common problems in digital photography. The Express Lab offers one-step, automatic noise removal.
- **One-click photo rating:** Digital photographers can assign ratings to their photos with a single click, so they can quickly find their favorites when sorting images. Other tools are also located around the perimeter of the photo window for rotating and saving images.

**New! Camera RAW Lab:** PaintShop Photo Pro X3 simplifies the digital photography workflow for those who shoot in RAW mode. The Camera RAW Lab launches whenever a RAW image is opened in the Full Editor, allowing for the adjustment of settings such as white balance, brightness, and saturation before processing. Then, the processed image can be opened the Full Editor or the changes can be simply applied and saved for processing later. To accelerate the editing process, adjustments made to a RAW image can be copied and applied to other files in the Organizer. In addition, the Camera RAW Lab is updated on an ongoing basis to support more RAW image formats as new cameras are released, minimizing compatibility headaches.



*The Camera RAW Lab is the perfect digital darkroom for working with RAW files.*

## Advanced features and performance




**New! Smart Carver™:** Using the Smart Carver, editors can seamlessly and realistically remove photo objects and alter the aspect ratio without distorting the rest of the image.



*Smart Carver lets you remove objects and change the aspect ratio.*

### Give it a try

#### **To remove an image area and change the aspect ratio**

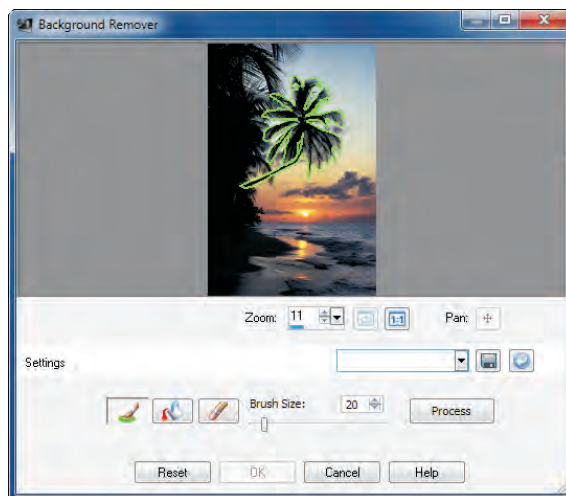
- 1 In the Organizer, select a photo, and click **Full Editor**.
- 2 Click **Image** menu ► **Smart Carver**.
- 3 Click the **Remove** tool , and select the areas of the image you want to remove.
- 4 Click one of the following buttons in the Smart Carving area:
  -  — automatically contracts horizontally, removing the highlighted image area
  -  — automatically contracts vertically, removing the highlighted image area
- 5 Click **OK**.

**Enhanced! Application performance:** In recent years, the size of images being created by digital cameras has grown significantly, making it critical for photo-editing software performance to increase, too. PaintShop Photo Pro X3 has been optimized for increased performance on PCs with multi-core processing, ensuring a fast, efficient working environment. Two-pass processing provides a faster preview of image adjustments, speeding up photo-editing. Many legacy features have also been refined to offer enhanced speed and performance.

**Enhanced! RAW format support:** With improved camera RAW support, users who shoot in RAW formats can choose from an expanded list of over 350 supported cameras. The list of supported formats is reviewed and updated regularly as new cameras are released.

**16-bit support:** Digital photography enthusiasts who shoot in a RAW format can open their photos at 16-bits per channel, so they can edit their photos with the full range of tonal detail in their pictures.



**New! Object Extractor:** This new tool makes it faster to precisely mask fine image details that are otherwise difficult to preserve. The Object Extractor is ideal for copying elements in one photo to another background — even challenging cases such as fly-away hair, wisps of smoke, tree branches.



*The Object Extractor is the ideal tool for removing part of an image and adding it to another.*

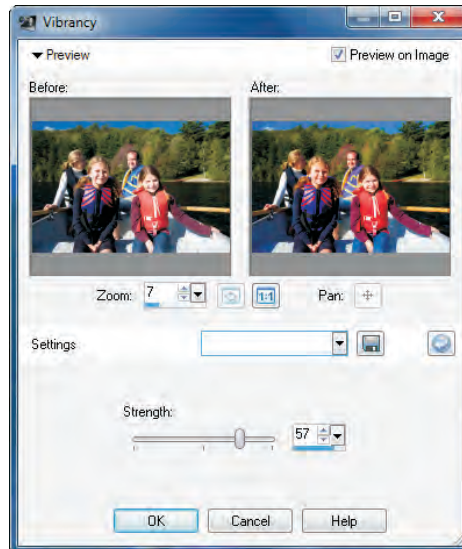
## Give it a try

### **To extract an image background**

- 1** In the Organizer, select a photo, and click **Full Editor**.
- 2** Click **Image** menu ► **Object Extractor**.
- 3** Click the **Brush** tool , and trace edge of the image area you want to keep.
- 4** Click the **Fill** tool , to identify the image area you want to extract.
- 5** Click **Process**.
- 6** Click **OK**.

**New! On-image text editing:** The PaintShop Photo Pro text engine has been updated, making it easier, faster, and more natural to apply text to an image. Text attributes, such as font, color, placement, position, size and more, can be easily adjusted. Existing text can be reselected, so users can edit it or continue typing. In addition, text can be applied to a path.

**New! Color vibrancy:** The Vibrancy control makes it possible to boost saturation in poorly saturated parts of an image, while well-saturated pixels are adjusted less, so no colors become unrealistically bright.



*You can improve under-saturated areas without affecting other parts of the image.*

## Give it a try

### **To adjust color vibrancy**

- 1** In the Organizer, select a photo, and click **Advanced**.
- 2** Click **Adjust** menu ► **Hue and Saturation** ► **Vibrancy**.
- 3** Adjust the **Strength** slider.
- 4** As you move the slider, a preview of the changes appear in the preview window
- 5** Click **OK**.

**New! HD video:** Acknowledging the broadening availability of HD video capabilities on DSLRs, PaintShop Photo Pro X3 lets enthusiasts use that video in slide shows along with photos.

**Enhanced! Depth of Field effect:** The Depth of Field effect draws attention to specific image areas by subtly blurring the rest of the photo. This replicates the look of limited depth of field, an effect that usually requires precise manual lens aperture adjustments. Photo enthusiasts can also draw attention to several areas of an image in ways that aren't possible in conventional photography. For example, users can keep objects in both the foreground and background in focus, while blurring the rest of the image. Now users can simply select the image areas to keep in focus directly on the photo and easily fine-tune settings to get just the right effect.



*The Depth of Field effect focuses attention on a specific image area.*

## Project creation and sharing

**New! Project Creator:** The Project Creator is a one-stop spot for creating, editing, and sharing projects. Users can produce photo books, collages, cards, calendars, and slideshows in a few clicks and then share their work to YouTube, Facebook, or Flickr. Projects can also be saved as a PDF, JPEG, or Microsoft® Silverlight™ animated files. In addition, photo enthusiasts can back up digital assets and order professional prints online from within the Project Creator.



*The Project Creator accelerates creating and sharing projects.*

Here are some of the projects and sharing options that users can start from the Project Creator:

- **Professional-looking photo books:** Photo books are the perfect way to showcase a collection of favorites, especially if they're professionally printed and bound. Uploading photos to an online printing service, however, can be time-consuming. In PaintShop Photo Pro X3, users simply choose a photo book style and select photos to create an eye-catching photo book. Then, they can order a professionally printed book in a couple of clicks. (Note: Online printing services are available in select countries only and subject to additional charges.)



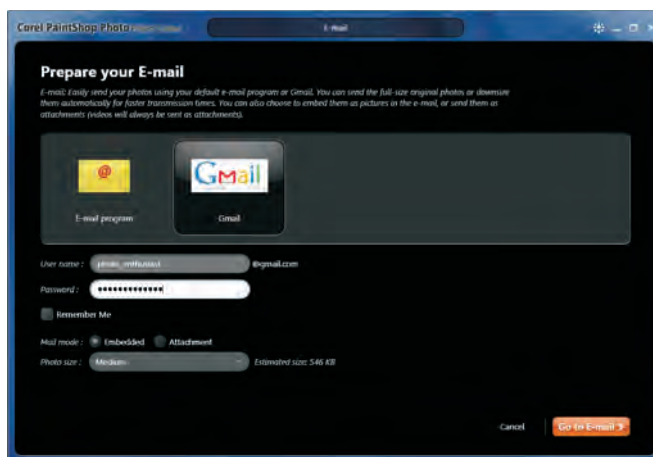
*PaintShop Photo Pro X3 simplifies creating great-looking photo books.*

- **Slide shows:** PaintShop Photo Pro X3 takes slide shows to the next level by offering the ability to include HD video clips along with photos. Slide shows can be personalized with soundtrack music or a variety of slide transitions. When it comes time to share a finished slide show, it can be saved to a video file, or uploaded to YouTube, Facebook, or Flickr.



*The Project Creator has a variety of slide show options.*

- **Easy uploading:** Photos, videos, and slideshows can be shared by uploading to media-sharing sites, including Facebook, Flickr, or YouTube — all from within PaintShop Photo Pro X3.
- **Online print ordering:** PaintShop Photo Pro X3 simplifies online ordering of professionally printed photo books, calendars, greeting cards, and collages. (Note: Online printing services are available in select countries only and subject to additional charges.)
- **Flexible emailing:** The most popular way to share photos is by email. PaintShop Photo Pro X3 enables users to embed or attach photos and has file size options that ensure workable email sizes. Embedding allows recipients to see photos without having to deal with attachments.



*The Project Creator takes the guesswork out of emailing images and projects.*



# 4



## Incomedia™ WebSite X5® Special Edition

Incomedia WebSite X5 Special Edition is an all-in-one solution for creating and publishing professional websites, blogs, and more.

With a powerful wizard-driven interface, WebSite X5 Special Edition guides users through five easy steps to create and publish a complete, functional website.

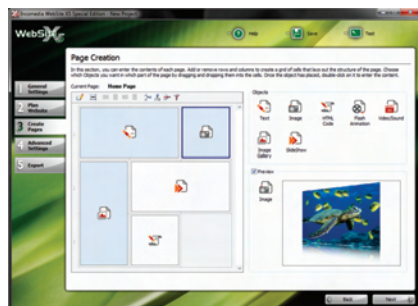
**1. Choose a design:** Users can base their website on one of the 1,400 WebSite X5 templates, customize a template with built-in graphic tools, or create their own template from scratch.



**2. Layout the website:** After users choose what information to present, intuitive website-layout features make organizing a site simple. WebSite X5 Special Edition is designed to create everything from a single webpage to complex sites filled with hundreds of highly detailed pages and much more. Features such as the automatic sitemap generator simplify site navigation and make it easy for search engines to find the website.



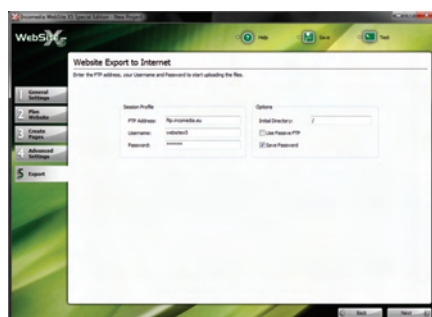
**3. Enter the content:** With its unique content entry system, WebSite X5 Special Edition lets users create complex page layouts in just a few clicks. The intelligent tools provided by the object palette make it easy for users to bring in content created or enhanced with Corel PaintShop Photo Pro X3 Ultimate. Users can add text, pictures, tables, animations, video clips, slide shows, and much more. The content layout tool divides each page into content zones, onto which content can be dragged-and-dropped from the object palette.



**4. Select advanced features:** When it comes to easily adding advanced features to a website, such as a blog or podcast, WebSite X5 Special Edition offers a range of tools that are second to none. With its multi-language welcome page and one-click Social Network submission feature, WebSite X5 Special Edition helps users attract a worldwide audience.



**5. Export the site to the Internet:** When the website design is complete, the final step is sending it to the Internet. The built-in WebSite X5 FTP engine takes the guesswork out of publishing a website. And whenever users update their website, for example by adding a news item, WebSite X5 Special Edition intelligently sends just the updates to the web space.





## Corel® KPT® Collection

The Corel KPT Collection provides 24 must-have filters from the powerful Kai's Power Tools plug-in series to give enthusiast and professional photographers and designers an unprecedented set of creative tools.

Arguably the most creative collection of plug-in filters available, KPT Collection fits right into any image-editing workflow, greatly extending the capabilities of Corel PaintShop Photo Pro X3. From realistic to artistic to surprising, it offers a range of image transformations and effects, so photo enthusiasts can create impressive effects that would ordinarily be impossible or too time-consuming to create from scratch.

Here are some a few KPT filters that create remarkable image transformations and original effects in no time at all:



•**KPT® Fluid™**— Treat an entire image as a fluid to create and animate a variety of distortions, including controlling the thickness of the liquid and the size and speed of the brush stroke.



•**KPT® FraxFlame II™**— Create a limitless array of stunning fractal flames, including ethereal effects like crystal clouds. A powerful rendering engine and intuitive navigational control give users maximum creative flexibility.



•**KPT® Gel™**— Use realistic 3D paint tools to synthesize photo-realistic materials, and apply lighting, reflection, refraction and transparency.



•**KPT® Goo** — Smear, smudge, swirl, pinch or “finger-paint” an image to produce stunning liquid distortion effects or short animations.



•**KPT® Ink Dropper™**— Create the effect of a liquid dropped on a piece of glass. Users can also add drops of ink to surfaces to create anything from water spots or stains, to smoky swirls.



•**KPT® Lightning™**— Create and customize realistic lightning effects by controlling every aspect of the bolt and path, including its color, the number of forks, and attractor and generator points.



•**KPT® Materializer™**— Create dynamic surface textures using bump maps and advanced controls, or “bend” an image over the contours of a surface texture.



•**KPT® Scatter™**— Create complex patterns and textures by importing particles and scattering them over an image. Users can control how the particles fall — in a grid, in spirals or at random — customize their density, size and opacity, and change the hue, luminance and saturation of their color.



•**KPT® ShapeShifter™**— Create limitless shapes and objects with refracting glass edges, 3D light sources on beveled metallic surfaces, curved and lit web buttons, UI gadgets and text.

Corel KPT Collection also includes:

**KPT® Blurr™**

**KPT® FraxPlorer™**

**KPT® Projector™**

**KPT® Channel Surfing™**

**KPT® Gradient Lab™**

**KPT® Pyramid Paint™**

**KPT® Equalizer™**

**KPT® Hyper Tiling™**

**KPT® RadWrap™**

**KPT® FiberOptix™**

**KPT® LensFlare™**

**KPT® Reaction™**

**KPT® Frax4D™**

**KPT® Noize™**

**KPT® Turbulence™**

# 6



## Corel® Painter™ Essentials 4

With its streamlined interface, intuitive workflow, and range of creative options, Corel Painter Essentials 4 is the ideal way to get started with digital art. This simple-to-use home art studio is based on the world's most powerful painting and illustration software — Corel® Painter™. Whether photo enthusiasts are sketching and painting on a blank canvas, or transforming photos into paintings, Corel Painter Essentials 4 provides everything needed to create stunning artwork. Corel Painter Essentials 4 is a perfect complement to Corel PaintShop Photo Pro X3.


Corel Painter Essentials 4 has two tabbed workspaces: Drawing & Painting for creating original artwork from scratch and Photo Painting for turning images into digital art.

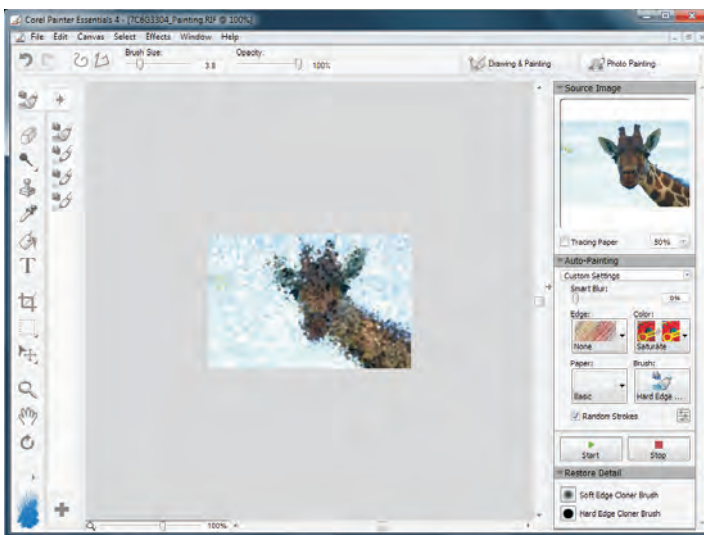
**Turn images into digital art:** The Photo Painting workspace has three palettes that make it simple to turn a photo into a painting. All brushes within the Photo Painting workspace act as cloners and take their color from the source image.

- The Source Image palette lets users choose a clone source, and includes controls to adjust the opacity of tracing paper and to toggle tracing paper on and off. In addition, the source image is saved with the painting, meaning that users don't have to keep a separate photo open.
- On the Auto-Painting palette, users can simply select a preset and let Corel Painter Essentials 4 do the work, or choose their own auto-painting settings for more control. The Auto-Painting palette includes Smart Stroke™ technology, which provides more intelligent brush behavior during the auto-painting process.
- The Restore Detail palette helps users put the final touches on a photo painting by providing brushes for restoring some detail from the original photo, such as features in a subject's face.

## Give it a try

### **To use the Photo Painting system**

- 1 Choose **File** menu ► **Open**, choose an image from the Select Image dialog box, and click **Open**.
- 2 Click the **Photo Painting**  workspace tab.
- 3 On the Source Image palette, click **Use Open Image**.  
This step creates a new document that is linked to the source image. The source image appears as a layer in the Layers palette.
- 4 At the top of the Auto-Painting palette, choose a preset from the **Auto-Painting Style** pop-up menu.
- 5 Click **Start**.  
To fine-tune your results, choose another Auto-Painting Style, or adjust any of the following settings: **Smart Blur**, **Edge**, **Color**, **Paper**, **Brush**.



*The Photo Painting workspace includes all the tools users need to paint photos.*

**Create a painting from scratch:** Like a fully stocked art store, Corel Painter Essentials 4 supplies you with many different art tools, such as brushes, pens, pencils, chalk, airbrushes, and palette knives. And each tool has modifiable characteristics, so an infinite variety of artwork is possible. In the Drawing & Painting workspace, users can access relevant tools, such as the Colors, Color Wheel, and Layers palettes. An intuitive toolbox makes it easy to identify and select brushes, media, and paper, so the interface never gets in the way of creativity.

Corel®  
**PaintShop Photo™**  
**Pro X3**

**Media Contact North America**

Jessica Gould  
Senior PR Manager  
Corel Corporation  
613-728-0826 ext. 5405  
jessica.gould@corel.com

**Media Contact EMEA**

Deborah Thomas  
Director PR, EMEA  
Corel UK Limited +44 (0) 1628 589850  
deborah.thomas@corel.com

**Media Contact APAC**

Joy Tsai  
PR Manager, APAC  
Corel TW +886-2-26273777 ext.6319  
joy.tsai@corel.com

**Corel Corporation**

1600 Carling Ave.  
Ottawa, ON  
Canada K1Z 8R7