



Cretin-Derham Hall

2021-2022 ANNUAL REPORT



THANK YOU!

Excellence

AT CRETIN-DERHAM HALL | 2021-2022

Our Mission

Cretin-Derham Hall is a Catholic co-educational high school, co-sponsored by the Brothers of the Christian Schools and the Sisters of St. Joseph of Carondelet, committed to Christian values and academic excellence in grades nine through twelve. We will educate young men and women of diverse abilities, cultures, and socioeconomic backgrounds for opportunities in post-secondary education.

Our Values

CATHOLIC | ACADEMIC | LEADERSHIP | COMMUNITY | SERVICE | DIVERSITY | EQUITY



19 Average Class Size



17 AP COURSES

50 Honors Courses



11:1 Student : Teacher Ratio

31.1

Average ACT of the Top 10%



Learning Lab with

FOUR

STAFF SPECIALISTS



EIGHT

Dual-Enrollment Courses
(high school and college credit)



95 Years

as JROTC Unit with Distinction



17,900+

Student Service Hours (average)

Affordable Excellence

Tuition Among Lowest in Metro

Cost to Educate \$18,760

Tuition \$15,340

GAP COVERED BY DONORS \$ 3,420

95%



Participate in One or More Co-Curriculars



50%

Involved in Fine Arts



87%

Play One or More Sports

\$3.1 Million Awarded in Tuition Assistance



3 MERIT SCHOLARSHIP PROGRAMS:

Academic | Faith, Service, Leadership | JROTC



Format of Annual Report Designed for our Readers

Cretin-Derham Hall is unequivocally blessed by our long tradition of support from our benefactors. We are pleased that you are taking some time to honor our generous donors by looking at this year's Annual Report. As one of our donors, you are in great company and we appreciate the faith and trust you put in CDH.

This year, you will find a more compact list of donors and a financial overview. We have also asked some of our donors to share why they support our school.

- In keeping with our dedication to the one community of Cretin-Derham Hall, the alumni sections are no longer separated by school: Cretin, Derham Hall or Cretin-Derham Hall. All alumni are now grouped by their graduation year. You and your classmates are now honored as an alum of our school, Cretin-Derham Hall and are listed alphabetically.
- To ensure the well-deserved recognition of our treasured donors as well as provide the information that our donors want or need, we asked donors what they valued most in the Annual Report. The response to these slight changes was positive and so we will continue the slight changes that were informed by our community.
 - Class lists will continue to be prominent, but are no longer broken up by gift levels. Donor names are presented alphabetically.
 - Gift levels will continue to be included with breakouts based on total annual giving. Donors who give \$500 or more will be listed under the appropriate giving level in the printed Annual Report.
 - A complete list of all donors, including those who have given less than \$500, will be listed in the online version of the Annual Report. We are very grateful for this incredible number of donors!

The 2021-2022 Annual Report is also available online. Scan this QR code with your phone's camera to view our complete report online.

Thank you for your ongoing support!





“Blessed are those who plant trees under whose shade they will never sit.”

— INDIAN PROVERB



Letter to
Our Benefactors



Dear CDH Benefactors,

Thank you for your generosity!

That single word, *generosity*, holds great meaning for us. In the Advancement Office we often refer to generosity as the eighth Value at Cretin-Derham Hall. Our community's generosity accounts for more than twenty percent of the annual budget. This is amazing and unprecedented among our peer schools. Thank you!

In May, CDH graduated 258 seniors. As they walked across the sanctuary of the Cathedral to receive their diplomas, you could see the hope and promise on their faces as they confidently looked to their future. They have been well-prepared, challenged, and encouraged over the four transformational years at Cretin-Derham Hall. And now, these impressive Raiders, the Class of 2022, are going forth to change our world in ways we cannot even imagine.

Because of you, we are able to continue the strong tradition of excellence that is the hallmark of Cretin-Derham Hall. We are proud of this accomplishment and grateful for your help during these difficult times. As always, your support means that our students have significantly more affordable access to our high quality education, as well as highly credentialed and caring teachers and a broad array of co-curriculars to round out their education.

The Ryan STEM Center opened to great fanfare and the students and staff love the new space. We completed a first-class Hall of Fame display in the Woulfe Activity Center, and many additional areas of the campus continue to be updated. This cannot be accomplished without loyal and generous benefactors like you.

Inside this Annual Report, you will see not only a record of our community's generosity, but also some highlights of this past year because of it. These are just statistics, but hopefully the distinctive quality of a CDH education comes through in your interactions with our students and graduates, and in the stories we share all year long of the great things happening here. Make sure you take a look at our magazine and the digital newsletters coming your way. You can also follow us on Social Media (see page 36 for more information).

We are humbled by your gifts and are grateful to partner with you in this sacred mission entrusted to us by our founders, the Christian Brothers and the Sisters of St. Joseph of Carondelet.

*May God continue to bless you and those you love!
Live Jesus in our hearts, forever!
So that all may be one.*

Francis M. Miley, J.D.
President

Robert Bollinger
Vice President for Advancement



Strong Foundation. Vibrant Future. **Capital Campaign** **Exceeds Goals and Strengthens** **Our Future**

Thanks to the generous and faithful support of our donors, the *Strong Foundation. Vibrant Future.* Campaign was successfully completed on June 30, 2022. The CDH community came together to support critical needs for our students, exceeding our goal of \$22 million with a grand total of \$22.4 million.

Because of you, this campaign will leave a lasting legacy of excellence and access for both our students of today and tomorrow. Thank you.

The impact of this *Strong Foundation. Vibrant Future.* Campaign is already significant.

- The new Lentsch Forum has become a welcoming hub of activity for our campus.
- The new Ryan STEM Center will provide innovative learning space for CDH students to hone their science, technology, engineering and math skills needed for a challenging world. This space includes a design lab and a STEM lab equipped with the technology and equipment needed for creative problem-solving and collaboration.
- Energy-efficient and cost-effective infrastructure updates include a more robust HVAC system as well as upgrades to ensure healthy air filtration and circulation, especially necessary in light of COVID-19. There were also significant upgrades to our network wiring and mapping to bring our campus up to today's technological standards.
- Much needed tuition assistance of more than \$3 million is provided to families annually. Additionally, a robust Merit Scholarship program was established.
- CDH took a leadership role in establishing the rollout of the inspiring and effective CSCOE/Archdiocesan Literacy Program: Believe + Read, impacting our Catholic school students for life-long learning.

Strong Foundation.
Vibrant Future.

CROSSING THE THRESHOLD
FOR THE NEXT GENERATION.



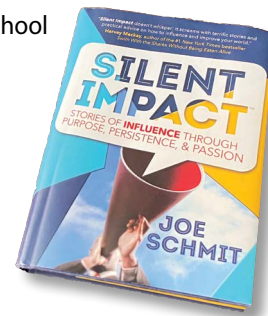
Mike Hally '01 and Joe Mauer '01 Meet Up at their CDH Lunch Table to Share a Story of Friendship

Mike Hally '01 and Joe Mauer '01 and were very happy to be back at school. This summer they met up for the first time in many years, so of course, it had to be at their old lunch table in the CDH Cafeteria.

The two friends and lunchtable-mates reconnected after many years to tell their story to support a teen mental health initiative through the THUMBS UP Foundation, along with author and KSTP Sports Anchor Joe Schmit. They are the focus of a film based on Joe Schmit's book, *Silent Impact*, that originally told the story of how Joe Mauer befriended fellow senior Mike Hally and welcomed him at their lunch table. The film will be shared with middle and high school students across the state to support teens in knowing the power of a kind word or small deed in all their relationships.

Neither men would do this story 'just on it's merits', but both lent their support for THUMBS UP and the hope that the film would positively impact middle and high school students.

Joe Schmit also gave the school copies of his two books he wrote, including the one featuring the Joe Mauer/Mike Hally story and they will be in the library for our students/faculty.



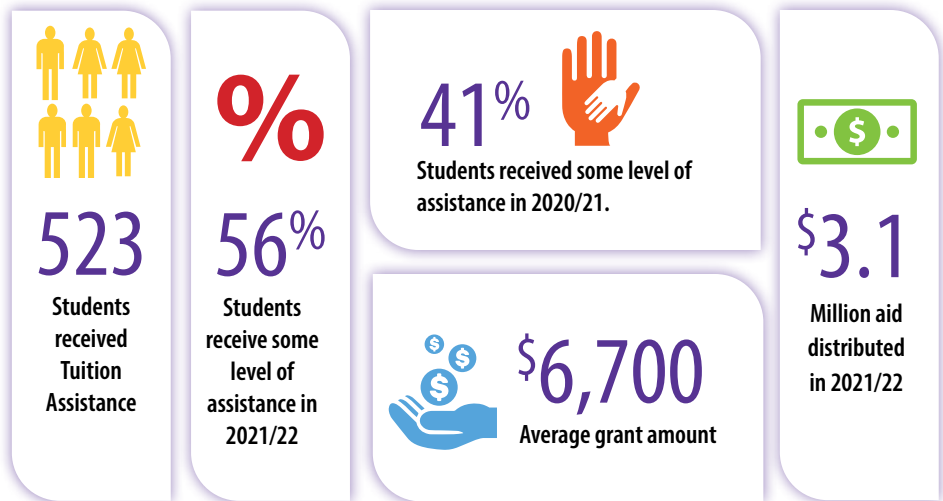
Joe Schmit invited Mike Hally and Joe Mauer to tell their story of the senior year lunch table. They met up back on campus in our cafeteria.



Scan the QR code to watch the KSTP story.



The Need for Financial Assistance is Growing



“The need for financial assistance is more pronounced than ever before. The changes in our economy are impacting so many of us.

To be certain — the financial support of our donors provides opportunities that simply would not be possible without our financial assistance program — it has always been vital, but the impact of our donor support these past few years has been critical and our school is immensely better because of it.”

MIKE DICKSON, CHAIR OF BOARD OF DIRECTORS

Cretin-Derham Hall’s ability to ensure that those families who value a CDH education can get a CDH education is directly tied to the generosity of our donors. As a community, we accomplish something quite distinctive with the fact that our donors take care of nearly 26% of our operating budget — which impacts each and every family by enabling one of the lowest tuition rates among all Catholic high schools in the state.

On top of that, CDH works diligently to provide need based tuition assistance to families who otherwise may not even be able to consider our school. The economy of the past few years has proven to be even more challenging than in previous years.

Mike Dickson, Chair of Board of Directors, explains that the need is growing and that our mission calls us to continue to be financially accessible. “The need for financial assistance is more pronounced than ever before. The changes in our economy are impacting so many of us.”

He stresses that our CDH community has the distinct advantage of a long tradition of generously stepping up to meet these needs and that same mission-focused philanthropy will continue to be the critical element in our ability to support our families and provide the excellence in education that is our hallmark.

“To be certain — the financial support of our donors provides life-changing opportunities that simply would not be possible without our generous financial assistance program — it has always been vital, but the impact of our donor support these past few years has been critical and our school is immensely better because of it!”

For more information on how to specifically support students and families in need, please contact Rob Bollinger, Vice President of Advancement at 651-696-3343 or rbollinger@c-dh.org.

Enter to Learn — Go Forth to Lead

CDH, a pathway to success

MARIA LEWIS '22

COLLEGE: Johns Hopkins University

PLANNING TO STUDY: Neuroscience/PreMed

While a student at CDH, Maria was involved in National Honor Society, Tennis, Theater, and volunteered at Memorial Blood Centers, Dorothy Day and Carondelet Village.

Honored as a Top 10 Student in the Class of 2022, Maria worked hard to earn top academic honors among her other notable accomplishments and she described the significant motivation she gained from the teachers/staff and fellow students at school. "CDH motivated me to achieve excellence through a supportive community in which everyone encouraged my dreams and ideas and allowed me to grow intellectually. It was a collaborative environment that encouraged me to pursue my own goals and uplift others while I was working toward my own aspirations."

She is excited to pursue those aspirations in college and beyond, and envisions a career in medicine with a potential focus on surgery, anesthesiology or pediatrics.

One of the main things she values about her years at CDH goes beyond being well-prepared to attain those goals, in fact, she believes CDH helped her develop a very important philosophy of life that will impact her far beyond her career.

"A lesson I learned at CDH is the importance of being a good person. Oftentimes, people don't like using the word 'good' because it lacks excitement, but in this context it means you don't need to be extraordinary to be a good person," she explained. "I learned that being a good person doesn't require extreme acts of kindness, but instead, it's about small actions that have a greater meaning."

We asked Maria to define excellence and she reflected that it centered on hard work and giving her best effort in all she tackled...and supporting others at the same time. "I think excellence is following your own path and lifting up others who are on different paths because excellence is also about helping one another."



FAVORITE QUOTE:

"I've learned that people will forget what you said, people will forget what you did, but people will never forget how you made them feel."

— MAYA ANGELOU



Why We Give



SCHOLARSHIP FUNDING

Jim Olsen '54 established the **Marcia Black Olsen Memorial Scholarship** in memory of his wife. His generosity ensures that current Raiders have the same opportunities that Jim and Marcia enjoyed during their time at Cretin and Holy Angels.

CDH has always meant a lot to me, since I was in the 5th grade, when I went to (then) Cretin to register with my 8th grade older brother. I could easily name several kindly Christian Brothers who encouraged my intellectual and leadership capabilities. I've returned frequently to see the faculty, students, staff who carry on, even improve the traditions of CDH.

I encourage others to give as well! I'm sure there are many other qualified, ambitious students who might need a little help. I wasn't looking necessarily for valedictorians, rather well qualified, good students who needed some help to continue their career at CDH. There are plenty more of those who could use support.

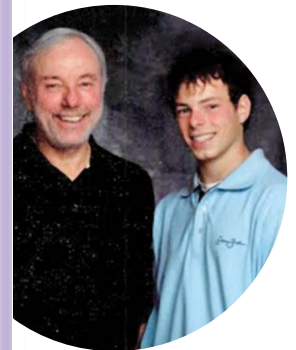
ENDOWMENT

Richard Dell, father of Chris Dell '07 who passed away in November 2020, established the **Christopher A. Dell '07 Memorial Scholarship** in his memory. The scholarship helps an incoming ninth-grader afford a CDH education.

Chris was an AP student at CDH, a Boy Scout, and an athlete. He volunteered at Union Gospel Mission and the Wilder Child Guidance Clinic. Some of Chris' happiest and most important times occurred during his four years at CDH. He was provided with an environment that allowed him to grow intellectually, socially, emotionally, and spiritually. He earned a bachelor's in kinesiology from the University of Wisconsin – Madison and worked at Regions Hospital in the surgical care department.

Richard established the endowment to ensure that Chris' legacy will live on and future students will have the opportunity to experience the same CDH education that Chris loved.

I believed that one of the best ways to honor our son's life was to establish an endowment in his name at CDH. His mother and I value and take some comfort in the fact that the endowment will remain in effect and continue to provide scholarships after our deaths. We are well aware of the high costs of providing a quality educational experience for students today. It is important to us that we are able to assist a student with these expenses.



GIVE DAY SUPPORT

Shannon and Joshua Cunningham, parents of Greta '23 and William '25, have seen their children thrive in some of CDH's many co-curriculars. Seeing first-hand the growth their kids have experienced in these activities, the Cunninghams were glad to support GiveCDH Day: Beyond the Books.

When we first researched CDH for high school, we were very impressed with both the rigor and the variety of classes offered. We were also excited by the many programs and clubs available to complement the academics. The experiences gained and the friendships made in the co-curricular offerings are equally important to the "books." It takes dedicated staff, interested students, and funding to offer all the clubs, activities, programs, and sports at CDH. We just wanted to offer a little bit of support to keep those programs alive and well for years to come.

I think being able to help secure the future of something that was important to you as a student or something that is valuable to your kids today is a wonderful way to demonstrate your appreciation for the gifts CDH helps to provide.



MEMORIAL GIFTS

The Gowan family (Ronda McCauley Gowan '82, Meghan Gowan Huss '03, Greg Gowan '08, Sam Gowan '15) made memorial gifts in honor of their husband and father, Dan Gowan '81, who passed away in July 2021.

CDH is a place that all five of us had the privilege to attend (Dan, Ronda, Meghan, Greg, Sam) which is something we have been able to bond and share stories over. CDH has provided a community for our small family, and we all have long-lasting friendships from our time there.

All of us have been provided opportunities and exposure to experiences we might not have had without CDH, including advanced education, volunteering, world travel, JROTC, sports/activities, and arts — especially photography and ceramics as family favorites. We feel well-rounded in our interests as individuals and continue to feel pulled towards serving the communities we are in, a foundation that was set at CDH as an expectation. We would love to be able to help others who want these opportunities to have them, regardless of their financial situations.

Dan was a firm believer that all children be provided a great educational opportunity, public or private, which is why he never had an issue paying taxes to support St. Paul Public Schools. However, if someone did want to join the CDH community, he was adamant that finances should never be a reason for someone to not be a part of CDH.

A hard financial situation can hit any family unexpectedly and education should not be a cause of financial stress. With our memorial gift, we hope to provide that security and support for other families. We encourage others to do so as well, as we have known people who have needed the help.



IRA CHARITABLE ROLLOVER

When John Erdos '54 was asked about giving via his IRA, he said simply, "It's just something I have to do. Like breathing."

It is a win-win proposition. A direct distribution to a qualified charity from my IRA is tax-free. It counts as part of my annual Minimum Required Distribution (yes, I'm over 72). And it goes to my favorite cause. What could be better?

I trust that it gives more young people the same opportunity for personal and intellectual growth that I enjoyed during my years at Cretin, and the benefit of a solid education with a Catholic perspective.

I encourage other people to give, too. Tell me a better way to spend your disposable income. The return is immeasurably rewarding. And I've never missed a dollar that I've given to CDH or any charitable, religious, or educational cause.



How to Support the Mission of Creton-Derham Hall

The commitment to providing an excellent, value-centered education, coupled with the need to provide affordable access to families of all economic levels, are the two most purposeful and mission-driven challenges facing CDH every day.

We must take prayerful action to preserve our school while maintaining the level of excellence and accessibility to a CDH education that is the hallmark of who we are. The legacy of our founders, the Sisters of St. Josephs of Carondelet and the Christian Brothers, continues to set the stage for how Creton-Derham Hall impacts lives and supports our students and families.

Annual Giving

Give Online

Make an immediate impact at Creton-Derham Hall with an online gift — class gift, annual giving, pledge fulfillment, memorial, etc. — today.

Matching Gifts

Each year, hundreds of corporations match gifts to Creton-Derham Hall through employee matching gift programs. Gifts can be matched by the employer of the donor or their spouse. To determine whether your company will match your charitable donation to CDH, contact your human resources office.

Give Stock

Securities gifts are an advantageous way of making a charitable contribution that may positively affect your financial, tax, and estate plans. Call Peggy Gartland Schafer '79 at 651-696-3318 to learn how to make your gift of stocks.

IRA Rollover

If you are 70½ years old or older, you can take advantage of a simple way to benefit Creton-Derham Hall and receive tax benefits in return. You can give any amount up to \$100,000 per year from your IRA directly to a qualified charity such as ours without having to pay income taxes on the money. This popular gift option is commonly called the IRA charitable rollover, but you may also see it referred to as a qualified charitable distribution, or QCD for short.



Planned Giving / Legacy Society

Planned Gifts

Planned Gifts options are including CDH in your will, or designating CDH as a beneficiary of a retirement account or insurance policy.

Endowments — Invest in Our Future

You have the power to help safeguard the future of Cretin-Derham Hall. How? By making an endowed gift. Your gift is an investment in our future, helping us grow and thrive for years to come.

To create an endowment, you give cash, securities, or other assets that we carefully invest to ensure it lasts forever. You could also make a gift in your will or estate plan, specifying that your gift be used to fund an endowment.

- A current gift of \$50,000 or more is needed to establish a named endowment at CDH.
- This endowment can be funded by a gift of cash, appreciated stock or an IRA rollover, or through a future gift in your estate plan.
- Endowment naming opportunities are often desired to honor an individual, family or business.
- An endowment agreement will be created to outline the designation of the endowed funds for scholarships or support for specific programs at CDH.

Read more at cretinderhamhall.planningyourlegacy.org, or scan this QR code to link directly to the web page.



For more information, please contact **Rob Bollinger**, Vice President of Advancement at 651-696-3343 or rbollinger@c-dh.org.

What is a Class Representative?

Class Representatives play a critical role in keeping each class update on the good news at Cretin-Derham Hall while helping their classmates stay connected. Class Reps engage their classmates, encourage giving, especially during the reunion years, attend events, and act as ambassadors for the school to help carry on the traditions that keep our school strong.

Started many years ago as a Cretin High School initiative, with many Derham Hall classes also having representatives, the program was expanded to officially include all Cretin-Derham Hall graduates.

See page 41 for the listing of your Class Representatives. You are encouraged to reach out to your Class Rep with any questions or ideas.

If you would like to join this important group of CDH ambassadors, please contact Megan Fee Smith '00 at 651-696-3389 or msmith@c-dh.org for more information.



Scan this QR code with your phone's camera to view our Advancement and Alumni webpage.



UPCOMING EVENTS

We anticipate a more event-filled 2022-23. Please check our Advancement and Alumni webpage for updated information. In the meantime, mark your calendars and plan to join us!

Community Awards Dinner



GiveCDH Day



Taste of CDH



REUNIONS

If your graduation year ends in a 3 or 8, and are interested in working on your class reunion, contact Peggy Gartland Schafer '79, pschafer@c-dh.org or 651-696-3318.

2021–2022 Board of Directors, Administration and Advancement Office

BOARD OF DIRECTORS

Michael Dickson '83, *Chair*
Katie Weinberger Stewart '87, *Past Chair*
Maria Wagner Reamer '82, *Vice-Chair*
Rick Long '79, *Treasurer*
Stefanie Phythian, *Secretary*

Dr. Mary Adrian
Lance Bonner '06
Carolyn Burns
Br. Francis Carr, FSC
Michael Cole '71
Anne Cullen Miller
Agnes Foley, CSJ
Thomas Gartland '75
Michael Jordan, AFSC
Kristi Kampmeyer
Scott Kier
Christine Ludwig, CSJ
Michael Salmen '83
Cathy Steffens, CSJ

Frank Miley, J.D. (*ex-officio*)
Mona Passman (*ex-officio*)
Chris Kaus, *Faculty Representative*
Martha Thornton Montzka '99,
Faculty Representative

ADMINISTRATION

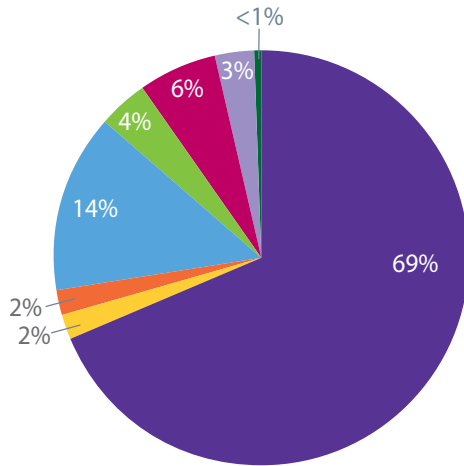
Frank Miley, J.D., *President*
Mona Passman, *Principal*
Amy Bellus '90, *Assistant Principal*

ADVANCEMENT OFFICE

Rob Bollinger,
Vice President for Advancement
Annie Broos,
*Director of Communication and
Public Relations*
Lisa Ford,
Advancement Database Manager
Peggy Gilligan,
Director of Annual Fund
Kristy McLeod,
Executive Administrative Assistant
Peggy Gartland Schafer '79,
Advancement and Alumni Associate
Megan Fee Smith '00,
Alumni Relations and Event Planner
Steve Walsh '85,
Major Gift Officer
Julie Wengelewski,
Digital Content Specialist
Tyler Zastrow,
Advancement Associate



2021–2022 Financial Highlights



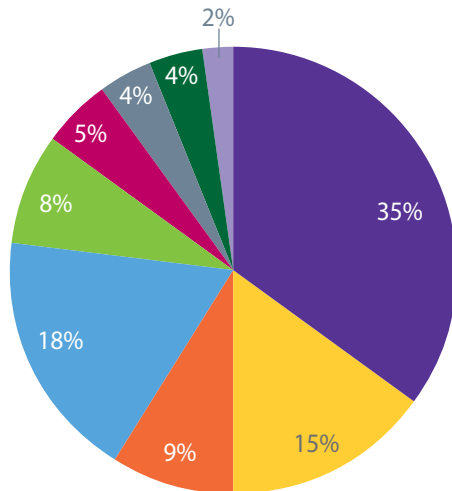
Sources of Funds

■ Tuition	\$ 14,124,471
■ Student Activities	433,634
■ Other Services	511,430

Advancement:

■ Annual Appeal	2,783,604
■ Contributions to Endowment	795,910
■ Transfer from Endowment for Tuition Assistance	1,278,000
■ Contributions for Capital Improvements	600,631
■ Event Revenue	72,135

TOTAL..... \$20,599,816



Uses of Funds

■ Instructional.....	\$ 7,146,030
■ Tuition Assistance/ Merit Scholarships	3,129,564
■ Student Activities	1,771,009
■ General & Administrative.....	3,643,318
■ Maintenance	1,736,254
■ Advancement	1,107,679
■ Debt Reduction and Interest	896,756
■ Transfer to Endowment	795,910
■ Transfer to Capital Improvements and to Tuition Assistance Fund for Future Use	373,296

TOTAL..... \$20,599,816



Cretin-Derham Hall Legacy Society

The Cretin Derham Hall Legacy Society has been established to honor those individuals who, through their generosity, have planned to invest in Cretin-Derham Hall through the capital preservation of our campus, an estate gift upon their death or have arranged a planned gift for Cretin Derham Hall's future use.

Estate Planned Gifts

Anonymous (5)
 Thomas Alexander '57†
 Roger Altman '38†
 Terry Anderson Alewine '59
 Edward Anglo '55
 Bernard Appel '30†
 Michael Arend '55†
 John '37† & Barbara Bacicht
 Brendan Bannigan '85 &
 Kathleen Just-Bannigan
 Paul Bard '38†
 Marilyn Adlin-Barnard, MD &
 Jerald M. Barnard, MD '66
 James '55 & Mary Beckert
 Donald '58 & Janet Berg
 Walter Blowers '46†
 Francis Boulger '30†
 George '33† & Murilla Boulger†
 Grace Brown†
 Morrie† & Patsy Buck Halvorsen '49
 Sam Buron '28†
 Robert '48† & Patricia Bussant
 Jerome Byrnes '31†
 Patricia Cain Kesser '43†
 Terrance, MD '56† &
 Jacque Girard Capistrant '57
 Helen Cardinal†
 James '68 & Janice Carey
 Most Rev. Robert Carlson '62
 Margaret Cernohous Ahrens '60
 William Chapin '54†
 Leo Chlebeck '33†
 Robert, MD '58 & Nancy Christensen
 Stephen, DDS '59 &
 Cathie Christensen
 Estate of Rose Ciresi
 Dorothy Clark
 J. Eugene Clifford '38† &
 Jane Keefe Clifford '41†
 Msgr. Patrick Coates '32†
 Rev. John Cody '38†
 Robert, MD & Bridgett Cook-Startz '77
 William '59† & Maureen Cosgriff
 Vincent Courtney '36†
 Nora Crowley '68
 Leah Curtint
 George Davis '28†
 Patrick '61† & Renee Daulton
 J. Hallam '54 & Mary Dawson
 Glen & Kirsten Dawson
 Richard Dell **
 Daniel '65 & Therese Shiely Diebel '66
 Msgr. Richard Doherty '22†
 Robert Donlan '47†
 James '69 & Christine Doody
 Shawn '76 & Kimberly Casey Doyle '75
 Daniel '45† & Terese Dufresne
 Paul Dwant

John Emerson '25†
 David '69 & Ann Sudheimer Ettel '63
 Thomas Fahey '47†
 Leo Fangel '42†
 John, MD '30† & Eleanor Farkast
 Patrick '55 & Arlene Finley
 Stanley, Jr. '64 & Suzanne Fay Fiorito
 Lyle J. Fischer '52†
 Kathleen Flynn Farness '27†
 Laudis Franckowiak '27†
 Thaddeus Franckowiak '28†
 Kenneth Freiberg†
 Eugene '48 & Mary Frost Frey '52†
 Richard, MD '40 & Dottie Dekko Frey
 Fred Gaertner†
 John '61 & Joyce Gardner†
 John Garrick '46†
 LTC Duane '55 & Donna† Geisen
 Robert Geisenheyner '39†
 Rev. William Gerlach '80
 Benjamin Geurs, MD '35†
 John Golden '32†
 Frederick '52† & Barbara Gorka
 Georgia Goswitz Loewe '73
 Thomas '64 &
 Kathleen Sullivan Goswitz '64†
 Marvin '45† & Judith Grundhoefer
 Wayne Haag '56
 Margaret Hannigan '26†
 A. James '52 & Shannon Hanzel
 A. Keith Hanzel '55
 Jeffrey & Martha Hanzel Johnson '87
 James '52† & Jean Hare
 Msgr. Ambrose Haydent
 Alfred '50† & Glenis Hentgest
 John D. Herrick '50
 William '40† & Anne Hickey Everett†
 Louis '42† & Geraldine Jacky†
 Mary Helen Johnson Koch '71
 Perry Johnson, Sr.†
 Randall, MD & Donna Johnson
 Frank Junghans '38†
 Charlie & Karen Kane Rambo '88
 Paul '33† & Betty Kanet
 William Keegan '43†
 Beatrice Kennedy Hokanson '25†
 Laurence '52 & Mary Suzanne Hager
 Kennedy '53†
 Paul '54 & Barbara Kerwin
 Elizabeth Keyes '74
 John Kingrey & Karen James
 Rev. George Kinney '55
 Charles & Kathleen Klett Riter '62
 Mildred Klost
 Lawrence Koeck '48†
 Audrey Koenigt
 Raymond Koleski '43†
 Michael '64 & Beverly Kratochvil
 Mark Krause '52†
 Fred Kueppers '22†

Margaret Kuzma†
 Frances & John Lamey, Jr., MD '61
 George '60 & Carol Lang
 James '68 & Nancy Lang
 Edward Lanpher '53†
 Clarence Larson '39†
 Philip Lavelle '36†
 Luanne Leibel**
 William Leibel '62†
 David '69 & Elizabeth Lentsch
 Richard '84 & Melody Lentsch
 Roger Lenzmeier '46†
 James '61 & Anne Lethert
 James Lund '81
 Willmar Madden '32†
 Grace Mahlberg†
 Rev. Richard Mahoney '49
 John Major '32†
 Catherine Maley, PhD '52†
 William '46† & Marjorie Manion†
 Edward Maranda '46
 Kenneth '45 & Bernice Markwardt†
 Gretchen Marquardt†
 Susan Marschall '68
 John Martin '63
 Roger '60 & Elizabeth Maulik
 Estate of Michael J. Maurer '51*
 Robert Mausser '51†
 Hon. Henry '45 &
 Genevieve Schweizer McCarr '48†
 Daniel McKasy '40†
 Kathleen McKee '74
 Michael '65 & Julie McKenny
 Thomas '56† & Barbara McLeod†
 Connie & John McMahan, III
 Daniel Meaney, Jr. '54†
 Jerome Mehsikomer '51†
 Barbara Memmer Schleck '51†
 Frank & Kathy Miley
 Sally Millett Rau '47
 Bernice Ann Mitscht
 Ronald, PhD '52 & Marilyn Mitsch
 Robert Moder '42†
 Gerald '56 & Julianne Monson
 Eugene '40 & Elin Morath†
 Michael Morgan, Sr. '79
 Eugene Morrill '52†
 Patrick, MD '59 & Maria Mottram
 Francis '40† & Margaret Moudry†
 Marion Murphy '23†
 Eugene Neumayer '45†
 James '66 & Mary Ellen Nichols
 Marie O'Brien Slawik†
 Carroll '63 & Jean Oby
 Patricia O'Connor '41†
 Bruce '58 & Catherine Odlaug
 John '57 & Cynthia O'Halloran
 Grace Overtont†
 Thomas Pacholl '44
 Nancy Parlin, PhD '52

William Patton '57†
 James & Mary B. Pearson Walsh '56†
 Pauline Peters†
 John Powell '52
 Richard Pranke '27†
 William '57 & Carol Queenan
 Kathleen Quitter
 Eugene '47† & Bernadine Ranconet
 John Reardon '51†
 A. Margaret Regnier '27†
 William '50 & Joan Reiling
 Br. William Rhody, FSC '45†
 Lorraine Ethel Ridget†
 Thomas Rogers '65†
 Raymond Rossini '66†
 Robert, LUTCF '59 & Kate Rugloski
 James '94 & Allisa Runyon
 James Salmen, MD '28†
 Marie Salment†
 Robert Salzer '43†
 Paul Sands '57†
 William '54† & Martha Saul
 Timothy, MD '64 & Kimberly Scanlan
 Gene, PhD '60 & Marilyn Scapanski†
 Russell '40† & Virginia Schaefer†
 John & Susan Schmid Morrison '57
 Donald Schoeller '57†
 Richard Schoenberger '43†
 Florence Schneider†
 Estate of William '45 &
 Dolores Schram
 William Schubert '23†
 Jerome Schwab '40†
 James '54 & Kieko Shrode
 Ruth Siedow†
 William Skally '60†
 Leo '38† & Sarann Slattery
 George Slipka '39†
 Martha Smeby†
 Lloyd '48† & Martha Smith
 C. Mildred Speranza '29†
 S. Joseph Speranza '34†
 James Spurrier '64
 Ethel Stegert
 John Stegert†
 John '43† & Nan Steger
 Mary Stegert
 Jerome Steiner '67†
 Gregory M. Stevens '70
 Gary Stoffel '63
 James, MD '62 & Judith Sturm
 Margaret Sudor†
 John Sullivan '46†
 Michael '63 & Jane Swenson
 Patrick & Jane Thiele
 Brian & Mary Lou Tierney Campion '55
 Patricia & Louis Tinucci, Jr. '46†
 M. James '57† & Susan Toner
 LeRoy Torkelson, Jr. '49†
 Michael '65 & Becky Tracy

* Represents bequests received this giving year | ** Represents new commitments received this giving year | † Represents deceased



Named Endowments

Cretin-Derham Hall is blessed to maintain over 100 endowed funds. The majority of the income from the endowment is designated for critical tuition assistance. The following is a list of these named endowments and includes in italics those generous donors who restricted their gift to an endowed fund between July 1, 2021 and June 30, 2022.

Francis, MD '49† & Nancy Trost
Carleton & Elizabeth Turbes
McCambridge '69
Robert '78 & Kathleen Uhler
Bernard '43† & Kathleen Vagnon†
David '78 & Duchie VanHoven
A. Marie Villafana '85
Henry Votel '32†
William '37† & Marion Votelt
Julius Waber '55†
John Waligora '28†
Robert '43† & Lois Wallnert
Arthur Walsh '58
Leonard Webber '34†
George Weiss '53†
John '70 &
Annette Mortinson Whaley '71
John '40† & Jeanette Whaley†
Joseph Wheeler '42†
James Wicker '60
Elizabeth Wier Olson '56
Michael Wier & Mary Pat McManus
James '79 & Jane Williams
Richard '46 & Dorothy Williams
Roland Williams '46†
Mark '87 &
Heidi Anderson Wingerd '87
Joseph† & Colleen Wirrert
Milton† & Dorothee Wolff†
Albert & Kathleen Woodward
James '39† & Julie Woulfe

Tuition Assistance Endowed Funds

John '49 and Janet Albers
Scholarship
Thomas P. Alexander '57 Scholarship
Erwin C. Alfonsus '52 Scholarship
Sister Mary Aloysius, CSJ Scholarship
David & Gail Galvani Bell '70
Edward '52 and Bernadette Altermatt
Scholarship in memory of
John Kinney
Bernard J. Appel '30 Scholarship
Asa Di Scholarship for Students of
American Indian Culture
*Jane Richards**
Basil & Susan Richards Owen '79
John '37 and George '36 Bacich
Scholarship
Robert '44 and Adrian Baril
Scholarship
Brother John Berchmans, FSC
Scholarship
Kevin Berry '81 Memorial Scholarship
James '53 & Mary Berry
Steven '80 & Kristin Messing
Colette M. Bisanz '26 Scholarship
Thomas & Susan Bisanz
John '66 &
Anne Bisanz Hannahan '69♦
James &
Susan Bisanz Nicholson '64
Elizabeth Bisanz Norqual '63
Walter J. Blowers '46 Scholarship in
honor of Eileen Murry
Michael (Bubs) '54 and Gerry Boland
Family Scholarship
Geraldine Boland
Margaret Boland
Francis W. '30 and Pauline C. Boulger
Scholarship
John B. Burke, Jr. '49 Memorial
Scholarship
Timothy & Mary Burke Lynch '81
Patricia A. and Robert M. Bussen '48
Scholarship
Michael J. and Grace L. Byrnes
Scholarship
Rowland R. (Bob) Campion '45
Scholarship

Carney Family Partnership
Scholarship
Robert F. and Margaret L. Christensen
Family Scholarship
Herbert '69 & Sheila Christensen
Robert, MD '58 &
Nancy Christensen
Christian Brothers Leadership
Scholarship
Christmas Fund
Sarann Slattery
Conzemius Endowment Fund for
Cretin-Derham Hall of the Catholic
Community Foundation
Cretin Alumni 100th Anniversary
Scholarship
Cretin Class of 1949 50th Anniversary
Scholarship
Cretin Class of 1954 Scholarship
Endowment
Lawrence '54 & Nancy Coleman
*John, PhD '54 & Nancy Erdos**
Robert '54 & Katherine Hamer
Thomas & Shari Hense
Peter Honsa '57 & Joanne Hense
John, DDS '54 & Rose Huntley
Lawrence '54 & Elizabeth Knaff
Peter Seghieri '54
John Taylor '54 & Leigh Dillard
Donald, PhD '54 &
Colleen Theissen
Cretin Class of 1963 40th Anniversary
Scholarship
Lawrence '63 & Norene Moser
Thomas '63 &
Linda Huna Troskey '67♦
Cretin Class of 1982 25th Anniversary
Scholarship
Christopher A. Dell '07 Memorial
Scholarship Endowment
Darlene Aliperto
Paul & Jean Bender
Jon Brumond
Patrick '71 & Deborah Connor
Richard Dell
Donald & Maureen Delsing
Judy & Don Johnson
Kevin & Mary Kelly
Daniel & Mary Joan Murray
Matthew '93 &
Michelle Nowaczewski
Leon & Elaine Oman
Robert Patient '65

William '69 & Annette Patient
Rudolph '73 & Jill Pitera
Kenneth & Mary Schaefer
Linnea Torstenson
Kent & Mary Verrill
Derham Hall Alumnae
Scholarship Trust
Derham Hall Carondelet
Leadership Endowment
Derham Hall Class of 1951
50th Anniversary Scholarship
Derham Hall Class of 1952
50th Anniversary Scholarship
Suzanne Kamman Flotten '52
Nancy Parlin, PhD '52
Derham Hall Class of 1957
50th Anniversary Scholarship
John '56 &
Mary Ann Campbell Kelly '57
Barbara Donahue Redpath '57
Jacque Girard Capistrant '57
Nancy Hagan Bock '57
Thomas '56 & Margaret
McCormick Kinney '57♦
Wayne &
Dorothy Schmitz Thalhuber '57
Derham Hall Class of 1976
25th Anniversary Scholarship
James E. Doherty Scholarship
Gilbert & Sylvia Engel Family
Scholarship
Timothy '72 &
Laurene Fonfara Engel '72♦
Richard R. Engler Scholarship
Eleanor and John Farkas '30
Scholarship
Joseph R. Finnegan '77 Memorial
Scholarship
John B. Frenzel Award
Thomas '75 and Barbara Gartland
Scholarship
Karen Gergen Thuente '82
Emergency Assistance
Ginther Family Scholarship
Mark Ginther '59
*Mary Alice Ginther**
Thomas '62 & Jeanne Ginther
Griep Family Scholarship
*John & Terry Griep**

* Represents Blessed Brother James Miller, FSC Lifetime Giving Society | ** Represents new commitments received this giving year | ♦ Represents Joint Alumni Household | † Represents deceased

Shannon Harris '10 Memorial Scholarship
Joseph '84 & Katherine Harris Participants of the Shannon Harris Golf Tournament Midwest Vending

Alfred '50 & Glenis Hentges Scholarship

Mary T. Hill Scholarship Trust

Brother Anselm Hoffmann, FSC Scholarship

Len Horyza Memorial Scholarship
Mary Horyza Miller '75

George Berg Ingebrand '44 and Addie McGuigan Ingebrand Scholarship

Sister Joan, CSJ Scholarship

Perry M. Johnson, Sr. Scholarship for Minority Students

William F. (Ted) Joyce '46 Scholarship

Paul '33 and Betty Kane Scholarship

Brother H. Bernard Lane, FSC Scholarship

Eugene '42† & Beverly Lentscht Scholarship Endowment Fund for Cretin-Derham Hall of the Catholic Community Foundation
Estate of Eugene & Beverly Lentsch

Lawrence and Olive Lenzmeier Memorial Scholarship

Roger R. Lenzmeier '46 Scholarship

Lord, the Work is Yours Scholarship

John E. Maeurer '48 Memorial Scholarship Endowment**
Thomas & Linda Heuer

Dr. Catherine A. Maley Academic Excellence Scholarship
*Estate of Catherine Maley, PhD '52**

Brother Alphonsus Martel, FSC Scholarship

Gregory Marzolf, Jr. '98 Scholarship
Anonymous (1) Robert & Mary Ellen Hennessey Patricia Marzolf Kendall & Debra Smith*

Joe '01 and Maddie Mauer '01 Scholarship

William and Veronica Maurer Scholarship

Thomas '56 and Barbara McLeod Endowment Fund**
Estate of Thomas '56 & Barbara McLeod

James R. McQuillan '50 Memorial Scholarship
Dan '73 & Lynne Davy O'Connell

Daniel J. Meaney, Jr. '54 Scholarship

Paul Molitor '74 Scholarship

Michael Morgan, Jr. '05 Memorial Scholarship
Michael Morgan, Sr. '79

Dr. Edmund J. Nightingale '59 Scholarship
Dr. Edmund J. Nightingale '59

Thomas J. Nikolai '51 Scholarship
*Thomas Nikolai '51**

André Nilles, CSJ/CSJ Scholarship in honor of the Sisters of St. Joseph

O'Gara Family Scholarship

Walter '68 & Nancy Olson Scholarship
Walter '68 & Nancy† Olson

Thomas J. Pacholl '44 Scholarship
*Thomas Pacholl '44**

Dick Paradise '63 Memorial Scholarship
Anthony '99 & Anna Scheuring James '68 & Jeannie Scheuring Joseph & Darcie Scheuring Lind '96*

Nancy M. Paul Scholarship
J. Thomas Paul

Gretchen Pollei Scholarship

Marie Elizabeth Pranke Memorial Scholarship

William '57 and Carol Queenan Family Scholarship

Robert L. Reiling '42 Memorial Scholarship

Brother William Rhody, FSC '45 Scholarship

Thomas '35 & Lone Salmen Memorial Scholarship
Richard '71 & Julie Aretz Salmen '76♦

Saul Family Scholarship
Sheila Calpin Martha Saul Tareef Shawa*

Drs. Tim '64 & Kim Scanlan Scholarship
Timothy, MD '64 & Kimberly Scanlan, PhD

William C. Schram '45 Scholarship Trust

Patrick and Alice Schriber Rogers '27 Scholarship

Thomas F. Shaughnessy '46 Scholarship
Margaret Shaughnessy

Patricia N. and James F. Shiely '36 Scholarship
James '94 & Alissa Runyon Robert '67 & Christine Shiely Runyon '67♦ Dianne & James Shiely, Jr. '64 Daniel '65 & Therese Shiely Diebel '66♦*

Ann Jane and Joseph L. Shiely, Jr. '32 Scholarship

Irvin and Mary Shrode Scholarship

William J. Skally '60 and William F. Skally Scholarship
Susanne Rohland Chad '93 & Shannon Skally James & Michelle Skally Doilney '87 Ron & Betty Weinke

Santo and Pauline Speranza Scholarship

C. Mildred Speranza '29 Scholarship Trust

John J. Steger Student Scholarship

Stevens VanGemert Wealth Management Scholarship Endowment
Anonymous (1) Gregory Stevens '70 The Van Gemert Family/Lon'68 & Michelle Van Gemert**

Russell J. Sudeith, Jr. '58 Scholarship

Traxler Family Scholarship
Anonymous (1) Mark Anfinson & Debra Maeurer Eric Bentley & Kelly de Rosier Patricia Berendt Captain Ken's Foods Thomas '69 & Sheila Casper Catholic Community Foundation Dorothy & Herbert Cook, Jr. '47 Thomas '82 & Lucy Cook Sullivan '81♦ Mary Davis Mark '77 & Lisa Dietsch James & Beth Enge Sarah Farley '77 Mary Ford Patricia Glass William '76 & Michele Windisch Gleason '76♦ John & Terry Griep Michael '77 & Kathleen Traxler Harrington '77♦ Thomas & Margaret Hietpas Endres '76 George '71 & Molly Hottinger Peter & Ana King Michael '76 & Patrice Kirchner Michael & Ellen Kuenster David Kuettel '77 & Megan Kavanaugh*

Michael & Joan Lawder Arlene Leyden Richard '79 & Patricia Arnold Long '79♦ Diane Mach '81 James & Laura McDonnell Boland '76 John '51 & Sandra McFarland Marie Medvec Richard & Pamela Newcome James '66 & Mary Ellen Nichols Kevin '76 & Mary Alice Ritt Noel '76♦ John '57 & Cynthia O'Halloran* Judith Ozbun Katie Reynolds Nicholas & Peggy Rolfes Mary Beth Rupp Robert & Michaelene Samec Shannon Shaughnessy Sarann Slattery Michael '65 & Lynn Smeby Lane & Maria Smith Gans '81 John Towle '76 Donald & Dolores† Traxler* Gregory Barth, MD & Maureen Traxler Barth '81 Michael '74 & Laurel Traxler Joseph & Teresa Traxler Lawder '84 Thomas '79 & Colleen Dietsch Traxler '84♦ David & Maria Wagner Reamer '82* Sara Wagner '81 & Peter Clements John '70 & Annette Mortinson Whaley '71*♦

Bill '45 and Terry Treacy Scholarship
George '71 & Molly Treacy Hottinger Daniel '70 & Mary Treacy O'Keefe Gregory & Emily Treacy Springer Lisa Springer '09 John & Bonnie Treacy Kevin, MD '73 & Ann Treacy

VanGemert Family Endowed Scholarship

George H. Veith, Jr. '39 Scholarship
Anonymous (1) Howard '71 & Phyllis Veith

The John '70 and Annette Whaley '71 Family Scholarship
Caitlin Whaley '06 & Charles Schultz John '70 & Annette Mortinson Whaley '71♦ Lauren Whaley '03 & Carolyn Wharton Megan Whaley '00 & Szymon Rakowicz The Whaley Foundation*

* Represents Blessed Brother James Miller, FSC Lifetime Giving Society | ** Represents new commitments received this giving year | ♦ Represents Joint Alumni Household | † Represents deceased

Named Endowments, continued

Thomas M. Whaley '78 Memorial
Scholarship

*Gregory, PhD '79 &
Kathryn Dillon Whaley '79*

Richard R. Williams '46 and Roland
C. Williams '46 Superior Cadet
Scholarship

Richard '46 & Dorothy Williams

Williams-Szyman Family Scholarship
Peter &

Catherine Williams Szyman '84

Leonard P. '35 & Mary C. Woessner
Scholarship

*Angela Samec Woessner '96 &
Shawn Woessner
Nathan Woessner '09
Thomas '80 & Michelle Woessner*

Milton C. and Dorothee I. Wolf
Scholarship

James B. Woulfe '39 Scholarship

Additional Endowed Funds (non scholarship)

Albers Fund

*Endowed Chair for Excellence
Instructional/Technological Fund
Capital Preservation Fund
Professional Staff/Faculty
Endowment*

Cretin Class of 1949 Faculty Awards

Brother Leonard Kromhout, FSC
Faculty Award

Mark Rumsey '68 Memorial

Fine Arts Endowment

*Anonymous (2)
Michael Bazal '73
Thomas Bibus '66
Alice Boland†
Bret Byfield
Tai Jin & Maria Chung
James Clarkin '61
John '58 & Diane Clarkin
Joseph Clarkin '63
Kathleen Culligan '73
Albert &
Elizabeth Culligan Maruggi '80
Joseph & Anne Dols
Barbara Fitzpatrick
Thomas & Susan Focke
Anita Giuliani
Anthony '95 & Heidi Giuliani
John Giuliani '58
Timothy '65 & Judy Giuliani
Kenneth '45 & Mary Herriges*
Jerry Hertel & Toni de Rosier
Mary Hynan
Thomas Jogodka & Linda Goss
Neel & Pegge Johnson*

Patricia Karel '75

Roberta Keller

Timothy & Dolly Kenney

Choon Koh

Joseph Alexander &

Bridget Manahan '74

James &

Laura McDonnell Boland '76

William Moore '61 & Mary Wagnert

Thomas '66 & Melinda Leahy

Nonnemacher '66♦

Ralph & Patricia Norusis

Daniel '70 & Mary Treacy O'Keefe

Charles & Ruth Ormiston

Judith Reger

Michael Rogers

Timothy, MD '66 &

Rosemarie Reger-Rumsey

Robert & Michaelene Samec

William & Virginia Satterstrom

Timothy & Catherine Scallen

David & Karen Schlaefer

Diane & Robert Stupka, Jr. '73

Tom Swain

Alanna Tabaka

Joan Utvik

Susan Voigt '74

Patrick Votel

Thomas & Barbara Votel

Wiessner, Inc.

The Rob Stupka '02 Memorial
Endowment Fund

John '74 & Helen Erb Barrett '74♦

Emily Colaizy '97

Thomas '67 & Kathleen Colaizy

Michael '70 &

Deborah Starr Donnelly '71♦

Bradley &

Margaret Gartland Schafer '79

James '75 & Nannette Hynes

Robert '74 & Pamela Keis

Kelly & Mary Michel

Adric Ryan '02

Zachary '94 & Jennifer Ryan

Diane & Robert Stupka, Jr. '73

Thomas '63 &

Linda Huna Troskey '67♦

* Represents Blessed Brother James Miller, FSC Lifetime Giving Society | ** Represents new commitments received this giving year | ♦ Represents Joint Alumni Household | † Represents deceased



Annual Named Scholarships

The following Named Scholarships in support of CDH students are funded on an Annual basis, and includes in italics those generous donors who restricted their gift to one of the scholarships between July 1, 2021 and June 30, 2022.

Tuition Assistance Funds

Class of 1992 Annual Scholarship

Scott Bjerketvedt '92
Alex & Julie Busse Polinsky '92
Anne Davini-Johnson '92
Matthew '92 & Shana Hockman
Steven Jackson Kozel '92
Christine Kustelski '92
Laura Meyer Tye '92
Tony '92 & Jodi Moline

Ancient Order of Hibernians

Annual Scholarship
*Ancient Order of Hibernians/
Division 4*

Fred Baker Annual Scholarships

Frederick Baker

Paige Bullis Memorial Scholarship

The J Foundation
Paula Karel Bullis '86 &
Rocklyn Bullis
Daniel '03 & Hayley Karel
Nicholas Karel '05
Samuel '09 & Helen Karel
*Steven '76 & Kathryn Karel**
Jon & Alyssa Karel Ylinen '07

Cretin Class of 1954 Annual

Scholarship
Michael '54 & Karen Ackerson
Frank Amato '54
Charles '54 & Jacqueline Bannitz
Paul '54 & Edna Berres
Estate of Paul '54 &
Carolyn Bigelbach
Robert Carrier '54
Alice & Thomas Dahl, Sr. '54
Robert Dube '54
*Michael Esch '54**
James Faricy '54
James Farrell '54
Rev. John Forliti '54
Dennis Gontarek '54
Robert '54 & Katherine Hamer
Jerome '54 & Joan Harper
Jerome Jensen '54
Lawrence '54 & Elizabeth Knaff
Michael '57 & Nonnie Leary
Larry Luck '54
John Regenold '54
Dante Rossini, Jr. '54
Ralph '54 & Jacqueline Roubal
Joseph '54 & Beatrice Sailer
Susan Schmid Morrison '57 &
*John Morrison**
Loren Stahmer '54
Robert '54 & Joan Wirtz

Flaherty Family Foundation

Scholarships
*Flaherty Family Foundation**
*John & Maureen Knapp**

Thomas '75 & Barbara Gartland

Annual Scholarships
*Thomas '75 & Barbara Gartland**

Lucille & Christian Haag Annual

Scholarships
*Wayne Haag '56**

Lasallian Merit-Based Scholarship

Shady A. Salamon '08

Lepsche Family Memorial

Annual Scholarship

Ryan & Kaylee McDonagh

Annual Scholarships

Kathryn McMahon Annual

Scholarship
Anonymous (1)
Mal '61 & Nancy Scanlan
Victor & Kathleen Scanlan Tschida

John '57 & Cynthia O'Halloran

Annual Scholarship
*John '57 & Cynthia O'Halloran**

James '54 & Marcia Black Olsen

Scholarships

Scanlan Family Scholarship

Daniel Ryan '16
William Ryan '18
Joseph '94 & Heather Scanlan
Mal '61 & Nancy Scanlan
Dan &
Christine Scanlan O'Brien '85
Daniel '87 &
Colleen Scanlan Ryan '87♦

John Schaller '71 Annual

JROTC Scholarships
*John Schaller '71**
Prof. David Schmauss '49

1957 Signum Fidei Tuition Fund

Anonymous (1)
Richard Callinan '61
James Clarkin '61
Jerome '61 & Deborah Filla
Gary, MD, '61 & Margaret Francis
Richard, PhD '61 &
Maxine Hammel
Peter Honsa '57 & Joanne Hense
Leonard Koehnen '61
Michael '57 & Nonnie Leary
John Mayer '61
Estate of Thomas '56 &
Barbara McLeod

Thomas Mich, PhD '61

William Moore '61 &
Mary Wagnert
Joanne & James Murphy, Jr. '57
Michael '57 & Jane Murphy
James Rebeck, Jr. '61
Michael '61 & Janet Smith
W. Jerome '61 &
Barbara Spitzmueller
William '61 & Elaine Treacy

Mike & Jane Swenson Annual

Scholarships

STEM Annual Scholarships

Norbert '60 &
*Mary Ellen Conzemius**
Adam Hendrick '04
Kathy Maurer Larson
Estate of Michael Maurer '51
Kelly & Mary Michel
John Phillips '65
Bradley Schafer &
Margaret Gartland Schafer '79
Patrick Witte '89
Col. Scott Witte '84

* Represents Blessed Brother James Miller, FSC Lifetime Giving Society | ♦ Represents Joint Alumni Household | † Represents deceased



Blessed Brother James Miller, FSC Lifetime Giving Society

Members of the Blessed Brother James Miller, FSC Lifetime Giving Society (formerly known as the Lifetime Member of the Good Samaritan Council) have distinguished themselves through their generous philanthropic support of Cretin-Derham Hall. These generous benefactors have each contributed \$100,000 or more over their lifetime in support of Cretin, Derham Hall or Cretin-Derham Hall.

Brothers of the Christian Schools
Sisters of St. Joseph of Carondelet
Anonymous (6)
John '66 & Catherine Agee
John '49† & Janet Albers
Estate of Tom Alexander '57
Alliss Educational Foundation
Archdiocese of Saint Paul & Minneapolis
John '37† & Barbara† Bacich
Rodney '55 & Marcia† Bailey
Edward '53† & Mimi Ouelette Bohrer '57†
Estate of Francis Boulger '30
George '33 & Murilla Boulger Trust
Estate of Sam J. Buron '28
Estate of Jerome Byrnes '31
Estate of Patricia Cain Kesser '43
Most Rev. Robert Carlson '62
George Carney '45†
Catholic Services Appeal Foundation
Coca-Cola Bottling Company
Michael '71 & Mary Cole
Paul Connolly '42†
Norbert '60 & Mary Ellen Conzemius
Hugh '77 & Melissa Cullen
Terry '58 & Katherine Cummings
Estate of George Davis '28
Michael '83 & Amy Dickson
Daniel '65 & Therese Shiely Diebel '66
Richard T. Doherty Trust '22
James '69 & Christine Doody
Richard & Bridget Engler
John, PhD '54 & Nancy Erdos
Michael '54 & Helent† Esch
H. James Farrell†
Participants of the Joseph R. Finnegan '77† Golf Tournament
Flaherty Family Foundation
William '74 & Terry Radford Fleischhacker '75
Estate of Kathleen Flynn Farness '27
Estate of Kenneth & Minna Freiberg
Eugene '48 & Mary Frost Frey '52†
Richard, MD '40 & Dottie Dekko Frey
Joseph & Laura Gagnon
Thomas '75 & Barbara Gartland
Mary Alice Ginther
Ted and Lorraine Glasrud Family Foundation
John & Terry Griep
Wayne Haag '56
Elaine Harmon Brown '37
Estate of Ambrose V. Hayden
Estate of Alfred '50 & Glenis Hentges
John Herrick '50
Kenneth '45 & Mary Herriges
Estate of William Hickey '40 & Anne Hickey Everett

Mary T. Hill Trust
Estate of Perry M. Johnson
Michael '58 & Judith Kammerer
Michael & Kristi Kampmeyer
Estate of Paul '33 & Betty Kane
Steven '76 & Kathryn Karel
John & Maureen Knapp
Robert '51 & Carolyn Koemptgen
Kopp Family Foundation
James '64† & Mary Kowalski
George '60 & Carol Lang
Estate of Philip Lavelle '36
Eugene '42† & Beverly† Lentsch
Thomas '68 & Deborah Lentsch
Estate of Roger Lenzmeier '46
Robert '66 and Ruth Link
Frank '41† & Margaret† Madden
Estate of Catherine Maley, PhD '52
The Mancini Family
Estate of Gretchen E. Marquardt
Br. Alphonsus Martel, FSC†
John & LeAnne Matthews Stewart '83
Joseph '01 & Madeline Bisanz Mauer '01
Estate of Michael '51 & Betty Maurer
Estate of Robert Mausser '51
Margaret Maykoski Roscher '68
Kevin & Teri McCloughan
Ryan '07 & Kaylee Keys McDonagh '08
Michael '65 & Julie McKenny
Estate of Thomas '56 & Barbara McLeod
Connie & John McMahon, III
John '51 & Margaret Ann Mahoney
McMahon '51
Participants of the J.R. McQuillan '50† Golf Tournament
Stephen '54 & Darlene† Metzger
Frank & Kathy Miley
Minnesota Independent School Forum
Estate of Bernice Ann Mitsch
Ronald, PhD '52 & Marilyn Mitsch
Paul '74 & Destini Molitor
John '61 & Sharon Mueller
Mercedest† & Edward† Murphy, Jr. '33
Catherine Murray '76
Stephen '63 & Jami Nachtsheim
Estate of Eugene Neumayer '45
Thomas '51 & Mary† Nikolai
Estate of André Nilles, CSJ
John '57 & Cynthia O'Halloran
Walter '68 & Nancy† Olson
Otto Bremer Foundation
Thomas Pacholl '44 & Rita Ottet†
Ouelette Foundation, Inc.
Scott Pollei
William '57 & Carol Queenan
Estate of Eugene '47 & Bernadine Rancone

William '50 & Joan Reiling
Eugene Richards '48†
Jane Richards
Michael Roscher, DDS '68
Ronald '62 & Patty Ryan
Estate of Robert Salzer '43
William '54† & Martha Saul
Timothy, MD '64 & Kimberly Scanlan, PhD
John Schaller '71
James '68 & Jeannie Scheuring
John & Susan Schmid Morrison '57
Estate of William '45 & Dolores Schram
Alice Schreiber Rogers '27†
Thomas Schreiber '54†
Ann† & Joseph† Shiely, Jr. '32
Georgann & Joseph Shiely, III '59
Gertrude R. Shiely Charitable Trust
James '54 & Kieko Shrode
Slawik Foundation Fund at the Catholic Community Foundation
Estate of George Slipka '39
Alfred '47† & Lucille† Smith
C. Mildred Speranza '29†
S. Joseph Speranza '34†
C. Mildred & S. Joseph Speranza Scholarship Trust
St. Joseph's Academy Alumnae Association
John '43† & Nan Steger
Leonard Steiner '67
Mary† & Russell Sudeith, Jr. '58
Frank '60† & Judith† Sunberg
Michael '63 & Jane Swenson
James '43† & Gloria Thorntont
Timothy '67 & Alice Thornton
Patricia & Louis† Tinucci, Jr. '46
Rose Totinot
Donald & Dolores† Traxler
The VanGemert Family
Elaine Villafana
Richard '58 & Susan Votel
David & Maria Wagner Reamer '82
Estate of John Waligora '28
Steven '85 & Deanna Walsh
William & Mary Weinberger Stewart '87
John '70 & Annette Mortinson Whaley '71
Thomas '86 & Angela Wicka
Estate of Roland Williams '46
Mark '87 & Heidi Anderson Wingerd '87
Estate of Milton & Dorothee Wolf
James '39† & Julie Woulfe

† Represents deceased



Annual Giving 2021–2022

We are pleased to acknowledge the following donors for their generosity and support of Cretin-Derham Hall through gifts made between July 1, 2021 and June 30, 2022.

GOOD SAMARITAN COUNCIL

\$25,000 or more

The Good Samaritan Council pays tribute to Cretin-Derham Hall's most generous donors. Like the biblical character referenced in the New Testament, these generous benefactors have surpassed all measures of stewardship by advancing the mission of our school.

George & Murilla Boulger Trust*
Catholic Community Foundation
Catholic Services Appeal Foundation
Norbert '60 & Mary Ellen Conzemius*
Richard T. Doherty Trust '22*
Flaherty Family Foundation
Thomas '75 & Barbara Gartland*
Francis, MD '49 & Helen Goswitz
John & Terry Griep*
Wayne Haag '56*
Linda and Tom Heuer through a donor-advised fund account at Schwab Charitable
Mary T. Hill Trust*
Michael & Kristi Kampmeyer*
Lawrence '54 & Elizabeth Knaff
George '60 & Carol Lang*
Thomas '68 & Deborah Lentsch*
Estate of Michael Maurer '51*
Kevin & Teri McCloughan*
Estate of Thomas '56 & Barbara McLeod
Connie & John McMahon, III*
Thomas Nikolai '51*
John '57 & Cynthia O'Halloran*
Walter '68 & Nancy Olson†*
Ouellette Foundation, Inc.
Jane Richards*
Martha Saul*
John Schaller '71*
James '54 & Kieko Shrode*
C. Mildred & S. Joseph Speranza Scholarship Trust*
Leonard Steiner '67*
Gregory Stevens '70
Katie Weinberger Stewart '87 & William Stewart*
Caitlin Whaley '06 & Charles Schultz John '70 & Annette Mortinson Whaley '70*♦
The John & Annette Whaley Family Foundation
Lauren Whaley '03 & Carolyn Wharton
Megan Whaley '00 & Szymon Rakowicz

BENEFACTORS COUNCIL

\$10,000 – \$24,999

The Benefactors Council recognizes those individuals who are committed to the availability of Catholic education for this and future generations of young men and women in our community.

Anonymous (1)(1*)
The Antonio V. Glassberg Educational Foundation
Rod and Marcia Bailey Family Fund of Fidelity Charitable
Frederick Baker
William & Mary Hogan-Bard
Thomas Bisanz
Michael '71 & Mary Cole*
Michael '83 & Amy Dickson*
Cherie Doyle Riesenberg '68 & Charles Riesenberg
Ted and Lorraine Glasrud Family Foundation
Estate of Marvin Grundhoefer '45
Margaret Gartland Schafer '79 & Bradley Schafer
Joseph '84 & Katherine Harris
Participants of the Shannon Harris Golf Tournament
Herregan Distributors, Inc.
Kenneth '45 & Mary Herriges*
Bill & Michelle Hren Donation Account at Schwab Charitable♦
James Koenig '72
Michael '57 & Nonnie Leary
Robert '66 and Ruth Link*
Richard '79 & Patricia Arnold Long '79♦
LeAnne Matthews Stewart '83 & John Stewart*
Frank & Kathy Miley*
Stephen '63 & Jami Nachtsheim*
Patrick '75 & Marianne Newell
Dr. Edmund J. Nightingale '59
Thomas Pacholl '44*
Rudy & Jill Pitera Charitable Fund of Fidelity Charitable Gift Fund
Thomas Quinn '47
Reiling Family Foundation
Cynthia Reiling Krebsbach '77 & Michael Krebsbach
Mary Beth Reiling Metz '80
William '50 & Joan Reiling*
Margaret Shaughnessy
Estate of Terrence Sullivan '56
Michael '63 & Jane Swenson*
Maria Wagner Reamer '82 & David Reamer*

FOUNDERS COUNCIL

\$5,000 – \$9,999

The Founders Council recognizes members of the Cretin-Derham Hall community who, through their extraordinary generosity, are helping to lay the foundation for continued excellence at Cretin-Derham Hall.

Anonymous (3)(1*)
John '66 & Catherine Agee*
Archdiocese of Saint Paul & Minneapolis
Estate of Paul & Carolyn Bigelbach
Captain Ken's Foods
Christian Brothers Cretin-Derham Hall
Mary Cullen McKeown & Thomas McKeown
C. Thomas '61 & Alison Enestvedt
Richard & Bridget Engler*
Michael Esch '54*
William '74 & Terry Radford Fleischhacker '75*♦
Jon-Paul '99 & Laura Gagne
Mary Alice Ginther*
Ruth Glarner
John Goswitz, MD '51
Charles Gregory '60
John Herrick '50*
Peter Honsa '57 & Joanne Hense
Michael '58 & Judith Kammerer*
Steven '76 & Kathryn Karel*
Mary Kerwin Partington '78 & Michael Partington
David Kiwus '84
Robert '51 & Carolyn Koemptgen*
Judy Korlath Hildman '66 & Thomas Hildman
The Kronschnabel Family
Lawrence '67 & Laura Laughlin
Anne Marie Lentsch Peltier '85 & Thomas Peltier
Bridget Manahan '74 & Joseph Alexander
John '51 & Margaret Ann Mahoney McMahon '51*♦
Microsoft Foundation
Mary Jane Miley
Nicholas Montelibano '12 & Alexa Klaus Montelibano '12♦
Maria Moores Watts '00 & Michael Watts
Richard and Annette Mullen Gift Trust at The American Gift Fund
Kevin '81 & Kay Murphy
Michael '57 & Jane Murphy
Shannon O'Leary '97 & Steve Jackson
John Peirson, III

Robert & Stefanie Phythian
Timothy, MD '64 & Kimberly Scanlan, PhD*
James '68 & Jeannie Scheuring*
Darcie Scheuring Lind '96 & Joseph Lind
Mary S. Schmid
St. Joseph's Academy Alumnae Association
Kathleen Steineman '94
George and Katharine Anne Stewart Charitable Gift Fund of the National Philanthropic Trust
Thomas '82 & Lucy Cook Sullivan '81♦
Wayne '58 & Sara Jane Thein
David W. Thomas Donor Advised Fund at Fidelity Charitable
Mike & Becky Tracy Family Fund at Fidelity Charitable
Donald & Dolores Traxler*
Michael '74 & Laurel Traxler
Thomas '79 & Colleen Dietsch Traxler '84♦
Robert '78 & Kathleen Uhler
United Way of Greater Milwaukee & Waukesha County
Richard Vogelgesang '48
Richard '60 & Kathleen Warren
Brian '98 & Jessica Whinnery
James Wicker Fund of the Catholic Community Foundation
James '93 & Jennifer Wieland
Catherine Williams Szyman '84 & Peter Szyman

GUARANTORS COUNCIL

\$2,500 – \$4,999

The Guarantors Council represents individuals whose level of support assures that a Catholic, value-based education will be afforded to the students of Cretin-Derham Hall.

Anonymous (2)
Michael '75 & Jan Aldrich
Bank of America Matching Gifts Program
Robert Beltz, Jr.'67
Ronald '61 & Terry Michel Bierbaum '62♦
J. Chris & Rita Brandt
Thomas '59 & Judith Buck
J. Richard '59 & Diane Casey
Michael Casey '62†
Robert, MD '58 & Nancy Christensen
Bridgette Cook-Startz '77 & Robert Startz, MD

* Represents Blessed Brother James Miller, FSC Lifetime Giving Society | ** Represents new commitments received this giving year | ♦ Represents Joint Alumni Household | † Represents deceased

Annual Giving 2021–2022, continued

Michael '97 & Valerie Johnson
Corrigan, MD '99♦
Terry '58 & Katherine Cummings*
The Ehrmantraut Family Fund of
Greater Horizons
John, PhD '54 & Nancy Erdos*
Gary, MD '61 & Margaret Francis
Richard, MD '40 & Dottie Dekko Frey*
Justine & Jeffrey Fritz
Gilligan Foundation
Jacque Girard Capistrant '57
Anthony '95 & Heidi Giuliani
James '50 & June Guldan
Kathryn Hart
Mary Hayes, PhD '54 & Don Kramer
John & Michelle Hickey
The Christopher and Ann Hilger
Charitable Fund of the
Saint Paul & Minnesota
Foundation
Gregory & Nancy Johnson
Kopp Family Foundation
Suzanne & Fred Kueppers, Jr. '50
Kathy Maurer Larson
The McNulty Family Charitable Fund
of Fidelity Charitable
Jane Metzger Von Haden '80 &
Anthony Von Haden
Robert '57 & Jeanne Novak
Kate O'Phelan Pletcher '97 &
Erik Pletcher
Joel & Jolene Owens
Nancy Parlin, PhD '52
Bryan, MD '99 &
Elizabeth Fastner Pershing '99♦
Bjorn '93 &
Tanya Scapanski Piltingsrud '93♦
Gregory '64 & Mary Pofel
Leslie & Joseph Reichert, Jr. '50
Jane Ruddy
Jan Runyon
Joseph '94 & Heather Scanlan
Mal '61 & Nancy Scanlan
Nicholas, MD & Erin Schneeman
Joseph & Rosemarie Schreier
William '58 & Judy Schubert
Mary Ann Schwab Wetoska '59 &
Robert Wetoska
Securian Foundation
Peter Seghieri '54
Sisters of St. Joseph of Carondelet
Joseph '96 & Sarah Skarda
Andrew '92 & Janell Soucheray
The J Foundation
Donald, PhD '54 & Colleen Theissen
Thrivent Financial
James, MD '68 &
Deborah Albers-Tierney
Michael Toner '58
John and Bonnie Treacy Family Fund
of the Catholic Community
Foundation
Mark Twombly '87
UBS Foundation
Kirk '68 & Susan Vadnais

John '64 & Mary Valerius
Gen. Joseph,(Ret) '76 & Michele Votel
Wells Fargo Foundation
Joseph, MD '55 &
Rachel Moga Westermeyer '56♦
The Richard and Debra Wicka
Charitable within the
Raymond James Charitable
Endowment Fund
Richard '46 & Dorothy Williams
Patrick Zenner '65

BISHOP CRETIN COUNCIL

\$1,000 – \$2,499

Bishop Joseph Cretin founded
a school in the basement of his
Cathedral in 1851. That school
became Cretin High School and now,
Cretin-Derham Hall. Committed
to the establishment of a Catholic
education, Bishop Cretin worked
tirelessly to develop a system that
taught the Catholic faith and had
solid academics.

Anonymous (9)
Darlene Aliperto
John Jr. '64 & Mary Althen
Ancient Order of Hibernians/
Division 4
Gregg Anderson '72
John '57 & Diane Andres
Roger '65 & Kathryn Anitzberger
Richard '69 & Leslie Arnold
Ayers & Riehm, P.A.
David Ayers '70
BAE Systems
Bailey Nurseries Foundation
Jerald, MD '66 &
Marilyn Adlin-Barnard, MD
John '74 & Helen Erb Barrett '74♦
The Robert and Margaret Simmet
Family Fund of the Catholic
Community Foundation
James Belland '68
Amy Bellus '90
James & Kathleen Bellus
Jeffrey '80 & Barbara Belting
Timothy '87 & Anastasia Benz
Marie Berendt Speltz '74 &
Joseph Speltz
John Biebel '61
George '62 & Margaret Bohrer
Kevin Bohrer '66
Robert & Lisa Bollinger
John Boncich
Robert '51 & Kathleen Borgstrom
Mark & Kelly Bruns
David '71 & Gail Wagner Busch '71♦
Katie Byrne Reeder '89 &
David Reeder
Michael '66 & Cathy Champion

Catherine Carroll-Hansen '00 &
Jon Hansen
A Charitable Grant Recommended by
Robert R. Cass and Mrs. Katherine
E. Cass from National
Philanthropic Trust
Paul Cassidy & Sarah Youngerman
Timothy '84 & Rebecca Caulfield
Stephen, DDS '59 & Cathie
Christensen
William '76 & Clare Williams Cizek '76♦
Robert D. and Mary M. Clarke Fund of
the Ayco Charitable Foundation
Community of Saints Regional
Catholic School
LTC Henry '62 & Marjorie Conroy
Dorothy & Herbert Cook, Jr. '47
Maureen Cosgriff
Timothy '77 & Virginia Coyle
Francis Coyne '50
Cretin Class of 1953
Sean '84 & Brenda Daly
Thomas '69 & Jeanne Del Fiacco
William '69 & Barbara DeMarco
Daniel '65 &
Therese Shiely Diebel '66*♦
Kristan and Dean Rennell Charitable
Fund of The U.S. Charitable
Gift Trust
Mary Dillon '83
James & Beverly Docherty
Patrick '78 & Susie Dolan
Donald & Cathy Donahue
Barbara Donahue Redpath '57
Lawrence Donohue '58
Ann Donovan McDonald '76
The Docherty Giving Fund of
Fidelity Charitable
Paul '02 & Jenna Dwyer
Ecolab Foundation
James '60 & Donna Ehrenberg
Timothy '72 &
Laurene Fonfara Engel '72♦
John Esch
Thomas Farnham, II '97
Mary Fleming
LTC Gordon Flygare, USAF(Ret) '56
Agnes Foley, CSJ
Forever Pets, Inc
Joseph & Jody Fox
Lisa Frenette '80 &
Donald Scheunemann
Eugene '48 & Mary Frost Frey '52†
Patrick '65 & Lois Gallagher
Gail Galvani Bell '70 & David Bell
John '57 & Judy Gardiner
Charles '01 &
Mairzy Russell Gattrell '03♦
Michael '69 & Peggy Gehlen
Richard & Kathryn Geist
Thomas & Ann Gent
Mark '82 & Dianne Gibbs
Steven Johnson & Margaret Gilligan
Brian & Ann Gleeson
Peter & Kathleen Gleich

Cecelia M. Goswitz Fund of the
Saint Paul & Minnesota
Foundation
Charles '62 & Mary Jo Groeller
John '80 & Liza Haas
Michael Haider, Jr. '61
John & Jill Hamburger
Robert '54 & Katherine Hamer
Richard, PhD '61 & Maxine Hammel
John '66 &
Anne Bisanz Hannahan '69♦
Robert Hanson '61
Clifford Haugen '62
Patricia Heffron
Michael Hermann '65
Highland Bank
Christopher Hill '86
Debora Hirsch '74
Diane Hirsch
Matthew '92 & Shana Hockman
Gerald & Sylvia Hoffstrom
Michael '96 &
Sara Weiberg Honsa '96♦
John Hoogesteger '63
Edward & Dianne Hughes
John Hughes '70
Todd Hughes '83
John, DDS '54 & Rose Huntley
Lawrence '61 & Laurie Jandrich
Theodore '71 &
Elizabeth Horan Jessen '73♦
JMB Charitable Fund of Fidelity
Charitable
Susan Johnson Kantor '72
Robert & Susan Johnson
Joan Jungkunz
Suzanne Kamman Flotten '52
Alyssa Karel Ylinen '07 & Jon Ylinen
Daniel '03 & Hayley Karel
Samuel '09 & Helen Karel
Vincent & Erin Keefe
David, EdD '59 &
Susan Shukay Keenan
Thomas '74 & Laurie Kelly
Kemps, LLC
Peter & Melissa Kestner
Michael '71 & Mary King
Rev. George Kinney '55
Mary Louise Klas
Patricia Klas Montalbano '85 &
James Montalbano
Daniel Kotasek & Lara Mowery
Thomas Kraus '86
Kevin & Cheryl Kuenster
KSA Charitable Trust of
Fidelity Charitable
Frances & John Lamey, Jr., MD '61
James Lennon '59
The Eugene† and Beverly† Lentsch
Scholarship Endowment Fund
for Cretin-Derham Hall at the
Catholic Community Foundation
Estate of Roger Lenzmeier '46*
Jeffrey '01 & Kara Delaney Lepley '01♦
Donald & Patricia Leseman

* Represents Blessed Brother James Miller, FSC Lifetime Giving Society | ** Represents new commitments received this giving year | ♦ Represents Joint Alumni Household | † Represents deceased

George '68 & Patricia Loban
 Richard '04 & Gaby Long
 Christine Ludwig, CSJ
 Timothy & Debra Macke
 William H. Madden Fund of
 Fidelity Charitable
 Patricia Marzolf
 Richard Matthews '70 & Cindy Quehl
 Anne McAlpin Lohmann '59 &
 John Lohmann
 Richard '50 & Regina McCarthy
 Bernard & Sheila McDonagh
 Hugh McElroy '56
 Noreen McKenna†
 James McMahan '59 & Peggy Meyer
 Robert McPartlin '67
 Sean & Heather McTeague
 The Medtronic Foundation
 John Messing '85
 Steven '80 & Kristin Messing
 Mark Miller & Anne Cullen Miller Fund
 of the Catholic Community
 Foundation
 James Minea
 Malachy & Barbara Mingo
 Ronald, PhD '52 & Marilyn Mitsch*
 Pamela Mix
 Thomas & Maureen Modl
 Michael Morgan, Sr. '79
 Jeffrey & Jodi Muetzel
 J. Finbar '88 & Kathleen Murphy
 Paul & Roberta Noack Murphy
 Daniel & Mary Joan Murray
 Maj Gen Thomas Murray '75
 Dana Niven Bruce '83 &
 Douglas Bruce
 Thomas & Sandra Novitzki
 Gary & Mary Nussbaum
 Peter & Laura Oberst
 Michael O'Brien '73
 Bruce '58 & Catherine Odlaug
 Emily O'Halloran '90
 Mary Beth O'Keefe Ebert '72 &
 Richard Ebert
 Douglas Olson & Charlene McEvoy
 James '74 & Susan Hietpas O'Neill '74♦
 John O'Reilly '61
 Ossmann Charitable Gift Fund of
 The U.S. Charitable Gift Trust
 Lucy Oswald
 Christopher & Martha Paar
 Mona Passman
 Mary B. Pearson Walsh '56† &
 James Walsh
 William Peters '55
 William Peterson '72
 Tamra Phillippi '81 & Thomas Heinen
 Frank Pilney, MD '52
 Mary Pohl, MD '72
 John Powell '52
 Peggy Purtell Hansen '85 &
 Tony Hansen
 Daniel '86 &
 Tammy Trenter Redpath '87♦

R. William '56 &
 Mary Ann Goodman Reilly '57♦
 Michael Rein '94 & Roxanne Nielsen
 John Reinartz, MD '81
 John '57 & Ellen Richardson
 Lawrence Rossini '56
 Jeanne Rossini Weir '76 &
 Thomas Weir
 Gregory Rotter '62
 H. William and Molly Park Family Fund
 of the Catholic Community
 Foundation
 James '94 & Alissa Runyon
 Matthew Runyon '92
 Shady A. Salamon '08
 Angela Samek Woessner '96 &
 Shawn Woessner
 Nancy Sampair
 Victor & Kathleen Scanlan Tschida
 Gene Scapanski, PhD '60
 Anthony '99 & Anna Scheuring
 Susan Schmid Morrison '57 &
 John Morrison*
 Dorothy Schmitz Thalhuber '57 &
 Wayne Thalhuber
 Kenneth '45 & Virginia Schoen
 Daniel '46 & Rita Sevenich
 Lawrence '65 & Marie Shomion
 Leigh Sitzmann Basha '78
 Michael '65 & Lynne Smeby
 Paul & Julie Solmon
 Brian Soltis & Maureen Sullivan
 Allen Standish '56
 Catherine Steffens, CSJ
 Michael '92 & Christina Steineman
 James '90 & Marcy Sticha
 Robert Tautges '71
 John Taylor '54 & Leigh Dillard
 Jeffrey '76 & Wendy Thames
 Janet & John Thames, Jr. '68
 Mark Thelemann & Lee Ann Herbert
 Patrick & Jane Thiele
 Mary Lou Tierney Campion '55 &
 Brian Campion
 Rachael & Marshall Tokheim Giving
 Fund at Fidelity Charitable
 Timothy Tracy '85
 Teresa Traxler Lawder '84 &
 Joseph Lawder
 William '61 & Elaine Treacy
 Thomas '63 & Linda Huna Troskey '67♦
 Robert Tryon '83
 Anthony '63 & Judith Tuk
 Carlton '58 & Sharon Paul Uselman '60
 The Van Gemert Family*/Lon '68 &
 Michelle Van Gemert*
 Howard '71 & Phyllis Veith
 Richard '58 & Susan Votel*
 Terrance '60 & Lynn Votel
 John & Michele Wackman
 John & Brenda Wagner
 Vincent '68 & Kathleen Walker
 Steven '85 & Deanna Walsh*
 Edward Waschbusch '55†

Laure Waschbusch, MD '84
 Janet Watson, PhD
 Eugene '74 & Nancy Weinreis
 Brian & Kathleen Wenger
 Steven & Karen Werden
 Gregory, PhD '79 &
 Kathryn Dillon Whaley '79♦
 Jean Whaley, ScD '76 &
 Brian Monahant
 Mary White Frey '76 & James Frey
 Judith White Jaffee '77
 Leo White '37
 Michael Wier & Mary Pat McManus
 Timothy '87 & Lisa Williams
 John '59 & Barbara Winters
 Donald, PhD '61 & Paula Wolkerstorfer
 Albert & Kathleen Woodward
 Thomas & May Woulfe
 Brian '93 &
 Tracy Ehrenberg Ziemann '94

Piper Sandler & Co
 Brenna Ryan Nicholson '76 &
 Kevin Nicholson
 Ed and Ann Schlueter Stewardship
 Fund of the Catholic Community
 Foundation
 Anthony Segale '67
 Michael '61 & Janet Smith
 Diane & Robert Stupka, Jr. '73
 Wallace Trudeau '64
 Katherine Wright Nelson '96 &
 Brent Nelson
 Youth Dance and Enrichment
 Aaron & Jennifer Zilka
 Matthew Znameroski '96

IRELAND COUNCIL

\$500 – \$749

The Ireland Council combines what was known as the Archbishop Ireland Society at Cretin High School and the Mother Seraphine Ireland Council at Derham Hall. John Ireland was the first Archbishop of St. Paul and a student at Bishop Cretin's school. Archbishop Ireland's sister, Mother Seraphine Ireland, was the Superior for the Sisters of St. Joseph of Carondelet at the time of Derham Hall's formation.

Anonymous (2)
 AbbVie Foundation
 James '53 & Evelyn Albrecht
 Chad & Jodie Anderson
 Michelle Andres '92
 Mark Anfinson & Debra Maeurer
 Kate Arend Burda '86 & Andrew Burda
 Joan Aretz Hedin '74
 Keith '98 & Lawreen Arnold
 Gordon & Josephine Bailey
 Charles '54 & Jacqueline Bannitz
 Timothy '80 &
 Monica Windisch Barrett '79♦
 Gregory Baumberger & Sarah Aesoph
 James Becker '55
 James '53 & Mary Berry
 Best Buy PAC Match Program
 Ellen Biales '87
 Lee Bissonette '77
 The Boeing Company
 Michael Boland '82
 Thomas '70 & Joanne Boyer
 Gerald & Catherine Brennan
 Kevin Buckley '87
 Thomas '02 & Trisha Delaney Burt '03♦
 Melissa Bushee Seebeck '87 &
 Douglas Seebeck
 John '59 & Betty Lou Cardinal
 Daniel & Merrilee Carlson
 Br. Francis Carr, FSC
 Timothy & Mary Carroll
 Christian Brothers-Midwest Province

PRESIDENTS COUNCIL

\$750 – \$999

The Presidents Council honors the religious lay men and women administrators, who, throughout the school's history, have provided leadership, commitment, and vision.

Anonymous (2)
 Mary Pat Anderson Maier '64 &
 Helmut Maier
 Mark & Kathleen Buck
 Kevin & Vicky Carey
 Margaret Conlin-Duevel '76 &
 James Duevel
 Patrick '71 & Deborah Connor
 Steven & Karen Crouch
 Daniel '86 & Peggy Cummings
 Jerome & Joan Downes
 Shawn '76 & Kimberly Casey Doyle '75
 Barbara Fitzpatrick
 Mark Flaten '81
 John Gardner '61
 Estate of Robert Geisenheyner '39
 Thomas '62 & Jeanne Ginther
 Stephen & Mary Hansen
 Yvonne Hughes
 Michael Jordan, AFSC
 Suzi Koemptgen Family Giving Fund
 of Fidelity Charitable
 William Kronschnabel '67
 Douglas Laska '60
 Estate of Catherine Maley, PhD '52
 Kenneth Markwardt '45
 Andrew McColley '02
 Kelly & Mary Michel
 Jane Miley
 Joseph '11 & Sara Miley
 James '68 & Colleen Nelson
 William (Joe) '62 & Mary O'Neil
 Brandon Pierce '97 &
 Laura Lapczynski

* Represents Blessed Brother James Miller, FSC Lifetime Giving Society | ** Represents new commitments received this giving year | ♦ Represents Joint Alumni Household | † Represents deceased

Annual Giving 2021–2022, continued

John & Catherine Clemency
 Jerome Colburn '65
 Lawrence, MD & Rosellen Condon
 Timothy '79 & Leslie Connelly
 Patrick '91 & Kelly Connolly
 Michael & Lynn Convery
 Kathleen Conway Russell '74 &
 Terrance Russell
 Richard Copeland, Sr. '49
 Molly Cotroneo Hickey '05 &
 Bill Hickey
 Cretin Class of 1976
 Patricia Cullen
 Charles Cunningham, Jr. '55
 Alicia Dahl Montojo '78 &
 Wilfrido Montojo
 LTC Steven, (Ret) & Judi Dahlgren
 Mary & Eugene Dario, Jr. '60
 Deluxe Corporation Foundation
 Michael '70 &
 Deborah Starr Donnelly '71♦
 Dru and Ann Drake of the
 U.S. Charitable Gift Trust
 Patrick & Margaret Dunham
 Robert & Mauri Evans
 John Ewen '64
 Maureen Fitzpatrick '79 &
 Douglas Armstrong
 Lori Flaherty Leslie '77 & Dennis Leslie
 Dominic Fleetham '99
 Richard Forliti '67
 Ann Marie Foss
 Gigi Fourre' Schumacher '70
 Jerry '55 & Patricia Friedmann
 Dennis '54 & Dorothy Gagnier
 Charles '69 & Kathleen Gitzen
 Richard '69 & Rita Laramy Glynn '72♦
 GoldCom
 Daniel '13 & Michaela Goldenstein
 Jason '94 & Anne Hable
 Eugina Haider
 Richard Harren '61
 Lawrence R. Haugh '58
 Juliann Heinz '86
 Thomas & Shari Hense
 Highland Catholic Home &
 School Assoc.
 Michael Holland '59
 David '66 &
 Susan McKoskey Howard '66♦
 James '75 & Nannette Hynes
 Infinite Health Collaborative, P.A.
 Elizabeth Johnson Hult '71 &
 Robert Hult
 Paula Karel Bullis '86 & Rocklyn Bullis
 Nicholas Karel '05
 Richard '66 & Elizabeth Karel
 Chad Kasper '93
 Michael Keis '05
 Kevin & Mary Kelly
 Mrs. Marjorie Kirk
 Jerome '59 & Kristi Klukas
 Brian '00 & Erin Knutson
 James Korman '59
 Mark '82 & Bonnie Korman

Richard '84 & Cynthia Korman
 L. Daniel '48 & Joyce Kuechenmeister
 Robert Kueppers '60
 William Kuhns '61
 The Laura & Tom Kuntz Account
 within the Raymond James
 Charitable Endowment Fund
 Richard '57 & Beverly Lachenmayer
 John Lamey, III '94
 James '68 & Nancy Lang
 Carol Lanners Hockert '77
 Erin Lee Muckerheide '98 &
 Mark Muckerheide
 John Lentsch '63
 Michele Lentsch Kleason '79 &
 Robert Kleason
 Steven '65 & Linda Lentsch
 Rose Lethert
 Arlene Leyden
 Joseph & Margaret Mansur
 John Martin '63
 Patrick, DDS '59 & Karin Mascia
 Lt. Col John Mazzitello '88
 Kathleen & John McCall, Jr. '67
 James McDonnell '66
 Shannon McDonough '88
 Thomas & Marianne McDonough
 Terrence McGibbon '60
 John '08 & Meg McGuire
 Nora McGuire '73
 Timothy '77 & Mary Jane McKasy
 Patrick '68 & Roberta McMahon
 Joseph, PhD '76 & Maria Metzger
 Laura Meyer Tye '92
 Margaret Meyers Neurer '68
 Terrence '58 & Rita Miller
 Mary Beth Mitsch Carnicom '74 &
 Jon Todd Carnicom
 James '63 & Mary Mollner
 Mary Kay Mooney McJilton '56
 William Moore '61 & Mary Wagner†
 Janet Muellerleile
 Randy & Pam Muetzel
 Steve & Tricia Muetzel
 Erin Mullan-Towns '02
 Robert Murphy
 Scott Murray, DC '72
 Thomas '97 & Anne Murray
 Mario & Heather Nardi
 Shirley Nelsen
 Anthony '81 &
 Mary Mazzitello Nemo '80♦
 Angela Nichols
 James '66 & Mary Ellen Nichols
 The Noonan Hoffmann Family
 Charitable Fund at Vanguard
 Charitable
 Daniel Norman '59
 Gary '53 & Virginia Norstrem
 Matthew '93 & Michelle Nowaczewski
 Ian O'Connell '97
 Thomas '65 & Susan O'Connell
 Robert Patient '65
 J. Thomas Paul
 William '69 & Michele Porter

William '57 & Carol Queenan*
 James Rebeck, Jr. '61
 Darwin & Geraldine Reedy
 Michael '64 and Maureen Ridge
 Eileen Roberts
 Nicholas & Peggy Rolfes
 Romens/Keane Charitable Account
 at Schwab Charitable
 Br. James Roszak, FSC '52
 Timothy, MD '66 &
 Rosemarie Reger-Rumsey
 Daniel '87 &
 Colleen Scanlan Ryan '87♦
 Paul '74 & Julia Ryan
 Anne Sampair Moreland '96 &
 Jake Moreland
 Michael '64 & Charlotte Sarafolean
 Stephen Sawyer '69
 Dr. Thomas Schaaf '75
 Mark '71 &
 Denise Barnett Schrantz '73♦
 James Schwab '72
 Joseph '57 & Maryann Schwebel
 Ted '67 & Linda Selbitschka
 Tareef Shawa
 Gina and Bernie Armada Family
 Foundation of The U.S.
 Charitable Gift Trust
 Dianne & James Shiely, Jr. '64
 Robert Shier '68
 Richard '52 & Bonita Simmons
 Chad '93 & Shannon Skally
 Michelle Skally Doilney '87 &
 James Doilney
 Peter '84 & Molly Skinner
 Skinner's Pub, Inc.
 F. Michael Skweres '66
 Patrick '69 & Kim Smith
 Joseph & Jennifer Soucheray
 Lisa Springer '09
 Capt. Heidemarie Stefanyshyn-Piper '80
 & Glenn Piper
 Nan Steger
 Michael & Julie Strommen
 Mary & Frederick Suhler, Jr. '62
 TCA AOG
 John Thuente &
 Nora Byrne-Fitzpatrick
 TIAA
 Robert, MD '67 & Judith Peck Tierney
 The Thomas P. Tracy Family Charitable
 Account at Schwab Charitable
 Maureen Traxler Barth '81 &
 Gregory Barth, MD
 David & Dathleen Tregilgas Family
 Fund of Fidelity Charitable
 Jacqueline Tschida Punch '77
 Richard Tschida '59
 Elizabeth Tuohy '96 & Jarod Anderson
 U.S. Bancorp Foundation
 Lt. Cmdr. Andrew '93 &
 Nicole Urbanski
 Timothy '63 & Mary Valento
 Lt. Col Phillip Ventura, USAF '00 &
 Brigid Ventura

John '57 & Mary Vogelgesang
 Mark Wallin '01
 William Walsh, MD '55
 Daniel & Jennie Weber
 Wells Fargo Educational
 Matching Gift Program
 James '79 & Jane Williams
 Michael & Constance Van Hoven
 Wittek Charitable Fund of
 Schwab Charitable
 Thomas '80 & Michelle Woessner
 Shawn & Martha Wood

* Represents Blessed Brother James Miller, FSC Lifetime Giving Society | ** Represents new commitments received this giving year | ♦ Represents Joint Alumni Household | † Represents deceased

HUGH DERHAM COUNCIL

\$250 – \$499

Named for the man whose gift of \$25,000 made Derham Hall a reality in 1905. Members of the council that bear his name lend credence to his belief in quality, Catholic education that was so much a part of Derham Hall and is preserved today at Cretin-Derham Hall.

Anonymous (1)
Lee & Kay Aaonsen
Frederick Ackermann '70
Michael '54 & Karen Ackerson
Thomas '60 & Lois Albrecht
Ameriprise Financial
Roger & Dorothy Anderson
Stephen Archer
Timothy Arland '77
Everett Arnold '66
Phillip Arnold '04
Steven & Simona Awiszus
Thomas & Mary Pat Bailey
Joseph & Christiane Bartels
Thomas Bauer '51
Kathryn Beatty
Dan & Stephanie Beaudette
Benjamin '03 &
Anna Ayotte Beery '03♦
Rebecca Beltz '94
Gerald Bender '62
Richard, PhD '50 & Dolores Berquist
Scott Bjerketvedt '92
Jamie Blaeser Nikolai '99 &
James Nikolai
Deborah Bohn, MD &
Mark Simenstad
David '64 & Elaine Borsheim
Barry '00 & Rosalinda Brandt
Daniel & Angela Broos
David '65 & Denise Bruggemann
Kathryn Buckley '82
David '55 & Judith Burns
James R. Burt
Julie Busse Polinsky '92 &
Alex Polinsky
Michael Callinan '66
James '68 & Janice Carey
Diane Caruso
Glenn & Rachael Caruso
Joseph '65 & Karen Casey
Kerry Casey '79 & Kelly Trewartha
Richard Casey '62
Susan Cavanagh
James Clarkin '61
Benjamin Clasen '96 & Amy Marc
Patty Clemons Jones '80 &
Dennis Jones
Thomas '67 & Kathleen Colaizy
Lawrence '54 & Nancy Coleman
Theodore Collins '50 & Jean Dick
John '69 & Sandy Conway
Br. Patrick Conway, FSC '71
Thomas Cook '65
Michael Costello '79
Stephen & Joan Costello, MD
James '83 & Margaret Cownie
Julie Cox
Cretin Class Of 1971
Nora Crowley '68
James '60 & Gloria Cullen
Anna Czech Carlson '09 &
Paul Carlson
Daniel '51 & Catherine Daly
James '72 & Nancy Daly
John & Marilyn Dan
Davanni's Pizza & Hot Hoagies
Anne Davini-Johnson '92
Ernest '53 & Catherine Dawson
Paul Delaney '89
Richard Dell
Dean & Janet Derfus
Derham Hall Class of 1971
Peter & Sara Discenza
Mary Kay Dolan
Rev. John Donahue '52
Terrence Jr., PhD '65 &
Mary Donohue
Joan Dorle Dolan '49
Michael Drake '70
Drivers Education Inc.
Donald Dupaul '51
William '66 & Claudia Engeland
Derek Engler '92 & Nina Severini
William '61 & Catherine Englund
Thomas Enright '65
William Fairbanks '65
Michael '76 & Laura Fecht
William Fiedler & Ruth Martinez
Tallie Fitzgerald & Jessica Olson
Kathleen Fitzsimmons Prettyman '51
Timothy Flesch '06
Kathleen Flynn McEachran '60
Margaret France
Lucy Frey Power '73
Ann Marie Froehle
Peter & Debra Gagnon
Stephen & Amy Geiger
Samantha Gemberling
Thomas '68 & Boey
Monroe Gergen '71♦
Hannah Gikling Larson '07 &
Benjamin Larson
James '64 & Pamela Moody-Ginther
Mark Ginther '59
Patrick '03 & Rosemary Girouard
Timothy '65 & Judy Giuliani
Anne Gleich '13
Paul '76 & Mary Sue Godfrey
Trista Gorman McCormick '91
Thomas '64 &
Kathleen Sullivan Goswitz '64♦
Cynthia Grams Bond '83
David, MD '66 & Teresa Groppoli
Mary Guldán Rugloski '79 &
Patrick Rugloski
John & Amy Guttery
Joseph '95 & Meghan Hahs
Buzz '94 & Sara Hannahan
Samuel & Cindy Hanson
Quinn Hanzel
Michael '77 &
Kathleen Traxler Harrington '77♦

Michael '79 & Seanne Harris
Kelly & Kimberly Harrison
Angela Haugh
Cynthia Haugh '85
Benjamin '07 & Allison Hause
Anna Heinz
Joseph '59 &
Roberta Wappel Hering '60♦
Juanita Hermann
Christopher Hill '01 &
Anne Romens '02♦
Stephen Hinze '70 &
Margaret Donohue
James '84 &
Julie Yoswa Hoffman '84♦
James & Pamela Holm
Roger Honebrink '43
Kathryn Hopkins
Thomas Horak, PhD '61
Howard Pulley Pro-Am Leagues
Thomas Hughes '67
Daniel '64 & Joan Huneke
Jeanne Inserra Dolinsky '82 &
Jerome Dolinsky
Susan Johnson Barry '74 &
Kevin Barry
Michael '06 & Ashley Johnson
Paul & Cleo Johnson
Randall, MD & Donna Johnson
Mary Kaye Jones '76
Paul Judge '60
John & Jill Kachmarek
Gerald Kackman '59
Karen Kane Rambo '88 &
Charlie Rambo
Robert Kane
Brennan '02 & Melinda Karalus
Loretta Kelly
Mary Jo Kelly '60
Laurence Kennedy '52
SFC William & Carolyn Keuhn
Scott Kier
Matthew Kilcoyne
Gordon '60 &
Kathleen Hamm Kill '65♦
Michael '76 & Patrice Kirchner
Joe & Rachel Klein
James & Mary Kleinberg
Kathleen Klett Riter '62
William '47 & Marlene Klett
April & Jerry Kline, Jr. '93
Leonard Koehnen '61
Helen Koenig McDonough '82 &
Thomas McDonough
Robert Kolasa, MD '68 &
Lois Lenarz, MD
Kevin & Wendy Koopmeiners
Terence Kriha '62
Peter & Kym Kronschnabel
Susanne Kueppers
Daniel Kumerow
John '11 & Nicole Kumerow
John Kunik '72
Christine Kustelski '92
LTC John Lang, USA(Ret) '58
Geoffrey '72 & Stephanie Laramy
Jerry & Laura Larson
William Lauer '81
Timothy Laughlin '90 &
Tina Zugschwert Laughlin
D. J. Leary '54† & Linda Wilson
Alexie Leitner '99
Paul '62 & Pamela LeMay
Chad & Mary Lemmons
Gretchen Lennon '80
Richard '84 & Melody Lentsch
Sarah & Sean Lentz
Mary Lessard
Mary Lindberg Beal '72 & Robert Beal
Karen & Vincent Long, Jr. '62
Terese Lynch '75 & Timothy Johnson
James & Marlaine Maahs
Timothy & Shannon Madden
Andrew '93 &
Jessica Lindstedt Madigan '93♦
M. Jeanne Madigan '52
Patrick Maguire & Meg Shih Hua Sun
Anne Malloy Wolff '93 & Jason Wolff
Thomas & Sheila Malone-Povolny
John '83 & Minnie Mancini
Bradley & Joyce Manor
Thomas & Lezlie Marek
Thomas '69 & Penny Margl
Mary Markley
Francis Marzitelli '63
Martha Maudsley Sauter '60
William, Jr. '79 &
Theresa Gregory McClellan '79♦
Timothy & Diana McGrath
Jerry '75 & Susan McGraw
Jane McGroarty Schneider '70
Matthew McGuire '02
David '67 & Kathleen McManus
Rebecca Medellin '88
Marguerite Melin Senninger '56 &
Edward Senninger
Paul & Jill Meskan
Timothy Miles '72
Timothy Miley '09
John '67 & Susan Mollner
Martin '65 & Joyce Moody
Sean '84 & Shari Mooney
Lawrence '63 & Norene Moser
William & Cynthia Mullan
Bridget Murphy
Marybeth Murphy Garrett '77 &
Daniel Garrett
Joanne & James Murphy, Jr. '57
Timothy Murphy '77
Elizabeth Murray Hamel '72 &
Mark Hamel
Christopher, PhD '69 &
Maureen Coonan Nachtsheim '69♦
Joseph Neuenfeldt '98
Matthew Nichols '81
Kevin '76 &
Mary Alice Ritt Noel '76♦
Ralph & Patricia Norusis
Forrest & Marit Nowlin
Michael Nuebel '59
Colin O'Brien '11
Carroll '63 & Jean Oby
Dan '73 & Lynne Davy O'Connell
Douglas Olchefske '87
John '67 & Margaret Olin
Thomas '60 & Judith Olin

* Represents Blessed Brother James Miller, FSC Lifetime Giving Society | ** Represents new commitments received this giving year | ♦ Represents Joint Alumni Household | † Represents deceased

Annual Giving 2021–2022, continued

Leon & Elaine Oman
Oracle
Nicholas '59 & Linda Paduano
David† & Patricia Peterson
Katherine Peterson Haney '88 &
Matthew Haney
Joe & Patsy Piazza
Denis '57 & Judith Plankers
Jeffrey Postlewaite '60
James Pritchard
John '73 & Jeanette Purcell
Chad & Annmarie Radenbaugh
Bradley & Kathleen Randolph
Michael Rasmussen
Patrick & Gerilynn Reardon
Dianna Reed '89 & Eric Henly
Mark '75 & Beth Ann Richter
Susanne Rohland
Kevin Roth '76
Greg Rudisill & Janet Schaffer
Zachary '94 & Jennifer Ryan
Robert '71 & Kristi Salisbury
Paul Salmen, MD '71
Phyllis Salmen
Richard '71 &
Julie Aretz Salmen '76♦
Robert & Michaelene Samec
David Samuelson '84 &
Gina Mancini-Samuelson, PhD '86♦
James '52 & Margaret Sankovitz
Michael Sarafolean
Robert & Mary Satterstrom
Christine Scanlan O'Brien '85 &
Dan O'Brien
Kenneth Schroeffer '65
James '63 & Cheryl Schubert
Robert, MD '64 & Patricia Schubert
Christopher '93 & Dawn Schwab
Matthew Sevenich '09
Kurri Sewich & Melissa Voicik
Georgann & Joseph Shiely, III '59*
Rebecca Skally '92 & John Stanley
James '65 & Eileen Slagle
Sarann Slattery
Don '67 & Connie Slipka
Steven '79 & Christine St. George
Andrew '94 &
Kathleen Haugh Staples '94♦
Jerome & Charlene Stark
Clifford, MD & Patricia Steer
James Stewart '61
Todd & Angela Stoltz
James & Stephanie Stowell
Maureen Sweeney Huss '73 &
George Huss, Jr.
Patrick & Ann Sweeney
George Swenson, Jr. '50
Ruth Swenson Nonnenkamp '57
Eugene Thill '80
Thomson Reuters
Lou Anne Tighe
Morida & Mark Tinucci, Sr.
Tinucci's Restaurant & Catering
Stephen Townley '67
Kevin, MD '73 & Ann Treacy

Roy Tschida & Elaina Bleifield
Thomas & Susan Sinz-Udelhoven
David '78 & Duchie Van Hoven
Varettoni Family Charitable Fund
at Fidelity Charitable
Sara Wagner '81 & Peter Clements
Barbara Wallrich Soihl '72 &
Bruce Soihl
Bryan & Melissa Walworth
Eugene Waschbusch '58
Matthew Wells & Lara Andersen
Christopher '08 &
Marie Broos Weyandt '08♦
Patrick '74 & Evelyn Wicker
William '54 & Virginia Willner
Nathan Woessner '09
Michael '61 & Pamela Wold
Matthew Wortman '96
Christine Zagaria '68
Sarah Zirnhelt

CENTURY COUNCIL

\$100 – \$249

The Century Council commemorates over 100 years of combined service that the Christian Brothers and Sisters of St. Joseph of Carondelet have provided for young men and women of the St. Paul area.

Anonymous (7)
Bridget Ahern Rooney '77 &
John Rooney
Anita Alexander
William '79 & Jennifer Alexander
Nancy Allen Orme '76 & John Orme
Alli M. Altier
Frank Amato '54
Br. Michael Lee Anderson, FSC
Christine & Luigi Andretta, Sr. '74
Jennifer Androsky
Margaret Angvik Ammann '63
Judy Archambeau
Phillip & Sandra Archer
Anne Archer Puype '53
Thomas '80 & Julia Arons
Steven Aronson
Phyllis & Vincent Ashton, Jr.
Raymond & Carmel Ayotte
Margaret Mary Bannigan
Patricia Bard '70
Linda Barnett
Robert Barnett '76
Jason & Sarah Barrett
Katherine Barrett '00
Mark Barrett '78
Thomas '75 & Wanda Barrett
Joseph '76 & Colleen Bartels
William Bartels '72
Paul '58 & Jera Barthol
Geoff & Natascha Bartsh
Joyce & Richard Bartusch, III
Carolyn Beauford

Patrick '06 &
Monica Miley Beery '14♦
Paul Beggin '65
Charles Belland '70
Gary Bellis '66
Joseph & Meghan Bennett
James '57 & Mary Benz
Ronald Bergman '49
Charles '56 & Carol Berigan
Gerald '58 & Marlys Bernier
Paul '54 & Edna Berres
Jeanne Berthiaume Ahlm '60 &
Rankin Ahlm
John Berthiaume '92
Howard & Jane Bicker
Anne Bilski Conlin '79 &
Steven Conlin
Susan Bisanz Nicholson '64 &
James Nicholson
JoAnne Blake '77
Daniel & Patricia Blaskowski
Laurel Boerger '72
David Boisclair
Geraldine Boland
Margaret Boland
Richard '60 & Corinne Bonin
David & Anne Book
James '61 & Marilyn Bossard
Boston Scientific
Jessie Botello
David Boudewyns '78
Eugene Bovy '63
Thomas '88 & Jennifer Brandt
John Brannigan '62
Anthony '77 & Celeste Brausen
Lila & Roy Bredahl, Jr. '51
Brian G. Youmans
Insurance Agency, Inc.
Charles Bricher '52
Joseph '64 & Rose Bronk
Mark '52 & Frankie Brown
Jon Brumond
Wayne Bugasch & Mary Fox
David & Pattie Murphy Bukowski
John Bultena
Jean Bumgardner Bauman '77 &
William Bauman
Kelley Ann Burg '61
Mary Burke Lynch '81 &
Timothy Lynch
Gerald & Carolyn Burns
Stephen & Lynn Busse
Kevin Byrne '75
Regan Byrne Palmer '81 &
Timothy Palmer
Michael '71 & Valerie Byrnes
Mary Kay & Charles Callahan, Jr.
James '61 & Jean† Callahan
Richard Callinan '61
Sheila Calpin
George Cameron, IV '67
Mary Ann Campbell Anetipa '68 &
Alesana Anetipa
Barbara Campbell Regan '56
Thomas '56 & Mary Campbell

Thomas '70 & Marcie Campbell
Jane Campion Coleman '76 &
Thomas Coleman
John '63 & Madonna Campion
Michael Cardinal '61
Matthew, DC '79 & Michelle Caron
Col. John '83 & Mary Carrell
Robert Carrier '54
Daniel '60 & Kathleen Carroll
Paul '82 &
Kathleen Lanners Carruth '82♦
Neill & Patricia Carter
Donald Casey, DDS '49
Jerome '62 & Carol Casey
Jolene Catudio
Keith & Margaret Cavanaugh
Paul Ceplecha '73
Paul Cerkvienik & Kathleen Murray
Margaret Cernohous Ahrens '60
Lee '69 & Lynnnda Cesar
Robert & Muriel Chakich
Jean '52 & Pauline Chaput
Charities Aid Foundation of America
Raymond & Jeanne Chaussee
Kurian & Pennamma Cherucheril
Daniel Chesky, II
Herbert '69 & Sheila Christensen
Mark '65 & Maria Claesgens
Br. William Clarey, FSC
James Clark
Jay Clark
Pamela Clayton
Charles '52 & Sharon Clysdale
Jerome Clysdale '56
Michael Coenen & Tehout Selameab
Clement & Molly Commers
Steven & Angela Commers
Robert '78 & Rosanne Congdon
E. Daniel Conlan '69
Marie Cook '75
Thomas Corrigan, III '68
Janet M. Cotten
Michelle Couture '81
LTC James '82 & Trulea Gann Craig
Karina Crockett
Lynda Crotty
Terrance '71 &
Laura Vannelli Cullen '73♦
Elisabeth Culligan
Kathleen Culligan '73
James Curran '49
Catherine Curtis '80
James & Joanne Daglish
Alice & Thomas Dahl, Sr. '54
Patrick '71 & Candace Daly
Virginia Davini
Kelly Davis Jirschele '94 &
Cameron Jirschele
Mary Davis
Glen & Kirsten Dawson
Christopher DeNet '77
Robert Dean '52
Harold '57 & Ruth Ann Deering
Donald & Maureen Delsing
Scott Deming, Sr. '66

* Represents Blessed Brother James Miller, FSC Lifetime Giving Society | ** Represents new commitments received this giving year | ♦ Represents Joint Alumni Household | † Represents deceased

Frank '56 & Phyllis Demma
 Jay DesLauriers '77
 Ronald DeTomaso & Vilma Collins Hynds
 James '77 & Maureen Detviler
 Michael Detviler '68
 David '96 & Teisha Devine
 Mark '77 & Lisa Dietsch
 Patrick '65 & Sandra Dignan
 Michelle Dill Rencher '85 & Brad Rencher
 James '63 & Sharon Dimond
 Gail Dixon
 Julie Dobbmann Swedberg '92 & Eric Swedberg
 Patrick '62 & Mary Lou Doherty
 Nancy Dolan Ingham '87
 Joseph & Anne Dols
 Michael '87 & Elizabeth Woodward Domler '88♦
 Daniel '70 & Mary Kay Dorgan
 Kristopher & Katherine Dornan
 John & Laura Doyle
 Sam & Cami Drahm
 Roger '50 & Catherine Drawing
 Andy & Natalie Droel
 Robert '54 & Elaine Dube
 James Duffy, Jr. '60
 Richard '59 & Yvonne Dugan
 James Dvorak, SM '64
 MaryEtta Dwyer Coursolle '58
 Sara Egan Hassel '98 & David Hassel
 Ethan Eid '06
 Leon & Joan Endres
 Katherine Enestvedt Johnston '86
 James & Beth Enge
 Thomas & Sharon Engels
 Joe & Alanah Engler Gentle '94
 Roseanne Eschle '70
 James '69 & Linda Evans
 Ann Marie Ewald
 Martin & Margaret Fallon
 James Faricy '54
 Brian & Kara Farley
 Sarah Farley '77
 Thomas & Florence Farnham
 James Farrell '54
 Joseph '57 & Shirley Ferraro
 Timothy & Kathryn Fetterly
 Barbara Figge Neighbors '78 & Tracy Neighbors
 Jerome '61 & Deborah Filla
 Will Finley '02
 Mary Finley
 Suzanne Fay & Stanley Fiorito, Jr. '64
 Emily Fischer Cripe '01 & Dustin Cripe
 Steve Fischer
 Bruce '55 & Carolyn Fitzgerald
 Dennis Fitzgerald '69
 Molly Fitzpatrick '80
 Anthony & Kathy Flaminio
 Michael '72 & Nanette Flaten
 James '77 & Lynn Flesch
 Daniel Flesher '67

Mary Flood Ranta '76 & Jeffrey Ranta
 Michele Fluhr Fraser
 John '51 & Jeanette Flynn
 Timothy '70 & Jane Flynn
 Vincent & Patricia Foley
 Eugene Forcier '58
 Mary Ford
 Rev. John Forliti '54
 Barbara Foure Lenahan '68 & Michael Lenahan
 Richard & Marci Franzen
 Susan Frejlach Lysne, LICSW '68
 Rev. Francis Fried '60
 Joe Friedrich & Anneliese Detwiler
 Michael Fritz '55
 Daniel '05 & Katie Fugina
 Mary Kay Funk Werner '77
 John, MD & Patricia Gaertner
 Thomas '67 & Marilyn Gahm
 John & Holly Gainer
 Kevin Galligan '79
 James & Anne Gattman
 Mark Gautschi '70
 Colleen Geary Brunner '72
 Richard '52 & Joan Geary
 Lillian J. Geist
 James Gerlach '62
 Father William Gerlach '80
 Kristin Germann Matelski '99 & Jayme Matelski
 Julius & Katherine Gernes
 John '50 & Claris Gibbons
 Maura Gibbons
 Ruth Gibson Rauschendorfer '74 & Thomas Rauschendorfer
 John '52 & Gil Giefer
 Matthew & Jeanne Giles
 Michael '74 & Terri Gleason
 Daniel Glendenning
 W. Gordon & Susan Glendenning
 Douglas & Catherine Goaley
 Robert '58 & Kathleen Goff
 Wayne '83 & Kristy Goldberg
 Dennis Gontarek '54
 John Goodlad '74
 Georgia Goswitz Loewe '73
 Richard '55 & Marlys Graff
 Brody Grandas '04
 Br. Paul Grass, FSC '52
 LTC Peter, (Ret.) '79 & Amy Orme Grayson '79♦
 James '60 & Nansee Greeley
 Patrick Green '76
 Peter Greenheck & Jane O'Meara-Greenheck
 Mark '64 & Donna Gregory
 Barbara Groebner
 Gerald Groh '65
 John Grooms '05
 Stephen & Gale Grundhauser
 Jonathan '96 & Emily Soucheray Guion '96♦
 John Guzik '75
 Holly Haag Rausch '59
 Thomas '72 & Nancy Haas

Richard '62 & Terri Hable
 Arthur Haessig '60
 Kasey & Amy Hafenbrack
 Nancy Hagan Bock '57
 Judith Hager Reichert '57 & Thomas Reichert
 Robert Hahn '70
 Charles & Kelly Halderman
 James & Nicole Hamel
 Philip Hamer '61
 Julie Hamiel Zirnheld '93 & Joe Zirnheld
 James '65 & Barb Hannegan
 James & Susan Hannon
 Jim '52 & Shannon Hanzel
 Martha Hanzel Johnson '87 & Jeffrey Johnson
 Brad & Mary Hapka
 Jerome '54 & Joan Harper
 Patrick '84 & Laura Harris
 Michael Hart '49
 David Hartung '60
 Charles Hathaway
 J. Michael '69 & Delores Hauer
 Anne Hause '13
 Leah Hawke
 Michael Hayes '61
 LTC Robert Hecht, Sr., USAF(Ret) '57
 Mark Hechtl '89
 James Hedeem '55
 Chad & Juli Heer
 Steven Heiberger '66
 Janet Heitzmann '68
 Thomas Hekele '65
 Timothy '66 & Sandra Heller
 Richard '72 & Nancy Hencier
 David '71 & Kathy Kilbane Hennes '72♦
 Robert & Mary Ellen Hennessey
 James '63 & Yolanda Hennessey
 Alexandra Henry Bartolic '74 & William Bartolic, III
 Kathleen Henry DesLauriers '71
 Sonseere Henton Goldenberg '76
 Mary Hermes Cromwell '79 & Timothy Cromwell
 Leo Hermes, III '69
 Edward '92 & Mary Hernandez
 Capt. G. Michael Hewitt, USN(Ret) '60
 Vicki Hill Erickson '75
 Eugene Hinze '73
 Edward & Susan Hitchcock
 Harriet Hoenck Arend '56
 Martin & Kimberly Hoffarth
 Thomas '73 & Margaret Hoffman
 Gina Hoffman Wolfe '87 & David Wolfe
 Robert Hofmann '77
 Ronald Hofmeister '64
 Phyllis & Daniel Hollihan, Jr. '60
 Peter & Krista Honsa
 Sarah Hood Floersch '88 & Michael Floersch
 Mary Horan '70
 John Horner

George '71 & Molly Hottinger
 Thomas & Katherine Howard
 Terrence Hoye '81
 Donald & Elaine Huber
 Carol Hubler
 Donald Hudalla '76
 John Hueg '80
 John Hughes '63
 Gregory Hull & Margaret Strutzel
 Mary Hynan
 Anthony '51 & Nancy Inserra
 Patrice Inserra Tate '72
 Steven Jackson Kozel '92
 Robert & Gloria Jameson
 Michelle Jamieson
 Mary Janssen McElroy '85
 Patrick '58 & Susan Jastrow
 Dave Jensen & Sieglinde Bier
 Michael '60 & Carol Jensen
 JNBA Financial Advisors, LLC
 Johnson & Johnson
 Ann Johnson Burns '77 & William Burns
 Christine Johnson
 Dale & Kathleen Johnson
 Jacob & Tyree Johnson
 Jay & Jeanne Johnson
 Judy & Don Johnson
 Lisa Johnson Kelly '02
 Mary Johnson Kietzmann '69
 Molly Johnson '17
 Neel & Pegge Johnson
 Richard & Barbara Johnson
 Thomas '12 & Veronica Johnson
 Grace & John Jorissen, Sr. '56
 Carol Joslin
 Jacquelyn Joyce Lutmer '80 & Thomas Lutmer
 Thomas Joyce, Jr. '57 & Annette Atkins
 James '52 & Carol Jungbauer
 Frank Kajer '16
 Kevin '89 & Julie Paladino-Kaminski
 Stephen '78 & Sherry Kampa
 Michael Karel '69
 John '94 & Elizabeth Shields Keating '95♦
 John Keis '70
 Robert '74 & Pamela Keis
 Kevin '78 & Jennifer Kelley
 Daniel & Debra Kelly
 Ann & James Kelly, Jr. '45
 John '60 & Nancy Kelly
 Susan Kelly Pierce '65
 Thomas Kelly '61
 Kate Kempe-Biley '81 & Mark Biley
 Sean Kennedy & Suzanne Sheridan
 Paul '54 & Barbara Kerwin
 Aaron & Angela Keske
 Susan Kessler Diamond '71
 Thomas '71 & Patricia Keyes
 Charles Kielkopf, PhD '53
 Brian Kilburg '02
 James & Sandra Kilburg
 Ronald '84 & Mary Kimlinger

* Represents Blessed Brother James Miller, FSC Lifetime Giving Society | ** Represents new commitments received this giving year | ♦ Represents Joint Alumni Household | † Represents deceased

Annual Giving 2021–2022, continued

D. Thomas, PhD '56 & Ruth King
 Thomas '71 & Julie King
 Gregory Kinne '68
 Thomas '56 &
 Margaret McCormick Kinney '57♦
 Mr. & Mrs. Michael Kipka
 Rand & Kim Kirmeier
 Mary Ellen Klas Kennedy '77
 Nancy Kleason Culligan '77 &
 John Culligan
 John '56 & Val Parsons Klett '65♦
 Sean Klett '87
 Brendan Kline '98
 David & Julie Kline
 Steven '70 & LeAnn Kline
 Dennis & Mary Kloek
 James Kneeland '60
 John Koegel '69
 Choon Koh
 James '66 & Jan Koktavy
 Nicholas J. Koop
 James Kortz
 Donald Kovarik '55
 Alexander Kowalczuk '58
 Robert Krammer '62
 Kristen Kraut Macken '99 &
 Gerald Macken, Jr.
 Richard Krupich '47
 Daniel '70 & Pam Kuechenmeister
 Larry & Tamara Kuenster
 Michael & Ellen Kuenster
 David Kuettel '77 &
 Megan Kavanaugh
 Patricia Kugler Tracy '58 &
 John Tracy
 Robert Kulvich '58
 Norbert Kulzer '55
 Timothy '72 & Pamela Kurtz
 Ronald '73 & Mary Lachenmayer
 Jack, III '63 & Ramona LaMont
 Anthony Lancette '62
 Richard '58 & Sharon LaPlace
 Karen Larson Milton '70
 Brett Laughlin '78
 LTC John Laverdure '81
 Dennis Leahy '77
 Mary Lebens '84
 Thomas & Mary Gerry Lee
 Daniel Leisen '69
 Leitner Company
 Otto & Dorothy Leitner
 Richard Leonard '57
 William Leonard '66
 Anthony Leritz, Jr. '67
 Antonio '01 & Ashley Leseman
 Mechthild E. Lindsay & John Fowler
 Ronald '88 & Terri Link
 Chad & Susan Loeffler
 Anthony & Jane Loftsgaarden
 Kevin Loney '75 & Norma Herther
 Arthur & Debra Longen
 Carole & Garry Loufek
 Amy Loughrey '88
 Joseph Lucio & Michelle Sukut
 Larry Luck '54

Bernard Lucking '59
 Joseph '78 & Lynn Lucking
 Jerome '56 & Janine Luger
 Kathleen Lynch Kaptain '77
 James '62 & Susan Mack
 Scott Madill & Erin Malone
 Timothy '68 & Linda Manahan
 Courtney Marek Rankin '05 &
 Dennis Rankin
 Richard '75 & Terese Margl
 Jean Markwardt Krasean '78 &
 Bradley Krasean
 Timothy & Mary Martin
 Kristine Masek Shields '88 &
 John Shields
 Elle Mason
 Aaron & Andrea Massari
 Molly Mattessich '97 &
 Ernesto Gluecksmann
 Katherine Mattocks '18
 Roger '60 & Elizabeth Maulik
 John Mayer '61
 Margaret Maykoski Roscher '68*
 James McCall '71
 Timothy '12 &
 Maureen Czech McClanahan '13♦
 Laura McDonnell Boland '76 &
 James Boland
 Robert McDonnell, DDS '50
 John '51 & Sandra McFarland
 Michael '65 & Lisa McGinn
 Joseph, PhD '63 & Paulette McGrath
 Patrick & Victoria McGrath
 Hugh McGuigan '57
 Mark & Kay McGuire
 Sean McGuire '84
 Roger '45 & Luella McNery
 Genevieve McJilton '84
 Bert & Carolyn McKasy
 Stephen & Anita McKeown
 Gerald '48 & Donna McKoskey
 Kathleen McLaughlin '62
 Philip '57 & Peggy McLaughlin
 Lawrence McMahon '57
 Al & Diane McMurray
 John '50 & Jane McNaughton
 James McNeely '53
 Lolly McNeely Salmen '74
 Ann McQuillan Stodolka '77 &
 Michael Stodolka
 Michael Mead '90
 Douglas Meeker & Patricia Santos
 Richard & Judy Meier
 Jane Merta
 Robert and Alesia Metry
 Stephen Metzger '54*
 Lawrence & Virginia Meuers
 Michele Meyer
 MFC Properties Corp
 Thomas Mich, PhD '61
 John '76 &
 Mary Clements Michaels '77♦
 Mark '78 & Donna Michel
 Charles '03 & Alexa Miesbauer
 Daniel & Bonnie Miesbauer

Kevin Miley '12
 Mary Kate Miley '16
 Matthew Miley
 Jean Miller '10
 Teresa & Donald Minni
 David Moga, MD '56
 Todd '92 &
 Karen Swenson Mohrland '92♦
 Tony '92 & Jodi Moline
 Lawrence '56 & Carol Monnens
 Stephanie & John Monogue, Jr.
 Gerald '56 & Julianne Monson
 Jay & Michelle Montpetit
 Kieran '79 & Kathy Moore
 Daniel Moran '54
 James Morelli '79
 Stephen & Margaret Morgan
 Heide & Joseph† Moss
 Judith Motschenbacher Lewis '68
 Patrick, MD '59 & Maria Mottram
 Daniel & Amy Muckala
 Mary Alice Muellerleile, PhD, J.D. '55
 John '68 & Kathy Mutch
 James '60 & Mary Nagel
 Nativity Men's Club
 James '59 & Beverly Neitz
 Dan & Susan Nelson
 Mr. & Mrs. Richard J. Newcome
 Gwen Nickolay Traynor '95
 Nicholas Niewinski '06
 Paul Nitti
 Thomas '66 &
 Melinda Leahy Nonnemacher '66♦
 Timothy & Elizabeth Nowak
 Michaela O'Brien Lauer '69
 Mary Kate O'Connell Fischer '71 &
 Martin Fischer
 Joan O'Connell
 Richard '75 & Ann O'Connell
 Paul O'Gorman '61
 Donald O'Grady '72
 Sharon O'Grady '70
 John '75 &
 Deborah Rubbelke O'Halloran '76♦
 Steven O'Hara '75
 Daniel '70 & Mary Treacy O'Keefe
 James Olsen '54
 Charlotte E. M. Olson
 Edward & Doreen Orbita
 Thomas '77 & Mary Ann Orfei
 Kathryn Orme Lasure '98
 Kevin '72 & Mary Kay O'Rourke
 Thomas O'Rourke '60
 Maureen O'Shaughnessy
 Magnuson '61
 Justin Palmer '90
 Sharon Paradise
 Kristina Parker
 Thomas '96 & Katie Parks
 Patricia Parlin Caponi '48
 Most Rev. Richard Pates
 William '69 & Annette Patient
 Wanda Peace
 Joseph & Carol Pearson
 Rose Pelikan

MSG Kenneth & Sharon Peloski
 Eric & Amy Perry
 David Peterson '82
 Katherine Peterson '95
 Richard '72 &
 Shannon Burke Peterson '72♦
 John Phillips '65
 Mary Picha Goiffon '77 &
 Daniel Goiffon
 Dale Anne Piro
 David '56 & Phyllis Plum
 Colleen Poechmann
 Michelle Poechmann Wenner '98
 Laura Poquette
 Daniel, J.D. '88 &
 Romelle Pornschloegl
 Mary Poston
 Gregory & Jenny Poynter
 Peter Prestrud '55
 Alexandra V. Prodoehl
 Gregory '64 & Mary Quehl
 Thomas '49 & Leona Quinlan
 Joseph & Mary Rafferty
 Robert '55 & Sallie Raleigh
 Kathleen Redpath '80 & Greg Fasset
 Charles & Patricia Reed
 Thomas Regal '65
 John Regenold '54
 Maureen Reid Wosepka '92 &
 Marc Wosepka
 Robert Reider '58
 Sara Reinartz Mountain '78 &
 Michael Mountain
 Mary Reiner Shuttlers '73
 Christine Rettler Page '84 &
 Gregory Page
 Perry & Sarah Rice
 Susan Richards Owen '79 &
 Basil Owen
 John Richardson
 John Richardson '70
 James Richter '70
 Donald '52 & Barbara Rigali
 Daniel Riley, MD &
 Elisabeth Slattery, MD
 Br. Michael Rivers, FSC
 Rita Roberts Bajari '77 & Dave Bajari
 Mary Roberts Edwards '74
 Paul Roberts Nicolo '81
 Col. Timothy '74 & Kathy Robertson
 William Robertson '79
 John Roby '73
 Gregory & Patricia Roedler
 Kenneth '63 & Judith Rogers
 William '53 & Roseann Rogers
 Martin '71 & Patricia Lillis Rongitsch '71
 Robert Rongitsch '67
 Dennis '84 & Jennifer Rosemark
 Ross Rosenberg '66
 Richard Rosga '59
 James '60 & Judith Ross
 Michael '87 & Tinna Ross
 Dante Rossini, Jr. '54
 Mary Rossini '78 & William Anderson
 Anthony Roszak '56

* Represents Blessed Brother James Miller, FSC Lifetime Giving Society | ** Represents new commitments received this giving year | ♦ Represents Joint Alumni Household | † Represents deceased

Kurt '76 & Mary Jo Roth
 Ralph '54 & Jacqueline Roubal
 John & Patricia Hren-Rowan
 Thomas Rowan, III '77 &
 Maria Martin
 Jeffrey Rudi
 James Rued
 Garry & Barbara Ruhlmann
 James Rupert '69
 Susan Rupert Newman '92 &
 Jason Newman
 William & Deborah Rupp
 Adric Ryan '02
 Barbara Ryan
 Daniel Ryan '16
 Kiera Ryan '20
 Nicholas E. Ryan
 Timothy '59 & Nancy Ryan
 William Ryan '18
 Leonard Sachi '53
 Meryl Sachs
 Joseph '54 & Beatrice Sailer
 James '70 & Beatrice Sanders
 LTC Gerald,(Ret) '62 & Patricia Sands
 Suzanne Saul
 William Schaffer '00
 David & Karen Schlaefer
 Prof. David Schmauss '49
 John Schmidt '87
 Anne Schmidt Novak '96
 Robert Schmidt
 Peter Schmittiel '76
 James '52 & Rosemary Schmitz
 Jack '61 & Mary Schneider
 Jason Schreiber '73
 John & Ellen Schreier
 Br. Walter Schreiner, FSC
 Sara Schulz Michel '93 & Rick Michel
 Archbishop Roger Schwietz, OMI '58
 Mark '83 &
 Sheila Kelley Schwirtz '84♦
 Maureen Seestedt Weiss '75 &
 James Weiss
 Michael Seifert '85
 Patrick & Donna Seng
 Michael '59 & Mary Ann Sexton
 Donald Shaughnessy '71
 Michael Shaw '61
 Patricia Shea '47
 F. Richard Sheahan '57
 David & Suzanne Shearon
 Patricia Shiely Oxley '69 &
 Gregory Oxley
 Michael '78 & Carrie Simmons
 Steve Sims
 Terry Skally
 Terrence '66 & Valerie Skrypek
 Joseph & Jody Skwira
 Robert '69 & Sang Slagle
 David '65 & Susan Smith
 Maria Smith Gans '81 & Lane Gans
 Jeff & Jennifer Smith
 John '76 & Jane Smith
 Linda R. Smith
 Br. Robert Smith, FSC '72

Stacy Sommerhauser Gianino '97 &
 Nicholas Gianino
 Jessica Sonnen Quinn '93 &
 Jeff Quinn
 Callista Sorenson Koelling '02 &
 Jared Koelling
 Dorothy Soshnik Spence '60 &
 Thomas Spence
 Nicolle Spears
 Thomas Spencer '67
 Michele Speranza Skare '78
 Joseph Spitzmueller '69 &
 Nancy Callinan
 W. Jerome '61 &
 Barbara Spitzmueller
 William, PhD '71 &
 Kathryn Spitzmueller
 Gregory & Emily Springer
 Daniel '62 & Marion St. Martin
 Mark Stahley '73
 Loren Stahmer '54
 Daniel '91 &
 Nicole McDonough Staples '92♦
 Lisa Starr
 Theresa Stead '81
 Christopher Steer '09
 David Stein '09
 Angela Stemig Anderson '83
 Jarrod Stenberg & Shawne Osborne
 Dianne Stephens
 John Stevens '61
 Nancy Stimmler Blade '69 &
 Barry Blade
 Daniel Stone '72
 Stephen '69 & Kathryn Stone
 Luke J. Stowell
 Elizabeth Strafelda '14
 Steven '82 & Mary Strafelda
 Bradley Straka '15
 Patrick Sullivan '58
 Sean & Ruth Sullivan
 Carol Summers
 Patrick Summers '91 &
 Alison Cook '91♦
 Robert & Mary Super
 Laura Sutton Pierson '97
 Tom Swain
 Joseph Swanson '76
 LTC William,(Ret) '52 &
 Constance Swendner
 Synchrony
 Andrew Tacheny '11
 Dominic '75 & Tomina Tacheny
 Steven & Jennifer Tacheny
 John & Michele Tauer
 William & Jaci Taylor
 Floyd & Kelly Teeter
 Thomas & Barbara Teresi
 The Omidyar Group
 Robert Theissen '58
 James & Judith Thomas
 Martha Thornton Montzka '99 &
 Justin Montzka
 Marcus '05 & Jessica Tibesara
 Jerome & Mary Tillman

Michael '57 & Malinda Todora
 Linnea Torstenson
 James Towle '65
 David '61 & Margaret Troje
 James Tschida '84
 John Tschida '49
 William Tschida '62
 Mary Turbak
 Elizabeth Turbes McCambridge '69
 Richard '57 & LaVonne Ubl
 Kurt & Lisa Urdahl
 William & Kathleen Vanderwall
 Yingkhong Vang &
 Kaopachuator Yang
 Daniel '64 & Mary Jo Vannelli
 Gregory & Mary Beth Vashro
 Kent & Mary Verrill
 Paul Verstraete '67
 Patti Vitek
 Gerald Vogel '64†
 James & Kathleen Kuenster-Vogt
 Susan Voigt '74
 Katherine Vosbeek '11
 Patrick Votel
 Thomas & Barbara Votel
 William Votel, MD '76 &
 Barbara Seery
 Frank & Claudia Vrtis
 John & Lourdes Wadell
 Sally Waldorf Umphress '53
 Robert '60 & Aase Walerius
 Michael Wallgren '57
 Arthur Walsh '58
 Carol Walsh Lugg '77 & Paul Lugg
 Dale & Sheila Wandersee
 James '57 & Anne Wandmacher
 Kent & Molly Wangsness
 Matthew Warren '02
 Michael '69 & Jean Warren
 John '62 & Pamela Waschbusch
 Michele Waschbusch Mingo '90 &
 Thomas Mingo
 Richard Washburn '64
 Peter & Mary Watkins
 Ron & Betty Weinke
 Derek '89 & Lora Weinke
 Rev. Gregory Welch '59
 Brian & Stephanie Wells
 Michael '99 & Deborah Welsch
 Patricia Wendt
 Michael & Carrie Wermager
 James '59 & Arlene Werner
 Walter '53 & Rosalie Wescott
 John Wessel '62
 Mary P. Wetschka '72
 Maryanne Wetschka
 Robert Weyandt '59
 Nicholas '83 & Nancy Whaley
 The Whitaker Foundation
 Richard Wiberg, DDS '60
 Robert Wicker
 Robert Wiesner '56
 Katherine Wilcox Jahnke '01 &
 Brady Jahnke
 Lisa Willems '79

Robert Wills '69
 Windmill Marina Association
 Bradley & Theresat Wirt
 Mary Witte
 Col. Scott Witte '84
 Jeff & Brooke Worden
 Steve & Sara Yaeger
 Emily Yanez Suedbeck
 Charles & Katherine Yenni
 Margaret Zastrow Kronschnabel '72
 Kassahun Zeleke & Misrak Nebeyiat
 Tony & Sarah Zirnheft
 Mark Zoff '02
 John Zugschwert '51

DONORS

Up to \$100

Anonymous (3)
 Robert Acker '64
 Janet Alexander
 Suzanne Alliegro '70
 Jeffrey Ammann '85
 Chloe C. Anderson
 Craig Anderson
 Dominic R. Anderson
 Mr. James R. Anderson
 Samuel D. Anglum
 Vincent '40 & Leona Arceno
 Steven Arduser '76
 Joseph Arends '13
 Thomas '57 & Mary Ann Arsenault
 David & Susan Arvidson
 Michelle Ayers Safe '99
 Elizabeth Griesgraber Backus '77 &
 Bruce Backus
 Jacob M. Banas
 Brendan Bannigan '85 &
 Kathleen Just-Bannigan
 Kathryn Barrett
 Michael Bazal '73
 Marilyn Bazal Siemers '74
 Joyce Beck
 Paul & Jean Bender
 Carson K. Bengtson
 Paul & Kathleen Benick
 Robert & Constance Benson
 Eric Bentley & Kelly de Rosier
 Patricia Berendt
 Mary Lisa Berg '68
 SGM David '81 & Cheri Berrisford
 Robert Berry
 Suzanne Berry
 Judd & Sonja Berthiaume
 Thomas Bibus '66
 Drew B. Bigelbach
 Anthony Biljan
 Kathleen Bird Peterson '89
 Elizabeth Bisanz Norqual '63
 Donald & Mary Louise Blaeser
 Richard & Anna Bohaty
 Alice Boland
 Patrick Boland '58

Annual Giving 2021–2022, continued

Diane Botz
 Ann Bredemus Gaertner '83 &
 Stephen Gaertner
 Louis Breimhurst '55
 John '58 & Deborah Bremseth
 Pamela Brethorst
 Mary Brown
 Paul '72 & Judy Brueggemann
 Patsy Buck Halvorsen '49
 John Buckeye '06
 Karen Buggs
 Bernice & Tes Burgy
 Anna Burke '13
 Justin E. Burns
 James & Suzanne Burton
 Bret Byfield
 Catherine Cahir '15
 Theresa Carlone-Morris '73
 Martin, DC '83 &
 Kathleen Erb Caron '83♦
 David Carr
 Anna M. Caruso
 Sheila Casey
 William & Josephine Casey
 Thomas '69 & Sheila Casper
 William & Jean Charles
 Tai Jin & Maria Chung
 William & Janice Cirhan
 Timothy Clancy '69
 Michael Clarke '67
 John '58 & Diane Clarkin
 Joseph Clarkin '63
 Peter '69 & Mary Jo Clasen
 Margaret Clemency Efthimiou '98
 Paula Clements '81
 Dan & Nancy Coffeen
 Emily Colaizy '97
 Laura Colaizy Frederixson '99 &
 Scott Frederixson
 Kathleen Collins Nobrega &
 Thomas Nobrega
 Patrick J. Connelly
 Julie Cook McBride '80
 Jeanne Cornish
 Mark & M. Beth Cotton
 Vincent '75 &
 Kate Latimer Courtney '84♦
 Brianne Covert Cockill '98
 Terry Cox Joseph '75
 Nicholas F. Coyle
 Richard & Trudy Cragg
 Sarah L. Craighead
 Michael '62 & Jeanne Crane
 Elizabeth Culligan Maruggi '80 &
 Albert Maruggi
 Joshua & Shannon Cunningham
 Monica Czech '14
 Theodore & Catherine Daigle
 John '63 & Olga Dale
 Lawrence & Rebecca Dandrea
 Catherine Davis
 Mrs. JoAnne Davis
 T. Andrew & Marie Day
 Shelagh Delaney Burke '82 &
 Joseph Burke
 William '67 & Julene DeNet
 Sarah Denkinger '04
 Katherine Denn Tischler '75
 Derham Hall Class of 1970
 Dick Allen Agency, Inc.
 Andrea Diederich Beyerlein '96 &
 Josh Beyerlein
 Sheila Dolan Boland '80
 Kevin '91 &
 Elizabeth Geheren Dolan '92♦
 Grace Dolan Wolfe
 Jonathan Dold
 Jeffrey '76 & Joan Domler
 Michael Dorle
 Camille Dougherty McCann '70 &
 Michael McCann
 Edward & Sandra Drenttel
 Henri Drews '62
 Shelley DuBois
 Russell Duehr & Mary Bach
 Joyce Dufresne Gwizdala '70
 SGM William Dullea '80
 Peter J. Dunham
 Kathleen Dupre
 Gayle Durand
 Hale Dustin, Jr. '68
 David & Vickie Dzieweczynski
 Ann Ebert O'Neill '02 & David O'Neill
 Rebecca & Daniel Edberg, Jr. '67
 Raymond Eiden, Jr. '67
 Steven Ekeberg '69
 Denise Engel Carlson '67 &
 David Carlson
 Dennis Enright '56
 Mary Cressy Epperly
 Kimberly Erickson Brenner '00 &
 Tobias Brenner
 Mark Esparolini &
 Jeanine Stelli-Esparolini
 Mary Jo Fadell
 John '58 & Susan Fahey
 John, III '93 &
 Rebecca Stromme Faison '91♦
 Ann Falk
 Marilyn Fenlon Kelly '57 &
 Laurence Fenlon
 Rebecca Finley '77
 Timothy Fischer
 Charlotte Fisk
 Michael & Margaret Fitzgerald
 Denise Flanagan McManus '57
 Richard Fleischhacker
 Thomas & Susan Focke
 Adrienne Foley
 Jeffrey & Jane Foley
 Margaret Foley '88 & Erik Janicki
 Lisa Ford
 Sally Francis Allen '69 &
 Thomas Allen
 Judith Franck
 Charles & Carole French
 Pam & Donald Friedlander, Jr. '68
 William & Lisa Fulton
 Candace Funk
 Terrence '80 & Sandra Furlong
 Michael Gaines '76
 Joseph Gallatin
 Kathleen Galligan Faricy '73 &
 Thomas Faricy
 Nancy Galligan '76
 Mary Gallivan
 John Garry
 Missy Gavin '81
 Kathleen Geary Shelley '71
 Eugene Gerlach '47
 Kari Germann
 Michael '75 &
 Peggy McQuillan Gibbs '77♦
 John '62 & Karen Gillespie
 Anita Giuliani
 Jackson A. Giuliani
 Patricia Glass
 Teresa Glass '80
 William '76 &
 Michele Windisch Gleason '76♦
 Mary Gleich-Matthews '06 &
 Brian Matthews
 Julie Glendenning '98
 William Gochberg '02
 Joshua Goldberg '17
 Ron & Sis Goren
 Terry & Jerilyn Gorman
 Teresa Goulet
 Del '55 & Kathleen Gregory
 Sandra Grippen Youngdahl '55
 Thomas & Mary Guion
 Richard Gustafson '45
 Daniel '67 & Mary Jo Haag
 Mary Haessig Schulz '75
 Jane Haffely '69
 Michael Hally '01
 James Hamburge '66
 Susan Hames, CSJ
 Mary Pat Hamm Simons '70
 James & Mary Lou Hammer
 Erin L. Hannon
 Timothy '91 &
 Kay Donohoo Hannon '91♦
 Bryn P. Hansen
 Linda Hansen
 Lyle & Cheryl Hanzal
 Jane Harbinson Maguire '74
 Kathryn Hartz
 James Hassing '66
 Leah M. Hausmann
 Michael '62 & Beth Hawkins
 Shannon Hayes Stroh '90
 Marjorie Hechtl Jambor '61 &
 James Jambor
 Courtney Heinz '06
 Douglas & Becky Heitkamp
 Nyasa A. Henderson Meany
 Adam Hendrick '04
 James Hermann '67
 Jerry Hertel & Toni de Rosier
 Anne Marie Hickey Pfaender '98
 Margaret Hietpas Endres '76 &
 Thomas Endres
 Peter Hinze '77
 Hildie R. Hoeschen
 Daniel Hogberg
 Anna J. Holm
 Samuel T. Holm
 Mark, DDS '56 & Mary Holmes
 Bretton & Carolyn Horttor
 Mary Horyza Miller '75
 Linda Howard '01
 Connor J. Howe
 Joshua Howe '92
 Carol Hudalla Crago '81 &
 Keith Crago
 Jennifer Hudoba Dewey '89
 James L. Hudoba
 Lilliana E. Hummel
 Michelle Hunt
 Diane Huntington Pietrs '63
 Christine Huot Johnson '68
 Patricia Hurd '76
 John '01 &
 Meghan Gowan Huss '03♦
 Richard Jabs '70
 Kathy Jacobs
 Gordon '56 & Frances Jacobson
 Anna Jaeschke '22
 Cheryl Jandrich '93
 Henry Jandrich, Sr. '71
 Gregory Jaunich
 Lee '69 & Dolores Javorski
 Christopher '95 &
 Kelly Mellgren Jensen '95
 Jerome Jensen '54
 Thomas Jogodka & Linda Goss
 Clare Johnson '10
 John & Dawn Johnson
 Margaret Johnson '14
 Douglas Jones, Jr.
 John & Shirley Jones
 Paul & Nancy Jones
 Mary Anne Jordan Smalley '63
 Patricia Karel '75
 Lisa Keese Dekker '81
 Roberta Keller
 John & Mary Ann Campbell Kelly♦
 Gregory Kelm '71
 Margaret Kelsch
 Timothy & Dolly Kenney
 Kathleen Kenney '80
 Mark '76 & Catherine Kenney
 David '80 & Betty Kepler
 Anne King '06
 Kathleen King Gaiser '02 &
 Jeremy Gaiser
 Mike & Jesse King
 Mr. & Mrs. Peter R. King
 Maureen Kirby Sigler '67 &
 Roger Sigler
 Gerald '55 & Lucille Kisch
 James '62 & Phylis Kisch
 Joseph Kleason
 Patricia Klein
 Robert '58 & Judith Klepperich
 Gary '76 & Sarah Kopp
 Charles & Debra Kovats
 M. Constance Kozlak
 Kathleen & Joseph Krammer, Jr. '58

* Represents Blessed Brother James Miller, FSC Lifetime Giving Society | ** Represents new commitments received this giving year | ♦ Represents Joint Alumni Household | † Represents deceased

Audrey Kraus
 Rock Krenik '77
 Theodore Kueppers '58†
 Dan & Ann Kuntz
 James Kurvers '69
 Georgine Kurvers Larson '73
 Joseph & Kimberly Labuz
 David & Colleen Lacey
 Joseph '71 & Marilyn Lais
 John Lamski '64
 James Landwehr '79
 Joseph '88 &
 Sheri Byrne Langevin '88♦
 Andre Lanoue
 Peter '48 & Elizabeth Laramy
 Jerome '76 & Doreen Lardy
 Nicole Larson
 Thomas Larson '65
 Isabella R. Lauer
 Mr. & Mrs. Michael Lawder
 Joanne Leahy Laubach '76
 Michelle Lehmann
 Jeffrey & Jennifer Lehtinen
 Andrew Lendway '04
 Margaret Leseman '08
 Susan & Herbert Lethert, Jr.
 Jane Leyden Cavanaugh '81 &
 Joseph Cavanaugh
 Ava M. Limoges
 Nora Loonan Beckjord '78
 Brendan '02 & Brienne Lucio
 Gerald Lunney, PhD '53
 Kathleen Lynch
 Diane Mach '81
 Lawrence Mack '71
 Aaron '93 & Sarah Macke
 Terry MacVey
 Molly Malloy Stucker '87
 Rebecca Manke Jacobson '98
 Joelle Marchio
 Joseph Marek
 Ronald '69 & Devonne Markwardt
 Claire Martin Duvall '76
 Adrienne Martin Sturm '65
 Sarah Jane Matschke
 Marissa Matthes
 Lari Anne Mazzitello
 Jean McCarthy Cadle '82
 Ann McCauley Urman '74
 Teresa McDonald '74
 David McDonell '52
 Thomas & Susan McGuire
 Mr. & Mrs. J. Thomas McNamara
 W. Timothy '55 & Helen McNeill
 Geraldine McQuillan
 Michael '73 &
 Anne Nichols McQuillan '74♦
 Georgia Mealey '54
 Marie Medvec
 Kabsay Mengistu &
 Akberet Gebremednin
 William M. D. Meyer
 Judith Michalski
 Karen & Rolf Middleton
 James & Deborah Miller
 Judith Miller '69
 Michele Miller
 Sally Millett Rau '47
 Dennis (Skip) Milotzky '57
 Robert '59 & Maureen Milske
 Robert & Monica Mitby
 Glenn '76 & Debbie Mitchell
 Molly Mock Bonin '65
 Donald '56 & Susan Mockenhaupt
 Adam & Faith Moddrell
 Michael & Cathy Mohr
 Margaret Mollner
 Patricia Mollner
 Joel '61 & Judy Montpetit
 Susan Morgan Claseman '66
 Joseph '80 & Cheryl Morin
 Jeremiah S. Morse
 Thomas & Lissa Muellner
 Kathryn Mullally
 Robert & Margaret Mary Murnane
 Daniel '83 & Elizabeth Murray
 Jeanne Murray Hesse '55
 Michael '97 &
 Rebecca Penfold Murray
 Joseph & Caroline Musolf
 Jason Naber & Wendy Raduzn
 Elizabeth A. Nelson
 Sandra Nesvig
 James & Mary Nichols
 Wyatt P. K. Nissen
 Ann Noel '13
 Elizabeth Noel '74
 Mark & Joyce Nordby
 Thomas & Candice Nordlund
 Amy Jo Nordstrand '01
 Glenn Norstrom '67
 Michael Novitzki '09
 Joanna Nutzmam '04
 John O'Brien '69
 Claudia O'Brien Lawrence '65
 John O'Connell '82
 Michelle O'Connell Kilroy '77
 Patricia O'Connell '79
 David Odlaug
 Andrew Olson &
 Lana Stewart-Olson
 Mary Orme Rogers '50
 Charles & Ruth Ormiston
 Doug and Lisa Osmon
 Judith Ozbun
 Michael Palzer '94
 Jackson T. Parker
 Patrick '66 & Kathleen Parnell
 Chad Parr
 Ryan Pates '01
 Robert Peham '66
 Jeannie Perrault Herrema '92 &
 Kevin Herrema
 Allen Petersen '59
 Shannon Petersen '88
 Robert Peterson '56
 Mary Pettit
 Margaret Phelan Waldorf '51
 William '76 & Patricia Picha
 William Pohl '65 &
 Teresa Schulte '74♦
 Luigi Portesan '76
 Joan Potts
 Jill Pritchard Stauffenecker
 Daniel Prokop '81
 Michael & Elizabeth Quayle
 Andre & Colleen Quesnell
 Paul Quinn
 Thomas Racine '63
 James Rafferty '60
 Mary Rapacz
 Bernard Rauen '51
 Walter & Mary Rea
 Margaret Read '16
 Reader's Digest Foundation
 Michael† & Terry Reasoner
 Eugene Recibe '68†
 Abigail Reeder '19
 Gavin Reeder '17
 Joseph Reeder '21
 Judith Reger
 John, Jr., PhD '67 &
 Marcy Fisher-Reiners
 Katie Reynolds
 John & Josephine Richards
 Kathleen Roan
 Michael Roberto '88
 Bruce Robertson '55
 Kathleen Robertson Kennedy '64
 Georgia Robertson Kessel '71
 James '49† & Mary Jane Rogers
 Mary Rogers
 Michael Rogers
 Patricia Rogers
 Timothy Rogers & Kathleen Brunelle
 Geri Rosenthal Miller '68 &
 Regan Miller
 David & Ronda Rottjakob
 Richard & Paulet Rousseau
 Joseph '85 & Kay Rubbelke
 Richard & Barbara Rudolph
 Katie Rufener '05
 John Ruhland '76
 Robert '67 &
 Christine Shiely Runyon '67♦
 Mary Beth Rupp
 Kathleen Russell Etten '98 &
 Joseph Etten
 Conor Ryan '99
 Dylan Ryan '97
 Elizabeth Ryan '11
 Lucienne Ryan '09
 Theodore Ryan '15
 Thomas '58 & Judith Ryan
 Will Ryan '11
 Zoe Ryan '06
 Jerome & Shannon Saatzer
 Michael '04 & Liz Sabaka
 Sheila Salisbury Galvan '83 &
 John Galvan
 J. Thomas Sampair '57
 Brian & Meri Santos
 Stephen & Mary Santos
 Robert Satterstrom, Jr. '01
 Mr. & Mrs. William D. Satterstrom
 Timothy & Catherine Scallen
 Ronald Schaaf '56
 Linda Schaak Distad '67 &
 Richard Distad
 Marlene Schader
 Kenneth & Mary Schaefer
 Caroline Schafer '14
 Ellen Schafer '10
 Jackie Schmidt
 Lynn Schram
 Mathias Schroeder '56
 Daniel '80 & Cynthia Schroer
 Jill Schueller DuRose '67
 Terence '69 & Jane Schwab
 Luke Schwirtz '13
 Steven '68 & Linda Setterlund
 Thomas & Beatrice Sexton
 Shannon Shaughnessy
 John Sheeser
 Bryan Shier
 Marlene Simandl Allard '54 &
 Raymond Allard
 Larry & Peggy Simenson
 Ann Simerson Williams '86 &
 Andrew Williams
 Samuel Sippl '97
 Lucy M. Skinner
 Joyce Smith Flynn '68
 MSG Julian & Gretchen Smith
 Kendall & Debra Smith
 Thomas '57 & Lois Smith
 Timothy E. Smith
 Jessica Smith Whalen '98
 Robert & Cindy Soler
 Sovos
 Sheila Speltz
 Roxanne St. Peter Reese '74 &
 Thomas Reese
 Susan Stanich
 William '86 & Kathryn Steigauf
 James Stephenson &
 Catherine Ritt Lallas
 David & Susan Steveken
 Donald Stiepan '65
 Donald & Penny Marie Stodolka
 Robert & Sarah Strain
 Rebecca Strauss
 John Stupka '77
 Joyce Suek
 Gordon Swanson
 James Sweeney, OD '60
 Nancy Sweeney
 Alanna K. Tabaka
 Thomas '75 & Marie Thell
 Margaret Thornton Crawford '77 &
 James Crawford
 Mark Tierney '74
 Tracy Tomberlin
 John Towle '76
 Patrick Turley '86
 William '51 & Kathleen Turley
 Marcia Turnquist
 Connor '12 &
 Gabriella Fortuna Udelhoven '12♦

* Represents Blessed Brother James Miller, FSC Lifetime Giving Society | ** Represents new commitments received this giving year | ♦ Represents Joint Alumni Household | † Represents deceased

Annual Giving 2021–2022, continued

Daniel C. Umland
Joan Utvik
Kristin Utvik Wallin '88
Lt. Andrew '02 & Raechel Valerius
Richard Vanyo '85
Nicholas Vashro '04
Michael & Alma Vasquez
Gregory & Karen Vievering
Joshua Vievering '14
Sharon Vievering
Brian '84 & Cheryl Lynch Vitek '83♦
Rita Vos
Lori Vosejka '76
Beth Wagner Voigt '79 &
Kevin Voigt
Laurel Waldoch Clift '95 &
Steven Clift
Mary Walker-Buchanan
Patrick Walseth '44
Patty Walsh Alfonso '76
Julia Walsh Bennett '76
Christine & Edward Walsh, Jr. '66
Marie Shaun Walter, CSJ '50
Rachel Wandersee Ronning '99 &
Dane Ronning
Jonah D. Wangsness
Anthony Warren '00
Rob Waschbusch
Gary '64 & Jeanille Watkins
Ryan Weber
Donald Weinberger, Jr. '74
William Weinberger '84
Sarah Weinke Murphy '96 &
Tim Murphy
Donald Welch '59
Jack R. Welsch
Martyna & Jan Werner, MD
John Wesolowski '71
Charles Wessinger '65
Grace O. Wethington
Mary Kay Wheeler Delaney '70
Robert White & Argerie Diaz-White
Cathy Wick
Carole Wick Manke '68 &
William Manke
Dan & Kelly Wicker
Wiessner, Inc.
Patricia Wilder & Ryan Schroeder
Kathleen Wilken '71
Lynn Willems '19
J.B. & K.M. Willette
Patricia Wilson Gaffney '77
Robert '54 & Joan Wirtz
Patrick Witte '89
Michael Wlaschin '56
Michael Wondra
Rita Wyman Bland '76
Richard, PhD '73 &
Nora Villemur Yanchar, PhD
Thomas '98 & Heather Yenni
Patrick Zenner '76
Francis '58 & Kathleen Ziegler
James & Judy Zielinski
Richard & Kathleen Ziemann
Jane J. Zirnheld

* Represents Blessed Brother James Miller, FSC Lifetime Giving Society | ** Represents new commitments received this giving year | ♦ Represents Joint Alumni Household | † Represents deceased



Alumni Donors 2021–2022

As we celebrate our alumni as ONE community, we now list all alumni by their graduating year in alphabetical order. There are no school breakouts or gift levels in this section.

For details on being a Class Representative, see page 12. For listing of your Class Representatives, see page 41.

CLASS OF 1937

Leo White

CLASS OF 1939

Estate of Robert Geisenheyner

CLASS OF 1940

Vincent† & Leona Arceno
Richard, MD & Dottie Dekko Frey*

CLASS OF 1942

Eugenet & Beverly† Lentsch

CLASS OF 1943

Roger Honebrink
William Madden
John† & Nan Steger*

CLASS OF 1944

Thomas Pacholl*
Patrick Walseth

CLASS OF 1945

Estate of Marvin Grundhoefer
Richard Gustafson
Kenneth & Mary Herriges*
Ann & James Kelly, Jr.
Kenneth Markwardt
Roger & Luella McInery
Kenneth & Virginia Schoen

CLASS OF 1946

Estate of Roger Lenzmeier*
Daniel & Rita Sevenich
Richard & Dorothy Williams

CLASS OF 1947

Dorothy & Herbert Cook, Jr.
Eugene Gerlach
William & Marlene Klett
Richard Krupich
Sally Millett Rau
Thomas Quinn
Patricia Shea

CLASS OF 1948

L. Daniel & Joyce Kuechenmeister
Peter & Elizabeth Laramy
Gerald & Donna McKoskey
Patricia Parlin Caponi
Richard Vogelgesang

CLASS OF 1949

Ronald Bergman
Patsy Buck Halvorsen
Donald Casey, DDS
Richard Copeland, Sr.
James Curran
Joan Dorle Dolan
Francis, MD & Helen Goswitz
Michael Hart
Thomas & Leona Quinlan
James† & Mary Jane Rogers
Prof. David Schmauss
David† & Kathleen Tregilgas
John Tschida

CLASS OF 1950

Richard, PhD & Dolores Berquist
Theodore Collins & Jean Dick
Francis Coyne
Grace Dolan Wolfe
Roger & Catherine Drawing
John & Claris Gibbons
James & June Guldan
John Herrick*
Suzanne & Fred Kueppers, Jr.
Richard & Regina McCarthy
Robert McDonnell, DDS
John & Jane McNaughton
Mary Orme Rogers
Leslie & Joseph Reichert, Jr.
William & Joan Reiling*
George Swenson, Jr.
David Thomas
Marie Shaun Walter, CSJ

CLASS OF 1951

Thomas Bauer
Robert & Kathleen Borgstrom
Lila & Roy Bredahl, Jr.
Daniel & Catherine Daly
Donald Dupaul
Kathleen Fitzsimmons Prettyman
John & Jeanette Flynn
John Goswitz, MD
Anthony & Nancy Inerra
Robert & Carolyn Koemptgen*
John & Margaret Ann Mahoney
McMahon*
Estate of Michael Maurer*
John & Sandra McFarland
Thomas Nikolai*
Margaret Phelan Waldorf
Bernard Rauen
William & Kathleen Turley
John Zugschwert

CLASS OF 1952

Charles Bricher
Mark & Frankie Brown
Jean & Pauline Chaput
Charles & Sharon Clysdale
Robert Dean
Rev. John Donahue
Richard & Joan Geary
John & Gil Giefer
Br. Paul Grass, FSC
A. James & Shannon Hanzel
James & Carol Jungbauer
Suzanne Kamman Flotten
Laurence Kennedy
M. Jeanne Madigan
Estate of Catherine Maley, PhD
David McDonell
Ronald, PhD & Marilyn Mitsch*
Nancy Parlin, PhD
Frank Pilney, MD
John Powell
Donald & Barbara Rigali
Br. James Roszak, FSC
James & Margaret Sankovitz
James & Rosemary Schmitz
Richard & Bonita Simmons
LTC William.(Ret) &
Constance Swendner

CLASS OF 1953

James & Evelyn Albrecht
Anne Archer Puype
James & Mary Berry
Ernest & Catherine Dawson
Charles Kielkopf, PhD
Gerald Lunney, PhD
James McNeely
Gary & Virginia Norstrom
William & Roseann Rogers
Leonard Sachi
Sally Waldorf Umphress
Walter & Rosalie Wescott

CLASS OF 1954

Michael & Karen Ackerson
Frank Amato
Charles & Jacqueline Bannitz
Paul & Edna Berres
Estate of Paul & Carolyn Bigelbach
Robert Carrier
Lawrence & Nancy Coleman
Alice & Thomas Dahl, Sr.
Robert & Elaine Dube
John, PhD & Nancy Erdos*
Michael Esch*
James Faricy
James Farrell

Rev. John Forliti
Dennis & Dorothy Gagnier
Dennis Gontarek
Robert & Katherine Hamer
Jerome & Joan Harper
Mary Hayes, PhD & Don Kramer
John, DDS & Rose Huntley
Jerome Jensen
Paul & Barbara Kerwin
Lawrence & Elizabeth Knaff
D. J. Leary† & Linda Wilson
Larry Luck
Georgia Mealey
Stephen Metzger*
Daniel Moran
James Olsen
John Regenold
Dante Rossini, Jr.
Ralph & Jacqueline Roubal
Joseph & Beatrice Sailer
Peter Seghieri
James & Kieko Shrode*
Marlene Simandl Allard &
Raymond Allard
Loren Stahmer
John Taylor & Leigh Dillard
Donald, PhD & Colleen Theissen
William & Virginia Willner
Robert & Joan Wirtz

CLASS OF 1955

Anonymous (1)
Rodney Bailey*
James Becker
Louis Breimhurst
David & Judith Burns
Charles Cunningham, Jr.
Bruce & Carolyn Fitzgerald
Jerry & Patricia Friedmann
Michael Fritz
Richard & Marlys Graft
Del & Kathleen Gregory
Sandra Grippen Youngdahl
James Hedeon
Rev. George Kinney
Gerald & Lucille Kisch
Donald Kovarik
Norbert Kulzer
W. Timothy & Helen McNeill
Mary Alice Muellerleile, PhD, J.D.
Jeanne Murray Hesse
William Peters
Peter Prestrud
Robert & Sallie Raleigh
Bruce Robertson
Mary Lou Tierney Campion &
Brian Campion

◆ Represents Joint Alumni Household | * Represents Blessed Brother James Miller, FSC Lifetime Giving Society | † Represents Deceased

Alumni Donors 2021–2022, continued

William Walsh, MD
Edward Waschbusch
Joseph, MD &
Rachel Moga Westermeyer♦

CLASS OF 1956

Charles & Carol Berigan
Barbara Campbell Regan
Thomas & Mary Campbell
Jerome Clysdale
Frank & Phyllis Demma
Dennis Enright
LTC Gordon Flygare, USAF(Ret)
Wayne Haag*
Harriet Hoenck Arend
Mark, DDS & Mary Holmes
Gordon & Frances Jacobson
Grace & John Jorissen, Sr.
John & Mary Ann Campbell Kelly♦
D. Thomas, PhD & Ruth King
Thomas &
Margaret McCormick Kinney♦
John & Val Parsons Klett♦
Jerome & Janine Luger
Hugh McElroy
Estate of Thomas & Barbara McLeod
Marguerite Melin Senninger &
Edward Senninger
Donald & Susan Mockenhaupt
David Moga, MD
Rachel Moga Westermeyer &
Joseph Westermeyer, MD♦
Lawrence & Carol Monnens
Gerald & Julianne Monson
Mary Kay Mooney McJilton
Mary B. Pearson Walsht &
James Walsh
Robert Peterson
David & Phyllis Plum
R. William &
Mary Ann Goodman Reilly♦
Lawrence Rossini
Anthony Roszak
Ronald Schaaf
Mathias Schroeder
Allen Standish
Estate of Terrence Sullivan
Robert Wiesner
Michael Wlaschin

CLASS OF 1957

John & Diane Andres
Thomas & Mary Ann Arsenault
James† & Mary Benz
Mary Ann Campbell Kelly &
John Kelly♦
Harold & Ruth Ann Deering
Barbara Donahue Redpath
Marilyn Fenlon Kelly &
Laurence Fenlon
Joseph & Shirley Ferraro
Denise Flanagan McManus
John & Judy Gardiner
Jacque Girard Capistrant

R. William &
Mary Ann Goodman Reilly♦
Nancy Hagan Bock
Judith Hager Reichert &
Thomas Reichert
LTC Robert Hecht, Sr., USAF(Ret)
Peter Honsa & Joanne Hense
Thomas Joyce, Jr. & Annette Atkins
Richard & Beverly Lachenmayer
Michael & Nonnie Leary
Richard Leonard
Thomas &
Margaret McCormick Kinney♦
Hugh McGuigan
Philip & Peggy McLaughlin
Lawrence McMahan
Dennis (Skip) Milotzky
Joanne & James Murphy, Jr.
Michael & Jane Murphy
Robert & Jeanne Novak
John & Cynthia O'Halloran*
Denis & Judith Plankers
William & Carol Queenan*
John & Ellen Richardson
J. Thomas Sampair
Susan Schmid Morrison &
John Morrison*
Wayne & Dorothy Schmitz Thalhuber
Joseph & Maryann Schwebel
F. Richard Sheahan
Thomas† & Lois Smith
Ruth Swenson Nonnenkamp
Michael & Malinda Todora
Richard & LaVonne Ubl
John & Mary Vogelgesang
Michael Wallgren
James & Anne Wandmacher

CLASS OF 1958

Paul & Jera Barthol
Gerald & Marlys Bernier
Patrick Boland
John & Deborah Bremseth
Robert, MD & Nancy Christensen
John & Diane Clarkin
Terry & Katherine Cummings*
Lawrence Donohue
MaryEtta Dwyer Coursolle
John & Susan Fahey
Eugene Forcier
Robert & Kathleen Goff
Lawrence R. Haugh
Patrick & Susan Jastrow
James & Patricia Jorissen
Michael & Judith Kammerer*
Robert & Judith Klepperich
Alexander Kowalczyk
Kathleen & Joseph Krammer, Jr.
Theodore Kuepper† &
Carolyn Kueppers
Patricia Kugler Tracy & John Tracy
Robert Kulvich
LTC John Lang, USA(Ret)
Richard & Sharon LaPlace
Terrence & Rita Miller

Bruce & Catherine Odlaug
Robert Reider
Thomas & Judith Ryan
William & Judy Schubert
Archbishop Roger Schwietz, OMI
Patrick Sullivan
Wayne & Sara Jane Thein
Robert Theissen
Michael Toner
Carlton & Sharon Paul Uselman♦
Richard & Susan Votel*
Arthur Walsh
Eugene Waschbusch
Francis & Kathleen Ziegler

CLASS OF 1959

Thomas & Judith Buck
John & Betty Lou Cardinal
J. Richard & Diane Casey
Stephen, DDS & Cathie Christensen
Richard & Yvonne Dugan
Mark Ginther
Holly Haag Rausch
Joseph & Roberta Wappel Hering♦
Michael Holland
Gerald Kackman
David, EdD & Susan Shukay Keenan
Jerome & Kristi Klukas
James Korman
James Lennon
Bernard Lucking
Patrick, DDS & Karin Mascia
Anne McAlpin Lohmann &
John Lohmann
James McMahon & Peggy Meyer
Robert & Maureen Milske
Patrick, MD & Maria Mottram
Richard & Annette Mullen
James & Beverly Neitz
Dr. Edmund J. Nightingale
Daniel Norman
Michael Nuebel
Nicholas & Linda Paduano
Allen Petersen
Richard Rosga
Timothy & Nancy Ryan
Mary Ann Schwab Wetoska &
Robert Wetoska
Michael & Mary Ann Sexton
Georgann & Joseph Shiely, III*
Richard Tschida
Donald Welch
Rev. Gregory Welch
James & Arlene Werner
Robert Weyandt
John & Barbara Winters

CLASS OF 1960

Anonymous (1)(1*)
Thomas & Lois Albrecht
Jeanne Berthiaume Ahlm &
Rankin Ahlm
Richard & Corinne Bonin
Daniel & Kathleen Carroll

Margaret Cernohous Ahrens
Norbert & Mary Ellen Conzemius*
James & Gloria Cullen
Mary & Eugene Dario, Jr.
James Duffy, Jr.
James & Donna Ehrenberg
Kathleen Flynn McEachran
Rev. Francis Fried
James & Nansee Greeley
Charles Gregory
Arthur Haessig
David Hartung
Capt. G. Michael Hewitt, USN(Ret)
Phyllis & Daniel Hollihan, Jr.
Michael & Carol Jensen
Paul Judge
John & Nancy Kelly
Mary Jo Kelly
Gordon & Kathleen Hamm Kill♦
James Kneeland
Robert Kueppers
George & Carol Lang*
Douglas Laska
Martha Maudsley Sauter
Roger & Elizabeth Maulik
Terrence McGibbon
James† & Mary Nagel
Thomas & Judith Olin
Thomas O'Rourke
Sharon Paul Uselman &
Carlton Uselman♦
Jeffrey Postlewaite
James Rafferty
James & Judith Ross
Gene Scapanski, PhD
Dorothy Soshnik Spence &
Thomas Spence
James Sweeney, OD
Terrance & Lynn Votel
Robert & Aase Walerius
Robert Wappel Hering &
Joseph Hering♦
Richard & Kathleen Warren
Richard Wiberg, DDS
James Wicker

CLASS OF 1961

Stephen Archer
John Biebel
Ronald & Terry Michel Bierbaum♦
James & Marilyn Bossard
Kelley Ann Burg
James & Jean† Callahan
Richard Callinan
Michael Cardinal
James Clarkin
C. Thomas & Alison Enestvedt
William & Catherine Englund
Jerome & Deborah Filla
Gary, MD & Margaret Francis
John Gardner
Michael Haider, Jr.
Philip Hamer
Richard, PhD & Maxine Hammel
Robert Hanson

♦ Represents Joint Alumni Household | * Represents Blessed Brother James Miller, FSC Lifetime Giving Society | † Represents Deceased

Richard Harren
 Michael Hayes
 Marjorie Hechtl Jambor &
 James Jambor
 Thomas Horak, PhD
 Lawrence & Laurie Jandrich
 Thomas Kelly
 Leonard Koehnen
 William Kuhns
 Frances & John Lamey, Jr., MD
 John Mayer
 Thomas Mich, PhD
 William Moore & Mary Wagnert
 Paul O'Gorman
 John O'Reilly
 Maureen O'Shaughnessy Magnuson
 Paul, MD & Joyce Ossmann
 James Rebeck, Jr.
 Mal & Nancy Scanlan
 Jack & Mary Schneider
 Michael Shaw
 Michael & Janet Smith
 W. Jerome & Barbara Spitzmueller
 John Stevens
 James Stewart
 William & Elaine Treacy
 David & Margaret Troje
 Michael & Pamela Wold
 Donald, PhD & Paula Wolkerstorfer

CLASS OF 1962

Gerald Bender
 George & Margaret Bohrer
 John Brannigan
 Jerome & Carol Casey
 Michael Casey
 Richard Casey
 LTC Henry & Marjorie Conroy
 Michael & Jeanne Crane
 Patrick & Mary Lou Doherty
 Henri Drews
 James Gerlach
 John & Karen Gillespie
 Thomas & Jeanne Ginther
 Charles & Mary Jo Groeller
 Richard & Terri Hable
 Clifford Haugen
 Michael & Beth Hawkins
 James & Phyllis Kisch
 Kathleen Klett Riter
 Robert Krammer
 Terence Kriha
 Anthony Lancette
 Paul & Pamela LeMay
 Karen & Vincent Long, Jr.
 James & Susan Mack
 Kathleen McLaughlin
 Terry Michel Bierbaum &
 Ronald Bierbaum♦
 William (Joe) & Mary O'Neil
 Gregory Rotter
 Ronald & Patty Ryan*
 LTC Gerald,(Ret) & Patricia Sands
 Daniel & Marion St. Martin
 Mary & Frederick Suhler, Jr.

William Tschida
 John & Pamela Waschbusch
 John Wessel

CLASS OF 1963

Margaret Angvik Ammann
 Elizabeth Bisanz Norqual
 Eugene Bovy
 John & Madonna Campion
 Joseph Clarkin
 John & Olga Dale
 James & Sharon Dimond
 James & Yolanda Hennessy
 John Hoogesteger
 John Hughes
 Diane Huntington Pietrs
 Mary Anne Jordan Smalley
 Jack, III & Ramona LaMont
 John Lentsch
 John Martin
 Francis Marzitelli
 Joseph, PhD & Paulette McGrath
 James & Mary Mollner
 Lawrence & Norene Moser
 Stephen & Jami Nachtsheim*
 Carroll & Jean Oby
 David Odlaug
 Thomas Racine
 Kenneth† & Judith Rogers
 James & Cheryl Schubert
 Michael & Jane Swenson*
 Thomas & Linda Huna Troskey♦
 Anthony & Judith Tuk
 Timothy & Mary Valento

CLASS OF 1964

Robert Acker
 John Jr. & Mary Althen
 Mary Pat Anderson Maier &
 Helmut Maier
 Susan Bisanz Nicholson &
 James Nicholson
 David & Elaine Borsheim
 Joseph & Rose Bronk
 James Dvorak, SM
 John Ewen
 Suzanne Fay & Stanley Fiorito, Jr.
 James & Pamela Moody Ginther
 Thomas &
 Kathleen Sullivan Goswitz♦
 Mark & Donna Gregory
 Ronald Hofmeister
 Daniel & Joan Huneke
 John Lamski
 Gregory & Mary Pofert
 Gregory & Mary Quehl
 Michael and Maureen Ridge
 Kathleen Robertson Kennedy
 Michael & Charlotte Sarafolean
 Timothy, MD & Kimberly Scanlan, PhD*
 Robert, MD & Patricia Schubert
 Dianne & James Shiely, Jr.
 Wallace Trudeau
 John & Mary Valerius

Daniel & Mary Jo Vannelli
 Gerald Vogel†
 Richard Washburn
 Gary & Jeanille Watkins
 Michael &
 Constance Van Hoven Wittek♦

CLASS OF 1965

Roger & Kathryn Anitzberger
 Paul Beggin
 David & Denise Bruggemann
 Joseph & Karen Casey
 Mark & Maria Claesgens
 Robert & Mary Clarke
 Jerome Colburn
 Thomas Cook
 Daniel & Therese Shiely Diebel♦
 Patrick & Sandra Dignan
 Terrence Jr., PhD & Mary Donohue
 Thomas Enright
 William Fairbanks
 Patrick & Lois Gallagher
 Timothy & Judy Giuliani
 Gerald Groh†
 Kathleen Hamm Kill & Gordon Kill♦
 James & Barb Hannegan
 Thomas Hekele
 Michael Hermann
 Susan Kelly Pierce
 Thomas Larson
 Steven & Linda Lentsch
 Adrienne Martin Sturm
 Michael & Lisa McGinn
 Molly Mock Bonin
 Martin & Joyce Moody
 Claudia O'Brien Lawrence
 Thomas & Susan O'Connell
 Val Parsons Klett & John Klett♦
 Robert Patient
 John Phillips
 William Pohl & Teresa Schulte♦
 Thomas Regal
 Kenneth Schroepfer
 Lawrence & Marie Shomion
 James & Eileen Slagle
 Michael & Lynne Smeby
 David & Susan Smith
 Donald Stiepan
 James Towle
 Michael & Becky Tracy
 Charles Wessinger
 Patrick Zenner

CLASS OF 1966

Anonymous (2)
 John & Catherine Agee*
 Everett Arnold
 Jerald, MD &
 Marilyn Adlin Barnard, MD
 Gary Bellis
 Thomas Bibus
 Kevin Bohrer
 Michael Callinan
 Michael & Cathy Campion

Scott Deming, Sr.
 William & Claudia Engeland
 David, MD & Teresa Groppoli
 James Hamburgue
 John & Anne Bisanz Hannahan♦
 James Hassing
 Steven Heiberger
 Timothy & Sandra Heller
 David & Susan McKoskey Howard♦
 Richard & Elizabeth Karel
 James & Jan Koktavy
 Judy Korlath Hildman &
 Thomas Hildman
 William Leonard
 Robert and Ruth Link*
 James McDonnell
 Susan Morgan Claseman
 James & Mary Ellen Nichols
 Thomas &
 Melinda Leahy Nonnemacher♦
 Patrick & Kathleen Parnell
 Robert Peham
 Ross Rosenberg
 Timothy, MD &
 Rosemarie Reger Rumsey
 Therese Shiely Diebel &
 Daniel Diebel♦
 Terrence & Valerie Skrypek
 F. Michael Skweres
 Christine & Edward Walsh, Jr.

CLASS OF 1967

Robert Beltz, Jr.
 George Cameron, IV
 Michael Clarke
 Thomas & Kathleen Colaizy
 William & Julene DeNet
 Rebecca & Daniel Edberg, Jr.
 Raymond Eiden, Jr.
 Denise Engel Carlson & David Carlson
 Daniel Flesher
 Richard Forliti
 Thomas & Marilyn Gahm
 Daniel & Mary Jo Haag
 James Hermann
 Thomas Hughes
 Linda Huna Troskey &
 Thomas Troskey♦
 Maureen Kirby Sigler & Roger Sigler
 William Kronschnabel
 Lawrence & Laura Laughlin
 Anthony Leritz, Jr.
 Kathleen & John McCall, Jr.
 David & Kathleen McManus
 Robert McPartlin
 John & Susan Mollner
 Glenn Norstrem
 John & Margaret Olin
 John, Jr., PhD & Marcy Fisher Reiners
 Robert Rongitsch
 Molly Rumsey Park &
 H. William Park, MD
 Robert & Christine Shiely Runyon♦
 Linda Schaak Distad & Richard Distad
 Jill Schueller DuRose

♦ Represents Joint Alumni Household | * Represents Blessed Brother James Miller, FSC Lifetime Giving Society | † Represents Deceased

Alumni Donors 2021–2022, continued

Anthony Segale
Ted & Linda Selbitschka
Don & Connie Slipka
Thomas Spencer
Leonard Steiner*
Robert, MD & Judith Peck Tierney
Stephen Townley
Paul Verstraete

CLASS OF 1968

James Belland
Mary Lisa Berg
Mary Ann Campbell Anetipa & Alesana Anetipa
James & Janice Carey
Thomas Corrigan, III
Nora Crowley
Michael Detviler
Cherie Doyle Riesenberg & Charles Riesenberg
Hale Dustin, Jr.
Barbara Fourre Lenahan & Michael Lenahan
Susan Frejlach Lysne, LICSW
Pam & Donald Friedlander, Jr.
Thomas & Boey Monroe Gergen♦
Janet Heitzmann
Christine Huot Johnson
Gregory Kinne
Robert Kolasa, MD & Lois Lenarz, MD
James & Nancy Lang
Thomas & Deborah Lentsch*
George & Patricia Loban
Timothy & Linda Manahan
Margaret Maykoski Roscher*
Patrick & Roberta McMahon
Margaret Meyers Neurer
Judith Motschenbacher Lewis
John & Kathy Mutch
James & Colleen Nelson
Walter & Nancy Olsons†
Eugene Recibe
Geri Rosenthal Miller & Regan Miller
James & Jeannie Scheuring*
Steven & Linda Setterlund
Robert Shier
Joyce Smith Flynn
Janet & John Thames, Jr.
James, MD & Deborah Albers Tierney
Kirk & Susan Vadnais
Lon & Michelle Van Gemert*
Vincent & Kathleen Walker
Carole Wick Manke & William Manke
Christine Zagaria

CLASS OF 1969

Anonymous (1*)
Richard & Leslie Arnold
Anne Bisanz Hannahan & John Hannahan♦
Thomas & Sheila Casper
Lee & Lynnda Cesar
Herbert & Sheila Christensen
Timothy Clancy

Peter & Mary Jo Clasen
E. Daniel Conlan
John & Sandy Conway
Thomas & Jeanne Del Fiacco
William & Barbara DeMarco
Richard, DDS & Kerry Ryan Ehrmantraut♦
Steven Ekeberg
James & Linda Evans
Dennis Fitzgerald
Sally Francis Allen & Thomas Allen
Michael & Peggy Gehlen
Charles & Kathleen Gitzen
Richard & Rita Laramy Glynn♦
Grant Haffely
J. Michael & Delores Hauer
Leo Hermes, III
Lee & Dolores Javorski
Mary Johnson Kietzmann
Michael Karel
John Koegel
James Kurvers
Daniel Leisen
Thomas & Penny Margl
Ronald & Devonne Markwardt
Judith Miller
Christopher, PhD & Maureen Coonan Nachtsheim♦
John O'Brien
Michaela O'Brien Lauer
Edward O'Neill
William & Annette Patient
William & Michele Porter
James Rupert
Stephen Sawyer
Terence & Jane Schwab
Patricia Shiely Oxley & Gregory Oxley
Robert & Sang Slagle
Patrick & Kim Smith
Joseph Spitzmueller & Nancy Callinan
Nancy Stimmler Blade & Barry Blade
Stephen & Kathryn Stone
Elizabeth Turbes McCambridge
Michael & Jean Warren
Robert Wills

CLASS OF 1970

Anonymous (1)
Frederick Ackermann
Suzanne Alliegro
David Ayers
Patricia Bard
Charles Belland
Thomas & Joanne Boyer
Thomas & Marcie Campbell
Michael & Deborah Starr Donnelly♦
Daniel & Mary Kay Dorgan
Camille Dougherty McCann & Michael McCann
Michael Drake
Joyce Dufresne Gwizdala
Roseanne Eschle
Timothy & Jane Flynn
Gigi Fourré Schumacher
Gail Galvani Bell & David Bell

Mark Gautschi
Robert Hahn
Mary Pat Hamm Simons
Stephen Hinze & Margaret Donohue
Mary Horan
John Hughes
Richard Jabs
John Keis
Steven & LeAnn Kline
Daniel & Pam Kuechenmeister
Karen Larson Milton
Richard Matthews & Cindy Quehl
Jane McGroarty Schneider
Sharon O'Grady
Daniel & Mary Treacy O'Keefe
John Richardson
James Richter
James & Beatrice Sanders
Gregory Stevens
John & Annette Mortinson Whaley*♦
Mary Kay Wheeler Delaney

CLASS OF 1971

Anonymous (1)
David & Gail Wagner Busch♦
Michael & Valerie Byrnes
Michael & Mary Cole*
Patrick & Deborah Connor
Br. Patrick Conway, FSC
Terrance & Laura Vannelli Cullen♦
Patrick & Candace Daly
Kathleen Geary Shelley
David & Kathy Kilbane Hennes♦
Kathleen Henry DesLauriers
George & Molly Hottinger
Henry Jandrich, Sr.
Theodore & Elizabeth Horan Jessen♦
Elizabeth Johnson Hult & Robert Hult
Gregory Kelm
Susan Kessler Diamond
Thomas & Patricia Keyes
Michael & Mary King
Thomas & Julie King
Joseph & Marilyn Lais
Lawrence Mack
James McCall
Boey Monroe Gergen & Thomas Gergen♦
Annette Mortinson Whaley & John Whaley*♦
Mary Kate O'Connell Fischer & Martin Fischer
Georgia Robertson Kessel
Martin & Patricia Lillis Rongitsch
Kerry Ryan Ehrmantraut & Richard Ehrmantraut, DDS♦
Robert & Kristi Salisbury
Paul Salmen, MD
Richard & Julie Aretz Salmen♦
John Schaller*
Mark & Denise Barnett Schrantz♦
Donald Shaughnessy
William, PhD & Kathryn Spitzmueller
Deborah Starr Donnelly & Michael Donnelly♦

Robert Tautges
Howard & Phyllis Veith
John Wesolowski
Kathleen Wilken

CLASS OF 1972

Anonymous (1)
Gregg Anderson
William Bartels
Laurel Boerger
Paul & Judy Brueggemann
James & Nancy Daly
Timothy & Laurene Fonfara Engel♦
Michael & Nanette Flaten
Colleen Geary Brunner
Thomas & Nancy Haas
Richard & Nancy Hencier
Patrice Inserra Tate
Susan Johnson Kantor
Kathy Kilbane Hennes & David Hennes♦
James Koenig
John Kunik
Timothy & Pamela Kurtz
Geoffrey & Stephanie Laramy
Rita Laramy Glynn & Richard Glynn♦
Mary Lindberg Beal & Robert Beal
Timothy Miles
Elizabeth Murray Hamel & Mark Hamel
Scott Murray, DC
Donald O'Grady
Mary Beth O'Keefe Ebert & Richard Ebert
Kevin & Mary Kay O'Rourke
Richard & Shannon Burke Peterson♦
William Peterson
Mary Pohl, MD
James Schwab
Br. Robert Smith, FSC
Daniel Stone
Barbara Wallrich Soihl & Bruce Soihl
Mary P. Wetschka
Margaret Zastrow Kronschnabel

CLASS OF 1973

Denise Barnett Schrantz & Mark Schrantz♦
Michael Bazal
Theresa Carlone Morris
Paul Ceplecha
Kathleen Culligan
Lucy Frey Power
Kathleen Galligan Faricy & Thomas Faricy
Georgia Goswitz Loewe
Charles Hathaway
Eugene Hinze
Thomas & Margaret Hoffman
Elizabeth Horan Jessen & Theodore Jessen♦
Georgine Kurvers Larson
Robert Kuschke & Jane Aby
Ronald & Mary Lachenmayer

♦ Represents Joint Alumni Household | * Represents Blessed Brother James Miller, FSC Lifetime Giving Society | † Represents Deceased

Nora McGuire
 Kevin & Theresa McNulty
 Michael & Anne Nichols McQuillan♦
 Michael O'Brien
 Dan & Lynne Davy O'Connell
 Rudolph & Jill Pitera
 John & Jeanette Purcell
 Mary Reiner Shutters
 John Roby
 Jason Schreiber
 Mark Stahley
 Diane & Robert Stupka, Jr.
 Maureen Sweeney Huss &
 George Huss, Jr.
 Kevin, MD & Ann Treacy
 Laura Vannelli Cullen &
 Terrance Cullen♦
 Richard, PhD &
 Nora Villemur Yanchar, PhD

CLASS OF 1974

Christine & Luigi Andretta, Sr.
 Joan Aretz Hedin
 John & Helen Erb Barrett♦
 Marilyn Bazal Siemers
 Marie Berendt Speltz & Joseph Speltz
 James Clark
 Kathleen Conway Russell &
 Terrance Russell
 William &
 Terry Radford Fleischhacker*♦
 Ruth Gibson Rauschendorfer &
 Thomas Rauschendorfer
 Michael & Terri Gleason
 John Goodlad
 Jane Harbinson Maguire
 Alexandra Henry Bartolic &
 William Bartolic, III
 Debora Hirsch
 Susan Johnson Barry & Kevin Barry
 Robert & Pamela Keis
 Thomas & Laurie Kelly
 Bridget Manahan & Joseph Alexander
 Ann McCauley Urman
 Teresa McDonald
 Lolly McNeely Salmen
 Mary Beth Mitsch Carnicom &
 Jon Todd Carnicom
 Anne Nichols McQuillan &
 Michael McQuillan♦
 Elizabeth Noel
 James & Susan Hietpas O'Neill♦
 Mary Roberts Edwards
 Col. Timothy & Kathy Robertson
 Paul & Julia Ryan
 Teresa Schulte & William Pohl♦
 Roxanne St. Peter Reese &
 Thomas Reese
 Mark Tierney
 Michael & Laurel Traxler
 Susan Voigt
 Donald Weinberger, Jr.
 Eugene & Nancy Weinreis
 Patrick & Evelyn Wicker

CLASS OF 1975

Anonymous (1)
 Michael & Jan Aldrich
 Thomas & Wanda Barrett
 Joseph Becker, DDS
 Kevin Byrne
 Kimberly Casey Doyle &
 Shawn Doyle♦
 Marie Cook
 Vincent & Kate Latimer Courtney♦
 Terry Cox Joseph
 Katherine Denn Tischler
 Thomas & Barbara Gartland*
 Michael & Peggy McQuillan Gibbs♦
 John Guzik
 Mary Haessig Schulz
 Vicki Hill Erickson
 Mary Horyza Miller
 William & Michele Jeffrey Hren♦
 James & Nannette Hynes
 Patricia Karel
 Kevin Loney & Norma Herther
 Terese Lynch & Timothy Johnson
 Richard & Terese Margl
 Jerry & Susan McGraw
 Maj Gen Thomas Murray
 Patrick & Marianne Newell
 Richard & Ann O'Connell
 John &
 Deborah Rubbelke O'Halloran♦
 Steven O'Hara
 Terry Radford Fleischhacker &
 William Fleischhacker♦
 Mark & Beth Ann Richter
 Dr. Thomas Schaaf
 Maureen Seestedt Weiss &
 James Weiss
 Dominic & Tomina Tacheny
 Thomas & Marie Thell

CLASS OF 1976

Anonymous (2)
 Nancy Allen Orme & John Orme
 Steven Arduser
 Julie Aretz Salmen & Richard Salmen♦
 Robert Barnett
 Joseph & Colleen Bartels
 Jane Campion Coleman &
 Thomas Coleman
 William & Clare Williams Cizek♦
 Margaret Conlin Duevel &
 James Duevel
 Jeffrey & Joan Domler
 Ann Donovan McDonald
 Shawn & Kimberly Casey Doyle♦
 Michael & Laura Fecht
 Mary Flood Ranta & Jeffrey Ranta
 Michael Gaines
 Nancy Galligan
 William & Michele Windisch Gleason♦
 Paul & Mary Sue Godfrey
 Patrick Green
 Sonseere Henton Goldenberg

Margaret Hietpas Endres &
 Thomas Endres
 Donald Hudalla
 Patricia Hurd
 Michele Jeffrey Hren & William Hren♦
 Mary Kaye Jones
 Steven & Kathryn Karel*
 Mark & Catherine Kenney
 Michael & Patrice Kirchner
 Gary & Sarah Kopp
 Jerome & Doreen Lardy
 Joanne Leahy Laubach
 Claire Martin Duvall
 Laura McDonnell Boland &
 James Boland
 Joseph, PhD & Maria Metzger
 John & Mary Clements Michaels♦
 Glenn & Debbie Mitchell
 Kevin & Mary Alice Ritt Noel♦
 William & Patricia Picha
 Luigi Portesan
 Jeanne Rossini Weir & Thomas Weir
 Kevin Roth
 Kurt & Mary Jo Roth
 Deborah Rubbelke O'Halloran &
 John O'Halloran♦
 John Ruhland
 Brenna Ryan Nicholson &
 Kevin Nicholson
 Peter Schmittiel
 John & Jane Smith
 Joseph Swanson
 Jeffrey & Wendy Thames
 John Towle
 Lori Vosejka
 Gen. Joseph,(Ret) & Michele Votel
 William Votel, MD & Barbara Seery
 Patty Walsh Alfonso
 Julia Walsh Bennett
 Jean Whaley, ScD & Brian Monahant
 Mary White Frey & James Frey
 Rita Wyman Bland
 Patrick Zenner

CLASS OF 1977

Anonymous (1)
 Bridget Ahern Rooney & John Rooney
 Timothy Arland
 Elizabeth Griesgraber Backus &
 Bruce Backus
 Lee Bissonette
 JoAnne Blake
 Anthony & Celeste Brausen
 Jean Bumgardner Bauman &
 William Bauman
 Mary Clements Michaels &
 John Michaels♦
 Bridgette Cook Startz &
 Robert Startz, MD
 Timothy & Virginia Coyle
 Christopher DeNet
 Jay DesLauriers
 James & Maureen Detviler
 Mark & Lisa Dietsch
 Sarah Farley

Rebecca Finley
 Lori Flaherty Leslie & Dennis Leslie
 James & Lynn Flesch
 Mary Kay Funk Werner
 Michael &
 Kathleen Traxler Harrington♦
 Peter Hinze
 Robert Hofmann
 Ann Johnson Burns & William Burns
 Mary Ellen Klas Kennedy
 Nancy Kleason Culligan &
 John Culligan
 Rock Krenik
 David Kuettel & Megan Kavanaugh
 Carol Lanners Hockert
 Dennis Leahy
 Kathleen Lynch Kaptain
 Timothy & Mary Jane McKasy
 Peggy McQuillan Gibbs &
 Michael Gibbs♦
 Ann McQuillan Stodolka &
 Michael Stodolka
 Marybeth Murphy Garrett &
 Daniel Garrett
 Timothy Murphy
 Michelle O'Connell Kilroy
 Thomas & Mary Ann Orfei
 Mary Picha Goiffon & Daniel Goiffon
 Cynthia Reiling Krebsbach &
 Michael Krebsbach
 Rita Roberts Bajari & Dave Bajari
 Thomas Rowan, III & Maria Martin
 John Stupka
 Margaret Thornton Crawford &
 James Crawford
 Jacqueline Tschida Punch
 Carol Walsh Lugg & Paul Lugg
 Judith White Jaffee
 Patricia Wilson Gaffney

CLASS OF 1978

Anonymous (1)
 Mark Barrett
 David Boudewyns
 Robert & Rosanne Congdon
 Alicia Dahl Montojo &
 Wilfrido Montojo
 Kristan Diedrich Rennell &
 Dean Rennell
 Patrick & Susie Dolan
 Barbara Figge Neighbors &
 Tracy Neighbors
 Stephen & Sherry Kampa
 Kevin & Jennifer Kelley
 Mary Kerwin Partington &
 Michael Partington
 Brett Laughlin
 Nora Loonan Beckjord
 Joseph & Lynn Lucking
 Jean Markwardt Krasean &
 Bradley Krasean
 Mark & Donna Michel
 Sara Reinartz Mountain &
 Michael Mountain
 Mary Rossini & William Anderson

♦ Represents Joint Alumni Household | * Represents Blessed Brother James Miller, FSC Lifetime Giving Society | † Represents Deceased

Alumni Donors 2021–2022, continued

Michael & Carrie Simmons
Leigh Sitzmann Basha
Michele Speranza Skare
Robert & Kathleen Uhler
David & Duchie Van Hoven

CLASS OF 1979

William & Jennifer Alexander
Anne Bilski Conlin & Steven Conlin
Matthew, DC & Michelle Caron
Kerry Casey & Kelly Trewartha
Timothy & Leslie Connelly
Michael Costello
Maureen Fitzpatrick &
Douglas Armstrong
Kevin Galligan
Margaret Gartland Schafer &
Bradley Schafer
LTC Peter, (Ret.) & Amy Orme Grayson♦
Mary Guldan Rugloski &
Patrick Rugloski
Michael & Seanne Harris
Mary Hermes Cromwell &
Timothy Cromwell
James Landwehr
Michele Lentsch Kleason &
Robert Kleason
Richard & Patricia Arnold Long♦
William, Jr. &
Theresa Gregory McClellan♦
Kieran & Kathy Moore
Michael Morgan, Sr.
Patricia O'Connell
Susan Richards Owen & Basil Owen
William Robertson
Steven & Christine St. George
Thomas & Colleen Dietsch Traxler♦
Beth Wagner Voigt & Kevin Voigt
Gregory, PhD &
Kathryn Dillon Whaley♦
Lisa Willems
James & Jane Williams
Monica Windisch Barrett &
Timothy Barrett♦

CLASS OF 1980

Thomas & Julia Arons
Timothy & Monica Windisch Barrett♦
Jeffrey & Barbara Belting
Patty Clemons Jones & Dennis Jones
Julie Cook McBride
Elizabeth Culligan Maruggi &
Albert Maruggi
Catherine Curtis
Sheila Dolan Boland
SGM William Dullea
Molly Fitzpatrick
Lisa Frenette & Donald Scheunemann
Terrence & Sandra Furlong
Father William Gerlach
Teresa Glass
John & Liza Haas
John Hueg

Jacquelyn Joyce Lutmer &
Thomas Lutmer
Kathleen Kenney
David & Betty Kepler
Gretchen Lennon
Mary Mazzitello Nemo &
Anthony Nemo♦
Steven & Kristin Messing
Jane Metzger Von Haden &
Anthony Von Haden
Joseph & Cheryl Morin
Kathleen Redpath & Greg Fassett
Mary Beth Reiling Metz
Daniel & Cynthia Schroer
Capt. Heidemarie Stefanyshyn Piper &
Glenn Piper
Eugene Thill
Thomas & Michelle Woessner

CLASS OF 1981

Margaret Bazal Simmet
SGM David & Cheri Berrisford
Mary Burke Lynch & Timothy Lynch
Regan Byrne Palmer &
Timothy Palmer
Paula Clements
Lucy Cook Sullivan & Thomas Sullivan♦
Michelle Couture
Mark Flaten
Missy Gavin
Terrence Hoye
Carol Hudalla Crago & Keith Crago
Lisa Keese Dekker
Kate Kempe Biley & Mark Biley
William Lauer
LTC John Laverdure
Jane Leyden Cavanaugh &
Joseph Cavanaugh
Diane Mach
Kevin & Kay Murphy
Anthony & Mary Mazzitello Nemo♦
Matthew Nichols
Catherine Noonan & Ed Hoffmann
Tamra Phillippi & Thomas Heinen
Daniel Prokop
John Reinartz, MD
Paul Roberts Nicolo
Maria Smith Gans & Lane Gans
Theresa Stead
Maureen Traxler Barth &
Gregory Barth, MD
Sara Wagner & Peter Clements

CLASS OF 1982

Michael Boland
Kathryn Buckley
Paul & Kathleen Lanners Carruth♦
LTC James & Trulea Gann Craig
Shelagh Delaney Burke &
Joseph Burke
Mark & Dianne Gibbs
Jeanne Insera Dolinsky &
Jerome Dolinsky

Helen Koenig McDonough &
Thomas McDonough
Mark & Bonnie Korman
Jean McCarthy Cadle
John O'Connell
David Peterson
Steven & Mary Strafelda
Thomas & Lucy Cook Sullivan♦
Maria Wagner Reamer &
David Reamer*

CLASS OF 1983

Ann Bredemus Gaertner &
Stephen Gaertner
Martin, DC & Kathleen Erb Caron♦
Col. John & Mary Carrell
James & Margaret Cownie
Michael & Amy Dickson*
Mary Dillon
Wayne & Kristy Goldberg
Cynthia Grams Bond
Todd Hughes
Cheryl Lynch Vitek & Brian Vitek♦
John & Minnie Mancini
LeAnne Matthews Stewart &
John Stewart*
Daniel & Elizabeth Murray
Dana Niven Bruce & Douglas Bruce
Sheila Salisbury Galvan & John Galvan
Mark & Sheila Kelley Schwartz♦
Angela Stemig Anderson
Robert Tryon
Nicholas & Nancy Whaley

CLASS OF 1984

Timothy & Rebecca Caulfield
Sean & Brenda Daly
Colleen Dietsch Traxler &
Thomas Traxler♦
Joseph & Katherine Harris
Patrick & Laura Harris
James & Julie Yoswa Hoffman♦
Sheila Kelley Schwartz &
Mark Schwartz♦
Ronald & Mary Kimlinger
David Kiwus
Richard & Cynthia Korman
Kate Latimer Courtney &
Vincent Courtney♦
Mary Lebens
Richard & Melody Lentsch
Sean McGuire
Genevieve McJilton
Sean & Shari Mooney
Christine Rettler Page &
Gregory Page
Dennis & Jennifer Rosemark
David Samuelson &
Gina Mancini Samuelson, PhD♦
Peter & Molly Skinner
Teresa Traxler Lawder &
Joseph Lawder
James Tschida

Brian & Cheryl Lynch Vitek♦
Laure Waschbusch, MD
William Weinberger
Catherine Williams Szyman &
Peter Szyman
Col. Scott Witte

CLASS OF 1985

Anonymous (1)
Jeffrey Ammann
Brendan Bannigan &
Kathleen Just Bannigan
Michelle Dill Rencher & Brad Rencher
Cynthia Haugh
Mary Janssen McElroy
Patricia Klas Montalbano &
James Montalbano
Anne Marie Lentsch Peltier &
Thomas Peltier
John Messing
Peggy Purtell Hansen & Tony Hansen
Joseph & Kay Rubbelke
Christine Scanlan O'Brien &
Dan O'Brien
Michael Seifert
Timothy Tracy
Richard Vanyo
Steven & Deanna Walsh*

CLASS OF 1986

Kate Arend Burda & Andrew Burda
Daniel & Peggy Cummings
Katherine Enestvedt Johnston
Juliann Heinz
Christopher Hill
Paula Karel Bullis & Rocklyn Bullis
Thomas Kraus
Gina Mancini Samuelson, PhD &
David Samuelson♦
Daniel '86 &
Tammy Trenter Redpath '87♦
Ann Simerson Williams &
Andrew Williams
William & Kathryn Steigauf
Patrick Turley

CLASS OF 1987

Timothy & Anastasia Benz
Ellen Biales
Kevin Buckley
Nancy Dolan Ingham
Michael &
Elizabeth Woodward Domler♦
Martha Hanzel Johnson &
Jeffrey Johnson
Gina Hoffman Wolfe & David Wolfe
Sean Klett
Molly Malloy Stucker
Douglas Olchefske
Michael & Tinna Ross
Daniel & Colleen Scanlan Ryan♦
John Schmidt

♦ Represents Joint Alumni Household | * Represents Blessed Brother James Miller, FSC Lifetime Giving Society | † Represents Deceased

Melissa Bushee Seebeck & Douglas Seebeck
Michelle Skally Doilney
Tammy Trenter Redpath & Daniel Redpath♦
Mark Twombly
Katie Weinberger Stewart & William Stewart*
Timothy & Lisa Williams

CLASS OF 1988

Thomas & Jennifer Brandt
Margaret Foley & Erik Janicki
Ann Marie Foss
Sarah Hood Floersch & Michael Floersch
Karen Kane Rambo & Charlie Rambo
Joseph & Sheri Byrne Langevin♦
Ronald & Terri Link
Amy Loughrey
Kristine Masek Shields & John Shields
Lt Col John Mazzitello
Shannon McDonough
Rebecca Medellin
J. Finbar & Kathleen Murphy
Shannon Petersen
Katherine Peterson Haney & Matthew Haney
Daniel, J.D. & Romelle Pornschloegl
Michael Roberto
Kristin Utvik Wallin
Elizabeth Woodward Domler & Michael Domler♦

CLASS OF 1989

Kathleen Bird Peterson
Katie Byrne Reeder & David Reeder
Paul Delaney
Joseph Gallatin
Mark Hechtl
Jennifer Hudoba Dewey
Douglas Jones, Jr.
Kevin & Julie Paladino Kaminski
André Lanoue & Crystal Flint
Dianna Reed & Eric Henly
Derek & Lora Weinke
Patrick Witte

CLASS OF 1990

Anonymous (2)
Amy Bellus
Shannon Hayes Stroh
Timothy Laughlin & Tina Zugschwert Laughlin
Michael Mead
Emily O'Halloran
Justin Palmer
James & Marcy Sticha
Michele Waschbusch Mingo & Thomas Mingo

CLASS OF 1991

Patrick & Kelly Connolly
Kevin & Elizabeth Geheren Dolan♦
Trista Gorman McCormick
Timothy & Kay Donohoo Hannon♦
Daniel & Nicole McDonough Staples♦
Rebecca Stromme Faison & John Faison, III♦
Patrick Summers & Alison Cook♦

CLASS OF 1992

Michelle Andres
John Berthiaume
Scott Bjerketvedt
Julie Busse Polinsky & Alex Polinsky
Anne Davini Johnson
Julie Dobbmann Swedberg & Eric Swedberg
Derek Engler & Nina Severini
Elizabeth Geheren Dolan & Kevin Dolan♦
Edward & Mary Hernandez
Matthew & Shana Hockman
Joshua Howe
Steven Jackson Kozel
Christine Kustelski
Nicole McDonough Staples & Daniel Staples♦
Laura Meyer Tye
Todd & Karen Swenson Mohrland♦
Tony & Jodi Moline
Jeannie Perrault Herrema & Kevin Herrema
Maureen Reid Wosepka & Marc Wosepka
Matthew Runyon
Susan Rupert Newman & Jason Newman
Rebecca Skally & John Stanley
Andrew & Janell Soucheray
Michael & Christina Steineman

CLASS OF 1993

John, III & Rebecca Stromme Faison♦
Julie Hamiel Zirnhelt & Joe Zirnhelt
Cheryl Jandrich
Chad Kasper
April & Jerry Kline, Jr.
Aaron & Sarah Macke
Andrew & Jessica Lindstedt Madigan♦
Anne Malloy Wolff & Jason Wolff
Matthew & Michelle Nowaczewski
Bjorn & Tanya Scapanski Piltingsrud♦
Sara Schulz Michel & Rick Michel
Christopher & Dawn Schwab
Gina Shields Armada & Bernard Armada
Chad & Shannon Skally
Jessica Sonnen Quinn & Jeff Quinn
Lt.Cmdr. Andrew & Nicole Urbanski
James & Jennifer Wieland
Brian & Tracy Ehrenberg Ziemann♦

CLASS OF 1994

Anonymous (1)
Rebecca Beltz
Kelly Davis Jirschele & Cameron Jirschele
Tracy Ehrenberg Ziemann & Brian Ziemann♦
Alanah Engler Gentle & Joe Gentle
Jason & Anne Hable
Buzz & Sara Hannahan
John & Elizabeth Shields Keating♦
John Lamey, III
Michael Palzer
Michael Rein & Roxanne Nielsen
James & Alissa Runyon
Zachary & Jennifer Ryan
Joseph & Heather Scanlan
Andrew & Kathleen Haugh Staples♦
Kathleen Steineman

CLASS OF 1995

Anthony & Heidi Giuliani
Joseph & Meghan Hahs
Christopher & Kelly Mellgren Jensen♦
Gwen Nickolay Traynor
Katherine Peterson
Elizabeth Shields Keating & John Keating♦
Bryan Shier
Laurel Waldoch Clift & Steven Clift

CLASS OF 1996

Benjamin Clasen & Amy Marc
David & Teisha Devine
Andrea Diederich Beyerlein & Josh Beyerlein
Daniel Glendenning
Jonathan & Emily Soucheray Guion♦
Michael & Sara Weiberg Honsa♦
Thomas & Katie Parks
Angela Samec Woessner & Shawn Woessner
Anne Sampair Moreland & Jake Moreland
Darcie Scheuring Lind & Joseph Lind
Anne Schmidt Novak
Joseph & Sarah Skarda
Elizabeth Tuohy & Jarod Anderson
Sarah Weinke Murphy & Tim Murphy
Matthew Wortman
Katherine Wright Nelson & Brent Nelson
Matthew Znameroski

CLASS OF 1997

Anonymous (1)
Murray, Shannon O'Leary
Emily Colaizy
Michael & Valerie Johnson Corrigan, MD♦
Thomas Farnham, II
Molly Mattessich & Ernesto Gluecksmann

Michael & Rebecca Penfold Murray
Thomas & Anne Murray
Ian O'Connell
Shannon O'Leary & Steve Jackson
Kate O'Phelan Pletcher & Erik Pletcher
Brandon Pierce & Laura Lapczynski
Dylan Ryan
Samuel Sippl
Stacy Sommerhauser Gianino & Nicholas Gianino
Laura Sutton Pierson
Emily Yanez Suedbeck

CLASS OF 1998

Keith & Lawreen Arnold
Margaret Clemency Eftimiou
Brianna Covert Cockill
Sara Egan Hassel & David Hassel
Julie Glendenning
Anne Marie Hickey Pfaender
Brendan Kline
Erin Lee Muckerheide & Mark Muckerheide
Rebecca Manke Jacobson
Joseph Neuenfeldt
Kathryn Orme Lasure
Michelle Poechmann Wenner
Kathleen Russell Etten & Joseph Etten
Jessica Smith Whalen
Brian & Jessica Whinnery
Thomas & Heather Yenni

CLASS OF 1999

Michelle Ayers Safe
Jamie Blaeser Nikolai & James Nikolai
Laura Colaizy Frederixson & Scott Frederixson
Dominic Fleetham
Jon Paul & Laura Gagne
Kristin Germann Matelski & Jayme Matelski
Valerie Johnson Corrigan, MD & Michael Corrigan♦
Kristen Kraut Macken & Gerald Macken, Jr.
Alexie Leitner
Bryan, MD & Elizabeth Fastner Pershing♦
Conor Ryan
Anthony & Anna Scheuring
Martha Thornton Montzka & Justin Montzka
Rachel Wandersee Ronning & Dane Ronning
Michael & Deborah Welsch

CLASS OF 2000

Katherine Barrett
Barry & Rosalinda Brandt
Catherine Carroll Hansen & Jon Hansen
Kimberly Erickson Brenner & Tobias Brenner
Brian & Erin Knutson

Alumni Donors 2021–2022, continued

Maria Moores Watts & Michael Watts
William Schaffer
Lt. Col Phillip Ventura, USAF &
Brigid Ventura
Anthony Warren
Megan Whaley & Szymon Rakowicz

CLASS OF 2001

Emily Fischer Cripe & Dustin Cripe
Charles & Mairzy Gatrell
Michael Hally
Christopher Hill & Anne Romens♦
Linda Howard
John & Meghan Gowan Huss♦
Jeffrey & Kara Delaney Lepley♦
Antonio & Ashley Leseman
Amy Jo Nordstrand
Ryan Pates
Robert Satterstrom, Jr.
Mark Wallin
Katherine Wilcox Jahnke &
Brady Jahnke

CLASS OF 2002

Anonymous (1)
Thomas & Trisha Delaney Burt♦
Paul & Jenna Dwyer
Ann Ebert O'Neill & David O'Neill
Will Finley
William Gochberg
Lisa Johnson Kelly
Brennan & Melinda Karalus
Brian Kilburg
Kathleen King Gaiser & Jeremy Gaiser
Brendan & Brianne Lucio
Andrew McColley
Matthew McGuire
Erin Mullan Towns
Anne Romens & Christopher Hill♦
Adric Ryan
Callista Sorenson Koelling &
Jared Koelling
Lt. Andrew & Raechel Valerius
Matthew Warren
Mark Zoff

CLASS OF 2003

Benjamin & Anna Ayotte Beery♦
Trisha Delaney Burt & Thomas Burt♦
Patrick & Rosemary Girouard
Meghan Gowan Huss & John Huss♦
Daniel & Hayley Karel
Charles & Alexa Miesbauer
Mairzy Russell Gatrell &
Charles Gatrell
Lauren Whaley & Carolyn Wharton

CLASS OF 2004

Phillip Arnold
Sarah Denkinger
Brody Grandas
Adam Hendrick
Andrew Lendway

Richard & Gaby Long
Joanna Nutzmann
Michael & Liz Sabaka
Nicholas Vashro

CLASS OF 2005

James Burt
Molly Cotroneo Hickey & Bill Hickey
Daniel & Katie Fugina
John Grooms
Nicholas Karel
Michael Keis
Courtney Marek Rankin &
Dennis Rankin
Katie Rufener
Marcus & Jessica Tibesar

CLASS OF 2006

Patrick & Monica Miley Beery♦
John Buckeye
Ethan Eid
Timothy Flesch
Mary Gleich Matthews &
Brian Matthews
Courtney Heinz
Michael & Ashley Johnson
Anne King
Nicholas Niewinski
Zoe Ryan
Caitlin Whaley & Charles Schultz

CLASS OF 2007

Hannah Gikling Larson &
Benjamin Larson
Benjamin & Allison Hause
Alyssa Karel Ylinen & Jon Ylinen

CLASS OF 2008

Margaret Leseman
John & Meg McGuire
Shady Salamon
Christopher & Marie Broos Weyandt♦

CLASS OF 2009

Anonymous (1)
Anna Czech Carlson & Paul Carlson
Samuel & Helen Karel
Joseph Kleason
Joseph Marek
Timothy Miley
Michael Novitzki
Lucienne Ryan
Matthew Sevenich
Lisa Springer
Christopher Steer
David Stein
Nathan Woessner

CLASS OF 2010

Clare Johnson
Jean Miller
Ellen Schafer

CLASS OF 2011

Anonymous (1)
Nicholas Koop
John & Nicole Kumerow
Joseph Miley
Colin O'Brien
Elizabeth Ryan
Will Ryan
Andrew Tacheny
Katherine Vosbeek

CLASS OF 2012

Thomas & Veronica Johnson
Timothy &
Maureen Czech McClanahan♦
Kevin Miley '12
Nicholas & Alexa Klaus Montelibano♦
Jeremiah Morse
Connor Udelhoven &
Gabiella Fortuna Udelhoven♦

CLASS OF 2013

Joseph Arends
Anna Burke
Maureen Czech McClanahan &
Timothy McClanahan♦
Anne Gleich
Daniel & Michaela Goldenstein
Anne Hause
Hildie Hoeschen
Ann Noel
Luke Schwirtz

CLASS OF 2014

Monica Czech
Nyasa Henderson Meany
Margaret Johnson
Monica Miley Beery & Patrick Beery♦
Caroline Schafer
Elizabeth Strafelda
Joshua Vievering

CLASS OF 2015

Catherine Cahir
Theodore Ryan
Bradley Straka

CLASS OF 2016

Alli Altier
Frank Kajer
Mary Kate Miley
Margaret Read
Daniel Ryan

CLASS OF 2017

Joshua Goldberg
Molly Johnson
Gavin Reeder

CLASS OF 2018

Katherine Mattocks
William Ryan

CLASS OF 2019

Abigail Reeder
Lynn Willems

CLASS OF 2020

Kiera Ryan

CLASS OF 2021

Joseph Reeder

CLASS OF 2022

Chloe Anderson
Dominic Anderson
Samuel Anglum
Jacob Banas
Carson Bengtson
Drew Bigelbach
Justin Burns
Anna Caruso
Nicholas Coyle
Sarah Craighead
Peter Dunham
Lillian Geist
Jackson Giuliani
Erin Hannon
Bryn Hansen
Leah Hausmann
Anna Holm
Samuel Holm
Connor Howe
Liliana Hummel
Anna Jaeschke
Isabella Lauer
Ava Limoges
William Meyer
Wyatte Nissen
Charlotte Olson
Jackson Parker
Alexandra Prodoehl
Nicholas Ryan
Lucy Skinner
Luke Stowell
Daniel Umland
Jonah Wangsness
Jack Welsch
Grace Wethington
Jane Zirnhelt



Tributes

IN MEMORY OF

1963 classmates that have died
for our country

Joseph Abbott
Kelly J. Abbott '99
Lucile Acker
Diane 'Penny' Adams
John Albers '49
Gary Ales
Vincent A. Arceno '40
Jerome F. Archambeau '63
Michael W. Arend '55
Thomas V. Ashton '75
Everett H. & Marguerite J. Ayers
Louis G. Bader '56
Mary G. Bard
Paul A. Bard '38
James A. Basta '58
Leonard E. Beatty '55
James F. Benz '57
Joan Birder Michel '39
Colette M. Bisanz '26
Bryce Blackwood Beauchamp '73
John '49 & Marguerite Blake
Edward J. Bohrer '53
Jerome T. Boland '74
Karen M. Brandt Kragt '03
John P. Britz '70
Daniel R. Brott '56
Alfred L. Broz '61
Paige Bullis '22
Harvey L. Buron '66
Anthony J. Byrne '68
Rowland R. Champion '45
Michael M. Champion '78
Dr. Terrance Capistrant '56
Agnes Carrier
Jo Ann Carrier
Mark P. Casey '60
Stephen M. Casey '63
Barbara Chaffin
Margaret L. Christensen
John R. Clayton '95
Bruce D. Clemen '65
Oliver W. Cohen '14
Kathleen Coleman
Mary Ellen Commers
Mary L. Connelly
Henry S. Conroy, Jr.
Cyril J. Corrigan '37
William J. Cosgriff '59
Getrude Costello Ivory '47
Charles Cunningham '30
Br. Lawrence Dannecker, FSC '38
Richard C. Dean '46
Deceased members of the
Class of 1960
Christopher A. Dell '07
Helen DeNet
Hugh Derham
Walter R. Dick '49
Clarence & Fern Monette Diebel
Richard E. Dillon '50
Patricia Dillon

James P. Dixon '67
John "Doc" Dolan '53
Daniel F. Dolan
John H. Dolan '55
Thomas M. Donohue '57
Dorothy A. Donovan McGuire '43
Robert J. Doyle, Sr. '43
Thomas J. Doyle
Virginia Dwyer
Raymond T. Engel '42
John M. Eshenbacher, Sr. '62
Kathleen A. Farley '57
Mary Louise Fleischhacker '72
Mark Flesher
Kevin M. Flynn '76
Phyllis A. Francis
David L. Francois '61
Clyde Fraser
Mary Frost Frey '52
Virginia Gaffrey
John J. Galligan '40
Mary Galvin Farrell '59
Patricia Ann Gartland
Loretta Gavin
Robert M. Geisenheyner '39
Margaret Gentle
Timothy H. Geraghty '70
Francis W. Giles '46
Betty Gillespie
John F. Glarner '63
Robert Glynn
Monica Goossens Glass '76
William D. (Dan) Gowan '81
Pamela A. Grayson '78
Michael P. Greeley '92
Charles D. Green '35
John Groebner '61
Maureen Guscetti
Michael J. Guzik '01
Lynelle M. Haag '61
Albert S. Haider, Jr. '68
Robert S. Hamm '68
Shannon K. Harris '10
William M. Hart '50
Thomas J. Haugh '61
J. Robert Haugh '55
Audrey June Wertheimer '44
Patricia Hayes Joyce '55
Daniel C. Hayne '61
Michael D. Heffron '53
Peter H. Hermann '75
Karl F. Hermann '80
David J. Hietpas '79
Thomas C. Hildman '01
Thomas J. Hirsch '83
Therese Hocks
Paul J. Hofmann '82
Thomas W. Hofmann '84
William J. Hollihan '66
Mike Hopkins
Len Horyza
Joshua A. Howard '98
Matthew W. Hubler '50
Mark J. Hughes '81
John E. Hughes '90

Carl Jaeschke
Laura Jensen Murphy
Kate Johnson
Anthony S. Kaminski
Marilyn A. Kane
Vincent C. Kavaloski '64
Judith Kavanaugh, CSJ
Pat Keating
John R. Kelley '45
William Kelly '30
Claire Kelly Jansen '10
Patti J. Kessler '75
Melvin A. Kimmel '44
Joseph & Mary Koegel
Joseph & Audry Koenig
John Kovarik
Theodore M. Kueppers '58
David A. Kulhanek '77
Ann & Ed Landy '25
Wilfred Lang '38
Rita Laramy
Katherine A. Larson
D.J. Leary '54
Dr. Richard J. Lessard '47
Donald J. Leyden '45
William D. Liberman '70
Owen Loftus '22
Patrice Loney '76
Edward F. Loney '40
Carol Lunney
Traci Macke Wulff '95
John E. Maeurer '48
Capt. John T. Manahan '01
Mary Ann P. Mancini
Nick P. Mancini
Gregory Marzolf, Jr. '98
Gregory G. Marzolf, Sr.
Elizabeth C. Maulik
George May, Sr.
Albin F. Mayer '51
Thomas McCarver
Susan Farnum McDonough
William J. McEvoy '33
Maryann McFadden Pearson '63
John H. McGuigan II
William L. McKee '70
Noreen B. McKenna
William McManus '55
James R. McQuillan '50
James P. McSherry '74
Theresa Meehan
Daniel Mellin
Jordyn A. Meskan '14
Robert J. Meyers '54
John H. Michel '51
Rolf Middleton
Stephen Y. Miller '01
Br. James Miller
Peter T. Mollner '73
Joel A. Montpetit '61
Frank M. Moran '55
Michael J. Morgan, Jr. '05
Harold & Mary Josephine Morrissey
Joseph Moss
Claude Mottram, Jr. '58

Michael G. Mottram '64
George '33 & Virginia Moudry
Michael J. Murray '45
Valerie Nash Glarner '63
Robert J. Nelsen '42
Jamin Neppel '90
Gerald Nichols '51
Rosemary Nichols
Paul J. Nikolai, PhD '49
Gloria OConnell
Mary Ann O'Connor Thill
Donald J. O'Grady '37
Marie Ann O'Neill Michel '41
Robert C. Oswald
Mimi Ouellette Bohrer '57
Timothy J. Owens '68
Br. John Pacholl, FSC '54
Warren Pagel
Nancy M. Paul
Mary B. Pearson Walsh '56
Sarah E. Peterson '03
David L. Peterson
Kaye Pohl
Lucy Poston Hendrickson '93
William Purcell '71
Harold R. Purtell '53
Felipa Ramirez
Anthony M. Rancone '09
John Rapacz
Timothy E. Reardon '68
David Regal '58
Eugene Richards '48
Robert E. Ridge '34
James J. Ridge '37
Michael W. Ridge '41
Gregory R. Ridge '63
Marc S. Rivard '69
Richard Roberts
Ann M. Robertson '69
James C. Rogers '49
Thomas M. Rogers '65
Reno Rossini '39
Raymond D. Rossini '66
Anthony R. Rossini '74
Ann M. Routier '73
Mike Ruddy '55
Jonathan M. Ruhlmann
George E. Rumsey '42
Mark J. Rumsey '68
Mary Kay Runyon '63
Robert M. Runyon '35
Mary Ann Runyon
Peter M. Runyon '69
John D. Ryan '60
John M. Sands '54
Carol C. Sawyer
Richard Scanlan '30
Marilyn Scapanski
John '41 & Mary Schaaf
Daniel J. Schneeman '50
Brother Walter J. Schreiner, FSC
John M. Schwartzbauer '71
Thomas F. Shaughnessy '46
John M. Shields '50
James Shiely '36

◆ Represents Joint Alumni Household | * Represents Blessed Brother James Miller, FSC Lifetime Giving Society | † Represents Deceased

Patricia N. Shiely
 Kathryn E. Shier '96
 Matthew Siebke
 William J. Skally '60
 William F. Skally
 Eugene Skok, Jr. '53
 Thomas F. Smith '57
 Bruce E. Smith '62
 Mary Soshnik McDonald '49
 Ronald Soutor '55
 Michael J. Speranza '33
 Edward P. Starr, Jr. '49
 John E. Steger '43
 Anthony Stephens
 Harold Stimmler '47
 Robert J. Stupka '39
 Robert J. Stupka, III '02
 Mary Beth Stupka
 Terrence M. Sullivan '56
 Janie M. Sullivan McManus '63
 Paul Summers
 Frank S. Sunberg '60
 George P. Sweeney, III '62
 Mary Sweeney
 Mary Jane Swenson Roedler '36
 Nancy Thell Kumerow '73
 Nanci K. Thomas '88
 Richard J. Thul '62
 Patrick M. Towle '79
 Dolores "Dee" M. Traxler
 Sylvester & Janet Turbes
 William Umphress
 Gary S. Vadnais '71
 George H. Veith, Jr. '39
 Richard D. Vierling '39
 Maurice P. Vitek '66
 Frank Vivadelli
 Dennis M. Walker '67
 Nicholas & Leona Wallrich
 J. James Walsh '48
 Edward A. Waschbusch '55
 Vince Washburn '48
 Raymond & Agnes Weinreis
 Thomas E. Welle '68
 Mary Anne Welsch
 Ernest Wetschka
 Thomas M. Whaley '78
 Donald G. Williams '71
 Frank J. Windisch '48
 Mary Kay Windisch Jones '75
 Kenneth Witte
 Leonard & Mary Woessner
 Mary Kay Woessner
 William L. Wold '33
 James B. Woulfe '39
 William Young
 John Zugschwert '11
 Edward Zugschwert '47

IN HONOR OF

Rob Bollinger
 Astrid Busse '21
 CDH Administration
 CDH Faculty & Staff
 CDH Family Members in
 Law Enforcement
 CDH Learning Lab
 Cretin Class of 1953
 Derham Hall Class of 1977
 Drew, Jake, and Lauren Fisher
 Richard R. Engler
 Rev John E. Forliti '54
 Tim & Linda Fungina
 Ann Glarner
 Mary Beth Glarner Coonan
 Mary Jo Groeller
 A. James Hanzel '52
 Cancer-free Years
 Br. Douglas Hawkins, FSC '64
 Robert P. Jameson, PhD
 Christopher D. Jensen '95
 Eve B. Johnson '01
 Evan P. Johnson '04
 Reed Johnson '06
 Graduation from Augsburg College
 Fr. Patrick A. Kennedy '69
 Mary Kae Kuenster
 Kevin & Terry Lewis
 Leyden Grandchildren
 Joseph Marek '09
 Courtney Marek Rankin '05
 Genevieve McJilton
 Charles McJilton
 Michele McQuillan
 Frank Miley
 Mary Jane Miley
 Joe '11 & Sara Miley
 Kevin Miley '12
 Brig. Gen. Paul Moga '91
 Michael J. Murray '97
 Thomas J. Murray '97
 Bruce Odlaug '58
 Irene O'Neill, CSJ '72
 Erin Paradise '98
 Maegan Paradise Schmidt '95
 Scott L. Peterson '02
 Dale Radenbaugh
 Jane H. Richards
 Roth Runners
 Danny Santielli
 Martha Saul
 Ellen Schafer '10
 Susan M. Schmid Morrison '57
 Sarah Schmitz Peterson '02
 Br. Robert Smith
 Colleen L. Stephens '90
 Thomas P. Stephens '93
 Lynn Strand
 Donald & Dee† Traxler
 Mark W. Traynor '85
 Retirement from UCARE
 Else '24 & Finn '25 Wermager



Cretin-Derham Hall Gifts in Kind, including Taste of CDH Participants

Anthony S. Fisher
 Bennett's Chop & Rail House
 Big Ten Catering
 Captain Ken's Foods
 Cossetta
 DeGidio's
 Eagle Street Grille, Inc.
 Anthony S. Fisher
 Gray Duck Tavern
 Hooch Booch
 Luci Ancora
 Mancini's
 Max Cakes
 Midwest Vending, Inc.
 The Nook
 Nothing Bundt Cakes
 Pool & Yacht Club
 Red's Savoy Pizza — St. Paul Snelling
 Scoops 7th Street Parlor & Slices
 Scout and Cellar Clean Crafted Wine
 Skinner's Pub, Inc.
 Taher Food Service
 The Ox Cart
 Thomas Liquor
 Union 32 Craft House
 Tommy Chicago's Pizzeria
 Yumi Sushi



For more information on how you can invest in Cretin-Derham Hall, visit [c-dh.org](https://www.c-dh.org) or contact **Rob Bollinger**, Vice President for Advancement, at **651-696-3343**.

Connect with Us!

We have great news to share. Stay connected with the school! Be proud of what is happening at CDH!

 [c-dh.org](https://www.c-dh.org)

 [instagram.com/CretinDerhamHall](https://www.instagram.com/CretinDerhamHall)

 [facebook.com/CretinDerhamHall](https://www.facebook.com/CretinDerhamHall)

 twitter.com/@CDH_raiders

Check your email for Newsletters, Event and Reunion Information, Class Obituaries, and other important ways to connect to CDH. If you are currently NOT receiving emails from CDH and would like to re-subscribe, please go to our website: [c-dh.org](https://www.c-dh.org)>**Advancement and Alumni**>**Update Your Information**. For more information, please contact the Advancement Office at **651-696-3318**, or email pschafer@c-dh.org.

Gifts reflected in this report were received from July 1, 2021 – June 30, 2022. We have made every effort to ensure the accuracy of this publication. If we have omitted, misplaced, or misspelled your name, please accept our apologies and contact the Advancement Office at **651-696-3318** or email Peggy Gartland Schafer '79 at pschafer@c-dh.org.

Note, in most instances, the names of Derham Hall and Cretin-Derham Hall alumni appear alphabetically in this publication according to the woman's maiden name.

Credits: KEA Photography

Excellence

BEYOND CRETIN-DERHAM HALL

Cretin-Derham Hall is a Foundation for Success Beyond High School

We take great pride in our students' Cretin-Derham Hall experience and the opportunities to thrive. These are four very impactful years of high school. The academic rigor and challenge for each student, within a broad slate of curricular choices and levels ensures very impressive opportunities beyond CDH, giving our graduates the finest choices for their continued education.

Our students earn admittance into a very impressive array of colleges and universities. This gives them the opportunity to select the best fit between the college or university, career goals, personal values, and affordability.

80% Students Earn Merit Scholarships to College

38% Choose Minnesota Schools Where the High Caliber, Affordable Education is Close to Home

60% Attend Schools in the Five State Area (MN, WI, IA, ND, SD)

27% Attend Catholic Colleges/Universities

Top Colleges Selected by Class of 2022

University of St. Thomas | University of Minnesota – Twin Cities | University of Wisconsin – Madison
St. John's University/College of St. Benedict | University of Iowa | Iowa State University
Creighton University | Loyola University, Chicago | Marquette University | St. Paul College

Highly Selective Colleges Offering Admittance to CDH Class of 2022

American University
Boston College
Boston University
Brandeis University
University of California – Berkeley
University of California –
Los Angeles
Carleton College
Carnegie Mellon University
Case Western Reserve
Chapman University
University Colorado School
of Mines
College of the Holy Cross
Duke University
Fordham University
George Washington University

Georgetown University
Georgia Tech
Grinnell College
Hobart & William Smith Colleges
Illinois Wesleyan University
Lehigh University
Macalester College
University of Miami
University of Michigan
Muhlenberg College
New York University
University of North Carolina
University of Notre Dame
Northeastern University
Northwestern
Occidental College
Ohio State University

Pepperdine University
Rhodes College
University of Rochester
University of San Diego
Santa Clara University
Skidmore College
St. Olaf College
Texas Christian University
University of Texas at Austin
United States Air Force Academy
United States Coast Guard Academy
Vanderbilt University
Villanova University
University of Virginia
University of Wisconsin – Madison
Worcester Polytechnic Institute



Cretin-Derham Hall

550 South Albert Street
St. Paul, MN 55116

NON-PROFIT
ORGANIZATION
U.S. POSTAGE

PAID
Twin Cities, MN
PERMIT NO. 155

Parents: If this publication is addressed to your son or daughter who no longer lives at home, please notify the Advancement Office at 651-696-3318 of his or her new mailing address.



Call today to schedule a tour
651-696-3301

Or visit us at
c-dh.org/admissions

Enter to
Learn



Go Forth to
Lead



Cretin-Derham Hall

550 South Albert St. | St. Paul, MN 55116

Admissions: 651-696-3301

Web: c-dh.org/admissions

 @CretinDerhamHall

 @CDH_raiders

 @CretinDerhamHall