

# FLORA BUTTENSIS

---

---

CONTRIBUTIONS TO THE FLORA OF BUTTE COUNTY, CALIFORNIA

Editor: Mary S. Taylor  
California State University, Chico  
Herbarium, Holt Hall

Vol. 3, No. 3 October 1982

---

---

## COMPILATION OF LOCAL CHECKLISTS I

Checklists Contributed by:

Mary S. Taylor  
James D. Jokerst  
Lowell Ahart  
Mike Foster  
Sandra C. Morey  
Robert Preston  
Joe Madeiros

---

---

FLORA BUTTENSIS is irregularly issued in three numbers to a volume per year. Emphasis is placed on Butte county, but contributions on vascular plant taxonomy and floristics of Northern California are welcome. Inquiries concerning purchase of back issues, and manuscript contributions should be sent to M.S. Taylor, PO Box 1686, Chico, CA. 95926. Thank you.

TABLE OF CONTENTS

CNPS Mt Lassen Chapter Field Trip Reports; Lake Almanor, Plumas County  
 Mary S. Taylor . . . . . 1

Vegetation of Anthony Peak - Rocky Slopes of the Non-Forested Summit  
 (Mendocino-Tehama County line. James D. Jokerst . . . . . 3

Vegetation of Bidwell River State Park (Chico Landing), Butte County  
 James D. Jokerst and Mary S. Taylor . . . . . 4

Flora of Baldy Ridge. James D. Jokerst . . . . . 6

Chips Creep, Plumas County. Mike Foster . . . . . 7

Vegetation of Buck Rock and Uhl Peak - Rocky Slopes of the Non-Forested  
 Summit (Tehama-Trinity county line). James D. Jokerst . . . . . 9

Devils Postpile National Monument - A Checklist of Plants Collected and/or  
 Mounted by Sandra C. Morey. Sandra C. Morey and J. Madeiros . . . 10

Vegetation of Hammerhorn Mt, Tehama-Trinity County line.  
 James D. Jokerst . . . . . 14

Vegetation of Hull Mt - Rocky Slopes of the Non-Forested Summit (Lake  
 County. James D. Jokerst . . . . . 15

Flora of Impassable Rock, Mendocino National Forest, Mendocino County.  
 James D. Jokerst . . . . . 16

Flora of Leech Lake Mt, Mendocino County. James D. Jokerst . . . . . 17

Little Summit Lake, Plumas County. Mary S. Taylor . . . . . 18

Vascular Flora of Snow Mt East & West and Signal Peak (Glenn-Colusa-  
 Lake County Junction). James D. Jokerst . . . . . 19

Vegetation of South Yolla Bolly, Tehama County. James D. Jokerst . . . 20

Checklist of Plants Located on the Peter Ahart Ranch, Honcut, Butte  
 County. Lowell Ahart . . . . . 21

CNPS Field Trip Notes; TNC Vina Plains Preserve, Tehama County.  
 Mary S. Taylor . . . . . 64

Pulga Serpentine II. Mary S. Taylor . . . . . 66

Mt Ingalls, 8372 feet, Plumas County. Mary S. Taylor . . . . . 69

Chambers Creek, Plumas County. Mike Foster . . . . . 70

Crablouse Ravine, Plumas County. Mike Foster . . . . . 71

Indian Creek, Plumas County.	Mike Foster . . . . .	72
Mt Hough (7232 feet) and Crystal Lake (6700 feet), Plumas County.	Mary S. Taylor . . . . .	73
Snake Lake, Plumas County.	Mary S. Taylor . . . . .	75
Graylodge Wildlife Refuge, Butte County.	Mary S. Taylor, Lowell Ahart, James D. Jokerst, and Robert Preston . . . . .	77
Taylor Lake, Plumas County.	Mary S. Taylor . . . . .	79
Red Rock Lookout, Plumas County.	Mary S. Taylor . . . . .	80
Round Valley Reservoir, Plumas County.	Mary S. Taylor . . . . .	81
Lake Almanor, Plumas County.	Mary S. Taylor . . . . .	83
Ramelli Ranch, Plumas County.	Mary S. Taylor . . . . .	92
Ohio Valley Creek, Plumas County.	Mike Foster . . . . .	97

APPENDICES

1. Location Index; alphabetical by name . . . . .	98
2. Location Index; alphabetical by county . . . . .	99
3. Author-Page Index . . . . .	100

CNPS-MT LASSEN CHAPTER FIELD TRIP NOTES...LAKE ALMANOR, PLUMAS COUNTY, CA  
July 11, 1981 Prattville south to the dam.

Compiled by Mary S. Taylor, Chico, CA

PINACEAE

*Pseudotsuga menziesii*  
Douglas Fir  
*Pinus ponderosa*  
Ponderosa Pine  
*Pinus jeffreyi*  
Jeffrey Pine  
*Abies concolor*  
White Fir

MARSILEACEAE

*Marsilea vestita*  
Clover Fern

APOCYNACEAE

*Apocynum pumilum*  
Dogbane

ASTERACEAE

*Achillea millefolium* var. *lanulosa*  
Yarrow  
*Antennaria* sp.  
Pearly Everlasting  
*Artemisia douglasiana*  
Mugwort, Wormwood  
*Centaurea solstitialis*  
Yellow Star Thistle  
*Chrysothamnus nauseosus*  
Rabbit Brush  
*Cirsium andersonii*  
Red Thistle  
*Conyza*  
Horseweed  
*Erigeron inornatus*  
CA Rayless Daisy  
*Gnaphalium palustre*  
Low Cudweed  
*Madia gracilis*  
Common Tarweed

BRASSICACEAE

*Rorippa curvisiliqua*  
Yellow Water Cress

BORAGINACEAE

*Plagiobothrys*  
Popcorn Flower

CHENOPODIACEAE

*Chenopodium*  
Pigweed

ERICACEAE

*Arctostaphylos patula*  
Green Manzanita

FABACEAE

*Trifolium longipes* var. *hansenii*  
Long-stalked Clover

GERANIACEAE

*Erodium cicutarium*  
Red Stem Filaree

HYDROPHYLLACEAE

*Phacelia*  
Phacelia

MALVACEAE

*Sidalcea*  
Checker

ONAGRACEAE

*Clarkia rhomboidea*  
Farewell-to-Spring  
*Epilobium paniculatum*  
Tall Annual Willow-weed  
*Gayophytum*  
Ground Smoke

PLATAGINACEAE

*Plantago lanceolata*  
English Ribwort

POLEMONIACEAE

*Collomia grandiflora*  
Large-flowered Collomia  
*Navarretia divaricata*  
Mt Navarretia

POLYGONACEAE

*Eriogonum nudum*  
Buckwheat  
*Polygonum aviculare*  
Knotweed

CNPS LAKE ALMANOR, cont.

POLYGONACEAE, cont.

*Polygonum douglasii*  
Douglas Knotweed  
*Rumex acetosella*  
Sheep Sorrel  
*Rumex crispus*  
Indian Tobacco, Dock

RHAMNACEAE

*Ceanothus cordulatus*  
Snow Bush, White Thorn

ROSACEAE

*Potentilla*  
Cinquefoil

SAXIFRAGACEAE

*Ribes roezlii*  
Sierra Gooseberry

SCROPHULARIACEAE

*Verbascum thapsus*  
Wooly Mullein

SOLANACEAE

*Nicotiana attenuata*  
Indian Tobacco

CYPERACEAE

*Carex*  
Sedge  
*Eleocharis acicularis*  
Needle Spikerush

HYDROCHARITACEAE

*Egeria densa* (*Elodea densa*)  
Waterweed

POACEAE

*Sitanion hystrix*  
Squirrel-tail

VEGETATION OF ANTHONY PEAK - ROCKY SLOPES OF THE NON-FORESTED SUMMIT  
(MENDOCINO-TEHAMA COUNTY LINE, CA)

Compiled by: James D. Jokerst, Chico, CA 1982  
Collections deposited in CSUC Herbarium

- Achillea millefolium var. lanulosa  
Agoseris grandiflora  
Allium amplexans (#1019)  
    A. campanulatum  
    A. falcifolium  
Arabis breweri  
    A. platysperma  
Arctostaphylos nevadensis  
Astragalus purshii var. lectulus  
    (#878)
- Brickellia greenei
- Calamagrostis koelerioides (#1022)  
Calyptridium umbellatum/monospermum?  
Castilleja applegatei var. fragilis  
Ceanothus cordulatus  
Chaenactis douglasii (#1013)  
    C. douglasii var. rubicaulis  
Cheilanthes gracillima  
Chrysothamnus nauseosus ssp. albicaulis  
Claytonia saxosa  
Collinsia greenei  
Collomia tinctoria  
Crepis monticola  
    C. pleurocarpa  
Cryptantha torreyana (#1009)  
Cycladenia humilis
- Dentaria pachystigma
- Epilobium canum ssp. latifolium  
    E. minutum  
Erigeron petrophilus (#1012)  
Eriogonum compositum  
    E. lobbiai (#1008)  
    E. nudum var. nudum  
    E. strictum var. greenei  
    E. umbellatum var. stellatum (#1016)  
Eriophyllum lanatum var. achillaeoides
- Fritillaria purdyi
- Gayophytum diffusum ssp. parviflorum  
Gilia leptalea
- Hackelia amethystina  
Haplopappus greenei  
Heterocodon rariflorum  
Holodiscus microphyllus
- Lesquerella occidentalis (#977 & 1010)  
Lomatium ciliolatum (#1011)  
    L. macrocarpum  
Lupinus sp. (albifrons var. flumineus?)  
    L. antonius  
    L. sellulus ssp. ursinus (#1006)
- Madia gracilis  
Melica stricta  
Mentzelia dispersa  
Microsteris gracilis  
Mimulus guttatus  
    M. moschatus  
    M. nanus (#1020)  
Minuartia congesta var. crassula  
    M. nuttallii ssp. gregaria  
Monardella odoratissima var. pinetorum
- Orobanche pinetorum (#1018)
- Penstemon azureus ssp. angustissimus (#1017)  
    P. purpusii  
Phacelia egea (#1023)  
    P. mutabilis (#1014)  
Phlox speciosa ssp. occidentalis  
Poa canbyi  
Polygonum davisiae  
Polystichum scopulinum  
Prunus emarginata
- Quercus garryana var. breweri
- Raillardella scabrida (#1015)
- Scutellaria californica (#1007)  
Sedum obtusatum ssp. retusum (#1021)  
Senecio aronicoides  
Sitanion hystrix
- Tritelia laxa
- Viola purpurea ssp. integrifolia

VEGETATION OF BIDWELL RIVER STATE PARK (CHICO LANDING), BUTTE COUNTY, CA

Compiled by James D. Jokerst & Mary S. Taylor  
Chico, CA 1982

(On the Sacramento River; T21N R1W section 2. Riparian Woodland & Sandbar)

Acer negundo ssp. californica	Eleocharis macrostachya
Alnus incana var. tenuifolia	Epilobium adenocaulon
Alisma trivale	Equisetum arvense
Amaranthus albus	E. hyemale ssp. affine
A. blitoides	Eragrostis pilosa
A. retroflexus	Eremocarpus setigerus
Ambrosia psilostachya	Euphorbia ocellata
Ammannia coccina	Euthamia occidentalis
Antehmis cotula	
Antirrhinum cornutum	Ficus carica
Aristolochia californica	Fimbristylis capillaris
Artemisia douglasiana	Fraxinus latifolia
Arundo donax	
	Gnaphalium luteo-album
Baccharis pilularis ssp. consanguinea	G. palustre
B. viminea	
Bergia texana	Heliotropium europaeum
Bidens frondosa	Helenium
Boisduvalia densiflora	Hemicarpha micrantha var. minor
Brassica kaber ssp. pinnatisectifolia	Holcus lanatus
	Hypericum perforatum
Calycanthus occidentalis	
Carex barbarae	Juglans
Centaurea solstitialis	Juncus acuminatus
Cephalanthus occidentalis ssp. californicus	
Chenopodium album	Kickxia elatine
C. ambros	
C. ambrosioides var. vagans	Lactuca serriola
C. anthelminticum	Leersia oryzicola
Chrysopsis oregana var. compacta	Lemna minor
Cichorium intybus	Leptochloa fascicularis
Cirsium arvense	Ludwigia peploides
Clematis ligusticifolia	L. palustris var. americana
Conyza canadensis	Lycopus americana
Crypsis schoenoides	
Cycloloma atriplicifolia	Marrubium vulgare
Cynodon dactylon	Medicago lupulina
Cyperus difformis	Mentha arvensis
C. eragrostis	M. piperita
C. erythrorhizos	Mentzelia laevicaulis
C. niger var. capitatus	Mimulus pilosa
C. strigosus	Mollugo verticillata
Datura meteloides	Nicotiana bigelovii
Digitaria sanguinalis	
Diplachne fascicularis	Orobanche vallicola
Echinochloa crusgalli	Panicum capillare
E. crusgalli var. orzicola	Paspalum dilatatum
Echinodorus rostratus	P. distichum
Eclipta alba	Plantago major

CHICO LANDING, cont.

Platanus racemosa  
Polygonum hydropiperoides var. asperifolium  
  P. lapathifolium  
  P. persicaria  
Polypogon monspeliensis  
Populus fremontii  
Potamogeton crispus

Rosa californica  
Rotala ramosior  
Rumex californica  
  R. conglomeratus  
  R. crispis  
  R. pulcher  
Rubus vitifolius/ursinus

Sagittaria latifolia  
Salix hindsiana  
  S. lasiolepis  
  S. melanopsis  
Salsola australis  
Sambucus caerulea

Scirpus acutus  
  S. koilolepis  
Setaria glauca  
Solanum nodiflorum  
Sonchus asper  
Sorghum halpense

Typha latifolia

Urtica dioice var. holosericea

Veronica anagallis-aquatica  
Vitis californica

Xanthium strumarium var. canadense



FLORA OF BALDY RIDGE

(Exposed rocky ridgeline nw and se of its junction with Forest Service Road 1N62 within 200 meters of the road. T23N R10W section 8. Mendocino County, CA)

Compiled by: James D. Jokerst, Chico, CA  
Collections deposited in CSUC Herbarium  
1980

- Achillea millefolium ssp. lanulosa  
Agoseris heterophylla (#776)  
    A. grandiflora (#937)  
    A. retrorsa (#872)  
Allium bolanderi (#902)  
    A. campanulatum (#821)  
    A. falcifolium (#785)  
Arabis glabra  
    A. puberula (#749)  
Astragalus rattanii (#823)  
Athysanus pusillus  
  
Bromus mollis  
    B. tectorum (#871)  
  
Calycadenia truncata ssp. microcephala  
    (#939)  
Castilleja roseana (#774)  
Chaenactis douglasii var. rubicaulis  
    (#900 & 943)  
Cheilanthes gracillima  
Clarkia gracilis (#816)  
    C. rhomboidea (#898)  
Claytonia rubra (#780)  
    C. saxosa (#750)  
    C. perfoliata (#818)  
Collomia grandiflora  
Crepis monticola (#871)  
    C. pleurocarpa (#777)  
Cryptantha milobakeri (#876)  
  
Delphinium sp.  
Dichelostemma pulchellum (#775)  
Draba verna  
  
Epilobium canum ssp. latifolium (#1005)  
    E. minutum (#815)  
Eriogonum nudum var. nudum (#1004)  
    E. umbellatum var. stellatum (#1003)  
Eriophyllum lanatum var. achillaeoides (#899)  
Eschscholzia californica var. crocea (#772)  
  
Fritillaria purdyi (#748)  
  
Galium aparine (#783)  
Gilia leptalea (#941)  
  
Horkelia tridentata ssp. flavescens (#773)  
  
Linanthus rattanii (#778)  
Lomatium ciliolatum (#875)  
    L. macrocarpum (#874)  
Lotus humistratus (#788)  
Lupinus albifrons var. flumineus? (#786)  
    L. bicolor  
  
Madia minima (#784)  
    M. gracilis (#938)  
Microsteris gracilis (#789)  
Mimulus nanus (#814 & 942)  
Minuartia douglasii (#819)  
  
Penstemon purpusii (#813)  
Phacelia egena (#944)  
Phlox speciosa ssp. occidentalis (#873)  
Phoenicaulis cheiranthoides (#751)  
Plagiobothrys tenellus (#817)  
Poa canbyi/scabrella? (#872)  
  
Ranunculus canus (#771)  
Rigiopappus leptocladus  
  
Sanicula tuberosa (#779)  
Scleranthus annuus (#823-A)  
Sedum stenopetalum ssp. radiatum (#940)  
Streptanthus tortuosus ssp. pallidus  
    (#940)  
  
Trifolium dichotomum (#822)  
  
Vulpia microstachys var. pauciflora  
Viola quercetorum (#787)  
  
Zigadenus micranthus (#812)  
  
ADDENDA:  
    Arabis breweri

CHIPS CREEK, PLUMAS COUNTY

T25N R6E section 23, 15. North off Hwy 70, ca. 1 mile west  
of Belden. Mike Foster 1982

TREES

*Abies concolor*  
*Pseudotsuga menziesii*  
*Calocedrus decurrens*  
*Pinus ponderosa*  
*Quercus kelloggii*  
*Quercus wislizenii*  
*Acer macrophyllum*  
*Cornus nuttallii*

SHRUBS

*Alnus rhombifolia*  
*Cornus stolonifera*  
*Rhamnus rubra obtusissima*  
*Rhamnus purshiana*  
*Umbellularia californica*  
*Salix*  
*Toxicodendron diversilobum*  
*Rhus trilobata*  
*Arctostaphylos viscida*  
*Garrya fremontii*  
*Ceanothus integerrimus*  
*Prunus virginiana demissa*  
*Calycanthus occidentalis*  
*Philadelphus lewisii*  
*Ribes nevadense*  
*Ribes roezlii*  
*Eriodictyon californicum*  
*Rhododendron occidentale*

GRASSES

*Poa bulbosa*  
*Poa nevadensis?*  
*Vulpia myuros*  
*Stipa*  
*Bromus tectorum*  
*Bromus sterilis*  
*Bromus mollis*

FERNS

*Pteridium aquilinum pubescens*  
*Polystichum imbricans*  
*Woodwardia fimbriata*

FERNS, cont.

*Pellaea mucronata*  
*Polypodium californicum*  
*Cystopteris fragilis*  
*Cheilanthes californica*  
*Pityrogramma triangularis*  
*Adiantum pedatum*

FORBS

*Agoseris retrorsa*  
*Eriophyllum lanatum*  
*Achillea millefolium*  
*Taraxacum officinale*  
*Artemisia douglasiana*  
*Brickellia*  
*Adenocaulon bicolor*  
*Equisetum*  
*Equisetum telmateia braunii*  
*Solanum parishii*  
*Aralia californica*  
*Fritillaria recurva*  
*Delphinium nudicaule*  
*Delphinium patens*  
*Ranunculus*  
*Nemophila heterophylla*  
*Phacelia*  
*Draperia systyla*  
*Trientalis latifolia*  
*Erysimum capitatum*  
*Dentaria pachystigma*  
*Arabis breweri*  
*Arabis holboelli retrofracta*  
*Streptanthus tortuosus*  
*Viola sheltonii*  
*Claytonia parviflora*  
*Claytonia parvifolia*  
*Viola purpurea*  
*Viola lobata*  
*Lewisia cantelowii*  
*Epilobium minutum*  
*Asarum hartwegii*  
*Mimulus kelloggii*  
*Mimulus guttatus*  
*Collinsia parviflora*  
*Penstemon deustus*  
*Monardella odoratissima*

Stachys rigida  
Orobanche uniflora  
Collomia heterophylla  
Asclepias cordifolia  
Lathyrus sulphureus  
Lotus micranthus  
Lupinus  
Sanicula bipinnatifida  
Galium aparine  
Galium  
Rumex crispus  
Cypripedium fasciculata  
Allium  
Cypripedium californicum

Lilium  
Lilium washingtonianum  
Smilacina racemosa  
Petrohagia velutina  
Heuchera micrantha erubescens  
Tellima grandiflora  
Dudleya cymosa  
Vitis californica  
Apocynum pumilum  
Rubus parviflorus  
Amelanchier alnifolia  
Symphoricarpos  
Goodyera oblongifolia



DEVILS POSTPILE NATIONAL MONUMENT--A CHECKLIST OF PLANTS COLLECTED AND/OR  
MOUNTED BY SANDRA C. MOREY

Sandra C. Morey 1980

& J. Madeiros

AMARYLLIDACEAE

*Brodiaea lutea* var. *analina*  
Golden Brodiaea

APIACEAE

*Heraclium lanatum*  
Cow-Parsnip  
*Lomatium torreyi*  
Torrey's Lomatium  
*Perideridia parishii*  
Parish's Yampah  
*Sphenosciadium capittellatum*  
Ranger's Button

ASTERACEAE

*Achillea lanulosa*  
Yarrow  
*Agoseris glauca* var. *monticola*  
Short-beaked Agoseris  
*Anaphalis margaritacea*  
Pearly Everlasting  
*Antennaria argentea*  
Silvery Everlasting  
*Arnica mollis*  
Cordilleran Arnica  
*Artemisia ludoviciana*  
Western Mugwort  
*Aster integrifolius*  
Entire-leaved Aster  
*Chaenactis alpigena*#  
Southern Sierra Chaenactis  
*Chaenactis douglasii* var. *rubricaulis*#  
Hoary Chaenactis  
*Erigeron breweri*  
Brewer's Fleabane  
*Erigeron peregrinus* var. *angustifolius*  
Wild Daisy Fleabane  
*Eupatorium occidentale*#  
Western Eupatorium  
*Haplopappus bloomeri*  
Bloomer's Goldenbush  
*Helenium bigelovii*#  
Bigelow's Sneezeweed  
*Hulsea brevifolia*  
Short-leaved Hulsea  
*Microseris nutans*  
Nodding Scorzonella  
*Senecio canus*  
Wooly Butterweed

ASTERACEAE, cont.

*Senecio integerrimus* var. *exaltatus*  
Groundsel  
*Senecio triangularis*  
Groundsel  
*Solidago canadensis* ssp. *elongata*  
Meadow Goldenrod  
*Stephanomeria tenuifolia*  
Narrow-leaved Stephanomeria  
*Taraxacum officinale*  
Common Dandelion  
*Wyethia mollis*  
Mountain Mule-ears

BORAGINACEAE

*Cryptantha torreyana*  
Cryptantha  
*Hackelia mundula*#  
Pink Stickseed  
*Hackelia velutina*  
Stickseed

BRASSICACEAE

*Arabis rectissima*  
Bristly-leaved Rock Cress  
*Barbarea orthoceras*  
Winter-Cress  
*Descurainia richardsonii* ssp. *viscosa*  
Mt. Tansy-Mustard  
*Erysimum perenne*  
Sierra Wallflower  
*Rorippa curvisiliqua*#  
Western Yellow-Cress  
*Streptanthus tortuosus* var. *orbiculatus*  
Mountain Jewel Flower

CAPRIFOLIACEAE

*Sambucus microbotrys*#  
Mountain Red Elderberry

CARYOPHYLLACEAE

*Stellaria umbellata*  
Umbellate Chickweed

EQUISETACEAE

*Equisetum arvense*  
Common Horsetail

FABACEAE

Lotus purshianus  
 Spanish Clover  
 Lupinus polyphyllus ssp. superbus  
 Large-leaved Lupine  
 Lupinus sellulus  
 Torrey's Lupine  
 Trifolium longipes  
 Long-stalked Clover  
 Trifolium monanthum  
 Carpet Clover

GENTIANACEAE

Gentiana holopetala#  
 Sierra Gentian

GERANIACEAE

Geranium richardsonii  
 Richardson's Geranium

HYDROPHYLLACEAE

Hesperochiron pumilus  
 Dwarf Hesperochiron  
 Phacelia frigida  
 Timberline Phacelia  
 Phacelia hastata  
 Silverleaf Phacelia  
 Phacelia hydrophylloides  
 Waterleaf Phacelia

IRIDACEAE

Sisyrinchium idahoense  
 Idaho Blue-eyed Grass

JUNCACEAE

Juncus nevadensis  
 Rush

LAMIACEAE

Agastache urticifolia#  
 Horse-mint  
 Monardella odoratissima  
 Mountain Monardella  
 Stachys albens  
 White Hedge-nettle

LILIACEAE

Calochortus leichtlinii  
 Leichtlin's Mariposa Lily  
 Lilium pardalinum  
 Leopard Lily  
 Smilacina racemosa var. amplexicaulis#  
 Racemose False Solomon's-Seal

LILIACEAE, cont.

Smilacina racemosa var. glabra  
 False Solomon's-Seal  
 Veratrum californicum  
 Corn-lily

ONAGRACEAE

Epilobium angustifolium  
 Fireweed  
 Epilobium brevistylum  
 Slender-Willow-herb  
 Epilobium hornemannii  
 Hornemann's Willow-herb  
 Epilobium pringleanum var. tenue  
 Pringle's Willow-herb  
 Gayophytum diffusum  
 Diffuse Gayophytum  
 Zauschneria californica var. latifolia  
 California Fushia

ORCHIDACEAE

Habenaria dilitata  
 Sierra Rein Orchid

OROBANCHACEAE

Orobanche fasciculata#  
 Fascicled Broom-rape

POACEAE

Agropyron trachycaulum  
 Slender Wheatgrass  
 Agrostis idahoensis  
 Idaho Bentgrass  
 Bromus ciliatus  
 Fringed Brome  
 Bromus suksdorfii  
 Suksdorf's Bromegrass  
 Calamagrostis inexpansa  
 Narrow-spiked Reedgrass  
 Deschampsia caespitosa  
 Tufted Hairgrass  
 Deschampsia elongata  
 Slender Hairgrass  
 Elymus glaucus  
 Blue Wildrye  
 Elymus tritcoides#  
 Creeping Wildrye  
 Glyceria elata  
 Tall Mannagrass  
 Hordeum brachyantherum  
 Meadow Barley  
 Melica harfordii  
 Harford's Melic  
 Melica stricta  
 Nodding Melic

## POACEAE, cont.

Muhlenbergia filiformis#  
Slender Muhly  
Muhlenbergia richardsonis  
Richardson's Muhly  
Phleum alpinum  
Mountain Timothy  
Phleum pratense  
Cultivated Timothy  
Poa incurva  
Bluegrass  
Poa nervosa  
Bluegrass  
Sitanion hystrix  
Bottlebrush Squirreltail  
Stipa californica  
California Stipa  
Trisetum spicatum  
Spike Trisetum

## POLEMONIACEAE

Collomia linearis  
Narrow-leaved Collomia  
Gilia leptalea  
Bridge's Gilia  
Leptodactylon pungens  
Granite-gilia  
Linanthus ciliatus  
Whisker-brush  
Polemonium caeruleum ssp. amygdalinum  
Great Polemonium

## POLYGONACEAE

Eriogonum nudum  
Nude Buckwheat  
Eriogonum spergulinum#  
Wild Buckwheat  
Eriogonum umbellatum ssp. polyanthum  
Sulfur Buckwheat  
Oxyria digyna  
Mountain Sorrel  
Polygonum bistortoides  
Knotweed  
Polygonum douglasii  
Douglas' Knotweed  
Polygonum minimum  
Leafy Dwarf Knotweed  
Rumex triangulivalvis  
Triangular-fruited Dock

## PORTULACACEAE

Calyptroidium umbellatum  
Pussy Paws  
Claytonia chamissoi  
Spring Beauty

## PORTULACACEAE, cont.

Lewisia nevadensis  
Nevada Lewisia

## PRIMULACEAE

Dodecatheon jeffreyi  
Jeffrey's Shooting Star

## PYROLACEAE

Pyrola picta  
White-veined Wintergreen

## RANUNCULACEAE

Aquilegia formosa  
Crimson Columbine  
Delphinium glaucum  
Glaucus Larkspur  
Delphinium pratense  
Meadow Larkspur  
Ranunculus alismaefolius  
Water Plantain Buttercup  
Ranunculus cymbalaria var. saximontanus#  
Desert Buttercup  
Thalictrum fendleri  
Meadow-Rue

## ROSACEAE

Geum macrophyllum  
Large-leaved Avens  
Holodiscus microphyllus  
Small-leaved Cream Bush  
Horkelia fusca ssp. parviflora  
Dusky Horkelia  
Ivesia santolinoides#  
Mouse-tail Ivesia  
Potentilla glandulosa  
Sticky Cinquefoil  
Potentilla gracilis ssp. nuttallii  
Slender Cinquefoil  
Prunus emarginata  
Bitter Cherry

## RUBIACEAE

Kelloggia galioides  
Kelloggia

## SAXIFRAGACEAE

Heuchera rubescens var. alpicola  
Alum-root  
Ribes roezlii  
Sierra Gooseberry  
Saxifraga odontoloma#  
Brook Saxifraga

## SCROPHULARIACEAE

Castilleja applegatei  
     Wavy-leaved Paintbrush  
 Castilleja miniata  
     Great Red Paintbrush  
 Collinsia parviflora  
     Small-flowered Blue-eyed Mary  
 Mimulus leptaleus  
     Least-flowered Monkey-flower  
 Mimulus lewisii#  
     Lewis' Monkey-flower  
 Mimulus moschatus  
     Musk Flower  
 Mimulus pilosus  
     Downy Monkey-flower  
 Mimulus primuloides  
     Primrose Monkey-flower  
 Mimulus tilingii  
     Larger Mountain Monkey-flower  
 Orthocarpus hispidus  
     Hairy Owl's Clover  
 Pedicularis attollens  
     Little Elephant's Head  
 Penstemon azureus#  
     Azure Penstemon  
 Penstemon bridgesii  
     Bridge's Penstemon

## SCROPHULARIACEAE, cont.

Penstemon heterodoxus  
     Sierra Penstemon  
 Penstemon laetus  
     Gay Penstemon  
 Penstemon newberryi  
     Mountain Pride  
 Veronica alpina var. alterniflora#  
     Alpine Speedwell  
 Veronica americana#  
     Brooklime  
 Veronica serpyllifolia#  
     Thyme-leaved Speedwell

## URTICACEAE

Urtica serra#  
     Mountain Nettle

## VALERIANACEAE

Valeriana capitata ssp. californica  
     Valerian

# Plants mounted but not collected  
     by Sandra C. Morey



VEGETATION OF HAMMERHORN MT., TEHAMA-TRINITY COUNTY LINE, CALIFORNIA  
(Rocky Slopes of the Non-Forested Summit)  
Compiled by James D. Jokerst, Chico, CA  
1980

- Achillea millefolium ssp. lanulosa  
Agoseris grandiflora  
Allium falcifolium  
Arabis breweri  
    A. platysperma  
Arctostaphylos nevadensis  
Astragalus purshii var. lectulus  
    A. whitneyi var. siskiyouensis (1098)
- Bromus marginatus (1093)
- Calamagrostis koelerioides (1094)  
Calyptridium monospermum/umbellatum  
Castilleja arachnoidea (1096)  
Ceanothus cordulatus  
Chaenactis douglasii var. rubicaulis  
Cheilanthes gracillima  
Chrysothamnus nauseosus ssp. albicaulis  
Claytonia saxosa  
Collinsia greenei  
Collomia tinctoria  
Crepis acuminata  
    C. monticola  
    C. pleurocarpa
- Dentaria pachystigma
- Eriogonum compositum  
    E. lobbiai  
    E. nudum var. nudum  
    E. strictum var. greenei (1099)  
    E. umbellatum var. stellatum (1091)
- Eriophyllum lanatum var. achillaeoides  
Eupatorium occidentale
- Hackelia amethystina  
Haplopappus greenei  
Hazardia whitneyi var. discoideus (1087)  
Hieracium greenei (1088)  
Holodiscus microphyllus  
Horkelia tridentata ssp. flavescens
- Ipomopsis aggregata
- Lesquerella occidentalis  
Lomatium macrocarpum  
Lupinus andersonii (1095A)  
    L. antoninus (1097)  
    L. sellulus ssp. ursinus (1092)
- Machaeranthera shastensis var. eradiata  
Melica stricta  
Minuartia congesta var. crassula  
    M. nuttallii ssp. gregaria  
Monardella odoratissima var. pinetorum
- Penstemon heterophyllus  
    P. newberryi ssp. berryi  
Perideridia oregona  
Phacelia mutabilis  
Phlox diffusa  
    P. speciosa ssp. occidentalis  
Poa canbyi/scabrella  
    P. nervosa (1095)  
    P. pringlei (1101)
- Polygonum davisiae  
Prunus emarginata
- Raillardella scabrida (1090, 1100)
- Sanicula tuberosa  
Senecio aronicoides  
Sitanion hystrix  
Stipa lemmonii



FLORA OF IMPASSIBLE ROCK  
MENDOCINO NATIONAL FOREST, MENDOCINO COUNTY, CA  
Compiled by James D. Jokerst  
Chico, CA  
1980

Allium falcifolium	Keckiella corymbosa
Arabis breweri	Kelloggia galioides
Castilleja applegatei ssp. fragilis	Lomatium macrocarpum
Ceanothus cordulatus'	Minuartia nuttallii ssp. gregaria
Chaenactis douglasii var. rubicaulis	Monardella odoratissima var. pinetorum
Cheilanthes gracillima	Pellaea brachyptera
Chrysothamnus nauseosus ssp. albicaulis	Penstemon newberryi ssp. berryi
Crepis acuminata	P. purpusii
C. pleurocarpa (1125)	Polystichum scopulinum
Erigeron petrophilus	Prunus emarginata
Eriogonum compositum	Scutellaria antirrhinoides
E. nudum var. nudum	Sitanion hystrix
E. umbellatum var. stellatum (1126)	Streptanthus tortuosus ssp. pallidus
Eriophyllum lanatum var. achillaeoides	
Gilia capitata ssp. capitata	ADDENDA:
Heuchera micrantha var. erubescens	Raillardella scabrida
Holodiscus microphyllus	

NOTE: Orobanche valida Jeps. ssp. howellii Heckard & Collins  
Recently described from this locality. See L.R. Heckard & L.T. Collins.  
1982. Taxonomy and distribution of Orobanche valida (Orobanchaceae).  
Madrono 29(2): 95-100.

FLORA OF LEECH LAKE MOUNTAIN, MENDOCINO COUNTY  
(Rocky slopes of the Non-Forested Summit)

Compiled by James D. Jokerst, Chico, CA  
1982

Arabis breweri  
  A. suffrutescens  
Arctostaphylos nevadensis  
  
Brickellia californica (1111)  
  B. greenei  
  
Ceanothus cordulatus  
Chaenactis douglasii rubicaulis  
Cheilanthes gracillima  
Chrysothamnus nauseosus albicaulis  
Collinsia greenei  
Collomia tinctoria  
Crepis pleurocarpa  
Cycladenia humilis  
  
Epilobium canum latifolium  
  E. minutum  
Erigeron inornatus viscidulus (1112)  
  E. petrophilus  
Eriogonum compositum  
  E. lobbii  
  E. nudum nudum  
  E. strictum greenei (1114)  
  E. umbellatum stellatum  
Eriophyllum lanatum achillaeoides  
  
Galium grayanum grayanum  
  G. grayanum nanum  
  
Hackelia amethystina  
Haplopappus greenei (1116)  
Hieracium greenei  
Holodiscus microphyllus  
  
Keckiella corymbosa  
  
Lesquerella occidentalis  
Lomatium macrocarpum  
Luina hypoleuca (1113)  
Lupinus albiflorus flumineus?  
  
Minuartia nuttallii gregaria  
Monardella odoratissima pinetorum?

Penstemon heterophyllus  
  P. purpusii  
Phacelia corymbosa  
  P. mutabilis  
Poa canbyi/scabrella  
Polystichum scopulinum  
Potentilla glandulosa  
Prunus emarginata  
  
Quercus garryana breweri  
  
Raillardella scabrida (1115)  
  
Sitanion hystrix

LITTLE SUMMIT LAKE, PLUMAS COUNTY

T24N R12E ne¼ section 20. 5800 feet. About 5 air miles northeast of Sloat. Collections deposited in California Academy of Sciences and California State University Chico. Mary S. Taylor 1982

TREES

*Abies concolor*  
*Pinus contorta* var. *murrayana*

SHRUBS

*Ribes roezlii*  
*Symphoricarpos vaccinioides*

GRASSES

*Danthonia spicata*  
*Deschampsia danthonioides*  
*Melica* ?

HERBS

*Achillea lanulosa*  
*Aquilegia formosa*  
*Aster*  
*Barbarea orthoceras*  
*Calyptridium umbellatum*  
*Carex* spp.  
*Cryptantha*  
*Dodecatheon*  
*Equisetum arvense*  
*Fragaria vesca* ssp. *platypetala*  
*Galium trifidum* var. *pacificum* (5005)  
*Gentiana simplex*  
*Geum macrophylla*  
*Hieracium albiflorum*  
*Hippuris vulgaris* (5008)  
*Juncus* spp.  
*Kelloggia galioides*  
*Ligusticum grayi*  
*Mimulus guttatus*  
*Mimulus primuloides*

HERBS, cont.

*Myriophyllum exalbescens*  
*Nuphar polysepalum*  
*Osmorhiza chilense*  
*Pedicularis semibarbata*  
*Perideridia parishii* ssp. *latifolia*  
*Polygonum bistortoides*  
*Potamogeton natans*  
*Potentilla gracilis*  
*Ranunculus alismaefolius*  
*Sagittaria cuneata* (5006)  
*Senecio integerrimus*  
*Sidalcea oregana* ssp. *spicata*  
*Sparganium emersum* ssp. *multipedunculatum*  
(5007)  
*Stellaria jamesiana*  
*Stellaria longipes*  
*Taraxacum officinale*  
*Trifolium longipes* ssp. *hansenii*  
*Trifolium productum*  
*Trifolium repens*  
*Utricularia vulgaris* (5009)  
*Veratrum californicum*  
*Veronica*  
*Viola adunca*  
*Viola macloskeyi*

VASCULAR FLORA OF SNOW MOUNTAIN EAST AND WEST AND SIGNAL PEAK  
(GLENN-COLUSA-LAKE COUNTY JCT, CA)

(Rocky open slopes above and interdigitating with a Red Fir Forest)

Compiled by James D. Jokerst, Chico, CA 1982

Collections deposited in CSUC Herbarium

- Achillea millefolium lanulosa  
Agoseris grandiflora  
Allium falcifolium  
Antennaria geyeri (1060)  
Arabis breweri  
    A. platysperma  
    A. repandra  
Arctostaphylos nevadensis  
Arnica (mollis? 1644)  
Asclepias fascicularis (1072)  
Aster occidentalis (1643)  
Astragalus purshii lectulus  
Brickellia greenei (1066)  
Bromus tectorum  
Calyptridium monospermum/umbellatum  
Castilleja applegatei fragilis  
Ceanothus cordulatus  
Cercocarpus ledifolius (1081)  
Chaenactis douglasii (var. rubicaulis?)  
Cheilanthes gracillima  
Chenopodium incognitum (1065)  
Claytonia saxosa  
Collinsia greenei  
Collomia tinctoria  
Crepis monticola (1078)  
    C. pleurocarpa  
Cryptantha torreyana (1064)  
Cryptogramma crispa acrostichoides (1070)  
Cycladenia humilis (1063)  
Epilobium canum latifolium  
    E. minutum  
    E. nivium (1049)  
Erigeron petrophilus (1056)  
Eriogonum compositum  
    E. lobbii (1051)  
    E. nudum  
    E. spergulinum reddingianum  
    E. strictum greenei (1048)  
    E. umbellatum stellatum (1059)  
    E. ursinum nervulosum (1055)  
    E. vimineum  
Eriogphyllum lanatum achillaeoides  
Erysimum capitatum  
Eupatorium occidentale (1062)  
Galium grayanum (1079)  
Gayophytum diffusum ssp. diffusum  
    G. diffusum parviflorum  
Hackelia amethystina  
Gilia capitata capitata  
Hazardia whitneyi discoideus (1068)  
Heuchera micrantha erubescens (1073)  
Hieracium greenei (1061)  
Holodiscus microphyllus  
Ivesia gordonii (1076)  
Juncus covillei (1641)  
    J. orthophyllus (1642)  
Keckiella corymbosa  
Kelloggia galioides (1083)  
Leptodactylon pungens pulchriflorum  
Lesquerella occidentalis (1067)  
Linum lewisii  
Lomatium ciliolatum  
    L. macrocarpum (1052)  
Lupinus albifrons flumineus?  
Machaeranthera shastensis eradiata (1084)  
Malacothrix floccifera (1075)  
Mentzelia dispersa  
Mimulus nanus  
Minuartia nuttallia gregaria  
Monardella odoratissima glauca  
Orobanche pinetorum  
Pellaea brachyptera (1074)  
Penstemon azureus angustissimus  
    P. purpusii  
    P. rupicola (1071)  
Phacelia egena (1058)  
    P. mutabilis (1059)  
Phoenicaulis cheiranthoides  
Pinus (monticola?, albicaulis? 1648)  
Poa scabrella/canbyi (1057)  
Polygonum davisiae  
Polystichum scopulinum (1069)  
Potentilla glandulosa  
Prunus emarginata  
Raillardella scabrida (1080)  
Rumex salicifolius (1050)  
Sedum obtusatum retusum  
Senecio aronicoides  
Silene verecunda platyota (1053)  
Sitanion hystrix  
Stipa californica (1082)  
Triteleia laxa

VEGETATION OF SOUTH YOLLA BOLLY, TEHAMA COUNTY, CALIFORNIA  
(Rocky Slopes of the Non-Forested Summit)  
Compiled by James D. Jokerst, Chico, CA 1980

- Achillea millefolium* ssp. *lanulosa*  
\**Agrostis variabilis* (6800 ft)  
*Allium falcifolium*  
*Antennaria geyeri* (1102)  
*Arabis breweri*  
  *A. platysperma*  
\* *A. platysperma* var. *howellii*  
*Arctostaphylos nevadensis*  
*Astragalus purshii* var. *lectulus*  
  (var. *tinctus* in Baker, 1954)  
  
\**Bromus suksdorfii* (Summit)  
  
*Calyptridium monospermum/umbellatum*  
*Castilleja applegatei* ssp. *fragilis*  
*Ceanothus cordulatus*  
*Chaenactis douglasii* var. *rubicaulis*  
*Cheilanthes gracillima*  
*Chrysothamnus nauseosus* ssp. *albicaulis*  
*Claytonia saxosa*  
*Collinsia greenii*  
\* *C. torreyi* var. *wrightii*  
*Crepis monticola*  
\* *C. occidentalis* var. *pumila* (Summit)  
  
*Delphinium glareosus capronum*  
  (In Baker 1954; not in Munz)  
  
*Epilobium minutum*  
*Eriogonum compositum*  
  *E. lobbii*  
  *E. nudum* var. *nudum*  
  *E. strictum* var. *greenii*  
  *E. umbellatum* var. *stellatum*  
*Eupatorium occidentale*  
  
*Galium grayanum*  
*Gayophytum racemosum*  
  (primitive area, acc. Baker)  
  
*Haplopappus greenii*  
*Hieracium greenii*  
*Holodiscus microphyllus*  
  
*Ivesia gordonii*  
  
\**Juncus mertensianus* (7000 ft)  
  
*Lesquerella occidentalis*  
*Lomatium macrocarpum*  
\**Lupinus obtusilobus* (1110)  
  
*Machaeranthera shastensis* var. *eradiata*  
\**Melica bulbosa* (Near Summit)  
\* *M. spectabilis* (Near Summit)  
  *M. stricta*  
*Mentzelia dispersa*  
*Mimulus nanus* (1106)  
*Minuartia congesta* var. *crassula*  
  *M. nuttallii* ssp. *gregaria*  
*Monardella odoratissima* var. *pinetorum*  
  
*Orobanche pinetorum*  
  
*Phacelia egena* (1103)  
  *P. hastata* (*leucophylla*; 8000 ft  
    acc. Baker)  
  *P. mutabilis*  
*Penstemon purpusii*  
\**Pinus monticola*  
  *Poa canbyi/scabrella*  
\* *P. epilis* (*nervosa*?)  
  *P. pringlei* (1109)  
*Polygonum davisiae*  
*Polystichum scopulinum*  
\**Potentilla glandulosa* ssp. *reflexa*  
*Prunus emarginata*  
  
*Scutellaria antirrhinoides* (1108)  
*Sitanion hystrix*  
*Stipa occidentalis*  
  
ADDENDA:  
  
  *Raillardella scabrida* (1105)

\* Citation from: Baker, Milo S.  
1954, 1958. A partial list of  
seed plants of the North Coast  
Ranges. Santa Rosa Junior College,  
Santa Rosa, CA. (and supplement)

CHECKLIST OF THE PLANTS LOCATED ON THE PETER AHART RANCH, HONCUT,  
BUTTE COUNTY, CALIFORNIA

Compiled by: Lowell Ahart, Honcut, CA  
1982 Second edition

The Peter Ahart Ranch is located about 1.5 miles north and east of Honcut, just north of the Butte-Yuba county line. The ranch encompasses 2440 acres with plant communities including Valley Grassland, Foothill Woodland, and a portion of Riparian Woodland along North Honcut Creek. The ranch has been owned by the Ahart family since 1932. Lowell Ahart has spent twenty years extensively botanizing and recording the land use history of the property. A complete collection of the ranch flora has been deposited in the herbaria of California State University Chico, and California Academy of Sciences, with partial collections in University of California Davis and the New York Botanical Garden. Two undescribed species of Juncus and Paronychia are located on the ranch. Mr. Ahart is an active member of the California Native Plant Society, and welcomes field trips to the ranch.--MST.

SELAGINELLACEAE

Selaginella hansenii Hieronymous. Little Clubmoss. #293. Common near North Honcut Creek; usually found around large rocks. One small colony on the north side of a dredger pile and on Honcut Loam.

Selaginella wallacei Hieronymous. Little Clubmoss. #292, 293. One small colony along North Honcut Creek, in a deep gorge area; on and around large rocks on the west bank of the creek.

ISOETACEAE

Isoetes howellii Engelmann. Howell's Quillwort. #746, 754, 1662. Fairly uncommon; found in deep vernal pools or on the bottom of small washes. The plants develop in water six to eight inches deep and complete their growth as the water dries up. They develop best in very wet years for the water protects the plants in the early stages of their growth. On dry years the sheep graze the plants, making them difficult to find.

Isoetes nuttallii A. Braun ex Engelmann. Nuttall's Quillwort. #369. Found in vernal pools and along wet swales. Very common on wet years; in some swales they are the most abundant plant species. It can also be found on hills and slopes but they are smaller and much harder to find.

EQUISETACEAE

Equisetum hyemale Linnaeus ssp. affine (Engelmann) Calder & Taylor. (E. hyemale var. affine). Western Scouring Rush. #1416. In dredger piles near North Honcut Creek about  $\frac{1}{2}$  mi north of the northern boundary of the ranch.

Equisetum laevigatum A. Braun. (E. funstonii, E. kansanum). Smooth Scouring Rush. #2752. Along North Honcut Creek in marsh places and on banks. I have seen fertile plants only on banks.



#### BLECHNACEAE

Woodwardia fimbriata J.E. Smith. Western Chain Fern. #684. On banks of North Honcut Creek near the State Water Meter. Known from two small colonies, which were removed by erosion caused by the 1978 high water. Presumed eradicated; not yet naturally established by neighboring colonies.

#### MARSILEACEAE

Marsilea vestita Hooker & Greville. (Marsilea mucronata). Clover Fern. #76, 77, 1724, 2367. Found in North Honcut Creek and in the small wash by our home. The Creek plants develop large leaves and are aquatic. The plants by our home grow in shallow water and as the water dries up they continue to develop on the clay bottom; they produce many sporocarps. The two populations look very different.

Pilularia americana A. Braun. Pillwort Fern. #197, 198, 1720, 2092, 2229. Very common and widespread in wet swales, vernal pools, washes and bottom of rice fields. It can be easily found on very wet years where grain has drown out in the farmed fields. This is the most abundant fern on the ranch, but it is very inconspicuous.

#### POLYPODIACEAE

Polypodium californicum Kaulfuss. California Polypody. #13, 311, 327, 2034. Found on and around large rocks along North Honcut Creek. Fairly common and spreading.

#### PTERIDACEAE

Pellaea mucronata (D.C. Eaton) D.C. Eaton. Birdsfoot Fern. #1037. Along North Honcut Creek in dry rocky places. Found in cracks of large rocks just inside the Creek Field gate and near the Government Pole Line pole just over the fence on the north side of the ranch.

Pityrogramma pallida (Weatherby) Alt. & Grant. (Pityrogramma triangularis var. pallida). Whiteback Fern. #685. Only one small colony on North Honcut Creek on the east side of the gorge in rock cliff. A large colony is growing around large boulders on a dry ridge about one mile north of the ranch.

Pityrogramma triangularis (Kaulfuss) Maxon. Goldenback Fern. #329, 2044. Common and widespread around large rock outcrops.

#### SALVINIACEAE

Azolla mexicana Presl. Mexican Duckweed Fern. #697, 1015. In dredger ponds along North Honcut Creek. The plants on the ranch did well for two years and then the pond dried up and the plants have disappeared. Uncommon on the ranch; when present it is susceptible to changes in water levels. It can be found in a large dredger pond near the floodgate across North Honcut Creek one mile north of the north boundary of the ranch.

## PINACEAE

Pinus ponderosa Lawson. Yellow or Ponderosa Pine. #1007, 1008. Along North Honcut Creek. Only one tree is located on the ranch; it is about 70 years old, 35 meters tall and 1 meter in diameter.

Pinus sabiniana Douglas. Digger Pine. #66. Common along North Honcut Creek. Thirty years ago a few large trees grew along a small wash near the creek, but today they are all dead and gone. Along North Honcut Creek many of the old trees have died in the past thirty years but there are a few young trees growing along the creek.

## AIZOACEAE

Mollugo verticillata Linnaeus. Indian Chickweed. #98. Found on the bottom of small washes and in the garden. Fairly common weed.

Tetragonia tetragonioides (Pallas) O. Kuntze. (Tetragonia expansa). New Zealand Spinach. This species was planted in the garden and persists as a weed. It has not spread outside of the garden area.

## ALISMATACEAE

Alisma lanceolatum Withering. Lance-leaved Water Plantain. #2838. A few plants are located in the swale on the west side of the ranch near the Palermo-Honcut Road. It can also be found along Central House Road about  $\frac{1}{4}$  mile west of the ranch.

Alisma triviale Pursh. Common Water Plantain. #853. Located in the rice field, the water-hole, and along the edges of North Honcut Creek. Very common.

Echinodorus rostratus (Nuttall) Engelman var. lanceolatus Engelman ex Watson & Coulter. (Echinodorus berteroi var. lanceolatus). Burhead. #798, 2692. Common and very persistent in the water-hole. Also found in the small wash by our home.

Machaerocarpus californicus (Torrey ex Benth) Small. Star Water Plantain. Previously located in a wet wash near the northwest part of ranch; wash was covered up and plant eradicated. Another population can be found  $\frac{1}{4}$  mile west of the ranch on Central House Road.

Sagittaria latifolia Willdenow. Arrowhead, Tule-Potato. Very common weed in our rice field.

## AMARANTHACEAE

Amaranthus albus Linnaeus. Tumbleweed. #471. Common on good summer fallowed fields. Also in the garden and along the edges of rice field. The plants form large round tumbleweeds that break off at the ground when mature; roll along the ground in the wind and pile up in washes and against fences.

Amaranthus blitoides Watson. (Amaranthus graecizans). Prostrate Pigweed. #1789. On good summer fallow in the farmed fields and around our shop. They form large mats; common.

Amaranthus retroflexus Linnaeus. Rough Pigweed. #1585. A minor weed in in the garden.

## AMARYLLIDACEAE

Allium amplexans Torrey. Slimleaf Onion. #1634. In vernal pools and along the edges of small washes. A few plants grow near North Honcut Creek. These are the typical white flowered robust form. #763, 1752 & 2354 appear different. They flower later, have thinner scapes which appear more 'delicate' and pink, bulbs are often in clumps, and it has a strong onion odor.

Allium peninsulare Lemmon. Red-flowered Onion. #1395. Along edge of North Honcut Creek growing around large rocks; uncommon.

Brodiaea californica Lindley. California Brodiaea. On the dry banks of North Honcut Creek; common.

Brodiaea elegans Hoover. Harvest Brodiaea. #221, 222. On bottom of a small wash.

Brodiaea minor (Bentham) Watson. Small Brodiaea. #1341. In open grassy pasture fields. Common on poor bare soils in the pasture fields.

Dichelostemma multiflora (Bentham) A.A. Heller. (Brodiaea multiflora). Many-flowered Brodiaea. #1666. In open grassy fields. Forms a very distinctive ball of flowers.

Dichelostemma pulchellum (Salisbury) A.A. Heller. (Brodiaea pulchella). Blue Dicks. #1229. Very common in open grassy pasture fields. (also #2049).

Dichelostemma volubile (Kellogg) A.A. Heller. (Brodiaea volubilis). #1396. Along the rocky banks of North Honcut Creek. Not common.

Triteleia hyacinthina (Lindley) Greene. (Brodiaea hyacinthina). White Brodiaea. #1671. In open grassy pasture fields; very abundant.

Triteleia laxa Bentham. Ithuriel's Spear. #774. Under Douglas Oaks near North Honcut Creek; very common and showy on late wet springs.

#### ANACARDIACEAE

Toxicodendron diversilobum (Torrey & Gray) Greene. (Toxicodendron radicans ssp. diversiloba, Rhus diversiloba). Poison Oak. #38. Around large rocks in the open pasture fields and along North Honcut Creek.

#### APOCYNACEAE

Apocynum cannabinum Linnaeus var. glaberrimum A. Candolle. Common Dogbane. #1414, 1417. On moist edges of North Honcut Creek.

#### ARISTOLOCHIACEAE

Aristolochia californica Torrey. Pipevine, Dutchman's Pipe. #298, 310, 2028. Around large rocks in the field south of the old sheep barn and along North Honcut Creek.

#### ASCLEPIADACEAE

Asclepias eriocarpa Bentham. Indian Milkweed. #789. Usually found along small washes and along North Honcut Creek. Very common but it will kill sheep and a great deal of time and effort has been spent in removing and destroying it.

Asclepias fascicularis Decaisne in A. Condolle. Mexican Whorled Milkweed. #1805. Found in farmed fields and along small washes on very heavy soil.

#### BETULACEAE

Alnus rhombifolia Nuttall. White Alder. #998, 1226. A small tree that grows along edges of North Honcut Creek.

#### BORAGINACEAE

Amsinckia intermedia Fischer & Meyer. Common Fiddleneck. #741, 2119. On dredger piles along North Honcut Creek and in the farmed fields.

Amsinckia menziesii (Lehmann) Nelson & Macbride. Small-flowered Fiddleneck. #2246. On dredger piles along North Honcut Creek.

Cryptantha flaccida (Douglas) Greene. Weak-stemmed Cryptantha. #101, 102, 2245. On gravel bars along the wash near our home and along North Honcut Creek on dredger piles.

Plagiobothrys canescens Bentham. Valley Popcorn Flower. #1621. In a farmed field near the old barn north of our home.

Plagiobothrys fulvus (Hooker & Arnott) Johnston var. campestris (Greene) Johnston. Fulvus Popcorn Flower. #1340, 1874, 2109. Common in open pasture fields.

Plagiobothrys glyptocarpus (Piper) Johnston. Sculptured Popcorn Flower. #1363, 1667, 2248. On heavy dark soil near a wet area and on the bottom of a small wash; not very common.

Plagiobothrys greenei (Gray) Johnston. Greene's Popcorn Flower. #1297, 1672, 1870, 2223. In swales and vernal pools.

Plagiobothrys leptocladus (Greene) Johnston. #2226. On the bottom of swales and small vernal pools; uncommon.

Plagiobothrys scriptus (Greene) Johnston. Scribe's Popcorn Flower. #1235, 1275, 1276, 2749. On edges and bottom of vernal pools north of our home. Flowers very early in the spring and is very inconspicuous; uncommon.

Plagiobothrys shastensis Greene ex Gray. Shasta Popcorn Flower. #1294, 1698, 1872. Common in open pasture fields.

Plagiobothrys stipitatus (Greene) Johnston var. micranthus (Piper) Johnston. Small Popcorn Flower. #405, 406, 1663, 1670, 2228. On bottom of swales and vernal pools; very common.

#### CALLITRICHACEAE

Callitriche heterophylla Pursh ssp. bolanderi (Hegelmaier) Calder & Taylor. Two-leaved Water-starwort. #186, 228, 347, 373. Aquatic in shallow water and sometimes on mud. In small swales and washes where water will stand.

Callitriche marginata Torrey. California Water-starwort. #447, 2093. On the bottom of wet swales and floor of our rice field.

#### CAMPANULACEAE

Downingia bicornuta Gray. Double-horned Downingia. #1627. On the bottom of small swales and vernal pools.

Downingia cuspidata (Greene) Greene. Cuspidate Downingia. #1713. On the bottom of a small wash in the farmed fields.

Downingia ornatissima Greene. Ornate Downingia. #1669. On the bottom of small swales and vernal pools; very common.

Githopsis specularioides Nuttall. Common Bluecup. #427. On sterile soil on edge of a small wash; not very common.

Heterocodon rariflorum Nuttall. #246, 247. Rather inconspicuous in open grassy pasture fields.

Triodanis perfoliata (Linnaeus) Nieuwland. Venus Looking Glass. #454, 455. Around large rocks south of the old sheep barn; difficult to find.

CAPRIFOLIACEAE

Lonicera interrupta Benth. Chaparral Honeysuckle. #1749. Banks of the North Honcut Creek, dry areas around rocks and shrubs.

Sambucus mexicana Presl. Southwestern Elderberry. #452, 2254. Around large rocks in the open pasture fields.

CARYOPHYLLACEAE

Arenaria californica (Gray) Brewer. California Sandwort. #313, 314, 315, 1057. Common and conspicuous along roads and trails, on bare hardpacked soils.

Cerastium glomeratum Thuillier. (Cerastium viscosum). Mouse-ear Chickweed. #205, 2080. Common and widespread on ranch, but never very abundant.

Minuartia douglasii (Fenzl ex Torrey & Gray) Mattfeld. (Arenaria douglasii). Douglas Sandwort. #362, 397. Only on a gravel bar by small wash; very uncommon and inconspicuous.

Paronychia sp., ined. #432, 1636, 1933. Small white plant found only in one small colony; on bare poor gravelly soil on sides of a small swale. Very uncommon.

Petrorhagia velutina (Gussone) Ball & Heywood. (Tunica prolifera, Kohltraushia velutina, Dianthus velutina). Grass Pink. #376. Very common and ubiquitous. More abundant along dirt roads and along North Honcut Creek than other areas on the ranch.

Polycarpon tetraphyllum (Linnaeus) Linnaeus. Four-leaf Polycarp. #1147, 1148, 1751. Around large rocks along North Honcut Creek; uncommon in the area.

Sagina apetala Arduino. (Sagina apetala var. barbata). Common Pearlwort. #391, 392, 421, 752. In grassy fields and a small wash; inconspicuous. Often common along edges of dirt roads.

Sagina decumbens ssp. occidentalis (Watson) Crow. (Sagina occidentalis). Western Pearlwort. #1615, 2081. Small inconspicuous plant of rice fields and grassy fields; uncommon.

Silene gallica Linnaeus. Windmill Pink. #401, 402. Common weed; mainly in farmed fields.

Spergula arvensis Linnaeus. Spurrey. #318, 319, 1394, 2047. Grain field weed; not very troublesome.

Spergularia bocconii (Scheele) Foucaud. Boccone's Sand Spurrey. #478, 1647. Along edges of dirt roads by farmhouse; very common.

Stellaria media (Linnaeus) Villars. Common Chickweed. #743. Scattered all over the ranch; troublesome in the garden.

Stellaria nitens Nuttall. Shiny Checkweed. #168, 169, 170, 714, 2035! In shaded areas around large rocks near North Honcut Creek. Inconspicuous and seldom found in this area.

#### CHENOPODIACEAE

Chenopodium album Linnaeus. Lamb's Quarters. #629, 630, 1150. Around old sheep barn, and on good summer fallow in the farmed fields.

Chenopodium ambrosioides Linnaeus. Mexican Tea. #1799. Very strong smelling plant found along edges of North Honcut Creek. Only one plant has been found.

Chenopodium ambrosioides Linnaeus var. anthelminticum (Linnaeus) Gray. Wormseed. #1790. Very strong smelling plant found along edges of road to the farmhouse. Only one plant found; immature and collected before animals could destroy it. "Tending towards var. anthelminticum according to Jim Jokerst."

Chenopodium botrys Linnaeus. Jerusalem Oak. #1806. One population just over the south fence by the new well.

Chenopodium murale Linnaeus. Wall Goosefoot. #1443. Garden weed and around the old sheep barn.

Chenopodium pumilio R. Brown. Tasmanian Goosefoot. #1224. Garden weed and around old sheep barn.

Chenopodium vulvaria Linnaeus. Stinking Goosefoot. #1442. Very strong smelling plant around farmhouse and near old sheep barn. The sheep like to eat this plant.

#### COMPOSITAE

##### HELIANTHEAE

Achrasaena mollis Schauer. Blow Wives. #1064. In open grassy pasture fields and in farmed fields.

Ambrosia psilostachya Candolle ssp. californica (Rydberg) Blake in Tidestrom. (Ambrosia psilostachya). California Ragweed. #289, 290. Along banks of North Honcut Creek.

Bidens frondosa Linnaeus. Stick Tight. #1145. Along edges of North Honcut Creek.

Calycadenia hispida (Greene) Greene. Hispid Calycadenia. #144, 145, 146, 3208. Near east boundary in open pasture fields; common in this area.

Calycadenia spicata (Greene) Greene. Spicate Calycadenia. #116, 117. In open pasture fields; very common in this area.

Eclipta alba (Linnaeus) Hasskarl. False Daisy. #677, 2660. Weed around edge of rice fields; uncommon.

Helianthus annuus Linnaeus ssp. lenticularis (Douglas) Cockerell. Common Sunflower. #2583. On south side of ranch near the old fig orchard.

Hemizonia fitchii Gray. Fitch's Spikeweed. #1565. Most of ranch.

Hemizonia luzulaefolia Candolle ssp. rudis (Bentham) Keck. Hayfield Tarweed. #658. Common on heavy soils. Flowers in late summer.

Holozonia filipes (Hooker & Arnott) Greene. #549. On edges of North Honcut Creek.

Lagophylla glandulosa Gray. Sticky Tarweed. #143, 1584. On most of ranch in the summer.

Lagophylla glandulosa Gray ss. serrata (Greene) Keck. #1879. On gravel bars along edges and bottoms of small washes.

Layia fremontii (Torrey & Gray) Gray. Tidytops. #69, 365, 366, 2104. In swales; common in wet years.

Madia elegans D. Don ssp. densifolia (Greene) Keck. Common Madia. #602, 1581. On gravel bars along North Honcut Creek.

Madia rammii Greene. Granite Madia. #1067, 2105. One small colony near the south boundary.

Madia subspicata Keck. Slender Tarweed. #83, 1750, 1787. Around large rocks near North Honcut Creek. Considered rare; not common on the ranch. Very inconspicuous.

Wyethia angustifolia (Candolle) Nuttall. Narrow-leaved Mule-ears. #2251. Along edge of North Honcut Creek.

Xanthium spinosum Linnaeus. Spiny Cocklebur. #1196. Around the garden.

Xanthium strumarium Linnaeus var. canadense (Miller) Torrey & Gray. Common Cocklebur. #1575, 1576. Along North Honcut Creek.

#### HELENIEAE

Blennosperma nanum (Hooker) Blake. Yellow Carpet. #738, 739. One small colony along a small wash north of Peter's barn.

Eriophyllum lanatum (Pursh) Forbes var. grandiflorum (Gray) Jepson. Large-flowered Woolly Sunflower. #1383. Along North Honcut Creek.

Helenium puberulum Candolle. Sneezeweed. #848. Along edges of North Honcut Creek.

Lasthenia californica Candolle ex Lindley. (Lasthenia chrysostoma, Baeria chrysostoma). Valley Goldfields. #1056, 1635. In low swales; very common.



Lasthenia fremontii (Torrey ex Gray) Greene. (Baeria fremontii). Fremont's Goldfields. #1693, 1694, 2222. In vernal pools in the farmed fields.

Lasthenia glaberrima Candolle. Smooth Lasthenia. #1718. Along the wash on the north boundary; abundant only in the one small area.

#### ASTEREAE

Aster chilensis Ness. Common California Aster. #1572, 1573. Along North Honcut Creek and along sloughs in the farmed fields.

Aster exilis Elliott. Slim Aster. #1589. Along North Honcut Creek and around the rice field.

Baccharis glutinosa Persoon. (Baccharis viminea). Mule Fat. #287. On gravel bars along North Honcut Creek.

Conyza bonariensis (Linnaeus) Cronquist. South American Conyza. #678, 828. Around the garden area, old sheep barn, and the rice field.

Conyza canadensis (Linnaeus) Cronquist. Horseweed. #657. Along the edges of North Honcut Creek.

Euthamia occidentalis Nuttall. (Solidago occidentalis). Western Goldenrod. #1570, 1571. Along North Honcut Creek.

Grindelia camporum Greene. Gumweed. #1604. On banks of North Honcut Creek.

Lessingia nana Gray in Bentham. Dwarf Lessingia. #895, 896. In open grassy pasture fields.

Lessingia virgata Gray. Virgate Lessingia. #1193. Along edges of small washes and on hardpacked soils in the pasture fields. Sheep think this is a good plant to eat.

Solidago californica Nuttall forma nevadensis Gray. Goldenrod. Along North Honcut Creek. Uncommon; only five plants in this area.

#### ANTHEMIDEAE

Anthemis cotula Linnaeus. Mayweed. #1914. Around the farmhouse and in the farmed fields.

Artemisia douglasiana Besser in Hooker. California Mugwort, Wormwood. #1583. Along North Honcut Creek.

Cotula coronopifolia Linnaeus. Brass-Buttons. #2220. On the floor of the rice field; only one plant has been found.

Erigeron foliosus Nuttall var. hartwegii (Greene) Jepson. Hartweg's Daisy. #1731, 2252. Along edges of North Honcut Creek.

Erigeron philadelphicus Linnaeus. Philadelphia Daisy. #1384. Along wet edges of North Honcut Creek.

Matricaria matricarioides (Lessing) Porter. Pineapple Weed. #1628. Along edges of roads on hardpacked soil.

Matricaria occidentalis Greene. Valley Pineapple Weed. #1320, 1338. On sheep bed-grounds near our home.

Soliva pterosperma (Jussieu) Lessing. South American Soliva. #51, 1871. In grassy pasture fields and around our home; inconspicuous.

#### SENECIONEAE

Senecio sylvaticus Linnaeus. Wood Groundsel. #1586. Scattered along North Honcut Creek on gravel bars and around our home. I have only seen about five plants over the years.

Senecio vulgaris Linnaeus. Common Groundsel, Old-Man-of-Spring. #307, 316. Common weed on most of the ranch; often abundant on gravel bars.

#### INULEAE

Evax acaulis (Kellogg) Greene. Dwarf Evax. #429, 440. On sterile soil in open pasture fields.

Evax caulescens (Bentham) Gray. Involucrate Evax. #7, 458. On very heavy soil in the open pasture fields.

Filago gallica Gray. Narrow-leaved Cottonrose. #435, 799, 1719. Along edges of a small wash; likes dry sterile bare soil.

Gnaphalium luteo-album Linnaeus. Weedy Cudweed. #897, 2024. Around the edges of our rice field and along North Honcut Creek.

Micropus californicus Fischer & Meyer. Slender Cottonweed, Q-tips. #97, 359, 767. On hard bare soil near a small wash.

Psilocarphus brevissimus Nuttall. Round Woolly-heads. #1302, 1303, 1684. On the bottom of vernal pools.

Psilocarphus oregonus Nuttall. Oregon Woolly-heads. #1301, 1715, 1869. On the bottom of vernal pools.

Psilocarphus tenellus Nuttall. Slender Woolly-heads. #1300, 1867. On the bottom of vernal pools and the floor of our rice field.

#### EUPATORIEAE

Brickellia californica (Torrey & Gray) Gray. California Brickelbush. #272, 273, 288. Small shrub on gravel bars along North Honcut Creek.

#### CYNAREAE

Carduus pycnocephalus Linnaeus. Italian Thistle. #785, 2247. On the banks of North Honcut Creek.

Centaurea melitensis Linnaeus. Tocalote. #1353. Around large rocks near North Honcut Creek.

Centaurea solstitialis Linnaeus. Yellow Star Thistle. #1418. Common on good soil.

Cirsium vulgare (Savi) Tenore. Bull Thistle. A few plants are around the rice field.

Silybum marianum (Linnaeus) Gaertner. Milk Thistle. #786. Near one of our pumps and around large rocks in the open pasture fields; also along edges of North Honcut Creek.

#### CICHORIEAE

Agoseris heterophylla (Nuttall) Greene. Mountain Dandelion. Only one plant has been found on an oak covered hill near North Honcut Creek; uncommon.

Cichorium intybus Linnaeus. Chicory. #1466. On west side of the ranch and around our home.

Hedypnois cretica (Linnaeus) Willdenow. #756, 2107. Weed on most of the ranch.

Hypochoeris glabra Linnaeus. Smooth Cat's Ear. #1349, 2108. Along North Honcut Creek.

Lactuca saligna Linnaeus. Narrow-leaved Lettuce. #1814. In farmed fields and on the banks of North Honcut Creek.

Lactuca serriola Linnaeus. Prickly Lettuce. In farmed fields; sometimes abundant.

Lactucua serriola Linnaeus forma integrata Bogenhard. (Lactuca serriola var. integrata). Whole-leaved Lettuce. #1601. Near the garden and in the farmed fields.

Leontodon taraxacoides (Villars) Merat. Hawkbit. #1135, 1154. On the bottom of small swales and washes; and on gravel bars along North Honcut Creek. Very common.

Microseris acuminata Greene. #1700. Along edges of a small wash.

Microseris douglasii (Candolle) Schultz-Bipontinus. #1062, 1665. On heavy soils in the open pasture fields.

Microseris douglasii (Candolle) Schultz-Bipontinus ssp. tenella (Gray) Chambers. #1866. On heavy soils in open pasture fields.

Microseris elegans Greene ex Gray. #1631. In open pasture fields.

Microseris lindleyi (Candolle) Gray. (Microseris linearifolia). #1631, 1632, 1830. On gravel bars along North Honcut Creek.

Microseris sylvatica (Bentham) Gray. #2787, 1831. On oak-covered hills near North Honcut Creek; very uncommon.

Sonchus asper Linnaeus. Prickly Sow Thistle. #1352. In a small wash in open pasture fields.

Sonchus oleraceus Linnaeus. Common Sow Thistle. #1782. Around the garden.

Sonchus tenerrimus Linnaeus. Slender Sow Thistle. #473, 474. In the garden.

Taraxacum officinale Wiggers. Common Dandelion. Weed in the lawn.

Tragopogon dubius Scopoli. Yellow Salsify. Around the rice field; only one plant has been seen.

#### CONVOLVULACEAE

Convolvulus arvensis Linnaeus. Field Bindweed. #1784. Well established weed in the cultivated fields and in our garden. On good summer fallow this plant turns large areas green with an abundance of foliage in the summer and fall. The sheep like this plant.

Dichondra donnelliana Tharp. & Johnston. Dichondra. #747. One small colony along North Honcut Creek. Seems to be well-established, but not expanding.

Dichondra micrantha Urban. Dichondra. Planted for lawn and has escaped into the garden area.

#### CORNACEAE

Cornus occidentalis (Torrey & Gray) Coville. Creek Dogwood. #1386. Shrub along the wet edges of North Honcut Creek.

#### CRASSULACEAE

Crassula aquatica (Linnaeus) Schonl. (Tillaea aquatica). Water Pigmy Weed. #393, 394, 456, 753, 1725. In vernal pools and the bottom of small swales. The plants as they grow older produce long peduncles and have been called var. drummondii Jepson. I have found the variety to be of little worth.

Crassula erecta (Hooker & Arnott) Berger. (Tillaea erecta). #177, 387. Pigmy Weed. Small and inconspicuous but fairly common on the ranch.

Crassula muscosa (Linnaeus) Roth. (Tillaea muscosa). Pigmy Weed. #176, 340, 381, 382. Very common and easy to find even though they are small and inconspicuous. The mature plants tend to become quite red or reddish in color.

Dudleya cymosa (Lemaire) Britton & Rose. Live-forever. #1038. On rocky sides of North Honcut Creek; usually in cracks of large rocks.

CRUCIFERAE

Athysanus pusillus (Hooker) Greene. Petty Athysanus. #159, 160, 161, 2036. Away from the edges of North Honcut Creek; small and inconspicuous.

Brassica campestris Linnaeus. Field Mustard. #1611. In the field near our home and near North Honcut Creek; uncommon.

Brassica geniculata (Desfontaines) J. Ball. Perennial Mustard. #1151. On gravel bars along North Honcut Creek.

Brassica kaber (Candolle) Wheeler var. pinnatifida (Stokes) Wheeler. Field Charlock. #1622, 1623. Usually in the farmed fields; common weed of grain crops. Plants on the range land are very much reduced in size.

Caulanthus lasiophyllum (Hooker & Arnott) Payson. (Thelypodium lasiophyllum). #383, 384, 385, 415. Very uncommon: seldom seen on dry years. On very wet years the plants may grow 1.5 meters tall and set many seeds. Usually found around large rocks.

Capsella bursa-pastoris (Linnaeus) Medicus. Shepherd's Purse. #303, 2025. Common weed in corrals and cultivated fields.

Cardamine oligosperma Nuttall. Bitter-cress. #175, 304, 2031. Common in wet swales and around rocks along North Honcut Creek. In deep shade the plants will develop on wet moss on the large rocks.

Draba verna Linnaeus. Whitlow Grass. #1643, 2027. In shady places around large rocks near the new PG & E pole line on the east side of the ranch by the Creek Field gate.

Draba verna Linnaeus var. aestivalis Lejeune. Whitlow Grass. #149, 150, 151, 152, 702, 703, 2032. Along North Honcut Creek on moist loam and on the north side of dredger piles. Becoming more plentiful along the creek every year.

Lepidium nitidum Nuttall. Peppergrass. #153, 158, 2039. Very abundant on most of the ranch.

Lepidium strictum (Watson) Rattan. Strict Peppergrass. #70. Along edges of roads and in the corrals; on hardpacked soils.

Raphanus raphanistrum Linnaeus. Jointed Charlock. #2084. A few plants are in the farmed fields near our big pump.

Raphanus sativus Linnaeus. Wild Radish. #157, 1393, 2048. Very common weed in farmed fields and on old sheep bed grounds. Bad weed in grain crops.

Rorippa curvisiliqua (Hooker) Bessey. Yellow Cress. #2582. Very uncommon and hard to find along North Honcut Creek; only a few plants seen.

Rorippa nasturtium-aquaticum (Linnaeus) Britten & Rendle. (Nasturtium officinale). Water Cress. #2258, 1355, 1356. In two small seeps that stay wet all year and also along North Honcut Creek.

Sisymbrium officinale (Linnaeus) Scopoli. Hedge Mustard. #1058. Common around the barns and on old bed grounds.

Thysanocarpus curvipes Hooker. Lace-Pod. #320, 718, 722, 737, 2030. Very common plant along North Honcut Creek. Often easy to find on dredger piles.

Thysanocarpus elegans (Fischer & Meyer) Robinson. Fringe-Pod. (Thysanocarpus curvipes var. elegans). #720, 721. Very common plant on dredger piles along North Honcut Creek.

Thysanocarpus radians Bentham. Spoke-Pod. #17, 719. In open grassy pasture fields. On wet years it is very plentiful and covers many acres with a scattering of plants.

Tropidocarpum gracile Hooker. #360. Very inconspicuous in the grassy pasture fields.

#### CUCURBITACEAE

Marah fabaceus (Naudin) Greene var. agrestis (Greene) Stocking. Wild Cucumber. #305, 306. Scattered in fields where there are large rocks.

#### CUSCUTACEAE

Cuscuta campestris Yuncker. Western Field Dodder. #1555. Along edge of the Palermo Honcut Highway that borders on the west side of the ranch.

Cuscuta howelliana Rubtsoff. Howell's Dodder. #1721, 1722, 1804. Rare in shallow vernal pools in the farmed fields. Generally very uncommon. Abundant and common on Downingia ornaticissima and Mimulus tricolor during the very wet spring of 1978; the plants flowered but did not set seed. A few plants attached onto Eryngium vaseyi var. vallicola and flowered and set seeds in the heads of the coyote thistle in an inconspicuous manner.

#### CYPERACEAE

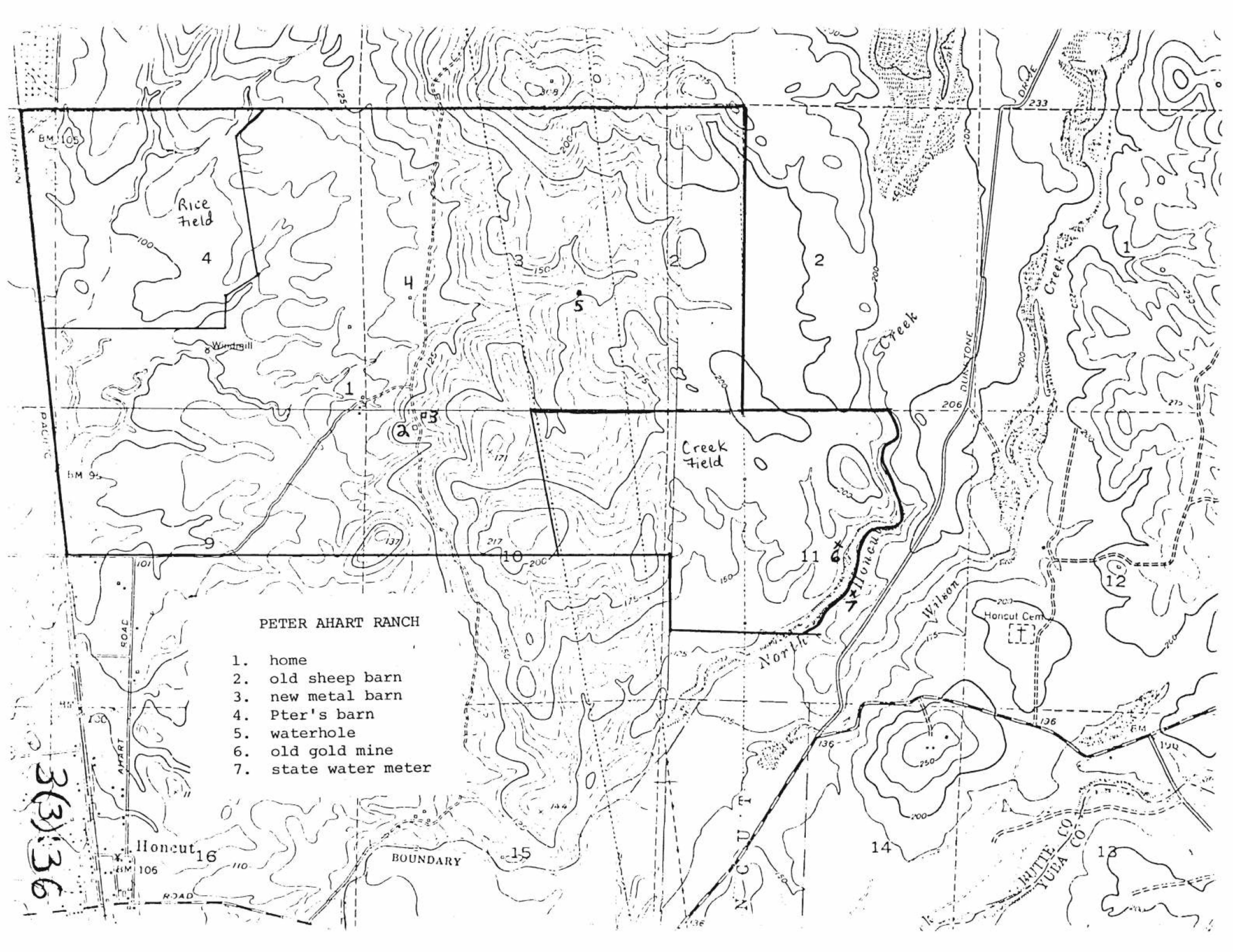
Carex barbarae Dewey. #1389. On the banks of North Honcut Creek.

Carex densa (Bailey) Bailey. #1060, 2249. Along the sides of a small wash.

Carex nudata W. Boott. #1061, 2250. Along edges of North Honcut Creek; in large clumps.

Carex praegracilis W. Boott. #1405. Near a springy area in a small wash in one of the open pasture fields.

Cyperus aristatus Rottboell. #110, 111, 112, 504. On the bottom of a small wash near our home.



PETER AHART RANCH

1. home
2. old sheep barn
3. new metal barn
4. Pter's barn
5. waterhole
6. old gold mine
7. state water meter

3(3)36

Honecut 16

BOUNDARY

RUTLE CO  
YUDA CO

- Cyperus difformis Linnaeus. #665, 666. A serious weed in the rice field.
- Cyperus eragrostis Lamarch. #34. On the edges of North Honcut Creek and by wet swales.
- Cyperus erythrorhizos Muhlenberg. #671, 672, 675. Around edges of the rice field.
- Cyperus niger Ruiz & Pavon var. capitatus (Britton) O'Neill. #674, 900, 901, 957. Along North Honcut Creek and around edges of the rice field.
- Cyperus strigosus Linnaeus. #32, 63. Along the edges of North Honcut Creek and around edges of the rice field.
- Eleocharis acicularis (Linnaeus) Roemer & Schultes. #2110, 2381, 2594. On the wet bottom of small washes northeast of our home: uncommon.
- Eleocharis bolanderii Gray. (Eleocharis montevidensis var. bolanderi). #29, 503, 793, 794. Common along edges of North Honcut Creek.
- Eleocharis ovata (Roth) Roemer & Schultes. (Eleocharis obtusa var. engelmannii). #28, 1911. In the rice field where it is sometimes abundant.
- Eleocharis palustris (Linnaeus) Roemer & Schultes. #114, 792, 1913. Along edges of North Honcut Creek, around the rice field, and sometimes in deep vernal pools.
- Eleocharis quadrangulata (F.X. Hartmann) Schwarz. (Eleocharis pauciflora). #39, 40, 229, 2225. In a small wash near our home.
- Hemicarpha micrantha (Vahl) Pax var. minor (Schrader) Friedland. #259, 260, 261, 271. On gravel bars along edges of North Honcut Creek.
- Scirpus acutus Muhlenberg. Common Tule. #779, 780. Common along a slough on the west boundary of the ranch.
- Scirpus koilolepis (Steudel) Gleason. #245, 495, 788. Very inconspicuous and uncommon on the bottom of a small wash and along edges of North Honcut Creek.
- Scirpus maritimus L. var. tuberosus (Desfontaines) Roemer & Schultes. (Scirpus tuberosus). #113. Very common and a serious weed in our rice field.
- Scirpus mucronatus Linnaeus. #133, 2595. At the water-hole or in the rice field, or along edges of North Honcut Creek; not common.



ELATINACEAE

Bergia texana (Hooker) Seubert. #552, 553, 569, 570, 628. A very foul smelling plant found only once in the wash north of our home; very uncommon.

Elatine rubella Rydberg. #448, 449, 1716. Occasionally very abundant on the floor of our rice field in the early spring. Inconspicuous even when it is very abundant, it sometimes covers the ground with many very small plants.

ERICACEAE

Arctostaphylos manzanita Parry. Parry Manzanita. #296, 297. Along North Honcut Creek.

Arctostaphylos viscida Parry. Whiteleaf Manzanita. #1007, 1010. Along North Honcut Creek.

Rhododendron occidentale (Torrey & Gray) Gray. Western Azalea. #1304. Small shrub found infrequently along edges of North Honcut Creek.

EUPHORBIACEAE

Eremocarpus setigerus (Hooker) Benth. Turkey Mullein, Doveweed. #118, 119. Very common. Seeds are much liked by doves.

Euphorbia maculata Linnaeus. (Euphorbia supina). #258, 472, 898. Along North Honcut Creek and in the garden.

Euphorbia nutans Lagasca y Segura. (Euphorbia maculata). #600. Along edges of North Honcut Creek.

Euphorbia ocellata Durand & Hilgard. #1153. In open grassy pasture fields where the soil is gravelly.

Euphorbia peplus Linnaeus. Petty Spurge. #291, 295, 1016. Very persistent garden weed.

Euphorbia serpyllifolia Persoon. #603, 851, 1579. On bottom of small washes and along the edges of North Honcut Creek.

FAGACEAE

Quercus douglasii (Hooker & Arnott. Blue Oak. #2781. The most common oak on the ranch; abundant around large rocks.

Quercus lobata Nee. Valley Oak. #1618. Along North Honcut Creek.

Quercus wislizenii A. Candolle. Interior Live Oak. #1305. Along North Honcut Creek; a few large specimens near the PG & E change-over tower in the northeast corner of the ranch but the trees are dying.

#### GENTIANACEAE

Centaurium floribundum (Bentham) Robinson. Centaury. #253. On moist soil along a small wash and along the edges of North Honcut Creek.

Centaurium venustum (Gray) Robinson ssp. abramsii Munz. Canchala<sup>4</sup>qua. #252, 469. On moist soil along a small wash and along North Honcut Creek.

Cicendia quadrangularis (Lamarck) Grisebach. (Microcala quadrangularis). Timwort. #353. Small and inconspicuous, but very common on wet years.

#### GERANIACEAE

Erodium botrys (Cavanilles) Bertoloni. Long-beaked Filaree. #1619, 2106. Important as an early forage plant for the livestock. The mature seeds and styles are of great nuisance to the sheep. Common.

Erodium brachycarpum (Godron) Thellung. (Erodium obtusiplicatum). Screw-seed Filaree. Very common but often overlooked because of its resemblance to the above species.

Erodium cicutarium (Linnaeus) L'Heritier de Brutelle. Red-stemmed Filaree. #775. Widespread but never very abundant.

Erodium moschatum (Linnaeus) L'Heritier de Brutelle. White-stemmed Filaree. On soils enriched by animal wastes; common along roads and around buildings.

Geranium dissectum Linnaeus. Cut-leaved Geranium. #742, 2117. Along North Honcut Creek.

Geranium molle Linnaeus. #1629, 1630. Around large rocks and near our home.

#### GRAMINEAE

##### FESTUCEAE

Brachypodium distachyon (Linnaeus) Palisot de Beauvois. False-Brome. #96, 434. In open pasture fields and on gravel bars along North Honcut Creek.

Briza maxima Linnaeus. Rattlesnake Grass. #53, 772. On banks of North Honcut Creek.

Briza minor Linnaeus. Little Quaking Grass. #72. On most of the ranch.

Bromus laevipes Shear. Woodland Brome Grass. #1347, 1412. Weedy in open pasture fields and along North Honcut Creek.

Bromus madritensis Linnaeus. Madrid Brome. #45, 85. Weedy in open pasture fields and along North Honcut Creek.

Bromus mollis Linnaeus. Soft Chess. #52, 84. Throughout ranch; very good forage plant.

Bromus rigidus Roth. Ripgut Grass. #761. In the farmed fields and on gravel bars along North Honcut Creek. Bad grass for the livestock.

Bromus rubens Linnaeus. Red Brome. In open grassy pasture fields.

Bromus sterilis Linnaeus. Poverty Brome. #1733. Along banks of North Honcut Creek; scattered and not very abundant.

Bromus willdenovii Kunth. (Bromus catharticus). Rescue Grass. #1855. Persistent garden weed of many years; uncommon.

Cynosurus echinatus Linnaeus. Dogtail. #759. On the banks of North Honcut Creek.

Eragrostis pilosa (Linnaeus) Palisot de Beauvois. Lovegrass. #667, 1552. In a slough near the front gate.

Melica californica Scribner. California Melica. #1732. Along rocky banks of North Honcut Creek.

Poa annua Linnaeus. Annual Bluegrass. #152, 317, 1236. On most of the ranch; often very abundant in our rice field.

Poa bulbosa Linnaeus. Bulbous Bluegrass. #379, 380. Along edges of North Honcut Creek.

Poa scabrella (Thurber) Bentham ex Vasey. Pine Bluegrass. #35, 1425. Around large rocks near North Honcut Creek; a few in the open pasture fields.

Scleropoa rigida (Linnaeus) Grisebach. #1852. On a gravel bar along North Honcut Creek and near the old gold mine. Uncommon.

Vulpia bromoides (Linnaeus) S.F. Gray. (Festuca dertonensis). Foxtail Fescue. #20, 1293, 2082. Scattered on the ranch.

Vulpia microstachys (Nuttall) Bentham var. ciliata (Beal) Lonard & Gould. (Festuca grayi). Ciliate Fescue. #103, 400. In open pasture fields.

Vulpia microstachys (Nuttall) Bentham var. confusa (Piper) Lonard & Gould. (Festuca confusa). Tracy's Fescue. #99. In open pasture fields.

Vulpia microstachys (Nuttall) Bentham var. pauciflora (Beal) Lonard & Gould. (Festuca pacifica). Few-flowered Fescue. #100. In open pasture fields.

Vulpia myuros (Linnaeus) C.C. Gmelin. (*Festuca myuros*). Rattail Fescue, #1730. In open pasture fields.

Vulpia myuros (Linnaeus) C.C. Gmelin var. hirsuta Hackel. (*Festuca megalura*). #2085, 2115. Common in farmed fields.

#### HORDEAE

Aegilops triuncialis Linnaeus. Goatgrass. #1089, 2227. One small colony on grassy hills in open pasture field; another along the wash on the northwest part of the ranch. Very bad grass and spreading.

Elymus glaucus Buckley. Western Ryegrass. #1410, 1420. On the banks of North Honcut Creek; scattered and never very abundant.

Hordeum brachyantherum Nerskii. #2836. Along wash near west boundary; very uncommon and inconspicuous.

Hordeum distichon Linnaeus. Hannchan Barley. This two-row barley was mixed with wheat seed and has appeared several years after the wheat crop. The spikes mature early and shatter easily.

Hordeum geniculatum Allioni. (*Hordeum hystrix*). Mediterranean Barley. #757, 758, 2120, 2121. In swales and low wet places on most of ranch.

Hordeum leporinum Link. Foxtail Barley. #43. On old sheep bed grounds where the ground is rich with animal wastes; common.

Hordeum vulgare Linnaeus. Common Barley. Sporadic after a grain crop; does not persist very long.

Lolium multiflorum Lamarck. Annual Ryegrass. #2834. Very common in farmed fields.

Lolium perenne Linnaeus. Perennial or English Ryegrass. #104, 2231. On most of ranch; often very abundant in wetter areas in farmed fields and it can be hayed. Very good forage plant.

Lolium temulentum Linnaeus. Darnel. #18, 106, 2230. In grain fields and along edges of small washes.

Monerma cylindrica (Willdenow) Cosson & Durieu de Maisonneuve. #464, 2382. Edges of a small wash. Uncommon and inconspicuous, I have found only a few plants over the years.

Scribneria bolanderi (Thurber) Hackel. Scribner Grass. #1664. Uncommon in open pasture fields on poor soil.

Sitanion jubatum J.G. Smith. Big Squirreltail. #1419. On rocky sides of North Honcut Creek; uncommon in this area.

Taeniatherum caput-medusae (Linnaeus) Nevskii. (*Elymus caput-medusae*; *Taeniatherum asperum*). Medusahead. #107, 1912. Becoming widespread; very poor forage plant.

Triticum aestivum Linnaeus. Wheat. #1337. Appears the year following a crop of wheat; does not persist.

AVENEAE

Aira caryophylla Linnaeus. Silver Hairgrass. #773, 2078. Most of ranch.

Aira elegans Willdenow. Diffuse Hairgrass. #203, 2079. In open pasture fields.

Avena barbata Brotero. Slender Wild Oat. #433. Most of ranch; very good forage plant.

Avena fatua Linnaeus. Wild Oat. #1669, 2118, 2835. In the farmed fields; very good forage plant and excellent hay when abundant. Seems to cross with Avena sativa forming a very complex group of glabrous to hairy lemmas. Some plants will have the first lemma with a few hairs and the second and third lemmas will be glabrous thus approaching the variety glabrata Petermann.

Avena sativa Linnaeus. Cultivated Oat. #1367. In the farmed fields following an oat crop. In 1977 we planted 200 acres to oats and hayed them. The following year we harvested the volunteered oats and they cut 400 pounds of oat seed per acre.

Deschampsia danthonioides (Trinius) Munro ex Bentham. Annual Hairgrass. #1339. On the bottom of vernal pools and small washes.

Deschampsia elongata (Hooker) Munro ex Bentham. Slender Hairgrass. #1424. On the moist banks of North Honcut Creek.

Koeleria phleoides (Villars) Persoon. #412. In the open grassy pasture fields.

AGROSTIDEAE

Agrostis stolonifera Linnaeus. (Agrostis alba). Redtop. #1480. On sand along North Honcut Creek.

Agrostis avenaceae Gmelin. Avens Bentgrass. #1335. In rice field where it is often abundant.

Agrostis exarata Trinius. Western Bentgrass. #808, 1422, 1423, 1445. Along edges of North Honcut Creek.

Agrostis exarata Trinius var. monolepis (Torrey) Hitchcock. #1421. On the moist edges of a wash near North Honcut Creek; uncommon.

Agrostis microphylla Steudel. On the bottom of a small vernal pool in the farmed fields along the north boundary of the ranch.

Alopecurus carolinianus Walter. Carolina Foxtail. #442, 443, 1315, 1660. In rice field. Considered to be an uncommon plant but it is often very abundant in our rice field.

Alopecurus saccatus Vasey. Pacific Foxtail. #2236. In one vernal pool in the farmed fields and near the northwest corner of the ranch.

Aristida oligantha Michaux. Triple-awned Grass. #1464, 1465. On the bottom of a small wash. Very common in the summer in the open pasture fields.

Crypsis schoenoides (Linnaeus) Lamarck. (Heleochloa schoenoides). Swampgrass. #633. In the summer found on the bottom of a small wash.

Gastridium ventricosum (Gouan) Schinz & Thellung. Nit Grass. #1390. On the bottom of a small wash; very common in the open pasture fields.

Muhlenbergia rigens (Bentham) Hitchcock. Deer Grass. #1638, 1602. Along small washes and the banks of North Honcut Creek. A perennial grass that forms very large clumps.

Polypogon interruptus Humboldt. Beardgrass. #1364, 1365, 1400. On dark heavy soil in a springy area in a small wash in one of the open pasture fields.

Polypogon maritimus Willdenow. On wet edges of North Honcut Creek.

Polypogon monspeliensis (Linnaeus) Desfontaines. Rabbitfoot Grass. #14, 806, 1399. In wet swales and small washes; occasionally along the wet edges of North Honcut Creek.

Stipa lemmonii (Vasey) Scribner. Lemmon's Stipa. #1411. On the banks of North Honcut Creek.

Stipa pulchra Hitchcock. Purple Stipa. #764. In the open pasture fields and in waste areas in the farmed fields.

#### CHLORIDEAE

Cynodon dactylon (Linnaeus) Persoon. Bermuda Grass. #2585. Around rice field and along wet washes.

Diplachne fascicularis (Lamarch) Palisot de Beauvois. (Leptochloa fascicularis). Sprangletop. #554. In and around the rice field.

#### PHALARIDEAE

Phalaris lemmonii Vasey. Lemmon Canary Grass. #2237. In the farmed fields.

Phalaris minor Retzius. Mediterranean Canary Grass. #477. In the farmed fields on wet years.

Phalaris paradoxa Linnaeus. Hood Canary Grass. #2833. In a small wash in one of the open pasture fields.

#### ORYZEAE

Leersia oryzoides (Linnaeus) Swartz. Rice Cutgrass. #1574. In North Honcut Creek.

PANICEAE

Digitaria sanguinalis (Linnaeus) Scopoli. Crab Grass. #1152, 1481. Around rice field and along edges of North Honcut Creek.

Echinochloa colonum (Linnaeus) Link. Jungle Rice. #1548. In a slough near the front gate.

Echinochloa crusgalli (Linnaeus) Palisot de Beauvois. #673, 1554, 1564. Watergrass. In and around rice field and in a slough near the front gate. A very serious weed in our rice field.

Echinochloa crus-pavonis var. macera (Wiegand) Gould. (Echinochloa crusgalli var. zelayensis). Mexican Barnyard Grass. #1549. In and around our rice field and in a slough near our front gate. Also found along wet edges of North Honcut Creek. Very troublesome weed in our rice field.

Panicum capillare Linnaeus. (Panicum capillare var. occidentale). Common Witchgrass. #550, 601. Around rice field and along edges of North Honcut Creek.

Panicum dichotomiflorum Michaux. Western Witchgrass. #1803. Around wet edges of our rice field.

Panicum lanuginosum Elliott var. fasciculatum (Torrey) Spellenberg. (Panicum occidentale). Panic Grass. #257, 499, 500. Along edges of North Honcut Creek.

Paspalum dilatatum Poiret. Dallis Grass. #1578. Around our rice field and along edges of North Honcut Creek.

Paspalum paspalodes (Michaux) Scribner. (Paspalum distichum). Knot Grass. #852. Along edges of North Honcut Creek and in our rice field.

Setaria glauca (Linnaeus) Palisot de Beauvois. (Setaria lutescens). Yellow Foxtail Grass. #801, 802, 1550. Around our rice field and along the edges of North Honcut Creek.

Setaria sphacelata (Schumacher) Stapf & C.E. Hubb. Bristlegrass. #1551, 1568. In a slough near the front gate and on the banks of North Honcut Creek.

ANDROPOGONEAE

Andropogon virginicus Linnaeus. Virginia Beardgrass. #286. Around our rice field and along the edges of North Honcut Creek.

Sorghum bicolor (Linnaeus) Moench. Sorghum. On good summer fallow or on edges of rice field.

Sorghum halepense (Linnaeus) Persoon. Johnson Grass. #1563. Around our rice field and on good summer fallow in the farmed fields. Also at the water-hole. This is a very bad weed.

HALORAGACEAE

Myriophyllum exalbescens Fernald. (Myriophyllum spicatum var. exalbescens).  
Water-Milfoil. #1173. In quiet water along and in North Honcut Creek.  
About ten years ago irrigation waste water started being dumped into the  
creek. This water has enabled a number of aquatic plants to become  
established.

HIPPOCASTANACEAE

Aesculus californica (Spach) Nuttall. California Buckeye. #1110, 1111, 1112.  
Shrub around large rocks along North Honcut Creek.

HYDROCHARITACEAE

Elodea canadensis Michaux. Elodea. #1610. In quiet water in North  
Honcut Creek.

HYDROPHYLLACEAE

Nemophila heterophylla Fischer & Meyer. Small White Nemophila. #715.  
In two small colonies along North Honcut Creek growing around large rocks.

Nemophila pedunculata Douglas ex Bentham. Spreading Nemophila. #162, 163,  
713. Small and inconspicuous plants in open pasture fields and along North  
Honcut Creek.

Phacelia cicutaria Greene. Cut-leaved Phacelia. #403, 439. On and around  
large rocks.

HYPERICACEAE

Hypericum anagalloides Chamisso & Schlechtendal. Tinker's Penny. #251,  
501, 1403, 1404. In very wet areas along North Honcut Creek and in a small  
wash.

Hypericum concinnum Bentham. Gold Wire. #1351. On the banks of a small  
wash and in open grassy pasture fields.

Hypericum perforatum Linnaeus. Klamath Weed, St. Johnswort. #1406. At one  
time this was becoming very common on the ranch. The introduction of the  
Klamath Weed Beetle has controlled and greatly reduced the abundance of  
the plant. On the banks of North Honcut Creek and on the borders of our  
rice field.

JUNCACEAE

Juncus articulatus Linnaeus. Jointed Rush. #502. In shallow water  
along North Honcut Creek. Only one plant has been found.



Juncus bolanderi Englemann. Bolander Rush. #796, 797, 2586. In shallow water along North Honcut Creek; uncommon.

Juncus bufonius Linnaeus. Common Toad Rush. #223, 224, 463, 1681. On bottom of swales where it is often very wet and along wet edges of North Honcut Creek. Very abundant.

Juncus bufonius Linnaeus var. congestus Wahl. #494, 1682, 1683. On bottom of swale in farmed fields.

Juncus bufonius Linnaeus var. congdonii (Watson) J.T. Howell. #2378. On bottom of small wash.

Juncus bufonius Linnaeus var. occidentalis F.J. Hermann. (Juncus sphaerocarpus). #1680. On dark heavy soil on bottom of small swale in a farmed field; uncommon.

Juncus capitatus Weigel. Capitata Rush. #226, 227, 430, 1679. Common in grassy pasture fields.

Juncus effusus Linnaeus var. pacificus Fernald & Wiegand. Pacific Rush. #1441. Along edges of North Honcut Creek; uncommon.

Juncus mexicanus Willdenow. On banks of North Honcut Creek; common.

Juncus phaeocephalus Engelman var. paniculatus Engelman. #1482. Along edges of North Honcut Creek; scattered and not common.

Juncus tenuis Willdenow. Slender Rush. #1415, 2122. Along wet edges of North Honcut Creek and rarely in the farmed fields; uncommon.

Juncus uncialis Greene. Dwarf Rush. #363, 364, 442, 1626, 1695. Small and inconspicuous on the bottom of vernal pools.

Juncus species, ined. #423, 1620, 1648, 1661, 1692, 2238. Very small and inconspicuous on the bottom of vernal pools and swales in the farmed fields. In 1978 the plants were abundant.

Luzula subsessilis (Watson) Buchenau. Wood Rush. #709, 710, 717, 2096. On banks of North Honcut Creek.

#### LABIATAE

Lamium amplexicaule Linnaeus. Henbit. #201. Weedy in the garden.

Lycopus americanus Muhlenberg. Water Horehound. #270, 2587. Along wet edges of North Honcut Creek.

Marrubium vulgare Linnaeus. Horehound. #2991. Seen on the ranch one or two times and promptly exterminated. Found at the flood gate and along the banks of North Honcut Creek.

Melissa officinalis Linnaeus. Garden Balm. #1479. Along North Honcut Creek; not common.

Mentha arvensis Linnaeus. Wild Mint. #1802. Along wet edges of North Honcut Creek.

Mentha spicata Linnaeus. Spearmint. On the rocky banks of North Honcut Creek.

Pogogyne zizyphoroides Benth. Sacramento Pogogyne. #431. On the bottom of shallow vernal pools in the open grassy pasture fields.

Prunella vulgaris Linnaeus. Selfheal. #849. Along edges of North Honcut Creek.

Prunella vulgaris Linnaeus ssp. lanceolata (Barton) Hulten. Selfheal. Uncommon along North Honcut Creek.

Scutellaria austinae Eastwood. Skullcap. #1387, 1388. On dry rocky banks of North Honcut Creek.

Stachys stricta Greene. Hedge Nettle. #1402. In a springy area in a small wash. Has a very strong odor.

Trichostema lanceolatum Benth. Vinegar Weed. #1566. In open grassy pasture fields in late summer. Bees seem to like this plant. Very common.

#### LEGUMINOSAE

Astragalus gamelianus Sheldon. Locoweed. #2751, 2789. On thin rocky soil near North Honcut Creek. Not common, and difficult to find.

Cercis occidentalis Torrey ex Gray. Redbud. #185, 1117. Shrub along North Honcut Creek.

Lathyrus angulatus Linnaeus. #1726, 1727, 2111. On the bottom of swales in the farmed fields. Becoming very abundant on wet springs.

Lathyrus sulphureus Brewer ex Gray. Sulphur Pea. #1308, 2100. Along North Honcut Creek.

Lotus humistratus Greene. Hairy Lotus. #2786. Near North Honcut Creek. Uncommon in this area.

Lotus micranthus Benth. #1034, 1035. On rocky thin soil on the banks of North Honcut Creek.

Lotus purshianus (Benth.) Clements & Clements. #1567. Common in late summer on most of ranch.

Lotus subpinnatus Lagasca y Segura. #2750, 2785. Near North Honcut Creek; not common in the area.

Lupinus bicolor Lindley ssp. pipersmithii (Heller) D. Dunn. Bicolored Lupine. #1686. In farmed fields and in the open pasture fields.

3(3):47

Lupinus vallicola Heller. Valley Sky Lupine. #778. On gravel bars and sandy soils along North Honcut Creek; often very abundant.

Medicago arabica (Linnaeus) Hudson. Spotted Medick. #1085. Along edges of North Honcut Creek.

Medicago lupulina Linnaeus. Black Medick. #1408. Along banks of North Honcut Creek.

Medicago polymorpha Linnaeus. (Medicago hispida). Bur Clover. #769, 1055, 1086, 1690. On most of ranch.

Medicago polymorpha Linnaeus var. brevispina (Bentham) Heynh. (Medicago hispida var. confinis). #1090. Along small washes and along North Honcut Creek.

Melilotus alba Desrousseau. (Melilotus albus). White Sweet Clover. #1788. Along edges of North Honcut Creek.

Melilotus indica (Linnaeus) Allioni. (Melilotus indicus). Indian Sweet Clover. #1398. Near edges of North Honcut Creek.

Psoralea orbicularis Lindley. Round-leaved Psoralea. #1428. Only one colony known on the edges of North Honcut Creek.

Robinia pseudo-acacia Linnaeus. Black Locust. #748. Near our home.

Trifolium dubium Sibthorp. Hop Clover. #770, 2101. Common in wet swales and along edges of North Honcut Creek.

Trifolium albopurpureum Torrey & Gray var. olivaceum (Greene) Isely. (Trifolium olivaceum). #374. Uncommon in open grassy pasture fields.

Trifolium bifidum Gray var. decipiens Greene. Notch-leaved Clover. #2102, 2784. Along banks of North Honcut Creek.

Trifolium ciliolatum Bentham. Foothill Clover. #441, 1087, 1088, 1332. Uncommon along the edges of North Honcut Creek and on dark heavy soil in the farmed fields.

Trifolium depauperatum Desvaux. Cow Bag Clover. #414, 1054. Scattered over most of the ranch; never very plentiful.

Trifolium fucatum Lindley. On very wet years a few plants have appeared on the ranch; very uncommon. About twenty years ago three or four plants were seen.

Trifolium gracilentum Torrey & Gray var. inconspicuum Fernald. Pinpoint Clover. #1333, 1334, 1865. On heavy dark soil in farmed fields and in open pasture fields; uncommon and inconspicuous.

Trifolium hirtum Allioni. Rose Clover. #388, 389, 424. Planted to many acres on the ranch for its forage value. One of the most successful clovers that we have tried.

Trifolium incarnatum Linnaeus. Crimson Clover. #771, 2116. Mainly in the farmed fields; persists from old clover plantings.

Trifolium microcephalum Pursh. #73, 769, 760. In open grassy pasture fields.

Trifolium repens Linnaeus. Ladino Clover. Around edges of our rice field.

Trifolium subterraneum Linnaeus. Subterranean Clover. #1299, 1369. Very good competitor with Filaree (*Erodium*) and very important forage plant on the ranch. We have spent a great deal of time and money getting it established.

Trifolium tridentatum Lindley. Tom Cat Clover. #1691, 2098. In the farmed fields.

Trifolium variegatum Nuttall. White-tipped Clover. #1357. On dark heavy soil near a springy area in a small wash in the open pasture fields.

Vicia angustifolia Reichard. Common Vetch. #2099. Around our rice field.

Vicia benghalensis Linnaeus. Red-flowered Vetch. #1873. In the farmed fields. Sometimes grown as a cover crop or for hay and seed.

Vicia dasycarpa Tenore. Purple Vetch. #1336. In the farmed fields. Often very abundant on wet springs and will make excellent hay.

Vicia sativa Linnaeus. Spring Vetch. #1084, 2221. Along edges of North Honcut Creek and in the farmed fields.

#### LEMNACEAE

Lemna minuata Humboldt. (*Lemna minima*). Least Duckweed. #696. In the slough by the northwest corner of the ranch.

#### LENTIBULARIACEAE

Utricularia gibba Linnaeus. Bladderwort. #497, 498, 505, 506. In quiet water along North Honcut Creek. It is becoming very well established because waste irrigation water is being dumped into the creek.

#### LILAEACEAE

Lilaea scilloides (Poiret) Hauman. Flowering Quillwort. #410, 1668, 2091. Very uncommon; known only in a spring-like vernal pool near one of the Federal Government towers. In the very very wet spring of 1978 it was in many vernal pools and swales.

#### LILIACEAE

Asparagus officinalis Linnaeus. Garden Asparagus. Weedy around the garden area.

3(3):49

Calochortus albus Douglas ex Bentham. Fairy Lantern. #2097. Along rocky edges of North Honcut Creek.

Calochortus luteus Douglas ex Lindley. Mariposa Lily. #1342, 1875. In open grassy pasture fields.

Chlorogalum angustifolium Kellogg. Narrow-leaved Soap Plant. #1397. In open grassy pasture fields; very common.

Chlorogalum pomeridianum (Candolle) Kunth. Common Soap Plant, Amole. Along rocky edges of North Honcut Creek.

Erythronium multiscapoideum (Kellogg) A. Nelson & Kennedy. Fawn Lily. #1230, 1231. Along sides of North Honcut Creek.

Odontostomum hartwegii Torrey. #1306. On the sides and bottom of small washes in the open grassy pasture fields.

Zigadenus fremontii Torrey. Star Lily. #1612. Along west side of ranch along Palermo Honcut Road.

#### LIMNANTHACEAE

Limnanthes alba Hartweg in Bentham. Meadowfoam. #75, 2113. In swales and vernal pools; sometimes abundant on very wet years.

#### LINACEAE

Hesperolinon californicum (Bentham) Small. (Linum californicum). California Dwarf Flax. #1366, 2261. Near front gate and on North Honcut Creek; generally uncommon and inconspicuous.

#### LOASACEAE

Mentzelia laevicaulis (Douglas) Torrey & Gray. Blazing Star. #956. On dredge piles and gravel bars along North Honcut Creek; one of the most showy plants of summer.

#### LORANTHACEAE

Arceuthobium occidentale Engelmann. Digger Pine Dwarf Mistletoe. #670. On a small Digger Pine along rocky edge of North Honcut Creek.

Phoradendron villosum (Nuttall in Torrey & Gray) Nuttall. (Phoradendron flavescens var. villosum). Common Oak Mistletoe. #995. On Blue Oaks that grow along North Honcut Creek; common.

#### LYTHRACEAE

Ammannia coccinea Rottboell. Red Berry. #266, 631, 676. In a small wash by our home, in our rice field, and along wet edges of North Honcut Creek.

Lythrum hyssopifolia Linnaeus. Common Loosestrife. #225, 902, 2379. Abundant in wet swales, around the rice field, and less common along the wet edges of North Honcut Creek.

Rotala indica (Willdenow) Koehne. Indian Tooth-cup. #2659. In the rice field.

Rotala ramosior (Linnaeus) Koehne. Tooth-cup. #268, 269, 899, 2578. Small and inconspicuous along wet edges of North Honcut Creek; uncommon. Usually on mud.

#### MALVACEAE

Abutilon theophrasti Medicus. Velvet Leaf. Occasional in the garden area and around the old sheep barn.

Malva nicaeensis Allioni. Bull Mallow. Common weed in the garden area.

Sidalcea diploscypha (Torrey & Gray) Gray. Fringed Sidalcea. #108, 109, 1735. One small colony near the old tunnel gold mine. Some of the plants have flowers with dark red-purple centers.

Sidalcea hartwegii Gray ex Bentham. Hartweg's Sidalcea. #86, 87, 1734. Large colony near the north boundary near North Honcut Creek.

Sidalcea hirsuta Gray. Hairy Sidalcea. #1723. Uncommon in low swales. Seen on the ranch only three times before 1978. In 1978 the plant was common in a large vernal pool in the farmed fields.

Sidalcea malvaeflora (Candolle) Gray ex Bentham var. asprella (Greene) C.L. Hitchcock. Checker Mallow. #2255. Common on high banks of North Honcut Creek.

#### MARTYNIACEAE

Ibicella lutea (Lindley) Van Eseltine. Yellow Unicorn Plant. #262. In the fields near the old sheep barn; appears with summer rains.

Proboscidea louisianica (Miller) Thellung. Common Unicorn Plant. #632. In the farmed fields on good summer fallow or when big summer rains appear.

#### MORACEAE

Maclura pomifera (Rafinesque) C.N. Schneider. Osage Orange. #1114. Shrub to small tree scattered along the banks of North Honcut Creek. Escaped and established ornamental; leaves turn yellow in the fall if weather conditions are right.

#### OLEACEAE

Fraxinus latifolia Bentham. Oregon Ash. #846. Small tree along North Honcut Creek.

ONAGRACEAE

Boisduvalia cleistogama Curran. Cleistogamous Boisduvalia. #1728, 1729, 1773. Uncommon on the cottom of small vernal pools.

Boisduvalia densiflora (Lindley) S. Watson. Dense-flowered Boisduvalia. #551, 805, 1577. Very common along edges of North Honcut Creek.

Boisduvalia glabella (Nuttall in Toreey & Gray) Walpers. Smooth Boisduvalia. #1772. Uncommon in a small wash on the northwest side of the ranch.

Boisduvalia stricta (Gray) Greene. Narrow-leaved Boisduvalia. #476, 1774, 2377. Common on the bottom of a small wash near our home.

Camissonia graciliflora (Hooker & Arnott) Raven. (*Oenothera graciliflora*). #1059, 1065. On a gravel bar along a small wash about three hundred meters west of the water-hole. Very uncommon and inconspicuous.

Clarkia gracilis (Piper) Nelson & Macbride. Farewell-to-Spring. #755, 1848. Uncommon and inconspicuous on dredger piles along edges of North Honcut Creek.

Clarkia purpurea (Curtis) Nelson & Macbride ssp. quadrivulnera (Douglas) Lewis & Lewis. Four-spotted Clarkia. #1368. Uncommon on edges of washes in the farmed fields and in the open pasture fields.

Epilobium adenocaulon Haussknecht var. holosericeum (Trelease) Munz. Hairy Willow-herb. #1146. Uncommon on gravel bars along edges of North Honcut Creek.

Epilobium adenocaulon Haussknecht var. parishii (Trelease) Munz. California Willow-herb. #2581. On gravel bars along edges of North Honcut Creek; uncommon.

Epilobium canum ssp. latifolium (Hooker) Raven. (*Zauschneria californica* ssp. *latifolia*). California Fushsia. #1818. Only one plant growing around rocks along North Honcut Creek. Uncommon for this area.

Epilobium paniculatum Nuttall ex Torrey & Gray. (*Epilobium brachycarpum*). Tall Annual Willow-herb. In farmed fields and along banks of North Honcut Creek.

Epilobium paniculatum Nuttall ex Torrey & Gray var. jucundum (Gray) Trelease. Glandular Dry-land Willow-herb. #1587, 1588. Abundant along gravel bars along edges of North Honcut Creek.

Ludwigia palustris (Linnaeus) Elliott var. pacifica Fernald & Griscom. Water Purslane. #470, 2580, 2593. Common in shallow water or on mud, in small washes and along edges of North Honcut Creek.

ORCHIDACEAE

Piperia elegans (Lindley) Rydberg. (Habenaria elegans). Rein Orchid. #450, 2256. Under blue oaks and near a large digger pine above the west side of the gorge in North Honcut Creek. A large colony of about 20 plants grows near a washed out dam on a small wash west of the old gold mine. Uncommon and difficult to find; on moist to dry soil.

Spiranthes romanzoffiana Chamisso & Schlechtendal. Ladies Tresses. #496. Above the State Water Meter and on the north boundary of the ranch in the creek. More common than the Piperia but very hard to find every year; once I saw about 40 plants flowering at one time.

OROBANCHACEAE

Orobanche uniflora Linnaeus ssp. occidentalis (Greene) Ferris. (Orobanche uniflora var. minuta). Broom-Rape. #332, 331. Very uncommon; found occasionally under Douglas Oaks along the banks of North Honcut Creek.

OXALIDACEAE

Oxalis corniculata Linnaeus. Oxalis. #762, 1091, 2689. Common lawn weed. Also found around large rocks in the field south of the old sheep barn and along the banks of North Honcut Creek.

Oxalis corniculata Linnaeus var. atropurpurea Planchon. #2690. Common lawn weed; grows with var. corniculata but remains distinct. Some researchers do not recognize the variety.

Oxalis laxa Hooker & Arnott. Lax Oxalis. #765, 766. Uncommon in damp shady places along edge of North Honcut Creek.

PAPAVERACEAE

Eschscholzia californica Chamisso. California Poppy. #777, 2262. On dredger piles and gravel bars along North Honcut Creek.

Eschscholzia lobbi Greene. Frying Pan Poppy. #409, 776, 1066. Our most common poppy; in grassy fields and the edges of small washes. On wet years the plants produce masses of yellow flowers that turn the hills yellow.

PLANTAGINACEAE

Plantago bigelovii Gray. Bigelow's Plantain. #336, 337, 341, 342, 426. Inconspicuous in drying swales and on the bottom of shallow vernal pools.

Plantago coronopus Linnaeus. Cut-leaved Plantain. #19, 74. Weedy on hard poor dry soils, along edges and in the middle of dirt roads. Common and spreading.



Plantago erecta Morris. (Plantago hookeriana var. californica). Hooker's Plantain. #348, 349, 1696, 1697. On poor early drying soils and on dry banks of washes. Common but often inconspicuous.

Plantago lanceolata Linnaeus. English Plantain, Ribwort. #256, 264. Weedy around edges of rice field and North Honcut Creek. Common and well established.

Plantago major Linnaeus. Common Plantain. #1801. One plant known from moist sand on edge of North Honcut Creek.

#### PLATANACEAE

Platanus racemosa Nuttall. Western Sycamore. #265. Large trees along banks of North Honcut Creek.

#### POLEMONIACEAE

Gilia tricolor Bentham. Bird's Eye Gilia. #372, 1063. On poor soil and small gravel bars along a small wash.

Linanthus acicularis Greene. #361, 1834. Three small colonies; more common on wet years.

Linanthus androsaceus (Bentham) Greene. #1036, 1820. One small colony on sides of North Honcut Creek.

Linanthus bicolor (Nuttall) Greene. #367, 368. In grassy pasture fields.

Linanthus filipes (Bentham) Greene. Wild Baby's Breath. #407, 408. On poor soils in open pasture fields.

Microsteris gracilis (Douglas ex Hooker) Greene. Beggar Gilia. #723. On north side of dredger piles along North Honcut Creek; uncommon.

Navarretia intertexta (Bentham) Hooker. #1361. In open pasture fields.

Navarretia leucocephala Bentham. #1296, 1714, 2224. On the bottom of vernal pools.

Navarretia pubescens (Bentham) Hooker & Arnott. #1362. In open pasture fields.

Navarretia tagetina Greene. #1360. In open pasture fields.

#### POLYGONACEAE

Chorizanthe membranacea Bentham. #783, 784, 2244. Inconspicuous on dredger piles along North Honcut Creek; very rare.

3(3):54

Eriogonum nudum Douglas ex Benth. (Eriogonum latifolium ssp. nudum). Wild Buckwheat. #1605. Along North Honcut Creek on dredger piles and in open pasture fields.

Eriogonum roseum Durand & Hilgard. (Eriogonum virgatum). #639, 640, 1603. On dry sandy soil along North Honcut Creek; rare.

Eriogonum vimineum Douglas ex Benth. #120, 121, 122, 123, 124. Common in small washes and along North Honcut Creek on gravel bars and dredger piles.

Eriogonum wrightii Torrey ex Benth. ssp. trachygonum (Torrey) S. Stokes. Wright's Buckwheat. #626, 627, 635, 636, 637. On gravel bars along North Honcut Creek; uncommon.

Polygonum aviculare Linnaeus. Common Knotweed. #2232. Common weed around our home.

Polygonum californicum Meissner. #663, 664, 3216. On hard dry bare soil which dries early, near edges of washes and along trails.

Polygonum hydropiper Linnaeus. #1582. On wet gravelly soil along edges of North Honcut Creek.

Polygonum persicaria Linnaeus. Lady's Thumb. #1580. Along edges of North Honcut Creek and around our rice field.

Polygonum scabrum Moench. (Polygonum lapathifolium). Willow Weed. #634, 679, 680. In our garden and around our rice field.

Pterostegia drymarioides Fischer & Meyer. #322, 351, 352. Around large rocks.

Rumex crispus Linnaeus. Curly Dock. #1149, 1440. Along North Honcut Creek, and common around our rice field.

Rumex pulcher Linnaeus. Fiddle Dock. In wet places in open pasture fields.

Rumex salicifolius Weinmann. Willow Dock. #507, 508. Along wet edges of North Honcut Creek.

#### PONTEDERIACEAE

Heteranthera limosa (Swartz) Willdenow. Duck Salad. #618, 619. In our rice field.

#### PORTULACACEAE

Calandrinia ciliata (Ruiz & Pavon) Candolle var. menziesii (Hooker) Macbride. Red Maids. #1295. In the garden, and in the farmed fields where it is occasionally abundant.

Claytonia parviflora Douglas & Hooker. (*Montia perfoliata* forma *parviflora*). #321. Along edges of North Honcut Creek.

Claytonia rubra (Howell) Tidestrom. (*Montia perfoliata* and *Montia perfoliata* forma *angustifolia*). Miner's Lettuce. #1228, 2755, 2756. In the garden, along banks of North Honcut Creek, and sometimes in the corrals at the old sheep barn.

Montia fontana ssp. ampositana Sennen. (*Montia hallii*). #164, 299, 300, 301, 1614. Usually around small rocks on early drying soils.

Montia fontana ssp. chondrosperma (Fenzl) Walter. (*Montia verna*). #354. Sometimes in shallow water but usually on very wet soil; common on sides and in small washes.

Portulaca oleracea Linnaeus. Purslane. Common summer weed in the garden.

#### POTAMOGETONACEAE

Potamogeton foliosus Rafinesque. Leafy Pondweed. #847. In the waterhole.

Potamogeton illinoensis Morong. Illinois Pondweed. #1569. In quiet water along North-Honcut Creek.

#### PRIMULACEAE

Anagallis arvensis Linnaeus. Scarlet Pimpernel, Poor Man's Weatherglass. #105. Weed in the garden and on the rice field levees.

Anagallis minimus (Linnaeus) Krause. (*Centunculus minimus*). Chaffweed. #428, 795, 1685. In low swales and depressions and along moist edges of North Honcut Creek.

Dodecatheon clevelandii Greene ssp. patulum (Greene) H.J. Thompson. Lowland Shooting Star. #302, 2040. Common in the open pasture fields. Has a good clear yellow spot below the anthers to distinguish the species.

Dodecatheon hansenii (Greene) H.J. Thompson. Hansen's Shooting Star. #2046. Scattered along banks of North Honcut Creek. These are short-scaped, with large red (pink) flowers. About 1/3 of the plants have a set of flower lobes appearing by the anthers. The lobes (both freak lobes and normal lobes) are often greatly twisted. The flowers are large and the connective looks broader than those on the Lowland Shooting Star.

Dodecatheon hendersonii Gray ssp. parvifolium (Knuth) H.J. Thompson. Henderson's Shooting Star. #716, 2033, 2037, 2038. Small colonies under and near Blue Oaks near North Honcut Creek. White and red flowered forms grow together with no intermediates. The red form is very stable in size with little variation in the flowers. The white flowered form is much more variable as to flower size and some flower lobes are incised. The scapes of the white flowered form are always shorter than the red form. I now believe that the two forms are the same species, not a hybrid with the Lowland Shooting Star.

Samolus parviflorus Rafinesque. Water Pimpernel. #267, 2579. Fairly common along moist edges of North Honcut Creek.

RANUNCULACEAE

Clematis ligusticifolia Nuttall in Torrey & Gray. Virgin's Bower. #1192, 1144. Along edges of North Honcut Creek; uncommon.

Delphinium hesperium Gray. Hirsute Larkspur. #1743, 2094. On dry soil on ridges and slopes near North Honcut Creek; uncommon.

Delphinium variegatum Torrey & Gray. Royal Larkspur. #323. Common on most of ranch where we do not cultivate the soil.

Myosurus minimus Linnaeus. Common Mousetail. #71, 324, 446. In vernal pools, shallow depressions and in our rice field; not common and usually very difficult to find.

Ranunculus aquatilis Linnaeus var. hispidulus E. Drew. Water Buttercup. #358, 467, 468. Aquatic in shallow water, in a water hole, in a wash by our home, and in a little seep east of the new all-metal barn.

Ranunculus arvensis Linnaeus. Field Buttercup. #1330, 1331, 2234. On dark heavy soil in a farmed field.

Ranunculus bonariensis Poiret var. trisepalus (Gill) Lourteig. (Ranunculus alveolatus). #184, 357, 1659, 2088. In a small wash near North Honcut Creek, a small pond in the Lower Rock Field, and by the pipe under the road east of the front gate. The plant likes shallow water or very wet places; not common.

Ranunculus californicus Benthham. California Buttercup. #334. Along North Honcut Creek near the north boundary.

Ranunculus hebecarpus Hooker & Arnott. Pubescent-fruited Buttercup. #174, 386. In the shade of and around large rocks along North Honcut Creek; fairly common.

Ranunculus muricatus Linnaeus. Spiny-fruited Crowfoot. Common weed along wet swales and in small washes.

Ranunculus occidentalis Nuttall var. eisenii (Kellogg) Gray. Mountain Buttercup. #333. Along North Honcut Creek near the north boundary.

Ranunculus pusillus Poiret. Low Buttercup. #444, 445, 2235. In our rice field before the ground is farmed, and in the swale northwest of the rice field; not very common.

Thalictrum polycarpum (Torrey) Watson. Meadow Rue. Seen only once in 1960 and apparently it did not survive; very rare.

RHAMNACEAE

Ceanothus cuneatus (Hooker) Nuttall. Buck Brush. #309, 330. On Blue Oak covered hills along North Honcut Creek; not common.

Rhamnus californica Eschscholtz ssp. tomentella (Bentham) C.B. Wolf. Coffeeberry. #781, 782. Around large rocks and along North Honcut Creek.

ROSACEAE

Alchemilla occidentalis Nuttall. Western Ladies Mantle. #193, 194, 350. Small and inconspicuous around large rocks.

Heteromeles arbutifolia Max Roemer. Christmas-Berry. #790, 994. Along North Honcut Creek.

Potentilla glandulosa Lindley. Cinquefoil. #1391. Along banks of North Honcut Creek.

Rosa californica Chamisso & Schlechtendel. California Rose. #1115. Along edges of North Honcut Creek.

Rubus ursinus Chamisso & Schlechtendel. California Blackberry. #1116. Along edges of North Honcut Creek.

RUBIACEAE

Cephalanthus occidentalis Linnaeus var. californicus Bentham. Buttonbush. #903. Along edges of North Honcut Creek.

Crucianella angustifolia Linnaeus. Narrow-leaf Crosswort. #220, 1343. Widespread on ranch. Inconspicuous when green but when it dries up as it matures it becomes conspicuous.

Galium aparine Linnaeus. Cleavers, Bedstraw. #398, 418, 419, 420. Around large rocks in the open pasture fields and along North Honcut Creek.

Galium divaricatum Lamarck. Lamarck's Bedstraw. #459, 460, 2380. Small and inconspicuous along edges of small washes and in the open pasture fields.

Galium porrigens Dempster. (Galium nuttallii). Climbing Bedstraw. #1108, 1109. Perennial around and on large rocks.

Sherardia arvensis Linnaeus. Field Madder. #37, 356, 2114. In small washes, along North Honcut Creek, and in the lawn by our home; widespread but not very abundant.

SALICACEAE

Populus fremontii Watson. Black Cottonwood. Along edges of North Honcut Creek.

Salix lasiandra Benth. Willow. #395, 396. Along edges of North Honcut Creek.

Salix lasiolepis Benth. Arroyo Willow. #165. Small shrub along North Honcut Creek.

#### SAXIFRAGACEAE

Lithophragma bolanderi Gray. (Lithophragma scabrella). Woodland Star. #355, 390, 2753. Fairly common in the shade of large rocks.

Lithophragma trifoliatum Eastw. (Lithophragma trifoliata). Thrice-parted Woodland Star. #328, 2754. One small colony by a large rock, another colony along banks of North Honcut Creek.

Saxifraga californica Greene. California Saxifraga. #312, 700, 2029. Very common and conspicuous along edges of North Honcut Creek.

Saxifraga fragosa Suksdorf. #711. One small colony around large rocks near edge of North Honcut Creek.

Saxifraga nidifica Greene. #308, 701, 712, 2026. In open pasture fields and near North Honcut Creek. Early flowering and inconspicuous in the fields.

#### SCROPHULARIACEAE

Bacopa rotundifolia (Michaux) Wettstein. (Bacopa nobisiana). Round-leaf Water Hyssop. In shallow water in our rice field.

Collinsia sparsiflora Fischer & Meyer. Few-flowered Collinsia. #1851. Around large and small rocks along banks of North Honcut Creek; uncommon.

Cordylanthus hansenii (Ferris) Macbride. Hansen's Bird'sbeak. #1427, 1447. On dry wooded hills near North Honcut Creek; flowers in late summer.

Dopatrium junceum (Roxburgh) Buchanan-Hamilton in Benth. #555, 556. In shallow water in our rice field; very inconspicuous.

Gratiola ebracteata Benth. #411. On mud on the bottom of a small wash near our home.

Keckiella breviflora (Lindley) Straw. (Penstemon breviflorus). Gaping Beardtongue. #1136. Small shrub along rocky sides of North Honcut Creek.

Kickxia elatine (Linnaeus) Dumortier. Fluellin. #475. Along North Honcut Creek, in the garden, and around the edges of our rice field.

Limosella aquatica Linnaeus. Mudwort. #1624. On the wet bottom of a small swale; rare.

Lindernia dubia var. anagallidea (Michaux) Cooperrider. (Lindernia anagallidea). False Pimpernel. #255, 2577. In the small wash by our home, in our rice field, and along North Honcut Creek.

Mimulus cardinalis Douglas ex Bentham. Scarlet Monkey Flower. #904. Occasional along edges of North Honcut Creek.

Mimulus douglasii (Bentham in Candolle) Gray. Purple Mouse Ears. #171, 172, 173. On bare sterile soil in the open grassy pasture fields and on gravel bars along the edges of North Honcut Creek; not common.

Mimulus floribundus Douglas ex Lindley. Purple-stemmed Monkey Flower. #404, 453. Around large rocks in the field south of the old sheep barn.

Mimulus guttatus Fischer ex Candolle. Yellow Monkey Flower. #1677, 1717. In very wet swales, along the edges of North Honcut Creek, and occasionally in our rice field.

Mimulus latidens (Gray) Greene. #1678. On dark heavy soil on bottom of a dry swale in the farmed field north of our home; very uncommon.

Mimulus pilosus (Bentham) Watson. Downy Monkey Flower. #807. Along edges of North Honcut Creek.

Mimulus tricolor Hartweg ex Lindley. Tricolor Monkey Flower. #413, 1687. In vernal pools and in swales in the farmed fields.

Orthocarpus attenuatus Gray. Narrow-leaved Owl's Clover, Vassel Tassels. #375. In open grassy pasture fields; common.

Orthocarpus campestris Bentham. Field Owl's Clover. #36, 425, 1625, 1688, 1689, 2090. On the bottom and sides of vernal pools.

Orthocarpus erianthus Bentham. Johnny Tuck, Butter-and-Eggs. #335, 346. Very common in the open grassy fields and along banks of North Honcut Creek.

Orthocarpus pusillus Bentham. Dwarf Owl's Clover. #343, 344, 345. Inconspicuous in the fields around our home.

Verbascum blattaria Linnaeus. Moth Mullein. Near the water hole and along North Honcut Creek.

Verbascum thapsus Linnaeus. Common Mullein. On gravel bars along North Honcut Creek.

Veronica peregrina Linnaeus ssp. xalapensis (Humboldt) Pennell. #1298. In our rice field and in shallow vernal pools.

Veronica persica Poiret. Persian Speedwell. #465. Weedy in the garden.

## SOLANACEAE

Datura ferox Linnaeus. Thorn-apple. #1208. Occasional on good summer fallow. Produces a large plant and sets many seed.

Datura meteloides A. Candolle. Toloache. #855. Established for five years by one of the buildings near our home.

Lycopersicon esculentum Miller. Tomato. Sometimes spontaneous in the garden area; usually the plum variety.

Nicotiana acuminata Hooker var. multiflora (Philippi) Reiche. Many-flowered Tobacco. #1783. Occasional in the garden area.

Physalis acutifolia (Miers) Sandwith. (Physalis wrightii). Wright's Ground Cherry. Near the garden and in pasture fields where there is summer irrigation.

Physalis angulata var. lanceifolia (Nees von Esenbeck) Waterfall. (Physalis lanceifolia). Lance-leaved Ground Cherry. #125. In and near the garden area, in the pasture fields where there is summer irrigation, and around the edges of our rice field and at the water-hole.

Physalis philadelphica Lamarck. (Physalis ixocarpa). Tomatillo. #1444. On summer fallow in the farmed fields.

Solanum sarrachoides Sendtner ex Martius. Hairy Nightshade. #1600, 2691. In the garden area in the fall.

## TYPHACEAE

Typha angustifolia Linnaeus. Narrow-leaved Cattail. #1462. One colony known from a ditch near our rice field. Rich brown pistillate flowers.

Typha x glauca Godron. (Typha angustifolia x Typha latifolia). Around our rice field. Common cattail that has a great deal of variation in the distance between the pistillate and staminate flowers.

Typha domingensis Persoon. Cattail. #3209. Around our rice field and at the water hole.

Typha latifolia Linnaeus. Soft-flag, Common Cattail. Around our rice field. Rich brown pistillate flowers.

## UMBELLIFERAE

Anethum graveolens Linnaeus. Dill. #854. Spontaneous in the garden.

Anthriscus caucalis Bieberstein. (Anthriscus scandicina). Bur-chervil. #1350, 2353. By the old sheep barn.

Conium maculatum Linnaeus. Poison Hemlock. #1673. At the old sheep barn.



Daucus carota Linnaeus. Wild Carrot. #1467. Along Palermo Honcut Road on west side of the ranch.

Daucus pusillus Michaux. Rattlesnake Weed. #1354. Near North Honcut Creek.

Eryngium vaseyi Coulter & Rose var. vallicola (Jepson) Munz. Coyote Thistle. #1401. In swales and on the bottom of small washes; very common and widespread.

Hydrocotyle umbellata Linnaeus. Marsh Pennywort. #1446. In shallow water along North Honcut Creek.

Lomatium dasycarpum ssp. tomentosum (Bentham) Theobald. (Lomatium tomentosum). #768. On gravel bars along North Honcut Creek.

Lomatium humile (Coulter & Rose) Hoover ex Mathias & Constance. Foothill Lomatium. #1876. In the open pasture fields where it flowers early; often very abundant.

Lomatium marginatum (Bentham) Coulter & Rose. Marginal Biscuit Root. #2253. On the sides of North Honcut Creek.

Lomatium utriculatum (Nuttall) Coulter & Rose. Common Biscuit Root. #1307, 2095. Around large rocks along edges of North Honcut Creek.

Perideridia sp. Squaw Root. #1413. On wooded hills along North Honcut Creek.

Sanicula bipinnata Hooker & Arnott. Poison Sanicle. #325, 2045. Near North Honcut Creek.

Sanicula bipinnatifida Douglas ex Hooker. Purple Sanicle. #1633. Near North Honcut Creek.

Sanicula crassicaulis Poeppig ex Candolle. Pacific Sanicle. On the banks of North Honcut Creek.

Scandix pecten-veneris Linnaeus. Shepherd's Purse. #370, 371, 2085. Along North Honcut Creek and occasional in the farmed fields.

Torilis heterophylla Gussone. #1118, 1409. Near North Honcut Creek.

Torilis nodosa (Linnaeus) Gaertner. Hedge Parsley. #1358, 1359, 2112. Near North Honcut Creek, occasional in the open pasture fields and around the garden by our home.

Yabea microcarpa (Hooker & Arnott) Koso-Pol. (Caucalis microcarpa). California Hedge-Parsley. #436, 437, 438, 2103. Near the edges of North Honcut Creek.

#### URTICACEAE

Hesperocnide tenella Torrey. #338, 339. South of the old sheep barn around large rocks in the shade; uncommon.

Urtica urens Linnaeus. Dwarf Nettle. #326. Under Blue Oaks where the soil has been enriched from animal wastes, and around the old sheep barn.

#### VALERIANACEAE

Plectritis ciliosa (Greene) Jepson. Long-spurred Plectritis. #377, 378, 2782. Along North Honcut Creek in damp shaded places; not common.

#### VERBENACEAE

Lippia nodiflora Michaux var. rosea (D. Don) Munz. Garden Lippia. #500. On the bottom of a small wash on very heavy dark soil.

Verbena bonariensis Linnaeus. Cluster-flowered Verbena. #1553. Along a swale near the northwest boundary of the ranch, along edges of North Honcut Creek, and in a small swale near our front gate.

#### VIOLACEAE

Viola douglasii Steudel. Yellow Violet. #1613. A few small colonies in the open grassy pasture fields.

Viola odorata Linnaeus. English Violet. #1225. Spontaneous and persistent in the garden and lawn.

#### VITACEAE

Vitis californica Benth. California Wild Grape. #1113, 1609. Vine on trees and shrubs along North Honcut Creek.

#### ZYGOPHYLLACEAE

Tribulus terrestris Linnaeus. Puncture Vine. #1785. Occasionally established but the soils and moisture conditions are so poor the plants seldom persist for more than a few years.

#### ADDENDUM

(31) Gnaphalium palustre Nuttall. Low Cudweed. #115, 461, 462. In small washes, around edges of our rice field, and along North Honcut Creek. (COMPOSITAE)

32 Scirpus berrus Vahl. var. californicus (Torrey) Beetle. #387, 1259. In wet mud along edges of North Honcut Creek; very common and occasional. (CYPERACEAE)

33 Geranium carolinianum L. Carolina Geranium. #3193. On North Honcut Creek. (GERANIACEAE)

CNPS FIELD TRIP NOTES - TNC VINA PLAINS PRESERVE, TEHAMA COUNTY, CA  
17 April 1982

Compiled by: Mary S. Taylor

MARSILEACEAE

Marsilea vestita  
Clover Fern  
Pilularia americana  
Pillwort

APIACEAE

Eryngium vaseyi var. vallicola  
Coyote Thistle  
Lomatium humile  
Foothill Bisquit Root  
Lomatium utriculatum  
Common Bisquit Root  
Sanicula bipinnatifida  
Poison Sanicle

ASTERACEAE

Achyraea mollis  
Blow Wives  
Blennosperma nanum  
Yellow Carpet  
Evax  
Evax  
Lasthenia californica  
Goldfields  
Layia fremontii  
Tidy Tips  
Matricaria matricarioides  
Pineapple Weed  
Senecio vulgaris  
Old Man of Spring

BORAGINACEAE

Plagiobothrys austinae  
Austins Popcorn Flower  
Plagiobothrys bracteatus  
Bractate Popcorn Flower  
Plagiobothrys scriptus  
Scribes Popcorn Flower  
Plagiobothrys stipitatus  
Stipitate Popcorn Flower  
Plagiobothrys stipitatus var. micranthus  
Small-flowered Popcorn Flower

BRASSICACEAE

Lepidium nitidum  
Peppergrass  
Raphanus raphanistrum  
Wild Radish

CALLITRICHACEAE

Callitriche  
Water Starwort

CAMPANULACEAE

Downingia spp.  
Downingia

CARYOPHYLLACEAE

Arenaria californica  
California Sandwort  
Cerastium glomeratum  
Mouse-ear Chickweed  
Petrorhagia velutina  
Grass Pink  
Sagina apetala  
Sagina

CRASSULACEAE

Crassula aquatica  
Water Pygmyweed  
Crassula erecta  
Erect Pygmyweed  
Crassula muscosa  
Weedy Pygmyweed  
Parvisedum pumilum  
Rock Sedella

CUSCUTACEAE

Cuscuta sp.  
Dodder

EUPHORBIACEAE

Eremocarpus setigerus  
Doveweed

FABACEAE

Astragalus gambeliansus  
Gambels Dwarf Locoweed  
Lupinus bicolor ssp. ?  
Bicolored Lupine  
Medicago polymorpha  
Bur Clover  
Trifolium albopurpureum  
Indian clover  
Trifolium depauperatum  
Cowbag Clover  
Trifolium tridentatum  
Trident Clover  
Trifolium variegatum  
Tomcat Clover

VINA PLAINS, cont.

GENTIANACEAE

*Cicendia quadrangularis*  
Timwort

GERANIACEAE

*Erodium cicutarium*  
Red-stem Filaree  
*Erodium moschatum*  
Musk Filaree

LAMIACEAE

*Pogogyne zizyphoroides*  
Sacramento Pogo

LIMNANTHACEAE

*Limnanthes* sp.  
Meadow Foam

MALVACEAE

*Sidalcea hirsuta*  
Hairy Checker

ONAGRACEAE

*Ludwigia* sp.  
Water Purslane

PAPAVERACEAE

*Eschscholzia californica*  
California Poppy

PLANTAGINACEAE

*Plantago erecta*  
Hookers Plantain

POLEMONIACEAE

*Linanthus bicolor*  
Bicolored Linanthus  
*Navarretia leucocephala*  
White-flowered Navarretia

PRIMULACEAE

*Anagallis arvensis*  
Scarlet Pimpernel

RANUNCULACEAE

*Delphinium variegatum*  
Superb Larkspur  
*Myosurus minimus* var. *apus* ssp. *sessiliflorus*  
Tiny Mousetails  
*Myosurus minimus* var. *filiformis*  
Big Mousetails  
*Ranunculus muricatus*  
Prickly-fruit Buttercup

SALICACEAE

*Salix* sp.  
Willow

SCROPHULARIACEAE

*Mimulus tricolor*  
Tricolored Monkeyflower  
*Orthocarpus attenuatus*  
Valley Tassels  
*Orthocarpus erianthus*  
Johnny Tuck  
*Veronica peregrina* ssp. *xalapensis*  
Persian Speedwell

VIOLACEAE

*Viola douglasii*  
Douglas Violet

AMARYLLIDACEAE

*Dichelostemma pulchellum*  
Blue Dicks  
*Triteleia laxa*  
Ithuriels Spear, Grass Nuts

JUNCACEAE

*Juncus uncialis*  
Inch Rush

LILIACEAE

*Zigadenus fremontii*  
Death Camas, Star Lily

POACEAE

*Alopecurus* sp.  
Meadow-foxtail  
*Bromus mollis*  
Soft Chess  
*Bromus rubens*  
Red Chess  
*Koeleria phleoides*  
Bristly Koeleria  
*Poa* sp.  
Poa  
*Vulpia* spp.  
Annual Festuca

PULGA SERPENTINE II.

Compiled by: Mary S. Taylor

Serpentine outcrop on both sides of the Pulga bridge over Hwy 70, ca. 1 mile west of the community of Pulga, ca. 20 miles northeast of Oroville. (T22N R5E ne¼ section 6. Pulga quadrangle). Compiled from the notes and collections of M.S. Taylor, J.D. Jokerst, & J.T. Howell.

SELAGINELLACEAE

*Selaginella hansenii*  
Hansen Clubmoss

POLYPODIACEAE

*Cheilanthes carlotta-halliae*  
Carlotta Lip-fern  
*Cheilanthes siliquosa*  
(*Onychium densum*, *Aspidotis densa*)  
Cliff Brake  
*Pityrogramma triangularis*  
Goldback Fern  
*Pityrogramma triangularis*  
var. *semipallida*  
Silverback Fern  
*Polypodium californicum*  
CA Polypody  
*Polystichum imbricans*  
(*P. munitum* var. *imbricans*)  
Sword Fern

PINACEAE

*Pinus sabiniana*  
Digger Pine  
*Pseudotsuga menziesii*  
Douglas Fir

ANACARDIACEAE

*Toxicodendron diversilobum*  
Poison Oak

APIACEAE (UMBELLIFERAE)

*Daucus pusillus*  
Rattlesnake Weed  
*Lomatium marginatum*  
Marginal Bisquit Root  
*Lomatium utriculatum*  
Common Bisquit Root  
*Sanicula bipinnata*  
Poison Sanicle

ARISTOLOCHIACEAE

*Asarum hartwegii*  
Hartweg Wild Ginger

ASTERACEAE (COMPOSITAE)

*Achillea millefolium* var. *lanulosa*  
Wooly Yarrow  
*Brickellia greenei*  
Greene Bricklebrush  
*Calycadenia truncata* ssp. *scabrella*  
Scabrous Calycadenia  
*Centaurea solstitialis*  
Yellow Star Thistle  
*Chrysothamnus nauseosus* ssp. *albicaulis*  
Whitestem Rabbitbush  
*Eriophyllum lanatum* var. *grandiflorum*  
Wooly Sunflower  
*Filago californica*  
Cotton Rose  
*Grindelia camporum*  
Gumweed  
*Lessingia nemaclada*  
Slender Lessingia  
*Matricaria matricarioides*  
Pineapple Weed  
*Microseris lindleyi*  
(*M. linearifolia*)  
Scorzonella  
*Senecio eurycephalus* var. *lewisrosei*  
(*S. lewisrosei*)  
Serpentine Butterweed  
*Senecio vulgaris*  
Old Man of Spring

BORAGINACEAE

*Cryptantha hendersonii*  
Henderson Cryptantha

BRASSICACEAE (CRUCIFERAE)

*Draba verna* var. *aestivalis*  
Whitlow Grass  
*Erysimum capitatum*  
Wall Flower  
*Streptanthus polygaloides*  
Milkwort Streptanthus  
*Thysanocarpus curvipes*  
Fringe Pod

CALYCANTHACEAE

*Calycanthus occidentalis*  
Spice Bush

CAPRIFOLIACEAE

Symphoricarpos rivularis  
Snowberry

CARYOPHYLLACEAE

Silene gallica  
Catchfly  
Stellaria media  
Chickweed

CRASSULACEAE

Sedum albomarginatum  
Pulga Stonecrop  
Sedum spathulifolium ssp. purdyi  
(S. spathulifolium)  
Pacific Stonecrop

ERICACEAE

Arctostaphylos viscida  
White-leaf Manzanita

FABACEAE (LEGUMINOSAE)

Cercis occidentalis  
Redbud  
Lotus humistratus  
Hairy Lotus  
Medicago sativa  
Alfalfa  
Trifolium hirtum  
Rose Clover  
Trifolium tridentatum  
Trident Clover

FAGACEAE

Quercus chrysolepis  
Canyon Oak

GERANIACEAE

Erodium cicutarium  
Redstem Filaree

HIPPOCASTANACEAE

Aesculus californica  
CA Buckeye

HYDROPHYLLACEAE

Phacelia heterophylla var. virgata  
Phacelia  
Phacelia corymbosa  
Serpentine Phacelia

LAMIACEAE

Monardella villosa ssp. sheltonii  
Coyote Mint

LAURACEAE

Umbellularia californica  
Bay Laurel

ONAGRACEAE

Clarkia gracilis ssp. albicaulis  
Clarkia  
Epilobium minutum  
Small Willowherb

PAPAVERACEAE

Eschscholzia californica  
CA Poppy

PLANTAGINACEAE

Plantago lanceolata  
Ribwort

POLEMONIACEAE

Gilia capitata  
Blue Gilia  
Linanthus filipes  
Wild Babies Breath

POLYGALACEAE

Polygala cornuta  
Sierra Milkwort

POLYGONACEAE

Eriogonum luteolum  
Yellow Wicker Buckwheat  
Eriogonum nudum var. pubiflorum  
Naked-stem Tibinagua  
Eriogonum umbellatum var. speciosum  
Sulphur-flower Buckwheat

PORTULACACEAE

Claytonia parviflora  
Narrow-leaf Miner's Lettuce

RANUNCULACEAE

Aquilegia formosa var. truncata  
Wild Columbine  
Ranunculus  
Buttercup

RHAMNACEAE

Ceanothus cuneatus  
Buckbrush  
Ceanothus integerrimus  
Deer Brush  
Rhamnus californica ssp. tomentella  
Coffeeberry  
Rhamnus ilicifolia  
(R. crocea ssp. ilicifolia)  
Buckthorn

ROSACEAE

Heteromeles arbutifolia  
Toyon  
Holodiscus boursieri  
Ocean Spray  
Potentilla glandulosa  
Sticky Cinquefoil

RUBIACEAE

Crucianella angustifolia  
Crosswort  
Galium bolanderi  
Bolander Bedstraw

SALICACEAE

Salix laevigata  
Willow  
Salix lasiolepis  
Willow

SAXIFRAGACEAE

Heuchera micrantha var. erubescens  
Alum Root  
Philadelphus lewisii ssp. californica  
CA Syringa  
Ribes nevadense  
Sierra Current  
Ribes roezlii  
Sierra Gooseberry

SCROPHULARIACEAE

Antirrhinum breweri  
Brewer Snapdragon  
Castilleja applegatei ssp. fragilis  
Indian Paintbrush  
Collinsia tinctoria  
Sticky Chinese Houses  
Diplacus grandiflorus  
(Mimulus bifidus)  
Plumas Bush Monkeyflower  
Mimulus glaucescens  
Shield Monkeyflower  
Mimulus torreyi  
Torrey Monkeyflower  
Penstemon azureus  
Azure Beardtongue  
Mimulus guttatus  
Common Monkeyflower

AMARYLLIDACEAE

Allium acuminatum  
Tapertip Onion  
Allium sanbornii  
Sanborn Onion

AMARYLLIDACEAE

Allium acuminatum  
Tapertip Onion  
Allium sanbornii  
Sanborn Onion  
Dichelostemma pulchellum  
(Brodiaea pulchella)  
Blue Dicks

LILIACEAE

Calochortus albus  
White Fairy Lantern  
Erythronium cliftonii, ined.  
Clifton Fawn Lily  
THIS IS THE TYPE LOCALITY

POACEAE (GRAMINEAE)

Aira caryophyllea  
Hairgrass  
Agropyron elongatum  
Elongate Wheatgrass  
Agrostis exarata var. monolepis  
Redtop  
Avena  
Wild Oats  
Bromus laevipes  
Chess  
Bromus madritensis  
Madrid Brome  
Bromus mollis  
Soft Chess  
Bromus rubens  
Red Brome  
Bromus sterilis  
Sterile Brome  
Festuca californica  
CA Fescue  
Holcus lanatus  
Johnson Grass  
Lolium perenne  
Wild Rye  
Melica californica  
CA Melic  
Phleum pratensis  
Timothy  
Poa bulbosa  
Bulbous Bluegrass  
Poa scabrella  
Pine Bluegrass  
Sitanion hystrix  
Squirrel-tail  
Stipa columbiana  
Columbia Needlegrass  
Vulpia myuros var. hirsuta  
Foxtail Fescue

MT INGALLS, 8372 feet, PLUMAS COUNTY

T25N R12E section 28 and 27. Tallest peak of the county, located about 11 air miles southeast of Taylorsville. Collections deposited in California Academy of Sciences and California State University Chico. Mary S. Taylor 1982

TREES

*Abies magnifica*  
*Pinus monticola* (3366)  
*Tsuga mertensiana* (3367)

SHRUBS

*Arctostaphylos nevadensis*  
*Artemisia tridentata*  
*Ceanothus velutinus*  
*Chrysothamnus nauseosus*  
    *ssp. albicaulis*  
*Chrysothamnus viscidiflorus*  
*Holodiscus microphyllus*  
*Prunus emarginata*  
*Ribes*  
*Sambucus*  
*Symphoricarpos vaccinioides*

GRASSES

*Agropyron*  
*Poa*  
*Sitanion hystrix*  
*Stipa occidentalis* (5014)

HERBS

*Angelica breweri*  
*Antennaria* (3918)  
*Arabis* (3920, 5010)  
*Arenaria* (3922)  
*Calyptridium umbellata*  
*Castilleja arachnoidea* (5013)  
*Chaenactis douglasii*  
*Erigeron*  
*Eriogonum marifolium* (3917)  
*Eriogonum umbellata* (5011)  
*Eriophyllum*  
*Erysimum capitata*  
*Gayophytum*  
*Haplopappus suffruticosus*  
*Ipomopsis aggregata*  
*Ipomopsis congesta* (5013A, 3919)  
*Lesquerella occidentalis* (3916)  
*Linum lewisii*  
*Lupinus* (5016)  
*Machaeranthera canescens* (5015)  
*Monardella odoratissima ssp. pallida*  
*Paeonia brownii*  
*Penstemon deustus*  
*Penstemon gracilentus*  
*Penstemon sp.*  
*Phacelia*  
*Phoenocaulis cheiranthoides* (3921)  
*Phlox*  
*Polygonum aviculare*  
*Silene*  
*Viola purpurea*  
*Wyethia angustifolia*  
*Wyethia mollis*



CHAMBERS CREEK, PLUMAS COUNTY

T24N R6E section 3, 4, 5. North off Hwy 70, about 4 air miles southwest of Belden, from Feather River to Plumas National Forest boundary. Mike Foster 18 June 1982

TREES

*Pseudotsuga menziesii*  
*Pinus ponderosa*  
*Calocedrus decurrens*  
*Abies concolor*  
*Pinus lambertiana*  
*Quercus kelloggii*  
*Lithocarpus densiflora echinoides*  
*Quercus wislizenii*  
*Umbellularia californica*  
*Acer macrophyllum*  
*Cornus nuttallii*

SHRUBS

*Acer glabrum torreyi*  
*Calycanthus occidentalis*  
*Garrya fremontii*  
*Philadelphus lewisii*  
*Alnus rhombifolia*  
*Sorbus scopulina*  
*Toxicodendron diversilobum*  
*Ceanothus integerrimus*  
*Arctostaphylos viscida*  
*Arctostaphylos nevadensis*  
*Ribes nevadensis*  
*Corylus cornuta californica*  
*Rhododendron occidentale*

FERNS

*Polystichum imbricata*  
*Polypodium californicum*  
*Cheilanthes siliquosa*  
*Cystopteris fragilis*  
*Pteridium aquilinum pubescens*  
*Pityrogramma triangularis semipallida*  
*Cheilanthes californica*

GRASSES

*Vulpia myuros*  
*Bromus mollis*  
*Bromus diandrus*  
*Poa bulbosa*

FORBS

*Dudleya cymosa*  
*Claytonia parvifolia*  
*Claytonia parviflora*  
*Silene lemmonii*  
*Epilobium canum latifolium*  
*Clarkia mildrediae*  
*Clarkia unguiculata*  
*Potentilla glandulosa*  
*Trientalis latifolia*  
*Draperia systyla*  
*Mimulus guttatus*  
*Diplacus heterophylla*  
*Castilleja applegatei*  
*Penstemon deustus*  
*Penstemon newberryi*  
*Monardella odoratissima*  
*Arabis breweri austinae*  
*Erysimum capitatum*  
*Darmera peltata*  
*Heuchera micrantha erubescens*  
*Tellima grandiflora*  
*Artemisia douglasiana*  
*Eriophyllum lanatum*  
*Agoseris retrorsa*  
*Hieracium albiflorum*  
*Lilium washingtonianum*  
*Smilacina racemosa*  
*Disporum hookeri trachyandrum*  
*Iris*  
*Corallorhiza maculata*  
*Goodyera oblongifolia*  
*Apocynum pumilum*  
*Campanula prenanthoides*  
*Asarum hartwegii*  
*Asclepias cordifolia*  
*Polygala cornuta*  
*Galium aparine*  
*Pyrola picta*  
*Vitis californica*  
*Chrysolepis sempervirens*

CRABLOUSE RAVINE, PLUMAS COUNTY

T26N R7E section 34, 27, 28, 21. North off Caribou Rd, about  
5 air miles northeast of Beldon. Mike Foster 1982

TREES

Cornus nuttallii  
Quercus wislizenii  
Quercus kelloggii  
Pseudotsuga menziesii  
Calocedrus decurrens  
Pinus ponderosa  
Pinus lambertiana  
Acer macrophylla

SHRUBS

Alnus rhombifolia  
Cornus stolonifera  
Philadelphus lewisii  
Toxicodendron diversilobum  
Rubus parviflorus  
Rubus ursinus?  
Rhamnus purshiana  
Ceanothus integerrimus  
Ribes nevadense  
Amelanchier alnifolia  
Prunus virginiana demissa

GRASSES

Poa pratense  
Poa bulbosa  
Bromus tectorum  
Bromus diandrus

FERNS

Pteridium aquilinum pubescens  
Polystichum imbricans  
Cystopteris fragilis

FORBS

Aralia californica  
Tragopogon porrifolius  
Taraxacum officinale  
Adenocaulon bicolor  
Collomia heterophylla  
Dentaria pachystigma  
Trientalis latifolia  
Galium aparine  
Delphinium nudicaule  
Viola sheltonii  
Corallorhiza striata  
Corallorhiza maculata  
Claytonia parviflora  
Draperia systyla  
Fritillaria recurva  
Lilium  
Asarum hartwegii  
Cypripedium fasciculatum  
Goodyera oblongifolia  
Smilacina racemosa

INDIAN CREEK, PLUMAS COUNTY

T25N R6E section 24, 13, 14, 11. North off Hwy 70, about  
0.5 miles west of Beldon. Mike Foster 1982

TREES

*Abies concolor*  
*Pseudotsuga menziesii*  
*Calocedrus decurrens*  
*Pinus ponderosa*  
*Quercus kelloggii*  
*Quercus wislizenii*  
*Acer macrophylla*  
*Cornus nuttallii*

SHRUBS

*Alnus rhombifolia*  
*Cornus stolonifera*  
*Umbellularia californica*  
*Toxicodendron diversilobum*  
*Arctostaphylos viscida*  
*Garrya fremontii*  
*Ceanothus integerrimus*  
*Calycanthus occidentalis*  
*Philadelphus lewisii*  
*Ribes nevadense*

GRASSES

*Vulpia myuros*  
*Bromus tectorum*

FERNS

*Polystichum imbricans*  
*Woodwardia fimbriata*  
*Polypodium californicum*  
*Cystopteris fragilis*  
*Cheilanthes californica*

FORBS

*Agoseris retrorsa*  
*Taraxacum officinale*  
*Artemisia douglasiana*  
*Equisetum telmateia braunii*  
*Aralia californica*  
*Fritillaria recurva*  
*Delphinium nudicaule*  
*Delphinium patens*  
*Ranunculus*  
*Nemophila heterophylla*  
*Phacelia*  
*Draperia systyla*  
*Trientalis latifolia*  
*Dentaria pachystigma*  
*Claytonia parviflora*  
*Epilobium minutum*  
*Asarum hartwegii*  
*Mimulus kelloggii*  
*Mimulus guttatus*  
*Collomia heterophylla*  
*Orobanche uniflora occidentalis*  
*Lathyrus sulphureus*  
*Sanicula bipinnatifida*  
*Galium aparine*  
*Galium*  
*Lilium*  
*Smilacina racemosa*  
*Heuchera micrantha erubescens*  
*Tellima grandiflora*  
*Dudleya cymosa*

MT HOUGH (7232') AND CRYSTAL LAKE (6700'),  
PLUMAS COUNTY, CALIFORNIA

T25N R10E section 8. About 7 air miles northwest of Quincy. (Pronounced Mt Huff). Collections deposited in California Academy of Sciences and California State University Chico. Mary S. Taylor 1982

TREES

*Abies magnifica* HC  
*Pinus monticola* H  
*Populus trichocarpa* C

SHRUBS

*Amelanchier pallida* C  
*Arctostaphylos nevadensis* H  
*Artemisia tridentata* HC  
*Ceanothus cordulatus* HC  
*Chrysolepis sempervirens* HC  
*Chrysothamnus nauseosus*  
    ssp. *albicaulis* H  
*Chrysothamnus viscidiflorus* H  
*Holodiscus microphyllus* HC (4923)  
*Prunus emarginata* HC  
*Rhamnus purshianus* C (4934)  
*Ribes* HC (4926)  
*Ribes roezlii* C  
*Salix* C  
*Salix scouleriana* C  
*Symphoricarpos rivularis* C  
*Symphoricarpos vaccinioides* C

GRASSES

*Bromus tectorum* H  
*Bromus willdenovii* HC  
*Festuca occidentalis?* HC  
*Melica* C  
*Sitanion hystrix* HC  
*Stipa* H

HERBS

*Achillea millefolium*  
    ssp. *lanulosa* C  
*Agastache utricifolia* HC  
*Agoseris retrorsa* C  
*Allium campanulata* H

HERBS, cont.

*Antennaria rosea?* H  
*Apocynum pumilum* H  
*Arabis* HC (4927A)  
*Balsamorhiza deltoidea* C  
*Calyptridium umbellata* HC  
*Calystegia polymorpha* C  
*Carex* C  
*Castilleja applegatei*  
    ssp. *fragilis* C (4935)  
*Castilleja miniata* C (4937)  
*Chaenactis douglasii* C  
*Chimaphila menziesii* H  
*Collinsia tinctoria* H  
*Collinsia torreyi* HC  
*Collomia grandiflora* HC  
*Corallorhiza maculata* H  
*Crepis* H (4931)  
*Cryptantha* HC (4929)  
*Cuscuta* H (4928)  
*Eleocharis* C  
*Erigeron* C  
*Erigeron inornatus* H  
*Eriogonum lobbii* H (4930)  
*Eriogonum marifolium* H  
*Eriogonum Spergulinum* H (4927)  
*Eriogonum umbellata* HC (4925)  
*Eriogonum ursinum* C  
*Euphorbia* C  
*Galium aparine* C  
*Galium bifolium* H  
*Galium grayanum* H (4932)  
*Gayophytum* C  
*Gayophytum humile* C  
*Gnaphalium palustre* C  
*Hackelia* HC  
*Heuchera* H (4933)  
*Hydrophyllum occidentale* C  
*Ipomopsis aggregata* H  
*Lupinus* HC  
*Mimulus mephiticus* C  
*Monardella odoratissima* HC  
*Navarretia* C  
*Pedicularis semibarbata* H

MT HOUGH AND CRYSTAL LAKE, CONT.

Penstemon deustus H  
Penstemon gracilentus HC  
Penstemon newberryi HC  
Phacelia HC  
Phacelia procera C (4941)  
Phlox H  
Polygonum phytolaccaefolium C

Rumex crispus C  
Sanicula graveolens H  
Silene H (4924)  
Stellaria jamesiana H  
Viola purpurea H  
Wyethia angustifolia C  
Wyethia mollis H

SNAKE LAKE, PLUMAS COUNTY, CALIFORNIA

T24N R8E sec 5, 6

T25N R8E sec 31, 32

Bucks Lake Quad

Mary S. Taylor 1982

TREES

*Abies concolor*  
*Alnus incana* ssp. *tenuifolia*  
*Pinus ponderosa*  
*Pseudotsuga menziesii*  
*Quercus kelloggii*

GRASSES

*Agrostis exarata*  
*Agrostis stolonifera* (alba)  
*Dactylis glomerata*  
*Glyceria borealis*  
*Melica aristata*  
*Panicum pacificum*

FORBS

*Achillea millefolium* ssp. *lanulosa*  
*Adenocaulon bicolor*  
*Antennaria argentea*  
*Aquilegia formosa*  
*Arnica discoidea*  
*Aster elatus*  
*Brasenia shreberi*  
*Carex amplifolia*  
*Carex buxbaumii*  
*Carex canescens*  
*Carex cusickii*  
*Carex eurycarpa*  
*Carex feta*  
*Carex gymnocarpa*  
*Carex scoparia*  
*Carex stipitata*  
*Cerastium vulgatum*  
*Chrysanthemum leucanthemum*  
*Cicuta douglasii*  
*Convolvulus malacophylla*  
*Eleocharis engelmannii*  
*Epilobium adenocaulon*  
*Equisetum arvense*  
*Galium trifidum* ssp. *pacificum*  
*Geum macrophylla*  
*Hypericum perforatum*  
*Juncus effusus*  
*Juncus ensifolius*  
*Juncus howellii*  
*Juncus tenuis*

SHRUBS

*Arctostaphylos patula*  
*Cornus stolonifera*  
*Ribes nevadense*  
*Rosa gymnocarpa*  
*Rosa pinetorum*  
*Spiraea douglasii*  
*Symphoricarpos rivularis*

FERNS

*Pteridium aquilinum* var. *pubescens*

*Kelloggia galioides*  
*Lactuca serriola*  
*Lotus oblongifolius*  
*Lotus purshianus*  
*Ludwigia palustris*  
*Lycopus asper*  
*Madia gracilis*  
*Melilotus albus*  
*Mentha arvensis*  
*Nuphar polysepalum*  
*Osmorhiza chilense*  
*Plantago lanceolata*  
*Plantago major*  
*Polygonum coccinum*  
*Potamogeton natans*  
*Potentilla palustris*  
*Prunella vulgaris* ssp. *lanceolata*  
*Rhynchospora glomerata* var. *capitellata*  
*Rubus parviflorus*  
*Rubus pensylvanica*  
*Rumex acetosella*  
*Schoenolirion alba*  
*Scirpus diffusus*  
*Scirpus microcarpus*  
*Sparganium emersum* var. *multipedunculatum*  
*Spiranthes porrifolia*  
*Stachys rigida*  
*Trifolium breweri*  
*Trifolium repens*  
*Typha angustifolia*

SNAKE LAKE, PLUMAS COUNTY, cont.

*Typha latifolia*  
*Utricularia intermedia*  
*Utricularia vulgaris*  
*Verbascum thapsus*  
*Veronica americana*  
*Veronica scutellata*  
*Viola nephrophylla*



To Meadow Valley ←

GRAYLODGE WILDLIFE REFUGE, BUTTE COUNTY

T17N R1E section 1-2, 9-12, 13-16, 22-24; T17N R2E section 16-18, 19-21, (29-30 in Sutter county). 60 to 70 feet in elevation. About 12 air miles southwest of Gridley. Collections deposited in California Academy of Sciences and California State University Chico.

Compiled by Mary S. Taylor, Lowell Ahart, James D. Jokerst  
and Robert Preston 1982

TREES and SHRUBS

Eucalyptus (MST 4494)  
Ficus carica  
Isomeris arborea  
    ssp. globosa (MST 4377)  
Populus fremontii  
Salix (MST 4498)  
Sambucus

GRASSES

Agropyron elongatum (LA 3678)  
A. riparium (LA 3668)  
Aira caryophyllea  
Avena barbata  
A. fatua  
Briza minor (LA 3391)  
Bromus diandrus  
B. erectum  
B. mollis  
B. rigidus  
B. rubens  
Cortaderia sellanoana  
Crypsis schoenoides (LA 3672)  
C. vaginiflora (LA 3673)  
Cynodon dactylon  
Deschampsia danthonioides (LA 3398)  
Distichlis spicata ssp.  
    stolonifera (LA 2808)  
Eragrostis orcuttiana (LA 3229)  
Festuca elatior (LA 3399)  
F. megastachys  
Hordeum depressum (LA 2744, 2807)  
H. geniculatum (LA 3397)  
H. leporinum  
Koeleria phleoides (LA 3386)  
Phalaris lemmonii (LA 2801)  
P. minor (LA 2802)  
P. paradoxa  
Poa annua  
Polypogon  
Puccinella simplex (LA 3396)  
Sorghum halepense

HERBS

Amaranthus albus (LA 3671)  
A. californicus (LA 3666)  
Ambrosia psilostachya  
Amsinckia intermedia  
Anagallis arvensis (MST 4362)  
Anthemis cotula (LA 3390)  
Anthriscus caucalis (LA 3395, MST 4378)  
Artemisia douglasiana  
Aster exilis (LA 3150)  
Atriplex hastata (=triangularis)  
    (LA 3146, 3221)  
A. heterosperma (LA 3149, 3219)  
A. lentiformis (LA 3008, 3144, 3217)  
A. rosea (LA 3006, 3147, 3220, 3662)  
A. serenana (LA 1493, 3007, 3145, 3218)  
Azolla mexicana (MST 4370)  
Baccharis pilularis  
    ssp. consanguinea (LA 3225)  
Bassia hyssopifolia (LA 3148, 3222)  
Boisduvalia glabella (LA 2805, 3669)  
Brassica geniculata  
B. nigra (RP B88, 218, MST 4501)  
Centaurea solstitialis  
Ceratophyllum demersum (MST 4493)  
Chenopodium album (LA 3223, 3230)  
C. ambrosoides (LA 3224)  
C. berlandieri var. zschackie (LA 3004)  
C. murale (LA 3002)  
Cichorium intybus  
Cirsium vulgare (LA 3010)  
Conium maculatum (MST 4357)  
Convolvulus arvensis (MST 4499)  
Crassula aquatica (MST 4358)  
C. muscosa (MST 4372)  
Downingia elegans (LA 2748, 2809)  
Echinodorus rostratus var.  
    lancolatus (LA 3014)  
Elatine rubella (MST 4356)  
Eleocharis palustris (MST 4368)  
Epilobium adenocaulon var.  
    holosericeum (LA 3003)  
Erodium cicutarium  
E. moschatum



GRAYLODGE, cont.

- Eschscholzia californica*  
*Euphorbia serphyllifolia* (LA 3001)  
*Geranium dissectum* (MST 4353)  
*Grindelia camporum*  
*G. sp.* (LA 3228)  
*Helianthus annuus* ssp.  
     *lenticularis* (LA 3663)  
*Heliotropium curassavicum* var.  
     *oculatum* (RP 98, LA 3000, MST 4507)  
*Hemizonia parryi* ssp. *rudis*  
     (LA 1494, 2803, MST 4345)  
*H. pungens*  
*Juncus balticus*  
*J. bufonium* (MST 4366)  
*J. effusus* var. *pacificus*  
*Lactuca ludoviciana*  
*L. serriola*  
*Lamium amplexicaule* (MST 4379)  
*Lemna minuta* (MST 4371)  
*Lepidium dictyotum* (RP 215, B89)  
*L. latifolium* (LA 3143, 3667, MST 4507A)  
*L. perfoliatum* (RP B87, LA 2742, MST 4375, 4363)  
*L. pinnatifidum* (RP 95, LA 3013, 3664)  
*L. strictum* (RP 217)  
*Lippia nodiflora* var. *rosea*  
     (MST 4494, RP 97)  
*Lotus corniculatus*  
*L. micranthus* (LA 2796)  
*Ludwigia*  
*Lupinus succulentus* (LA 2806, MST 4354A)  
*Lythrum hyssopifolia* (MST 4502)  
*Malva parviflora* (MST 4374)  
*Marrubium vulgare* (MST 4506)  
*Matricaria occidentalis* (MST 4359,  
     LA 3392)  
*M. matricarioides* (MST 4347)  
*Medicago polymorpha* (LA 2800)  
*M. p. ssp. brevispina*  
*Melilotus alba* (LA 3670)  
*M. indica* (LA 2797)  
*Myosurus minimus* (LA 2746)  
*M. m. ssp. apus* (LA 2747, 3389)  
*Myriophyllum exalbescens* (MST 4497)  
*Orthocarpus attenuatus* (MST 4355)  
*Picris echioides* (LA 3009)  
*Plagiobothrys stipitatus* (LA 3387)  
*P. s. var. micranthus* (LA 3388)  
*Plantago bigelovii* (LA 2745)  
*P. coronopus* (LA 2795, MST 4345)  
*P. lanceolata*  
*Polygonum arenastrum* (MST 4364)  
*Potamogeton crispus* (MST 4496)  
*Rubus procerus* (MST 4506)  
*Rumex crispus* (LA 2810)  
*R. dentatus* ssp. *klotzschianus*  
     (LA 2804, 3393, MST 4369, 4504)  
*R. stenophyllus* (LA 3394, 3676)  
*Sagina apetala* (MST 4365)  
*Scirpus acutus* (MST 4367, LA 3674)  
*S. robustus* (LA 3226)  
*S. tuberosus* (LA 3675)  
*Senecio vulgaris* (MST 4354)  
*Sida hederacea* (RP 96, LA 3012)  
*Silybum marianum*  
*Sonchus asper* (MST 4351)  
*Spergularia bocconii* (LA 2743, 2799)  
*Stellaria media*  
*Suaeda fruticosa* (LA 3227)  
*Toxicodendron diversilobum*  
*Tribulus terrestris* (MST 4505, LA 3665)  
*Urtica dioica* ssp. *holosericea* (LA 3011)  
*Verbascum blattaria* (MST 4500)  
*Verbena bonariensis* (LA 3677)  
  
*Veronica peregrina* ssp. *xalapensis*  
     (LA 2798, MST 4300)  
*Vicia dasycarpa* (MST 4352)  
*C. sativa* (MST 4361)  
*Vinca major*  
*Xanthium strumarium*

TAYLOR LAKE, PLUMAS COUNTY

T27N R11E sw¼ section 35 and se¼ section 34. Kettle Rock quadrangle. 6900 feet elevation. About 6 air miles northeast of Taylorsville. Collections deposited in California Academy of Sciences. Mary S. Taylor 1982

TREES

*Abies magnifica*  
*Pinus contorta murrayana*  
*Pinus monticola*  
*Populus tremuloides*

SHRUBS

*Acer glabrum torreyi*  
*Alnus tenuifolia*  
*Amelanchier pallida*  
*Arctostaphylos nevadensis*  
*Ceanothus cordulatus*  
*Ceanothus velutinus*  
*Chrysolepis sempervirens*  
*Prunus emarginata*  
*Ribes roezlii*  
*Sorbus californica*  
*Spiraea densiflora*  
*Symphoricarpos rivularis*

GRASSES

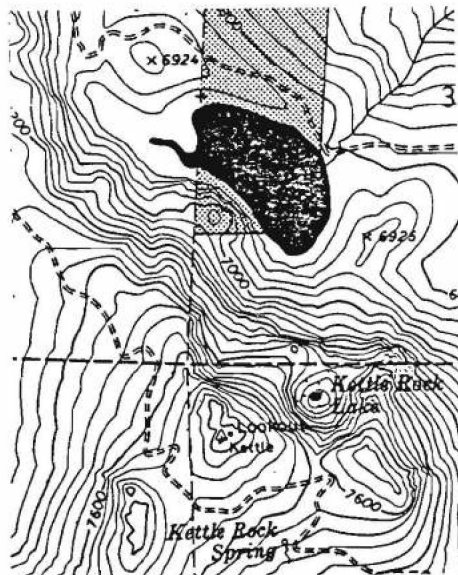
*Bromus commutatus*  
*Hordeum brachyantherum*  
*Sitanion hystrix*  
*Stipa*

HERBS

*Achillea millefolium lanulosa*  
*Agastache utricifolia*  
*Allium campanulatum*  
*Angelica breweri*  
*Antennaria rosea*  
*Apocynum pumilum*  
*Arabis*  
*Aster integerrimus* (5077)  
*Carex*  
*Castilleja applegatei fragilis* (5079)  
*Castilleja miniata*  
*Cheilanthes gracillima*  
*Cheilanthes siliquosa*  
*Chimaphila umbellata occidentalis*

HERBS, cont.

*Chrysopsis breweri*  
*Corydalis caesna*  
*Crepis pleurocarpa*  
*Cryptogramma acrostichoides* (5078)  
*Epilobium adenocaulon?*  
*Eriogonum marifolium*  
*Eriogonum spergulinum*  
*Gayophytum*  
*Gilia capillaris*  
*Gnaphalium palustre*  
*Hackelia*  
*Hieracium albiflorum*  
*Juncus*  
*Kelloggia galioides*  
*Ligusticum grayi*  
*Madia glomerata*  
*Mertensia ciliata stomatechoides*  
*Mimulus moschatus*  
*Monardella odoratissima*  
*Peonia brownii*  
*Pedicularis semibarbata*  
*Penstemon gracilentus*  
*Penstemon newberryi*  
*Phacelia*  
*Phlox*  
*Polygonum*  
*Polygonum phytolaccaefolia*  
*Potentilla gracilis*  
*Rorippa* (5076)  
*Rubus parviflorus*  
*Senecio triangularis*  
*Stellaria jamesiana*  
*Thalictrum*  
*Veratrum californicum*



3(3):79

RED ROCK LOOKOUT, PLUMAS COUNTY

T28N R11E sec 11. Diamond Mountain quadrangle.  
7618 feet in elevation. About 15 air miles northeast  
of Taylorsville. Collections deposited in California  
Academy of Sciences and California State University  
Chico. Mary S. Taylor 1982

TREES

*Abies concolor*  
*Pinus jeffreyi*

SHRUBS

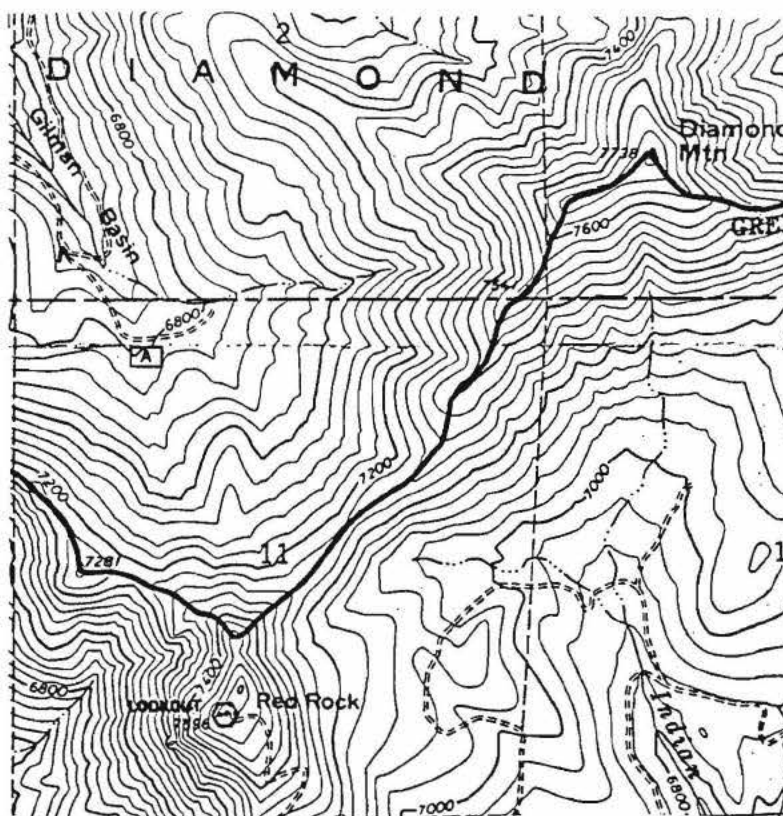
*Arctostaphylos nevadensis*  
*Arctostaphylos patula*  
*Artemisia tridentata*  
*Ceanothus velutinus*  
*Chrysolepis sempervirens*  
*Chrysothamnus viscidiflorus*  
*Haplopappus bloomeri*  
*Holodiscus microphyllus*  
*Prunus emarginata*  
*Purshia tridentata*  
*Symphoricarpos albus?*  
*Tetradymia canescens* (4158)

GRASSES

*Bromus tectorum*  
*Sitanion hystrix*  
*Stipa*

HERBS

*Angelica breweri*  
*Arabis*  
*Balsamorhiza deltoidea*  
*Calyptridium umbellatum*  
*Castilleja applegatei fragilis* (5086)  
*Cryptantha*  
*Eriogonum* (5084)  
*Eriogonum umbellatum* (5083)  
*Eriogonum ursinum*  
*Gayophytum*  
*Haplopappus acaulis*  
*Ipomopsis aggregata*  
*Mentzelia* (4159)  
*Monardella odoratissima* (4157)  
*Navarretia*  
*Orthocarpus copelandii* (5085)  
*Penstemon deustus*  
*Penstemon gracilentus*  
*Phacelia linearis*  
*Phlox*  
*Senecio integerrimus*



ROUND VALLEY RESERVOIR, PLUMAS COUNTY

T26N R9E section 15, 16, 22, 23. Greenville SW quad. 4600 feet in elevation. About 3 air miles south of Greenville. Collections deposited in California Academy of Sciences and California State University Chico. Mary S. Taylor 1982

TREES

Abies concolor  
Calocedrus decurrens  
Quercus kelloggii  
Pinus contorta murrayana  
Pinus jeffreyi  
Pinus ponderosa  
Populus trichocarpa  
Pseudotsuga menziesii

SHRUBS

Amelanchier pallida  
Arctostaphylos patula  
Ceanothus cordulatus  
Ceanothus integerrimus  
Ceanothus prostratus  
Cornus stolonifera  
Prunus emarginata  
Ribes  
Ribes roezlii  
Rosa pinetorum  
Salix  
Salix scouleriana  
Sorbus  
Spiraea douglasiana  
Symphoricarpos rivularis

GRASSES

Agropyron spp.  
Bromus spp.  
Dactylis glomerata  
Deschampsia danthonioides  
Elymus tritcoides  
Hordeum brachyantherum  
Phleum pratense  
Poa spp.

HERBS

Achillea millefolium lanulosa  
Adenocaulon bicolor  
Allium campanulata

HERBS, cont.

Angelica breweri (5120)  
Antennaria argentea  
Apocynum  
Arabis  
Arnica cordifolia  
Artemisia douglasiana  
Aster integrifolius (5119)  
Aster (5120)  
Asclepias speciosa  
Bidens frondosa (4268)  
Brasenia shreberi  
Calochortus nudus  
Campanula prenanthoides  
Carex spp. (5109)  
Centaurea solstitialis  
Ceratophyllum demersum (4266)  
Chimaphila menziesii  
Chimaphila umbellata occidentalis  
Cirsium andersonii  
Cirsium vulgare  
Claytonia rubra  
Collomia grandiflora  
Cordylanthus (5117)  
Crepis pleurocarpa  
Cryptantha (5116)  
Dichelostemma multiflorum  
Elodea nuttallii (4264)  
Epilobium adenocaulon (5100)?  
Epilobium paniculatum  
Eriogonum nudum  
Eriogonum ursinum  
Eryngium articulatum (5110)  
Erythronium purpurascens  
Euthamia occidentalis (4269)  
Fragaria virginiana platypetala  
Galium bolanderi  
Galium trifidum pacificum  
Galium triflorum  
Geum macrophyllum  
Gilia leptalea  
Gnaphalium palustre  
Goodyera oblongifolia  
Heterocodon rariflorum (5114)  
Hieracium  
Hieracium albiflorum  
Horkelia fusca

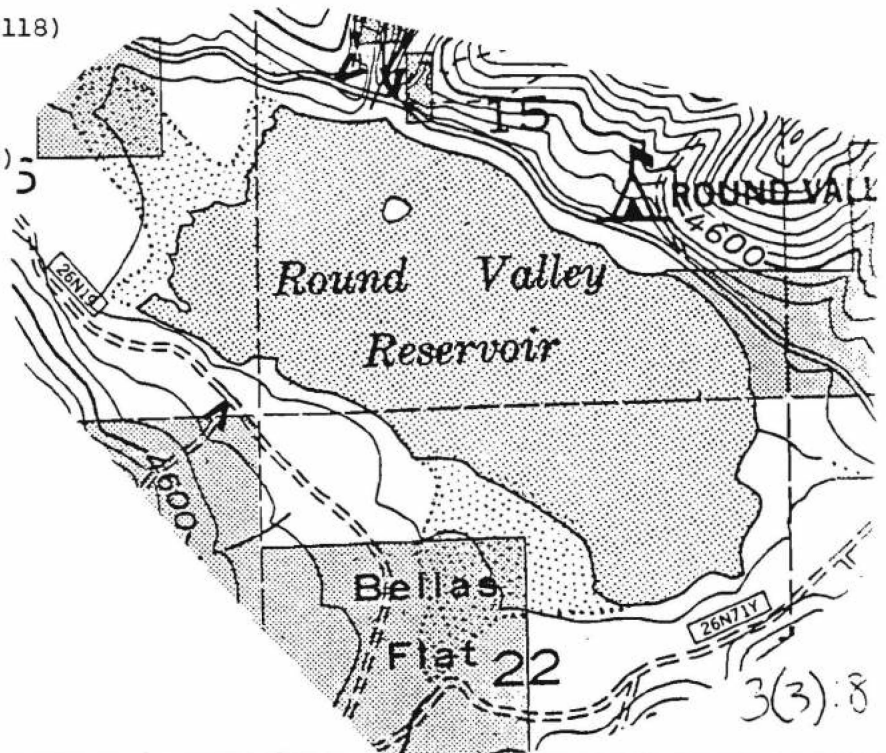
ROUND VALLEY RESERVOIR, cont.

HERBS, cont.

Hydrophyllum occidentale  
 Hypericum scouleri  
 Juncus spp.  
 Lathyrus nevadensis  
 Lepidium campestre  
 Ligusticum grayii  
 Lilium kelleyanum  
 Lilium washingtonianum  
 Lotus crassifolius  
 Lotus oblongifolius  
 Lotus purshianus  
 Lupinus confertus (4825)  
 Luzula ?  
 Madia elegans  
 Madia glomerata  
 Madia gracilis  
 Mentha arvensis  
 Mimulus guttatus  
 Mimulus moschatus  
 Monardella odoratissima glauca  
 Myriophyllum exalbescens (4265)  
 Najas guadalupensis (4266)  
 Navarretia intertexta (5113)  
 Nemophila spatulata  
 Nuphar polysepala  
 Oenothera hookeri angustifolia  
 Osmorhiza chilense  
 Penstemon deustus  
 Perideridia parishii latifolia  
 Plantago lanceolata  
 Platanthera dilatata leucostachys  
 Polygonum amphibium emersum (5124)  
 Polygonum arenastrum (5112)  
 Polygonum aviculare ?  
 Polygonum douglasii  
 Polygonum spargulariaeforme (5118)  
 Potentilla glandulosa  
 Potentilla lanceolata  
 Prunella vulgaris lanceolata  
 Psilocarphus brevissimus (5115)  
 Pteridium aquilinum pubescens  
 Pterospora andromedea  
 Pyrola picta picta  
 Pyrola picta dentata  
 Ranunculus occidentalis?  
 Ranunculus flammula ovalis  
 Rorippa curvisiliqua  
 Rubus parviflorus  
 Rubus ursinus ?  
 Rumex acetosella  
 Rumex crispus (5108)

HERBS, cont.

Sagittaria latifolia (5123)  
 Sanicula bipinnatifida  
 Sanicula graveolens  
 Sanguisorba minor  
 Sarcodes sanguinea  
 Schoenolirion album  
 Scirpus acutus (5125)  
 Senecio hydrophilus (5121)  
 Senecio integerrimus  
 Senecio triangularis  
 Sidalcea malvaeflora asprella  
 Sidalcea oregana spicata  
 Sisymbrium  
 Smilacina racemosa  
 Solidago canadensis  
 Spergularia rubra  
 Stachys rivularis ?  
 Stellaria jamesiana  
 Stellaria longipes  
 Taraxacum officinale  
 Trichostema oblongum (5122)  
 Trifolium breweri  
 Trifolium cyanthiferum  
 Trifolium pratense  
 Trifolium repens  
 Tritelia montana  
 Utricularia vulgaris  
 Veratrum californica  
 Verbascum thapsus  
 Veronica scutellata  
 Viola lobata  
 Wyethia mollis



LAKE ALMANOR, PLUMAS COUNTY

Compiled by: Mary S. Taylor  
1982

FERNS AND FERN ALLIES

Equisetum arvense  
Common Horsetail

Marsilea vestita  
Clover Fern  
Dam area

TREES

Abies concolor  
White Fir  
Dam area, Rest Stop  
Almanor, Chester, Canyon Dam

Acer macrophyllum  
Canyon Maple

Calocedrus decurrens  
Incense Cedar

Cornus nuttallii  
Dogwood

Pinus contorta var. murrayana  
Lodgepole Pine  
Almanor

Pinus jeffreyi  
Jeffrey Pine  
Almanor, Chester

Pinus lambertiana  
Sugar Pine  
Almanor

Pinus ponderosa  
Ponderosa Pine  
Dam area, Chester, Almanor

Populus tremuloides  
Quaking Aspen  
Almanor

Populus trichocarpa  
Black Cottonwood  
Almanor

TREES, cont.

Pseudotsuga menziesii  
Douglas Fir  
Dam area, Canyon Dam, Almanor

Quercus kelloggii  
Black Oak

Alnus tenuifolia  
Alder

Arctostaphylos patula  
Green Manzanita  
Dam area, Almanor, Rest Stop, Canyon Dam

Arctostaphylos viscida  
White-leaf Manzanita  
PGE Overlook

SHRUBS

Betula glandulosa  
Birch  
Big Meadows

Ceanothus cordulatus  
White Thorn  
Dam area, Rest Stop, Canyon Dam, Prattville

Ceanothus integerrimus  
Deer Brush  
Almanor, Rest Stop, Chester

Chamaebatia foliosa  
Mt Misery

Chrysolepis sempervirens  
(*Castanopsis sempervirens*)  
Chinquapin  
PGE Overlook

Chrysothamnus nauseosus albicaulis  
Rabbitbrush  
Prattville, Chester, Rest Stop, Dam

Chrysothamnus viscidiflorus  
Sticky Rabbit Brush  
Chester, Dam

SHRUBS, cont.

Prunus emarginata

Bitter Cherry  
Almanor Heights, PGE overlook

Prunus virginiana demissa

Chokecherry  
Big Springs, Almanor, Almanor Heights,  
Chester

Purshia tridentata

Bitterbrush  
Almanor, Chester,  
Almanor Heights

Rhamnus alnifolia

Narrow Coffeeberry  
Big Meadows

Ribes roezlii

Sierra Gooseberry  
Canyon Dam, Dam  
Prattville, Chester

Rosa

Rose  
PGE Overlook

Salix

Willow  
Chester

Sambucus mexicana

Elderberry

Spiraea douglasii

Douglas Spiraea  
Prattville

Symphoricarpos rivularis

Snowberry  
Almanor, Rest Stop, Canyon Dam

GRASSES

Agrostis

Hairgrass  
Chester

Avena barbata

Wild Oats

GRASSES, cont.

Agrostis scabra

Rough Hairgrass

Agrostis stolonifera

(Agrostis alba)

Redtop

Bromus orcuttianus

Orcutt Brome

Bromus tectorum

Cheat Grass  
Chester

Deschampsia elongata

Slender Hairgrass

Elymus glaucus

Giant Rye  
PGE Overlook

Elymus triticoides

Canyon Dam

Holcus lanatus

Velvet Grass

Hordeum jubatum (4959)

Foxtail  
Dam

Muhlenbergia filiformis

Filiform Muhley

Panicum capillare

Witchgrass

Phleum pratense

Timothy

Poa bulbosa

Bulbous Bluegrass  
Chester, Almanor

Poa pratensis

Kentucky Bluegrass

Sitanion hystrix

Squirreltail  
Prattville, Dam

HERBS

Achillea millefolium lanulosa  
Yarrow  
Prattville, Almanor, Canyon Dam

Agoseris retrorsa  
Spearleaf Mt Dandelion  
Chester

Allium campanulatum  
Wild Onion  
Canyon Dam

Allium lemmonii  
Lemmon Onion

Allophyllum integrifolium (4639)  
Otherleaf  
Chester

Antennaria argentea  
Pussy Toes  
Dam

Antennaria rosea  
Rosy Everlasting

Apocynum pumilum  
Dogbane  
Prattville, Dam

Arabis glabra  
Tower Mustard  
Big Meadows

Arabis rectissima  
Bristly-leaf Rock Cress  
Prattville

Arceuthobium campylopodum  
Dwarf Mistletoe  
Chester

Artemisia douglasiana  
Wormwood, Mugwort  
Prattville, Dam

Barbarea orthoceras  
Meadow Mustard  
Almanor

Brassica campestris  
Field Mustard

Brodiaea minor  
Blue Stars  
Prattville

Callitriche heterophylla  
Water Starwort  
Chester

Calochortus nudus  
Nude Pussy Ears  
Prattville

Calyptridium umbellatum  
Pussy Paws  
Chester

Calystegia  
Morning Glory  
Canyon Dam

Camassia quamash breviflora  
Camas  
Prattville, Almanor

Campanula prenanthoides  
Blue Bells

Carex anthrostachya  
Slender-beaked Sedge

Carex fracta  
Sedge

Carex interior  
Sedge  
Prattville

Carex kelloggii  
Sedge

Carex vesicaria  
Sedge  
Prattville

Centaurea cyanus  
Bachelor's Buttons

Centaurea solstitialis  
Yellow Star Thistle  
Prattville

Ceratophyllum demersum  
Hornwort



Chaenactis douglasii

Pin Cushion  
Chester

Chenopodium album

Goosefoot, Pigweed

Chenopodium pumilio

Tasmanian Goosefoot

Chimaphila umbellata occidentalis

Pipisissiwa  
Almanor

Cirsium arvense

Lavender Thistle, <sup>(4957)</sup> Canadian Thistle  
Dam

Cirsium vulgare

Bull Thistle  
Dam

Clarkia rhomboidea

Common Clarkia  
Prattville, Almanor, PGE Overlook  
Big Meadows, Dam

Collinsia grandiflora

Big-flower Collinsia  
Big Meadows

Collinsia parviflora

Blue-eyed Mary  
Prattville

Collinsia torreyi

Blue-eyed Mary  
Almanor, Chester, Rest Stop

Collomia grandiflora

Large-flowered Collomia  
Prattville, dam

Collomia tinctoria

Yellow-stain Collomia

Conyza canadensis

Horseweed  
Prattville, Dam

Corallorhiza striata

Striped Coralroot  
Prattville

Cordylanthus viscida

Bird'sbeak  
Big Meadows

Corydalis caseana

Sierra Corydalis  
THIS IS THE TYPE LOCALITY  
Big Meadows

Cryptantha affinis

Common Cryptantha  
Prattville

Cryptantha simulans

Pine Cryptantha  
Prattville

Cryptantha torreyana

Torrey Cryptantha  
Prattville

Cypripedium fasciculatum

Brownie Lady Slipper  
near Prattville

Delphinium

Larkspur  
Canyon Dam

Dentaria californica

Milkmaids  
Big Meadows

Descurainia

Tansy Mustard  
Chester

Downingia cuspidata

Cuspidate Downingia

Downingia elegans

Showy Downingia  
Prattville, near Chester  
Big Meadows

Downingia insignis

Cupped Downingia  
Prattville

Egeria densa (4640)

(Elodea densa)  
Waterweed  
Prattville, Dam,

Eleocharis acicularis

Needle Spikerush  
Prattville, Dam

Eleocharis palustris

Creeping Spikerush

Elodea nuttallii (4955)

Ditchmoss  
Dam

Epilobium angustifolium

Fireweed  
Big Meadows, Big Springs

Epilobium paniculatum

Dryland Willowweed  
Big Meadows, Prattville, Dam

Eremocarpus setigerus

Doveweed  
Canyon Dam

Erigeron inornatus

Rayless Daisy  
Prattville, Dam, Canyon Dam

Erigeron lassenianus

Lassen Daisy  
Almanor

Eriogonum nudum

Nude Buckwheat  
Prattville, Dam, Chester

Erodium cicutarium

Redstem Filaree  
Prattville, Dam, Chester

Erythronium purpurascens

Purple Fawn Lily  
Big Meadows

Euphorbia serpyllifolia

Ground Spurge

Fragaria virginiana platypetala

Scarlet Strawberry  
Big Meadows, Almanor

Galium aparine

Common Bedstraw  
PGE Overlook

Galium bolanderi

Dry Bedstraw  
PGE Overlook

Galium sparsiflorum glabrius

Smooth Bedstraw  
Big Meadows

Galium trifidum pacificum

Meadow Bedstraw

Galium triflorum

Fragrant Bedstraw

Gayophytum diffusum

Groundsmoke  
near Prattville

Gayophytum heterozygum

Groundsmoke  
near Prattville

Gentiana amarella acuta

Northern Gentian  
Big Meadows

Gilia leptalea

Pink Gilia  
Canyon Dam

Gnaphalium microcephalum thermale

Pine Cudweed

Gnaphalium palustre

Low Cudweed  
Prattville, Dam, Canyon Dam

Hackelia californica

California Stickseed

Hackelia micrantha

Small Stickseed  
Big Meadows

Helianthus bolanderi

Bolander Sunflower  
Almanor

Heterocodon rariflorum

Heterocodon  
Almanor

Hieracium albiflorum

White Hawkbit  
PGE Overlook, Canyon Dam

Horkelia fusca parviflora

Dusky Horkelia  
Almanor

Horkelia tridentata

Three-toothed Horkelia  
Big Meadows, Almanor,  
Chester, Canyon Dam

Hypericum perforatum

Klamath Weed  
Dam

Hypericum scouleri

(Hypericum formosum scouleri)  
Big Meadows

Iris hartwegii pinetorum

Pine Iris  
Almanor

Isoetes

Quillwort  
Almanor

Juncus uncialis

Rush  
Almanor

Kelloggia galioides

Kelloggia  
PGE Overlook

Lactuca serriola

Wild Lettuce  
Dam

Lathyrus pauciflorus brownii

Brush Pea  
Prattville, Big Meadows

Lemna

Duckweed  
Almanor

Lepidium campestre

Field Peppergrass

Leucophysalis nana

(Chamaesaracha nana)  
Dwarf Chamaesaracha  
Chester

Lewisia kelloggii

Kellogg Bitterroot  
Big Meadows

Limosella aquatica

Mudwort

Linanthus harknesii

Flaxflower  
Almanor

Lithophragma bolanderi

Scabrella Star  
Big Meadows

Lithophragma glabrum

Glabrous Star  
Big Meadows

Lotus crassifolius

Big Lotus  
Canyon Dam

Lotus micranthus

Small Lotus  
Chester

Lotus purshianus

Hairy Lotus  
Almanor, Canyon Dam, Dam

Lupinus confertus (4960)

Lupine  
Big Meadows, Dam

Lupinus sellulus artulus (4638)

Ground Lupine  
Chester

Lycopus uniflorus

near Prattville

Lysimachia thyrsiflora

Tuften Loosestrife  
Big Meadows

Machaeranthera shastensis glossopetala

Shasta Aster  
Chester

Machaerocarpus californicus

Fringed Water Plantain  
Big Meadows

Madia citrigracilis (4067)  
Fragrant Tarweed  
Almanor

Madia exigua  
Small Tarweed

Madia gracilis (4958)  
Slender Tarweed  
Prattville, Dam

Madia minima  
Small Tarweed  
Chester

Matricaria matricarioides  
Pineapple Weed  
Chester

Melilotus albus  
White Sweet Clover  
Dam

Menyanthes trifoliata  
Bog Bean  
Big Meadows

Mertensia ciliata stomatechoides  
Lungwort  
Between Prattville & Brices

Microsteris gracilis  
Beggar Gilia  
Almanor, Chester

Mimulus breweri  
Brewer Monkey flower  
Almanor, Chester

Mimulus guttatus  
Common Monkey flower

Mimulus moschatus  
Musk Flower

Mimulus primuloides  
Primrose Monkey flower

Mimulus pulsiferae (3932)  
Candlebrum  
Almanor

Mimulus pygmaeus (3933, 4637)  
Pygmy Monkey flower  
RARE AND ENDANGERED  
Almanor

Mimulus torreyi  
Torrey Monkey flower

Monardella odoratissima  
Mt Coyote Mint  
Big Meadows

Monardella odoratissima pallida  
Pallid Coyote Mint  
Prattville

Montia chamissoi  
Toad Lily  
Prattville, Almanor

Montia linearis  
Linear-leaf Montia  
Prattville, Almanor

Myosotis versicolor  
Meadow Forgetmenot

Myriophyllum hippurioides  
Milfoil  
Big Meadows

Navarretia divaricata  
Mt Navarretia  
Prattville, Dam, Chester

Nemophila parviflora austinae  
Austin Baby Blue Eyes  
Prattville

Nemophila spatulata  
Sierra Nemophila  
Chester

Nicotiana attenuata  
Indian Tobacco  
Prattville, Dam

Nuphar polysepalum  
Water Lily  
Big Meadows

Orobanche californica grayana

Broomrape  
Big Meadows

Orthocarpus hispidus

Hairy Owls Clover

Orthocarpus lacerus (3931)

Cut-leaf Owls Clover  
Almanor

Osmorhiza chilensis

Sweet Cicely  
Canyon Dam

Penstemon neotericus

Derived Beardtongue

Penstemon oreocharis

Meadow Beardtongue

Perideridia lemmonii

Lemmon Squawroot  
Child Meadow

Phacelia humilis

Phacelia  
Big Meadows

Plagiobothrys cusickii

Cusick Popcorn flower  
Chester

Plagiobothrys hispidulus

Hispid Popcorn flower  
Chester, Prattville

Plantago lanceolata

Ribwort  
Prattville, Dam, Canyon Dam

Polygonum amphibium emersum (4956)

Water Smartweed  
Dam

Polygonum aviculare (4956)

Knotweed  
Dam

Polygonum bistortoides

Western Bistort  
Almanor

Polygonum douglasii

Polygonum Knotweed  
Prattville, Dam

Porterella carnosula

Porterella  
Almanor

Potentilla biennis

Biennial Cinquefoil

Potentilla glandulosa

Sticky Cinquefoil  
Canyon Dam, Dam

Potentilla gracilis

Slender Cinquefoil  
Prattville

Potentilla millefolium

Many-leaf Cinquefoil  
Prattville

Psilocarphus brevissimus

Pussy Toes  
Almanor

Pyrola picta

Whitevein Shinleaf  
PGE Overlook

Rorippa curvisiliqua

Yellow Bitter Cress  
Prattville, Dam

Rorippa obtusa

Obtuse Bitter Cress

Rubus parviflorus

Thimbleberry  
Almanor

Rumex acetosella

Sheep Sorrel  
Prattville, Chester

Rumex crispus

Yellow Dock  
Prattville, Dam

Sanguisorba annua

Burnet  
Chester, Almanor, Canyon Dam

<u>Sanguisorba minor</u> Minor Burnet Prattville	<u>Stellaria longipes</u> Long-stalked Starwort Big Meadows, Almanor
<u>Scheuchzeria palustris americana</u> Scheuchzeria BELIEVED EXTINCT	<u>Taraxacum officinale</u> Dandelion Chester
<u>Sclerolinon digynum</u> (3935) ( <u>Linum digynum</u> ) Almanor	<u>Tragopogon dubius</u> Oyster Root, Salsify Chester
<u>Scutellaria antirrhinoides</u> (4950) Skullcap Canyon Dam, Big Meadows	<u>Trifolium beckwithii</u> Beckwith Clover Big Meadows
<u>Scutellaria angustifolia</u> Skullcap Prattville	<u>Trifolium breweri</u> Brewer Clover Big Meadows
<u>Sidalcea malvaeflora asprella</u> Checker Canyon Dam	<u>Trifolium longipes hansenii</u> Meadow Clover Prattville, Dam
<u>Sidalcea oregona spicata</u> Oregon Checker Almanor	<u>Trifolium wormskioldii</u> Coast Clover Prattville
<u>Silene lemmonii</u> Lemmon Catchfly	<u>Triteleia hyacinthina</u> ( <u>Brodiaea hyacinthina</u> ) White Brodiaea
<u>Silene montana</u> Mt Catchfly Big Meadows	<u>Triteleia montana</u> ( <u>Brodiaea gracilis</u> ) Chester
<u>Silene nuda insectivora</u> (4068) Sticky Catchfly Almanor	<u>Typha latifolia</u> Cattail
<u>Silene occidentalis</u> Western Catchfly Prattville	<u>Urtica dioica holosericea</u> Hoary Stinging Nettle
<u>Sisymbrium altissimum</u> Tumbleweed	<u>Verbascum thapsus</u> Wooly Mullein Prattville, Dam, Chester
<u>Solidago guiradonia</u> Mt Goldenrod	<u>Veronica americana</u> Brooklime, Speedwell
<u>Spergularia rubra</u> Purple Sandspurry	<u>Veronica peregrina xalapensis</u> Persian Speedwell
<u>Stachys</u> Hedge Nettle Almanor	<u>Veronica scutellata</u> Speedwell

RAMELLI RANCH, PLUMAS COUNTY

T23N R14E section 26-28, 33-34. 4800 to 6000 feet.  
 Between Portola and Beckwourth, south side of Highway  
 70, including a portion of North Fork Feather River  
 and Ross Ranch Meadow. Collections deposited in  
 California Academy of Sciences and California State  
 University Chico. Mary S. Taylor 1982

TREES

Incense Cedar  
     *Calocedrus decurrens*  
 Juniper  
     *Juniperus occidentalis*  
 Jeffrey Pine  
     *Pinus jeffreyi*  
 Black Cottonwood  
     *Populus trichocarpa*

SHRUBS

Service Berry  
     *Amelanchier pallida*  
 Sagebrush  
     *Artemisia tridentata*  
 White Thorn  
     *Ceanothus cordulatus*  
 Rabbitbrush  
     *Chrysothamnus nauseosus*  
 Green Rabbitbrush  
     *Chrysothamnus viscidiflorus*  
 Choke Cherry  
     *Prunus virginiana*  
 Antelope Bush  
     *Purshia tridentata*  
 Rose  
     *Rosa*  
 Willow  
     *Salix*  
 Horsebrush  
     *Tetradymia canescens* (4008)

GRASSES

Wheatgrass  
     *Agropyron*  
 Crested Wheatgrass  
     *Agropyron cristatum* (5137)  
 Intermediate Wheatgrass  
     *Agropyron intermedium* var  
     *trichophorum* (5133)

GRASSES, cont.

Foxtail  
     *Alopecurus geniculatus* (5062)  
 Swamp Grass  
     *Beckmannia syzigachne* (5068)  
 Brome  
     *Bromus commutatus* (4804, 4774)  
 Cheat Grass  
     *Bromus tectorum*  
 Barnyard Grass  
     *Echinochloa*  
 Meadow Barley  
     *Hordeum brachyantherum* (4768)  
 Water Barley  
     *Hordeum jubatum*  
 Timothy  
     *Phleum pratense*  
 Bluegrass  
     *Poa*  
 Bulbous Bluegrass  
     *Poa bulbosa*  
 Rabbitfoot Grass  
     *Polygogon monspeliensis* (5072)  
 Squirreltail  
     *Sitanion hystrix*  
 Medusa-head  
     *Taeniatherum caput-medusae*

FORBS

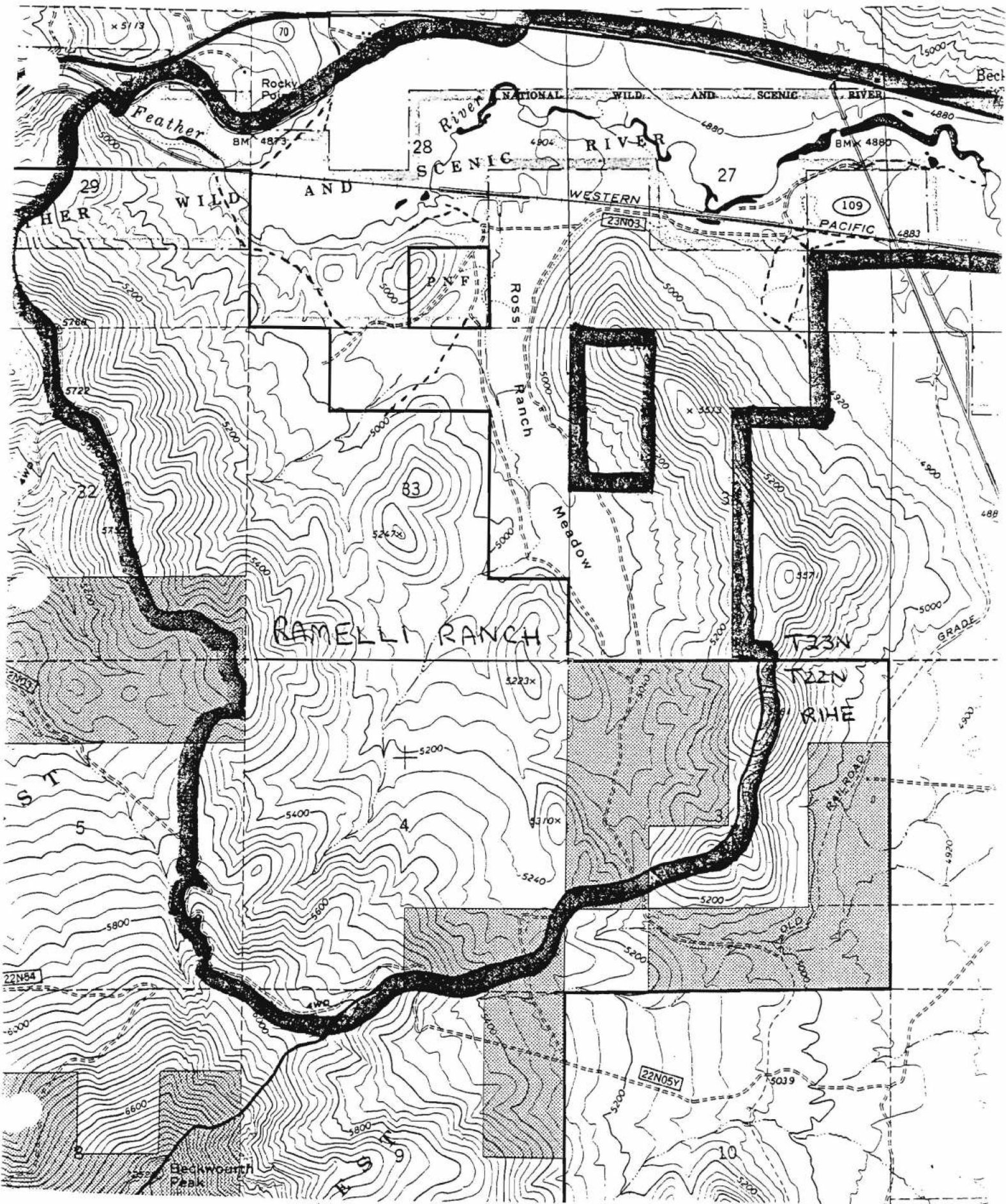
Yarrow (400)  
     *Achillea millefolium lanulosa*  
 Tumbleweed  
     *Amaranthus albus* (5098)  
 Fiddleneck  
     *Amsinckia intermedia* (4773)  
 Arnica  
     *Arnica chamissonis foliosa* (5  
 Biennial Sage  
     *Artemisia biennis* (5071)  
 Mugwort,  
     *Artemisia douglasiana*

Tarragon	Umbrella Sedge
Artemisia dracunculus (5130)	Cyperus aristatus (5105, 5138A)
Hairy Locoweed	Larkspur
Astragalus purshii (4417)	Delphinium
Balsamroot	Tansy-Mustard
Balsamorhiza sagittata (4419)	Descurainia pinnata (5128)
Meadow Mustard	Tansy-Mustard
Barbarea orthoceras (5094)	Descurainia sophia (5102)
Nodding Bur Marigold	Downingia
Bidens cernua (5066)	Downingia bacigalupi (3945, 429)
Eyelash Daisy	Whitlow Grass
Blepharipappus scaber (4765A)	Draba verna (4415)
Boisduvalia	Spike Rush
Boisduvalia densiflora (5060)	Eleocharis palustris (4777)
Water Starwort	Waterweed, Ditchmoss
Callitriche heterophylla?	Elodea densa
Pussy Paws	Water Willowweed
Calyptridium umbellata (4885)	Epilobium exaltatum (5100)
Camas	Dry Willowweed
Camissia leichtlinii suksdorfii	Epilobium paniculatum
Tansy-leaved Evening Primrose	Horsetail
Camissonia tanacetifolia ssp	Equisetum arvense
quadriperforata	Ferris Horsetail
Shepards Purse	Equisetum X ferrissii (4805)
Capsella bursa-pastoris	Scouring Rush
Sedge	Equisetum laevigatum
Carex (4780)	Turkey Mullein
Sedge	Eremocarpus setigerus
Carex anthrostachys (4795)	Erigeron
Indian Paintbrush	Erigeron decumbens robustior (4
Castilleja applegatei X C.	Erigeron
chromosa (4635)	Erigeron pumilus intermedius (4
Indian Paintbrush	Buckwheat
Castilleja miniata	Eriogonum elatum (4004)
Pincushion	Buckwheat
Chaenactis douglasii (4763)	Eriogonum umbellatum (4776A)
Pigweed	Buckwheat
Chenopodium	Eriogonum vimineum
Water Hemlock	Redstem Filaree
Cicuta douglasii (4776)	Erodium cicutarium
Thistle	Coyote Thistle
Cirsium	Eryngium articulatum (5058)
Bull Thistle	California Poppy
Cirsium vulgare	Eschscholzia californica
Blue-eyed Mary	Spurge
Collinsia sparsiflora	Euphorbia serpyllifolia (5065)
Large-flowered Collomia	Bedstraw
Collomia grandiflora	Galium trifidum pacificum (5074)
Morning Glory	Groundsmoke
Convolvulus arvensis	Gayophytum (4757)
Horseweed	Gilia
Conyza canadensis (5091)	Gilia leptalea (4797)
Hawkweed	Low Cudweed
Crepis pleurocarpa (4778)	Gnaphalium palustre (4760)



Hedge Hyssop	Hairy Lotus
Gratiola neglecta (5057)	Lotus purshianus
Haplopappus	Desert Lupine
Haplopappus lanceolatus (5129)	Lupinus caudatus (4754)
Haplopappus	Spike Lupine
Haplopappus lucidus (5059)	Lupinus confertus (4792)
White Centaur	Sword Aster
Hesperochiron californicus (4487)	Machaeranthera shastensis var.
Rare Bell	glossophylla (4782)
Heterocodon rariflorum (4781)	Fringed Water Plantain
Golden Aster	Machaerocarpus californicus (477
Heterotheca villosa hispida (4005)	Big Tarweed
Mare's tail	Madia elegans (4767)
Hippuris vulgaris (5069)	Dense Tarweed
Blue Iris	Madia glomerata (5092)
Iris missourensis (4636)	Slender Tarweed
Poverty Weed	Madia gracilis (5131)
Iva axillaris (5136)	Henbit
Yellow Mousetails	Malva
Ivesia aperta (4775)	Bur Clover
White Mousetails	Medicago polymorpha
Ivesia sericoleuca (4006)	Alfalfa
Rush	Medicago sativa
Juncus	White Sweet Clover
Rush	Melilotus albus
Juncus bufonius	Small Blazing Star
Rush	Mentzelia (3946A)
Juncus macrandrus (4795)	Wild Mint
Rush	Mentha arvensis
Juncus sphaerocarpus (4794)	False Dandelion
Narrow-leaved Lettuce	Microseris
Lactuca saligna (5097)	Beggar Gilis
Wild Lettuce	Microsteris gracilis (4414)
Lactuca serriola	Common Monkey Flower
Whole-leaved Lettuce	Mimulus guttatus
Lactuca sarriola integrata	Monkey Flower
Hareleaf	Mimulus (5096)
Lagophylla ramosissima (4766)	Meadow Lettuce
Duckweed	Montia linearis (4412)
Lemna minor (5106)	Water Milfoil
Cow Cress	Myriophyllum exalbescens
Lepidium campestre	Navarretia
Prickly Phlox	Navarretia (4758)
Leptodactylon pungens ssp.	Blue Spot
pulchriflorum? (4765)	Nemophila pedunculata (4488)
Mudwort	Yellow Water Lily
Limosella aquatica (4807)	Nuphar polysepala (3947)
Woodland Star	Owls Clover
Lithophragma bulbifera?	Orthocarpus hispidus (4770, 488
Puccoon	Western Paeony
Lithospermum ruderales (4486)	Paeonia brownii (4418)
Pestle Parsnip	Meadow Beardtongue
Lomatium nudicaule	Penstemon rydbergi (4636)

Creek Squawroot	Burnet
<i>Perideridia parishii</i> var.	<i>Sanguisorba annua</i> (4755)
<i>latifolia</i> (4762)	Small Burnet
Squawroot	<i>Sanguisorba minor</i>
<i>Perideridia lemmonii</i> (4796)	Forest Butterweed (4416)
White Phacelia	<i>Senecio integerrimus exaltatus</i>
<i>Phacelia hastata</i> (4756)	Sticky Catchfly
Blue Phacelia	<i>Silene nuda insectivora</i> (4764)
<i>Phacelia linearis</i>	Tumble-Mustard
Popcorn Flower	<i>Sisymbrium altissimum</i> (5132)
<i>Plagiobothrys cognatus</i> (4799)	Water Parsnip
Soft Popcorn Flower	<i>Sium suave</i> (5067)
<i>Plagiobothrys mollis</i> (4802)	Sow Thistle
Ribwort	<i>Sonchus asper</i> (5136A)
<i>Plantago lanceolata</i>	Sand-spurry
Plantain	<i>Spergularia rubra</i> (5104)
<i>Plantago major</i>	Dandelion
Sage Polemonium	<i>Taraxacum officinale</i>
<i>Polemonium micranthum</i> (4413)	Penny Cress
Water Smartweed	<i>Thlaspi arvense</i> (4483)
<i>Polygonum amphibium</i>	Salsify, Oyster Root
Knotweed	<i>Tragopogon dubius</i>
<i>Polygonum aviculare</i> (5139, 5135)	Vinegar Weed
Sage Knotweed	<i>Trichostemma oblongum</i> (5064)
<i>Polygonum esotericum</i> (4633)	Anderson Clover
Cinquefoil (4806)	<i>Trifolium andersonii</i> (3948A)
<i>Potentilla gracilis nuttallii</i>	Beckwith Clover
Ground Chaff	<i>Trifolium beckwithii</i> (4484, 4632)
<i>Psilocarphus brevissimus</i> (4634)	Meadow Clover
Buttercup	<i>Trifolium longipes hansenii</i>
<i>Ranunculus</i>	White Clover
Rigiopappus	<i>Trifolium repens</i>
<i>Rigiopappus leptocladus</i> (4771)	White Brodiaea
Yellow Cress	<i>Triteleia hyacinthina</i>
<i>Rorippa</i> (4803, 5099)	Wooly Mullein
Yellow Cress	<i>Verbascum thapsus</i>
<i>Rorippa islandica hispida</i> (5101)	Speedwell (4772)
Sheep Sorrel	<i>Veronica peregrina xalapensis</i>
<i>Rumex acetosella</i>	Meadow Speedwell
Dock	<i>Veronica scutellata</i> (5070)
<i>Rumex crassus?</i>	Shelton Violet
Indian Tobacco	<i>Viola sheltonii</i>
<i>Rumex crispus</i>	Mule'sears
Russian Thistle	<i>Wyethia mollis</i>
<i>Salsola australis</i>	



3(3):96

OHIO VALLEY CREEK, PLUMAS COUNTY

T26N R8E section 5,6; T27N R8E section 31, T27N R7E section  
36, 25, 26. North off Caribou Rd, between Lake Almanor and  
Butt Valley Reservoir. Mike Foster 1982

TREES

*Abies concolor*  
*Calocedrus decurrens*  
*Pinus lambertiana*  
*Pinus ponderosa*  
*Populus tremuloides*  
*Pseudotsuga menziesii*  
*Acer macrophyllum*  
*Quercus kelloggii*  
*Quercus wislizenii*  
*Cornus nuttallii*

SHRUBS

*Cornus stolonifera*  
*Acer glabrum* var. *torreyi*  
*Alnus rhombifolia*  
*Alnus tenuifolia*  
*Rhamnus purshiana*  
*Salix*  
*Rubus parviflorus*  
*Rubus ursinus?*  
*Ceanothus integerrimus*  
*Ceanothus cordulatus*  
*Ceanothus prostratus*  
*Ribes roezlii*  
*Ribes nevadense*  
*Symphoricarpos mollis*  
*Spiraea douglasii*  
*Chrysolepis sempervirens*  
*Arctostaphylos patula*  
*Arctostaphylos nevadensis*  
*Prunus emarginata*  
*Prunus virginiana demissa*

FORBS

*Delphinium patens*  
*Delphinium nudicaule*  
*Aquilegia* (probably *formosa*)  
*Ranunculus aquatilis*  
*Ranunculus*  
*Osmorhiza chilensis*

FORBS, cont.

*Gnaphalium*  
*Taraxacum officinale*  
*Achillea millefolium*  
*Adenocaulon bicolor*  
*Agoseris retrorsa*  
*Hieracium albiflorum*  
*Artemisia douglasiana*  
*Wyethia mollis*  
*Orobanche uniflora occidentalis*  
*Penstemon deustus*  
*Penstemon newberryi*  
*Mimulus guttatus*  
*Phlox diffusa* (or *douglasii*?)  
*Microsteris gracilis*  
*Stellaria jamesiana*  
*Claytonia parviflora*  
*Lotus oblongifolius*  
*Cycladenia humilis tomentosa*  
*Mertensia ciliata stomatechoides*  
*Cypripedium fasciculatum*  
*Corallorhiza maculata*  
*Habenaria dilatata*  
*Camassia*  
*Veratrum californicum*  
*Rosa*  
*Potentilla*  
*Heuchera micrantha erubescens*  
*Sarcodes sanguinea*  
*Pterospora andromedea*

FERNS

*Cystopteris fragilis*  
*Polystichum imbricans*  
*Cheilanthes gracillima*

APPENDIX 1. LOCATION INDEX; ALPHABETICAL BY NAME.

<u>Page</u>	<u>Name</u>	<u>Page</u>	<u>Name</u>
3	Anthony Peak	18	Little Summit Lake
6	Baldy Ridge	69	Mt Ingalls
4	Bidwell River State Park	73	Mt Hough
9	Buck Rock	97	Ohio Valley Creek
70	Chambers Creek	21	Peter Ahart Ranch
7	Chips Creek	66	Pulga Serpentine II
71	Crablouse Ravine	92	Ramelli Ranch
73	Crystal Lake	80	Red Rock Lookout
10	Devils Postpile	81	Round Valley Reservoir
77	Graylodge Wildlife Refuge	19	Signal Peak
14	Hammerhorn Mt	75	Snake Lake
15	Hull Mt	19	Snow Mt E & W
16	Impassable Rock	20	South Yolla Bolly
72	Indian Creek	79	Taylor Lake
1	Lake Almanor CNPS Trip	9	Uhl Peak
83	Lake Almanor	64	Vina Plains Preserve
17	Leech Lake Mt		

APPENDIX 2. LOCATION INDEX; ALPHABETICAL BY COUNTY.

Butte

Bidwell River State Park . . . . .4  
 Graylodge Waterfowl Refuge . .77  
 Peter Ahart Ranch . . . . .21  
 Pulga Serpentine . . . . .66

Colusa

Signal Peak . . . . .19  
 Snow Mt . . . . .19

Glenn

Signal Peak . . . . .19  
 Snow Mt . . . . .19

Lake

Hull Mt . . . . .15  
 Signal Peak . . . . .19  
 Snow Mt . . . . .19

Madera

Devils Postpile . . . . .10

Mendocino

Anthony Peak . . . . .2  
 Baldy Ridge . . . . .6  
 Impassable Rock . . . . .16  
 Leech Lake Mt . . . . .17

Plumas

Chambers Creek . . . . .70  
 Chips Creek . . . . .7  
 Crablouse Creek . . . . .71  
 Crystal Lake . . . . .73  
 Lake Almanor CNPS Trip . . . .1  
 Lake Almanor . . . . .83  
 Little Summit Lake . . . . .15  
 Mt Hough . . . . .73  
 Mt Ingalls . . . . .69  
 Ohio Valley Creek . . . . .97  
 Ramelli Ranch . . . . .92  
 Red Rock Lookout . . . . .80  
 Round Valley Reservoir . . . .81  
 Snake Lake . . . . .75  
 Taylor Lake . . . . .79

Tehama

Anthony Peak . . . . .2  
 Buck Rock . . . . .9  
 Hammerhorn . . . . .14  
 South Yolla Bolly . . . . .20  
 Vina Plains Preserve . . . . .64

Trinity

Buck Rock . . . . .9  
 Hammerhorn . . . . .14  
 Uhl Peak . . . . .9

APPENDIX 3. AUTHOR-PAGE INDEX.

Ahart, L. 21, 77  
Foster, M. 7, 70, 71, 72, 97  
Jokerst, J. 3, 4, 6, 9, 14, 15, 16, 17, 19, 20, 77  
Medeiros, J. 10  
Morey, S. 10  
Preston, R. 77  
Taylor, M. 1, 4, 18, 64, 66, 69, 73, 75, 77, 79,  
80, 81, 83, 92

FLORA BUTTENSIS

___	Vol 1, #1.	"Preliminary list of Post-Munz and Keck's A California flora nomenclature changes which affect Butte county, CA."	50p	\$4.00	\$ _____
___	Vol 1, #2.	"New names in plant taxonomy for Butte county, CA."	7p	.70	_____
___	Vol 1, #3.	"Checklist of the ferns and seed plants of Butte county, CA."	90p	7.00	_____
___	Vol 2, #1	"Supplement to the Butte county checklist."	32p	2.50	_____
___	Vol 2, #2.	"Syllabus for the medicinal and edible native plants of Butte county, CA."	81p	7.00	_____
___	Vol 2, #3.	"Second supplement to the Butte county checklist."	22p	2.00	_____
___	Vol 3, #1.	"Contributions towards a checklist of the vascular flora of Plumas county, CA."	116p	8.00	_____
___	Vol 3, #2.	"California floristics: a preliminary bibliography of unpublished checklists and reports."	46p	\$4.00	_____
___	Vol 3, #3.	"Compilation of local checklists I"	103p	8.00	_____
				Total	_____

Please send check or money order to: Mary S. Taylor  
 Editor, Flora Buttensis  
 PO Box 1686  
 Chico, CA 95926

THANK YOU