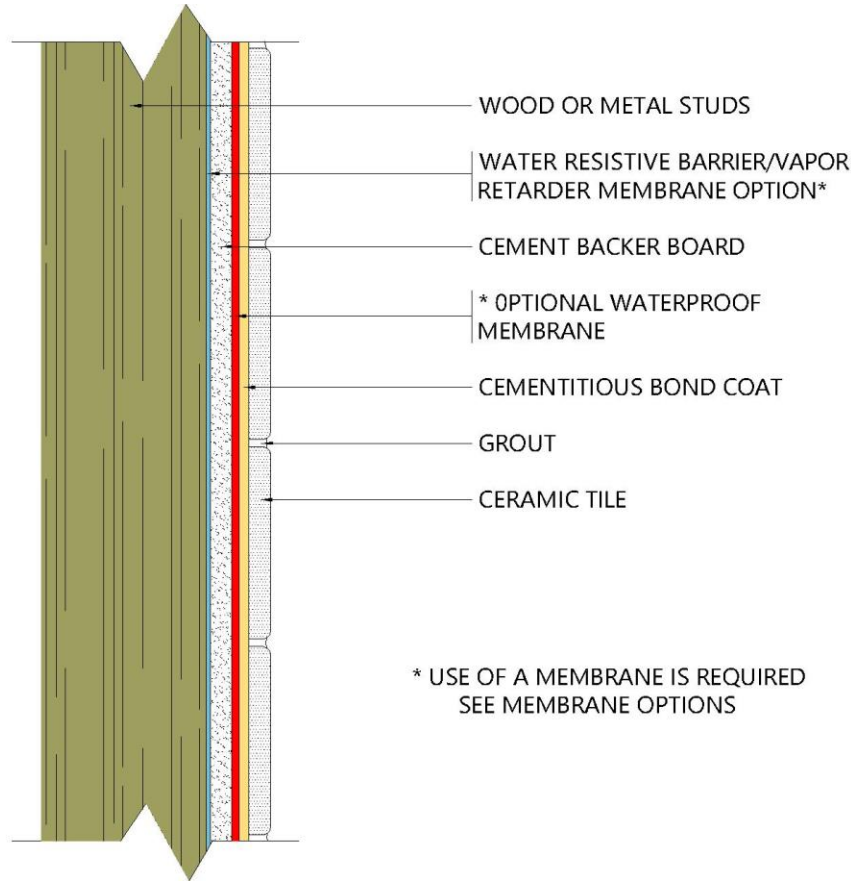


EXTERIOR WALLS

Wood or Metal Studs
Cement Backer Board

CW-244E
(TCNA W244E / TTMAC 305W)

TCNA Environmental Classification (Recommended for)
RES 6; COM 6 – Freeze/thaw cycling, Exterior conditions



NOTE: Illustration shows the necessary components of the tile installation method, including the substrate. This has not been drawn to scale. It is intended to clearly identify and label each component and its placement in the assembly.

Backer Board:

- WonderBoard® Lite Backerboard (ANSI A118.9)

Membrane Option:

- RedGard® Waterproofing and Crack Prevention Membrane (Liquid Applied) ANSI A118.10 & A118.12)

Mortar Options:

- MegaLite® Ultimate Crack Prevention Large Format Tile Mortar (ANSI A118.15 TE)
- ProLite® Premium Large Format Tile Mortar (Ideal for Large Format Tiles) (ANSI A118.15 TE)

Grout:

- Prism® Ultimate Performance Cement Grout (Shade and Efflorescence Control) (ANSI A118.6 & A118.7)

*Refer to Product Technical Data Sheet for complete installation instructions and product limitations. This drawing is listed in Tile Council of North America's (TCNA) Handbook for Ceramic Tile Installation. They are compatible with the drawings in Terrazzo, Tile and Marble Association of Canada's (TTMAC) Handbook. For your convenience, Custom Building Products options are substituted for TCNA's and TTMAC's generic product descriptions. Please refer to the handbooks for complete information.