

# Getting Ready for Your Blue Light Cystoscopy with Cysview<sup>®</sup>

Patient Name: \_\_\_\_\_

Date/Time of Procedure: \_\_\_\_\_ @ \_\_\_\_\_ AM/PM

Location: \_\_\_\_\_

## Healthcare Provider Contact Information

\_\_\_\_\_  
\_\_\_\_\_



Arrival Time: \_\_\_\_\_

## Description of procedure



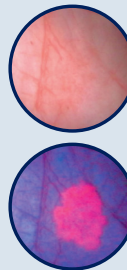
- 1** It is essential for you to arrive early for your procedure. Your arrival time is critical for its success. One hour before the procedure, you will receive an optical imaging agent called Cysview to prepare your bladder.



- 2** A small amount (2 oz) of Cysview will be placed into your bladder through a catheter. You will be asked to hold it in your bladder for as long as you can during the hour before your procedure.



- 3** During the Blue Light Cystoscopy with Cysview procedure, your healthcare professional will look into your bladder through a cystoscope using white light then blue light.



- 4** In blue light, Cysview makes abnormal cells easier to identify. It causes tumor cells to glow bright pink under blue light, but it is not a dye. Because cancer is more visible, your healthcare professional can better assess your bladder health and take the most appropriate next steps in your care.

## Preparing for your cystoscopy

Your procedure will be performed in the:

\_\_\_\_\_ hospital \_\_\_\_\_ clinic

Patient Instructions: \_\_\_\_\_  
\_\_\_\_\_  
\_\_\_\_\_



Be sure to follow any instructions noted above and any directions from your healthcare professional about the medications and supplements you take.

**CYSVIEW<sup>®</sup>**  
Hexaminolevulinate HCl

See back for Important Risk & Safety Information for Cysview.

## After the procedure



You may experience:

- Bladder spasms
- Trouble urinating
- Discomfort when urinating
- Frequent urination
- Blood in your urine
- Bladder pain



Follow your discharge instructions carefully.



Be sure to contact your physician's office with any issues or concerns.



It's a good idea to drink plenty of fluids after any cystoscopy.

To learn more, go to [Cysview.com](https://www.cysview.com)

### Product Indication

Cysview is an optical imaging agent indicated for use in the cystoscopic detection of carcinoma of the bladder, including carcinoma in situ (CIS), among patients suspected or known to have lesion(s) on the basis of a prior cystoscopy, or in patients undergoing surveillance cystoscopy for carcinoma of the bladder. Cysview is used with the KARL STORZ D-Light C Photodynamic Diagnostic (PDD) system to perform Blue Light Cystoscopy (BLC<sup>®</sup>) as an adjunct to White Light Cystoscopy.

### Important Risk & Safety Information

Cysview is not a replacement for random bladder biopsies or other procedures used in the detection of bladder cancer.

Anaphylactoid shock, hypersensitivity reactions, bladder pain, cystitis, and abnormal urinalysis have been reported after administration of Cysview. The most common adverse reactions seen in clinical trials were bladder spasm, dysuria, hematuria, and bladder pain.

Cysview should not be used in patients with porphyria, gross hematuria, or with known hypersensitivity to hexaminolevulinate or any derivative of aminolevulinic acid. Cysview may fail to detect some malignant lesions. False positive fluorescence may occur due to inflammation, cystoscopic trauma, scar tissue, previous bladder biopsy and recent BCG therapy or intravesical chemotherapy. No specific drug interaction studies have been performed.

Safety and effectiveness have not been established in pediatric patients. There are no available data on Cysview use in pregnant women. Adequate reproductive and developmental toxicity studies in animals have not been performed. Systemic absorption following administration of Cysview is expected to be minimal. There are no data on the presence of hexaminolevulinate in human or animal milk, the effects on a breastfed infant, or the effects on milk production. The development and health benefits of breastfeeding should be considered along with the mother's clinical need for Cysview and any potential adverse effects on the breastfed infant from Cysview or from the underlying maternal condition.

Cysview is approved for use with the KARL STORZ D-Light C Photodynamic Diagnostic (PDD) system. For system set up and general information for the safe use of the PDD system, please refer to the KARL STORZ instruction manuals for each of the components.

**Prior to Cysview administration, read the Full Prescribing Information and follow the preparation and reconstitution instructions.**

**CYSVIEW<sup>®</sup>**  
Hexaminolevulinate HCl



THE  
BLADDER CANCER  
COMPANY

# CYSVIEW<sup>®</sup>

## Hexaminolevulinate HCl



### HIGHLIGHTS OF PRESCRIBING INFORMATION

These highlights do not include all the information needed to use CYSVIEW safely and effectively. See full prescribing information for CYSVIEW.

**Cysview (hexaminolevulinate hydrochloride), for Intravesical Solution**  
For bladder instillation only

Initial U.S. Approval: 2010

### INDICATIONS AND USAGE

Cysview is an optical imaging agent indicated for use in the cystoscopic detection of carcinoma of the bladder, including carcinoma in situ (CIS), among patients suspected or known to have lesion(s) on the basis of a prior cystoscopy, or in patients undergoing surveillance cystoscopy for carcinoma of the bladder. Cysview is used with the KARL STORZ D-Light C Photodynamic Diagnostic (PDD) system to perform Blue Light Cystoscopy (BLC<sup>®</sup>) as an adjunct to the white light cystoscopy.

Important Limitations of Use:

- Not a replacement for random bladder biopsies or other procedures used in the detection of bladder cancer. (1.1, 5.2)

### DOSAGE AND ADMINISTRATION

Training in blue light cystoscopy with the KARL STORZ D-Light C PDD system is essential prior to the use of Cysview. (2.5)

- Reconstitute Cysview powder with the supplied 50 mL DILUENT under aseptic conditions. (2.2)
- Use solution of Cysview shortly after reconstitution. If unable to use, the solution may be stored for up to 2 hours in a refrigerator at 2°-8°C (36°-46°F) in the labeled syringe. Discard after 2 hours. (2.2, 16)
- Instill 50 mL of reconstituted solution of Cysview into the emptied bladder via an intravesical catheter. Retain in the bladder for 1 hour before evacuating and performing cystoscopic examination. (2.3, 2.5)
- First perform a complete cystoscopic examination of the entire bladder under white light and then repeat the examination of the entire bladder under blue light. Record and document information about location and appearance of suspicious lesions and areas seen under both white and blue light. (2.5)

### DOSAGE FORMS AND STRENGTHS

Cysview (hexaminolevulinate hydrochloride) is supplied as a kit. The kit may be supplied as two options; with or without a vial adapter:

- One 10 mL glass vial containing 100 mg powder of Cysview. (hexaminolevulinate hydrochloride) for Intravesical Solution.
- One plastic prefilled syringe containing 50 mL DILUENT for Cysview.
- One Luer Lock catheter adapter.
- One vial adapter for use during reconstitution (in the kit containing the vial adapter). (16)

Once reconstituted, the solution contains 2 mg/mL (8 mmol/L) of hexaminolevulinate hydrochloride.

### CONTRAINDICATIONS

Do not use Cysview in patients with:

- porphyria,
- gross hematuria,
- known hypersensitivity to hexaminolevulinate or aminolevulinate derivatives. (4)

### WARNINGS AND PRECAUTIONS

- Anaphylaxis: have trained personnel and therapies available. (5.1).
- Failed Detection: Cysview may not detect all malignant lesions. Always perform white light cystoscopy followed by blue light cystoscopy. Do not biopsy with blue light only. (5.2)
- False fluorescence may occur due to inflammation, cystoscopic trauma, scar tissue, previous bladder biopsy, recent BCG therapy or chemotherapy. (5.3)

### ADVERSE REACTIONS

The most common adverse reaction reported in patients who received Cysview was bladder spasm, occurring in 2% of patients, followed by dysuria, hematuria and bladder pain. (6.1)

To report SUSPECTED ADVERSE REACTIONS, contact Photocure Inc. at 1-855-297-8439 or FDA at 1-800-FDA-1088 or [www.fda.gov/medwatch](http://www.fda.gov/medwatch).

### USE IN SPECIFIC POPULATIONS

Pediatric Use: Safety and effectiveness in pediatric patients have not been established. (8.4)

See 17 for PATIENT COUNSELING INFORMATION.

### FULL PRESCRIBING INFORMATION: CONTENTS\*

#### 1 INDICATIONS AND USAGE

1.1 Limitations of Use

#### 2 DOSAGE AND ADMINISTRATION

2.1 Recommended Dose

2.2 Reconstitution of Cysview

2.3 Bladder Instillation of Cysview

2.4 Use of the KARL STORZ D-Light C Photodynamic Diagnostic (PDD) System

2.5 Cystoscopic Examination

#### 3 DOSAGE FORMS AND STRENGTHS

#### 4 CONTRAINDICATIONS

#### 5 WARNINGS AND PRECAUTIONS

5.1 Anaphylaxis

5.2 Failed Detection

5.3 False Fluorescence

#### 6 ADVERSE REACTIONS

6.1 Clinical Study Experience

6.2 Postmarketing Experience

#### 7 DRUG INTERACTIONS

#### 8 USE IN SPECIFIC POPULATIONS

8.1 Pregnancy

8.2 Lactation

8.4 Pediatric Use

8.5 Geriatric Use

#### 10 OVERDOSAGE

#### 11 DESCRIPTION

#### 12 CLINICAL PHARMACOLOGY

12.1 Mechanism of Action

12.2 Pharmacodynamics

12.3 Pharmacokinetics

#### 13 NONCLINICAL TOXICOLOGY

13.1 Carcinogenesis, Mutagenesis, Impairment of Fertility

13.2 Animal Toxicology and/or Pharmacology

#### 14 CLINICAL STUDIES

#### 16 HOW SUPPLIED/STORAGE AND HANDLING

#### 17 PATIENT COUNSELING INFORMATION

\*Sections or subsections omitted from the full prescribing information are not listed.

### FULL PRESCRIBING INFORMATION

#### 1 INDICATIONS AND USAGE

Cysview is indicated for use in the cystoscopic detection of carcinoma of the bladder, including carcinoma in situ (CIS), among patients suspected or known to have lesion(s) on the basis of a prior cystoscopy, or in patients undergoing surveillance cystoscopy for carcinoma of the bladder. Cysview is used with the KARL STORZ D-Light C Photodynamic Diagnostic (PDD) system to perform Blue Light Cystoscopy (BLC<sup>®</sup>) as an adjunct to the white light cystoscopy.

##### 1.1 Limitations of Use

Cysview is not a replacement for random bladder biopsies or other procedures used in the detection of bladder cancer [see Warnings and Precautions (5.2)].

#### 2 DOSAGE AND ADMINISTRATION

##### 2.1 Recommended Dose

The recommended dose for adults is 50 mL of reconstituted solution of Cysview [see Dosage and Administration (2.2)], instilled into the bladder via a urinary catheter [see Dosage and Administration (2.3)].

##### 2.2 Reconstitution of Cysview

Cysview is supplied as a kit containing: a clear glass vial labeled as Cysview (hexaminolevulinate HCl) for Intravesical Solution containing 100 mg hexaminolevulinate hydrochloride as a powder, a prefilled syringe labeled as DILUENT for Cysview, containing 50 mL of the diluent and a catheter adapter. The kit may be supplied as two options; with or without a vial adapter for use during reconstitution.

Perform all steps under aseptic conditions. Wear gloves during the reconstitution procedure; skin exposure to hexaminolevulinate hydrochloride may increase the risk for sensitization to the drug.

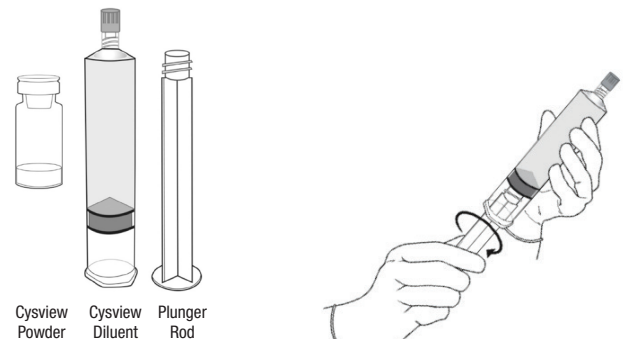


Figure 1.

### Reconstitution Using a Vial Adapter

1. Fasten the plunger rod into the rubber stopper of the prefilled syringe by turning the plunger rod clockwise until it stops (Figure 1).

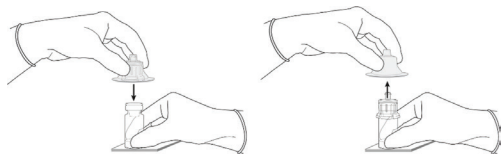


Figure 2.

2. Remove the plastic cap from the vial. Remove the Tyvek® cover from the vial adapter blister package. Do not remove the vial adapter from the package. Place the Cysview vial on a flat surface. Using the blister package to hold the vial adapter, connect to the vial with a downward vertical motion. The vial adapter snaps onto the vial as the spike penetrates the rubber stopper of the vial. Remove the plastic blister package and discard it. Take care not to touch the exposed end of the vial adapter (Figure 2).



Figure 3.

3. Remove the cap from the prefilled syringe and carefully retain it for subsequent reattachment to the syringe. Hold the prefilled syringe upright and carefully press the plunger rod upward to remove air. Connect the syringe to the vial adapter. Inject about 10 mL of the diluent from the prefilled syringe down into the vial. The vial should be about ¾ full (Figure 3).

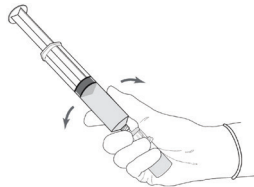


Figure 4.

4. Without disconnecting the vial adapter from the vial, hold the vial and syringe in a firm grip (Figure 4) and gently shake to dissolve the powder in the diluent. The powder normally dissolves almost immediately.

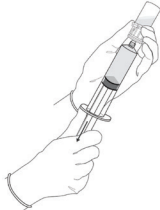


Figure 5.

5. Turn the vial upside down and withdraw all of the dissolved solution from the vial back into the syringe (Figure 5). Do not inject large amounts of air or diluent when vial is inverted as it may block the venting action of the vial adapter. If this occurs, turn the vial upright and pull back on the plunger rod in the syringe.

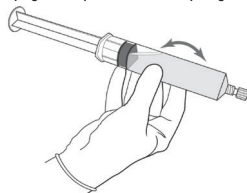


Figure 6.

6. Disconnect the empty vial with the vial adapter from the syringe tip and discard it. Plug the syringe with the syringe cap (Figure 6). Gently mix the contents of the syringe. The reconstituted solution of Cysview is colorless to pale yellow and clear to slightly opalescent, and free from visible particles.
7. Peel off the detachable portion of the syringe label. On the syringe label, add two hours to the present time and write the resulting expiration time and date.

Cysview is now reconstituted and ready for use. The solution of Cysview contains 2 mg/mL of hexaminolevulinate hydrochloride. Instill the reconstituted solution of Cysview into the bladder [see Bladder Instillation of Cysview (2.3)]. If unable to administer the solution shortly after reconstitution, store the solution for up to 2 hours in a refrigerator at 2°-8°C (36°- 46°F) in the labeled syringe. If not used within 2 hours, discard the solution [see How Supplied/Storage and Handling (16)].

### Reconstitution Without the Use of a Vial Adapter

1. Fasten the plunger rod into the rubber stopper of the prefilled syringe by turning the plunger rod clockwise until it stops (Figure 1)

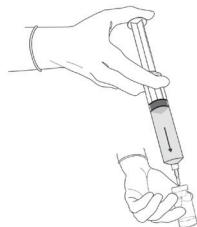


Figure 7.

2. Remove the plastic cap from the vial. Remove the cap from the prefilled syringe and carefully retain it for subsequent reattachment to the syringe. Attach a needle to the prefilled syringe. Hold the prefilled syringe upright and carefully press the plunger rod upward to remove air. Penetrate the stopper of the Cysview vial with the needle and inject about 10 mL of the diluent from the prefilled syringe down into the vial. The vial should be about ¾ full (Figure 7).

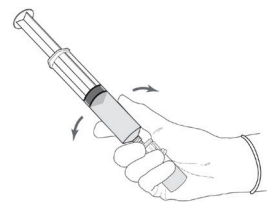


Figure 8.

3. Without withdrawing the needle from the vial, hold the vial and syringe in a firm grip (Figure 8) and gently shake to dissolve the powder in the diluent. The powder normally dissolves almost immediately.

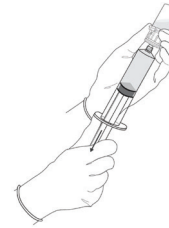


Figure 9.

4. Turn the vial upside down and withdraw all of the dissolved solution from the vial back into the syringe (Figure 9).

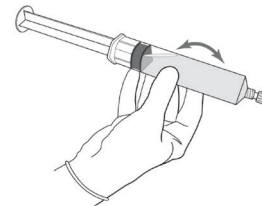


Figure 10.

5. Remove the needle from the vial, disconnect the needle from the syringe tip and discard it. Plug the syringe with the syringe cap (Figure 10). Gently mix the contents of the syringe. The reconstituted solution of Cysview is colorless to pale yellow and clear to slightly opalescent, and free from visible particles.
6. Peel off the detachable portion of the syringe label. On the syringe label, add two hours to the present time and write the resulting expiration time and date.

Cysview is now reconstituted and ready for use. The solution of Cysview contains 2 mg/mL of hexaminolevulinate hydrochloride. Instill the reconstituted solution of Cysview into the bladder [see Bladder Instillation of Cysview (2.3)]. If unable to administer the solution shortly after reconstitution, store the solution for up to 2 hours in a refrigerator at 2°-8°C (36°- 46°F) in the labeled syringe. If not used within 2 hours, discard the solution [see How Supplied/Storage and Handling (16)].

### 2.3 Bladder Instillation of Cysview

For bladder instillation of the solution of Cysview, use straight or intermittent, urethral catheters with a proximal funnel opening that will accommodate the Luer Lock adapter. Use only catheters made of vinyl (uncoated or coated with hydrogel), latex (amber or red), and silicone to instill the reconstituted Cysview. Do not use catheters coated or embedded with silver or antibiotics. In-dwelling bladder catheters (Foley catheters) may be used if the catheters are inserted shortly prior to Cysview administration and are removed following the Cysview instillation. Use the following steps for bladder instillation of Cysview:

1. Using standard sterile catheterization technique, first insert the urethral catheter into the bladder of the patient and use the catheter to completely empty the patient's bladder before instillation of Cysview.

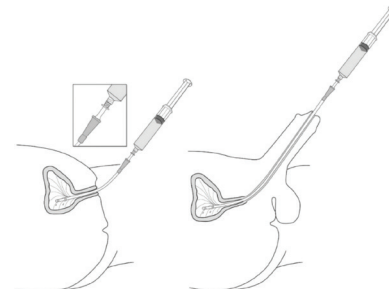


Figure 11.

2. To attach the syringe containing the solution of Cysview to the catheter, do the following:

- Remove the syringe cap from the syringe that contains the reconstituted solution of Cysview.
- Attach the Luer Lock end of the (provided) catheter adapter to the syringe.
- Insert the tapered end of the catheter adapter into the funnel opening of the catheter. See Figure 11, with the connection enlarged in the inset.

3. Slowly instill the solution of Cysview into the bladder through the catheter (Figure 11), ensuring that the complete volume of the syringe (50 mL) is administered.
4. After the solution is instilled, remove the catheter and instruct the patient to retain the solution within the bladder for at least 1 hour; do not exceed 3 hours [see Cystoscopic examination (2.5)]. Patients may stand, sit and move about during the time period between instillation and start of the cystoscopic procedure.
5. Evacuate the solution of Cysview from the bladder as part of routine emptying of the bladder immediately prior to the initiation of the cystoscopic procedure (refer to the KARL STORZ D-Light C Photodynamic Diagnostic (PDD) System Manual for further details). Also, the patient may void and completely empty the bladder prior to the procedure.

Avoid skin contact with Cysview. If skin does come in contact with Cysview, wash immediately with soap and water and dry off. After voiding the bladder of Cysview, routinely wash the patient's perineal skin region with soap and water and dry.

## 2.4 Use of the KARL STORZ D-Light C Photodynamic Diagnostic (PDD) System

Cysview imaging requires the use of the KARL STORZ D-Light C PDD system, which consists of either:

- a light source, a camera head, a camera control unit, a light cable, and a rigid cystoscope for use with the Rigid PDD Cystoscope System, or
- a light source, a camera control unit, and a flexible video cystoscope for use with the Flexible PDD Video Cystoscope System.

The light source enables both white light cystoscopy and blue light (wavelength 360 – 450 nm) fluorescence cystoscopy. Familiarity with this system is essential before beginning the procedure and before instilling Cysview into the bladder. For system set-up and general information for the safe use of the PDD system, refer to the KARL STORZ instruction manual for the PDD system and the instruction manuals for each of the system components. The PDD System is not for use by healthcare providers with green-red color blindness.

## 2.5 Cystoscopic Examination

### Training

Training and proficiency in cystoscopic procedures are essential prior to the use of Cysview. Carefully review the instruction manuals provided with the KARL STORZ D-Light C Photodynamic Diagnostic (PDD) System. For additional training in the use of the PDD System, contact the manufacturer's representative.

### Preparation for Cystoscopy

Initiate the cystoscopic examination within 30 minutes after evacuation of Cysview from the bladder, but no less than 1 or more than 3 hours after Cysview is instilled in the bladder. If the patient did not retain Cysview in the bladder for 1 hour, allow 1 hour to pass from the instillation of Cysview into the bladder to the start of the cystoscopic examination. The efficacy of Cysview has not been established when the solution was retained for less than 1 hour.

### Cystoscopic Examination

Empty the patient's bladder and then fill the bladder with a clear fluid (standard bladder irrigation fluid) in order to distend the bladder wall for cystoscopic visibility. Ensure adequate irrigation during examination of the bladder; blood, urine or floating particles in the bladder may interfere with visualization under both white light and blue light.

First perform a complete cystoscopic examination of the entire bladder under white light and then repeat the examination of the entire bladder surface under blue light unless the white light cystoscopy reveals extensive mucosal inflammation. Do not perform the blue light cystoscopy if the white light cystoscopy reveals wide-spread mucosal inflammation. Abnormalities of the bladder mucosa during blue light cystoscopy are characterized by the detection of red, homogenous and intense fluorescence. The margins of the abnormal lesions are typically well-demarcated and in contrast to the normal urothelium, which appears blue. Register and document (map) the location (as appropriate for the cystoscopy procedure) and appearance (e.g. papillary, flat) of suspicious lesions and abnormalities seen under either white or blue light.

During the cystoscopic examination, be aware that:

- a red fluorescence is expected at the bladder outlet and the prostatic urethra; this fluorescence occurs in normal tissue and is usually less intense and more diffuse than the bladder mucosal fluorescence associated with malignant lesions.
- tangential light may give false fluorescence. To help avoid false fluorescence, hold the endoscope perpendicular and close to the bladder wall with the bladder distended.
- false positive fluorescence may result from scope trauma from a previous cystoscopic examination and/or bladder inflammation [see *Warnings and Precautions* (5.3)].
- malignant lesions may not fluoresce following Cysview administration, particularly if the lesions are coated with necrotic tissue. Blue light may fail to detect tumors which have a tendency to be necrotic on the surface, and necrotic cells generally do not fluoresce [see *Warnings and Precautions* (5.3)].
- when performing the blue light cystoscopy, avoid prolonged blue light exposure. Studies have not evaluated the potential for adverse effects from blue light. In the controlled clinical trials, the cumulative blue light exposure from bladder evaluation, mapping and resection did not exceed 32 minutes for any procedure [see *Clinical Studies* (14)].

For rigid cystoscopy, perform biopsy and/or resection of suspicious lesions by transurethral resection of the bladder (TURB) only after completing white and blue light cystoscopic examinations with bladder mapping. Using standard cystoscopic practices, obtain biopsies of abnormal areas identified during either white or blue light examination and perform resections. Always check for the completeness of the resections under both white light and blue light before finalizing the TURB procedure.

## 3 DOSAGE FORMS AND STRENGTHS

Cysview (hexaminolevulinate hydrochloride) is supplied as a kit. The kit may be supplied as two options; with or without a vial adapter, and contains:

### Cysview kit with a vial adapter

- Cysview (*hexaminolevulinate hydrochloride*) for Intravesical Solution, 100 mg, as a powder in a 10 mL clear glass vial.
- DILUENT for Cysview, 50 mL, in a plastic prefilled syringe.
- One vial adapter for use during reconstitution.
- One Luer Lock catheter adapter (to connect the syringe containing the reconstituted solution of Cysview to the urethral catheter for bladder instillation of Cysview).

### Cysview kit without a vial adapter

- Cysview (*hexaminolevulinate hydrochloride*) for Intravesical Solution, 100 mg, as a powder in a 10 mL clear glass vial.
- DILUENT for Cysview, 50 mL, in a plastic prefilled syringe.
- One Luer Lock catheter adapter (to connect the syringe containing the reconstituted solution of Cysview to the urethral catheter for bladder instillation of Cysview).

Once reconstituted, the solution of Cysview contains 2 mg/mL of hexaminolevulinate hydrochloride.

## 4 CONTRAINDICATIONS

Cysview is contraindicated in patients with:

- porphyria,
- gross hematuria,
- known hypersensitivity to hexaminolevulinate or any derivative of aminolevulinic acid.

## 5 WARNINGS AND PRECAUTIONS

### 5.1 Anaphylaxis

Anaphylaxis, including anaphylactoid shock, has been reported following administration of Cysview [see *Adverse Reactions* (6.2)]. Prior to and during use of the Cysview, have trained personnel and therapies available for the treatment of anaphylaxis.

### 5.2 Failed Detection

Cysview may fail to detect some bladder tumors, including malignant lesions. Cysview is not a replacement for random biopsies or any other procedure usually performed in the cystoscopic evaluation for cancer. Do not perform cystoscopy with blue light alone as malignant lesions can be missed unless the bladder is initially examined under white light [see *Dosage and Administration* (2.5) and *Clinical Studies* (14)].

### 5.3 False Positive Fluorescence

Fluorescent areas detected during blue light cystoscopy may not indicate a bladder mucosal lesion. In the controlled clinical studies, approximately 20% of the lesions detected only by blue light cystoscopy showed neither dysplasia nor carcinoma [see *Clinical Studies* (14)]. False positive fluorescence may result from inflammation, cystoscopic trauma, scar tissue or bladder mucosal biopsy from a previous cystoscopic examination, and recent BCG immunotherapy or intravesical chemotherapy. In a study of patients treated with recent BCG immunotherapy or intravesical chemotherapy, the rate of false positives with blue light was 55% between 6 weeks to 90 days and 41% after 90 days; the false positive rate was 53% and 33% at the respective time intervals with white light.

The presence of urine and/or blood within the bladder may interfere with the detection of tissue fluorescence. To enhance the diagnostic utility of Cysview with the KARL STORZ D-Light C PDD System:

- ensure the bladder is emptied of urine prior to the instillation of fluids at cystoscopy;
- biopsy/resect bladder mucosal lesions only following completion of both white light and blue light rigid cystoscopy;

## 6 ADVERSE REACTIONS

Anaphylaxis has been reported following exposure to Cysview [see *Warnings and Precautions* (5.1)].

### 6.1 Clinical Study Experience

Because clinical trials are conducted under widely varying conditions, adverse reaction rates observed in the clinical trials of a drug cannot be directly compared to rates in the clinical trials of another drug and may not reflect the rates observed in practice.

In seven clinical trials, safety data were obtained from 1,628 patients, aged 32 to 96 years with a median age of 70 years, all primarily Caucasian and approximately 75% male. All patients were evaluated after a single instillation of 50 mL solution of Cysview, and 103 patients received a repeat administration of Cysview. Of these patients, 170 (10.4%) patients reported at least one adverse reaction. The most common adverse reaction was bladder spasm (reported in 2.0% of the patients) followed by dysuria, hematuria, and bladder pain. No patients experienced anaphylaxis. In the randomized controlled clinical study, adverse reactions were similar in nature and rate between the study drug group and the control group. In a controlled study using Cysview in the surveillance setting, adverse reaction types were similar [see *Clinical Studies* (14)].

### 6.2 Postmarketing Experience

The following adverse reactions have been identified during post-approval use of Cysview. Because these reactions are reported voluntarily from a population of uncertain size, it is not always possible to reliably estimate their frequency or establish a causal relationship to drug exposure.

Anaphylactoid shock, hypersensitivity reactions, bladder pain, cystitis and abnormal urinalysis have been reported during post-marketing use of Cysview.

## 7 DRUG INTERACTIONS

No specific drug interaction studies have been performed.

## 8 USE IN SPECIFIC POPULATIONS

### 8.1 Pregnancy

#### Risk Summary

There are no available data on Cysview use in pregnant women to inform a drug associated risk of adverse developmental outcomes. Adequate reproductive and developmental toxicity studies in animals have not been performed. Systemic absorption following administration of Cysview is expected to be minimal [see *Clinical Pharmacology* (12.3)].

The background risk of major birth defects and miscarriage for the indicated populations is unknown. All pregnancies have a background risk of birth defect, loss, or other adverse outcomes. In the U.S. general population, the estimated background risk of major birth defects and miscarriage in clinically recognized pregnancies is 2-4% and 15-20%, respectively.

### 8.2 Lactation

#### Risk Summary

There are no data on the presence of hexaminolevulinate in human or animal milk, the effects on a breastfed infant, or the effects on milk production. Systemic absorption following administration of Cysview is expected to be minimal [see *Clinical Pharmacology* (12.3)]. The lack of clinical data during lactation precludes a clear determination of the risk of Cysview to an infant during lactation; therefore, the development and health benefits of breastfeeding should be considered along with the mother's clinical need for Cysview and any potential adverse effects on the breastfed infant from Cysview or from the underlying maternal condition.

### 8.4 Pediatric Use

Safety and effectiveness in pediatric patients have not been established.

### 8.5 Geriatric Use

Of 2127 subjects in clinical studies of Cysview, 67% were 65 years and over. No clinically important differences in safety or efficacy have been observed between older and younger patients in the controlled study.

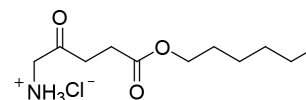
## 10 OVERDOSAGE

No adverse events were reported in a dose-finding study conducted among patients whose bladders were instilled with twice the recommended concentration (dose) of solution of Cysview.

## 11 DESCRIPTION

Cysview contains hexaminolevulinate hydrochloride, an optical imaging drug that in solution form is instilled intravesically for use with photodynamic blue light cystoscopy as an adjunct to white light cystoscopy.

The chemical formula for hexaminolevulinate hydrochloride is C<sub>11</sub>H<sub>21</sub>N<sub>3</sub>O<sub>3</sub>·HCl. Its molecular weight is 251.76 and it has the following structural formula:



Cysview (hexaminolevulinate hydrochloride) for Intravesical Solution is intended for intravesical administration only after reconstitution with the supplied 50 mL DILUENT. Cysview (hexaminolevulinate hydrochloride) for Intravesical Solution and DILUENT for Cysview are supplied together as a kit.

Cysview (hexaminolevulinate hydrochloride) for Intravesical Solution is supplied as a sterile, non-pyrogenic, freeze-dried, white to off-white or pale yellow, powder containing 100 mg of hexaminolevulinate hydrochloride (equivalent of 85 mg of hexaminolevulinate) in a 10 mL clear glass vial. The DILUENT for Cysview is a sterile, non-pyrogenic solution (pH 6) containing 0.61 mg/mL disodium hydrogen phosphate, 0.58 mg/mL of potassium dihydrogen phosphate, 7.02 mg/mL of sodium chloride, hydrochloric acid, sodium hydroxide, and water for injection. It is a clear, colorless solution, free from visible particles, and is provided in a 50 mL plastic prefilled syringe.

The reconstituted solution of Cysview contains 2 mg/ml of hexaminolevulinate hydrochloride and is colorless to pale yellow. It is free from visible particles and has a pH between 5.7 and 6.2.

## 12 CLINICAL PHARMACOLOGY

### 12.1 Mechanism of Action

Cysview is an ester of the heme precursor, aminolevulinic acid. After bladder instillation, Cysview enters the bladder mucosa and is proposed to enter the intracellular space of mucosal cells where it is used as a precursor in the formation of the photoactive intermediate protoporphyrin IX (PpIX) and other photoactive porphyrins (PAPs). PpIX and PAPs are reported to accumulate preferentially in neoplastic cells as compared to normal urothelium, partly due to altered enzymatic activity in the neoplastic cells. After excitation with light at wavelengths between 360 and 450 nm, PpIX and other PAPs return to a lower energy level by fluorescing, which can be detected and used for cystoscopic detection of lesions. The fluorescence from tumor tissue appears bright red and demarcated, whereas the background normal tissue appears dark blue. Similar processes may occur in inflamed cells.

### 12.2 Pharmacodynamics

*In vitro* studies have shown increased porphyrin fluorescence in normal urothelium after exposure to Cysview. In the human bladder, a greater accumulation of porphyrins is proposed in neoplastic or inflamed cells, compared to normal urothelium. After bladder instillation of Cysview for approximately 1 hour and subsequent illumination with blue light at wavelengths 360 – 450nm, the porphyrins will fluoresce red [see *Dosage and Administration* (2.5)].

### 12.3 Pharmacokinetics

After bladder instillation of [<sup>14</sup>C]-labeled Cysview (100 mg) for approximately 1 hour in healthy volunteers, absolute bioavailability of Cysview was 7% (90% confidence interval [CI]: 5%-10%). The [<sup>14</sup>C]-labeled substance(s) showed biphasic elimination, with an initial elimination half-life of 39 minutes, followed by a terminal half-life of approximately 76 hours. Whole blood analysis showed no evidence of significant binding of Cysview to erythrocytes. An *in vitro* study showed that Cysview underwent rapid metabolism in human blood.

## 13 NONCLINICAL TOXICOLOGY

### 13.1 Carcinogenesis, Mutagenesis, Impairment of Fertility

No studies in animals have been conducted to evaluate the carcinogenic potential of hexaminolevulinatate hydrochloride.

Hexaminolevulinatate hydrochloride was not mutagenic in *in vitro* reverse mutation tests in bacteria, or in chromosome aberration tests in human peripheral blood lymphocytes, and was negative in an *in vivo* micronucleus test in mice after intravenous injection of doses up to 45 mg/kg in the absence of light activation. Adequate studies have not been performed to evaluate the genetic toxicity of hexaminolevulinatate hydrochloride in the presence of light activation.

Adequate reproductive and developmental toxicity studies in animals have not been performed to evaluate the effects of hexaminolevulinatate hydrochloride on fertility.

### 13.2 Animal Toxicology and/or Pharmacology

Dose dependent neurological effects such as tremor, increased motor activity, and increased startle and touch escape responses were observed immediately after dosing at doses  $\geq$  30 mg/kg (24 times human systemic exposure based on the body surface area, using 10% as the upper level of 90% confidence interval of bioavailability) in a single-dose rat study. The animals recovered to normal status by 60 min after dosing. Adverse neurological effects were also noted in other single- or repeat-dose toxicity studies.

Hexaminolevulinatate hydrochloride had moderate to strong potential to cause skin sensitization based on a local lymph node assay in mouse.

## 14 CLINICAL STUDIES

The safety and efficacy of Cysview when used with photodynamic cystoscopy were studied in two controlled clinical trials.

**Study 1:** A prospective, multicenter, controlled clinical trial in adult patients with known or suspected bladder cancer who were randomized to either white light (WL) cystoscopy (control group, n = 384) or WL followed by blue light (BL) cystoscopy (study drug group, n = 395). Only the study drug group patients received Cysview by bladder instillation prior to cystoscopy. After bladder evacuation of Cysview, bladder lesion mapping was performed initially using the KARL STORZ PDD system in the WL mode followed by lesion mapping in the BL mode. Control group patients underwent only WL cystoscopy with lesion mapping. The average age of the randomized patients was 69 years (range 24 to 96); 78% were male and 94% were Caucasian. All patients had previously undergone cystoscopy.

The main diagnostic efficacy outcome was assessed within the study drug group. This assessment compared lesions detected during an initial cystoscopic examination to their centralized histologic findings (the standard of truth). Following the initial diagnostic cystoscopy, patients within both study groups who had histologically confirmed Ta and/or T1 lesions underwent follow-up WL cystoscopy at 3, 6 and 9 months; these histologic evaluations were based upon the site assessments at both the initial and follow-up cystoscopy.

Diagnostic efficacy assessed the number of patients within the study drug group who had at least one additional Ta or T1 bladder cancer detected only by BL; the proportion of these patients was compared to a proposed threshold proportion of 10%. Within the study drug group, 286 patients had at least one Ta and/or T1 lesion, including 47 patients who had at least one of the lesions detected only by BL (see Table 1).

**Table 1: BL Cystoscopic Ta and/or T1 Lesion Detection within the Study Drug Group**

Number of patients with any Ta and/or T1 lesion detected with either WL or BL	286
Number (%) of patients with any Ta and/or T1 lesion detected only with BL	47 (16%)
p-value*	0.001

\*Exact test comparison of the proportion to a threshold value of 10%

**Table 2: Bladder Tumor Detection within the Study Drug Group by WL and/or BL Cystoscopy**

Number of lesions	Detected by Both WL & BL	Detected by WL Only	Detected by BL Only
CIS, n = 66	33	6	27
Ta, n = 580	472	52	56
T1, n = 95	76	10	9
T2 – T4, n = 47	38	8	1

Among the lesions detected only by BL, 23% were negative for any carcinoma-related pathology, including dysplasia. Among the lesions detected only by WL, 17% were negative for any carcinoma-related pathology, including dysplasia.

**Study 2:** A prospective, open-label, within-patient controlled clinical trial using BL cystoscopy in the detection of bladder cancer during surveillance cystoscopy. Patients with bladder cancer in follow-up for tumor recurrence (n=304) received Cysview by bladder instillation. The average age of the patients was 69 years (range 35 to 92); 80% were male and 89% were Caucasian. After bladder evacuation of Cysview, a standard WL cystoscopy was performed, followed by BL cystoscopy using the KARL STORZ D-Light C Photodynamic Diagnostic (PDD) System with the Flexible PDD Videoscope System. Suspected malignant lesions were counted and evaluated. Patients with suspected recurrence (n=103), underwent a Cysview instillation followed by WL and BL rigid cystoscopy in the operating room (OR), including lesion mapping, using the KARL STORZ D-Light C PDD System with the Rigid PDD Cystoscope System. The suspicious lesions were biopsied and surgically removed by TURB. Cysview efficacy assessed the proportion of patients with malignancy detected only with blue light cystoscopy and not WL cystoscopy during the surveillance cystoscopic examination. The assessment was performed at patient level, and compared malignancy detected during the surveillance cystoscopic examination to the centralized histologic findings (the standard of truth) obtained in the OR examination.

Table 3 shows patient-level detection of malignancy suspected in cystoscopic surveillance stage that was verified in the OR stage (n=103). Among the 103 patients, 63 patients had malignancy confirmed: 49 patients had malignancy detected by both WL and BL; 1 patient had malignancy detected by WL only; and 13 patients had malignancy detected by BL only [12.6% with 95% CI (7%, 21%), p<0.0001]. Among these 103 patients, 40 patients had false positive detections: 17 patients had false positive detection by both WL and BL; 3 patients had false positive detection by WL only; and 20 patients had false positive detection by BL only.

**Table 3: Patient Level Malignancy Detection Suspected in BL Cystoscopic Surveillance and Verified in the OR**

	Detected by Both WL and BL	Detected by WL only	Detected by BL only	Total
True Positive	49	1	13	63
False Positive	17	3	20	40
Total	66	4	33	103

\* Exact test comparison of the proportion to a threshold value of 0.5%

Among 26 patients with confirmed CIS malignancy, 9 patients had CIS malignancy detected by BL only and 17 patients had CIS malignancy detected by both WL and BL.

In the same study, there were 315 lesions detected during the cystoscopy in the OR. Table 4 shows the detection of lesions by type of malignancy.

**Table 4: Lesion Detection by Type of Malignancy as Verified in the OR**

Malignancy Type	Detected by Both WL & BL	Detected by WL Only	Detected by BL Only
CIS, n = 43	24	3	16
Ta, n = 94	61	9	24
T1, n = 10	7	0	3
T2 – T4, n = 5	5	0	0
PUNLMP** n=3	2	0	1
False positive n=160	65	22	73
Total number of lesions	164	34	117

\*\* papillary urothelial neoplasm of low malignant potential

## 16 HOW SUPPLIED/STORAGE AND HANDLING

Cysview is supplied as a kit labeled Cysview (hexaminolevulinatate HCl) Kit for Intravesical Solution, 100 mg. The kit may be supplied as two options; with or without a vial adapter, and contains:

### Cysview kit with a vial adapter

- Cysview (hexaminolevulinatate hydrochloride) for Intravesical Solution, 100 mg, as a powder in a 10 mL clear glass vial.
- One plastic prefilled syringe of DILUENT for Cysview, 50 mL.
- One vial adapter for use during reconstitution. The vial adapter is either a "West Vented Vial Adapter" or a "West Mixject Dispensing Pin".
- One Luer Lock catheter adapter (to connect the syringe containing the reconstituted solution of Cysview to the urethral catheter for bladder instillation of Cysview).

NDC 10511-3001-2

### Cysview kit without a vial adapter

- Cysview (hexaminolevulinatate hydrochloride) for Intravesical Solution, 100 mg, as a powder in a 10 mL clear glass vial.
- One plastic prefilled syringe of DILUENT for Cysview, 50 mL.
- One Luer Lock catheter adapter (to connect the syringe containing the reconstituted solution of Cysview to the urethral catheter for bladder instillation of Cysview).

NDC 10511-3001-3

## Storage

Store Cysview (hexaminolevulinatate hydrochloride) Kit for Intravesical Solution at 20°-25°C (68°-77°F); excursions are permitted to 15°-30°C (59°-86°F). Do not use beyond the expiry date printed on the carton.

Use the solution of Cysview shortly after reconstitution. If unable to use within this time period, the reconstituted solution can be stored under refrigeration at 2°-8°C (36°-46°F) for up to 2 hours in the labeled syringe.

## 17 PATIENT COUNSELING INFORMATION

Ask patients if they have:

- a diagnosis or a family history of porphyria,
- allergy to aminolevulinic acid or prior exposure to Cysview,
- gross hematuria,
- had BCG immunotherapy or chemotherapy within the bladder.

Inform patients that Cysview should be retained in the bladder for 1 hour from instillation of Cysview to the start of the cystoscopic procedure. If the patient cannot hold Cysview for 1 hour but needs to void and expel Cysview from the bladder, he or she may void and should then inform a healthcare professional [see *Dosage and Administration* (2)].

Distributed by Photocure Inc. Princeton, NJ 08540 U.S.A.



Cysview and BLC are registered trademarks of Photocure ASA with registration numbers 4021232 and 5461301, respectively.

Photocure and the Photocure logo are registered trademarks of Photocure ASA.

© 2019 Photocure ASA – All rights reserved.