

Datalogic ADC, Inc.  
959 Terry Street  
Eugene, Oregon 97402  
USA  
Telephone: (541) 683-5700  
Fax: (541) 345-7140

©2007-2015 Datalogic, Inc.

An Unpublished Work - All rights reserved. No part of the contents of this documentation or the procedures described therein may be reproduced or transmitted in any form or by any means without prior written permission of Datalogic ADC, Inc. or its subsidiaries or affiliates ("Datalogic" or "Datalogic ADC"). Owners of Datalogic products are hereby granted a non-exclusive, revocable license to reproduce and transmit this documentation for the purchaser's own internal business purposes. Purchaser shall not remove or alter any proprietary notices, including copyright notices, contained in this documentation and shall ensure that all notices appear on any reproductions of the documentation.

Should future revisions of this manual be published, you can acquire printed versions by contacting your Datalogic representative. Electronic versions may either be downloadable from the Datalogic website (www.datalogic.com) or provided on appropriate media. If you visit our website and would like to make comments or suggestions about this or other Datalogic publications, please let us know via the "Contact Datalogic" page.

#### DISCLAIMER

Datalogic has taken reasonable measures to provide information in this manual that is complete and accurate, however, Datalogic reserves the right to change any specification at any time without prior notice. Datalogic and the Datalogic logo are registered trademarks of Datalogic S.p.A. in many countries, including the U.S.A. and the E.U. All other trademarks and trade names referred to herein are property of their respective owners.

#### SERVICE AND SUPPORT

Datalogic provides several services as well as technical support through its website. Log on to [www.datalogic.com](http://www.datalogic.com) and click on the links indicated for further information including:

#### PRODUCTS

Search through the links to arrive at your product page where you can download specific **Manuals and Software & Utilities** including:

- **Datalogic Aladdin™** a multi-platform utility program that allows device configuration using a PC. It provides RS-232 interface configuration as well as configuration barcode printing.

#### SERVICE & SUPPORT

- **Technical Support** - Product documentation and programming guides and Technical Support Department in the world
- **Service Programs** - Warranty Extensions and Maintenance Agreements
- **Repair Services** - Flat Rate Repairs and Return Material Authorization (RMA) Repairs.
- **Downloads** - Manuals & Documentation, Data Sheets, Product Catalogues, etc.

#### CONTACT US

Information Request Form and Sales & Service Networks

#### DECLARATION OF CONFORMITY



Datalogic ADC Srl, Via S. Vitalino, 13  
Lippo di Calderara di Reno (BO) 40012 Italy

EC-030  
Rev.: 4  
Pag.: 1 di 1

La presente dichiarazione di conformità è rilasciata sotto la responsabilità esclusiva di Datalogic ADC Srl per:

Cette déclaration de conformité est établie sous la seule responsabilité de Datalogic ADC Srl pour:  
Diese Konformitätserklärung wird unter der alleinigen Verantwortung des Datalogic ADC Srl erteilt für:  
Esta declaración de conformidad se expide bajo la exclusiva responsabilidad de Datalogic ADC Srl para:

#### HERON D1XX ; Barcode Reader

e tutti i suoi modelli  
and all its models  
et tous ses modèles  
und seine Modelle  
y todos sus modelos

sono conformi alle Direttive del Consiglio Europeo sottolencate:  
are in conformity with the requirements of the European Council Directives listed below:  
sont conformes aux spécifications des Directives de l'Union Européenne ci-dessous:  
den nachstehenden angeführten Direktiven des Europäischen Rats:  
cumple con los requisitos de las Directivas del Consejo Europeo, según la lista siguiente:

2004/108/EC - EMC Directive  
2011/65/EU - RoHS Directive

Basate sulle legislazioni degli Stati membri in relazione alla compatibilità elettromagnetica ed alla sicurezza dei prodotti.  
On the approximation of the laws of Member States relating to electromagnetic compatibility and product safety.

Basée sur la législation des Etats membres relative à la compatibilité électromagnétique et à la sécurité des produits.  
Über die Annäherung der Gesetze der Mitgliedsstaaten in bezug auf elektromagnetische Verträglichkeit und Produktsicherheit entsprechen.

Basado en la aproximación de las leyes de los Países Miembros respecto a la compatibilidad electromagnética y las Medidas de seguridad relativas al producto.

Questa dichiarazione è basata sulla conformità dei prodotti alle norme seguenti:  
This declaration is based upon compliance of the products to the following standards:  
Cette déclaration repose sur la conformité des produits aux normes suivantes:  
Diese Erklärung basiert darauf, daß das Produkt den folgenden Normen entspricht:  
Esta declaración se basa en el cumplimiento de los productos con las siguientes normas:

EN 55022 (CLASS B ITE), SEPTEMBER 2006:  
AMENDMENT A1: OCTOBER 2007:

LIMITS AND METHODS OF MEASUREMENTS OF RADIO  
DISTURBANCE CHARACTERISTICS OF INFORMATION  
TECHNOLOGY EQUIPMENT

EN 55024, SEPTEMBER 1998:  
AMENDMENT A1:2001+A2:2003:

INFORMATION TECHNOLOGY EQUIPMENT  
IMMUNITY CHARACTERISTICS  
LIMITS AND METHODS OF MEASUREMENT

EN 50581, SEPTEMBER 2012:

TECHNICAL DOCUMENTATION FOR THE ASSESSMENT  
OF ELECTRICAL AND ELECTRONIC PRODUCTS WITH  
RESPECT TO THE RESTRICTION OF HAZARDOUS  
SUBSTANCES

Lippo di Calderara, March 29th, 2013

Ruggero Cacioppo  
Quality & Reliability Manager - Europe

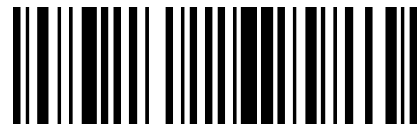
*Ruggero Cacioppo*



# Heron™

## D130 READERS

### QUICK REFERENCE GUIDE



820074014 (Rev. J) April 2015

#### CHINA ROHS STATEMENT

China RoHS	Polybrominated biphenyls (PBB)	Polybrominated diphenyl ethers (PBDE)	Hexavalent Chromium (Cr(VI))	Cadmium (Cd)	Mercury (Hg)	Lead (Pb)	部件名称
	多溴联苯	多溴二苯醚	有毒有害物质或元素	镉	汞	铅	电路板组件
							光学组件
							电缆
							Printed Circuit Board Assembly
							Assy. Module
							Cable

**O:** 代表此种部件的所有有害物质均低于《中华人民共和国信息产业部颁布的《电子信息产品中有害物质含量的限量要求》(SJ/T 11363-2006) 规定的限量。  
**X:** 代表此种部件所含的有害物质高于《中华人民共和国信息产业部颁布的《电子信息产品中有害物质含量的限量要求》(SJ/T 11363-2006) 规定的限量。

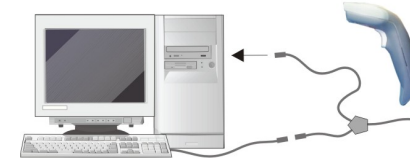


#### CONNECTIONS

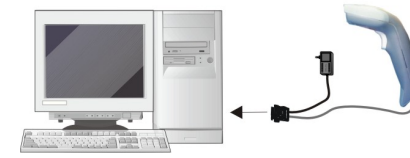
##### USB



##### WEDGE



##### RS-232



##### PEN



#### COMPLIANCE

##### LED CLASS

Class 1 LED product.

This product conforms to EN60825-1:2001.

##### FCC COMPLIANCE

Modifications or changes to this equipment without the expressed written approval of Datalogic could void the authority to use the equipment.

This device complies with PART 15 of the FCC Rules. Operation is subject to the following two conditions: (1) This device may not cause harmful interference, and (2) this device must accept any interference received, including interference which may cause undesired operation.

This equipment has been tested and found to comply with the limits for a Class A digital device, pursuant to part 15 of the FCC Rules. These limits are designed to provide reasonable protection against harmful interference when the equipment is operated in a commercial environment. This equipment generates, uses, and can radiate radio frequency energy and, if not installed and used in accordance with the instruction manual, may cause harmful interference to radio communications. Operation of this equipment in a residential area is likely to cause harmful interference in which case the user will be required to correct the interference at his own expense.

##### POWER SUPPLY

This device is intended to be connected to a UL Listed/CSA Certified computer which supplies power directly to the reader or else be supplied by a UL Listed/CSA Certified Power Unit marked "Class 2" or LPS power source rated 5 V, minimum 180 mA, which supplies power directly to the reader via the power connector of the cable.

##### WEEE COMPLIANCE



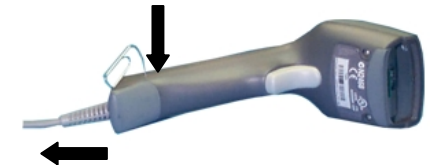
For information about the disposal of Waste Electrical and Electronic Equipment (WEEE), please refer to the website at [www.datalogic.com](http://www.datalogic.com).

##### CUSTOMS UNION

The CU conformity certification has been achieved; this allows the Product to bear the Eurasian mark of conformity.



#### DISCONNECTING THE CABLE



#### PATENTS

See [www.patents.datalogic.com](http://www.patents.datalogic.com) for patent list

This product is covered by one or more of the following patents:

Utility patents: EP0789315B1, EP0851378B1, EP0895175B1, EP0926620B1, EP0997760B1, EP1128315B1, EP1164536B1, EP1205871B1, EP1205873B1, EP1396811B1, EP1413971B1, US5992740, US6260764, US6305606, US6712271, US6808114, US6834806, US6871785, US6997385, US7075663, US7387246, USRE41349.

#### DATALOGIC ADC LIMITED FACTORY WARRANTY

##### Warranty Coverage

Datalogic warrants this product against defects in workmanship and materials, for a period of 5 years from the date of shipment, provided that the product is operated under normal and proper conditions.

Datalogic ADC ("Datalogic") hardware products are warranted against defects in material and workmanship under normal and proper use. The liability of Datalogic under this warranty is limited to furnishing the labor and parts necessary to remedy any defect covered by this warranty and restore the product to its normal operating condition. Repair or replacement of product during the warranty does not extend the original warranty term. Products are sold on the basis of specifications applicable at the time of manufacture and Datalogic has no obligation to modify or update products once sold.

If Datalogic determines that a product has defects in material or workmanship, Datalogic shall, at its sole option repair or replace the product without additional charge for parts and labor, or credit or refund the defective products duly returned to Datalogic. To perform repairs, Datalogic may use new or reconditioned parts, components, subassemblies or products that have been tested as meeting applicable specifications for equivalent new material and products. Customer will allow Datalogic to scrap all parts removed from the repaired product. The warranty period shall extend from the date of shipment from Datalogic for the duration published by Datalogic for the product at the time of purchase (Warranty period). Datalogic warrants repaired hardware devices against defects in workmanship and materials on the repaired assembly for a 90 day period starting from the date of shipment of the repaired product from Datalogic or until the expiration of the original warranty period, whichever is longer. Datalogic does not guarantee, and it is not responsible for, the maintenance of, damage to, or loss of configurations, data, and applications on the repaired units and at its sole discretion can return the units in the "factory default" configuration or with any software or firmware update available at the time of the repair (other than the firmware or software installed during the manufacture of the product). Customer accepts responsibility to maintain a back up copy of its software and data.

##### Warranty Claims Process

In order to obtain service under the Factory Warranty, Customer must notify Datalogic of the claimed defect before the expiration of the applicable Warranty period and obtain from Datalogic a return authorization number (RMA) for return of the product to a designated Datalogic service center. If Datalogic determines Customer's claim is valid, Datalogic will repair or replace product without additional charge for parts and labor. Customer shall be responsible for packaging and shipping the product to the designated Datalogic service center, with shipping charges prepaid. Datalogic shall pay for the return of the product to Customer if the shipment is to a location within the country in which the Datalogic service center is located. Customer shall be responsible for paying all shipping charges, duties, taxes, and any other charges for products returned to any other locations. Failure to follow the applicable RMA policy, may result in a processing fee. Customer shall be responsible for return shipment expenses for products which Datalogic, at its sole discretion, determines are not defective or eligible for warranty repair.

##### Warranty Exclusions

The Datalogic Factory Warranty shall not apply to:

- any product which has been damaged, modified, altered, repaired or upgraded by other than Datalogic service personnel or its authorized representatives;
- any claimed defect, failure or damage which Datalogic determines was caused by faulty operations, improper use, abuse, misuse, wear and tear, negligence, improper storage or use of parts or accessories not approved or supplied by Datalogic;
- any claimed defect or damage caused by the use of product with any other instrument, equipment or apparatus;
- any claimed defect or damage caused by the failure to provide proper maintenance, including but not limited to cleaning the upper window in accordance with product manual;
- any defect or damage caused by natural or man-made disaster such as but not limited to fire, water damage, floods, other natural disasters, vandalism or abusive events that would cause internal and external component damage or destruction of the whole unit, consumable items;
- any damage or malfunctioning caused by non-restoring action as for example firmware or software upgrades, software or hardware reconfigurations etc.;
- the replacement of upper window/cartridge due to scratching, stains or other degradation and/or
- any consumable or equivalent (e.g., cables, power supply, batteries, keypads, touch screen, triggers etc.).

##### No Assignment

Customer may not assign or otherwise transfer its rights or obligations under this warranty except to a purchaser or transferee of product. No attempted assignment or transfer in violation of this provision shall be valid or binding upon Datalogic.

DATALOGIC'S LIMITED WARRANTY IS IN LIEU OF ALL OTHER WARRANTIES, EXPRESS OR IMPLIED, ORAL OR WRITTEN, STATUTORY OR OTHERWISE, INCLUDING, WITHOUT LIMITATION, ANY IMPLIED WARRANTIES OF MERCHANTABILITY, FITNESS FOR A PARTICULAR PURPOSE, OR NON-INFRINGEMENT. DATALOGIC SHALL NOT BE LIABLE FOR ANY DAMAGES SUSTAINED BY CUSTOMER ARISING FROM DELAYS IN THE REPLACEMENT OR REPAIR OF PRODUCTS UNDER THE ABOVE. THE REMEDY SET FORTH IN THIS WARRANTY STATEMENT IS THE CUSTOMER'S SOLE AND EXCLUSIVE REMEDY FOR WARRANTY CLAIMS. UNDER NO CIRCUMSTANCES WILL DATALOGIC BE LIABLE TO CUSTOMER OR ANY THIRD PARTY FOR ANY LOST PROFITS, OR ANY INCIDENTAL, CONSEQUENTIAL IN-DIRECT, SPECIAL OR CONTINGENT DAMAGES REGARDLESS OF WHETHER DATALOGIC HAD ADVANCE NOTICE OF THE POSSIBILITY OF SUCH DAMAGES.

##### Risk of Loss

Customer shall bear risk of loss or damage for product in transit to Datalogic. Datalogic shall assume risk of loss or damage for product in Datalogic's possession. In the absence of specific written instructions for the return of product to Customer, Datalogic will select the carrier, but Datalogic shall not thereby assume any liability in connection with the return shipment.

## DEFAULT VALUES

### USB-KBD DEFAULT SETTINGS

USA keyboard, FIFO enabled, inter-character and inter-code delays disabled, control character emulation = ctrl+shift+key.

DATA FORMAT: code identifier disabled, no field adjustment, code length not transmitted, no header, terminator = ENTER, character replacement disabled.

### RS232 Standard DEFAULT SETTINGS

9600 baud, no parity, 8 data bits, 1 stop bit, no handshaking, delay disabled, rx timeout 5 sec., ack/nack disabled, FIFO enabled, serial trigger lock disabled.

DATA FORMAT: code identifier disabled, no field adjustment, code length not transmitted, no header, terminator = CR-LF, character replacement disabled.

### WEDGE DEFAULT SETTINGS

USA keyboard, caps lock off, caps lock auto-recognition enabled, num lock unchanged, inter-character and inter-code delays disabled, control character emulation = ctrl+shift+key.

DATA FORMAT: code identifier disabled, no field adjustment, code length not transmitted, no header, terminator = ENTER, character replacement disabled.

### PEN DEFAULT SETTINGS

interpret mode, conversion to code 39 disabled, output level normal, idle level normal, minimum output pulse 600 µs, overflow medium, inter-block delay disabled.

### CODE SELECTION

#### Enabled codes

- EAN 8/EAN 13 / UPC A/UPC E without ADD ON check digit transmitted, no conversions
- Interleaved 2/5 check digit control and transmission, variable length code; 4-99 characters
- Standard Code 39 no check digit control, variable length code; 1-99 characters
- Code 128 variable length code; 1-99 characters

#### Disabled codes

EAN 128, ISBT128, Code 93, Codabar, pharmaceutical codes, MSI, Plessey, Telepen, Delta IBM, Code 11, Code 16K, Code 49, RSS Codes

## TECHNICAL FEATURES

### Heron™ D130

Electrical Features	
Power Supply	5 Vdc ± 5%
Consumption:	
Maximum	180 mA @ 5 Vdc
Operating	155 mA @ 5 Vdc
Sleep mode/USB Suspend	< 2.5 mA @ 5 Vdc
Max. Scan Rate	256 scans/sec
Reading Indicators	LED, Good Read Spot, Beeper
Optical Features	
Sensor	CCD solid state (2048 pixels)
Illuminator	LED array
Wavelength	630 ~ 670 nm
Max. LED Output Power	0.31 mW
LED Safety Class	Class 1 EN 60825-1
Reading Field	2 ~ 27 cm (20 mils)
Max. Resolution	0.10 mm (4 mils)
PCS (Datalogic Test Chart)	min. 15%
Environmental Features	
Working Temperature	0 °C to + 55 °C (+32° to +131 °F)
Storage Temperature	-20 °C to + 70 °C (-4° to +158 °F)
Humidity	90% non condensing
Drop Resistance	IEC 68-2-32 Test ED 1.8 m (5.9 ft)
ESD Protection	16 KV
Protection Class	IP30
Mechanical Features	
Weight (without cable)	about 160 g (5.6 oz)
Cable Length	2 m (6 ft 6 in)

## RESTORE DEFAULT

### RESTORE DEFAULT



To change the defaults refer to the HHD II Software Configuration Manual, or to the Datalogic Aladdin Configuration program, both downloadable from the website.

## INTERFACE SELECTION

Select one of the interface codes according to your application.

### USB INTERFACE SELECTION

#### USB-KBD



#### USB-KBD - ALT-mode



#### USB-COM \*



#### USB-IBM-Hand Held



\* When configuring USB-COM, the relevant files and drivers must be installed from the USB Device Installation software, which can be downloaded from the web site <http://www.datalogic.com>.

### PEN EMULATION INTERFACE SELECTION

#### PEN



### RS-232 INTERFACE SELECTION

#### RS-232 Standard



#### Nixdorf Mode A



#### Fujitsu



#### ICL Mode



### WEDGE INTERFACE SELECTION

#### Wedge IBM AT or PS/2 PCs



#### PC Notebook



#### PC Notebook - ALT mode



#### IBM AT - ALT mode



Many other interfaces are supported and can be selected from the HHD II Software Configuration Manual available online at [datalogic.com](http://datalogic.com). Other supported interfaces:

**USB:** USB-IBM-Table Top; USB-KBD-APPLE

**WEDGE:** IBM XT; IBM SURE1; IBM Terminal 3153; IBM Terminals 31xx, 32xx, 34xx, 37xx; VT220 style Keyboards; Digital Terminal VT2xx/VT3xx/VT4xx; APPLE ADB Bus

## KEYBOARD NATIONALITY

USB-KBD and Wedge users should select one of the following wedge keyboard nationality codes according to your keyboard.

#### Belge



#### Deutsch



#### English



#### Español



#### Français



#### Italiano



#### Japanese



#### Svenskt



#### USA (Default)



## DATA FORMAT TERMINATORS

For your convenience, some common Terminators are given below. For other Header/Terminator selections, Data Format and Advanced Data Format parameters, see the HHD II Software Configuration Manual.

#### CR-LF



#### Enter



#### Tab



#### None



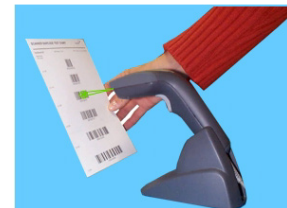
## OPERATING TEST

Read the TEST code below.

#### Code 128



## USING HERON™ SERIES READERS



Heron™ readers automatically scan barcodes **at a distance**. Simply aim and pull the trigger. Code scanning is performed along the center of the light bar emitted from the reading window. This bar must cover the entire code.

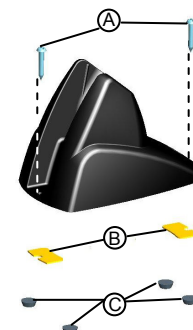
Successful scanning is obtained by tilting the scanner with respect to the barcode to avoid direct reflections, which impair the reading performance (see the figure above).

Successful reading is signaled by an audible tone plus a good-read green spot.

Once the reader is correctly inserted into the stand, it is immediately ready to automatically read any code present in its reading area without pressing the trigger. Furthermore, a green aiming light is continuously emitted to facilitate the positioning of the barcode to be read (see the figure above).

To guarantee single code reading, same code consecutive reading requires the code to be removed from the reading area (no decoding) before the reader will accept the same code.

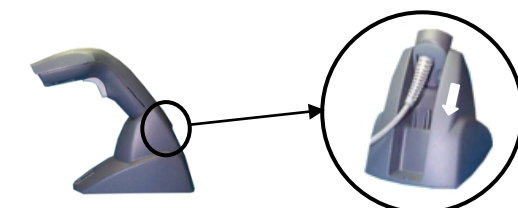
## STAND INSTALLATION



The stand can be mounted by using self-tapping screws, double sided adhesive strips or rubber feet:

- Mount the stand directly to the surface using the self-tapping screws;
- Carefully clean the bottom surface of the stand and the table surface. Remove the protective plastic from one side of the adhesive strips and stick them on the stand bottom. Then, remove the plastic from the other side of the strips and affix the stand to the table;
- Carefully clean the bottom surface of the stand, remove the protective film from the rubber feet and stick them in the corresponding housing on the bottom surface. It is also possible to affix an optional metal plate.

## INSERTION INTO STAND



Pair the reader to the stand, taking care to insert the handle into the stand clip (see figure above). Correct insertion will be signaled by a beep; then, the reader will be ready to read barcodes.

