

## L7 SUBWOOFERS



- 11S15L72 (2 DVC)  
11S15L74 (4 DVC)
- 15" Solo-Baric L7 Subwoofer
  - 2000W Peak, 1000W RMS Max Rec Power
  - 89.4dB Sensitivity
  - 18-100Hz Frequency Response
  - Heat-sinking cast aluminum basket
  - Injection-molded SoloKon™
  - 8 11/16" Mounting Depth

MSRP \$499.95



- 11S12L72 (2 DVC)  
11S12L74 (4 DVC)
- 12" Solo-Baric L7 Subwoofer
  - 1500W Peak, 750W RMS Max Rec Power
  - 88.6dB Sensitivity
  - 20-100Hz Frequency Response
  - Heat-sinking cast aluminum basket
  - Injection-molded SoloKon™
  - 6 11/16" Mounting Depth

MSRP \$399.95



- 11S10L72 (2 DVC)  
11S10L74 (4 DVC)
- 10" Solo-Baric L7 Subwoofer
  - 1200W Peak, 600W RMS Max Rec Power
  - 86.8dB Sensitivity
  - 24-100Hz Frequency Response
  - Heat-sinking cast aluminum basket
  - Injection-molded SoloKon™
  - 6 1/4" Mounting Depth

MSRP \$349.95



- 11S8L72 (2 DVC)  
11S8L74 (4 DVC)
- 8" Solo-Baric L7 Subwoofer
  - 900W Peak, 450W RMS Max Rec Power
  - 83.6dB Sensitivity
  - 28-100Hz Frequency Response
  - Heat-sinking cast aluminum basket
  - Injection-molded SoloKon™
  - 4 3/4" Mounting Depth

MSRP \$299.95

## COMPR™ SUBWOOFERS



- 40CWR152 (2 DVC)  
40CWR154 (4 DVC)
- 15" Compr™ Subwoofer
  - 2400W Peak, 1200W RMS Max Rec Power
  - 89.2dB Sensitivity
  - Injection-molded polypropylene cone and tough Santoprene® surround
  - Large-diameter, progressive-roll spider with high-strength Spiralead™ tinsel leads
  - 7 7/8" Mounting Depth

MSRP \$299.95



- 40CWR122 (2 DVC)  
40CWR124 (4 DVC)
- 12" Compr™ Subwoofer
  - 1600W Peak, 800W RMS Max Rec Power
  - 86.9dB Sensitivity
  - Injection-molded polypropylene cone and tough Santoprene® surround
  - Large-diameter, progressive-roll spider with high-strength Spiralead™ tinsel leads
  - 5 3/4" Mounting Depth

MSRP \$179.95



- 40CWR102 (2 DVC)  
40CWR104 (4 DVC)
- 10" Compr™ Subwoofer
  - 1200W Peak, 600W RMS Max Rec Power
  - 83.6dB Sensitivity
  - Injection-molded polypropylene cone and tough Santoprene® surround
  - Large-diameter, progressive-roll spider with high-strength Spiralead™ tinsel leads
  - 5 3/16" Mounting Depth

MSRP \$149.95



- 40CWR82 (2 DVC)  
40CWR84 (4 DVC)
- 8" Compr™ Subwoofer
  - 800W Peak, 400W RMS Max Rec Power
  - 82.8dB Sensitivity
  - Injection-molded polypropylene cone and tough Santoprene® surround
  - Large-diameter, progressive-roll spider with high-strength Spiralead™ tinsel leads
  - 4 1/16" Mounting Depth

MSRP \$119.95

## COMPRT™ SUBWOOFERS



- 40CWRT121 (1 DVC)  
40CWRT122 (2 DVC)
- 12" CompRT™ Shallow Mount Subwoofer
  - 1600W Peak, 800W RMS Max Rec Power
  - 87.1dB Sensitivity
  - Large-diameter, progressive-roll spider
  - Injection-molded polypropylene cone and tough Santroprene® surround that interlocks with front gasket
  - 3 3/4" Mounting Depth

MSRP \$229.95



- 40CWRT101 (1 DVC)  
40CWRT102 (2 DVC)
- 10" CompRT™ Shallow Mount Subwoofer
  - 1200W Peak, 600W RMS Max Rec Power
  - 87.2dB Sensitivity
  - Large-diameter, progressive-roll spider
  - Injection-molded polypropylene cone and tough Santroprene® surround that interlocks with front gasket
  - 3 7/16" Mounting Depth

MSRP \$199.95



- 40CWRT81 (1 DVC)  
40CWRT82 (2 DVC)
- 8" CompRT™ Shallow Mount Subwoofer
  - 800W Peak, 400W RMS Max Rec Power
  - 84.8dB Sensitivity
  - Large-diameter, progressive-roll spider
  - Injection-molded polypropylene cone and tough Santroprene® surround that interlocks with front gasket
  - 2 11/16" Mounting Depth

MSRP \$179.95



- 40CWRT671 (1 DVC)  
40CWRT672 (2 DVC)
- 6" CompRT™ Shallow Mount Subwoofer
  - 300W Peak, 150W RMS Max Rec Power
  - 84.6dB Sensitivity
  - Large-diameter, progressive-roll spider
  - Injection-molded polypropylene cone and tough Santroprene® surround that interlocks with front gasket
  - 2 3/4" Mounting Depth

MSRP \$149.95

## COMPS™ SUBWOOFERS



- 40CWS152 (2 SVC)  
40CWS154 (4 SVC)
- 15" CompS™ Subwoofer
  - 1200W Peak, 600W RMS Max Rec Power
  - 90.3dB Sensitivity
  - 25-500Hz Frequency Response
  - Quad Venting™ includes vertical & horizontal slots under the cone, & venting in the pole piece
  - Rip-resistant, large-diameter spider
  - 7" Mounting Depth

MSRP \$179.95



- 40CWS122 (2 SVC)  
40CWS124 (4 SVC)
- 12" CompS™ Subwoofer
  - 600W Peak, 300W RMS Max Rec Power
  - 88.3dB Sensitivity
  - 27-500Hz Frequency Response
  - Quad Venting™ includes vertical & horizontal slots under the cone, & venting in the pole piece
  - Rip-resistant, large-diameter spider
  - 5 3/8" Mounting Depth

MSRP \$129.95



- 40CWS102 (2 SVC)  
40CWS104 (4 SVC)
- 10" CompS™ Subwoofer
  - 600W Peak, 300W RMS Max Rec Power
  - 86.2dB Sensitivity
  - 30-500Hz Frequency Response
  - Quad Venting™ includes vertical & horizontal slots under the cone, & venting in the pole piece
  - Rip-resistant, large-diameter spider
  - 4 13/16" Mounting Depth

MSRP \$119.95



- 40CWS82 (2 SVC)  
40CWS84 (4 SVC)
- 8" CompS™ Subwoofer
  - 400W Peak, 200W RMS Max Rec Power
  - 85.6dB Sensitivity
  - 30-500Hz Frequency Response
  - Quad Venting™ includes vertical & horizontal slots under the cone, & venting in the pole piece
  - Rip-resistant, large-diameter spider
  - 3 7/8" Mounting Depth

MSRP \$99.95

## COMP D™ SUBWOOFERS



40CWD152 (2 DVC)  
40CWD154 (4 DVC)

- 15" CompD™ Subwoofer
- 1200W Peak, 600W RMS Max Rec Power
- 90.3dB Sensitivity
- Quad Venting™ for efficient cooling and long life
- Rip-resistant, large-diameter spider
- 7" Mounting Depth

MSRP \$179.95



40CWD122 (2 DVC)  
40CWD124 (4 DVC)

- 12" CompD™ Subwoofer
- 600W Peak, 300W RMS Max Rec Power
- 88.3dB Sensitivity
- Quad Venting™ for efficient cooling and long life
- Rip-resistant, large-diameter spider
- 5 3/8" Mounting Depth

MSRP \$129.95



40CWD102 (2 DVC)  
40CWD104 (4 DVC)

- 10" CompD™ Subwoofer
- 600W Peak, 300W RMS Max Rec Power
- 86.2dB Sensitivity
- Quad Venting™ for efficient cooling and long life
- Rip-resistant, large-diameter spider
- 4 13/16" Mounting Depth

MSRP \$119.95



40CWD82 (2 DVC)  
40CWD84 (4 DVC)

- 8" CompD™ Subwoofer
- 400W Peak, 200W RMS Max Rec Power
- 85.6dB Sensitivity
- Quad Venting™ for efficient cooling and long life
- Rip-resistant, large-diameter spider
- 3 7/8" Mounting Depth

MSRP \$99.95

## WOOFER GRILLES



08GL715  
- 15" L7 Subwoofer Grille

MSRP \$45.95

08GL710  
- 10" L7 Subwoofer Grille

MSRP \$29.95



GR150  
- 15" Round Subwoofer Grille

MSRP \$39.95

GR100  
- 10" Round Subwoofer Grille

MSRP \$25.95

GR650  
- 6.5" Round Subwoofer Grille

MSRP \$19.95

08GL712  
- 12" L7 Subwoofer Grille

MSRP \$35.95

08GL78  
- 8" L7 Subwoofer Grille

MSRP \$25.95

GR120  
- 12" Round Subwoofer Grille

MSRP \$29.95

GR80  
- 8" Round Subwoofer Grille

MSRP \$19.95

## POWERED SUBWOOFERS



### 11PES10C

- 10" Solo Classic Sealed Sub Station
- 450W RMS Class-D Power Amplifier
- 25-200Hz Frequency Response
- 12dB/ Octave Low Pass at 50-200Hz Crossover
- Remote adjustable gain, crossover, 0-180° phase reversal and +18dB bass boost for precise bass tuning
- 18" W x 13 1/4" H x 8 1/4" D

MSRP \$579.95



### 11PECVR12

- 12" CompVR Vented Sub Station
- 400W RMS Class-D Power Amplifier
- 25-200Hz Frequency Response
- 12dB/ Octave Low Pass at 50-200Hz Crossover
- Remote adjustable gain, crossover, 0-180° phase reversal and +18dB bass boost for precise bass tuning
- 17 1/16" W x 16" H x 14 1/2" D

MSRP \$449.95



### 11PHD12

- Dual 12" Bass Station
- 200W RMS Class-D Power Amplifier
- 25-120Hz Frequency Response
- 12dB/ Octave Low Pass at 50-120Hz Crossover
- Remote adjustable gain, crossover, 0-180° phase reversal and bass boost for precise bass tuning
- Velcro® mounting straps
- 31 1/2" W x 14 5/16" H x 11 1/4" D

MSRP \$579.95



### 11PH12

- 12" Bass Station
- 100W RMS Class-D Power Amplifier
- 25-120Hz Frequency Response
- 12dB/ Octave Low Pass at 50-120Hz Crossover
- Remote adjustable gain, crossover, 0-180° phase reversal and bass boost for precise bass tuning
- Velcro® mounting straps
- 16 13/16" W x 14 5/16" H x 11 1/4" D

MSRP \$399.95



### 11PT10CA

- 10" Bass Station
- 100W RMS Class-D Power Amplifier
- 25-120Hz Frequency Response
- 12dB/ Octave Low Pass at 50-120Hz Crossover
- Remote adjustable gain, crossover, 0-180° phase reversal and bass boost for precise bass tuning
- Velcro® mounting straps
- 19 5/16" W x 12 13/16" H x 7 11/16" D

MSRP \$299.95



### 11PT8

- 8" Bass Station
- 100W RMS Class-D Power Amplifier
- 25-120Hz Frequency Response
- 12dB/ Octave Low Pass at 50-120Hz Crossover
- Remote adjustable gain, crossover, 0-180° phase reversal and bass boost for precise bass tuning
- Velcro® mounting straps
- 16 15/16" W x 11 1/4" H x 6 5/8" D

MSRP \$279.95



### 11HS8

- 8" Hideaway
- 150W RMS Power Amplifier
- 25-120Hz Frequency Response
- 12dB/ Octave Low Pass at 50-120Hz Crossover
- KickEQ boost variable to +6dB @ 40Hz
- Nylon straps with Velcro® fasteners
- 9 3/8" W x 3 1/8" H x 13 7/8" D

MSRP \$349.95

## ENCLOSURES



### 11DS12L72

- Dual 12" L7 Loaded Enclosure
- 2 Ohm Impedance
- 3000W Peak/1500W RMS Power
- 89.9dB Sensitivity
- Carbon fiber look vinyl face
- Heavy duty gray carpet
- 32 3/8" W x 16" H x 19 9/16" D

MSRP \$899.95



### 11VS12L72

- Single 12" L7 Loaded Enclosure
- 2 Ohm Impedance
- 1500W Peak/750W RMS Power
- 86.9dB Sensitivity
- Carbon fiber look vinyl face
- Heavy duty gray carpet
- 18 3/4" W x 16" H x 18" D

MSRP \$499.95



### 11TS10L72

- Single 10" L7 Thin-Profile Loaded Enclosure
- 2 Ohm Impedance
- 1200W Peak/600W RMS Power
- 85.9dB Sensitivity
- Carbon fiber look vinyl face
- Heavy duty gray carpet
- 21 1/2" W x 15" H x 10" D

MSRP \$399.95

## ENCLOSURES



### 40DCWR122

- Dual 12" CompR Loaded Enclosure
- 2 Ohm Impedance
- 3200W Peak/1600W RMS Power
- 98dB Sensitivity
- Sturdy MDF boxes with rounded corners covered in plush, charcoal-gray carpeting
- 31 7/8" W x 16" H x 13 15/16" D

MSRP \$449.95



### 40DCWR102

- Dual 10" CompR Loaded Enclosure
- 2 Ohm Impedance
- 2400W Peak/1200W RMS Power
- 96.5dB Sensitivity
- Sturdy MDF boxes with rounded corners covered in plush, charcoal-gray carpeting
- 28 1/16" W x 14" H x 16 7/16" D

MSRP \$399.95



### 40VCWR122

- Single 12" CompR Loaded Enclosure
- 2 Ohm Impedance
- 1600W Peak/800W RMS Power
- 95dB Sensitivity
- Sturdy MDF boxes with rounded corners covered in plush, charcoal-gray carpeting
- 17 1/2" W x 16" H x 14 5/8" D

MSRP \$299.95



### 40TCWRT122 (2 OHMS) 40TCWRT124 (4 OHMS)

- Single 12" CompRT Loaded Enclosure
- 1600W Peak/800W RMS Power
- 98dB Sensitivity
- Tough, sealed-design sturdy MDF boxes with rounded corners covered in plush, charcoal-gray carpeting
- 21 1/2" W x 13 1/4" H x 6 3/4" D

MSRP \$299.95



### 40TCWRT102 (2 OHMS) 40TCWRT104 (4 OHMS)

- Single 10" CompRT Loaded Enclosure
- 1200W Peak/600W RMS Power
- 96.5dB Sensitivity
- Tough, sealed-design sturdy MDF boxes with rounded corners covered in plush, charcoal-gray carpeting
- 19 5/16" W x 11 7/16" H x 6 5/16" D

MSRP \$279.95



### 40TCWRT82 (2 OHMS) 40TCWRT84 (4 OHMS)

- Single 8" CompRT Loaded Enclosure
- 800W Peak/400W RMS Power
- 85.5dB Sensitivity
- Tough, sealed-design sturdy MDF boxes with rounded corners covered in plush, charcoal-gray carpeting
- 9" W x 16 1/8" H x 5 3/8" D

MSRP \$249.95



### 40DCWS122

- Dual 12" CompS Loaded Enclosure
- 2 Ohm Impedance
- 1200W Peak/600W RMS Power
- 99.9dB Sensitivity
- Sturdy MDF boxes with rounded corners covered in plush, charcoal-gray carpeting
- 32 3/8" W x 16" H x 17 3/8" D

MSRP \$349.95

### 40DCWS102

- Dual 10" CompS Loaded Enclosure
- 2 Ohm Impedance
- 1200W Peak/600W RMS Power
- 98.4dB Sensitivity
- Sturdy MDF boxes with rounded corners covered in plush, charcoal-gray carpeting
- 28" W x 14" H x 16 3/8" D

MSRP \$329.95



### 40VCWS122 (2 OHMS) 40VCWS124 (4 OHMS)

- Single 12" CompS Loaded Enclosure
- 600W Peak/300W RMS Power
- 95.3dB Sensitivity
- Sturdy MDF boxes with rounded corners covered in plush, charcoal-gray carpeting
- 17 1/2" W x 16" H x 14 5/8" D

MSRP \$229.95



### 40TCWS102 (2 OHMS) 40TCWS104 (4 OHMS)

- Single Thin-Profile 10" CompS Loaded Enclosure
- 600W Peak/300W RMS Power
- 93.8dB Sensitivity
- Sturdy MDF boxes with rounded corners covered in plush, charcoal-gray carpeting
- 21 1/2" W x 15" H x 7 5/8" D

MSRP \$179.95

## IX SERIES AMPLIFIERS



### 11IX5002

- 2 Channel IX Series Amplifier
- 250W x 2 Ch @ 2 Ohm Stereo
- 500W @ 4 Ohm Bridged Mono
- 95dB Signal to Noise Ratio
- 20-20kHz Frequency Response
- Fully Featured in an Ultra-Compact Footprint
- KickEQ™ Boost with variable gain up to 18dB centered at 40Hz
- 7 7/8" W x 2 3/16" H x 9 3/8" L

MSRP \$449.95



### 11IX5004

- Multi Channel IX Series Amplifier
- 125W x 4 Ch @ 2 Ohm Stereo
- 250W x 2 Ch @ 4 Ohm Bridged Mono
- 98dB Signal to Noise Ratio
- 20-20kHz Frequency Response
- Fully Featured in an Ultra-Compact Footprint
- KickEQ™ Boost with variable gain up to 18dB centered at 40Hz
- 7 7/8" W x 2 3/16" H x 11 3/8" L

MSRP \$449.95



### 11IX10005

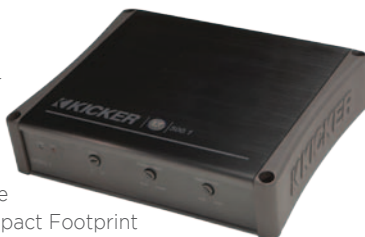
- Multi Channel IX Series Amplifier
- 125W x 4 Ch @ 2 Ohm Stereo
- 250W x 2 Ch @ 4 Ohm Bridged Mono
- 500W @ 2 Ohm Mono
- 98dB Signal to Noise Ratio
- 20-20kHz Frequency Response
- Fully Featured in an Ultra-Compact Footprint
- 7 7/8" W x 2 3/16" H x 11 3/8" L

MSRP \$699.95

### 11IX5001

- Mono-Block IX Series Amplifier
- 500W Class D Mono
- Remote Bass Included
- 95dB Signal to Noise Ratio
- 25-200Hz Frequency Response
- Fully Featured in an Ultra-Compact Footprint
- KickEQ™ Boost with variable gain up to 18dB centered at 40Hz
- 7 7/8" W x 2 3/16" H x 9 3/8" L

MSRP \$449.95



### 11IX10001

- Mono-Block IX Series Amplifier
- 1000W Class D Mono
- Remote Bass Included
- 95dB Signal to Noise Ratio
- 25-200Hz Frequency Response
- Fully Featured in an Ultra-Compact Footprint
- KickEQ™ Boost with variable gain up to 18dB centered at 40Hz
- 7 7/8" W x 2 3/16" H x 9 3/8" L

MSRP \$649.95



### 10IXSM

- Stacking Mount
- One Mounting Bracket and Mounting Hardware
- Compatible with IX Amplifiers

MSRP \$59.95



### 10IXSK

- Stacking Hardware
- Compatible with IX Amplifiers

MSRP \$19.95



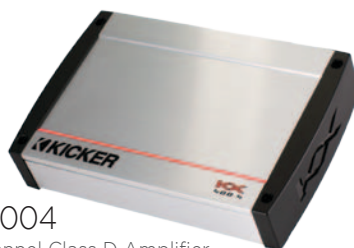
## KX SERIES AMPLIFIERS



### 40KX2002

- 2 Channel Class D Stereo Amplifier
- 100W x 2 Ch @ 2 Ohm Stereo
- 200W @ 4 Ohm Bridged Mono
- 95dB Signal to Noise Ratio
- 10-20kHz Frequency Response
- 8 5/16" W x 2 1/8" H x 8" L

MSRP \$199.95



### 40KX4004

- Multi Channel Class D Amplifier
- 100W x 4 Ch @ 2 Ohm Stereo
- 50W x 2 Ch @ 4 Ohm Bridged Mono
- 95dB Signal to Noise Ratio
- 10-20kHz Frequency Response
- 8 5/16" W x 2 1/8" H x 11 3/16" L

MSRP \$329.95



### 40KX8005

- Multi Channel Class D Amplifier
- 100W x 4 Ch @ 2 Ohm Stereo
- 50W x 2 Ch @ 4 Ohm Bridged Mono
- 400W x 1 Ch @ 2 Ohms Mono
- 95dB Signal to Noise Ratio
- 10-20kHz Frequency Response
- 8 5/16" W x 2 1/8" H x 12 3/4" L

MSRP \$549.95

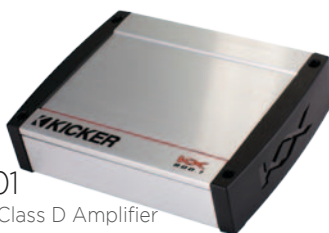
## KX SERIES AMPLIFIERS CONT.



### 40KX4001

- Monoblock Class D Amplifier
- 400W @ 2 Ohm Mono
- 95dB Signal to Noise Ratio
- 10-160Hz Frequency Response
- All feature FIT™ (Fail-Safe Integration Technology)
- 8 5/16" W x 2 1/8" H x 8" L

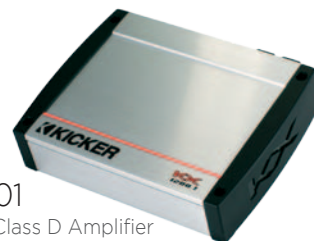
MSRP \$329.95



### 40KX8001

- Monoblock Class D Amplifier
- 800W @ 2 Ohm Mono
- 95dB Signal to Noise Ratio
- 10-160Hz Frequency Response
- All feature FIT™ (Fail-Safe Integration Technology)
- 8 5/16" W x 2 1/8" H x 9 9/16" L

MSRP \$479.95



### 40KX12001

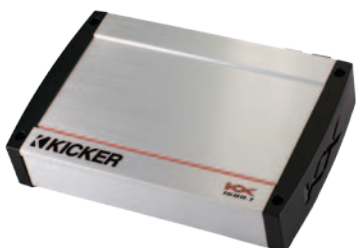
- Monoblock Class D Amplifier
- 1200W @ 2 Ohm Mono
- 95dB Signal to Noise Ratio
- 10-160Hz Frequency Response
- All feature FIT™ (Fail-Safe Integration Technology)
- 8 5/16" W x 2 1/8" H x 9 9/16" L

MSRP \$629.95

### 40KX16001

- Monoblock Class D Amplifier
- 1600W @ 2 Ohm Mono
- 95dB Signal to Noise Ratio
- 10-160Hz Frequency Response
- All feature FIT™ (Fail-Safe Integration Technology)
- 8 5/16" W x 2 1/8" H x 11 3/16" L

MSRP \$779.95



### 40KX24001

- Monoblock Class D Amplifier
- 2400W @ 2 Ohm Mono
- 95dB Signal to Noise Ratio
- 10-160Hz Frequency Response
- All feature FIT™ (Fail-Safe Integration Technology)
- 8 5/16" W x 2 1/8" H x 15 1/2" L

MSRP \$1129.95



## CX SERIES AMPLIFIERS

Vertical Mounting Option!



### 12CX3004

- Multi-Channel Amplifier
- 75W x 4 Ch @ 2 Ohm Stereo
- 95dB Signal to Noise Ratio
- 10-20k0Hz Frequency Response
- 7 3/16" W x 2 3/8" H x 12 7/16" L

MSRP \$229.95

Vertical Mounting Option!



### 12CX6005

- Multi-Channel Amplifier
- 75W x 4 Ch @ 2 Ohm Mono
- 95dB Signal to Noise Ratio
- 10-20k0Hz Frequency Response
- 7 3/16" W x 2 3/8" H x 12 7/16" L

MSRP \$449.95

Vertical Mounting Option!



### 12CX3001

- Monoblock Class D Amplifier
- 300W @ 2 Ohm Mono
- CXRC Remote Bass Capable
- 95dB Signal to Noise Ratio
- 25-200Hz Frequency Response
- 7 3/16" W x 2 3/8" H x 8 1/8" L

MSRP \$169.95

Vertical Mounting Option!



### 12CX6001

- Monoblock Class D Amplifier
- 600W @ 2 Ohm Mono
- CXRC Remote Bass Capable
- 95dB Signal to Noise Ratio
- 25-200Hz Frequency Response
- 7 3/16" W x 2 3/8" H x 8 1/8" L

MSRP \$299.95

Vertical Mounting Option!



### 12CX12001

- Monoblock Class D Amplifier
- 1200W @ 2 Ohm Mono
- CXRC Remote Bass Capable
- 95dB Signal to Noise Ratio
- 25-200Hz Frequency Response
- 7 3/16" W x 2 3/8" H x 12 1/16" L

MSRP \$399.95

### 12CXRC

- Remote Bass Control For CX-Series Amplifiers

MSRP \$29.95



## SIGNAL PROCESSORS

### 03KX3

- 3-Way 18dB/Octave Active Electronic Crossover
- One Variable Low Pass Filter (45-250Hz)
- Two Variable High Pass Filters
- Remote Control Bass Boost is Variable to +18dB at 40Hz
- 24dB/Octave Subsonic Filter
- Two Stereo Inputs with Parallel Input Option
- Three Stereo Outputs
- >110dB Signal-to-Noise Ratio

MSRP \$169.95

### 03KQ30

- 30 Band EQ and Pre-Amp
- 25Hz-80Hz Bass
- 100Hz-320Hz Midbass
- 400Hz-1.27kHz Lower Midrange
- 1.6kHz-5kHz Upper Midrange
- 6.4kHz-20kHz Treble
- >95dB, a-weighted, 1V ref. Signal-to-Noise Ratio
- 500mV-9V Input Sensitivity

MSRP \$329.95

### 03KX2

- 2-Way Electronic Crossover
- One Variable Low Pass Filter (40-300Hz)
- One Variable High Pass Filters (40-300Hz)
- Remote Control Bass Boost is Variable to +18dB at 40Hz
- 24dB/Octave Subsonic Filter
- Optional Low or High Stereo Input
- Variable Stereo Outputs (5V RMS)
- >110dB Signal-to-Noise Ratio

MSRP \$119.95

### 03KQ5

- 5 Band EQ
- 40Hz-90Hz Bass
- 125Hz-250Hz Midbass
- 300Hz-750Hz Lower Midrange
- 1kHz-4kHz Upper Midrange
- 6kHz-20kHz Treble
- 950mV-9V Input Sensitivity

MSRP \$229.95



### 10ZXSUM8

- Summing Interface provides complete integration of aftermarket audio
- Adds auxiliary-input jack for entertainment from portable media devices
- Sums and balances multiple signals of varying frequency ranges from a factory system into a single full-bandwidth, line-level signal

MSRP \$229.95



### 10ZXMRLC

- Dual-zone Remote Level Control/Preamp
- Provides separate level controls for a pair of audio zones
- Single line-level, (RCA) stereo input
- Up to 9VRMS of unclipped output to amplifiers and dual line-level

MSRP \$119.95



### 12ZXDSP1

- 6-Channel Digital Signal Processor
- SHOCwave bass restoration circuit for deep bass and full frequency response
- 6-Channels (3 stereo pairs)
- Total sound stage control with speaker time alignment

MSRP \$299.95

## QS SERIES COMPONENTS



### 09QS652

- 6.5" Component System
- 6.5" Woofer
- 1 3/16" Tweeter
- 200W Peak/ 100W RMS Max Rec Amp Power
- 87dB Sensitivity
- 40-22k Hz Frequency Response
- 5 7/16" Mounting Hole Diameter

MSRP \$549.95

### 09QS602

- 6" Component System
- 6" Woofer
- 1 3/16" Tweeter
- 180W Peak/ 90W RMS Max Rec Amp Power
- 86dB Sensitivity
- 50-22k Hz Frequency Response
- 5 1/16" Mounting Hole Diameter

MSRP \$499.95



## RS SERIES COMPONENTS



### 09RS652

- 6.5" Component System
- 6.5" Woofer
- 1" Tweeter
- 200W Peak/ 100W RMS Max Rec Amp Power
- 87dB Sensitivity
- 40-21k Hz Frequency Response
- 5 7/16" Mounting Hole Diameter

MSRP \$449.95

### 09RS602

- 6" Component System
- 6" Woofer
- 1" Tweeter
- 180W Peak/ 90W RMS Max Rec Amp Power
- 87dB Sensitivity
- 50-21k Hz Frequency Response
- 5" Mounting Hole Diameter

MSRP \$399.95

## KS SERIES COMPONENTS



### 11KS652

- 6.5" Component System
- 6.5" Woofer
- 1" Titanium Dome Tweeter
- 4 Ohms Impedance
- 150W Peak/ 75W RMS Max Rec Amp Power
- 88dB Sensitivity
- 35-21k Hz Frequency Response
- 2 1/8" Woofer Mounting Depth
- Grilles Included

MSRP \$249.95



### 11KS62

- 6" Component System
- 6" Woofer
- 1" Titanium Dome Tweeter
- 4 Ohms Impedance
- 150W Peak/ 75W RMS Max Rec Amp Power
- 88dB Sensitivity
- 35-21k Hz Frequency Response
- 1 15/16" Woofer Mounting Depth
- Grilles Included

MSRP \$219.95



### 11KS52

- 5 1/4" Component System
- 5 1/4" Woofer
- 1" Titanium Dome Tweeter
- 4 Ohms Impedance
- 130W Peak/ 65W RMS Max Rec Amp Power
- 88dB Sensitivity
- 38-21k Hz Frequency Response
- 2" Woofer Mounting Depth
- Grilles Included

MSRP \$199.95

## KS SERIES COAXIALS & 3-WAY SPEAKERS



### 11KS693

- 6 x 9" Speaker
- 1" Midrange
- 3/4" Tweeter
- 4 Ohms Impedance
- 300W Peak/ 100W RMS Max Rec Amp Power
- 92dB Sensitivity
- 30-21k Hz Frequency Response
- 3 3/16" Mounting Depth
- Grilles Included

MSRP \$179.95



### 11KS69

- 6 x 9" Speaker
- 1" Tweeter
- 4 Ohms Impedance
- 270W Peak/ 90W RMS Max Rec Amp Power
- 92dB Sensitivity
- 30-21k Hz Frequency Response
- 3 3/16" Mounting Depth
- Grilles Included

MSRP \$139.95



### 11KS68

- 6 x 8" Speaker
- 3/4" Tweeter
- 4 Ohms Impedance
- 180W Peak/ 60W RMS Max Rec Amp Power
- 90dB Sensitivity
- 45-21k Hz Frequency Response
- 2 3/8" Mounting Depth

MSRP \$119.95

## KS SERIES COAXIALS & 3-WAY SPEAKERS

### 11KS65

- 6 1/2" Speaker
- 3/4" Tweeter
- 4 Ohms Impedance
- 195W Peak/ 65W RMS Max Rec Amp Power
- 90dB Sensitivity
- 40-21k Hz Frequency Res
- 2 1/8" Mounting Depth
- Grilles Included



MSRP \$139.95

### 11KS60

- 6" Speaker
- 3/4" Tweeter
- 4 Ohms Impedance
- 195W Peak/ 65W RMS Max Rec Amp Power
- 90dB Sensitivity
- 43-21k Hz Frequency Response
- 1 15/16" Mounting Depth
- Grilles Included



MSRP \$119.95



### 11KS525

- 5 1/4" Speaker
- 3/4" Tweeter
- 4 Ohms Impedance
- 135W Peak/ 45W RMS Max Rec Amp Power
- 90dB Sensitivity
- 45-21k Hz Frequency Response
- 2" Mounting Depth
- Grilles Included

MSRP \$99.95



### 11KS46

- 4 x 6" Speaker
- 1/2" Tweeter
- 4 Ohms Impedance
- 60W Peak/ 30W RMS Max Rec Amp Power
- 88dB Sensitivity
- 50-20k Hz Frequency Response
- 1 3/16" Mounting Depth

MSRP \$89.95



### 11KS410

- 4 x 10" Speaker
- 1/2" Tweeter
- 4 Ohms Impedance
- 70W Peak/ 35W RMS Max Rec Amp Power
- 88dB Sensitivity
- 45-20k Hz Frequency Response
- 2 7/16" Mounting Depth

MSRP \$119.95

### 11KS40

- 4" Speaker
- 1/2" Tweeter
- 4 Ohms Impedance
- 60W Peak/ 30W RMS Max Rec Amp Power
- 88dB Sensitivity
- 60-20k Hz Frequency Res
- 1 3/16" Mounting Depth
- Grilles Included



MSRP \$89.95

### 11KS35

- 3.5" Speaker
- 1/2" Tweeter
- 4 Ohms Impedance
- 40W Peak/ 20W RMS Max Rec Amp Power
- 88dB Sensitivity
- 80-20k Hz Frequency Response
- 1 9/16" Mounting Depth



MSRP \$59.95

## KS SERIES TWEETERS



### 11KS25

- 1" Titanium Dome Tweeter
- Neodymium Magnet
- 4 Ohms Impedance
- 300W Peak/ 150W RMS Power
- 94dB Sensitivity
- 3.5-21k Hz Frequency Response

MSRP \$169.95



### 11KS20

- 3/4" Aluminum Dome Tweeter
- Neodymium Magnet
- 4 Ohms Impedance
- 190W Peak/ 95W RMS Power
- 92dB Sensitivity
- 4.5-21k Hz Frequency Response

MSRP \$149.95



### 11KS13

- 1/2" PEI Dome Tweeter
- Neodymium Magnet
- 4 Ohms Impedance
- 150W Peak/ 75W RMS Power
- 92dB Sensitivity
- 4.5-21k Hz Frequency Response

MSRP \$119.95

## CS SERIES COMPONENTS

### 40CSS694

- 6 x 9" Component Speaker
- 3/4" Titanium Dome Tweeter
- 4 Ohms Impedance
- 450W Peak/ 150W RMS Max Rec Amp Power
- 90dB Sensitivity
- 30-21k Hz Frequency Res
- 3 3/16" Woofer Mounting Depth
- Grilles Included



MSRP \$189.95

### 40CSS684

- 6 x 8" Component Speaker
- 3/4" Titanium Dome Tweeter
- 4 Ohms Impedance
- 225W Peak/ 75W RMS Max Rec Amp Power
- 90dB Sensitivity
- 40-21k Hz Frequency Res
- 2 3/16" Woofer Mounting Depth



MSRP \$169.95

### 40CSS674

- 6 3/4" Component Speaker
- 3/4" Titanium Dome Tweeter
- 4 Ohms Impedance
- 300W Peak/ 100W RMS Max Rec Amp Power
- 90dB Sensitivity
- 35-21k Hz Frequency Res
- 1 13/16" Woofer Mounting Depth
- Grilles Included



MSRP \$169.95

### 40CSS654

- 6 1/2" Component Speaker
- 3/4" Titanium Dome Tweeter
- 4 Ohms Impedance
- 300W Peak/ 100W RMS Max Rec Amp Power
- 90dB Sensitivity
- 35-21k Hz Frequency Res
- 1 11/16" Woofer Mounting Depth
- Grilles Included



MSRP \$169.95

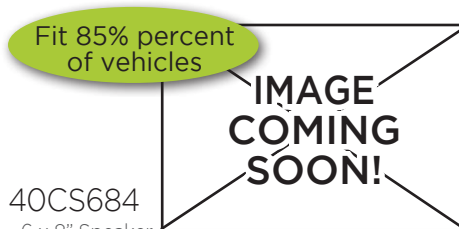
## CS SERIES COAXIALS



### 40CS6934

- 6 x 9" 3-Way Speaker
- 1/2" Tweeter
- 4 Ohms Impedance
- 450W Peak/ 150W RMS Max Rec Amp Power
- 92dB Sensitivity
- 30-20k Hz Frequency Res
- 3 3/16" Mounting Depth
- Grilles Included

MSRP \$129.95



### 40CS684

- 6 x 8" Speaker
- 1/2" Tweeter
- 4 Ohms Impedance
- 225W Peak/ 75W RMS Max Rec Amp Power
- 90dB Sensitivity
- 45-20k Hz Frequency Res
- 2 3/16" Mounting Depth

MSRP \$79.95



### 40CS674

- 6 3/4" Speaker
- 1/2" Tweeter
- 4 Ohms Impedance
- 300W Peak/ 100W RMS Max Rec Amp Power
- 90dB Sensitivity
- 40-20k Hz Frequency Res
- 1 13/16" Mounting Depth
- Grilles Included

MSRP \$89.95



### 40CS654

- 6 1/2" Speaker
- 1/2" Tweeter
- 4 Ohms Impedance
- 300W Peak/ 100W RMS Max Rec Amp Power
- 90dB Sensitivity
- 40-20k Hz Frequency Res
- 1 11/16" Mounting Depth
- Grilles Included

MSRP \$79.95



### 40CS54

- 5 1/4" Speaker
- 1/2" Tweeter
- 4 Ohms Impedance
- 225W Peak/ 75W RMS Max Rec Amp Power
- 90dB Sensitivity
- 45-20k Hz Frequency Res
- 1 3/4" Mounting Depth
- Grilles Included

MSRP \$69.95

## CS SERIES COAXIALS CONT.

Fit 85% percent of vehicles

IMAGE COMING SOON!

### 40CS464

- 4 x 6" Coaxial Speaker
- 1/2" Tweeter
- 4 Ohms Impedance
- 150W Peak/ 50W RMS Max Rec Amp Power
- 88dB Sensitivity
- 50-20k Hz Frequency Res
- 1 11/16" Mounting Depth

MSRP \$59.95

Fit 85% percent of vehicles



### 40CS44

- 4" Coaxial Speaker
- 1/2" Tweeter
- 4 Ohms Impedance
- 150W Peak/ 50W RMS Max Rec Amp Power
- 88dB Sensitivity
- 60-20k Hz Frequency Res
- 1 13/16" Mounting Depth
- Grilles Included

MSRP \$59.95

Fit 85% percent of vehicles

IMAGE COMING SOON!

### 40CS354

- 3 1/2" Coaxial Speaker
- 1/2" Tweeter
- 4 Ohms Impedance
- 90W Peak/ 30W RMS Max Rec Amp Power
- 88dB Sensitivity
- 80-20k Hz Frequency Res
- 1 11/16" Mounting Depth

MSRP \$49.95

## MARINE SUBWOOFERS & ENCLOSURES



### 11KM10 (CHARCOAL)

- 10" Marine Subwoofer
- 4 Ohms Impedance
- 300W Peak/ 150W RMS Max Rec Amp Power
- 86.5dB Sensitivity
- 30-500 Hz Frequency Response
- 5 1/4" Mounting Depth
- Co-molded SoloKon and surround
- Polyimide (Kapton) coil former

MSRP \$179.95



### 11KM104W (WHITE)

- 10" Marine Subwoofer
- 4 Ohms Impedance
- 300W Peak/ 150W RMS Max Rec Amp Power
- 86.5dB Sensitivity
- 30-500 Hz Frequency Response
- 5 1/4" Mounting Depth
- Co-molded SoloKon and surround
- Polyimide (Kapton) coil former

MSRP \$179.95



### 11SKM10

- 10" Marine KM10 Loaded Enclosure
- 4 Ohms Impedance
- 300W Peak/ 150W RMS Max Rec Amp Power
- Co-molded SoloKon and surround
- Polyimide (Kapton) coil former
- UV treated
- Heavy Duty Grille
- 23 15/16" W x 16 1/16" H x 8 5/16" D

MSRP \$349.95

## ZXM MARINE AMPLIFIERS



### 10ZX4502

- 2 Channel Marine Amplifier
- 225W x 2 Ch @ 2 Ohm Stereo
- 450W x 1 Ch @ 4 Ohm Bridged Mono
- Remote Bass Capable
- >95dB Signal to Noise Ratio
- 20Hz - 20kHz Frequency Response
- 9 5/8" W x 2 1/8" H x 16 3/4" L

MSRP \$399.95



### 10ZX3504

- Multi Channel Marine Amplifier
- 90W x 4 Ch @ 2 Ohm Stereo
- 175W x 2 Ch @ 4 Ohm Bridged Mono
- >95dB Signal to Noise Ratio
- 20Hz - 20kHz Frequency Response
- 9 5/8" W x 2 1/8" H x 13 1/2" L

MSRP \$349.95



### 10ZX7005

- Multi Channel Marine Amplifier
- 85W x 4 Ch @ 2 Ohm Stereo
- 165W x 2 Ch @ 4 Ohm Bridged Mono
- Remote Bass Capable
- >95dB Signal to Noise Ratio
- 20Hz - 20kHz Frequency Response
- 9 5/8" W x 2 1/8" H x 20" L

MSRP \$549.95

## MARINE TOWER SYSTEM



**11KMT60**

- 2-Way Long Range Tower System
- Dual 6 1/2" Woofers & Horn-loaded Tweeters
- 300W Peak/ 150W RMS Max Rec Amp Power
- Billet Aluminum Mounting Brackets are Roll Bar Adjustable
- Removable Grilles

MSRP \$599.95



**12KMTES (SINGLE)**

MSRP \$349.95

**12KMTED (DUAL)**

MSRP \$449.95

- KM Tower Speaker Empty Enclosure
- Tough ABS, Weather Proof
- Slotted Mounting Holwa
- Aluminum Tower Pipe Clamps 2-5/8"
- Three Adapter Sizes (2 1/4", 2 3/8", 2 1/2")
- Includes Mounting Hardware and Polyfill



**12KMTAP**

- Adapter Pack Fits More Pipe Diameters

MSRP \$49.95

## MARINE COMPONENTS



**11KM62502**

- 6" Marine Component System
- 1" Tweeter
- 4 Ohms Impedance
- 225W Peak/ 75W RMS Max Rec Amp Power
- 86.5dB Sensitivity
- 35-21k Hz Frequency Response
- Sealed Motors, Cones and Locking Terminal Covers for Weather Protection

MSRP \$299.95



**11KM65002**

- 6.5" Marine Tower Component System
- 2" Horn Tweeter
- 4 Ohms Impedance
- 400W Peak/ 200W RMS Max Rec Amp Power
- 94.1dB Sensitivity
- 50-22k Hz Frequency Response

MSRP \$549.95



**11KM6500**

- 6.5" Midrange
- 6.5" Woofer
- 4 Ohms Impedance
- 200W Peak/ 100W RMS Max Rec Amp Power
- 90.5dB Sensitivity
- 50-17k Hz Frequency Response
- 3 7/8" Mounting Depth

MSRP \$279.95

## MARINE COAXIALS

**11KM6200 (4 OHM)**

**11KM6202 (2 OHM)**

- 6" Marine Coaxial Speaker, Charcoal
- 3/4" PEI Dome Tweeter
- 195W Peak/ 65W RMS Max Rec Amp Power
- 90dB Sensitivity
- 35-21k Hz Frequency Res
- 2 7/8" Mounting Depth
- Grilles Included

MSRP \$179.95



**11KM6204W (4 OHM)**

**11KM6202W (2 OHM)**

- 6" Marine Coaxial Speaker, White
- 3/4" PEI Dome Tweeter
- 195W Peak/ 65W RMS Max Rec Amp Power
- 90dB Sensitivity
- 35-21k Hz Frequency Res
- 2 7/8" Mounting Depth
- Grilles Included

MSRP \$179.95



## MARINE COAXIALS

### 11KM6LC (CHARCOAL) 11KM6LW (WHITE)

- 6" Marine Coaxial Speaker with Blue LED Accent Lighting
- 1/2" PEI Dome Tweeter
- 195W Peak/ 65W RMS Max Rec Amp Power
- 90dB Sensitivity
- 35-21k Hz Frequency Res
- 2 7/8" Mounting Depth
- Grilles Included

MSRP \$179.95



### 09KM6000

- 6" Marine Coaxial Speaker
- 1/2" PEN Dome Tweeter
- 4 Ohm Impedance
- 150W Peak/ 50W RMS Max Rec Amp Power
- 90dB Sensitivity
- 40-20k Hz Frequency Res
- 2 1/2" Mounting Depth
- Grilles Included

MSRP \$129.95



## POWERSPORTS AMPLIFIED CONTROLLERS

### 40PXIBT502 (BLUETOOTH)

MSRP \$299.95

### 11PXI502

MSRP \$249.95

- Amplified Controller for iPod and iPhone
- Works with iPhone 5, 7th generation iPod Nano® and iOS 6
- 25W x 2 Ch @ 2 Ohms RMS Output
- 15W x 2 Ch @ 4 Ohms RMS Output
- 20Hz - 20kHz Frequency Response
- 90dB Signal-to-Noise Ratio



### 40PXIRCX

- Remote Accessory Only for the PXI50.2 Controller
- Allows Control of the PXI50.2 from a second distant location in a mobile setting
- Includes a 30 ft Cable with Y-adapter for control of the PXI50.2 from a distance

MSRP \$99.95

## POWERSPORTS AMPLIFIERS

### 12PX1002

- 2 Channel Powersport Amplifier
- 50W x 2 Ch @ 2 Ohm Stereo
- 25W x 2 Ch @ 4 Ohm Stereo
- 20-20k Hz Frequency Response
- 85dB Signal to Noise Ratio
- 3 1/2" W x 2" H x 7" L
- Recommended use with PS5250 Powersports coaxial speakers, with any KM-Series coaxials, component systems, tower systems, or with KS or DS-Series speakers

MSRP \$199.95



### 12PX2001

- Monoblock Powersport Amplifier
- 200W @ 0.4 Ohm Mono
- 100W @ 1 Ohm Mono
- 40-250 Hz Frequency Response
- 90dB Signal to Noise Ratio
- 3 1/2" W x 2" H x 4 3/4" L
- Recommended use with CompVT 6-1/2-inch (1 Ohm) shallow-mount subwoofer

MSRP \$199.95



## POWERSPORTS COAXIALS

### 10PS5250 (2 OHM) 10PS52504 (4 OHM)

- 5 1/4" Coaxial Speaker
- 3/4" Tweeter
- 100W Peak/ 50W RMS Power
- 88.3 Sensitivity
- 60-20k Hz Frequency Response
- 2 3/16" Mounting Depth
- Include Replacement Grilles for Bat-wing Fairing

MSRP \$249.95



### 10CVT651

- 6 1/2" Shallow Mount Subwoofer
- 300W Peak/ 150W RMS Power
- 1 Ohm SVC
- 84.6dB Sensitivity
- 2 7/8" Mounting Depth
- Weather-proof for saddle-bag or fairing installations
- Steel "clearance" adapter plate

MSRP \$119.95



## K-SERIES INTERCONNECTS

- Split-pin RCAs with silver-tinned, OFC wire for superior bass response and signal clarity
- K-Grip dual-mold connectors
- K-Grip line union ultra-slim
- KISLOC is a micro surface-mount, line output converter



		MSRP
KI21	RCA 2-Channel, 1 Meter	\$12.95
KI22	RCA 2-Channel, 2 Meter	\$14.95
KI23	RCA 2-Channel, 3 Meter	\$17.95
KI24	RCA 2-Channel, 4 Meter	\$19.95
KI25	RCA 2-Channel, 5 Meter	\$22.95
KI26	RCA 2-Channel, 6 Meter	\$24.95
KI44	RCA 4-Channel, 4 Meter	\$34.95
KI46	RCA 4-Channel, 6 Meter	\$39.95
KIYFM	Y-Adapter Kit, Male & Female	\$24.95
KISL	2-Channel Speaker-to-RCA Converter, No LOC	\$12.95
KISLOC	2-Channel Speaker-to-RCA Converter, LOC	\$24.95

## Q-SERIES INTERCONNECTS



- High-end, sophisticated signal cable
- K-Grip connectors
- Large K-cut collars and split center pins
- K-Grip line union ultra-slim
- Integrated AR foil shield over tightly twisted wire

		MSRP
QI21	RCA 2-Channel, 1 Meter	\$24.95
QI22	RCA 2-Channel, 2 Meter	\$29.95
QI23	RCA 2-Channel, 3 Meter	\$34.95
QI24	RCA 2-Channel, 4 Meter	\$39.95
QI25	RCA 2-Channel, 5 Meter	\$44.95
QI26	RCA 2-Channel, 6 Meter	\$49.95
QI44	RCA 4-Channel, 4 Meter	\$69.95
QI46	RCA 4-Channel, 6 Meter	\$79.95

## COMPLETE AMP KITS

### CK8

- 8 GA AWG 2 Channel Amp Kit
- Hyper-Flex power, ground and turn-on
- High-performance K-Series speaker wire & interconnects
- Heavy-duty AFS fuse holder & fuse
- Includes terminals, spade & ground lugs & zip ties
- One additional year of Kicker amplifier warranty if purchased with the amp

MSRP \$99.95



### CK4

- 4 GA AWG 2 Channel Amp Kit
- Hyper-Flex power, ground and turn-on
- High-performance K-Series speaker wire & interconnects
- Heavy-duty AFS fuse holder & fuse
- Includes terminals, spade & ground lugs & zip ties
- One additional year of Kicker amplifier warranty if purchased with the amp

MSRP \$149.95



## D-SERIES AMP KITS



### 09DCK10

- Entry-level complete 10 GA AWG 2 Channel Amp Kit
- Includes in the kit are power cable, ground cable, fuse holder, system fuses and 2-channel RCA's
- All wire made from oxygen-free copper
- One additional year of Kicker amplifier warranty if purchased with the amp

MSRP \$49.95



### 09DCK8

- Entry-level complete 8 GA AWG 2 Channel Amp Kit
- Includes in the kit are power cable, ground cable, fuse holder, system fuses and 2-channel RCA's
- All wire made from oxygen-free copper
- One additional year of Kicker amplifier warranty if purchased with the amp

MSRP \$79.95

## POWER KITS



### PKD1

- Dual-Amp 1/0 GA AWG 2 Channel Power Kit
- Extra cable lengths & accessories
- Hyper-Flex power, ground and turn-on
- Heavy-duty AFS fuse holders & fuse
- All connectors and zip ties needed
- One additional year of Kicker amplifier warranty if purchased with the amp

MSRP \$299.95



### PKD4

- Dual-Amp 4 GA AWG 2 Channel Power Kit
- Extra cable lengths & accessories
- Hyper-Flex power, ground and turn-on
- Heavy-duty AFS fuse holders & fuse
- All connectors and zip ties needed
- One additional year of Kicker amplifier warranty if purchased with the amp

MSRP \$199.95



### PK4

- 4 GA AWG 2 Channel Power Kit
- Hyper-Flex power, ground and turn-on
- Wire constructed of tinned, oxygen-free copper
- All connectors and zip ties needed
- One additional year of Kicker amplifier warranty if purchased with the amp

MSRP \$129.95



### PK8

- 8 GA AWG 2 Channel Power Kit
- Hyper-Flex power, ground and turn-on
- Wire constructed of tinned, oxygen-free copper
- All connectors and zip ties needed
- One additional year of Kicker amplifier warranty if purchased with the amp

MSRP \$79.95

## D-SERIES POWER KITS



### 09DPK8

- Entry Level 8 GA AWG 2 Channel Power Kit
- Hyper-Flex & Direct-Connect
- Power & ground, fuse holders & fuse, turn-on wire & connectors
- All wire made from oxygen-free copper
- One additional year of Kicker amplifier warranty if purchased with the amp

MSRP \$69.95



### 09DPK10

- Entry Level 10 GA AWG 2 Channel Power Kit
- Hyper-Flex & Direct-Connect
- Power & ground, fuse holders & fuse, turn-on wire & connectors
- All wire made from oxygen-free copper
- One additional year of Kicker amplifier warranty if purchased with the amp

MSRP \$39.95



## POWER WIRE

- Spools of full-spec, multi-strand wire covered in virgin PVC
- Cobalt blue & gun-metal gray Hyper-Flex insulation
- Super-flexible under hot or cold temperature extremes
- Top-quality construction



		MSRP
PWB050	Blue, 1/0 AWG, 50 Ft.	\$499.95
PWG050	Gray, 1/0 AWG, 50 Ft.	\$499.95
PWB4100	Blue, 4 AWG, 100 Ft.	\$399.95
PWG4100	Gray, 4 AWG, 100 Ft.	\$399.95
PWB8200	Blue, 8 AWG, 200 Ft.	\$299.95
PWG8200	Gray, 8 AWG, 200 Ft.	\$299.95

## SPEAKER WIRE



QW1220 (20 FT.)

MSRP \$39.95

QW12150 (150 FT. SPOOL)

MSRP \$299.95

- 12 GA AWG Q-Series Speaker Wire
- Tightly twisted, silver-tinned OFC wire
- Full-spec, Hyper-Flex wire



KW1620 (20 FT.)

MSRP \$19.95

KW16400 (400 FT. SPOOL)

MSRP \$299.95

- 16 GA AWG K-Series Speaker Wire
- Tightly twisted, silver-tinned OFC wire
- Full-spec, Hyper-Flex wire

## BRASS HARDWARE

BT4

- POS/NEg Battery Terminal
- (2) 1/0-8 AWG, (1) 4-8 AWG
- Uses Versa-Gauge Connection Points
- Includes a negative-post adapter collar

MSRP \$29.95



DB4

- Distribution Block
- (2) 1/0-8 AWG In, (4) 4-8 AWG Out
- Uses Versa-Gauge Connection Points

MSRP \$29.95



FHS

- AFS Fuse Holder
- 1/0-8 AWG In/Out, Single Fuse
- Uses Versa-Gauge Connection Points
- K-Mount two-stage mounting holes

MSRP \$29.95



FHD

- AFS Fuse Holder
- 1/0-8 AWG In/Out, Dual Fuse
- Uses Versa-Gauge Connection Points
- K-Mount two-stage mounting holes

MSRP \$39.95

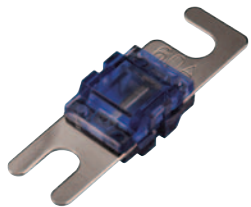


GT2

- Ground Terminal Block
- (2) 1/0-8 AWG In
- Uses Versa-Gauge Connection Points
- Also comes with ∞Gauge™ side terminal

MSRP \$19.95

## AFS FUSES



### AFS60

- AFS 60 Amp Fuse
- Automotive-grade, platinum-plated
- Two fuses per pack

MSRP \$9.95



### AFS80

- AFS 80 Amp Fuse
- Automotive-grade, platinum-plated
- Two fuses per pack

MSRP \$9.95



### AFS100

- AFS 100 Amp Fuse
- Automotive-grade, platinum-plated
- Two fuses per pack

MSRP \$9.95



### AFS200

- AFS 200 Amp Fuse
- Automotive-grade, platinum-plated
- Two fuses per pack

MSRP \$9.95