



Roanoke River Paddle Trail & How It All Got Started

*Carol J. Shields, MA
& Christina Gordon*

Roanoke River Partners
Executive Board Members

Roanoke River Partners Paddle Trail

Consists of over 200 miles
of interconnected creeks,
rivers, and swamps along
the Roanoke River



Includes over 6
miles of class 2
and 3 whitewater
rapids

Passes through
historic towns
which offer a
variety of quaint
small town
experiences





Hosts a myriad of birds
and other wildlife

A wooden boardwalk winds through a dense forest of tall, thin trees, leading towards a body of water. The scene is lush and green, with sunlight filtering through the canopy. A wooden structure is partially visible on the right side of the frame.

Offers camping platforms in mysterious
backwater swamps, as well as riverside
campsites



Opportunities
exist along the
Roanoke River
for visitors to...

Observe both plant
and animal wildlife
which thrives in
this lush natural
environment



Photograph animals in the wild





Experience small town life

Participate in local events and festivals



10/10/2007



Sample traditional foods like rock stew, fried herring, shad and a host of other wild game



Enjoy the unique & beautiful “outdoor
paradise” found along the Roanoke





Birds which are seen along the Roanoke River include...

- ▶ Bald Eagles
- ▶ Egrets
- ▶ Hawks
- ▶ Herons
- ▶ Mississippi Kites
- ▶ Ospreys
- ▶ Owls
- ▶ Wild Turkeys
- ▶ Crows
- ▶ Gulls
- ▶ Vultures
- ▶ Songbirds
- ▶ Waterfowl
 - Ducks
 - Geese
 - Tundra Swan



RRPs collaborates to promote tourism and economic development along the Roanoke River.

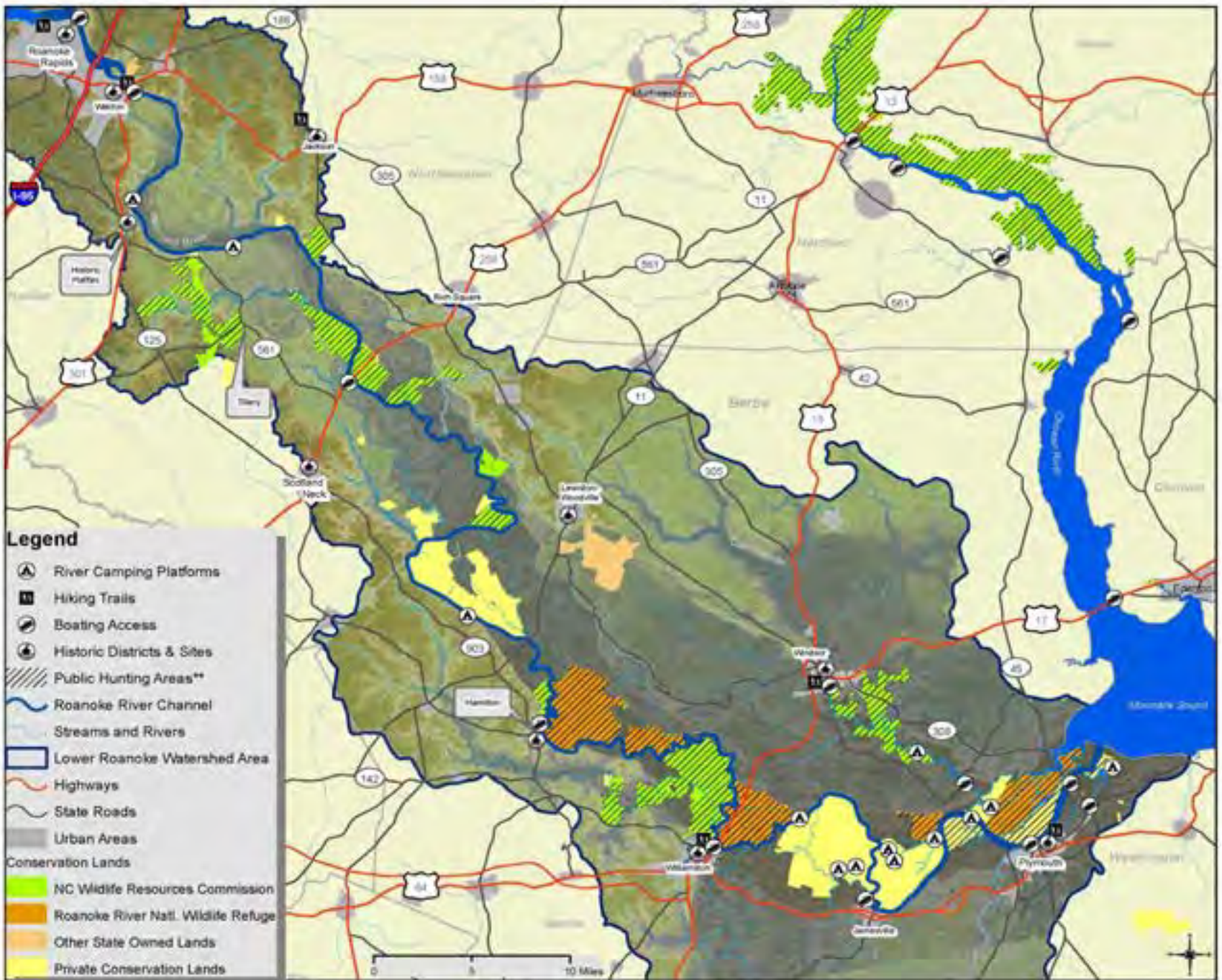
Those partners include...

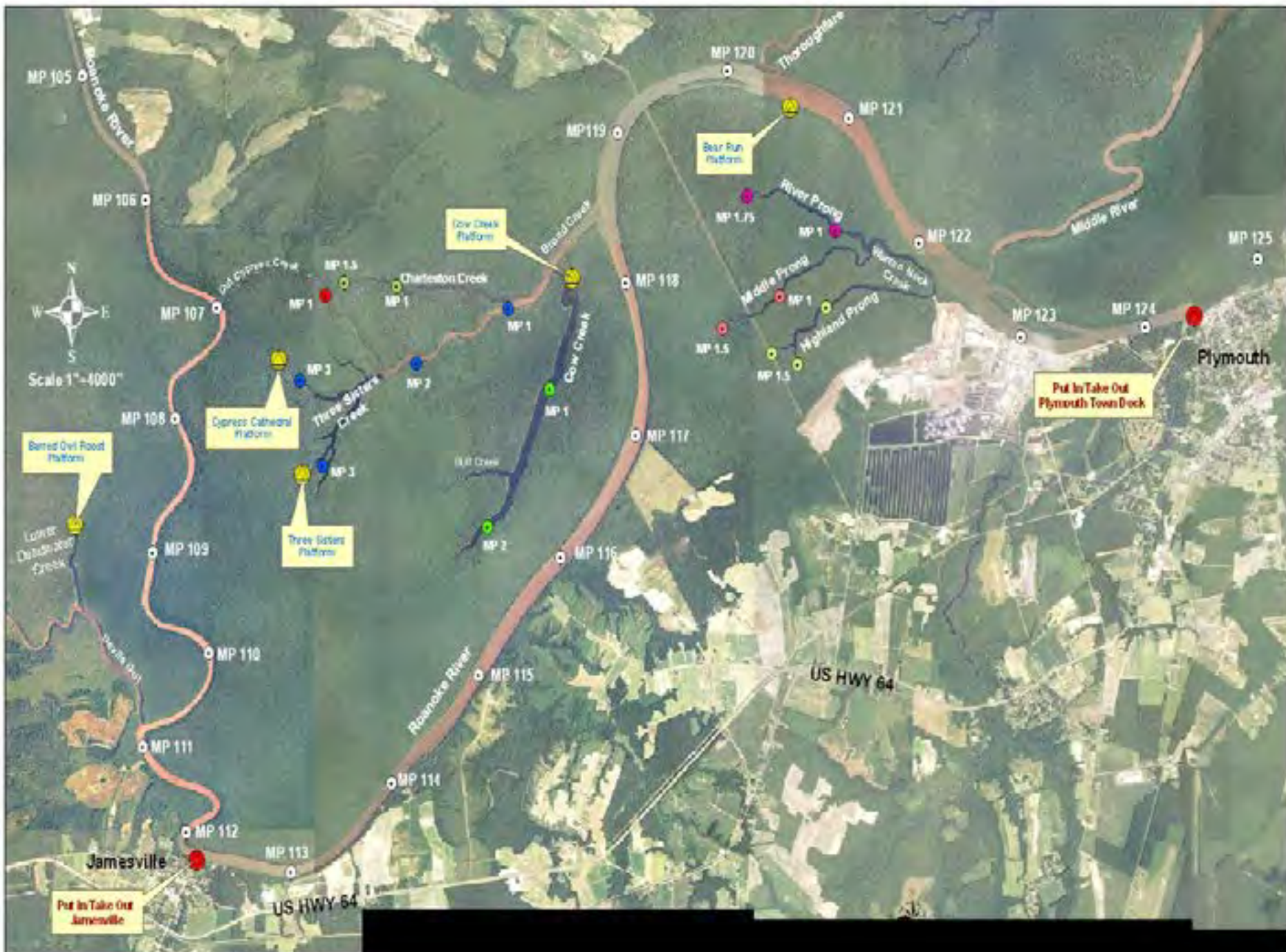
- ▶ a variety of agencies like The Conservation Fund, The Nature Conservancy and N.C. Wildlife Resources Commission & Tourism
- ▶ local communities
- ▶ private landowners
- ▶ compatible initiatives

The Nature
Conservancy



Protecting nature. Preserving life.™





History of RRP's Development

- ▶ In 1995, reps from 5 counties along the Roanoke met to brainstorm
- ▶ Mission was to positively impact local economies
- ▶ Ideas included a Civil War Trail, an Antique trail, promoting local products and a series of camping platforms along the Roanoke



Initial Support

- ▶ The Conservation Fund
- ▶ The Nature Conservancy
- ▶ Also acquired support of the Army Corp of Engineers

THE CONSERVATION FUND
America's Partner in Conservation

In the Beginning ...

- ▶ 1st Platform built by volunteers (Barred Owl)
- ▶ Grant funds were acquired for additional platform construction and professionals were hired
- ▶ Among the first users was a group of blind students from England (provided momentum)



RRP Today

- ▶ Public/private partnerships have been developed with landowners to secure new platform opportunities
- ▶ RRP enters into a lease agreement with the landowner
- ▶ An initial lease fee is paid in addition to revenue-sharing from rental of platforms



Roanoke River Paddle Trail

Welcome To
Tusca Landing



Walk less than 125 yards from the viewing platform, and you will see a marker for the NC Civil War Trail on the left of the river. This marker denotes the area in the Roanoke River where the waters were deep enough for the cutting of the Civil War tunnel, the USS Allamanchi, in 1862-3. The Allamanchi was one of the most successful of the monitors, sinking 28 Federal vessels before being torpedoed and sunk near Plymouth on October 27, 1864.

Walk approximately one-half mile from here to the Historic Healey State Historic Site. There is a Visitors Center with exhibits and a leafy picnic. See a walking tour of some historic structures, including a brewer's shop, an oil clerk's office, an archaeological structure and private homes. Have a picnic in market square. Walk through a revolutionary-era cemetery. Take photos by one of the oldest and largest paper millenary trees in America.

Once you have toured the Historic Site, be sure to take a stroll along King Street into downtown Halifax.



Revenues/Support to Sustain RRP

- ▶ Memberships (since 1997)
- ▶ Platform fees
- ▶ Service fees (handling other paddle trail reservations)
- ▶ Fundraisers
- ▶ Private donations (in-kind & monetary)
- ▶ Partner contributions
- ▶ Grants



RRP as Eco-Tourism Model



Study paddle trail's economic impact

EAST CAROLINA UNIVERSITY

Roanoke River Partners Paddle Trail: Economic Impact and Analysis

Regional Development Services
East Carolina University

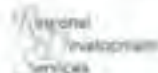


Report Prepared By:

East Carolina University's Regional Development Services
S. Richard Brockett, ECU associate director for economic development
Kari Moftam, ECU project intern
Vicki Luttrell, ECU information and communication specialist

Report Prepared For:

Roanoke River Partners
Cindy Trapp, executive director
Board of Directors:
Crystal Bailey, Chris Wicker, Bill Smith, Jeff Horton, Miki Sager, Harry Thompson,
Martha Thompson, Lyman Mayo, Jack Powell, Russell Lee, Donna Griffin,
Lucia Peel, Wayne Short, Bill Blackwell, Carol Shields, Tony Short

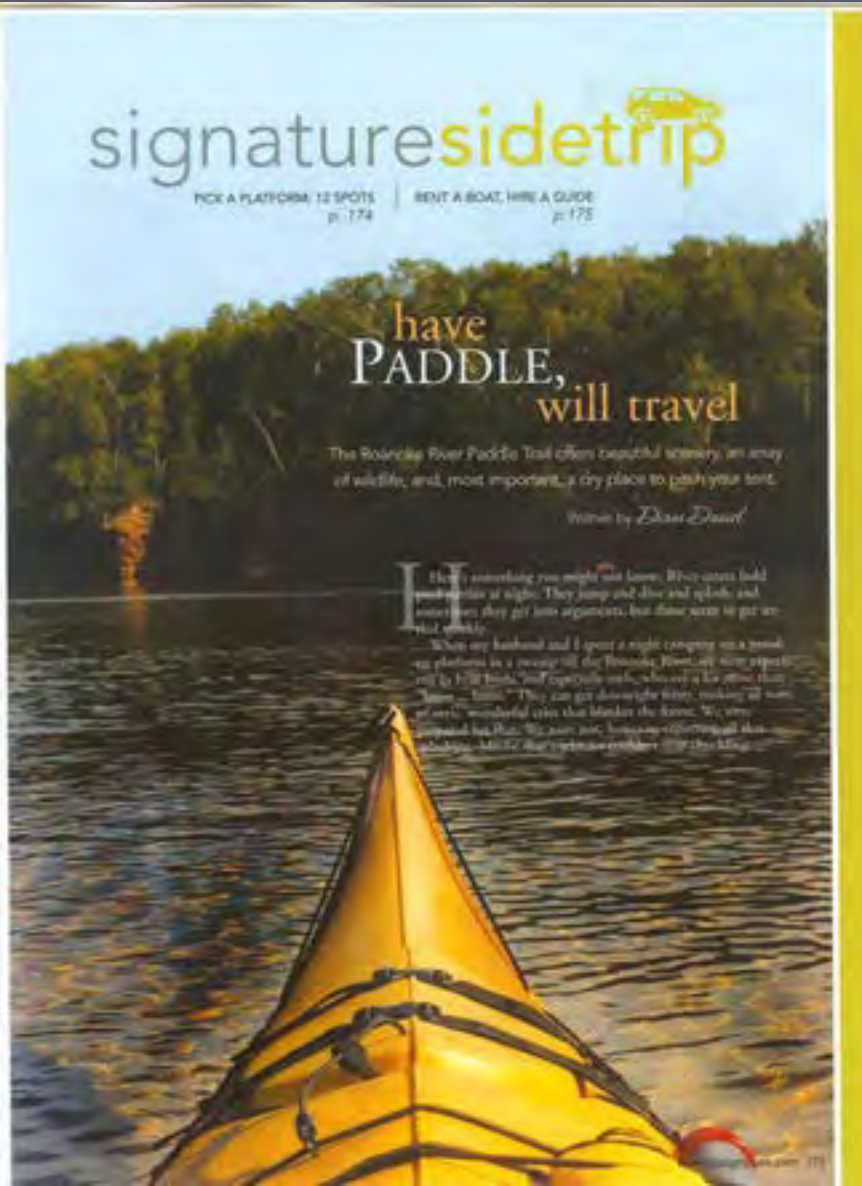


Direct camping expenditures exceeded \$66,000.

Those dollars, along with local RRP expenditures, resulted in an induced spin-off (direct & indirect goods & services) of nearly \$386,000.

EAST CAROLINA
UNIVERSITY
Regional Development Services
Wills Building
300 East First Street
Greenville, NC 27938
Phone: 252-328-6850
Fax: 252-328-4358
Web: www.ecu.edu/rds

Maximize free PR

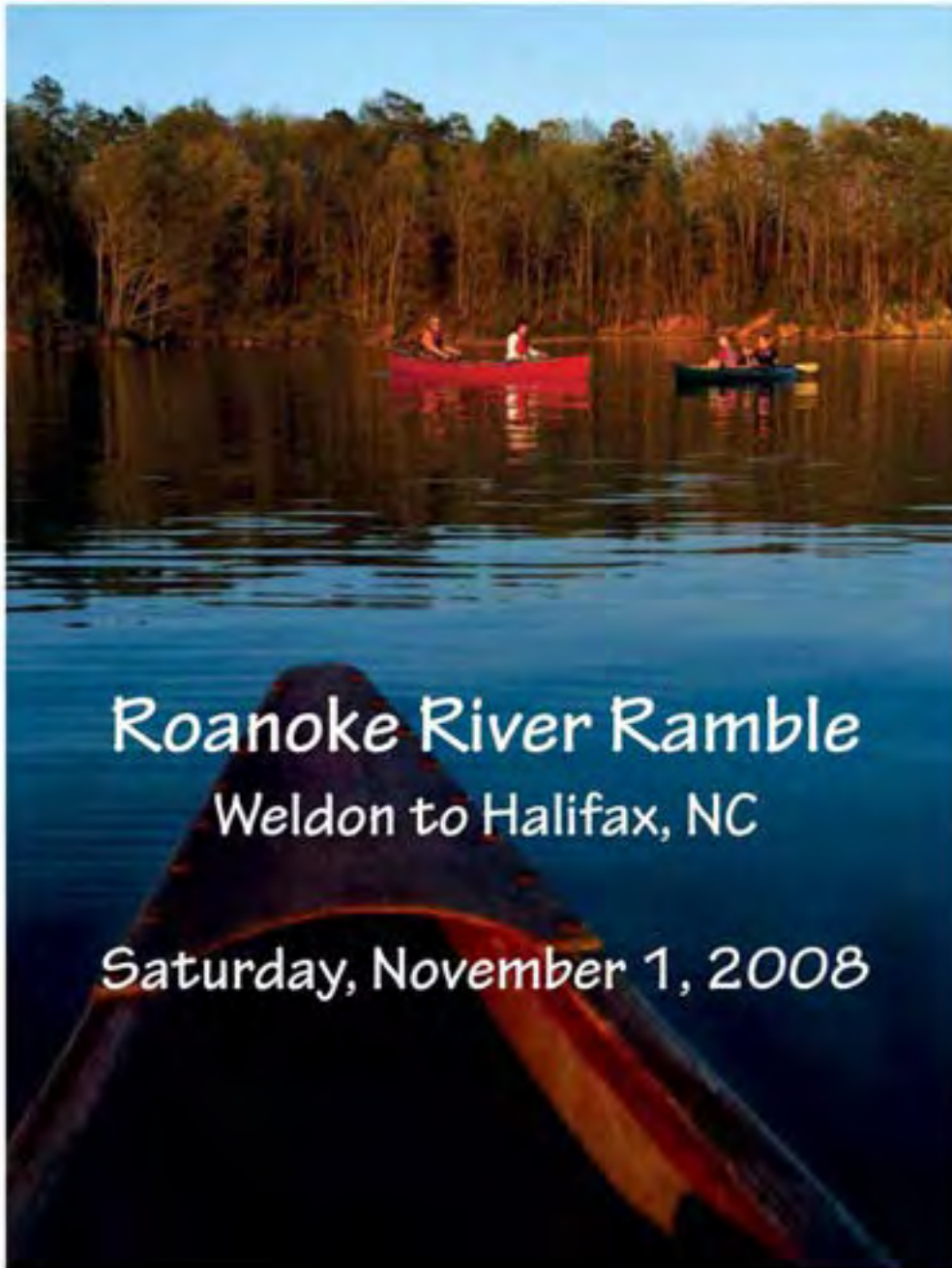


The Roanoke River Paddle Trail, and thus RRP itself, has been featured in local, regional, state and national publications – *NC Signature*, *Our State* magazine, visitnc.com, and the *Washington Post* to name a few

Sponsor Annual Paddle Days event with Roanoke River Paddle Club – collaborate to maximize resources



03/27/2004



Roanoke River Ramble

Weldon to Halifax, NC

Saturday, November 1, 2008

Open to
creation of new
events to
include more
river
communities

Bring together individuals of diverse backgrounds but similar interests – drawing from large geographic area





Provide means for maintaining old friendships & forging new – the #1 reason for travel

Ripples from the Roanoke

A publication from Roanoke River Partners

"The mission of Roanoke River Partners is to preserve, enhance and promote the natural, cultural and historic resources and integrity of the Roanoke River region through tourism and other environmentally sustainable activities which encourage economic development and social justice."

January 2008



Board of Directors

President
Lucia Peel, Martin

Vice-President
Carol Shields, Halifax

Secretary-Treasurer
Christina Deyton, Halifax

Sara Katherine Adams, Martin
Crystal Emery, Pitt
Bill Blackwell, Halifax
Richard Collier, Northampton
Philly Hodges, Martin
Jack Powell, Bertie
David Schwartz, Pitt
Bill Smith, Martin
Harry Thompson, Bertie
Martha Thompson, Bertie

Staff

Anne Landford, Bertie

Advisory Board Members

Alan Coughlin, Dare
David Hodges, Pitt
Chuck Peoples, Halifax
Denise Phelps, Martin
Tom Potter, Wayne
Susan Sachs-Middl, Sayer
Orange
Wayne Short, Halifax
Chris Wicker, Halifax

P.O. Box 408
Windsor, NC 27983
252-798-3920
www.roanokriverpartners.org

Roanoke River Partners, Inc. Celebrates 10th Anniversary

On a beautiful, crisp Sunday afternoon in November, over 75 supporters gathered at Sylvan Heights Waterfowl Center in Scotland Neck to celebrate RRP's 10th Anniversary.

The celebration began with attendees enjoying a special guided tour of the center. This was a treat since the center is home to the world's largest collection of waterfowl. Among the species housed at Sylvan Heights are a number of exotic birds, as well as numerous rare and endangered waterfowl.

After the guided tour, attendees were treated to refreshments while they viewed a host of donated items that were being sold by silent auction.

Among the auction items were: weekend getaways to the Outer Banks; guided paddles on the Roanoke River; a guided bird-watching excursion; a guided duck hunt; a B&B stay; a number of outdoor and wildlife prints; original watercolors by Catherine Spauld of Greenville; a hand-forged knife; a hand-

crafted walking stick; tickets to local venues; a variety of state and local tourism items; Nature Conservancy items; and a host of other interesting items, crafts and local products.

In addition to the items above, nine different books by regional writers and photographers were available with the authors on hand to personally sign them. Authors in attendance included the following: Carl Galey, a noted outdoor photographer and author of *Vision Quest—A Visual Journey Through North Carolina's Luster Roanoke River Basin*; Lucia Peel Powe, author of *Roanoke Rock Middle*; Paul Ferguson, author of *Paddling Eastern North Carolina*; Jan Wicker, author of three children's books about animals; and local historian Harry Thompson, author of several books about the history of Bertie County.

Another local product featured at this event was Bertie County Peanuts including Roa-



noke River Trail Mix (which makes a great gift for paddlers or hikers). These items were generously donated by Jack Powell, RRP Board Member. If you are interested in receiving more information about Bertie County Peanuts or any of the books mentioned above, please contact RRP. Any of these would make great gifts!

Carol Shields, event organizer and RRP executive board member, would like to thank all those who attended and all those who generously donated items for this event.

RRP Receives Donation from Environmental Holdings Group

In November RRP was pleased to get a call from Lindsey Postles with Environmental Holdings Group, LLC (EHG). Lindsey, who handles Business Development with EHG, called to say that she had chosen RRP as the recipient of a \$1000 donation that her employer was making available.

On December 17th Lindsey and Ed Pungarell, President of EHG, traveled to Williamston to meet with Lucia Peel and Carol Shields (RRP Executive Board Members) to get acquainted and to make their award. During this meeting, they visited a nearby RRP camping platform just north of Hamilton, as well as the newly acquired



on upcoming projects.

RRP is truly grateful for the spirit of giving that EHG is fostering among their employees and especially appreciative to Lindsey for selecting RRP as her designated recipient. We welcome Lindsey and EHG as our newest Friends of the Roanoke supporters and look forward to a mutually beneficial partnership.

Communicate regularly with members and donors

Show donors their impact



Invest in Roanoke River communities



06/23/2008



DESTINATION *Roanoke*

a traveler's guide to the roanoke river region



Preserve & promote
Roanoke River
communities' heritage,
history and culture

Collaborate with other regional eco-tourism partners



Share Information & Seek New Partnerships



Promote other paddle trails



- [About RRP](#)
- [About The Basin](#)
- [River Camping](#)
- [Reservations](#)
- [Membership](#)
- [Trail Tales](#)
- [FAQs](#)
- [Links](#)
- [Our Sponsors](#)
- [Trail Store](#)
- [Home](#)



Roanoke River Partners



Camping Along the Roanoke & Cashie Rivers

**New Camping Platforms
Available...including new group
options!**

Several upriver land-based camping sites are in the planning stages, as well. Paddlers will be able to "legitimately" camp from Weldon all the way to the Albemarle Sound. Enjoy an "up close and personal" view of different habitats within the Roanoke River Basin. Each camping site and platform offers a unique experience. Try 'em all out!

New Campsites

Check out these two great new camping systems:

- [Palmetto Peartree Preserve's Hidden Lake](#)
- [Chowan River's Holladay Island](#)

**Camping
Platforms**



Go Wild!

www.roanokeriverpartners.org

For more information
visit us on-line at
www.roanokeriverpartners.org
or contact...



Carol J. Shields
cjshields@touchnc.net

Christina Gordon
cgordon@visithalifax.com