

SHARKS

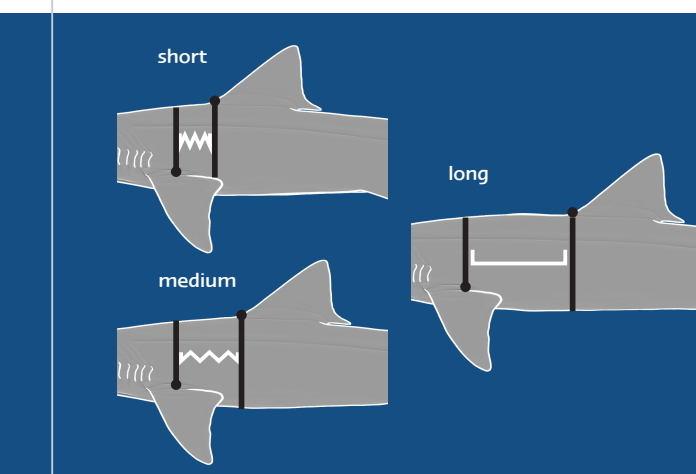
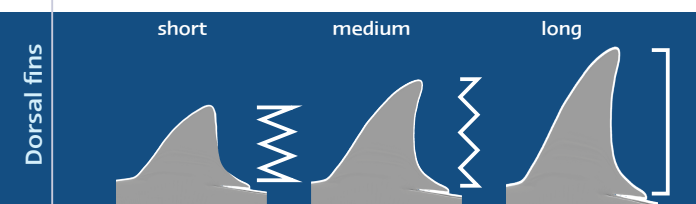
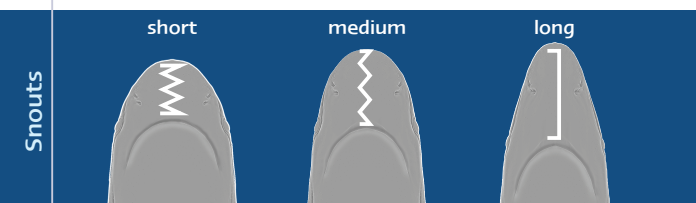
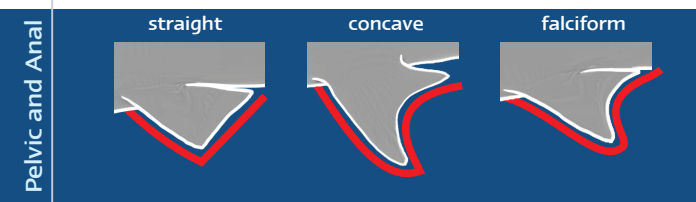
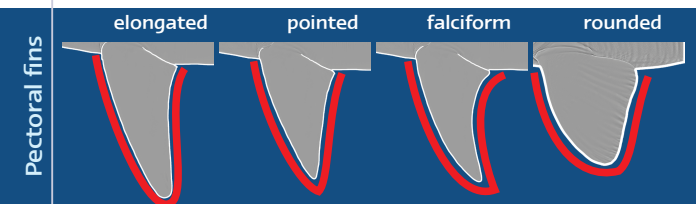
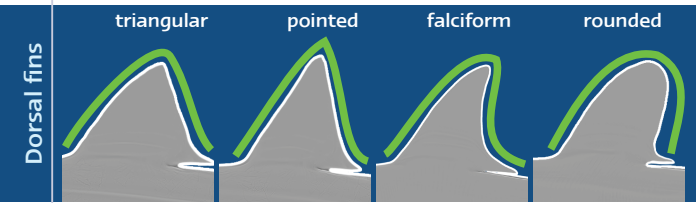
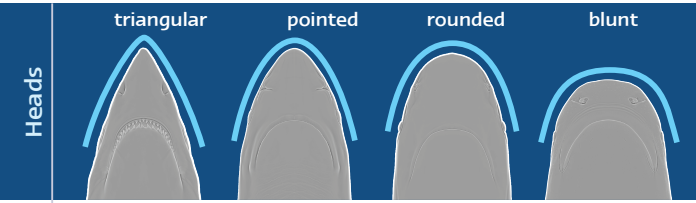
of Mexico, Central America and the Caribbean

SHARKS of Mexico, Central America and the Caribbean



Author / Juan Carlos Cantú,
Defenders of Wildlife.

Illustrations and Design / Raziel Levi Méndez



Sphyrna tiburo
Bonnethead shark

a. Shovel-shaped head. b. Long dorsal fin. c. Free tip on dorsal fin across from origin of pelvic fin. d. Anal fin with partially concave margin.

Sphyrna tudes
Smalleye Hammerhead

a. Head with deep middle indentation. b. Free end tip of dorsal fin above pelvic fin. c. Partially concave margin on anal fin.

Prionace glauca
Blue shark

a. Pointed head and long snout. b. Very long pectoral fin. c. Dorsal fin with origin far behind pectoral fin. d. Medium dorsal fin. e. Low caudal keel.

Carcharhinus porosus
Smalltail shark

a. Pointed head and long snout. b. Falciform and long dorsal fin. c. Small pectoral fin. d. Margin of 2nd dorsal fin above anal fin. e. Very concave anal fin.

Sphyrna lewini
Scalped Hammerhead

a. Head with 5 indentations. b. Pectoral fin with dark spot on tip. c. Pelvic fin with straight margin. d. Free end tip on second dorsal fin, adjoining origin of caudal fin.

Rhizoprionodon lalandei
Brazilian Sharpnose shark

a. Rounded head and long snout. b. Long labial furrows. c. Big eye. d. Short 2nd dorsal fin with origin above anal fin. e. Dark dorsal fin margin. f. Medium pectoral fin and white margin.

Negaprion brevirostris
Lemon shark

a. Rounded head and short snout. b. Dorsal fin with origin behind pectoral fin. c. Large dorsal fins, same size.

Carcharhinus limbatus
Blacktip shark

a. Pointed head and long snout. b. Dorsal fin with origin above pectoral fin. c. Very black spots on fin tips.

Sphyrna zygaena
Smooth Hammerhead

a. Head without middle indentation, 4 on sides. b. Straight margin on pelvic fin. c. Free end tip on 2nd dorsal fin separate from origin of caudal fin. d. Dark spot along caudal fin margin.

Rhizoprionodon porosus
Caribbean Sharpnose

a. Rounded head and long snout. b. Long labial furrows. c. Big eye. d. Dorsal fin with origin behind pectoral fin apex. e. Few white spots. f. Short 2nd dorsal fin. g. 2nd dorsal fin with origin above anal fin.

Carcharhinus acronotus
Blacknose shark

a. Dark nose tip. b. Medium dorsal fin. c. 2nd caudal fin with origin above anal fin origin. d. Dark margins on 2nd dorsal fin and caudal fin.

Carcharhinus leucas
Bull shark

a. Blunt head and short snout. b. Large pectoral fin. c. Large and triangular dorsal fin. d. Dark spots on fin tips. e. Low caudal keel.

Sphyrna mokarran
Great Hammerhead

a. Straight head, middle indentation. b. Very long dorsal fin. c. Very concave margin on anal fin. d. High and falciform 2nd dorsal fin.

Rhizoprionodon terraenovae
Atlantic Sharpnose shark

a. Rounded head and long snout. b. Long upper labial furrow. c. Many white spots. d. Dorsal fin with origin almost behind pectoral fin apex. e. 2nd dorsal fin with origin above anal fin.

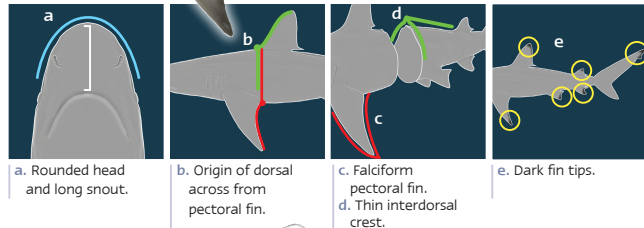
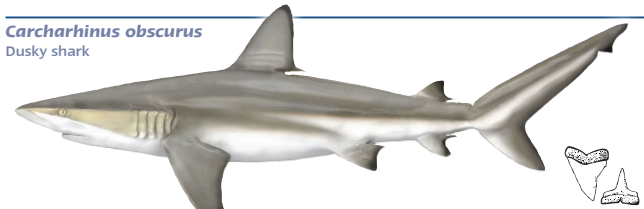
Carcharhinus brevipinna
Spinner shark

a. Pointed head, long snout. b. Long upper labial furrow. c. Long and narrow pectoral fin. d. Medium dorsal fin. e. Dark spots on fin margins.

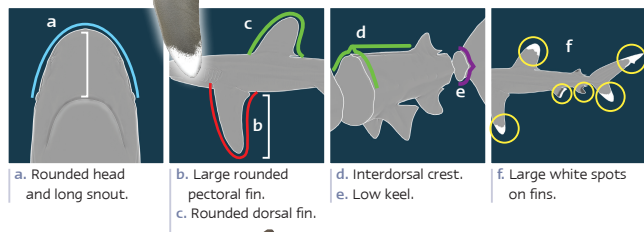
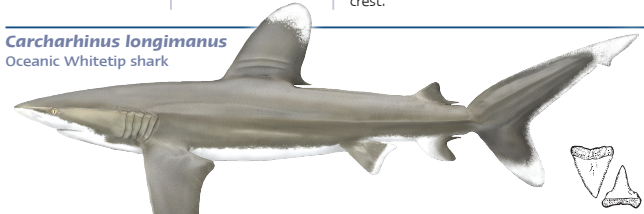
Carcharhinus falciformis
Silky shark

a. Rounded head and long snout. b. Long and narrow pectoral fins. c. Origin of dorsal fin behind pectoral fin. d. Interdorsal crest. e. Small 2nd dorsal fin. f. Dark spots on fin tips.

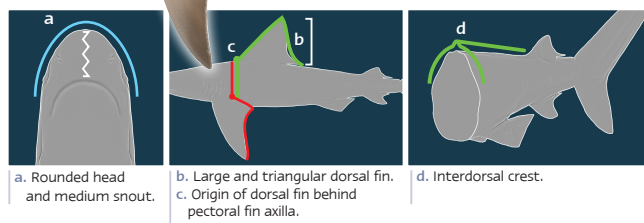
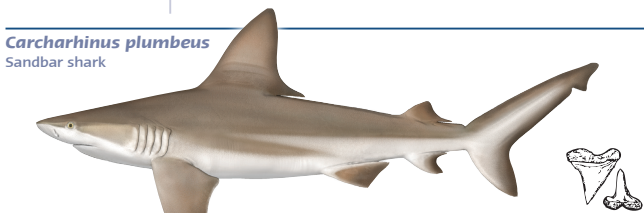
Carcharhinus obscurus
Dusky shark



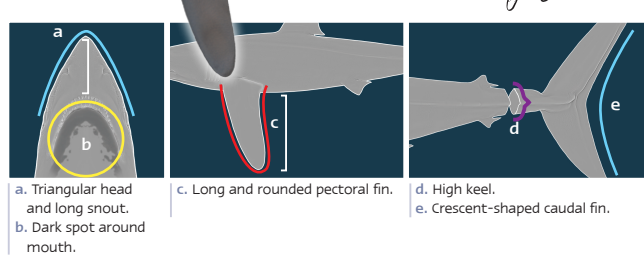
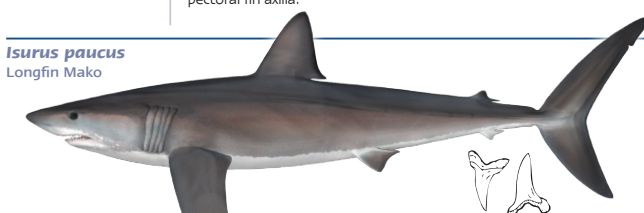
Carcharhinus longimanus
Oceanic Whitetip shark



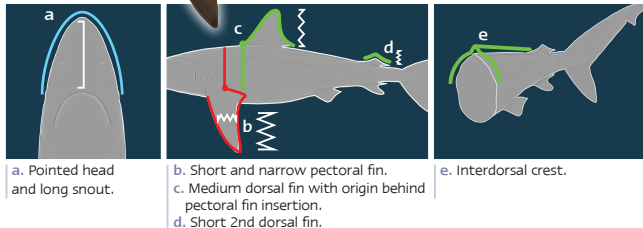
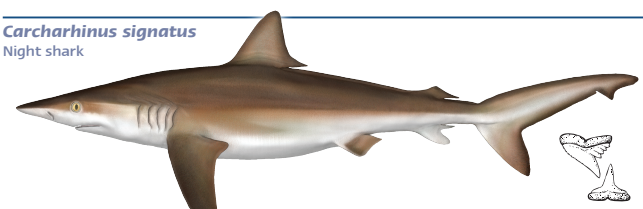
Carcharhinus plumbeus
Sandbar shark



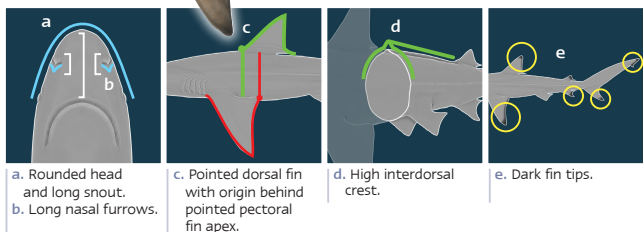
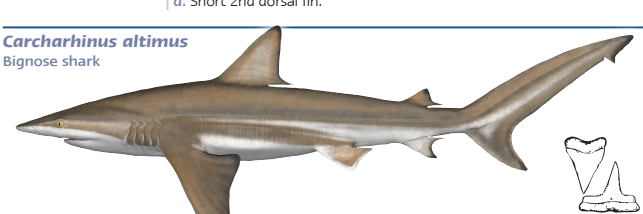
Isurus paucus
Longfin Mako



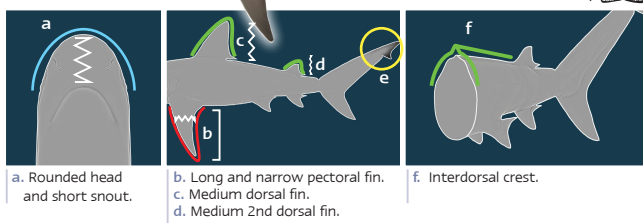
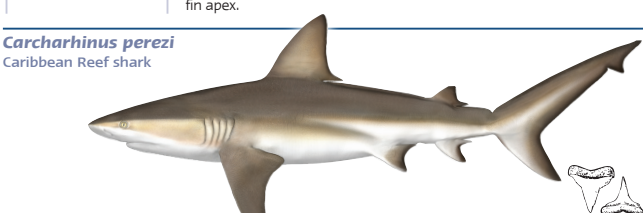
Carcharhinus signatus
Night shark



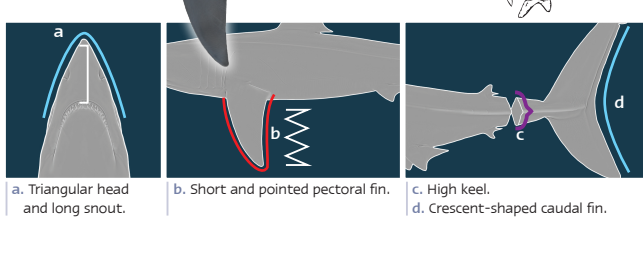
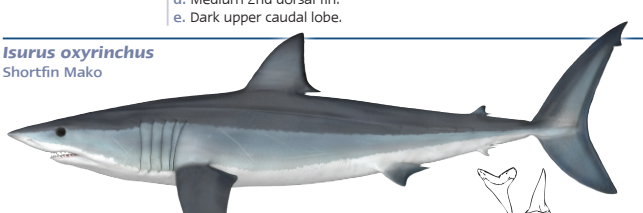
Carcharhinus altimus
Bignose shark



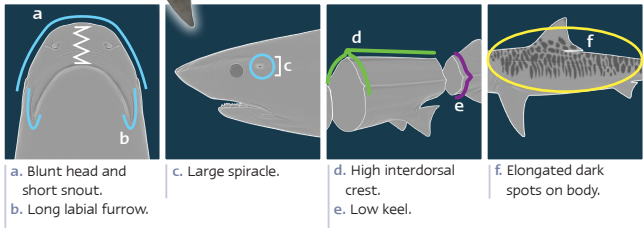
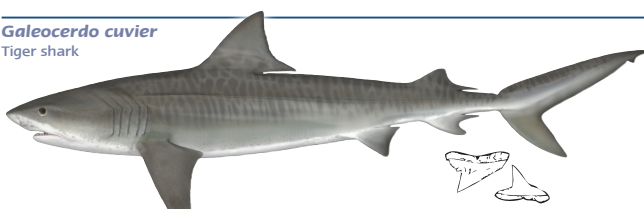
Carcharhinus perezii
Caribbean Reef shark



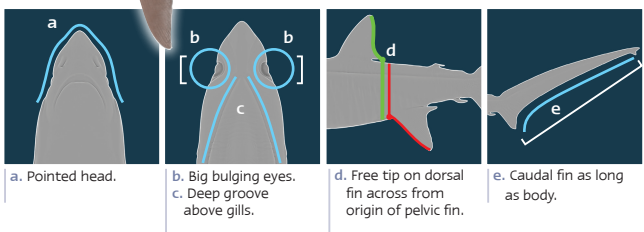
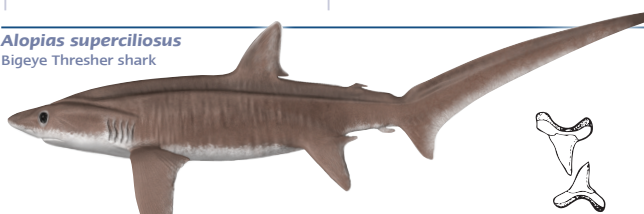
Isurus oxyrinchus
Shortfin Mako



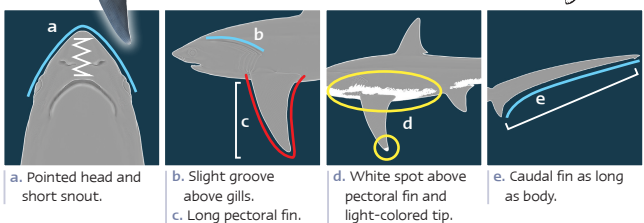
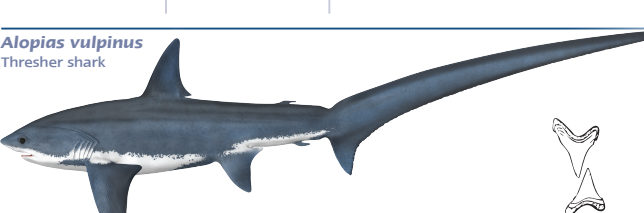
Galeocerdo cuvier
Tiger shark



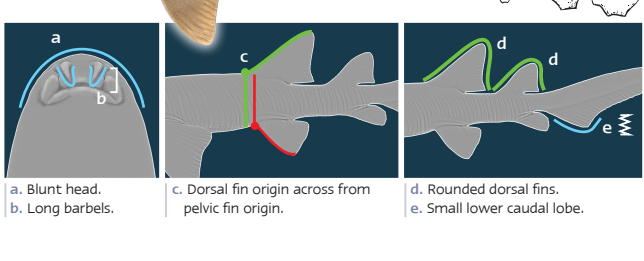
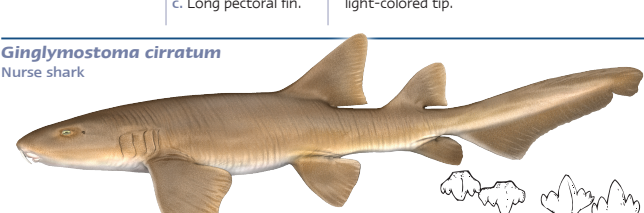
Alopias superciliosus
Bigeye Thresher shark



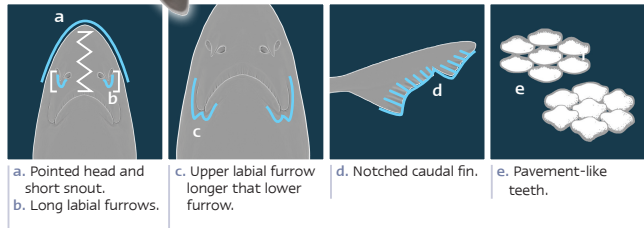
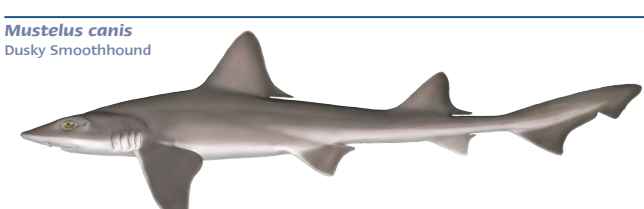
Alopias vulpinus
Thresher shark



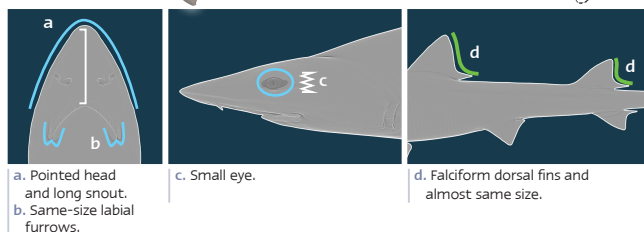
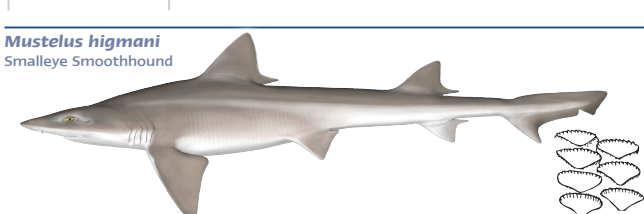
Ginglymostoma cirratum
Nurse shark



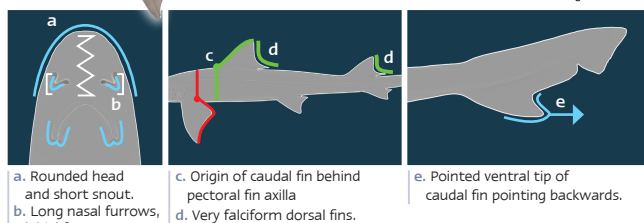
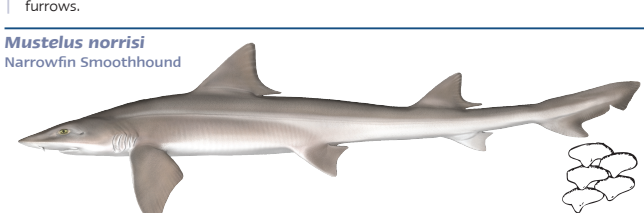
Mustelus canis
Dusky Smoothhound



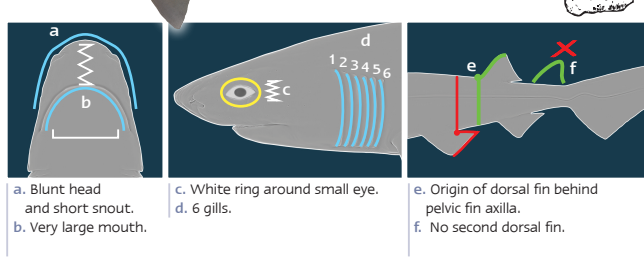
Mustelus higmani
Smalleye Smoothhound



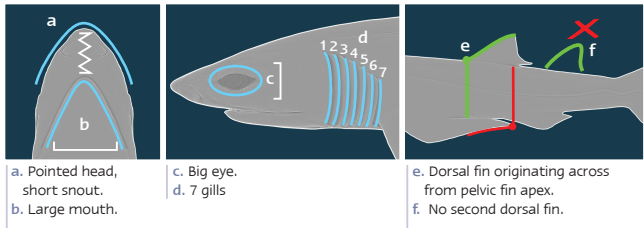
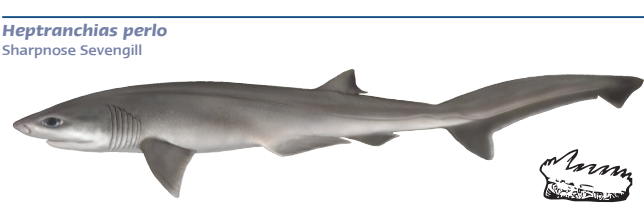
Mustelus norrisii
Narrowfin Smoothhound



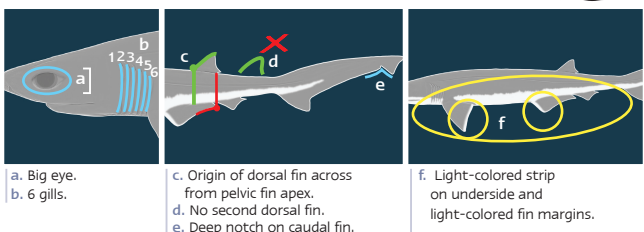
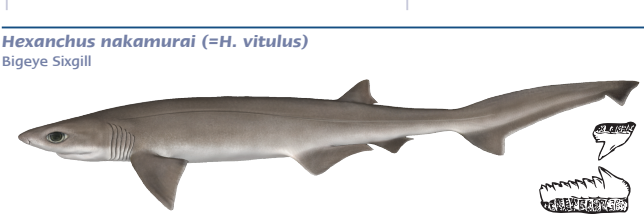
Hexanchus griseus
Bluntnose Sixgill



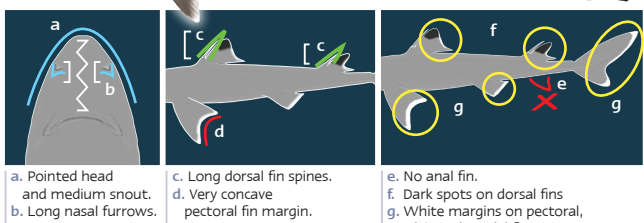
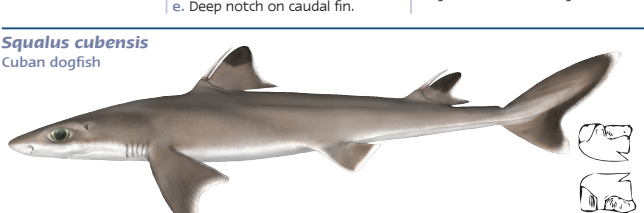
Heptranchias perlo
Sharpnose Sevengill



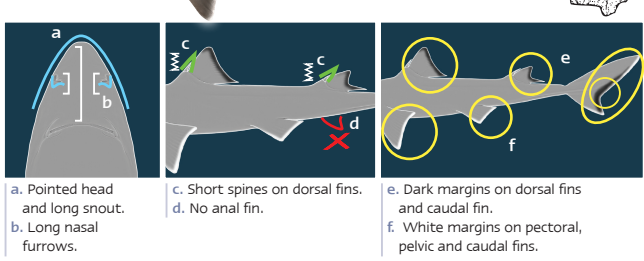
Hexanchus nakamurai (=H. vitulus)
Bigeye Sixgill



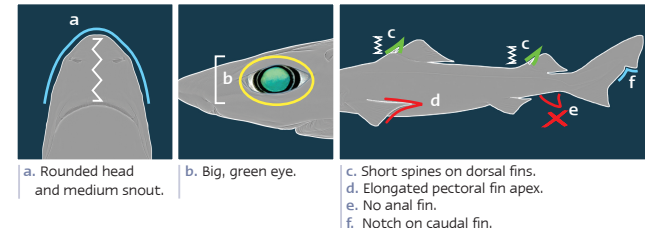
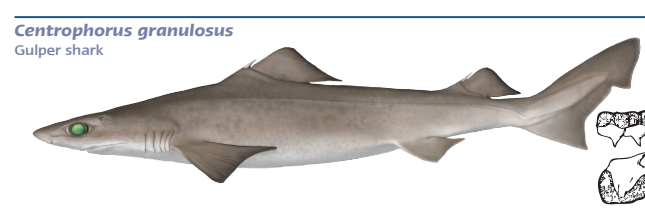
Squalus cubensis
Cuban dogfish



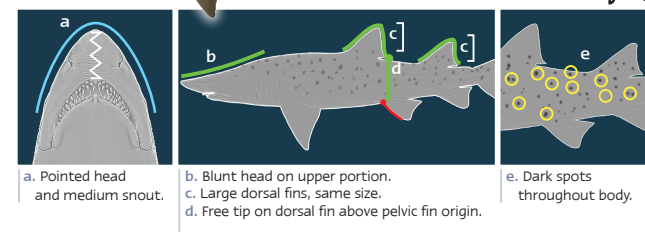
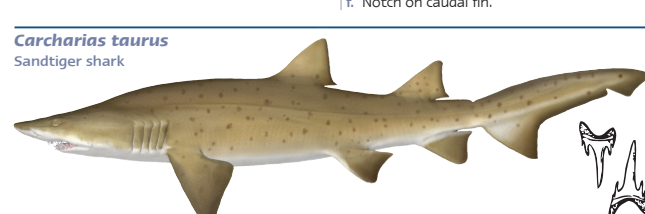
Squalus mitsukurii
Shortspine Spurdog



Centrophorus granulosus
Gulper shark



Carcharias taurus
Sandtiger shark



Shark parts

