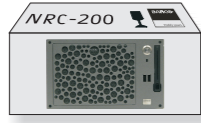


What's in the box ?

NRC-200

- NGP controller
- 2 chassis mounting brackets
- Quick Start Guide (this)
- Safety Manual
- USB recovery stick
- 1 DVI-VGA adapter
- 4 chassis feet
- 4 screws 3.9x6.5 (to fix brackets to bottom plate)
- 4 screws M4x8 (to fix brackets to housing)
- 2 part number labels
- 2 serial number labels
- 2x2 MAC address labels



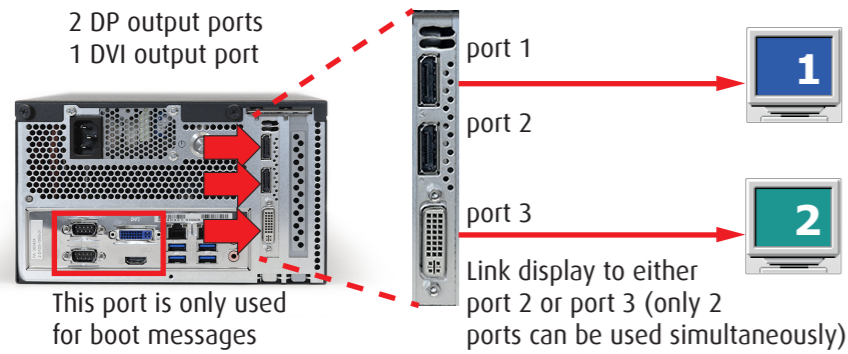
Accessories pack

- 2 DP to HDMI cables
- 2 DP to DVI cables
- 1 Ethernet cable
- 3 Power cables (EU, UK and US)

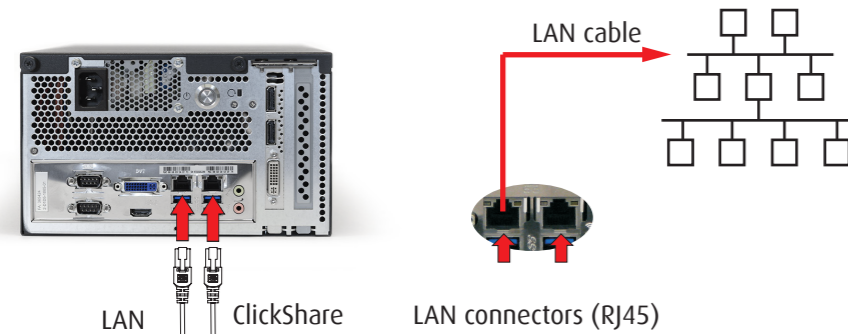


1 Connect Graphics Card

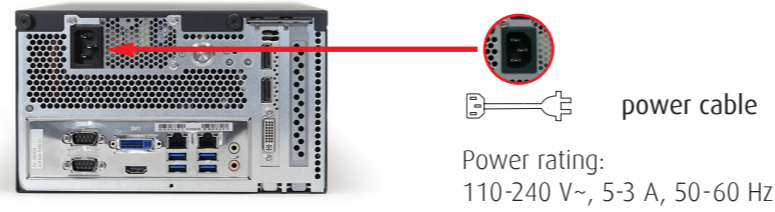
NRC-200 rear view



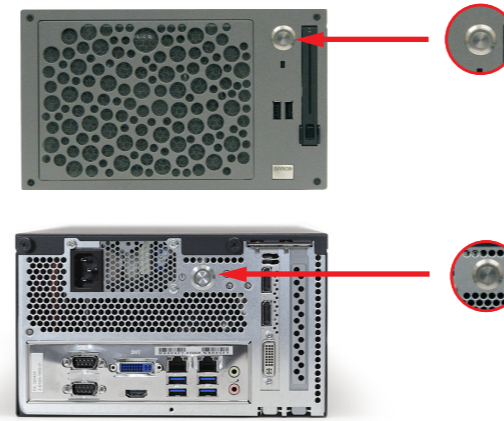
2 Connect to network & ClickShare



3 Connect Power Supply

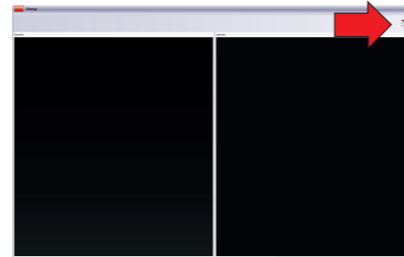


Power up the NRC-200 by means of the power button at the front or the rear.

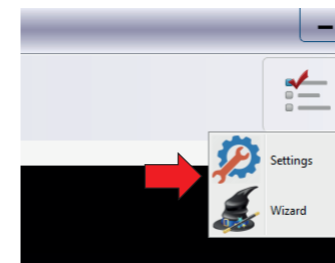


4 System Configuration

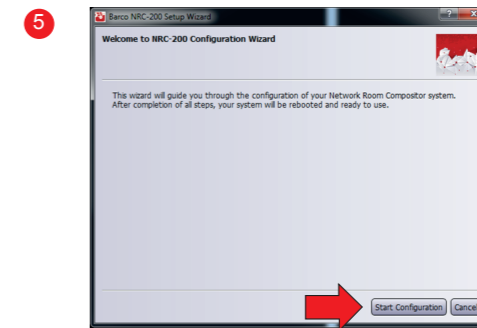
- 1 On tablet PC or normal PC with MS Windows7 or 8, 64-bit: Connect to same network as your NRC-200.
- 2 The Client GUI makes use of the Bonjour Services to detect your NRC-200 devices on the network. Install Bonjour on your system; Bonjour Print Services for Windows v2.0.2 is available on this site: http://support.apple.com/downloads/DL999/en_US/BonjourPSSetup.exe
- 3 Download the Client GUI from www.barco.com/NRC_client
Install client
Run client



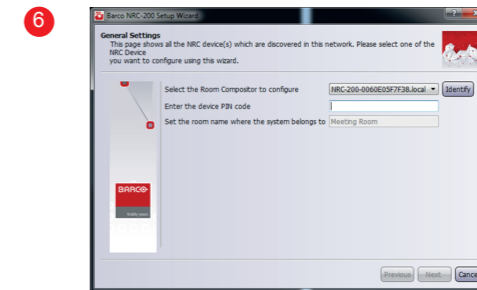
4 Select Wizard



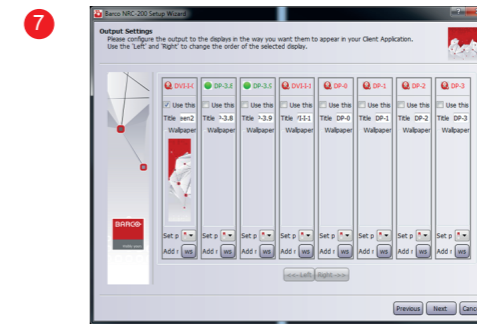
Go to Config Wizard



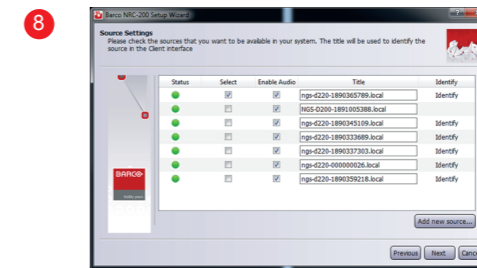
Welcome window: Start configuration.



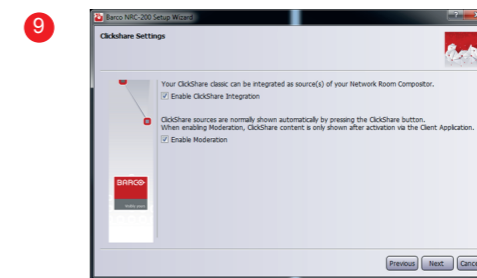
General settings
Select the NRC you want to configure. The pin code is 1234 by default.



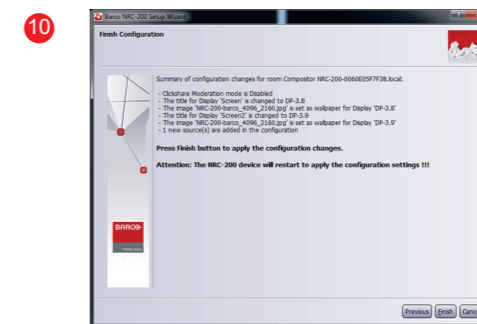
Output settings
Define the screen output settings.



Source settings
Configure the input sources.



ClickShare settings



Final configuration
This page shows a summary of all the changes that will be applied. Press **Finish**. The Wizard will apply all the changes listed above and reboot automatically.