

Devon Ash Dieback  
Resilience Forum



Devon  
Wildlife Trust



Saving  
Devon's  
Treescapes

# The Wonderful World of Lichens

*Lichen Introduction & Identification: Saving Devon's  
Treescapes (Devon Wildlife Trust).*

**April Windle**

Twitter: @aprilwindle  
Instagram: @aprilwindle.nature



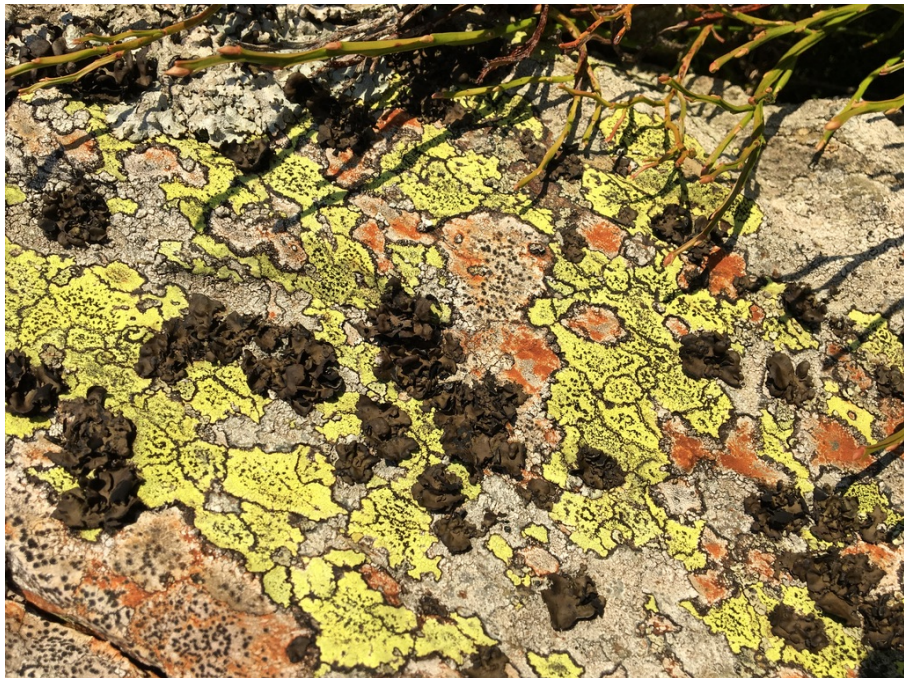


**Devon**  
Wildlife Trust

Part 1

# Introduction to Lichens & Ash

















LICHEN = FUNGI & ALGAE  
&/OR CYANOBACTERIA



# Significance of ash for lichens in Devon (& potential impacts of ash dieback).



Category	Records Total	Species Total
Devon (VC3 & 4)	125, 296	1432
Substrate Ash	5774	348
Near Threatened (ash)	126	21
Threatened (ash)	92	14
Notable (ash)	1013	118

**Ash properties:** base-rich bark where young trees (smooth bark), mature/post-mature trees (craggy bark) and ancient trees (decorticated/exposed lignum).



# Significance of ash in Devon (& ash dieback).

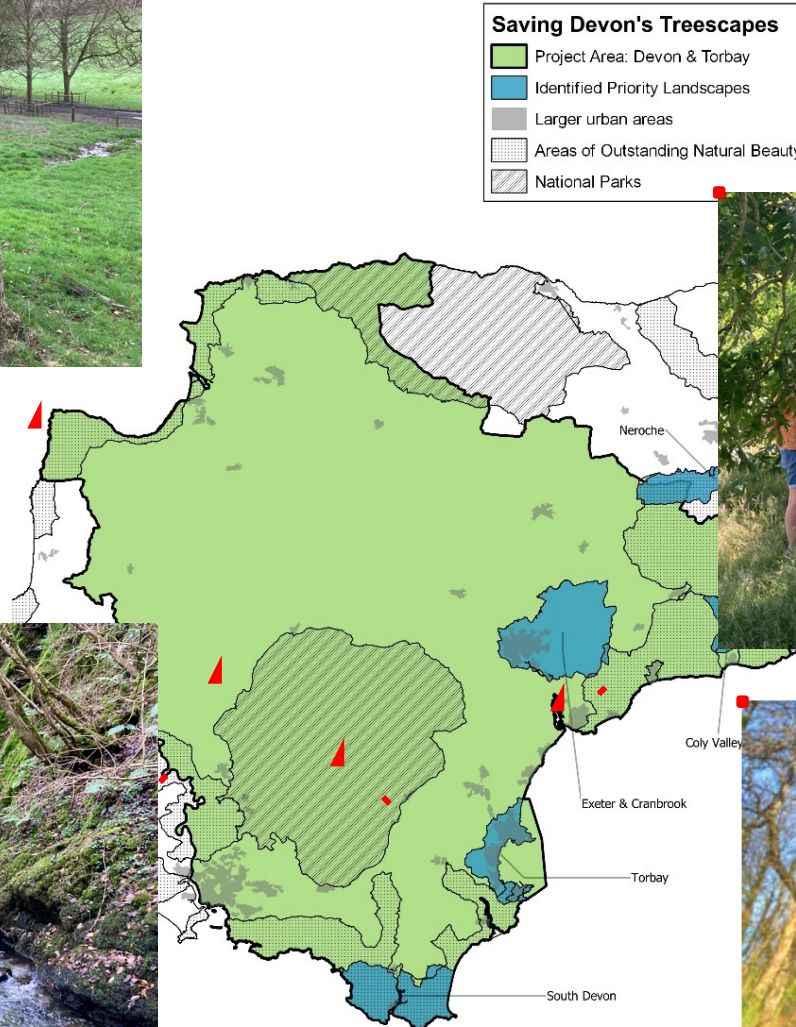


**1. Hartland Vale  
(North Devon)**



**2. Lydford Gorge  
(Dartmoor)**

Contains Ordnance Survey data © Crown copyright and database rights [2020]



**4. Phear Park (Exmouth)**



**3. nr. Holne Woodlands  
(Dartmoor)**





1.





***Cryptolechia carneolutea* (IUCN EN)**





2.





***Peltigera collina* (floury dog lichen)**





3.





***Lobaria pulmonaria* (lungwort lichen)**





4.



*Parmelina carporrhizans* (IUCN VU)





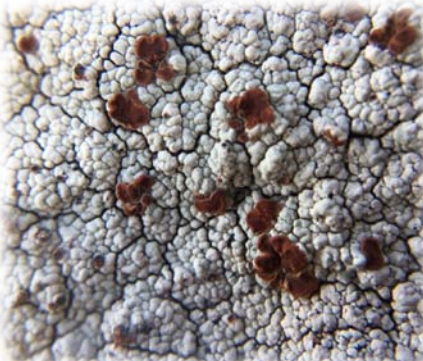
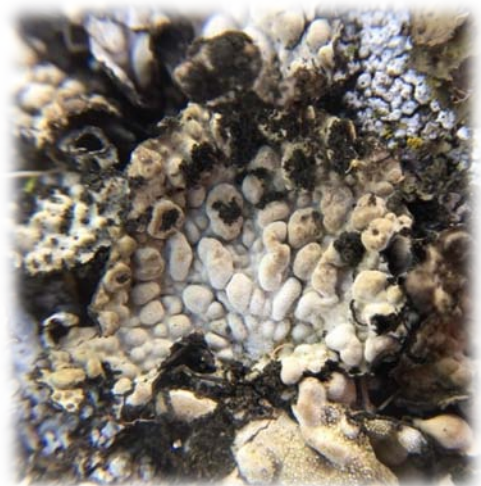
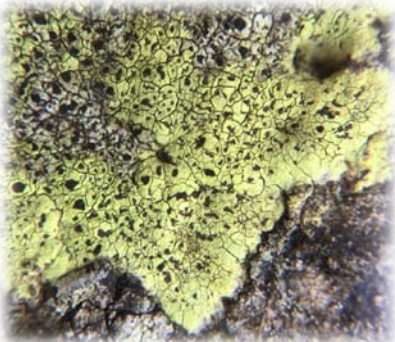


**Devon**  
Wildlife Trust

# Part 2

## Identification of Lichens







# 1. IDENTIFICATION - LICHEN THALLUS FORM



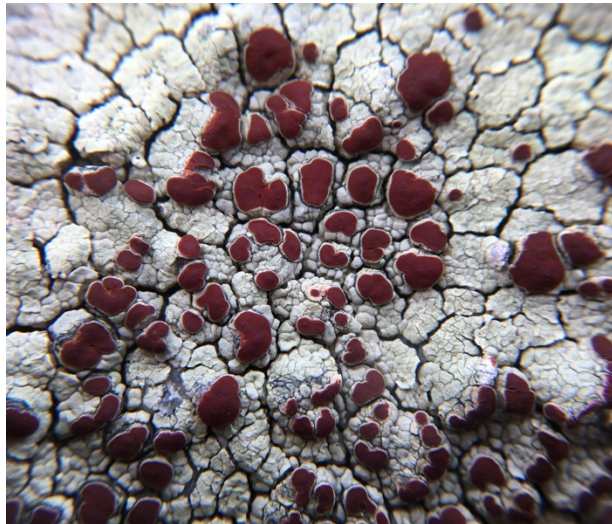
**CRUSTOSE**



**FOLIOSE**



**FRUTICOSE**

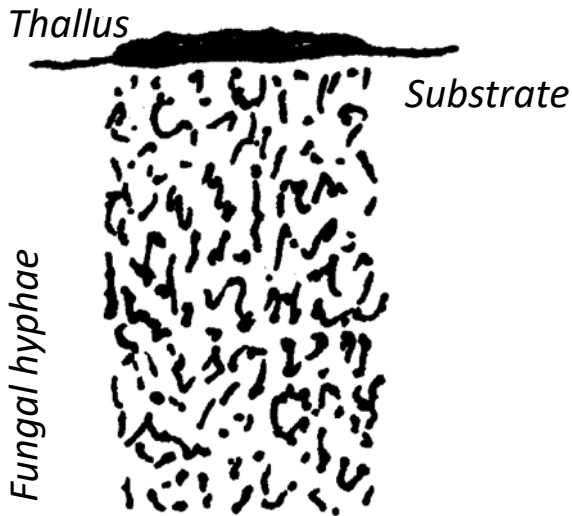




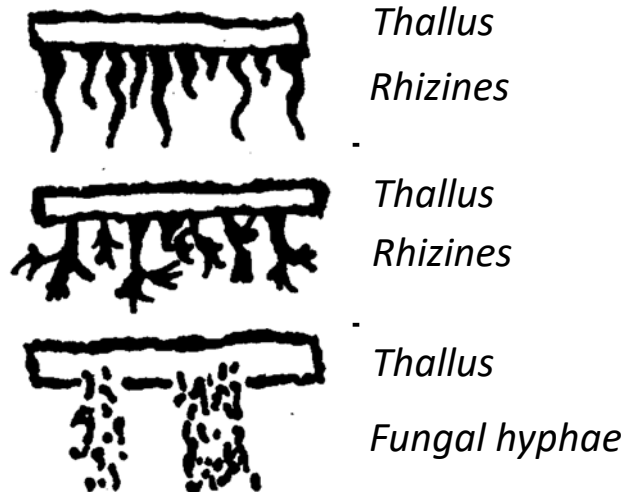
## 2. IDENTIFICATION – SUBSTRATE ATTACHMENTS



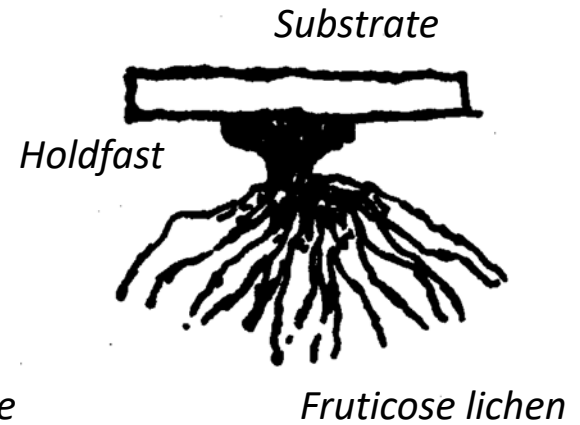
FUNGAL HYPHAE



RHIZINES / HAPTERS



HOLDFAST





# 3. IDENTIFICATION - LICHEN SEXUAL REPRODUCTION



Lecanorine



Lecideine



Crenulate



Gyrose



Stalked



Lirrelate



## 4. IDENTIFICATION - LICHEN ASEXUAL REPRODUCTION



SOREDIA



ISIDIA





**Devon**  
Wildlife Trust

# Part 3

## Project Indicator Species



*Thelotrema lepadinum*  
aka "barnacle lichen"

Crustose





Crustose



*Arthonia cinnabarina*  
aka "bloody-comma-lichen"







Crustose

*Graphis scripta*  
aka "script lichen"



*Parmelia sulcata*  
aka "crottle lichen"

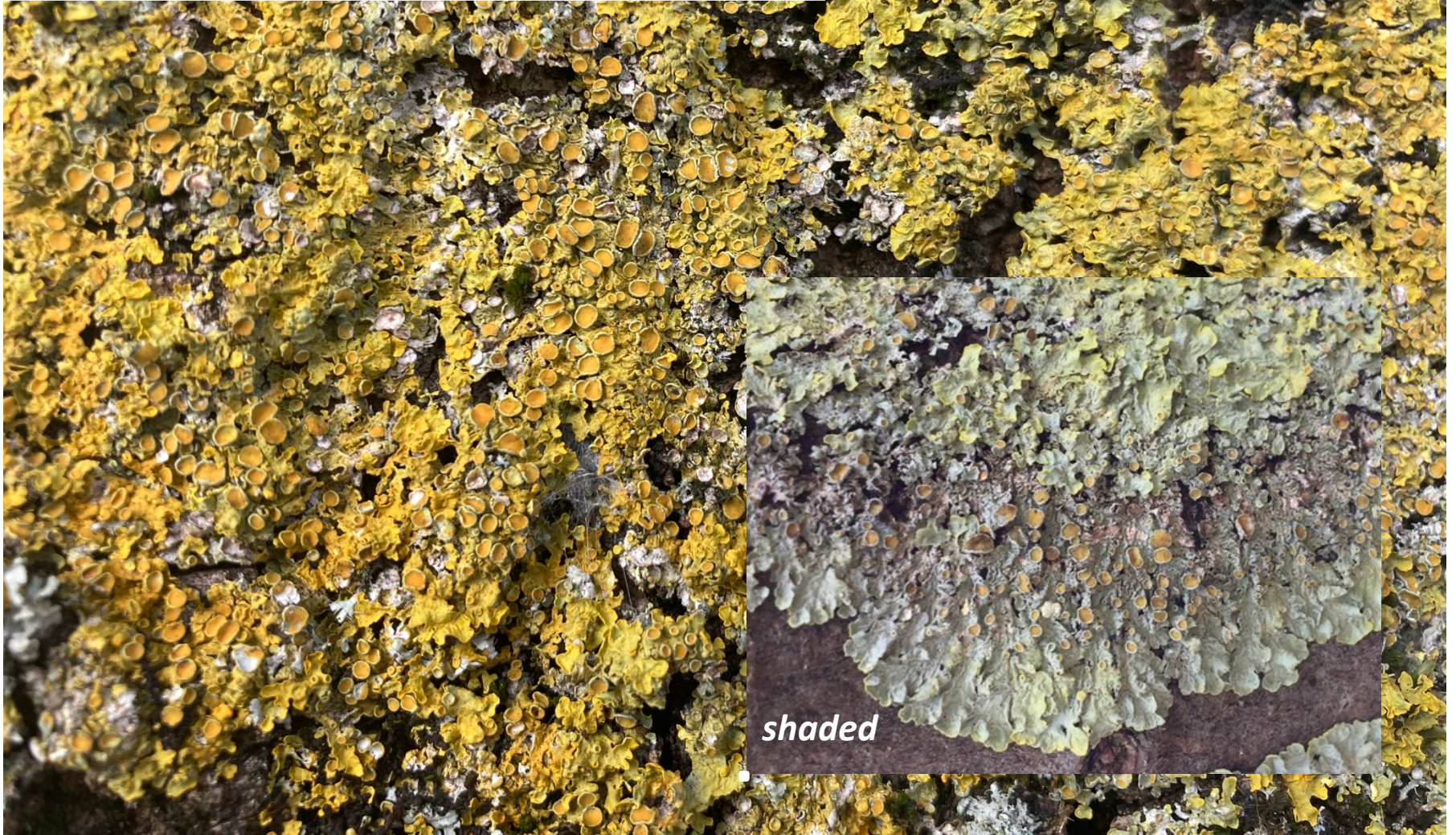
Foliose





Foliose

*Xanthoria parietina*  
aka "sunburst lichen"







Foliose

*Lobaria pulmonaria*  
aka "lungwort lichen"



Sticta spp.  
aka "stinky Stictas"

Foliose



*S. canariensis* (top left)

*S. sylvatica* (top right)

*S. limbata* (bottom left)

*S. Fuliginosa s. lat.* (bottom left)

cyphellae





Foliose



*Collema furfuraceum*  
aka "jelly lichen"

*Collema subflaccidum*  
aka "jelly lichen"





Foliose

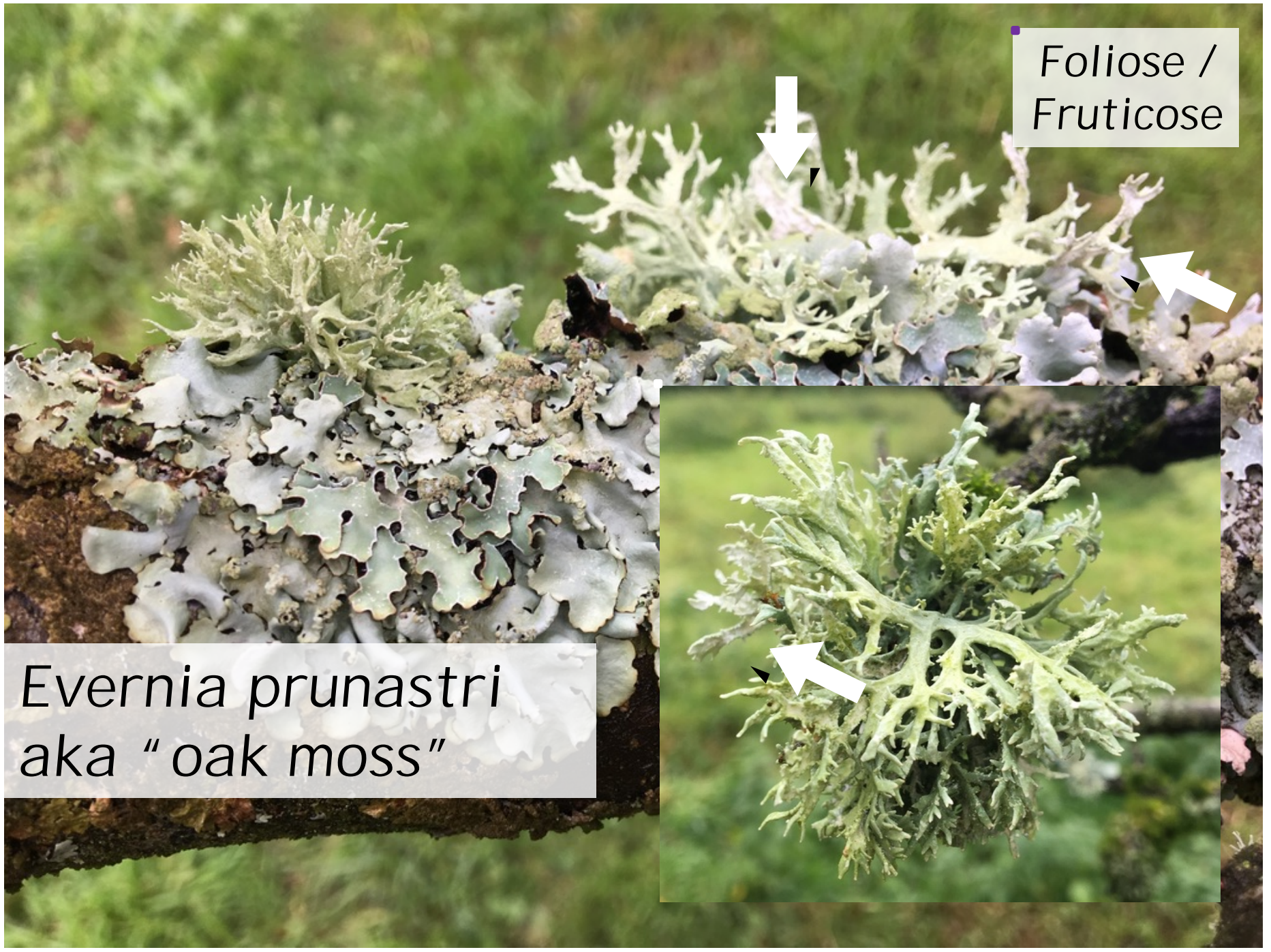
*Anaptychia ciliaris*  
aka "eagles claw"





Foliose /  
Fruticose

*Evernia prunastri*  
aka "oak moss"





*Ramalina farinacea*  
aka "shaggy strap lichen"

Fruticose







Fruticose

*Usnea articulata*  
aka "sting-of-sausages-lichen"



Devon Ash Dieback  
Resilience Forum



Devon  
Wildlife Trust



Saving  
Devon's  
Treescapes

# The Wonderful World of Lichens

THANK YOU FOR LISTENING!

April Windle

Twitter: [@aprilwindle](#)  
Instagram: [@aprilwindle.nature](#)