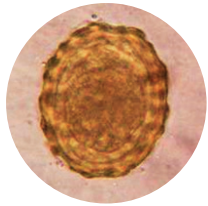
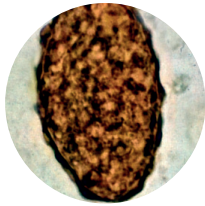


PARASITOLOGIA



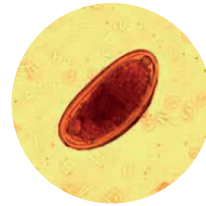
Ascaris lumbricoides
(ovo fértil)



Ascaris lumbricoides
(ovo infértil)



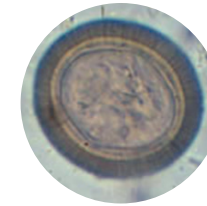
Ancilostomídeo sp
(ovos)



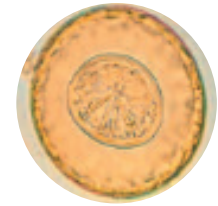
Enterobius vermicularis
(ovos)



Verme adulto de
Enterobius vermicularis



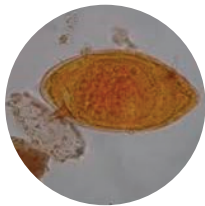
Taenia sp
(ovos)



Hymenolepis diminuta
(ovos)



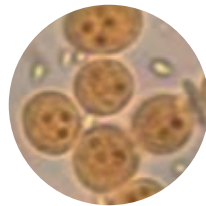
Hymenolepis nana
(ovos)



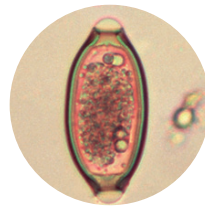
Schistosoma mansoni
(ovos)



Fasciola hepática
(ovos)



Endolimax nana
(cistos)



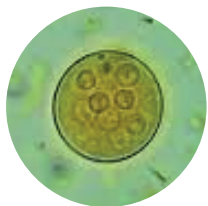
Trichuris trichiura
(ovos)



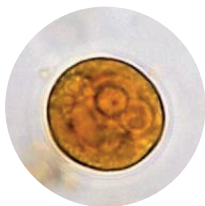
Ancilostomídeo sp
(larva)



*Strongyloides
Stercoralis sp*
(larva)



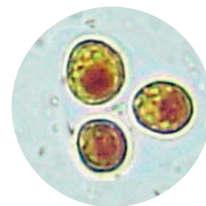
Entamoeba coli
(cistos)



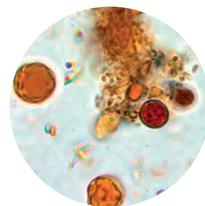
*Entamoeba
histolytica/dispar*
(cistos)



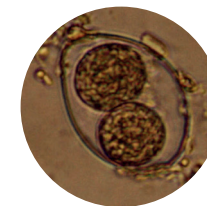
Giardia lamblia
(cistos)



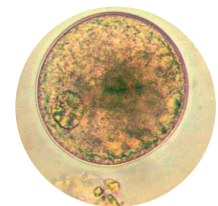
Iodamoeba butschlii
(cistos)



Blastocystis hominis
(cistos)



Isospora sp
(coccídeo)



Balantidium coli
(cistos)