

PRODUCT OVERVIEW  
2017/2018



THE ART OF SOUND



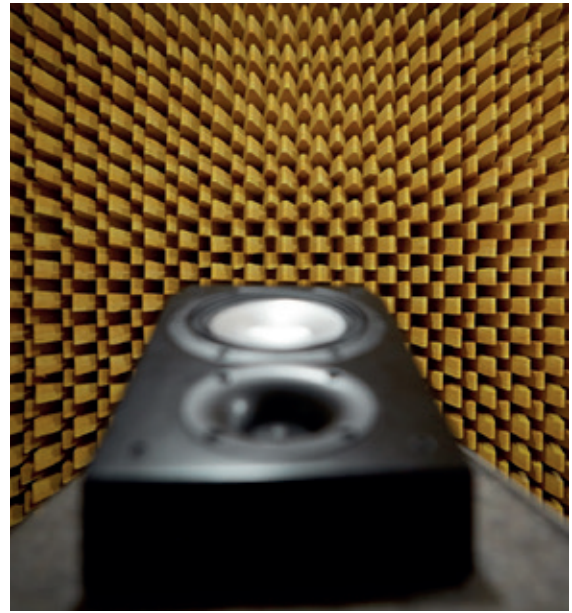
## THE ART OF SOUND

The art of finding the best sound for every taste, every requirement and every budget: For 45 years our loudspeakers have combined innovative technology, premium quality and an exceptionally diverse range of models and designs to create unique and individual sound experiences.

Our latest product highlights continue to reflect this philosophy: The new compact soundbar DM 5 expands our DM series for home cinema and music enjoyment. And the popular GLE series gets an update with new models and technologies, such as the GLE 496.2 BT, a high quality stereo active loudspeaker set with HDMI for direct connection with flat screen TV and Bluetooth® interfaces.

# OUR PRODUCTS

All products are designed in our in-house development centre in Weilrod, near Frankfurt. We only use top quality components for the manufacture of our loudspeakers in our facilities in Weilrod and in the Czech Republic, and all quality control is done in Germany. Our commitment pays off: Many of our loudspeakers have won awards for their sound and their design.



# OUR SERVICE

Every one of our speakers undergoes strict quality control. But, if you still encounter issues, our service department will provide rapid support. Because we put such a premium on long-lasting products, we will gladly repair any model at any time. No matter how old it is.







## 45 YEARS OF CANTON

2017 is an anniversary year for Canton: Since 1972 we have provided a great many people with the chance to experience good music through our products. One of the secrets of Canton's success is that the company has remained in family ownership to this day: With founder Günther Seitz and his son and Managing Partner Achim Seitz, the next generation is already in place to take the company forwards.

## WE CELEBRATE MUSIC

Music is at the heart of everything we do at Canton: In the company's in-house development centre, Frank Göbl and his team work with the latest technology and top quality materials to hone the perfect sound. From the first computer simulation to the final surface finish: We are always searching for ways to reproduce every kind of music to perfection. We do this by using technical innovations, such as the latest generation wave surround technology found in many of our loudspeakers, which enables us to create more strokes and authentic sound even at the upper and lower ends of the scale.





# EXPERIENCE CANTON

THE ART OF SOUND, as we see it, is the art of perfectly harmonizing tradition with innovation. The only way to develop speakers with personality is to put a lot of personal dedication into them. Get to know us.

*„The best thing about my job? Making my colleagues smile every day!“*

Heike Kalusche, the heart and soul of Canton since 1978.



*„I value the interaction with our community on social media – loyal and new Canton fans, who are as enthusiastic as we are about good loudspeakers.“*

Emre Altinay, employed by Canton since 2014 and Junior Marketing Manager since 2017.



*„Our products have constantly evolved over the last 45 years. The good working environment has stayed the same.“*

Heike Raab, involved in production planning for Canton since 1979.





## VENTO

The new titanium speaker cone membranes together with the ceramic tweeter system optimized for omni-directional performance and neutrality: a perfect symbiosis for an extraordinary sound experience. With re-designed cabinets and substantially more internal volume, every Vento speaker stands for absolute perfection. The downfire bass reflex vent enhances the bass reproduction of the three standing models.

- Ceramic tweeter system
- Titanium woofers and midrange speakers
- Wave-surround technology
- Reference internal cabling
- High-quality connection terminals
- Multi-layer laminate cabinet
- Diamond-cut aluminum rings
- Fabric cover with magnetic fastening
- High gloss cabinet surface
- Matching speaker stand: LS 850.3
- Suitable Dolby Atmos® loudspeaker: AR-800



Vento 896 DC

Vento 886 DC

Vento 876 DC

Vento 836

Vento 826

W x H x D

11.2" x 43.3" x 14.6"

W x H x D

9.8" x 40.4" x 13"

W x H x D

8.9" x 37.4" x 11.8"

W x H x D

8.7" x 14.2" x 11.8"

W x H x D

7.7" x 11.8" x 10.6"

Color



Color



Color



Color



Color



Subwoofer (recommendation)



Vento 866 Center

Vento 816 OnWall

AR-800

SUB 1500 R

W x H x D

23.6" x 7.9" x 13.8"

W x H x D

7.7" x 11.8" x 3.5"

W x H x D

7.7" x 10.6" x 5.7"

B x H x T

15" x 19.9" x 18.1"

Color



Color



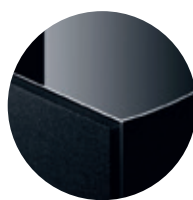
Color



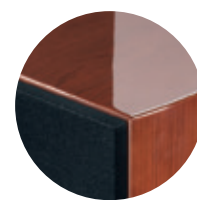
Color



White lacquer "high gloss"  
Black fabric grill



Black lacquer "high gloss"  
Black fabric grill



Cherry veneer "high gloss"  
Black fabric grill





## CHRONO SL

The high standards of this series are reflected in the elaborate design of the seamless cabinets. With multi-layer laminate cabinets and high-gloss finish, these speakers look like they formed in a mold. Diamond-cut aluminum rings and titanium speaker membranes round out the high quality standards of the new Chrono SL.

- Aluminum-manganese tweeter system
- Titanium woofers and midrange speakers
- Wave-surround technology
- High-quality internal cabling
- Bi-wiring terminal
- Diamond-cut aluminum rings
- Fabric cover with magnetic fastening
- High gloss cabinet surface
- Matching speaker stand: LS 650
- Suitable Dolby Atmos® loudspeaker: AR-500



Chrono SL 596 DC

Chrono SL 586 DC

Chrono SL 536

Chrono SL 526

Chrono SL 556 Center

W x H x D

9.8" x 41.3" x 11.8"

W x H x D

7.5" x 39.4" x 11"

W x H x D

7.5" x 14.2" x 10.6"

W x H x D

6.7" x 7.7" x 10.2"

W x H x D

17.9" x 6.7" x 11.8"

Color



Color



Color



Color



Color



Subwoofer (recommendation)



Chrono SL 516 OnWall

AR-500

SUB 1500 R

W x H x D

6.7" x 11.6" x 3.5"

W x H x D

6.7" x 10.2" x 5.7"

W x H x D

15" x 19.9" x 18.1"

Color



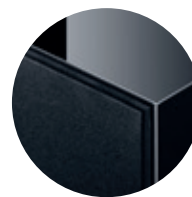
Color



Color



White lacquer "high gloss"  
Black fabric grill



Black lacquer "high gloss"  
Black fabric grill



## CHRONO

The high-gloss varnished baffle combined with a vinyl cabinet surface and Canton's typical diamond-cut aluminum rings are defining features of the current Chrono series. Proven technology within: aluminum-manganese tweeters, 18 dB crossover and midrange systems with aluminum cone membranes and our latest version of our wave surrounds.

- Aluminum-manganese tweeter system
- Aluminum woofers and midrange speakers
- Wave-surround technology
- Diamond-cut aluminum rings
- Removable fabric cover
- Massive baffle in high gloss
- Floorstanding speaker with "Rear-Fix"
- Vinyl cabinet surface
- Matching speaker stand: LS 660
- Suitable Dolby Atmos® loudspeaker: AR-400





Chrono 519 DC

Chrono 518 DC

Chrono 517

Chrono 513

Chrono 512

W x H x D

9.8" x 41.3" x 11.8"

W x H x D

9" x 39.4" x 11"

W x H x D

9" x 37.4" x 11"

W x H x D

7.5" x 14.2" x 10.6"

W x H x D

6.7" x 11.6" x 10.2

Color



Color



Color



Color



Color



Subwoofer (recommendation)



Chrono 515 Center

Chrono 511 OnWall

AR-400

SUB 80.2

W x H x D

17.9" x 6.7" x 11.8"

W x H x D

6.7" x 11.6" x 3.5"

W x H x D

6.7" x 10.2" x 5.7"

W x H x D

10.8" x 15" x 16.5"

Color



Color



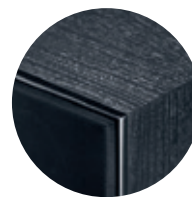
Color



Color



White decor  
White lacquer "high gloss"  
Black fabric grill



Black ash decor  
Black lacquer "high gloss"  
Black fabric grill



## ERGO

Anyone looking for that classic Hi-Fi sound will find exactly what they want with the Ergo series. The timeless design with premium real-wood veneer, the metal grill front covers, the rounded cabinet corners typical of Ergo, and the classic chassis arrangement: tweeters and midrange at the top and massive bass at the bottom with bass reflex pipe facing out to the front.

- Aluminum-manganese tweeter system
- Aluminum woofers and midrange speakers
- Wave-surround technology
- High-quality internal cabling
- Bi-wiring terminal
- Metal grill front cover, removable
- Cabinets with real-wood veneer
- Matching speaker stand: LS 650



Ergo 690 DC

W x H x D

9.1" x 41.3" x 12"

Color



Ergo 670 DC

W x H x D

8.5" x 37.4" x 11.2"

Color



Ergo 620

W x H x D

8.1" x 13.4" x 10.8"

Color



Ergo 655 Center

W x H x D

20.9" x 8.1" x 11.2"

Color



SUB 650

W x H x D

14.2" x 18.9" x 19.7"

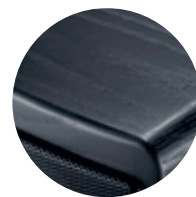
Color



Cherry veneer  
Black metal grill



Wenge veneer  
Black metal grill



Black ash veneer  
Black metal grill





## GLE 496.2 BT

Made for music and film pleasure: The high quality stereo active loudspeaker set with Bluetooth® interface and integrated virtual surround sound with HDMI is a genuine all-rounder for the living room: Thanks to its integrated amplifier, the GLE 496.2 BT is a compact solution and can be connected directly to the television. The set guarantees optimal speech intelligibility, an impressive spatial presence and powerful bass tones.

- 300 watt system output
- Master/slave principle
- Aluminium bass/midrange system
- No separate AV receiver required
- Aluminium-manganese tweeter system
- 3-way bass reflex system
- 3 HDMI inputs (with 3D, 4K), 1 HDMI output (with ARC)
- Optical and coaxial digital input, analogue cinch input
- Bluetooth® 3.0 interface
- Loss-free transmission in CD quality via apt-X® technology

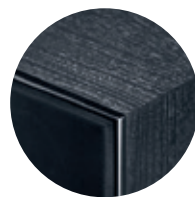


GLE 496.2 BT

Principle	3-way, bass reflex
Rated/music load	300 watt
Frequency range	22 ... 30.000 Hz
Crossover frequency	300 / 3.200 Hz
W x H x D	10.7" x 42" x 12.2"
Weight	41 kg (Set)
Color	<input type="radio"/> <input checked="" type="radio"/>



White vinyl decor  
White lacquer  
Black fabric grill



Black ash decor  
Black lacquer  
Black fabric grill



## GLE.2

The external feature of the latest GLE.2 series is the new aluminium-manganese tweeter system, which is integrated in the matt varnished, 0.9" strong baffle. The combination of the sophisticated wave guide, new membrane material and appropriate crossover network now offers a reproduction of 20 to 40,000 Hz, making it the best GLE of all time (GLE 496.2).

The optical highlight is the bi-color design in Black-Macassar. This all makes our GLE series one of Europe's bestselling loudspeaker series.

- Aluminium-manganese tweeter system
- Aluminium woofers and mid range speakers
- Wave-surround technology
- Polycarbonate speaker baskets
- Removable fabric cover
- Baffle in matt lacquer
- Cabinet in vinyl decor
- Matching speaker stand: LS 660
- Suitable Dolby Atmos® loudspeaker: AR-400





<b>GLE 496.2</b>	<b>GLE 476.2</b>	<b>GLE 436.2</b>	<b>GLE 426.2</b>	<b>GLE 456.2 Center</b>
W x H x D 8.3" x 41.7" x 12.2"	W x H x D 7.5" x 37.8" x 11.4"	W x H x D 7.5" x 14.2" x 11"	W x H x D 6.7" x 11.6" x 10.6"	W x H x D 17.9" x 6.7" x 12.2"
Color <input type="radio"/> <input type="radio"/> <input type="radio"/>	Color <input type="radio"/> <input type="radio"/>	Color <input type="radio"/> <input type="radio"/>	Color <input type="radio"/> <input type="radio"/> <input type="radio"/>	Color <input type="radio"/> <input type="radio"/>



Subwoofer (recommendation)



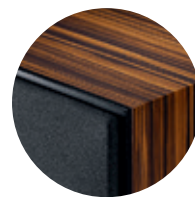
<b>GLE 417.2 OnWall</b>	<b>GLE 416.2 OnWall</b>	<b>GLE 416.2 Pro</b>	<b>AR-400</b>	<b>SUB 8.3</b>
W x H x D 6.7" x 20.5" x 3.3"	W x H x D 6.7" x 11.6" x 3.9"	W x H x D 6.7" x 11.6" x 5.7"	W x H x D 6.7" x 10.2" x 5.7"	W x H x D 10.8" x 15.1" x 16.5"
Color <input type="radio"/> <input type="radio"/>	Color <input type="radio"/> <input type="radio"/> <input type="radio"/>	Color <input type="radio"/> <input type="radio"/>	Color <input type="radio"/> <input type="radio"/>	Color <input type="radio"/> <input type="radio"/>



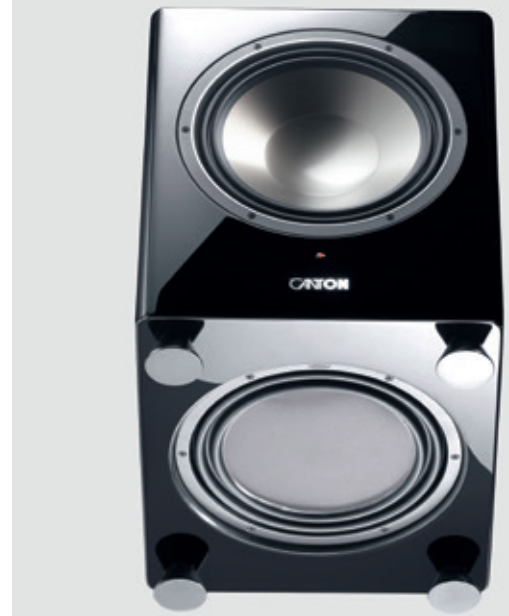
White vinyl decor  
White lacquer  
Black fabric grill



Black vinyl decor  
Black lacquer  
Black fabric grill



Makassar vinyl decor  
Black lacquer  
Black fabric grill



## SUBWOOFER

Our powerful, active subwoofers all follow the bass reflex principle and ensure a solid bass foundation in a compact design. Generous reverberation systems with aluminum or titanium speaker membranes combined with 3rd generation wave surround technology ensure precise mechanical performance. The room compensation technology, integrated in the larger models, allows the speakers to be adjusted to suit the acoustics of the room.

- Long throw woofer
- Dual compound aluminum membranes
- Down-firing bass reflex system
- High-quality digital amplifiers
- High and low-level inputs
- Massive cabinet construction
- Compact, timeless cube design
- ASF 75 SC with wall mount



SUB 1500 R

SUB 80.2

SUB 601

SUB 650

W x H x D

15" x 19.9" x 18.1"

W x H x D

10.8" x 15" x 16.5"

W x H x D

10.6" x 13.1" x 11.6"

W x H x D

14.2" x 18.9" x 19.7"

Color



Color



Color



Color



SUB 12.3

SUB 10.3

SUB 8.3

ASF 75 SC

W x H x D

14.2" x 18.1" x 19.7"

W x H x D

12.6" x 17.1" x 17.9"

W x H x D

10.8" x 15.1" x 16.5"

W x H x D

16.9" x 6.1" x 16.1"

Color



Color



Color



Color



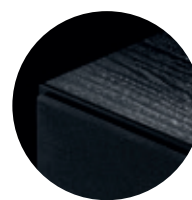
SUB 1500 R:  
White lacquer "high gloss"  
Black fabric grill



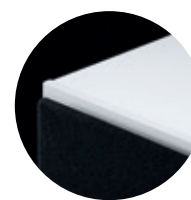
SUB 1500 R:  
Black lacquer "high gloss"  
Black fabric grill



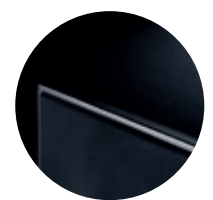
SUB 80.2:  
White vinyl decor,  
White lacquer "high gloss"  
Black fabric grill



SUB 80.2:  
Ash vinyl decor  
Black lacquer "high gloss"  
Black fabric grill



SUB 12.3, 10.3, 8.3:  
White vinyl decor  
White lacquer semi-gloss  
Black fabric grill



SUB 12.3, 10.3, 8.3:  
Black vinyl decor  
Black lacquer semi-gloss  
Black fabric grill



## TV-SOUNDSYSTEM

It's hard to imagine a modern flatscreen TV without good speaker system. Our TV-Soundsystem range provides that perfect movie theater feeling along with excellent sound for music, all with minimal connection efforts. In addition to digital and analogue connections, all systems are equipped with Bluetooth®- and aptX®-technology for the best possible wireless connection quality.

- Full 5.1 surround experience
- Minimum cable requirement
- Controllable via TV remote
- Bluetooth® 3.0 with aptX® technology
- Sounddecks with integrated subwoofer
- Soundbars with integrated wall mounts
- High-quality HDF cabinets
- DM 90.3 with HDMI



# HDMI



**DM 90.3**

W x H x D  
35.4" x 5.7" x 11.8"

Color  
   HG

**DM 100**

W x H x D  
39.4" x 2.7" x 13"

Color

**DM 75**

W x H x D  
28.5" x 2.7" x 12.6"

Color

**DM 55**

W x H x D  
21.7" x 2.7" x 11.8"

Color



**DM 9**

W x H x D  
35" x 4.7" x 2.8"

Color

**DM 5**

W x H x D  
21.7" x 2.5" x 3.5"

Color

**DM 900**

W x H x D  
35" x 2.4" x 2.6"

Color



White lacquer, White glass  
White metal grill



Silver lacquer, Silver glass  
Silver metal grill



Black lacquer, Black glass  
Black metal grill



Black lacquer "high gloss"  
Black metal grill



## 5.1 MOVIE

The ideal home cinema has six speakers: two front, two back, one center and a powerful active subwoofer. Whether it's a high-end system with two floorstanding speakers in the front, or a compact set like Movie 75 for smaller rooms: our wide range of surround solutions offers the right match for every need.

- Aluminum tweeter system
- Powerful active subwoofers
- Aluminum or polycarbonate cabinets
- Metal grill front cover
- Wall mount for center and surround speakers
- Matching speaker stands: LS 90.2, LS 250.2



**Movie 1005.2**

W x H x D

Front:  
3.5" x 5.4" x 3.9"  
Center:  
8.7" x 3.5" x 3.9"  
Surround:  
3.5" x 5.4" x 3.9"  
Subwoofer:  
9.5" x 15.9" x 16.5"

Color



**Movie 365**

W x H x D

Front:  
4.3" x 11.4" x 4.8"  
Center:  
11.4" x 4.3" x 4.8"  
Surround:  
4.3" x 11.4" x 4.8"  
Subwoofer:  
9.5" x 15.9" x 16.5"

Color



**Movie 265**

W x H x D

Front:  
3.5" x 7.7" x 4.2"  
Center:  
7.7" x 4.2" x 3.5"  
Surround:  
3.5" x 7.7" x 4.2"  
Subwoofer:  
9.5" x 15.9" x 16.5"

Color



**Movie 165**

W x H x D

Front:  
4.3" x 6.3" x 4.8"  
Center:  
11.4" x 10.8" x 4.8"  
Surround:  
4.3" x 6.3" x 4.8"  
Subwoofer:  
9.5" x 15.9" x 16.5"

Color



**Movie 135**

W x H x D

Front:  
3.5" x 4.6" x 4.2"  
Center:  
7.7" x 3.5" x 4.2"  
Surround:  
3.5" x 4.6" x 4.2"  
Subwoofer:  
9.5" x 15.9" x 16.7"

Color



**Movie 95**

W x H x D

Front:  
3.5" x 3.5" x 4.2"  
Center:  
7.7" x 3.5" x 4.2"  
Surround:  
3.5" x 3.5" x 4.2"  
Subwoofer:  
9.5" x 15.9" x 16.7"

Color



**Movie 75**

W x H x D

Front:  
3.5" x 3.5" x 4.2"  
Center:  
7.7" x 3.5" x 4.2"  
Surround:  
3.5" x 3.5" x 4.2"  
Subwoofer:  
9.1" x 14.2" x 15.8"

Color



White lacquer semi-gloss  
White metal grill



Silver lacquer semi-gloss  
Silver metal grill



Black lacquer semi-gloss  
Black metal grill



Black lacquer anodized  
Black metal grill



## MUSICBOX

The world of music has changed drastically with MP3s and downloads. Nevertheless, the same rules still apply for speakers: when it comes to good, it all depends on the technology.

Our portable Bluetooth® speakers unify state-of-the-art technology with ease of use and elegant design. They deliver that irreplicable Canton sound when and wherever you want it. You can even connect two of our musicboxes in stereo or party mode.

- User-friendly voice announcement
- Bluetooth® 4.0 connection
- 10 meter range
- aptX® technology
- Near Field Communication
- True Wireless mode
- Line-In
- Plays up to 10/18 hrs
- High-quality aluminum cabinet





musicbox S

W x H x D

9.7" x 5.5" x 2.2"

Color

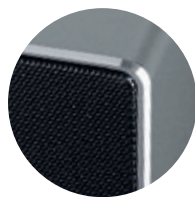


musicbox XS

W x H x D

7.3" x 2.2" x 2.5"

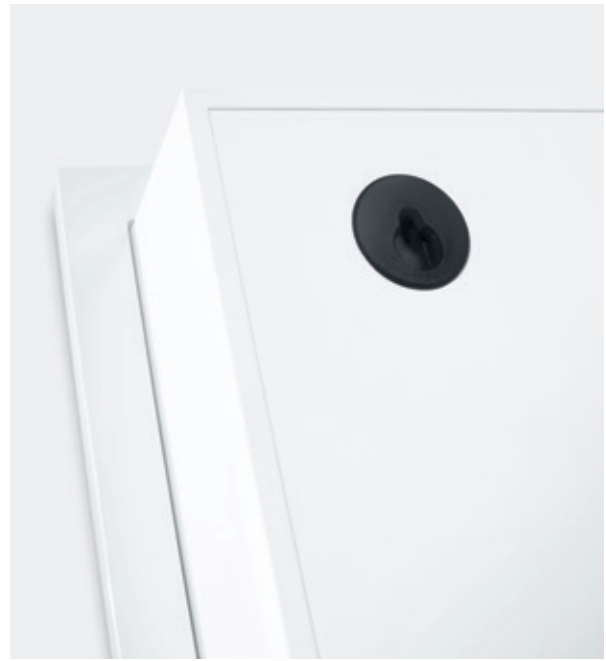
Color



Lacquer titan  
Black metal grill



Black lacquer semi-gloss  
Black metal grill



## ATELIER

The slim speakers in our Atelier series are only 3.9" deep and have an integrated wall mount, making them perfect for hanging on the wall. If you want to make them even more discreet, you can install them into the wall using the included installation kit. This makes them even slimmer, with the speakers protruding only 0.8" from the surface of the wall. All you see is the classic white fabric cover with a matte satin white frame.

- Aluminum-manganese tweeter system
- Cone systems with aluminium membranes
- Slim cabinet design
- Integrated wall mount for OnWall installation
- Mounting Kit for InWall installation
- Depth: < 3.9"
- Removable decorative frame
- Removable fabric cover



**Atelier 1100**

W x H x D  
12.8" x 45.3" x 3.8"

Color

**Atelier 900**

W x H x D  
9.7" x 37.5" x 3.4"

Color

**Atelier 700**

W x H x D  
10.2" x 29.5" x 3.9"

Color

**Atelier 500**

W x H x D  
8.7" x 22.4" x 3.5"

Color

**Atelier 300**

W x H x D  
13" x 13" x 3.5"

Color



**Atelier 1150 Center**

W x H x D  
45.3" x 12.8" x 3.8"

Color

**Atelier 950 Center**

W x H x D  
37.5" x 9.7" x 3.4"

Color

**Atelier 750 Center**

W x H x D  
29.5" x 10.2" x 3.9"

Color

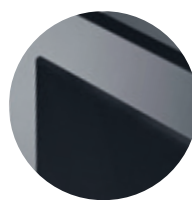
**Atelier 550 Center**

W x H x D  
22.4" x 8.7" x 3.5"

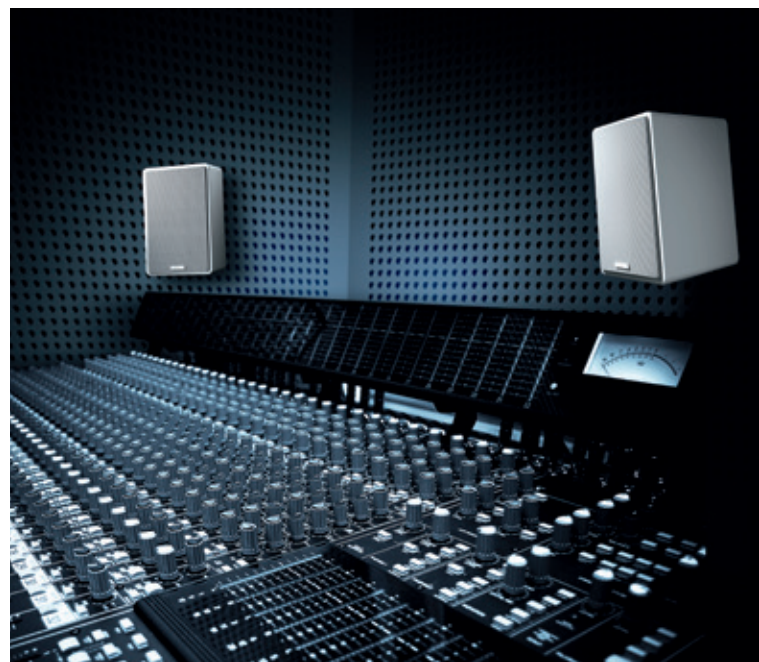
Color



White semi-gloss  
White fabric grill



Black semi-gloss  
Black fabric grill



## ACTIVE MONITOR AM 5

The active AM 5 is a professional studio monitor, effective PC solution and sophisticated TV loudspeaker in one. The intelligent loudspeaker concept, first class components and meticulous workmanship enable it to provide genuine high-end sound for entry level enthusiasts and professionals alike. It can be used as a Plug&Play solution or adapted to suit individual requirements.

- Aluminum tweeter system
- Neodyn magnet drive
- 80 watts output power
- Symmetric XLR input
- Universal cinch input
- Switchable high pass filter
- Switchable input sensitivity
- Switchable sound settings
- Usable with Cantomount AM wall mount





## AM 5

Application: Active monitor

Principle: 2-way, bass reflex system

Duration/Peak output: 80 / 100 watt

Maximum sound pressure: 97 dB SPL

Frequency range: 50...38,000 Hz

Crossover frequency: 3,000 Hz

Bass chassis: 1 x 4.5", aluminium

Aluminium tweeter chassis:  
1 x 1", aluminium

High-pass filter:  
50 Hz, 70 Hz, 100 Hz

Treble adjustment:  
+ 2 dB, 0 dB, - 2 dB

Midrange adjustment:  
0 dB, - 2 dB, - 4 dB

Bass adjustment: + 2 dB, 0 dB, - 2 dB

SNR: 95 dB

W x H x D

5.5" x 9.5" x 6.3"

Color



White lacquer semi-gloss  
White metal grill



Black lacquer semi-gloss  
Black metal grill



## SPECIAL LOUDSPEAKERS

Every loudspeaker has its perfect area of application. Our special loudspeakers have many such areas. Anyone looking for high quality but compact passive loudspeakers for the wall will find the right solution in our Plus series. The robust Pro series is suitable for use in damp environments while its screw-in universal bracket also enables it to be mounted on the ceiling. The CD series is noted for its elegant shapes and high quality aluminium cabinet.

- Aluminum tweeter system
- Cone systems with aluminium membrane
- Robust metal grill as front cover
- Compact alternative in hi-fi quality
- Plus series: Suitable wall mounts Cantomount & Cantomount XL
- Pro series: moisture-resistant, rust-free aluminium grill
- Pro series: ideal for outdoor use
- Pro series: with swivelling universal bracket
- CD series: perfectly designed for a modern lifestyle



Plus XL.3

W x H x D

5.9" x 9.3" x 6.1"

Color



Plus X.3

W x H x D

4.7" x 7.7" x 5.1"

Color



Plus MX.3

W x H x D

3.5" x 4.5" x 3.9"

Color



Pro XL.3

W x H x D

5.9" x 9.3" x 6.1"

Color



Pro X.3

W x H x D

4.7" x 7.7" x 5.1"

Color



CD 220.3

W x H x D

5.5" x 8.5" x 3.9"

Color



CD 1020

W x H x D

3.5" x 5.5" x 3.5"

Color



CD 120.2

W x H x D

3.5" x 5.5" x 3.9"

Color



CD 250.3

W x H x D

16.9" x 5.5" x 3.9"

Color



CD 1050

W x H x D

16.9" x 3.5" x 3.5"

Color



CD 150.2

W x H x D

14.2" x 3.5" x 3.9"

Color



White lacquer semi-gloss  
White metal grill



White lacquer "high-gloss"  
White metal grill

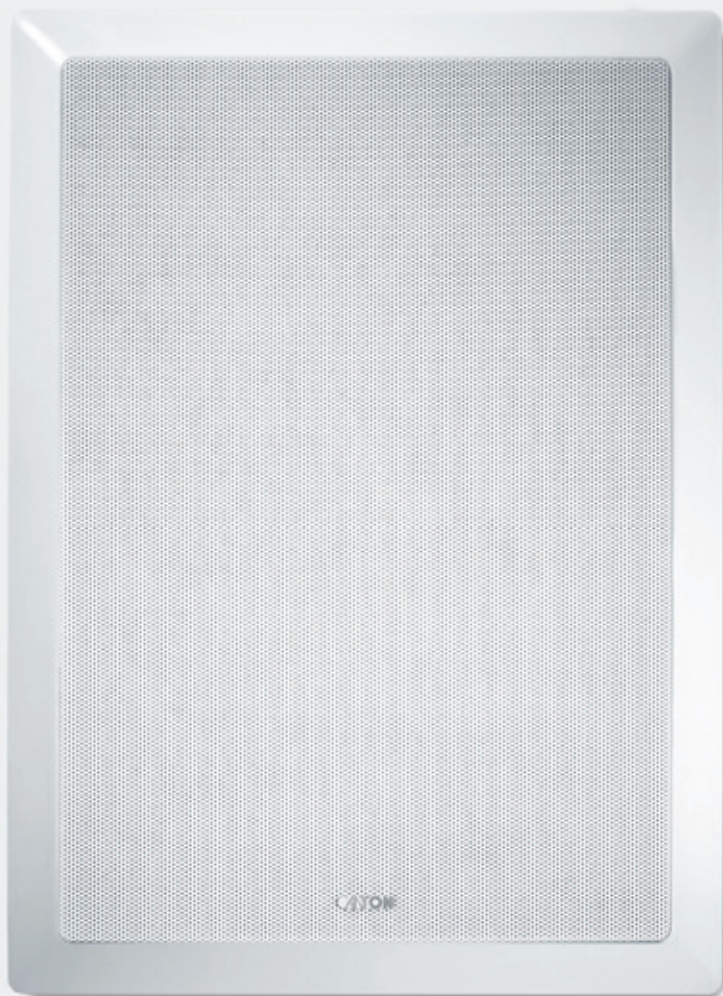


Black lacquer semi-gloss  
Black metal grill



Black lacquer "high-gloss"  
Black metal grill





## 403 SERIES

Designed for audio purists, the models of the 403 series are an excellent introduction to the world of Canton speakers. Its solid technology with a swivel mount soft dome tweeter allows the sound to be adapted to fit the environment. The long-throw polypropylene woofer system ensures high-volume durability.

- Swivel mount soft dome tweeter
- Adjustable levels
- Removable metal grill with Canton logo
- Polypropylene cone membrane
- Baffle with a wide white edge
- InCeiling 463 DT: single stereo, dual dome tweeter





InWall 483	
W x H x D	10.5" x 14.6" x 4.5"
Installation size	9.3" x 13.5"
Installation depth	4.1"
Available accessories	ER 8
Color	<input type="radio"/>

InWall 443	
W x H x D	7.2" x 10.4" x 3"
Installation size	6" x 9.2"
Installation depth	2.6"
Available accessories	ER 4
Color	<input type="radio"/>

InWall 443 LCR	
W x H x D	7.2" x 15.5" x 3"
Installation size	6" x 14.3"
Installation depth	2.6"
Available accessories	ER 4 LCR
Color	<input type="radio"/>

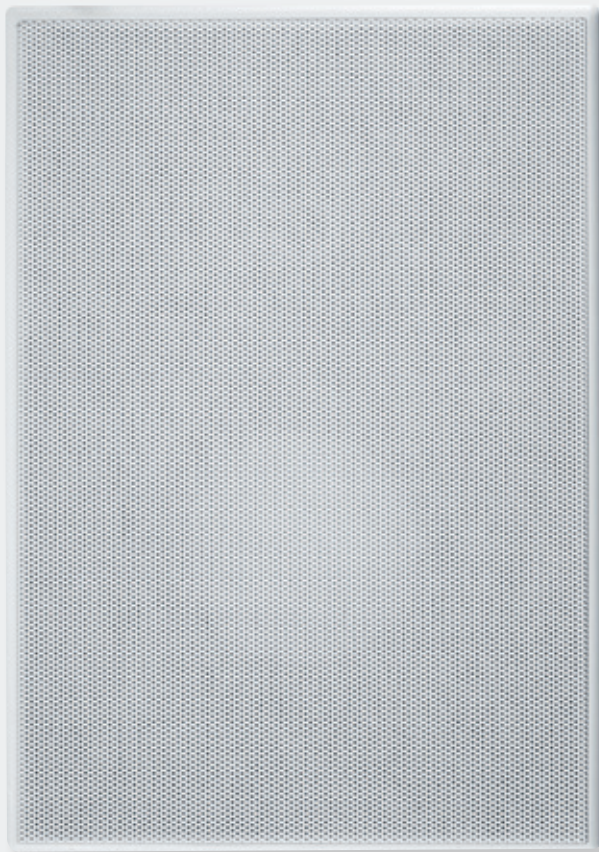


InCeiling 483	
Diameter (Ø)	11.3"
Installation size (Ø)	10.2"
Installation depth	4"
Color	<input type="radio"/>

InCeiling 463 DT	
Diameter (Ø)	9.4"
Installation size (Ø)	8.1"
Installation depth	13.3"
Color	<input type="radio"/>

InCeiling 463	
Diameter (Ø)	9.4"
Installation size (Ø)	8.1"
Installation depth	3.3"
Color	<input type="radio"/>

InCeiling 443	
Diameter (Ø)	7.9"
Installation size (Ø)	6.6"
Installation depth	2.8"
Color	<input type="radio"/>



## 805 SERIES

Who can ask for anything more? A metal cover with a discreet frame invisibly held by magnets. An aluminum tweeter with adjustable angle and volume. A woofer system with aluminum speaker cone and powerful magnetic drive. Those are the ingredients that go into the InWall and InCeiling of the 805 series.

- Swivel mount aluminum tweeter
- Aluminum cone membrane
- Adjustable levels
- Un-framed baffle
- Metal cover with discreet frame
- Front cover with magnetic fastening
- InCeiling 865 DT: single stereo, dual dome tweeter
- InCeiling 845 - 16: Ceiling speakers with 16 ohm impedance



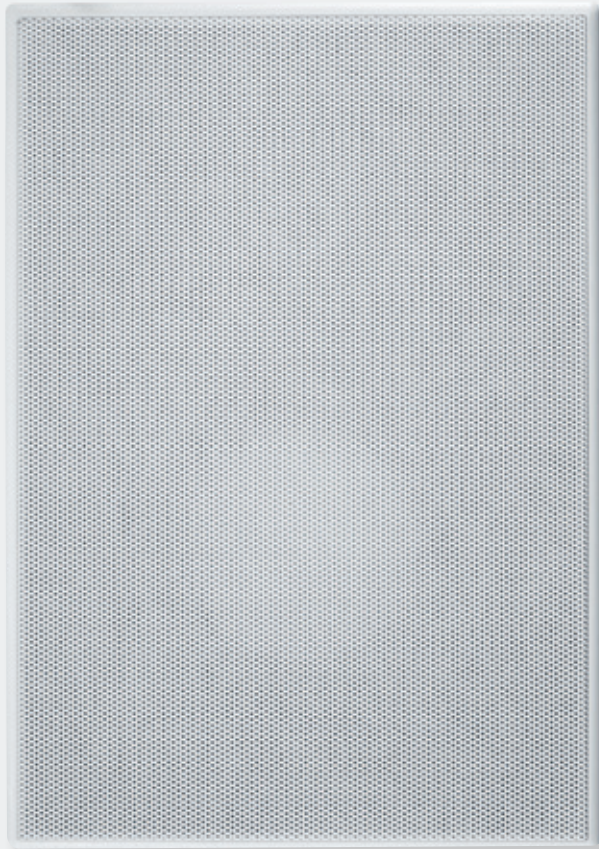
InWall 885	InWall 865	InWall 845	InWall 845 LCR	InCeiling 845 SQ
W x H x D	W x H x D	W x H x D	W x H x D	W x H x D
10.8" x 14.9" x 4"	9.3" x 13" x 3.6"	7.5" x 10.6" x 3"	7.5" x 15.6" x 3"	7.5" x 7.5" x 3.4"
Installation size	Installation size	Installation size	Installation size	Installation size (Ø)
9.3" x 13.5"	7.8" x 11.6"	6" x 9.2"	6" x 14.3"	5.9"
Installation depth	Installation depth	Installation depth	Installation depth	Installation depth
3.7"	3.3"	2.3"	2.3"	3"
Available accessories	Available accessories	Available accessories	Available accessories	
ER 8 WFB 800	ER 6 WFB 650	ER 4	ER 4 LCR	
Color	Color	Color	Color	Color
<input type="radio"/>	<input type="radio"/>	<input type="radio"/>	<input type="radio"/>	<input type="radio"/>



16 ohm loudspeaker

InCeiling 885	InCeiling 865 DT	InCeiling 865	InCeiling 845	InCeiling 845 -16
Diameter (Ø)	Diameter (Ø)	Diameter (Ø)	Diameter (Ø)	Diameter (Ø)
11.2"	9.6"	9.6"	7.5"	7.5"
Installation size (Ø)	Installation size (Ø)	Installation size (Ø)	Installation size (Ø)	Installation size (Ø)
9.7"	8.2"	8.2"	6"	6"
Installation depth	Installation depth	Installation depth	Installation depth	Installation depth
3.7"	3.4"	3.4"	3"	3"
Color	Color	Color	Color	Color
<input type="radio"/>	<input type="radio"/>	<input type="radio"/>	<input type="radio"/>	<input type="radio"/>





## 809 SERIES

The 809 series is for connoisseurs who like a discreetly framed metal cover, but prefer the technology of ceramic cones. They combine the look of the 805 series with the technology of our premium models. Used in combination with elements of the 805 series, they can set acoustic highlights in strategic locations while still maintaining an overall uniform design.

- Swivel mount ceramic tweeter
- Ceramic cone membrane
- Adjustable levels
- Un-framed baffle
- Metal cover with discreet frame
- Front cover with magnetic fastening
- InCeiling 849 - 16: Ceiling speakers with 16 ohm impedance
- InCeiling 855 T series: Loudspeaker with 100 V/70 V transformer





InWall 889	InWall 869	InWall 849	InWall 849 LCR	InCeiling 889
W x H x D	W x H x D	W x H x D	W x H x D	Diameter (Ø)
10.8" x 15" x 4"	9.3" x 13" x 3.6"	7.5" x 10.6" x 3"	7.5" x 15.8" x 3"	11.2"
Installation size	Installation size	Installation size	Installation size	Installation size (Ø)
9.3" x 13.5"	7.8" x 11.6"	6" x 9.2"	6" x 14.3"	9.7"
Installation depth	Installation depth	Installation depth	Installation depth	Installation depth
3.8"	3.4"	2.7"	2.7"	3.8"
Available accessories	Available accessories	Available accessories	Available accessories	
ER 8	ER 6 WFB 650	ER 4	ER 4 LCR	
Color	Color	Color	Color	Color
<input type="radio"/>	<input type="radio"/>	<input type="radio"/>	<input type="radio"/>	<input type="radio"/>



16 ohm loudspeaker



100 V loudspeaker

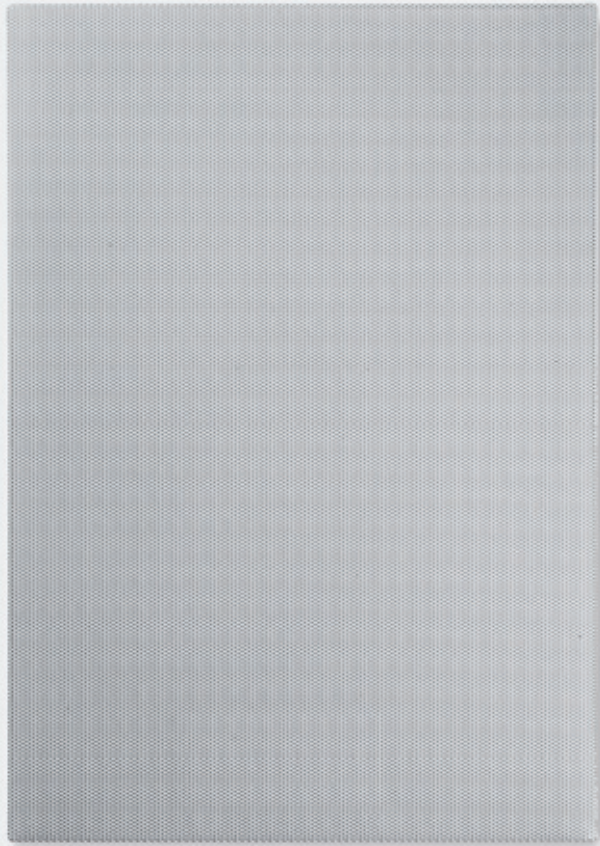


100 V loudspeaker



100 V loudspeaker

InCeiling 869	InCeiling 849 - 16	InCeiling 855 T	InCeiling 855 T-BC 7	InCeiling 855 T-BC 15
Diameter (Ø)	Diameter (Ø)	Diameter (Ø)	Diameter (Ø)	Diameter (Ø)
9.6"	7.5"	11.4"	11.4"	11.4"
Installation size (Ø)	Installation size (Ø)	Installation size (Ø)	Installation size (Ø)	Installation size (Ø)
8.2"	6"	10.6"	10.6"	10.6"
Installation depth	Installation depth	Installation depth	Installation depth	Installation depth
3.4"	3"	3.5"	4.5"	8.7"
Color	Color	Color	Color	Color
<input type="radio"/>	<input type="radio"/>	<input type="radio"/>	<input type="radio"/>	<input type="radio"/>



## 909 SERIES

Like all of our built-in speakers, the models in our 909 series are 2-way systems and round out our spectrum of built-in wall and ceiling speakers.

The series boasts reference technology, high-quality ceramic membranes and elegant, un-framed front cover grills.

- Swivel mount ceramic tweeter
- Ceramic cone membrane
- Adjustable levels
- Un-framed baffle
- Frameless metal grill
- Front cover with magnetic fastening
- InCeiling 969 Pro: Splash-proof and suitable for use in wet environments



InWall 989	InWall 969	InWall 949	InWall 949 LCR
W x H x D	W x H x D	W x H x D	W x H x D
10.4" x 14.5" x 4"	8.8" x 12.5" x 3.6"	7" x 10.2" x 3"	7" x 15.3" x 3"
Installation size	Installation size	Installation size	Installation size
9.3" x 13.5"	7.8" x 11.6"	6" x 9.2"	6" x 14.3"
Installation depth	Installation depth	Installation depth	Installation depth
13.8"	3.4"	2.7"	2.7"
Available accessories	Available accessories	Available accessories	Available accessories
ER 8 WFB 800	ER 6 WFB 650	ER 4	ER 4 LCR
Color	Color	Color	Color
<input type="radio"/>	<input type="radio"/>	<input type="radio"/>	<input type="radio"/>



Splash-proof

InCeiling 989	InCeiling 969	InCeiling 949	InCeiling 969 Pro
Diameter (Ø)	Diameter (Ø)	Diameter (Ø)	Diameter (Ø)
10.8"	9.1"	7"	9.1"
Installation size (Ø)	Installation size (Ø)	Installation size (Ø)	Installation size (Ø)
9.7"	8.2"	6"	8.2"
Installation depth	Installation depth	Installation depth	Installation depth
3.8"	3.4"	3"	3.4"
Color	Color	Color	Color
<input type="radio"/>	<input type="radio"/>	<input type="radio"/>	<input type="radio"/>



## ACCESSORIES

The Canton family would not be complete without its range of speaker stands. With stands and mounts for all compact speakers, most center speakers and the satellites of our home theater systems, you'll find the right solution for optimal positioning around your listening space. You'll also find the right Cantomount for all small speakers that don't come with a wall mount.

### Speaker stands

- Cable hiding solutions
- Adjustable floor spikes
- Plate with mounting holes

### Cantomount

- Stable and solid
- Pivot mount
- Including fixtures





LS 850.3	
Height	24"
Works with:	Vento 826 Vento 836 Vento 866 Center
Color	<input type="radio"/> HG <input checked="" type="radio"/> HG

LS 660	
Height	24.4"
Works with:	Chrono 512 Chrono 513 Chrono 515 Center Chrono SL 526 Chrono SL 536 Chrono SL 556 Center GLE 426.2 GLE 436.2 GLE 456.2 Center
Color	<input type="radio"/> HG <input checked="" type="radio"/> HG

LS 250.2	
Height	40.9"
Works with:	CD 220.3 CD 250.3
Color	<input checked="" type="radio"/>

LS 90.2	
Height	34.7"
Works with:	Movie 75 Movie 95 Movie 135 Movie 165 Movie 1005.2 CD 120.2 Plus MX.3
Color	<input type="radio"/> <input checked="" type="radio"/> <input type="radio"/>



Cantomount AM	
W x H x D	3.2" x 3.1" x 2.6"
Works with:	AM 5
Color	<input checked="" type="radio"/>

Cantomount	
W x H x D	1.8" x 3.2" x 3.1"
Works with:	Plus X.3 Pro X.3
Color	<input type="radio"/> <input checked="" type="radio"/>

Cantomount XL	
W x H x D	1.8" x 3.2" x 3.9"
Works with:	AM 5 Plus XL.3 Pro XL.3
Color	<input type="radio"/> <input checked="" type="radio"/>

ŠKODA



## CAR HIFI – CANTON SOUND SYSTEM FOR ŠKODA KODIAQ, KAROQ, SUPERB AND OCTAVIA



In close collaboration with ŠKODA we have developed a premium sound system that is available as an optional feature for the models ŠKODA Kodiaq, Karoq, Superb and Octavia. Each system is adapted to suit the individual vehicle model. The CANTON sound systems for ŠKODA combine active noise reduction technology with premium virtual surround sound to create balanced acoustics for all types of music.



### CANTON Sound Tuning

Precise adjustment for all seating positions:  
The focus of the sound can be adjusted individually.



### CANTON Noise Cancellation

The system dynamically balances out driving noise – wherever you happen to be travelling.



### CANTON Equaliser

Crystal clear sound:  
The CANTON Equaliser creates optimum acoustics for music, telephone and navigation.



#### KODIAQ

1 x center loudspeaker, 2 x bass/midrange speakers, subwoofer, 4 x tweeters,  
2 x bass speakers, DSP amplifier



#### KAROQ

1 x center loudspeaker, 2 x bass/midrange speakers, 4 x tweeters,  
subwoofer, DSP amplifier



#### SUPERB

1 x center loudspeaker, 2 x bass/midrange speakers, 4 x tweeters, 2 x bass speakers,  
2 x midrange speakers, subwoofer, DSP amplifier



#### OCTAVIA

1 x center loudspeaker, 2 x bass/midrange speakers, 4 x tweeters, 2 x bass speakers,  
subwoofer, DSP amplifier

You can find more information about the CANTON sound systems for ŠKODA on our website  
[www.canton.de/de/skoda](http://www.canton.de/de/skoda)



## LOCATION

### Canton Elektronik GmbH + Co. KG

Neugasse 21–23  
61276 Weilrod  
Germany

Product advice: +49 (0)6083 287 77  
Service Hotline: +49 (0)6083 287 87

Fax: +49 (0) 6083 287-50

E-Mail: [info@canton.de](mailto:info@canton.de)

For more information and to see our  
online shop, see

[www.canton.de](http://www.canton.de)



Speakerstands are accessories and not included. Changes to the information provided, in particular technical changes, and errors cannot be ruled out.

Manufactured under license from Dolby Laboratories. Dolby, Dolby Atmos, and the "double-D" symbol are trademarks of Dolby Laboratories.

The Bluetooth® word mark and logos are registered trademarks owned by the Bluetooth® SIG, Inc. and any use of such marks by Canton is under license. Other trademarks and trade names are those of their respective owners.

Qualcomm is a trademark of Qualcomm Incorporated, registered in the United States and other countries, used with permission. aptX is a trademark of Qualcomm Technologies International, Ltd., registered in the United States and other countries, used with permission.

The terms HDMI and HDMI High-Definition Multimedia Interface, and the HDMI Logo are trademarks or registered trademarks of HDMI Licensing LL C in the United States and other countries.



[www.canton.de](http://www.canton.de)