

The pdf of Supplementary Figure S2 of Phan *et al.* (2021)

Phan, Q. C., Nakahara-Tsubota, M., Inoue, Y. & Tsubota, H. 2021. New record of *Dysphania pumilio* (Amaranthaceae) for Hiroshima Prefecture, southwest Japan. *Hikobia* 18: 145–156.

BP_{RAXML}/PP_{BEAST}

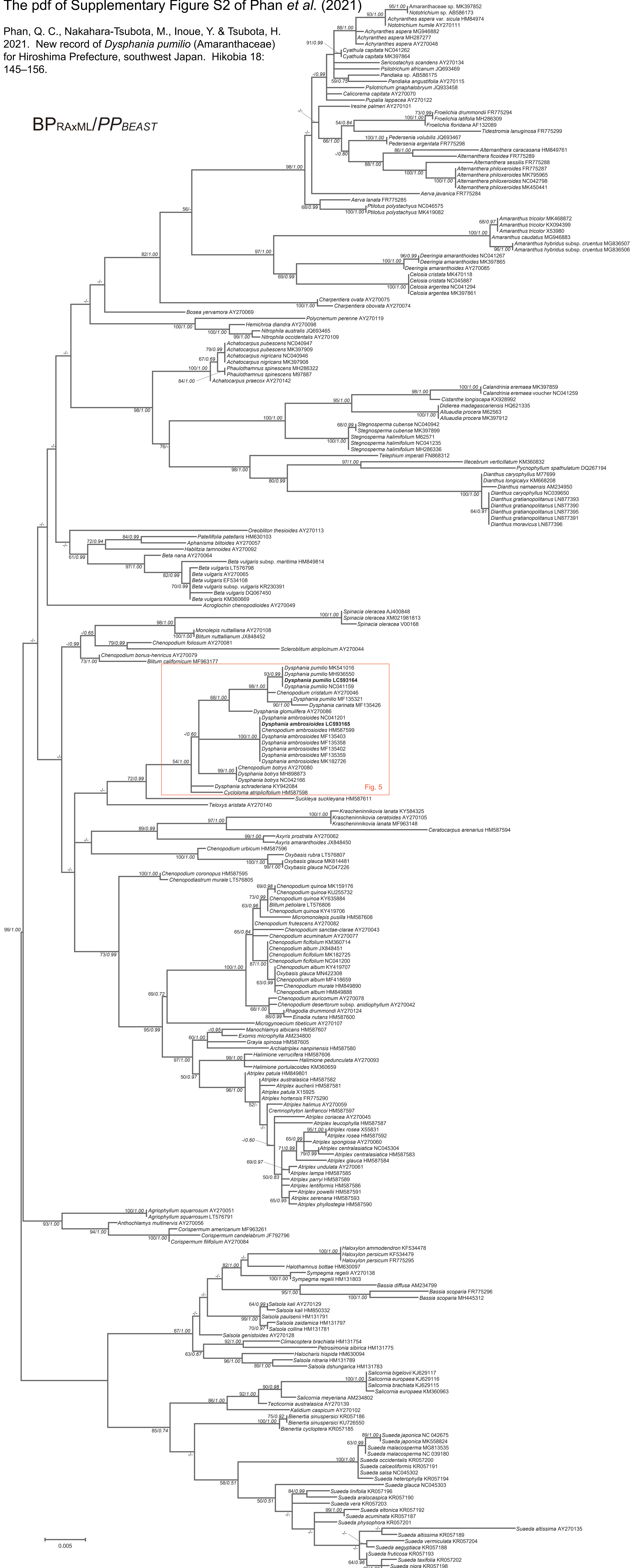


Fig. S2. Phylogenetic tree of the family Amaranthaceae based on the chloroplast ribulose-1,5-bisphosphate carboxylase/oxygenase large-subunit (*rbcL*) gene sequence, depicted by RAXML-NG version 0.9.0git. The evolutionary history was inferred by using the maximum likelihood method based on the TVM + I + G model. Accession numbers were listed behind each name. Statistical support values more than 50 % obtained by RAXML-NG for bootstrap probabilities (BP) with 10,000 replicates and BEAST version 2.6.2 for Bayesian posterior probabilities (PP) with 10,000,000 replicates are shown on or near nodes (BP/PP). The tree was rooted at the midpoint. The pdf of Supplementary Figure S2 can be downloadable via the web link https://www.digital-museum.hiroshima-u.ac.jp/~main/index.php/Supplementary_data.