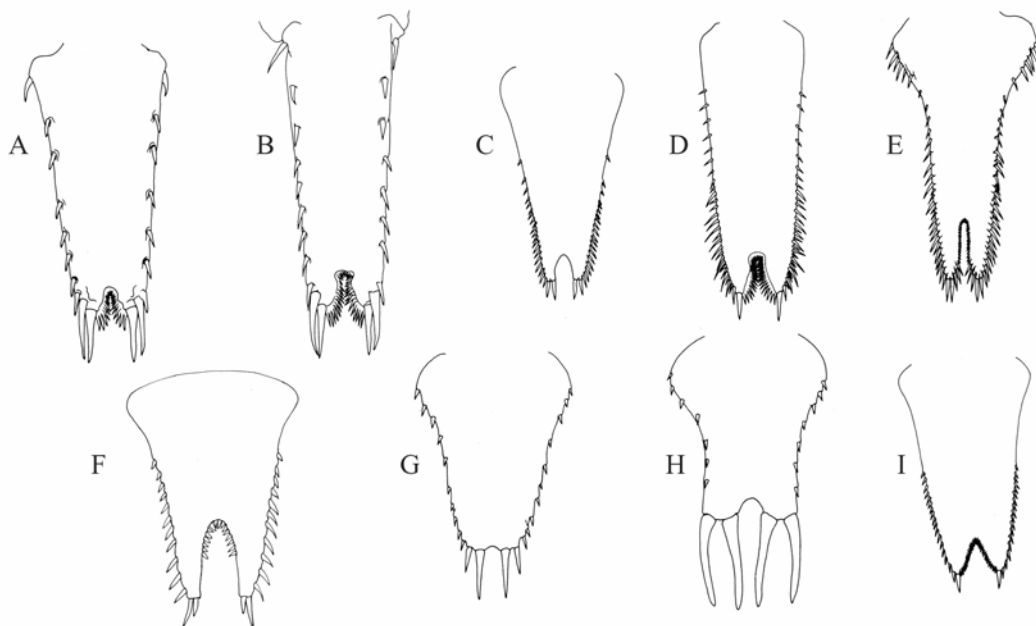


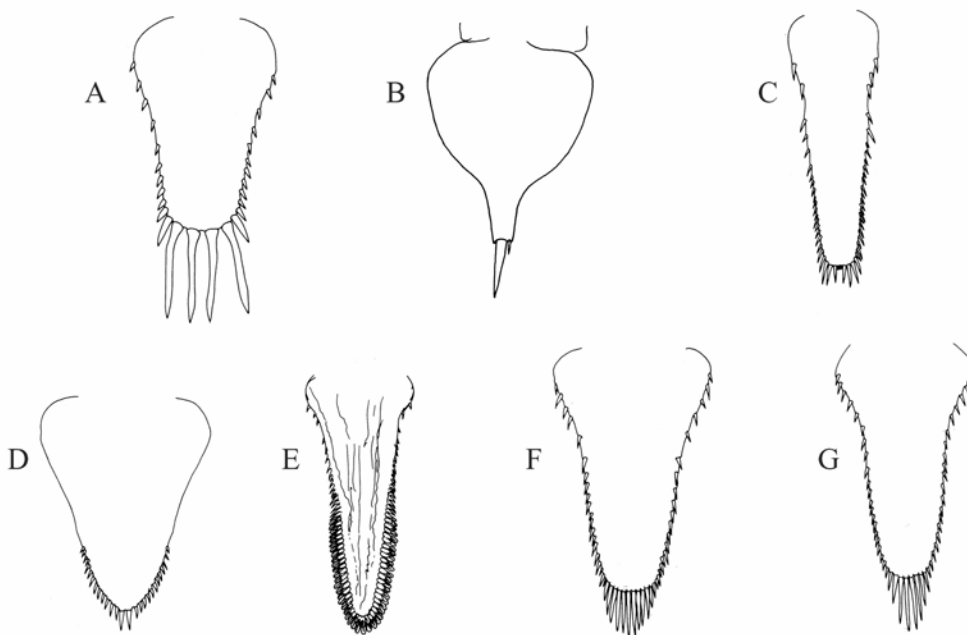
Key to the mysids of the South Atlantic Bight

(Modified in part from Stuck et al., 1979a; Price, 1982; Price et al., 1994)

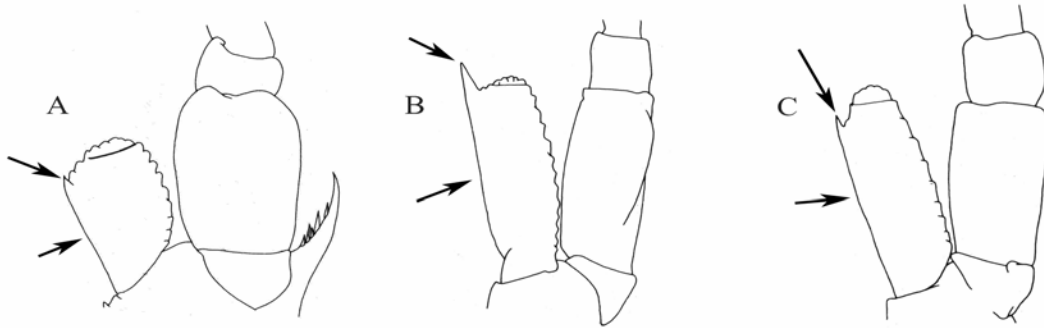
1. Posterior margin of telson emarginate (slightly indented), concave, or deeply cleft2



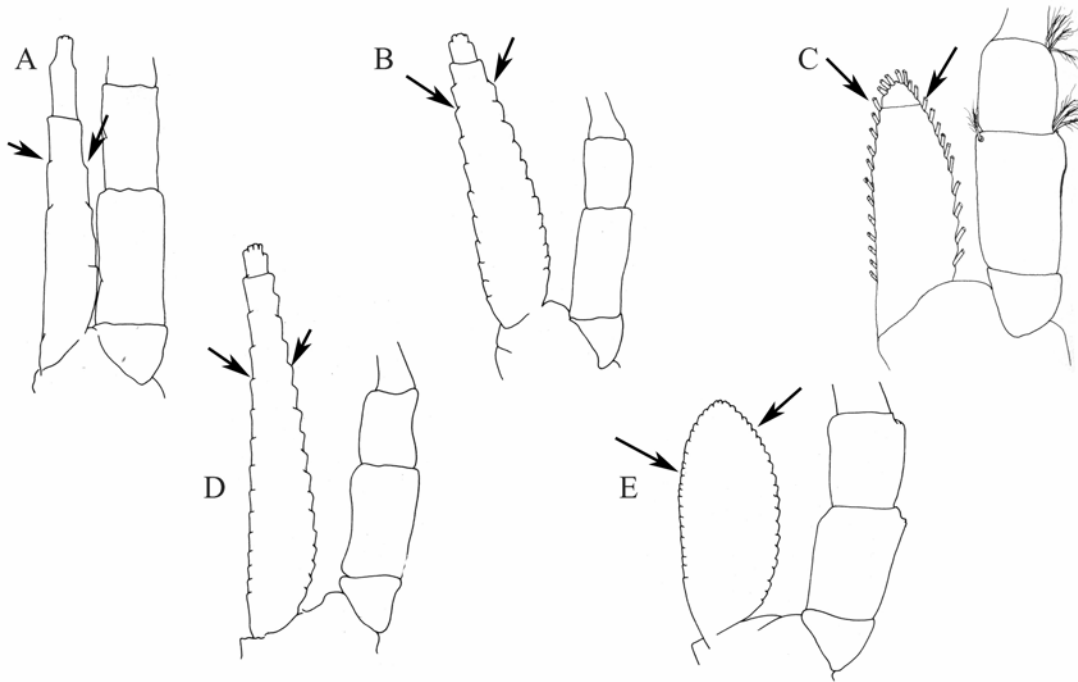
—Posterior margin of telson convex, linguiform, or pointed (not terminally cleft or emarginate)9



2. Antennal scale with lateral tooth present (sometimes minute), devoid of setae on outer margin (setae on inner margin not drawn in Figure 4, instead, the setal insertions are indicated) ...(**Subfamily Gastrosaccinae**)3

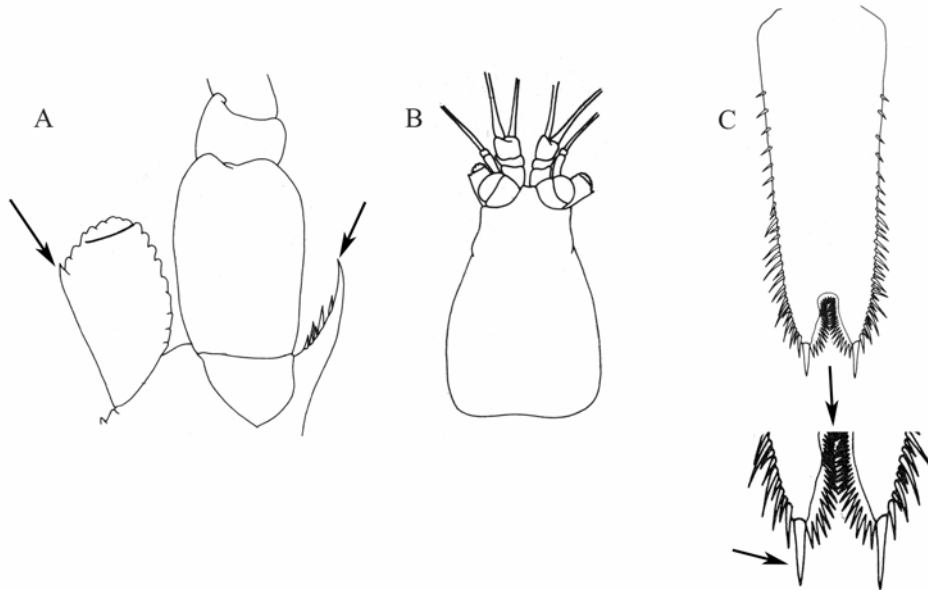


—Antennal scale without lateral tooth, setae present on both inner and outer margins (setae not drawn in Figure 5, instead, the setal insertions are indicated).....5



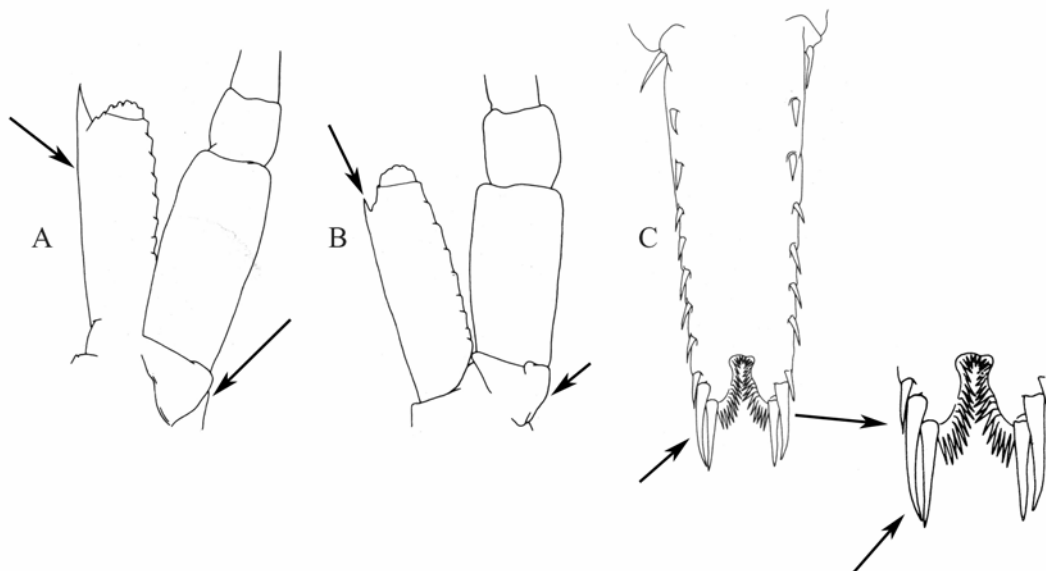
3. Antennal scale small, rounded, distinctly shorter than article 2 of peduncle, lateral tooth minute, antennal peduncle with sympod with large barbed tooth on inner distal corner. Telson with each posterior lobe armed with 1 large terminal spiniform seta

.....*Anchialina typica*

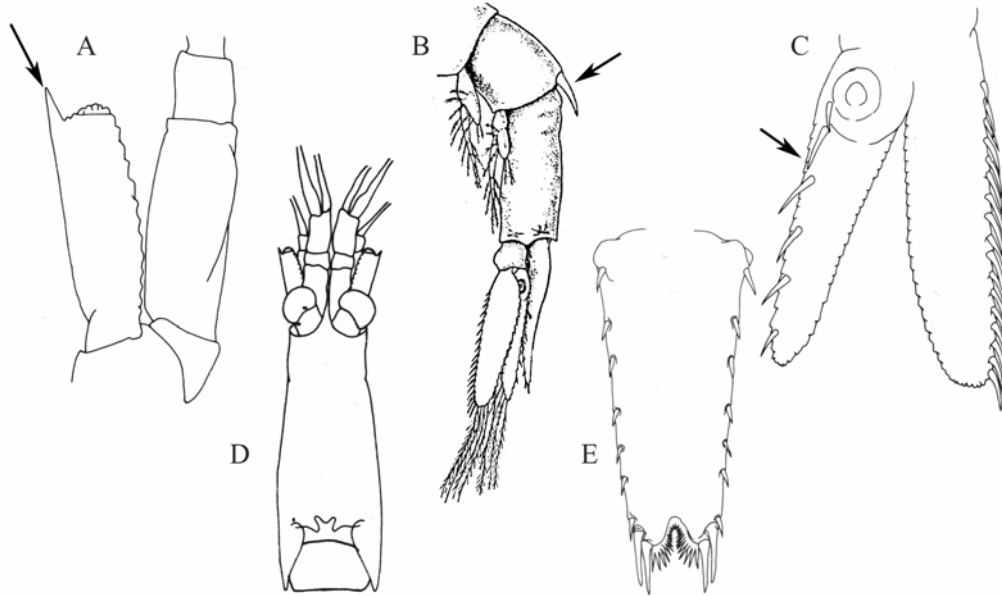


—Antennal scale large, elongate, reaching to or past distal end of article 2 of peduncle, lateral tooth distinct, antennal peduncle with sympod lacking tooth on inner distal corner. Telson with each posterior lobe armed with 1 large terminal spiniform seta and 1 large sub-terminal spiniform seta...(Bowmaniella)

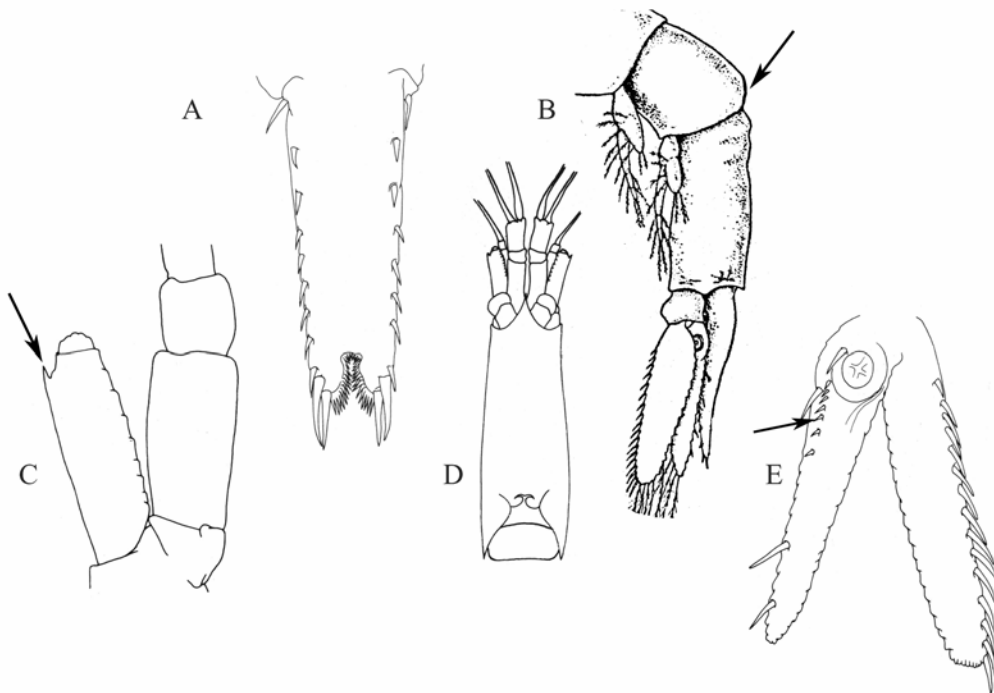
4



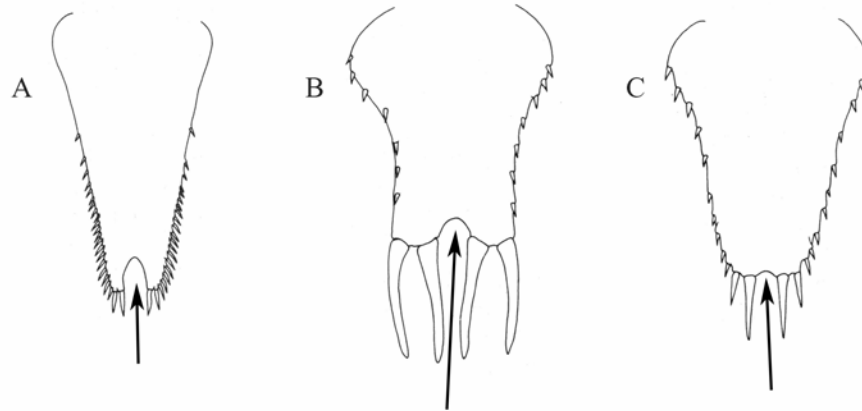
4. Antennal scale with lateral tooth strongly developed, nearly terminal, extending beyond end of blade. Abdomen with posterior margin of segment 5 with articulated, linguiform, dorsal process. Uropodal endopod armed with 4 or more large spiniform setae along medial margin, without row of smaller spiniform setae near statocyst ***Bowmaniella dissimilis***



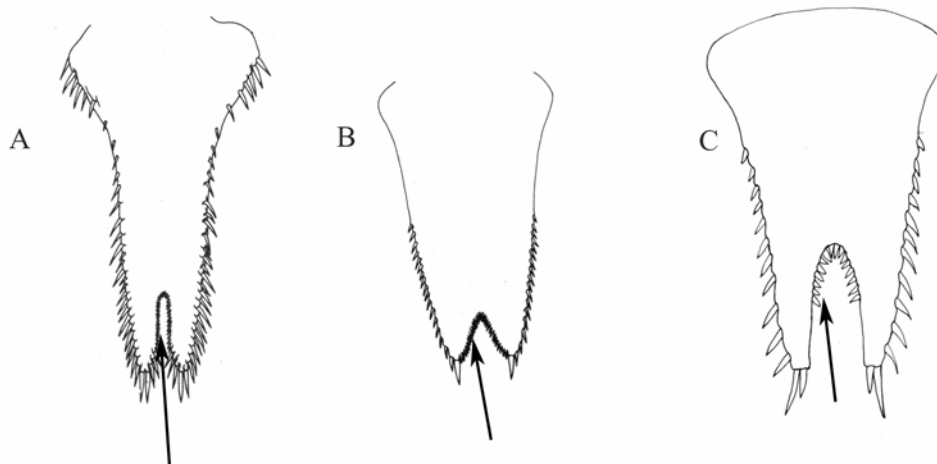
—Antennal scale with lateral tooth not strongly developed, not extending beyond end of blade. Abdomen with posterior margin of segment 5 lacking dorsal articulated process. Uropodal endopod armed with 3-4 large spiniform setae along medial margin, distinct row of smaller spiniform setae present near statocyst ***Bowmaniella mexicana***



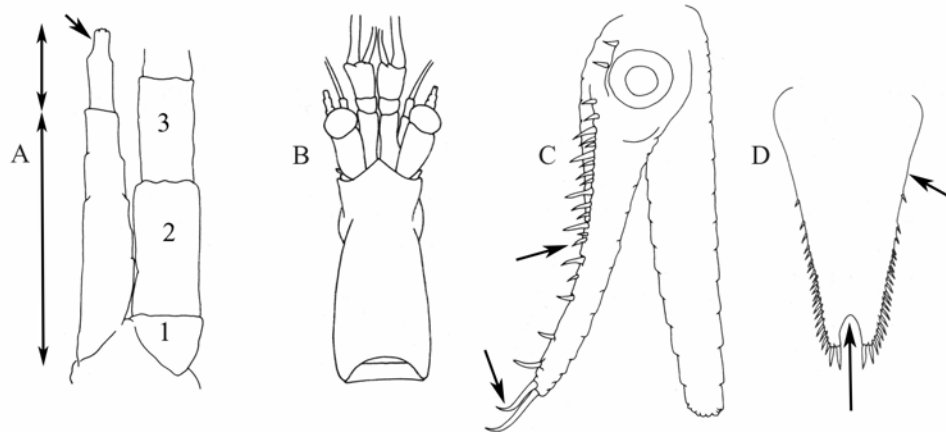
5. Telson with posterior cleft (or emargination) devoid of spiniform setae on inner margins.....6



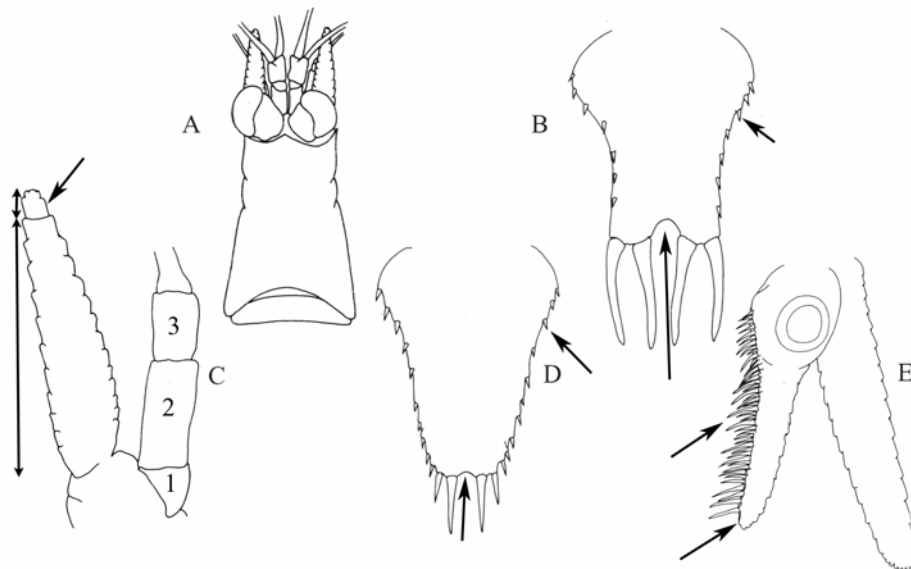
—Telson with posterior cleft (or emargination) armed with spiniform setae on inner margins.....7



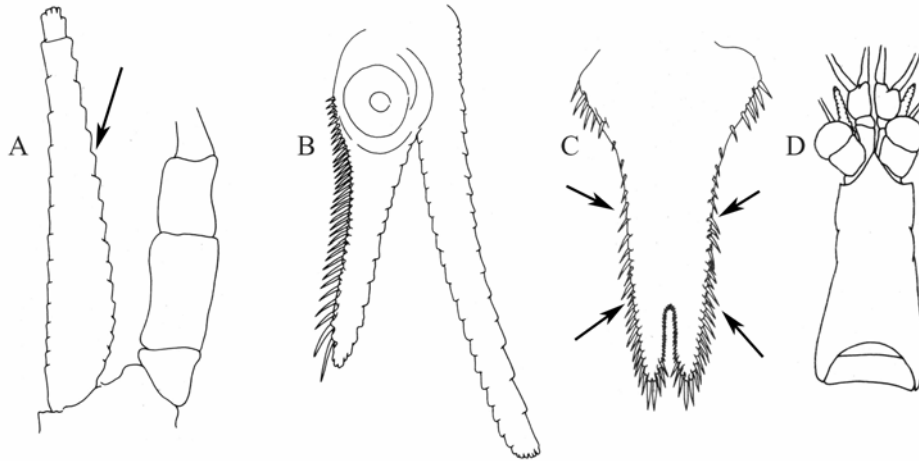
6. Antenna with distal article of scale about 1/3 length of proximal article, reaching to or just past article 3 of peduncle. Uropodal endopod entire margin armed with 14-30 irregularly spaced spiniform setae; apex armed with 1 or 2 large, spiniform setae with distally curved tips. Telson with anterior 1/3 of lateral margins lacking spiniform setae; posterior end with cleft distinct..... *Promysis atlantica*



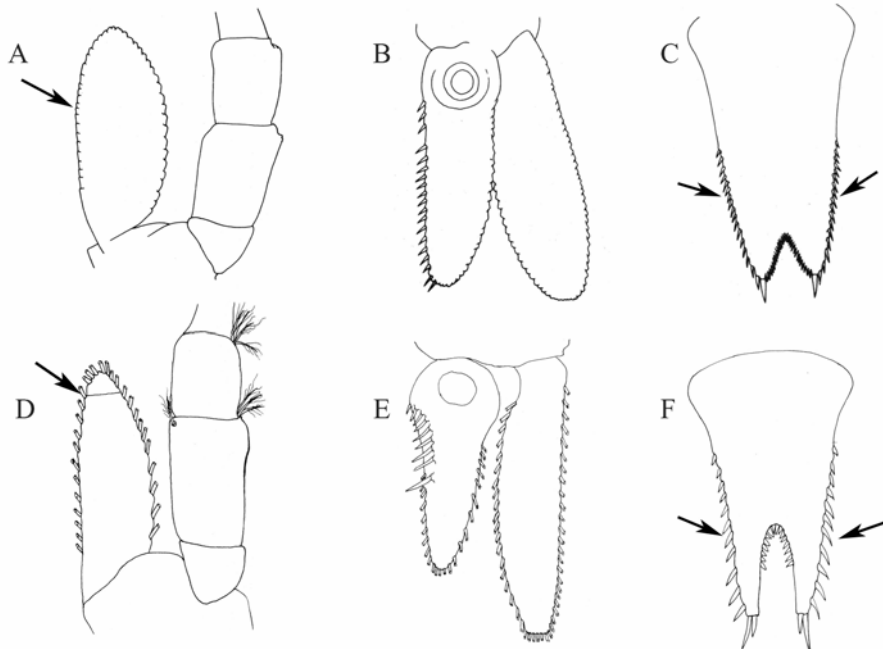
—Antenna with distal article of scale about 1/8 length of proximal article, reaching distinctly past article 3 of peduncle. Uropodal endopod entire inner margin armed with a closely spaced row of 20-45 spiniform setae; apex unarmed. Telson entire lateral margins with spiniform setae; posterior end shallowly cleft between the inner most terminal spiniform setae *Mysidopsis furca*



7. Antennal scale length about 5 to 6 times greatest width. Telson with lateral margins armed with 25 or more spiniform setae*Neobathymysis renoculata*

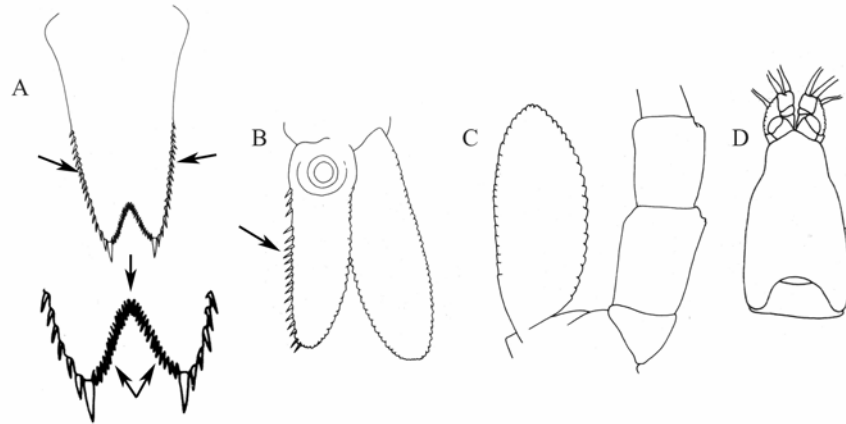


—Antennal scale length about 3 times greatest width. Telson with lateral margins armed with 8-20 spiniform setae.....8



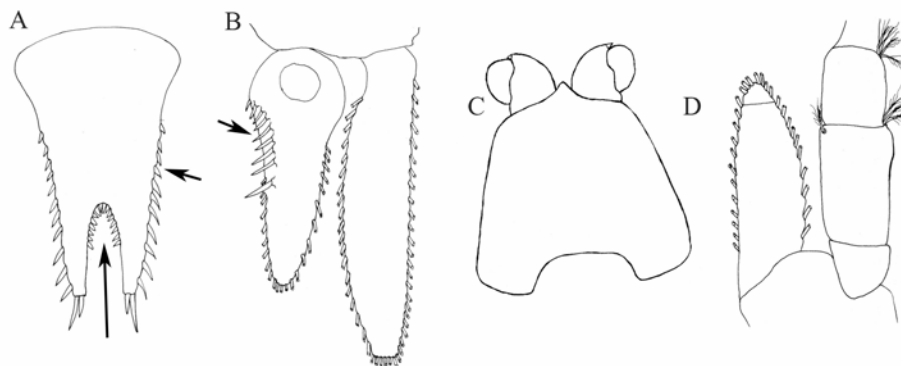
8. Telson with posterior 1/2 of lateral margins bearing around 16 relatively small spiniform setae, posterior cleft relatively shallow, about 1/5 total telson length, with 16-30 closely spaced spiniform setae distributed along entire inner margin. Uropodal endopod armed with 16-21 small spiniform setae extending along the entire inner (medial) margin (beginning adjacent to distal border of statocyst and ending near apex)

..... *Heteromysis formosa*



—Telson with posterior 2/3 of each lateral margin bearing 9-12 relatively large, moderately spaced, lateral spiniform setae, posterior cleft depth about 1/3 total telson length, inner margin anterior half armed with 15-17 spiniform setae, posterior half lacking setae. Uropodal endopod armed with 7-9 large spiniform setae extending only along the proximal inner (medial) margin (beginning adjacent to distal border of statocyst and ending midway to the apex)

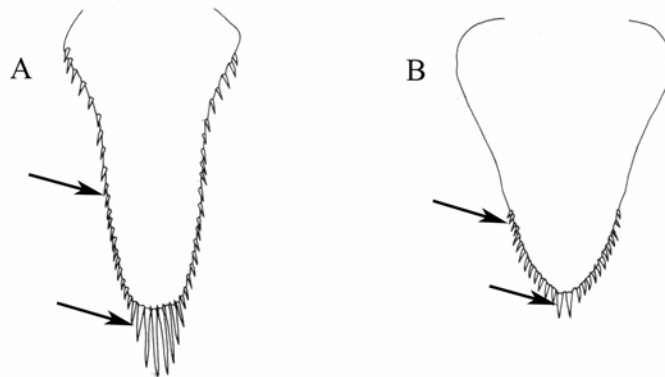
Heteromysis bectoni



9. Telson constricted posteriorly into a truncated point, armed with 1-2 large terminal spiniform setae, spiniform setae absent from lateral margins ...(*Amathimysis*).....10

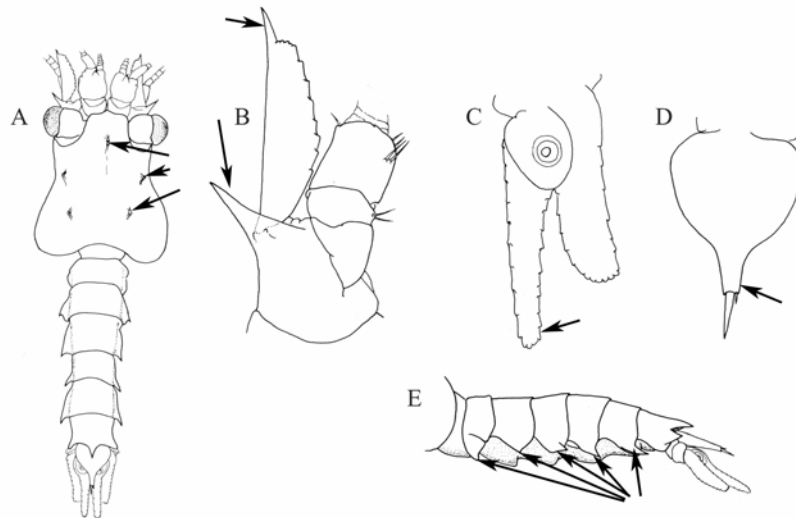


—Telson gradually narrowing posteriorly, with spiniform setae on lateral margins11



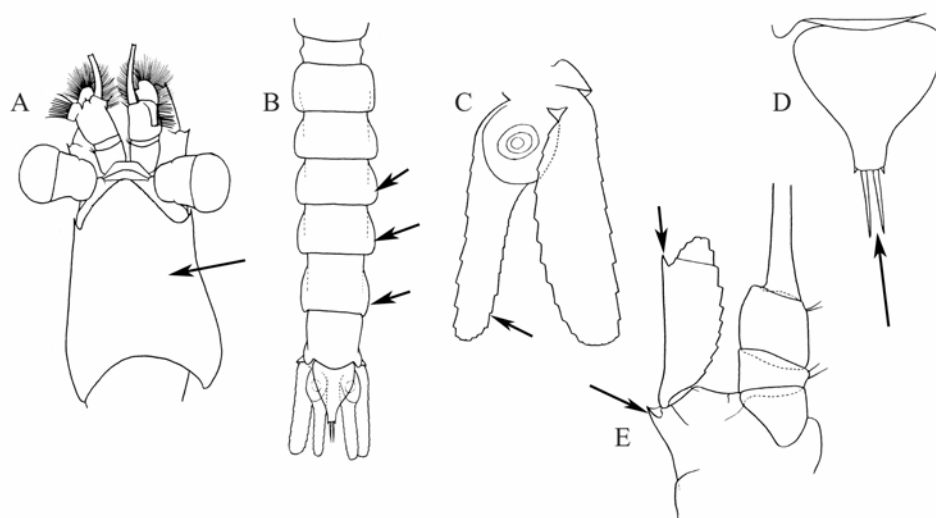
10. Carapace with 5 keel-like tubercles. Antennal scale with tooth terminal, forming a spiniform process; antennal peduncle with sympod with large barbed tooth on outer distal corner. Abdominal pleura with posteroventral margins forming acute spiniform processes, especially on segments 3-5. Uropodal endopod longer than exopod. Telson very constricted posteriorly, apex armed with 1 large and 1 small spiniform seta

.....*Amathimysis brattegardi*

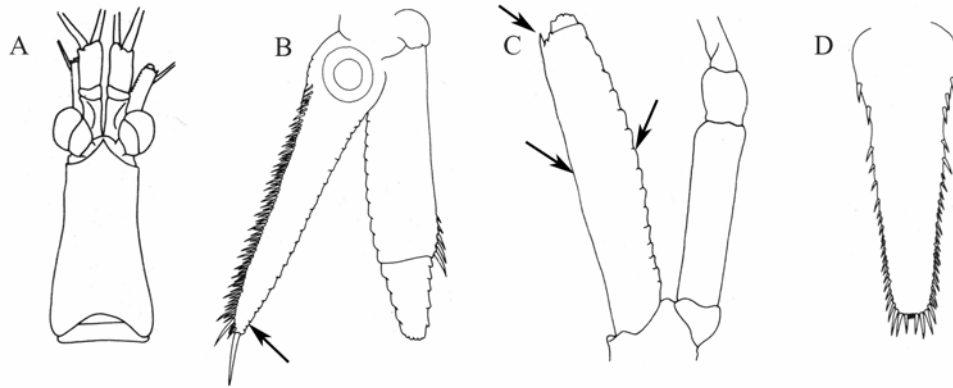


—Carapace without keel-like tubercles. Antennal scale with tooth sub-terminal, extending to or just short of tip of blade; antennal peduncle with sympod with small or indistinct tooth on outer distal corner. Abdominal pleura with posteroventral margins rounded. Uropodal endopod similar in length to exopod. Telson narrowly truncate posteriorly, apex armed with 2 large medial and 2 small lateral spiniform setae.....

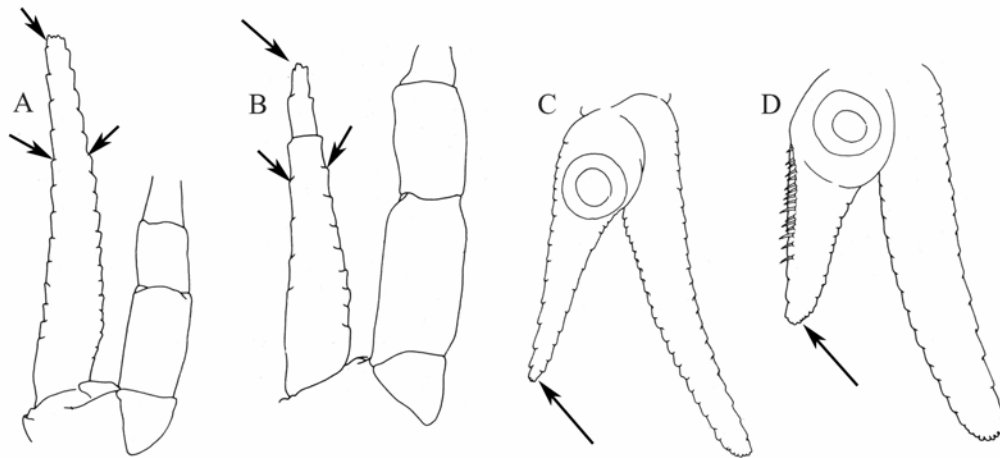
Amathimysis sp. (nr. *serrata*)



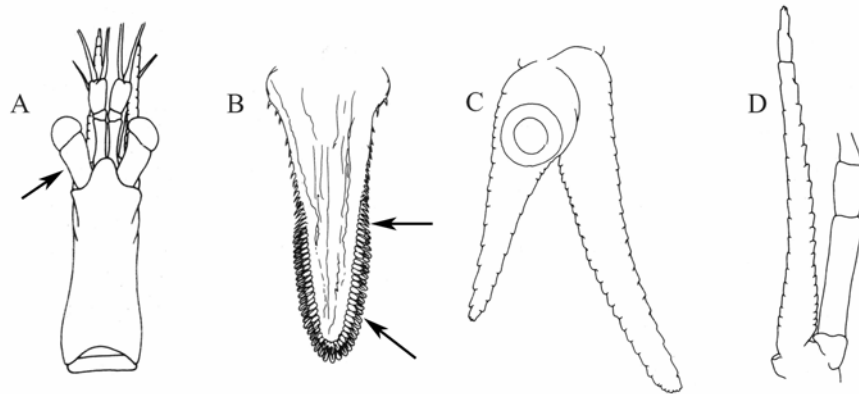
11. Antennal scale with small lateral tooth, with setae on inner margin but devoid of setae on outer margin (setae on inner margin not drawn in fig. 22, instead, the setal insertions are indicated). Uropodal endopod similar in length to exopod..... *Siriella thompsonii*



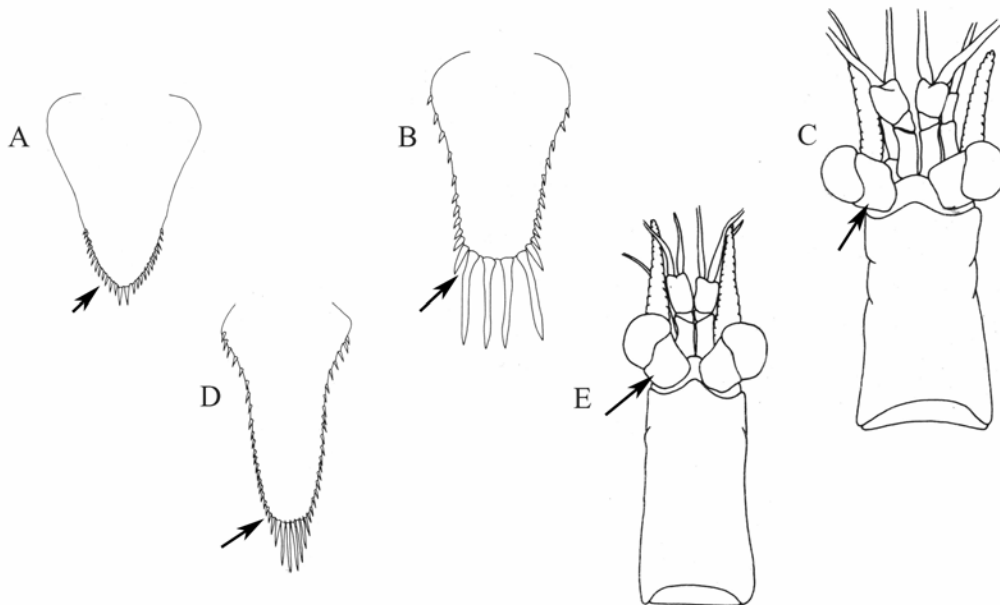
—Antennal scale without lateral tooth, with setae on both inner and outer margins (setae on margins not drawn in fig. 23, instead, the setal insertions are indicated). Uropodal endopod distinctly shorter than exopod12



12. Eyestalks long and slender, about twice as long as wide at mid-length. Posterior half of telson armed with 40 or more spatulate spiniform setae *Brasilomysis castroi*

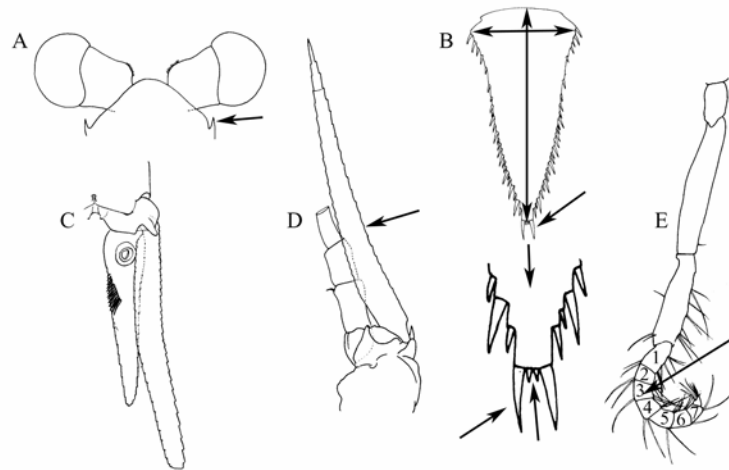


—Eyestalks about as long as wide at midlength. Lateral margins of telson armed with simple (non-spatulate) spiniform setae13

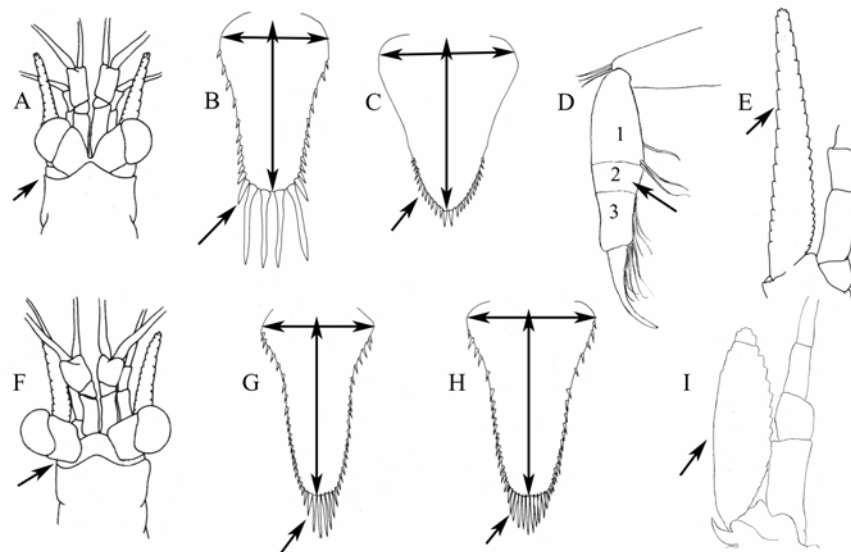


13. Carapace with spine on each anterolateral margin, just posterior to eyes. Antennal scale narrow, lanceolate, 10-11 times longer than greatest width. Thoracic endopods 3-8 having carpo-propodus divided into 5-9 small articles. Telson relatively long and narrowing to a truncated point, length about 2-2.5 times greater than greatest width near base, each lateral margin armed with 22-42 spiniform setae (those on posterior 2/3 of each margin arranged in groups of 1-3 with small setae between larger ones), apex armed with 2 pairs of spiniform setae (outer pair about 3-4 times length of inner medial pair)

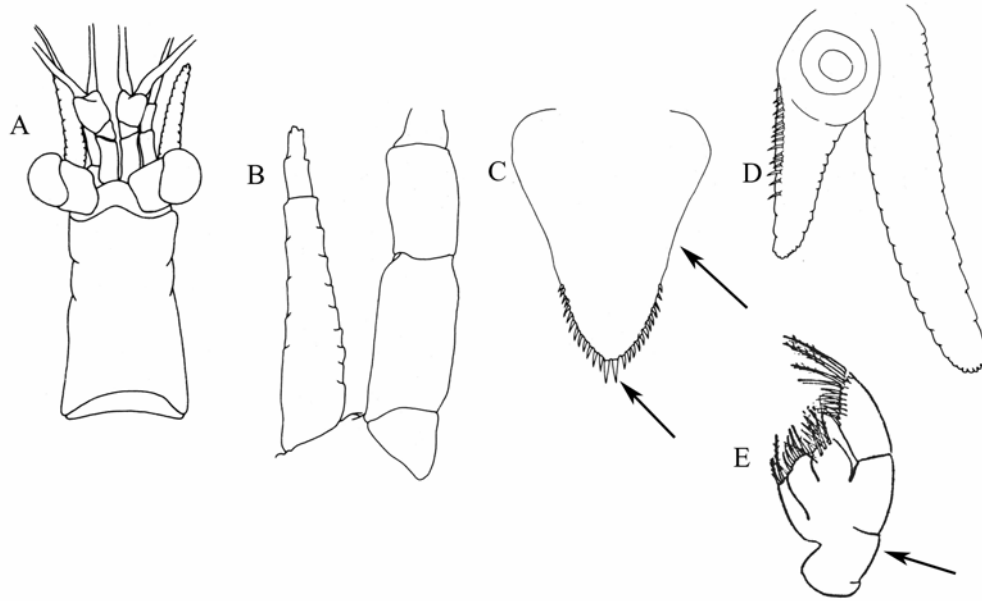
.....*Neomysis americana*



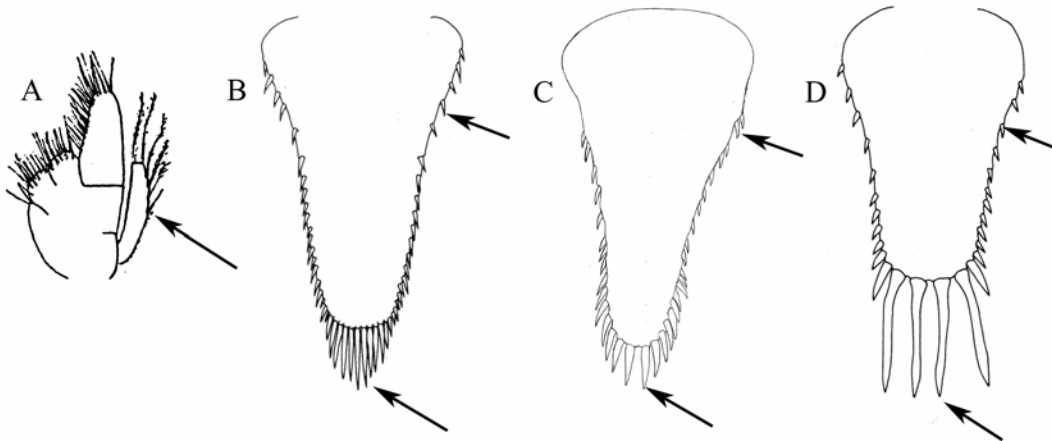
—Carapace lacking spines on anterolateral margin behind eyes. Antennal scale less than 8 times longer than greatest width. Thoracic endopods 3-8 having carpo-propodus divided into 2-3 articles. Telson tapering to a rounded apex, length less than twice greatest width near base, each lateral margin armed with fewer than 20 spiniform setae (not alternating in size and length, but generally increasing in size posteriorly)14



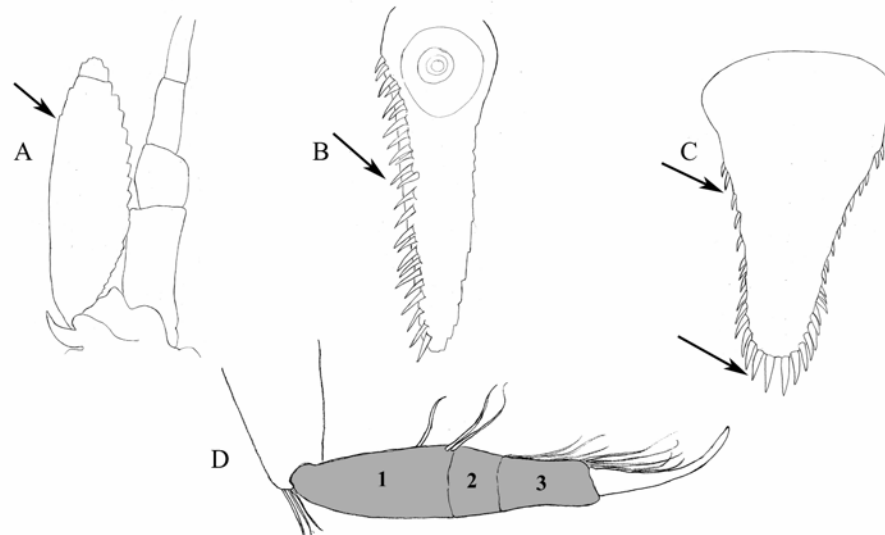
14. Maxilla lacking exopod. Telson with spiniform setae only on posterior 1/3 of lateral margins, apex armed with two large distinct spiniform setae..... *Metamysidopsis swifti*



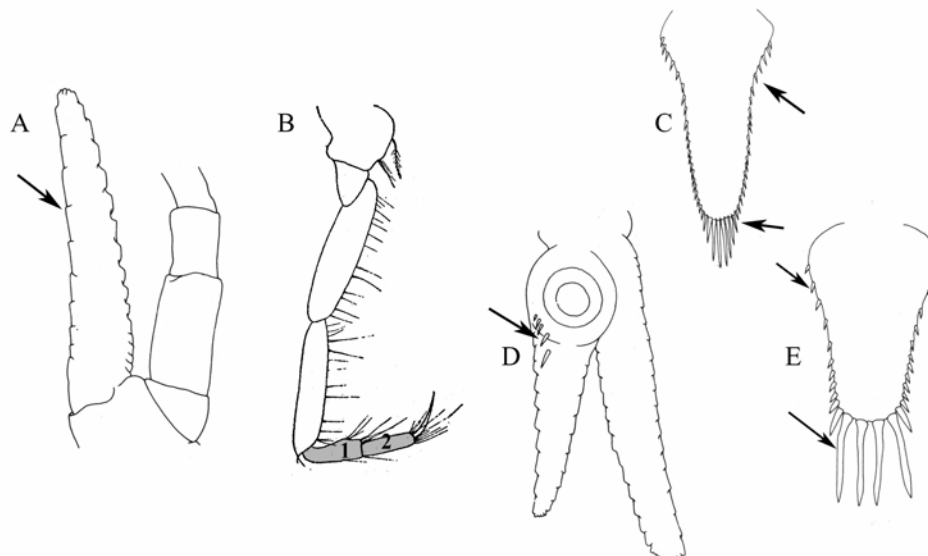
—Maxilla with exopod. Telson armed with spiniform setae along the posterior 2/3 or more of lateral margins, apex armed with more than two large distinct spiniform setae15



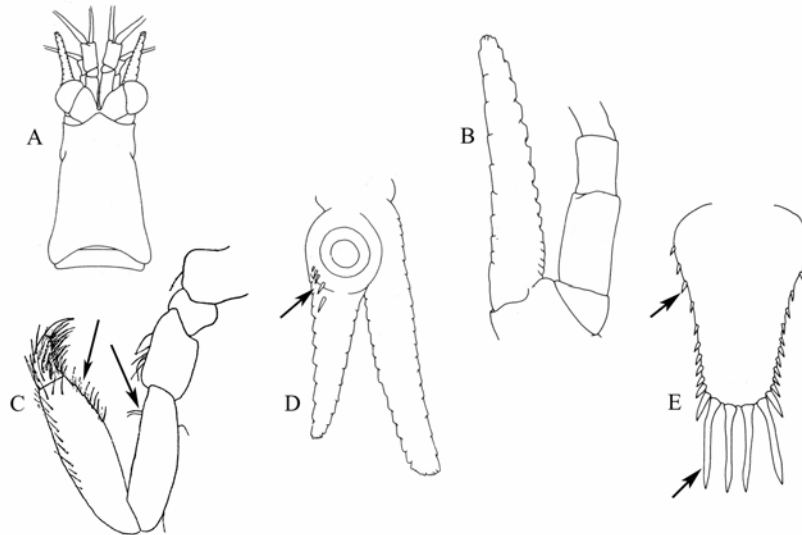
15. Antennal scale less than 3.5 times as long as greatest width, with distal article.
 Carpo-propodus of thoracic endopods 3-8 having 3 articles. Uropodal endopod inner
 margin armed with row of 19-28 relatively large spiniform setae extending to distal end
 of endopod. Telson with large spiniform setae on apex slightly larger than those on lateral
 margins (being less than 1/7 of telson length) *Mysidopsis* sp. (*mortenseni* complex)



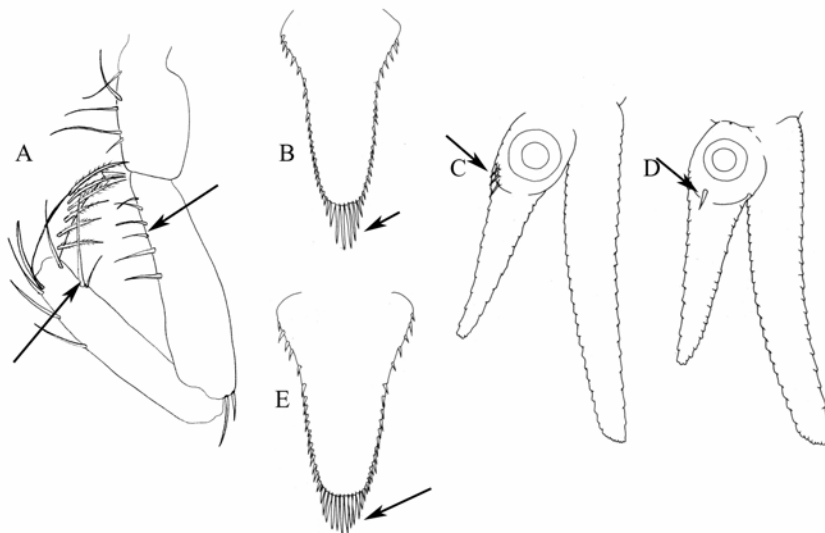
—Antennal scale more than 5 times as long as greatest width, lacking distal article.
 Carpo-propodus of thoracic endopods 3-8 having 2 articles. Uropodal endopod inner
 margin armed with fewer than 7 spiniform setae barely extending distally past statocyst.
 Telson with spiniform setae on apex distinctly larger than those on lateral margins (being
 at least 1/5 of telson length) ... (*Americamysis*) **16**



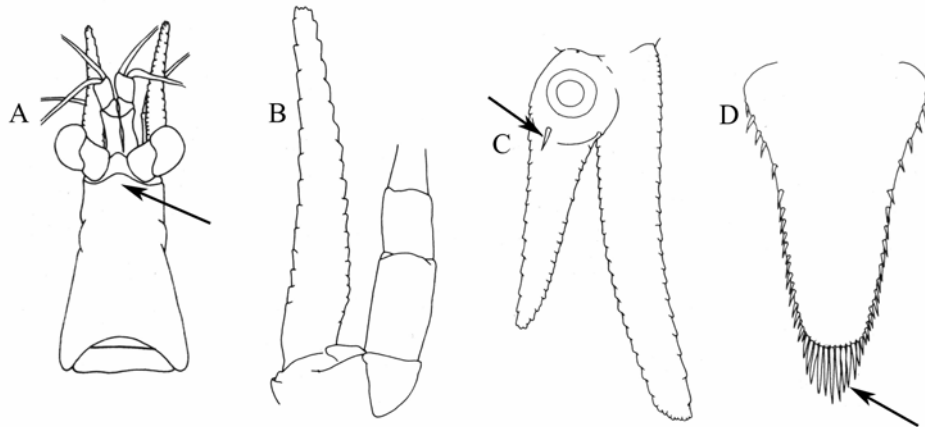
16. Carpo-propodus of second thoracic endopod with a series of 4-12 spiniform setae on distal 1/2 to 2/3 of inner margin of the first article; merus with 2 setae on proximal inner margin. Uropodal endopod usually with 4-5 (rarely 3 or 6) spiniform setae on inner margin near distal edge of statocyst. Telson with 3 pairs of large terminal setae, all distinctly longer than lateral setae, the innermost being about 1/3 the length of telson
Americamysis bigelowi



—Carpo-propodus of second thoracic endopod with 2-4 setae on distal part of inner margin of first article; merus with 4-18 setae on proximal 2/3 of inner margin. Uropodal endopod usually with 1-3 (sometimes 4-5) spiniform setae on inner margin near distal edge of statocyst. Apex of telson with 3-8 pairs of closely-set terminal setae, outermost pair being only slightly longer than adjacent lateral setae, innermost pair being no more than 1/4 length of telson.....17



17. Anterior margin of carapace (rostral shield) broadly rounded. Uropodal endopod usually with 1 spiniform seta on inner margin near distal edge of statocyst. Telson with apex usually bearing 4-8 pairs of terminal spiniform setae gradually increasing in length medially.....*Americamysis almyra*



—Anterior margin of carapace produced to form a short triangular rostrum. Uropodal endopod usually with 2-3 (occasionally 1 or 4-5) spiniform setae on inner margin near distal edge of statocyst. Telson with apex usually bearing 3-6 pairs of terminal spiniform setae abruptly increasing in length medially.....*Americamysis bahia*

