



3 Connect to your PC

What you can do with your PC Installer CD ?

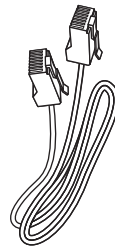
- Connect your **WAC700** Center to your PC or home network directly, via wired router or via wireless access point
- Manage your music collection via **Digital Media Manager (DMM)**, including:
 - Create and rename playlists/tracks, edit track information and transfer music files from PC to **WAC700** Center
 - Paths to update Gracenote® music recognition service for the latest disc information
 - Paths and supporting link for DMM software and WACS700's firmware upgrades
- Product registration for upgrades

PC system requirements

- Windows 98SE/ME/2000/XP (Home or Professional)
- Pentium III 300MHz processor or higher
- Ethernet network adapter
- CD-ROM drive
- Free hard disk space: 500MB for the software

What else you'll need ?

- Supplied Ethernet cable (straight cable)
- Supplied PC Installer CD



PHILIPS

You can connect **WAC700** Center to your PC or existing home network.. For common users, **Express Installation** provides **WAC700**'s standard PC connection.

Express Installation

IMPORTANT!

- When using a router, keep it at least 0.5 meter away from **WAC700** Center.

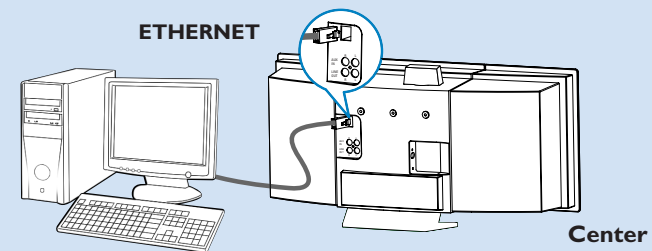
Preparation for installation

On **WACS700**:

- 1 Check you have finished the Wi-Fi connection between **WAC 700 Center** and **WAS700 Station**. (See **Quick Start Guide**, Step A)
- 2 Check your **WAC700 Center** is switched on or to standby mode

On your PC or existing PC network:

- 1 Switch on the PC with administrator's privileges.
- 2 Close all the applications on your PC, including the internet connection
- 3 Connect the supplied Ethernet cable (straight cable) to Center's **ETHERNET** port



- 4 Insert the installer CD into your PC and select your desired language

Tips:

- You can also start up the installer CD by running **WAC_installer.exe** on the CD-ROM driver.



Option 1:


Direct connection

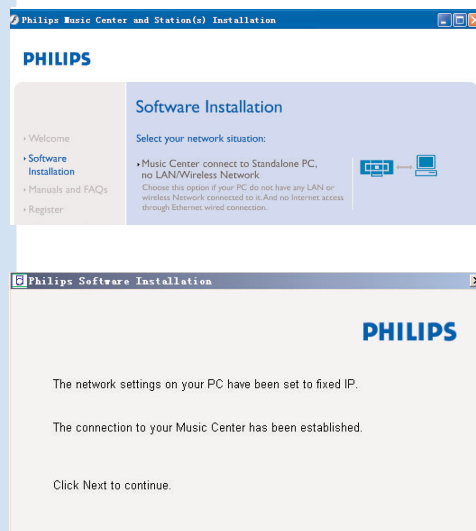
Choose this option if you want to connect Music Center to a Standalone PC without LAN/Wireless Network

1 In **Software Installation** page, click to select **Music Center connect to Standalone PC, no LAN/Wireless Network**

2 When prompted by the installation wizard, ensure the supplied Ethernet cable (straight cable) is connected to Center's **ETHERNET** port

3 Follow the screen instructions to finish the PC connection.
→ The screen shows: "The connection to your Music Center has been established"

4 Click **Next** to start **DMM** installation.
→ The icon  appears on your computer desktop after **DMM** installation is finished.



Tips:

- If your PC is also connected to Internet via XDSL modem, use a wired router or wireless access point and follow the installation steps of Option 2 and Option 3. Otherwise, manually change your PC's IP from its original one to IP address: 192.168.107.20, Subnet mask: 255.255.255.0 or vice versa.
- To configure your IP, go to Start menu - Settings - Control Panel - Network Connections - Properties. Scroll to Internet Protocol (TCP/IP).



Option 2:

Wireless connection

Choose this option if you want to connect Music Center to a wireless Router/ wireless Access Point or an existing wireless network

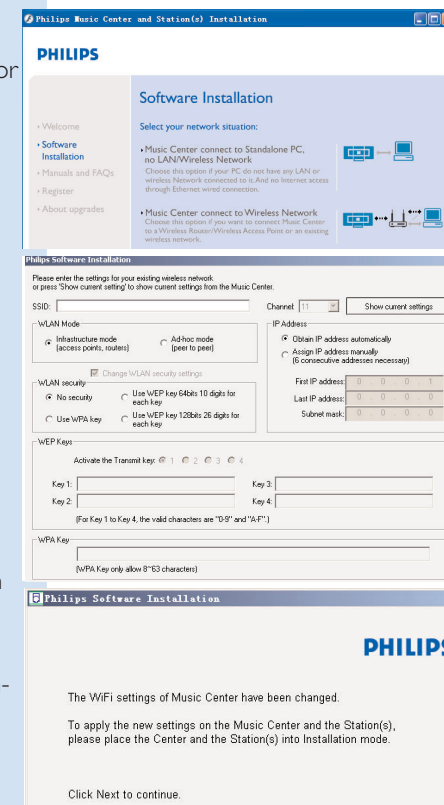
1 Check the wireless router/access point is working properly. Write down its SSID and also the WEP or WPA key if it is enabled in the router/access point

2 In **Software Installation** page, click to select **Music Center connect to Wireless Network**

3 When prompted by the installation wizard, ensure the supplied Ethernet cable (straight cable) is connected to Center's **ETHERNET** port

4 When the screen on the right appears,
a. Input the SSID you wrote down in the above **step 1**
b. In WLAN mode, click **Infrastructure mode**
c. Input the WEP or WPA key you wrote down in the above **step 1**

5 Follow the screen instructions to finish the PC connection.
→ The screen shows: "The WiFi settings of Music Center have been changed."



Tips:

- It is recommended that WEP key encryption be used for better network performance and security.
- In Infrastructure mode, Channel is assigned automatically by the router/access point.



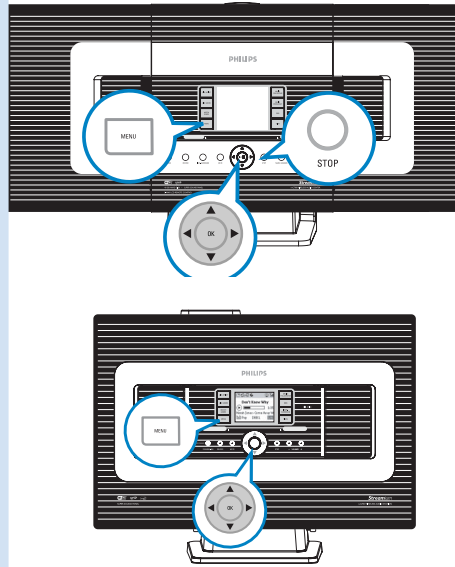
6 To apply new settings on WACS700, you need to let both Center and Station enter **Installation Mode**.


On Center:

- Select **HD**.
- Press **MENU**
- Use the navigation controls ▲ or ▼ and ► to enter **Station Mgmt** menu
- In **Station Mgmt** menu, use the navigation controls ▲ or ▼ and ► to select **Add New Station**
- Press **STOP** ■ to exit **Installation Mode** when Center has found all the stations

On Station:

- Select **AUX**.
- Press **MENU**.
- Use the navigation controls ▲ or ▼ and ► to select **Installation Mode**



7 Click **Next** to start **DMM** installation.
→ The icon  appears on your computer desktop after **DMM** installation is finished.

8 Disconnect the supplied Ethernet cable from your PC and Center, and then, connect your PC to the wireless router/access point.

Option 3:

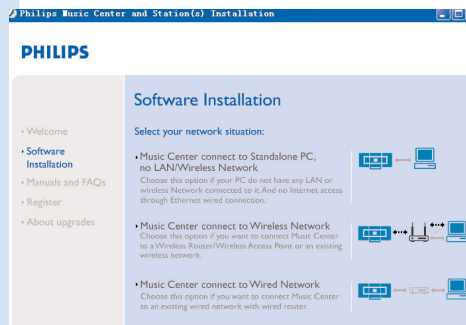


Wired connection

Choose this option if you want to connect Music Center to an existing wired network with wired router

1 Check the wired router is working properly and enable its DHCP.

2 In **Software Installation** page, click to select **Music Center connect to Wired Network**



3 When prompted by the installation wizard, ensure the supplied Ethernet cable (straight cable) is connected to Center's **ETHERNET** port.

4 When the screen on the right appears, select **"Obtain an IP address automatically"**.

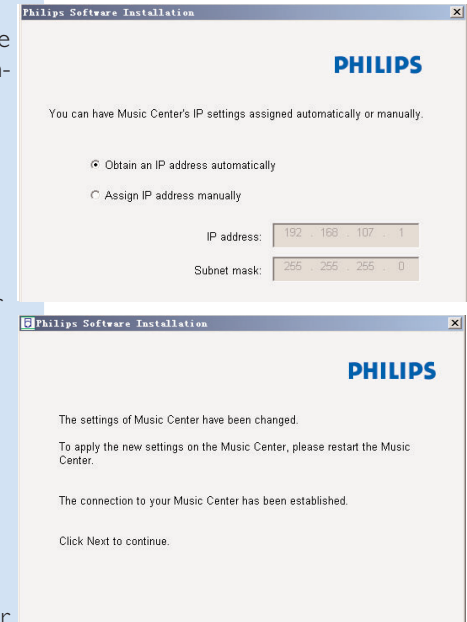
5 Follow the screen instructions to finish the PC connection.
→ The screen shows: ".....The connection to your Music Center has been established....."

6 To apply new settings, you need to power off WAC700 Center, and then power it on again.

7 Click **Next** to start **DMM** installation.

→ The icon  appears on your computer desktop after **DMM** installation is finished.

8 Disconnect the supplied Ethernet cable from your PC and Center, and then, connect your PC and Center to the wired router.



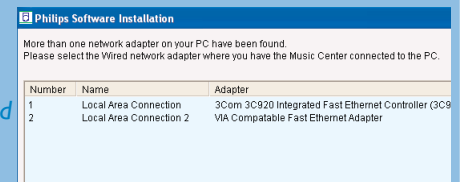
Notes:

– If you are Windows 98 SE/ME user, you will be prompted to restart your computer before starting DMM installation.

– If you are Windows 2000 user, check Service Pack 2 is installed.

– Select PC's network adapter that connects Center via the supplied Ethernet cable, if you have installed more than one network adapter on your PC


– In Option 3: Wired connection, avoid assigning the IP address manually as: IP address: 169.254.xxx.yyy; Subnet mask: 255.255.0.0. Such an IP address will cause conflict with the WiFi network of WACS700 Center and Station, resulting in Center's disabled Ethernet port. To restore the disabled Ethernet port, restore your WAC700 Center to its factory settings (see Chapter Reset in the User Manual)





Digital Media Manager (DMM)

Digital Media Manager (DMM) contains necessary software components for your PC to work with WAC700 Center.

1 Double click  on your computer desktop to launch DMM.

2 Follow the screen instructions for your operation

To learn more about DMM, click Help → Digital Media Manager Help

IMPORTANT!

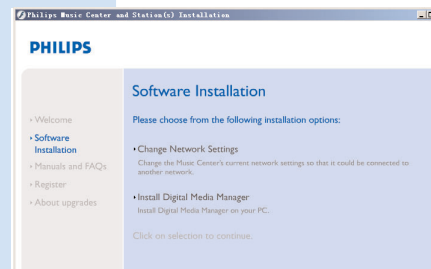
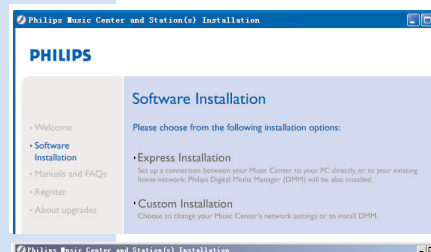
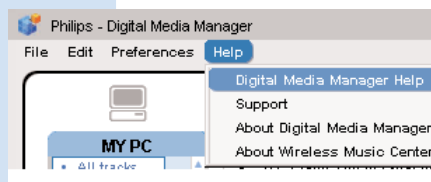
– When transferring music from PC to Center via DMM, do not remove Center's power plug from the wall outlet within 15 minutes after the music transfer is completed.

Custom Installation

Change Network Settings

1 Restore your WAC700 Center to its factory settings (see Chapter **Reset** in the User Manual).

2 Follow the steps under **Custom Installation** to change your network settings.



Glossary

Access point: communication hub for the connection between a wireless device and a wired LAN.

Ad-hoc mode: a networking framework where devices communicate with each other directly, without access point.

DHCP: stands for **D**ynamic **H**ost **C**onfiguration **P**rotocol. It is a protocol for assigning dynamic IP addresses to devices on a network.

Infrastructure mode: a networking framework where devices communicate with each other via an access point

IP address: computer or device identifier on a TCP/IP network

SSID: stands for **S**ervice **S**et **I**Dentifier. The same SSID must be used for all the access points and all the devices if you try to connect them to a specific WLAN.

Subnet Mask: It serves to decide what subnet an IP address belongs to

WEP: stands for **W**ired **E**quivalent **P**rivacy. It is a security protocol for wireless local area network

WLAN: stands for **W**ireless **L**ocal **A**rea **N**etwork. In such a network, high-frequency radio waves are used for communication

WPA: stands for **W**i-Fi **P**rotected **A**ccess. It is a Wi-Fi standard aimed to improve WEP's security features. It works with an existing WEP-enabled Wi-Fi products. *Gracernote and CDDB are registered trademarks of Gracernote. The Gracernote logo and logotype, and the "Powered by Gracernote" logo are trademarks of Gracernote.*

Need help?

Online

Go to www.philips.com/support



2005 © Koninklijke Philips Electronics N.V.
All rights reserved.
3141 075 20771
www.philips.com

Be responsible
Respect copyrights