



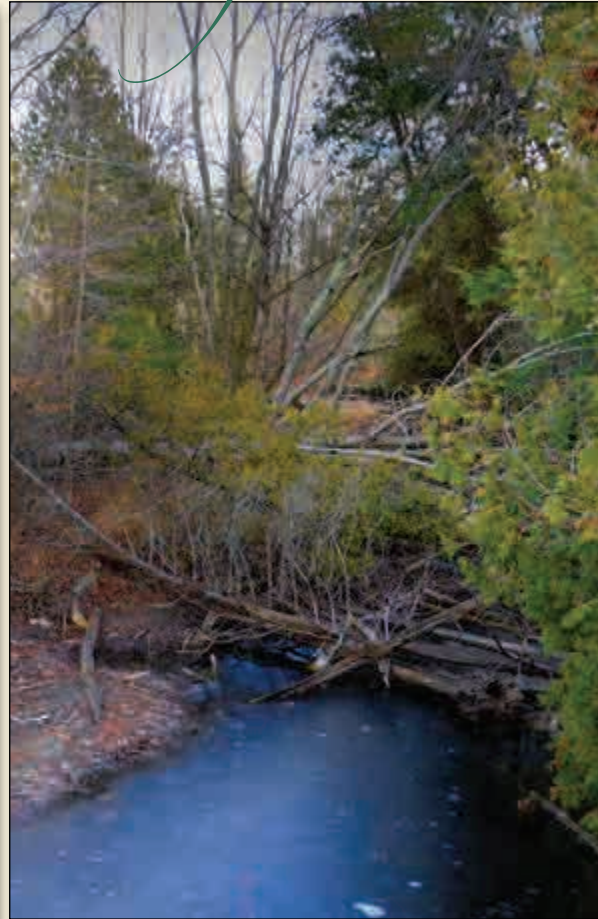
Landings

JOURNAL OF THE DOOR COUNTY LAND TRUST

A Banner Year for Land Preservation

2012 Annual Report Enclosed

Spring 2013, Vol 16, Issue 1



751 Acres Protected • Four Public Nature Preserves Created • Guide Book and Hiking Trails Map Published • Land Stewardship and Restoration Efforts Expanded

REFLECTIONS FROM THE EXECUTIVE DIRECTOR



Families have traditions and experiences all their own that fill their collective memory chest. A tradition that gets repeated every Christmas for my family is our exhausting 24-hour car trip to South Florida followed by the reward of sun, warmth and my parents' hospitality. We leave behind frigid temps, my daughter and son reconnect with their grandparents, and my wife, Heidi, and I shed the work and schedules that define our lives back home. For these two weeks, Florida seems to have very little in common with Door County. The perceived disconnect, however, all but evaporated on our most recent visit.

Soon after our arrival, we went to our favorite Naples area beach, Clam Pass, where we discovered an ecological dilemma unfolding. Last summer, a passing hurricane closed off the pass (a small river) that connects the Gulf of Mexico with the biologically-rich backwaters.

Without the steady interaction between the Gulf sea water and the fresh water of the inland bay, the bay was suffering and becoming stagnant. A simple dredging operation could have easily remedied the situation, but local politics got in the way. Citizens and visitors who love this place were becoming increasingly frustrated and decided to take matters into their own hands—and shovels!

One by one, residents and tourists alike, my family included, seized beach shovels and began digging. The goal: to recreate the pass by digging a six-foot deep channel 150 feet long. Ambitious, yes, but the inspirational sight of so many eight-year-olds working alongside eighty-year-olds to restore and preserve a special place was all the motivation anyone needed. By the third day, progress had been made. So much so that the local press arrived and the story was the lead on the evening news and in the morning paper. By the fifth day of digging, it happened; the hand-dug channel succeeded in connecting and mixing the salt and fresh waters.

A deep sense of communal satisfaction permeated the crowd. While we all knew that this was not the final answer to the problems facing Clam Pass, it mattered little. What did matter was the experience of a community coming together to help preserve a cherished place. Despite the fact that I was 1,500 miles away and 60 degrees warmer, this collective effort made Door County and South Florida seem like close, kindred places. The same cooperative spirit that recreated Clam Pass propels the work of the Door County Land Trust every day and makes it possible for the Land Trust to preserve the beautiful lands and waters that matter the most.

As you will read in this issue of *Landings*, that spirit made 2012 a banner year for your Land Trust as over 750 acres were protected and four new public nature preserves were established. Thank you for picking up your metaphorical shovel and lending a helping hand. Through your partnership and support, Door County will remain an inspiring place for generations to come.

Sincerely,

Dan Burke, *Executive Director*

The mission of the Door County Land Trust is to preserve, maintain, and enhance lands that contribute significantly to the scenic beauty, open space and ecological integrity of Door County.



Board of Directors

Tim Stone, *President*
Beth Coleman, *President-Elect*
Andy Coulson, *Treasurer*
Jean Barrett, *Secretary*

Tom Blackwood	Jim Lester
Mike Brodd	Judy Lokken
Dave Callsen	Mark Martin
Donna DeNardo	Bryan Nelson
Sharon Donegan	Rob Watson
Jack Finger	Kathy Wolff
Cathy Fiorato	Karen Yancey
Jon Hollingshead	

Staff

Dan Burke, *Executive Director*
Terrie Cooper, *Land Program Director*
Laurel Hauser, *Director of Charitable Giving*
Jodi Milske, *Stewardship Director*
Kristi Rice, *Office Manager*
Cinnamon Rossman, *Communications Coordinator*
Julie Schartner, *Project Manager*
Bobbie Webster, *Land Stewardship Coordinator*

23 N. Fifth Avenue
PO Box 65 • Sturgeon Bay, WI 54235
(920)746-1359 • Fax: (920)746-1024
email: info@doorcountylandtrust.org
www.DoorCountyLandTrust.org



Cover: Bluebirds at Oak Road Nature Preserve - Photo by Roy Lukes
Heins Creek Nature Preserve - Photo by Dennis Connolly
Hikers at Kangaroo Lake Nature Preserve - Photo by Julie Schartner



Photo by Judy Lokken

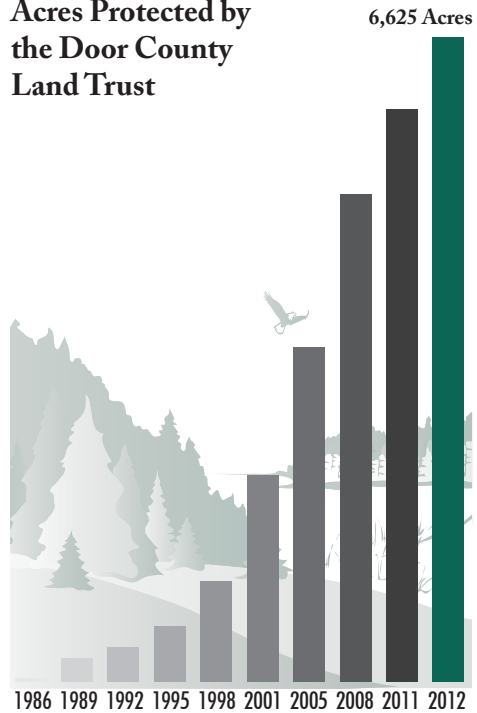
The Clearing Folk School class enjoys January's abundant snowfall by exploring the new Heins Creek Nature Preserve on snowshoes on an outing led by Door County Land Trust Executive Director, Dan Burke.

Land Preservation Successes

A BANNER YEAR!

2012 was a banner year for the Door County Land Trust as it contained many organizational highs. Some were quantitative, like the most acres protected in a year, the most land deals completed in a year and the most nature preserves established and expanded in a year. Others were qualitative, like the lush native plant habitat returning to restored landscapes or the smiles on the faces of children discovering new hiking trails. They are detailed in the pages ahead and they all count in making Door County a great place to live and play—now and in the future.

Acres Protected by the Door County Land Trust



1 property was purchased to expand the Lautenbach Woods Nature Preserve.



7 properties were donated to the Land Trust from The Nature Conservancy at Bay Shore Blufflands State Natural Area.



483 acres were purchased to establish the Schwartz Lake at Shivering Sands Preserve.



16 acres were purchased to establish the Grand View Scenic Overlook and Park.



3 properties were purchased on Washington Island at Coffey Swamp and Big and Little Marsh State Natural Areas.



A **32-acre** land donation helped create the new Carlson Nature Preserve in the Town of Liberty Grove.

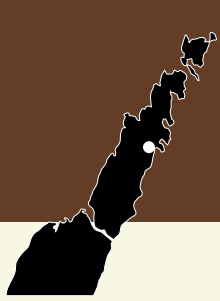


64 acres were added to the Kangaroo Lake Nature Preserve with the purchase of two properties.



A new **74-acre** nature preserve was established at Heins Creek with the purchase of two properties.

18 properties, totaling 751 acres, were preserved by the Land Trust in 2012, bringing the total number of acres protected by the Door County Land Trust to 6,625.



The Places We Protect

KANGAROO LAKE NATURE PRESERVE

Land Trust Partners with Girl Scouts to Protect Historic Camp



Photo by Dennis Connolly

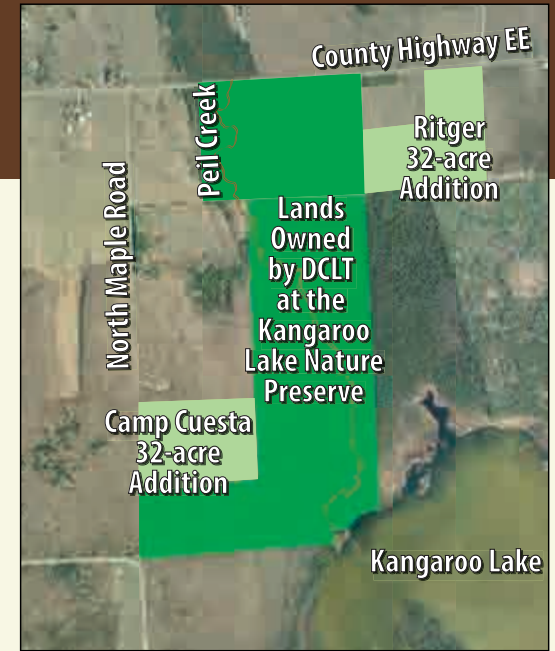
The Kangaroo Lake Nature Preserve was expanded by 64 acres with the recent purchase of two properties including a portion of the Girl Scouts' historic Camp Cuesta property.

The northern half of Kangaroo Lake and its surrounding wetlands, forest, rock outcroppings and pastoral fields, is home to the Land Trust's **Kangaroo Lake Nature Preserve**. The preserve is a refuge for Door County's rare and endangered plants and animals and is also a place of awe-inspiring beauty. In 2012, the Door County Land Trust completed two land purchases here that not only expand the protected acreage of this special place by 64 acres, but add to the impressive collection of partners that have joined forces to care for it.

Partnerships and Kangaroo Lake are synonymous as the idea to establish this preserve in the mid-1990s grew out of a shared vision between the Door County Land Trust, The Nature Conservancy, the Wisconsin Department of Natural Resources, the Kangaroo Lake Association, and many individuals. Over the past 17 years, the list of partners has continued to grow as has the preserve itself. Nearly 700 acres are now under protection and open for public enjoyment.

Add to the list of partners the Girl Scouts of the Northwestern Great Lakes. In 2012, the Door County Land Trust worked with the Girl Scouts to purchase a 32-acre portion of historic Camp Cuesta Girl Scout Camp. The Girl Scouts have retained ownership of the camp "campus" and will continue to operate it as they have in the past. They will have access to the Kangaroo Lake Nature Preserve through the parcel recently purchased by the Land Trust.

"The purchase by the Land Trust helps both organizations fulfill long-term goals," explains Terrie Cooper, Land Program Director for the Door County Land Trust. "The Land Trust is protecting a place of great ecological and scenic value; the Girl Scouts are deriving needed income and will forever be able to use the purchased property for nature exploration and education. It's a win-win scenario."



Additional Purchase Protects Watershed

In addition to the acquisition at Camp Cuesta, the Land Trust recently purchased 32 acres from the Ritger family. The property is located at the north end of the nature preserve and provides an ecological buffer to Peil Creek, a spring-fed stream that empties into Kangaroo Lake and is home to the federally-endangered Hine's emerald dragonfly. The 32 acres of wind-swept fields offer a stretch of pastoral scenery along County EE and provide an ideal entryway into the northern portion of the preserve.

The Ritger family acquired this land in 1995 and has had conservation in mind from the start. "Our family has a great deal of appreciation for the Kangaroo Lake area and is dedicated to doing what we can to protect the integrity of this special place," explains Ed Ritger. "Since we originally purchased this parcel to protect it and be good stewards, it made total sense for us to partner with the Door County Land Trust to make it part of the nature preserve."

Funds for these two Land Trust purchases were made possible through a generous grant from the Knowles-Nelson Stewardship Fund of Wisconsin and through private donations from Door County Land Trust supporters.

Letting Nature Take its Course: Natural Disturbance Enhances Ecological Integrity at Kangaroo Lake

On September 29, 2011, a cyclonic windstorm over Door County produced a microburst that hit the **Kangaroo Lake Nature Preserve**. Estimated at over 70 miles per hour, the winds reduced the canopy cover of an approximately 10-acre area by almost half, leaving a swath of fallen and uprooted trees and destroying hours of volunteer trail-building work in a matter of moments.

This blowdown and the many other smaller scale blowdowns that occurred are all part of what is known as the 'historic disturbance regime' of this region. A disturbance regime is a concept that describes the scale, severity, and return interval of disturbances like fire, wind, flooding, drought, insect or disease outbreak, etc. and/or interactions of the above. Blowdowns of this magnitude are rare occurrences. How does the Land Trust deal with an historic disturbance of this type? In this case, the trail affected was permanently closed for two reasons: one, it would have been very costly and dangerous to clear the affected section of trail to make it safe for visitors, and two, while the Kangaroo Lake Nature Preserve and other Land Trust preserves welcome public use, the Land Trust's primary goal, as defined in our mission statement, is to preserve the ecological integrity of the lands we protect. Attractive or not, these blowdowns play an important role in the ecological health of the forests of this region.

When blowdowns occur, fallen trees create openings in the forest canopy which have many important short and long-term effects. The increased sunlight reaching the forest floor causes increased soil and air temperatures, while the decrease in vegetation generally results in higher soil moisture. These factors stimulate tree regeneration, accelerate cycling of nutrients like nitrogen and carbon, and increase diversity in the understory plant community.

A disturbance regime is a concept that describes the scale, severity, and return interval of disturbances like fire, wind, flooding, drought, insect or disease outbreak, etc. and/or interactions of the above.

The pit and mound topography created by uprooted trees results in microclimatic differences in moisture and temperature. These differences significantly affect the establishment and success of tree seedlings and influence the type of tree species that regenerate. Decomposing woody debris is a key factor in the regeneration of white cedar, hemlock and yellow birch. Furthermore, coarse woody debris such as snags (standing dead trees), serves many important functions for wildlife; they provide perches for birds, cavities for bird nests and a source of food for insect-eating birds.

In the case of the Kangaroo Lake Nature Preserve windstorm, letting nature take its course is the best way to ensure the Land Trust's mission of preserving ecological integrity.

What became of the trail system at the Kangaroo Lake Nature Preserve? Thanks to our dedicated volunteers and the purchase of additional lands, a new trail system is installed and ready for visitors. See the new trail map to the right. We invite you to come explore it!



A fallen tree provides the nutrients young saplings need to root.

Photo by Bobbie Webster



Photo by Cinnamon Roseman

Green Bay Troop 4003 spent a weekend in the Camp Cuesta lodge in January, 2013. The girls enjoyed snowshoeing on new trails and the 'jungle gym' formed by a fallen tree.

Nature's Jungle Gym

For Girl Scouts, Camp Cuesta is synonymous with fun times spent in nature. Since the early 1960s, girls throughout Wisconsin have come here for all-season camping, friendship building, and learning. The new partnership between the Girl Scouts and the Land Trust means that girls at Camp Cuesta will continue to experience the wonders of the Kangaroo Lake Nature Preserve and have opportunities to participate in ongoing restoration projects like an upcoming tree planting activity scheduled for spring.

Take a Hike at the Kangaroo Lake Nature Preserve



Photo by Laurel Hauser



Kangaroo Lake Nature Preserve Trail

This past summer, the hiking trail at Kangaroo Lake Nature Preserve increased in length by more than a half-mile, thanks in part to the purchase of a portion of the neighboring Camp Cuesta Girl Scout Camp. The new loop, designed with help from volunteers, passes through quintessential Door County terrain including juniper fields and young forest with karst features such as crevices and exposed bedrock and high quality northern hardwood forest with beech, sugar maple and northern red oak. Situated atop a plateau that descends over one hundred feet to nearby Peil Creek, the trail, especially in winter and early spring, provides outstanding sweeping views of the surrounding forest and rural countryside. Trails maps to all Door County Land Trust Preserves are available at our offices or online at www.DoorCountyLandTrust.org.



The Places We Protect

HEINS CREEK NATURE PRESERVE

A Nature Preserve is Born at Heins Creek

A preserve is born! The Door County Land Trust added a new member to its nature preserve family when it recently completed two land purchases to establish the 74-acre **Heins Creek Nature Preserve**. The new preserve is situated along a ½-mile stretch of Highway 57 midway between Jacksonport and Baileys Harbor and is an essential piece of a wildlife corridor connecting Kangaroo Lake to the west and Lake Michigan to the east. This corridor features a large isthmus of wooded and open sand dunes that reach as high as 50-to-60 feet. It is Heins Creek, however, that truly defines this area and the Land Trust's newest nature preserve.

Shortly after departing the south end of Kangaroo Lake on its relatively short one-mile journey to Lake

Michigan, Heins Creek meanders through the entire length of the Land Trust property. Where Heins Creek cuts through the preserve's wooded sand dunes, a serene, almost mystical landscape unfolds. The forest floor is densely populated with an understory of diverse plants. Banks of the creek and surrounding dunes are blanketed with mature stands of hemlock, white cedar, sugar maple, and yellow birch, which tower over the stream, offering shade and cover for trout. Classified as a Class II trout stream, the creek is a popular destination for anglers. Cars parked on either side of the creek along the highway are a sure sign that spring has arrived.

As part of a greater Kangaroo Lake and Heins Creek wildlife corridor, the property provides essential migratory and breeding bird habitat. According to the



Wisconsin Breeding Bird Atlas (www.uwgb.edu/birds/wbba/), this area contains one of the highest densities of bird species found in the county; over 100 species have been recorded in the Baileys Harbor West quadrant. Protection of the contiguous forest cover throughout this area is vital to protecting our native bird population.

Creating this beautiful and abundant nature preserve would not have been possible without the generosity, vision and patience of two families. The Land Trust acquired the properties from the Widen and Walter/Williams families, neighbors that agreed to sell their respective property at 50% of its appraised, fair-market value. These two "bargain sales" were key to the project's success; their donated value was used to match a grant from the Knowles-Nelson Stewardship Fund of Wisconsin, a state program that supports land preservation. In the months ahead, the Land Trust will be working to raise additional funds needed for immediate and ongoing stewardship work at the Heins Creek Nature Preserve and welcomes any contributions earmarked for this use.

"Working with landowners who have a conservation ethic and a deep respect for the lands they own is often the key to a successful project, and this was certainly the case with Heins Creek," states Dan Burke, Land Trust Executive Director. "We now have the opportunity to share this special place with the public and are working hard to establish hiking trails, a parking area, and educational signage. We know that people are anxious to meet the newest member of our preserve family. They won't be disappointed."



Heins Creek bisects sand dunes and wooded forest on the new 74-acre nature preserve.

Photo by Dennis Connolly

Two Urbanites on Heins Creek

Director of Charitable Giving, Laurel Hauser, recounts a conversation with Arnie and Judy Widen about their contribution of land to the Door County Land Trust.

“Hello? Hello? ... Hello? I’ll call you Hright back. We’re in an elevator.” With Holmesian deduction, I surmised that Arnie and Judy Widen were not, as I had hoped, in Door County. They were, in fact, in downtown Chicago, but would be leaving their 41st floor apartment to return to their home in nearly elevator-bereft Door County the following day. We laughed at the wide extremes of their lives and made plans to meet.

A day or so later, a long, winding driveway led me through beautiful woods and along picturesque Heins Creek to Arnie and Judy’s home north of Jacksonport. The Widens had been working with the Land Trust on a bargain sale of part of their property for many, many months; the process of land preservation takes time, patience and a deep commitment to the desired end result. It is always, therefore, interesting to hear about the motivation behind this sort of commitment. Whence begins the “land ethic,” as Aldo Leopold would say?

When asked that question, people often speak of a childhood spent on a farm or transformative weeks at summer camp. When Arnie and Judy are asked if wilderness had been an important part of either of their upbringings, they almost choke on the coffee we are enjoying. Arnie laughs and explains that he had “barely seen a tree” during his childhood. Time spent in Colorado during college for Judy and a trip to the Grand Tetons during medical school for Arnie opened their eyes to what land could look like when it wasn’t “covered by concrete.” And, just as they became, through life’s experiences, exposed to other social issues, they also came to understand the moral responsibility we have to care for our environment.

When Judy suggested a trip to Door County shortly before their marriage in 1982, it was met with skepticism on Arnie’s part. The fact that they “fell in love with everything about it” and bought



Photo by Laurel Hauser

Arnie and Judith Widen stand along Heins Creek on a portion of property they helped the Land Trust preserve.

property here a month later surprised both of them. Since then, they’ve become deeply committed to their land and to the community. They are both heavily involved with the Midsummer’s Music Festival, on whose board Judy sits, and Arnie’s recent retirement as Medical Director of the Office of the Illinois Attorney General has allowed him to accept a position on the Land Trust’s Membership Committee.

“When Land Trust Board President Tim Stone called us years ago to plant the proverbial seed about preserving this land, it didn’t take us long to say ‘Absolutely!’” recounts Arnie. “We love knowing that this special place will be here, as it is now, when Judy and I are gone. And, we are so pleased to be working with a group like the Land Trust. We’ve sometimes heard the Land Trust referred to in the third person as ‘them’ or ‘those guys.’ At some point it clicked for us that the Land Trust isn’t ‘those guys,’ it’s ‘us guys!’ We are the Land Trust and we can do something good here.”

Judy speaks for both of them in saying, “Our lives are so urbanized. It’s been interesting for us to discover that knowing a small piece of land intimately and being a part of its care-taking can make it seem large. In comparison, a place like Chicago can seem oddly small. We are grateful for the chance to love this place and to be good stewards of its future.”

Life on the Peninsula Centuries Before Europeans Arrived by Paul Burton

Centuries ago, long before the white man came, Native Americans roamed and intermittently settled Door County. During spring, summer and fall, they hunted game, fished, and even grew maize. These villages flourished until the cold and snows of winter drove the inhabitants southward to join other tribes in a winter encampment on the Green Bay side of the peninsula, perhaps at Red Banks north of Green Bay.

About 1,300 years ago, one of the most heavily populated villages was located just north of Jacksonport on Heins Creek, a stream that connects Kangaroo Lake to Lake Michigan. It is estimated that at one time as many as 1,000 Native American men, women and children were scattered along the Lake Michigan shoreline, with Heins and nearby Hibbards Creeks (two miles to the south) as their epicenters. The remnants of a burial ground in the area attest to native people living and dying here, and the ground still yields artifacts of their existence.

Many artifacts confirming the Native American settlement at Heins Creek were collected by the late Edward Wells of Forestville. Nearly every weekend during summertime, Ed and his wife, Cass, took their children on expeditions along the Lake Michigan shoreline. Looking for artifacts, they found evidence of Late Woodland (~400 AD to 1,300 AD) Native American cultures. The Wells’ collection now resides at Lawrence University in Appleton.

Walk the Heins and Hibbards Creek shoreline today, or wander through the nearby forest, and there is little evidence of the area’s rich Native American history—but, it is easy to imagine row after row of wigwams set back in the forest along the shoreline, and the plumes of smoke rising from family campfires.

(For more information and fascinating accounts of Native American culture in Door County, see *More Door County Stories...and the Indians who discovered the Door Peninsula* by Paul Burton, Stonehill Publishing, copyright 2007.)



Photo by Cinnamon Rossman

Local historian, Paul Burton, poses at the Heins Creek Nature Preserve with a Native American artifact. The stone ax he carries is representative of the Late Woodland culture that resided along Heins Creek.

Partners in Preservation

DOOR COUNTY CONSERVATION PARTNERS

Stronger Together

Land protection takes place in two distinct phases: acquisition and stewardship. In Door County, this often involves more than one organization. Acquiring land requires landowner outreach, fundraising through grants and community appeals and the recording of legal documents. Although arduous, complicated and sometimes lengthy, it is, in the scope of things, relatively short-term. By comparison, stewardship is long-term and involves a property's ongoing, perpetual care and management. Door County is fortunate to have a cadre of conservation organizations approaching these two

distinct phases of land protection in one unified way. The Door County Land Trust, The Ridges Sanctuary, The Nature Conservancy, the Wisconsin Department of Natural Resources (DNR) and the United States Fish and Wildlife Service (USFWS) often work together to preserve and care for the most ecologically-valuable lands in the state's most ecologically-diverse county.

On many projects, Door County's conservation partners work to first identify property deserving protection and to then determine which organizations are best suited to do what task. If one group does not have the organizational resources at hand when an acquisition opportunity arises, another group may be able to assist or complete the purchase. This is possible because many federal and state grants are able to be transferred or shared among the partnering organizations. Likewise, a party other than the purchaser may be the best owner and long-term steward of a property either due to its resources or because it manages contiguous lands. By partnering together, Door County's conservation organizations have protected thousands of acres in Door County's State Natural Areas (SNAs). According to Terrie Cooper, Land Program Director for the Door County Land Trust, "The bottom line is, we're



Washington Island State Natural Areas

all committed to the same result and we are stronger together. The partnership between the conservation organizations in Door County has become a national model." The following two stories are examples of this partnership at work.

Land protection takes place in two distinct phases: acquisition and stewardship. In Door County, this often involves more than one organization.

Partnerships at Work on Washington and Detroit Islands

Door County's islands are blessed with some of the county's best remaining large blocks of forests, wetlands and undeveloped shorelines. In 2000, The Nature Conservancy, as part of its Great Lakes eco-regional planning, spearheaded a partnership to identify coastal wetlands and forests on the Grand Traverse Islands, and in particular, Washington and Detroit Islands. They searched for hot spots of Great Lakes biodiversity and their efforts, along with work by the Door County Land Trust, resulted in the establishment of the Coffey Swamp, Little Lake, Big and Little Marsh and Detroit Harbor SNAs. SNAs



Photo by Julie Scharrner

Federal and State partners join the Door County Land Trust to tour the Coffey Swamp State Natural Area. They are pictured here in front of an old log home, part of what was once the "Dutch Village" fishing community.

host the best remaining plant and animal communities in Wisconsin. These SNAs include boreal rich fens with floating sedge mats, ridges and swales, cedar swamps, and a freshwater estuary on Detroit Harbor. They provide critical habitat for the federally-endangered Hine's emerald dragonfly, a number of rare orchids, and over 25 state listed species of birds including osprey, bald eagles and Caspian terns.

In 2004 and again in 2007, the DNR, in partnership with the Door County Land Trust, applied for and received two very competitive USFWS Coastal Wetlands Conservation grants to purchase and preserve properties within the islands' newly-established SNAs. Over 4 million dollars of federal funds and matching state funds from the Knowles-Nelson Stewardship Fund have been leveraged with \$200,000 of matching private donations and gifts of land, to result in the protection of over 1,000 acres of the islands' most ecologically valuable lands. These places are now permanently protected and open to the public.

This past autumn, utilizing funds from the two grant programs mentioned above, the Door County Land Trust purchased and protected an additional 50 acres in the Big and Little Marsh and Coffey Swamp State Natural Areas. The Land Trust intends to transfer these lands to the DNR for long-term management as the DNR manages other neighboring properties within these SNAs.



Photo by Julie Scharner

Little Lake State Natural Area



Photo by Julie Scharner

Big and Little Marsh State Natural Area

Partnerships at Work at Woods at Monument Point

During the past year, The Nature Conservancy determined that many properties they've protected throughout Wisconsin would best be managed by, as Conservation Ecologist Mike Grimm says, "good, local land trusts."

The Door County Land Trust was the recipient of seven properties totaling just over 38 acres. The properties are located in the Town of Egg Harbor within the Bay Shore Blufflands State Natural Area. Five of the seven parcels are adjacent to lands already owned by the Door County Land Trust as part of the Woods at Monument Point Nature Preserve.

The Nature Conservancy began conversations with the Land Trust nearly five years ago to discuss how the lands could be most effectively managed and to explore whether it made sense for the Land Trust to become the long-term owner and manager of these properties. According to Grimm, "In this particular situation, for the sake of the land, the Conservancy decided that the Land Trust would be the better owner and caretaker."

Land Trust Stewardship Director, Jodi Milske, agrees. She explained, "Because the Land Trust is already invested in land protection efforts at Woods at Monument Point, it made sense to consolidate the lands under one owner so they can be managed as a whole system."

The 63-acre newly-consolidated preserve is located on the Niagara Escarpment and features a great, high quality forest of sugar maple, beech, cedar and hemlock. Red-shouldered hawks, a state-threatened raptor, have been known to nest in these woods. Warblers make a rest stop during migration



Photo by Julie Scharner

Woods at Monument Point

and northern forest birds such as wood and hermit thrushes, red-eyed vireo, and crested flycatchers have found this to be a good place to raise a family. When asked what his wishes are for the recently transferred parcels, Grimm said, "I hope that the Door County Land Trust continues land protection efforts here and that this donation becomes a catalyst to expand the protected acreage. I also hope that this place provides enjoyment for people who visit and fosters interest in understanding the Niagara Escarpment and how it functions."

Milske concurs with Grimm's wishes and adds, "The Land Trust is extremely grateful to The Nature Conservancy for entrusting us with these lands. We'll do our best to make sure they are well cared for."

Stewarding the Lands We Preserve

RESTORATION ON OUR NATURE PRESERVES

Land Protection Doesn't End with Land Acquisition; Stewardship is Key to Land Trust Mission

In our 26-year history, the Door County Land Trust has worked to permanently protect the “best of the best” of Door County’s unique landscapes, places that are home to the largest number of endangered species and communities found anywhere in the Midwest. When we’re successful, it often makes the headlines; threatened landscapes saved for public use is heady stuff. There is, however, another equally important component to the Land Trust mission. At the very heart of our mission statement is the phrase “ecological integrity.” Our mission is not only to preserve land; it is also to maintain and enhance a healthy, resilient ecosystem.

Once a piece of land is protected, either through a purchase or donations, the “forever” part of our stewardship work begins. Stewardship is, by definition, “the careful and responsible management of something entrusted to one’s care.” It is an ongoing job, it can be hard work, and the results can take years to see. Yet, it is a responsibility we willingly embrace. As Jodi Milske, our Land Stewardship Director, points out, “Our nature preserves are in many ways like children. They require

a lot of care and can be a lot of trouble, but we approach the responsibility with joy and love.”

In some fortunate cases, our preserved lands are so ecologically pristine that all we have to do is maintain the healthy, balanced habitat. In many cases, however, our preserved lands bear the ecological scars of past human activities, scars that have disrupted nature’s balance and led to habitat fragmentation and loss of native communities. In these cases, our stewardship responsibility is to enhance the land through restoration. Simply put, restoration is the process of bringing an ‘out of whack’ ecosystem back to a self-sustaining condition, one where nature can once again ‘take its course.’

So how does an ecosystem get ‘out of whack?’ Clear-cut logging of old growth trees and clearing lands for agricultural use causes obvious and dramatic destruction. But while initially cataclysmic, these impacts are temporary; in a healthy ecosystem, nature will immediately attempt to heal its wounds. Before it can do so, however, an insidious and even more devastating human impact can occur. The void created by the destruction of native plant species can fill rapidly with non-native invasive species. What was once a rich and diverse community with hundreds or even thousands of different plant species becomes a monoculture of one or a few species. Land that once provided habitat to a great variety of mammals, birds, reptiles, amphibians and insects now houses only a few, if any. Invasive plants initiate a domino effect that ultimately creates an ecological desert. (See page 12: *Green is not Always Good.*)

Because of the havoc they wreak, control of invasive species is the essential first step in any restoration effort. It is also the cornerstone of more than a dozen active restoration projects underway at Door County Land Trust preserves. Invasive species removal is tedious, difficult, labor-intensive, and often expensive. The good

news is that, in many cases, this is the only large-scale restoration work needed. Nature is resilient, and once the neighborhood bully is out of the picture, native vegetation will move in and coexist as a balanced community.

A good example may be found in the restoration of the open fields at the Bay Shore Blufflands Nature Preserve near Carlsville. The native forest



Hundreds of acres of wildlife habitat are being actively restored at the Oak Road Nature Preserve. This Kingbird perches on a white pine sapling.

Photo by Paul Burton

“Our nature preserves are in many ways like children. They require a lot of care and can be a lot of trouble, but we approach the responsibility with joy and love.”

—Jodi Milske, Land Stewardship Director

canopy that once covered this area was clear-cut for lumber and to make way for eventual residential development. The cleared areas were invaded by non-native woody species like buckthorn and honeysuckle which spread like wildfire, preventing native trees from seeding. Photos on the next page show a newly-cut and treated thicket of invasive buckthorn, and the same area after native trees such as aspen, white ash and cherry have begun to grow.

In some cases, restoration involves a more proactive approach, such as planting native trees and shrubs to re-establish forested corridors. This has been our approach at the Oak Road Nature Preserve, where pockets of high quality woodlands were separated by fields converted to agricultural use. When the Land Trust acquired the property, tilling was discontinued. Reconnection of woodland corridors is now being accelerated by selective plantings of a variety of native upland and lowland shrubs and trees to enhance natural succession.



“Just my size!” This young Land Trust member greets a healthy oak sapling at the Oak Road Nature Preserve.

Photo by Laurel Hauser



Photo by Steven Rice



Photo by Jodi Milske

Jodi Milske surveys freshly-cut buckthorn at the Bay Shore Blufflands Nature Preserve (left). After just 2 years, the same scene (right) shows native trees sprouting through the buckthorn treatment area.

Restoration Partners

Although Bay Shore Blufflands and Oak Road are two of our largest restoration projects, active restoration at some level is taking place at many of our preserves. How do we find the resources to accomplish it all? The key lies in creating partnerships, joining together with individuals and organizations that share a common vision for the wild places and open spaces of Door County.

Our most fundamental restoration partnership, in fact the very ‘hands and soul’ of the Land Trust’s restoration program, is our stewardship volunteer corps, the Door Stewardship Alliance (DSA). This intrepid work force collectively contributes more than a thousand hours annually to care for our preserve lands with a passion that transcends inclement weather, blisters, insects, and even the well-travelled granola bars that are their only tangible reward (see “Stewardship by the Numbers.”) The success of our stewardship program literally rests on their strong, if weary, shoulders.

Another critical partner in land restoration is neighborhood associations. The Land Trust works closely with the Bay Shore Property Owners Association, the South

Lake Michigan Drive Association, the Glidden Drive Association, Lake Forest Park Corporation and others.

Successful restoration on a landscape scale also requires considerable financial support, and this need continues to grow as more land is preserved. Over the past decade, we have received restoration funding assistance from a number of state and federal agencies, including the Wisconsin DNR, the Natural Resource Damage Assessment Fund, the U.S. EPA’s Great Lakes Restoration Initiative, the Lakeshore Natural Resources Partnership, and the U.S. Fish and Wildlife Service. These grant awards enable us to hire professional resto-

ration contractors for projects that are beyond the scope of staff and volunteers. Recent examples of grant-funded restoration at Land Trust preserves include:

- Woody invasives and *Phragmites* eradication at Bay Shore Blufflands Nature Preserve
- *Phragmites* eradication from 50 miles of Lake Michigan and Green Bay shoreline, including Sturgeon Bay Ship Canal Nature Preserve and Legacy Preserve at Clay Banks
- *Phragmites* and Reed Canary Grass eradication at White Cliff Nature Preserve
- Buckthorn, *Phragmites* and Narrow-leaved Cattail removal at Kellner Fen Natural Area

When our preserved lands are healthy, they keep us healthy, too. They clean our air and water and they provide soul-sustaining beauty. They nourish a whole ecosystem of which we are an integral part.

2012 Stewardship by the Numbers

- 44 volunteers donated 565 hours to special projects on 25 Nature Preserves and Natural Areas.
- 58 volunteers donated over 516 work hours during 24 Door Stewardship Alliance work days, at 13 different preserves.
- 9 new preserve stewards were welcomed into the Preserve Stewards Program. Preserve stewards routinely visit and monitor Door County Land Trust nature preserves.
- Over 90 Land Trust-protected parcels and preserves were monitored by staff, preserve stewards and other volunteers.
- 15 volunteers attended a chainsaw training course held by the Land Trust.
- All told, 73 stewardship volunteers donated 1047 hours of their time.

- Wetland restoration and reforestation at Oak Road Nature Preserve
- Wetland restoration at Ephraim Preserve at Anderson Pond
- Woody invasives and Spotted Knapweed eradication at Sturgeon Bay Ship Canal Nature Preserve

Applying for and managing the grants and coordinating volunteer efforts takes resources, too. Annual membership contributions from Door County Land Trust members provide critical support.

When our preserved lands are healthy, they keep us healthy, too. They clean our air and water and they provide soul-sustaining beauty. They nourish a whole ecosystem of which we are an integral part. When we pass preserved lands on to future generations, we therefore need to do so with their ecological integrity intact. It is, after all, our mission.

PLANTS OUT OF PLACE: GREEN IS NOT ALWAYS GOOD

Most of us who enjoy nature seek lush, verdant landscapes. It can come as a shock, therefore, to find out that green is not always good. Since the first European settlers began to colonize North America, humans have intentionally or accidentally introduced plant species from other continents, a practice that continues to this day. These species are “plants out of place,” and although the majority manage to coexist with native plants (i.e. are not invasive), a number have spread wildly out of control, with devastating consequences for native ecosystems.

The worst invaders possess a number of characteristics that give them a huge competitive advantage over native plant species. They reproduce extravagantly through seeds, runners or underground stolons, they leaf out earlier and keep their leaves later, they are highly tolerant of many soil and moisture conditions, and some even secrete toxins that suppress the growth of other plants. Add to that the absence of natural predators, and you have the perfect picture of a nasty green bully. (It’s hard to resist the urge to anthropomorphize invasive plants, although they just hate that.)

Shrubs to Watch Out For!

A dozen or so non-native plant species represent Door County’s worst invaders due to the damage they inflict on important and fragile ecosystems. Two of the really bad actors are buckthorn and honeysuckle. European Buckthorn (*Rhamnus cathartica*, *Rhamnus frangula*) and Exotic Bush Honeysuckle (*Lonicera spp*) are woody, ornamental shrubs that are unfortunately all too familiar to many people. Imported from Eurasia, they were prized for their vigorous growth, extreme hardiness and ability to rapidly form dense hedges. The very attributes so desirable in ornamental plantings are devastating when unleashed into the wild. Both produce an abundance of berries which are avidly consumed by birds. Of little nutritive value to native bird species, the fruit passes through the intestinal tract very quickly and largely undigested (hence, the species name “*cathartica*”), ensuring that the intact seeds are spread over a wide area. Buckthorn and honeysuckle form dense, monotypic (one species) thickets that strangle and kill native shrubs and young trees, and prevent new ones from germinating.

Effective control of these shrubs focuses on first eliminating the mature individuals to prevent further fruit production, followed by eradication of juvenal plants before they can begin to reproduce. The Door County Invasive Species Team (DCIST) was established to educate and assist private landowners on identification and correct control methods for these and other common invasive plants. For more information or to request a property visit, contact DCIST Coordinator Kari Hagenow at dcist1@gmail.com.

By learning to spot invasive species when they first appear, we can prevent minor infestations from becoming uncontrollable. We will continue to provide information about different invasives in future issues of *Landings*. Many other resources are available to preserve visitors and private landowners to assist with identifying and controlling invasive plants. (For more information visit the Door County Invasive Species website: <http://map.co.door.wi.us/swcd/invasive/default.htm>.)

Two Non-Native Invasives Commonly Found in Door County



Close-up of European buckthorn

Photo by Joeli Miske



Close-up of honeysuckle

Photo by Joeli Miske

Good Neighbors: Innovative Program Helps Neighbors Control Invasive Species in “the ‘Hood”

The Bay Shore Property Owners Association (BSPOA) is once again a shining example of land stewardship. This group of private landowners in the Bay Shore Blufflands Nature Preserve neighborhood long ago recognized that invasive species do not respect property lines! BSPOA and the Land Trust formed a partnership aimed at eradicating buckthorn and honeysuckle on a landscape scale. Association members took the initiative to participate in identification and control workshops and then applied their knowledge to their own and their neighbors’ properties. In 2008, BSPOA pledged a whopping 400 hours of work to provide in-kind match on a Land Trust restoration grant application. The grant was awarded at full funding, thanks in large part to their strong, hands-on support. In the end, they even exceeded their pledge by more than 100 hours!

This energetic group continues to lead by example with an innovative new incentive program. BSPOA has earmarked \$5,000 to provide financial assistance of up to 50% of cost for BSPOA members who hire a professional, invasives control contractor for buckthorn or honeysuckle removal on their property. The “fifty-fifty” program serves as an effective, creative model for other neighborhood associations in the collective battle against invasive species. (For further details, contact program administrator Dan Mathein at 715-923-5000 or email mathein6126@charter.net.)



The Places We Protect

CARLSON NATURE PRESERVE

Land Donation Extends North Bay Wildlife Corridor and Gives Rise to a New Nature Preserve

The Door County Land Trust was recently the beneficiary of a very generous, 32-acre land donation from Carl and Juanita Carlson. Their gift will forever benefit all of Door County as it establishes the new **Carlson Nature Preserve**.

It was 1977 and Carl and Juanita were in search of a northern Door County property that would help fulfill two of their passions and talents – home design and land restoration. What they discovered, and ultimately purchased, was a 40-acre parcel of picturesque old field

along County Q and Woodcrest Road in the Town of Liberty Grove.

The northwest 8-acre portion of the property provided an ideal backdrop for a home that Carl would design and build. Carl is an architect by trade, and in 1978 he and a few of his colleagues began construction. Carl worked in Chicago at the time and would drive up to Door County every weekend to work on the home.

The remaining 32 acres they purchased would be the focus of years of effort to bring life back to what was



Photo by Julie Scharmer

The new 32-acre Carlson Nature Preserve is a result of a land donation from Carl and Juanita Carlson.

once a worn out farm field. It is these 32 acres that are now entrusted to the Door County Land Trust.

Although early settlers had high hopes for agricultural bounty, the Carlson property, like most property in northern Door, has very poor, shallow soil unsuitable for agriculture. The Carlsons envisioned restoring this native land, but before undertaking a large effort, Carl thought it would be wise to have the soil tested. “The soil analysis concluded that our land was essentially dead,” Carl recalls. Fortunately, they were undeterred.

Over the subsequent years, the Carlson family planted over 10,000 white pine and cedar trees and countless shrubs of various varieties. And all were hand planted! “We dug out holes by hand because we didn’t want the plantings to be in symmetrical rows. I guess it’s the architect in me,” explains Carl.

Today, these 32 acres are a wonderful mix of meadow and young forest. The wildlife is back, too. This is particularly good news because the new Carlson Nature Preserve borders the North Bay State Natural Area, one of the most biologically diverse and significant wildlife corridors in the State of Wisconsin.

The Door County Land Trust will use the next year to assess and develop plans for the public nature preserve and to continue the hard restoration work the Carlsons initiated. We thank Carl and Juanita for their stewardship of this landscape and for their generosity in making this property available for others to enjoy.

2012 YEAR IN REVIEW

AN ANNUAL REPORT TO OUR MEMBERSHIP

INTERVIEW WITH THE PRESIDENT

Tim Stone, our Board President, is a busy man. Between bird watching (small 'b' as in feathered friends), Badger watching (capital 'B' as in basketball and football), hiking, board work for many local non-profits, theater, classes and the occasional symphony concert, he and his wife, Sue, have a full schedule. We managed to catch Tim at a slow moment to talk about his reflections on the past year and his vision for the Door County Land Trust in the year ahead.

Q: Aside from exciting land acquisitions like the Grand View property and Schwartz Lake at Shivering Sands, what's one thing you're most proud of the Land Trust for in the past year?

A: I'm proud of all the great work of the staff and board and Land Trust volunteers. But, without question, I am incredibly proud of the fact that we distributed our new hiking map to 1,600 area school kids—from Washington Island down to Southern Door. I



Board President, Tim Stone, pulls the Door County Land Trust wagon in the Olde Ellison Bay Days Parade.

was fortunate to grow up in a time when kids spent all day outdoors. We'd head out in the morning and have to be back home when the Carnation factory whistle blew at noon and 5. Anything we can do to help kids discover the outside world rates high with me.

Q: The work of 2012 means there'll be some new preserves to hike. What tops your list for places to explore in 2013? Do you have a list of birds you haven't seen yet that you're looking for when you go out?

A: I make a concerted effort to visit each property the Land Trust has preserved. Of the new ones, Shivering Sands will need some more exploration. At nearly 500 acres, there's ground I haven't covered. As for birds, I always say I haven't met a bird I didn't like! The spring migration of warblers is really special. Every year is different and a lot depends on the wind, but when the midges hatch, the warblers are usually not far behind. And, when they come, the trees just sing!

Q: When you think about the opportunities and/or challenges the Door County Land Trust has in the near future, what inspires you the most?

A: Without doubt, and I believe I can speak for the entire board in saying this, we are committed to assuring the long-term sustainability of the Land Trust. It takes a lot of resources to do work that will last into perpetuity, work that's this important.

Q: What's one thing you've learned since becoming involved in the Land Trust that you didn't know before? What's one thing you've become most passionate about? What's one thing people might not know but you'd like them to know?



Third graders at Sunrise Elementary School in Sturgeon Bay are excited to get out and explore. Over 1,600 area school children received the Door County Land Trust's hiking trails map in 2012.

A: Well, in that order...I have to say that I did not know how many truly tremendous people support the mission of the Land Trust. As for passion, I am passionate about getting the Land Trust story out. I enjoy giving presentations to area groups through the Speakers Bureau. As for one thing I'd like people to know, that's easy. I'd like them to know of the unsung corps of volunteers who are out on the land each and every week getting their hands dirty, removing invasive species, working to restore the ecological health of our county. That's commitment.



Door County Land Trust supporters line up for the Olde Ellison Bay Days Parade.

2012 FINANCIAL STATEMENT

OF THE DOOR COUNTY LAND TRUST

BALANCE STATEMENT AS OF DECEMBER 31, 2012*

ASSETS

Current Assets

Checking/Savings	\$493,493
Legal Defense Fund	\$88,712
Pledges and receivables	\$9,926
Prepaid expenses	\$15,823

Total Current Assets **\$607,954**

Property and Equipment

For Operations	\$199,780
Land held for conservation **	\$21,165,611

Investments

Endowment Fund	\$912,170
Egg Harbor Life Estate Residence	\$1,068,832

TOTAL ASSETS **\$23,954,347**

* This is a preliminary pre-audit Balance Sheet Statement. If you are interested in obtaining our 2012 Audited Financial Statements, we will be happy to provide you a copy upon the audit completion.

LIABILITIES & NET ASSETS

Liabilities

Accounts payable and accrued expenses	\$64,457
Notes payable	\$86,658

TOTAL LIABILITIES **\$151,115**

Net Assets

Permanently restricted	\$18,048,223
Temporarily restricted	\$1,078,758
Unrestricted	
Invested in property and equipment	\$4,142,680
Designated for legal defense	\$88,712
Available for operations	\$444,859

TOTAL NET ASSETS **\$23,803,232**

** Nearly all our Nature Preserve acreage is permanently protected through deed restrictions. The value of these lands as indicated in this financial report is the appraised value of the parcels at the time the Land Trust acquired the properties.

STEWARDSHIP ENDOWMENT FUND

AS OF DECEMBER 31, 2012

The Land Trust's Stewardship Endowment Fund is a segregated fund designed to provide long-term financial stability to the organization. Because only a portion of the investment returns is available for use, the principal remains intact and will continue to generate funds for the Land Trust far into the future.

Asset Type	Market Value	% of Portfolio
Cash and Equivalents	\$20,554.41	2.25%
Fixed Income	\$413,296.76	45.31%
Equities and Alternatives	\$478,318.97	52.44%
Value as of 12/31/2012	\$912,170.14	100%

The Endowment is managed by Baylake Bank and is governed by the following Board of Trustees:

Sharon Donegan Richard Hauser Jeff Ottum
Tony Fiorato Jim Lester

If you are interested in making a tax-deductible donation to the Endowment, please contact Dan Burke or Laurel Hauser at the Land Trust office, (920)746-1359.

2012 Membership Support by the Numbers

- **250+** individuals volunteered their time leading hikes, taking care of our preserves, helping with mailings, serving on committees and doing the myriad of other tasks needed to keep the Land Trust going!
- **1,506** households made a financial contribution in 2012.
- **223** households made their first gift to the Land Trust in 2012.
- **127** gifts were made online, on our website, in 2012.
- **25** households participated in our Recurring Gift Program. (See page 17 to join them!)
- **\$43,000** in net proceeds were raised at Land Trust events throughout the year. These gifts directly benefit our land preservation efforts.
- **5** new households included the Door County Land Trust in their estate plans, becoming members of our *Sustainer's Circle*. (See page 19.)

DOOR COUNTY LAND TRUST BOARD OF DIRECTORS

Welcome to... Donna DeNardo

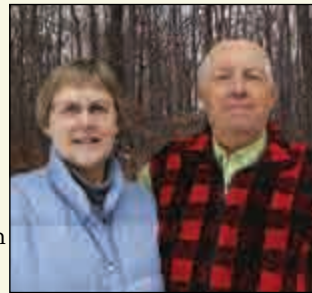
Donna and Tony DeNardo first came to Door County as tent campers in Nicolet Bay at Peninsula State Park. Through the years they despaired over soggy pillows and nighttime raccoon raids, so acquired a condo to spend more time in Door County. Ultimately, they bought property overlooking the Ephraim Swamp and built a home. While living near St. Charles, Illinois, Donna's career was primarily in health care and consulting. As president of Vitalink Pharmacy Services, she took pride in developing a company that pioneered consultative services. Tony managed the warranty service function for Motorola, Inc., and together, they raised 2 beautiful, nature-loving daughters, who come back to visit Door County.



Since becoming full-time residents of Door County in 2006, Donna and Tony have enjoyed volunteering at The Ridges Sanctuary and the Door County Land Trust. Donna has been a member of the Door County Land Trust's Membership Committee since 2009. She currently works at Scandia Village as the Senior Living Manager for Independent Living residents.

Welcome to... Mark Martin

Mark first visited Door County in the mid-1970s when traveling with his parents. Today, Door County is a favorite trip destination for Mark and his wife, Sue Foote. Since 1979, Mark and Sue have been the resident managers at Madison Audubon Society's Goose Pond Sanctuary near Arlington in Columbia County. Both worked for the Department of Natural Resources (DNR) where Sue developed the Great Wisconsin Birding and Nature Trail project. Mark worked with the State Natural Areas program from 1982 to 2011 in the Bureau of Endangered Resources and retired at the end of 2011 after a 40-year career with the DNR. Mark helped secure many US Fish and Wildlife Service Coastal Wetland Grants that assisted the DNR, The Ridges Sanctuary, and the Door County Land Trust in acquiring natural area lands. Mark also helped secure funding to control *Phragmites* on Door County's shorelines. Mark serves on the Door County Land Trust's Land Policy Committee.



Welcome to... Rob Watson

Rob and Judy Watson have long been involved in environmental issues and preservation. The two met in Rockford, Illinois where Rob founded the local chapter of the Sierra Club and Judy worked for the Natural Land Institute. In 1993, Rob's career as an architect offered the opportunity to take a position in Green Bay, leading them to move to Brussels. Once settled in Door County, they grew to appreciate the natural beauty found here. In March 2011, after Rob retired, they joined the Door County Land Trust. For the past two years, Rob has been an active volunteer with the Door Stewardship Alliance, mainly working on invasive species eradication in the preserves. Rob also serves on the Land Trust's Facilities Committee and is currently assisting in several projects to improve the Land Trust offices. Rob is honored to serve on the Door County Land Trust Board of Directors and to contribute to the Land Trust mission.



Farewell to... Jim Janning

In 2012, Jim Janning retired from the Door County Land Trust Board of Directors. Jim was elected to the board in 2006 and during his tenure served on the Land Trust's Finance and Operations Committee, Membership Committee and Endowment Board of Trustees. Jim brought a wealth of business experience to the Land Trust, but it is his contagious enthusiasm and can-do attitude that will be missed most of all. Jim, along with his wife, Donna, are huge advocates for the protection of the Kellner Fen area northeast of Sturgeon Bay and have been personally involved in the growth of the Land Trust's Kellner Fen Nature Preserve over the past seven years. The Jannings have also been extremely generous in hosting fundraising events and other Land Trust gatherings at their home. We thank Jim for the time and talent he gave the Land Trust as a member of the Board of Directors.



STAFF

Farewell to... Karen Wilkinson

The Door County Land Trust said good-bye this year to a friendly and calm presence in its office. After twelve years of working at the Land Trust, Karen Wilkinson embarked on a well-deserved retirement. In her role as administrative assistant, Karen impacted every Land Trust member. She was the cheerful voice that answered the phone, the person who gave timely acknowledgment to membership donations, handled event registrations, worked in great camaraderie with volunteers and juggled a myriad of other tasks all with aplomb. She had the rare gift of being able to work equally well with details and people. The Land Trust wishes her well and thanks her for her many years of dedicated, exceptional work.



Welcome to... Cinnamon Rossman

Cinnamon Rossman joined the Door County Land Trust in November 2012 as our new Communications Coordinator. Her experience with non-profits in Door County and Milwaukee includes organizing events, coordinating volunteers, publicity, graphic design and more. She is a graduate of Alverno College, Milwaukee, with a BA in English Literature and a BA in Studio Arts. Cinnamon grew up near Mud Lake and remembers playing around the swamp, finding dragonflies, turtle eggs and antlers. As a Door County native, she has a passion for this place, saying "I wouldn't want to be anywhere else!" She is excited to be working with the Land Trust to protect this place we all love.



^{EASY} Two Ways to Support the Door County Land Trust

Donate Online

Donating online is a great way to preserve Door County! Make a gift in someone's honor, make a 'thank you' donation after you've hiked one of our preserves, or renew your annual membership. Whenever the spirit moves you, just visit our website: www.DoorCountyLandTrust.org and click Donate Online. You'll receive a letter from us thanking you for your gift.

Recurring Gifts / Automatic Withdrawals

Our recurring gift option is beneficial to the Land Trust and convenient for you. Your annual support may be split into monthly or quarterly contributions and automatically deducted from a savings or checking account or charged to a credit card. It's quick and easy to set up. Call us for more information or visit our website www.DoorCountyLandTrust.org. Thank you for considering this contribution option.

"Every year when my Door County Land Trust membership renewal request arrived in the mail, I wanted to and intended to contribute at a higher level than the previous year. Some unexpected expense always seemed to occur at the same time, however, and wouldn't allow it. I found a great solution with the Recurring Gift program. I completed the authorization form to allow my annual contribution to be split into monthly payments and automatically deducted (a big plus!) from my checking account. It's helpful for me since I can incorporate my giving into my monthly budget, and it helps the Land Trust to know they will be receiving my gifts on a regular basis."



-Sharon Donegan

Various Views

by Marilyn Hansotia

An unfortunate auto accident several years ago gave me the opportunity to see the future through various lenses. Initially my perspective was a short view: learning to use a walker, finding comfortable spots where the multiple chest injuries were peaceful, deciding which book titles I might finally indulge in.

During recovery, focus changed to a longer view: how to re-order priorities, respecting the friendships that were solidified during this time of need and deleting the unnecessary clutter of activities in exchange for those more meaningful. Another challenge was to turn this experience into something positive that might benefit others.

About four years after the accident, Dan Burke, Executive Director of the Land Trust, called together a small group of Land Trust members living in northern Door County to discuss initial efforts to acquire the Grand View property, an iconic landscape in Ellison Bay. Instantly this became my Grand View! What a perfect match for the accident-related insurance payment and my desire to turn adversity into advantage! When I shared this impulsive yet long-simmering idea with Dan, we knew we had each resolved an issue.

My donation gave the Land Trust confidence that there was sufficient interest and backing to pursue the purchase and permanent protection of the Grand View property. It gave me the sense of well-being, the "grand" perspective, I had been seeking since my accident. When I drive by or visit the Grand View today, and especially when I see others enjoying this special place, I know that the idea I had so long ago has been realized.



Photo by Bobbie Webster

In addition to making a generous financial contribution to protect Grand View, Marilyn acts as the Door County Land Trust's preserve steward at the site. She is shown here at a recent Unitarian Universalist community work party with fellow preserve steward, Bob Judd.

The Door County Land Trust's Northern Door Field Office has a New Home in Sister Bay

Have you noticed a new sign in Sister Bay? The Door County Land Trust moved its northern Door field office to 10668 N. Bay Shore Drive, just above Passtimes Books. The office is used for meetings and volunteer work parties and houses our northern Door staff. The office is open by appointment and has Door County Land Trust materials available for pick-up at all times. Mail and phone calls should be directed to our main office in Sturgeon Bay.



Calling All Volunteers! Lend Us a Hand

Share your time and talents to help land preservation and have a lot of fun doing it! Join our dedicated cadre of volunteers who help out on our preserves, at outings and events, and in our office. Whether you volunteer for one afternoon or a few times a month, volunteers are an essential component of the success of the Door County Land Trust.

Go to www.DoorCountyLandTrust.org or stop by our office, where you'll find a short questionnaire to tell us about your skills and interests. Send it in and we'll give you a call. Thank you!

Do You Have a Car You'd Consider Donating?

The Door County Land Trust staff is always on the move, meeting with landowners, monitoring protected properties and attending meetings of one sort or another. We are in need of a vehicle to help get us safely from point A to point B. If you have a gently used passenger car you'd be interested in donating, please call our office, (920)746-1359.



CELEBRATING THE PEOPLE AND EVENTS OF YOUR LIFE

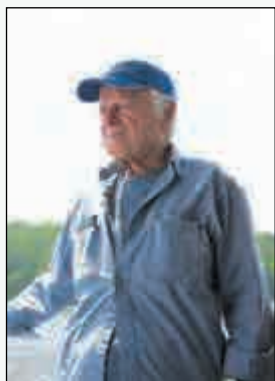
The connection between people and the places they love is strong and enduring.

Raymond Cordon 1914 - 2010

In 2010, Raymond Cordon, a man with deep, abiding ties to Door County, passed away. As part of his legacy, he made a bequest to the Door County Land Trust. According to his daughter, Helen, "Dad always loved the natural side of Door County and he wanted to make sure that this place he loved was protected." Ray grew up in Chicago. He first came to Door County while enlisted in the Coast Guard and set buoys in Death's Door. He spent many summers in northern Door and later brought Helen here during her childhood. They lived both in Ellison Bay and on Rowleys Bay. He loved the water, was a fisherman and an avid downhill skier and participated in the Senior Olympics until he was 88 years old. Although he spent much of his life in Colorado and Arizona, Door County always held a special place in his heart and he returned here to spend the final decade of his life.

Raymond's bequest helped the Door County Land Trust permanently protect the Grand View property in Ellison Bay in 2012. It also benefitted the Door County Land Trust's Endowment Fund. The Door County Land Trust is grateful to Raymond Cordon for his vision and generosity.

Planned gifts, or bequests, are greatly appreciated as are gifts made in a loved one's honor or memory. When you make a gift to the Door County Land Trust in honor of a friend, family member, special event or life of a loved one, your gift will help preserve the places that make Door County special.



MEMORIALS AND TRIBUTES

Gifts received between January 1, 2012 and January 31, 2013



Photo by Julie Schaner

In Honor of Gifts

In Honor of John & Marion Blake
Gerald LeBeau

In Honor of Beth Coleman
Tom and Diane Brown

In Honor of their 20th Wedding Anniversary
Beth Coleman and Curt Wessel

In Honor of David Drewek
Drewek and Kern Families

In Honor of Robert and Liesbeth Fickes on the Birth of Granddaughter Cybele Fickes
Christopher Fickes

In Honor of Larry and Cissie Franklin
Anne Beach

In Honor of Marsha & Jon Habegger
Ron and Chris Donovan

In Honor of Julie and Charlie Imig's 25th Wedding Anniversary
Terry and Ginny Foster

In Honor of Cynthia Johnson's Birthday
William and Susan Jacobs

In Honor of Barb Kanzler's Birthday
Bob and Nancy Richards
Jim and Marianne Richards

In Honor of Jerry Krause
Krause Family

In Honor of Don and Kayval Larson
Jen Posanski

In Honor of Paul and Irene Mayer's 50th Wedding Anniversary
Michael and Jennifer Faugust

In Honor of Jacob and Madeline Osadjan Cruger
Lou and Paula Osadjan

In Honor of Chari and Ham Rutledge's 50th Wedding Anniversary
Terry and Ginny Foster

In Honor of Maxine and Clay Schroll
Thomas Buske and Anna Phillips

In Honor of the Marriage of Phil and Andrea Stollenwerk
Robert Stollenwerk Family

In Honor of Mary and Bill Tolan
Sally Tolan

In Honor of Ron and Millie Turner
Rick Turner

In Honor of Dr. William J. and Barbara Urbrock's 50th Wedding Anniversary
Laurita Maher and Sherwood Johnson

In Honor of Arnie Widen on Father's Day
Gene and Sally Chisholm

In Honor of Jock and Karen Wilcox
Neiman Family

In Honor of Betty and Don Wilkinson's 65th Wedding Anniversary
Bill and Betty Peterson

In Honor of John F. Wilson's Birthday
Dan and Pat Kiehnau

Memorials

In Memory of Stephen Becker
Dan and Marjorie Andrae

In Memory of Bernal Chomeau
Matt and Kathy Andrews

In Memory of Margaret "Peg" Debenham
Dave and Barb Debenham
Dave and Sarah Debenham
Karen Debenham
Pete Debenham
Maud Galloway

In Memory of Nancy Dieringer
Steve and Joan Wilkie

In Memory of Bob Farwell
Mary Field

In Memory of Robert and Carol Farwell
Robin Farwell Gavin

In Memory of Robert Finger
Mike and Judy Brodd
Kathleen Finger
Arthur and Dee Hopper
T.C. and Linda Johnson
Ron Klimaitis and Gloria Dougherty
Dennis and Diane Kocs
David and Danielle Lewcock
Ron and Judy Lokken
Ron and Sylvi Zigler



Photo by Jim Hoyer

In Memory of Tilden and Bernice Gabert
Beth Danielson

In Memory of Hans Gerlach
Dave and Dana Eick



Photo by Julie Scharmer

In Memory of David Gustafson
James and Michelle Artman
Richard Ault Family
Adrienne Busch
Thomas and Barbara Cale
Jeannette Harrison
J. A. Lijewski
Gail McCarthy
Mary Moore
Steve and Linda Sanduski
Steven and Barbara Thomas
Todd and Karen Trimmerger
Laurie Uhl

In Memory of Doris Kessel
Janice Zmrazek

In Memory of Winifred King
Ron and Judy Lokken

In Memory of Dorothy Kneuppel
Steve and Joan Wilkie

In Memory of John Lees
Kevin and Wendy Bassett
Ralph and Kathy Blankenburg
Bob Brogan
Bob and Nancy Davis
Sharon Donegan
Jon and Bonnie Hanson
Albert and Cynthia Johnson
T.C. and Linda Johnson
William and Rose Marie Klein
Wiley and Roselyn Krapf
Ron and Judy Lokken

Bonnie Lund
Sally Nesser
Bill and Anne Porter
Mary Rosecky
David and Jan Schrader
Gary and Beverly Schulze
Mona Simpson
David and Barbara Tuch
Richard and Jean Wagner
Philip and Judith Winkel
Dan and Arlene Woelfel
Duane and Leslie Youngsteadt

In Memory of Sam Lewis
Gloria Eckman
Barbara Froemming
Angie Kopf
Bill and Betty Parsons
Peter and Sharon Peshek
Malcom and Phyllis Shepherd

In Memory of Jayn Maiken
Terry and Ginny Foster

In Memory of Gene Meyer
Thomas and Wendy Cooke

In Memory of Pat Miller
Tom Jordan and Susan Cubar

In Memory of George and Irene Morris
Greg and Terry Morris

In Memory of Charles Nesbitt
Dave and Vonnie Callsen
Ron Klimaitis and Gloria Dougherty
Ron and Judy Lokken
Tim and Sue Stone

In Memory of Ann Nick
Bob and Liz Dickson
Miriam Erickson

In Memory of Pat Olson
Madelyn Ostrand

In Memory of Richard Oshiro
Cory and Jacqui Farber
Gary and Marcia Farber

In Memory of Mark Perry
Kerry Perry
Kay Siess

In Memory of Nancy Rentsch
Arvid and Jan Alvin
Howard and Judy Sersen

In Memory of Mike Rosecky
Mary Dahlstrom
Gary and Marcia Farber
Don and Lynne Luker
Jack Travis and Diane Morgan

In Memory of Don Schartner
Dave and Vonnie Callsen
Ron and Judy Lokken

In Memory of Walter Schoof
Donald and Barbara Anders
Danny and Bonnie Galginaitis
Nancy Kazmierczak
Thomas and Linda Konitzer
H. W. and Joan Nickel
Ed Laster and Mary Roark
Frederic Schoof
Robert and Claire Schoof
Roger and Katherine Schoof
Tamara Su Schoof



Photo by Julie Scharmer

In Memory of Heidrun Thilenius - Wich
Otto and Elsbeth Thilenius

In Memory of Marty Tully
Dave and Colette McDonough

In Memory of Ernst and Elsa von Briesen
Theodore and Peggy von Briesen

In Memory of Eunice Wolff
Dan and Marjorie Andrae

In Memory of John Wyandt
Don and Mimi Mayer

Where There's a Will, There's a Way

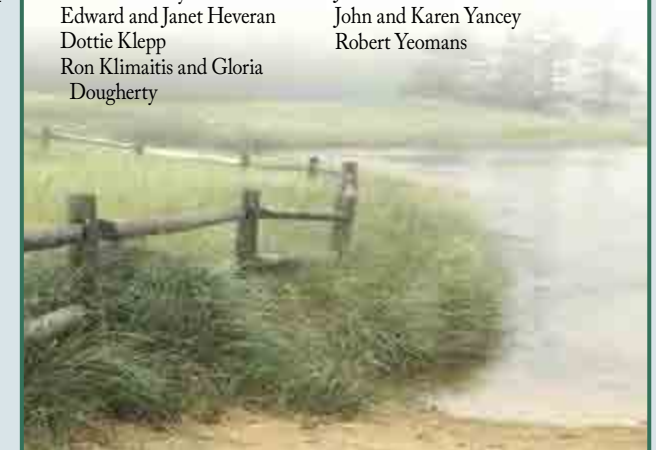
Planned giving is a great way to share your love for Door County. You can leave a legacy of protected lands for future generations by making provisions for the Door County Land Trust in your estate plans.

For more information on becoming a member of our *Sustainer's Circle*, please contact Laurel Hauser, Director of Charitable Giving, at (920)746-1359. If you have already named the Land Trust in your estate planning documents, please let us know so we may thank you.



Sustainer Circle Members

Anonymous	Karl and Lucy Klug
Anonymous	Jeannie and Dan Kokes
Jean Barrett	Bill Laatsch and Fran Hunter
James and Barbara Blanton	Richard and Roberta Larson
Richard and Dorothy Burkhardt	Mitch and Jean Leavitt
Paul and Fran Burton	Jim and Barbee Lester
Ken and Mary Bussard	Ron and Judy Lokken
Dave and LaVonne Callsen	Don and Lynne Luker
John and Julie Carpenter	Ed and Sandy Miller
Ardis Cermak	Kenneth and Glenda Miller
Dan Collins and Nancy Aten	Rich Propsom and Jane Bruesch
Peter and Beverly Ann Conroy	Kathryn Schlott
Terrie Cooper	Jim and Judy Schwengel
Jerry Cross and Jayne Steffens	Tom Seagard and Brigitte Kozma
Lyn Dimberg	Michael and Mary Standish
Susan Duffy	Lee Traven
Donald Fundingsland	Dale Vanden Houten and
Lloyd and Dottie Gerrits	Richard Scott
Phil and Marilyn Hansotia	John and Karen Wilson
Edward and Janet Heveran	John and Karen Yancey
Dottie Klepp	Robert Yeomans
Ron Klimaitis and Gloria Dougherty	



2012 FINANCIAL SUPPORTERS

Total cash gifts received during 2012



Stewarding Our Lands

Denotes **Arbor Vitae Society (AVS)** members. AVS members supported the Door County Land Trust in 2012 at the level of \$500 or more per year and provide the consistency needed to ensure long-term goals.

Welcome to our new supporters! Donor names listed in bold type made their first contribution to the Land Trust in 2012.

Your gift deserves to be acknowledged. If we have made an error, please notify us so we may correct it for future publications.

Benefactor Level \$10,000 and above

Anonymous
Barnes, David
Callsen, Dave and Ronnie
Carla and Ellsworth Peterson Foundation
Geyer, Phyllis
Hansotia, Marilyn
Krebs, Marty and Alice
Lester, Jim and Barbee
Ministry Door County Medical Center
Stiehl, Cynthia
Stone, Tim and Sue
U.S. Fish and Wildlife Service
WIDNR State Stewardship Fund

Heritage Level \$5,000-\$9,999

Ambuel, Bruce and Helen
American Transmission Company
Barker, Ruth
Bernal T. Chomeau Private Foundation
Boldt, Oscar and Pat
Calkins, William and Priscilla
Davis, Bob and Nancy
Fiedler, Jessie
Franklin, Larry and Cissie
Gould, Spencer and Barbara
Kessler, Dennis and Barbara
Klug, Karl and Lucy
Lisle, Tom and Bev
Schimberg, Joe and Lynda

Siebel, Bill and Barbara
Turner, John and Judy

Legacy Level \$1,000-\$4,999

Anonymous
Anonymous
Anonymous
Andrews, Kathy and Matt
Baer, Charles and Stephanie
Baliszewski, Robin and Riopelle, Maureen
Barrett, Jean
Batzli, George and Sandra
Beadell, Tony and Prilla
Becker, Bruce and Patty
Becker, Carl and Susan
Bell, Steve and Susan
Bero, Robert and Judy
Black, Jim and Patricia
Blacksmith Inn on the Shore
Bridenhagen Tree and Landscape, Inc
Burkhardt, Richard and Dorothy
Burton, Paul and Fran
Carl, Rudy and Patricia
Conta, Dennis and Deborah
Cook, Andrew and Karen
Daniel, David and Janet
Davis, Dwight and Linda
Diekman, Don and Marianne
Doerr, David and Marilyn
Doneff, Robert and Lynn
Door County Community Foundation
Door Landscape & Nursery
Eggert, Joel and Paula
Fiorato, Tony and Cathy
Friedl, Mike and Carolyn
Fundingsland, Donald
Gabert, Trent and Salva
Guenzel, Elizabeth
Haswell, Anthony
Hauser, John and Laurel
Herlache, John and Nell
Herreman, Nita
Hitt, Brad and Karol
Hislop Family Foundation
Hoehn, Jim and Goldberg, Nancy
Hollingshead, Jon and Judy
Hugh and Helena Brogan Foundation
James E. Dutton Foundation, Inc
Janning, Jim and Donna
Keller, Bob and Paula
Klein, Michael and Maureen
Klimaitis, Ron and Dougherty, Gloria
Klug, Jr., Karl
Kokes, Jeannie
Land Trust Alliance
Lanser, Brian and Sue
Lewis, William "Red"
Licata, Anthony and Judith
Lindsay, Bill and Sue
Lokken, Ron and Judy
Main Street Market
Marcon, Fred
Mark and Anne Hansen Foundation
McDonald, Kevin and Wanda
Burkhardt, Richard and Dorothy
Moore, Tom and Kathie
Morris, Greg and Terry
Natural Resources Foundation
Of Wisconsin's C.D. Besadny
Conservation Grant Program
Nell, Patricia
Northrop, Steve and Kaaren
Olander, Ron and Lori
Olson, Bruce and Carol
Olson, David and Fritsche, Claire
On Deck Clothing Co
Pinkert Law Firm LLP

Place, Sandra
Rutabaga Paddlesports LLC
Sankey, Peg
Sargent, Cindy
Schmitz, Michael and Jeanne
Scholz, Carl and Ruth
Seiler, Lois
Silberman, Ann
Stanley, Steve and Emmy
Steffen, Michael
Stiefel, John
Stonecipher, Ray
The Nature Conservancy
Thilenius, Otto and Elsbeth
True North Real Estate
Van Lanen, Jack and Fran
Vieth, Gordon and Rohini
von Briesen, Theodore and Peggy
Waldburg-Wolfegg, Andreas
Walker, Allin and Lockwood, Margaret
Walker, William and Sunshine
Warch, Rik and Margot
Warner, David and Rose
Washington Island Folk Fest
Weese-Young, Shirley
White Gull Inn
Wilson, John and Karen
Wisconsin Land Fund of the Greater
Green Bay Community Foundation
Wolff, Bill and Kathy
Youell, Sylvia
Zimmer, Frederick

Guardian Level \$500-\$999

Anonymous
Anderson, Henry
Benson, Adam and Linnea
Benson, Don and Mary Lee
Bosworth, Bob and Wendy
Bramsen, John and Norma
Brezan, Barry
Brodd, Mike and Judy
Brorson, Jon and Linda
Buerstatte, Gary and Pepelnjak, Anna
Bunning, Jim and Barbara
Burke, Dan, Heidi, Mackenzie and Nathan
Butler, Jill
Carlson, Ken and Naomi
Claggett, Tom and Meg
Classen, Peter and Barbara
Cole, Roy and Jo
Collins, Dan and Aten, Nancy
Conroy, Peter and Beverly Ann
Cummings, James and Lisa
Dagon, Russell and Sandy
Dammon, Ronald and Candace
DeNardo, Tony and Donna
Deutsch, Harold and Regine
DeWitt, David and Julie
Douthitt, Jack and Zimmer, Michelle
Eccles, Bob and Mary
Enright, William
Fickes, Robert and Liesbeth
Finger, Jack and Diane
Foote, Peter and Wilson, Robin
Foster, Terry and Ginny
Frey, Fred and Barb
Frudden, Bruce and Grace
Fuchs, Marianna
Fuhrmann Clark, Kristin and Clark,
Stephen
Fuhrmann, Don and Barbara
Fulkerson, John and Edith
Gathering Waters Conservancy
Gills Rock Stoneware
Glidden Drive Association, Inc
Greenfeldt, Eric and Barbara
Hardin, Jo and Adlai
Heinemann, Dick and Sharon
Hermann, John and Dolores
Jacobson, Rod and Jean
Johnson, Albert and Cynthia
Johnson, David and Mel
Johnston, Mike and LeTourneau, Sara
Jones, Milo and Joan
Keller, Tom and Marge
Kimbell, Alan and Anne
Kinney, Jim and Susan
Klug, Bill and Gretchen
Knueppel, Paul and Barbara
Kudick, Wayne and Julie
Larson, Richard and Roberta
Lauter, Charles and Estella
Lecy, Jerry and Pam
Lecy, Mark and Deana
Lewis, Elmer and Ann
LFP Design!
Loewi, Helen
Lukes, Roy and Charlotte
Lynch, Rich and Mary
Mahlberg, Paul and Marilyn
Maloney, Ron and Pam
McCarty, Neil and Pat
McGurk, Lincoln and Florence
McLaughlin, Rick and Joan
McMillan, Florence
Meissner, David and Marion
Miller, Ed and Sandy
Molnar, Alex and Lindquist, Barbara
Munch, John and Nancy
Myerson, Bob and Carla
Neumann, William

Niesen, Dan and Penny
O'Brien, Frances
Olson, Lars and Kelly
Olson, Ted and Lady
Orner, William
Parks, Bob and Cathi
Peterson, Scott and Desenis, Judy
Petrie, Peter and Lucia
Potthoff, Ruth
Powley, Kent and Kristin
Premier Properties Of Door County
Przybylo, H.J. and Sandra
Quinnies, Barry and Toska
Ross, Mason and Julie
Russell, Stan and Dorothy
Sandor, Bela and Ruth
Schoof, Robert and Claire
Schoof, Walter
Schwartz, Carl and Barbara
Scott, Richard and Vanden Houten, Dale
Siegel, Catherine
Smythe, Dick and Mary
South Lake Michigan Drive Property Owners Association
Sunnypoint Landscape
Surbaugh, William and Cheryl
Tatman Foundation
Tencate, Chuck and Lana
Thilly, Roy and Mary
Turrieff, Tom and Jo Ann
Utey, Bill and Phyllis
Walwark, Jim and Polly
Watson, Robert and Picken, Judith
Weinert, Robert and Joann
Weltmer, Gretel
Wenberg, David and Brenda
Wessel, Curt and Coleman, Beth
Whitney, John and Jane
Widder, Tripp and Nancy
Wilkie, Steve and Joan
Witt, Gene and Carmen
Wulle-Dugan, Kate
Wyman, Anne
Zigler, Ron and Sylvi
Zimmer, John and Bernie

Steward Level \$250-\$499

Ahlbeck, Dirk and Tracy
Alexander, Kenneth and Mary Ellen
Allen, Edson and Loretta
Alt, Tom and Susan
Apfelbach, G Leonard
Associated Bank
Aurichio, Errico
Barrie, Tom and Sue
Bell, Hugh and Joyce
Bhatheja, Alexis

Blahnik Investment Group
 Bleser, Don and Helen
 Blietz, Bruce and Bev
 Brian Frisque Surveys Inc
 Brown County Graphics
 Budzak, Lynn
 Bultman, Tim and Ruth
 Bussard, Ken and Mary
 Capp, Stephen
 Carpenter, Joe
 Cellcom
 Chrimer, Bob and Alice
 Ciezki, Nancy and Kostecke, Diane
 Connolly, Dennis and Bonnie
 Cook, Bill and Bev
Cottage Row Framing and Gallery
 Cowan, Karen
 Czarnacki, Nancy
 D'Abbraccio, Deanna and Morgan,
 Barbara
 DiBuono, John and JoAnn
 Dickson, Bob and Liz
 Dineen, Dan and Linda
 Donovan, Ron and Chris
 Door Bluff Neighbors Association
 Door County Eye Associates
 Door County Ice Cream Factory
 Door County Nature Works
 Dougherty, Tom and Linda
 Drouet, Michael and Christina
 Dull, Charles and Joanne
 Eagle Harbor Inn
 EcoDoor LLC
 Ecology Sports
 Edgewood Orchard Galleries
 Ellison Bay Service Club
 Erickson, Miriam
 Fardig, Diane
 Feist, Tim and Braatz, Laurel
 Filosa, John and Roach, Cathaleen
 Fine Line Designs Gallery
 Fish Creek Kite Company
 Francik, Jeffrey
 Fritz, Don
 Fults, Tim and Marsella
 Gadiant, Richard and Bette
 Garrity, Dennis and Susan
 Glenn, Bill and Mardi
 Goldammer, William and Colette
 Gousseff, James and Marla
 Guasta, Joan
 Guenther, John and Chris
 Guenzel, Bill and Jo
 Harbor Ridges Association
 Hardin, William and Marian
 Hartman, Bill and Mary
 Haus, David and Jill
 Hauser, Richard and Carrie
 Hayes, Howard and Charlotte

Hedeem, Paul and Arlene
 Heeringa, Don and Coggin
 Henderson, Doug and Barbara
 Hendrickson, Duane and Bonnie
 Herbert H. Kohl Charities
 Hildebrand, Mike and Jane
 Hody, Eugene
 Holland, Michael
 Holly, Mike and Deb
 Horst, Bob and Lorry
 Ironwood Foundation

"We have enjoyed many Door County Land Trust sites this year... Bay Shore Blufflands, Lautenbach Woods, Oak Road, White Cliff, and Sturgeon Bay Ship Canal Nature Preserves. We're grateful to have these preserves to walk in!"

-Chuck and Stephanie Baer,
 New Members

Jane's Clothing & Accessories
Joe Jo's Pizza and Gelato
 Johnson, T.C. and Linda
 Jordan, Tom and Cubar, Susan
 Judd, Robert and Martha
Just, Hal and Nancy
 Kaercher, Ray and Susan
 Kane, Ralph and Gretchen
 Karges, Steve and Lynn
Kasper, Michael and Robin Kay, Inger Keller, Frank Klepp, Dottie Kober, Kurt and Kiefer, Abigail Koehler, Thomas and Christine Krutek, Don and Brigid LaBorde, John and Lisa Lacy, Mary Lake Forest Park Corporation Landry, Robert and Stillman, Gertrude Landwehr, John and Marietta Larsen, Bob and Sara Lavell, Stephen and Parker, Cheryl Lesica, Mike and Julie Lewis, Lloyd Lhost, John and Cynthia Liberty Square Shops Lindahl, Bob Livengood, Susan

Luker, Don and Lynne
 Maring, John and Gretchen
Martin, Marcia
 Mazeski, Conrad and Kelly
 McAninch, James and Susan
 McCarthy, Chip and Mary Jo
 McCormick, Maureen
McNamara, Daniel and Debby
 Miller, Bill and Diane
 Mitchell, Judith
 Moore, Chris and Sheri
 Movall, Ed and Chris
 Muderlak, Ken and Carol
 Nelson, Joanne
 Nielsen, Camilla
Nooyen, Steve and Kristi
 Nottleson, Neal and Gerry
 Nusslock, Jim and Nancy
 Olson, Pat
 Ottum, Jeff and Barb
 Out Of The Woods Woodworking
 Pelt, Mike and Kathy
 Peninsula Vision Care, LLC
 Pentecost, Ed and Erny
 Pojunas, Kathleen
 Potts, Greg and Marilyn
 Racker, Stephen and Daphne
 Reddin, Jon and Mary
Reichwald, Harry and Carla
 Richards, Bob and Nancy
 Roback, David and Virginia
 Rodriguez, Ed and Schartner, Michelle
 Rosecky, Mary
 Ross Estate Planning
 Rothschild, Ann
 Rutter, James and Mary
 Sandlund, Dave and Pat
 Sarosiek, Jim and Diane
 Sauter, Martha
 Schaars, Bill and Mary Jo
 Schaper, John and Susan
 Schneider, Tom and Sarah
 Schuldt, John and Moore, Mary
 Schultz, Craig and Sandy
 Schwengel, Jim and Judy
 Shadle, Neil and Lillie Mae
 Sherman, Gerald and Lipp, Carolyn
 Shoreline Restaurant
 Smith, Phil and Katie
 Stamp, Aurelia
 Staudenmaier Chiropractic Center
 Sterner Family Foundation
 Stonypath LLC
 Straus, Doug and Suzanne
 Swanson, John and Deanna
Telfer, Lee and Ruth
Terra Cottages
 TR Pottery
 Voreis, Mark and Lucia

Wagon Trail Campground
 Walters, Mark and Diane
 Wanda, Nick and Jane
 Washington Island Bird Festival
 Washington Island Ferry Line, Inc
 Watkins, Norman and Mabel
 Widem, Arnold and Judith
 Wilcox, Jock and Karen
 Wilder, Nick and Keven
 Williamson, Jim and Betsy
 Moore, Chris and Sheri
 Wilson, Nick and Demoly, Marc
Wiltse, Curtis and Roxanne
 Wolfenberg, Jim and Janet
 Wolfram, Dan and Joan
 Wood, David and Doughty, Jane
 Zapffe, Carl and Sandy
 Zeller, Peter and Lisa
 Zuhlke, David

Preserver Level \$150 - \$249

Agnew, Bob and Marge
 Aik, Betty
 Allen, Mark and Fisher, Judith
 Anderson, Jim and Jane
 Anderson, Stefan and Joan
 Andrae, Dan and Marjorie
 Bacon, Lee and Inge
Bay Ridge Golf Corp
 Beaumont, Susanne
 Bither, Chuck and Leanne
 Blackwood, Tom and Joan
 Blanchard, Don and Pam
 Blankenburg, Ralph and Kathy
 Boettcher, Bill and Yvonne
 Bonk, Mack and Kaczmarek, Lynn
 Bowman, John and Kay
 Boyd, Ken and Carol
 Brogan, Bob
 Brogan, Julie
 Brophy, Michael and Debra
 Brown, Robert and Kathleen
 Buchholz, Donald and Louise
 Bultman, David and Marge
 Bush, Guy and Dorie
 Cagle, Jim and McCabe, Kathy

Cahan, Jim and Schneider, Linda
 Campbell, John and Kathy
 Carmen, Sam and Vicky
 Christy, Stephen and Jennifer
 Coleman, Gerald and Wilma
 Comstock, Warren and Carolyn
 Cotts, Bill and Wilson, Carol
 Cotts, Tim and McNally, Patty
 Craig, Will and Ginny
 Cramer, Ward and Judy
 Wilson, Jim and Doris
 Cross, Jerry and Steffens, Jayne
 Curtis, Hope
 Dearthoff, Joan
 Diltz, Peter and Kathy
 Drake, Merton and Carol
 Drewek, Michael and Cynthia
 Dude, Bob and Mary Ann
 Dukehart, Tad and Andy
 Egan, Richard and Anne
 Engelke, Dan and Jean
Erdmann, Hank
 Fallucca, Giacomo and Laurie
Fedenia, Sue and Stanley, Jeff
 Fiddler's Green
 Fish Creek Moccasin Works
 Fitzgerald, Pat and Judy
 Ford, Martin and Hilary
 Forester, James
 Frazier, Jay and Alison
 Froemming, Barbara
 Gattolin, Frank
 Gauger, Stephen and Aimee
 Gesme, John and Person, Colleen
 Gill, Margaret
Gimelli, Giorgio
 Graham, David and Lizzie
 Groh, James and Virginia
 Hanke, Dale and Kathy
 Hanson, Jon and Bonnie
 Hansotia, Phil and Marilyn
 Harlan, Bob and Madeline
 Hart, Fraser and Meredith
 Hawley, Robert and Blahnik, Jennifer

Hensge, Bill and Jane
 Herrell, Mark and Dempster, Dorene
 Herrick, Reeder and Barbara
 Hickey, Dave and Pat
 Hillner, Ed and Nancy
 Holland, Jim
 Holland, Jim and Jackie
 Holman, Dave and Barbara
Hoppa, George and Nancy
 Hubbard, Ron and Bev
 Hyde, Jane and Starck, Paulette
 Ingerson, Quentin and Katy
 Island Outpost, Ltd
 Jauquet, Jim and Andrea
 Johnsonbaugh, Richard and Patricia
 Jordan, Jack and Raeona
 Kalmbach, Charles and Lois
 Kaufman, Larry and Marie
 Kerley, Tom and Marsha
 Ketterling, Marvin and Rogers, Kaye
 Kimbell, Bob and Carolyn
King, Mark
 Klein, Herb and Bonniervier, Cal
 Kosky, Bob and Judy
 Kress, James
 Laird, Ben and Rintelman, Mary Jane
 Laitner, Ted and Nancy
 Ford, Martin and Hilary
 Larson, James and Susan
 Larson, Paul and Corky
 Leavitt, Mitch and Jean
 Lengh, Robert and Carolyn
Lewcock, David and Danielle
 Lewis, Joan
Looman, Mike
 Lundstedt, Tom and Charli
 Lyons, Timothy and Julie
 Mabbott, Tom and Lundstrom, Carol
 Makurat, Phillip
 Martin, Gary and Sara, Julie
Martin, Mark and Foote, Sue
 McCutcheon, Mike and Windsor
 McDonough, Dave and Colette
 McGrath, Maureen



The Grand View Dedication



Annual Membership Gathering



2012 FINANCIAL SUPPORTERS

Total cash gifts received during 2012

McHolland, Jim and Cass
 McLeish, Ken and Chris
Mead, Chuck
 Memmen, Jim and Mary
 Merline, Robert and Linda
Michal, Robert
 Miles, Stan
 Moeller, Robert and Judie
 Moline, Ron and Barbara
 Moon, Alan and Christine
 Mueller, Paul and Ingrid
Mullaney, Pat and Gail
 Murphy, William and JoAnn
 Mutchler, Keith and Sherry
Neiman, Sara
 Nelson, Jim and Judi
 Newkirk, Martha
Northwest River Supply
 Notermann, Tom and Carol
 Olsen, Lawrence and Lynn
 Osajian, Lou and Paula
 Panzer, Fred and Sandy
 Paschen, Douglas and Terry
Peirce, Nancy Jane and Toth, Susan
 Peshek, Peter and Sharon
 Porter, George and Kathryn
 Porter, Marianne
 Prindle, Peggy
 Pritchett, Wendell and Kringel, Anne
 Ranta, Bruce and Lyn
 Ray, Don and Kathy
 Remy, Gene and Pat
 Rentsch, Lothar
 Rix, Bill and Jerri
 Rock, Rob and Katie
Rosner, June
Sabourin, Ed and Nan
 Sanden, Jim and Kathy
 Saville, Judith
Schanock, David and Kim
 Schartner, Julie
 Schaulis, Dan and Cindy
 Schmuhl, John and Carol
 Schwartz, Harry and Chris

Seiler, Jeffrey and Sally
 Sessler, Greg and Kaufman, Dale Ann
 Simpson, Mona
 Sleeting, Walter and Gail
 Stanger, Steven and Arlene
Stanley, Jeff and Fedenia, Sue
 Stoklos, Eleanor
 Stollenwerk, Jim and Alice
Straubel, Carol
 Stultz, Rich and Jenni
 Sullivan, Maury and Ann
 Sutton, Lois
 Szuberla, Wayne and Geri
 Taylor, Ann
 Taylor, Charles
 Temple, Vic and Ginny
Tranquilli, Bill and Mary
 Trelle, Ron and Patty
 Van Gemert, Rob
 Wahl, Bob and Barba
 Walker, Richard and Melissa
 Warnecke, Michael
 Wiesman, Glen and Kris
Wiley, George and Sally
 Wilkie, Charles and Nancy
 Wilkinson, Jim and Karen
 Williams, Lou and Moster, Mary
 Wilsman, Norman and O'Harrow, Peg
Winzenz, Jerold
 Wise, Karl and Jane
 Wittenkeller, Al and Judy
 Wittkowski, Allan and Salick, Linda
 Wolter, Kirk and Mary Jane
Woods, Brian
Wrede, Jane
 Yancey, John and Karen
 Yanovsky, Rostislav and Hunt, Sally
 Yard, Albert and Valerie
 Young, James and Margaret
 Young, Larry and Kate
 Ziarnik, David
 Zuckerman, David and Madsen, Judy
 Zwick, Kenneth and Hallar, Carol

Partner Level \$35-\$149

Acker, Fred and Cindy
 Agarwala, Darlene
Aicher, Matthew
 Alexander, Ann
 Alfred, Larry and Linda
 Allen, Helen
 Ames, John and Betty
 Andera, Eileen
 Anderson, Bill and Candy
 Anderson, Daniel and Dawn
 Anderson, Jack and Susan
Anderson, Linda
 Anderson, Mary
 Anderson, Robert and Dorothy
 Angst, John
 Armstrong, Lloyd and Susan
 Asher, Barbara
 Aufreere-Sebetic, Jacqueline
 Avram Berk Charitable Fund Of The
 Greater Green Bay Community
 Foundation
 Azure
 Babel, Jerry
 Bagby, Martha
 Bajorek, Ray and Lola
 Banks, Charles and Marian
 Banzhaf, Harry and Marilyn
 Barba, Gwynne
 Barnard, Francha
 Barta, Bud and Marilyn
**Bartolini, Susan and McMillan,
 Michael**
 Bartolini, Vickie
 Bass, Leroy and Marjorie
 Bauer, Chuck and Dorothy
 Bauer, Tim and Barb
Bauer, Tom and MaryAnne
 Bearman, Ken and Larsen, Karla
 Becker, Al and Jane
 Beeson, Elizabeth

Bell, David and Mary
 Benedict, Roger and Christensen, Paula
 Bennett, Joan
 Benson, Bill and Donna
 Berg, Jeff and Jennelle
 Berg, W. Gerald and Jane
 Berger, Clyde and Pat
 Berggren, Ken and Janet
 Berk, Avi and Laurie
 Berkeley, Ted and Ruthe
 Berkenstock, Jim and Jean
Berner, Sally
Berto, Doug and Colleen
 Bezouska, Bob and Mary
 Binder, Robert and Jeanne
 Birder, James
Blackburn, Bob and Kay
 Blahnik, James and Judith
 Blanc, Marge
Blei, Norbert
 Block, Bob and Bonnie
 Bloedorn, Michael and Lucy
Bochek, Rick and Knutson, Bev
 Bock, Barbara
 Bock, Edward and Margie
 Bohn, Rod and Eileen
 Bork, Darwin and Barbara
 Boyd, Nancy
 Boyer, Wayne and Eleanor
 Bradley, Jim and Arlene
 Bradley, Jim and Libby
 Branson, Beverly
 Brawner, Rick and Janet
 Brecke, Michael and Titterington, Betsy
 Breseman, Mark and Hillstrom, Jane
 Bresnahan, Julia
 Breving, Bob and Rosenberg, Emily
 Brickman, Jay and Rita
 Brink, Don and Loraine
 Brogan, John and Gisela
 Brorson, Lois
 Brotherhood, Randal and Mary Lynn
 Brown, Karen and Kirk
 Banzhaf, Harry and Diane
 Buchanan, John and Ellen
 Buck, David and Patricia
 Budic, Peter and Ruth
 Budzak, Archie and Kathe
 Burg, Edward and Adrienne
 Burke, Ned and Mary
Burkhardt, Jeff
 Burlend, Warren and Nancy
 Burr, Joan
 Burrows, Don
 Bykowski, John and Rose
 Cadwallader, Gary and Sheila
 Cady, Bonnie

Caltebert, Robert
Cance, John and Iris
 Cardiff, Joe and Dot
 Carey, George and Linda
 Connelly, Carole and Rylander, Leona
 Carpenter, John and Julie
Cascio, Kathi
 Casey, Daniel and Barbara
Casey, William and Jean
 Cerny, Lawrence and Eleanor
 Chapman, Harley and Jean
 Chaudoir, Bill and Cheryl
 Chelmecki, Tony and Trudy
 Chowdhury, Mofazzal and Audrey
Christensen, John and Mary
Christenson, Toni
 Christiansen, Bruce and Laurie, Susan
 Ciszewski, Jerry and Elaine
Clay Bay Pottery
 Cobb, George and Sharon
 Cochrane, Peter and Sandy
 Cohn, Garrett and Myrna
 Collins, Helen
Collins, Mary
 Come On Inn
 Conger, David
Conner, Bob and Kathy
 Conway, Darrell and Susan
 Conway, Robert and Maureen
 Cooper, Terrie
 Cory, William and Marlene
 Branson, Beverly
 Cote, Phil and Miriam
 Covalt, Robert and Virginia
 Coventry, Russell and Martha
 Craig, Richard and Barbara
 Cramer, Joe and Donna
Crocco, Syndi and John
 Cross, David and Fagan, Joan
 Crow, Patricia
 Crummer, Gayle
Culver, Cheryl
 Cushing, Jim and Marilyn
 Dahl, Katie
 Dahlberg, Daniel and Nancy
 Dahlman, John and Betty Jo
Dalton, Larry and Berman, Lisa
 Damrow, Roger and Jean
 Danielson, Dan and Donna
 Danis, David and Nancy
Danz, Greg
 Dare, Chuck and Karen
 Davis, Carleton and Kathleen
 Davis, Michael and Buchanan, Susan
 Dearnorff, Stuart and Robyn
 Debenham, Dave and Barbara
 DeLong, Paul and Myra

Demarest, Courtie
 Desotell, Larry and Wied, Debbie
 Detert, David and Joyce
 DeVries, Jim and Eleanor
 Di Iulio, Ray and Helene
 Dickey, Frances
 Dickson, Charles
 Diekman, Karl
 Diemer, Richard and Pat
 Differding, James and Dickes, Jim
 Dinan, Stephen and Joan
 Dinesen, Niel
 Dirks, Rich and Sandra
Dobbins, Judy and Gregory
 Doneff, Sarah
 Donegan, Sharon
 Donovan, Tom and Linda
 Door Pioneer Trailblazers
 Snowmobile Club
 Douglass, Ed and Adele
 Doyle, Charles and Rita
 Draeb, Joan
 Drewek and Kern Families
 Drey, Robert and Cynthia
Dries, Robert
 Drought, Tom and Bette
Dukes, Jack and Joanne
 Dunworth, Bob and Mary
 Dupuy, Mark and Toft, Trudy
 Ealy, Thomas
Eastman, Mark
 Eckman, Gloria
 Edelstein, Daniel
 Ehlers, D. Todd and Cynthia
Ehrfurth, John and Linquist, Ann
Eick, Dave and Dana
Ekman, Malin
 Ellis, James and Karen
 Engberg, Amanda
 Engl, Rob and Robin
 Enroth, Mary
 Ericson, Anne
 Erskine, Tim and Holly
 Eskra, Dale
 Evans, Marge
 Evans, Tom and Pam
 Evanson, Robert and Nancy
 Everett, Curtis and Joan
 Ewaskowitz, Jeffrey
 Fagiolo, Joseph and Mary
 Falk, Kenn
 Fandrei, Loren
 Farmer, Michael and Rafal, Nancy
 Farnan, Laurie
Feeney, Barbara
Feeney, Robert
 Felhofer, Myrtle
 Fentzlaff, Randy and Anne

Ferris, Ken and Beth
 Fiedler, George and Julie
 Fink, Bob and Marge
 Fiore, Beth
 Flansburg, Ron and Jean
 Florin, Jack and Gail
 Foote, Tad and Betsy
 Forsberg, Bob and Margo
 Fox, Jim and Luann
 Fox, Robert and Michele
 Franceschi, Bruno and Shirley
 Franceschi, Laura
 Franz, Jeff and Engs, Ruth
 Frelly, Michael and Donald
 Frelly, Richard and Betty
 Freyman, Bill and Sarah
 Friedbacher, Chris and Sally
 Frunceck, John and Betsy
 Frunceck, Ron and Theresa
 Fuller, Dan and Lois
 Furlick, Tony and Cheryl
 Gadiant, Stephen and Margaret
 Garrity, Jerry and Lois
Garry, Constance
 Gaskill, Warren and Sharon
Gaston, Bud and Karen
Gavin, Robin Farwell
Gerrits, Nick and Katherine
Gershan, Bob and Jill
 Gifford, Andrew and Lisa
Giles, Richard
 Gilford, Steven
 Gilson, Michael
 Gilson, Susan
Girman, Thomas and Jerrilyn
 Glessner, Kay
 Goepfinger, Al and Lynn
 Goetzinger, Mark and Susan
 Going Garbage and Recycling Inc.
 Goldenbogen, Roy and Jan
 Goldsmith, Robert and Ann
 Goldstein, Donald and Gail
 Goodner, Dale and Mary
 Gordon, Brad and Judy

Gould, Susan
Graboyes, Joseph
 Grady, Hildy
 Graef, Robert and Maude
 Graff, Jerry and Ann
 Graul, Tim and Barb
 Gray, James and Ellen
 Greaves, Robert and Alison
 Green, Kathy
 Greene, Tad and Deb
 Griffin, Shirley
 Grota, Carl and Jennifer
 Grow, Conrad and Marlene
Grunau, Anne
Guilfoile, Tom and Jeanne
 Haag, Judy
 Habschmidt, Jim and Paula
Haiman, Nancy
 Hale, Mary Jean
 Halverson, Paul
 Hamilton, James and Mary Ellen
 Hammen, John and Nancy
 Hammerberg, Wally and Norma
 Hammond, Charles
Hammond, Gary and Susan
 Hanney, Rick and Roxanne
 Hanreddy, Joe and Jami
 Hansen, Betsy
 Hansen, Doris
 Hanson, Bob and Gretchen
 Harding, Jeff and Ruth
 Harmer, Ron and Debbie
Harmon, George
 Harsh, David and Ann
 Hart, Marian
 Hartmann, Bob and Bonnie
 Hatch, Mick and Lisa
 Hauser, Tom and Peggy
Hawkins, John
Hayes Marketing Services Inc
Hays, Robert
 Heard, Betty Ann
 Heath, Bill and Darlene
Hebal, Bill and Katie

Heck, Albert
 Hedquist, Pat and Susan
Heier, Richard
Heil, Richard and Carol
Heim, Paul and Julie
 Heinecke, Ed and Priscilla
 Helland, Richard and Nancy
 Hellstedt, Linda
 Hellyer, Walter and Jeanee
 Helm, Mary
 Helms, Kay
 Helpfern, Leslie
 Henger, Gary and Jo Ann
 Henrichs, Melvin and Ruth
Higdon, Rich
 Hilbert, Ryan and Jessa
 Hill, Kenneth and Jeannie
Hitch, Gregory
 Hoard, Judith and Ringgenberg, Beth
 Hobson, Carol
 Hoft-March, John and Eilene
 Hogan, Michael and Geske, Janine
 Hole, Sarah
 Holey, Mark and Michaela
 Holub, Greg and Mary
 Hoover, Robert and Rebecca
 Hopper, Arthur and Dee
 Horn, Ronald
 Houston, Kate
 Howard, Phoebe
 Howell, Jonathan and Maureen
 Hubbard, Kenneth and Denice
 Hubing, Dan and Kathy
 Hughes, George and Sue Raye
 Huizenga, Beth
 Hultman, Marv and Barb
 Huntley, Art and Abbott, Ann
 Ihlenfeld, Bill and Lynn
 Indiana University
Irwin, Harriet
 Jacobs, Gail
 Jacobs, William and Susan
 Janda, Louie and Rosie



Feast by the Fire



Widening the Circle

Janda, Robert and Dawn
Janes, Robert
 Jarosh, Joe and Sue
 Jarvis, Eugene and Barbara
 Jaskunas, Jeremy
 Jaskunas, Richard and Sharron
 Jelen, Mike and Annette
 Jerdee, Ann
 Johnson, Bill and Cathy
 Johnson, Charles and Marilyn
 Johnson, Dale and Michele
 Johnson, Donna
Johnson, Inger
 Johnson, Jeff and Sue
Johnson, Stan and Sandra
 Johnson, Tom and Nancy
 Hubbard, Kenneth and Denice
 Jondahl, Thor and Darlene
 Jordal, David and Hinkston, Linda
 Jurss, Allan and Sue
 Kalms, Walter and Michelsen, Patsy
 Kane, Terrence and Judith
 Kanzler, Barbara
 Karecki, John and Karin
 Karlo, Ken and Laurel
Kasriel, Paul and Katy
 Katz, William
 Kaye, Jesse
 Kearney, Doug and Anne
 Keefer, Jim and Mary
 Keen, Dave and Perkins, Judy
 Keepper, Lester and Julia
 Keller, Charles and Barbara
 Keller, Ron and Diane
 Kellman, Bill and Marianne
Kemmler, Mike and Lori
 Kennard, Kay
Kenney-Carter, Carolyn
Kepchar, Dennis and Heidi
 Kepper, Martin and Karen
 Kibbee, Doug and Jo
 Kiedrowski, John and Deborah
 Kiehnau, Dan and Pat
 Kile, Tom and Lucy

King, Paul and Kanani
 Kirgues, Patricia
Kirkham, Kristin
 Kirkland, Diane
 Kirkwood, Rhonda
 Kita, James and Meyers-Kita, Patricia
 Kjellenberg, Evan and Missy
 Klatt, Mel and Shirley
 Klein, Charles and Gigot-Klein, Susan
 Klenz, Bob and Judy
 Kluessendorf, Jerry and Lucy
 Klug Associates, Inc
Knill, Jeanette
Knoedler, Dan and Riley, Suzanne
 Knowles, Richard
 Knox, Merritt and Julie
 Konkol, Dale and Rebecca
 Kopecky, Rob and Cheryl
 Kopf, Angie
 Krainak, Mike
 Krapp, Wiley and Roselyn
 Krause, Gerald and Nancy
Krause, Tim
Kray, Marcia
 Kretzmann, Conrad and Georgine
 Kriegsmann, Greg and Barbara
Krings, Steven
 Krueger, Dean and Judith
 Krug, Carol
 Kubicz, Agnes
 Kubik, Jim and Kathy
 Kubitz, Jack and Nancy
 Kuftrin, Robert and Lainie
Kupper, John and Koestring, Janet
Kupsch, David
 Kuske, Mary Lou
 Kust, Jason
 Kwaterski, Mitchell and Carol
 Laatsch, David and Tara
Lacy, Margaret
 Ladinsky, Jack
 Lake Michigan Wind and Sun
Lang, Merlin

Lange, Jeff and Brenda
 Lappin, Terry and Marilyn
 Larson, Don and Kayval
 Lauter and Passananti Families
 Lawler, Elizabeth
LeBeau, Gerald
 Lee, Jack and Claire
 Lehman, Jim
Lembck, Diane
 Lenehan, Roma
 Lenius, HJ and Sharon
 Lenke, Robert and Linda
 Leonard, Marce and Court
 Leonard, Ralph and Barbara
 Leporte, Lawrence and Elfriede
 Levi, John and Jill
 Lewis, Bill and Janet
Liberski, Jov Jov
 Librizzi, Charles
 Lindbloom, Dell
 Lindgren, John and Elsie
 Lindsay, Ben and Norene
 Link, David and Carrie
 Lint, Cheryl
 Liss, Paul and Jan
 Locher, George and Patricia
 Lockhart, Alex and Helene
 Lodge, Ann
Longert, Jack and Lyman, Kate
 Lorenz, Tony and Nancy
 Loss, Bob and Doris
 Lott, Peggy
 Love, Gregory
Lovett, Tom and Lundin, Anne
 Lubbers, Anne
 Luchterhand, Kubet
 Lucier, Larry and Jeanne
 Lundquist, John and Mary Ann
 Lundquist, Lyle and Barbara
 Luning, Thomas and Betty
 Lurie, Paul and Margaret
 Lutzen, Bob and Val
 Lyndahl, Dale and Kay
 Lyon, Tom and Barbara



Dining for Open Spaces



2012 FINANCIAL SUPPORTERS

Total cash gifts received during 2012

MacKinney, Arthur and Lois
MacPhetridge, Louise
 Madden, Steve and Teri
 Madel, Melvin and Margaret
 Madigan, Jim and Doris
Mallien, Larry and Barbara
 Maltman, Elizabeth
 Malzahn, Richard and Mildred
Maras, Jeff and Amy
Maravilla, Eric and Kelley
 Marcín, Marietta
 Marcon, Michael
Markelz, Peter
 Marks, David and Cruice, Kathy
 Marlett, Myron and Pat
 Maronek, James and Carole
 Marsho, James and Nancy
 Martin, Jack and Pat
 Martin, Lucy
 Martin, Steven and Anita
Masiak, Cory
 Mason, Jeffrey and Elsie
Mason, Mr and Mrs Ronald
 Mason, Peg
 Mathewson, Randy and Karen
 May, Russ and Susan
 Mayer, Irene
 Mayheu, Stephen and Mary
 Mazza, Peter and Mary
McAllister, Greg
 McKeeffry, Bruce and Yeomans, Geoffrey
 McCluggage, Lee and Sandy
McCoy, Sharon and Bob
 McCurdy, Bob
 McDonald, Marilyn
 Mellem, Roger and Connie
 Meyer, Gertrud
 Meyer, Marilyn and Betty
 Michalske, Lee Ann
 Middleton, Fred and Judy
 Mielke, Phyl
Miller Art Museum
 Miller, Allen and Dirst, Victoria
Miller, Jack and Jane
 Miller, Jean
 Miller, Jim
 Miller, Keith and Christine
Miller, Kenneth and Glenda
 Miller, Marvin and Audrey
 Mohr, Wayne and Barbara
 Molitor, Daniel and Tracy
 Monaghan, Robert and Mueller, Marcia
 Mooney, Brian and Christina
 Moore, Craig and Karen
 Moore, Merlyn and Pamela
Moran, Karen and Nicholas
 Morgon, Ed and Chris
 Mostek, Irene

Mrazek, Joseph and Janet
 Mroz, Mitch
 Mueller, Bill and Jo Ann
 Mueller, John and Jan
Mulligan, Tom and Elaine
 Munch, Charles and Furchgott, Jane
 Murphy, John and Dorothea
 Murphy, Mary Beth
 Murray, Bob and Faith
 Murzyn, Estelle
 Musiel, Tammy
 Musolf, Gene and Bea
Myse, Gordon
Nabbefeldt, Scott and Peggy
 Naber, Sarah
 Naleway, Wally and Elaine
 Naples, Greg and Lynn
 Needelman, Jerry and Margie
 Nelesen, John and Shirley
 Nelson, Bruce and Cindy
 Nelson, Doug and Judy
Nelson, Kay
Nelson, Ken and Wendy
 Nelson, Larry and Jane
Nelson, Megan
 Nelson, Randy and Jane
 Nelson, Rick and Patty
 Nesser, Sally
 Neuman, Juliana
 Neuman, Paul and Carol
 Newlon, Jesse and Joan
Newman, Peter
 Norfray, John and Diane
 Olson, Eugene
 Olson, Lynn
 O'Mara, Brian and Debbie
 Omundson, Roy and Gene
 Orlando, Fred and Caryl
 Osinski, Ray and Carol Ann
 Ostrand, Madelyn
 Ott, Sandra
 Oxenford, Chuck and Pat
Page, Susan
 Paley, Irving and Vivian
 Paral, John and Harriet
 Pardonner, Don and Reninger, Judy
 Parent, Steve and Mary
 Parkes, Johanna
 Parsons, Bill and Betty
 Parsons, Robin
 Pasquesi, Lou and Barb
 Passen, Phil and Gregorich, Barbara
Payne, Don and Carolyn
 Pedersen, Sverre and Falck, Christine
 Penny, Chuck and Marilyn
 Penpek, Art and Elaine
PEO Sisterhood Chapter EE
Pescheret, Marc and Kathleen



Peters, Stefan and Glenna
 Petersen, Sandy
 Naber, Sarah
Peterson, Fred and Jan
Peterson, Lee and Beth
 Peterson, Susan
 Phipps, Ken and Diane
 Pierson, Cal and Trish
 Pikas, Bruce and Joan
 Platt, William and Nancy
 Pletz, Teufel, and DeGrave Family
 Plinke, Karl and Lainy
 Ploor, Jerry and Pat
 Poehlman, Art and Sandra
Polacek, Lynn
 Pope, Rex and Linda
 Popiel, Michael
 Porta, Melissa
 Porter, Bill and Anne
 Porter, Harry and Judy
 Potter, Rod and Judy
 Poulton, David and Marlene
 Powell, Dan and Heather
 Powers, Joan
 Powis, Don and Judy
 Prange, Phil and Nancy
 Pratt, Rachel
 Price, Bill and Doris
 Protz, Jane
Protz, Janet
Prout, Steve and Susan
Quick, Doug and Karen
 Quirk, Neil and Susan
Raaths, Jack and Susan
 Radtke, Al and Sue
Rakoczy, Joe and Marie
 Rand, Milton and Jane
 Rank, Don and Barb
 Rankin, Jim and JoAnne
 Ranney, Dave and Wright, Pat
 Reed, Stephen
 Reese, Hayne and Nancy
 Reeve, James and Ann
 Regnier, Paul and Cindy
 Rentmeester, Tom and Honore
 Repp, Pete and Shirley



Reynolds, Jean
 Richards, Jim and Marianne
 Ries, Jane
 Ripp, Dan and Karon
 Risser, Joyce
 Ritter, Mark and Judy
 Robinson, Richard and Gail
 Rockne, Paul and Judy
 Rogers, Robert and Laura
 Rooney, Vincent and Jacqueline
 Rossol, Jim and Evie
 Rothschild, John
 Rotlie, John and Susan
Rulseh, Ann and Kasper, Tom
Rusy, Agnes
 Rutledge, Ham and Chari
 Ryan, Bob and Sue
 Ryan, Caroline
 Ryan-Hohman, Billie
 Ryder, Ingrid
 Sadler, Frank and Annie
 Sajna, Barbara
 Sandretti, Dick and Sally
 Sandstrom, Karen
 Sanford, Lynda
 Sannes, Randy and Sandy
 Santilli, Bob and Gloria
 Sargent, James and Madeleine
 Saron, Gordon and Dianne
 Sautebin, Alice
 Schaefer, John and Sandra
 Schafer, Michael
 Scheckler, Bill and Rolliana
 Schlott, Kathryn
 Schluter, Ernie and Betty
 Schmelzer, Steve and Gretchen
 Schmidt, Bob and Mary
 Schmidt, Ken and Becky
 Schmitt, Mark and Sandi
 Reese, Hayne and Nancy
 Reeve, James and Ann
 Regnier, Paul and Cindy
 Rentmeester, Tom and Honore
 Repp, Pete and Shirley

Schrader, David and Jan
 Schroeder, David and Delores
 Schulte, Joe and Catherine
 Schultz, Gwynne
 Schultz, Jim and Marti
 Schultze, Richard and Haldane, Diane
 Schulze, Gary and Beverly
 Schumacher, Paul and Logerquist, Deb
 Schuster, Dorothy
 Rogers, Robert and Gail
 Schwartz, Neena
 Scott, Ron
 Seagren, Warren and Barbara
 Sedlacek, Warren and Joan
 Seeber, Lisa
 Seefor, Anne
 Seiler, Ronnie
 Selke, Esther
 Serrahn, Janet
 Serrahn, Robin
 Sessions, David and Frances
 Seville, Joseph and Linda
 Shadle, Mary Lou
 Shadow Lawn
 Shanahan, Allen and Karen
 Shappell, Dick and Dorothy
 Shaw, Allison
 Shereikis, Richard and Judith
 Sherman, Art and Jan
 Shields, Walt and Tiggy
 Shiels, Joan
 Sholem, Tank and Susan
 Schafer, Michael
 Shumway, Dean and Bernice
 Shumway, Steve and Kim
 Siegel, Ginny and Ross
 Sieker, Fritz and Van Glarik, Janet
 Sigmann, Peter and Jeannie
 Skaff, Larry and Franie
 Skoglund, Bob and Janet
 Skogsbakken, John and Pat
Skrobot, Marie
 Slight, George and Jean
 Small, Ron and Christine
 Smith, Greg and Alice



Smith, Helen
 Smith, Ken and Nolde, Judy
 Smith, Lee and Sue
Smith, Neil
 Smith, Jim and Kay
 Sneeberger, Marion
Snowball, W David
 Soffa, Marguerite
Sorensen, Jack and Marianne
 Sorensen, Larry and Kathleen
 Sperberg, Elizabeth
 Spitz, Mike and Sue
 Stanley, Jerrel and Judy
Stark, Joseph and Mary
 State Farm Insurance, Carol Devault
 Steger, Kimberly
 Stein, Harry and Heimerl, Kristine
 Steiner, Bruce and Carol
 Stenzel, Gary and Sue
Stevens, Kristin
 Stevenson, Nancy
 Stobba, Greg and Marian
 Stock, Tom and Mary Jo
 Stocking, Patricia
 Stoelting, Paul and Carol
 Stowe, Dennis and Kathy
 Stowell, Janice
 Strabel, Jeffrey
 Strupp, Tom and Linda
 Sucharda, Rick and Sue
Sullivan, Bob and Rita
 Swearngin, John and Sherry
 Sweeney, Michael and Barbara
 Swiercz, David and Edith
 Taillon, Jim and Diane
 Tanck, Glen and Lou Ann
 Tank, Rick and Kathy
Tarczewski, Eugene and JoAnn
 Tarkowski, Jim
 Taylor, Helen
 Taylor, O.E. and JoAnne
 Taylor, Rick and Boucher, Karen
Tebbutt, Maryann
 The Linen Press

Thomas, Naomi
 Thomas, Tom and Maynard, Candice
 Thompson, Bill and Marti
Thompson, Doris
 Thompson, Margaret
 Thomsen, Catharina
 Thornton, Gerry
 Thorpe, Craig and Diane
Thorson, Dale and Nancy
 Thurow, Dave and Posy
Tilton, Dave and Oeler, Paula
Timm, Wendy
 Tincher, Tom and Ethel
 Tipton, John and Marilyn
 Tolan, Sally
 Toney, Mike and Carol
 Top O The Thumb Snowmobile Club
 Travis, Jack and Morgan, Diane
Treleven, J.T. and Terry
Tuch, David and Barbara
 Turner, Ron and Millie
 Tyndall, Jim and Maryann
 Uhlhorn, Ken and Rori
 Urbanik, Ron and Maggie
 Urbrock, Bill and Barbara
 Valatka, Ralph and Bryntesen, Jordyce
 Van De Ven, Richard and Anne
Van Dyke, David and Mary
 Van Dyke, Kieth and Cindy
 Van Zandt, Mike and Sue
 Vanderhoof, Tom and Vickey
 Vartanian, Wally and Mary Kay
 Vermillion, David and Meg
 Verni, Vic and Kathie
 Village Green Lodge
 Vincent, John and Annette
 Virlee, Richard and Sharon
Vlaming, Lee and Ray
Vogel, Mary
 Voight, Dennis and Lisa
 Volk, Gregory and Gretta
 Vopat, James and Theresa
 Vukсанovic, Rob and Cathy
Wade, Lori and Alfred
 Waldron, John and Merrilee
 Waldron, Steve and Laura
 Welsh, Steven
 Walsh, Bill and Adele
 Walsh, Sheila
Warren, Iver and Kathleen
 Warth, Robert and Mary
 Washington Island Lions Club
 Watson, Al and Maribeth
 Watson, Cathy
 Webber Chiropractic Office
 Weber, Dan and Mary
Weber, Frank and Carol
 Weis, John and Jane

Wellhausen, John and Donna
 Welter, Bill and Pam
 Wergin, Dan and Carol
 Wessel, Joanne
 Westen, David and Elizabeth
 Whipple, Thomas and Christine
 Whitney, Caleb, Ida and Peil, Kristen
 Whyatt, Nelson and Christine
 Wiley, Ann
 Willer, Ed and Mary
 Williams, Carol
 Wilson, Doug and Vicki
 Wilson, Mary
 Wilson, Todd and Joan
 Winkler, Lee
 Winsborough, Hal and Shirley
 Witanowski, Michael
 Wittmann, Thomas and Beth
 Woelfel, Dan and Arlene
Woerfel, Carol
 Wojciechowski, Jim and Mastrangelo, Jane
 Woodyard, John and Taylor-Woodyard, Patricia
 Wyandt, Dorothy
 Yahnke, Ross and Mary Jo
Yeast, Gary and Barbara
 Young, K. E.
 Young, Raymond and Jean
 Youngsteadt, Duane and Leslie
 Zatlín, Phyllis
 Zaug, Jerry and Joan
 Zehner, Diane
Zeldenrust, Lucy
 Zeller, Dwight and Pamela
 Zilavy, Jack and Barbara
 Ziman, Rudy and Shirley
 Zimmerman, Steve and Jan
Zmrazek, Janice
 Zmuda, Joe
 Zwicky, Tom

Company Matching Gifts

Anonymous, *Microsoft Matching Gifts Program*
 Bruce and Helen Ambuel, *Mead Witter Foundation, Inc*
 Lloyd and Susan Armstrong, *Pfizer*
 Tom and Kathy Bullermann, *Ace Charitable Foundation*
 Kristin Fuhrmann Clark and Stephen Clark, *Google Matching Gift Program*
 Jon and Beth Danielson, *Windhover Foundation*
 Kurt Kober and Abigail Kiefer, *The Clorox Company Foundation*
 Mark and Deana Lecy, *ITW Foundation*
 Tom Mabbott, *Alliant Energy Foundation*

Ron and Pam Maloney, *Grainger*
 Dennis Rocheleau, *GE Foundation*
 Steve and Emmy Stanley, *Mead Witter Foundation, Inc*

2012 Land Donors

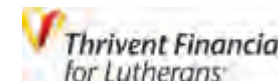
Carlson, Carl and Juanita
 Weese-Young, Shirley
 Widen, Arnie and Judith
 Walter/ Williams Families

2012 Special Gifts

Base Camp Coffee
 Bay Shore Outfitters
 Bill and Bev Cook
 Bridenhagen Tree and Landscape, Inc
 Brown County Graphics
 DC Floral
 Door County Tree Tech LLC
 Door Landscape & Nursery
 Flour Girl Patisserie
 Hank Erdmann
 Bob and Marge Fink
 Tony and Cathy Fiorato
 Dan Eggert
 Gills Rock Stoneware
 Rick and Roxanne Hanney
 John and Dolores Hermann
 Jim Hoehn and Nancy Goldberg
 The Jensen Family
 Gretchen Klug
 Karl and Lucy Klug
 Marcia Kray
 Liberty Square Shops
 Ron and Judy Lokken
 Mike Looman
 Roy and Charlotte Lukes
 Madison Avenue Wine Shop
 Mill Road Gallery
 Arvid Munson
 Sandra Murzyn
 Northwest River Supply
 Out of the Woods Woodworking
 Sandra Place
 Popelka Trenchard Glass
 Rick Bocek Computer Service
 Sail Door County
 Savory Spoon Cooking School
 Lisa Seeber
 Dave Tilton and Paula Oeler
 Dale Vanden Houten
 Theodore and Peggy von Briesen
 Nick Waldvogel
 Allin Walker and Margaret Lockwood
 Waseda Farms
 White Gull Inn
 Bill and Kathy Wolff

Join us in thanking our Annual Business Sponsors!

Please support these businesses that support land preservation.
 And, when you do, please thank them for supporting the Door County Land Trust.



Grace Rossman, CFP®



Ashbrooke
 Associated Bank
 Blahnik Investment Group
 Brown County Graphics
 Cellcom
 Cottage Row Framing and Gallery
 Door County Eye Associates
 Door County Ice Cream Factory
 Door County Nature Works
 Eagle Harbor Inn
 EcoDoor, LLC

Ecology Sports & Base Camp Coffee
 Edgewood Orchard Galleries
 Ellison Bay Service Club
 Fine Line Designs Gallery
 Fish Creek Kite Company
 Gills Rock Stoneware
 Jane's Clothing & Accessories
 Joe Jo's Pizza and Gelato
 Lfp Design! LLC
 Liberty Square Shops
 Dr. John Ludwigsen, DDS and
 Dr. Timothy Tishler, DDS
 Peninsula Vision Care, LLC

Port Storage
 Premier Properties of Door County
 Ross Estate Planning
 Shoreline Restaurant
 Staudenmaier Chiropractic
 Sunnypoint Landscape
 Ruth and Lee Telfer
 Terra Cottages
 The Garden Lady
 TR Pottery
 Virge Temme Architecture
 Wagon Trail Campground
 Roxanne and Curtis Wiltse



Hard-working Committee and Board Members



Raise a Hand for Land!

New Online Auction Seeks Items to Benefit Land Preservation



The Door County Land Trust is pleased to announce that its popular Annual Membership Gathering Auction will soon be expanded and have a new online component. Details on when the bidding starts and how it works will be shared later this summer. **Right now, however, we need your help!**

We're looking for **one-of-a-kind experiences, unique items, sought-after services** and **desirable destinations** to raise funds for land preservation and restoration. So, put your thinking caps on and get creative! What do you have to share? If you'd bid on it, chances are someone else would, too!

To get you thinking...

- **Out for a joy ride!** Do you own a vintage car? How about offering a chauffeured outing for two to a Land Trust nature preserve, complete with an old-fashioned picnic lunch?
- **Love kids?** Love kids in nature? Offer a party for eight kids with a nature-based scavenger hunt, games and treats culminating in a jump in the lake.
- **Dream Vacation.** Do you own a condo in Florida, a cottage in Door County or a villa in Spain? Consider donating a week's or weekend's stay.
- **Rah, rah, sis boom bah!** Sports lovers, share your Badger or Packer tickets. We'll make it a multi-day event by finding someone to donate a hotel stay.
- **You take the cake!** If baking is your specialty, offer a cake or pie per month to the lucky bidder.
- **Handy man (or woman) special.** Do you wield a mean hammer or paint brush? Someone surely could use your services.

What's your idea? Please email us at raiseahand@doorcountylantrust.org and we'll be in touch. Thanks for making something new something special. Deadline for submitting items is May 1, 2013. All proceeds will help us protect more of this county we love. Thank you for raising a hand for land!

Door County Land Trust Speakers Bureau Share the Door County Land Trust with your Organization



Would your civic organization, church group, neighborhood or condominium association be interested in knowing more about land preservation in Door County? A member of our *Speakers Bureau* would be happy to give a presentation about the Door County Land Trust, the places we protect, how and why we protect them, and where to find them. To make an appointment, please call our Office Manager, Kristi Rice at (920) 746-1359 or email info@doorcountylantrust.org.

2013 UPCOMING EVENTS

MORE ABOUT EACH OF THESE EVENTS CAN BE FOUND
AT WWW.DOORCOUNTYLANDTRUST.ORG.

Door County Land Trust Events:

Dining for Open Spaces • June - December, 2013
Washington Island Land Tour • August 8, 2013
Annual Membership Gathering • August 25, 2013

Other Events of Interest:

Door County Festival of Nature • May 24-25, 2013
Washington Island Bird Fest • May 31 - June 2, 2013
Washington Island Kayak Symposium • June 14 - 16, 2013
Rutabaga's Door County Sea Kayak Symposium • July 12-14, 2013



Autumn Glow, by James Ingwersen

Miller Art Museum *This Land is Your Land* Exhibit

During November and December 2012, the Miller Art Museum exhibited original artwork by 52 artists with strong connections to Door County. Artists were invited to paint on the Land Trust's nature preserves during the four seasons prior to the exhibition. The show was a huge success and the Door County Land Trust expresses its gratitude to the Miller Art Museum and the participating artists.

Striving for Excellence

We are pleased to announce that in 2012, the Door County Land Trust applied for and was accepted into the Land Trust Alliances' Leadership, Excellence and Advancement Program (LEAP).

LEAP is a national initiative designed to greatly strengthen a participating land trust's capacity and efficiency by demanding excellence in such critical areas as record-keeping, policy development, financial management, and sound and ethical land transactions.



Photo by Phil Jensen

Grants received through LEAP in 2012 allowed the Land Trust to hire summer intern, Tara Jensen, to assist with our recordkeeping system.

Connecting People with Place



Let's Hike! New App for Mobile Devices

Just in time to help combat cabin fever, the Door County Land Trust has unveiled its newly-created Android phone app, *Let's Hike!* The new *Let's Hike!* app was designed by Land Trust volunteer and former member of the Land Trust board of directors, Jim Kinney. The new phone app is based on a fold-out map published by the Land Trust last summer, and includes Google navigation to direct users to parking areas, as well as trail maps for thirteen of the Land Trust's signature preserves. The app is available free at the Google Play store or see our website for a link to the download.

Hot Off The Press!

Two New Land Trust Publications to Guide Your Next Hike

During 2012, the Door County Land Trust made hiking its nature preserves easier and more enriching. We produced a printed map, "Hiking Trails of the Door County Land Trust," and a 78-page book entitled "A Guide to the Places We Protect." Together, these two pieces offer trail maps, preserve features, scientific and historic facts and personal stories from enthusiastic local conservationists and land owners.

Purchase a copy of the guide book or pick up a free hiking trail map at our Sturgeon Bay or Sister Bay offices. "A Guide to the Places We Protect" will be available for purchase at select businesses throughout the county beginning in May, and on loan through the Door County Public Library system.

Thanks for the Memories

Three generations of the Zima Borski family have explored Door County Land Trust nature preserves. Jill Zima Borski of Islamorada, FL sent us this photo of her son engaged in "catch-and-release" frog hunting along with the following kind words.

"Exploring the Door County Land Trust nature preserves, protected by generous donations of forward thinking individuals and families, is not taken for granted. We hugely appreciate the availability and stewardship of these amazing lands. Through our numerous visits, my sons have come to appreciate the natural treasures of the home state of their father and grandfathers and to create some wonderful memories."

Do you have any family photos taken at Land Trust nature preserves? We'd love to see and share them! Please consider sending them to info@doorcountylandtrust.org.



Josef Borski catching and releasing a Leopard and pickerel frog at the Three Springs Nature Preserve.

Photo by Jill Zima Borski

EXPLORE THE DOOR Guided Hikes on Our Preserves and Protected Properties

The Land Trust's "Explore the Door" outings offer you the opportunity to visit the beautiful places you've helped protect! All "Explore the Door" outings are free of charge for Land Trust members, but pre-registration is required. To ensure a high-quality hiking experience, registration for "Explore the Door" events is limited. For more information, or to register, please contact Door County Land Trust Communications Coordinator, Cinnamon Rossman at (920) 746-1359 or email explore@doorcountylandtrust.org. You will be emailed a confirmation of your registration and directions to the event. All outings last approximately two hours.

- Schwartz Lake Preserve at Shivering Sands**
April 11, 1 p.m., April 13, 10 a.m.
- Legacy Preserve at Clay Banks**
May 9, 1 p.m., May 11, 10 a.m.
- Lautenbach Woods Nature Preserve**
June 1, 10 a.m.
- Ephraim Preserve at Anderson Pond**
June 13, 1 p.m., June 15, 1 p.m. and 2:30 p.m.
- Grand View Scenic Overlook and Park**
June 20, 1 p.m., June 22, 3 p.m.
- Heins Creek Nature Preserve**
July 11, 1 p.m., July 13, 10 a.m.
- Oak Road Nature Preserve**
August 8, 1 p.m., August 10, 10 a.m.
- Bay Shore Blufflands Nature Preserve**
September 19, 1 p.m., September 21, 10 a.m.
- Three Springs Nature Preserve**
October 17, 1 p.m., October 19, 3 p.m.
- White Cliff Nature Preserve**
November 14, 1 p.m., November 16, 10 a.m.
- Heins Creek Nature Preserve**
December 12, 1 p.m., December 14, 10 a.m.

Visit www.DoorCountyLandTrust.org
for more info about hikes!

*The mission of the
Door County Land Trust
is to preserve, maintain,
and enhance lands that
contribute significantly
to the scenic beauty, open
space and ecological
integrity of Door County.*



PO Box 65
Sturgeon Bay, WI 54235
www.DoorCountyLandTrust.org

FORWARDING SERVICE REQUESTED

Non-Profit Org.
US POSTAGE
PAID
Sturgeon Bay, WI
Permit # 31

Spring is Coming Soon!

A Sandhill crane protects its nest at the Little Lake Nature Preserve.

Photo by Ron Maloney

