

What's in your dung?

A guide to dung beetle species in South East SA.



**DUNG
BEETLE**

Ecosystem Engineers



REGIONAL GUIDE

South East SA

South East SA

Dung beetle species that are commonly found in the region.

Introduced



*Bubas
bison*

Tunneler



*Euoniticellus
fulvus*

Tunneler



*Euoniticellus
intermedius*

Tunneler



*Euoniticellus
pallipes*

Tunneler



*Onitis
aygulus*

Tunneler



*Onitis
alexis*

Tunneler



*Onthophagus
binodis*

Tunneler

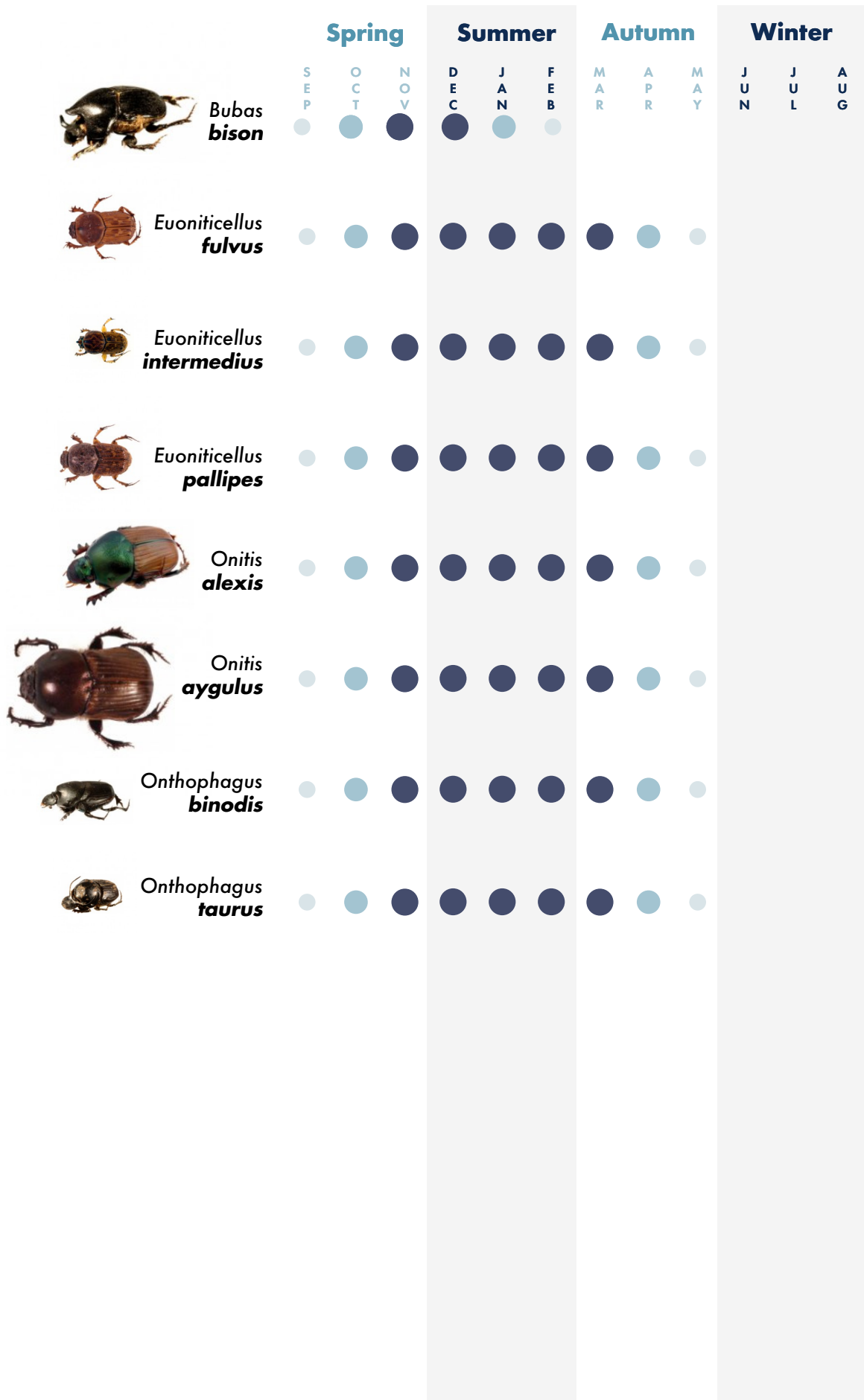


*Onthophagus
taurus*

Tunneler

Seasonal activity

When dung beetles are most likely to be found in dung (in your region)



Bubas bison



Tunneler

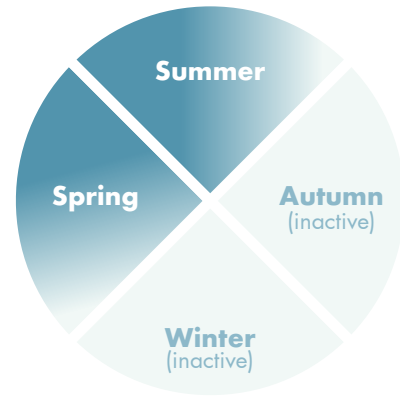
Colour shiny black

Horns horn on each side of head and horn on pronotum (male); distinct ridge on head between eyes and on pronotum (female)

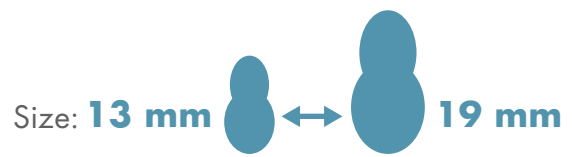
Flight time dusk and dawn

Distribution WA, SA, VIC, southern NSW

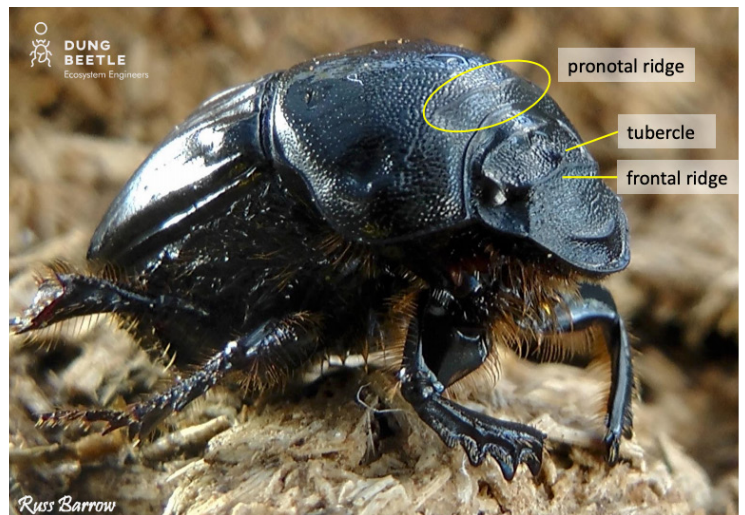
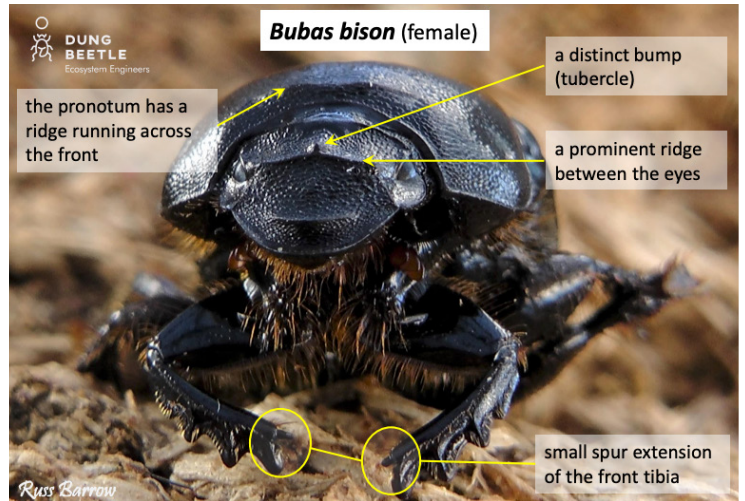
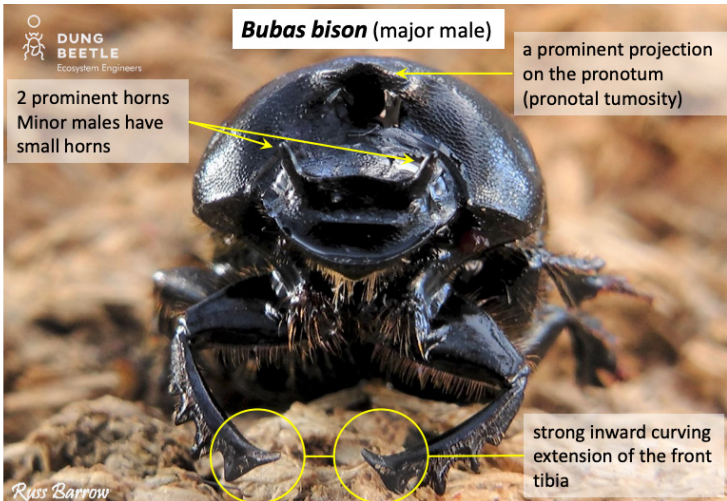
Seasonal activity



■ Active □ Inactive



Burrowing depth
20 – 65 cm



Euoniticellus fulvus



Tunneler

Colour yellow to medium brown, no speckling on pronotum. Wing covers may have dark brown patches but no speckling

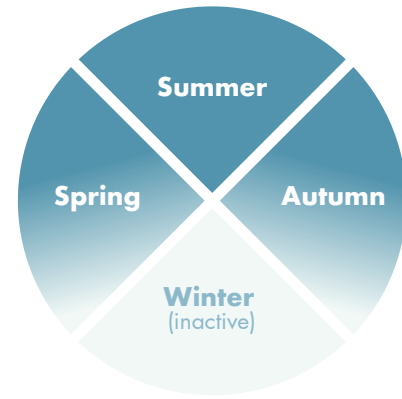
Horns none; males have two ridges at front of head but females have none

Flight time day

Distribution WA, SA, VIC, NSW, TAS

Similar species Similar to other species of *Euoniticellus*, but its small size and lack of markings set it apart.

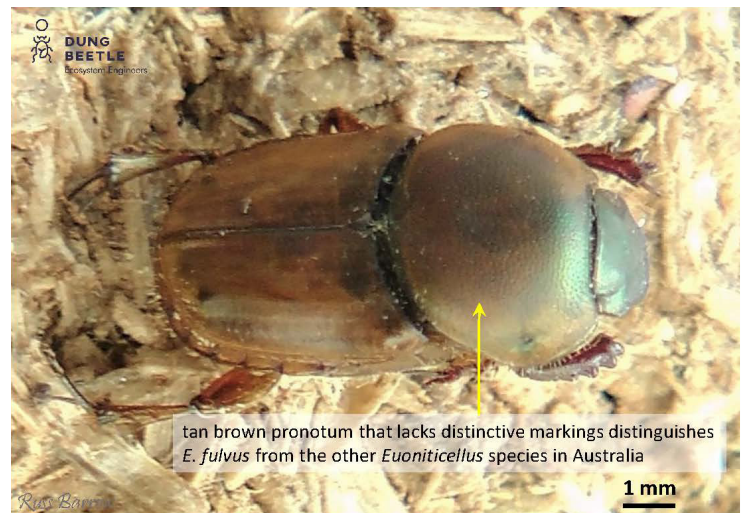
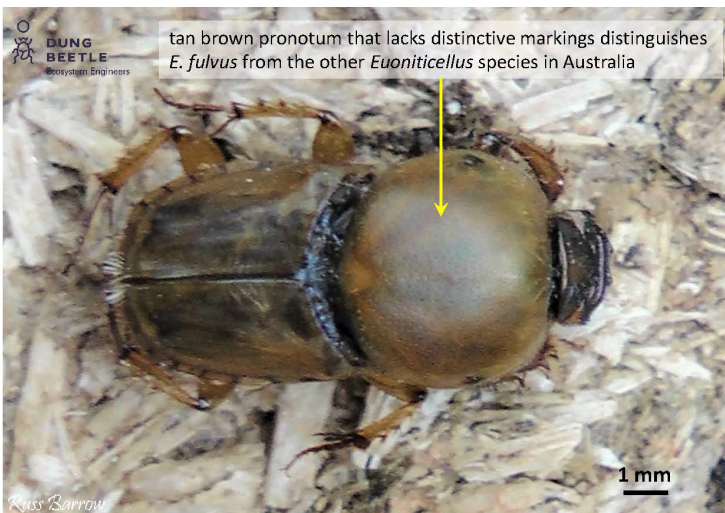
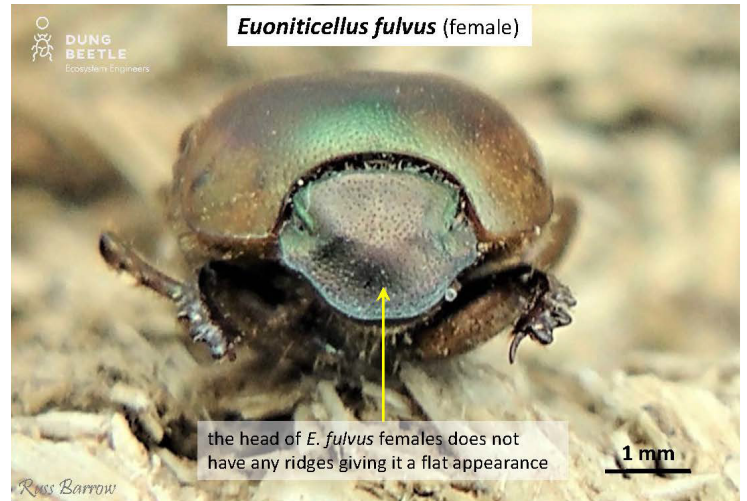
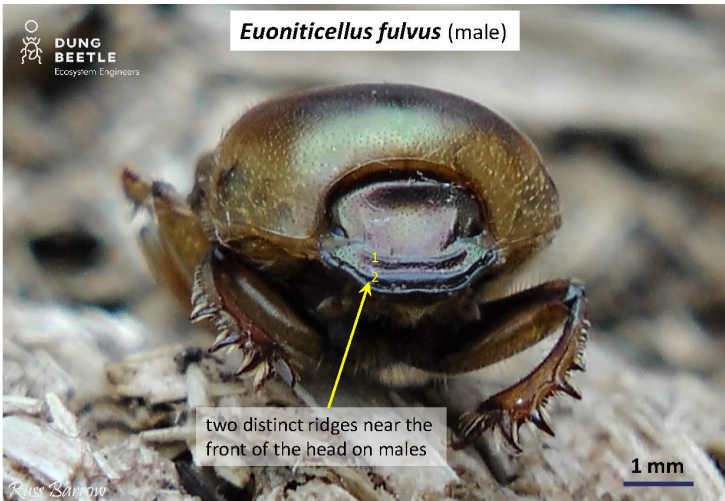
Seasonal activity



■ Active □ Inactive

Size: 8 mm ↔ 12 mm

Burrowing depth
17 – 23 cm



Euoniticellus intermedius



Tunneler

Colour yellow–brown, with diamond pattern on pronotum

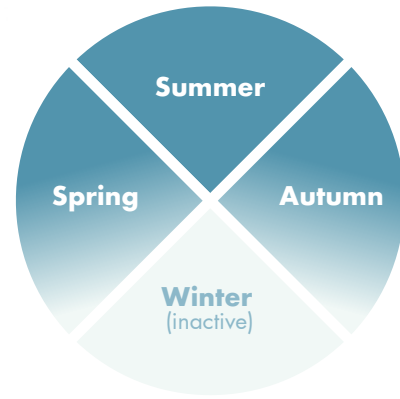
Horns males have a blunt horn in middle of head; females have a ridge between the eyes

Flight time day

Distribution throughout Australia except very dry and southernmost regions

Similar species similar to other species of *Euoniticellus*, but the distinctive markings on pronotum differentiate it from other species.

Seasonal activity

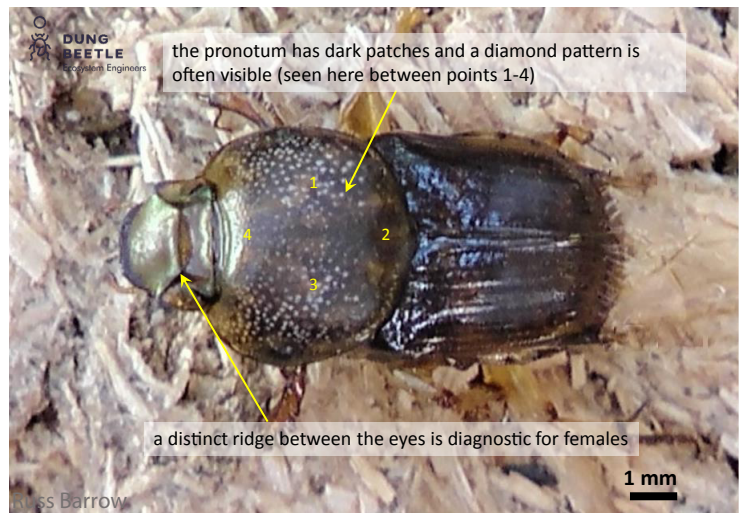
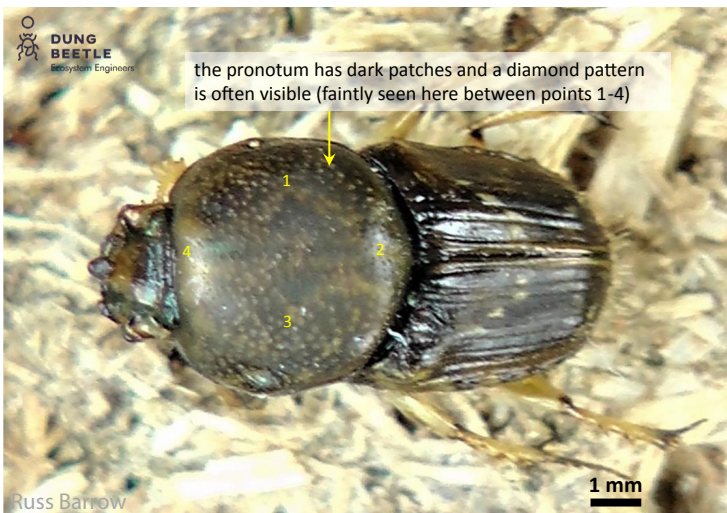
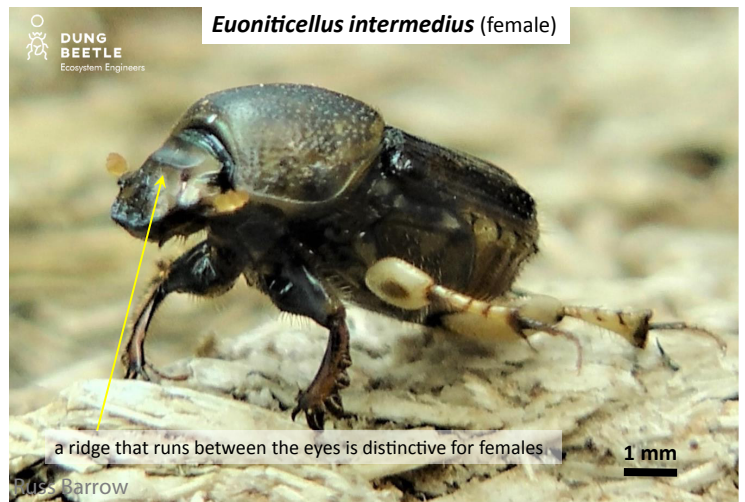
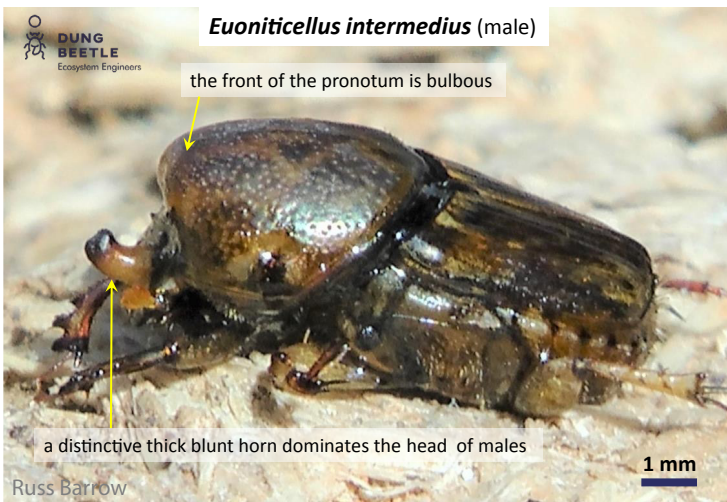


Active Inactive

Size: 7 mm ↔ 9 mm

Burrowing depth

11 – 19 cm



Euoniticellus pallipes



Seasonal activity



■ Active □ Inactive

Tunneler

Colour light to medium brown with speckling over pronotum and wing covers. 2–3 pairs of dark patches in centre of pronotum

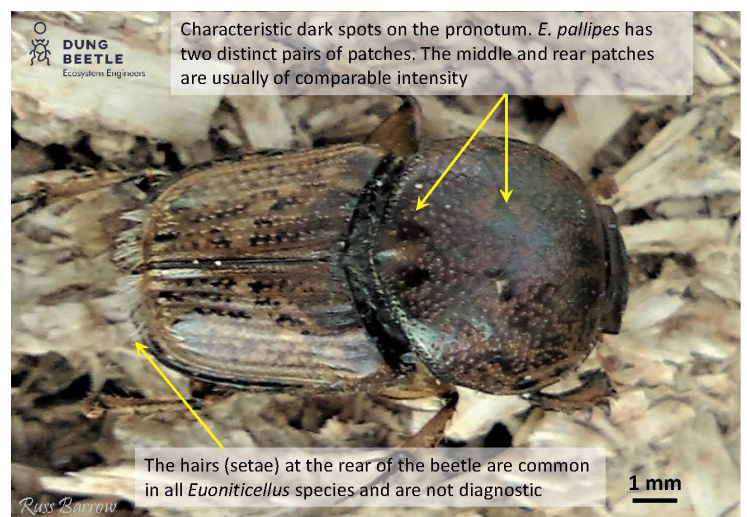
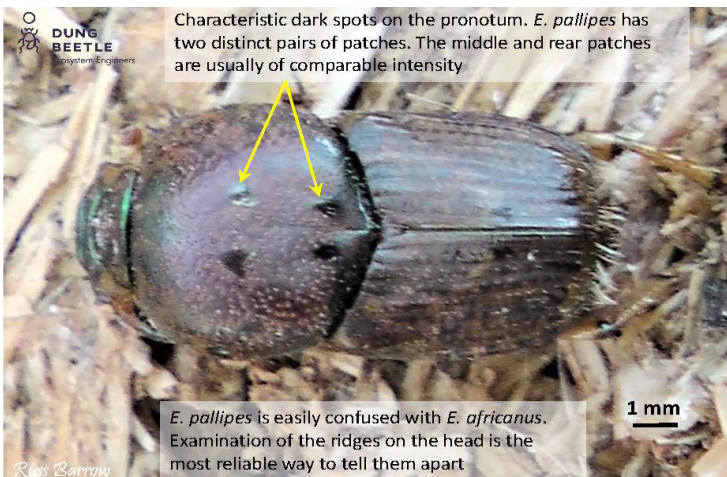
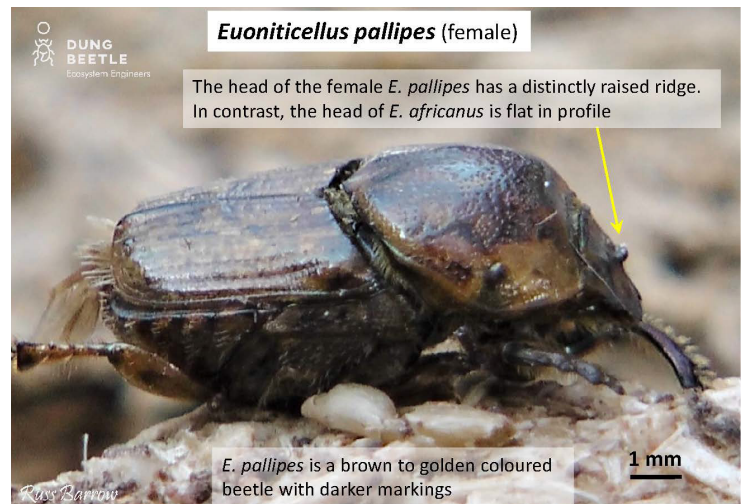
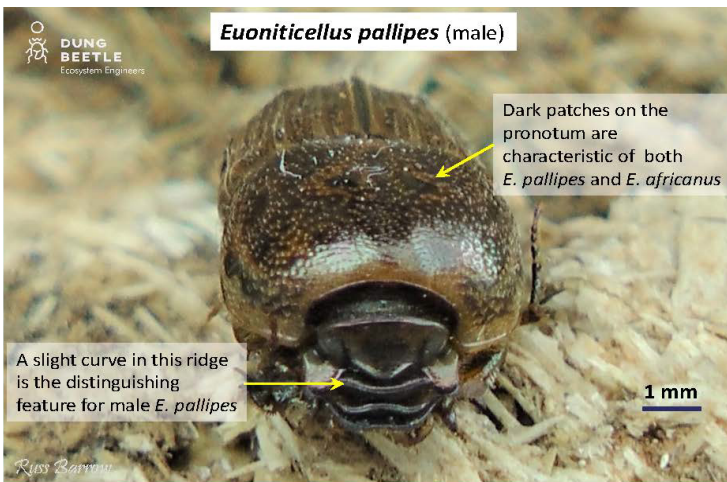
Horns none; arched ridge between eyes in males, small ridge in females

Flight time day

Distribution WA, SA, VIC, NSW

Similar species *E. pallipes* female has a small ridge between eyes, but *E. africanus* female has none. *E. pallipes* male has shallowly arched ridge between eyes, which is strongly curved in male *E. africanus*.

Size: 9 mm 12 mm



Onitis alexis



Tunneler

Colour green/coppery pronotum, light brown wing covers

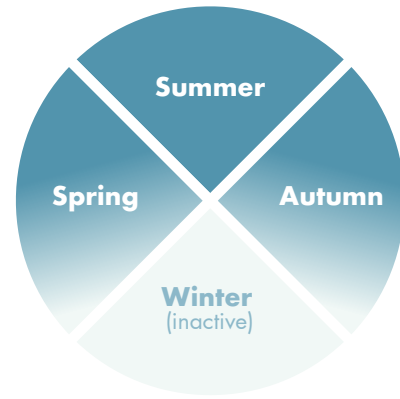
Horns both sexes have a ridge midway between eyes and front of head; female has distinct bump at back of head

Flight time dusk and dawn

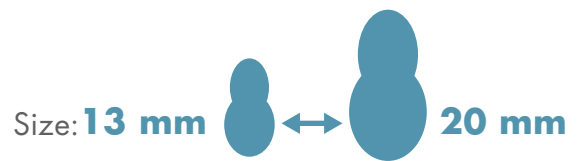
Distribution all of Australia except TAS

Similar species *Onitis aygulus* is larger and has an unequal double spur on hind femur of male (single spur in *O. alexis*).

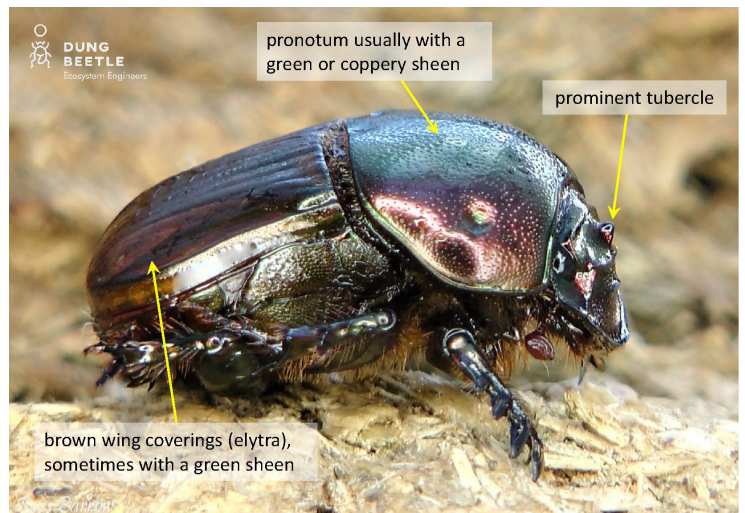
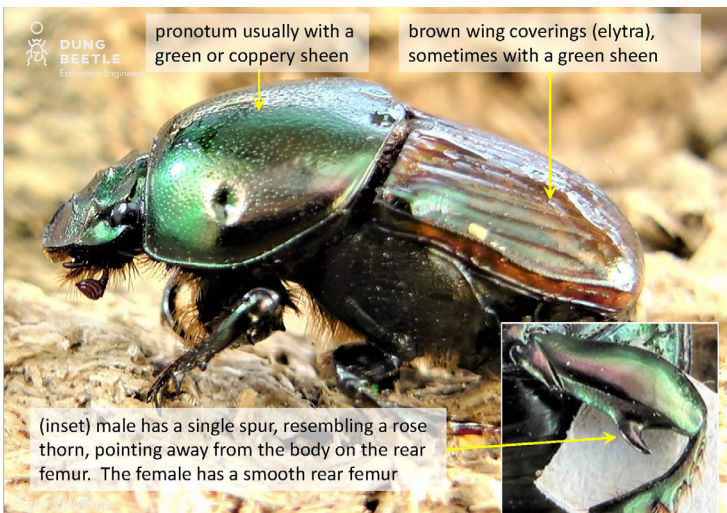
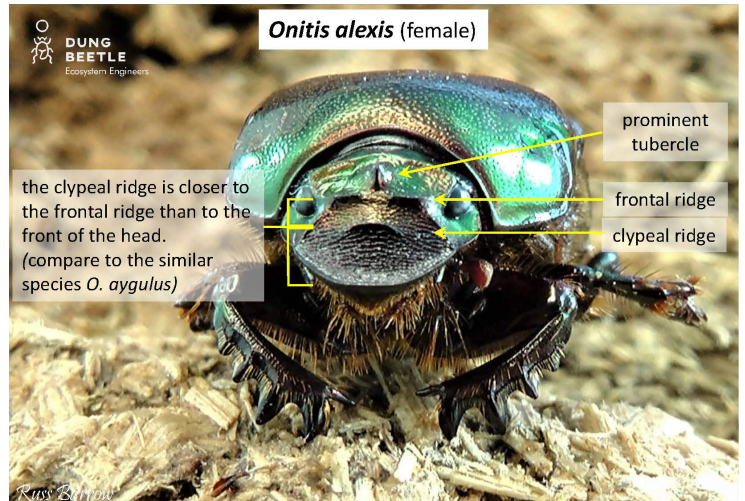
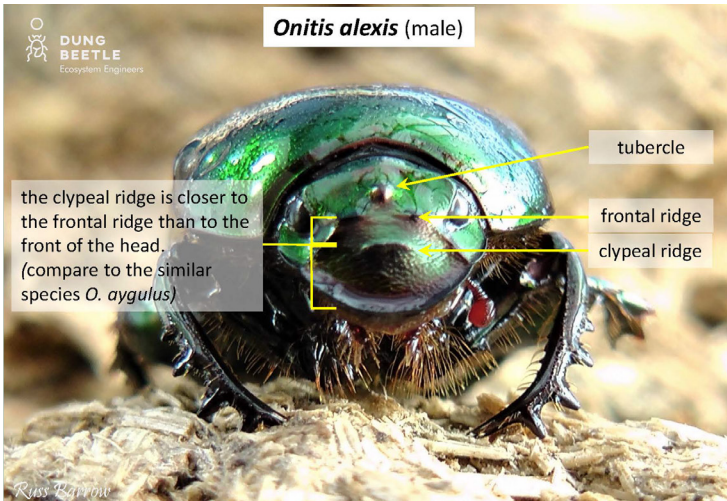
Seasonal activity



Active Inactive



Burrowing depth
20 – 65 cm



Onitis aygulus



Tunneler

Colour dark brown pronotum with coppery or green sheen, light brown wing covers

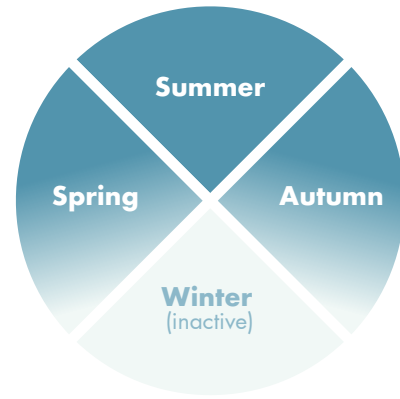
Horns female has distinct bump at back of head and a ridge close to front of head

Flight time dusk and dawn

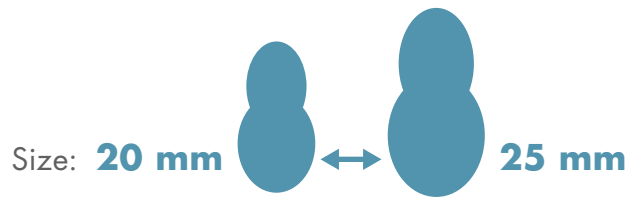
Distribution WA, SA, VIC, NSW

Similar species *Onitis alexis* is similar but smaller and has a single curved spur on hind femur of male (unequal double spur in *O. aygulus*).

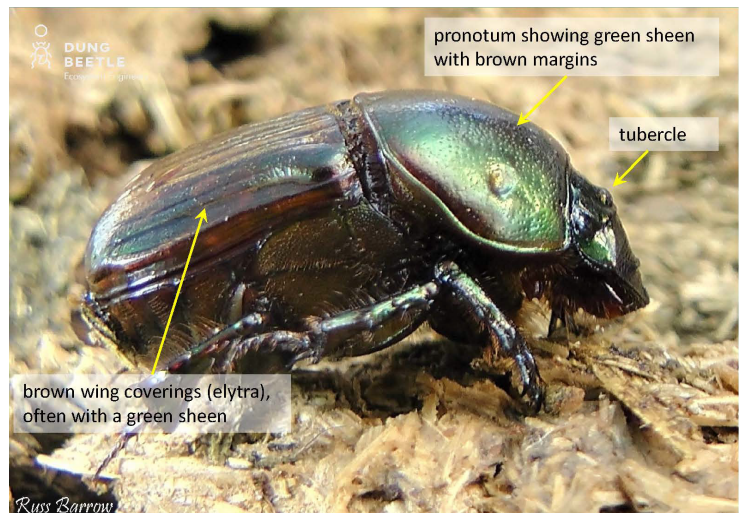
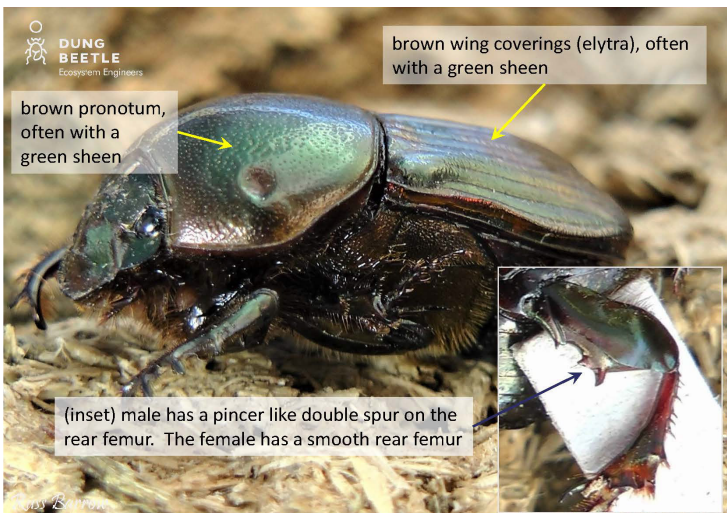
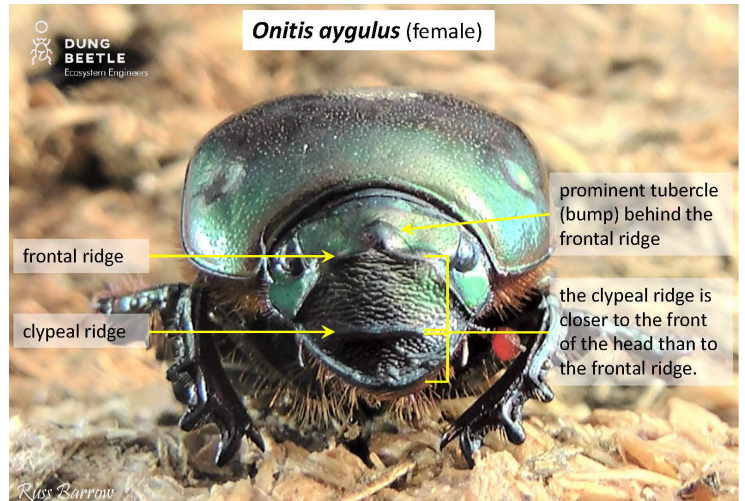
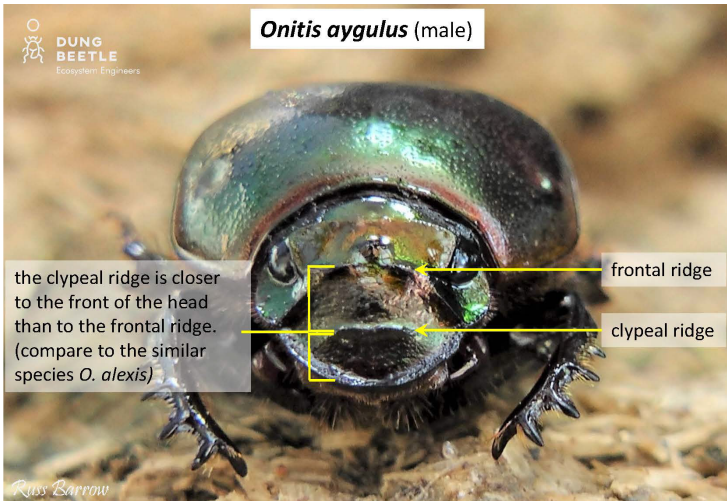
Seasonal activity



■ Active □ Inactive



Burrowing depth
5 – 16 cm



Onthophagus binodis



Tunneler

Colour matt black

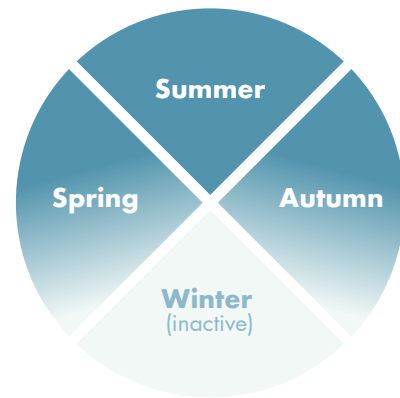
Horns large lobe at front of pronotum (males), smaller in females

Flight time day

Distribution WA, SA, VIC, NSW, TAS, south-east QLD

Similar species female *O. taurus* are similar to female *O. binodis*, but *O. taurus* females are shinier and the front of the pronotum is rounded.

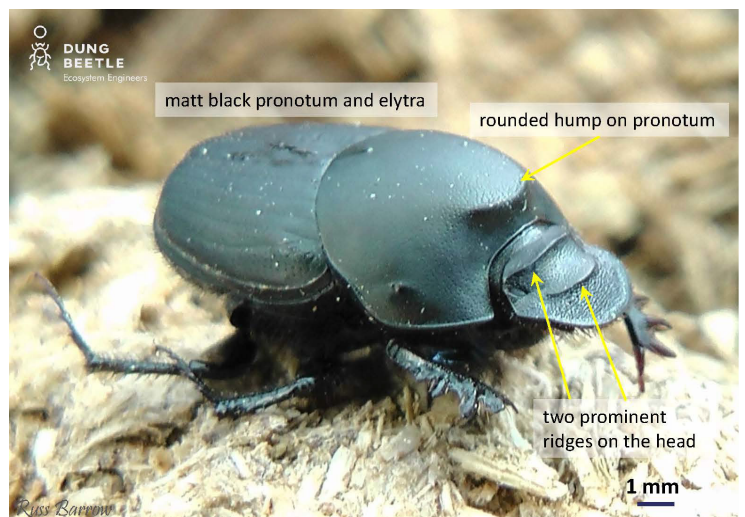
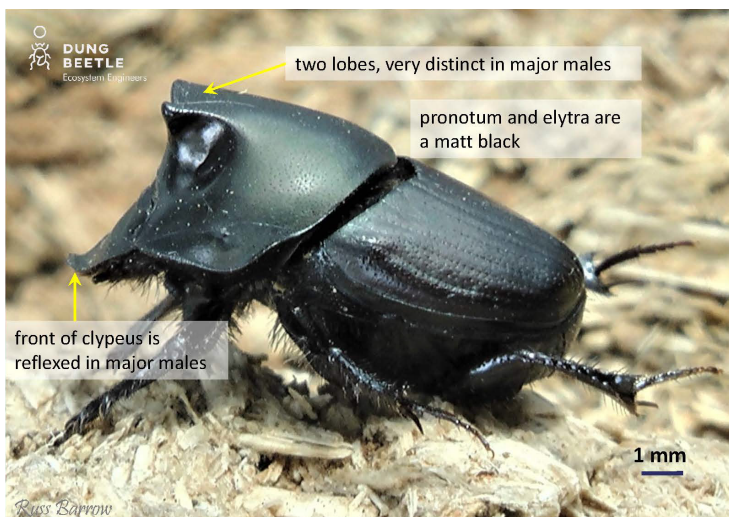
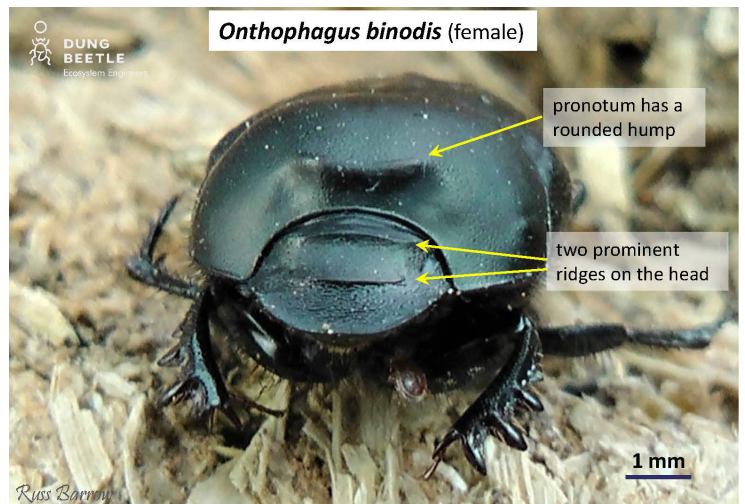
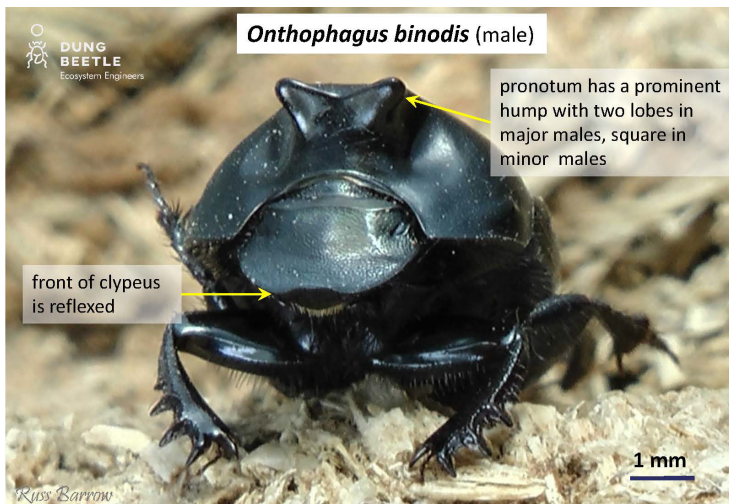
Seasonal activity



■ Active □ Inactive

Size: 11 mm ↔ 13 mm

Burrowing depth
17 – 23 cm



Onthophagus taurus



Tunneler

Colour shiny black

Horns males have long, curved horns; females have none

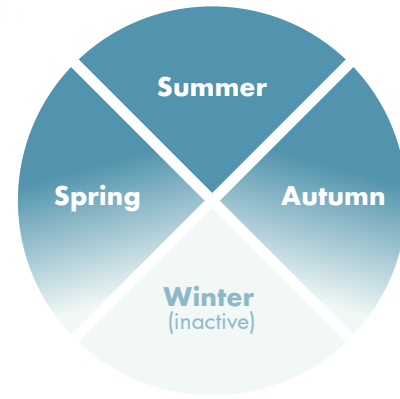
Flight time day

Minor minor males have very short horns extending upward from back of head

Distribution WA, SA, VIC, TAS, NSW

Similar species female *O. binodis* are similar to female *O. taurus*, but *O. taurus* females are shinier and the front of the pronotum is rounded, not lobed.

Seasonal activity

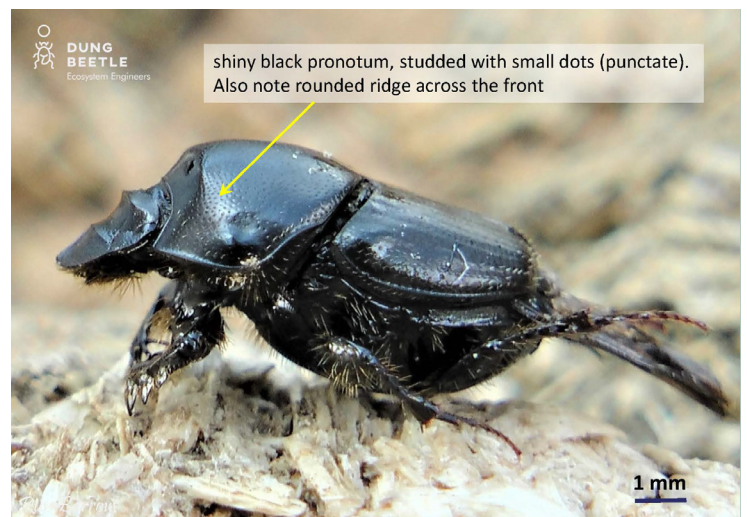
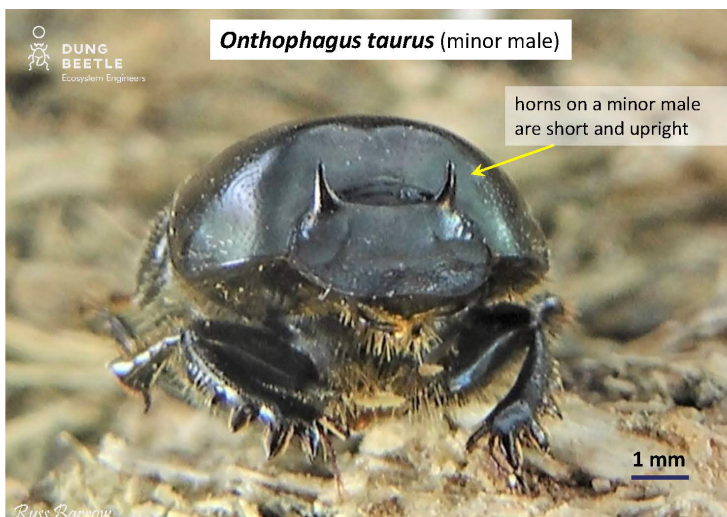
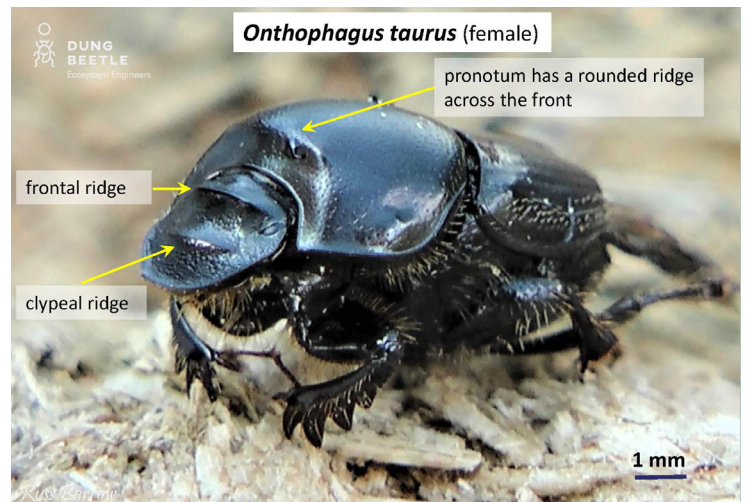
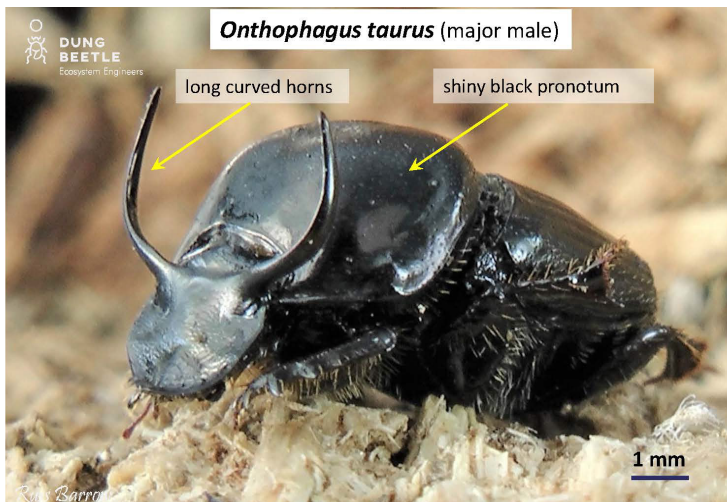


■ Active □ Inactive

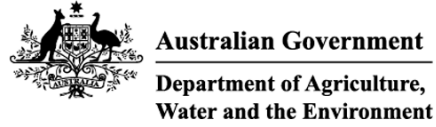
Size: 8 mm ↔ 10 mm

Burrowing depth

8 – 13 cm



This project is supported by Meat & Livestock Australia, through funding from the Australian Government Department of Agriculture and Water Resources as part of its Rural R&D for Profit programme.



DUNG BEETLE
Ecosystem Engineers

www.dungbeetles.com.au