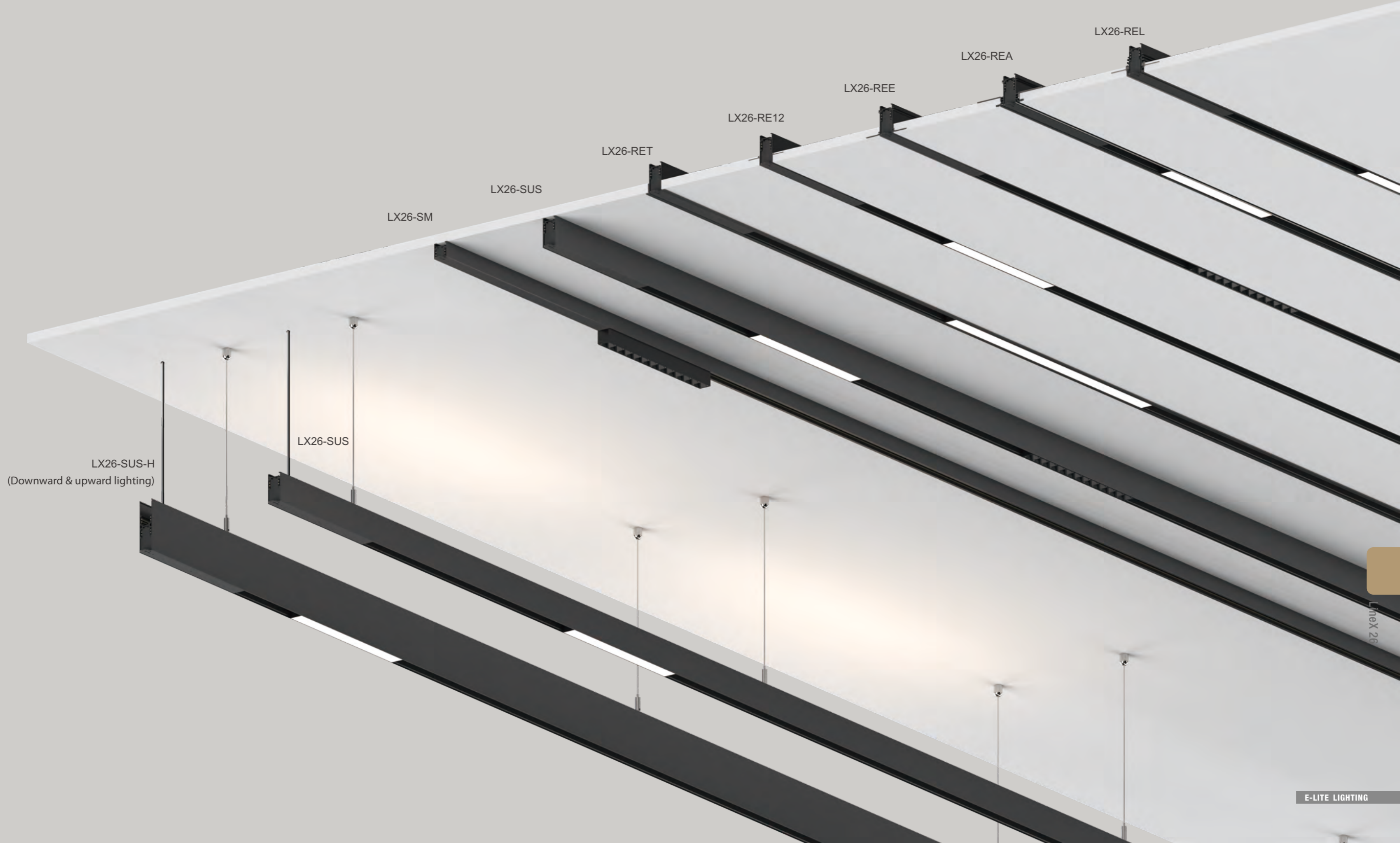


**LineX** SYSTEM  
Low Voltage Track System  
LineX 26

LineX 26



LX26-SM

LX26-SUS

LX26-RET

LX26-RE12

LX26-REE

LX26-REA

LX26-REL

LX26-SUS

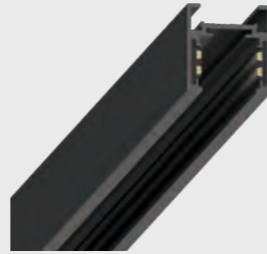
LX26-SUS-H  
(Downward & upward lighting)

LineX 26



1

Surface-mounted Track



LX26-SM  
Surface-mounted



LX26-SUS  
Standard track

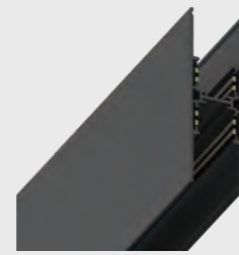


LineX 26 DC48V Track



2

Suspended Track



LX26-SUS-H  
Downward & upward lighting



LX26-SUS  
Standard track

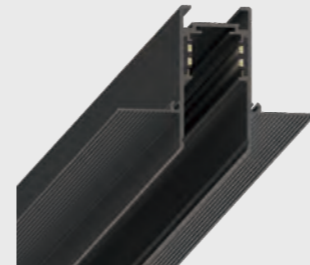


3

Recessed Track



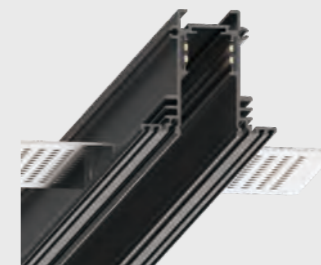
LX26-RET  
With trim



LX26-RE12  
Compatible with 1/2" ceiling



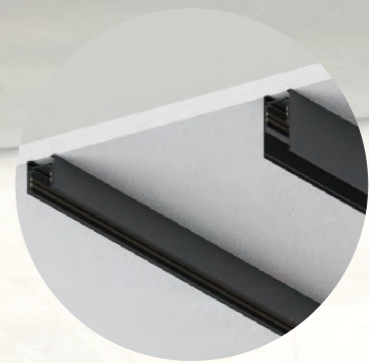
LX26-REE  
Easy installation



LX26-REA  
With adjustable trimless recessed installation kit

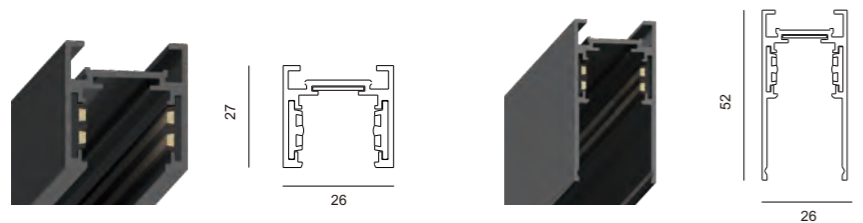


LX26-REL  
Compatible with various thickness of ceiling



Surface-mounted

## Surface-mounted Track



### Order Options

Code	Description	LengthNN	Power supply	Installation
LX26-SM	surface-mounted	1000/2000/3000	built-in available	surface-mounted
LX26-SUS	standard	1000/2000/3000	built-in available	surface-mounted, suspended

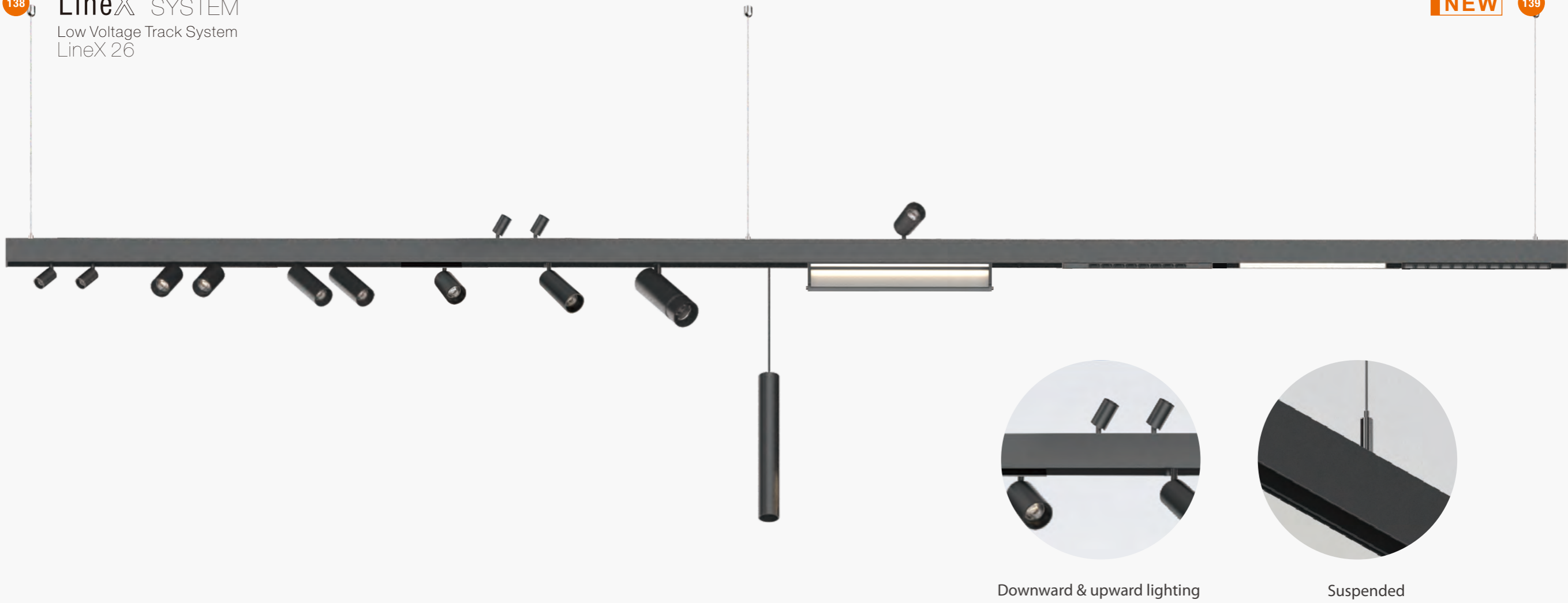
### Accessories

#### LX26-SM

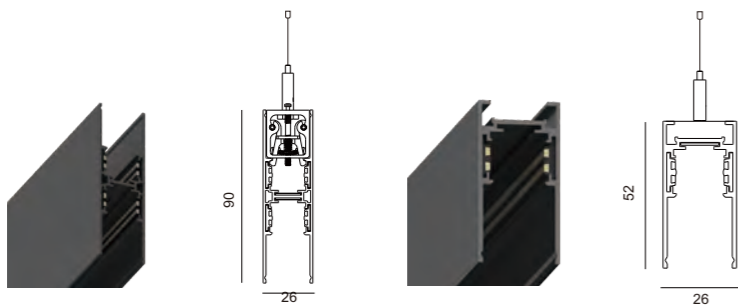


#### LX26-SUS





## Suspended Track

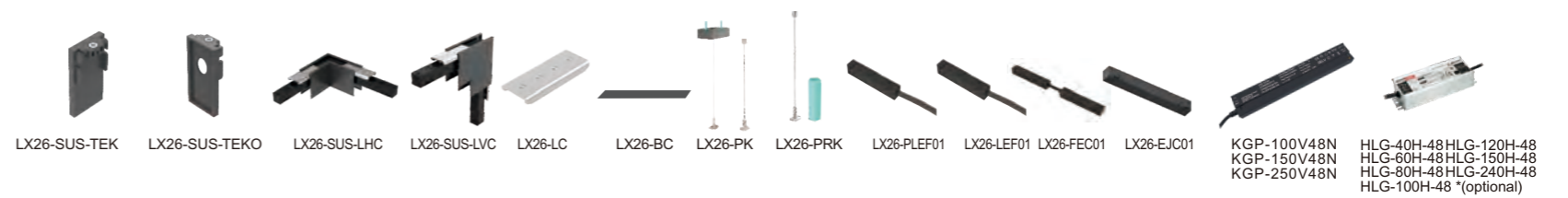


### Order Options

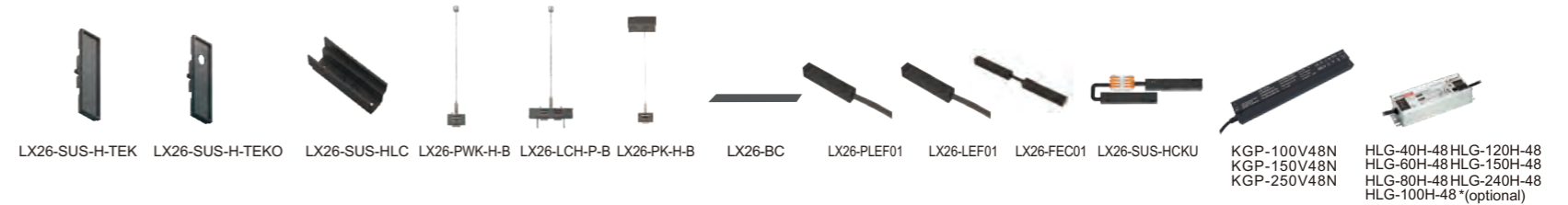
Code	Description	LengthNN	Power supply	Installation
LX26-SUS	standard	1000/2000/3000	built-in available	suspended
LX26-SUS-H	downward & upward lighting	1000/2000/3000	built-in available	suspended

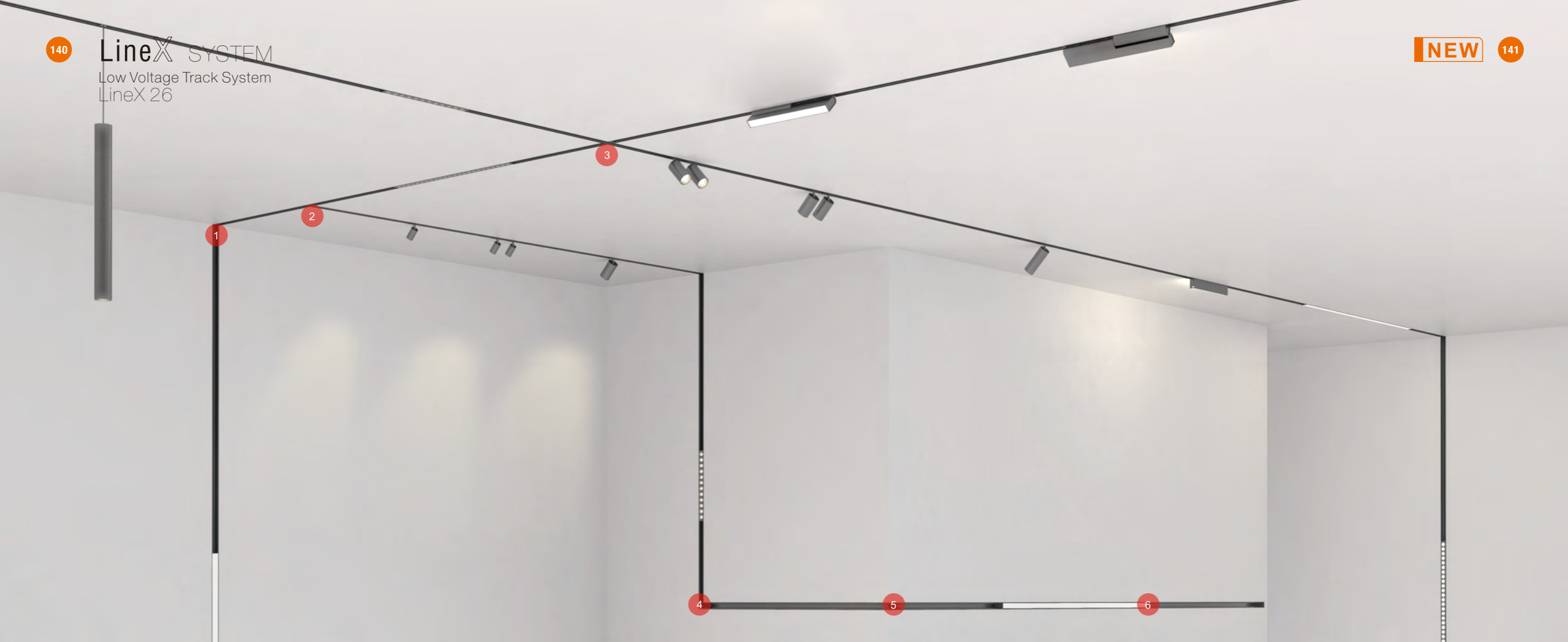
### Accessories

#### LX26-SUS



#### LX26-SUS-H

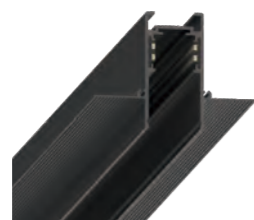




## Recessed Track



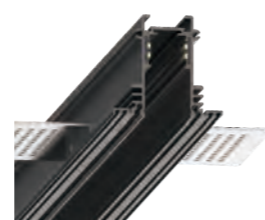
LX26-RET



LX26-RE12



LX26-REE



LX26-REA



LX26-REL

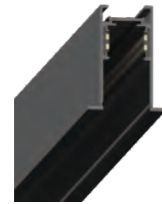
## Corner

- 1. 'L'shape vertical corner
- 2. 'T'shape corner
- 3. 'X'shape corner
- 4. 'L'shape corner
- 5. 'L'shape outer corner
- 6. Linear connector

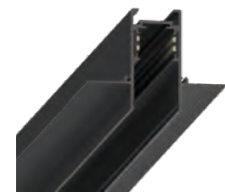
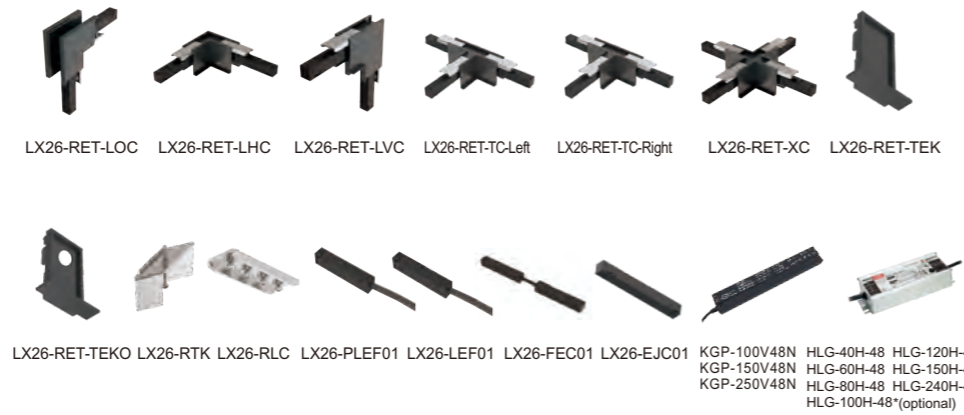
## Order Options

Code	Description	LengthNN	Power supply	Installation
LX26-RET	with trim	1000/2000/3000	built-in available	recessed with trim
LX26-RE12	compatible with ? ceiling	1000/2000/3000	built-in available	trimless recessed
LX26-REE	easy installation	1000/2000/3000	built-in available	trimless recessed
LX26-REA	with adjustable trimless recessed installation kit	1000/2000/3000	built-in available	trimless recessed
LX26-REL	compatible with various thickness of ceiling	1000/2000/3000	built-in available	trimless recessed

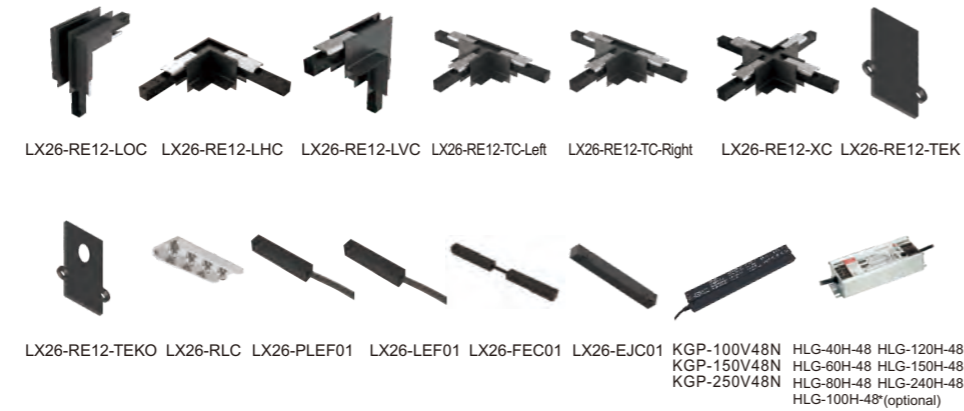
Accessories



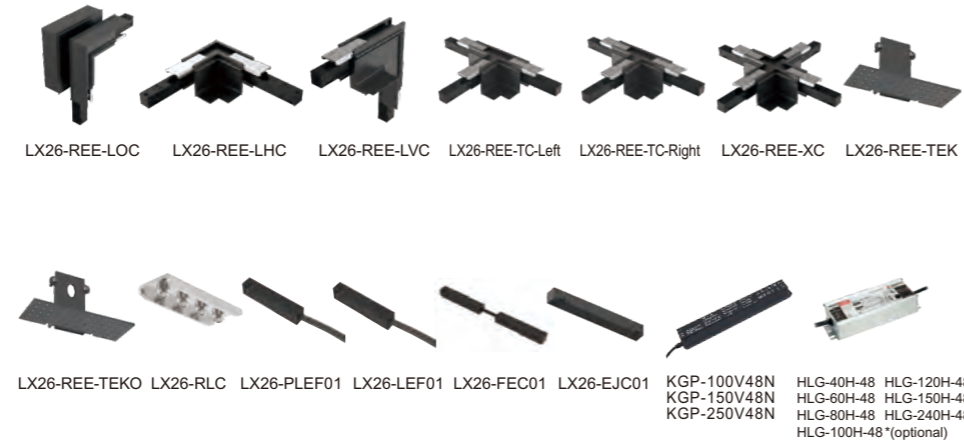
LX26-RET



LX26-RE12



LX26-REE



Accessories



LX26-REA



LX26-REL



\*Several plastic anti-deformation accessories have been put into the tracks, so the tracks can remain the original shape, despite that they are installed into the ceiling board.

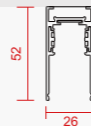
## Installation

### Surface-mounted track



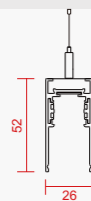
Code: LX26-SM  
Description: surface-mounted  
Length: 1000/2000/3000(mm)  
Color: RAL9005 black, RAL9016 white

### Surface-mounted track



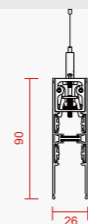
Code: LX26-SUS  
Description: standard  
Length: 1000/2000/3000(mm)  
Color: RAL9005 black, RAL9016 white

### Suspended track

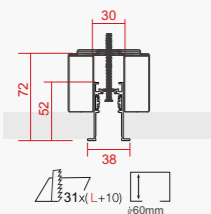


Code: LX26-SUS  
Description: standard  
Length: 1000/2000/3000(mm)  
Color: RAL9005 black, RAL9016 white

### Suspended track

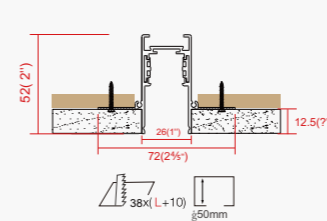


Code: LX26-SUS-H  
Description: downward & upward lighting  
Length: 1000/2000/3000(mm)  
Color: RAL9005 black, RAL9016 white

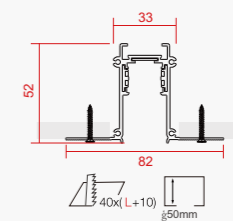


Code: LX26-RET  
Description: with trim  
Length: 1000/2000/3000(mm)  
Color: RAL9005 black, RAL9016 white

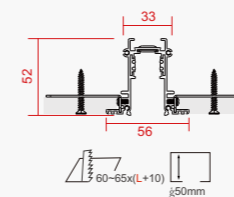
### Recessed track



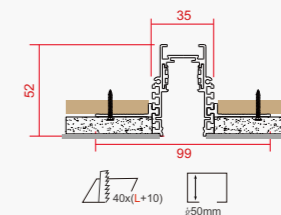
Code: LX26-RE12  
Description: compatible with 1/2" ceiling  
Length: 1000/2000/3000(mm)  
Color: RAL9005 black, RAL9016 white



Code: LX26-REE  
Description: easy installation  
Length: 1000/2000/3000(mm)  
Color: RAL9005 black, RAL9016 white



Code: LX26-REA  
Description: with adjustable trimless recessed installation kit  
Length: 1000/2000/3000(mm)  
Color: RAL9005 black, RAL9016 white  
\*Compatible with the ceiling of thickness between 12.5-20.5mm



Code: LX26-REL  
Description: compatible with various thickness of ceiling  
Length: 1000/2000/3000(mm)  
Color: RAL9005 black, RAL9016 white  
\*Compatible with the ceiling of thickness: 5mm/9mm/12.5mm/15mm/18mm/20mm/25mm

\*All dimensions in the catalogue in mm



# Inserts for track

## Spotlight Insert



LX26-RS25-3W



LX26-RS25-5W



LX26-RS40-8W



LX26-RS40-16W



LX26-RS40-12W



LX26-RS40-24W



LX26-RT55-10W



LX26-RS72-19W  
LX26-RS72-26W



LX26-WRS96-9W

## Accent Light Insert



LX26-AL190-S2-3W



LX26-AL190-S6-7W



LX26-AL280-S8-9W



LX26-AL280-S12-13W



LX26-SA280-13W



LX26-Rita315-15W



LX26-AL-A-280-13W  
LX26-AL-A-560-26W

# Inserts for track

## General light insert



LX26-GL280-7W  
LX26-GL560-13W  
LX26-GL840-19W  
LX26-GL1120-26W



LX26-SG280-7W



LX26-Stella315-8W



LX26-LENA600-GL-13W

## Comfort light insert



LX26-CL280-7W  
LX26-CL560-13W  
LX26-CL840-19W  
LX26-CL1120-26W

## Wall washer insert



LX26-WW280-7W  
LX26-WW560-14W

## Downlight insert



LX26-WRD72-10W



LX26-WRD72-T2-20W

## Decorative light insert



LX26-SPD120-10W



LX26-PD300-18W



LX26-SURI60-5W



LX26-MINNIE150GL-12W



LX26-MINNIE150CL-12W



LX26-PS40-12W

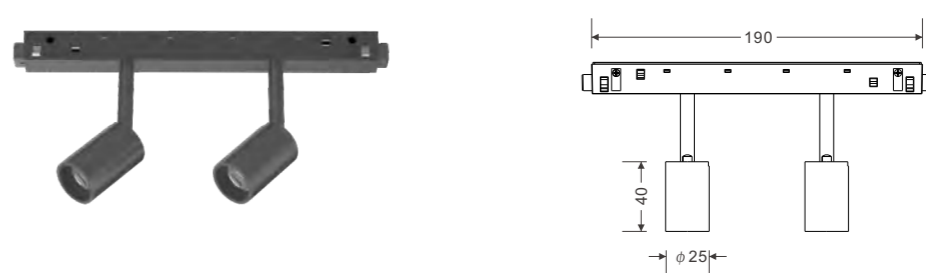


LX26-PS55-14W

**LX26-RS25-3W Module**

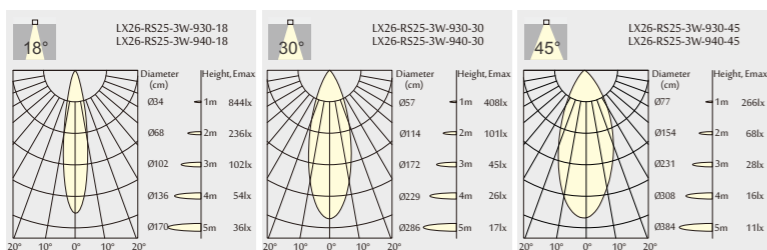


**LX26-RS25-5W Module**



**Module distribution for 3000K**

**3W** 180lm-190lm

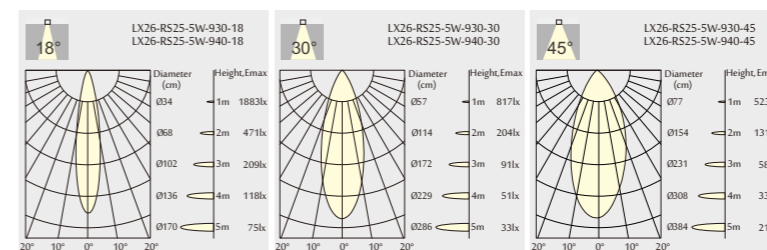


**Order Options**

LX26-RS25-3W						
Code	System LM	System W	Input Voltage	CRI	CCT	Beam
LX26-RS40-3W-930-18	180Lm				3000K	
LX26-RS40-3W-940-18	190Lm	3W	DC48V	90	4000K	18°
LX26-RS40-3W-930-30	180Lm				3000K	
LX26-RS40-3W-940-30	190Lm	3W	DC48V	90	4000K	30°
LX26-RS40-3W-930-45	180Lm				3000K	
LX26-RS40-3W-940-45	190Lm	3W	DC48V	90	4000K	45°

**Module distribution for 3000K**

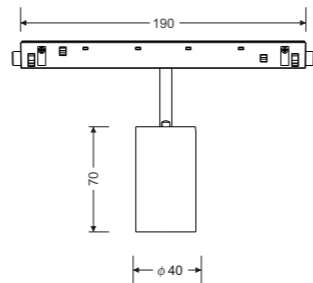
**5W** 350lm-380lm



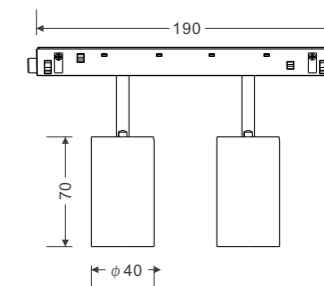
**Order Options**

LX26-RS25-5W						
Code	System LM	System W	Input Voltage	CRI	CCT	Beam
LX26-RS40-5W-930-18	350Lm				3000K	
LX26-RS40-5W-940-18	380Lm	5W	DC48V	90	4000K	18°
LX26-RS40-5W-930-30	350Lm				3000K	
LX26-RS40-5W-940-30	380Lm	5W	DC48V	90	4000K	30°
LX26-RS40-5W-930-45	350Lm				3000K	
LX26-RS40-5W-940-45	380Lm	5W	DC48V	90	4000K	45°

LX26-RS40-8W Module

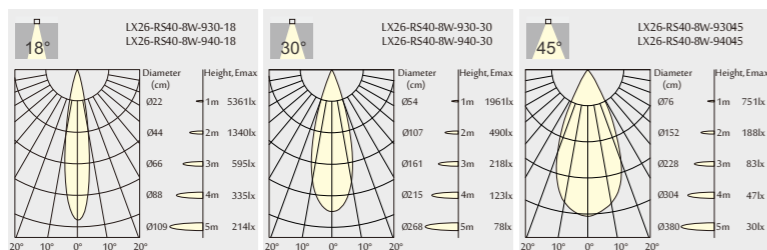


LX26-RS40-16W Module



Module distribution for 3000K

8W 420lm-620lm



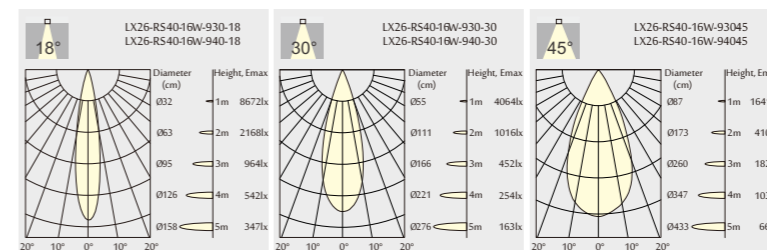
Order Options

LX26-RS40-8W

Code	System LM	System W	Input Voltage	CRI	CCT	Beam
LX26-RS40-8W-930-18	580Lm				3000K	
LX26-RS40-8W-940-18	620Lm	8W	DC48V	90	4000K	18°
LX26-RS40-8W-930-30	580Lm				3000K	
LX26-RS40-8W-940-30	620Lm	8W	DC48V	90	4000K	30°
LX26-RS40-8W-930-45	580Lm				3000K	
LX26-RS40-8W-940-45	620Lm	8W	DC48V	90	4000K	45°

Module distribution for 3000K

16W 850lm-1200lm



Order Options

LX26-RS40-16W

Code	System LM	System W	Input Voltage	CRI	CCT	Beam
LX26-RS40-16W-930-18	1100Lm				3000K	
LX26-RS40-16W-940-18	1200Lm	16W	DC48V	90	4000K	18°
LX26-RS40-16W-930-30	1100Lm				3000K	
LX26-RS40-16W-940-30	1200Lm	16W	DC48V	90	4000K	30°
LX26-RS40-16W-930-45	850Lm				3000K	
LX26-RS40-16W-940-45	900Lm	16W	DC48V	90	4000K	45°

**LX26-RS40-12W Module**

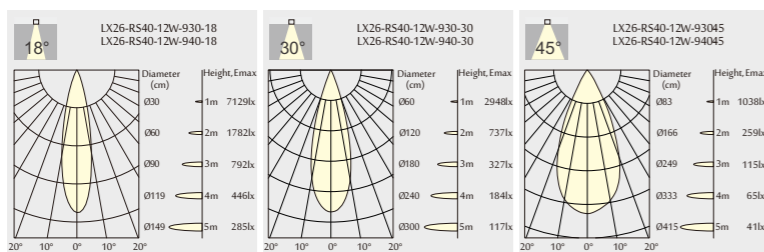


**LX26-RS40-24W Module**



**Module distribution for 3000K**

**12W 600lm-800lm**



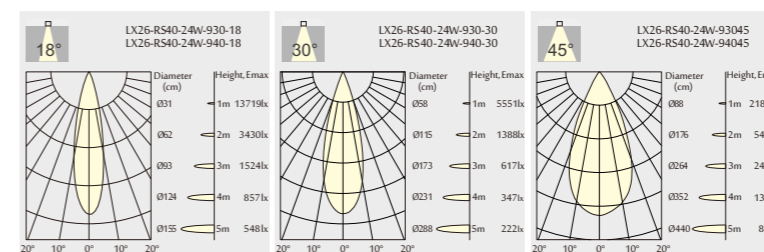
**Order Options**

**LX26-RS40-12W**

Code	System LM	System W	Input Voltage	CRI	CCT	Beam
LX26-RS40-12W-930-18	750Lm	12W	DC48V	90	3000K	18°
LX26-RS40-12W-940-18	800Lm					
LX26-RS40-12W-930-30	750Lm	12W	DC48V	90	3000K	30°
LX26-RS40-12W-940-30	800Lm					
LX26-RS40-12W-930-45	600Lm	12W	DC48V	90	3000K	45°
LX26-RS40-12W-940-45	650Lm					

**Module distribution for 3000K**

**24W 1200lm-1600lm**

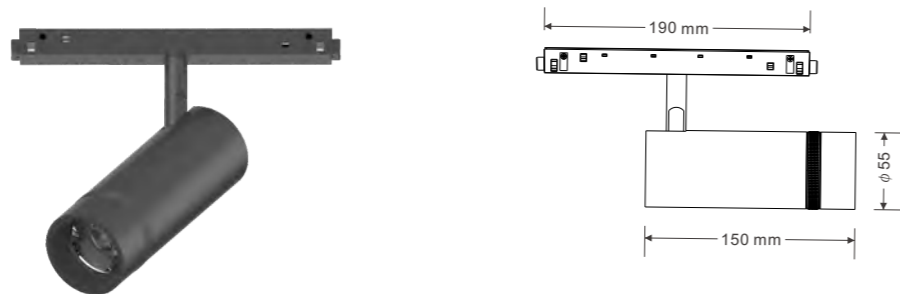


**Order Options**

**LX26-RS40-24W**

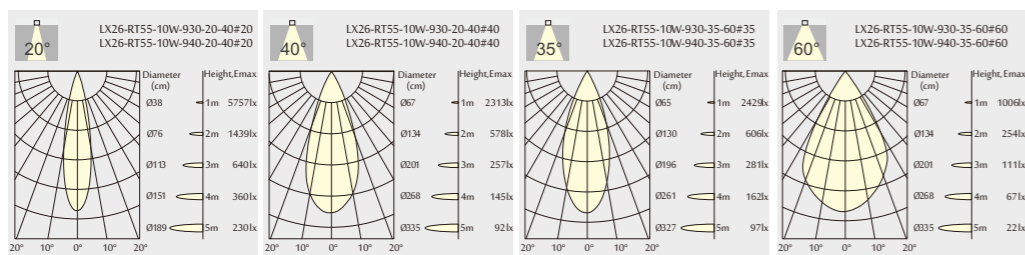
Code	System LM	System W	Input Voltage	CRI	CCT	Beam
LX26-RS40-24W-930-18	1500Lm	24W	DC48V	90	3000K	18°
LX26-RS40-24W-940-18	1600Lm					
LX26-RS40-24W-930-30	1500Lm	24W	DC48V	90	3000K	30°
LX26-RS40-24W-940-30	1600Lm					
LX26-RS40-24W-930-45	1200Lm	24W	DC48V	90	3000K	45°
LX26-RS40-24W-940-45	1300Lm					

**LX26-RT55-10W Module**



**Module distribution for 3000K**

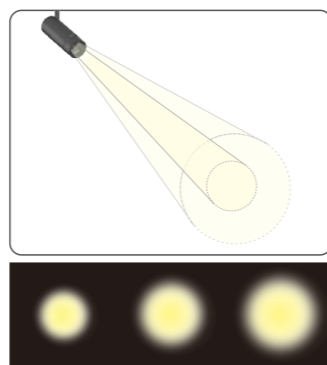
**10W** 750lm-850lm



**Order Options**

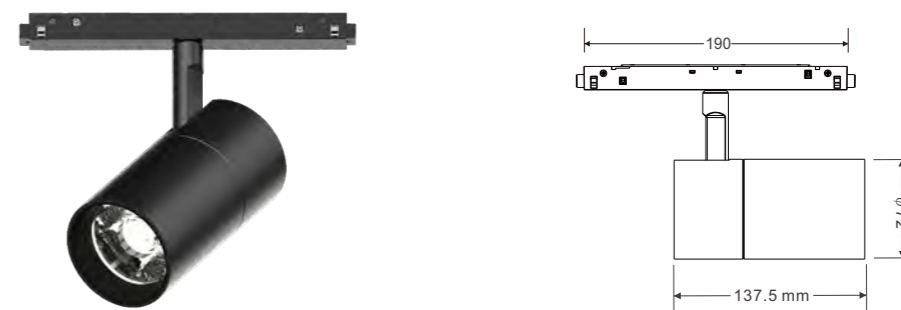
**LX26-RT55-10W**

Code	System LM	System W	Input Voltage	CRI	CCT	Beam
LX26-RT55-10W-930	800Lm					
LX26-RT55-10W-940	850Lm	10W	DC48V	90	3000K 4000K	20°-40°
LX26-RT55-10W-930	750Lm					
LX26-RT55-10W-940	800Lm	10W	DC48V	90	3000K 4000K	35°-60°



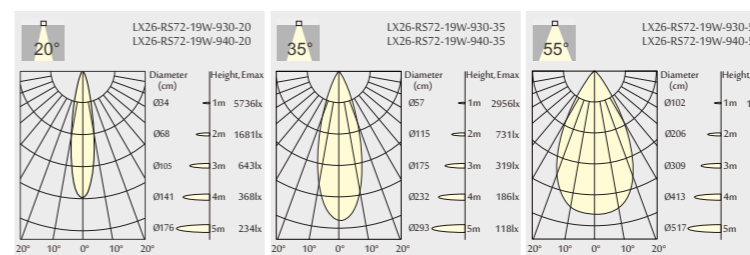
ZOOM Lens from narrow beam angle 20°\35° to wide beam angle 40°\60°

**LX26-RS72 Module**



**Module distribution for 3000K**

**19W** 1700lm-1800lm

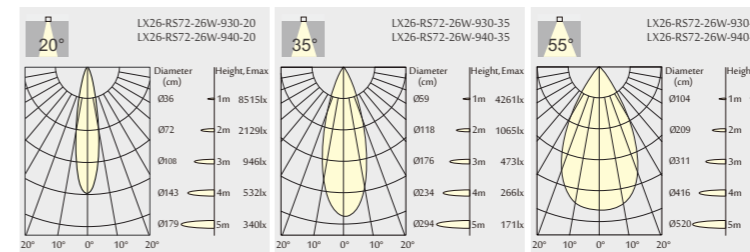


**Order Options**

**LX26-RS72-19W**

Code	System LM	System W	Input Voltage	CRI	CCT	Beam
LX26-RS72-19W-930-20	1700Lm					
LX26-RS72-19W-940-20	1800Lm	19W	DC48V	90	3000K 4000K	20°
LX26-RS72-19W-930-35	1700Lm					
LX26-RS72-19W-940-35	1800Lm	19W	DC48V	90	3000K 4000K	35°
LX26-RS72-19W-930-55	1700Lm					
LX26-RS72-19W-940-55	1800Lm	19W	DC48V	90	3000K 4000K	55°

**26W** 2300lm-2500lm

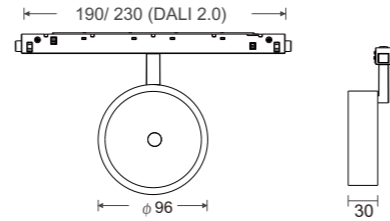


**Order Options**

**LX26-RS72-26W**

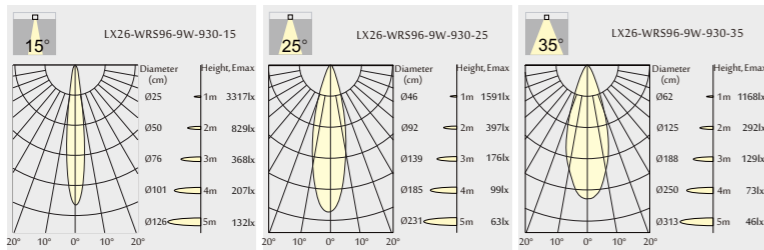
Code	System LM	System W	Input Voltage	CRI	CCT	Beam
LX26-RS72-26W-930-20	2300Lm					
LX26-RS72-26W-940-20	2500Lm	26W	DC48V	90	3000K 4000K	20°
LX26-RS72-26W-930-35	2300Lm					
LX26-RS72-26W-940-35	2500Lm	26W	DC48V	90	3000K 4000K	35°
LX26-RS72-26W-930-55	2300Lm					
LX26-RS72-26W-940-55	2500Lm	26W	DC48V	90	3000K 4000K	55°

**LX26-WRS96-9W Module**



**Module distribution for 3000K**

**9W** 720lm-750lm



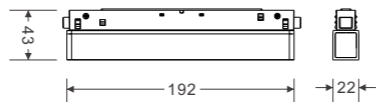
**Order Options**

**LX26-WRS96-9W**

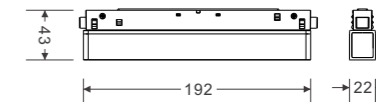
Code	System LM	System W	Input Voltage	CRI	CCT	Beam
LX26-WRS96-9W-930-15	720Lm				3000K	
LX26-WRS96-9W-940-15	780Lm	9W	DC48V	90	4000K	15°
LX26-WRS96-9W-930-25	750Lm				3000K	
LX26-WRS96-9W-940-25	830Lm	9W	DC48V	90	4000K	25°
LX26-WRS96-9W-930-35	750Lm				3000K	
LX26-WRS96-9W-940-35	830Lm	9W	DC48V	90	4000K	35°



**LX26-AL190-S2-3W Module**

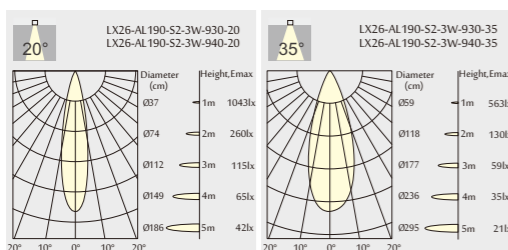


**LX26-AL190-S6-7W Module**



**Module distribution for 3000K**

**3W** 200lm-250lm



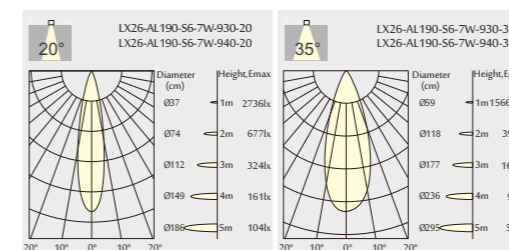
**Order Options**

**LX26-AL190-S2-3W**

Code	System LM	System W	Input Voltage	CRI	CCT	Beam
LX26-AL190-S2-3W-930-20	180Lm	3W	DC48V	90	3000K	20°
LX26-AL190-S2-3W-940-20	200Lm	3W	DC48V	90	4000K	20°
LX26-AL190-S2-3W-930-35	180Lm	3W	DC48V	90	3000K	35°
LX26-AL190-S2-3W-940-35	200Lm	3W	DC48V	90	4000K	35°

**Module distribution for 3000K**

**7W** 600lm-650lm



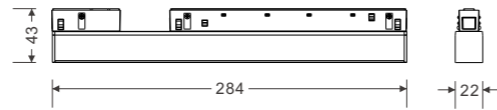
**Order Options**

**LX26-AL190-S6-7W**

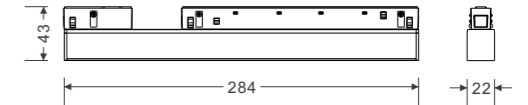
Code	System LM	System W	Input Voltage	CRI	CCT	Beam
LX26-AL190-S6-7W-930-20	550Lm	7W	DC48V	90	3000K	20°
LX26-AL190-S6-7W-940-20	600Lm	7W	DC48V	90	4000K	20°
LX26-AL190-S6-7W-930-35	550Lm	7W	DC48V	90	3000K	35°
LX26-AL190-S6-7W-940-35	600Lm	7W	DC48V	90	4000K	35°



**LX26-AL280-S8-9W Module**

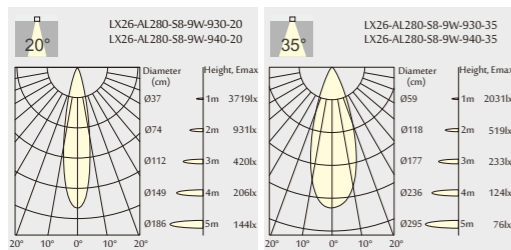


**LX26-AL280-S12-13W Module**



**Module distribution for 3000K**

**9W** 750lm-800lm



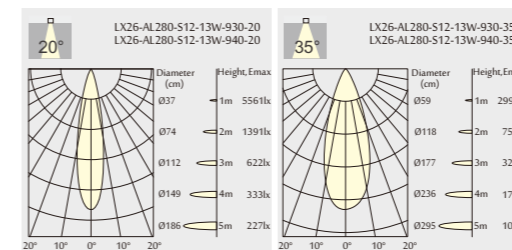
**Order Options**

**LX26-AL280-S8-9W**

Code	System LM	System W	Input Voltage	CRI	CCT	Beam
LX26-AL280-S8-9W-930-20	750Lm				3000K	
LX26-AL280-S8-9W-940-20	800Lm	9W	DC48V	90	4000K	20°
LX26-AL280-S8-9W-930-35	750Lm				3000K	
LX26-AL280-S8-9W-940-35	800Lm	9W	DC48V	90	4000K	35°

**Module distribution for 3000K**

**13W** 1100lm-1200lm

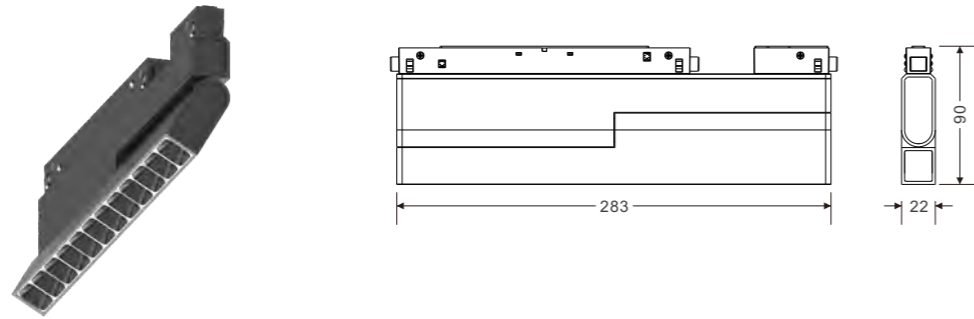


**Order Options**

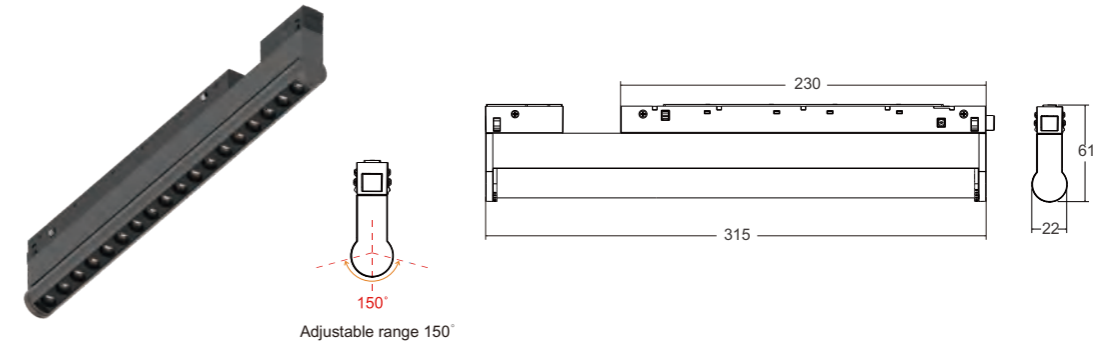
**LX26-AL280-S12-13W**

Code	System LM	System W	Input Voltage	CRI	CCT	Beam
LX26-AL280-S12-13W-930-20	1100Lm				3000K	
LX26-AL280-S12-13W-940-20	1200Lm	13W	DC48V	90	4000K	20°
LX26-AL280-S12-13W-930-35	1100Lm				3000K	
LX26-AL280-S12-13W-940-35	1200Lm	13W	DC48V	90	4000K	35°

**LX26-SA280-13W Module**

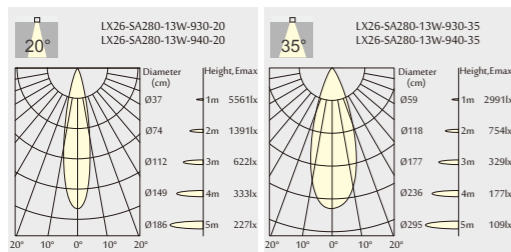


**LX26-Rita315-15W Module**



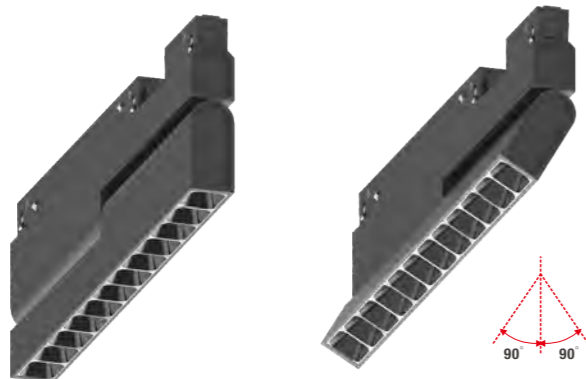
**Module distribution for 3000K**

**13W 1100lm-1200lm**



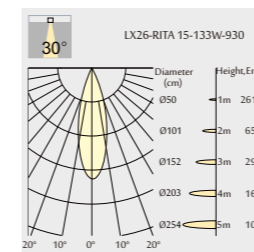
**Order Options**

LX26-SA280-13W						
Code	System LM	System W	Input Voltage	CRI	CCT	Beam
LX26-SA280-13W-930-20	1100Lm				3000K	
LX26-SA280-13W-940-20	1200Lm	13W	DC48V	90	4000K	20°
LX26-SA280-13W-930-35	1100Lm				3000K	
LX26-SA280-13W-940-35	1200Lm	13W	DC48V	90	4000K	35°



**Module distribution for 3000K**

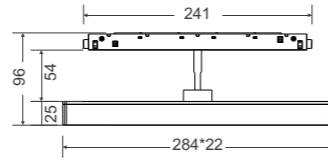
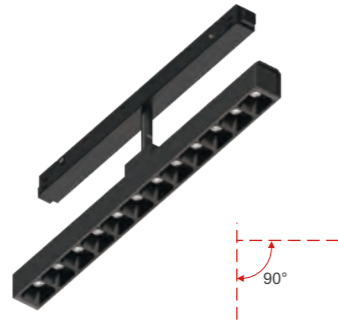
**15W 1100lm-1180lm**



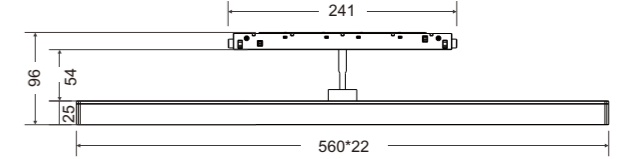
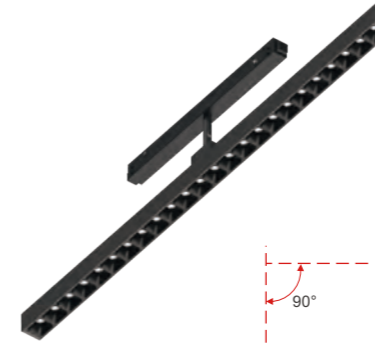
**Order Options**

LX26-Rita315-15W						
Code	System LM	System W	Input Voltage	CRI	CCT	Beam
LX26-Rita315-15W-940-30	1100Lm				3000K	
LX26-Rita315-15W-940-30	1180Lm	15W	DC48V	90	4000K	30°

**LX26-AL-A-280-13W Module**

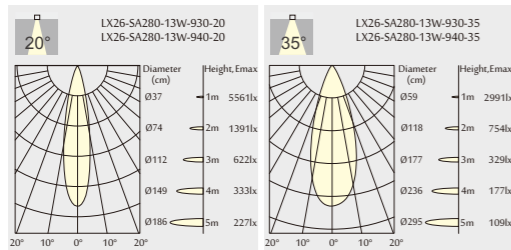


**LX26-AL-A-560-26W Module**



**Module distribution for 3000K**

**13W** 1100lm-1200lm



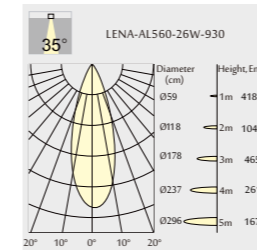
**Order Options**

**LX26-AL-A-280-13W**

Code	System LM	System W	Input Voltage	CRI	CCT	Beam
LX26-AL-A-280-13W-930-20	1100Lm	13W	DC48V	90	3000K	20°
LX26-AL-A-280-13W-940-20	1200Lm	13W	DC48V	90	4000K	20°
LX26-AL-A-280-13W-930-35	1100Lm	13W	DC48V	90	3000K	35°
LX26-AL-A-280-13W-940-35	1200Lm	13W	DC48V	90	4000K	35°

**Module distribution for 3000K**

**26W** 2200lm

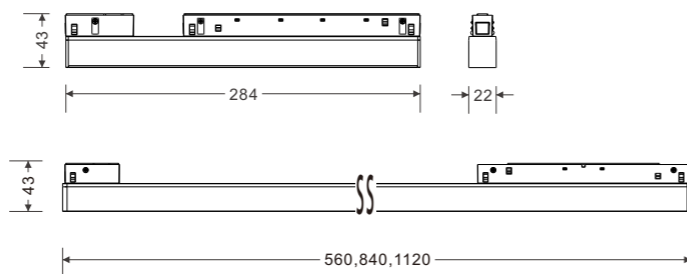


**Order Options**

**LX26-AL-A-560-26W**

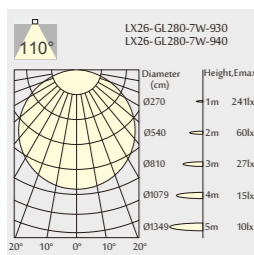
Code	System LM	System W	Input Voltage	CRI	CCT	Beam
LX26-AL-A-560-26W-930-20	2200Lm	26W	DC48V	90	3000K	20°
LX26-AL-A-560-26W-940-20	2400Lm	26W	DC48V	90	4000K	20°
LX26-AL-A-560-26W-930-35	2200Lm	26W	DC48V	90	3000K	35°
LX26-AL-A-560-26W-940-35	2400Lm	26W	DC48V	90	4000K	35°

LX26-GL Module



Module distribution for 3000K

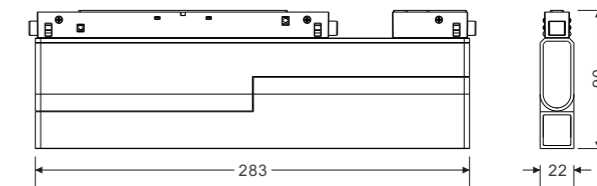
7W 400lm-450lm



Order Options

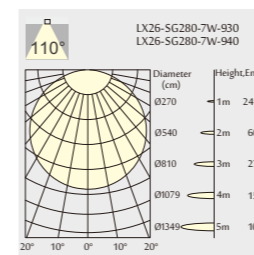
LX26-GL280-7W						
Code	System LM	System W	Input Voltage	CRI	CCT	Beam
LX26-GL280-7W-930-110	400Lm	7W	DC48V	90	3000K	110°
LX26-GL280-7W-940-110	450Lm				4000K	
LX26-GL560-13W						
LX26-GL560-13W-930-110	800Lm	13W	DC48V	90	3000K	110°
LX26-GL560-13W-940-110	850Lm				4000K	
LX26-GL840-19W						
LX26-GL840-19W-930-110	1200Lm	19W	DC48V	90	3000K	110°
LX26-GL840-19W-940-110	1300Lm				4000K	
LX26-GL1120-26W						
LX26-GL1120-26W-930-110	1600Lm	26W	DC48V	90	3000K	110°
LX26-GL1120-26W-940-110	1700Lm				4000K	

LX26-SG280-7W Module



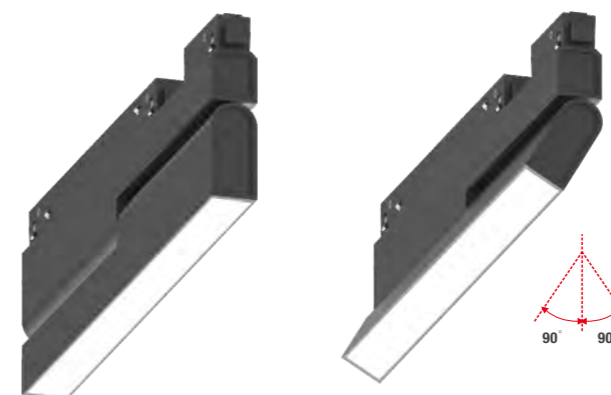
Module distribution for 3000K

7W 400lm-450lm

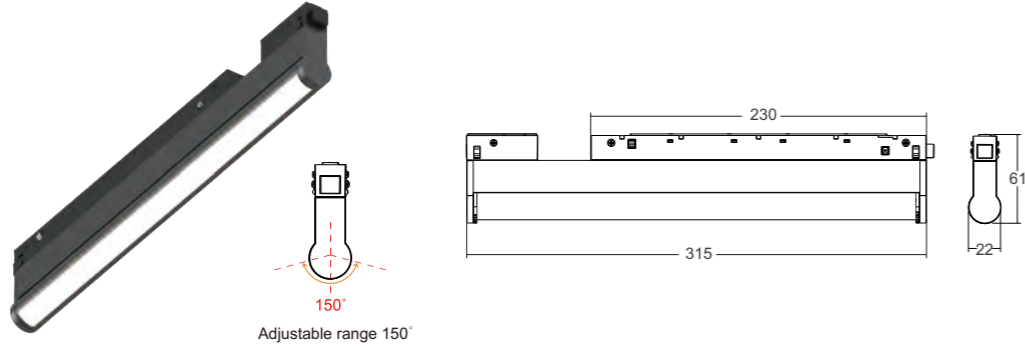


Order Options

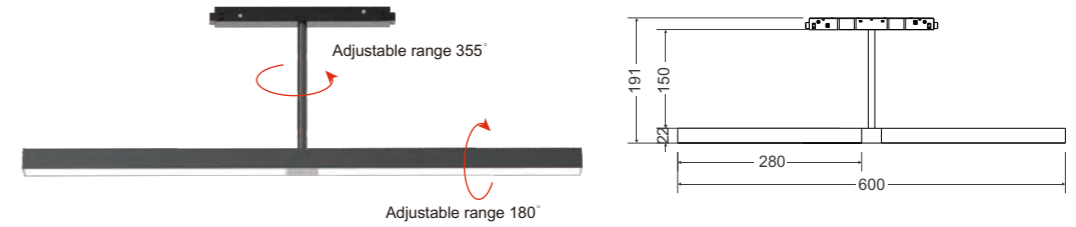
LX26-SG280-7W						
Code	System LM	System W	Input Voltage	CRI	CCT	Beam
LX26-SG280-7W-940-110	400Lm	7W	DC48V	90	3000K	110°
LX26-SG280-7W-940-110	450Lm				4000K	



**LX26-Stella315-8W Module**

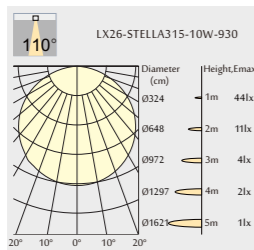


**LX26-LENA600-GL-13W Module**



**Module distribution for 3000K**

10W 520lm



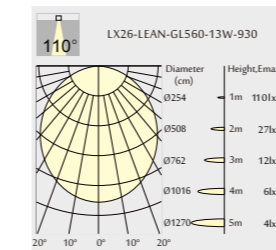
Order Options

**LX26-Stella315-10W**

Code	System LM	System W	Input Voltage	CRI	CCT	Beam
LX26-Stella315-10W-930-120	500Lm	10W	DC48V	90	3000K	120°
LX26-Stella315-10W-940-120	550Lm				4000K	120°

**Module distribution for 3000K**

13W 800lm



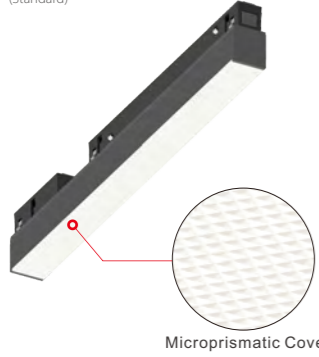
Order Options

**LX26-LENA600-GL-13W**

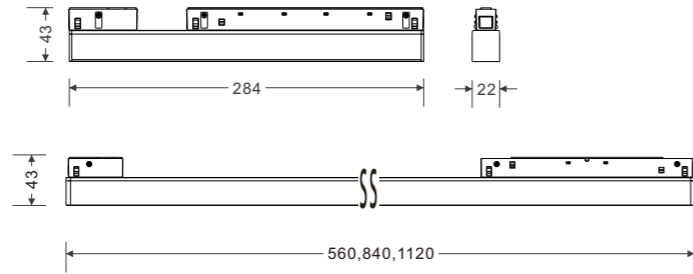
Code	System LM	System W	Input Voltage	CRI	CCT	Beam
LX26-LENA600-GL-13W-930-110	800Lm	13W	DC48V	90	3000K	110°
LX26-LENA600-GL-13W-940-110	900Lm				4000K	110°

**LX26-CL Module**

3000K (Standard) | CE | CB | IP20 | 65°

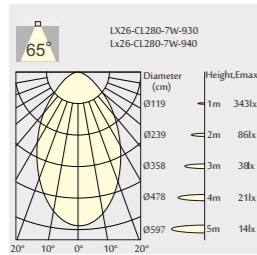


Microprismatic Cover



**Module distribution for 3000K**

7W 380lm-420lm

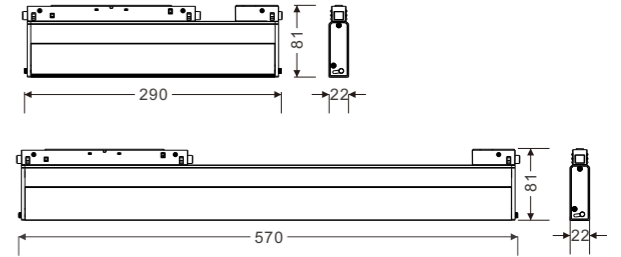


**Order Options**

LX26-CL280-7W						
Code	System LM	System W	Input Voltage	CRI	CCT	Beam
LX26-CL280-7W-930-65	380Lm	7W	DC48V	90	3000K	65°
LX26-CL280-7W-940-65	420Lm	7W	DC48V	90	4000K	65°
LX26-CL560-13W						
LX26-CL560-13W-930-65	750Lm	13W	DC48V	90	3000K	65°
LX26-CL560-13W-940-65	800Lm	13W	DC48V	90	4000K	65°
LX26-CL840-19W						
LX26-CL840-19W-930-65	1100Lm	19W	DC48V	90	3000K	65°
LX26-CL840-19W-940-65	1200Lm	19W	DC48V	90	4000K	65°
LX26-CL1120-26W						
LX26-CL1120-26W-930-65	1500Lm	26W	DC48V	90	3000K	65°
LX26-CL1120-26W-940-65	1600Lm	26W	DC48V	90	4000K	65°

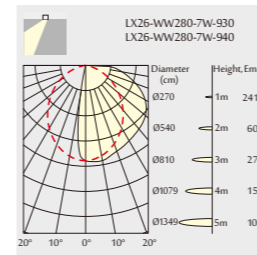
**LX26-WW Module**

3000K (Standard) | CE | CB | IP20



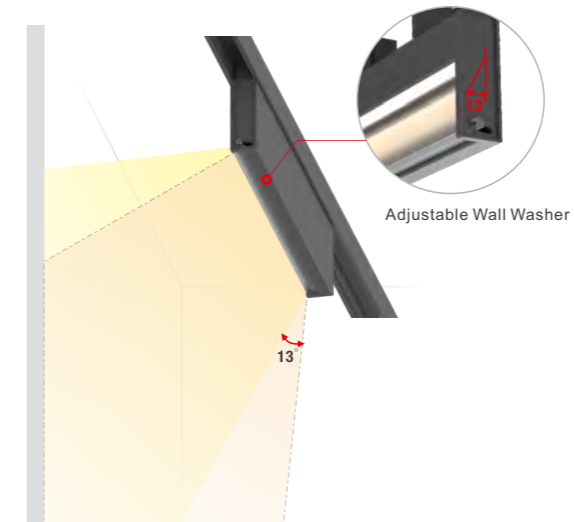
**Module distribution for 3000K**

7W 350lm-380lm

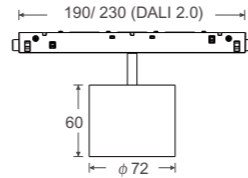


**Order Options**

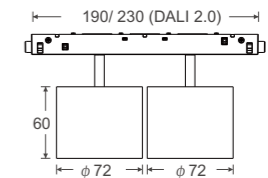
LX26-WW280-7W						
Code	System LM	System W	Input Voltage	CRI	CCT	Beam
LX26-WW280-7W-930	350Lm	7W	DC48V	90	3000K	Wall Washer
LX26-WW280-7W-940	380Lm	7W	DC48V	90	4000K	Wall Washer
LX26-WW560-13W						
LX26-WW560-13W-930	700Lm	13W	DC48V	90	3000K	Wall Washer
LX26-WW560-13W-940	750Lm	13W	DC48V	90	4000K	Wall Washer



**LX26-WRD72-10W Module**

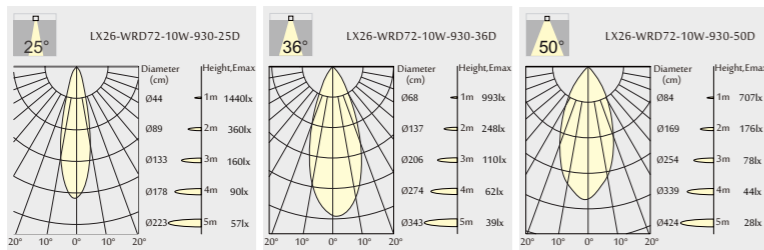


**LX26-WRD72-T2-20W Module**



**Module distribution for 3000K**

**10W** 600lm-800lm



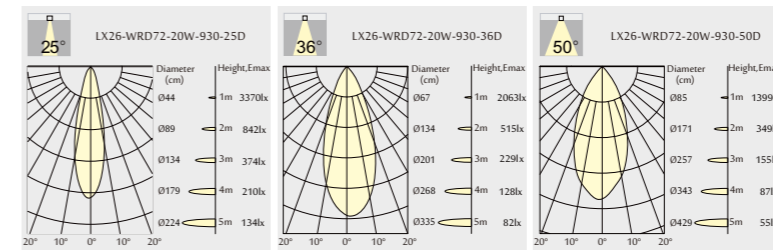
**Order Options**

**LX26-WRD72-10W**

Code	System LM	System W	Input Voltage	CRI	CCT	Beam
LX26-WRD72-10W-930-25	700Lm				3000K	25°
LX26-WRD72-10W-940-25	750Lm	10W	DC48V	90	4000K	25°
LX26-WRD72-10W-930-36	750Lm				3000K	36°
LX26-WRD72-10W-940-36	800Lm	10W	DC48V	90	4000K	36°
LX26-WRD72-10W-930-50	750Lm				3000K	50°
LX26-WRD72-10W-940-50	800Lm	10W	DC48V	90	4000K	50°

**Module distribution for 3000K**

**20W** 1400lm-1500lm



**Order Options**

**LX26-WRD72-T2-20W**

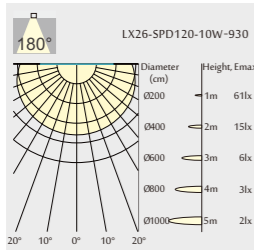
Code	System LM	System W	Input Voltage	CRI	CCT	Beam
LX26-WRD72-T2-20W-930-25	1400Lm				3000K	25°
LX26-WRD72-T2-20W-940-25	1500Lm	20W	DC48V	90	4000K	25°
LX26-WRD72-T2-20W-930-36	1500Lm				3000K	36°
LX26-WRD72-T2-20W-940-36	1600Lm	20W	DC48V	90	4000K	36°
LX26-WRD72-T2-20W-930-50	1500Lm				3000K	50°
LX26-WRD72-T2-20W-940-50	1600Lm	20W	DC48V	90	4000K	50°

**LX26-SPD120-10W Module**



**Module distribution for 3000K**

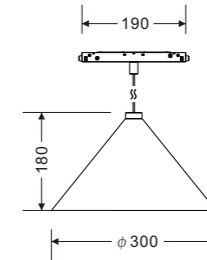
10W 600lm-700lm



Order Options

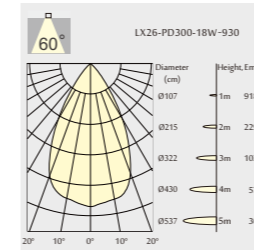
LX26-SPD120-10W						
Code	System LM	System W	Input Voltage	CRI	CCT	Beam
LX26-SPD120-10W-940-180	650Lm	10W	DC48V	90	3000K	180°
LX26-SPD120-10W-940-180	700Lm				4000K	

**LX26-PD300-18W Module**



**Module distribution for 3000K**

18W 1200lm



Order Options

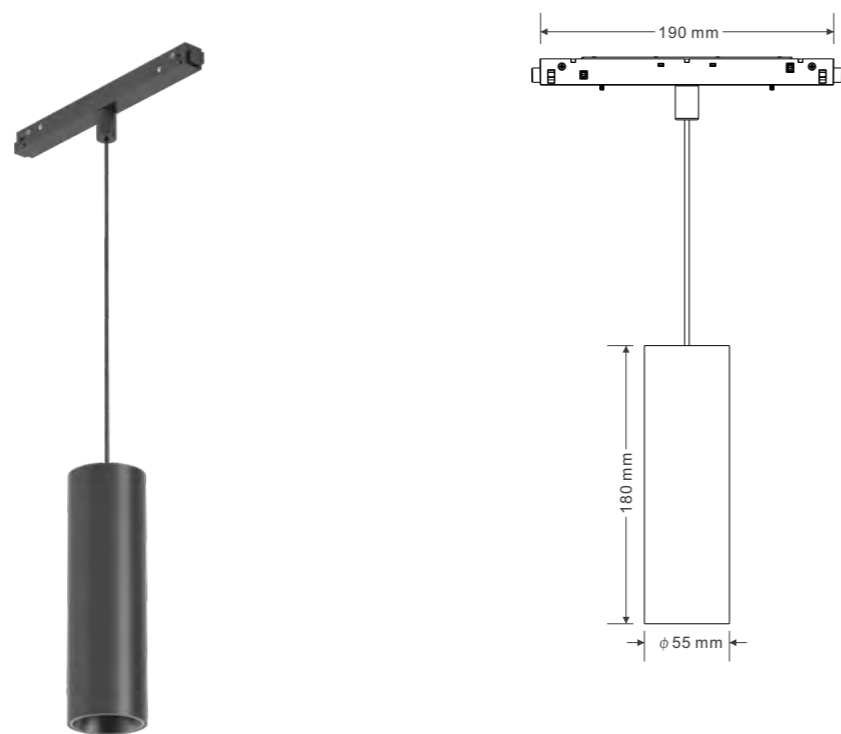
LX26-PD300-B-18W						
Code	System LM	System W	Input Voltage	CRI	CCT	Beam
Lx26 -PD300-B-18W-930-60	1100Lm	18W	DC48V	90	3000K	60°
LX26 -PD300-B-18W-940-60	1200Lm				4000K	60°

LX26-PD300-W-18W						
Code	System LM	System W	Input Voltage	CRI	CCT	Beam
LX26 -PD300-W-18W-930-60	1100Lm	18W	DC48V	90	3000K	60°
LX26 -PD300-W-18W-940-60	1200Lm				4000K	60°

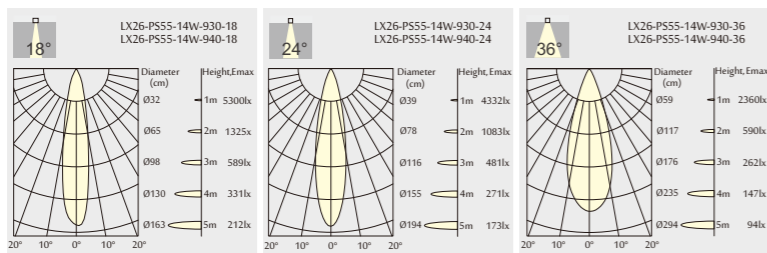


**LX26-PS55-14W Module**



**Module distribution for 3000K**

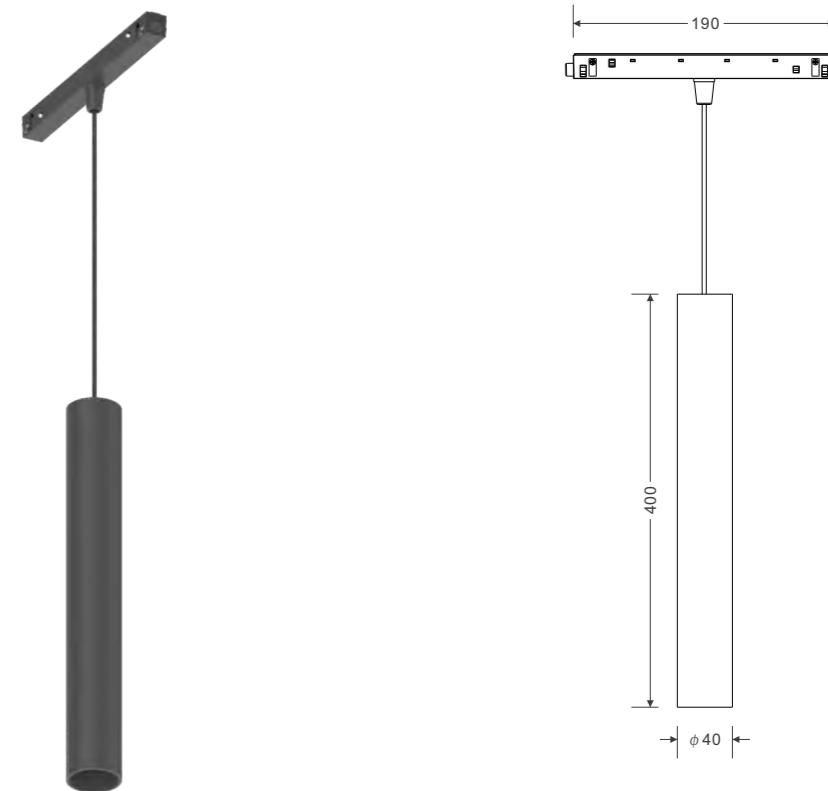
**14W** 950lm-1000lm



**Order Options**

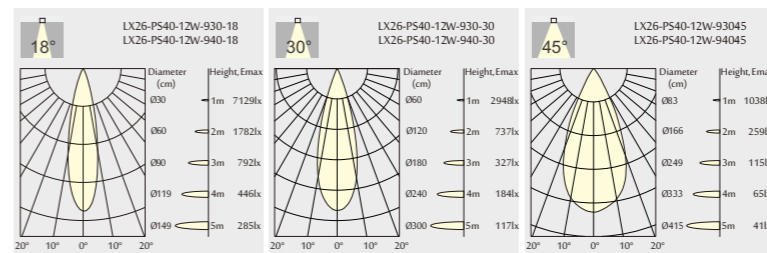
LX26-PS55-14W						
Code	System LM	System W	Input Voltage	CRI	CCT	Beam
LX26-PS55-14W-930-18	950Lm	14W	DC48V	90	3000K	18°
LX26-PS55-14W-940-18	1000Lm	14W	DC48V	90	4000K	18°
LX26-PS55-14W-930-24	950Lm	14W	DC48V	90	3000K	24°
LX26-PS55-14W-940-24	1000Lm	14W	DC48V	90	4000K	24°
LX26-PS55-14W-930-36	950Lm	14W	DC48V	90	3000K	36°
LX26-PS55-14W-940-36	1000Lm	14W	DC48V	90	4000K	36°

**LX26-PS40-12W Module**



**Module distribution for 3000K**

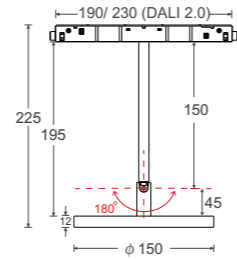
**12W** 600lm-800lm



**Order Options**

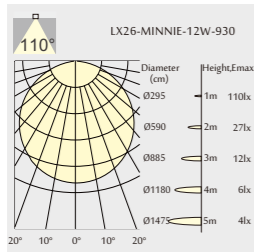
LX26-PS40-12W						
Code	System LM	System W	Input Voltage	CRI	CCT	Beam
LX26-PS40-12W-930-18	750Lm	12W	DC48V	90	3000K	18°
LX26-PS40-12W-940-18	800Lm	12W	DC48V	90	4000K	18°
LX26-PS40-12W-930-30	750Lm	12W	DC48V	90	3000K	30°
LX26-PS40-12W-940-30	800Lm	12W	DC48V	90	4000K	30°
LX26-PS40-12W-930-45	600Lm	12W	DC48V	90	3000K	45°
LX26-PS40-12W-940-45	650Lm	12W	DC48V	90	4000K	45°

LX26-MINNIE150GL-12W Module



Module distribution for 3000K

12W 1050lm



Order Options

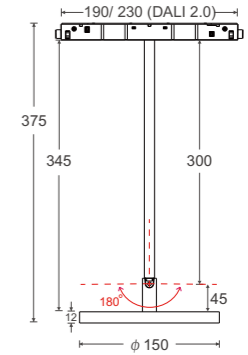
LX26-MINNIE150GL-12W

Code	System LM	System W	Input Voltage	CRI	CCT	Beam
LX26-MINNIE150GL-150-12W-940-110	750Lm				3000K	
LX26-MINNIE150GL-150-12W-940-110	800Lm				4000K	
LX26-MINNIE150GL-300-12W-930-110	750Lm	12W	DC48V	90	3000K	110°
LX26-MINNIE150GL-300-12W-940-110	800Lm				4000K	

LX26-MINNIE150CL Module

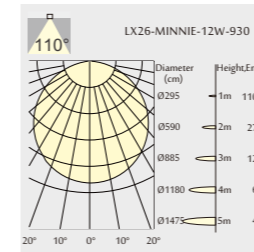


Microprism Cover



Module distribution for 3000K

12W 1050lm

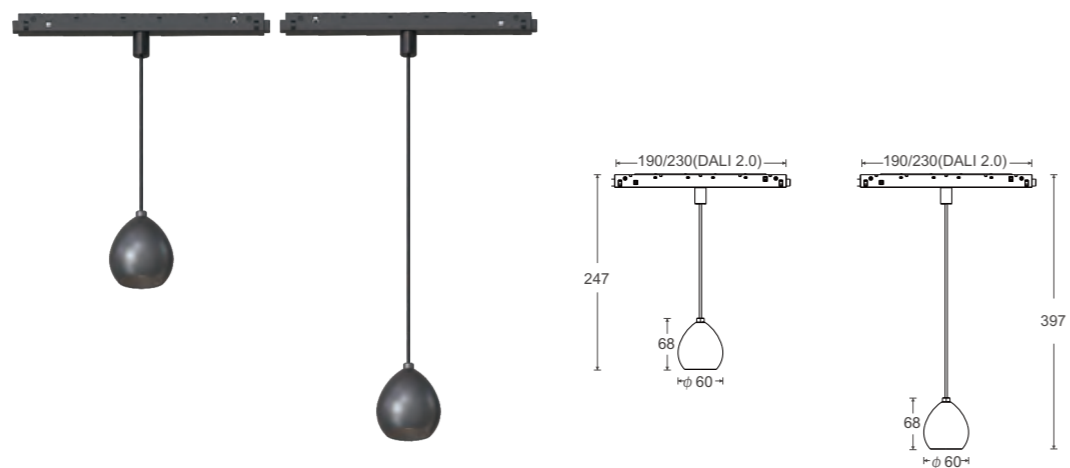


Order Options

LX26-MINNIE150CL-12W

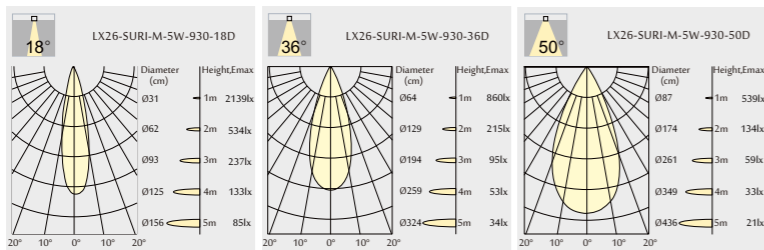
Code	System LM	System W	Input Voltage	CRI	CCT	Beam
LX26-MINNIE150CL-150-12W-930-100	750Lm				3000K	
LX26-MINNIE150CL-150-12W-940-100	800Lm				4000K	
LX26-MINNIE150CL-300-12W-930-100	750Lm	12W	DC48V	90	3000K	100°
LX26-MINNIE150CL-300-12W-940-100	800Lm				4000K	

LX26-MINNIE150GL-12W Module



Module distribution for 3000K

5W 500lm



Order Options

LX26-SURI60-5W						
Code	System LM	System W	Input Voltage	CRI	CCT	Beam
LX26-SURI60-5W-930-18	500Lm	5W	DC48V	90	3000K	18°
LX26-SURI60-5W-940-18	550Lm	5W	DC48V	90	4000K	18°
LX26-SURI60-5W-930-24	500Lm	5W	DC48V	90	3000K	24°
LX26-SURI60-5W-940-24	550Lm	5W	DC48V	90	4000K	24°
LX26-SURI60-5W-930-36	500Lm	5W	DC48V	90	3000K	36°
LX26-SURI60-5W-940-36	550Lm	5W	DC48V	90	4000K	36°
LX26-SURI60-5W-930-50	500Lm	5W	DC48V	90	3000K	50°
LX26-SURI60-5W-940-50	550Lm	5W	DC48V	90	4000K	50°



LineX 26