



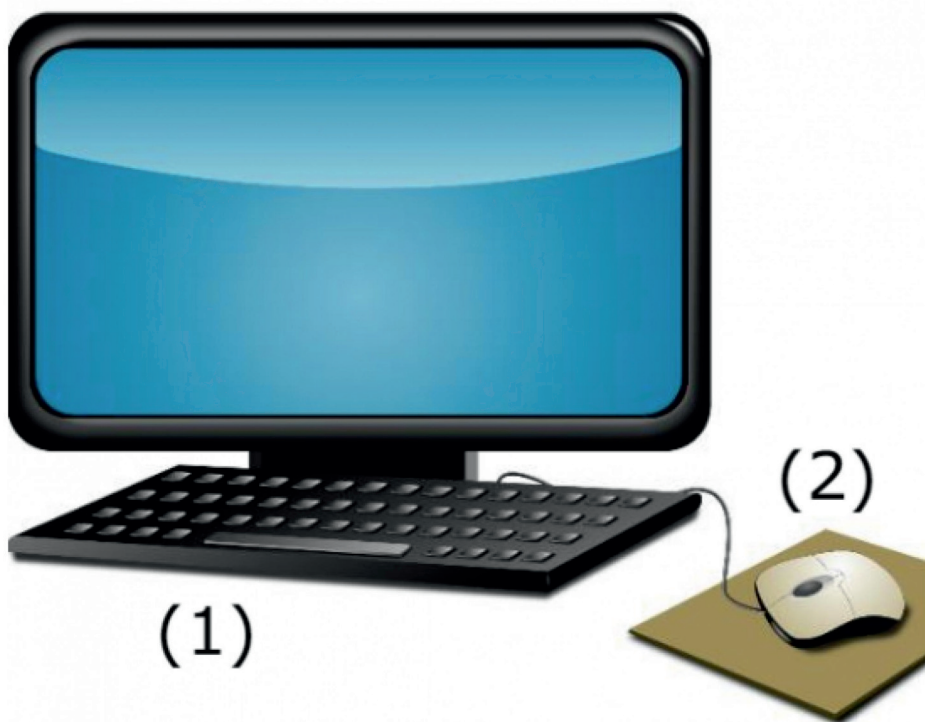
Kompro e sebetsa ka tlhahisoleseding e bitswang 'pokello ya dintlha'.

Pokello ya dintlha e kaba ka mokgwa wa ditlhaku, dinomoro le medumo.



Ha o kenya tlhahisoleseding komporong, o kenya pokello ya dintlha.

Ho thaepa hodima khiboto ya komporo ke tsela enngwe ya ho kenya pokello ya dintlha.



Re sebedisa disebediswa tse latelang ho kenya pokello ya dintlha komporong:

Khiboto (1)

Maose (2)



Re sebadisa disebediswa tse latelang ho kenya pokello ya dintlha ka mokgwa wa medumo le ditshwantsho:

Maekrofounu (3)

Senkadinepe (4)



Hape re fumana pokello ya dintlha komporong.

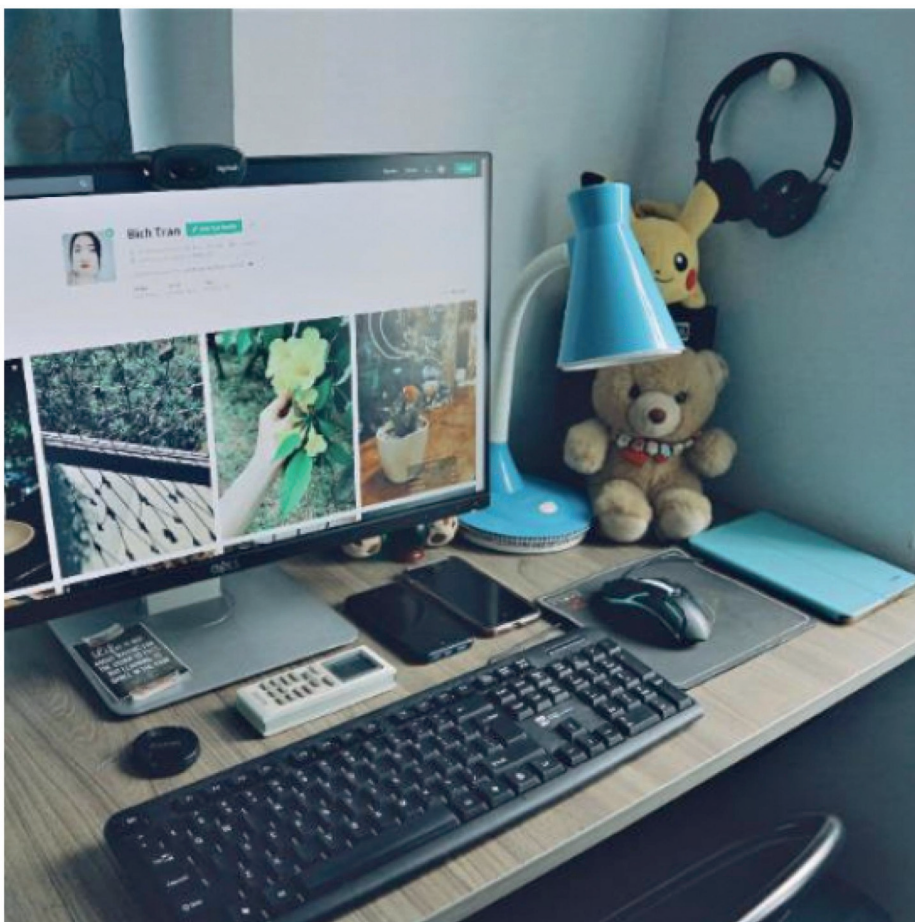
Pokello ya dintlha yeo re e fumanang komporong e bitswa tlhaiso.

Sebuelahole (5) le sekerini (6) di refa tlhaiso.



Sekerini (6) se re fa tlhaiso ka ditshwantsho, ditlhaku, le dinomoro.

Sebuela hole le difounu tsa ditsebe (7) di fana ka tlhaiso ka mokgwa wa medumo.



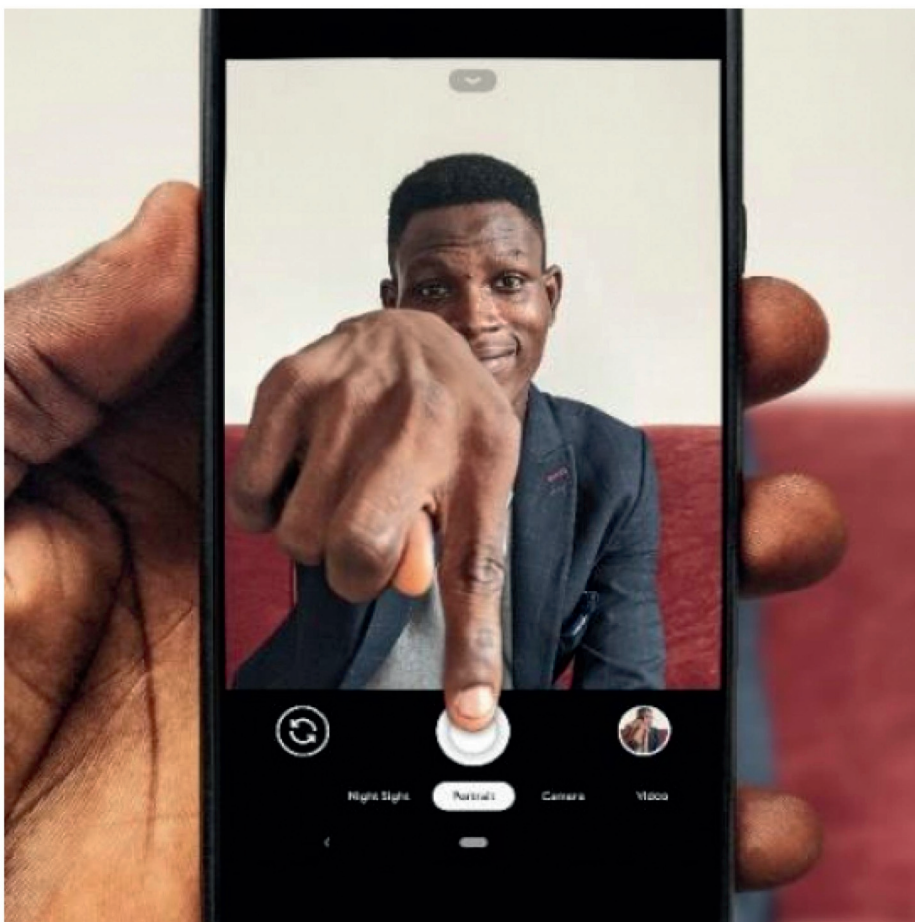
Hatewere ke dikarolo tse bonahalang tsa komporo. Ke dikarolo tse tshwarehang.

Sekerini, khiboto, dibuelahodimo, maose, dibuelahole, le difounu tsa hlooho kaofela ke hatewere.



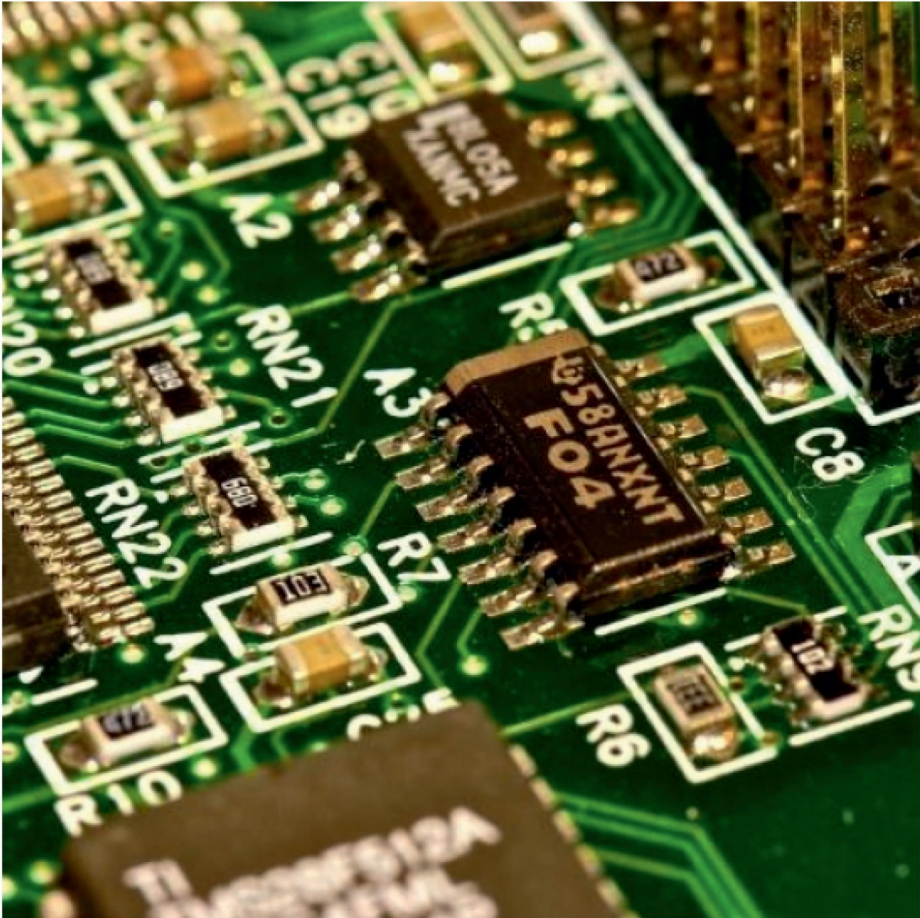
Komporo e hloka software hore re kgone ho e sebedisa.  
Software e fana ka ditaelo komporong hore e kgone ho  
sebeta ka pokello ya dintlha tse fapaneng.





Diprograma le tshebediso ke mekgwa ya softwewere.

Mohlala, o hloka tshebediso ya senkadinepe sematefounung ho nka dinepe le dividio.



Ha o sheba ka hara komporo, o tla bona dikarolwana tse nyane tse bitswang maqhetswana.

Maqhetswana a komporo a tsamaisa tlhaisoleseding hore komporo e sebetse.



## —Dipotso

1. Tlhaisoleseding komporong e bitswang?
2. Khiboto le maose ke disebediswa tsa ...
3. Pokello ya dintlha e fumanwang komporong e bitswang?
4. Fana ka mehlala e mmedi ya hatewere.
5. Softewere ke eng?



---

Buka ena ke ya bobedi letotong la tse nne tse lelekelang dihlooho theknolojing ya komporo.

Buka e qapetswe projeke ya 2021 ya Zenex Ulwazi Lwethu ya dibuka tse balwang.