

01 fixLink® Cabling System

Table of Contents

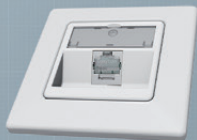
Modules	Page
• fixLink® SL RJ45 Keystone module Cat. 6 _A ISO/IEC shielded	4
• fixLink® SL RJ45 Keystone module angled, Cat. 6 _A ISO/IEC shielded	5
• fixLink® Extender Cat.6 _A ISO/IEC shielded	6
• fixLink® Tools and Accessories	7
Data Outlets	
• Data Outlet SL single, double, triple	8
• Designable Data Outlet SL single, double	9
• Data Outlet, Double, Straight Exit	10
• Cover Plates, Surface-Mounted Housing	10
• Surface-Mount Housing Set, Lockable, IP44, Double	11
Carrier Rail Adapter	
• Carrier Rail Module Housing and Adapter Set	12
Floor Tank	
• OBO/Ackermann Floor Tank Systems GB2, GB3	14
• OBO/Ackermann Floor Tank Systems, Inserts	15
Panels	
• 19" 1U for 24 Keystone Modules, Straight Exit	16
• 19" 0.5U for 24 Keystone Modules, Straight Exit	17
• 19" 1U for 24 Keystone Modules, Angled Exit Left and Right	18
• 19" 1U for 24 Keystone Modules, Angled Exit Left or Right	19
Component Racks	
• 19" 3U Module Rack (MR)	20
• 19" 1U Module Rack (MR)	21
• 14HP 3U Side Module Rack (S-CR)	22
• Slot Module for CR and S-CR	23
Consolidation Point Panel	
• Subfloor Consolidation Point Panel	24
• Desk Consolidation Point Panel	25
Trunk Cable	
• fixLink® CT/BC Distribution System	26
• fixLink® CT/MC Distribution System	27
• fixLink® CT/CC Distribution System	28
Other	
• Routing Panel with 5 clamps (plastic or stainless steel)	30
• Keystone F-Coupling (coax), Keystone Empty Module (SC-S, LC-D)	31



fixLink[®] SL Keystone Cat. 6_A ISO/IEC
CKFAK001 (Solid Version)
CKFAKFL1 (Flex Version)

fixlink[®] SL Key...
CKWA...
CKW...

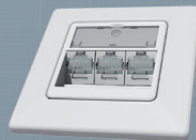
Data outlets SL



Single
CKVDUSL1R

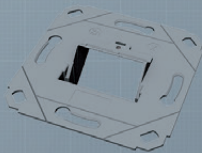


Double
CKVDUSL2R

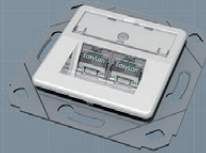


Triple
CKVDUSL3R

Designable data outlets

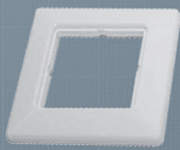


Double without cover plate
CKVD1DS

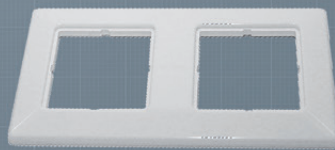


Double with cover plate
CKVD1D1

Cover plates for data outlets



Single
ADZ00102

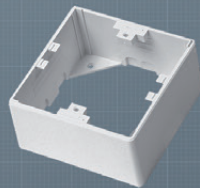


Double
ADZ00103

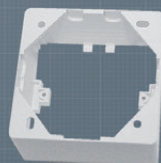
Surface mount data outlets



Double
CKVDU292

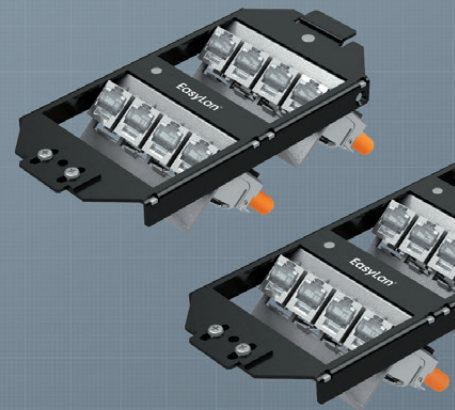


Surface mount housing
CKVDAP90



Depth extender 10 mm
CKVDDR90

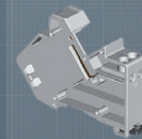
Underfloor



OBO carrier plate GB2
ABG00011

OBO carrier
ABG00...

Carrier Rail modular housing



for distributor cabinets
with circuit breaker
covers
CKVHMOD



for distributor cabinets
without circuit breaker
covers
CKVHECOMOD



lateral cover
CKVHECOSTL

Consolidation



4-fold
CKVPL0041E



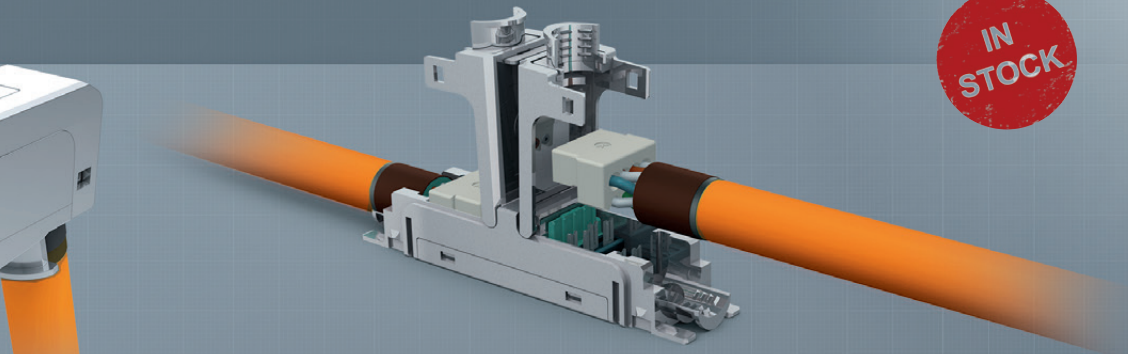
6-fold
CKVPL0061E



8-fold
CKVPL0081E

System

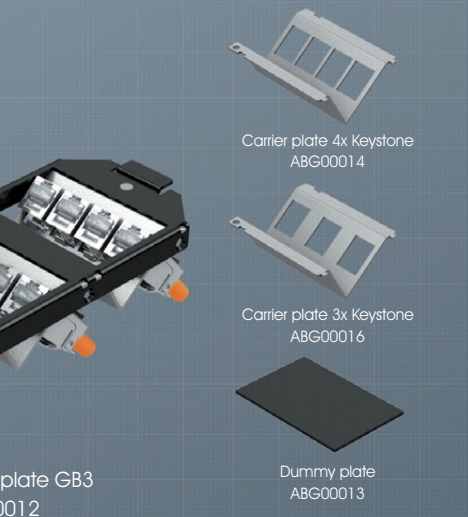
IN STOCK



Keystone Cat. 6_A ISO/IEC angled
 AK007 (Solid Version)
 AKFL7 (Flex Version)

fixlink® Extender Cat. 6_A ISO/IEC
 CKEFFL00 (Solid Version)
 CKEFFLFL (Flex Version)

Systems



Carrier plate 4x Keystone
 ABG00014

Carrier plate 3x Keystone
 ABG00016

Dummy plate
 ABG00013

Carrier plate GB3
 ABG00012

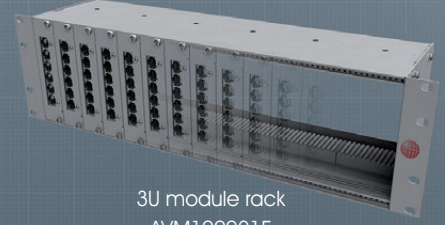
Module Rack (BGT)



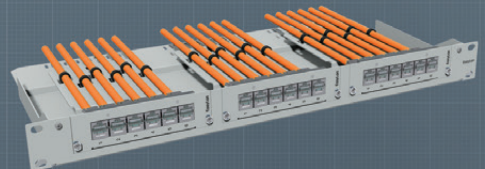
Slot module for module rack
 CVE000001E



Side modul rack
 AVMS10001E

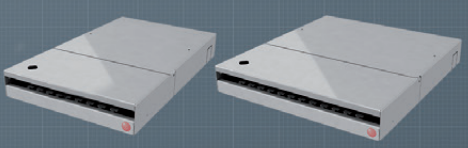


3U module rack
 AVM100021E



1U module rack
 AVM113001E

Modular consolidation point panels



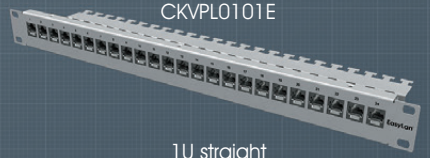
10" modular for 12x Keystone
 CPPF01KS1E

19" modular for 24x Keystone
 CPPF09KS1E

Panels



1U straight
 48x RJ45 preLink® RZ
 CKVPL0101E

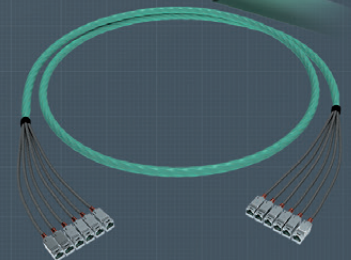
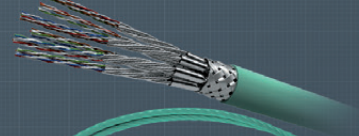


1U straight
 CKVPL0101E



1U angled outlet
 CKVPL0W01E

Accessoires



point panels



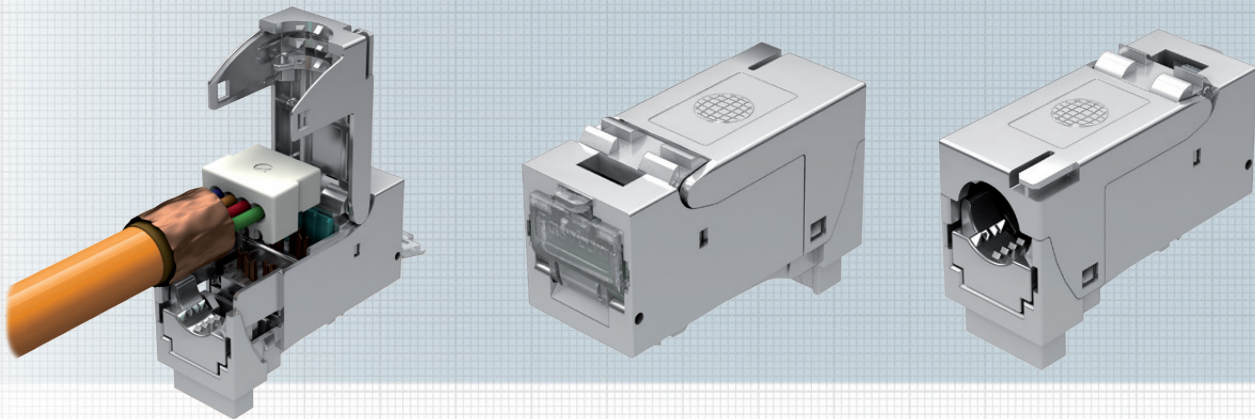
8-fold
 CKVPL0081E

12-fold
 CKVPL0121E

fixLink®-System
 Cu

fixLink® SL RJ45 Keystone Module shielded Cat. 6_A (ISO/IEC)

IN STOCK



With the fixLink® SL RJ45 Keystone module, the user receives a top-quality RJ45 socket module. The fixLink® SL RJ45 Keystone module can be assembled in under a minute using a side cutter. The freely accessible contact zone ensures perfect assembly quality and the associated guaranteed transmission performance. 360° shield connectivity only requires the integrated cover to be clicked into place, eliminating time-consuming attachment of a cable tie. The special contact geometry, in connection with 50 μ" gold plating ensures PoE+ per IEEE 80.3at under all conditions. The housing material consists of nickel-plated die-cast zinc and consequently meets the highest mechanical and environmental requirements. Use with the multi-design module holder permits combination with all switch product ranges. Various certifications (current list: www.easylan.de) from independent test laboratories round out the highest quality demands of the fixLink® SL Keystone module. The fixLink® SL Keystone modules are delivered in an environmentally friendly cardboard box.

Connector norm: IEC 60603-7-51

Mechanical Properties:

Mating cycles	≥ 750
Housing material	nickel-plated die-cast zinc
Gold plating in contact area	50 μ"
Contacting	AWG 27-22
Cable diameter	5-9 mm

Environmental requirements:

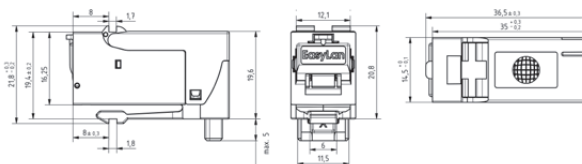
Connection class	IP 20
Temperature range	-40 °C to +70 °C

Electrical properties:

Contact resistance	≤ 20 mΩ
Insulation resistance between contacts	≥ 500 MΩ
Dielectric withstanding voltage contact – contact	1000 V DC/AC peak
Dielectric withstanding voltage contact – screen	1500 V DC/AC peak
Current-carrying capacity at 50° C	1.25 A
PoE+ acc. to IEEE 802.3at	PoE+

Transmission properties:

10 Gbit Class E _A	supported ISO/IEC 11801 AMD1 and AMD2, link length > 1 m
Cat. 6 _A GHMT	ISO/IEC 11801 AMD2 List at www.easylan.de



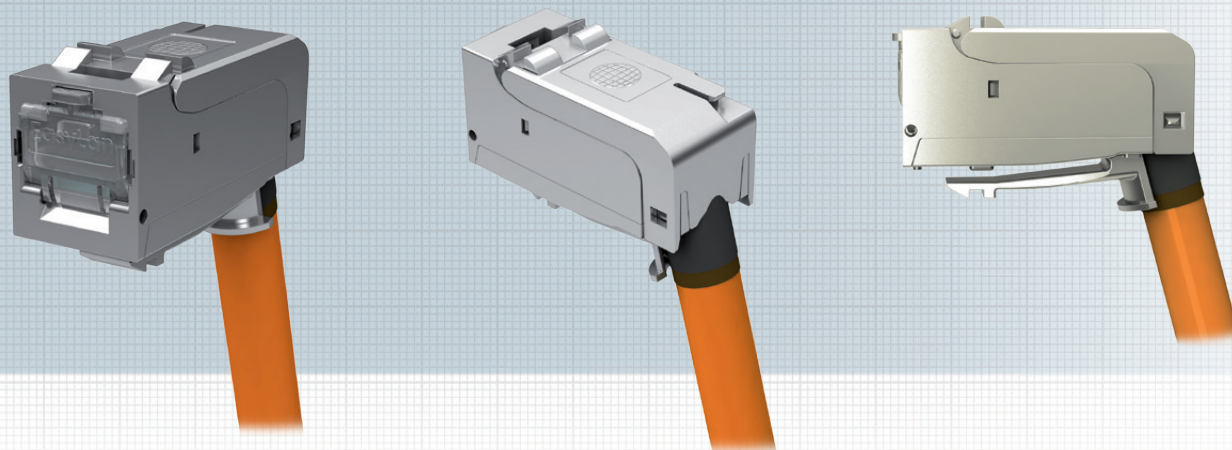
Description

Ordering Code

Description	Ordering Code	Ordering Code
fixLink® SL RJ45 Keystone Cat. 6 _A ISO/IEC for AWG 24-AWG 22	PU: 24 CKFAK001	PU: 1 CKFAK001EP
fixLink® SL RJ45 Keystone Cat. 6 _A ISO/IEC for AWG 27-AWG 26	CKFAKFL1	CKFAKFL1EP

fixLink® SL RJ45 Keystone Module shielded Cat. 6_A (ISO/IEC) angled

IN STOCK



With the fixLink® SL RJ45 Keystone module, the user receives a top-quality RJ45 socket module specially developed for applications with space constraints. The 75° cable exit makes the module especially suitable for use in data outlets and cable installation in cavities. The minimal 27mm installation depth permits a virtually unlimited variety of applications. The fixLink® SL RJ45 Keystone module can be assembled in under a minute using a side cutter. The freely accessible contact zone ensures perfect assembly quality and the associated transmission performance. 360° shield removal only requires the integrated cover to be clicked into place, eliminating time-consuming attachment of a cable tie. The special contact geometry, in connection with 50 μ" gold plating ensures PoE+ per IEEE 80.3at under all conditions. The housing material consists of nickel-plated die-cast zinc and consequently meet the highest mechanical and environmental requirements. Use with the multi-design module holder permits combination with all switch ranges. Various certifications (current list: www.easylan.de) from independent test laboratories round out the highest quality demands of the fixLink® SL Keystone module. The fixLink® SL Keystone modules are delivered in an environmentally friendly cardboard box.

Connector standard: IEC 60603-7-51

Mechanical Properties:

Mating cycles ≥ 750
Housing material nickel-plated die-cast zinc
Gold plating in contact area 50 μ"

Contacting AWG 27-22
Cable diameter 5-9 mm

Environmental requirements:

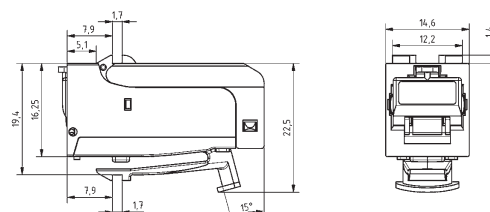
Connection class IP 20
Temperature range -40° C to +70° C

Electrical properties:

Contact resistance ≤ 20 mΩ
Insulation resistance between contacts ≥ 500 MΩ
Dielectric withstanding voltage contact – contact 1000 V DC/AC peak
Dielectric withstanding voltage contact – screen 1500 V DC/AC peak
Current-carrying capacity at 50° C 1.25 A
PoE+ acc. to IEEE 802.3at PoE+

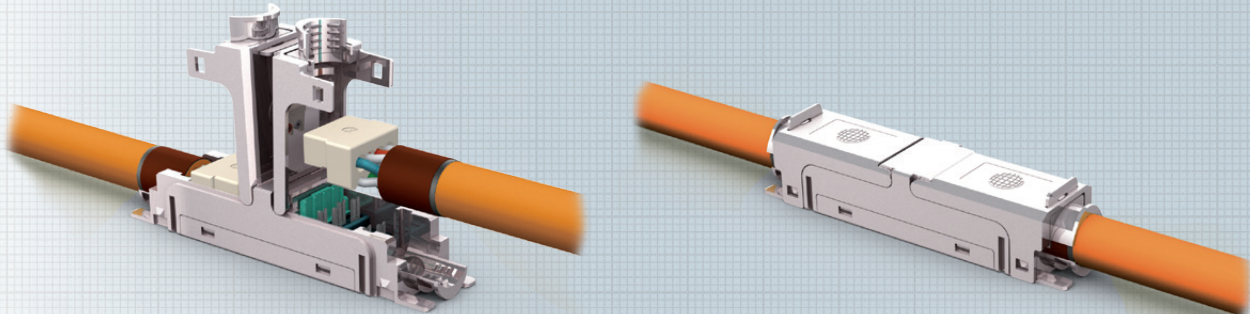
Transmission properties:

10 Gbit Class E_A supported
ISO/IEC 11801 AMD1 and AMD2, link length > 1 m
Cat. 6_A ISO/IEC 11801 AMD2
GHMT List at www.easylan.de



Description	Ordering Code	
fixLink® SL RJ45 Keystone Cat. 6 _A ISO/IEC for AWG 24-AWG 22, angled	PU: 24 CKWAK007	PU: 1 CKWAK007EP
fixLink® SL RJ45 Keystone Cat. 6 _A ISO/IEC for AWG 27-AWG 26, angled	CKWAKFL7	CKWAKFL7EP

fixLink® Extender Cat. 6_A (ISO/IEC) shielded



The fixLink® Extender enables cables to be extended with minimal effort. In addition, unused cables can be reactivated and extended to the next required connection. This results in optimal use of the tight space in the cable channel. The installer simply screws the extender onto the end of the installed cable in the channel or on the wall. Once installation has been completed, the extended cable can be used up to the maximum link length, even for 10 Gigabit Ethernet transmission, and supports PoE+ (Power over Ethernet).

Packaging unit: 1 piece in polybag

Standards:

IEEE 802.3; 10Base-T; 100Base-T; 1000Base-T; 1GBase-T; 10GBase-T; IEEE 802.5; 16 MB; ISDN; ATM, Telephone

Properties:

Installation dimension	
Housing material	nickel-plated die-cast zinc
Insulation components material	PC aqua
Gold plating in contact area	30 μm
Contacting	AWG 27-22, depending on fixLink® Extender
Cable diameter	5-9.5 mm
Assembly	Screwed connection
EMC	360° shielding
Electrical values	Cat. 6 _A and Class E _A for extended link
Length of link extension	link up to 90 m
	No additional cable rotation needed

Environmental requirements:

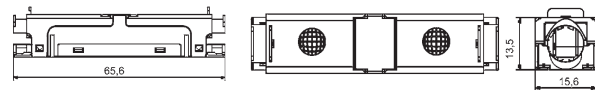
Connection class	IP 20
Temperature range	-40° C to +70° C

Electrical properties:

Contact resistance	≤ 20 mΩ
Insulation resistance between contacts	500 MΩ
Dielectric withstanding voltage contact – contact	1000 V DC/AC peak
Dielectric withstanding voltage contact – screen	≥ 1500 V DC/AC peak
Current-carrying capacity at 50° C	1.25 A
PoE+ acc. to IEEE 802.3at	PoE+

Transmission properties:

10 Gbit Cat. 6 _A	supported ISO/IEC 11801
-----------------------------	-------------------------



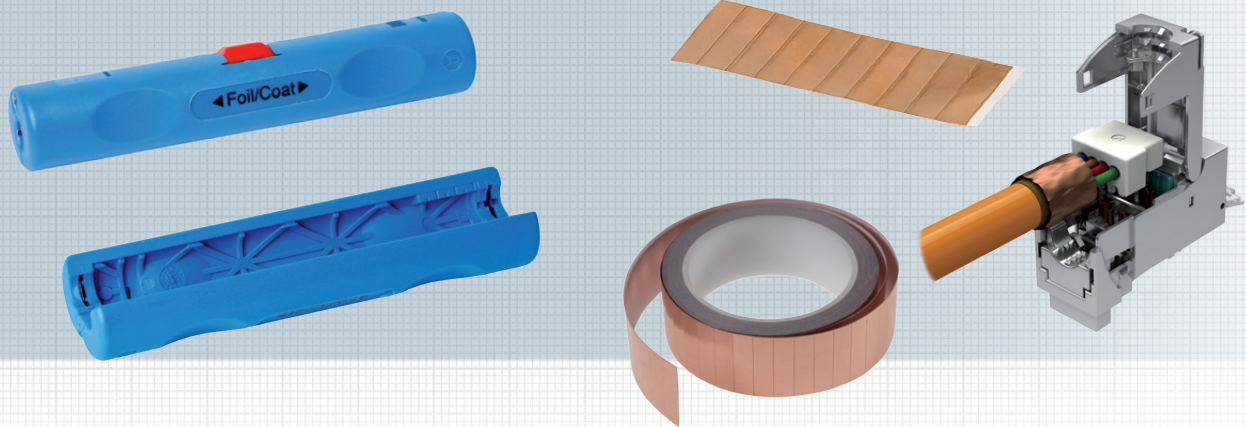
Description

Ordering Code

fixLink® Extender Cat. 6 _A ISO/IEC with 2 cable terminals for AWG 24-22	CKEFFL00
fixLink® Extender Cat. 6 _A ISO/IEC, with 1 cable terminal for AWG 24-22 and 1 terminal for AWG 27-26	CKEF00FL
fixLink® Extender Cat. 6 _A ISO/IEC with 2 cable terminals for AWG 27-26	CKEFFLFL

Tools and Accessories

IN STOCK



Stripping Tool for Mantle and Foil of Data Cable

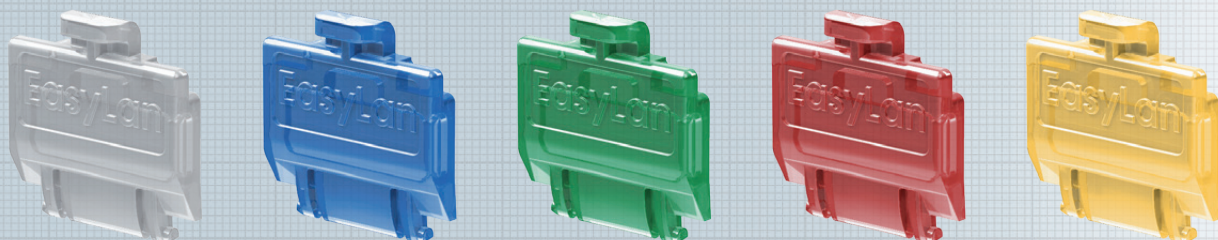
Stripping tool to remove mantle of any cable or to strip off metallic foil from any data cable. Color: Blue.

Packaging unit: 1 piece

Copper strip

Copper adhesive tape to affix mesh screen. Pre-cut to 35mm x 9mm.

Packaging unit: bag of 20 pcs.
roll with 1500 pcs.



Dust Protection Covers

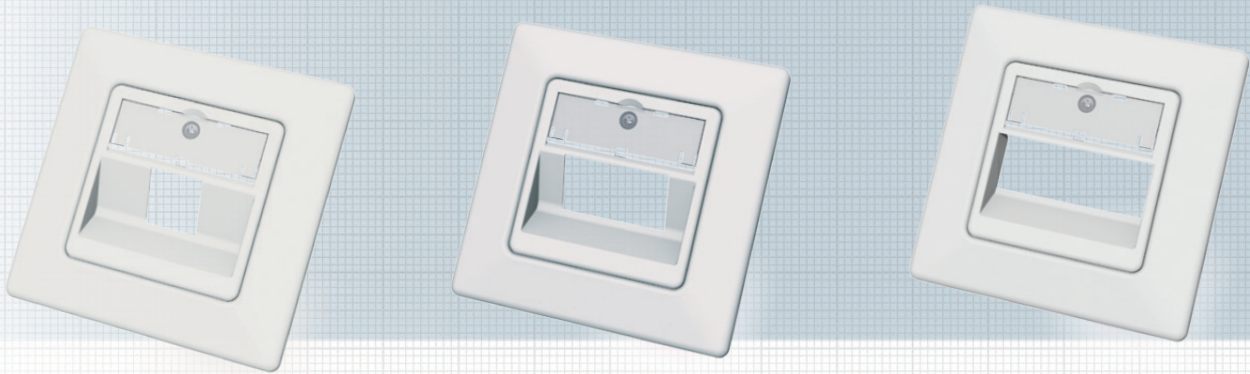
Colorful dust protection covers for preLink® SL and fixLink® SL Keystone module.

Packaging unit: 50 pieces/polybag

Description	Ordering Code
Stripping Tool	CZABIBL1
Copper strip, bag of 20	CZCUBT20
Copper strip, roll of 1,500	CZCUBR15

Description	Ordering Code
Dust Protection Covers	CKZMSKWS
Dust Protection Cover transparent blue	CKZMSKBL
Dust Protection Cover transparent green	CKZMSKGN
Dust Protection Cover transparent red	CKZMSKRD
Dust Protection Cover transparent yellow	CKZMSKYE

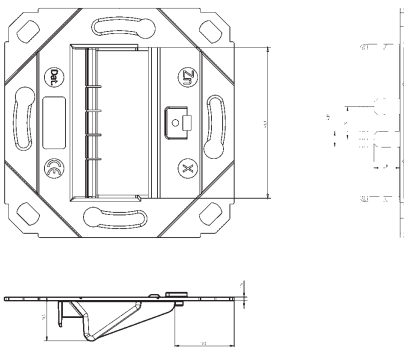
Data Outlet SL with Cover Plate and Frame 80x80mm Snap-in angle, single, double, triple



The SL data outlet are particularly suitable for installation in a cable channel (IC), for flush mounting (FM) and for surface mounting (SM). Breaking of two mounting tabs also makes floor tank assembly (FT) possible. The SL module holder can accommodate 1-3 EasyLan Keystones absolutely securely and permanently. The SL module holders feature a large, centered labeling window for easy identification. The central plate (50x50mm) and the frame (80x80mm) are made of UV-resistant and extremely shatterproof plastic. This ensures high color fidelity over the long term.

Properties:

Material	module holder: Die-cast zinc frame: Polymer
Color	white, similar to RAL 9010
Components	central plate 50 x 50 mm, frame 80 x 80 mm
Application	installation in cable conduit, flush or surface-mounted
Packaging unit:	5 pieces per box



Description

- Module holder, flush-mounted, single
- Module holder, flush-mounted, double
- Module holder, flush-mounted, triple

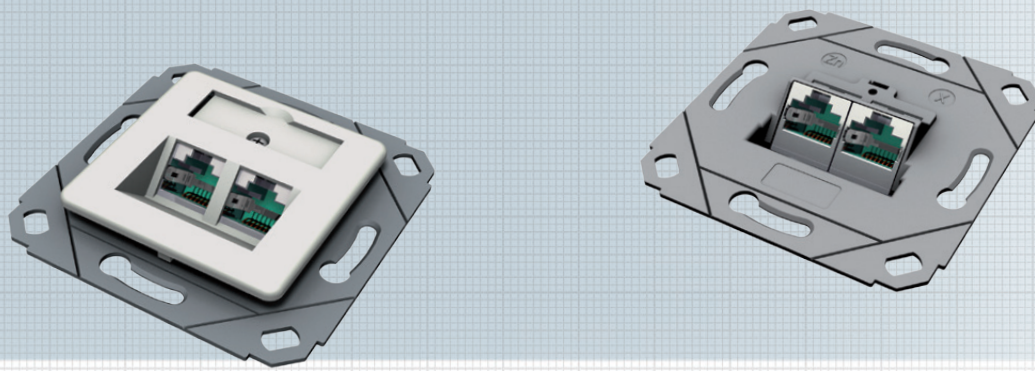
Ordering Code

- CKVDUSL1R
- CKVDUSL2R
- CKVDUSL3R

Designable Data Outlet SL with Cover Plate

Snap-in angle, single, double

IN STOCK



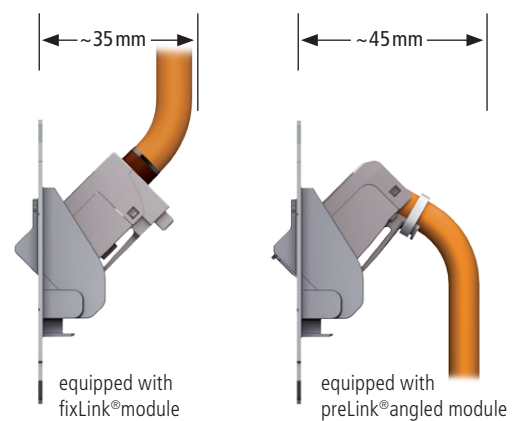
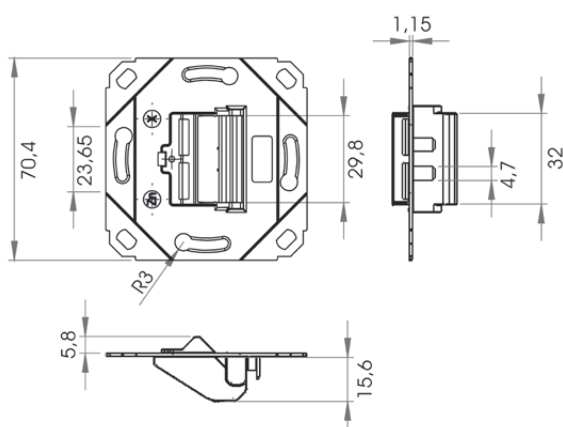
Keystone modules are not included!

The designable module holder is made of a die-cast zinc frame. It is suitable for installation in a cable channel (IC), for flush mounting (FM) as well as for surface mounting (SM) using a separate frame. Breaking of two mounting tabs also makes floor tank assembly (FT) possible. The multi-design data outlet can be combined with nearly all switch ranges on the market.

You can find a compatibility list at www.easylan.de.

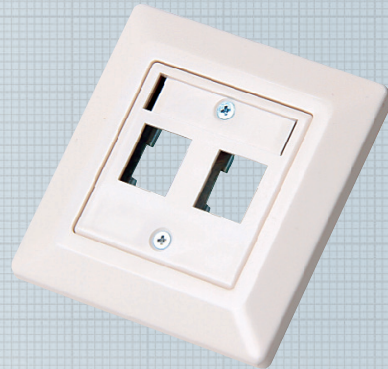
Properties:

Material	module holder: Die-cast zinc
Color cover plate	white, similar to RAL 9010
Components	central plate 50 x 50 mm, • preLink® SL • fixLink® SL
Range of application	Installation in cable duct, flush or surface mounting, can be combined with all VAE central plates from common switch manufacturers
Packaging unit:	5 pieces per box



Description	Ordering Code
Multi-design module holder (without cover plate), single, double	CKVD1DS
Multi-design module holder (with cover plate), single	CKVD1D2
Multi-design module holder (with cover plate), double	CKVD1D1

Data Outlet SL with Cover Plate and Frame 80x80mm Horizontal, Double



Data outlet, empty, straight exit, flush-mounted, double

The module holder with straight Keystone exit consists of a die-cast zinc frame and is suitable for installation in a cable channel (IC), for flush mounting (FM) as well as for surface mounting (SM) using a separate frame.

Properties:

Material	module holder: Die-cast zinc, frame: Polymer
Color	white, similar to RAL 9010
Components	central plate 50 x 50 mm, frame 80 x 80 mm, labeling area (also available as separate spare part)
Packaging unit	10 pieces per box

Cover Plates, Surface-Mounted Housing



Properties Cover Plate Single/Double:

Material	plastic
Color	white, similar to RAL 9010
Range of application	Cover plate for preLink®/fixLink® Module holder SL
Packaging unit:	5 pieces per box

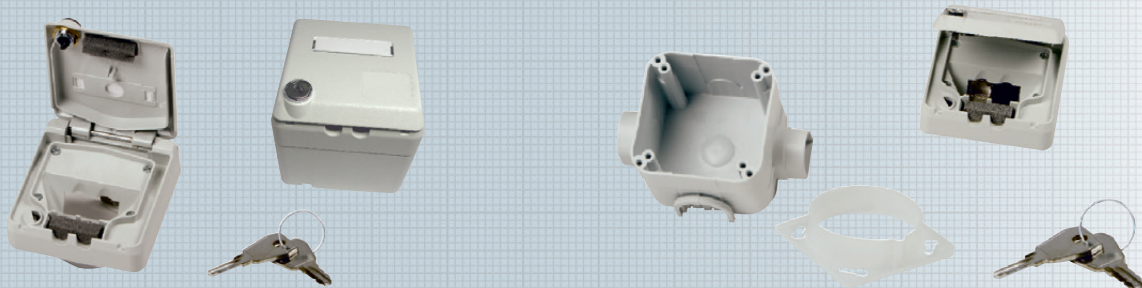
Properties surface-mounted housing IP20, 80 x 80 x 42 mm:

Material	plastic
Dimensions:	80x80x42 mm:
Color	white, similar to RAL 9010
Range of application	Surface-mounted frame for preLink®/fixLink® Module holder SL
Packaging unit:	5 pieces per box

Description	Ordering Code
preLink®/fixLink® Data Outlet SL with Cover Plate and Frame 80x80mm Horizontal, Double	CKVDU292
Cover Plate Single for Data Outlets 80x80mm white RAL 9010	ADZ00102
Cover Plate Double for Data Outlets 150x80mm white RAL 9010	ADZ00103
Surface Mount Housing 80x80x42mm white RAL 9010	CKVDAP90
Frame for Surface Mount Housing white RAL 9010	CKVDDR90

Surface-Mount Housing IP 44, Lockable, Double

IN STOCK



Surface-Mount Housing set double, lockable IP44

The surface-mounted housing is suitable for installation of preLink® and fixLink® Keystone modules via an adapter. For better strain relief we recommend using cable clamp M25 / 2x8, which is designed to handle two cables with a diameter of up to 8 mm.

Properties:

Material	Polymer
Color	light gray, similar to RAL 7035
Dimensions (HxWxD)	90 x 90 x 90 mm
Connection class	degree of protection IP44
Packaging unit	1 piece per box

Flush-mounted housing set double, lockable IP44

The flush-mounted housing is suitable for installation of preLink® and fixLink® Keystone modules via an adapter. The set contains the flush-mounted housing as well as the IP44 flush-mounted outlet.

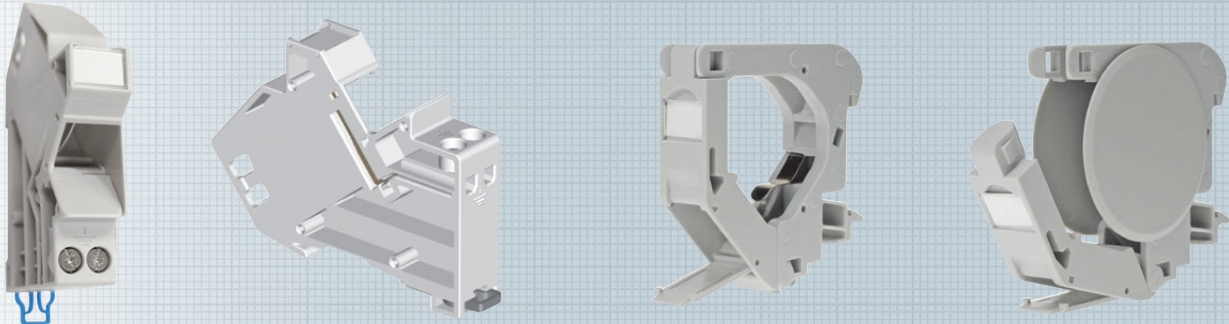
Properties:

Material	Polymer
Color	light gray, similar to RAL 7035
Dimensions (HxWxD)	35 x 90 x 90 mm
Connection class	degree of protection IP44
Packaging unit	1 piece per box

Description	Ordering Code
Surface-Mount Housing, IP 44, Lockable, Double	CKVDAP42
Cable Clamp for Surface-Mount Housing Set, Lockable	CKVDZP40
Cable Clamp for Surface-Mount Housing Set, Lockable	CKVDUP42

Carrier rail modular housing and adapter set

IN STOCK



Carrier rail modular housing for 1 module

Carrier rail modular housing for preLink®/fixLink®-modules, suitable for distributor cabinets with cover for circuit breakers.

Properties:

Material	plastic
Color	gray, RAL 7035
Dimensions (WxHxD)	18 x 65 x 90 mm (1U installation)
Range of application	ground terminal separate Modular housing of module on carrier rails, suitable for cabinets with cover for circuit breakers
Packaging unit	1 piece per box

Compact carrier rail modular housing for 1 module

Carrier rail modular housing for preLink®/fixLink®-modules, suitable for distributor cabinets without cover for circuit breakers.

Properties:

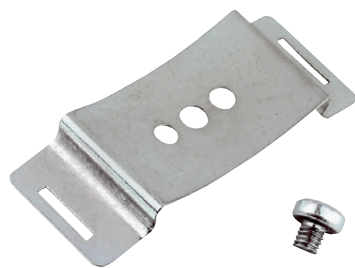
Material	plastic
Color	gray
Dimensions w/o side panels	18 x 70.5 x 67.5 mm (WxHxD)
Dimensions with side panels	18 x 70.5 x 67.5 mm (WxHxD)
Range of application	(1U installation), ground terminal integrated Modular housing of module on carrier rails, suitable for cabinets without cover for circuit breakers

Carrier rail adapter set

Carrier rail adapter set for installation of preLink®/fixLink® sub-mounted panel for 4-8 modules, for 1U installation.

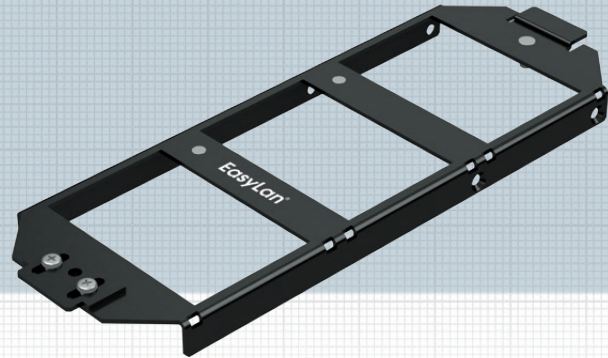
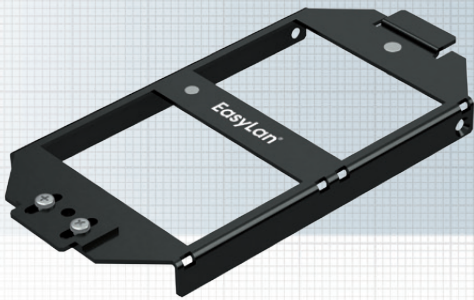
Properties:

Material	spring plate
Range of application	Adapter clip for distribution panels for mounting on carrier rails
Packaging unit	1 piece per box



Description	Ordering Code
Carrier Rail Modular Housing for one Modul (for distribution cabinets with cover)	CKVHMOD
Compact Carrier Rail Modular Housing for one Modul (ground terminal integrated)	CKVHECOMOD
Carrier Rail Side Panels for Compcat Carrier Rail Modular Housing, PU: 2	CKVHECOSTL
Carrier Rail Adapter Set, for 4-8 modules	CKVHMEK

OBO/Ackermann Floor Tank Systems GB2, GB3

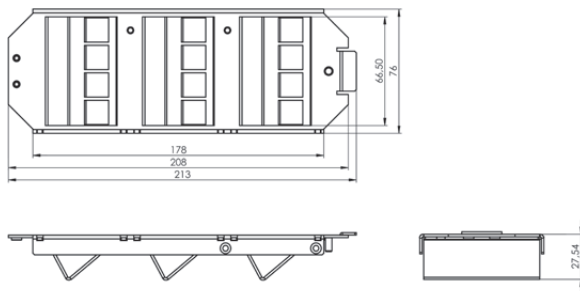


The support plate replaces the device carriers and thus offers the greatest possible space for cable feed. The slanted ingress and exit enable secure cable routing even with very low intermediate floors.

Allows a combination of installation plates for 4x preLink®/fixLink® modules or 1x H.D.S.. The installation plates are fastened to the support plate with two screws. Unused fields of the support plate can be covered with dummy plates.

Properties:

Dimension	Per specification of Ackermann under-floor systems
Material	steel plate, hot-dipped galvanized
Color	black, RAL 9005
Material thickness	1.5 mm
Equipped	- with a max. of 12 socket modules preLink®/fixLink® - with a max. of 3 H.D.S. Cu modules
Version	GB2 and GB3
Packaging unit	1 piece



Description

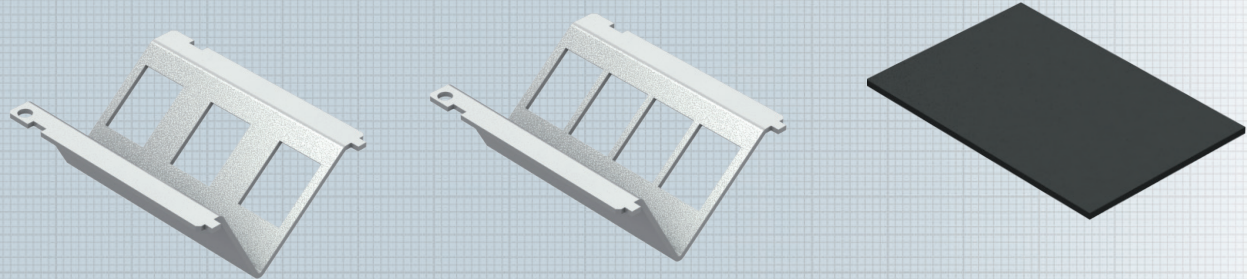
OBO / Ackermann Support Plate for Underfloor System GB2 modular, RAL9005
 OBO / Ackermann Support Plate for Underfloor System GB3 modular, RAL9005

Ordering Code

ABG00011
 ABG00012

OBO/Ackermann Inserts for Floor Tank Systems GB2, GB3

IN STOCK



Installation plates for 3 or 4 Keystone modules

For grounding purposes, the inserts for modules are not powder-coated or hot-dip galvanized. The installation plates are fastened to the support plate with two screws. Unused fields in the support plate can be covered with dummy plates.

Properties:

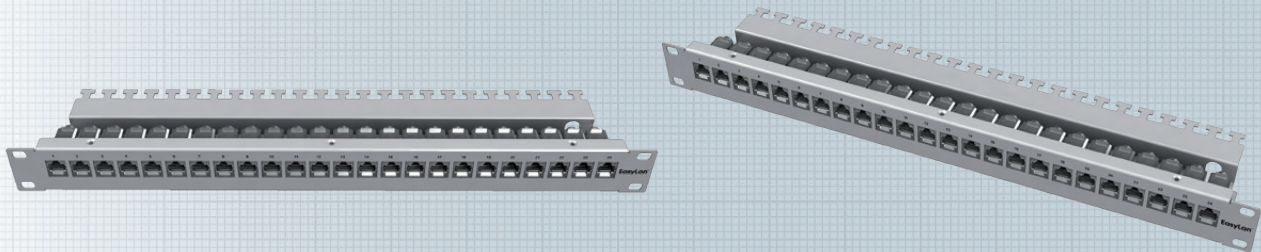
Dimension	Per specification of OBO/Ackermann underfloor systems
Material	steel plate, hot-dipped galvanized
Color inserts	Metal, hot-dipped galvanized, black, RAL 9005
Color	black, RAL 9005
Material thickness	1.5 mm

Installation examples:



Description	Ordering Code
OBO / Ackermann Carrier Plate 4x Keystone for Underfloor System, Nickel-plated	ABG00014
OBO / Ackermann Carrier Plate 3x Keystone for Underfloor System, Nickel-plated	ABG00016
OBO / Ackermann Carrier Plate 1x H.D.S. for Underfloor System, Nickel-plated	ABG00015
OBO / Ackermann Dummy Plate for Underfloor System, RAL 9005	ABG00013

Panel 19" 1U for 24 Keystone modules



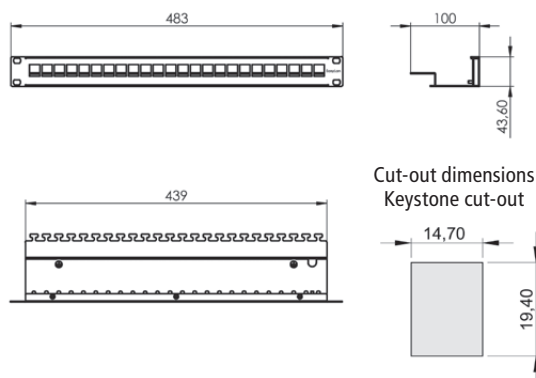
The 19" 1U distribution panel can be loaded with up to 24 preLink® / fixLink® RJ45 Keystone modules. The panel has two levels. This positions the modules flush with the front panel. The distribution panel can be ordered in stainless steel or powder-coated iron sheet.

Mounting material and Keystone modules are not included!

Standards: IEC 60 603-7-1

Properties:

Installation dimension	19" 1U Depth 155 mm
Front-side standard cut-out	24 modules
Back side	cable clamps
Material housing	steel plate, varnished / stainless steel
Cable fastening	via cable ties
Materials	per RoHS 2002/95/EG
Connection class	IP20
Temperature range	-40° C to +70° C
Application	Installation in distribution rack
Packaging unit	1 piece per box



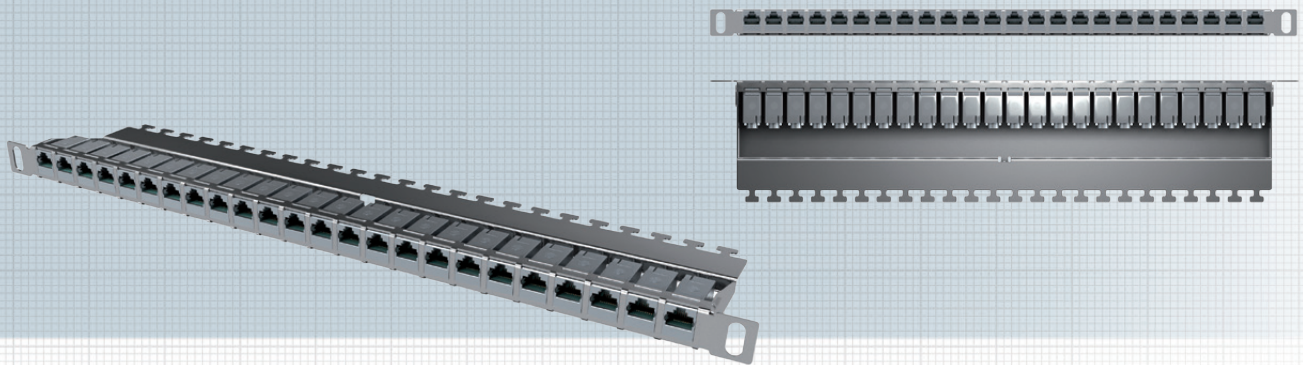
Description

preLink® / fixLink® Panel 19" 1U 24x Keystone RAL7035

Ordering Code

CKVPL0101E

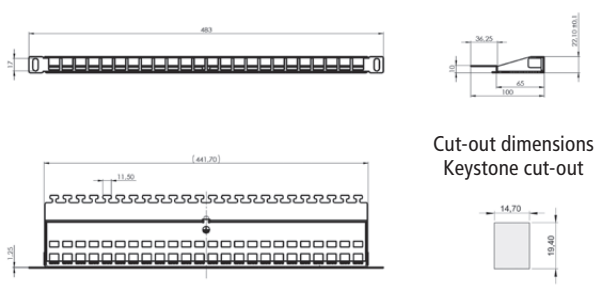
Panel 19" 0.5U for 24 Keystone modules



The fixLink® distribution panel 19" 0.5U can be loaded with up to 24 fixLink® RJ45 Keystone modules. The modules are flush with the front panel.

Mounting material and Keystone modules are not included!

Standards:	IEC 60 603-7-1
Properties:	
Installation dimension	19" 0.5U depth 155 mm
Front side	standard cut-out 24 modules
Back side	cable clamps
Material housing	stainless steel
Cable fastening	via velcro cable ties
Materials	According to RoHS 2002/95/EG
Connection class	IP20
Temperature range	-40° C to +70° C
Application	Installation in distribution rack
Packaging unit	1 piece per box

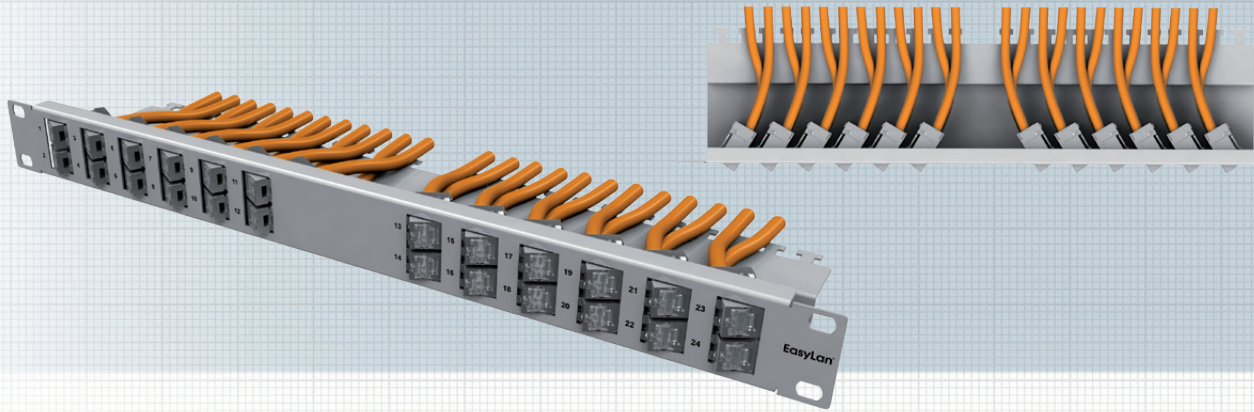


Description	Ordering Code
preLink® / fixLink® Panel 19" 0,5U 24x Keystone, Stainless Steel	CKVPL5F0EE
Labeling area for für 19" Panel, Stainless Steel	CVZB5FEE

fixLink®-System
Cu

Angled panel 30° 19" 1U for 24 Keystone modules

Variant 1: Keystone Angle: 12 left, 12 right

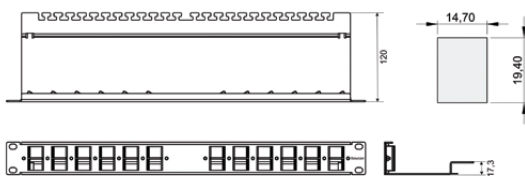


With the preLink®/fixLink® angled panel, the user has the option of clicking 24 keystone modules into the panel at an angle of 30°, and as a result the connected patch cables automatically run to the cabinet side and need only be attached laterally beside the patch level. This means the user can eliminate additional routing panels for cable routing. During operation, the angled panels with the flat front side and the side-facing patch cables also require less space than conventional patch panels with vertically installed ports.

Mounting material and Keystone modules are not included!

Standards:	IEC 60 603-7-1
Properties:	
Installation dimension	19" 1U depth 120 mm
Front side	standard cut-out 24 modules
Back side	cable clamps
Material housing	steel plate, varnished RAL7035 (gray)
Cable fastening	via cable ties
Materials	per RoHS 2002/95/EG
Environmental requirements	Connection class IP20
Temperature range	-40°C to +70° C
Application	Installation in distribution rack
Packaging unit	1 piece per box

Cut-out dimensions
Keystone cut-out



Description

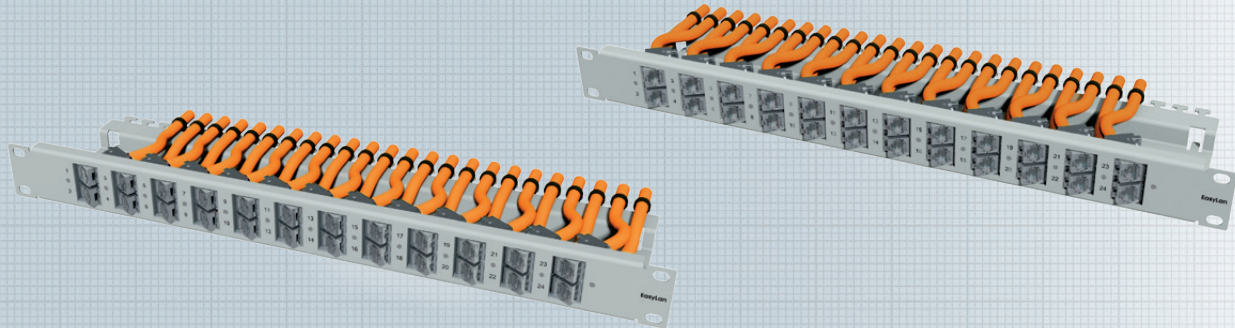
preLink® / fixLink® Angled Panel 1U 19" Variant 1 / Keystone Angle: 12 left, 12 right

Ordering Code

CKVPL0W01E

Angled panel 30° 19" 1U for 24 Keystone modules

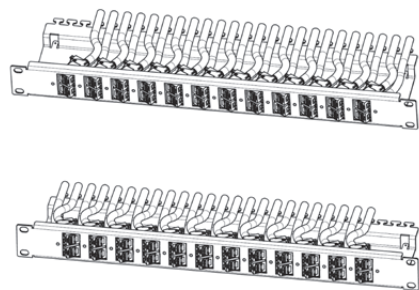
Variant 2: Keystone Angle: 24 left ; Variant 3: Keystone Angle: 24 right



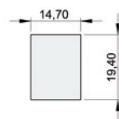
With the preLink®/fixLink® angled panel, the user has the option of clicking 24 keystone modules into the panel at an angle of 30°, and as a result the connected patch cables automatically run to the cabinet side and need only be attached laterally beside the patch level. This means the user can eliminate additional routing panels for cable routing. During operation, the angled panels with the flat front side and the side-facing patch cables also require less space than conventional patch panels with vertically installed ports.

Mounting material and Keystone modules are not included!

Standards:	IEC 60 603-7-1
Properties:	
Installation dimension	19" 1U depth 120 mm
Front side	standard cut-out 24 modules
Back side	cable clamps
Material housing	steel plate, varnished RAL7035 (gray)
Cable fastening	via cable ties
Materials	per RoHS 2002/95/EG
Environmental requirements	Connection class IP20
Temperature range	-40°C to +70° C
Application	Installation in distribution rack
Packaging unit	1 piece per box



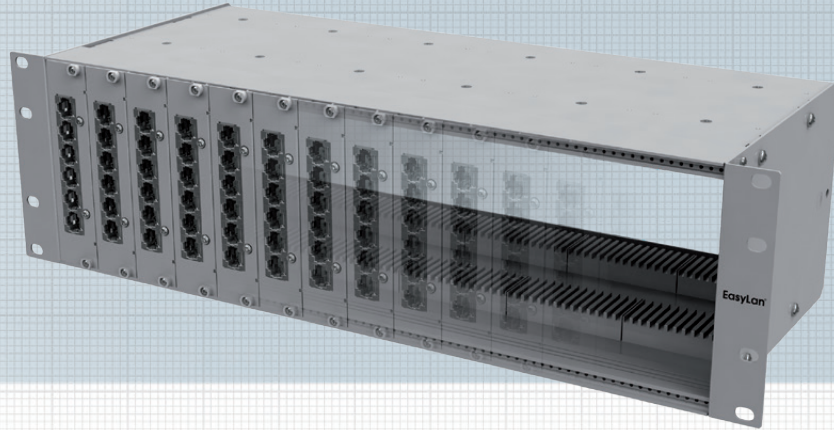
Cut-out dimensions
Keystone cut-out



Description	Ordering Code
preLink® / fixLink® Angled Panel 1U 19" Variant 2 / Keystone Angle: 24 left	CKVPL0L01E
preLink® / fixLink® Angled Panel 1U 19" Variant 3 / Keystone Angle: 24 right	CKVPL0R01E

Modul Rack (MR) 19" 3U, 7HP for max. 12x Slot Modules

**IN
STOCK**



Module holder (CR) for use with 7 depth-unit slot modules in copper and FO. The slot modules are fastened to the module holder from the panel side using 2 screws. The slot modules can be completely pulled out of the module holder. A maximum of 12 x 7 depth-unit slot modules (72 ports) can be mounted in the module holder.

Mounting material and Keystone modules are not included!

Properties:

Material	Steel plate Nickel-plated and Heat-treated
Color	Gray, RAL 7035 Cover: Metallic Luster
Installation depth Keystone modules	190 mm For max. 72 Ports divided among 12 slot modules
Range of application	Limited cabinet space, high flexibility, individual extensions, e.g. in data centers
Packaging:	1 piece per box

Description

Modul Rack (MR) 19" 3U, 7HP for max. 12x Slot Modules

Dummy Plate for Modul Rack (MR) and Side-Modul Rack (S-MR), 7HP, Aluminium

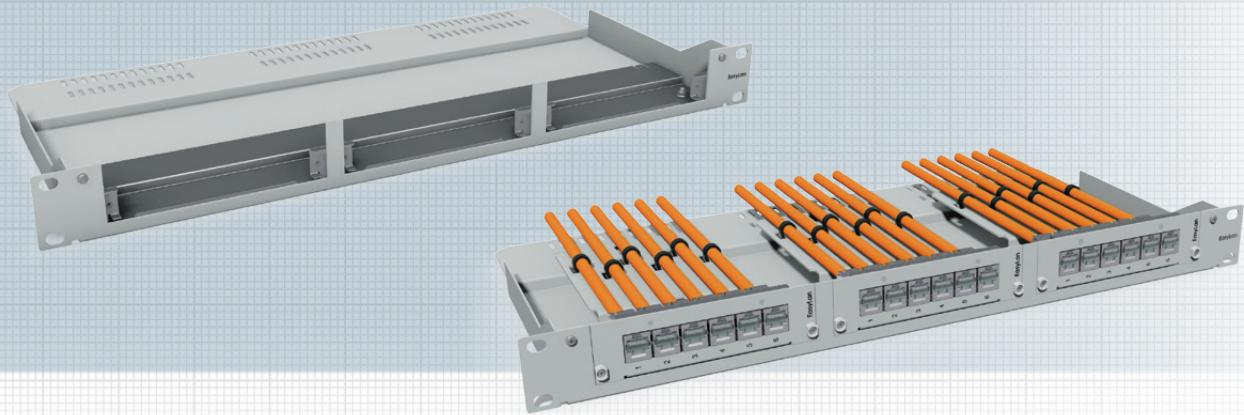
Ordering Code

AVM100021E

AVMB00001E

Modul Rack (MR) 19" 1U, 7HP for max. 3x Slot Modules

IN STOCK



Module holder (CR) for use with 7HP insert modules in copper and FO. The insert modules are fastened to the module holder from the panel side using 2 screws. The insert modules can be completely pulled out of the module holder. A maximum of 3 x 7HP insert modules (18 ports) can be mounted in the module holder.

Mounting material and Keystone modules are not included!

Properties:

Material	Steel plate Nickel-plated and Heat-treated
Color	Gray, RAL 7035 Cover: Metallic Luster
Installation depth Keystone modules	250 mm For max. 18 Ports divided among 3 slot modules
Range of application	Limited cabinet space, high flexibility, individual extensions, e.g. in data centers
Packaging:	1 piece per box

Description

Modul Rack (MR) 19" 1U, 7HP for max. 3x Slot Modules

Dummy Plate for Modul Rack (MR) and Side-Modul Rack (S-MR), 7HP, Aluminium

Ordering Code

AVM113001E

AVMB00001E

Modul Rack (S-MR) 19" 3U, 7HP for max. 12x Slot Modules

**IN
STOCK**



Side module holder (S-CR) for use with 7HP insert modules in copper and FO. The plug-in modules are fastened to the module holder from the panel side using 2 screws. The plug-in modules can be completely pulled out of the module holder. A maximum of 2 x 7HP insert modules (12 ports) can be mounted in the module holder. The side module holder (S-CR) is affixed on the lateral cabinet perforation. This makes mounting simple and fast. Side-mounting of the cabinet makes it possible to perform cabling in space-saving manner while enhancing climate control and without impacting the air flow.

Mounting material and Keystone modules are not included!

Properties:

Material	Steel plate Nickel-plated and Heat-treated
Color	Gray, RAL 7035
Installation depth	190 mm
Keystone modules	For max. 12 Ports divided among 2 slot modules
Range of application	Limited cabinet space, high flexibility, individual extensions, e.g. in data centers
Packaging:	1 piece per box

Description

Modul Rack (S-MR) 19" 3U, 7HP for max. 12x Slot Modules

Ordering Code

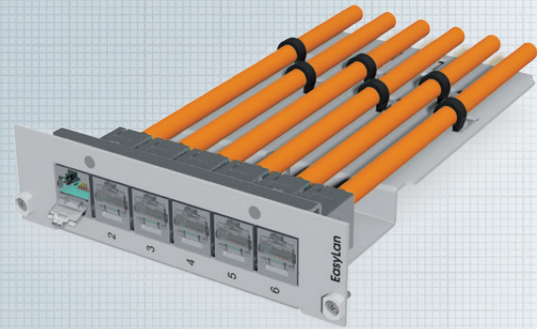
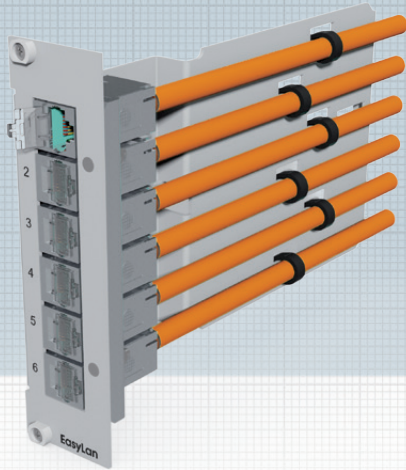
AVM100021E

Dummy Plate for Modul Rack (MR) and Side-Modul Rack (S-MR), 7HP, Aluminium

AVMB00001E

Slot Module for 6x Keystones 7TE for Modul Rack (MR) and Side-Modul Rack (S-MR)

IN STOCK

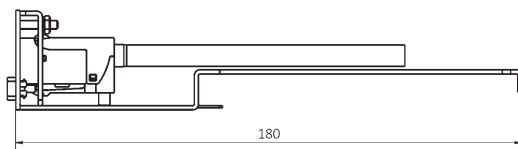
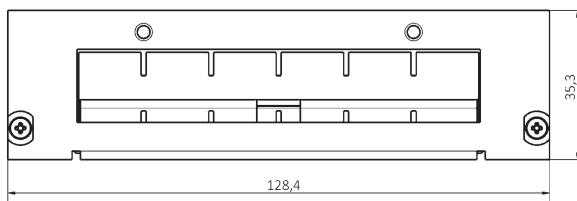


Keystone insert module for loading module carriers. The Keystone insert module can be equipped with up to 6 preLink® or fixedLink® Keystone modules. The Keystone insert module is composed of two levels, and as a result the modules are flush with the front panel. The cable is clamped directly on the insert module housing. 6 single cables or 1 trunk cable can be attached.

Mounting material and Keystone modules are not included!

Properties:

Material	Steel plate Nickel-plated and Heat-treated
Color	Gray, RAL 7035
Installation depth	190 mm
Keystone modules	For max. 12 Ports divided among 2 slot modules
Range of application	Limited cabinet space, high flexibility, individual extensions, e.g. in data centers
Packaging:	1 piece per box



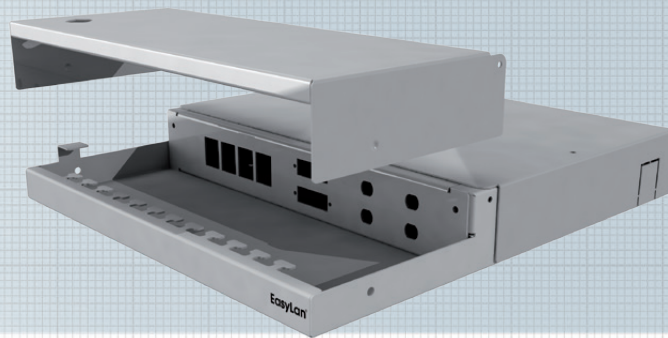
Description

Slot Module for 6x Keystones 7TE, for Modul Rack (MR) and Side-Modul Rack (S-MR)

Ordering Code

CVE000001E

Subfloor Consolidation Point Panel 19" and 10" 1U with exchangeable front plates



Subfloor Consolidation Point Panel with exchangeable front plates to accommodate a wide array of connections in copper and FO. The subfloor Consolidation Point Panel can optionally be secured against unauthorized access by a lock.

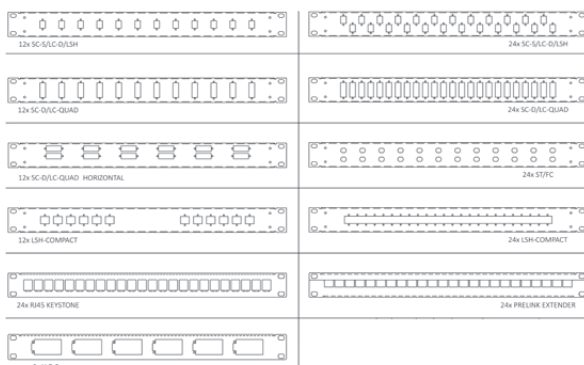
Mounting material and Keystone modules are not included!

Properties:

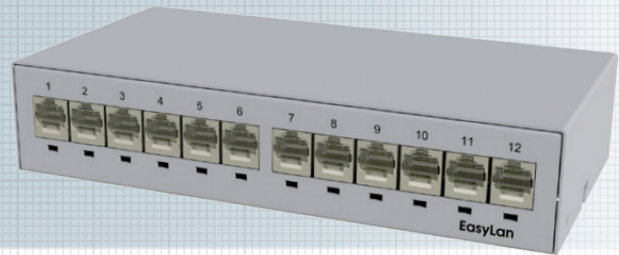
Material	steel plate, varnished
Materials	per RoHS 2002/95/EG
Dimensions (HxWxD)	45 x 270 x 300 mm
Color	gray RAL 7035 / black RAL 9004

Environment:

Connection class	IP20
Temperature	-40° C to +70° C



Desk Mounted Consolidation Point Panel for 4 -12 Keystone modules



Desk Mounted Consolidation Point Panel for preLink® / fixLink® RJ45 Keystone modules, for use as Consolidation Panel, direct mounting or mounting set on DIN rails in electrical distribution systems.

The Desk Mounted Consolidation Point Panel has two levels. This positions the modules flush with the front panel.

Mounting material and Keystone modules are not included!

Standards: IEC 60 603-7

Properties:

Front side standard cut-out	4 modules / 6 modules / 8 modules / 12 modules
Back side	cable clamps
Material housing	zinc-plated steel, hot-dip coated
Cable fastening	via cable ties
Materials	per RoHS 2002/95/EG

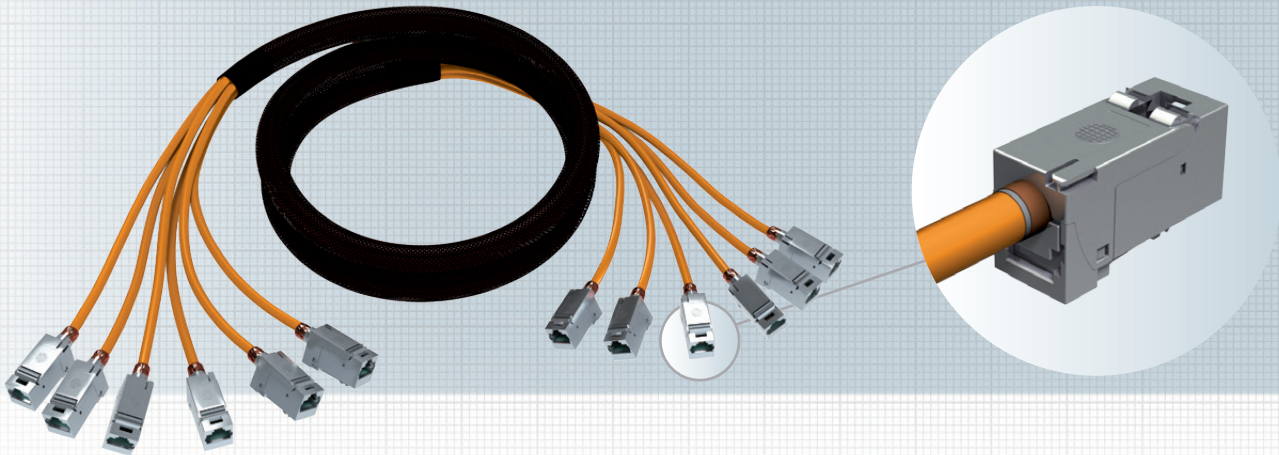
Environmental requirements:

Connection class	IP20
Temperature range	-40° C to +70° C
Application	Consolidation Panel, direct installation or DIN rail
Packaging unit	1 piece per box

Description	Ordering Code
preLink® /fixLink® Desk Mounted Consolidation Point Panel 4x Keystone RAL7035	CKVPL0041E
preLink® /fixLink® Desk Mounted Consolidation Point Panel 6x Keystone RAL7035	CKVPL0061E
preLink® /fixLink® Desk Mounted Consolidation Point Panel 8x Keystone RAL7035	CKVPL0081E
preLink® /fixLink® Desk Mounted Consolidation Point Panel 12x Keystone RAL7035	CKVPL0121E

fixLink® SL CTBC Distribution System

Copper-Trunk-Bundled-Cable



The CTBC distribution system is ideal for flexible use in structured building cabling and data centers. The cables are prebundled in a braided hose and are factory assembled and pre-tested with fixLink® Keystone modules. The bundles can be made using either installation or flexible cables. The maximum length of the bundled cable is 20 meters. The distribution system as 10 Gbit solution for data center cabling meets Class E requirements at a minimum. The transmission parameters depend on the choice of fixLink® modules used.

Features:

- Bundling of AWG 22 to AWG 27 data cables
- Universal pre-assembly with preLink® cable connectors
- Slim cable end
- Flexible installation
- Up to 12 cables

Properties of braided hose:

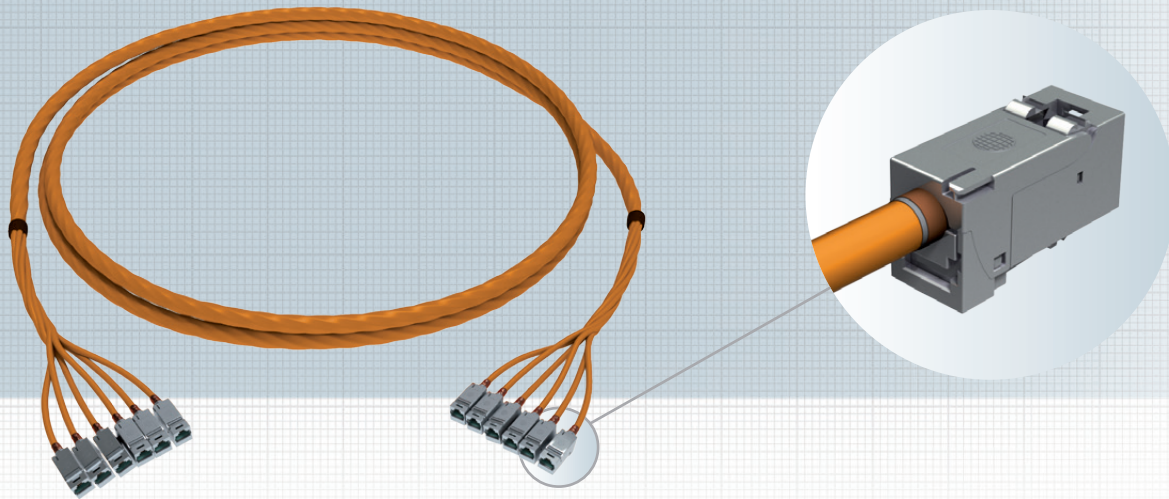
- UL-certified
- Reach
- RoHS
- Easy installation due to 100% covering
- halogen-free

Applications:

- Data centers
- Cabinet connections
- Structured building cabling

fixLink® SL CTMC Distribution System

Copper-Trunk-Multi-Cable



The CTBC distribution system is ideal for flexible use in structured building cabling and data centers. Six-fold (6 x 4P), 8-fold (8 x 4P) or single cables leave the factory pre-assembled with preLink® cable connectors and tested.

The maximum bundled cable length is up to 90m for AWG 23 and up to 60m for AWG 26. The distribution system as 10 Gbit solution for data center cabling meets Class EA requirements at a minimum.

The transmission parameters depend on the choice of fixLink® modules used.

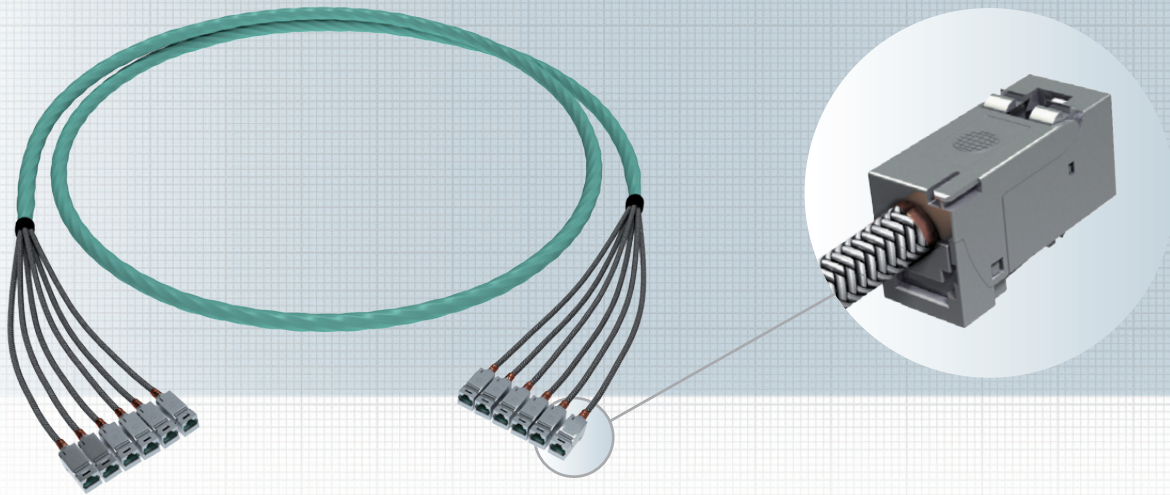
Features:

- Single or multi-cables in AWG 26 or AWG 23
- Universal pre-assembly with preLink® cable connectors
- Slim cable end

Applications:

- Data centers
- Cabinet connections
- Structured building cabling

fixLink® SL CTCC Distribution System Copper-Trunk-Compact-Cable



Thanks to its minimal cable diameter and the associated low fire load, the CTCC distribution system is ideal for flexible use in structured building cabling and data centers. Six-fold (6 x 4P) cables leave the factory pre-assembled with fixLink® cable connectors and tested. The maximum length of the multi-cable is 60 meters. The distribution system as 10 Gbit solution for data center cabling meets Class EA requirements at a minimum.

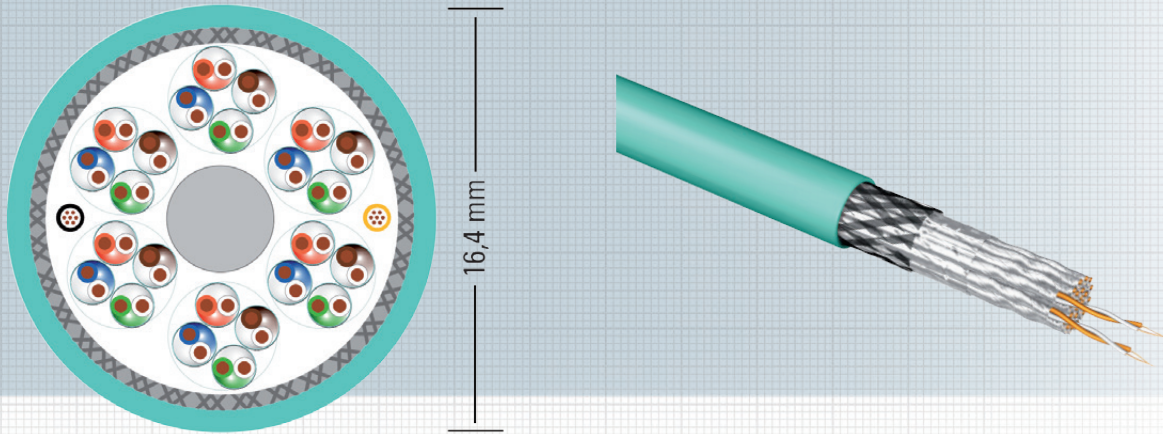
Properties:

- Multi-cable in AWG 26 with minimal outer diameter
- Minimal space requirement compared to bundled cables, break-out variants and single-laid cables
- Improved cabinet climate control due to reduced air inflow
- Significant reduction in fire load

Applications:

- Data centers
- Structured building cabling

H.D.S. Indoor Cable Cat. 7 6x (4 x 2 x AWG 24) S-FTP



H.D.S. internal cable Cat.7 6x (4x2xAWG24 S/FTP) for easy cabinet-to-cabinet cabling in data centers and multi-connection of server rooms to sub-distribution. The cable assembly consists of 24 pair-shielded cable elements, 4 pairs are combined into a strand. Each stranding element is provided with a range of numbers for easy identification. The flexible central strain relief provides very good protection for the cable during installation. The shell is made of a flexible LSOH material. The pilot cores are AWG 28/7.

Standards:

Applicable Standards	IEC 61156-6, IEEE 802.3at (PoE+), ISO/IEC 11801, RoHS-2 2011/65/EU
Flamability Rating	IEC 60332-1, IEC 60332-3, IEC 60754-1/2, IEC 61034-1/2

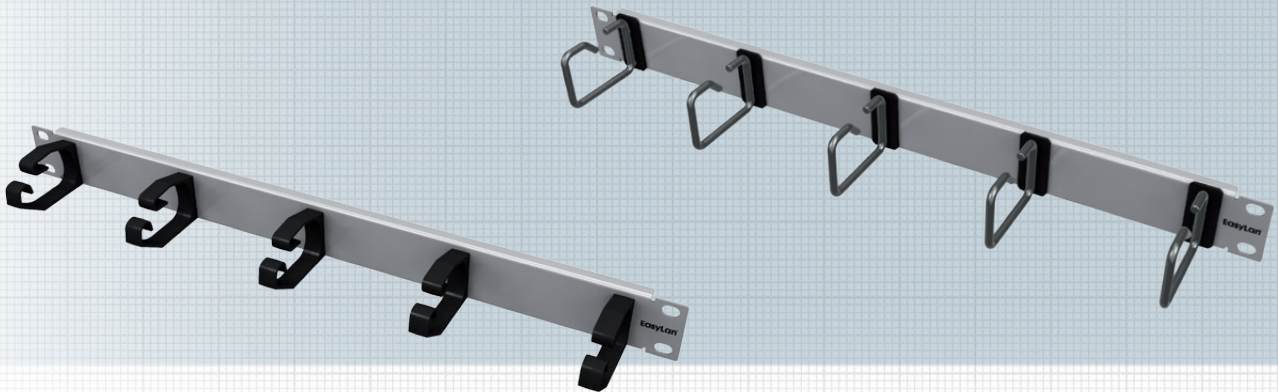
Technical Data:

Electrical values	Cat. 7
Strand	AWG 24
Strand diameter	1.04 mm nom.
Outside diameter	16.4 mm nom.
Weight	270 kg/km
Sheath	FR-LSZH
Sheath color	aqua
Flame retardancy index	IEC 60332.3
Transmission length	Class EA >= 60 m
Flame retardancy	1.83 MJ/m; 0.51 kWh/m
Temperature range	-35°C to +65°C
Max. tensile strength	190 N
Minimum bending radius	>65.6 mm (In operation) >130 mm (Installation)

Frequency [MHz]	Return loss [dB/100m]	NEXT [dB]	RL [dB]	ELFEXT [dB]
	Typ. value	Typ. value	Typ. value	Typ. value
1	2.6	108	22	98
4	4.9	101	25	93
10	7.7	98	28	89
20	10.9	93	28	83
100	25.0	83	24	69
250	40.8	78	20	61
500	59.5	73	19	50
600	62.0	73	19	50

Routing Panel 19" with 5 cable clamps

IN STOCK



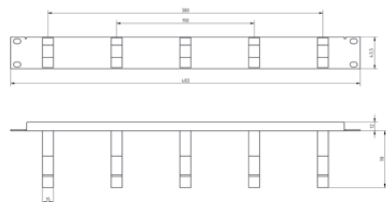
Routing panel / Installation, 19" 1U

Routing panel / Installation, 19" 1U, 5 Plastic cable clamps

Routing panel for routing of jumpers in 19" cabinet – Built-in version

Properties:

Material	Steel plate, powder coated
Color	Gray, RAL 7035 (standard) – other colors on request
Range of application	Installation in 19" Cabinet
Description	5 cable clamps of Plastic on Carrier panel 19"
Packaging unit	1 piece per box



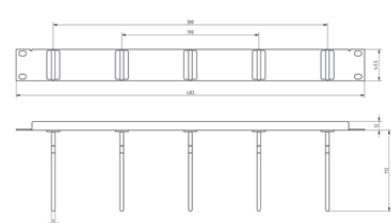
Routing panel / Installation, 19" 1U

Routing panel / Installation, 19" 1U, 5 Steel cable clamps

Routing panel for routing of jumpers in 19" cabinet – Built-in version

Properties:

Material	Steel plate, powder coated
Color	Gray, RAL 7035 (standard) – other colors on request
Range of application	Installation in 19" Cabinet
Description	5 cable clamps of steel on Carrier panel 19"
Packaging unit	1 piece per box



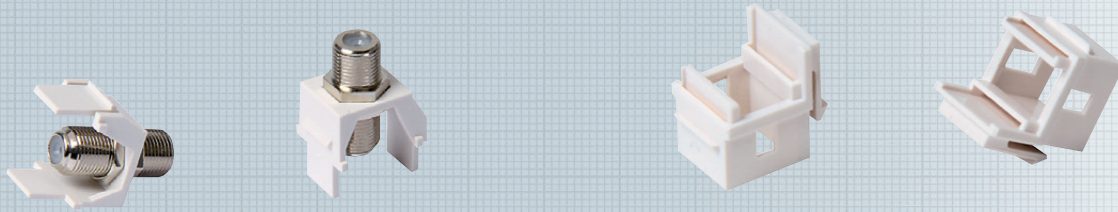
Description

Routing Panel 1U with 5 Cable Clamps of Plastic 78mm long, RAL7035
 Routing Panel 1U with 5 Cable Clamps of Steel 60mm long, RAL7035
 Routing Panel 1U with 5 Cable Clamps of Steel 110mm long, RAL7035

Ordering Code

AVR5KSTB1E
 AVR5METB1E
 AVR5METC1E

F-Coupling and Blind Cover Module Replacement Empty Module Replacement for SC-S or LC-D



F-Coupling and Blind Cover Module Replacement

The F-Coupling is used to integrate coax cables into a preLink® patch panel and the socket product range. Blind covers are used in distribution panels as well as in outlets to cover ports which are not in use.

Properties:

Material	Polymer
Color	white, similar to RAL 9010
Note:	Dust protector must be removed prior to installation of F-coupling.
Packaging unit	1 piece

Empty Module Replacement for SC-S or LC-D

Empty module for SC-S or SC-D couplings in distribution panels or outlets.

One blind cover must be installed between each module.

Properties:

Material	Polymer
Color	white, similar to RAL 9010
Note:	Dust protector must be removed prior to installation of outlets.
Packaging unit	1 piece

Description	Ordering Code
F-Coupling to integrate Coax Cables into Keystone Patch Panel	CKVZMFK1
Blind Cover Module white RAL 9010	CKVZMB01
Empty Module Replacement for LC-D/SC-S white RAL 9010	CKVZMLC1