

Common Species of Chicago Park District Natural Areas. Chicago, IL USA

Prairies & Savannas

The Field Museum, Chicago Park District

Produced by: John Balaban, Rebecca Collings, Mario Longoni, Jason Steger, Byron Tsang

Photos by: Ann Arbor Natural Areas Program, Thomas Antonio, John and Jane Balaban, Rebecca Collings, Ilana Emanuel, Bill Glass, Pam Johnson, A. Nyboer, A. A. Reznicek, R.W. Smith, B.S. Walters. Photos by Ann Arbor Natural Areas Program, A. A. Reznicek, R.W. Smith, B.S. Walters courtesy of Michigan Flora - University of Michigan Herbarium - <http://michiganflora.net/>. © 2015 The Field Museum, Chicago, IL 60605 USA idtools.fieldmuseum.org/ CRCG@fieldmuseum.org version 01 10/2015

FLOWERS



01 *Allium cernuum*
NODDING WILD ONION



02 *Anemone cylindrica*
THIMBLEWEED



03 *Asclepias tuberosa*
BUTTERFLY WEED



04 *Aster azureus*
SKY BLUE ASTER



05 *Aster laevis*
SMOOTH BLUE ASTER



06 *Aster novae-angliae*
NEW ENGLAND ASTER



07 *Aster sagittifolius*
ARROW-LEAVED ASTER



08 *Astragalus canadensis*
CANADIAN MILK VETCH



09 *Baptisia leucantha*
WHITE WILD INDIGO



10 *Blephilia hirsuta*
HAIRY WOOD MINT



11 *Campanula americana*
TALL BELLFLOWER



12 *Cassia fasciculata*
PATRIDGE PEA



13 *Coreopsis lanceolata*
SAND COREOPSIS



14 *Coreopsis palmata*
PRAIRIE COREOPSIS



15 *Coreopsis tripteris*
TALL COREOPSIS



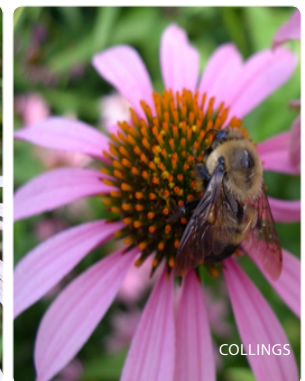
16 *Dodecatheon meadia*
SHOOTING STAR



17 *Desmodium illinoense*
ILLINOIS TICK TREFOIL



18 *Echinacea pallida*
PURPLE CONEFLOWER



19 *Echinacea purpurea*
BROAD-LEAVED PURPLE CONEFLOWER

Common Species of Chicago Park District Natural Areas. Chicago, IL USA Prairies & Savannas

02

The Field Museum, Chicago Park District

Produced by: John Balaban, Rebecca Collings, Mario Longoni, Jason Steger, Byron Tsang

Photos by: John and Jane Balaban, Rebecca Collings, Bill Glass, Cassie Halls, Pam Johnson, R.W. Smith, B. S. Walters.

Photos by R.W. Smith and B.S. Walters courtesy of Michigan Flora - University of Michigan Herbarium - <http://michiganflora.net/>.

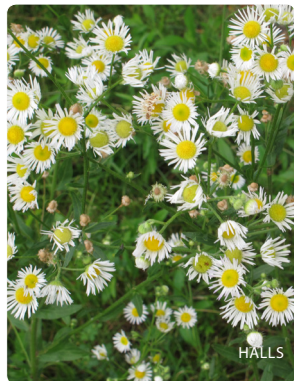
© 2015 The Field Museum, Chicago, IL 60605 USA

idtools.fieldmuseum.org/

CRCG@fieldmuseum.org

version 01

10/2015



20 *Erigeron strigosus*
DAISY FLEABANE



21 *Eryngium yuccifolium*
RATTLESNAKE MASTER



22 *Eupatorium altissimum*
TALL BONESET



23 *Eupatorium purpureum*
PURPLE JOE PYE WEED



24 *Helianthus divaricatus*
WOODLAND SUNFLOWER



25 *Helianthus helianthoides*
FALSE SUNFLOWER



25 *Kuhnia eupatorioides*
FALSE BONESET



26 *Lespedeza capitata*
ROUND HEADED BRUSH
CLOVER



27 *Liatris aspera*
ROUGH BLAZING STAR



28 *Liatris pycnostachya*
PRAIRIE BLAZING STAR



29 *Monarda fistulosa*
WILD BERGAMOT



30 *Parthenium integrifolium*
WILD QUININE



00 *Penstemon digitalis*
FOXGLOVE BEARD TONGUE



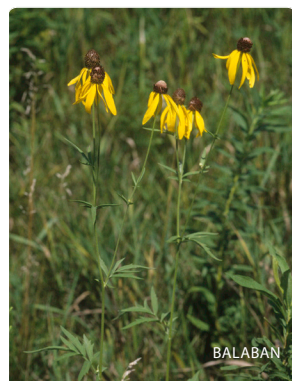
31 *Petalostemum candidum*
WHITE PRAIRIE CLOVER



32 *Petalostemum purpureum*
PURPLE PRAIRIE CLOVER



33 *Pycnanthemum virginianum*
MOUNTAIN MINT



34 *Ratibida pinnata*
YELLOW CONEFLOWER



35 *Rudbeckia hirta*
BLACK-EYED SUSAN



36 *Rudbeckia subtomentosa*
SWEET BLACK-EYED SUSAN



37 *Silphium integrifolium*
ROSIN WEED

Common Species of Chicago Park District Natural Areas. Chicago, IL USA

Prairies & Savannas

The Field Museum, Chicago Park District

Produced by: John Balaban, Rebecca Collings, Mario Longoni, Jason Steger, Byron Tsang

Photos by: John and Jane Balaban, Rebecca Collings, Bill Glass, Scott Namestnik, Pam Johnson, A.A. Reznicek, R.W. Smith, B. S. Walters

Photos by A. A. Reznicek, R.W. Smith, B.S. Walters courtesy of Michigan Flora - University of Michigan Herbarium - <http://michiganflora.net/>

© 2015 The Field Museum, Chicago, IL 60605 USA

idtools.fieldmuseum.org/

CRCG@fieldmuseum.org

version 01

10/2015



38 *Silphium laciniatum*
COMPASS PLANT



39 *Silphium terbinthinaceum*
PRAIRIE DOCK



40 *Solidago altissima*
TALL GOLDENROD



41 *Solidago nemoralis*
OLD FIELD GOLDENROD



42 *Solidago rigida*
STIFF GOLDENROD



43 *Solidago ulmifolia*
ELM-LEAVED GOLDENROD



44 *Teucrium canadense*
WILD GERMANDER



45 *Tradescantia ohiensis*
COMMON SPIDERWORT



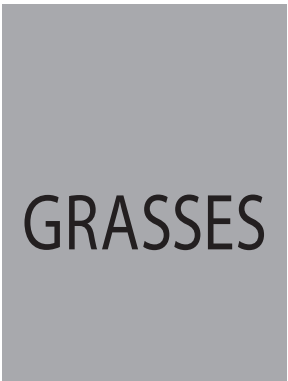
46 *Verbena stricta*
HOARY VERVAIN



47 *Vernonia fasciculata*
COMMON IRON WEED



48 *Zizia aurea*
GOLDEN ALEXANDER



49 *Andropogon gerardii*
BIG BLUESTEM



50 *Bouteloua curtipendula*
SIDE-OATS GRAMA



51 *Bromus pubescens*
WOODLAND BROME



52 *Elymus canadensis*
CANADA WILD RYE



53 *Elymus hystrix*
BOTTLEBRUSH GRASS



55 *Elymus trachycaulus*
SLENDER WHEAT GRASS



54 *Elymus virginicus*
VIRGINIA WILD RYE



56 *Schizachyrium scoparium*
LITTLE BLUESTEM

Common Species of Chicago Park District Natural Areas. Chicago, IL USA

Prairies & Savannas

The Field Museum, Chicago Park District

Produced by: John Balaban, Rebecca Collings, Mario Longoni, Jason Steger, Byron Tsang
 Photos by: Josh Engle, J. Goldner, Arlene Koziol, Stephanie Ware
 © 2015 The Field Museum, Chicago, IL 60605 USA

idtools.fieldmuseum.org/

CRCG@fieldmuseum.org

version 02

12/2015



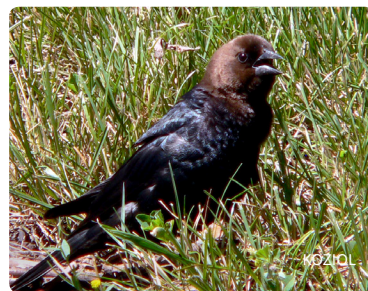
58 *Spinus tristis*
AMERICAN GOLDFINCH



59 *Icterus galbula*
BALTIMORE ORIOLE



60 *Poecile atricapillus*
BLACK CAPPED CHICKADEE



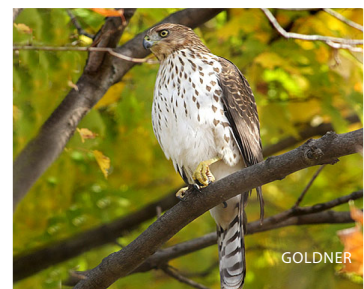
61 *Molothrus ater*
BROWN-HEADED COWBIRD



62 *Corvus brachyrhynchos*
AMERICAN CROW



63 *Geothlypis trichas*
COMMON YELLOWTHROAT



64 *Accipiter cooperii*
COOPER'S HAWK



65 *Buteo jamaicensis*
RED-TAILED HAWK



66 *Dumetella carolinensis*
GRAY CATBIRD



67 *Passerina cyanea*
INDIGO BUNTING



68 *Colaptes auratus*
NORTHERN FLICKER



69 *Agelaius phoeniceus*
RED-WINGED BLACKBIRD



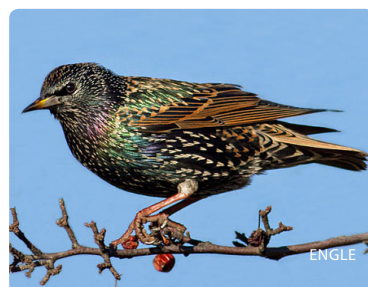
70 *Melospiza melodia*
SONG SPARROW



71 *Larus delawarensis*
RING-BILLED GULL



72 *Cardinalis cardinalis*
NORTHERN CARDINAL



73 *Sturnus vulgaris*
EUROPEAN STARLING



74 *Columbia livia*
ROCK PIGEON



75 *Quiscalus quiscula*
GRACKLE



76 *Passer domesticus*
HOUSE SPARROW



77 *Turdus migratoris*
AMERICAN ROBIN

Common Species of Chicago Park District Natural Areas. Chicago, IL USA

Prairies & Savannas

The Field Museum, Chicago Park District

Produced by: John Balaban, Rebecca Collings, Mario Longoni, Jason Steger, Byron Tsang
 Photos by: Peter Broster, Jane and John Balaban, Benny Mazur, Tom Peterson, Cody Pope, D. Tsui, Whpq

© 2015 The Field Museum, Chicago, IL 60605 USA

idtools.fieldmuseum.org/

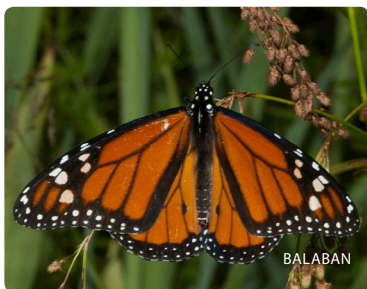
CRCG@fieldmuseum.org

version 02

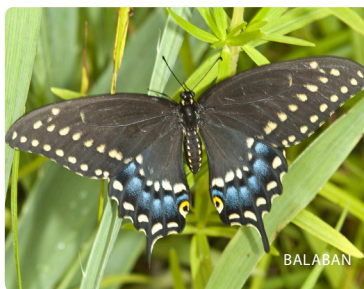
12/2015



78 *Limentis archippus*
VICEROY



79 *Danaus plexippus*
MONARCH



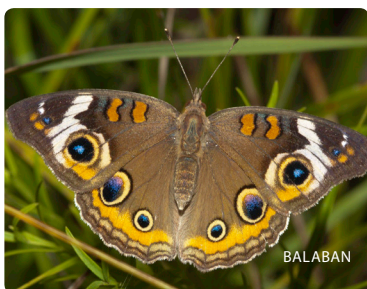
80 *Papilio polyxenes*
BLACK SWALLOWTAIL



81 *Papilio glaucus*
EASTERN TIGER SWALLOWTAIL



82 *Limenitis arthemis astyanax*
RED SPOTTED PURPLE



83 *Junonia coenia*
COMMON BUCKEYE



84 *Vanessa cardui*
PAINTED LADY



85 *Vanessa atalanta*
RED ADMIRAL



86 *Pieris raqae*
CABBAGE WHITE



87 *Cupido comyntas*
EASTERN TAILED BLUE



88 *Polygonia interrogationis*
QUESTION MARK



89 *Polygonia comma*
EASTERN COMMA



90 *Sciurus carolinensis*
EASTERN GRAY SQUIRREL



91 *Sciurus niger*
FOX SQUIRREL



92 *Canis latrana*
COYOTE



93 *Didelphis virginiana*
VIRGINIA OPOSSUM



94 *Procyon lotor*
RACCOON



95 *Myotis lucifugus*
LITTLE BROWN BAT



96 *Microtus pennsylvanicus*
MEADOW VOLE



97 *Sylvilagus floridanus*
EASTERN COTTONTAIL