



## EEP17 info package



With **eisenbahn.exe professional - EEP** you create complex railway worlds on your PC or laptop. You modify the terrain, design mountains and valleys, equip your facility with real estate and set up a sophisticated traffic system. The various traffic lanes can then be populated with rail and road vehicles, which can be regulated with a sophisticated signalling system. Air and sea traffic is also represented. However, the focus is set on the railway world with steam, diesel and electric locomotives, as well as passenger and freight cars, all available in a wide selection. In addition to the high quality reproduction of the rolling stock, which aims to be faithful to the original, EEP offers a great depth of play with endless possibilities for building and operating a great network with complex scenarios.

The complete railway simulation for the PC was invented in 1998 and has been further developed in a number of ways since then. Over the years, the program has been "step by step" expanded with detailed routes, a powerful signal system, freely editable timetables, an immense selection of vehicles and dynamic weather, automatic day-night change, animated figures and animals and much more. A completely editable sequence control via script with LUA and a powerful track control desk editor have also been added in recent years. Numerous add-ons such as layouts, scenarios and thousands of model packages are available for the EEP program series. There is also a noticeable range of free models available.

### EEP 17 Expert: What`s new

- Two complete train sets of the Alstom Coradia iLint, the first passenger train in the world to be powered by a hydrogen fuel cell for environmentally friendly zero-emission transport. (Corona-Edition 2020 – 2021)
- Complete new design of the ICE4 train set BR412 with the multiple unit number 9005 as "ICE 582"
- Lots of new models on the subject of hydrogen mobility (as real estate or rolling stock)
- Over 100 new models from various themes: animated SST (Single Slip Turnouts) and DST (Double Slip Turnouts); bridge cranes with movable load; train station "Baden-Baden"; various
- track construction and track maintenance machines, etc.
- Improved editor functionalities in many areas: e.g. setting up models according to redefined rules; automatic docking of real estate and landscape elements to other models; simplified, automatic turnout construction and much more.
- Configurable cross span assembly for up to 9 tracks
- The 3D track (viaducts and bridges whose length and curvature can be adjusted)
- 30 new Lua functions
- Improved sound features for cabin views
- Signals can be edited in height and rotated around z-axis
- Height is held when copying objects with "Ctrl + C".
- Improved trax library

### EEP 17 Features

- Complete railway simulation including all traffic routes
- Extremely realistic all the way down to the smallest detail
- Comfortable editing of the tracks in 2D and 3D
- Immediate switch between editor and simulation
- Steerable driver's cabins
- Cargo loading and animated people
- Track control desks and routes
- Lua scripting language with a large command set
- Thousands of ready-to-use 3D models included
- Can be extended with a myriad of models, layouts and tools
- Video tutorials and tutorial layouts for a quick start

EEP17 landing page: <https://eepshopping.de/eep17/>

The official trailer for EEP17: <https://youtu.be/f1ao5GO97TM>

Order EEP17: <https://eepshopping.de/1376-eep-eep-eisenbahn-exe-17>

Program versions available as download  and box/ DVD version 



## EEP17 info package



Airport Railway station – Trailer



## EEP17 info package



Trailer scene



“Hydrogen fuel cells” trains, Alstom Coradia iLint (ÖBB variant for pre-orderers)



# EEP17 info package



Alstom Coradia iLint - Interior



## EEP17 info package



Track construction and track maintenance machines SUZ 500





# EEP17 info package





## EEP17 info package



Trailer scenes





## EEP17 info package



ICE 4 – Series 412, Tz 9214 – 7-part, for pre-orderers





# EEP17 info package



ICE 4 – Series 412, Tz 9005 – 13-part



## EEP17 info package



**3D tracks, viaducts and bridges adjustable in length and radius**





## EEP17 info package

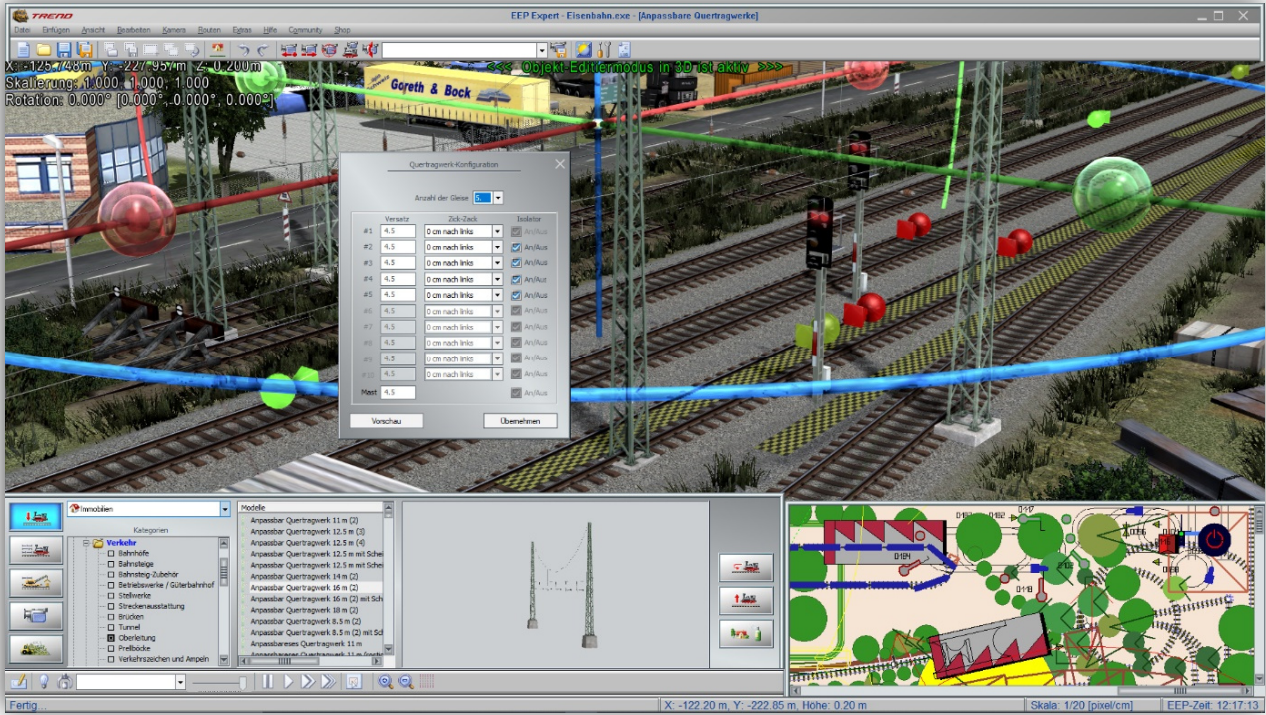


**3D tracks, viaducts and bridges adjustable in length and radius**





# EEP17 info package



## Configurable cross span assemblies



## Models on the subject of hydrogen mobility



## EEP17 info package



## Trailer Scenes

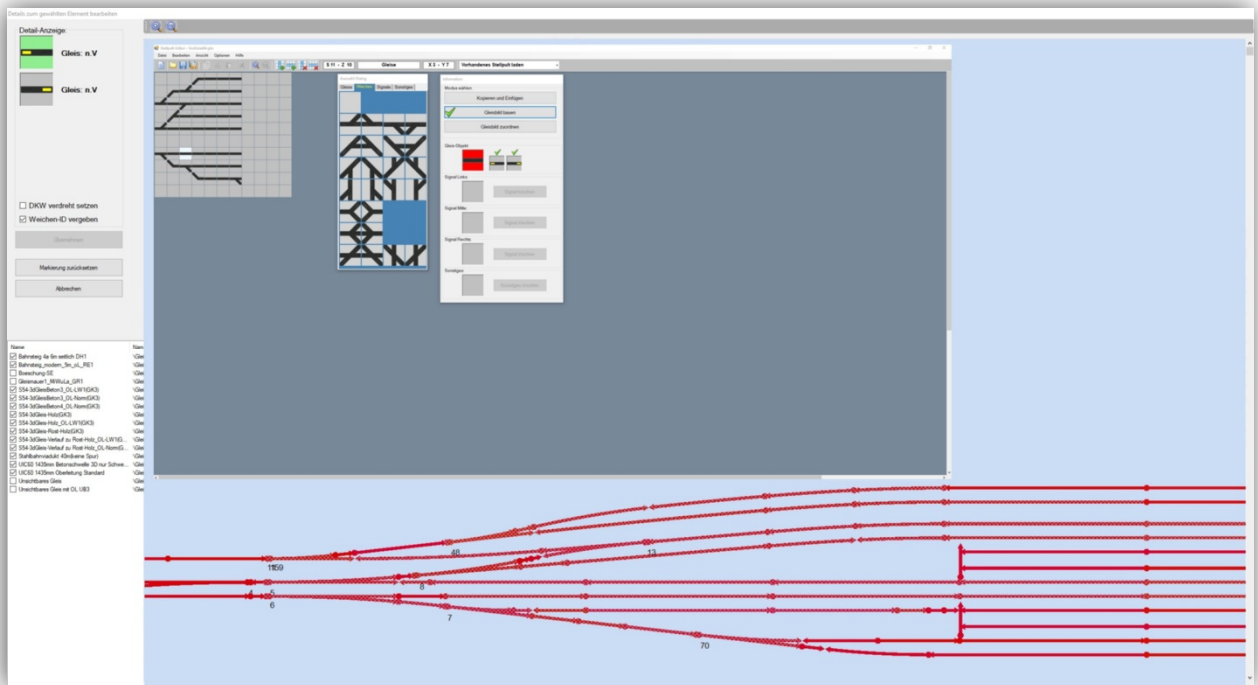




# EEP17 info package



## Control Desk Editor (GBS)





## EEP17 info package



### Scope of delivery:

**Box version** (EEP Eisenbahn.exe Professional 17 in high quality metal relief box)

*Reference:*P17EXPBOXDE

- DVD-ROM for PC-Windows (trilingual – English, French, German)
- High quality metal relief box with insert and install instructions
- New top models: two train sets of the Alstom Coradia iLint, series 654
- Immediately operational model systems
- Ready-made scenarios for a quick start
- A great variety of 3D models (real estate, vegetation, rolling stock, etc.)
- Over 100 new models from various themes: animated SST (Single Slip Turnouts) and DST (Double Slip Turnouts); bridge cranes with movable load; train station "Baden-Baden"; various track construction and track maintenance machines, etc.
- Numerous new models on hydrogen mobility (real estate and rolling stock - DAF hydrogen truck, hydrogen filling station, hydrogen plant)
- Detailed manual (PDF)
- Original DB signal book as PDF

**Download version** (EEP Eisenbahn.exe Professional 17 as download)

*Reference:*P17EXPESDDE

- Download version of EEP17 for PC-Windows (trilingual – English, French, German)
- New top models: two train sets of the Alstom Coradia iLint, series 654
- Immediately operational model systems
- Ready-made scenarios for a quick start
- A great variety of 3D models (real estate, vegetation, rolling stock, etc.)
- 100 new models from different topics: animated EKW's and DKW's; Bridge cranes with moveable cargo; Railway station "Baden-Baden"
- Numerous new models on hydrogen mobility (real estate and rolling stock - DAF hydrogen truck, hydrogen filling station, hydrogen plant)
- Detailed manual (PDF)
- Original DB signal book as PDF